

Congenital Malformations and Preeclampsia Associated with Integrase Inhibitor Use in Pregnancy

Short Title: INSTI Use in Pregnancy

Christiana Smith^{1*}, Angela J. Fought², Joyce F. Sung², Jennifer R. McKinney³, Torri D. Metz⁴, Kirk B. Fetters⁵, Sarah Lazarus⁶, Shannon Capraro⁷, Emily Barr⁸, Carrie Glenny⁹, Jenna Buehler², Adriana Weinberg^{1,10}, for the CHIP Perinatal Medical Team[^]

¹Department of Pediatrics, University of Colorado, Aurora, CO, USA

²University of Colorado, Aurora, CO, USA

³Baylor College of Medicine, Houston, TX, USA

⁴University of Utah Health, Salt Lake City, UT, USA

⁵Department of Medicine, Harbor-UCLA Medical Center, Torrance, CA, USA

⁶University of Wisconsin, Madison, WI, USA

⁷Department of Pediatrics, Children's Mercy Hospital, Kansas City, MO, USA

⁸UT Health Houston, Cizik School of Nursing, Houston, TX, USA

⁹Children's Hospital Colorado, Aurora, CO, USA

¹⁰Departments of Medicine and Pathology, University of Colorado, Aurora, CO, USA

*Corresponding Author

Email: Christiana.Smith@childrenscolorado.org

[^]Membership of the CHIP Perinatal Medical Team is provided in the Acknowledgments.

Abstract

Background: Antiretroviral therapy (ART) decreases perinatal HIV transmission, but concerns exist regarding maternal and infant safety. We compared the incidence of congenital malformations and other adverse outcomes in pregnancies exposed to integrase inhibitor (INSTI) versus non-INSTI ART.

Setting: Single-site review of all pregnancies among women living with HIV between 2008 and 2018.

Methods: We used binomial family generalized estimating equations to model the relationship of congenital anomalies and pregnancy outcomes with exposure to INSTI or dolutegravir (DTG) versus non-INSTI ART.

Results: Among 257 pregnancies, 77 women received ≥ 1 INSTI (54 DTG, 14 elvitegravir, 15 raltegravir), 167 received non-INSTI, and 3 had missing data. Forty-nine congenital anomalies were identified among 36 infants. Infants with first-trimester DTG or any first-trimester INSTI exposure had higher odds of congenital anomalies than infants with first-trimester non-INSTI exposure (OR=2.55; 95%CI=1.07-6.10; OR=2.61; 95%CI=1.15-5.94, respectively). Infants with INSTI exposure after the second trimester had no increased odds of anomalies. Women with INSTI exposure had higher odds of preeclampsia (OR=4.73; 95%CI=1.70-13.19). Among women who received INSTI, grade ≥ 3 laboratory abnormalities were noted in 2.6% while receiving the INSTI and 3.9% while not receiving the INSTI, versus 16.2% in women who received non-INSTI. There was no association between INSTI exposure and other pregnancy outcomes.

Conclusion: First-trimester INSTI exposure may be associated with increased rates of congenital anomalies.

Use of INSTI during pregnancy was also associated with preeclampsia in our cohort. These findings underscore the need for continued monitoring of the safety of INSTI in pregnancy.

44 Introduction

45 Antiretroviral therapy (ART) is an invaluable tool for preventing perinatal transmission of HIV, but concerns
46 exist regarding maternal and fetal safety of these medications. For example, protease inhibitors (PI) were
47 associated with increased rates of preterm birth; nevirapine and efavirenz with severe hepatitis; and stavudine
48 and didanosine with lactic acidosis.[1] Integrase strand transfer inhibitors (INSTI) are a newer class of ART that
49 have been incompletely studied in pregnancy. The INSTI dolutegravir (DTG) quickly gained popularity for use
50 in pregnant women due to its antiviral potency, high genetic barrier to resistance, and low side effect profile. In
51 2018, a birth outcomes surveillance study in Botswana reported increased rates of neural tube defects among
52 infants exposed to DTG at the time of conception, leading some public health institutions to advise against its
53 use in women contemplating pregnancy.[2] However, this study subsequently reported that the risk of neural
54 tube defects was lower than initially thought, and an increased risk has not been confirmed in other large
55 observational or retrospective studies.[3-6] DTG is now recommended as a preferred drug during
56 pregnancy.[1, 7]

57
58 Although a definitive link between DTG and neural tube defects has not been established, there has been
59 recent interest in a potential association between DTG and other types of congenital anomalies. Reports
60 published to date have had insufficient power to identify increases in the rate of anomalies among DTG-
61 exposed infants over the background prevalence. Post-marketing surveillance data identified musculoskeletal,
62 cardiac, and neurologic problems in infants exposed to DTG, but these reports are difficult to interpret given
63 the lack of denominators.[8] Observational studies reported rates of congenital anomalies ranging from 4-24%
64 in DTG-exposed infants.[4, 9] The SMARTT study identified a non-significant trend toward increased
65 neurologic diagnoses, including microcephaly and strabismus, among children with in utero DTG exposure
66 compared with other types of ART, with a greater magnitude of association for exposure during the first
67 trimester and at conception.[10]

68

69 Fewer data exist for INSTIs other than DTG, including raltegravir (RAL), elvitegravir (EVG), and bictegravir.
70 These INSTIs have not been associated with an increased risk of congenital anomalies among the few cases
71 reported to the Antiretroviral Pregnancy Registry or the Canadian Perinatal HIV Surveillance Programme;
72 however, these databases are subject to reporting biases and the true denominator of exposed infants remains
73 unknown.[11, 12] Observational cohorts from the US, UK, and Ireland reported low rates (0-2.5%) of congenital
74 anomalies among RAL- and EVG-exposed infants.[13, 14] The French Perinatal Cohort found a concerning 2-
75 fold higher rate of birth defects in infants exposed to RAL at conception compared to matched controls (6.4%
76 vs. 2.3%), albeit this difference did not reach statistical significance ($p=0.08$).[15] These studies suggest that
77 ongoing surveillance of infants with in utero INSTI exposure is needed.

78
79 Pregnancy outcomes other than congenital anomalies have also been inadequately described among women
80 exposed to DTG or other INSTIs. Several studies reported no increased rates of stillbirth, spontaneous
81 abortion, preterm birth, or SGA among INSTI-exposed infants.[4, 5, 15-17] In contrast, the SMARTT study
82 identified a 2-fold higher rate of preterm birth among infants with first-trimester INSTI exposure compared to no
83 INSTI exposure.[18] Few studies have compared maternal outcomes such as preeclampsia, gestational
84 diabetes, and laboratory abnormalities between pregnancies exposed to INSTIs versus other ART.[19, 20]

85
86 The objective of this study was to compare rates of congenital anomalies and adverse maternal and pregnancy
87 outcomes between INSTI-exposed mother-infant dyads and those exposed to PI- or non-nucleoside reverse
88 transcriptase inhibitor (NNRTI) regimens.

90 **Methods**

91 **Study Design**

92 For this retrospective cohort study, electronic health records were abstracted (EHR, Epic systems, Verona, WI)
93 for all pregnant women living with HIV and their infants who were followed by the Children's Hospital

94 Immunodeficiency Program (CHIP) clinic between January 1, 2008 and August 31, 2018. The CHIP clinic is
95 housed within Children’s Hospital Colorado, a large tertiary care referral center in Aurora, Colorado. CHIP
96 manages the majority of pregnant women living with HIV in a 7-state region and follows HIV-exposed infants
97 for the first 12-18 months of life. This study was approved by the Colorado Multiple Institutional Review Board
98 (COMIRB) with a waiver of informed consent.

99 **Data Management**

100 Demographic and clinical data were recorded in standardized forms developed in REDCap, hosted by the
101 University of Colorado, Denver.[21] EHR data included all available primary care, obstetric and HIV specialty
102 encounters, inpatient notes and diagnostic test results during the pregnancy period. Spontaneous abortion was
103 defined as fetal death <20 weeks, and stillbirth as death \geq 20 weeks gestational age. Small-for-gestational-age
104 (SGA) was defined as weight <10th percentile.[22] Infants with stillbirth, spontaneous abortion, or chromosomal
105 abnormalities were excluded from analyses of congenital anomalies. Twins were excluded from all analyses.
106 Pregnancies were categorized as having DTG or any INSTI exposure if a mother received these drugs at any
107 time between conception and delivery. ART was categorized by timing of receipt, in the first (gestational age
108 \leq 13 weeks), second (14-27), or third (28-delivery) trimesters.

109 Laboratory abnormalities were graded according to the 2017 Division of AIDS Table for Grading the Severity of
110 Adult and Pediatric Adverse Events with pregnancy-specific modifications.[23, 24] For white blood cells,
111 platelets, and absolute neutrophil count, grades were assigned according to the absolute values in the DAIDS
112 table. Grade 2 anemia was defined using a lower limit of hemoglobin according to trimester (9.5 and 8.0 g/dL in
113 trimesters 1 and 2/3, respectively). Grade 3 anemia was defined using a lower limit of hemoglobin of 7.0 g/dL
114 in all trimesters. For alanine aminotransferase, aspartate aminotransferase, creatinine, bilirubin, and lipase, the
115 upper limits of normal were assigned based on previously published normal ranges in each trimester.[24]
116 Laboratory abnormalities were considered potentially related to ARV exposure if they occurred at least 3 days
117 after starting a new medication or within 3 days of stopping a medication. “Baseline” viral load and CD4 count

118 were defined by the first value measured during pregnancy, and “delivery” values were obtained within 45 days
119 before or after the date of infant birth (or pregnancy loss).

120 Congenital anomalies were recorded if they were present at birth and identified in the first year of life. To avoid
121 missing any potential safety signals, we used a broad definition of congenital anomalies. Anomalies were
122 considered major if they required surgical or medical intervention or had serious cosmetic significance, as per
123 the NIAID definition for clinical trials.[25]

124 **Statistical Analysis**

125 All models fit were binomial family generalized estimating equations (GEEs) with logit link and an
126 exchangeable working correlation structure, which account for correlation in repeat measures among women
127 who had more than 1 pregnancy. This model was used unless otherwise specified. Inferences were conducted
128 using robust standard errors. We compared descriptive characteristics between INSTI- and non-INSTI-
129 exposed mothers and infants using binomial family GEEs for all characteristics except viral load and birth
130 weight, which were evaluated using GEE models with a normal distribution. Non-live births were excluded from
131 the descriptive analyses of birth/infant characteristics.

132 We evaluated the association between DTG or any INSTI exposure in the 1st trimester or the 2nd/3rd trimester
133 and congenital anomalies. The comparison group was either 1st trimester non-INSTI ART exposure or no
134 INSTI exposure, described separately for each result. We evaluated the relationship between INSTI exposure
135 (yes/no) and binary birth outcome (term versus preterm delivery). We also evaluated the relationship between
136 INSTI exposure (yes/no) and pregnancy outcomes including gestational diabetes, SGA, and preeclampsia. We
137 also described infrequent pregnancy outcomes including polyhydramnios (amniotic fluid index >25cm),
138 oligohydramnios (amniotic fluid index <5 cm), placenta previa (placental edge within 2cm of the internal
139 cervical os), and placental abruption (diagnosed clinically). We evaluated the association between two
140 demographic variables, race (Black vs. all other races) and maternal age (<18 or >40 vs. 18-40 years old), with
141 preeclampsia, using univariable analyses. Then we performed a multivariable analysis using binomial family
142 GEE that evaluated the association between INSTI exposure (yes/no), maternal age, and preeclampsia.

143 We used descriptive statistics to report the rates of grade ≥ 2 and ≥ 3 maternal chemistry and hematology
144 laboratory abnormalities among women who were and were not exposed to INSTI. For women who were
145 exposed to INSTI, we described laboratory abnormalities both while taking the INSTI, and during other times in
146 the pregnancy. Because the definition of the laboratory adverse events outcome included receipt of an INSTI
147 (or not) at the time of the laboratory abnormality, a statistical comparison of the association between this
148 outcome and INSTI exposure could not be performed.

149 All analyses were two-tailed, and significance was set at $p < 0.05$. Analyses were performed in SAS 9.4 (SAS
150 Institute).

151 Results

152 Participant Characteristics and Antiretroviral Regimens

153 During the study period, 193 mothers living with HIV had 257 pregnancies (**Figure 1**). After excluding 10 twin
154 gestations, 247 pregnancies remained in the analysis. Seventy-seven women received at least 1 INSTI (54
155 DTG, 14 EVG, 15 RAL), 167 received a PI- or NNRTI- (non-INSTI) regimen, and 3 had missing ART data and
156 were excluded from subsequent analyses. ART was started before conception for 25 women who received an
157 INSTI (13 of whom received DTG) and 87 women who received a non-INSTI regimen.

158 **Figure 1. Flowchart of HIV-exposed infants followed in the Children's Hospital Immunodeficiency**
159 **Program (CHIP) clinic who were included in this study.** A) All infants, divided by type of maternal
160 antiretroviral (ART) exposure; B) infants exposed to maternal integrase inhibitors (INSTI), divided by exposure
161 or not to dolutegravir (DTG).

162
163 **Table 1** shows maternal and infant demographics for the 244 pregnancies included in outcome analyses.
164 Women generally had well-controlled HIV, with a median (IQR) CD4 count of 520 (342-686) cells/mm³ and
165 viral load of 69.5 (<20-6967) RNA copies/mL at baseline. Pregnancies exposed to INSTI- vs. non-INSTI
166 regimens did not differ with respect to maternal age, CD4 count and viral load at baseline or delivery,

167 mechanism of delivery (vaginal vs. cesarean delivery), gestational age at delivery, infant race/ethnicity, infant
 168 sex, or infant birthweight. No infants acquired HIV.

169 **Table 1. Demographic and HIV disease characteristics of INSTI- and non-INSTI-exposed mothers and**
 170 **infants.**

		INSTI-exposed	Non-INSTI-exposed	
Maternal Characteristic		(n=77)	(n=167)	P
Maternal age at delivery/outcome (years)	Median (IQR)	31 (27-34)	30 (26-35)	0.15
Maternal CD4 count at baseline (cells/mm ³) ^a	Median (IQR)	531 (302-778)	517 (342-651)	0.66
Maternal CD4 count at delivery (cells/mm ³) ^a	Median (IQR)	520 (328-706)	570 (408-731)	0.36
Maternal viral load at baseline (copies/mL) ^a	Median (IQR)	121 (<20-15960)	71.5 (<20-6445)	0.74
Maternal viral load at delivery (copies/mL) ^a	Median (IQR)	<20 (<20-<20)	24 (<20-39)	0.47
Toxicology screen ever positive during pregnancy	Yes	10 (12.5%)	16 (9.2%)	0.26
		INSTI-exposed	Non-INSTI-exposed	
Birth/Infant Characteristic^b		(n=76)	(n=164)	P
Mechanism of delivery ^a	Vaginal	37 (48.68%)	84 (51.22%)	0.46
	Cesarean	38 (50.00%)	77 (46.95%)	
Gestational age at delivery (weeks)	Median (IQR)	38 (37-39)	39 (37-39)	0.44
Infant birth weight (grams) ^a	Median (IQR)	2998 (2661-3415)	3000 (2700-3221)	0.85
Infant sex	Male	37 (48.68%)	83 (50.61%)	0.83

Infant race ^a	Black	46 (60.53%)	86 (52.44%)	0.58
	White	21 (27.63%)	52 (31.71%)	
	Other	4 (5.26%)	11 (6.71%)	
Infant ethnicity ^a	Hispanic	13 (18.06%)	48 (30.77%)	0.06

^a Variables with missing data for INSTI-exposed vs. non-INSTI-exposed infants, respectively: maternal CD4 count at baseline (3, 9); maternal CD4 count at delivery (25, 56); maternal viral load at baseline (1, 1); maternal viral load at delivery (8, 19); mode of delivery (1, 3); infant birth weight (0, 2); infant race (5, 15); infant ethnicity (4, 8). All proportions are calculated among those with non-missing data.

^b Non-live births (n=4) were excluded from all birth/infant characteristics.

INSTI, integrase inhibitor; IQR, interquartile range

Incidence of Congenital Anomalies

After excluding 2 stillbirths, 2 spontaneous abortions, and one infant with multiple congenital anomalies attributed to Trisomy 21, 76 INSTI-exposed infants (53 of whom were DTG-exposed) and 163 non-INSTI-exposed infants were evaluated for congenital anomalies (**Figure 1**). Overall, 49 congenital anomalies were identified among 36 infants [12 (24.5%) musculoskeletal, 10 (20.4%) otolaryngologic, 8 (16.3%) cardiac, 6 (12.2%) cerebrospinal, 6 (12.2%) genitourinary, 3 (6.1%) dermatologic, 2 (5.7%) ophthalmologic, 2 (3.8%) gastrointestinal; **Table 2**]. No neural tube defects were identified. Twenty-six (53.1%) anomalies were major, and 34 (69.4%) anomalies were diagnoses tracked by the Metropolitan Atlanta Congenital Defects Program (MACDP).

187 **Table 2. Description of specific congenital anomalies that occurred among live-born infants of single gestation pregnancies, by organ**
 188 **system^a**

Anomaly type	Specific Diagnoses	Major^b	MACDP^c	Earliest maternal ART in pregnancy	Gestational age (weeks) at start of maternal ART
Cardiac	Atrial septal defect	Yes	Yes	elvitegravir, cobicistat, emtricitabine, tenofovir	preconception
	Atrial septal defect	No	Yes	lopinavir, ritonavir, lamivudine, zidovudine	preconception
	Innominate artery compression syndrome	Yes	Yes	atazanavir, ritonavir, emtricitabine, tenofovir	13
	Left ventricle noncompaction	Yes	Yes	atazanavir, ritonavir, lamivudine, abacavir	15
	Patent foramen ovale and patent ductus arteriosus	No	Yes	rilpivirine, emtricitabine, tenofovir	preconception
	Pulmonic valve dysplasia and stenosis	No	Yes	none	N/A
	Ventricular septal defect	No	Yes	dolutegravir, lamivudine, abacavir	preconception
	Ventricular septal defect	No	Yes	elvitegravir, cobicistat, emtricitabine, tenofovir	preconception
Cerebrospinal	Agenesis of the corpus callosum	Yes	Yes	atazanavir, ritonavir, emtricitabine, tenofovir	preconception
	Macrocephaly and developmental delay	Yes	Yes	atazanavir, ritonavir, emtricitabine, tenofovir	11
	Macrocephaly	No	Yes	elvitegravir, cobicistat, emtricitabine, tenofovir	18
	Macrocephaly	No	Yes	lopinavir, ritonavir, lamivudine, zidovudine	15
	Microcephaly and developmental delay	Yes	Yes	atazanavir, ritonavir, lamivudine, abacavir	15

	Rhomboencephalosynapsis, thin corpus callosum, prominent ventricles and extra-axial spaces, suggestive of diffuse atrophy	Yes	Yes	raltegravir, emtricitabine, tenofovir	12
Dermatologic	Hemangioma	Yes	No	dolutegravir, lamivudine, abacavir	12
	Hemangioma	No	No	atazanavir, ritonavir, lamivudine, abacavir	preconception
	Sebaceous nevus with associated alopecia on scalp	No	Yes	efavirenz, lamivudine, tenofovir	18
Otolaryngologic	Ankyloglossia	Yes	Yes	atazanavir, lamivudine, zidovudine	preconception
	Ankyloglossia	No	Yes	efavirenz, emtricitabine, tenofovir	preconception
	Ankyloglossia and laryngomalacia	Yes	Yes	dolutegravir, emtricitabine, tenofovir	23
	Bilateral nasolacrimal duct obstruction	Yes	No	elvitegravir, cobicistat, emtricitabine, tenofovir	preconception
	Congenital dacryocystocele	Yes	Yes	atazanavir, ritonavir, emtricitabine, tenofovir	preconception
	Laryngomalacia	No	No	atazanavir, ritonavir, lamivudine, abacavir	7
	Laryngomalacia and tracheomalacia	Yes	No	atazanavir, ritonavir, emtricitabine, tenofovir	preconception
	Middle ear dysfunction resulting in conductive hearing loss	Yes	Yes	dolutegravir, lamivudine, abacavir	preconception
	Tracheomalacia	No	No	rilpivirine, emtricitabine, tenofovir	10
	Tracheomalacia	No	No	elvitegravir, cobicistat, emtricitabine, tenofovir	18
Gastrointestinal	Hirschsprung's disease	Yes	Yes	atazanavir, ritonavir, emtricitabine, tenofovir	preconception
	Iliac volvulus due to abnormal mesentery development with congenital band	Yes	Yes	dolutegravir, lamivudine, abacavir	preconception

	Duplicate right renal collecting system	No	Yes	elvitegravir, cobicistat, emtricitabine, tenofovir	preconception
	Hydronephrosis	No	Yes	atazanavir, ritonavir, emtricitabine, tenofovir	9
	Penile torsion	Yes	Yes	atazanavir, ritonavir, emtricitabine, tenofovir	preconception
	Undescended testes, bilateral, self-resolved	No	Yes	dolutegravir, lamivudine, abacavir	preconception
	Undescended testicle, unilateral, self-resolved	No	Yes	lopinavir, ritonavir, lamivudine, zidovudine	24
	Vesicoureteral reflux and undescended testes	Yes	Yes	atazanavir, ritonavir, emtricitabine, tenofovir	preconception
Musculoskeletal	Acetabular dysplasia with leg length discrepancy	Yes	Yes	efavirenz, emtricitabine, tenofovir	1
	Arthrogyriposis and talipes equinovarus	Yes	Yes	dolutegravir, lamivudine, abacavir	preconception
	Butterfly vertebrae	No	Yes	raltegravir, emtricitabine, tenofovir	12
	Developmental hip dysplasia	No	No	dolutegravir, lamivudine, abacavir	24
	Developmental hip dysplasia	Yes	No	efavirenz, emtricitabine, tenofovir	preconception
	Diplegia with limb dystonia	Yes	No	lopinavir, ritonavir, lamivudine, abacavir	preconception
	Pseudoarthrosis of clavicle	Yes	Yes	elvitegravir, cobicistat, emtricitabine, tenofovir	preconception
	Syndactyly	No	Yes	atazanavir, ritonavir, lamivudine, abacavir	15
	Talipes equinovarus	Yes	Yes	atazanavir, ritonavir, emtricitabine, tenofovir	preconception
	Umbilical hernia	No	No	dolutegravir, emtricitabine, tenofovir	8
	Umbilical hernia	No	No	atazanavir, ritonavir, emtricitabine, tenofovir	18
	Umbilical hernia	No	No	dolutegravir, lamivudine, abacavir	12

Ophthalmologic	Strabismus	Yes	No	dolutegravir, emtricitabine, tenofovir	25
	Strabismus	Yes	No	dolutegravir, emtricitabine, tenofovir	8

189 ^a Forty-nine anomalies occurred among 36 infants; some infants were counted more than once in this table.

190 ^b Major anomalies were defined as those that required surgical or medical intervention or had serious cosmetic significance.

191 ^c MACDP, Metropolitan Atlanta Congenital Defects Program. "Yes" indicates that the diagnosis is tracked by the MACDP, and "no" indicates that the diagnosis is considered a minor
192 defect, a normal variant, or another type of condition that is not tracked by MACDP.

193 Abbreviations: ART, antiretroviral treatment.

194

Association of Congenital Anomalies with Antiretroviral Drugs

Among 40 infants exposed to an INSTI in the first trimester, 11 (27.5%) had at least one congenital anomaly compared with 13 (11.9%) among 109 infants exposed to non-INSTI ART in the first trimester (OR=2.61; 95%CI=1.15-5.94; **Figure 2**). When infants never exposed to an INSTI were used as the comparator group, the rates of congenital anomalies were 27.5% vs. 11.0% (18 out of 163) for an OR=2.91 (95%CI=1.33-6.40). When anomalies were restricted to those recognized by the MACDP, the rates of congenital anomalies were 17.5% (7 out of 40) among infants with first trimester INSTI exposure vs. 8.6% (14 out of 163) among infants with no INSTI exposure (OR=2.23; 95%CI=0.89-5.56). Infants whose INSTI exposure began in the second or third trimesters did not have increased odds of congenital anomalies; 6 out of 36 (16.7%) of these infants had an anomaly compared with 11.0% among infants with no INSTI exposure (OR=1.58; 95%CI=0.58-4.30). The anomaly types that occurred most frequently among INSTI-exposed infants were otolaryngologic and musculoskeletal (**Figure 3**).

Figure 2. Association between in utero exposure to any integrase inhibitor (INSTI) or dolutegravir (DTG) and the odds of having a congenital anomaly. The reference group for first trimester DTG or any INSTI exposure is infants with first trimester non-INSTI ART exposure. The reference group for 2nd/3rd trimester DTG or any INSTI exposure is infants never exposed to INSTI ART.

Figure 3. Percentage of infants ever exposed to an integrase inhibitor (INSTI) or non-INSTI regimen with each type of congenital anomaly.

Among 24 infants exposed to DTG in the first trimester, 7 (29.2%) had congenital anomalies compared with 13 (11.9%) among 109 infants exposed to non-INSTI ART in the first trimester (OR=2.55; 95%CI=1.07-6.10; **Figure 2**). When infants never exposed to an INSTI were used as the comparator group, the rates of congenital anomalies were 29.2% vs. 11.0% (18 out of 163) for an OR=3.13 (95% CI=1.29-7.63). When anomalies were restricted to those recognized by the MACDP, the rates of congenital anomalies were 16.7%

(4 out of 24) among infants with first trimester DTG exposure vs. 8.6% (14 out of 163) among infants with no INSTI exposure (OR=2.14; 95%CI=0.73-6.25). Infants whose DTG exposure began in the second or third trimesters did not have increased odds of congenital anomalies; 5 out of 29 (17.2%) of these infants had an anomaly compared with 11.0% among infants with no INSTI exposure (OR=1.80; 95%CI=0.61-5.30).

One stillbirth that had been exposed to DTG beginning in the 2nd trimester had dysmorphic features noted at autopsy, including microcephaly, low set ears, retrognathia, and elongated fingers. Cytogenetic studies of fetal tissue revealed no abnormalities of chromosome number or structure. This mother was diagnosed with HIV in the 2nd trimester of pregnancy and received 5 weeks of DTG prior to presenting in preterm labor. The 3 remaining non-live births (1 stillbirth and 2 spontaneous abortions) occurred after non-INSTI ART exposures. All 3 fetuses were anatomically normal, as documented by fetal autopsies in two cases and gross examination in the remaining case.

Association of Maternal and Pregnancy Outcomes with Antiretroviral Drugs

We examined maternal and pregnancy outcomes with respect to exposure to INSTI- vs. non-INSTI ART (**Table 3**). We found an association between INSTI exposure at any time during pregnancy and preeclampsia (OR=4.73; 95%CI=1.70-13.19). To evaluate for potential confounders, we examined the relationship of maternal age and race with preeclampsia in univariable analyses. We only found an association between maternal age and preeclampsia (OR=1.11; 95% CI=1.02-1.19). In a multivariable model including maternal age, INSTI exposure during pregnancy remained a significant predictor of preeclampsia ($p=0.01$). Other maternal and pregnancy outcomes did not differ between groups, including preterm birth, which occurred in 16.88% of INSTI-exposed and 13.77% of non-INSTI exposed pregnancies.

244 **Table 3. Pregnancy outcomes of women receiving INSTI- and non-INSTI antiretroviral therapy**

Outcome		INSTI-exposed	Non-INSTI-exposed	P ^a
		(n=77)	(n=167)	
Birth outcome	Term delivery	63 (81.82%)	141 (84.43%)	0.37
	Preterm delivery	13 (16.88%)	23 (13.77%)	
	Spontaneous abortion	0 (0%)	2 (1.20%)	
	Stillbirth	1 (1.30%)	1 (0.60%)	
Small for gestational age ^{b,c}		14 (18.92%)	27 (18.00%)	0.81
Preeclampsia		11 (14.29%)	6 (3.59%)	<0.01
Gestational diabetes		6 (7.79%)	16 (9.58%)	0.39
Polyhydramnios ^d		1 (1.25%)	2 (1.15%)	-
Oligohydramnios ^d		4 (5.00%)	5 (2.87%)	-
Placenta previa ^d		0	3 (1.72%)	-
Placental abruption ^d		2 (2.50%)	3 (1.72%)	-

245 ^a Birth outcome, small for gestational age, preeclampsia, and gestational diabetes were compared using binomial family generalized
 246 estimating questions (GEEs).

247 ^b Variables with missing data for women receiving INSTI- vs. non-INSTI ART, respectively: small for gestational age (2, 14). All
 248 proportions are calculated among those with non-missing data.

249 ^c Non-live births (n=4) were excluded from the following characteristics: small for gestational age

250 ^d Outcomes occurred too infrequently to perform a statistical comparison.

251 INSTI, integrase inhibitor

252

253 Of 77 women who received INSTIs, 11 (14.3%) had a grade ≥ 2 chemistry or hematology laboratory
 254 abnormality while taking the INSTI, and 13 (16.9%) had a grade ≥ 2 laboratory abnormality at another time
 255 during the pregnancy. Of 167 women who received non-INSTI ART, 47 (28.1%) had a grade ≥ 2 laboratory

256 abnormality during pregnancy. The most common grade ≥ 2 laboratory abnormalities among women receiving
257 INSTIs included hyperbilirubinemia (n=6), elevated lipase (n=2), elevated aspartate aminotransferase (n=2),
258 and anemia (n=2). The most common grade ≥ 2 laboratory abnormalities among women receiving non-INSTI
259 ART included hyperbilirubinemia (n=65), elevated lipase (n=21), and thrombocytopenia (n=10).

260 Of 77 women who received INSTIs, 2 (2.6%) had a grade ≥ 3 chemistry or hematology laboratory abnormality
261 while taking the INSTI, and 3 (3.9%) at another time during the pregnancy. Of 167 women who received non-
262 INSTI ART, 27 (16.2%) had a grade ≥ 3 laboratory abnormality. The grade ≥ 3 laboratory abnormalities among
263 women receiving INSTIs included anemia (n=2), elevated lipase (n=1), and elevated serum creatinine (n=1).
264 The most common grade ≥ 3 laboratory abnormalities among women receiving non-INSTIs included
265 hyperbilirubinemia (n=37), anemia (n=4), and elevated lipase (n=2).

266 Discussion

267 In this single-center cohort over a 10-year period, we identified a more than two-fold higher risk of congenital
268 anomalies among infants exposed to INSTI- vs. non-INSTI ART during the first trimester of pregnancy. Of the
269 40 INSTI exposures in the first trimester, 24 included DTG, which on its own was associated with a more than
270 two-fold increased risk of anomalies. However, when evaluating all INSTI exposures together, the association
271 with anomalies remained significant, suggesting that a class effect may exist. The birth defects we identified
272 among INSTI-exposed infants did not cluster by organ system, although most anomalies observed among
273 INSTI-exposed infants were either musculoskeletal or otolaryngologic. We did not identify any neural tube
274 defects.

275 To our knowledge, this is the first study showing a significant association between a variety of congenital
276 anomalies and the use of INSTI in the first trimester of pregnancy. Several previous studies have focused on
277 the specific association between DTG and neural tube defects.[2, 3, 5] Recent publications describing other
278 types of congenital anomalies among INSTI-exposed infants are subject to limitations such as small sample
279 sizes, lack of a control group, and/or lack of a true denominator.[4, 8, 9, 11-14] However, at least two large
280 observational studies identified non-significant trends toward increased congenital anomalies among infants

281 exposed to INSTI in the first trimester.[10, 15] Ideally, the potential associations we identified should be
282 confirmed in additional studies with larger sample sizes.

283 We did not find significant associations between congenital anomalies and the use of INSTI in the second or
284 third trimester. This aligns with what is known about the timing of organogenesis, which is complete by 12-14
285 weeks of gestation. In support of the hypothesis that in utero INSTI exposure could trigger abnormal fetal
286 development, one research group has presented preliminary data showing that cultured human embryonic
287 stem cells experience apoptosis, reduction in viability and/or loss of pluripotency after in vitro exposure to
288 various drugs from the INSTI class at therapeutic and sub-therapeutic concentrations.[26, 27]

289 We noted high overall rates of congenital anomalies in our cohort: 27.5% in INSTI-exposed and 11.9% in non-
290 INSTI-exposed infants. Previous studies of HIV- and/or ART-exposed infants have documented rates of
291 congenital anomalies ranging from 5.5 to 14.8%.[28-30] One pharmacokinetics study of DTG in pregnant
292 women diagnosed anomalies in 24% of exposed infants, similar to the proportion we identified.[9] We suspect
293 that our clinic's practice of following HIV-exposed infants with frequent visits and careful examinations over the
294 first 12-18 months of life allowed us to identify anomalies that may have been overlooked in other settings. In
295 particular, studies that depend on registry data are subject to bias from under-reporting/differential reporting,
296 under-ascertainment/differential ascertainment of birth defects, and loss to follow up. We do not believe that
297 our elevated rate of congenital anomalies is attributable to the inclusion of inappropriate diagnoses. Seventy
298 percent of the anomalies we included are diagnoses that are tracked by the MACDP (see **Table 2**), and
299 diagnoses that are not tracked by the MACDP have been included in other reports of the association between
300 congenital anomalies and INSTI exposure.[8, 15, 31, 32] Of note, congenital anomalies have been associated
301 with maternal pre-gestational diabetes; only two women in this cohort had a diagnosis of pre-gestational
302 diabetes and neither of their infants had an anomaly.

303 We identified higher rates of preeclampsia in women who received INSTI vs. non-INSTI ART during
304 pregnancy. A previous study reported higher rates of gestational hypertension among women receiving DTG
305 compared to efavirenz, although rates of hypertension were lower than among women without HIV in that
306 study.[19] Other studies have identified a relationship between INSTIs and adverse cardiometabolic outcomes,

307 with one study in non-pregnant women showing increases in both blood pressure and HbA1c in women who
308 switched from a PI- or NNRTI to an INSTI regimen, compared with women who did not switch.[33] However,
309 another study found a protective effect of DTG against gestational diabetes.[34] We did not find an association
310 between INSTI exposure and any other adverse maternal and/or pregnancy outcomes, including gestational
311 diabetes, SGA, spontaneous abortion, stillbirth, or preterm birth. Other studies have identified an association
312 between INSTI exposure during pregnancy and preterm birth.[18] Of note, our comparison group included
313 women who received PIs, which are associated with increased rates of preterm birth [35, 36]; this may have
314 limited our ability to detect an association between INSTI exposure and preterm birth, should one exist.

315 We noted that women on INSTI had fewer grade ≥ 3 chemistry and hematology laboratory abnormalities
316 compared to women on non-INSTI regimens, although this could not be compared in a formal statistical
317 analysis. Hyperbilirubinemia made up the majority of laboratory abnormalities in our cohort. Of note, we used
318 pregnancy-specific normal ranges for bilirubin in the current study, which are lower than normal ranges in
319 nonpregnant adults.[24, 37]

320 We did not identify differences in maternal viral load at delivery between mothers receiving INSTI vs. non-
321 INSTI regimens. Notably, most women in our cohort had well-controlled HIV at baseline. One benefit of INSTIs
322 is rapid reduction in viral load, which makes their use beneficial in particular scenarios, i.e. pregnant women
323 who present late to care. Several studies have identified lower viral loads at delivery among pregnant women
324 receiving INSTI compared with non-INSTI regimens.[17, 32, 38] Other potential benefits of INSTI include a low
325 side effect profile and high genetic barrier to resistance. Our findings suggest that these potential benefits must
326 be weighed against the potential risks of congenital anomalies and preeclampsia associated with INSTI use in
327 pregnancy.

328 Limitations of this study include its retrospective nature. The total number of pregnancies included in the study
329 was relatively small, which resulted in wide confidence intervals around our odds ratios. Our small sample size
330 also precluded the ability to perform multivariable analyses; however, most characteristics were well balanced
331 between infants exposed to INSTI and non-INSTI regimens. In addition, this study was performed at a single
332 site, which may limit the generalizability of our results. The introduction of INSTIs overlapped with changes in

333 the nucleoside reverse transcriptase inhibitor (NRTI) backbone from zidovudine- to abacavir- or tenofovir-
334 containing regimens, such that we were unable to match or control for the use of NRTI. Although one recent
335 large study did not find any association between specific NRTIs and congenital anomalies, previous studies
336 attributed fetal cardiac malformations to in utero zidovudine exposure.[29, 39-41] However, only one out of
337 eight infants with a cardiac anomaly in our study was exposed to zidovudine. The temporal change in NRTI
338 backbone may also explain the higher incidence of grade ≥ 3 toxicities in the non-INSTI cohort and it may have
339 resulted in additional confounders. Finally, we did not collect data on maternal body mass index, tobacco or
340 alcohol use, or medications other than ART.

341 In conclusion, we identified a potential association between first trimester INSTI exposure and congenital
342 anomalies of the non-neural tube defect type. We also identified an association between receipt of INSTI
343 during pregnancy and preeclampsia. Ongoing surveillance of women and infants with gestational INSTI
344 exposure is necessary to confirm these potential safety concerns.

345

346 **Acknowledgements**

347 CHIP Perinatal Team members who contributed to this study and/or publication: Megan Dinnebeil, Jennifer
348 Dunn, Phillip Ferrero, Kay Kinzie, Elizabeth J. McFarland, Jennifer Moor, Kacey Navarro, and Suzanne Paul.

References

1. Panel on Treatment of HIV During Pregnancy and Prevention of Perinatal Transmission. Recommendations for the Use of Antiretroviral Drugs During Pregnancy and Interventions to Reduce Perinatal HIV Transmission in the United States. [Available from: <https://clinicalinfo.hiv.gov/en/guidelines/perinatal>.
2. Zash R, Makhema J, Shapiro RL. Neural-Tube Defects with Dolutegravir Treatment from the Time of Conception. *N Engl J Med*. 2018;379(10):979-81.
3. Zash R, Holmes L, Diseko M, Jacobson DL, Mayondi G, Isaacson A, et al., editors. Update on Neural Tube Defects with Antiretroviral Exposure in the Tsepamo Study, Botswana. *AIDS* 2020; 2020 July 8, 2020; San Francisco, CA (Held virtually due to COVID-19).
4. Thorne C, Rasi V, Aebi-Popp K, Ene L, Florida M, Mendoza Palomar N, et al., editors. Outcomes following prenatal exposure to dolutegravir: The DOLOMITE-EPPICC Study Conference on Retroviruses and Opportunistic Infections 2020; (Held virtually due to COVID-19).
5. Pereira GFM, Kim A, Jalil EM, Fernandes Fonseca F, Shepherd BE, Veloso VG, et al. Dolutegravir and pregnancy outcomes in women on antiretroviral therapy in Brazil: a retrospective national cohort study. *Lancet HIV*. 2021;8(1):e33-e41.
6. Vannappagari V, Albano JD, Ragone L, Cook T, Scheuerle AE, Short WR, et al., editors. Maternal Dolutegravir (DTG) Use, and Pregnancy and Birth Outcomes: The Antiretroviral Pregnancy Registry (APR). *IDWeek*; 2021 September 29 - October 3, 2021; Held virtually due to COVID-19.
7. World Health Organization. WHO recommends dolutegravir as preferred HIV treatment option in all populations. 2019.
8. Crawford M, van Wyk J, Aboud M, Vannappagari V, Romach B, Curtis L, et al. Postmarketing Surveillance of Pregnancy Outcomes With Dolutegravir Use. *J Acquir Immune Defic Syndr*. 2020;83(1):e2-e5.
9. Mulligan N, Best BM, Wang J, Capparelli EV, Stek A, Barr E, et al. Dolutegravir pharmacokinetics in pregnant and postpartum women living with HIV. *Aids*. 2018;32(6):729-37.

- 374 10. Crowell CS, Williams PL, Yildirim C, Van Dyke RB, Smith R, Chadwick EG, et al. Safety of in-utero
375 antiretroviral exposure: neurologic outcomes in children who are HIV-exposed but uninfected. *AIDS*.
376 2020;34(9):1377-87.
- 377 11. Antiretroviral Pregnancy Registry Steering Committee. Antiretroviral Pregnancy Registry Interim Report
378 for 1 January 1989 through 31 January 2020 Wilmington NC: Registry Coordinating Center; 2020 [Available
379 from: www.APRegistry.com.
- 380 12. Money D, Lee T, O'Brien C, Brophy J, Bitnun A, Kakkar F, et al. Congenital anomalies following
381 antenatal exposure to dolutegravir: a Canadian surveillance study. *BJOG*. 2019;126(11):1338-45.
- 382 13. Badell ML, Sheth AN, Momplaisir F, Rahangdale L, Potter J, Woodham PC, et al. A Multicenter
383 Analysis of Elvitegravir Use During Pregnancy on HIV Viral Suppression and Perinatal Outcomes. *Open Forum*
384 *Infect Dis*. 2019;6(4):ofz129.
- 385 14. Rasi V, Cortina-Borja M, Peters H, Sconza R, Thorne C. Brief Report: Surveillance of Congenital
386 Anomalies After Exposure to Raltegravir or Elvitegravir During Pregnancy in the United Kingdom and Ireland,
387 2008-2018. *J Acquir Immune Defic Syndr*. 2019;80(3):264-8.
- 388 15. Sibiude J, Le Chenadec J, Mandelbrot L, Dollfus C, Matheron S, Lelong N, et al. Risk of birth defects
389 and perinatal outcomes in HIV-infected women exposed to integrase strand inhibitors during pregnancy. *Aids*.
390 2021;35(2):219-26.
- 391 16. Zash R, Jacobson DL, Diseko M, Mayondi G, Mmalane M, Essex M, et al. Comparative safety of
392 dolutegravir-based or efavirenz-based antiretroviral treatment started during pregnancy in Botswana: an
393 observational study. *Lancet Glob Health*. 2018;6(7):e804-e10.
- 394 17. Lockman S, Brummel SS, Ziemba L, Stranix-Chibanda L, McCarthy K, Coletti A, et al. Efficacy and
395 safety of dolutegravir with emtricitabine and tenofovir alafenamide fumarate or tenofovir disoproxil fumarate,
396 and efavirenz, emtricitabine, and tenofovir disoproxil fumarate HIV antiretroviral therapy regimens started in
397 pregnancy (IMPAACT 2010/VESTED): a multicentre, open-label, randomised, controlled, phase 3 trial. *Lancet*.
398 2021;397(10281):1276-92.

- 399 18. O'Brien BE, Williams PL, Huo Y, Kacanek D, Chadwick EG, Powis KM, et al. Repeat Pregnancies
400 Among US Women Living With HIV in the SMARTT Study: Temporal Changes in HIV Disease Status and
401 Predictors of Preterm Birth. *Journal of acquired immune deficiency syndromes*. 2020;85(3):346-54.
- 402 19. Zash R, Caniglia E, Mayondi G, Diseko M, Mabuka J, Jacobson D, et al., editors. The Risk of
403 Gestational Hypertension with Use of Dolutegravir at Conception. . Conference on Retroviruses and
404 Opportunistic Infections; 2021 March 6-10, 2021; virtual due to COVID-19.
- 405 20. Chadwick EG, Jacobson D, Haddad L, Jao J, Powis KM, Kacanek D, et al., editors. Timing of ART is
406 Associated with Hypertensive Disorders of Pregnancy. Conference on Retroviruses and Opportunistic
407 Infections; March 6-10, 2021; (Held virtually due to COVID-19).
- 408 21. Harris PA, Taylor R, Thielke R, Payne J, Gonzalez N, Conde JG. Research electronic data capture
409 (REDCap)--a metadata-driven methodology and workflow process for providing translational research
410 informatics support. *J Biomed Inform*. 2009;42(2):377-81.
- 411 22. Olsen IE, Groveman SA, Lawson ML, Clark RH, Zemel BS. New intrauterine growth curves based on
412 United States data. *Pediatrics*. 2010;125(2):e214-24.
- 413 23. Division of AIDS (DAIDS) Table for Grading the Severity of Adult and Pediatric Adverse Events July
414 2017 [Available from: <https://rsc.niaid.nih.gov/sites/default/files/daidsgradingcorrectedv21.pdf>].
- 415 24. Cunningham FC. Normal Reference Ranges for Laboratory Values in Pregnancy. In: Post TW, editor.
416 UpToDate. Waltham, MA: UpToDate; 2020.
- 417 25. Rasmussen SA, Hernandez-Diaz S, Abdul-Rahman OA, Sahin L, Petrie CR, Keppler-Noreuil KM, et al.
418 Assessment of congenital anomalies in infants born to pregnant women enrolled in clinical trials. *Clin Infect*
419 *Dis*. 2014;59 Suppl 7:S428-36.
- 420 26. Smith M-SR, Cote HC, editors. Toxicity of Integrase Inhibitors in a Human Embryonic Stem-Cell Model.
421 Conference on Retroviruses and Opportunistic Infections; March 8-11, 2020; (Held virtually due to COVID-19).
- 422 27. Smith M-SR, Patel R, Martineau L, Cote HC, editors. Some InSTIs Induce Toxicity and Differentiation in
423 Human Embryonic Stem Cells. Conference on Retroviruses and Opportunistic Infections; 2022; Virtual due to
424 Covid-19.

- 425 28. Berard A, Sheehy O, Zhao JP, Abrahamowicz M, Loutfy M, Boucoiran I, et al. Antiretroviral combination
426 use during pregnancy and the risk of major congenital malformations. *AIDS*. 2017;31(16):2267-77.
- 427 29. Williams PL, Crain MJ, Yildirim C, Hazra R, Van Dyke RB, Rich K, et al. Congenital anomalies and in
428 utero antiretroviral exposure in human immunodeficiency virus-exposed uninfected infants. *JAMA Pediatr*.
429 2015;169(1):48-55.
- 430 30. Knapp KM, Brogly SB, Muenz DG, Spiegel HM, Conway DH, Scott GB, et al. Prevalence of congenital
431 anomalies in infants with in utero exposure to antiretrovirals. *Pediatr Infect Dis J*. 2012;31(2):164-70.
- 432 31. Vannappagari V, Thorne C, for APR, Eppicc. Pregnancy and Neonatal Outcomes Following Prenatal
433 Exposure to Dolutegravir. *J Acquir Immune Defic Syndr*. 2019;81(4):371-8.
- 434 32. Kintu K, Malaba TR, Nakibuka J, Papamichael C, Colbers A, Byrne K, et al. Dolutegravir versus
435 efavirenz in women starting HIV therapy in late pregnancy (DoIPHIN-2): an open-label, randomised controlled
436 trial. *Lancet HIV*. 2020;7(5):e332-e9.
- 437 33. Summers NA, Lahiri CD, Angert CD, Aldredge A, Mehta CC, Ofotokun I, et al. Metabolic Changes
438 Associated With the Use of Integrase Strand Transfer Inhibitors Among Virally Controlled Women. *J Acquir
439 Immune Defic Syndr*. 2020;85(3):355-62.
- 440 34. Mmasa KN, Powis K, Sun S, Makhema J, Mmalane M, Kgole S, et al. Gestational diabetes in women
441 living with HIV in Botswana: lower rates with dolutegravir- than with efavirenz-based antiretroviral therapy. *HIV
442 Med*. 2021;22(8):715-22.
- 443 35. Mesfin YM, Kibret KT, Taye A. Is protease inhibitors based antiretroviral therapy during pregnancy
444 associated with an increased risk of preterm birth? Systematic review and a meta-analysis. *Reprod Health*.
445 2016;13:30.
- 446 36. Sebikari D, Farhad M, Fenton T, Owor M, Stringer JSA, Qin M, et al. Risk Factors for Adverse Birth
447 Outcomes in the PROMISE 1077BF/1077FF Trial. *J Acquir Immune Defic Syndr*. 2019;81(5):521-32.
- 448 37. Weinberg A, Forster-Harwood J, Davies J, McFarland EJ, Pappas J, Kinzie K, et al. Safety and
449 tolerability of antiretrovirals during pregnancy. *Infectious diseases in obstetrics and gynecology*.
450 2011;2011:867674.

- 451 38. Joao EC, Morrison RL, Shapiro DE, Chakhtoura N, Gouvea MIS, de Lourdes BTM, et al. Raltegravir
452 versus efavirenz in antiretroviral-naive pregnant women living with HIV (NICHD P1081): an open-label,
453 randomised, controlled, phase 4 trial. *Lancet HIV*. 2020;7(5):e322-e31.
- 454 39. Sibiude J, Le Chenadec J, Bonnet D, Tubiana R, Faye A, Dollfus C, et al. In utero exposure to
455 zidovudine and heart anomalies in the ANRS French perinatal cohort and the nested PRIMEVA randomized
456 trial. *Clinical infectious diseases : an official publication of the Infectious Diseases Society of America*.
457 2015;61(2):270-80.
- 458 40. Garcia-Otero L, Lopez M, Gomez O, Gonce A, Bennasar M, Martinez JM, et al. Zidovudine treatment in
459 HIV-infected pregnant women is associated with fetal cardiac remodelling. *AIDS*. 2016;30(9):1393-401.
- 460 41. Sibiude J, Mandelbrot L, Blanche S, Le Chenadec J, Boullag-Bonnet N, Faye A, et al. Association
461 between prenatal exposure to antiretroviral therapy and birth defects: an analysis of the French perinatal
462 cohort study (ANRS CO1/CO11). *PLoS medicine*. 2014;11(4):e1001635.

463

464

Figure 1.

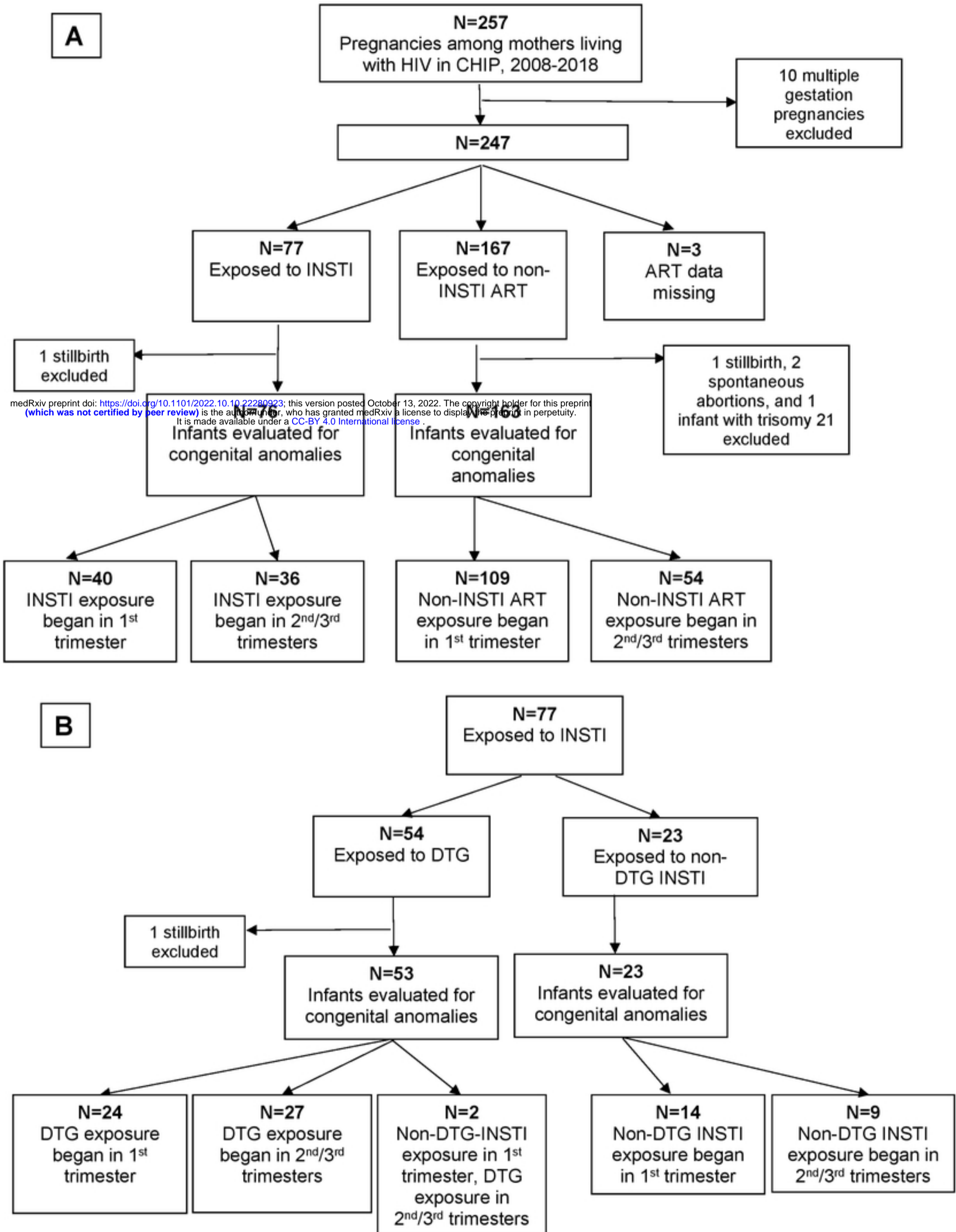


Figure 1

Figure 2.

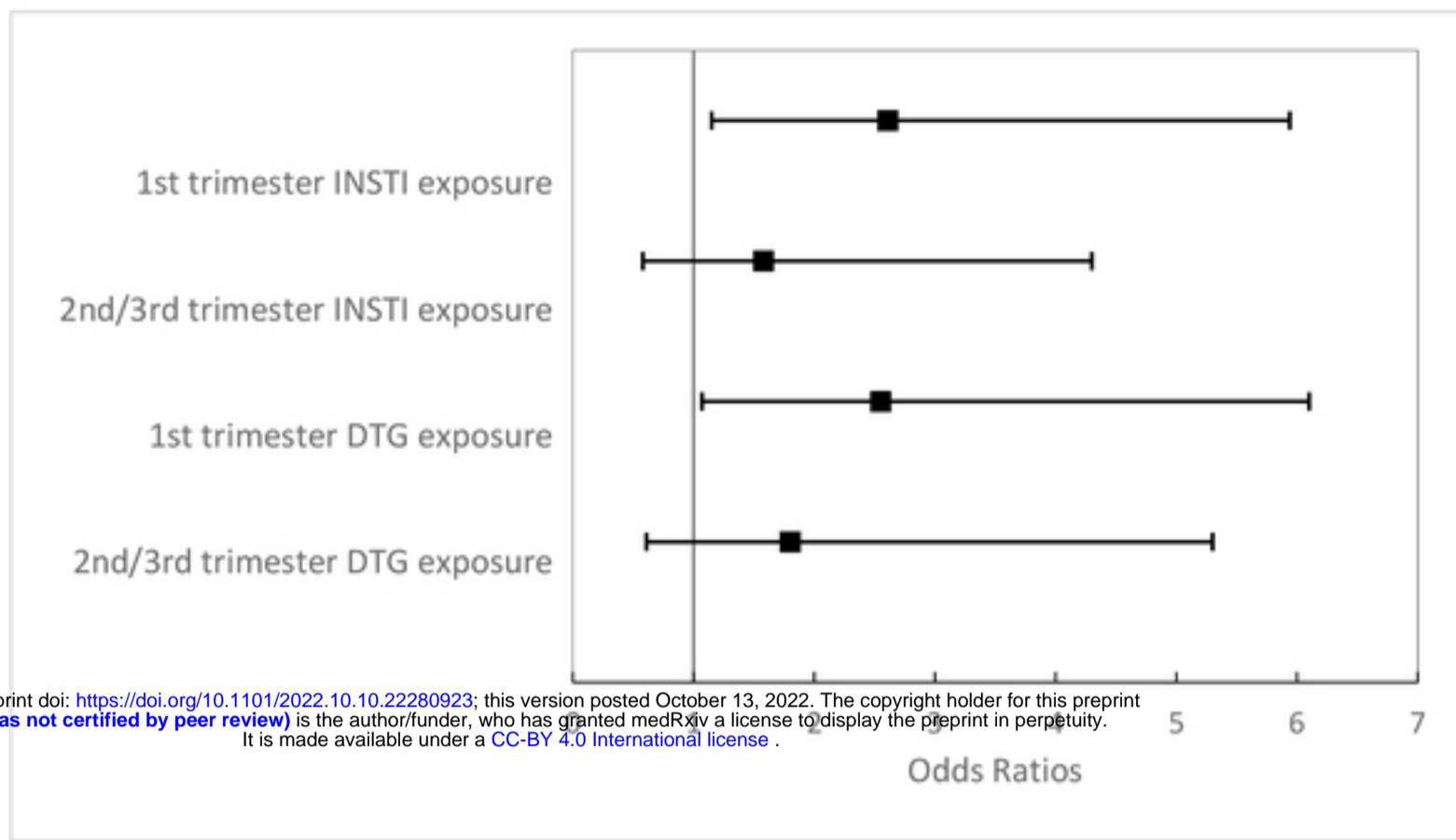


Figure 3.

