

1 **Immune response after SARS-CoV-2 infection with residual post COVID symptoms**

2
3 Tanyaporn Pongkunakorn, M.Sc.¹, Thamonwan Manosan, B.Sc.¹, Apinya Surawit, M.Sc.¹, Suphawan
4 Ophakas, B.Sc.¹, Pichanun Mongkolsucharitkul, M.Sc.¹, Sureeporn Pumiem, B.Sc.¹, Sophida Suta,
5 M.Sc.¹, Bonggochpass Pinsawas, M.Sc.¹, Nitat Sookrung, Ph.D.², Nawannaporn Saelim, M.Sc.²,
6 Kodchakorn Mahasongkram, Ph.D.², Pannathee Prangtaworn, Ph.D.², Anchalee Tungtrongchitr, M.D.,
7 Ph.D.², Watip Tangjittipokin, Ph.D.³, Kobporn Boonnak, Ph.D.³, Tassanee Narkdontri, M.Sc.⁴, Nipaporn
8 Teerawattanapong, M.Sc.⁴, Anan Jongkaewwattana, Ph.D.⁵, Korapat Mayurasakorn, M.D., FRCFPT^{1,*}

9
10 ¹Siriraj Population Health and Nutrition Research Group, Department of Research and Development, Siriraj
11 Medical Research Center, Mahidol University, ²Center of Research Excellence on Therapeutic Proteins and
12 Antibody Engineering, Department of Parasitology, Faculty of Medicine Siriraj Hospital, Mahidol
13 University, ³Department of Immunology, the Faculty of Medicine Siriraj Hospital, Mahidol University,
14 ⁴Research Department, Faculty of Medicine Siriraj Hospital, Mahidol University, ⁵National Center for
15 Genetic Engineering and Biotechnology, National Science and Technology Development Agency,
16 Pathumthani, Thailand

17
18 **Correspondence to:** Dr. Mayurasakorn can be contacted at korapat.may@mahidol.edu, or at the Siriraj
19 Population Health and Nutrition Research Group, Department of Research and Development, Siriraj Medical
20 Research Center, Mahidol University, 2 Wanglang Rd, Siriraj, Bangkok Noi, Bangkok, Thailand 10700.

21
22 **Funding:** This study was supported by the Faculty of Medicine, Siriraj Hospital, Mahidol University (grant
23 number R016534004). The funders had no role in study design, data collection, data measurement, publish
24 decisions, and manuscript preparation.

25
26 **Competing interests:** The authors declare that no competing interests exist.

27 **ABSTRACT**

28 **BACKGROUND**

29 In a number of patients, post-acute COVID syndrome develops after acute infection with severe acute
30 respiratory syndrome coronavirus 2 (SARS-CoV-2) (Long COVID [LC]). Here, we examined the immune
31 responses and clinical characteristics of individuals with LC compared to age- and gender-matched healthy
32 recovered COVID individuals (HC) during the Omicron pandemic. Immune responses following
33 BNT162b2 (Pfizer) booster are also determined.

34 **METHODS**

35 This retrospective cohort study included 292 patients (LC, 158; HC, 134) confirmed to have SARS-CoV-2
36 infection from January to August 2022. We determined anti-SARS-CoV-2 receptor-binding domain
37 immunoglobulin G (anti-RBD IgG), surrogate virus neutralization test (sVNT), T-cell subsets, and
38 neutralization of wild-type, BA.1 and BA.5. A subset of patients was voluntarily recruited for booster
39 vaccination with BNT162b2 vaccine and immunogenicity was assessed 4weeks after vaccination.

40 **RESULTS**

41 Cycle thresholds were higher in the HC group than in the LC group (20.7 vs. 19.7; $P < 0.039$). Anti-RBD
42 IgG was higher at ≤ 56 days after COVID-19 onset (PC) in 3-dose vaccines compared with 2-dose vaccines
43 in the LC group ($P = 0.02$) and after 57-84 days PC in 3-dose vaccines in the HC group ($P < 0.001$). The sVNT
44 in LC was significantly high against Wuhan and sVNT was 30% lower against the Omicron than the Wuhan.
45 sVNT was relatively sustained in 3-dose vaccines than ≤ 2 -dose vaccines. sVNT in the HC group reached
46 its peak at 57-84 days PC as compared with the LC group.

47 **CONCLUSIONS**

48 These findings imply that LC produced increased neutralizing antibody responses than those with HC.
49 During the Omicron pandemic, immunity after LC has still waned; therefore, a booster vaccine may be
50 needed after 2-3 months from last infection. (ClinicalTrials.gov number, NCT05484700)

51 INTRODUCTION

52 Severe acute respiratory syndrome coronavirus 2 (SARS-CoV-2) is constantly changing and accumulating
53 mutations in its genetic code over time.¹ Omicron lineage (B.1.1.529) which has been acknowledged in
54 November 2021 as a variant of concern (VOC), unprecedentedly spread to become globally dominant and
55 later has evolved into two more transmissible BA.5 and BA.4 sublineages.² BA.5 and BA.4 share many
56 genetic mutations with BA.2.² Omicron displaced Delta as the predominant variant during the study period.
57 Randomly selected SARS-CoV-2 variants captured by surveillance conducted by the Department of
58 Medical Science, Thailand, the UK Health Security Agency (UKHSA) and Centers for Disease Control and
59 Prevention, USA during weeks 37 to 38 of 2022 demonstrated that almost all new infections in Thailand³,
60 the U.K.⁴ and the U.S.⁵ were due to Omicron BA.5/BA.4 (49.2% - 95.5% - 96.4%) and Omicron BA.2
61 (59.6% - 3.4% - 1.4%). Now BA.2.75 was designated as a new variant of interest and is monitored. It would
62 be investigated once there is a significant public health impact.⁴

63 Variants' transmission including BA.5 and BA.4 which carry their own unique mutations can lead
64 into a wide range of clinical presentation and biological modifications. These speed infectivity to infect
65 more people even in fully vaccinated, boosted individuals as well as who were immune to earlier forms of
66 Omicron and other variants.¹ Most individuals with breakthrough SARS-CoV-2 infection can experience
67 asymptomatic or mild-to-moderate-to-severe coronavirus disease 2019 (COVID-19).^{6,7} A previous study¹
68 showed sera from BA.1 vaccine breakthrough infection exhibited significant reductions in neutralization
69 against BA.5/BA.4; thereby, raising the possibility of Omicron reinfections.

70 Several lines of evidence show that there are multisystemic humoral responses and immune
71 responses during acute illness and following recovery from the acute phase of COVID-19 infection. These
72 contribute to both host defense and pathogenesis of severe COVID-19 and residual post COVID syndrome
73 (Long COVID [LC]). Distinct immune dysregulation with lymphocytopenia, increased neutrophils and
74 activation of the coagulation cascade have been described in the acute phase.^{6,8} Following acute COVID-
75 19 infection, 10-70% of COVID-19 patients reported physical and mental symptoms 2-3 months after
76 infection.⁹⁻¹¹ Numbers of hospitalized symptomatic COVID-19 patients experienced LC symptoms. Still,

77 more than half of patients with prior mild-to-moderate COVID-19 have LC persisting more than 4 months
78 after infection.^{12,13} LC manifests as diverse symptoms affecting various organs-as seen in COVID-19
79 patients who did not recover fully.¹⁴ The most predominant LC symptoms are headache, breathlessness,
80 cough, chest pain, abdominal symptoms, myalgia, fatigue, cognitive difficulties, anxiety and depression^{15,16}
81 and neurologic/psychiatric symptoms.¹⁷ Evidence demonstrates that T cells and sustained immune
82 dysfunction following even mild COVID-19 be associated with LC.¹⁸ For instance, effector molecule
83 expression in memory T cells was reduced in neurologic patients with LC symptoms and sustained increases
84 in T cell activities to SARS-CoV-2 mRNA vaccination was observed in this group compared with healthy
85 COVID convalescents (HC).¹⁹ Nevertheless, the driver of this immune dysfunction and the immune
86 response after vaccination, specific effects on LC are needed for further investigation and verification.

87

88 **RESULTS**

89 **DEMOGRAPHIC CHARACTERISTICS AND CLINICAL MANIFESTATION**

90 292 participants following COVID-19 infection enrolled from the surrounding Bangkok area. This included
91 158 participants (86.1% women) in the LC group and 134 participants (66.4% women) in the HC group.
92 The mean age of both groups was similar (Table 1). Among those in the HC and LC groups, 130 (97%) and
93 157 (99.4%) were treated in out-patient home isolation system indicating that COVID-19 symptoms were
94 mild-to-moderate. The median peak viral RNA based on Ct values in the LC groups (19.7 [IQR=18.0-21.9])
95 was lower than ones in the HC groups (20.7 [IQR=18.2-25.1]; $P<0.037$). The median of a targeted COVID-
96 19 gene for envelope (E) was 18.4 (IQR = 16.3-23.3) for HC group and 17.8 (IQR = 16.5-19.9) for LC
97 group ($P=0.017$). Our results showed no significant correlation between vaccination status (either primary
98 two doses or booster shots) between groups (ns). Retrospective analysis revealed that patients in the LC
99 group had a higher proportion of Favipiravir treatment (65%) than in the HC group (53.7%). This finding
100 indicates that having LC was associated with lower Ct values and disease severity based on the prevalence
101 of Favipiravir treatment. In the LC group, the presence of comorbidity was found in LC group more than
102 HC group including hypertension ($P=0.052$) and obesity ($P=0.025$). It was found that most participants

103 received more than three doses of vaccines (93.0% in LC vs. 90.3% in HC, $P=0.306$). The major residual
104 LC symptoms included fatigue/myalgia (91.8%), breathlessness (74.7%), anorexia (55.1%), and problem
105 with concentration (77.8%) and memory (63.9%). Other respiratory, gastrointestinal, and musculoskeletal
106 symptoms were more reported in the LC groups than in the HC group ($P<0.05$).

107 **IMMUNE RESPONSES AGAINST SARS-COV-2 VARIANTS**

108 High antibody titers were observed in both LC and HC groups (Figure 2A). The IgG antibody positive rates
109 to SARS-CoV-2 S protein were found in nearly 100% at any time points in both LC and HC groups, except
110 in one patient with 2 doses of vaccines prior to breakthrough COVID-19 infection who had negative IgG
111 level at > 84 days. At least 3 doses of vaccines produced remarkably high and comparable IgG levels
112 between LC and HC groups (ns) suggesting that the titer of anti-SARS-CoV-2 IgG antibody was still
113 detectable at high levels between two groups. Serum samples at different time points after illness onset
114 showed differences in the distribution of IgG. The RBD-IgG geometric mean titers (GMT) were higher in
115 3-dose vaccines in the LC group at ≤ 56 days post COVID-19 infection (PC, $P=0.02$) as compared with 2-
116 dose vaccines and in 3-dose vaccines in the HC group at 57-84 PC ($P<0.001$). The overall proportion of
117 sera with an IgG > 1000 BAU/mL decreased from <56-day to 57-84-day and >84-day PC (86.8% to 79.6%
118 and 74.7%, ns for HC vs. LC [Figure 2A]). This implied that recent booster vaccination enhanced IgG
119 responses effectively and IgG antibodies were still remarkably high after three months PC. And the titers
120 reached their peak around 2 months PC and decreased slightly (about 25%) over the following 3 months
121 (GMT 2713 to 2085 in LC group and GMT 2482 to 2377 BAU/mL in HC group). Sera from individuals
122 presumably recently infected with BA.5/BA.4 (Figure 2A [black dots]) showed high RBD-IgG GMT levels
123 4630 BAU/mL) as compared with other groups (Figure 2A [pink and blue dots], $P<0.001$). This implies
124 that previous infection with BA.5/BA.4 but not an older Omicron variant (such as BA.1, BA.2) offers
125 substantial more immune response regardless of individual vaccine heterogenous profile.

126

127

128

129 **NEUTRALIZING ANTIBODY RESPONSES**

130 Ninety nine percent of the patients had positive sVNT against wild type and Omicron (Figure 2B). In the
131 LC group, sVNT was high against Wuhan regardless of doses of vaccines and at any time points PC even
132 at >84-day PC, whereas positive sVNT titers were chiefly observed since at <56 days PC (Omicron GMT
133 59.3%) and sVNT was approximately 30% lower against the Omicron variant in most time points as
134 compared with the Wuhan. sVNT was relatively sustained in 3-dose vaccination than \leq 2-dose vaccination.
135 In the HC group, sVNT was also high against Wuhan regardless of doses of vaccines and at all time points
136 PC. However, sVNT against the Omicron was also 30% lower than those against Wuhan. Of note, sVNT
137 in the HC group reached its peak at 57-84 days PC as compared with the LC group, sVNT of which was
138 still at its high level after 84 days. This can imply that LC produced increased and more sustainable
139 neutralizing antibody responses than those with full recovery. Additionally, those with recent BA.4/BA.5
140 breakthrough infection showed higher SVNT titers against the overall Omicron variant. This benefit has
141 helped to prevention reinfection at least 2-3 months PC in the LC group and in those with BA.4/BA.5 prior
142 infection.

143 **IMMUNE RESPONSE AFTER A VACCINE BOOSTER**

144 The immunogenicity against SARS-CoV-2 after a booster dose of the Pfizer-BioNTech mRNA vaccine
145 measured at 4 weeks after the vaccination in a subgroup of participants were analyzed. IgG antibodies
146 directed against RBD were double after a booster vaccine ($P < 0.0001$). However, the average GMT
147 concentration of anti-RBD IgG in the LC group was 10% higher than that in the HC group (4665 ± 1.76 vs.
148 4152 ± 2.15 BAU/mL, $P < 0.05$) (Figure 3A). Of note, sVNT against the Omicron variant was similarly
149 increased in nearly all participants irrespective of having LC (LC 92.87% vs. HC 90.09%, ns [Figure 3B]).
150 This implies that a booster mRNA vaccination may be beneficial to enhance immunity after COVID-19
151 infection especially for vulnerable individuals.

152

153

154

155 **DISCUSSION**

156 In this study, we ascertained the following central findings. First, LC presents as a constellation of
157 enervating symptoms most commonly including unremitting fatigue/myalgia, post-exertional malaise,
158 breathlessness, anorexia, and cognitive dysfunction.²⁰ In accordance with previous studies, this syndrome
159 was more prevalent in women, middle-aged patients and in patients with even mild-to-moderate COVID-
160 19 irrespective of vaccination status.^{9,21} Age is recognized as the general determinant of disease severity
161 mainly because the immune response deteriorates in aging people.²² With regard to the uncertainty about
162 the frequency and prevalence of such individual symptoms of LC and how long they last, several patients
163 reported fatigue shortly after COVID-19 recovery. A systematic review showed that self-report fatigue after
164 recovery from COVID-19 infection can last up to 6 months and immunological dysfunction can persist for
165 8 months post mild-to-moderate COVID-19.^{18,20} SARS-CoV-2 may remain within some patients with the
166 long-term symptoms, thereby leading to chronic inflammation and some organ and tissue dysfunction.²³ In
167 a previous cohort study, chronic post-COVID “brain fog” had significant associations with sex (female),
168 respiratory symptoms at the onset, and the severity of the illness.²⁴ However, increasing evidence indicates
169 that LC can develop regardless of the severity of the original symptoms²⁵ but it may depend on antigen
170 persistence and sustained specific immune responses to SARS-CoV-2.²⁶

171 Second, a well-defined understanding of innate and adaptive immune response in LC in association
172 with vaccination status and heterogeneous characteristics of the virus and host responses is indispensable
173 for planning for therapeutic and vaccination strategies. Our results showed that there were no significant
174 differences in immune response between LC and individuals with complete recovery, regardless of
175 vaccination status before COVID-19 infection. Significant decreases in levels of IgG and neutralizing
176 antibodies were also observed among participants without booster vaccines prior to COVID-19 infection,
177 which are classically associated with waned immunity. High levels of antibodies were still remarkably
178 observed after three-month PC. An analysis of immune responses of those who were presumably infected
179 with BA.5/BA.4 displayed significant increases in the immunity as compared with those who were infected
180 with other Omicron variants. More interestingly among a subset of participants with LC, anti-RBD IgG

181 antibody but not sVNT after a Pfizer-BioNTech booster shot was significantly increased compared with the
182 HC group. These findings are supported by prior reports that LC pathogenesis might include persistent viral
183 antigen, reactivation of latent herpesviruses, and chronic inflammation, which may be associated with the
184 elevation in antibody responses.^{11,27}

185 There were some limitations in this study. During the study period, most COVID-19 cases had
186 mild-to-moderate symptoms and they were most likely to self-quarantine at home. Therefore, we only had
187 patients under home isolation conditions, and it does not provide a fair comparison about the long COVID
188 in the hospitalized patients and the results could not be generalized to all types of long COVID community.
189 In addition, our study focused on post-acute residual COVID-19 symptoms at 1-4 months post. The onset
190 of COVID-19; therefore, it cannot discern whoever will develop long-term chronic LC. An additional
191 limitation is sample size. Patients who exhibited both a classic LC symptom and risk factors may constitute
192 only a minute subset, making it difficult to draw specific, novel predictors.

193

194 **CONCLUSION**

195 No clinical and laboratory differences have been identified between participants with long COVID and
196 demographically and medically matched convalescent and healthy control groups and all were responded
197 remarkably after a booster dose of an mRNA vaccine after the COVID-19 infection. Sera from participants
198 infected during the Omicron BA.5/BA.4 but not the Omicron BA.1, BA.2 showed the better immune
199 responses against the overall Omicron variants. Our study provides a basis of immunological and evidence
200 for vaccination program after COVID-19 infection with or without long COVID symptoms.

Characteristics	Healthy COVID-19 convalescents (HC) group (n = 134)				Long COVID (LC) group (n = 158)				p-value‡	
					Long COVID symptoms					
	n	(%)	n	(%)	3 major symptoms (n=132)		1-2 major symptoms (n=26)			p-value†
					n	(%)	n	(%)		
Female	89	66.4	136	86.1	114	86.4	22	84.6	0.814	<0.001
Age (yr.), mean (SD)	36.3	(9.6)	38.4	(8.4)	38.7	(8.5)	37.0	(7.5)	0.338	0.078
18-30	42	31.3	24	15.2	19	14.4	5	19.2	0.344	0.362
31-45	72	53.7	99	62.7	81	61.4	18	69.2		
>45	20	14.9	35	22.2	32	24.2	3	11.5		
Time from symptom onset to COVID detection, months										0.353
1-2	40	29.9	37	23.4	34	25.8	3	11.5	0.147	
3	60	44.8	83	52.5	65	49.2	18	69.2		
>3	34	25.4	38	24.1	33	25.0	5	19.2		
Types of hospital admission									0.024	0.123
Home isolation	130	97.0	157	99.4	132	100.0	25	96.2		
Hospital	4	3.0	1	0.6	0	0.00	1	3.8		
COVID-19 detection									0.379	0.362
RT-PCR§	129	96.3	146	92.4	122	92.4	24	92.3		
ATK ¶	5	3.7	12	7.6	10	7.6	2	7.7		
Cycle Threshold**, median (IQR)	20.7	(18.2-25.1)	19.7	(18.0-21.9)	19.7	(17.7-22.1)	19.5	(18.5-21.0)	0.921	0.039
<20	52	43.7	80	55.9	64	54.2	16	64.0	0.466	0.037
20-30	51	42.9	55	38.5	48	40.7	7	28.0		
>30	16	13.4	8	5.6	6	5.1	2	8.0		
Envelope, median (IQR)	18.4	(16.3-23.3)	17.8	(16.5-19.9)	17.7	(16.3-19.7)	18.1	(17.0-19.9)	0.588	0.017
RNA-dependent RNA polymerase (RdRp), median (IQR)	19.9	(18.0-24.8)	19.2	(17.9-22.5)	19.4	(17.8-21.4)	18.9	(18.1-21.5)	0.670	0.807
Presence of comorbidities										
None	121	90.3	125	79.1	104	78.8	21	80.8	0.820	0.009
Hypertension	5	3.7	15	9.5	10	7.6	5	19.2	0.064	0.052
Obesity	3	2.2	13	8.2	12	9.1	1	3.8	0.374	0.025
Diabetes mellitus	5	3.7	6	3.8	5	3.8	1	3.8	0.989	0.976
Cancer	0	0.0	3	1.9	3	2.3	0	0.0	0.349	0.109
Chronic respiratory disease	2	1.5	3	1.9	3	2.3	0	0.0	0.438	0.791
Kidney disease	0	0.0	1	0.6	1	0.8	0	0.0	0.656	0.356
Lifestyle										
Smoking									0.027	0.016
Never	114	85.1	144	91.1	122	92.4	22	84.6		
Stop smoking	12	9.0	5	3.2	2	1.5	3	11.5		
Smoking	8	6.0	9	5.7	8	6.1	1	3.9		
Vaccination									0.485	0.306
0-2 doses	13	9.7	11	7.0	9	6.8	2	7.7		

1 booster dose	66	49.3	64	40.5	52	39.4	12	46.2		
2 booster doses	55	41.0	83	52.5	71	53.8	12	46.2		
Medication									0.922	0.048
No treatment	9	6.7	3	1.9	3	2.3	0	0.0		
Symptomatic treatment	53	39.6	51	32.5	42	32.1	9	34.6		
Symptomatic + Favipiravir treatment	69	51.5	94	59.8	79	60.3	15	57.7		
Symptomatic + Favipiravir treatment + Dexamethasone	3	2.2	9	5.7	7	5.3	2	7.7		
Long COVID symptoms										
Fatigue/myalgia	0	0.0	145	91.8	126	95.5	19	73.1	<0.001	<0.001
Breathlessness	0	0.0	118	74.7	116	87.9	2	7.7	<0.001	<0.001
Anorexia	0	0.0	87	55.1	85	64.4	2	7.7	<0.001	<0.001
Problem with concentration	0	0.0	123	77.8	116	87.9	7	26.9	<0.001	<0.001
Problem with memory	0	0.0	101	63.9	99	75.0	2	7.7	<0.001	<0.001
Headache	40	29.8	88	55.7	75	56.8	13	50.0	0.522	<0.001
Cough/chest pain/chest discomfort	52	38.8	111	70.3	92	69.7	19	73.1	0.730	<0.001
Loss of smell/taste	23	17.2	52	32.9	43	32.6	9	34.6	0.840	0.001
Muscle pain/joint pain	37	27.6	91	57.6	78	59.1	13	50.0	0.391	<0.001
Diarrhea	20	14.9	46	29.1	39	29.5	7	26.9	0.788	0.004

* Continuous data demographic, clinic finding of all patients referred back presented as mean (standard deviation; SD), median (interquartile rang; IQR) and range at $p<0.05$ indicates statistical significance

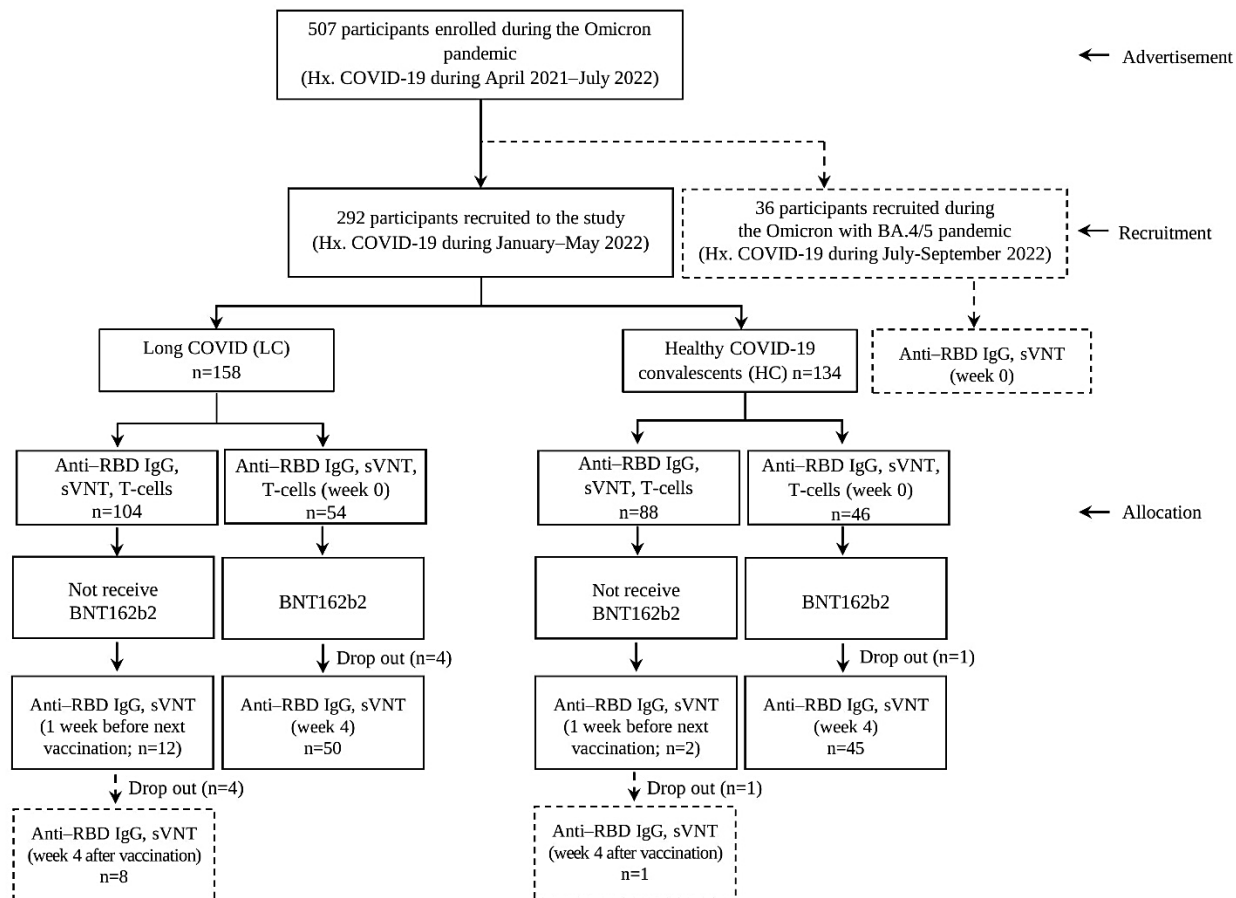
† The statistical significance was assessed by the Fisher's exact test and Kruskal-wallis test, statistical difference within Long COVID symptoms at $p<0.05$

‡ The statistical significance was assessed by the Fisher's exact test and Kruskal-wallis test, statistical difference between participants with healthy COVID-19 convalescents (HC) and Long COVID (LC) group at $p<0.05$

§ RT-PCR is a real-time reverse transcription polymerase chain reaction (rRT-PCR) test for the qualitative detection of nucleic acid from SARS-CoV-2 in upper and lower respiratory specimens.

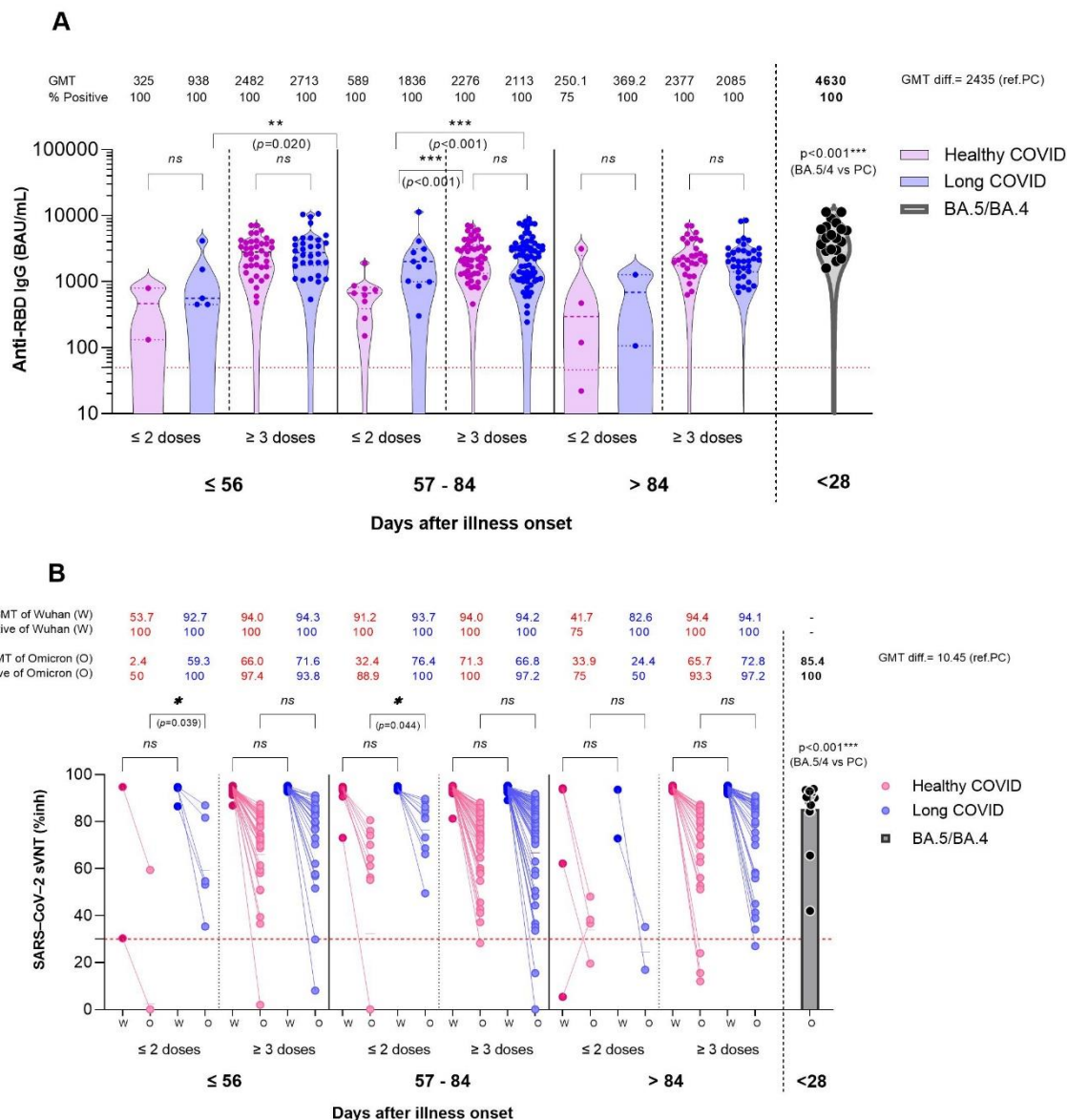
¶ ATK is SARS-CoV-2 rapid antigen self-test kits.

** Cycle Threshold (Ct) value from RT-PCR tests represents the cycle number at which the signal breaches the threshold for positivity, a lower Ct value is indicative of a high viral.



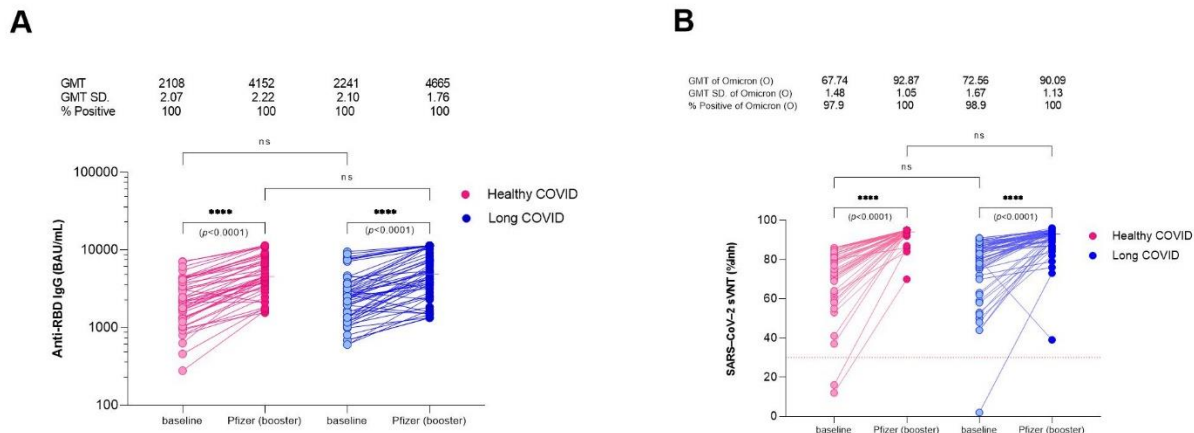
202

203 **Figure 1.** Study source recruitment and enrollment



204
 205 **Figure 2. Immune responses after breakthrough COVID-19 infection with prior vaccination as**
 206 **compared between patients with healthy COVID-19 recovery (HC, pink dots), patients with residual**
 207 **long COVID (LC, blue dots) during the Omicron pandemic and patients during the BA.5/BA.4 (black**
 208 **color).** (A) Geometric mean titers (GMTs) of SARS-CoV-2 anti-spike protein receptor-binding domain
 209 antibodies' (Anti-RBD IgG) concentrations in serum samples obtained from subjects after COVID-19
 210 infection and with prior various vaccination status and duration post COVID-19 onset (PC). All sera were
 211 from the patients during the Omicron pandemic. The dotted line (red) represents the threshold for positive

212 in this assay. **(B)** Scatter plots demonstrate an inhibition rate of Wuhan and Omicron RBD-blocking
213 antibodies measured using a surrogate viral neutralization test (sVNT) by vaccination/reinfection status;
214 the lower dot line represents the cut-off level for seropositivity. The generalized linear model (GLM) was
215 applied to evaluate the association between immune response (including antibody IgG and sVNT responses)
216 and potential factors (i.e., vaccination, sex, and age). * $P < 0.05$; ** $P < 0.01$; **** $P < 0.0001$.



217
 218 **Figure 3. Immunogenicity against SARS-CoV-2 after a booster dose of the Pfizer-BioNTech mRNA**
 219 **vaccine compared between patients with healthy COVID-19 recovery (HC, red color) patients and**
 220 **patients with residual long COVID (LC, blue color) during the Omicron pandemic by scatter plots**
 221 **analysis. (A) A SARS-CoV-2 anti-spike protein receptor-binding domain antibodies' (Anti-RBD IgG)**
 222 **concentrations in serum samples obtained from subjects after a 30-ug Pfizer booster vaccine at 4 weeks**
 223 **after vaccination. (B) An inhibition rate of the Omicron RBD-blocking antibodies measured using a**
 224 **surrogate viral neutralization test (sVNT). The generalized linear model (GLM) was applied to evaluate the**
 225 **association between immunogenicity of anti-RBD IgG and sVNT, and the potential factors (i.e., sex and**
 226 **age). * P<0.05; ** P<0.01; **** P<0.0001.**

227 **METHODS**

228 This retrospective cohort study compared immunogenicity post COVID-19 between individuals with
229 residual LC symptoms and ones with HC related to pathophysiology, immunology, and clinical
230 consequence. In addition, immune responses at 4 weeks were determined after a subset of these participants
231 was voluntarily administered with additional 30 ug of BNT162b2 (Pfizer) (Figure 1). The Institutional
232 Review Board (IRB), Faculty of Medicine Siriraj Hospital, Mahidol University reviewed and approved the
233 follow-up study (COA no. Si 1036/2021).

234 **STUDY POPULATION**

235 All patients (age 18-65 years) were invited for volunteer participation in the study of the immune responses
236 against SARS-CoV-2 after breakthrough infection. The eligible participants were those who had confirmed
237 SARS-CoV-2 infection based on a patient's medical certificate from January to May 2022 (during the
238 Omicron-dominant pandemic), and they had not received any additional COVID -19 vaccine after infection.
239 Written informed consent was obtained from all participants. Pregnant participants and people having a
240 history of allergic reactions after COVID-19 vaccination, or any drugs were excluded. Participants were
241 defined as having LC when they had residual self-reported LC symptoms longer than 1-month after
242 COVID-19 onset. LC symptoms were based on the presence of one of the three major symptoms:
243 fatigue/myalgia, breathlessness, and anorexia.¹⁸ On the other hand, patients without LC symptoms were
244 called "healthy COVID-19 recovery; HC". These two groups were gender and age (± 5 years) matched with
245 each other (Table 1). Based on their reported residual symptoms from questionnaires, 158 participants with
246 LC symptoms and 134 participants with HC were enrolled into the study. We performed a subset of analyses
247 on an independent group of 36 post-acute COVID-19 patients (ambulatory adults infected during the
248 Omicron with BA.5/BA.4 pandemic) to compare the immune responses with our primary cohort. Previous
249 infections were classified as Omicron BA.1/BA.2 dominant versus Omicron BA.5/BA.4 dominant previous
250 infections based on if they occurred before or after the emergence of BA.5/BA.4 wave that started in
251 Thailand since June 2022.³

252

253 **A BOOSTER AND IMMUNOGENICITY**

254 In the studied cohort, a subset of 100 patients (age \geq 18 years) were voluntarily recruited for immunogenicity
255 follow-up study after receiving 30 ug of BNT162b2 (Pfizer) as a booster shot at 29-84 days post COVID-
256 19 onset. All participants provided informed consent for this study. They were tested for SARS-CoV-2
257 antibodies and a surrogate virus neutralization (sVNT) against SARS-CoV-2 Wuhan and Omicron variants.
258 Those who denied this booster dose were asked to come back for IgG testing again before their next booster
259 shot to determine levels of waned immunity. The Department of Disease Control, Ministry of Public Health
260 (Thailand) kindly provided the Pfizer-BioNTech (Comirnaty) BNT162b2 vaccine, designated Lot.
261 1L085A. This RNA vaccines belong to a state-of-art approach that uses genetically engineered mRNA of
262 viral spike proteins included in a lipid nanoparticle, which subsequently inject intramuscularly into human
263 body and allow the ribosomes in the cell to synthesize the viral spike proteins that safely prompts an immune
264 response.²⁸ We further explore the immunogenicity of this boosting at 4-week post booster shot.

265 **OMICRON BA.5/BA.4 IMMUNOGENICITY**

266 For the pilot study, 36 patients who were diagnosed with COVID-19 during July 15 to September 14, 2022,
267 were recruited. This provided a proxy for BA.5/BA.4 infections, considering the incidence of this variants
268 during the recruitment time. Immune responses against the overall Omicron variants were evaluated for
269 viral neutralization against BA.5/BA.4.³

270 **OUTCOME MEASURES**

271 The primary outcome was to compare patients' baseline clinical and biological characteristics between LC
272 and HC groups. The outcome included demographic data, clinical and biochemical characteristics.
273 Participants shared a copy of their government-issued documents with study staff to verify their vaccination
274 information. The "date of disease onset" was defined as the day when new-onset self-reported respiratory
275 symptoms were observed. Viral loads were considered in cycle threshold (Ct) value analyses. Analyses
276 considered viral load for comparisons of Ct values by vaccine exposure groups and self-reported symptoms
277 as previously described.⁶

278

279 SARS-COV-2 RT-QUANTITATIVE PCR ASSAY (RT-PCR)

280 Diagnosis of COVID-19 was made based on the detection of ≥ 2 SARS-CoV-2 genes by RT-PCR from
281 nasopharyngeal (NP) swab, throat swab, and/or any respiratory samples as previously described.²⁹ COVID-
282 19 diagnostic assay was a probe-based qualitative RT-PCR probe. Allplex™ 2019-nCoV Assay (Seegene,
283 Seoul, South Korea) was used for SARS-CoV2 detection. The targeted COVID-19 genes detected here
284 included nucleocapsid (N), envelope (E) of Sarbecovirus and RNA-dependent RNA polymerase (RdRp) of
285 COVID-19 according to the manufacturer's instructions and described previously.³⁰ Antigen test kit (ATK)
286 was also accepted as a confirmation of COVID-19; in case that RT-PCR could not be assessed.

287 SEROLOGICAL ASSAYS

288 Blood samples were collected at baseline (pre-booster), and 4 weeks after a booster shot (post-boost) in a
289 subset of participants from both groups. Briefly, plasma samples were processed for anti-SARS-CoV-2
290 receptor-binding domain immunoglobulin G (anti-RBD IgG, (S1 subunit, No. 06S600), SARS-CoV-2 IgG
291 II Quant for use with ARCHITECT; Abbott Laboratories, USA) as described previously.⁶ This assay
292 linearly measures the antibody level between 21.0 - 80,000.0 arbitrary unit (AU)/mL, which was converted
293 later to WHO International Standard concentration as binding antibody unit per mL (BAU/mL) following
294 the equation provided by the manufacturer (BAU/mL = 0.142 x AU/mL). The level greater or equal to the
295 cutoff value of 50 AU/mL or 7.1 BAU/mL was defined as seropositive.

296 A surrogate virus neutralization test (sVNT) was undertaken against the or wild type (Wuhan) strain
297 and the Omicron (B.1.1.529) strain. Briefly, plasma was pre-incubated with horseradish-peroxidase-
298 conjugated receptor-binding domain protein (HRP-conjugated RBD protein). Subsequently, the mixture
299 was transferred to each well containing Streptavidin bound with Biotin-conjugated angiotensin-converting
300 enzyme 2 (ACE2). Finally, the optical density absorbance was measured using a spectrophotometer at 450
301 nm. Sample diluent was used as the negative control. The inhibition rate was calculated through this
302 formula:

$$\text{Inhibition rate (\%)} = \left(1 - \frac{OD_{450} \text{ of Sample}}{OD_{450} \text{ of Negative control}} \right) \times 100.$$

303

304 **PERIPHERAL BLOOD MONONUCLEAR CELLS ISOLATION AND COLLECTION**

305 Isolation of peripheral blood mononuclear cells (PBMC) was done from peripheral blood supplemented
306 with anticoagulants by using Ethylenediamin tetra-acetic acid (EDTA) tube.³¹ Briefly, blood was diluted
307 1:1 with phosphate buffer saline (PBS [HyClone™, Utah, USA]) pH 7.2 3 ml of a density gradient medium
308 (Lymphoprep [STEMCELL Technologies, Germany]) were added into a 15 ml tube. After that, 10 of
309 diluted blood samples were carefully layered on top and centrifuged at 400xg for 30 min at 25°C (Allegra
310 X-15R Centrifuge, Beckman Coulter). The PBMC were transferred to a new 15 ml tube, and 10 ml of PBS
311 were filled, mixed, and centrifuged at 400xg for 5 min at 25°C. The supernatant was completely removed,
312 and the cells were resuspended with a small volume of PBS. When most of the platelets were removed, the
313 cells were suspended in a complete cryoprotective media with 10% dimethyl sulfoxide (DMSO [SIGMA
314 Life Science, USA]) and fetal bovine serum (FBS [Gibco™, Thermo Fisher Scientific Inc., USA]) in the
315 cryovials. Finally, the cryovials were frozen at -80°C for 1 day and then were transferred and stored in
316 liquid nitrogen.

317 **MICRONEUTRALIZATION ASSAYS USING THE AUTHENTIC SARS-COV-2 VIRUSES**

318 Sera from participants were used to assess the neutralization against wild type (WA1), and Omicron
319 (B.1.1.529, BA.2 and BA.5). SARS-CoV-2 isolates (kindly provided by Prof. Florian Krammer, Icahn
320 school of medicine at Mount Sinai, NY, USA). All procedures were performed in a certified biosafety level
321 3 (BSL-3) facility following standard safety guidelines. In brief, Vero.E6-TMPRSS2 cells were seeded in
322 96-well high binding cell culture plates (Costar, cat. no. 07620009) at a density of 20,000 cells per well in
323 complete Dulbecco's modified Eagle medium (cDMEM) one day before the infection. Heat inactivated
324 serum samples (56 °C for 1 h) were serially diluted (three-fold) in minimum essential media (Gibco, life
325 technology, Grand Island, NY, USA) supplemented with 2 mM L-glutamine (Gibco, life technology, Grand
326 Island, NY, USA), antibiotic-antimycotic (Invitrogen-Gibco, Carlsbad, CA, USA) and 0.2% fetal bovine
327 serum (Gibco, life technology, NY, USA). Serially diluted sera were incubated with 10,000 TCID of SARS-
328 CoV-2 viruses for one hour at room temperature, followed by the transfer of 120 µL of the virus-serum
329 mix to Vero.E6-TMPRSS2 plates. Infection proceeded for 1 h at 37°C and inoculum was removed. One

330 hundred μL per well of the corresponding antibody dilutions plus 100 μL per well of infection media
331 supplemented with 2% fetal bovine serum (Gibco, life technology, NY, USA) were added to the cells.
332 Plates were incubated for 48 h at 37°C followed by fixation overnight at 4°C in 200 μL per well of a 10%
333 formaldehyde solution. For staining of the nucleoprotein, formaldehyde solution was removed, and cells
334 were washed with and permeabilized by adding 150 μL per well of PBS with 0.1% Triton X-100 (Fisher
335 Bioreagents, Pennsylvania, USA) for 15 min at room temperature. Permeabilization solution was
336 removed, plates were washed with 200 μL per well of PBS (Gibco, life technology, NY, USA) twice and
337 blocked with PBS, 3% BSA for 1 h at room temperature. Blocking solution was removed and 100 μL per
338 well of biotinylated monoclonal antibody 1C7C7 (Center for Therapeutic Antibody Development at The
339 Icahn School of Medicine at Mount Sinai ISMMS) at a concentration of 1 μg /ml in PBS, 1% BSA was
340 added for 1 h at room temperature. Cells were washed with 200 μL per well of PBS twice and 100 μL per
341 well of HRP-conjugated streptavidin (Thermo Fisher Scientific, Massachusetts, USA) diluted in PBS, 1%
342 BSA were added at a 1:2000 dilution for 1 h at room temperature. Cells were washed twice with PBS, and
343 100 μL per well of O-phenylenediamine dihydrochloride (Sigmafast OPD; Sigma-Aldrich, Massachusetts,
344 USA) were added for 10 min at room temperature, followed by addition of 50 μL per well of a 3 M HCl
345 solution (Thermo Fisher Scientific, Massachusetts, USA). Optical density (OD) was measured (490 nm)
346 using a microplate reader. Analysis was performed using Prism 7 software (GraphPad). After subtraction
347 of background and calculation of the percentage of neutralization with respect to the ‘virus-only’ control, a
348 nonlinear regression curve fit analysis was performed to calculate the 50% inhibitory dilution (ID₅₀), with
349 top and bottom constraints set to 100% and 0% respectively. All samples were analyzed in a blinded
350 manner.

351 **STATISTICAL ANALYSIS**

352 Normally distributed continuous variables were summarized as the mean \pm standard deviation (SD);
353 otherwise, the median (interquartile range, IQR) was used. Categorical variables were described as
354 percentages and compared using the Chi-squared test. Continuous variables were described using geometric
355 mean antibody titers (GMT), median, and IQR. The Mann–Whitney U test was used to compare differences

356 between groups. The generalized linear model (GLM) was applied to evaluate the association between
357 immune responses (including anti-RBD IgG and sVNT) and potential factors (i.e., vaccination, sex, and
358 age). The statistical significance of anti-RBD IgG, sVNT, and others was determined using Kruskal–Wallis
359 and Dunn’s multiple comparisons tests using GraphPad Prism 9 (GraphPad Software, San Diego, CA, USA)
360 and STATA version 17 (Stata Corp, College Station, TX, USA). Two-tailed P values less than 0.05 were
361 considered significant (*P<0.05, **P<0.01, ***P<0.001 and ****P<0.0001).

362

363 **ACKNOWLEDGEMENTS**

364 The authors are grateful to the participants in this study. We would like to thank all the COVID-19 teams
365 for their dedication and expertise in recruitment, specimen processing and biobanking. We thank Kantapat
366 Boriuttham, Patcharaporn Thabsuwan, Pimchanok Boonariya, Thaksaphon Siripant, Supinya Piwlaor,
367 Boonjira Wetprasit, Noppanat Wachiranan, Suavaluk Songlilitchuwong, and Sirapassorn Ditkasem from
368 the Department of Biotechnology, Faculty of Applied Science, King Mongkut’s University of Technology
369 North Bangkok for participant recruitment. We appreciate grant support from Faculty of Medicine, Siriraj
370 Hospital, Mahidol University and the Department of Disease Control (DDC), the Department of Medical
371 Services Ministry of Public Health (MoPH). Authors are very grateful for all support for this study:
372 Tassanee Narkdontri and Nipaporn Teerawattanapong from Siriraj Center of Research Excellence for
373 Diabetes and Obesity (SiCORE-DO); Utane Runpanich from the Department of Immunology; Population
374 Health and Nutrition Research Group; Department of Parasitology; and Center of Research Excellence on
375 Therapeutic Proteins and Antibody Engineering. We acknowledge Prof. Florian Krammer and Dr. Juan
376 Manuel Carreno, Icahn School of Medicine at Mount Sinai, NY, USA for their contribution to
377 microneutralization assay. We also would like to acknowledge Professor Kulkanya Chokephaibulkit,
378 professor of Pediatric Infectious Diseases and Director of the Siriraj Institute of Clinical Research
379 (SICRES) for her guidance for initiation of this project.

380

381

382 **AUTHORS CONTRIBUTIONS**

383 T.P., T.M., S.O. and A.S. contributed to the experimental design, collected patient data, performed data
384 experimentation and interpretation. T.P., K.M., and N.K. drafted and finalized the manuscript. A.S.
385 performed the statistical analysis. W.T. performed the anti-RBD IgG testing and provided data establishing
386 testing. Ni.S., Na.S. and A.T. performed sVNT testing. Ko.M. and P.P performed T cell immunity analysis.
387 A.J. performed a pseudotyped virus neutralization test. K.B. performed microneutralization assays using
388 live virus. K.B. and A.J. proofread. All authors read the manuscript and agreed with its content. The
389 corresponding author (K.M.) attests that all listed authors meet authorship criteria and that no others have
390 been omitted.

391

392 **DATA AVAILABILITY**

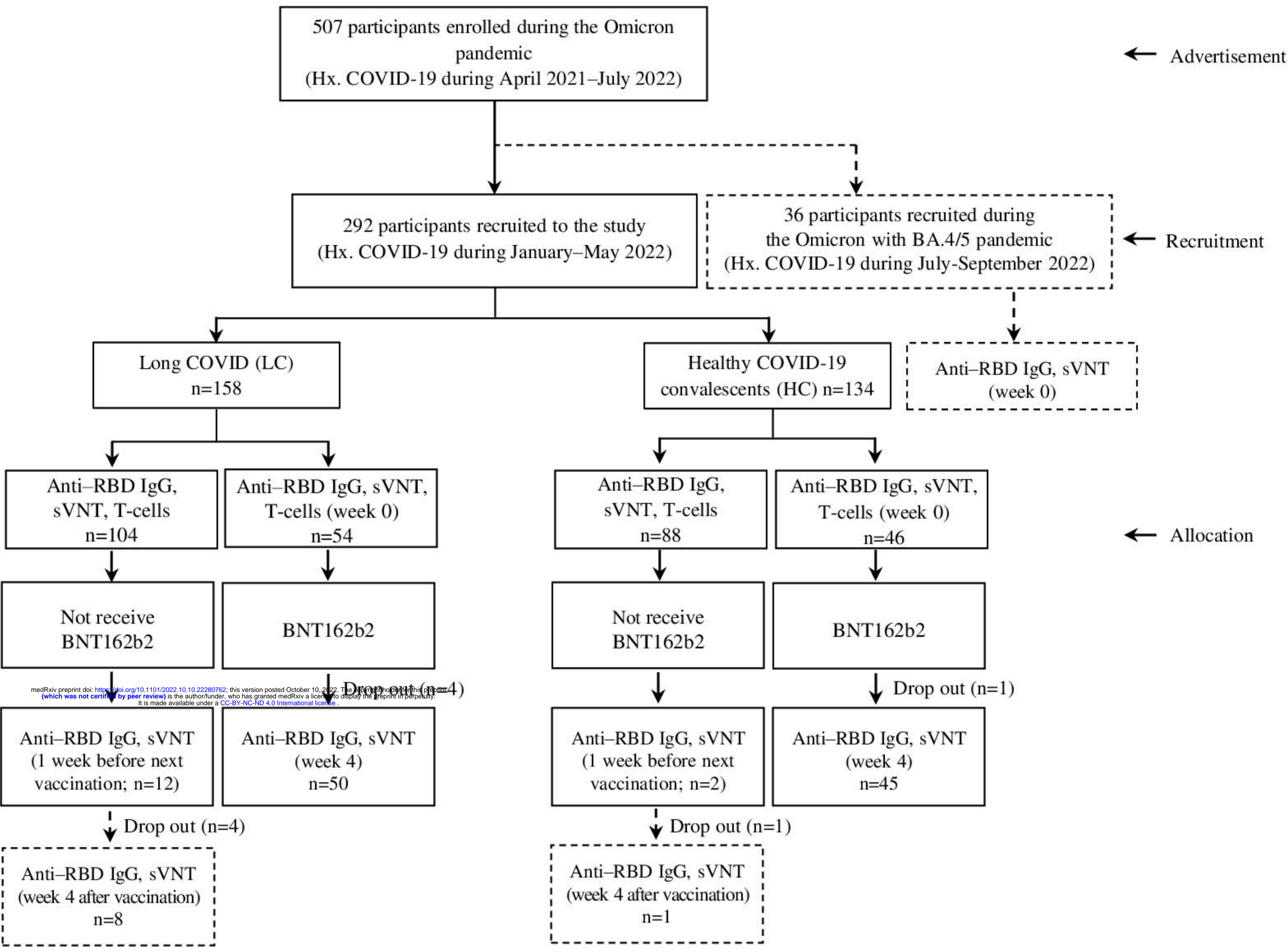
393 Raw data used in this study, including de-identified patient metadata and test results, are available upon
394 request.

395 **REFERENCES**

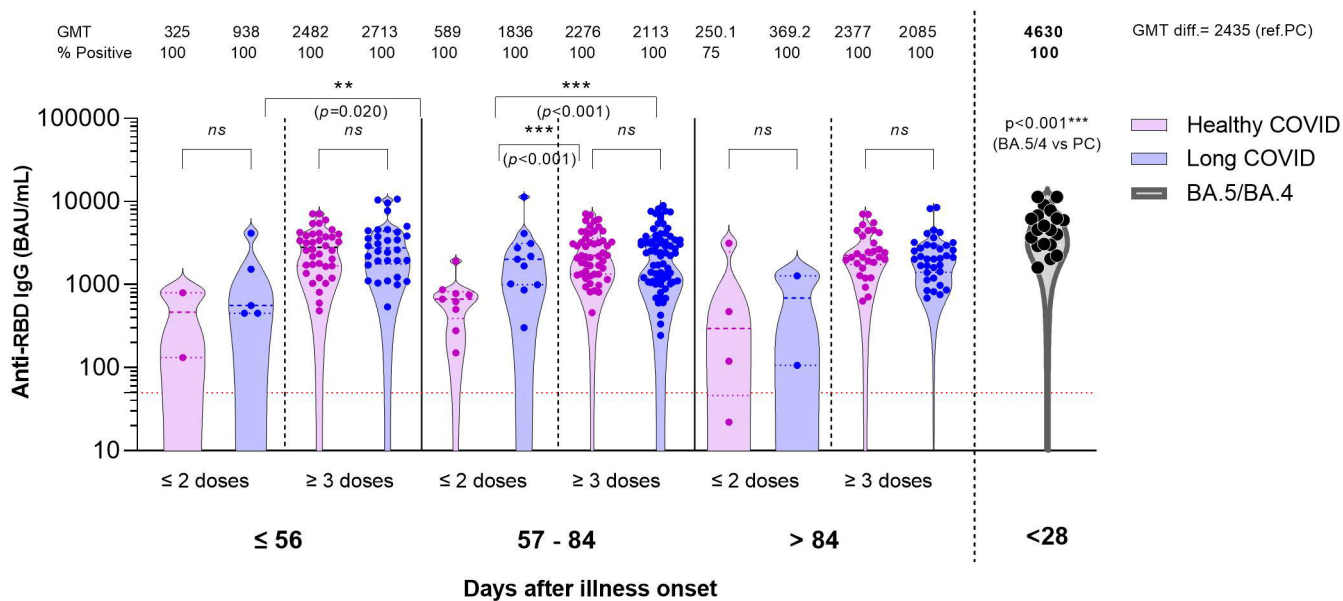
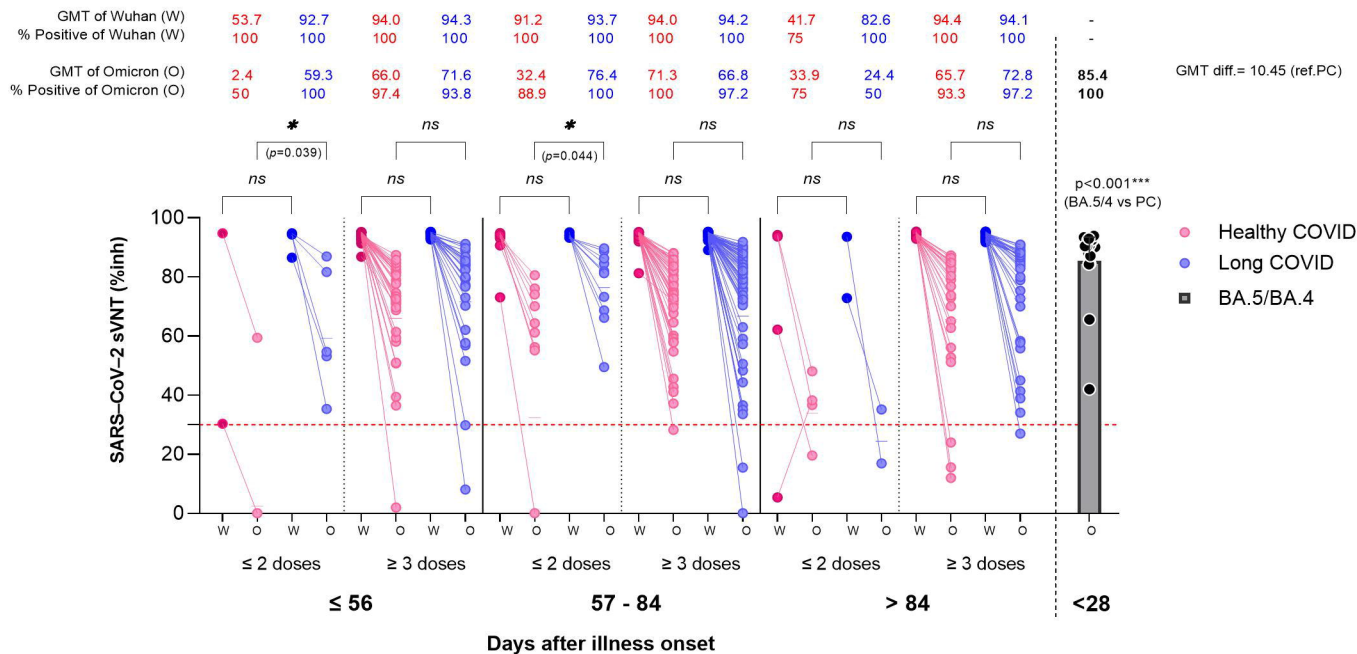
- 396 1. Tuekprakhon A, Nutalai R, Dijokaite-Guraliuc A, *et al.* Antibody escape of SARS-CoV-2 Omicron
397 BA.4 and BA.5 from vaccine and BA.1 serum. *Cell* 2022;185(14):2422-2433.e13.
- 398 2. Tegally H, Moir M, Everatt J, *et al.* Emergence of SARS-CoV-2 Omicron lineages BA.4 and BA.5
399 in South Africa. *Nat Med* 2022;28(9):1785-1790.
- 400 3. World Health Organization Thailand. COVID-19 - WHO Thailand situation reports. World Health
401 Organization. (<https://www.who.int/thailand/emergencies/novel-coronavirus-2019/situation-reports>).
- 402 4. UK Health Security Agency. SARS-CoV-2 variants of concern and variants under investigation in
403 England: technical briefing 45. United Kingdom: UK Health Security Agency, September 2022.
404 (https://assets.publishing.service.gov.uk/government/uploads/system/uploads/attachment_data/file/1103869/Technical-Briefing-45-9September2022.pdf).
- 405
- 406 5. Centers for disease control and prevention. Monitoring variant proportions. Atlanta, GA: U.S.
407 Department of Health & Human Services, CDC, October 2 2022. ([https://covid.cdc.gov/covid-](https://covid.cdc.gov/covid-data-tracker/#variant-proportions)
408 [data-tracker/#variant-proportions](https://covid.cdc.gov/covid-data-tracker/#variant-proportions)).
- 409 6. Mongkolsucharitkul P, Surawit A, Pumeiam S, *et al.* SARS-CoV-2 antibody response against mild-
410 to-moderate breakthrough COVID-19 in home isolation setting in Thailand. *Vaccines (Basel)*
411 2022;10(7):1131.
- 412 7. Cervia C, Zurbuchen Y, Taeschler P, *et al.* Immunoglobulin signature predicts risk of post-acute
413 COVID-19 syndrome. *Nat Commun* 2022;13(1):446.
- 414 8. Carvalho T, Krammer F, Iwasaki A. The first 12 months of COVID-19: a timeline of
415 immunological insights. *Nat Rev Immunol* 2021;21(4):245-256.
- 416 9. Sudre CH, Murray B, Varsavsky T, *et al.* Attributes and predictors of long COVID. *Nat Med*
417 2021;27(4):626-631.
- 418 10. Ortona E, Malorni W. Long COVID: to investigate immunological mechanisms and sex/gender
419 related aspects as fundamental steps for tailored therapy. *Eur Respir J* 2022;59(2):2102245.

- 420 11. Su Y, Yuan D, Chen DG, *et al.* Multiple early factors anticipate post-acute COVID-19 sequelae.
421 Cell 2022;185(5):881-895.e20.
- 422 12. Halpin SJ, McIvor C, Whyatt G, *et al.* Postdischarge symptoms and rehabilitation needs in survivors
423 of COVID-19 infection: A cross-sectional evaluation. J Med Virol 2021;93(2):1013-1022.
- 424 13. Yaksi N, Teker AG, Imre A. Long COVID in hospitalized COVID-19 patients: A retrospective
425 cohort study. Iran J Public Health 2022;51(1):88-95.
- 426 14. Yan Z, Yang M, Lai CL. Long COVID-19 syndrome: A comprehensive review of its effect on
427 various organ systems and recommendation on rehabilitation plans. Biomedicines 2021;9(8):966.
- 428 15. World Health Organization. A clinical case definition of post COVID-19 condition by a Delphi
429 consensus. ([https://apps.who.int/iris/bitstream/handle/10665/345824/WHO-2019-nCoV-Post-](https://apps.who.int/iris/bitstream/handle/10665/345824/WHO-2019-nCoV-Post-COVID-19-condition-Clinical-case-definition-2021.1-eng.pdf)
430 [COVID-19-condition-Clinical-case-definition-2021.1-eng.pdf](https://apps.who.int/iris/bitstream/handle/10665/345824/WHO-2019-nCoV-Post-COVID-19-condition-Clinical-case-definition-2021.1-eng.pdf)).
- 431 16. Sugiyama A, Miwata K, Kitahara Y, *et al.* Long COVID occurrence in COVID-19 survivors. Sci
432 Rep 2022;12(1):6039.
- 433 17. Hanson BA, Visvabharathy L, Ali ST, *et al.* Plasma biomarkers of neuropathogenesis in
434 hospitalized patients with COVID-19 and those with postacute sequelae of SARS-CoV-2 infection.
435 Neurol Neuroimmunol Neuroinflamm 2022;9(3):e1151.
- 436 18. Phetsouphanh C, Darley DR, Wilson DB, *et al.* Immunological dysfunction persists for 8 months
437 following initial mild-to-moderate SARS-CoV-2 infection. Nat Immunol 2022;23(2):210-216.
- 438 19. Visvabharathy L, Hanson B, Orban Z, *et al.* Neuro-COVID long-haulers exhibit broad dysfunction
439 in T cell memory generation and responses to vaccination. medRxiv 2021
- 440 20. Rao S, Benzouak T, Gunpat S, *et al.* Fatigue symptoms associated with COVID-19 in convalescent
441 or recovered COVID-19 patients; a systematic review and meta-analysis. Ann Behav Med
442 2022;56(3):219-234.
- 443 21. de Erausquin GA, Snyder H, Carrillo M, Hosseini AA, Brugha TS, Seshadri S. The chronic
444 neuropsychiatric sequelae of COVID-19: The need for a prospective study of viral impact on brain
445 functioning. Alzheimers Dement 2021;17(6):1056-1065.

- 446 22. Sumi T, Harada K. Immune response to SARS-CoV-2 in severe disease and long COVID-19.
447 iScience 2022;25(8):104723.
- 448 23. Vibholm LK, Nielsen SSF, Pahus MH, *et al.* SARS-CoV-2 persistence is associated with antigen-
449 specific CD8 T-cell responses. EBioMedicine 2021;64:103230.
- 450 24. Asadi-Pooya AA, Akbari A, Emami A, *et al.* Long COVID syndrome-associated brain fog. J Med
451 Virol 2022;94(3):979-984.
- 452 25. Townsend L, Dyer AH, Jones K, *et al.* Persistent fatigue following SARS-CoV-2 infection is
453 common and independent of severity of initial infection. PLoS One 2020;15(11):e0240784.
- 454 26. Files JK, Sarkar S, Fram TR, *et al.* Duration of post-COVID-19 symptoms is associated with
455 sustained SARS-CoV-2-specific immune responses. JCI Insight 2021;6(15):e151544.
- 456 27. Klein J, Wood J, Jaycox J, *et al.* Distinguishing features of Long COVID identified through
457 immune profiling. medRxiv 2022:2022.08.09.22278592.
- 458 28. Mascellino MT, Di Timoteo F, De Angelis M, Oliva A. Overview of the main anti-SARS-CoV-2
459 vaccines: Mechanism of action, efficacy and safety. Infect Drug Resist 2021;14:3459-3476.
- 460 29. Sirijatuphat R, Suputtamongkol Y, Angkasekwinai N, *et al.* Epidemiology, clinical characteristics,
461 and treatment outcomes of patients with COVID-19 at Thailand's university-based referral hospital.
462 BMC Infect Dis 2021;21(1):382.
- 463 30. Aranha C, Patel V, Bhor V, Gogoi D. Cycle threshold values in RT-PCR to determine dynamics of
464 SARS-CoV-2 viral load: An approach to reduce the isolation period for COVID-19 patients. J Med
465 Virol 2021;93(12):6794-6797.
- 466 31. Riedhammer C, Halbritter D, Weissert R. Peripheral blood mononuclear cells: Isolation, freezing,
467 thawing, and culture. In: Weissert R, ed. Multiple Sclerosis: Methods and Protocols. New York,
468 NY: Springer New York; 2016:53-61.
469

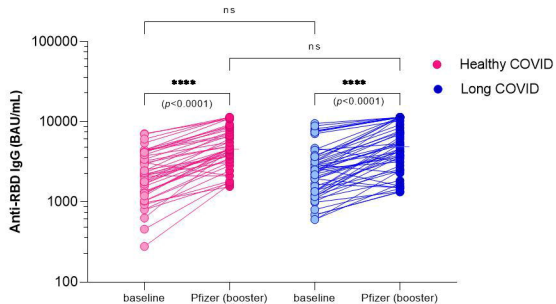


medRxiv preprint doi: <https://doi.org/10.1101/2022.10.10.22280762>; this version posted October 10, 2022. The copyright holder for this preprint (which was not certified by peer review) is the author/funder, who has granted medRxiv a license to display the preprint in perpetuity. It is made available under a [CC-BY-NC-ND 4.0 International license](https://creativecommons.org/licenses/by-nc-nd/4.0/).

A**B**

A

GMT	2108	4152	2241	4665
GMT SD.	2.07	2.22	2.10	1.76
% Positive	100	100	100	100

**B**

GMT of Omicron (O)	67.74	92.87	72.56	90.09
GMT SD. of Omicron (O)	1.48	1.05	1.67	1.13
% Positive of Omicron (O)	97.9	100	98.9	100

