

1 **Predictive Biomarkers for the Responsiveness of Recurrent**
2 **Glioblastomas to Activated Killer Cell Immunotherapy**
3 **Running title: GBM biomarkers that predict therapeutic response**

4 Sohyun Hwang^{1,2,#}, Jaejoon Lim^{3,#}, Haeyoun Kang¹, Ju-Yeon Jeong², Je-Gun Joung^{2,4}, Jinhyung Heo¹,
5 Daun Jung¹, Kyunggi Cho^{3,§}, Hee Jung An^{1,2,§}

6 ¹Department of Pathology, CHA Bundang Medical Center, CHA University School of Medicine,
7 Seongnam, Korea

8 ²CHA Future Medicine Research Institute, CHA Bundang Medical Center, Seongnam, Korea

9 ³Department of Neurosurgery, CHA Bundang Medical Center, CHA University School of Medicine,
10 Seongnam, Korea

11 ⁴Department of Biomedical Science, CHA University, Seongnam, Korea

12

13 **Abstract**

14 **Background:** Recurrent glioblastoma multiforme (GBM) is a highly aggressive primary malignant
15 brain tumor that is resistant to existing treatments. Recently, we reported that activated autologous
16 natural killer (NK) cell therapeutics induced a marked increase in survival of some patients with
17 recurrent GBM.

18 **Methods:** To identify biomarkers that predict responsiveness to NK therapeutics, we examined
19 immune profiles in tumor tissues using NanoString nCounter analysis and compared the profiles
20 between 5 responders and 7 non-responders. Through a three-step data analysis, we identified three
21 candidate biomarkers (*TNFRSF18*, *TNFSF4*, and *IL12RB2*) and performed validation with qRT-PCR.
22 We also performed immunohistochemistry and an NK cell migration assay to assess the function of
23 these genes.

24 **Results:** Responders had higher expression of many immune-signaling genes compared with non-
25 responders, which suggests an immune-active tumor microenvironment in responders. The random
26 forest model that identified *TNFRSF18*, *TNFSF4*, and *IL12RB2* showed a 100% accuracy (95% CI:
27 73.5%–100%) for predicting the response to NK therapeutics. The expression levels of these three
28 genes by qRT-PCR were highly correlated with the NanoString levels, with high Pearson's correlation
29 coefficients (0.419 (*TNFRSF18*), 0.700 (*TNFSF4*), and 0.502 (*IL12RB2*)); their prediction
30 performance also showed 100% accuracy (95% CI: 73.54%–100%) by logistic regression modeling.
31 We also demonstrated that these genes were related to cytotoxic T cell infiltration and NK cell
32 migration in the tumor microenvironment.

33 **Conclusions:** We identified *TNFRSF18*, *TNFSF4*, and *IL12RB2* as biomarkers that predict response
34 to NK cell therapeutics in recurrent GBM, which might provide a new treatment strategy for this
35 highly aggressive tumor.

36 #These two authors contributed equally to this work as co-first authors.

37 §These two authors contributed equally to this work as co-corresponding authors.

38 **Corresponding authors**

39 **Hee Jung An, MD PhD**

40 Department of Pathology, CHA Bundang Medical Center, 59 Yatap-ro, Bundang-gu, Seongnam-si,
41 Korea, 13496

42 Telephone: +82-31-780-5440

43 Fax: +82-31-780-5045

44 e-mail: hjahn@cha.ac.kr

45 **Kyunggi Cho, MD PhD**

46 Department of Neurosurgery, CHA Bundang Medical Center, 59 Yatap-ro, Bundang-gu, Seongnam-si,
47 Korea, 13496

48 Telephone: +82-31-780-5688

49 Fax: +82-31-780-5269

50 e-mail: sandori50@gmail.com

51

52 **Key words:** recurrent GBM, NK therapeutics, tumor microenvironment, *TNFRSF18*,

53 *TNFSF4*, *IL12RB2*

54 **Background**

55 Glioblastoma multiforme (GBM) is a highly malignant brain tumor that generally has a median
56 survival of less than 20 months, while the 5-year survival rate is only 4%–5% [1]. Despite available
57 aggressive standard therapies, such as radiation and temozolomide (TMZ), after maximal surgical
58 resection, most patients experience recurrence, for which there are currently no effective treatments,
59 and thus, these patients exhibit poor overall survival.

60 Although a remarkable survival benefit has been achieved in many solid tumors including
61 melanoma and lung cancer from recent advances in cancer immunotherapy, clinical trials showed that
62 immune checkpoint inhibitors, such as CTLA-4, PD-1, and PD-L1, failed to prolong survival in
63 patients with glioblastoma [2-4]. The mechanism of resistance to these immunotherapeutic drugs is
64 considered to involve both endogenous and exogenous factors. The endogenous factors are related to
65 the GBM tumor cells [5] and include low tumor mutation burden (TMB) [6], extensive intra-tumoral
66 heterogeneity [7], and a tumor microenvironment (TME) that inhibits the recruitment and function of
67 T cells, such as through activation of the mitogen-activated protein kinase pathway, VEGF, and
68 interleukin production. The exogenous factors are those that affect T cell activation. The most
69 important external factor is the immune microenvironment. Infiltration of regulatory T (Treg) cells [8],
70 myeloid-derived suppressor cells (MDSCs) [9], and tumor-associated macrophages (TAMs), which
71 inhibit the antitumor activity of T cells and natural killer (NK) cells, might induce resistance to
72 immunotherapy. Therefore, biomarkers that predict treatment sensitivity and that can be used to
73 screen the population to determine who is suitable for immunotherapy are urgently needed to improve
74 immunotherapy efficacy.

75 Recently, we performed a clinical trial that included 14 patients with recurrent GBM treated with
76 autologous activated NK cells (AKCs) [10] and found that the progression-free and overall survival
77 times were significantly increased in some patients in the treatment group, whereas the average
78 survival of patients with recurrent GBM generally ranges from 5 to 10 months [11-14]. Of the 14
79 patients in the treatment group, 5 responded to the treatment, and survival was longer than 24 months.

80 In this study, to identify the characteristics of the tumor immune microenvironment profile in
81 responders to AKC therapy and the factors that can predict treatment response, we examined the
82 immune profiles of each patient's tissue using NanoString nCounter analysis. We also performed
83 immunohistochemistry to detect immune cells and analyzed the possible predictive biomarkers of
84 response to this immune-cell therapy. In addition, we performed a functional study for the possible
85 predictive biomarkers we identified.

86 **Materials and methods**

87 *Patient samples*

88 A previous clinical study was conducted with 14 patients with recurrent GBM as a single-arm,
89 open-label, and investigator-initiated trial [10]. Autologous AKCs, which were expanded *ex-vivo* for
90 14 days and activated from peripheral blood mononuclear cells (PBMCs), were administered via
91 intravenous injection 24 times at two-week intervals. Among the 14 patients, 5 showed a durable
92 response and survived for over 2 years; the other nine patients survived less than 2 years after surgery,
93 and MRI revealed progression during AKC treatment; these patients were classified as non-responders.
94 A further study was performed on paraffin-embedded tissue samples of 12 patients (5 responders and
95 7 non-responders), which were obtained before AKC treatment and were of sufficient quantity and
96 quality to be used in this study. Two board-certified pathologists (H.K and J.H.) reviewed the
97 hematoxylin and eosin (H&E)-stained slides of all patients to evaluate tissue quality and to identify
98 the tumor area to be analyzed. This study was approved by the Institutional Review Board of
99 Bundang CHA Medical Center (#2012-12-172, #2021-01-024). Informed consent was obtained from
100 each patient before the clinical trial.

101 *RNA extraction and NanoString nCounter analysis*

102 The method for RNA extraction and NanoString nCounter analysis is described in the
103 Supplementary Methods.

104 *Identification of genes significantly associated with treatment response and random forest modeling*

105 To identify genes that are significantly associated with treatment response, we performed a three-
106 step data analysis: area under the ROC curve (AUC), survival analysis, and random forest modeling.
107 In the AUC analysis, we selected genes for which the AUC score was equal to or higher than 0.85. In
108 the survival analysis, we selected genes for which the overall survival (OS) p -value or progression-
109 free survival (PFS) p -value was less than 0.05. Lastly, we constructed random forest models with the
110 identified significant genes by randomForest and care R packages. We used all default values for
111 random forest parameters. The random forest model provided the importance scores, such as mean
112 disease Gini score and mean disease accuracy, which represent gene importance for predictability. The
113 mean decrease in Gini/accuracy scores was used to calculate how the model accuracy would decrease
114 when each gene was excluded in model construction. A high score indicates greater importance for
115 prediction. For performance measurement, the out-of-bag error rate of the random forest model,
116 sensitivity, and specificity were calculated.

117 *Logistic regression modeling*

118 To assess the prediction performance of selected genes, we applied a logistic regression model
119 using the glm (generalized linear model) function in R along with the expression levels of NanoString
120 nCounter. The prediction accuracy was evaluated based on leave-one-out cross-validation. In addition,
121 we constructed the prediction model using logistic regression to distinguish responders from non-
122 responders by RT-qPCR.

123 *RT-qPCR with TaqMan gene expression assays*

124 RNAs (500 ng) were reverse transcribed using SuperScriptTM IV VILOTM Master mix (Invitrogen,
125 Waltham, MA, USA). RT-qPCR quantitation was performed using TaqManTM Gene expression assays
126 [FAM] (Applied Biosystems, Carlsbad, CA, USA) for *TNFSF4* (Hs01911853_s1), *TNFRSF18*
127 (Hs00188346_m1), and *IL12RB2* (Hs00155486_m1) and TaqManTM Gene expression Master Mix
128 (Applied Biosystems, Foster City, CA, USA) on a Bio-Rad CFX96 Real-Time PCR Detection System

129 (Bio-Rad). TBP (Hs00427620_m1) was used as a control to allow quantitation of relative gene
130 expression in RNA samples. All PCR reactions were amplified in duplicate, and relative gene
131 expression levels were calculated using the $-\Delta\text{Ct}$ method.

132 *Immunohistochemistry and digital image analysis*

133 Immunohistochemistry for CD3 (2GV6) (Roche Diagnostics International AG, Rotkreuz,
134 Switzerland), CD8 (SP57) (Roche Diagnostics International AG, Rotkreuz, Switzerland), and CD68
135 (KP-1) (Roche Diagnostics International AG, Rotkreuz, Switzerland) was performed on formalin-
136 fixed paraffin-embedded (FFPE) tissues from all 12 cases on a fully automated stainer (VENTANA
137 BechMark ULTRA, Roche Diagnostics International AG, Rotkreuz, Switzerland). The secondary
138 antibodies with horse radish peroxidase (HRP)-3,3'-diaminobenzidine tetrahydrochloride (DAB) were
139 applied as instructed by the manufacturer (See Supplementary Table 1 for more details). For each
140 immunohistochemical stain, the number of positive cells per mm^2 was detected and calculated on
141 QuPath [15]. Whole slide images were scanned at 20x using a digital slide scanner (APERIO AT2,
142 Leica Biosystems, Nussloch, Germany). Tumor and non-tumor areas of the whole slide image of
143 representative sections for each patient were annotated with QuPath.

144 *Transwell migration assay for NK cell migration to assess the function of the three genes*

145 To assess whether these three genes were expressed in T cells and whether they were related to NK
146 cell migration to the tumor, we performed a Transwell migration assay mimicking the tumor
147 microenvironment. We detected the number of NK cells in the upper chamber that migrated to the
148 lower chamber, which contained GBM cancer cells and T cells that either expressed or did not express
149 these three genes. The human glioblastoma cell line U87MG was purchased from the American Type
150 Culture Collection (ATCC, Manassas, VA, USA) and was cultured under the conditions recommended
151 by ATCC. The method for preparing T and NK cells is described in the Supplementary Methods.

152 To detect TNFSF4, TNFRSF18, and IL12RB expression, the cells were stained with anti-TNFSF4-
153 PE (#318706), anti-TNFRSF18-PE (#311603), or anti-IL12RB2-PE (#394205) (BioLegend, San

154 Diego, CA, USA) in the dark at 4 °C for 20 min. Stained cells were analyzed using a CytoFLEX flow
155 cytometer (Beckman Coulter, Brea, CA, USA) ,and data were analyzed using FlowJo software
156 version 10.1 (Treestar Inc., Ashland, OG, USA).

157 For Transwell migration assays, 5×10^5 U87MG cells alone or with 5×10^5 T cells were seeded
158 into the lower chamber of a Transwell insert (SPL life science, Pocheon, Korea) in culture medium.
159 After the NK cells were stained with carboxyfluorescein succinimidyl ester (CFSE) (MA 02451,
160 Thermo Fisher Scientific, Waltham, USA), 5×10^5 NK cells were placed to the upper chamber in
161 serum free-medium, and the plates were incubated for 8 h at 37°C. To block TNFSF4, TNFRSF18,
162 and IL-12RB2 expression in T cells, T cells were pre-incubated with 20 µg/mL of the anti-TNFSF4
163 (MAB10541-SP), anti-TNFRSF18 (MAB689-SP), and anti-IL12RB2 antibodies (AF1959) (R&D
164 Systems, Minneapolis, MN, USA) for 1 hour at 37°C. The number of NK cells that migrated to the
165 lower chamber was determined by automated counting of CFSE-positive cells using a Luna cell
166 counter. Data are presented as the percentage of migration based on total cell input.

167

168 **Results**

169 *Clinical information of immune-cell therapy participants*

170 Twelve patients participated in this study based on inclusion and exclusion criteria [10] and
171 received AKC treatment, as summarized in Table 1. Of the 12 patients, five showed durable responses
172 and survived for at least 28 months and for a maximum of 76 months after tumor recurrence; these
173 patients were designated as the responder group. The median OS and PFS times of the responder
174 group were 22.5 and 10 months, respectively. Five patients were alive over 2 years later and were
175 active in their daily lives. The survival time of the seven patients in the non-responder group was less
176 than 2 years, and MRI revealed progression during AKC treatment. The isocitrate dehydrogenase
177 (*IDH1*) mutation (R132H) was detected in only 1 patient in the non-responder group. *MGMT*
178 methylation was found in 3 and 4 patients in the responder and non-responder groups, respectively.

179 *Immune landscape profiling by the nCounter PanCancer Immune Profiling Panel*

180 To predict the response to AKC treatment, we explored the immune landscape of 12 patients using
181 the nCounter PanCancer Immune Profiling Panel of 730 immune- and cancer-related genes (Figure
182 1A). We aligned the results of the 730 genes according to functional annotation groups. In Figure 1A,
183 individual patients are represented in each column and are grouped by treatment response: responders
184 (green) on the left and non-responders (red) on the right. Responders showed higher immune-related
185 gene expression compared with non-responders, which suggests a pre-existing increased immune
186 response in the tumor microenvironment of responders. We also calculated the gene signature score of
187 genes in each functional category (Figure 1B). Responders showed high signature scores in the TNF
188 superfamily, cytokines, chemokines, and interleukins, while non-responders showed high signature
189 scores in senescence and cell cycle ($AUC \geq 0.8$, Supplementary Table 2).

190 We identified 35 differentially expressed genes (DEGs) based on t-tests where $p < 0.05$; DEGs
191 between responders and non-responders included *TNFSF4* (fold change: 1.75), *IL34* (fold change:
192 2.85), *IL7* (fold change: 2.94), and *NOTCH1* (fold change: 0.65) (Figure 1C, Supplementary Table 3).
193 Most DEGs (33 DEGs) were highly expressed in responders, but interestingly, *NOTCH1* was highly
194 expressed in non-responders compared with responders. In the principal component analysis (PCA) of
195 35 DEGs, responders and non-responders, except one patient, were grouped separately by PC1
196 (Figure 1D). When we compared the expression level of ligands of various NK-activating receptors,
197 such as *MICA*, *MICB*, and *ULBP2*, *ULBP2* was significantly overexpressed in responders compared
198 with non-responders (1.52-fold higher, $p < 0.05$, Supplementary Figure 1).

199 When we analyzed the correlation patterns between immune-cell receptors and their ligands,
200 immune-cell markers were highly correlated in responders (Figure 1E) but not in non-responders
201 (Figure 1F). For example, *TNFRSF18* was highly correlated with 17 immune activating genes, such as
202 *CD40LG*, *TNFSF4*, *CD70*, *TNFRSF9*, *CD28*, *CD80*, *IL2RA*, *IL2RB*, *CCR5*, *CCL5*, *CCR4*, *CCR2*,
203 *CCR3*, *CCR7*, *CCL21*, *MICA*, and *KLRF1* (Pearson's correlation coefficient: 0.884–0.995 and $p <$
204 0.05) and 13 immune suppressive genes, such as *ICOS*, *ICOSLG*, *PDCD1*, *CD274*, *PDCD1LG2*,
205 *TIGIT*, *BTLA*, *CTLA4*, *CD96*, *HAVCR2*, *CEACAM1*, *IDO1*, and *LILRB1* (Pearson's correlation
206 coefficient: 0.885–0.960 and $p < 0.05$) in responders. In contrast, only *CCL3*, *CCL4*, *CCL19*, *SELL*,

207 and *CD33* were correlated in non-responders. Interestingly, *CX3CL1* was inversely correlated with
208 most other genes, except *CD244*, in the responder group.

209 *Identification of genes significantly associated with NK treatment response*

210 To identify genes that are significantly associated with treatment response, we performed a three-
211 step analysis (Figure 2A), and finally, we revealed that *TNFRSF18*, *TNFSF4*, and *IL12RB2* were
212 candidate biomarkers for predicting the response to AKC treatment. First, we calculated the AUC of
213 each gene and selected 114 genes with AUC values equal to or higher than 0.85. Second, we
214 calculated *p*-values for OS and PFS of each gene and selected 64 genes for which the OS or PFS *p*-
215 value was less than 0.05 (Supplementary Table 4). Figure 2B shows the expression patterns of those
216 64 genes. Each gene was grouped according to its functional annotation group. Similar to the DEG
217 results, all genes except *NOTCH1* were significantly higher in responders than in non-responders.
218 Lastly, using the 64 genes, we constructed 16 random forest models. One model was constructed
219 using all 64 genes, and the other 15 models were constructed using each functional group or pathway,
220 where the 64 genes were annotated (Supplementary Table 5).

221 Among the 16 random forest models, the TNF superfamily model of *TNFRSF18*, *TNFSF4*, and
222 *IL12RB2* showed the best performance with an out-of-bag error rate of 0.0%, a sensitivity of 1.0, a
223 specificity of 1.0, and an accuracy of 100% (95% CI: 73.5%–100%), (Supplementary Table 5). When
224 we calculated the probability of treatment response, the random forest model of these three genes
225 could explicitly separate responders from non-responders (Figure 2C). The same accuracy was
226 achieved when tested using the logistic regression model, which had a sensitivity of 1.0, a specificity
227 of 1.0, and an accuracy of 100% (95% CI: 73.5%–100%). When we compared the expression of each
228 of the three genes according to patient response (Figure 2D), the mRNA expression of the three genes
229 clearly differed according to patients' treatment response. *TNFRSF18* expression in responders was
230 2.8-fold higher ($p = 0.06$), that of *TNFSF4* was 1.7-fold higher ($p = 0.0014$), and that of *IL12RB2* was
231 2.0-fold higher ($p = 0.06$) in responders than in non-responders.

232 *Validation of qRT-PCR and logistic regression modeling*

233 To validate whether the mRNA expression levels of the three selected genes, *TNFRSF18*, *TNFSF4*,
234 and *IL12RB2*, could predict the response to AKC treatment, we performed qRT-PCR with different
235 primers and probes and found that the mRNA levels were positively correlated with the expression
236 levels found by NanoString nCounter with high Pearson's correlation coefficients (0.419 (*TNFRSF18*),
237 0.700 (*TNFSF4*), and 0.502 (*IL12RB2*)), as shown in Figure 3A. All three genes showed significant
238 differences in expression between responders and non-responders (*TNFRSF18*: $p = 0.009$, *TNFSF4*: p
239 $= 0.005$, and *IL12RB2*: $p = 0.034$) (Figure 3B). Next, we assessed whether the prediction model could
240 distinguish responders from non-responders using the selected genes. The logistic regression model
241 had high accuracy (100%; 95% CI: 73.54%–100%) when validated using the leave-one-out cross-
242 validation. Notably, qRT-PCR for the above three genes and logistic regression modeling are both
243 highly accurate for identifying responders.

244 *Clinical implication of the three candidate genes*

245 We investigated the PFS and OS associated with expression of these three genes in enrolled patients.
246 After dividing patients into two groups (high expression and low expression groups) based on the
247 median expression level of each gene, we investigated whether the prognosis of patients in the two
248 groups was associated with expression of these genes. In terms of PFS (Figure 3C), all three genes
249 were significantly associated with patient prognosis (*TNFRSF18*: $p = 0.0017$, *TNFSF4*: $p = 0.0017$,
250 and *IL12RB2*: $p = 0.0055$). In terms of OS (Figure 3D), all three genes were also statistically
251 significantly associated with patient prognosis (*TNFRSF18*: $p = 0.0042$, *TNFSF4*: $p = 0.0042$, and
252 *IL12RB2*: $p = 0.018$). For both PFS and OS, patients with higher expression of all three genes
253 exhibited a better prognosis than those with lower expression.

254 *The expression of immune-cell markers by immunohistochemistry*

255 To explore the composition of the immune cells in the tumor and peritumoral areas, the T cell
256 marker CD3, the cytotoxic T cell marker CD8, and the macrophage/microglia marker CD68 were

257 assessed in responders and non-responders (Supplementary Table 6). To determine the impact of
258 infiltration of these immune cells on the response to AKC treatment and to adjust for variation in
259 immune-cell infiltration between areas, the mean density per mm^2 was calculated in the tumor and
260 peritumoral areas of each sample. The median numbers of infiltrating CD3^+ T cells per mm^2 were not
261 different between responders and non-responders (data not shown). The mean number of infiltrating
262 cytotoxic CD8^+ T cells per mm^2 in the tumor area in responders was 11.5-fold higher than in non-
263 responders (169.6 ± 306.8 vs. 14.62 ± 12.2) (Figure 4A). Although not statistically significant ($p =$
264 0.32) because of the small number of samples, higher numbers of CD8^+ T cells per mm^2 tended to
265 predict AKC treatment response with a high AUC of 0.91 (Figure 4B). A higher CD8^+ T cell count
266 could discriminate the treatment response with a sensitivity of 0.8, a specificity of 0.86, and an
267 accuracy of 0.83 at a cut-off score of 19.225. For the non-tumor area, the mean number of infiltrating
268 CD8^+ T cells per mm^2 in responders was 5.1-fold higher in the tumor area than in non-responders
269 (82.7 ± 170.5 vs. 16.1 ± 17.3); however, this difference was not statistically significant ($p = 0.43$)
270 (Figure 4A).

271 The mean number of infiltrating CD68^+ macrophages/microglia per mm^2 in the tumor area in
272 responders was 2.2-fold higher than in non-responders (621.2 ± 684.7 vs. 279.5 ± 198.1), but this
273 difference was not statistically significant ($p = 0.33$). The number of these cells in the non-tumor area
274 was not significantly different between responders and non-responders (295.0 ± 424.1 vs. $189.2 \pm$
275 184.3 , $p = 0.62$) (Figure 4C). The numbers of CD8^+ and CD68^+ cells were highly correlated with each
276 other in responders (Pearson's correlation coefficient = 0.95, $p = 0.013$, Supplementary Figure 2A),
277 which suggests that these immune cells might influence each other's infiltration in the in responders
278 (Figure 4D), whereas it was not in non-responders.

279 Based on this result, to examine the pattern of distribution of CD8^+ cytotoxic T cells and CD68^+
280 macrophages/microglia in the tumor microenvironment of responders and non-responders, a CD8^+
281 and CD68^+ cell density map was generated (See Supplementary Methods). In responders, the high-
282 density areas of CD8^+ and CD68^+ cells seemed to be located more frequently in tumor tissue rather
283 than in non-tumor tissue, and similar distribution patterns were observed within the same piece of

284 tissue. This suggests that cases with close interaction of CD8⁺ and CD68⁺ cells in the tumor might
285 respond better to NK cell therapy. In contrast, non-responders showed somewhat nonspecific
286 distribution patterns of high-density CD8⁺ and CD68⁺ cell areas (Supplementary Figure 2B). The
287 infiltration of these two immune cells using immunohistochemical stain was correlated with mRNA
288 expression of each genes by NanoString in the responders, whereas their correlation was not seen in
289 non-responders (Supplementary Figure 2C).

290 In addition, we found that infiltration by CD8⁺ cytotoxic T cells was highly correlated with
291 *TNFRSF18* and *TNFSF4* expression (Pearson's correlation coefficient = 0.83, $p = 9.0 \times 10^{-4}$ for
292 *TNFRSF18*, Pearson's correlation coefficient = 0.56, $p = 0.06$ for *TNFSF4*) (Supplementary Figure
293 3C).

294 *Effect of three candidate genes on NK cell migration*

295 To validate whether expression of the three candidate genes (*TNFSF4*, *TNFRSF18*, and *IL12RB2*)
296 in the tumor microenvironment is implicated in NK cell migration toward cancer cells, we conducted
297 a Transwell migration assay using GBM U87MG cells, T cells, and NK cells derived from PBMCs.
298 First, we evaluated the expression of these three candidate genes on T cells and U87MG cells. The
299 three candidate genes were highly expressed on activated T cells (62.29%, 63.49%, and 69.59% for
300 *TNFSF4*, *TNFRSF18*, and *IL12RB2*, respectively) (Figure 5A).

301 After blocking expression of these three candidate genes on T cells, we compared the percentage of
302 NK cells that migrated from the upper chamber to the lower chamber between the GBM + control T
303 cell group and the GBM + T cell groups in which expression of these genes was blocked. The number
304 of NK cells that migrated toward U87MG GBM cells was significantly reduced in the *TNFSF4*-
305 blocked T cell group ($26.9\% \pm 2.0\%$, $p = 0.027$), and tended to decrease in the *TNFRSF18*-blocked T
306 cell group ($42.1\% \pm 9.6\%$, $p = 0.195$) and the *IL12RB*-blocked T cell group ($37.8\% \pm 9.6\%$, $p = 0.146$)
307 compared with the control T cells in which the expression of these three genes was not blocked (63.8%
308 $\pm 5.9\%$) (Figure 5B). Collectively, these results suggest that higher expression of these three genes,
309 especially *TNFSF4*, in T cells contributed to NK cell migration toward cancer cells.

310 **Discussion**

311 GBM is the most common and aggressive primary malignant brain tumor and patients with GBM
312 have a very poor prognosis, as their median OS is 14.6 months [16]. Although newly developed
313 immuno-oncology drugs have been used to treat primary GBM, the current therapeutic approaches
314 have very limited impact on improvement of the survival of patients with GBM. The CheckMate-143
315 study [4], a large-scale phase 3 study conducted in patients with recurrent GBM, compared
316 Nivolumab, a PD-1 immune checkpoint inhibitor, and Bevacizumab, a control drug, but failed to
317 demonstrate an effect on OS. Other immune checkpoint inhibitors have also not shown any significant
318 therapeutic effects.

319 Considering the results of research conducted thus far, both the GBM cancer cells themselves and
320 the tumor microenvironment seem to be the cause of the failure of these immuno-oncologic drugs.
321 Since GBM has a low tumor mutation burden compared with other cancers, it has fewer tumor
322 antigens, and therefore, it is believed to be difficult to prime an anticancer immune response in GBM.
323 In addition, GBM cells secrete many soluble immunosuppressive factors, such as TGF- β ,
324 prostaglandin E2 (PGE2), vascular endothelial growth factor (VEGF), IL10, CCL2, and CCL22,
325 which suppress cytotoxic T cells and recruit Treg cells. Treg cells contribute to cytotoxic T cell
326 suppression and tumor progression via production of IL10, IL35, and TGF- β . GBM cells also recruit
327 TAMs by releasing CX3CL1 or CCL5, and they promote the acquisition of an M2 phenotype by
328 microglial cells via secretion of IL10, IL4, IL13, and TGF- β . Therefore, NK cell-based
329 immunotherapy might become an attractive and promising therapy that can overcome the
330 immunosuppressive microenvironment of GBM, since NK cells, complement the antitumor activity of
331 T cells by releasing various cytokines or chemokines, by recruiting dendritic cells, and by directly
332 killing cancer cells.

333 Recently, we performed a clinical trial using intravenous autologous AKC treatment for patients
334 with recurrent GBM after surgical resection to overcome the immunosuppressive TME. In our clinical
335 trial, we observed that this NK therapy suppressed the tumors and resulted in prolonged OS and PFS

336 in patients with some subsets of these tumors [10]. Therefore, we examined the immune profiles in
337 tumor and TME tissues of these patients and compared them between responders and non-responders
338 to identify the biomarkers predictable to treatment responsiveness.

339 In the present study, we found that the expression of genes related to various immune-signaling
340 molecules was increased in responders. Interestingly, the DEG analysis and filtering of genes by AUC,
341 OS, or PFS revealed that the genes commonly related to immune-cell function, regulation, and
342 recruitment were significantly increased in responders compared with non-responders. When the
343 correlation patterns between immune-cell receptors and their ligands were analyzed, signaling
344 proteins were highly correlated in responders whereas they were not correlated in non-responders
345 (Figure 1E). This immune profiling might be related to higher infiltration of CD8⁺ T cells in
346 responders compared with non-responders, although the difference between the two was not
347 statistically significant, and it was not clear whether these T cells were activated or exhausted.

348 Considering that previous studies reported the frequent occurrence of transition to a mesenchymal
349 subtype with increased expression of various immune-related genes in recurrent glioblastomas after
350 standard therapy [17, 18], the responder group is more likely to have the mesenchymal molecular
351 subtype, which is considered to be more aggressive. In the mesenchymal subtype of GBM, an
352 increased subpopulation of TAMs/microglia has been described as an integral component that
353 contributes to mesenchymal transition [19, 20]. In this study, we also demonstrated that responders
354 had a 2.2-fold higher infiltration of TAMs/microglia than non-responders, which supports the concept
355 that the responder group was more likely to have the mesenchymal subtype of GBM. In addition,
356 using density maps and correlation analysis by immunohistochemistry, we demonstrated similar
357 distribution patterns and highly correlated infiltration of CD8⁺ and CD68⁺ cells in the tumors of
358 responders. Taken together, our results implied that AKC treatment might be effective at least in some
359 subset of tumors in the highly immune-active group of GBM, such as those with the mesenchymal
360 subtype, which is known to have poor outcomes.

361 In addition, the DEG analysis demonstrated that *NOTCH1* expression was significantly lower in the
362 responder group than in the non-responder group, whereas the other significantly altered genes were

363 upregulated in the responder group. Considering that NOTCH1 is a marker of glioma stem cells, it is
364 suggested that non-responders harbor more glioma stem cells than responders. When the correlation
365 patterns between immune-cell receptors and their ligands were analyzed, signaling proteins except
366 CX3CL1 were highly and positively correlated in responders, whereas they were not correlated in
367 non-responders (Figure 1E). CX3CL1 is reported to be mostly expressed in neurons where it inhibits
368 the overexpression of pro-inflammatory molecules. Therefore, it is believed that CX3CL1 expression
369 was inversely correlated with the expression of other inflammatory genes in the responder group.

370 In this study, we identified three candidate genes, *TNFRSF18*, *TNFSF4*, and *IL12RB2*, which can
371 best predict responsiveness to AKC treatment; these were selected through the random forest method
372 (Figure 3C). These genes are members of the TNF family, which is known to coordinate co-
373 stimulation or co-inhibition of the immune response in the tumor microenvironment.

374 *TNFRSF18*, also known as GITR (glucocorticoid-induced tumor necrosis factor receptor related
375 protein), was initially known to play a co-stimulatory role in T cell activation. However, GITR-
376 GITRL interactions are far more complex. GITR is expressed at high levels on T regulatory cells [21]
377 as well as on activated CD4⁺ and CD8⁺ T cells [22] and at intermediate levels on NK cells. According
378 to previous reports, GITR expression on tumor-infiltrating Tregs is higher than that on tumor CD8⁺ T
379 cells and peripheral Treg cells [23]. On the contrary, agonistic GITR antibodies directly suppressed
380 Tregs and reduced the sensitivity of effector T cells to Treg-mediated suppression [24]. A current
381 clinical trial reported that an agonistic anti-GITR mAb reduced Treg levels both in the circulation and
382 the tumors of treated patients [25, 26]. Considering the previous reports and the finding that our NK
383 cells expressed high GITR ligands (2.65-fold higher than PBMCs, data not shown), GITR-GITRL
384 signaling might have induced anticancer immunity by Treg suppression when we introduced our NK
385 therapeutics.

386 *TNFSF4*, also known as OX40 ligand, is primarily expressed on antigen-presenting cells, activated
387 T cells, and some endothelial cells, where it stimulates OX40 expression on the surface of activated T
388 or NK cells. OX40-OX40L signaling increases the adaptive immune response to pathogenic antigens
389 by promoting effector and memory T cell survival [27]. The previous study using The Cancer

390 Genome Atlas and the Cancer Cell Line Encyclopedia RNA sequencing data from anti-PD1-treated
391 patients with melanoma demonstrated that the low *TNFSF4* mRNA expression group was associated
392 with worse prognosis and showed a worse outcome after anti-PD1 treatment [28]. On the contrary, a
393 recent analysis [29] of a TNF family based-signature in diffuse gliomas using 4 datasets reported that
394 35 TNF family genes including *TNFSF4* were related to the high-risk group of patients, who had a
395 poor prognosis. However, several preclinical studies using a murine glioma model [30, 31]
396 demonstrated that OX40-OX40L activation was related to a better prognosis and prolonged survival
397 by agonistic OX40 antibody therapy through reverse intracranial T cell exhaustion. The findings from
398 previous preclinical research [32] that OX40 on NK cells interacts with OX40L on dendritic cells
399 resulting in increased IFN- γ release and T cell induction, and from our previous report that shows a
400 high-level of OX40 in our AKC cells [10, 33], provide reasonable evidence for OX40L as a predictive
401 biomarker of our AKC therapeutics. According to our Transwell migration assay, it is assumed that T
402 cells expressing *TNFSF4* in the TME of GBM might induce NK cell migration into the tumor,
403 resulting in a better therapeutic effect of our AKC treatment.

404 *IL12RB2* encodes the β 2 chain of the high-affinity receptor that binds to IL-12, which is well-
405 known cytokine that bridges innate and adaptive immunity [34]; the β 2 chain is expressed by antigen-
406 presenting cells, including macrophages and microglia. IL-12 drives T helper responses, enhances T
407 and NK cell cytotoxicity, and induces IFN- γ production by T and NK cells [35]. *IL12RB2* is essential
408 for IL-12 signal transduction and functions as a tumor suppressor. Higher expression of *IL12RB2* was
409 reported to be associated with better prognosis and longer survival in various human tumors,
410 including lung and laryngeal cancers [36, 37]. Taken together, it could be expected that higher
411 expression of *IL12RB2* is predictive marker for responsiveness to NK cell therapeutics.

412 In conclusions, we identified *TNFRSF18*, *TNFSF4*, and *IL12RB2* as biomarkers that predict
413 response to NK cell therapeutics by studying the tumor immune microenvironment using NanoString
414 and qRT-PCR analyses in patients with recurrent GBM who received activated NK cell treatment.
415 Given the fact that the early clinical trial sample size is usually small, however, those samples are
416 worthy for predicting clinical efficacy, the results would be very valuable although the sample size

417 was small in this study. Therefore, these three genes can be used to screen individuals who might
418 benefit from NK cell therapy. In addition, our results show that responders to NK therapy have an
419 immune-activated TME, whereas non-responders do not. Considering that immune and inflammatory
420 response-enrichment is related to the high-risk group in this tumor type, our findings highlight a new
421 treatment strategy of NK cell therapeutics for patients with highly aggressive recurrent GBM.\

422 **List of abbreviations**

423	AKC	Autologous activated NK cells
424	ATCC	American Type Culture Collection
425	AUC	Area under the ROC curve
426	CFSE	Carboxyfluorescein succinimidyl ester
427	CI	Confidence interval
428	DEG	Differentially expressed genes
429	FFPE	Formalin-fixed paraffin-embedded
430	GBM	Glioblastoma multiforme
431	KHIDI	Korea Health Industry Development Institute
432	NK	Natural killer
433	OS	Overall survival
434	PBMC	Peripheral blood mononuclear cells
435	PCA	Principal component analysis
436	PFS	Progression-free survival
437	TAM	Tumor-associated macrophages
438	TMB	Tumor mutation burden
439	Treg	Regulatory T

440 **Declarations**

441 *Ethics approval and consent to participate*

442 This study was approved by the Institutional Review Board of Bundang CHA Medical Center (#2012-
443 12-172, #2021-01-024). Informed consent was obtained from each patient before the clinical trial.

444 *Consent for publication*

445 The authors approved the manuscript and gave their consent for submission and publication.

446 *Availability of data and materials*

447 All expression data are available in the GEO Database (<https://www.ncbi.nlm.nih.gov/geo/>) under
448 accession number GSE207753.

449 *Competing interests*

450 The authors declare that there are no conflicts of interest.

451 *Funding*

452 This work was funded by a grant (HI16C1559) from the Korea Health Technology R&D Project
453 through The Korea Health Industry Development Institute (KHIDI), funded by the Ministry of Health
454 & Welfare, and supported by Basic Science Research Program through the National Research
455 Foundation of Korea (NRF) funded by the Ministry of Education (No. NRF-
456 2019R1A6A1A03032888).

457 *Author Contributions*

458 Conceptualization, H.K., H.J.A., J.L. K.C. and S.H.; methodology, H.K., H.J.A., J.L. and S.H.;
459 software, J.G.J. and S.H.; validation, D.J., J.G.J. and J.Y.J.; visualization, D.J., H.K., J.G.J. and S.H.;
460 formal analysis, J.G.J. and S.H.; investigation, J.Y.J. and D.J.; resources, H.K., J.H., H.J.A., J.L. and
461 S.H.; data curation, H.K. and J.H.; writing □ original draft preparation, J.L., H.J.A. and S.H.; writing
462 □ review and editing, J.L., H.K., H.J.A. and S.H., supervision, K.J. and H.J.A., project administration,
463 K.J. and H.J.A., funding acquisition, H.J.A. and S.H. All authors have read and agreed to the
464 published version of the manuscript.

465 **Table 1. Summary of Patients with GBM who Received AKC immunotherapy.**

Patient	Prior recurrence	Survival at last F/U	OS (month)	PFS (month)	KPS	IDH1 status
A1	2	Alive	64	64	70	wild-type
A2	2	Dead	11	5	60	wild-type
A3	1	Dead	10	7	60	wild-type
A4	2	Dead	27	12	80	wild-type
A5	2	Dead	18	5	70	wild-type
A6	2	Alive	39	21	70	wild-type
A7	1	Alive	40	40	80	wild-type
A8	1	Dead	3	2	60	wild-type
A9	1	Dead	12	7	70	mutation
A10	2	Dead	18	9	60	wild-type
A11	2	Alive	24	24	80	wild-type
A12	1	Dead	8	5	60	wild-type
A13	1	Dead	28	22	70	wild-type
A14	1	Alive	15	15	90	wild-type

466 AKC; Activated Killer Cell, F/U; follow-up, KPS; Karnofsky performance scale, OS; overall survival,
467 PFS; progression free survival.

468 **References**

- 469 1. Reuss DE, Mamatjan Y, Schrimpf D, Capper D, Hovestadt V, Kratz A, Sahm F, Koelsche C,
470 Korshunov A, Olar A, et al: **IDH mutant diffuse and anaplastic astrocytomas have similar**
471 **age at presentation and little difference in survival: a grading problem for WHO.** *Acta*
472 *Neuropathol* 2015, **129**:867-873.
- 473 2. Omuro A, Vlahovic G, Lim M, Sahebjam S, Baehring J, Cloughesy T, Voloschin A,
474 Ramkissoon SH, Ligon KL, Latek R, et al: **Nivolumab with or without ipilimumab in**
475 **patients with recurrent glioblastoma: results from exploratory phase I cohorts of**
476 **CheckMate 143.** *Neuro Oncol* 2018, **20**:674-686.
- 477 3. Kurz SC, Wen PY: **Quo Vadis-Do Immunotherapies Have a Role in Glioblastoma?** *Curr*
478 *Treat Options Neurol* 2018, **20**:14.
- 479 4. Reardon DA, Brandes AA, Omuro A, Mulholland P, Lim M, Wick A, Baehring J, Ahluwalia

- 480 MS, Roth P, Bahr O, et al: **Effect of Nivolumab vs Bevacizumab in Patients With**
481 **Recurrent Glioblastoma: The CheckMate 143 Phase 3 Randomized Clinical Trial.** *JAMA*
482 *Oncol* 2020, **6**:1003-1010.
- 483 5. Woroniecka K, Chongsathidkiet P, Rhodin K, Kemeny H, Dechant C, Farber SH, Elsamadicy
484 AA, Cui X, Koyama S, Jackson C, et al: **T-Cell Exhaustion Signatures Vary with Tumor**
485 **Type and Are Severe in Glioblastoma.** *Clin Cancer Res* 2018, **24**:4175-4186.
- 486 6. McGranahan N, Furness AJ, Rosenthal R, Ramskov S, Lyngaa R, Saini SK, Jamal-Hanjani M,
487 Wilson GA, Birkbak NJ, Hiley CT, et al: **Clonal neoantigens elicit T cell immunoreactivity**
488 **and sensitivity to immune checkpoint blockade.** *Science* 2016, **351**:1463-1469.
- 489 7. Touat M, Li YY, Boynton AN, Spurr LF, Iorgulescu JB, Bohrsen CL, Cortes-Ciriano I, Birzu
490 C, Geduldig JE, Pelton K, et al: **Mechanisms and therapeutic implications of**
491 **hypermutation in gliomas.** *Nature* 2020, **580**:517-523.
- 492 8. Chaudhary B, Elkord E: **Regulatory T Cells in the Tumor Microenvironment and Cancer**
493 **Progression: Role and Therapeutic Targeting.** *Vaccines (Basel)* 2016, **4**.
- 494 9. Weber R, Fleming V, Hu X, Nagibin V, Groth C, Altevogt P, Utikal J, Umansky V: **Myeloid-**
495 **Derived Suppressor Cells Hinder the Anti-Cancer Activity of Immune Checkpoint**
496 **Inhibitors.** *Front Immunol* 2018, **9**:1310.
- 497 10. Lim J, Park Y, Ahn JW, Sim J, Kang SJ, Hwang S, Chun J, Choi H, Kim SH, Chun DH, et al:
498 **Autologous adoptive immune-cell therapy elicited a durable response with enhanced**
499 **immune reaction signatures in patients with recurrent glioblastoma: An open label,**
500 **phase I/IIa trial.** *PLoS One* 2021, **16**:e0247293.
- 501 11. Bota DA, Mason W, Kesari S, Magge R, Winograd B, Elias I, Reich SD, Levin N, Trikha M,
502 Desjardins A: **Marizomib alone or in combination with bevacizumab in patients with**
503 **recurrent glioblastoma: Phase I/II clinical trial data.** *Neurooncol Adv* 2021, **3**:vdab142.
- 504 12. Mandel JJ, Cachia D, Liu D, Wilson C, Aldape K, Fuller G, de Groot JF: **Impact of IDH1**
505 **mutation status on outcome in clinical trials for recurrent glioblastoma.** *J Neurooncol*
506 2016, **129**:147-154.

- 507 13. McBain C, Lawrie TA, Rogozinska E, Kernohan A, Robinson T, Jefferies S: **Treatment**
508 **options for progression or recurrence of glioblastoma: a network meta-analysis.**
509 *Cochrane Database Syst Rev* 2021, **5**:CD013579.
- 510 14. Schritz A, Aouali N, Fischer A, Dessenne C, Adams R, Berchem G, Huiart L, Schmitz S:
511 **Systematic review and network meta-analysis of the efficacy of existing treatments for**
512 **patients with recurrent glioblastoma.** *Neurooncol Adv* 2021, **3**:vdab052.
- 513 15. Bankhead P, Loughrey MB, Fernandez JA, Dombrowski Y, McArt DG, Dunne PD, McQuaid
514 S, Gray RT, Murray LJ, Coleman HG, et al: **QuPath: Open source software for digital**
515 **pathology image analysis.** *Sci Rep* 2017, **7**:16878.
- 516 16. Stupp R, Hegi ME, Mason WP, van den Bent MJ, Taphoorn MJ, Janzer RC, Ludwin SK,
517 Allgeier A, Fisher B, Belanger K, et al: **Effects of radiotherapy with concomitant and**
518 **adjuvant temozolomide versus radiotherapy alone on survival in glioblastoma in a**
519 **randomised phase III study: 5-year analysis of the EORTC-NCIC trial.** *Lancet Oncol*
520 2009, **10**:459-466.
- 521 17. Behnan J, Finocchiaro G, Hanna G: **The landscape of the mesenchymal signature in brain**
522 **tumours.** *Brain* 2019, **142**:847-866.
- 523 18. Bhat KPL, Balasubramaniyan V, Vaillant B, Ezhilarasan R, Hummelink K, Hollingsworth F,
524 Wani K, Heathcock L, James JD, Goodman LD, et al: **Mesenchymal differentiation**
525 **mediated by NF-kappaB promotes radiation resistance in glioblastoma.** *Cancer Cell*
526 2013, **24**:331-346.
- 527 19. Kim Y, Varn FS, Park SH, Yoon BW, Park HR, Lee C, Verhaak RGW, Paek SH: **Perspective**
528 **of mesenchymal transformation in glioblastoma.** *Acta Neuropathol Commun* 2021, **9**:50.
- 529 20. Wang Q, Hu B, Hu X, Kim H, Squatrito M, Scarpace L, deCarvalho AC, Lyu S, Li P, Li Y, et
530 al: **Tumor Evolution of Glioma-Intrinsic Gene Expression Subtypes Associates with**
531 **Immunological Changes in the Microenvironment.** *Cancer Cell* 2017, **32**:42-56 e46.
- 532 21. Shimizu J, Yamazaki S, Takahashi T, Ishida Y, Sakaguchi S: **Stimulation of CD25(+)CD4(+)**
533 **regulatory T cells through GITR breaks immunological self-tolerance.** *Nat Immunol* 2002,

- 534 **3:135-142.**
- 535 22. Nocentini G, Riccardi C: **GITR: a modulator of immune response and inflammation.** *Adv*
536 *Exp Med Biol* 2009, **647**:156-173.
- 537 23. Vence L, Bucktrout SL, Fernandez Curbelo I, Blando J, Smith BM, Mahne AE, Lin JC, Park
538 T, Pascua E, Sai T, et al: **Characterization and Comparison of GITR Expression in Solid**
539 **Tumors.** *Clin Cancer Res* 2019, **25**:6501-6510.
- 540 24. Stephens GL, McHugh RS, Whitters MJ, Young DA, Luxenberg D, Carreno BM, Collins M,
541 Shevach EM: **Engagement of glucocorticoid-induced TNFR family-related receptor on**
542 **effector T cells by its ligand mediates resistance to suppression by CD4+CD25+ T cells.** *J*
543 *Immunol* 2004, **173**:5008-5020.
- 544 25. Mahne AE, Mauze S, Joyce-Shaikh B, Xia J, Bowman EP, Beebe AM, Cua DJ, Jain R: **Dual**
545 **Roles for Regulatory T-cell Depletion and Costimulatory Signaling in Agonistic GITR**
546 **Targeting for Tumor Immunotherapy.** *Cancer Res* 2017, **77**:1108-1118.
- 547 26. Zappasodi R, Sirard C, Li Y, Budhu S, Abu-Akeel M, Liu C, Yang X, Zhong H, Newman W,
548 Qi J, et al: **Rational design of anti-GITR-based combination immunotherapy.** *Nat Med*
549 2019, **25**:759-766.
- 550 27. Porciuncula A, Morgado M, Gupta R, Syrigos K, Meehan R, Zacharek SJ, Frederick JP,
551 Schalper KA: **Spatial Mapping and Immunomodulatory Role of the OX40/OX40L**
552 **Pathway in Human Non-Small Cell Lung Cancer.** *Clin Cancer Res* 2021, **27**:6174-6183.
- 553 28. Roszik J, Markovits E, Dobosz P, Layani A, Slabodnik-Kaner K, Baruch EN, Ben-Betzalel G,
554 Grimm E, Berger R, Sidi Y, et al: **TNFSF4 (OX40L) expression and survival in locally**
555 **advanced and metastatic melanoma.** *Cancer Immunol Immunother* 2019, **68**:1493-1500.
- 556 29. Wang QW, Lin WW, Zhu YJ: **Comprehensive analysis of a TNF family based-signature in**
557 **diffuse gliomas with regard to prognosis and immune significance.** *Cell Commun Signal*
558 2022, **20**:6.
- 559 30. Shibahara I, Saito R, Zhang R, Chonan M, Shoji T, Kanamori M, Sonoda Y, Kumabe T,
560 Kanehira M, Kikuchi T, et al: **OX40 ligand expressed in glioblastoma modulates adaptive**

- 561 **immunity depending on the microenvironment: a clue for successful immunotherapy.**
562 *Mol Cancer* 2015, **14**:41.
- 563 31. Jahan N, Talat H, Curry WT: **Agonist OX40 immunotherapy improves survival in glioma-**
564 **bearing mice and is complementary with vaccination with irradiated GM-CSF-**
565 **expressing tumor cells.** *Neuro Oncol* 2018, **20**:44-54.
- 566 32. Liu C, Lou Y, Lizee G, Qin H, Liu S, Rabinovich B, Kim GJ, Wang YH, Ye Y, Sikora AG, et
567 al: **Plasmacytoid dendritic cells induce NK cell-dependent, tumor antigen-specific T cell**
568 **cross-priming and tumor regression in mice.** *J Clin Invest* 2008, **118**:1165-1175.
- 569 33. Jung D, Baek YS, Lee IJ, Kim KY, Jang H, Hwang S, Jung J, Moon YW, Park KS, Choi YS,
570 An HJ: **Ex vivo expanded allogeneic natural killer cells have potent cytolytic activity**
571 **against cancer cells through different receptor-ligand interactions.** *J Exp Clin Cancer Res*
572 2021, **40**:333.
- 573 34. Trinchieri G: **Interleukin-12 and the regulation of innate resistance and adaptive**
574 **immunity.** *Nat Rev Immunol* 2003, **3**:133-146.
- 575 35. Airoidi I, Di Carlo E, Cocco C, Taverniti G, D'Antuono T, Ognio E, Watanabe M, Ribatti D,
576 Pistoia V: **Endogenous IL-12 triggers an antiangiogenic program in melanoma cells.** *Proc*
577 *Natl Acad Sci U S A* 2007, **104**:3996-4001.
- 578 36. Suzuki K, Kadota K, Sima CS, Nitadori J, Rusch VW, Travis WD, Sadelain M, Adusumilli PS:
579 **Clinical impact of immune microenvironment in stage I lung adenocarcinoma: tumor**
580 **interleukin-12 receptor beta2 (IL-12Rbeta2), IL-7R, and stromal FoxP3/CD3 ratio are**
581 **independent predictors of recurrence.** *J Clin Oncol* 2013, **31**:490-498.
- 582 37. Liu Z, Yang W, Yang S, Cai K: **The close association between IL12Rbeta2 and p38MAPK,**
583 **and higher expression in the early stages of NSCLC, indicates a good prognosis for**
584 **survival.** *Mol Med Rep* 2018, **18**:2307-2313.

585 **Figure legends**

586 **Figure 1. The immune landscape profiling of 12 patients with recurrent GBM.** (A) Heatmap of
587 the 730-gene pancancer immune panel for 12 patients. Columns represent patients and rows represent
588 genes. Expression levels were aligned according to the functional annotation groups. Categories of
589 response (responders, non-responders), *IDH1* mutation status, and *MGMT* methylation status are
590 shown. Immunohistochemical stains for CD3, CD8, and CD68 are shown as continuous variables.
591 The mRNA expression levels of genes are represented as colors from red (upregulated, z-score 4) to
592 blue (downregulated, z-score -4). (B) Heatmap of the seven-gene signature scores of the functional
593 annotation groups between responders and non-responders. (C) Volcano plot depicting 35 DEGs
594 between the treatment response groups. (D) A PCA plot based on 35 DEGs. As seen by the dark gray
595 line (PC1 score = 0.00), all patients except one were grouped separately by treatment response.
596 Correlation plots of immune-cell receptors and their ligands in responders (E) and non-responders (F).
597 Pearson's correlation coefficient scores are represented as colors from blue (1.0) to red (-1.0).

598 **Figure 2. Identification of predictive markers and their expression patterns.** (A) Schematic
599 workflow explaining the three steps needed to identify the *TNFSF18*, *TNFSF4*, and *IL12RB2* genes.
600 (B) Heatmap of 64 genes based on an AUC > 0.85, an overall survival *p*-value > 0.05, and a
601 progression-free survival *p*-value > 0.05. (C) A barplot of probability of response to AKC therapy in a
602 random forest model. According to the black line of probability = 0.5, responders and non-responders
603 were clearly separated. (D) The mRNA expression levels of *TNFSF18*, *TNFSF4*, and *IL12RB2* in
604 responders and non-responders are shown as boxplots.

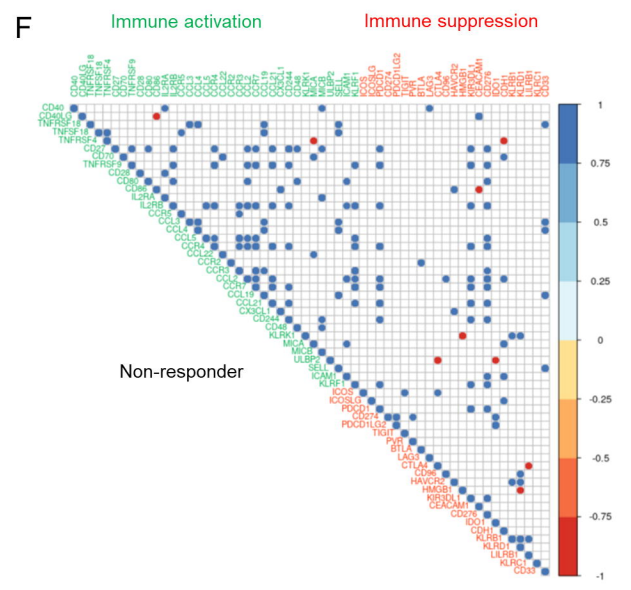
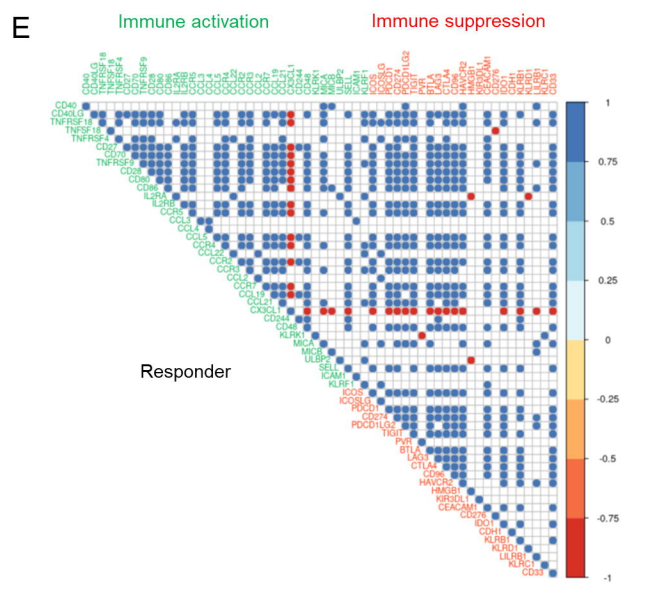
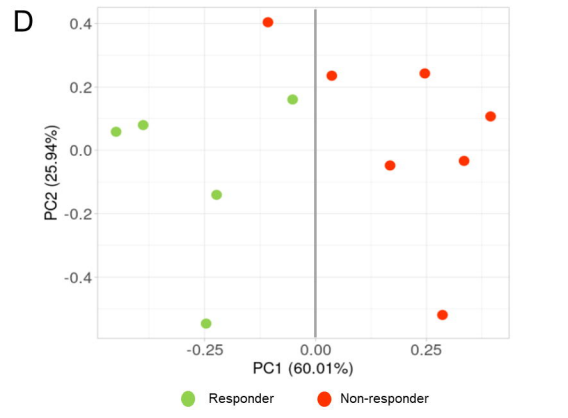
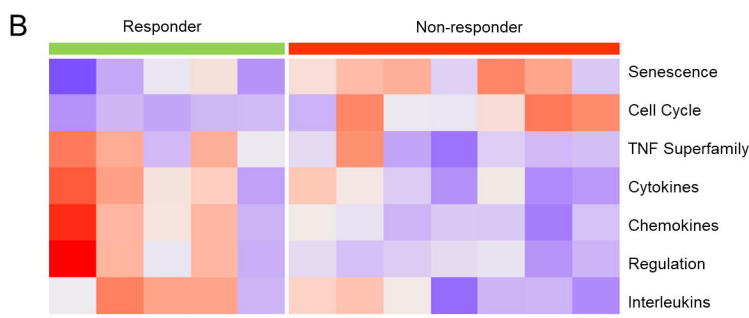
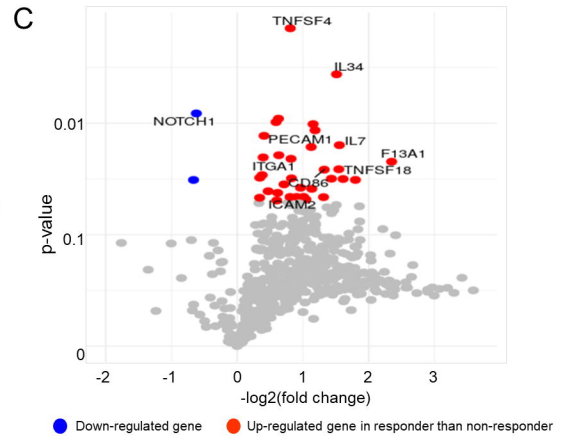
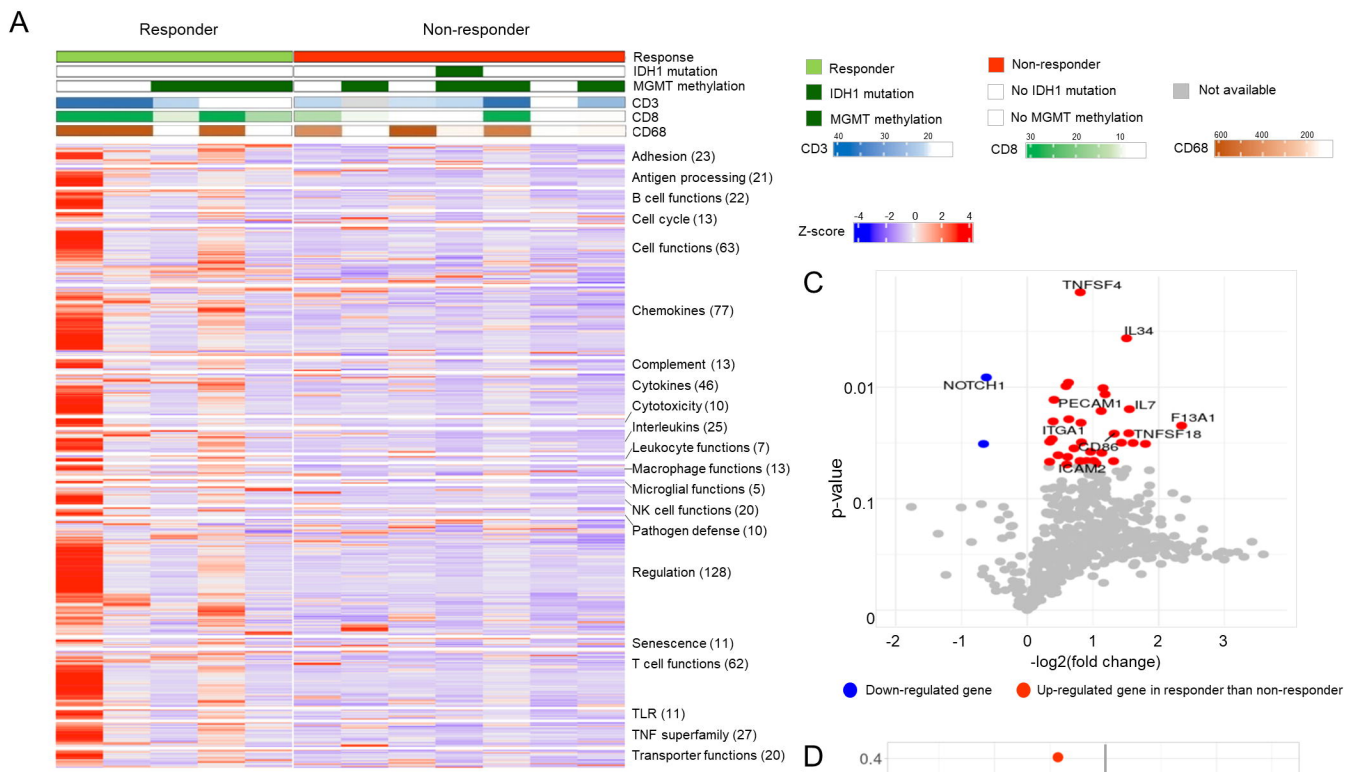
605 **Figure 3. Validation of marker expression and clinical outcomes.** (A) Scatter plots of the
606 expression levels by NanoString nCounter and those by qRT-PCR. Patients are represented by
607 different colors according to the response group. Pearson's correlation coefficients are shown. (B)
608 Boxplots of qRT-PCR quantification for the response group (responders and non-responders).
609 Significance levels of the Wilcoxon rank-sum test are shown as **p* < 0.05, and ***p* < 0.01. (C)

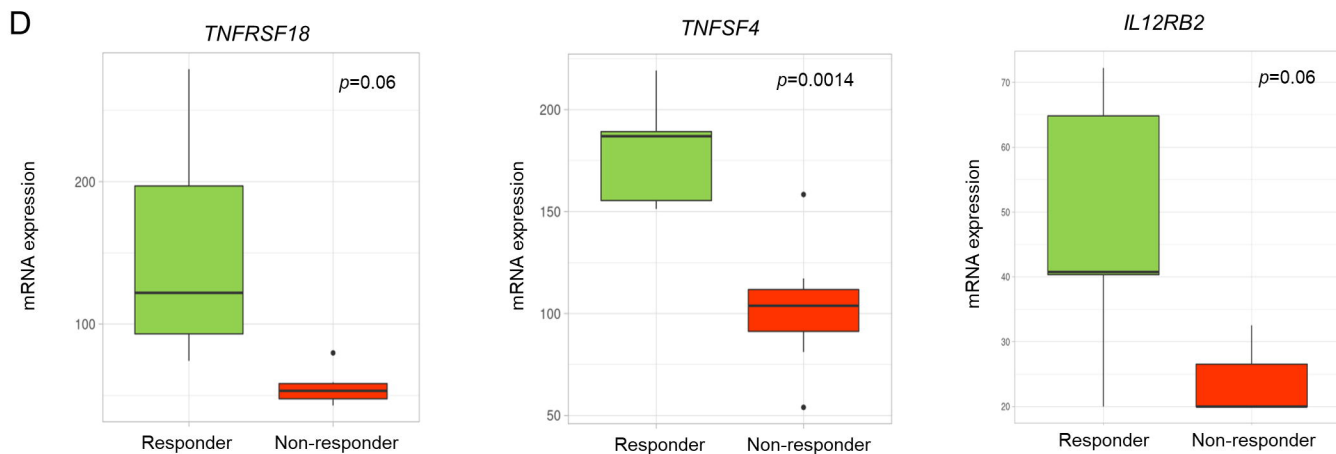
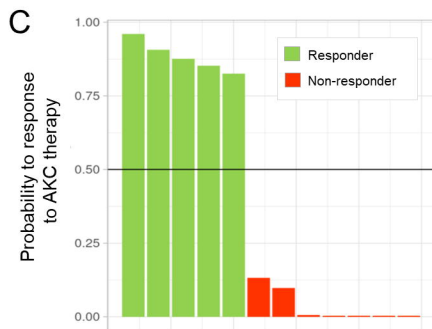
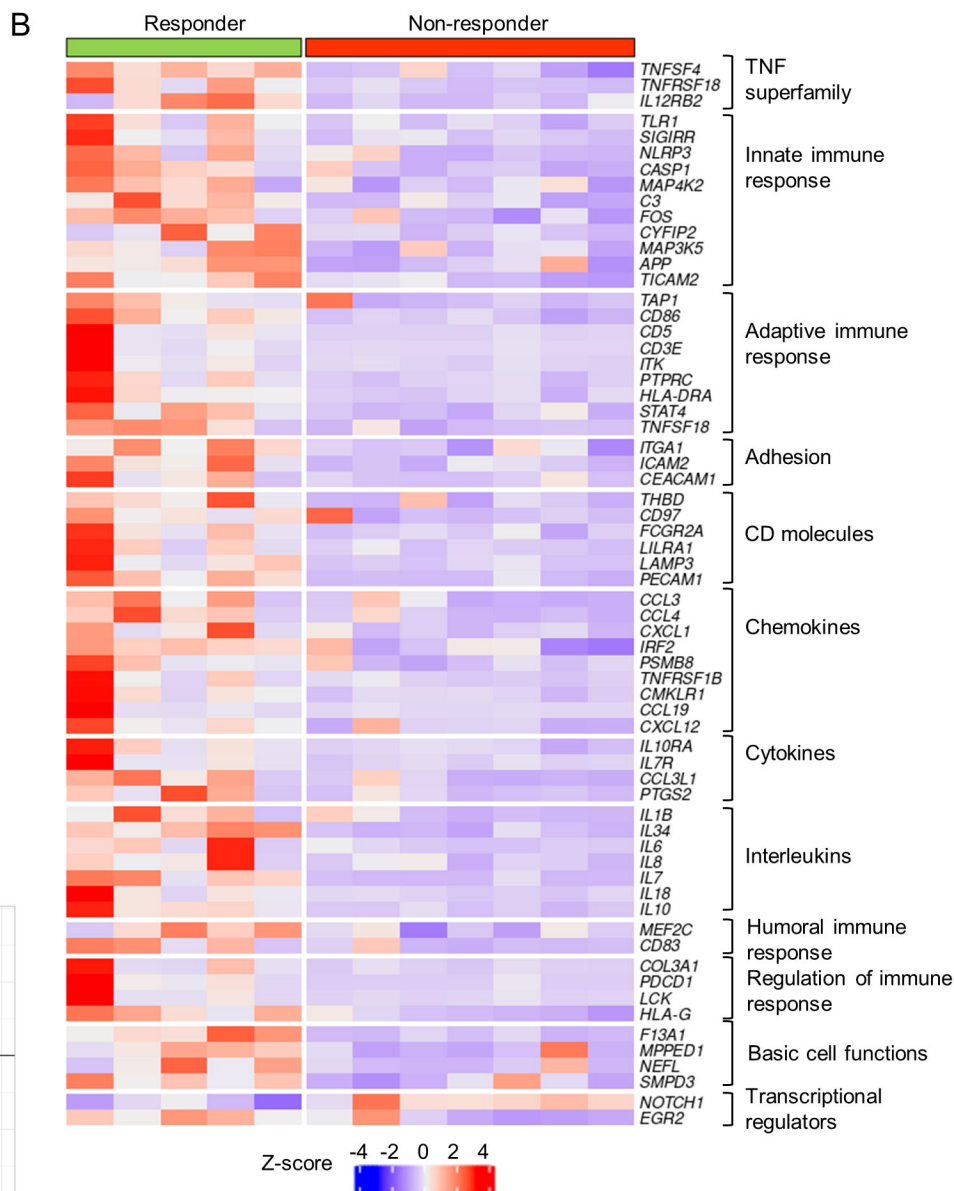
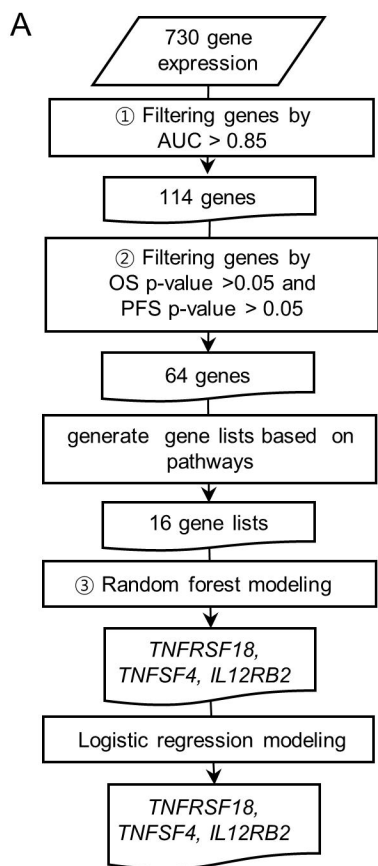
610 Progression-free survival curves according to expression of the three genes. (D) Overall survival
611 curves.

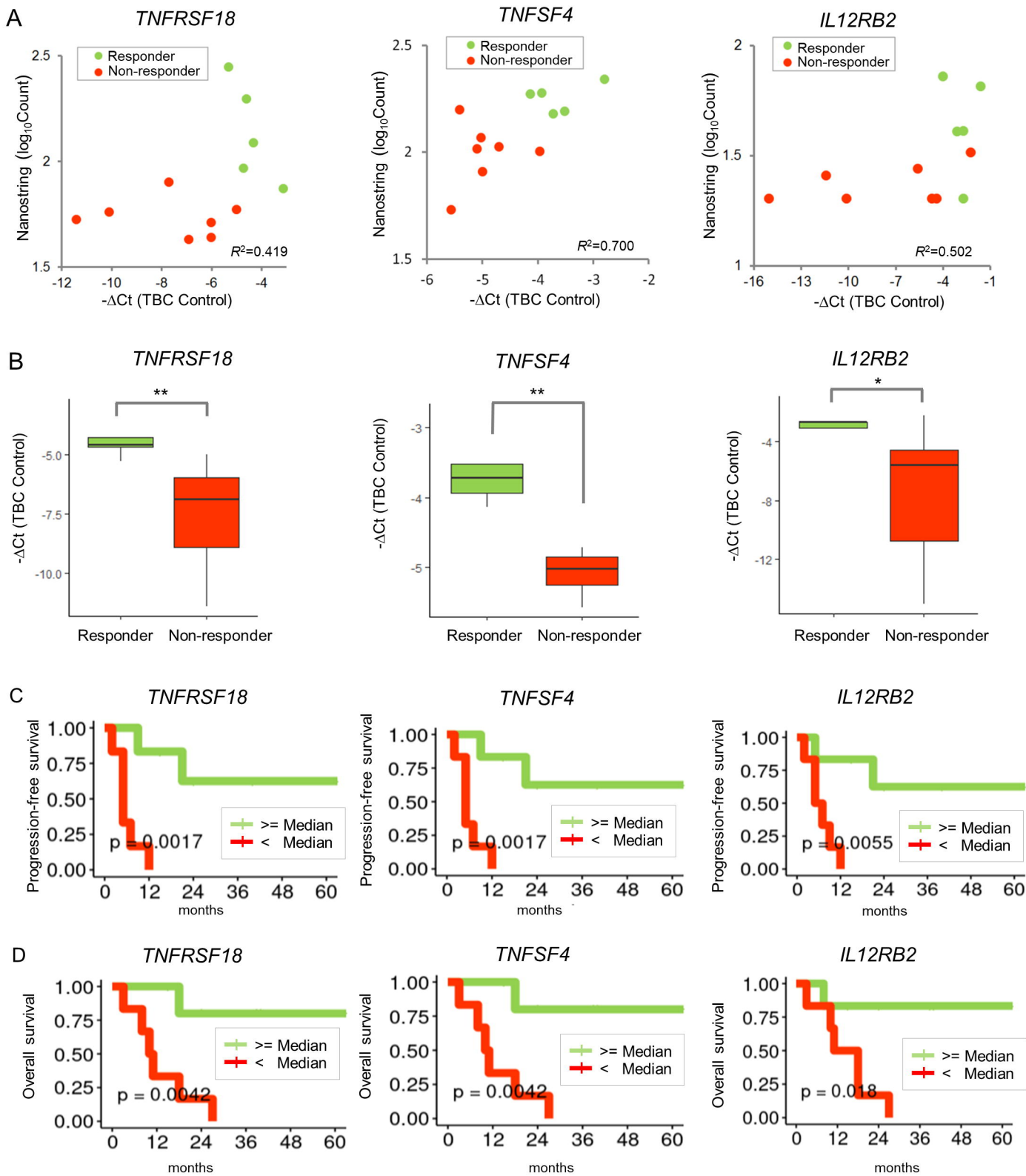
612 **Figure 4. The expression of immune-cell markers (CD8⁺ and CD68⁺ cells) by**
613 **immunohistochemistry.** (A) Distribution of cells expressing the cytotoxic T cell marker CD8⁺ per
614 mm² in tumor and non-tumor areas. R represents responders and NR represents non-responders. (B)
615 The ROC curve based on CD8⁺ cells in the tumor area of each patient. The cut-off score for
616 calculating sensitivity and specificity is indicated by a blue dot. (C) Distribution of cells expressing
617 the macrophage/microglia marker CD68⁺ per mm² in tumor and non-tumor areas. (D) (a-b):
618 Histologic features of the tumor area in responders and non-responders (Hematoxylin and eosin. 1000
619 × 1000 μm), (c-d) The median number of CD3⁺ T cells was not significantly different between
620 responders and non-responders, as a similar density of CD3⁺T cell infiltration was observed in both
621 groups. (e-f) The density (number of cells/mm²) of CD8⁺ cytotoxic T cells in the tumor was higher in
622 responders than in non-responders. (g-h) The density of CD68⁺ macrophages/microglia in the tumor
623 was higher in responders than in non-responders, and in some areas in responders, increased density
624 of these cells coincided with high CD8⁺ T cell density, which suggests intimate interactions with
625 cytotoxic T cells (grey arrows). In some thick-walled vessels, a high density of immune-cell
626 infiltration was observed (left angle bracket).

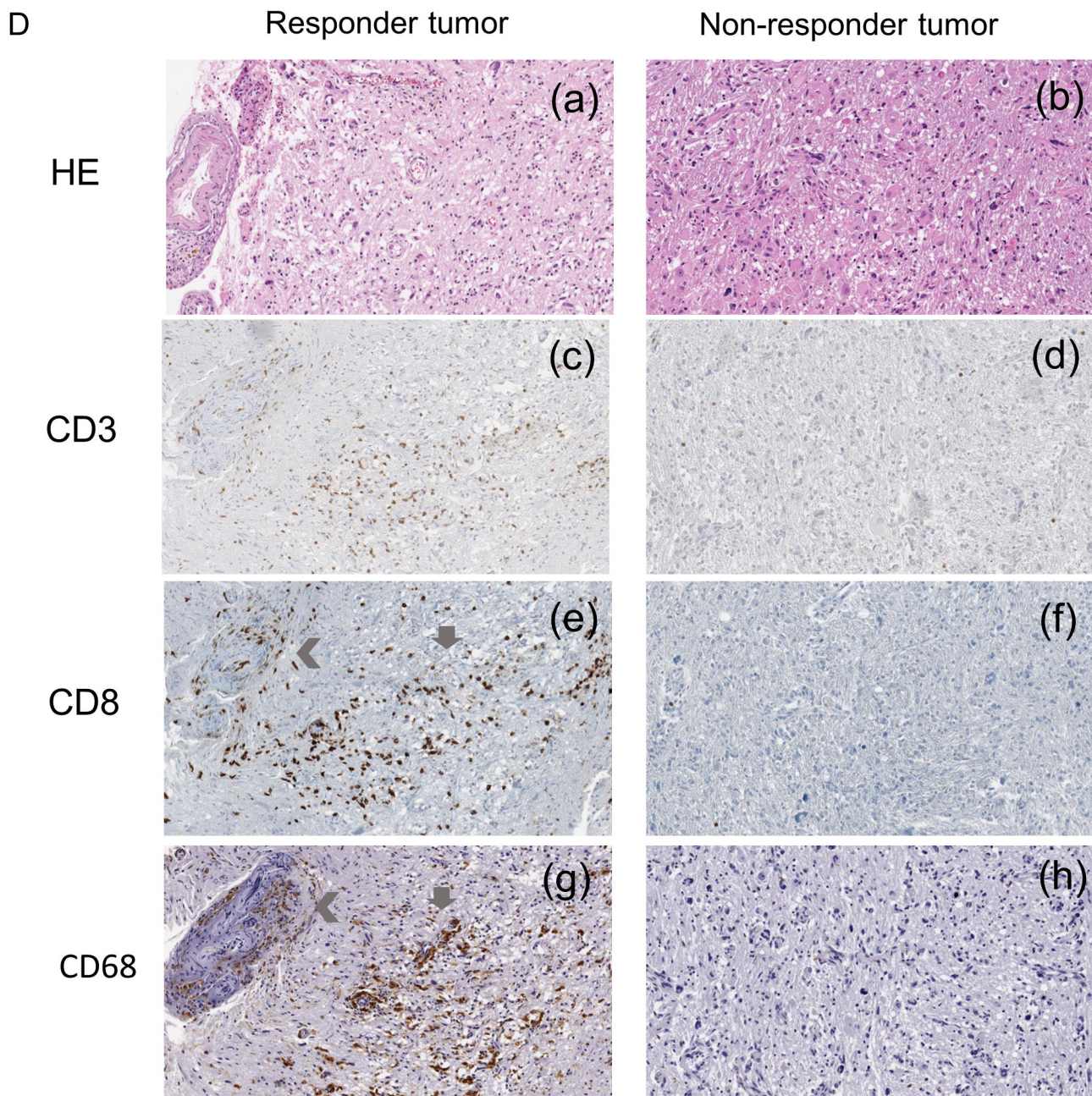
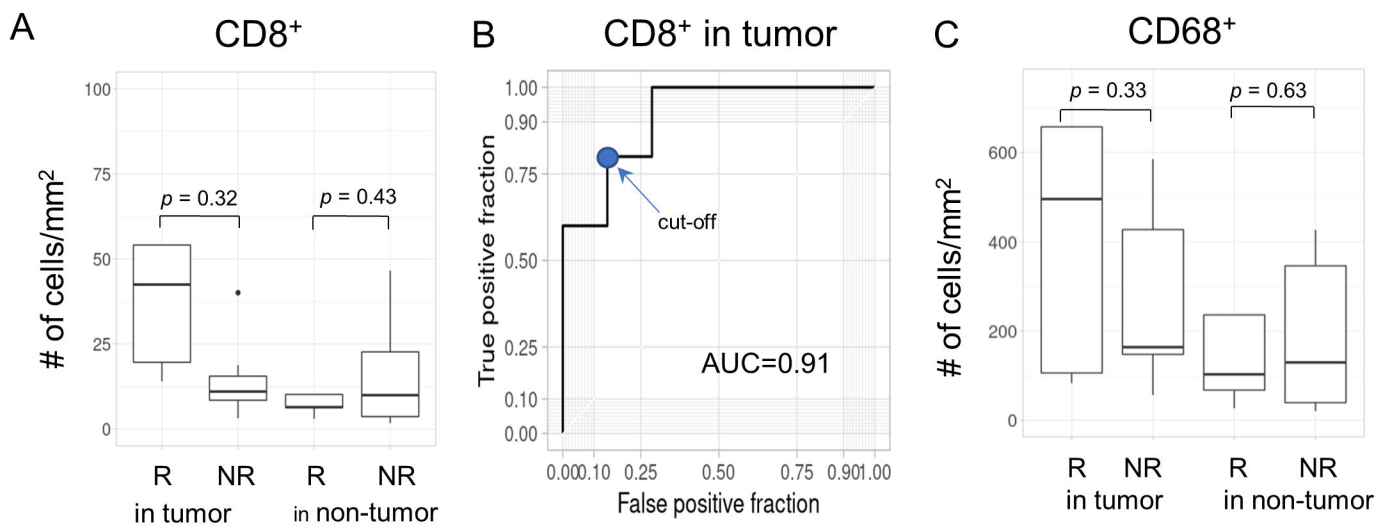
627 **Figure 5. Effects of three candidate genes on migration of NK cells toward GBM cancer cells.** (A)
628 Expression of TNFSF4, TNFRSF18, and IL12RB2 in T cells and U87MG cells was analyzed by flow
629 cytometry. Left: Representative histogram plots. Gray histograms represent isotype controls. Right:
630 Column graphs show the frequencies of TNFSF4⁺, TNFRSF18⁺, and IL12RB2⁺ cells. (B) Transwell
631 migration assay: CFSE-stained NK cells were plated in the upper chamber of a Transwell insert with
632 an 8-mm pore size. Cells were allowed to migrate for 8 hours toward U87MG cells with or without T
633 cells in the lower chamber. T cells were pre-incubated with blocking antibodies to TNFSF4,
634 TNFRSF18, and IL12RB2 for 1 hour. NK cells that migrated to the lower chamber were counted

635 using a cell counter. The experiments were performed in triplicate.

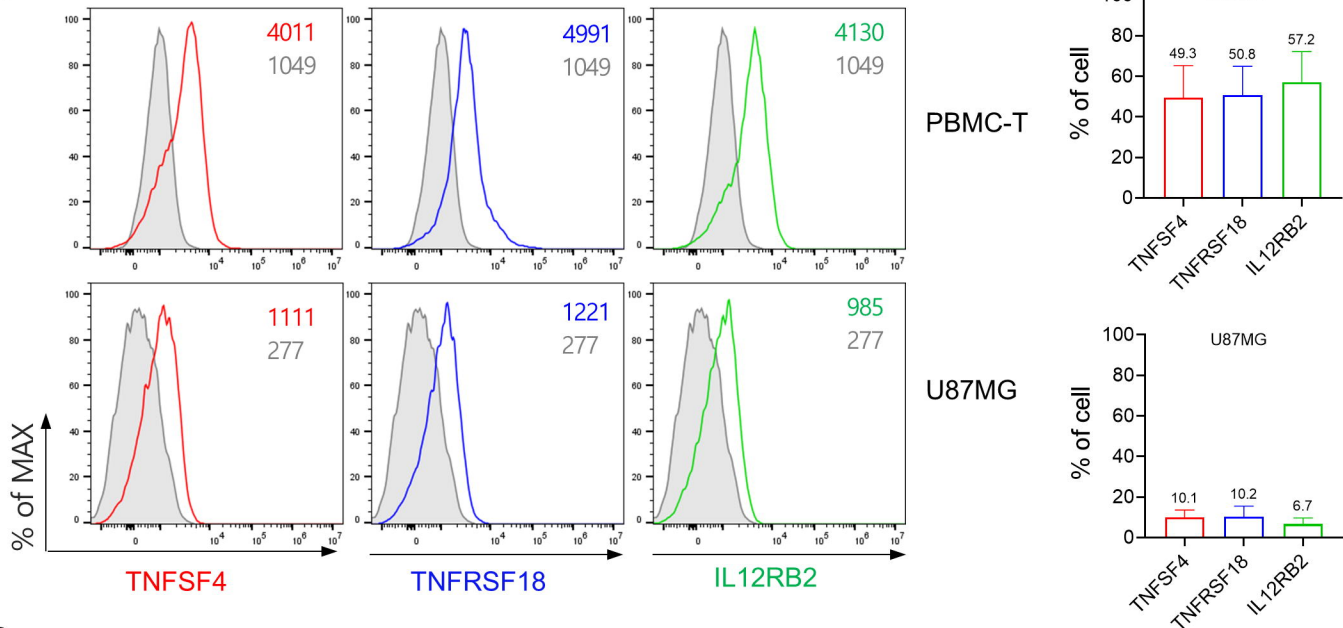








A



B

