

The impact of cross-reactive immunity on the emergence of SARS-CoV-2 variants

1 **R.N. Thompson^{1,2*}, E. Southall^{1,2}, Y. Daon^{3,4}, F.A. Lovell-Read⁵, S. Iwami⁶, C.P. Thompson^{7†},**
2 **U. Obolski^{3,4†}**

3 ¹Mathematics Institute, University of Warwick, Coventry, UK

4 ²Zeeman Institute for Systems Biology and Infectious Disease Epidemiology Research, University of
5 Warwick, Coventry, UK

6 ³School of Public Health, Faculty of Medicine, Tel Aviv University, Tel Aviv, Israel

7 ⁴Porter School of the Environment and Earth Sciences, Faculty of Exact Sciences, Tel Aviv University,
8 Tel Aviv, Israel

9 ⁵Mathematical Institute, University of Oxford, Oxford, UK

10 ⁶Department of Biology, Nagoya University, Nagoya, Japan

11 ⁷Division of Biomedical Sciences, Warwick Medical School, University of Warwick, Coventry, UK

12 *** Correspondence:**

13 Corresponding Author

14 robin.n.thompson@warwick.ac.uk

15 [†]These authors contributed equally

16 **Keywords: Cross-reactive immunity, Mathematical modelling, Infectious disease epidemiology,**
17 **SARS-CoV-2, COVID-19, Variants, Emergence**

18 **Abstract**

19 A key feature of the COVID-19 pandemic has been the emergence of SARS-CoV-2 variants with
20 different transmission characteristics. However, when a novel variant arrives in a host population, it
21 will not necessarily lead to many cases. Instead, it may fade out, due to stochastic effects and the
22 level of immunity in the population. Immunity against novel SARS-CoV-2 variants may be
23 influenced by prior exposures to related viruses, such as other SARS-CoV-2 variants and seasonal
24 coronaviruses, and the level of cross-reactive immunity conferred by those exposures. Here, we
25 investigate the impact of cross-reactive immunity on the emergence of SARS-CoV-2 variants in a
26 simplified scenario in which a novel SARS-CoV-2 variant is introduced after an antigenically related
27 virus has spread in the population. We use mathematical modelling to explore the risk that the novel
28 variant invades the population and causes a large number of cases, as opposed to fading out. If cross-
29 reactive immunity is complete (i.e. someone infected by the previously circulating virus is no longer
30 susceptible to the novel variant), the novel variant must be more transmissible than the previous virus
31 to invade the population. However, in a more realistic scenario in which cross-reactive immunity is
32 partial, we show that it is possible for novel variants to invade, even if they are less transmissible
33 than previously circulating viruses. This is because partial cross-reactive immunity effectively
34 increases the pool of susceptible hosts that are available to the novel variant compared to complete
35 cross-reactive immunity. Furthermore, if previous infection with the antigenically related virus
36 assists the establishment of infection with the novel variant, as has been proposed following some
37 experimental studies, then even variants with very limited transmissibility are able to invade the host
38 population. Our results highlight that fast assessment of the level of cross-reactive immunity

39 conferred by related viruses on novel SARS-CoV-2 variants is an essential component of novel
40 variant risk assessments.

41 **1 Introduction**

42 When a new SARS-CoV-2 variant first arrives in a host population, a key question for policy makers
43 is whether or not it will become widespread. For this to occur, two steps are required: introduction
44 and invasion. First, the variant must arrive in the host population, either through de novo mutation or
45 by importation from elsewhere (introduction). Second, the variant must then spread from person to
46 person and cause a large number of cases, as opposed to simply fading out (invasion). Following
47 introduction, a range of factors affect the risk that a novel variant will invade, including its inherent
48 transmissibility and the connectivity of the location in which it is introduced [1,2]. An additional
49 crucial factor in this process is the background level of immunity to the new variant in the host
50 population. For example, a feature of the Omicron (B.1.1.529) variant that allowed it to become
51 widespread is its ability to evade immunity from past infection or vaccination, at least partially,
52 meaning that the background immunity level was low [3–6].

53 Mathematical modelling has often been used to explore the impact of cross-reactive immunity
54 between pathogen strains on the dynamics of infectious disease outbreaks [7–12]. During the
55 COVID-19 pandemic, models have provided real-time insights into the risk from novel variants. For
56 example, Bhatia *et al.* [13] extended existing methods for estimating pathogen transmissibility
57 [14,15] to enable the transmissibility of novel variants to be assessed, including estimating the
58 infectiousness of the Alpha (B.1.1.7), Beta (B.1.351) and Gamma (P.1) variants relative to the wild
59 type virus (the SARS-CoV-2 virus that first emerged in Wuhan, China). Dyson *et al.* [16] analysed
60 epidemiological data from England, and projected the course of the outbreak in that country if a
61 variant emerged with different transmission characteristics. They warned that a variant with high
62 transmissibility or substantial immune escape properties had the potential to generate large numbers
63 of infections and hospitalisations.

64 Meanwhile, experimental and statistical studies have explored the effects of prior infections with
65 related viruses on infections with different SARS-CoV-2 variants. Some studies have found previous
66 infections with other SARS-CoV-2 variants to have a protective effect. For example, Wratil *et al.*
67 [17] demonstrated that a combination of infection and vaccination induced hybrid immunity is
68 protective against SARS-CoV-2 variants including the Omicron variant. A recent analysis of
69 infection data from Portugal found that previous SARS-CoV-2 infections were protective against
70 infection with the BA.5 Omicron subvariant, with the level of protection particularly high in
71 individuals who were previously infected by the BA.1 or BA.2 Omicron subvariants [18]. However,
72 some studies have indicated that prior infection with other SARS-CoV-2 variants may instead have a
73 detrimental effect on subsequent infections with novel SARS-CoV-2 variants. For example, infection
74 with the SARS-CoV-2 wild type was found to inhibit the immune response to infections with the
75 Omicron variant among triple vaccinated healthcare workers [6].

76 Similarly to the cross-reactive immunity conferred by other SARS-CoV-2 variants, the impact of
77 prior infections with seasonal coronaviruses on subsequent infections by SARS-CoV-2 is also
78 unclear. Some analyses have found that previous infections with seasonal coronaviruses are likely to
79 be protective against SARS-CoV-2 infection. The SARS-CoV-2 spike protein can be divided into the
80 S1 and S2 subunits. The S1 subunit contains an antigenically variable receptor binding domain, while
81 the S2 subunit is more conserved between coronaviruses. Kaplonek *et al.* [19] showed that SARS-
82 CoV-2 S2 antibody responses are associated with milder COVID-19 symptoms, suggesting that
83 previous infection with seasonal coronaviruses may lead to COVID-19 infections being less severe.
84 Furthermore, strong and multispecific cross-reactive T-cell responses induced by seasonal
85 coronavirus infection prior to SARS-CoV-2 infection have been associated with protection against
86 SARS-CoV-2 infection in seronegative healthcare workers [6,20].

87 In contrast, there is also evidence that previous infections with seasonal coronaviruses can have
88 detrimental effects on susceptibility to and outcomes of infection with SARS-CoV-2. With respect to
89 disease outcomes, McNaughton *et al.* [21] showed that prior immunity to seasonal coronaviruses was
90 positively associated with fatal outcomes in individuals with severe COVID-19. Similar results were
91 found by Smit *et al.* [22] in an independent cohort. Conflicting results to Kaplonek *et al.* [19] were
92 found by Garrido *et al.* [23], who found that S2 antibody responses were associated with greater
93 disease severity. With respect to susceptibility, Wratil *et al.* [24] demonstrated that reactive cross-
94 immunity imparted by seasonal coronaviruses may increase susceptibility to SARS-CoV-2.
95 Additionally, a modelling analysis by Pinotti *et al.* [25] has suggested that the general trend of
96 increased severity of SARS-CoV-2 infections in older individuals may be explained by an increased
97 chance that older individuals have been exposed to seasonal coronaviruses.

98 Given this conflicting evidence in the literature, and to help understand the possible effects of prior
99 infections on the risk of emergence of SARS-CoV-2 variants, in this study we develop a
100 mathematical model considering two viruses: a novel SARS-CoV-2 variant and an antigenically
101 related virus that has previously spread in the population. We investigate the factors affecting the risk
102 that the novel variant invades the host population. We assume that infection with the previously
103 circulating virus affects the chance of successful infection with, and subsequent transmission of, the
104 novel variant, considering scenarios in which prior infection is either protective (partially or
105 completely) or detrimental. We show that the level of cross-reactive immunity between novel SARS-
106 CoV-2 variants and antigenically related viruses is a key factor determining whether or not a novel
107 variant will invade the host population. This highlights the need to conduct a rapid assessment of the
108 level of cross-reactive immunity between previously circulating viruses and newly emerged SARS-
109 CoV-2 variants whenever a novel SARS-CoV-2 variant is introduced into a new host population.

110

111 2 Methods

112 2.1 Epidemiological model

113 We consider the introduction of a novel variant to a population consisting of N hosts. We assume that
114 prior immunity has been conferred by infections with a related virus that has already spread within
115 the host population. Assuming that this previously circulating virus follows dynamics that are
116 characterised by the standard (deterministic) SEIR model, the number of individuals in the population
117 that have been previously infected by that virus is given by the solution, N_p , to the final size equation
118 [9],

$$119 \quad N_p = N - Ne^{-\frac{R_{0p}N_p}{N}}. \quad (1)$$

120 In this expression, R_{0p} is the reproduction number of the previously circulating virus, which we
121 assume accounts for any interventions that were introduced (prior to, or immediately after, its arrival
122 in the host population) to limit its spread. We assume that N_p individuals were previously infected by
123 that virus (we round N_p to the nearest integer value), and the remaining $N - N_p$ individuals in the
124 population are immunologically naïve (i.e. they do not carry any immunity against the novel variant).

125 We then model the emergence of the novel variant. If an individual has previously been infected by
126 the related virus, their susceptibility to the novel variant is assumed to be modified by a factor $1 - \alpha$
127 (relative to the susceptibility of a host who has not previously been infected by the related virus).

128 Consequently, if $\alpha > 0$, prior infection with the related virus is protective against infection with the
129 novel variant. If instead if $\alpha = 0$, then earlier infection with the related virus does not affect the risk
130 of infection with the novel variant. If $\alpha < 0$, earlier infection with the related virus promotes
131 infection with the novel variant. Similarly, the infectiousness of a host infected with the novel variant
132 who has previously been infected by the related virus is modified by a factor $1 - \varepsilon$ (relative to the
133 infectiousness of a host who has not previously been infected by the related virus). Again, positive

134 (negative) values of ε reflect scenarios in which prior infection with the related virus reduces
135 (increases) the infectiousness of an individual who is infected with the novel variant.

136 Transmission dynamics for the novel variant are also modelled using an SEIR model, but with two
137 main differences compared to the dynamics of the previously circulating virus. First, the SEIR model
138 for the novel variant is extended to account for cross-reactive immunity conferred by the related
139 virus. Second, since we are modelling invasion, we use a stochastic model in which, in each
140 simulation of the model, the novel variant may either invade the host population or fade out with few
141 infections. The analogous deterministic model to the stochastic model that we consider for the novel
142 variant is given by:

$$143 \quad \frac{dS_n}{dt} = -\beta I_n S_n - \beta(1 - \varepsilon) I_p S_n, \quad \frac{dE_n}{dt} = \beta I_n S_n + \beta(1 - \varepsilon) I_p S_n - \gamma E_n,$$

$$144 \quad \frac{dI_n}{dt} = \gamma E_n - \mu I_n, \quad \frac{dR_n}{dt} = \mu I_n,$$

$$145 \quad \frac{dS_p}{dt} = -\beta(1 - \alpha) I_n S_p - \beta(1 - \varepsilon)(1 - \alpha) I_p S_p,$$

$$146 \quad \frac{dE_p}{dt} = \beta(1 - \alpha) I_n S_p + \beta(1 - \varepsilon)(1 - \alpha) I_p S_p - \gamma E_p, \quad \frac{dI_p}{dt} = \gamma E_p - \mu I_p, \quad \frac{dR_p}{dt} = \mu I_p. \quad (2)$$

147 In these equations, the variables S_n , E_n , I_n and R_n refer to the infection status (with the novel variant)
148 of individuals who have not been infected previously by the related virus, and S_p , E_p , I_p and R_p refer
149 to the infection status of individuals who have previously been infected by the related virus. A
150 schematic illustrating the transitions of individuals between these states, and the rates at which those
151 transitions occur, is shown in Fig 1A. The parameter β is the infection rate parameter, and the mean
152 latent period and infectious period are $1/\gamma$ days and $1/\mu$ days, respectively. We define the
153 reproduction number of the novel variant to be $R_{0n} = \frac{\beta N}{\mu}$, reflecting the transmission potential of the
154 novel variant if the host population is entirely immunologically naïve.

155 As noted above, since we are interested in the risk of invasion of the novel variant, we use the
156 analogous stochastic model to system of equations (2) rather than solving the differential equations
157 numerically. We run model simulations using the direct method version of the Gillespie stochastic
158 simulation algorithm [26] until the novel variant fades out (i.e. $E_n + I_n + E_p + I_p$ reaches zero). The
159 parameter values used in our main analyses are given in Table 1.

160 **2.2 Risk of invasion**

161 When the novel variant is introduced, we approximate the probability that it invades the population
162 analytically. To do this, we assume that infections occur according to a branching process [27–30].
163 Specifically, we denote by q_{ij} the probability that the novel variant fails to invade the host
164 population, starting from i currently infected individuals who are immunologically naïve and j
165 currently infected individuals who were previously infected by the related virus. In this analysis,
166 “currently infected” individuals refer to those who are either exposed or infectious, since exposed and
167 infectious individuals are each expected to infect the same number of other hosts in future. This is
168 because exposed individuals are not yet infectious, and only start generating infections when they
169 move into the infectious compartments in the model.

170 We then consider the probability of the novel variant failing to establish in the host population
171 starting from a single currently infected individual who was previously immunologically naïve, q_{10} .
172 As in similar previous branching process analyses [31–34], we consider the various possibilities for
173 what happens next: either that individual infects another individual who was also previously
174 immunologically naïve (with probability $\frac{\beta(N-N_p)}{\beta(N-N_p)+\beta(1-\alpha)N_p+\mu}$); or, that individual infects someone
175 who was previously infected with the related virus (with probability $\frac{\beta(1-\alpha)N_p}{\beta(N-N_p)+\beta(1-\alpha)N_p+\mu}$); or, that
176 individual recovers without infecting anyone else (with probability $\frac{\mu}{\beta(N-N_p)+\beta(1-\alpha)N_p+\mu}$). Applying
177 the law of total probability therefore gives

$$178 \quad q_{10} = \frac{\beta(N-N_p)}{\beta(N-N_p)+\beta(1-\alpha)N_p+\mu} q_{20} + \frac{\beta(1-\alpha)N_p}{\beta(N-N_p)+\beta(1-\alpha)N_p+\mu} q_{11} + \frac{\mu}{\beta(N-N_p)+\beta(1-\alpha)N_p+\mu} q_{00}.$$

179 Instead starting from a single infected individual who was previously infected by the related virus
180 gives

$$181 \quad q_{01} = \frac{\beta(1-\varepsilon)(N-N_p)}{\beta(1-\varepsilon)(N-N_p)+\beta(1-\varepsilon)(1-\alpha)N_p+\mu} q_{11} + \frac{\beta(1-\varepsilon)(1-\alpha)N_p}{\beta(1-\varepsilon)(N-N_p)+\beta(1-\varepsilon)(1-\alpha)N_p+\mu} q_{02} +$$

$$182 \quad \frac{\mu}{\beta(1-\varepsilon)(N-N_p)+\beta(1-\varepsilon)(1-\alpha)N_p+\mu} q_{00}.$$

183 We then assume that infections occur according to a branching process (so that $q_{20} = q_{10}^2$; as
184 infection lineages failing to establish starting from two infected hosts requires the infection lineages
185 from both infected hosts to fail independently [31–33]). Making similar approximations throughout
186 the equations above, and noting that $q_{00} = 1$ (since the novel variant will not invade if there are no
187 infected individuals) gives

$$188 \quad q_{10} = \frac{\beta(N-N_p)}{\beta(N-N_p)+\beta(1-\alpha)N_p+\mu} q_{10}^2 + \frac{\beta(1-\alpha)N_p}{\beta(N-N_p)+\beta(1-\alpha)N_p+\mu} q_{10}q_{01} + \frac{\mu}{\beta(N-N_p)+\beta(1-\alpha)N_p+\mu},$$

$$189 \quad q_{01} = \frac{\beta(1-\varepsilon)(N-N_p)}{\beta(1-\varepsilon)(N-N_p)+\beta(1-\varepsilon)(1-\alpha)N_p+\mu} q_{10}q_{01} + \frac{\beta(1-\varepsilon)(1-\alpha)N_p}{\beta(1-\varepsilon)(N-N_p)+\beta(1-\varepsilon)(1-\alpha)N_p+\mu} q_{01}^2 + \frac{\mu}{\beta(1-\varepsilon)(N-N_p)+\beta(1-\varepsilon)(1-\alpha)N_p+\mu}. \quad (3)$$

190 The probability of invasion starting from one infected individual who was previously
191 immunologically naïve, p_{10} , and the probability of invasion starting from one infected individual
192 who was previously infected by the related virus, p_{01} , are then given by $p_{10} = 1 - q_{10}$ and $p_{01} =$
193 $1 - q_{01}$, where q_{10} and q_{01} are the minimal non-negative solutions of system of equations (3) [35].

194 2.3 Special cases

195 In general, we solve system of equations (3) numerically. However, an analytic solution is possible in
196 some special cases.

197 For example, in a scenario in which previous infection with the related virus is entirely protective
198 against infection with the novel variant, then $\alpha = 1$. In that case, since a previously infected
199 individual cannot be infected with the novel variant, then p_{01} does not apply. However, in that
200 scenario, $p_{10} = 1 - \frac{\mu}{\beta(N-N_p)}$ (whenever $\frac{\beta(N-N_p)}{\mu} > 1$; otherwise, the novel variant will never establish
201 in the host population). This can be seen by substituting $\alpha = 1$ into the first equation of system of
202 equations (3), solving the resulting quadratic equation for q_{10} (taking the minimal non-negative
203 solution [35]), and then calculating $p_{10} = 1 - q_{10}$. In a scenario in which the related virus has not
204 previously spread in the host population, then this solution for p_{10} is identical to the classic branching
205 process estimate for the probability of a major outbreak, $p_{10} = 1 - \frac{1}{R_{0n}}$ [28,36,37].

206 Alternatively, we can consider a scenario in which prior infection with the related virus eliminates
207 the infectiousness of a host infected by the novel variant (i.e. the individual can become infected, but
208 the virus cannot then establish, so onwards transmission cannot occur). In that case, $\varepsilon = 1$ and so – in
209 a similar fashion to above – we obtain $p_{10} = 1 - \frac{\mu}{\beta(N-N_p)}$ (whenever $\frac{\beta(N-N_p)}{\mu} > 1$) and $p_{01} = 0$.

210 Again, in a scenario in which a related virus has not previously spread in the population, this is the
211 classic estimate for the probability of a major outbreak, $p_{10} = 1 - \frac{1}{R_{0n}}$ [28,36,37].

212 Finally, in a scenario in which previous infection by the related virus does not affect the dynamics of
213 the novel variant (so that $\alpha = \varepsilon = 0$), we expect the risk of novel variant invasion to be independent
214 of whether or not the initial infected individual has previously been infected by the related virus. In
215 other words, we expect $q_{10} = q_{01}$. In this case, system of equations (3) reduces to a single quadratic
216 equation for q_{10} . Taking the minimal non-negative solution of that equation [35] indicates that
217 $p_{10} = p_{01} = 1 - q_{10} = 1 - \frac{1}{R_{0n}}$ (whenever $R_{0n} > 1$; otherwise the novel variant will never establish
218 in the host population).

219 3 Results

220 To investigate the effects of prior infection by an antigenically related virus on the epidemiological
221 dynamics of a newly emerged variant, we first ran stochastic simulations of the analogous stochastic
222 model to system of equations (2). Representative time series of the dynamics illustrate that, if the
223 novel variant successfully spreads in the host population, outbreaks tend to have a lower peak
224 number of infections and have a longer duration when cross-reactive immunity has a protective effect
225 (Fig 1B), compared to when prior infection by the related virus has no effect (Fig 1C). In contrast, if
226 prior infection by the related virus instead promotes infection by the novel variant, outbreaks tend to
227 have a higher peak number of infections and a shorter duration (Fig 1D).

228 However, rather than focusing on the dynamics of outbreaks once the novel variant has invaded the
229 host population, our main goal was to quantify the risk of the novel variant successfully invading in
230 the first place (as opposed to fading out with few cases). We therefore calculated the risk of the novel
231 variant invading the population, starting from the introduction of a single case to the population (Fig
232 2). We not only calculated this quantity by numerically solving system of equations (3) (Fig 2 - red
233 dotted and dashed lines), but also confirmed that these numerical approximations matched estimates
234 of the invasion probability obtained using large numbers of simulations of the stochastic model (Fig
235 2 - black dots and crosses).

236 We found that, when previous infection with the related virus is completely protective against the
237 novel variant (i.e. $\alpha = \varepsilon = 1$), then the reproduction number of the novel variant must be higher than
238 the reproduction number of the antigenically related virus in order for the novel variant to invade.
239 Specifically, in Fig 2A (in which $R_{0p} = 1.5$, as marked by the vertical blue dotted line), the
240 probability of the novel variant invading the host population is zero unless $R_{0n} > R_{0p}$, and indeed
241 remains zero whenever R_{0n} is only slightly larger than R_{0p} . This can be explained analytically as
242 follows. The previously circulating virus will spread around the population until sufficiently many

243 individuals have been infected for herd immunity (to the previous virus) to be reached. This occurs
244 when $N \left(1 - \frac{1}{R_{0p}}\right)$ individuals have become infected [38]. However, at this point, infections do not
245 stop immediately: there is an “overshoot” in infections while transmission slows and the previously
246 circulating virus fades out. As a result, a lower bound on the final size of the outbreak caused by the
247 previously circulating virus is $N_p > N \left(1 - \frac{1}{R_{0p}}\right)$. As noted in the Methods (Special cases), in a
248 scenario involving complete cross-reactive immunity, the novel variant can only invade the
249 population if $\frac{\beta(N-N_p)}{\mu} > 1$, or equivalently $R_{0n} > \frac{N}{N-N_p}$. Substituting the lower bound for N_p into this
250 expression shows that invasion of the novel variant requires $R_{0n} > R_{0p}$.

251 In contrast, if cross-reactive immunity is only partial, then the novel variant may invade for lower
252 values of R_{0n} (Fig 2B). This can include scenarios in which $R_{0n} < R_{0p}$ (in some cases lying between
253 those shown in Fig 2B and Fig 2C). As noted in the Methods, when previous infection by the
254 antigenically related virus does not affect the epidemiological dynamics of the novel variant, then the
255 novel variant can only invade if $R_{0n} > 1$ (Fig 2C), mirroring the classical result for models in which
256 cross-reactive immunity is not accounted for [36]. Finally, in scenarios in which prior infection by
257 the related virus promotes infection with the novel variant, the novel variant can invade even if R_{0n} is
258 small. This includes scenarios in which $R_{0n} < 1$ (Fig 2D).

259 In Fig 2, we note that the immune status of the initial infected individual affects the risk that the
260 novel variant will invade the host population. In particular, when cross-reactive immunity is
261 protective, we found that the probability of invasion is higher if the initially infected host had not
262 previously been infected by the related virus (Fig 2B). In contrast, if cross-reactive immunity
263 promotes infection with the novel variant, then the probability of the novel variant invading is higher

264 if the initial infection arose in an individual who had previously been infected with the related virus
265 (Fig 2D).

266 We then explored how the probability of invasion of the novel variant depends on the susceptibility-
267 and infectiousness-modifying effects of cross-reactive immunity individually (Fig 3). We found that
268 the values of α and ε affect the probability of a major outbreak differently. This is because, starting
269 from a single infected individual, the number of infections generated by that individual is crucial in
270 determining whether or not a novel variant will invade. If the first infected host infects multiple
271 others, then all of those individuals' transmission lineages must fade out in order for invasion to fail
272 to occur. Hence, invasion is much more likely to occur if the first infected individual infects many
273 individuals. Starting from a single infected individual who was not previously infected by the related
274 virus, only susceptibility-reducing immunity (characterised by α) affects the number of infections
275 generated by the first infected individual. As such, the probability of invasion in this case is more
276 sensitive to α than to ε (Fig 3A).

277 In contrast, if the first infected individual was previously infected by the related virus, then
278 infectiousness-reducing immunity (characterised by ε) also affects the probability of this individual
279 infecting any other member of the population. In fact, ε then affects all potential transmissions
280 generated by the first infected individual, whereas α only affects potential transmissions to part of the
281 population (those individuals who were previously infected by the related virus). In that scenario, the
282 probability of a major outbreak is therefore slightly more sensitive to ε than α (Fig 3B). The different
283 effects of susceptibility-reducing and infectiousness-reducing cross-reactive immunity therefore
284 explain the asymmetric nature of the contours about the diagonal $\varepsilon = \alpha$ in Fig 3.

285

286

287 4 Discussion

288 The epidemiological dynamics of the COVID-19 pandemic have been shaped by the emergence of
289 different SARS-CoV-2 variants. However, not all variants that have appeared have propagated and
290 caused a large number of cases. Most novel variants have faded out, with relatively few variants
291 being responsible for the vast majority of SARS-CoV-2 infections.

292 Here, we have developed a mathematical model to investigate the impact of cross-reactive immunity
293 (generated by previous infections by related viruses) on the probability that a newly introduced
294 variant will invade the host population. We found that, if prior infection with a related virus has a
295 strong protective effect, then the novel variant must be more infectious than the related virus to be
296 able to invade the host population (Fig 2A). If instead, however, the previously circulating virus has a
297 very weak protective effect or no protective effect on infection with the novel variant, then the risk of
298 invasion of the novel variant is unaffected by the outbreak of the related virus, and so the invasion
299 probability matches the well-known estimate for the “probability of a major outbreak” (Fig 2C)
300 [28,36,37]. If prior infection with the related virus promotes infection by the novel variant, as has
301 been proposed in some studies exploring the impact of prior infections by SARS-CoV-2 or seasonal
302 coronaviruses on infections with SARS-CoV-2 variants, then even novel variants with limited
303 transmissibility are able to invade (Fig 2D).

304 We further showed that the immune status of the first individual in the population infected by the
305 novel variant affects the probability that the novel variant invades (Figs 2 and 3). This is in turn
306 influenced by the pathway by which the novel variant is introduced into the host population. If the
307 variant is introduced from elsewhere, for example by an incoming traveller [1,39], then it may be
308 introduced by someone who was not previously infected by the related virus. If instead it appears as a
309 result of mutation from a related virus within the local population (as was likely the case for the

310 emergence of the Alpha variant in Kent, England [40]), then the initial infected case would be an
311 individual who was previously infected by the related virus.

312 Previous modelling studies have explored the risk of a novel virus invading when it is introduced to a
313 host population, including scenarios in which the pathogen evolves to facilitate emergence [41–45].

314 Of significant relevance to our study, Hartfield and Alizon [46] applied a branching process model to
315 investigate the invasion probability in a scenario in which a resident pathogen strain that confers
316 cross-immunity is spreading in the host population, and considered Chikungunya virus as a case
317 study. Those authors demonstrated that a simple estimate for the probability of a major outbreak
318 overestimates the invasion probability in that scenario, due to the potential for depletion of
319 susceptible individuals by the resident strain over the timescale of invasion of the novel virus.

320 Echoing this result in a single strain setting, Sachak-Patwa *et al.* [47] showed that simple estimates
321 for the probability of a major outbreak are overestimates if the pathogen enters the host population
322 during a vaccination campaign, again due to susceptible depletion occurring within the period of the
323 pathogen either invading or fading out. Other researchers have investigated the emergence of a novel
324 pathogen strain that is introduced to the population when a resident strain is endemic [48]. In contrast
325 to previous studies, we focus on a scenario in which a related virus has already spread widely around
326 the host population and caused a completed outbreak, rather than being resident in the host
327 population. An additional novel aspect of the current study is that we conduct a thorough
328 investigation of the effect of different levels of cross-reactive immunity, including scenarios in which
329 prior infection with an antigenically related virus can promote infection with the novel variant.

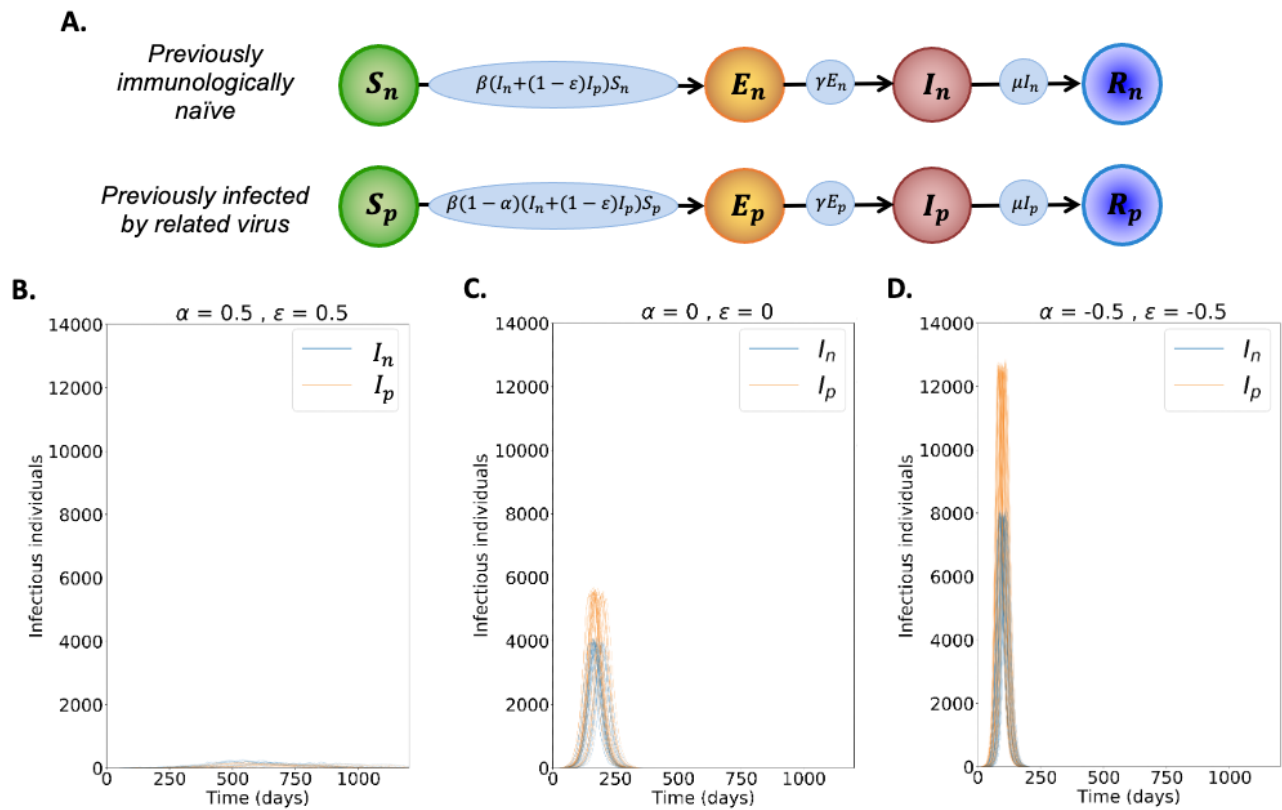
330 Although such scenarios may seem counterintuitive, recent evidence suggests that there is a clear
331 possibility that infection-promoting cross-reactivity may occur, as described in the Introduction.

332 To understand general principles governing the relationship between cross-reactive immunity and the
333 risk of invasion of a novel variant, we constructed the simplest possible model in this study. Further

334 developments could involve including additional epidemiological and evolutionary detail in our
335 transmission model, particularly if it is to be used to predict emergence of specific variants rather
336 than to understand general principles. For example, in the model considered here, the infectious
337 period of individuals infected by the novel variant is assumed to follow an exponential distribution.
338 However, gamma distributions have been found to represent observed epidemiological periods more
339 accurately than exponential distributions [49,50], and gamma-distributed infectious periods can be
340 incorporated into calculations of invasion probabilities [51,52]. We also assumed a fixed level of
341 cross-reactive immunity for all individuals who were previously infected by the related virus. In
342 reality, immunity is heterogeneous between different previously infected hosts, and is likely to wane
343 over time [53,54]. Waning immunity has been included previously in a range of epidemiological
344 models [55,56], and is a target for future study in the modelling framework presented here.

345 In summary, understanding the risk posed by a novel variant requires the degree of cross-reactive
346 immunity between the new variant and previously circulating viruses to be assessed. In scenarios in
347 which previous infections by antigenically related viruses have a limited effect, or promote infection
348 with the novel variant, then the risk of the variant invading the host population successfully is
349 substantially higher than in scenarios in which previous infections by related viruses are protective.
350 Given the impact that different variants have had on transmission and control during the COVID-19
351 pandemic, fast detection and analysis of novel variants is essential for both national and global public
352 health.

353 **Figures**



354

355 Figure 1. Dynamics of the novel variant invading a population in which a related virus has previously spread. A.

356 Schematic showing the transitions (and their rates) in the stochastic model of novel variant invasion (the analogous

357 stochastic model to system of equations (2)). B. Realisations of 50 stochastic simulations of the model, for $R_{0n} = 2$ and

358 with protective cross-reactive immunity ($\alpha = \epsilon = 0.5$; other parameter values are as stated in Table 1). Orange lines

359 represent the number of individuals infected by the novel variant who were previously infected by the related virus (I_p),

360 and blue lines represent the number of individuals infected by the novel variant who were previously immunologically

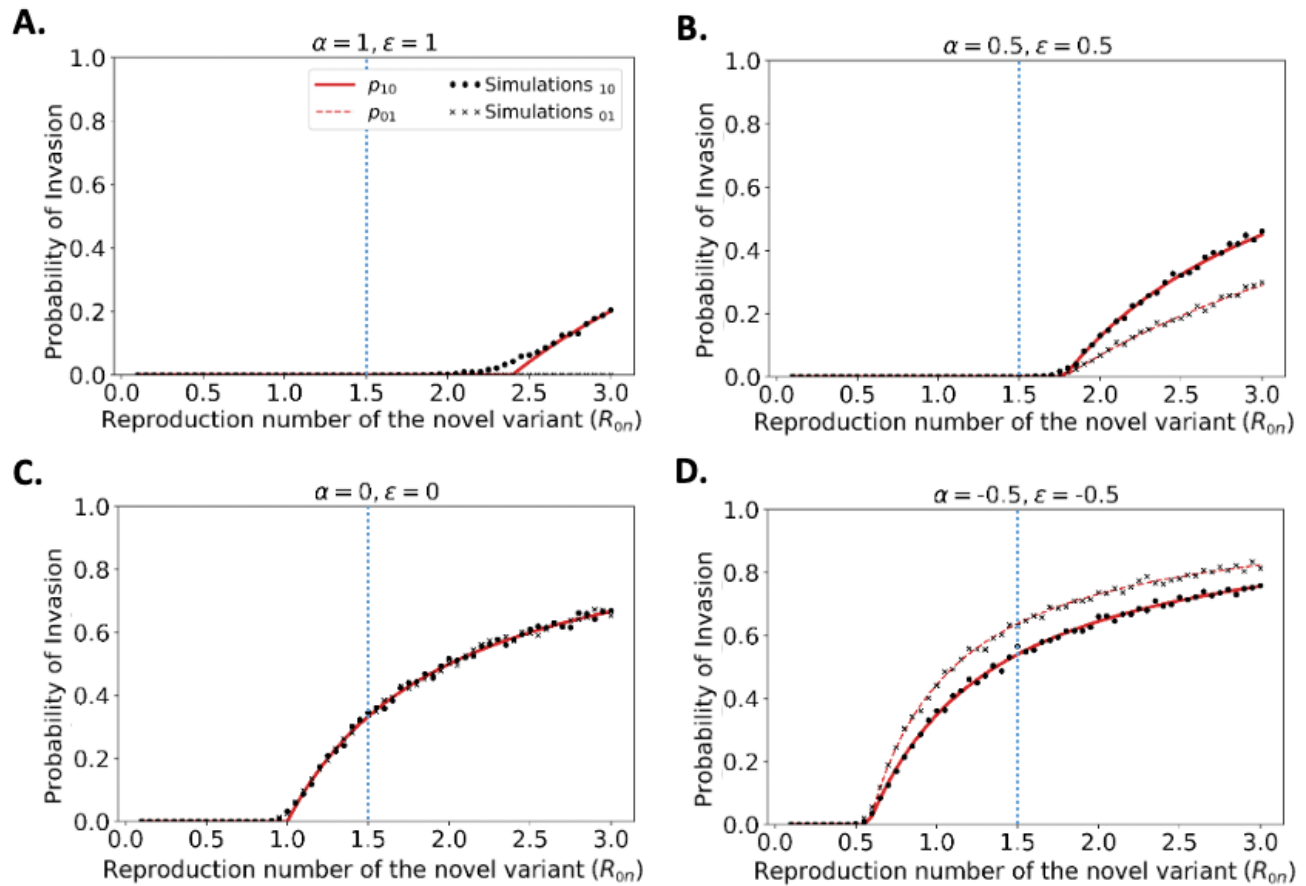
361 naïve (I_n). C. Analogous to panel B, but with no cross-reactive immunity ($\alpha = \epsilon = 0$). D. Analogous to panel B, but with

362 cross-reactive immunity instead promoting infection with the novel variant ($\alpha = \epsilon = -0.5$). Simulations were initiated

363 with a single infected, previously immunologically naïve individual ($I_n = 1$), with all other individuals susceptible ($S_n =$

364 $N - N_p - 1$ and $S_p = N_p$, where N_p is the solution of the final size equation for the previously circulating virus, equation

365 (1), rounded to the nearest integer value).

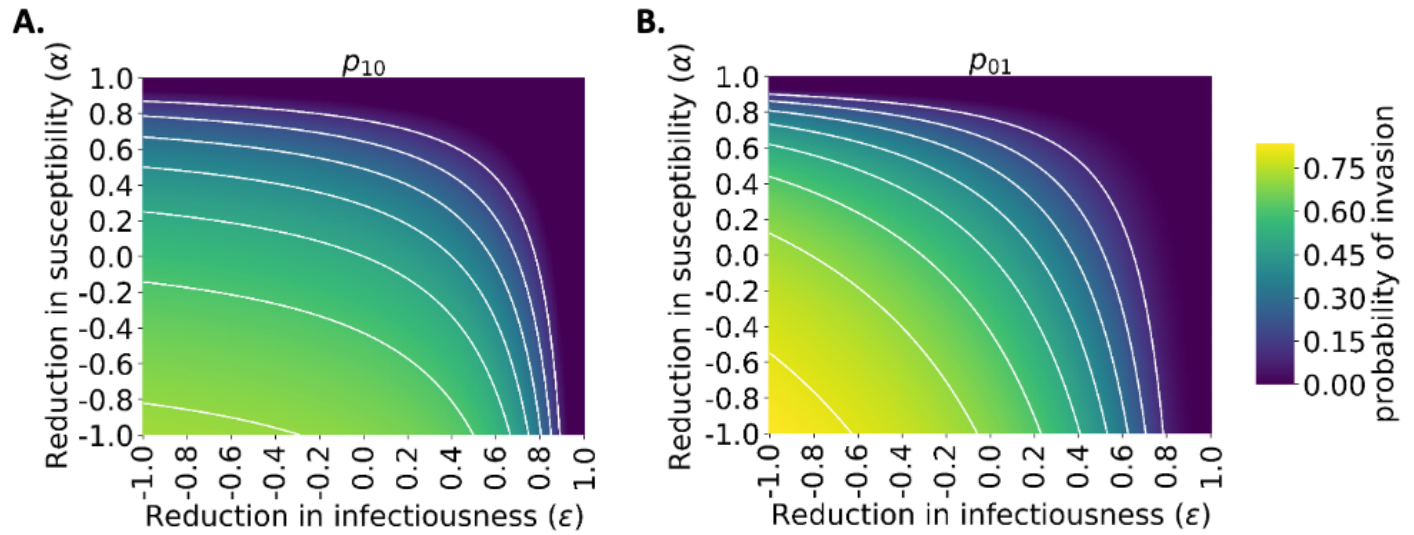


366

367 Figure 2. Probability of the novel variant invading the host population, starting from the introduction of a single
368 infectious individual. A. The probability of the novel variant invading under an assumption of perfectly protective cross-
369 reactive immunity ($\alpha = \epsilon = 1$). Results are shown both for analytic approximations of the invasion probability calculated
370 using system of equations (3) (either starting from a single infected individual who was previously immunologically
371 naïve (red solid) or starting from a single infected individual who was previously infected by the related virus (red
372 dashed)) and for the invasion probability calculated using stochastic simulations (either starting from a single infected
373 individual who was previously immunologically naïve (black dots) or starting from a single infected individual who was
374 previously infected by the related virus (black crosses)). The vertical blue dotted line represents the reproduction number
375 of the previously circulating virus ($R_{0p} = 1.5$). B. Analogous results to panel A, but with partial protective cross-reactive
376 immunity ($\alpha = \epsilon = 0.5$). C. Analogous results to panel A, but with no cross-reactive immunity ($\alpha = \epsilon = 0$). D.
377 Analogous to panel A, but with cross-reactive immunity instead promoting infection with the novel variant ($\alpha = \epsilon =$
378 -0.5). In the simulations, the probability of invasion was calculated as the proportion of simulations in which the number
379 of simultaneously infected individuals ($I_n + I_p$) exceeded 15 at any time. As in Fig 1, the division of the host population
380 between individuals who were previously immunologically naïve and those who were infected by the related virus was

381 calculated based on the final size equation for the previously circulating virus (equation (1)). Other parameter values used
382 are shown in Table 1.

383



384

385 Figure 3. Probability of the novel variant invading the host population, starting from the introduction of a single
386 infectious individual, for different levels of cross-reactive immunity affecting susceptibility and infectiousness
387 individually. The invasion probability is approximated analytically using system of equations (3). A. The probability of
388 the novel variant invading, starting from a single infected individual who was previously immunologically naïve. B.
389 Analogous to panel A, but starting from a single infected individual who was previously infected by the related virus.
390 White lines represent contours of constant probability of invasion of the novel variant. As in Fig 1, the division of the
391 host population between individuals who were previously immunologically naïve and those who were infected by the
392 related virus was calculated based on the final size equation for the previously circulating virus (equation (1)). Other
393 parameter values used are shown in Table 1.

394

395

396

397

398

399 **Table**

400 Table 1. Illustrative parameter values used in model simulations.

Parameter	Meaning	Value used
N	Size of local host population	100,000
$1/\gamma$	Mean latent period of novel variant	5 days [57,58]
$1/\mu$	Mean infectious period of novel variant	8 days [59–61]
R_{0p}	Reproduction number of previously circulating virus (accounting for interventions)	1.5, so that $N_p = 58,281$ individuals are assumed to have been infected by the previously circulating virus (~58% of the population)
R_{0n}	Reproduction number of novel variant (accounting for interventions)	Varies (see figures)
β	Transmission rate of novel variant	Set so that $R_{0n} = \frac{\beta N}{\mu}$
α	Reduction (positive) or increase (negative) in susceptibility due to cross-reactive immunity	Varies (see figures)
ε	Reduction (positive) or increase (negative) in infectiousness due to cross-reactive immunity	Varies (see figures)

401

402 **Conflict of Interest**

403 The authors declare that the research was conducted in the absence of any commercial or financial
404 relationships that could be construed as a potential conflict of interest.

405 **Author Contributions**

406 Conceptualisation: RNT, CPT, SI, UO; Methodology: RNT, UO, ES, FLR; Formal analysis: RNT,
407 ES, YD, UO; Supervision: RNT, UO; Writing – Original draft: RNT, CPT, UO; Writing – Review
408 and editing: All authors.

409 **Funding**

410 RNT was funded by the EPSRC through the Mathematics for Real-World Systems CDT (grant number
411 EP/S022244/1). The collaboration between RNT and SI was supported by an International Exchange
412 grant from the Royal Society (grant number IES\R3\193037) and a Computer Science Small Grant

413 from the London Mathematical Society. YD and UO were supported by a grant from Tel Aviv
414 University Center for AI and Data Science in collaboration with Google, as part of the initiative of AI
415 and Data Science for social good. FALR was funded by the BBSRC through the Oxford
416 Interdisciplinary Bioscience DTP (grant number BB/M011224/1).

417 **Acknowledgments**

418 Thanks to members of the Zeeman Institute for Systems Biology and Infectious Disease
419 Epidemiology Research for useful discussions about this work.

420 **Data Availability Statement**

421 Computing code developed to generate the results in the manuscript is available at
422 <https://github.com/yairdaon/waning>

423

424 **References**

- 425 1. Daon Y, Thompson RN, Obolski U. Estimating COVID-19 outbreak risk through air travel. *J*
426 *Trav Med.* 2020;27: taaa093.
- 427 2. Davies N, Abbott S, Barnard R, Jarvis C, Kucharski A, Munday J, et al. Estimated
428 transmissibility and impact of SARS-CoV-2 lineage B.1.1.7 in England. *Science.* 2021;372:
429 149.
- 430 3. Altarawneh HN, Chemaitelly H, Hasan MR, Ayoub HH, Qassim S, AlMukdad S, et al.
431 Protection against the Omicron variant from previous SARS-CoV-2 infection. *N Engl J Med.*
432 2022;386: 1288–1290.
- 433 4. Ferguson N, Ghani A, Cori A, Hogan A, Hinsley W, Volz E, et al. Report 49 - Growth,
434 population distribution and immune escape of Omicron in England. 2021. Available:
435 <https://www.imperial.ac.uk/mrc-global-infectious-disease-analysis/covid-19/report-49-omicron/>
- 436 5. Viana R, Moyo S, Amoako DG, Tegally H, Scheepers C, Althaus CL, et al. Rapid epidemic
437 expansion of the SARS-CoV-2 Omicron variant in southern Africa. *Nature.* 2022;603: 679–686.
- 438 6. Reynolds CJ, Pade C, Gibbons JM, Otter AD, Lin K-M, Muñoz Sandoval D, et al. Immune
439 boosting by B.1.1.529 (Omicron) depends on previous SARS-CoV-2 exposure. *Science.*
440 2022;377: eabq1841.
- 441 7. Saunders IW. Epidemics in competition. *J Math Biol.* 1981;11: 311–318.
- 442 8. Allen L, Ackleh A. Competitive exclusion in SIS and SIR epidemic models with total cross
443 immunity and density-dependent host mortality. *DCDS-B.* 2005;5: 175–188.
- 444 9. Thompson RN, Thompson CP, Pelerman O, Gupta S, Obolski U. Increased frequency of travel
445 in the presence of cross-immunity may act to decrease the chance of a global pandemic. *Phil*
446 *Trans Roy Soc B.* 2019;374: 20180274.

- 447 10. Amador J, Armesto D, Gómez-Corral A. Extreme values in SIR epidemic models with two
448 strains and cross-immunity. *Math Biosci Eng.* 2019;16: 1992–2022.
- 449 11. Opatowski L, Baguelin M, Eggo RM. Influenza interaction with cocirculating pathogens and its
450 impact on surveillance, pathogenesis, and epidemic profile: A key role for mathematical
451 modelling. Hobman TC, editor. *PLoS Pathog.* 2018;14: e1006770.
- 452 12. Bhattacharyya S, Gesteland PH, Korgenski K, Bjørnstad ON, Adler FR. Cross-immunity
453 between strains explains the dynamical pattern of paramyxoviruses. *Proc Natl Acad Sci.*
454 2015;112: 13396–13400.
- 455 13. Bhatia S, Wardle J, Nash RK, Nouvellet P, Cori A. Report 47 - A generic method and software
456 to estimate the transmission advantage of pathogen variants in real-time: SARS-CoV-2 as a
457 case-study. 2021. Available: [https://www.imperial.ac.uk/mrc-global-infectious-disease-
458 analysis/covid-19/report-47-mvepiestim/](https://www.imperial.ac.uk/mrc-global-infectious-disease-analysis/covid-19/report-47-mvepiestim/)
- 459 14. Cori A, Ferguson NM, Fraser C, Cauchemez S. A new framework and software to estimate
460 time-varying reproduction numbers during epidemics. *Am J Epi.* 2013;178: 1505–12.
- 461 15. Thompson RN, Stockwin JE, van Gaalen RD, Polonsky JA, Kamvar ZN, Demarsh PA, et al.
462 Improved inference of time-varying reproduction numbers during infectious disease outbreaks.
463 *Epidemics.* 2019;29: 100356–100356.
- 464 16. Dyson L, Hill EM, Moore S, Curran-Sebastian J, Tildesley MJ, Lythgoe KA, et al. Possible
465 future waves of SARS-CoV-2 infection generated by variants of concern with a range of
466 characteristics. *Nat Commun.* 2021;12: 5730.
- 467 17. Wratil PR, Stern M, Priller A, Willmann A, Almanzar G, Vogel E, et al. Three exposures to the
468 spike protein of SARS-CoV-2 by either infection or vaccination elicit superior neutralizing
469 immunity to all variants of concern. *Nat Med.* 2022;28: 496–503.
- 470 18. Malato J, Ribeiro RM, Leite PP, Casaca P, Fernandes E, Antunes C, et al. Risk of BA.5
471 infection among persons exposed to previous SARS-CoV-2 variants. *N Engl J Med.* 2022;387:
472 953–954.
- 473 19. Kaplonek P, Wang C, Bartsch Y, Fischinger S, Gorman MJ, Bowman K, et al. Early cross-
474 coronavirus reactive signatures of humoral immunity against COVID-19. *Sci Immunol.* 2021;6:
475 eabj2901.
- 476 20. Swadling L, Diniz MO, Schmidt NM, Amin OE, Chandran A, Shaw E, et al. Pre-existing
477 polymerase-specific T cells expand in abortive seronegative SARS-CoV-2. *Nature.* 2022;601:
478 110–117.
- 479 21. McNaughton AL, Paton RS, Edmans M, Youngs J, Wellens J, Phalora P, et al. Fatal COVID-19
480 outcomes are associated with an antibody response targeting epitopes shared with endemic
481 coronaviruses. *JCI Insight.* 2022;7: e156372.
- 482 22. Smit WL, van Tol S, Wal S van der, van Vulpen F, la Grouw S, van Lelyveld L, et al.
483 Heterologous Immune Responses of Serum IgG and Secretory IgA Against the Spike Protein of
484 Endemic Coronaviruses During Severe COVID-19. *Front Immunol.* 2022;13: 839367.

- 485 23. Garrido JL, Medina MA, Bravo F, McGee S, Fuentes-Villalobos F, Calvo M, et al. IgG
486 targeting distinct seasonal coronavirus- conserved SARS-CoV-2 spike subdomains correlates
487 with differential COVID-19 disease outcomes. *Cell Rep.* 2022;39: 110904.
- 488 24. Wratil PR, Schmacke NA, Karakoc B, Dulovic A, Junker D, Becker M, et al. Evidence for
489 increased SARS-CoV-2 susceptibility and COVID-19 severity related to pre-existing immunity
490 to seasonal coronaviruses. *Cell Rep.* 2021;37: 110169.
- 491 25. Pinotti F, Wikramaratna PS, Obolski U, Paton RS, Damineli DSC, Alcantara LCJ, et al.
492 Potential impact of individual exposure histories to endemic human coronaviruses on age-
493 dependent severity of COVID-19. *BMC Med.* 2021;19: 19.
- 494 26. Gillespie DT. Exact stochastic simulation of coupled chemical reactions. *J Phys Chem.* 1977;8:
495 2340–2361.
- 496 27. Ball F, Donnelly P. Strong approximations for epidemic models. *Stoch Proc Appl.* 1995;55: 1–
497 21.
- 498 28. Britton T. Stochastic epidemic models: A survey. *Math Biosci.* 2010;225: 24–35.
- 499 29. Allen LJS, van den Driessche P. Relations between deterministic and stochastic thresholds for
500 disease extinction in continuous- and discrete-time infectious disease models. *Math Biosci.*
501 2013;243: 99–108.
- 502 30. Kaye AR, Hart WS, Bromiley J, Iwami S, Thompson RN. A direct comparison of methods for
503 assessing the threat from emerging infectious diseases in seasonally varying environments. *J*
504 *Theor Biol.* 2022;548: 111195.
- 505 31. Lovell-Read FA, Funk S, Obolski U, Donnelly CA, Thompson RN. Interventions targeting non-
506 symptomatic cases can be important to prevent local outbreaks: SARS-CoV-2 as a case study. *J*
507 *R Soc Interface.* 2021;18: 20201014.
- 508 32. Lovell-Read FA, Shen S, Thompson RN. Estimating local outbreak risks and the effects of non-
509 pharmaceutical interventions in age-structured populations: SARS-CoV-2 as a case study. *J*
510 *Theor Biol.* 2022;535: 110983.
- 511 33. Thompson RN, Gilligan CA, Cunniffe NJ. Will an outbreak exceed available resources for
512 control? Estimating the risk from invading pathogens using practical definitions of a severe
513 epidemic. *J R Soc Interface.* 2020;17: 20200690.
- 514 34. Thompson RN. Novel coronavirus outbreak in Wuhan, China, 2020: Intense surveillance is vital
515 for preventing sustained transmission in new locations. *J Clin Med.* 2020;9: 498.
- 516 35. Norris JR. *Markov Chains.* Cambridge University Press; 1998.
- 517 36. Keeling MJ, Rohani P. *Modeling infectious diseases in humans and animals.* Princeton
518 University Press; 2008.

- 519 37. Thompson RN, Gilligan CA, Cunniffe NJ. Detecting presymptomatic infection is necessary to
520 forecast major epidemics in the earliest stages of infectious disease outbreaks. *PLoS Comp Biol.*
521 2016;12: e1004836.
- 522 38. Britton T, Ball F, Trapman P. A mathematical model reveals the influence of population
523 heterogeneity on herd immunity to SARS-CoV-2. *Science.* 2020;369: 846–849.
- 524 39. Creswell R, Augustin D, Bouros I, Farm HJ, Miao S, Ahern A, et al. Heterogeneity in the
525 onwards transmission risk between local and imported cases affects practical estimates of the
526 time-dependent reproduction number. *Phil Trans R Soc A.* 2022;380: 20210308.
- 527 40. Kraemer MUG, Hill V, Ruis C, Dellicour S, Bajaj S, McCrone JT, et al. Spatiotemporal
528 invasion dynamics of SARS-CoV-2 lineage B.1.1.7 emergence. *Science.* 2021;373: 889–895.
- 529 41. Chabas H, Lion S, Nicot A, Meaden S, van Houte S, Moineau S, et al. Evolutionary emergence
530 of infectious diseases in heterogeneous host populations. *PLoS Biol.* 2018;16: e2006738–
531 e2006738.
- 532 42. Antia R, Regoes RR, Koella JC, Bergstrom CT. The role of evolution in the emergence of
533 infectious diseases. *Nature.* 2003;426: 658–661.
- 534 43. Arinaminpathy N, McLean AR. Evolution and emergence of novel human infections. *Proc Roy*
535 *Soc B.* 2009;276: 3937–3943.
- 536 44. Kubiak RJ, Arinaminpathy N, McLean AR. Insights into the evolution and emergence of a
537 novel infectious disease. *PLoS Comp Biol.* 2010;6: e1000947.
- 538 45. Leventhal GE, Hill AL, Nowak MA, Bonhoeffer S. Evolution and emergence of infectious
539 diseases in theoretical and real-world networks. *Nat Commun.* 2015;6: 6101.
- 540 46. Hartfield M, Alizon S. Epidemiological feedbacks affect evolutionary emergence of pathogens.
541 *Am Nat.* 2014;183: E105–E117.
- 542 47. Sachak-Patwa R, Byrne HM, Dyson L, Thompson RN. The risk of SARS-CoV-2 outbreaks in
543 low prevalence settings following the removal of travel restrictions. *Comms Med.* 2021;1: 39.
- 544 48. Meehan MT, Cope RC, McBryde ES. On the probability of strain invasion in endemic settings:
545 Accounting for individual heterogeneity and control in multi-strain dynamics. *J Theor Biol.*
546 2020;487: 110109.
- 547 49. Lloyd AL. Destabilization of epidemic models with the inclusion of realistic distributions of
548 infectious periods. *Proc Roy Soc B.* 2001;268: 985–993.
- 549 50. Wearing HJ, Rohani P, Keeling MJ. Appropriate models for the management of infectious
550 diseases. *PLoS Med.* 2005;2: 0621–0627.
- 551 51. Anderson D, Watson R. On the spread of a disease with gamma distributed latent and infectious
552 periods. *Biometrika.* 1980;67: 191–8.
- 553 52. Thompson RN, Jalava K, Obolski U. Sustained transmission of Ebola in new locations: more
554 likely than previously thought. *Lancet Inf Dis.* 2019;19: 1058–59.

- 555 53. Goldberg Y, Mandel M, Bar-On YM, Bodenheimer O, Freedman LS, Ash N, et al. Protection
556 and waning of natural and hybrid immunity to SARS-CoV-2. *N Engl J Med.* 2022;386: 2201–
557 2212.
- 558 54. Townsend JP, Hassler HB, Sah P, Galvani AP, Dornburg A. The durability of natural infection
559 and vaccine-induced immunity against future infection by SARS-CoV-2. *Proc Natl Acad Sci*
560 *USA.* 2022;119: e2204336119.
- 561 55. Carlsson R-M, Childs LM, Feng Z, Glasser JW, Heffernan JM, Li J, et al. Modeling the waning
562 and boosting of immunity from infection or vaccination. *J Theor Biol.* 2020;497: 110265.
- 563 56. Le A, King AA, Magpantay FMG, Mesbahi A, Rohani P. The impact of infection-derived
564 immunity on disease dynamics. *J Math Biol.* 2021;83: 61.
- 565 57. Xin H, Li Y, Wu P, Li Z, Lau EHY, Qin Y, et al. Estimating the latent period of Coronavirus
566 Disease 2019 (COVID-19). *Clin Infect Dis.* 2022;74: 1678–1681.
- 567 58. Davies NG, Kucharski AJ, Eggo RM, Gimma A, Edmunds WJ, Jombart T, et al. Effects of non-
568 pharmaceutical interventions on COVID-19 cases, deaths, and demand for hospital services in
569 the UK: a modelling study. *Lancet Pub Health.* 2020;5: e375–e385.
- 570 59. Arons MM, Hatfield KM, Reddy SC, Kimball A, James A, Jacobs JR, et al. Presymptomatic
571 SARS-CoV-2 infections and transmission in a skilled nursing facility. *N Engl J Med.* 2020;382:
572 2081–2090.
- 573 60. Bullard J, Dust K, Funk D, Strong JE, Alexander D, Garnett L, et al. Predicting infectious
574 Severe Acute Respiratory Syndrome Coronavirus 2 from diagnostic samples. *Clin Infect Dis.*
575 2020;71: 2663–2666.
- 576 61. Wölfel R, Corman VM, Guggemos W, Seilmaier M, Zange S, Müller MA, et al. Virological
577 assessment of hospitalized patients with COVID-2019. *Nature.* 2020;581: 465–469.
- 578