

1 The spatio-temporal distribution of musculoskeletal disorders: results of the 2 Global Burden of Disease in 204 countries and 21 subregions between 1990 3 and 2019.

4 By Bouziri H, MSc, MPH¹, Roquelaure Y, MD, PhD², Descatha A, MD, PhD², Dab W, MD, PhD¹, Jean K,
5 PhD^{1,3}

- 6 1. Laboratory of Modeling epidemiology and surveillance of health risks (MESuRS), In the French National
7 Institute for Science, Technology, and Management (Cnam), Paris, France
- 8 2. Inserm, EHESP, Irset (Institut de recherche en santé, environnement et travail) – UMR_S 1085, Univ
9 Angers, Univ Rennes, 28 Roger Amsler, CS 74521, 49045, Angers Cedex 01, France
- 10 3. MRC Centre for Global Infectious Disease Analysis, Department of Infectious Disease Epidemiology,
11 Imperial College London, United Kingdom.

12

13 **Abstract:**

14 **Background**

15 Musculoskeletal disorders (MSD) represent the main contributor to disability worldwide. However, a global view
16 of the geographic and temporal trends in the occurrence of MSD remains lacking. This study aimed to assess the
17 spatio-temporal distribution of MSD from 1990 to 2019.

18

19 **Methods**

20 We used data from the 2019 Global Burden of Diseases (GBD) to analyse the prevalence of 6 work-related MSD
21 defined medically or self-reported pain, over the 1990-2019 period. We mapped raw and age-standardized
22 prevalence in over 204 countries. We also described the 2019 MSD prevalence by sub-regions, age, and sex. We
23 assessed temporal trends in prevalence using Cochran-Armitage trend tests (CA). We also explored the correlation
24 between national income level and medical density for each country with the MSD prevalence using multivariate
25 regression.

26

27 **Findings**

28 In 2019, global raw prevalences of work-related MSD ranged from 0.56% [95% CI: 0.43-0.70] for hip
29 osteoarthritis to 8.62% [95% CI: 7.62-9.74] for low back pain, with large variations across countries. The
30 prevalence of MSD increased monotonically with age, except for neck pain which increase then remain stable or
31 decreases after 45-50 years old. Globally, MSD prevalences increased with age in both men and women. Although
32 the shapes of the age distributions were similar between men and women in all sub-regions, MSD prevalences
33 were higher in women compared to men. Prevalences were higher in high vs. middle income countries for the 6
34 MSD. Over time, in most sub-regions, trends in raw prevalences of low back and neck pain increased significantly,
35 whereas after controlling for age, a majority were no longer significant. Osteoarthritis raw prevalence increased
36 in more than half of the sub-regions; however, after taking age into account, almost half of the trends remained
37 significant or close to significance. Finally, on multivariate linear regressions, the World Bank income level and
38 medical density for each country were positively correlated with the prevalences of MSD.

39

40 **Interpretation**

41 The ageing of the population presumably drives the growing burden of MSD on a global scale, although other
42 factors also play a role in the occurrence of these pathologies over time. Longitudinal data on a larger panel of
43 MSD, considering occupational exposures over time, would allow better prevention of these pathologies.

44

45 **Fundings**

46 The French National Institute for Science, Technology, and Management (Cnam) grant and the Health and
47 Enterprises Chair (Cnam, Malakoff Humanis).

48

NOTE: This preprint reports new research that has not been certified by peer review and should not be used to guide clinical practice.

49 **Research in context**

50 **Evidence before this study**

51 Musculoskeletal disorders (MSD) represent a major public health problem and the burden of morbidity is expected
52 to increase considerably due to the overall ageing of the population. Several studies from the Global Burden of
53 Disease (GBD) have shown that MSD are among the most disabling chronic non-communicable pathologies in
54 the world. There are established links between many risk factors and MSD such as biomechanical and
55 psychosocial factors, but very few studies have focused on the temporal trends of MSD and their geographical
56 distribution. We searched PubMed and Google Scholar for articles of any language focusing on temporal trends
57 in MSD, up to July 15, 2022. The search terms were: ("Musculoskeletal disorder*" OR "Musculoskeletal
58 disease*") AND ("temporal trends" OR "time trends" OR "over time") AND ("incidence" OR "prevalence").
59 Several articles described the global burden of specific MSD based on data from the GBD. However, these studies
60 focused on a unique MSD, and did not describe global patterns of diseases. Additionally, a recent systematic
61 review explored the role of aging and other risk factors in the time trends of MSD. This review highlighted the
62 scarcity of evidence regarding time trends in the burden of MSD, especially beyond western countries. The
63 surveys set up by the GBD allowed to quantify the prevalence of several pathologies, including MSD standardized
64 by age, in the world, to be able to compare diseases and study their trends over time.
65

66 **Added value of this study**

67 To our knowledge, this study is the first to analyze the spatio-temporal distribution of global and regional MSD.
68 It has been shown that the burden of MSD has tended to increase over the past 30 years. Regardless of the years
69 and geographical locations studied, the prevalence of low back pain is by far the most widespread in the world.
70 There is also a great diversity of prevalence between MSD and regions. Most MSD increased significantly over
71 time but were explained by age. However, age was not sufficient to explain all the trends we report here.
72 Especially, we observe a marked difference in the prevalence of MSD between countries in the global North vs.
73 global South, which was not totally explained by differences in age structures. The prevalence of MSD is higher
74 in high-income countries and with countries with high medical density.
75

76 **Implications of all the available evidence**

77 In a context of expected ageing of the active population, a better understand these pathologies, it is becoming
78 urgent to better understand these pathologies to better prevent them. This study has therefore highlighted the
79 relevance of broader surveillance of these pathologies, considering occupational exposure over time, with a view
80 to developing effective policies for the management and prevention. Furthermore, the cause of the difference in
81 MSD prevalence between the Global North and the Global South deserve further research.
82
83
84
85
86
87
88
89
90
91
92
93
94
95
96
97

98 **Introduction:**

99

100 Musculoskeletal disorders (MSD) are among the most common conditions in the world, affecting 1.71 billion
101 people in 2020. MSD includes approximately 150 distinct conditions and can affect people's quality of life,
102 healthcare costs, and work efficiency.¹ Beyond health issues, MSD may generate considerable productivity loss.
103 In 2010, it has been estimated that 39.2% of European workers suffered from chronic pain and therefore could
104 not work to their full capacity.² Despite the widespread perception of a Northern country-specific issue, MSD
105 represent a global health concern. In 2016, the Global Burden of Disease (GBD) estimated that low back pain
106 (LBP) was the main cause of years lived with a disability in 160 countries.^{3,4} Providing a detailed picture of the
107 current global burden of MSD, and anticipating their likely future trends is thus key to assessing the needs of
108 prevention and care, as well as health expenses. However, evidence of past and current trends in the occurrence
109 of MSD comes primarily from high-income countries, while evidence in the Global South remains scarce.⁵

110

111 Several factors may drive the spatial and temporal distribution of MSD. First, several risk factors for MSD have
112 been consistently identified, including occupational exposures such as biomechanical or psychosocial factors.^{6,7}
113 Moreover, estimates of MSD burden are likely affected by under-report, which itself may be driven by diagnostic
114 capacities and cultural factors, such as perceptions of MSD by caregivers and patients.^{7,8,9} Therefore, trends in
115 these individual, occupational, or diagnostic-related factors may contribute to the temporal and spatial distribution
116 of MSD. Moreover, age also constitutes a strong risk factor for MSD. Among the working population, the
117 incidence of MSD is globally higher in people over 50 years.^{10,11} Thus, the global variations in demographic
118 structures may also affect the spatial distribution of MSD. Similarly, the global demographic trend of ageing
119 populations may also have impacted the temporal trends in the burden of MSD.^{12,13} Assessing the contribution of
120 demography in MSD' past trends may thus be insightful to anticipate their fate regarding projected further
121 population ageing.

122

123 A global view of the geographic and temporal trends in the occurrence of MSD remains lacking. This study aims
124 to understand the spatio-temporal oral distribution of MSD around the world, between 1990 and 2019, for 204
125 countries and 21 territories, based on an analysis of the GBD 2019 study.

126

127 **Method**

128

129 **The GBD 2019 study**

130

131 The GBD constitutes the largest and most comprehensive effort to date to measure levels and trends in disease
132 prevalence worldwide.¹⁴ It is conducted by the Institute for Health Metrics and Evaluation (IHME). The data
133 processed includes medical claims databases, general population surveys, and medical diagnostics.¹⁵ We accessed
134 1990 to 2019 GBD data at: <https://vizhub.healthdata.org/gbd-results/>.¹⁶

135

136 **Case definition**

137 The present study focuses on work-related MSD. Therefore, we excluded MSD from inflammatory origin or
138 resulting from a joint manifestation of organic diseases (such as gout, lupus, psoriasis, certain infectious diseases,
139 etc.). We thus included the following definitions, based on two types of MSD data collection: self-reported pain
140 and medically diagnosed osteoarthritis. Both were used for distinct sites: i) low-back pain, ii) neck pain, iii)
141 osteoarthritis of the hip, iv) osteoarthritis of the knee, v) osteoarthritis of the hand, and vi) other osteoarthritis.

142

143 Low back pain (LBP), neck pain (NP), and osteoarthritis (OA) were classified with the following codes according
144 to the International Classification of Diseases (ICD-10): LBP (M54.3, M54.4, and M54.5), NP (M54.2), and OA
145 (M16 and M1). The "other osteoarthritis" category represents the most common form of arthritis, involving
146 chronic inflammation, breakdown, and structural alteration of the joint. Here, the reference case was
147 radiographically confirmed, symptomatic OA present in any joint other than those of the hand, hip and knee that
148 were treated independently.^{17,18,19}

149

150 Data collection covered 204 countries and 21 sub-regions between 1990 and 2019.¹⁶ These subregions were
151 further classified into 6 larger regions: the Americas, the Caribbean, Europe, Oceania, Asia, and Africa. We
152 selected age groups between 20 and 70 years old to best reflect work-related MSD.

153 154 **Spatial and temporal distribution of the prevalence of MSD across countries and territories, 1990-2019** 155

156 For each MSD studied, we firstly mapped national raw and age-standardized prevalence (supplementary materials
157 S1). We also analysed temporal trends of raw and age-standardized prevalence of MSD, by sub-regions and
158 globally, by computing annual population-weighted average prevalence with the corresponding 95% confidence
159 interval (95% CI). Temporal trends in raw and age-standardized prevalence were tested using Cochran-Armitage
160 (CA) trend tests. Analyses were conducted on both males and females first and then stratified by sex.

161 162 **The distribution of the prevalence of MSD considering the income level and medical density worldwide** 163

164 We hypothesized that country-level prevalence of MSD was positively correlated with national income level,
165 which may capture the labour/employment structure and then be used as a rough proxy for occupational exposure,
166 and with medical density, which may capture MSD diagnostic capacities.

167
168 National income levels were measured using the World Bank income category provided by the GBD, analysed as
169 an ordinal variable (high-/upper-middle-/lower-middle-/low-income country).¹⁶ The national 2017 values of
170 medical density, expressed as the number of healthcare providers per 1,000 inhabitants extracted from the World
171 Bank's BIRD - IDA database.²⁰ This variable was categorized as ordinal based on the quartiles of its distribution.
172 The independent effect of income level and medical density was explored using multivariate linear regression. All
173 analyses were conducted using the R software (v 4.1.1).

174 175 **Results** 176

177 **Spatial and temporal distribution of the prevalence of MSD by worldwide countries and territories between** 178 **1990 and 2019** 179

180 In 2019, globally, the raw prevalence mean of MSD were 0.46% [95% confidence interval, CI: 0.35-0.58] for hip
181 OA, 1.71% [95% CI: 1.27-2.29] for hand OA, 2.34% [95% CI: 1.84-2.98] for neck pain, 4.34% [95% CI: 3.71-
182 5.02] for knee OA and 8.22% [95% CI: 7.21-9.35] for low back pain. Country-specific prevalence ranged from
183 0.04% [95% CI: 0.02-0.05] for hand OA in Timor-Leste to 18.9% [95% CI: 16.7-21.4] for LBP in Japan, with
184 important variations across MSD and regions (**S2**). Among the 6 MSD analysed, lower levels of prevalence were
185 consistently observed for sub-Saharan Africa.

186
187 The higher overall average prevalence (%) per sub-regions all year combined was observed in each barplot
188 presented in **figure 1**. They varied between 0.09% [95% CI: 0.06-0.13] for hand OA in Southeast Asia and 15.8%
189 [95% CI: 14.6-17.3] for low back in High-income North America. The lowest overall prevalences (%) per sub-
190 regions all year combined were for the LBP in Eastern Sub-Saharan Africa at 3.9% [95% CI: 3.4-4.4], for NP in
191 Central Sub-Saharan Africa at 0.7% [95% CI: 0.5-0.9], for hip OA in Eastern Sub-Saharan Africa at 0.1% [95%
192 CI: 0.09-0.15], knee OA in Eastern Sub-Saharan Africa at 1.4% [95% CI: 1.1-1.6] and the hand OA in Southeast
193 Asia at 0.09% [95% CI: 0.06-0.13]. The highest overall prevalences (%) per sub-regions all year combined were
194 for NP in Western Europe at 4.7% [95% CI: 3.8-5.8], hip OA in Western Europe at 1.2% [95% CI: 0.9-1.6],
195 knee OA in High-income Asia Pacific at 9.7% [95% CI: 8.5-11.0] and for the hand OA in Eastern Europe at 7.2%
196 [95% CI: 5.5-9.4]. It has mainly been observed that the overall average prevalence for all years combined is
197 higher in high-income countries for LBP, hip, knee, and other OA. For overall prevalence, in all years combined,
198 NP and hand OA were higher in high- and middle-income countries (**figure 1**).

199
200 Globally, the prevalences of LBP, hip OA, hand OA and other OA increase with age in both males and females
201 (**figure 2**). The 2019 age-specific prevalence of neck and knee OA increased, then peaked around age 45 for NP

202 and around age 55 for knee OA. Although absolute levels varied, the shapes of the sex-specific age distributions
203 were similar across sub-regions. Prevalences were higher in women for most of MSD, except for hip OA in
204 Southern Sub-Saharan Africa and other OA for which prevalence was higher in men.

205
206 Over time, more than half of the raw prevalence of pain increase significantly, whereas after age standardization
207 the trends were mostly not significant except for 4 pain trends that were decreasing: 3 for LBP in Australasia, East
208 Asia, and South Asia and 1 for NP in high-income North America (**table1**). As observed for LBP and NP, most
209 of the osteoarthritis was explained by demographics, for hand OA and other OA. However, unlike LBP and NP,
210 nearly half of the increasing trends remained so after age-standardization for hip OA (13/22 significant or near-
211 significant increase) and knee OA (6/22 significant increase or near-significant increase).

212
213 To compare temporal trends in MSD prevalences by sex, a total of 252 CA trend tests were performed for age-
214 standardized prevalence (126 for men and 126 for women). Among these 252 tests, differences were observed
215 (**supplementary material S4 and S5**) for 21 sub-regions. For LBP, 3 different temporal trends were highlighted
216 when considering age: in Australasia, the trends are stable for women and decrease significantly in men; in East
217 Asia and South Asia, trends increase significantly for women and decrease significantly for men. There are no
218 differences in time trends of age-standardized MSD for NP. For hip OA, 8 temporal trends differences were
219 observed between women and men: in Andean Latin America, Southern Latin America, High-income North
220 America, Tropical Latin America, Australasia, and Southeast Asia, stable trends for women and increasing trends
221 for men were highlighted, while for East Asia and South Asia decrease was observed in women and an increase
222 was observed in men. For knee OA, 5 temporal trends in the prevalence of MSD considering age were noticed: in
223 Central Latin America, Tropical Latin America, Caribbean, and Southern Sub-Saharan Africa, the trends were
224 stable for women and increased in men, while in South Asia the opposite was seen (stable trends for men and
225 increasing for women). Finally, for hand OA, 2 differences in trends were observed: in Eastern Europe, the trends
226 were stable in women and decreased in men, while for High-income Asia Pacific, in women the trends increased
227 while in men were stable.

228 229 **The distribution of the prevalence of MSD considering the World Bank incomes and the medical density** 230 **worldwide**

231
232 We observed a positive association between the prevalence of MSD and, on the one side, the World Bank income
233 level, and, on the other side, medical density (**Figure 4**). In multivariate regressions, both variables were
234 independently positively associated with the prevalence, for each of the 6 MSD (**S6**).

235 236 **Discussion**

237
238 In this study, relying on an extensive analysis of 6 work-related MSD, we describe several patterns driving their
239 spatial and temporal distribution. First, we observed large geographical variations in the raw prevalence of MSD
240 across sub-regions, with a constant trend toward higher prevalence in high-income countries. Second, we observed
241 that the prevalence of MSD increases monotonically with age, except for neck pain, which plateaus or decreases
242 after 45-50 years old. Third, we report that for 5 out of the 6 MSD (except for other OA) we studied, women were
243 more affected than men, constantly across sub-regions. Fourth, we document that globally, the raw prevalence of
244 MSD has significantly increased between 1990 and 2019, with some variations across sub-regions. This increasing
245 trend is likely to be mainly driven by the ageing of the population, as age-standardized prevalence did not
246 significantly change over time. Fifth, when studying the drivers of the spatial distribution of MSD, we observed
247 that large variations remain in prevalence levels when controlling for age, suggesting that demographics only
248 cannot explain spatial disparities in MSD prevalence. Sub-regional levels of income level and medical density
249 were independently associated with a higher prevalence of MSD, suggesting that both labour landscape and
250 diagnostic capacities may affect the local levels of prevalence. Furthermore, it is also interesting to note that the
251 low prevalence values in low-income countries can be partly explained by a probable under-reporting of MSD
252 since in these countries, research priorities are often directed towards pathologies or health problems requiring
253 rapid action (undernutrition, problems related to geopolitical conflicts, infectious diseases, work-related death or

254 other competitive risk etc.), whereas high income is more on long action (overnutrition, psychosocial ...) Global
255 health at work are important for all countries with such relevant factors.

256

257 A great disparity in overall average prevalence between the sub-regions, all years combined, depending on the
258 type of MSD has been observed. For LBP the difference is a factor of 4, with 3.9% prevalence in Eastern Sub-
259 Saharan Africa and 15.8% prevalence in high-income North America. For NP, the prevalence in Western Europe
260 (4.7%) is more than 6 times higher than the prevalence in Central Sub-Saharan Africa (0.72%). For hip OA, in
261 Central and Eastern Sub-Saharan the prevalence is 0.12% which is 10 times lower than for Western Europe which
262 has a prevalence of 1.2%. The range between the highest and lowest prevalence for knee OA is more than 7, with
263 a prevalence of 1.3% for Eastern Sub-Saharan Africa and a prevalence of 9.7% for the High-income Asia Pacific.
264 Finally, the prevalence of High-income Asia Pacific at 7.2% is about 80 times higher than for Southeast Asia,
265 which has an overall average prevalence for all years combined of 0.09%. These large variations in prevalence
266 are not solely explained by differences in demography, as large prevalence differences remain while considering
267 age-adjusted prevalence.

268

269 This study showed that the most widely high prevalence is attributable to LBP, which corroborates previous results
270 from a study published in 2014.²¹ The raw prevalence of MSD increased between 1990 and 2019 in a large
271 majority of sub-regions of the world, but most of the pains were explained after considering the age factor, while
272 there were still persistent increases for hip, knee, and other OA. Depending on the type of MSD, demographic
273 seems, therefore, to explain a large majority of temporal changes in pain, but it is not enough to properly
274 understand and apprehend its geographic distribution. Another interesting point is that when observing the
275 prevalence of MSD for 2019 by sub-region, sex, and age, most of the prevalence was increasing with the age, and
276 at a higher level for women. This higher prevalence in women may be due to several reasons: differential
277 exposures; interactions between exposures and gender; effect modification due to male/ female social roles,
278 genetics, psychology and physiology; differential pain experience, reporting or care-seeking.²² These results
279 improved our understanding of temporal trends in MSD, suggesting notably that the overall average prevalence
280 of MSD will globally increase over time. Furthermore, in regions where overall income and medical density are
281 lower, the burden of MSD was ranked lower, probably due to a lack of means and accessibility to diagnosis.
282 Added to this is the fact that in recent years, the ageing of the world population has been observed, which implies
283 that a considerable number of people living with MSD is expected in the decades to come to.²³

284

285 Large disparities in prevalence between countries have been highlighted, especially a marked distinction between
286 the South and the North countries, with higher prevalence in the latter. After age standardization, OA increase can
287 be explained by the potential underdiagnosis of patients who do not necessarily report their pain because they
288 consider it sufficiently low. In addition, differences in prevalence can be explained by specific characteristics of
289 the populations, not only by the age pyramids but also by obesity²⁴, biomechanical and psychological exposures⁷,
290 ergonomics of the workstation and /or the tools used at work²⁵, or even cultural factors in the diagnosis of
291 patients²⁶. These aspects mean that the sensitivity and specificity of the indicators observed undoubtedly vary
292 geographically due to the diversity of the characteristics of the countries and the profiles of the populations.
293 Among these variations, we can count the differences in definitions, in national income, reflecting the structure
294 of employment and acting in part on cultural factors and pain tolerance, or even variations in medical density
295 which may be used as an indicator of diagnostic capability and probability of detection⁵. Moreover, country
296 treatment arsenal may also indirectly drive the country diagnostic capacity. Another point to consider is the
297 probable improvement in the sensitivity of diagnostic tools and knowledge of these pathologies in North countries.
298 Given these results, the low prevalence in middle- or low-income countries could see their values increase
299 considerably given the rise in the level of income per country over time and therefore potentially in medical
300 density and accessibility to care.

301

302 The variations in the occurrence of MSD depending on the country can also be explained by the evolution of
303 professions and the predominance of certain sectors according to gender, age, and social categories, or the
304 evolution of occupational exposure.²⁷ Several examples can be cited such as construction or transport trades
305 mainly occupied by men vs cashiers, caregivers, and housekeepers mainly occupied by women.^{28,29} We must

306 therefore consider several opposing factors that can considerably influence the occurrence of MSD. For example,
307 protective factors such as better knowledge of these pathologies with increasingly effective diagnostic and
308 prevention efforts must be considered as much as the known and emerging risk factors. Among the risk factors
309 that will probably increase, we can cite the evolution and emergence of certain professions requiring increasingly
310 rapid activity leading to high stress and sometimes non-optimal postural and ergonomic conditions, with different
311 level of risk factors .^{30,31,32,33} Finally, even if most MSD do not directly lead to death, the state of health is often
312 being considerably degraded. Indeed, these pathologies can play a role in premature mortality by inducing joint
313 effects with other pathologies, for example by making their diagnosis more difficult .^{3,34,35}
314

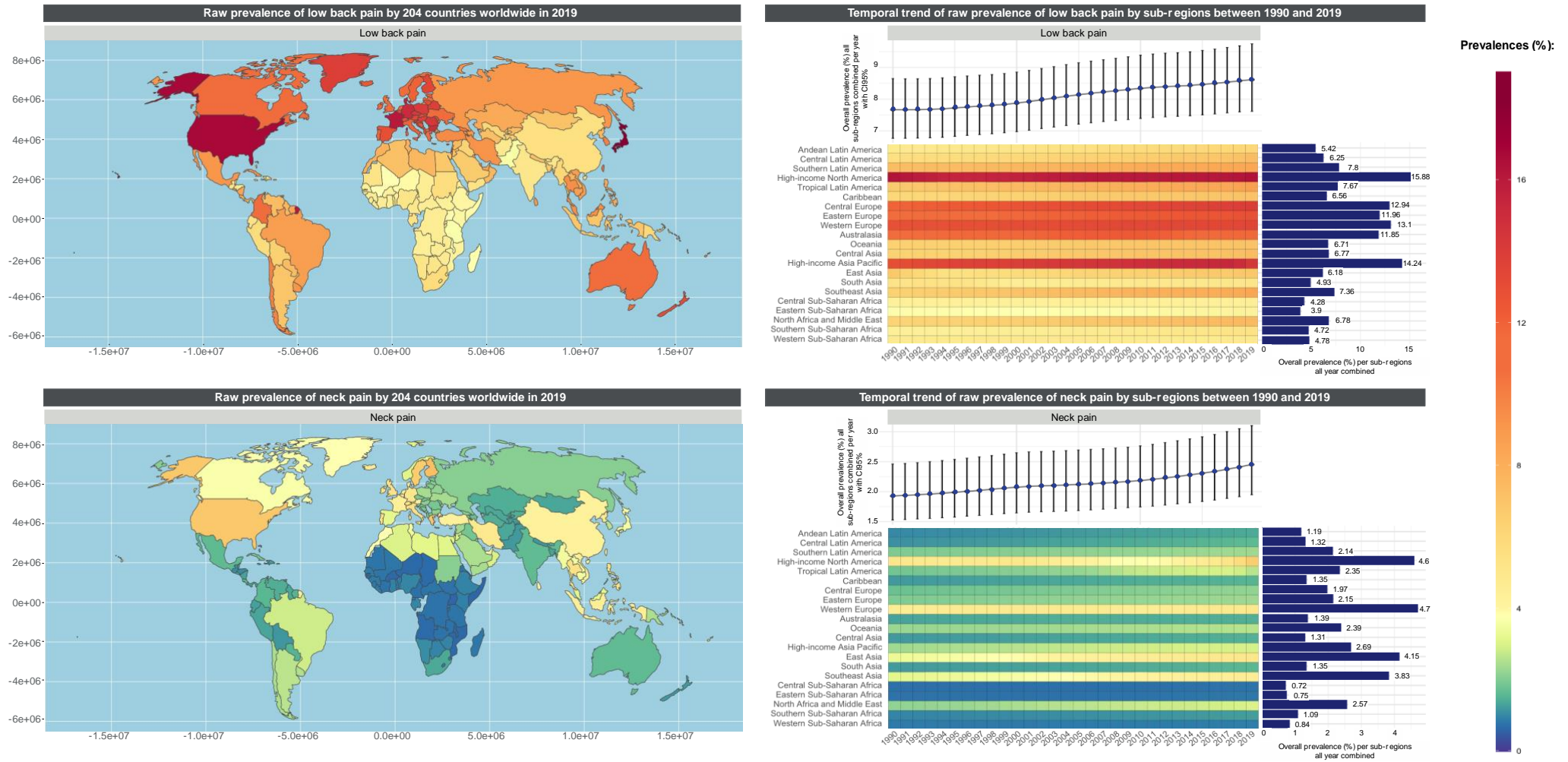
315 Despite the strength of the study, the GBD data present certain limitations that must be considered in the
316 interpretations for multiple reasons. First, the GBD estimates rely on various sources of data in which quality may
317 differ across countries. Second, it happens that for certain countries where the data was incomplete, calibration
318 was used on neighbouring countries (this aspect was mainly observed for data from African countries).⁵
319 Furthermore, this study does not allow to distinguish whether the differences in prevalence observed according to
320 the type of MSD and the geographical location of the individuals are due to differences in risk which depend on
321 the characteristics between the regions, such as genetic factors, or whether these differences in prevalence are due
322 to risk factors such as occupational or environmental exposure factors.
323

324 This work presents other limitations that could explain an underestimation of the prevalence and the real burden
325 of MSD over time.^{3,36} Case definitions for MSD are not universally standardized in population studies, making
326 analysis sometimes less precise, especially for different incomes by region.³⁷ Large-scale population studies on
327 the 150 musculoskeletal conditions are very difficult to set up due to the exhaustiveness of the pathologies making
328 the setting up of field studies very expensive.^{1,34} Throughout a person's lifetime, there can be a wide variation in
329 the likelihood of a condition, and reporting of pain resulting from highly variable musculoskeletal diseases makes
330 diagnosis sometimes very difficult, especially in low-income areas and with low medical density.
331

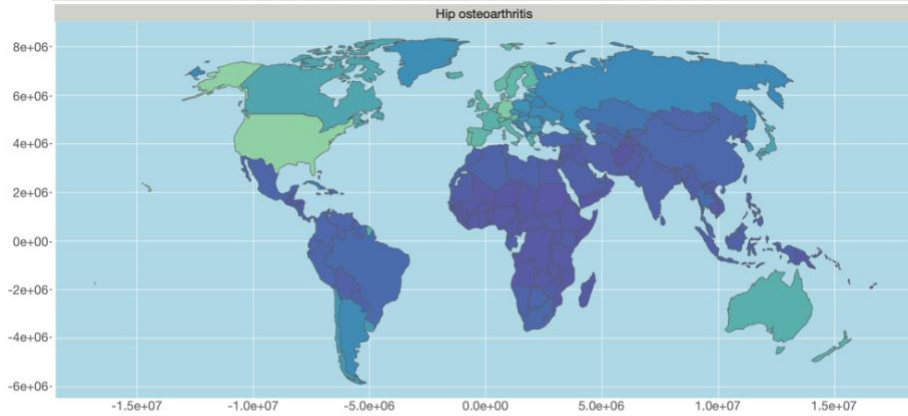
332 **Conclusion**

333
334 MSD are among the most frequent diseases and the most impactful on the quality of life of individuals worldwide.
335 Globally, there is a large variation of prevalence between countries and whether the MSD studied is related to
336 pain or OA. The burden of MSD is mostly increasing worldwide, especially for OA. As the ageing of the global
337 population is rising, this temporal trend is expected to continue.³⁸ The prevalence of lower back pain is by far the
338 most widespread in the world, regardless of the years and geographical locations studied. A great diversity of
339 prevalence is also observed between MSD and between regions. Over time, the variations in MSD are
340 overwhelmingly increasing, with most of these increases explained by age, particularly for LBP and NP.
341 Demography does not seem to be the only indicator to consider in these variations since, for example, the
342 differences in prevalence observed by country in 2019 highlighted that for all MSD, prevalences are much higher
343 for the North countries compared to the South countries. In this sense, it has also been shown that income levels
344 and medical densities by region were significantly correlated with observed prevalence. To reduce the burden of
345 these MSD, which is tending to increase considerably, it is important to continue to set up broad surveillance, and
346 to refine the collection methods by facilitating access to data on a wider type of MSD.³⁶ Exhaustive longitudinal
347 data on a larger panel of MSD and relevant factors, taking into account occupational exposures over time, would
348 allow to better understand their evolution and to develop efficient policies for the management and prevention of
349 these diseases.^{34,39}
350

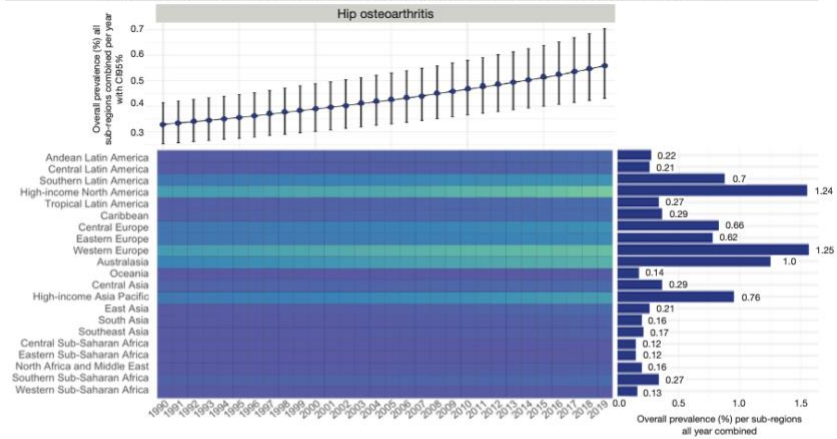
Figure 1. Spatial and temporal distribution of the raw prevalence of MSD worldwide by 204 countries and 21 sub-regions between 1990 and 2019.



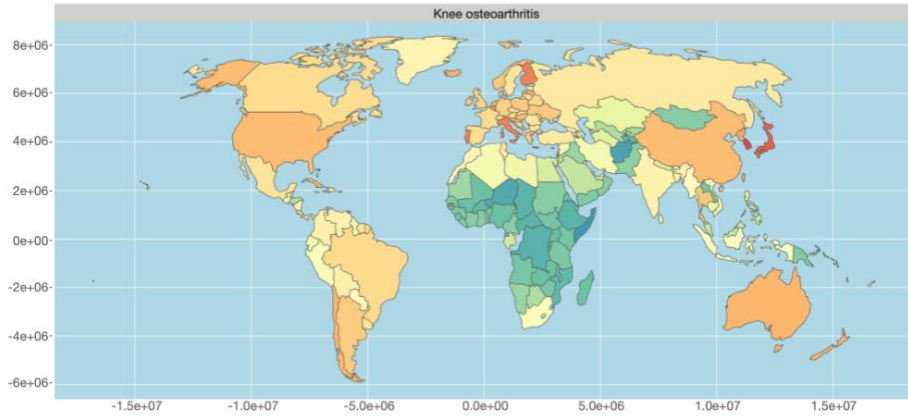
Raw prevalence of hip osteoarthritis by 204 countries worldwide in 2019



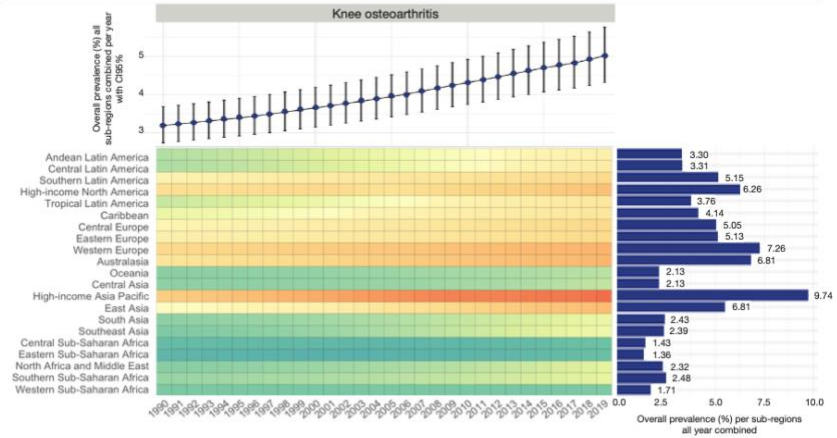
Temporal trend of raw prevalence of hip osteoarthritis by sub-regions between 1990 and 2019



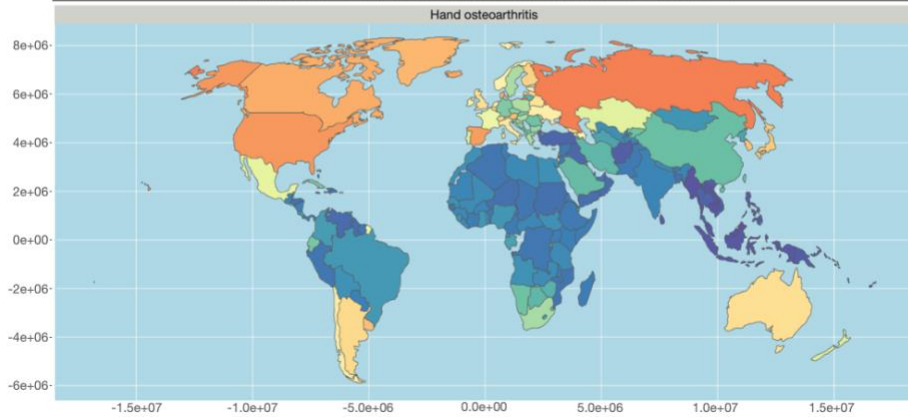
Raw prevalence of knee osteoarthritis by 204 countries worldwide in 2019



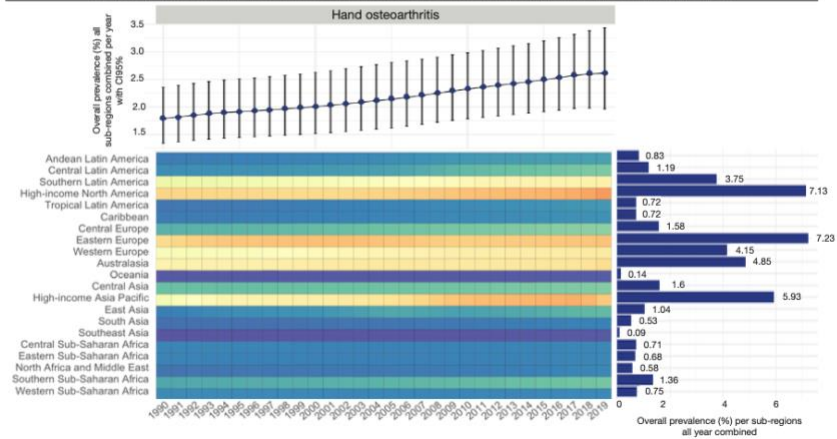
Temporal trend of raw prevalence of knee osteoarthritis by sub-regions between 1990 and 2019



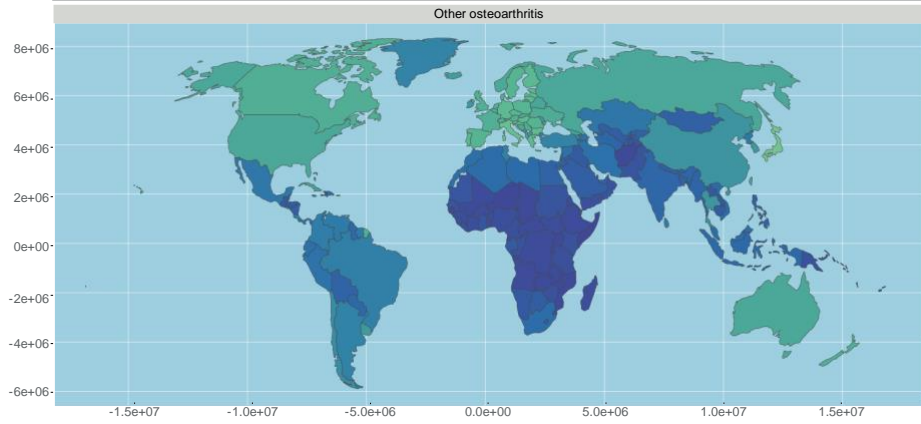
Raw prevalence of hand osteoarthritis by 204 countries worldwide in 2019



Temporal trend of raw prevalence of hand osteoarthritis by sub-regions between 1990 and 2019



Raw prevalence of other osteoarthritis by 204 countries worldwide in 2019



Temporal trend of raw prevalence of other osteoarthritis by sub-regions between 1990 and 2019

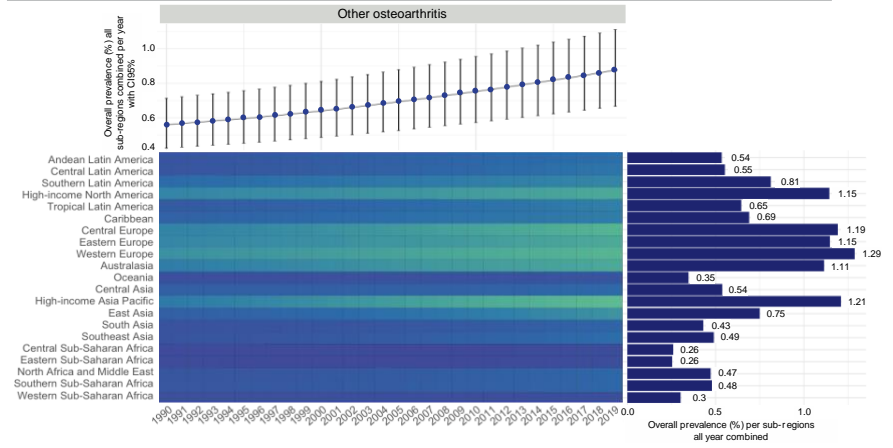
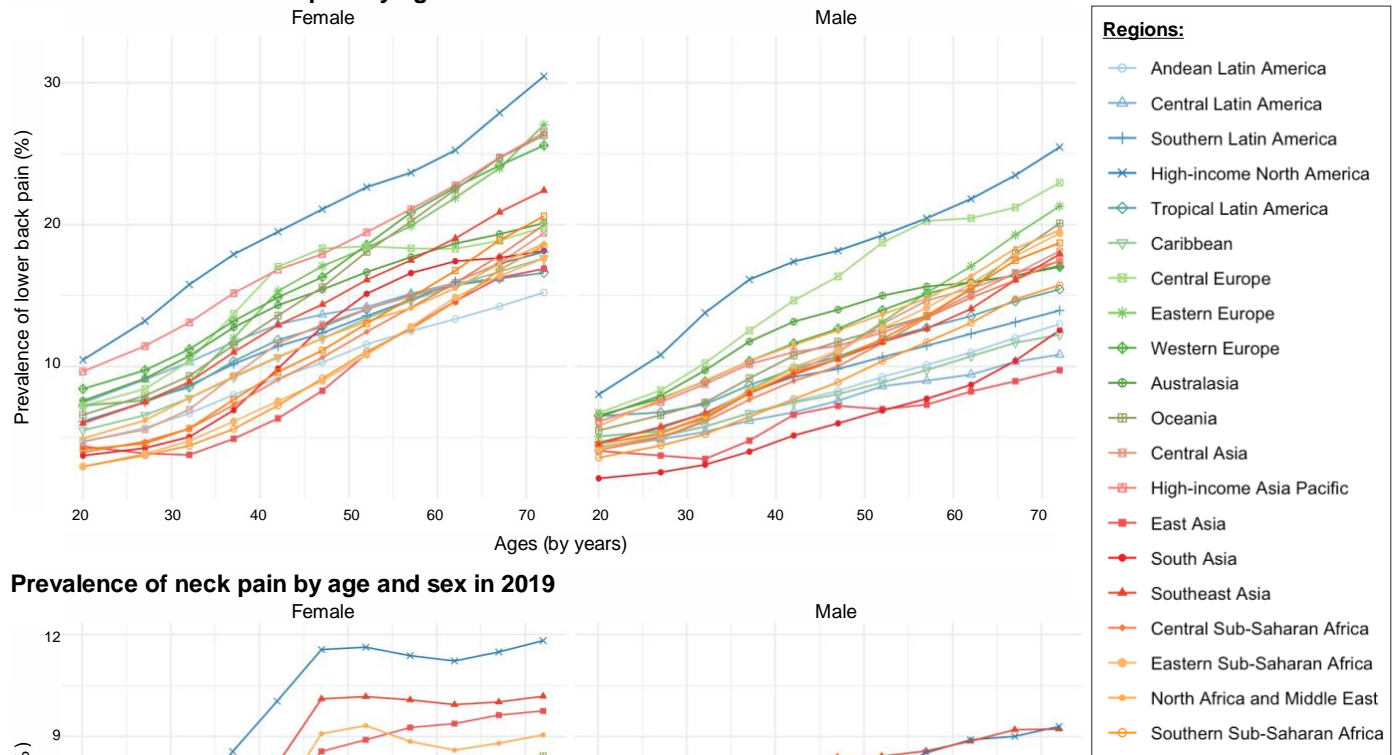
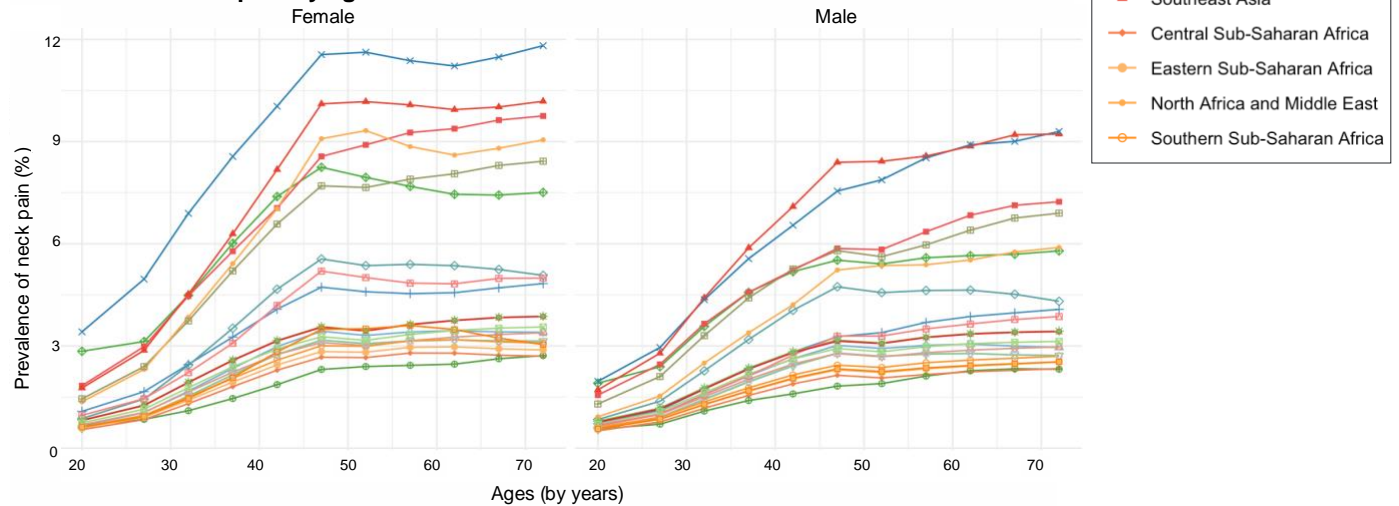


Figure 2: Prevalence of MSD worldwide by sub-regions, age and sex for 2019.

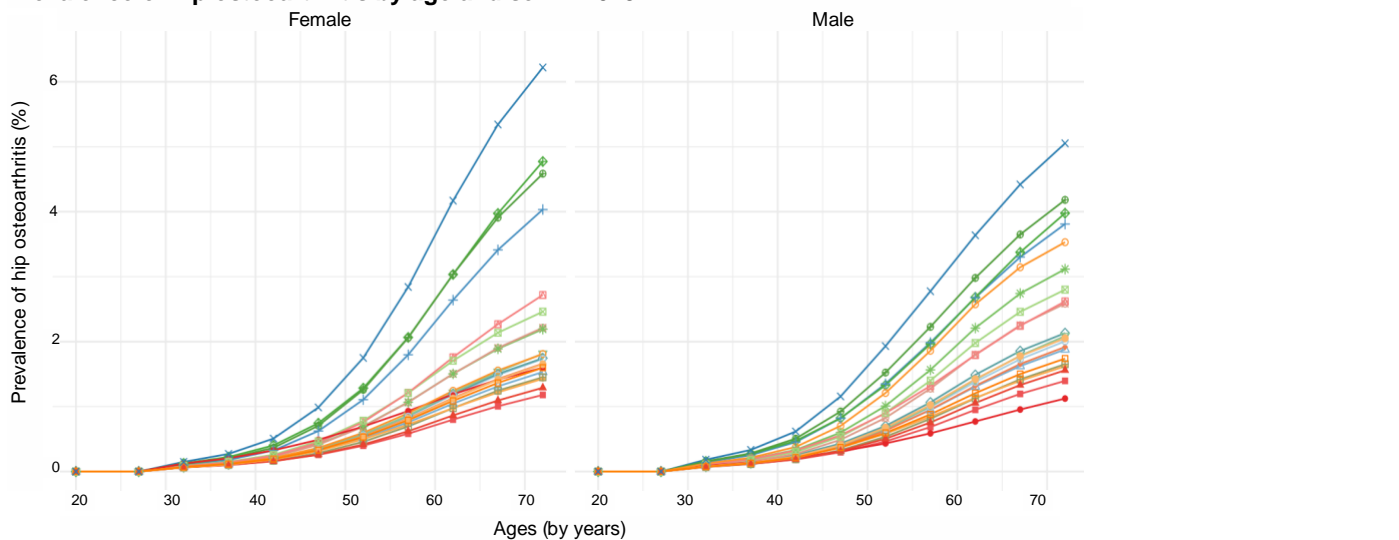
Prevalence of lower back pain by age and sex in 2019



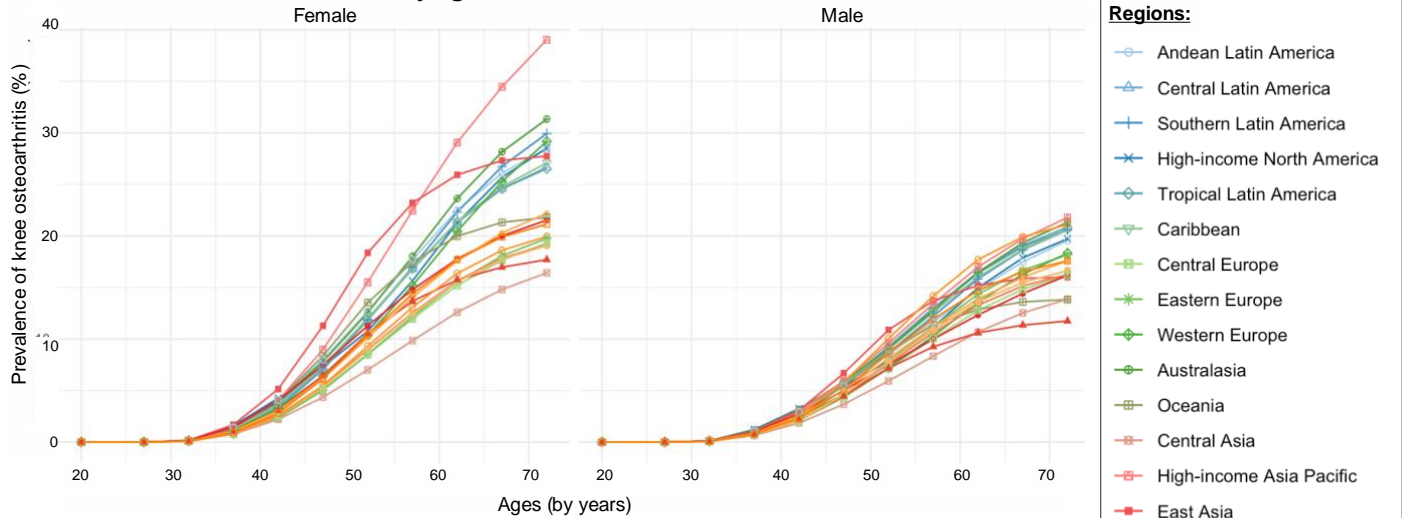
Prevalence of neck pain by age and sex in 2019



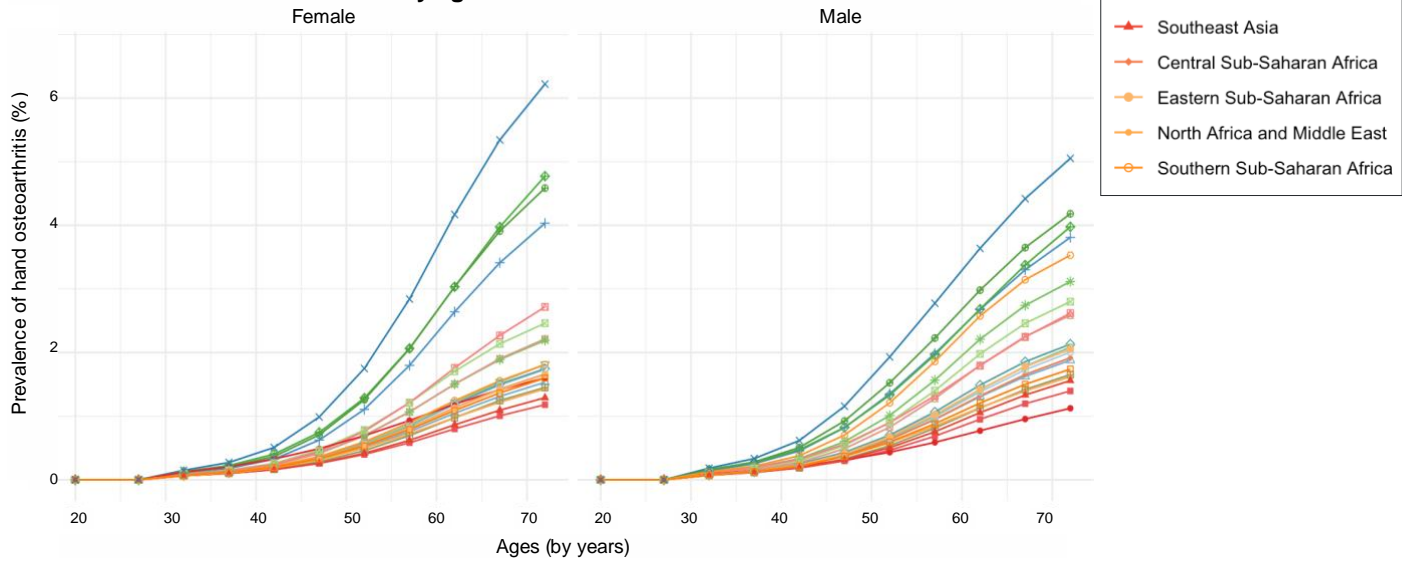
Prevalence of hip osteoarthritis by age and sex in 2019



Prevalence of knee osteoarthritis by age and sex in 2019



Prevalence of hand osteoarthritis by age and sex in 2019



Prevalence of other osteoarthritis by age and sex in 2019

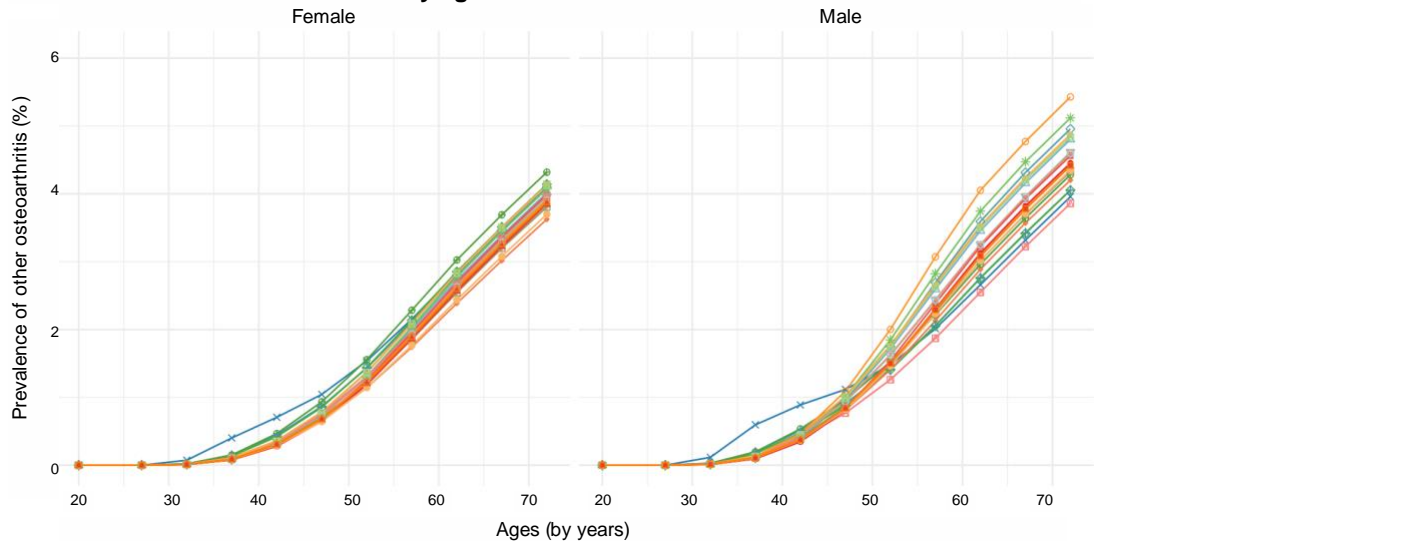


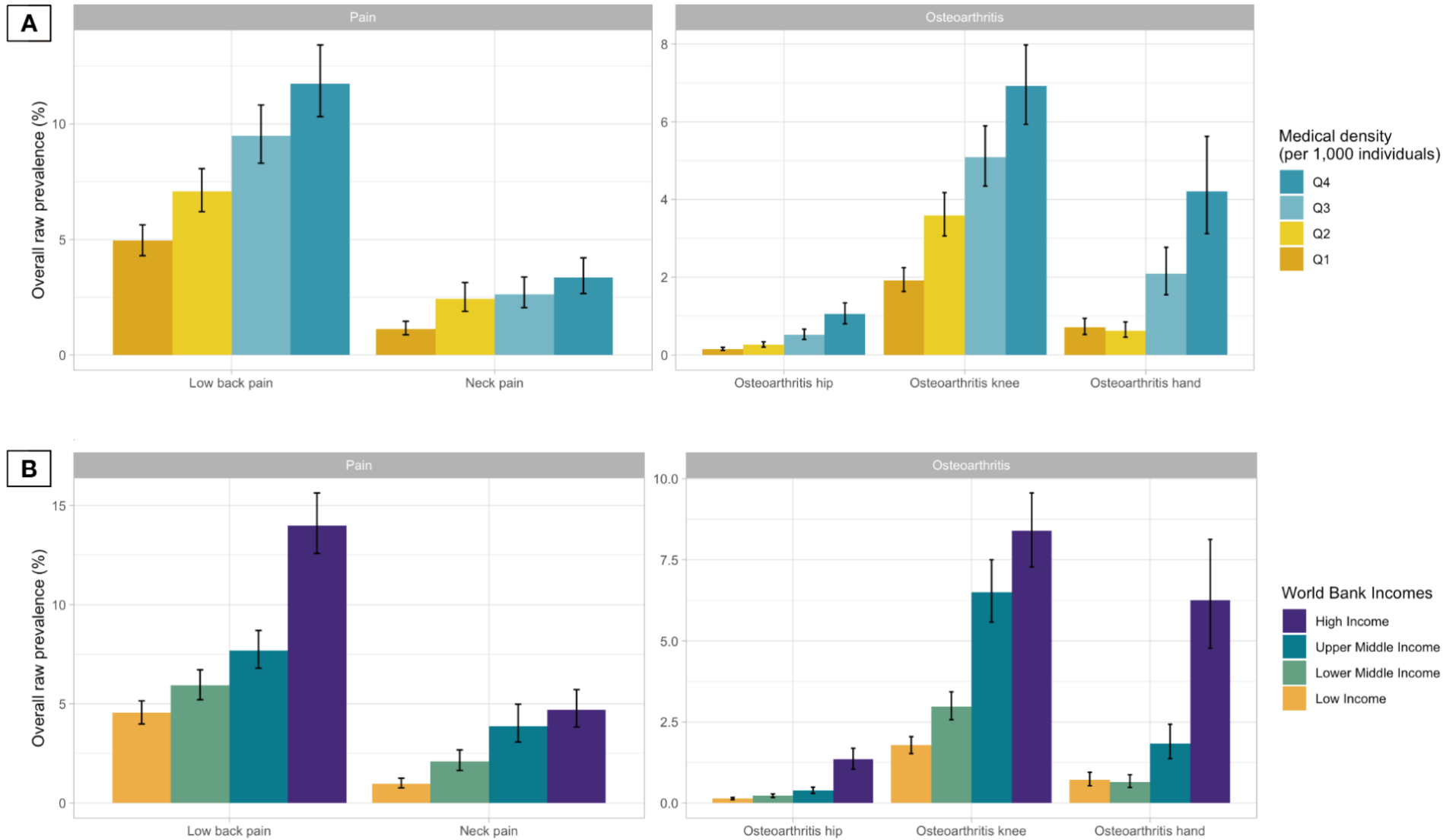
Table 1: Cochran-Armitage trend tests on the raw and age-standardized prevalence of MSD between 1990 and 2019, by regions and sub-regions in both sexes.

		TYPE OF MSD	PAIN				OSTEOARTHRITIS							
			LOW BACK		NECK		HIP		KNEE		HAND		OTHER	
			Raw	Age-std	Raw	Age-std	Raw	Age-std	Raw	Age-std	Raw	Age-std	Raw	Age-std
REGIONS	AMERICA	Andean Latin America	Orange	Light Blue	Orange	Light Blue	Orange	Light Pink	Orange	Light Pink	Orange	Light Blue	Orange	Light Blue
		Central Latin America	Orange	Light Blue	Orange	Light Blue	Orange	Light Blue	Orange	Light Pink	Orange	Light Blue	Orange	Light Blue
		Southern Latin America	Orange	Light Blue	Orange	Light Blue	Orange	Light Pink	Orange	Light Pink	Orange	Light Blue	Orange	Light Blue
		High-income North America	Light Blue	Light Blue	Light Blue	Green	Orange	Light Blue	Orange	Light Blue	Orange	Light Blue	Orange	Light Blue
		Tropical Latin America	Orange	Light Blue	Orange	Light Blue	Orange	Light Pink	Orange	Light Pink	Orange	Light Blue	Orange	Light Blue
		Caribbean	Orange	Light Blue	Light Pink	Light Blue	Orange	Light Blue	Orange	Light Blue	Orange	Light Blue	Orange	Light Blue
	EUROPE	Central Europe	Orange	Light Blue	Light Pink	Light Blue	Orange	Light Blue	Orange	Light Blue	Orange	Light Blue	Orange	Light Blue
		Eastern Europe	Orange	Light Blue	Light Blue	Light Blue	Orange	Light Blue	Orange	Light Blue	Orange	Light Blue	Orange	Light Blue
		Western Europe	Light Blue	Light Blue	Light Blue	Light Blue	Orange	Light Blue	Orange	Light Blue	Orange	Light Blue	Orange	Light Blue
		Australasia	Light Blue	Light Green	Light Blue	Light Blue	Orange	Light Blue	Orange	Light Blue	Orange	Light Blue	Orange	Light Blue
		Oceania	Light Pink	Light Blue	Light Blue	Light Blue	Light Pink	Light Blue	Orange	Light Blue	Light Blue	Light Blue	Orange	Light Blue
	ASIA	Central Asia	Orange	Light Blue	Light Pink	Light Blue	Orange	Light Blue	Orange	Light Blue	Orange	Light Blue	Orange	Light Blue
		High-income Asia Pacific	Orange	Light Blue	Orange	Light Blue	Orange	Light Blue	Orange	Light Blue	Orange	Light Blue	Orange	Light Blue
		East Asia	Orange	Green	Orange	Light Blue	Orange	Light Blue	Orange	Light Blue	Orange	Light Blue	Orange	Light Blue
		South Asia	Light Blue	Green	Orange	Light Blue	Orange	Light Blue	Orange	Light Pink	Orange	Light Blue	Orange	Light Blue
		Southeast Asia	Orange	Light Blue	Orange	Light Blue	Orange	Light Pink	Orange	Light Blue	Orange	Light Blue	Orange	Light Blue
	AFRICA	Central Sub-Saharan Africa	Light Blue	Light Blue	Light Blue	Light Blue	Light Blue	Light Blue	Light Blue	Light Blue	Light Blue	Light Blue	Light Blue	Light Blue
		Eastern Sub-Saharan Africa	Light Blue	Light Blue	Light Blue	Light Blue	Light Blue	Light Blue	Light Blue	Light Blue	Light Blue	Light Blue	Light Blue	Light Blue
		North Africa and Middle East	Orange	Light Blue	Orange	Light Blue	Orange	Light Blue	Orange	Light Blue	Orange	Light Blue	Orange	Light Blue
		Southern Sub-Saharan Africa	Orange	Light Blue	Light Pink	Light Blue	Orange	Light Blue	Orange	Light Blue	Orange	Light Blue	Orange	Light Blue
Western Sub-Saharan Africa		Light Blue	Light Blue	Light Blue	Light Blue	Light Blue	Light Blue	Light Blue	Light Blue	Light Blue	Light Blue	Light Blue	Light Blue	
	GLOBAL REGIONS	Orange	Light Blue	Orange	Light Blue	Orange	Light Blue	Orange	Light Blue	Orange	Light Blue	Orange	Light Blue	

Legends:

- Increase, p-value < 0.05
- Decrease, p-value < 0.05
- Increase, p-value < 0.1
- Decrease, p-value < 0.1

Figure 4: The distribution of the prevalence of MSD considering the World Bank incomes and the medical density worldwide. **A.** Distribution of MSD prevalence by World Bank income (low, lower-middle, upper-middle, and high incomes) in 2019. **B.** Distribution of MSD prevalence by medical density (per 1,000 individuals) categorized by quantiles in 2017.



References:

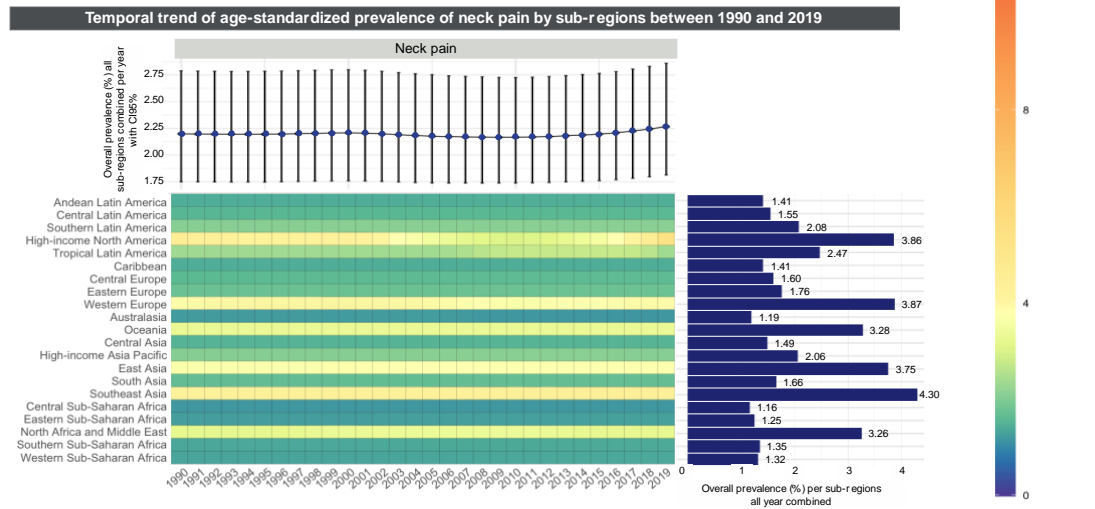
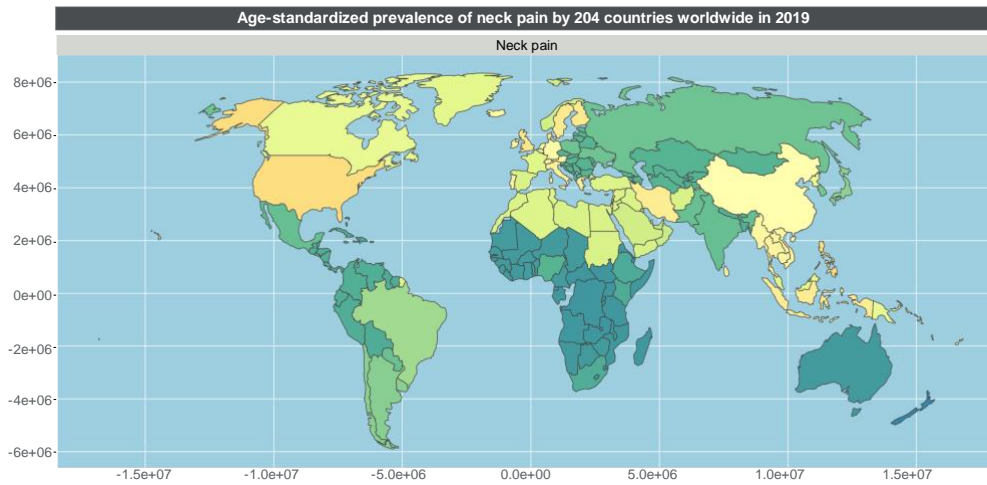
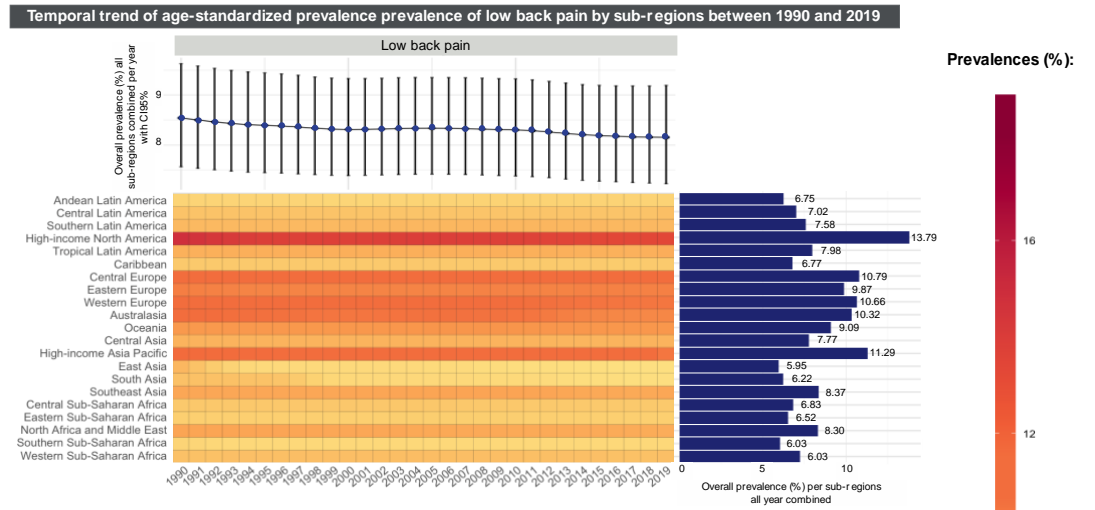
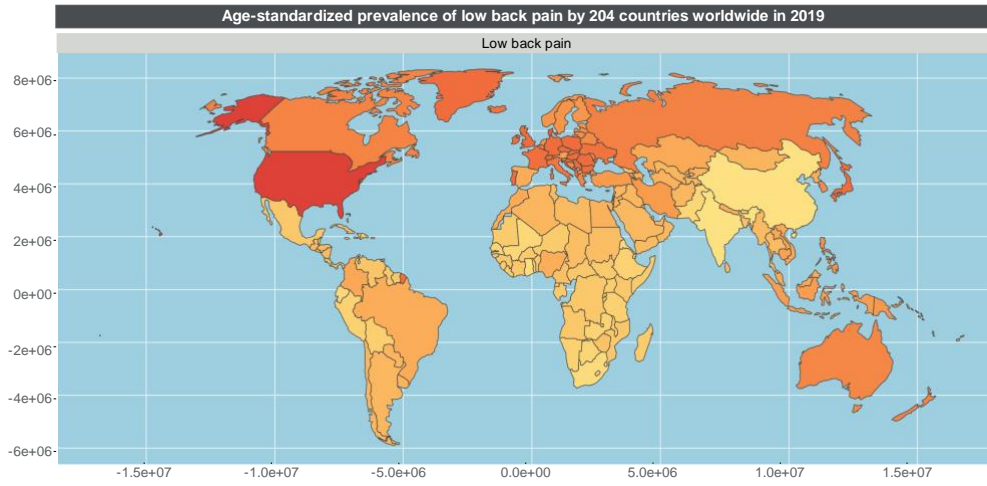
- 1 Report of a WHO Scientific Group. The burden of musculoskeletal conditions at the start of the new millenium. 2003.
http://apps.who.int/iris/bitstream/handle/10665/42721/WHO_TRS_919.pdf;jsessionid=D00C30C4A569458754AD14CC3E3A0D8D?sequence=1 (accessed Oct 14, 2021).
- 2 Bevan S. Economic impact of musculoskeletal disorders (MSDs) on work in Europe. *Best Pract Res Clin Rheumatol* 2015; **29**: 356–73.
- 3 Blyth FM, Briggs AM, Schneider CH, Hoy DG, March LM. The Global Burden of Musculoskeletal Pain—Where to From Here? *Am J Public Health* 2019; **109**: 35–40.
- 4 Cieza A, Causey K, Kamenov K, Hanson SW, Chatterji S, Vos T. Global estimates of the need for rehabilitation based on the Global Burden of Disease study 2019: a systematic analysis for the Global Burden of Disease Study 2019. *The Lancet* 2020; **396**: 2006–17.
- 5 Bouziri H, Descatha A, Roquelaure Y, Dab W, Jean K. Can we distinguish the roles of demographic and temporal changes in the incidence and prevalence of musculoskeletal disorders? A systematic review. *Scand J Work Environ Health* DOI:10.5271/sjweh.4018.
- 6 Hulshof CTJ, Pega F, Neupane S, *et al.* The effect of occupational exposure to ergonomic risk factors on osteoarthritis of hip or knee and selected other musculoskeletal diseases: A systematic review and meta-analysis from the WHO/ILO Joint Estimates of the Work-related Burden of Disease and Injury. *Environ Int* 2021; **150**: 106349.
- 7 Roquelaure Y. Musculoskeletal disorders and psychosocial factors at work [Internet]., Brussels: European Trade Union Institute (ETUI); 2018 p. 82. Report No.: 142. <https://www.etui.org/sites/default/files/EN-Report-142-MSD-Roquelaure-WEB.pdf>.
- 8 Physical and psychosocial risk factors for musculoskeletal disorders in New Zealand nurses, postal workers and office workers | Injury Prevention. <https://injuryprevention.bmj.com/content/16/2/96.short> (accessed Oct 29, 2021).
- 9 Jain R, Meena ML, Dangayach GS, Bhardwaj AK. Association of risk factors with musculoskeletal disorders in manual-working farmers. *Arch Environ Occup Health* 2018; **73**: 19–28.
- 10 E C, Y R, C H, *et al.* [MSDs and job security of employees aged 50 years and over: a challenge for occupational health and public health]. *Sante Publique Vandoeuvre--Nancy Fr* 2008; **20 Suppl 3**: S19-28.
- 11 Okunribido OO, Wynn T, Lewis D. Are older workers at greater risk of musculoskeletal disorders in the workplace than young workers? – A literature review. *Occup Ergon* 2011; **10**: 53–68.
- 12 Schofield DJ, Shrestha RN, Passey ME, Earnest A, Fletcher SL. Chronic disease and labour force participation among older Australians. *Med J Aust* 2008; **189**: 447–50.
- 13 United Nations, Department of Economic and Social Affairs, Population Division. World population ageing, 2019 highlights. 2020.
- 14 The Lancet: Latest global disease estimates reveal perfect storm of rising chronic diseases and public health failures fuelling COVID-19 pandemic. *Inst. Health Metr. Eval.* 2020; published online Oct 14.
<https://www.healthdata.org/news-release/lancet-latest-global-disease-estimates-reveal-perfect-storm-rising-chronic-diseases-and> (accessed July 15, 2022).
- 15 Global Burden of Disease Study 2017 (GBD 2017) - Nonfatal Health Outcomes 9 | GHDx.
<http://ghdx.healthdata.org/gbd-2017/code/nonfatal-9> (accessed March 31, 2021).

- 16 GBD Results Tool | GHDx. <http://ghdx.healthdata.org/gbd-results-tool> (accessed March 31, 2021).
- 17 Osteoarthritis other — Level 4 cause. Inst. Health Metr. Eval. 2020; published online Oct 15.
https://www.healthdata.org/results/gbd_summaries/2019/osteoarthritis-other-level-4-cause (accessed May 17, 2022).
- 18 Other musculoskeletal disorders — Level 3 cause. Inst. Health Metr. Eval. 2020; published online Oct 15.
https://www.healthdata.org/results/gbd_summaries/2019/other-musculoskeletal-disorders-level-3-cause (accessed May 17, 2022).
- 19 The global burden of other musculoskeletal disorders: estimates from the Global Burden of Disease 2010 study | Annals of the Rheumatic Diseases. <https://ard.bmj.com/content/73/8/1462.short> (accessed Jan 16, 2022).
- 20 Physicians (per 1,000 people) | Data. <https://data.worldbank.org/indicator/SH.MED.PHYS.ZS> (accessed April 12, 2022).
- 21 Driscoll T, Jacklyn G, Orchard J, *et al.* The global burden of occupationally related low back pain: estimates from the Global Burden of Disease 2010 study. *Ann Rheum Dis* 2014; **73**: 975–81.
- 22 Punnett L. Musculoskeletal disorders and occupational exposures: how should we judge the evidence concerning the causal association? *Scand J Public Health* 2014; **42**: 49–58.
- 23 Vos T, Flaxman AD, Naghavi M, *et al.* Years lived with disability (YLDs) for 1160 sequelae of 289 diseases and injuries 1990–2010: a systematic analysis for the Global Burden of Disease Study 2010. *Lancet Lond Engl* 2012; **380**: 2163–96.
- 24 Heuch I, Heuch I, Hagen K, Zwart J-A. Body mass index as a risk factor for developing chronic low back pain: a follow-up in the Nord-Trøndelag Health Study. *Spine* 2013; **38**: 133–9.
- 25 Chiasson M-È, Imbeau D, Major J, Aubry K, Delisle A. Influence of musculoskeletal pain on workers' ergonomic risk-factor assessments. *Appl Ergon* 2015; **49**: 1–7.
- 26 Guido D, Leonardi M, Mellor-Marsá B, *et al.* Pain rates in general population for the period 1991–2015 and 10-years prediction: results from a multi-continent age-period-cohort analysis. *J Headache Pain* 2020; **21**.
DOI:10.1186/s10194-020-01108-3.
- 27 Punnett L, Wegman DH. Work-related musculoskeletal disorders: the epidemiologic evidence and the debate. *J Electromyogr Kinesiol* 2004; **14**: 13–23.
- 28 Tang KHD. The Prevalence, Causes and Prevention of Occupational Musculoskeletal Disorders. *Glob Acad J Med Sci* 2022; **4**: 56–68.
- 29 Dabbagh A, MacDermid JC, Grewal R, Walton DM. The Role of Perceived Job Exertion and Age as Moderators of the Relationship Between Gender and Upper Extremity Musculoskeletal Disability and Pain in Injured Workers. *J Occup Rehabil* 2022; **32**: 128–37.
- 30 Bouziri H, Smith DRM, Descatha A, Dab W, Jean K. Working from home in the time of COVID-19: how to best preserve occupational health? *Occup Environ Med* 2020; **77**: 509–10.
- 31 Gold J, Rodgers H, Smith V. The future of the professions: are they up for it? *Foresight* 2002; **4**: 46–53.
- 32 Elvira M, Tatiana P, Tatiana G, Nasezhda P, Rita S. New professions emerging out of the development of robotics. ; : 10.
- 33 Descatha A, Evanoff BA, Leclerc A, Roquelaure Y. Occupational Determinants of Musculoskeletal Disorders. In: Bültmann U, Siegrist J, eds. *Handbook of Disability, Work and Health*. Cham: Springer International Publishing, 2019: 1–20.

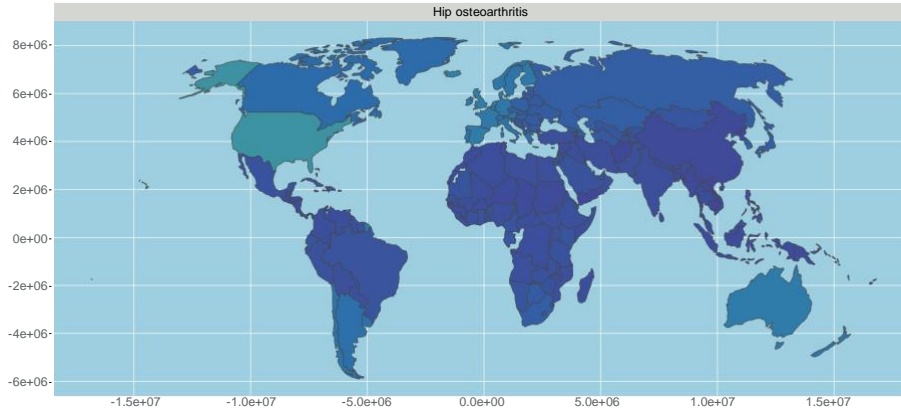
- 34 Briggs AM, Woolf AD, Dreinhöfer K, *et al.* Reducing the global burden of musculoskeletal conditions. *Bull World Health Organ* 2018; **96**: 366–8.
- 35 Wall S. Globalization makes new demands on public health research. *Scand J Public Health* 2007; **35**: 449–53.
- 36 Storheim K, Zwart J-A. Musculoskeletal disorders and the Global Burden of Disease study. *Ann Rheum Dis* 2014; **73**: 949–50.
- 37 Escorpizo R, Kostanjsek N, Kennedy C, *et al.* Harmonizing WHO’s International Classification of Diseases (ICD) and International Classification of Functioning, Disability and Health (ICF): importance and methods to link disease and functioning. *BMC Public Health* 2013; **13**: 742.
- 38 Safiri S, Kolahi A-A, Smith E, *et al.* Global, regional and national burden of osteoarthritis 1990-2017: a systematic analysis of the Global Burden of Disease Study 2017. *Ann Rheum Dis* 2020; **79**: 819–28.
- 39 Hoy D, Geere J-A, Davatchi F, Meggitt B, Barrero LH. A time for action: Opportunities for preventing the growing burden and disability from musculoskeletal conditions in low- and middle-income countries. *Best Pract Res Clin Rheumatol* 2014; **28**: 377–93.

Supplementary materials:

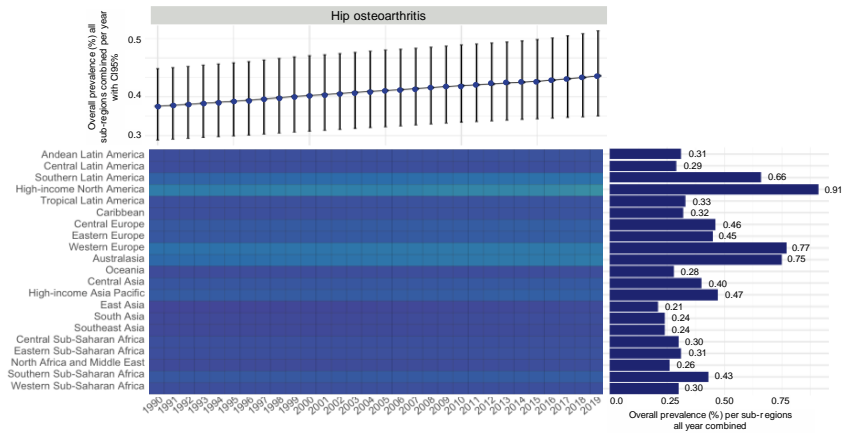
S1: Spatial and temporal distribution of the age-standardized prevalence of MSD worldwide by 204 countries and 21 sub-regions between 1990 and 2019.



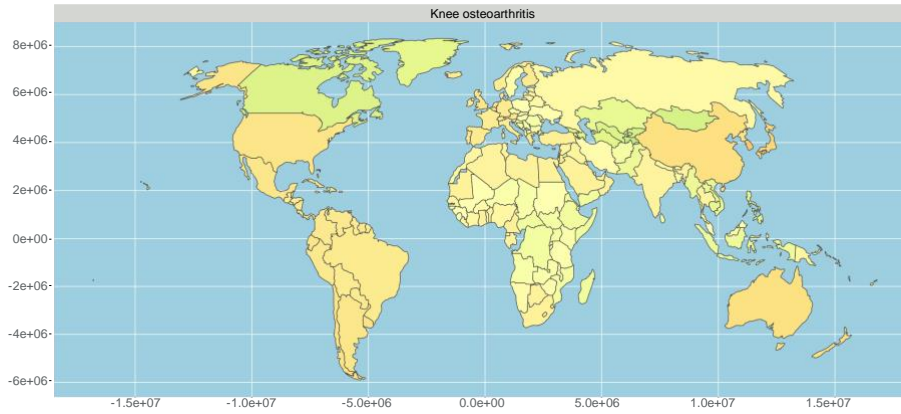
Age-standardized prevalence of hip osteoarthritis by 204 countries worldwide in 2019



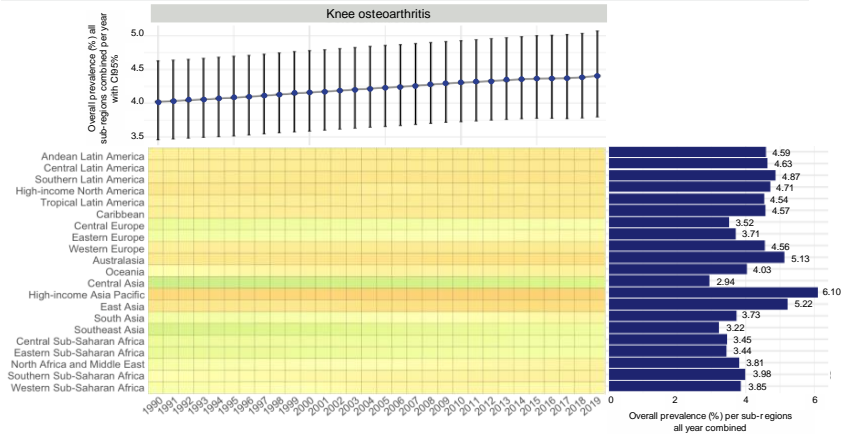
Temporal trend of age-standardized prevalence of hip osteoarthritis by sub-regions between 1990 and 2019



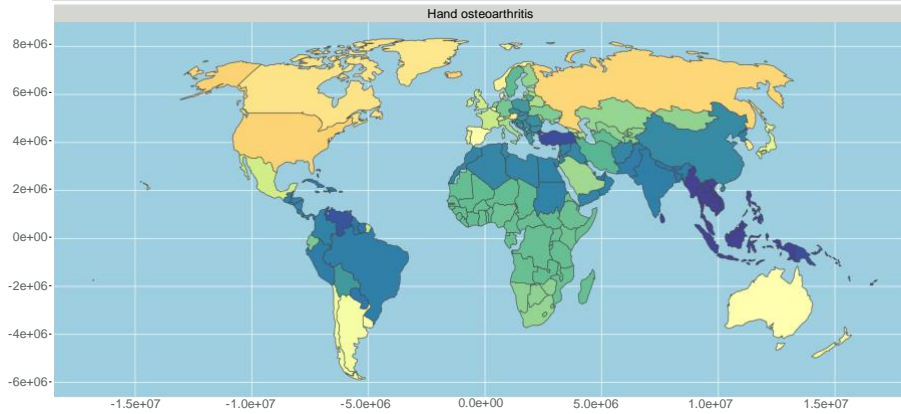
Age-standardized prevalence of knee osteoarthritis by 204 countries worldwide in 2019



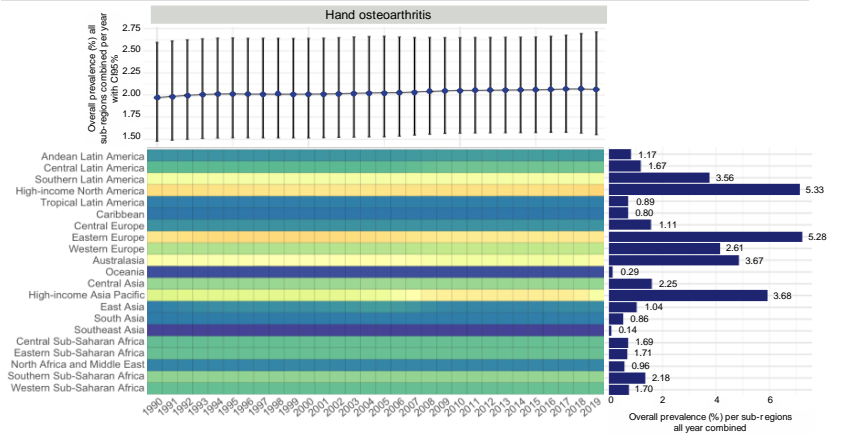
Temporal trend of age-standardized prevalence of knee osteoarthritis by sub-r egions between 1990 and 2019

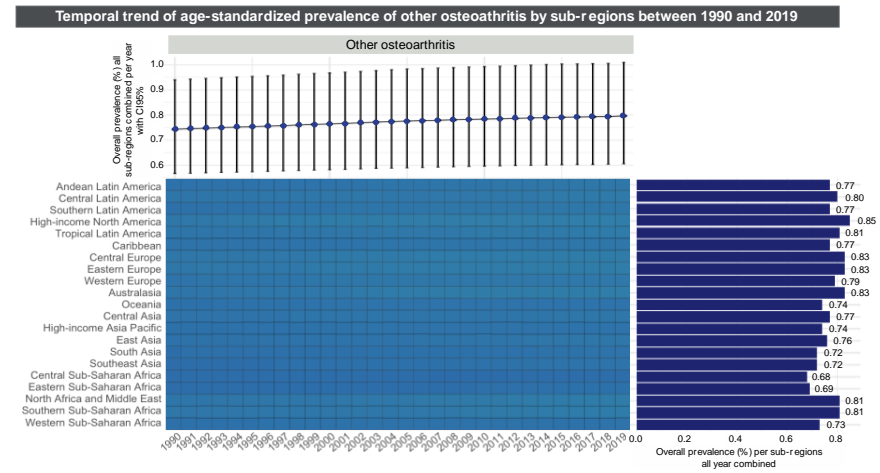
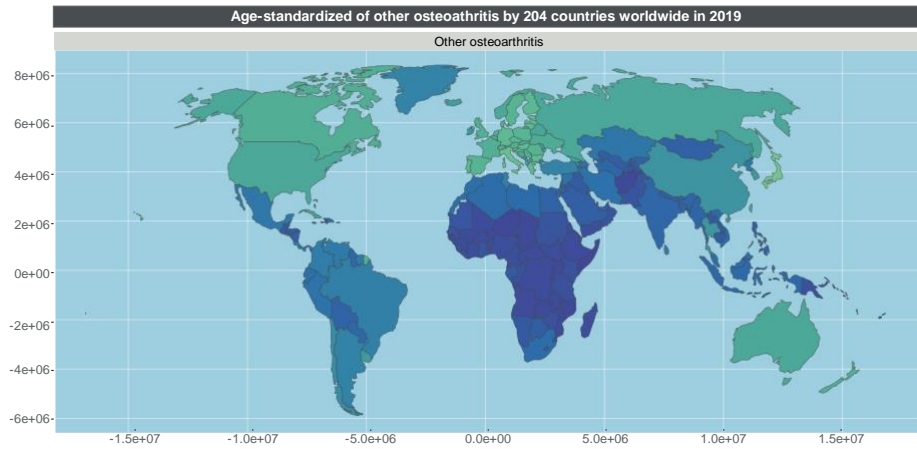


Age-standardized prevalence of hand osteoarthritis by 204 countries worldwide in 2019



Temporal trend of age-standardized prevalence of hand osteoarthritis by sub-r egions between 1990 and 2019





S2: The table of the minimum and maximum prevalence of MSD considering their 95% CIs per country for the year 2019

Min/ max	MSD	Raw prevalence of MSD			Age-standardized prevalence of MSD		
		Country	Prevalence (%)	CI 95%	Country	Prevalence (%)	CI 95%
Minimum	Low back pain	India	3.31	[2.89-3.77]	India	5.37	[4.73-6.09]
	Neck pain	Niger	0.56	[0.44-0.73]	New Zealand	0.96	[0.77-1.20]
	Osteoarthritis hip	Afghanistan	0.07	[0.06-0.09]	Democratic People's Republic of Korea	0.19	[0.14-0.24]
	Osteoarthritis knee	Somalia	0.98	[0.82-1.14]	Tajikistan	2.77	[2.38-3.21]
	Osteoarthritis hand	Timor-Leste	0.04	[0.02-0.05]	Maldives	0.12	[0.08-0.16]
	Other osteoarthritis	Somalia	0.21	[0.16-0.28]	Central African Republic	0.67	[0.51-0.86]
	Average minimum prevalence		0.86	[0.73-1.01]	Average minimum prevalence	1.68	[1.43-1.96]
Maximum	Low back pain	Japan	18.9	[16.7-21.4]	United States of America	13.7	[12.7-14.9]
	Neck pain	United States of America	7.98	[6.63-9.56]	Philippines	5.55	[4.42-7.01]
	Osteoarthritis hip	Monaco	2.08	[1.57-2.64]	United States of America	1.12	[0.89-1.37]
	Osteoarthritis knee	Japan	16.9	[19.1-14.7]	Republic of Korea	6.74	[5.80-7.71]
	Osteoarthritis hand	Republic of Korea	13.3	[10.0-17.3]	Iceland	6.21	[4.65-8.06]
	Other osteoarthritis	Monaco	1.82	[1.41-2.29]	Qatar	1.01	[0.75-1.30]
	Average maximum prevalence		10.16	[10.5-11.3]	Average maximum prevalence	5.72	[4.65-6.72]

S3: The table of the global prevalence of MSD considering their 95% CIs worldwide for the year 2019

MSD	Prevalence (%)	CI 95%
Low back pain	8.62	[7.62-9.74]
Neck pain	2.45	[1.95-3.10]
Osteoarthritis hip	0.56	[0.43-0.70]
Osteoarthritis knee	5.02	[4.32-5.77]
Osteoarthritis hand	2.61	[1.96-3.44]
Other osteoarthritis	0.70	[0.53-0.89]

S4: Summary of the CA temporal trend tests on the prevalence of MSD between 1990 and 2019 in both sexes (♂), women (♀), and men (♂).

S4.1: Summary of the CA temporal trend tests on the prevalence of pain between 1990 and 2019.

P-VALUES FROM THE RESULTS OF THE COCHRAN-ARMITAGE TEMPORAL TREND TEST ON PREVALENCE OF 5 TYPES OF MSDs BETWEEN 1990 & 2019																		
TYPE OF MSDs	LOW BACK PAIN						NECK PAIN						OTHER MSD					
	Prevalence			Age-standardized			Raw			Age-standardized			Raw			Age-standardized		
SEX	♂	♀	♂	♂	♀	♂	♂	♀	♂	♂	♀	♂	♂	♀	♂	♂	♀	♂
Andean Latin America	Red	Red	Red	Blue	Blue	Blue	Red	Red	Red	Blue	Blue	Blue	Red	Red	Red	Red	Red	Red
Central Latin America	Red	Red	Red	Blue	Blue	Blue	Red	Red	Red	Blue	Blue	Blue	Red	Red	Red	Red	Red	Red
Southern Latin America	Red	Red	Red	Blue	Blue	Blue	Red	Red	Red	Blue	Blue	Blue	Red	Red	Red	Red	Red	Red
High-income North America	Blue	Blue	Blue	Blue	Blue	Blue	Blue	Blue	Blue	Green	Green	Green	Blue	Blue	Blue	Blue	Blue	Blue
Tropical Latin America	Red	Red	Red	Blue	Blue	Blue	Red	Red	Red	Blue	Blue	Blue	Red	Red	Red	Red	Red	Red
Caribbean	Red	Red	Red	Blue	Blue	Blue	Red	Red	Red	Blue	Blue	Blue	Red	Red	Red	Red	Red	Red
Central Europe	Red	Red	Red	Blue	Blue	Blue	Red	Red	Red	Blue	Blue	Blue	Red	Red	Red	Red	Red	Red
Eastern Europe	Red	Red	Red	Blue	Blue	Blue	Red	Red	Red	Blue	Blue	Blue	Red	Red	Red	Red	Red	Red
Western Europe	Blue	Blue	Blue	Blue	Blue	Blue	Blue	Blue	Blue	Blue	Blue	Blue	Red	Red	Red	Red	Red	Red
Australasia	Blue	Blue	Blue	Green	Green	Green	Blue	Blue	Blue	Blue	Blue	Blue	Blue	Blue	Blue	Blue	Blue	Blue
Oceania	Red	Red	Red	Blue	Blue	Blue	Red	Red	Red	Blue	Blue	Blue	Red	Red	Red	Red	Red	Red
Central Asia	Red	Red	Red	Blue	Blue	Blue	Red	Red	Red	Blue	Blue	Blue	Red	Red	Red	Red	Red	Red
High-income Asia Pacific	Red	Blue	Red	Blue	Blue	Blue	Red	Red	Red	Blue	Blue	Blue	Red	Red	Red	Red	Red	Red
East Asia	Red	Red	Red	Green	Green	Green	Red	Red	Red	Blue	Blue	Blue	Red	Red	Red	Red	Red	Red
South Asia	Blue	Blue	Blue	Green	Green	Green	Red	Red	Red	Blue	Blue	Blue	Red	Red	Red	Red	Red	Red
Southeast Asia	Red	Red	Red	Blue	Blue	Blue	Red	Red	Red	Blue	Blue	Blue	Red	Red	Red	Red	Red	Red
Central Sub-Saharan Africa	Blue	Blue	Blue	Blue	Blue	Blue	Blue	Blue	Blue	Blue	Blue	Blue	Blue	Blue	Blue	Blue	Blue	Blue
Eastern Sub-Saharan Africa	Blue	Blue	Blue	Blue	Blue	Blue	Blue	Blue	Blue	Blue	Blue	Blue	Red	Red	Red	Red	Red	Red
North Africa and Middle East	Red	Blue	Red	Blue	Blue	Blue	Red	Red	Red	Blue	Blue	Blue	Red	Red	Red	Red	Red	Red
Southern Sub-Saharan Africa	Red	Red	Red	Blue	Blue	Blue	Red	Red	Red	Blue	Blue	Blue	Red	Red	Red	Red	Red	Red
Western Sub-Saharan Africa	Blue	Red	Blue	Blue	Blue	Blue	Blue	Blue	Blue	Blue	Blue	Blue	Red	Red	Red	Red	Red	Red

Legends:

- Increase, p-value < 0.05
- Decrease, p-value < 0.05
- Increase, p-value < 0.1
- Decrease, p-value < 0.1
- Non-significant p-value > 0.1

S4.2: Summary of the CA temporal trend tests on the prevalence of osteoarthritis between 1990 and 2019

P-VALUES FROM THE RESULTS OF THE COCHRAN-ARMITAGE TEMPORAL TREND TEST ON PREVALENCE OF 5 TYPES OF MSDs BETWEEN 1990 & 2019																									
TYPE OF MSDs		HIP OSTEOARTHRITIS						KNEE OSTEOARTHRITIS						HAND OSTEOARTHRITIS						OTHER OSTEOARTHRITIS					
Prevalence		Raw			Age-standardized			Raw			Age-standardized			Raw			Age-standardized			Raw			Age-standardized		
SEX		♂	♀	♂	♂	♀	♂	♂	♀	♂	♂	♀	♂	♂	♀	♂	♂	♀	♂	♂	♀	♂	♂	♀	♂
Andean Latin America																									
Central Latin America																									
Southern Latin America																									
High-income North America																									
Tropical Latin America																									
Caribbean																									
Central Europe																									
Eastern Europe																									
Western Europe																									
Australasia																									
Oceania																									
Central Asia																									
High-income Asia Pacific																									
East Asia																									
South Asia																									
Southeast Asia																									
Central Sub-Saharan Africa																									
Eastern Sub-Saharan Africa																									
North Africa and Middle East																									
Southern Sub-Saharan Africa																									
Western Sub-Saharan Africa																									

Legends:

- Increase, p-value < 0.05
- Decrease, p-value < 0.05
- Increase, p-value < 0.1
- Decrease, p-value < 0.1
- Non-significant p-value > 0.1

S5: Details of the p-values from the Cochran-Armitage temporal trend tests on the prevalence of MSD between 1990 and 2019: in both sex (S5.1), women (S5.2), and men (S5.3).

S5.1

P-VALUES FROM THE RESULTS OF THE COCHRAN-ARMITAGE TEMPORAL TREND TEST ON PREVALENCE OF 5 TYPES OF MSDs BETWEEN 1990 & 2019 (both sex)

TYPE OF MSDs	LOW BACK PAIN		NECK PAIN		HIP OSTEOARTHRITIS		KNEE OSTEOARTHRITIS		HAND OSTEOARTHRITIS	
	Prevalence	Raw	Age-standardized	Raw	Age standardized	Raw	Age standardized	Raw	Age standardized	Raw
Andean Latin America	0.0002***	0.6048	0.0188*	0.5578	4.9e-07***	0.0626	1.1e-13***	0.0521	6.4e-05***	0.2029
Central Latin America	0.0005***	0.4831	0.0075**	0.5639	1.5e-05***	0.2830	4.6e-16***	0.1096	3.5e-06***	0.1371
Southern Latin America	0.0300*	0.4247	0.1049	0.4565	0.0001***	0.0218*	6.1e-06***	0.0674	0.0585	0.4713
High-income North America	0.2111	0.1269	0.7167	0.0449*	2.2e-05***	0.0495*	0.0006***	0.8182	0.0026**	0.2689
Tropical Latin America	0.0016**	0.4644	0.0003***	0.8898	5.8e-08***	0.0761	6.3e-15***	0.0906	0.0004***	0.4561
Caribbean	0.0058**	0.4245	0.0542	0.5149	3.7e-05***	0.0985	4.4e-09***	0.1192	0.0123*	0.4765
Central Europe	0.0182*	0.3891	0.0591	0.5671	0.0001***	0.1389	1.4e-07***	0.1613	0.0115*	0.4665
Eastern Europe	0.0279*	0.5057	0.1469	0.5458	0.0026**	0.1187	0.0001***	0.1506	0.4312	0.9118
Western Europe	0.2171	0.2495	0.4195	0.3374	0.0030**	0.1418	0.0001***	0.2210	0.0192*	0.2824
Australasia	0.3240	0.0956	0.2629	0.3583	1.5e-05***	0.0267*	1.9e-07***	0.0860	0.0468*	0.6912
Oceania	0.0708	0.5554	0.1776	0.5169	0.0693	0.3059	0.0031**	0.2013	0.2160	0.4940
Central Asia	0.0234*	0.4885	0.0792	0.5445	0.0344*	0.1830	0.0028**	0.2052	0.1496	0.4945
High-income Asia Pacific	0.0268*	0.2184	0.0359*	0.5566	2.7e-06***	0.2278	1.4e-14***	0.1897	3.2e-10***	0.0020**
East Asia	0.0077**	0.0102*	0.0028**	0.3813	2.6e-11***	0.0102*	9.5e-23***	0.0232*	0.0001***	0.5226
South Asia	0.6705	0.0006***	0.0450*	0.5502	2.3e-06***	0.0182*	3.4e-09***	0.0710	0.0097**	0.4150
Southeast Asia	0.0001***	0.5026	0.0082**	0.5771	1.3e-06***	0.0800	1.8e-13***	0.0470*	0.0055**	0.4456
Central Sub-Saharan Africa	0.3846	0.4409	0.3639	0.5145	0.4247	0.3673	0.4164	0.3440	0.4882	0.4648
Eastern Sub-Saharan Africa	0.2141	0.5049	0.2912	0.5422	0.1474	0.1723	0.1632	0.1899	0.4084	0.4423
North Africa and Middle East	0.0024**	0.2870	0.0121*	0.5507	0.0001***	0.0932	5.9e-08***	0.1038	0.0155*	0.4501
Southern Sub-Saharan Africa	0.0054**	0.4411	0.0547	0.5641	0.0016**	0.1595	5.6e-06***	0.1649	0.0244*	0.4380
Western Sub-Saharan Africa	0.4717	0.5022	0.3800	0.6109	0.6406	0.4113	0.5171	0.1886	0.6167	0.4521

Legends:

- Increase, p-value < 0.05
- Decrease, p-value < 0.05
- Increase, p-value < 0.1
- Decrease, p-value < 0.1
- Non-significant p-value > 0.1

S5.2

P-VALUES FROM THE RESULTS OF THE COCHRAN-ARMITAGE TEMPORAL TREND TEST ON PREVALENCE OF 5 TYPES OF MSDs BETWEEN 1990 & 2019 (women)

TYPE OF MSDs	LOW BACK PAIN		NECK PAIN		HIP OSTEOARTHRITIS		KNEE OSTEOARTHRITIS		HAND OSTEOARTHRITIS	
	Prevalence	Raw	Age-standardized	Raw	Age standardized	Raw	Age standardized	Raw	Age standardized	Raw
Andean Latin America	0.0001***	0.4012	0.0135*	0.4552	0.0001***	0.4012	7.46e-14***	0.0671	2.04e-05***	0.1933
Central Latin America	0.0035**	0.7429	0.0061**	0.4597	0.0035**	0.7429	8.90e-17***	0.1573	2.42e-06***	0.1645
Southern Latin America	0.0350*	0.4528	0.1229	0.4657	0.0350*	0.4528	1.25e-05***	0.0861	0.0624	0.4706
High-income North America	0.2313	0.8498	0.6680	0.0812	0.2313	0.8498	0.0025**	0.7870	0.0023**	0.1966
Tropical Latin America	0.0016**	0.5552	0.0002***	0.1014	0.0016**	0.5552	5.39e-15***	0.1356	0.0003***	0.4823
Caribbean	0.0033**	0.5710	0.0436*	0.4879	0.0033**	0.5710	3.51e-09***	0.1534	0.0093**	0.4905
Central Europe	0.0382*	0.6794	0.0674	0.4450	0.0382*	0.6794	1.40e-07***	0.1433	0.0116*	0.4718
Eastern Europe	0.0344*	0.4837	0.1702	0.4670	0.0344*	0.4837	0.0004***	0.1256	0.3394	0.8175
Western Europe	0.1584	0.6624	0.4348	0.6528	0.1584	0.6624	0.0006***	0.1916	0.0264*	0.2430
Australasia	0.2059	0.8106	0.2907	0.6753	0.2059	0.8106	1.34e-06***	0.0943	0.0733	0.7384
Oceania	0.0710	0.4473	0.1805	0.4904	0.0710	0.4473	0.0029**	0.1662	0.2303	0.4928
Central Asia	0.0366*	0.5274	0.0870	0.4664	0.0366*	0.5274	0.008**	0.2143	0.1829	0.4827
High-income Asia Pacific	0.0586	0.8590	0.0481*	0.4306	0.0586	0.8590	4.17e-15***	0.1373	4.15e-11***	0.0002***
East Asia	0.0026**	0.0135*	0.0022**	0.4076	0.0026**	0.0135*	5.45e-24***	0.0202*	1.56e-06***	0.1776
South Asia	0.7255	0.0001***	0.0397*	0.4760	0.7255	0.0001***	7.73e-11***	0.0531	0.0059**	0.4757
Southeast Asia	0.0001***	0.4922	0.0086**	0.4372	0.0001***	0.4922	1.19e-13***	0.0588	0.0058**	0.4626
Central Sub-Saharan Africa	0.5031	0.6456	0.4016	0.4871	0.5031	0.6456	0.4636	0.3981	0.5024	0.4886
Eastern Sub-Saharan Africa	0.3165	0.6432	0.2933	0.4740	0.3165	0.6432	0.1425	0.2741	0.3680	0.4729
North Africa and Middle East	0.0025	0.6406	0.0116*	0.4388	0.0025**	0.6406	3.17e-08***	0.1012	0.0123*	0.4338
Southern Sub-Saharan Africa	0.0090**	0.7089	0.0526	0.4599	0.0090**	0.7089	3.59e-06***	0.2592	0.0166*	0.4649
Western Sub-Saharan Africa	0.2821**	0.4702	0.2390	0.3774	0.2821	0.4702	0.2294	0.2050	0.5072	0.4921

Legends:

- Increase, p-value < 0.05
- Decrease, p-value < 0.05
- Increase, p-value < 0.1
- Decrease, p-value < 0.1
- Non-significant p-value > 0.1

S5.3

P-VALUES FROM THE RESULTS OF THE COCHRAN-ARMITAGE TEMPORAL TREND TEST ON PREVALENCE OF 5 TYPES OF MSDs BETWEEN 1990 & 2019 (men)

TYPE OF MSDs	LOW BACK PAIN		NECK PAIN		HIP OSTEOARTHRITIS		KNEE OSTEOARTHRITIS		HAND OSTEOARTHRITIS	
	Prevalence	Raw	Age-standardized	Raw	Age standardized	Raw	Age standardized	Raw	Age standardized	Raw
Andean Latin America	0.0005***	0.4002	0.0282*	0.4342	2.21e-07***	0.0335*	6.09e-13***	0.0453*	0.0012**	0.3040
Central Latin America	1.97e-05***	0.1861	0.0098**	0.4215	3.55e-06***	0.2434	6.85e-15***	0.0874	5.74e-06***	0.1225
Southern Latin America	0.0269*	0.3860	0.1012	0.4473	0.0001***	0.0178*	3.89e-06***	0.0450*	0.0612	0.4586
High-income North America	0.1866	0.8818	0.7780	0.0181*	7.36e-05***	0.0322*	2.99e-05***	0.7792	0.0037**	0.3662
Tropical Latin America	0.0018**	0.5214	0.0007***	0.1333	7.36e-05***	0.0394*	2.00e-14***	0.0594	0.0019**	0.4677
Caribbean	0.0133*	0.5905	0.0711	0.4842	6.87e-07***	0.0787	1.30e-08***	0.0925	0.0242*	0.4874
Central Europe	0.0077**	0.5355	0.0600	0.4156	0.0003***	0.2014	2.70e-07***	0.1805	0.0112*	0.4523
Eastern Europe	0.0275*	0.4814	0.1382	0.4362	0.0035**	0.2231	4.18e-05***	0.1985	0.6666	0.0169*
Western Europe	0.3015	0.8104	0.3844	0.6571	0.0009***	0.1553	4.26e-06***	0.1561	0.0081**	0.2797
Australasia	0.4956	0.0433*	0.2451	0.5985	6.59e-06***	0.0285*	2.03e-08***	0.0627	0.0155*	0.4791
Oceania	0.0772	0.4410	0.1889	0.4761	0.0764	0.3431	0.0049**	0.2602	0.2258	0.4842
Central Asia	0.0126*	0.4773	0.0786	0.4412	0.0172*	0.1869	0.0004***	0.1745	0.0753	0.4279
High-income Asia Pacific	0.0071**	0.4655	0.0248*	0.4355	7.18e-06***	0.3325	1.32e-13***	0.1531	0.0002***	0.4490
East Asia	0.0369*	0.0076**	0.0056**	0.3806	2.83e-11***	0.0102*	9.72e-20***	0.0445*	0.0060**	0.8821
South Asia	0.6661	0.0011**	0.0569	0.4439	0.0002***	0.0957	1.04e-06***	0.1800	0.0309*	0.4574
Southeast Asia	0.0002***	0.5024	0.0085**	0.4099	7.79e-07***	0.0497	7.50e-13***	0.0405*	0.0240*	0.4680
Central Sub-Saharan Africa	0.2694	0.4709	0.3216	0.4746	0.3554	0.2692	0.3537	0.3008	0.4633	0.4791
Eastern Sub-Saharan Africa	0.1468	0.3601	0.2883	0.4486	0.1145	0.0837	0.1943	0.1315	0.4816	0.4506
North Africa and Middle East	0.0024**	0.2292	0.0139*	0.4482	0.0002***	0.1135	1.82e-07***	0.1071	0.0275*	0.4745
Southern Sub-Saharan Africa	0.0036**	0.3941	0.0658	0.4169	0.0011**	0.0756	1.08e-05***	0.0823	0.0460*	0.4357
Western Sub-Saharan Africa	0.6692	0.5329	0.5970	0.4931	0.7808	0.4166	0.8378	0.2233	0.7789	0.4741

Legends:

- Increase, p-value < 0.05
- Decrease, p-value < 0.05
- Increase, p-value < 0.1
- Decrease, p-value < 0.1
- Non-significant p-value > 0.1

S6: Tables of linear regression models on 5 MSD for 2019.

The World Bank income was an ordinal variable classified into four income levels: World Bank high-income, World Bank upper-middle-income, World Bank lower-middle-income, and World Bank low-income. The medical density variable for 1,000 individuals per country in 2017 was initially continuous and then categorized as an ordinal variable according to the highlighted four quantiles (Q1, Q2, Q3 and Q4).

Predictors	Low back pain			Neck pain			Hip osteoarthritis			Knee osteoarthritis			Hand osteoarthritis		
	Estimates	CI (95%)	P-Value	Estimates	CI (95%)	P-Value	Estimates	CI (95%)	P-Value	Estimates	CI (95%)	P-Value	Estimates	CI (95%)	P-Value
World Bank Incomes	1.54	[1.16 – 1.92]	<0.001	0.55	[0.31 – 0.78]	<0.001	0.17	[0.12 – 0.21]	<0.001	1.15	[0.89 – 1.42]	<0.001	0.60	[0.29 – 0.90]	<0.001
Medical density	0.71	[0.51 – 0.92]	<0.001	0.20	[0.07 – 0.33]	0.002	0.12	[0.10 – 0.15]	<0.001	0.55	[0.41 – 0.69]	<0.001	0.52	[0.35 – 0.69]	<0.001
Observations	187			187			187			187			187		
R ² /R ² adjusted	0.654/0.650			0.340/0.333			0.688/0.685			0.697/0.694			0.469/0.463		