

Title: An Early and Preliminary Assessment of the Clinical Severity of the Emerging SARS-CoV-2 Omicron Variants in Maharashtra, India

Rajesh Karyakarte^{1*}, Rashmita Das¹, Nyabom Taji¹, Sushma Yanamandra¹, Smriti Shende¹, Suvarna Joshi¹, Bhagyashree Karekar¹, Reshma Bawale¹, Rahul Tiwari¹, Madhuri Jadhav¹, Shivani Sakalkar¹, Geetanjali Chaudhari¹, Srushti Rane¹, Jeanne Agarasen¹, Praveena Pillai¹, Sonali Dudhate¹, Priyanka Chandankhede¹, Rutika Labhshetwar¹, Yogita Gadiyal¹, Mansi Rajmane¹, Savita Mukade¹, Preeti Kulkarni¹

¹*Department of Microbiology, Byramjee Jeejeebhoy Government Medical College (BJGMC), Pune, Maharashtra, India*

**Corresponding Author*

ABSTRACT:

Background: The SARS-CoV-2 Omicron variants BA.2.74, BA.2.75 and BA.2.76 have appeared recently in India and have already spread to over 40 countries. They have acquired additional mutations in their spike protein compared to BA.2, branching away on the SARS-CoV-2 phylogenetic tree. These added mutations, over and above those of the parental BA.2 variant, have raised concerns about the impact on viral pathogenicity, transmissibility, and immune evasion properties of the new variants.

Material and Methods: A total of 990 RT-PCR positive SARS-CoV-2 samples, with a cycle threshold value (Ct) less than 25, were processed for SARS-CoV-2 whole genome sequencing between 3rd June 2022 to 7th August 2022. All corresponding demographic and clinical data were recorded and analyzed using Microsoft® Excel. **Results:** Out of 990 samples sequenced, BA.2.75 (23.03%) was the predominant Omicron sublineage, followed by BA.2.38 (21.01%), BA.5 (9.70%), BA.2 (9.09%), BA.2.74 (8.89%) and BA.2.76 (5.56%). A total of 228 cases of BA.2.74, BA.2.75 and BA.2.76 were contacted by telephone, of which 215 (94.30%) were symptomatic with mild symptoms, and 13 (5.70%) had no symptoms. Fever (82.02%) was the most common symptom, followed by cough (49.12%), cold (35.97%), fatigue (27.19%), headache (21.05%) and myalgia (20.61%). Of the 228 cases, 195 (85.53%) cases recovered at home, and 33 (14.47%) required institutional quarantine. Recovery with conservative treatment was observed in 92.98% of cases, while 4.83% required additional oxygen therapy. Only 03 (1.32%) cases had poor outcomes resulting in death, and the remaining 225 (98.68%) had a good outcome. Among the 228 cases, 219 (96.05%) cases were vaccinated with COVID-19 vaccine; of these 72.60% had received both doses, 26.03% had also received the precautionary booster dose, while 1.37% were incompletely vaccinated with a single dose of vaccine. **Conclusion:** The current study indicates that the three BA.2 sublineages are causing mild disease in India. However, BA.2.75 has key mutations that are notable for accelerated growth and transmission and require close and effective monitoring.

Keywords: Omicron, BA.2.74, BA.2.75, BA.2.76, SARS-CoV-2 whole-genome sequencing

ARTICLE

1. INTRODUCTION

Since the first case of Severe Acute Respiratory Syndrome Coronavirus (SARS-CoV-2) in March 2020, India has witnessed three pandemic waves. Delta (B.1.617.2) and its sublineages (AY. *) caused the second wave, and Omicron (B.1.1.529) and its sublineages (BA.1 and BA.2) are driving the third wave. (1)

The B.1.1.529 was first reported from South Africa on 24th November 2021 (2) and was designated as a Variant of Concern (VoC) on 26th November 2021 by World Health Organisation. By late January 2022, the Omicron variant had been identified in 171 countries across all six WHO regions. Due to its substantial growth advantage over Delta, the Omicron variant rapidly replaced the Delta variant globally. Initially, the Omicron variant (B.1.1.529) comprised three sister lineages, B.1.1.529.1 (BA.1), B.1.1.529.2 (BA.2) and BA.1.1.529.3 (BA.3). Characteristic constellation of mutations, particularly 26-32 mutations in its spike protein, have been responsible for its increased transmissibility and its ability to evade immunity established by natural infection or vaccination. (3)

India witnessed its third wave from late December 2021 to late February 2022 (4), with BA.1 and BA.2 dominating the early and the latter half of the wave, respectively (3). Since then, the Omicron variant has evolved continuously to give rise to BA.4/ BA.5 in South Africa (5) and BA.2.12.1 in the USA (6), causing global outbreaks. Unlike the Delta variant, Omicron caused less severe disease and decreased hospitalization rates and deaths. However, unvaccinated people with advanced age and underlying disease conditions suffered from severe disease. (7)

After the waning of the third wave, India saw a surge in COVID-19 cases from the fourth week of May 2022 (4). On sequencing, these variants were characterized as BA.2 by Pangolin. However, the predominance of BA.2 after the waning of the third COVID-19 wave was unexplainable. This issue was discussed in detail on the GitHub repository, cov-lineages/pango-designation, a repository for suggesting new lineages that should be added to the current scheme for naming the SARS-CoV-2 virus. Subsequently, the Indian isolates of BA.2 were further classified into sub-lineages BA.2.74 (Issue #775) (8), BA.2.75 (Issue #773) (9) and BA.2.76 (Issue #787) (10). The BA.2.75 subvariant has been classified as an Omicron subvariant under monitoring by the World Health Organization (WHO) due to its increasing numbers in India and its identification in dozen countries, including Nepal, Singapore, Martinique, China, New Zealand, Cambodia and Indonesia. (11) Only three months since its designation, BA.2.75 subvariant has acquired several mutations to give rise to new sublineages (BA.2.75.1,

BA.2.75.2, BA.2.75.3, BA.2.75.4, BA.2.75.6, BL.1, BM.1 and BN.1) that can compete with the circulating lineages. (12)

With the emergence of new variants, data on the clinical severity of the disease caused by them are essential to guide public health planning and response. Therefore, the current study aimed to describe the severity and clinical presentation of these emerging SARS-CoV-2 variants sequenced at Byramjee Jeejeebhoy Government Medical College, Pune, Maharashtra.

2. MATERIAL AND METHODS

This study was carried out at the Department of Microbiology of the Byramjee Jeejeebhoy Government Medical College (BJGMC), Pune, Maharashtra. It was part of the Indian SARS-CoV-2 Genomics Consortium (INSACOG) sequencing activity in Maharashtra. INSACOG is a Pan-India network of 54 laboratories to monitor the genomic variations in the SARS-CoV-2 virus and to study the linkages between the variants and epidemiological trends.

The study falls within the research activities approved by the BJGMC Institutional Ethics Committee, Pune, Maharashtra, India.

2.1. Sample Acquisition

The Department of Microbiology of BJGMC, Pune, is the coordinating laboratory for the surveillance of the SARS-CoV-2 virus in the community in Maharashtra. It receives samples from its attached hospital and various RTPCR testing laboratories across Maharashtra for SARS-CoV-2 whole genome sequencing. Nasopharyngeal samples collected in VTM, between 3rd June 2022 to 7th August 2022 with a cycle threshold (Ct) value of less than 25, were transported to the laboratory, maintaining a cold chain at 2 to 8°C. The samples were stored at -80°C until further processing.

The viral RNA was extracted using the MagMax™ Viral/Pathogen Nucleic Acid Isolation Kit (ThermoFisher Scientific Inc., Waltham, US), following the manufacturer's instructions. The RNA samples were processed for SARS-CoV-2 whole genome sequencing, and its analysis was done at the Centre of Excellence for Genomics, Department of Microbiology, BJGMC, Pune.

2.2. Library preparation, next-generation sequencing, and lineage analysis

Libraries for Covid-19 were prepared using Rapid Barcoding and Midnight RT-PCR Expansion kits (Midnight protocol) (Oxford Nanopore Technologies (ONT), Littlemore, United Kingdom). Sequencing was conducted on the R9.4 flow cell by ONT using a GridION sequencer (ONT, United Kingdom). Primary data acquisition was performed using MinKNOW, version 22.05.7, the operating software that operates nanopore sequencing devices. Basecalling was

performed using Guppy, version 6.1.5, in fast basecalling mode. The data was further processed using the wf-ARTIC workflow, a repository that contains the nextflow workflow for running the ARTIC SARS-CoV-2 workflow on multiplexed GridION runs, installed in MinKNOW software. Lineage identification was carried out using Pangolin, version 4.1.1, pangolin-data version 1.12 and University of California Santa Cruz (UCSC) Genome Browser USHER: Ultrafast Sample placement on Existing tree. The clade analysis was done using the Nextclade software, version 2.3.0.

2.3. Data Collection

A set of individual-level data was obtained, corresponding to the samples received from various RT-PCR laboratories sending samples for sequencing. Each sample's unique identification number (ICMR ID) was also recorded. Additional information on the presence of any symptoms, hospitalization, treatment, comorbidities and vaccination status was collected via a telephonic interview with each patient.

2.4. Statistical analysis

All demographic and clinical data were recorded and analyzed using Microsoft® Excel.

3. RESULTS

Between 3rd June 2022 and 7th August 2022, 990 RT-PCR positive SARS-CoV-2 samples were processed and sequenced at BJGMC, Pune. The study population included cases from all age groups with a median age of 36 years. The male-to-female ratio was 1.39:1. **Table 1** shows the geographical distribution of the sequenced samples.

Table 1: Geographical Distribution of 990 RT-PCR positive SARS-CoV-2 samples

Geographical Area	Number (%)
Pune	792 (80%)
Mumbai	143 (14.44%)
Solapur	27 (2.73%)
Latur	16 (1.62%)
Jalgaon	7 (0.71%)
Sindhudurg	5 (0.50%)
Grand Total	990 (100%)

Of these 990 samples sequenced, BA.2.75 (23.03%) was the predominant Omicron sublineage followed by BA.2.38 (21.01%), BA.5 (9.70%), BA.2 (9.09%), BA.2.74 (8.89%) and BA.2.76 (5.56%) (Table 2).

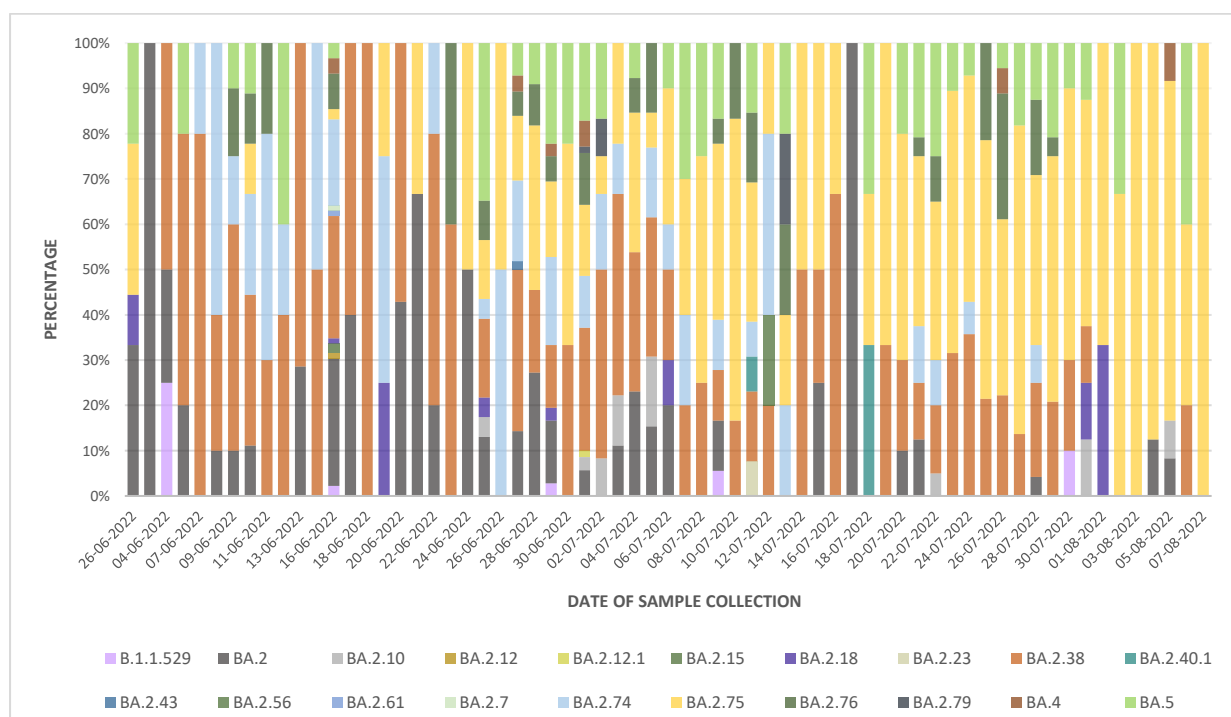
Table 2: Variant Distribution among the 990 SARS-CoV-2 samples sequenced

SARS-CoV-2 Lineage		Number (%)	
BA.2.38	BA.2.38	193	208 (21.01%)
	BA.2.38.1	13	
	BH.1 (BA.2.38.3.1)	02	
BA.2.75	BA.2.75	215	228 (23.03%)
	BA.2.75.1	13	
BA.2.74			88 (8.89%)
BA.2			90 (9.09%)
BA.5	BA.5	07	96 (9.70%)
	BA.5.1	03	
	BA.5.2	33	
	BA.5.2.1	27	
	BA.5.2.3	12	
	BA.5.3	01	
	BA.5.3.1	01	
	BA.5.5	01	
	BE.3	02	
	BF.3	08	
BA.2.76			55 (5.56%)
BA.4	BA.4	08	12 (1.21%)
	BA.4.1	01	
	BA.4.1.8	02	
	BA.4.6	01	
BA.2.10			10 (1.01%)
BA.2.18			08 (0.81%)
B.1.1.529			06 (0.61%)
BA.2.79	BA.2.79	01	03 (0.30%)
	BA.2.79.1	02	
BA.2.15			02 (0.20%)
BA.2.40.1			02 (0.20%)

BA.2.12	BA.2.12	01	02
	BA.2.12.1	01	(0.20%)
BA.2.7			01 (0.10%)
BA.2.23			01 (0.10%)
BA.2.43			01 (0.10%)
BA.2.56			01 (0.10%)
BA.2.61			01 (0.10%)
Samples with poor coverage			175 (17.68%)
Total			990 (100%)

The distribution of variants to date of sample collection is shown in **Figure 1**.

Figure 1: Distribution of variants to date of sample collection
(From 06th June 2022 to 7th August 2022)



3.1 Demographic characteristics of the BA.2 sublineage confirmed cases (BA.2.74, BA.2.75, and BA.2.76)

The demographic and epidemiological characteristics of 371 BA.2 sub-lineage (BA.2.74, BA.2.75 and BA.2.76) confirmed patients are summarised in **Table 3**. Of these 371 cases, 212 (57.14%) were male, and 159 (42.86%) were female. The median age of the cases is 36 years, and the age group 21-40 years were predominantly affected.

Table 3: Demographic characteristics of the emerging Omicron variants

Characteristics	Number of cases (%)			
	BA.2.74	BA.2.75	BA.2.76	Total
1. Age Group (in years)				
0-10	03 (3.41%)	04 (1.75%)	04 (7.27%)	11 (2.96%)
11-20	02 (2.27%)	15 (6.58%)	03 (5.45%)	20 (5.39%)
21-30	20 (22.73%)	65 (28.51%)	08 (14.54%)	93 (25.07%)
31-40	21 (23.86%)	51 (22.37%)	14 (25.46%)	86 (23.18%)
41-50	15 (17.05%)	32 (14.04%)	14 (25.46%)	61 (16.44%)
51-60	11 (12.50%)	24 (10.53%)	02 (3.64%)	37 (9.97%)
61-70	11 (12.50%)	20 (8.77%)	04 (7.27%)	35 (9.43%)
71-80	04 (4.55%)	11 (4.82%)	06 (10.91%)	21 (5.66%)
>80	01 (1.14%)	06 (2.63%)	00 (00%)	07 (1.89%)
2. Gender				
Male	50 (56.82%)	131 (57.46%)	31 (56.36%)	212 (57.14%)
Female	38 (43.18%)	97 (42.54%)	24 (43.64%)	159 (42.86%)
3. Area of Residence				
Pune	69 (78.40%)	216 (94.74%)	48 (87.27%)	333 (89.76%)
Mumbai	17 (19.32%)	02 (0.88%)	07 (12.73%)	26 (7.01%)
Solapur	0 (00%)	10 (4.38%)	0 (00%)	10 (2.69%)
Latur	01 (1.14%)	0 (00%)	0 (00%)	01 (0.27%)
Sindhudurg	01 (1.14%)	0 (00%)	0 (00%)	01 (0.27%)
4. Calendar week of sample collection				

22nd week of the year 2022 (30th May to 5th June 2022)	00 (00%)	00 (00%)	00 (00%)	00 (00%)
23rd week of the year 2022 (6th to 12th June 2022)	18 (20.45%)	01 (0.44%)	06 (10.91%)	25 (6.74%)
24th week of the year 2022 (13th to 19th June 2022)	20 (22.73%)	03 (1.32%)	07 (12.73%)	30 (8.09%)
25th week of the year 2022 (20th to 26th June 2022)	03 (3.41%)	09 (3.95%)	04 (7.28%)	16 (4.31%)
26th week of the year 2022 (27th June to 3rd July 2022)	28 (31.82%)	36 (15.79%)	14 (25.45%)	78 (21.02%)
27th week of the year 2022 (4th to 10th July 2022)	07 (7.95%)	26 (11.40%)	05 (9.09%)	38 (10.24%)
28th week of the year 2022 (11th to 17th July 2022)	04 (4.55%)	12 (5.26%)	03 (5.45%)	19 (5.12%)
29th week of the year 2022 (18th to 24th July 2022)	06 (6.82%)	42 (18.42%)	03 (5.45%)	51 (13.75%)
30th week of the year 2022 (25th to 31st July 2022)	02 (2.27%)	62 (27.19%)	13 (23.64%)	77 (20.76%)
31st week of the year 2022 (1st August to 7th August 2022)	00 (0%)	37 (16.23%)	00 (0%)	37 (9.97%)

3.2 Clinical characteristics of the BA.2 sublineage cases (BA.2.74, BA.2.75 and BA.2.76)

Of the 371 cases, 228 (61.46%) could be contacted to obtain information regarding symptoms, hospitalization status, treatment and vaccination status. **Table 4** describes the clinical characteristics and vaccination status of the confirmed cases of BA.2.74, BA.2.75 and BA.2.76.

Among the 228 cases, 219 (96.05%) were vaccinated with at least a single dose of the COVID vaccine, and the remaining 08 (3.51%) were unvaccinated. Of the 219 vaccinated cases, 159 (72.60%) have received two doses of vaccine and 57 (26.03%) have received the precautionary

dose. Three (1.37%) cases were vaccinated with a single dose only. All the unvaccinated cases were children less than 18 years.

Out of 228 cases, 215 (94.30%) developed mild symptoms, of which fever (82.02%) was the most common symptom, followed by cough (49.12%), cold (35.97%), fatigue (27.19%), headache (21.05%) and myalgia (20.61%). Rest 13 (5.70%) had an asymptomatic infection. There were 195 (85.53%) cases who recovered at home, and 33 (14.47%) required institutional quarantine. Of the 228 cases, 212 (92.98%) cases recovered with supportive treatment, 11 (4.83%) required supplemental oxygen therapy and 05 (2.19%) were given antiviral treatment. None were administered steroids, immunomodulatory drugs or monoclonal antibodies. There were 03 (1.32%) cases that progressed to severe disease that resulted in death, and the remaining 225 (98.68%) cases had good clinical outcomes.

Table 4: Clinical Characteristics and outcome of patients infected with emerging Omicron BA.2 sub-lineages

Characteristics	Number of cases (%)			
	BA.2.74	BA.2.75	BA.2.76	Total
1. Total number of cases with history available				
	59 (67.05%)	132 (57.89%)	37 (67.27%)	228 (61.46%)
2. History of previous COVID-19 infection				
	13 (22.03%)	15 (11.36%)	04 (10.81%)	32 (14.04%)
3. Symptom status at the time of sample collection				
Asymptomatic	03 (5.08%)	07 (5.30%)	03 (8.11%)	13 (5.70%)
Symptomatic	56 (94.92%)	125 (94.70%)	34 (91.89%)	215 (94.30%)
4. Comorbidity Score				
0 (No Comorbidity)	48 (81.36%)	119 (90.15%)	33 (89.19%)	200 (87.72%)
1 (Presence of one condition)	09 (15.25%)	10 (7.58%)	03 (8.11%)	22 (9.65%)
2 (Presence of two or more conditions)	02 (3.39%)	03 (2.27%)	01 (2.70%)	06 (2.63%)

5. Initial presenting symptoms					
Fever		47 (79.66%)	111 (84.09%)	29 (78.38%)	187 (82.02%)
Cough		35 (59.32%)	60 (45.45%)	17 (45.95%)	112 (49.12%)
Fatigue/ Weakness		20 (33.90%)	32 (27.06%)	10 (27.03%)	62 (27.19%)
Myalgia		13 (22.03%)	24 (24.24%)	10 (27.03%)	47 (20.61%)
Cold		23 (38.98%)	49 (37.12%)	10 (27.03%)	82 (35.97%)
Headache		14 (23.73%)	30 (22.73%)	04 (10.81%)	48 (21.05%)
Running Nose/ Coryza		05 (8.47%)	14 (10.61%)	06 (16.22%)	25 (10.97%)
Diarrhoea		02 (3.39%)	01 (0.76%)	00 (00%)	03 (1.32%)
Breathlessness		01 (1.70%)	09 (6.82%)	10 (27.03%)	20 (8.77%)
Vomiting		01 (1.70%)	02 (1.52%)	00 (00%)	03 (1.32%)
Sore throat		01 (1.70%)	13 (9.85%)	01 (2.70%)	15 (6.58%)
Confusion		00 (00%)	01 (0.76%)	00 (00%)	01 (0.44%)
Chest Pain		00 (00%)	00 (00%)	01 (2.70%)	01 (0.44%)
Loss of Taste		00 (00%)	01 (0.76%)	00 (00%)	01 (0.44%)
6. Type of Quarantine					
Home Quarantine		54 (91.53%)	107 (81.06%)	34 (91.89%)	195 (85.53%)
Institutional Quarantine/ Required Hospitalization		05 (8.47%)	25 (18.94%)	03 (8.11%)	33 (14.47%)
7. Treatment					
Need for Conservative Treatment		57 (96.62%)	119 (90.15%)	36 (97.30%)	212 (92.98%)
Need for supplem ental oxygen	Low Flow Oxygen	01 (1.69%)	07 (5.30%)	00 (00%)	08 (3.51%)
	Intubat ion	00 (00%)	02 (1.52%)	01 (2.70%)	03 (1.32%)

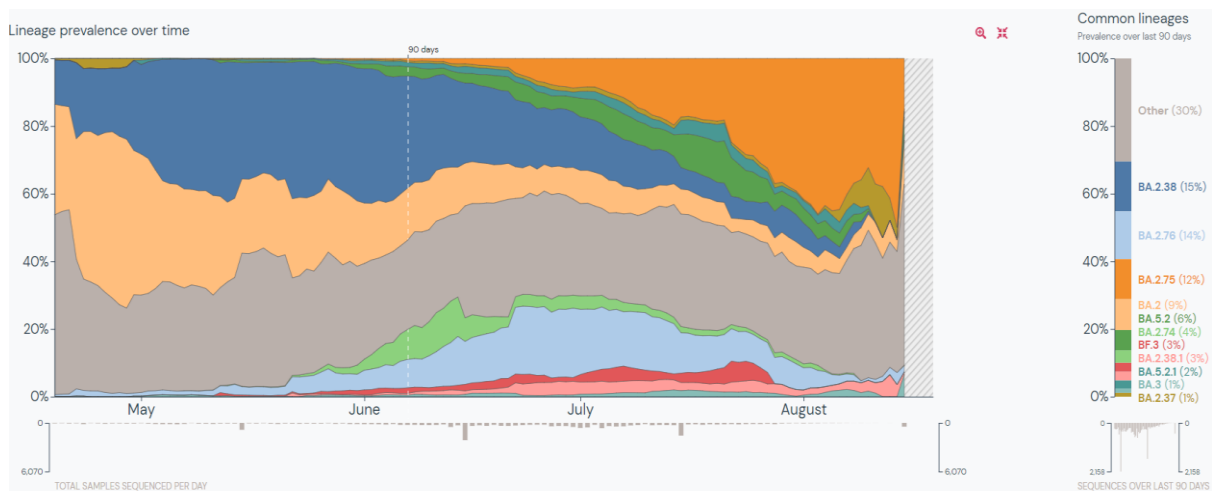
Need for antiviral agents	01 (1.69%)	04 (3.03%)	00 (00%)	05 (2.19%)	
Need for steroid or immunomodulatory drugs	00 (00%)	00 (00%)	00 (00%)	00 (00%)	
8. Outcome of Disease					
Alive	59 (100%)	130 (98.49%)	36 (97.30%)	225 (98.68%)	
Dead	00 (00%)	02 (1.51%)	01 (2.70%)	03 (1.32%)	
9. Vaccination Status					
Vaccinated	Single Dose	00 (00%)	03 (2.31%)	00 (00%)	03 (1.37%)
	Two doses	54 (91.53%)	130 (98.49%)	35 (94.59%)	219 (96.05%)
	Booster Dose	09 (16.67%)	37 (28.46%)	11 (31.43%)	57 (26.03%)
Not vaccinated	04 (6.78%)	02 (1.51%)	02 (5.41%)	08 (3.51%)	
Data Not available	01 (1.69%)	00 (00%)	00 (00%)	01 (0.44%)	

4. DISCUSSION

One of the most characteristic features of the SARS-CoV-2 virus has been its rapid evolution during the pandemic. New variants have emerged from time to time with selective advantages, replacing the previously circulating variants and achieving global dominance. Barely weeks after the BA.2 lineage-driven surges globally, towards the third week of May 2022, India saw a surge in cases of COVID-19. (4) In the last 90 days, 219,503 whole genome sequences of SARS-CoV-2 have been deposited on GISAID from India. Of these, BA.2.38 (15%) is the predominant lineage, followed by BA.2.76 (14%), BA.2.75 (14%), BA.2 (9%), BA.5.2 (6%), and BA.2.74 (4%) (**Figure 2**). (13) To date, 4,389 sequences of BA.2.76 (14), 3,321 of BA.2.75 (15), and 1,250 sequences of BA.2.74 (16) lineages have been deposited on GISAID. The apparent cumulative prevalence is less than 0.5% worldwide for all three lineages. In India, the prevalence of BA.2.76, BA.2.75 and BA.2.74 is 6%, 3% and 1%, respectively. Apart from India, BA.2.76 has been detected in 48 countries and 39 US states, BA.2.75 in 37 countries and 30 US states, and BA.2.74 in 32 countries and 23 US states. (14) (15) (16) When the world, particularly countries like South Africa, the United Kingdom, the United States, Germany, Portugal and Denmark, were experiencing the latest global outbreak driven by the BA.4 and BA.5 Omicron lineages (5), India, on the other hand, did not see an exponential increase in cases due to these two lineages. Based on the sequences deposited on GISAID, the BA.5 and

BA.4 Omicron lineages continue to dominate globally, with a weekly prevalence of 69.6% and 11.8%, respectively. (17) However, it is interesting to note that, in India, the prevalence of BA.5 and BA.4 lineages is 9% and less than 0.5% among the sequences deposited on GISAID, respectively. (13) This probably could be as both Delta and BA.4/ BA.5 share the L452R mutation on the receptor-binding domain (RBD) of spike protein, the convalescent sera from Delta infection may contain L452R-specific neutralizing antibodies, which could have impaired the BA.4/ BA.5 transmission in India. (18) Also, BA.2.75 has shown 57-fold higher binding affinity to ACE2 receptors when compared with BA.5, accounting for its higher transmissibility. (19)

Figure 2: Lineage prevalence in India over the last 90 days (13)



The SARS-CoV-2 virus has evolved rapidly, adapting to its human hosts by developing mutations over time and resulting in the emergence of new variants. The Omicron subvariant BA.2.74 contains BA.2 mutations along with characteristic R346T and L452M mutations in its spike protein. (8) Similarly, the subvariant BA.2.76 contains BA.2 mutations with Y248N and R346T in the spike protein. (10) The subvariant BA.2.75, on the other hand, contains nine additional spike mutations compared to BA.2. The defining mutations include the BA.2 mutations with K147E, W152R, F157L, I210V, G257S in N-terminal domain and G339H, G446S, N460K, R493Q in the RBD region of spike protein (**Figure 3**). (9) The effect of the mutations in the RBD region on the virus-host interactions is described in **Table 5**. (20) R493Q and N460K mutations increase the ACE-2 receptor affinity and surface RBD expression. (21) (22) On the other hand, mutations G446S and G339H decrease the ACE-2 affinity and RBD expression. Such adaptive mutations can alter the pathogenic potential of the virus.

Table 6 compares the growth advantage of the common variants in India. These estimates reflect the advantage of the new variants compared to the cocirculating variants. The relative growth of a variant can be explained by three mechanisms: increased transmissibility, infectious duration, and immune evasion. The BA.2.75 sublineage has a relative growth advantage of 77% per week, with 0.08 as an assumed logistic growth rate per day. It has a 42% increase in transmissibility (23). The spike protein mutations D339H, G446S, N460K and R493Q allow BA.2.75 to escape neutralization by antibodies produced against different RBD epitopes in BA.2. (21) **Figure 4** shows the effect of antibodies elicited during pre-Omicron and Omicron BA.1 period on the BA.2.75 variant. The mutations in the RBD region confer an escape fraction of 0.45. (24) These features of BA.2.75 indicate that it might

outcompete BA.4/ BA.5 and can become a potential risk to global health. Therefore, the spread and frequency of these sublineages in India and countries outside India require close monitoring through sustained genomic and clinical surveillance as they possess key mutations that are notable for their accelerated growth and extensive geographical distribution.

Figure 3: S-gene mutations in > 75% of global sequences for the three sublineages in the last 60 days (13)

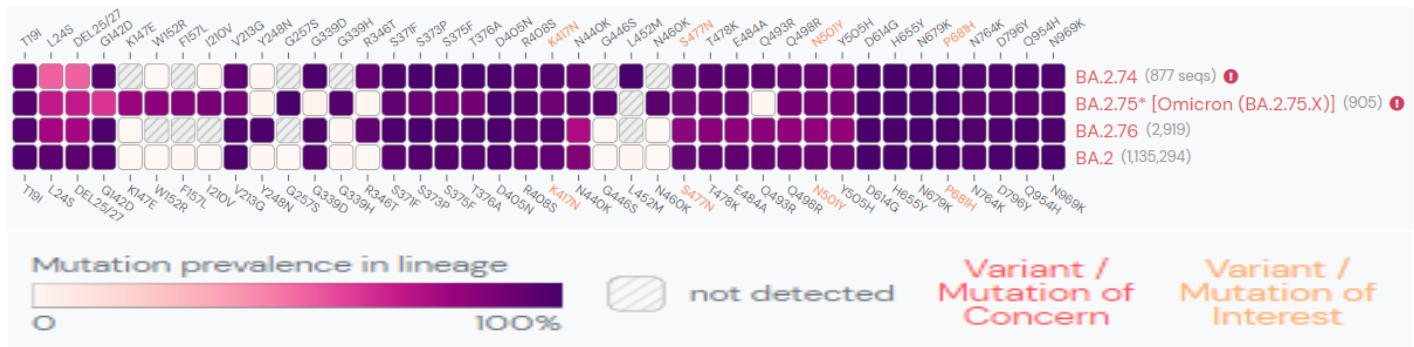


Table 5: The defining spike mutations in the RBD region of three BA.2 sublineages and their effect on virus-host interaction (20)

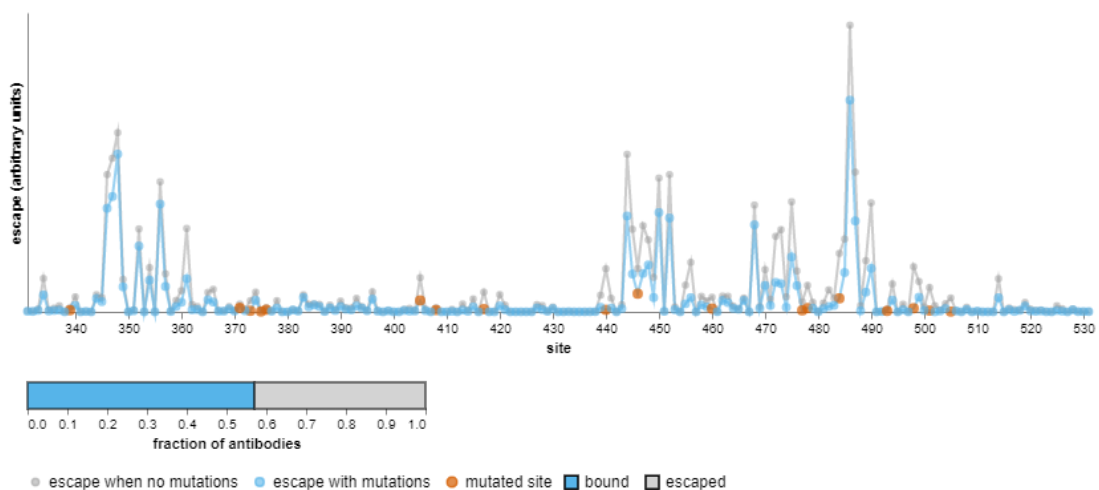
Variant	Mutations	Impact on		
		ACE-2 affinity $\Delta\log_{10} Kd$	RBD expression $\Delta\log$ (MFI)	Contact with ACE-2 receptor
BA.2.74	R346T	0.11	0.13	No
	L452M	0.11	0.24	No
BA.2.75	G339H	-0.03	-0.06	No
	G446S	-0.07	-0.18	Yes
	N460K	0.2	0.3	No
	R493Q	1.07	0.04	Yes
BA.2.76	R346T	0.11	0.13	No

Table 6: A comparative growth advantage of BA.4*, BA.5*, BA.2.38*, BA.2.74*, BA.2.75* and BA.2.76* in India (Data represented is as of 05-09-2022) (25)(26)(27)(22)(28)

Growth Characteristics	BA.4*	BA.5*	BA.2.38*	BA.2.74*	BA.2.75 *	BA.2.76*
Relative growth advantage per week (in % with Confidence intervals)	06% (03% - 10%)	23% (22% - 24%)	02% (01% - 02%)	07% (06% - 08%)	2% (69% - 75%)	13% (12% - 14%)

Assumed logistic growth rate (per day)	0.01	0.03	0.00	0.01	0.08	0.02
Increase in transmissibility (%)	05%	15%	01%	05%	40%	09%
Reproduction Number (Re) (HPD) (As on 13.08.2022)	0.00 (0.00 – 0.01)	0.22 (0.15 – 0.28)	0.00 (0.00 – 0.00)	0.41 (0.00 – 4.68)	0.95 (0.89 - 1.01)	1.22 (0.76 - 1.68)

Figure 4: Effect of antibodies elicited during pre-Omicron SARS-CoV-2 and Omicron BA.1 period on neutralization of BA.2.75 variant* (24)



*Escape fraction ranges from 0 to 1, where 0 means no escape and 1 means complete escape. Orange dots represent the site of mutation. Blue dots represent the escape in the presence of a mutation. Grey dots represent escape in the absence of a mutation.

The current study indicates that these BA.2 sublineages caused mild disease with reduced need for the hospital admission. In animal models, BA.2.75 replicated more efficiently in the lungs of hamsters than other Omicron variants causing focal pneumonia characterized by patchy inflammation in alveolar regions. These findings suggest that the Omicron subvariant BA.2.75 can cause severe respiratory disease and may affect the clinical outcome in infected humans. (29) However, it is still unclear to what extent the intrinsic virulence of the virus and the immunity due to vaccination or previous infections could have contributed to mild disease in India. Further, data from other clinical settings will be essential to assess the behaviour of these BA.2 sublineages in countries with different levels of previous infections and vaccination.

The fact that subvariant BA.2.75 contains mutations greater than BA.2 and BA.4/BA.5 raises concern regarding the possibility that it might have significantly reduced sensitivity to therapeutic monoclonal antibodies and antibodies developed by vaccination/natural infection. It is important to note that these subvariants have emerged when the world is about to achieve global immunity against the SARS-CoV-2 virus through various vaccines available

for COVID-19. India has conducted 200 crore vaccinations and has vaccinated 73.02% of its population with at least one dose of vaccine and 66.85% of the population with two doses of vaccine. Around 7.67% of the total population has received the precautionary dose. (30) Various studies on the evasion of neutralizing antibodies have found that the Omicron subvariant BA.2.75, which has a local growth advantage in India, is 1.8 and 1.1 times more resistant to sera from vaccinated individuals than BA.2 and BA.2.12.1, respectively. However, it is 0.6-times more sensitive than BA.4/BA.5. It has increased resistance to class 1 and 3 monoclonal antibodies but is sensitive to Class 2 monoclonal antibodies. This increased resistance may be due to the spike protein's G446S and R460K mutations. It is also 3.7 times more resistant to Bebtelovimab, the only monoclonal antibody potent against all Omicron subvariants. (21) Another study in a small sample of plasma from post-vaccination Delta infection shows that the BA.2.75 subvariant is more immune evasive than the BA.4 / BA.5 lineages in the Delta-stimulated immune background, which probably may explain why BA.2.75 has a growth advantage over BA.4/BA.5 in India. (18) Also, a study found that BA.2.75 has a higher resistance to BA.5 induced immunity. This property may make BA.2.75 variant spread efficiently in areas where BA.5 has been widely circulating. (31) Close monitoring and following these variants effectively and investigating their development as early as possible is crucial.

5. CONCLUSION

To conclude, this study provides essential and early evidence of the severity of the disease in patients infected with BA.2.74, BA.2.75 and BA.2.76 sublineages. Currently, there is no evidence of an increased risk of hospital admission or severe disease due to these sublineages in India. Despite these second-generation variants being detected only recently, they have the potential to be successfully transmitted across several countries due to the presence of critical mutations and significant growth advantages. The ability of the SARS-CoV-2 virus to evolve continuously and achieve increased transmission and immune evasion reinforces the importance of vaccination and sustained epidemiological surveillance to detect the emerging new variants.

ACKNOWLEDGEMENT

We acknowledge and thank Mrs Poonam Pacharne, Mr Vishal Rajput and Mrs Reena Katke for the technical help during the study.

COMPETING INTEREST STATEMENT

The authors have declared no competing interest.

FUNDING STATEMENT

This study did not receive any funding.

REFERENCES

1. Potdar V, Cherian S. Evolution of the SARS-CoV-2 pandemic in India. Medical Journal Armed Forces India. 2022;78(3):264-270.
2. Viana R, Moyo S, Amoako DG, Tegally H, Scheepers C, Althaus CL, et al. Rapid epidemic expansion of the SARS-CoV-2 Omicron variant in southern Africa. Nature. 2022;603(7902):679-686. Available from: <https://doi.org/10.1038/s41586-022-04411-y>

3. Enhancing response to Omicron SARS-CoV-2 variant: Technical brief and priority actions for Member States. World Health Organization. 2022; 1-28.
4. Covid19.who.int. 2022. India: WHO Coronavirus Disease (COVID-19) Dashboard with Vaccination Data. [online] Available from: <https://covid19.who.int/region/searo/country/in>
5. Tegally H, Moir M, Everatt J, Giovanetti M, Scheepers C, Wilkinson E, et al. Emergence of SARS-CoV-2 Omicron lineages BA.4 and BA.5 in South Africa. Nature Medicine.2022. Available from: <https://doi.org/10.1038/s41591-022-01911-2>
6. COVID-19 Weekly Epidemiological Update [Internet]. 89th ed. World Health Organization; 2022;1-21. [cited 10th August 2022]. Available from: <https://www.who.int/publications/m/item/weekly-epidemiological-update-on-covid-19---27-april-2022>
7. Christie B. Covid-19: Early studies give hope Omicron is milder than other variants. BMJ [Internet]. 2021;1. Available from: <http://dx.doi.org/10.1136/bmj.n3144>
8. BA.2+C25416T + 14925T sublineage with S:346T+S:452M emerged in India (73 sequences) · Issue #775 · cov-lineages/pango-designation [Internet]. GitHub. 2022 [cited 10 August 2022]. Available from: <https://github.com/cov-lineages/pango-designation/issues/775>
9. BA.2 sublineage with S:K147E, W152R, F157L, I210V, G257S, D339H, G446S, N460K, R493Q (73 seq as of 2022-06-29, mainly India) · Issue #773 · cov-lineages/pango-designation [Internet]. GitHub. 2022 [cited 10 August 2022]. Available from: <https://github.com/cov-lineages/pango-designation/issues/773>
10. Proposal for a Sublineage of BA.2 with Spike Y248N and R346T, primarily in India · Issue #787 · cov-lineages/pango-designation [Internet]. GitHub. 2022 [cited 10 August 2022]. Available from: <https://github.com/cov-lineages/pango-designation/issues/787>
11. COVID-19 Weekly Epidemiological Update [Internet]. 101th ed. World Health Organization; 2022;1-21. [cited 10th August 2022]. Available from: <https://www.who.int/publications/m/item/weekly-epidemiological-update-on-covid-19---20-july-2022>
12. Cov-Lineages [Internet]. Cov-lineages.org. 2022 [cited 4 September 2022]. Available from: https://cov-lineages.org/lineage_list.html
13. Gangavarapu K, Latif A, Mullen J, Alkuzweny M, Tsueng G, Cano M, Haag E, et al. India Variant Report [Inetrnet]. Outbreak.info; 2022. Available from: <https://outbreak.info/location-reports?loc=IND&pango=BA.4.3&pango=BA.4.1&pango=BA.4.6&pango=BA.4.1.1&pango=BA.4.4&pango=BA.4.7&pango=BA.4.2&pango=BA.4.1.2&pango=BA.4.5&pango=BA.4.1.3&pango=BA.4.1.4&dark=true&selected=BA.4.3&selected=BA.4.1&selected=BA.4.6&selected=BA.4.1.1&selected=BA.4.4&selected=BA.4.7&selected=BA.4.2&selected=BA.4.1.2&selected=BA.4.5&selected=BA.4.1.3&selected=BA.4.1.4>
14. Gangavarapu K, Latif A, Mullen J, Alkuzweny M, Tsueng G, Cano M, Haag E, et al. BA.2.76 Lineage Report [Inetrnet]. Outbreak.info; 2022. Available from: <https://outbreak.info/situation-reports?pango=BA.2.76&loc=IND&loc=USA&selected=IND&overlay=false>
15. Gangavarapu K, Latif A, Mullen J, Alkuzweny M, Tsueng G, Cano M, Haag E, et al. BA.2.75 Lineage Report [Inetrnet]. Outbreak.info; 2022. Available from: https://outbreak.info/situation-reports?pango=BA.2.75&selected=IND&loc=USA&loc=USA_US-CA&loc=IND&overlay=false
16. Gangavarapu K, Latif A, Mullen J, Alkuzweny M, Tsueng G, Cano M, Haag E, et al. BA.2.74 Lineage Report [Inetrnet]. Outbreak.info; 2022. Available from: https://outbreak.info/situation-reports?pango=BA.2.74&selected=IND&loc=USA&loc=USA_US-CA&loc=IND&overlay=false

17. COVID-19 Weekly Epidemiological Update [Internet]. 102th ed. World Health Organization; 2022;1-10. [cited 10th August 2022]. Available from: <https://www.who.int/publications/m/item/weekly-epidemiological-update-on-covid-19---27-july-2022>
18. Cao Y, Song W, Wang L, Liu P, Yue C, Jian F, et al. Characterization of enhanced infectivity and antibody evasion of Omicron BA.2.75. bioRxiv preprint [Internet]. 2022 [cited 10 August 2022]. Available from: <https://doi.org/10.1101/2022.07.18.500332>
19. Zappa M, Verdecchia P, Angeli F. Knowing the new Omicron BA.2.75 variant ('Centaurus'): A simulation study. European Journal of Internal Medicine. 2022. Available from: <https://doi.org/10.1016/j.ejim.2022.08.009>
20. Greaney A, Starr T, Bloom J. [Internet]. Jbloomlab.github.io. 2022 [cited 14 August 2022]. Available from: https://jbloomlab.github.io/SARS-CoV-2-RBD_DMS_Omicron/RBD-heatmaps/
21. Cao Y, Yu Y, Song W, Jian W, Yisimayi A, Yue C, et al. Neutralizing antibody evasion and receptor binding features of SARS-CoV-2 Omicron BA.2.75. bioRxiv preprint [Internet]. 2022 [cited 10 August 2022]. Available from: <https://doi.org/10.1101/2022.07.18.500332>;
22. Wang Q, Iketani S, Li Z, Guo Y, Yeh AY, Liu M, et al. Antigenic characterization of the SARS-CoV-2 Omicron subvariant BA.2.75. bioRxiv preprint [Internet]. 2022 [cited 10 August 2022]. Available from: <https://doi.org/10.1101/2022.07.31.502235>.
23. BA.2.75. covSPECTRUM [Internet]. Cov-spectrum.org. 2022 [cited 10 August 2022]. Available from: <https://cov-spectrum.org/explore/India/AllSamples/Past6M/variants?pangoLineage=BA.2.75&>
24. Jbloomlab.github.io. [Internet]. 2022. [cited 14th August 2022]. Available from: https://jbloomlab.github.io/SARS-CoV-2-RBD_DMS_Omicron/RBD-heatmaps/
25. BA.4*. covSPECTRUM [Internet]. Cov-spectrum.org. 2022 [cited 10 August 2022]. Available from: https://cov-spectrum.org/explore/India/AllSamples/Past6M/variants?pangoLineage=BA.4*&
26. BA.5*. covSPECTRUM [Internet]. Cov-spectrum.org. 2022 [cited 10 August 2022]. Available from: https://cov-spectrum.org/explore/India/AllSamples/Past6M/variants?variantQuery=nextcladePangoLineage%3ABA.5*&
27. BA.2.74. covSPECTRUM [Internet]. Cov-spectrum.org. 2022 [cited 10 August 2022]. Available from: <https://cov-spectrum.org/explore/India/AllSamples/Past6M/variants?pangoLineage=BA.2.74&>
28. BA.2.76. covSPECTRUM [Internet]. Cov-spectrum.org. 2022 [cited 10 August 2022]. Available from: <https://cov-spectrum.org/explore/India/AllSamples/Past6M/variants?pangoLineage=BA.2.76&>
29. Urake R, Iida S, Halfmann P, Yamayoshi S, Hirata Y, Iwatsuki-Horimoto K, et al. Characterization of SARS-CoV-2 Omicron BA.2.75 clinical isolates. bioRxiv preprint [Internet]. 2022 [cites 29 August 2022]. Available from: <https://doi.org/10.1101/2022.08.26.505450>
30. CoWIN Dashboard [Internet]. Dashboard.cowin.gov.in. 2022 [cited 10 August 2022]. Available from: <https://dashboard.cowin.gov.in/>
31. Saito A, Tamura T, Zahradnik J, Deguchi S, Tabata K, Kimura I, et al. Virological characteristics of the SARS-CoV-2 Omicron BA.2.75. bioRxiv preprint [Internet]. 2022 [cited 14 August 2022]. Available from: <https://doi.org/10.1101/2022.08.07.503115>