

**The COVID-19 Pandemic as an Opportunity for Unravelling the Causative  
Association between Respiratory Viruses and Pneumococcus-Associated Disease  
in Young Children: A Prospective Cohort Study**

Ron Dagan<sup>1</sup>, Bart Adriaan van der Beek<sup>1</sup>, Shalom Ben-Shimol<sup>2, 3</sup>, David Greenberg<sup>2, 3</sup>, Yonat Shemer-Avni<sup>2, 4</sup>, Daniel M. Weinberger<sup>5</sup>, Dana Danino<sup>2, 3</sup>

**Affiliations:**

<sup>1</sup> The Shraga Segal Dept. of Microbiology, Immunology, and Genetics, Faculty of Health Sciences, Ben Gurion University of the Negev, Beer Sheva, Israel

<sup>2</sup> Faculty of Health Services, Ben Gurion University, Beer Sheva, Israel

<sup>3</sup> The Pediatric Infectious Disease Unit, Soroka University Medical Center, Beer Sheva, Israel

<sup>4</sup> Clinical Virology Laboratory, Soroka University Medical Center, Beer-Sheva, Israel

<sup>5</sup> Department of Epidemiology of Microbial Diseases, New Haven CT, USA, Yale School of Public Health

**Address correspondence to**

Prof. Ron Dagan MD  
The Shraga Segal Dept. of Microbiology, Immunology, and Genetics  
Faculty of Health Sciences, Ben Gurion University of the Negev  
David Ben Gurion Blvd. 1, POB 653  
8410500 Beer-Sheva, Israel  
Email: [rdagan@bgu.ac.il](mailto:rdagan@bgu.ac.il)  
Phone: +972-8-6400606

## Summary

**BACKGROUND:** In young children, rates of community-acquired alveolar pneumonia (CAAP) or invasive pneumococcal disease (IPD) have been associated with respiratory syncytial virus (RSV), human metapneumovirus (hMPV), influenza (flu), and parainfluenza (PIV) (collectively termed here as pneumococcal disease-associated viruses [PDA-viruses]). However, their contribution to the pathogenesis of pneumococcal-associated disease has not yet been elucidated. The COVID-19 pandemic provided a unique opportunity to examine the question.

**METHODS:** This prospective study comprised all children <5 years, living in southern Israel, during 2016 through 2021. The data were derived from multiple ongoing prospective cohort surveillance programs and include: hospital visits for CAAP, non-CAAP lower respiratory infections (LRI); nasopharyngeal pneumococcal carriage (<3 years of age); respiratory virus activity; all-ages COVID-19 episodes; and IPD in children <5 years (nationwide) A hierarchical negative binomial regression model was developed to estimate the proportion of the disease outcomes attributable to each of the viruses from monthly time series data, stratified by age and ethnicity. A separate model was fit for each outcome, with covariates that included a linear time trend, 12-month harmonic variables to capture unexplained seasonal variations, and the proportion of tests positive for each virus in that month.

**FINDINGS:** During 2016 through 2021, 3,204, 26,695, 257, and 619 episodes of CAAP, non-CAAP LRI, pneumococcal bacteremic pneumonia and non-pneumonia IPD, respectively, were reported. Compared to 2016-2019, broad declines in the disease outcomes were observed shortly after the pandemic surge, coincident with a

complete disappearance of all PDA-viruses and continued circulation of rhinovirus (RhV) and adenovirus (AdV). From April 2021, off-season and abrupt surges of all disease outcomes occurred, associated with similar dynamics among the PDA-viruses, which re-emerged sequentially. Using our model fit to the entire 2016-2021 period, 82% (95% CI, 75-88%) of CAAP episodes in 2021 were attributable to the common respiratory viruses, as were 22%-31% of the other disease outcomes. Virus-specific contributions to CAAP were: RSV, 49% (95% CI, 43-55%); hMPV, 13% (10-17%); PIV, 11% (7-15%); flu, 7% (1-13%). RhV and AdV did not contribute. RSV was the main contributor in all outcomes, especially in infants. Pneumococcal carriage prevalence remained largely stable throughout the study.

**INTERPRETATION:** RSV and hMPV play a critical role in the burden of CAAP and pneumococcal disease in children. Interventions targeting these viruses could have a secondary effect on the disease burden typically attributed to bacteria.

## Research in Context

### Evidence before this study

Community-acquired alveolar pneumonia (CAAP) and invasive pneumococcal disease (IPD) in young children have often been associated with specific respiratory viruses, namely respiratory syncytial virus (RSV) human metapneumovirus (hMPV) influenza viruses (flu), and parainfluenza viruses (PIV) (termed in the current article pneumococcal disease-associated viruses [PDA-viruses]). However, their causative role as co-pathogens has not yet been fully elucidated. Pneumococcal conjugate vaccines (PCVs) significantly reduce hospitalization for viral lower respiratory infections (LRIs), suggesting that viral-pneumococcal coinfections are common and play a role in the pathogenesis of pneumococcal respiratory infections. However, in theory, the strongest demonstration of the causative role of respiratory viruses on pneumococcus-associated diseases would derive from measuring the impact of elimination of one or more of the respiratory viruses during the expected respiratory season. Shortly after the start of the COVID-19 pandemic, multiple reports have demonstrated reduced IPD and LRI rates among young children, coincident with dramatically reduced rates of the PDA-viruses globally. Initially, the reduced pneumococcal disease rates were attributed to non-pharmaceutical interventions that might reduce pneumococcal transmission in the community. However, continuous, virtually unchanged pneumococcal carriage rates were reported in multiple studies, strongly suggesting the reduced circulation of *S. pneumoniae* was not significantly contributing to disease reduction. Surprisingly, pneumococcus-associated diseases and PDA-viruses simultaneously re-emerged in 2021 during the off-season. In contrast to PDA-viruses, other viruses, such as adenovirus and rhinovirus did not show any of the patterns discussed above. We searched PubMed on June 1<sup>st</sup>, 2022, for

studies since 2012 using the following terms: ("COVID-19" or "SARS-Cov-2") and ("*S. pneumoniae*" or "pneumococcus" or "IPD" or "respiratory virus" or respiratory syncytial virus" or "hMPV" or "influenza" or "parainfluenza" or "adenovirus" or "rhinovirus" or "lower respiratory infection"). The search was for English literature and unrestricted by date.

### **Added value of this study**

Three unique characteristics of the COVID-19 pandemic-induced abnormal dynamics, coupled with multiple ongoing cohort studies in young children, contributed to the historic opportunity to model and quantify the attributable role of the various common respiratory viruses to four pneumococcus-associated disease outcomes (CAAP, non-CAAP LRIs, pneumococcal bacteremic pneumonia and non-pneumonia IPD): First, the full seasonal disappearance of all PDA-viruses shortly after the start of the pandemic, in the presence of continuous, uninterrupted pneumococcal carriage and continuous unchanged rhinovirus and adenovirus activity. Second, the off-season resurgence of the PDA-viruses in 2021. Third, the sequential, rather than simultaneous, re-emergence of the PDA-viruses. The analysis in this study suggests that several of the respiratory viruses, particularly RSV and hMPV, play an important causative role in the pathogenesis of pneumococcal diseases and related conditions. Furthermore, the proportion attributable to each of the PDA-viruses for each of the four studied disease outcomes, and each of the age groups (<1, 1, and 2-4 years of age) could be demonstrated.

### **Implication of all the available findings**

Our findings add evidence about the absolute and relative contribution of common respiratory viruses to the burden of pneumococcal diseases and related conditions in

young children, likely to be caused, at least in part, by virus-pneumococcus interaction or coinfections. The strong predominance of RSV contribution compared to other viruses in all studied disease outcomes suggests that interventions that target viruses could have secondary effects on the burden of diseases typically attributed to bacteria.

## Introduction

Rates of pneumococcal disease are influenced by exposure to *S. pneumoniae* (pneumococcus) and susceptibility of the host. In turn, susceptibility of the host can increase following recent infections or during current coinfections with certain respiratory viruses. Respiratory syncytial virus (RSV), human metapneumovirus (hMPV), influenza viruses (flu), and parainfluenza viruses (PIV) have been associated with either community-acquired alveolar pneumonia (CAAP; considered mostly bacterial, in particular pneumococcal),<sup>1</sup> or invasive pneumococcal disease (IPD).<sup>1-12</sup> However, for other common viruses, such as adenoviruses (AdV) and rhinoviruses (RhV), there is little evidence of a causal association with pneumococcal disease in young children.<sup>13</sup>

The use of Pneumococcal Conjugate Vaccines (PCVs) is associated with reductions in rates of hospitalization for viral pneumonia and non-pneumonia lower respiratory tract infections (LRIs) in young children. This supports the notion that pneumococcus may increase the severity of viral infections.<sup>11, 14, 15</sup> However, there is limited evidence about whether reducing or eliminating the activity of specific viruses could reduce severity or rates of pneumococcal disease. The COVID-19 pandemic provided a unique opportunity to examine this question.

Shortly after the emergence of the COVID-19 pandemic, temporary elimination of the circulation of RSV, hMPV, flu, and PIV occurred globally, while RhV and AdV continued to circulate.<sup>13, 16</sup> At the same time, a drop in pneumococcal disease rates was seen,<sup>17-21</sup> initially believed to result from reduced pneumococcal circulation,

caused by the mitigation measures adopted during the COVID-19 pandemic.

However, nasopharyngeal carriage rates of pneumococcus among young children were largely unchanged during the pandemic, suggesting that this was not the main factor behind the decline in IPD.<sup>8, 13, 16, 22</sup> An alternative possibility, based on previous observations of bacterial-viral coinfections, is that the dramatic suppression of the respiratory viruses led to the decline in rates of IPD.

Starting in 2021, an off-season sequential re-emergence of the suppressed viruses occurred in Israel, starting with PIV and followed by hMPV, RSV, and flu. This provided a unique opportunity to examine the association of these viruses with rates of community acquired alveolar pneumonia (CAAP), IPD and non-CAAP LRIs. We hypothesized that RSV, hMPV, flu, and PIV (collectively termed in the current study pneumococcus disease-associated viruses [PDA-viruses]) are important determinants of these disease outcomes in young children.



## Methods

### Setting:

The Soroka University Medical Center (SUMC) is the only hospital in the Negev, southern Israel, providing health services to >95% of the children living in the region, enabling incidence calculations. Two distinct pediatric ethnic populations, differing in disease epidemiology, reside side-by-side in southern Israel: The Bedouin and the Jewish populations. (**Appendix**)

Implementation of PCVs in the National Immunization Plan occurred in 2009 (PCV7) and 2010 (PCV13); since 2013 ~90% of both Jewish and Bedouin children have received all three required doses.<sup>23</sup>

### Study design:

The study population for respiratory disease and virus-testing comprised all children <5 years living in our region from January 2016 through December 2021. For IPD, we included all children <5 years nationwide. For pneumococcal carriage, we included children <3 years in our region. The data were derived from multiple ongoing, prospective long-standing cohort surveillance programs.

Monthly incidence or prevalence rates during 2020-2021 were compared to mean monthly rates during 2016-2019. The total numbers for each database and the comparison of demographic characteristics are presented in **Table 1**. (Detailed description, **Appendix**)

The studied outcomes and the outcome-specific measures are detailed in the

**Appendix.** In brief:

- 1) *CAAP*: All children <5 years visiting the Pediatric Emergency Room (PER) or hospitalized, requiring chest radiography, with World Health Organization (WHO)-defined CAAP diagnosis.<sup>14</sup>
- 2) *Non-CAAP LRIs*: All children <5 years visiting PER or hospitalized for LRIs requiring chest radiography, excluding those with CAAP.
- 3) *IPD*: Children <5 years with blood or CSF positive cultures for *S. pneumoniae*, in all 27 medical centers in Israel were part of a nationwide, prospective, active surveillance, accounting for >95% all IPD cases. A pneumococcal bacteremic pneumonia episode was defined as an episode diagnosed as pneumonia by the reporting center during which *S. pneumoniae* was isolated from blood. A non-pneumonia IPD episode was defined as an IPD episode excluding those with pneumonia.
- 4) *Nasopharyngeal pneumococcal carriage*:
  - a. *Children <3 years without respiratory infection visiting the PER*: Each working day nasopharyngeal cultures have been obtained from the first eight children <5 years seen at the PER or within 48 hours, if hospitalized. Positive cultures were assessed by semi-quantitative methodology.
  - b. *Healthy children <3 years, presenting for vaccination.*
- 5) *Nasopharyngeal detection of respiratory viruses*: Samples were routinely obtained from children <5 years as per clinical indication and sent to

the SUMC virology laboratory for detection of RSV, hMPV, flu A and B, PIV, AdV, and RhV (RhV was added in February 2019) (see **Appendix**).

All the above projects, as well as the overall current study were approved by the SUMC Ethics Committee.

### **Statistical Analysis**

Demographic characteristics of the study subjects during 2016-2019 and 2020-2021 were compared using the Pearson  $\chi^2$  test for categorical outcomes or Student's t-test for continuous outcomes. Monthly incidence rates for all endpoints were calculated by age (<1, 1, 2-4 years) and ethnicity (Bedouin, Jewish). Viruses were divided into 2 groups: PDA-viruses (RSV, hMPV, flu, and PIV) and non-PDA-viruses (RhV and AdV). When in a single swab both a PDA-virus and a non-PDA-virus were detected, the non-PDA-virus was discarded. The monthly proportion of positive pneumococcal nasopharyngeal cultures were calculated out of all collected samples for children <1 and 1-2 years, except during April-May 2020, due to disruptions in sample collection caused by a strict lockdown. No difference in the age distribution of the population <5 was observed during the study years. Ratios of incidence rates and proportions were calculated to compare the COVID-19 and pre-COVID-19 periods. All rate ratios were adjusted for ethnicity and age using the Cochran-Mantel-Haenszel method. The statistical significance threshold was  $p < 0.05$ . Data were analyzed using R 4.0.2.<sup>24</sup>

## Statistical Modeling

The goal was to estimate the proportion of each disease outcome attributable to the different viruses. To do this, we developed a hierarchical negative binomial regression model (details in **Appendix**). For each outcome, we have a time series of incidence by month, stratified by age category (<1, 1, 2-4 years) and ethnicity (Jewish vs. Bedouin children for CAAP and non-CAAP LRIs; Jewish vs. non-Jewish children for IPD).

The covariates are a linear trend for time, 12 month harmonic variables to capture unexplained seasonal variations, and the proportions of tests positive for each virus in that month for the corresponding ethnicity (combined across all three age groups).

The model coefficients were used to estimate the contribution of each virus. Since RhV testing was initiated only in February 2019, we did not include this virus in the model, however, multi-regression analysis for the period of February 2020 to December 2021 showed no correlation of RhV activity to any of the four outcomes.

The model was fit in a Bayesian framework with minimally informative priors using rjags.<sup>25</sup> R scripts for the models can be found at

[https://github.com/weinbergerlab/Israel\\_pneumo\\_covid](https://github.com/weinbergerlab/Israel_pneumo_covid)

## Results

### I. Dynamics of Disease:

The details of the COVID-19 pandemic and associated mitigation measures are described in **Supplementary Figure 1**.

During 2016 through December 2021, a total of 3,204, 26,695, 257, and 619 episodes of CAAP, non-CAAP LRI, pneumococcal bacteremic pneumonia, and non-pneumonia IPD, respectively, were recorded. The highest incidence occurred in children <1 year. (**Table 1, Supplementary Tables 1, 2**)

The dynamics of the four disease outcomes during the early pandemic period (through February 2021) were described in detail in a previous publication,<sup>13</sup> and are included as part of **Figures 1 and 2**. In brief, broad declines in all four outcomes were observed. The largest decline in incidence was seen in CAAP and pneumococcal bacteremic pneumonia, while for non-pneumococcal LRIs, although highly significant, the reduction was less accentuated. For non-pneumococcal IPD, the decline was not statistically significant.

Starting in spring 2021, an off-season, abrupt surge was observed with unexpectedly high rates, particularly for the 3 respiratory outcomes (CAAP, non-CAAP LRIs, and pneumococcal bacteremic pneumonia). In all outcomes, the off-season rates reached a magnitude similar to those observed during 2016-2019. (**Figures 1, 2, Supplementary Table 3**)

The dynamic patterns of all disease outcomes were similar when examined by age (<1, 1, and 2-4 years). (**Supplementary Figures 2-4**)

## **II. Dynamics of pneumococcal nasopharyngeal carriage in children <3 year:**

A total of 7,921, 1,190, and 1,323 samples were obtained in 2016-2019, 2020, and 2021, respectively. (**Table 1**) During April and May 2020, we interrupted the surveillance because of the severe lockdown, but resumed from June 2020. (**Figure 3**)

During 2016-2019, the mean monthly proportion of carriage ranged from 34.3% to 56.7% in 2016-2019, 29.0% to 52.1% in 2020, and 31.3% to 45.6% in 2021.

Although from September 2020 to February 2021, carriage was somewhat lower than during 2016-2019 ( $P=0.067$ ) (**Figure 3A, Supplementary Tables 4, 5**), no overall trend was observed, and changes in carriage prevalence did not correlate with changes in any of the disease outcomes in a multivariate regression. Furthermore, the semi-quantitative analysis showed a decline in lower-density colonization, but the prevalence of high-density colonization remained stable. (**Figure 3B, Supplementary Table 6**)

No significant changes in serotype distribution were found during the pandemic. (**Supplementary Table 7, Supplementary Figure 5**)

## **III. Dynamics of viral activity in children <5 years:**

A total of 27,147 nasopharyngeal samples were obtained for virus detection, 17,555; 3,444; and 6,143 in 2016-2019, 2020, and 2021, respectively. (**Table 1**) Of these, 41.7%, 58.0%, and 63.4%, respectively, were positive for  $\geq 1$  virus: RSV 4,024, AdV 3,049, PIV 1,143, flu A 1,026, hMPV 883, and flu B 308. Testing for RhV was only initiated in February 2019 with 4,845 positive samples. (**Supplementary Table 8**) Co-detection of  $\geq 2$  viruses was common, especially starting in February 2019, when RhV testing was added. However, a co-detection of any PDA-virus with another PDA-virus was rare (1.3%). (**Supplementary Table 9**)

Strikingly, from April 2020 through October 2020, none of the PDA-viruses were detected. (**Figure 4, Supplementary Figure 6**) However, since November 2020, an off-season sequential re-emergence of the PDA-viruses was observed, each with a peak reaching an equal or higher magnitude compared to the pre-pandemic seasonal peaks: PIV (November 2020), hMPV (March 2021), RSV (May 2021), flu A (H<sub>3</sub>N<sub>2</sub> only; September 2021). However, flu B was not detected from March 2020 till the end of the study. In contrast, although RhV and AdV had a short nadir during the time of the first lockdown (April-May 2020), they were frequently detected throughout the study. From March 2021, AdV had a higher-than-usual activity.

#### **IV. Model fit to the pre-pandemic period correctly captured the re-emergence of CAAP in <1y old, but underestimates the increase in older children:**

Due to the striking similarity of the dynamics of all 4 disease outcomes and the dynamics of the PDA-viruses, we sought to quantify the contribution of each virus. We first fit a model to CAAP data from the pre-pandemic period only. The main

contributor was RSV (32%), followed by hMPV (5%), flu (4%), PIV (3%), and AdV (1%). (**Supplementary Table 10**) Projecting the model forward based on observed virus activity, this model accurately captured the surge in CAAP cases in 2021 among children <1 year but underestimated the number of CAAP cases among children aged 1 and 2-4 years (**Supplementary Figure 7**), suggesting that the model is undercounting the importance of the viruses in the older age groups. Since the activity of these viruses typically peaks around the same time in winter, it can be difficult to accurately attribute changes to specific viruses.

To better disentangle the contribution of the viruses to the burden of pneumonia, we leveraged the different timing of the re-emergence of the different viruses in 2020-2021 and refit the models to the entire dataset. (**Figure 5, Table 2**) With these models, we estimated that 82% of CAAP cases could be attributed to the common respiratory viruses. The main contributor to this burden was RSV (49%), followed by hMPV (13%), PIV (11%), and flu (7%). AdV activity was not associated with variations in CAAP. The importance of the different viruses varied somewhat by age with smaller contributions overall from the viruses in older age groups. (**Figure 6, Table 2**) RSV was a particularly large contributor (62%) to CAAP among children <1 year.

The viruses also made important contributions to the other outcomes with 31% of non-CAAP cases, 29% of IPD pneumonia and 22% of non-pneumonia IPD associated with viruses. (**Table 2, Supplementary Figure 8**) For both non-CAAP and IPD pneumonia, RSV was the most important contributor, 21% and 18%, respectively. For non-pneumonia IPD, none of the PDA-viruses, individually, contributed significantly.



AdV did not contribute to any of the outcomes at any age.

## Discussion

The COVID-19 pandemic has temporarily but strikingly modified the epidemiology of both PDA-virus activity and pneumococcus-associated disease in children <5 years in Israel. Both PDA viruses and pneumococcus-associated diseases declined sharply in 2020, and then pneumococcus-associated disease returned with the re-emergence of the PDA viruses in 2021. These dramatic changes in disease occurred in the presence of virtually unchanged nasopharyngeal carriage of pneumococcus, strongly suggesting its continuous circulation in the community. While PDA-virus activity was associated with the studied disease endpoints, that of RhV and AdV was not. A high proportion of the burden of CAAP and non-CAAP LRIs was associated with the activity of PDA-viruses, especially during the first year of life. We also showed that the modified dynamics of both disease and viruses during the COVID-19 pandemic helped to improve estimates of the PDA-virus contribution to the studied disease outcomes. Finally, we showed that the highest attributable contribution was by RSV, except for non-pneumonia IPD.

Multiple sites have described the abrupt reduction of pneumococcal diseases (mostly IPD) and all-cause respiratory diseases shortly following the start of the COVID-19 pandemic. The initial speculation was that the widely undertaken non-pharmaceutical interventions largely resulted in a reduction of pneumococci transmission.<sup>17, 18</sup>

However, continuous active surveillance of pneumococcal carriage in young children showed normal or close to normal carriage rates, and no association with IPD or pneumococcal pneumonia could be demonstrated.<sup>8, 13, 19, 22</sup> A recent report from Vietnam, while confirming no association of overall nasopharyngeal carriage during NPI, noted a marked decrease of the density of pneumococcus in carriage.<sup>26</sup> In

contrast, we found no reduction of carriage density, although measured by semi-quantitative methods. In addition, no change in serotype distribution was found, similar to findings from France.<sup>8</sup> Therefore, it is unlikely that changes in carriage played an important role in the drastic disease incidence dynamics during COVID-19. This is the first report of the carriage dynamics during the resurgence of pneumococcus-associated diseases.

During the study period, the dynamic patterns of the 4 studied disease outcomes were similar but not identical. The most affected rates were those of CAAP, with similar dynamics seen for pneumococcal bacteremic pneumonia. However, the smaller number of outcome events of the latter resulted in a higher uncertainty range. Non-CAAP LRIs were also reduced during the first year of the pandemic, but the reduction was only 50% compared to that of CAAP. The non-pneumonia IPD incidence reductions, although exhibiting similar trends, did not reach significance in any of the time points, when compared to those in 2016-2019, consistent with the absence of demonstrable association with the PDA-viruses.

The contribution to the various disease outcomes differed between individual viruses, and between age groups. By far, the most important contributor to both CAAP, non-CAAP LRIs, and pneumococcal bacteremic pneumonia was RSV. In children <2 years, over half of the cases were attributable to RSV. Its contribution to non-CAAP LRIs was only around half compared to that in CAAP. This was somewhat unexpected, due to the common association with bronchiolitis. However, this difference suggests a potentially significant pathogenic role of RSV as a coinfecting agent with bacterial pathogens causing CAAP.

The extent of pneumococcal involvement in CAAP and non-CAAP-LRIs is still not fully clarified. This cannot be directly answered since detection of pneumococcus in the respiratory tract does not necessarily imply its causative role in CAAP. However, the profound impact of PCV on CAAP and even non-CAAP LRIs provides a powerful tool for inference on the likely causative role of *S. pneumoniae* in these disease outcomes.<sup>14, 27</sup> Studies from Israel and elsewhere, have demonstrated a ~50% reduction in CAAP in young children following PCV implementation,<sup>14, 28</sup> thus strongly suggesting an extensive causative role of *S. pneumoniae* in CAAP during the pre-PCV era.

Our non-CAAP LRI cases were severe enough to warrant a chest radiograph, but per definition, those with CAAP were excluded. Studies have shown that such cases have a more diverse etiology. Even so, a rate reduction of  $\geq 25\%$  was observed in young children post PCV implementation, including a 34% reduction in our region.<sup>14</sup> Using a similar logic as per CAAP, it is plausible that vaccine-serotype pneumococci also played an important role in non-CAAP LRIs, although of a lesser magnitude than in CAAP. The similarity in dynamics between CAAP and non-CAAP LRIs is therefore not surprising.

Second to RSV, the estimated contribution of hMPV in CAAP is notable, contributing to approximately one in seven CAAP episodes in all age groups. The role of hMPV in CAAP has been well recognized.<sup>12, 29-31</sup> However, for the first time we can compare its role in CAAP to that in other studied outcomes. Surprisingly, no significant contribution to any of the non-CAAP outcomes could be demonstrated. The specific mechanisms by which hMPV contributed mainly to CAAP are not elucidated. The

attributable proportions of flu and PIV to both CAAP and non-CAAP, although significant, were modest, and the PIV relative contribution increased with age. The lower relative contribution of flu to hospitalization for LRIs compared to RSV and hMPV was described previously<sup>30</sup> and is in contrast to reports from adults.<sup>32</sup>

We examined separately the dynamics of pneumococcal bacteremic pneumonia and non-pneumonia IPD. We have previously shown that after PCV7/PCV13 implementation in Israel, the dynamics of the two outcomes differed by specific pneumococcal serotype proportions and seasonality. The seasonality of bacteremic pneumonia was typical of respiratory viruses, while that of non-pneumonia IPD was not.<sup>2</sup> In the current study we estimate that RSV played a significant role in pneumococcal bacteremic pneumonia, but its role in non-pneumonia IPD was negligible. This suggests some differences in the pathogenesis, further supporting previous observations.<sup>33</sup> This might also explain, at least in part, the lack of significant reduction of the non-pneumonia IPD in the presence of significant reduction of the other three analyzed outcomes.

It is not clear why RhV and AdV rates did not decline globally during 2020-2021. The rates of these viruses were completely unrelated to those of the studied disease outcomes. Detection of RhV and AdV is common, both in healthy children and children with LRI, and their attributable role to LRI is often questionable.<sup>34-36</sup> Furthermore, the co-detection of RhV and AdV with other viruses is common, and the co-presence with any of the PDA-viruses usually bears the clinical presentation typical of the specific coinfecting PDA-virus. In contrast, we found that co-detection of  $\geq 2$  PDA-viruses was rare (1.3%).

This study has a number of important strengths. We leverage unique and high-quality datasets that cover a long time period including pre-pandemic years. Together with the natural disruptions caused by the pandemic, these data provide a comprehensive understanding of the contributions of respiratory viruses to the etiology of pneumococcal disease and other related respiratory diseases. These data are integrated using regressions models to estimate the contribution of each virus to the observed variations and estimates from models fit exclusively to the pre-pandemic period and those fit to the entire study period provide a range of estimates for the contribution of each virus.

The analyses also have important limitations. We did not account for the possible effects of coinfections or interactions between viruses. The data on viral activity are also limited by being conducted in the hospital setting. However, we expect that viral activity in the hospital likely reflects viral activity in the community.

In conclusion, this study leverages the unique disruptions of pathogen circulation that followed COVID-19 mitigation measures to gain a deeper understanding of the role of respiratory viruses in driving the burden of pneumococcal disease and related conditions. These analyses suggest that several of the respiratory viruses, particularly RSV and hMPV, play a critical role in pathogenesis in children. This suggests that interventions that target these viruses could have secondary effects on the burden of disease typically attributed to bacteria.

## Legends to Figures:

**Figure 1:** Monthly dynamics of community-acquired alveolar pneumonia (CAAP) (A), pneumococcal bacteremic pneumonia (B), non-community-acquired alveolar pneumonia lower respiratory infections (non-CAAP LRIs) (C), and non-pneumonia invasive pneumococcal disease (non-pneumonia IPD) (D)

**Figure 2:** Incidence rates ratio ( $\pm 95\%$  CI) by quarters comparing incidence of 2020 and 2021 to the mean incidence of 2016 through 2019; community-acquired alveolar pneumonia (CAAP) (A), pneumococcal bacteremic pneumonia (B), non-community-acquired alveolar pneumonia lower respiratory infections (non-CAAP LRIs) (C), and non-pneumonia invasive pneumococcal disease (non-pneumonia IPD) (D). Black dots are quarterly IRRs; the vertical lines show 95% confidence intervals.

**Figure 3:** (A) Monthly dynamics of the proportion of all tested nasopharyngeal swabs that were positive for *S. pneumoniae* in children <3 years of age, in 2020 and 2021 compared to 2016 through 2019. The red line represents the proportion of 2020 and 2021, the blue line shows the mean proportion and the blue shaded area the minimum and maximum proportion during 2016 through 2019; (B) Dynamics of pneumococcus positive proportions of swab samples by semi quantitatively determined density: low density (1-2) represented by the blue line vs. high density (3-4), represented by the red line.

**Figure 4:** Dynamics of monthly numbers of all virus-positive nasal wash samples in children <5 years in southern Israel for specific viruses in 2020 and 2021 compared to 2016 through 2021. The red line represents the number of positive samples in 2020 and 2021, the blue line shows the mean number of positive samples and the shaded blue area the minimum and maximum number of positive samples during 2016 through 2019.

**Figure 5:** Observed (dark gray lines) and model-fitted values (black line) for the number of cases of community-acquired alveolar pneumonia (CAAP), non-community-acquired alveolar pneumonia lower respiratory infections (non-CAAP LRIs), pneumococcal bacteremic pneumonia, and non-pneumonia invasive pneumococcal disease (non-pneumonia IPD), based on a model fit to the entire data set. The red dashed line and shaded area represent the estimate for how many cases there would have been in the absence of viruses ( $\pm 95\%$  CI).

**Figure 6:** Estimated contribution of different viruses to the burden of community-acquired alveolar pneumonia (CAAP) among children <5 years of age in southern Israel. Parainfluenza – yellow; hMPV – green; influenza – blue; RSV – orange; other viruses/non – grey.

### **Conflict of Interest Statement:**

Ron Dagan has received grants from Pfizer, MSD, MedImmune/AstraZenaca. He serves as a scientific consultant and on the advisory board of Pfizer and MSD. He also is part of the speakers' bureau of Pfizer, MSD, Sanofi Pasteur, and GSK. Shalom Ben-Shimol has received grants from Pfizer and serves as a scientific consultant and on the advisory board of Pfizer and MSD. He also is part of the speakers' bureau of Pfizer, MSD, and GSK. David Greenberg has received grants from MSD and he serves as scientific consultant for Pfizer, MSD, and GSK where he is also part of the speakers' bureau. Daniel Weinberger has received consulting fees from Pfizer, Merck, Affinivax, Matrivax, and GSK and is principal investigator on grants from Pfizer and Merck to Yale University. Dana Danino has received grants from Pfizer.



## References

1. Ampofo K, Bender J, Sheng X, Korgenski K, Daly J, Pavia AT, et al. Seasonal invasive pneumococcal disease in children: role of preceding respiratory viral infection. *Pediatrics*. 2008;**122**:229-37.
2. Ben-Shimol S, Greenberg D, Hazan G, Shemer-Avni Y, Givon-Lavi N, Dagan R. Seasonality of both bacteremic and nonbacteremic pneumonia coincides with viral lower respiratory tract infections in early childhood, in contrast to nonpneumonia invasive pneumococcal disease, in the pre-pneumococcal conjugate vaccine era. *Clin Infect Dis*. 2015;**60**:1384-7.
3. Chiavenna C, Presanis AM, Charlett A, de Lusignan S, Ladhani S, Pebody RG, et al. Estimating age-stratified influenza-associated invasive pneumococcal disease in England: A time-series model based on population surveillance data. *PLoS Med*. 2019;**16**:e1002829.
4. Greenberg D, Givon-Lavi N, Faingelernt Y, Ben-Shimol S, Avni YS, Bar-Ziv J, et al. Nasopharyngeal Pneumococcal Carriage During Childhood Community-Acquired Alveolar Pneumonia: Relationship Between Specific Serotypes and Coinfecting Viruses. *J Infect Dis*. 2017;**215**:1111-6.
5. Hernandez S, Munoz-Almagro C, Ciruela P, Soldevila N, Izquierdo C, Codina MG, et al. Invasive Pneumococcal Disease and Influenza Activity in a Pediatric Population: Impact of PCV13 Vaccination in Pandemic and Nonpandemic Influenza Periods. *J Clin Microbiol*. 2019;**57**.
6. Murdoch DR, Jennings LC. Association of respiratory virus activity and environmental factors with the incidence of invasive pneumococcal disease. *J Infect*. 2009;**58**:37-46.
7. O'Brien KL, Walters MI, Sellman J, Quinlisk P, Regnery H, Schwartz B, et al. Severe pneumococcal pneumonia in previously healthy children: the role of preceding influenza infection. *Clin Infect Dis*. 2000;**30**:784-9.
8. Rybak A, Levy C, Angoulvant F, Auvrignon A, Gembara P, Danis K, et al. Association of Nonpharmaceutical Interventions During the COVID-19 Pandemic With Invasive Pneumococcal Disease, Pneumococcal Carriage, and Respiratory Viral Infections Among Children in France. *JAMA Netw Open*. 2022;**5**:e22.18959
9. Watson M, Gilmour R, Menzies R, Ferson M, McIntyre P, New South Wales Pneumococcal N. The association of respiratory viruses, temperature, and other climatic parameters with the incidence of invasive pneumococcal disease in Sydney, Australia. *Clin Infect Dis*. 2006;**42**:211-5.
10. Weinberger DM, Grant LR, Steiner CA, Weatherholtz R, Santosham M, Viboud C, et al. Seasonal drivers of pneumococcal disease incidence: impact of bacterial carriage and viral activity. *Clin Infect Dis*. 2014;**58**:188-94.
11. Weinberger DM, Klugman KP, Steiner CA, Simonsen L, Viboud C. Association between respiratory syncytial virus activity and pneumococcal disease in infants: a time series analysis of US hospitalization data. *PLoS Med*. 2015;**12**:e1001776.

12. Wolf DG, Greenberg D, Shemer-Avni Y, Givon-Lavi N, Bar-Ziv J, Dagan R. Association of human metapneumovirus with radiologically diagnosed community-acquired alveolar pneumonia in young children. *J Pediatr*. 2010;**156**:115-20.
13. Danino D, Ben-Shimol S, Van Der Beek BA, Givon-Lavi N, Avni YS, Greenberg D, et al. Decline in Pneumococcal Disease in Young Children during the COVID-19 Pandemic in Israel Associated with Suppression of seasonal Respiratory Viruses, despite Persistent Pneumococcal Carriage: A Prospective Cohort Study. *Clin Infect Dis*. 2022.
14. Ben-Shimol S, Dagan R, Givon-Lavi N, Avital D, Bar-Ziv J, Greenberg D. Use of Chest Radiography Examination as a Probe for Pneumococcal Conjugate Vaccine Impact on Lower Respiratory Tract Infections in Young Children. *Clin Infect Dis*. 2020;**71**:177-87.
15. Madhi SA, Klugman KP, Vaccine Trialist G. A role for Streptococcus pneumoniae in virus-associated pneumonia. *Nat Med*. 2004;**10**:811-3.
16. Dagan R, Danino D, Weinberger DM. The Pneumococcus-Respiratory Virus Connection-Unexpected Lessons From the COVID-19 Pandemic. *JAMA Netw Open*. 2022;**5**:e2218966.
17. Amin-Chowdhury Z, Aiano F, Mensah A, Sheppard CL, Litt D, Fry NK, et al. Impact of the Coronavirus Disease 2019 (COVID-19) Pandemic on Invasive Pneumococcal Disease and Risk of Pneumococcal Coinfection With Severe Acute Respiratory Syndrome Coronavirus 2 (SARS-CoV-2): Prospective National Cohort Study, England. *Clin Infect Dis*. 2021;**72**:e65-e75.
18. Brueggemann AB, Jansen van Rensburg MJ, Shaw D, McCarthy ND, Jolley KA, Maiden MCJ, et al. Changes in the incidence of invasive disease due to Streptococcus pneumoniae, Haemophilus influenzae, and Neisseria meningitidis during the COVID-19 pandemic in 26 countries and territories in the Invasive Respiratory Infection Surveillance Initiative: a prospective analysis of surveillance data. *Lancet Digit Health*. 2021;**3**:e360-e70.
19. Danino D, Van Der Beek BA, Givon-Lavi N, Greenberg D, Ben-Shimol S, Dagan R. Unravelling the Impact of Pneumococcal Conjugate Vaccines on Ambulatory Antibiotic Drug Consumption in Young Children: An Interrupted Time Series Analysis. *Clin Infect Dis*. 2021.
20. Rybak A, Levy C, Bonacorsi S, Bechet S, Vie le Sage F, Elbez A, et al. Antibiotic Resistance of Potential Otopathogens Isolated From Nasopharyngeal Flora of Children With Acute Otitis Media Before, During and After Pneumococcal Conjugate Vaccines Implementation. *Pediatr Infect Dis J*. 2018;**37**:e72-e8.
21. Teng JLL, Fok KMN, Lin KPK, Chan E, Ma Y, Lau SKP, et al. Substantial decline in invasive pneumococcal disease (IPD) during COVID-19 pandemic in Hong Kong. *Clin Infect Dis*. 2021.
22. Willen L, Ekinici E, Cuypers L, Theeten H, Desmet S. Infant Pneumococcal Carriage in Belgium Not Affected by COVID-19 Containment Measures. *Front Cell Infect Microbiol*. 2021;**11**:82.5427
23. Ben-Shimol S, Givon-Lavi N, Greenberg D, Dagan R. Pneumococcal nasopharyngeal carriage in children <5 years of age visiting the pediatric emergency room in relation

- to PCV7 and PCV13 introduction in southern Israel. *Hum Vaccin Immunother.* 2016;**1.2**:268-76
24. Team RC, . A language and environment for statistical computing. *R Foundation for Statistical Computing.* 2020.
  25. Plummer M. rjags: Bayesian graphical models using MCMC. R package version 3-14. *Google Scholar.* 2014.
  26. Nation ML, Manna S ,Tran HP, Nguyen CD, Vy LTT, Uyen DY, et al. Impact of COVID-19 non-pharmaceutical interventions on pneumococcal carriage prevalence and density in Vietnam. *medRxiv.* 2022:2022.05.05.22274646.
  27. Feikin DR, Scott JA, Gessner BD. Use of vaccines as probes to define disease burden. *Lancet.* 2014;**383**:1762-70.
  28. Greenberg D, Givon-Lavi N, Ben-Shimol S, Ziv JB, Dagan R. Impact of PCV7/PCV13 introduction on community-acquired alveolar pneumonia in children <5 years. *Vaccine.* 2015;**33**:4623-9.
  29. Howard LM, Edwards KM, Zhu Y, Grijalva CG, Self WH, Jain S, et al. Clinical Features of Human Metapneumovirus-Associated Community-acquired Pneumonia Hospitalizations. *Clin Infect Dis.* 2021;**72**:108-17.
  30. Jain S, Williams DJ, Arnold SR, Ampofo K, Bramley AM, Reed C, et al. Community-acquired pneumonia requiring hospitalization among U.S. children. *N Engl J Med.* 2015;**372**:835-45.
  31. Wolf DG, Greenberg D, Kalkstein D, Shemer-Avni Y, Givon-Lavi N, Saleh N, et al. Comparison of human metapneumovirus, respiratory syncytial virus and influenza A virus lower respiratory tract infections in hospitalized young children. *Pediatr Infect Dis J.* 2006;**25**:320-4.
  32. Hu Z, Lin J, Chen J, Cai T, Xia L, Liu Y, et al. Overview of Viral Pneumonia Associated With Influenza Virus, Respiratory Syncytial Virus, and Coronavirus, and Therapeutics Based on Natural Products of Medicinal Plants. *Front Pharmacol.* 2021;**12**:630834.
  33. Ben-Shimol S, Greenberg D, Hazan G, Givon-Lavi N, Gottesman G, Grisaru-Soen G, et al. Differential impact of pneumococcal conjugate vaccines on bacteremic pneumonia versus other invasive pneumococcal disease. *Pediatr Infect Dis J.* 2015;**34**:409-16.
  34. Singleton RJ, Bulkow LR, Miernyk K, DeByle C, Pruitt L, Hummel KB, et al. Viral respiratory infections in hospitalized and community control children in Alaska. *J Med Virol.* 2010;**82**:1282-90.
  35. Tapia MD, Sylla M, Driscoll AJ, Toure A, Kourouma N, Sissoko S, et al. The Etiology of Childhood Pneumonia in Mali: Findings From the Pneumonia Etiology Research for Child Health (PERCH) Study. *Pediatr Infect Dis J.* 2021;**40**:S18-S28.
  36. Yun KW, Wallihan R, Desai A, Alter S, Ambroggio L, Cohen DM, et al. Clinical Characteristics and Etiology of Community-acquired Pneumonia in US Children, 2015–2018. *The Pediatric Infectious Disease Journal.* 2022;**41**:381-7.

**Table 1: Demographics of the study population**

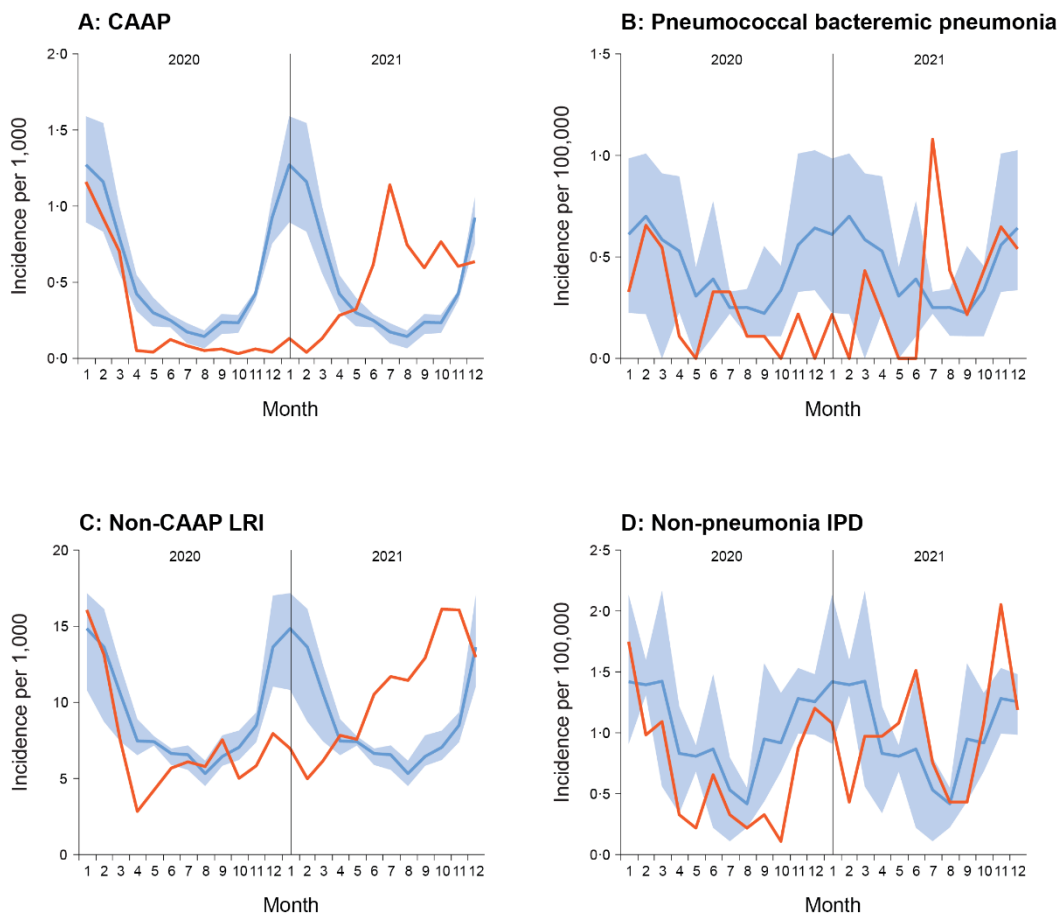
	<b>Total</b>	<b>2016-2019</b>	<b>2020-2021</b>	<b>p-value*</b>
<b>Viruses</b>				
Cases	27,138	17,555	9,583	
Age (mean±SD)	14.9±14.9	14.5±14.8	15.5±15.1	<0.001
Ethnicity n (%)				
Jewish	9,200 (33.9%)	6,102 (34.8%)	3,098 (32.3%)	
Bedouin	17,938 (66.1%)	11,453 (65.2%)	6,458 (67.7%)	<0.001
<b>Viruses in CAAP</b>				
Cases	1,756	1,236	520	
Age (mean±SD)	14.4±13.9	14.1±13.8	15.2±14.2	0.138
Ethnicity** n (%)				
Jewish	608 (34.5%)	418 (33.8%)	190 (36.5%)	
Bedouin	1,148 (65.4%)	818 (66.2%)	330 (63.5%)	0.274
<b>Viruses in NA-LRI</b>				
Cases	8,927	5,226	3,701	
Age (mean±SD)	14.7±14.4	13.9±13.9	15.8±14.9	<0.001
Ethnicity*** n (%)				
Jewish	3,189 (35.7%)	1,888 (36.1%)	1,301 (35.2%)	
Bedouin	5,738 (64.3%)	3,338 (63.9%)	2,400 (64.8%)	0.344
<b>Carriage</b>				
Cases	10,434	7,921	2,513	
Age (mean±SD)	11.1±9.2	11.3±9.3	10.6±9.0	<0.001
Ethnicity n (%)				
Jewish	4,724 (45.3%)	3,615 (45.6%)	1,109 (44.1%)	
Bedouin	5,710 (54.7%)	4,306 (54.4%)	1,404 (55.9%)	0.186
<b>CAAP</b>				
Cases	3,204	2,286	918	
Age (mean±SD)	17.4±14.6	17.1±14.7	18.0±14.5	0.116
Ethnicity n (%)				
Jewish	1,259 (39.3%)	871 (38.1%)	388 (42.3%)	
Bedouin	1,945 (60.7%)	1,415 (61.9%)	530 (57.7%)	0.029
<b>Non-CAAP LRI</b>				
Cases	26,695	17,349	9,346	
Age (mean±SD)	17.7±14.9	17.3±14.7	18.4±15.3	<0.001
Ethnicity n (%)				
Jewish	11,143 (41.7%)	7,377 (42.5%)	3,766 (40.3%)	
Bedouin	15,552 (58.3%)	9,972 (57.5%)	5,580 (59.7%)	<0.001
<b>Pneumococcal Bacteremic Pneumonia</b>				
Cases	257	193	64	
Age (mean±SD)	20.5±13.3	20.9±13.6	19.3±12.1	0.387
Ethnicity n (%)				
Jewish	220 (85.6%)	167 (86.5%)	53 (82.8%)	
Non-Jewish	37 (14.4%)	26 (13.5%)	11 (17.2%)	0.463
<b>Non-pneumococcal IPD</b>				
Cases	619	434	185	
Age (mean±SD)	15.8±12.2	15.2±11.8	17.2±12.9	0.058
Ethnicity n (%)				
Jewish	489 (79.0%)	346 (79.7%)	143 (77.3%)	
Non-Jewish	130 (21.0%)	88 (20.3%)	42 (22.7%)	0.498

\*p value 2020-2021 vs. 2016-2019

**Table 2: Percent of CAAP attributable to RSV, hMPV, Flu, AdV, PIV (adjusted for ethnicity), stratified by age**

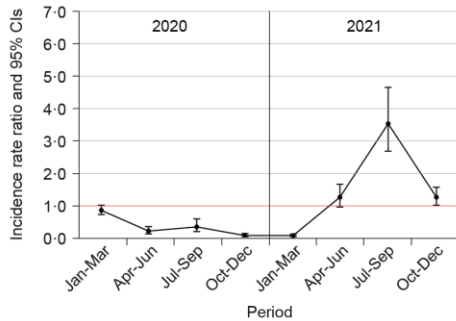
	Virus	CAAP	Non-CAAP LRIs	Pneumococcal bacteremic pneumonia	Non-pneumococcal IPD
All children <60m	Any	82 (75,88)	31 (25,39)	29 (11,54)	22 (6,40)
	RSV	49 (43,55)	21 (18,24)	18 (6,30)	2 (0,10)
	hMPV	13 (10,17)	2 (0,4)	0 (0,7)	3 (0,7)
	Flu	7 (1,13)	2 (0,4)	3 (0,12)	6 (0,11)
	AdV	0 (0,4)	3 (0,8)	0 (0,22)	1 (0,14)
	PIV	11 (7,15)	3 (0,6)	0 (0,12)	7 (0,16)
<12m	Any	87 (80,93)	34 (28,42)	21 (0,45)	15 (2,31)
	RSV	62 (50,71)	27 (23,31)	15 (0,33)	1 (0,12)
	hMPV	11 (6,17)	2 (0,4)	0 (0,4)	0 (0,5)
	Flu	7 (0,18)	1 (0,4)	1 (0,11)	4 (0,11)
	AdV	0 (0,5)	1 (0,7)	0 (0,15)	0 (0,10)
	PIV	5 (1,9)	2 (0,5)	0 (0,9)	4 (0,13)
12-23m	Any	80 (70,88)	27 (17,39)	40 (13,81)	19 (1,44)
	RSV	49 (41,57)	16 (12,20)	29 (6,48)	0 (0,11)
	hMPV	14 (8,19)	3 (0,5)	0 (0,9)	1 (0,6)
	Flu	5 (0,11)	2 (0,5)	1 (0,15)	5 (0,12)
	AdV	0 (0,5)	2 (0,11)	0 (0,42)	0 (0,20)
	PIV	10 (4,16)	3 (0,7)	0 (0,12)	6 (0,21)
24-59m	Any	76 (62,87)	29 (19,43)	19 (0,50)	40 (8,73)
	RSV	29 (20,38)	15 (10,19)	5 (0,21)	1 (0,17)
	hMPV	17 (10,23)	2 (0,5)	0 (0,14)	7 (0,21)
	Flu	6 (0,13)	3 (0,6)	2 (0,22)	9 (0,21)
	AdV	0 (0,6)	4 (0,14)	0 (0,17)	0 (0,26)
	PIV	22 (11,31)	4 (0,8)	0 (0,26)	13 (0,32)

**Figure 1**

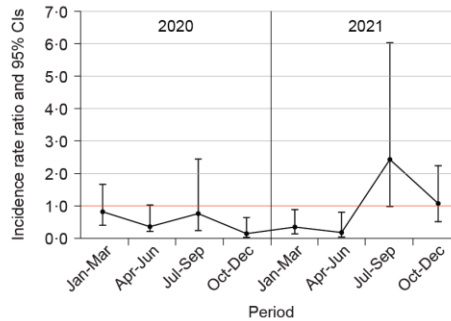


**Figure 2**

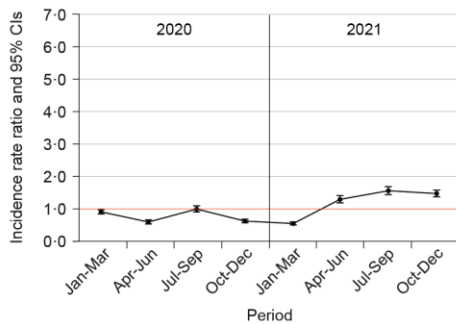
**A: CAAP**



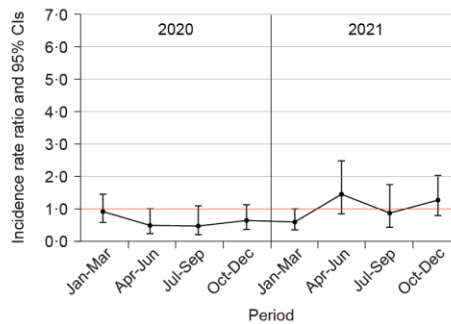
**B: Pneumococcal bacteremic pneumonia**



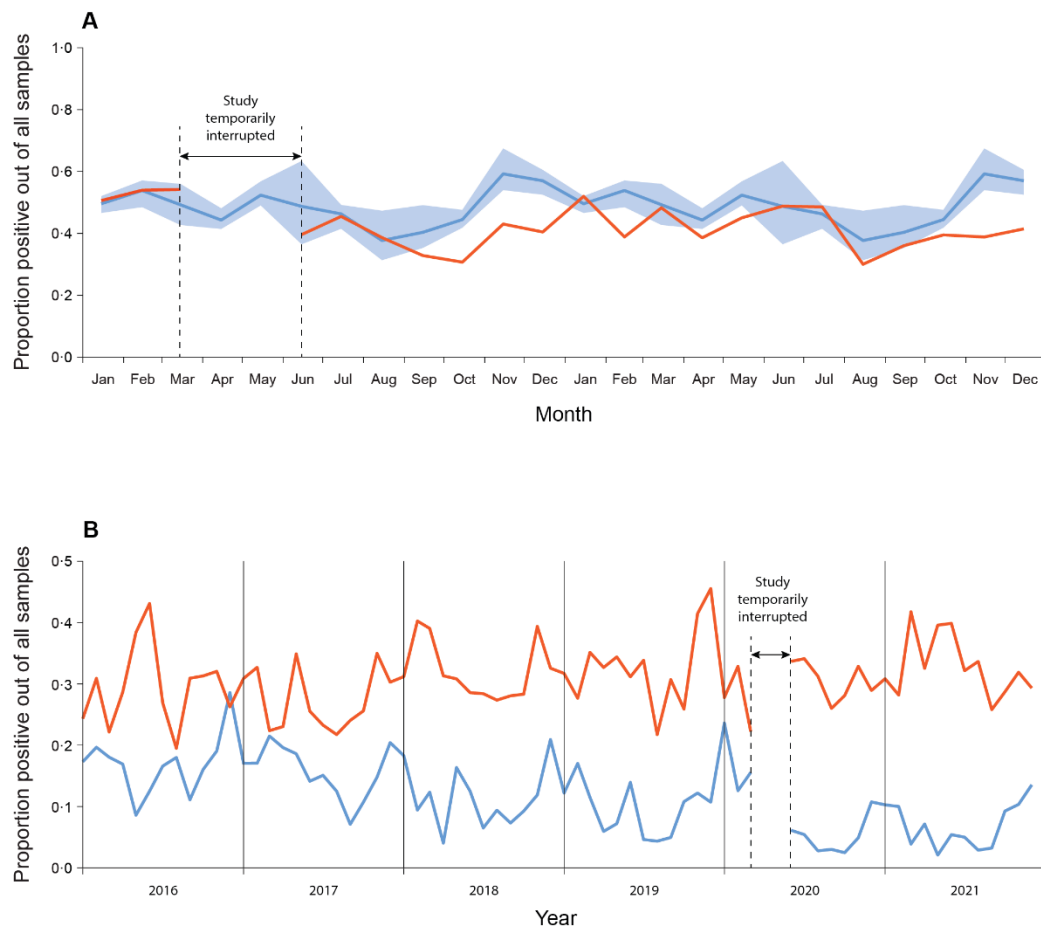
**C: Non-CAAP LRI**



**D: Non-pneumonia IPD**

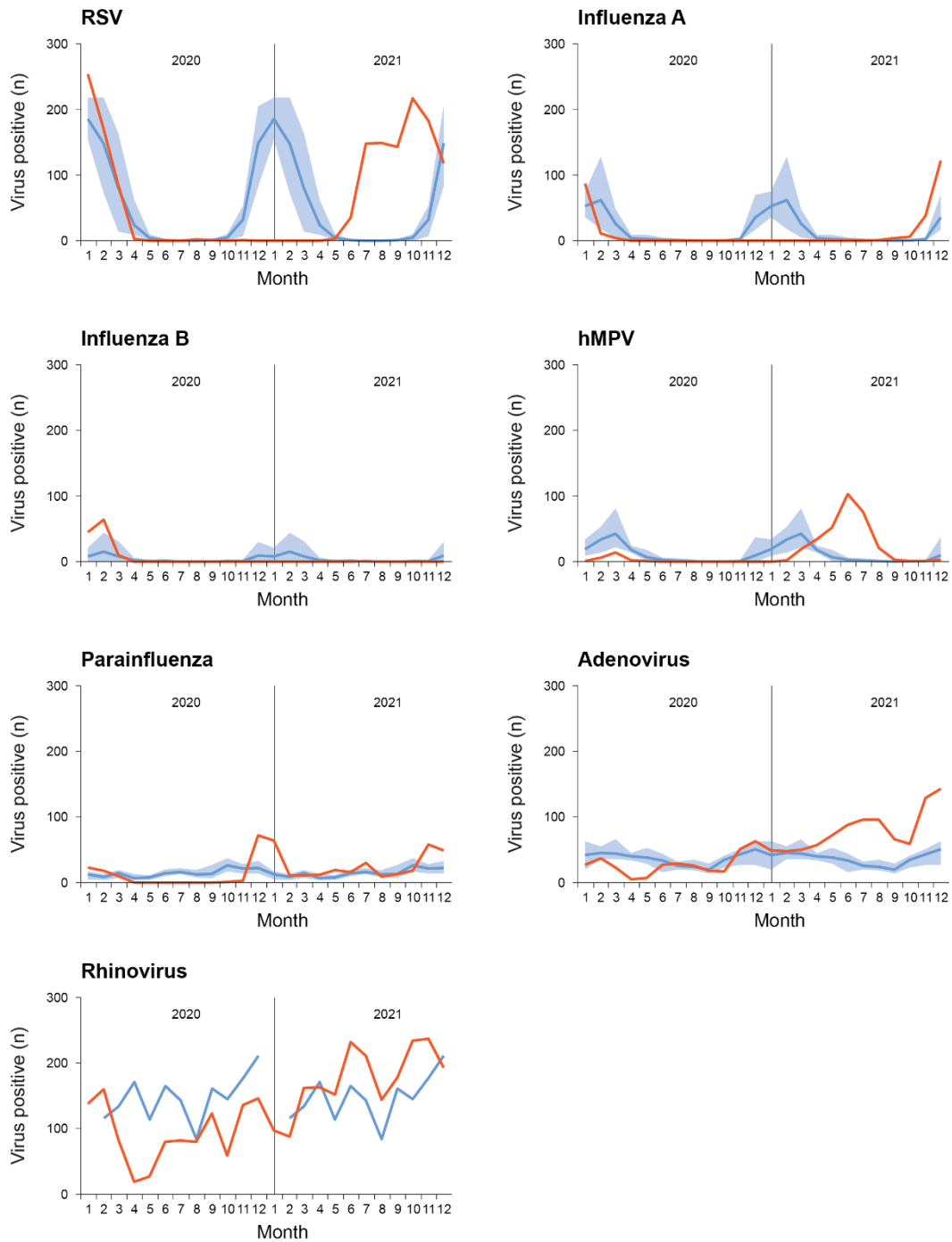


**Figure 3**





**Figure 4**





**Figure 6**

