

1 **Full title: Prevalence of carbapenem-resistant and extended-spectrum beta-**
2 **lactamase-producing Enterobacteriaceae in a teaching hospital in Ghana.**

3 **Short title: carbapenem resistance in Enterobacteriaceae**

4 James Sampah^{1,4}, Isaac Owusu-Frimpong^{1,2}, Frank T. Aboagye², Alex Owusu-Ofori^{1,3*}

5 ¹Department of Clinical Microbiology, School of Medicine and Dentistry, Kwame Nkrumah
6 University of Science and Technology, Kumasi, Ghana

7 ²Biomedical and Public Health Research Unit, CSIR-Water Research Institute, Accra, Ghana

8 ³Clinical Microbiology Unit, Laboratory Services Directorate Komfo Anokye Teaching
9 Hospital, Kumasi, Ghana

10 ⁴Laboratory Department, St. Patrick's Hospital, Offinso, Ghana

11 *Corresponding author: ekowsampah@yahoo.com (JS)

12 **Abstract**

13 **Background:** Carbapenem-resistant *Enterobacteriaceae* (CRE) and Extended-spectrum beta-
14 lactamase (ESBL) production among Gram-negative Enterobacteriaceae is an increasing
15 global challenge because of the high morbidity and mortality associated with their infections,
16 especially in developing countries where there may not be many antibiotic treatment options.
17 . Despite these challenges, there are few studies in Ghana that have described the burden of
18 CRE. This study aimed to determine the prevalence of carbapenem-resistant
19 Enterobacteriaceae isolated from patients at the Cape Coast Teaching Hospital (CCTH) in the
20 Central region of Ghana.

21 **Methodology/Principal findings:** Enterobacteriaceae isolates were collected from April to
22 July 2019 at the bacteriology unit of CCTH using a consecutive sampling method. Isolates

NOTE: This preprint reports new research that has not been certified by peer review and should not be used to guide clinical practice.

23 were identified by standard microbiological techniques and confirmed using API 20E. Kirby
24 Bauer disc diffusion method was used to determine the antibiogram of isolates. Isolates were
25 also subjected to ESBL testing using the single-disc combination method. Carbapenem
26 resistant isolates were identified by the Kirby Bauer disc diffusion method and then subjected
27 to genetic confirmation using polymerase chain reaction (PCR). Of the 230 isolates
28 comprising *E. coli* (40.9%), *Citrobacter spp.* (32.6%), *K. pneumoniae* (9.1%), *P. mirabilis*
29 (6.1%), *P. vulgaris* (5.2%), *Enterobacter spp* (3.5%), *K. oxytoca* (2.2%), and *Serratia*
30 *marcenses* (0.4%). Majority of the isolates were from urine 162(70.4%) and wound samples.
31 The isolates showed high resistance to ampicillin 171 (74.3%) and cefuroxime 134(58.3%).
32 The prevalence of MDR was 35.2% (81) with *E. coli* 40(42.6%) being the majority that
33 exhibited MDR. Out of the 230 isolates, 113(49.1%) were ESBL producers with *E. coli*
34 54(57.5%) accounting for the majority while *Serratia marcenses* was the least. Out of the 13
35 (5.7%) CRE isolates which showed resistance towards carbapenem in the disc diffusion
36 method, 11 expressed the blaNDM-1 gene whilst all isolates which showed resistant CRE
37 expressed the blaOXA-48 gene.

38 **Conclusion:** The prevalence of carbapenem resistance and ESBL- producing
39 Enterobacteriaceae pathogens among patients at the CCTH, Cape coast of Ghana is high, and
40 effective infection prevention and control measures should be implemented at the hospital to
41 prevent the rapid spread of these dangerous organisms.

42 **Keywords:** Antibiotic resistance, extended-spectrum beta-lactamases, carbapenem
43 resistance, Enterobacteriaceae

44 **Introduction**

45 The occurrence of antimicrobial resistance (AMR) is a significant challenge in the treatment
46 of infections and these infectious diseases are ever-increasing especially with the re-

47 emergence of pathogens [1]. AMR is considered to occur naturally and has been known to be
48 escalated by the misuse and overuse of antimicrobial agents [2]. The increasing emergence of
49 multidrug-resistant (MDR) Gram-negative bacilli is of great priority in clinical settings across
50 the globe. Management of Gram-negative multidrug-resistant (MDR) infections has become
51 significantly challenging over the past two decades in many developing countries, especially
52 within the Sub-Saharan region [3]. These infections are usually associated with high
53 morbidity rates, high mortalities, and extended hospital stays [4].

54 Enterobacteriaceae account for more than 30% of bacterial infections with high morbidity
55 and mortality outcomes [5, 6]. Meningitis, urinary tract infections, gastroenteritis, septicemia,
56 pneumonia, and wound infections are just a few of the infections that these organisms
57 commonly cause [7, 8]. Enterobacteriaceae are well known for their public health threat
58 across the globe due to their increasing antimicrobial resistance. Studies have established that
59 members of this family of bacteria gain their antimicrobial resistance via the acquisition of
60 drug-resistance genes through mobile genetic elements such as transposons and plasmids
61 transferred within the same species or different species [9, 10]. The acquired resistance genes
62 facilitate the production of β -lactamase enzymes, especially the extended-spectrum β -
63 lactamase (ESBL), responsible for conferring resistance to the majority of β -lactam
64 antibiotics [7, 10–13]. For instance, carbapenems, a class of β -lactam antibiotics, have been
65 established to lose their potency against Enterobacteriaceae due to resistance [7, 14]. Other
66 well-known antimicrobials such as fluoroquinolones, aminoglycosides, phenicols,
67 sulfonamides, and tetracyclines have been rendered ineffective by this group of bacteria,
68 thereby making treatment of infections of these bacteria difficult [15–17].

69 Carbapenems are broad-spectrum β -lactam antibiotics that are globally regarded as the ‘last-
70 line’ antibiotics, thus, they are considered the last choice of drug for the treatment of
71 critically ill patients and/or those infected with resistant Gram-negative bacteria [18]. They

72 are essentially reserved for cases of suspected MDR bacterial infections. This class of β -
73 lactam is very similar to penicillin and cephalosporin [19]. Carbapenems are bactericidal in
74 their mode of activity against bacterial species that are Gram-negative. Unlike other β -lactam
75 antibiotics, carbapenems invade the bacterial cell through the outer membrane proteins
76 (*OprDs*), other than those used by the cephalosporin and penicillin (*OmpC* and *OmpF*),
77 which results in the interruption of cell wall formation [18]. Once the cell wall formation is
78 interrupted by the carbapenems, the peptidoglycan layer becomes very weak and the cell
79 eventually bursts leading to the death of the bacterial cell [20, 21].

80 Generally, carbapenem-resistant Enterobacteriaceae (CRE) has been studied and reported in a
81 few African countries such as Tanzania, South Africa, Nigeria, Kenya, Morocco, and Ghana
82 [14, 22–36]. In Ghana, reported carbapenem resistance is not too different from other
83 developing and under-developed countries in Africa. In a study by Codjoe and colleagues
84 among Gram-negative isolates collected from four hospitals in Ghana, a 2.9% prevalence of
85 carbapenem-resistant was reported [37]. The report further indicated that 23.4 % of the
86 bacterial isolates were harbouring known carbapenem-resistant genes; *bla VIM-1*, *bla Oxa-*
87 *48*, and *bla NDM-1*. Another study conducted by Quansah and colleagues reported
88 carbapenem-resistant genes *OXA- 48* (2.16%) and *NDM-1* (0.72%) in the study population
89 [36].

90 While there are a few studies in other parts of Ghana that have looked at carbapenem
91 resistance in Enterobacteriaceae, there are no published data on CRE from the Central Region
92 of Ghana. As result, this study aimed to determine the prevalence of carbapenem-resistance,
93 MDR, and ESBL-producing Enterobacteriaceae in the Cape Coast Teaching Hospital, in the
94 Central Region of Ghana.

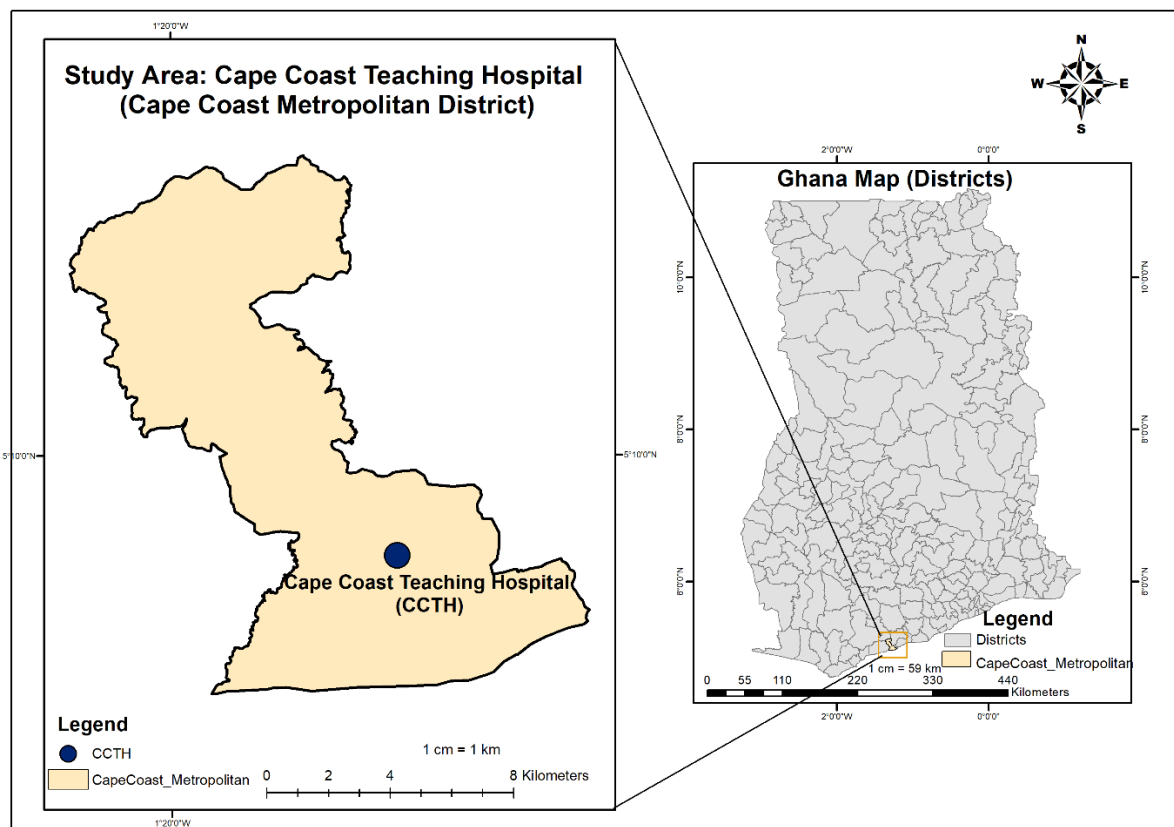
95 **Materials and methods**

96 **Ethics statement**

97 Cape Coast Teaching Hospital Ethical Review Committee (CCTHERC/EC/2019/044) of the
98 Cape Coast Teaching Hospital and Committee on Human Research, Publication and Ethics
99 (CHRPE/AP/201/19) of the School of Medical Sciences, Kwame Nkrumah University of
100 Science and Technology jointly approved the study. Informed consent was obtained from all
101 participants either by thumbprint or signature after an explanation of the procedure and the
102 purpose of the study was provided to the patient. Informed consent was obtained from parents
103 or guardians for participants below 18yrs.

104 **Study setting**

105 The study was conducted between April and October 2019, at Cape Coast Teaching Hospital
106 (CCTH) in Cape Coast in the Cape Coast Metropolitan, in the Central region of Ghana (Fig
107 1). The health facility is a tertiary government healthcare facility with a bed capacity of 420.
108 In 2018, the facility recorded out-patient attendance of 158,164 while the total admission was
109 10,865 [38]. During the period of sample collection (April to July 2019), the diagnostic
110 bacteriology unit received and processed 1,388 clinical specimens [38]. CCTH serves as a
111 referral hospital for the Central Region and other parts of the Western Region. The
112 metropolitan has a recorded population of 169,894, which comprises 82,810 (48.7%) males
113 and 87,084 (51.3%) females [39].



114

115 **Fig 1. The map of Ghana showing the location of Cape Coast Teaching Hospital in the**
116 **Cape Coast Metropolitan District. Map developed with ESRI ArcMap 10.8 using data from**
117 **Ghana Open Data Initiative, and OpenStreetMap and OpenStreetMap Foundation.**

118

119 **Bacterial collection**

120 Two hundred and thirty (230) non-repetitive *Enterobacteriaceae* were isolated and identified
121 from the clinical specimens submitted using standard bacteriological techniques and a panel
122 of biochemical tests. Isolates were from urine, blood, sputum, high vaginal swab (HVS),
123 endocervical swab, wound swab, stools, and semen presented to the bacteriology unit at
124 CCTH. Using a pretested questionnaire, sociodemographic data including age and sex were
125 recorded. Isolates identification was confirmed using the API 20E strip (BioMerieux,
126 France). Isolates were maintained in 20% brain heart infusion glycerol broth at -20°C for
127 further testing.

128 **Antibiotic susceptibility testing**

129 All isolates from glycerol broth were subcultured on MacConkey agar media after partially
130 thawing the broth. Antibiotic susceptibility testing (AST) was performed on Mueller Hinton
131 agar using the Kirby Bauer disc diffusion method and interpreted according to the Clinical
132 and Laboratory Standards Institute (CLSI) guideline [40]. The AST was performed using
133 the following antibiotic discs; Ampicillin (10µg), Ciprofloxacin (5µg), Levofloxacin (5µg),
134 Ofloxacin (5µg), Gentamicin (10µg), Amikacin (30µg), Ceftriaxone (30µg), Ceftazidime
135 (30µg), Cefotaxime (30µg) and Cefuroxime (30µg) which were from Biomark Laboratories,
136 India. Antibiotic discs Meropenem (10µg), Imipenem (10µg), and Ertapenem (10µg) from
137 Oxoid, UK were included. *E. coli* (NCTC 19418) was used as a quality control strain. The
138 zones of inhibitions were recorded and interpreted according to the Clinical and Laboratories
139 Standards Institute guidelines [40]. Multidrug resistance was defined as resistance to at least
140 three classes of antibiotics [21].

141 **Phenotypic screening and confirmation for ESBL**

142 ESBL detection was carried out on Mueller Hinton agar seeded with the test organism. All
143 230 isolates were screened for ESBL-producing enzymes using Ceftazidime (30µg) and
144 Cefotaxime (30µg) discs according to the method described by the CLSI guideline [40]. An
145 isolate resistant to any of the screening antibiotic discs was suspected of ESBL and reported
146 as positive for ESBL screening. ESBL confirmation was done using a single disc of Oxoid
147 Cefpodoxime (10µg) alone and Cefpodoxime/ clavulanic acid (10/1µg) using the Kirby
148 Bauer disc diffusion method [40]. The confirmatory discs were placed on the seeded Mueller
149 Hinton agar ensuring that the discs were at least 20mm apart and incubated at 37°C overnight.
150 An enhanced zone of inhibition (≥ 5 mm) around the Cefpodoxime/ clavulanic acid (10/1µg)
151 relative to the single disc of Cefpodoxime (10µg) was considered positive for the production

152 of ESBL. *Escherichia Coli* ATCC 25299 and *K. pneumoniae* ATCC 700603 were used as
153 quality controls.

154 **Molecular detection of carbapenem-resistant genes**

155 After the antibiotic susceptibility testing using antibiotic discs, isolates that were resistant and
156 intermediate susceptible to ertapenem, meropenem or imipenem were selected for genetic
157 confirmation using polymerase chain reaction (PCR).

158 **Bacterial DNA extraction**

159 The DNA of bacteria isolates was extracted using Quick DNA kits (Zymo Research, USA)
160 according to the manufacturer's procedure. Using a sterile loop, a loopful of the isolates were
161 picked from the Mueller Hinton agar plate and emulsified in sterile 1.5 mL microcentrifuge
162 tubes containing 400 µL of Genomic Lysis Buffer and 5 µL Proteinase K. These tubes were
163 vortexed at 2500 rpm for 30sec and incubated at 56°C overnight. After the overnight
164 incubation, mixtures were vortexed again and transferred to Zymo-Spin™ IIC Columns in
165 collection tubes and centrifuged at 10,000 x g for one minute. The flow-throughs were
166 discarded, after which 200 µL of DNA Pre-Wash Buffer was added to each spin column.
167 Centrifugation was performed again at 10,000 x g for one minute. Afterward, the final
168 washing was done by adding 500 µL of g-DNA Wash Buffer to the spin column and
169 centrifuging again at 10,000 x g for one minute. Finally, the spin columns were transferred
170 into sterile 1.5 mL microcentrifuge tubes, after which 100 µL of Elution Buffer was added to
171 elute the DNA. DNA samples were stored at -20°C before proceeding to downstream
172 analysis. DNA quantification was performed to determine the individual concentrations of the
173 isolate with the Qubit 3.0 fluorometer (Life Technologies Holdings Pte Ltd, Malaysia) and
174 the values recorded.

175 **Detection of carbapenem resistance-encoding genes using PCR**

176 Carbapenem-resistant isolates were examined for the presence of *blaKPC-1*, *blaIMP-1*,
177 *blaVIM-1*, *blaNDM-1*, and *blaOXA-48* genes by PCR methods using gene-specific primers
178 (Table 1) described by Poirel and colleagues [27]. The PCR assay was carried out with a 20
179 μ L reaction mixture containing 2 μ L genomic-DNA, 1x Standard reaction buffer, 0.3mM
180 each of dATP, dCTP, dTTP, and dGTP, 200 nM each of Forward and Reverse primers, and
181 1.25 U *OneTaq* DNA Polymerase (New England Biolabs Inc., USA). PCR reactions were
182 performed using the Bio-Rad PTC-200 Thermal Cycler (Bio-Rad Laboratories, USA) with
183 the following cycling conditions; an initial denaturation at 94 °C for 3 mins, followed by 40
184 cycles at 94 °C for 30sec, 56 °C for 30sec, and 68 °C for 30sec. Finally, an elongation step
185 was performed at 68°C for 5 minutes. Afterward, the PCR products were resolved by agarose
186 gel electrophoresis and visualized under UV light using UVP Bio-Doc- It Imaging system –
187 trans-illuminator (AnalytikJena, Germany).

188 **Table 1. Carbapenem-resistant genes primer sets.**

Gene	Sequence 5' → 3'	Fragment size (bp)
blaKPC-1	Forward: CGTCTAGTTCTGCTGTCTTG	798
	Reverse: CTTGTCATCCTTGTTAGGCG	
blaIMP-1	Forward: GGAATAGAGTGGCTTAAAYTCTC	232
	Reverse: GGTTTAAAYAAAACAACCACC	
blaVIM-1	Forward: GATGGTGTGGTTCGCATA	390
	Reverse: CGAATGCGCAGCACCAG	
blaNDM-1	Forward: GGTTTGGCGATCTGGTTTTC	621
	Reverse : CGGAATGGCTCATCACGATC	
blaOXA-48	Forward: GCGTGGTTAAGGATGAACAC	438
	Reverse: CATCAAGTTCAACCCAACCG	

189 **NB:** KPC, *Klebsiella pneumoniae* carbapenemase; IMP, Imipenemase; VIM, Verona
190 integron-encoded metallo- β -lactamase; *NDM*, New Delhi metallo- β -lactamase, OXA-48,
191 oxacillinase-48.

192 Statistical analysis

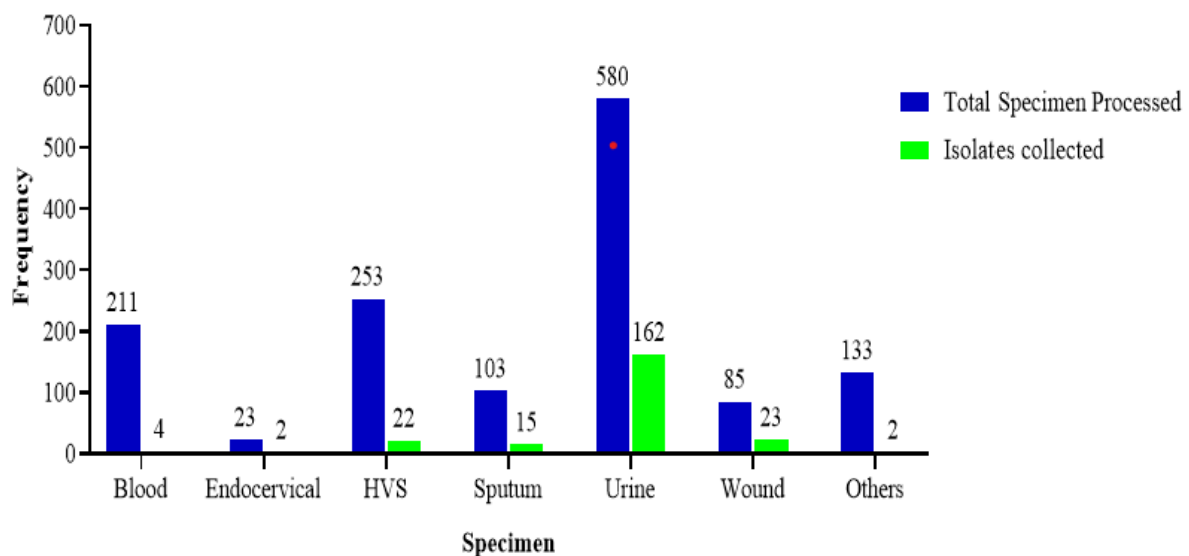
193 Data were entered using Microsoft Excel 2019 and analyzed using GraphPad Prism version
194 8.0 (Graphpad Inc., La Jolla, CA, USA). A simple frequency was used to describe the study
195 population with the socio-demographic and other relevant variables.

196

197 Results

198 Distribution of clinical specimen

199 Out of the 1388 samples processed, 230 isolates were identified as Enterobacteriaceae; 162
200 (70.4%) isolates were from urine, 23 (10.0%) from wound swab, 22 (9.6%) from HVS, 15
201 (6.5%) from sputum, 4 (1.7%) from blood, 2 (0.8%) from endocervical swab, 1 (0.4%) from
202 other types of specimens (Fig 2).



203

204 **Fig 2. Distribution of samples received, and isolates collected**

205 Sociodemographic characteristics of the study population

206 The study enrolled 230 participants from whose clinical specimens *Enterobacteriaceae* were
207 isolated. Out of the total participants, 196 (85.2%) were out-patients while 34 (14.8%) were
208 on admission at various wards. Most participants were >70years 43 (18.7%) while the age
209 group with the least number of participants was children <10yrs 8 (3.5%). One hundred and

210 sixty-six (166) females representing 72.2% participated in the study while 64 (27.8%) were
211 males (Table 2).

212 **Table 2. Gender and age distribution among participants**

	Age group [Number of participants (N)]								Total (%)
	<10	11-20	21-30	31-40	41-50	51-60	61-70	>70	
Male	2	2	6	6	2	10	15	21	64 (27.8)
Female	6	12	35	28	20	22	21	22	166 (72.2)
Outpatient	3	12	32	33	20	26	33	37	196 (85.2)
In-patients	5	2	9	1	2	6	3	6	34 (14.8)

213

214 **Distribution of isolates/organism**

215 Of the 230 isolates collected for this study, *Escherichia coli* was the most frequent pathogen
216 94 (40.9%), followed by *Citrobacter* spp. 75 (32.6%), *Klebsiella pneumoniae* 21 (9.1%),
217 *Proteus vulgaris* 12 (5.2%), *Proteus mirabilis* 14 (6.1%), *Enterobacter* spp. 8 (3.5%)
218 *Klebsiella oxytoca* 5 (2.2%) and *Serratia marcescens* 1 (0.4%) (Table 3).

219 **Table 3: Distribution of isolates**

Isolate	Point of Care		
	Outpatient [N]	In-patient [N]	Total [N] (%)
<i>E. coli</i>	80	14	94 (40.9)
<i>Citrobacter</i> spp.	66	9	75 (32.6)
<i>K. pneumoniae</i>	19	2	21 (9.1)
<i>P. vulgaris</i>	9	3	12 (5.2)
<i>P. mirabilis</i>	8	6	14 (6.1)
<i>Enterobacter</i> spp.	8	0	8 (3.5)
<i>K. oxytoca</i>	5	0	5 (2.2)
<i>Serratia marcescens</i>	1	0	1 (0.4)
Frequency	196	34	230 (100)

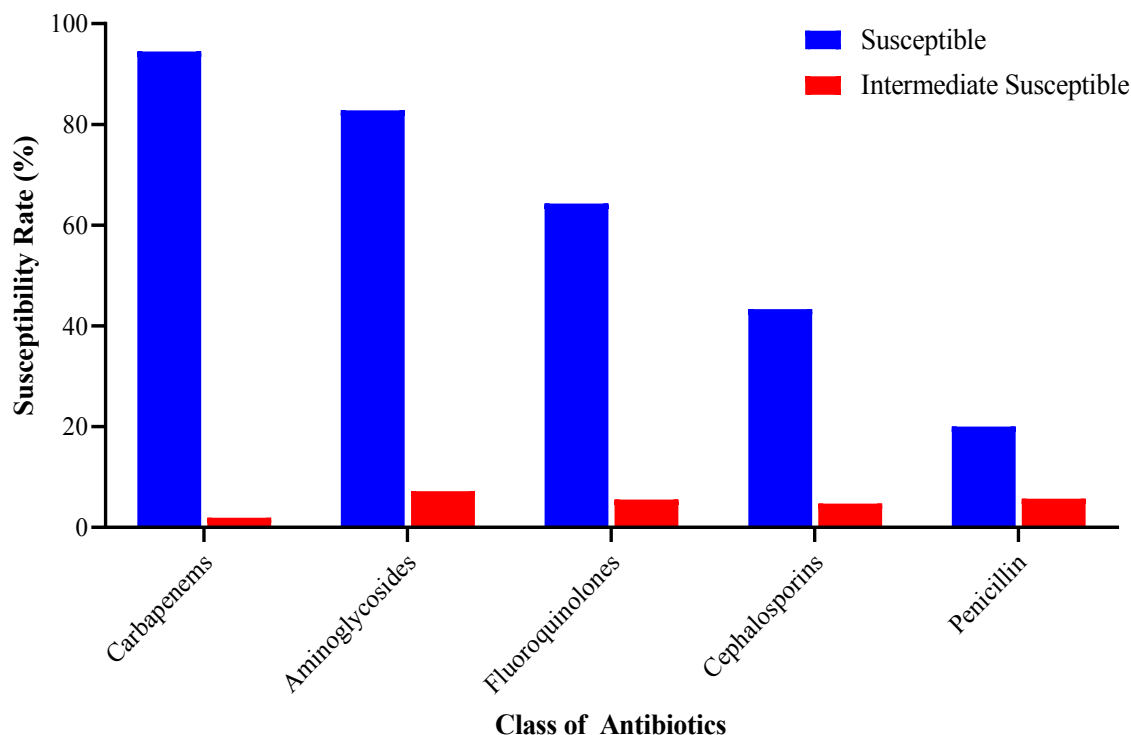
220 **Antibiotics susceptibility pattern of Enterobacteriaceae**

221 Out of the total of 13 antibiotics tested, susceptibility was highest to amikacin (AMK)
222 (97.8%). This was followed by meropenem (MEM), imipenem (IMI), and ertapenem (ERT)
223 with frequencies of 224 (97.4%), 224 (97.4%), and 204 (88.7%), respectively. The antibiotics
224 to which isolates were most resistant were ampicillin (AMP) (74.4%), cefuroxime (CXM)
225 (58.3%), and cefotaxime (CTX) (50.9%). Concerning the use of other antibiotics, isolates
226 were resistant to Ciprofloxacin (33.0%) and gentamicin (19.2%) (Table 4). Penicillin (74.3%)
227 was the class of antibiotic to which isolates showed the most resistance whilst carbapenem
228 (3.6%) was the class of antibiotic to which isolates showed the least resistance (Fig 3).

229 **Table 4: Antibiotic susceptibility profile of *Enterobacteriaceae***

Antibiotic	Susceptible <i>n</i> (%)	Intermediate <i>n</i> (%)	Resistant <i>n</i> (%)
Ampicillin	46 (20)	13 (5.7)	171 (74.3)
Gentamicin	156 (67.8)	30 (13.0)	44 (19.1)
Amikacin	225 (97.8)	3 (1.3)	2 (0.9)
Ciprofloxacin	141 (61.3)	13 (5.7)	76 (33.0)
Levofloxacin	158 (68.7)	12 (5.2)	60 (26.1)
Ofloxacin	145 (63)	13 (5.7)	72 (31.3)
Cefuroxime	80 (34.8)	16 (6.9)	134 (58.3)
Cefotaxime	104 (45.2)	9 (3.9)	115 (50.9)
Ceftazidime	106 (46.1)	9 (3.9)	115 (50.0)
Ceftriaxone	108 (47.0)	9 (3.9)	113 (49.1)
Ertapenem	204 (88.6)	13 (5.7)	13 (5.7)
Meropenem	224 (97.4)	0 (0.0)	6 (2.6)
Imipenem	224 (97.4)	0 (0.0)	6 (2.6)

230



231

232 **Fig 3. Susceptibility of isolates to the different classes of antibiotics**

233

234 **MDR and Extended-Spectrum Beta-Lactamase (ESBL) producing organisms**

235 Out of the 230 isolates collected, eighty-one (81) isolates exhibited multidrug resistance
236 (35.2%) toward antibiotics used. Among isolates that exhibited MDR, *E. coli* (42.6%) was in
237 the majority while *Serratia marcescens* was the least. Out of 230 isolates screened for ESBL
238 production, 113 (49.1%) were ESBL producers while 117 (50.9%) were non-ESBL
239 producers. Among the ESBL producers, *E. coli* (23.5%) was in the majority while *Serratia*
240 *marcescens* (0.4%) was the least. ESBL producers were found among all the species of
241 isolates collected. (Table 5).

242

243

244

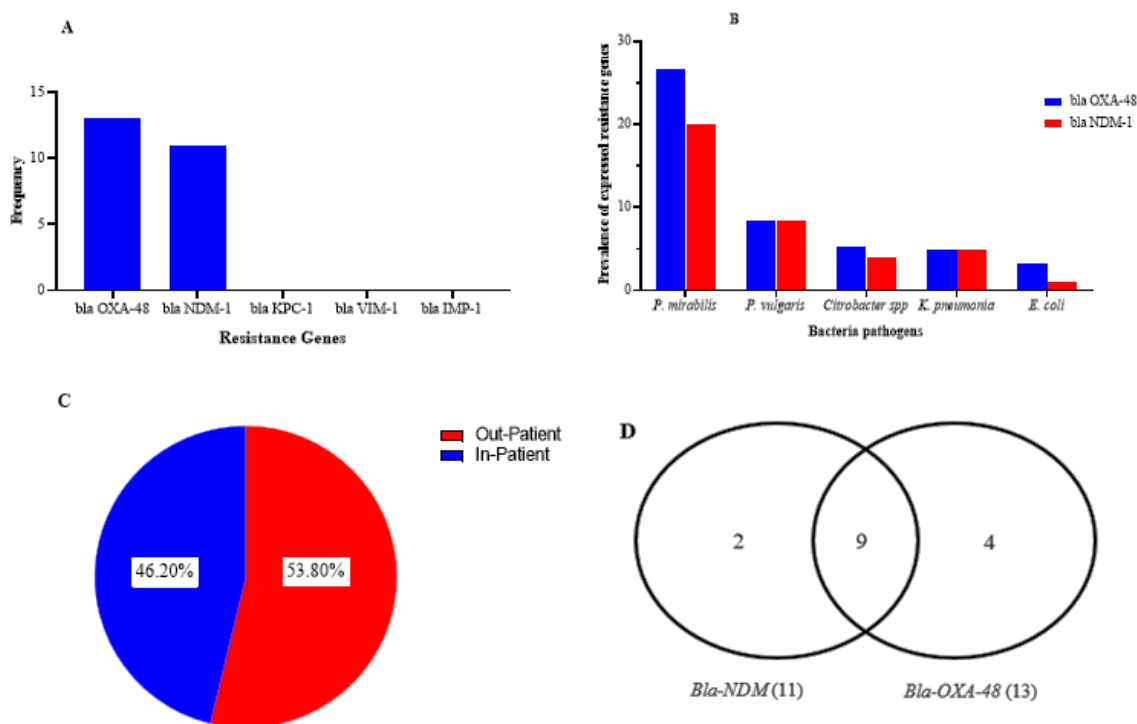
245 **Table 5: MDR and ESBL among isolates**

Bacterial isolates	Number of isolates (n)	MDR n (%)	ESBL n (%)	Non-ESBL n (%)
<i>E.coli</i>	94	40 (42.6)	54 (57.5)	40 (42.6)
<i>Citrobacter</i> spp.	75	25 (33.3)	31 (41.3)	44 (58.7)
<i>Klebsiella pneumoniae</i>	21	5 (23.8)	10 (47.6)	11 (52.4)
<i>Proteus mirabilis</i>	14	4 (28.6)	7 (50.0)	7 (50.0)
<i>Proteus vulgaris</i>	12	3 (25.0)	4 (33.3)	8 (66.7)
<i>Enterobacter</i> spp.	8	2 (25.0)	3 (37.5)	5 (62.5)
<i>Klebsiella oxytoca</i>	5	1 (20.0)	3 (60)	2 (40.0)
<i>Serratia marcescens</i>	1	1 (100)	1 (100)	0 (0.0)
Frequency	230	81 (35.2)	113 (49.1)	117 (50.9)

246

247 **Molecular detection of Carbapenem-resistant genes**

248 Thirteen (13) isolates that showed resistance and 13 isolates that showed intermediate
249 resistance to carbapenem from the Kirby Bauer disc diffusion test were selected for PCR (Fig
250 4, A). None of the isolates selected for PCR expressed blaKPC-1, IMP-1, and VIM-1.
251 BlaOXA-48 and blaNDM-1 were detected among some of the Carbapenem-Resistant
252 Enterobacteriaceae (CRE) isolates (Fig 4, A). Out of the 13 resistant isolates, 11 expressed
253 the blaNDM-1 gene whilst all resistant CRE expressed the blaOXA-48 gene (Fig 4, D). Also,
254 9 out of the 13 resistant isolates expressed both blaOXA-48 and blaNDM-1 resistant genes.
255 *P. mirabilis* (26.7%) was the Enterobacteriaceae which expressed more of the OXA-48 gene
256 whilst *E. coli* (3.2%) was the least among the isolates which expressed the OXA-48 gene (Fig
257 4, B). Also, *P. mirabilis* (20.0%) expressed more of the NDM-1 gene whilst *E. coli* (1.1%)
258 was the isolate with the least expression of the NDM-1 gene (Fig 4, B). The 13 resistant
259 isolates with carbapenem-resistant genes detected were found among both outpatients
260 (53.8%) and in-patients (46.2%). The blaOXA-48 gene was also found among all 13
261 intermediate susceptible isolates (Fig 4, C).



262

263 **Fig 4. The outcome of Carbapenem-resistant genes from the molecular detection**
 264 **showing the presence of Carbapenem-resistant gene (A), distribution of bla OXA-48**
 265 **and bla NDM-1 genes among CRE isolates (B), location of patients with CRE (C) and**
 266 **the distribution of bla OXA-48 and NDM-1 genes (D).**

267

268 Discussion

269 The knowledge of the distribution and surveillance of bacterial infections and their antibiotic
 270 profiles are very critical for the creation of awareness, implementation of infection control
 271 measures, and proper management of such infections. This is essential in developing
 272 countries, especially in sub-Saharan Africa where studies have shown that many health
 273 facilities have poor infection prevention and control (IPC) adherence. This challenge
 274 translates into increased bacterial infections caused by multi-drug resistant bacteria and
 275 subsequently resulted in increased morbidity and mortality [41, 42]. Resistance to β -lactam
 276 antimicrobials among Enterobacteriaceae has been caused largely by the acquisition of
 277 resistant genes that encodes for β -lactamase enzymes [43, 44].

278 From this study, the frequent isolates from clinical specimens were *Escherichia coli* (40.9%),
279 *Citrobacter* spp (32.6%), and *Klebsiella pneumoniae* (9.1%). This finding agrees with the
280 report by Blomberg and colleagues from a study conducted in Tanzania, which indicated that
281 *Escherichia coli*, *Klebsiella oxytoca*, and *Klebsiella pneumoniae* are common bacteria
282 isolated from clinical samples of patients [45]. The findings of this study are consistent with a
283 finding in Ghana which reported *Klebsiella pneumoniae*, *Enterobacter spp.*, and *Escherichia*
284 *coli* as the most isolated pathogenic *Enterobacteriaceae* from clinical specimens [46]. Again,
285 the results of the isolated organisms conform to the findings from a study conducted by Feglo
286 and colleagues in Ghana which reported that the most isolated *Enterobacteriaceae* from
287 clinical specimens were predominantly *E. coli*, *Klebsiella pneumoniae*, and *Klebsiella*
288 *oxytoca* [47]. These commonly isolated bacteria have developed resistance to commonly used
289 antibiotics thereby making it difficult to effectively treat infections caused by such bacteria
290 [45].

291 Findings from this study have shown that *Citrobacter* spp (32.6%) is one of the common
292 emerging uropathogens of urinary tract infections. Out of the 75 isolates of *Citrobacter* spp
293 collected, 58(35.8%) of the total number of *Citrobacter* spp. were isolated from urine
294 specimens. This agrees with the study conducted by Sami and colleagues which reported a
295 prevalence of 3.5% *Citrobacter* spp [48], although this prevalence is lower than that of this
296 study. The increase in the proportion of the *Citrobacter* spp. isolated could be attributed to
297 the difference in geographical location.

298 The Enterobacteriaceae were predominantly isolated from females and mostly from urine
299 specimens. The finding from this study is contrary to the study conducted by Nordmann and
300 colleagues which indicated that there is no preference for sex by Enterobacteriaceae [49].
301 Their finding indicated that both genders are equally infected when the opportunity is created
302 since these organisms are mainly opportunistic. Though the results from this study indicate

303 that both sexes are affected, more females (166, 72.2%) were affected. The rate of
304 antimicrobial drug resistance is increasing rapidly, and the majority of commonly used drugs
305 are significantly becoming ineffective for antimicrobial therapy [49, 50]. Antimicrobial
306 resistance (AMR) is a threat to the effective prevention and treatment of infectious diseases
307 caused by infectious pathogens [1]. Across the globe, antibiotics are the mainstay in the
308 effective control and management of bacterial infections in the clinical setting [21].

309 The susceptibility profile of Enterobacteriaceae isolates in this study showed a low multidrug
310 resistance (32.5%) as compared to 89.5% in a similar study [4]. This study has shown a
311 relatively low resistance toward ampicillin (74.4%), cefuroxime (58.3%), and cefotaxime
312 (54.8%) as compared to the report by Agyepong and colleagues which indicated a high
313 resistance of Gram-negative bacteria towards, ampicillin (94.4%), cefuroxime (79.0%) and
314 cefotaxime (71.3%) [4]. Similarly, the results from this study were contrary to the report in
315 Ghana by Feglo and colleagues which reported isolates resistant to ampicillin (91.7%) and
316 cefuroxime (70.6%) [47]. Resistance of isolates towards cefotaxime (54.8%) was high in this
317 study as compared to 48.1% as reported by Feglo and colleagues [47]. Results from the
318 present study also support the findings by Labi and colleagues which indicated high antibiotic
319 resistance among members of the *Enterobacteriaceae* at the Korle Bu Teaching Hospital to
320 the combination of ampicillin/ gentamicin and ampicillin/ cefotaxime [51]. The resistance
321 among *Enterobacteriaceae* to ampicillin and other commonly used antibiotics is consistent
322 with other studies in sub-Saharan African countries such as Nigeria [52], Rwanda [53],
323 Ethiopia [54], Zimbabwe [55], and Tanzania [56]. The trend of antibiotic resistance rates in
324 the sub-region could be due to high antibiotic selection pressure which comes as a result of
325 the unregulated availability of antibiotics over the counter and cheap substandard antibiotics
326 influx in the sub-Saharan region [14, 57–59].

327 ESBL production by Gram-negative bacteria poses a great challenge in the management of
328 Gram-negative bacterial infections. ESBL production may be associated with MDR. From
329 the study, the prevalence of ESBL producers among *Enterobacteriaceae* was 49.1%
330 (113/230) with the most ESBL-producing organism being *E. coli* (57.5%). The prevalence
331 (49.1%) of the ESBL was lower than that reported by Feglo and colleagues in a study
332 conducted in Ghana which reported a prevalence of 57.8% [47]. Furthermore, findings from
333 this study showed that ESBL prevalence was higher than the ESBL prevalence (37.96 %)
334 reported by Oduro-Mensah and colleagues in Ghana [60]. The difference in the prevalence
335 could be attributed to the difference in geographical location, sample size, and the period of
336 sampling. Also, the result on the ESBL producers indicated that the ESBL harbouring isolates
337 were predominantly from outpatients (76.1%). This is not expected since inpatients are most
338 likely to have nosocomial infections and have been exposed to more antibiotics so are likely
339 to harbour ESBL producers. Inpatients are more at risk than outpatients. The ESBL
340 distribution among outpatients and in-patients is contrary to the report by Khanfar and
341 colleagues from Saudi Arabia which reported ESBL producers to be higher in inpatients
342 (15.4%) than out-patients (4.5%) [61]. In like manner, a study conducted by Ouedraogo and
343 colleagues in Burkina Faso in the sub-Saharan region also reported ESBL prevalence to be
344 higher in hospitalized patients [62]. The high prevalence of ESBL producers among
345 outpatients could be due to the possible self-medication due to the unregulated availability of
346 antibiotics over the counter which may have escalated the transmission of the plasmid-
347 encoded genes within the community. The community may serve as a reservoir for ESBL
348 which may eventually result in a possible outbreak of ESBL-carrying strains of
349 *Enterobacteriaceae* if not contained.

350 The outcome of the detection of the carbapenem-resistant gene via PCR showed the presence
351 of *bla NDM-1* and *bla OXA-48* among different bacteria. In addition, the urine specimens

352 exhibited more carbapenem-resistant genes than the other specimens. Also in this study, the
353 most implicated bacteria were *Proteus* spp, *Citrobacter* spp, and *E. coli*. This result is in
354 agreement with the report by Codjoe and colleagues [37]and Quansah and colleagues [36]
355 which indicated the presence of both *bla NDM-1* and *bla OXA-48* in Ghana. Furthermore, the
356 CRE-resistant isolates which harboured carbapenem-resistant genes were also ESBL-
357 producing bacteria using the phenotypic method of detection. This agrees with the study
358 conducted by Borner and colleagues [63] which affirms that most CREs are ESBL producers.
359 Reports from this study agree with surveillance studies in the western world and developed
360 countries, which indicated that there had been reports of several rates of carbapenemase
361 producers globally. In Europe, Germany had a prevalence of CRE of less than 1 [64]. When
362 compared with prevalence in these developed countries, the prevalence from this study was
363 high. This could be due to the well-regulated use of drugs (antibiotics) in developed countries
364 compared to developing countries. For instance in Asia, China had a reported prevalence of
365 33.3% which was mainly due to *NDM-1*-producing CRE [65]. This prevalence in China is
366 high when compared to the prevalence of CRE in this study. The possible importation of
367 resistance genes has been found in a few countries such as South Africa due to tourism and
368 migration [66].

369 **Conclusion**

370 The study has demonstrated the high prevalence of carbapenem-resistant and high ESBL
371 production among *Enterobacteriaceae*. ESBL production was found among 49.1% of isolates
372 and the prevalence of MDR and CRE were 35.2% and 5.7% respectively. *E. coli*,
373 *Citrobacter* spp., *K. pneumoniae*, and *Klebsiella oxytoca* were the most common causative
374 organisms isolated. The study found high rates of MDR among *E. coli* and *Citrobacter* spp.
375 The *Enterobacteriaceae* were most sensitive towards amikacin, imipenem, and meropenem
376 and most resistant towards ampicillin, cefuroxime, and cefotaxime. These results should

377 guide the empirical treatment of bacterial infections caused by *Enterobacteriaceae* in Cape
378 Coast Teaching Hospital of Ghana. Other recommendations may include PCR to determine
379 the types of ESBL in CCTH and adopting strict infection control measures to prevent the
380 rapid spread of resistance.

381

382 **Acknowledgment**

383 We would like to thank the Cape Coast Teaching Hospital staff, especially the technical staff
384 at the bacteriology unit of the laboratory department.

385 **Funding**

386 This study was funded by the first author.

387 **Availability of data and materials**

388 Data and materials have been provided in the main manuscript. Additional information can be
389 provided by the corresponding author upon request.

390 **Authors' contributions**

391 The study was conceptualized and jointly designed by JS and AOO. AOO supervised the
392 work. JS and IOF collected the data and undertook laboratory analysis. Data analysis was
393 done with assistance from FTA. JS, IOF, and FTA prepared the manuscript with the
394 assistance of AOO. All authors read and approved the final manuscript.

395 **Conflicts of Interest:** The authors declare that they have no conflict of interest.

396 **References**

397 1. World Health Organization. Antimicrobial resistance:: Global report on surveillance;
398 2014.

- 399 2. World Health Organization 2018 Global Antimicrobial Resistance Surveillance System
400 (GLASS) Report Early Implementation 2017–2018 2018.
- 401 3. Singh N, Manchanda V. Control of multidrug-resistant Gram-negative bacteria in low-
402 and middle-income countries-high impact interventions without much resources. *Clin*
403 *Microbiol Infect.* 2017;23:216–8. doi:10.1016/j.cmi.2017.02.034.
- 404 4. Agyepong N, Govinden U, Owusu-Ofori A, Essack SY. Multidrug-resistant gram-
405 negative bacterial infections in a teaching hospital in Ghana. *Antimicrob Resist Infect*
406 *Control.* 2018;7:37. doi:10.1186/s13756-018-0324-2.
- 407 5. Méndez-Vilas A. Microbial pathogens and strategies for combating them: Science,
408 technology and education 2013;4. Badajoz: Formatex Research Center.
- 409 6. Rossolini GM, Mantengoli E, Docquier J-D, Musmanno RA, Coratza G. Epidemiology
410 of infections caused by multiresistant gram-negatives: ESBLs, MBLs, panresistant
411 strains. *J Nat Sci.* 2007;30:332–9.
- 412 7. Nordmann P, Naas T, Poirel L. Global spread of Carbapenemase-producing
413 Enterobacteriaceae. *Emerging Infectious Diseases.* 2011;17:1791–8.
414 doi:10.3201/eid1710.110655.
- 415 8. Paterson DL. Resistance in gram-negative bacteria: Enterobacteriaceae. *American*
416 *Journal of Infection Control.* 2006;34:S20-8; discussion S64-73.
417 doi:10.1016/j.ajic.2006.05.238.
- 418 9. Bitew A, Tsige E. High Prevalence of Multidrug-Resistant and Extended-Spectrum β -
419 Lactamase-Producing Enterobacteriaceae: A Cross-Sectional Study at Arsho Advanced
420 Medical Laboratory, Addis Ababa, Ethiopia. *Journal of Tropical Medicine.*
421 2020;2020:6167234. doi:10.1155/2020/6167234.
- 422 10. Shilpakar A, Ansari M, Rai KR, Rai G, Rai SK. Prevalence of multidrug-resistant and
423 extended-spectrum beta-lactamase producing Gram-negative isolates from clinical

- 424 samples in a tertiary care hospital of Nepal. *Trop Med Health*. 2021;49:23.
425 doi:10.1186/s41182-021-00313-3.
- 426 11. Bradford PA. Extended-spectrum beta-lactamases in the 21st century: characterization,
427 epidemiology, and detection of this important resistance threat. *Clin Microbiol Rev*.
428 2001;14:933-51, table of contents. doi:10.1128/CMR.14.4.933-951.2001.
- 429 12. Ben-Ami R, Rodríguez-Baño J, Arslan H, Pitout JDD, Quentin C, Calbo ES, et al. A
430 multinational survey of risk factors for infection with extended-spectrum beta-lactamase-
431 producing enterobacteriaceae in nonhospitalized patients. *Clin Infect Dis*. 2009;49:682–
432 90. doi:10.1086/604713.
- 433 13. Perez F, van Duin D. Carbapenem-resistant Enterobacteriaceae: a menace to our most
434 vulnerable patients. *Cleveland Clinic Journal of Medicine*. 2013;80:225–33.
435 doi:10.3949/ccjm.80a.12182.
- 436 14. Mushi MF, Mshana SE, Imirzalioglu C, Bwanga F. Carbapenemase genes among
437 multidrug resistant gram negative clinical isolates from a tertiary hospital in Mwanza,
438 Tanzania. *BioMed Research International*. 2014;2014:303104. doi:10.1155/2014/303104.
- 439 15. Tada T, Miyoshi-Akiyama T, Dahal RK, Mishra SK, Ohara H, Shimada K, et al.
440 Dissemination of multidrug-resistant *Klebsiella pneumoniae* clinical isolates with various
441 combinations of carbapenemases (NDM-1 and OXA-72) and 16S rRNA methylases
442 (ArmA, RmtC and RmtF) in Nepal. *International Journal of Antimicrobial Agents*.
443 2013;42:372–4. doi:10.1016/j.ijantimicag.2013.06.014.
- 444 16. Leski TA, Taitt CR, Bangura U, Stockelman MG, Ansumana R, Cooper WH, et al. High
445 prevalence of multidrug resistant Enterobacteriaceae isolated from outpatient urine
446 samples but not the hospital environment in Bo, Sierra Leone. *BMC Infectious Diseases*.
447 2016;16:167. doi:10.1186/s12879-016-1495-1.

- 448 17. Leski T, Vora GJ, Taitt CR. Multidrug resistance determinants from NDM-1-producing
449 *Klebsiella pneumoniae* in the USA. *International Journal of Antimicrobial Agents*.
450 2012;40:282–4. doi:10.1016/j.ijantimicag.2012.05.019.
- 451 18. Papp-Wallace KM, Endimiani A, Taracila MA, Bonomo RA. Carbapenems: past,
452 present, and future. *Antimicrobial Agents and Chemotherapy*. 2011;55:4943–60.
453 doi:10.1128/AAC.00296-11.
- 454 19. Kula B, Djordjevic G, Robinson JL. A systematic review: can one prescribe carbapenems
455 to patients with IgE-mediated allergy to penicillins or cephalosporins? *Clin Infect Dis*.
456 2014;59:1113–22. doi:10.1093/cid/ciu587.
- 457 20. Wilson H, Török ME. Extended-spectrum β -lactamase-producing and carbapenemase-
458 producing Enterobacteriaceae. *Microbial Genomics* 2018. doi:10.1099/mgen.0.000197.
- 459 21. Torok ME, Moran E, Cooke FJ. Oxford Handbook of Infectious Diseases and
460 Microbiology. In: Oxford handbook of infectious diseases and microbiology. 2nd ed.
461 [Oxford]: Oxford University Press; 2016.
- 462 22. P. Oduro. Prevalence of Carbapenemase Producing Enterobacteriaceae in Urinary Tract
463 Infection Patients in Ghana. undefined. 2016.
- 464 23. Ssekatawa K, Byarugaba DK, Wampande E, Ejobi F. A systematic review: the current
465 status of carbapenem resistance in East Africa. *BMC Res Notes*. 2018;11:629.
466 doi:10.1186/s13104-018-3738-2.
- 467 24. Moyo SJ, Aboud S, Kasubi M, Lyamuya EF, Maselle SY. Antimicrobial resistance
468 among producers and non-producers of extended spectrum beta-lactamases in urinary
469 isolates at a tertiary Hospital in Tanzania. *BMC Research Notes*. 2010;3:348.
470 doi:10.1186/1756-0500-3-348.

- 471 25. Warnes SL, Highmore CJ, Keevil CW. Horizontal transfer of antibiotic resistance genes
472 on abiotic touch surfaces: implications for public health. *Am Soc Microbiol.* 2012;3:6–
473 12. *Am Soc Microbiol.* 2012;3:6.
- 474 26. Moyo S, Haldorsen B, Aboud S, Blomberg B, Maselle SY, Sundsfjord A, et al.
475 Identification of VIM-2-producing *Pseudomonas aeruginosa* from Tanzania is associated
476 with sequence types 244 and 640 and the location of blaVIM-2 in a TniC integron.
477 *Antimicrobial Agents and Chemotherapy.* 2015;59:682–5. doi:10.1128/AAC.01436-13.
- 478 27. Poirel L, Revathi G, Bernabeu S, Nordmann P. Detection of NDM-1-producing
479 *Klebsiella pneumoniae* in Kenya. *Antimicrobial Agents and Chemotherapy.*
480 2011;55:934–6. doi:10.1128/AAC.01247-10.
- 481 28. Revathi G, Siu LK, Lu P-L, Huang L-Y. First report of NDM-1-producing *Acinetobacter*
482 *baumannii* in East Africa. *Int J Infect Dis.* 2013;17:e1255-8.
483 doi:10.1016/j.ijid.2013.07.016.
- 484 29. Perovic O, Ismail H, Quan V, Bamford C, Nana T, Chibabhai V, et al. Carbapenem-
485 resistant Enterobacteriaceae in patients with bacteraemia at tertiary hospitals in South
486 Africa, 2015 to 2018. *European Journal of Clinical Microbiology & Infectious Diseases.*
487 2020;39:1287–94. doi:10.1007/s10096-020-03845-4.
- 488 30. Adesanya OA, Igwe HA. Carbapenem-resistant Enterobacteriaceae (CRE) and gram-
489 negative bacterial infections in south-west Nigeria: a retrospective epidemiological
490 surveillance study. *AIMS Public Health.* 2020;7:804–15.
491 doi:10.3934/publichealth.2020062.
- 492 31. Vasaikar SD, Hanise P, Abaver DT. Epidemiology, risk factors and molecular analysis of
493 carbapenem-resistant Enterobacteriaceae (CRE) in Mthatha, Eastern Cape, South Africa.
494 *International Journal of Infectious Diseases.* 2020;101:54. doi:10.1016/j.ijid.2020.09.173.

- 495 32. Thomas TSM, Duse AG. Epidemiology of carbapenem-resistant Enterobacteriaceae
496 (CRE) and comparison of the phenotypic versus genotypic screening tests for the
497 detection of carbapenemases at a tertiary level, academic hospital in Johannesburg, South
498 Africa. Southern African Journal of Infectious Diseases. 2018;1–7.
499 doi:10.1080/23120053.2018.1509184.
- 500 33. Adrian Brink, Jennifer Coetzee, Cornelis Clay, Craig Corcoran, Johan van Greune, J D
501 Deetlefs, et al. The spread of carbapenem-resistant Enterobacteriaceae in South Africa:
502 Risk factors for acquisition and prevention. South African Medical Journal.
503 2012;102:599–601.
- 504 34. Ngbede EO, Adekanmbi F, Poudel A, Kalalah A, Kelly P, Yang Y, et al. Concurrent
505 Resistance to Carbapenem and Colistin Among Enterobacteriaceae Recovered From
506 Human and Animal Sources in Nigeria Is Associated With Multiple Genetic
507 Mechanisms. Front. Microbiol. 2021;12:740348. doi:10.3389/fmicb.2021.740348.
- 508 35. El Wartiti MA, Bahmani F-Z, Elouennass M, Benouda A. Prevalence of carbapenemase-
509 producing enterobacteriaceae in a University Hospital in Rabat, Morocco: A 19-months
510 prospective study. International Arabic Journal of Antimicrobial Agents. 2012;2:1–6.
511 doi:10.3823/718.
- 512 36. Quansah E, Amoah Barnie P, Omane Acheampong D, Obiri-Yeboah D, Odarkor Mills R,
513 Asmah E, et al. Geographical Distribution of β -Lactam Resistance among Klebsiella spp.
514 from Selected Health Facilities in Ghana. Tropical Medicine and Infectious Disease
515 2019. doi:10.3390/tropicalmed4030117.
- 516 37. Codjoe FS, Donkor ES, Smith TJ, Miller K. Phenotypic and Genotypic Characterization
517 of Carbapenem-Resistant Gram-Negative Bacilli Pathogens from Hospitals in Ghana.
518 Microbial Drug Resistance. 2019;25:1449–57. doi:10.1089/mdr.2018.0278.

- 519 38. Cape Coast Teaching Hospital. Cape Coast Teaching Hospital:: 2018 Performance
520 Report. Cape Coast; 2018.
- 521 39. Ghana Statistical Service. 2010 Population & Housing Census:: District analytical report.
522 Cape Coast Municipality. Accra; 2010.
- 523 40. CLSI. Performance Standards for Antimicrobial Susceptibility Testing. 28th ed. Wayne,
524 PA; 2018.
- 525 41. Huttner A, Harbarth S, Carlet J, Cosgrove S, Goossens H, Holmes A, et al. Antimicrobial
526 resistance: a global view from the 2013 World Healthcare-Associated Infections Forum.
527 *Antimicrob Resist Infect Control*. 2013;2:31. doi:10.1186/2047-2994-2-31.
- 528 42. Samuel S, Kayode O, Musa O, Nwigwe G, Aboderin A, Salami T, Taiwo S. Nosocomial
529 infections and the challenges of control in developing countries. *Afr J Clin Exp*
530 *Microbiol*. 2010;11:102–9.
- 531 43. Shaikh S, Fatima J, Shakil S, Rizvi SMD, Kamal MA. Antibiotic resistance and extended
532 spectrum beta-lactamases: Types, epidemiology and treatment. *Saudi Journal of*
533 *Biological Sciences*. 2015;22:90–101. doi:10.1016/j.sjbs.2014.08.002.
- 534 44. Jacoby GA, Munoz-Price LS. The new beta-lactamases. *N Engl J Med*. 2005;352:380–
535 91. doi:10.1056/NEJMra041359.
- 536 45. Blomberg B, Jureen R, Manji KP, Tamim BS, Mwakagile DSM, Urassa WK, et al. High
537 rate of fatal cases of pediatric septicemia caused by gram-negative bacteria with
538 extended-spectrum beta-lactamases in Dar es Salaam, Tanzania. *Journal of Clinical*
539 *Microbiology*. 2005;43:745–9. doi:10.1128/JCM.43.2.745-749.2005.
- 540 46. Codjoe FS. Detection and characterisation of carbapenem-resistant gram-negative bacilli
541 infections in Ghana.
- 542 47. Feglo PK, Gbedema SY, Quay SNA, Adu-Sarkodie Y, Opoku-Okrah C. Occurrence,
543 species distribution and antibiotic resistance of *Proteus* isolates: A case study at the

- 544 Komfo Anokye Teaching Hospital (KATH) in Ghana. *International Journal of Pharma*
545 *Sciences and Research*. 2010;1.
- 546 48. Sami H, Sultan A, Rizvi M, Khan F, Ahmad S, Shukla I, Khan H. *Citrobacter* as a
547 uropathogen, its prevalence and antibiotics susceptibility pattern. *CHRISMED J Health*
548 *Res*. 2017;4:23. doi:10.4103/2348-3334.196037.
- 549 49. Nordmann P, Cuzon G, Naas T. The real threat of *Klebsiella pneumoniae*
550 carbapenemase-producing bacteria. *The Lancet Infectious Diseases*. 2009;9:228–36.
551 doi:10.1016/S1473-3099(09)70054-4.
- 552 50. Donkor ES, Dayie NT, Badoe EV. Vaccination against pneumococcus in West Africa:
553 perspectives and prospects. *Int J Gen Med*. 2013;6:757–64. doi:10.2147/IJGM.S45842.
- 554 51. Labi A-K, Obeng-Nkrumah N, Bjerrum S, Enweronu-Laryea C, Newman MJ. Neonatal
555 bloodstream infections in a Ghanaian Tertiary Hospital: Are the current antibiotic
556 recommendations adequate? *BMC Infect Dis*. 2016;16:598. doi:10.1186/s12879-016-
557 1913-4.
- 558 52. Ogbolu DO, Daini OA, Ogunledun A, Alli AO, Webber MA. High levels of multidrug
559 resistance in clinical isolates of Gram-negative pathogens from Nigeria. *International*
560 *Journal of Antimicrobial Agents*. 2011;37:62–6. doi:10.1016/j.ijantimicag.2010.08.019.
- 561 53. Carroll M, Rangaiahagari A, Musabeyezu E, Singer D, Ogbuagu O. Five-Year
562 Antimicrobial Susceptibility Trends Among Bacterial Isolates from a Tertiary Health-
563 Care Facility in Kigali, Rwanda. *The American Journal of Tropical Medicine and*
564 *Hygiene*. 2016;95:1277–83. doi:10.4269/ajtmh.16-0392.
- 565 54. Muluye D, Wondimeneh Y, Ferede G, Nega T, Adane K, Biadgo B, et al. Bacterial
566 isolates and their antibiotic susceptibility patterns among patients with pus and/or wound
567 discharge at Gondar university hospital. *BMC Research Notes*. 2014;7:619.
568 doi:10.1186/1756-0500-7-619.

- 569 55. Mbanganga J, Dube S, Munyanduki H. Prevalence and drug resistance in bacteria of the
570 urinary tract infections in Bulawayo province, Zimbabwe. *East Afr J Public Health*.
571 2010;7:229–32.
- 572 56. Kumburu HH, Sonda T, Mmbaga BT, Alifrangis M, Lund O, Kibiki G, Aarestrup FM.
573 Patterns of infections, aetiological agents and antimicrobial resistance at a tertiary care
574 hospital in northern Tanzania. *Tropical Medicine and International Health*. 2017;22:454–
575 64. doi:10.1111/tmi.12836.
- 576 57. Mshana SE, Matee M, Rweyemamu M. Antimicrobial resistance in human and animal
577 pathogens in Zambia, Democratic Republic of Congo, Mozambique and Tanzania: an
578 urgent need of a sustainable surveillance system. *Annals of Clinical Microbiology and*
579 *Antimicrobials*. 2013;12:28. doi:10.1186/1476-0711-12-28.
- 580 58. Ocan M, Bwanga F, Bbosa GS, Bagenda D, Waako P, Ogwal-Okeng J, Obua C. Patterns
581 and predictors of self-medication in northern Uganda. *PLoS ONE*. 2014;9:e92323.
582 doi:10.1371/journal.pone.0092323.
- 583 59. Donkor ES, Tetteh-Quarcoo PB, Nartey P, Agyeman IO. Self-medication practices with
584 antibiotics among tertiary level students in Accra, Ghana: a cross-sectional study.
585 *International Journal of Environmental Research and Public Health*. 2012;9:3519–29.
586 doi:10.3390/ijerph9103519.
- 587 60. Oduro-Mensah D, Obeng-Nkrumah N, Bonney EY, Oduro-Mensah E, Twum-Danso K,
588 Osei YD, Sackey ST. Genetic characterization of TEM-type ESBL-associated
589 antibacterial resistance in Enterobacteriaceae in a tertiary hospital in Ghana. *Annals of*
590 *Clinical Microbiology and Antimicrobials*. 2016;15:29. doi:10.1186/s12941-016-0144-2.
- 591 61. Khanfar HS, Bindayna KM, Senok AC, Botta GA. Extended spectrum beta-lactamases
592 (ESBL) in *Escherichia coli* and *Klebsiella pneumoniae*: trends in the hospital and
593 community settings. *J Infect Dev Ctries*. 2009;3:295–9. doi:10.3855/jidc.127.

- 594 62. Ouedraogo A-S, Sanou M, Kissou A, Sanou S, Solaré H, Kaboré F, et al. High
595 prevalence of extended-spectrum β -lactamase producing enterobacteriaceae among
596 clinical isolates in Burkina Faso. *BMC Infectious Diseases*. 2016;16:326.
597 doi:10.1186/s12879-016-1655-3.
- 598 63. Bonnet R. Growing group of extended-spectrum beta-lactamases: the CTX-M enzymes.
599 *Antimicrobial Agents and Chemotherapy*. 2004;48:1–14. doi:10.1128/AAC.48.1.1-
600 14.2004.
- 601 64. Ehrhard I, Karaalp A-K, Hackel T, Höll G, Rodewald N, Reif U, et al.
602 Prävalenzerhebung zum Vorkommen von Carbapenemase-Bildnern in sächsischen
603 Kliniken. [Prevalence of carbapenemase-producing bacteria in hospitals in Saxony,
604 Germany]. *Bundesgesundheitsblatt - Gesundheitsforschung - Gesundheitsschutz*.
605 2014;57:406–13. doi:10.1007/s00103-013-1914-z.
- 606 65. Qin S, Fu Y, Zhang Q, Qi H, Wen JG, Xu H, et al. High incidence and endemic spread of
607 NDM-1-positive Enterobacteriaceae in Henan Province, China. *Antimicrobial Agents
608 and Chemotherapy*. 2014;58:4275–82. doi:10.1128/AAC.02813-13.
- 609 66. Brink A, Coetzee J, Clay C, Corcoran C, van Greune J, Deetlefs JD, et al. The spread of
610 carbapenem-resistant Enterobacteriaceae in South Africa: Risk factors for acquisition and
611 prevention. *South African Medical Journal*. 2012;102:599–601.
612