

1 **Associations of the Triglyceride and Glucose Index with Hypertension Stages, Phenotypes,**  
2 **and Progressions among Middle-aged and Older Chinese**

3

4 Shiyi Shan<sup>1,#</sup>, Shuting Li<sup>1,#</sup>, Keyao Lu<sup>1</sup>, Jin Cao<sup>1</sup>, Weidi Sun<sup>1</sup>, Jiali Zhou<sup>1</sup>, Ziyang Ren<sup>1,2,3</sup>, Siyu  
5 Zhu<sup>1</sup>, Leying Hou<sup>1</sup>, Dingwan Chen<sup>4\*</sup>, Peige Song<sup>1\*</sup>

6 <sup>1</sup> School of Public Health and Women's Hospital, Zhejiang University School of Medicine,  
7 Hangzhou, Zhejiang, China.

8 <sup>2</sup> Institute of Reproductive and Child Health / Key Laboratory of Reproductive Health, National  
9 Health Commission of the People's Republic of China, Peking University, Beijing, China.

10 <sup>3</sup> Department of Epidemiology and Biostatistics, School of Public Health, Peking University,  
11 Beijing, China.

12 <sup>4</sup> School of Public Health, Hangzhou Medical College, Hangzhou, Zhejiang, China.

13

14 <sup>#</sup> The authors contributed equally to the paper.

15 **\* Corresponding Author:**

16 Dingwan Chen,

17 School of Public Health, Hangzhou Medical College, Hangzhou, Zhejiang, China

18 Email: chendw@hmc.edu.cn

19 Peige Song, PhD,

20 School of Public Health and Women's Hospital, Zhejiang University School of Medicine,  
21 Hangzhou, Zhejiang, China

22 Email: peigesong@zju.edu.cn

23

24 **Abstract**

25 ***Background***

26 The triglyceride and glucose (TyG) index has been proposed as a surrogate indicator of insulin  
27 resistance. By far, the associations of the TyG index with hypertension stages, phenotypes, and  
28 progressions remain unclear.

29 ***Methods***

30 The data originated from two waves (2011 and 2015) of the China Health and Retirement  
31 Longitudinal Study (CHARLS). Participants with systolic blood pressure  $\geq 140$  mmHg and/or  
32 diastolic blood pressure  $\geq 90$  mmHg and/or using antihypertensive medications were considered  
33 hypertensive. After excluding those under antihypertensive medications, hypertension stages were  
34 classified as stage 1 and stage 2, and phenotypes were classified as isolated systolic hypertension  
35 (ISH), isolated diastolic hypertension (IDH), and systolic diastolic hypertension (SDH).  
36 Multinomial logistic regression was used to investigate the associations of the TyG index with  
37 hypertension stages and phenotypes, together with their progressions from 2011 to 2015.

38 ***Results***

39 At baseline in CHARLS 2011, a total of 8,209 participants were recruited, among whom 3,169  
40 (38.6%) were hypertension. Compared with individuals with the lowest quartile (Q1) of TyG  
41 index, those with the highest quartile (Q4) were significantly associated with increased risks of  
42 stage 1 hypertension (odds ratio [OR] 1.71, 95% confidence interval [CI] 1.38-2.13), stage 2  
43 hypertension (1.74, 1.27-2.38), ISH (1.66, 1.31-2.11), IDH (2.52, 1.26-5.05), and SDH (1.65,  
44 1.23-2.23). Similar results were found when the TyG index was used as a continuous variable.  
45 From 2011 to 2015, a higher baseline TyG index was revealed to be significantly associated with

46 the progressions from normotension to stage 1 (for Q4 vs Q1: 1.45, 1.05-2.00; for per-unit: 1.39,  
47 1.16-1.65), normotension to ISH (for per-unit: 1.28, 1.04-1.56), and normotension to IDH (for Q4  
48 vs Q1: 3.46, 1.42-8.44; for per-unit: 1.94, 1.27-2.97).

49 ***Conclusions***

50 The TyG index was significantly associated with different hypertension stages, phenotypes and  
51 their progressions. Our findings highlight the importance of the TyG index as a potential surrogate  
52 indicator for early hypertension screening and management.

53 ***Keywords:*** triglyceride and glucose; hypertension; status; stages; phenotypes; Chinese

54

## 55 **Introduction**

56 Hypertension can lead to myocardial infarction, renal failure, and even death if not treated  
57 appropriately<sup>1,2</sup>. According to the World Health Organization report, hypertensive heart disease is  
58 one of the top 10 causes of death in upper-middle-income countries in 2019<sup>3</sup>. It is estimated that  
59 1.28 billion adults aged 30-79 years are affected by hypertension in 2021<sup>4</sup>. In China, hypertension  
60 has evolved into a serious public health concern, as its burden grows in tandem with increased  
61 urbanization, population ageing, and exposure to unhealthy lifestyles<sup>5-10</sup>. A review from Yin et al.  
62 reported that the prevalence of hypertension ranged from 18.0% to 44.7% in China<sup>11</sup>. According to  
63 the *Chinese Guidelines for Prevention and Treatment of Hypertension (2018 Edition)*,  
64 hypertension statuses can be divided into hypertension and normotension, hypertension stages are  
65 classified as stage 1, stage 2, and stage 3 and hypertension phenotypes are classified as isolated  
66 systolic hypertension (ISH), isolated diastolic hypertension (IDH), and systolic diastolic  
67 hypertension (SDH)<sup>12</sup>. Besides, as the course of hypertension progresses, changes in hypertension  
68 statuses or stages or phenotypes will occur, namely hypertension progressions. Investigating the  
69 progressions of hypertension can help to conduct dynamic management and treatment of  
70 hypertension more accurately.

71 The triglyceride and glucose (TyG) index, calculated as  $\ln(\text{fasting triglycerides [TG]} [mg/$   
72  $dl] \times \text{fasting plasma glucose [FPG]} [mg/dl] / 2)$ , has attracted increasing interest due to its  
73 excellent sensitivity (79%) and specificity (86%) for diagnosing insulin resistance (IR)<sup>13-15</sup>.  
74 Previous studies mainly focused on the association between the TyG index and the risk of  
75 hypertension in adults, and suggested that the TyG index was a superior indicator for hypertension  
76 than independent lipid or glycemic markers<sup>16-19</sup>. To the best of our knowledge, limited studies  
77 have explored the associations of the TyG index with various hypertension stages and phenotypes,  
78 let alone their progressions.

79 To fill the research gap, this study aims to evaluate the associations of the TyG index with  
80 hypertension stages and phenotypes. And we also investigate whether the TyG index is associated  
81 with the progressions of hypertension stages and phenotypes.

82

## 83 **Methods**

## 84 **Study population**

85 This study used data from the China Health and Retirement Longitudinal Study (CHARLS), a  
86 nationwide longitudinal survey of people aged 45 years or above<sup>20</sup>. A stratified four-stage  
87 probability sampling strategy was adopted to recruit participants from 150 counties and urban  
88 districts across 28 provinces in China. The baseline survey was conducted in 2011. Respondents  
89 were then followed up with a face-to-face computer-assisted personal interview every two years  
90 (2013, 2015, and 2018, respectively). Detailed study procedures can be found elsewhere<sup>20</sup>.  
91 CHARLS was approved by the Behavioral and Social Research division of the National Institute  
92 on Aging of the National Institute of Health, the Natural Science Foundation of China, the World  
93 Bank, and Peking University.

## 94 **Measurement of blood-based biomarkers**

95 Blood sample collection was done once every two follow-up periods (2011 and 2015). Biomarkers  
96 were measured using overnight fasting blood samples, which were promptly transported to the  
97 local laboratory and stored at 4°C. The blood samples were centrifuged and stored at -20°C before  
98 being transported to the China Center for Disease Prevention and Control (CDC) in Beijing and  
99 frozen at -70°C before analysis<sup>20</sup>. Routine blood tests were performed at township hospitals or the  
100 local CDC. FPG was measured using the enzymatic method. TG, high-density lipoprotein  
101 cholesterol (HDL-C), and low-density lipoprotein cholesterol (LDL-C) were measured using the  
102 enzymatic colour metric method<sup>21</sup>. C-reactive protein (CRP) was measured using the  
103 colourimetric enzyme-linked immunosorbent assay<sup>22</sup>.

104 The TyG index was calculated as  $\ln[TG (mg/dl) \times FPG (mg/dl)/2]$ <sup>13</sup>.

## 105 **Definition of hypertension stages, phenotypes and progressions**

106 Blood pressure (BP) was measured three times in a sitting position at a 45-second interval using  
107 an electronic monitor (Omron model HEM-7200). The average of the three measurements was  
108 calculated to the nearest 0.1 mmHg for analysis. Hypertension statuses were divided into  
109 hypertension and normotension. Hypertension was defined as mean systolic blood pressure (SBP)  
110  $\geq 140$  mmHg and/or mean diastolic blood pressure (DBP)  $\geq 90$  mmHg and/or using  
111 antihypertensive medications<sup>12,20</sup>. Normotension was defined as SBP  $< 140$  mmHg and DBP  $< 90$   
112 mmHg. After excluding those with antihypertensive medications, hypertension stages were further

113 classified as stage 1 hypertension (SBP  $\geq$  140 mmHg and  $<$  159 mmHg and/or DBP  $\geq$  90  
114 mmHg and  $<$  99 mmHg), stage 2 hypertension (SBP  $\geq$  160 mmHg and  $<$  179 mmHg and/or DBP  
115  $\geq$  100 mmHg and  $<$  109 mmHg), and stage 3 hypertension (SBP  $\geq$  180 mmHg and/or DBP  $\geq$   
116 110 mmHg). Given the sample size constraints, we combined stage 2 and stage 3 hypertension  
117 into stage 2 hypertension. Hypertension phenotypes were also classified as ISH (SBP  $\geq$  140  
118 mmHg and DBP  $<$  90 mmHg), IDH (SBP  $<$  140 mmHg and DBP  $\geq$  90 mmHg), and SDH (SBP  
119  $\geq$  140 mmHg and DBP  $\geq$  90 mmHg). More details are shown in **Table S1**. The progressions of  
120 hypertension statuses were classified as maintained normotension, normotension to hypertension,  
121 and maintained hypertension. The progressions of hypertension stages were classified as  
122 maintained normotension, normotension to stage 1, normotension to stage 2, maintained stage 1,  
123 stage 1 to stage 2, and maintained stage 2. The progressions of hypertension phenotypes were  
124 classified as maintained normotension, normotension to ISH, normotension to IDH, normotension  
125 to SDH, maintained ISH, ISH to SDH, and maintained SDH.

#### 126 **Definition of covariates**

127 Anthropometric measurements, including height, weight, and waist circumference (WC), were  
128 made at every 2-year follow-up. Information on age, sex, residence, education, economic status,  
129 tobacco use, and alcohol consumption were collected through questionnaires. The residence was  
130 classified as urban and rural according to the location of the participants. Education was divided  
131 into illiterate, primary school and below, and junior high school or above. Economic status was  
132 evaluated by the natural logarithm of per capita expenditures ( $\ln[\text{PCE}]$ )<sup>23</sup>. The bottom, middle, and  
133 top tertile of  $\ln(\text{PCE})$  indicated poor, middle, and rich economic status, respectively. Tobacco use  
134 was categorized as never smoking and ever smoking (including current smoking). Likewise,  
135 alcohol consumption was classified as never drinking and ever drinking (including current  
136 drinking). Body mass index (BMI) was calculated as (weight [kg] / [height [m]]<sup>2</sup>). The  
137 categories of general obesity included normal (BMI $<$ 24 kg/m<sup>2</sup>), overweight (BMI $\geq$ 24 kg/m<sup>2</sup> and  
138 BMI $<$ 28 kg/m<sup>2</sup>), and obesity (BMI $\geq$ 28 kg/m<sup>2</sup>)<sup>24</sup>.

139 **Statistical analysis**

140 Characteristics of participants at baseline (CHARLS 2011) were described in the form of the  
141 median with interquartile range (IQR) for continuous variables with skewed distribution, and  
142 number with percent (%) for categorical variables. The basic characteristics of participants  
143 between the included participants and excluded participants, between normotension and  
144 hypertension, among different hypertension stages, hypertension phenotypes, and hypertension  
145 progressions were compared using Wilcoxon rank-sum test for continuous variables and the  
146 Chi-square test for categorical variables.

147 The included participants were divided into four groups based on their TyG index levels (quartile  
148 1, quartile 2, quartile 3 and quartile 4). In the data analysis, the TyG index was considered as a  
149 continuous (per-unit) variable and converted to a categorical (quartiles) variable.

150 For the cross-sectional analysis in CHARLS 2011, we used multinomial logistic regression to  
151 investigate the associations of the TyG index with hypertension statuses, stages, and phenotypes,  
152 with normotension as reference. The model was adjusted for age, sex, residence, education,  
153 economic status, tobacco use, alcohol consumption, general obesity, WC, LDL-C, HDL-C, and  
154 CRP. Meanwhile, considering the sex-TyG index interaction, we conducted sex-stratified  
155 multinomial logistic regression as well<sup>25</sup>.

156 For the longitudinal analysis using CHARLS 2011 and 2015, we excluded those who had taken  
157 antihypertensive medications to ensure proper classification of hypertension stages and  
158 phenotypes. Participants interviewed in both waves with complete data on SBP and DBP were  
159 included to further investigate the associations between the TyG index and hypertension  
160 progressions. Those who had non-attenuated hypertension progression patterns including  
161 maintained normotension, normotension to hypertension, and maintained hypertension based on  
162 their hypertension statuses from 2011 to 2015 were included. Subsequently, we selected  
163 participants who had non-attenuated hypertension stages (i.e. maintained normotension,  
164 normotension to stage 1, normotension to stage 2, maintained stage 1, stage 1 to stage 2, and  
165 maintained stage 2) and phenotypes (i.e. maintained normotension, normotension to ISH,  
166 normotension to IDH, normotension to SDH, maintained ISH, ISH to SDH, and maintained SDH)  
167 to explore whether the TyG index was associated with hypertension stages and phenotypes

168 progressions, respectively. All of these analyses were conducted using sex-stratified multinomial  
169 logistic regression with maintained normotension as reference.

170 This study was done following the Strengthening the Reporting of Observational Studies in  
171 Epidemiology (STROBE) guidelines<sup>26</sup>. SAS statistical software (version 9.4; SAS Institute Inc.,  
172 Cary, NC, USA) was used. All analyses were two-sided, and statistical significance was defined as  
173 a *P* value <0.05.

174

## 175 **Results**

### 176 **Selection of study participants**

177 A total of 17,708 participants were recruited at baseline in CHARLS 2011. After excluding those  
178 under the age of 45 (n=289) or with incomplete data on sex, education, economic status, tobacco  
179 use, SBP, DBP, weight, height, and WC (n=6,018), who had incomplete data on TG, FPG, HDL-C,  
180 and LDL-C (n=3,192), finally 8,209 participants were included in analyses (**Figure 1**).  
181 Characteristic comparisons between the included (n=8,209) and excluded (n=9,499) participants  
182 were shown in **Table S2**. **Table S3** showed that of the 8,209 individuals included in CHARLS  
183 2011, 5,040 (61.4%) had normotension, and 3,169 (38.6%) had hypertension. Significant  
184 differences in age, residence, education, economic status, alcohol consumption, general obesity,  
185 WC, LDL-C, HDL-C, CRP, and the TyG index between different hypertension statuses were  
186 observed (all *P* values <0.05).

### 187 **Cross-sectional analyses**

188 For the cross-sectional analysis in CHARLS 2011, we found that when compared with the bottom  
189 quartile of baseline TyG index, a higher quartile of TyG index was significantly associated with  
190 hypertension (odds ratio [OR] 1.17, 95% confidence interval [CI] 1.01-1.35 for quartile 2; OR  
191 1.48, 95% CI 1.28-1.72 for quartile 3; OR 1.90, 95% CI 1.63-2.23 for quartile 4). Similar results  
192 were also found when the TyG index was used as a continuous variable and in the sex-stratified  
193 analyses (**Table S4**).

194 After excluding participants with antihypertensive medications in 2011 (n=1,625), baseline  
195 characteristics of the remaining 6,584 participants by hypertension stages and phenotypes were



196 shown in **Table S5** and **Table S6**, respectively. We also found that compared with people with the  
197 lowest quartile of baseline exposure, those with a higher TyG index had an increased risk of stage  
198 1 hypertension (OR 1.26, 95% CI 1.02-1.55 for quartile 3; OR 1.71, 95% CI 1.38-2.13 for quartile  
199 4) and stage 2 hypertension (OR 1.52, 95% CI 1.13-2.04 for quartile 3; OR 1.74, 95% CI  
200 1.27-2.38 for quartile 4). Furthermore, the TyG index was also positively associated with ISH (OR  
201 1.35, 95% CI 1.08-1.68 for quartile 3; OR 1.66, 95% CI 1.31-2.11 for quartile 4), IDH (OR 2.04,  
202 95% CI 1.03-4.04 for quartile 3; OR 2.52, 95% CI 1.26-5.05 for quartile 4), and SDH (OR 1.65,  
203 95% CI 1.23-2.23 for quartile 4) (**Table 1**). Similarly, a higher TyG index (per-unit) was  
204 significantly associated with the development of stage 1 hypertension (OR 1.43, 95% CI  
205 1.27-1.61), stage 2 hypertension (OR 1.42, 95% CI 1.20-1.67), ISH (OR 1.41, 95% CI 1.24-1.61),  
206 IDH (OR 1.78, 95% CI 1.30-2.45), SDH (OR 1.35, 95% CI 1.15-1.58). However, neither as a  
207 continuous variable nor as a categorical variable of the TyG index, there was no evidence of a  
208 significant association between the TyG index and stage 2 hypertension in males.

#### 209 **Longitudinal analyses**

210 In the longitudinal study using CHARLS 2011 and 2015, participants with incomplete data on  
211 SBP and DBP (n=1,887) or unrelated hypertension progressions (n=893) were further excluded,  
212 leaving 5,429 participants for longitudinal analyses. During the 4-year follow-up, 796 individuals  
213 (14.7%) developed hypertension (**Table S7**). Participants who were in the highest quartile TyG  
214 index were more likely to have the progression of normotension to hypertension (normotension to  
215 hypertension vs maintained normotension: OR 1.48, 95% CI 1.14-1.92) and maintained  
216 hypertension (maintained hypertension vs maintained normotension: OR 2.16, 95% CI 1.74-2.69),  
217 compared with those in the lowest quartile TyG index, as shown in **Table S8**. Associations of the  
218 per-unit TyG index with the progression of normotension to hypertension (OR 1.34, 95% CI  
219 1.16-1.54) and maintained hypertension (OR 1.59, 95% CI 1.41-1.79) were also found when  
220 compared with maintained normotension. However, in females, there was no evidence of  
221 significant associations between the TyG index (per-unit) and normotension to hypertension (OR  
222 1.18, 95% CI 0.96-1.45), compared with maintained normotension (**Table S8**).

223 Furthermore, 4,144 and 4,126 participants were enrolled separately to explore whether the TyG  
224 index was associated with the progressions of hypertension stages and phenotypes. Characteristics

225 of these participants were described in **Table S9** and **Table S10**, respectively. As shown in **Table**  
226 **S11** and **Figure 2**, individuals with a higher baseline TyG index were more likely to have  
227 progressions of normotension to stage 1 (for highest quartile vs lowest quartile: OR 1.45, 95%CI  
228 1.05-2.00; for per-unit: OR 1.39, 95% CI 1.16-1.65), maintained stage 1 (for highest quartile vs  
229 lowest quartile: OR 1.68, 95%CI 1.10-2.56; for per-unit: OR 1.32, 95% CI 1.05-1.67), and  
230 maintained stage 2 (for highest quartile vs lowest quartile: OR 2.62, 95%CI 1.23-5.62; for per-unit:  
231 OR 2.00, 95% CI 1.37-2.91).

232 In addition, we also found significant associations of the TyG index with normotension to ISH  
233 (per-unit: OR 1.28, 95% CI 1.04-1.56), normotension to IDH (for highest quartile vs lowest  
234 quartile: OR 3.46, 95%CI 1.42-8.44; for per-unit: OR 1.94, 95% CI 1.27-2.97), maintained ISH  
235 (for highest quartile vs lowest quartile: OR 1.63, 95%CI 1.03-2.57; for per-unit: OR 1.34, 95%  
236 CI=1.05-1.70), and maintained SDH (for highest quartile vs lowest quartile: OR 2.66, 95%CI  
237 1.36-5.20; for per-unit: OR 1.71, 95% CI 1.22-2.40) as shown in **Table S12** and **Figure 3**.

238

## 239 **Discussion**

240 In this study, we found significant associations between a higher TyG index with increased risks of  
241 every hypertension stage and phenotype. Increased TyG index was also associated with the  
242 progressions of hypertension status (including normotension to hypertension and maintained  
243 hypertension), stages (including normotension to stage 1, maintained stage 1 and maintained stage  
244 2) and phenotypes (including normotension to ISH, normotension to IDH, maintained ISH and  
245 maintained SDH).

246 Our results are consistent with previous findings, which discovered that a higher TyG index is  
247 associated with higher odds of hypertension<sup>17,18,27-29</sup>. Because of the TyG index's high sensitivity  
248 and specificity, it has been proposed as a prominent indicator of IR<sup>14,15</sup>. And the association  
249 between IR and hypertension has been verified in some researches<sup>30-32</sup>. So, several potential  
250 mechanisms via IR may explain our main results. IR may cause hyperinsulinemia and elevate  
251 blood pressure by stimulating the sympathetic nervous system and the adrenergic system<sup>33-35</sup>.  
252 Increased insulin enhances insulin-mediated glucose metabolism in neurons and stimulates the  
253 sympathetic centre in the brain stem, resulting in higher BP<sup>36</sup>. What's more, sympathetic  
254 excitement can generate increased catecholamine levels, which thicken vascular smooth muscle

255 and lead to hypertension<sup>37</sup>. IR may also promote the release of angiotensin II by activating the  
256 renin-angiotensin system (RAS). Angiotensin II can inhibit the phosphatidylinositol 3-kinase  
257 pathway while activating the mitogen-activated protein kinase pathway and finally contribute to  
258 hypertension<sup>35,38,39</sup>. Meanwhile, elevated angiotensin II promotes adrenal aldosterone secretion  
259 and leads to sodium retention, plasma volume expansion, and non-genetic mineralocorticoid  
260 receptor mediation, all of which play an important role in hypertension pathogenesis<sup>40,41</sup>.

261 Our study supplemented previous findings and revealed that the TyG index was associated with  
262 multiple hypertension stages and phenotypes, as well as their progressions. Kaze et al.<sup>42</sup> found a  
263 positive association between the development of IR and BP progressions, which aligns with our  
264 findings. In particular, we found that a higher TyG index was associated with minor hypertension  
265 progressions (i.e. normotension to stage 1, normotension to ISH, and normotension to IDH),  
266 implying that the TyG index could be a potential early screening indicator for hypertension. Given  
267 our sample limitations, we conducted our study in the general population but not in patients with  
268 hypertension, which may pull down the average TyG level and lead to the non-significant  
269 association of the TyG index with normotension to stage 2 and normotension to SDH. Therefore,  
270 the association of the TyG index with hypertension progressions across a broader range warrants  
271 further validation in larger-scale studies. However, in the sex-stratified analysis, we found that a  
272 higher TyG index was significantly associated with stage 2 hypertension in females, but not in  
273 males. The sex-stratified results may be related to the change in female estrogen levels. Research  
274 has shown that endogenous estrogen may play a role in higher insulin sensitivity in females<sup>43</sup>. Our  
275 study included females who were older than 45 years, and most of them were postmenopausal.  
276 Their dropping estrogen level resulted in a decrease of insulin sensitivity, making them susceptible  
277 to IR. Moreover, we found that a higher TyG index was significantly correlated with different  
278 progressions of hypertension in males (normotension to stage 1, normotension to ISH,  
279 normotension to IDH, maintained SDH), but not in females. Differences in the preferred  
280 location of fat storage between men and women may also affect the development of IR<sup>44,45</sup>.

281 Women are more likely to store fat subcutaneously, while men store more abdominal fat with a  
282 higher amount of abdominal visceral fat and ectopic fat<sup>46,47</sup>. Therefore, the level of visceral fat  
283 storage will be higher in men than in women with the same BMI. Visceral fat is strongly  
284 associated with IR, which may lead to sex differences in the progression of hypertension.

285 **Strengths and limitations**

286 The principal strength of this study is that we are the first to explore the associations of the TyG  
287 index with various hypertension stages and phenotypes, as well as their progressions, in a large  
288 Chinese general population. Since the TyG index is a recently proposed and high-profile indicator,  
289 our findings assist to accelerate the clinical application of the TyG index and facilitate early  
290 hypertension screening. Moreover, we used data from the CHARLS, which has broad geographic  
291 coverage, rigorous implementation procedures, and nationwide samples to warrant the  
292 generalizability of our conclusions.

293 Despite these strengths, several limitations need to be recognized. First, the TyG index was only  
294 assessed in 2011, and its changes during follow-up were not taken into account. Second, there  
295 were significant characteristic differences between included and excluded participants (**Table S2**),  
296 which may lead to selection bias and affect national representation. Third, since all participants  
297 were Chinese adults aged 45 and over, our findings cannot be directly extrapolated to younger  
298 groups. Fourth, we merged stage 2 and stage 3 hypertension into stage 2 hypertension due to the  
299 limited sample size, which may result in misjudging the association between the TyG index and  
300 stage 2 hypertension, or the progressions. Moreover, the participants in our study are the general  
301 population but not the patients with hypertension, which may pull down the average TyG level and  
302 lead to the non-significant association of the TyG index with normotension to stage 2 and  
303 normotension to SDH. More high-quality epidemiologic investigations and primary prevention  
304 studies are needed to explore the role of TyG index in the progression of hypertension. Finally,  
305 even though the model we used was adjusted for multiple covariates, certain possible confounding  
306 factors, such as exercise habits and family history of hypertension, were not included.

307 **Conclusion**

308 In conclusion, our study revealed that a higher TyG index was significantly associated with  
309 hypertension stages, phenotypes, and their progressions. Given the rising prevalence of  
310 hypertension and diabetes in China, the TyG index may serve as a useful indicator for the early  
311 prevention of hypertension.

312 **Ethics statement**

313 The study protocol and data collection were approved by the Ethical Review Committee of Peking  
314 University. All respondents were informed and consented to the study protocol before data

315 collection.

316 **Data availability statement**

317 The dataset presented in this study can be found in online repositories. Requests to access the  
318 datasets should be directed to <http://charls.pku.edu.cn/>.

319 **Conflict of interest**

320 The authors declare that the research was conducted in the absence of any commercial or financial  
321 relationships that could be construed as a potential conflict of interest.

322 **Funding**

323 This study has no funding.

324 **Authors' contributions**

325 PS and DC designed the study. ZR and SS managed and analyzed the data. SS and KL prepared  
326 the first draft. PS, DC, SS, SL, KL, JC, WS, JZ, SZ and LH critically revised the manuscript. All  
327 authors were involved in revising the paper and gave final approval of the submitted versions.

328 **Acknowledgements**

329 All authors thank the China Health and Retirement Longitudinal Study (CHARLS) team for  
330 providing data and instructions for using the dataset.

331

332 **Figure 1.** Flow chart of study participants

333 Notes: SBP, systolic blood pressure. DBP, diastolic blood pressure. WC, waist circumference. TG,

334 fasting triglycerides. FPG, fasting plasma glucose. LDL-C, low-density lipoprotein cholesterol.

335 HDL-C, high-density lipoprotein cholesterol. ISH, isolated systolic hypertension. IDH, isolated

336 diastolic hypertension. SDH, systolic diastolic hypertension. Unrelated hypertension progressions:

337 hypertension to normotension. Unrelated progressions of hypertension stages: stage 2 to stage 1,

338 stage 2 to normotension, stage 1 to normotension. Unrelated progressions of hypertension

339 phenotypes: ISH to normotension, ISH to IDH, IDH to normotension, IDH to ISH, SDH to

340 normotension, SDH to ISH, SDH to IDH.

341 **Figure 2.** Odds ratios and 95% confidence interval of the progressions of hypertension stages by

342 the TyG index

343 **Figure3.** Odds ratios and 95% confidence interval of the progressions of hypertension phenotypes

344 by the TyG index

345 Notes: ISH, isolated systolic hypertension. IDH, isolated diastolic hypertension. SDH, systolic

346 diastolic hypertension.

347

348

349 **Reference**

- 350 1. James PA, Oparil S, Carter BL, et al. 2014 evidence-based guideline for the  
351 management of high blood pressure in adults: report from the panel members  
352 appointed to the Eighth Joint National Committee (JNC 8). *Jama*.  
353 2014;311(5):507-520.
- 354 2. Price RS, Kasner SE. Hypertension and hypertensive encephalopathy. *Handbook of*  
355 *clinical neurology*. 2014;119:161-167.
- 356 3. WHO. The top 10 causes of death. December 9, 2020;  
357 <https://www.who.int/news-room/fact-sheets/detail/the-top-10-causes-of-death>.
- 358 4. Hypertension. 25 August 2021;  
359 <https://www.who.int/news-room/fact-sheets/detail/hypertension>.
- 360 5. Global, regional, and national age-sex specific mortality for 264 causes of death,  
361 1980-2016: a systematic analysis for the Global Burden of Disease Study 2016.  
362 *Lancet (London, England)*. 2017;390(10100):1151-1210.
- 363 6. Yang G, Wang Y, Zeng Y, et al. Rapid health transition in China, 1990-2010: findings  
364 from the Global Burden of Disease Study 2010. *Lancet (London, England)*.  
365 2013;381(9882):1987-2015.
- 366 7. Global, regional, and national under-5 mortality, adult mortality, age-specific mortality,  
367 and life expectancy, 1970-2016: a systematic analysis for the Global Burden of  
368 Disease Study 2016. *Lancet (London, England)*. 2017;390(10100):1084-1150.
- 369 8. Mills KT, Bundy JD, Kelly TN, et al. Global Disparities of Hypertension Prevalence and  
370 Control: A Systematic Analysis of Population-Based Studies From 90 Countries.

- 371            *Circulation*. 2016;134(6):441-450.
- 372    9.        Wang Z, Chen Z, Zhang L, et al. Status of Hypertension in China: Results From the  
373            China Hypertension Survey, 2012-2015. *Circulation*. 2018;137(22):2344-2356.
- 374    10.        Pencina M, Pencina K, Lloyd-Jones D, Catapano A, Thanassoulis G, Sniderman AJC.  
375            The Expected 30-Year Benefits of Early Versus Delayed Primary Prevention of  
376            Cardiovascular Disease by Lipid Lowering. *Circulation*. 2020;142(9):827-837.
- 377    11.        Yin R, Yin L, Li L, et al. Hypertension in China: burdens, guidelines and policy  
378            responses: a state-of-the-art review. *J Hum Hypertens*. 2022 Feb;36(32):126-134.
- 379    12.        2018 Chinese Guidelines for Prevention and Treatment of Hypertension-A report of  
380            the Revision Committee of Chinese Guidelines for Prevention and Treatment of  
381            Hypertension. *Journal of geriatric cardiology : JGC*. 2019;16(3):182-241.
- 382    13.        Navarro-González D, Sánchez-Íñigo L, Pastrana-Delgado J, Fernández-Montero A,  
383            Martínez JA. Triglyceride-glucose index (TyG index) in comparison with fasting  
384            plasma glucose improved diabetes prediction in patients with normal fasting glucose:  
385            The Vascular-Metabolic CUN cohort. *Preventive medicine*. 2016;86:99-105.
- 386    14.        Sánchez-García A, Rodríguez-Gutiérrez R, Mancillas-Adame L, et al. Diagnostic  
387            Accuracy of the Triglyceride and Glucose Index for Insulin Resistance: A Systematic  
388            Review. *International journal of endocrinology*. 2020;2020:4678526.
- 389    15.        Unger G, Benozzi SF, Perruzza F, Pennacchiotti GL. Triglycerides and glucose index:  
390            a useful indicator of insulin resistance. *Endocrinología y nutrición : organo de la*  
391            *Sociedad Española de Endocrinología y Nutrición*. 2014;61(10):533-540.
- 392    16.        Soleimani M. Insulin resistance and hypertension: new insights. *Kidney international*.



- 393 2015;87(3):497-499.
- 394 17. Zheng R, Mao Y. Triglyceride and glucose (TyG) index as a predictor of incident  
395 hypertension: a 9-year longitudinal population-based study. *Lipids in health and*  
396 *disease*. 2017;16(1):175.
- 397 18. Wang Y, Yang W, Jiang X. Association Between Triglyceride-Glucose Index and  
398 Hypertension: A Meta-Analysis. *Frontiers in cardiovascular medicine*. 2021;8:644035.
- 399 19. Zhu B, Wang J, Chen K, et al. A high triglyceride glucose index is more closely  
400 associated with hypertension than lipid or glycemic parameters in elderly individuals: a  
401 cross-sectional survey from the Reaction Study. *Cardiovascular diabetology*.  
402 2020;19(1):112.
- 403 20. Zhao Y, Hu Y, Smith JP, Strauss J, Yang G. Cohort profile: the China Health and  
404 Retirement Longitudinal Study (CHARLS). *International journal of epidemiology*.  
405 2014;43(1):61-68.
- 406 21. Wu Z, Zhou D, Liu Y, et al. Association of TyG index and TG/HDL-C ratio with arterial  
407 stiffness progression in a non-normotensive population. *Cardiovascular diabetology*.  
408 2021;20(1):134.
- 409 22. Carbone F, Elia E, Casula M, et al. Baseline hs-CRP predicts hypertension remission  
410 in metabolic syndrome. *European journal of clinical investigation*. 2019;49(8):e13128.
- 411 23. Song P, Wang H, Xia W, Chang X, Wang M, An L. Prevalence and correlates of  
412 hyperuricemia in the middle-aged and older adults in China. *Scientific reports*.  
413 2018;8(1):4314.
- 414 24. Weir CB, Jan A. BMI Classification Percentile And Cut Off Points. BTI - StatPearls.

- 415 25. Li M, Zhan A, Huang X, et al. Positive association between triglyceride glucose index  
416 and arterial stiffness in hypertensive patients: the China H-type Hypertension Registry  
417 Study. *Cardiovascular diabetology*. 2020;19(1):139.
- 418 26. von Elm E, Altman DG, Egger M, Pocock SJ, Gøtzsche PC, Vandenbroucke JP.  
419 Strengthening the Reporting of Observational Studies in Epidemiology (STROBE)  
420 statement: guidelines for reporting observational studies. *BMJ (Clinical research ed)*.  
421 2007;335(7624):806-808.
- 422 27. Wang K, He G, Zhang Y, et al. Association of triglyceride-glucose index and its  
423 interaction with obesity on hypertension risk in Chinese: a population-based study.  
424 *Journal of human hypertension*. 2021;35(3):232-239.
- 425 28. Zhang F, Zhang Y, Guo Z, et al. The association of triglyceride and glucose index, and  
426 triglyceride to high-density lipoprotein cholesterol ratio with prehypertension and  
427 hypertension in normoglycemic subjects: A large cross-sectional population study.  
428 *Journal of clinical hypertension (Greenwich, Conn)*. 2021;23(7):1405-1412.
- 429 29. Xie Y, Guo R, Li Z, et al. Temporal relationship between body mass index and  
430 triglyceride-glucose index and its impact on the incident of hypertension. *Nutrition,  
431 metabolism, and cardiovascular diseases : NMCD*. 2019;29(11):1220-1229.
- 432 30. Wang F, Han L, Hu D. Fasting insulin, insulin resistance and risk of hypertension in  
433 the general population: A meta-analysis. *Clinica chimica acta; international journal of  
434 clinical chemistry*. 2017;464:57-63.
- 435 31. Slater EE. Insulin resistance and hypertension. *Hypertension (Dallas, Tex : 1979)*.  
436 1991;18(3 Suppl):1108-114.

- 437 32. Liu XZ, Fan J, Pan SJ. METS-IR, a novel simple insulin resistance indexes, is  
438 associated with hypertension in normal-weight Chinese adults. *Journal of clinical*  
439 *hypertension (Greenwich, Conn)*. 2019;21(8):1075-1081.
- 440 33. Minh HV, Tien HA, Sinh CT, et al. Assessment of preferred methods to measure  
441 insulin resistance in Asian patients with hypertension. *Journal of clinical hypertension*  
442 *(Greenwich, Conn)*. 2021;23(3):529-537.
- 443 34. Fan J, Liu LY, Liu XZ. Hyperinsulinemia negatively affects the association between  
444 insulin resistance and blood pressure. *Nutrition, metabolism, and cardiovascular*  
445 *diseases : NMCD*. 2021;31(12):3359-3366.
- 446 35. McGill JB, Haffner S, Rees TJ, Sowers JR, Tershakovec AM, Weber M. Progress and  
447 controversies: treating obesity and insulin resistance in the context of hypertension.  
448 *Journal of clinical hypertension (Greenwich, Conn)*. 2009;11(1):36-41.
- 449 36. Landsberg L. Insulin-mediated sympathetic stimulation: role in the pathogenesis of  
450 obesity-related hypertension (or, how insulin affects blood pressure, and why). *Journal*  
451 *of hypertension*. 2001;19(3 Pt 2):523-528.
- 452 37. Takagi M, Tanaka Y, Yamasaki Y, et al. Responsiveness of insulin-induced cardiac  
453 sympathetic nerve activation associates with blood pressure regulation in diabetics.  
454 *American journal of physiology Endocrinology and metabolism*.  
455 2003;284(5):E1022-1026.
- 456 38. Fonseca VA. Insulin resistance, diabetes, hypertension, and renin-angiotensin system  
457 inhibition: reducing risk for cardiovascular disease. *Journal of clinical hypertension*  
458 *(Greenwich, Conn)*. 2006;8(10):713-720; quiz 721-712.

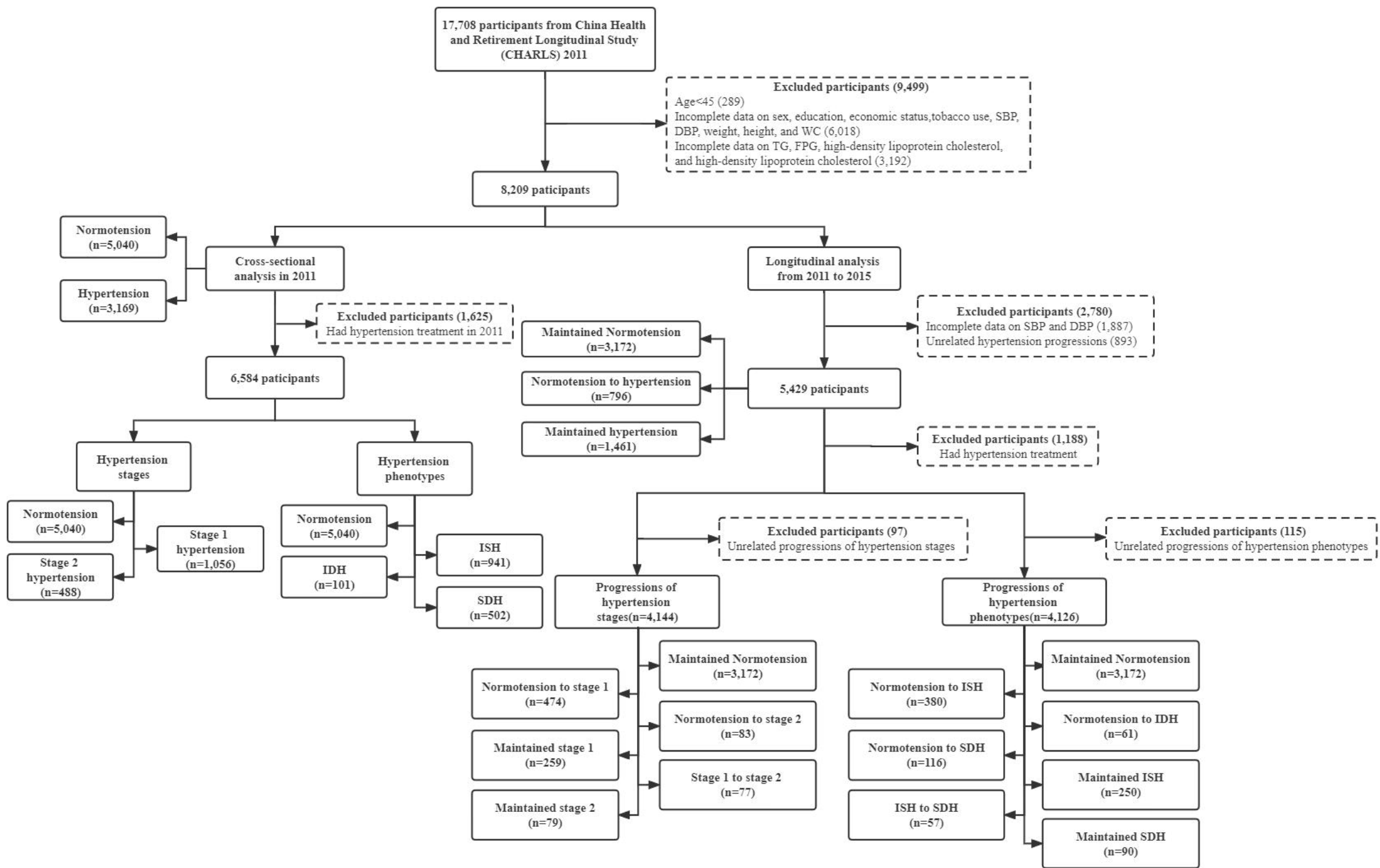
- 459 39. Prasad A, Quyyumi AA. Renin-angiotensin system and angiotensin receptor blockers  
460 in the metabolic syndrome. *Circulation*. 2004;110(11):1507-1512.
- 461 40. Hall JE, do Carmo JM, da Silva AA, Wang Z, Hall ME. Obesity, kidney dysfunction and  
462 hypertension: mechanistic links. *Nature reviews Nephrology*. 2019;15(6):367-385.
- 463 41. Manrique C, Lastra G, Gardner M, Sowers JR. The renin angiotensin aldosterone  
464 system in hypertension: roles of insulin resistance and oxidative stress. *The Medical  
465 clinics of North America*. 2009;93(3):569-582.
- 466 42. Kaze AD, Musani SK, Correa A, et al. Insulin resistance, metabolic syndrome, and  
467 blood pressure progression among Blacks: the Jackson Heart Study. *Journal of  
468 hypertension*. 2021;39(11):2200-2209.
- 469 43. Tiano JP, Mauvais-Jarvis F. Importance of oestrogen receptors to preserve functional  
470  $\beta$ -cell mass in diabetes. *Nature reviews Endocrinology*. 2012;8(6):342-351.
- 471 44. Geer EB, Shen W. Gender differences in insulin resistance, body composition, and  
472 energy balance. *Gender medicine*. 2009;6 Suppl 1(Suppl 1):60-75.
- 473 45. Sattar N, Gill JM. Type 2 diabetes as a disease of ectopic fat? *BMC medicine*.  
474 2014;12:123.
- 475 46. Power ML, Schulkin J. Sex differences in fat storage, fat metabolism, and the health  
476 risks from obesity: possible evolutionary origins. *The British journal of nutrition*.  
477 2008;99(5):931-940.
- 478 47. Lemieux S, Prud'homme D, Bouchard C, Tremblay A, Després JP. Sex differences in  
479 the relation of visceral adipose tissue accumulation to total body fatness. *The  
480 American journal of clinical nutrition*. 1993;58(4):463-467.



**Table 1.** Association of the TyG index with hypertension stages and hypertension phenotypes in 2011

	<b>Stage 1 hypertension</b>	<b>Stage 2 hypertension</b>	<b>ISH</b>	<b>IDH</b>	<b>SDH</b>
	<b>Adjusted OR (95% CI)</b>		<b>Adjusted OR (95% CI)</b>		
<b>Overall (N=6,584)</b>					
Quartile 1	Reference	Reference	Reference	Reference	Reference
Quartile 2	1.10 (0.89-1.35)	1.14 (0.85-1.54)	1.10 (0.88-1.37)	1.50 (0.75-3.00)	1.07 (0.80-1.42)
Quartile 3	1.26 (1.02-1.55)	1.52 (1.13-2.04)	1.35 (1.08-1.68)	2.04 (1.03-4.04)	1.20 (0.90-1.62)
Quartile 4	1.71 (1.38-2.13)	1.74 (1.27-2.38)	1.66 (1.31-2.11)	2.52 (1.26-5.05)	1.65 (1.23-2.23)
TyG-continuous	1.43 (1.27-1.61)	1.42 (1.20-1.67)	1.41 (1.24-1.61)	1.78 (1.30-2.45)	1.35 (1.15-1.58)
<b>Male (N=3,154)</b>					
Quartile 1	Reference	Reference	Reference	Reference	Reference
Quartile 2	1.08 (0.81-1.45)	1.05 (0.70-1.58)	1.06 (0.78-1.46)	1.02 (0.41-2.55)	1.11 (0.74-1.64)
Quartile 3	1.15 (0.85-1.55)	1.24 (0.82-1.88)	1.11 (0.80-1.54)	1.16 (0.47-2.87)	1.34 (0.91-1.99)
Quartile 4	1.74 (1.28-2.36)	1.33 (0.85-2.09)	1.65 (1.17-2.32)	1.66 (0.68-4.04)	1.62 (1.07-2.44)
TyG-continuous	1.42 (1.20-1.67)	1.25 (0.98-1.60)	1.36 (1.12-1.65)	1.65 (1.08-2.50)	1.31 (1.06-1.62)
<b>Female (N=3,430)</b>					
Quartile 1	Reference	Reference	Reference	Reference	Reference
Quartile 2	1.17 (0.87-1.57)	1.21 (0.79-1.87)	1.22 (0.90-1.67)	3.21 (1.01-10.20)	0.91 (0.58-1.41)
Quartile 3	1.33 (0.98-1.79)	1.74 (1.14-2.65)	1.47 (1.08-2.01)	4.40 (1.38-14.05)	1.13 (0.73-1.76)
Quartile 4	1.79 (1.30-2.46)	2.03 (1.30-3.19)	1.81 (1.29-2.54)	3.97 (1.17-13.43)	1.74 (1.11-2.72)
TyG-continuous	1.44 (1.21-1.71)	1.45 (1.15-1.84)	1.43 (1.19-1.72)	1.73 (1.04-2.87)	1.40 (1.10-1.78)

Note: TyG, triglyceride-glucose. ISH, isolated systolic hypertension. IDH, isolated diastolic hypertension. SDH, systolic-diastolic hypertension. OR, odds ratio. CI, confidence interval. OR values were adjusted for age, sex, residence, education, economic status, tobacco use, alcohol consumption, general obesity, waist circumference, low-density lipoprotein cholesterol, high-density lipoprotein cholesterol, and C-reactive protein.



**Maintained Normotension**

**Normotension to Stage 1**

**Normotension to Stage 2**

**Maintained Stage 1**

**Stage 1 to Stage 2**

**Maintained Stage 2**

**Maintained Normotension**

**Normotension to Stage 1**

**Normotension to Stage 2**

**Maintained Stage 1**

**Stage 1 to Stage 2**

**Maintained Stage 2**

**Maintained Normotension**

**Normotension to Stage 1**

**Normotension to Stage 2**

**Maintained Stage 1**

**Stage 1 to Stage 2**

**Maintained Stage 2**

Reference

Reference

Reference

● Overall (*N*=4144)

■ Male (*N*=1946)

▲ Female (*N*=2198)



Odds ratio, 95% confidence interval



**Maintained Normotension**

Reference

**Normotension to ISH**

medRxiv preprint doi: <https://doi.org/10.1101/2022.08.18.22278942>; this version posted August 19, 2022. The copyright holder for this preprint (which was not certified by peer review) is the author/funder, who has granted medRxiv a license to display the preprint in perpetuity. All rights reserved. No reuse allowed without permission.

**Normotension to IDH**

**Maintained ISH**

**ISH to SDH**

**Maintained SDH**

● Overall (N=4126)

■ Male (N=1934)

▲ Female (N=2192)

**Maintained Normotension**

Reference

**Normotension to ISH**

**Normotension to IDH**

**Normotension to SDH**

**Maintained ISH**

**ISH to SDH**

**Maintained SDH**

**Maintained Normotension**

Reference

**Normotension to ISH**

**Normotension to IDH**

**Normotension to SDH**

**Maintained ISH**

**ISH to SDH**

**Maintained SDH**

0 2 4 6

Odds ratio, 95% confidence interval

