

# Self-monitoring of blood glucose levels among pregnant individuals with gestational diabetes: a systematic review and meta-analysis

1 **Ping Teresa Yeh<sup>1</sup>, Caitlin Elizabeth Kennedy<sup>1</sup>, Dong Keun Rhee<sup>1</sup>, Chloe Zera<sup>2</sup>, Özge Tunçalp<sup>3</sup>,**  
2 **Briana Lucido<sup>3</sup>, Rodolfo Gomez Ponce de Leon<sup>4</sup>, Manjulaa Narasimhan<sup>3\*</sup>**

3 <sup>1</sup>Department of International Health, Johns Hopkins Bloomberg School of Public Health, Baltimore,  
4 Maryland, USA.

5 <sup>2</sup>Department of Obstetrics and Gynecology, Division of Maternal Fetal Medicine, Beth Israel  
6 Deaconess Medical Center, Harvard Medical School.

7 <sup>3</sup>Department of Sexual and Reproductive Health and Research, World Health Organization, includes  
8 the UNDP/UNFPA/UNICEF/WHO/World Bank Special Programme of Research, Development and  
9 Research Training in Human Reproduction – HRP, Geneva, Switzerland.

10 <sup>4</sup>Latin American Center of Perinatology, Women and Reproductive Health PAHO/WHO,  
11 Montevideo, Uruguay.

## 12 \* Correspondence:

13 Manjulaa Narasimhan

14 Department of Sexual and Reproductive Health and Research

15 UNDP/UNFPA/UNICEF/WHO/World Bank Special Programme

16 World Health Organization

17 20 Avenue Appia, 1211 Geneva 27, Switzerland

18 [narasimhanm@who.int](mailto:narasimhanm@who.int)

19 **Keywords:** self-monitoring<sub>1</sub>, blood glucose<sub>2</sub>, diabetes<sub>3</sub>, pregnancy<sub>4</sub>, pre-eclampsia<sub>5</sub>, self-care<sub>6</sub>.

## 20 1 Abstract

21 **Introduction:** The World Health Organization (WHO) recommends treatment and management of  
22 gestational diabetes (GD) through lifestyle changes, including diet and exercise, and self-monitoring  
23 blood glucose (SMBG) to inform timely treatment decisions. To expand the evidence base of WHO's  
24 guideline on self-care interventions, we conducted a systematic review of SMBG among pregnant  
25 individuals with GD.

26 **Setting:** We searched for publications through November 2020 comparing SMBG with clinic-based  
27 monitoring during antenatal care (ANC) globally.

28 **Primary and secondary outcome measures:** We extracted data using standardized forms and  
29 summarized maternal and newborn findings using random effects meta-analysis in GRADE evidence  
30 tables. We also reviewed studies on values, preferences, and costs of SMBG.

31 **Results:** We identified 6 studies examining SMBG compared to routine ANC care, 5 studies on  
32 values and preferences, and 1 study on costs. Nearly all were conducted in Europe and North  
33 America. Moderate-certainty evidence from 3 randomized controlled trials (RCTs) showed that  
34 SMBG as part of a package of interventions for GD treatment was associated with lower rates of

35 preeclampsia, lower mean birthweight, fewer infants born large for gestational age, fewer infants  
36 with macrosomia, and lower rates of shoulder dystocia. There was no difference between groups in  
37 self-efficacy, preterm birth, C-section, mental health, stillbirth, or respiratory distress. No studies  
38 measured placenta previa, long-term complications, device-related issues, or social harms. Most end-  
39 users supported SMBG, motivated by health benefits, convenience, ease of use, and increased  
40 confidence. Health workers acknowledged SMBG's convenience but were wary of technical  
41 problems. One study found SMBG by pregnant individuals with insulin-dependent diabetes was  
42 associated with decreased costs for hospital admission and length of stay.

43 **Conclusion:** SMBG during pregnancy is feasible and acceptable, and when combined in a package  
44 of GD interventions, is generally associated with improved maternal and neonatal health outcomes.  
45 However, research from resource-limited settings is needed.

46 **Systematic review registration number:** PROSPERO CRD42021233862

## 47 **2 Manuscript**

### 48 **2.1 Introduction**

49 Gestational diabetes (GD) is defined as glucose intolerance resulting in clinical hyperglycemia with  
50 onset or first recognition during pregnancy.[1, 2] Hyperglycemia during pregnancy is associated with  
51 adverse short-term and long-term maternal and newborn health outcomes. Self-management of GD  
52 through lifestyle modification, including diet and exercise, is considered first-line treatment by health  
53 workers and several professional associations.[3-5] One component of GD self-management is self-  
54 monitoring of blood glucose (SMBG) levels, which is used clinically to monitor the effectiveness of  
55 lifestyle changes, guide intensification of treatment, and inform ANC.

56 This systematic review sought to examine the evidence for SMBG compared with monitoring of  
57 blood glucose levels by health workers within the ANC (clinic) setting. We conducted this systematic  
58 review in the context of expanding the evidence base of the World Health Organization (WHO)  
59 guideline on self-care interventions for health,[6] which includes several recommendations on self-  
60 care interventions during pregnancy, childbirth and post-natal care.[7, 8] WHO's 2020 "Package of  
61 Essential Noncommunicable Disease Interventions for Primary Health Care" recommends 'non-  
62 pharmacological' treatment for management of type 2 diabetes.[9] This could be considered self-  
63 care, though it does not specify how/by whom diabetes should be diagnosed or monitored.  
64 Furthermore, self-monitoring may be a feasible approach when health services are disrupted such as  
65 in emergency or humanitarian settings. In the context of maintaining essential health services during  
66 the COVID-19 pandemic, WHO recommends creation of self-management plans for diabetes, if  
67 appropriate, supported by health workers.[10]

### 68 **2.2 Methods**

69 This review addressed the following overarching question: Should SMBG among pregnant women  
70 and other pregnant people<sup>1</sup> with GD be made available in addition to clinic check-ups? Per the WHO

---

<sup>1</sup> While a majority of persons who are or can get pregnant are cisgender women, who were born and identify as female, transgender men and other gender diverse people may have the reproductive capacity to get pregnant. Therefore, the WHO guideline on self-care interventions which references the findings of this review uses language that is inclusive of all these experiences ("pregnant individuals"). In this manuscript, we use the term

71 guideline development process which incorporates multiple aspects of evidence,[11] we reviewed the  
72 extant literature in three areas relevant to this question: effectiveness of the intervention (what is the  
73 impact on the outcomes of interest when comparing SMBG to glucose monitoring at clinic check-ups  
74 for pregnant individuals with GD?), values and preferences of end users and health workers (what do  
75 patients and health workers think of SMBG?), and cost information (what are the costs (to the patient  
76 and to the health system) of SMBG?).

77 We followed Preferred Reporting Items for Systematic review and Meta-Analysis (PRISMA)  
78 guidelines,[12] and we registered the protocol on the International Prospective Register of Systematic  
79 Reviews (PROSPERO registration number CRD42021233862). Ethical approval was not required  
80 for this systematic review, since all data came from published articles.

## 81 **Effectiveness review**

82 The effectiveness review was designed according to the PICO format as follows, through  
83 consultation with the WHO staff and expert group as part of the WHO guideline development  
84 process,[11] focusing on the aspect of self-monitoring versus clinic monitoring:

85 **Population:** Pregnant women and other pregnant people diagnosed with GD

86 **Intervention:** SMBG (either by the pregnant person or by another layperson, such as a family  
87 member) – Note: Although many products, devices, and mobile applications can be used to monitor  
88 blood glucose levels, we defined SMBG as home-based use of finger-prick devices, continuous  
89 glucose monitoring (including real-time), flash glucose monitoring, or urine dipstick for glucose  
90 testing.

91 **Comparison:** Clinic blood glucose monitoring by health workers during ANC contacts only

## 92 **Outcomes:**

93 Maternal:

- 94 (1) Preterm labor
- 95 (2) Caesarean section (including emergency C-section)
- 96 (3) Long-term progression to type 2 diabetes or other metabolic disorders
- 97 (4) Placenta previa
- 98 (5) Hypertensive disorders of pregnancy (pre-eclampsia) or eclampsia
- 99 (6) Self-efficacy, self-determination, autonomy, and empowerment
- 100 (7) Device-related issues (e.g. test failure, problems with manufacturing, packaging,  
101 labelling, or instructions for use)
- 102 (8) Follow-up care with appropriate management
- 103 (9) Mental health and well-being (e.g. anxiety, stress, self-harm)
- 104 (10) Social harms (including discrimination, intimate partner violence, stigma), and whether  
105 these harms were corrected/had redress available

106 Fetal/newborn:

---

"pregnant women and other pregnant people" to include the preferred terminology of pregnant parents who use words other than women.

- 107 (1) Birth weight/size for gestational age (including macrosomia)
- 108 (2) Respiratory distress syndrome
- 109 (3) Stillbirth or perinatal death
- 110 (4) Shoulder dystocia

## 111 **Inclusion criteria**

112 To be included in the review, an article must have met the following criteria:

- 113 1) Study design that compared SMBG to clinic monitoring of blood glucose levels by health
- 114 workers during ANC visits. This includes both randomized controlled trials, non-randomized
- 115 controlled trials and comparative observational studies (including prospective controlled
- 116 cohort studies, cross-sectional studies, controlled before-after studies and interrupted time
- 117 series) that compare individuals who received the intervention to those who did not.
- 118 2) Measured one or more of the outcomes listed above
- 119 3) Published in a peer-reviewed journal

120 No restrictions were placed based on location of the intervention. No language restrictions were used

121 on the search. Articles in English, French, Spanish, and Chinese were coded directly; articles in other

122 languages were translated.

## 123 **Search strategy**

124 The following electronic databases were searched through the search date of November 11, 2020:

125 PubMed, CINAHL, LILACS, and EMBASE using the following search string (designed for Pubmed

126 and adapted for the other databases).

127 ("glucose tolerance test"[Mesh] OR "oral glucose tolerance test"[tiab] OR "OGTT"[tiab] OR

128 "blood glucose"[Mesh] OR "blood glucose"[tiab] OR "blood sugar"[tiab] OR "diabetes"[tiab]

129 OR "gestational diabetes"[mesh] OR "gestational diabetes mellitus"[tiab] OR "glycemic

130 index"[Mesh] OR "continuous glucose monitoring"[tiab] OR "glucose monitoring

131 technique"[tiab] OR "glycemic control"[tiab] OR "flash glucose monitoring"[tiab])

132 AND

133 (pregnancy [Mesh] OR pregnancy [tiab] OR pregnant [tiab] OR peri-natal [tiab] OR perinatal

134 [tiab] OR antenatal [tiab] OR maternal [tiab])

135 AND

136 ("self care"[Mesh] OR "self-care"[tiab] OR "self-monitoring"[tiab] OR "self-

137 management"[tiab] OR "self-monitor"[tiab] OR "self-manage"[tiab] OR "self-

138 monitored"[tiab] OR "self-managed"[tiab] OR "self-evaluate"[tiab] OR "self-evaluating"[tiab]

139 OR "self-evaluation"[tiab] OR "self-test"[tiab] OR "self-testing"[tiab] OR "home"[tiab] OR

140 "pharmacy"[tiab])

141 Secondary reference searching was conducted on all studies included in the review and

142 relevant reviews.[13-18] We also searched for ongoing randomized controlled trials (RCTs)

143 through [clinicaltrials.gov](https://clinicaltrials.gov), the WHO International Clinical Trials Registry Platform, the Pan

144 African Clinical Trials Registry, and the Australian New Zealand Clinical Trials Registry. In

145 addition, we searched the Cochrane Database of Systematic Reviews for potentially relevant  
146 articles cited in their reviews. Finally, selected experts in the field were contacted to identify  
147 additional articles not identified through other search methods.

148 Titles, abstracts, citation information, and descriptor terms of citations identified through the  
149 search strategy were screened by a member of the senior study staff. Full text articles were  
150 obtained of all selected abstracts and two independent reviewers assessed all full-text articles  
151 for eligibility to determine final study selection. Differences were resolved through consensus.

## 152 **Data management and analysis**

153 Data were extracted independently by two reviewers using standardized data extraction forms.  
154 Differences in data extraction were resolved through consensus and referral to a senior study  
155 team member from WHO when necessary.

156 The following information was gathered from each included study:

- 157 • Study identification: Author(s); type of citation; year of publication
- 158 • Study description: Study objectives; location; population characteristics; definition  
159 of/diagnostic criteria for GD used in the study; type of blood glucose monitoring; description  
160 of self-monitoring access; description of any additional intervention components (e.g. any  
161 education, training, support provided); study design; sample size; follow-up periods and loss  
162 to follow-up
- 163 • Outcomes: Analytic approach; outcome measures; comparison groups; effect sizes;  
164 confidence intervals; significance levels; conclusions; limitations

165 For RCTs, risk of bias was assessed using the Cochrane Collaboration's tool for assessing risk of  
166 bias.[19] For studies that were not randomized trials but were comparative, study rigor was  
167 assessed using the Evidence Project 8-item checklist for intervention evaluations.[20] Data  
168 were analyzed according to coding categories and outcomes. Where there were multiple  
169 studies reporting the same outcome, meta-analysis was conducted using random-effects  
170 models to combine risk ratios (RRs) or mean differences (MDs) with the program  
171 Comprehensive Meta-Analysis (CMA).

172 For each PICO outcome category, data were summarized in a GRADE Evidence Profile table  
173 using GRADEPro, prioritizing RCT data over observational data where available.

174 All analyses were stratified by the following categories/subgroups, where possible:

- 175 • Home monitoring (self, layperson, community health worker) vs. clinic monitoring outside of  
176 ANC (ambulatory, hospitalized, or additional to standard antenatal clinic visits)
- 177 • Type of glucose monitor
- 178 • Prior risk of (gestational) diabetes
- 179 • Vulnerabilities (i.e. obesity, age, poverty, disability, rural/urban, literacy/education level)
- 180 • High-income versus low or middle-income countries

## 181 **Complementary reviews**

182 We conducted complementary reviews to examine the values and preferences of end-users and health  
183 workers and costs related to SMBG. We used the same search strategy as the effectiveness review to



184 identify studies to be included in these reviews. These studies could have been qualitative or  
185 quantitative in nature, but had to present primary data collection; think pieces and review articles  
186 were not included. We summarized this literature qualitatively and organized findings by study  
187 design and methodology, location, and population.

188 Values and preferences review. We focused on studies examining the values and preferences of  
189 pregnant women and other pregnant people who were self-monitoring blood glucose levels or who  
190 were potential candidates for such self-monitoring, but we also included studies examining the values  
191 and preferences of health workers. We considered issues related to age of availability, informed  
192 decision-making, coercion, and seeking redress in this section; this included the effects of stock-outs  
193 or availability of glucose monitors.

194 Cost review. We included studies in this review if they presented primary data comparing costing,  
195 cost-effectiveness, cost-utility, or cost-benefit of the intervention and comparison listed in the PICO  
196 question above, or if they presented cost-effectiveness of the intervention as it related to the PICO  
197 outcomes listed above. This included both cost to the health system and cost to the end-user. Cost  
198 literature were classified into four categories: health sector costs, other sector costs, end-user/family  
199 costs, and productivity impacts.

## 200 **2.3 Results**

201 Our database search yielded 2787 records, and another 10 were identified through hand-searching  
202 and secondary searching (Figure 1). Of the 1871 unique records, we retained 78 for full-text review.  
203 Ultimately, we included 6 studies in the effectiveness review, 5 in the values and preferences review,  
204 and 1 in the cost review.

205 Figure 1. PRISMA flowchart for the search and screening process.

### 206 **Effectiveness review**

207 For the effectiveness review, we identified 6 studies meeting the inclusion criteria: 3 RCTs and 3  
208 observational studies.[21-26] The two larger RCTs (approximately 500 individuals per arm)  
209 compared SMBG as part of a package of interventions for GD treatment to routine care during  
210 antenatal contacts on clinical and healthcare utilization outcomes; one small RCT compared SMBG  
211 with periodic monitoring during prenatal visits on pregnancy and psychosocial outcomes (Table 1).  
212 While they did not specify the specific approach to glucose surveillance in the clinic setting, and  
213 while the results could not be disaggregated by intervention component, we opted to include these  
214 studies in the analysis as the closest available evidence for our PICO question. Both intervention and  
215 control groups ultimately received blood glucose monitoring and appropriate follow-up/treatment for  
216 GD; the difference was in self- versus clinic-monitoring. The 3 observational studies presented the  
217 same outcomes as the RCTs; therefore, to assess the highest-certainty evidence for each PICO  
218 outcome category, we included RCT data in the GRADE Evidence Profile (Table 2). Findings  
219 summarized in Table 2 represent pooled results from meta-analysis where multiple studies measured  
220 the same outcome, and the effect size of single studies where no other studies measured a specific  
221 outcome in a similar way. Meta-analysis results are presented in Figure 2. Given the small number of  
222 studies presenting outcome data, no further stratifications from our *a priori* list were possible.

223 Table 1. Description of included studies in the effectiveness review (RCTs)

224 Table 2. GRADE Evidence Profile

225 Figure 2. Forest plots and summary statistics from meta-analysis.

### 226 *Maternal Outcomes*

227 Moderate-certainty evidence from two RCTs demonstrated that SMBG as part of a package of  
228 interventions for GD treatment led to lower rates of preeclampsia (RR 0.61, 95% CI 0.46-0.81,  
229 Figure 2A).[22, 26] There was no difference on cesarean delivery rates (Figure 2B), with a pooled  
230 rate of 29.2% in the group that was treated, as compared to 32.6% in the untreated controls (RR 0.92,  
231 95% CI 0.72-1.18), based on moderate- to low-certainty evidence from three RCTs.[22, 25, 26] One  
232 trial which disaggregated C-section outcomes by elective C-section and emergency C-section also  
233 found no difference between groups.[22] This package of interventions was not associated with  
234 gestational age at delivery[25, 26] or risk for preterm delivery[22] (RR 0.81, 95% CI 0.56-1.18); this  
235 evidence was graded as low- to moderate-certainty.

236 In a small RCT in the United States, Homko and colleagues found no impact of SMBG as part of a  
237 package of interventions on self-efficacy based on self-empowerment score at 37 vs 33 weeks;[25]  
238 this evidence was graded as low certainty because of lack of blinding and the very small sample size.  
239 One RCT conducted in Australia and the United Kingdom showed SMBG as part of a package of  
240 interventions had no impact on validated questionnaire measures of mental health or anxiety.[22]

### 241 *Fetal/neonatal Outcomes*

242 Moderate-certainty evidence from 3 RCTs demonstrates that SMBG as part of a package of  
243 interventions was associated with changes in fetal growth, including lower mean birthweight (-  
244 126 g, 95% CI -176 to -76 g, Figure 2C) as well as lower risk for large for gestational age  
245 birthweight (RR 0.58, 95% CI 0.46 to 0.72, Figure 2D) and macrosomia (RR 0.44, 95% CI 0.34 to  
246 0.57, Figure 2E) when compared to routine care during ANC contacts.[22, 25, 26] Two of these  
247 RCTs also demonstrated SMBG as part of a package of interventions was associated with lower  
248 rates of shoulder dystocia (RR 0.41, 95% CI 0.22 to 0.76, Figure 2F).[22, 26] There was no  
249 difference between groups for stillbirth rate[22, 26] (Figure 2G, low-certainty) or respiratory  
250 distress syndrome[22, 25, 26] (Figure 2H, very-low-certainty).

### 251 *Healthcare Utilization*

252 Crowther and colleagues quantified the impact of SMBG as part of a package of interventions for  
253 GD treatment on multiple measures of healthcare utilization.[22] In this study, both  
254 participants and health workers were blinded to the diagnosis of GD at randomization, and  
255 therefore treatment was, as expected, associated with more physician clinic visits and visits  
256 with dietitians and diabetes educators. Assignment to the treatment arm had no impact on  
257 antenatal hospital admissions.

258 No studies reported other quantitative comparative outcomes of interest for the effectiveness  
259 review, including long-term complications (such as both maternal and child type 2 diabetes,  
260 hypertension, or other metabolic disorders), device-related issues (e.g. test failure, problems  
261 with manufacturing, packaging, labeling, instructions), or social harms (e.g. discrimination,  
262 intimate partner violence, stigma).

### 263 **Values and Preferences Review**

264 Five feasibility studies reported in 6 articles presented values and preferences data for specific  
265 blood glucose management systems (Table 3).[27-32] These studies (3 quantitative and 3  
266 qualitative) all took place in high or upper-middle income countries: Canada, United Kingdom,  
267 Norway, Spain, and Thailand.

268 Table 3. Description of studies presenting values and preferences data

269 Overall, end-users found SMBG acceptable and even beneficial for a variety of reasons.  
270 Participants appreciated the technical convenience of using a smartphone for SMBG, which  
271 made recording and sharing blood glucose level readings easy,[29, 30] allowed for receiving  
272 feedback in real-time,[31] and kept important GD-related information handy as a resource.[31]  
273 Most believed that successful SMBG led to delivering healthy infants.[31, 32] However, this  
274 overall positive response appeared to be mostly from those who incorporated smartphone use  
275 in self-monitoring: one study which required participants use a glucometer and log book to  
276 record their blood glucose level values found only 6-7% of the surveyed end-users said that  
277 SMBG was convenient.[27]

278 Among end-users who self-monitored their blood glucose via smartphone, there was general  
279 consensus on the ability of SMBG to improve their confidence about health or self-care. Beyond  
280 finding SMBG useful and convenient, most stated they would recommend SMBG to other  
281 pregnant women and other pregnant people with GD.[30] End-users also found that SMBG  
282 increased their self-awareness and knowledge of their health status, amplifying their ability to  
283 effectively manage blood glucose levels during and after pregnancy.[31]

284 However, end-users also noted some concerns about SMBG. Some were frustrated with  
285 technical issues with the smartphone application: sometimes the application automatically  
286 transferred blood glucose values and registered wrong values.[31] Others expressed hesitation  
287 about the pain that comes with finger-pricking, though this dissipated over time and with  
288 experience.[32] When health workers lacked interest in the smartphone application, end-users  
289 were discouraged from continuing SMBG; most considered SMBG as a supplement to and not a  
290 replacement for usual ANC visits.[31]

291 One study in Norway reported values and preferences about SMBG from the health worker  
292 perspective.[28] Most participants agreed that SMBG through a smartphone application could  
293 help pregnant women and other pregnant people self-manage GM and found it useful for its  
294 convenience over paper-recording, especially given that modern technological progress would  
295 make app-based SMBG a more common practice over time. In addition, midwives and nurses  
296 reported liking the fact that the application could be resourceful for patients by providing  
297 helpful, credible health-related information to complement the SMBG records. However, some  
298 also expressed concerns that using the application alone may not allow patients to convey their  
299 emotion to their health care team, which could negatively affect the patient-provider  
300 relationship.

### 301 **Cost Review**

302 No studies investigated the economic effects of SMBG in people with GD. One study reported  
303 economic effects of SMBG by patients with insulin-dependent diabetes during pregnancy  
304 (Orange County, California, USA).[33] Though this was a different study population than our  
305 population of interest, we used this study as indirect evidence for individuals with GD. Patients



306 in the group using the reflectance colorimeter (SMBG) spent an average of 1.3 days in the  
307 hospital at a total average cost of US \$593.00 as compared with the control group (conventional  
308 outpatient), who were hospitalized for an average of 3.8 days at an average of US \$1,732.80.  
309 Only two of the nine patients in the meter group required admission as compared to five of the  
310 nine patients in the control group.

## 311 **2.4 Discussion**

312 This review attempted to answer the question of the value of SMBG for pregnant women and  
313 other pregnant people with GD. All three RCTs included in the effectiveness review compared  
314 SMBG as part of a package of interventions for GD treatment to routine care during ANC  
315 contacts. While they did not specify the specific approach to glucose surveillance in the clinic  
316 setting such that none of the comparison groups were explicitly aligned with the comparator in  
317 our PICO question but were approximations, and while the results could not be disaggregated  
318 by intervention component, the results highlight the value of SMBG as part of a larger program  
319 of treatment for GD. These studies showed that SMBG, in combination with other interventions  
320 for GD, was associated with maternal benefit, specifically lower risk of preeclampsia, as well as  
321 fetal benefits, including lower mean birthweight, fewer infants born large for gestational age,  
322 fewer infants with macrosomia, and lower rates of shoulder dystocia. In studies reporting end-  
323 users' values and preferences, pregnant women and other pregnant people found SMBG  
324 acceptable and recognized benefits including convenience, ease of use, and increased  
325 confidence in managing their own health. Although we found no cost studies specifically on  
326 SMBG by individuals with GD, one study among pregnant women and other pregnant people  
327 with insulin-dependent diabetes found modest cost savings associated with SMBG.

328 Our findings must be interpreted in the context of limited available data. None of the  
329 effectiveness studies we identified included a control group with monitoring in the clinic  
330 setting, but rather had untreated “mild” GD receiving routine ANC. Inclusion of control  
331 participants with untreated GD likely exaggerates the impact of SMBG; however, we were  
332 unable to find any studies comparing SMBG to periodic monitoring in the ANC setting. While we  
333 hypothesize that isolated blood glucose monitoring in a clinic setting has limited utility, it is  
334 possible that periodic checks in the clinic setting have some benefit beyond no treatment at all  
335 given the likelihood of identifying the most overt hyperglycemia. However, participants with  
336 overt hyperglycemia on glucose screening tests were excluded from the RCTs included in this  
337 analysis.

338 In addition, though insulin therapy and dietary behavior modifications are both appropriate  
339 responses to the findings from blood glucose monitoring, because the included studies did not  
340 disaggregate data by the follow-up given after the monitoring (self vs clinic) step, we were not  
341 able to compare the effects of pharmacological intervention for GD in this review. Of the six  
342 included studies in the effectiveness review, five mentioned insulin therapy. Two of the three  
343 RCTs used in the effectiveness review listed in Table 1 compared SMBG (plus nutrition/diet  
344 counseling and insulin therapy if required) to routine prenatal care and did not disaggregate  
345 outcome effects by exposure to different components of the multi-component intervention,[22,  
346 26] and the third RCT compared SMBG to clinic-monitoring in the context of diet-treated GD,  
347 though if a participant failed to meet metabolic targets they would start insulin.[25] Of the  
348 three observational studies, one study in the Czech Republic and another in Denmark  
349 compared SMBG to clinic-monitoring among women with insulin-treated GD,[21, 23] so both

350 intervention and treatment groups received pharmacological intervention, and the third study  
351 in the USA compared SMBG to clinic-monitoring among diet-treated GD and explicitly excluded  
352 women who were initiated on insulin from the analysis.[24]

353 A strength of the review was the inclusion not only of effectiveness studies, but also of studies  
354 looking at costs and at values and preferences of patients and health workers. Costs to the  
355 patient, the health system, and society more broadly are an important consideration for any  
356 potential monitoring intervention. Potential drawbacks of SMBG as part of treatment of GD  
357 include increased healthcare utilization. One small study suggested potential cost savings;  
358 however, no studies examined out-of-pocket costs to individuals versus health system costs.  
359 Across multiple settings, values and preferences were generally positive towards SMBG,  
360 despite a few study participants noting inconveniences or frustrations with the  
361 technology/device. Studies generally pointed towards approval of expanded use of SMBG.

362 All of the studies included in the meta-analysis were conducted in high-income countries; only  
363 one values and preferences study was conducted outside of the United States and Europe (in  
364 Thailand). Health systems differ widely in their ability to provide care to individuals with GD,  
365 and data from a wider range of settings on effectiveness, values and preferences, and cost of  
366 this intervention would be valuable.

367 One concern that has been raised about SMBG is whether to conduct continuous glucose  
368 monitoring. While we included continuous glucose monitoring and intermittently-scanned  
369 (commonly known as Flash) glucose monitoring in our definition of SMBG, we excluded studies  
370 that compared different forms of SMBG, such as studies comparing continuous versus periodic  
371 SMBG. However, we note that a number of such studies have found SMBG positively associated  
372 with maternal and neonatal outcomes with continuous monitoring [34-36]; this approach has  
373 recently been recommended by some for GD [37]. Furthermore, in the context of the COVID-19  
374 pandemic, possible delays in diagnosis and treatment could result in more advanced disease  
375 stages; delayed, incomplete or interrupted treatment and increases in behavioral risk factors,  
376 such as physical inactivity. Self-management actions are prioritized by WHO for maintaining  
377 essential NCD services during the pandemic.

378 Our review has several strengths. We used rigorous methods to search for, extract, grade and  
379 contextualize the evidence. We also included several outcomes beyond clinical pregnancy  
380 outcomes, including impact on maternal mental health and quality of life, as well as values and  
381 preferences and costs data. Together, these provide a more complete picture of the positive and  
382 negative aspects of this intervention. However, we did not include conference abstracts or grey  
383 literature, and the available peer-reviewed evidence was limited and came almost exclusively  
384 from high-income countries.

## 385 **Conclusions**

386 SMBG during pregnancy among individuals with GD is feasible and acceptable, and when  
387 provided along with a package of interventions including insulin therapy, dietary counseling,  
388 and ongoing prenatal care with health workers, is generally associated with similar or  
389 improved maternal and neonatal health outcomes compared with standard care during ANC.  
390 However, more research is needed in resource-limited settings.

## 391 **2.5 Tables**

**Table 1. Description of included studies in the effectiveness review (RCTs)**

Study	Location	Population	Sampling	Intervention	Comparator
RCTs					
<b>Crowther 2005 [22]</b>	Australia: 14 centers  UK: 4 centers	Women (24-34 weeks gestation) with GD, primiparous, singleton or twin pregnancy  Age (mean±sd): 30.9±5.4 (self); 30.1±5.5 (provider)  N=490 (self); 510 (provider)	Non-probability facility-based	Glucose self-monitoring (4 times a day) at home, as well as insulin therapy (if required), dietary advice from a dietitian, and ongoing care by attending obstetrical team with physician's support	Routine care at prenatal visits
<b>Landon 2009 [26]</b>	USA: 16 centers	Women (24-31 weeks gestation) with mild GD  Age (mean±sd): 29.2±5.7 (self); 28.9±5.6 (provider)  N=485 (self); 473 (provider)	Non-probability facility-based	Glucose self-monitoring (daily) at home using a portable memory-based reflectance meter, as well as formal nutritional counseling and diet therapy along with insulin (if required)	Routine care at prenatal visits
<b>Homko 2002 [25]</b>	USA: Philadelphia, PA	Women (<=33 weeks gestation) with GD  Age (mean±sd): 30.3±5.4 (self); 29.0±6.4 (provider)  N=31 (self); 27 (provider)	Non-probability facility-based	Glucose self-monitoring (4 times a day) at home using a reflectance meter with memory (One Touch Profile)	Routine care at prenatal visits

**Table 2. GRADE Evidence Profile**

Certainty assessment							№ of patients		Effect		Certainty	Importance
№ of studies	Study design	Risk of bias	Inconsistency	Indirectness	Imprecision	Other considerations	self-monitoring of blood glucose	clinic blood glucose monitoring	Relative (95% CI)	Absolute (95% CI)		
<b>MATERNAL: Hypertensive disorders of pregnancy: Pre-eclampsia</b>												
2 [22, 26]	randomised trials	not serious <sup>d</sup>	not serious	serious <sup>e</sup>	not serious	none	70/966 (7.2%)	118/965 (12.2%)	<b>RR 0.61</b> (0.46 to 0.81)	<b>48 fewer per 1,000</b> (from 66 fewer to 23 fewer)	⊕⊕⊕○ MODERATE	IMPORTANT
<b>MATERNAL: C-section: all combined</b>												
3 [22, 25, 26]	randomised trials	not serious <sup>d</sup>	not serious <sup>g</sup>	serious <sup>e</sup>	not serious	none	291/997 (29.2%)	323/992 (32.6%)	<b>RR 0.92</b> (0.72 to 1.18)	<b>26 fewer per 1,000</b> (from 91 fewer to 59 more)	⊕⊕⊕○ MODERATE	IMPORTANT
<b>MATERNAL: C-section: elective C-section only</b>												
1 [22]	randomised trials	not serious <sup>d</sup>	not serious <sup>b</sup>	serious <sup>e</sup>	serious <sup>f</sup>	none	72/490 (14.7%)	61/510 (12.0%)	<b>RR 1.23</b> (0.89 to 1.69)	<b>28 more per 1,000</b> (from 13 fewer to 83 more)	⊕⊕○○ LOW	IMPORTANT
<b>MATERNAL: C-section: emergency C-section only</b>												
1 [22]	randomised trials	not serious <sup>d</sup>	not serious <sup>b</sup>	serious <sup>e</sup>	serious <sup>f</sup>	none	80/490 (16.3%)	103/510 (20.2%)	<b>RR 0.81</b> (0.62 to 1.05)	<b>38 fewer per 1,000</b> (from 77 fewer to 10 more)	⊕⊕○○ LOW	IMPORTANT
<b>MATERNAL: Preterm labor: Gestational age at delivery in weeks (assessed with: median (IQR))</b>												

Certainty assessment							№ of patients		Effect		Certainty	Importance
№ of studies	Study design	Risk of bias	Inconsistency	Indirectness	Imprecision	Other considerations	self-monitoring of blood glucose	clinic blood glucose monitoring	Relative (95% CI)	Absolute (95% CI)		
1 [22]	randomised trials	not serious <sup>d</sup>	not serious <sup>b</sup>	serious <sup>c</sup>	not serious	none	490	510	Median(IQR) as reported by study authors: Self: 39.0(38.1-40.0) vs Provider: 39.3(38.3-40.4), non-parametric test p=0.01		⊕⊕⊕○ MODERATE	IMPORTANT

**MATERNAL: Preterm labor: Gestational age at delivery in weeks (assessed with: mean (SD))**

1 [25]	randomised trials	not serious <sup>d</sup>	not serious <sup>b</sup>	not serious	serious <sup>c</sup>	none	31	27	Mean(SD) as reported by study authors: Self: 38.7(2.4) vs Provider-monitoring: 38.4(1.8), student t-test p=0.66		⊕⊕⊕○ MODERATE	IMPORTANT
--------	-------------------	--------------------------	--------------------------	-------------	----------------------	------	----	----	---	--	------------------	-----------

**MATERNAL: Preterm labor: Preterm delivery**

1 [26]	randomised trials	not serious <sup>d</sup>	not serious <sup>b</sup>	serious <sup>c</sup>	serious <sup>f</sup>	none	45/477 (9.4%)	53/455 (11.6%)	<b>RR 0.81</b> (0.56 to 1.18)	<b>22 fewer per 1,000</b> (from 51 fewer to 21 more)	⊕⊕○○ LOW	CRITICAL
--------	-------------------	--------------------------	--------------------------	----------------------	----------------------	------	---------------	----------------	-------------------------------	--	-------------	----------

**MATERNAL: Self-efficacy (assessed with: delta score on diabetes empowerment scale between at enrollment (<=33 weeks GA) and at 37 weeks GA)**

1 [25]	randomised trials	serious <sup>a</sup>	not serious <sup>b</sup>	not serious	serious <sup>c</sup>	none	31	27	Mean (SD) of delta score reported by study authors: Self: 3.9 (12.4) vs Provider: 0.2 (7.8), no statistically significant difference (p-value >0.05)		⊕⊕○○ LOW	CRITICAL
--------	-------------------	----------------------	--------------------------	-------------	----------------------	------	----	----	--	--	-------------	----------

**MATERNAL: Mental health and well-being: Mental health status (follow up: 6 weeks; assessed with: SF-36, score ranges from 0 (worst) to 100 (best))**



Certainty assessment							№ of patients		Effect		Certainty	Importance
№ of studies	Study design	Risk of bias	Inconsistency	Indirectness	Imprecision	Other considerations	self-monitoring of blood glucose	clinic blood glucose monitoring	Relative (95% CI)	Absolute (95% CI)		
1 [22]	randomised trials	serious <sup>a</sup>	not serious <sup>b</sup>	serious <sup>c</sup>	not serious	none	490	510	Mean(SD) as reported by study authors: Self: 50.9(9.2) vs Provider: 49.6(10.4), adjusted treatment effect (mean difference, adjusted for maternal age, race/ethnicity, parity): 1.2 (-0.3 to 2.7), p=0.11. Medical Outcomes Study 36-Item Short-Form General Health Survey assesses 8 general aspects of health status/quality of life. Reported scores for relevant subscales (social functioning, emotional role, mental health, and vitality) all showed trends in favor of glucose self-monitoring, though only emotional role showed a statistically significant benefit of self-monitoring.		⊕⊕○○ LOW	IMPORTANT

**MATERNAL: Mental health and well-being: Anxiety (follow up: 6 weeks; assessed with: Spielberger State-Trait Anxiety Inventory short form, scores below 15 are considered normal)**

Certainty assessment							№ of patients		Effect		Certainty	Importance
№ of studies	Study design	Risk of bias	Inconsistency	Indirectness	Imprecision	Other considerations	self-monitoring of blood glucose	clinic blood glucose monitoring	Relative (95% CI)	Absolute (95% CI)		
1 [22]	randomised trials	serious <sup>a</sup>	not serious <sup>b</sup>	serious <sup>c</sup>	not serious	none	490	510	Mean(SD) as reported by study authors: Self: 11.2(3.7) vs Provider: 11.5(4.0), adjusted treatment effect (mean difference, adjusted for maternal age, race/ethnicity, parity): -0.4 (-1.0 to 0.2), p=0.17		⊕⊕○○ LOW	IMPORTANT

**FETAL/NEWBORN: Birthweight/size for gestational age: Birthweight in grams**

3 [22, 25, 26]	randomised trials	not serious <sup>d</sup>	not serious	serious <sup>c</sup>	not serious	none	1022	1024	MD <b>125.79 g lower</b> (-175.91 to -75.68)		⊕⊕⊕○ MODERATE	IMPORTANT
----------------	-------------------	--------------------------	-------------	----------------------	-------------	------	------	------	--	--	------------------	-----------

**FETAL/NEWBORN: Birthweight/size for gestational age: Large for gestational age (assessed with: >= 90th percentile)**

3 [22, 25, 26]	randomised trials	not serious <sup>d</sup>	not serious	serious <sup>c</sup>	not serious	none	107/1014 (10.6%)	187/1005 (18.6%)	<b>RR 0.58</b> (0.46 to 0.72)	<b>78 fewer per 1,000</b> (from 100 fewer to 52 fewer)	⊕⊕⊕○ MODERATE	IMPORTANT
----------------	-------------------	--------------------------	-------------	----------------------	-------------	------	------------------	------------------	-------------------------------	--	------------------	-----------

**FETAL/NEWBORN: Birthweight/size for gestational age: Macrosomia (assessed with: >= 4 kg)**

2 [22, 26]	randomised trials	not serious <sup>d</sup>	not serious	serious <sup>c</sup>	not serious	none	77/983 (7.8%)	175/978 (17.9%)	<b>RR 0.44</b> (0.34 to 0.57)	<b>100 fewer per 1,000</b> (from 118 fewer to 77 fewer)	⊕⊕⊕○ MODERATE	IMPORTANT
------------	-------------------	--------------------------	-------------	----------------------	-------------	------	---------------	-----------------	-------------------------------	---	------------------	-----------

**FETAL/NEWBORN: Shoulder dystocia**

Certainty assessment							№ of patients		Effect		Certainty	Importance
№ of studies	Study design	Risk of bias	Inconsistency	Indirectness	Imprecision	Other considerations	self-monitoring of blood glucose	clinic blood glucose monitoring	Relative (95% CI)	Absolute (95% CI)		
2 [22, 26]	randomised trials	not serious <sup>d</sup>	not serious	serious <sup>e</sup>	not serious	none	14/982 (1.4%)	34/979 (3.5%)	<b>RR 0.41</b> (0.22 to 0.76)	<b>20 fewer per 1,000</b> (from 27 fewer to 8 fewer)	⊕⊕⊕○ MODERATE	IMPORTANT

**FETAL/NEWBORN: Stillbirth**

2 [22, 26]	randomised trials	not serious <sup>d</sup>	not serious	serious <sup>e</sup>	serious <sup>h,i</sup>	none	0/991 (0.0%)	1/997 (0.1%)	<b>RR 0.52</b> (0.07 to 3.81)	<b>0 fewer per 1,000</b> (from 1 fewer to 3 more)	⊕⊕○○ LOW	CRITICAL
------------	-------------------	--------------------------	-------------	----------------------	------------------------	------	--------------	--------------	-------------------------------	---	-------------	----------

**FETAL/NEWBORN: Respiratory distress syndrome**

3 [22, 25, 26]	randomised trials	not serious <sup>d</sup>	not serious	serious <sup>e</sup>	very serious <sup>f,h</sup>	none	37/1014 (3.6%)	33/1006 (3.3%)	<b>RR 1.09</b> (0.62 to 1.91)	<b>3 more per 1,000</b> (from 12 fewer to 30 more)	⊕○○○ VERY LOW	CRITICAL
----------------	-------------------	--------------------------	-------------	----------------------	-----------------------------	------	----------------	----------------	-------------------------------	--	------------------	----------

**HEALTHCARE UTILIZATION: Follow-up care with appropriate management: Number of visits to a health worker (assessed with: total count of antenatal clinic visits after enrollment, including routine ANC visits, possibly but not necessarily prompted by blood glucose monitoring monitoring)**

1 [22]	randomised trials	not serious <sup>d</sup>	not serious <sup>b</sup>	serious <sup>e</sup>	not serious	none	490	510	Median (IQR) reported by study authors: Self: 5.0 (1-7) vs Provider: 5.2 (3-7), non-parametric test p<0.001	⊕⊕⊕○ MODERATE	CRITICAL
--------	-------------------	--------------------------	--------------------------	----------------------	-------------	------	-----	-----	---	------------------	----------

**HEALTHCARE UTILIZATION: Follow-up care with appropriate management: Number of visits to a health worker (assessed with: total count of physician clinic visits after enrollment, potentially including routine ANC visits, possibly but not necessarily prompted by blood glucose monitoring monitoring)**

Certainty assessment							№ of patients		Effect		Certainty	Importance
№ of studies	Study design	Risk of bias	Inconsistency	Indirectness	Imprecision	Other considerations	self-monitoring of blood glucose	clinic blood glucose monitoring	Relative (95% CI)	Absolute (95% CI)		
1 [22]	randomised trials	not serious <sup>d</sup>	not serious <sup>b</sup>	serious <sup>e</sup>	not serious	none	490	510	Median (IQR) reported by study authors: Self: 3 (1-7) vs Provider: 0 (0-2), non-parametric test p<0.001		⊕⊕⊕○ MODERATE	CRITICAL

**HEALTHCARE UTILIZATION: Follow-up care with appropriate management: Visits to a health worker (assessed with: Visit with a dietitian yes/no)**

1 [22]	randomised trials	not serious <sup>d</sup>	not serious <sup>b</sup>	serious <sup>e</sup>	not serious	none	453/490 (92.4%)	51/510 (10.0%)	<b>RR 9.24</b> (7.12 to 12.01)	<b>824 more per 1,000</b> (from 612 more to 1,000 more)	⊕⊕⊕○ MODERATE	CRITICAL
--------	-------------------	--------------------------	--------------------------	----------------------	-------------	------	-----------------	----------------	--------------------------------	---	------------------	----------

**HEALTHCARE UTILIZATION: Follow-up care with appropriate management: Visits to a health worker (assessed with: Visit with a diabetes educator yes/no)**

1 [22]	randomised trials	not serious <sup>d</sup>	not serious <sup>b</sup>	serious <sup>e</sup>	not serious	none	460/490 (93.9%)	56/510 (11.0%)	<b>RR 8.55</b> (6.67 to 10.96)	<b>829 more per 1,000</b> (from 623 more to 1,000 more)	⊕⊕⊕○ MODERATE	CRITICAL
--------	-------------------	--------------------------	--------------------------	----------------------	-------------	------	-----------------	----------------	--------------------------------	---	------------------	----------

**HEALTHCARE UTILIZATION: Follow-up care with appropriate management: Antenatal admission**

1 [22]	randomised trials	not serious <sup>d</sup>	not serious <sup>b</sup>	serious <sup>e</sup>	serious <sup>f</sup>	none	141/490 (28.8%)	139/510 (27.3%)	<b>RR 1.06</b> (0.87 to 1.29)	<b>16 more per 1,000</b> (from 35 fewer to 79 more)	⊕⊕○○ LOW	CRITICAL
--------	-------------------	--------------------------	--------------------------	----------------------	----------------------	------	-----------------	-----------------	-------------------------------	---	-------------	----------

**Table 3. Description of studies representing values and preferences data**

Study	Location	Population and sample size	Data collection method	SMBG description
Ardilouze et al., 2019 [27]	Canada	<p>Pregnant women and other pregnant people ages 18+ years, with singleton pregnancy, 24-28-weeks gestation, 50 g GLT <math>\geq</math>7.2 mmol/L (GLT+), who were receiving pre- and perinatal care and did not have pre-pregnancy diabetes, disease or treatment with implications for glucose metabolism</p> <p>N=103</p>	Questionnaires	<p>Self-monitoring with a calibrated glucometer used after fasting and 2 hours postprandially, over 7 consecutive days without modifications to diet or exercise habits. Patients recorded their glucose levels on paper and transmitted them to the study nurse via e-mail or fax the day after the 7<sup>th</sup> day of measurements. They subsequently received questionnaires which were returned before diagnoses were announced to patients.</p>
<p>Garnweidner-Holme et al., 2018 and Skar et al., 2018 [28, 31]</p> <p>Pregnant+</p>	Norway	<p>Midwives (n=6) and nurses specializing in diabetes care (n=3) working at the diabetes outpatient clinic with a large population of women from diverse ethnic backgrounds; N=9 [28]</p> <p>Pregnant women and other pregnant people of either ethnic Norwegian (n= 10) or immigrant backgrounds (i.e. born outside Norway and residing in Norway at the time of the study) (n= 7); N=17 [31]</p>	Semi-structured interviews using the intervention group participants from a parent RCT (Pregnant+)	<p>Self-monitoring by recording blood glucose levels accompanied by receiving verbal and written health and nutrition information, in line with clinic-based standard care protocol for GD.</p> <p>The parent RCT added a use of a culture-sensitive mobile phone application to the standard care protocol. Patients could create their own profiles consisting of information related to but not limited to: their outpatient clinic, pre-pregnancy anthropometric measurements and physical activity level and preferred food culture. Patients could also record their physical activity time. Caregivers were requested to refrain from using the application to communicate as part of consultation.</p>
Hirst et al., 2015 [29]	United Kingdom	Pregnant women and other pregnant people, with singleton pregnancy, whose GD was	Structured questionnaires	Self-monitoring using a Bluetooth-enabled glucometer (Polymap Glucose meter accessory with Lifescan UltraEasy meter) which automatically transmitted finger-prick blood



		<p>diagnosed prior to the 34<sup>th</sup> week of gestation, and having not received pharmacological therapy after 1 week of BG monitoring</p> <p>N=49</p>		<p>glucose level readings to a secure website via a smartphone application. Patients could label the readings with information regarding meals and medication use. The record was reviewed at least 3 times a week by caregiver team; patients and the team could communicate using the application. All equipment was loaned for free.</p>
Rigla et al., 2018 [30]	Spain	<p>Pregnant women and other pregnant people of greater than 19 years of age with GD diagnosed before the 34<sup>th</sup> week of gestation, having familiarity with smartphones and computer technology in general, and no history of pre-gestational diabetes, hemoglobin A1c &gt;6.5%, active treatment with implications for changes in blood glucose levels, blindness, or severe mental disturbances</p> <p>N=19</p>	Questionnaires	<p>Self-monitoring using a smartphone with the clinical data collection and messaging system, including an accelerometer, Bluetooth-enabled glucometer (Accu-Chek Aviva Connect, Roche Diagnostics GmbH, Mannheim, Germany), Bluetooth-enabled blood pressure monitor (Bluetooth Blood Pressure Monitor 708-BT, Omron Healthcare Co, Ltd, Kyoto, Japan), and mechanism with which to report on the results of fasting daily ketonuria determination.</p> <p>When it comes to the blood glucose level monitoring, patients were requested to download their readings (fasting and 1-hour postprandial) from the glucometer every 3 days. Patients were also requested to continue with their in-person visits to the clinic.</p>
Youngwanichsetha et al., 2016 [32]	Thailand	<p>Pregnant women and other pregnant people with GD diagnosed during 24- to 30-week gestation treated in the antenatal care units, diabetes clinics, or obstetric wards.</p> <p>N=30</p>	Semi-structured interviews	<p>Pregnant women and other pregnant people with GD were assumed to practice self-monitoring four times a day with a glucometer, as standard clinical practice in this hospital. The patients were to record the readings on paper or keep in the device memory.</p>

## 392 **3 Declarations**

### 393 **3.1 Ethics approval and consent to participate**

394 Ethical approval and patients' consent to participate was not required for this systematic review, since  
395 all data came from published articles.

### 396 **3.2 Consent for publication**

397 Not required, since all data came from published articles.

### 398 **3.3 Availability of data and materials**

399 Extracted data are available on request to the corresponding author.

### 400 **3.4 Competing interests**

401 The authors declare that the research was conducted in the absence of any commercial or financial  
402 relationships that could be construed as a potential conflict of interest.

## 403 **4 Author Contributions**

404 MN and OT conceptualized the study. CEK and PTY designed the protocol with feedback from OT,  
405 RG, BL, CZ and MN. PTY ran the database search and oversaw search, screening, full text review,  
406 and data abstraction processes with support from DR. CEK and PTY performed data analysis. PTY,  
407 CEK, and CZ drafted the manuscript. All authors reviewed the draft, provided critical review, and  
408 read and approved the final manuscript. The corresponding author, as guarantor, accepts full  
409 responsibility for the finished article has access to any data and controlled the decision to publish.  
410 The corresponding author attests that all listed authors meet the authorship criteria and that no others  
411 meeting the criteria have been omitted.

412 The named authors alone are responsible for the views expressed in this publication and do not  
413 necessarily represent the decisions or the policies of the World Health Organization (WHO) or the  
414 UNDP-UNFPA-UNICEF-WHO-World Bank Special Programme of Research, Development and  
415 Research Training in Human Reproduction (HRP).

416 The corresponding author, as guarantor, affirms that the manuscript is an honest, accurate, and  
417 transparent account of the study being reported; that no important aspects of the study have been  
418 omitted; and that any discrepancies from the study as planned (and, if relevant, registered) have been  
419 explained.

## 420 **5 Funding**

421 We gratefully acknowledge financial support of The Children's Investment Fund Foundation (CIFF).  
422 The funder played no part in the decision to submit the article for publication, nor in the collection,  
423 analysis and interpretation of data. All authors had full access to all of the data in the study and can  
424 take responsibility for the integrity of the data and the accuracy of the data analysis.

## 425 **6 Acknowledgments**

426 We thank Laura Ferguson, University of Southern California, and Maurice Bucagu, Department of  
427 Maternal, Child and Adolescent Health, World Health Organization, for their feedback on the review  
428 protocol and Bianca Hemmingson, Department of Non-Communicable Diseases, World Health  
429 Organization, for her feedback on the interpretation of the review findings. We also thank our  
430 research assistants from the Johns Hopkins Bloomberg School of Public Health (Jaime Marquis,  
431 Sarah Wagner, and Xuhao Yang) for their help in screening citations and abstracting data.

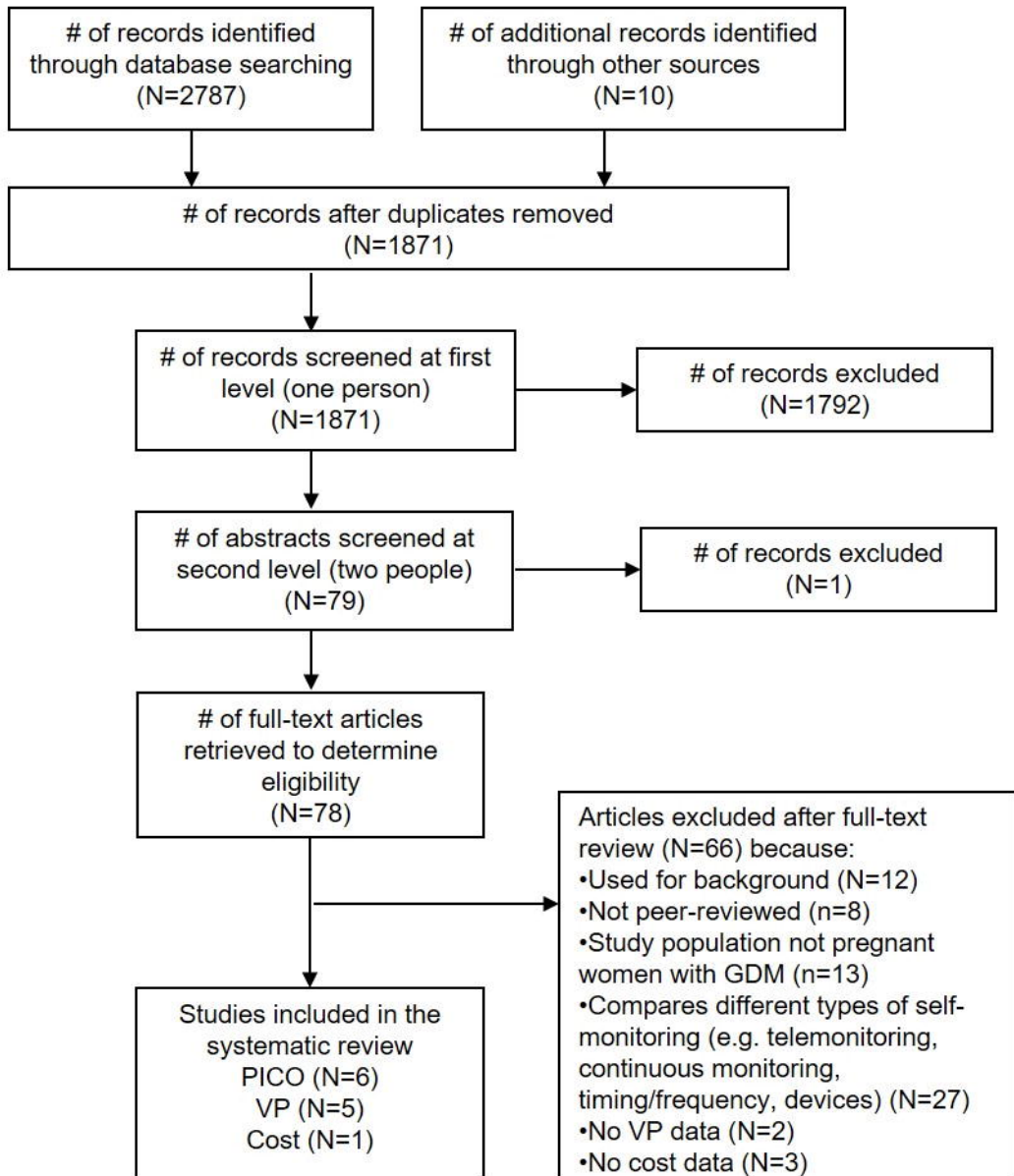
## 7 References

1. WHO. Definition, diagnosis and classification of diabetes mellitus and its complications. Report of a WHO consultation, Part 1. Geneva, Switzerland: World Health Organization; 1999.
2. WHO. Diagnostic criteria and classification of hyperglycaemia first detected in pregnancy. Geneva, Switzerland: World Health Organization; 2013.
3. American Diabetes Association. 14. Management of Diabetes in Pregnancy: Standards of Medical Care in Diabetes—2021. *Diabetes care*. 2021;44(Supplement 1):S200.
4. Metzger BE, Buchanan TA, Coustan DR, de Leiva A, Dunger DB, Hadden DR, et al. Summary and Recommendations of the Fifth International Workshop-Conference on Gestational Diabetes Mellitus. *Diabetes care*. 2007;30(Supplement 2):S251.
5. International Diabetes Federation. IDF GDM Model of Care. Implementation protocol. Guidelines for healthcare professionals. Brussels, Belgium: IDF; 2017.
6. WHO. WHO consolidated guideline on self-care interventions for health: sexual and reproductive health and rights. Geneva, Switzerland: World Health Organization; 2019.
7. WHO. WHO recommendations for prevention and treatment of pre-eclampsia and eclampsia. Geneva, Switzerland: World Health Organization; 2011.
8. WHO. WHO recommendations on antenatal care for a positive pregnancy experience. Geneva, Switzerland: World Health Organization; 2017.
9. WHO. WHO package of essential noncommunicable (PEN) disease interventions for primary health care. Geneva, Switzerland: World Health Organization; 2020.
10. WHO. Maintaining essential health services: operational guidance for the COVID-19 context interim guidance. Geneva, Switzerland: World Health Organization; 2020.
11. WHO. WHO handbook for guideline development. 2nd ed ed. Geneva: World Health Organization; 2014 2014.
12. Page MJ, McKenzie JE, Bossuyt PM, Boutron I, Hoffmann TC, Mulrow CD, et al. The PRISMA 2020 statement: an updated guideline for reporting systematic reviews. *BMJ (Clinical research ed)*. 2021;372:n71.
13. De Block C, Vertommen J, Manuel-y-Keenoy B, Van Gaal L. Minimally-invasive and non-invasive continuous glucose monitoring systems: indications, advantages, limitations and clinical aspects. *Current diabetes reviews*. 2008;4(3):159-68.
14. Hoeks LB, Greven WL, de Valk HW. Real-time continuous glucose monitoring system for treatment of diabetes: a systematic review. *Diabetic medicine : a journal of the British Diabetic Association*. 2011;28(4):386-94.
15. Lau Y, Htun TP, Wong SN, Tam WS, Klainin-Yobas P. Efficacy of Internet-Based Self-Monitoring Interventions on Maternal and Neonatal Outcomes in Perinatal Diabetic Women: A Systematic Review and Meta-Analysis. *Journal of medical Internet research*. 2016;18(8):e220.
16. Negrato CA, Zajdenverg L. Self-monitoring of blood glucose during pregnancy: indications and limitations. *Diabetology & metabolic syndrome*. 2012;4(1):54-.
17. Xie W, Dai P, Qin Y, Wu M, Yang B, Yu X. Effectiveness of telemedicine for pregnant women with gestational diabetes mellitus: an updated meta-analysis of 32 randomized controlled trials with trial sequential analysis. *BMC pregnancy and childbirth*. 2020;20:1-14.
18. Raman P, Shepherd E, Dowswell T, Middleton P, Crowther CA. Different methods and settings for glucose monitoring for gestational diabetes during pregnancy. *Cochrane Database of Systematic Reviews*. 2017;2017(10).
19. Cochrane Handbook for Systematic Reviews of Interventions 2019. Available from: [www.training.cochrane.org/handbook](http://www.training.cochrane.org/handbook).

20. Kennedy CE, Fonner VA, Armstrong KA, Denison JA, Yeh PT, O'Reilly KR, et al. The Evidence Project risk of bias tool: assessing study rigor for both randomized and non-randomized intervention studies. *Systematic Reviews*. 2019;8(1):3.
21. Bělobrádková J, Filipenský B, Roztocil A, Horký P, Janků K, Pilka L, et al. [The effect of self-monitoring on perinatal outcome in insulin therapy of diabetic women during pregnancy]. *Vnitřní lékařství*. 1992;38(11):1077-81.
22. Crowther CA, Hiller JE, Moss JR, McPhee AJ, Jeffries WS, Robinson JS. Effect of treatment of gestational diabetes mellitus on pregnancy outcomes. *The New England journal of medicine*. 2005;352(24):2477-86.
23. Espersen T, Klebe JG. Self-monitoring of blood glucose in pregnant diabetics. A comparative study of the blood glucose level and course of pregnancy in pregnant diabetics on an out-patient regime before and after the introduction of methods for home analysis of blood glucose. *Acta obstetricia et gynecologica Scandinavica*. 1985;64(1):11-4.
24. Hawkins JS, Casey BM, Lo JY, Moss K, McIntire DD, Leveno KJ. Weekly compared with daily blood glucose monitoring in women with diet-treated gestational diabetes. *Obstetrics and gynecology*. 2009;113(6):1307-12.
25. Homko CJ, Sivan E, Reece EA. The impact of self-monitoring of blood glucose on self-efficacy and pregnancy outcomes in women with diet-controlled gestational diabetes. *The Diabetes educator*. 2002;28(3):435-43.
26. Landon MB, Spong CY, Thom E, Carpenter MW, Ramin SM, Casey B, et al. A multicenter, randomized trial of treatment for mild gestational diabetes. *The New England journal of medicine*. 2009;361(14):1339-48.
27. Ardilouze A, Bouchard P, Hivert MF, Simard C, Allard C, Garant MP, et al. Self-Monitoring of Blood Glucose: A Complementary Method Beyond the Oral Glucose Tolerance Test to Identify Hyperglycemia During Pregnancy. *Canadian journal of diabetes*. 2019;43(8):627-35.
28. Garnweidner-Holme L, Hoel Andersen T, Sando MW, Noll J, Lukasse M. Health Care Professionals' Attitudes Toward, and Experiences of Using, a Culture-Sensitive Smartphone App for Women with Gestational Diabetes Mellitus: Qualitative Study. *JMIR mHealth and uHealth*. 2018;6(5):e123.
29. Hirst JE, Mackillop L, Loerup L, Kevat DA, Bartlett K, Gibson O, et al. Acceptability and user satisfaction of a smartphone-based, interactive blood glucose management system in women with gestational diabetes mellitus. *Journal of diabetes science and technology*. 2015;9(1):111-5.
30. Rigla M, Martínez-Sarriegui I, García-Sáez G, Pons B, Hernando ME. Gestational Diabetes Management Using Smart Mobile Telemedicine. *Journal of diabetes science and technology*. 2018;12(2):260-4.
31. Skar JB, Garnweidner-Holme LM, Lukasse M, Terragni L. Women's experiences with using a smartphone app (the Pregnant+ app) to manage gestational diabetes mellitus in a randomised controlled trial. *Midwifery*. 2018;58:102-8.
32. Youngwanichsetha S, Phumdoung S. Lived experience of blood glucose self-monitoring among pregnant women with gestational diabetes mellitus: a phenomenological research. *Journal of clinical nursing*. 2017;26(19-20):2915-21.
33. Goldstein A, Elliott J, Lederman S, Worcester B, Russell P, Linzey EM. Economic effects of self-monitoring of blood glucose concentrations by women with insulin-dependent diabetes during pregnancy. *The Journal of reproductive medicine*. 1982;27(8):449-50.
34. De Valk HW. First nationwide real-life results on the efficacy of real-time continuous glucose monitoring in the Netherlands: The tracing study. *Endocrine Reviews*. 2015;36.
35. Kestilä KK, Ekblad UU, Rönnemaa T. Continuous glucose monitoring versus self-monitoring of blood glucose in the treatment of gestational diabetes mellitus. *Diabetes research and clinical practice*. 2007;77(2):174-9.

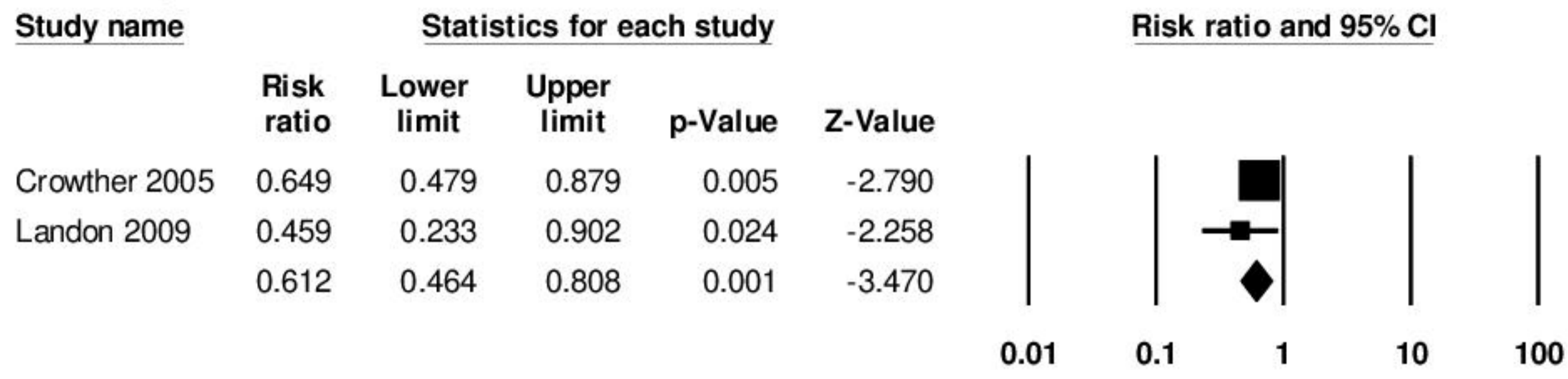


36. Lane AS, Mlynarczyk MA, de Veciana M, Abuhamad AZ, Green LM, Baraki DI. Real-Time Continuous Glucose Monitoring in Gestational Diabetes: A Randomized Controlled Trial. *American Journal of Perinatology*. 2019;36(9):891-7.
37. Yamamoto JM, Corcoy R, Donovan LE, Stewart ZA, Tomlinson G, Beardsall K, et al. Maternal glycaemic control and risk of neonatal hypoglycaemia in Type 1 diabetes pregnancy: a secondary analysis of the CONCEPTT trial. *Diabetic medicine : a journal of the British Diabetic Association*. 2019;36(8):1046-53.

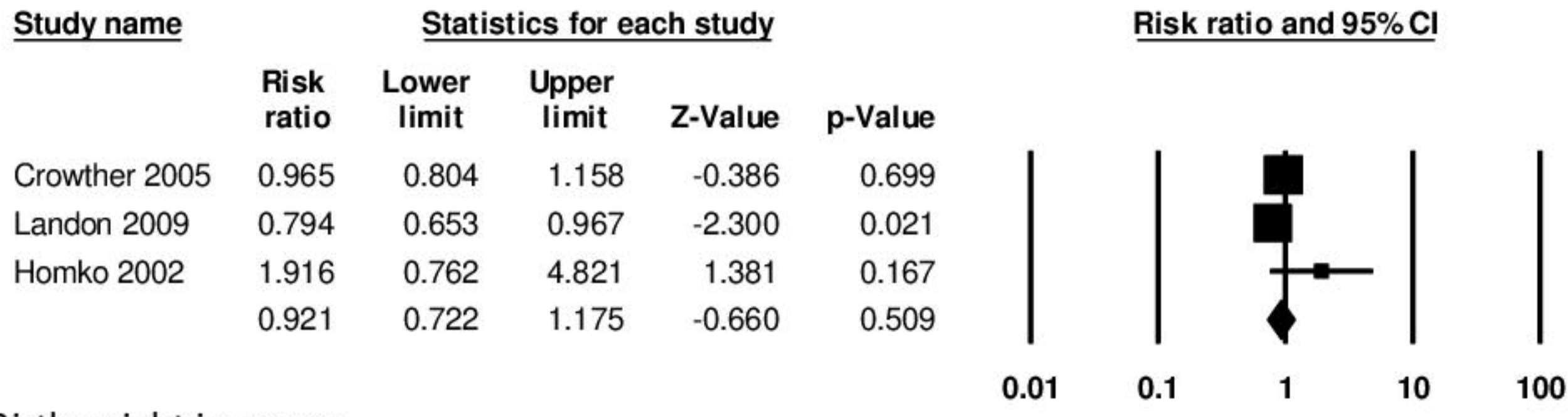




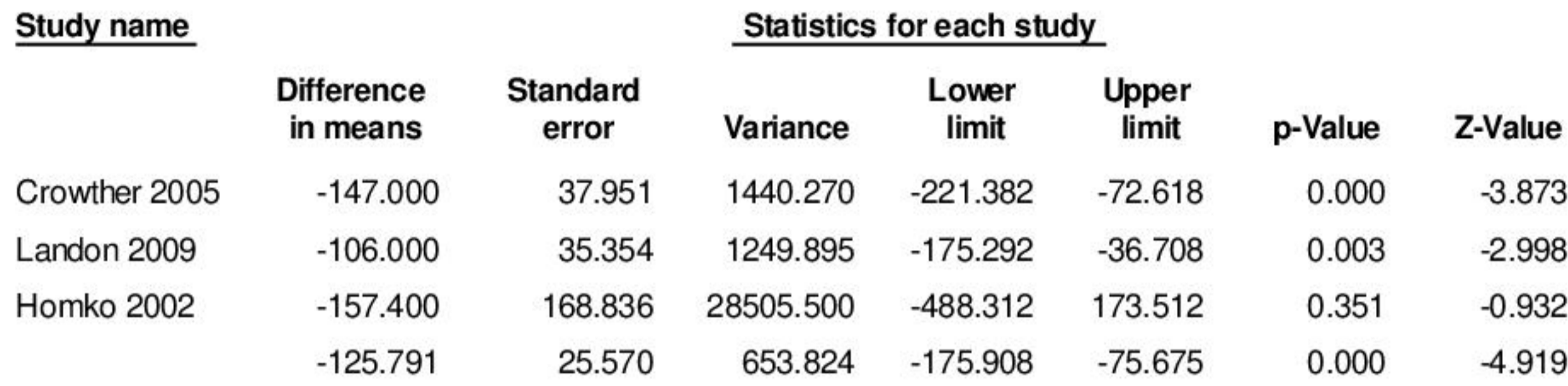
A. Pre-eclampsia



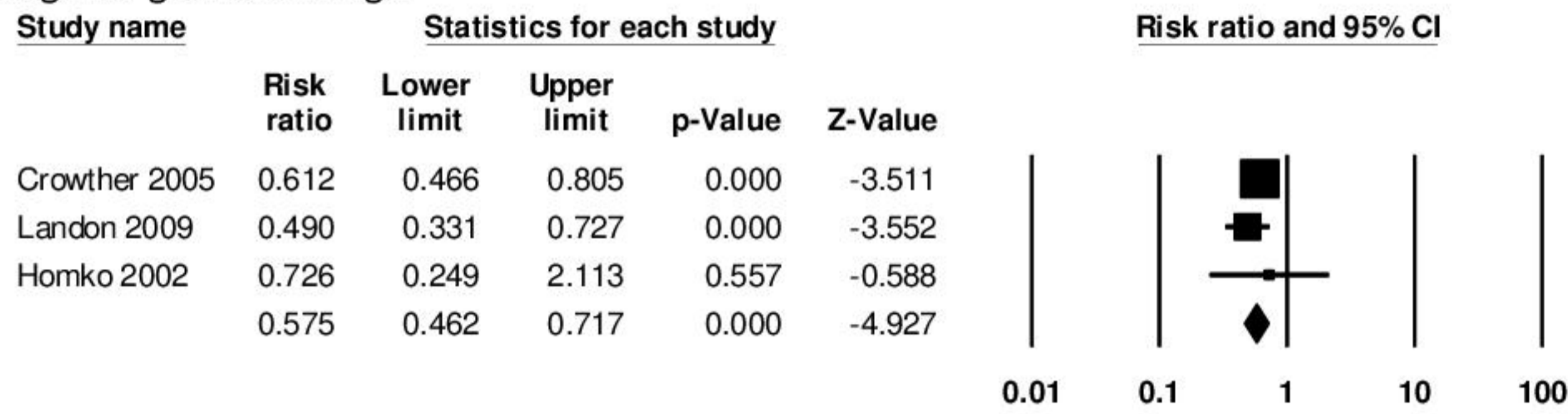
B. C-section



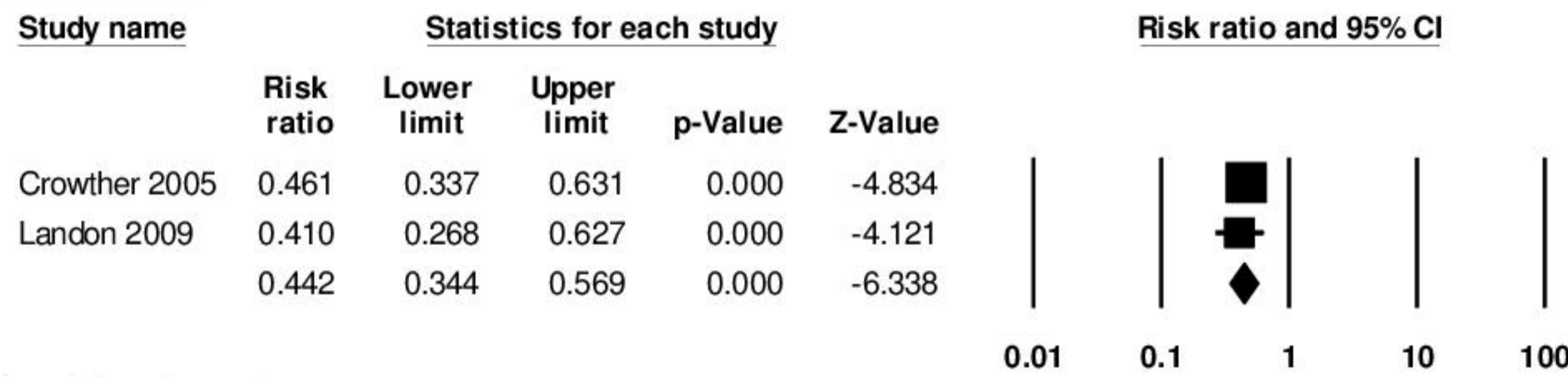
C. Birthweight in grams



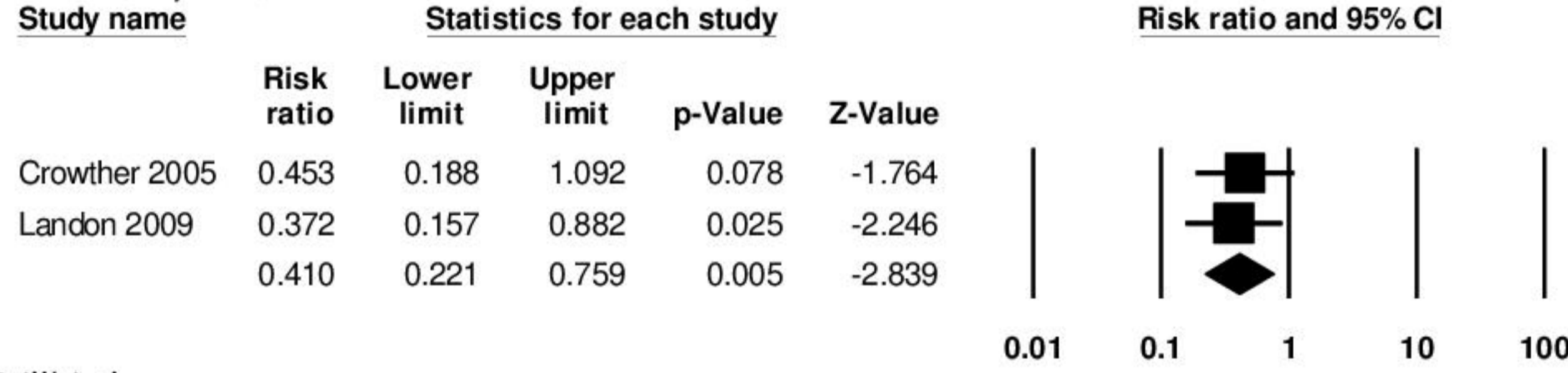
D. Large for gestational age



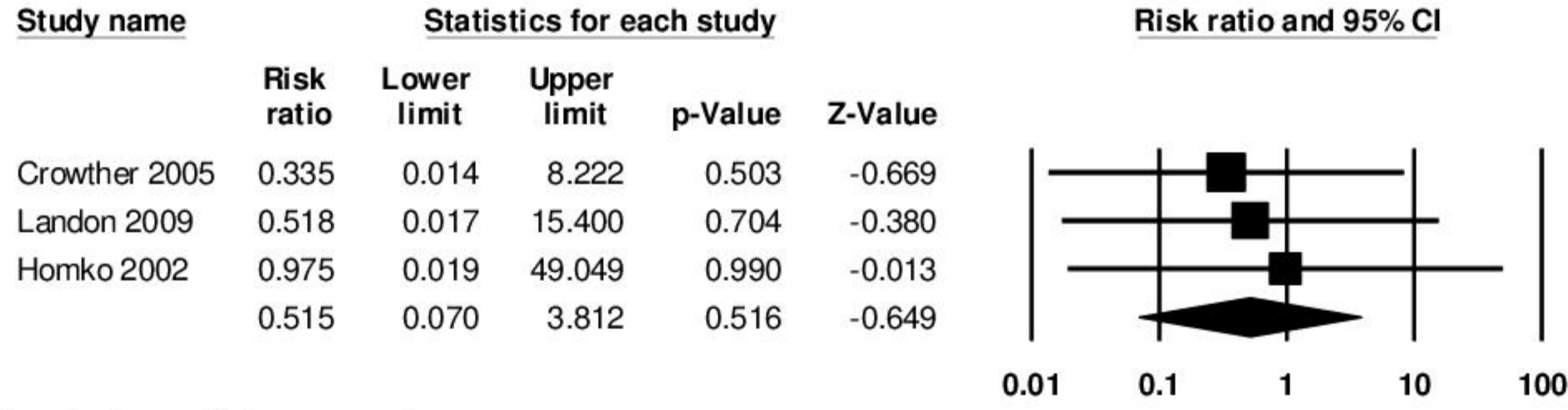
E. Macrosomia



F. Shoulder dystocia



G. Stillbirth



H. Respiratory distress syndrome

