

ORIGINAL ARTICLE

An observational study on imported COVID-19 cases in Hong Kong during mandatory on-arrival hotel quarantine

Mario Martín-Sánchez¹, Peng Wu^{1,2}, Dillon C. Adam¹, Bingyi Yang¹, Wey Wen Lim¹, Yun Lin¹, Eric H. Y. Lau^{1,2}, Sheena G. Sullivan^{3,4}, Gabriel M. Leung^{1,2}, Benjamin J. Cowling^{1,2}

Affiliations:

1. WHO Collaborating Centre for Infectious Disease Epidemiology and Control, School of Public Health, Li Ka Shing Faculty of Medicine, The University of Hong Kong, Hong Kong Special Administrative Region, China.
2. Laboratory of Data Discovery for Health Limited (D²4H), Hong Kong Science and Technology Park, Hong Kong Special Administrative Region, China
3. WHO Collaborating Centre for Reference and Research on Influenza, Royal Melbourne Hospital, and Department of Infectious Diseases, University of Melbourne, at the Peter Doherty Institute for Infection and Immunity, Melbourne, Australia
4. Department of Epidemiology, University of California, Los Angeles, USA

Financial support: Health and Medical Research Fund, Hong Kong

Corresponding author: Peng Wu, pengwu@hku.hk

Running title: COVID-19 detections in on-arrival quarantine, Hong Kong

Word count (abstract): 275

Word count (main text): 2,664

ABSTRACT

Background: Hong Kong has enforced stringent travel restrictions particularly for inbound travellers since the emergence of SARS-CoV-2. Understanding the characteristics of imported COVID-19 cases is important for establishing evidence-based control measures.

Methods: We conducted a retrospective cohort study to summarise the characteristics of cases classified as imported cases that were detected on or soon after arrival into Hong Kong from 13 November 2020 through to 31 January 2022, when all arriving persons were required to quarantine in a hotel or a designated quarantine facility. We analysed individual demographics, and clinical information including symptoms and disease severity, virus variants, and Ct values.

Results: There were 2269 imported COVID-19 cases aged 0-85 years identified in Hong Kong. Almost half (48.6%) of the imported cases were detected on arrival. A shorter median delay from arrival to isolation was observed in Delta and Omicron cases (3 days) than cases infected with the ancestral strain and other variants (12 days; $p < 0.001$) while lower Ct values at isolation were observed in cases infected with Omicron than the ancestral strain or other variants. No Omicron cases were detected beyond 14 days after arrival, and the cases ($n=58$, 2.6%) detected after 14 days of quarantine more frequently presented without symptoms at isolation and had a higher RT-PCR Ct-value during isolation. At least some of these cases were post-arrival infections.

Conclusions: Testing inbound travellers at arrival and during on-arrival quarantine can detect imported cases early although it may not be sufficient to prevent all introductions of COVID-19 into the community. Public health measures should be adjusted in responses to the emergence of new variants of SARS-CoV-2 based on the epidemiologic evidence from continuous surveillance.

BACKGROUND

The COVID-19 pandemic and its associated control measures have had an enormous impact on population health and the functioning of societies. Since the emergence SARS-CoV-2 particularly before 2022, many countries have enforced travel restrictions in order to reduce introduction of the virus through inbound travellers.¹ These measures include arrival and departure restrictions based on residence, vaccination status or other conditions, quarantine for incoming passengers, and COVID-19 test requirements before departure, on arrival, and after arrival. Nevertheless, there has been high variability in application of travel-related measures across jurisdictions.^{2,3}

Hong Kong reported its first COVID-19 case on 23 January 2020 in a returnee from Wuhan.⁴ Since then, travel-related measures have been implemented combined with public health and social measures in the community to control a series of community epidemics.⁵ Measures have undergone changes following the evolution of the pandemic worldwide and the emergence of variants of concerns.^{6,7} The travel-related measures have substantially reduced the number of virus introductions into the community but at the expense of a 98% reduction in airport passenger traffic and a ban on visitors to the city from most parts of the world between March 2020 and April 2022.

In Hong Kong, hotel quarantines of up to 21 days with frequent testing have been mandatory for international arrivals. Delta and Omicron variants have been found to have a shorter latent period compared to other variants, stimulating discussions about shortening quarantine periods.^{8,9} In addition, within-quarantine transmission is a risk for individual travellers^{10,11} that will increase with longer quarantine durations. Understanding the characteristics of imported cases is important for establishing evidence-based control measures. In this study,

we characterised imported cases in Hong Kong from the start of mandatory on-arrival hotel quarantine for all arrivals through to 31 January 2022.

METHODS

Mandatory hotel quarantine was implemented in July 2020 for travellers from high-risk locations^{12, 13} and was extended to all persons arriving in Hong Kong from overseas starting from 13 November 2020. For a short period, arrivals from certain locations were required to quarantine in purpose-built quarantine facilities rather than hotels. We conducted a retrospective cohort study based on a detailed line list without personal data provided by the Hong Kong Department of Health including all confirmed COVID-19 cases and selected for this study imported cases with an arrival from 13 November 2020 through to 31 January 2022. Imported cases were defined as COVID-19 cases that were presumed to have acquired their infection overseas but were confirmed in Hong Kong through reverse transcription polymerase chain reaction (RT-PCR), with an international travel history before the diagnosis. Our study received ethical approval from the Institutional Review Board of the University of Hong Kong.

During the study period, people entering Hong Kong from abroad were tested on arrival and during quarantine by RT-PCR. We divided our study period into five phases based on key changes in testing and quarantine requirements (**Table S1, Table S2**). During our study period, all confirmed cases in Hong Kong were admitted to hospitals or designated facilities for isolation regardless of symptoms or disease severity, including asymptomatic cases and re-positive cases. “Re-positive cases” were defined as individuals who had a previous episode of SARS-CoV-2 infection and tested positive again by RT-PCR, also known as long-term intermittent shedding.¹⁴ We used information from electronic health records provided by the

Hospital Authority to obtain information after case detection, including RT-PCR tests performed during isolation, detection of viral mutations compatible with SARS-CoV-2 variants of concerns, and RT-PCR reaction cycle threshold values (Ct values). Because the date of collection of the first positive RT-PCR before isolation and its Ct-value were not available in the dataset, we instead used the date of isolation and the first Ct-value during isolation as proxies. For cases that tested positive via RT-PCR in quarantine but were negative after transfer to isolation facilities, we imputed a Ct value of 45 at the time of isolation for the cases.¹⁵

Cases were frequently tested during isolation. Initially, cases would be discharged from isolation if two criteria were met: (i) improvement of clinical conditions and absence of fever in symptomatic cases and (ii) two consecutive negative RT-PCR tests 24 hours apart or tested positive for SARS-CoV-2 IgG.¹⁶ Discharge criteria were revised in August 2021 requiring symptomatic cases to be isolated for a minimum of 10 days and modifying laboratory criteria: SARS-CoV-2 IgG should be positive and three consecutive PCR tests 24 hours apart with the Ct value of 33 or above.¹⁷ In October 2021 the criteria were changed again to require two consecutive negative RT-PCR without IgG results needed. Additionally, all cases including asymptomatic and re-positive required a minimum of 10 days of isolation after the first positive test followed by an additional 14 days of isolation in a separate community isolation facility after discharge from the isolation ward.¹⁸

Imported cases were further characterised into four moments of detection: (i) detected at arrival, (ii) detected during quarantine up to day 14, (iii) detected after day 14 of quarantine, and (iv) detected after arrival with special quarantine arrangements (including imported close contacts of other imported cases that quarantined at designated facilities; aircrew, sea crew

and other arrivals with different testing and self-isolation arrangements). We conducted descriptive analyses to summarize case characteristics by moment-of-detection. For individuals detected after day 14 of quarantine, we hypothesised they might be re-positive cases or persons infected after arrival, as it is relatively less likely to observe cases with a very long latent period. Since lower Ct-values during isolation may have increased infectivity and are more compatible with newly incident cases,¹⁹⁻²¹ we further examined the subset of cases detected after day 14 with a minimum Ct-value lower than 30 during isolation. To test for differences across groups we used Chi-squared or Fisher tests, and Kruskal-Wallis and Mood's median test for non-parametric continuous variables. We used Kaplan-Meier curves to compare the time from isolation to a first negative RT-PCR test result based on the presence of symptoms, moment-of-detection, vaccination status and SARS-CoV-2 variant of concern. Cases that did not have a negative test during follow-up were censored at the date of discharge from isolation. We used the log-rank test to test for differences across groups. A p-value <0.05 was used to indicate statistical significance. Statistical analyses were conducted using R version 4.0.3 (R Foundation for Statistical Computing, Vienna, Austria).

RESULTS

There were 2269 imported COVID-19 cases reported in Hong Kong during the study period, most frequently reported from Southeast Asia and other regions of Asia (**Table S1**) where the Philippines, Indonesia and India were the countries with the highest number of importations (**Figure 1**). The median age was 35 years ranging from 0 to 85. Over the study period, the highest number of imported cases were observed in the fifth phase of the epidemics (**Table S1, Table S2**) and in January 2022 (**Figure 1**).

Half of the imported cases were detected at arrival (48.6%, n=1102), 34.5% (n=782) during quarantine up to day 14 after arrival and 2.6% (n=58) after day 14. For cases not detected on arrival, there was a median delay of 5 days (interquartile range [IQR]: 3-12) between arrival and isolation. The median Ct value at isolation was 29.1 (IQR: 21.2-35.6), higher in asymptomatic cases (30, 22.7-37.9) than in symptomatic cases (23.1, 18.6-29.8, p<0.001).

Among all imported cases, 26.6% were symptomatic at detection, and of these, 19.5% (n=115) reported symptoms before arrival, 23.9% (n=141) on the day of arrival and 56.6% (n=334) after arrival. For cases that initiated symptoms after arrival, the median delay from arrival to onset was 4 days (interquartile range, IQR: 2-6). For cases arriving on or after 12 May 2021 with available information on the vaccination status (n=1122), 650 (57.9%) had received at least two doses of mRNA vaccine, 256 (22.8%) two doses of inactivated vaccine and 216 (19.3%) had other vaccination courses.

Data on SARS-CoV-2 genomic mutations were available for 1295 cases (57.1%), of which 38.4% (497/1295) were compatible with Omicron variants, 38.1% (493/1295) with Delta and 13.1% (170/1295) with other variants of concern (Alpha, Beta or Gamma). Among cases detected after arrival, the median time from arrival to isolation for Omicron and Delta was 3 days (IQR: 3-5) compared to 12 days for other variants (IQR: 5-13; p<0.001) and for the ancestral strain (IQR: 7-13; p<0.001). Among symptomatic cases, the median time from arrival to symptoms onset was shorter for Omicron (3 days, IQR: 2-4) and Delta cases (2 days, 1-5) compared to other variants (7 days, 4-10) and the ancestral strain (5 days, 2-6).

The median Ct-value at isolation for cases infected with Omicron (23, IQR: 19-29) was lower than that for Delta cases (27, 19-34, p<0.001) and cases infected with other variants (29, 22-

34; $p < 0.001$) or the ancestral strain (29, 23-34; $p < 0.001$) (**Figure 2**). This value changed with the delay from arrival to isolation and was consistently lower for Omicron cases (**Figure 3**). The median minimum Ct-values during isolation also differed across variants, with Omicron cases (20, 18-24) lower than Delta (22, 18-30; $p < 0.001$), other variants (27, 20-31; $p < 0.001$) and the ancestral strain (25, 20-31; $p < 0.001$) (**Figure 2**).

Fifty-eight (2.6%) cases were detected after day 14. These cases were more frequently female, mostly detected during the second phase (21-day hotel quarantine for all international arrivals, **Table S2**) and the most common region of importation was Southeast Asia (60.3%). Only 10.3% of them were symptomatic compared to 32.0% detected up to day 14 and 22.8% detected at arrival ($p < 0.001$). Their median Ct value at isolation (44, IQR: 36-45) was higher than in the cases detected within 14 days (30, 22-38, $p < 0.001$) and those detected at arrival (28, 21-34, $p < 0.001$). The median minimum Ct value during isolation was 24 (19-30), 27 (20-35) and 36 (31-45) for cases detected at arrival, within and after 14 days of quarantine, respectively ($p < 0.001$). No Omicron case was detected after day 14 (**Table 1**).

After excluding cases without available data or under special quarantine arrangements, among 8 cases detected beyond 14 days of quarantine with at least one Ct-value lower than 30 during isolation, three were probably infected during hotel quarantine,¹¹ three were suspected cases of within-hotel transmission (epidemiological overlap but genomic sequences not available or inconclusive),¹¹ one was related to an air travel-related outbreak but within-quarantine transmission cannot be ruled out,²² and another was classified as a re-positive case²³ (**Table S3**).

Among the 5 symptomatic cases with data available detected after day 14, three had a Ct-value lower than 30 during isolation (**Table S3**). The other two correspond to a young child who had symptom onset on day 9 after arrival but was only isolated on day 22, and to a case arriving from the Philippines who had symptom onset 21 days after arrival, with a low viral load when first detected and then an indeterminate PCR result at the isolation facility, consistent with detection of a re-positive case and co-incidental symptoms from a separate infection.

Patients were isolated for a median of 12 days (IQR: 8-17). On 23 March 2022, 40 cases (1.8%) were still in isolation, and two died. Among currently isolated or already discharged cases, only 6 had severe or serious disease. The median time from isolation to the first PCR negative result was 10 days (95% confidence interval, CI: 10, 11) compared to 5 days (95% CI: 4,5) from isolation to the first Ct value at 33 or above. The time from isolation to the first PCR negative result was shorter for asymptomatic patients (median: 9 days, 95% CI: 9, 10) compared to symptomatic ones (median: 12 days, 95% CI: 12, 13) and for individuals detected after 14 days of quarantine (median: 0.5 days, 95% CI: 0, 2), compared to cases detected at arrival (median: 12 days, 95% CI: 11-13), and up to day 14 of quarantine (median: 9 days, 95% CI: 8, 9). The time from isolation to the first PCR result with Ct value at 33 or above was similar among cases with SARS-CoV-2 variants and the ancestral strain (**Figure 4**).

DISCUSSION

Our analysis on 2269 imported cases in Hong Kong over 18 months indicated strict on-arrival measures could reduce community introductions of the virus. The imported cases were largely asymptomatic at confirmation and presented mild symptoms during hospital isolation.

The majority of imported infections could be detected at arrival or within a few days after arrival, with some cases detected beyond 14-day quarantine likely due to re-positivity or transmission during quarantine. Differences in time from arrival to onset and detection across SARS-CoV-2 variants were apparent.

The relatively shorter median delay from arrival to symptom onset in imported Omicron and Delta cases than cases of the ancestral strains and other variants is consistent with the findings from a systematic review showing a mean incubation period of 6.3 days for infections of the ancestral strain compared to 4.8 and 3.6 days for Delta and Omicron, respectively.²⁴ Studies from China estimated a mean latent period of 5.5 days for SARS-CoV-2 in local outbreaks before April 2021²⁵ and a shorter latent period for Delta (mean: 3.9 days).²⁶ Our estimates of the median time from arrival to isolation in imported cases also suggested a difference between cases infected with Delta and Omicron (median: 3, third quartile: 5 days) and with other variants and ancestral strains (median: 12 days, third quartile: 13 days). Given the circulation of SARS-CoV-2 in origin countries,^{1, 27} the duration of quarantine for inbound travellers should be adjusted in response to the changes in epidemiological characteristics of the virus.

In our study, some cases mostly asymptomatic were detected after 14 days of quarantine, though they often had higher Ct values (median Ct-value at isolation: 44.0, minimum Ct value during isolation: 36.1) compared to those detected earlier, indicating a lower viral burden and perhaps less transmissibility²¹. It has been widely documented that positive RT-PCR tests might occur weeks after recovery for SARS-CoV-2 sometimes following previous negative results.^{19, 28-30} This is compatible with the hypothesis that re-positive cases who recovered from previous infections before departure would be very unlikely to be

contagious.³¹ Conversely, some cases with a negative RT-PCR result at arrival were detected during or after quarantine with lower Ct values were more likely due to infections acquired during quarantine (e.g. among families traveling together, or through transmission between rooms in a quarantine hotel) rather than long incubation periods.¹¹

Transmission events occurring between rooms in quarantine hotels have been reported in Hong Kong, Australia, and New Zealand, among others, and have resulted in COVID-19 reintroductions in jurisdictions that pursued an elimination strategy.^{10, 11, 32-34} Hotel rooms are not designed for quarantine purposes and may have limitations in the ventilation systems or floor plan design.^{33, 35} Hong Kong experienced a large epidemic of Omicron BA.2 in early 2022 which had originated in a quarantine hotel transmission between arriving persons staying in different hotel rooms.³⁶⁻³⁸

This study has several limitations. First, we did not have the date of sample collection of the diagnostic RT-PCR to determine the moment of detection, instead, we used the date of isolation in designated facilities. It is possible that for some cases the moment of detection occurred a few days before isolation, but we believe these were a minority and would therefore have limited impact on estimates. Second, different RT-PCR testing, quarantine, and discharge criteria across periods together with changes in arrival characteristics may confound the relationship between key parameters and SARS-CoV-2 variants. Although in our study, clear differences across variants that align with scientific literature were described, caution is still needed in their interpretation.

In conclusion, testing inbound travellers at arrival and during on-arrival quarantine could detect imported cases early although it might not be sufficient to prevent all introductions of

SARS-CoV-2 into the community. Travel-related public health measures should be implemented with a holistic consideration of the potential individual and societal costs as well as the potential public health benefits through reducing the rate of community importations of infections. Travel-related measures may need to be adjusted in response to the epidemiologic parameters of new variants of SARS-CoV-2.

FUNDING

This project was supported by the Health and Medical Research Fund, Health Bureau, Government of the Hong Kong Special Administration Region, the Collaborative Research Scheme (Project No. C7123-20G) of the Research Grants Council of the Hong Kong SAR Government, and the National Foundation for Australia China Relations' Doherty Sino-Australia COVID-19 Partnership Seed Funding (#SACOV-05).

ACKNOWLEDGMENTS

The authors acknowledge the Hospital Authority of Hong Kong and the Centre for Health Protection of the Hong Kong Department of Health for providing epidemiological data for the study. The authors thank Julie Au for technical support.

DATA AVAILABILITY

The data analysed in this study were provided by the Hospital Authority of Hong Kong and the Centre for Health Protection of the Hong Kong Department of Health, and cannot be shared without the permission from the two parties.

AUTHOR CONTRIBUTIONS

MM-S, PW and BJC conceived the study. MM-S, DCA, YL, EHYL collected the data. MM-S conducted the analysis and wrote the first draft of the manuscript. All authors critically reviewed, revised, and commented on the manuscript and approved the final version of the manuscript.

POTENTIAL CONFLICTS OF INTEREST

BJC consults for AstraZeneca, Fosun Pharma, GlaxoSmithKline, Moderna, Pfizer, Roche and Sanofi Pasteur. SGS has served (unpaid) on advisory boards for Sanofi and Seqirus. The authors report no other potential conflicts of interest.

REFERENCES

- 1 B Yang, TK Tsang, JY Wong, et al. The differential importation risks of COVID-19 from inbound travellers and the feasibility of targeted travel controls: A case study in Hong Kong. *Lancet Reg Health West Pac* 2021; 13:100184.
- 2 KA Grepin, TL Ho, Z Liu, et al. Evidence of the effectiveness of travel-related measures during the early phase of the COVID-19 pandemic: a rapid systematic review. *BMJ Glob Health* 2021; 6(3).
- 3 TW Russell, JT Wu, S Clifford, et al. Effect of internationally imported cases on internal spread of COVID-19: a mathematical modelling study. *Lancet Public Health* 2021; 6(1):e12-e20.
- 4 CKC Lai, RWY Ng, MCS Wong, et al. Epidemiological characteristics of the first 100 cases of coronavirus disease 2019 (COVID-19) in Hong Kong Special Administrative Region, China, a city with a stringent containment policy. *Int J Epidemiol* 2020; 49(4):1096-1105.
- 5 BJ Cowling, ST Ali, TWY Ng, et al. Impact assessment of non-pharmaceutical interventions against coronavirus disease 2019 and influenza in Hong Kong: an observational study. *Lancet Public Health* 2020; 5(5):e279-e288.
- 6 RP Walensky, HT Walke, AS Fauci. SARS-CoV-2 Variants of Concern in the United States-Challenges and Opportunities. *JAMA* 2021; 325(11):1037-1038.
- 7 H Gu, R Xie, DC Adam, et al. Genomic epidemiology of SARS-CoV-2 under an elimination strategy in Hong Kong. *Nat Commun* 2022; 13(1):736.
- 8 L Jansen, B Tegomoh, K Lange, et al. Investigation of a SARS-CoV-2 B.1.1.529 (Omicron) Variant Cluster - Nebraska, November-December 2021. *MMWR Morb Mortal Wkly Rep* 2021; 70(5152):1782-1784.

- 9 Y Wang, R Chen, F Hu, et al. Transmission, viral kinetics and clinical characteristics of the emergent SARS-CoV-2 Delta VOC in Guangzhou, China. *EClinicalMedicine* 2021; 40(10):1129.
- 10 H Gu, P Krishnan, DYM Ng, et al. Probable Transmission of SARS-CoV-2 Omicron Variant in Quarantine Hotel, Hong Kong, China, November 2021. *Emerg Infect Dis* 2022; 28(2):460-462.
- 11 DC Adam, M Martín-Sánchez, H Gu, et al. Within-hotel transmission of SARS-CoV-2 during on-arrival quarantine in Hong Kong. *medRxiv* 2022:2022.06.25.22276894.
- 12 The Government of The Hong Kong Special Administrative Region. Specifications under the Prevention and Control of Disease (Regulation of Cross-boundary Conveyances and Travellers) Regulation gazetted. In: info.gov.hk. Hong Kong: The Government of The Hong Kong Special Administrative Region,, 2020.
- 13 The Government of The Hong Kong Special Administrative Region. Specifications under Prevention and Control of Disease (Regulation of Cross-boundary Conveyances and Travellers) Regulation to be gazetted. In: info.gov.hk. Hong Kong: The Government of The Hong Kong Special Administrative Region,, 2020.
- 14 V Agarwal, AJ Venkatakrishnan, A Puranik, et al. Long-term SARS-CoV-2 RNA shedding and its temporal association to IgG seropositivity. *Cell Death Discov* 2020; 6(1):138.
- 15 PY Chia, SWX Ong, CJ Chiew, et al. Virological and serological kinetics of SARS-CoV-2 Delta variant vaccine breakthrough infections: a multicentre cohort study. *Clin Microbiol Infect* 2022; 28(4):612 e1-612 e7.
- 16 Scientific Committee on Emerging and Zoonotic Diseases. Updated Consensus Recommendations on Criteria for Releasing Confirmed COVID-19 Patients from Isolation

(July 29, 2020) In: Centre for Health Protection, ed.^,eds. Hong Kong Special Administrative Region: Department of Health, 2020.

17 Hong Kong Special Administrative Region Government News. Patient isolation criteria updated. August 6, 2021. In: news.gov.hk. COVID-19. Vol 2022. Hong Kong Special Administrative Region: Government of the Hong Kong Special Administrative Region,, 2021.

18 Hong Kong Special Administrative Region Government News. Isolation discharge criteria revised. October 26, 2021. In: news.gov.hk. COVID-19. Vol 2022. Hong Kong Special Administrative Region: Government of the Hong Kong Special Administrative Region,, 2021.

19 R Laxminarayan, B Wahl, SR Dudala, et al. Epidemiology and transmission dynamics of COVID-19 in two Indian states. *Science* 2020; 370(6517):691-697.

20 S Al Bayat, J Mundodan, S Hasnain, et al. Can the cycle threshold (Ct) value of RT-PCR test for SARS CoV2 predict infectivity among close contacts? *J Infect Public Health* 2021; 14(9):1201-1205.

21 A Singanayagam, M Patel, A Charlett, et al. Duration of infectiousness and correlation with RT-PCR cycle threshold values in cases of COVID-19, England, January to May 2020. *Euro Surveill* 2020; 25(32).

22 V Dhanasekaran, KM Edwards, R Xie, et al. Air travel-related outbreak of multiple SARS-CoV-2 variants. *J Travel Med* 2021; 28(8).

23 The Government of The Hong Kong Special Administrative Region. CHP investigates four COVID-19 preliminary positive imported cases and strongly reminds public to observe relevant compulsory testing requirement. In: info.gov.hk. Hong Kong: The Government of The Hong Kong Special Administrative Region,, 2021.

24 Z Du, C Liu, L Wang, et al. Shorter serial intervals and incubation periods in SARS-CoV-2 variants than the SARS-CoV-2 ancestral strain. *J Travel Med* 2022.

- 25 H Xin, Y Li, P Wu, et al. Estimating the Latent Period of Coronavirus Disease 2019 (COVID-19). *Clin Infect Dis* 2022; 74(9):1678-1681.
- 26 M Kang, H Xin, J Yuan, et al. Transmission dynamics and epidemiological characteristics of SARS-CoV-2 Delta variant infections in Guangdong, China, May to June 2021. *Euro Surveill* 2022; 27(10).
- 27 GH Jen, AM Yen, CY Hsu, et al. A pre-symptomatic incubation model for precision strategies of screening, quarantine, and isolation based on imported COVID-19 cases in Taiwan. *Sci Rep* 2022; 12(1):6053.
- 28 V Cento, L Colagrossi, A Nava, et al. Persistent positivity and fluctuations of SARS-CoV-2 RNA in clinically-recovered COVID-19 patients. *J Infect* 2020; 81(3):e90-e92.
- 29 LK Vibholm, SSF Nielsen, MH Pahu, et al. SARS-CoV-2 persistence is associated with antigen-specific CD8 T-cell responses. *EBioMedicine* 2021; 64(103230).
- 30 J Lu, J Peng, Q Xiong, et al. Clinical, immunological and virological characterization of COVID-19 patients that test re-positive for SARS-CoV-2 by RT-PCR. *EBioMedicine* 2020; 59(102960).
- 31 L Liang, Q Guo, H Zhang, et al. Low infectious risk of re-positive COVID-19 patients: a single-center study. *Int J Infect Dis* 2021; 111(5-9).
- 32 L Grout, A Katar, D Ait Ouakrim, et al. Failures of quarantine systems for preventing COVID-19 outbreaks in Australia and New Zealand. *Med J Aust* 2021; 215(7):320-324.
- 33 LEX Leong, J Soubrier, M Turra, et al. Whole-Genome Sequencing of SARS-CoV-2 from Quarantine Hotel Outbreak. *Emerg Infect Dis* 2021; 27(8):2219-2221.
- 34 J Douglas, JL Geoghegan, J Hadfield, et al. Real-Time Genomics for Tracking Severe Acute Respiratory Syndrome Coronavirus 2 Border Incursions after Virus Elimination, New Zealand. *Emerg Infect Dis* 2021; 27(9):2361-2368.

- 35 SC Wong, H Chen, DC Lung, et al. To prevent SARS-CoV-2 transmission in designated quarantine hotel for travelers: Is the ventilation system a concern? *Indoor Air* 2021; 31(5):1295-1297.
- 36 PH Cheung, CP Chan, DY Jin. Lessons learned from the fifth wave of COVID-19 in Hong Kong in early 2022. *Emerg Microbes Infect* 2022; 11(1):1072-1078.
- 37 Centre for Health Protection of the Department of Health; and the Hospital Authority Statistics on 5th Wave of COVID-19 (from 31 Dec 2021 up till 1 May 2022 00:00). Hong Kong, 2022.
- 38 DJ Smith, AJ Hakim, GM Leung, et al. COVID-19 Mortality and Vaccine Coverage - Hong Kong Special Administrative Region, China, January 6, 2022-March 21, 2022. *MMWR Morb Mortal Wkly Rep* 2022; 71(15):545-548.

Table 1. Characteristics of imported cases in Hong Kong by moment of detection (excluding cases with special quarantine arrangements)

	At arrival (N=1102)	Up to day 14 of quarantine (N=782)	After day 14 of quarantine (N=58)	P-value
Age group				
<20 years	103 (9.35%)	84 (10.7%)	7 (12.1%)	0.470
20-39 years	577 (52.4%)	421 (53.8%)	31 (53.4%)	
40-59 years	350 (31.8%)	221 (28.3%)	14 (24.1%)	
>59 years	72 (6.53%)	56 (7.16%)	6 (10.3%)	
Sex				
Female	574 (52.1%)	460 (58.8%)	44 (75.9%)	<0.001
Male	528 (47.9%)	322 (41.2%)	14 (24.1%)	
Region of importation				
Asia (not including Southeast Asia)	330 (30.3%)	282 (36.4%)	15 (25.9%)	<0.001
Southeast Asia	280 (25.7%)	280 (36.2%)	35 (60.3%)	
Europe	255 (23.4%)	117 (15.1%)	4 (6.90%)	
Others	223 (20.5%)	95 (12.3%)	4 (6.90%)	
Period of arrival (% by row)				
First phase (N=258)	187 (72.5%)	68 (26.4%)	3 (1.2%)	<0.001
Second phase (N=561)	282 (50.3%)	239 (42.6%)	40 (7.1%)	
Third phase (N=185)	100 (54.1%)	83 (44.9%)	2 (1.1%)	
Fourth phase (N=324)	158 (48.8%)	154 (47.5%)	12 (3.7%)	
Fifth phase (N=614)	375 (61.1%)	238 (38.8%)	1 (0.2%)	
Vaccination status (from 12 May 2021)				
2 doses mRNA	342 (54.0%)	202 (42.5%)	2 (13.3%)	<0.001
2 doses inactivated	93 (14.7%)	124 (26.1%)	6 (40.0%)	
Other vaccination courses	115 (18.2%)	72 (15.2%)	4 (26.7%)	
Not vaccinated/Not reported	83 (13.1%)	77 (16.2%)	3 (20.0%)	
Presence of symptoms				
Asymptomatic	851 (77.2%)	532 (68.0%)	52 (89.7%)	<0.001
Symptomatic	251 (22.8%)	250 (32.0%)	6 (10.3%)	
Variants of concern				
Omicron	273 (24.8%)	117 (15.0%)	0 (0%)	<0.001
Delta	245 (22.2%)	164 (21.0%)	9 (15.5%)	
Other variants (Alpha/Beta/Gamma)	85 (7.71%)	59 (7.54%)	7 (12.1%)	
Ancestral strain	65 (5.90%)	55 (7.03%)	4 (6.90%)	
Not tested/Indeterminate	434 (39.4%)	387 (49.5%)	38 (65.5%)	
RT-PCR Ct-value at isolation				
Mean (SD)	28.2 (8.73)	30.2 (9.79)	39.8 (6.98)	<0.001
Median [Q1, Q3]	27.7 [21.1, 33.8]	30.0 [21.5, 38.5]	44.0 [36.1, 45.0]	
Minimum RT-PCR Ct-value during isolation				
Mean (SD)	25.4 (8.22)	27.9 (9.04)	36.3 (7.43)	<0.001
Median [Q1, Q3]	23.6 [18.7, 30.5]	27.3 [19.9, 34.8]	36.1 [31.3, 44.6]	
RT-PCR Ct-value ever lower than 30 during isolation				
No	334 (30.4%)	336 (43.2%)	49 (84.5%)	<0.001
Yes	766 (69.6%)	441 (56.8%)	9 (15.5%)	

FIGURE LEGENDS

Figure 1. Number of imported COVID-19 cases identified in Hong Kong from 13 November 2020 through 31 January 2022 by week of isolation (A), weekly imported cases per 1000 arrivals to Hong Kong International Airport and weekly cases worldwide (B) and number of imported cases by week of isolation for the most common countries of origin (C).

Figure 2. Differences across SARS-CoV-2 variants among imported COVID-19 cases identified in Hong Kong in days from arrival to admission for isolation (A), RT-PCR Ct-value at admission for isolation (B), days from isolation to negative RT-PCR (C) and minimum RT-PCR Ct-value during isolation (D).

Figure 3. Number of imported cases with Omicron and other SARS-CoV-2 variants identified in Hong Kong by day from arrival to isolation and day from arrival to symptom onset, and RT-PCR Ct-value at isolation of the imported cases by day from arrival to admission for isolation. Horizontal lines indicate RT-PCR Ct-value at 33 (samples with very low viral load, the criterion used for release of isolation during specific time periods) and 30 (samples with low viral load, indicating a possible re-positive result i.e. long-term intermittent shedding).

Figure 4. Kaplan-Meier curves for the time from isolation to first RT-PCR result with Ct value at 33 or above among imported COVID-19 cases identified in Hong Kong by: (A) presence of symptoms; (B) moment of detection; (C) type of SARS-CoV-2; (D) vaccination status including receipt of mRNA vaccination (BNT162b2), inactivated vaccine (CoronaVac), or other vaccine types.

SUPPLEMENTARY MATERIAL

Table S1. Characteristics of imported cases that arrived in Hong Kong from 13 November 2020 to 31 January 2022.

	Overall (N=2269)
Age group	
<20 years	251 (11.1%)
20-39 years	1182 (52.1%)
40-59 years	678 (29.9%)
>59 years	157 (6.92%)
Sex	
Female	1218 (53.7%)
Male	1051 (46.3%)
Region of importation	
Asia (not including Southeast Asia)	781 (34.9%)
Southeast Asia	652 (29.1%)
Europe	426 (19.0%)
North America	207 (9.24%)
Africa	59 (2.63%)
South America	13 (0.580%)
Multiple regions	103 (4.60%)
Period of arrival*	
First phase ^a	277 (12.2%)
Second phase ^b	608 (26.8%)
Third phase ^c	221 (9.74%)
Fourth phase ^d	385 (17.0%)
Fifth phase ^e	778 (34.3%)
Presence of symptoms	
Asymptomatic	1664 (73.4%)
Symptomatic	603 (26.6%)
Moment of symptom onset	
Before arrival	115 (19.5%)
Day of arrival	141 (23.9%)
After arrival	334 (56.6%)
Vaccination status (from 12 May 2021)	
2 doses mRNA	650 (47.0%)
2 doses inactivated	256 (18.5%)
Other vaccination courses	216 (15.6%)
Not vaccinated/Not reported	262 (18.9%)
Moment of detection	
At arrival	1102 (48.6%)

	Overall (N=2269)
Up to day 14 of quarantine	782 (34.5%)
After day 14 of quarantine	58 (2.56%)
After arrival, special quarantine arrangements	326 (14.4%)

^a14-day hotel quarantine (13 November-24 December 2020), ^b21-day hotel quarantine (25 December 2021-11 May 2021), ^c7,14 or 21-day hotel quarantine based on vaccination status and country of arrival (12 May-19 August 2021), ^d14 or 21-day hotel quarantine based on vaccination status and country of arrival (20 August-27 November 2021), ^e14 or 21-day hotel quarantine based on vaccination status and country of arrival, enhanced surveillance of arrivals from high risk countries (28 November 2021-31 January 2022)

*Details in Table S1

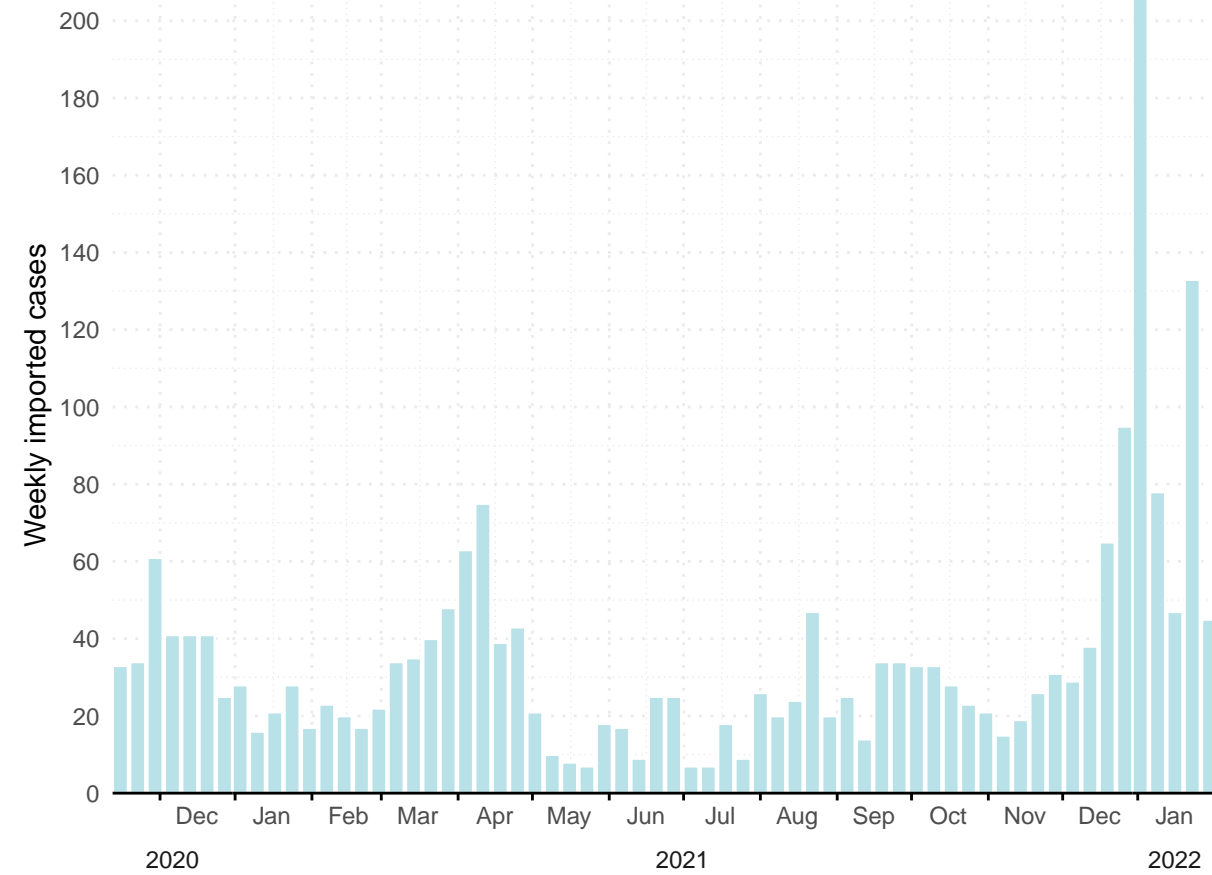
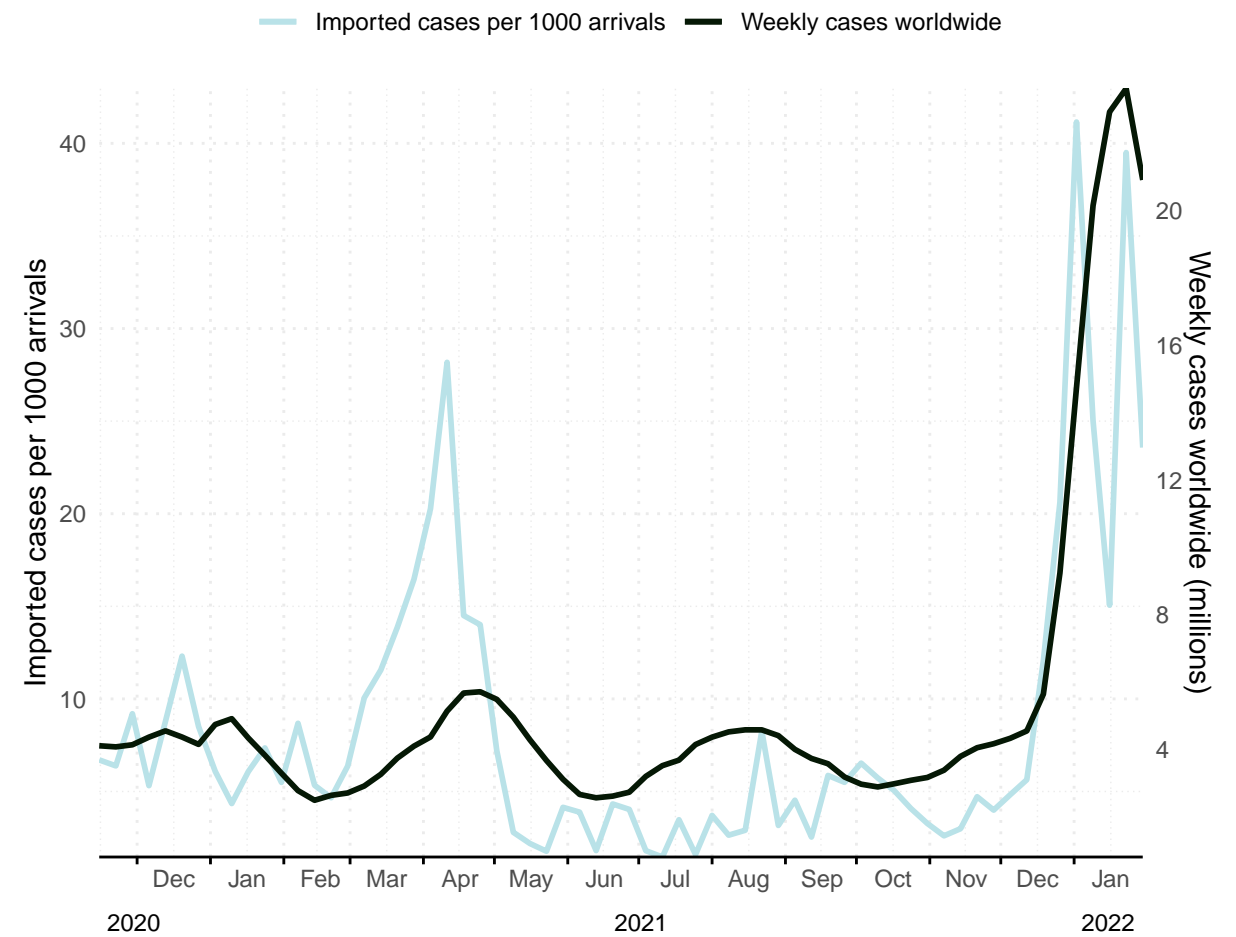
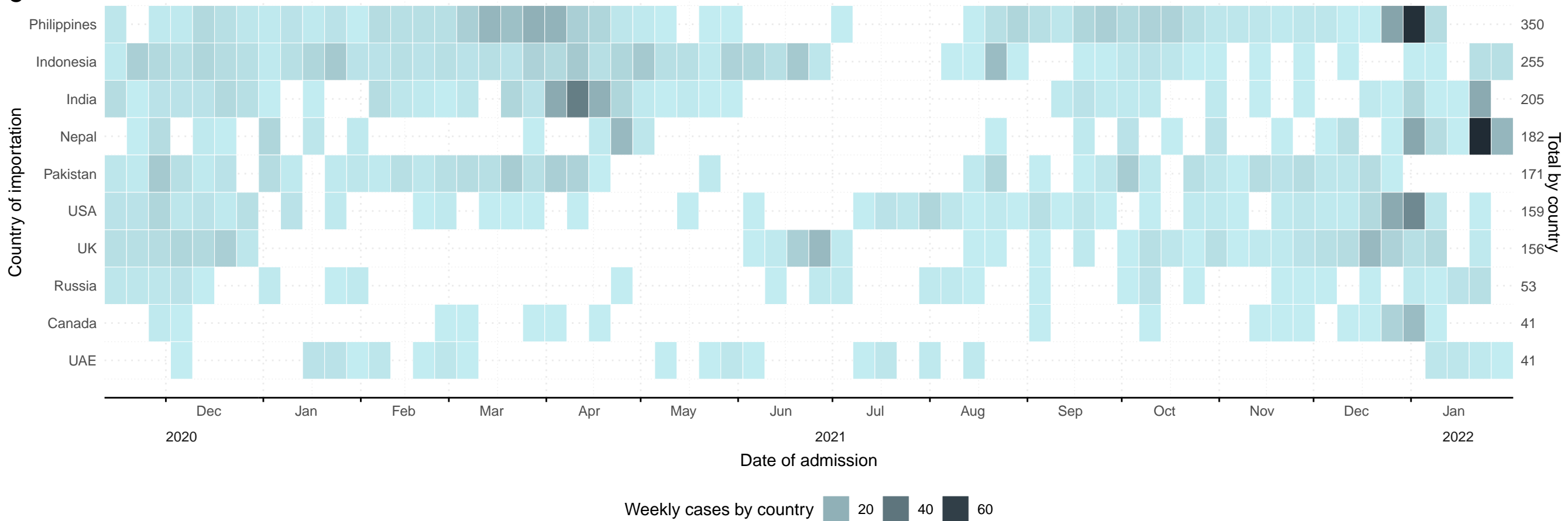
Table S2. Testing and quarantine requirements for international arrivals in Hong Kong, 13 November 2020 to 31 January 2022

Period of arrival	Quarantine requirements	PCR testing	Others	Links to sources
1st phase: 13 Nov 2020 – 24 Dec 2020	14-day compulsory hotel quarantine	<ul style="list-style-type: none"> • Test 72h before boarding* • Test at arrival • Test on day 12 • Test on day 19 (from 18 Dec 2020) 	<p>Quarantine only allowed in designated hotels complying with specific infection control requirements (from 22 Dec)</p> <p>Flight-specific suspension mechanism</p> <p>Place-specific ban on arrivals (resumed in 22 Dec 2020)</p>	<p>https://sc.news.gov.hk/TuniS/www.news.gov.hk/chi/2020/11/20201111/20201111_113510_630.html?type=category&name=covid19&tl=t</p> <p>https://www.info.gov.hk/gia/general/202010/27/P20201027005505.htm</p> <p>https://www.news.gov.hk/eng/2020/12/20201213/20201213_233023_572.html?type=category&name=covid19&tl=t</p> <p>https://www.news.gov.hk/eng/2020/07/20200713/20200713_211216_022.html?type=category&name=covid19&tl=t</p> <p>https://www.news.gov.hk/eng/2020/04/20200407/20200407_230341_587.html?type=category&name=covid19</p> <p>https://www.info.gov.hk/gia/general/202012/18/P2020121800850.htm</p> <p>https://www.info.gov.hk/gia/general/202012/22/P2020122200030.htm?fontSize=1</p> <p>https://www.news.gov.hk/eng/2020/12/20201221/20201221_170008_575.html?type=category&name=covid19&tl=t</p>
2nd phase: 25 Dec 2020 – 11 May 2021	21-day compulsory hotel quarantine. 14-day for arrivals from low-risk places [§] (from 9 April 2021)	<ul style="list-style-type: none"> • Test 72h before boarding* • Test at arrival • Test on day 12 • Test on day 19 	<p>Flight-specific suspension mechanism</p> <p>Place-specific ban on arrivals</p>	<p>https://www.news.gov.hk/eng/2020/12/20201224/20201224_231616_358.html?type=category&name=covid19&tl=t</p> <p>https://www.news.gov.hk/chi/2021/03/20210329/20210329_164518_198.html?type=category&name=covid19&tl=t</p>
3rd phase: 12 May 2021 – 19 Aug 2021	7, 14 or 21-day compulsory hotel quarantine based on vaccination status and country of arrival (“Vaccination bubble”)	<ul style="list-style-type: none"> • Test 72h before boarding* (mandatory for all overseas arrivals after 9 Aug 2021) • Test at arrival • 2 to 4 tests during quarantine* • Test after quarantine on day/s 9/12/16/19/26* 	<p>Place-specific ban on arrivals and flight-specific suspension mechanism</p> <p>Reduction of quarantine days for vaccinated arrivals based on COVID-19 serology results (from 30 June 2021)</p>	<p>https://www.news.gov.hk/eng/2021/05/20210507/20210507_162630_307.html?type=category&name=covid19&tl=t</p> <p>https://gia.info.gov.hk/general/202105/07/P2021050700821_366766_1_1620395105832.pdf</p> <p>https://www.news.gov.hk/eng/2021/06/20210621/20210621_165237_355.html?type=category&name=covid19&tl=t</p> <p>https://www.news.gov.hk/eng/2021/08/20210802/20210802_181121_697.html?type=category&name=covid19</p>
4th phase: 20 Aug 2021 – 27 Nov 2021	14 or 21-day compulsory hotel quarantine based on vaccination status and country of arrival (7 day-quarantine only for arrivals from New Zealand up to 17 Nov 2021)	<ul style="list-style-type: none"> • Test 72 h before boarding • Test at arrival • 2 to 6 tests during quarantine* • Test after quarantine on day/s 9/12/16/19/26* 	<p>Place-specific ban on arrivals and flight-specific suspension mechanism</p> <p>Serology results no longer accepted for quarantine reduction</p> <p>Designated places for quarantine for foreign domestic helpers (from 4 Oct 2021)</p>	<p>https://www.news.gov.hk/eng/2021/08/20210817/20210817_222359_409.html?type=category&name=covid19&tl=t</p> <p>https://gia.info.gov.hk/general/202108/17/P2021081700867_374725_1_1629212803742.pdf</p> <p>https://www.news.gov.hk/eng/2021/11/20211110/20211110_122241_324.html?type=category&name=covid19&tl=t</p> <p>https://www.news.gov.hk/eng/2021/09/20210928/20210928_160830_723.html</p>
5th phase: 28 Nov 2021 – 31 Jan 2022	14 or 21-day compulsory hotel quarantine based on vaccination status and country of arrival. Arrivals from high-risk places [§] with enhanced surveillance first 7 days at quarantine centre before being transferred to quarantine hotel (reduced to 4 days on 21 Dec 2021)	<ul style="list-style-type: none"> • Test 72 h before boarding (changed to 48 h on 24 Dec 2021) • Test at arrival • 4 to 6 tests during quarantine* • Arrivals from high-risk places[§] with enhanced surveillance daily test for the first 4/7 days* • Test after quarantine on day/s 16/19/26* 	<p>Place-specific ban on arrivals and tightening of flight-specific suspensions mechanism (on 20 Dec 2021)</p> <p>Start of 5th COVID-19 wave of local cases (Jan 2022)</p>	<p>https://www.news.gov.hk/eng/2021/11/20211127/20211127_202708_109.html?type=category&name=covid19&tl=t</p> <p>https://www.news.gov.hk/eng/2021/11/20211130/20211130_103032_985.html?type=category&name=covid19&tl=t</p> <p>https://www.news.gov.hk/eng/2021/12/20211220/20211220_192157_083.html?type=category&name=covid19&tl=t</p> <p>https://www.info.gov.hk/gia/general/202112/20/P202112200964.htm</p> <p>https://www.info.gov.hk/gia/general/202201/26/P2022012600382.htm</p>

Table S3. Description of cases detected after 14 days of quarantine with Ct-values lower than 30 during isolation

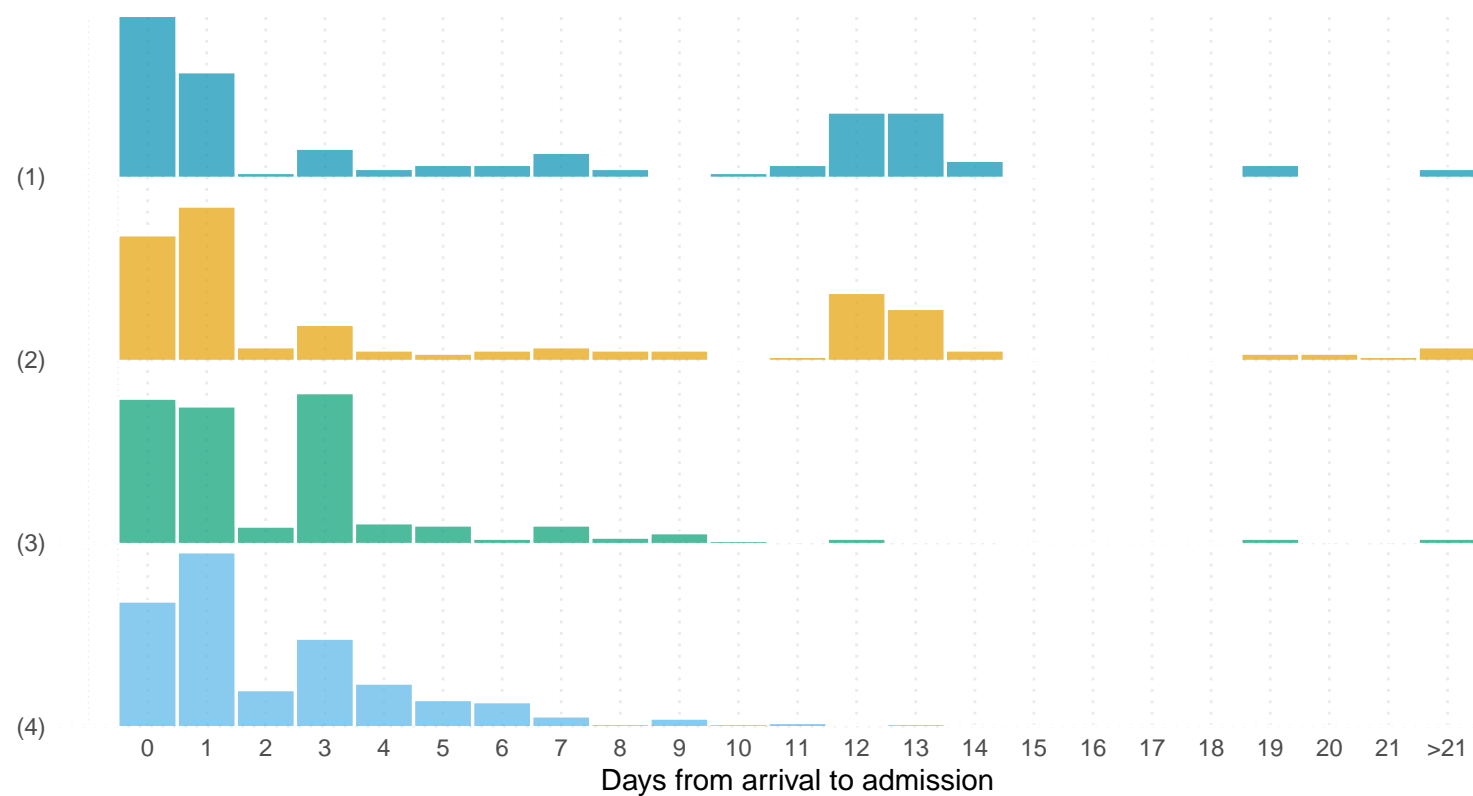
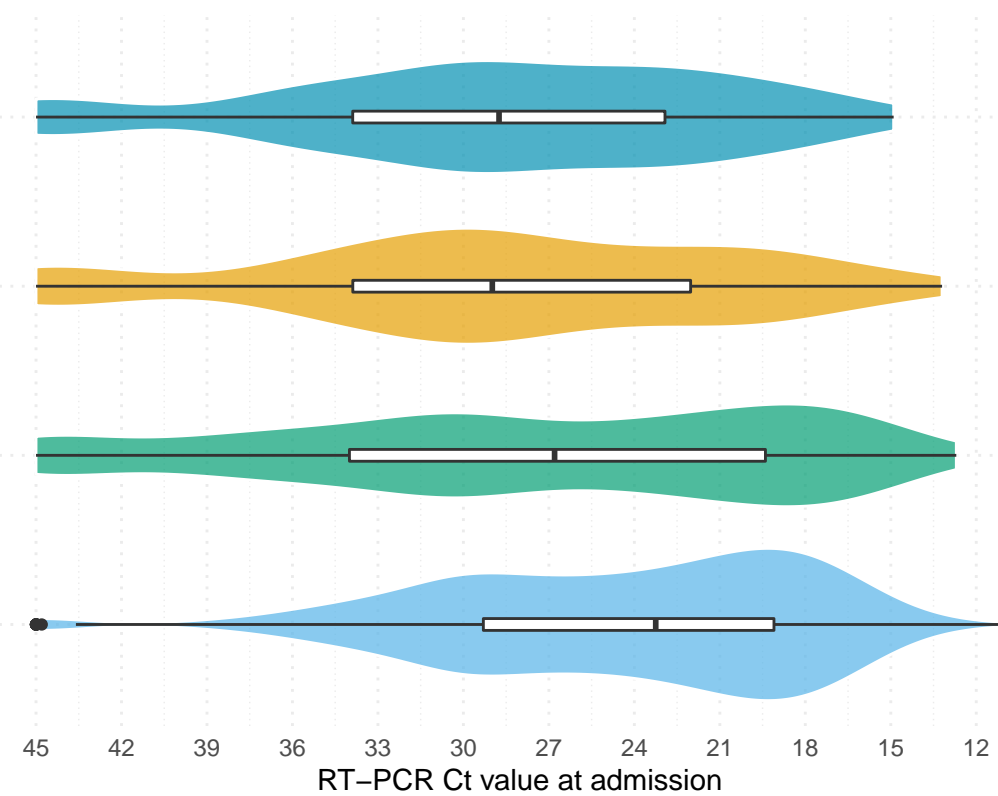
Age group, years	Month of arrival	Country of origin	Days from arrival to isolation	Mandated quarantine length	Vaccination status	Days from arrival to onset	Lowest RT-PCR Ct-value during isolation	Case details ^{1, 22, 23}
40-59	Dec 2020	Nepal	20 days	21 days	NA	18 days	18.2	Suspected transmission during hotel quarantine ^a
>59	Feb 2021	Canada	19 days	21 days	NA	18 days	15.8	Probable transmission during hotel quarantine ^b
30-39	March 2021	Indonesia	20 days	21 days	NA	19 days	29.4	Probable transmission during hotel quarantine ^b
30-39	April 2021	India	21 days	21 days	NA	Asymptomatic	26.8	Part of an air-travel-related cluster of 59 cases arriving on a single flight from New Delhi. Transmission during quarantine cannot be ruled out
40-49	March 2021	Philippines	33 days	21 days	NA	Asymptomatic	26.9	Suspected transmission during hotel quarantine ^a . Detected after hotel quarantine through required community testing for foreign domestic helpers
40-49	June 2021	Indonesia	19 days	21 days	Not vaccinated/not reported	Asymptomatic	25.8	Probable transmission during hotel quarantine ^b
<20	October 2021	Italy, Qatar	26 days	21 days	Not vaccinated/not reported	Asymptomatic	29.5	Case classified as re-positive
>59	October 2021	Thailand	19 days	21 days	2 doses inactivated vaccine	Asymptomatic	19.6	Suspected transmission during hotel quarantine ^a .

NA: not applicable, ^aEpidemiological overlap with an imported case staying in a different room of the same quarantine hotel but genome sequences not available or inconclusive ^bEpidemiological overlap and identical genomic sequencing or ≤ 4 genome-wide substitutions, in cases with different countries of departure

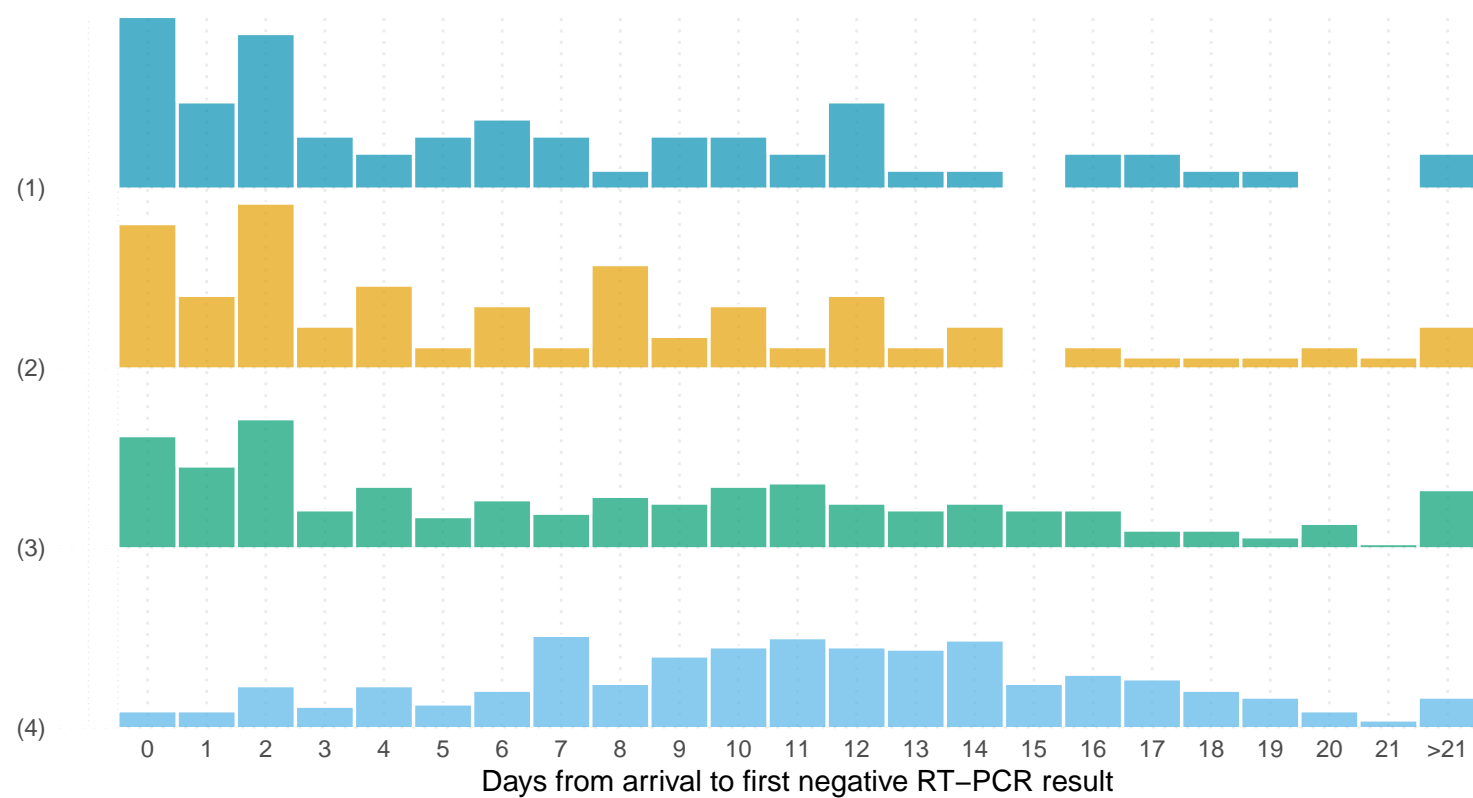
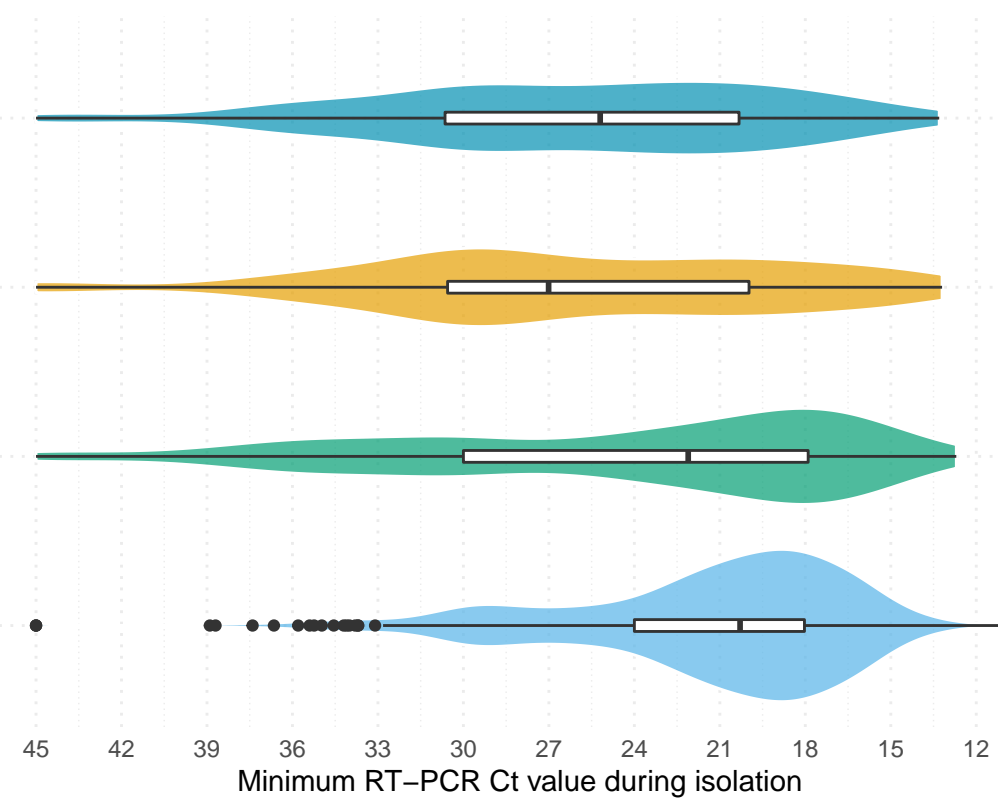
A**B****C**

A

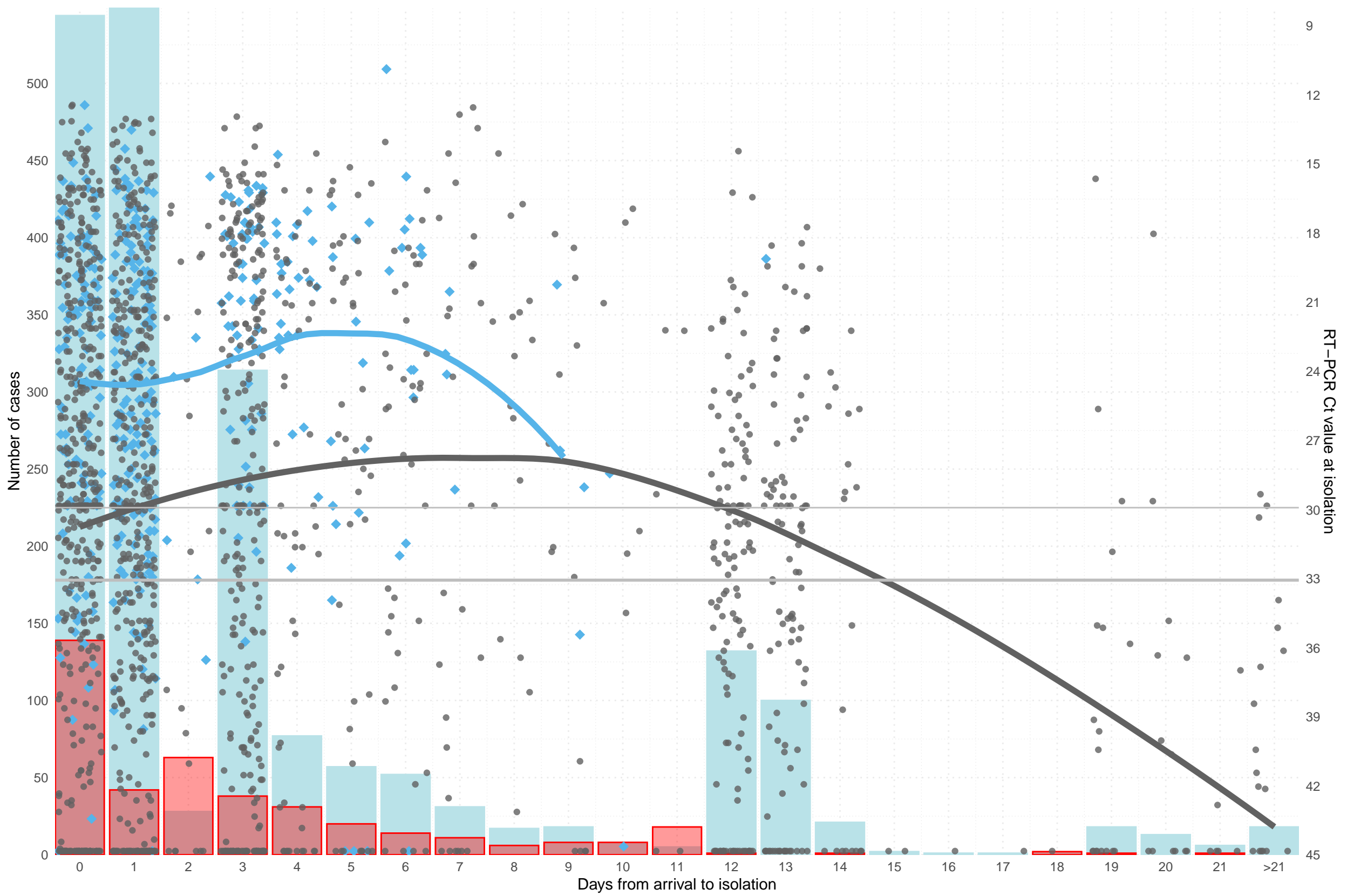
Density by SARS-CoV-2 variants

**B**(1)
(2)
(3)
(4)**C**

Density by SARS-CoV-2 variants

**D**(1)
(2)
(3)
(4)

(1): Ancestral strain (2): Alpha/Beta/Gamma (3): Delta (4): Omicron



Isolation in designated facility

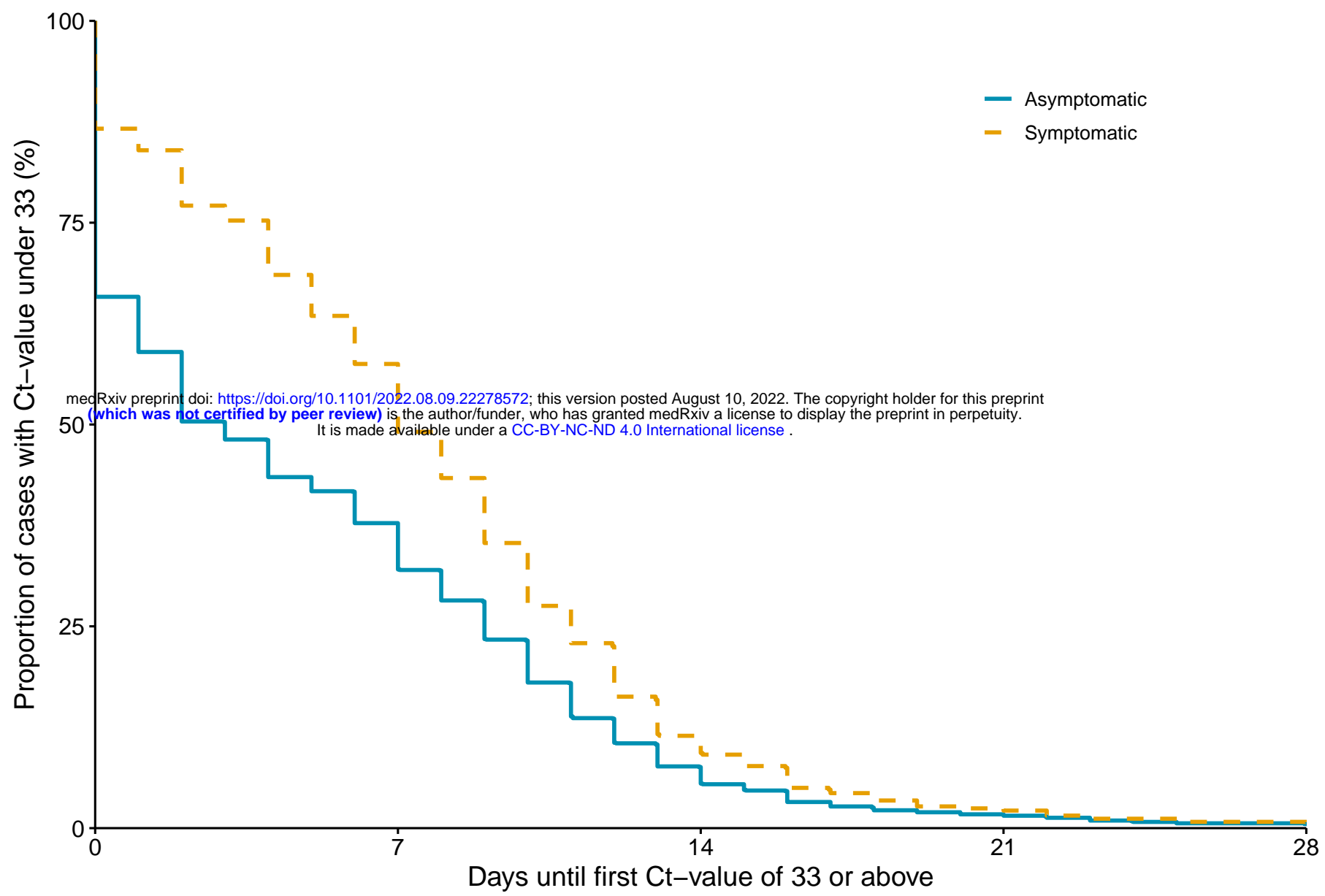
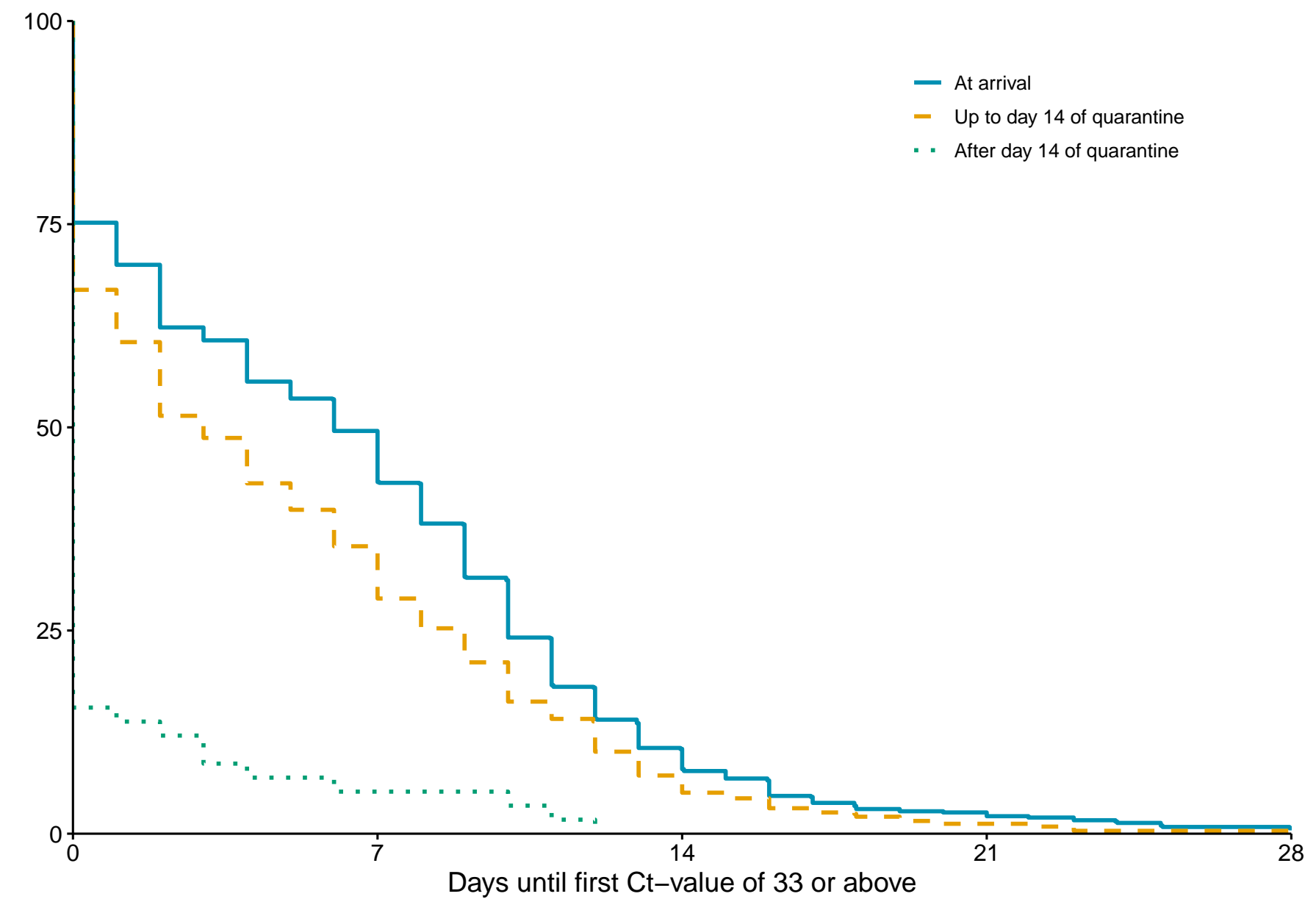
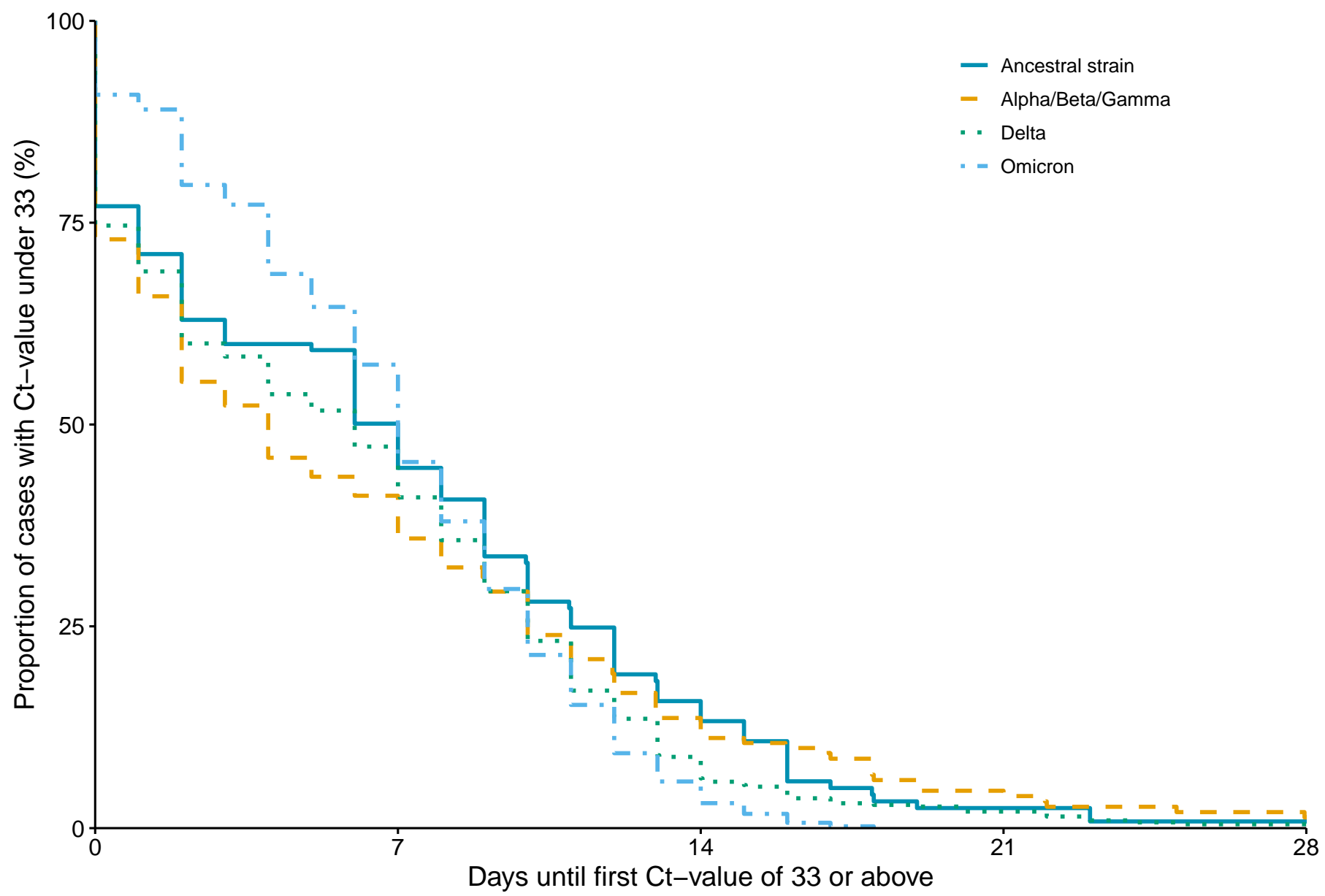
Onset of symptoms

● Ct value at isolation for ancestral strain and other variants

◆ Ct value at isolation for Omicron variant

— Median Ct value at isolation for ancestral strain and other variants

— Median Ct value at isolation for Omicron variant

A**B****C****D**