

1
2
3
4
5
6
7
8
9
10
11
12
13
14
15
16
17
18
19
20
21
22
23
24
25
26

Near point-of-care HIV viral load testing: Uptake and utilization in suburban Yangon, Myanmar

Ni Ni Tun^{1,2*}, Frank Smithuis^{1,2}, Nyan Lynn Tun², Myo Min², Myo Ma Ma Hlaing¹, Josefien van Olmen^{3*}, Lutgarde Lynen^{4*}, Tinne Gils⁴

1. HIV/TB, Medical Action Myanmar, Yangon Myanmar.
2. HIV/TB, Myanmar Oxford Clinical Research Unit, Yangon, Myanmar.
3. Spearhead research Public Health & Primary Care, University of Antwerp, Belgium.
4. Clinical Sciences, Institute of Tropical Medicine, Antwerp, Belgium

*Corresponding author:

E-mail: nini@mam.org.mm (NNT)

27 Abstract

28 **Introduction:** HIV viral load testing in resource-limited settings is often centralized, limiting
29 access. Near point-of-care (POC) viral load testing was introduced in Myanmar in 2017. We
30 assessed its uptake and utilization.

31 **Methods:** Routine program data from three HIV clinics of Medical Action Myanmar were
32 used. Annual viral load uptake was cross-sectionally analysed in people living with HIV
33 (PLHIV) on antiretroviral therapy (ART) initiated between July 2009-June 2019. Attrition at
34 two years was assessed between PLHIV with different access to viral load testing with Kaplan-
35 Meier analysis. For those eligible for a first viral load when near POC viral load became
36 available, a viral load cascade was constructed. We used logistic regression to explore
37 predictors of confirmed virological failure after a first high viral load.

38 **Results:** Among 5271 PLHIV who started ART between July 2009-December 2019, annual
39 viral load uptake increased significantly after near POC was introduced. Attrition in the first
40 two years after ART initiation was not different among those eligible for a first viral load before
41 viral load was available, after centralized laboratory-based viral load, and after near POC viral
42 load introduction. After introduction of near POC viral load, 92% (2945/3205) of eligible
43 PLHIV received a first viral load, a median of 2.8 years (IQR: 1.4-4.4) after initiation. The
44 delay was 3.7 years (IQR: 2.8-5.1) and 0.9 years (IQR: 0.6-1.4) in those becoming eligible
45 before and after near POC viral load was available, respectively. Among those with a first viral
46 load, 95% (2796/2945) were ≤ 1000 copies/ml. Eighty-four % (125/149) of those with a viral
47 load > 1000 copies/ml received enhanced adherence counselling and a follow up viral load, a
48 median of 119 days (IQR: 95-167) after the first viral load. Virological failure was confirmed
49 in 67% (84/125), and 82% (69/84) of them were switched to second-line ART. Nine-three %
50 (64/69) among those switched were alive on ART at end of follow-up. Having a first viral load
51 of ≥ 5000 copies/ml was associated with confirmed virological failure.

52 **Conclusion:** Near POC viral load testing enabled rapid scale-up of viral load testing in
53 Myanmar. PLHIV with a high viral load were adequately managed.

54

55

56

57 **Introduction**

58 Scaling up antiretroviral therapy (ART) and access to routine HIV viral load (VL) testing are
59 critical to control the HIV epidemic [1]. The World Health Organization (WHO) recommends
60 VL to monitor people living with HIV (PLHIV) on ART, six months after the start of ART and
61 annually thereafter [2]. In case of a VL above 1000 copies/mL, enhanced adherence counselling
62 (EAC) should be performed and the VL should be repeated after three months. If the second
63 VL is also above 1000 copies/mL despite EAC, virological failure is confirmed and prompt
64 switch to a second-line regimen is indicated [3]. Though VL is regularly measured in developed
65 countries, access to VL tests is still very limited in many low resource settings and this leads to
66 delayed switching to second-line ART [4–8]. The mostly centralized VL testing demands
67 sophisticated and expensive facilities, equipment, and skilled technicians, making it difficult
68 and impractical to scale up. Moreover, challenges with blood collection, sample storage, and
69 transportation often lead to delayed results [9,10].

70
71 To expand VL monitoring, WHO recommends point-of-care (POC) VL testing in priority
72 groups since 2021 [11]. In the STREAM study, the time to the return of test results and to
73 clinical decision making following an elevated VL reduced, and retention in care improved
74 when POC was compared to centralized VL [12]. Near POC viral load testing, an approach
75 using testing in laboratories close to, but not inside, treatment facilities, has shown to be feasible
76 and to enable prompt clinical action in seven countries in sub-Saharan Africa. Compared to
77 centralized testing, near POC also improved the turn-around time from sampling to results
78 delivery to PLHIV and to action when high VL was identified [13,14]. For its implementation,
79 inexpensive, low-complexity and POC assays are needed. The GeneXpert® HIV-1 VL assay
80 (Cepheid, Sunnyvale, CA; GeneXpert), is an in vitro diagnostic test which uses polymerase
81 chain reaction (PCR) technology to quantify HIV-1 in human plasma from PLHIV [15].
82 Evidences have shown that the result of GeneXpert compared well with the widely used
83 Abbott® HIV-1 m2000 Real Time PCR (Abbott) [15–18]. The GeneXpert is suitable for near
84 POC VL and was included in the WHO list of prequalified in vitro diagnostics since 2017 [19].

85
86 Myanmar is a low resource country with an overall estimated HIV prevalence of 0.6%, the
87 second highest in Southeast Asia [20]. In 2019, Myanmar had an estimated 240 000 PLHIV, 10
88 000 new HIV infections and 7700 AIDS-related deaths. In the same year, 76% of PLHIV
89 received ART, and 72% of them were virally suppressed. The epidemic is highly concentrated
90 among key affected populations (KAP); HIV prevalence is 5.6% among female sex workers,

91 6.4% among men who have sex with men and 19% among people who inject drugs [20].
92 Routine VL monitoring was introduced in Myanmar in 2017. Until then, VL testing remained
93 limited to centralized laboratory-based testing (Abbott Molecular; Abbott RealTime HIV-1
94 assay) situated in two major cities, Mandalay and Yangon. Hence, access to VL testing
95 remained limited. In 2017, only half of over 7000 newly initiated PLHIV in five regions across
96 the country received a VL test in the first year on ART [8]. Even in six ART clinics in Yangon,
97 a mere 58% of eligible PLHIV had received a VL test in 2019. Among the challenges
98 encountered were sample transport, resulting in long turn-around times between sampling and
99 reception of results [9].

100

101 GeneXpert for near POC VL testing was introduced in Yangon 2017 by the organization
102 Medical Action Myanmar (MAM). Evidence on implementation of near POC VL testing
103 remains limited [11]. In this study, we describe annual VL uptake and attrition according to
104 access to VL over a 10-year period. For those eligible for VL after POC VL introduction, we
105 present the VL cascade and predictors of having confirmed virological failure after a first high
106 VL and EAC.

107

108 **Methods**

109 **Study setting, design and population**

110 The study took place at three MAM clinics in two of Yangon's large suburban slum areas:
111 Hlaingtharya (clinic 1 and 2) and Shwepyitha (clinic 3). These areas are generally inhabited by
112 people with a low income, like day laborers, garment factory workers, taxi and highway drivers,
113 and female sex workers. Many people have recently been internally displaced there from rural
114 areas. Medical Action Myanmar (MAM) is a medical organization providing care and for
115 PLHIV in Myanmar since 2009. MAM operates free-of-charge clinics which provide a package
116 of services, including primary health care such as care for non-communicable diseases,
117 reproductive healthcare, antenatal care, and tuberculosis and HIV care. Details of this HIV
118 treatment project were described previously [21]. In short, HIV clinical care was performed by
119 medical doctors and nurses. Counselling and adherence support through home visits were done
120 by trained lay counsellors and outreach adherence supporters in line with the National AIDS
121 Program and WHO HIV treatment guidelines [3,21,22]. First-line treatment consisted of a
122 combination of two nucleoside/nucleotide reverse transcriptase inhibitors (zidovudine,
123 tenofovir, lamivudine, abacavir) with a non-nucleoside reverse transcriptase inhibitor

124 (efavirenz or nevirapine. Second-line regimens were composed of two nucleoside/nucleotide
125 reverse transcriptase inhibitors, ideally which had not been used in the first-line regimen and
126 one protease inhibitor (atazanavir/ritonavir or lopinavir/ritonavir). WHO recommended 2013
127 routine VL monitoring guideline was used [3]. Since 2013, one centralized Abbot HIV-1 VL
128 testing platform was available at the National Health Laboratory (NHL) in downtown Yangon
129 at 1 to 2 hours' drive from the clinics. Due to the limited capacity of the NHL, only one to two
130 samples per clinic could be sent for VL testing monthly; results could delay for over a month
131 and many samples got lost. From January 2017, the three MAM clinics shared one near POC
132 GeneXpert. The device was installed in a small laboratory within 30 minutes by motorbike from
133 each clinic and was handled by trained lay personnel. Blood samples were collected at each
134 clinic and sent daily to the laboratory. Results were provided by phone to the clinic team
135 immediately on request, and on paper the next morning.

136 We used routinely collected data of PLHIV enrolled on ART in the three MAM clinics between
137 July 2009 and June 2019. The database was closed in December 2019. The different analyses
138 with the respective study populations are shown in fig 1.

139 **Fig 1. Study population per analysis performed in PLHIV on ART from three clinics in Yangon,**
140 **Myanmar.** ART, antiretroviral treatment; EAC, enhanced adherence counselling; PLHIV, people living
141 with HIV/AIDS. †Group 1, six months on ART before viral load available. Group 2, eligible for viral
142 load when laboratory-based centralized viral load available. Group 3, eligible for viral load when near
143 point-of-care viral load available.

144
145 Annual VL uptake was analysed cross-sectionally in PLHIV eligible to have a VL done in a
146 certain year. The remaining analyses were retrospective. Attrition during the first two years on
147 ART was analysed among PLHIV who initiated ART between July 2009–June 2018. Three
148 groups for comparison were defined based on the system of VL available. Group 1 consisted
149 of PLHIV initiated on ART between July 2009–June 2012 before VL was available. Group 2
150 included PLHIV initiated on ART between July 2012–June 2016 who became eligible after
151 introduction of laboratory-based centralized VL and before near POC VL. Group 3 included
152 PLHIV initiated on ART between July 2016–June 2018, who became eligible after the
153 introduction of near POC VL. PLHIV were considered eligible for VL when they were at least
154 6 months on ART, according to routine VL monitoring guideline of WHO [3]. For the VL
155 cascade and risk factors associated with confirmed virological failure after EAC, we included
156 those initiated ART between 1 July 2009 and 30 June 2018 (minimum potential follow-up time

157 of 18 months on 31 December 2019) and who were eligible for a first VL from January 2017
158 (when POC VL was present).

159 **Study variables**

160 The study used routine programme data collected from standardized patient forms in hard copy,
161 designed for the use of FUCHIA software (Follow-Up Care of Clinical HIV infection and
162 AIDS). Values recorded during the ART initiation visit were considered baseline for age, sex,
163 marital status, employment, KAP status, clinic, place of origin, mode of entry, WHO stage and
164 tuberculosis co-infection. We defined CD4 at ART initiation as the measurement taken closest
165 to the date before ART initiation. Yearly uptake of viral load was defined as the proportion of
166 PLHIV on ART who had at least one VL done among those who were active on ART for at
167 least six months at the beginning of the respective year. A first VL >1000 copies/ml at least six
168 months after ART initiation was defined as first high VL. A VL of ≤ 1000 copies/ml is a
169 suppressed VL. A follow up VL after the first high VL and EAC of >1000 copies/ml is defined
170 as confirmed virological failure. A follow up VL of ≤ 1000 copies/ml is a re-suppressed VL.
171 EAC is a special form of counselling for ART patients with a first high VL in which the
172 counsellor and patient go through the identification of barriers to adherence and strategies to
173 overcome them. To construct the VL cascade, we assessed the proportion of ART patients who
174 were eligible and who underwent VL monitoring, had a first high VL, had a follow up VL, had
175 confirmed virological failure and were switched to second-line ART [3]. Outcomes were
176 defined as follows: dead was confirmed death for any reason during the observation period.
177 Lost to follow up (LTFU) was defined as a delay of more than three months between an
178 expected and actual visit. The LTFU date was the last date of the clinic visit. A patient
179 transferred to a non-MAM ART centre during the observation period was defined as transferred
180 out (TO). Those taking ART at a MAM clinic until the end of the observation period were alive
181 on ART. Attrition was not alive on ART due to either dead or LTFU.

182

183 **Data collection and management**

184 Data from the laboratory database and information from the EAC counselling register were
185 compiled with clinical data in individual patient files. These clinical files in hard copy were
186 routinely entered into the FUCHIA database by trained data clerks. After pseudonymisation,
187 patient-level data were extracted into Microsoft Excel. In case of discrepancies between the
188 FUCHIA database and patient files, original records were verified, and corrections made. Data
189 cleaning and verification was done by the first author.

190

191 **Data analysis**

192 Categorical variables were summarized with frequencies and proportions whilst continuous
193 variables were summarized with medians and interquartile ranges. The trend of VL uptake
194 between was analysed with a chi-square test for trend. Kaplan-Meier techniques and a log-rank
195 test were used to compare time to attrition of ART patients who were at least six months on
196 ART before VL testing was introduced, after laboratory-based and before near POC, and after
197 near POC was introduced. Follow-up time was started the day PLHIV initiated ART and ended
198 on the date of the outcome or at database closure (31 December 2019) for those alive on ART.
199 ART patients transferred out were censored the day they were transferred. We used stepwise
200 multivariable logistic regression from a saturated model to explore predictors of having a
201 confirmed virological failure after EAC. Age and sex were retained in the multivariable model,
202 as well as variables with p-values ≤ 0.05 . Odds ratios (OR) and 95% confidence intervals (CI)
203 were presented. All analyses were done using Stata 14 (Stata Corp, College Station, TX).

204

205 **Ethics statement**

206 As this is retrospective analysis, it would be impractical to collect informed consent. A consent
207 waiver was obtained for the study by the Institutional Review Board of Institute of Tropical
208 Medicine, Antwerp, Belgium (approval number IRB/AB/AC/058 1363/20) and Oxford
209 Tropical Research Ethics Committee of University of Oxford.

210 **Results**

211 **Annual viral load uptake**

212 Between July 2009 and June 2019, 5271 PLHIV were enrolled on ART in three MAM clinics.
213 VL uptake between 2010 and 2019 was 0% (0/30), 0% (0/289), 0% (0/443), 4.6% (49/1055),
214 5.6% (89/1579), 2.4% (49/2068), 8.2% (204/2487), 32.6% (931/2858), 91.9% (2786/3033),
215 94.5% (2649/2804) respectively (Fig 2). There was a significant trend towards higher uptake
216 between 2010-2019, between 2013-2019, and between 2017-2019 (chi-square for trend
217 $p < 0.001$).

218

219 **Fig 2: Annual viral load testing uptake among eligible PLHIV in three clinics in Yangon,**
220 **Myanmar from 2010 to 2019.** ART, antiretroviral treatment; PLHIV, people living with HIV/AIDS.

221

222 **Comparison of attrition**

223 Between July 2009-June 2018, 4291 PLHIV initiated ART. Among them, 794 (18%) PLHIV
 224 were eligible to do first VL before any form of VL was introduced in Myanmar (group 1), 2386
 225 (56%) were eligible after introduction of laboratory-based centralized VL and before the
 226 availability of near POC VL (group 2), and 1111 (26%) became eligible after introduction of
 227 near POC VL (group 3). Attrition in the first two years on ART was similar between these three
 228 groups (log-rank p-value= 0.35) (Fig 3).

229
 230 **Fig 3. Comparing the attrition rates on ART among three patient groups in their first two years**
 231 **on ART.** ART, antiretroviral treatment.

232 Group 1, six months on ART when no viral load available; Group 2, eligible for viral load when
 233 centralized viral load available; Group 3, eligible for viral load when near point-of-care viral load
 234 available

235
 236 **Baseline characteristics**
 237 Among 4291 patients who initiated ART between July 2009 and June 2018, 3205 were eligible
 238 for first VL testing after near POC introduction. Their characteristics at initiation are presented
 239 in table 1. The excluded 25% (1086/4291), were those who already had a first VL done (347,
 240 32%), those LTFU (337, 31%), were those who died (228, 21%) and were TO (174, 16%)
 241 before near POC introduction.

242 **Table 1: Baseline characteristics of PLHIV initiated on ART and eligible for viral load after**
 243 **near point-of care viral load introduction, Yangon, Myanmar (N=3205).**

Variable	n	%
Median age, IQR (years)	34	[28-40]
Age category (years)		
<24	337	11%
25-49	2644	82%
>50	224	7%
Sex		
Male	1643	51%
Female	1562	49%
TB at initiation		
No	2202	69%
Yes	1003	31%
Median CD4, IQR (cells/cm ³) †	203	[81-332]
CD4 category (cells/cm ³) †		
<200	1579	49%
≥200	1623	51%
WHO stage		
I/II	1191	37%
III/V	2014	63%

ART history			
Yes	126	4%	
No	3079	96%	
Part of key population			
No	2445	76%	
Yes	686	21%	
Unknown	74	2%	
Place of origin [‡]			
Yangon	2829	88%	
Outside Yangon	375	12%	
Marital status			
Married	2136	67%	
Not married	1069	33%	
Employment [§]			
Unemployed	847	26%	
Employed	2356	74%	
Clinic site			
Clinic 1	2042	64%	
Clinic 2	537	17%	
Clinic 3	626	20%	

[†]excluding three with missing data

[‡]excluding one with missing data

[§]excluding two with missing data

244 IQR, interquartile range; PLHIV, people living with HIV/AIDS; WHO, World Health Organization

245

246 HIV viral load cascade after near POC introduction

247 The VL cascade of those eligible for a first VL after near POC introduction is presented by

248 Fig 4.

249

250

251 **Fig 4: Viral load cascade of PLHIV who were enrolled on ART between July 2009 and June 2018**

252 **and eligible to do first viral load after near point-of-care viral load introduction.** ART, antiretroviral

253 treatment; EAC, enhanced adherence counselling; IQR, interquartile range; LTFU, lost to follow up;

254 PLHIV, people living with HIV/AIDS; VL, viral load.

255

256 Of 2945 PLHIV who had done first VL test, 945 (32%) had become eligible when near POC

257 was available (i.e. initiated ART after July 2016). For them, the median time to a first VL was

258 0.9 years (IQR: 0.6-1.4). For 2000 (68%) PLHIV who had started ART before July 2016, the

259 median time to a first VL was 3.7 years (IQR: 2.8-5.1).

260

261 Predictors of confirmed virological failure

262 Predictors for confirmed virological failure after enhanced adherence counselling are shown in
 263 Table 2. Among 125 PLHIV who underwent EAC and had a follow-up VL, having a first high
 264 VL result of ≥ 5000 copies/ml was significantly associated with confirmed virological failure in
 265 both univariate and multivariate analysis (adjusted odd ratio: 2.61 [95% CI: 1.02-6.65]).

266 **Table 2: Factors associated with confirmed virological failure in ART patients with**
 267 **enhanced adherence counselling after a first high viral load in Yangon, Myanmar**

Variable	n	%	Univariate analysis			Multivariate analysis		
			OR	95%CI	p	aOR	95%CI	p
Age			1.00	[0.95-1.04]	0.86	1.00	[0.96-1.05]	0.91
Sex								
Male	72	58%	ref					
Female	53	42%	0.59	[0.28-1.25]	0.17	0.67	[0.31-1.47]	0.32
Tuberculosis								
No	65	52%	ref					
Yes	60	48%	2.00	[0.93-4.31]	0.08			
Tuberculosis at first VL								
No	118	94%	ref					
Yes	7	6%	3.08	[0.36-26.4]	0.31			
CD4 (cells/ μ L)	125	100%	1.00	[1.00-1.00]	0.50			
CD4 category (cells/ μ L)								
<200	92	74%	ref					
≥ 200	33	26%	0.81	[0.35-1.86]	0.61			
WHO stage								
I/II	27	22%	ref					
III/V	98	78%	1.27	[0.52-3.09]	0.60			
ART history before baseline								
Yes	4	3%	ref					
No	121	97%	6.55	[0.66-65.0]	0.11			
Part of key population †								
No	81	65%	ref					
Yes	42	34%	0.85	[0.39-1.87]	0.69			
Place of origin								
Yangon	116	93%						
Outside Yangon	9	7%	1.77	[0.35-8.94]	0.49			
Marital status								
Married	78	62%	ref					
Not married	47	38%	1.28	[0.59-2.74]	0.53			
Employment								
Unemployed	30	24%	ref					
Employed	95	76%	1.83	[0.79-4.26]	0.16			
Clinic site								
Clinic 1	75	60%	ref					
Clinic 2	31	25%	1.54	[0.62-3.81]	0.35			
Clinic 3	19	15%	3.36	[0.90-12.56]	0.07			
Years between ART initiation and first VL								
<3 years	89	71%	ref					

≥3 years	36	29%	0.58	[0.26-1.29]	0.18			
First viral load								
<5000 copies/ml	25	20%	ref					
≥5000 copies/ml	100	80%	2.79	[1.14-6.84]	0.03	2.61	[1.02-6.65]	0.05

† excluding two with missing data

Variables reported those measured at ART initiation, unless specified

aOR, adjusted odds ratio; ART, antiretroviral treatment; OR, odds ratio; viral load, VL; WHO, World Health Organization

268

269 Discussion

270 This study is the first assessment of VL testing uptake and management after introduction of
 271 near POC VL in Myanmar. When near POC VL was introduced, VL uptake improved
 272 significantly, but two-year attrition was similar when comparing groups with different access
 273 to VL. Despite long delays until a first VL was done, only 5% of PLHIV had a first
 274 unsuppressed VL, and their subsequent VL cascade was adequately managed. Having a first
 275 high viral load of 5000 copies/ml or higher was associated with confirmed virological failure.

276 Viral load uptake increased significantly after introduction of near-POC VL as compared to
 277 laboratory-based VL. While centralized, laboratory-based VL had been introduced in 2013, VL
 278 uptake remained below 10% of those eligible until 2016. This was due in part to the fact that
 279 the two central laboratories accepted only a small number of tests and it took up to a month to
 280 get the test results. After 2017, there was a rapid scale up of VL testing, reaching 95% of those
 281 eligible in 2019. Contributing to this fast increase were the test result delivery time, which
 282 reduced from about a month to one day. This probably increased the motivation of the doctors
 283 to perform VL testing and for PLHIV have a VL test done. The relatively simple viral load
 284 procedure on GeneXpert allowed task shifting to lay workers. We were also able to secure
 285 uninterrupted supply of cartridges, which had been a challenge at introduction of centralised
 286 VL in Yangon. A reduction of results notification time was also observed after introduction of
 287 near POC VL in seven countries in sub-Saharan Africa [14].

288

289 We found no difference in attrition in the first two years after ART initiation between three
 290 groups of PLHIV with different access to VL testing (no access, limited access to centralized
 291 testing or access to near POC testing). In the STREAM randomised controlled trial, retention
 292 in care and viral suppression was significantly better in a group receiving POC VL group with
 293 tasking shifting compared to laboratory-based VL. However, retention at any clinic 12 months
 294 after ART initiation was also not found to be different between the groups [12]. In Uganda,
 295 access to viral load also did not improve survival when participants were randomized to

296 different VL monitoring strategies [23]. We did not correct for confounders in our analysis of
297 attrition and might thus not accurately capture the impact of near POC VL. The follow up period
298 of two years may also be short to witness an effect of improved access to VL testing in a real-
299 life setting. In addition, retention in care was already high before VL introduction in our cohort
300 and remained high when laboratory-based VL was available. Measures to improve medicine
301 adherence and retention in care should thus be continued and strengthened, regardless of the
302 VL platform used.

303

304 The VL cascade was managed adequately after POC VL was made available. Ninety-two % of
305 PLHIV eligible for a first VL had a VL done. This is high when compared to review data from
306 low-and middle income countries, in which the median VL testing coverage was 74% (IQR:
307 46-82%) [24]. The time to a first VL was very long, but reduced when near POC became
308 available from almost four to about one year. Despite the long waiting time for a first VL, 95%
309 of patients who had a first VL done had a VL below 1000 copies/ml. This is also high compared
310 to other reports in resource-limited settings in Africa and Asia, including Myanmar, in which
311 suppression rates were found between 72 and 91% [4,9,25–29]. As treatment adherence was
312 probably good in our cohort, the long delay in VL testing did not have a large negative impact
313 on viral load results. In earlier studies in Myanmar, high retention was also reported [21,30].

314

315 Of the PLHIV with a first high VL result, 85% received a follow up VL test after EAC. A recent
316 review by Pham et al. reported that only 66% (median, IQR: 38-77%) of those eligible had a
317 follow-up VL in low-and middle-income settings [24]. Only 41 (33%) of the patients had their
318 VL re-suppressed after EAC in our study. In comparison, a systematic review from 2019
319 showed a higher re-suppression rate (53%) after EAC [31]. In our study, the high initial VL
320 was probably based on true resistance and hence, patients would not benefit from EAC. Of the
321 84 patients whose virological failure was confirmed, 69 (82%) were switched to second line
322 ART. This is again much higher when compared to Pham et al., reporting a switch rate of 45%
323 (mean, IQR: 35-71) [24]. The highest switch rate came from a study from Myanmar, in which
324 85% of patients switched to second-line ART [8]. Like in our study, this was a cohort supported
325 by a medical organization, in which patient follow-up might benefit from more resources
326 compared to other settings.

327

328 We also looked at the factors associated with confirmed virological failure among the patients
329 with a first high VL. In the 125 patients with a follow-up VL, a first high VL result of ≥ 5000

330 copies/ml was significantly associated with confirmed virological failure (adjusted odds ratio
331 2.61, 95%CI:1.02-6.65). Similar findings were found in Zimbabwe and Ethiopia where PLHIV
332 with a first VL of respectively ≥ 5000 copies/ml and $\geq 10,000$ copies/mL also had higher odds
333 of virological failure after EAC. In PLHIV cohorts with high levels of adherence, high initial
334 VL due to underlying resistance might indeed predict virological failure [29,32].

335
336 This study has several limitations. Since it is a retrospective analysis, there could be important
337 unmeasured confounding factors. In addition, the sample size of the regression analysis was
338 small, allowing for limited conclusions based on the results. Our clinics are managed by
339 Medical Action Myanmar, a private medical organization receiving external funding, and
340 results might not be generalizable to other facilities. However, all near POC sampling and
341 analysis were managed by trained lay workers, with skills easily transferable to public health
342 facilities. Our study also has important strengths. This study is the first one to document the
343 impact of near POC VL on VL uptake in Myanmar, and in Southeast Asia. We present real-life
344 results from ten years of programme implementation in a large cohort in a resource-limited
345 setting. The principal investigator verified source files to correct incomplete data and errors that
346 were detected in the database. In this way, despite the retrospective design, we had very little
347 missing data.

348
349 We respond to a research gap identified by WHO addressing implementation of POC VL. The
350 WHO conditionally recommends POC viral load, adapted to the capacity of health facilities,
351 and while giving priority to populations at risk [11]. We provided near POC VL for all PLHIV
352 eligible for viral load. After 2019, access to services for PLHIV deteriorated rapidly in
353 Myanmar due to COVID-19 further due to political turmoil [33,34]. In such situations,
354 providing services faster and closer to patients could partly mitigate impact of service
355 disruption. Future research should show if near point-of-care viral load has this potential. In
356 other contexts, with similar constraints in access and resources, near POC could provide an
357 acceptable alternative to POC testing, improving time to a VL and subsequent management
358 while limiting the burden on primary care facilities.

359

360 **Conclusion**

361 Near POC testing rapidly increased VL uptake and lead to adequate management of ART
362 patients with a first high VL result. In resource-constraint settings, near POC VL
363 implementation should be considered as a priority measure to control the HIV epidemic.

364

365

366

367 **Competing interests**

368 There are no conflicts of interests for all authors.

369

370 **Authors' contributions**

371 NNT conceived the idea and designed the study. LL, JVO & TG supported study
372 design. FS supervised data acquisition. NNT, MM, MMMH and NLT performed data
373 acquisition and analysis. NNT, FS, LL, JVO and TG performed data interpretation. TG
374 supported statistical analysis. NNT drafted the first version of the manuscript, which was
375 subsequently critically revised, edited and approved by all authors.

376

377 **Acknowledgments**

378 We would like to thank the contribution of the study participants, and the medical and data
379 teams from Medical Action Myanmar, and the Myanmar Oxford Clinical Research Unit,
380 Yangon, Myanmar.

381

382

383 **References**

384

- 385 1. Joint United Nations Programme on HIV/AIDS (UNAIDS). Understanding Fast-Track.
386 Accelerating action to end the AIDS epidemic by 2030 [Internet]. Geneva, Switzerland:
387 UNAIDS; 2015 [cited 2022 May 24]. Available from:
388 [https://www.unaids.org/sites/default/files/media_asset/201506_JC2743_Understanding](https://www.unaids.org/sites/default/files/media_asset/201506_JC2743_Understanding_FastTrack_en.pdf)
389 [_FastTrack_en.pdf](https://www.unaids.org/sites/default/files/media_asset/201506_JC2743_Understanding_FastTrack_en.pdf)
- 390 2. World Health Organization. Consolidated guidelines on the use of antiretroviral drugs

- 391 for treating and preventing HIV infection: recommendations for a public health
392 approach [Internet]. Geneva, Switzerland: WHO; 2013 [cited 2022 May 24]. Available
393 from:
394 https://apps.who.int/iris/bitstream/handle/10665/85321/9789241505727_eng.pdf?sequence=1
395
- 396 3. World Health Organization. Consolidated Guidelines on the use of antiretroviral drugs
397 for treating and preventing HIV infection [Internet]. Geneva, Switzerland: WHO; 2016
398 [cited 2022 May 24]. Available from:
399 <https://apps.who.int/iris/bitstream/handle/10665/208825/97892?sequence=1>
- 400 4. Mesic A, Spina A, Mar HT, Thit P, Decroo T, Lenglet A, et al. Predictors of virological
401 failure among people living with HIV receiving first line antiretroviral treatment in
402 Myanmar: retrospective cohort analysis. *AIDS Res. Ther.* 2021;18(1):16
- 403 5. Ssempijja V, Nakigozi G, Chang L, Gray R, Wawer M, Ndyanabo A, et al. Rates of
404 switching to second-line antiretroviral therapy and impact of delayed switching on
405 immunologic, virologic, and mortality outcomes among HIV-infected adults with
406 virologic failure in Rakai, Uganda. *BMC Infect Dis.* 2017;17:1–10.
- 407 6. Petersen ML, Tran L, Geng EH, Reynolds SJ, Kambugu A, Wood R, et al. Delayed
408 switch of antiretroviral therapy after virologic failure associated with elevated mortality
409 among HIV-infected adults in Africa. *AIDS.* 2014;28(14):2097-107
- 410 7. Awungafac G, Amin ET, Fualefac A, Takah NF, Agyingi LA, Nwobegahay J et al.
411 Viral load testing and the use of test results for clinical decision making for HIV
412 treatment in Cameroon : An insight into the clinic- laboratory interface. *PLoS One.*
413 2018;13(6):e0198686
- 414 8. Thu Ya SS, Harries AD, Wai KT, Kyaw NTT, Aung TK MJ et al. Performance and
415 Outcomes of Routine Viral Load Testing in People Living with HIV Newly Initiating
416 ART in the Integrated HIV Care Program in Myanmar between January 2016 and
417 December 2017. *Trop Med Infect Dis.*2020;5(3):140
- 418 9. Thinn KK, Thekkur P, Kyaw NTT, Aye NS, Zaw TM, Soan P, et al. Uptake of routine
419 viral load testing among people living with HIV and its implementation challenges in
420 Yangon region of Myanmar: A mixed-methods study. *BMJ Open.*2019; 9(12): e032678
- 421 10. Roberts T, Cohn J, Bonner K, Hargreaves S. Scale-up of Routine Viral Load Testing in

- 422 Resource-Poor Settings: Current and Future Implementation Challenges. *Clin Infect*
423 *Dis.* 2016; 62(8):1043–48.
- 424 11. World Health Organization. Consolidated guidelines on HIV prevention, testing,
425 treatment, service delivery and monitoring: recommendations for a public health
426 approach [Internet]. Geneva, Switzerland: WHO; 2021 [cited 2022 May 24]. Available
427 at: <https://www.who.int/publications/i/item/9789240031593>
- 428 12. Drain PK, Dorward J, Violette LR, Quame-Amaglo J, Thomas KK, Samsunder N, et al.
429 Point-of-care HIV viral load testing combined with task shifting to improve treatment
430 outcomes (STREAM): findings from an open-label, non-inferiority, randomised
431 controlled trial. *Lancet HIV.* 2020 Apr;7(4):e229-e237.
- 432 13. Ganesh P, Heller T, Chione B, Gumulira J, Gugsu S, Khan S, et al. Near point-of-care
433 HIV viral load: Targeted testing at large facilities. *J Acquir Immune Defic Syndr.* 2021
434 Feb 1;86(2):258-263.
- 435 14. Boeke CE, Joseph J, Atem C, Banda C, Coulibaly KD, Doi N, et al. Evaluation of near
436 point-of-care viral load implementation in public health facilities across seven
437 countries in sub-Saharan Africa. *J Int AIDS Soc.* 2021;24(1).
- 438 15. Nash M, Huddart S, Badar S, Baliga S, Saravu K, Paia M. Performance of the xpert
439 HIV-1 viral load assay: A systematic review and meta-analysis. *J Clin Microbiol.* 2018;
440 26;56(4):e01673-17.
- 441 16. Kulkarni S, Jadhav S, Khopkar P, Sane S, Londhe R, Chimanpure V, et al. GeneXpert
442 HIV-1 quant assay, a new tool for scale up of viral load monitoring in the success of
443 ART programme in India. *BMC Infect Dis.* 2017; 17(1):506
- 444 17. Moyo S, Mohammed T, Wirth KE, Prague M, Bennett K, Holme MP, et al. Point-of-
445 care Cepheid Xpert HIV-1 viral load test in rural African communities is feasible and
446 reliable. *J Clin Microbiol.* 2016 Dec;54(12):3050-3055
- 447 18. Manavi K, Hodson J, Masuka S, Singo M, Dediccoat K, Osman H. Correlation between
448 Cepheid GeneXpert and Abbott M2000 assays for HIV viral load measurements. *Int J*
449 *STD AIDS.* 2021; 32(5):444-448.
- 450 19. World Health Organization. Prequalification of Medical Products. WHO Public
451 Reports for In Vitro Diagnostics [Internet]. Geneva, Switzerland: WHO; 2019 [cited

- 452 2022 May 24]. Available from: <https://extranet.who.int/pqweb/vitro->
453 [diagnostics/prequalification-reports/whopr](https://extranet.who.int/pqweb/vitro-diagnostics/prequalification-reports/whopr)
- 454 20. Joint United Nations Programme on HIV/AIDS. UNAIDS data 2020 [Internet].
455 Geneva, Switzerland: UNAIDS; 2020 [cited 2022 May 24]. Available from:.
456 <https://www.unaids.org/en/resources/documents/2020/unaids-data>
- 457 21. Tun NN, McLean ARD, Wilkins E, Hlaing MMM, Aung YY, Linn T, et al. Integration
458 of HIV services with primary care in Yangon, Myanmar: a retrospective cohort
459 analysis. *HIV Med.* 2020;21: 547–556.
- 460 22. National AIDS program, Ministry of Health Myanmar. Guidelines for the clinical
461 Management Of HIV infection in Adults and Adolescents in Myanmar [Internet].
462 Yangon, Myanmar: Ministry of Health; 2011 [cited 2022 May 24]. Available from:
463 [https://reliefweb.int/report/myanmar/guidelines-clinical-management-hiv-infection-](https://reliefweb.int/report/myanmar/guidelines-clinical-management-hiv-infection-adults-and-adolescents-myanmar)
464 [adults-and-adolescents-myanmar](https://reliefweb.int/report/myanmar/guidelines-clinical-management-hiv-infection-adults-and-adolescents-myanmar)
- 465 23. Mermin J, Ekwaru JP, Were W, Degerman R, Bunnell R, Kaharuza F et al. Utility of
466 routine viral load, CD4 cell count, and clinical monitoring among adults with HIV
467 receiving antiretroviral therapy in Uganda: Randomised trial. *BMJ.* 2011;343:d6792
- 468 24. Pham MD, Nguyen HV, Anderson D, Crowe S, Luchters S. Viral Load Monitoring for
469 People Living with HIV in the Era of Test and Treat : Progress Made and Challenges
470 Ahead – A Systematic Review [Internet]. 2021; Preprint (Version 1) [cited 2022 May
471 24]. Available from: <https://www.researchsquare.com/article/rs-1091142/v1>
- 472 25. Ferradini L, Laureillard D, Prak N, Ngeth C, Fernandez M, Pinoges L, et al. Positive
473 outcomes of HAART at 24 months in HIV-infected patients in Cambodia. *AIDS*
474 2007;21: 2293–2301.
- 475 26. Ma Y, Zhao D, Yu L, Bulterys M, Matthew, Zhao Y, et al. Predictors of Virologic
476 Failure in HIV-1–Infected Adults Receiving First-Line Antiretroviral Therapy in 8
477 Provinces in China. *Clin Inf Dis* 2010;50(2):264–71
- 478 27. Kiweewa F, Esber A, Musingye E, Reed D, Crowell TA, Cham F, et al. HIV virologic
479 failure and its predictors among HIV-infected adults on antiretroviral therapy in the
480 African Cohort Study. *PLoS One.* 2019;14(2):e0211344.
- 481 28. Assemie MA, Alene M, Ketema DB, Mulatu S. Treatment failure and associated

- 482 factors among first line patients on highly active antiretroviral therapy in Ethiopia: a
483 systematic review and meta-analysis. *Glob Heal Res Policy*. 2019;4 (32).
- 484 29. Bvochora T, Satyanarayana S, Takarinda K.C, Bara H, Chonzi P, Komtenza B et al.
485 Enhanced adherence counselling and viral load suppression in HIV seropositive
486 patients with an initial high viral load in Harare, Zimbabwe: Operational issues. *PLoS*
487 *One*. 2019;14(2):e0211326.
- 488 30. Sabapathy K, Ford N, Chan KN, Kyaw MK, Elema R, Smithuis F, et al. Treatment
489 outcomes from the largest antiretroviral treatment program in Myanmar (Burma): A
490 cohort analysis of retention after scale-up. *J Acquir Immune Defic Syndr*. 2012;
491 ;60(2):e53-62
- 492 31. Ford N, Orrell C, Shubber Z, Apollo T, Vojnov L. HIV viral resuppression following
493 an elevated viral load: a systematic review and meta-analysis. *J Int AIDS Soc*.
494 2019;22(11):e25415.
- 495 32. Bisetegn G, Arefaynie M, Mohammed A, Fentaw Z, Muche A, Dewau R, et al.
496 Predictors of virological failure after adherence-enhancement counseling among first-
497 line adults living with HIV/AIDS in Kombolcha town, northeast Ethiopia. *HIV/AIDS -*
498 *Res Palliat Care*. 2021;13: 91–97.
- 499 33. Oo HN, Myo N, Wan A, Soan P, Tawil O, Lwin MK, et al. How Myanmar Is Working
500 to Maintain Essential Services for People Living With HIV and Key Populations
501 During the Covid-19 Pandemic. *J Int Assoc Provid AIDS Care*.
502 2021;20:23259582211017742.
- 503 34. Aung MN, Shiu C, Chen W. Amid political and civil unrest in Myanmar , health
504 services are inaccessible. *Lancet*. 2021 Apr 17;397(10283):1446.

505

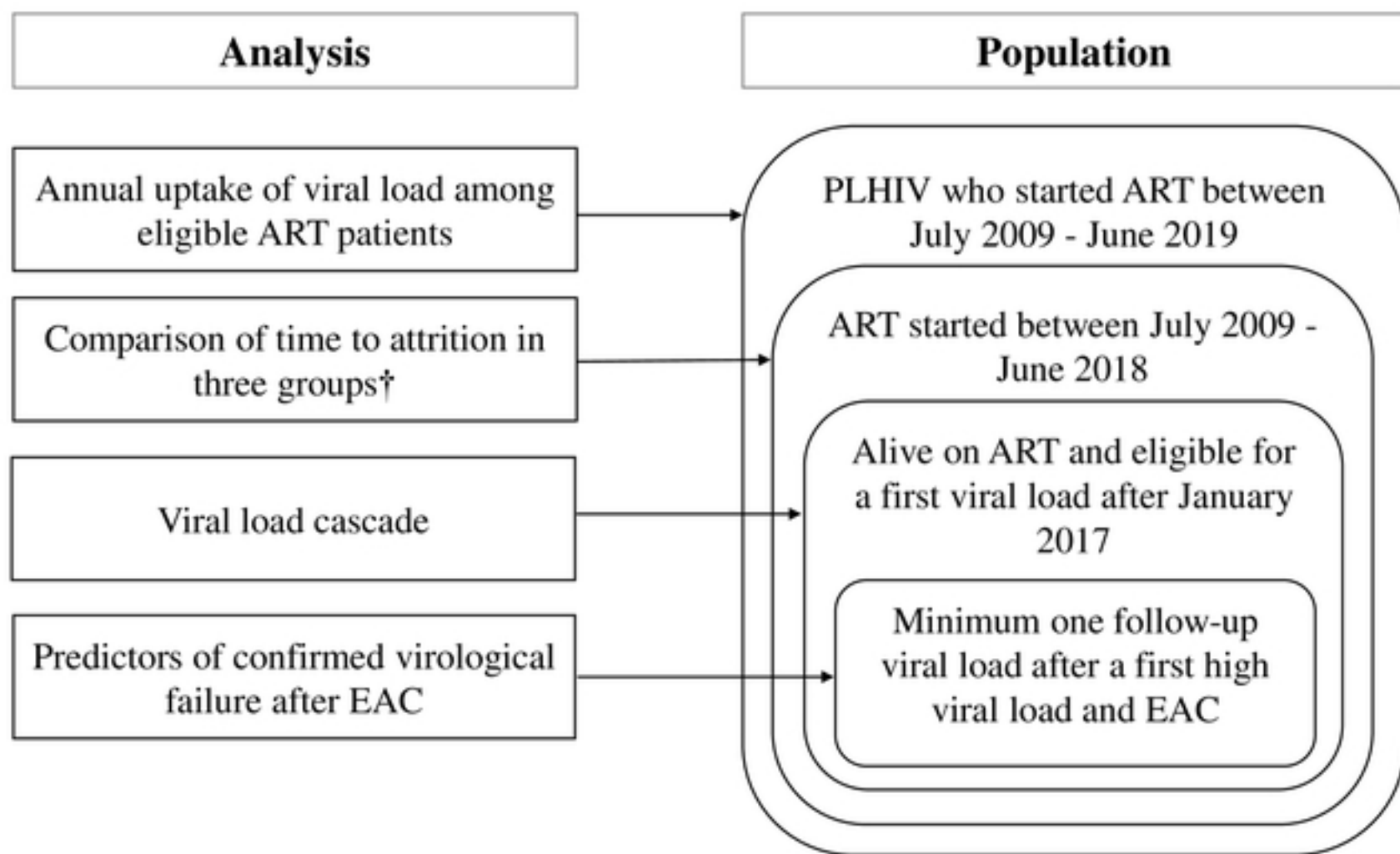
506

507

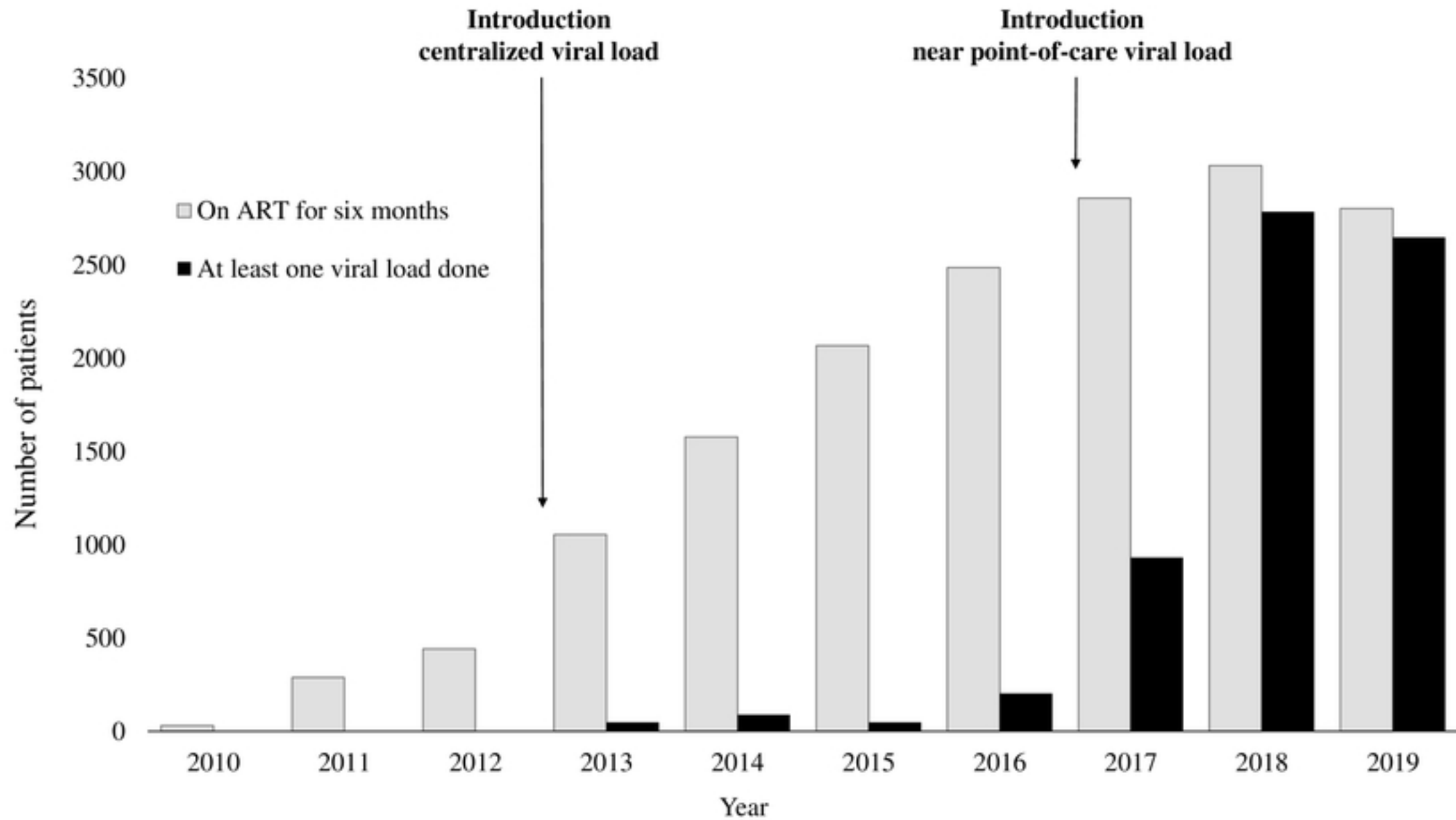
508

509

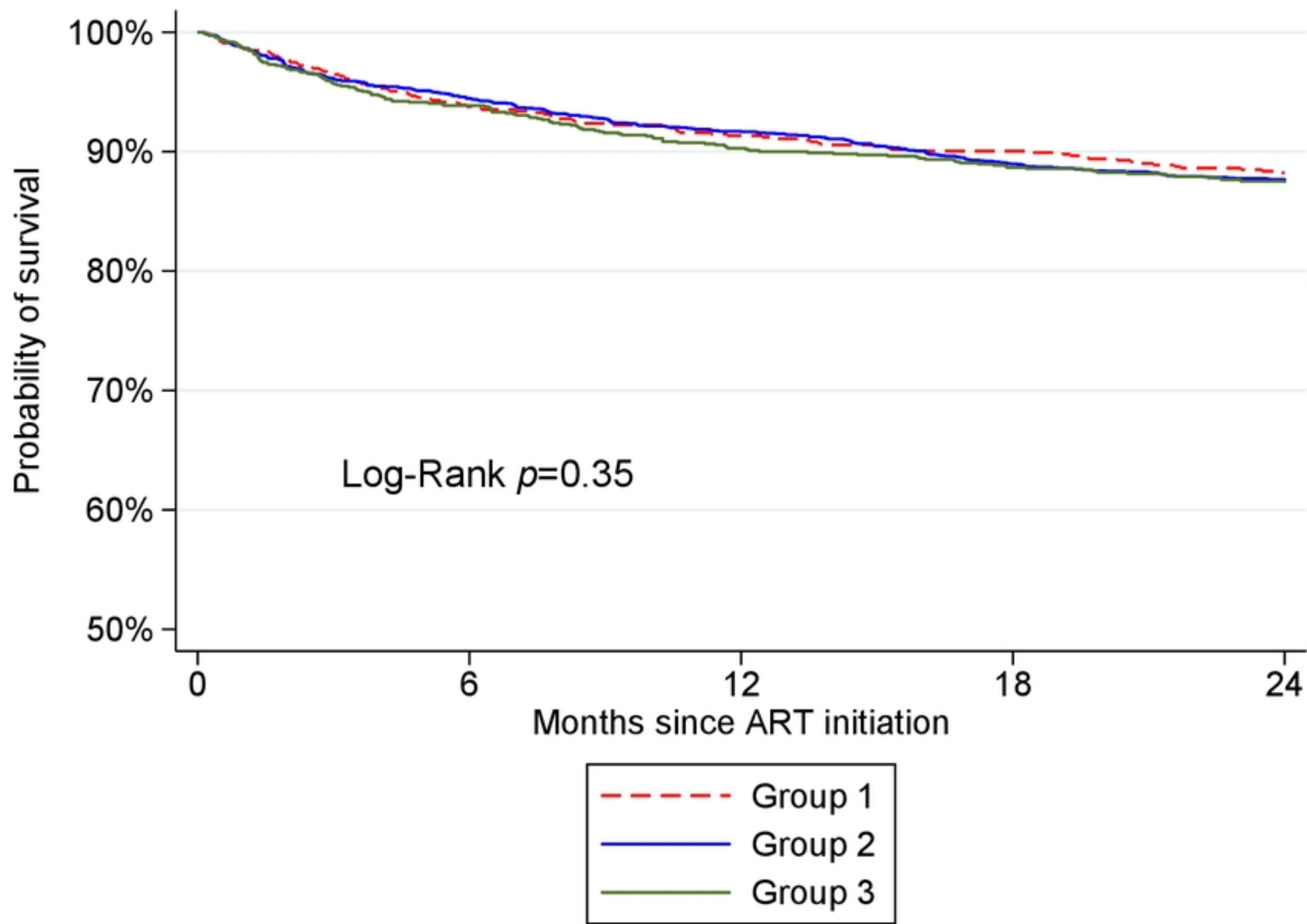
510



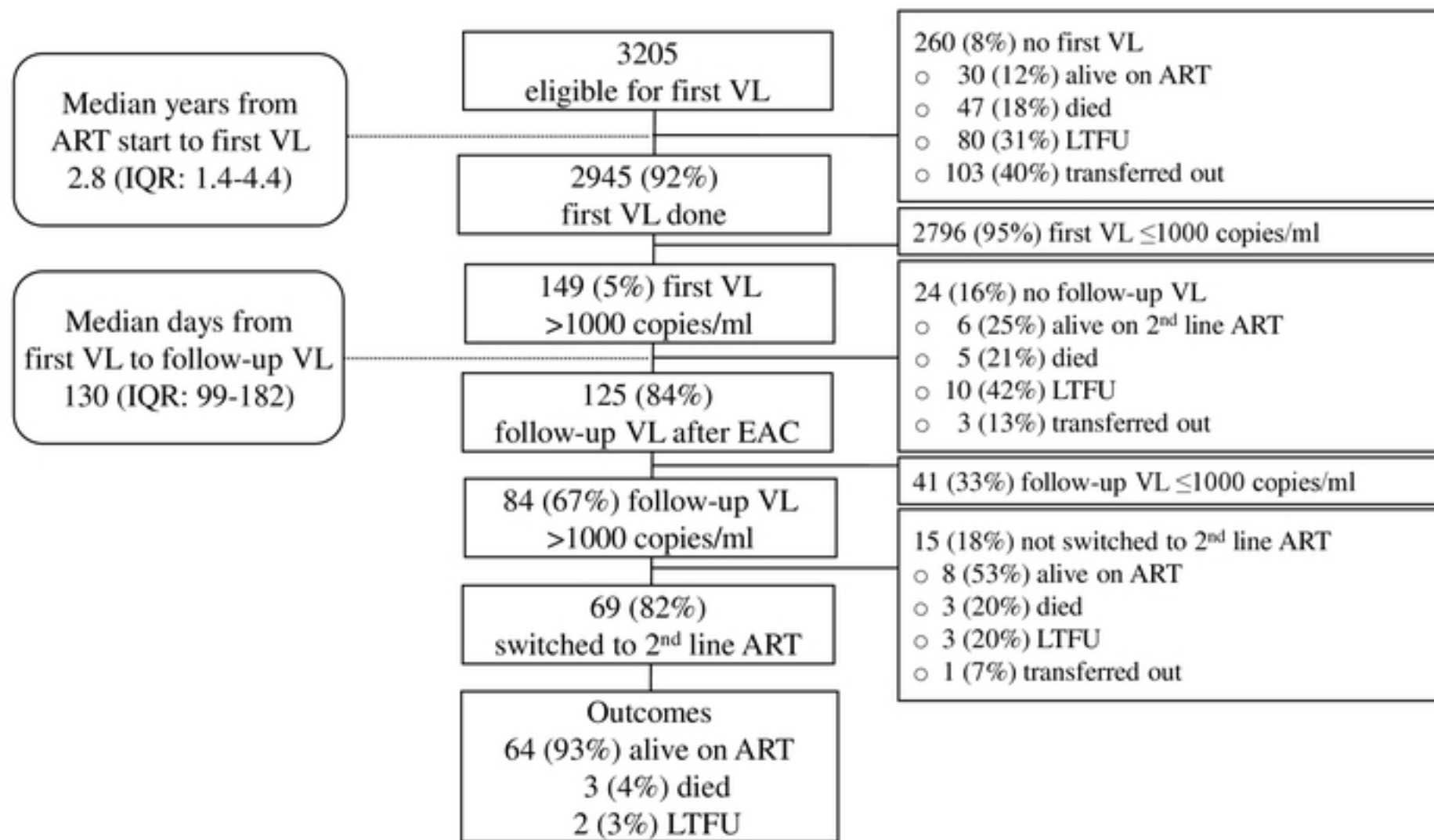
Figure



Figure



Figure



Figure