

1 The use of artificial intelligence and machine learning methods in  
2 first trimester pre-eclampsia screening: a systematic review  
3 protocol  
4  
5

6 Paula L. Hedley<sup>1,2</sup>, Christian M. Hagen<sup>1</sup>, Casper Wilstrup<sup>1,3</sup>, Michael Christiansen<sup>1,4\*</sup>  
7

- 8 1. Department for Congenital Disorders, Statens Serum Institut, Copenhagen, 2300 Denmark  
9 2. Brazen Bio, Los Angeles, California, USA  
10 3. Abzu, Copenhagen, 2200, Denmark  
11 4. Department of Biomedical Science, University of Copenhagen, 2200 Copenhagen, Denmark  
12  
13  
14

15 **Email:** Paula L. Hedley - [phy@ssi.dk](mailto:phy@ssi.dk); Christian M. Hagen – [unc@ssi.dk](mailto:unc@ssi.dk); Casper Wilstrup -  
16 [casper.wilstrup@abzu.ai](mailto:casper.wilstrup@abzu.ai); Michael Christiansen - [mic@ssi.dk](mailto:mic@ssi.dk)  
17  
18  
19  
20

21 **Short title:** An assessment of AI/ML methods in first trimester pre-eclampsia risk prediction: A systematic  
22 review protocol  
23  
24  
25  
26  
27  
28  
29  
30

31 **\* Corresponding author**

32 E-mail: [mic@ssi.dk](mailto:mic@ssi.dk) (MC)

## 33 Abstract

34 **Introduction:** Pre-eclampsia (PE) is a leading cause of perinatal morbidity and mortality worldwide. Low-  
35 dose aspirin can prevent PE in high risk pregnancies if started early. However, despite intense research into  
36 the area, first-trimester screening for PE risk is still not a routine part of pregnancy care. Several studies  
37 have described the application of artificial intelligence (AI) and machine learning (ML) in risk prediction of  
38 PE and its subtypes. A systematic review of available literature is necessary to catalogue the current  
39 applications of AI/ML methods in early pregnancy screening for PE, in order to better inform the  
40 development of clinically relevant risk prediction algorithms which will enable timely intervention and the  
41 development of new treatment strategies. The aim of this systematic review is to identify and assess  
42 studies regarding the application of AI/ML methods in first-trimester screening for PE.

43 **Methods:** A systematic review of peer-reviewed as well as the grey literature cohort or case-control studies  
44 will be conducted. Relevant information will be accessed from the following databases; PubMed, Google  
45 Scholar, Web of Science, Arxiv, BioRxiv, and MedRxiv. The studies will be evaluated by two reviewers in a  
46 parallel, blind assessment of the literature, a third reviewer will assess any studies in which the first two  
47 reviewers did not agree. The free online tool Rayyan, will be used in this literature assessment stage. The  
48 Preferred Reporting Items for Systematic Reviews and Meta-Analyses (PRISMA) 2020 checklist will be used  
49 to guide the review process and the methods of the studies will be assessed using the Newcastle-Ottawa  
50 scale. Narrative synthesis will be conducted for all included studies. Meta-analysis will also be conducted  
51 where data quality and availability allow.

52 **Ethics and dissemination:** The review will not require ethical approval and the findings will be published in  
53 a peer-reviewed journal using the PRISMA guidelines.

54 **Keywords:** Pre-Eclampsia; Artificial Intelligence; Machine Learning; Neonatal Screening; Pregnancy  
55 Trimester, First

## 56 Introduction

57 Estimated to cause 100,000 maternal deaths annually [1]; pre-eclampsia (PE) is an frequent (3-8 %) [2] and  
58 important contributor to maternal [3, 4] and perinatal [5] — mortality and morbidity. PE is also associated  
59 with cardiovascular morbidity and metabolic syndrome later in life for both mother and child [6]. Low dose  
60 aspirin treatment reduces the risk of PE, if initiated prior to week 16 [7]. It is therefore important that high-  
61 risk patients are identified early, offered preventive treatment, and then carefully monitored throughout  
62 pregnancy [5].

63 Demographic and clinical risk factors along with a plethora of first trimester biochemical and ultrasound  
64 markers of the development of PE [8-15] have been identified. These factors and markers have been  
65 combined in several recommended algorithms [16] with variable performance [17], particularly for late-  
66 onset PE. There is thus a need to develop more effective screening methods [18]. An immense body of  
67 knowledge has been assembled on markers and potential risk algorithms and it has been suggested that  
68 future developments should rely on large-scale prospective studies [19]. However, recent improvements in  
69 computing power and cloud storage will make it possible to use clinical phenotype data from patient  
70 registers [20] and novel methods of data combination [21] to develop high-performance, robust, clinical  
71 screening algorithms for PE [22]. Using big data in this way may also enable the definition of algorithms that  
72 can identify pregnancies which will benefit from preventive treatment, as well as support research into the  
73 development and implementation of individualised preventive treatments [23].

74 Artificial intelligence (AI) and machine learning (ML) methods may provide the key to unlocking the  
75 potential of the many markers and risk factors of PE identified to date. By enabling the combination of  
76 clinical phenotype information (extracted from electronic health records) and biomarker information along  
77 with environmental exposures, AI/ML methods provide the promise of producing a clinically relevant PE  
78 prediction algorithm [20]. Furthermore, AI/ML methods have been applied to the prediction of pregnancy  
79 complications, albeit not in a clinical care setting [24].

80 The objective of this systematic review is to identify and assess studies regarding the application of AI/ML  
81 methods in first-trimester screening for PE. The research questions (below) follow a PIO method in which  
82 the population of interest (P) are first-trimester pregnancies, the intervention (method of analysis) (I) is any  
83 AI/ML method, and the outcome (O) is prediction of PE risk.

#### 84 **Research questions**

- 85 • Which AI/ML methods (I) have been used to assess PE risk (O) during the first-trimester (P)?
- 86 • How effective are these algorithms (I) at predicting PE risk (O) during the first trimester (P)?
- 87 • What risk factors have been associated with PE risk (O) during first-trimester (P) using AI/ML  
88 methods (I)?

## 89 **Methods**

90 In accordance with the guidelines, our systematic review protocol has been submitted to the International  
91 Prospective Register of Systematic Reviews (PROSPERO) and is, at the time of submission, awaiting  
92 approval.

## 93 **Study design**

94 A systematic review of both peer-reviewed and grey literature with a meta-analysis (if possible), will be  
95 performed in accordance with the Preferred Report Items for Systematic Reviews and Meta-analyses  
96 (PRISMA) statement [25]. The PRISMA Protocols (PRISMA-P) checklist [26] was used to prepare this  
97 protocol (S1 Table).

## 98 **Eligibility criteria and information sources**

99 We will include original studies (cohort or case-control studies) on PE, performed on samples taken during  
100 the first trimester or performed on data which is otherwise not specific to the stage of pregnancy (e.g.  
101 genetic variants). AI/ML methods must have been used to assess the data. Inclusion and exclusion criteria  
102 are listed in Table 1. Electronic searches of literature will be carried out using the following databases:  
103 PubMed, Web of Science, Google Scholar, Arxiv, MedRxiv, and BioRxiv. No date limit will be applied to the  
104 searches, with the exception of the pre-print, grey literature sources (Arxiv, MedRxiv, and BioRxiv) which  
105 will be limited to articles submitted from the 1<sup>st</sup> of January 2020 in order to reduce duplication with  
106 published sources as well as eliminate publication failures.

107 Table 1. Inclusion/exclusion criteria.

	<b>Inclusion</b>	<b>Exclusion</b>
<b>Population</b>	<ul style="list-style-type: none"> <li>• First trimester pregnancy</li> </ul>	
<b>Methods (Intervention)</b>	<ul style="list-style-type: none"> <li>• Artificial intelligence</li> <li>• Machine learning</li> <li>• Integrated learning</li> <li>• Neural network</li> <li>• Sequence learning</li> <li>• Deep learning</li> <li>• Network analysis</li> <li>• Boosting gradient</li> <li>• AdaBoost</li> <li>• XGBoost</li> <li>• Symbolic regression</li> <li>• Supervised learning</li> <li>• Unsupervised learning</li> <li>• Random forest</li> <li>• Decision forest</li> <li>• Decision tree</li> <li>• Support vector machine</li> <li>• Reinforcement learning</li> <li>• Bayesian network</li> <li>• Genetic algorithm</li> <li>• Dimensionality reduction</li> <li>• K-nearest neighbour</li> </ul>	<ul style="list-style-type: none"> <li>• Linear regression</li> <li>• Logistic regression</li> </ul>
<b>Outcome</b>	<ul style="list-style-type: none"> <li>• Pre-eclampsia</li> </ul>	
<b>Language</b>	<ul style="list-style-type: none"> <li>• English</li> </ul>	<ul style="list-style-type: none"> <li>• Non-English</li> </ul>
<b>Species</b>	<ul style="list-style-type: none"> <li>• Human</li> </ul>	<ul style="list-style-type: none"> <li>• Animal studies</li> </ul>
<b>Publication Type</b>	<ul style="list-style-type: none"> <li>• Original Research</li> </ul>	<ul style="list-style-type: none"> <li>• Case reports/series</li> <li>• Reviews</li> <li>• Commentaries</li> <li>• Editorials</li> <li>• Letter to editors</li> <li>• Expert opinions</li> <li>• Conference abstracts</li> </ul>
<b>Study Design</b>	<ul style="list-style-type: none"> <li>• Case-control</li> <li>• Cohort study</li> </ul>	<ul style="list-style-type: none"> <li>• Meta-analyses</li> <li>• In vitro studies</li> </ul>

108 **Search strategy**

109 Search terms to be used are listed in Table 2. Population terms related to the first-trimester will not be  
 110 used as the time of testing may be unrelated to the stage of pregnancy (e.g. genetic variants, clinical  
 111 history). As an example; PubMed would be searched using the following search strategy: ("artificial  
 112 intelligence"[MeSH Terms] OR "machine learning"[MeSH Terms] OR "integrated learning"[Title/Abstract]  
 113 OR "neural network"[Title/Abstract] OR "sequence learning"[Title/Abstract] OR "deep

114 learning"[Title/Abstract] OR "network analysis"[Title/Abstract] OR "boosting"[Title/Abstract] OR  
 115 "AdaBoost"[Title/Abstract] OR "XGBoost"[Title/Abstract] OR "symbolic regression"[Title/Abstract] OR  
 116 "supervised learning"[Title/Abstract] OR "unsupervised learning"[Title/Abstract] OR "Random  
 117 forest"[Title/Abstract] OR "Decision forest"[Title/Abstract] OR "Decision tree"[Title/Abstract] OR "Support  
 118 vector machine"[Title/Abstract] OR "Reinforcement learning"[Title/Abstract] OR "Bayesian  
 119 network"[Title/Abstract] OR "Genetic algorithm"[Title/Abstract] OR "Dimensionality  
 120 reduction"[Title/Abstract] OR "K-nearest neighbour"[Title/Abstract] OR "K-nearest  
 121 neighbor"[Title/Abstract]) AND ("preeclampsia"[Title/Abstract] OR "pre-eclampsia"[MeSH Terms]).

122 Table 2. List of search terms to be applied covering the AI/ML intervention terms and PE outcome terms.

	<b>Search Terms</b>
<b>Intervention Terms</b>	"artificial intelligence" OR "machine learning" OR "integrated learning" OR "neural network" OR "sequence learning" OR "deep learning" OR "network analysis" OR "boosting" OR "AdaBoost" OR "XGBoost" OR "symbolic regression" OR "supervised learning" OR "unsupervised learning" OR "Random forest" OR "Decision forest" OR "Decision tree" OR "Support vector machine" OR "Reinforcement learning" OR "Bayesian network" OR "Genetic algorithm" OR "Dimensionality reduction" OR "K-nearest neighbour" OR "K-nearest neighbor")
AND	
<b>Outcome Terms</b>	"preeclampsia" OR "pre-eclampsia"

## 123 Study records

### 124 Data management and selection process

125 Literature search results will be collected and merged using Endnote (vers 20.3) and, in order to facilitate  
 126 collaboration among reviewers during the study selection process, transferred to the free online tool  
 127 Rayyan [27], where duplicates will be removed, and keyword lists based on the inclusion and exclusion  
 128 criteria will be made in order to facilitate both level 1 and 2 assessment of the literature search results.  
 129 Prior to the formal screening process, a calibration exercise will be undertaken to pilot and refine the  
 130 keyword lists. Two reviewers (PLH and MC) will independently assess titles and abstracts against the  
 131 inclusion and exclusion criteria, as guided by the keyword lists, in order to identify eligible articles. Articles  
 132 will be rated as 'included', 'excluded' or 'maybe' (i.e. insufficient information in abstract to decide  
 133 eligibility) and a full-text review will then be performed by both reviewers for all 'included' and 'maybe'

134 articles. Any discrepancies between the first and second reviewer will be discussed and in the event that a  
135 consensus cannot be reached a third reviewer (CMH or CW) will make the final decision regarding eligibility.  
136 A PRISMA flow diagram will be drawn to demonstrate the stages of the literature selection process and  
137 record the reason for excluding studies (Fig 1) [25].

138 **Fig 1. PRISMA Flow diagram.** An illustration of the process of selecting studies for review.

### 139 **Critical Appraisal of selected studies**

140 The reviewers (PLH and MC) will assess the quality of all eligible studies using the Newcastle-Ottawa Quality  
141 Assessment Scale (NOS) for case-control and cohort studies [28]. NOS is a validated quality assessment tool  
142 which is divided into three sections focused on selection of participants, comparability of study groups, and  
143 ascertainment of outcomes. Each section contains a number of criteria for which a study can be awarded a  
144 star, the maximum number of stars that can be awarded is nine. Any discrepancy in NOS scoring will be  
145 settled by a third reviewer (CMH or CW). If a discrepancy persists then the average score will be used.  
146 Studies with 7-9 stars will be considered high-quality and their data used in a meta-analysis.

### 147 **Data collection**

148 One reviewer (PLH) will extract data from the included studies using an excel spreadsheet. Data from  
149 multiple reports pertaining to the same study will be linked so as not to report duplicate results. The excel  
150 spreadsheet will collect data on the first author, publication year, study period, country of study, type of  
151 study, peer-reviewed status, pre-publication status, sample size, maternal age, gestational age at sampling,  
152 blood pressure measurements, maternal body mass index, birth weight, risk markers, AI/ML method, all  
153 reported outcomes pertaining to PE, and NOS scores. The excel sheet will be adapted following a pilot test  
154 on 10 articles, selected to represent various AI/ML methods and risk factors, in order to ensure all relevant  
155 data is extracted. The second reviewer (MC) will approve the excel sheet and check the accuracy of the  
156 data.



## 157 **Data synthesis**

158 Tables will be created to summarise the characteristics of the included studies. A narrative analysis will be  
159 presented with reference to the particular AI/ML method and type of data used in the study. We intend to  
160 compare the diagnostic efficiency of the different methods, if sufficient studies will be found. If possible,  
161 considering the wide range of possible AI/ML methods employed, a meta-analysis will be performed using  
162 R package meta. In the event that a meta-analysis cannot be performed, data for similar AI/ML methods  
163 will be compiled and reported together. Strength of evidence will be graded by two reviewers (PLH and  
164 MC) using the Evidence-based Practice Centre 2015 guidelines [29].

## 165 **Patient and public involvement**

166 Patients or the public will not be involved in this systematic review.

## 167 **Ethics and dissemination**

168 This systematic review will not need ethical approval because it will retrieve and synthesise data from  
169 publically available published and pre-published studies. Study results will be disseminated through  
170 scientific publications presented at relevant local and international scientific conferences.

## 171 Discussion

172 Studies have been performed which use AI/ML methods to predict complications in pregnancy [24].

173 However, as most studies focus on second trimester pregnancies an overview of first trimester pregnancy

174 PE prediction using AI/ML methods is needed as identification of PE risk in the first trimester can be used to

175 select pregnancies that may benefit from preventive treatment with Low dose aspirin, which has been

176 documented to reduce the occurrence of PE [7, 30].

177 Many AI/ML methods are currently in use within research and development [21]; this review would allow

178 us to comment on the ability of these methods to support patient participation in decisions with reference

179 to the “explainability” or “interpretability” of the result. These two concepts refer to the ability to explain

180 how the algorithm parameters relates to the result (explainability of black-box models) and how

181 understandable and trustworthy the algorithm results are (interpretability of white-box models) [31]. As

182 risk assessment for PE supports high-risk decisions it is a very important that patients and doctors can

183 understand which underlying factors determine the outcome.

184 This systematic review will establish the current state of knowledge concerning the prediction of PE during

185 the first trimester through use of AI/ML methods and will provide the highest level of evidence to inform

186 future research as well as the development of first-trimester, PE screening algorithms. However, the

187 considerable heterogeneity expected among the included literature (i.e. different AI/ML methods used,

188 different sample type or gestational ages at time of sampling) may pose a challenge for consistent and

189 comprehensive data extraction. Consequently, meta-analysis will be limited by the quality and quantity of

190 data available. Any significant amendments to this systematic review protocol will require the approval of

191 all authors and will be documented, with the date of the amendment and the rationale for the amendment,

192 on the PROSPERO record, updated protocol document, and in the final manuscript. The review findings will

193 be published in a peer-reviewed open-access scientific journal at the conclusion of this study.

## 194 References

- 195 1. Mol BWJ, Roberts CT, Thangaratinam S, Magee LA, de Groot CJM, Hofmeyr GJ. Pre-  
196 eclampsia. *Lancet*. 2016;387(10022):999-1011. Epub 2015/09/08. doi: 10.1016/S0140-6736(15)00070-7.  
197 PubMed PMID: 26342729.
- 198 2. Abalos E, Cuesta C, Grosso AL, Chou D, Say L. Global and regional estimates of preeclampsia  
199 and eclampsia: a systematic review. *Eur J Obstet Gynecol Reprod Biol*. 2013;170(1):1-7. Epub 2013/06/12.  
200 doi: 10.1016/j.ejogrb.2013.05.005. PubMed PMID: 23746796.
- 201 3. Say L, Chou D, Gemmill A, Tunçalp O, Moller AB, Daniels J, et al. Global causes of maternal  
202 death: a WHO systematic analysis. *Lancet Glob Health*. 2014;2(6):e323-33. Epub 2014/08/12. doi:  
203 10.1016/S2214-109X(14)70227-X. PubMed PMID: 25103301.
- 204 4. Zhang J, Meikle S, Trumble A. Severe maternal morbidity associated with hypertensive  
205 disorders in pregnancy in the United States. *Hypertens Pregnancy*. 2003;22(2):203-12. Epub 2003/08/12.  
206 doi: 10.1081/PRG-120021066. PubMed PMID: 12909005.
- 207 5. von Dadelszen P, Payne B, Li J, Ansermino JM, Broughton Pipkin F, Cote AM, et al. Prediction  
208 of adverse maternal outcomes in pre-eclampsia: development and validation of the fullPIERS model.  
209 *Lancet*. 2011;377(9761):219-27. Epub 2010/12/28. doi: 10.1016/S0140-6736(10)61351-7. PubMed PMID:  
210 21185591.
- 211 6. Chappell LC, Cluver CA, Kingdom J, Tong S. Pre-eclampsia. *Lancet*. 2021;398(10297):341-54.  
212 Epub 2021/05/31. doi: 10.1016/S0140-6736(20)32335-7. PubMed PMID: 34051884.
- 213 7. Rolnik DL, Wright D, Poon LC, O'Gorman N, Syngelaki A, de Paco Matallana C, et al. Aspirin  
214 versus Placebo in Pregnancies at High Risk for Preterm Preeclampsia. *N Engl J Med*. 2017;377(7):613-22.  
215 Epub 20170628. doi: 10.1056/NEJMoa1704559. PubMed PMID: 28657417.
- 216 8. Akolekar R, Zaragoza E, Poon LC, Pepes S, Nicolaides KH. Maternal serum placental growth  
217 factor at 11 + 0 to 13 + 6 weeks of gestation in the prediction of pre-eclampsia. *Ultrasound Obstet Gynecol*.  
218 2008;32(6):732-9. Epub 2008/10/29. doi: 10.1002/uog.6244. PubMed PMID: 18956425.
- 219 9. Christiansen M, Hedley PL, Placing S, Wojdemann KR, Carlsen AL, Jorgensen JM, et al.  
220 Maternal Serum Resistin Is Reduced in First Trimester Preeclampsia Pregnancies and Is a Marker of Clinical  
221 Severity. *Hypertension in Pregnancy*. 2015;34(4):422-33. doi: 10.3109/10641955.2014.913615. PubMed  
222 PMID: WOS:000366271200003.
- 223 10. Cnossen JS, Morris RK, ter Riet G, Mol BW, van der Post JA, Coomarasamy A, et al. Use of  
224 uterine artery Doppler ultrasonography to predict pre-eclampsia and intrauterine growth restriction: a  
225 systematic review and bivariable meta-analysis. *CMAJ*. 2008;178(6):701-11. Epub 2008/03/12. doi:  
226 10.1503/cmaj.070430. PubMed PMID: 18332385; PubMed Central PMCID: PMCPMC2263112.
- 227 11. Grill S, Rusterholz C, Zanetti-Dallenbach R, Tercanli S, Holzgreve W, Hahn S, et al. Potential  
228 markers of preeclampsia--a review. *Reproductive biology and endocrinology : RB&E*. 2009;7:70. Epub  
229 2009/07/16. doi: 10.1186/1477-7827-7-70. PubMed PMID: 19602262; PubMed Central PMCID:  
230 PMCPMC2717076.
- 231 12. Hedley PL, Placing S, Wojdemann K, Carlsen AL, Shalmi AC, Sundberg K, et al. Free leptin  
232 index and PAPP-A: a first trimester maternal serum screening test for pre-eclampsia. *Prenat Diagn*.  
233 2010;30(2):103-9. Epub 2009/12/17. doi: 10.1002/pd.2337. PubMed PMID: 20013873.
- 234 13. Laigaard J, Sorensen T, Placing S, Holck P, Frohlich C, Wojdemann KR, et al. Reduction of the  
235 disintegrin and metalloprotease ADAM12 in preeclampsia. *Obstet Gynecol*. 2005;106(1):144-9. Epub  
236 2005/07/05. doi: 10.1097/01.AOG.0000165829.65319.65. PubMed PMID: 15994630.
- 237 14. Spencer K, Cowans NJ, Nicolaides KH. Low levels of maternal serum PAPP-A in the first  
238 trimester and the risk of pre-eclampsia. *Prenat Diagn*. 2008;28(1):7-10. Epub 2007/11/15. doi:  
239 10.1002/pd.1890. PubMed PMID: 18000943.
- 240 15. De Villiers CP, Hedley PL, Placing S, Wojdemann KR, Shalmi AC, Carlsen AL, et al. Placental  
241 protein-13 (PP13) in combination with PAPP-A and free leptin index (fLI) in first trimester maternal serum

242 screening for severe and early preeclampsia. *Clin Chem Lab Med.* 2017;56(1):65-74. Epub 2017/07/14. doi:  
243 10.1515/cclm-2017-0356. PubMed PMID: 28704180.

244 16. O'Gorman N, Wright D, Poon LC, Rolnik DL, Syngelaki A, de Alvarado M, et al. Multicenter  
245 screening for pre-eclampsia by maternal factors and biomarkers at 11-13 weeks' gestation: comparison  
246 with NICE guidelines and ACOG recommendations. *Ultrasound Obstet Gynecol.* 2017;49(6):756-60. doi:  
247 10.1002/uog.17455. PubMed PMID: 28295782.

248 17. Tan MY, Syngelaki A, Poon LC, Rolnik DL, O'Gorman N, Delgado JL, et al. Screening for pre-  
249 eclampsia by maternal factors and biomarkers at 11-13 weeks' gestation. *Ultrasound Obstet Gynecol.*  
250 2018;52(2):186-95. Epub 2018/06/14. doi: 10.1002/uog.19112. PubMed PMID: 29896812.

251 18. Chaemsaitong P, Sahota DS, Poon LC. First trimester preeclampsia screening and prediction.  
252 *Am J Obstet Gynecol.* 2022;226(2S):S1071-S97 e2. Epub 20200716. doi: 10.1016/j.ajog.2020.07.020.  
253 PubMed PMID: 32682859.

254 19. Townsend R, Khalil A, Premakumar Y, Allotey J, Snell KIE, Chan C, et al. Prediction of pre-  
255 eclampsia: review of reviews. *Ultrasound Obstet Gynecol.* 2019;54(1):16-27. doi: 10.1002/uog.20117.  
256 PubMed PMID: 30267475.

257 20. Myatt L. The prediction of preeclampsia: the way forward. *Am J Obstet Gynecol.*  
258 2022;226(2S):S1102-S7 e8. Epub 20210327. doi: 10.1016/j.ajog.2020.10.047. PubMed PMID: 33785181.

259 21. Christiansen M, Wilstrup C, Hedley PL. Explainable "White-box" machine learning is the way  
260 forward in pre-eclampsia screening. *Am J Obstet Gynecol.* 2022. Epub 20220629. doi:  
261 10.1016/j.ajog.2022.06.057. PubMed PMID: 35779588.

262 22. Topol EJ. High-performance medicine: the convergence of human and artificial intelligence.  
263 *Nat Med.* 2019;25(1):44-56. Epub 20190107. doi: 10.1038/s41591-018-0300-7. PubMed PMID: 30617339.

264 23. Bica I, Alaa AM, Lambert C, van der Schaar M. From Real-World Patient Data to Individualized  
265 Treatment Effects Using Machine Learning: Current and Future Methods to Address Underlying Challenges.  
266 *Clin Pharmacol Ther.* 2021;109(1):87-100. Epub 20200628. doi: 10.1002/cpt.1907. PubMed PMID:  
267 32449163.

268 24. Bertini A, Salas R, Chabert S, Sobrevia L, Pardo F. Using Machine Learning to Predict  
269 Complications in Pregnancy: A Systematic Review. *Front Bioeng Biotechnol.* 2021;9:780389. Epub  
270 20220119. doi: 10.3389/fbioe.2021.780389. PubMed PMID: 35127665; PubMed Central PMCID:  
271 PMC8807522.

272 25. Page MJ, McKenzie JE, Bossuyt PM, Boutron I, Hoffmann TC, Mulrow CD, et al. The PRISMA  
273 2020 statement: an updated guideline for reporting systematic reviews. *BMJ.* 2021;372:n71. Epub  
274 2021/03/31. doi: 10.1136/bmj.n71. PubMed PMID: 33782057; PubMed Central PMCID: PMC8005924.

275 26. Moher D, Shamseer L, Clarke M, Ghersi D, Liberati A, Petticrew M, et al. Preferred reporting  
276 items for systematic review and meta-analysis protocols (PRISMA-P) 2015 statement. *Syst Rev.* 2015;4:1.  
277 Epub 20150101. doi: 10.1186/2046-4053-4-1. PubMed PMID: 25554246; PubMed Central PMCID:  
278 PMC84320440.

279 27. Ouzzani M, Hammady H, Fedorowicz Z, Elmagarmid A. Rayyan-a web and mobile app for  
280 systematic reviews. *Syst Rev.* 2016;5(1):210. Epub 2016/12/07. doi: 10.1186/s13643-016-0384-4. PubMed  
281 PMID: 27919275; PubMed Central PMCID: PMC5139140.

282 28. Wells GA, Shea B, O'Connell D, Peterson J, Welch V, Losos M, et al. The Newcastle-Ottawa  
283 Scale (NOS) for assessing the quality of nonrandomised studies in meta-analyses Ottawa, Canada: Ottawa  
284 Hospital Research Institute; 2019 [cited 2020 20/01/2020]. Available from:  
285 [http://www.ohri.ca/programs/clinical\\_epidemiology/oxford.asp](http://www.ohri.ca/programs/clinical_epidemiology/oxford.asp).

286 29. Berkman ND, Lohr KN, Ansari MT, Balk EM, Kane R, McDonagh M, et al. Grading the strength  
287 of a body of evidence when assessing health care interventions: an EPC update. *J Clin Epidemiol.*  
288 2015;68(11):1312-24. Epub 20141220. doi: 10.1016/j.jclinepi.2014.11.023. PubMed PMID: 25721570.

289 30. ACOG Committee Opinion No. 743: Low-Dose Aspirin Use During Pregnancy. *Obstet Gynecol.*  
290 2018;132(1):e44-e52. doi: 10.1097/AOG.0000000000002708. PubMed PMID: 29939940.

291 31. Barragan-Montero A, Bibal A, Dastarac MH, Draguet C, Valdes G, Nguyen D, et al. Towards a  
292 safe and efficient clinical implementation of machine learning in radiation oncology by exploring model  
293 interpretability, explainability and data-model dependency. *Phys Med Biol.* 2022;67(11). Epub 20220527.  
294 doi: 10.1088/1361-6560/ac678a. PubMed PMID: 35421855.

295 **Supporting information**

296 S1 Table. PRISMA-P 2015 checklist

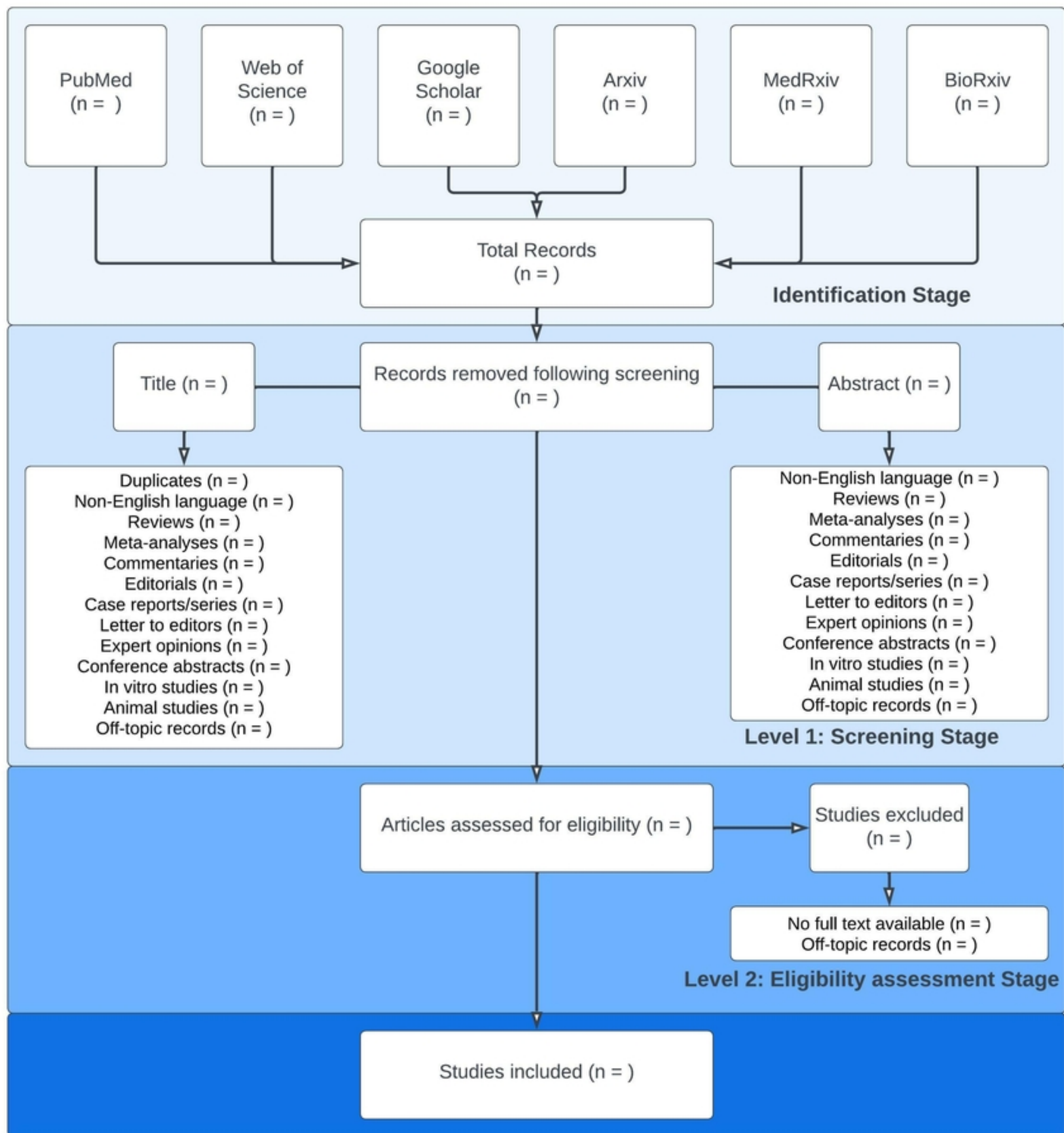
297 **Statements**

298 **Funding:** The author(s) received no specific funding for this work.

299 **Author contributions:** MC is the guarantor. PLH and MC drafted the manuscript and contributed to the  
300 development of the selection criteria, the critical appraisal strategy and data extraction criteria. PLH  
301 developed the search strategy. CW and CMH provided statistical expertise. CW provided expertise on  
302 artificial intelligence and machine learning. All authors read, provided feedback and approved the final  
303 manuscript.

304 **Competing interests:** The authors have declared that no competing interests exist.

305 **Abbreviations:** **AI**, artificial intelligence; **ML**, machine learning; **NOS**, Newcastle-Ottawa Quality Assessment  
306 Scale; **PE**, pre-eclampsia; **PRISMA**, preferred reporting items for systematic reviews and meta-analyses;  
307 **PRISMA-P**, PRISMA-protocols; **PROSPERO**, the international prospective register of systematic reviews.



Figure