

1 **Differential symptoms among COVID-19 outpatients before and during periods of SARS-**
2 **CoV-2 Omicron variant dominance in Blantyre, Malawi: a prospective observational study**

3

4 Marah G. Chibwana^{1†}, Herbert W. Thole^{1†}, Cat Anscombe^{1,3†}, Philip M. Ashton^{1,2}, Edward
5 Green³, Kayla G. Barnes^{1,2,4,5,6}, Jen Cornick^{1,2}, Ann Turner², Desiree Witte^{1,2}, Sharon Nthala¹,
6 Chikondi Thom¹, Felistas Kanyandula¹, Anna Ainani¹, Natasha Mtike, Hope Tambala⁷,
7 Veronica N’goma¹, Dorah Mwafulirwa¹, Erick Asima¹, Ben Morton³, Markus Gmeiner¹,
8 Zaziwe Gundah⁷, Gift Kawalazira⁷, Neil French², Nicholas Feasey^{1,3}, Robert S. Heyderman⁸,
9 Todd D Swarthout⁸, Kondwani C. Jambo^{1,3,9*}

10

- 11 1. Malawi-Liverpool-Wellcome Clinical Research programme (MLW), Blantyre, Malawi
12 2. Institute of Infection, Veterinary and Ecological Sciences, University of Liverpool,
13 Liverpool, United Kingdom
14 3. Department of Clinical Sciences, Liverpool School of Tropical Medicine, Liverpool, United
15 Kingdom
16 4. Harvard School of Public Health, Boston, USA
17 5. Broad Institute of MIT and Harvard, Cambridge, USA
18 6. University of Glasgow MRC Centre for Virus Research, Glasgow, UK
19 7. Blantyre District Health Office, Ministry of Health, Blantyre, Malawi
20 8. NIHR Global Health Research Unit on Mucosal Pathogens, Research Department of
21 Infection, Division of Infection and Immunity, University College London, London, UK
22 9. Kamuzu University of Health Sciences (formerly University of Malawi-College of
23 Medicine) Blantyre, Malawi

24

25 ***Corresponding author**

26 Email: Kondwani.Jambo@lstmed.ac.uk or kjambo@mlw.mw (KCJ)

27 † Contributed equally to this manuscript

28

29 **Main text:** 2717 words

30

31 **Running title:** Changes in symptoms from Pre-Omicron to Omicron variants

NOTE: This preprint reports new research that has not been certified by peer review and should not be used to guide clinical practice.

32 **ABSTRACT**

33 **Background.** It is widely reported that the SARS-CoV-2 Omicron variant has resulted in high
34 number of cases, but relatively low incidence of severe disease and deaths, compared to the
35 pre-Omicron variants of concern. We aim to assess the differences in symptom prevalence
36 between Omicron and pre-Omicron infections in a sub-Saharan African population.

37 **Methods.** In this cross-sectional observational study, we collected data from children and
38 adult outpatients presenting at two primary healthcare facilities in Blantyre, Malawi. Eligible
39 participants were aged >1month old, with signs suggestive of COVID-19, and those not
40 suspected of COVID-19. Nasopharyngeal swabs were collected for SARS-CoV-2 PCR testing
41 and positive samples whole genome sequenced to identify the infecting variant. The
42 primary outcome was the likelihood of presenting with a given symptom in individuals
43 testing positive during the period in which Omicron-dominated (December 2021 to March
44 2022) with those infected during the pre-Omicron period (August 2021 to November 2021).

45 **Findings.** Among 5176 study participants, the median age was 28 years (IQR 21-38), of
46 which 6.4% were under 5, 9.2% were 6 to 17 years, 77% were 18 to 50 years, and 7.1% were
47 above 50 years old. Prevalence of SARS-CoV-2 infection was 23% (1187/5188), varying over
48 time, with peaks in January 2021, July 2021 and December 2021, driven by the Beta
49 (B.1.351), Delta (B.1.617.2) and Omicron (BA.1/2) variants, respectively. Headache (OR
50 0.47[CI 0.29 – 0.79]), cough (OR 0.37[CI 0.22 – 0.61]), fatigue (OR 0.20[CI 0.08 – 0.48]) and
51 abdominal pain (OR 0.38[CI 0.18 – 0.78]) were less common in participants infected during
52 the Omicron-dominant period than during pre-Omicron period. Fever was more common in
53 participants infected during the Omicron-dominated period than during pre-Omicron period
54 (OR 2.46[CI 1.29 – 4.97]). COVID-19 vaccination, accounting for number of doses and days
55 since last dose, was not associated with a reduced risk of PCR-confirmed SARS-CoV-2
56 infection (1 dose, OR 1.10[CI 0.39 – 2.66]; 2 doses, OR 1.11[CI 0.40 – 2.57]; all p=0.8).

57 **Interpretation.** In this Malawian population, the prevalence of clinical symptoms associated
58 with Omicron infection differ from those of pre-Omicron infections and may be harder to
59 identify clinically with current symptom guidelines. To maintain robust surveillance for
60 COVID-19 and emerging variants, case definitions and testing policies will need to be
61 regularly reviewed to ensure case ascertainment.

62

63

64 INTRODUCTION

65 As of June 2022, the COVID-19 pandemic has resulted in 543 million cases and 6.3 million
66 deaths globally ¹. In sub-Saharan Africa, the pandemic has however been associated with a
67 lower rate of hospitalisation and deaths than in Europe and the Americas ¹, despite
68 widespread SARS-CoV-2 community transmission ², and low COVID-19 vaccine coverage ³.
69 Due to the continued emergence of SARS-CoV-2 variants of concern, surveillance is essential
70 for monitoring the pandemic and informing public health interventions, however the
71 optimal approach to surveillance in low-income, resource-poor settings is unclear ⁴.

72

73 By June 2022, Malawi had experienced four epidemic waves peaking in July 2020, January
74 2021, July 2021, and December 2021. There were 86,348 confirmed SARS-CoV-2 cases
75 nationally, with 2,645 COVID-19-associated deaths ¹. However, due to the availability of
76 testing there is considerable case under ascertainment, as evidence by the high
77 seroprevalence of >65% observed in Malawi as of July 2021 ⁵. Blantyre has had the highest
78 number of reported COVID-19 cases in Malawi, with 28.6% of the national cases ⁶. Recently,
79 the Omicron variant has resulted in less hospitalisations and mortality in Malawi compared
80 to the Delta variant ¹, which has coincided with high seroprevalence of SARS-CoV-2
81 antibodies in Malawi and across sub-Saharan Africa ^{5,7}. Further, Malawi introduced COVID-
82 19 vaccines in March 2021 ⁸. The COVID-19 vaccination coverage for Malawi is 4.5%,
83 including the AstraZeneca, Janssen and Pfizer vaccines, with AstraZeneca vaccine
84 constituting most of the doses ⁸.

85

86 Using data from early in the pandemic, a standardised case definition for COVID-19 was
87 developed by the World Health Organisation (WHO) ⁹ and United States Centre for Disease
88 Control (US CDC) ¹⁰, and these have allowed targeted SARS-CoV-2 testing. However, there
89 has been limited systematic data collected on clinical presentation of SARS-CoV-2 infection
90 in sub-Saharan African settings, outside of South Africa. This is particularly important as
91 there is a high burden of other febrile illnesses such as malaria, pneumonia, TB and
92 salmonellosis that have clinical features that overlap with COVID-19 ^{11,12}. Further, there is
93 limited data on the differences in clinical presentation between infections caused by
94 different variants of concern (VOC), especially amongst non-hospitalised patients. To
95 address these gaps, our study measured the prevalence of PCR-confirmed SARS-CoV-2

96 infection among outpatients presenting with medical conditions at primary healthcare
97 facilities and compared the symptom profiles between Omicron and pre-Omicron infections.

98

99 **METHODS**

100 ***Study design and population***

101 From November 2020 to March 2022, we conducted a SARS-CoV-2 prevalence study in
102 primary healthcare facilities in the city of Blantyre, southern Malawi. Blantyre is Malawi's
103 commercial city with a population of 800,264 (pop density, 3334/km²). Adults and children
104 were recruited voluntarily from two government-owned primary healthcare facilities,
105 Ndirande Health Centre and Limbe Health Centre, both overseen by the Blantyre District
106 Health Office. Census data shows Ndirande HC serves a catchment area of 135,736, while
107 Limbe HC serves a catchment area of 145,604, but the actual catchment is likely much
108 higher.

109

110 From November 2020 to July 2021, individuals with medical conditions were screened at the
111 facility's outpatient services department. Following assessment by a clinician and a review
112 of the individual's health passport (patient retained medical record), a nasopharyngeal swab
113 was collected for SARS-CoV-2 screening by SARS-CoV-2 by RT-PCR from patients suspected
114 of COVID-19 according to the WHO case definition⁹. From August 2021, following a protocol
115 amendment to include capturing a more detailed clinical history using the ISARIC symptom
116 list¹³⁻¹⁵, participants included both those suspected and those not suspected of COVID-19
117 according to the WHO case definition, with a 2:1 numerical bias towards those with
118 suspected COVID-19. Patients with suspected COVID-19 were recruited as and when they
119 presented to the facility, while those with not clinically suspected of COVID-19 were
120 selected by approaching every third patient in health facility's triage area.

121

122 ***Data and specimen collection***

123 Following informed consent and assent (for children) from August 2021, we used an
124 abridged International Severe Acute Respiratory and Emerging Infection Consortium
125 (ISARIC) Clinical Characterisation Protocol (CCP) electronic case report form (eCRF)¹³⁻¹⁵ to
126 collect demographic and clinical data from all participants. Study nurses collected
127 nasopharyngeal swabs in Universal Transport Medium (UTM) (Copan, Brescia, Italy) from all

128 participants. Samples were initially stored and transported to the Malawi-Liverpool-
129 Wellcome Programme (MLW) laboratory on ice and processed within 48 hours.

130

131 ***Laboratory testing***

132 Nasopharyngeal swabs were tested for SARS-CoV-2 RNA using the CDC 2019-nCoV RNA RT-
133 PCR diagnostic panel (Integrated DNA Technologies, Iowa, USA). A cycle threshold (Ct) value
134 of <40 was considered positive for SARS-CoV-2 using QuantStudio Real-Time PCR software
135 v1.3 (Applied Biosystems, UK). Ribonuclease protein was used as an internal control to
136 identify presence of human RNA. A negative extraction control and a PCR no-template
137 control were also performed with every test. The results of patients with positive PCR tests
138 were shared with the Blantyre District Health Office for further follow up and patient
139 management.

140

141 ***Genomic sequencing and analysis***

142 Samples were extracted using the Qiasymphony-DSP mini kit 200 (Qiagen, UK) with offboard
143 lysis. Samples were then tested using the CDC N1 assay to confirm the Ct values before
144 sequencing. Samples with a Ct value <27 were sequenced. The following sequencing
145 protocols were used; ARTICv2 and v3 was used from November 2020 from July 2021 to July
146 2021¹⁶ and UNZA¹⁷ from August 2021 on wards. Initially two primer pools were used,
147 however a third pool was made for primer pairs that commonly had lower depth compared
148 to the average¹⁵. PCR cycling conditions were adapted to the new sequencing primers, with
149 annealing temperature changed to 60°C. Sequencing was carried out with the Oxford
150 Nanopore Technologies MinION sequencer. Samples that had poor coverage (<70%) with
151 the ARTIC primer set were repeated with the UNZA primer set.

152

153 For analysis of sequencing data, the lineage of each consensus genome was identified using
154 pangolin with the following versions; pangolin v3.1.17, pangolearn 2021-12-06,
155 constellations v0.1.1, scorpio v0.3.16, pango-designation used by pangoLEARN/Usher
156 v1.2.105, pango-designation aliases v1.2.122¹⁸. Samples were re-analysed when the
157 Pangolin database was updated. The run was repeated if there was contamination in the
158 negative control.

159

160 ***Statistical analysis***

161 We performed statistical analyses and graphical presentation using R statistical package,
162 version 4.1.0. Categorical variables were summarised using frequency distributions and
163 compared using Pearson's Chi-squared test and Fisher's exact test. The continuous variables
164 were presented as median with interquartile range.

165
166 We employed multivariable logistic regression models, as implemented in the R package
167 stats (version 3.6.2), to investigate odds of presenting with particular symptoms in Omicron
168 compared pre-Omicron phases, adjusting for age and sex. A multivariable logistic regression
169 model adjusting for age, sex, vaccination status, vaccination doses and days since last
170 vaccine dose was also employed to investigate the impact of COVID-19 vaccination on PCR-
171 confirmed SARS-CoV-2. P-values <0.05 were considered significant.

172

173 ***Ethics approval***

174 The study was approved by the College of Medicine Research and Ethics Committee
175 (COMREC P.08/20/3099) and Liverpool School of Tropical Medicine Research Ethics
176 Committee (LSTMREC 21-058).

177

178 **RESULTS**

179 ***Demographic and clinical characteristics of participants***

180 From November 2020 through March 2022, 6147 (Ndirande Health Centre, n=2899; Limbe
181 Health Centre, n=3248) individuals were approached, and 5188 participants were enrolled
182 but 12 were excluded as they did not have sex recorded. Refusals were mostly from parents
183 or guardians who did not consent for their children to undergo nasopharyngeal swabbing,
184 and this did not change throughout the study period. Overall, the participants' median age
185 was 28 years (IQR 21-38), of which 6.4% (331/5176) were under 5 years, 9.2% (331/5176)
186 were 6 to 17 years (479/5176), 77% (4000/5176) were 18 to 50 years, and 7.1% (368/5176)
187 were above 50 years old. Of the total 50% (2596/5176) were female (**table 1**).

188

189 ***Prevalence of SARS-CoV-2 infection and genomic surveillance***

190 The overall prevalence of PCR-confirmed SARS-CoV-2 infection was 23% (1187/5176) (**table**
191 **1**). SARS-CoV-2 prevalence varied over time, with three distinct peaks over the study period,

192 namely January 2021, July 2021, and December 2021 (**figure 1A**). SARS-CoV-2 prevalence
193 was lowest in those under 5 years of age (5.74% [CI 3.49 – 8.82]) compared to all other age
194 groups (6-12yrs, 16.7% [12.1 – 22.2]; 13-17yrs, 25.3% [20.0 – 31.2]; 18-50yrs, 24.5% [23.2 –
195 25.9]; 50+yrs, 22.8% [18.6 –27.5]) (**figure 1B**). The three prevalence peaks corresponded with
196 emergence of variants of concern (VOC), including Beta (B.1.351; January 2021), Delta
197 (1.617.2; July 2021) and Omicron (BA.1/2; December 2021) (**figure 1C**). Only Omicron (BA.1)
198 was detectable in all age groups (**figure 1D**).

199

200 ***Symptoms associated with SARS-CoV-2 infection, pre- and during the Omicron-dominated*** 201 ***phase***

202 Forty-nine percent (2520/5176) of the total participants were recruited from August 2021 to
203 March 2022, hence had detailed symptom and medical history (**Supplementary figure 1**).

204 Out of these 2509 had complete symptomology data and were used in the subsequent
205 analysis. Using a multivariable analysis, cough (71% vs 68%, risk ratio, 1.50; 95% CI, 1.00 to
206 2.30, p=0.056), fatigue (14% vs 6.3%, risk ratio, 2.27; 95% CI, 1.29 to 3.86, p=0.003) and
207 headache (49% vs 37%, risk ratio, 1.64; 95% CI, 1.15 to 2.34, p=0.007) were associated with
208 a high risk of PCR-confirmed SARS-CoV-2 infection during the pre-Omicron period (**table 2**).
209 While, during the Omicron-dominated period, only headache (39% vs 30%, risk ratio, 1.41;
210 95% CI, 1.07 to 1.86, p=0.015) was associated with a high risk of PCR-confirmed SARS-CoV-2
211 infection.

212

213 ***Impact of COVID-19 vaccination on the risk of PCR-confirmed SARS-CoV-2 infection***

214 Eighty percent (2009/2520) of the participants with detailed symptomology were eligible for
215 vaccination (18 years and above) and had complete vaccination history. We, therefore, used
216 these individuals to determine whether the risk of PCR-confirmed SARS-CoV-2 infection was
217 different between vaccinated compared to unvaccinated adults. Using a multivariable
218 analysis, adjusting for days since last vaccine dose, sex, age and recruitment period; COVID-
219 19 vaccination was not associated with a reduced risk of PCR-confirmed SARS-CoV-2
220 infection (1 dose, OR 1.10[CI 0.39-2.66]; 2 doses, OR 1.11[CI 0.40-2.57]; <91 days, OR 1.93[CI
221 0.74-5.68]; 91+ days, OR 1.54[CI 0.63-4.34]) (**table 3**). However, the recruitment period of
222 December 2021 to March 2022 (Omicron), was associated with a threefold increase in the

223 risk of PCR-confirmed SARS-CoV-2 infection than the August 2021 to November 2021 (pre-
224 Omicron) period (OR 2.56 [CI 2.02-3.26]) (**table 3**).

225

226 ***Symptoms associated with PCR-confirmed SARS-CoV-2 infection change with variants***

227 Based on the genomic surveillance data (**figure 1C**), we assigned all individuals infected
228 within the period from August 2021 to November 2021 as pre-Omicron infections (most
229 commonly Delta infections), and those from December 2021 to March 2022 as Omicron
230 infections. Twenty two percent (447/2009) of vaccine-eligible patients who had provided
231 the date since last vaccine dose had PCR-confirmed SARS-CoV-2 infection (**table 4**), while 35
232 out of 228 patients were less than 18 years of age and had PCR-confirmed SARS-CoV-2
233 infection (**supplementary table 1**), as such subsequent analyses focused on the adult
234 population (18 years and above). Fifty percent (151/302) of these patients in Omicron phase
235 were female, while 56% (81/145) were female in the pre-Omicron phase. The median age of
236 patients from the two phases was similar (31 years [IQR 25-38] vs. 32[IQR 23-39], $p=0.8$)
237 (**table 4**). Among those with known self-reported HIV status, the HIV prevalence was 16%,
238 which was similar between the two phases (17% vs 13%, $p=0.4$). Of those People Living with
239 HIV (PLHIV), 97% (34/35) in the Omicron phase and 94% (15/16) in the pre-Omicron phase
240 were on antiretroviral therapy. Other chronic illnesses were uncommon, with only 1.6%
241 (7/447), 0.9% (4/447) and 3.4% (15/447) self-reported to have hypertension, diabetes, and
242 asthma, respectively, although hypertension and diabetes, in particular, are widely
243 underdiagnosed in Malawi^{19,20}. Thirty-one percent (137/447) of the participants reported
244 being vaccinated with at least one dose of the COVID-19 vaccine (AstraZeneca vaccine (80%
245 (109/137)) or Janssen vaccine (20% (28/137))). Of which, 54% (74/447) had self-reported to
246 have received at least two doses of the AstraZeneca vaccine, with more patients in the
247 Omicron phase than the pre-Omicron phase (20% (59/302) vs. 10% (15/145), $p=0.025$).
248 Moreover, the days since last vaccine dose were longer in the Omicron phase than pre-
249 Omicron phase (173[IQR 141-208] vs. 78[IQR 40-137], $p<0.001$).

250

251 Clinical symptoms associated with PCR-confirmed SARS-CoV-2 infections were different
252 during the Omicron and pre-Omicron phases (**table 5**). Cough (70% vs. 54%, $p<0.001$),
253 fatigue (14% vs 3.6%, $p<0.001$), loss of taste (10% vs. 5.0%, $p=0.033$), headache (50% vs.
254 39%, $p=0.034$), and abdominal pain (14% vs. 8.3%, $p=0.043$) were more frequent in patients

255 from the pre-Omicron phase compared to the Omicron phase. In contrast, muscle ache was
256 more common in the Omicron phase than pre-Omicron phase (35% vs 25%, $p=0.029$).

257

258 Controlling for age, sex and COVID-19 vaccination status in a multivariable analysis, cough
259 (OR 0.37 [CI 0.22 – 0.61], $p<0.001$), fatigue (OR 0.20 [CI 0.08 – 0.48], $p<0.001$), headache (OR
260 0.47 [CI 0.29 – 0.79], $p=0.001$), and abdominal pain (OR 0.38 [CI 0.18 – 0.78]) were
261 independently associated with pre-Omicron than Omicron SARS-CoV-2 PCR positive
262 diagnosis (**figure 2 and table 5**). Conversely, fever was independently associated with
263 Omicron than pre-Omicron SARS-CoV-2 PCR positive diagnosis (OR 2.46 [CI 1.29 – 4.97])
264 (**figure 2 and table 5**).

265

266 **DISCUSSION**

267 In a setting where there is a high burden of presentations with infectious disease, we found
268 that the symptoms associated with SARS-CoV-2 Omicron infection have become
269 considerably less distinct, differing significantly from those infections with pre-Omicron
270 variants (predominantly Delta). Indeed fever, which is common to many infectious
271 presentations^{11,12}, was most prevalent among presumed Omicron infected patients, while
272 headache, cough, fatigue, and abdominal pain were significantly more prevalent among pre-
273 Omicron cases.

274

275 Our data showing a different symptom profile associated with Omicron infection is
276 consistent with studies elsewhere²¹ with headache being prominent in three other studies
277 from the UK²¹⁻²³. However, we observed high odds for presenting with fever in presumed
278 Omicron-infected patients than pre-Omicron patients, in contrast with the two studies in
279 the UK^{21,23}. The main differences between the Malawi study and the UK studies are age and
280 prevalence of Omicron sub-lineages, with Malawi cohort being a younger population and
281 having predominantly BA.1 at time of sampling. BA.1 is associated with a different symptom
282 profile than BA.2²². Together, our findings and those of others suggest that the clinical case
283 definition of COVID-19 used for testing and surveillance may need to be revised to maintain
284 case ascertainment.

285

286 Data from Malawi and elsewhere has shown that the Omicron variant has presented with
287 less severe disease, hospitalisation and deaths, than the pre-Omicron VOCs ^{1,24}. The
288 Omicron variant have been shown to be less capable of transition from the upper to lower
289 respiratory tract infection ²⁵, and this could potentially contribute to the low incidence of
290 severe disease. However, data in non-immunised populations in Hong Kong indicate that
291 Omicron is not intrinsically mild ^{26,27}, suggesting that immune response or past exposure
292 could be an important determinant of this low severity. Data from South Africa has shown
293 that high SARS-CoV-2 seroprevalence has been associated with low number of deaths and
294 hospitalisation attributed to the Omicron variant ²⁴. In Malawi, seroprevalence data has
295 shown that more than 70% of the population had anti-SARS-CoV-2 receptor binding domain
296 (RBD) antibodies before the Omicron variant pandemic wave ⁵, reaching over 90% at the
297 peak of the Omicron wave in January 2022 (unpublished). In line with previous findings ²⁸,
298 COVID-19 vaccination was not associated with a reduced risk of PCR-confirmed SARS-CoV-2
299 infection, especially during the Omicron wave. It is therefore plausible that the altered
300 clinical presentation observed in our study could also be attributed to pre-existing immunity
301 from prior SARS-CoV-2 exposure.

302
303 Furthermore, our findings align with the temporal dynamics of the COVID-19 pandemic
304 waves in Malawi and the region ^{1,5,24}. A high SARS-CoV-2 prevalence of 30-50% among
305 patients presenting to primary healthcare at the peak of the three pandemic waves, is
306 consistent with high reported national COVID-19 cases during the same period ¹.
307 Furthermore, consistent with genomic surveillance ^{15,29}, our sentinel surveillance correctly
308 identified the VOCs driving the local pandemic waves. Due to the consistency in our
309 sampling over time, we were able to provide real-time data to aid public health response in
310 Malawi, especially on the identification of VOCs driving community transmission
311 (unpublished). Collectively, this indicates that sentinel surveillance backed up by diagnostics
312 and genomics data could be an early warning system for national pandemic response in
313 resource-limited settings, considering that by the time hospitalisations are rising it is already
314 too late to intervene effectively.

315
316 Our study had several limitations. Firstly, the study was conducted in urban Blantyre and
317 findings may not be generalisable to rural settings. Secondly, our study cohort (median age

318 28 years [IQR 21-38]) was not fully representative of the population structure in Malawi
319 (median age 17.5 years)³⁰. Thirdly, since our genomic surveillance was limited to a subset of
320 samples with low PCR CT values, this approach biases our identification of variants to those
321 causing high viral burden infections at time of recruitment.

322

323 In conclusion, our study demonstrates changes in clinical symptoms overtime, aligned to
324 infecting variant, indicating that case definitions of COVID-19 need constant monitoring and
325 revision to match SARS-CoV-2 evolution to maintain its relevance for institutional and
326 national testing policies. This study also highlights the importance and utility of sentinel
327 surveillance in low-resourced settings to aid timely public health response against the
328 COVID-19 pandemic and future pandemics.

329

330 **NOTES**

331 ***Author contributions***

332 Conceptualization of study: RSH, NF, TS, MGC, KCJ

333 Study design: RSH, NF, TS, MGC, KCJ

334 Data collection: SN, CT, FK, AA, NM

335 Laboratory testing: CA, KB, JC

336 Data analysis: PMA, KCJ

337 Accessed and verified the underlying data: HWT, KCJ

338 Study management: HWT, MG, HT, VN, DM, EA

339 Manuscript writing: MGC, HWT, KCJ, NF

340 Manuscript review and approval: All authors

341

342 **ACKNOWLEDGEMENTS**

343 The authors thank all participants whose samples are used in this study. We thank the MLW
344 Clinical Research Support Unit (CRSU) team for supporting this study.

345

346 **DISCLAIMER**

347 The findings and conclusions in this report are those of the authors and do not necessarily
348 represent the official position of the funders.

349

350 FUNDING

351 The work is supported by funding from Wellcome [220757/Z/20/Z] and the National
352 Institute for Health Research (NIHR) [16/136/46]. KCJ is supported by an MRC African
353 Research Leader award [MR/T008822/1]. RSH is a NIHR senior investigator. The views
354 expressed in this publication are those of the authors and not necessarily those of the NIHR
355 or the UK government. A Wellcome Strategic award number 206545/Z/17/Z supports MLW.
356 The funders were not involved in the design of the study; in the collection, analysis, and
357 interpretation of the data; and in writing the manuscript.

358

359 DECLARATION OF INTEREST

360 All other authors declare no conflict of interest.

361

362 REFERENCE

- 363 1. JHU. COVID-19 Case Tracker 2020. <https://coronavirus.jhu.edu/map.html>.
- 364 2. Lewis H, Ware H, Whelan M, et al. SARS-CoV-2 infection in Africa: A systematic
365 review and meta-analysis of standardised seroprevalence studies, from January 2020 to
366 December 2021. *medRxiv* 2022: 2022.02.14.22270934.
- 367 3. Organization WH. Africa COVID-19 vaccination dashboard. 2022.
368 <https://app.powerbi.com/view?r=eyJrIjojY2ViYzlyZjltYzhhkMi00ZWVkbkLTgyM2ltZTk1ZTJmODRjMTkxliwidCI6ImY2MTBjMGI3LWJkMjQtNGlzOS04MTBiLTNkYzI4MGFmYjU5MCIsmMiOjh9>.
- 369 4. WHO. End-to-end integration of SARS-CoV-2 and influenza sentinel surveillance.
370 *Global influenza programme*, 2022. (accessed).
- 371 5. Mandolo J, Msefula J, Henrion MYR, et al. SARS-CoV-2 exposure in Malawian blood
372 donors: an analysis of seroprevalence and variant dynamics between January 2020 and July
373 2021. *BMC Med* 2021; **19**(1): 303.
- 374 6. PHIM. Daily COVID--19 Situation Report. Lilongwe: Public Health Institute of Malawi,
375 Ministry of Health, 2020.
- 376 7. Estimating global, regional, and national daily and cumulative infections with SARS-
377 CoV-2 through Nov 14, 2021: a statistical analysis. *Lancet* 2022.
- 378 8. WHO. COVID-19 vaccine tracker and landscape. 2021.
379 <https://www.who.int/publications/m/item/draft-landscape-of-covid-19-candidate-vaccines>.
- 380 9. WHO. Coronavirus disease (COVID-19). 2022. [https://www.who.int/health-](https://www.who.int/health-topics/coronavirus#tab=tab_3)
381 [topics/coronavirus#tab=tab_3](https://www.who.int/health-topics/coronavirus#tab=tab_3).
- 382 10. CDC. Symptoms of COVID-19. 2022. [https://www.cdc.gov/coronavirus/2019-](https://www.cdc.gov/coronavirus/2019-ncov/symptoms-testing/symptoms.html)
383 [ncov/symptoms-testing/symptoms.html](https://www.cdc.gov/coronavirus/2019-ncov/symptoms-testing/symptoms.html).
- 384 11. Maze MJ, Bassat Q, Feasey NA, Mandomando I, Musicha P, Crump JA. The
385 epidemiology of febrile illness in sub-Saharan Africa: implications for diagnosis and
386 management. *Clin Microbiol Infect* 2018; **24**(8): 808-14.
- 387 12. Elven J, Dahal P, Ashley EA, et al. Non-malarial febrile illness: a systematic review of
388 published aetiological studies and case reports from Africa, 1980-2015. *BMC Med* 2020;
389 **18**(1): 279.

- 391 13. Morton B, Barnes KG, Anscombe C, et al. Distinct clinical and immunological profiles
392 of patients with evidence of SARS-CoV-2 infection in sub-Saharan Africa. *Nat Commun* 2021;
393 **12**(1): 3554.
- 394 14. ISARIC. COVID-19 CRF. 2022. [https://isaric.org/research/covid-19-clinical-research-
395 resources/covid-19-crf/](https://isaric.org/research/covid-19-clinical-research-resources/covid-19-crf/).
- 396 15. Anscombe C, Lissauer S, Thole H, et al. Genomically informed clinical comparison of
397 three epidemic waves of COVID-19 in Malawi. *medRxiv* 2022: 2022.02.17.22269742.
- 398 16. ARTIC field bioinformatics pipeline. 2022. [https://github.com/artic-
399 network/fieldbioinformatics](https://github.com/artic-network/fieldbioinformatics).
- 400 17. Simulundu E, Mupeta F, Chanda-Kapata P, et al. First COVID-19 case in Zambia -
401 Comparative phylogenomic analyses of SARS-CoV-2 detected in African countries.
402 *International journal of infectious diseases : IJID : official publication of the International
403 Society for Infectious Diseases* 2021; **102**: 455-9.
- 404 18. O'Toole Á, Scher E, Underwood A, et al. Assignment of epidemiological lineages in an
405 emerging pandemic using the pangolin tool. *Virus Evol* 2021; **7**(2): veab064.
- 406 19. Amberbir A, Lin SH, Berman J, et al. Systematic Review of Hypertension and Diabetes
407 Burden, Risk Factors, and Interventions for Prevention and Control in Malawi: The NCD
408 BRITE Consortium. *Glob Heart* 2019; **14**(2): 109-18.
- 409 20. Price AJ, Crampin AC, Amberbir A, et al. Prevalence of obesity, hypertension, and
410 diabetes, and cascade of care in sub-Saharan Africa: a cross-sectional, population-based
411 study in rural and urban Malawi. *Lancet Diabetes Endocrinol* 2018; **6**(3): 208-22.
- 412 21. Menni C, Valdes AM, Polidori L, et al. Symptom prevalence, duration, and risk of
413 hospital admission in individuals infected with SARS-CoV-2 during periods of omicron and
414 delta variant dominance: a prospective observational study from the ZOE COVID Study.
415 *Lancet* 2022; **399**(10335): 1618-24.
- 416 22. Whitaker M, Elliott J, Bodinier B, et al. Variant-specific symptoms of COVID-19
417 among 1,542,510 people in England. *medRxiv* 2022: 2022.05.21.22275368.
- 418 23. Vihta K-D, Pouwels KB, Peto TE, et al. Omicron-associated changes in SARS-CoV-2
419 symptoms in the United Kingdom. *medRxiv* 2022: 2022.01.18.22269082.
- 420 24. Madhi SA, Kwatra G, Myers JE, et al. Population Immunity and Covid-19 Severity with
421 Omicron Variant in South Africa. *N Engl J Med* 2022.
- 422 25. Hui KPY, Ho JCW, Cheung MC, et al. SARS-CoV-2 Omicron variant replication in
423 human bronchus and lung ex vivo. *Nature* 2022; **603**(7902): 715-20.
- 424 26. Lewis D. Will Omicron finally overpower China's COVID defences? *Nature*. 2022.
- 425 27. Tso WWY, Kwan M, Wang LY, et al. Intrinsic Severity of SARS-CoV-2 Omicron BA.2 in
426 Uninfected, Unvaccinated Children: A Population-Based, Case-Control Study on Hospital
427 Complications. *SSRN* 2022.
- 428 28. Feikin DR, Higdon MM, Abu-Raddad LJ, et al. Duration of effectiveness of vaccines
429 against SARS-CoV-2 infection and COVID-19 disease: results of a systematic review and
430 meta-regression. *Lancet* 2022; **399**(10328): 924-44.
- 431 29. Wilkinson E, Giovanetti M, Tegally H, et al. A year of genomic surveillance reveals
432 how the SARS-CoV-2 pandemic unfolded in Africa. *Science*; **0**(0): eabj4336.
- 433 30. NSO. Malawi Population and Housing Census. Zomba: National Statistical Office,
434 Malawi, 2018.

435

436

437 **FIGURE LEGENDS**

438 **Figure 1. Prevalence of SARS-CoV-2 infections.** A) Prevalence of SARS-CoV-2 infections
439 across age groups. B) Prevalence of SARS-CoV-2 infections over time. Grey area represents
440 confidence intervals. C) SARS-CoV-2 variants of concern across the three pandemic waves.
441 D) SARS-CoV-2 variants of concern across age groups. (n=402)

442

443 **Figure 2. Clinical symptoms associated with PCR-confirmed SARS-CoV-2 infection.**

444 Differences in clinical symptoms of PCR-confirmed SARS-CoV-2 infected adults during the
445 Omicron and Pre-Omicron phases (n=447).

446

447

448

449

450

451

452

453

454

455

456

457

458

459

460

461

462

463

464

465

466

467

468

469 **TABLES**

470 **Table 1. Participant characteristics for main cohort**

471

| Characteristic | N = 5,176 [†] |
|----------------------------------|------------------------|
| Sex | |
| Female | 2,596 (50%) |
| Male | 2,580 (50%) |
| Age | 28 (21, 38) |
| Age group | |
| 1. 0-5 years | 331 (6.4%) |
| 2. 6-12 years | 228 (4.4%) |
| 3. 13-17 years | 249 (4.8%) |
| 4. 18-50 years | 4,000 (77%) |
| 5. 51+ years | 368 (7.1%) |
| SARS-CoV-2 PCR positivity | |
| Negative | 3,992 (77%) |
| Positive | 1,184 (23%) |

481

482

483 [†] n (%); Median (IQR)

484

485

486

487

488

489

490

491

492

493

494

495

496

497

498

499

500

501 **Table 2. Symptoms associated with SARS-CoV-2 infection**

502

503

504

505

506

507

508

509

510

511

512

513

514

515

516

517

518

519

520

521

522

523

524

525

526

527

528

529

530

531

532

| Characteristic | SARS-CoV-2 PCR Result (Pre-Omicron) | | | | Univariate (Pre-Omicron) | | | Multivariable (Pre-Omicron) | | | SARS-CoV-2 PCR Result (Omicron) | | | | Univariate (Omicron) | | | Multivariable (Omicron) | | | | |
|----------------------------|-------------------------------------|----------------------------------|--------------------------------|----------------------|--------------------------|-----------------|---------------------|-----------------------------|-----------------|---------------------|---------------------------------|---------------------------------|--------------------------------|--------------------------------|----------------------|-------|-----------------|-------------------------|--------------|-----------------|---------------------|--|
| | Overall, N = 1,311 ¹ | Negative, N = 1,157 ¹ | Positive, N = 154 ¹ | p-value ² | N | OR ³ | 95% CI ³ | p-value | OR ³ | 95% CI ³ | p-value | Overall, N = 1,198 ¹ | Negative, N = 870 ¹ | Positive, N = 328 ¹ | p-value ² | N | OR ³ | 95% CI ³ | p-value | OR ³ | 95% CI ³ | |
| Fever | 229 (17%) | 207 (18%) | 22 (14%) | 0.3 | 1,311 | | | | | | | 217 (18%) | 148 (17%) | 69 (21%) | 0.11 | 1,198 | | | | | | |
| No | | | | | | Ref. | — | | Ref. | — | | | | | | | Ref. | — | | Ref. | — | |
| Yes | | | | | | 0.76 | 0.46, 1.21 | 0.3 | 0.65 | 0.39, 1.05 | 0.093 | | | | | | 1.30 | 0.94, 1.78 | 0.11 | 1.23 | 0.88, 1.71 | |
| Cough | 893 (68%) | 784 (68%) | 109 (71%) | 0.5 | 1,311 | | | | | | | 654 (55%) | 477 (55%) | 177 (54%) | 0.8 | 1,198 | | | | | | |
| No | | | | | | Ref. | — | | Ref. | — | | | | | | | Ref. | — | | Ref. | — | |
| Yes | | | | | | 1.15 | 0.80, 1.68 | 0.5 | 1.50 | 1.00, 2.30 | 0.056 | | | | | | 0.97 | 0.75, 1.25 | 0.8 | 1.04 | 0.79, 1.38 | |
| Fatigue | 94 (7.2%) | 73 (6.3%) | 21 (14%) | <0.001 | 1,311 | | | | | | | 32 (2.7%) | 21 (2.4%) | 11 (3.4%) | 0.4 | 1,198 | | | | | | |
| No | | | | | | Ref. | — | | Ref. | — | | | | | | | Ref. | — | | Ref. | — | |
| Yes | | | | | | 2.34 | 1.37, 3.87 | 0.001 | 2.27 | 1.29, 3.86 | 0.003 | | | | | | 1.40 | 0.65, 2.89 | 0.4 | 1.24 | 0.55, 2.64 | |
| Loss of smell | 62 (4.7%) | 53 (4.6%) | 9 (5.8%) | 0.5 | 1,311 | | | | | | | 25 (2.1%) | 16 (1.8%) | 9 (2.7%) | 0.3 | 1,198 | | | | | | |
| No | | | | | | Ref. | — | | Ref. | — | | | | | | | Ref. | — | | Ref. | — | |
| Yes | | | | | | 1.29 | 0.59, 2.55 | 0.5 | 0.89 | 0.34, 2.16 | 0.8 | | | | | | 1.51 | 0.63, 3.38 | 0.3 | 0.70 | 0.22, 2.06 | |
| Loss of taste | 86 (6.6%) | 70 (6.1%) | 16 (10%) | 0.041 | 1,311 | | | | | | | 37 (3.1%) | 21 (2.4%) | 16 (4.9%) | 0.028 | 1,198 | | | | | | |
| No | | | | | | Ref. | — | | Ref. | — | | | | | | | Ref. | — | | Ref. | — | |
| Yes | | | | | | 1.80 | 0.99, 3.11 | 0.044 | 1.79 | 0.83, 3.65 | 0.12 | | | | | | 2.07 | 1.05, 4.01 | 0.031 | 2.04 | 0.81, 5.13 | |
| Sore throat | 154 (12%) | 134 (12%) | 20 (13%) | 0.6 | 1,311 | | | | | | | 161 (13%) | 108 (12%) | 53 (16%) | 0.090 | 1,198 | | | | | | |
| No | | | | | | Ref. | — | | Ref. | — | | | | | | | Ref. | — | | Ref. | — | |
| Yes | | | | | | 1.14 | 0.67, 1.85 | 0.6 | 1.03 | 0.59, 1.72 | >0.9 | | | | | | 1.36 | 0.95, 1.93 | 0.091 | 1.35 | 0.93, 1.93 | |
| Headache | 501 (38%) | 426 (37%) | 75 (49%) | 0.004 | 1,311 | | | | | | | 389 (32%) | 261 (30%) | 128 (39%) | 0.003 | 1,198 | | | | | | |
| No | | | | | | Ref. | — | | Ref. | — | | | | | | | Ref. | — | | Ref. | — | |
| Yes | | | | | | 1.63 | 1.16, 2.28 | 0.005 | 1.64 | 1.15, 2.34 | 0.007 | | | | | | 1.49 | 1.14, 1.95 | 0.003 | 1.41 | 1.07, 1.86 | |
| Muscle ache | 270 (21%) | 233 (20%) | 37 (24%) | 0.3 | 1,311 | | | | | | | 343 (29%) | 235 (27%) | 108 (33%) | 0.043 | 1,198 | | | | | | |
| No | | | | | | Ref. | — | | Ref. | — | | | | | | | Ref. | — | | Ref. | — | |
| Yes | | | | | | 1.25 | 0.83, 1.85 | 0.3 | 1.15 | 0.72, 1.80 | 0.6 | | | | | | 1.33 | 1.01, 1.74 | 0.044 | 1.28 | 0.94, 1.73 | |
| Joint pain | 105 (8.0%) | 89 (7.7%) | 16 (10%) | 0.2 | 1,311 | | | | | | | 75 (6.3%) | 49 (5.6%) | 26 (7.9%) | 0.14 | 1,198 | | | | | | |
| No | | | | | | Ref. | — | | Ref. | — | | | | | | | Ref. | — | | Ref. | — | |
| Yes | | | | | | 1.39 | 0.77, 2.38 | 0.2 | 1.07 | 0.54, 2.01 | 0.8 | | | | | | 1.44 | 0.87, 2.34 | 0.15 | 1.00 | 0.57, 1.73 | |
| Abdominal pain | 159 (12%) | 137 (12%) | 22 (14%) | 0.4 | 1,311 | | | | | | | 96 (8.0%) | 68 (7.8%) | 28 (8.5%) | 0.7 | 1,198 | | | | | | |
| No | | | | | | Ref. | — | | Ref. | — | | | | | | | Ref. | — | | Ref. | — | |
| Yes | | | | | | 1.24 | 0.75, 1.98 | 0.4 | 1.33 | 0.76, 2.23 | 0.3 | | | | | | 1.10 | 0.69, 1.72 | 0.7 | 1.29 | 0.79, 2.08 | |
| Diarrhoea | 102 (7.8%) | 92 (8.0%) | 10 (6.5%) | 0.5 | 1,311 | | | | | | | 82 (6.8%) | 63 (7.2%) | 19 (5.8%) | 0.4 | 1,198 | | | | | | |
| No | | | | | | Ref. | — | | Ref. | — | | | | | | | Ref. | — | | Ref. | — | |
| Yes | | | | | | 0.80 | 0.39, 1.51 | 0.5 | 0.89 | 0.41, 1.78 | 0.8 | | | | | | 0.79 | 0.45, 1.31 | 0.4 | 0.87 | 0.49, 1.49 | |
| Shortness of breath | 108 (8.2%) | 100 (8.6%) | 8 (5.2%) | 0.14 | 1,311 | | | | | | | 86 (7.2%) | 66 (7.6%) | 20 (6.1%) | 0.4 | 1,198 | | | | | | |
| No | | | | | | Ref. | — | | Ref. | — | | | | | | | Ref. | — | | Ref. | — | |
| Yes | | | | | | 0.58 | 0.25, 1.14 | 0.15 | 0.55 | 0.23, 1.15 | 0.14 | | | | | | 0.79 | 0.46, 1.30 | 0.4 | 0.80 | 0.41, 1.52 | |
| Chest pain | 244 (19%) | 217 (19%) | 27 (18%) | 0.7 | 1,311 | | | | | | | 156 (13%) | 108 (12%) | 48 (15%) | 0.3 | 1,198 | | | | | | |
| No | | | | | | Ref. | — | | Ref. | — | | | | | | | Ref. | — | | Ref. | — | |
| Yes | | | | | | 0.92 | 0.58, 1.41 | 0.7 | 0.83 | 0.51, 1.32 | 0.5 | | | | | | 1.21 | 0.83, 1.74 | 0.3 | 1.32 | 0.90, 1.93 | |
| Runny nose | 416 (32%) | 372 (32%) | 44 (29%) | 0.4 | 1,311 | | | | | | | 261 (22%) | 191 (22%) | 70 (21%) | 0.8 | 1,198 | | | | | | |
| No | | | | | | Ref. | — | | Ref. | — | | | | | | | Ref. | — | | Ref. | — | |
| Yes | | | | | | 0.84 | 0.58, 1.21 | 0.4 | 0.78 | 0.52, 1.16 | 0.2 | | | | | | 0.96 | 0.70, 1.31 | 0.8 | 0.96 | 0.69, 1.32 | |
| Pneumonia | 80 (6.1%) | 70 (6.1%) | 10 (6.5%) | 0.8 | 1,311 | | | | | | | 72 (6.0%) | 57 (6.6%) | 15 (4.6%) | 0.2 | 1,198 | | | | | | |
| No | | | | | | Ref. | — | | Ref. | — | | | | | | | Ref. | — | | Ref. | — | |
| Yes | | | | | | 1.08 | 0.51, 2.05 | 0.8 | 1.51 | 0.67, 3.13 | 0.3 | | | | | | 0.68 | 0.37, 1.19 | 0.2 | 0.78 | 0.37, 1.58 | |

¹ n (%)
² Pearson's Chi-squared test
³ OR = Odds Ratio, CI = Confidence Interval

533 **Table 3. Participant characteristics for PCR-confirmed SARS-CoV-2 infected adult patients**

| Characteristic | Overall, N = 447 ¹ | Omicron phase, N = 302 ¹ | Pre-omicron phase, N = 145 ¹ | p-value ² |
|-------------------------------------|-------------------------------|-------------------------------------|---|----------------------|
| sex | | | | 0.2 |
| Female | 232 (52%) | 151 (50%) | 81 (56%) | |
| Male | 215 (48%) | 151 (50%) | 64 (44%) | |
| Age | 31 (24, 39) | 31 (25, 38) | 32 (23, 39) | 0.8 |
| HIV status | | | | 0.4 |
| Negative | 277 (84%) | 173 (83%) | 104 (87%) | |
| Positive | 51 (16%) | 35 (17%) | 16 (13%) | |
| Unknown | 119 | 94 | 25 | |
| PLHIV on ART | 49 (11%) | 34 (11%) | 15 (10%) | 0.8 |
| Hypertension | 7 (1.6%) | 5 (1.7%) | 2 (1.4%) | >0.9 |
| Diabetes | 4 (0.9%) | 0 (0%) | 4 (2.8%) | 0.011 |
| Asthma | 15 (3.4%) | 8 (2.6%) | 7 (4.8%) | 0.3 |
| COVID-19 vaccination (doses) | | | | 0.025 |
| 0 | 310 (69%) | 206 (68%) | 104 (72%) | |
| 1 | 63 (14%) | 37 (12%) | 26 (18%) | |
| 2 | 74 (17%) | 59 (20%) | 15 (10%) | |
| Days since last vaccine dose | 137 (51, 187) | 173 (141, 208) | 78 (40, 137) | <0.001 |
| Unknown | 375 | 263 | 112 | |

¹ n (%); Median (IQR)
² Pearson's Chi-squared test; Wilcoxon rank sum test; Fisher's exact test

534

535

536

537

538

539

540

541

542

543

544

545

546

547

548

549 **Table 4. COVID-19 vaccination and the risk of PCR-confirmed SARS-CoV-2 infection**

| Characteristic | Seropositivity | | | p-value ² | N | Univariate | | | Multivariable | | |
|-------------------------------------|---------------------------------|---------------------------|-------------------------|----------------------|-------|-----------------|---------------------|------------------|-----------------|---------------------|------------------|
| | Overall, N = 2,009 ¹ | 0, N = 1,627 ¹ | 1, N = 382 ¹ | | | OR ³ | 95% CI ³ | p-value | OR ³ | 95% CI ³ | p-value |
| COVID-19 vaccine doses | | | | 0.027 | 2,009 | | | | | | |
| 0 | 1,718 (100%) | 1,408 (82%) | 310 (18%) | | | Ref. | — | | Ref. | — | |
| 1 | 142 (100%) | 107 (75%) | 35 (25%) | | | 1.49 | 0.98, 2.20 | 0.053 | 1.10 | 0.39, 2.66 | 0.8 |
| 2 | 149 (100%) | 112 (75%) | 37 (25%) | | | 1.50 | 1.00, 2.20 | 0.042 | 1.11 | 0.40, 2.57 | 0.8 |
| Days since last vaccine dose | | | | 0.003 | 2,009 | | | | | | |
| 0 | 1,763 (100%) | 1,447 (82%) | 316 (18%) | | | Ref. | — | | Ref. | — | |
| <91 days | 90 (100%) | 68 (76%) | 22 (24%) | | | 1.48 | 0.88, 2.39 | 0.12 | 1.93 | 0.74, 5.68 | 0.2 |
| 91+ days | 156 (100%) | 112 (72%) | 44 (28%) | | | 1.80 | 1.23, 2.58 | 0.002 | 1.54 | 0.63, 4.34 | 0.4 |
| Sex | | | | 0.4 | 2,009 | | | | | | |
| Female | 1,001 (100%) | 803 (80%) | 198 (20%) | | | Ref. | — | | Ref. | — | |
| Male | 1,008 (100%) | 824 (82%) | 184 (18%) | | | 0.91 | 0.72, 1.13 | 0.4 | 0.84 | 0.67, 1.06 | 0.15 |
| Age group | | | | 0.13 | 2,009 | | | | | | |
| 18-50 years | 1,904 (100%) | 1,536 (81%) | 368 (19%) | | | Ref. | — | | Ref. | — | |
| 51+ years | 105 (100%) | 91 (87%) | 14 (13%) | | | 0.64 | 0.35, 1.10 | 0.13 | 0.62 | 0.33, 1.09 | 0.12 |
| Recruitment period | | | | <0.001 | 2,009 | | | | | | |
| Pre-omicron phase | 1,080 (100%) | 943 (87%) | 137 (13%) | | | Ref. | — | | Ref. | — | |
| Omicron phase | 929 (100%) | 684 (74%) | 245 (26%) | | | 2.47 | 1.96, 3.11 | <0.001 | 2.56 | 2.02, 3.26 | <0.001 |

¹ n (%)

² Pearson's Chi-squared test

³ OR = Odds Ratio, CI = Confidence Interval

550
551
552
553
554
555
556
557
558
559
560
561
562
563
564
565
566

567 **Table 5. Prevalence of symptoms among PCR-confirmed SARS-CoV-2 infected adult**
 568 **patients during Omicron and pre-Omicron phases**

| Characteristic | Proportions | | | | N | Univariate | | | Multivariable | | |
|----------------------------|-------------------------------|-------------------------------------|---|----------------------|-----|-----------------|---------------------|------------------|-----------------|---------------------|------------------|
| | Overall, N = 447 ¹ | Omicron phase, N = 302 ¹ | Pre-omicron phase, N = 145 ¹ | p-value ² | | OR ³ | 95% CI ³ | p-value | OR ³ | 95% CI ³ | p-value |
| Fever | 77 (17%) | 58 (19%) | 19 (13%) | 0.11 | 447 | | | | | | |
| No | | | | | | Ref. | — | | Ref. | — | |
| Yes | | | | | | 1.58 | 0.91, 2.82 | 0.11 | 2.33 | 1.23, 4.66 | 0.012 |
| Cough | 264 (59%) | 162 (54%) | 102 (70%) | <0.001 | 447 | | | | | | |
| No | | | | | | Ref. | — | | Ref. | — | |
| Yes | | | | | | 0.49 | 0.32, 0.74 | <0.001 | 0.36 | 0.21, 0.60 | <0.001 |
| Fatigue | 32 (7.2%) | 11 (3.6%) | 21 (14%) | <0.001 | 447 | | | | | | |
| No | | | | | | Ref. | — | | Ref. | — | |
| Yes | | | | | | 0.22 | 0.10, 0.47 | <0.001 | 0.18 | 0.07, 0.41 | <0.001 |
| Loss of smell | 16 (3.6%) | 8 (2.6%) | 8 (5.5%) | 0.13 | 447 | | | | | | |
| No | | | | | | Ref. | — | | Ref. | — | |
| Yes | | | | | | 0.47 | 0.17, 1.29 | 0.13 | 0.45 | 0.10, 1.97 | 0.3 |
| Loss of taste | 30 (6.7%) | 15 (5.0%) | 15 (10%) | 0.033 | 447 | | | | | | |
| No | | | | | | Ref. | — | | Ref. | — | |
| Yes | | | | | | 0.45 | 0.21, 0.96 | 0.037 | 0.81 | 0.27, 2.51 | 0.7 |
| Sore throat | 64 (14%) | 47 (16%) | 17 (12%) | 0.3 | 447 | | | | | | |
| No | | | | | | Ref. | — | | Ref. | — | |
| Yes | | | | | | 1.39 | 0.78, 2.58 | 0.3 | 1.44 | 0.75, 2.86 | 0.3 |
| Headache | 190 (43%) | 118 (39%) | 72 (50%) | 0.034 | 447 | | | | | | |
| No | | | | | | Ref. | — | | Ref. | — | |
| Yes | | | | | | 0.65 | 0.44, 0.97 | 0.035 | 0.47 | 0.29, 0.74 | 0.001 |
| Muscle ache | 142 (32%) | 106 (35%) | 36 (25%) | 0.029 | 447 | | | | | | |
| No | | | | | | Ref. | — | | Ref. | — | |
| Yes | | | | | | 1.64 | 1.06, 2.58 | 0.030 | 1.59 | 0.94, 2.76 | 0.089 |
| Joint pain | 42 (9.4%) | 26 (8.6%) | 16 (11%) | 0.4 | 447 | | | | | | |
| No | | | | | | Ref. | — | | Ref. | — | |
| Yes | | | | | | 0.76 | 0.40, 1.49 | 0.4 | 0.69 | 0.30, 1.61 | 0.4 |
| Abdominal pain | 46 (10%) | 25 (8.3%) | 21 (14%) | 0.043 | 447 | | | | | | |
| No | | | | | | Ref. | — | | Ref. | — | |
| Yes | | | | | | 0.53 | 0.29, 1.00 | 0.046 | 0.37 | 0.18, 0.76 | 0.007 |
| Diarrhoea | 24 (5.4%) | 14 (4.6%) | 10 (6.9%) | 0.3 | 447 | | | | | | |
| No | | | | | | Ref. | — | | Ref. | — | |
| Yes | | | | | | 0.66 | 0.29, 1.56 | 0.3 | 0.69 | 0.27, 1.82 | 0.4 |
| Shortness of breath | 28 (6.3%) | 20 (6.6%) | 8 (5.5%) | 0.7 | 447 | | | | | | |
| No | | | | | | Ref. | — | | Ref. | — | |
| Yes | | | | | | 1.21 | 0.54, 2.99 | 0.7 | 2.65 | 0.88, 8.76 | 0.094 |
| Chest pain | 73 (16%) | 46 (15%) | 27 (19%) | 0.4 | 447 | | | | | | |
| No | | | | | | Ref. | — | | Ref. | — | |
| Yes | | | | | | 0.79 | 0.47, 1.34 | 0.4 | 0.83 | 0.46, 1.53 | 0.5 |
| Runny nose | 104 (23%) | 65 (22%) | 39 (27%) | 0.2 | 447 | | | | | | |
| No | | | | | | Ref. | — | | Ref. | — | |
| Yes | | | | | | 0.75 | 0.47, 1.18 | 0.2 | 1.10 | 0.65, 1.90 | 0.7 |
| Pneumonia | 24 (5.4%) | 15 (5.0%) | 9 (6.2%) | 0.6 | 447 | | | | | | |
| No | | | | | | Ref. | — | | Ref. | — | |
| Yes | | | | | | 0.79 | 0.34, 1.92 | 0.6 | 0.35 | 0.11, 1.10 | 0.071 |
| Sex | | | | 0.2 | 447 | | | | | | |
| Female | 232 (52%) | 151 (50%) | 81 (56%) | | | Ref. | — | | Ref. | — | |
| Male | 215 (48%) | 151 (50%) | 64 (44%) | | | 1.27 | 0.85, 1.89 | 0.2 | 1.38 | 0.89, 2.16 | 0.15 |
| Age | 31 (24, 39) | 31 (25, 38) | 32 (23, 39) | 0.8 | 447 | 1.00 | 0.98, 1.02 | 0.7 | 0.99 | 0.97, 1.02 | 0.5 |
| COVID-19 vaccinated | | | | 0.5 | 447 | | | | | | |
| No | 310 (69%) | 206 (68%) | 104 (72%) | | | Ref. | — | | Ref. | — | |
| Yes | 137 (31%) | 96 (32%) | 41 (28%) | | | 1.18 | 0.77, 1.84 | 0.5 | 1.35 | 0.83, 2.22 | 0.2 |

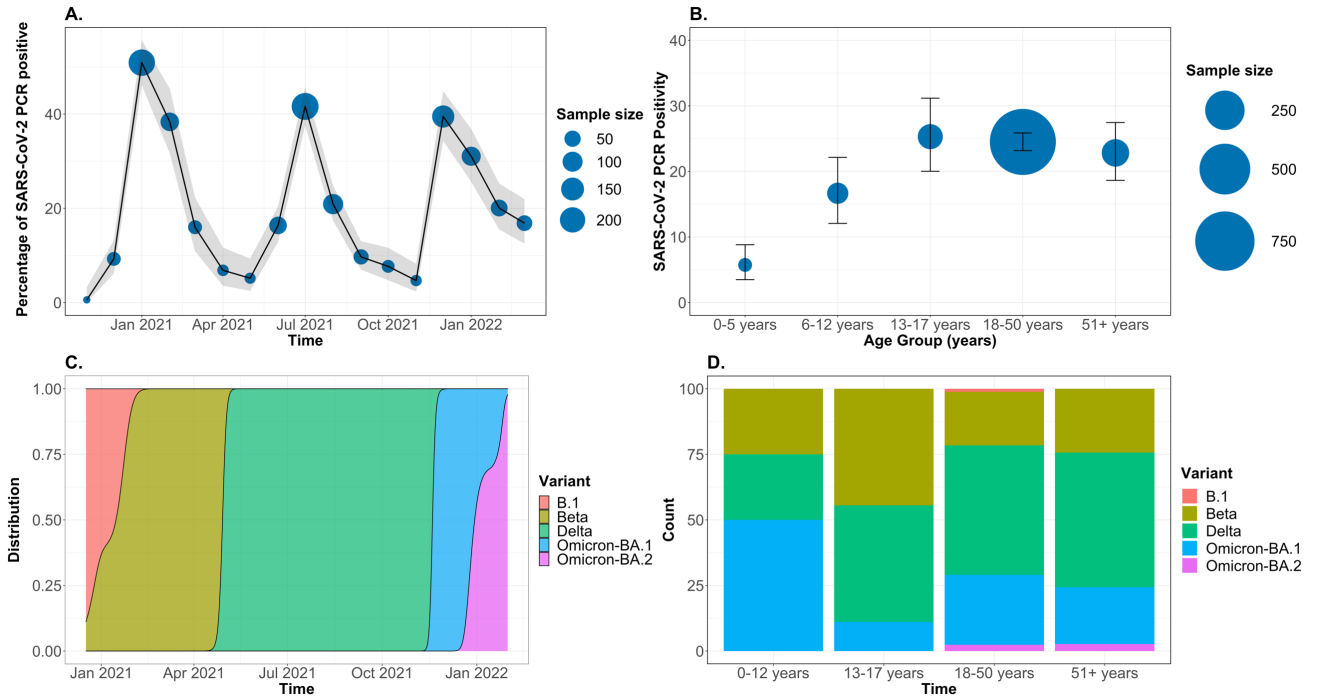
¹ n (%); Median (IQR)

² Pearson's Chi-squared test; Wilcoxon rank sum test

³ OR = Odds Ratio, CI = Confidence Interval

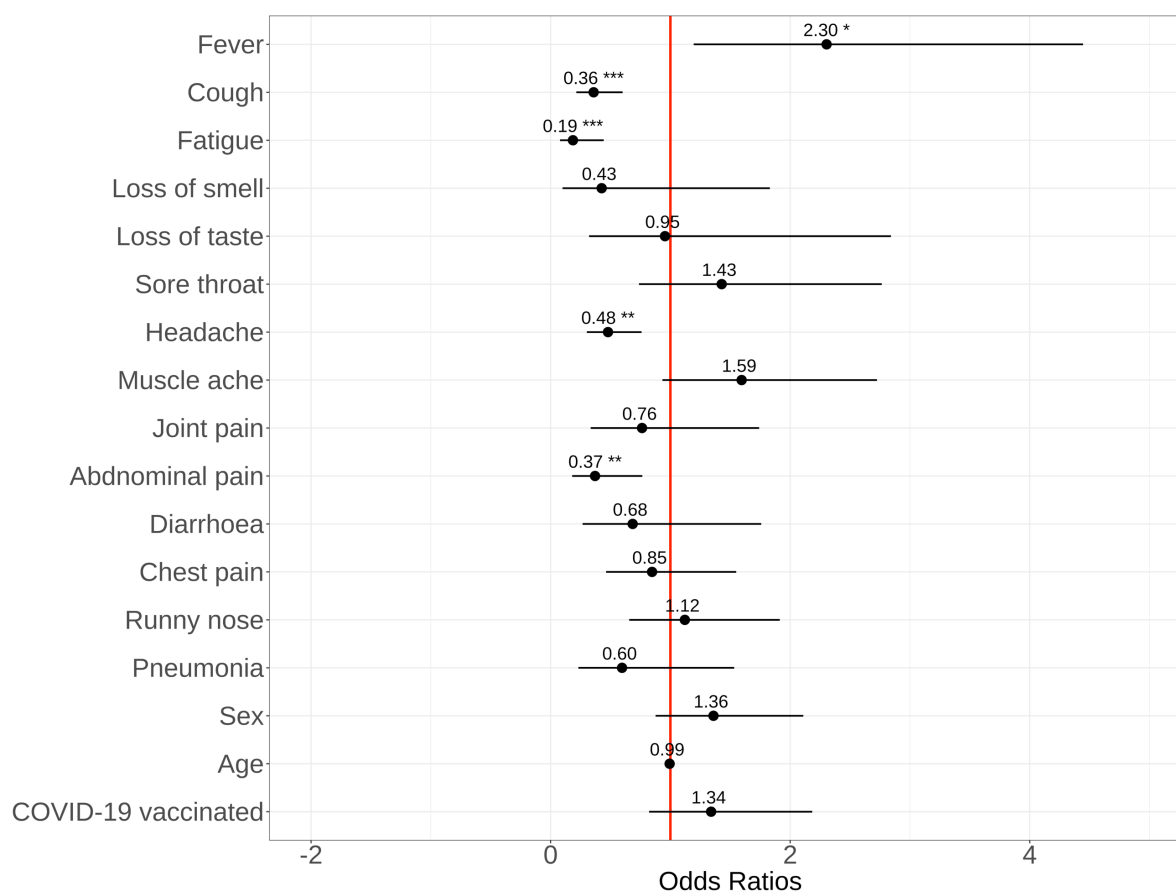
599 FIGURES

600 Figure 1.



601
602
603
604
605
606
607
608
609
610
611
612
613
614
615
616
617
618

619 **Figure 2.**



620
621
622
623
624
625
626
627
628
629
630
631
632
633
634
635

636 **Supplementary Material**

637

638 **Supplementary Table 1.**

639

| Characteristic | Overall, N = 35 ¹ | Omicron phase, N = 26 ¹ | Pre-omicron phase, N = 9 ¹ | p-value ² |
|------------------|------------------------------|------------------------------------|---------------------------------------|----------------------|
| Sex | | | | 0.5 |
| Female | 16 (46%) | 13 (50%) | 3 (33%) | |
| Male | 19 (54%) | 13 (50%) | 6 (67%) | |
| Age group | | | | 0.3 |
| <13 years | 28 (80%) | 22 (85%) | 6 (67%) | |
| 13-17 years | 7 (20%) | 4 (15%) | 3 (33%) | |
| Asthma | 1 (2.9%) | 1 (3.8%) | 0 (0%) | >0.9 |

¹ n (%)
² Fisher's exact test

647

648

649

650

651

652

653

654

655

656

657

658

659

660

661

662

663

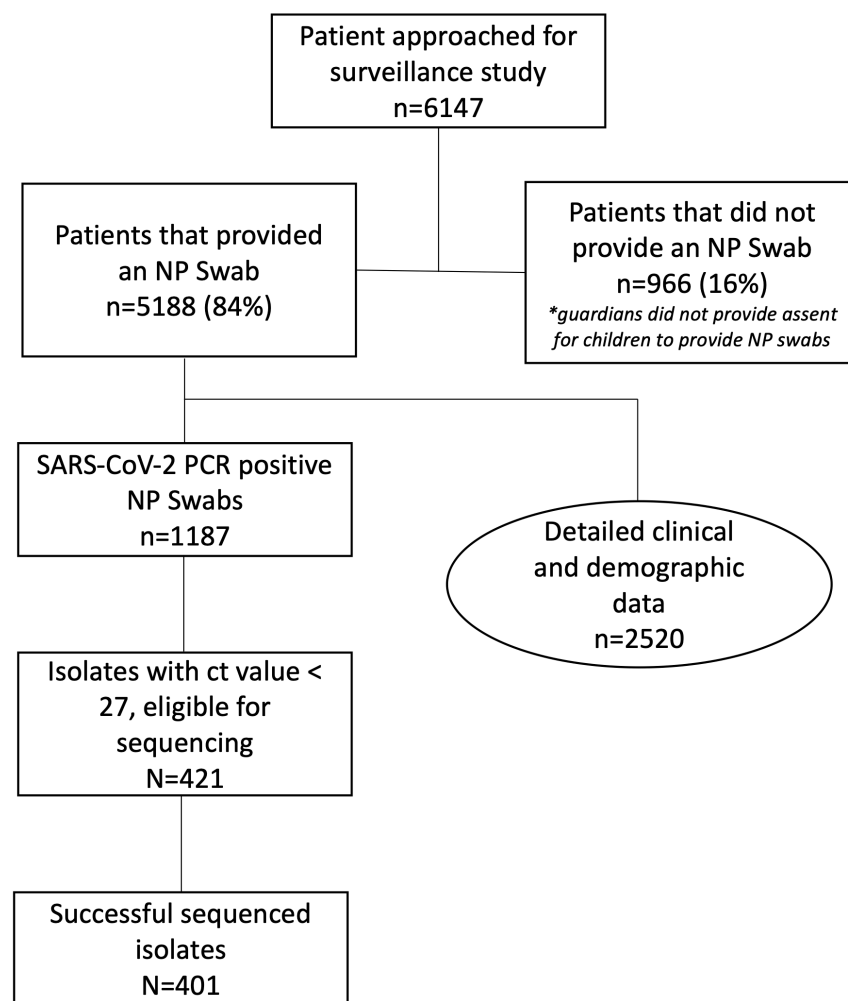
664

665

666

667

668 **Supplementary Figure 1.**



669

670

671 **Supplementary Figure 1.** Flowchart of participant enrolment and testing in two primary

672 healthcare facilities in Blantyre City, Malawi, November 2020 – March 2022.

673

674

675

676

677

678

679

680

681