

1 **Upregulation of Activation Induced Cell Markers (AIM) among Severe COVID-19 patients**
2 **in Bangladesh**

3 Taufiqur Rahman Bhuiyan^{1¶}, Hasan Al Banna^{1¶}, M Hasanul Kaisar¹, Polash Chandra Karmakar¹,
4 Al Hakim^{1,2}, Afroza Akter¹, Tasnuva Ahmed¹, Imam Tauheed¹, Shaumik Islam¹, Mohammad
5 Abul Hasnat³, Mostafa Aziz Sumon³, Asif Rashed⁴, Shuvro Ghosh⁴, John D Clemens^{1,5,6}, Sayera
6 Banu¹, Tahmina Shirin⁷, Daniela Weiskopf⁸, Alessandro Sette^{8,9}, Fahima Chowdhury^{1#}, Firdausi
7 Qadri^{1,#,*}

8 ¹International Centre for Diarrhoeal Disease Research Bangladesh (icddr,b), Dhaka, Bangladesh

9 ²Department of Genetic Engineering and Biotechnology, Faculty of Life and Earth Sciences,
10 Jagannath University, Dhaka, Bangladesh

11 ³Kurmitola General Hospital, Dhaka, Bangladesh

12 ⁴Mugda Medical College & Hospital, Dhaka, Bangladesh

13 ⁵UCLA Fielding School of Public Health, Los Angeles, CA, USA

14 ⁶International Vaccine Institute, Seoul, South Korea

15 ⁷Institute of Epidemiology, Disease Control and Research, Dhaka, Bangladesh

16 ⁸Center for Infectious Disease and Vaccine Research, La Jolla Institute for Immunology (LJI),
17 La Jolla, CA 92037, USA

18 ⁹Department of Medicine, Division of Infectious Diseases and Global Public Health, University
19 of California, San Diego (UCSD), La Jolla, CA 92037, USA

20

21 **Running title:** AIM assay in COVID-19 patients

22 [¶]Co-first author; [#]Senior author; ^{*}Corresponding author

23 ^{*}Dr. Firdausi Qadri, PhD

24 Senior Scientist and Head, Mucosal Immunology and Vaccinology Unit,
25 Infectious Diseases Division
26 International Centre for Diarrhoeal Disease Research, Bangladesh (icddr,b),
27 68, Shaheed Tajuddin Ahmed Sarani, Mohakhali, Dhaka 1212, Bangladesh.
28 Tel: +880 (0)2-2222-77001-10, Ext 2431; Email: fqadri@icddr.org

29 **ABSTRACT**

30 COVID-19 caused by SARS-CoV-2 can develop the disease with different degree of clinical
31 severity including fatality. In addition to antibody responses the antigen specific T cells may
32 play a critical role in defining this protective immune response against this virus. As a part of a
33 longitudinal cohort study in Bangladesh to investigate B and T cell specific immune responses,
34 we sought to evaluate the activation induced cell marker (AIM) and the status of different
35 immune cell subsets during infection. A total of 115 participants were analyzed in this study
36 which included participants with asymptomatic, mild, moderate and severe clinical symptoms.
37 In addition, healthy controls (19 in each group) were analysed. Specimens from participants
38 collected during the pre-pandemic period were also analyzed (n=10). Follow-up visits were
39 conducted on day 7, 14, and 28 for all the cases since the enrollment (day 1). In this study 10
40 participants among the moderate and severe cases expired during the course of follow up. We
41 observed a decrease in mucosa associated invariant T (MAIT) cell frequency on the initial days
42 (day 1 and day 7) in comparison to later days of the COVID-19 infection. However, natural killer
43 (NK) cells were found to be elevated in symptomatic patients just after the onset of disease
44 compared to both asymptomatic patients and healthy individuals. Moreover, we found AIM⁺
45 (both OX40⁺ CD137⁺ and OX40⁺ CD40L⁺) CD4⁺ T cells to show significant increase in
46 moderate and severe COVID-19 patients in response to SARS-CoV-2 peptides (specially spike
47 peptide) compared to prepandemic controls, who are unexposed to SARS-CoV-2. Notably, we
48 did not observe any significant difference in the CD8⁺ AIM markers (CD137⁺ CD69⁺), which
49 indicates the exhaustion of CD8⁺ T cells during COVID-19 infection. These findings suggest that
50 the patients who recovered from moderate and severe COVID-19 were able to mount a strong

51 CD4⁺ T cell response against shared viral determinants that ultimately induced the T cells to
52 mount further immune responses to SARS-CoV-2.

53 **Keywords:** COVID-19, SARS-CoV-2, Bangladesh, Activation Induced Marker, CD4⁺ T cells,
54 MAIT cells

55

56 INTRODUCTION

57 The coronavirus disease 2019 (COVID-19) caused by the novel coronavirus SARS-CoV-2 has
58 created an unprecedented global pandemic causing over 364 million confirmed cases and over
59 5.6 million deaths as of January 28, 2022 (1). In spite of a number of available vaccines against
60 the COVID-19 the spread of the disease is still not controlled everywhere. This disease shows
61 several stages of severity, different systemic nature from other respiratory diseases, and
62 unpredictable outcome with possible comorbidities including cardiovascular disease, obesity,
63 diabetes, lung diseases, kidney diseases and cancer. These have made the management of
64 COVID-19 patients challenging. Therefore, an understanding of human T-cell response to
65 SARS-CoV-2 is imperative to quantify the antigen specific CD4⁺ and CD8⁺ T cells which will
66 provide insights into immunity and pathogenesis of SARS-CoV-2 infection as well as vaccine
67 design and evaluation of candidate vaccines (2). There are a number of assays conventionally
68 used for measuring the quantity and quality of antigen-specific T cells in humans, either at the
69 single cell level by flow cytometry or enzyme-linked immunospot (ELISpot) and intracellular
70 cytokine staining (ICS) assays or at the population level by enzyme-linked immunosorbent assay
71 (ELISA) (3-5). Several research groups have overcome the limitations by antigen specific T cells
72 assays based on the upregulation of T-cell receptor (TCR)-stimulated surface markers called
73 activation-induced markers (AIM), which can effectively determine the overall antigen-specific
74 T cell response (6). Several studies have been successfully used the AIM assays to detect the
75 virus-specific, vaccine-specific, or tuberculosis-specific CD4⁺ T cells (7-9).

76 Pre-existing immunity acquired from ‘common cold’ Human Coronaviruses (HCoVs) could have
77 extensive consequence in the outcome of the pandemic. Recent reports reveal the existence of
78 cross-reactive CD4⁺ T cells in ~20-50% of the individuals who have not been exposed to SARS-

79 CoV-2 (10, 11). In fact, less is known in relation to cross-reactive immune memory to SARS-
80 CoV-2 CD4⁺ T cells, antibody analyses and more studies are required to studied as no firm data
81 are available yet (12, 13). However, a concern has been arisen because a decline of antibodies
82 have been observed within first few months after recovery from SARS-CoV-2 infection (14, 15).
83 Moreover, identifying the particular immune cells that are being activated by SARS-CoV-2, may
84 have substantial impact on evaluating the immune response to COVID-19 vaccines. Therefore, to
85 understand the attributes of adaptive immunity, in this study, we have examined the activation
86 induced markers responses and stability of immune memory in unexposed donors and patients
87 recovered from COVID-19 infection for observing COVID-19 specific immune responses.

88 **METHODS AND MATERIALS**

89 **Participants and Study Design**

90 Participants of this study were classified in three groups- unexposed individuals, healthy control
91 and COVID-19 patients (19). COVID-19 infected patients were followed up for 1 year at day 1,
92 day 7, day 14, day 28, day 90, day 180, day 270 and day 360 after becoming RT-PCR positive.
93 Patients were enrolled before starting COVID vaccination in Bangladesh. For unexposed
94 individuals, we used cryopreserved Peripheral Blood Mononuclear Cells (PBMC) from healthy
95 participants collected before the pandemic era. The healthy controls and COVID-19 participants
96 of this study are part of an ongoing longitudinal cohort study, which has been conducted in
97 Dhaka, Bangladesh since November, 2020. COVID-19 patients were enrolled from two COVID-
98 19 hospitals, Mugda Medical College and Hospital and Kurmitola General Hospital and the non-
99 hospitalized patients were enrolled from the community in and around the Dhaka city (19).
100 Nasopharyngeal swab samples were collected from the patients to diagnose the SARS-CoV-2 by
101 reverse transcription polymerase chain reaction (RT-PCR). Participants who had never been

102 diagnosed for COVID-19, had no clinical signs and symptoms for at least 2 weeks and were
103 tested negative by RT-PCR for SARS-CoV-2 before the enrollment, were considered as healthy
104 controls. We have enrolled healthy participants during the same time when we have enrolled
105 COVID-19 patients by matching age and gender. Among the total 115 participants of this study
106 86 were COVID-19 cases of four types of different disease severity (n=19) in each group, along
107 with 10 who had expired due to COVID-19, 19 healthy individuals and 10 unexposed or pre-
108 pandemic participants (collected before October 2019). A fraction of COVID-19 patients from
109 each category was used for AIM assay on multiple day points which includes asymptomatic
110 (n=5), mild (n=6, every fourth), moderate (n=6, every fourth), severe (n=15, every alternate), and
111 expired (n=10, all) patients. The AIM assay was also conducted in 10 unexposed and 9 healthy
112 participants. The existing WHO standards (16) were used to classify the patients' disease
113 severity, which was determined from their hospital admission records or clinical status at the
114 time of study enrolment. Asymptomatic cases were classified as those who tested positive for
115 RT-PCR but had no signs or symptoms of illness. We randomly tested RT-PCR in the
116 participants in the community and who were positive but having no COVID symptoms were
117 enrolled as asymptomatic participants. The participants had a mean age of 45.86 years (n=115,
118 range 18 to 76 years). Among all the participants, 70 were male and 45 were female. A detail of
119 all demographic information (age, sex, blood group) for participants' of the AIM assay (n=61)
120 were given in the **Supplementary Table 1**. This study was approved by the Institutional Review
121 Board (IRB) of icddr,b and the Directorate General of Health Services (DGHS), Bangladesh.
122 Written consent was collected from the study participants before enrollment.

123

124 **Isolation of Peripheral Blood Mononuclear Cells (PBMCs)**

125 Blood samples were collected in Sodium-EDTA tube and isolation of peripheral blood
126 mononuclear cells (PBMCs) was done by density gradient method using Ficoll-Paque PLUS
127 (Cytiva, USA). Before isolating cells, plasma was separated using centrifugation. After
128 separating plasma, the whole blood was diluted as 1:1 ratio using R-10 media (89% RPMI 1640
129 (Gibco), 10% Fetal Bovine Serum (FBS; Gibco), 1% Penicillin-Streptomycin (Gibco)). Isolated
130 PBMCs were resuspended to a concentration of 1×10^6 cells/mL in RPMI complete medium
131 (87% RPMI 1640, 10% FBS, 1% Penicillin-Streptomycin, 1% Sodium-Pyruvate (Gibco), 1% L-
132 Glutamine (Gibco)). Fraction of the cells were used as fresh for flow cytometry and rest of the
133 cells were cryopreserved using the cryoprotectant (90% FBS, 10% DMSO). These cryopreserved
134 cells were later used in different immune assays, including the AIM assay.

135

136 **Flow Cytometry and T Cell Phenotyping**

137 All immunophenotyping experiments were performed on FACS Aria Fusion instruments (BD
138 Bioscience, San Jose, CA). Freshly separated PBMCs were stained with fluorochrome-tagged
139 antibodies which are listed in the **Supplementary Table 2**. After staining the cells were washed
140 with PBS with 2% FBS (FACS buffer) and antibody tagged cells were fixed using Cytofix (BD
141 Biosciences, Cat# 554655). Then the data were acquired using the FACSDiva software program
142 the next day. During analyses live singlet lymphocytes were gated to quantitate different types of
143 T cells (See representative gating in **Supplementary Figure 1**).

144 Helper T cell were gated as $CD19^{-ve} CD3^{+ve} CD4^{+ve}$ cells and cytotoxic T cells were gated as
145 $CD19^{-ve} CD3^{+ve} CD8^{+ve}$. Follicular helper T cells are $CXCR5^{+ve}$ cells gated on helper T cells.

146 Fluorochrome-tagged antibodies that were used to stain Mucosal-associated Invariant T (MAIT)
147 cells are listed in the **Supplementary Table 3**. MAIT cells were gated on live singlet as $CD3^{+ve}$

148 CD8^{+ve} TCR V α 7.2^{+ve} CD161^{+ve} (See representative gating in **Supplementary Figure2**). Again,
149 antibodies used for Natural Killer (NK) cell staining are listed in the **Supplementary Table 4**.
150 During NK cell analysis CD19 and CD14 were dumped using a single channel and then the NK
151 cells were gated as CD3^{-ve} CD16^{+ve} CD56^{+ve}. Lastly, the central memory (Tcm) and the effector
152 memory (Tem) T cells were gated as CD45RO^{+ve} CD27^{+ve} and CD45RO^{+ve} CD27^{-ve} respectively
153 on either CD4 or CD8 cell. All the phenotyping results are expressed as percentage of parent
154 population. We have analyzed the acquired data with FlowJo software (version 10.6.1, TreeStar
155 Inc., USA).

156

157 **Activation Induced Marker (AIM) Assay**

158 To identify and quantitate the SARS-CoV-2-specific CD4⁺ as well as CD8⁺ T cell responses, we
159 performed T cell receptor dependent (TCR) dependent AIM assays (2) using cryopreserved
160 PBMCs. We stimulated PBMC of COVID-19 patients and other control samples with four
161 different SARS-CoV-2 specific peptide megapools (MPs). SARS-CoV-2 specific CD4 peptide
162 MPs were divided into two groups: spike protein as spike MP and all other polyproteins as non-
163 spike MPs. Again, the antigen-specific analyses of CD8 T cells were performed using the class I
164 peptide megapool prepared from the whole virus proteome and consist of 628 peptides. The
165 megapool splitted into two parts consisting of 314 peptide each, CD8-A MP and CD8-B MP (17).
166 Cryopreserved cells were thawed and were rested overnight in 37°C incubator supplemented
167 with 5% CO₂. Next day, they were distributed into 96-well U bottom plate in a total of 0.3x10⁶
168 PBMCs per well and different peptide MPs were added at 1 mg/mL concentration. An equimolar
169 quantity of DMSO (vehicle) and phytohaemagglutinin (PHA) were used as negative and positive
170 controls, respectively. Moreover, we used Cytomegalovirus derived peptides, like- CMV CD4

171 MP and CMV CD8 MP as positive control to compare the stimulations with the SARS-CoV-2
172 MPs. The PBMCs were stimulated for 24 hours in a 37⁰C incubator supplemented with 5% CO₂.
173 The stimulated cells were stained for 1 hour at 4 °C in the dark with a cocktail of antibody panel
174 (**Supplementary Table 5**) targeting the AIM⁺ T cells. Following the surface staining, cells were
175 washed with PBS with 2% FBS and fixed using Cytotfix (BD Biosciences). Later data acquisition
176 was carried out in a FACSAria Fusion cytometer through FACSDiva software. Data analyses
177 was done using FlowJo 10.6.1. During analysis live singlet lymphocytes were gated and CD14^{+ve}
178 and CD16^{+ve} cells were discarded by a dump channel. Then both OX40^{+ve}CD40L^{+ve} and
179 OX40^{+ve}CD137^{+ve} cells were gated on CD4^{+ve} cells, while CD137^{+ve}CD69^{+ve} cells were gated on
180 CD8^{+ve} cells (see representative gating in **Supplementary Figure 3**). We measured Stimulation
181 Index (SI) for each participant for every type of stimulation to quantify the extent of stimulation.
182 SI has been defined by dividing the percentage of megapool stimulated AIM⁺ cells with the
183 percentage of DMSO stimulated AIM⁺ cells. Stimulation due to SARS-CoV-2 CD8 MP was
184 determined using the combined SI data of CD8-A and CD8-B MP.

185 **Statistical Analysis**

186 All statistical analysis was performed using the GraphPad Prism 6.0. Flow cytometry figures
187 were generated using FlowJo software and other plots were generated using GraphPad Prism. To
188 compare DMSO versus spike, non-spike, CMV, or PHA in both Unexposed and COVID-19
189 cases we used Wilcoxon matched-pairs signed rank test because the data was paired and
190 nonparametric. To compare unexposed versus COVID-19 cases we performed two-tail Mann-
191 Whitney test because the data was unpaired and nonparametric. We also performed Mann-
192 Whitney test while comparing immune cell frequency in symptomatic and asymptomatic
193 patients. Again, while comparing different day points of the same category of disease condition

194 we utilized paired t test as the data was parametric. Moreover, we conducted a one-way ANOVA
195 to compare immune cell frequency of multiple groups with a single group (healthy control)
196 followed by Dunnett's Multiple Comparison Tests to see the differences compared to control. All
197 tests are specified in the corresponding figure legends. All the statistical analyses were done
198 considering 95% confidence level.

199

200 **RESULTS**

201 **Frequency of Helper, Cytotoxic, and Follicular Helper T cells with Disease Severity and** 202 **Time Points**

203 We conducted phenotypic analyses of fresh PBMCs for different subsets of T cells We did not
204 observe any statistically significant difference in frequency for helper, cytotoxic, and follicular T
205 cells among different disease categories in different day points from disease onset (**Figure 1 A-**
206 **C**).

207

208 **MAIT Cell Frequency in Symptomatic Patients During the Initial Days of Infection**

209 We have found that MAIT cell frequency tend to decrease significantly ($p= 0.0111$) in the initial
210 days of infection (both in Day 1 and Day 7). In later days (Day 14 and Day 28) this difference
211 become statistically insignificant in symptomatic patients compared to both asymptomatic
212 patients and healthy participants. (**Figure 1D**). We further investigated MAIT cells by including
213 an activation marker (CD69) and observed a higher expression of the marker remains in
214 symptomatic patients throughout the infection compared to asymptomatic patients. Even the
215 difference gets statistically significant ($p < 0.05$) after one month (Day 28) (**Figure 1E**).

216

217 **Natural Killer (NK) Cells in Symptomatic Patients**

218 During the early days of infection, we observed significantly higher frequency of NK cell in
219 symptomatic patients ($P= 0.0014$) compared to asymptomatic patients. We also found that NK
220 cell activity was significantly higher in symptomatic patients compared to healthy controls, as
221 expected. However, this difference did not remain significant in the later day points of infection
222 (day 14 and 28) (**Figure 1F**).

223

224 **Frequency of CD4⁺ and CD8⁺ Central and Effector Memory T Cells**

225 To see the status of Central Memory T cell (Tcm) and Effector Memory T cell (Tem), we
226 measured their frequency in both CD4⁺ and CD8⁺ T cells (**Figure 2**). We found that the
227 frequency of CD4⁺ Tcm cells significantly ($p= 0.0119$) differs from the control group, but CD4⁺
228 Tem cells do not (**Figure 2A, B**). On the other hand, we have got the statistically significant ($p=$
229 0.0055) difference for CD8⁺ Tem cells, and not for CD8⁺ Tcm cells, when compared with the
230 healthy control group (**Figure 2C, D**).

231

232 **Cell Recovery Tends to Decrease After Thawing for Severe Patients**

233 While we thawed cryopreserved PBMCs for AIM assays, we observed very low count of
234 PBMCs at their day 1 in case of Severe COVID-19 patients compared to healthy and other
235 categories. This trend remains the same after overnight resting at 37°C in the CO₂ incubator.
236 Therefore, we plotted the values and found a significant decrease in recovery of the PBMCs in
237 severe patient's compared to healthy control (**Supplementary Figure 4A**). Recovery after
238 thawing from day 1 PBMCs of unexposed, healthy, asymptomatic and dead participants showed
239 no significant differences. This scenario led us to analyze the number of PBMCs per mL of

240 blood of these samples before cryopreservation and we again found significantly less number of
241 PBMCs from day 1 samples of severe cases compared to healthy control (**Supplementary**
242 **Figure 4C**). PBMCs of day 28 from the different patient groups did not show any remarkable
243 difference in case of the percentages of recovery and number of PBMCs per mL of blood
244 (**Supplementary Figure 4B, 4D**).

245

246 **SARS-CoV-2-Specific CD4⁺ T Cell Responses in Severe COVID-19 Patients**

247 To explore the T cells primed for anti-viral immune response, we have evaluated the SARS-
248 CoV-2 specific CD4⁺ T cells in the TCR dependent AIM assay in COVID-19 patients of
249 different disease severity. We have found that AIM⁺ (OX40⁺ CD137⁺) CD4⁺ T cells showed
250 significant increase over the DMSO control in response to both peptide MP spanning the spike
251 domain (spike) and the MP covering the remainder of the SARS-CoV-2 genome (non-spike)
252 (**Figure 3A, B**). When compared between the unexposed response to OX40⁺ CD137⁺ with
253 recovered severe patients (Day 28), we found statistically significant differences for spike (p=
254 0.002), but not for non-spike MPs (**Figure 4B**). Again, both SARS-CoV-2 spike and non-spike
255 reactive AIM⁺ (OX40⁺ CD40L⁺) CD4⁺ T cells have also shown significant increase over DMSO
256 control (**Supplementary Figure 5**). Similarly, CMV MP and PHA was also used as a positive
257 control here. Notably here SI was also found to be significantly higher for both spike (p=0.0007)
258 and non-spike (p=0.0054) MPs in response to this (OX40⁺ CD40L⁺) AIM panel in severe
259 COVID-19 patients compared to the unexposed participants (**Figure 4A**). In case of both AIM
260 panels, the unexposed donors consistently responded to the CMV peptide MP and the PHA
261 superantigen significantly over the DMSO control (**Supplementary Figure 5A, B**). So,

262 according to our data, severe COVID-19 patients consistently a substantial CD4⁺ T cell response
263 against SARS-CoV-2 after one month from the onset of the infection.

264

265 **SARS-CoV-2-Specific CD8⁺ T Cell Responses in Severe COVID-19 Patients**

266 To measure the SARS-CoV-2 specific CD8⁺ T cells in unexposed and severe COVID-19
267 patients, we used CD8-A and CD8-B peptide MPs where whole virus proteome was split
268 between these group of MPs. Though both unexposed and COVID-19 patients responded
269 consistently to CMV and PHA, they did not respond to CD8-A and CD8-B MPs substantially
270 (**Supplementary Figure 6A, B**). When we combined the SI for CD8-A and CD8-B MPs we got
271 somewhat higher AIM⁺ (CD137⁺ CD69⁺) CD8⁺ T cell response, but that was not statistically
272 significant (**Figure 4C**).

273 In essence, when comparing the recovered severe COVID-19 patients to the unexposed
274 participants, antigen-specific T cell studies reveal a predominant role of CD4⁺ T cells over CD8⁺
275 T cells.

276 **SARS-CoV-2-Specific CD4⁺ & CD8⁺ T Cell Response in Patients who had Expired**

277 We have compared AIM assay markers in COVID-19 patients who expired at different days after
278 onset of symptoms. Very high levels of CD4⁺ AIM makers (OX40⁺137⁺, OX40⁺CD40L⁺) were
279 observed at day 7 and day 14 after onset of symptoms to spike and non-spike proteins.
280 Similarly, we observed CD8⁺ AIM markers (CD137⁺CD69⁺) was also upregulated at day 7
281 after onset of symptoms (**Figure 4D,E,F**). In addition, we used one way ANOVA to see the
282 differences in response to Spike and Non-spike MPs among respective groups of day points.
283 Mean of SI given by samples taken on the last visit before their death for all 10 expired patients
284 showed no significant differences with the responses found in individual day points. This result

285 indicates that deceased patients generally had a very high antigen specific T cell response before
286 death and looked similar when compared combinedly as well as individually in different day
287 points since infection.

288

289 **AIM⁺ T Cell Response to Spike Generates Over Time**

290 To investigate the periodic scenario of the COVID-19 disease condition from every category, we
291 performed the AIM assay for all category as well as for healthy controls in presence of both
292 spike and non-spike MPs. When we compared the SI against spike MPs by paired analysis
293 between Day 1 and Day 28 of infection, we found that every category responded significantly for
294 AIM⁺ (OX40⁺ CD40L⁺) CD4⁺ T cells (**Figure 5**). This conveys the message that the T cell
295 response augmented due to the COVID-19 infection over time. Though the AIM⁺ T cell response
296 looks somewhat elevated in every case for Day 28, it was not statistically significant for neither
297 non-spike MPs nor for another AIM panel (OX40⁺ CD137⁺).

298

299 **Activation of Follicular Helper T cells (Tfh) Due to COVID-19**

300 To determine the role of follicular helper T cell (Tfh) in recovered severe COVID-19, we
301 performed the same stimulation experiment utilizing both spike and non-spike MPs and analyzed
302 the cultured cells by flow cytometry using two different activation markers. We found that
303 frequency of CXCR5⁺ CD40L⁺ cells tend to increase significantly ($P < 0.05$ for both spike and
304 non-spike), while CXCR5⁺ PD1⁺ helper T cells tend to decrease, though not significantly, after
305 one month of infection (**Figure 6**). This data suggests possibility of the role of Tfh cells during
306 our immune system's fight against SARS-CoV-2.

307

308 **DISCUSSION**

309 Understanding of adaptive immunity to COVID-19 has increased but remains limited and
310 unclear especially in acute and convalescence COVID-19 patients. As the study was exploratory,
311 the antigen-specific antibody and T cell data suggest the following conditions: (i) AIMs may
312 limit COVID-19 severity; (ii) with prominent roles SARS-CoV-2-specific helper T cells are
313 associated with less COVID-19 severity (18); and (iii) aging and lack of naive T cells number
314 possibly linked to the unsuccessful synchronized AIM responses that result increased
315 vulnerability to severe COVID-19. These findings have significant involvement both to
316 understand immunity and pathology to novel coronavirus, as well as for designing an effective
317 COVID-19 vaccine.

318 In our earlier reports, we have presented clinical, genomic and humoral antibody responses to
319 Covid-19 (19-21) The is the first longitudinal study in Bangladesh that has been carried out to
320 evaluate the adaptive T cell immune responses in patients with differing levels of severity of
321 illness after SARS-CoV-2 infection. Bangladesh is similar to other countries globally, regarding
322 age, gender and comorbid conditions (22, 23). However, the death rate due to COVID-19 is low
323 in Bangladesh as the demographic characteristics of our population is different in compared to
324 other countries, and elderly population (>50 years) is only 10-15% (24). Meanwhile, we would
325 also like to observe the adaptive T cell responses in these different categories of severe patients
326 and have compared the responses with peripheral blood mononuclear cells collected from a pre
327 pandemic time point as health controls.

328 This study demonstrates the presence of robust antigen specific CD4+ T cell responses specific
329 for SARS-CoV-2 in the COVID-19 recovered participants PBMCs. Higher viral loads may
330 develop stronger SARS-CoV-2 specific T cell responses who had severe disease and may reflect

331 a poor early T cell response that might be inadequate to clear/control the virus along with other
332 factors including less innate immunity. Alternatively, it is possible that the T cell response was
333 itself harmful and contributed to severity. Consistent with recent reports
334 Alternatively, there is a probability that T cell response was itself harmful which might
335 contribute severity. Consistent with current findings (2), (25), high frequency of helper T cell
336 responses specific to spike protein was observed in recovered COVID-19 patients. This is much
337 alike to influenza infection, where surface hemagglutinin of the virus elicited helper T cell
338 responses, whereas the greater part of cytotoxic T cell responses found specific to viral internal
339 proteins (26). CD8⁺ T cells recognize and kill host cells already infected by the virus and
340 according to our results, they got exhausted after 1 month of infections which correspond to
341 earlier study (27). Understanding the roles, timing and strength of different subsets of T cells in
342 protection of SARS-CoV-2 is crucial for the prevention and treatment of COVID-19 infection.
343 By the time, several vaccines are available and WHO approved globally and different countries
344 including Bangladesh are administrating vaccine in the population and trying to increase the
345 coverage rate as much as possible. The current COVID-19 infection is more challenging than
346 prophylaxis. The data presented here suggest that SARS-CoV-2-specific CD4⁺ T cells has
347 association in resolving acute COVID-19 infection. These findings suggest that introduction of
348 vaccine can elicit both helper and cytotoxic T cells specific to SARS-CoV-2, along with
349 protective neutralizing antibodies, and thus may generate immunity to provide adaptive antiviral
350 immune response in SARS-CoV-2 infection. However, further understanding is required to
351 determine adaptive T cell immune responses in current vaccinees simultaneously and correlate
352 the responses with natural infection. By studying antigen-specific CD4 T cells, we can monitor
353 the development of crucial immunological responses. As the helper T cell responses are

354 significantly diverse, and thus detection of antigen-specific helper T cells with the production of
355 one or more cytokines is likely to remarkably miscalculate the amount of the total antigen-
356 specific response (28, 29).

357 In the current longitudinal study, we reported that moderate or severe disease patients had
358 significantly higher antibody responses to SARS-CoV-2 RBD in compared to mild or
359 asymptomatic infection (19). In further analyses, kinetics of IgG antibody has shown persistence
360 until day 270 in moderate and severe patients and in contrast mild and asymptomatic participants
361 antibody dropped from day 180 after onset of COVID-19 diagnosis. The IgM antibody responses
362 showed transient immune responses and dropped after day 30 after onset of diagnosis. Patients
363 develop IgG and IgM isotypes of antibodies suggesting a key role for CD4+ T cells in isotype
364 switching and memory responses after COVID-19 infection (30). It has been reported earlier that
365 the SARS-CoV-2-specific antibodies along with SARS-CoV-2-specific helper and cytotoxic
366 cells persist around 6-8 months (31). In the current study, we have analyzed adaptive T cell
367 responses until day 28 after onset of diagnosis and showed the COVID antigen specific T cell
368 responses and further time points can be evaluated in our future studies. Ten individuals who
369 expired in this longitudinal study due to COVID-19 infection, all had COVID-19 specific
370 antibody responses prior to death that is comparable to other patients, suggesting that their
371 humoral and adaptive immune responses are inadequate to control and clear the infection. As we
372 are observing higher responses at day 7 for AIM markers in deceased patients, it may due to
373 more cytokine production (cytokine storm, CS), that is creating vulnerable immune responses in
374 these patients. In literature, it has been shown that CS in COVID-19 infection is triggered by
375 increased production of IL-6, IL-10, TNF- α , IFN- γ , etc (32). These can be produced by an
376 uncontrolled immune response, like- continuous activation and expansion of immune cells,

377 lymphocytes, and macrophages. Although cytokines can be produced by different immune cells
378 like- DC, NK, B cells, along with T cells, CS could be a reason for obtaining high CD4⁺ T cells
379 activation a few days before the participant's death. There is evidence that SARS-CoV-2-specific
380 T cells predominantly produced proinflammatory cytokines, like- effector and T helper 1 (Th1)
381 cytokines, as well as Th2 and Th17 cytokines (33). We can assume that after CS some days
382 were needed to develop severe systemic inflammation, other complications, and organ failure,
383 which ultimately lead to death.

384 In summary, we found robust CD4⁺ AIM responses that were observed in COVID-19 patients
385 and these responses are more in severe patients compared to asymptomatic and mild patients.
386 Patients with moderate and severe disease developed higher levels of AIM responses that may
387 help to generate good humoral responses to clear the infection in COVID-19 patients. In the
388 patients who died it was high. Our data also suggests that T cell response plays role as function
389 of disease severity and possibly recovery from Covid-19 infection and it can inform to develop
390 or improve candidate vaccines to combat this novel coronavirus infection.

391 **Figure Legends**

392 **Figure 1:** Frequency of different immune cell types in different category of COVID-19 patients
393 (Asymptomatic, Mild, Moderate, and Severe) in different day points from the onset of infection
394 and compared with the Healthy controls. (A) Percentage of Helper T cells in CD3⁺ cells, (B)
395 percentage of Cytotoxic T cells in CD3⁺ cells, (C) percentage of Follicular Helper T cells in
396 CD4⁺ cells. In plots (D-E) symptomatic and asymptomatic COVID-19 patients are compared for-
397 (D) MAIT cells as a percentage of CD8⁺ cells, (E) CD69⁺ activated MAIT cells. (F) Percentage
398 of Natural Killer (NK) cells. Bars represent mean value with Standard Error of Mean. Statistical
399 comparisons were done (D-F) using two-tail Mann-Whitney test. *p <0.05; **p <0.01; ***p <
400 0.001; ns: non-significant.

401 **Figure 2:** Frequency of Memory T cell subtypes in different category of COVID-19 patients
402 (Asymptomatic, Mild, Moderate, and Severe) in different day points from the onset of infection
403 and compared with the Healthy controls. (A) CD4⁺ Central Memory T cells, (B) CD4⁺ Effector
404 Memory T cells, (C) CD8⁺ Central Memory T cells, and (D) CD8⁺ Effector Memory T cells.
405 One-way ANOVA was performed for each of the plots to compare differences of each column
406 with corresponding Healthy control data.

407 **Figure 3:** (A) Presentative plot for Fluorescence-activated cell sorting (FACS) gating for AIM⁺
408 (OX40⁺ CD137⁺) cells gated on CD4⁺ T cell; (B) AIM⁺ CD4⁺ T cell reactivity in COVID-19
409 cases between the negative control (DMSO) and different antigen-specific stimulations (Spike,
410 Non-spike MP, CMV, PHA). Wilcoxon matched-pairs signed rank test was performed to
411 compare between groups. *p <0.05; **p <0.01; ***p < 0.001; ns: non-significant.

412 **Figure 4:** Antigen specific response to different CD4⁺ and CD⁺ AIM markers. (A-C) AIM
413 expression in Unexposed & Covid-19 participants. Stimulation Index (SI) quantitation of the

414 AIM⁺ T cells after stimulation with CD4-nCOV-Spike, Non-spike (CD4-nCOV-all MP), and the
415 class I CD8 peptide MPs (CD8-A and CD8-B). Covid-19 patient samples are collected after one
416 month (day 28) after infection. For Unexposed n=10, and for Covid-19 n=15. (D-F) AIM
417 expression in “Expired” participants. The left column (purple) shows SI of expired participants
418 (n=10) from samples collected immediate visit before their death. Ordinary one way ANOVA
419 (with Tukey’s multiple comparison test) was done to compare the groups. Figure shows the
420 mean SI with error bars representing standard errors of the means (mean ± SEM). Statistical
421 comparisons were performed by two-tail Mann-Whitney test. ns: non-significant, *p<0.05,
422 **p<0.01, ***p<0.001

423 **Figure 5:** AIM expression in different category of COVID-19 patients immediately after
424 infection (Day1) and after one month of infection (Day 28). (A) Stimulation of AIM⁺ (OX40⁺
425 CD40L⁺ and OX40⁺ CD137⁺) CD4⁺ T cells in response to Spike antigen; (B) Stimulation of
426 AIM⁺ (OX40⁺ CD40L⁺ and OX40⁺ CD137⁺) CD4⁺ T cells in response to Non-spike megapool
427 peptides; (C) Stimulation of AIM⁺ (CD137⁺ CD69⁺) CD8⁺ T cells in response to CD8-A and
428 CD8-B megapool peptides. Paired t test is done to compare statistically groups. ns: non-
429 significant, *p<0.05, **p<0.01, ***p<0.001

430 **Figure 6:** Activation of Follicular Helper T cells (Tfh) in Unexposed individual & severe
431 COVID-19 patients. Samples were collected after one month (Day 28) of infection and response
432 were observed for stimulation by both Spike and Non-spike antigens. (A) Frequency of CXCR5⁺
433 PD1⁺ cells in helper T cells; (B) Frequency of CXCR5⁺ CD40L⁺ cells in helper T cells.
434 Statistical comparisons were done using two-tail Mann-Whitney test. *p<0.05; **p<0.01; ***p <
435 0.001; ns: non-significant.

436 **Supplementary Figure 1:** Representative plot and gating strategy for T cell phenotyping
437 antibody panel

438 **Supplementary Figure 2:** Representative plot and gating strategy for Mucosa Associated
439 Invariant T (MAIT) cell antibody panel

440 **Supplementary Figure 3:** Representative plot and gating strategy for Activation Induced
441 Marker (AIM) assay antibody panel

442 **Supplementary Figure 4:** Percentages of PBMC recovery of different disease groups after
443 thawing at their day 1 (4A) and day 28 (4B). Number of PBMC (in million) per mL of blood
444 from the disease groups at day 1 (4C) and day 28 (4D). Dunnett's Multiple Comparison Tests
445 were performed in both cases to compare between groups and $*p < 0.05$.

446 **Supplementary Figure 5:** (A) Presentative plot for Fluorescence-activated cell sorting (FACS)
447 gating for AIM⁺ (OX40⁺ CD40L⁺) cells gated on CD4⁺ T cell; (B) AIM⁺ CD4⁺ T cell
448 reactivity in COVID-19 cases between the negative control (DMSO) and different antigen-
449 specific stimulations (Spike, Non-spike MP, CMV, PHA). Wilcoxon matched-pairs signed rank
450 test was performed to compare between groups. $*p < 0.05$; $**p < 0.01$; $***p < 0.001$; ns: non-
451 significant.

452 **Supplementary Figure 6:** (A) Presentative plot for Fluorescence-activated cell sorting (FACS)
453 gating for AIM⁺ (CD69⁺ CD137⁺) cells gated on CD8⁺ T cell; (B) AIM⁺ CD8⁺ T cell reactivity
454 in COVID-19 cases between the negative control (DMSO) and different antigen-specific
455 stimulations (CD8-A MP, CD8-B MP, CMV, PHA). Wilcoxon matched-pairs signed rank test
456 was performed to compare between groups. $*p < 0.05$; $**p < 0.01$; $***p < 0.001$; ns: non-significant.

457 **Supplementary Table 1:** Demographic information for participants of AIM assay

458 **Supplementary Table 2:** Antibody Panel for T cell phenotyping

459 **Supplementary Table 3:** Antibody Panel for MAIT cell phenotyping

460 **Supplementary Table 4:** Antibody Panel for NK cell phenotyping

461 **Supplementary Table 5:** Antibody Panel for Activation Induced Marker (AIM) assay

462 **DATA AVAILABILITY STATEMENT**

463 The raw data supporting the conclusions of this article will be made available by the authors,
464 without undue reservation.

465 **ETHICS STATEMENT**

466 The studies involving human participants were reviewed and approved by Ethical review
467 committee of the International Centre for Diarrhoeal Disease Research, Bangladesh. The
468 patients/participants provided their written informed consent to participate in this study.

469 **CONFLICTS OF INTEREST**

470 A.S. is a consultant for Gritstone Bio, Flow Pharma, ImmunoScape, Avalia, Moderna, Fortress,
471 Repertoire, erson Lehrman Group, RiverVest, MedaCorp, and Guggenheim. La Jolla Institute
472 has filed for patent protection for various aspects of T cell epitope and vaccine design work.

473 The authors declare that the research was conducted in the absence of any commercial or
474 financial relationships that could be construed as a potential conflict of interest.

475

476 **AUTHOR CONTRIBUTIONS**

477 FQ, TRB, FC, AA, TA designed, managed and supervised the study. AA, TA, IT, AH, MAS,
478 AR, SG helped to collect the specimens. HAB, MHK, PCK, AH, SI performed the laboratory
479 work and immunological analyses. TRB, HAB, MHK, PCK analyzed the data. FQ, TRB, DW,
480 TS provided key reagents. TRB, HAB, MHK, PCK drafted the manuscript. FQ, TRB, SB, TS,
481 JDC, DW, SB, TS, FC, AA, TA, IT reviewed and planned the manuscript. All authors
482 contributed to the interpretation of results and critical review and revision of the manuscript and
483 have approved the final version.

484 **ACKNOWLEDGEMENTS**

485 This study was supported by Grant INV-018954 from the Bill and Melinda Gates Foundation,
486 Global Emerging Leader Award (K43TW010362), R01 AI130378 of the National Institutes of
487 Health (NIH), and icddr,b. This work has been supported by NIH contract 75N93019C00065
488 (A.S, D.W). The authors would like to thank Ministry of Health and Family Welfare (MOHFW)
489 of Bangladesh, IEDCR, ideSHi, Kurmitola General Hospital and Mugda Medical College &
490 Hospital for their continuous support. We also like to thank Daniela Weiskopf for providing the
491 SARS-CoV-2 peptides for carrying out AIM assay. The authors would also like to express their
492 sincere thanks to the staff members of icddr,b for their dedicated work in the field and laboratory
493 during the pandemic situation. icddr,b is supported by the Governments of Bangladesh, Canada,
494 Sweden, and the UK. The funders had no role in study design, data collection and analysis,
495 decision to publish, or preparation of the manuscript.

496 **REFERENCES**

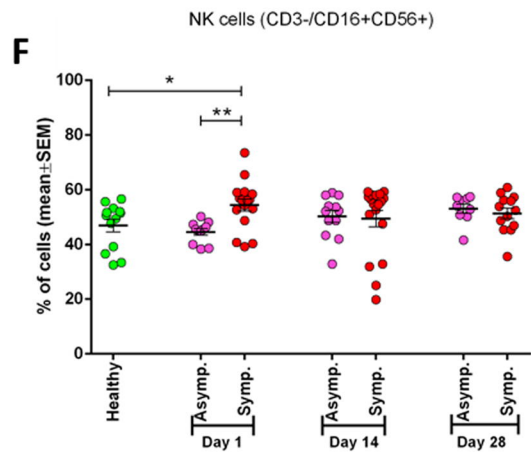
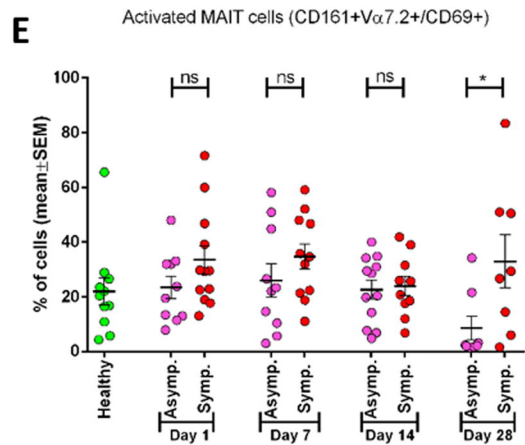
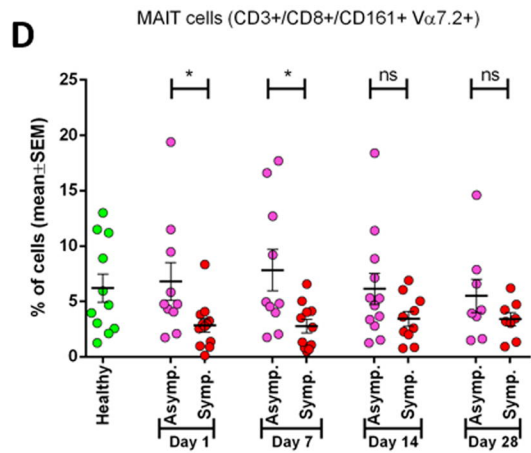
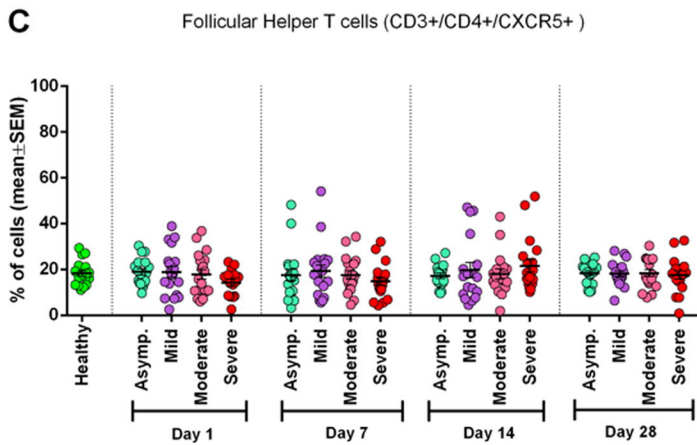
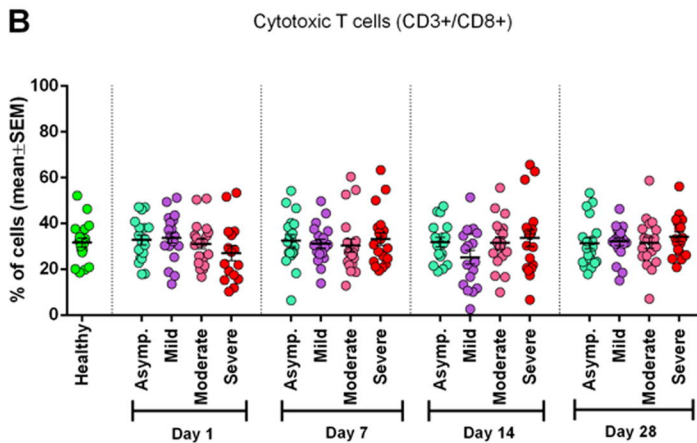
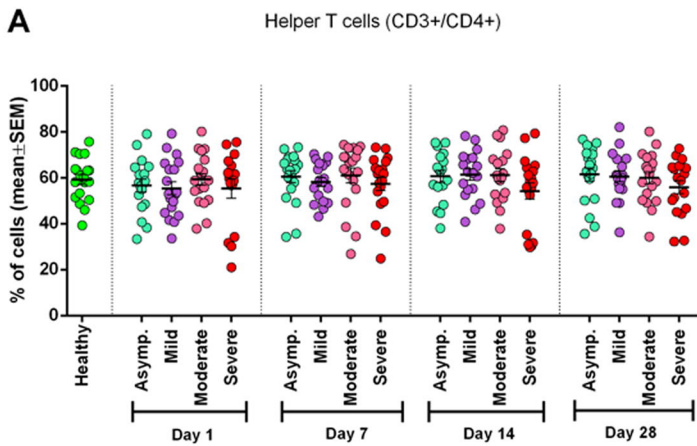
- 497 1. WHO. WHO Coronavirus (COVID-19) Dashboard 2021 [Available from: Available at:
498 <https://covid19.who.int/>
- 499 2. Grifoni A, Weiskopf D, Ramirez SI, Mateus J, Dan JM, Moderbacher CR, et al. Targets
500 of T Cell Responses to SARS-CoV-2 Coronavirus in Humans with COVID-19 Disease and
501 Unexposed Individuals. *Cell*. 2020;181(7):1489-501.e15.
- 502 3. Ten Brinke A, Marek-Trzonkowska N, Mansilla MJ, Turksma AW, Piekarska K,
503 Iwaszkiewicz-Grześ D, et al. Monitoring T-Cell Responses in Translational Studies:
504 Optimization of Dye-Based Proliferation Assay for Evaluation of Antigen-Specific Responses.
505 *Frontiers in Immunology*. 2017;8(1870).
- 506 4. Slota M, Lim J-B, Dang Y, Disis ML. ELISpot for measuring human immune responses
507 to vaccines. *Expert Rev Vaccines*. 2011;10(3):299-306.
- 508 5. Smith SG, Smits K, Joosten SA, van Meijgaarden KE, Satti I, Fletcher HA, et al.
509 Intracellular Cytokine Staining and Flow Cytometry: Considerations for Application in Clinical
510 Trials of Novel Tuberculosis Vaccines. *PloS one*. 2015;10(9):e0138042-e.
- 511 6. Dan JM, Lindestam Arlehamn CS, Weiskopf D, da Silva Antunes R, Havenar-Daughton
512 C, Reiss SM, et al. A Cytokine-Independent Approach To Identify Antigen-Specific Human
513 Germinal Center T Follicular Helper Cells and Rare Antigen-Specific CD4+ T Cells in Blood. *J*
514 *Immunol*. 2016;197(3):983-93.
- 515 7. Dan JM, Havenar-Daughton C, Kendric K, Al-Kolla R, Kaushik K, Rosales SL, et al.
516 Recurrent group A Streptococcus tonsillitis is an immunosusceptibility disease involving
517 antibody deficiency and aberrant T(FH) cells. *Sci Transl Med*. 2019;11(478):eaau3776.

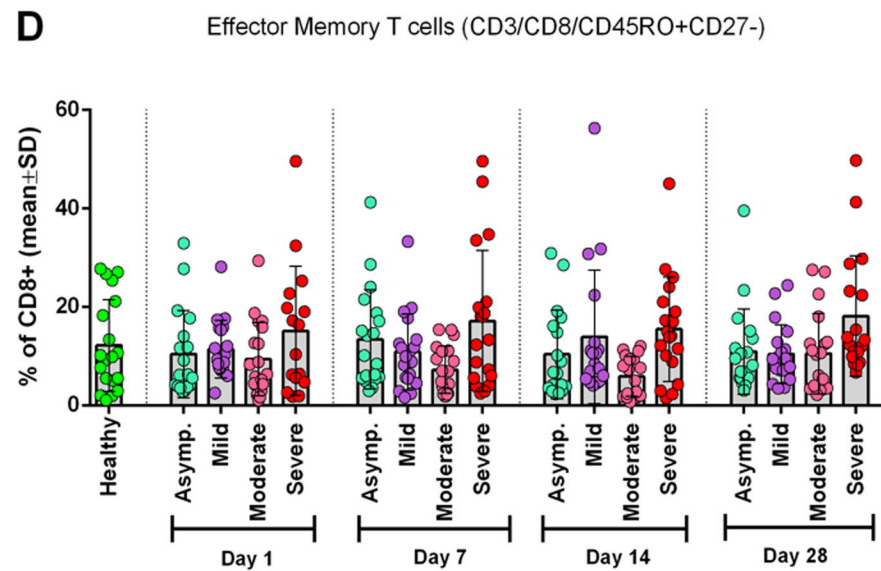
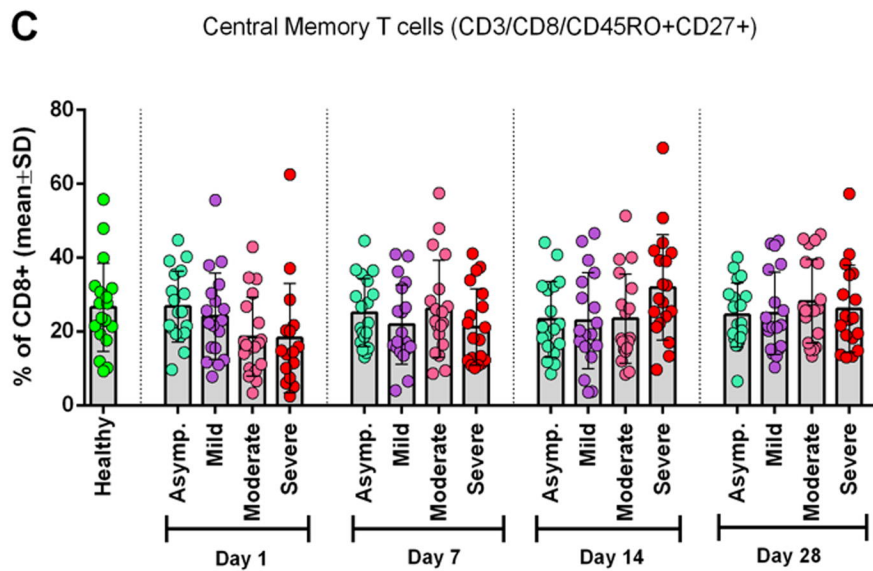
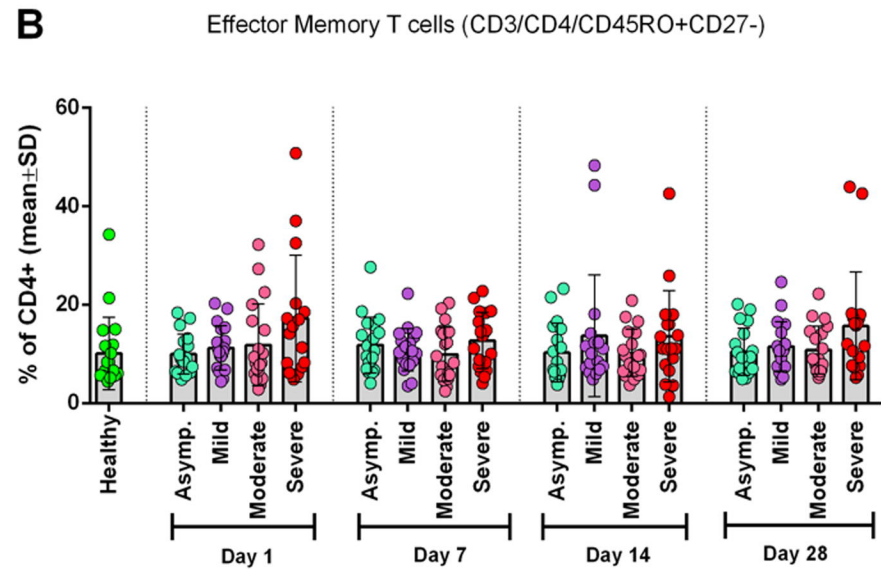
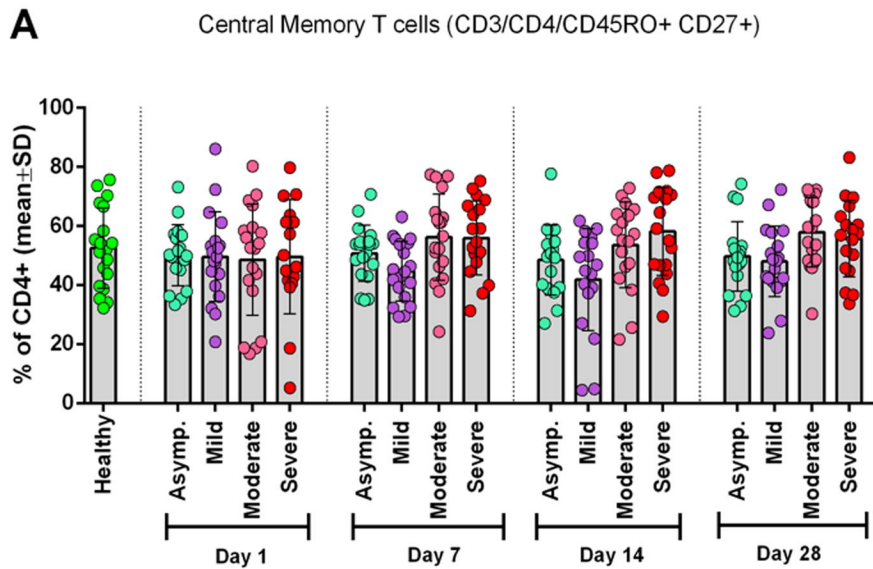
- 518 8. Herati RS, Muselman A, Vella L, Bengsch B, Parkhouse K, Del Alcazar D, et al.
519 Successive annual influenza vaccination induces a recurrent oligoclonotypic memory response in
520 circulating T follicular helper cells. *Sci Immunol.* 2017;2(8):eaag2152.
- 521 9. Morou A, Brunet-Ratnasingham E, Dubé M, Charlebois R, Mercier E, Darko S, et al.
522 Altered differentiation is central to HIV-specific CD4(+) T cell dysfunction in progressive
523 disease. *Nat Immunol.* 2019;20(8):1059-70.
- 524 10. Mateus J, Grifoni A, Tarke A, Sidney J, Ramirez Sydney I, Dan Jennifer M, et al.
525 Selective and cross-reactive SARS-CoV-2 T cell epitopes in unexposed humans. *Science.*
526 2020;370(6512):89-94.
- 527 11. Dykema AG, Zhang B, Woldemeskel BA, Garliss CC, Cheung LS, Choudhury D, et al.
528 Functional characterization of CD4+ T cell receptors crossreactive for SARS-CoV-2 and
529 endemic coronaviruses. *The Journal of Clinical Investigation.* 2021;131(10).
- 530 12. Lipsitch M, Grad YH, Sette A, Crotty S. Cross-reactive memory T cells and herd
531 immunity to SARS-CoV-2. *Nat Rev Immunol.* 2020;20(11):709-13.
- 532 13. Bonifacius A, Tischer-Zimmermann S, Dragon AC, Gussarow D, Vogel A, Krettek U, et
533 al. COVID-19 immune signatures reveal stable antiviral T cell function despite declining
534 humoral responses. *Immunity.* 2021;54(2):340-54.e6.
- 535 14. Sette A, Crotty S. Adaptive immunity to SARS-CoV-2 and COVID-19. *Cell.*
536 2021;184(4):861-80.
- 537 15. Deeks JJ, Dinnes J, Takwoingi Y, Davenport C, Spijker R, Taylor-Phillips S, et al.
538 Antibody tests for identification of current and past infection with SARS-CoV-2. *Cochrane*
539 *Database Syst Rev.* 2020;6(6):CD013652-CD.

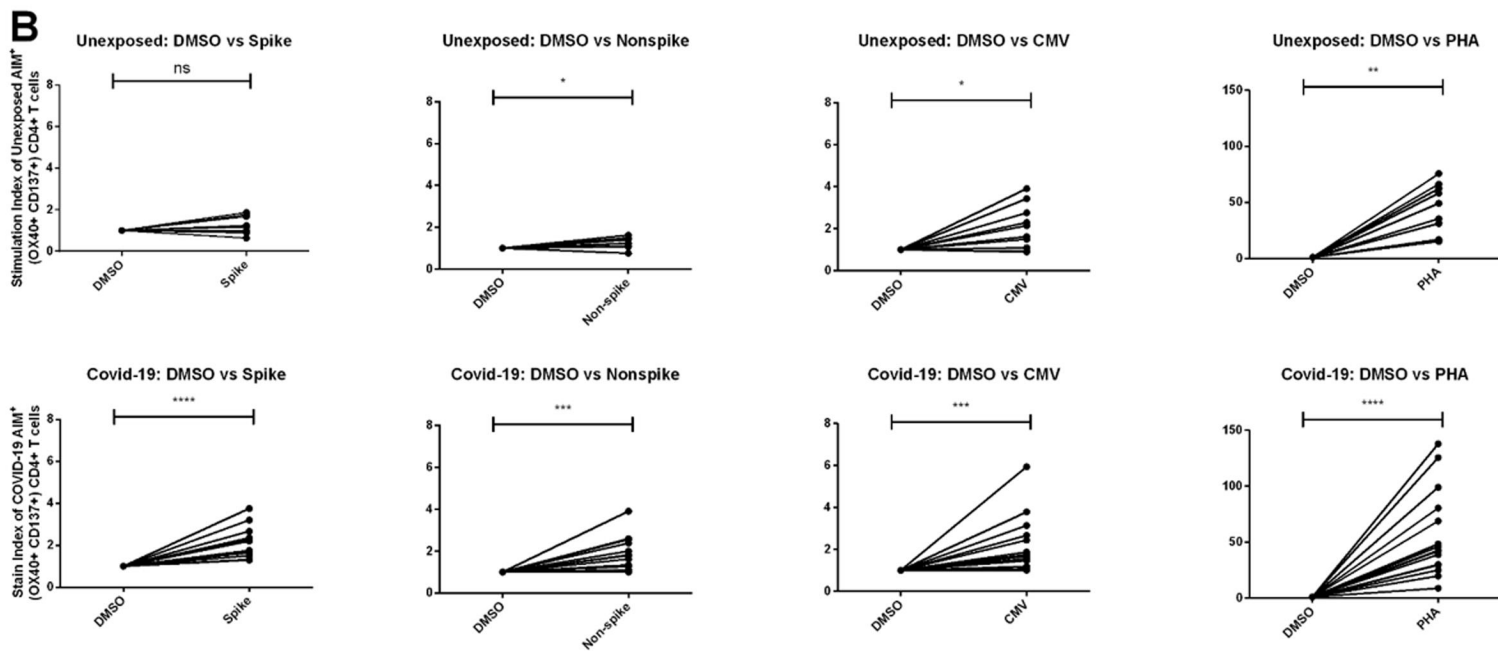
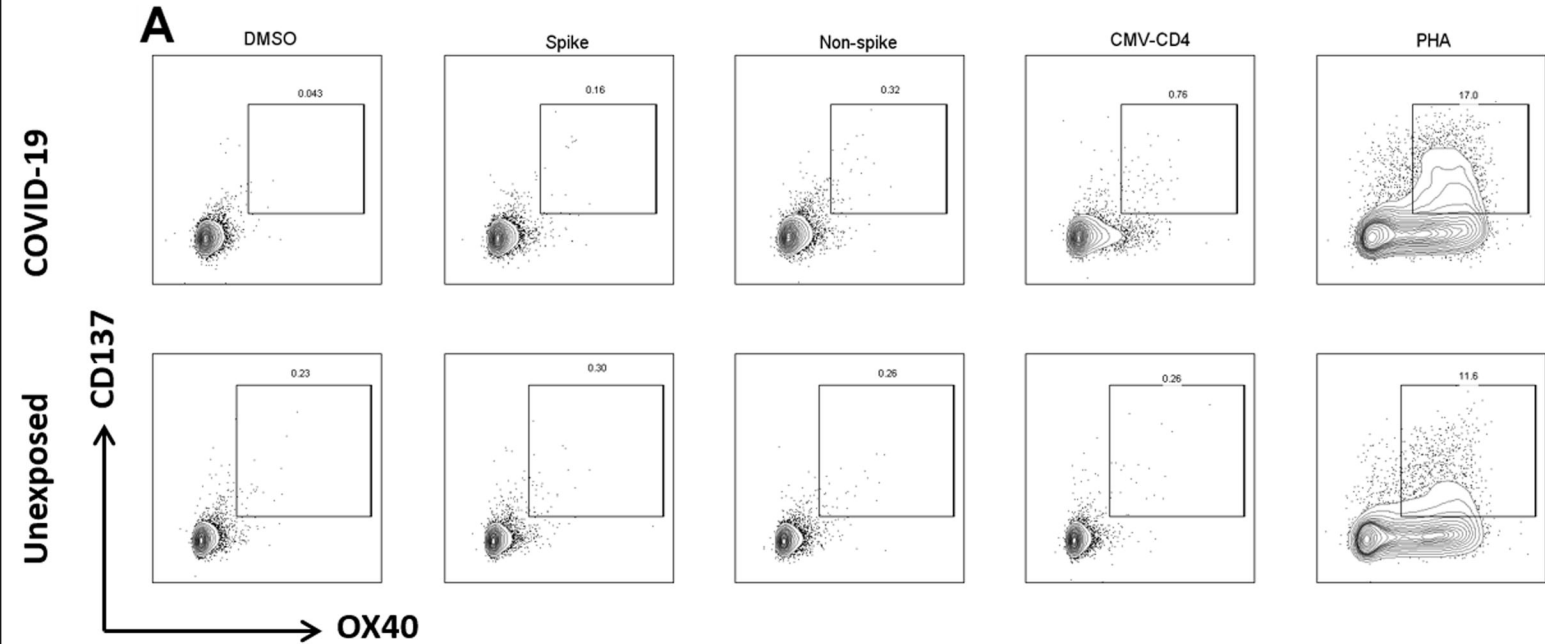
- 540 16. WHO. COVID-19 Clinical management: living guidance: Available at:
541 <https://www.who.int/publications/i/item/WHO-2019-nCoV-clinical-2021-1>; Accessed on:
542 January 25, 2021 [
- 543 17. Grifoni A, Sidney J, Zhang Y, Scheuermann RH, Peters B, Sette A. A Sequence
544 Homology and Bioinformatic Approach Can Predict Candidate Targets for Immune Responses
545 to SARS-CoV-2. *Cell Host & Microbe*. 2020;27(4):671-80.e2.
- 546 18. Rydzynski Moderbacher C, Ramirez SI, Dan JM, Grifoni A, Hastie KM, Weiskopf D, et
547 al. Antigen-Specific Adaptive Immunity to SARS-CoV-2 in Acute COVID-19 and Associations
548 with Age and Disease Severity. *Cell*. 2020;183(4):996-1012.e19.
- 549 19. Akter A, Ahmed T, Tauheed I, Akhtar M, Rahman SIA, Khaton F, et al. Disease
550 characteristics and serological responses in patients with differing severity of COVID-19
551 infection: A longitudinal cohort study in Dhaka, Bangladesh. *PLOS Neglected Tropical*
552 *Diseases*. 2022;16(1):e0010102.
- 553 20. Cowley LA, Afrad MH, Rahman SIA, Mamun MMA, Chin T, Mahmud A, et al.
554 Genomics, social media and mobile phone data enable mapping of SARS-CoV-2 lineages to
555 inform health policy in Bangladesh. *Nature Microbiology*. 2021;6(10):1271-8.
- 556 21. Afrad MH, Khan MH, Rahman SIA, Bin Manjur OH, Hossain M, Alam AN, et al.
557 Genome Sequences of 15 SARS-CoV-2 Sublineage B.1.617.2 Strains in Bangladesh. *Microbiol*
558 *Resour Announc*. 2021;10(28):e0056021-e.
- 559 22. Zhou F, Yu T, Du R, Fan G, Liu Y, Liu Z, et al. Clinical course and risk factors for
560 mortality of adult inpatients with COVID-19 in Wuhan, China: a retrospective cohort study. *The*
561 *Lancet*. 2020;395(10229):1054-62.

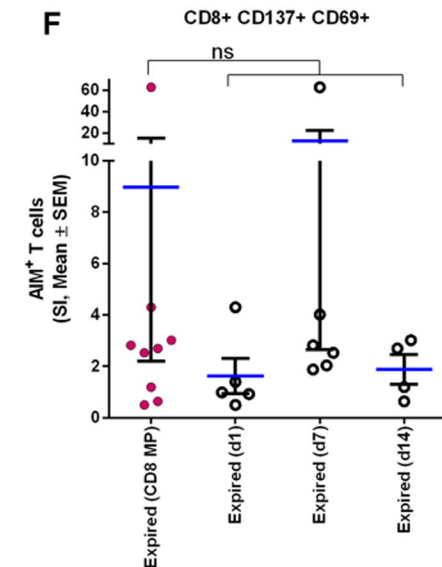
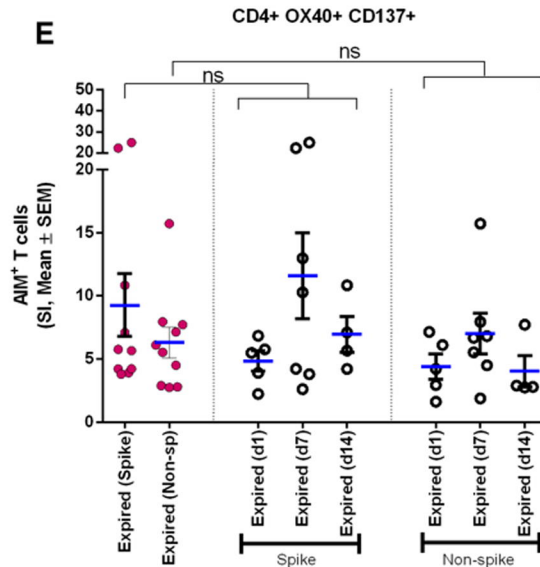
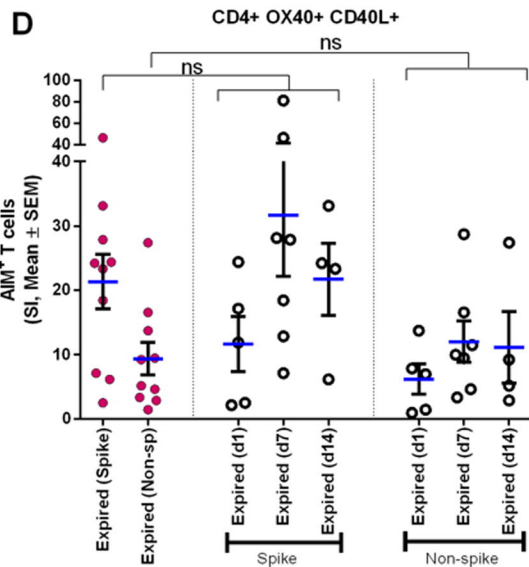
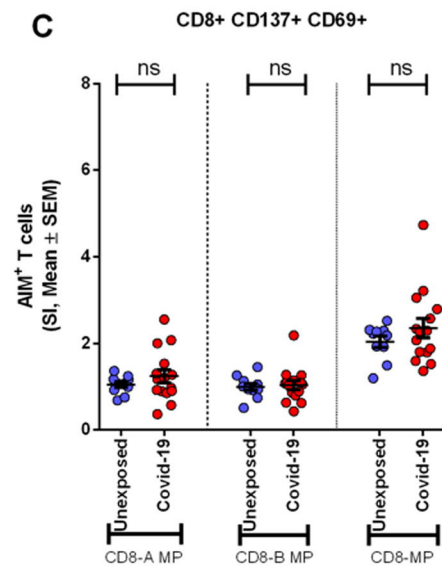
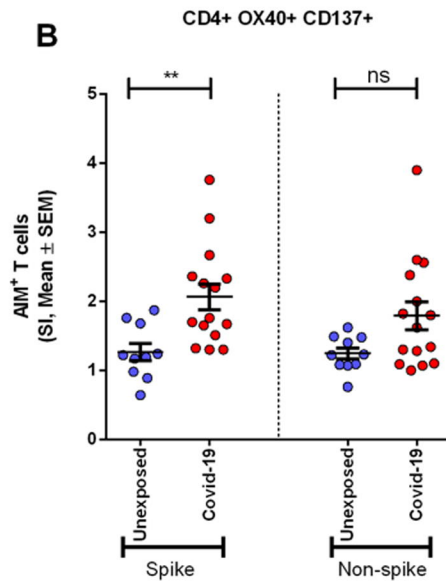
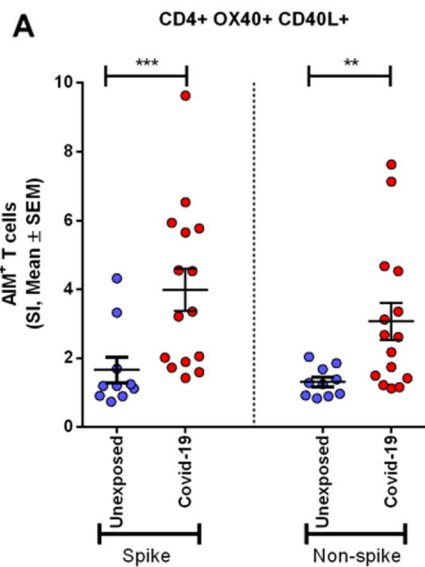
- 562 23. Wang B, Li R, Lu Z, Huang Y. Does comorbidity increase the risk of patients with
563 COVID-19: evidence from meta-analysis. *Aging*. 2020;12(7):6049-57.
- 564 24. CIA. The World Factbook: Bangladesh. Available at: [https://www.cia.gov/the-world-](https://www.cia.gov/the-world-factbook/countries/bangladesh/)
565 [factbook/countries/bangladesh/](https://www.cia.gov/the-world-factbook/countries/bangladesh/). Accessed on: November 01, 2021.
- 566 25. Sekine T, Perez-Potti A, Rivera-Ballesteros O, Strålin K, Gorin J-B, Olsson A, et al.
567 Robust T Cell Immunity in Convalescent Individuals with Asymptomatic or Mild COVID-19.
568 *Cell*. 2020;183(1):158-68.e14.
- 569 26. Lee LY-H, Ha DLA, Simmons C, de Jong MD, Chau NVV, Schumacher R, et al.
570 Memory T cells established by seasonal human influenza A infection cross-react with avian
571 influenza A (H5N1) in healthy individuals. *The Journal of Clinical Investigation*.
572 2008;118(10):3478-90.
- 573 27. Marklund E, Leach S, Nyström K, Lundgren A, Liljeqvist J-Å, Nilsson S, et al.
574 Longitudinal Follow Up of Immune Responses to SARS-CoV-2 in Health Care Workers in
575 Sweden With Several Different Commercial IgG-Assays, Measurement of Neutralizing
576 Antibodies and CD4+ T-Cell Responses. *Frontiers in Immunology*. 2021;12.
- 577 28. Sallusto F, Cassotta A, Hoces D, Foglierini M, Lanzavecchia A. Do Memory CD4 T
578 Cells Keep Their Cell-Type Programming: Plasticity versus Fate Commitment?: T-Cell
579 Heterogeneity, Plasticity, and Selection in Humans. *Cold Spring Harbor Perspectives in Biology*.
580 2017.
- 581 29. Crotty S. Do Memory CD4 T Cells Keep Their Cell-Type Programming: Plasticity versus
582 Fate Commitment? Complexities of Interpretation due to the Heterogeneity of Memory CD4 T
583 Cells, Including T Follicular Helper Cells. *Cold Spring Harbor perspectives in biology*.
584 2018;10(3):a032102.

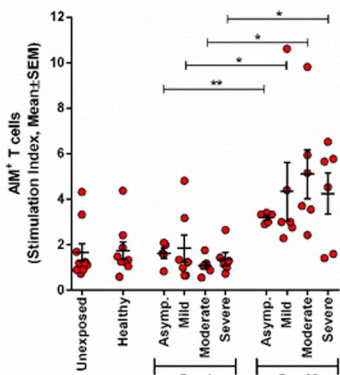
- 585 30. DeSimone M, Simmons DP, Tolan N, Melanson S, Petrides A, Tanasijevic M, et al.
586 Clinical correlations of SARS-CoV-2 antibody responses in patients with COVID-19 infection.
587 medRxiv. 2020:2020.10.22.20213207.
- 588 31. Jiang H-w, Li Y, Zhang H-n, Wang W, Yang X, Qi H, et al. SARS-CoV-2 proteome
589 microarray for global profiling of COVID-19 specific IgG and IgM responses. Nature
590 Communications. 2020;11(1):3581.
- 591 32. Ragab D, Salah Eldin H, Taeimah M, Khattab R, Salem R. The COVID-19 Cytokine
592 Storm; What We Know So Far. Frontiers in Immunology. 2020;11.
- 593 33. Weiskopf D, Schmitz Katharina S, Raadsen Matthijs P, Grifoni A, Okba Nisreen MA,
594 Endeman H, et al. Phenotype and kinetics of SARS-CoV-2-specific T cells in COVID-19
595 patients with acute respiratory distress syndrome. Sci Immunol. 2020;5(48):eabd2071.



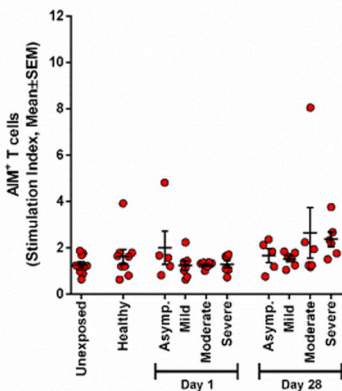
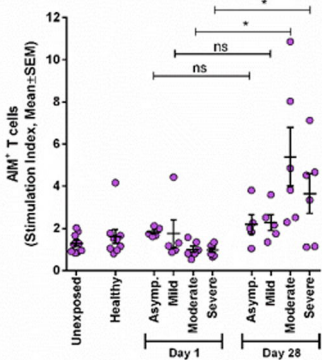




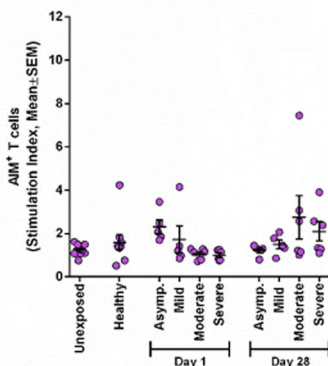
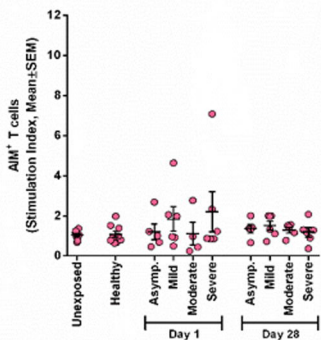


A CD4+ CD40L+ OX40+ in response to Spike

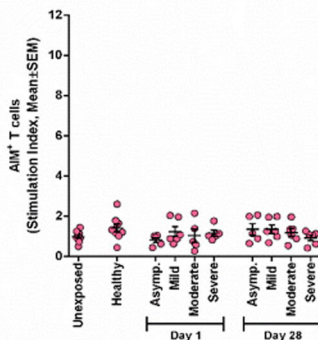
CD4+ CD137+ OX40+ in response to Spike

**B** CD4+ CD40L+ OX40+ in response to Non-spike

CD4+ CD137+ OX40+ in response to Non-spike

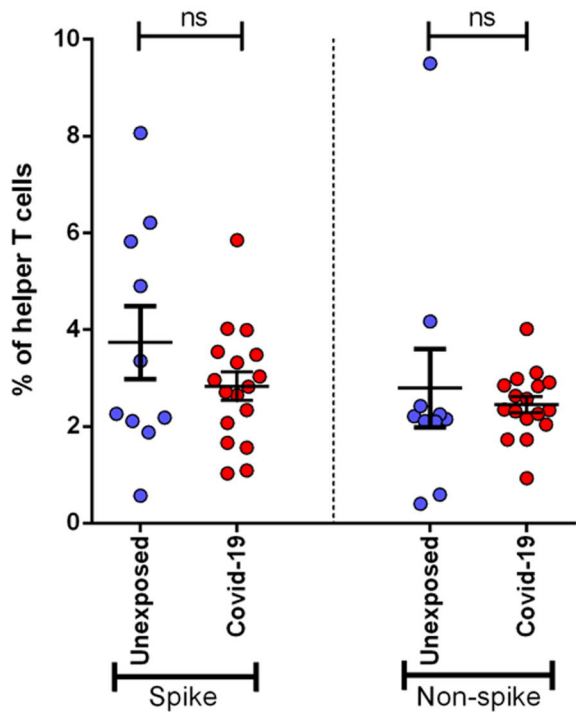
**C** CD8+ CD137+ CD69+ in response to CD8-A MP

CD8+ CD137+ CD69+ in response to CD8-B MP



A

CD4+ CXCR5+ PD1+

**B**

CD4+ CXCR5+ CD40L+

