

1 **Title: Use of illness severity scores to predict mortality in interstitial lung disease**  
2 **patients hospitalised with acute respiratory deterioration**

3 Rachel L Williams<sup>1,2†</sup>, Catherine Hyams<sup>1,3,4,5†</sup>, Joe Robertshaw<sup>1,3</sup>, Maria Garcia Gonzalez<sup>4,5</sup>,  
4 Zsuzsa Szasz-Benczur<sup>4</sup>, Paul White<sup>6</sup>, Nick A Maskell<sup>1</sup>, Adam Finn<sup>4</sup> and Shaney L Barratt<sup>1,3</sup>  
5 on behalf on the AvonCAP Research Group

6

7 <sup>1</sup> Academic Respiratory Unit, University of Bristol, North Bristol NHS Trust, Southmead,  
8 Bristol, BS10 5NB

9 <sup>2</sup> Research and Innovation, North Bristol NHS Trust, Southmead, Bristol BS10 5NB

10 <sup>3</sup> Bristol Interstitial Lung Disease Service, North Bristol NHS Trust, Southmead, Bristol  
11 BS10 5NB

12 <sup>4</sup> Bristol Vaccine Centre, Schools of Population Health Sciences and Cellular and Molecular  
13 Medicine, University of Bristol, Bristol, BS2 8AE

14 <sup>5</sup> Vaccine and Testing Team, UHBW NHS Trust, Bristol

15 <sup>6</sup> University of the West of England, Bristol, BS16 1QY

16 † These authors contributed equally to this work

17

18 **Correspondence to:** Dr Shaney Barratt,  
19 Bristol Interstitial Lung Disease Service,  
20 North Bristol NHS Trust, Southmead Hospital,  
21 Bristol BS10 5NB, UK  
22 shaney.barratt@nbt.nhs.uk

23

24 **Short Title:** Utility scores in ARD-ILD

25

26 **Keywords:** Interstitial lung disease, acute respiratory deterioration, severity scores,  
27 pulmonary fibrosis

28

29 **Word Count:** 2954 (manuscript) and 250 (abstract)

30

31 **Funding:** The AvonCAP study is an investigator-led University of Bristol  
32 sponsored study which was designed and implemented collaboratively  
33 with Pfizer, Inc. which also funded the study. For the current

34 manuscript, Pfizer staff did not play any part in data collection,  
35 analysis plan, data analysis or manuscript preparation

36

37

38

39

## 40 **ABBERVIATIONS**

41	6MWT	6-minute walk test
42	aLRTD	acute lower respiratory tract disease
43	AE	acute exacerbation
44	ARD	Acute respiratory deterioration
45	AUROC	Area Under the Receiver Operating Curve
46	CRP	C-reactive protein
47	CI	confidence interval
48	CCI	Charlson comorbidity index
49	CPFE	combined pulmonary fibrosis and emphysema (IPF with emphysema)
50	CT	computerized tomography (CT) scan
51	CTD	connective tissue disease
52	CXR	Chest x-ray (i.e. chest radiograph)
53	GAP	Gender-Age-Physiology
54	FVC	Forced vital capacity
55	HFNO	high flow nasal oxygen
56	HR	hazard ratio
57	ILD	Interstitial lung disease
58	IMV	invasive mechanical ventilation
59	IPF	Idiopathic pulmonary fibrosis
60	IQR	interquartile range;
61	LFTs	lung function tests
62	LOS	length of stay
63	MDT	multidisciplinary team
64	NEWS-2	National Early Warning Score-2
65	NIV	non-invasive ventilation
66	NSIP	non-specific interstitial pneumonia
67	NP-LRTI	non-pneumonic lower respiratory tract infection
68	OR	odds ratio
69	PFTs	pulmonary function tests
70	PSI	pneumonia severity index
71	qSOFA	Sequential Organ Failure Assessment
72	ROC	Receiver Operating Curve
73	TLCO	transfer capacity of the lung, for the uptake of carbon monoxide

74 **ABSTRACT**

75 **Introduction**

76 Hospitalisations relating to acute respiratory deteriorations (ARD) in Interstitial Lung  
77 Disease (ILD) have poor outcomes. Factors predicting adverse outcomes are not fully  
78 understood and data addressing the use of illness severity scores in prognostication are  
79 limited.

80

81 **Objective**

82 To investigate the use of CURB-65 and NEWS-2 severity scores in the prediction of  
83 mortality following ARD-ILD hospitalisation, using prospective methodology and to validate  
84 previously determined cut-offs, derived from a retrospective study cohort.

85

86 **Methods**

87 A dual-centre prospective observational cohort study of all adults ( $\geq 18$ y) hospitalised with  
88 ARD-ILD in Bristol, UK (n=179). Gender-Age-Physiology (GAP), CURB-65 and NEWS-2  
89 scores were calculated for each eligible admission.

90

91 Receiver operating characteristics (ROC) curve analysis was used to quantify the strength of  
92 discrimination for NEWS-2 and CURB-65 scores. Univariable and multivariable logistic  
93 regression analyses were performed to explore the relationship between baseline severity  
94 scores and mortality.

95

96 **Results**

97 GAP showed some merit at predicting 30-day mortality (AUC=0.64,  $P=0.015$ ); whereas  
98 CURB-65 showed modest predictive value for in-hospital (AUC=0.72,  $P<0.001$ ) and 90-day

99 mortality (AUC=0.67,  $P<0.001$ ). NEWS-2 showed higher predictive value for in-hospital  
100 (AUC=0.80,  $P<0.001$ ) and 90-day mortality (AUC=0.75,  $P<0.001$ ), with an optimal derived  
101 cut-off  $\geq 6.5$  found to be sensitive and specific for predicting in-hospital (83% and 63%) and  
102 90-day (73% and 72%) mortality. In exploratory analyses, GAP score addition improved the  
103 predictive ability of NEWS-2 against 30-day mortality and CURB-65 across all time-periods.

104

## 105 **Conclusion**

106 NEWS-2 has good discriminatory value for predicting in-hospital mortality and moderate  
107 discriminatory value for predicting 90-day mortality. The optimal NEWS-2 cut-off value  
108 determined was the same as in a previous retrospective cohort, confirming the NEWS-2 score  
109 shows promise in predicting mortality following ARD-ILD hospitalisation.

## 110 INTRODUCTION

111 Idiopathic pulmonary fibrosis (IPF) is considered the archetypal chronic progressive fibrotic  
112 Interstitial Lung Disease (ILD), which can have an unpredictable clinical course punctuated  
113 by sudden, severe acute respiratory deteriorations (ARD). ARD related hospitalisations in  
114 IPF patients are associated with poor patient outcomes, posing a significant burden on  
115 healthcare services.<sup>1-4</sup> ARD-IPF are categorised into parenchymal (e.g. pneumonia ) and  
116 extra-parenchymal causes (e.g. pleural effusion) within a conceptual framework.<sup>1</sup> Acute  
117 exacerbation (AE), defined within this framework describes rapid respiratory deterioration  
118 associated with new widespread parenchymal ground glass opacification (with or without  
119 consolidation) on the background of established fibrosis and is not fully explained by fluid  
120 overload or cardiac failure. Mortality associated with AE-IPF is high,<sup>1,5</sup> although, factors  
121 predicting adverse outcomes are not fully understood. Whilst originally described in IPF,  
122 both ARD and AE are increasingly considered to be features of other fibrosing ILDs;  
123 although, ARD and AE epidemiology and triggers in non-IPF ILDs are less well understood,  
124 with no randomised controlled trials examining optimal management.<sup>5</sup>

125

126 The emergence of SARS-CoV-2 and resultant pandemic have severely impacted healthcare  
127 provision, with ILD patients at increased risk of severe COVID-19 disease, possibly  
128 attributable to immunosuppressive treatment in addition to their chronic lung changes.<sup>6-8</sup>  
129 Ensuring appropriate healthcare resource allocation and usage, especially with the significant  
130 ILD disease burden, may be aided by routinely used and validated illness scores. The CURB-  
131 65 score is a national standard and was validated against 30-day mortality in pneumonia,<sup>9</sup> and  
132 subsequently validated against other conditions including sepsis. The National Early Warning  
133 Score-2 (NEWS-2) is used routinely throughout UK hospitals to rapidly identify patients at  
134 risk of deterioration,<sup>10</sup> and also to predict in-hospital mortality. Both these scores are  
135 undertaken routinely with no requirement for invasive or additional testing and are thus

136 widely available to physicians. There are, however, few data on the use of admission illness  
137 severity scores to predict short to medium term outcomes following admission with ARD.<sup>11-</sup>

138 <sup>13</sup>

139

140 Our previous single-centre, retrospective, observational cohort study of 172 IPF patients  
141 admitted with ARD, supported the use of CURB-65 and NEWS-2 illness severity scores to  
142 predict in-hospital and 90-day mortality.<sup>4</sup> This analysis identified baseline CURB-65  $\geq$  3.5  
143 and NEWS-2 score  $>$ 6.5 as the optimum cut-offs for predicting in-hospital mortality. ARD-  
144 IPF mortality was high irrespective of cause, in-line with mortality estimates from other  
145 published cohorts;<sup>3</sup> however, data also suggested AE-IPF mortality was higher compared to  
146 other parenchymal causes of ARD.<sup>14</sup>

147

148 The AvonCAP prospective observational study of acute lower respiratory tract disease  
149 (aLRTD) provided the opportunity to describe the characteristics of a prospective cohort of  
150 patients hospitalised with ARD-ILD following SARS-CoV-2 emergence. We therefore aimed  
151 to pragmatically evaluate whether admission CURB-65 and NEWS-2 scores could be used as  
152 predictors of mortality following ARD-ILD requiring hospitalisation, as these practical scores  
153 which are routinely used may aid both specialists and non-specialists in optimising treatment  
154 for patients with ILD. We then compared patients following an episode of ARD requiring  
155 hospitalisation with IPF and non-IPF ILDs and investigated factors associated with worse  
156 outcome.

157

158

## 159 MATERIALS AND METHODS

### 160 Study Design

161 A prospective, dual-centre observational cohort study undertaken at North Bristol and  
162 University Hospitals Bristol and Weston NHS Foundation Trusts, encompassing all  
163 secondary care institutions in Bristol, UK, as part of the AvonCAP study. The study was  
164 approved by the Health Research Authority East of England Ethics Committee, including  
165 Section 251 of the 2006 NHS Act approved by the Confidentiality Advisory Group  
166 (REC:20/EE/0157, ISRCTN:17354061).

167

### 168 Study Subjects

169 All admission lists were screened by members of the clinical care team to identify patients  
170 hospitalised with worsening respiratory signs/symptoms between 1<sup>st</sup> August 2020 and 9<sup>th</sup>  
171 November 2021. Full inclusion and exclusion criteria are available on IRISCTN  
172 (Supplementary Data 1).<sup>15</sup> Only individuals with a multidisciplinary team (MDT)-confirmed  
173 diagnosis of ILD (either pre-existing or arising from the hospitalisation), including but not  
174 limited to IPF, were included in this analysis.

175

176 Collection of clinical data was undertaken on all eligible participants using a standardised  
177 REDCap proforma<sup>16</sup>. Lung Function Tests (LFTs) and 6-min walk test (6MWT) were  
178 included if conducted within 6-months of hospitalisation and were not performed specifically  
179 for this study. Gender-Age-Physiology (GAP), CURB-65 and NEWS-2 scores at the point of  
180 admission and Charlson Comorbidity Index (CCI), which is a predictor of 10-year mortality,  
181 were calculated for each hospital admission (Supplementary Data 2).<sup>9,17-19</sup> Mortality data (30-  
182 and 90-day mortality) was collected through linked national healthcare data records using a  
183 unique identifier given to each patient.

184



## 185 **Case Definitions**

186 The aetiology of ARD-ILD was categorised according to Collard's conceptual framework:

187 (1) Extra-parenchymal causes: pleural effusion, pneumothorax or pulmonary embolism,

188 (2) AE-ILD: diagnosed in accordance with broadened Collard *et al.* revised criteria<sup>1</sup> to

189 include all fibrosing ILDs: previous/concurrent ILD, worsening dyspnoea <1 month duration,

190 new bilateral ground-glass opacification (with/without consolidation) on CT imaging,

191 superimposed on background of established fibrosis and not fully explained by cardiac

192 failure/ fluid overload. AE-ILD was further sub-categorised into triggered (clear precipitant)

193 or idiopathic.

194 (3) Not AE-ILD: other parenchymal ARD-ILD causes not attributed to an AE, including:

195 non-pneumonic lower respiratory tract infection (NP-LRTI)/presumed NP-LRTI (defined in

196 the context of a CT not clearly identifying a radiological cause for the deterioration or

197 unchanged CXR (presumed) but CRP>6mg/ml); pneumonia; cardiac failure/fluid overload;

198 disease progression; and, those with non-specific trigger (no radiological cause demonstrated

199 on CT imaging with CRP<6mg/ml; for example: anxiety, symptom control and/or palliation).

200 Respiratory infection, regardless of pathogen, was categorised into pneumonic or NP-LRTI –

201 thus COVID-19 was classified as a 'Not AE-ILD' cause of ARD.

202 (4) Not fully classified ARD-ILD: hospitalisation without CT imaging on admission but

203 unaltered chest radiograph and CRP <6mg/ml and no clear trigger.

204

## 205 **Outcome Measures**

206 The primary outcome of this analysis was to validate previously determined admission (i.e. at

207 the time of hospitalisation) CURB-65 score  $\geq 3.5$  and NEWS-2 score  $\geq 6.5$  as predictors of in-

208 hospital mortality<sup>4</sup> in a broader group of patients with ILD.

209

210 Secondary outcomes were to determine the utility of the GAP score to predict in-hospital, 30-  
211 and 90-day mortality rates in patients with ARD-ILD. We also determined the overall in-  
212 hospital, 30- and 90-day mortality rates for patients with ARD-ILD, hospital length of stay  
213 (LOS), thereby highlighting any differences in mortality between IPF and non-IPF ARD  
214 cohorts.

215

## 216 **Statistical Analysis**

217 Categorical data were presented as numbers and proportions (n, %), continuous non-  
218 parametric data as medians and interquartile range (IQR). Either log rank test, Fisher's exact  
219 test or chi-square test was used where appropriate to analyse differences between groups.

220

221 For the primary analysis, univariable and multivariable logistic regression analyses were  
222 performed to explore the relationship between baseline severity scores and mortality. The  
223 factors used in the multivariable model were decided *a priori* and were smoking status, GAP  
224 score, CURB-65 and NEWS-2 score. Receiver operating characteristic (ROC) curve analysis  
225 was used to quantify the strength of discrimination. Previous data suggested cut-offs of  
226 CURB-65>3.5 and NEWS-2>6.5, provided Area Under the Receiver Operating Curve  
227 (AUROC) estimates of 0.85 and 0.89 respectively, in the prediction of in-hospital mortality in  
228 hospitalised ARD-IPF.<sup>4</sup> Assuming an inpatient mortality rate approximating 20%.<sup>4</sup> a  
229 consecutive sample size of 175 patients would be sufficient to validate an AUROC $\geq$ 0.8 with  
230 a lower 95% confidence interval (CI) of the AUROC exceeding a lower acceptability  
231 threshold of 0.7.<sup>20</sup> Power calculations were performed using the proprietary Power Analysis  
232 & Sample Size (PASS) software. The impact of prognostic factors on survival was  
233 computed using a Kaplan-Meier analysis and multivariate Cox proportional hazards model.  
234 For all tests, a  $P<0.05$  was considered statistically significant. Data were analysed using IBM  
235 SPSS v28.0.



## 237 **RESULTS**

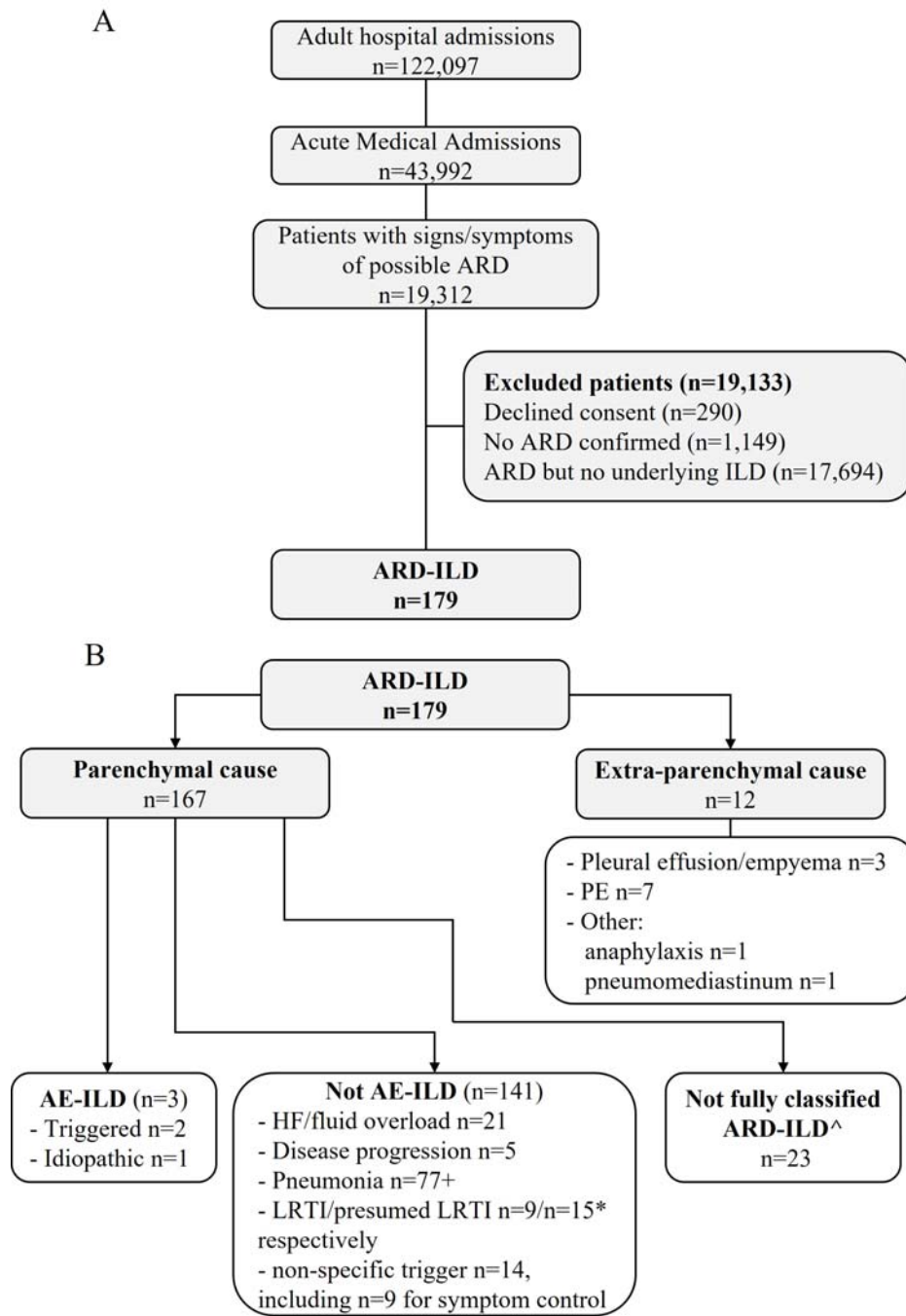
### 238 **Patient Demographics**

239 Of the total 122,097 patients  $\geq 18$  years hospitalised in the study period: 179 patients had  
240 confirmed ARD with a multidisciplinary diagnosis of ILD (Figure 1A). The median age of  
241 patients was 75 years (IQR 72-84), 64% were male and 57% were ex-smokers (Table 1). IPF  
242 was the underlying diagnosis of 39% of the cohort, but a broad range of other ILD diagnoses  
243 existed, including: unclassifiable ILD (13%), hypersensitivity pneumonitis (HP) (12%), and  
244 connective tissue disease associated-ILD (10%) (Table 1). *De novo* presentations with ILD  
245 were infrequent (3% ILD admissions). Patients had moderately restrictive disease (median  
246 FVC% predicted 75 (IQR 63-91), TLCO 44% (IQR 33-58) and a median GAP score of 4  
247 (IQR 3-5), corresponding to GAP stage II. Approximately one third of patients had at least 2  
248 or more (31%, n=56) concurrent medical co-morbidities. Overall, vaccination rates were high  
249 in the cohort: 75% of patients having received pneumococcal and seasonal influenza  
250 vaccination by the time of admission, and 83% of eligible patients (Supplementary Data 3)  
251 having received at least one dose of a COVID-19 vaccination prior to admission. The median  
252 length of stay was 7 days (IQR 3-11) versus 6 days (IQR 3-11) for IPF and non-IPF ARD  
253 admissions ( $P=0.545$ ), respectively.

254

255

256 **Figure 1. Adults hospitalised with acute respiratory deterioration of interstitial lung**  
 257 **disease (A) Flow diagram of study participants and (B) aetiology of acute respiratory**  
 258 **deterioration of Interstitial lung disease (ARD-ILD).**  
 259 ARD; acute respiratory deterioration; AE-ILD, acute exacerbation of interstitial lung disease;  
 260 LRTI, lower respiratory tract infection; COVID-19, coronavirus disease 2019; HF, heart  
 261 failure.  
 262 +n=11 COVID-19 pneumonia, one aspiration pneumonia, one hospitalised pneumonia,  
 263 remainder deemed to be community acquired pneumonia  
 264 \*including 3 with symptomatic COVID-19 but no CXR infiltrates  
 265 ^ unclassified – CT not performed and CRP <50.



266

267 IPF patients were statistically older than those with non-IPF ILD diagnoses (IPF 81 years vs  
268 non-IPF 77 years,  $P=0.0068$ ), more likely to be male (IPF 77% vs non-IPF 55%, Fisher's  
269 exact test,  $P=0.004$ ), with lower TLCO % predicted (IPF 38% vs non-IPF 54%,  $P=0.0002$ )  
270 and higher GAP scores (IPF 5 vs non-IPF 4,  $P<0.0001$ ) on hospitalisation. IPF and non-IPF  
271 ILD patients had comparable baseline spirometry values (Table 1).

272

### 273 **Underlying Aetiology**

274 Most (79%) ARD-ILD admissions were due to parenchymal causes other than AE-ILD  
275 (Figure 1B). Pneumonia was the most common parenchymal cause (57%, 77/141); the vast  
276 majority were community-acquired (83% of pneumonias,  $n=63$ ), with COVID-19  
277 pneumonitis in eleven patients (14%). Other parenchymal causes included cardiac failure  
278 ( $n=21$ , 15%), NP-LRTI ( $n=24$ , 17%, including 3 patients with symptomatic COVID) and  
279 disease progression in  $n=5$  (4%). An extra-parenchymal pathology was considered the cause  
280 of ARD in 12 patients (7%); 7 with pulmonary embolism, 3 with pleural effusion/empyema,  
281 with pneumomediastinum and anaphylaxis in the remaining patients.

282

283 Non-specific triggers of ARD were identified in approximately 10% of patients and these  
284 admissions were related to requirements for palliation and symptom control, including  
285 anxiety and breathlessness. AE-ILD was rare in this cohort ( $n=3$ , 2%) and seen in patients  
286 with fibrotic hypersensitivity pneumonitis and IPF. Due to low incidence of AE-ILD we were  
287 not able to perform analyses to determine differences between patients admitted with AE-ILD  
288 and other parenchymal causes.

289 **Table 1: Characteristics of adults hospitalised with ARD-ILD**

<b>Characteristic</b>	<b>ARD-ILD n = 179</b>	<b>IPF n = 70</b>	<b>Non IPF n = 109</b>	<b>P-value</b>
<b>Male, n (%)</b>	114 (64)	54 (77)	60 (55)	<b>0.0040</b>
<b>Age (years), median (IQR)</b>	79 (72-84)	81 (75-86)	77 (70-83)	<b>0.0068</b>
<b>Smoking Status, n (%)</b>				0.2537
Current	9 (5)	4 (6)	5 (5)	
Ex-smoker	102 (57)	48 (69)	54 (50)	
Never	53 (30)	14 (20)	39 (36)	
Unknown	15 (8)	4 (6)	11 (10)	
<b>Ethnicity, n (%)</b>				0.7566
Caucasian	148 (83)	58 (83)	90 (83)	
Other	11 (6)	6 (9)	5 (5)	
Unknown	20 (11)	6 (9)	14 (13)	
<b>CCI, median (IQR)</b>	5 (4-6)	5 (4-6)	5 (3-6)	0.8765
<b>Aetiology ILD, n (%)</b>				N/A
IPF	70 (39)	70 (100)	-	
Unclassifiable	23 (13)	-	23 (13)	
Hypersensitivity pneumonitis	22 (12)	-	22 (12)	
CTD-ILD	17 (10)	-	17 (10)	
Smoking related ILD	14 (8)	-	14 (8)	
CPFE (IPF with emphysema)	9 (5)	-	9 (5)	
NSIP	8 (5)	-	8 (5)	
Sarcoid	6 (3)	-	6 (3)	
Asbestosis	4 (2)	-	4 (2)	
Other □	6 (3)	-	6 (3)	
<b>Baseline PFTs, median (IQR)</b>				
<b>Lung function</b>				
FEV1 % predicted	78 (66-93), n=168	81 (69-93), n=68	75 (63-93), n=100	0.5627
FVC % predicted	75 (63-91), n=168	75 (64-89), n=68	77 (63-96), n=100	0.5324
TLCO % predicted	44 (33-58), n=137	40 (30-46), n=58	54 (37-61), n=79	<b>0.0002</b>
6MWT distance (m)	240 (155-311), n=133	240 (130-290), n=60	245 (168-354), n=73	0.7552
6MWT minimum sats (%)	87 (84-90) n=133	87 (84-89), n=60	87 (84-90), n=73	0.8129
<b>Total GAP score</b>	4 (3-5), n=150	5 (4-6), n=61	4 (3-5), n=89	<b>&lt;0.0001</b>
<b>Admission Severity Scores</b>				
CURB-65, median (IQR)	2 (1-4)	2 (1-4)	1 (1-3)	<b>0.0096</b>
NEWS-2, median (IQR)	6 (3-8)	6 (3-8)	5 (2-8)	0.4246
<b>ARD-ILD cause</b>				
Extra-Parenchymal	12 (7)	5 (7)	7 (6)	
AE-ILD	3 (2)	2 (3)	1 (1)	
Not AE-ILD	141 (79)	53 (76)	88 (81)	
Pneumonia	77 (43)	33 (47)	44 (40)	
Not fully classified ARD-ILD	23 (13)	9 (13)	14 (13)	
<b>Respiratory Support, n (%)</b>				
None	20 (11)	10 (14)	10 (9)	0.3346
Oxygen	159 (89)	60 (86)	99 (91)	
HFNO	20 (11)	8 (11)	12 (11)	1.0000
NIV	8 (4)	5 (7)	3 (3)	0.2123
IMV	1 (1)	0 (0)	1 (1)	0.4033
<b>Treatment, n (%) #</b>				
<b>Antifibrotic on admission</b>	40 (22)	40 (57)	0 (0)	N/A
Received antibiotics (>2 days)	139 (78)	53 (74)	86 (79)	0.4391
Received corticosteroids	49 (27)	18 (26)	31 (28)	0.7702
<b>Length of stay, median (IQR)</b>				

Hospitalisation days	6 (3-11)	7 (3-11)	6 (3-11)	0.5451
<b>Mortality, n (%)</b>				
In-hospital mortality	34 (19)	17 (24)	17 (16)	0.1848
30-day mortality	42 (23)	21 (30)	21 (19)	0.0901
90-day mortality	69 (39)	33 (47)	36 (33)	0.0614
Survival days, median (IQR)	59 (10-144), n=101	23 (10-23), n=41	79 (13-144), n=60	<b>0.0417</b>

290 *P*-values represent the result of a Log-rank Test or Fisher's exact test between IPF and non-IPF  
 291 groups

292

293 □ Other includes lymphocytic interstitial pneumonia, Langerhan's cell histiocytosis, pleuro-  
 294 parenchymal fibroelastosis, Rosai-Dorfman, organising pneumonia.

295

296 # corticosteroid treatment was defined as either a three day course of 500mg IV methylprednisolone  
 297 or an equivalent dose of alternative steroid. No patients in this cohort were started on  
 298 immunosuppressive therapy or received antifibrotic therapy acutely.

299

300 6MWT, 6-minute walk test; ARD, acute respiratory deterioration; CCI, Charlson comorbidity index;  
 301 CPFE, combined idiopathic pulmonary fibrosis & emphysema; CTD-ILD, connective tissue disease  
 302 ILD; GAP, gender, age and physiology score; HFNO, high flow nasal oxygen; ILD, interstitial lung  
 303 disease; IPF, idiopathic pulmonary fibrosis; IMV, invasive mechanical ventilation; IQR, interquartile  
 304 range; NIV, non-invasive ventilation NSIP, non-specific interstitial pneumonia; PFTs, pulmonary  
 305 function tests

306

307

308

### 309 **Primary Outcome**

310 Over half of all patients hospitalised with an ARD-ILD had a CURB-65 $\geq$ 2 (n=99, 55%) and  
 311 NEWS-2  $\geq$ 5 (n=114, 64%) on admission. Patients with ARD-IPF had a statistically higher  
 312 baseline CURB-65 compared to those with non-IPF ARD-ILD diagnoses (median CURB-65  
 313 2 [IQR 1-4] versus 1 [IQR 1-3], *P*=0.0096), but baseline NEWS-2 scores were comparable  
 314 (median NEWS-2 6 [IQR 3-8] versus 5 [IQR 2-8] respectively, *P* >0.05) (Table 1).

315

316 GAP score was found to have diminishing utility for in-hospital mortality (AUC=0.604,  
 317 *P*=0.087) and some merit for 30-day mortality (AUC=0.642, *P*=0.015). CURB-65 showed  
 318 modest predictive value for in-hospital (AUC=0.715, *P*<0.0001) and 90-day mortality  
 319 (AUC=0.672, *P*<0.0001), with the optimal derived cut-off CURB-65 $\geq$ 2.5 in our previous  
 320 study<sup>4</sup> had high specificity (75, 88% respectively) but low sensitivity (57, 46% respectively)  
 321 (Table 2). The optimal derived cut-off for CURB-65 in this cohort was 3.5. The NEWS-2



322 showed higher predictive value for in-hospital (AUC=0.803,  $P<0.0001$ ) and 90-day mortality  
323 (AUC=0.751,  $P<0.0001$ ). The optimal cut-off for NEWS-2 $\geq$ 6.5 was found to have high  
324 sensitivity (73%) and specificity (72%) for predicting 90-day mortality, in contrast to high  
325 sensitivity (83%) and moderate specificity (63%) for predicting in-hospital mortality (Table  
326 2).

327

328 As the CURB-65 score correlated moderately to NEWS-2 score ( $R=0.552$ ,  $P<0.0001$ ), the  
329 combined ability of these two scores to predict mortality was assessed (Table 2). NEWS-2  
330 retained significance to predict 90-day and in-hospital mortality after allowing for the effect  
331 of CURB-65 score (OR 1.34,  $P<0.0001$ , and OR 1.47,  $P<0.0001$ , respectively); however,  
332 CURB-65 was no longer a significant predictor after controlling for NEWS-2 for 90-day (OR  
333 1.34,  $P=0.1648$ ) or in-hospital mortality (OR 1.423,  $P=0.1791$ ) (Supplementary Data 5). The  
334 addition of the GAP score improved the ability of the CURB-65 score to predict mortality  
335 (Table 2), with both GAP and CURB-65 retaining significance in each other's presence. In  
336 contrast, the GAP score only improved the ability of the NEWS-2 score to predict 30-day  
337 mortality.

338

339

340 **Table 2: Outcomes of ROC curve analysis for evaluating optimal cut-off values for**  
 341 **CURB-65, NEWS-2 and GAP scores, correlating with ARD-ILD mortality**

342 Evaluation of the receiver operator curve (ROC) curve analysis for CURB-65, NEWS-2 and  
 343 GAP scores correlate with 30- and 90-day mortality, in addition to in-hospital mortality.

344

	AUC	95% CI	P-value	Decision Point	Sensitivity	Specificity	Youden's Index (J)
<b>SINGLE DISEASE SEVERITY SCORES</b>							
<b>CURB-65</b>							
In-hospital mortality	0.715	0.620-0.810	<0.0001	3.5	0.200	0.965	0.17
				2.5	0.571	0.746	0.32
30-day mortality	0.650	0.553-0.746	0.0021	1.5	0.476	0.737	0.21
90-day mortality	0.672	0.591-0.753	<0.0001	3.5	0.130	0.973	0.10
				2.5	0.464	0.882	0.25
<b>NEWS-2</b>							
In-hospital mortality	0.803	0.731-0.875	<0.0001	6.5	0.829	0.634	0.46
30-day mortality	0.750	0.669-0.831	<0.0001	6.5	0.762	0.642	0.40
90-day mortality	0.751	0.680-0.822	<0.0001	6.5	0.725	0.718	0.44
<b>GAP</b>							
In-hospital mortality	0.604	0.491-0.717	0.0869	4.5	0.607	0.554	0.16
30-day mortality	0.642	0.541-0.744	0.0151	3.5	0.871	0.353	0.22
90-day mortality	0.564	0.471-0.658	0.1887	4.5	0.545	0.568	0.11
<b>COMBINATION DISEASE SEVERITY SCORES</b>							
<b>CURB-65 and NEWS-2</b>							
In-hospital mortality	0.805	0.731-0.879	<0.0001	0.157	0.857	0.620	0.48
30-day mortality	0.681	0.589-0.822	<0.0001	0.225	0.624	0.681	0.40
90-day mortality	0.757	0.687-0.827	<0.0001	0.392	0.710	0.682	0.39
<b>CURB-65 and GAP</b>							
In-hospital mortality	0.764	0.671-0.856	<0.0001	0.207	0.679	0.739	0.41
30-day mortality	0.761	0.677-0.846	<0.0001	0.140	0.903	0.504	0.41
90-day mortality	0.727	0.646-0.809	<0.0001	0.335	0.673	0.663	0.34
<b>NEWS-2 and GAP</b>							
In-hospital mortality	0.802	0.745-0.895	<0.0001	0.239	0.679	0.802	0.48
30-day mortality	0.810	0.732-0.888	<0.0001	0.177	0.839	0.639	0.48
90-day mortality	0.752	0.675-0.828	<0.0001	0.342	0.782	0.642	0.43

345

346 AUC, area under curve; CI, confidence interval; GAP, Gender, Age, Physiology Score; ROC,  
 347 receiver operator characteristics. ROCs are provided within Supplementary Data 5 and 6.

348

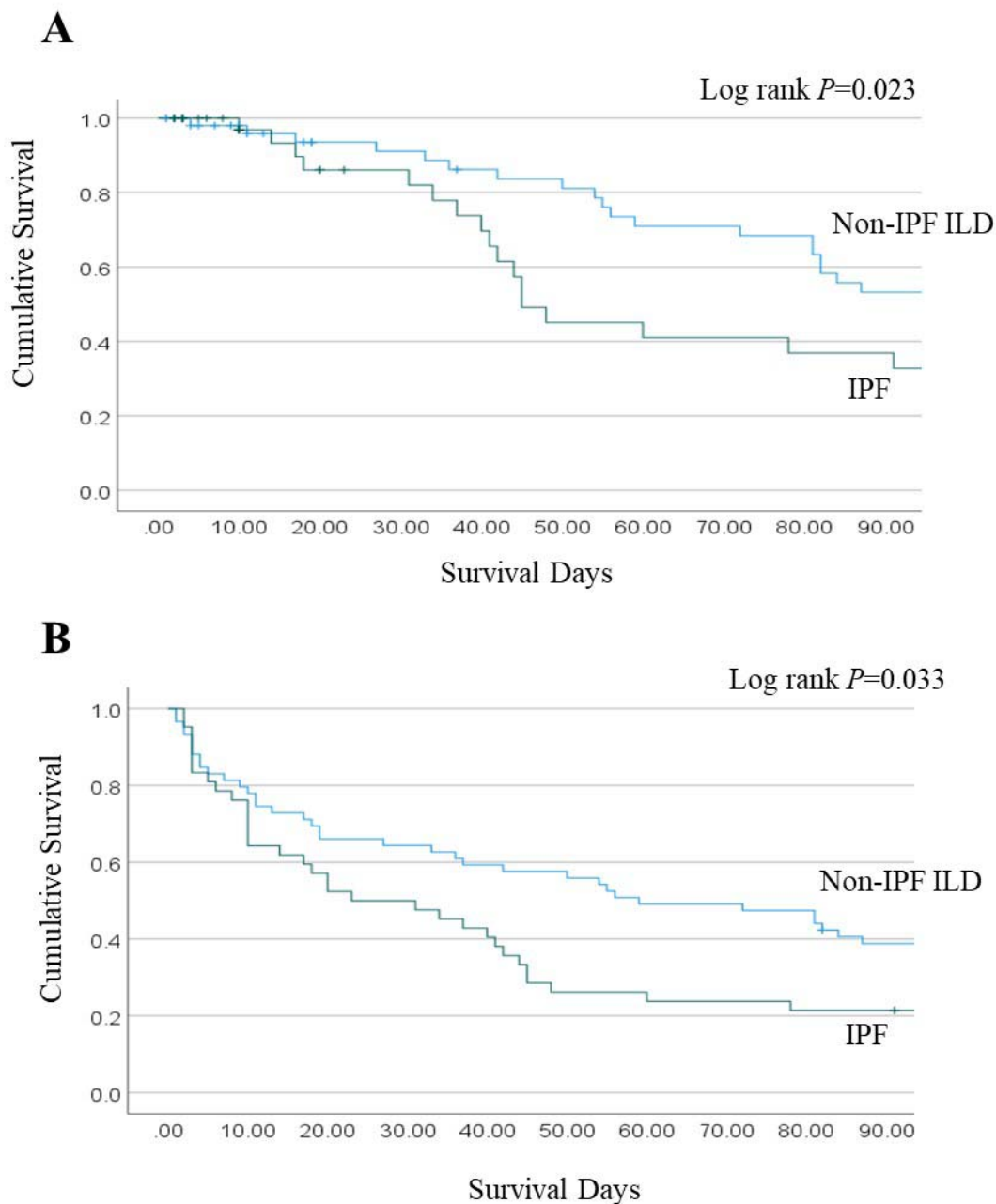
## 349 **Secondary Outcomes**

350 The median length of stay for patients admitted with an ARD-ILD was 6 days, but variability  
351 was observed across the cohort (IQR 3-11 days). Small numbers of patients received  
352 advanced respiratory support during their admission (n=29, 16%) although supplementary  
353 oxygen was frequently prescribed (n=159, 89%) (Table 1). ARD-ILD associated mortality  
354 was high; 20% of hospitalisations resulted in death, with 30- and 90-day mortality following  
355 admission of 24% and 38% (n=68) respectively (Table 1). Survival curve analysis indicated  
356 that patients admitted with ARD-IPF had higher in-hospital and 90-day mortality than  
357 patients with non-IPF-ARD (Figure 2). Univariate Cox regression analysis indicated that  
358 increasing NEWS-2 score was associated with higher mortality risk in-hospital and at 90-  
359 days; however, increased admission CURB-65 scores were not associated with an increased  
360 mortality risk (Table 3). Neither were higher admission CURB-65 nor NEWS-2 scores found  
361 to be associated with increased hazard of in-hospital mortality.

362

363 **Figure 2: ARD-ILD survival curve analysis**

364 Kaplan Meier survival curves for (A) in-hospital and (B) 90-day mortality, for patients  
365 admitted with ARD-IPF (green line) and non-IPF ARD-ILD (blue line).  
366



367

368

369

370 **Table 3: Association of baseline patient factors with in-hospital mortality and 90-day**  
371 **mortality following hospitalisation with ARD-ILD**  
372 Cox proportional hazard regression univariate analysis  
373

Analysis	Factor	Wald	HR	P-value	95% CI
<b>In hospital mortality</b>	GAP score	0.365	1.089	0.5452	0.826-1.435
	Smoking Status	3.102	2.022	0.0778	0.924-4.428
	CURB-65 score	3.163	1.565	0.0747	0.955-2.562
	NEWS-2 score	3.841	1.188	0.0501	1.000-1.411
<b>90-day mortality</b>	GAP score	1.020	0.773	0.3132	0.469-1.274
	Smoking Status	2.016	1.676	0.1558	0.822-3.419
	CURB-65 score	1.089	0.753	0.2967	0.442-1.283
	NEWS-2 score	4.251	1.231	<b>0.0391</b>	1.010-1.501

374  
375 CI, confidence interval; GAP, Gender, Age, Physiology Score; HR, hazard ratio.

## 376 **DISCUSSION**

377 The identification of patients with poor prognosis among those with ARD-ILD remains a  
378 significant challenge and there are limited data addressing the utility of illness severity scores  
379 to predict outcomes of these patients. This pragmatic, prospective study suggests that, as a  
380 predictor of mortality in this patient cohort, the admission NEWS-2 score has good  
381 discriminatory value for predicting in-hospital mortality and moderate discriminatory value  
382 for predicting 90-day mortality in patients following an ARD-ILD episode. As NEWS-2 is  
383 non-invasive and routinely calculated for all hospitalisations, this analysis suggests this  
384 severity score may be useful to non-specialists, enabling them to provide earlier appropriate  
385 care to ILD patients. To our knowledge, this is the first prospective evidence for utilising  
386 admission NEWS-2 as a tool to predict in-hospital and post hospitalisation morbidity  
387 following ARD-ILD. A previous retrospective cohort study conducted at one of the study  
388 hospitals found that both admission NEWS-2 and CURB-65 risk stratification tools were  
389 independent predictors of mortality in patients with IPF.<sup>4</sup> The current study therefore  
390 confirms the findings of this previous retrospective cohort<sup>4</sup> and hence admission NEWS-2  
391 may represent a simple tool to help prognostication. Notably, the optimal derived cut-off  
392 value for admission NEWS-2 in predicting mortality across inpatient, 30- and 90-days was  
393 NEWS-2  $\geq 6.5$ , the same in both this prospective patient cohort and our previously reported  
394 retrospective cohort.<sup>4</sup>

395

396 The CURB-65 score at the point of admission was found to have little additional benefit for  
397 predicting mortality, either as an individual predictor or when used in exploratory analyses  
398 with NEWS-2. Furthermore, we found that admission CURB-65 was able to predict both 90-  
399 day and in-hospital mortality in ARD-ILD with high specificity but low sensitivity, in  
400 keeping with previous data from our IPF cohort<sup>4</sup>. Aligning with these findings, Yamazaki *et*  
401 *al* found that CURB-65, Pneumonia Severity Index (PSI) and Sequential Organ Failure

402 Assessment (qSOFA) were all predictive of inpatient mortality from pneumonia in a  
403 retrospective study of 79 patients with IPF.<sup>21</sup> In that study, the optimal CURB-65 cut-off  
404 value was  $\geq 3.0$ , differing slightly from the value derived in our previous retrospective IPF  
405 cohort,<sup>4</sup> but contrasting with the optimal cut-off  $\geq 2.5$  derived in this current prospective ILD  
406 cohort. Notably, the admission CURB-65 score did not add value to the ability of the NEWS-  
407 2 score to predict poor outcomes. In contrast, exploratory analyses indicate there is some  
408 evidence of increased predictive ability on outcomes when NEWS-2 and GAP scores are  
409 used in tandem. Overall, these findings from different centres and patient populations suggest  
410 that the disease severity scores show promise in predicting poor outcome following  
411 hospitalisation with acute respiratory deterioration.

412

413 As reported before the emergence of SARS-CoV-2, patients hospitalised with ARD-IPF had  
414 a poor prognosis.<sup>4,22-24</sup> We found that ARD-ILD continues to cause a significant disease  
415 burden in secondary care following SARS-CoV-2 emergence, with a median hospital  
416 admission of 6 days (IQR3-11). Whilst we found in-hospital and 90-day mortality rates were  
417 significantly higher in the IPF group than the non-IPF group, all admissions related to an  
418 ARD were associated with significant mortality; 24% and 38% for 30- and 90-day mortality,  
419 respectively. The median survival in this cohort was 23 days, slightly shorter than the  
420 survival times in the literature ranging between 1 and 4 months after AE-IPF.<sup>25-28</sup> In keeping  
421 with our findings, Suzuki *et al* reported that AE IPF was associated with a 47% 90-day  
422 mortality, which was statistically poorer than non-IPF AE 90-day mortality of 38%.<sup>29</sup> Other  
423 studies have reported IPF patients have a significantly shorter overall and post-hospitalization  
424 survival time following an acute respiratory deterioration compared with other ILDs.<sup>22,29</sup>  
425 Our in-hospital mortality data supports early and frank discussions between patients/families  
426 and clinicians surrounding the high mortality associated with ARD, even in the context of  
427 potentially 'treatable' causes e.g. infection and pulmonary embolism. Furthermore, the high

428 short-term mortality after discharge may prompt clinicians to consider early discussions  
429 surrounding palliation and/or transplantation in suitable candidates. In practice, the treatment  
430 decisions in patients with ARD-ILD faced by both specialist and non-specialist clinicians,  
431 patients and their families are profound and often irreversible. Making these decisions  
432 optimally requires the integration of many differing and individual considerations, including  
433 accurate prognostic information, and as the predictive characteristics of the scores as  
434 determined in this study may not add value above the ability of experienced clinicians to  
435 advise patients and their families. Whilst antifibrotics reduce mortality in ILD, to our  
436 knowledge it is currently unknown what the impact of antifibrotics on severity of AE ILD  
437 once it occurs;<sup>30</sup> although, nintedanib may reduce severity of first exacerbation.<sup>31</sup> The NICE  
438 (National Institute for Health and Care Excellence) technology appraisal guideline for  
439 antifibrotics in non-IPF ILD did not exist at the time this cohort was hospitalised. We note  
440 that 57% of IPF patients in this study were receiving antifibrotic treatment at the time of  
441 admission, but this analysis would not be powered to determine if antifibrotic use in IPF  
442 reduces the severity of AE-IPF in patients hospitalised with this condition.

443

444 There were few admissions secondary to AE-ILD, which prevented further detailed analyses  
445 of any differences in the mortality between AE-ILD and other parenchymal causes of ARD.  
446 Teramachi *et al* showed 90-day mortality of AE-IPF patients was significantly higher than  
447 ARD due to other parenchymal causes (46% [16/35] vs 17% [12/71] respectively;  
448  $P=0.002$ ).<sup>14</sup> It is not possible to ascertain fully to what extent healthcare access and patient  
449 behaviour during the pandemic affected these outcomes. The Task Force for Lung Health  
450 suggested that over a third of people with pre-existing lung problems felt pressure to avoid or  
451 delay seeking treatment.<sup>32</sup> Hence, patients may have delayed presentation to hospital.  
452 Alternatively, the emergence of a novel pathogen may have affected outcomes of patients  
453 with ARD, either directly or indirectly through changes in the epidemiology of other acute



454 respiratory infection, treatment pathways or other aspects of patient healthcare provision. In  
455 non-ILD patients hospitalised with SARS-CoV-2 infection, admission NEWS-2 correlates  
456 moderately well with severe outcomes such as ITU admission, positive airway pressure  
457 support or death; however, there were no such significant correlations for admission CURB-  
458 65 ( $P>0.05$ ).<sup>33</sup>

459

460 This study has many strengths. It was undertaken as a prospective two site cohort study  
461 which screened hospital admissions for signs/symptoms of acute respiratory disease. This  
462 study therefore does not rely on ICD-10 coding or solely on data-linkage. There were  
463 minimal missing data, and the study includes adults who lack capacity to consent through a  
464 consultee and by specific authorisation to use certain data without consent, thereby ensuring  
465 full ascertainment of ARD-ILD during this period. The medical records were linked with  
466 community records to obtain detailed and accurate data for each study participant.

467

468 There are also some limitations of this study. We assessed the use of admission severity  
469 scores as mortality predictors in patients hospitalised with ARD-ILD and this analysis cannot  
470 and does not assess their usefulness in ILD patients in stable state. We assessed ARD-ILD at  
471 both acute care NHS hospitals in Bristol and 83% of this cohort is Caucasian; therefore, we  
472 cannot be sure that results are generalisable to other patient populations. We are not  
473 sufficiently power to statistically test whether two correlated area under the curves differ  
474 when one element is in common (CURB-65 and GAP vs. NEWS and GAP) or whether one  
475 model nested in another (CURB-65 versus CURB-65 and GAP) differ in terms of their  
476 AUROC. This study used linked national healthcare records to determine mortality, and did  
477 not ascertain the specific cause of death. We acknowledge that the ILD exacerbation rate in  
478 this cohort appears to be low, we were therefore unable to confirm our previous findings that  
479 mortality associated with ARD-ILD was high, irrespective of the underlying cause for the

480 deterioration. Notably only three patients met the definition of AE-ILD. Not all patients with  
481 evidence of pneumonia had a CT performed and it is therefore possible that some of these  
482 patients had a triggered exacerbation with increased ground glass opacification not evident on  
483 CXR. We were also unable to determine the time from ILD diagnosis until hospitalisation  
484 with ARD, and therefore could not adjust for this co-variate. The impact of shielding during  
485 the COVID pandemic on exacerbation rate is a further factor to be considered. Lastly, it is  
486 difficult to determine whether healthcare access may have affected time to hospitalisation and  
487 hence outcomes, as previously discussed. Others have reported that patients with chronic  
488 respiratory disease had fewer admissions to secondary-care during the COVID-19  
489 pandemic<sup>32, 34</sup> and this may have affected the results of this study, although the direction of  
490 effect is unclear.

491

## 492 **CONCLUSION**

493 Simple illness severity scores may permit refinement of ARD management of ILD patients  
494 and if survival to discharge is achieved, permit early discussion with patients, referral to  
495 transplantation or palliative care planning as appropriate.

496

497 **REFERENCES**

- 498 1. Collard HR, Ryerson CJ, Corte TJ, Jenkins G, Kondoh Y, Lederer DJ, et al. Acute  
499 Exacerbation of Idiopathic Pulmonary Fibrosis. An International Working Group Report.  
500 *Am J Respir Crit Care Med.* 2016 Aug 1;194(3):265–75.
- 501 2. Cottin V, Schmidt A, Catella L, Porte F, Fernandez-Montoya C, Le Lay K, et al. Burden  
502 of Idiopathic Pulmonary Fibrosis Progression: A 5-Year Longitudinal Follow-Up Study.  
503 *PLoS One.* 2017;12(1):e0166462.
- 504 3. Moua T, Westerly BD, Duloherly MM, Daniels CE, Ryu JH, Lim KG. Patients With  
505 Fibrotic Interstitial Lung Disease Hospitalized for Acute Respiratory Worsening: A Large  
506 Cohort Analysis. *Chest.* 2016 May;149(5):1205–14.
- 507 4. Hyams C, Hettle D, Bibby A, Adamali HA, Barratt SL. Utility of illness severity scores  
508 to predict mortality in patients hospitalised with respiratory deterioration of Idiopathic  
509 Pulmonary Fibrosis. *QJM.* 2020 Jul 1;hcaa214.
- 510 5. Kolb M, Bondue B, Pesci A, Miyazaki Y, Song JW, Bhatt NY, et al. Acute exacerbations  
511 of progressive-fibrosing interstitial lung diseases. *Eur Respir Rev.* 2018 Dec  
512 31;27(150):180071.
- 513 6. Southern BD. Patients with interstitial lung disease and pulmonary sarcoidosis are at high  
514 risk for severe illness related to COVID-19. *Cleve Clin J Med.* 2020 Jun 18;
- 515 7. Esposito AJ, Menon AA, Ghosh AJ, Putman RK, Fredenburgh LE, El-Chemaly SY, et al.  
516 Increased Odds of Death for Patients with Interstitial Lung Disease and COVID-19: A  
517 Case-Control Study. *Am J Respir Crit Care Med.* 2020 Dec 15;202(12):1710–3.
- 518 8. Drake TM, Docherty AB, Harrison EM, Quint JK, Adamali H, Agnew S, et al. Outcome  
519 of Hospitalization for COVID-19 in Patients with Interstitial Lung Disease. An  
520 International Multicenter Study. *Am J Respir Crit Care Med.* 2020 Dec 15;202(12):1656–  
521 65.
- 522 9. Lim WS, van der Eerden MM, Laing R, Boersma WG, Karalus N, Town GI, et al.  
523 Defining community acquired pneumonia severity on presentation to hospital: an  
524 international derivation and validation study. *Thorax.* 2003 May;58(5):377–82.
- 525 10. Chang CL, Sullivan GD, Karalus NC, Mills GD, McLachlan JD, Hancox RJ. Predicting  
526 early mortality in acute exacerbation of chronic obstructive pulmonary disease using the  
527 CURB65 score. *Respirology.* 2011 Jan;16(1):146–51.
- 528 11. Smith MEB, Chiovaro JC, O’Neil M, Kansagara D, Quiñones AR, Freeman M, et al.  
529 Early warning system scores for clinical deterioration in hospitalized patients: a  
530 systematic review. *Ann Am Thorac Soc.* 2014 Nov;11(9):1454–65.
- 531 12. Smith GB, Prytherch DR, Meredith P, Schmidt PE. Early warning scores: unravelling  
532 detection and escalation. *Int J Health Care Qual Assur.* 2015;28(8):872–5.
- 533 13. Kim I, Song H, Kim H, Park K, Kim SH, Oh S, et al. Use of the National Early Warning  
534 Score for predicting in-hospital mortality in older adults admitted to the emergency  
535 department. *Clinical and Experimental Emergency Medicine.* 2020 Mar 31;7:61–6.

- 536 14. Teramachi R, Kondoh Y, Kataoka K, Taniguchi H, Matsuda T, Kimura T, et al.  
537 Outcomes with newly proposed classification of acute respiratory deterioration in  
538 idiopathic pulmonary fibrosis. *Respir Med*. 2018 Oct;143:147–52.
- 539 15. ISRCTN - ISRCTN17354061: A pan-pandemic respiratory infection surveillance study  
540 [Internet]. [cited 2021 Oct 6]. Available from: <https://www.isrctn.com/ISRCTN17354061>
- 541 16. Harris PA, Taylor R, Thielke R, Payne J, Gonzalez N, Conde JG. Research electronic  
542 data capture (REDCap)--a metadata-driven methodology and workflow process for  
543 providing translational research informatics support. *J Biomed Inform*. 2009  
544 Apr;42(2):377–81.
- 545 17. Kolb M, Collard HR. Staging of idiopathic pulmonary fibrosis: past, present and future.  
546 *Eur Respir Rev*. 2014 Jun;23(132):220–4.
- 547 18. Ley B, Ryerson CJ, Vittinghoff E, Ryu JH, Tomassetti S, Lee JS, et al. A  
548 multidimensional index and staging system for idiopathic pulmonary fibrosis. *Ann Intern*  
549 *Med*. 2012 May 15;156(10):684–91.
- 550 19. Smith GB, Prytherch DR, Jarvis S, Kovacs C, Meredith P, Schmidt PE, et al. A  
551 Comparison of the Ability of the Physiologic Components of Medical Emergency Team  
552 Criteria and the U.K. National Early Warning Score to Discriminate Patients at Risk of a  
553 Range of Adverse Clinical Outcomes. *Crit Care Med*. 2016 Dec;44(12):2171–81.
- 554 20. Hanley JA, McNeil BJ. The meaning and use of the area under a receiver operating  
555 characteristic (ROC) curve. *Radiology*. 1982 Apr 1;143(1):29–36.
- 556 21. Yamazaki R, Nishiyama O, Yoshikawa K, Saeki S, Sano H, Iwanaga T, et al.  
557 Comparison of CURB-65, PSI, and qSOFA for predicting pneumonia mortality in  
558 patients with idiopathic pulmonary fibrosis. *Sci Rep*. 2021 Feb 16;11(1):3880.
- 559 22. Salonen J, Vähänikkilä H, Purokivi M, Kaarteenaho R. Causes of acute respiratory  
560 hospitalizations predict survival in fibrosing interstitial lung diseases. *PLOS ONE*. 2020  
561 Nov 30;15(11):e0242860.
- 562 23. Collard HR, Moore BB, Flaherty KR, Brown KK, Kaner RJ, King TE, et al. Acute  
563 exacerbations of idiopathic pulmonary fibrosis. *Am J Respir Crit Care Med*. 2007 Oct  
564 1;176(7):636–43.
- 565 24. Kondoh Y, Cottin V, Brown KK. Recent lessons learned in the management of acute  
566 exacerbation of idiopathic pulmonary fibrosis. *Eur Respir Rev*. 2017 Sep  
567 30;26(145):170050.
- 568 25. Arai T, Kagawa T, Sasaki Y, Sugawara R, Sugimoto C, Tachibana K, et al.  
569 Heterogeneity of incidence and outcome of acute exacerbation in idiopathic interstitial  
570 pneumonia. *Respirology*. 2016 Nov;21(8):1431–7.
- 571 26. Cao M, Sheng J, Qiu X, Wang D, Wang D, Wang Y, et al. Acute exacerbations of  
572 fibrosing interstitial lung disease associated with connective tissue diseases: a population-  
573 based study. *BMC Pulmonary Medicine*. 2019 Nov 14;19(1):215.

- 574 27. Collard HR, Yow E, Richeldi L, Anstrom KJ, Glazer C, for the IPFnet investigators.  
575 Suspected acute exacerbation of idiopathic pulmonary fibrosis as an outcome measure in  
576 clinical trials. *Respiratory Research*. 2013 Jul 13;14(1):73.
- 577 28. Song JW, Hong SB, Lim CM, Koh Y, Kim DS. Acute exacerbation of idiopathic  
578 pulmonary fibrosis: incidence, risk factors and outcome. *European Respiratory Journal*.  
579 2011 Feb 1;37(2):356–63.
- 580 29. Suzuki A, Kondoh Y, Brown KK, Johkoh T, Kataoka K, Fukuoka J, et al. Acute  
581 exacerbations of fibrotic interstitial lung diseases. *Respirology*. 2020;25(5):525–34.
- 582 30. Petnak T, Lertjitbanjong P, Thongprayoon C, Moua T. Impact of Antifibrotic Therapy on  
583 Mortality and Acute Exacerbation in Idiopathic Pulmonary Fibrosis: A Systematic  
584 Review and Meta-Analysis. *Chest*. 2021 Nov;160(5):1751–63.
- 585 31. Kreuter M, Koegler H, Trampisch M, Geier S, Richeldi L. Differing severities of acute  
586 exacerbations of idiopathic pulmonary fibrosis (IPF): insights from the INPULSIS®  
587 trials. *Respir Res*. 2019 Apr 11;20(1):71.
- 588 32. Over a third of people with lung conditions felt pressure to avoid or delay seeking  
589 treatment during lockdown - British Lung Foundation [Internet]. Asthma + Lung UK.  
590 2020 [cited 2022 Jul 6]. Available from: [https://www.blf.org.uk/taskforce/press-](https://www.blf.org.uk/taskforce/press-release/over-a-third-of-people-with-lung-conditions-felt-pressure-to-avoid-or-delay-seeking-treatment)  
591 [release/over-a-third-of-people-with-lung-conditions-felt-pressure-to-avoid-or-delay-](https://www.blf.org.uk/taskforce/press-release/over-a-third-of-people-with-lung-conditions-felt-pressure-to-avoid-or-delay-seeking-treatment)  
592 [seeking-treatment](https://www.blf.org.uk/taskforce/press-release/over-a-third-of-people-with-lung-conditions-felt-pressure-to-avoid-or-delay-seeking-treatment)
- 593 33. Arnold DT, Attwood M, Barratt S, Morley A, Elvers KT, McKernon J, et al. Predicting  
594 outcomes of COVID-19 from admission biomarkers: a prospective UK cohort study.  
595 *Emerg Med J*. 2021 Jul;38(7):543–8.
- 596 34. [Alqahtani JS, Oyelade T, Aldhahir AM, Gonçalves Mendes R, Alghamdi SM, Miravitlles](#)  
597 [M et al. Reduction in hospitalised COPD exacerbations during COVID-19: A systematic](#)  
598 [review and meta-analysis. \*PLOS ONE\* 2021;16:e0255659.](#)  
599 [doi:10.1371/journal.pone.0255659](https://doi.org/10.1371/journal.pone.0255659)  
600

601 **AUTHOR CONTRIBUTIONS**

602 CH, RW, PW, AF and SLB generated the research question and analysis plan. The data for  
603 this study was collected by the AvonCAP Research Team, CH, RW, JR, MGG and ZSB. CH,  
604 MGG, ZSB and RW verified the data. RW, CH, PW, AF and SLB undertook data analysis.  
605 All authors were involved in the final manuscript preparation and its revisions before  
606 publication. AF and SB provided oversight of the research.

607

608 **ACKNOWLEDGEMENTS**

609 The authors would like to acknowledge the Research Teams at North Bristol NHS and  
610 University Hospitals Bristol and Weston NHS Trusts, including Helen Lewis-White, Diana  
611 Benton, Anna Morley, Jade King and Nicola Manning. Furthermore, we would like to  
612 acknowledge the significant contribution to the AvonCAP study made by Rachel Davies,  
613 Adam Taylor, Mai Baquedano and the IT team, including Stuart Robinson, at North Bristol  
614 NHS Trust.

615

616 **DATA SHARING**

617 The data used in this study are sensitive and cannot be made publicly available without  
618 breaching patient confidentiality regulations. Therefore, individual participant data and a data  
619 dictionary are not available to other researchers.

620

621 **DECLARATION OF INTEREST**

622 CH is Principal Investigator of the AvonCAP study, which is an investigator-led University  
623 of Bristol study funded by Pfizer, Inc, and is currently a member of the BTS Pulmonary  
624 Infection Specialty Advisory Group (SAG). AF is a member of the Joint Committee on  
625 Vaccination and Immunization (JCVI) and chair of the World Health Organization European  
626 Technical Advisory Group of Experts (WHO ETAGE) committee. In addition to receiving

627 funding from Pfizer as Chief Investigator for this study, he leads another project investigating  
628 transmission of respiratory bacteria in families jointly funded by Pfizer and the Gates The  
629 other authors declare no competing interests.

630 **The AvonCAP Research Group**

<b>AUTHOR</b>	<b>AFFILIATION</b>
David Adegbite	Bristol Vaccine Centre, University of Bristol
Rupert Antico	Bristol Vaccine Centre, University of Bristol
Francesca Bayley	Bristol Vaccine Centre, University of Bristol
Beth Begier	Vaccines Medical Development, Scientific and Clinical Affairs, Pfizer Inc, USA
Maddalena Bellavia	North Bristol NHS Trust
Emma Bridgeman	Bristol Vaccine Centre, University of Bristol
Julia Brzezinska	Clinical Research and Imaging Centre, UHBW NHS Trust
James Campling	Vaccines Medical Development, Scientific and Clinical Affairs, Pfizer Inc, USA
Natalie Chang	Clinical Research and Imaging Centre, UHBW NHS Trust
Julie Cloake	Clinical Research and Imaging Centre, UHBW NHS Trust
Madeleine Clout	Bristol Vaccine Centre, University of Bristol
Pip Croxford	North Bristol NHS Trust
Gillian Ellsbury	Vaccines Medical Development, Scientific and Clinical Affairs, Pfizer Inc, UK
Bradford Gessner	Vaccines Medical Development, Scientific and Clinical Affairs, Pfizer Inc, USA
Niall Grace	Bristol Vaccine Centre, University of Bristol
Sharon Gray	Vaccines Medical Development, Scientific and Clinical Affairs, Pfizer Inc, USA
Oliver Griffiths	Clinical Research and Imaging Centre, UHBW NHS Trust
Charli Grimes	North Bristol NHS Trust
Lucy Grimwood	Bristol Vaccine Centre, University of Bristol
Zsolt Friedrich	North Bristol NHS Trust
Leah Fleming	Bristol Vaccine Centre, University of Bristol
Kazminder Fox	Clinical Research and Imaging Centre, UHBW NHS Trust
Milo Jeenes-Flanagan	Bristol Vaccine Centre, University of Bristol
Luis Jodar	Vaccines Medical Development, Scientific and Clinical Affairs, Pfizer Inc, USA
Johanna Kellett Wright	Clinical Research and Imaging Centre, UHBW NHS Trust
Jane Kinney	Bristol Vaccine Centre, University of Bristol
Robyn Heath	Clinical Research and Imaging Centre, UHBW NHS Trust
Kate Helliker	North Bristol NHS Trust
Robyn Huber	Vaccines Medical Development, Scientific and Clinical Affairs, Pfizer Inc, USA
Amelia Langdon	Bristol Vaccine Centre, University of Bristol
Rajeka Lazarus	Clinical Research and Imaging Centre, UHBW NHS Trust
Sandi Nammuni Arachchge	Clinical Research and Imaging Centre, UHBW NHS Trust
Vicki Mackay	Clinical Research and Imaging Centre, UHBW NHS Trust
Robin Marlow	Bristol Vaccine Centre, University of Bristol
Zandile Maseko	North Bristol NHS Trust



Anya Mattocks	Bristol Vaccine Centre
Katie Maughan	Clinical Research and Imaging Centre, UHBW NHS Trust
Nicola Manning	Clinical Research and Imaging Centre, UHBW NHS Trust
Katarina Milutinovic	Clinical Research and Imaging Centre, UHBW NHS Trust
Konstantina Minou	Clinical Research and Imaging Centre, UHBW NHS Trust
Anna Morley	North Bristol NHS Trust
Taslina Mona	Clinical Research and Imaging Centre, UHBW NHS Trust
Claire Mitchell	Clinical Research and Imaging Centre, UHBW NHS Trust
Leigh Morrison	North Bristol NHS Trust
Bethany Osborne	Clinical Research and Imaging Centre, UHBW NHS Trust
Fiona Perkins	Clinical Research and Imaging Centre, UHBW NHS Trust
Tawassal Riaz	Clinical Research and Imaging Centre, UHBW NHS Trust
Gabriella Ruffino	North Bristol NHS Trust
Peter Sequenza	Bristol Vaccine Centre, University of Bristol
Lily Smart	Bristol Vaccine Centre, University of Bristol
Emma Scott	Clinical Research and Imaging Centre, UHBW NHS Trust
Jo Southern	Vaccines Medical Development, Scientific & Clinical Affairs, Pfizer Inc, UK
Seevakumar Suppiah	North Bristol NHS Trust
Zoe Taylor	Bristol Vaccine Centre, University of Bristol
Grace Tilzey	Clinical Research and Imaging Centre, UHBW NHS Trust
Anabella Turner	Clinical Research and Imaging Centre, UHBW NHS Trust
Gabriella Valentine	Bristol Vaccine Centre, University of Bristol
Marianne Vasquez	North Bristol NHS Trust
Rhian Walters	Clinical Research and Imaging Centre, UHBW NHS Trust
Lana Ward	North Bristol NHS Trust
Louise Wright	North Bristol NHS Trust

631

1 **Supplemental Data 1: AvonCAP inclusion and exclusion criteria**

2  
3 **Inclusion criteria:**

4  
5 Patients must meet all the following inclusion criteria to be eligible for enrolment:

- 6 1. Aged  $\geq 18$  years of age
- 7 2. Patients with illness with following 2 characteristics:
- 8 a. Acute illness (i.e., present for 28 days or less); AND
- 9 b. Evidence of acute LRTD:
- 10 a. Patients with current or suspected COVID-19 or previous proven
- 11 COVID-19 within last 28 days OR
- 12 b. Clinical or radiologic diagnosis of pneumonia or an acute LRTI
- 13 OR
- 14 c. New onset or worsening of  $\geq 2$  of following 8 LRTD symptoms or
- 15 clinical findings:
- 16 i. fever ( $>38.0^{\circ}\text{C}$ ) or hypothermia ( $<35.5^{\circ}\text{C}$ ) before or
- 17 within 24 hours of enrolment;
- 18 ii. pleuritic chest pain;
- 19 iii. cough (including nocturnal only);
- 20 iv. sputum production or purulence;
- 21 v. dyspnea (shortness of breath) including orthopnea or on
- 22 exertion only;
- 23 vi. tachypnea (respiratory rate  $\geq 20/\text{min}$ ) documented by
- 24 healthcare professional;
- 25 vii. abnormal auscultatory findings suggestive of LRTD (e.g.,
- 26 crepitations/rales or evidence of pulmonary consolidation
- 27 including dullness on percussion, bronchial breath sounds,
- 28 wheezing, or egophony);
- 29 viii. radiologic finding that is consistent with LRTD, including
- 30 pneumonia, and/or acute congestive heart failure (e.g.,
- 31 pleural effusion, increased pulmonary density due to
- 32 infection, the presence of alveolar infiltrates [multilobar,
- 33 lobar or segmental] containing air bronchograms, or
- 34 interstitial oedema).
- 35

36 **Exclusion criteria:**

37 Patients meeting any of the following criteria will not be included in the study:

- 38 1. Any patient who develops signs and symptoms of LRTD after being hospitalized for  $\geq 48$
- 39 hours (either at current hospital, another transferring hospital, or a combination of these),
- 40 unless admitted with current, previous proven, or suspected COVID-19 infection
- 41 2. Previously enrolled participants readmitted  $\leq 7$  days after discharge for their study
- 42 qualifying admission, unless admitted with current, previous proven, or suspected
- 43 COVID-19 infection
- 44 3. At the time of enrolment, an LRTD-related diagnosis has been excluded or another
- 45 diagnosis confirmed (for example, patient was found to have fever and tachypnoea due to
- 46 an intraabdominal process such as cholecystitis)

47 **Supplemental Data 2: Disease severity scores**

48

49 **a) NEWS-2 Score:**

Physiological parameter	Score						
	3	2	1	0	1	2	3
Respiration rate (per minute)	≤8		9–11	12–20		21–24	≥25
SpO <sub>2</sub> Scale 1 (%)	≤91	92–93	94–95	≥96			
SpO <sub>2</sub> Scale 2 (%)	≤83	84–85	86–87	88–92 ≥93 on air	93–94 on oxygen	95–96 on oxygen	≥97 on oxygen
Air or oxygen?		Oxygen		Air			
Systolic blood pressure (mmHg)	≤90	91–100	101–110	111–219			≥220
Pulse (per minute)	≤40		41–50	51–90	91–110	111–130	≥131
Consciousness				Alert			CVPU
Temperature (°C)	≤35.0		35.1–36.0	36.1–38.0	38.1–39.0	≥39.1	

50

51

52 **b) CURB-65 Score**

CURB-65	Clinical Feature	Points
<b>C</b>	Confusion	1
<b>U</b>	Urea > 7 mmol/L	1
<b>R</b>	RR ≥ 30	1
<b>B</b>	SBP ≤ 90 mm Hg OR DBP ≤ 60 mm Hg	1
<b>65</b>	Age > 65	1

53

54

55 **c) GAP Score**

	Predictor	Points
<b>G</b>	<b>Gender</b>	
	Female	0
	Male	1
<b>A</b>	<b>Age years</b>	
	≤60	0
	61–65	1
	>65	2
<b>P</b>	<b>Physiology</b>	
	FVC % predicted	
	>75	0
	50–75	1
	<50	2
	DLC0 % predicted	
>55	0	
	36–55	1
	≤35	2
	Cannot perform	3

56

Maximum possible points=8. FVC: forced vital capacity; DLC0: diffusing capacity of the lung for carbon monoxide.

57 **Supplementary Data 3: Availability of vaccine appointments in England by date.**

58

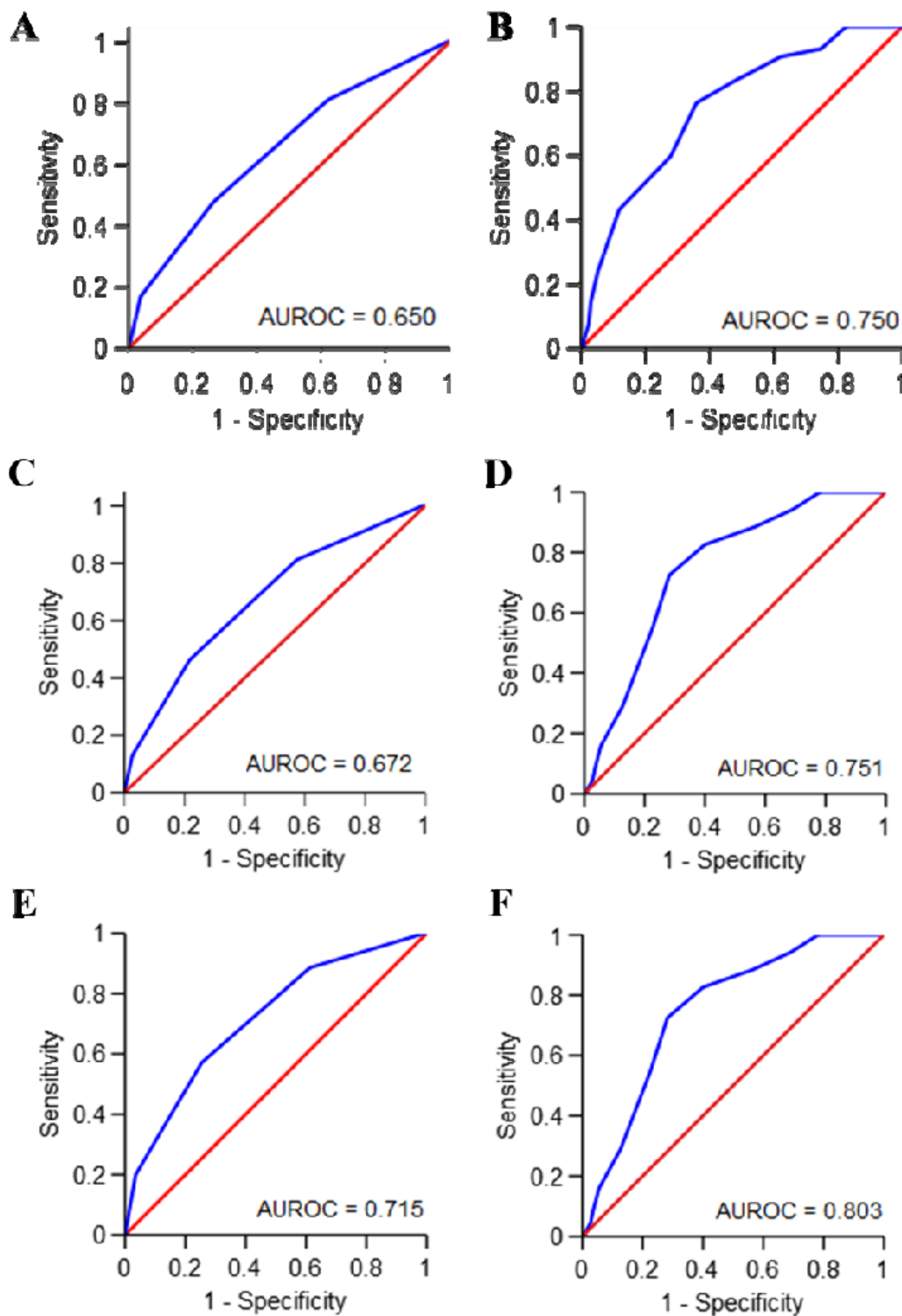
Start date	Group(s) which could receive vaccine	Priority group
8 December 2020	Residents in a care home for older adults and their carers; and all aged 80 and over	1 and part of 2
Procedures set out on 9 and 14 January 2021	Frontline health and social care workers	Part of 2
18 January 2021	All aged 70 and over, and clinically extremely vulnerable individuals	3 and 4
15 February 2021	All aged 65 and over; and those aged 16 to 64 with underlying health conditions which put them at higher risk of serious disease and mortality	5 and 6
1 March 2021	All aged 60 and over	7
6 March 2021	All aged 56 and over	8 (age adjusted from 55)
17 March 2021	All aged 50 and over	9

59

60

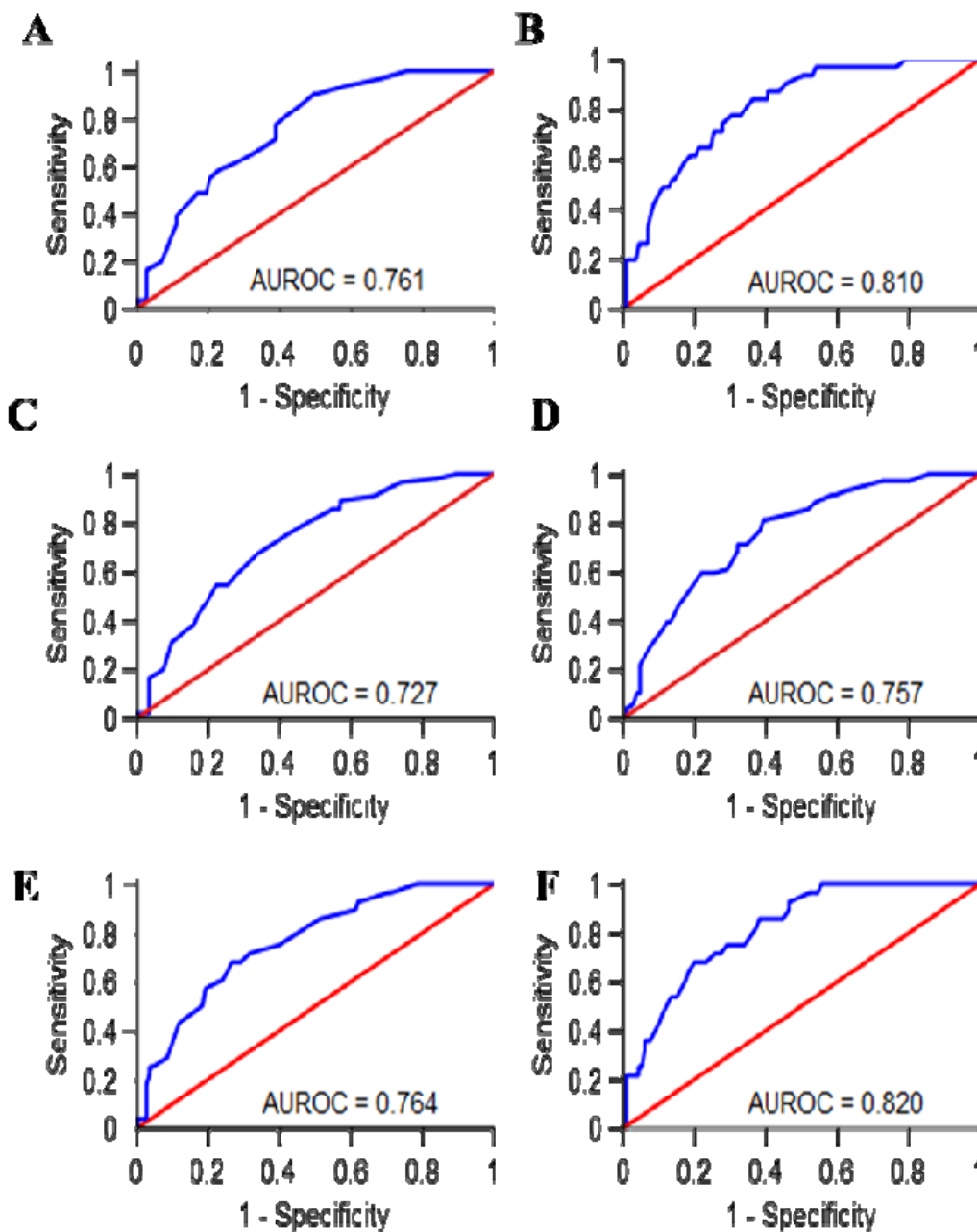
61 **Supplementary Data 4: Receiver Operator Characteristic (ROC) curves**

62 ROC curves for 30-day mortality and (A) CURB-65 score and (B) NEWS-2 score; 90-day  
63 mortality and (C) CURB-65 and (D) NEWS-2 score; and, in-hospital mortality and (E)  
64 CURB-65 and (F) NEWS-2.  
65



67 **Supplementary Data 5: Receiver Operator Curves (ROC) for NEWS-2 and CURB-65**  
68 **combined with GAP score**

69 ROC curves for 30-day mortality and GAP with (A) CURB-65 score and (B) NEWS-2 score;  
70 90-day mortality and GAP with (C) CURB-65 and (D) NEWS-2 score; and, in-hospital  
71 mortality and GAP with (E) CURB-65 and (F) NEWS-2.



73 **Supplementary Data 6: Joint predictive value of NEWS-2 and CURB-65 scores in**  
74 **predicting in-hospital mortality and 90-day mortality following hospitalisation with**  
75 **ARD-ILD**

76 (A) Binary logistic regression analysis for joint predictive value of NEWS-2 and CURB-65  
77 scores in predicting mortality following hospital admission with ARD-ILD.

78

<b>Analysis</b>	<b>Factor</b>	<b>OR</b>	<b>95% CI</b>	<b>P-value</b>
<b>In-hospital mortality</b>	NEWS-2 score	1.469	1.197-1.803	<0.0001
	CURB-65	1.423	0.851-2.380	0.1791
	Constant	0.008	-	<0.0001
<b>30-day mortality</b>	NEWS-2 score	1.341	1.152-1.566	<0.0001
	CURB-65	1.346	0.888-2.150	0.1662
	Constant	0.061	-	<0.0001
<b>90-day mortality</b>	NEWS-2 score	1.343	1.153-1.564	<0.0001
	CURB-65	1.344	0.885-2.040	0.1648
	Constant	0.052	-	<0.0001

79

80 ARD-ILD, acute respiratory deterioration of interstitial lung disease; CI, confidence interval;  
81 OR, Odds Ratio

82

## STROBE Statement—Checklist of items that should be included in reports of *cohort studies*

	Item No	Recommendation	Page/Figure Number
<b>Title and abstract</b>	1	(a) Indicate the study's design with a commonly used term in the title or the abstract	2
		(b) Provide in the abstract an informative and balanced summary of what was done and what was found	2-3
<b>Introduction</b>			
Background/rationale	2	Explain the scientific background and rationale for the investigation being reported	5-6
Objectives	3	State specific objectives, including any prespecified hypotheses	6
<b>Methods</b>			
Study design	4	Present key elements of study design early in the paper	6
Setting	5	Describe the setting, locations, and relevant dates, including periods of recruitment, exposure, follow-up, and data collection	6-7
Participants	6	(a) Give the eligibility criteria, and the sources and methods of selection of participants. Describe methods of follow-up	7-8
		(b) For matched studies, give matching criteria and number of exposed and unexposed	N/A
Variables	7	Clearly define all outcomes, exposures, predictors, potential confounders, and effect modifiers. Give diagnostic criteria, if applicable	6-9
Data sources/ measurement	8*	For each variable of interest, give sources of data and details of methods of assessment (measurement). Describe comparability of assessment methods if there is more than one group	6-9
Bias	9	Describe any efforts to address potential sources of bias	6-9
Study size	10	Explain how the study size was arrived at	Fig 1, 6-8
Quantitative variables	11	Explain how quantitative variables were handled in the analyses. If applicable, describe which groupings were chosen and why	8-9
Statistical methods	12	(a) Describe all statistical methods, including those used to control for confounding	8-9
		(b) Describe any methods used to examine subgroups and interactions	8-9
		(c) Explain how missing data were addressed	8-9
		(d) If applicable, explain how loss to follow-up was addressed	NA
		(e) Describe any sensitivity analyses	8-9
<b>Results</b>			
Participants	13*	(a) Report numbers of individuals at each stage of study—eg numbers potentially eligible, examined for eligibility, confirmed eligible, included in the study, completing follow-up, and analysed	Figure 1, 9
		(b) Give reasons for non-participation at each stage	Figure 1
		(c) Consider use of a flow diagram	Figure 1
Descriptive data	14*	(a) Give characteristics of study participants (eg demographic, clinical, social) and information on exposures and potential confounders	9-10
		(b) Indicate number of participants with missing data for each variable of interest	Table 1
		(c) Summarise follow-up time (eg, average and total amount)	NA
Outcome data	15*	Report numbers of outcome events or summary measures over time	Table 1
Main results	16	(a) Give unadjusted estimates and, if applicable, confounder-adjusted	13-14, tables



		estimates and their precision (eg, 95% confidence interval). Make clear which confounders were adjusted for and why they were included	2+3
		(b) Report category boundaries when continuous variables were categorized	NA
		(c) If relevant, consider translating estimates of relative risk into absolute risk for a meaningful time period	NA
Other analyses	17	Report other analyses done—eg analyses of subgroups and interactions, and sensitivity analyses	13-14, Figure 2, Supp data
<b>Discussion</b>			
Key results	18	Summarise key results with reference to study objectives	17-18
Limitations	19	Discuss limitations of the study, taking into account sources of potential bias or imprecision. Discuss both direction and magnitude of any potential bias	19
Interpretation	20	Give a cautious overall interpretation of results considering objectives, limitations, multiplicity of analyses, results from similar studies, and other relevant evidence	17-20
Generalisability	21	Discuss the generalisability (external validity) of the study results	17-20
<b>Other information</b>			
Funding	22	Give the source of funding and the role of the funders for the present study and, if applicable, for the original study on which the present article is based	1

\*Give information separately for exposed and unexposed groups.

**Note:** An Explanation and Elaboration article discusses each checklist item and gives methodological background and published examples of transparent reporting. The STROBE checklist is best used in conjunction with this article (freely available on the Web sites of PLoS Medicine at <http://www.plosmedicine.org/>, Annals of Internal Medicine at <http://www.annals.org/>, and Epidemiology at <http://www.epidem.com/>). Information on the STROBE Initiative is available at <http://www.strobe-statement.org>.