

1 **Title:** Altered visual evoked potentials associated with verbal and nonverbal skills in Fragile X
2 syndrome.

3

4 **Authors:** Elizabeth Saoud^{1,2*}, John Fitzgerald³, Megan Hartney², and Carol L. Wilkinson²

5

6 **Affiliations:**

7 ¹Department of Neuroscience, Harvard University, Boston, MA 02138, USA

8 ²Division of Developmental Medicine, Boston Children's Hospital, Harvard Medical School,
9 Boston, MA 02115, USA.

10 ³Department of Psychology and Brain Sciences, Dartmouth College, Hanover, NH 03755 USA

11

12 *To whom correspondence should be addressed: Carol Wilkinson

13 Labs of Cognitive Neuroscience

14 2 Brookline Place, Brookline, MA 02445

15 Carol.Wilkinson@childrens.harvard.edu

16

17 **Short Title:** VEP measures associated with verbal and nonverbal development in FXS

18

19 **Key Words:** EEG, VEP, Event Related Potential, Language Development, Child Development

20

21

22

23

24

25

26

27

28

29

30

31

32

33

34

35

36

37

38

39

40

1 **Abstract**

2

3 **Background:** Understanding the neurobiology behind Fragile X syndrome (FXS) is critical in
4 identifying effective therapeutics and improving care for affected individuals.

5 Electroencephalography (EEG) provides an opportunity to investigate the biological foundations
6 of this disorder. We aimed to characterize the visual evoked potential (VEP) in young children
7 with FXS, and to understand how measures of the VEP are associated with verbal and
8 nonverbal development within FXS.

9 **Methods:** VEPs were collected in children between 2-7 years old with FXS (n = 9) as well as
10 corresponding age- (n = 10) and cognitive-matched (n = 9) typically developing children.
11 Additionally, the Mullen Scales of Early Learning and Preschool Language Scales were
12 administered to collect measures of verbal and nonverbal development. Differences in
13 component amplitudes and latencies of the VEP were assessed using ANCOVAs, and
14 associations of VEP measures and verbal and nonverbal development were evaluated using
15 linear regression with age as a covariate.

16 **Results:** No differences between groups were observed in N1, P1, or N2 VEP components.
17 However, a consistent and prominent P2 component (latency = 177ms \pm 13.7), was observed in
18 children with FXS. The P2 amplitude was significantly increased in FXS children compared to
19 the cognitive-matched group (p = 0.004). For children with FXS, the amplitude of several VEP
20 components were associated with verbal and nonverbal development; larger N1 amplitude and
21 smaller P1 and P2 amplitudes were all associated with better receptive language (all p<0.05)
22 and larger N1 amplitude was also associated with better fine motor skills (p<0.05).

23 **Conclusions:** The observed increase in P2 amplitude and its negative association with
24 language development within the FXS group supports the P2 component as a potential
25 biomarker for FXS as a disorder, as well as a pathophysiological marker of verbal impairment
26 that could be used in clinical trials.

27

28

29

30

31

32

33

34

35

36

1 Background

2 Fragile X Syndrome (FXS) is the most common inherited form of intellectual disability,
3 and children with FXS often struggle with severe language impairments as well as sensory and
4 behavioral challenges (Hagerman et al., 2017). FXS is caused by a CGG trinucleotide repeat
5 expansion on the X chromosome, leading to silencing of the *Fmr1* gene. This reduces
6 production of Fragile X Messenger Ribonucleoprotein 1 (FMRP), leading to overexpression of
7 other local proteins that negatively impact synapse development, strength, and plasticity
8 (Garber et al., 2008). The cognitive and behavioral deficits experienced by children with FXS
9 overlap with other neurodevelopmental disorders. For example, around 50% of males with FXS
10 meet criteria for autism spectrum disorder (CDC, 2021), and many if not the majority of children
11 with FXS meet criteria for attention deficit hyperactivity disorder (ADHD) and anxiety (Hagerman
12 et al., 2009). The neuropathology underlying FXS points to an imbalance of neural excitation
13 and inhibition (Contractor et al., 2015), which likely disrupts downstream synaptic and
14 homeostatic plasticity and ultimately learning and memory. Mouse models of FXS exhibit
15 reduced GABA transmission, resulting in over-excitation (Gibson et al., 2008; Lozano et al.,
16 2014), and several GABA agonists have successfully improved physiological and behavioral
17 phenotypes in mice (Henderson et al., 2012; Qin et al., 2015). Unfortunately, most human phase
18 II trials have not been successful in part due to the lack of validated brain-based biomarkers to
19 monitor clinical improvement (Berry-Kravis et al., 2013; Jacquemont et al., 2014).

20 The visual evoked potential (VEP) has potential as a brain-based biomarker candidate in
21 neurodevelopmental disorders as it has been used in both human and mouse studies, and is
22 non-invasive, low cost, and feasibly collected across the lifespan from infants to adults. As a
23 neural measure, the VEP provides information both about integrity of the visual pathway and
24 higher-level cognitive processing of sensory information. As such, the VEP can be used as a
25 neurological biomarker, inform underlying neurophysiology, and map progression of disorders
26 that affect sensory systems (Odom et al., 2004). Several studies have examined differences in
27 VEP across several neurodevelopmental disorders, including FXS, Down syndrome, 16p11.2
28 variants, tuberous sclerosis complex (TSC), and Rett syndrome. Alterations in component
29 amplitudes have been observed across disorders, with increased P1 amplitude in 16p11.2
30 deletions (LeBlanc & Nelson, 2016) and TSC (Varcin et al., 2016), and decreased P1 amplitude
31 in 16p11.2 duplications (LeBlanc & Nelson, 2016) and Rett syndrome (LeBlanc et al., 2015). In
32 FXS, a study of VEP response in individuals 10-22 years old observed increased N1 and N2
33 amplitude when compared to age-matched, but not cognitive matched comparison groups

1 (Knoth et al., 2014). Despite differences being observed in a range of neurodevelopmental
2 disorders, few studies have examined the relationship between VEP responses and behavioral
3 and cognitive outcomes – a crucial component of biomarker identification. Further in FXS, there
4 have been few EEG studies in young children; identification of EEG based biomarkers
5 associated with developmental outcomes at these young ages is crucial to biomarker efficacy in
6 clinical trials for young children.

7 This study had two main aims. First, we characterize the VEP in children with FXS
8 compared to both age- and cognitive-matched comparison groups. We hypothesized that FXS
9 children would have differences in their VEP components compared to both groups. Second,
10 within the FXS group we assess how VEP measures are associated with varying levels of
11 cognitive and language development.

12

13 **Methods**

14

15 **Participants**

16 Table 1 describes participant characteristics. A total of 16 FXS children (age 33-78
17 months old) with full mutation of *Fmr1* and 12 similarly aged typically developing children were
18 recruited for this study (IRB#P00025493) conducted at the Labs of Cognitive Neuroscience at
19 Boston Children's Hospital. 6 FXS participants and 1 age-matched participant did not complete
20 VEP EEG acquisition. VEP data from 1 FXS and 1 age-matched participant was excluded due
21 to excessive artifact. VEP and behavioral data was analyzed for a total of 9 FXS participants
22 and 10 age-control participants.

23

24 *FXS and age-controls:* FXS participants all had documented full mutation of the *Fmr1*
25 gene; however, methylation status was not known for all participants. All data was collected
26 prior to the COVID pandemic, which halted additional recruitment. Prior to this, 1 female
27 participant with FXS had been enrolled, but we had not yet enrolled an age- and sex-matched
28 comparison participant. Therefore, the age- matched comparison groups were composed of all
29 males. Across FXS and age-matched groups, additional exclusion criteria included history of
30 prematurity (< 35 weeks gestational age), low birth weight (< 2000 g), known birth trauma,
31 known genetic disorders, unstable seizure disorder, current use of anticonvulsant medication,
32 and uncorrected hearing or vision problems. Children were required to be from a primarily
33 English-speaking household with English spoken more than 50% of the time.

1
2

Table 1: Demographics of Subjects

	Age-Matched (N = 10)	FXS (N = 9)	Cognitive-Matched (N = 9)
Age, mean in months (SD)	48.6 (14.1)	44.3 (14.5)	25.2 (8.5)
Highest parental education, n (%)			
≤ High school/GED	0 (0)	0 (0)	0 (0)
Associate's degree	0 (0)	1 (11)	0 (0)
Bachelor's degree	1 (10)	2 (22)	1 (11)
Graduate or professional degree(s)	9 (90)	6 (67)	8 (89)
Household income, n (%)			
< \$40,000	0 (0)	0 (0)	0 (0)
\$40-70,000	0 (0)	3 (33)	1 (11)
>\$70,000	10 (100)	6 (67)	8 (89)
No response	0 (0)	0 (0)	0 (0)
Sex, n (%)			
Female	0 (0)	1 (11)	3 (33)
Male	10 (100)	8 (89)	6 (67)
Race, n (%)			
White	6 (60)	6 (67)	6 (67)
Black/African American	0 (0)	0 (0)	0 (0)
Asian	0 (0)	1 (11)	0 (0)
Multi-race	4 (40)	1 (11)	3 (33)
No response	0 (0)	1 (11)	0 (0)
Ethnicity, n (%)			
Hispanic or Latino	0 (0)	2 (22)	2 (22)
Mullen Scales of Early Learning (mean ± SD)			
Nonverbal Developmental Quotient	109.1 ± 11.0	59.1 ± 13.6	110.1 ± 17.8
Visual Reception Raw Score	44.8 ± 3.4	28.4 ± 7.2	28.0 ± 5.5
Fine Motor Raw Score	38.0 ± 4.5	24.4 ± 4.2	25.6 ± 5.3
EEG Quality Measures (mean ± SD)			
Number of Trials Post Rejection	91.3 ± 9.8	76.4 ± 20.1	91.2 ± 11.1
Percent Good Channels	80.6 ± 10.8	80.9 ± 6.1	87.7 ± 7.8
1 Hz Pre and Post Wav-Thresholding Correlation	0.72 ± 0.17	0.66 ± 0.15	0.86 ± 0.05

1 *Cognitive matched controls*: VEP data from an additional 9 cognitive-matched children
2 were analyzed. Individuals from this group provided data as part of a concurrent longitudinal
3 study (IRB#P00018377) in infants 12-36 months old which used the same VEP paradigm in the
4 same EEG rooms. Exclusion criteria were the same as above. Participants were matched based
5 on raw Fine Motor and Visual Reception scores on the Mullen Scales of Early Learning (see
6 Methods: Developmental Assessment).

7 Institutional review board approval was obtained prior to starting the study, and written,
8 informed consent was obtained from all parents or guardians prior to their child's participation.

9

10 **Developmental Assessment**

11 Nonverbal subscales (Fine Motor and Visual Reception) of the Mullen Scales of Early
12 Learning (MSEL; Mullen, 1995) were administered to all FXS and cognitive-matched
13 participants, and age-matched controls under 70 months of age. The Preschool Language Scale
14 5th Edition (PLS; Zimmerman et al., 2011) was administered to FXS and age-matched controls.
15 The PLS assesses early language development, including both receptive and expressive
16 language skills. We utilized the raw scores from the Expressive Communication and Auditory
17 Comprehension subscales.

18

19 **VEP collection**

20 EEG data were collected in a dimly lit, sound-attenuated, electrically shielded room. The
21 child sat either in their caregiver's lap or independently in a chair or stroller while looking at a
22 Tobii 120 monitor (Tobii Technology, Sweden) approximately 60cm away, and caregivers were
23 instructed to avoid social interactions with their child. A research assistant was also present in
24 the room to help keep the child calm and focused, if necessary. Pattern-reversal visual stimuli,
25 consisting of a reversing black and white checkerboard pattern (with diagonal check size of
26 0.5cpd), were presented on the monitor using ePrime software (Psychology Software Tools Inc.,
27 Pittsburgh, PA, USA). Stimuli were presented for at least 500ms as the stimulus phase-reversal
28 was contingent on binocular fixation on the monitor for a period of 100ms to ensure the
29 participant was looking for each trial. In a small number of cases, the eye tracking software did
30 not accurately pick up on the child's binocular fixation. In these cases, the research assistant
31 manual progressed the stimuli based on whether the child was looking at the screen. A
32 maximum of 200 trials were presented, with fewer trials presented if the child became
33 inattentive. Continuous EEG was recorded using a 128-channel high density HydroCel

1 Geodesic Sensor Net and amplified with a NetAmps 300 high-input amplifier (Electrical
2 Geodesics Inc., Eugene, OR, USA). Data were sampled at 1000Hz, and impedance was kept
3 below 100kOhms in accordance with the impedance capabilities of the high-impedance
4 amplifiers inside the electrically shielded room (Ferree et al., 2001).

5

6 **EEG pre-processing**

7 Raw Netstation files were pre-processed, and artifact was removed using the Harvard
8 Automated Processing Pipeline for EEG plus Event-Related Software (HAPPE+ER; Monachino
9 et al., 2021). Line noise was removed using Cleanline's multi-taper regression, data was low
10 pass filtered at 100Hz, and bad channels were removed. Artifact was then extracted using
11 wavelet-thresholding with wavelet resolution level set to ≤ 0.1 Hz as determined to be optimal in
12 infant VEP analyses by Monachino et al. 2021. Data was then filtered (0.3-30Hz) and
13 segmented (-100 to 400ms) around the visual stimulus, and baseline corrected via mean
14 subtraction. Segments with retained artifact in the region of interest used for VEP analysis
15 (Electrodes: O1, O2, 71, 75, and 76) were then rejected using HAPPE+ER's amplitude and joint
16 probability method with an artifact threshold of ± 200 μ V. Bad channels were then interpolated
17 and data was referenced to the average reference.

18

19 **EEG rejection criteria**

20 EEGs were excluded from the final sample if (1) they had fewer than 20 trials post
21 segment rejection, (2) $>3/5$ electrodes in the region of interest were interpolated, or (3) they did
22 not meet the following HAPPE+ER quality metrics: cross-correlation value < 0.2 for pre/post
23 wavelet thresholding for frequencies 0.5, 1, and 2Hz. 1 FXS and 1 age-matched participant
24 were excluded based on the above criteria.

25

26 **VEP analysis**

27 Grand average waveforms were calculated by averaging the 5 occipital electrodes
28 described above. Given observed differences in latency of components between groups,
29 components were identified as follows: The P1 component was identified as the most positive
30 peak between 80-120ms after stimulus onset. The N1 and N2 components were then identified
31 as the relative minimums that come before and after the P1, respectively. The P2 component
32 was identified as the relative maximum after the N2. Finally, N1-P1 amplitude was calculated as
33 the amplitude of the P1 measured from the preceding N1 peak, and P1-N2 amplitude was

1 calculated as the amplitude of the N2 measured from the preceding P1 peak. Individual VEPs
2 were visually inspected to confirm or adjust VEP components.

3

4 **Statistical analysis**

5 ANCOVAs with post-hoc pairwise Tukey HDR tests were conducted to determine if there
6 were significant differences in the mean VEP amplitude and latencies between groups, while
7 accounting for covariates related to data quality, specifically number of trials post-rejection and
8 1Hz pre- and post-thresholding correlation. A false discovery rate (FDR) correction was used to
9 account for the multiple comparisons made for each analysis.

10 Linear regression was used to determine if component amplitudes were associated with
11 nonverbal and language measures within the FXS group. Raw scores were used, and age was
12 included as a covariate, as both VEP and raw scores on behavioral tests change with age.
13 Analyses were performed in Python 3.9 with Statsmodels and Pingouin. Figures were created
14 using python data visualization libraries [matplotlib (Hunter, 2007) and Seaborn
15 (<https://seaborn.pydata.org/index.html>)]

16

17 **Results**

18

19 **Sample Description**

20 A summary of the demographic information and mean scores for MSEL nonverbal scales
21 are shown in Table 1. As expected, the mean nonverbal developmental quotient (NVDQ) was
22 lower for the FXS group, reflecting developmental delays associated with this syndrome. Raw
23 scores on subscales were well matched between FXS and cognitive-matched controls. EEG
24 quality measures are also shown in Table 1. The FXS group had a significantly smaller number
25 of trials post-rejection (ANOVA, $p = 0.048$) and a significantly smaller 1Hz pre- and post-
26 thresholding correlation (ANOVA, $p = 0.004$) when compared to its control groups. This latter
27 value suggests that EEG data collected from the FXS group, had greater signal change before
28 and after wavelet thresholding likely due to increased noise in the data, although mean values
29 across all measures were well above our exclusion criteria. Given the significant differences
30 between groups, EEG quality measures were used as co-variates in statistical analyses.

31

32 **VEP Waveform**

1 Grand-averaged VEPs for the FXS, age-matched, and cognitive-matched groups are
 2 shown in Figure 1. All groups demonstrated a typical N1-P1-N2 pattern response. However, a
 3 prominent P2 was also observed in the FXS group. Statistical analyses (Table 2) confirmed a

4 **Table 2: Summary of Amplitude and Latencies of Components**

	Age- Matched, mean ± SD	FXS, mean ± SD	Cognitive- Matched, mean ± SD	ANCOVA, F	P Value, unadjusted; adjusted
Component Amplitude (µV)					
N1 Amplitude	-4.56 ± 3.48	-6.77 ± 6.00	-6.24 ± 4.16	1.518	0.240; 0.321
P1 Amplitude	3.63 ± 4.29	6.71 ± 6.97	3.13 ± 4.05	1.128	0.341; 0.379
N2 Amplitude	-2.32 ± 5.04	0.80 ± 8.42	-7.97 ± 6.09	2.496	0.105; 0.261
P2 Amplitude	0.95 ± 5.39	8.63 ± 5.62	-1.48 ± 5.14	6.769	0.005; 0.049
N1P1 Amplitude	8.19 ± 5.04	13.5 ± 7.26	9.37 ± 6.01	2.648	0.092; 0.261
P1N2 Amplitude	5.95 ± 4.50	5.91 ± 3.64	11.1 ± 6.81	1.630	0.218; 0.321
Latency (ms)					
N1 Latency	56.6 ± 9.29	64.2 ± 4.94	63.8 ± 9.46	2.789	0.082; 0.261
P1 Latency	93.4 ± 4.43	97.1 ± 8.95	96.0 ± 6.08	0.445	0.646; 0.646
N2 Latency	126 ± 13.6	127 ± 11.5	138 ± 14.2	1.499	0.245; 0.321
P2 Latency	160 ± 20.0	177 ± 13.7	182 ± 27.3	1.442	0.257; 0.321

5
 6 significant group effect for P2 amplitude, and post-hoc pairwise Tukey HSD tests demonstrated
 7 FXS children having significantly increased P2 amplitude compared to the cognitive-matched (p
 8 = 0.004, Figure 1) comparison group. A similar trend was observed when compared to the age-
 9 matched comparison group, but with marginal significance (p = 0.052). While there was no
 10 significant difference in P2 latency, we observed more consistent timing of the P2 within the
 11 FXS group (Coefficient of variance FXS = 0.07, Age-Matched = 0.12; Cog-Matched = 0.14;
 12 Figure 1). No other components showed significant differences between groups.

1

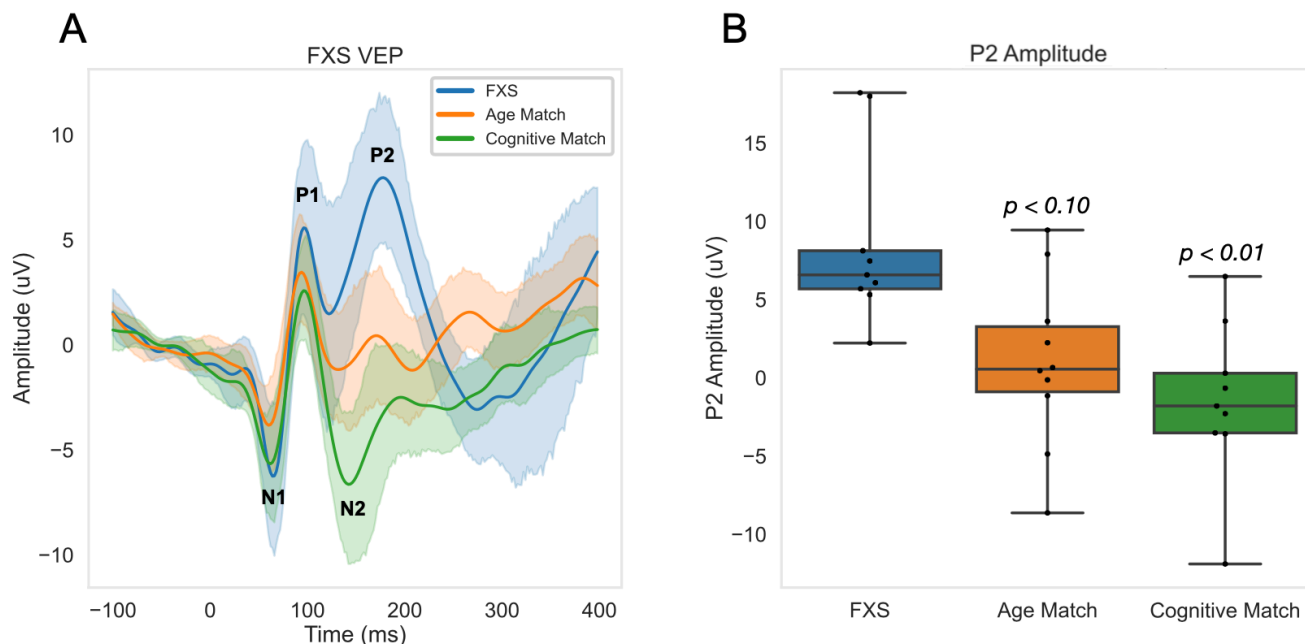


Figure 1: (A) Grand-averaged VEPs are shown, with 95% confidence intervals. (B) Mean P2 Amplitude across trials across groups. P values shown are in comparison to the FXS group.

2

3

4 **VEP and Nonverbal Development**

5

6

7

8

9

10

We next examined whether component amplitudes were associated with measures of nonverbal development, specifically the MSEL visual reception and fine motor subscales. Results from linear regression analyses with age included as a covariate are shown in Table 3. Within the FXS group, a larger, more negative N1 was correlated with higher fine motor scores. All other associations were not significant. Visualization of unadjusted Pearson correlation between N1 and fine motor scores is shown in Figure 2.

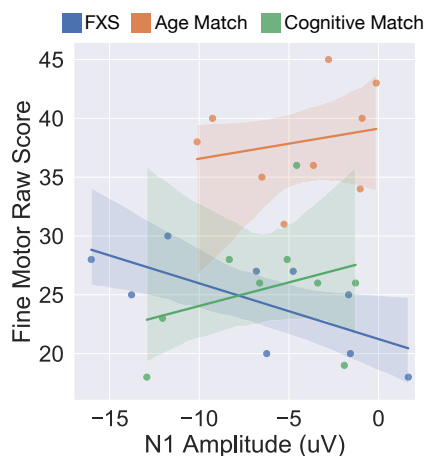


Figure 2: Correlation between N1 Amplitude and MSEL fine motor raw score for FXS, Age Match, and Cognitive Match groups.

1
2
3

Table 3: VEP component associations with clinical measures

	Mullen Scales of Early Learning		Preschool Language Scale	
	Visual Reception	Fine Motor	Expressive Communication	Auditory Comprehension
Adjusted R ²	0.327	0.569	0.041	0.540
Variables [B Coefficient (SE)]				
Intercept	15.46 (6.8) [†]	15.69 (3.15)**	19.43 (9.49) [†]	14.52 (6.58) [†]
N1 Amplitude	-0.63 (0.35)	-0.42 (0.16)*	-0.72 (0.49)	-0.98 (0.34)*
Age (months)	0.20 (0.15)	0.12 (0.07) [†]	0.04 (0.20)	0.18 (0.14)
Adjusted R ²	0.152	0.369	0.285	0.609
Variables [B Coefficient (SE)]				
Intercept	18.05 (7.53) [†]	17.44 (3.74)**	22.61 (8.04)*	18.75 (5.95)*
P1 Amplitude	-0.39 (0.35)	-0.29 (0.18)	-0.83 (0.38) [†]	-0.91 (0.28)*
Age (months)	0.29 (0.17)	0.20 (0.08) [†]	0.21 (0.18)	0.37 (0.13)*
Adjusted R ²	0.017	0.251	0.219	0.446
Variables [B Coefficient (SE)]				
Intercept	17.65 (8.11) [†]	17.08 (4.08)**	21.42 (8.41)*	17.50 (7.09)*
N2 Amplitude	-0.15 (0.30)	-0.17 (0.15)	-0.62 (0.31) [†]	-0.64 (0.26) [†]
Age (months)	0.25 (0.18)	0.17 (0.09)	0.12 (0.18)	0.27 (0.15)
Adjusted R ²	0.184	0.539	0.172	0.585
Variables [B Coefficient (SE)]				
Intercept	25.11 (9.44)*	23.45 (4.09)**	34.88 (11.07)*	33.55 (7.84)**
P2 Amplitude	-0.53 (0.43)	-0.45 (0.19) [†]	-0.93 (0.50)	-1.12 (0.36)*
Age (months)	0.18 (0.17)	0.11 (0.07)	-0.01 (0.20)	0.12 (0.14)

4
5
6
7

p < 0.01 ** p < 0.05 * p < 0.10 †

8 VEP and Verbal Development

9 We next examined associations between component amplitudes and language development, as
10 measured using the PLS-5. Linear regressions with age as a covariate found that larger N1

1 amplitude, and smaller P1 and P2 amplitudes were associated with better receptive language
2 skills ($p = 0.028$, $p = 0.017$, $p = 0.020$, respectively; Table 3). Additionally, association between
3 the N2 amplitude and Auditory Comprehension raw score was marginally significant ($p = 0.052$).
4 Only marginally significant associations were found between component amplitudes and the
5 Expressive Communication subscale. Visualization of unadjusted Pearson correlations are
6 shown in Figure 3. Note that the PLS-5 was only administered to FXS and age-matched
7 controls.

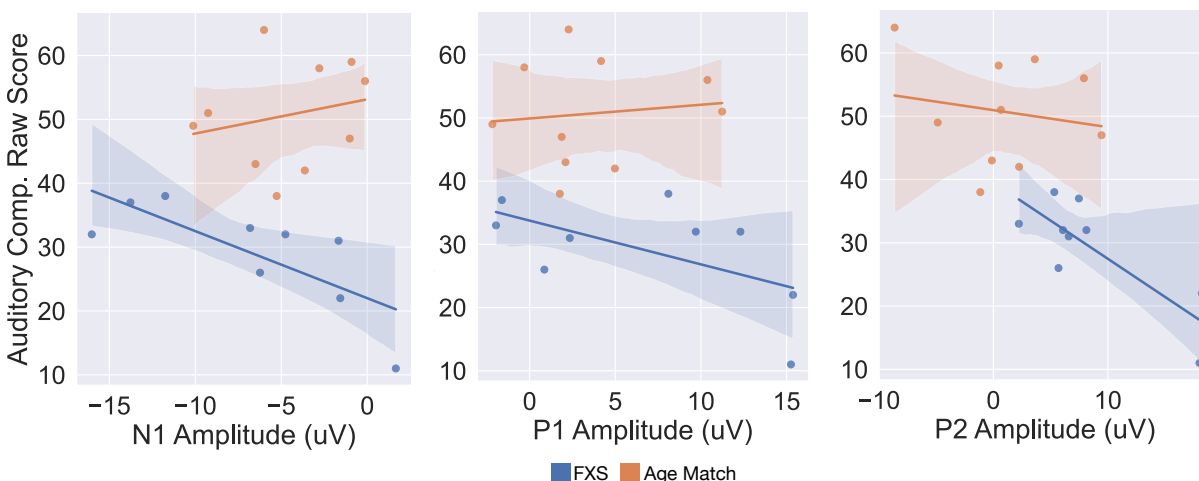


Figure 3: Correlations between N1, P1, and P2 Amplitude and PLS Auditory Comprehension Raw score for FXS and Age Match groups.

8

9

10 Discussion

11

12 In this study, we compared the VEP response in children with FXS compared to both
13 age- and cognitive-matched typically developing children. Overall, we observed that children
14 with FXS showed an increased P2 amplitude which was negatively associated with receptive
15 language development. These findings support further investigation of the P2 component as a
16 potential biomarker for the FXS population.

17

18 VEP Response

19 The FXS group produced clear and robust early VEP responses that largely matched
20 those of typically developing children, indicating that early- and lower-order visual processing is
21 likely functionally intact for this group. Instead, differences in a later and higher-order visual
22 processing component, the P2, was observed. FXS participants displayed an increased P2
23 amplitude compared to the cognitive-matched comparison group, with a similar but not-

1 significant trend when compared to the age-matched group. Prior ERP studies in male adults
2 with FXS have observed increased P2 amplitude in response to auditory but not in response to
3 visual stimuli (Knoth & Lippé, 2012; Van der Molen et al., 2012). In another study specifically
4 using a checkboard VEP stimulus, Knoth et al. also did not observe differences in P2 amplitude.
5 However, this study was in an older population (10-22 years) that included a larger percentage
6 of females who, although had full mutation, were also mosaic, which is associated with less
7 severe symptom presentation (Knoth et al., 2014). The VEP P2 component has been less well
8 studied than early components, but is thought to represent both primary sensory and higher
9 cognitive processing. It has been suggested that P2 amplitude is negatively associated with
10 attention. However, as our task was passive, we do not have a simultaneous measure of
11 attention to determine whether decreased attention was associated with increased P2 amplitude
12 in this sample. There is some evidence that P2 response in a visual priming task in adults is
13 associated with theta (4-6Hz) phase-locking (Freunberger et al., 2007), and interestingly,
14 studies in FXS adults have observed increased theta power in response to auditory stimuli
15 compared to age-matched adults without FXS (Ethridge et al., 2019).

16
17 Differences in VEP component amplitudes have also been observed in several genetic
18 neurodevelopmental disorders including tuberous sclerosis complex and 16p11.2 copy number
19 variants (LeBlanc & Nelson, 2016; Varcin et al., 2016). Most of these studies identify differences
20 in the early components, namely the N1 and P1, which are hypothesized to be related to early
21 processing of sensory information. In our FXS participants we observed only a marginally
22 significant group effect for the N1-P1 amplitude prior to adjusting for multiple comparisons, with
23 the FXS group having a larger N1-P1 amplitude compared to comparison groups. The P2
24 component has not been extensively studied in other neurodevelopmental disorders. However,
25 we do note that VEP waveforms obtained in Rett syndrome patients visually appear to have an
26 increased P2 amplitude, although this relationship was not statistically assessed (LeBlanc et al.,
27 2015). Identifying genetic disorders with shared ERP findings could shed further light on the
28 underlying mechanisms of the altered P2 component.

29
30

31 **VEP Associations with Nonverbal and Verbal Measures**

32 Previous studies have examined correlations between VEP component amplitudes and
33 various measures of development, finding that increases in component amplitudes are often

1 associated with better outcomes in typically developing populations (Jensen et al., 2019;
2 Josiassen et al., 1988). We hypothesized that N1 and P1 amplitudes would be associated with
3 nonverbal developmental measures. Indeed, we observed that within the FXS group a larger
4 (more negative) N1 amplitude was associated with better fine motor skills after adjusting for age.
5 Significant associations between other components and non-verbal measures were not
6 observed. In addition, we did not observe significant associations between VEP components
7 and nonverbal development within the two typically developing samples, although our sample
8 size is small, so negative findings must be interpreted with caution.

9 We also examined associations between component amplitudes and measures of verbal
10 development. Here, a larger (more negative) N1 amplitude and smaller (less positive) P1 and
11 P2 amplitudes were significantly associated with better receptive language within the FXS
12 group. Association between N2 amplitude and receptive language was marginally significant.
13 Associations between VEP measures and expressive communication were not found to be
14 significant, although the trends were consistent across these measures for FXS children. Our
15 finding that both early (N1) and later (P2) components are associated with receptive language,
16 could be interpreted in several ways. First, it may suggest that alterations in visual sensory
17 processing affect language development, with receptive language processing being more
18 affected due to its increased reliance on additional visual information, especially at young ages.
19 Alternatively, these findings may instead reflect global network alterations within FXS, such as
20 imbalances in glutamatergic/GABAergic signaling, separately affecting visual brain responses
21 and language development. In this same cohort of subjects, we found that increased aperiodic
22 gamma power, hypothesized to be a marker increased cortical excitation, was associated with
23 better language abilities (Wilkinson & Nelson, 2021). Differences in basal neuronal network
24 excitability could cause differences in VEP response. Exploratory correlation analysis between
25 baseline aperiodic gamma power VEP components found no significant associations, however
26 given the small sample size, further analysis in larger populations is necessary to determine the
27 relationships between underlying network activity and brain responses to stimuli.

28
29 Finally, a larger (more negative) N1 amplitude was associated with both better verbal and
30 nonverbal measures, suggesting it may be a proxy of overall cognitive functioning. Ethridge et
31 al. 2019 similarly observed that a larger N1 amplitude in response to an auditory habituation
32 task, was associated with better scores on Woodcock-Johnson III Test of Cognitive Abilities
33 Auditory Attention subscale. Authors hypothesized that the increased N1 amplitude within the

1 FXS population may reflect increased hyper-vigilance and in turn improved ability to complete
2 standardized tests.

3

4 **Limitations and Clinical Relevance**

5 FXS is a rare genetic disorder, which creates challenges in recruiting large patient
6 samples. In addition, collecting high quality EEG data is challenging in young populations with
7 limited communication abilities and increased behavioral challenges. Despite the small sample
8 size, our findings present a promising future avenue for clinical use. Namely, the VEP P2
9 component is worthy of continued study as a potential biomarker for FXS itself, as the P2
10 amplitude was significantly increased in FXS children and often weak or absent in typically
11 developing populations. In addition, this paper contributes to a field of research that is beginning
12 to reveal VEP N1 and P2 amplitudes as a useful neurobiological outcome measure of
13 developmental levels that could be used in clinical trials.

14

15 **Bibliography**

16

- 17 Berry-Kravis, E., Hessler, D., Abbeduto, L., Reiss, A. L., Beckel-Mitchener, A., & Urv, T. K. (2013).
18 Outcome Measures for Clinical Trials in Fragile X Syndrome. *Journal of Developmental &*
19 *Behavioral Pediatrics*, 34(7), 508–522. <https://doi.org/10.1097/DBP.0b013e31829d1f20>
- 20 Contractor, A., Klyachko, V. A., & Portera-Cailliau, C. (2015). Altered Neuronal and Circuit
21 Excitability in Fragile X Syndrome. *Neuron*, 87(4), 699–715.
22 <https://doi.org/10.1016/j.neuron.2015.06.017>
- 23 Ethridge, L. E., de Stefano, L. A., Schmitt, L. M., Woodruff, N. E., Brown, K. L., Tran, M., Wang,
24 J., Pedapati, E. v., Erickson, C. A., & Sweeney, J. A. (2019). Auditory EEG Biomarkers in
25 Fragile X Syndrome: Clinical Relevance. *Frontiers in Integrative Neuroscience*, 13.
26 <https://doi.org/10.3389/fnint.2019.00060>
- 27 Ferree, T. C., Luu, P., Russell, G. S., & Tucker, D. M. (2001). Scalp electrode impedence,
28 infection risk, and EEG data quality. *Clinical Neurophysiology: Official Journal of the*
29 *International Federation of Clinical Neurophysiology*, 112(3), 536–544.
30 [https://doi.org/10.1016/s1388-2457\(00\)00533-2](https://doi.org/10.1016/s1388-2457(00)00533-2)
- 31 Freunberger, R., Klimesch, W., Doppelmayr, M., & Höller, Y. (2007). Visual P2 component is
32 related to theta phase-locking. *Neuroscience Letters*, 426(3), 181–186.
33 <https://doi.org/10.1016/j.neulet.2007.08.062>
- 34 Garber, K. B., Visootsak, J., & Warren, S. T. (2008). Fragile X syndrome. *European Journal of*
35 *Human Genetics*, 16(6), 666–672. <https://doi.org/10.1038/ejhg.2008.61>
- 36 Gibson, J. R., Bartley, A. F., Hays, S. A., & Huber, K. M. (2008). Imbalance of Neocortical
37 Excitation and Inhibition and Altered UP States Reflect Network Hyperexcitability in the
38 Mouse Model of Fragile X Syndrome. *Journal of Neurophysiology*, 100(5), 2615–2626.
39 <https://doi.org/10.1152/jn.90752.2008>

- 1 Hagerman, R. J., Berry-Kravis, E., Hazlett, H. C., Bailey, D. B., Moine, H., Kooy, R. F., Tassone,
2 F., Gantois, I., Sonenberg, N., Mandel, J. L., & Hagerman, P. J. (2017). Fragile X
3 syndrome. *Nature Reviews Disease Primers*, 3(1), 17065.
4 <https://doi.org/10.1038/nrdp.2017.65>
- 5 Hagerman, R. J., Berry-Kravis, E., Kaufmann, W. E., Ono, M. Y., Tartaglia, N., Lachiewicz, A.,
6 Kronk, R., Delahunty, C., Hessel, D., Visootsak, J., Picker, J., Gane, L., & Tranfaglia, M.
7 (2009). Advances in the Treatment of Fragile X Syndrome. *Pediatrics*, 123(1), 378–390.
8 <https://doi.org/10.1542/peds.2008-0317>
- 9 Henderson, C., Wijetunge, L., Kinoshita, M. N., Shumway, M., Hammond, R. S., Postma, F. R.,
10 Brynczka, C., Rush, R., Thomas, A., Paylor, R., Warren, S. T., Vanderklish, P. W., Kind, P.
11 C., Carpenter, R. L., Bear, M. F., & Healy, A. M. (2012). Reversal of Disease-Related
12 Pathologies in the Fragile X Mouse Model by Selective Activation of GABA_B Receptors with
13 Arbaclofen. *Science Translational Medicine*, 4(152), 152ra128.
14 <https://doi.org/10.1126/scitranslmed.3004218>
- 15 Hunter, J. D. (2007). Matplotlib: A 2D Graphics Environment. *Computing in Science &*
16 *Engineering*, 9(3), 90–95. <https://doi.org/10.1109/MCSE.2007.55>
- 17 Jacquemont, S., Berry-Kravis, E., Hagerman, R., von Raison, F., Gasparini, F., Apostol, G.,
18 Ufer, M., des Portes, V., & Gomez-Mancilla, B. (2014). The challenges of clinical trials in
19 fragile X syndrome. *Psychopharmacology*, 231(6), 1237–1250.
20 <https://doi.org/10.1007/s00213-013-3289-0>
- 21 Jensen, S. K. G., Kumar, S., Xie, W., Tofail, F., Haque, R., Petri, W. A., & Nelson, C. A. (2019).
22 Neural correlates of early adversity among Bangladeshi infants. *Scientific Reports*, 9(1),
23 3507. <https://doi.org/10.1038/s41598-019-39242-x>
- 24 Josiassen, R. C., Shagass, C., Roemer, R. A., & Slepner, S. (1988). Evoked potential correlates
25 of intelligence in nonpatient subjects. *Biological Psychology*, 27(3), 207–225.
26 [https://doi.org/10.1016/0301-0511\(88\)90031-2](https://doi.org/10.1016/0301-0511(88)90031-2)
- 27 Knoth, I. S., & Lippé, S. (2012). Event-related potential alterations in fragile X syndrome.
28 *Frontiers in Human Neuroscience*, 6, 264. <https://doi.org/10.3389/fnhum.2012.00264>
- 29 Knoth, I. S., Vannasing, P., Major, P., Michaud, J. L., & Lippé, S. (2014). Alterations of visual
30 and auditory evoked potentials in fragile X syndrome. *International Journal of*
31 *Developmental Neuroscience*, 36, 90–97. <https://doi.org/10.1016/j.ijdevneu.2014.05.003>
- 32 LeBlanc, J. J., DeGregorio, G., Centofante, E., Vogel-Farley, V. K., Barnes, K., Kaufmann, W.
33 E., Fagiolini, M., & Nelson, C. A. (2015). Visual evoked potentials detect cortical processing
34 deficits in Rett syndrome. *Annals of Neurology*, 78(5), 775–786.
35 <https://doi.org/10.1002/ana.24513>
- 36 LeBlanc, J. J., & Nelson, C. A. (2016). Deletion and duplication of 16p11.2 are associated with
37 opposing effects on visual evoked potential amplitude. *Molecular Autism*, 7(1), 30.
38 <https://doi.org/10.1186/s13229-016-0095-7>
- 39 Lozano, R., Hare, E. B., & Hagerman, R. J. (2014). Modulation of the GABAergic pathway for
40 the treatment of fragile X syndrome. *Neuropsychiatric Disease and Treatment*, 10, 1769–
41 1779. <https://doi.org/10.2147/NDT.S42919>
- 42 Monachino, A. D., Lopez, K. L., Pierce, L. J., & Gabard-Durnam, L. J. (2021). The HAPPE plus
43 Event-Related (HAPPE+ER) Software: A Standardized Processing Pipeline for Event-

- 1 Related Potential Analyses. *BioRxiv*.
2 [https://www.biorxiv.org/content/10.1101/2021.07.02.450946v1%0Ahttps://www.biorxiv.org/c](https://www.biorxiv.org/content/10.1101/2021.07.02.450946v1%0Ahttps://www.biorxiv.org/content/10.1101/2021.07.02.450946v1.abstract)
3 [ontent/10.1101/2021.07.02.450946v1.abstract](https://www.biorxiv.org/content/10.1101/2021.07.02.450946v1.abstract)
- 4 Mullen, EM. (1995). *Mullen Scales of Early Learning*. American Guidance Service.
- 5 Odom, J. V., Bach, M., Barber, C., Brigell, M., Marmor, M. F., Tormene, A. P., & Holder, G. E.
6 (2004). Visual evoked potentials standard (2004). *Documenta Ophthalmologica*, 108(2),
7 115–123. <https://doi.org/10.1023/B:DOOP.0000036790.67234.22>
- 8 Qin, M., Huang, T., Kader, M., Krych, L., Xia, Z., Burlin, T., Zeidler, Z., Zhao, T., & Smith, C. B.
9 (2015). R-Baclofen Reverses a Social Behavior Deficit and Elevated Protein Synthesis in a
10 Mouse Model of Fragile X Syndrome. *International Journal of Neuropsychopharmacology*,
11 18(9), pyv034. <https://doi.org/10.1093/ijnp/pyv034>
- 12 Van der Molen, M. J. W., Van der Molen, M. W., Ridderinkhof, K. R., Hamel, B. C. J., Curfs, L.
13 M. G., & Ramakers, G. J. A. (2012). Auditory and visual cortical activity during selective
14 attention in fragile X syndrome: A cascade of processing deficiencies. *Clinical*
15 *Neurophysiology*, 123(4), 720–729. <https://doi.org/10.1016/j.clinph.2011.08.023>
- 16 Varcin, K. J., Nelson, C. A., Ko, J., Sahin, M., Wu, J. Y., & Jeste, S. S. (2016). Visual evoked
17 potentials as a readout of cortical function in infants with tuberous sclerosis complex.
18 *Journal of Child Neurology*, 31(2), 195–202. <https://doi.org/10.1177/0883073815587328>
- 19 Wilkinson, C. L., & Nelson, C. A. (2021). Increased aperiodic gamma power in young boys with
20 Fragile X Syndrome is associated with better language ability. *Molecular Autism*, 12(1), 17.
21 <https://doi.org/10.1186/s13229-021-00425-x>
- 22 Zimmerman, I. L., Steiner, V. G., & Pond, R. E. (2011). *Preschool Language Scales, Fifth*
23 *Edition* (Fifth). Pearson Education, Inc.
24 [http://www.pearsonclinical.com/language/products/100000233/preschool-language-scales-](http://www.pearsonclinical.com/language/products/100000233/preschool-language-scales-fifth-edition-pls-5.html)
25 [fifth-edition-pls-5.html](http://www.pearsonclinical.com/language/products/100000233/preschool-language-scales-fifth-edition-pls-5.html)
- 26
27
28
29
30
31
32
33
34
35
36
37
38
39
40
41
42
43

1
2
3
4
5
6
7
8
9
10
11
12
13
14
15
16
17
18
19
20
21
22
23
24
25
26
27
28
29
30
31
32
33
34
35
36
37
38
39
40
41
42
43

List of Abbreviations

ADHD: Attention Deficit Hyperactivity Disorder

ADOS: Autism Diagnostic Observation Schedule

ANCOVA: Analysis of Covariance

ANOVA: Analysis of Variance

ASD: Autism Spectrum Disorder

EEG: Electroencephalogram

ERP: Event Related Potential

FDR: False Discovery Rate

FXS: Fragile X Syndrome

FMRP: Fragile X Messenger Ribonucleoprotein 1

GABA: Gamma-Aminobutyric Acid

HAPPE+ER: Harvard Automated Processing Pipeline for Electroencephalography plus Event-Related Software

MSEL: Mullen Scales of Early Learning

NVDQ: Nonverbal Developmental Quotient

PLS: Preschool Language Scale

TSC: Tuberous Sclerosis Complex

VEP: Visual Evoked Potential

1 **FIGURE TITLES AND LEGENDS**

2

3 **Figure 1: Grand average VEPs and P2 Amplitude across groups.** (A) Grand-averaged VEPs
4 are shown, with 95% confidence intervals. (B) Mean P2 Amplitude across trials across groups.
5 P values shown are in comparison to the FXS group.

6

7 **Figure 2: VEP N1 Amplitude and fine motor development.** Correlation between N1
8 Amplitude and MSEL fine motor raw score for FXS, Age Match, and Cognitive Match groups are
9 shown.

10

11 **Figure 3: VEP component amplitudes and receptive language development.** Correlation
12 between N1, P1, and P2 Amplitude and PLS Auditory Comprehension Raw score for FXS, Age
13 Match, and Cognitive Match groups are shown.

14

15

16

17

18

19

20

21

22

23

24

25

26

27

28

29

30

31

32

33

34

35

36

37

38

39

40

41

42

43

44

1 **DECLARATIONS**

2 **Acknowledgements:** We thank all the families who participated in this study. We also thank
3 Jack Keller, Megan Lauzé, and the Translational Neuroscience Center Human Neurobehavioral
4 Core at Boston Children's Hospital for their assistance in data collection. We also thank the
5 Infant Screening Study Team for their assistance in data collection of the cognitive-matched
6 controls. We thank Graham Holt for his EEG technical support.

7
8 **Author Contributions:** CLW contributed to the conception and design of the study. CLW, JF,
9 and MH recruited participants and collected data. ES and CLW performed the data analysis and
10 data visualization, and wrote the draft of the manuscript. All authors contributed to manuscript
11 revision, read, and approved the submitted manuscript.

12
13 **Funding:** Support for this work was provided by: FRAXA Research Foundation, Autism Science
14 Foundation, The Pierce Family Fragile X Foundation, Thrasher Research Fund, Society for
15 Developmental Behavioral Pediatrics, Harvard Catalyst Medical Research Investigator Training
16 Award, the National Fragile X Foundation, and the National Institutes of Health
17 (1T32MH112510, 1K23DC017983-01A1, R01DC010290).

18
19 **Availability of data and materials:** The datasets used and/or analyzed during the current study
20 are available from the corresponding authors on reasonable request.

21
22 **Ethics approval and consent to participate:** The study was approved by the institutional
23 review board (#P00025493, P000183777).

24 Consent for publication: N/A

25
26 **Competing Interests:** The authors declare that they have no competing interests.

27
28 **Author Information:** Not applicable