

1 **Homologous Recombination Inquiry Through Ovarian Malignancy Investigations: The**  
2 **Japanese Gynecologic Oncology Group study JGOG3025**

3  
4 Kosuke Yoshihara MD, PhD<sup>1</sup>, Tsukasa Baba MD, PhD<sup>2</sup>, Muneaki Shimada MD, PhD<sup>3</sup>, Koji  
5 Nishino MD, PhD<sup>1</sup>, Masayuki Sekine MD, PhD<sup>1</sup>, Shiro Takamatsu MD<sup>4</sup>, Noriomi Matsumura  
6 MD, PhD<sup>5</sup>, Hiroshi Yoshida MD, PhD<sup>6,13</sup>, Hiroaki Kajiyama MD, PhD<sup>7</sup>, Tatsuo Kagimura PhD<sup>8</sup>,  
7 Katsutoshi Oda MD, PhD<sup>9</sup>, Yuko Sasajima MD, PhD<sup>10</sup>, Aikou Okamoto MD, PhD<sup>11</sup>, Toru  
8 Sugiyama MD, PhD<sup>12</sup>, Takayuki Enomoto MD, PhD<sup>1,14</sup>

- 9  
10 1. Department of Obstetrics and Gynecology, Niigata University Graduate School of Medical  
11 and Dental Sciences, Niigata, Japan  
12 2. Department of Obstetrics and Gynecology, Iwate Medical University, Morioka, Japan  
13 3. Department of Gynecology, Tohoku University Graduate School of Medicine, Sendai, Japan  
14 4. Department of Gynecology and Obstetrics, Graduate School of Medicine, Kyoto University,  
15 Kyoto, Japan  
16 5. Department of Obstetrics and Gynecology, Kindai University Faculty of Medicine, Osaka,  
17 Japan  
18 6. Department of Obstetrics and Gynecology, Yokohama Municipal Citizen's Hospital,  
19 Yokohama, Japan  
20 7. Department of Obstetrics and Gynecology, Nagoya University Graduate School of Medicine,  
21 Nagoya, Japan  
22 8. Translational Research Center for Medical Innovation, Kobe, Japan  
23 9. Division of Integrative Genomics, University of Tokyo, Tokyo, Japan

- 24 10. Department of Pathology, Teikyo University Hospital, Tokyo, Japan
- 25 11. Department of Obstetrics and Gynecology, The Jikei University School of Medicine,  
26 Tokyo, Japan
- 27 12. Department of Obstetrics and Gynecology, St. Mary's Hospital, Fukuoka, Japan
- 28 13. Department of Obstetrics and Gynecology, Tokai University Graduate School of  
29 Medicine, Isehara, Japan (present)
- 30 14. Niigata University Graduate School of Medical and Dental Sciences, Niigata, Japan

31

32 **Corresponding authors: Takayuki Enomoto**

33 Takayuki Enomoto MD, PhD

34 Niigata University Graduate School of Medical and Dental Sciences

35 E-mail: enomoto@med.niigata-u.ac.jp

36 Phone: +81-25-227-2320

37 Fax: +81-25-227-0789

38

39 **Keywords:** Ovarian cancer, Homologous recombination deficiency, Target-gene sequencing,

40 HITOMI study

41

42 **Manuscript word count:** 3759 words

43 Number of Figures: 6

44 Number of Tables: 2

45 Number of Supporting Information: 2

46 **Abstract**

47 The Cancer Genome Atlas has clarified that about 50% of high-grade serous ovarian cancer  
48 shows homologous recombination deficiency (HRD). However, the frequency of HRD in  
49 Japanese patients with ovarian cancer remains unclear. The aim of JGOG3025 study  
50 (NCT03159572) is to identify the frequency of HRD in Japanese patients with ovarian cancer.  
51 The JGOG3025 study is a multicenter collaborative prospective observational study involving 65  
52 study sites throughout Japan. We recruited 996 patients who were clinically diagnosed with  
53 ovarian cancer before surgery from March 2017 to March 2019, and 701 patients were eligible  
54 for JGOG3025 criteria. We used frozen tumor tissues to extract DNA and performed targeted  
55 sequencing for 51 genes most of which are HR-associated genes in 701 ovarian cancers (298  
56 high-grade serous, 189 clear cell, 135 endometrioid, 12 mucinous, 3 low-grade serous, and 64  
57 others). HRD was defined as positive when at least one HR-associated gene was mutated. The  
58 frequencies of HRD and tumor *BRCA1/2* mutation were 45.2% (317/701) and 18.5% (130/701)  
59 in the full analysis set (FAS), respectively. Next, we performed multivariate Cox proportional  
60 hazards regression analysis for progression-free survival (PFS) and overall survival (OS).  
61 Advanced-stage ovarian cancer patients with HRD had an adjusted hazard ratio of 0.72 (95%CI,  
62 0.55-0.93) and 0.58 (95%CI, 0.39-0.87) for PFS and OS compared to those without HRD ( $p =$   
63 0.013 and 0.009). Our study demonstrated that mutations in HR-associated genes might be  
64 associated with their prognosis. Further study will be needed to investigate prognostic impact of  
65 each HR-associated gene in ovarian cancer.

66 **Abbreviations**

67 aHR: adjusted hazard ratio

68 CI: Confidence Interval

69 FAS: Full analysis set

70 FIGO: International Federation of Gynecology and Obstetrics

71 GI: Genomic Instability

72 HR: homologous recombination

73 HRD: homologous recombination deficiency

74 JGOG: Japanese Gynecologic Oncology Group

75 MSI: Microsatellite instability

76 NAC: Neoadjuvant chemotherapy

77 OS: Overall survival

78 PARP: poly (ADP-ribose) polymerase

79 PFS: Progression free survival

80 PS: Performance status

81 SNV: Single nucleotide variant

82 TCGA: The Cancer Genome Atlas

83 ToMMo: Tohoku Medical Megabank organization

84 VAF: variant allele frequency

85

86

## 87 **1. Introduction**

88 Homologous recombination deficiency (HRD) has attracted attention as a new molecular  
89 biomarker in gynecologic oncology field<sup>1</sup>. Homologous recombination (HR) repair is one of the  
90 repair mechanisms for DNA double-strand breaks, in which the ends of double-strand breaks are  
91 precisely repaired<sup>2</sup>. In humans, several genes including *BRCA1/2* and *RAD51* are involved in  
92 HR repair, and genomic alterations in these HR-associated genes result in HRD. In HRD cells,  
93 DNA repair mechanisms other than HR repair are important, especially poly (ADP-ribose)  
94 polymerase (PARP) is focused on a new therapeutic target. PARP inhibition in HRD cells leads  
95 to genomic instability and cell death (synthetic lethality)<sup>3</sup>. At present, two PARP inhibitors  
96 (olaparib and niraparib) have become clinically available for ovarian cancer in Japan.  
97 Interestingly, two phase III trials have demonstrated that niraparib significantly prolonged  
98 progression-free survival (PFS) in not only patients with *BRCA1/2* mutations but also those with  
99 HRD compared to placebo<sup>4, 5</sup>. PAOLA-1 regimen (olaparib + bevacizumab) also provides a  
100 significant PFS benefit in patients with HRD<sup>6</sup>. Thus, HRD status is an important factor in the  
101 treatment of ovarian cancer.

102 The Cancer Genome Atlas (TCGA), a national cancer genome project of the United States, found  
103 that about half of high-grade serous ovarian cancers have genomic or epigenomic alterations in  
104 the HR-associated pathway such as *BRCA1/2* mutations, *BRCA1* methylation, *CDK12* mutations,  
105 and *RAD51C* promoter methylation<sup>7, 8</sup>. However, the frequency of HR-associated mutations in  
106 ovarian cancer in Japan remains unclear, especially in non-serous histologic type. Because there  
107 are differences in the distribution of histologic types in ovarian cancer between the United States  
108 and Japan, the results of TCGA cannot be directly applied to Japan. In addition, clinical  
109 significance of HRD remains unclear compared to that of germline *BRCA1/2* mutation.

110 Therefore, it is an urgent issue to investigate the frequency and clinical significance of HRD in  
111 Japanese patients with ovarian cancer.

112 So, on 2017, we started JGOG3025 trial, which was a multicenter collaborative prospective  
113 observational study, to clarify the frequency of HRD in Japanese patients with ovarian cancer.  
114 We defined the presence of at least one HR-associated gene mutation as HRD in this study. We  
115 closed enrollment of the participants at the end of March 2019, and fixed data after 30 months of  
116 follow-up. We report the results of final analysis in the JGOG3025 trial.

117

## 118 **2. Materials and Methods**

### 119 **2.1 Patients and study design**

120 A multicenter collaborative prospective observational study (ClinicalTrials.gov, NCT03159572;  
121 UMIN 000026303) was conducted in Japan between January 2017 and September 2021. We  
122 enrolled the participants for 27 months between January 2017 and March 2019 and the follow-up  
123 period was 30 months after the end of enrollment. The target sample size was 700. Study schema  
124 is shown in Figure 1. Patients diagnosed with ovarian cancer clinically were enrolled in 65  
125 Japanese Gynecologic Oncology Group (JGOG) institutions throughout Japan (Table S1). After  
126 written informed consent for HRD test and biobanking, we obtained tumor tissue samples during  
127 surgery. Tumor tissue samples were sent to JGOG-Tohoku Medical Megabank organization  
128 (ToMMo) Biobank under controlled temperature. We performed HRD test after the end of  
129 enrollment. When patients had the information of germline *BRCA1/2* mutation and allowed us to  
130 use this information in this study, germline *BRCA1/2* mutation status was also submitted to data  
131 center. Treatment selection was basically performed according to the Japan Society of  
132 Gynecologic Oncology guidelines for the treatment of ovarian cancer, fallopian tube cancer, and

133 primary peritoneal cancer<sup>9, 10</sup>. All evaluations were scheduled according to the clinical practice  
134 standards of each institution.

135 We collected data including patient characteristics, clinicopathological data, clinical outcome,  
136 and adverse events. Clinical outcome was updated prospectively every 6 months on the  
137 electronic data capture system.

138 The study was conducted in accordance with the Declaration of Helsinki and the Ethical  
139 Guidelines for Medical and Health Research Involving Human Subjects. Approval from the  
140 institutional review board of each participating JGOG institution was obtained prior to initiation  
141 of the study. All patients provided written informed consent.

142

## 143 **2.2 Study population**

144 The inclusion criteria are as follows: Patients who can approve informed consent and sign it;  
145 Patients who show their will to participate in this study and can sign the informed consent forms  
146 by themselves; Patients who are clinically diagnosed as ovarian cancer and can provide written  
147 informed consent before the surgery; Patients who are 20 years old and over at the enrollment;  
148 Patients with ECOG Performance status (PS) 0-2; Patients who can provide tumor tissue  
149 specimens. Ascites cytology and cell block specimens are not considered tumor tissue specimens.  
150 For patients to be treated with Neoadjuvant Chemotherapy (NAC), a tumor biopsy should be  
151 performed prior to NAC to make a pathologic diagnosis and to obtain a tumor tissue specimen.

152 Patients are excluded based on the following criteria: Patients with other clinically active  
153 malignancy (except breast cancer) that have been treated within 5 years (excluding basal cell  
154 carcinoma and squamous cell carcinoma of the skin, and carcinoma in situ or intramucosal

155 carcinoma which are curable with local treatment); the principal investigator judges that  
156 enrollment of the patient in the study is inappropriate.

157

### 158 **2.3 Study outcomes**

159 The primary outcome of JGOG3025 trial is to identify the HRD frequency in Japanese patients  
160 with ovarian cancer including fallopian tube cancer and primary peritoneal cancer. The  
161 secondary outcome is to assess associations between PFS and HRD in ovarian cancer and  
162 between PFS and germline *BRCA1/2* mutation in ovarian cancer. PFS was defined as the time  
163 from registration in the trial to disease progression or death from any cause.

164

### 165 **2.4 Definition of HRD**

166 We performed target-gene sequencing of 51 genes by using DNA extracted from cancer tissues.  
167 A list of genes is shown in Table S2. Five genes (*ARID1A*, *KRAS*, *PIK3CA*, *PTEN*, and *TP53*)  
168 were included as molecular diagnostic markers in ovarian cancer, and 29 genes were categorized  
169 as HR-associated genes. We used QIAseq Targeted DNA Custom Panel (CDHS-16649Z-2451,  
170 Qiagen) and conducted 150bp paired-end sequencing on the Illumina NextSeq sequencer. Single  
171 nucleotide variant (SNV) or short InDel was detected by smCounter2 (Qiagen)<sup>11</sup>. Variant  
172 annotation was performed using ANOVAR version 20190408<sup>12</sup>.

173 To make a mutation list, we generated MAF file using maftools<sup>13</sup> and filtered as follow: variants  
174 with variant allele frequency(VAF) less than 5% were excluded; variants classified as Nonsense,  
175 Frame Shift InDel, Nonstop, Translation Start Site, Missense, Splice Site were included; variants  
176 with VAF more than 1% in gnomAD<sup>14</sup>, 1000 Genomes Project<sup>15</sup>, ExAC<sup>16</sup>, ESP6500<sup>17</sup>, or 14K  
177 Japanese custom reference from jMorp<sup>18</sup> were excluded; variants interpreted as pathogenic or



178 likely pathogenic in ClinVar (<https://www.ncbi.nlm.nih.gov/clinvar/>) or InterVar<sup>19</sup> were  
179 included; Based on dbsnpf35a or dbcsnv11, Missense variants with deleterious 2 predictions or  
180 Splice variants with deleterious > 1 prediction were included; variants which are not found in  
181 both COSMIC<sup>20</sup> and ICGC<sup>21</sup> were excluded.

182 As for HRD, we defined case harboring at least one mutation of HR-associated genes as HRD  
183 and case without any HR-associated gene mutation as non-HRD. Because Microsatellite  
184 Instability (MSI)-high or POLE mutated ovarian cancers showing very high tumor mutational  
185 burden led to passenger mutation of HR-associated genes, cases with both HR associated gene  
186 mutations and MSI-high or POLE mutations were determined as HRD negative.

187

## 188 **2.5 Central pathological review**

189 To confirm the histological diagnosis, central pathological review was performed by three  
190 pathologists assigned by the Japanese Gynecologic Oncology Group using hematoxylin and  
191 eosin slide specimens from tumor tissues. The central histological evaluation and diagnosis of  
192 ovarian cancer was based on the WHO classification of tumors of female reproductive organs.

193

## 194 **2.6 Statistical analysis**

195 Descriptive statistics were used for clinicopathological characteristics, with n (%) for categorical  
196 variable. The full analysis set (FAS) consisted of all ovarian cancer patients with target-gene  
197 sequencing data. The frequency of HRD was calculated, together with 95% CIs, for all patients,  
198 and was stratified by FIGO stage and histologic types. Cox proportional hazard model analysis  
199 was performed to investigate an association of HRD or germline *BRCA1/2* status with PFS or OS  
200 after adjustment for age, stage, histologic type, surgery, NAC, and adjuvant chemotherapy. All

201 statistical analyses were performed using SAS 9.4 (SAS Institute, Cary, North Carolina, USA) or  
202 R version 4.1.1 (<https://www.R-project.org/>).

203

### 204 **3. Results**

#### 205 **3.1 Patient characteristics**

206 The study was conducted from June 2015 to November 2019. The enrollment period was  
207 initially planned for 2 years but was extended to 2 years 3 months to reach the sample size  
208 required. The patient disposition is shown in Figure 2. A total of 996 patients who were clinically  
209 diagnosed with ovarian cancer were enrolled, but 295 patients were excluded from the full  
210 analysis set according to the eligibility criteria. A total of 701 patients were included in the final  
211 analysis. Patient characteristics are shown in Table 1. Patients in the full analysis set had a mean  
212 age of 58.4 years. Of 701 patients, 47.4% were stage I/II and 51.6% were stage III/IV.

213

#### 214 **3.2 Primary outcome**

215 The frequency of HRD in Japanese patients with ovarian cancer was 45.2% (317/701) (Figure 1).  
216 The mutation rates of tumor *BRCA1* and *BRCA2* were 9.8%, 7.7%, respectively. Seven patients  
217 (1.0%) had both germline *BRCA1* and *BRCA2* mutations. On the other hand, the mutation rate of  
218 HR-associated genes except *BRCA1/2* was 26.7%.

219

#### 220 **3.3 Secondary outcomes**

221 First, we performed Cox proportional hazard model analysis after adjustment for age, stage,  
222 histologic type, surgery, NAC, and adjuvant chemotherapy. There was no significant difference

223 in PFS between HRD and non-HRD groups (adjusted hazard ratio (aHR), 0.84; 95% confidence  
224 interval (CI), 0.66-1.06;  $p = 0.14$ ).

225 Next, we stratified ovarian cancers by FIGO stage. Although there was no significant difference  
226 in PFS between stage I/II HRD and non-HRD subgroups (aHR, 1.35; 95%CI, 0.82-2.24;  $p =$   
227 0.24), PFS in stage III/IV HRD subgroup was significantly longer than that in non-HRD  
228 subgroup (aHR, 0.72; 95%CI, 0.55-0.93;  $p = 0.013$ ) (Figure 4). In addition, OS in stage III/IV  
229 HRD subgroup was also significantly longer than that in non-HRD subgroup (aHR, 0.58; 95%CI,  
230 0.39-0.87;  $p = 0.009$ ) (Figure 5).

231 The frequency of HRD by histologic type was shown in Table 2. In patients with high-grade  
232 serous carcinoma, the frequencies of both HRD and tumor *BRCA1/2* mutations were relatively  
233 higher than those of other histologic types. Although the frequency of HRD in clear-cell type  
234 was also relatively high, tumor *BRCA1/2* mutation rate was lower than that of high-grade serous  
235 carcinoma.

236 Finally, we focused on germline *BRCA1/2* mutation status in ovarian cancer. We collected  
237 germline *BRCA1/2* information from 112 participants. Of them, germline *BRCA1/2* mutations  
238 were positive in 21 participants. 18 of which were identified in the corresponding tumors in this  
239 study cohort. There was no significant difference in PFS between PFS and germline *BRCA1/2* in  
240 stage I/II ovarian cancer because only three participants harbor germline *BRCA1/2* mutation  
241 (aHR, 1.12; 95%CI, 0.08-15.67;  $p = 0.93$ ). On the other hand, germline *BRCA1/2* mutated stage  
242 III/IV ovarian cancers show significantly longer PFS compared to germline *BRCA1/2* wildtype  
243 stage III/IV ovarian cancers (aHR, 0.32; 95%CI, 0.14-0.72;  $p = 0.006$ ) (Figure 6). In addition,  
244 germline *BRCA1/2* mutation was significantly associated with OS in stage III/IV ovarian cancer  
245 (aHR, 0.12; 95%CI, 0.02-0.59;  $p = 0.009$ ).

246

#### 247 4. Discussion

248 Our multicenter collaborative prospective observational study revealed that the frequency of  
249 HRD in Japanese patients with ovarian cancer was 45.2% and that HRD was significantly  
250 associated with PFS and OS in advanced stage ovarian cancer.

251 In this study, we enrolled patients who were clinically diagnosed with ovarian cancer and could  
252 provide tumor tissue sample after surgery. Compared to the real-world distribution of each  
253 histology based on the JSOG annual report<sup>22</sup>, the proportion of mucinous carcinoma and low-  
254 grade serous carcinoma was smaller in the JGOG3025 trial. This may be due to the difficulty of  
255 preoperative diagnosis and tumor tissue sampling in mucinous and low-grade serous carcinomas.

256 HRD was significantly associated with prognosis in Stage III/IV ovarian cancer but not in Stage  
257 I/II. The distribution of histologic types differed between Stage I/II and Stage III/IV, and the  
258 proportion of high-grade serous carcinoma was higher in Stage III/IV than in Stage I/II.  
259 Therefore, the frequency of *BRCA1/2* mutations was also higher in Stage III/IV. It is well  
260 known that *BRCA1/2* mutation is associated with platinum sensitivity in ovarian cancer<sup>23</sup>, and  
261 *BRCA1/2* status might affect the present results. On the other hand, we also found an association  
262 between PFS and HRD in Stage III/IV clear cell carcinoma which harbored less *BRCA1/2*  
263 mutation. These results suggest that not only *BRCA1/2* but also other HR-associated gene  
264 mutations are linked with platinum sensitivity in advanced-stage ovarian cancer<sup>24</sup>.

265 Olaparib maintenance therapy for platinum-sensitive relapsed ovarian cancer was approved by  
266 health insurance in January 2018 in Japan. The SOLO2 trial has shown that Olaparib treatment  
267 group has longer OS (median 51.7 months; 95%CI 41.5-59.1) than the placebo group (median  
268 38.8 months; 95%CI 31.4-48.6) (HR 0.74; 95%CI 0.54-1.00; p = 0.054) although 38% of the

269 placebo group received subsequent PARP inhibitor therapy<sup>25</sup>. In addition, niraparib for platinum-  
270 sensitive relapsed or HRD ovarian cancers was also approved by health insurance in September  
271 2020. Therefore, it is necessary to verify whether there is a difference in the rate of PARP  
272 inhibitor administration between HRD and non-HRD groups.

273 In this study, HRD was defined as the presence of at least one HR-related gene mutations. In  
274 clinical practice, Myriad myChoice diagnostic system is now covered by health insurance in  
275 Japan and is the standard method for assessing genomic instability (GI) score calculated by  
276 genomic loss of heterozygosity (LOH)<sup>26</sup>, telomeric allelic imbalance (TAI)<sup>27</sup>, and large-scale  
277 state transition (LST)<sup>28</sup>. Recently, the assessment of HRD based on mutational signature is also  
278 proposed<sup>29, 30</sup>. However, the two methods reflect the genomic scar caused HRD and do not  
279 indicate whether the current tumor is HRD or not. On the other hand, HR-associated gene  
280 mutation is one of the etiologies of HRD. It is well known that *BRCA1/2* mutations are  
281 significantly correlated with GI score and significantly associated with clinical outcome in  
282 ovarian cancer. However, the clinical significance of HR-associated genes except *BRCA1/2*  
283 remains unclear. Recently, PAOLA-1 subsequent analysis demonstrated that HR-associated gene  
284 mutation (excluding *BRCA1/2* mutation) was not predictive of PFS benefit with maintenance  
285 olaparib in combination with bevacizumab, compared with bevacizumab alone, in PAOLA-1  
286 trial and that only five genes (*BLM*, *BRIP1*, *RAD51C*, *PALB2*, and *RAD51D*) had a median GI  
287 score  $\geq 42$ . Further multi-omics data analysis should be needed to the clinical impact of each  
288 HR-associated gene mutation in ovarian cancer.

289 Our study has several limitations. The HR-associated mutations may be monoallelic, without any  
290 alterations in the opposite allele. Although tumors with MSI-High or POLE mutations were  
291 excluded from HRD, other HR-associated mutations may also not contribute to tumorigenesis.

292 As correlation between GI score and HR-associated mutations has not been analyzed, the HRD  
293 status in each tumor has not been fully verified. In addition, the target sequencing cannot pick up  
294 tumors with epigenetic alterations (such as hypermethylation in promoter region in *BRCA1* or  
295 *RAD51C*).

296 In conclusion, HRD was detected in not only high-grade serous histologic type but also other  
297 histologic types, and HRD status may be useful to provide an effective treatment option for  
298 patients with ovarian cancer.

299

### 300 **Acknowledgments**

301 The authors wish to thank all members of the Japanese Gynecologic Oncology Group. We  
302 appreciate all women who participated in this study and their families, the staff of Translational  
303 Research Center for Medical Innovation (TRI; the data and statistical analysis center for  
304 JGOG3025), and the participating JGOG member institutions.

305

### 306 **Disclosure statement:**

307 The authors except KY declare that they have no conflicts of interest. Although KY received  
308 only lecture fees from AstraZeneca, he has no other conflicts of interest to declare.

309

### 310 **Funding Information**

311 This study was partially funded by AstraZeneca Externally Sponsored Research.

312

### 313 **Ethics Statement**

314 1. Cohort name: Japanese patients with ovarian cancer cohort (JGOG3025)

- 315 2. Non-abbreviated, full name of Ethics Committee / Institutional Review Board (IRB) for the  
316 cohort: The Ethics Committee of the Japanese Gynecologic Oncology Group and Niigata  
317 University
- 318 3. Decision made by ethics oversight body: approved (No. JGOG3025 in the Ethics Committee  
319 of JGOG and No. 2006-0006 in Niigata University)
- 320 4. Informed Consent: All patients provided written informed consent.
- 321 5. Registry and the Registration No. of the study/trial: NCT03159572 (ClinicalTrials.gov);  
322 UMIN 000026303 (UMIN-CTR)
- 323 6. Animal Studies: N/A
- 324

## 325 **References**

- 326 1 Vergote I, Gonzalez-Martin A, Ray-Coquard I, et al. European experts consensus:  
327 BRCA/homologous recombination deficiency testing in first-line ovarian cancer. *Ann*  
328 *Oncol.* 2022; 33: 276-287.
- 329 2 Lord CJ, Ashworth A. The DNA damage response and cancer therapy. *Nature.* 2012;  
330 481: 287-294.
- 331 3 Pierson WE, Peters PN, Chang MT, et al. An integrated molecular profile of  
332 endometrioid ovarian cancer. *Gynecol Oncol.* 2020; 157: 55-61.
- 333 4 Mirza MR, Monk BJ, Herrstedt J, et al. Niraparib Maintenance Therapy in Platinum-  
334 Sensitive, Recurrent Ovarian Cancer. *N Engl J Med.* 2016; 375: 2154-2164.
- 335 5 Mirza MR, Avall Lundqvist E, Birrer MJ, et al. Niraparib plus bevacizumab versus  
336 niraparib alone for platinum-sensitive recurrent ovarian cancer (NSGO-

- 337 AVANOVA2/ENGOT-ov24): a randomised, phase 2, superiority trial. *Lancet Oncol.*  
338 2019; 20: 1409-1419.
- 339 6 Ray-Coquard I, Pautier P, Pignata S, et al. Olaparib plus Bevacizumab as First-Line  
340 Maintenance in Ovarian Cancer. *N Engl J Med.* 2019; 381: 2416-2428.
- 341 7 Cancer Genome Atlas Research N. Integrated genomic analyses of ovarian carcinoma.  
342 *Nature.* 2011; 474: 609-615.
- 343 8 Konstantinopoulos PA, Ceccaldi R, Shapiro GI, D'Andrea AD. Homologous  
344 Recombination Deficiency: Exploiting the Fundamental Vulnerability of Ovarian Cancer.  
345 *Cancer Discov.* 2015; 5: 1137-1154.
- 346 9 Komiyama S, Katabuchi H, Mikami M, et al. Japan Society of Gynecologic Oncology  
347 guidelines 2015 for the treatment of ovarian cancer including primary peritoneal cancer  
348 and fallopian tube cancer. *Int J Clin Oncol.* 2016; 21: 435-446.
- 349 10 Tokunaga H, Mikami M, Nagase S, et al. The 2020 Japan Society of Gynecologic  
350 Oncology guidelines for the treatment of ovarian cancer, fallopian tube cancer, and  
351 primary peritoneal cancer. *J Gynecol Oncol.* 2021; 32: e49.
- 352 11 Xu C, Gu X, Padmanabhan R, et al. smCounter2: an accurate low-frequency variant  
353 caller for targeted sequencing data with unique molecular identifiers. *Bioinformatics.*  
354 2019; 35: 1299-1309.
- 355 12 Wang K, Li M, Hakonarson H. ANNOVAR: functional annotation of genetic variants  
356 from high-throughput sequencing data. *Nucleic Acids Res.* 2010; 38: e164.
- 357 13 Mayakonda A, Lin DC, Assenov Y, Plass C, Koeffler HP. Maftools: efficient and  
358 comprehensive analysis of somatic variants in cancer. *Genome Res.* 2018; 28: 1747-1756.



- 359 14 Karczewski KJ, Francioli LC, Tiao G, et al. The mutational constraint spectrum  
360 quantified from variation in 141,456 humans. *Nature*. 2020; 581: 434-443.
- 361 15 Genomes Project C, Auton A, Brooks LD, et al. A global reference for human genetic  
362 variation. *Nature*. 2015; 526: 68-74.
- 363 16 Karczewski KJ, Weisburd B, Thomas B, et al. The ExAC browser: displaying reference  
364 data information from over 60 000 exomes. *Nucleic Acids Res*. 2017; 45: D840-D845.
- 365 17 Fu W, O'Connor TD, Jun G, et al. Analysis of 6,515 exomes reveals the recent origin of  
366 most human protein-coding variants. *Nature*. 2013; 493: 216-220.
- 367 18 Tadaka S, Saigusa D, Motoike IN, et al. jMorp: Japanese Multi Omics Reference Panel.  
368 *Nucleic Acids Res*. 2018; 46: D551-D557.
- 369 19 Li Q, Wang K. InterVar: Clinical Interpretation of Genetic Variants by the 2015 ACMG-  
370 AMP Guidelines. *Am J Hum Genet*. 2017; 100: 267-280.
- 371 20 Tate JG, Bamford S, Jubb HC, et al. COSMIC: the Catalogue Of Somatic Mutations In  
372 Cancer. *Nucleic Acids Res*. 2019; 47: D941-D947.
- 373 21 Zhang J, Bajari R, Andric D, et al. The International Cancer Genome Consortium Data  
374 Portal. *Nat Biotechnol*. 2019; 37: 367-369.
- 375 22 Yoshino K, Kurita T, Takahashi F, Nagase S, Board members of the Committee on  
376 Gynecologic Oncology of the Japan Society of O, Gynecology. Annual report of the  
377 committee on gynecologic oncology, the Japan Society of Obstetrics and Gynecology:  
378 Annual patient report for 2019 and annual treatment report for 2014. *J Obstet Gynaecol*  
379 *Res*. 2022; 48: 1570-1579.

- 380 23 Yang D, Khan S, Sun Y, et al. Association of BRCA1 and BRCA2 mutations with  
381 survival, chemotherapy sensitivity, and gene mutator phenotype in patients with ovarian  
382 cancer. *JAMA*. 2011; 306: 1557-1565.
- 383 24 Takamatsu S, Brown JB, Yamaguchi K, et al. Utility of Homologous Recombination  
384 Deficiency Biomarkers Across Cancer Types. *JCO Precis Oncol*. 2022; 6: e2200085.
- 385 25 Poveda A, Floquet A, Ledermann JA, et al. Olaparib tablets as maintenance therapy in  
386 patients with platinum-sensitive relapsed ovarian cancer and a BRCA1/2 mutation  
387 (SOLO2/ENGOT-Ov21): a final analysis of a double-blind, randomised, placebo-  
388 controlled, phase 3 trial. *Lancet Oncol*. 2021; 22: 620-631.
- 389 26 Abkevich V, Timms KM, Hennessy BT, et al. Patterns of genomic loss of heterozygosity  
390 predict homologous recombination repair defects in epithelial ovarian cancer. *Br J*  
391 *Cancer*. 2012; 107: 1776-1782.
- 392 27 Birkbak NJ, Wang ZC, Kim JY, et al. Telomeric allelic imbalance indicates defective  
393 DNA repair and sensitivity to DNA-damaging agents. *Cancer Discov*. 2012; 2: 366-375.
- 394 28 Popova T, Manie E, Rieunier G, et al. Ploidy and large-scale genomic instability  
395 consistently identify basal-like breast carcinomas with BRCA1/2 inactivation. *Cancer*  
396 *Res*. 2012; 72: 5454-5462.
- 397 29 Alexandrov LB, Nik-Zainal S, Wedge DC, et al. Signatures of mutational processes in  
398 human cancer. *Nature*. 2013; 500: 415-421.
- 399 30 Miller RE, Leary A, Scott CL, et al. ESMO recommendations on predictive biomarker  
400 testing for homologous recombination deficiency and PARP inhibitor benefit in ovarian  
401 cancer. *Ann Oncol*. 2020.
- 402



404 **Table 1. Clinicopathological characteristics of FAS**

405

	FAS (n = 701)
Age	
< 65 years	474 (67.6%)
≥ 65 years	227 (32.4%)
FIGO stage	
I/II	332 (47.4%)
III/IV	362 (51.6%)
Unknown	7 (1.0%)
Histologic type	
High-grade serous carcinoma	298 (42.5%)
Clear cell carcinoma	189 (27.0%)
Endometrioid carcinoma	135 (19.3%)
Mucinous carcinoma	12 (1.7%)
Low-grade serous carcinoma	3 (0.4%)
Others	64 (9.1%)
Surgery	
Complete	520 (74.2%)
Optimal (<1cm)	75 (10.7%)
Not optimal (≥1cm)	104 (14.8%)
Unknown	2 (0.3%)
Neoadjuvant chemotherapy	
Yes	152 (21.7%)
No	549 (78.3%)
Adjuvant chemotherapy	
Yes	612 (87.3%)
No	89 (12.7%)

406

407

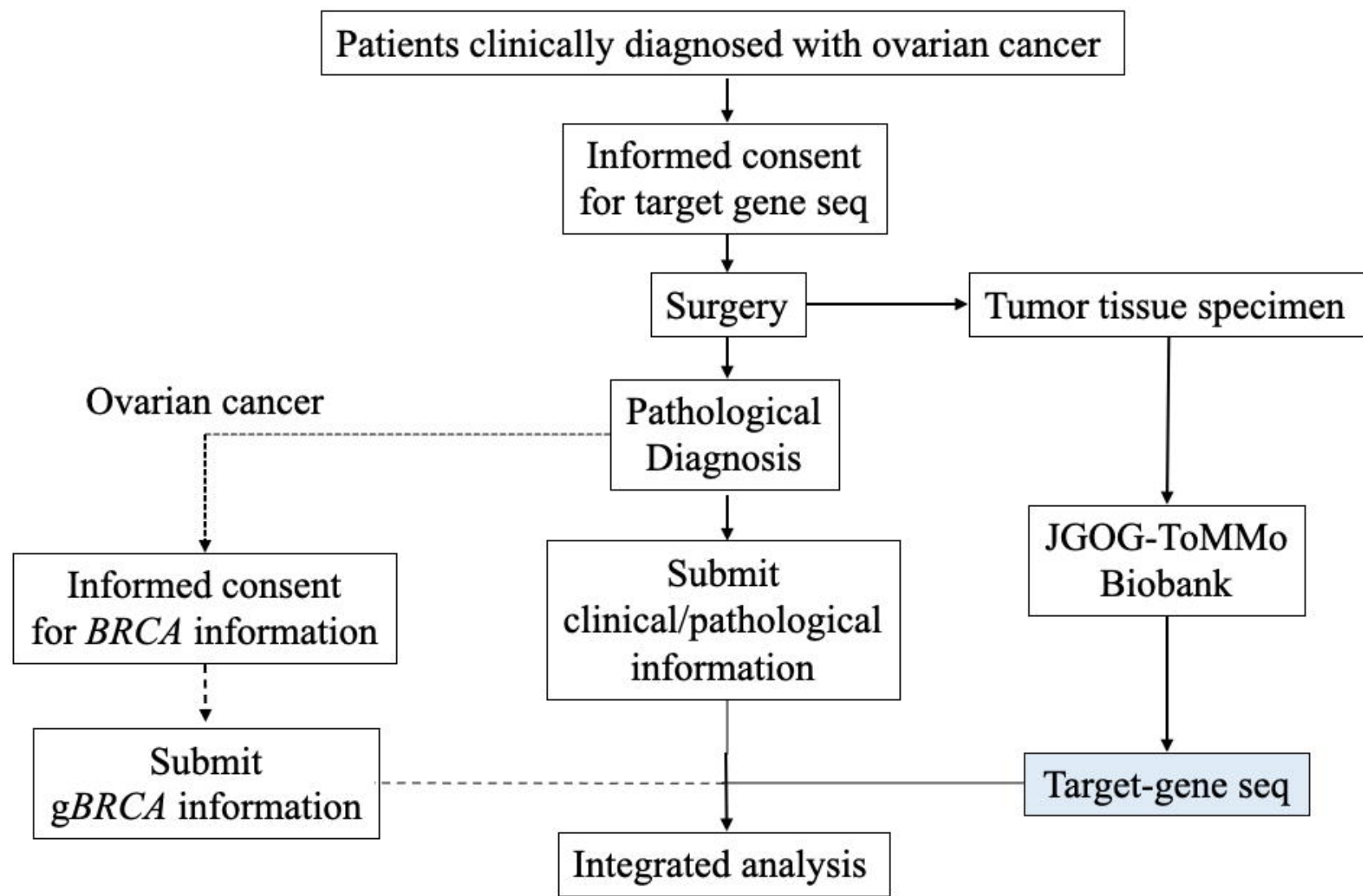
408 **Table 2. The frequency of HRD by histologic type**

409

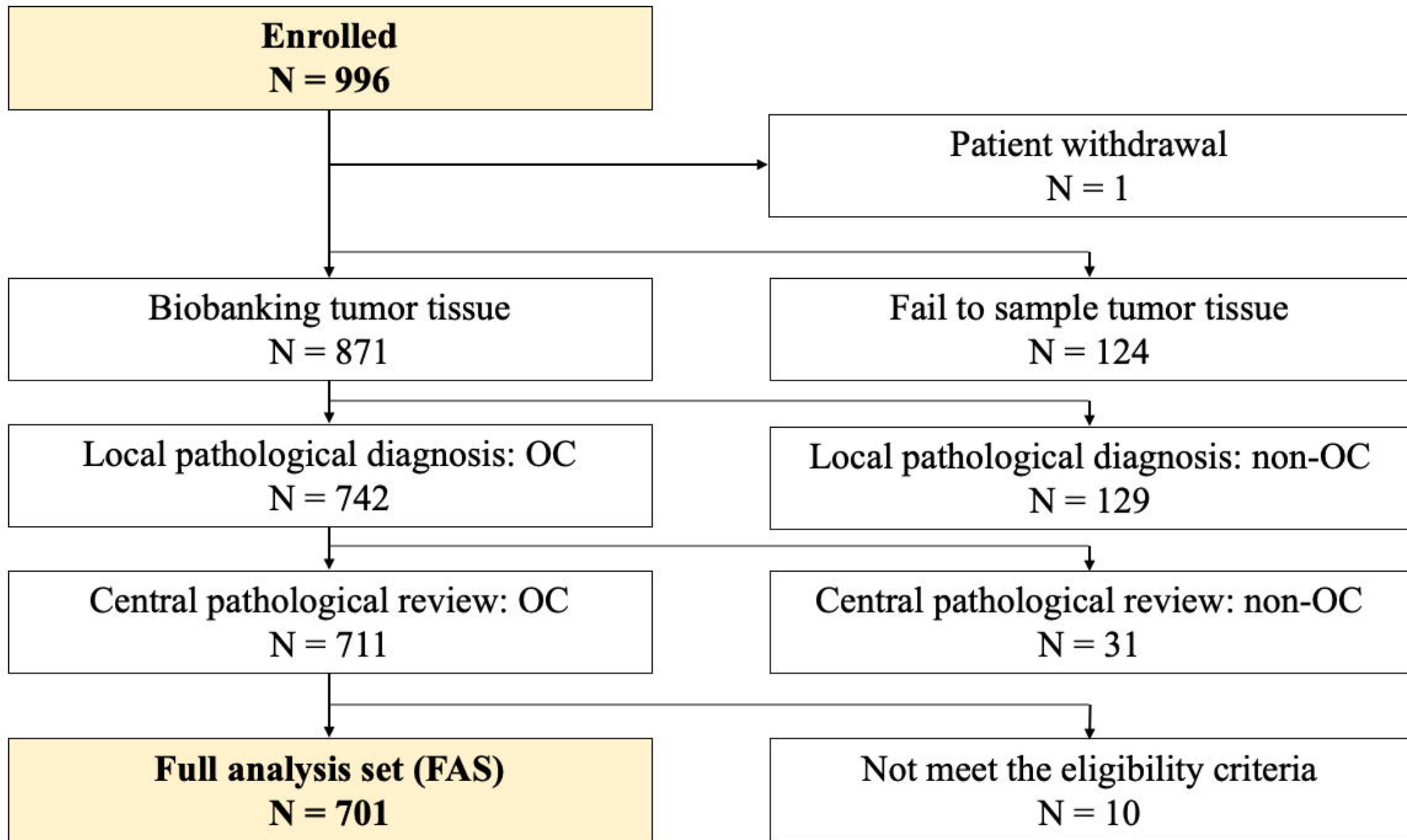
Histology	N	HRD	<i>BRCA1</i>	<i>BRCA2</i>	<i>BRCA1+2</i>
High-grade serous carcinoma	298	154 (51.7%)	52 (17.4%)	33 (11.1%)	2 (0.7%)
Clear cell carcinoma	189	81 (42.9%)	6 (3.2%)	2 (1.1%)	0 (0%)
Endometrioid carcinoma	135	49 (36.3%)	6 (4.4%)	16 (11.9%)	3 (2.2%)
Mucinous carcinoma	12	3 (25.0%)	0 (0%)	0 (0%)	0 (0%)
Low-grade serous carcinoma	3	3 (100%)	0 (0%)	0 (0%)	0 (0%)
Others	64	27 (42.2%)	5 (7.8%)	3 (4.7%)	2 (3.1%)

410

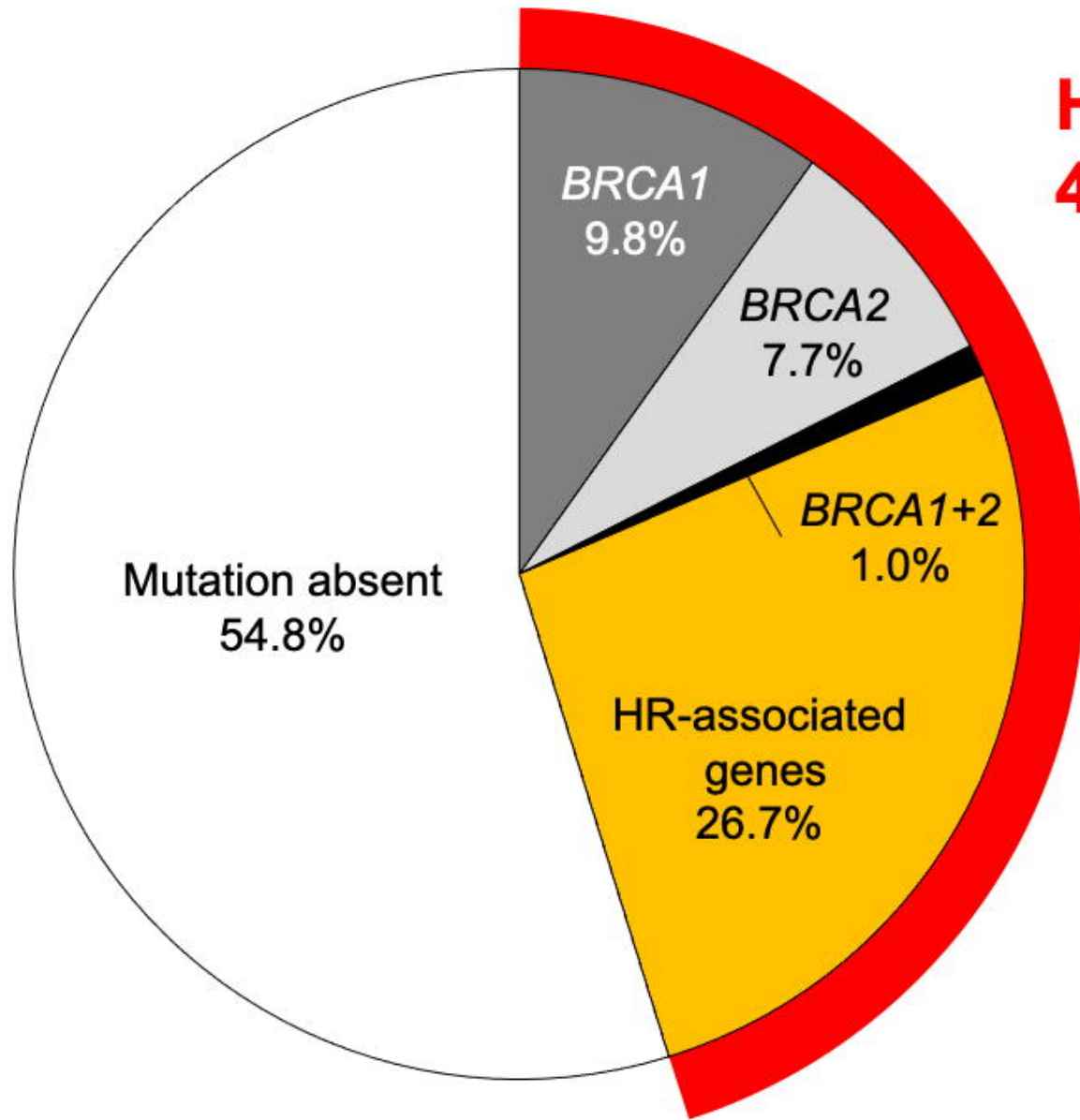
411



**Figure 1. A schema of JGOG 3025 trial.**



**Figure 2. Patients disposition**

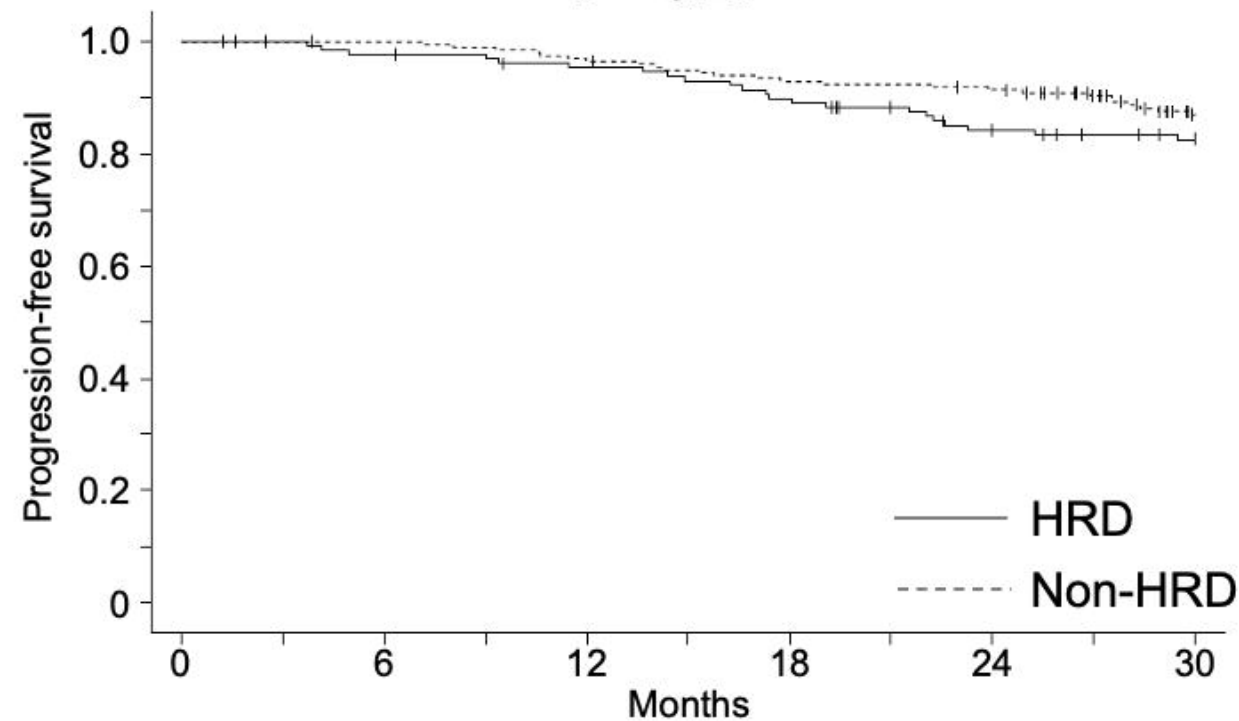


**HRD**  
**45.2% (95%CI, 41.5-49.0%)**

**Figure 3. Frequency of HRD in Japanese patients with ovarian cancer**

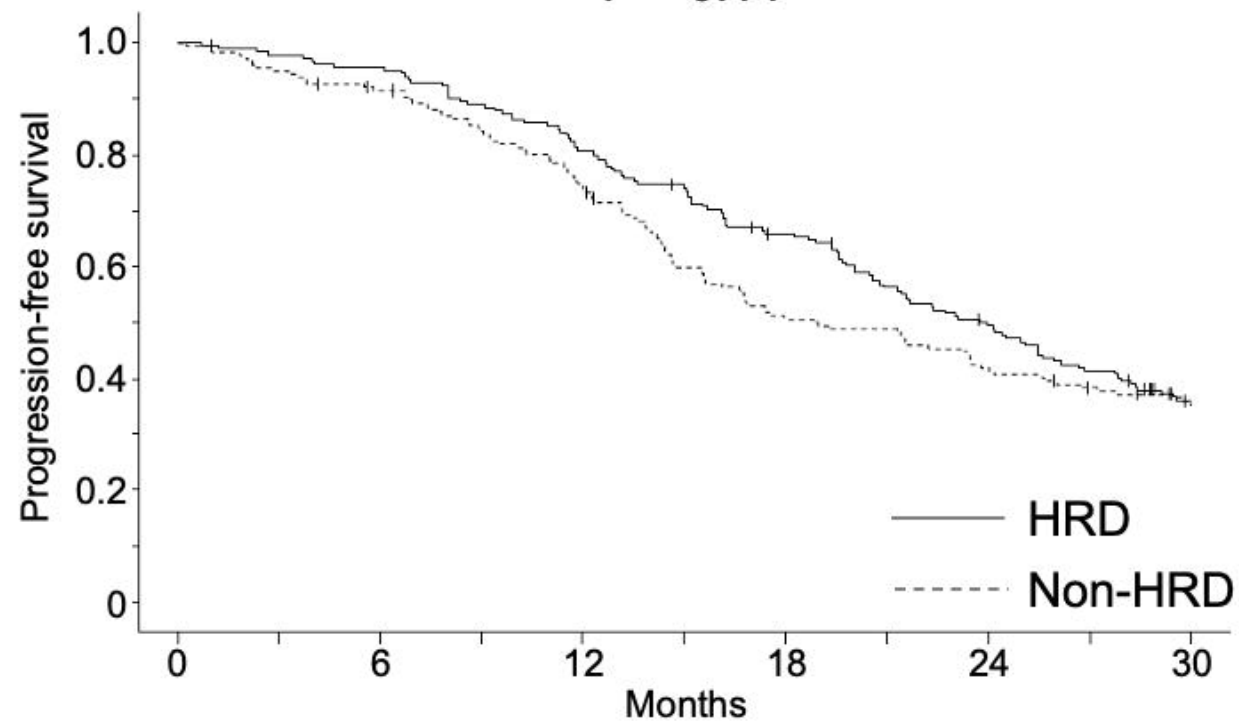


(A) Stage I/II aHR 1.35 (95%CI, 0.82-2.24)  
P = 0.24



HRD	130	127	122	115	103	94
Non-HRD	202	198	191	183	179	149

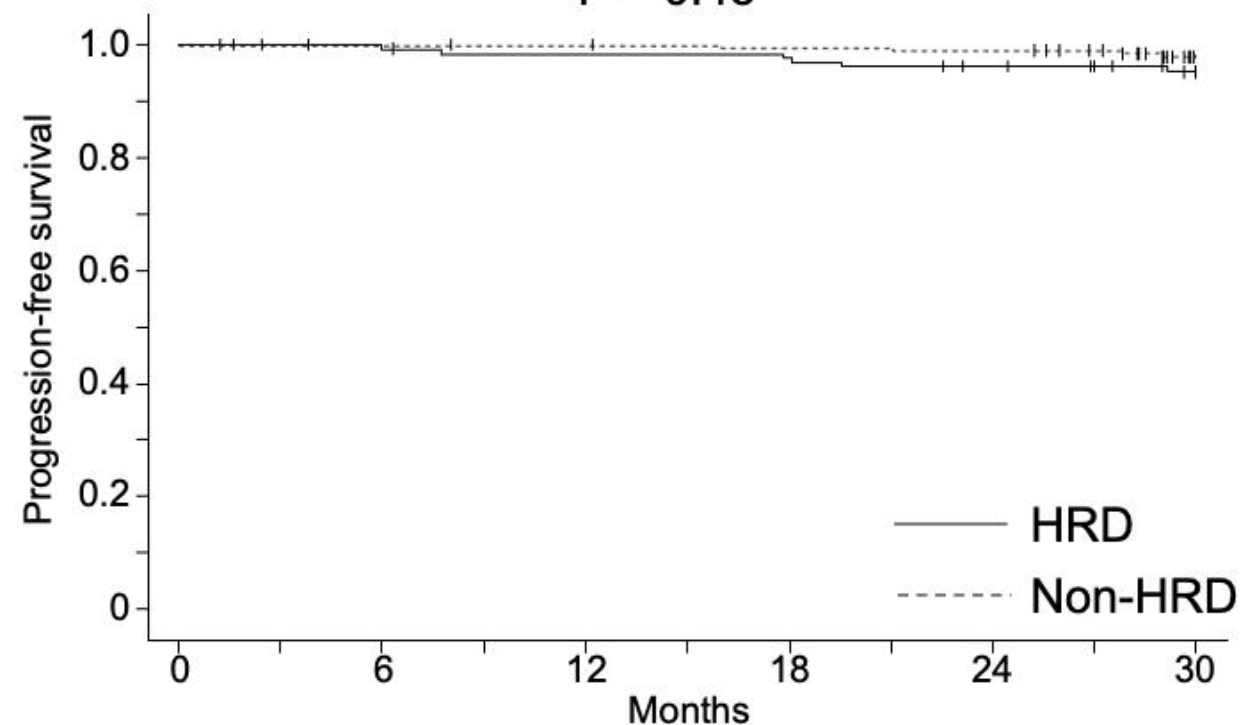
(B) Stage III/IV aHR 0.84 (95%CI, 0.66-1.06)  
P = 0.14



HRD	183	174	147	117	86	55
Non-HRD	179	161	130	87	72	58

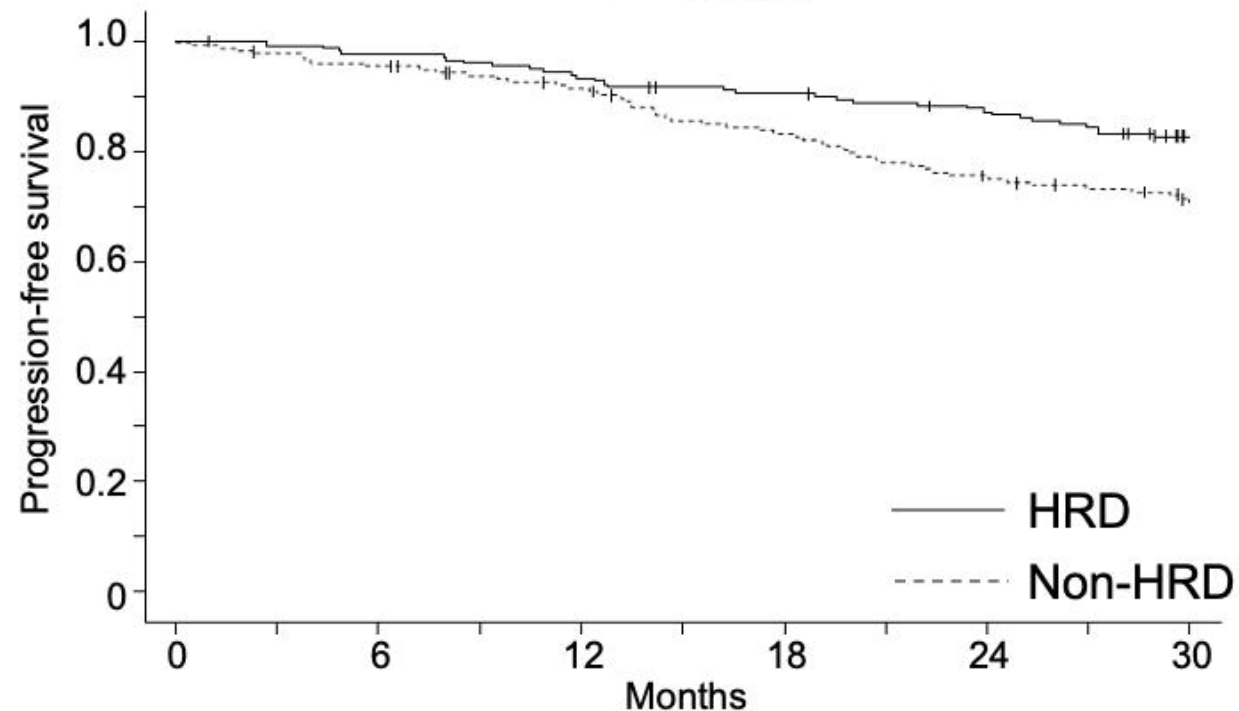
**Figure 4. Association between PFS and HRD in Japanese patients with ovarian cancer**

(A) Stage I/II aHR 1.47 (95%CI, 0.54-3.96)  
P = 0.45



HRD	130	129	127	126	121	113
Non-HRD	202	198	197	195	194	173

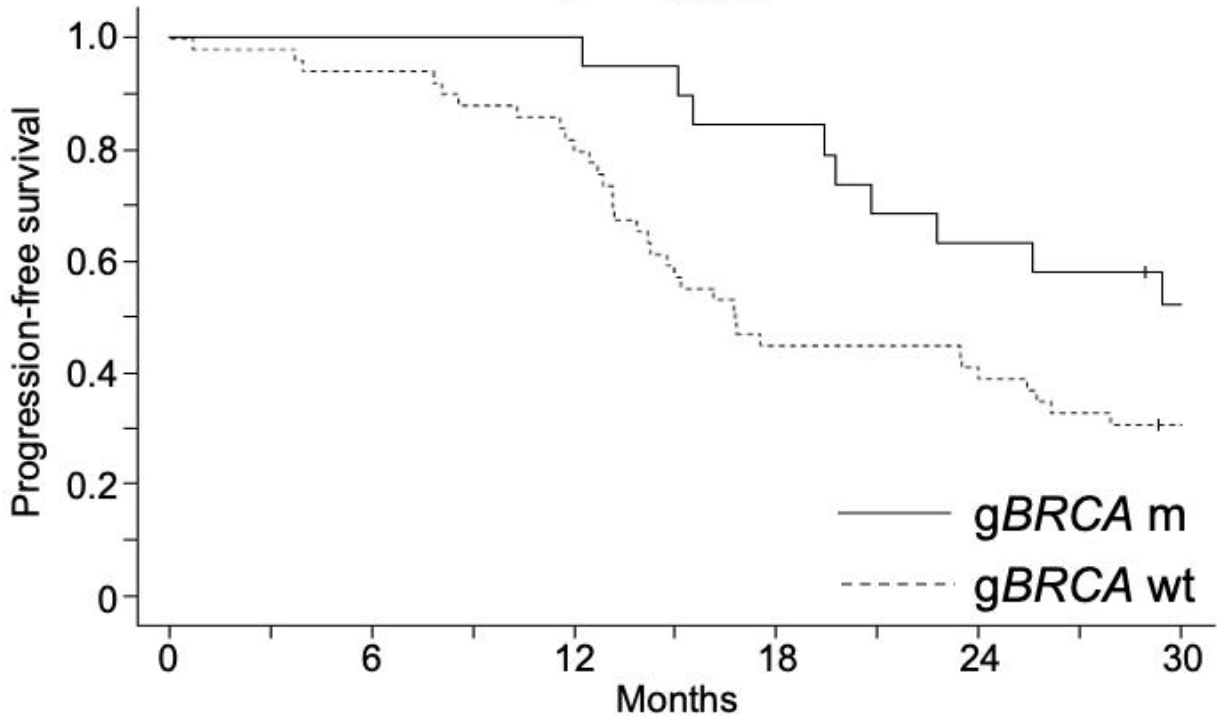
(B) Stage III/IV aHR 0.58 (95%CI, 0.39-0.87)  
P = 0.009



HRD	183	178	170	163	155	137
Non-HRD	179	170	158	142	128	114

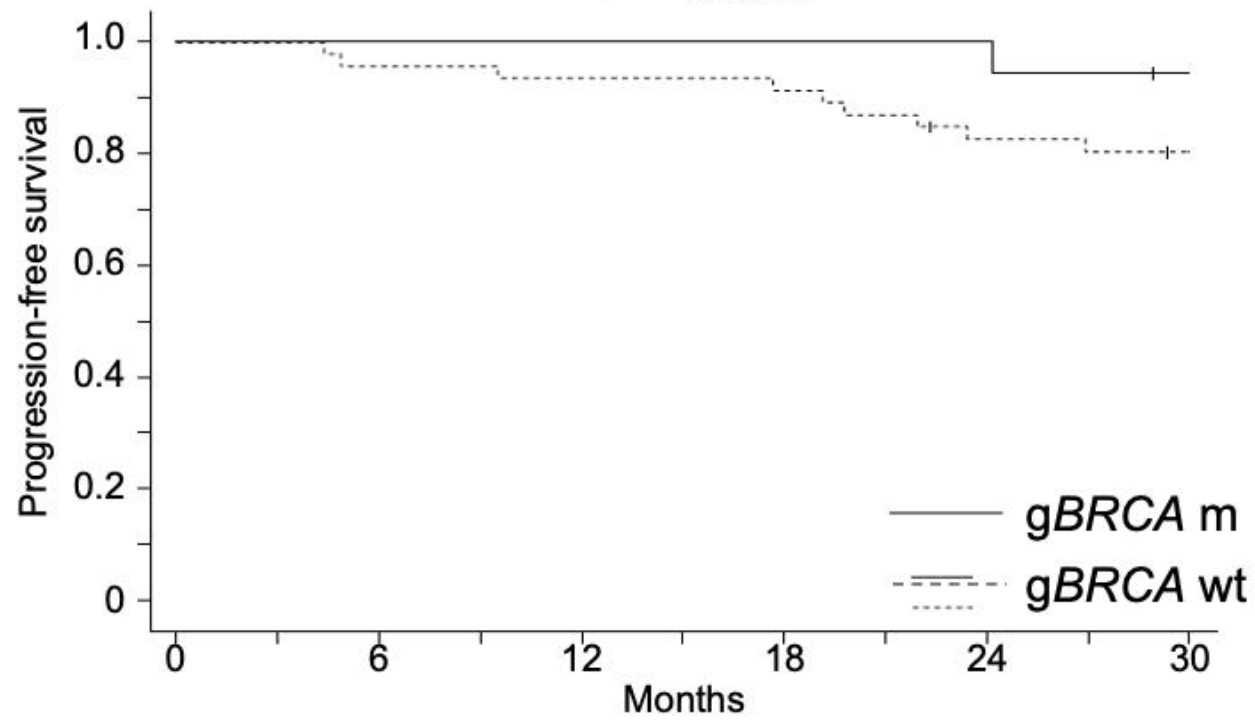
**Figure 5. Association between OS and HRD in Japanese patients with ovarian cancer**

(A) PFS aHR 0.32 (95%CI, 0.14-0.72)  
P = 0.006



gBRCAm	19	19	19	16	12	9
gBRCAwt	49	46	39	22	20	14

(B) OS aHR 0.12 (95%CI, 0.02-0.59)  
P = 0.009



gBRCAm	18	18	18	18	18	16
gBRCAwt	43	44	43	42	37	35

**Figure 6. Association of germline *BRCA1/2* mutation with PFS and OS in stage III/IV ovarian cancer**