

# 1 The decline of COVID-19 severity and lethality over two years of 2 pandemic

3 Valentina Marziano <sup>1</sup>, Giorgio Guzzetta <sup>1</sup>, Francesco Menegale <sup>1,2</sup>, Chiara Sacco <sup>3</sup>, Daniele Petrone <sup>3</sup>,  
4 Alberto Mateo Urdiales <sup>3</sup>, Martina Del Manso <sup>3</sup>, Antonino Bella <sup>3</sup>, Massimo Fabiani <sup>3</sup>, Maria Fenicia  
5 Vescio <sup>3</sup>, Flavia Riccardo <sup>3</sup>, Piero Poletti <sup>1</sup>, Mattia Manica <sup>1</sup>, Agnese Zardini <sup>1</sup>, Valeria d'Andrea <sup>1</sup>, Filippo  
6 Trentini <sup>1,4,5</sup>, Paola Stefanelli <sup>3</sup>, Giovanni Rezza <sup>6</sup>, Anna Teresa Palamara <sup>3</sup>, Silvio Brusaferrò <sup>3</sup>, Marco  
7 Ajelli <sup>7,#</sup>, Patrizio Pezzotti <sup>3,#</sup>, Stefano Merler <sup>1,#,\*</sup>

8 <sup>1</sup> Center for Health Emergencies, Bruno Kessler Foundation, Trento, Italy

9 <sup>2</sup> Department of Mathematics, University of Trento, Trento, Italy

10 <sup>3</sup> Department of Infectious Diseases, Istituto Superiore di Sanità, Rome, Italy

11 <sup>4</sup> Dondeña Centre for Research on Social Dynamics and Public Policy, Bocconi University, Milan, Italy

12 <sup>5</sup> Covid Crisis Lab, Bocconi University, Italy

13 <sup>6</sup> Health Prevention directorate, Ministry of Health, Rome, Italy

14 <sup>7</sup> Laboratory for Computational Epidemiology and Public Health, Department of Epidemiology and  
15 Biostatistics, Indiana University School of Public Health, Bloomington, IN, USA

16

17 # Senior authors

18 \* Corresponding author: [merler@fbk.eu](mailto:merler@fbk.eu)

19

## 20 Abstract

21 Undert notification of SARS-CoV-2 infections has been a major obstacle to the tracking of critical  
22 quantities such as infection attack rates and the probability of severe and lethal outcomes. We use a  
23 model of SARS-CoV-2 transmission and vaccination informed by epidemiological and genomic  
24 surveillance data to estimate the number of daily infections occurred in Italy in the first two years of  
25 pandemic. We estimate that the attack rate of ancestral lineages, Alpha, and Delta were in a similar  
26 range (10-17%, range of 95% CI: 7-23%), while that of Omicron until February 20, 2022, was  
27 remarkably higher (51%, 95%CI: 33-70%). The combined effect of vaccination, immunity from natural  
28 infection, change in variant features, and improved patient management massively reduced  
29 the probabilities of hospitalization, admission to intensive care, and death given infection, with 20 to  
30 40-fold reductions during the period of dominance of Omicron compared to the initial acute phase.

31

32

## 33 Introduction

34 The first two years of the COVID-19 pandemic have been characterized by an ever-changing  
35 epidemiological situation, forcing almost every country in the world to face a series of major  
36 challenges (1). During the first pandemic year, non-pharmaceutical interventions (NPIs) were widely  
37 adopted to counter the spread of COVID-19 and prevent health care systems to be overwhelmed,  
38 including social distancing restrictions culminating in nation-wide lockdowns, school closures and  
39 mandatory face masks (2–6). In Europe, the second pandemic year was characterized by a progressive  
40 relaxation of restrictions, the rollout of COVID-19 vaccination campaigns (7), and, concurrently, by the  
41 emergence of hyper transmissible SARS-CoV-2 variants of concern (8–11).

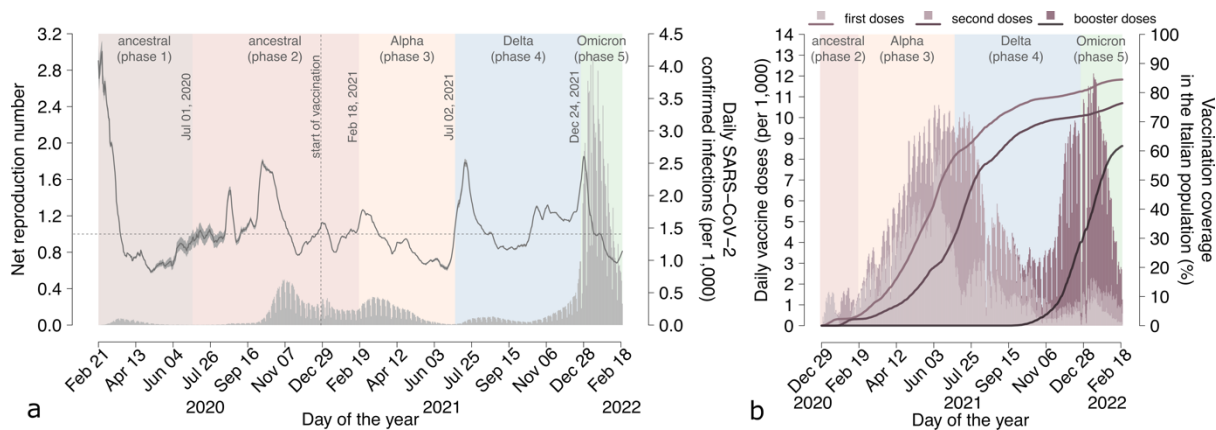
42 One of the main obstacles to pandemic containment has been represented by underreported and  
43 underdiagnosed SARS-CoV-2 infections. Due to the unknown extent of unobserved SARS-CoV-2  
44 transmission, many aspects of the temporal changes in the COVID-19 epidemiology over the course of  
45 the pandemic remain unclear. Infection ascertainment ratios likely changed over time due to several  
46 factors: the impact of improved research testing capacity, the increasing availability of diagnostic data sets,  
47 and the implementation of public health measures.

47 (also sustained by the development of quicker and cheaper antigen-based detection technologies),  
48 the varying intensity of contact-tracing, the shift of infections towards segments of the population  
49 less likely to develop symptoms, differences in pathogenicity associated with SARS-CoV-2 variants, the  
50 impact of external regulations (e.g. the requirement of a negative test result for access to workplaces  
51 or community indoor spaces in absence of vaccination), and changes in the people's attitudes and  
52 behavior related to SARS-CoV-2 testing or in the self-perception of symptoms associated with COVID-  
53 19. The quantification of changes in population susceptibility to SARS-CoV-2 infection is instrumental  
54 to assess the expected impact of further epidemic waves. This has been a difficult task due to the lack  
55 of knowledge on the number of undetected infections throughout the pandemic; to the partial  
56 protection against infection provided by existing vaccines (12–14); to the emergence of new variants  
57 partially escaping immunity from natural infection with previous lineages (15); and to the effect of  
58 waning of protection from both natural infection and vaccination (12–14,16). If the actual number of  
59 SARS-CoV-2 infections is unknown, it is also not possible to estimate changes in the proportion of  
60 infections resulting in adverse outcomes (e.g., severe disease or death). In turn, these changes were  
61 induced by COVID-19 vaccines, which have proven highly effective in preventing severe COVID-19 or  
62 death (12,17,18), as well as by the improvement in timely diagnoses and clinical care, by the  
63 increased health care capacity, and possibly also by changes in virulence of emerging SARS-COV-2  
64 variants (19,20). An assessment of the immunity accrued in the first two pandemic years and of the  
65 probability of adverse outcomes is essential to quantify the risks associated to SARS-CoV-2 infection  
66 and COVID-19 burden in the future.

67 In this study, we use a mathematical model of SARS-CoV-2 transmission, informed with integrated  
68 surveillance data (epidemiological and microbiological results on variants), to quantify the evolution  
69 of COVID-19 epidemiology in Italy over the first two years of the pandemic. Specifically, we provide  
70 estimates of changes in infection ascertainment ratios, infection attack rates, population susceptibility  
71 to infection, and probability of adverse outcomes given SARS-CoV-2 infection.

## 72 Results

73 We developed an age-structured stochastic model to simulate SARS-CoV-2 transmission and  
74 vaccination in Italy between February 21, 2020, (when the first locally transmitted case was detected)  
75 and February 20, 2022. We divided the two years of simulation into five phases (background colors in  
76 Figure 1a). The first two phases are associated with the circulation of ancestral SARS-CoV-2 lineages  
77 and they distinguish the first pandemic wave including the national lockdown (phase 1, from February  
78 21, 2020 to the end of June 2020), and a second phase characterized by a new upsurge of cases in fall  
79 2020 and by the start of the COVID-19 vaccination campaign on December 27, 2020 (phase 2, from  
80 July 1, 2020 to February 17, 2021). The three remaining phases correspond to the periods of  
81 dominance in Italy of different SARS-CoV-2 variants: Alpha (phase 3, from February 18, 2021 to July 1,  
82 2021), Delta (phase 4, from July 2, 2021 to December 23, 2021), and Omicron (phase 5, from  
83 December 24, 2021 to February 20, 2022) (21). The epidemic curve over the study period (Figure 1a)  
84 was reproduced by adjusting the SARS-CoV-2 transmission rate on a given day in such a way that the  
85 model reproduction number matches the daily net reproduction number  $R_t$  as estimated from the  
86 epidemiological surveillance data (29,30). The model keeps into account the dynamics of age-specific  
87 population immunity due to natural infection, to the progress of the vaccination campaign including  
88 first, second and booster doses (Figure 1b) (22). The model considers waning of immunity after  
89 natural infection with all lineages (16), as well as the ability of the omicron variant to escape immune  
90 response from natural infection with previous SARS-CoV-2 lineages (15). Vaccine protection is  
91 assumed to be “leaky”, i.e. successfully vaccinated individuals are partially immune with a relative risk  
92 of infection that depends on the SARS-CoV-2 variant and on the number of doses received and on the  
93 time since vaccination to reproduce the effect of waning immunity (12–14). Further details on the  
94 model are provided in Section Methods and in Appendix.



95

96 Figure 1. Epidemiological profile of the SARS-CoV-2 epidemic in Italy. **a** Mean estimates of the net reproduction  
 97 number  $R_t$  as obtained from epidemic curves of symptomatic cases by date of symptom onset collected by the  
 98 National Integrated Surveillance System (23) (mean, grey solid line; shaded area, 95% CI; y-axis on the left).  
 99 Horizontal dotted line: epidemic threshold ( $R_t = 1$ ). Grey bars represent the daily incidence per 1,000 individuals  
 100 of SARS-CoV-2 confirmed infections by date of diagnosis as reported to the Italian Integrated Surveillance  
 101 System (24,25) (y-axis on the right). Background colors indicate the classification in different phases, and the  
 102 dates indicated within the graph denote the day of transition between consecutive phases. The vertical dotted  
 103 line denotes the start of the vaccination campaign on December 27, 2020. **b** Daily number of vaccine doses  
 104 administered in Italy per 1,000 individuals (stacked barchart, y-axis on the left) (22). Line and bar colors, from  
 105 lighter to darker shades, indicate respectively first, second and booster doses. Solid lines show the cumulative  
 106 vaccination coverage in the Italian population (y-axis on the right). In Italy, administration of two doses is  
 107 recommended to all individuals aged 5 years or more; administration of one booster dose is recommended to  
 108 all individuals aged 12 years or more.

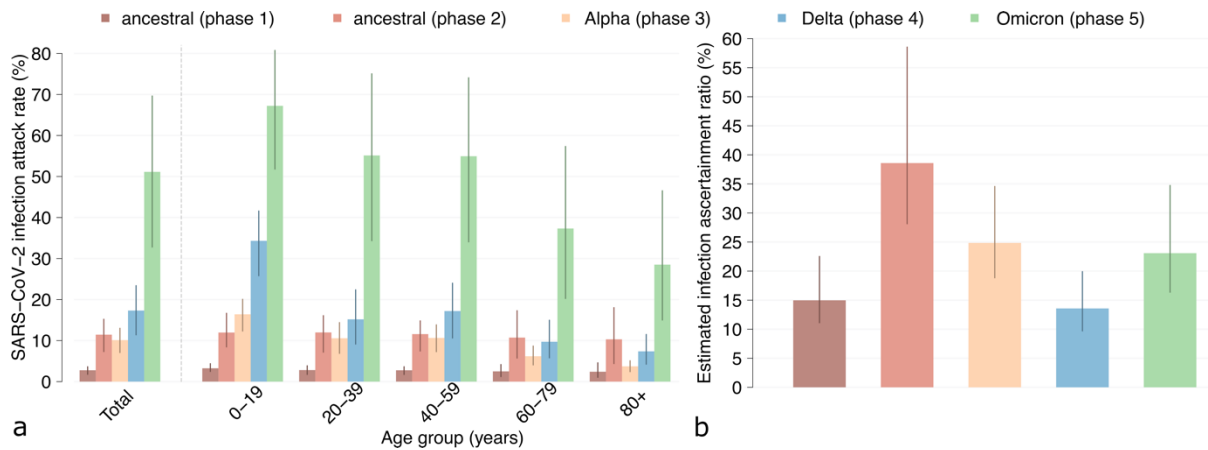
### 109 Attack rate and ascertainment of SARS-CoV-2 infections

110 Despite the explosive spread of SARS-CoV-2 in the early phase of the pandemic, which threatened to  
 111 overwhelm the Italian health system, we estimate that the adoption of a strict nationwide lockdown  
 112 managed to limit the infection attack rate in the first phase to 2.8% (95%CI: 1.8-3.6) (Figure 2a).  
 113 During the second phase, in the context of less stringent NPIs, we estimate an attack rate of 11.4%  
 114 (95%CI: 7.3-15.2). In both phases dominated by ancestral lineages, the SARS-CoV-2 attack rate was  
 115 substantially homogeneous across age groups (Figure 2a). We estimate that in the first phase, about  
 116 15.0% (95%CI: 11.1-22.5) of infections, i.e. about 1 in 7, were detected by the Italian Integrated  
 117 Surveillance System (Figure 2b). Even though the second phase was characterized by a greater  
 118 infection incidence, we estimate a higher infection ascertainment ratio of 38.6% (95%CI: 28.1-58.5)  
 119 (Figure 2b).

120 By mid-February 2021, the ancestral SARS-CoV-2 lineages were replaced by the more transmissible  
 121 Alpha variant (8) which remained dominant until early July 2021. During this period, we estimate that  
 122 Alpha infected about 10.1% (95%CI: 7.1-13.0) of the Italian population, with a marked heterogeneity  
 123 across ages: the highest attack rate is estimated in the age group 0-19 years (16.4%, 95%CI: 12.3-  
 124 20.1), while the lowest in people aged over 80 years (3.7%, 95%CI: 2.4-5.1) who had been prioritized  
 125 for vaccination in the early months of 2021 (Figure 2a and Figure S2). We estimate for this period an  
 126 infection ascertainment ratio of 24.9% (95%CI: 18.9-34.6) (Figure 2b).

127 The second half of 2021 was characterized by the circulation of the Delta variant, in the context of a  
 128 progressive relaxation of NPIs, with an estimated attack rate of 17.3% (95%CI: 11.4-23.4). Our results  
 129 suggest that the progression of the vaccination campaign, including the administration of booster  
 130 doses (Figure 1b), led to a further shift of infections towards less protected age groups (children and  
 131 young adults), with over one third of infections occurring among individuals aged 20 years or less  
 132 (Figure S4). For this period, we estimate a further decrease in the infection ascertainment ratio with  
 133 respect to the Alpha phase, 13.6% (95%CI: 9.7-19.9) (Figure 2b).

134 By the end of December 2021, the Delta variant was replaced by Omicron. We estimate that, as of  
 135 February 20, 2022, about 51.1% (95%CI: 32.8-69.6) of the Italian population got infected with  
 136 Omicron, with age-specific attack rates ranging from 28.5% (95%CI: 15.0-46.5) in the individuals aged  
 137 80 years or more to 67.2% (95%CI: 51.8-80.7) in those younger than 20 years. For this period, we  
 138 estimate an infection ascertainment ratio of 23.1% (95%CI: 16.4-34.7).



139 **a** SARS-CoV-2 infection attack rate (%) as of February 20, 2022, in the overall population and by age classes. Colors indicate  
 140 the considered phase. Bars: mean estimates; vertical lines: 95% CI; n=300 stochastic model realizations. **b**  
 141 Estimated SARS-CoV-2 infection ascertainment ratio in the different phases (%). Bars: mean estimates; vertical  
 142 lines: 95% CI; n=300 stochastic model realizations. The infection ascertainment ratio in each phase is estimated  
 143 as the fraction between the number of SARS-CoV-2 confirmed infections as reported to the Italian Integrated  
 144 Surveillance System and the number of infections estimated through the model in each phase.  
 145  
 146

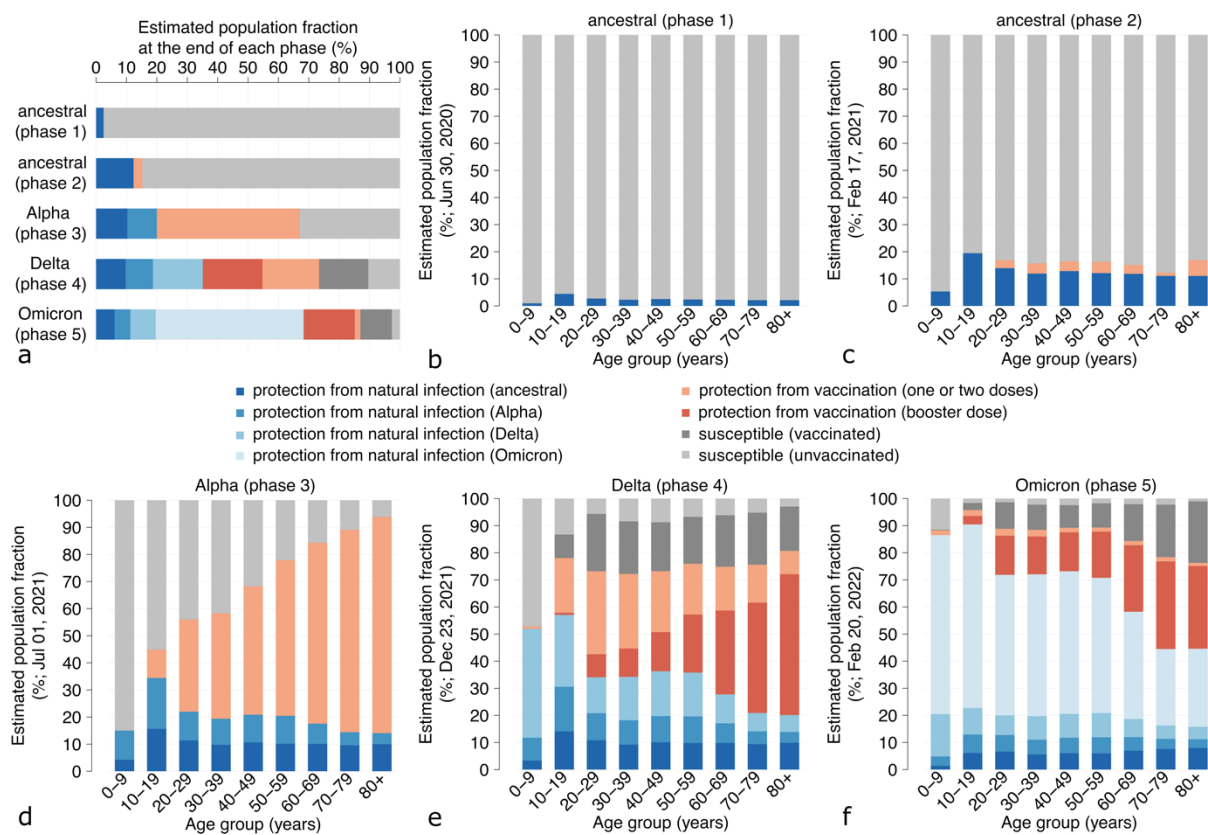
### 147 Evolution of population susceptibility

148 Throughout the first two years of the COVID-19 pandemic, the percentage of the population  
 149 susceptible to SARS-CoV-2 infection (depicted in shades of grey in Figure 3a) progressively decreased  
 150 from 97.5% (95%CI 96.8-98.4) at the end of the first phase to 13.0% (95%CI: 5.1-23.5) by February 20,  
 151 2022. The effect of vaccination on population susceptibility was still negligible when the ancestral  
 152 strain was replaced by the Alpha variant, with only 2.9% (95%CI: 2.8-3.0) of the population being  
 153 protected by vaccination (orange in Figure 3a and 3c), while it had become significant at the end of  
 154 the Alpha phase (Figure 3d): according to our estimates, only about one third of the population  
 155 (33.0%, 95%CI: 30.4-35.6) was unprotected against SARS-CoV-2 infection by July 2021, most of them  
 156 being children and young adults (Figure 3a and 3d).

157 The Delta phase was characterized by an increased vaccination coverage in children and young adults  
 158 and by the start of the booster dose campaign, which initially targeted the over 80 population and  
 159 then was gradually extended to younger age groups (Figure 3e). The administration of boosters  
 160 partially compensated the waning of immunity after two doses of vaccine. However, by the end of  
 161 December 2021, when Delta was replaced by Omicron, individuals unprotected against SARS-CoV-2  
 162 infection still represented 26.6% (95%CI: 21.1-32.4) of the Italian population (Figure 3a).

163 We estimate that by February 20, 2022, 68.3% (95%CI: 48.6-84.3) of the Italian population was  
 164 protected by natural immunity (blue tones in Figure 3a and 3f) mostly acquired after infection with  
 165 Omicron (48.7%, 95%CI: 31.4-65.9). This percentage includes also individuals vaccinated before or  
 166 after natural infection with SARS-CoV-2. Vaccination alone protected an additional 18.7% (95%CI:  
 167 10.7-27.9), mainly thanks to the administration of boosters (orange and red in Figure 3f). However,  
 168 we estimate that by February 20, 2022, a marked proportion of individuals unprotected against SARS-  
 169 CoV-2 infection can be found among vaccinated subjects (especially among the adults and elderly)  
 170 due to the waning of vaccine protection (dark grey in Figure 3f). At that time, the contribution of

171 unvaccinated individuals to residual population susceptibility was negligible (2.7% of the population,  
 172 95%CI: 0.9-5.7), with a large majority represented by children younger than 10 years.  
 173



174 **d** **e** **f**  
 175 **Figure 3. SARS-CoV-2 susceptibility profiles. a** Mean estimates for the overall SARS-CoV-2 susceptibility profile  
 176 of the Italian population at the end of each phase (n=300 stochastic model realizations). In categories  
 177 “protection from natural infection” the indicated variant corresponds to that of the most recent infection,  
 178 independently of whether the individual has been vaccinated before or after natural infection. Uninfected and  
 179 vaccinated individuals whose immunity has not waned are included in the “protection from vaccination”  
 180 categories, depending on whether they received or not a booster dose. Individuals who were never infected or  
 181 whose immunity against infection (from natural infection or vaccine) has waned are considered in the  
 182 “susceptible” categories depending on their vaccination status. Note that the latter may retain a residual  
 183 protection against other clinical endpoints, such as symptoms, severe disease, or death. Also note that  
 184 individuals who experienced SARS-CoV-2 infection (depicted in shades of blue) are considered fully protected  
 185 against reinfection during the ancestral, Alpha and Delta phases, while in the Omicron phase they may get  
 186 infected due to the significant ability of this variant to escape previous immunity from natural infection. **b** Mean  
 187 estimates of the SARS-CoV-2 susceptibility profile by age groups at the end of the first ancestral phase (June 30,  
 188 2020). **c** As **b** but at the end of the second ancestral phase (February 17, 2021). **d** As **b** but at the end of the  
 189 Alpha phase (July 1, 2021). **e** As **b** but at the end of the Delta phase (December 23, 2021). **f** As **b** but at the end  
 190 of simulations (February 20, 2022, Omicron phase).

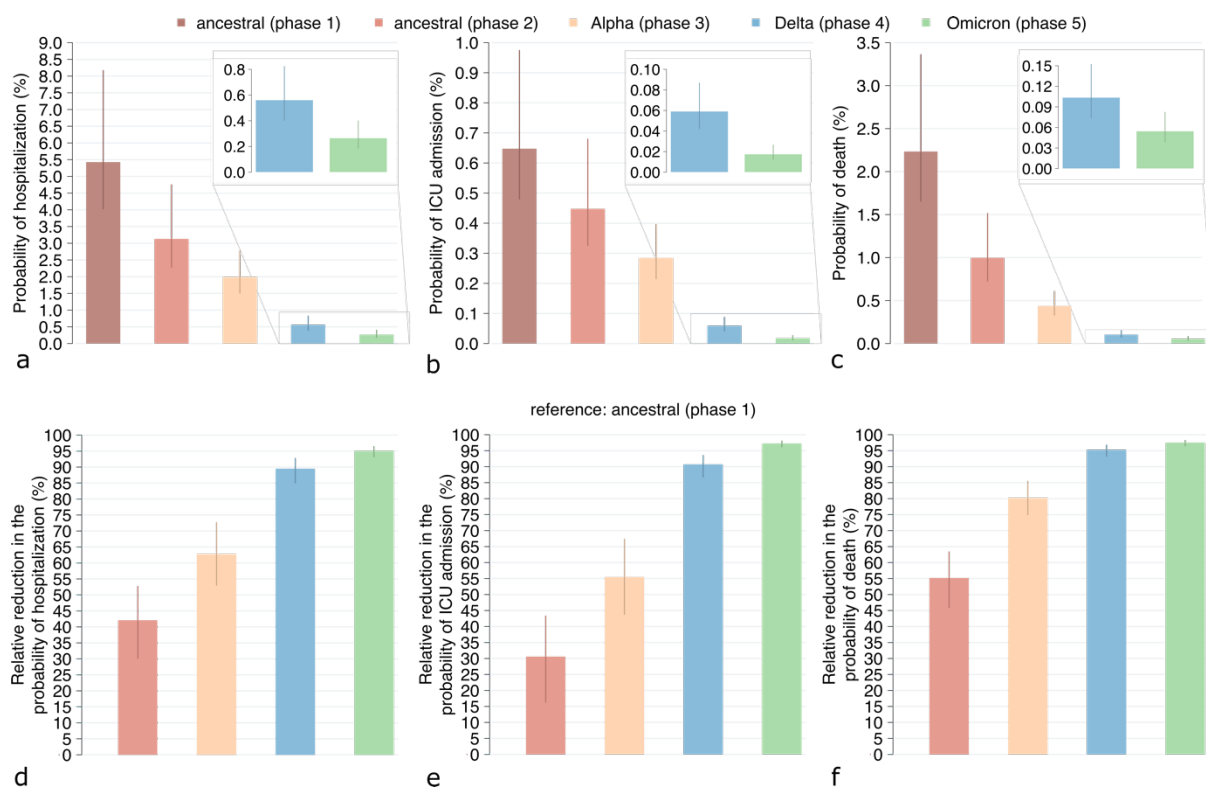
### 191 Evolution of COVID-19 severity and lethality

192 We estimated the probability of hospitalization, admission to ICU, and death after SARS-CoV-2  
 193 infection in the different epidemic phases (Figure 4, first row). The first ancestral phase was  
 194 characterized by the highest probability of severe clinical outcomes, with a probability of  
 195 hospitalization per infection of 5.4% (95%CI: 4.0-8.2), a probability of ICU admission of 0.65% (95%CI:  
 196 0.48-0.97) and a probability of death of 2.2% (95%CI: 1.7-3.4). Estimates of all these probabilities  
 197 progressively decreased throughout the pandemic.

198 The probability of hospitalization given infection is estimated to decrease to 3.1% (95%CI: 2.3-4.7) in  
 199 the second ancestral phase (42.1% reduction compared to first ancestral phase), 2.0% (95%CI: 1.5-  
 200 2.8) in the Alpha phase (62.8% reduction compared to first ancestral phase; 35.8% compared to  
 201 second ancestral phase), 0.56% (95%CI: 0.40-0.82) in the Delta phase (89.5% reduction compared to  
 202 first ancestral phase; 71.9% compared to Alpha phase) and 0.27% (95%CI: 0.19-0.40) in the Omicron  
 203 phase (95.1% reduction compared to first ancestral phase and 52.7% compared to Delta phase)  
 204 (Figure 4a and 4d).

205 The probability of ICU admission given infection is estimated to decrease to 0.45% (95%CI: 0.33-0.68)  
 206 in the second ancestral phase (30.6% reduction compared to first ancestral phase), to 0.28% (95%CI:  
 207 0.22-0.40) in the Alpha phase (55.5% reduction compared to first ancestral phase; 35.9% compared to  
 208 second ancestral phase), to 0.06% (95%CI: 0.04-0.09) in the Delta phase (90.7% reduction compared  
 209 to first ancestral phase and 79.2% compared to Alpha phase) and to 0.018% (95%CI: 0.012-0.026) in  
 210 the Omicron phase (97.3% reduction compared to first ancestral phase and 70.3% compared to Delta  
 211 phase) (Figure 4b and 4e).

212 Finally, we estimate the probability of death given infection at 1.0% (95%CI: 0.7-1.5) in the second  
 213 ancestral phase (55.2% reduction compared to first ancestral phase), 0.44% (95%CI: 0.33-0.61) in the  
 214 Alpha phase (80.2% reduction compared to the first ancestral phase; 55.9% compared to second  
 215 ancestral phase), 0.1% (95%CI: 0.07-0.15) in the Delta phase (95.3% reduction compared to first  
 216 ancestral phase; 76.3% compared to Alpha phase) and 0.05% (95%CI: 0.04-0.08) in the Omicron phase  
 217 (97.5% reduction compared to first ancestral phase; 47.3% compared to Delta phase) (Figure 4c and  
 218 4f).



219 **d** **e** **f**  
 220 **Figure 4. Probabilities of adverse outcomes given SARS-CoV-2 infection.** **a** Probability of being hospitalized in  
 221 the different epidemic phases (%), computed as the ratio between the number of COVID-19 hospital admissions  
 222 reported to the Italian Integrated Surveillance System and the estimated number of SARS-CoV-2 infections in  
 223 the same phase. **b** Probability of being admitted to an ICU in the different phases (%), computed as the ratio  
 224 between the number of SARS-CoV-2 admissions to ICUs reported to the Italian Integrated Surveillance System  
 225 and the estimated number of SARS-CoV-2 infections in the same phase. **c** Probability of death in the different  
 226 phases (%), computed as the ratio between the number of COVID-19 deaths reported to the Italian Integrated

227 Surveillance System and the estimated number of SARS-CoV-2 infections in the same phase. **d** Estimated relative  
228 reduction in the probability of hospitalization in the different phases compared to the first ancestral phase (%).  
229 **e** As **d** but for the probability of ICU admission. **f** As **d** but for the probability of death. Bars: mean estimates;  
230 vertical lines: 95% CI; n=300 stochastic model realizations.

## 231 Discussion

232 In this work, we analyzed the first two years of the COVID-19 pandemic in Italy and quantified  
233 changes in COVID-19 epidemiological indicators, including the infection ascertainment ratio, the  
234 infection attack rate, the population susceptibility to SARS-CoV-2 infection, and the probabilities of  
235 hospitalization, ICU admission, and death, given infection.

236 Detection of SARS-CoV-2 infections changed throughout the pandemic. We estimated an increase in  
237 the infection ascertainment ratio between the two ancestral phases, likely ascribable to the  
238 expanding of testing capacity (Figure S5), to the strengthening of regional reporting systems and to an  
239 aggressive implementation of the test-track and trace strategy. In contrast, we found a reduction in  
240 infection ascertainment during the Alpha and Delta phases, probably related to a combination of  
241 factors including: the availability of home testing leading to self-diagnoses that were not notified to  
242 the surveillance system, the reduction in the frequency of contact tracing since 2021, and the  
243 significant increase of asymptomatic infections following the expansion of the vaccination program.  
244 Indeed, vaccination brought a shift of infections towards younger age groups (Figure S4) and  
245 increased the proportion of breakthrough infections (Figure S6); both trends reduced the overall  
246 probability of having symptoms given an infection (26–28) and therefore the overall probability of  
247 test-seeking by unaware infected individuals. In the Omicron phase, we estimated that the infection  
248 ascertainment ratio increased again. This period was characterized by a substantial scale-up of COVID-  
249 19 testing capacity (Figure S5) associated to the escalation of cases, as well as by a surge in voluntary  
250 testing in preparation for gatherings during Christmas and New Year's holidays.

251 We estimated that the SARS-CoV-2 infection attack rate was highest for the Delta (17%) and Omicron  
252 (51%) phases, despite the highest vaccination coverage in the population. The large number of  
253 infections in these periods may be ascribable to several factors, such as a possible decline in  
254 adherence to residual COVID-19 restrictions due to pandemic fatigue (29); the high transmissibility of  
255 these variants (8–10,30); the reduced efficacy of the vaccine in preventing infection by different viral  
256 variants (12–14); the increased risk of reinfection during the Omicron phase compared with previous  
257 epidemic phases (31); the progressive release of restrictions, sustained by a lower morbidity among  
258 vaccinated individuals (27,28) and by a reduced intrinsic severity of Omicron (19,20).

259 Our results underline the key role played by booster vaccination during the Omicron phase. We  
260 estimated that, by the end of February 2022, about 9 out of 10 individuals in Italy who were still  
261 protected by vaccination had received a booster dose (Figure 3a). Given the available evidence on the  
262 declining effectiveness of boosters over time (13,14), waning immunity will likely contribute to an  
263 increase in population susceptibility throughout 2022 (Figure S7).

264 Estimates obtained for the probabilities of hospitalization, ICU admission and death given infection in  
265 the first phase of the pandemic (5.4%, 0.65% and 2.2%, respectively) are in line with values reported  
266 in the literature (32–34). We found that the severity of SARS-CoV-2 infections has progressively  
267 declined throughout the pandemic, with the infection fatality ratio in 2022 falling close to the levels of  
268 2009 H1N1 pandemic influenza (estimated at about 0.02% (35)). Compared to the first pandemic  
269 wave, we estimated a 20 times lower probability of hospitalization, a 36 times lower probability of ICU  
270 admission, and a 40 times lower probability of death during the Omicron phase. The estimated  
271 reduction in COVID-19 severity is attributable to a combination of factors. Improved knowledge on  
272 the pathogen and patient management, and the relieving of the pressure on the health care system  
273 allowed by the national lockdown likely reduced severity between the first and second ancestral  
274 phases. From the Alpha phase on, the vaccination program increased the population immunity

275 against severe disease. The predominance of Omicron variant likely contributed to a reduced severity  
276 of the disease due to a decrease in the intrinsic viral pathogenicity (19,20). In the absence of  
277 immunity from natural infection and vaccination the health impact of SARS-CoV-2 variants could have  
278 been different. We note however that, as of June 2022, the overall COVID-19 morbidity and mortality  
279 is still remarkably high in Italy due to the very high incidence of infections (25). For what concerns the  
280 estimated probability of ICU admission given infection, we note that this does not necessarily  
281 represent the probability of critical disease but includes the effect of patient management choices  
282 concerning trade-offs between the usage of limited ICU resources and the expected benefits for the  
283 patient; the expansion of ICU capacity throughout the pandemic may have influenced temporal  
284 changes in this parameter.

285 The proposed model was designed to evaluate overall changes of several COVID-19 epidemiological  
286 indicators at the national level, but it cannot estimate the relative weight of individual determinants  
287 in the reduction of the severity of SARS-CoV-2 infections. Estimates for COVID-19 severity rely on the  
288 assumption of negligible underdiagnosis of COVID-19 hospitalizations, admission to ICUs, and deaths.  
289 Another limitation of our analysis is that we consider conventionally defined epidemic phases with  
290 instantaneous transitions, roughly corresponding to the times at which different variants became  
291 dominant (Table S1). The susceptibility profile of the population is also updated instantaneously at  
292 every change of variant, to consider different vaccination effectiveness and rates of waning. This  
293 approximation is in contrast with the observation that SARS-CoV-2 variants showed extended periods  
294 of co-circulation (21), which are not explicitly modeled. Furthermore, we could not consider changes  
295 in the age-specific proportion of contacts over time in absence of longitudinal contact patterns data  
296 by age. This is obviously a simplification as, for example, some restrictions targeted preferentially  
297 contacts in specific age groups (e.g., school closure). Despite these conservative assumptions, we  
298 show that the model approximates well age-specific trends in SARS-CoV-2 infection dynamics (Figure  
299 S4).

300 Quantitative estimates provided in this study apply to the case of Italy and depend on many country-  
301 specific factors, such as governmental choices on mitigation measures, the speed of rollout of COVID-  
302 19 vaccines, or the population socio-demographic structure. Therefore, generalization to different  
303 geographic contexts and conditions should be made with caution. Nonetheless, we expect that the  
304 general trends and conclusions may apply to other high-income countries that have adopted a similar  
305 mitigation approach throughout the pandemic. In particular, considering that the Italian demographic  
306 structure is skewed towards older ages, the decreasing trends in probabilities of adverse outcomes  
307 might be even more marked in countries with younger populations.

308 Despite the large number of SARS-CoV-2 cases since the beginning of 2022, the burden of COVID-19  
309 in Italy has remained limited with a manageable impact on hospitals. However, the possible future  
310 emergence of new variants that may escape previous immunity (natural or from vaccine), be more  
311 transmissible and/or pathogenic stresses the need of maintaining careful surveillance on SARS-CoV-2  
312 variants (36) and epidemic trends. Moreover, our results highlight the key role played by the changing  
313 immunity against SARS-CoV-2 from natural infections and vaccination on the decrease of severe  
314 clinical outcomes upon SARS-CoV-2 infection across the different phases. This trend might be  
315 reversed if the level of population susceptibility to SARS-CoV-2 infection will increase again in the  
316 future, due to waning of vaccine and natural protection.

## 317 **Methods**

318 We developed an age-structured stochastic model of SARS-CoV-2 transmission and vaccination, based  
319 on a susceptible-infectious-removed-susceptible (SIRS) scheme (37,38). The model was used to  
320 simulate the evolution of COVID-19 epidemiology in Italy between February 21, 2020, and February  
321 20, 2022. The simulation period is conventionally subdivided as follows:

- 322 1. “ancestral (phase 1)”, from February 21 to June 30, 2020.
- 323 2. “ancestral (phase 2)”, from July 1, 2020, to February 17, 2021.



- 324 3. “Alpha (phase 3)”, from February 18 to July 1, 2021.
- 325 4. “Delta (phase 4)”, from July 2 to December 23, 2021.
- 326 5. “Omicron (phase 5)”, from December 24, 2021 to February 20, 2022.

327 Dates of transition between variants were chosen based on estimates of the prevalence of SARS-CoV-  
328 2 lineages from genomic surveillance data in Italy (Table S1) (21). The model population is stratified by  
329 age (17 5-year age groups from 0 to 84 years plus one age group for individuals aged 85 years or  
330 older). Mixing patterns across ages are encoded by a social contact matrix estimated prior to the  
331 COVID-19 pandemic (39). During circulation of ancestral lineages susceptibility to SARS-CoV-2  
332 infection was assumed to be age-dependent (lower in children under 15 years of age and higher for  
333 the elderly above 65 years, compared to individuals aged 15 to 64 years) (40). For SARS-CoV-2  
334 variants, we assumed homogenous susceptibility across ages in absence of age-specific estimates.  
335 Infectiousness was assumed to be homogeneous by age for all lineages (40,41).

336 To reproduce the epidemic curve over the study period, we adjusted the SARS-CoV-2 transmission  
337 rate on a given day, in such a way that the model’s reproduction number (estimated via the Next  
338 Generation Matrix approach (42,43)) would match the daily net reproduction number  $R_t$  as estimated  
339 from surveillance data (specifically, the number of new symptomatic SARS-CoV-2 infected individuals  
340 by date of symptom onset) (29,30).

341 The rollout of the vaccination campaign is modeled using detailed data on the daily age-specific  
342 number of doses administered over the considered period, including first, second and booster doses.  
343 In the model, individuals are considered eligible for vaccination, independently of a previous SARS-  
344 CoV-2 infection. Breakthrough infections (i.e., infections in vaccinated individuals) are assumed to be  
345 half as infectious as those in unvaccinated individuals (44,45).

346 Protection from natural immune response is assumed to wane exponentially with a constant rate over  
347 all periods considered (16). Before waning, natural infection provides complete protection against re-  
348 infection with ancestral lineages and Alpha and Delta variants, while we assume a partial cross-  
349 protection against Omicron (15). Waning of protection from vaccine-induced immune response was  
350 observed only in the Delta and Omicron phases (12–14). Accordingly, we consider variant-specific  
351 average durations of protection after two doses of vaccine and after a booster dose. Before waning of  
352 vaccine-induced immunity, individuals are in a compartment where the risk of infection is reduced by  
353 the vaccine efficacy. After waning of immunity either from natural infection or vaccination, individuals  
354 are in a compartment where the risk of infection is the same as unvaccinated individuals who were  
355 never exposed to SARS-CoV-2. We note that individuals with waned protection against infection may  
356 still be protected against other clinical endpoints, such as symptoms, severe disease, or death (12).

357 The age-profile of SARS-CoV-2 susceptibility in the Italian population at the end of each phase is  
358 obtained from model states variables, considering the protection acquired from natural infection or  
359 vaccination and accounting for waning of both. The SARS-CoV-2 infection ascertainment ratio is  
360 computed as the ratio between COVID-19 cases reported to the Italian Integrated Surveillance System  
361 (24) and the number of SARS-CoV-2 infections estimated by the model in the same period. The  
362 probabilities of hospitalization, ICU admission and death after SARS-CoV-2 infection are computed as  
363 the ratio between COVID-19 cases reported to the Italian Integrated Surveillance System (24) who  
364 were respectively admitted to hospital, ICUs, and deceased, and the number of SARS-CoV-2 infections  
365 estimated by the model in the same period. COVID-19 cases are assigned to each period based on  
366 their date of diagnosis. Further details on the model and parameter values are provided in Appendix.

### 367 **Data availability**

368 Processed data and code will be made available in a public repository upon publication.

369

## 370 References

- 371 1. Koelle K, Martin MA, Antia R, Lopman B, Dean NE. The changing epidemiology of SARS-CoV-2.  
372 Science. 2022 Mar 11;375(6585):1116–21.
- 373 2. Guzzetta G, Riccardo F, Marziano V, Poletti P, Trentini F, Bella A, et al. Impact of a Nationwide  
374 Lockdown on SARS-CoV-2 Transmissibility, Italy. *Emerg Infect Dis*. 2020/10/20 ed. 2021  
375 Jan;27(1):267–70.
- 376 3. Pan A, Liu L, Wang C, Guo H, Hao X, Wang Q, et al. Association of Public Health Interventions With  
377 the Epidemiology of the COVID-19 Outbreak in Wuhan, China. *JAMA*. 2020 May 19;323(19):1915–  
378 23.
- 379 4. Di Domenico L, Pullano G, Sabbatini CE, Boëlle PY, Colizza V. Impact of lockdown on COVID-19  
380 epidemic in Île-de-France and possible exit strategies. *BMC Med*. 2020 Jul 30;18(1):240.
- 381 5. Coletti P, Libin P, Petrof O, Willem L, Abrams S, Herzog SA, et al. A data-driven metapopulation  
382 model for the Belgian COVID-19 epidemic: assessing the impact of lockdown and exit strategies.  
383 *BMC Infect Dis*. 2021 May 30;21(1):503.
- 384 6. Marziano V, Guzzetta G, Rondinone BM, Boccuni F, Riccardo F, Bella A, et al. Retrospective  
385 analysis of the Italian exit strategy from COVID-19 lockdown. *Proc Natl Acad Sci*. 2021 Jan  
386 26;118(4):e2019617118.
- 387 7. Mathieu E, Ritchie H, Ortiz-Ospina E, Roser M, Hasell J, Appel C, et al. A global database of COVID-  
388 19 vaccinations. *Nat Hum Behav*. 2021 Jul;5(7):947–53.
- 389 8. Stefanelli P, Trentini F, Guzzetta G, Marziano V, Mammone A, Schepisi MS, et al. Co-circulation of  
390 SARS-CoV-2 Alpha and Gamma variants in Italy, February and March 2021. *Eurosurveillance*. 2022  
391 Feb 3;27(5):2100429.
- 392 9. Davies NG, Abbott S, Barnard RC, Jarvis CI, Kucharski AJ, Munday JD, et al. Estimated  
393 transmissibility and impact of SARS-CoV-2 lineage B.1.1.7 in England. *Science*. 2021/03/03 ed.  
394 2021 Apr 9;372(6538):eabg3055.
- 395 10. Alison S, Haim-Boukobza S, Foulongne V, Verdurme L, Trombert-Paolantoni S, Lecorche E, et al.  
396 Rapid spread of the SARS-CoV-2 Delta variant in some French regions, June 2021.  
397 *Eurosurveillance*. 2021 Jul 15;26(28):2100573.
- 398 11. Ferguson NM. B.1.617.2 transmission in England: risk factors and transmission advantage. 2021  
399 Jun;14.
- 400 12. Fabiani M, Puopolo M, Morciano C, Spuri M, Alegiani SS, Filia A, et al. Effectiveness of mRNA  
401 vaccines and waning of protection against SARS-CoV-2 infection and severe covid-19 during  
402 predominant circulation of the delta variant in Italy: retrospective cohort study. *BMJ*. 2022 Feb  
403 10;376:e069052.
- 404 13. Andrews N, Stowe J, Kirsebom F, Toffa S, Rickeard T, Gallagher E, et al. Covid-19 Vaccine  
405 Effectiveness against the Omicron (B.1.1.529) Variant. *N Engl J Med* [Internet]. 2022 Mar 2 [cited  
406 2022 Apr 11]; Available from: <https://doi.org/10.1056/NEJMoa2119451>
- 407 14. Fabiani M, Puopolo M, Filia A, Sacco C, Mateo-Urdiales A, Spila Alegiani S, et al. Effectiveness of  
408 an mRNA vaccine booster dose against SARS-CoV-2 infection and severe COVID-19 in persons

- 409 aged  $\geq 60$  years and other high-risk groups during predominant circulation of the delta variant in  
410 Italy, 19 July to 12 December 2021. *Expert Rev Vaccines*. 2022 Apr 7;0(0):1–8.
- 411 15. Altarawneh HN, Chemaitelly H, Hasan MR, Ayoub HH, Qassim S, AlMukdad S, et al. Protection  
412 against the Omicron Variant from Previous SARS-CoV-2 Infection. *N Engl J Med*. 2022 Mar  
413 31;386(13):1288–90.
- 414 16. Hall VJ, Foulkes S, Charlett A, Atti A, Monk EJM, Simmons R, et al. SARS-CoV-2 infection rates of  
415 antibody-positive compared with antibody-negative health-care workers in England: a large,  
416 multicentre, prospective cohort study (SIREN). *The Lancet*. 2021 Apr 17;397(10283):1459–69.
- 417 17. Luring AS, Tenforde MW, Chappell JD, Gaglani M, Ginde AA, McNeal T, et al. Clinical severity of,  
418 and effectiveness of mRNA vaccines against, covid-19 from omicron, delta, and alpha SARS-CoV-2  
419 variants in the United States: prospective observational study. *BMJ*. 2022 Mar 9;376:e069761.
- 420 18. Sacco C, Mateo-Urdiales A, Petrone D, Spuri M, Fabiani M, Vescio MF, et al. Estimating averted  
421 COVID-19 cases, hospitalisations, intensive care unit admissions and deaths by COVID-19  
422 vaccination, Italy, January–September 2021. *Eurosurveillance*. 2021 Nov 25;26(47):2101001.
- 423 19. Bager P, Wohlfahrt J, Bhatt S, Stegger M, Legarth R, Møller CH, et al. Risk of hospitalisation  
424 associated with infection with SARS-CoV-2 omicron variant versus delta variant in Denmark: an  
425 observational cohort study. *Lancet Infect Dis* [Internet]. 2022 Apr 22 [cited 2022 Apr 29];0(0).  
426 Available from: [https://www.thelancet.com/journals/laninf/article/PIIS1473-3099\(22\)00154-](https://www.thelancet.com/journals/laninf/article/PIIS1473-3099(22)00154-2/fulltext)  
427 [2/fulltext](https://www.thelancet.com/journals/laninf/article/PIIS1473-3099(22)00154-2/fulltext)
- 428 20. Wolter N, Jassat W, Walaza S, Welch R, Moultrie H, Groome M, et al. Early assessment of the  
429 clinical severity of the SARS-CoV-2 omicron variant in South Africa: a data linkage study. *The*  
430 *Lancet*. 2022 Jan 29;399(10323):437–46.
- 431 21. Istituto Superiore di Sanità. Monitoraggio delle varianti del virus SARS-CoV-2 di interesse in sanità  
432 pubblica in Italia [Internet]. [cited 2022 Apr 22]. Available from:  
433 <https://www.epicentro.iss.it/coronavirus/sars-cov-2-monitoraggio-varianti-indagini-rapide>
- 434 22. Covid-19 Opendata Vaccini [Internet]. Developers Italia; 2022 [cited 2022 Apr 12]. Available from:  
435 <https://github.com/italia/covid19-opendata-vaccini>
- 436 23. Task force COVID-19 del Dipartimento Malattie Infettive, Servizio di Informatica, Istituto  
437 Superiore di Sanità. Epidemia COVID-19. Aggiornamento nazionale: 2 marzo 2022 [Internet].  
438 Available from: [https://www.epicentro.iss.it/coronavirus/bollettino/Bollettino-sorveglianza-](https://www.epicentro.iss.it/coronavirus/bollettino/Bollettino-sorveglianza-integrata-COVID-19_2-marzo-2022.pdf)  
439 [integrata-COVID-19\\_2-marzo-2022.pdf](https://www.epicentro.iss.it/coronavirus/bollettino/Bollettino-sorveglianza-integrata-COVID-19_2-marzo-2022.pdf)
- 440 24. Riccardo F, Ajelli M, Andrianou XD, Bella A, Manso MD, Fabiani M, et al. Epidemiological  
441 characteristics of COVID-19 cases and estimates of the reproductive numbers 1 month into the  
442 epidemic, Italy, 28 January to 31 March 2020. *Eurosurveillance*. 2020 Dec 10;25(49):2000790.
- 443 25. Istituto Superiore di Sanità. COVID-19 ISS open data – EpiCentro. [Internet]. [cited 2022 Apr 19].  
444 Available from: [https://www.epicentro.iss.it/coronavirus/open-data/covid\\_19-iss.xlsx](https://www.epicentro.iss.it/coronavirus/open-data/covid_19-iss.xlsx)
- 445 26. Poletti P, Tirani M, Cereda D, Trentini F, Guzzetta G, Sabatino G, et al. Association of Age With  
446 Likelihood of Developing Symptoms and Critical Disease Among Close Contacts Exposed to  
447 Patients With Confirmed SARS-CoV-2 Infection in Italy. *JAMA Netw Open*. 2021 Mar  
448 10;4(3):e211085.

- 449 27. Thomas SJ, Moreira ED, Kitchin N, Absalon J, Gurtman A, Lockhart S, et al. Safety and Efficacy of  
450 the BNT162b2 mRNA Covid-19 Vaccine through 6 Months. *N Engl J Med*. 2021 Nov  
451 4;385(19):1761–73.
- 452 28. El Sahly HM, Baden LR, Essink B, Doblecki-Lewis S, Martin JM, Anderson EJ, et al. Efficacy of the  
453 mRNA-1273 SARS-CoV-2 Vaccine at Completion of Blinded Phase. *N Engl J Med*. 2021 Nov  
454 4;385(19):1774–85.
- 455 29. Petherick A, Goldszmidt R, Andrade EB, Furst R, Hale T, Pott A, et al. A worldwide assessment of  
456 changes in adherence to COVID-19 protective behaviours and hypothesized pandemic fatigue.  
457 *Nat Hum Behav*. 2021 Sep;5(9):1145–60.
- 458 30. Campbell F, Archer B, Laurenson-Schafer H, Jinnai Y, Konings F, Batra N, et al. Increased  
459 transmissibility and global spread of SARS-CoV-2 variants of concern as at June 2021.  
460 *Eurosurveillance*. 2021 Jun 17;26(24):2100509.
- 461 31. Sacco C, Petrone D, Manso MD, Mateo-Urdiales A, Fabiani M, Bressi M, et al. Risk and protective  
462 factors for SARS-CoV-2 reinfections, surveillance data, Italy, August 2021 to March 2022.  
463 *Eurosurveillance*. 2022 May 19;27(20):2200372.
- 464 32. Salje H, Tran Kiem C, Lefrancq N, Courtejoie N, Bosetti P, Paireau J, et al. Estimating the burden of  
465 SARS-CoV-2 in France. *Science*. 2020 Jul 10;369(6500):208–11.
- 466 33. Zardini A, Galli M, Tirani M, Cereda D, Manica M, Trentini F, et al. A quantitative assessment of  
467 epidemiological parameters required to investigate COVID-19 burden. *Epidemics*. 2021 Dec  
468 1;37:100530.
- 469 34. Poletti P, Tirani M, Cereda D, Trentini F, Guzzetta G, Marziano V, et al. Age-specific SARS-CoV-2  
470 infection fatality ratio and associated risk factors, Italy, February to April 2020. *Eurosurveillance*.  
471 2020 Aug 6;25(31):2001383.
- 472 35. Khandaker G, Dierig A, Rashid H, King C, Heron L, Booy R. Systematic review of clinical and  
473 epidemiological features of the pandemic influenza A (H1N1) 2009. *Influenza Other Respir*  
474 *Viruses*. 2011 May 1;5(3):148–56.
- 475 36. Markov PV, Katzourakis A, Stilianakis NI. Antigenic evolution will lead to new SARS-CoV-2 variants  
476 with unpredictable severity. *Nat Rev Microbiol*. 2022 May;20(5):251–2.
- 477 37. Yang J, Marziano V, Deng X, Guzzetta G, Zhang J, Trentini F, et al. Despite vaccination, China  
478 needs non-pharmaceutical interventions to prevent widespread outbreaks of COVID-19 in 2021.  
479 *Nat Hum Behav*. 2021 Aug 1;5(8):1009–20.
- 480 38. Marziano V, Guzzetta G, Mammone A, Riccardo F, Poletti P, Trentini F, et al. The effect of COVID-  
481 19 vaccination in Italy and perspectives for living with the virus. *Nat Commun*. 2021 Dec  
482 14;12(1):7272.
- 483 39. Mossong J, Hens N, Jit M, Beutels P, Auranen K, Mikolajczyk R, et al. Social Contacts and Mixing  
484 Patterns Relevant to the Spread of Infectious Diseases. *PLOS Med*. 2008 Mar 25;5(3):e74.
- 485 40. Hu S, Wang W, Wang Y, Litvinova M, Luo K, Ren L, et al. Infectivity, susceptibility, and risk factors  
486 associated with SARS-CoV-2 transmission under intensive contact tracing in Hunan, China. *Nat*  
487 *Commun*. 2021 Mar 9;12(1):1533.

- 488 41. Sun K, Wang W, Gao L, Wang Y, Luo K, Ren L, et al. Transmission heterogeneities, kinetics, and  
489 controllability of SARS-CoV-2. *Science*. 2021 Jan 15;371(6526):eabe2424.
- 490 42. Diekmann O, Heesterbeek JAP, Metz JAJ. On the definition and the computation of the basic  
491 reproduction ratio  $R_0$  in models for infectious diseases in heterogeneous populations. *J Math*  
492 *Biol*. 1990 Jun 1;28(4):365–82.
- 493 43. Diekmann O, Heesterbeek J a. P, Roberts MG. The construction of next-generation matrices for  
494 compartmental epidemic models. *J R Soc Interface*. 2010 Jun 6;7(47):873–85.
- 495 44. Harris RJ, Hall JA, Zaidi A, Andrews NJ, Dunbar JK, Dabrera G. Effect of Vaccination on Household  
496 Transmission of SARS-CoV-2 in England. *N Engl J Med*. 2021 Aug 19;385(8):759–60.
- 497 45. Lipsitch M, Kahn R. Interpreting vaccine efficacy trial results for infection and transmission.  
498 *Vaccine*. 2021 Jul 5;39(30):4082–8.
- 499