

1 **Severity of Omicron (B.1.1.529) and Delta (B.1.1.617.2) SARS-CoV-2 infection among**  
2 **hospitalised adults: a prospective cohort study**

3 Dr Catherine Hyams PhD<sup>†</sup>, Population Health Sciences, University of Bristol, Bristol, UK

4 Dr Robert Challen MA MBBS<sup>†</sup>, Engineering Mathematics, University of Bristol, UK

5 Dr Robin Marlow PhD, Population Health Sciences, University of Bristol, Bristol, UK

6 Dr Jennifer Nguyen ScD, MPH, Vaccines Medical Development, Scientific and Clinical Affairs,

7 Pfizer Inc, Collegeville, PA, USA

8 Dr Elizabeth Begier MD, MPH, Global Medical Development Scientific and Clinical Affairs,

9 Pfizer Vaccines, Ireland

10 Dr Jo Southern PhD, Vaccines Medical Affairs, Pfizer Ltd, Tadworth, UK, KT20 7NS.

11 Ms Jade King MSc, Vaccine and Testing Team, Clinical Research Facility, UHBW NHS Trust,

12 Bristol, UK

13 Ms Anna Morley MSc, Academic Respiratory Unit, University of Bristol, Southmead Hospital,

14 Bristol, UK

15 Ms Jane Kinney BSc, Bristol Vaccine Centre, Population Health Sciences, University of Bristol,

16 Bristol, UK

17 Ms Madeleine Clout BSc, Bristol Vaccine Centre, Population Health Sciences, University of

18 Bristol, Bristol, UK

19 Dr Jennifer Oliver PhD, Bristol Vaccine Centre, Population Health Sciences, University of

20 Bristol, Bristol, UK

21 Dr Gillian Ellsbury MD, Vaccines Medical Affairs, Pfizer Ltd, Tadworth, UK, KT20 7NS

22 Prof Nick Maskell MD, Academic Respiratory Unit, University of Bristol, Southmead Hospital,

23 Bristol, UK

24 Dr Luis Jodar PhD Vaccines Medical Development, Scientific and Clinical Affairs, Pfizer Inc,  
25 Collegeville, PA, USA.  
26 Dr Bradford Gessner PhD, Vaccines Medical Development, Scientific and Clinical Affairs,  
27 Pfizer Inc, Collegeville, PA, USA.  
28 Dr John McLaughlin PhD, Vaccines Medical Development, Scientific and Clinical Affairs,  
29 Pfizer Inc, Collegeville, PA, USA  
30 Dr Leon Danon PhD, Engineering Mathematics, University of Bristol, UK  
31 Professor Adam Finn PhD FRCP, Bristol Vaccine Centre, Cellular and Molecular Medicine and  
32 Population Health Sciences, University of Bristol, Bristol, UK (Corresponding Author)  
33 The Avon CAP Research Group

34 † These authors contributed equally, and should be considered co-first authors

35

36 **Corresponding Author:** Professor Adam Finn, PhD  
37 Bristol Vaccine Centre, University of Bristol  
38 Level 6, UHB Education and Research Centre  
39 Upper Maudlin Street  
40 Bristol BS2 8AE  
41 United Kingdom  
42 +44(0)117 342 0160  
43 adam.finn@bristol.ac.uk  
44

45 **Keywords:** COVID-19, SARS-CoV-2, respiratory infection, vaccination

46 **ABSTRACT**

47 Limited data exist assessing severity of disease in adults hospitalised with Omicron SARS-CoV-  
48 2 variant infections, and to what extent patient-factors, including vaccination and pre-existing  
49 disease, affect variant-dependent disease severity. This prospective cohort study of all adults  
50 ( $\geq 18$  years of age) hospitalised at acute care hospitals in Bristol, UK assessed disease severity  
51 using 3 different measures:  $\text{FiO}_2 > 28\%$ , World Health Organization (WHO) outcome score  $> 5$ ,  
52 and hospital length of stay (LOS)  $> 3$  days following admission for Omicron or Delta variant  
53 infection.

54  
55 Independent of other variables, including vaccination, Omicron variant infection was associated  
56 with a statistically lower severity compared to Delta; risk reductions were 58%, 67%, and 16%  
57 for  $\text{FiO}_2$ , WHO score, and LOS, respectively. Younger age and vaccination with two or three  
58 doses were also independently associated with lower COVID-19 severity. Despite lower severity  
59 relative to Delta, Omicron infection still resulted in substantial patient and public health burden  
60 following admission.

61

## 62 INTRODUCTION

63 The emergence of SARS-CoV-2 has resulted in a global pandemic, with multiple variants  
64 detected since the wild-type virus emerged. The Delta variant (B.1.617.2) was first detected in  
65 India in late March 2021, spread rapidly [1] and resulted in a sharp rise in SARS-CoV-2 cases in  
66 the United Kingdom [2]. The Omicron (B.1.1.529) variant, first detected in South Africa in  
67 November 2021, rapidly replaced Delta as the main circulating variant globally and resulted in a  
68 fourth wave of SARS-CoV-2 infection in the UK. By 26<sup>th</sup> December 2021, 95% of UK SARS-  
69 CoV-2 cases were estimated to be caused by Omicron [3].

70

71 SARS-CoV-2 variants may differ in intrinsic capacity to infect and transmit, susceptibility either  
72 to vaccine- or infection-derived immunity and clinical phenotype including disease severity.  
73 Laboratory data suggest that vaccine-induced neutralizing antibody activity is lower against  
74 Delta [4,5] and Omicron variants [6,7] than against previous variants and wild/prototype viral  
75 strains. Real world data have subsequently confirmed that vaccine effectiveness is substantially  
76 lower against symptomatic disease with Omicron than with Delta and other prior variants [8,9].  
77 However, numbers of hospitalisations as a proportion of cases during the Omicron wave have  
78 been considerably lower than previous waves [2,10]. Moreover, observational data suggest that  
79 vaccines remain effective against Omicron-related hospitalization in the general population  
80 [11,12]. It remains uncertain to what extent the Omicron variant is intrinsically less severe than  
81 earlier variants and how much increasing vaccine coverage over time instead explains the  
82 observed reduction in severity. Understanding the reasons for differences in clinical disease  
83 caused by SARS-CoV-2 variants assists planning and implementation of public health measures.

84

85 Several reports [13-16] have compared the risk of hospitalization or severe disease based on  
86 SARS-CoV-2 variant and some suggest that Omicron is probably less severe than Delta in both  
87 vaccinated and unvaccinated individuals [13-15]. Lower vaccine effectiveness against severe  
88 disease due to Omicron than Delta after 2 and 3 doses has been documented, protection that may  
89 also wane faster over time [14,17-19]. However, a recent preliminary report found no difference  
90 in severity between Omicron and Delta [16]. While some studies have stratified results by  
91 vaccination status [13-15] and age [13], none have comprehensively evaluated the simultaneous  
92 impact of these and other important factors (e.g., chronic medical conditions, frailty) on more  
93 detailed measures of relative clinical severity in hospitalized patients.

94

95 In this study, we assessed the relative impact of SARS-CoV-2 variant (i.e., Omicron versus  
96 Delta) on three separate measures of severity of COVID-19-related hospitalization after  
97 adjusting for important potential confounders, such as age, frailty, and vaccination status. Our  
98 results should facilitate public health and hospital service planning.

99 **METHODS**

100 **Study design and study population**

101 We are conducting a prospective cohort study of adults with acute respiratory illness admitted to  
102 North Bristol and University Hospitals Bristol and Weston NHS Trusts and now report those  
103 presenting between 1<sup>st</sup> June 2021 and 28<sup>th</sup> March 2022 inclusive. All adults aged  $\geq 18$  years  
104 admitted to these hospitals were screened for signs and symptoms of respiratory disease as  
105 reported previously [20]. Of these, patients who tested positive for COVID-19 as detailed below  
106 were included.

107

108 **UK Vaccination Programme**

109 The UK vaccine programme prioritised first dose administration, extending the interval between  
110 first and second doses of COVID-19 vaccines up to 12 weeks [21]. Initially BNT162b2  
111 (Comirnaty®) was deployed in the UK, followed rapidly by the addition of ChAdOx1  
112 (Vaxzevria®) and, subsequently, mRNA-1273 (Spikevax®). After January 2022, coverage with  
113 2 doses of vaccine was over 80% in adults aged  $\geq 20$  years of age with higher rates among those  
114  $\geq 50$  years of age [22]. A booster campaign delivering a third vaccine dose commenced in  
115 September 2021 and was accelerated in December 2021 to meet the emerging threat of Omicron  
116 [23], resulting in 60% of adults receiving a booster by 1st January 2022. Both the primary  
117 vaccination campaign and the booster campaign were rolled out in an age-stratified fashion, with  
118 elderly and high-risk groups targeted first [2].

119

120

121

## 122 **Data Collection**

123 Clinical data were collected from electronic and paper patient records and recorded on an  
124 electronic case report form using REDCap software [24]. Data collection was undertaken by  
125 individuals not involved in data analysis and methods were identical for patients with Omicron  
126 and Delta variant infections. Vaccination records for each study participant were obtained by  
127 team members unaware of subjects' SARS-CoV-2 test results from linked hospital and GP  
128 records, including details of vaccination brand and date of administration. The QCovid2 hazard  
129 score, which includes components for age, deprivation, body mass index (BMI), and pre-existing  
130 disease, was calculated for each admission [25], in addition to the Charlson Comorbidity Index  
131 (CCI) [26,27].

132

## 133 **Case definitions and exclusions**

134 SARS-CoV-2 infection was defined as respiratory disease and a positive test result for SARS-  
135 CoV-2 on/during admission or within 7 days prior to admission, using the established UK Health  
136 Security Agency (UKHSA) diagnostic assay deployed at the time. Infection with a particular  
137 SARS-CoV-2 variant was likewise determined using the standard UKHSA variant identification  
138 methods deployed at the time. Initially, Delta was identified by S-gene positive PCR (SGTP),  
139 which was replaced on 11<sup>th</sup> May 2021 by the P681R target following validation. Omicron was  
140 identified as S-gene negative (SGNP) and then by K417N mutation [28]. Cases without variant  
141 identification results admitted between the 1<sup>st</sup> June 2021 and 7<sup>th</sup> November 2021 were inferred to  
142 be Delta, and those after 7<sup>th</sup> Feb 2022 were inferred to be Omicron. These two dates represent the  
143 first date of a proven Omicron admission and the last date of a proven Delta admission in the  
144 Bristol area, respectively.

145 Patients developing symptoms >10 days prior to admission were excluded to avoid including  
146 individuals who may have falsely tested negative for SARS-CoV-2 upon admission because they  
147 presented to hospital late in their clinical course as were individuals who had been inpatients for  
148 >28 days prior to their first positive SARS-CoV-2 PCR test. Patients who were partially  
149 vaccinated, i.e. had received only one dose or a second dose <7 days before the time of symptom  
150 onset, and those who had previously recovered from COVID-19 and not been vaccinated, were  
151 also excluded from the analysis. Individuals were defined as unvaccinated if they had never  
152 received any COVID-19 vaccine. Immunisation with only two vaccine doses was defined as  
153 receipt of two doses with  $\geq 7$  days elapsing between symptom onset and the second dose (and no  
154 third dose). Immunisation with three doses was defined as receipt of a third vaccine dose after  
155 receiving two doses, with  $\geq 7$  days elapsing between the third dose and symptom onset. Only  
156 patients being admitted with COVID-19 for the first time were included, as repeat admissions  
157 may be expected to follow different clinical courses.

158

### 159 **Outcome and covariates**

160 The primary comparison is between cases infected with SARS-CoV-2 Delta variant and SARS-  
161 CoV-2 Omicron variant. To investigate disease severity and consider the hypothesis that  
162 Omicron is associated with less severe outcomes in patients hospitalised with COVID-19, we  
163 considered three separate binary outcomes measured on the seventh day following admission: (1)  
164 maximum oxygen requirement  $\text{FiO}_2 > 28\%$ , (2) a WHO outcome score greater than 5 (i.e.  
165 ventilation or intubation required or death) within the first seven days of hospitalisation [29], and  
166 (3) length of stay longer than three days. The WHO outcome score, or clinical progression scale  
167 is based on the level of invasive ventilation required and, in admitted patients, scores range from



168 4 to 10 (4 = room air, 5 = oxygen supplementation required, 6 = non-invasive positive pressure  
169 ventilation [NIPPV] usage, and 7-9 needing endotracheal intubation). A score of 10 represents  
170 death. Outcome measures were chosen to reflect different operational concerns for hospitals, in  
171 particular the adequacy of oxygen supply, availability of high dependency care, and a measure of  
172 overall hospital bed utilisation. We measured the scores at day seven to include relevant data  
173 from the hospital admission and to prevent complications with right censoring. Thresholds for  
174 the outcomes used here were determined empirically following an initial investigation, and a  
175 sensitivity analysis conducted on the level of each threshold.

176

## 177 **Statistical Analysis**

178 The demographics of patients with Delta infection and those with Omicron were compared using  
179 Fisher exact tests for categorical variables, two sided Kolmogorov–Smirnov tests for continuous  
180 variables and two-sided Wilcoxon-Mann-Whitney tests for score variables. Where data were  
181 missing, this comparison was performed with both the missing data removed and with missing  
182 data included as a separate category (Table 1).

183

184 The complex interaction between the dynamics of variant distribution in the UK and the  
185 progressing age-stratified booster campaign rollout was hypothesised to influence both the risk  
186 profile of patients hospitalised and severity of outcome once hospitalised. The outcomes are  
187 relatively frequent in both groups which can make interpretation of odds ratios resulting from  
188 logistic regression complex [30]. Thus, we used Poisson regression with a robust error variance  
189 [30] to estimate the relative risk of each of the three outcomes described above.

190

191 The primary comparison was the impact of the variant (i.e., Delta versus Omicron) on hospital  
192 outcomes. Other covariates were identified that might also influence the outcomes, which  
193 included: vaccination status; age (categorical); markers of frailty (Charlson Comorbidity Index  
194 [CCI] [26], QCovid2 hazard, [25], Rockwood score [31]); gender; ethnicity; immunosuppressive  
195 therapy; residence in a care home; index of multiple deprivation; duration of symptoms prior to  
196 admission; hospital site and study week number. The distribution of these variables with respect  
197 to variant are shown in Supplementary Table 3. These covariates were screened for systematic  
198 biases due to missing data, resulting in removal of index of multiple deprivation (Supplementary  
199 Tables 4 and 5). Remaining missing data were imputed using the fully conditional specification  
200 approach implemented using the `mice` package in R [32]. Multiple imputations were performed  
201 and the full analysis repeated for each imputation. For each of the factors and outcomes, the  
202 univariate relative risk was estimated, followed by a multivariable model of a linear combination  
203 of genomic variant, vaccination, age and CCI [26]. These were then fully adjusted using the  
204 remaining covariates, gender, ethnicity, immunosuppressive therapy, residence in a care home,  
205 duration of symptoms prior to admission, hospital site, and study week number. The resulting  
206 coefficients for each imputation were combined using a mixture distribution, assuming normally  
207 distributed beta coefficients. Sensitivity analyses were conducted using different combinations of  
208 age and frailty markers, including CCI as a continuous variable, Rockwood score [31] and the  
209 QCovid2 hazard rate (which includes age) [25]. Further sensitivity analyses were conducted  
210 looking at different threshold values of each of the three binary outcomes.

211  
212 Statistical analyses were performed in R, version 4.0.2. Robust Poisson regression was  
213 performed using maximum likelihood estimation of a generalised linear model, with a positive

214 outcome encoded as a count of 1 and negative outcome as 0. We employed a logarithmic link  
215 function, and heteroscedasticity consistent covariance matrix estimators. [30,33] Statistical  
216 significance was defined using a 2-sided significance level of  $\alpha = 0.05$ . We also conducted a  
217 sensitivity analysis on the statistical model using quasi-Poisson and log-binomial regression  
218 giving relative risks and logistic regression giving odds ratios for completeness.

219

## 220 **Ethics and permissions**

221 The study was approved by the Health Research Authority Research Ethics Committee (East of  
222 England, Essex), REC 20/EE/0157, including data collection under Section 251 of the 2006 NHS  
223 Act authorised by the Confidentiality Advisory Group.

224

## 225 **Role of the funding source**

226 The funders of the study did not play any part in data collection; they collaborated in the design  
227 of the study, data analysis and manuscript preparation.

## 228 **RESULTS**

229 During the study period reported here, 3297 admissions with SARS-CoV-2 were identified,  
230 resulting in 1938 SARS-CoV-2 positive qualifying admissions: 1190 with Delta variant and 748  
231 with Omicron variant. 59 Delta and 22 Omicron cases were excluded from analysis as described  
232 in Figure 1.

233  
234 Patients hospitalised with the Omicron variant were statistically older than those with Delta  
235 infection (median [IQR]: 70·6y [44·8y – 83·5y] versus 57·7y [42·6y – 74·1y] respectively,  
236  $P<0.001$ ) and had a higher CCI (4 [1 – 5] versus 2 [0 – 4] respectively,  $P<0.001$ ). These  
237 individuals were also more likely to have received a third vaccination dose (60·2 versus 5·0%  
238 respectively,  $P<0.001$ ) (Table 1). Additional analysis investigated the nature of the additional  
239 comorbidities (Supplementary Table 1) and detail of vaccination (Supplementary Table 2),  
240 showing that patients admitted with Omicron infection were more likely to have pre-existing  
241 heart disease, hypertension, atrial fibrillation, dementia, mild chronic kidney disease (CKD), and  
242 peripheral vascular disease than patients admitted with Delta infection (all  $P<0.001$ ).

243  
244 The proportion of hospitalisations with the Omicron variant increased over time and became the  
245 dominant variant in the last week of December 2021 (Figure 2A). As the vaccination campaign  
246 progressed over the course of the study period, we saw increasing proportions of admissions of  
247 individuals who had received two vaccine doses or a booster (Figure 2B). Admissions occurring  
248 early in the study period tended to be younger individuals, and the age profile of admissions  
249 shifted towards older groups with time, with evidence of a change point in late December 2021,  
250 coincident with the increase in Omicron cases (Figure 2C). Overall, the patterns suggest that

251 patients admitted between December and February were generally older and frailer, but more  
252 commonly vaccinated.

253  
254 In addition to being older, frailer, and more frequently vaccinated, patients admitted with  
255 Omicron infections experienced less severe outcomes compared to patients infected with Delta.  
256 Omicron admissions required ventilation less frequently (Figure 3A), and when they did, a lower  
257 oxygen supplement was needed (Figure 3B). The WHO outcome score was also lower within the  
258 first seven days of admission (Figure 3C). There was no discernible difference in these outcomes  
259 between Delta and Omicron in patients  $\geq 85$  years of age (Figure 3D and 3E). Length of hospital  
260 stay was shorter for Omicron compared to Delta among patients  $< 70$  years of age but was similar  
261 for those  $\geq 70$  years (Figure 3F).

262  
263 Direct associations (Figure 3) account for neither the changes in patient frailty nor vaccination  
264 status observed over the course of the study. Figure 4 presents results of adjusted regression  
265 models that account for these time-varying factors observed over the duration of the study  
266 (methodological details in Supplementary Tables 3-11, numerical results in Supplementary  
267 Tables 12 & 13). Relative to Delta, patients infected with Omicron were less likely to require  
268 oxygen supplementation of  $\text{FiO}_2 > 28\%$  [RR = 0.42 (95% CI: 0.34-0.52)], to have a WHO  
269 outcome score  $> 5$  (which implies that a patient required positive pressure ventilatory support or  
270 died in the hospital) [RR = 0.33 (95% CI: 0.21-0.50)], and to have a hospital stay lasting over  
271 three days [RR = 0.84 (95% CI: 0.76-0.92)]. In stratified analyses by vaccination status, infection  
272 with Omicron relative to Delta was associated with lower severity across all three measures in  
273 both vaccinated and unvaccinated patients.

274  
275 Compared to unvaccinated patients, those who were vaccinated with two doses were less likely  
276 to require high flow oxygen  $>28\%$   $\text{FiO}_2$  [RR = 0.78 (95% CI: 0.68-0.89)], positive pressure  
277 ventilatory support or increased critical care [RR = 0.56 (95% CI: 0.43-0.73)], and to have a  
278 hospital admission  $>3$  days [RR = 0.90 (95% CI: 0.84-0.98)]. Results for vaccination with three  
279 doses were similar but had wider confidence intervals than for two doses. In analyses stratified  
280 by infecting variant, vaccination was associated with lower severity of disease using all three  
281 measures for both Omicron and Delta infections. In analyses assessing potential effect  
282 modification by adding an interaction term between variant and vaccination status to adjusted  
283 models, the interaction term was not significant for any severity outcome (Supplementary Table  
284 14).

285  
286 In sensitivity analyses using threshold levels of increased severity to dichotomize outcomes, the  
287 relative lower severity of Omicron declined further when using higher thresholds for oxygen  
288 requirement [ $\text{FiO}_2 >35\%$ : RR = 0.27 (95% CI: 0.19-0.39);  $\text{FiO}_2 >50\%$ : RR = 0.23 (95% CI:  
289 0.15-0.37); Supplementary Table 15]. Sensitivity analysis using a WHO outcome score threshold  
290  $>6$  (and hence necessitating intubation) had insufficient statistical power (Supplementary Table  
291 16). When longer thresholds for LOS were used, the lower relative severity of Omicron  
292 attenuated as the threshold increased [LOS  $>5$  days: RR = 0.81 (95% CI: 0.71-0.92); LOS  $>7$   
293 days: RR = 0.85 (95% CI: 0.73-0.99); Supplementary Table 17], suggesting that certain patient  
294 characteristics may be associated with shorter hospital admissions. For vaccination, the  
295 protective effect of vaccines increased as the severity level threshold increased for each outcome

296 measure. Associations were similar in sensitivity analyses that replaced age group and the  
297 Charlson comorbidity index with the QCovid2 score.  
298

299 **DISCUSSION**

300 We found evidence that infection with Omicron was associated with less severe illness than that  
301 caused by Delta and that vaccination was independently associated with lower in-hospital disease  
302 severity using three separate measures of severity. Specifically, compared to Delta, Omicron-  
303 related hospitalizations were 58%, 67%, and 16% less likely to require high flow oxygen >28%  
304 FiO<sub>2</sub>, positive pressure ventilatory support or more critical care, and to have a hospital stay  
305 lasting more than three days, respectively. These findings persisted even after controlling for  
306 multiple potential confounders including age, chronic medical conditions, frailty, and increasing  
307 vaccination coverage over time. Our findings are in keeping with previously published  
308 assessment of the relative severity of Omicron variant infection compared to other variants,  
309 which examined markers of severity such as hospitalization, ICU admission, mechanical  
310 ventilation, severe disease and death [34,35]. Further, by determining the reduced requirement of  
311 increased oxygen requirement and total positive pressure requirement, including non-invasive  
312 ventilation, this analysis should contribute to future hospital care and service planning  
313 assessments.

314  
315 From a public health perspective, the impact of the lower severity of Omicron-related  
316 hospitalization must be balanced with increased transmissibility and overall higher numbers of  
317 infections due to this variant. Even with the reduced risk of severe disease posed by Omicron,  
318 this may result in substantial pressure on the hospital system due to increased bed occupancy, as  
319 the less severe variant is offset by the increasingly elderly and frail patients requiring hospital  
320 care. Further, considerable morbidity resulted from Omicron infection, with 18% of Omicron  
321 admissions requiring oxygen supplementation of FiO<sub>2</sub> >28%, 6% requiring positive pressure



322 ventilation, 62% resulting in hospital stays lasting four days or longer, and 4% resulting in in-  
323 hospital mortality. Despite the reduction in individual-level risk of needing high flow oxygen or  
324 high dependency care with Omicron compared to earlier variants, healthcare systems could still  
325 be overwhelmed by the sheer number of cases and the resulting high (absolute) number of  
326 hospitalizations. Omicron's increased transmissibility also increases the risk of infection for  
327 clinical and other hospital staff, which can take a significant toll on the number of staff available  
328 to provide care. The hospital burden of COVID-19 is influenced by: (a) the community  
329 prevalence of SARS-CoV-2 infection, (b) the relative frequency and intrinsic severity of  
330 circulating SARS-CoV-2 variants, (c) the inherent risk of severe disease among those infected,  
331 (d) the modification of this risk resulting from vaccination, and (e) any limitations on the end-to-  
332 end function of health and social care. These factors all vary with time in our analysis.  
333 Determining their relative importance helps us to identify elements of the health service that may  
334 be most affected by the high incidence of community COVID-19 disease caused by the Omicron  
335 variant.

336  
337 Discerning the effect of a variant on hospital length of admission in the context of individuals  
338 who have already developed severe enough disease to merit hospital level care is difficult.  
339 Multiple factors affect duration of admission which confound the effect of any individual  
340 pathogen or pathogen strain, including patient frailty and their need for continued care following  
341 discharge. Other events unrelated to the patient's primary pathology, such as inpatient falls or  
342 secondary hospital-acquired infection, may also impact discharge. In contrast, the reductions in  
343 oxygen requirements and lower WHO outcome scores we observe for Omicron infections are  
344 reassuring. This suggests that exhaustion of oxygen supplies or high dependency care beds are

345 less likely to be seen in large waves of community Omicron infection than was the case with  
346 Delta and other previous variants. Vaccination is seen to reduce these risks further and our  
347 results suggest it is an important modifier of these aspects of impact on health services.

348  
349 Our results are in line with prior studies reporting that infection with Omicron was less likely to  
350 result in severe disease compared to infection with Delta, in both vaccinated and unvaccinated  
351 individuals [13-15]. Lauring *et al.* also reported lower in-hospital severity for Omicron than for  
352 Delta among unvaccinated patients, and that severity was significantly lower for vaccinated  
353 patients, for both Omicron and Delta infections. Although additional studies have reported lower  
354 intrinsic severity for Omicron relative to Delta, measured as the risk of hospitalization [13,15] or  
355 death [13] following infection after taking into account vaccination status, the scientific evidence  
356 continues to evolve. A recent preliminary report found no difference in severity between the two  
357 variants with regards to risk of hospitalization or mortality [14].

358  
359  
360 Our study has several strengths. All patients were admitted to hospital with acute respiratory  
361 illness caused by SARS-CoV-2, so these results are unlikely to be subject to bias caused by  
362 admission for other causes (i.e., incidental COVID-19 disease). In the UK, all national  
363 programme vaccines are provided at no cost at the point of delivery; hence our cohort is not  
364 biased by issues surrounding the cost of vaccination that are seen in fee-based systems [36].  
365 While week of symptom onset was identified as a significant univariate predictor for adverse  
366 outcome, we observe it becomes non-significant on a multivariable analysis which includes time  
367 varying factors, such as vaccination, or variant status (Supplementary Tables 6, 8, 10). This

368 reassures us that there are no other time varying factors for which we have not accounted. With a  
369 comparatively rich data set of prospectively collected information, we can determine timing of  
370 disease onset accurately and capture information on a range of factors more precisely, such as  
371 vaccination status and patient comorbidities, than could be done using a retrospective design.  
372 However, we are limited in this study to observation of patient outcomes in patients only after  
373 hospital admission. Thus, we cannot draw conclusions about the severity of Omicron infections  
374 occurring entirely in the community. We observed a change in the demographics of patients  
375 being admitted towards more elderly and frail populations, which could be explained if  
376 community Omicron disease were especially milder in young and healthy individuals. The  
377 effects we observed for Omicron and vaccination on clinical outcomes in hospitalised patients  
378 occurred over and above any community-level effects. We did not have sufficient data to  
379 determine the effectiveness of any individual vaccine against the outcomes studied and our  
380 results cannot be interpreted as a vaccine effectiveness estimate. Furthermore, we did not have  
381 sufficient statistical power to determine with confidence whether booster doses of COVID-19  
382 vaccine offered additional protection against adverse outcomes. We are unable to control for  
383 pressures in the social care system following discharge, and large waves of community Omicron  
384 infection may put pressure on community elderly care facilities resulting in a backward pressure  
385 on hospital discharges. This could partially explain our observation that length of stay longer  
386 than three days is less associated with variant status and vaccination than other outcomes. Whilst  
387 the population of the Bristol area is representative of the UK population, it is principally  
388 Caucasian, and our findings must be interpreted in this context.  
389

390 In this prospective study, patients hospitalised with Omicron infections had lower clinical  
391 severity than those with Delta infections, as assessed by maximal oxygen requirements, a  
392 validated WHO outcome score, and hospital length of stay. Omicron infection, however, still  
393 resulted in substantial patient and public health burden following admission. Elderly and frail  
394 patients remain particularly susceptible to severe SARS-CoV-2 infection, underscoring the  
395 importance of maintaining high levels of vaccine coverage in this population. Understanding  
396 differences in the risk of clinical disease caused by SARS-CoV-2 variants following infection  
397 and following hospitalisation, and the role of vaccination and other factors in modifying risk, is  
398 critical for planning of public health measures.  
399

400 **TABLES**

401 **Table 1: Baseline Characteristics of Adults Hospitalised with Delta and Omicron SARS-CoV-2 Infection.**

402 Confidence intervals shown are the 95% binomial confidence interval for each group, compared to other groups. *P*-values are shown  
 403 for the comparison excluding missing values, and in parentheses for the comparison including missing values as a separate category.

404 BMI – body mass index, CCI – Charlson Comorbidity Index, HR – Hazard Ratio, IQR – interquartile range, SD – standard deviation

| Characteristic       | Group          | Delta |                    | Omicron |                    | P-value         |
|----------------------|----------------|-------|--------------------|---------|--------------------|-----------------|
|                      |                | N     | Value              | N       | Value              |                 |
| Age                  | Median [IQR]   | 1114  | 57.7 [42.6 – 74.1] | 679     | 70.6 [44.8 – 83.5] | <0.001          |
| Gender               | Male           | 628   | 56.4% [53.4–59.3]  | 349     | 51.4% [47.6–55.1]  | 0.045 (0.045)   |
|                      | Female         | 486   | 43.6% [40.7–46.6]  | 330     | 48.6% [44.9–52.4]  |                 |
| Race                 | White British  | 669   | 60.1% [57.1–62.9]  | 463     | 68.2% [64.6–71.6]  | 0.025 (0.020)   |
|                      | White other    | 72    | 6.5% [5.2–8.1]     | 28      | 4.1% [2.9–5.9]     |                 |
|                      | Mixed origin   | 11    | 1.0% [0.6–1.8]     | 5       | 0.7% [0.3–1.7]     |                 |
|                      | Black          | 39    | 3.5% [2.6–4.7]     | 19      | 2.8% [1.8–4.3]     |                 |
|                      | Asian          | 45    | 4.0% [3.0–5.4]     | 21      | 3.1% [2.0–4.7]     |                 |
|                      | Other race     | 21    | 1.9% [1.2–2.9]     | 7       | 1.0% [0.5–2.1]     |                 |
|                      | Unknown        | 257   | 23.1% [20.7–25.6]  | 135     | 19.9% [17.1–23.0]  |                 |
|                      | Missing        | 0     | 0.0% [0.0–0.3]     | 1       | 0.1% [0.0–0.8]     |                 |
| BMI                  | Median [IQR]   | 703   | 29.1 [24.7 – 33.3] | 192     | 25 [21.4 – 29.9]   | <0.001          |
| CCI category         | None (0)       | 349   | 31.3% [28.7–34.1]  | 167     | 24.6% [21.5–28.0]  | <0.001 (<0.001) |
|                      | Mild (1-2)     | 253   | 22.7% [20.3–25.3]  | 98      | 14.4% [12.0–17.3]  |                 |
|                      | Moderate (3-4) | 247   | 22.2% [19.8–24.7]  | 186     | 27.4% [24.2–30.9]  |                 |
|                      | Severe (5+)    | 265   | 23.8% [21.4–26.4]  | 228     | 33.6% [30.1–37.2]  |                 |
| Vaccination          | Unvaccinated   | 551   | 49.5% [46.5–52.4]  | 164     | 24.2% [21.1–27.5]  | <0.001 (<0.001) |
| On immunosuppression | 2 doses        | 507   | 45.5% [42.6–48.4]  | 106     | 15.6% [13.1–18.5]  | 0.567 (0.031)   |
|                      | 3 doses        | 56    | 5.0% [3.9–6.5]     | 409     | 60.2% [56.5–63.8]  |                 |
|                      | No             | 1033  | 92.7% [91.1–94.1]  | 631     | 92.9% [90.8–94.6]  |                 |
|                      | Yes            | 81    | 7.3% [5.9%–8.9%]   | 44      | 6.5% [4.9%–8.6%]   |                 |
|                      | Missing        | 0     | 0.0% [0.0%–0.3%]   | 4       | 0.6% [0.2%–1.5%]   |                 |

405

406 **FIGURE LEGENDS**

407 **Figure 1: CONSORT diagram of adults hospitalised with SARS-CoV-2 infection**

408 Inclusion and exclusion criteria in the cohort stratified by the primary comparison or SARS-  
409 CoV-2 variant. Any patient may be excluded for multiple reasons at each stage, hence the counts  
410 of reasons for exclusion may not add up to the number of patients excluded.

411 FiO<sub>2</sub>, fraction of inspired oxygen; LOS, length of stay; VOC, variant of concern; WHO, World  
412 Health Organisation

413

414 **Figure 2: Hospitalisations with SARS-CoV-2 infection throughout the study**

415 (A) Daily rates of hospitalisations with Delta and Omicron SARS-CoV-2 infection, (B) 14-day  
416 rolling proportions of hospitalisations by vaccination status (excluding people partially  
417 vaccinated on admission) and (C) by age groups (in years) throughout the study. Vertical lines  
418 represent the earliest time an Omicron case was admitted and the latest time a Delta case was  
419 admitted. Outside this date range all cases are assumed to be Delta or Omicron when sequencing  
420 results are not available.

421

422 **Figure 3: The detailed breakdown of the three selected indicators of severity of hospital**  
423 **admission stratified by SARS-CoV-2 variant, and the comparison of three binary**  
424 **indicators of hospital burden and their relationship to SARS-CoV-2 variant and patient**  
425 **age, for patients admitted to hospital.**

426 The distribution of patients (A) requiring different peak levels of oxygen supplementation, (B)  
427 with different ventilation requirements as defined by the WHO outcome or clinical progression

428 score, and (C) with different lengths of stay. The proportion of patients who (D) require high  
429 flow oxygen  $>28\%$   $\text{FiO}_2$ , (E) have a WHO outcome score  $>5$  (requiring NIPPV), and (F) have a  
430 hospital length of stay greater than three days, as assessed on the seventh day following  
431 admission. Error bars show 95% binomial confidence intervals for each outcome, compared to  
432 other outcomes.

433  $\text{FiO}_2$ , Fraction of inspired oxygen; LOS, length of stay; NIPPV, non-invasive positive pressure  
434 ventilation

435

436 **Figure 4: Robust Poisson regression model relative risks for the three indicators of hospital**  
437 **burden.**

438 Relative risks describing the effect of different predictors on whether patients require oxygen  
439 supplementation with  $\text{FiO}_2 >28\%$  (first column), have a WHO outcome score greater than 5  
440 (second column) or who remain in hospital for more than 3 days (third column) measured on the  
441 seventh day after admission. Numerical details of these regression models, including other  
442 explanatory variables that are not our primary interest, are given in Supplementary Table 15. A  
443 comparison of relative risks computed by different methods and odds ratios by logistic  
444 regression is shown in Supplementary Table 18.

445  $\text{FiO}_2$  – fraction inspired oxygen, LOS – length of stay, CCI – Charlson Comorbidity Index

446

447 **DATA SHARING**

448 The data used in this study are sensitive and cannot be made publicly available without  
449 breaching patient confidentiality rules.

450

451 **CONTRIBUTORS**

452 CH, RC, RM, LD, JO, JN, JM and AF generated the research questions and analysis plan. CH,  
453 AM, JK, MC and The Avon CAP team were involved in data collection. CH, RC, RM, LD, and  
454 AF undertook data analysis. All authors were involved in the final manuscript preparation and its  
455 revisions before publication. AF provided oversight of the research.

456

457 **FUNDING**

458 This study is a University of Bristol sponsored study which is funded under an investigator-led  
459 collaborative agreement by Pfizer Inc.

460

461 **DECLARATIONS OF INTEREST**

462 CH is Principal Investigator of the Avon CAP study which is an investigator-led University of  
463 Bristol study funded by Pfizer and has previously received support from the NIHR in an  
464 Academic Clinical Fellowship. JO is a Co-Investigator on the Avon CAP Study. AF is a member  
465 of the Joint Committee on Vaccination and Immunization (JCVI) and chair of the World Health  
466 Organization European Technical Advisory Group of Experts on Immunization (ETAGE)  
467 committee. In addition to receiving funding from Pfizer as Chief Investigator of this study, he  
468 leads another project investigating transmission of respiratory bacteria in families jointly funded  
469 by Pfizer and the Gates Foundation. LD, RC are members of SPI-M-O subgroups of SAGE and



470 are also partly funded through AvonCAP. LD is a Co-Investigator of the AvonCAP study and  
471 has also received funding from Pfizer, UKRI and UKHSA for unrelated projects. EB, JS, JN,  
472 GE, LJ, BG, and JM are employees of Pfizer, Inc and may hold stock or stock options. The other  
473 authors have no relevant conflicts of interest to declare.

474

#### 475 **ACKNOWLEDGEMENTS**

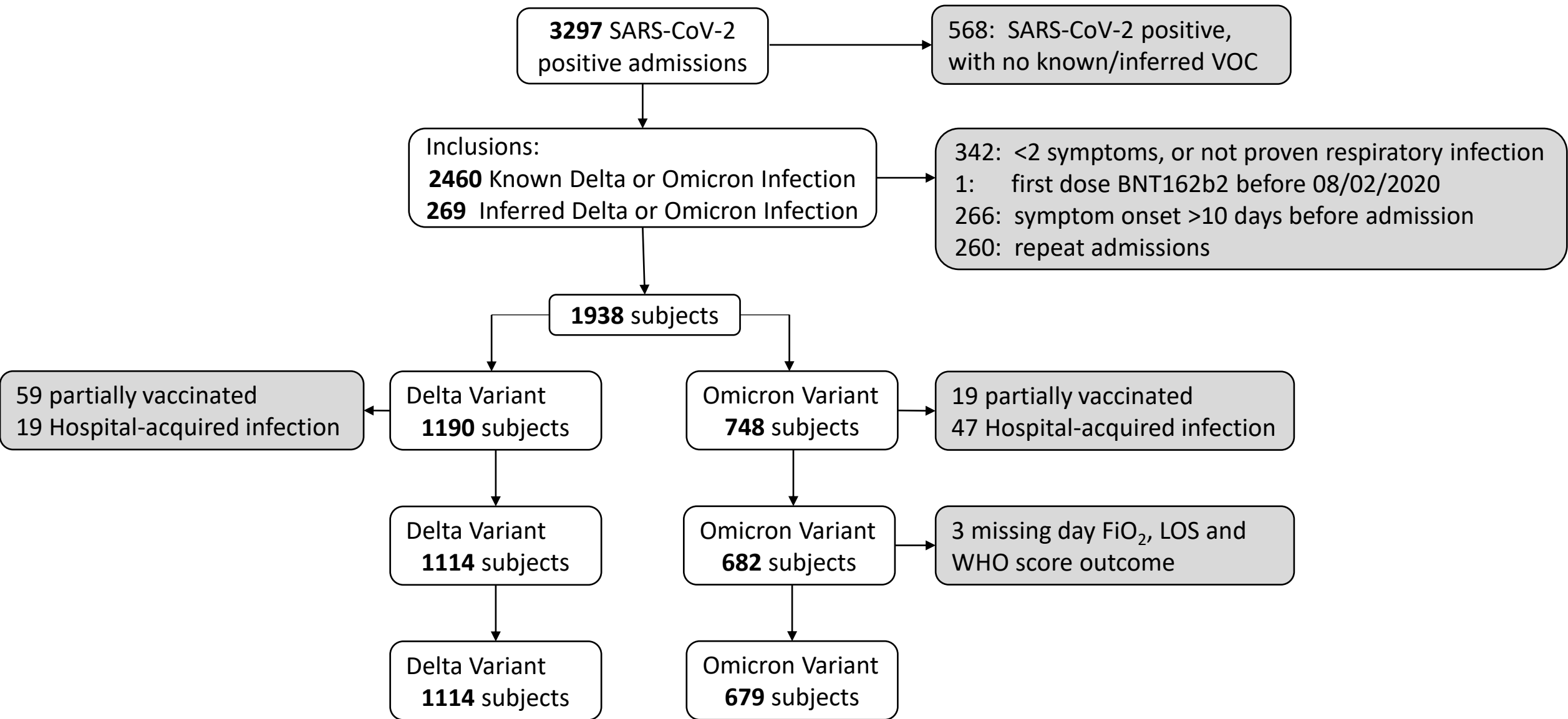
476 The authors would like to thank the UK Health Security Agency (UKHSA) Vaccine  
477 Effectiveness Working group and the University of Bristol UNCOVER group for guidance in  
478 data analysis and study design. We thank colleagues at the University of Bristol for their support  
479 with this study, including Rachel Davies, Paul Savage, Emma Foose, Susan Christie, Mark  
480 Mummé, and Adam Taylor. We would also like to acknowledge the research teams at North  
481 Bristol and University Hospitals of Bristol and Weston NHS Trusts for making this study  
482 possible, including Helen Lewis-White, Rebecca Smith, Rajeka Lazarus, Mark Lyttle, Kelly  
483 Turner, Jane Blazeby, Diana Benton, and David Wynick. We would also like to acknowledge all  
484 participants of the many studies undertaken to find effective vaccines against SARS-CoV-2.

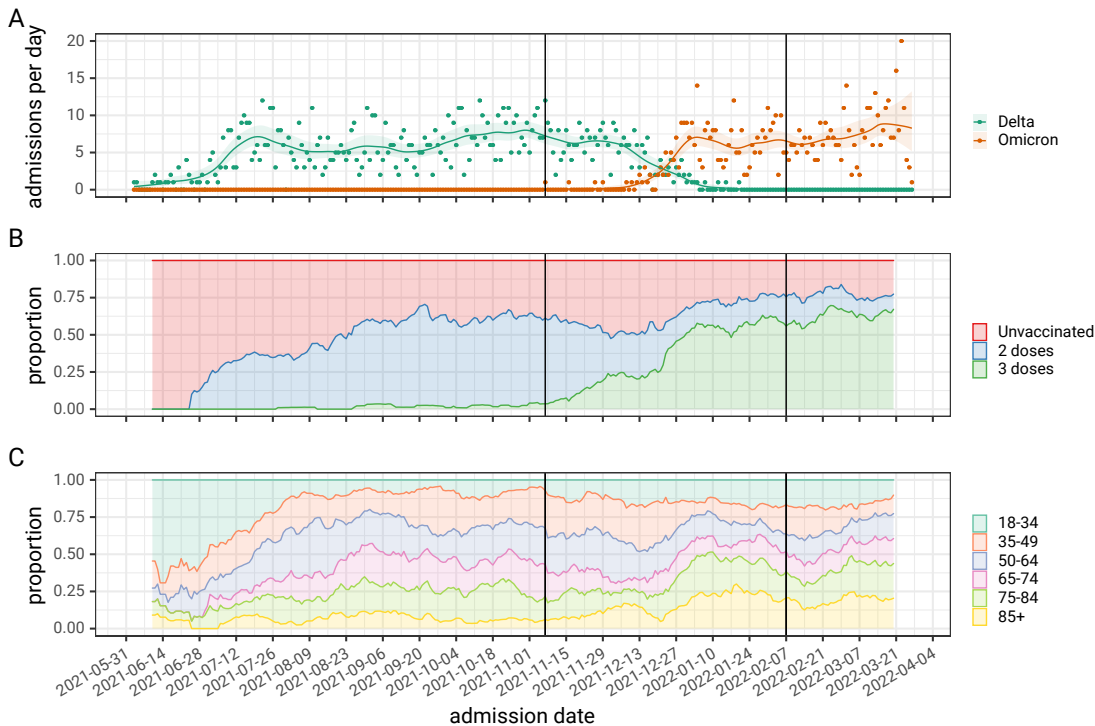
## 485 REFERENCES

- 486 1. Challen R, Dyson L, Overton CE, et al. Early epidemiological signatures of novel SARS-CoV-2  
487 variants: establishment of B.1.617.2 in England. *medRxiv* 2021: 2021.06.05.21258365.
- 488 2. Government U. Coronavirus (COVID-19) in the UK. 2022.  
489 [https://coronavirus.data.gov.uk/details/vaccinations?areaType=overview&areaName=United%20Kingdo](https://coronavirus.data.gov.uk/details/vaccinations?areaType=overview&areaName=United%20Kingdom)  
490 [m](https://coronavirus.data.gov.uk/details/vaccinations?areaType=overview&areaName=United%20Kingdom) (accessed 14 February 2022).
- 491 3. UKHSA. SARS-CoV-2 variants of concern and variants under investigation in England,  
492 Technical briefing 36. 2022.
- 493 4. Wang P, Nair MS, Liu L, et al. Antibody resistance of SARS-CoV-2 variants B. 1.351 and B. 1.1.  
494 7. *Nature* 2021; **593**(7857): 130-5.
- 495 5. Liu Y, Liu J, Xia H, et al. Neutralizing activity of BNT162b2-elicited serum. *New England*  
496 *Journal of Medicine* 2021; **384**(15): 1466-8.
- 497 6. Nemet I, Kliker L, Lustig Y, et al. Third BNT162b2 Vaccination Neutralization of SARS-CoV-2  
498 Omicron Infection. *New England Journal of Medicine* 2021; **386**(5): 492-4.
- 499 7. Schmidt F, Muecksch F, Weisblum Y, et al. Plasma Neutralization of the SARS-CoV-2 Omicron  
500 Variant. *New England Journal of Medicine* 2021; **386**(6): 599-601.
- 501 8. Ferguson N, Ghani A, Hinsley W, Volz E. Report 50: Hospitalisation risk for Omicron cases in  
502 England. *Imperial College London* 2022.
- 503 9. Sheikh A, Kerr S, Woolhouse M, McMenamin J, Robertson C. Severity of Omicron variant of  
504 concern and vaccine effectiveness against symptomatic disease: national cohort with nested test negative  
505 design study in Scotland. *University of Edinburgh* 2021.
- 506 10. Jassat W, Abdool Karim SS, Mudara C, et al. Clinical severity of COVID-19 in patients admitted  
507 to hospital during the omicron wave in South Africa: a retrospective observational study. *The Lancet*  
508 *Global Health*.
- 509 11. Kirsebom FCM, Andrews N, Stowe J, et al. COVID-19 vaccine effectiveness against the omicron  
510 (BA.2) variant in England. *Lancet Infect Dis* 2022.
- 511 12. UKHSA UHSA. COVID-19 vaccine surveillance report: week 19. 2022.  
512 [https://assets.publishing.service.gov.uk/government/uploads/system/uploads/attachment\\_data/file/107511](https://assets.publishing.service.gov.uk/government/uploads/system/uploads/attachment_data/file/107511/5/COVID-19_vaccine_surveillance_report_12_May_2022_week_19.pdf)  
513 [5/COVID-19\\_vaccine\\_surveillance\\_report\\_12\\_May\\_2022\\_week\\_19.pdf](https://assets.publishing.service.gov.uk/government/uploads/system/uploads/attachment_data/file/107511/5/COVID-19_vaccine_surveillance_report_12_May_2022_week_19.pdf) (accessed 8th June 2022 2022).
- 514 13. Nyberg T, Ferguson NM, Nash SG, et al. Comparative analysis of the risks of hospitalisation and  
515 death associated with SARS-CoV-2 omicron (B.1.1.529) and delta (B.1.617.2) variants in England: a  
516 cohort study. *The Lancet*.
- 517 14. Lauring AS, Tenforde MW, Chappell JD, et al. Clinical severity of, and effectiveness of mRNA  
518 vaccines against, covid-19 from omicron, delta, and alpha SARS-CoV-2 variants in the United States:  
519 prospective observational study. *BMJ* 2022; **376**: e069761.
- 520 15. Bager P, Wohlfahrt J, Fonager J, et al. Risk of hospitalisation associated with infection with  
521 SARS-CoV-2 lineage B.1.1.7 in Denmark: an observational cohort study. *Lancet Infect Dis* 2021; **21**(11):  
522 1507-17.
- 523 16. Strasser Z, Hadavand A, Murphy S, Estiri H. SARS-CoV-2 Omicron Variant is as Deadly as  
524 Previous Waves After Adjusting for Vaccinations, Demographics, and Comorbidities. *Research Square*  
525 2022.
- 526 17. UKHSA. COVID-19 vaccine surveillance report: Week 11: UK Government, 2022.
- 527 18. Ferdinands J, Rao S, Dixon B, al e. Waning 2-Dose and 3-Dose Effectiveness of mRNA Vaccines  
528 Against COVID-19–Associated Emergency Department and Urgent Care Encounters and  
529 Hospitalizations Among Adults During Periods of Delta and Omicron Variant Predominance — VISION  
530 Network, 10 States, August 2021–January 2022. *MMWR Morb Mortal Wkly Rep* 2022; **71**: 255-63.
- 531 19. Thompson M, Natarajan K, SA I, al e. Effectiveness of a Third Dose of mRNA Vaccines Against  
532 COVID-19–Associated Emergency Department and Urgent Care Encounters and Hospitalizations Among  
533 Adults During Periods of Delta and Omicron Variant Predominance — VISION Network, 10 States,  
534 August 2021–January 2022. *MMWR Morb Mortal Wkly Rep* 2022; **71**: 139-45.

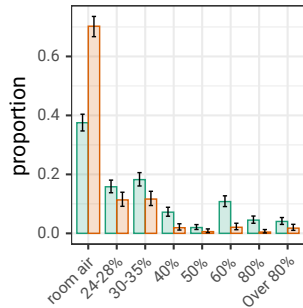
- 535 20. Hyams C, Marlow R, Maseko Z, et al. Effectiveness of BNT162b2 and ChAdOx1 nCoV-19  
536 COVID-19 vaccination at preventing hospitalisations in people aged at least 80 years: a test-negative,  
537 case-control study. *The Lancet Infectious Diseases* 2021; **21**(11): 1539-48.
- 538 21. JCVI. Optimising the COVID-19 vaccination programme for maximum short-term impact. 26th  
539 January 2021 2021. [https://www.gov.uk/government/publications/prioritising-the-first-covid-19-vaccine-](https://www.gov.uk/government/publications/prioritising-the-first-covid-19-vaccine-dose-jcvi-statement/optimising-the-covid-19-vaccination-programme-for-maximum-short-term-impact)  
540 [dose-jcvi-statement/optimising-the-covid-19-vaccination-programme-for-maximum-short-term-impact](https://www.gov.uk/government/publications/prioritising-the-first-covid-19-vaccine-dose-jcvi-statement/optimising-the-covid-19-vaccination-programme-for-maximum-short-term-impact)  
541 (accessed 24th February 2021).
- 542 22. UKHSA. COVID-19 vaccine surveillance report - Week 51. 2021.
- 543 23. England N. NHS begins COVID-19 booster vaccination campaign. 2021.
- 544 24. Harris PA, Taylor R, Thielke R, Payne J, Gonzalez N, Conde JG. Research electronic data  
545 capture (REDCap)—A metadata-driven methodology and workflow process for providing translational  
546 research informatics support. *Journal of Biomedical Informatics* 2009; **42**(2): 377-81.
- 547 25. Hippisley-Cox J, Coupland CAC, Mehta N, et al. Risk prediction of covid-19 related death and  
548 hospital admission in adults after covid-19 vaccination: national prospective cohort study. *BMJ* 2021;  
549 **374**: n2244.
- 550 26. Charlson ME, Pompei P, Ales KL, MacKenzie CR. A new method of classifying prognostic  
551 comorbidity in longitudinal studies: Development and validation. *Journal of Chronic Diseases* 1987;  
552 **40**(5): 373-83.
- 553 27. Physicians RCo. National Early Warning Score (NEWS) 2: Standardising the assessment of  
554 acute-illness severity in the NHS. Updated report of a working party. *RCP, London* 2017.
- 555 28. UKHSA. SARS-CoV-2 variants of concern and variants under investigation in England,  
556 Technical Briefing 33, 2021.
- 557 29. Characterisation WHOWGotC, Management of C-i. A minimal common outcome measure set for  
558 COVID-19 clinical research. *Lancet Infect Dis* 2020; **20**(8): e192-e7.
- 559 30. Zou G. A modified poisson regression approach to prospective studies with binary data. *Am J*  
560 *Epidemiol* 2004; **159**(7): 702-6.
- 561 31. Rockwood K, Song X, MacKnight C, et al. A global clinical measure of fitness and frailty in  
562 elderly people. *CMAJ : Canadian Medical Association journal = journal de l'Association medicale*  
563 *canadienne* 2005; **173**(5): 489-95.
- 564 32. van Buuren S, Groothuis-Oudshoorn K. mice: Multivariate Imputation by Chained Equations in  
565 R. *Journal of Statistical Software* 2011; **45**(3): 1 - 67.
- 566 33. Zeileis A, Köll S, Graham N. Various Versatile Variances: An Object-Oriented Implementation  
567 of Clustered Covariances in R. *Journal of Statistical Software* 2020; **95**(1): 1 - 36.
- 568 34. Lewnard JA, Hong VX, Patel MM, Kahn R, Lipsitch M, Tartof SY. Clinical outcomes associated  
569 with SARS-CoV-2 Omicron (B.1.1.529) variant and BA.1/BA.1.1 or BA.2 subvariant infection in  
570 southern California. *Nature Medicine* 2022.
- 571 35. Van Goethem N, Chung PY, Meurisse M, et al. Clinical Severity of SARS-CoV-2 Omicron  
572 Variant Compared with Delta among Hospitalized COVID-19 Patients in Belgium during Autumn and  
573 Winter Season 2021&ndash;2022. *Viruses* 2022; **14**(6).
- 574 36. Wheelock A, Miraldo M, Thomson A, Vincent C, Sevdalis N. Evaluating the importance of  
575 policy amenable factors in explaining influenza vaccination: a cross-sectional multinational study. *BMJ*  
576 *Open* 2017; **7**(7): e014668.

577

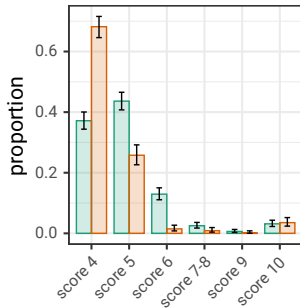




A

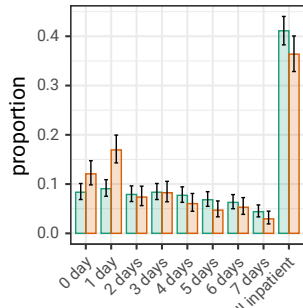
Max FiO<sub>2</sub>

B



WHO Outcome score

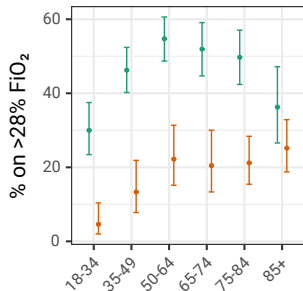
C



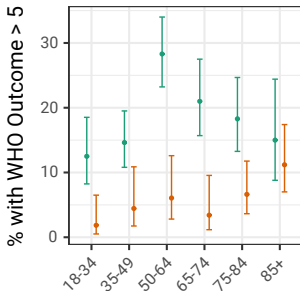
Length of Stay

Delta  
Omicron

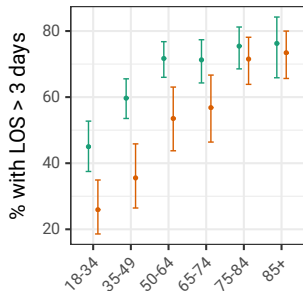
D

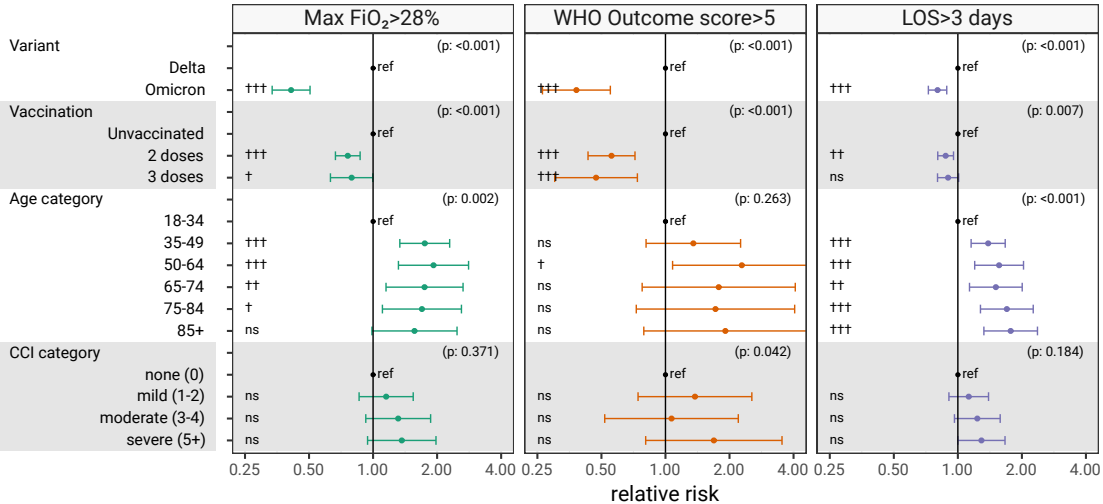


E



F





††† indicates p-value < 0.001, †† p-value < 0.01 and † p-value < 0.05. 'ns' have p-value ≥ 0.05