

Validation of a Multivariate Prediction Model of the Clinical Progression of Alzheimer's Disease  
in a Community-Dwelling Multiethnic Cohort

Eric Stallard,<sup>a</sup> Anton Kocielek,<sup>b</sup> Zhezhen Jin,<sup>c</sup>  
Hyunnam Ryu,<sup>b</sup> Seonjoo Lee,<sup>d,e</sup> Stephanie Cosentino<sup>b</sup>  
Carolyn Zhu,<sup>f,g</sup> Yian Gu,<sup>b</sup> Kayri Fernandez,<sup>b</sup>  
Michelle Hernandez,<sup>b</sup> Bruce Kinosian, M.D.,<sup>h</sup> Yaakov Stern<sup>b</sup>

<sup>a</sup> Biodemography of Aging Research Unit, Social Science Research Institute, Duke University, Durham, North Carolina, USA

<sup>b</sup> Cognitive Neuroscience Division of the Department of Neurology and Taub Institute for Research on Alzheimer's Disease and the Aging Brain, Vagelos College of Physicians and Surgeons, Columbia University, New York, New York, USA

<sup>c</sup> Department of Biostatistics, Mailman School of Public Health, Columbia University, New York, New York, USA

<sup>d</sup> Division of Biostatistics, New York State Psychiatric Institute, New York, NY, USA

<sup>e</sup> Department of Psychiatry, Columbia University, New York, NY, USA

<sup>f</sup> Brookdale Department of Geriatrics and Palliative Medicine, Icahn School of Medicine at Mount Sinai, New York, New York, USA

<sup>g</sup> James J. Peters VAMedical Center, Bronx, New York, USA

<sup>h</sup> Department of Medicine, Perelman School of Medicine, University of Pennsylvania, Philadelphia, Pennsylvania, USA

**Running title:** Validating AD Prediction in a Multiethnic Cohort

**Correspondence:** Yaakov Stern, 630 W. 168<sup>th</sup> St., P&S Box 16, New York, NY 10032.

Tel: 212-342-1350, ys11@columbia.edu

## **Abstract—Limit 250 Words**

**Background:** The major aims of the three Predictors Studies have been to further our understanding of Alzheimer’s disease (AD) progression sufficient to predict the length of time from disease onset to major disease outcomes in individual patients with AD.

**Objectives:** To validate a longitudinal Grade of Membership (L-GoM) prediction algorithm developed using clinic-based, mainly white patients from the Predictors 2 Study in a statistically representative community-based sample of Hispanic ( $N=211$ ) and non-Hispanic ( $N=62$ ) older adults (with 60 males and 213 females) from the Predictors 3 Study and extend the algorithm to mild cognitive impairment (MCI).

**Methods:** The L-GoM model was applied to data collected at the initial Predictors 3 visit for 150 subjects with AD and 123 with MCI. Participants were followed annually for up to seven years. Observed rates of survival and need for full-time care (FTC) were compared to those predicted by the algorithm.

**Results:** Initial MCI/AD severity in Predictors 3 was substantially higher than among clinic-based AD patients enrolled at the specialized Alzheimer’s centers in Predictors 2. The observed survival and need for FTC followed the L-GoM model trajectories in individuals with MCI or AD, except for  $N=32$  subjects who were initially diagnosed with AD but reverted to a non-AD diagnosis on follow-up.

**Conclusions:** These findings indicate that the L-GoM model is applicable to community-dwelling, multiethnic older adults with AD. They extend the use of the model to the prediction of outcomes for MCI. They also justify release of our L-GoM calculator at this time.

**Keywords:** Alzheimer’s disease; Custodial care; Dementia progression; Life tables; Mild cognitive impairment; Mortality determinants; Patient-specific modeling; Prognostic factors; Survival; Validation.

## INTRODUCTION

The course of Alzheimer's disease varies markedly across patients. We recently introduced a model of the progression of Alzheimer's disease (AD) that uses a longitudinal Grade of Membership (L-GoM) approach to model disease progression [1]. Developed using data from the Predictors 2 Study, the L-GoM model incorporates measures of 11 key domains (see Table 1) at each patient's initial visit and every six months for up to 10 years. The L-GoM model can use data from an individual at any point in the disease process to predict the likely future trajectory for that individual. We subsequently validated the model on a separate data set from the Predictors 1 Study [2], showing that the model made accurate predictions of time to important disease outcomes.

The Predictors 1 and 2 data sets used to derive and validate the L-GoM model both consisted of clinic-based, non-Hispanic white patients with high socioeconomic status (SES), all initially with mild AD. In addition, all were patients at specialized Alzheimer's centers. It is important to determine whether or not the model operates equally well among community-dwelling older adults of different ethnic, linguistic, and SES backgrounds.

The Predictors 3 cohort was developed to examine this issue [3]. This cohort consists of community-dwelling, multiethnic older adults in the Washington Heights and Inwood areas of Manhattan, New York who were assigned research diagnoses of prevalent or incident AD, as well as individuals whose cognitive or functional status suggested they were at risk for converting to AD in the near future—individuals who were assigned research diagnoses of mild cognitive impairment (MCI). In order to validate the L-GoM model in this cohort, we applied the model to information acquired at the first dementia or MCI visit—i.e., the initial visit of subjects diagnosed with prevalent AD dementia, the visit at which incident cases were diagnosed with AD dementia, or the visit at which MCI was first detected. We used the L-GoM model [1] to predict individual-specific survival probabilities over the first 7.5 years after the initial visit, and individual-specific prevalence probabilities of the need for full-time care (FTC) at the initial visit

and each year thereafter. We aggregated the individual subjects into various diagnostic and demographic groups and subgroups in order to validate the L-GoM predicted probabilities against the corresponding group-specific observed proportions.

Validation of the L-GoM model in the Predictors 3 cohort can extend its utility in important ways by establishing its applicability to community-dwelling, multiethnic older adults with AD in addition to patients recruited from a clinical setting. Predictors 3 also allows us to explore the broader application of the L-GoM model to individuals with MCI. These applications can help establish the model as an important predictive tool for individuals with AD or MCI, clinicians, clinical trialists, and other researchers.

## **METHODS**

### ***The Predictors 3 Cohort***

Community-based subjects for the Predictors 3 cohort were recruited from the Washington Heights Inwood Columbia Aging Project (WHICAP). WHICAP participants were first identified from a random sample of elderly Medicare recipients residing in the designated areas of Washington Heights, Hamilton Heights, and Inwood in North Manhattan, NY. Potential participants were excluded at the time of recruitment if they did not speak English or Spanish. WHICAP participants were evaluated approximately every 18 months. WHICAP follows a combination of remaining participants from cohorts originally recruited in 1992 (N = 2332), 1999–2001 (N = 2776), and 2009–2015 (N = 2088). Recruitment of the Predictors 3 cohort began in 2011 and continued to 2019. The primary goal was to recruit subjects from WHICAP's incident and prevalent AD dementia cases. The diagnosis of AD dementia was based on the 2011 criteria [4]; the Clinical Dementia Rating Scale (CDR) [5] was used to rate dementia severity. We also enrolled WHICAP participant with MCI. These included participants who received the diagnosis of MCI using an implementation of MCI criteria [6, 7] consistent with the 2011 criteria [8]. These also included others who received a CDR score of 0.5 based on the

WHICAP algorithm for evaluating neuropsychological test scores [9] and activities of daily living. All participants' data were reviewed in a consensus conference at each follow-up assessment, at which time the conferees ascertained if/when any at-risk individuals with MCI converted to AD dementia, and whether those diagnosed with AD retained that diagnosis. Except as noted in the next paragraph, the present study included all AD cases, whether or not they reverted to a non-dementia diagnosis, and similarly all MCI cases, whether or not they converted to AD dementia at a subsequent follow-up visit.

Once included in the Predictors 3 Study, subjects were followed annually using many of the same instruments administered in Predictors 2 [Stern et al. 2017], including all instruments in Table 1. Of the 292 participants, 19 were lost to follow-up after the first visit; they were excluded from the present study because they did not contribute to our longitudinal analysis. Baseline characteristics of the 273 subjects used for model validation are displayed in Table 2 along with comparable statistics for the 229 subjects used for model development in Predictors 2.

The study participants were classified according to initial diagnosis (MCI vs. AD dementia) and their subsequent progression. Among the 273 participants, 123 met criteria for MCI at the initial visit, 83 of whom were consistently diagnosed with MCI (nonconverters) and 40 of whom subsequently converted to AD dementia (converters); 150 met criteria for AD dementia at the initial visit, 118 of whom were consistently diagnosed as AD over follow up (nonreverters) and 32 of whom were subsequently re-diagnosed as non-dementia at a follow up visit (reverters).

The present study was conducted as part of IRB protocol 7258R and approved by the New York State Psychiatric Institute Institutional Review Board; informed consent was obtained from all participants in the study

### ***Longitudinal Grade of Membership (L-GoM) Model***

The L-GoM model was estimated using data from Predictors 2. Its development and internal/external validation was previously described [1, 2]. Under the L-GoM model, the clinical status of a subject with AD at any point in time is described by six fixed covariates and 73 time-

varying clinical signs and/or symptoms (Table 1). All signs and symptoms are coded as dichotomous or polytomous variables, representing the presence/absence of a sign/symptom or the graded severity of a clinical measure (e.g., the different ranges of the MMSE). The L-GoM model summarizes each subject's current clinical status as a convex combination of four latent disease subtypes (Figure 1). In other words, each subject's clinical status at each visit can be represented by a subject/visit-specific weighted average of four disease subtypes (e.g., 25% subtype 1, 15% subtype 2, 40% subtype 3, and 20% subtype 4). The subtype with the lowest frequency of AD signs/symptoms at initial presentation and the slowest rate of progression was labeled **Subtype 1**. **Subtype 2** has only slightly higher initial frequencies of AD signs/symptoms than subtype 1, but unlike subtype 1, subtype 2 has substantially more rapid rates of progression—more rapid even than subtype 3. **Subtype 3** has higher initial frequencies of behavioral (e.g., verbal outbursts), psychiatric (e.g., delusions), and other signs/symptoms (e.g., depression, agitation) than subtypes 1 and 2, and faster rates of progression than subtype 1. The subtype with the most severe clinical signs/symptoms, and the only one with significant mortality and need for FTC, was labeled **Subtype 4**; all disease progression in the first three subtypes is ultimately toward subtype 4.

The fraction apportioned to each disease subtype for each subject can be any value in the range 0.0–1.0; the sum of the apportionment fractions must be exactly 1.0. The apportionment fractions—or subtype scores—are not directly observed. Instead, they are computationally constructed such that at any point in time a subject's L-GoM scores reflect, or, alternatively, can be used to generate, the probability of each clinical sign/symptom being present or absent. The constraints on the apportionment ranges and sums imply that the L-GoM scores fall within a regular tetrahedron (equivalently, triangular pyramid). Subtypes 1–3 form the triangular base of the tetrahedron (Figure 1, Panels A and B; more simply, Figs. 1.A and 1.B); subtype 4 defines a perpendicular line segment extending upward from the center of the triangular base (Figs. 1.C–1.F), giving rise to the 3-dimensional structure of the L-GoM model. The geometry of the model

and its relationship to the usual 1-dimensional formulation of AD severity is further described in the legend for Figure 1.

The model describes how a subject's clinical signs/symptoms progress over the 10-year study period by specifying how the L-GoM scores change between each pair of adjacent visits using a sequence of time-varying upper-triangular transition matrices that are constant across all subjects. This requires us to treat each subject's L-GoM scores for subtypes 1–4 as an ordered set of four elements—i.e., as a vector—that obeys the rules of matrix algebra. By successively applying the transition matrices to each subject's vector of L-GoM scores, starting with their initial visit, one can generate their L-GoM vectors at each subsequent visit and, derivatively, the concurrent probability of any clinical sign/symptom included in the model. The original transition matrices reported in [1] were smoothed for use in external validation in [2]; this was the only update to the original model in the present validation study.

### ***Mortality and Need for FTC***

Two outcomes were used for validation of the L-GoM model predictions in Predictors 3: time of death and need FTC. Date of death was determined from family report or other sources including the National Death Index, most recently updated through July 2019, for 101 of the 273 subjects; time of death was coded as elapsed time in days since the initial visit. For consistency with Predictors 2, we coded the remaining 172 subjects as surviving to their last visit date with the date/time of death coded as right-censored thereafter.

Need for FTC is part of the Dependence Scale [10]. Using all available information, the examiner ascertained if the care the subject needed and/or received was the equivalent of nursing home care. Of the 273 subjects, FTC information was provided for 263 at the initial visit, at which time 34 needed FTC; FTC information was provided for another 6 subjects only after their initial visit. The subset at risk to needing FTC at each subsequent visit comprised surviving subjects having sufficient information to determine their FTC status.

### ***Statistical Analysis***

Data for each subject's initial visit were input to the L-GoM model to generate individual-specific L-GoM scores that were subsequently used to generate predicted survival and FTC prevalence curves covering up to 7.5 years beyond the initial visit.

The L-GoM predicted survival curves for individuals were calculated separately and independently at semi-annual intervals following the initial visit for each subject. The L-GoM predicted survival curves for groups/subgroups of subjects defined at the initial visit were calculated by averaging the individual L-GoM predicted survival values at each semi-annual point of time for all members of the respective groups/subgroups. Corresponding observed survival curves were generated for groups/subgroups of subjects using the Kaplan-Meier (KM) product-limit estimator [11] with: (1) mortality recorded at the end of the semi-annual interval during which each death occurred; and (2) censoring/withdrawal without a known date of death recorded at the time of the last completed visit. Simultaneous 95% confidence bands were calculated and centered on the L-GoM predicted survival probabilities using the normal approximation for binomial proportions, with sample sizes and z-scores computed as follows. The sample sizes of the respective groups/subgroups at the initial visit were downwardly adjusted at follow-up visits, as needed, to reflect the cumulative effects over time of censoring/withdrawal using eqn. (2j) in [11]. The z-score of 1.96 in the conventional normal approximation for binomial proportions was replaced with an adjusted z-score of 3.16 so that the 95% confidence bands centered on the L-GoM survival probabilities were approximately the same size as Nair's simultaneous "equal precision" (EP) 95% confidence bands for the KM estimator—with parameters  $a = 1 - b = 0.05$ ; see Table 2 in [12].

The L-GoM predicted FTC prevalence curves for individuals were calculated separately and independently for all subjects with Dependence Scale information at the initial visit and for all surviving subjects with Dependence Scale information at any of the seven annual follow-up visits. The L-GoM predicted FTC prevalence curves for groups/subgroups of subjects were calculated by averaging the individual L-GoM predicted FTC prevalence probabilities at each



visit for all members of the respective groups/subgroups with the requisite Dependence Scale information. Corresponding observed FTC prevalence curves were generated for groups/subgroups of subjects using the observed relative frequencies of need for FTC at baseline or among survivors to each follow-up visit with complete Dependence Scale assessments as binomial proportions. Simultaneous 95% confidence bands were calculated and centered on the L-GoM predicted FTC prevalence probabilities using the normal approximation for binomial proportions, with the z-score of 1.96 in the conventional normal approximation for binomial proportions replaced with an adjusted z-score of 2.73, using Bonferroni's method to determine the adjusted z-score needed to control for the eight simultaneous comparisons [13].

The confidence bands were centered on the predicted survival and predicted prevalence curves with the width of the confidence interval at each predicted plot point, taking account of the number of subjects supporting the corresponding observed plot points. With this centering, the probability that at least one observed plot point falls outside the resulting 95% confidence bands is approximately 5%—under the null hypothesis that the L-GoM model is the correct model. Rejection of the null hypothesis is equivalent to rejection of the L-GoM model. Ideally, for validation, one would want all of the observed plot points within the 95% confidence bands, in which case one would accept (i.e., “fail to reject”) the L-GoM model. Practically, one could provisionally accept the model if only one or two plot points were outside the 95% confidence bands, i.e., if the deviations were reasonably small [14]. In order to explore the impact of lack of fit for AD reverters, the survival and FTC prevalence analyses were replicated after excluding the AD reverters.

Between-group comparisons of the L-GoM scores at the initial visit were conducted separately, but not independently, for each of the four subtypes via two-tailed Student's *t*-tests, using Bonferroni's method (i.e., multiplying each raw *p*-value by 4) to adjust the *p*-values for each *t*-test for multiple-testing at the overall 5% level of significance—equivalent to, but more

convenient than, increasing the conventional large-sample critical value for each  $t$ -test from 1.96 to 2.50 [15]. The overall null hypothesis—that the average initial L-GoM scores do not differ between the groups—is rejected if the adjusted  $p$ -value is less than 0.05 for any  $t$ -statistic. The logic is similar to that of the  $M$ -test for the multinomial distribution [16]. In each case, a single summation constraint (i.e., L-GoM scores and multinomial probabilities must each sum to 1.0) leads to dependencies between the component test statistics that are controlled using Bonferroni's method.

### ***Statistical Software***

Statistical calculations were performed using SAS 9.4, Excel 2016, Simply Fortran 2.41, and R 3.5.1.

## **RESULTS**

### ***Demographics***

Demographic characteristics of the Predictors 2 and 3 cohorts are displayed in Table 2 along with baseline values for eight time-varying variables selected from the 11 domains listed in Table 1. The characteristics for Predictors 3 are also displayed separately for MCI nonconverters ( $N=83$ ) and converters ( $N=40$ ), and AD reverters ( $N=32$ ) and nonreverters ( $N=118$ ). Compared to Predictors 2, the Predictors 3 cohort was relatively older, more female, and more Hispanic, with lower educational attainment and lower frequency of the ApoE e4 allele (APOE4<sup>+</sup>).

### ***L-GoM Scores and Subtypes***

Figure 1 displays the L-GoM scores for all subjects at the initial visit in Predictors 3, grouped as in Table 2, with supplementary displays by sex and ethnicity. Table 3 compares the average L-GoM scores for the groups in Figure 1, with supplementary comparisons for ApoE. The average L-GoM scores differed significantly between the MCI and AD groups, with the average on subtype 1 higher for MCI and the average on subtypes 3 and 4 higher for AD. The average L-GoM scores differed significantly between AD reverters and AD nonreverters, with the

average on subtype 1 higher for reverters and the average on subtype 4 higher for nonreverters. The average L-GoM scores did not differ significantly between MCI converters and MCI nonconverters.

The average L-GoM scores differed significantly by sex, with the average on subtype 1 higher for males; by ethnicity, with the average on subtype 1 higher for non-Hispanics and the average on subtype 3 higher for Hispanics; and by ApoE, with the average on subtype 3 higher for APOE4<sup>+</sup>. Among AD nonreverters (not shown): (1) the average on subtype 1 was higher for males ( $t=3.42$ , adj.  $p<0.01$ ); (2) the average on subtype 3 was higher for Hispanics ( $t=3.24$ , adj.  $p<0.01$ ); and (3) the average on subtype 3 was higher for APOE4<sup>+</sup> ( $t=3.67$ , adj.  $p<0.01$ ).

### ***Mortality***

Figure 2 presents the observed and predicted survival curves both overall (Fig. 2.A) and for five subgroups (Figs. 2.B–2.F). Figure 2.A shows that the model-based curves provided close fits to the observed data with just one observation (at 54 months) clearly outside the simultaneous confidence bands and a second observation (at 6 months) overlaying but just outside its confidence interval. Given that the 54-month deviation was small relative to the confidence band and the observed points following that deviation were within the confidence bands at all later visits, this fit may be good enough to use the model in out-of-sample applications.

Nonetheless, Predictors 3 has several well-defined subgroups that adequately explain the deviations in Figure 2.A. The observed survival for the 32 AD reverters was substantially higher than predicted (Fig.2.B) and higher than observed for the rest of the Predictors 3 cohort (Fig. 2.C). Only five of the 32 AD reverters died during follow-up, and none during the first 36 months; seven observations in Figure 2.B were outside the confidence bands; four were visibly noticeable. The model does not fit these data.

Figure 2.C replotted the data in Figure 2.A excluding the 32 AD reverters. All observations in Figure 2.C were within the confidence bands; hence, the model fits these data. Figure 2.D

displays the results for the 118 AD nonreverters. All observations in Figure 2.D were within the confidence bands; the model fits these data. Figure 2.E displays the results for the 123 subjects with MCI; the fit was excellent. Figure 2.F shows that the 40 MCI converters survived longer than predicted, though not long enough to fall outside the confidence bands. A complementary shortening effect was manifest for the 83 MCI nonconverters (not shown)—sufficient, on balance, to produce the very close fit shown in Figure 2.E. Hence, Figure 2.E validates the L-GoM model for MCI.

The median predicted survival among MCI cases was 19.7 months above that of the AD nonreverters (76.4 vs. 56.7 months, respectively; Figs. 2.E and 2.D). The combined median predicted survival for these two groups was 66.4 months (Fig. 2.C).

Figure 3 stratifies Figure 2.C by ethnicity and sex. All observed values in Figure 3 were within the associated confidence bands except for Hispanics and females, at 12 months, where the deviations were less than the thickness of the plot point. The predicted survival curves for Hispanics and non-Hispanics were similar—with the Hispanic median lower by 1.1 month—consistent with their initial higher scores on subtype 3. The predicted survival curve for males was higher than for females—with the male median higher by 11.5 months—consistent with their initial higher scores on subtype 1.

### ***Need for FTC***

Figure 4 displays the prevalence curves for need for FTC, both overall (Fig. 4.A) and for the same five subgroups (Figs. 4.B–4.F) shown in Figure 2. The title line of each panel indicates the number ( $N$ ) of subjects contributing one or more visits in which FTC status was assessed and the total number of visits ( $V$ ) contributed by the  $N$  subjects. The confidence bands are wider than in Figure 2 because the prevalences in Figure 4 are conditional probabilities for which the number of subjects at risk decreases at least as fast as the survival curves in Figure 2; it decreases further if information on FTC status is missing for subjects at the respective visit.

The model-based curves in Figure 4.A overpredicted the observed curves in the first 36 months; two observations were outside the confidence bands—at 0 and 36 months. The observed points converged to and crossed over the model predictions following the second deviation.

Figure 4.B shows that the observed probabilities of FTC for 30 (of 32) AD reverters were substantially lower than for Figure 4.A up to 84 months, consistent with their better survival (Fig. 2.B); three observations (at 24, 36, and 48 months) were outside the confidence bands.

Figure 4.C replotted Figure 4.A excluding the 30 AD reverters. All observations but the first in Figure 4.C were within the confidence bands; the first deviation was less than the thickness of the plot point. Thus, the model in Figure 4.C was close to fitting the data.

Figure 4.D displays the results for 116 (of 118) AD nonreverters. All observations except at 48 months were within the confidence bands; the deviation at 48 months was relatively small. The observed and predicted curves were almost identical from 0 to 36 months—the predictions were excellent for this time period. The observed prevalences beyond 48 months were relatively higher than predicted but still within the confidence bands.

Figure 4.E displays the results for all 123 MCI cases; there were two visits (at 12 and 36 months) where the observed prevalence rates were visibly below the confidence bands and a third observation (at 0 months) overlaying but just below its confidence band. The observed and predicted prevalence rates agreed closely beyond 36 months.

Figure 4.F shows that the 40 MCI converters had lower than predicted FTC prevalence rates up to 36 months and higher than predicted thereafter; all observed rates thereafter were within the confidence bands. The observed prevalence rates for the 83 MCI nonconverters (not shown) were uniformly lower than predicted, contributing to the deviations in Figure 4.E.

Figure 5 stratifies Figure 4.C by ethnicity and sex. All observed values in Figure 5 were within the associated confidence bands except for Hispanics at 0 months where the deviation was slightly greater than the thickness of the plot point. The predicted prevalence curves for

Hispanics and non-Hispanics were similar up to 36 months despite initial differences on subtype 3. The predicted prevalence curve for males was substantially lower than for females at all visits—consistent with their initial higher scores on subtype 1.

## DISCUSSION

The three Predictors Studies share common instruments which makes Predictors 3 ideal for external validation of our latest implementation of the L-GoM model developed using Predictors 2 [1] and externally validated using Predictors 1 [2].

Predictors 3 differed from Predictors 2 in design, recruitment, and target population [3]. Moreover, Predictors 3 included three subgroups minimally represented in Predictors 2—MCI converters, MCI nonconverters, and AD reverters. These subgroups offered the opportunity to expand the scope of application of the L-GoM model. The distributional differences with respect to race, ethnicity, and education offered further opportunities to expand the scope of application of the L-GoM model beyond the clinic-based high SES non-Hispanic white patients enrolled at specialized AD centers with mild AD dementia at their initial visit in Predictors 1 and 2. The WHICAP-based recruitment protocol ensured that Predictors 3 participants were representative of MCI and AD dementia cases in North Manhattan with respect to sex, age, race, ethnicity, and education—making the present study generalizable to the local area population, and possibly beyond to other urban areas. The high percentage of Hispanic participants in Predictors 3 allowed the present study to assess AD progression in this important but understudied segment of the U.S. population noted for its high incidence and prevalence of AD dementia [17, 18].

The target population for the L-GoM model validation was older persons with probable AD dementia. This target was represented in the Predictors 3 Study by the 118 AD nonreverters. The results in Figures 2.D and 4.D provided strong support for the validity of the L-GoM model for this target sample. These results contrasted sharply with those for the 32 AD reverters—supporting the assumption that these cases were incorrectly diagnosed as having AD at the

initial visit, given that a major hallmark of AD is its progressive nature. Identification of possible misdiagnosis of AD dementia based on reversion to lower CDR scores required information not available at the initial visit. Almost all (i.e., 29 of 32) reversions occurred within 2–3 years after the initial visit and almost all (i.e., 28 of 32) were for the Hispanic group. Nonetheless, 12 of the 32 AD reverters (11 Hispanics) had a second reversal in which they exhibited a CDR score of 1 or 2 at a later visit—suggesting that their AD diagnoses may have been premature rather than incorrect. Applying the same reversion rules to Predictors 2, we identified seven (of 229) potential AD reverters of whom six exhibited a CDR score of 1 or 2 at a later visit.

The higher prevalence of reverters in Predictors 3 than in Predictors 2 most likely relates to Predictors 2 (and Predictors 1) being clinic-based while Predictors 3 was community-based. Patients seek clinic-based diagnoses when cognitive, functional, or behavioral problems are severe enough to raise concerns that enhance the probability that the diagnosis of AD will be accurate. In contrast, participants in Predictors 3 were chosen at random from the community. In a community-based study where the participants did not self-select to seek a diagnosis, it is more likely that they meet diagnostic criteria due to causes unrelated to AD, thereby accounting for the higher prevalence of AD reverters in Predictors 3.

### ***L-GoM Scores and Subtypes***

The substantially higher initial average score on subtype 4 for AD nonreverters in Predictors 3 (0.364) than in Predictors 2 (0.099) implies substantially greater AD severity at the initial visit. In addition to the 23.7% of AD nonreverters in need of FTC at the initial visit, another 57.0% needed adult home care vs. 9.1% and 29.1%, respectively, in Predictors 2. Similarly, 17.8% of AD nonreverters had CDR>1 vs. 4.0% in Predictors 2; 11.0% of AD nonreverters had MMSE<16 vs. 1.8% in Predictors 2; and 55.1% of AD nonreverters were 85+ years vs. 14.0% in Predictors 2.

The initial average score on subtype 4 for the MCI cases in Predictors 3 was also substantially higher than for the AD cases in Predictors 2—attributable, in part, to their older

ages (56.1% aged 85+ vs. 14.0% in Predictors 2), higher prevalence of moderate/severe extrapyramidal signs (24.6% vs. 15.4%), greater need to be accompanied when bathing/eating (25.0% vs. 10.3%), and greater need to be dressed/washed/groomed (25.8% vs. 5.9%). More than offsetting this difference, however, the average subtype 1 score for the MCI cases in Predictors 3 (0.567) was substantially higher than for the AD cases in Predictors 2 (0.291), consistent with MCI having lower initial frequencies of multiple items from the Dependence Scale and the Blessed Dementia Rating Scale [1], Table 2).

### ***Mortality***

The survival predictions in Figures 2.C–2.E support the validity of the L-GoM model in Predictors 3. In contrast, the survival predictions in Figure 2.B identify an important subgroup in Predictors 3—AD reverters—for which the L-GoM model was not valid. How should we interpret this finding? The positive results in Figures 2.C–2.E combine with the finding that all subjects in Figure 2.B reverted to CDR scores below the dementia threshold to suggest that this subgroup did not have AD dementia. Most likely, the majority also did not have MCI and were not at-risk for AD.

The accuracy of the survival predictions for participants with MCI (Figure 2.E) supports the validity of the extension of the model to MCI. This extension meets a published goal in conducting the Predictors 3 Study [3]—made possible because the L-GoM model's four subtypes characterize a heterogeneous range of AD presentations and disease severities at the initial visit. With subtype 1 having the lowest frequency of AD signs/symptoms, the 123 MCI cases had an average initial score on subtype 1 of 0.567 vs. an average of 0.207 for the 118 AD nonreverters. Conversely, with subtype 4 representing the L-GoM model's disease severity scale, the 123 MCI cases had an average initial score on subtype 4 of 0.180 vs. an average of 0.364 for the 118 AD nonreverters.

One further aspect of Figure 2 was the absence of observed mortality in the first six months. This may be an artifact of measurement in community-based epidemiologic studies in which



individuals more likely to die within six months are less likely to agree to participate. The effect was short-term and not impactful beyond 6–12 months.

### ***Need for FTC***

The predictions of need for FTC in Figures 4.C–4.E further support the validity of the L-GoM model in this population. Unlike the survival predictions in Figure 2, the predictions in Figure 4 were for conditional probabilities of need for FTC at the indicated visits. Another difference is the need for FTC was based on judgments of trained interviewers applying the Dependence Scale protocol whereas mortality was unequivocal. Figure 4.D indicates that the FTC predictions for 116 AD nonreverters were excellent for 0–36 months but possibly a little low beyond that time. Figure 4.E indicates that the FTC predictions for 123 MCI cases were possibly a little high up to 48 months after which they appear to be very good. Figure 4.C, which combined these two groups, indicates an acceptable overall fit.

Figures 4.C–4.E have important implications for analyses that treat need for FTC as a patient outcome or endpoint of an AD cohort study (e.g., see [19] and [1]). Figure 4.D shows that the predicted prevalence of FTC was above 30% at the initial visit for AD nonreverters. While this was above the observed initial prevalence in Predictors 3, the order reversed at 12 months when the observed prevalence was above 35%. This presents challenges to the use of FTC as an endpoint of treatment/intervention with no obvious way to represent the impact of the initial FTC group in, for example, a standard Cox [20] regression model. Moreover, 24 of the 110 subjects who needed FTC at one visit had a later visit at which they did not need FTC, indicating that FTC is not a stable endpoint. L-GoM analysis resolves both issues: it allows FTC to be analyzed without special accommodations for non-zero initial FTC levels or for subsequent reversals in FTC levels.

### ***Web-Based Calculator***

The L-GoM scores were estimated using the same code as in our web-based calculator described in the Supplementary Materials. Thus, validation of the L-GoM model in the present

study also serves to validate the web-based calculator. It follows that the subject-specific L-GoM scores are valid summarizations of the information available at each subject's initial visit.

To illustrate, Figure 6 presents the observed and predicted survival curves for four distinct subgroups formed, after excluding the 32 AD reverters, by determining which, if any, of the corresponding L-GoM scores on subtypes 1-4 were  $> 0.50$ ; this can happen just once per subject due to the constraint that the sum of the L-GoM scores = 1.00. All observations in Figure 6 were within the subgroup-specific confidence bands; the model fits the data. The subgroups contained  $N=91$ , 10, 28, and 36 subjects, respectively, with 76 ungrouped. The median predicted survival for the subgroups were 86.0, 59.9, 66.5, and 37.3 months, respectively, and 59.7 months for the ungrouped. These medians can be compared with the overall median predicted survival of 66.4 months for the 241 subjects (Fig. 2.C). The 48.7 month spread between the medians for subgroups 1 and 4 was 2.5 times larger than the 19.7-month spread between AD nonreverters and MCI cases (Figs. 2.D and 2.E). The individual medians ranged from 25.4 months (lowest in subgroup 4) to 108.2 months (highest in subgroup 1)—a high-low ratio of 4.3 to 1—demonstrating that the L-GoM scores can be highly informative predictors for individuals with AD or MCI.

### ***Combining FTC with Survival***

The L-GoM model provides a way to predict the probability of future need for FTC at the time of a patient's initial visit: one needs only to multiply the predicted conditional FTC probability at the selected future time (e.g., Figures 4–5) by the predicted probability of surviving to that time (e.g., Figure 2–3, 6). This method facilitates prediction of total future time in need of FTC during the remaining lifetime of individual patients with new diagnoses of MCI or AD dementia; see [1]. Our web-based calculator uses these calculations to compute the predicted residual years of life to be lived with/without need for FTC.

### ***Limitations***

Our prior studies [1, 2] showed that the L-GoM model applies to non-Hispanic whites—comprising 90.5% and 90.2% of the Predictors 1 and 2 cohorts, respectively. The present study shows that the L-GoM model applies to Hispanics—comprising 77.5% of the overall Predictors 3 cohort and 82.9% of AD nonreverters. The Hispanics in Predictors 3, however, were predominantly (90.5%) of Caribbean origin; e.g., 72.5% were Dominican. The present study also shows that the L-GoM model applies to non-Hispanic nonwhites—predominantly (94.6%) African Americans—but the sample size ( $N=37$ ) was too small to be fully confident in the validation for these populations. Our validation now needs to be replicated for other minority groups in the United States.

The present study shows that misdiagnosis of AD (evidenced by reversion to lower CDR scores) can lead to incorrect predictions; similarly, though not detected in the present study, misdiagnosis of MCI can also yield incorrect predictions. Misdiagnosis of AD was predominantly (87.5%) for Hispanics; non-Hispanic nonwhites accounted for the remaining 12.5% with no AD misdiagnoses among non-Hispanic whites.

The L-GoM model employs a 3-dimensional structure with four component subtypes (Figure 1) [1] derived from 11 measurement domains (Table 1) using L-GoM-score estimation procedures described in [2]. The model can accommodate other sources of heterogeneity by expanding one or more of the existing vertexes from a single point to a new axis extending to additional subtypes. The current and prior validation studies indicate, however, that such expansion is unnecessary; i.e., the current 3-dimensional structure is valid for modeling AD presentation and progression for the three Predictors Studies. Subsequent application of the L-GoM model to other longitudinal studies may require modification to accommodate differences in instrumentation for the 11 existing measurement domains and biological domains not currently represented, including AD imaging, CSF biomarkers, postmortem pathologic data, and differential gene expression profiles. Further research is needed to determine if other biological domains can be accommodated within the existing 3-dimensional structure—potentially linking

the current set of clinical signs/symptoms to the underlying pathology in a unified model of AD progression.

### ***Conclusions***

The major aims of the three Predictors Studies were to further our understanding of AD progression in order to develop algorithms to predict the length of time from disease onset to major disease outcomes in individual patients with AD. Our results showed that the initial presentation of AD is quite heterogeneous, incorporating signs/symptoms from one or more of 11 domains (Table 1). The initial heterogeneity across the 11 domains can be represented as an ordered set of four L-GoM scores (Figure 1) with subtype 4 representing the model's disease severity scale, i.e., subtype 4 was the only subtype with significant mortality and need for FTC.

Our validation showed that mortality and need for FTC could be accurately predicted for all subjects except AD reverters—who were likely misdiagnosed as having AD. We concluded that the L-GoM model can be used to predict outcomes in community-dwelling older adults of different ethnic, linguistic, and SES backgrounds. In addition, we found for the first time that the model extends to MCI.

## **SUPPLEMENTARY MATERIALS**

The web-based calculator implementing the L-GoM model calculations is described in the Supplementary Materials.

**Acknowledgments:** Research reported in this publication was supported by the National Institute on Aging of the National Institutes of Health under Award Number R01AG007370. The content is solely the responsibility of the authors and does not necessarily represent the official views of the National Institutes of Health.

**Conflicts Of Interest:** Dr. Stern consults for Eisai, Lilly, and Arcadia. Columbia University licenses the Dependence Scale, and in accordance with university policy, Dr. Stern is entitled to royalties through this license. The remaining authors report no conflicts of interest.

**Table 1.** Domains of measurement, instruments, and descriptions of covariates used in the longitudinal Grade of Membership model

Domain	Instrument	Variable Names
<b>Fixed Covariates (N=6)</b>		
Baseline characteristics	Initial assessment	ApoE genotype, sex, age at intake, ethnicity/race, occupation, <i>years since diagnosis</i>
<b>Time-Varying Variables (N=73)</b>		
Acute medical treatments/conditions	Patient follow-up questionnaire	<i>Admission to hospital, treatment, had seizure?</i>
Alcohol use	Alcohol questionnaire	<i>Beer/week, wine/week, hard liquor/week</i>
Behavior	CUSPAD [21]	Wandering away, verbal outbursts, physical threats, difficulty sleeping
Cognition	MMSE [22]	Orientation, registration, “world” backward, recall, language, drawing; <i>MMSE completion indicator</i>
Dementia with Lewy body symptoms	DLB questionnaire [23]	Fluctuating cognition, visual hallucinations; <i>DLB questionnaire completion indicator</i>
Dependence	Dependence scale [10]	Dependence scale (13 items), equivalent institutional care, type of residence/facility, <i>length of stay in LTC facility</i>
Depression/agitation	CUSPAD [21]	Agitation, sadness/depression, depression frequency, appetite problems
Eyesight/hearing	Medical questionnaire	Adequate sight? Adequate hearing?
Function, Personality	BDRS [24]	IADL (8 items), BADL (3 items), <i>personality (11 items)</i>
Motor signs/symptoms	UPDRS [25]	Extrapyramidal signs (summary score), tremor, bradykinesia, gait, myoclonus, rigidity
Psychiatric/psychotic symptoms	CUSPAD [21]	Delusions, hallucinations, illusions

**Notes:** 21 variables with names listed in italics were not used in the present validation study; the remaining 58 variables were used to estimate the initial L-GoM scores in Predictors 3 using procedures for randomly missing data described in [2] to handle the approximately 5% of missing data points.

**Abbreviations:** ApoE Apolipoprotein E, BADL Basic activities of daily living, BDRS Blessed Dementia Rating Scale, CUSPAD Columbia University Scale for Psychopathology in Alzheimer’s Disease, DLB Dementia with Lewy bodies, IADL Instrumental activities of daily living, MMSE Mini Mental State Examination, UPDRS Unified Parkinson’s Disease Rating Scale.

**Table 2. Characteristics of Predictors 2 and 3 Cohorts at Initial Visit**

	Predictors 2		Predictors 3									
	Full Sample		Full Sample		MCI				AD Dementia			
	N	% (Excl. Unkn.)	N	% (Excl. Unkn.)	Nonconverters		Converters		Reverters		Nonreverters	
					N	% (Excl. Unkn.)	N	% (Excl. Unkn.)	N	% (Excl. Unkn.)	N	% (Excl. Unkn.)
Total	229	100%	273	100%	83	100%	40	100%	32	100%	118	100%
Sex												
Male	91	39.7%	60	22.0%	23	27.7%	11	27.5%	6	18.8%	20	16.9%
Female	138	60.3%	213	78.0%	60	72.3%	29	72.5%	26	81.3%	98	83.1%
Age												
49-64	20	8.7%	-	0.0%	-	0.0%	-	0.0%	-	0.0%	-	0.0%
65-69	14	6.1%	-	0.0%	-	0.0%	-	0.0%	-	0.0%	-	0.0%
70-74	48	21.0%	22	8.1%	10	12.0%	2	5.0%	4	12.5%	6	5.1%
75-79	69	30.1%	29	10.6%	9	10.8%	2	5.0%	6	18.8%	12	10.2%
80-84	46	20.1%	72	26.4%	19	22.9%	12	30.0%	6	18.8%	35	29.7%
85+	32	14.0%	150	54.9%	45	54.2%	24	60.0%	16	50.0%	65	55.1%
Ethnicity/Race												
Hispanic	8	3.6%	211	77.3%	55	66.3%	29	72.5%	28	87.5%	99	83.9%
Non-Hispanic White	202	90.2%	25	9.2%	13	15.7%	6	15.0%	-	0.0%	6	5.1%
Non-Hispanic Nonwhite	14	6.3%	37	13.6%	15	18.1%	5	12.5%	4	12.5%	13	11.0%
Unknown	5	2.2%	-	0.0%	-	0.0%	-	0.0%	-	0.0%	-	0.0%
Education (Years)												
0-8	8	3.5%	191	70.0%	59	71.1%	23	57.5%	24	75.0%	85	72.0%
9-12	85	37.1%	47	17.2%	11	13.3%	8	20.0%	5	15.6%	23	19.5%
13+	136	59.4%	35	12.8%	13	15.7%	9	22.5%	3	9.4%	10	8.5%
ApoE Genotype												
e4/e4	20	11.8%	5	1.8%	1	1.2%	2	5.0%	1	3.1%	1	0.8%
e3/e4	71	42.0%	74	27.1%	15	18.1%	13	32.5%	4	12.5%	42	35.6%
e2/e4	3	1.8%	6	2.2%	1	1.2%	1	2.5%	-	0.0%	4	3.4%
e3/e3	62	36.7%	156	57.1%	58	69.9%	20	50.0%	21	65.6%	57	48.3%
e2/e3	13	7.7%	32	11.7%	8	9.6%	4	10.0%	6	18.8%	14	11.9%
Unknown	60	26.2%	-	0.0%	-	0.0%	-	0.0%	-	0.0%	-	0.0%
Any ApoE e4?												
No (APOE4 <sup>-</sup> )	75	44.4%	188	68.9%	66	79.5%	24	60.0%	27	84.4%	71	60.2%
Yes (APOE4 <sup>+</sup> )	94	55.6%	85	31.1%	17	20.5%	16	40.0%	5	15.6%	47	39.8%
CDR — Clinical Dementia Rating Scale												
0=Healthy	-	0.0%	19	7.0%	18	21.7%	1	2.5%	-	0.0%	-	0.0%
0.5=Questionable	8	3.5%	101	37.0%	62	74.7%	39	97.5%	-	0.0%	-	0.0%
1=Mild Dementia	209	92.5%	132	48.4%	3	3.6%	-	0.0%	32	100.0%	97	82.2%
2=Moderate Dementia	9	4.0%	17	6.2%	-	0.0%	-	0.0%	-	0.0%	17	14.4%
3=Severe Dementia	-	0.0%	4	1.5%	-	0.0%	-	0.0%	-	0.0%	4	3.4%
Unknown	3	1.3%	-	0.0%	-	0.0%	-	0.0%	-	0.0%	-	0.0%
MMSE — Mini-Mental State Examination												
0-15	4	1.8%	20	7.3%	4	4.8%	2	5.0%	1	3.1%	13	11.0%
16-23	130	59.4%	188	68.9%	36	43.4%	30	75.0%	23	71.9%	99	83.9%
24-30	85	38.8%	65	23.8%	43	51.8%	8	20.0%	8	25.0%	6	5.1%
Unknown	10	4.4%	-	0.0%	-	0.0%	-	0.0%	-	0.0%	-	0.0%
EIC — Equivalent Institutional Care												
Limited Home Care	136	61.8%	113	43.0%	53	65.4%	27	69.2%	11	37.9%	22	19.3%
Adult Home Care	64	29.1%	116	44.1%	23	28.4%	10	25.6%	18	62.1%	65	57.0%
Full-Time Care: FTC	20	9.1%	34	12.9%	5	6.2%	2	5.1%	-	0.0%	27	23.7%
Unknown	9	3.9%	10	3.7%	2	2.4%	1	2.5%	3	9.4%	4	3.4%
Verbal Outbursts												
No	175	78.8%	211	80.2%	69	85.2%	37	94.9%	25	86.2%	80	70.2%
Yes	47	21.2%	52	19.8%	12	14.8%	2	5.1%	4	13.8%	34	29.8%
Unknown	7	3.1%	10	3.7%	2	2.4%	1	2.5%	3	9.4%	4	3.4%
Delusions												
No	162	72.0%	144	54.8%	58	71.6%	27	69.2%	18	62.1%	41	36.0%
Yes	63	28.0%	119	45.2%	23	28.4%	12	30.8%	11	37.9%	73	64.0%
Unknown	4	1.7%	10	3.7%	2	2.4%	1	2.5%	3	9.4%	4	3.4%
Extrapyramidal Signs												
None/Mild	187	84.6%	196	74.2%	61	76.3%	28	73.7%	26	81.3%	81	71.1%
Moderate/Severe	34	15.4%	68	25.8%	19	23.8%	10	26.3%	6	18.8%	33	28.9%
Unknown	8	3.5%	9	3.3%	3	3.6%	2	5.0%	-	0.0%	4	3.4%
Needs to be Accompanied when Bathing/Eating												
No	200	89.7%	164	62.1%	61	75.3%	29	74.4%	18	62.1%	56	48.7%
Yes	23	10.3%	100	37.9%	20	24.7%	10	25.6%	11	37.9%	59	51.3%
Unknown	6	2.6%	9	3.3%	2	2.4%	1	2.5%	3	9.4%	3	2.5%
Needs to be Dressed/Washed/Groomed												
No	209	94.1%	170	64.6%	59	72.8%	30	76.9%	21	72.4%	60	52.6%
Yes	13	5.9%	93	35.4%	22	27.2%	9	23.1%	8	27.6%	54	47.4%
Unknown	7	3.1%	10	3.7%	2	2.4%	1	2.5%	3	9.4%	4	3.4%

**Table 3. Average L-GoM Scores by Group/Subgroup at Initial Visit, Predictors 3**

	Group/Subgroup		<i>t</i> -statistic	Adjusted <i>p</i> -value
Diagnosis	MCI	AD		
N/N/df/Overall <i>p</i>	123	150	271	<0.001
Subtype 1	0.567	0.241	10.63	<0.001
Subtype 2	0.104	0.126	-1.07	NS
Subtype 3	0.150	0.297	-7.05	<0.001
Subtype 4	0.180	0.337	-6.85	<0.001
MCI	Nonconverter	Converter		
N/N/df/Overall <i>p</i>	83	40	121	NS
Subtype 1	0.573	0.556	0.33	NS
Subtype 2	0.099	0.112	-0.42	NS
Subtype 3	0.151	0.147	0.11	NS
Subtype 4	0.177	0.185	-0.23	NS
AD	Reverter	Nonreverter		
N/N/df/Overall <i>p</i>	32	118	148	<0.01
Subtype 1	0.364	0.207	3.38	<0.01
Subtype 2	0.174	0.113	1.76	NS
Subtype 3	0.225	0.317	-2.46	NS
Subtype 4	0.237	0.364	-3.17	<0.01
Sex	Male	Female		
N/N/df/Overall <i>p</i>	60	213	271	<0.001
Subtype 1	0.525	0.349	4.13	<0.001
Subtype 2	0.072	0.128	-2.30	NS
Subtype 3	0.191	0.242	-1.87	NS
Subtype 4	0.212	0.281	-2.32	NS
Ethnicity	Non-Hispanic	Hispanic		
N/N/df/Overall <i>p</i>	62	211	271	<0.001
Subtype 1	0.507	0.353	3.62	<0.01
Subtype 2	0.106	0.119	-0.51	NS
Subtype 3	0.128	0.261	-5.14	<0.001
Subtype 4	0.259	0.268	-0.28	NS
ApoE	APOE4 <sup>-</sup>	APOE4 <sup>+</sup>		
N/N/df/Overall <i>p</i>	188	85	271	<0.01
Subtype 1	0.417	0.323	2.43	NS
Subtype 2	0.113	0.122	-0.41	NS
Subtype 3	0.205	0.286	-3.38	<0.01
Subtype 4	0.265	0.269	-0.16	NS

Notes: *p*-values adjusted for four simultaneous *t*-tests using Bonferroni's method; each overall *p* is the most significant of the corresponding adjusted *p*-values; NS denotes nonsignificance (i.e., adjusted *p* ≥ 0.05). See text for details.



## References

- [1] Stallard E, Kinoshian B, Stern Y (2017) Personalized predictive modeling for patients with Alzheimer's disease using an extension of Sullivan's life table model. *Alzheimers Res Ther* **9**, 75.
- [2] Stern Y, Stallard E, Kinoshian B, Zhu C, Cosentino S, Jin Z, Gu Y (2021) Validation and demonstration of a new comprehensive model of Alzheimer's disease progression. *Alzheimers Dement* **17**, 1698-1708.
- [3] Stern Y, Gu Y, Cosentino S, Azar M, Lawless S, Tatarina O (2017) The Predictors study: Development and baseline characteristics of the Predictors 3 cohort. *Alzheimers Dement* **13**, 20-27.
- [4] McKhann GM, Knopman DS, Chertkow H, Hyman BT, Jack CR, Jr., Kawas CH, Klunk WE, Koroshetz WJ, Manly JJ, Mayeux R, Mohs RC, Morris JC, Rossor MN, Scheltens P, Carrillo MC, Thies B, Weintraub S, Phelps CH (2011) The diagnosis of dementia due to Alzheimer's disease: recommendations from the National Institute on Aging-Alzheimer's Association workgroups on diagnostic guidelines for Alzheimer's disease. *Alzheimers Dement* **7**, 263-269.
- [5] Berg L (1988) Clinical Dementia Rating (CDR). *Psychopharmacol Bull* **24**, 637-639.
- [6] Manly JJ, Bell-McGinty S, Tang MX, Schupf N, Stern Y, Mayeux R (2005) Implementing diagnostic criteria and estimating frequency of mild cognitive impairment in an urban community. *Arch Neurol* **62**, 1739-1746.
- [7] Petersen RC, Doody R, Kurz A, Mohs RC, Morris JC, Rabins PV, Ritchie K, Rossor M, Thal L, Winblad B (2001) Current concepts in mild cognitive impairment. *Arch Neurol* **58**, 1985-1992.
- [8] Albert MS, DeKosky ST, Dickson D, Dubois B, Feldman HH, Fox NC, Gamst A, Holtzman DM, Jagust WJ, Petersen RC, Snyder PJ, Carrillo MC, Thies B, Phelps CH (2011) The diagnosis of mild cognitive impairment due to Alzheimer's disease: recommendations from the National Institute on Aging-Alzheimer's Association workgroups on diagnostic guidelines for Alzheimer's disease. *Alzheimers Dement* **7**, 270-279.
- [9] Stern Y, Andrews H, Pittman J, Sano M, Tatemichi T, Lantigua R, Mayeux R (1992) Diagnosis of dementia in a heterogeneous population. Development of a neuropsychological paradigm-based diagnosis of dementia and quantified correction for the effects of education. *Archives of Neurology* **49**, 453-460.
- [10] Stern Y, Albert SM, Sano M, Richards M, Miller L, Folstein M, Albert M, Bylsma FW, Lafleche G (1994) Assessing patient dependence in Alzheimer's disease. *Journal of Gerontology* **49**, M216-M222.

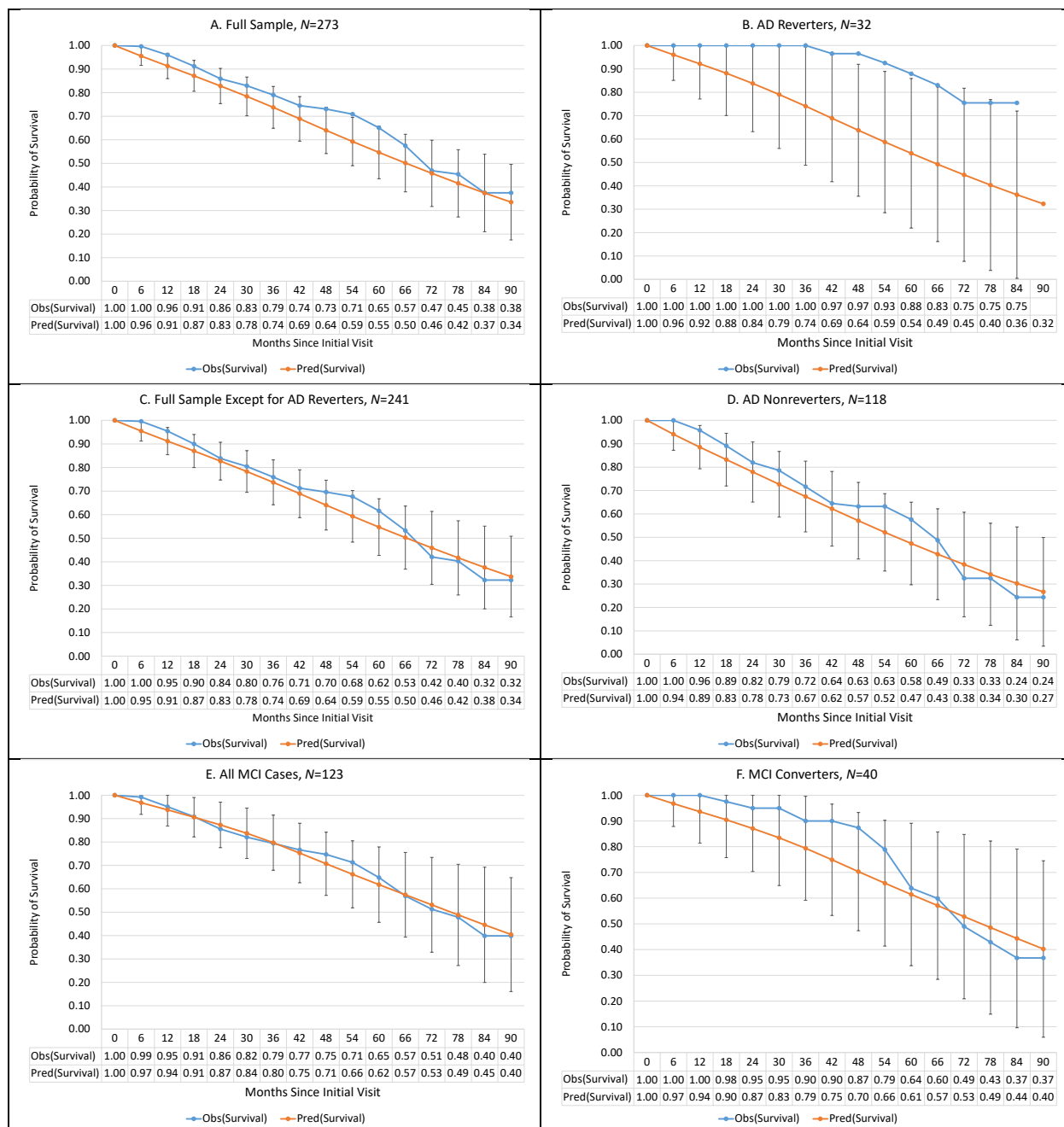
- [11] Kaplan EL, Meier P (1958) Nonparametric estimation from incomplete observations. *J Am Stat Assoc* **53**, 457-481.
- [12] Nair VN (1984) Confidence bands for survival functions with censored data: a comparative study. *Technometrics* **26**, 265-275.
- [13] Dunn OJ (1961) Multiple Comparisons among Means. *Journal of the American Statistical Association* **56**, 52-64.
- [14] Petty MD (2012) Calculating and using confidence intervals for model validation. *Proceedings of the Fall 2012 Simulation Interoperability Workshop*, 10-14.
- [15] Goeman JJ, Solari A (2014) Multiple hypothesis testing in genomics. *Statistics in Medicine* **33**, 1946-1978.
- [16] Fuchs C, Kenett R (1980) A Test for Detecting Outlying Cells in the Multinomial Distribution and Two-Way Contingency Tables. *Journal of The American Statistical Association - J AMER STATIST ASSN* **75**, 395-398.
- [17] Tang MX, Cross P, Andrews H, Jacobs DM, Small S, Bell K, Merchant C, Lantigua R, Costa R, Stern Y, Mayeux R (2001) Incidence of Alzheimer's disease in African-Americans, Caribbean Hispanics and Caucasians in northern Manhattan. *Neurology* **56**, 49-56.
- [18] Lines LM, Sherif NA, Wiener JM (2014) RTI Press, Research Triangle Park (NC).
- [19] Stern Y, Tang MX, Albert MS, Brandt J, Jacobs DM, Bell K, Marder K, Sano M, Devanand D, Albert SM, Bylsma F, Tsai WY (1997) Predicting time to nursing home care and death in individuals with Alzheimer disease. *Journal of the American Medical Association* **277**, 806-812.
- [20] Cox DR (1972) Regression Models and Life-Tables. *Journal of the Royal Statistical Society: Series B (Methodological)* **34**, 187-202.
- [21] Devanand DP, Miller L, Richards M, Marder K, Bell K, Mayeux R, Stern Y (1992) The Columbia University Scale for Psychopathology in Alzheimer's disease. *Archives of Neurology* **49**, 371-376.
- [22] Folstein MF, Folstein SE, McHugh PR (1975) 'Mini-mental State': A practical method for grading the cognitive state of patients for the clinician. *Journal of Psychiatric Research* **12**, 189-198.

- [23] Van Dyk K, Towns S, Tatarina O, Yeung P, Dorrejo J, Zahodne LB, Stern Y (2016) Assessing Fluctuating Cognition in Dementia Diagnosis: Interrater Reliability of the Clinician Assessment of Fluctuation. *Am J Alzheimers Dis Other Demen* **31**, 137-143.
- [24] Blessed G, Tomlinson BE, Roth M (1968) The association between quantitative measures of dementia and of senile change in the cerebral grey matter of elderly subjects. *The British Journal of Psychiatry* **114**, 797-811.
- [25] Fahn S, Marsden C, Calne D, Fahn S, Marsden C, Calne D (1987) *Recent Developments in Parkinson's disease*, Macmillan Healthcare Information, Florham Park, N.J.

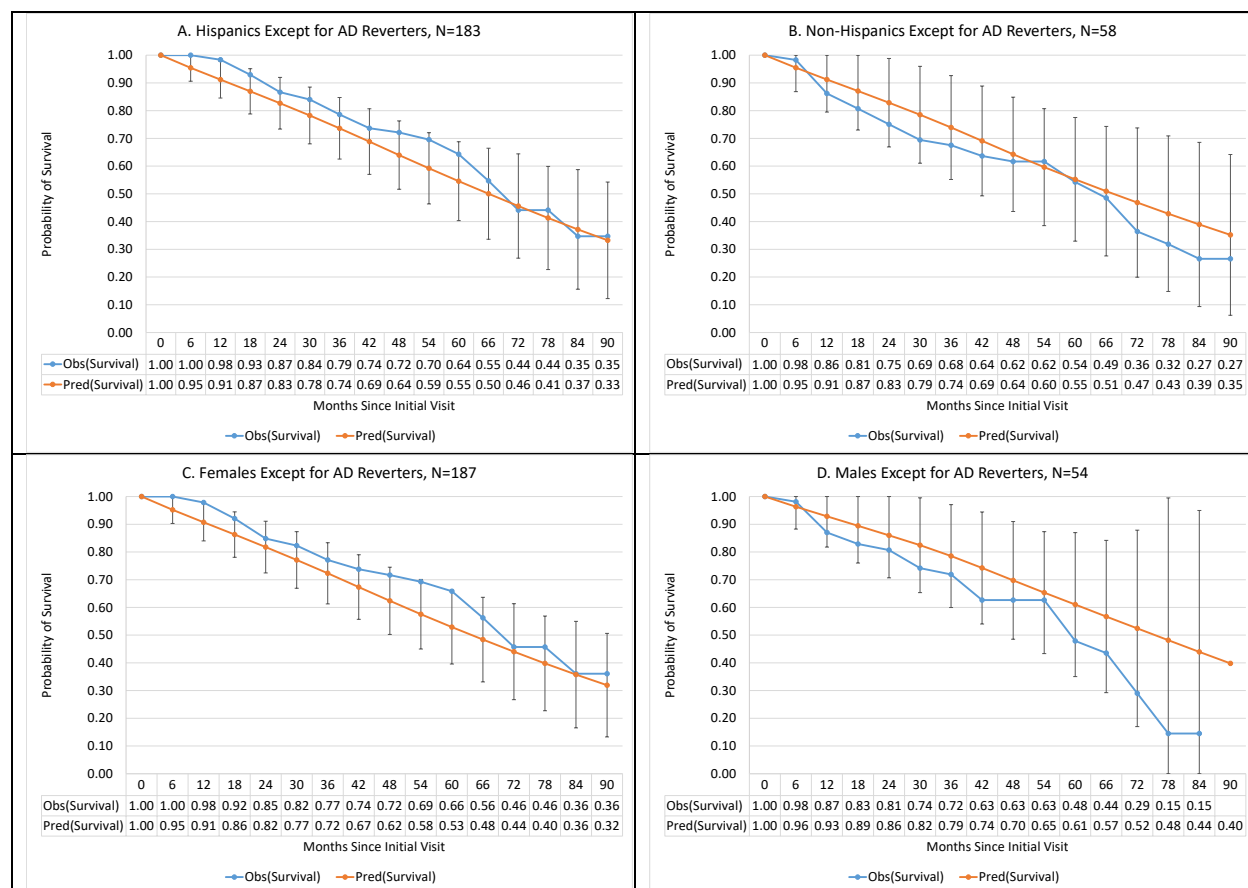


**Figure 1:** 3-D Bubble plot of L-GoM scores at the initial visit for Predictors 3. **Panels A and B:** **Aerial View.** The L-GoM continuum is a regular triangular pyramid (tetrahedron) with a triangular base. Subtypes 1–3 are marked at the vertices of each triangular base, in counterclockwise order. The vertex for subtype 4 is located above the center of the triangular base (i.e., pointing out of the page) where it is also marked. Each bubble represents the estimated L-GoM scores for one subject.

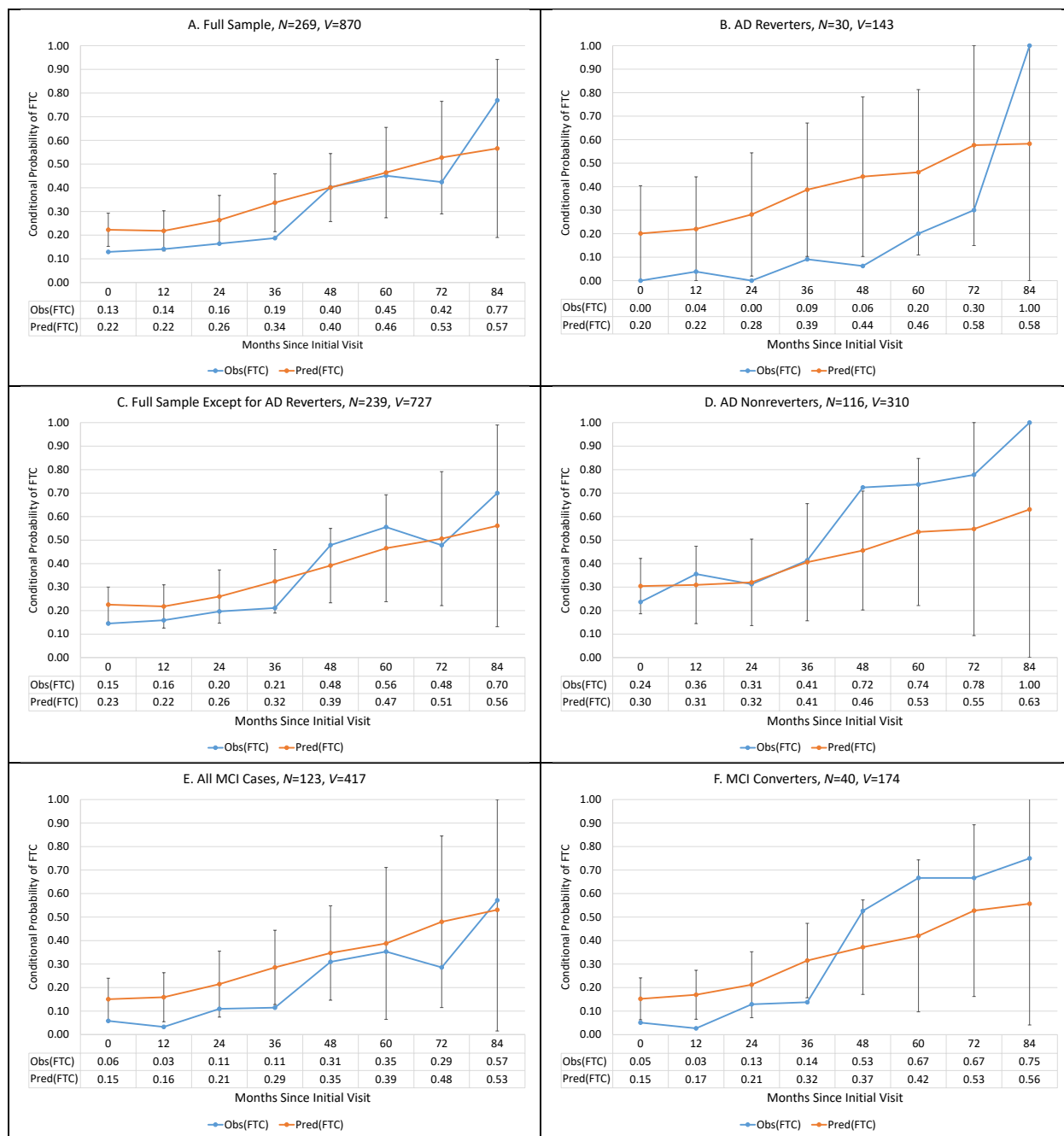
The bubbles are color coded by AD subgroup in Panel A and by MCI subgroup in Panel B. The location of each bubble is determined by the subject's L-GoM scores on subtypes 1–3. The size of each bubble is determined by the subject's L-GoM score on subtype 4, i.e., its width increases linearly with the subtype 4 score up to a maximum 1.2 times larger at vertex 4 than at the base of the triangular pyramid. The axes in Panels A and B were scaled to the standard GoM metric. **Panels C and D: Side View.** These panels show the same L-GoM scores, tetrahedron, and study groups rotated 90 degrees on the subtype 1–3 axis such that the line segment from the center of the triangular base to the vertex for subtype 4 points upward on the page. The  $y$ -axes in Panels C and D were rescaled to represent the severity of the disease on a scale from 0.0 to 1.0; the same scale factor was also applied to the  $x$ -axes. With the 90-degree rotation, each triangular base in Panel A and B is contained in its entirety on the  $x$ -axis, with subtype 4=0.0. The size of each bubble in Panels C and D is unchanged from the size shown in Panels A and B, respectively. The heterogeneity of AD at the initial visit is represented by the distribution of L-GoM scores over the base of the triangular pyramids shown in Panels A and B. By collapsing that distribution to a single point at the centroid of the base, one can generate a 1-dimensional model of AD severity, located at the center of Panels C and D at  $x=0.00$ , rising vertically. Conversely, by expanding the base of the 1-dimensional model one can reintroduce the heterogeneity on rates of progression (extending along the subtype 1–2 axis) and on behavioral, psychiatric, and other signs/symptoms (extending along the subtype 1–3 axis). **Panels E and F: Side View.** These panels show the combined L-GoM scores and triangular pyramid from Panels C and D regrouped by ethnicity and sex, respectively.



**Figure 2:** Observed vs. predicted probability of survival in Predictors 3 under L-GoM model derived from Predictors 2, with 95% simultaneous confidence intervals based on Nair’s “Equal Precision” bands (Nair, 1984) (with parameters  $a = 1 - b = 0.05$ ). Curves for average survival are shown in the upper left panel (A) for  $N = 273$  subjects where  $N =$  Number of subjects seen at the initial visit. The  $x$ -axis indicates the number of months since the initial visit. Corresponding survival curves are shown in the remaining panels for subsets of the study sample defined using: (B) AD reverters; (C) all subjects except AD reverters; (D) all AD nonreverters; (E) all MCI cases; and (F) all MCI converters.

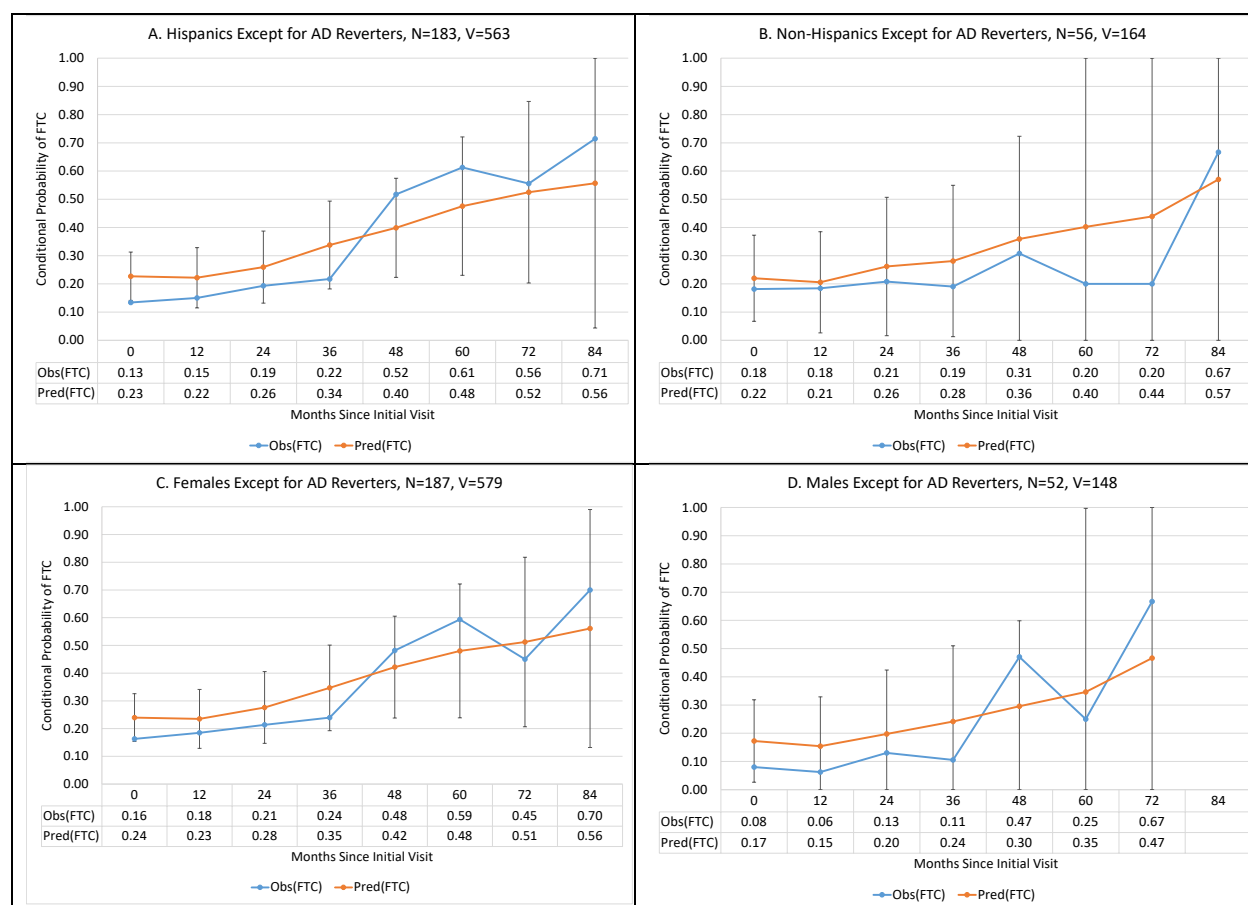


**Figure 3:** Observed vs. predicted probability of survival in Predictors 3, for all subjects except AD reverters, under L-GoM model derived from Predictors 2, with 95% simultaneous confidence intervals based on Nair’s “Equal Precision” bands (Nair, 1984) (with parameters  $a = 1 - b = 0.05$ ). Curves for average survival are shown in the upper left panel (A) for  $N = 183$  Hispanic subjects where  $N =$  Number of subjects seen at the initial visit. The  $x$ -axis indicates the number of months since the initial visit. Corresponding survival curves are shown in the remaining panels for subsets of the study sample defined using: (B) non-Hispanics; (C) females; and (D) males.

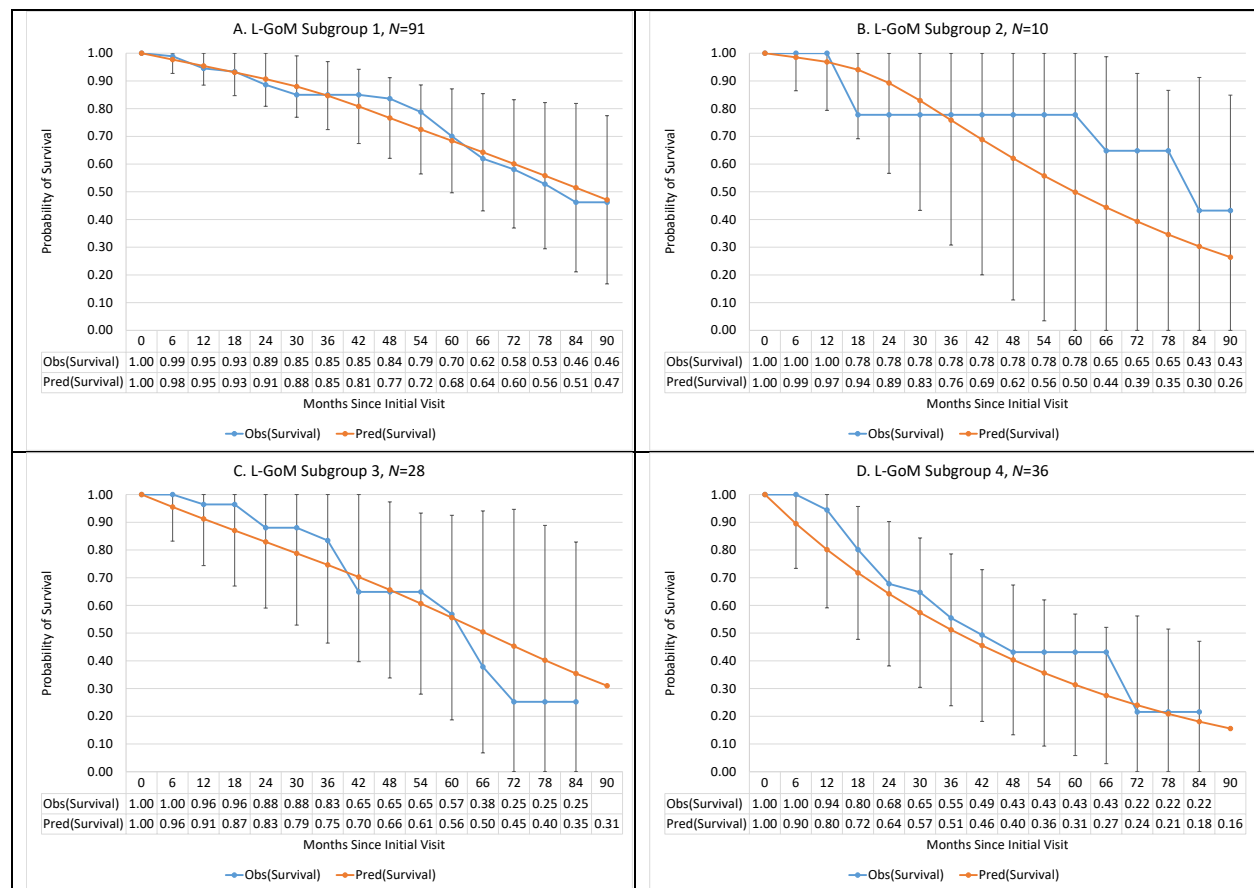


**Figure 4:** Observed vs. predicted conditional probability of need for FTC among survivors to each follow-up visit in Predictors 3 with complete Dependence Scale assessments under L-GoM model derived from Predictors 2, with 95% simultaneous confidence intervals using Bonferroni's correction for multiple testing (Dunn, 1961). Curves for overall average prevalence of need for FTC are shown in the upper left panel (A) for  $N = 269$  subjects with  $V = 870$  visits where  $N =$  Number of subjects contributing at least one visit and  $V =$  Total number of Visits contributed by the  $N$  subjects. The x-axis indicates the number of months since the initial visit. Corresponding prevalence curves are shown in the remaining panels for sample subsets using: (B) all AD reverters in Panel A; (C) all subjects in Panel A except AD reverters; (D) all AD nonreverters in Panel A; (E) all MCI cases; and (F) all MCI converters.





**Figure 5:** Observed vs. predicted conditional probability of need for FTC among survivors to each follow-up visit in Predictors 3 with complete Dependence Scale assessments, for all subjects except AD reverters, under L-GoM model derived from Predictors 2, with 95% simultaneous confidence intervals using Bonferroni’s correction for multiple testing (Dunn, 1961). Curves for overall average prevalence of need for FTC are shown in the upper left panel (A) for  $N = 183$  Hispanic subjects with  $V = 563$  visits where  $N =$  Number of subjects contributing at least one visit and  $V =$  Total number of Visits contributed by the  $N$  subjects. The  $x$ -axis indicates the number of months since the initial visit. Corresponding prevalence curves are shown in the remaining panels for sample subsets using: (B) non-Hispanics; (C) females; and (D) males.



**Figure 6:** Observed vs. predicted probability of survival in Predictors 3, excluding AD reverters, under L-GoM model derived from Predictors 2, with 95% simultaneous confidence intervals based on Nair’s “Equal Precision” bands (Nair, 1984) (with parameters  $a = 1 - b = 0.05$ ). Panel (A): Survival curves for subgroup 1 with  $N = 91$  subjects having subtype 1 score  $> 0.50$ . The  $x$ -axis indicates the number of months since the initial visit. Corresponding survival curves are shown in the remaining panels for: (B) subgroup 2, comprising  $N = 10$  subjects having subtype 2 score  $> 0.50$ ; (C) subgroup 3, comprising  $N = 28$  subjects having subtype 3 score  $> 0.50$ ; and (D) subgroup 4, comprising  $N = 36$  subjects having subtype 4 score  $> 0.50$ .