

# The COVID-19 pandemic sparked off a large-scale outbreak of carbapenem-resistant *Acinetobacter baumannii* from the endemic strains of an Italian hospital

Greta Bellinzona\* <sup>1</sup>, Greta Petazzoni\* <sup>2,3</sup>, Cristina Merla <sup>2</sup>, Marta Corbella <sup>2</sup>, Ørjan Samuelsen <sup>4,5</sup>, Jukka Corander <sup>6,7</sup>, Davide Sasserà <sup>1</sup>, Stefano Gaiarsa # <sup>2</sup>, Patrizia Cambieri <sup>2</sup>

1. Department of Biology and Biotechnology. University of Pavia. Pavia, Italy
2. Microbiology and Virology Unit. Fondazione IRCCS Policlinico San Matteo. Pavia, Italy
3. Division of Infectious Diseases I. Fondazione IRCCS Policlinico San Matteo. Pavia, Italy
4. Norwegian National Advisory Unit on Detection of Antimicrobial Resistance, Department of Microbiology and Infection Control. University Hospital of North Norway. Tromsø, Norway
5. Institute of Pharmacy, Faculty of Health Sciences. UiT The Arctic University of Norway. Tromsø, Norway
6. Department of Biostatistics. University of Oslo. Oslo, Norway
7. Department of Mathematics and Statistics. University of Helsinki. Helsinki, Finland

## Abstract

*Acinetobacter baumannii* is an insidious nosocomial pathogen that poses a serious threat due to the rise of incidence of multidrug resistant (MDR) strains. During the COVID-19 pandemic, MDR *A.baumannii* clones have caused several outbreaks worldwide. Here we describe a detailed investigation of an MDR *A. baumannii* outbreak that occurred at Fondazione IRCCS Policlinico San Matteo (Pavia, Italy). A total of 96 *A. baumannii* strains, isolated between January and July 2020 from 41 inpatients (both SARS-CoV-2 positive and negative) in different wards, were characterized by phenotypic and genomic analyses combining Illumina and Nanopore sequencing. Antibiotic susceptibility testing revealed that all isolates were resistant to carbapenems and the sequence analysis attributed this to the carbapenemase gene *bla*<sub>OXA-23</sub>. Screening of virulence factors unveiled that all strains carried determinants for biofilm formation. A core genome-based phylogeny was inferred to integrate outbreak strain genomes with background genomes from public databases and the local surveillance program. All strains belonged to the globally disseminated ST2 clone and were divided into two main clades. Strains from the outbreak clustered with surveillance isolates from 2019, suggesting that the outbreak was caused by two strains that were already circulating in the hospital before the start of the pandemic. The intensive spread of *A. baumannii* in the hospital was enhanced by the extreme emergency situation of the first COVID-19 pandemic wave that resulted in minor attention to infection prevention and control practices.

## INTRODUCTION

*Acinetobacter baumannii* is an opportunistic gram-negative pathogen frequently associated with community-acquired and healthcare-associated infections (HAIs). This pathogen is a member of the ESKAPE group, despite causing only 2% of HAIs (1), due to its virulence and the substantial prevalence of antibiotic resistance. Currently, the greatest cause of concern are strains that have shown to be rapidly capable of becoming resistant to a wide range of antibiotics (including front-line agents like carbapenems), thus becoming multidrug resistant (MDR). This is a critical issue in Southern Europe, especially in Italy, where the percentage of carbapenem-resistant *A. baumannii* (CRAB) strains during 2020 was 80.8% (WHO Regional Office for Europe/European Centre for Disease Prevention and Control. Antimicrobial resistance surveillance in Europe 2022 – 2020 data. Copenhagen: WHO Regional Office for Europe; 2022). In conjunction with antibiotic resistance, *A. baumannii* is concerning because of its exceptional capability to persist for long periods in the environment, even in the hospital setting, aided by biofilm production. This persistence on abiotic and biotic surfaces leads to chronic infections and facilitates its spread (2), especially in Intensive Care Units (ICUs) (3). Indeed, *A. baumannii* infections are typically related to medical equipment such as catheters and ventilators (i.e. pneumonia and bloodstream infections), while urinary infections and those affecting skin, soft tissues and surgical sites are less common (4). In light of this, the World Health Organization included MDR *A. baumannii* in the critical group, a list of bacteria that pose the greatest threat to human health and for which the development of novel antibiotics is urgently needed (5).

The COVID-19 pandemic has been posing an arduous challenge for hospitals worldwide, especially in the early period. The increasing COVID-19-related hospitalizations led to shortages in personnel, personal protective equipment and medical equipment. These, in turn, often resulted in the impossibility to maintain strict infection prevention and control (IPC) practices and consequently in an increase of bacterial and fungal infections. In fact, several *A. baumannii* outbreaks have been described during the first pandemic wave worldwide; e.g. (6), (7). Fondazione IRCCS Policlinico San Matteo (Pavia, Italy) played a key role in the management of COVID-19 pandemic in North Italy, especially during the first wave, being one of the largest hospitals (~900 beds) in the Lombardy region. An active genomic surveillance programme and IPC containment strategies for ESKAPE pathogens were already in place in the hospital before COVID-19. Thanks to surveillance measures, the prevalence of *A. baumannii* in the 2018-2019 biennium was less than one isolate per 1000 days of hospitalizations. However, during the first wave of COVID-19 a large outbreak of MDR *A. baumannii* emerged. Here we report a detailed genomic characterization of this outbreak.

## MATERIALS AND METHODS

### Data collection

This retrospective study was conducted at IRCCS Fondazione Policlinico San Matteo in Pavia (Italy), where 151 isolates of *A. baumannii* were collected from 06 January, 2020 to 30 July, 2020. 96 isolates were chosen to conduct this study; the choice was made favoring the inclusion of both samples from colonization and infection materials for each patient (where available) and of multiple samples in case of long hospitalizations (1 sample/7 days/material). The isolates selected were identified with MALDI-TOF mass spectrometry (Bruker Daltonik, Bremen, Germany) equipped with Bruker biotyper 3.1 software. Antibiotic susceptibility was tested with both Sensititre™ Gram Negative EUMDROXF Plate (ThermoFisher Scientific, Rodano, Italy) and Phoenix™ NMIC/402 panel loaded on BD Phoenix™ M50 instrument. Values were interpreted according to the European Committee on Antimicrobial

Susceptibility Testing (EUCAST) clinical breakpoints (vr. 10). Tigecycline was interpreted following Clinical Laboratory Standard Institute (CLSI) breakpoints (30<sup>th</sup> ed.).

Patient information was retrieved from the hospital database. COVID-19 positivity was defined at the time of admission, consulting the results of real-time reverse transcriptase PCR tests for the presence of SARS-CoV-2.

### **DNA extraction and genome characterization**

The genomic DNA of the 96 strains was extracted with DNeasy Blood & Tissue Kit (QIAGEN) for short-read sequencing using Illumina platform and with MagAttract HMW DNA Kit (QIAGEN) for long-read sequencing using Nanopore technology. Short and long reads were combined with the Unicycler software (8) in order to perform hybrid assemblies. The genomes obtained were then *in silico* sequence typed (ST) using the Pasteur MLST scheme (9) with an in-house script. Presence of plasmids, virulence and resistance genes was assessed using ABRicate [<https://github.com/tseemann/abricate>] with the NCBI AMRFinderPlus (10), CARD (11), Resfinder (12), VirulenceFinder (13), and PlasmidFinder (14) databases. The presence of insertion sequences was determined with MobileElementFinder (15). A more in-depth plasmid search was performed by visualizing the assembly graph in Bandage (16) for the least fragmented isolates and checking for circularity and higher depth coverage. The presence of the plasmids identified was assessed in all the remaining assemblies using BLASTn. Plasmid genes were finally annotated using Prokka (17).

### **Surveillance program genomes**

Strains selected by the genomic surveillance program of the Hospital are routinely processed for short-read sequencing as follows: DNA is extracted using DNeasy Blood & Tissue Kit (QIAGEN), sequenced with Illumina platform and assembled using Unicycler with default parameters. We retrieved all the ST2 genomes obtained by the surveillance program (N = 23) in the months before and after the outbreak period (12 from 2019, five from 2020 and six from 2021) and we added them to our dataset.

### **Phylogenetic analyses**

In order to characterize the outbreak of *A. baumannii* a genomic background was constructed. In detail, the twenty high-quality genomes most similar to those in our set according to k-mer content similarity (MASH (18)) were retrieved from the PATRIC DB (<https://www.patricbrc.org>). Then, the Purple pipeline (19) was used to align all genomes in our dataset to an internal reference (the complete genome of strain 4946) and to extract coreSNPs. Maximum Likelihood phylogeny was inferred with RAxML (20) (using 100 bootstraps resamples) on the resulting coreSNP alignment using the general time reversible model, as suggested by ModelTest-NG (21), with ascertainment bias correction (22).

## **RESULTS**

### **Dataset characterization**

During the first COVID-19 wave an increase of incidence of *A. baumannii* strains was registered in the study hospital; the cases raised from a baseline of less than one isolate in the 2018-2019 biennium to 2.8 isolates per 1000 days of hospitalization. We characterized 96 strains collected in this period (from January to July 2020) from 41 individuals hospitalized in the ICUs (N = 37), Pneumology (N = 2) and Otorhinolaryngology (N=1) wards. Three samples were collected from one outpatient, who was later

admitted to the Emergency department. Patients had a mean age of 61 (SD: +/- 10 years), ranging from 30 to 83 years old and were predominantly male (87.8% - N = 36). The median length of stay was 47 days (interquartile range [IQR] = 25-74 days) and 43.9% (N = 18) of patients died (median length of stay = 52 days; IQR = 37-85 days). Thirty patients tested positive and seven negative to SARS-CoV-2; the remaining four were hospitalized before the pandemic period. 33.3% (N = 32) of the *A. baumannii* isolates were related to lower respiratory tract infections and 22.9% (N = 22) to bloodstream infections; 3.1% of strains were isolated from the urinary tract (N=3) and the other 40.6% from rectal swabs (N = 38) and nasal swab (N = 1). Table 1 summarizes isolate and patient information.

All 96 isolates were sequenced using both long- and short-read technology. The hybrid assemblies enabled us to obtain eight complete and 87 high-quality genomes (mean length of the genomes = 4 Mbp; mean number of contigs = 11.3, Table S1). The remaining one was discarded (sample 4964) and excluded from all downstream analyses. Genome analysis revealed that all 95 isolates belonged to ST2, which is part of the globally disseminated International Clone II (IC2) (23).

### Phylogenetic analysis

In order to further characterize the outbreak, we performed a phylogenetic analysis using the 95 *A. baumannii* genomes from the outbreak, 23 from the surveillance program, and 367 from the PATRIC database as background. The estimated phylogeny (Figure 1) depicts a situation in which the *A. baumannii* outbreak in the hospital was caused by multiple strains. The majority of the outbreak isolates (N = 93) are divided into two monophyletic clades: one larger (Cluster 1 - 71 strains out of 80) and one smaller (Cluster 2 - 23 strains out of 23). Cluster 1 also includes nine isolates from the hospital surveillance program (one from 2019, four from 2020 and four from 2021). Cluster 2 is exclusively composed of 2020 isolates, nonetheless, isolate 4200\_2019 from 2019 is basal to this cluster. A background isolate from Belgium (470.13595 of PATRIC DB) interposes between the 2019 surveillance isolate and Cluster 1; however the common branch to these genomes has very limited support (29/100 bootstrap). Interestingly, the genome of one of the two remaining isolates from January 2020 (4636\_2020) clustered with four 2019 surveillance genomes, while the second one (4614\_2020) clustered with one surveillance genome from late 2020.

### Antibiotic resistance and resistance/virulence genes

All 95 outbreak isolates were found resistant to carbapenems (100% to imipenem and meropenem). Almost all isolates presented resistance to aminoglycosides: 97.9% (N = 93) were found to be resistant to gentamicin and 98.9% (N = 94) to amikacin. Moreover, only 8.9 % (N = 7) of isolates tested were resistant to tigecycline and eight isolates were susceptible to increased exposure to this antibiotic. Additionally, the totality of isolates tested for the ciprofloxacin (N = 90) were resistant. None of the isolates was found resistant to colistin. The antibiotic resistance factors predicted in the genomes were concordant with the phenotypes. Resistance to carbapenems was confirmed by the presence of *bla*<sub>OXA-23</sub>. The intrinsic *bla*<sub>OXA-51</sub>-variant *bla*<sub>OXA-66</sub> was also detected but no ISAb<sub>1</sub> sequence insertion was found upstream. All strains carried *bla*<sub>ADC-25</sub>, the majority (N = 89) also presented *bla*<sub>ADC-73</sub>, other five *bla*<sub>ADC-56</sub> and the remaining one had none of these two (Tab. S2).

Virulence determinants were also found in outbreak isolates, particularly involved in biofilm formation. In detail, all isolates presented *ompA* gene which is important for the development of robust biofilms on abiotic surfaces (24) and *bap* gene which ensures a strong biofilm formation (25).

94/95 isolates had *csuAB*, *csuA*, *csuB*, *csuC*, *csuD* and *csuE* that encodes for Chaperon–Usher secretion (CUS) system, fundamental for the first bacterial attachment on abiotic surfaces (26). The 4614\_2020 strain isolated in January did not carry the CUS system. Strains also had genes for the BfmS/BfmR, a two-component system that plays a key role in CUS systems regulation and *ompA* (27). Finally, 23.3% (N = 25) isolates presented a cluster of four genes (*pgaA*, *pgaB*, *pgaC*, and *pgaD*) encoding for the Poly- $\beta$ -(1, 6)-N-Acetylglucosamine (PNAG), a component involved in biofilm development (28). Interestingly, these isolates included the two from January 2020 (4636\_2020, 4614\_2020) and all of Cluster 1. In other isolates (N = 70) the *pcaC* gene was interrupted by the ISAbal1 insertion sequence (Tab. S3).

## Plasmids

We investigated the presence of plasmids and found that all the samples shared a plasmid of 8731 bp which perfectly matches with NZ\_CP008708.1, containing 12 coding sequences, 10 being hypothetical proteins. Most of the genomes of Cluster 1 (51/79) presented a second plasmid around 100 kbp long (highly similar to CP081146.1). By analyzing the 100 kbp plasmid with Prokka, 116 out of 131 coding sequences were annotated as hypothetical. Neither plasmid encodes virulence or resistance genes.

## DISCUSSION

In this work we present the data from a hospital-wide outbreak of MDR *A. baumannii* that occurred during the first wave of the COVID-19 pandemic. A rise in the incidence of HAIs during COVID-19 pandemic waves was observed in the study hospital and also in other hospitals and countries worldwide (29, 30, 31). This is particularly true for *A. baumannii*, which was the most frequently reported cause of hospital outbreaks, together with methicillin resistant *Staphylococcus aureus* and fungal infections (32, 33, 34). For example, during the first wave, Perez et al. reported a hospital-acquired CRAB outbreak of 34 isolates harboring *bla*<sub>OXA-23</sub> which involved 34 patients admitted to ICUs for COVID-19 patients in New Jersey hospital (6). Also Gottesman and colleagues (7) reported an outbreak in Israel of five CRAB carrying *bla*<sub>OXA-24</sub> and belonging to IC2 in ICUs patients.

The inclusion of genomes from isolates sequenced before and after the outbreak by the hospital genome surveillance program, enabled our phylogenetic analysis (Fig. 1) to clearly show that multiple strains were circulating in the hospital before the start of the pandemic, including the two from 2019 (3996\_2019 and 4200\_2019) that caused the outbreak. Mapping patient information on the tree revealed that SARS-CoV-2 coinfection was approximately equally distributed between the two phylogenetic clusters. Thus, no association between *A. baumannii* clusters and the viral infection can be hypothesized. The possibility of transmission of *A. baumannii* between COVID-19 positive and negative patients, without viral co-transmission can be explained by the high capability of *A. baumannii* to survive on abiotic surfaces due to biofilm formation. Moreover no association can be hypothesized between clusters and wards, outcome, or age of patients.

Our analysis indicates that the spread of the bacterial pathogen was enhanced by the extreme emergency situation. Personnel and bed shortage, and the prioritization of self-preservation from the viral infection of healthcare workers, led to unavoidable diminished attention towards the standard patient handling measures (e.g. changing gloves between patients). In accordance with this hypothesis, the incidence of *A. baumannii* decreased to lower than one isolate per 1000 days of hospitalizations after the first pandemic wave and remained under control during the following waves, thanks to a better management of COVID-19 patients and to a better knowledge of the viral disease.

## Ethical statement

The study was designed and conducted in accordance with the Helsinki declaration and approved by the Ethics Committee of Fondazione IRCCS Policlinico San Matteo in Pavia, Italy (internal project code: 08022298/13, Project number: 733-rcr2013-34). The work described herein is a retrospective study performed on bacterial isolates from human samples that were obtained as part of routine hospital care.

## Funding section

J.C. was supported by the ERC grant 742158.

## Acknowledgement section

We acknowledge Anna K. Pöntinen and Francois Cleon for experimental assistance and the Genomics Support Centre Tromsø, UiT The Arctic University of Norway for the short- and long-read sequencing.

## Figure legend

Fig. 1 - Maximum likelihood phylogeny of 485 *A. baumannii* strains: 95 outbreak genomes (red labels), 23 surveillance genomes (green labels) and 367 PATRIC genomes (gray labels) inferred on coreSNPs with RAxML. Date of isolation (innermost crown), ward (second crown), and SARS-CoV-2 positivity (third crown) were retrieved from the hospital and microbiological database. The presence of 100 kb plasmid (blue dots) and *pggC* gene (red dots) were determined by genomic analyses. The two main outbreak clusters are highlighted in blue (Cluster 1) and red (Cluster 2). Bootstrap values above 50/100 are indicated on tree branches. This figure was obtained using iTol (<https://itol.embl.de/>).

## Table legend

Tab. 1 - Isolates of *A. baumannii* information and patient metadata.

Tab. S1 - Characteristics of the 96 *A. baumannii* genomes.

Tab. S2 - Phenotypic resistance and presence of antibiotic resistance genes in the 95 *A. baumannii* isolates.

Tab. S3 - Presence of virulence genes in the 95 *A. baumannii* isolates.



## BIBLIOGRAPHY

1. Lob SH, Hoban DJ, Sahm DF, Badal RE. 2016. Regional differences and trends in antimicrobial susceptibility of *Acinetobacter baumannii*. *Int J Antimicrob Agents* 47:317–323.
2. Yang C-H, Su P-W, Moi S-H, Chuang L-Y. 2019. Biofilm Formation in *Acinetobacter Baumannii*: Genotype-Phenotype Correlation. *Molecules* 24.
3. Antunes LCS, Visca P, Towner KJ. 2014. *Acinetobacter baumannii*: evolution of a global pathogen. *Pathog Dis* 71:292–301.
4. Wong D, Nielsen TB, Bonomo RA, Pantapalangkoor P, Luna B, Spellberg B. 2017. Clinical and pathophysiological overview of acinetobacter infections: a century of challenges. *Clin Microbiol Rev* 30:409–447.
5. Tacconelli E, Carrara E, Savoldi A, Harbarth S, Mendelson M, Monnet DL, Pulcini C, Kahlmeter G, Kluytmans J, Carmeli Y, Ouellette M, Outtersson K, Patel J, Cavalieri M, Cox EM, Houchens CR, Grayson ML, Hansen P, Singh N, Theuretzbacher U, WHO Pathogens Priority List Working Group. 2018. Discovery, research, and development of new antibiotics: the WHO priority list of antibiotic-resistant bacteria and tuberculosis. *Lancet Infect Dis* 18:318–327.
6. Perez S, Innes GK, Walters MS, Mehr J, Arias J, Greeley R, Chew D. 2020. Increase in Hospital-Acquired Carbapenem-Resistant *Acinetobacter baumannii* Infection and Colonization in an Acute Care Hospital During a Surge in COVID-19 Admissions - New Jersey, February-July 2020. *MMWR Morb Mortal Wkly Rep* 69:1827–1831.
7. Gottesman T, Fedorowsky R, Yerushalmi R, Lellouche J, Nutman A. 2021. An outbreak of carbapenem-resistant *Acinetobacter baumannii* in a COVID-19 dedicated hospital. *Infection Prevention in Practice* 3:100113.
8. Wick RR, Judd LM, Gorrie CL, Holt KE. 2017. Unicycler: Resolving bacterial genome assemblies from short and long sequencing reads. *PLoS Comput Biol* 13:e1005595.
9. Diancourt L, Passet V, Nemec A, Dijkshoorn L, Brisse S. 2010. The population structure of *Acinetobacter baumannii*: expanding multiresistant clones from an ancestral susceptible genetic pool. *PLoS ONE* 5:e10034.
10. Feldgarden M, Brover V, Haft DH, Prasad AB, Slotta DJ, Tolstoy I, Tyson GH, Zhao S, Hsu C-H, McDermott PF, Tadesse DA, Morales C, Simmons M, Tillman G, Wasilenko J, Folster JP, Klimke W. 2019. Validating the AMRFinder Tool and Resistance Gene Database by Using Antimicrobial Resistance Genotype-Phenotype Correlations in a Collection of Isolates. *Antimicrob Agents Chemother* 63.
11. Jia B, Raphenya AR, Alcock B, Waglechner N, Guo P, Tsang KK, Lago BA, Dave BM, Pereira S, Sharma AN, Doshi S, Courtot M, Lo R, Williams LE, Frye JG, Elsayegh T, Sardar D, Westman EL,

- Pawlowski AC, Johnson TA, McArthur AG. 2017. CARD 2017: expansion and model-centric curation of the comprehensive antibiotic resistance database. *Nucleic Acids Res* 45:D566–D573.
12. Zankari E, Hasman H, Cosentino S, Vestergaard M, Rasmussen S, Lund O, Aarestrup FM, Larsen MV. 2012. Identification of acquired antimicrobial resistance genes. *J Antimicrob Chemother* 67:2640–2644.
  13. Joensen KG, Scheutz F, Lund O, Hasman H, Kaas RS, Nielsen EM, Aarestrup FM. 2014. Real-time whole-genome sequencing for routine typing, surveillance, and outbreak detection of verotoxigenic *Escherichia coli*. *J Clin Microbiol* 52:1501–1510.
  14. Carattoli A, Zankari E, García-Fernández A, Voldby Larsen M, Lund O, Villa L, Møller Aarestrup F, Hasman H. 2014. In silico detection and typing of plasmids using PlasmidFinder and plasmid multilocus sequence typing. *Antimicrob Agents Chemother* 58:3895–3903.
  15. Johansson MHK, Bortolaia V, Tansirichaiya S, Aarestrup FM, Roberts AP, Petersen TN. 2021. Detection of mobile genetic elements associated with antibiotic resistance in *Salmonella enterica* using a newly developed web tool: MobileElementFinder. *J Antimicrob Chemother* 76:101–109.
  16. Wick RR, Schultz MB, Zobel J, Holt KE. 2015. Bandage: interactive visualization of de novo genome assemblies. *Bioinformatics* 31:3350–3352.
  17. Seemann T. 2014. Prokka: rapid prokaryotic genome annotation. *Bioinformatics* 30:2068–2069.
  18. Ondov BD, Treangen TJ, Melsted P, Mallonee AB, Bergman NH, Koren S, Phillippy AM. 2016. Mash: fast genome and metagenome distance estimation using MinHash. *Genome Biol* 17:132.
  19. Gona F, Comandatore F, Battaglia S, Piazza A, Trovato A, Lorenzin G, Cichero P, Biancardi A, Nizzero P, Moro M, Cirillo DM. 2020. Comparison of core-genome MLST, coreSNP and PFGE methods for *Klebsiella pneumoniae* cluster analysis. *Microb Genom* 6.
  20. Stamatakis A. 2014. RAxML version 8: a tool for phylogenetic analysis and post-analysis of large phylogenies. *Bioinformatics* 30:1312–1313.
  21. Darriba D, Posada D, Kozlov AM, Stamatakis A, Morel B, Flouri T. 2020. ModelTest-NG: A New and Scalable Tool for the Selection of DNA and Protein Evolutionary Models. *Mol Biol Evol* 37:291–294.
  22. Lewis PO. 2001. A likelihood approach to estimating phylogeny from discrete morphological character data. *Syst Biol* 50:913–925.
  23. Dijkshoorn L, Aucken H, Gerner-Smidt P, Janssen P, Kaufmann ME, Garaizar J, Ursing J, Pitt TL. 1996. Comparison of outbreak and nonoutbreak *Acinetobacter baumannii* strains by genotypic and phenotypic methods. *J Clin Microbiol* 34:1519–1525.
  24. Gaddy JA, Tomaras AP, Actis LA. 2009. The *Acinetobacter baumannii* 19606 *OmpA* protein plays



- a role in biofilm formation on abiotic surfaces and in the interaction of this pathogen with eukaryotic cells. *Infect Immun* 77:3150–3160.
25. Azizi O, Shahcheraghi F, Salimizand H, Modarresi F, Shakibaie MR, Mansouri S, Ramazanzadeh R, Badmasti F, Nikbin V. 2016. Molecular Analysis and Expression of *bap* Gene in Biofilm-Forming Multi-Drug-Resistant *Acinetobacter baumannii*. *Rep Biochem Mol Biol* 5:62–72.
  26. Tomaras AP, Dorsey CW, Edelmann RE, Actis LA. 2003. Attachment to and biofilm formation on abiotic surfaces by *Acinetobacter baumannii*: involvement of a novel chaperone-usher pili assembly system. *Microbiology (Reading, Engl)* 149:3473–3484.
  27. Kishii K, Hamada M, Aoki K, Ito K, Onodera J, Ishii Y, Tateda K. 2020. Differences in biofilm formation and transcription of biofilm-associated genes among *Acinetobacter baumannii* clinical strains belonging to the international clone II lineage. *J Infect Chemother* 26:693–698.
  28. Choi AHK, Slamti L, Avci FY, Pier GB, Maira-Litrán T. 2009. The *pgaABCD* locus of *Acinetobacter baumannii* encodes the production of poly-beta-1-6-N-acetylglucosamine, which is critical for biofilm formation. *J Bacteriol* 191:5953–5963.
  29. Garcia-Vidal C, Sanjuan G, Moreno-García E, Puerta-Alcalde P, Garcia-Pouton N, Chumbita M, Fernandez-Pittol M, Pitart C, Inciarte A, Bodro M, Morata L, Ambrosioni J, Grafia I, Meira F, Macaya I, Cardozo C, Casals C, Tellez A, Castro P, Marco F, COVID-19 Researchers Group. 2021. Incidence of co-infections and superinfections in hospitalized patients with COVID-19: a retrospective cohort study. *Clin Microbiol Infect* 27:83–88.
  30. Cusumano JA, Dupper AC, Malik Y, Gavioli EM, Banga J, Berbel Caban A, Nadkarni D, Obla A, Vasa CV, Mazo D, Altman DR. 2020. *Staphylococcus aureus* Bacteremia in Patients Infected With COVID-19: A Case Series. *Open Forum Infect Dis* 7:ofaa518.
  31. Contou D, Claudinon A, Pajot O, Micaëlo M, Longuet Flandre P, Dubert M, Cally R, Logre E, Fraissé M, Mentec H, Plantefève G. 2020. Bacterial and viral co-infections in patients with severe SARS-CoV-2 pneumonia admitted to a French ICU. *Ann Intensive Care* 10:119.
  32. Pascale R, Bussini L, Gaibani P, Bovo F, Fornaro G, Lombardo D, Ambretti S, Pensalfine G, Appolloni L, Bartoletti M, Tedeschi S, Tumietto F, Lewis R, Viale P, Giannella M. 2022. Carbapenem-resistant bacteria in an intensive care unit during the coronavirus disease 2019 (COVID-19) pandemic: A multicenter before-and-after cross-sectional study. *Infect Control Hosp Epidemiol* 43:461–466.
  33. O’Toole RF. 2021. The interface between COVID-19 and bacterial healthcare-associated infections. *Clin Microbiol Infect* 27:1772–1776.
  34. Kundu R, Singla N. 2022. COVID-19 and Plethora of Fungal Infections. *Curr Fungal Infect Rep* 1–8.

Figure 1

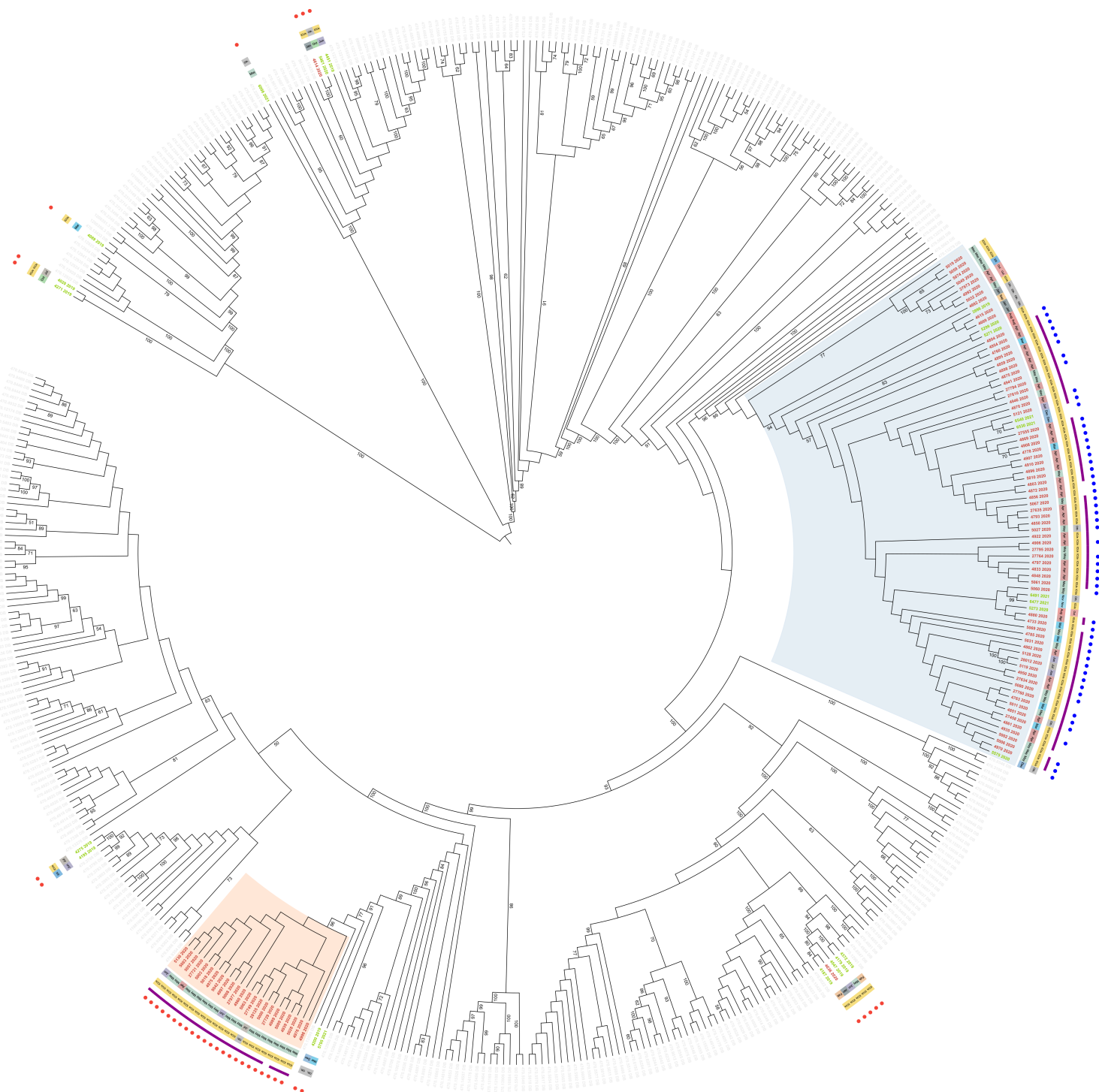


Table 1

SAMPLE	SAMPLE SOURCE	ISOLATE DATE	WARD	WARD CLASSIFICATION	PATIENT ID	SEX	AGE	LENGHT OF STAY	OUTCOME	COVID-19 STATUS
4614_2020	Urine	Jan 2020	ICU 1	ICUs	P18	M	61-70	47	Ordinary discharge	NA
4615_2020	Rectal swab	Jan 2020	Otorhinolaryngology	Other	P27	M	61-70	25	Ordinary discharge	NA
4636_2020	Rectal swab	Jan 2020	ICU 1	ICUs	P17	M	61-70	11	Transferred to another hospital	NA
4682_2020	Bronchoalveolar lavage	Jan 2020	Pneumology	Other	P20	M	81-90	20	Ordinary discharge	NA
4669_2020	Rectal swab	Jan 2020	Pneumology	Other	P20	M	81-90	20	Ordinary discharge	NA
4733_2020	BAL	Mar 2020	ICU 1	ICUs	P34	M	51-60	3	Deceased	Negative
27458_2020	Blood	Mar 2020	ICU 1	ICUs	P38	M	71-80	85	Transferred to another hospital	Positive
4760_2020	Rectal swab	Mar 2020	ICU 1	ICUs	P38	M	71-80	85	Transferred to another hospital	Positive
4763_2020	Rectal swab	Mar 2020	ICU 1	ICUs	P32	M	71-80	74	Transferred to another hospital	Positive
4778_2020	Rectal swab	Mar 2020	ICU 1	ICUs	P23	M	61-70	17	Deceased	Positive
4785_2020	Rectal swab	Mar 2020	ICU 1	ICUs	P22	M	61-70	14	Deceased	Positive
4793_2020	Blood	Apr 2020	ICU 1	ICUs	P36	M	51-60	17	Deceased	Positive
4833_2020	BAL	Apr 2020	ICU 1	ICUs	P5	M	61-70	45	Transferred to another hospital	Positive
4797_2020	BAL	Apr 2020	ICU 1	ICUs	P36	M	51-60	17	Deceased	Positive
27555_2020	Blood	Apr 2020	ICU 1	ICUs	P10	M	61-70	54	Deceased	Positive
4803_2020	Rectal swab	Apr 2020	ICU 1	ICUs	P5	M	61-70	45	Transferred to another hospital	Positive
4804_2020	Rectal swab	Apr 2020	ICU 1	ICUs	P8	M	41-50	49	Transferred to another hospital	Positive
4869_2020	BAL	Apr 2020	ICU 1	ICUs	P8	M	41-50	49	Transferred to another hospital	Positive
4861_2020	BAL	Apr 2020	ICU 1	ICUs	P14	M	71-80	18	Deceased	Positive
4851_2020	Rectal swab	Apr 2020	Pneumology	Other	P37	M	41-50	39	Ordinary discharge	Positive
4848_2020	Rectal swab	Apr 2020	ICU 1	ICUs	P33	M	61-70	104	Deceased	Positive
4859_2020	Bronchoalveolar lavage	Apr 2020	ICU 1	ICUs	P13	M	30-40	27	Ordinary discharge	Positive
4862_2020	BAL	Apr 2020	ICU 1	ICUs	P19	M	51-60	67	Transferred to another hospital	Positive
4856_2020	BAL	Apr 2020	ICU 1	ICUs	P9	F	51-60	48	Deceased	Negative
4870_2020	Blood	Apr 2020	ICU 1	ICUs	P19	M	51-60	67	Transferred to another hospital	Positive
4850_2020	Rectal swab	Apr 2020	ICU 1	ICUs	P35	M	51-60	133	Transferred to another hospital	Positive
4872_2020	Blood	Apr 2020	ICU 1	ICUs	P9	F	51-60	48	Deceased	Negative

4875_2020	BAL	Apr 2020	ICU Infectious diseases	ICUs	P32	M	71-80	74	Transferred to another hospital	Positive
4880_2020	Rectal swab	Apr 2020	ICU 1	ICUs	P41	F	61-70	37	Ordinary discharge	Positive
4898_2020	BAL	Apr 2020	ICU 1	ICUs	P35	M	51-60	133	Transferred to another hospital	Positive
4906_2020	BAL	Apr 2020	ICU 1	ICUs	P25	M	51-60	50	Transferred to another hospital	Positive
27610_2020	Blood	Apr 2020	ICU 1	ICUs	P33	M	61-70	104	Deceased	Positive
4895_2020	Rectal swab	Apr 2020	ICU 1	ICUs	P13	M	30-40	27	Ordinary discharge	Positive
4896_2020	Rectal swab	Apr 2020	ICU 1	ICUs	P10	M	61-70	54	Deceased	Positive
4907_2020	Bronchoalveolar lavage	Apr 2020	ICU 1	ICUs	P41	F	61-70	37	Ordinary discharge	Positive
4910_2020	Rectal swab	Apr 2020	ICU 1	ICUs	P2	M	61-70	35	Deceased	Positive
4922_2020	Rectal swab	Apr 2020	ICU 1	ICUs	P5	M	61-70	45	Transferred to another hospital	Positive
27634_2020	Blood	Apr 2020	ICU Infectious diseases	ICUs	P32	M	71-80	74	Transferred to another hospital	Positive
4908_2020	BAL	Apr 2020	ICU 1	ICUs	P6	F	61-70	74	Transferred to another hospital	Positive
27635_2020	Blood	Apr 2020	ICU 1	ICUs	P6	F	61-70	74	Transferred to another hospital	Positive
4935_2020	Bronchoaspirate	Apr 2020	ICU Infectious diseases	ICUs	P38	M	71-80	85	Transferred to another hospital	Positive
4950_2020	Rectal swab	Apr 2020	ICU 1	ICUs	P19	M	51-60	67	Transferred to another hospital	Positive
4954_2020	Rectal swab	Apr 2020	ICU 1	ICUs	P25	M	51-60	50	Transferred to another hospital	Positive
27673_2020	Blood	Apr 2020	Outpatient	Out	P39	NA	41-50	NA	NA	NA
27731_2020	Blood	Apr 2020	ICU Lombardy Region	ICUs	P21	M	61-70	85	Transferred to another hospital	Positive
4992_2020	Blood	Apr 2020	Outpatient	Out	P39	NA	41-50	NA	NA	NA
4939_2020	Bronchoaspirate	May 2020	ICU 1	ICUs	P3	M	61-70	7	Deceased	Negative
4941_2020	BAL	May 2020	ICU 1	ICUs	P10	M	61-70	54	Deceased	Positive
4960_2020	BAL	May 2020	ICU Lombardy Region	ICUs	P21	M	61-70	85	Transferred to another hospital	Positive
4946_2020	BAL	May 2020	ICU 1	ICUs	P35	M	51-60	133	Transferred to another hospital	Positive
4976_2020	BAL	May 2020	ICU Lombardy Region	ICUs	P28	M	30-40	82	Deceased	Positive
4964_2020	Rectal swab	May 2020	ICU 1	ICUs	P9	F	51-60	48	Deceased	Negative
4970_2020	Rectal swab	May 2020	ICU 1	ICUs	P6	F	61-70	74	Transferred to another hospital	Positive
4975_2020	Blood	May 2020	ICU 1	ICUs	P30	M	61-70	31	Deceased	Positive
4989_2020	BAL	May 2020	ICU 1	ICUs	P30	M	61-70	31	Deceased	Positive
5028_2020	BAL	May 2020	ICU Lombardy Region	ICUs	P40	M	51-60	89	Deceased	Positive

5000_2020	BAL	May 2020	ICU Lombardy Region	ICUs	P16	M	51-60	119	Transferred to another hospital	Positive
5002_2020	BAL	May 2020	ICU 1	ICUs	P9	F	51-60	48	Deceased	Negative
27729_2020	Blood	May 2020	ICU Lombardy Region	ICUs	P16	M	51-60	119	Transferred to another hospital	Positive
5019_2020	BAL	May 2020	ICU 1	ICUs	P24	M	71-80	15	Deceased	Negative
5018_2020	BAL	May 2020	ICU Lombardy Region	ICUs	P31	M	51-60	70	Transferred to another hospital	Positive
4997_2020	Rectal swab	May 2020	ICU 1	ICUs	P40	M	51-60	89	Deceased	Positive
5003_2020	Rectal swab	May 2020	ICU Lombardy Region	ICUs	P31	M	51-60	70	Transferred to another hospital	Positive
5006_2020	Rectal swab	May 2020	ICU 1	ICUs	P33	M	61-70	104	Deceased	Positive
5008_2020	Rectal swab	May 2020	ICU 1	ICUs	P21	M	61-70	85	Transferred to another hospital	Positive
5009_2020	Rectal swab	May 2020	ICU 1	ICUs	P30	M	61-70	31	Deceased	Positive
5010_2020	Rectal swab	May 2020	ICU Infectious diseases	ICUs	P38	M	71-80	85	Transferred to another hospital	Positive
5011_2020	Rectal swab	May 2020	ICU Infectious diseases	ICUs	P26	M	61-70	45	Ordinary discharge	Positive
27749_2020	Blood	May 2020	ICU 1	ICUs	P21	M	61-70	85	Transferred to another hospital	Positive
4998_2020	Nasal swab	May 2020	ICU Lombardy Region	ICUs	P16	M	51-60	119	Transferred to another hospital	Positive
5027_2020	Urine	May 2020	Pneumology	Other	P12	M	51-60	76	Ordinary discharge	Positive
27764_2020	Blood	May 2020	ICU Infectious diseases	ICUs	P5	M	61-70	45	Transferred to another hospital	Positive
5057_2020	BAL	May 2020	ICU 1	ICUs	P30	M	61-70	31	Deceased	Positive
27760_2020	Blood	May 2020	ICU Infectious diseases	ICUs	P25	M	51-60	50	Transferred to another hospital	Positive
27794_2020	Blood	May 2020	ICU 1	ICUs	P33	M	61-70	104	Deceased	Positive
27795_2020	Blood	May 2020	ICU 1	ICUs	P33	M	61-70	104	Deceased	Positive
5042_2020	Rectal swab	May 2020	ICU 1	ICUs	P28	M	30-40	82	Deceased	Positive
5031_2020	Rectal swab	May 2020	ICU Infectious diseases	ICUs	P25	M	51-60	50	Transferred to another hospital	Positive
5032_2020	Rectal swab	May 2020	ICU 1	ICUs	P24	M	71-80	15	Deceased	Negative
5049_2020	Rectal swab	May 2020	Emergency Room	ER	P39	M	41-50	45	Transferred to another hospital	Negative
5074_2020	Blood	May 2020	ICU 1	ICUs	P11	M	61-70	58	Deceased	Negative
5080_2020	BAL	May 2020	ICU 1	ICUs	P7	M	61-70	62	Transferred to another hospital	Positive
5083_2020	BAL	May 2020	ICU Lombardy Region	ICUs	P29	M	61-70	93	Deceased	Positive
5059_2020	Rectal swab	May 2020	ICU 1	ICUs	P11	M	61-70	58	Deceased	Negative
5060_2020	Rectal swab	May 2020	ICU 1	ICUs	P4	M	51-60	5	Deceased	Negative
5061_2020	Rectal swab	May 2020	ICU 1	ICUs	P1	F	61-70	43	Deceased	Positive

5063_2020	Rectal swab	May 2020	ICU 1	ICUs	P35	M	51-60	133	Transferred to another hospital	Positive
5069_2020	BAL	May 2020	ICU 1	ICUs	P6	F	61-70	74	Transferred to another hospital	Positive
5067_2020	BAL	May 2020	ICU 1	ICUs	P1	F	61-70	43	Deceased	Positive
5119_2020	Bronchoaspirate	Jun 2020	ICU Lombardy Region	ICUs	P33	M	61-70	104	Deceased	Positive
5121_2020	Urine	Jun 2020	ICU Lombardy Region	ICUs	P15	F	51-60	87	Transferred to another hospital	Positive
5128_2020	Rectal swab	Jun 2020	ICU Lombardy Region	ICUs	P33	M	61-70	104	Deceased	Positive
5130_2020	Rectal swab	Jun 2020	ICU Lombardy Region	ICUs	P15	F	51-60	87	Transferred to another hospital	Positive
27977_2020	Blood	Jun 2020	ICU Lombardy Region	ICUs	P15	F	51-60	87	Transferred to another hospital	Positive
28012_2020	Blood	Jul 2020	ICU Lombardy Region	ICUs	P33	M	61-70	104	Deceased	Positive
28125_2020	Blood	Jul 2020	Pneumology	Other	P16	M	51-60	119	Transferred to another hospital	Positive