

1 **Article title:**

2 Efficacy and safety of ensitrelvir in patients with mild-to-moderate COVID-19: the phase 2b part
3 of a randomized, placebo-controlled, phase 2/3 study

4

5 **Authors:**

6 Hiroshi Mukae¹, Hiroshi Yotsuyanagi², Norio Ohmagari³, Yohei Doi^{4,5}, Hiroki Sakaguchi⁶,
7 Takuhiro Sonoyama⁶, Genki Ichihashi⁶, Takao Sanaki⁷, Keiko Baba⁷, Yuko Tsuge⁶, Takeki
8 Uehara^{6*}

9

10 **Affiliations:**

11 ¹Department of Respiratory Medicine, Nagasaki University Graduate School of Biomedical
12 Sciences, Nagasaki, Japan

13 ²The Institute of Medical Science, The University of Tokyo, Tokyo, Japan

14 ³Disease Control and Prevention Center, National Center for Global Health and Medicine,
15 Tokyo, Japan

16 ⁴Division of Infectious Diseases, University of Pittsburgh School of Medicine, Pittsburgh,
17 Pennsylvania, USA

18 ⁵Departments of Microbiology and Infectious Diseases, Fujita Health University School of
19 Medicine, Toyoake, Japan

20 ⁶Drug Development and Regulatory Science Division, Shionogi & Co., Ltd., Osaka, Japan

21 ⁷Pharmaceutical Research Division, Shionogi & Co., Ltd., Toyonaka, Japan

22

23 ***Corresponding author:**

24 Takeki Uehara

25 Drug Development and Regulatory Science Division, Shionogi & Co., Ltd.

26 Address: 8F, Nissay Yodoyabashi East, 3-3-13 Imabashi, Chuo-ku, Osaka 541-0042, Japan

27 Email: takeki.uehara@shionogi.co.jp

28 Telephone: +81-6-6209-6907

29

30 **Abstract**

31 This phase 2b part of a randomized phase 2/3 study assessed the efficacy and safety of ensitrelvir
32 for mild-to-moderate coronavirus disease 2019 (COVID-19). Patients were randomized (1:1:1)
33 to orally receive ensitrelvir fumaric acid 125 mg (375 mg on day 1; $n=140$) or 250 mg (750 mg
34 on day 1; $n=140$) or placebo ($n=141$) once daily for 5 days. Compared with placebo, the change
35 from baseline in severe acute respiratory syndrome coronavirus 2 titer (measured as \log_{10} 50%
36 tissue-culture infectious dose) on day 4 was significantly greater with ensitrelvir 125 mg and
37 250 mg (differences from placebo: -0.41, $P<0.0001$ for both). The total score of predefined 12
38 COVID-19 symptoms showed an improving trend with ensitrelvir treatment without a significant
39 intergroup difference. Most adverse events were mild in severity. Ensitrelvir treatment
40 demonstrated a favorable antiviral efficacy and potential clinical benefit with an acceptable
41 safety profile. (Japan Registry of Clinical Trials identifier: jRCT2031210350)

42

43 **Keywords:** COVID-19, ensitrelvir, S-217622, SARS-CoV-2 3C-like protease inhibitor, viral
44 titer

45 **Main**

46 Coronavirus disease 2019 (COVID-19), caused by infection with severe acute respiratory
47 syndrome coronavirus 2 (SARS-CoV-2), has been declared a global pandemic by the World
48 Health Organization (WHO) ([https://www.who.int/emergencies/diseases/novel-coronavirus-](https://www.who.int/emergencies/diseases/novel-coronavirus-2019)
49 [2019](https://www.who.int/emergencies/diseases/novel-coronavirus-2019)). As of May 25, 2022, more than 520 million confirmed cases of COVID-19 have been
50 reported worldwide, with over 6 million COVID-19–associated deaths (<https://covid19.who.int/>).
51 To combat the COVID-19 pandemic, several vaccines against SARS-CoV-2 infection have been
52 developed and approved for clinical use¹⁻⁴, and more than 11 billion vaccine doses have been
53 administered to the worldwide population (<https://covid19.who.int/>). However, humoral immune
54 response against SARS-CoV-2, as measured by neutralizing antibody titers, decreases
55 substantially with time after vaccination⁵, potentially leading to postvaccination infections⁶.
56 Therefore, in addition to vaccines, effective antiviral agents are needed for the management of
57 the COVID-19 pandemic.

58 Gene mutations in the SARS-CoV-2 genome have resulted in the emergence of various
59 variants, of which those posing an increased risk to global health are referred to as variants of
60 concern (VOCs). The SARS-CoV-2 Omicron (B.1.1.529) variant was first detected in South
61 Africa in November 2021, quickly spread worldwide, and was designated as a VOC by the WHO
62 ([https://www.who.int/news/item/26-11-2021-classification-of-omicron-\(b.1.1.529\)-sars-cov-2-](https://www.who.int/news/item/26-11-2021-classification-of-omicron-(b.1.1.529)-sars-cov-2-variant-of-concern)
63 [variant-of-concern](https://www.who.int/news/item/26-11-2021-classification-of-omicron-(b.1.1.529)-sars-cov-2-variant-of-concern)). By the end of January 2022, >99% of SARS-CoV-2 cases reported in the
64 United States (US) had been infected with the Omicron variant⁷. This variant is characterized by
65 more than 30 mutations located in its spike protein, of which 15 are focused on the receptor-
66 binding domain⁸. Mutations in the receptor-binding domain of the spike protein result in high
67 binding affinity with human angiotensin-converting enzyme 2, increased viral invasion into host

68 cells, and a high transmission rate associated with this VOC⁹. The disease caused by infection
69 with the Omicron variant is considered to be less severe than that caused by previous variants¹⁰⁻
70 ¹², but the high transmissibility and infectivity of this variant may pose an additional threat to
71 global health security. Several antiviral treatment options for patients with COVID-19 at risk of
72 severe disease, including molnupiravir¹³, nirmatrelvir in combination with a pharmacokinetic
73 booster ritonavir¹⁴, sotrovimab¹⁵, and casirivimab/imdevimab¹⁶, have demonstrated efficacy in
74 reducing the risk of hospitalization, death, or disease progression. However, in view of the public
75 burden of the transmission of infectious viruses and disease characteristics of COVID-19, as well
76 as to draw maximum benefits from early pharmacological treatment initiation
77 (https://www.kansensho.or.jp/uploads/files/topics/2019ncov/covid19_drug_220218.pdf; website
78 in Japanese), additional oral antiviral agents that can be administered to patients with
79 mild-to-moderate COVID-19 regardless of the risk of severe disease are needed.

80 Ensitrelvir fumaric acid (S-217622; hereafter, ensitrelvir), a novel oral SARS-CoV-2
81 3C-like protease inhibitor, was discovered through joint research by Hokkaido University and
82 Shionogi & Co., Ltd¹⁷. Ensitrelvir has shown antiviral efficacy in both *in vitro* and *in vivo* animal
83 studies against different SARS-CoV-2 variants, including the Omicron variant¹⁷⁻¹⁹. Additionally,
84 in a phase 1 study of ensitrelvir (Japan Registry of Clinical Trials identifier: jRCT2031210202),
85 the once-daily oral dose was well tolerated and demonstrated a favorable pharmacokinetic profile
86 (R. Shimizu, et al., unpublished data). A multicenter, randomized, double-blind,
87 placebo-controlled, phase 2/3 study is also underway to assess the efficacy, safety, and
88 pharmacokinetics of ensitrelvir administered as a 5-day oral regimen. In its phase 2a part,
89 although the sample size was small, ensitrelvir treatment led to a reduction in the SARS-CoV-2
90 viral titer and viral RNA versus placebo with an acceptable safety profile²⁰. Herein, we present

91 the antiviral and clinical efficacy and safety of ensitrelvir derived from the phase 2b part of this
92 phase 2/3 study.

93

94 **Results**

95 **Patient disposition**

96 This phase 2b, dose-finding part of the study (Japan Registry of Clinical Trials identifier:
97 jRCT2031210350) was conducted from January 2 to February 9, 2022, at 87 institutions in Japan
98 and South Korea (Supplementary Table 1). Of the 437 patients who provided informed consent,
99 9 were excluded prior to randomization due to screening failure. Among the 428 patients in total,
100 142, 143, and 143 were randomized to receive ensitrelvir 125 mg (375 mg on day 1), ensitrelvir
101 250 mg (750 mg on day 1), or placebo, respectively, until day 5; 140, 140, and 141 patients,
102 respectively, were included in the safety analysis population. A total of 134, 136, and 139
103 patients in the ensitrelvir 125 mg, ensitrelvir 250 mg, and placebo groups, respectively,
104 completed the study. After the exclusion of patients with undetectable SARS-CoV-2 titer at
105 baseline or those who provided incomplete informed consent (ensitrelvir 125 mg, 28; ensitrelvir
106 250 mg, 27; and placebo, 32; some patients were excluded from the analysis populations due to
107 more than one reason), 341 patients (ensitrelvir 125 mg, 114; ensitrelvir 250 mg, 116; and
108 placebo, 111) were included in the intention-to-treat (ITT) population (Fig. 1). All analyses were
109 performed in the planned treatment groups. The ITT population was used for all efficacy
110 analyses, and the safety analysis population was used for all safety analyses.

111 **Demographics and clinical characteristics**

112 The baseline demographics and clinical characteristics of the ITT population are summarized in
113 Table 1. No notable difference was observed in the baseline characteristics across the treatment

114 groups; the mean age was 35.6, 35.3, and 37.3 years, and 1 (0.9%), 2 (1.7%), and 1 (0.9%)
115 patients were aged >65 years in the ensitrelvir 125 mg, ensitrelvir 250 mg, and placebo groups,
116 respectively. A total of 61 (53.5%), 66 (56.9%), and 72 (64.9%) patients in the ensitrelvir
117 125 mg, ensitrelvir 250 mg, and placebo groups, respectively, were male. Nearly half (ensitrelvir
118 125 mg, 55 [48.2%]; ensitrelvir 250 mg, 53 [45.7%]; and placebo, 54 [48.6%]) of the patients
119 were randomized within 72 hours of COVID-19 symptom onset, and >80% had received at least
120 1 dose of mRNA SARS-CoV-2 vaccine (ensitrelvir 125 mg, 97 [85.1%]; ensitrelvir 250 mg,
121 97 [83.6%]; and placebo, 97 [87.4%]). Among the predefined 12 COVID-19 symptoms
122 (Supplementary Table 2), sore throat (ensitrelvir 125 mg, 65 [57.0%]; ensitrelvir 250 mg,
123 63 [54.3%]; and placebo, 54 [48.6%]) and cough (ensitrelvir 125 mg, 48 [42.1%]; ensitrelvir
124 250 mg, 46 [39.7%]; and placebo, 49 [44.1%]) were most frequently observed in all treatment
125 groups.

126 **Treatment compliance**

127 The treatment compliance rate in the safety population was high across the treatment groups
128 (mean value: ensitrelvir 125 mg, 97.9%; ensitrelvir 250 mg, 99.3%; and placebo, 99.3%).

129 **Co-primary efficacy endpoint: SARS-CoV-2 viral titer**

130 The mean SARS-CoV-2 viral titer, measured as \log_{10} 50% tissue-culture infectious dose
131 ($[\text{TCID}_{50}]/\text{mL}$), was comparable across groups at baseline (2.5–2.8 \log_{10} $\text{TCID}_{50}/\text{mL}$). In all
132 treatment groups, the SARS-CoV-2 viral titer decreased with time for up to day 4 (after the third
133 drug administration) and remained stable at the levels of lower limit of detection
134 (1.1 \log_{10} $\text{TCID}_{50}/\text{mL}$) until day 21 (Fig. 2a,b). The change from baseline in the SARS-CoV-2
135 viral titer (\log_{10} $\text{TCID}_{50}/\text{mL}$) on day 4, assessed using analysis of covariance (ANCOVA), was
136 significantly greater with ensitrelvir 125 mg and 250 mg (least-square [LS] mean [standard error

137 (SE)], -1.49 [0.04]; difference from placebo, -0.41 [95% confidence interval (CI), -0.51 to -0.31];
138 $P < 0.0001$) versus placebo (LS mean [SE], -1.08 [0.04]). The change from baseline in the
139 SARS-CoV-2 viral titer on day 4 was significantly greater with ensitrelvir 125 mg and 250 mg
140 versus placebo irrespective of COVID-19 vaccination history or time from COVID-19 onset to
141 randomization (Supplementary Table 3).

142 **Co-primary efficacy endpoint: Total scores for 12 COVID-19 symptoms**

143 The mean total score of the predefined 12 COVID-19 symptoms showed a decreasing trend with
144 time after treatment initiation in all groups (Extended Data Fig. 1). There was no significant
145 difference in the time-weighted average change from baseline up to 120 hours in the total score
146 of the 12 COVID-19 symptoms between the ensitrelvir 125 mg or 250 mg group and the placebo
147 group (Table 2).

148 **SARS-CoV-2 viral RNA level**

149 The SARS-CoV-2 RNA level decreased with time in all groups (Fig. 2c,d). The change from
150 baseline in SARS-CoV-2 RNA level (\log_{10} copies/mL) on day 4, assessed using ANCOVA, was
151 significantly greater with ensitrelvir 125 mg (LS mean [SE], -2.58 [0.11]; difference from
152 placebo, -1.30 [95% CI, -1.57 to -1.03]; $P < 0.0001$) and 250 mg (LS mean [SE], -2.49 [0.11];
153 difference from placebo, -1.21 [95% CI, -1.48 to -0.94]; $P < 0.0001$) versus placebo (LS mean
154 [SE], -1.28 [0.11]). Similarly, the change from baseline in SARS-CoV-2 RNA level was
155 significantly greater in the ensitrelvir groups versus the placebo group on days 2, 6, and 9.

156 **Time to first negative SARS-CoV-2 viral titer**

157 The time to first negative SARS-CoV-2 viral titer (infectious viral clearance) was significantly
158 shorter with ensitrelvir 125 mg (51.3 hours; difference of median time from placebo, -40.6 hours;

159 $P<0.0001$) and 250 mg (62.1 hours; difference of median time from placebo, -29.8 hours;
160 $P<0.0001$) versus placebo (91.9 hours) (Fig. 3).

161 **Proportion of patients with a positive SARS-CoV-2 viral titer**

162 The proportion of patients with a positive SARS-CoV-2 viral titer decreased with time in all
163 treatment groups; on day 4, it was significantly lower with ensitrelvir 125 mg (1.9%, $P<0.0001$)
164 and 250 mg (5.4%, $P<0.0001$) versus placebo (50.0%), with a reduction of approximately 90%.
165 Similarly, the proportion of patients with a positive SARS-CoV-2 viral titer was significantly
166 lower with ensitrelvir 125 mg and 250 mg versus placebo on day 6 (Extended Data Fig. 2).

167 **Subtotal scores for the 12 COVID-19 symptoms**

168 The mean changes from baseline in the subtotal scores of the 12 COVID-19 symptoms are
169 depicted in Extended Data Fig. 3. In addition to the preplanned subtotal scores (acute symptoms,
170 main clinical symptoms, respiratory symptoms, systemic symptoms, and digestive symptoms), a
171 composite subtotal score of respiratory symptoms and feverishness was evaluated as a post hoc
172 analysis. The time-weighted average change from baseline up to 120 hours was significantly
173 greater with ensitrelvir versus placebo in the subtotal scores for acute symptoms (250 mg group,
174 $P=0.0070$), main clinical symptoms (250 mg group, $P=0.0149$), respiratory symptoms (125 mg
175 and 250 mg groups, $P=0.0153$ and 0.0033, respectively), and the composite of respiratory
176 symptoms and feverishness (125 mg and 250 mg groups, $P=0.0164$ and 0.0039, respectively). In
177 contrast, no significant difference was observed between the ensitrelvir and placebo groups in the
178 time-weighted average change for systemic symptoms and digestive symptoms (Supplementary
179 Table 4). The anosmia and dysgeusia scores generally showed a transient increase from baseline,
180 suggesting a delayed onset of these symptoms in patients with COVID-19. The change from

181 baseline in the anosmia and dysgeusia scores was lower with ensitrelvir 125 mg and 250 mg
182 versus placebo (Extended Data Fig. 4).

183 No significant difference was observed in the time to first improvement of COVID-19
184 symptoms (median [95% CI] hours: 28.0 [21.5 to 36.6], 27.8 [24.6 to 40.0], and 36.6 [28.0 to
185 40.8] for ensitrelvir 125 mg, ensitrelvir 250 mg, and placebo, respectively).

186 **COVID-19 exacerbation**

187 After treatment initiation, 1 vaccinated patient in the ensitrelvir 250 mg group was rated as ≥ 3
188 (corresponding to hospitalization or death) by the investigator on an 8-point ordinal scale for
189 disease exacerbation. None of the patients in the ensitrelvir 125 mg and placebo groups recorded
190 ≥ 3 on the disease exacerbation scale.

191 **Safety**

192 Overall, 48 (34.3%), 60 (42.9%), and 44 (31.2%) patients in the ensitrelvir 125 mg, ensitrelvir
193 250 mg, and placebo groups, respectively, reported treatment-emergent adverse events (TEAEs),
194 most of which were mild in severity. Treatment-related adverse events (AEs) were observed in
195 19 (13.6%), 31 (22.1%), and 7 (5.0%) patients in the ensitrelvir 125 mg, ensitrelvir 250 mg, and
196 placebo groups, respectively, a majority of which were resolved without sequelae. A decrease in
197 high-density lipoprotein (HDL) levels was most frequently reported as a TEAE across groups
198 (ensitrelvir 125 mg, 31 [22.1%] patients; ensitrelvir 250 mg, 40 [28.6%] patients; and placebo, 5
199 [3.5%] patients) and was the most common treatment-related AE in both ensitrelvir groups
200 (125 mg, 13 [9.3%] patients; 250 mg, 22 [15.7%] patients). No TEAEs leading to death were
201 reported during the study (Table 3).

202 Two patients in the placebo group had serious TEAEs (thoracic vertebral fracture
203 [recovered without sequelae] and facial paralysis [recovering]), both of which were determined

204 as not treatment related. Another 2 patients in the ensitrelvir 125 mg group discontinued the
205 treatment due to TEAEs. All 3 TEAEs leading to treatment discontinuation (mild eczema on day
206 2 in 1 patient and moderate nausea and mild headache on day 2 in 1 patient) were judged as
207 treatment related by the investigator, and both patients recovered without sequelae after drug
208 discontinuation.

209 A dose-dependent, transient change in the HDL cholesterol, triglyceride, total bilirubin,
210 and iron levels was observed on day 6 in the ensitrelvir groups (Extended Data Fig. 5). These
211 changes were asymptomatic and resolved without additional treatment.

212 No notable difference was observed with ensitrelvir treatment versus placebo in the
213 haptoglobin, reticulocyte, or low-density lipoprotein levels, and no laboratory or clinical signs of
214 hemolysis were observed. None of the patients showed serum bilirubin increase occurring
215 concurrently with liver enzyme elevation.

216

217 **Discussion**

218 This phase 2b part of a randomized, double-blind, placebo-controlled, phase 2/3 trial of
219 ensitrelvir in patients with mild-to-moderate COVID-19 was conducted in early 2022 during the
220 SARS-CoV-2 Omicron epidemic. Based on the results of the phase 2a part conducted during the
221 SARS-CoV-2 Delta epidemic²⁰, which showed a statistically significant reduction in the
222 SARS-CoV-2 viral titer and an improving trend in the total score of the 12 COVID-19 symptoms
223 after ensitrelvir treatment, we used these outcomes as the co-primary endpoints. On day 4,
224 ensitrelvir treatment significantly reduced the SARS-CoV-2 viral titer versus placebo. There was
225 no significant difference from placebo in the time-weighted average change from baseline up to
226 120 hours in the total score of the 12 COVID-19 symptoms. Of note, because of the difference in

227 the predominant SARS-CoV-2 variants, virologic characteristics and clinical disease course
228 observed in this phase 2b part may not be consistent with those observed in the phase 2a part or
229 previous anti-COVID-19 clinical trials and may affect the interpretation of the virologic and
230 clinical efficacy of ensitrelvir.

231 In the current phase 2b part, virologic efficacy was assessed using the change in
232 SARS-CoV-2 viral titer from baseline to day 4 (co-primary endpoint) and SARS-CoV-2 RNA
233 (endpoint commonly used in clinical studies for anti-COVID-19 treatments^{14,16,21}). The rapid and
234 significant reduction in the SARS-CoV-2 viral titer and viral RNA following ensitrelvir
235 treatment is consistent with the findings of the previous phase 2a part²⁰, but the level of viral titer
236 reduction from baseline to day 4 was lower in the current phase 2b part ($-1.49 \log_{10} \text{TCID}_{50}/\text{mL}$)
237 than in the phase 2a part ($-2.81 \log_{10} \text{TCID}_{50}/\text{mL}$ with ensitrelvir 250 mg)²⁰. These differences in
238 findings may be attributed to the lower baseline titer recorded in the phase 2b part than in the
239 phase 2a part (2.5–2.8 versus 3.3–3.7 $\log_{10} \text{TCID}_{50}/\text{mL}$), as well as other unidentified differences
240 in viral characteristics. Indeed, previous research findings indicate different characteristics
241 between the Omicron and Delta variants in the infectivity or peak viral titer measured in Vero-E6
242 cells²² and peak viral load and viral clearance²³, despite the consistent antiviral efficacy of
243 ensitrelvir against the Omicron variant shown in preclinical research¹⁷⁻¹⁹. The difference from
244 placebo in the reduction in SARS-CoV-2 RNA observed from baseline to day 4 in the current
245 phase 2b part (-1.30 and $-1.21 \log_{10} \text{copies}/\text{mL}$ for ensitrelvir 125 and 250 mg, respectively)
246 appeared greater than that observed with molnupiravir 800 mg (day 5, $-0.547 \log_{10} \text{copies}/\text{mL}$)²¹,
247 nirmatrelvir 300 mg in combination with ritonavir 100 mg (day 5, $-0.868 \log_{10} \text{copies}/\text{mL}$)¹⁴, or
248 casirivimab/imdevimab 2400 mg (day 7, $-0.86 \log_{10} \text{copies}/\text{mL}$)¹⁶. The majority of patients
249 enrolled in the current phase 2b part were vaccinated, whereas previous anti-COVID-19

250 treatments were evaluated in unvaccinated patients at risk of severe disease^{13,14}. Although no
251 direct comparison with previous clinical trials is feasible due to differences in study settings, our
252 results support the promising efficacy of ensitrelvir in real-world clinical settings. Moreover, no
253 notable viral rebound (increase in viral titer or RNA) was observed on day 14 or 21 of ensitrelvir
254 treatment in contrast to the findings observed with nirmatrelvir treatment
255 (<https://www.fda.gov/media/155194/download>). The absence of viral rebound may be attributed
256 to a longer half-life of ensitrelvir (51.4 hours; R. Shimizu et al., unpublished data) versus
257 nirmatrelvir 250 mg in combination with ritonavir 100 mg (approximately 6.5 hours)²⁴, which
258 should be further assessed in large-scale, confirmatory trials.

259 Clinical efficacy, such as a symptom relief, is a pivotal part of COVID-19 clinical trials
260 because patients present with diverse symptoms²⁵ and clinical symptoms may differ depending
261 on the epidemic variants. Although the decreasing trend in the total 12 COVID-19 symptom
262 scores is consistent with the findings from the phase 2a part²⁰, the results of the current phase 2b
263 part indicate differences in the symptom characteristics between the Omicron and Delta variant
264 infections. Among the 12 symptoms assessed, respiratory symptoms and feverishness were
265 recorded in many patients enrolled in the phase 2b part, whereas systemic and digestive
266 symptoms were relatively less observed at baseline. These findings can be explained by an
267 epidemiology report in Japan, where the most commonly reported COVID-19 symptoms in
268 patients infected with the Omicron variant were respiratory symptoms, such as cough (46.0%),
269 sore throat (33.8%), runny nose (18.0%), and fever (30.9%) ([https://www.niid.go.jp/niid/ja/2019-
270 ncov/2484-idsc/10969-covid19-72.html](https://www.niid.go.jp/niid/ja/2019-ncov/2484-idsc/10969-covid19-72.html); website in Japanese). The absence of significant
271 intergroup difference in the total score of the 12 COVID-19 symptoms can be attributed to the
272 low baseline subtotal scores recorded for some patients (e.g., digestive symptoms) in the current

273 phase 2b part. Interestingly, ensitrelvir treatment improved respiratory symptoms or a composite
274 outcome of respiratory symptoms and feverishness versus placebo, which suggests the potential
275 clinical benefits of this antiviral in patients infected with the Omicron variant.

276 The current phase 2b part of the study found no clear dose response, which is consistent
277 with the findings of the phase 2a part²⁰. Pharmacokinetic data for 5-day ensitrelvir 125 mg
278 treatment (375 mg on day 1) derived from the phase 1 study of ensitrelvir (maximum plasma
279 concentration, 30.4 µg/mL; area under the curve, 598.3 µg·hr/mL) suggest that this regimen is
280 sufficient to achieve a reduction in SARS-CoV-2 in humans (R. Shimizu et al., unpublished
281 data). Ensitrelvir 125 mg (375 mg on day 1) is thus considered the optimal dose for achieving an
282 antiviral effect while minimizing drug exposure.

283 Infection with the Omicron variant causes less severe disease than infection with the
284 Delta variant²⁶⁻²⁸, which may be attributed to altered infectivity and attenuated lung disease with
285 the Omicron variant observed in rodent models²⁹ or immunity acquired via previous viral
286 exposure through vaccination and/or past infections^{27,28}. In the current phase 2b part, >95% of
287 patients receiving placebo showed symptom improvement by day 5, and the median time to first
288 improvement of the 12 COVID-19 symptoms (27.8–36.6 hours) was shorter than that observed
289 in the previous phase 2a part (36.7–55.2 hours), which may reflect less disease severity of
290 infection with the Omicron variant. New clinical endpoints that can assess the clinical symptoms
291 of COVID-19 are warranted.

292 In addition to treatment options for patients at risk of severe disease, effective antivirals
293 that can rapidly reduce SARS-CoV-2 are warranted because patients with asymptomatic or
294 mild-to-moderate COVID-19 may shed infectious viruses for up to 10 days and may be a source
295 for viral transmission³⁰. Early treatment initiation for mild-to-moderate COVID-19 is necessary

296 in view of the disease characteristics and to gain maximum benefits from pharmacological
297 therapies
298 (https://www.kansensho.or.jp/uploads/files/topics/2019ncov/covid19_drug_220218.pdf; website
299 in Japanese). Moreover, long-term complications after COVID-19, such as loss of taste and/or
300 smell, fatigue, headache, attention disorder, hair loss, and dyspnea, can occur in the relatively
301 healthy population (e.g., young adults or patients with mild disease) and contribute toward
302 persistent and significant health issues^{31,32}. Although the exact mechanism of the onset of
303 long-term COVID-19 complications is unknown, rapid SARS-CoV-2 reduction with ensitrelvir
304 treatment may be effective in suppressing these complications, which should be assessed in an
305 optional, exploratory period (days 28 to 337) of the current phase 2/3 study.

306 Similar to the previous phase 1 study (R. Shimizu et al., unpublished data) and phase 2a
307 part of the current study²⁰, a transient change in the HDL cholesterol and triglyceride levels was
308 observed in patients treated with ensitrelvir. In addition, total bilirubin and iron levels transiently
309 increased with ensitrelvir treatment. The underlying causes of these laboratory findings and their
310 potential relationship with ensitrelvir treatment warrant further investigation.

311 This study has some limitations. The number of elderly patients (aged ≥ 65 years) was
312 limited; thus, data analysis for this population was not feasible. As the risk of severe COVID-19
313 increases with age³³, the safety and efficacy of ensitrelvir in a wide range of patients with
314 COVID-19 should be further assessed in the phase 3, multinational, randomized, placebo-
315 controlled study, SCORPIO-HR (ClinicalTrials.gov identifier: NCT05305547). Moreover, as
316 new variants may arise in the future, continuous monitoring and assessment of ensitrelvir activity
317 against new VOCs would be required. In addition to the preclinical antiviral activity of

318 ensitrelvir against a variety of SARS-CoV-2 variants¹⁷, evidence derived in clinical trial settings
319 is awaited.

320 In conclusion, 5-day, once daily, oral ensitrelvir treatment demonstrated rapid and
321 favorable antiviral efficacy with an acceptable safety profile in patients with mild-to-moderate
322 COVID-19, a majority of whom had been vaccinated. Ensitrelvir treatment improved respiratory
323 symptoms and feverishness, which were common COVID-19 symptoms during the Omicron
324 variant epidemic. The results support further clinical development of ensitrelvir for mild-to-
325 moderate COVID-19.

326

327 **Methods**

328 **Study design**

329 Patients with mild-to-moderate COVID-19 were randomized (1:1:1) to orally receive ensitrelvir
330 fumaric acid (375 mg on day 1, followed by 125 mg on days 2 through 5, or 750 mg on day 1,
331 followed by 250 mg on days 2 through 5) or matching placebo once daily without dose
332 modification and followed up until day 28.

333 This study was conducted in accordance with the principles of the Declaration of
334 Helsinki, Good Clinical Practice guidelines, and other applicable laws and regulations. The study
335 was reviewed and approved by the institutional review boards of all participating institutions
336 listed in Supplementary Table 1. All patients or their legally acceptable representatives provided
337 written informed consent.

338 **Patients**

339 Patients aged 12 to 69 years who tested positive for SARS-CoV-2 (assessed by SARS-CoV-2
340 antigen or nucleic acid detection testing) within 120 hours prior to randomization were eligible

341 for study enrollment. To avoid excess drug exposure, patients aged <20 years should have
342 recorded a body weight of ≥ 40 kg at enrollment. Patients should have at least one moderate or
343 severe symptom or worsening of an existing symptom among the 12 COVID-19 symptoms
344 (stuffy or runny nose, sore throat, shortness of breath, cough, low energy or tiredness, muscle or
345 body aches, headache, chills or shivering, feeling hot or feverish, nausea, vomiting, or diarrhea;
346 Supplementary Table 2) based on the US Food and Drug Administration (US FDA) guidance
347 ([https://www.fda.gov/regulatory-information/search-fda-guidance-documents/assessing-covid-](https://www.fda.gov/regulatory-information/search-fda-guidance-documents/assessing-covid-19-related-symptoms-outpatient-adult-and-adolescent-subjects-clinical-trials-drugs)
348 [19-related-symptoms-outpatient-adult-and-adolescent-subjects-clinical-trials-drugs](https://www.fda.gov/regulatory-information/search-fda-guidance-documents/assessing-covid-19-related-symptoms-outpatient-adult-and-adolescent-subjects-clinical-trials-drugs)) and a
349 symptom duration of ≤ 120 hours. In Japan, patients were eligible for enrollment irrespective of
350 treatment settings (inpatient, outpatient, recuperation at home, or recuperation at designated
351 hotels) because some of them required hospitalization or recuperation for the purpose of isolation
352 or clinical trial participation, regardless of disease severity, at the time of this research.

353 The key exclusion criteria included the following: an awake oxygen saturation of $\leq 93\%$
354 (room air); oxygen administration; likely worsening of COVID-19 within 48 hours from
355 randomization in the opinion of the investigator; suspected active and systemic infections
356 requiring treatment (except for COVID-19); current or chronic history of moderate or severe
357 liver disease, known hepatic or biliary abnormalities (except for Gilbert's syndrome or
358 asymptomatic gallstones), or moderate-to-severe kidney disease; pregnant, possibly pregnant, or
359 breastfeeding women; and blood donation (≥ 400 mL within 12 weeks or ≥ 200 mL within
360 4 weeks prior to enrollment). Patients who had used drugs for SARS-CoV-2 infection within
361 7 days prior to randomization or a strong cytochrome P450, family 3, subfamily A (CYP3A)
362 inhibitor or inducer or St. John's wort products within 14 days prior to randomization were also
363 excluded.

364 **Randomization and blinding**

365 Randomization of patients was performed through an interactive response technology system
366 using time from the onset of COVID-19 to randomization (<72 hours/≥72 hours) and the first
367 COVID-19 vaccination (Yes/No) as stratification factors. All patients and study staff were
368 blinded to the treatment, except for designated persons at the sponsor and contract research
369 organization in charge of statistical analyses. When all patients completed the day 6 assessment,
370 the study sponsor was unblinded to intervention allocation to allow for an early-stage evaluation
371 of the efficacy and safety data. Investigators, patients, and other study staff remained blinded
372 until the completion of the 28-day follow-up period. Emergency unblinding per the investigator's
373 request was allowed only in the event of AEs to determine appropriate therapy for the patient.

374 **Treatment**

375 Patients received allocated study drugs orally (ensitrelvir fumaric acid 125 mg, 250 mg, or
376 placebo tablets), which were indistinguishable in appearance, labeling, and packaging. Prohibited
377 concomitant medications (study initiation to day 28 or study discontinuation) included drugs for
378 the treatment of SARS-CoV-2 infection; antiviral, antibacterial, or antifungal drugs (except for
379 topical use); antipyretic analgesics other than acetaminophen; antitussives and expectorants;
380 combination cold remedy; and CYP3A substrates. Drugs prohibited for use from study initiation
381 to 10 days after the last study drug administration (or study discontinuation) included strong
382 CYP3A inhibitors or inducers, strong P-glycoprotein or breast cancer resistance protein
383 inhibitors, and other transporter substrates. Treatment was discontinued when liver function
384 abnormalities, pregnancy, COVID-19 exacerbation, or serious or intolerable AEs were observed.

385 **Outcomes and assessments**

386 The primary virologic outcome was change from baseline (day 1, before drug administration) in
387 the SARS-CoV-2 viral titer on day 4 of treatment. The primary clinical outcome was
388 time-weighted average change from baseline up to 120 hours in the total score of COVID-19
389 symptoms. The co-primary endpoint was constructed by the primary virologic and clinical
390 outcomes. The secondary outcomes included the SARS-CoV-2 viral titer and viral RNA level
391 (absolute values and change from baseline) up to day 21, time to first negative SARS-CoV-2
392 viral titer (infectious viral clearance), proportion of patients with positive viral titers, subtotal
393 scores of the 12 COVID-19 symptoms (acute symptoms, main clinical symptoms, respiratory
394 symptoms, systemic symptoms, and digestive symptoms; Supplementary Table 2), time to first
395 improvement of COVID-19 symptoms (Supplementary Table 2), and COVID-19 exacerbations
396 assessed by the investigator. Additionally, post hoc analyses were performed to assess a
397 composite subtotal score (respiratory symptoms and feverishness) for the 12 COVID-19
398 symptoms.

399 Nasopharyngeal swabs were collected from the patients on days 1 (before drug
400 administration), 2 to 6 (days 3 and 5 as optional), 9, 14, and 21 (or study discontinuation), and
401 the SARS-CoV-2 viral titers and RNA levels were centrally measured at Shionogi
402 TechnoAdvance Research (Osaka, Japan) and Viroclinics (Rotterdam, Netherlands),
403 respectively. For the assessment of COVID-19 symptoms, patients rated each symptom on a
404 4-point or 3-point scale (Supplementary Table 2) and recorded the scores in a diary twice daily
405 (morning and evening) until day 9 and once daily (evening) from days 10 to 21. Additionally,
406 patients' COVID-19 exacerbation was assessed by the investigator using an 8-point ordinal scale
407 (0=Asymptomatic; 1=Symptomatic, no limitation of activities; 2=Symptomatic, limitation of
408 activities; 3=Hospitalized, no oxygen therapy; 4=Hospitalized, with oxygen therapy [<5 L/min];

409 5=Hospitalized, with oxygen therapy [≥ 5 L/min]; 6=Hospitalized, with ventilation; 7=Death) on
410 day 1 (before drug administration) and days 2, 4, 6, 9, 14, 21, and 28 (or study discontinuation).

411 Safety was assessed by the occurrence of TEAEs, that is, any AEs reported after the
412 initiation of study intervention. All AEs were coded and classified using Medical Dictionary for
413 Regulatory Activities version 24.0. Laboratory tests, vital sign measurements, and
414 electrocardiography were additionally performed throughout the study period. All safety data
415 were evaluated by an independent data and safety monitoring board. Pregnancy tests were
416 performed for women with childbearing potential on days 1 (before drug administration) and 28
417 (or study discontinuation). Additional pregnancy tests at the investigator's discretion were
418 permitted.

419 **Statistical analyses**

420 Based on the interim evaluation of the phase 2a part of this study (Shionogi & Co., Ltd.,
421 unpublished data), the difference in time-weighted average change in the total score of
422 COVID-19 symptoms from baseline up to 120 hours between the ensitrelvir and placebo groups
423 was assumed to be -1, with a standard deviation (SD) of 2.6. A total of 108 patients per group
424 (324 in total) were required to detect this difference with 80% power using a two-sample t-test at
425 a one-sided significance level of 0.025. The same sample size was required to detect the
426 intergroup difference in change from baseline in the SARS-CoV-2 viral titer on day 4 with
427 99.9% power using a two-sample t-test at a one-sided significance level of 0.025, assuming a
428 difference between the ensitrelvir and placebo groups of $-0.5 \log_{10}$ TCID₅₀/mL and an SD of
429 $0.7 \log_{10}$ TCID₅₀/mL. Considering a dropout rate of 25% (proportion of patients with a negative
430 SARS-CoV-2 viral titer at baseline), the final sample size was set at 145 patients per group (435
431 in total).

432 All randomized patients with a positive SARS-CoV-2 viral titer ($\geq 1.1 \log_{10}$ TCID₅₀/mL)
433 at baseline were included in the ITT population. All randomized patients who received at least
434 one dose of the study drug were included in the safety analysis population.

435 A prespecified statistical hypothesis was set, wherein both virologic and clinical
436 efficacy are confirmed if differences in the co-primary endpoints of virologic and clinical
437 outcomes between the ensitrelvir (125 mg or 250 mg) and placebo groups are statistically
438 significant at a one-sided significance level of 0.025. To control the type I error for multiplicity
439 of testing that occurred in pairwise comparisons between each of the ensitrelvir dose groups and
440 the placebo group, a fixed sequence procedure was applied to the primary virologic and clinical
441 outcomes, where the statistical tests were performed in the order of ensitrelvir 125 mg versus
442 placebo and ensitrelvir 250 mg versus placebo. Other statistical tests were performed at a
443 two-sided significance level of 0.05.

444 An ANCOVA model was constructed for the primary analysis of the primary endpoints
445 for pairwise comparison of each efficacy outcome between each of the ensitrelvir groups and the
446 placebo group using baseline values, time from COVID-19 onset to randomization (<72 or
447 ≥ 72 hours), and COVID-19 vaccination history (Yes or No) as covariates. LS mean, difference
448 from placebo, and 95% CI were calculated based on the ANCOVA model. Time-weighted
449 average change from baseline up to 120 hours in the total score of the 12 COVID-19 symptoms
450 was calculated by dividing the area under the curve up to 120 hours for change from baseline in
451 the total score of the 12 COVID-19 symptoms by hours from the start of first drug
452 administration. A Kaplan-Meier curve was plotted for the analyses of time to first negative
453 SARS-CoV-2 viral titer and time to first improvement of COVID-19 symptoms, and the median
454 time was compared between each of the ensitrelvir groups and the placebo group using a

455 log-rank test stratified by time from COVID-19 onset to randomization and COVID-19
456 vaccination history. The proportion of patients with a positive SARS-CoV-2 viral titer was
457 compared between each of the ensitrelvir groups and the placebo group using the
458 Mantel-Haenszel test, stratified by time from COVID-19 onset to randomization and
459 SARS-CoV-2 vaccination history.

460 No imputation was performed for missing data. All analyses were performed using SAS
461 version 9.4 (SAS Institute, Inc., Cary, NC, USA).

462

463 **Data availability**

464 Shionogi & Co., Ltd. is committed to disclosing the synopses and results of its clinical trials and
465 sharing the clinical trial data with researchers on reasonable request. For further details, please
466 refer to the websites of Shionogi & Co., Ltd.

467 (<https://www.shionogi.com/shionogi/global/en/company/policies/shionogi-group-clinical-trial->
468 [data-transparency-policy.html](https://www.shionogi.com/shionogi/global/en/company/policies/shionogi-group-clinical-trial-data-transparency-policy.html)) and Vivli (<https://vivli.org/>).

469

470 **Acknowledgments**

471 The authors and research team thank all the patients involved in this study and Masahiro
472 Kinoshita and Satoshi Kojima (Shionogi & Co., Ltd.) for preparing technical support documents
473 and an earlier version of the manuscript draft. Support for study monitoring and data
474 management was provided by EPS Corporation and funded by Shionogi & Co., Ltd. Medical
475 writing and editorial assistance was provided by Mami Hirano, MS, of Cactus Life Sciences (part
476 of Cactus Communications) and funded by Shionogi & Co., Ltd. All authors retained full
477 ownership of the manuscript content and approved the final draft for submission.

478 This study was sponsored by Shionogi & Co., Ltd., and financially supported by the
479 Organization of the Ministry of Health, Labour and Welfare. Employees of Shionogi & Co., Ltd.,
480 participated in and approved the design and conduct of the study; wrote the protocol; and were
481 involved in the collection, management, analysis, and interpretation of data. Institutional authors
482 reviewed and approved the protocol and collected and interpreted the data.

483 H. Mukae has received funding relevant to the submitted work from Shionogi and grants
484 from Taisho Pharma; lecture fees from Pfizer, MSD, Shionogi, and Taisho Pharma; and advisory
485 fees from Pfizer, MSD, and Shionogi outside the submitted work. H. Yotsuyanagi has received
486 consulting fees from Shionogi, lecture fees from Shionogi and ViiV Healthcare, and travel
487 support from Shionogi outside the submitted work. He serves as an advisory board member of
488 Shionogi and President of the Japanese Society of Infectious Diseases. Y. Doi has received
489 grants from Shionogi and Entasis; consulting fees from Shionogi, Meiji Seika Pharma, Gilead
490 Sciences, GSK, MSD, Chugai, and bioMerieux; and lecture fees from MSD, AstraZeneca,
491 Shionogi, and Teijin Healthcare outside the submitted work and serves as an advisory board
492 member of FujiFilm. H. Sakaguchi, T. Sonoyama, G. Ichihashi, T. Sanaki, K. Baba, Y. Tsuge,
493 and T. Uehara are full-time employees of Shionogi & Co., Ltd., and may have stocks or stock
494 options. N. Ohmagari declares no conflict of interest.

495 **Author contributions:** H. Mukae, H. Yotsuyanagi, N. Ohmagari, Y. Doi, T. Sonoyama, Y.
496 Tsuge, and T. Uehara conceived and designed the experiments and wrote the paper. H.
497 Sakaguchi conceived and designed the experiments, analyzed the data, contributed
498 materials/analysis tools, and wrote the paper. G. Ichihashi conceived and designed the
499 experiments and contributed materials/analysis tools. T. Sanaki conceived and designed the
500 experiments, performed the experiments, analyzed the data, contributed materials/analysis tools,

501 and wrote the paper. K. Baba performed the experiments, analyzed the data, contributed
502 materials/analysis tools, and wrote the paper.
503

504 **References**

- 505 1 Baden, L. R. et al. Efficacy and safety of the mRNA-1273 SARS-CoV-2 vaccine. *N. Engl.*
506 *J. Med.* 384, 403–416 (2021).
- 507 2 Polack, F. P. et al. Safety and efficacy of the BNT162b2 mRNA Covid-19 vaccine. *N.*
508 *Engl. J. Med.* 383, 2603–2615 (2020).
- 509 3 Voysey, M. et al. Single-dose administration and the influence of the timing of the
510 booster dose on immunogenicity and efficacy of ChAdOx1 nCoV-19 (AZD1222)
511 vaccine: a pooled analysis of four randomised trials. *Lancet* 397, 881–891 (2021).
- 512 4 Heath, P. T. et al. Safety and efficacy of NVX-CoV2373 Covid-19 vaccine. *N. Engl. J.*
513 *Med.* 385, 1172–1183 (2021).
- 514 5 Levin, E. G. et al. Waning immune humoral response to BNT162b2 Covid-19 vaccine
515 over 6 months. *N. Engl. J. Med.* 385, e84 (2021).
- 516 6 Bergwerk, M. et al. Covid-19 breakthrough infections in vaccinated health care workers.
517 *N. Engl. J. Med.* 385, 1474–1484 (2021).
- 518 7 Lambrou, A. S. et al. Genomic surveillance for SARS-CoV-2 variants: predominance of
519 the Delta (B.1.617.2) and Omicron (B.1.1.529) variants - United States, June 2021-
520 January 2022. *MMWR Morb. Mortal. Wkly. Rep.* 71, 206–211 (2022).
- 521 8 Ao, D. et al. SARS-CoV-2 Omicron variant: immune escape and vaccine development.
522 *MedComm (2020)*. 3, e126 (2022).
- 523 9 Kumar, S. et al. Omicron and Delta variant of SARS-CoV-2: a comparative
524 computational study of spike protein. *J. Med. Virol.* 94, 1641–1649 (2022).
- 525 10 Wolter, N. et al. Early assessment of the clinical severity of the SARS-CoV-2 omicron
526 variant in South Africa: a data linkage study. *Lancet* 399, 437–446 (2022).

- 527 11 Auvigne, V. et al. Severe hospital events following symptomatic infection with Sars-
528 CoV-2 Omicron and Delta variants in France, December 2021 – January 2022: a
529 retrospective, population-based, matched cohort study. *eClinicalMedicine* doi:
530 10.1016/j.eclinm.2022.101455 **Error! Hyperlink reference not valid.**(2022).
- 531 12 Nyberg, T. et al. Comparative analysis of the risks of hospitalisation and death associated
532 with SARS-CoV-2 omicron (B.1.1.529) and delta (B.1.617.2) variants in England: a
533 cohort study. *Lancet* 399, 1303–1312 (2022).
- 534 13 Jayk Bernal, A. et al. Molnupiravir for oral treatment of Covid-19 in nonhospitalized
535 patients. *N. Engl. J. Med.* 386, 509–520 (2022).
- 536 14 Hammond, J. et al. Oral nirmatrelvir for high-risk, nonhospitalized adults with Covid-19.
537 *N. Engl. J. Med.* 386, 1397–1408 (2022).
- 538 15 Gupta, A. et al. Early treatment for Covid-19 with SARS-CoV-2 neutralizing antibody
539 sotrovimab. *N. Engl. J. Med.* 385, 1941–1950 (2021).
- 540 16 Weinreich, D. M. et al. REGEN-COV antibody combination and outcomes in outpatients
541 with Covid-19. *N. Engl. J. Med.* 385, e81 (2021).
- 542 17 Unoh, Y. et al. Discovery of S-217622, a non-covalent oral SARS-CoV-2 3CL protease
543 inhibitor clinical candidate for treating COVID-19. *J. Med. Chem.* doi:
544 10.1021/acs.jmedchem.2c00117 (2022).
- 545 18 Uraki, R. et al. Characterization and antiviral susceptibility of SARS-CoV-2
546 Omicron/BA.2. *Nature* doi: 10.1038/s41586-022-04856-1 (2022).
- 547 19 Sasaki, M., Tabata, K., Kishimoto, M., Itakura, Y., Kobayashi, H., Ariizumi, T., Uemura,
548 K., Toba, S., Kusakabe, S., Maruyama, Y., Iida, S., Nakajima, N., Suzuki, T., Yoshida, S.,
549 Nobori, H., Sanaki, T., Kato, T., Shishido, T., Hall, W. W., Orba, Y., Sato, A. & Sawa, H.

- 550 Oral administration of S-217622, a SARS-CoV-2 main protease inhibitor, decreases viral
551 load and accelerates recovery from clinical aspects of COVID-19. Preprint at *bioRxiv*
552 <https://www.biorxiv.org/content/10.1101/2022.02.14.480338v1.full> (2022).
- 553 20 Mukae, H., Yotsuyanagi, H., Ohmagari, N., Doi, Y., Imamura, T., Sonoyama, T.,
554 Fukuhara, T., Ichihashi, G., Sanaki, T., Baba, K., Takeda, Y., Tsuge, Y. & Uehara, T. A
555 randomized phase 2/3 study of ensitrelvir, a novel oral SARS-CoV-2 3C-like protease
556 inhibitor, in Japanese patients with mild-to-moderate COVID-19 or asymptomatic SARS-
557 CoV-2 infection: results of the phase 2a part. Preprint at *medRxiv*
558 <https://www.medrxiv.org/content/10.1101/2022.05.17.22275027v1> (2022).
- 559 21 Fischer, W. A., 2nd et al. A phase 2a clinical trial of molnupiravir in patients with
560 COVID-19 shows accelerated SARS-CoV-2 RNA clearance and elimination of infectious
561 virus. *Sci. Transl. Med.* 14, eab17430 (2022).
- 562 22 Mautner, L. et al. Replication kinetics and infectivity of SARS-CoV-2 variants of
563 concern in common cell culture models. *Viol. J.* 19, 76 (2022).
- 564 23 Hay, J. A., Kissler, S. M., Fauver, J. R., Mack, C., Tai, C. G., Samant, R. M., Connelly,
565 S., Anderson, D. J., Khullar, G., MacKay, M., Patel, M., Kelly, S., Manhertz, A., Eiter, I.,
566 Salgado, D., Baker, T., Howard, B., Dudley, J. T., Mason, C. E., Ho, D. D., Grubaugh, N.
567 D. & Grad, Y. H. Viral dynamics and duration of PCR positivity of the SARS-CoV-2
568 Omicron variant. Preprint at *medRxiv*
569 <https://www.medrxiv.org/content/10.1101/2022.01.13.22269257v1> (2022).
- 570 24 Singh, R. S. P. et al. Innovative randomized phase I study and dosing regimen selection
571 to accelerate and inform pivotal COVID-19 trial of nirmatrelvir. *Clin. Pharmacol. Ther.*
572 doi: 10.1002/cpt.2603 (2022).

- 573 25 Rodebaugh, T. L. et al. Acute symptoms of mild to moderate COVID-19 are highly
574 heterogeneous across individuals and over time. *Open Forum Infect. Dis.* 8, ofab090
575 (2021).
- 576 26 Johnson, A. G. et al. COVID-19 incidence and death rates among unvaccinated and fully
577 vaccinated adults with and without booster doses during periods of Delta and Omicron
578 variant emergence - 25 U.S. jurisdictions, April 4-December 25, 2021. *MMWR Morb.*
579 *Mortal. Wkly. Rep.* 71, 132–138 (2022).
- 580 27 Davies, M-A. et al. Outcomes of laboratory-confirmed SARS-CoV-2 infection in the
581 Omicron-driven fourth wave compared with previous waves in the Western Cape
582 Province, South Africa. *Trop. Med. Int. Health.* doi: 10.1111/tmi.13752 (2022).
- 583 28 Veneti, L. et al. Reduced risk of hospitalisation among reported COVID-19 cases
584 infected with the SARS-CoV-2 Omicron BA.1 variant compared with the Delta variant,
585 Norway, December 2021 to January 2022. *Euro. Surveill.* 27, 2200077 (2022).
- 586 29 Halfmann, P. J. et al. SARS-CoV-2 Omicron virus causes attenuated disease in mice and
587 hamsters. *Nature* 603, 687–692 (2022).
- 588 30 Singanayagam, A. et al. Duration of infectiousness and correlation with RT-PCR cycle
589 threshold values in cases of COVID-19, England, January to May 2020. *Euro. Surveill.*
590 25, 2001483 (2020).
- 591 31 Blomberg, B. et al. Long COVID in a prospective cohort of home-isolated patients. *Nat.*
592 *Med.* 27, 1607–1613 (2021).
- 593 32 Lopez-Leon, S. et al. More than 50 long-term effects of COVID-19: a systematic review
594 and meta-analysis. *Sci. Rep.* 11, 16144 (2021).

595 33 Pennington, A. F. et al. Risk of clinical severity by age and race/ethnicity among adults
596 hospitalized for COVID-19-United States, March-September 2020. *Open Forum Infect.*
597 *Dis.* 8, ofaa638 (2020).

598 **FIGURE LEGENDS**

599 **Fig. 1: Patient disposition.**

600 Some patients were excluded from the analysis populations due to more than one reason.

601 AE, adverse event; ITT, intention-to-treat.

602

603 **Fig. 2: a, Absolute values and b, change from baseline in SARS-CoV-2 viral titer; c,**

604 **absolute values and d, change from baseline in SARS-CoV-2 RNA level (ITT**

605 **population).**

606 Data are presented as mean±SD. * $P < 0.05$ versus placebo. Dotted lines indicate the lower

607 limit of detection for SARS-CoV-2 viral titer ($1.1 \log_{10}$ TCID₅₀/mL) and lower limit of

608 quantification for SARS-CoV-2 RNA level ($2.08 \log_{10}$ copies/mL).

609 ITT, intention-to-treat; SARS-CoV-2, severe acute respiratory syndrome coronavirus 2; SD,

610 standard deviation; TCID₅₀, 50% tissue-culture infectious dose.

611

612 **Fig. 3: Time to first negative SARS-CoV-2 viral titer (viral clearance; ITT population).**

613 CI, confidence interval; ITT, intention-to-treat; SARS-CoV-2, severe acute respiratory

614 syndrome coronavirus 2.

615 **Extended data**

616 **Extended Data Fig. 1 a, Mean absolute values and b, mean change from baseline in the**
617 **total score of the 12 COVID-19 symptoms (ITT population).**

618 COVID-19, coronavirus disease 2019; ITT, intention-to-treat.

619

620 **Extended Data Fig. 2 Proportion of patients with a positive SARS-CoV-2 viral titer**
621 **(ITT population).**

622 * $P < 0.05$ versus placebo.

623 ITT, intention-to-treat; SARS-CoV-2, severe acute respiratory syndrome coronavirus 2.

624

625 **Extended Data Fig. 3 Mean change from baseline in subtotal scores of the 12 COVID-19**
626 **symptoms for a, acute symptoms, b, main clinical symptoms, c, respiratory symptoms,**
627 **d, systemic symptoms, e, digestive symptoms, and f, respiratory symptoms and**
628 **feverishness (ITT population).**

629 COVID-19, coronavirus disease 2019; ITT, intention-to-treat.

630

631 **Extended Data Fig. 4 Mean change from baseline in anosmia and dysgeusia scores (ITT**
632 **population).**

633 Avg, average; ITT, intention-to-treat.

634

635 **Extended Data Fig. 5 Levels of a, HDL cholesterol, b, triglycerides, c, total bilirubin,**
636 **and d, iron (safety analysis population).**

637 Data are presented as mean \pm SD.

638 Avg, average; HDL, high-density lipoprotein; SD, standard deviation.

TABLES**Table 1 Baseline demographics and clinical characteristics (ITT population)**

Variables	Ensitrelvir 125 mg (N=114)	Ensitrelvir 250 mg (N=116)	Placebo (N=111)
Male sex, <i>n</i> (%)	61 (53.5)	66 (56.9)	72 (64.9)
Age, years, mean (SD)	35.6 (13.5)	35.3 (13.1)	37.3 (12.6)
Age, <i>n</i> (%)			
≥12 to <18 years	4 (3.5)	2 (1.7)	2 (1.8)
≥18 to <65 years	109 (95.6)	112 (96.6)	108 (97.3)
≥65 to <70 years	1 (0.9)	2 (1.7)	1 (0.9)
Patient conditions, <i>n</i> (%) ^a			
Hospitalized	29 (25.4)	44 (37.9)	33 (29.7)
Outpatient	49 (43.0)	40 (34.5)	48 (43.2)
Recuperation at home	2 (1.8)	1 (0.9)	0 (0.0)
Recuperation at hotels	34 (29.8)	31 (26.7)	30 (27.0)
Time from onset to randomization, <i>n</i> (%)			
<24 hours	11 (9.6)	2 (1.7)	5 (4.5)

≥24 to <48 hours	21 (18.4)	21 (18.1)	24 (21.6)
≥48 to <72 hours	23 (20.2)	30 (25.9)	25 (22.5)
≥72 to <96 hours	37 (32.5)	38 (32.8)	33 (29.7)
≥96 to ≤120 hours	22 (19.3)	23 (19.8)	24 (21.6)
>120 hours	0 (0.0)	2 (1.7)	0 (0.0)
COVID-19 vaccination history, <i>n</i> (%)	97 (85.1)	97 (83.6)	97 (87.4)
Patients with COVID-19 symptoms, <i>n</i> (%)			
Respiratory symptoms			
Stuffy or runny nose	29 (25.4)	34 (29.3)	26 (23.4)
Sore throat	65 (57.0)	63 (54.3)	54 (48.6)
Shortness of breath (difficulty breathing)	8 (7.0)	8 (6.9)	1 (0.9)
Cough	48 (42.1)	46 (39.7)	49 (44.1)
Systemic symptoms			
Low energy or tiredness	37 (32.5)	42 (36.2)	27 (24.3)
Muscle or body aches	26 (22.8)	19 (16.4)	23 (20.7)
Headache	28 (24.6)	30 (25.9)	24 (21.6)
Chills or shivering	31 (27.2)	20 (17.2)	17 (15.3)

Feeling hot or feverish	43 (37.7)	41 (35.3)	36 (32.4)
Digestive symptoms			
Nausea	4 (3.5)	5 (4.3)	2 (1.8)
Vomiting	3 (2.6)	3 (2.6)	2 (1.8)
Diarrhea	6 (5.3)	6 (5.2)	8 (7.2)
Sensation disturbance			
Anosmia	16 (14.0)	10 (8.6)	10 (9.0)
Dysgeusia	19 (16.7)	7 (6.0)	9 (8.1)
Total score of 12 COVID-19 symptoms, mean (SD) ^b	9.9 (5.0)	9.3 (4.5)	8.6 (3.8)
Patients with fever (body temperature $\geq 37.0^{\circ}\text{C}$), <i>n</i> (%)	45 (39.5)	39 (33.6)	30 (27.0)

^aIn Japan, patients were eligible for enrollment irrespective of treatment settings (inpatient, outpatient, recuperation at home, or recuperation at designated hotels) because some of them required hospitalization or recuperation for the purpose of isolation or clinical trial participation, regardless of disease severity, at the time of this research. ^b*n*=110, *n*=113, and *n*=110 for the ensitrelvir 125 mg, ensitrelvir 250 mg, and placebo groups, respectively.

COVID-19, coronavirus disease 2019; ITT, intention-to-treat; SD, standard deviation.

Table 2 Time-weighted average change from baseline up to 120 hours in the total score of 12 COVID-19 symptoms (ITT population)

Statistics	Ensitrelvir 125 mg (N=114)	Ensitrelvir 250 mg (N=116)	Placebo (N=111)
<i>N</i>	109	113	110
Mean (SD) change from baseline	-5.95 (4.02)	-5.42 (3.70)	-4.92 (3.25)
LS mean (SE) change from baseline assessed by ANCOVA	-5.37 (0.24)	-5.17 (0.23)	-5.12 (0.24)
LS mean (SE) difference in change from baseline versus placebo	-0.24 (0.30)	-0.04 (0.29)	–
95% CI	-0.83 to 0.34	-0.62 to 0.53	–
<i>P</i> -value	0.4171	0.8806	–

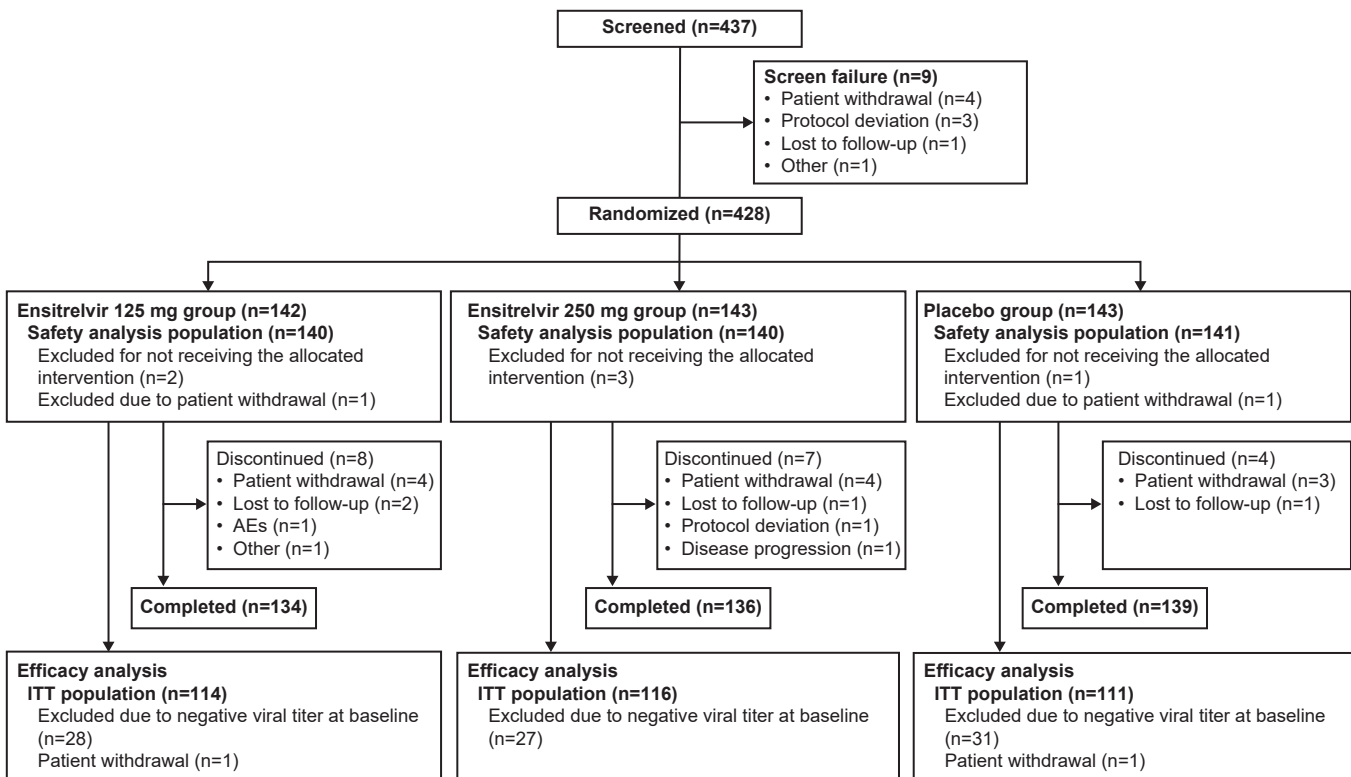
ANCOVA, analysis of covariance; CI, confidence interval; COVID-19, coronavirus disease 2019; ITT, intention-to-treat; LS, least squares; SD, standard deviation; SE, standard error.

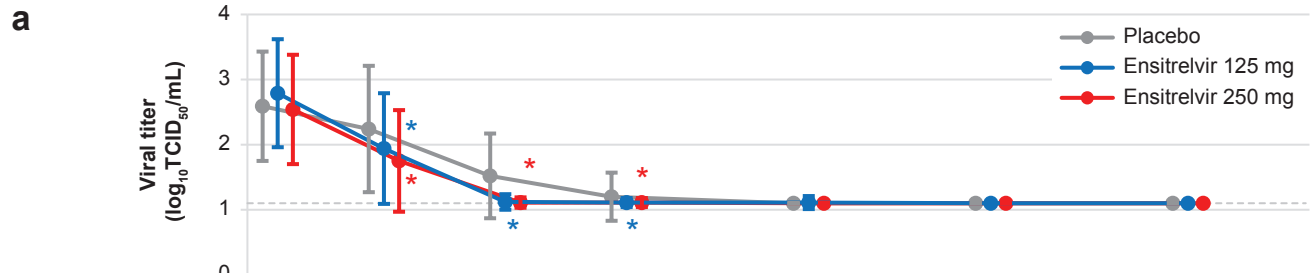
Table 3 Summary of TEAEs (safety analysis population)

Patients with events, <i>n</i> (%)	Ensitrelvir 125 mg (<i>N</i>=140)	Ensitrelvir 250 mg (<i>N</i>=140)	Placebo (<i>N</i>=141)
Patients with any TEAE	48 (34.3)	60 (42.9)	44 (31.2)
Patients with any treatment-related AE	19 (13.6)	31 (22.1)	7 (5.0)
Patients with any serious TEAE	0 (0.0)	0 (0.0)	2 (1.4)
Patients with TEAEs leading to death	0 (0.0)	0 (0.0)	0 (0.0)
Patients with TEAEs leading to treatment discontinuation	2 (1.4)	0 (0.0)	0 (0.0)
TEAEs occurring in $\geq 2\%$ of patients in either group			
Dyslipidemia	0 (0.0)	3 (2.1)	0 (0.0)
Headache	3 (2.1)	3 (2.1)	0 (0.0)
Diarrhea	2 (1.4)	3 (2.1)	1 (0.7)
Abdominal pain upper	0 (0.0)	0 (0.0)	4 (2.8)
Rash	2 (1.4)	1 (0.7)	3 (2.1)
Back pain	1 (0.7)	3 (2.1)	1 (0.7)
High-density lipoprotein decrease	31 (22.1)	40 (28.6)	5 (3.5)
Blood triglycerides increase	1 (0.7)	9 (6.4)	1 (0.7)

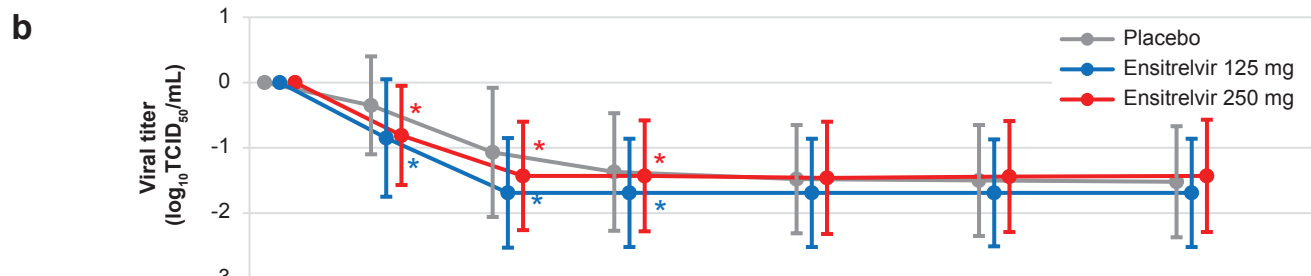
Blood creatine phosphokinase increase	0 (0.0)	0 (0.0)	4 (2.8)
Treatment-related AEs occurring in $\geq 5\%$ of patients in either group			
High-density lipoprotein decrease	13 (9.3)	22 (15.7)	0 (0.0)

AE, adverse event; TEAE, treatment-emergent AE.

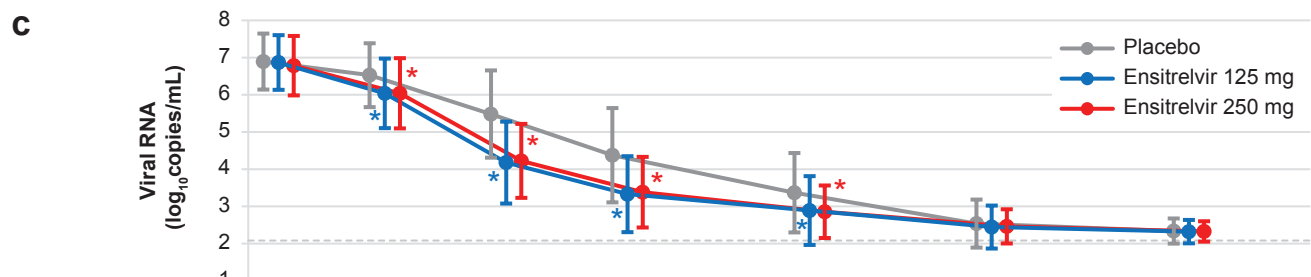




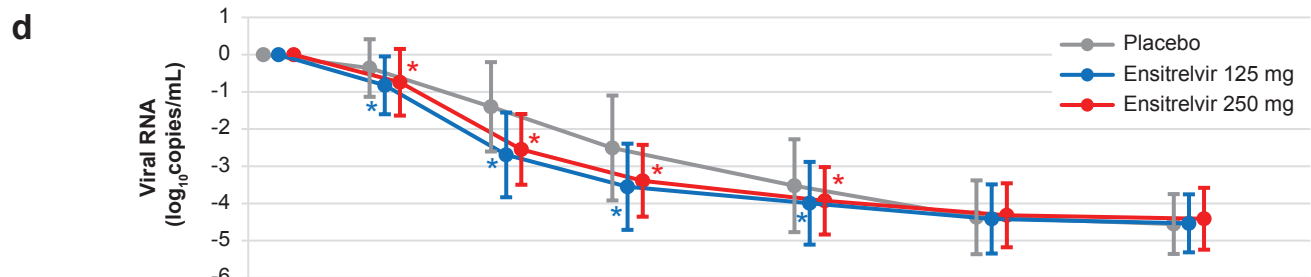
Number of patients	Baseline	Day 2	Day 4	Day 6	Day 9	Day 14	Day 21
Placebo	111	111	108	108	105	102	100
Ensitrelvir 125 mg	113	112	107	111	109	105	106
Ensitrelvir 250 mg	115	113	112	112	106	103	100



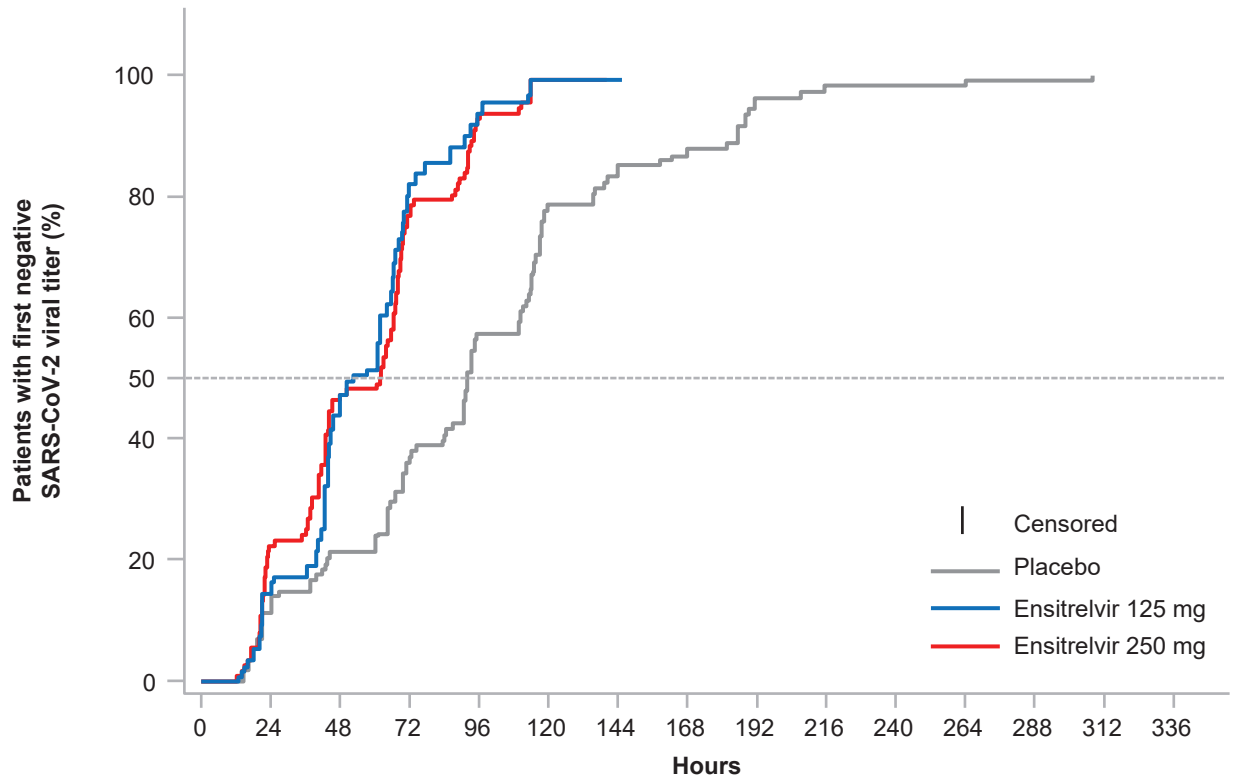
Number of patients	Baseline	Day 2	Day 4	Day 6	Day 9	Day 14	Day 21
Placebo	111	111	108	108	105	102	100
Ensitrelvir 125 mg	113	112	107	111	109	105	106
Ensitrelvir 250 mg	115	113	112	112	106	103	100



Number of patients	Baseline	Day 2	Day 4	Day 6	Day 9	Day 14	Day 21
Placebo	111	110	110	110	106	102	100
Ensitrelvir 125 mg	113	112	111	111	109	106	106
Ensitrelvir 250 mg	115	115	112	112	106	103	101



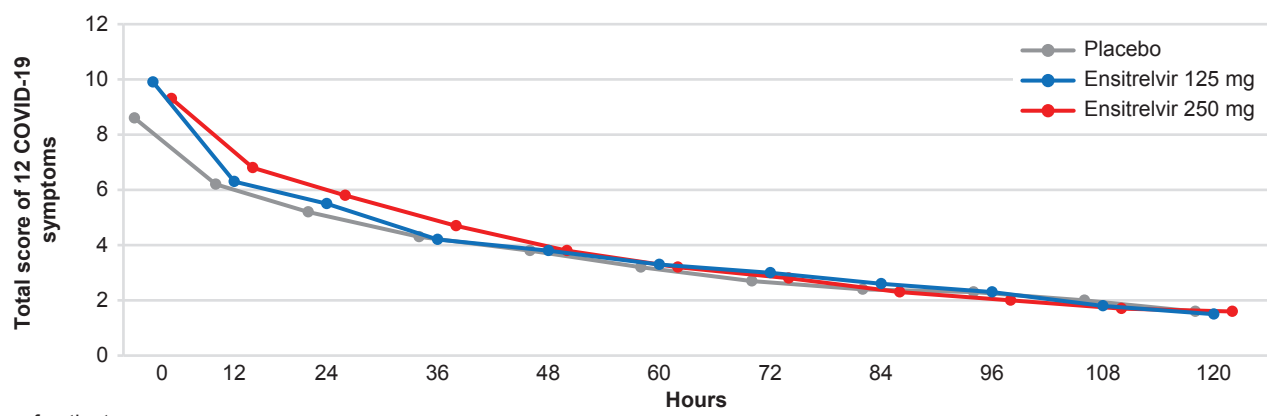
Number of patients	Baseline	Day 2	Day 4	Day 6	Day 9	Day 14	Day 21
Placebo	111	110	110	110	106	102	100
Ensitrelvir 125 mg	113	112	111	111	109	106	106
Ensitrelvir 250 mg	115	115	112	112	106	103	101



Number at risk

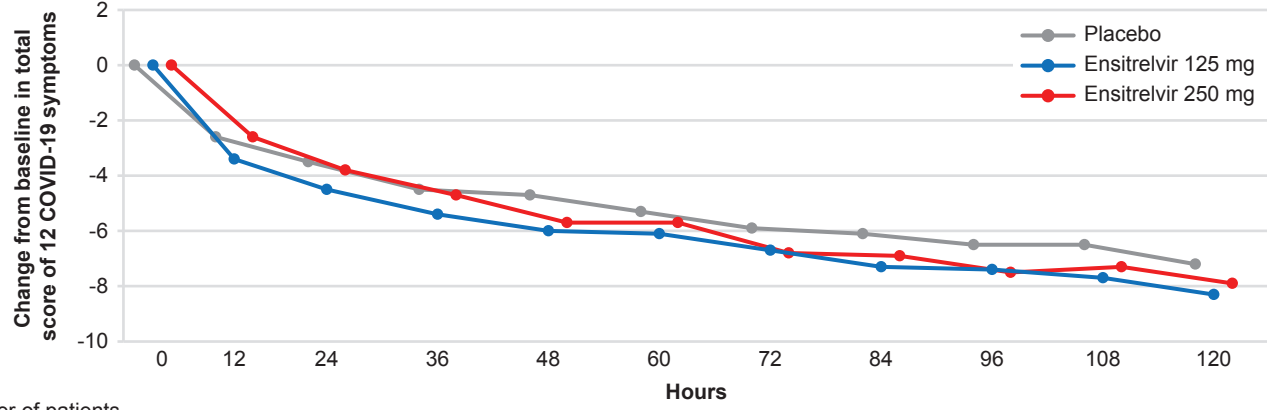
Placebo	108	95	85	69	46	23	17	14	4	3	2	2	1	0	0
Ensitrelvir 125 mg	111	93	58	20	7	1	1	0	0	0	0	0	0	0	0
Ensitrelvir 250 mg	113	87	59	26	8	1	0	0	0	0	0	0	0	0	0

	Ensitrelvir 125 mg n = 111	Ensitrelvir 250 mg n = 113	Placebo n = 108
Median (hours) [95% CI]	51.3 [44.1, 61.8]	62.1 [43.7, 66.5]	91.9 [84.0, 109.9]
Difference from placebo (hours) [95% CI]	-40.6 [-58.5, -26.5]	-29.8 [-52.0, -23.6]	-
P Value	<.0001	<.0001	-

a

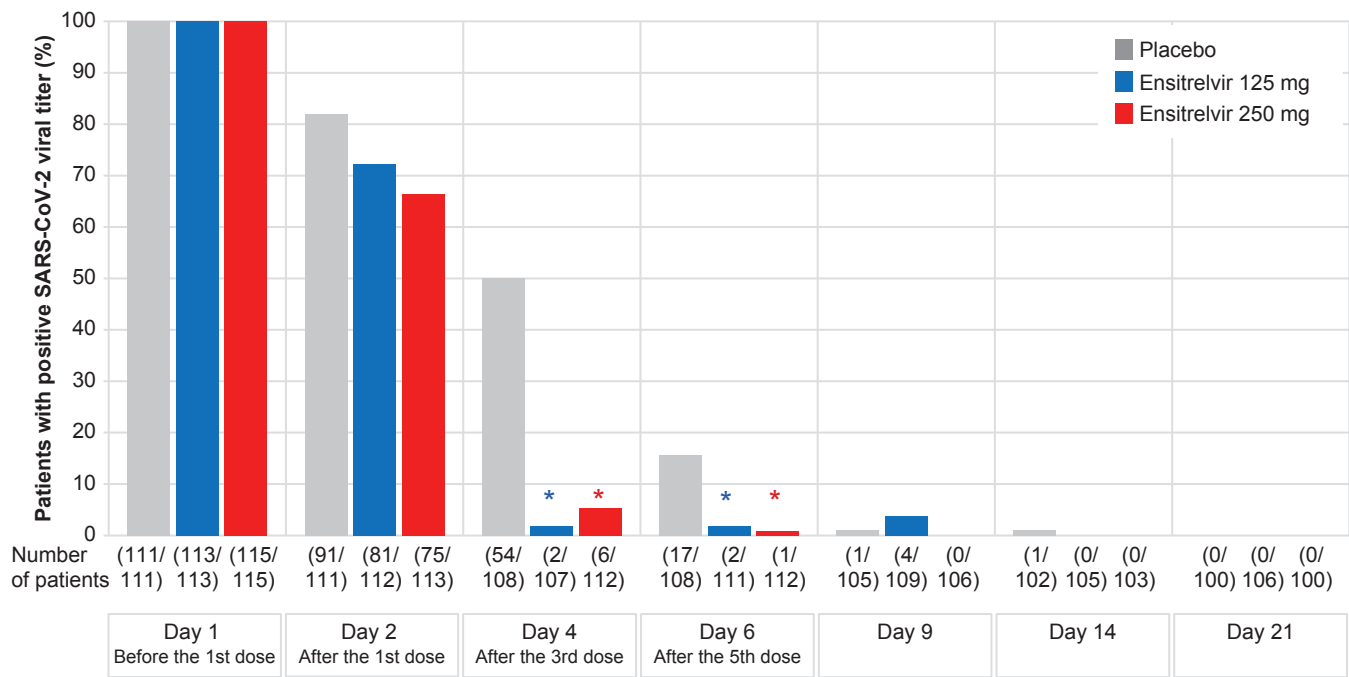
Number of patients

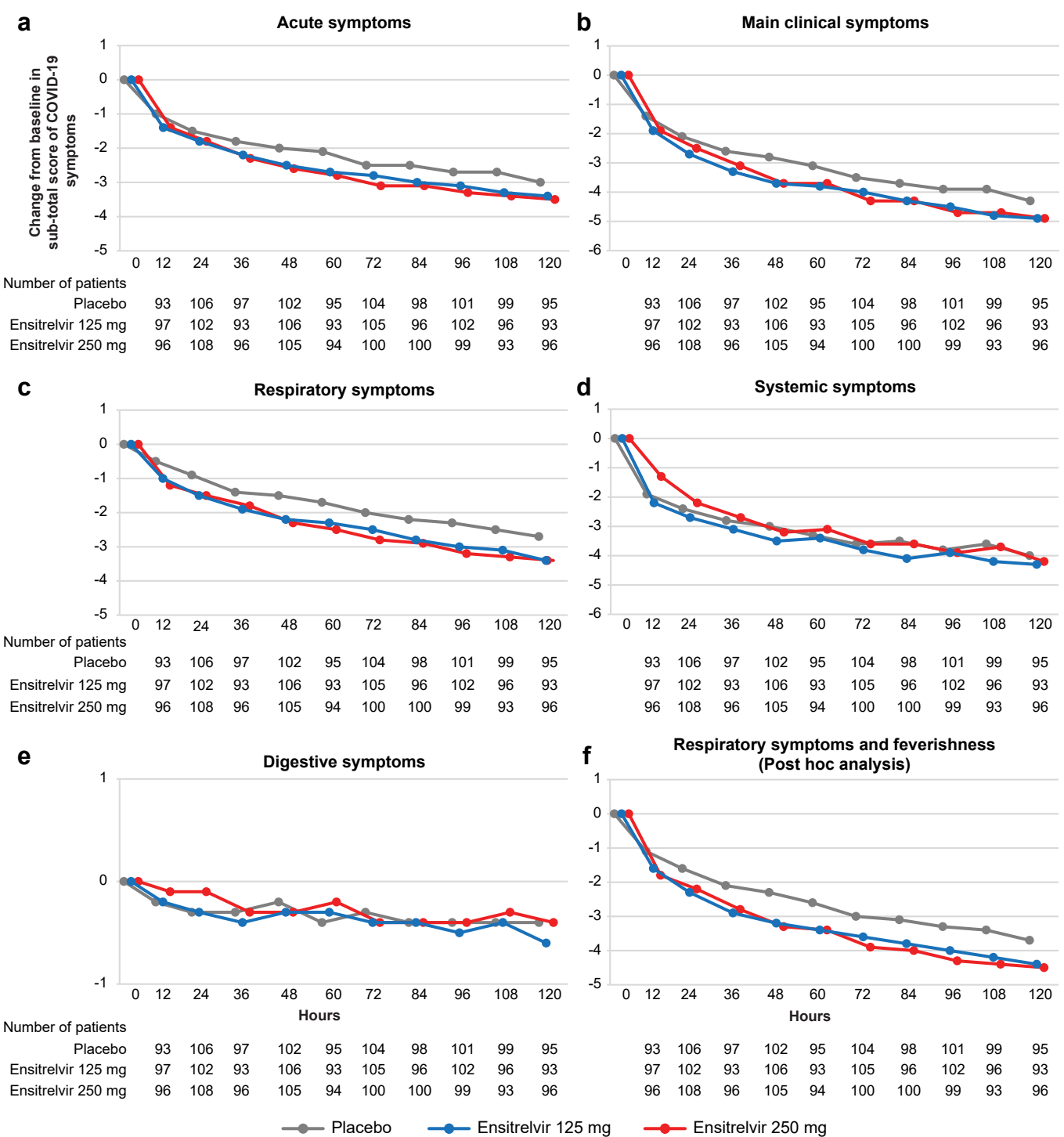
Placebo	110	94	106	98	103	96	105	99	102	100	96
Ensitrelvir 125 mg	110	100	105	96	108	95	108	98	105	98	96
Ensitrelvir 250 mg	113	98	110	98	107	96	102	102	101	95	98

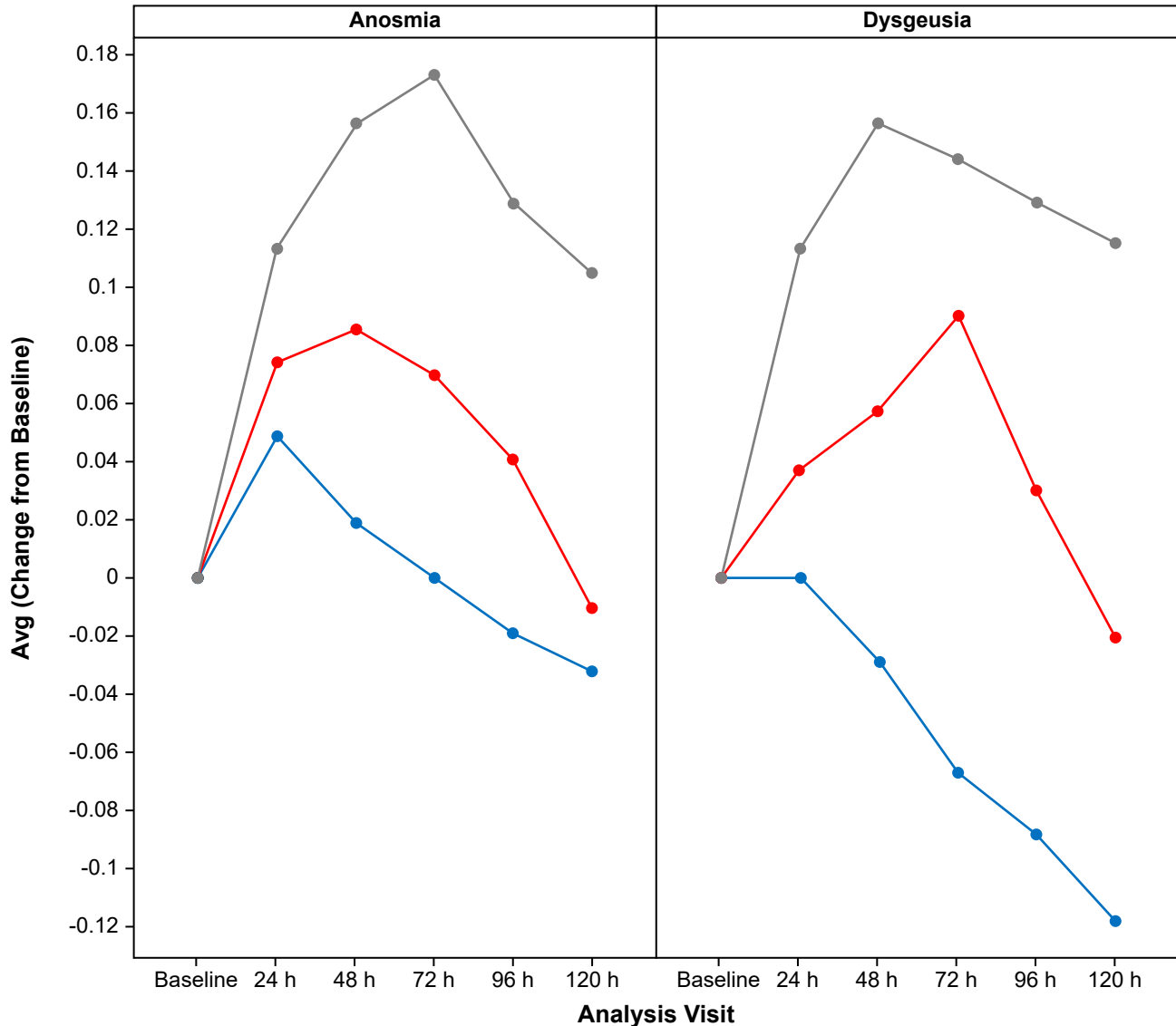
b

Number of patients

Placebo	93	106	97	102	95	104	98	101	99	95
Ensitrelvir 125 mg	97	102	93	106	93	105	96	102	96	93
Ensitrelvir 250 mg	96	108	96	105	94	100	100	99	93	96

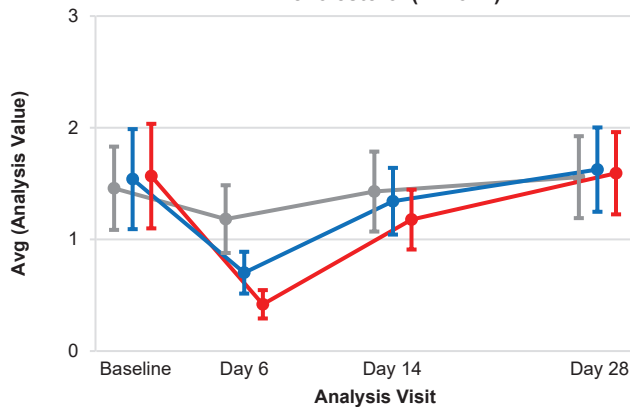






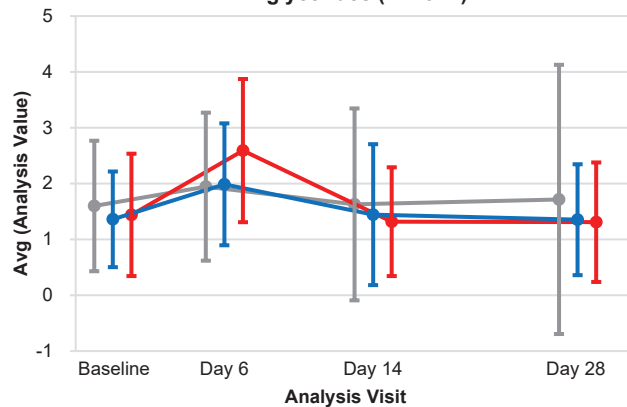
Number of patients	Baseline	24 h	48 h	72 h	96 h	120 h	Baseline	24 h	48 h	72 h	96 h	120 h
Ensitrelvir 125 mg	102	106	105	102	93		102	106	105	102	93	
Ensitrelvir 250 mg	108	105	100	99	96		108	105	100	99	96	
Placebo	106	102	104	101	95		106	102	104	101	95	

● Placebo
 ● Ensitrelvir 125 mg
 ● Ensitrelvir 250 mg

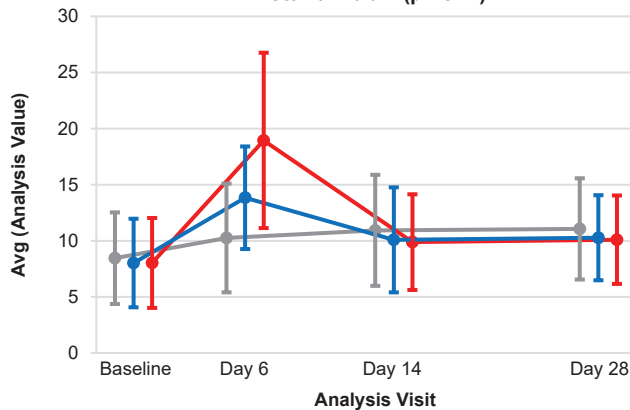
a**HDL cholesterol (mmol/L)**

Number of patients

Ensitrelvir 125 mg	140	137	131	128
Ensitrelvir 250 mg	140	134	127	130
Placebo	141	139	129	130

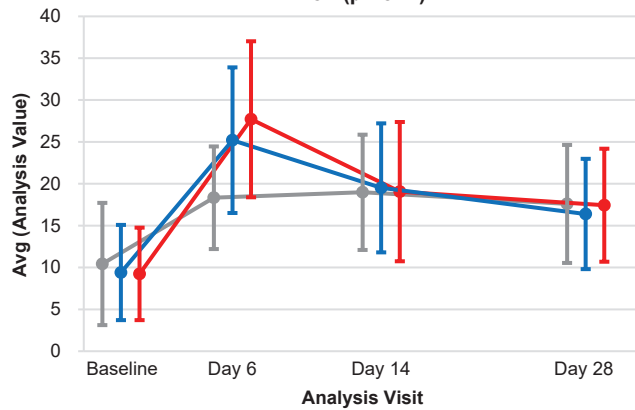
b**Triglycerides (mmol/L)**

Ensitrelvir 125 mg	140	137	131	128
Ensitrelvir 250 mg	140	134	127	130
Placebo	141	139	129	130

c**Total bilirubin ($\mu\text{mol/L}$)**

Number of patients

Ensitrelvir 125 mg	140	138	131	128
Ensitrelvir 250 mg	140	134	127	130
Placebo	141	139	129	130

d**Iron ($\mu\text{mol/L}$)**

Ensitrelvir 125 mg	138	136	129	126
Ensitrelvir 250 mg	137	131	124	127
Placebo	138	136	126	127

● Placebo ● Ensitrelvir 125 mg ● Ensitrelvir 250 mg