

1
2 **Dietary Exposure to Oxidized Lipids in US Infants**
3

4 Lisaura Maldonado-Pereira^{1,3}, Carlo Barnaba², Ilce Gabriela Medina-Meza^{1,3 *}
5
6
7
8

9 ¹Department of Chemical Engineering and Materials Science, Michigan State University, East
10 Lansing, MI, USA. *maldon60@msu.edu*

11 ²Institute of Quantitative Health Science and Engineering, Michigan State University, East
12 Lansing, MI, USA. *barnabac@msu.edu*

13 ³Department of Biosystems and Agricultural Engineering, East Lansing, MI, USA.
14 *ilce@msu.edu*
15
16
17
18
19
20
21
22
23
24
25
26

27 **Corresponding Author**

28 Medina-Meza, Ilce Gabriela, Ph.D.
29 Department of Biosystems and Agricultural Engineering
30 469 Wilson Rd. | Room 302C
31 East Lansing, MI
32 ilce@msu.edu
33 Phone: 517-884-1971
34
35

36
37
38
39
40
41
42
43
44
45
46
47
48
49
50

51
52
53
54
55
56
57
58
59

Abstract

Baby Foods (BFs) and Infant formulas (IFs) are the main sources of nutrition for an infant throughout the 1st year of life. A variety of enriched products are commercially available for parents seeking to fulfill their baby's nutritional needs. Consequently, different bioactive lipids are present in BFs and IFs including dietary oxidative substances (DOxS) whose known toxicity has been associated with mutagenicity, cancer, and other chronic diseases. In this work, we performed an exposure assessment of 25 bioactive lipids on a total of 63 baby food samples (50 – IFs and 13 – BFs) commercially available in the US. To determine the dietary exposure to DOxS, we used EPA's SHEDS-HT probabilistic model. Even though β -Sitosterol was the most exposed bioactive lipid with 75,4 $\mu\text{g}/\text{day}$, cholesterol was the most absorbed compound during the entire first year (19,320 $\mu\text{g}/\text{day}$). Additionally, we found 7 α -hydroxycholesterol (7 α -OH) as a potential DOxS biomarker of the BFs manufacturing process. This is the first time that an exposure assessment including DOxS ingested by infants after BFs and IFs consumption is performed, enabling much-needed information regarding these hazardous compounds and their potential effects on infants' health.

Keywords: Oxidized lipids, Dietary exposure, Toxicity, Baby foods, Infant formula, Oxysterols

60 **1. Introduction**

61 Diet, during the first year of life of a newborn, plays a crucial role to ensure an infant's
62 proper growth and brain development (Babawale et al., 2018; CDC, 2021b; Harris & Pomeranz,
63 2020; Timby, Domellöf, Hernell, Lönnerdal, & Domellöf, 2014). Despite the U. S. Dietary
64 Guidelines for Americans recommendation for breastfeeding during the first 6 months, reports
65 show that only 25% of babies are exclusively breastfed in the US (CDC, 2021a), and globally,
66 only 40% have been estimated (Collective, 2017; Timby et al., 2021). Different circumstances
67 influence the mother's decision to rely mainly on infant formulations (IFs) instead of breast milk.
68 After the baby is 6 months old, baby foods (BFs), also known as complementary foods, are
69 commonly introduced to the infant, and it is not until the infant's 1st or 2nd year that they will be
70 eating almost the same foods as any other adult (CDC, 2021b).

71 Cholesterol content in human milk is typically comprised of 0.34 to 1.3 wt% based on total
72 lipids (Jensen, 1999). On the contrary, standard IF doesn't contain cholesterol but it is high in
73 plant-based oils such as palm and soybean oil (Zubin Maslov, Hill, Lüscher, & Narula, 2021)
74 which provide other lipid classes such as phytosterols and tocopherols also needed for a healthy
75 growth and development processes. During weaning (4-6 months), BFs are gradually introduced.
76 BFs consist of unsweetened, unsalted, no added starch or artificial flavors/colors puree of fruits,
77 vegetables, grains, and blends of meats or poultry. All these ingredients are good sources of
78 protein, iron, zinc, and other much-needed nutrients (Gerber, 2021a, 2021b).

79 The main purpose of IFs and BFs manufacturing relies on providing the best, most nutritious,
80 and safest food for the most vulnerable population, infants. Both IF and BFs undergo industrial
81 processing to guarantee their microbiological safety. Processing, in particular thermal
82 processing, act on macro and micronutrients of raw material, potentially favoring changes in the

83 nutritional properties of these foods. For instance, several lipid oxidation molecules, such as
84 dietary oxysterols (DOxS), are formed because of food's over-processing during their
85 confection, storage, and even transportation processes.

86 The oxidation of cholesterol results in the accumulation of DOxS. The formation of DOxS is
87 triggered by high temperature, hydrostatic pressure used for nonthermal pasteurization, light
88 exposure, and aging of food (Cais-Sokolińska, Walkowiak-Tomczak, & Rudzińska, 2022; Chudy
89 & Teichert, 2021; Lisaura Maldonado-Pereira, 2021; Risso et al., 2022; Sabolová et al., 2017).
90 Several studies have summarized the biological activities of these compounds which have been
91 extensively associated with different chronic diseases including pro-inflammatory and pro-
92 oxidant activities, as well as promote carcinogenesis (Garcia-Llatas, Mercatante, López-García,
93 & Rodríguez-Estrada, 2021; L. Maldonado-Pereira, Schweiss, Barnaba, & Medina-Meza, 2018;
94 Poli et al., 2022; Willinger, 2019; Zmysłowski & Szterk, 2019). Our group recently studied the
95 metabolomic signatures of liquid and powder infant formulations and proposed that 7-keto could
96 be considered a biomarker of powder IFs (A. Kilvington, Barnaba, Rajasekaran, Laurens
97 Leimanis, & Medina-Meza, 2021). Additionally, Risso and coworkers pointed out that the shelf-
98 life is the primary determinant of DOxS after analyzing whole milk powders (Risso et al., 2022).
99 Their study serves as another example of how DOxS could be used as markers to further quantify
100 and characterize the nutritional quality and freshness, not only of ingredients but also of
101 composite products such as commercial chocolate milk and whole powder milk. These findings
102 highlight the potential relationship of DOxS loads with specific unit operations used in food
103 processing. This knowledge may be a critical factor in identifying processing steps that may
104 increase their formation in foods and could prevent infants' exposure to these compounds and
105 their long-term effect on their health. Previously, we assessed the dietary exposure of DOxS on

106 infant formula-fed infants in the first 6 months of life (Alice Kilvington, Barnaba, Rajasekaran,
107 Laurens, & Gabriela Medina-Meza, 2021). To date, the estimated exposure level of DOxS in
108 infants (0-1 years old) has not been addressed.

109 The present study provides a dietary assessment of sterols and their oxidized derivatives
110 using a probabilistic exposure assessment model during the first year of infant development for
111 several sterols species (previously analyzed in our laboratory) present in various IFs and BFs
112 commercially available in the US market (A. Kilvington et al., 2021; A. Kilvington,
113 Maldonado-Pereira, Torres-Palacios, & Medina-Meza, 2019). The dietary exposure
114 assessment will provide an estimation of the exposure extent of these compounds in infants
115 which is the first step in conducting a risk assessment of these sterols and their oxidative species
116 that could become a potential health risk in the infant's community (Wei et al., 2022).

117 **2. Methods**

118 *2.1. Stochastic Human Exposure and Dose Simulation (SHEDS-HT)*

119 SHEDS-HT was coded in the R language (v. 2.15.3). Several modifications were performed
120 to the code's input files to enable the dietary exposure analysis of bioactive lipids including
121 sterols (both animal and plant origin), squalene, and tocopherols. A complete description of the
122 SHEDS-HT model can be found in Isaacs' work (Isaacs et al., 2014). The following sections will
123 explain the modifications employed in this analysis.

124 *2.1.1. Chemical Pathway and Scenario*

125 A list of the compounds analyzed in this study is shown in **Table 1**. The chemical and
126 physical properties of the compounds required by SHEDS-HT were obtained from The
127 Metabolomics Innovation Centre and the ChemSpider webpages (Centre, 2021; ChemSpider,
128 2021). Concentration values of these chemicals in Infant Formulas (IFs) were obtained from

129 previous work performed in the Food and Health Engineering Laboratory (FHEL) at Michigan
130 State University (A. Kilvington et al., 2019).

131

132 **Table 1:** Chemical properties used in SHEDS-HT to evaluate exposure of the compounds of interest.

133

Compound	Water Solubility (mg/L)	Absorption factor (f_{abs})
7keto	0.0027 ¹	0.12 ³
Triol	0.000156 ¹	0.15 ³
5,6alpha-Epoxy	0.005104 ²	0.28 ³
5,6beta-Epoxy	0.005104 ²	0.32 ³
7beta-OH	0.48 ¹	0.42 ³
7alpha-OH	0.48 ¹	0.30 ³
20alpha-OH	0.57 ¹	0.40*
22-OH	0.65 ¹	0.40 ⁴
24-OH	0.40 ¹	0.40*
25-OH	0.24 ¹	0.40*
Campesterol	0.05803 ⁵	0.1431 ⁵
Beta-sitosterol	0.02739 ⁵	0.05074 ⁵
Stigmasterol	0.0000112 ⁵	0.040 ⁵
Brassicasterol	0.06420 ⁵	0.3121 ⁵
Alpha-Tocopherol	0.003317 ⁵	0.03394 ⁵
Beta-Tocopherol	0.02826 ⁵	0.03423 ⁵
Delta-Tocopherol	0.2477 ⁵	0.03477 ⁵
Gamma-Tocopherol	0.02852 ⁵	0.03424 ⁵
Cholesterol	0.077038 ⁵	0.314705 ⁵
Squalene	0.004897 ⁵	0.986721 ⁵
Desmosterol	0.049427 ⁵	0.378243 ⁵

134

135 ¹The Metabolomics Innovation Centre (<https://www.metabolomicscentre.ca/>)

136 ²ChemSpider – Search and share chemistry (www.chemspider.com)

137 ³Value obtained from the paper: Osada, Sasaki, & Sugano, 1994

138 ⁴Value obtained from the paper: Tranheim Kase et al., 2012

139 ⁵Properties provided by SHEDS-HT

140 *Absorption value of 22-OH was used for these compounds since no estimated value could be found for these
141 specific DOxS (20alpha-OH, 24-OH, and 25-OH)

142

143 DOxS concentrations from Baby Foods (BFs) were obtained experimentally as is explained
144 in sections 2.2-2.4. Since this study was focused on ingestion of DOxS because of BFs and IFs
145 consumption, SHEDS-HT only needs to consider the dietary pathway and the direct ingestion
146 scenario of the samples tested. In this study, the dietary exposures are calculated by determining

147 the total daily mass of chemical intake for each simulated person via different foods.
148 Concentration distributions for each food are provided as input. For each individual, daily
149 concentrations (μg of sterol per g of food) are sampled (one for each food item). Dietary
150 exposures are calculated as the sum (over food groups) of the food item's concentration and
151 mass of food consumed (as determined by the assigned food diary for the person). Exposure
152 equation used by SHEDS-HT:

$$153 \quad \text{Exposure} \left(\frac{\mu\text{g}}{\text{day}} \right) = \text{Consumption} \left(\frac{\text{g of food}}{\text{day}} \right) * \text{Residue of the Compound in Food} \left(\frac{\mu\text{g}}{\text{g food}} \right)$$

154 Intake dose estimates are calculated using distributions of route-specific fractional
155 absorptions as it is shown below:

$$156 \quad \text{Dose Intake} \left(\frac{\text{mg}}{\text{kg} - \text{day}} \right) = \frac{\text{abs dermal} \left(\frac{\text{mg}}{\text{day}} \right) + \text{exp ingest} \left(\frac{\text{mg}}{\text{day}} \right) + \text{dose inhale} \left(\frac{\text{mg}}{\text{day}} \right)}{1000 * \text{BW}}$$

158 Where *abs dermal* is the absorption of the compound through the skin, *exp ingest* is the
159 exposure of the compound through ingestion of the food item, and *dose inhale* is the dose of the
160 compound inhaled by the infant.

161 Absorption values are obtained using the estimated absorption factor (f_{abs}) of each bioactive
162 lipid in the following equation:

$$163 \quad \text{Absorption} \left(\frac{\mu\text{g}}{\text{day}} \right) = \text{Exposure} \left(\frac{\mu\text{g}}{\text{day}} \right) * f_{\text{abs}}$$

164 A full description of the exposure equations used in SHEDS-HT and their corresponding
165 input parameter distributions are provided in Isaacs' work (Isaacs et al., 2014).

166 2.1.2. Population Module

167 Input-based data from the U.S. Census was used to generate a simulated population
168 representative of the U.S. population in terms of age and gender. A population of 10,000

169 individuals was selected for this study. Afterward, Monte Carlo methods were used to assign
170 relevant exposure factors and cohort-matched activity and food intake diaries to each person.

171 Food diaries were based on the National Health and Nutrition Examination Survey-What We
172 Eat in America (NHANES-WWEIA) 1999–2018 two-day food intake diaries (USDA, 2018).
173 Food diaries calculated the mass of each food group consumed by the individual.

174 *2.2. Bioactive Lipids Extraction in Baby Foods*

175 Bioactive lipids were extracted from 13 baby foods according to a slightly modified Folch's
176 (Folch, Lees, & Sloane Stanley, 1957) cold extraction method as is described in Maldonado-
177 Pereira et al. (2022). Thirty grams of sample were minced and placed in a 500 ml glass bottle
178 with a screwcap with 200 mL of chloroform:methanol solution (1:1, v/v). The sample was mixed
179 for 15 min at 300 rpm. Homogenization was performed using an Ultra-Tourrax for 3 minutes.
180 The bottle was kept in an oven at 60°C for 20 min before adding 100 mL chloroform. Then, the
181 bottle was vortexed for 2 min following by filtration. The filtrate was mixed thoroughly with 100
182 mL of 1 M KCl solution. Samples were left overnight at 4 °C. Then, the lower phase containing
183 lipids was collected and dried at 60°C with a vacuum evaporator at 25 in Hg. Total fat content
184 was determined gravimetrically (L. Maldonado-Pereira, Barnaba, De los Campos, & Medina-
185 Meza, 2021).

186 *2.3. Determination of Total Cholesterol, Tocopherols, and Phytosterols Content in Baby* 187 *Foods by GC-MS*

188 A simultaneous quantification method for cholesterol, tocopherols, and phytosterols
189 developed by our group was used (A. Kilvington et al., 2021). Cold saponification at room
190 temperature was performed following Bonoli's protocol with some modifications (Matteo Bonoli
191 et al., 2008). Two hundred mg of lipid were mixed with 50 µg of 19-hydroxycholesterol and 140

192 μg of 5α -cholestane as internal standards for the determination of dietary COPs and total
193 cholesterol, respectively. Subsequently, the sample was mixed with 10 mL of 1 N KOH solution
194 in methanol and left under gentle agitation, and covered from the light for at least 15 h (Sander,
195 Addis, Park, & Smith, 1989). One-tenth of the unsaponifiable matter was subjected to silylation.
196 The sample was mixed with 100 μL of pyridine and 100 μL of the Sweeley's reactive mixture
197 (pyridine/hexamethyldisilazane/trimethylchlorosilane, 10:2:1, v/v/v) at 75°C for 45 min, dried
198 under nitrogen stream and dissolved in 1 mL of n-hexane. One microliter of the silylated solution
199 was injected into a gas chromatograph using a fitted with a ZebronTMZB-5HT (Phenomenex,
200 Torrance, CA) capillary column (30 m \times 0.25 mm \times 0.25 μm). Oven temperature conditions
201 were set up as follows: 260 to 300°C at $2.5^\circ\text{C}/\text{min}$, then from 300 to 320°C at $8^\circ\text{C}/\text{min}$, and
202 finally hold at 320°C for 1 min. The injector and detector were both set at 320°C . Helium was
203 used as the carrier gas at a flow rate of 54.0 mL/min, the split ratio at 1:50, and the pressure
204 constant at 134 kPa.

205 *2.4. DOxS profiling in Baby Foods*

206 The other nine-tenths of the sample was used for the quantification of dietary COPs.
207 Purification by NH_2 -SPE was performed according to the literature (Rose-Sallin, 1995). The
208 enriched fraction was recovered and evaporated to dryness under a nitrogen stream.
209 Subsequently, the purified fraction was silylated with Sweeley's reactive mixture (at 75°C for
210 45 min), dried under a nitrogen stream and dissolved in 1 mL of n-hexane.

211 Dietary DOxS were identify using the selected ion molecule (SIM) method with a GCMS-
212 QP2010 SE single quadrupole Shimadzu Corporation (Kyoto, Japan). One μL of the silylated
213 DOxS was injected into a single quadrupole (GCMS-QP2010 SE) with the following conditions:
214 from 250 to 280°C at $2^\circ\text{C}/\text{min}$, hold at 280°C for 7 min, and from 280 to 315°C at $1.5^\circ\text{C}/\text{min}$.

215 Helium was used as a carrier gas (flow rate of 0.37 mL/min); the split ratio was 1:15 and the
216 pressure was 49.2 kPa. The interface temperature for the GC-MS was 320 °C, with the electron
217 multiplier voltage set at 0 kV and the injector at 320 °C. A fused silica column (30 m x 0.25 mm
218 i.d. x 0.25 µm thickness) coated with 5% phenyl polysiloxane (Phenomenex Zebron ZB-5) was
219 used.

220 2.5. Statistical Analysis

221 Descriptive statistics were obtained from the SHEDS-HT model. Mean, standard deviation,
222 and the following quantiles: 5%, 25%, 50%, 75%, 90%, and 95%, were reported. Since the data
223 did not follow a normal distribution after a Shapiro-Wilk test a non-parametric Mann-Whitney *U*-
224 test was performed at a $p < 0.05$ significance level. Data normalization was performed for
225 exposure, absorption, and dose intake results for comparison purposes. A sparse PLS-DA (sPLS-
226 DA) was used to evaluate relationships between a single ‘omics data set. Additionally, a
227 biomarker analysis, including the ROC curves, were performed using MetaboAnalyst in its web
228 server version (Chong et al., 2018) All the statistical analysis were computed using RStudio
229 (version 1.4.1717 © 2009-2021 RStudio, PBC)

230 3. Results and discussion

231 3.1 Bioactive Lipids Profiling in BF

232 A complete list of the BF samples, their codes, and results can be found in the Supplemental
233 Material – **Table 1S and Table 2S**. Cholesterol was the most abundant compound in BF (**Figure**
234 **1S**), reaching a concentration value of 1,247.2 mg/100g fat for BF1 (**Table 1S**). A higher
235 cholesterol value compared to the one reported in the nutritional facts label was observed for
236 samples: BF1, BF6, and BF11. The items presenting higher fat content had mainly beef, turkey,
237 and dairy products as the main ingredient in their preparation process. Plain meat BFs after the

238 first 6 months of age is recommended by the CDC to avoid iron deficiency (CDC, 1998; Fox,
239 Pac, Devaney, & Jankowski, 2004; Miller, 2013). Even though a higher fat content was observed
240 for those specific BFs, fat consumption is normally promoted during the infants' first years of
241 life because of its essential role during the infants' growth phase. Restricting fat before the age of
242 two is not recommended and could be harmful during the infants' growing stage (Allen &
243 Myers, 2006; Hardy & Kleinman, 1994; Johnson, 1998; Öhlund, Hörnell, Lind, & Hernell,
244 2008).

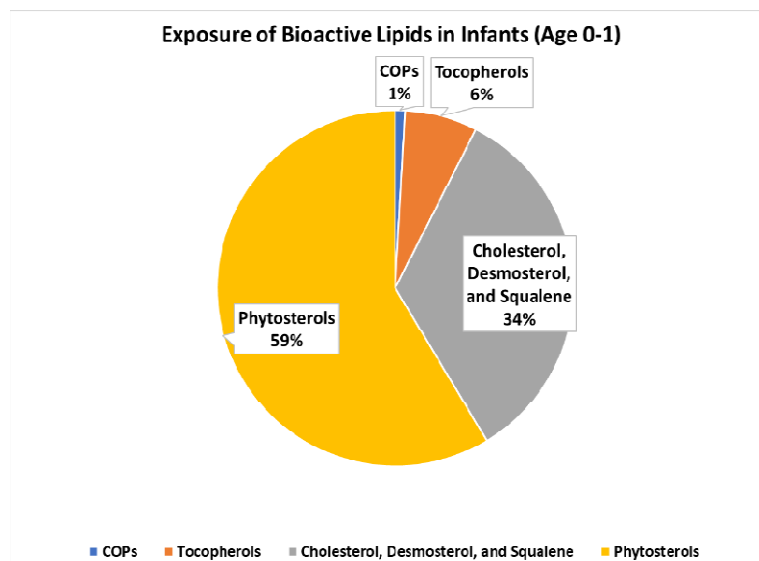
245 Phytosterols comprised 39% of the total bioactive lipid's distribution, followed by DOxS
246 with only 2%. Tocopherols, desmosterol, and squalene were not detected in our BF samples.

247 β -Sitosterol was the dominant phytosterol which agrees with previous studies (Guadalupe
248 García-Llatas et al., 2008; G. García-Llatas & Rodríguez-Estrada, 2011; A. Kilvington et al.,
249 2021). The presence of high amounts of β -Sitosterol reflect the use of vegetable oils in the
250 preparation of most BFs.

251 *3.2 Dietary Exposure from IFs and BFs during Infant's 1st Year of Life*

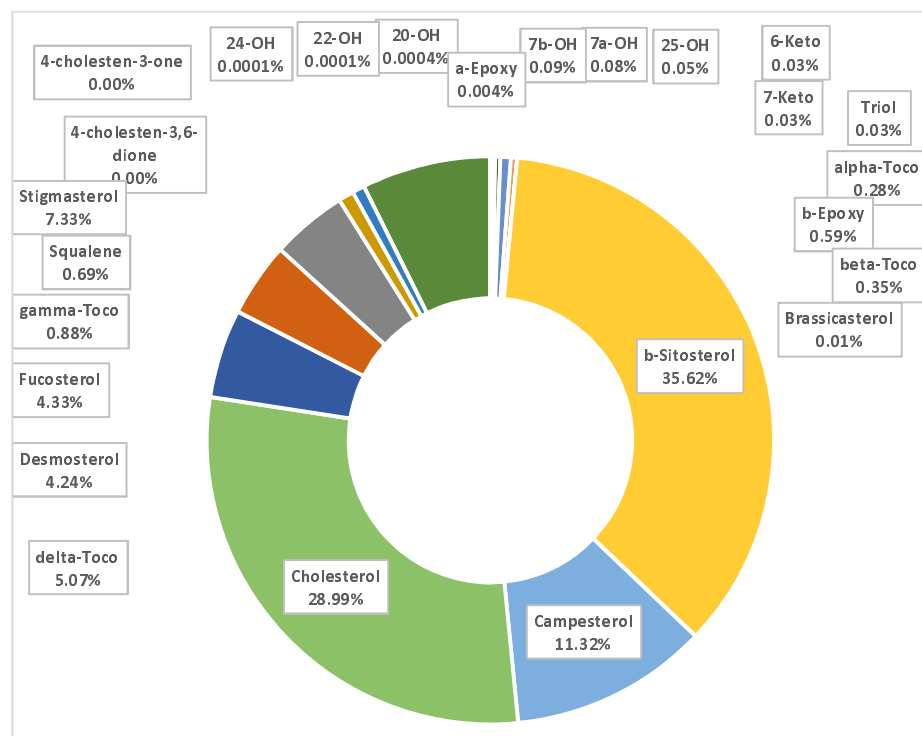
252 The equation used by SHEDS-HT to calculate the exposure value of each compound is
253 shown above. Exposure results are reported in units of $\mu\text{g}/\text{day}$ (**Table 3S**) and are based on the
254 quantities of IFs and BFs ingested by infants between 0 and 1 year old reported by the
255 NHANES-WWEIA 1999-2018. Overall, 59% of the most exposed bioactive lipids were
256 phytosterols (**Figure 1**) - specifically, β -Sitosterol with 75,410 $\mu\text{g}/\text{day}$ (**Figure 2**) - which is the
257 most abundant group and lipid reported in our previous study (A. Kilvington et al., 2021).
258 Cholesterol and campesterol were the 2nd and 3rd most exposed bioactive lipids. Among DOxS,
259 5,6 β -epoxycholesterol, 7 β -OH, and 7 α -OH obtained the 8th, 9th, and 10th highest exposure levels
260 with 1,244.4, 191.8, and 165.5 $\mu\text{g}/\text{day}$, respectively. These DOxS have been related to several

261 adverse effects on human health in previous studies such as cardiovascular diseases -
262 atherosclerosis, hypertension, ischemic stroke-, neurological diseases, viral infections, and
263 cancer (A. Kilvington et al., 2021; Lisaura Maldonado-Pereira, 2021; L. Maldonado-Pereira et
264 al., 2018; Zmysłowski & Szterk, 2019), which arise concerns related to their consumption by
265 infants.



266
267
268

Figure 1: Bioactive Lipids Exposure in IFs and BF Consumption during 1st Year of Life



269
270 **Figure 2:** Percentages of the Bioactive Lipids Exposure Values in IFs and BFJs after their Consumption during the
271 1st Year of Life according to Supplemental Material - Table 3S

272 3.1 Dietary Dose Intake and Absorption of Bioactive Lipids by Infants (0-1 years old)

273 The dietary dose intake of phytosterols (**Figure 3B**) was higher than any other bioactive lipid
274 group which agrees with previous studies (Claumarchirant, Matencio, Sanchez-Siles, Alegría, &
275 Lagarda, 2015; Hamdan, Claumarchirant, Garcia-Llatas, Alegría, & Lagarda, 2017).

276 β -Sitosterol showed the largest dose intake among all bioactive lipids reaching a value of
277 9.64 mg/kg day in females (Hamdan, Sanchez-Siles, Garcia-Llatas, & Lagarda, 2018; Hamdan,
278 Sanchez-Siles, Matencio, et al., 2018).

279 Interestingly, dietary dose intakes (mg/kg-day) were higher in male infants compared to
280 females for most of the DOxS (5,6 β -epoxycholesterol, 6-ketocholesterol, 7-ketocholesterol, 7 α -
281 OH, and 7 β -OH) and α -tocopherol (**Figure 3A and 3C**). On the other hand, dietary dose intake
282 of β -sitosterol, cholesterol, δ -tocopherol, and 25-OH were slightly higher for female infants.

283 Even though this difference in dose intake values between sexes was not significant, it highlights
284 the effect of body weight's average variability between females and males (body weight usually
285 varies by only 0.79 kg) (CDC, 2001). In our previous study focused only on IFs consumption,
286 the difference in dietary dose intake values between males and females was also not statistically
287 significant (A. Kilvington et al., 2021).

288 The estimated absorption factors (f_{abs}) provided a predicted absorption value (mg/kg-day) for
289 each specific bioactive lipid analyzed in this model (**Figure 4A and 4B**). Cholesterol showed the
290 highest absorption value with 1.90 mg/kg-day. Subsequently, β -sitosterol, campesterol, and
291 desmosterol showed values of 0.38, 0.34, and 0.33 mg/kg-day, respectively.

292

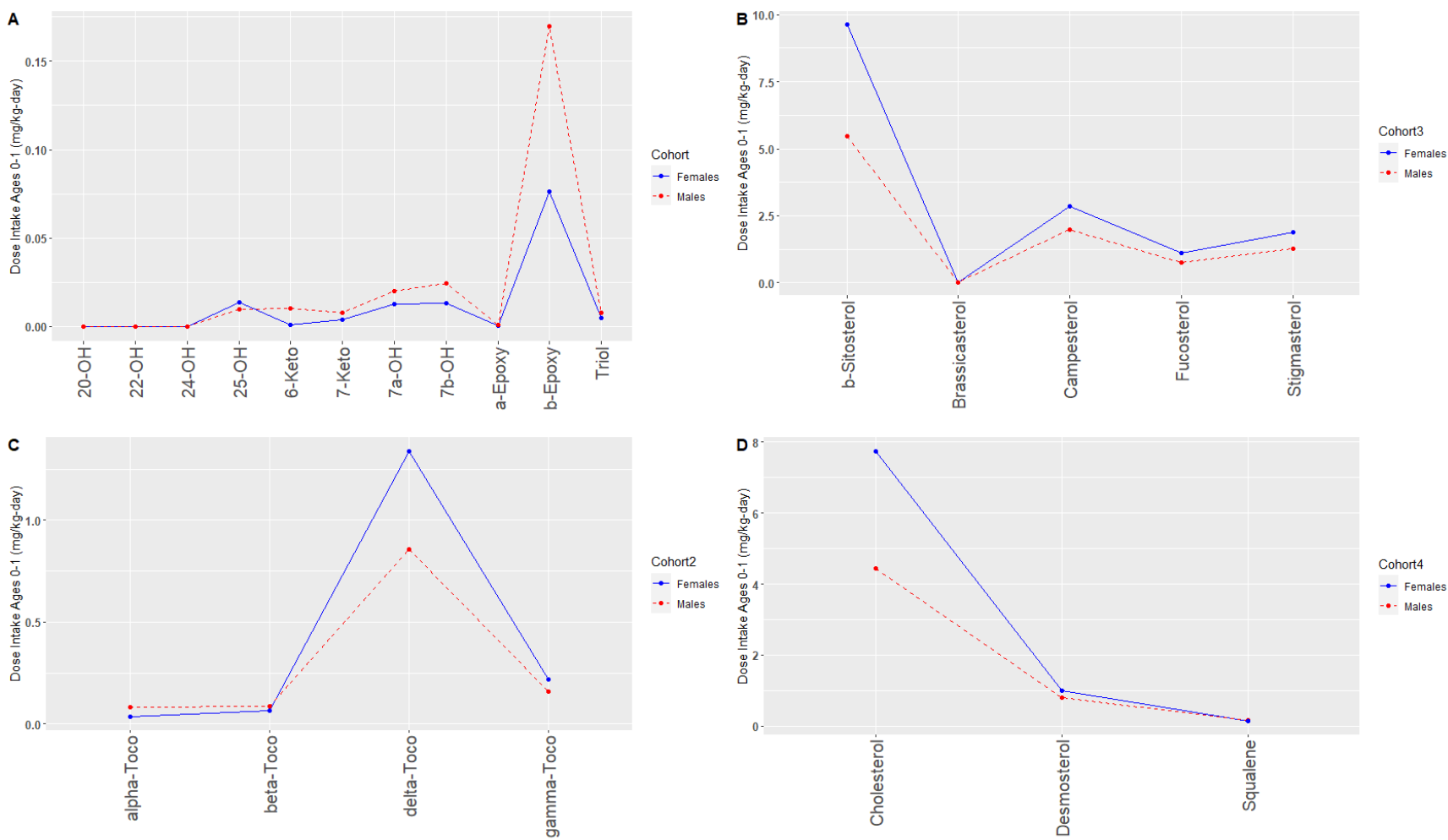


Figure 3: Dose Intake (mg/kg-day) of A) DOxS, B) Phytosterols, C) Tocopherols, and D) Cholesterol, Desmosterol, and Squalene

293

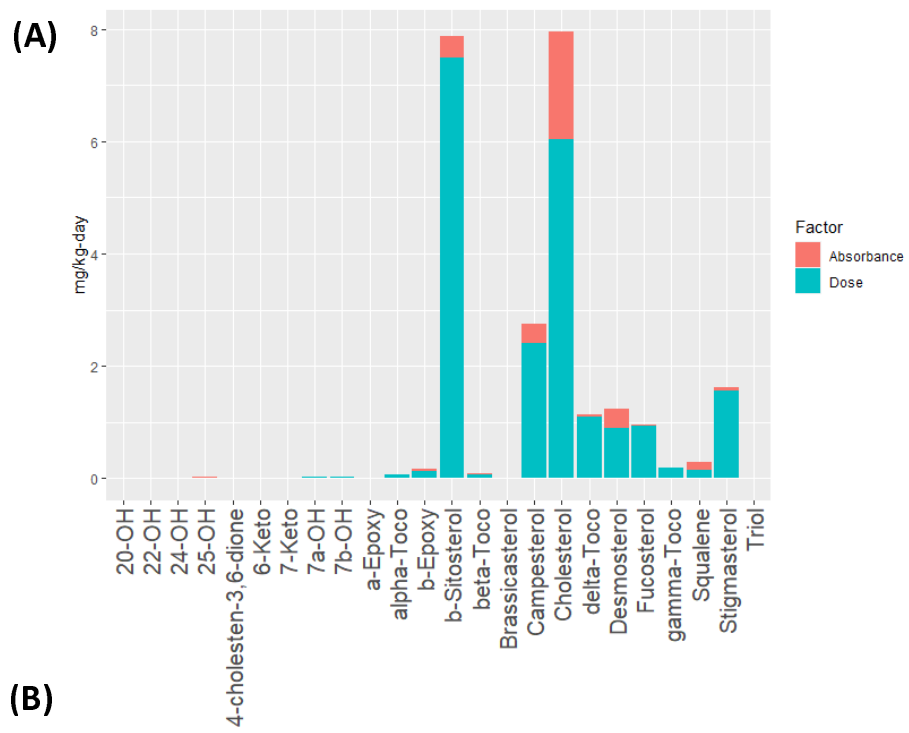
294

295 Even though β -sitosterol was the compound with the highest exposure value, cholesterol was
296 absorbed by 80% more. The bioaccessibility of β -sitosterol has been reported to be lower than
297 other sterols, which explains the reason for being less absorbed than other sterols, despite its
298 higher exposure level, and dietary dose intake (Claumarchirant et al., 2015).

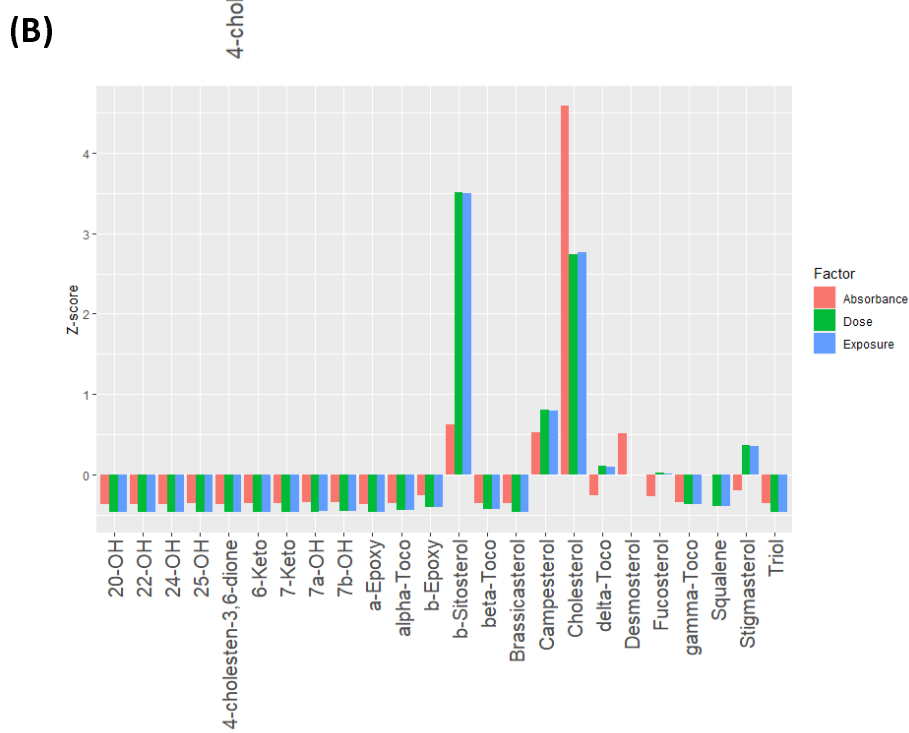
299 All DOxS together showed an absorption value of 0.062 mg/kg-day, being 5,6 β -
300 epoxycholesterol the DOxS with the highest absorption value (0.040 mg/kg-day). There's a clear
301 distinction between DOxS absorption comparing 0-6 and 6-12 months of life of an infant. The
302 presence of 7-keto in IFs was previously seen in metabolomics studies such as the one performed
303 by our group (A. Kilvington et al., 2021), where 7-keto was proposed as a processing biomarker
304 for powder IFs. Here, it is observed that it is not the most exposed, ingested, and absorbed sterol
305 (**Figure 4A**) once solids foods are introduced into the infant's diet. Therefore, it could be stated
306 that it's highly absorbed by infants, probably during just the first 6 months of life based on their
307 dietary intake through *only* IFs consumption. With the introduction of solid foods past the first 6
308 months of life, 5,6 β -epoxycholesterol resulted to be more absorbed. Absorption of these two
309 DOxS raises concerns since their toxicity has been reported in previous studies in concentrations
310 as low as 30.0 and 39.7 ng/mg of biological tissue, specifically in atherosclerosis patients
311 (Micheletta et al., 2004). Maldonado-Pereira and coworkers provided a comprehensive review
312 that reported the concentration of DOxS that exerted biological activities (L. Maldonado-Pereira
313 et al., 2018). It is crucial to study in-depth the relationship between infants' exposure and
314 absorption of these DOxS with the future development of different chronic diseases.

315 *3.2 Comparison of Bioactive Lipids Exposure, Dose Intake, and Absorption*

316 Normalized values of exposure, dose intake, and absorption for all compounds are shown in



317



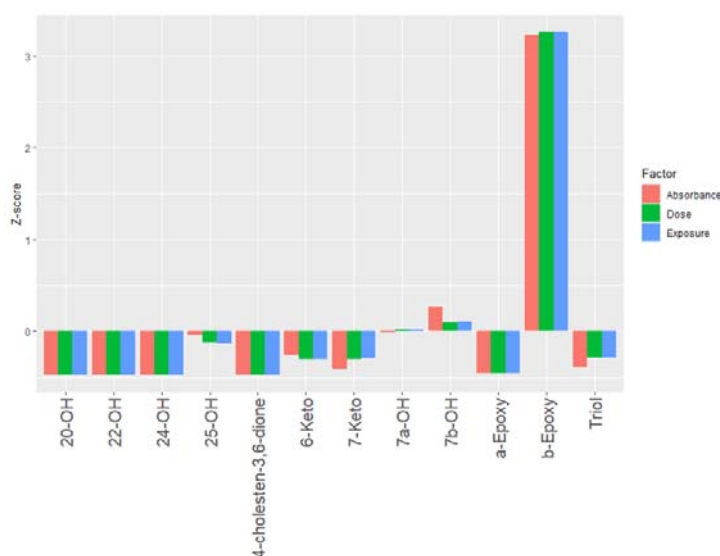
318
319

320 **Figure 4:** A) Comparison of absorption and Dose Intake. B) Normalization of Exposure, Dose Intake, and
321 Absorption

322

323 **Figure 4B.** Cholesterol's normalized absorption value was almost doubled compared to either its
324 normalized exposure or dose intake values. It is known that massive amounts of cholesterol are
325 needed for an infant's growth (especially during the first 0-24 months of life) since every
326 membrane requires cholesterol with especially high amounts in neuronal cells (Lawrence &
327 Lawrence, 2022; Woollett & Heubi, 2000; Zubin Maslov et al., 2021). Therefore, such a high
328 absorption rate of cholesterol was already expected.

329 Overall, 5,6 β -epoxycholesterol was the most absorbed DOxS. It is noteworthy to mention
330 that DOxS were absorbed in a significantly less proportion than cholesterol (**Figure 5**) as a result
331 of their lower solubility in the mixed micelles and/or lower esterification inside the enterocytes
332 (Garcia-Llatas et al., 2021). Additionally, the dominant presence of phytosterols in BF and IF
333 could be exerting an antioxidant effect that promotes such high cholesterol absorption rate while
334 it hinders further absorption of COPs. This high presence of phytosterols could result in a
335 positive attribute of IF and BF by reducing the absorption of the DOxs and promoting cholesterol
336 absorption which is much needed by infants at this early stage of life.



337

338 **Figure 5:** Normalization of Exposure, Dose Intake, and Absorption Only for COPs during 1st Year of Life

339 For β -sitosterol, a higher dose intake was obtained after comparing the exposure level. As it
340 was mentioned above, β -sitosterol is an abundant phytosterol in vegetable oils which is the main
341 ingredient of IF and certain BFs. Additionally, it could be the exerting an antioxidant effect
342 during the bioactive lipids absorption process after BFs and IFs consumption.

343 Lastly, since the absorption values for 25-OH, triol, and 7-keto were estimated values
344 obtained from 2 different scientific sources (Centre, 2021; ChemSpider, 2021), an Absorption,
345 Digestion, Metabolism, and Excretion (ADME) study is needed to obtained realistic absorption
346 rates that will facilitate more accurate exposure assessments.

347 *3.3 Dietary Dose Intake Comparison between SHEDS-HT and Theoretical Equation*

348 After comparing the results from this exposure assessment with our previous study
349 (Kilvington et al., 2021), a better idea of the dietary intake and potential absorption values was
350 obtained. Kilvington and her co-worker estimated dose intake values using the theoretical
351 equation:

$$DI = \frac{[C] \times Intake \times Abs}{BW}$$

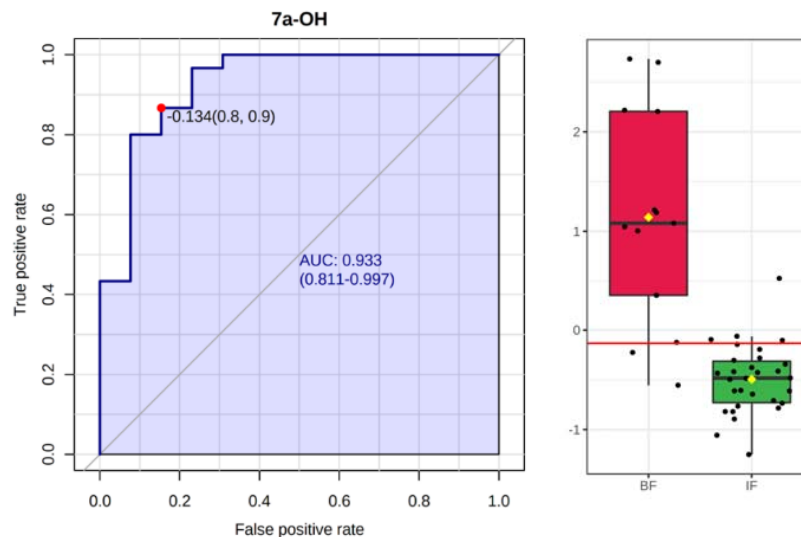
352 This equation was modified to analyze the ingestion and dose intake during the first 6 months
353 of life of several bioactive lipids. Our previous work identified 7-keto as a potential biomarker
354 for IFs. Lately, Risso and coworkers also suggested 7-keto as a biomarker in their study using
355 powder milk samples (Risso et al., 2022).

356 Our results -which are derived from the equation previously mentioned used by SHEDS-HT-
357 revealed that compared to the first 6 months of an infant where their diet is mainly comprised of
358 IFs, 5,6 β -epoxycholesterol, 7 β -OH, and 7 α -OH were the most absorbed DOxS from BFs

359 consumption. 5,6 β -epoxycholesterol, 7 β -OH, and 7 α -OH have been previously found in several
360 types of meat and poultry samples (Chiu, 2018; Gehring et al., 2020; Grau, Codony, Grimpa,
361 Baucells, & Guardiola, 2001; Khan et al., 2015; Musto, Faraone, Cellini, & Musto, 2014; Osada,
362 Hoshina, Nakamura, & Sugano, 2000; Pie, 1991; Rant et al., 2019). Compared to IFs, BFs'
363 protein content commonly comes from different meat and poultry ingredients used during their
364 confection. Interestingly, based on unpublished results from our lab, 5,6 β -epoxycholesterol has
365 been found present in human placenta samples. This finding could somehow relate the higher
366 absorption rate of this DOxS with prenatal factors such as hormones present during the infant's
367 fetal development (Prins et al., 2022; Rodríguez-Rodríguez et al., 2018; Wu, Tian, & Lin, 2015)

368 Biomarker analysis for our BF and IF data revealed that a 7 α -OH could be a DOxS
369 processing biomarker for BFs (**Figure 6**). From these results and considering our previous study,
370 we suggest that 7 α -OH is a biomarker for BFs while 7-keto serves as a biomarker for powder IF.
371 It is worth noting that 7-OH isomers are direct precursors of 7-keto. Differences in the type of
372 thermal processing of each type of food (IF and BF) are the main reason that leads to the
373 formation of certain DOxS, which suggests them as potential biomarkers of either BF or powder
374 IF. This hypothesis is strongly supported by previous studies that have reported differences in
375 DOxS dominance on the same food matrices cooked under different conditions (Francesc
376 Guardiola, 2002; F. Guardiola, Bou, Boatella, & Codony, 2004; Lisaura Maldonado-Pereira,
377 2021; L. Maldonado-Pereira et al., 2018).

378 An sPLS-DA was performed to evaluate the accuracy of our models. Data were classified by
379 BF, Liquid IFs (L-IFs), and Powder IF (P-IFs) to highlight any potential differences in IF
380 processing techniques. **Figures 7A** show that there is indeed a noticeable difference between the
381 confection process of BF, L, and P that affects the values of the DOxS present in the samples.



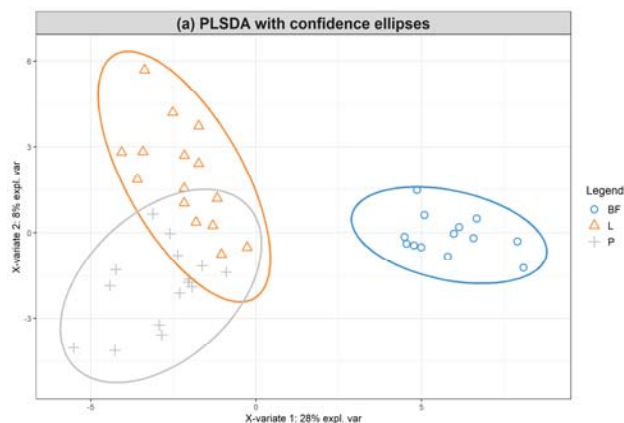
382

383

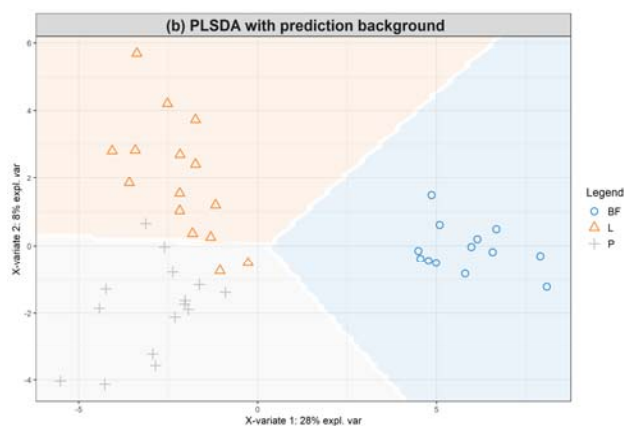
Figure 6: 7α -OH as a Potential Biomarkers of BFs

384 Additionally, **Figure 7B** shows the prediction zone for other samples based on our data. In
385 our model, only 3 out of 63 samples were incorrectly classified, reaching a 95.2% accuracy. Both
386 of these figures provide intuition on how novel samples would be classified according to the
387 generated model. Lastly, **Figure 8** shows a ROC for all 3 models (BF, L-IFs, and P-IFs) with
388 highly positive sensitivity rates for each one (BF: 0.1, P-IFs: 0.9905, and L-IFs: 0.981, allowing
389 a good prediction rate for future data.

390



391

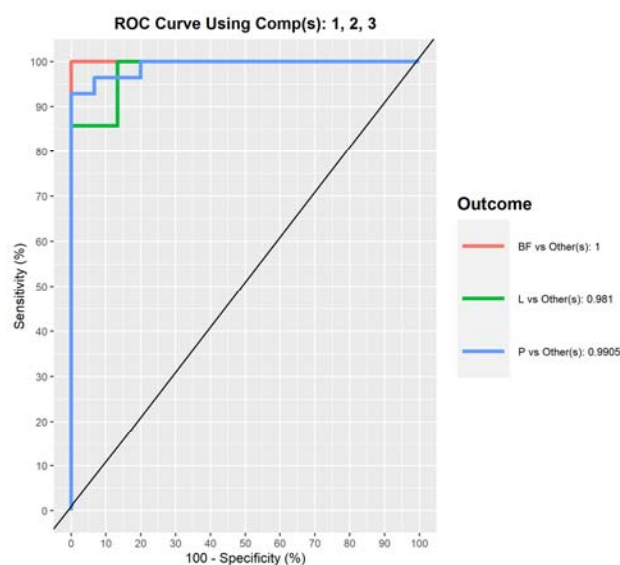


392

Figure 7: A) IF and BF data with confidence ellipses and B) Prediction Zones

393 Besides the use of 7α -OH and 7-keto as biomarkers of thermal processing techniques
394 employed during the confection of BFs and IFs, it is important to keep in mind their biological
395 toxicity that could become a potential hazard among infants. Comparing both DOxS, 7α -OH and
396 7-keto have been found in patients suffering different chronic diseases such as hypertension,
397 multiple sclerosis, cancer, atherosclerosis, among others (L. Maldonado-Pereira et al., 2018). The
398 lowest concentrations exerting a toxicological effect previously reported for 7α -OH and 7-keto
399 were 0.004 and 0.006 $\mu\text{g/mL}$ of blood plasma, respectively, in atherosclerosis patients. Since
400 there is so little available information regarding the relationship between these compounds and
401 the development of these diseases as a result of the consumption of IFs and BFs by infants, this

402 vulnerable population could be potentially at a health risk. More accurate information regarding
403 DOxS absorption values, their metabolism, and excretion rates is needed to start reducing this
404 knowledge gap. Therefore, we suggest the development of an Absorption, Digestion,
405 Metabolism, and Excretion (ADME) study followed by the completion of a risk assessment to
406 identify the real hazard and protect our infants.



407

408 **Figure 8:** ROC for BF, Liquid Formula, and Infant Formula Models

409 4. Conclusions

410 Bioactive lipid distribution of BF is dominated by cholesterol (59%) from animal based
411 foods, followed by phytosterols (~39%) from plant based foods. β -Sitosterol was the most
412 abundant phytosterol as a result of its dominant presence in vegetable oils, which is the BF's
413 main ingredient.

414 Dietary exposure assesment showed that phytosterols had the highest exposure
415 percentages (59%) compared to DOxS, tocopherols, cholesterol, squalene, and desmosterol. β -
416 Sitosterol was the most exposed compound (0.38 mg/kg-day) but the 2nd most absorbed

417 compound because of its lower bioaccessibility which has been previously reported
418 (Claumarchirant et al., 2015). Cholesterol was the most absorbed lipid with a 1.90 mg/kg-day.

419 5,6 β -epoxycholesterol was the DOxS with the highest absorption value (0.040 mg/kg-day)
420 which places it overall in the 7th position among all bioactive lipids absorbed. Even though
421 absorbance of all DOxS together accounted for only 1.86% (0.062 mg/kg-day), there's evidence
422 of their biological effect which raises concerns related to their consumption by infants. There is a
423 critical need to deeper investigate the relationship of infants diet – especially during the 1 year of
424 life – with future development of chronic diseases.

425 One of our model's limitations includes the lack of information regarding the absorption
426 fractions (f_{abs}) of 25-OH, triol, and 7-keto. For the purpose of our study, these values were
427 estimated from the available data found from 2 different scientific sources (Centre, 2021;
428 ChemSpider, 2021). This is why the FHEL suggests and is currently conducting an Absorption,
429 Digestion, Metabolism, and Excretion (ADME) study – especially of DOxS - to obtain more
430 accurate absorption values to enable a more precise exposure assessment. Despite this weakness,
431 this is the first time that an exposure assessment including DOxS ingested by infants after BFs
432 and IFs consumption is performed, enabling information regarding these hazardous compounds
433 and their potential future effects on infants' health.

434 Based on the biomarker analysis, 7 α -OH could be a potential biomarker of BFs which could
435 not be predicted by just analyzing the exposure and absorption data obtained from SHEDS-HT.

436 The difference in DOxS distribution between BF, IFs-L, and IFs-P as a result of processing
437 techniques variability, was confirmed after an sPLS-DA was performed. All 3 groups showed
438 segregation among samples of the same classification group. Therefore, based on our results

439 which also compared processing techniques between BF, L-IFs, and P-IFs and their significance,
440 we support Kilvington's proposal of 7-ketocholesterol as a biomarker for powder IF based on its
441 specific spray drying and canning techniques employed during its confection (A. Kilvington et
442 al., 2019; Risso et al., 2022).

443 **Acknowledgments:**

444 This study was funded by the Center for Research Ingredients Safety (CRIS) with the
445 GR100229 grant, and the USDA National Institute of Food and Agriculture, Hatch project
446 MICL02526 to I.G.M.M. The authors are grateful to Kristin Isaacs, Center for Computational
447 Toxicology and Exposure, U.S. Environmental Protection Agency for her help with the SHEDS-
448 HT software package. The authors are grateful to Nama Naseem, Nicole Urrea, Ashley Xu,
449 Rosemary Laurito, Grant Gmitter, and Lisa Zou for their assistance during lipid extraction.

450 **Conflict of interest**

451 The authors have declared no conflict of interest.

452

453 **References**

- 454 Allen, R. E., & Myers, A. L. (2006). Nutrition in toddlers. *Am Fam Physician*, *74*(9), 1527-1532.
- 455 Babawale, E. A., Jones, P. J., Mercer, K. E., Lin, H., Yeruva, L., Bar Yoseph, F., & Rutherford, S. M.
- 456 (2018). Modulating Sterol Concentrations in Infant Formula Influences Cholesterol
- 457 Absorption and Synthesis in the Neonatal Piglet. *Nutrients*, *10*(12).
- 458 doi:10.3390/nu10121848
- 459 Cais-Sokolińska, D., Walkowiak-Tomczak, D., & Rudzińska, M. (2022). Photosensitized oxidation
- 460 of cholesterol and altered oxysterol levels in sour cream: Effects of addition of cucumber
- 461 pickles. *J Dairy Sci*, *105*(6), 4760-4771. doi:10.3168/jds.2022-21856
- 462 CDC. (1998). *Recommendations to prevent and control iron deficiency in the United States*.
- 463 MMWR
- 464 CDC. (2001). *Data Table of Infant Weight-for-age Charts*. Retrieved from
- 465 https://www.cdc.gov/growthcharts/html_charts/wtageinf.htm
- 466 CDC. (2021a). *Maternity Practices in Infant Nutrition and Care (mPINC) Survey*. Retrieved from
- 467 <https://www.cdc.gov/breastfeeding/data/mpinc/index.htm>
- 468 CDC. (2021b). *Vitamins & Minerals*. Retrieved from
- 469 <https://www.cdc.gov/nutrition/infantandtoddlernutrition/vitamins-minerals/index.html>
- 470 Centre, T. M. I. (2021). The Metabolomics Innovation Centre. Retrieved from
- 471 <https://www.metabolomicscentre.ca/>
- 472 ChemSpider. (2021). ChemSpider. Retrieved from <http://www.chemspider.com/>
- 473 Chiu, C.-W. a. K. T.-H. a. C. B.-H. (2018). Improved Analytical Method for Determination of
- 474 Cholesterol-Oxidation Products in Meat and Animal Fat by QuEChERS Coupled with Gas
- 475 Chromatography–Mass Spectrometry. *Journal of Agricultural and Food Chemistry*,
- 476 *66*(13), 3561-3571. doi:10.1021/acs.jafc.8b00250
- 477 Chong, J., Soufan, O., Li, C., Caraus, I., Li, S., Bourque, G., . . . Xia, J. (2018). MetaboAnalyst 4.0:
- 478 towards more transparent and integrative metabolomics analysis. *Nucleic Acids Res*,
- 479 *46*(W1), W486-W494. doi:10.1093/nar/gky310
- 480 Chudy, S., & Teichert, J. (2021). Oxysterols in stored powders as potential health hazards.
- 481 *Scientific Reports*, *11*(1), 21192. doi:10.1038/s41598-021-00636-5
- 482 Claumarchirant, L., Matencio, E., Sanchez-Siles, L. M., Alegría, A., & Lagarda, M. J. (2015). Sterol
- 483 Composition in Infant Formulas and Estimated Intake. *J Agric Food Chem*, *63*(32), 7245-
- 484 7251. doi:10.1021/acs.jafc.5b02647
- 485 Collective, G. B. (2017). *Global Breastfeeding Scorecard 2017,*
- 486 *tracking progress for breastfeeding policies and programmes*. Paper presented at the UNICEF
- 487 and World Health Organization, New York and Geneva.
- 488 Folch, J., Lees, M., & Sloane Stanley, G. (1957). A simple method for the isolation and
- 489 purification of total lipides from animal tissues. *J biol Chem*, *226*(1), 497-509.
- 490 Fox, M. K., Pac, S., Devaney, B., & Jankowski, L. (2004). Feeding infants and toddlers study:
- 491 What foods are infants and toddlers eating? *J Am Diet Assoc*, *104*(1 Suppl 1), s22-30.
- 492 doi:10.1016/j.jada.2003.10.026
- 493 Garcia-Llatas, G., Mercatante, D., López-García, G., & Rodríguez-Estrada, M. T. (2021).
- 494 Oxysterols – how much do we know about food occurrence, dietary intake and
- 495 absorption? *Current Opinion in Food Science*.
- 496 doi:<https://doi.org/10.1016/j.cofs.2021.08.001>

- 497 García-Llatas, G., Cercaci, L., Rodríguez-Estrada, M. T., Lagarda, M. J., Farré, R., & Lercker, G.
498 (2008). Sterol Oxidation in Ready-to-Eat Infant Foods During Storage. *Journal of*
499 *Agricultural and Food Chemistry*, 56(2), 469-475. doi:10.1021/jf072475g
- 500 García-Llatas, G., & Rodríguez-Estrada, M. T. (2011). Current and new insights on phytosterol
501 oxides in plant sterol-enriched food. *Chem Phys Lipids*, 164(6), 607-624.
502 doi:10.1016/j.chemphyslip.2011.06.005
- 503 Gehring, J., Touvier, M., Baudry, J., Julia, C., Buscail, C., Srouf, B., . . . Allès, B. (2020).
504 Consumption of Ultra-Processed Foods by Pesco-Vegetarians, Vegetarians, and Vegans:
505 Associations with Duration and Age at Diet Initiation. *The Journal of Nutrition*, 151(1),
506 120-131. doi:10.1093/jn/nxaa196
- 507 Gerber. (2021a). Baby Food. In.
- 508 Gerber. (2021b). Daily nutrition goals & food groups for Crawlers. Retrieved from
509 <https://www.gerber.com/learning-center/crawler-nutrition-basics>
- 510 Grau, A., Codony, R., Grimpa, S., Baucells, M. D., & Guardiola, F. (2001). Cholesterol oxidation in
511 frozen dark chicken meat: influence of dietary fat source, and alpha-tocopherol and
512 ascorbic acid supplementation. *Meat Science*, 57(2), 197-208. doi:10.1016/s0309-
513 1740(00)00094-2
- 514 Guardiola, F. (2002). *Cholesterol and phytosterol oxidation products: analysis, occurrence, and*
515 *biological effects*: The American Oil Chemists Society.
- 516 Guardiola, F., Bou, R., Boatella, J., & Codony, R. (2004). Analysis of sterol oxidation products in
517 foods. *Journal of Aoac International*, 87(2), 441-466.
- 518 Hamdan, I. J. A., Claumarchirant, L., Garcia-Llatas, G., Alegria, A., & Lagarda, M. J. (2017). Sterols
519 in infant formulas: validation of a gas chromatographic method. *Int J Food Sci Nutr*,
520 68(6), 695-703. doi:10.1080/09637486.2017.1287883
- 521 Hamdan, I. J. A., Sanchez-Siles, L. M., Garcia-Llatas, G., & Lagarda, M. J. (2018). Sterols in Infant
522 Formulas: A Bioaccessibility Study. *J Agric Food Chem*, 66(6), 1377-1385.
523 doi:10.1021/acs.jafc.7b04635
- 524 Hamdan, I. J. A., Sanchez-Siles, L. M., Matencio, E., Bermúdez, J. D., Garcia-Llatas, G., & Lagarda,
525 M. J. (2018). Sterols in human milk during lactation: bioaccessibility and estimated
526 intakes. *Food Funct*, 9(12), 6566-6576. doi:10.1039/c8fo01795f
- 527 Hardy, S. C., & Kleinman, R. E. (1994). Fat and cholesterol in the diet of infants and young
528 children: implications for growth, development, and long-term health. *J Pediatr*, 125(5
529 Pt 2), S69-77. doi:10.1016/s0022-3476(06)80739-0
- 530 Harris, J. L., & Pomeranz, J. L. (2020). Infant formula and toddler milk marketing: opportunities
531 to address harmful practices and improve young children's diets. *Nutr Rev*, 78(10), 866-
532 883. doi:10.1093/nutrit/nuz095
- 533 Isaacs, K. K., Glen, W. G., Egeghy, P., Goldsmith, M. R., Smith, L., Vallero, D., . . . Ozkaynak, H.
534 (2014). SHEDS-HT: An Integrated Probabilistic Exposure Model for Prioritizing Exposures
535 to Chemicals with Near-Field and Dietary Sources. *Environmental Science & Technology*,
536 48(21), 12750-12759. doi:10.1021/es502513w
- 537 Jensen, R. G. (1999). Lipids in human milk. *Lipids*, 34(12), 1243-1271.
538 doi:<https://doi.org/10.1007/s11745-999-0477-2>
- 539 Johnson, R. (1998). Young children and dietary fat intake: how much is too little? *J Am Diet*
540 *Assoc*, 98(4), 402. doi:10.1016/S0002-8223(98)00091-1

- 541 Khan, M. I., Min, J. S., Lee, S. O., Yim, D. G., Seol, K. H., Lee, M., & Jo, C. (2015). Cooking, storage,
542 and reheating effect on the formation of cholesterol oxidation products in processed
543 meat products. *Lipids Health Dis*, 14, 89. doi:10.1186/s12944-015-0091-5
- 544 Kilvington, A., Barnaba, C., Rajasekaran, S., Laurens Leimanis, M. L., & Medina-Meza, I. G.
545 (2021). Lipid profiling and dietary assessment of infant formulas reveal high intakes of
546 major cholesterol oxidative product (7-ketocholesterol). *Food Chem*, 354, 129529.
547 doi:10.1016/j.foodchem.2021.129529
- 548 Kilvington, A., Barnaba, C., Rajasekaran, S., Laurens, M. L. L., & Gabriela Medina-Meza, I. (2021).
549 Lipid profiling and dietary assessment of infant formulas reveal high intakes of major
550 cholesterol oxidative product (7-ketocholesterol). *Food Chemistry*, 129529.
551 doi:<https://doi.org/10.1016/j.foodchem.2021.129529>
- 552 Kilvington, A., Maldonado-Pereira, L., Torres-Palacios, C., & Medina-Meza, I. (2019).
553 Phytosterols and their oxidative products in infant formula. *Journal of Food Process*
554 *Engineering*, e13151.
- 555 Lawrence, R. M., & Lawrence, R. A. (2022). 10 - Normal Growth, Growth Faltering, and Obesity
556 in Breastfed Infants. In R. A. Lawrence & R. M. Lawrence (Eds.), *Breastfeeding (Ninth*
557 *Edition)* (pp. 298-325). Philadelphia: Elsevier.
- 558 Maldonado-Pereira, L. (2021). *Comprehensive Study of the Oxidative Stability of the Most*
559 *Consumed Ultra-Processed Foods in the USA*. (Ph.D.). Michigan State University, Ann
560 Arbor. Retrieved from
561 [http://ezproxy.msu.edu/login?url=https://www.proquest.com/dissertations-](http://ezproxy.msu.edu/login?url=https://www.proquest.com/dissertations-theses/comprehensive-study-oxidative-stability-most/docview/2536440379/se-2?accountid=12598)
562 [theses/comprehensive-study-oxidative-stability-most/docview/2536440379/se-](http://ezproxy.msu.edu/login?url=https://www.proquest.com/dissertations-theses/comprehensive-study-oxidative-stability-most/docview/2536440379/se-2?accountid=12598)
563 [2?accountid=12598](http://ezproxy.msu.edu/login?url=https://www.proquest.com/dissertations-theses/comprehensive-study-oxidative-stability-most/docview/2536440379/se-2?accountid=12598) Retrieved from
564 [http://resolver.ebscohost.com/openurl?ctx_ver=Z39.88-](http://resolver.ebscohost.com/openurl?ctx_ver=Z39.88-2004&ctx_enc=info:ofi/enc:UTF-8&rft_id=info:sid/ProQuest+Dissertations+%26+Theses+Global&rft_val_fmt=info:ofi/fmt:kev:mtx:dissertation&rft.genre=dissertations+%26+theses&rft.jtitle=&rft.atitle=&rft.au=Maldonado-Pereira%2C+Lisa+&rft.aulast=Maldonado-Pereira&rft.aufirst=Lisa+&rft.date=2021-01-01&rft.volume=&rft.issue=&rft.spage=&rft.isbn=9798738634932&rft.btitle=&rft.title=Comprehensive+Study+of+the+Oxidative+Stability+of+the+Most+Consumed+Ultra-Processed+Foods+in+the+USA&rft.issn=&rft_id=info:doi/)
565 [2004&ctx_enc=info:ofi/enc:UTF-](http://resolver.ebscohost.com/openurl?ctx_ver=Z39.88-2004&ctx_enc=info:ofi/enc:UTF-8&rft_id=info:sid/ProQuest+Dissertations+%26+Theses+Global&rft_val_fmt=info:ofi/fmt:kev:mtx:dissertation&rft.genre=dissertations+%26+theses&rft.jtitle=&rft.atitle=&rft.au=Maldonado-Pereira%2C+Lisa+&rft.aulast=Maldonado-Pereira&rft.aufirst=Lisa+&rft.date=2021-01-01&rft.volume=&rft.issue=&rft.spage=&rft.isbn=9798738634932&rft.btitle=&rft.title=Comprehensive+Study+of+the+Oxidative+Stability+of+the+Most+Consumed+Ultra-Processed+Foods+in+the+USA&rft.issn=&rft_id=info:doi/)
566 [8&rft_id=info:sid/ProQuest+Dissertations+%26+Theses+Global&rft_val_fmt=info:ofi/fm](http://resolver.ebscohost.com/openurl?ctx_ver=Z39.88-2004&ctx_enc=info:ofi/enc:UTF-8&rft_id=info:sid/ProQuest+Dissertations+%26+Theses+Global&rft_val_fmt=info:ofi/fmt:kev:mtx:dissertation&rft.genre=dissertations+%26+theses&rft.jtitle=&rft.atitle=&rft.au=Maldonado-Pereira%2C+Lisa+&rft.aulast=Maldonado-Pereira&rft.aufirst=Lisa+&rft.date=2021-01-01&rft.volume=&rft.issue=&rft.spage=&rft.isbn=9798738634932&rft.btitle=&rft.title=Comprehensive+Study+of+the+Oxidative+Stability+of+the+Most+Consumed+Ultra-Processed+Foods+in+the+USA&rft.issn=&rft_id=info:doi/)
567 [t:kev:mtx:dissertation&rft.genre=dissertations+%26+theses&rft.jtitle=&rft.atitle=&rft.au=](http://resolver.ebscohost.com/openurl?ctx_ver=Z39.88-2004&ctx_enc=info:ofi/enc:UTF-8&rft_id=info:sid/ProQuest+Dissertations+%26+Theses+Global&rft_val_fmt=info:ofi/fmt:kev:mtx:dissertation&rft.genre=dissertations+%26+theses&rft.jtitle=&rft.atitle=&rft.au=Maldonado-Pereira%2C+Lisa+&rft.aulast=Maldonado-Pereira&rft.aufirst=Lisa+&rft.date=2021-01-01&rft.volume=&rft.issue=&rft.spage=&rft.isbn=9798738634932&rft.btitle=&rft.title=Comprehensive+Study+of+the+Oxidative+Stability+of+the+Most+Consumed+Ultra-Processed+Foods+in+the+USA&rft.issn=&rft_id=info:doi/)
568 [Maldonado-Pereira%2C+Lisa+&rft.aulast=Maldonado-](http://resolver.ebscohost.com/openurl?ctx_ver=Z39.88-2004&ctx_enc=info:ofi/enc:UTF-8&rft_id=info:sid/ProQuest+Dissertations+%26+Theses+Global&rft_val_fmt=info:ofi/fmt:kev:mtx:dissertation&rft.genre=dissertations+%26+theses&rft.jtitle=&rft.atitle=&rft.au=Maldonado-Pereira%2C+Lisa+&rft.aulast=Maldonado-Pereira&rft.aufirst=Lisa+&rft.date=2021-01-01&rft.volume=&rft.issue=&rft.spage=&rft.isbn=9798738634932&rft.btitle=&rft.title=Comprehensive+Study+of+the+Oxidative+Stability+of+the+Most+Consumed+Ultra-Processed+Foods+in+the+USA&rft.issn=&rft_id=info:doi/)
569 [Pereira&rft.aufirst=Lisa+&rft.date=2021-01-](http://resolver.ebscohost.com/openurl?ctx_ver=Z39.88-2004&ctx_enc=info:ofi/enc:UTF-8&rft_id=info:sid/ProQuest+Dissertations+%26+Theses+Global&rft_val_fmt=info:ofi/fmt:kev:mtx:dissertation&rft.genre=dissertations+%26+theses&rft.jtitle=&rft.atitle=&rft.au=Maldonado-Pereira%2C+Lisa+&rft.aulast=Maldonado-Pereira&rft.aufirst=Lisa+&rft.date=2021-01-01&rft.volume=&rft.issue=&rft.spage=&rft.isbn=9798738634932&rft.btitle=&rft.title=Comprehensive+Study+of+the+Oxidative+Stability+of+the+Most+Consumed+Ultra-Processed+Foods+in+the+USA&rft.issn=&rft_id=info:doi/)
570 [01&rft.volume=&rft.issue=&rft.spage=&rft.isbn=9798738634932&rft.btitle=&rft.title=C](http://resolver.ebscohost.com/openurl?ctx_ver=Z39.88-2004&ctx_enc=info:ofi/enc:UTF-8&rft_id=info:sid/ProQuest+Dissertations+%26+Theses+Global&rft_val_fmt=info:ofi/fmt:kev:mtx:dissertation&rft.genre=dissertations+%26+theses&rft.jtitle=&rft.atitle=&rft.au=Maldonado-Pereira%2C+Lisa+&rft.aulast=Maldonado-Pereira&rft.aufirst=Lisa+&rft.date=2021-01-01&rft.volume=&rft.issue=&rft.spage=&rft.isbn=9798738634932&rft.btitle=&rft.title=Comprehensive+Study+of+the+Oxidative+Stability+of+the+Most+Consumed+Ultra-Processed+Foods+in+the+USA&rft.issn=&rft_id=info:doi/)
571 [omprehensive+Study+of+the+Oxidative+Stability+of+the+Most+Consumed+Ultra-](http://resolver.ebscohost.com/openurl?ctx_ver=Z39.88-2004&ctx_enc=info:ofi/enc:UTF-8&rft_id=info:sid/ProQuest+Dissertations+%26+Theses+Global&rft_val_fmt=info:ofi/fmt:kev:mtx:dissertation&rft.genre=dissertations+%26+theses&rft.jtitle=&rft.atitle=&rft.au=Maldonado-Pereira%2C+Lisa+&rft.aulast=Maldonado-Pereira&rft.aufirst=Lisa+&rft.date=2021-01-01&rft.volume=&rft.issue=&rft.spage=&rft.isbn=9798738634932&rft.btitle=&rft.title=Comprehensive+Study+of+the+Oxidative+Stability+of+the+Most+Consumed+Ultra-Processed+Foods+in+the+USA&rft.issn=&rft_id=info:doi/)
572 [Processed+Foods+in+the+USA&rft.issn=&rft_id=info:doi/](http://resolver.ebscohost.com/openurl?ctx_ver=Z39.88-2004&ctx_enc=info:ofi/enc:UTF-8&rft_id=info:sid/ProQuest+Dissertations+%26+Theses+Global&rft_val_fmt=info:ofi/fmt:kev:mtx:dissertation&rft.genre=dissertations+%26+theses&rft.jtitle=&rft.atitle=&rft.au=Maldonado-Pereira%2C+Lisa+&rft.aulast=Maldonado-Pereira&rft.aufirst=Lisa+&rft.date=2021-01-01&rft.volume=&rft.issue=&rft.spage=&rft.isbn=9798738634932&rft.btitle=&rft.title=Comprehensive+Study+of+the+Oxidative+Stability+of+the+Most+Consumed+Ultra-Processed+Foods+in+the+USA&rft.issn=&rft_id=info:doi/) Dissertations & Theses @ CIC
573 Institutions; ProQuest Dissertations & Theses Global database. (28497722)
- 574 Maldonado-Pereira, L., Barnaba, C., De los Campos, G., & Medina-Meza, I. (2021). Evaluation of
575 the Nutritional Quality of Ultra-Processed Foods (Ready to Eat + Fast Food): Fatty Acid
576 Composition. *medRxiv*, 2021.2004.2016.21255610. doi:10.1101/2021.04.16.21255610
- 577 Maldonado-Pereira, L., Schweiss, M., Barnaba, C., & Medina-Meza, I. G. (2018). The role of
578 cholesterol oxidation products in food toxicity. *Food and Chemical Toxicology*, 118, 908-
579 939. doi:10.1016/j.fct.2018.05.059
- 580 Micheletta, F., Natoli, S., Misuraca, M., Sbarigia, E., Diczfalusy, U., & Iuliano, L. (2004). Vitamin E
581 supplementation in patients with carotid atherosclerosis: reversal of altered oxidative
582 stress status in plasma but not in plaque. *Arterioscler Thromb Vasc Biol*, 24(1), 136-140.
583 doi:10.1161/01.ATV.0000104028.07929.72

- 584 Miller, J. L. (2013). Iron deficiency anemia: a common and curable disease. *Cold Spring Harbor*
585 *perspectives in medicine*, 3(7), a011866. doi:10.1101/cshperspect.a011866
- 586 Musto, M., Faraone, D., Cellini, F., & Musto, E. (2014). Changes of DNA quality and meat
587 physicochemical properties in bovine supraspinatus muscle during microwave heating.
588 *Journal of the Science of Food and Agriculture*, 94(4), 785-791. doi:10.1002/jsfa.6441
- 589 Osada, K., Hoshina, S., Nakamura, S., & Sugano, M. (2000). Cholesterol Oxidation in Meat
590 Products and Its Regulation by Supplementation of Sodium Nitrite and Apple Polyphenol
591 before Processing. *Journal of Agricultural and Food Chemistry*, 48(9), 3823-3829.
592 doi:10.1021/jf991187k
- 593 Pie, J. E. a. S. K. a. S. C. (1991). Cholesterol oxidation in meat products during cooking and
594 frozen storage. *Journal of Agricultural and Food Chemistry*, 39(2), 250-254.
595 doi:10.1021/jf00002a005
- 596 Poli, G., Leoni, V., Biasi, F., Canzoneri, F., Risso, D., & Menta, R. (2022). Oxysterols: From redox
597 bench to industry. *Redox Biol*, 49, 102220. doi:10.1016/j.redox.2021.102220
- 598 Prins, J. R., Schoots, M. H., Wessels, J. I., Campmans-Kuijpers, M. J. E., Navis, G. J., van Goor, H.,
599 . . . Gordijn, S. J. (2022). The influence of the dietary exposome on oxidative stress in
600 pregnancy complications. *Molecular Aspects of Medicine*, 87, 101098.
601 doi:<https://doi.org/10.1016/j.mam.2022.101098>
- 602 Rant, W., Radzik-Rant, A., Świątek, M., Niżnikowski, R., Szymańska, Ż., Bednarczyk, M., . . .
603 Ślęzak, M. (2019). The effect of aging and muscle type on the quality characteristics and
604 lipid oxidation of lamb meat. *Arch Anim Breed*, 62(2), 383-391. doi:10.5194/aab-62-383-
605 2019
- 606 Risso, D., Leoni, V., Canzoneri, F., Arveda, M., Zivoli, R., Peraino, A., . . . Menta, R. (2022).
607 Presence of cholesterol oxides in milk chocolates and their correlation with milk powder
608 freshness. *PLoS One*, 17(3), e0264288. doi:10.1371/journal.pone.0264288
- 609 Rodríguez-Rodríguez, P., Ramiro-Cortijo, D., Reyes-Hernández, C. G., López de Pablo, A. L.,
610 González, M. C., & Arribas, S. M. (2018). Implication of Oxidative Stress in Fetal
611 Programming of Cardiovascular Disease. *Frontiers in physiology*, 9, 602-602.
612 doi:10.3389/fphys.2018.00602
- 613 Rose-Sallin, C. (1995). Quantification of Cholesterol Oxidation Products in Milk Powders Using
614 [2H7]Cholesterol To Monitor Cholesterol Autoxidation Artifacts. *Journal of agricultural*
615 *and food chemistry*, 43(4), 935-941.
- 616 Sabolová, M., Pohořelá, B., Fišnar, J., Kouřimská, L., Chrpová, D., & Pánek, J. (2017). Formation
617 of oxysterols during thermal processing and frozen storage of cooked minced meat. *J Sci*
618 *Food Agric*, 97(15), 5092-5099. doi:10.1002/jsfa.8386
- 619 Sander, B. D., Addis, P. B., Park, S. W., & Smith, D. E. (1989). Quantification of Cholesterol
620 Oxidation-Products in a Variety of Foods. *Journal of food protection*, 52(2), 109-114.
- 621 Timby, N., Adamsson, M., Domellöf, E., Grip, T., Hernell, O., Lönnerdal, B., & Domellöf, M.
622 (2021). Neurodevelopment and growth until 6.5 years of infants who consumed a low-
623 energy, low-protein formula supplemented with bovine milk fat globule membranes: a
624 randomized controlled trial. *Am J Clin Nutr*, 113(3), 586-592. doi:10.1093/ajcn/nqaa354
- 625 Timby, N., Domellöf, E., Hernell, O., Lönnerdal, B., & Domellöf, M. (2014). Neurodevelopment,
626 nutrition, and growth until 12 mo of age in infants fed a low-energy, low-protein

627 formula supplemented with bovine milk fat globule membranes: a randomized
628 controlled trial. *Am J Clin Nutr*, 99(4), 860-868. doi:10.3945/ajcn.113.064295
629 USDA. (2018). *What We Eat in America, NHANES 1999–2018*. National Center for Health
630 Statistics: Hyattsville, MD.: Centers for Disease Control and Prevention Retrieved from
631 <https://www.cdc.gov/nchs/nhanes/wweia.htm>
632 Wei, S., Wei, Y., Gong, Y., Chen, Y., Cui, J., Li, L., . . . Yi, L. (2022). Metabolomics as a valid
633 analytical technique in environmental exposure research: application and progress.
634 *Metabolomics*, 18(6), 35. doi:10.1007/s11306-022-01895-7
635 Willinger, T. (2019). Oxysterols in intestinal immunity and inflammation. *J Intern Med*, 285(4),
636 367-380. doi:10.1111/joim.12855
637 Woollett, L. A., & Heubi, J. E. (2000). Fetal and Neo-natal Cholesterol Metabolism. In *Endotext*.
638 South Dartmouth, MA: MDText.com, Inc.
639 Wu, F., Tian, F.-J., & Lin, Y. (2015). Oxidative Stress in Placenta: Health and Diseases. *BioMed*
640 *Research International*, 2015, 293271. doi:10.1155/2015/293271
641 Zmysłowski, A., & Szterk, A. (2019). Oxysterols as a biomarker in diseases. *Clin Chim Acta*, 491,
642 103-113. doi:10.1016/j.cca.2019.01.022
643 Zubin Maslov, P., Hill, J. A., Lüscher, T. F., & Narula, J. (2021). High-sugar feeding and increasing
644 cholesterol levels in infants. *Eur Heart J*, 42(12), 1132-1135.
645 doi:10.1093/eurheartj/ehaa868
646 Öhlund, I., Hörnell, A., Lind, T., & Hernell, O. (2008). Dietary fat in infancy should be more
647 focused on quality than on quantity. *European Journal of Clinical Nutrition*, 62(9), 1058-
648 1064. doi:10.1038/sj.ejcn.1602824
649

Table 1S: Food Codes for Baby Foods Used in this Study

<i>Sample ID</i>	<i>Baby Food</i>	<i>Brand</i>
BF1 - RTE	Beef and broth/gravy	Beech-Nut
BF2 - RTE	Chicken and broth/gravy	Gerber
BF3 - RTE	Vegetables and beef	Gerber
BF4 - RTE	Vegetables and chicken	Gerber
BF5 - RTE	Chicken noodle dinner	Gerber
BF6 - RTE	Macaroni, tomato, and cheese	Gerber
BF7 - RTE	Turkey, and rice	Gerber
BF8 - RTE	Turkey and broth/gravy	Beech-Nut
BF9 - RTE	Fruit yogurt	Gerber
BF10 - RTE	Chicken with rice	Gerber
BF11 - RTE	Vegetables and turkey	Gerber
BF12 - RTE	Macaroni and cheese with vegetables	Gerber
BF13 - RTE	Pasta pick-ups (cheese ravioli)	Gerber

Table 2S: DOxS Profiling in BF Samples

	<i>BF1</i>	<i>BF2</i>	<i>BF3</i>	<i>BF4</i>	<i>BF5</i>	<i>BF6</i>	<i>BF7</i>	<i>BF8</i>	<i>BF9</i>	<i>BF10</i>	<i>BF11</i>	<i>BF12</i>	<i>BF13</i>	Total Average ±STD
Serving Size (g)	71.00	113.40	113.40	113.40	113.40	128.00	113.40	71.00	113.40	113.40	113.40	113.40	85.00	-
Cholesterol (mg/100 g fat) ± STD	1,247.23 ± 227.45	673.84 ± 98.50	58.17 ± 8.50	319.43 ± 83.74	348.65 ± 82.26	123.24 ± 29.61	263.77 ± 76.69	683.55 ± 310.63	162.73 ± 95.67	251.02 ± 57.95	313.34 ± 27.54	172.87 ± 17.84	327.40 ± 87.35	380.40 ± 307.85
Cholesterol Reference (mg/100 g fat)	1,000.00	833.33	250.00	500.00	400.00	7.81	400.00	875.00	333.33	333.33	285.71	333.33	500.00	-
Phytosterols (mg/100 g fat) ±STD														
Brassicasterol	ND	ND	ND	ND	ND	ND	ND	ND	ND	ND	19.72 ± 3.21	29.60 ± 3.30	ND	24.66 ± 4.94
Campesterol	ND	ND	10.48 ± 5.14	182.76 ± 53.20	136.48 ± 47.29	21.98 ± 6.84	190.88 ± 21.15	ND	ND	48.06 ± 9.69	ND	99.33 ± 24.73	44.86 ± 3.55	91.85 ± 66.85
Stigmasterol	ND	ND	6.52 ± 1.87	75.16 ± 41.86	33.77 ± 7.19	ND	ND	ND	ND	25.41 ± 14.33	48.31 ± 2.23	ND	ND	37.83 ± 23.04
β-Sitosterol	ND	ND	47.10 ± 13.21	498.98 ± 129.71	391.77 ± 93.78	100.31 ± 19.76	421.59 ± 137.27	ND	ND	160.14 ± 26.56	435.62 ± 41.06	236.18 ± 18.19	ND	286.46 ± 160.91
Fucosterol	ND	ND	ND	ND	ND	ND	ND	ND	ND	ND	ND	ND	0.046 ± 0.014	0.046 ± 0.000
Total Phytosterols	ND	ND	64.1	756.9	562.02	122.29	612.47	0	0	233.61	503.65	365.11	44.91	251.16 ± 264.06

*P-value < 0.001

Table 2S: DOxS Profiling in BF Samples (cont'd)

	<i>BF1</i>	<i>BF2</i>	<i>BF3</i>	<i>BF4</i>	<i>BF5</i>	<i>BF6</i>	<i>BF7</i>	<i>BF8</i>	<i>BF9</i>	<i>BF10</i>	<i>BF11</i>	<i>BF12</i>	<i>BF13</i>	<i>Total Average ±STD</i>
	COPs <i>(mg/100 g fat) ±STD</i>													
7α-OH	8.97 ± 5.42	2.92 ± 0.73	0.10 ± 0.031	1.80 ± 0.22	2.10 ± 0.50	3.73 ± 1.98	2.12 ± 0.16	5.85 ± 1.82	0.68 ± 0.12	2.08 ± 0.63	0.66 ± 0.092	0.41 ± 0.10	4.22 ± 3.77	2.74 ± 2.40
7β-OH	24.61 ± 15.21	2.27 ± 0.64	0.065 ± 0.037	1.61 ± 0.24	1.94 ± 0.37	0.66 ± 0.12	2.38 ± 0.15	4.91 ± 1.12	0.59 ± 0.17	1.62 ± 0.46	0.58 ± 0.020	0.40 ± 0.078	1.27 ± 0.89	3.30 ± 6.27
5,6α-epoxy	0.69 ± 0.36	0.044 ± 0.012	ND	ND	0.052 ± 0.021	ND	ND	0.030 ± 0.019	ND	0.027 ± 0.016	ND	ND	0.062 ± 0.023	0.15 ± 0.24
5,6β-epoxy	1.39 ± 0.81	0.033 ± 0.0062	ND	ND	0.045 ± 0.027	ND	ND	0.073 ± 0.039	ND	0.042 ± 0.032	1.05 ± 0.12	ND	0.10 ± 0.025	0.39 ± 0.53
7-keto	16.69 ± 5.45	0.84 ± 0.34	ND	0.57 ± 0.065	0.59 ± 0.18	0.67 ± 0.42	0.48 ± 0.15	1.68 ± 0.61	0.24 ± 0.075	0.65 ± 0.087	ND	ND	1.31 ± 0.83	2.37 ± 4.79
Triol	2.63 ± 0.46	0.22 ± 0.031	ND	0.27 ± 0.086	0.31 ± 0.091	0.20 ± 0.034	0.39 ± 0.056	0.27 ± 0.10	0.21 ± 0.050	0.35 ± 0.041	0.12 ± 0.036	0.18 ± 0.013	0.15 ± 0.03	0.44 ± 0.66
6-keto	ND	0.11 ± 0.064	ND	ND	ND	ND	ND	0.12 ± 0.018	ND	ND	ND	0.10 ± 0.044	ND	0.11 ± 0.01
20α-OH	ND	ND	0.65 ± 0.17	ND	ND	ND	ND	ND	ND	ND	5.29 ± 0.40	ND	ND	2.97 ± 2.32
22-OH	ND	ND	0.07 ± 0.03	ND	ND	ND	ND	ND	ND	ND	ND	ND	ND	0.07 ± 0.00
24-OH	ND	ND	ND	ND	ND	0.11 ± 0.06	0.13 ± 0.02	0.45 ± 0.20	ND	ND	ND	ND	0.25 ± 0.19	0.24 ± 0.14

25-OH	3.60 ± 1.22	0.24 ± 0.055	ND	0.16 ± 0.056	0.27 ± 0.16	ND	ND	0.67 ± 0.16	ND	0.27 ± 0.047	ND	ND	0.47 ± 0.32	0.81 ± 1.15
Total COPs	58.59 ± 27.02	6.68 ± 1.80	0.88 ± 0.11	4.61 ± 0.64	5.31 ± 1.22	5.37 ± 2.51	5.51 ± 0.15	14.06 ± 3.95	1.71 ± 0.37	5.04 ± 1.25	7.69 ± 0.42	1.08 ± 0.23	7.85 ± 6.04	9.57 ± 14.53

Table 3S: Values of Exposure, Dose Intake, and Absorption Provided by SHEDS-HT

	Females			Males			Total		
	<i>Exposure (ug/day)</i>	<i>Dose Intake (ug/day)</i>	<i>Absorption (mg/kg-day)</i>	<i>Exposure (ug/day)</i>	<i>Dose Intake (ug/day)</i>	<i>Absorption (mg/kg-day)</i>	<i>Exposure (ug/day)</i>	<i>Dose Intake (ug/day)</i>	<i>Absorption (mg/kg-day)</i>
Cholesterol	77,575.04	7.75	2.44	46,101.42	4.44	1.40	61,391.3	6.04	1.90
Desmosterol	9,689.138	0.99	0.38	8,286.66	0.79	0.30	8,967.98	0.90	0.34
Squalene	1,339.386	0.13	0.13	1,576.29	0.15	0.15	1,461.20	0.14	0.14
Phytosterols									
Brassicasterol	0.087003	9.10E-06	2.84E-06	42.59	0.0041	0.0013	21.94	0.0021	0.00066
β-Sitosterol	94,659.75	9.64	0.49	57,224.17	5.46	0.28	75410.37	7.49	0.38
Campesterol	27,609.45	2.85	0.41	20,512.97	1.97	0.28	23,960.44	2.40	0.34
Fucoesterol	10,530.81	1.10	0.044	7,890.36	0.76	0.030	9,173.092	0.93	0.037
Stigmasterol	18,091.73	1.88	0.075	13,095.2	1.27	0.051	15,522.51	1.56	0.063
Tocopherols									
α-Tocopherol	333.66	0.034	0.0011	844.76	0.082	0.0028	596.47	0.059	0.0020
β-Tocopherol	604.36	0.064	0.0022	866.75	0.085	0.0029	739.28	0.075	0.0026
δ-Tocopherol	12,780.61	1.34	0.047	8,782.58	0.86	0.030	10,724.83	1.09	0.038
γ-Tocopherol	2,75.94	0.22	0.0075	1,656.91	0.16	0.0055	1,860.48	0.19	0.0065
DOxS									
20-OH	0.38	4.03E-05	1.61E-05	1.30	0.00013	5.03E-05	0.86	8.42E-05	3.37E-05
22-OH	0.30	3.12E-05	1.25E-05	0.21	2.04E-05	8.16E-06	0.25	2.56E-05	1.03E-05
24-OH	0.32	3.29E-05	1.32E-05	0.31	2.98E-05	1.19E-05	0.31	3.13E-05	1.25E-05
25-OH	132.46	0.014	0.0056	98.85	0.0096	0.0038	115.17	0.012	0.0047
4-cholesten-3,6-dione	0	0	0	0.0055	5.28E-07	2.15E-07	0.0028	2.71E-07	1.1E-07
6-Keto	8.64	0.00091	0.00037	103.38	0.010	0.0042	57.35	0.0057	0.0023
7α-OH	120.85	0.013	0.0038	207.76	0.020	0.0060	165.54	0.017	0.0050
7β-OH	127.20	0.013	0.0056	252.86	0.024	0.010	191.81	0.019	0.0080
7-Keto	36.18	0.0038	0.00046	80.57	0.0078	0.00094	59.01	0.0059	0.00071
5,6α-Epoxy	4.67	0.00049	0.00014	10.25	0.00099	0.00028	7.54	0.00075	0.00021
5,6β-Epoxy	732.54	0.076	0.024	1,727.98	0.17	0.054	1,244.39	0.12	0.040
Triol	45.87	0.0048	0.00072	78.35	0.0076	0.0011	62.57	0.0063	0.00094

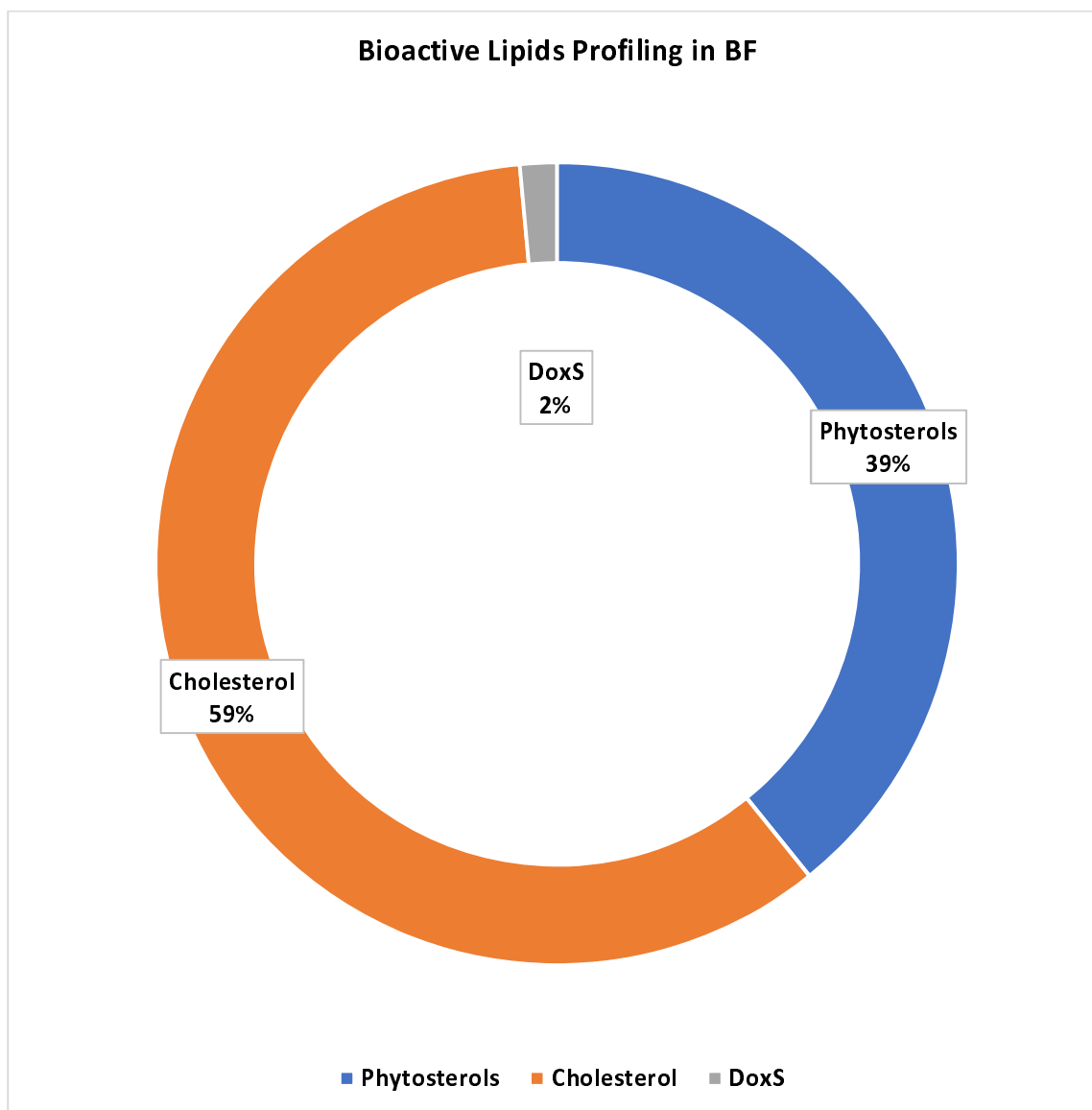


Figure 1S: Distribution of Bioactive Lipids Concentrations Among BF