

Patterns of antibiotic use, pathogens and clinical outcomes in hospitalised neonates and young infants with sepsis in the NeoOBS global neonatal sepsis observational cohort study

Neal Russell*,¹ Wolfgang Stöhr*,² Nishad Plakkal,³ Aislinn Cook,¹ James A Berkley,^{4,5,6} Bethou Adhisivam,³ Ramesh Agarwal,⁷ Manica Balasegaram,⁸ Daynia Ballot,⁹ Adrie Bekker,¹⁰ Eitan Naaman Berezin,¹¹ Davide Bilardi,¹² Supawat Boonkasidecha,¹³ Cristina G. Carvalheiro,¹⁴ Suman Chaurasia,¹⁵ Sara Chiurchiu,¹⁶ Simon Cousens,¹⁷ Tim R. Cressey,¹⁸ Tran Minh Dien,¹⁹ Yijun Ding,²⁰ Angela Dramowski,¹⁰ Madhusudhan DS,²¹ Ajay Dudeja,²² Jinxing Feng,²³ Youri Glupczynski,²⁴ Herman Goossens,²⁴ Tatiana Munera Huertas,¹ Mohammad Shahidul Islam,²⁵ Daniel Jarovsky,¹¹ Nathalie Khavessian,⁸ Meera Khorana,²⁶ Tomislav Kostyanev,²⁴ Mattias Larsson,²⁷ Maia De Luca,¹⁶ Surbhi Malhotra-Kumar,²⁴ Marisa M. Mussi-Pinhata,¹⁴ Ruchi Nanavati,²¹ Sushma Nangia,²² Jolly Nankunda,²⁸ Alessandra Nardone,¹² Borna Nyaoke,⁸ Christina W Obiero,^{4,29} Maxensia Owor,²⁸ Wang Ping,³⁰ Kanchana Preedisripipat,³¹ Shamim Qazi,³² Tanusha Ramdin,^{9,33} Amy Riddell,¹ Emmanuel

¹ Center for Neonatal and Paediatric Infection (CNPI), Institute of Infection & Immunity, St George's University of London

² Medical Research Council Clinical Trials Unit at University College London, London, UK

³ Department of Neonatology, Jawaharlal Institute of Postgraduate Medical Education & Research (JIPMER), Pondicherry, India

⁴ Clinical Research Department, KEMRI-Wellcome Trust Research Programme, Kilifi, Kenya

⁵ Centre for Tropical Medicine & Global Health, Nuffield Department of Medicine, University of Oxford, Oxford UK

⁶ The Childhood Acute Illness & Nutrition (CHAIN) Network, Nairobi, Kenya

⁷ Newborn Division and WHO-CC, All India Institute of Medical Sciences, New Delhi, India.

⁸ Global Antibiotic Research and Development Partnership (GARDP), Geneva, Switzerland

⁹ Department of Paediatrics and Child Health, Chris Hani Baragwanath Academic Hospital, School of Clinical Medicine, Faculty of Health Sciences, University of the Witwatersrand, Johannesburg, South Africa.

¹⁰ Department of Paediatrics and Child Health, Faculty of Medicine and Health Sciences, Stellenbosch University, South Africa

¹¹ Pediatric Infectious Diseases Unit, Santa Casa de São Paulo, Rua Dr. Cesário Mota Júnior 112, São Paulo, SP 01221-020, Brazil

¹² Penta Foundation, Padova, Italy

¹³ Queen Sirikit National Institute of Child Health, Bangkok, Thailand

¹⁴ Department of Pediatrics, Ribeirão Preto Medical School, University of São Paulo, Brazil

¹⁵ All India Institute of Medical Sciences, Department of Paediatrics, New Delhi, India

¹⁶ Academic Hospital Paediatric Department, Bambino Gesù Children's Hospital, Rome, Italy

¹⁷ Faculty of Epidemiology and Population Health, Department of Infectious Disease Epidemiology, London School of Hygiene & Tropical Medicine

¹⁸ PHPT/IRD-MIVEGEC, Faculty of Associated Medical Sciences, Chiang Mai University, Thailand

¹⁹ Vietnam National Children's Hospital, Hanoi, Vietnam and Surgical intensive care unit, Vietnam National Children's Hospital, Hanoi, Vietnam

²⁰ Department of Neonatology, Beijing Children's Hospital, Capital Medical University, National Centre for Children's Health, Beijing, China

²¹ Neonatology Department, Seth GS Medical College and King Edward Memorial Hospital, Mumbai, India.

²² Department of Neonatology, Lady Hardinge Medical College & associated SSK & KSC Hospitals, New Delhi

²³ Department of Neonatology, Shenzhen Children's Hospital, Shenzhen, China

²⁴ Laboratory of Medical Microbiology, University of Antwerp, Antwerp, Belgium

²⁵ Child Health Research Foundation (CHRF), Dhaka Shishu Hospital, Dhaka, Bangladesh

²⁶ Neonatal Unit, Department of Pediatrics, Queen Sirikit National Institute of Child Health, College of Medicine, Rangsit University, Bangkok, Thailand

²⁷ Department of Global Public Health, Karolinska Institutet, Stockholm, Sweden

²⁸ Makerere University - Johns Hopkins University Research Collaboration, Kampala, Uganda

²⁹ Amsterdam UMC, University of Amsterdam, Emma Children's Hospital, Department of Global Health, Amsterdam, the Netherlands.

³⁰ Beijing Obstetrics and Gynecology Hospital, Capital Medical University, Beijing, China

³¹ Chiangrai Prachanukroh Hospital, Chiang Rai, Thailand

³² World Health Organisation, Maternal, Newborn, Child and Adolescent Health Department, Geneva, Switzerland

³³ Department of Paediatrics and Child Health, Charlotte Maxeke Johannesburg Academic Hospital, Johannesburg, South Africa

Roilides,³⁴ Samir K Saha,²⁵ Kosmas Sarafidis,³⁵ Reenu Thomas,³⁶ Sithembiso Velaphi,⁹ Tuba Vilken,²⁴ Yajuan Wang,³⁷ Yonghong Yang,²³ Liu Zunjie,³⁰ Sally Ellis,⁸ Julia Bielicki,¹ A Sarah Walker,² Paul T. Heath,¹ Mike Sharland,¹ **Co-First authors, listed alphabetically*

³⁴ Infectious Diseases Unit, 3rd Dept Pediatrics, School of Medicine, Faculty of Health Sciences, Aristotle University and Hippokration General Hospital, Thessaloniki, Greece

³⁵ Neonatology Dept, School of Medicine, Faculty of Health Sciences, Aristotle University and Hippokration General Hospital, Thessaloniki, Greece

³⁶ School of Clinical Medicine, Faculty of Health Sciences, University of the Witwatersrand

³⁷ Department of Neonatology, Children's Hospital, Capital Institute of Pediatrics, Yabao Road, Chaoyang District, Beijing, China

1 **Abstract**

2 Background

3 Neonatal sepsis is a leading cause of child mortality, and increasing antimicrobial resistance
4 threatens progress towards the Sustainable Development Goals. Evidence to guide antibiotic
5 treatment for sepsis in neonates and young infants from randomized controlled trials or
6 observational studies in low- and middle-income countries (LMICs) is scarce. We aimed to describe
7 patterns of antibiotic use, pathogens and outcomes in LMIC hospital settings globally to inform
8 future clinical trials on the management of neonatal sepsis.

9 Methods & Findings

10 Hospitalised infants aged <60 days with clinical sepsis were enrolled during 2018-2020 by 19 sites in
11 11 countries (mainly Asia and Africa). Prospective daily data was collected on clinical signs,
12 supportive care, antibiotic treatment, microbiology and clinical outcome at 28 days. The study was
13 observational, with no changes to routine clinical practice. 3204 infants were enrolled, with median
14 birth weight 2500g (IQR 1400-3000) and postnatal age 5 days (IQR 2-15). Of 309 enrolled aged 28-60
15 days, 58.6% (n=181) were ex-preterm and/or a neonate at admission. 2215 (69%) infants had been
16 in hospital since birth.

17 206 different empiric antibiotic combinations were used, which were structured into 5 groups that
18 were developed from the World Health Organisation (WHO) AWaRe classification. 25.9% (n=814) of
19 infants started a WHO first line regimen (Group 1 -Access, penicillin-based regimen) and 13.8%
20 (n=432) started WHO second-line cephalosporins (cefotaxime/ceftriaxone) (Group 2- 'Low' Watch).
21 The largest group (34.0%, n=1068) started a regimen providing partial extended-spectrum beta-
22 lactamase (ESBL)/pseudomonal coverage (piperacillin-tazobactam, ceftazidime, or fluoroquinolone-
23 based) (Group 3 – 'Medium' Watch), 18.0% (n=566) started a carbapenem (Group 4 – 'High' Watch),
24 and 1.8% (n=57) started a Reserve antibiotic (Group 5, largely colistin-based). Predictors of starting
25 non-WHO recommended regimens included lower birth weight, longer in-hospital stay, central
26 vascular catheter use, previous culture positive sepsis or antibiotic exposure, previous surgery and
27 greater sepsis severity. 728/2880 (25.3%) of initial regimens in Group 1-4 were escalated, mainly to
28 carbapenems, and usually for clinical indications (n=480; 65.9%).

29 564 infants (17.6%) isolated a pathogen from their baseline blood culture, of which 62.9% (n=355)
30 had a Gram-negative organism, predominantly *Klebsiella pneumoniae* (n=132) and *Acinetobacter*
31 spp. (n=72). These leading Gram-negatives were both mostly resistant to WHO-recommended
32 regimens, and also resistant to carbapenems in 32.6% and 71.4% of cases respectively. MRSA
33 accounted for 61.1% of *Staphylococcus aureus* (n=54) isolates.

34 Overall, 350/3204 infants died (11.3%; 95%CI 10.2-12.5%), with 17.7% case fatality rate among
35 infants with a pathogen in baseline culture (95%CI 14.7-20.1%, n=99/564). Gram-negative infections
36 accounted for 75/99 (75.8%) of pathogen-positive deaths, especially *Klebsiella pneumoniae* (n=28;
37 28.3%), and *Acinetobacter* spp. (n=24; 24.2%).

38 Conclusion

39 A very wide range of antibiotic regimens are now used to treat neonatal sepsis globally. There is
40 common use of higher-level Watch antibiotics, frequent early switching and very infrequent de-
41 escalation of therapy. Future hospital based neonatal sepsis trials will ideally need to account for the
42 multiple regimens used as standard of care globally and include both empiric first line regimens and
43 subsequent switching in the trial design.

44

45 **Author Summary**

46

47 **Why was this study done?**

- 48 ➤ Increasing trends in antimicrobial resistance (AMR) disproportionately affect neonates and
- 49 young infants with sepsis in LMIC settings and undermine the effectiveness of WHO-
- 50 recommended antibiotics.
- 51 ➤ Despite this, longitudinal data on antibiotic management strategies and outcomes of
- 52 affected hospitalised neonates and young infants in LMIC settings are extremely limited,
- 53 impeding the design of robust antibiotic trials.

54 **What did the researchers do and find?**

- 55 ➤ To our knowledge this is the first global, prospective, hospital-based observational study of
- 56 clinically diagnosed neonatal sepsis across 4 continents including LMIC settings, with daily
- 57 data on clinical status, antibiotic use and outcomes.
- 58 ➤ There was a high mortality among infants with culture positive sepsis (almost 1 in 5), and a
- 59 significant burden of antibiotic resistance.
- 60 ➤ This study highlights wide variations in standard of care for sepsis in neonates and young
- 61 infants with more than 200 different antibiotic combinations, significant divergence from
- 62 WHO-recommended regimens, and frequent switching of antibiotics.

63 **What do these findings mean?**

- 64 ➤ These data demonstrate that patterns of routine antibiotic use are now markedly divergent
- 65 from global guidance
- 66 ➤ There is an urgent need for randomised controlled trials to address optimal empiric first and
- 67 second line antibiotic treatment strategies in LMIC hospital settings with a significant AMR
- 68 burden.
- 69 ➤ Data from this study can inform the design of multicentre hospital-based neonatal antibiotic
- 70 trials in LMIC settings.
- 71 ➤ The wide range of multiple antibiotic regimens routinely used as Standard of Care (SOC)
- 72 suggests the need for novel trial designs.

73

74

75

76

77

78

79 **Introduction**

80 Sepsis is responsible for a significant burden of disease in neonates and young infants, both as a
81 primary cause of death, and as a frequent contributor.¹² Access to facility-based delivery and care,
82 including antibiotics, has not consistently reduced mortality to the extent necessary to achieve the
83 Sustainable Development Goal targets in many low and middle income countries (LMICs).³
84 Antimicrobial resistance (AMR) increasingly threatens to undermine the effectiveness of antibiotics
85 and potentially slows the progress in reducing mortality, particularly in LMICs,⁴⁻¹⁰ with AMR-
86 attributable neonatal deaths recently estimated between 140,000¹⁰ and 214,000.¹¹

87 Recent large scale antibiotic trials in neonates and young infants in LMIC settings have largely
88 focused on simplification of first line antibiotic regimens with oral amoxicillin and short course
89 gentamicin.^{12,13} These have been based in community settings and included populations with
90 mortality below 2%. However, an increasing global proportion of new-borns are delivered in facilities
91 (~3/4),¹⁴ where sepsis case fatality rates and the burden of AMR are greater. Despite this, there is
92 limited high quality evidence generated in LMIC neonatal inpatient settings to guide empiric
93 antibiotic treatment.^{4,15} Published observational data largely involve single centre studies reporting
94 non-systematically collected microbiological data, which are rarely accompanied by detailed clinical
95 and antibiotic use data. Global antibiotic use data largely rely on point prevalence surveys, with
96 limited information on patterns of switching and duration.¹⁶

97 In this paper we describe a prospective multi-country observational study in which we collected
98 detailed daily longitudinal data on clinical features, microbiology, antibiotic use and switching, and
99 outcomes of neonatal sepsis in hospital settings, predominantly in LMICs. The primary aim was to
100 describe the variation and patterns of hospital-based antibiotic use to inform the design of hospital
101 based neonatal sepsis antibiotic trials and future guidance.¹⁷

102

103 **Methods**

104 **Study design and participants**

105 Hospitalized infants <60 days of age with a new episode of clinically suspected sepsis were enrolled
106 between 2018 and 2020, in 19 hospital sites across 11 countries in Asia (Bangladesh, China, India,
107 Thailand and Vietnam), Africa (Kenya, South Africa, Uganda), Europe (Italy, Greece) and South
108 America (Brazil). Sites were selected after conducting a feasibility study¹⁸ to represent diverse
109 regions and to include secondary and tertiary referral hospitals, public facilities, and facilities with
110 varying proportions of in-born and out-born neonates, with access to microbiology.

111 Infants were eligible if the local physician had decided to treat the infant with antibiotics for a new
112 episode of sepsis meeting the inclusion criteria (supplement figure 1), derived by combining clinical
113 and laboratory criteria from WHO possible Serious Bacterial Infection (pSBI)¹⁹ and EMA Criteria for
114 neonatal sepsis trials.²⁰ To allow for variation in access to laboratory testing, and ensure
115 generalizability to varying LMIC hospital contexts, laboratory values were not mandatory. A
116 minimum of 2 clinical, or 1 clinical and 1 laboratory sepsis criteria, were required for inclusion, and
117 up to 200 infants per site were enrolled according to a sampling frame adapted to local case volume
118 and activity. Infants were excluded if an alternative primary diagnosis other than sepsis was
119 suspected, or a serious non-infective comorbidity was expected to cause death within 72 hours.
120 Previous antibiotic use was not an exclusion criterion as long as a new antibiotic regimen was being
121 started after a blood culture for a distinct new episode of sepsis. Sepsis episodes occurring >48 hours

122 after admission, defined by time of blood culture, were considered healthcare-associated infections
123 (HAI).

124 Ethical approval was obtained from St. George's, University of London (SGUL) Research Ethics
125 Committee and sites' local, central or national ethics committees and other relevant local bodies,
126 where required. Design and reporting were guided by the STROBE-NI framework,²¹ and the trial was
127 registered with ClinicalTrials.gov (NCT03721302).

128 **Procedures**

129 After consent from parents, baseline demographic and clinical data were collected, followed by
130 prospective daily collection of observational data including multiple clinical parameters, laboratory
131 investigations and microbiological results. Antibiotic data were collected daily including drug, dose,
132 route, duration, switching and reasons given for any changes. Clinical data collection was required
133 up to 48 hours after the completion of antibiotic therapy or discharge if sooner. Aside from a
134 mandatory blood culture at enrolment and daily monitoring of vital signs, all clinical observations
135 and investigations were performed according to routine local site practices. Infants were followed
136 until 28 days after enrolment in-person if still hospitalized, or by telephone post-discharge. A final
137 diagnosis was documented by clinicians, as were primary and secondary causes of death, and any
138 clinical illness or readmission occurring after discharge and within 28 days of enrolment.

139 Data were collected by research and clinical staff based on clinical observation and routine source
140 documentation (e.g. medical and nursing notes, vital signs and prescription charts), and entered and
141 managed using REDCap™ electronic data capture tools²² hosted at SGUL (details on data monitoring
142 in supplementary appendix.)

143 **Microbiology/Laboratory assessments**

144 Laboratory analysis was performed in each site following local practice, with standard operating
145 procedures developed to optimise procedures including blood culture technique, and antibiotic
146 susceptibility testing. A locally defined algorithm was used to classify contaminants and pathogens
147 by site clinicians and microbiologists. External validation of the capability of laboratories to detect
148 multi-drug resistant (MDR) Gram-negative pathogens from each site was evaluated objectively by
149 testing an external quality assurance (EQA) panel sent from the central laboratory at Laboratory of
150 Medical Microbiology (LMM) at the University of Antwerp (UA).

151 European Committee on Antimicrobial Susceptibility Testing (EUCAST) or Clinical and Laboratory
152 Standard Institute (CLSI) guidelines and interpretive algorithms were used to interpret reported
153 antibiotic susceptibility testing data for all organisms. EUCAST 2019 breakpoints table (v9.0) and
154 guidelines were used as this was the year the majority of the data was reported. In most cases,
155 where susceptibility to a particular antibiotic was reported, this was used to determine
156 susceptibility. If the organism was considered intrinsically resistant to a particular antibiotic
157 according to EUCAST, then it was coded as resistant regardless of reported susceptibility. If
158 susceptibility to a particular antibiotic was not reported, susceptibility results of a different antibiotic
159 in the same class were used to determine susceptibility (e.g. susceptibility of organism to another
160 aminoglycoside if gentamicin susceptibility was not reported); if no other antibiotic in that class had
161 reported susceptibility then susceptibility was coded as unknown.

162

163 **Analysis of antibiotic patterns of use**

164 The initial antibiotic regimen was defined as the first new antibiotic(s) started within 24 hours from
165 baseline blood culture (including 3 hours pre baseline culture). To structure the analysis and
166 reporting of the multiple regimens used, a novel method of grouping antibiotics was derived, based
167 on the Essential Medicine List for Children (EMLc) AWaRe classification (Access, Watch, Reserve;
168 supplementary appendix),²³ with the ‘Watch’ category divided into 3 distinct groups of
169 ‘Low/Medium/High Watch’ based on inclusion in current WHO guidelines (Low Watch) and
170 likelihood of resistance generation in regimens outside WHO recommendations (Medium or High
171 Watch).²⁴ Antibiotic groups were defined by the main ‘stem’ in the antibiotic combination: Group 1
172 antibiotics included a first line WHO recommended penicillin-based regimen (e.g. ampicillin and
173 gentamicin) (Access), Group 2 included 3rd generation cephalosporin (eg cefotaxime/ceftriaxone)-
174 based WHO regimens (‘Low’ Watch), Group 3 included regimens with partial anti-extended-
175 spectrum beta-lactamase ((ESBL) or pseudomonal activity (e.g. piperacillin-
176 tazobactam/ceftazidime/fluoroquinolone-based) (‘Medium’ Watch), and Group 4 included
177 carbapenems (e.g. meropenem) (‘High’ Watch). Group 5 antibiotics included Reserve antibiotics
178 targeting carbapenem resistant organisms (e.g. colistin). Aminoglycosides (e.g.
179 gentamicin/amikacin), glycopeptides (e.g. vancomycin/teicoplanin) and metronidazole used in
180 combination regimens were classified as additional coverage and did not define the main antibiotic
181 ‘stem’ for the grouping. All antifungals and antivirals were excluded from the antimicrobial
182 treatment data as these were not relevant to the analysis. Escalation of treatment was defined as a
183 switch to a higher group antibiotic, and de-escalation was defined as switching to a lower group or
184 discontinuation of the ‘stem’ antibiotic whilst continuing with an additional coverage antibiotic.

185

186 **Statistical analysis**

187 The pre-specified primary outcome was mortality through 28 days post-enrolment, analysed using
188 Kaplan-Meier and Cox proportional hazards regression with site-level random effects. Time was
189 measured from the initial blood culture sample, censoring at the earliest of day 28, withdrawal or
190 last contact if lost post-discharge. To analyse whether time from baseline culture to the start of new
191 antibiotic regimen or type of pathogen were associated with mortality, respectively, we adjusted for
192 previously established baseline predictors of mortality (Submitted manuscript²⁵). Multivariable
193 logistic regression with backwards elimination (exit p=0.05) adjusted for site was used to analyse
194 factors associated with starting group 3-5 versus group 1-2 regimens in sites with at least 10% of
195 infants in either. Candidate factors were known at sepsis presentation and included birth weight,
196 gestational age, postnatal age, time in hospital, central line or indwelling catheter, Intravenous (IV)
197 antimicrobials in previous 24 hours, signs of meningitis, previous positive culture, previous surgery,
198 and a score reflecting sepsis severity (Submitted manuscript²⁵). Cumulative incidence antibiotic
199 escalation or stop of all iv antibiotics was estimated with death as competing risk.
200 Analyses used Stata version 16.1.

201 **Role of the funding source**

202 This study was funded by the Global Antibiotic Research and Development Partnership (GARDP),
203 made possible by Bill & Melinda Gates Foundation; German Federal Ministry of Education and
204 Research; German Federal Ministry of Health; Government of the Principality of Monaco; the Indian
205 Council for Medical Research; Japanese Ministry of Health, Labour and Welfare; Netherlands
206 Ministry of Health, Welfare and Sport; South African Medical Research Council; UK Department of
207 Health and Social Care (UK National Institute of Health Research and the Global Antimicrobial
208 Resistance Innovation Fund – GAMRIF); UK Medical research Council; Wellcome Trust. GARDP has

209 also received core funding from the Leo Model Foundation; Luxembourg Ministry of Development
210 Cooperation and Humanitarian Aid; Luxembourg Ministry of Health; Médecins Sans Frontières; Swiss
211 Federal Office of Public Health; UK Foreign, Commonwealth & Development Office (previously the
212 UK Department for International Development).

213 The authors had access to all study-related data and had final responsibility for publication.

214

215 **Results**

216 3204 infants (90.4% neonates aged <28 days, n=2895; 42.1% female, n=1348) were recruited from
217 20th August 2018 - 29th February 2020 (table 1; supplement figure 2). Sites included varying
218 populations of infants, and levels of care (see supplement figures 3-5). The median postnatal age
219 was 5 (IQR 1-15) days, and 3088 (96.4%) infants had been born in a hospital/facility (1550 in the
220 enrolling facility), 1412 (44.3%) by caesarean section (969 as an emergency). 71 (2.2%) had
221 previously been treated for an episode of culture-positive sepsis. The median (IQR) gestational age
222 at birth was 37 (31-39) weeks, with birth weight 2500g (1400-3000g). At enrolment, 69.1% (n=2215)
223 infants had been hospitalised since birth, and 30.9% (n=989) were admitted from the community.
224 2759 (86.1%) were recruited in a neonatal unit. Among 309 (9.6%) infants enrolled aged ≥28 days,
225 the majority (n=181; 58.6%) were either ex-premature (n=146; 47.4%) and/or had been admitted
226 during the neonatal period (n=136, 44.2%).

227 The most common previously identified risk factors for sepsis other than prematurity were preterm
228 premature rupture of membranes (14.5%, n=466), prolonged rupture of membranes (>18hrs) (10.2%
229 n=328), prelabour rupture of membranes at term (9.4%, n=300), presence of an indwelling central
230 vascular catheter (8.2% n=262), intrapartum fever >38°C (3.5%, n=112), chorioamnionitis (2.8%,
231 n=75), known maternal Group B streptococcus (GBS) colonisation (1.4%, n=46) and previous surgery
232 (abdominal or for congenital malformations: 3.0%, n=95). Of note, 8.3% (n=265) had a congenital
233 anomaly (supplement table 1), and 7% (n=220) of infants were exposed to maternal HIV. 1318
234 (41.1%) sepsis episodes were healthcare-associated (occurring >48h after hospital admission).

235 *Clinical and laboratory findings*

236 A median of 4 (IQR 2-5) clinical signs were present at baseline, the most common being respiratory
237 (65.8%, n=2107), difficulty feeding (45.7%, n=1464), lethargy or reduced movement (35.3%,
238 n=1,131), abdominal distension (24.3%, n=777) and evidence of shock (21.3%, n=683). Signs
239 suggestive of meningitis were reported in <10% of babies (irritability, convulsions, abnormal
240 posturing, bulging fontanelle) (supplement figures 6-7). The availability of laboratory values varied
241 by site. At baseline, a base excess <-10 mmol/L was documented in 352 of 1492 with results
242 available (23.6%), lactate >2mmol in 1034/1283 (80.6%), raised CRP >10mg/L in 1306/2286 (57.1%),
243 abnormal white blood cell count (<4 or >20x10⁹ cells/L) in 875/2800 (31.3%), and thrombocytopenia
244 (<150x10⁹ cells/L) in 619/2776 (22.3%) (supplement table 2).

245 *Patterns of empiric antibiotic use*

246 1180 (36.8%) infants had a history of previous intravenous antibiotic treatment, and 742 (23.2%) had
247 been receiving an intravenous antibiotic in the previous 24h before starting new antibiotics for the
248 new episode of sepsis. Median time from baseline culture being taken to new intravenous antibiotic
249 treatment being started for the distinct sepsis episode was 1 hour (IQR 0-3); 2913 (90.9%) started
250 within 8 hours, and 228 (7.1%) within 8-24 hours (supplement figure 8).

251 There were 206 different combinations of empiric antibiotics started at baseline in this hospital-
252 based cohort. These were grouped as described in the methods, and most frequent regimens are
253 reported in table 2. 25.9% (n=814) of infants were started on a WHO-recommended first line
254 penicillin-based regimen (Group 1 - Access). 13.8% (n=432) of infants were started on a WHO second
255 line cefotaxime or ceftriaxone-based combination (Group 2 – ‘Low’ Watch) (figure 1a). The largest
256 group (34.0%, n=1068) were started on a regimen providing partial ESBL/pseudomonal coverage
257 (piperacillin-tazobactam, ceftazidime, or fluoroquinolone based) (Group 3 – ‘Medium’ Watch).
258 Within Group 3 ceftazidime ± amikacin (n=436; 13.9%) and piperacillin/tazobactam±amikacin
259 (n=410; 13.1%) were prominent combinations. 18.0% (n=566) of initial regimens were carbapenem-
260 based (Group 4 – ‘High’ Watch), among whom meropenem ± vancomycin (n=447; 14.2%) was the
261 most common combination. 1.8% (n=57) of initial regimens were classified as group 5 antibiotics
262 targeting carbapenem-resistant organisms, predominantly colistin-based (Group 5 - Reserve) (table
263 2; supplement figures 9-13). An ‘Other’ group (n=204) consisted of more rarely used local regimens
264 not on the WHO EMLc, or regimens which did not include a new antibiotic ‘stem’ that was used to
265 define groups 1-5 (e.g. aminoglycoside or glycopeptide given alone or in combination with each
266 other) (supplementary figure 14). Cefoperazone/sulbactam (n=99) was the most common antibiotic
267 in this category, but was used as initial regimen only in India (n=86; 14.5%), China (n=11; 1.9%) and
268 Vietnam (n=2; 1.0%).

269 There was wide variation between sites in the frequency of empiric use of different antibiotic groups
270 (Figure 1b). Some sites used predominantly Group 1 antibiotics as the initial regimen, and others
271 often started immediately with Group 3 or 4 regimens, or a mixture of all groups. The most
272 frequently prescribed empiric regimens used for healthcare associated infections (HAI) were
273 meropenem±vancomycin (28.2%, 361/1280), followed by piperacillin/tazobactam±amikacin (17.5%,
274 n=224), ceftazidime±amikacin (6.7%, n=86, colistin (4.3%, n=55) and cefoperazone/sulbactam (3.9%,
275 n=50). Ampicillin+gentamicin was the most common regimen for non-HAI (19.7%, 366/1861),
276 followed by ceftazidime±amikacin (18.8%, n=350) and piperacillin/tazobactam±amikacin (10.0%,
277 n=186) (supplement table 3).

278 Adjusting for site, predictors of starting empiric therapy with group 3-5 rather than group 1-2
279 antibiotics included lower birth weight (OR=0.57 per additional kg, 95% CI 0.47-0.69), presence of a
280 central vascular catheter (OR=3.48, 95% CI 1.74-6.94), previous antibiotics at enrolment (OR=5.71,
281 95% CI 3.73-8.77), previous culture positive sepsis (OR=25.71, 95% CI 3.00-220.7), longer time in
282 hospital (48 versus 0 hours: OR=4.41, 95% CI 3.41-5.69), previous surgery (OR=5.18, 95% CI 1.65-
283 16.28) and higher sepsis severity (OR=1.27 per additional score point, 95% CI 1.16-1.40) (see
284 supplement table 4).

285

286 *Antibiotic switching*

287 After initial therapy, 728/2880 (25.3%) who started on Group 1-4 regimens were escalated to a
288 higher group regimen, the majority switching within the first days of treatment (supplement figures
289 15-17). 258/814 (31.7%) infants escalated from Group 1 (ampicillin/gentamicin) regimens, the
290 majority of which switched to Group 2 (cefotaxime/ceftriaxone-based) regimens (61.6%, n=159)
291 (figure 1c). 101/432 (23.4%) infants escalated from Group 2 regimens, mostly directly to a Group 4
292 carbapenem-based regimen (62.4%, n=63) rather than a Group 3 partial ESBL/pseudomonal activity
293 regimen (32.7%, n=33). 287/1068 (26.9%) escalated from group 3 regimens, and of 566 infants
294 starting treatment with carbapenems (Group 4), 82 (14.5%) escalated therapy to a colistin-
295 containing regimen. Common reported reasons for first escalation of antibiotics overall included

296 clinical deterioration (65.9%, n=480), microbiology results (15.4%, n=112), and worsening
297 inflammatory biomarkers (9.8%, n=71). De-escalation of antibiotics was rare (173/2937; 5.9%).

298 Cumulative incidence of stopping intravenous treatment within 7 days from baseline culture was
299 38.9% (95% CI 37.2-40.6%) overall (Figure 1d); 45.8% (95% CI 43.8-47.6%) in pathogen-negative and
300 6.9% (95% CI 5.0-9.2%) in pathogen-positive cases. After stopping intravenous antibiotics, 350/2803
301 (12.5%) switched to oral therapy. 289 of 2803 infants who had stopped (10.3%), restarted
302 intravenous antibiotics during the original hospital stay, and a further 84 infants after discharge. 115
303 (3.4%) were still on uninterrupted antibiotic treatment at day 28. Median total number of days on
304 intravenous antibiotics during the 28 days follow-up was 8 (IQR 6-14) days (supplement figure 18).
305 Of note, intramuscular use of antibiotics was very rare (<0.1%).

306

307 *Microbiology*

308 Initial blood culture results were available for 3195 (99.7%) infants; 693 (21.7%) grew at least one
309 organism. Organisms identified as significant pathogens were isolated in 564/693 (>1 pathogen in
310 29) blood cultures, contaminants (presumed non-pathogens) in 117, and indeterminate in 12
311 cultures (table 1). Gram-negative and Gram-positive pathogens were found in 62.9% (355/564) and
312 34.8% (196/564) of infants, respectively (n=8 with both), and fungal pathogens in 21. Amongst
313 infants with a significant pathogen, *Klebsiella pneumoniae* (23.4%, n=132), Coagulase-negative
314 staphylococci (CoNS) (14.9%, n=84), *Acinetobacter species* (12.8%, n=72), *Staphylococcus aureus*
315 (9.6%, n=54), and *Escherichia coli* (8.3%, n=47) were the most common (table 1; supplement figure
316 19) but with differences between sites (supplement figure 20). *Streptococcus agalactiae* was found
317 in only 19 babies (3.4%). All the common pathogens were identified in both early and late onset
318 sepsis (figure 2), although *Escherichia coli* was more common in the first 3 days of life while
319 *Klebsiella pneumoniae* more frequent in late onset sepsis (supplement table 5).

320 58% (75/130 tested) of *Klebsiella pneumoniae* isolates were resistant to gentamicin, 75.0% (96/128)
321 to commonly used 3rd-generation cephalosporins (cefotaxime/ceftriaxone), 46.5% (53/114) were
322 resistant to piperacillin-tazobactam, 46.6% (48/103) to ciprofloxacin, and 32.6% (43/132) to
323 meropenem (supplementary table 6). *Acinetobacter species* were resistant to meropenem in 71.4%
324 (50/70) of cases. *Escherichia coli* retained greater susceptibility to 3rd-generation cephalosporins
325 (64.4%, 29/45 susceptible), and was susceptible in 90.4% (38/42) of cases to piperacillin-tazobactam.
326 Among Gram-negatives there were important differences in susceptibility among aminoglycosides,
327 with amikacin providing significantly better activity than gentamicin (e.g. 61.5% vs 38.5%
328 susceptibility among *Klebsiella pneumoniae*).

329 Among 54 *Staphylococcus aureus* isolates, 33 (61.1%) were methicillin resistant. *Staphylococcus*
330 *aureus* and CoNS were susceptible to vancomycin in all of 42 and 73 isolates tested respectively, and
331 all 19 *Streptococcus agalactiae* isolates were susceptible to ampicillin. Other rarer and more site-
332 specific pathogens with high rates of resistance to antibiotics included *Serratia species*, *Burkholderia*
333 *species*, and *Elizabethkingia meningoseptica* (supplement table 6).

334 1226/3204 (38.3%) infants had a cerebrospinal fluid (CSF) culture performed at baseline or during
335 the subsequent 7 days. 73/1226 (6.0%) were culture-positive, 47 with a pathogen, and 26
336 contaminant/indeterminate. Gram-negative organisms also dominated in CSF cultures (supplement
337 table 7).

338

339 *Mortality*

340 Overall, 350 infants (11.3%; 95%CI 10.2-12.5%) died within 28 days of baseline blood culture.
341 Mortality among infants with a pathogen-positive baseline culture was 17.7% (99/564; 95%CI 14.7-
342 21.1%) compared with 9.9% (250/2631; 95%CI 8.8-11.2%) in infants without pathogens ($p<0.001$).
343 Mortality was higher in infants with Gram-negative (21.3%; 95%CI 17.4-25.9%) or fungal pathogens
344 (38.1%; 95%CI 21.2-61.9%) than with Gram-positive pathogens (8.5%; 95%CI 5.3-13.5%; $p<0.001$).
345 Mortality was 33.3% (95%CI 23.7-45.5%) in infants with *Acinetobacter* spp., 21.5% (95%CI 15.4-
346 29.6%) with *Klebsiella pneumoniae*, 21.1% (95%CI 8.5-46.8%) with *Streptococcus agalactiae*, 12.8%
347 (95%CI 6.0-26.3%) with *E. coli*, 11.1% (95%CI 5.2-23.1%) with *Staphylococcus aureus*, and 3.6%
348 (95%CI 1.2-10.8%) with CoNS (figure 3; supplement table 8). Overall, Gram-negative infections
349 accounted for 75/99 (75.8%) of culture-positive deaths, especially *Klebsiella pneumoniae* ($n=28$;
350 28.3%), and *Acinetobacter* spp. ($n=24$; 24.2%). There was significant variation in mortality between
351 different sites (Figure 5).

352 There was no significant association between time from blood culture to start of new antibiotics and
353 mortality, neither overall (HR=1.01 per additional 2 hours [95%CI 0.96-1.07]; $p=0.68$) nor in the
354 subgroup with no previous antibiotic exposure (HR=1.02 [95%CI 0.94-1.10]; $p=0.67$) (supplement
355 figure 21).

356

357 **Discussion**

358 In this hospital-based observational study in 11 countries across Africa, Asia, Europe and Latin
359 America we observed wide variation in antibiotic prescribing beyond WHO recommendations for
360 neonates and young infants with sepsis, with over 200 different empiric combinations, frequent
361 empiric escalation and rare de-escalation of therapy. Antimicrobial resistance was common, and
362 Gram-negative pathogens (*Klebsiella* and *Acinetobacter*), were largely resistant to WHO
363 recommended regimens. Among Gram positives, MRSA accounted for over half of *Staphylococcus*
364 *aureus* isolates. 10% of pathogen-negative, and 18% of pathogen-positive infants died, and Gram-
365 negative infections were associated with the majority of pathogen-positive deaths.

366 To our knowledge this is the largest multi-country hospital based observational study of sepsis in
367 neonates and young infants to collect detailed daily prospective clinical and antimicrobial prescribing
368 data linked to microbiology and clinical outcomes. These data confirm trends in antibiotic use
369 reported in recent point prevalence surveys in LMIC settings,¹⁶ but this study provides evidence on
370 patterns of switching and escalation of therapy. In particular, a third of infants that had started on
371 WHO recommended regimens escalated to broader spectrum antibiotic regimens, and escalation
372 overall was most commonly to a carbapenem. There was also considerable use of 'carbapenem-
373 sparing' regimens with 'partial' ESBL and anti-pseudomonal activity that varied between centres
374 (piperacillin-tazobactam, ceftazidime and quinolone-based regimens, often in combination with
375 amikacin). Evidence on carbapenem-sparing regimens is limited in neonates,²⁶ but *Pseudomonas*
376 infections were rare in NeoOBS and in the recent published literature.^{5,6} Notably, a small but
377 important proportion of infants in some sites received treatment for proven or suspected
378 carbapenem-resistant infection with colistin, for which a recommended approach to dosing and
379 combination therapy remains unclear, and CSF penetration and side effect profile are sub-optimal.²⁷
380 Some countries are also using less widely used combinations such as cefoperazone/sulbactam, for
381 which neonatal data are limited.^{28,29}

382 The extent to which increasing prevalence of AMR is associated with excess mortality, and whether
383 this may be modifiable with different antibiotic treatment strategies, is unclear in neonates and
384 young infants. AMR has been demonstrated as an independent predictor of mortality in adults with
385 bloodstream infections, including in LMIC settings.³⁰ However, data in neonates and young infants in
386 many LMIC settings are scarce.^{15,31} A limited number of largely retrospective observational studies
387 have shown an increase in mortality particularly in association with resistant Gram negative
388 infections³²⁻³⁵, such as those due to organisms producing extended spectrum beta-lactamases
389 (ESBL)³⁶⁻³⁹ and carbapenem resistant organisms (CRO),⁴⁰⁻⁴³ and some suggest an increase in
390 mortality in the absence of appropriate antimicrobial therapy.^{32,44-47} A recent large multicentre
391 neonatal sepsis study (BARNARDS) demonstrated high resistance to ampicillin + gentamicin (97%
392 and 70%, respectively) among Gram-negative infections; however, analysis of the influence of
393 antibiotic treatment on outcomes was confounded by country effects, and limited clinical data
394 prevented adjusting for other important confounders.⁹ Appropriate analyses of the causal
395 relationship between discordant antibiotic treatment and mortality would need to consider baseline
396 confounders as well as time-dependent confounding,⁴⁸ but to our knowledge this has not been done
397 for neonatal sepsis in LMIC settings to an extent that it could inform changes to global
398 guidance.^{9,35,42,49,50} Relevant analyses in the NeoOBS cohort are ongoing.

399 Limitations should be taken into account when considering the generalisability of these data. Most
400 sites in NeoOBS represented secondary or tertiary hospitals in urban settings, in some cases
401 receiving referrals after prior treatment in other hospitals. In many cases these facilities provided a
402 higher level of care than is typical in many low resource settings. AMR may be more important, and
403 a wider range of antibiotics may be available in these settings compared to more rural low resource
404 settings.^{51,52} This is an important bias in most studies on AMR in low resource settings, where the
405 need for high quality microbiology means certain settings are over-represented. A significant
406 proportion (36.8%) of infants had previously received antibiotics before the new sepsis episode,
407 which may influence culture yield and pathogen characteristics. Selection bias was also possible
408 beyond site selection, in particular with prospective recruitment potentially leading to a milder
409 phenotype as infants who die rapidly with sepsis are more difficult to enrol, possibly leading to
410 underestimation of mortality. The sites were selected to be heterogenous, with wide variation in
411 levels of supportive care and mortality. These data highlight the major limitations of basing
412 antibiotic recommendations on observational data alone. Analyses to determine the impact of
413 antibiotic use on outcomes are confronted with important biases,⁴⁸ including the influence of initial
414 sepsis severity on antibiotic choice and timing of first administration, antibiotic availability and
415 affordability, inter-site population heterogeneity, local guidelines and microbiology, and varying
416 levels of supportive care.

417 In the context of increasing resistance to WHO recommended therapy for neonatal sepsis in LMIC
418 settings, and a lack of evidence to guide optimal management due to the limitations of observational
419 data, further randomised antibiotic trials are urgently needed. There is a very limited pipeline of new
420 antibiotics for Gram negative infections⁵³ and future strategic trials of novel regimens need to
421 include older off-patent antibiotics.^{54,55} This study demonstrates there is no single “standard of care”
422 in neonatal sepsis. Novel trial designs are therefore needed to define optimal treatment from a
423 background of wide variation in empiric antibiotic prescribing and frequent switching. This study has
424 now informed the design of the NeoSep1 trial (ISRCTN 48721236) which will use a network meta-
425 analytic approach to rank novel off patent antibiotic combinations compared to WHO recommended
426 and other commonly used regimens, combined with a SMART (Sequential Multiple Assessment
427 Randomised Trial) design to allow randomisation to both empiric first and second line treatment.

Table 1: Baseline Characteristics and Antibiotic use

Infant characteristics		N (%) or median (IQR)	
Infant characteristics	WHO region of enrolment:		
	Africa	998 (31.1%)	
	Americas	79 (2.5%)	
	South-East Asia	1201 (37.5%)	
	Europe	121 (3.8%)	
	Western Pacific	805 (25.1%)	
	Age at baseline (days)	5 (1, 15)	
	Sex		
	Male	1854 (57.9%)	
	Female	1348 (42.1%)	
Indeterminate/intersex	2 (0.1%)		
Birth weight (grams)		2500 (1400, 3200)	
Gestational age at birth (weeks)		37 (31, 39)	
Estimated gestational age at birth, categories	extremely preterm (<28 weeks)	227 (7.1%)	
	very preterm (28 to <32 weeks)	607 (19.0%)	
	moderately preterm 32 to <37 weeks	694 (21.7%)	
	term (≥37 weeks)	1674 (52.3%)	
	Birth history	Birth status	
	Hospitalised since birth	2215 (69.1%)	
	Admitted from home/community	989 (30.9%)	
	Time from admission to enrolment (hours)	22 (1, 126)	
	Mode of delivery: Vaginal	1774 (55.4%)	
	Emergency caesarean section	969 (30.2%)	
	Elective caesarean section	443 (13.8%)	
	Congenital anomalies	265 (8.3%)	
Antibiotics	On IV antibiotics in previous 24 hours	742 (23.2%)	
Previous surgery	Abdominal surgery or for congenital malformations	95 (3.0%)	
Supportive care at baseline	IV fluid (supportive/feeding)	2497 (77.9%)	
	Thermal care	Incubator care	984 (30.7%)
		Heated mattress	115 (3.6%)
		Overhead heater	(33.7%)
		Kangaroo Mother Care	163 (5.1%)
	Oxygen supplementation		1894 (59.1%)
	Ventilation support:	Non-invasive ventilation	719 (22.4%)
		Invasive ventilation	701 (21.9%)
	Phototherapy		522 (16.3%)
	Transfusion red blood cells		221 (6.9%)
	Transfusion platelets		64 (2.0%)
	Fresh frozen plasma		118 (3.7%)
	Feeding	Breast/formula/other milk	1953 (61.0%)
TPN		527 (16.4%)	
Nasogastric tube		1432 (44.7%)	
Baseline culture	Negative	2502 (78.3%)	
	Contaminant (presumed non-pathogen)	117 (3.7%)	
	Pathogen	564 (17.7%)	
	Indeterminate	12 (0.4%)	
Pathogens	<i>Klebsiella pneumoniae</i>	132 (4.1)	
	<i>Coagulase-negative Staphylococci</i>	84 (2.6)	

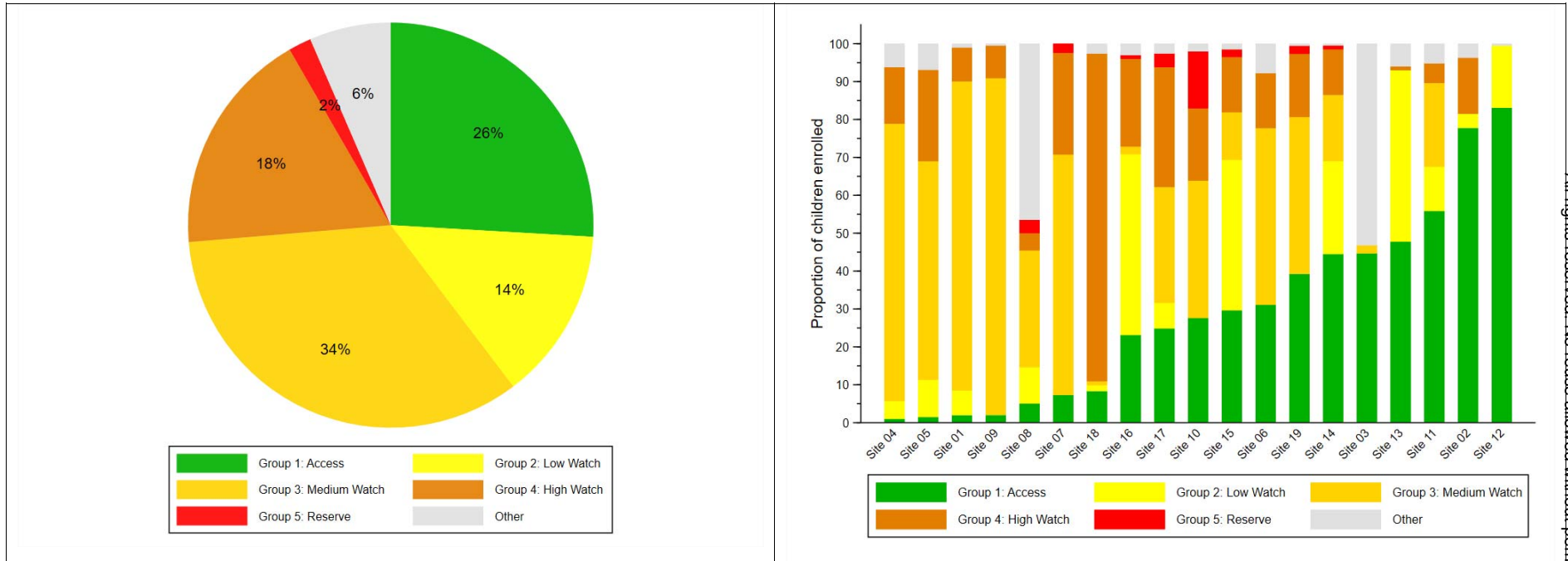
<i>Acinetobacter</i> spp. *	72 (2.3)
<i>Staphylococcus aureus</i>	54 (1.7)
<i>Escherichia coli</i>	47 (1.5)
<i>Enterobacter</i> spp.	39 (1.2)
<i>Serratia</i> spp.	20 (0.6)
<i>Streptococcus agalactiae</i>	19 (0.6)
Other Gram-negative bacteria **	65 (2.0)
Other Gram-positive bacteria ***	42 (1.3)
Fungi ****	21 (0.7)

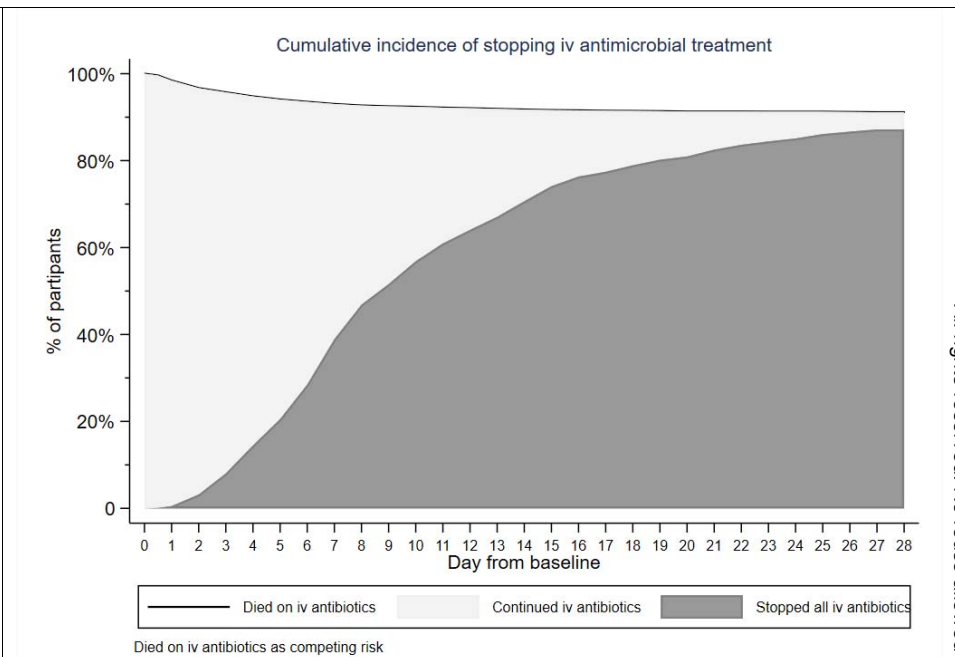
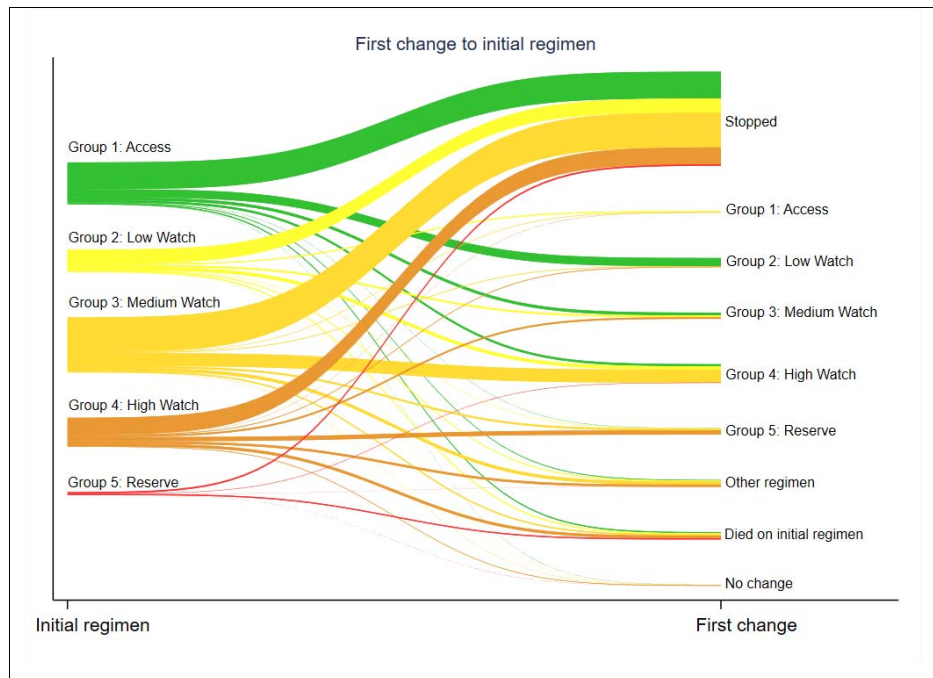
Note: * *Acinetobacter baumannii*: n=64; *Acinetobacter iwoffii*: n=2; unspecified: n=6. ** *Enterococcus faecalis*: n=14; *Enterococcus faecium*: n=10; *Bacillus* spp.: n=4; *Streptococcus pneumoniae*: n=3; *Streptococcus pyogenes*: n=3; *Aerococcus viridans*: n=1; *Corynebacterium* spp.: n=1; *Dermabacter hominis*: n=1; *Listeria monocytogenes*: n=1; *Streptococcus gallolyticus*: n=1; *Streptococcus salivarius*: n=1; *Streptococcus vestibularis*: n=1; *Streptococcus viridans*: n=1. *** *Elizabethkingia meningoseptica*: n=15; *Burkholderia* spp.: n=12; *Citrobacter* spp.: n=10; *Elizabethkingia anophelis*: n=7; *Klebsiella oxytoca*: n=7; *Pseudomonas aeruginosa*: n=5; *Proteus mirabilis*: n=2; *Campylobacter coli*: n=1; *Klebsiella* spp.: n=1; *Morganella morgannii*: n=1; *Pseudomonas putida*: n=1; *Pseudomonas stutzeri*: n=1; *Salmonella* spp.: n=1; *Sphingomonas paucimobilis*: n=1; *Stenotrophomonas maltophilia*: n=1. **** *Candida albicans*: n=13; *Candida parapsilosis*: n=2; *Candida pelliculosa*: n=2; *Candida auris*: n=1; *Candida tropicalis*: n=1; *Kodamaea ohmeri*: n=1; *Wickerhamomyces anomalus*: n=1.

Table 2: Most common antibiotic regimens in each Group

	Most common antibiotic combinations (>5% of each group)	N (%) of group
Group 1	Ampicilin + Gentamicin	403 (49.5%)
	Ampicillin + Amikacin	87 (10.7%)
	Penicillin + Gentamicin	61 (7.5%)
	Co-amoxiclav + Amikacin	59 (7.2%)
	Co-amoxiclav	55 (6.8%)
Group 2	Cefotaxime	92 (21.3%)
	Cefotaxime + Ampicillin	78 (18.1%)
	Ceftriaxone	58 (13.4%)
	Cefotaxime + Amikacin	50 (11.6%)
Group 3	Piperacillin/Tazobactam + Amikacin	356 (33.3%)
	Ceftazidime	297 (27.8%)
	Ceftazidime + Amikacin	139 (13.0%)
	Ciprofloxacin + Amikacin	58 (5.4%)
	Ceftazidime + penicillin	55 (5.1%)
Group 4	Meropenem + Vancomycin	246 (43.5%)
	Meropenem	201 (35.5%)
	Meropenem + Amikacin	49 (8.7%)
Group 5	Colistin + Meropenem	15 (26.3%)
	Colistin	13 (22.8%)
	Colistin + Meropenem + Amikacin	5 (8.8%)
	Colistin + Meropenem + Vancomycin	5 (8.8%)
	Colistin + Vancomycin	4 (7.0%)
Other	Cefoperazone/sulbactam + Amikacin	61 (29.9%)
	Cefoperazone/sulbactam	24 (11.8%)
	Moxalactam	21 (10.3%)
	Vancomycin + Gentamicin	18 (8.8%)
	Vancomycin	17 (8.3%)
	Amikacin	11 (5.4%)

Figure 1 – 1a Antibiotic AWaRe Wheel including empiric antibiotic grouping at baseline; 1b Empiric baseline therapy by site; 1c First change of initial regimen, by baseline regimen; 1d Cumulative incidence of stopping all iv antibiotics.





Group 1 = First line WHO recommended penicillin-based regimen (e.g. ampicillin and gentamicin) (Access). Group 2 = 3rd generation cephalosporin (eg cefotaxime/ceftriaxone)-based WHO regimens ('Low' Watch). Group 3 = regimens with partial anti-extended-spectrum beta-lactamase ((ESBL) or pseudomonal activity (e.g. piperacillin-tazobactam/ceftazidime/fluoroquinolone-based) ('Medium' Watch). Group 4 = Carbapenems ('High' Watch). Group 5 = Reserve antibiotics targeting carbapenem resistant organisms (e.g. colistin).

Figure 2: Pathogens isolated in baseline blood culture, by day of life.

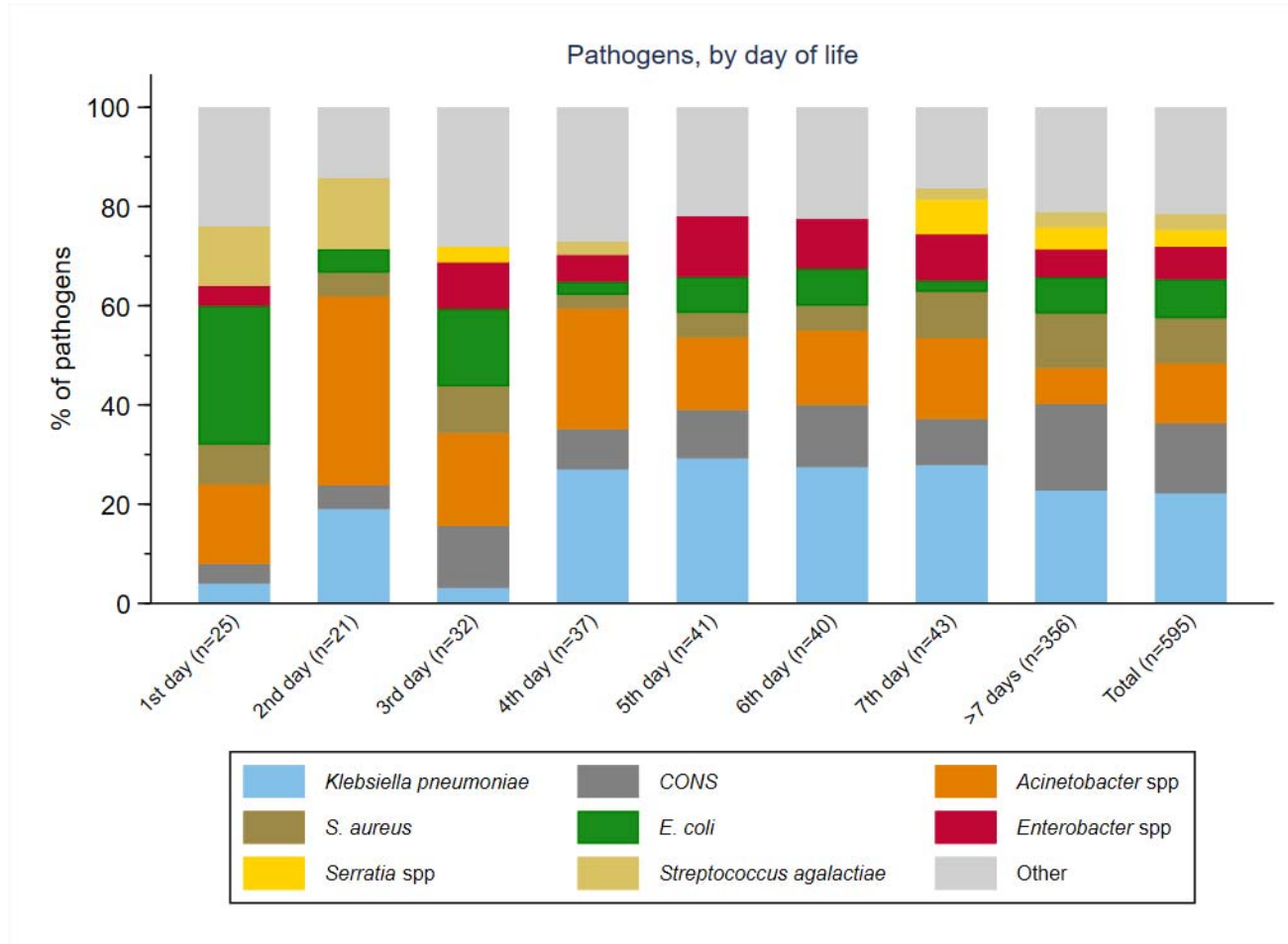
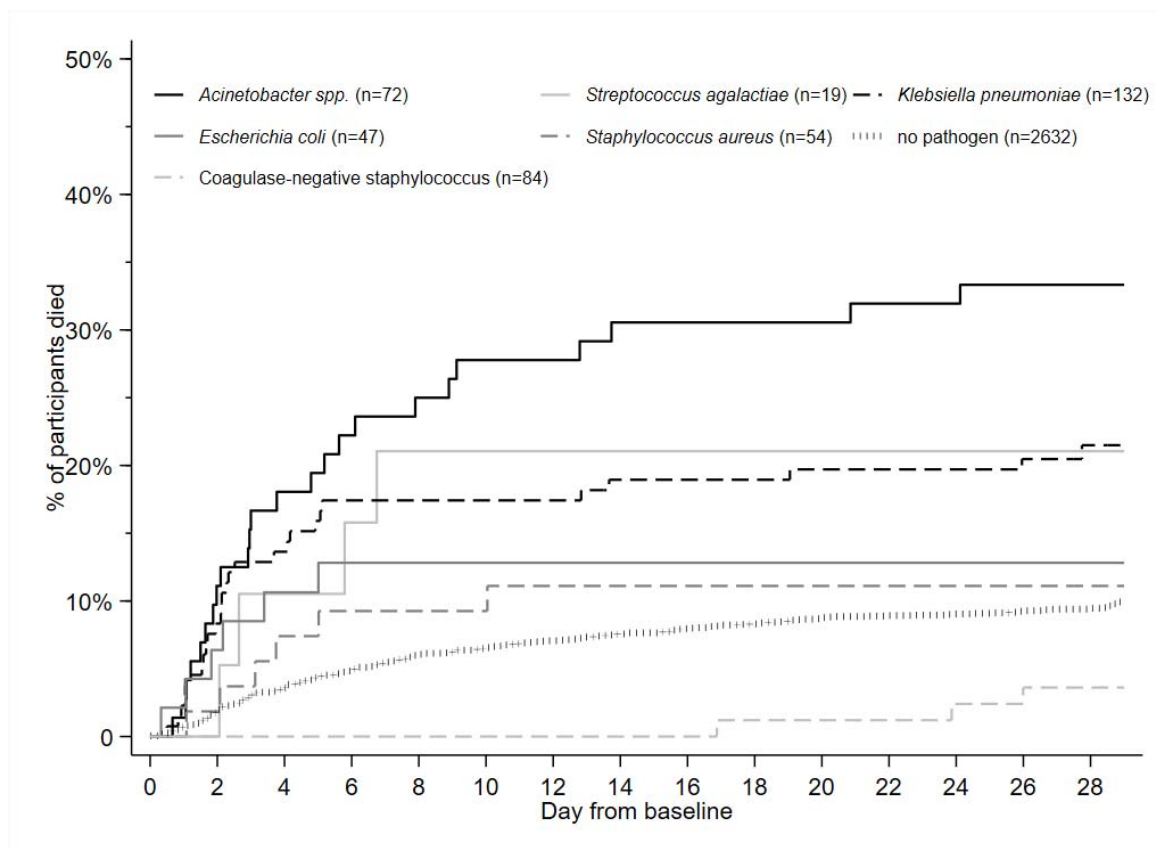


Figure 3: Mortality by pathogen in baseline blood culture



Note: Kaplan-Meier analysis, unadjusted.

Figure 4: Antibiotic resistance among leading pathogens in baseline blood culture

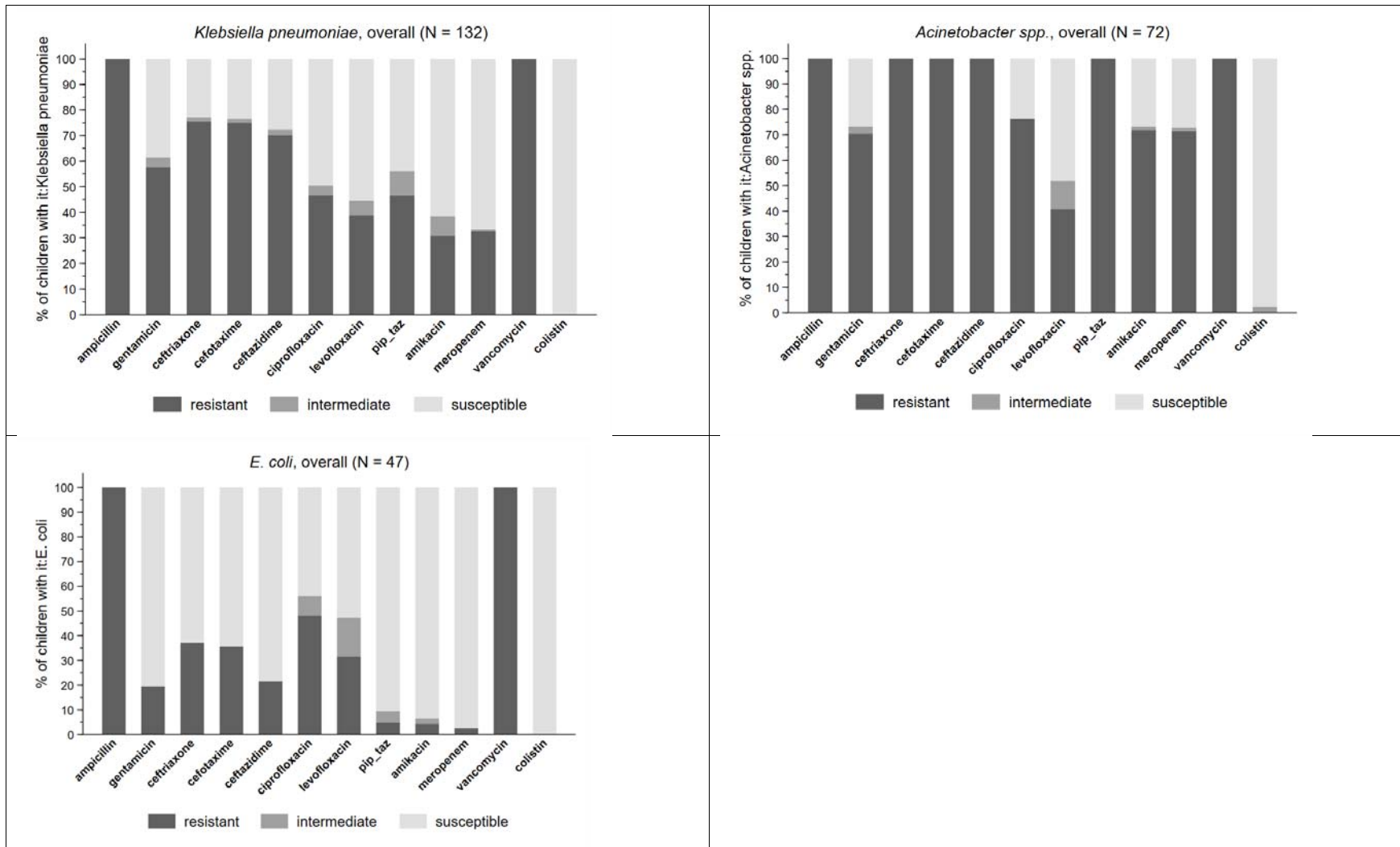
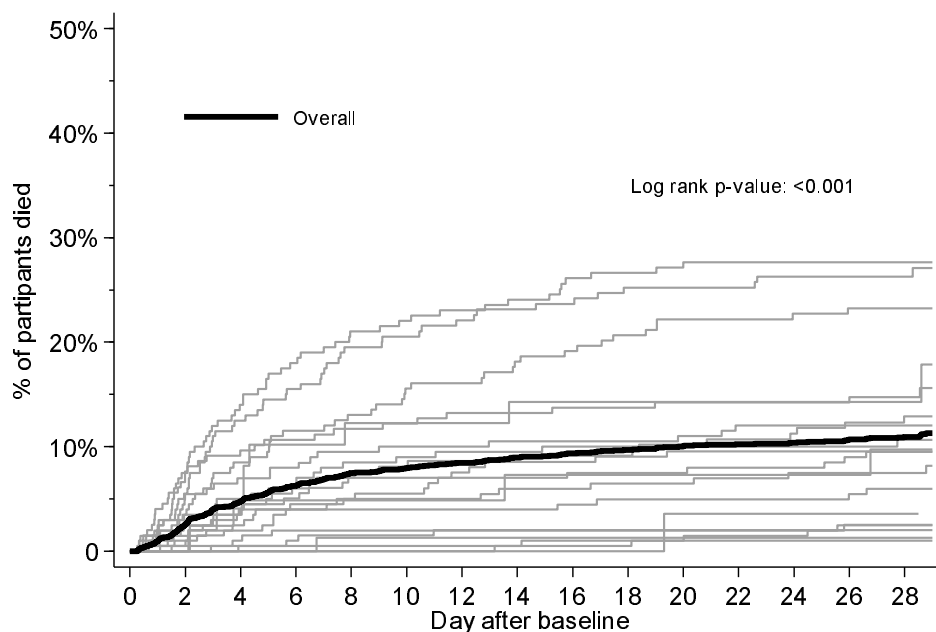


Figure 5: Kaplan-Meier curves for mortality, overall and by site



References

1. Seale, A. C. *et al.* Estimates of possible severe bacterial infection in neonates in sub-Saharan Africa, south Asia, and Latin America for 2012: a systematic review and meta-analysis. *Lancet Infect. Dis.* **14**, 731–741 (2014).
2. Breiman, R. F. *et al.* Postmortem investigations and identification of multiple causes of child deaths: An analysis of findings from the Child Health and Mortality Prevention Surveillance (CHAMPS) network. *PLOS Med.* **18**, e1003814 (2021).
3. Gabrysch, S. *et al.* Does facility birth reduce maternal and perinatal mortality in Brong Ahafo, Ghana? A secondary analysis using data on 119,244 pregnancies from two cluster-randomised controlled trials. *Lancet Glob. Heal.* **7**, e1074–e1087 (2019).
4. Fuchs, A., Bielicki, J., Mathur, S., Sharland, M. & Van Den Anker, J. N. Reviewing the WHO guidelines for antibiotic use for sepsis in neonates and children. *Paediatr. Int. Child Health* **38**, S3–S15 (2018).
5. Okomo, U. *et al.* Aetiology of invasive bacterial infection and antimicrobial resistance in neonates in sub-Saharan Africa: a systematic review and meta-analysis in line with the STROBE-NI reporting guidelines. *Lancet Infect. Dis.* (2019). doi:10.1016/S1473-3099(19)30414-1
6. Chaurasia, S. *et al.* Neonatal sepsis in South Asia: huge burden and spiralling antimicrobial resistance. *BMJ* **364**, k5314 (2019).

7. Investigators of the Delhi Neonatal Infection Study (DeNIS) collaboration. Characterisation and antimicrobial resistance of sepsis pathogens in neonates born in tertiary care centres in Delhi, India: a cohort study. *Lancet Glob. Heal.* **4**, e752–e760 (2016).
8. Sands, K. *et al.* Characterization of antimicrobial-resistant Gram-negative bacteria that cause neonatal sepsis in seven low- and middle-income countries. *Nat. Microbiol.* **6**, 512–523 (2021).
9. Thomson, K. M. *et al.* Effects of antibiotic resistance, drug target attainment, bacterial pathogenicity and virulence, and antibiotic access and affordability on outcomes in neonatal sepsis: an international microbiology and drug evaluation prospective substudy (BARNARDS). *Lancet Infect. Dis.* (2021). doi:10.1016/S1473-3099(21)00050-5
10. Murray, C. J. L. *et al.* Global burden of bacterial antimicrobial resistance in 2019: a systematic analysis. *Lancet* **399**, 629–655 (2022).
11. Laxminarayan, R. *et al.* Access to effective antimicrobials: a worldwide challenge. *Lancet* **387**, 168–175 (2016).
12. Dewez, J. E., Chellani, H. K., Halim, A. & Van Den Broek, N. Simplified antibiotic regimens for neonatal sepsis - AFRINEST(1). *The Lancet* (2015). doi:10.1016/S0140-6736(15)00330-X
13. Mir, F. *et al.* Simplified antibiotic regimens for treatment of clinical severe infection in the outpatient setting when referral is not possible for young infants in Pakistan (Simplified Antibiotic Therapy Trial [SATT]): a randomised, open-label, equivalence trial. *Lancet Glob. Heal.* **5**, e177–e185 (2017).
14. Joseph, G., da Silva, I. C. M., Wehrmeister, F. C., Barros, A. J. D. & Victora, C. G. Inequalities in the coverage of place of delivery and skilled birth attendance: analyses of cross-sectional surveys in 80 low and middle-income countries. *Reprod. Health* **13**, 77 (2016).
15. Korang, S. K. *et al.* Antibiotic regimens for late-onset neonatal sepsis. *Cochrane Database Syst. Rev.* (2021). doi:10.1002/14651858.CD013836.pub2
16. Jackson, C. *et al.* Global Divergence From World Health Organization Treatment Guidelines for Neonatal and Pediatric Sepsis. *Pediatr. Infect. Dis. J.* **38**, (2019).
17. Folgari, L. *et al.* Tackling antimicrobial resistance in neonatal sepsis. *Lancet. Glob. Heal.* **5**, e1066–e1068 (2017).
18. Li, G. *et al.* Towards understanding global patterns of antimicrobial use and resistance in neonatal sepsis: insights from the NeoAMR network. *Arch. Dis. Child.* **105**, 26 LP – 31 (2020).
19. WHO. *Managing possible serious bacterial infection in young infants when referral is not feasible.* (2015).
20. Tuzun, F. *et al.* Is European Medicines Agency (EMA) sepsis criteria accurate for neonatal sepsis diagnosis or do we need new criteria? *PLoS One* **14**, e0218002–e0218002 (2019).
21. Fitchett, E. J. A. *et al.* Strengthening the Reporting of Observational Studies in Epidemiology for Newborn Infection (STROBE-NI): an extension of the STROBE statement for neonatal infection research. *Lancet Infect. Dis.* **16**, e202–e213 (2016).
22. Harris, P. A. *et al.* Research electronic data capture (REDCap)—A metadata-driven methodology and workflow process for providing translational research informatics support. *J. Biomed. Inform.* **42**, 377–381 (2009).
23. Hsia, Y. *et al.* Use of the WHO Access, Watch, and Reserve classification to define patterns of

- hospital antibiotic use (AWaRe): an analysis of paediatric survey data from 56 countries. *Lancet Glob. Heal.* **7**, e861–e871 (2019).
24. Sulis, G. *et al.* Exposure to WHO AWaRe antibiotics and isolation of multi-drug resistant bacteria: a systematic review and meta-analysis. *Clin. Microbiol. Infect.* (2022). doi:10.1016/j.cmi.2022.03.014
 25. Neal Russell*, Wolfgang Stöhr* Co-First authors, listed alphabetically *et al.* The NeoSep Severity and Recovery scores to predict mortality in hospitalized neonates and young infants with sepsis derived from the global NeoOBS observational cohort study. *Submitt. to Plos Med.* (2022).
 26. Lutsar, I. *et al.* Meropenem vs standard of care for treatment of neonatal late onset sepsis (NeoMero1): A randomised controlled trial. *PLoS One* **15**, e0229380 (2020).
 27. Nakwan, N., Chokephaibulkit, K. & Imberti, R. The Use of Colistin for the Treatment of Multidrug-resistant Gram-negative Infections in Neonates and Infants: A Review of the Literature. *Pediatr. Infect. Dis. J.* **38**, (2019).
 28. Ovali, F., Gursoy, T., Sari, I., Divrikli, D. & Aktas, A. Use of Cefoperazone/sulbactam in neonates. *Pediatr. Int.* **54**, 60–63 (2012).
 29. Bortone, B. *et al.* High global consumption of potentially inappropriate fixed dose combination antibiotics: Analysis of data from 75 countries. *PLoS One* **16**, e0241899 (2021).
 30. Stewardson, A. J. *et al.* Effect of carbapenem resistance on outcomes of bloodstream infection caused by Enterobacteriaceae in low-income and middle-income countries (PANORAMA): a multinational prospective cohort study. *Lancet. Infect. Dis.* **19**, 601–610 (2019).
 31. Wen, S. C. H. *et al.* Gram-negative neonatal sepsis in low- and lower-middle-income countries and WHO empirical antibiotic recommendations: A systematic review and meta-analysis. *PLOS Med.* **18**, e1003787 (2021).
 32. Peters, L. *et al.* Multiple antibiotic resistance as a risk factor for mortality and prolonged hospital stay: A cohort study among neonatal intensive care patients with hospital-acquired infections caused by gram-negative bacteria in Vietnam. *PLoS One* **14**, e0215666–e0215666 (2019).
 33. Folgori, L. *et al.* Epidemiology and Clinical Outcomes of Multidrug-resistant, Gram-negative Bloodstream Infections in a European Tertiary Pediatric Hospital During a 12-month Period. *Pediatr. Infect. Dis. J.* **33**, (2014).
 34. Foglia, E. E., Fraser, V. J. & Elward, A. M. Effect of Nosocomial Infections Due to Antibiotic-Resistant Organisms on Length of Stay and Mortality in the Pediatric Intensive Care Unit. *Infect. Control Hosp. Epidemiol.* **28**, 299–306 (2007).
 35. Ivády, B. *et al.* Factors influencing antimicrobial resistance and outcome of Gram-negative bloodstream infections in children. *Infection* **44**, 309–321 (2016).
 36. Abdel-Hady, H., Hawas, S., El-Daker, M. & El-Kady, R. Extended-spectrum β -lactamase producing *Klebsiella pneumoniae* in neonatal intensive care unit. *J. Perinatol.* **28**, 685 (2008).
 37. Kayange, N., Kamugisha, E., Mwizamholya, D. L., Jeremiah, S. & Mshana, S. E. Predictors of positive blood culture and deaths among neonates with suspected neonatal sepsis in a tertiary hospital, Mwanza- Tanzania. *BMC Pediatr.* **10**, 39 (2010).
 38. Ariffin, H. *et al.* Ceftazidime-resistant *Klebsiella pneumoniae* bloodstream infection in

- children with febrile neutropenia. *Int. J. Infect. Dis.* **4**, 21–5 (2000).
39. Zaoutis, T. E. *et al.* Risk Factors for and Outcomes of Bloodstream Infection Caused by Extended-Spectrum ss-Lactamase-Producing *Escherichia coli* and *Klebsiella* Species in Children. *Pediatrics* **115**, 942–949 (2005).
 40. Thatrimontrichai, A. *et al.* Risk Factors and Outcomes of Carbapenem-resistant *Acinetobacter baumannii* Bacteremia in Neonatal Intensive Care Unit: A Case-case-control Study. *Pediatr. Infect. Dis. J.* **32**, (2013).
 41. Thatrimontrichai, A. *et al.* Risk factors and outcomes of carbapenem-resistant *Acinetobacter baumannii* ventilator-associated pneumonia in the neonate: A case-case-control study. *J. Infect. Chemother.* **22**, 444–449 (2016).
 42. Punpanich, W., Nithitamsakun, N., Treeratweeraphong, V. & Suntarattiwong, P. Risk factors for carbapenem non-susceptibility and mortality in *Acinetobacter baumannii* bacteremia in children. *Int. J. Infect. Dis.* **16**, e811–e815 (2012).
 43. Saleem, A. F., Ahmed, I., Mir, F., Ali, S. R. & Zaidi, A. K. Pan-resistant *Acinetobacter* Infection in Neonates in Karachi, Pakistan. *J. Infect. Dev. Ctries.* **4**, 030–037 (2010).
 44. Cook, A. *et al.* Association of Empiric Antibiotic Regimen Discordance With 30-Day Mortality in Neonatal and Pediatric Bloodstream Infection—A Global Retrospective Cohort Study. *Pediatr. Infect. Dis. J.* **40**, (2021).
 45. Lenglet, A., Faniyan, O. & Hopman, J. A Nosocomial Outbreak of Clinical Sepsis in a Neonatal Care Unit (NCU) in Port-Au-Prince Haiti, July 2014 - September 2015. *PLoS Curr.* **10**, ecurrents.outbreaks.58723332ec0de952adef9a9b69059 (2018).
 46. Dramowski, A., Aucamp, M., Bekker, A. & Mehtar, S. Infectious disease exposures and outbreaks at a South African neonatal unit with review of neonatal outbreak epidemiology in Africa. *Int. J. Infect. Dis.* **57**, 79–85 (2017).
 47. Naas, T. *et al.* Neonatal infections with multidrug-resistant ESBL-producing *E. cloacae* and *K. pneumoniae* in Neonatal Units of two different Hospitals in Antananarivo, Madagascar. *BMC Infect. Dis.* **16**, 275 (2016).
 48. Lim, C. *et al.* Effect of Delays in Concordant Antibiotic Treatment on Mortality in Patients With Hospital-Acquired *Acinetobacter* Species Bacteremia: Emulating a Target Randomized Trial With a 13-Year Retrospective Cohort. *Am. J. Epidemiol.* **190**, 2395–2404 (2021).
 49. Dramowski, A. *et al.* Mortality attributable to third-generation cephalosporin resistance in Gram-negative bloodstream infections in African hospitals: a multi-site retrospective study. *JAC-Antimicrobial Resist.* **3**, (2021).
 50. Zaoutis, T. E. *et al.* Risk factors for and outcomes of bloodstream infection caused by extended-spectrum beta-lactamase-producing *Escherichia coli* and *Klebsiella* species in children. *Pediatrics* **115**, 942–9 (2005).
 51. Panigrahi, P. *et al.* Neonatal sepsis in rural India: timing, microbiology and antibiotic resistance in a population-based prospective study in the community setting. *J. Perinatol.* **37**, 911–921 (2017).
 52. Saha, S. K. *et al.* Causes and incidence of community-acquired serious infections among young children in south Asia (ANISA): an observational cohort study. *Lancet* **392**, 145–159 (2018).
 53. Clancy, C. J. & Nguyen, M. H. It's worse than we thought: the US market for novel Gram-

negative antibiotics. *Lancet Infect. Dis.* **20**, 1009–1010 (2020).

54. Darlow, C. A. *et al.* Potential Antibiotics for the Treatment of Neonatal Sepsis Caused by Multidrug-Resistant Bacteria. *Pediatr. Drugs* **23**, 465–484 (2021).
55. Li, G. *et al.* The Potential Role of Fosfomycin in Neonatal Sepsis Caused by Multidrug-Resistant Bacteria. *Drugs* **77**, 941–950 (2017).