

1 **Strategies for using antigen rapid diagnostic tests to reduce transmission of**
2 **SARS-CoV-2 in low- and middle-income countries: a mathematical**
3 **modelling study**

4
5 Alvin X. Han, PhD^{1,*}, Sarah Girdwood, MSc², Shaukat Khan, PhD³, Jilian A. Sacks, PhD⁴,
6 Amy Toporowski, MD⁴, Naushin Huq, MA⁴, Emma Hannay, PhD⁴, Colin A. Russell,
7 PhD^{1,5,†}, Brooke E. Nichols, PhD^{1,4,5,†}

8
9 ¹Department of Medical Microbiology & Infection Prevention, Amsterdam University
10 Medical Center, University of Amsterdam, Amsterdam, The Netherlands

11 ²Health Economics and Epidemiology Research Office, Department of Internal Medicine,
12 School of Clinical Medicine, Faculty of Health Sciences, University of the Witwatersrand,
13 Johannesburg, South Africa

14 ³Clinton Health Access Initiative, Boston, MA, USA

15 ⁴Foundation for Innovative New Diagnostics (FIND), Geneva, Switzerland

16 ⁵Department of Global Health, School of Public Health, Boston University, Boston, MA,
17 USA

18
19 †Contributed equally

20 *Correspondence to Alvin X. Han (x.han@amsterdamumc.nl)

21

22 **Summary (249/250 words)**

23 *Background*

24 Increasing the availability of antigen rapid diagnostic tests (Ag-RDTs) in low- and middle-
25 income countries (LMICs) is key to alleviating global SARS-CoV-2 testing inequity (median
26 testing rate in December 2021-March 2022 when the Omicron variant was spreading in
27 multiple countries; high-income countries=600 tests/100,000 people/day; LMICs=14 tests/
28 100,000 people/day). However, target testing levels and effectiveness of asymptomatic
29 community screening to impact SARS-CoV-2 transmission in LMICs are unclear.

30

31 *Methods*

32 We used PATAT, an LMIC-focused agent-based model to simulate COVID-19 epidemics,
33 varying the amount of Ag-RDTs available for symptomatic testing at healthcare facilities and
34 asymptomatic community testing in different social settings. We assumed that testing was a
35 function of access to healthcare facilities and availability of Ag-RDTs. We explicitly
36 modelled symptomatic testing demand from non-SARS-CoV-2 infected individuals and
37 measured impact based on the number of infections averted due to test-and-isolate.

38

39 *Findings*

40 Testing symptomatic individuals yields greater benefits than any asymptomatic community
41 testing strategy until most symptomatic individuals who sought testing have been tested.
42 Meeting symptomatic testing demand likely requires ~200-400 tests/100,000 people/day on
43 average as symptomatic testing demand is highly influenced by non-SARS-CoV-2 infected
44 individuals. After symptomatic testing demand is satisfied, excess tests to proactively screen
45 for asymptomatic infections among household members yields the largest additional
46 infections averted.

47

48 *Interpretation*

49 Testing strategies aimed at reducing transmission should prioritize symptomatic testing and
50 incentivizing test-positive individuals to adhere to isolation to maximize effectiveness.

51

52 *Funding*

53 European Research Council, the Rockefeller Foundation, and the Governments of Germany,
54 Canada, UK, Australia, Norway, Saudi Arabia, Kuwait, Netherlands and Portugal.

55 **Research in context**

56 *Evidence before this study*

57 SARS-CoV-2 transmission can be reduced by test-trace-and-isolate strategies. However,
58 large gaps in global COVID-19 testing equity exist: only ~20% of tests administered globally
59 as of May 2022 (<https://www.finddx.org/covid-19/test-tracker/>) were performed in low- and
60 middle-income countries (LMICs) where half the world's population reside. To narrow the
61 equity gap, expanded access to SARS-CoV-2 antigen rapid diagnostic tests (Ag-RDTs) in
62 low-resource settings has been prioritized, with the diagnostics pillar of the global Access to
63 COVID-19 Tools (ACT)-Accelerator setting a target testing rate of 100 tests per 100,000
64 persons per day (/100k/day). Community testing to detect asymptomatic infected individuals
65 has also been proposed to be a key component in bridging the equity gap. We searched
66 PubMed and Google Scholar using combinations of search terms (i.e. "SARS-CoV-2",
67 "COVID-19", "diagnostic", "testing", "rapid diagnostic tests", "lateral flow tests", "Ag-
68 RDT", "LMIC") and critically reviewed publications and preprints on how scaling up testing
69 availability using Ag-RDTs and implementing community testing programs alongside
70 healthcare facility-based symptomatic testing would impact community transmissions in
71 LMICs. There is currently no robust quantitative evidence on the strategies or amount of
72 testing needed to reduce community transmission of SARS-CoV-2.

73

74 *Added value of this study*

75 To our knowledge, this is the first study that critically assessed the minimum COVID-19
76 testing targets set by the ACT-Accelerator in LMICs. This is also the first study that
77 estimated the reduction in secondary SARS-CoV-2 transmissions in LMICs given varying
78 levels of Ag-RDT availability and testing strategies, including the implementation of
79 asymptomatic community testing across different social settings (e.g. households, schools,
80 formal workplaces and regular mass gatherings such as religious gatherings). In doing so, this
81 is the first robust evidence-base on the utility of using Ag-RDTs to scale-up testing-for-
82 mitigation strategies in LMICs.

83

84 *Implications of all the available evidence*

85 Our model showed that testing of symptomatic individuals yields greater reduction in
86 transmissions than any asymptomatic community testing program. Asymptomatic community
87 testing will only support reduced infections after prioritizing available tests for symptomatic

88 individuals who sought testing. The current minimum COVID-19 testing rate target of 100
89 tests/100k/day can modestly reduce transmissions in LMICs but substantially larger volumes
90 of tests are needed to saturate symptomatic testing demand or effectively implement
91 community testing.

92 **Main Text (~3500/3500 words)**

93 **Introduction**

94 Since the emergence of SARS-CoV-2 in 2019, the COVID-19 pandemic has resulted in over
95 500 million confirmed cases and 6 million deaths worldwide as of May 2022.¹ While
96 vaccination is the key medical intervention to mitigate the pandemic, SARS-CoV-2 testing
97 remains an important public health tool for case identification and transmission reduction.
98 Testing is especially important in many low- and middle-income countries (LMICs) that
99 continue to struggle with gaining equitable access to global vaccine supplies.² Testing is also
100 the backbone of surveillance systems to monitor the emergence of novel variants of concern
101 (VOCs)³ that may escape immunity acquired from previous infections and vaccination.⁴

102
103 At the same time, the global imbalance in SARS-CoV-2 testing rates is substantial.⁵ Between
104 December 2021 and March 2022 when the Omicron (BA.1) VOC was spreading in multiple
105 countries, the median testing rate in LMICs was 14 (IQR = 7-41) tests per 100,000 persons
106 per day (/100k/day), whereas HICs tested >43 times more, with a median rate of 603 (IQR =
107 317-1181) tests/100k/day (<https://www.finddx.org/covid-19/test-tracker/>). Limited testing has
108 likely led to substantial underestimation of COVID-19 prevalence and mortality in LMICs.⁶
109 The diagnostics pillar of the Global Access to COVID-19 Tools (ACT) Accelerator, co-
110 convened by FIND and the Global Fund in partnership with the World Health Organization
111 to enhance access to COVID-19 tests and sequencing, has set a minimum testing rate of 100
112 tests/100k/day.⁷ This minimum testing rate is thought to be a “critical threshold to facilitate
113 effective public health interventions”.⁷ Additionally, asymptomatic testing in a community
114 setting (i.e. community testing) was identified by this initiative as a crucial step for LMICs to
115 close in on the global equity gap.⁷

116
117 Real-time reverse transcription polymerase chain reaction (PCR) tests remain the gold
118 standard for COVID-19 diagnostic testing, as it is the most sensitive testing method.⁸
119 However, PCR-based testing can be plagued by long turnaround times and necessitate
120 relatively costly laboratory infrastructures, robust sample transport networks and well-trained
121 personnel that are lacking in many low-resourced settings.⁹ While the sensitivity of antigen
122 rapid diagnostic tests (Ag-RDTs) is lower than PCR(>80%)¹⁰, Ag-RDTs are cheaper, capable
123 of producing results in under 30 minutes and can be performed easily at point-of-care.¹¹ As
124 such, Ag-RDTs offer a practical alternative diagnostic tool to enable massive scale up of

125 testing, including in resource-limited settings, potentially bridging the testing equity gap
126 between HICs and LMICs.⁵

127

128 To date, there is no robust evidence-base on how scaling-up Ag-RDTs to 100 tests/100k/day
129 would impact community transmissions. There is also a lack of information on the
130 effectiveness of community testing programs when used to complement symptomatic testing
131 under the constraints of limited test availability. In this study, we developed and used the
132 Propelling Action for Testing and Treating (PATAT) simulation model, an agent-based
133 modelling framework to investigate the impact of using Ag-RDTs for healthcare facility-
134 based symptomatic testing. We considered testing programs both with and without additional
135 asymptomatic testing programs in the community, using a population with demographic
136 profiles, contact mixing patterns, and levels of public health resources akin to those in many
137 LMICs. We used PATAT to interrogate how different Ag-RDT distribution availability and
138 testing strategies, including the implementation of community testing in households, schools,
139 formal workplaces and regular mass gatherings such as churches, could impact onward
140 disease transmission. In turn, we aimed to identify key priorities and gaps that should be
141 addressed when implementing mass testing programs using Ag-RDTs in low-resource
142 settings.

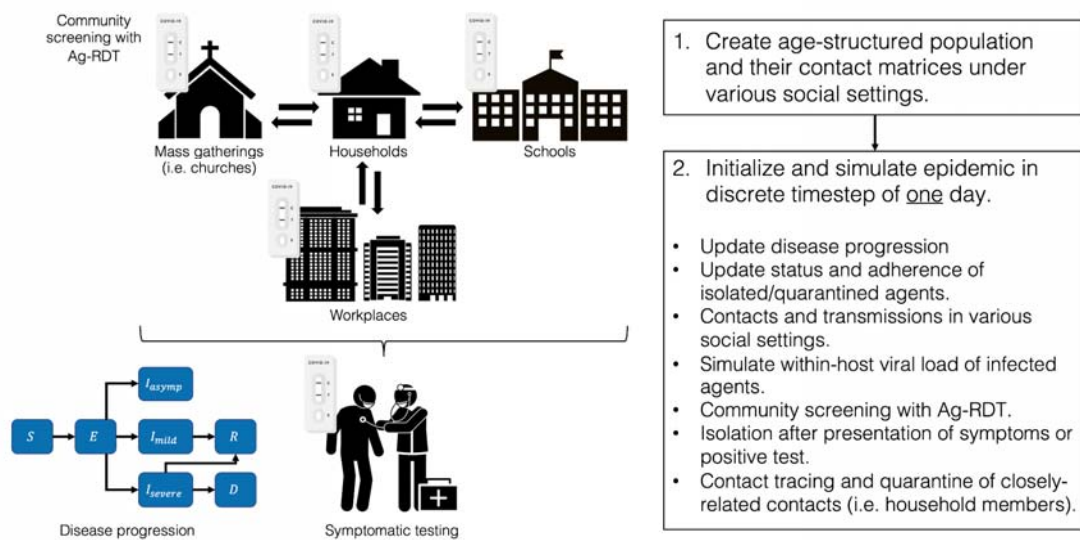
143

144 **Methods**

145 *The Propelling Action for Testing And Treating (PATAT) simulation model*

146 PATAT first creates an age-structured population of individuals within contact networks of
147 multi-generational households, schools, workplaces, churches (i.e. regular mass gatherings)
148 and random community with the given demographic data here based on archetypal LMIC
149 estimates (Figure 1). The simulation starts with a user-defined proportion of individuals
150 infected with SARS-CoV-2. Given that viral loads of an infected individual at the time of
151 testing affect Ag-RDT sensitivity,¹⁰ PATAT randomly draws a within-host viral load
152 trajectory over the course of each individual's infection from known distribution of
153 trajectories^{12,13} using previously developed methods.¹⁴ Given conflicting evidence,¹⁵ similar
154 viral load trajectories were drawn for both asymptomatic and symptomatic infected
155 individuals.

156



157

158 **Figure 1: Schematic of Propelling Action for Testing And Treating (PATAT) simulation model.**

159

160 The simulation computes transmission events across different contact networks each day and
 161 updates the disease progression of infected individuals based on the SEIRD epidemic model,
 162 stratifying them based on symptom presentation (asymptomatic, mild or severe).

163 Symptomatic individuals may seek symptomatic testing at clinics after symptom onset. Given
 164 that most LMICs are currently testing at rates far below 100 tests/100k/day to the extent that
 165 only a small proportion of COVID-19 positive deaths were identified in life (e.g. <10% in
 166 Zambia),¹⁶ we assumed that all clinic-provided testing demand by mild symptomatic
 167 individuals are satisfied by Ag-RDTs while PCR tests are restricted for testing severe patients
 168 only. Positively-tested individuals may go into isolation and their household members may
 169 also be quarantined.

170

171 *Simulation variables*

172 We assumed a populations size of 1,000,000 individuals, creating contact networks and
 173 healthcare facilities based on demographic data collected from Zambia.¹⁷ We initialized each
 174 simulation with 1% of the population being infected by SARS-CoV-2 and ran the model over
 175 a 90-day period. We permutated a range of R_0 values (i.e. 0.9, 1.1, 1.2, 1.5, 2.0, 2.5 and 3.0)
 176 against varying Ag-RDT stock availability (i.e. 100, 200-1,000 (in 200 increments), 1,000-
 177 5,000 (in 1,000 increments) tests per 100,000 persons per day). Various test distribution
 178 strategies were simulated: (1) 85% of weekly allocated tests were used for routine

179 asymptomatic community testing at a social setting and the remaining used for symptomatic
180 testing at healthcare facilities; (2) all weekly allocated test stocks are distributed to healthcare
181 facilities for symptomatic testing only with no asymptomatic community testing and (3)
182 weekly allocated tests are used for symptomatic testing at healthcare facilities first before any
183 remaining tests at the end of the week are used for asymptomatic community testing in the
184 next week. As a baseline, we simulated a set of runs using the same range of R_0 with no
185 testing at all.

186

187 To determine impact of testing on reducing infections, we assumed that the only public health
188 intervention measure is by test-and-isolate of positive-tested individuals. We also performed
189 a separate set of simulations that require a same-day quarantine of asymptomatic household
190 members of positively-tested individuals. This distinction is important because quarantine
191 should change contact patterns of more individuals per positive test, thereby increasing test
192 utility. We did not consider the quarantine of close contacts outside of household members as
193 contact tracing programs are often resource intensive and discontinued in most countries.

194

195 *Distribution of routine asymptomatic community test*

196 Due to their fixed nature and potential accessibility, routine asymptomatic community testing
197 may be implemented in households, schools, formal workplaces or churches. Community
198 tests stocks may be distributed in each setting in two ways: (1) even distribution to as many
199 entities as possible once per week (e.g. if we have 10 tests available for 10 households per
200 week, then one member of each household would be tested); (2) concentrated distribution to
201 test all individuals in selected entities twice a week who will continue to get tested
202 throughout the epidemic (e.g. if we have 10 tests available for 10 households per week but
203 only one housing 5 members, then all 10 tests will be distributed to this selected household of
204 5 for testing on Monday and Thursday of every week).

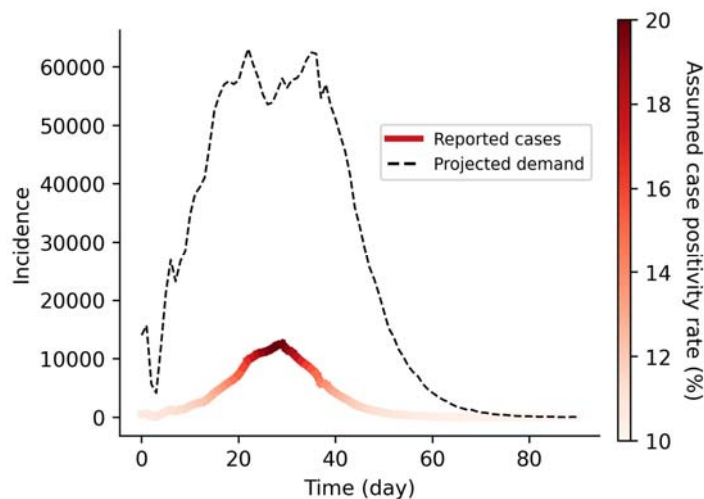
205

206 *Healthcare provided symptomatic testing demand*

207 Symptomatic testing demand estimation is particularly challenging for SARS-CoV-2 because
208 COVID-19 symptoms overlaps with other respiratory infections, thus increasing testing
209 demand. We assumed that symptomatic individuals would seek testing at clinics based on a
210 probability distribution that inversely correlate with the distance between their homes and the
211 nearest clinic¹⁸ (Table S1). Additionally, we simulated daily demand of clinic tests from

212 individuals that were not infected by SARS-CoV-2 but sought symptomatic testing as they
213 presented with COVID-19-like symptoms. This non-COVID-19 related demand was
214 estimated by assuming a 10% test positivity rate at the start as well as end of an epidemic
215 curve and 20% test positivity rate at the peak, linearly interpolating the demand for periods
216 between these time points (Figure 2). These assumptions are based on observed test positivity
217 rates in multiple countries experiencing infection waves during the second half of 2021.¹⁹ If
218 there are limited clinic test stocks for the day, the available tests are randomly distributed
219 among symptomatic SARS-CoV-2-infected patients and those seeking tests for non-COVID-
220 19 related reasons. We assumed that any individual who failed to receive a test due to test
221 shortage would not seek clinic-provided testing again for the rest of their infection. If these
222 individuals had previously decided to self-isolate upon presenting symptoms, they may
223 continue to do so (see Supplementary appendix). Otherwise, we assumed that they would
224 continue to mix with the community.
225

226 All key parameters are tabulated in Table S1 and full details of PATAT are described in the
227 Supplementary appendix. The PATAT model source code is available at
228 <https://github.com/AMC-LAEB/PATAT-sim>.
229



230
231 **Figure 2: Projected symptomatic testing demand based on assumed case positivity rate.** This projected
232 demand includes both SARS-CoV-2 infected persons who were tested and reported as well as those who seek
233 symptomatic testing for other reasons (e.g. individuals presenting COVID-19-like symptoms but were not
234 infected with SARS-CoV-2).
235

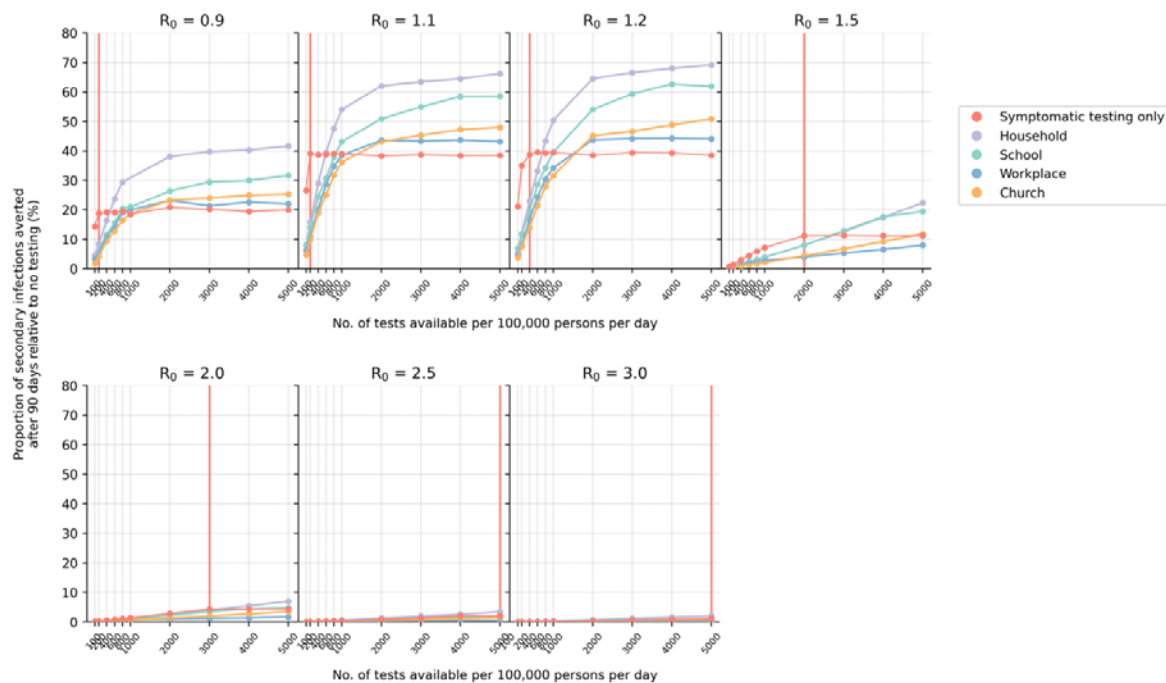
236 Results

237 *Healthcare provided symptomatic testing demand should be fulfilled first*

238 We first investigated if routine asymptomatic community testing programs could
239 substantially reduce SARS-CoV-2 transmissions in the population. We compared scenarios
240 where either all Ag-RDT stocks were used only for symptomatic testing (with no community-
241 based testing of asymptomatic populations), or that most tests were used for community
242 testing and only 15% of weekly available stocks were allocated for symptomatic testing. The
243 proportion of infections averted under each test distribution strategy was computed as a
244 measure of impact. Regardless of community testing distribution strategy or R_0 , we found
245 that setting aside large proportions of Ag-RDTs for community testing led to lower
246 proportion of infections averted than if all tests were solely used for symptomatic testing
247 (Figure 3). Community testing would only outperform symptomatic testing when the same
248 number of available tests saturated symptomatic testing demand in the only-symptomatic
249 testing scenario. This conclusion remains the same when household members of all positively
250 tested individuals were quarantined (Figure S1).

251

252



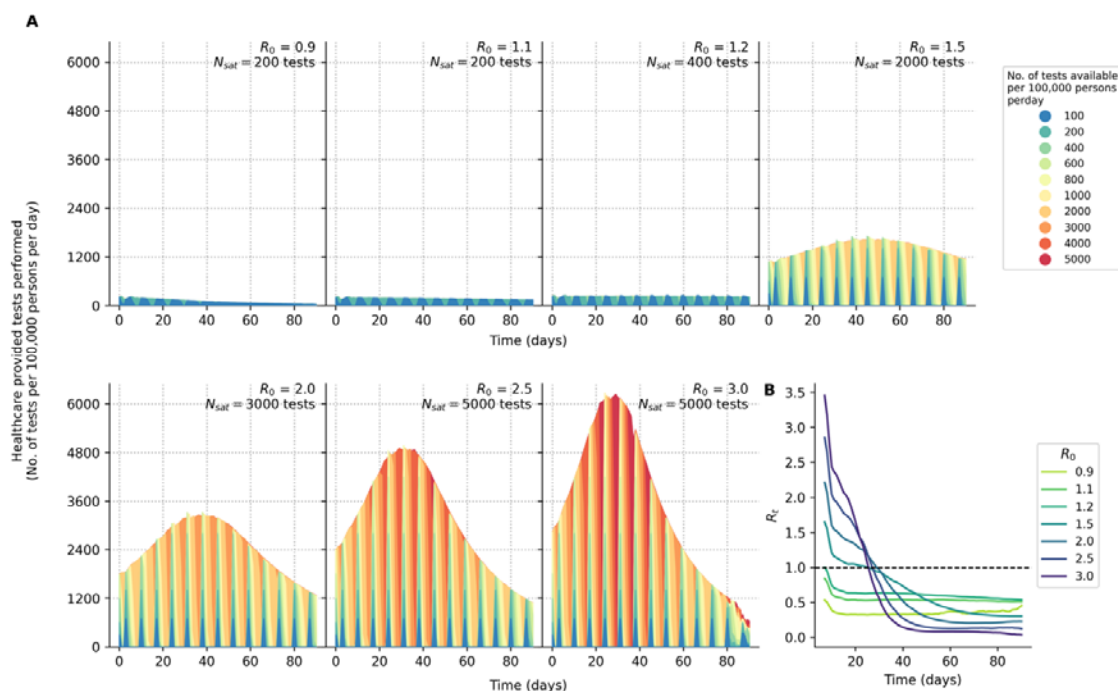
253

254 **Figure 3: Impact of either using all available Ag-RDT for symptomatic testing or a majority of them**
255 **(85%) for community testing in various settings (even distribution only; without quarantine of household**
256 **members). The proportion of secondary infections averted after 90 days relative to the no testing baseline for**

257 different number of tests available per 100,000 persons per day is plotted for each test distribution strategy. The
 258 vertical red line denotes the number of tests required to saturate symptomatic testing demand (Figure 4).
 259

260 *Number of tests needed to saturate healthcare provided symptomatic testing demand*

261 Given the importance of saturating symptomatic testing demand, we then estimated the
 262 number of tests needed to saturate symptomatic testing demand under different (Figure 3
 263 and 4A). Besides symptomatic SARS-CoV-2 infected individuals who sought testing, our
 264 simulations factored in that 80-90% of symptomatic test stocks were used by individuals who
 265 were not infected by SARS-CoV-2 by assuming that test positivity rate ranges at 10%-20%
 266 over the course of the infection wave. Under these assumptions, even when $R_0 = 1.2$ (where
 267 the initial average instantaneous reproduction number (R_t) = ~ 1.0 ; Figure 4B), at least 200-
 268 400 tests/100k/day was needed to ensure all test-seeking individuals were tested. If $R_0 = 1.5$
 269 (initial average $R_t = 1.6$), at least 10 times more tests, in the range of 2,000-5,000
 270 tests/100k/day, was needed to satisfy all symptomatic testing demand. These conclusions
 271 were similar when household members of positive-tested individuals were quarantined
 272 (Figure S2).
 273



274
 275 **Figure 4: Symptomatic testing demand during an epidemic (without quarantine of household members).**
 276 (A) Number of symptomatic tests performed per 100,000 persons per day over time for different R_0 . Each
 277 differently colored shaded curve denotes a different number of tests available per 100,000 persons per day. We
 278 assumed that all healthcare facilities in the community will have new stocks of one week's worth of Ag-RDTs
 279 every Monday. The symptomatic testing demand include both symptomatic SARS-CoV-2 infected individuals

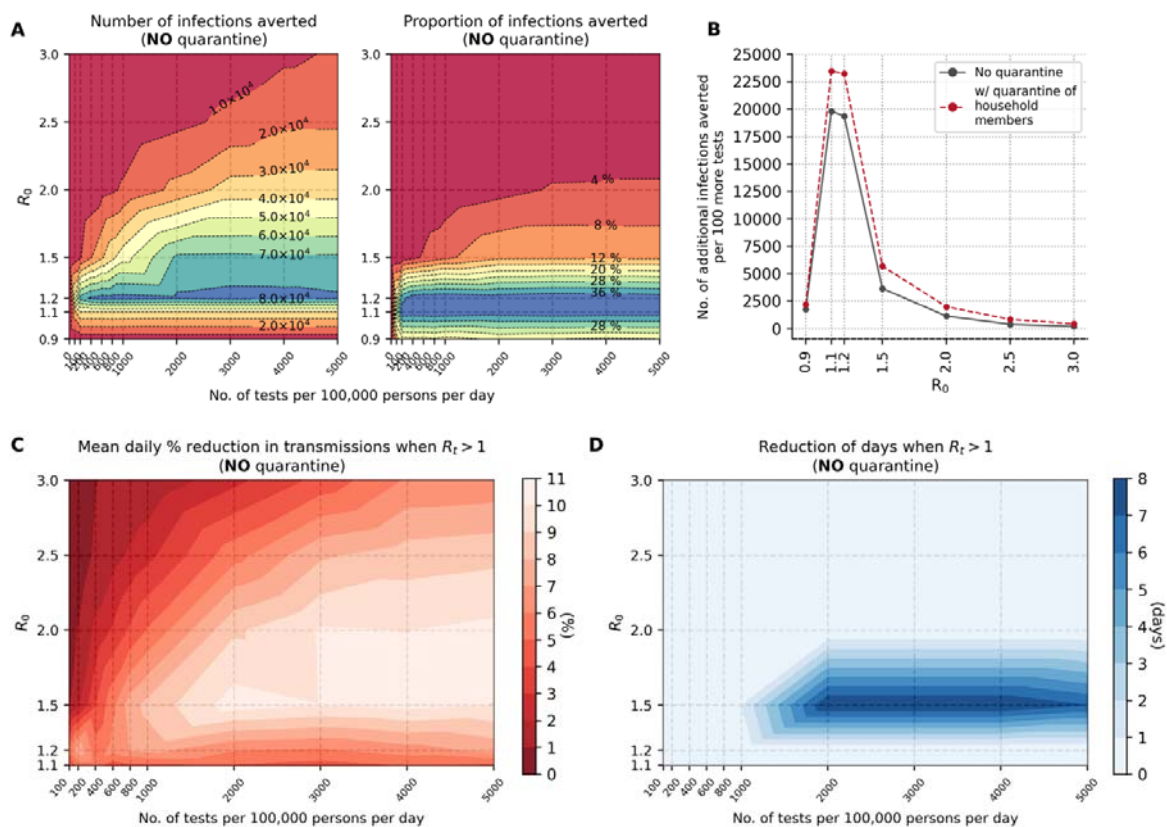
280 who seek testing at healthcare facilities and those who seek symptomatic testing for other reasons based on
 281 assumed case positivity rates (see Methods). The area between the curve plotting the testing rate needed to
 282 saturate symptomatic testing demand () and the curve for testing rate is the amount of symptomatic
 283 testing shortage accumulated over time between those two testing rates. **(B)** 7-day moving average of
 284 instantaneous reproduction number () over simulated epidemic period (90 days) for different assumed basic
 285 reproduction number ().

286

287 *Marginal impact of symptomatic testing prior to saturating demand*

288 We linearly regressed the number of infections averted against test availability to compute
 289 the number of additional infections averted with increasing Ag RDT availability, before
 290 saturating symptomatic testing demand (Figures 5A-B). Assuming only symptomatic cases
 291 that test positive isolate, the largest marginal benefit of increasing Ag-RDT availability for
 292 symptomatic testing prior to demand saturation is achieved when $R_0 = 1.1-1.2$, with close to
 293 20,000 additional infections averted for every increase of 100 more Ag-RDTs available for
 294 symptomatic testing (Figure 5B; Table 1). When operating at tests availability that meet all
 295 symptomatic testing demand, the greatest impact of test-and-isolate is also achieved when
 296 $R_0 = 1.1-1.2$ with ~40% of total infections averted (Figure 5A).

297



298

299 **Figure 5: Marginal impact of symptomatic testing prior to saturating demand (without quarantine of**
 300 **household members).** (A) Contour plots depicting infections averted relative to the no testing baseline for
 301 simulations with different R_0 values and varying number of Ag-RDTs availability. Number of infections averted
 302 relative to no testing baseline after 90 days (left panel); Proportion of secondary infections averted relative to no
 303 testing baseline after 90 days (right panel). (B) Number of additional infections averted for every 100 more Ag-
 304 RDTs available prior to saturating symptomatic testing demand for different R_0 values. Dashed red line shows
 305 marginal benefit with quarantine of household members while solid black line depicts that without quarantine.
 306 (C) Mean daily percentage reduction in transmissions while instantaneous R_t of simulated epidemic is still > 1
 307 for different R_0 values and varying number of Ag-RDTs available for symptomatic testing only. (D) Reduction
 308 in number of days when instantaneous R_t of simulated epidemic is > 1 for different R_0 values and varying
 309 number of Ag-RDTs available for symptomatic testing only.

310

w/ quarantine of household members	R_0	No. of additional infections averted per 100 more tests
No	0.9	1,772
	1.1	19,807
	1.2	19,372
	1.5	3,655
	2.0	1,149
	2.5	401
	3.0	216
	Yes	0.9
1.1		23,444
1.2		23,250
1.5		5,702
2.0		1,999
2.5		853
3.0		441

311

312 **Table 1: Number of additional infections averted for every 100 more Ag-RDTs available prior to**
 313 **saturating symptomatic testing demand for different R_0 values.**

314

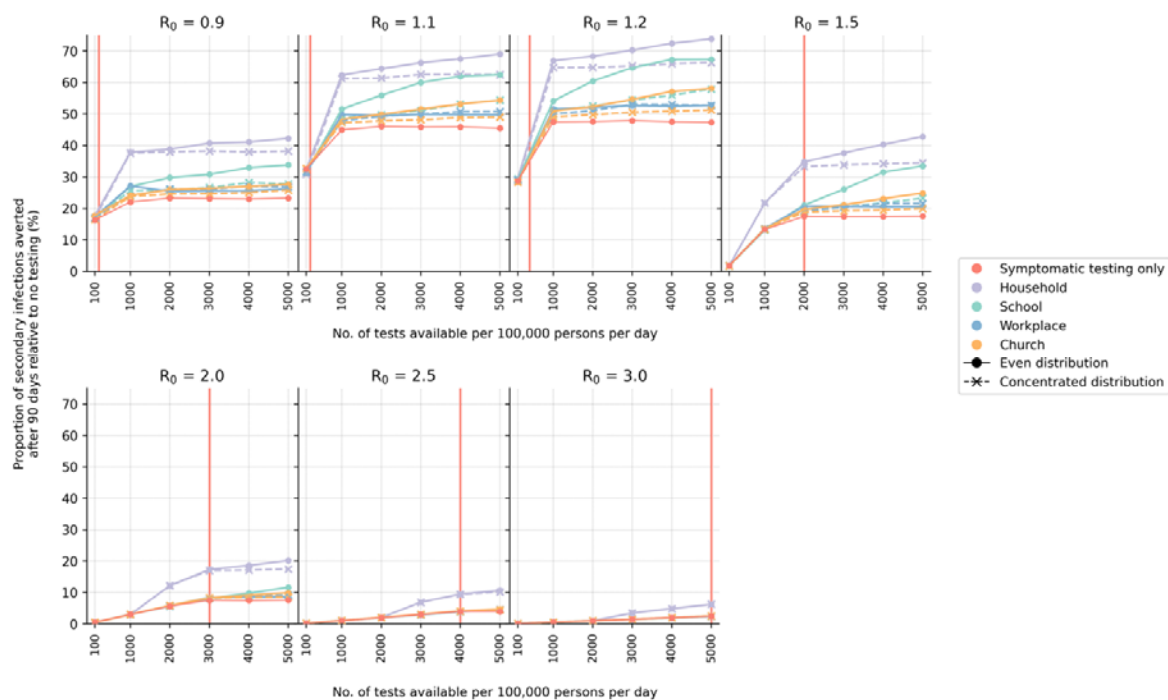
315 Both the marginal benefit and the maximum infection reduction at demand saturation,
 316 however, diminish exponentially with increasing values of R_0 (Figure 5A-B and Table 1).
 317 Nonetheless, there are other impacts that could be gained from performing more symptomatic
 318 testing at values of $R_0 > 1.2$. For instance, for R_0 values between 1.5 and 2.0 without
 319 quarantining household members, it is possible to reduce daily transmissions by up to 11%
 320 with increasing levels of test availability during the growth phase of the epidemic ($R_t > 1$;
 321 Figure 5C). Additionally, when $R_0 \sim 1.5$ and test availability is in the range of 2,000
 322 tests/100K/day or more, it is possible to shorten the duration of the epidemic's growth phase
 323 (and in turn, the epidemic itself) by about one week (Figure 5D).

324

325 The marginal benefit of symptomatic testing can be further augmented if asymptomatic
326 household members of positively-tested individuals quarantine as well (Figure S3). However,
327 depending on R_0 and level of test availability, the percentage of infections averted only
328 improved modestly by 2-10%. As we assumed that individuals would isolate and quarantine
329 in their own homes, infectious individuals in isolation may infect healthy household members
330 in quarantine with them.

331

332 *A symptomatic-testing-first strategy to community testing*



333

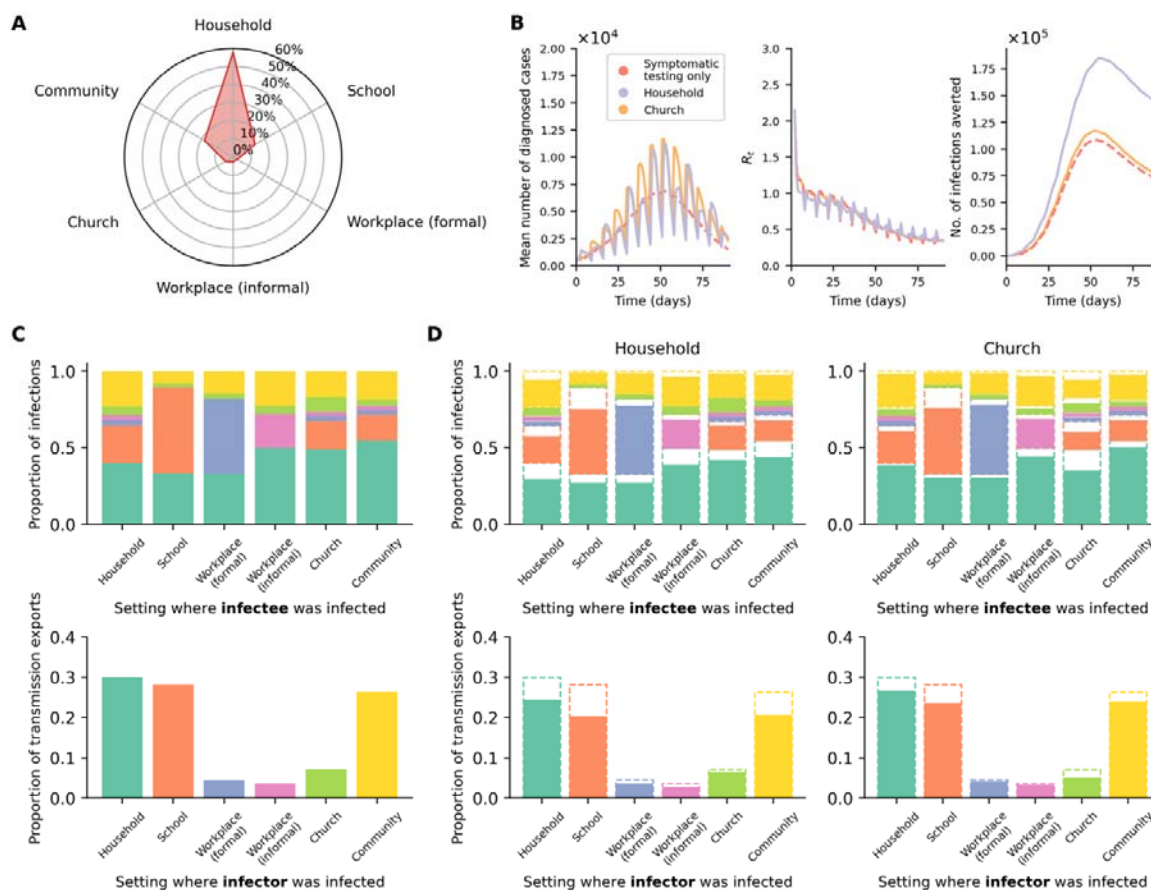
334 **Figure 6: Symptomatic-testing-first strategy to community testing (without quarantine of household**
335 **members).** When community testing is performed under this strategy, the leftover tests from the previous
336 week's stock allocated for symptomatic testing are used for community testing in various setting in the current
337 week. Two different types of community test distributions approaches (even or concentrated; see Methods) were
338 simulated. The proportion of secondary infections averted after 90 days relative to the no testing baseline for
339 different number of tests available per 100,000 persons per day is plotted for each test distribution strategy. The
340 vertical red line denotes the number of tests required to saturate symptomatic testing demand.

341

342 Given the importance of symptomatic testing, we then simulated an alternate community
343 testing strategy that prioritizes saturating symptomatic testing demand first every week. If
344 there were leftover tests from clinics in the previous week, they were used for community
345 testing in the following week. We also investigated two ways in which community tests were
346 either evenly and randomly distributed in the social setting to as many individuals as possible

347 or concentrate the available tests to a fixed number of persons throughout the epidemic
 348 period.
 349
 350 Even under this symptomatic-testing-first approach, other than households, community
 351 testing in almost all social settings only yields greater reduction in infections when test
 352 availability is higher than what is needed to saturate symptomatic testing needs (Figure 6).
 353 Overall, household community testing yielded the greatest reduction in transmissions for all
 354 simulated values, followed by schools if $R_t > 1.5$. Community testing in churches and
 355 formal workplaces only results in modest improvements over symptomatic testing. An even
 356 distribution of community tests tends to produce larger reduction in infections. The difference
 357 between even and concentrated community test distributions also increases with larger test
 358 availability. These results were similarly observed when household members of positively-
 359 tested individuals were quarantined (Figure S4).
 360

361 *Routine community testing in households*



363 **Figure 7: Routine community testing in households outperforms other settings.** (A) Average breakdown of
364 infections based on the social setting where transmissions occurred for the simulations presented in this work.
365 (B) Results from simulations using different testing strategies where $R_0 = 1.5$, no quarantine of household
366 members of positively-tested individuals assumed, and Ag-RDT availability of 5,000 tests per 100,000 persons
367 per day. Community testing (even distribution) was performed with a symptomatic-testing-first approach. The
368 average total number of diagnosed cases (left), instantaneous reproduction number (R_t ; middle) and number of
369 infections averted (right) over the epidemic period are plotted. (C, D) Transmissions across distinct social
370 settings. The top row of stacked plots shows the proportion of infections stratified by the source settings where
371 infectors were infected for each sink setting where their infectees were infected. The stacked bars are colored by
372 the source settings as per the bottom row of bar plots. The bottom row of bar plots shows the contribution of
373 transmission exports into other settings (i.e. transmission events where the infectee were infected in a setting
374 that is different from their infectors) from different source settings where the infectors were infected. (C) No
375 testing baseline results from the example case as in (B). (D) Results from either implementing a symptomatic-
376 testing-first community testing in households (left column) or church (right column). The dashed bar outlines
377 are the no testing baseline results as in (C).
378

379 In the symptomatic-testing-first approach, household community testing can achieve greater
380 reduction in transmissions before saturating symptomatic testing demand but only at high
381 levels of test availability ($>1,000$ tests/100k/day; Figure 6 and S4). There are several reasons
382 why household community testing outperformed other settings. First, large multigenerational
383 homes (mean household size = 5 people) were simulated to mirror what is often found in
384 many LMICs. Second, population in LMICs tend to skew young (i.e. 48% of the population
385 are expected to be ≤ 15 years in age).¹⁷ Furthermore, overall employment rates are low (i.e.
386 assumed 39% and 23% among men and women respectively)¹⁷ and a large majority of
387 employed individuals likely work in informal employment settings (i.e. assumed 64% and
388 76% among employed men and women respectively)¹⁷ where test distribution is assumed to
389 be difficult or infeasible. Third, dedicated isolation and quarantine facilities are likely rare in
390 low-resource settings. Thus, positively-tested individuals and their close contacts could only
391 isolate/quarantine themselves in their own homes. In turn, almost 60% of all infections
392 observed in a typical simulation arose from transmissions in households. Random community
393 transmissions aside, schools are then the second most common setting where transmissions
394 occurred ($\sim 14\%$) and workplaces, be if formal or informal, the least common ($<3\%$) (Figure
395 7A).

396
397 Interestingly, even though we assumed that 70% of all households regularly attended large
398 church congregations weekly, churches contributed to a limited proportion of total infections
399 ($\sim 5\%$) (Figure 7A). Yet, if we compare the results between household and church testing at
400 levels of test availability large enough to satisfy symptomatic testing demand (e.g. $N =$

401 5,000), the total number of diagnosed cases over time is actually similar for both community
402 testing strategies (Figure 7B). In fact, testing in churches yielded relatively larger number of
403 cumulative diagnoses by the end of the epidemic but household testing suppressed R_t more
404 during the growth phase of the epidemic, resulting in greater number of infections averted
405 over time. This is because household testing not only reduces the already higher number of
406 infections taking place in households, it also decreased transmissions between different
407 distinct social settings (e.g. if an infector infected an infectee in the household setting but the
408 infector was infected in school) (Figure 7C-D).

409

410 **Discussion**

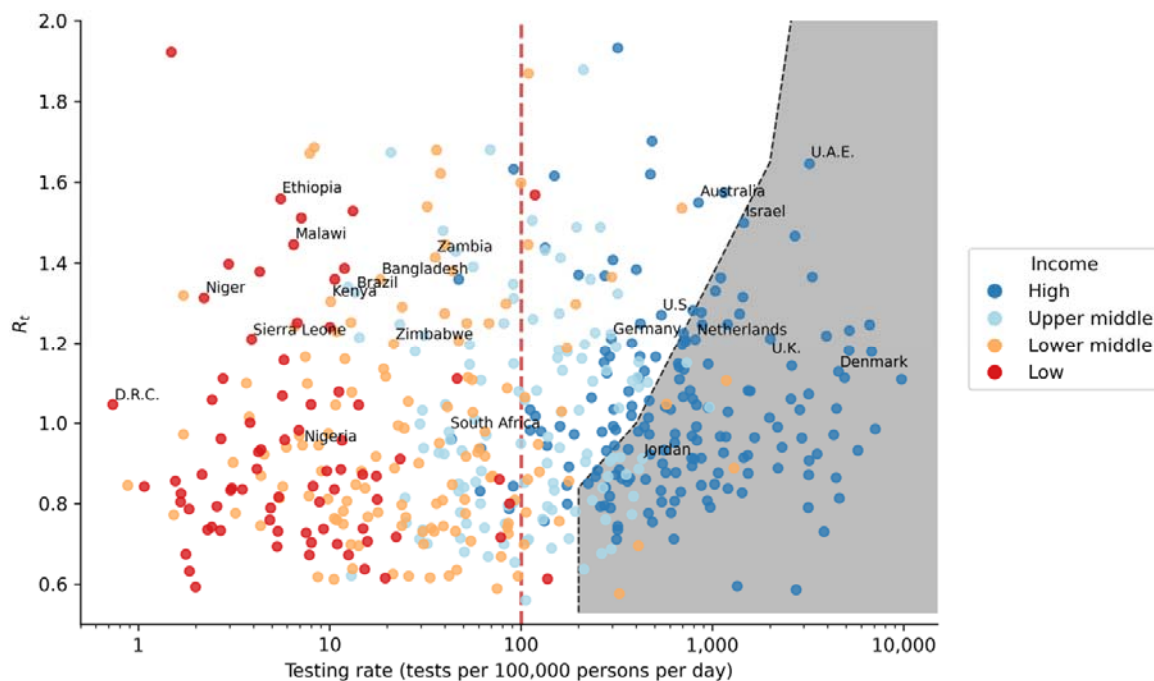
411 Community asymptomatic testing only achieves high levels of infection reduction after
412 symptomatic testing demand has been saturated. However, the current minimum target of 100
413 tests/100k/day is unlikely to saturate symptomatic testing demand even with scenarios where
414 $R_t < 1$ (i.e. equivalent to simulated epidemics where $R_0 \leq 1.2$). Saturating symptomatic
415 testing demand in realistic epidemic wave scenarios where $R_0 > 1.2$ likely requires $>1,000$
416 tests/100k/day. This is because testing demand is largely shaped by non-SARS-CoV-2
417 infected individuals due to the overlap of SARS-CoV-2 infection symptoms with other
418 respiratory tract infections. In other words, even before implementing any form of
419 community testing, it is crucial to increase investments in testing capacities that meet
420 symptomatic testing demand first.

421

422 If $R_0 < 1.5$, or can be reduced to that point through other public health interventions,
423 increasing testing capacity from 100 tests/100k/day to 200-400 tests/100k/day provides the
424 greatest proportional reduction in secondary transmissions. Furthermore, testing has the
425 potential to be most effective at reducing transmission when $R_0 < 1.5$. As SARS-CoV-2
426 outbreaks can have R_0 appreciably above 1.5, it is important to combine testing with other
427 public health measures such as social distancing so as to maximize impact. It is also
428 important to note that the utility of testing in averting infections is predicated on people
429 changing and maintaining their behaviour to reduce contacts following a positive test.²⁰
430 Encouraging and incentivizing these changes of behaviour are essential for the effectiveness
431 of any test-and-isolate program, particularly individuals of lower socioeconomic status²¹ and
432 communities in low-resource settings.²²

433

434 As a corroboration of our results, we compared the monthly average testing rate
435 (<https://www.finddx.org/covid-19/test-tracker/>) to the monthly average values estimated
436 from COVID-19 case counts²³ of 134 countries between December 2021 and March 2022
437 when the Omicron (BA.1) VOC spread rapidly across multiple countries (Figure 8).
438 Although the demographic profiles differ between high-income countries (HICs) and LMICs,
439 we found that some HICs were expectedly testing at rates that were sufficient or even higher
440 than what was likely needed to saturate the symptomatic testing demand we had estimated for
441 LMICs at similar epidemic intensity (i.e. values). However, as Omicron (BA.1) cases
442 surged, some HICs such as the United States, Germany and Australia were still reportedly
443 facing test shortages.^{24–26} Based on our results, these countries were indeed falling short of
444 meeting symptomatic testing demand (Figure 8). Finally, if we assume that most HICs are
445 testing at rates that sufficiently meet symptomatic testing demand, we found that most of
446 them were testing at least 200 tests/100k/day, which is in line with our recommendation of
447 minimum testing capacity for LMICs.
448



449
450 **Figure 8: Global reported COVID-19 testing rate between December 2021 and March 2022 when the**
451 **Omicron (BA.1) variant of concern spread rapidly across multiple countries.** Each data point denotes the
452 average monthly reported COVID-19 testing rate of a country against the average instantaneous reproduction
453 number (R_t) computed in the same month and is coloured by the income level of the country. Selected data
454 points that are annotated with country names denotes the testing rate on the month at which R_t is the highest
455 during the four-month time period. The shaded area denotes the level of test availability we had estimated to
456 saturate symptomatic testing demand given different equivalent initial values (Figure 4). The red vertical line

457 at 100 tests per 100,000 persons per day is the minimum testing rate target set by the ACT-Accelerator
458 diagnostics pillar. Testing rate data were sourced from the SARS-CoV-2 Test Tracker by FIND
459 (<https://www.finddx.org/covid-19/test-tracker/>) while R_t was computed from reported COVID-19 case counts.²³
460

461 If there are excess tests available after meeting symptomatic testing demand, it is important to
462 critically consider where and how routine community testing of asymptomatic populations is
463 implemented to maximize impact. Given that a larger proportion of infections is expected to
464 occur within households, household community testing after meeting symptomatic testing
465 demand in the previous week would yield greater total infections averted. While testing at
466 regular mass gatherings such as churches every week, for instance, could lead to comparable
467 number of diagnosed infections, doing so only effectively tallies the number of infections that
468 had happened in the week prior and limited infections at these gatherings. Disseminating tests
469 across households, on the other hand, is more effective in not just lowering transmissions
470 occurring in households but likely lessens the number of transmissions between different
471 contact networks as well.

472
473 There are limitations with our study. First, we assumed that all healthcare facilities will have
474 access to all Ag-RDT stocks available each week. However, there could be disparities in
475 stock allocation between different clinics such as prioritizing stock allocation for hospitals.
476 Such disproportionate distributions could lead to uneven fulfilment of symptomatic testing
477 demand and consequently affect levels of infections. Nonetheless, our key finding that >100
478 tests/100k/day is needed to saturate symptomatic testing demand before rolling out
479 community testing programs is unlikely to change.

480
481 Second, we only modelled scenarios where test-and-isolation was the only public health
482 intervention. Symptomatic testing demand would expectedly be lower if other non-
483 pharmaceutical interventions (NPIs) were introduced, and thus potentially improve the utility
484 of community testing at lower test availability. However, the impact of NPIs is confounded
485 by temporal effects²⁷ and thus difficult to parameterize their mean effects on infection control
486 and in turn, testing demand. Since NPIs effectively decrease the number of secondary
487 transmissions and in turn, R_t , we expect that the testing demand for a population subjected to
488 NPIs and testing would mirror the demand we had estimated for a population subject to
489 testing only but at lower R_t values. Analogously, we also did not model how vaccination- and
490 infection-acquired immunity affect testing demand explicitly. However, by the same

491 reasoning that increased population immunity lowers R_t , the testing demand for a partially
492 immune population should be similar to that of a naïve population at lower R_t values as well.

493

494 Third, we parameterized incubation and virus shedding periods using those empirically
495 measured from infections by Wuhan-like SARS-CoV-2^{12,28} for this work. However,
496 generation intervals have shortened considerably for recent VOCs such as Delta²⁹ and
497 Omicron (BA.1)³⁰ and could impact the utility of testing in identifying an infection before it
498 becomes infectious. However, as demonstrated by the corroboration of our results on
499 symptomatic testing demand against empirical testing data collected during the spread of
500 Omicron (BA.1) globally, the minimum required test availability of 200 tests/100k/day
501 estimated from our results still stand regardless of the circulating variant.

502

503 To conclude, Ag-RDTs are a valuable diagnostic tool for COVID-19 testing capacities in
504 LMICs. The target on minimal testing rate of 100 tests/100k/day should be seen as a true
505 minimum if testing is going to be used for reducing transmission but substantially higher
506 testing rates are needed to fulfil likely symptomatic testing demand or effective
507 implementation of community testing.

508

509 **Data sharing**

510 All data relevant to the study are included in the Article, the Supplementary Appendix and
511 the GitHub repository (<https://github.com/AMC-LAEB/PATAT-sim>). The PATAT model
512 source code can also be found in the GitHub repository
513 (<https://github.com/AMC-LAEB/PATAT-sim>).

514

515 **Declaration of interests**

516 J.A.S., A.T., N.H., E.H. and B.E.N. were employed by FIND, the global alliance for
517 diagnostics.

518

519 **Acknowledgements**

520 A.X.H. and C.A.R. were supported by ERC NaviFlu (No. 818353). C.A.R. was also
521 supported by NIH R01 (5R01AI132362-04) and an NWO Vici Award (09150182010027).
522 The authors are pleased to acknowledge that all computational work reported in this paper

523 was performed on the Shared Computing Cluster which is administered by Boston
524 University's Research Computing Services (www.bu.edu/tech/support/research/).

525

526 **Authors' contributions**

527 A.X.H. contributed to the conceptualization, data curation, formal analysis, investigation,
528 methodology, software, validation and visualization of the study. B.E.N. and C.A.R.
529 contributed to the conceptualization, data curation, funding acquisition, investigation,
530 methodology, project administration, resources, validation and supervision of the study.
531 J.A.S., A.T., N.H. and E.H. contributed to the conceptualization, investigation, validation and
532 visualization of the study. S.G. and S.K. contributed to the investigation, validation and
533 visualization of the study. A.X.H. and C.A.R. wrote the original draft of the manuscript. All
534 authors are involved in the review and editing of the manuscript. All authors had full access
535 to all data of the study and the final responsibility for the decision to submit for publication.

536

537 **References**

- 538 1 Dong E, Du H, Gardner L. An interactive web-based dashboard to track COVID-19 in
539 real time. *The Lancet Infectious Diseases* 2020; **20**: 533–4.
- 540 2 Ye Y, Zhang Q, Wei X, Cao Z, Yuan H-Y, Zeng DD. Equitable access to COVID-19
541 vaccines makes a life-saving difference to all countries. *Nature Human Behaviour*
542 2022 2022; : 1–10.
- 543 3 Viana R, Moyo S, Amoako DG, *et al.* Rapid epidemic expansion of the SARS-CoV-2
544 Omicron variant in southern Africa. *Nature* 2022 2022; : 1–10.
- 545 4 Straten K van der, Guerra D, Gils MJ van, *et al.* Mapping the antigenic diversification
546 of SARS-CoV-2. *medRxiv* 2022; : 2022.01.03.21268582.
- 547 5 Batista C, Hotez P, Amor Y ben, *et al.* The silent and dangerous inequity around
548 access to COVID-19 testing: A call to action. *eClinicalMedicine* 2022; **43**.
549 DOI:10.1016/J.ECLINM.2021.101230.
- 550 6 Tessema SK, Nkengasong JN. Understanding COVID-19 in Africa. *Nature Reviews*
551 *Immunology* 2021 21:8 2021; **21**: 469–70.
- 552 7 ACT-Accelerator Strategic Plan & Budget: October 2021 to September 2022.
553 [https://www.who.int/publications/m/item/act-accelerator-strategic-plan-budget-](https://www.who.int/publications/m/item/act-accelerator-strategic-plan-budget-october-2021-to-september-2022)
554 [october-2021-to-september-2022](https://www.who.int/publications/m/item/act-accelerator-strategic-plan-budget-october-2021-to-september-2022) (accessed Feb 19, 2022).

- 555 8 Vandenberg O, Martiny D, Rochas O, van Belkum A, Kozlakidis Z. Considerations for
556 diagnostic COVID-19 tests. *Nature Reviews Microbiology* 2020 19:3 2020; **19**: 171–
557 83.
- 558 9 Mulu A, Bekele A, Abdissa A, *et al.* The challenges of COVID-19 testing in Africa:
559 the Ethiopian experience. *PAMJ* 2021; 38:6 2021; **38**: 1–4.
- 560 10 Brümmer LE, Katzenschlager S, Gaeddert M, *et al.* Accuracy of novel antigen rapid
561 diagnostics for SARS-CoV-2: A living systematic review and meta-analysis. *PLOS*
562 *Medicine* 2021; **18**: e1003735-.
- 563 11 Onsongo SN, Otieno K, van Duijn S, *et al.* Performance of a rapid antigen test for
564 SARS-CoV-2 in Kenya. *Diagnostic Microbiology and Infectious Disease* 2022; **102**:
565 115591.
- 566 12 Linton NM, Kobayashi T, Yang Y, *et al.* Incubation Period and Other Epidemiological
567 Characteristics of 2019 Novel Coronavirus Infections with Right Truncation: A
568 Statistical Analysis of Publicly Available Case Data. *Journal of Clinical Medicine*
569 2020, Vol 9, Page 538 2020; **9**: 538.
- 570 13 Kissler SM, Fauver JR, Mack C, *et al.* Viral dynamics of acute SARS-CoV-2 infection
571 and applications to diagnostic and public health strategies. *PLOS Biology* 2021; **19**:
572 e3001333-.
- 573 14 Quilty BJ, Clifford S, Hellewell J, *et al.* Quarantine and testing strategies in contact
574 tracing for SARS-CoV-2: a modelling study. *The Lancet Public Health* 2021; **6**: e175–
575 83.
- 576 15 Boyton RJ, Altmann DM. The immunology of asymptomatic SARS-CoV-2 infection:
577 what are the key questions? *Nature Reviews Immunology* 2021 21:12 2021; **21**: 762–8.
- 578 16 Gill CJ, Mwananyanda L, MacLeod W, *et al.* Sustained high prevalence of COVID-19
579 deaths from a systematic post-mortem study in Lusaka, Zambia: one year later.
580 *medRxiv* 2022; : 2022.03.08.22272087.
- 581 17 Zambia Statistics Agency. 2019 Labour Force Survey Report. 2019.
582 <https://www.zamstats.gov.zm/index.php/publications/category/7-labour> (accessed Jan
583 26, 2022).
- 584 18 Dovel K, Balakasi K, Gupta S, *et al.* Frequency of visits to health facilities and HIV
585 services offered to men, Malawi. *Bull World Health Organ* 2021; **99**: 618–26.
- 586 19 Hasell J, Mathieu E, Beltekian D, *et al.* A cross-country database of COVID-19
587 testing. *Scientific Data* 2020 7:1 2020; **7**: 1–7.

- 588 20 Pavelka M, Van-Zandvoort K, Abbott S, *et al.* The impact of population-wide rapid
589 antigen testing on SARS-CoV-2 prevalence in Slovakia. *Science (1979)* 2021; **372**:
590 635–41.
- 591 21 Sweeney S, Capeding TPJ, Eggo R, *et al.* Exploring equity in health and poverty
592 impacts of control measures for SARS-CoV-2 in six countries. *BMJ Global Health*
593 2021; **6**: e005521.
- 594 22 Torres-Rueda S, Sweeney S, Bozzani F, *et al.* Stark choices: exploring health sector
595 costs of policy responses to COVID-19 in low-income and middle-income countries.
596 *BMJ Global Health* 2021; **6**: e005759.
- 597 23 Abbott S, Hickson J, Badr HS, *et al.* epiforecasts/EpiNow2: Beta release. 2021;
598 published online June 28. DOI:10.5281/ZENODO.5036949.
- 599 24 Reuters. U.S. testing struggles to keep up with Omicron. 2021; published online Dec
600 22. [https://www.reuters.com/world/us/us-testing-struggles-keep-up-with-omicron-](https://www.reuters.com/world/us/us-testing-struggles-keep-up-with-omicron-2021-12-22/)
601 [2021-12-22/](https://www.reuters.com/world/us/us-testing-struggles-keep-up-with-omicron-2021-12-22/) (accessed April 7, 2022).
- 602 25 DW News. Germany faces PCR test bottlenecks. 2022; published online Jan 14.
603 <https://www.dw.com/en/germany-faces-pcr-test-bottlenecks/av-60431333> (accessed
604 April 7, 2022).
- 605 26 BBC News. Covid: Australians desperate for tests amid Omicron surge. 2022;
606 published online Jan 4. <https://www.bbc.com/news/world-australia-59864428>
607 (accessed April 7, 2022).
- 608 27 Sharma M, Mindermann S, Rogers-Smith C, *et al.* Understanding the effectiveness of
609 government interventions against the resurgence of COVID-19 in Europe. *Nature*
610 *Communications* 2021 12:1 2021; **12**: 1–13.
- 611 28 Wölfel R, Corman VM, Guggemos W, *et al.* Virological assessment of hospitalized
612 patients with COVID-2019. *Nature* 2020 581:7809 2020; **581**: 465–9.
- 613 29 Kang M, Xin H, Yuan J, *et al.* Transmission dynamics and epidemiological
614 characteristics of Delta variant infections in China. *medRxiv* 2021; :
615 2021.08.12.21261991.
- 616 30 Hay JA, Kissler SM, Fauver JR, *et al.* Viral dynamics and duration of PCR positivity
617 of the SARS-CoV-2 Omicron variant. *medRxiv* 2022; : 2022.01.13.22269257.
618