

1 **Title:**

2 Vaccine Effectiveness of Primary Series and Booster Doses against Omicron Variant COVID-19-Associated
3 Hospitalization in the United States

4

5 **Authors:**

- 6 (1) Katherine Adams, MPH*
7 CDC COVID-19 Response Team, Atlanta, Georgia
- 8 (2) Jillian P. Rhoads, PhD*
9 Vanderbilt Institute for Clinical and Translational Research, Vanderbilt University Medical
10 Center, Nashville, Tennessee
- 11 (3) Diya Surie, MD*
12 CDC COVID-19 Response Team, Atlanta, Georgia
- 13 (4) Manjusha Gaglani, MBBS
14 Baylor Scott and White Health, Texas A&M University College of Medicine, Temple, Texas
- 15 (5) Adit A. Ginde, MD, MPH
16 Department of Emergency Medicine, University of Colorado School of Medicine, Aurora,
17 Colorado
- 18 (6) Tresa McNeal, MD
19 Baylor Scott and White Health, Texas A&M University College of Medicine, Temple, Texas
- 20 (7) Shekhar Ghamande, MD
21 Baylor Scott and White Health, Texas A&M University College of Medicine, Temple, Texas
- 22 (8) David Huynh, MD
23 Department of Emergency Medicine, University of Colorado School of Medicine, Aurora,
24 Colorado
- 25 (9) H. Keipp Talbot, MD, MPH
26 Departments of Medicine and Health Policy, Vanderbilt University Medical Center, Nashville,
27 Tennessee
- 28 (10) Jonathan D. Casey, MD, MSci
29 Department of Medicine, Vanderbilt University Medical Center, Nashville, Tennessee
- 30 (11) Nicholas M. Mohr, MD, MS
31 Department of Emergency Medicine, University of Iowa, Iowa City, Iowa
- 32 (12) Anne Zepeski, PharmD
33 Department of Emergency Medicine, University of Iowa, Iowa City, Iowa
- 34 (13) Nathan I. Shapiro, MD, MPH
35 Department of Emergency Medicine, Beth Israel Deaconess Medical Center, Boston,
36 Massachusetts
- 37 (14) Kevin W. Gibbs, MD
38 Department of Medicine, Wake Forest School of Medicine, Winston-Salem, North Carolina
- 39 (15) D. Clark Files, MD
40 Department of Medicine, Wake Forest School of Medicine, Winston-Salem, North Carolina
- 41 (16) Madeline Hicks, BA
42 Department of Medicine, Wake Forest School of Medicine, Winston-Salem, North Carolina
- 43 (17) David N. Hager, MD, PhD
44 Department of Medicine, Johns Hopkins University School of Medicine, Baltimore, Maryland
- 45 (18) Harith Ali, MBBS
46 Department of Medicine, Johns Hopkins University School of Medicine, Baltimore, Maryland
- 47 (19) Matthew E. Prekker, MD, MPH

- 48 Department of Emergency Medicine and Medicine, Hennepin County Medical Center,
49 Minneapolis, Minnesota
- 50 (20) Anne E. Frosch, MD
51 Department of Medicine, Hennepin County Medical Center, Minneapolis, Minnesota
- 52 (21) Matthew C. Exline, MD, MPH
53 Department of Medicine, The Ohio State University, Columbus, Ohio
- 54 (22) Michelle N. Gong, MD
55 Department of Medicine, Montefiore Health System, Albert Einstein College of Medicine, Bronx,
56 New York
- 57 (23) Amira Mohamed, MD
58 Department of Medicine, Montefiore Medical Center, Albert Einstein College of Medicine,
59 Bronx, New York
- 60 (24) Nicholas J. Johnson, MD
61 Department of Emergency Medicine and Division of Pulmonary, Critical Care and Sleep
62 Medicine, University of Washington, Seattle, Washington
- 63 (25) Vasisht Srinivasan, MD
64 Department of Emergency Medicine, University of Washington, Seattle, Washington
- 65 (26) Jay S. Steingrub, MD
66 Department of Medicine, Baystate Medical Center, Springfield, Massachusetts
- 67 (27) Ithan D. Peltan, MD, MSc
68 Department of Medicine, Intermountain Medical Center, Murray, Utah and University of Utah,
69 Salt Lake City, Utah
- 70 (28) Samuel M. Brown, MD, MS
71 Department of Medicine, Intermountain Medical Center, Murray, Utah and University of Utah,
72 Salt Lake City, Utah
- 73 (29) Emily T. Martin, PhD
74 School of Public Health, University of Michigan, Ann Arbor, Michigan
- 75 (30) Arnold S. Monto, MD
76 School of Public Health, University of Michigan, Ann Arbor, Michigan
- 77 (31) Adam S. Luring, MD, PhD
78 Departments of Internal Medicine and Microbiology and Immunology, University of Michigan,
79 Ann Arbor, Michigan
- 80 (32) Akram Khan, MD
81 Department of Medicine, Oregon Health and Sciences University, Portland, Oregon
- 82 (33) Catherine L. Hough, MD
83 Department of Medicine, Oregon Health and Sciences University, Portland, Oregon
- 84 (34) Laurence W. Busse, MD
85 Department of Medicine, Emory University, Atlanta, Georgia
- 86 (35) Caitlin C. ten Lohuis, ACNP-BC
87 Emory Critical Care Center, Emory Healthcare, Atlanta, Georgia
- 88 (36) Abhijit Duggal, MD
89 Department of Medicine, Cleveland Clinic, Cleveland, Ohio
- 90 (37) Jennifer G. Wilson, MD
91 Department of Emergency Medicine, Stanford University School of Medicine, Stanford,
92 California
- 93 (38) Alexandra June Gordon, MD
94 Department of Emergency Medicine, Stanford University School of Medicine, Stanford,
95 California

96 (39) Nida Qadir, MD
97 Department of Medicine, University of California-Los Angeles, Los Angeles, California
98 (40) Steven Y. Chang, MD, PhD
99 Department of Medicine, University of California-Los Angeles, Los Angeles, California
100 (41) Christopher Mallow, MD, MHS
101 Department of Medicine, University of Miami, Miami, Florida
102 (42) Carolina Rivas
103 Department of Medicine, University of Miami, Miami, Florida
104 (43) Hilary M. Babcock, MD, MPH
105 Department of Medicine, Washington University, St. Louis, Missouri
106 (44) Jennie H. Kwon, DO, MS
107 Department of Medicine, Washington University, St. Louis, Missouri
108 (45) James D. Chappell, MD, PhD
109 Department of Pediatrics, Vanderbilt University Medical Center, Nashville, Tennessee
110 (46) Natasha Halasa, MD, MPH
111 Department of Pediatrics, Vanderbilt University Medical Center, Nashville, Tennessee
112 (47) Carlos G. Grijalva, MD, MPH
113 Department of Health Policy, Vanderbilt University Medical Center, Nashville, Tennessee
114 (48) Todd W. Rice, MD, MSc
115 Department of Medicine, Vanderbilt University Medical Center, Nashville, Tennessee
116 (49) William B. Stubblefield, MD, MPH
117 Department of Emergency Medicine, Vanderbilt University Medical Center, Nashville, Tennessee
118 (50) Adrienne Baughman
119 Department of Emergency Medicine, Vanderbilt University Medical Center, Nashville, Tennessee
120 (51) Christopher J. Lindsell, PhD
121 Department of Biostatistics, Vanderbilt University Medical Center, Nashville, Tennessee
122 (52) Kimberly W. Hart, MA
123 Department of Biostatistics, Vanderbilt University Medical Center, Nashville, Tennessee
124 (53) Sandra N. Lester, PhD
125 CDC COVID-19 Response Team, Atlanta, Georgia
126 (54) Natalie J. Thornburg, PhD
127 CDC COVID-19 Response Team, Atlanta, Georgia
128 (55) SoHee Park, BS
129 CDC COVID-19 Response Team, Atlanta, Georgia
130 (56) Meredith L. McMorrow, MD
131 CDC COVID-19 Response Team, Atlanta, Georgia
132 (57) Manish M. Patel, MD
133 CDC COVID-19 Response Team, Atlanta, Georgia
134 (58) Mark W. Tenforde, MD, PhD**
135 CDC COVID-19 Response Team, Atlanta, Georgia
136 (59) Wesley H. Self, MD, MPH**
137 Department of Emergency Medicine and Vanderbilt Institute for Clinical and Translational
138 Research, Vanderbilt University Medical Center, Nashville, Tennessee
139
140 For the Influenza and Other Viruses in the Acutely Ill (IVY) Network***
141

142 *Katherine Adams, Jillian P. Rhoads, and Diya Surie contributed equally to this work as lead author.
143 ** Wesley H. Self and Mark W. Tenforde contributed equally to this work as senior author.
144 *** A full list of collaborators in the IVY Network is shown in Appendix A in the Supplemental Materials.

145

146 **Corresponding Author:**

147 Wesley H. Self, MD, MPH; Vanderbilt University Medical Center; Nashville, Tennessee USA. Email:
148 wesley.self@vumc.org.

149

150 **Second Corresponding Author:**

151 Katherine Adams, MPH; Influenza Division, Centers for Disease Control and Prevention, 1600 Clifton Rd,
152 MS H24-7, Atlanta, Georgia 30329. Email: rqx6@cdc.gov.

153

154 **Funding:**

155 Primary funding for this work was provided by the United States Centers Disease Control and Prevention
156 (contracts 75D30120F00002 and 75D30122C12914 to Dr. Self). The REDCap data tool used in this work
157 was supported by a Clinical and Translational Science Award (UL1 TR002243) from the National Center
158 for Advancing Translational Sciences, National Institutes of Health.

159

160 **Disclaimer:**

161 The findings and conclusions in this report are those of the authors and do not necessarily represent the
162 official position of the Centers for Disease Control and Prevention (CDC).

163

164 **Key Words:**

165 COVID-19; SARS-CoV-2; vaccine effectiveness; attenuation; mRNA vaccines; omicron variant

166

167 **Word Counts:**

168 Abstract: 367

169 Main Text: 4373

170 **ABSTRACT**

171 **Objectives:** To compare the effectiveness of a primary COVID-19 vaccine series plus a booster dose with
172 a primary series alone for the prevention of Omicron variant COVID-19 hospitalization.

173 **Design:** Multicenter observational case-control study using the test-negative design to evaluate vaccine
174 effectiveness (VE).

175 **Setting:** Twenty-one hospitals in the United States (US).

176 **Participants:** 3,181 adults hospitalized with an acute respiratory illness between December 26, 2021 and
177 April 30, 2022, a period of SARS-CoV-2 Omicron variant (BA.1, BA.2) predominance. Participants
178 included 1,572 (49%) case-patients with laboratory confirmed COVID-19 and 1,609 (51%) control
179 patients who tested negative for SARS-CoV-2. Median age was 64 years, 48% were female, and 21%
180 were immunocompromised; 798 (25%) were vaccinated with a primary series plus booster, 1,326 (42%)
181 were vaccinated with a primary series alone, and 1,057 (33%) were unvaccinated.

182 **Main Outcome Measures:** VE against COVID-19 hospitalization was calculated for a primary series plus a
183 booster and a primary series alone by comparing the odds of being vaccinated with each of these
184 regimens versus being unvaccinated among cases versus controls. VE analyses were stratified by
185 immune status (immunocompetent; immunocompromised) because the recommended vaccine
186 schedules are different for these groups. The primary analysis evaluated all COVID-19 vaccine types
187 combined and secondary analyses evaluated specific vaccine products.

188 **Results:** Among immunocompetent patients, VE against Omicron COVID-19 hospitalization for a primary
189 series plus one booster of any vaccine product dose was 77% (95% CI: 71–82%), and for a primary series
190 alone was 44% (95% CI: 31–54%) ($p < 0.001$). VE was higher for a boosted regimen than a primary series
191 alone for both mRNA vaccines used in the US (BNT162b2: primary series plus booster VE 80% (95% CI:
192 73-85%), primary series alone VE 46% (95% CI: 30-58%) [$p < 0.001$]; mRNA-1273: primary series plus
193 booster VE 77% (95% CI: 67-83%), primary series alone VE 47% (95% CI: 30-60%) [$p < 0.001$]). Among

194 immunocompromised patients, VE for a primary series of any vaccine product against Omicron COVID-
195 19 hospitalization was 60% (95% CI: 41-73%). Insufficient sample size has accumulated to calculate
196 effectiveness of boosted regimens for immunocompromised patients.

197 **Conclusions:** Among immunocompetent people, a booster dose of COVID-19 vaccine provided
198 additional benefit beyond a primary vaccine series alone for preventing COVID-19 hospitalization due to
199 the Omicron variant.

200 **BACKGROUND**

201 The highly transmissible SARS-CoV-2 Omicron variant, first identified in southern Africa in
202 November 2021, became the dominant variant in the United States (US) by late December 2021.^{1,2} The
203 surges in COVID-19 cases driven by this variant and its emergent lineages (PANGO BA.1/BA.2) was the
204 largest recognized in the United States, with a peak of over 400,000 cases per day.³ Emerging data on
205 vaccine protection against disease caused by the Omicron variant has been mixed. Early immunological
206 studies showed evidence of immune evasion by the Omicron variant with decreased neutralization from
207 either vaccine sera or monoclonal antibodies compared to previous variants.^{4,5} Recent evidence
208 suggests a rapid decline over time in antibody titers following booster doses.⁶ Real-world studies have
209 shown decreased effectiveness of both primary series and booster doses of COVID-19 vaccine regimens
210 against symptomatic infection, with waning occurring as early as 5–9 weeks after booster dose receipt.⁷⁻
211 ⁹ However, results from studies evaluating the protection provided by booster doses against severe
212 COVID-19 due to the Omicron variant have varied, with some studies suggesting robust protection
213 similar to protection against earlier SARS-CoV-2 variants, and others suggesting reduced protection
214 against the Omicron variant and further reductions over time as the time from booster dosing
215 increases.^{8,10-14} Additionally, questions remain about the effectiveness of booster vaccine doses and
216 whether specific demographic and high-risk groups benefit most from COVID-19 booster doses.¹⁵

217 Understanding the effectiveness of COVID-19 vaccines against severe disease caused by the
218 Omicron variant and its lineages has been challenging, which likely plays a role in the variability of recent
219 results that have emerged. Many hospitalized patients tested positive for SARS-CoV-2 in the first quarter
220 of 2022; however, in part due to the high incidence of infections caused by the Omicron variant and
221 universal testing upon admission, some fraction of these detections were likely “incidental” in patients
222 admitted for alternative reasons and may not have represented hospitalizations due to COVID-19.^{16,17} If
223 VE is lower against milder infections compared with severe infections, incidental SARS-CoV-2 detections

224 may artificially reduce VE estimates against severe COVID-19, when using any COVID-19 detections
225 among hospitalized patients as an outcome.¹⁰ Increased time since vaccination with a primary series
226 and widespread use of booster vaccine doses during the Omicron period further complicate
227 distinguishing the contribution of immune evasion of the Omicron variant from waning immunity.^{8,10}

228 To overcome these challenges, we evaluated the effectiveness of COVID-19 vaccines to prevent
229 hospitalizations during the Omicron predominant period in the US, using data from patients hospitalized
230 primarily because of COVID-19. We calculated vaccine effectiveness (VE) of a primary series plus one
231 booster dose and a primary vaccine series alone, by time since the last vaccine dose, thus providing data
232 to help understand the effectiveness of booster doses and the interplay of immune evasion and waning
233 immunity during the Omicron surge. Lastly, as a complementary laboratory analysis to these clinical VE
234 evaluations, we measured serum antibody concentrations in healthy adult volunteers to determine anti-
235 SARS-CoV-2 responses before and after receiving booster doses.

236

237 **METHODS**

238 *Setting and Design for VE Analysis*

239 This prospective, multicenter observational assessment was conducted by the Influenza and
240 Other Viruses in the Acutely Ill (IVY) Network in collaboration with the US Centers for Disease Control
241 and Prevention (CDC). The IVY Network is a 21-hospital collaborative in the US that has published
242 COVID-19 VE estimates iteratively throughout the pandemic (**Table S1**). The current analysis included
243 adult patients hospitalized at IVY sites during the period of Omicron variant predominance in the
244 Network: December 26, 2021–April 30, 2022 (with a brief pause of enrollment January 25–31, 2022 for a
245 protocol update). Using a test-negative design, VE for the prevention of Omicron-variant COVID-19-
246 associated hospitalization was calculated for the COVID-19 vaccines authorized for use in US: BNT162b2
247 (Pfizer-BioNTech), mRNA-1273 (Moderna), and Ad26.COV2 (Johnson & Johnson [Janssen]).¹⁸⁻²⁰ These

248 activities were reviewed by CDC, were conducted consistent with applicable federal law and CDC policy
249 (45 C.F.R. part 46.102(l)(2), 21 C.F.R. part 56; 42 U.S.C. §241(d); 5 U.S.C. §552a; 44 U.S.C. §3501 et seq),
250 and were determined to be public health surveillance with waiver of informed consent by institutional
251 review boards at CDC and each enrolling site.

252

253 *Participants*

254 Site personnel prospectively identified and enrolled hospitalized COVID-19 case-patients and
255 concurrent test-negative control-patients. Case-patients were adults (≥ 18 years old) admitted to the
256 hospital with symptomatic COVID-19 confirmed with a positive SARS-CoV-2 reverse transcription-
257 polymerase chain reaction (RT-PCR) or antigen test within 14 days of symptom onset. Case-patients had
258 one or more of the following COVID-19-associated signs or symptoms: fever, cough, shortness of breath,
259 loss of taste, loss of smell, use of respiratory support (high flow oxygen by nasal cannula, non-invasive
260 ventilation, or invasive mechanical ventilation) for the acute illness, or new pulmonary findings on chest
261 imaging indicating pneumonia. Control-patients were adults hospitalized with at least one of the above
262 signs or symptoms of COVID-like illness who tested negative for SARS-CoV-2, influenza, and respiratory
263 syncytial virus by RT-PCR within 14 days of symptom onset. Case-control status was determined by
264 results of both clinical SARS-CoV-2 testing at the admitting hospital as well as standardized, central
265 laboratory RT-PCR SARS-CoV-2 testing. Patients who tested positive for SARS-CoV-2 by either clinical
266 testing or central laboratory testing were classified as cases, while patients who tested negative by both
267 clinical and central laboratory testing were classified as controls. Sites sought to enroll case and control-
268 patients in a 1:1 ratio. Case- and control-patients were enrolled within two weeks of one another and
269 not matched on other individual patient characteristics.

270

271 *Data Collection*

272 Trained personnel at enrolling sites collected patient data on demographics, medical history,
273 underlying health conditions (**Table S2**), COVID-19 vaccination status, laboratory findings, and clinical
274 outcomes through patient or proxy interviews and medical record review. Patients were followed from
275 admission until discharge, death, or hospital day 28 (whichever occurred first). Clinical outcomes
276 included in-hospital death, invasive mechanical ventilation, supplemental oxygen therapy, vasopressor
277 use, and intensive care unit admission. The composite outcome of death or invasive mechanical
278 ventilation was used to identify patients with “critical COVID-19.” Individual pre-existing health
279 conditions were grouped into condition categories of cardiovascular, endocrine, gastrointestinal,
280 hematologic, immunocompromising, neurologic, pulmonary, and renal. Verification of COVID-19
281 vaccination was performed for information such as dates of vaccination, vaccine products, and lot
282 numbers using a systematic search of hospital electronic medical records, state vaccine registries, and
283 vaccination cards (when available).

284

285 *Classification of Vaccination Status*

286 We assessed effectiveness of a primary COVID-19 vaccine series plus one booster dose and a
287 primary series alone.²¹ During the surveillance period, US recommendations for COVID-19 vaccine
288 dosing for primary series and booster doses varied depending on health status (notably, presence of
289 immunocompromising conditions), age, vaccine product, and timing of prior vaccination. While national
290 US vaccine surveillance data do not distinguish vaccination status by medical conditions, the IVY
291 network collects detailed clinical data to facilitate descriptions of vaccine uptake by nuanced eligibility
292 criteria.³ Based on CDC recommendations, we classified patients into four mutually exclusive vaccination
293 status groups: 1) unvaccinated; 2) partially vaccinated; 3) primary series alone; 4) primary series plus
294 one booster dose (**Table S3**).

295 Among immunocompetent individuals (i.e., those without an immunocompromising condition
296 collected by the IVY network [**Table S2**]), we classified patients as completing a primary series if they
297 received either one dose of Ad26.COVID2 (Janssen) or two doses (>3-8 weeks apart) of an mRNA vaccine
298 (BNT162b2 or mRNA-1273) with the final dose ≥ 14 days before illness onset.²² Immunocompetent
299 patients were classified as having received a booster dose if they completed a primary series and
300 received an additional dose of any licensed COVID-19 vaccine ≥ 7 days prior to illness onset.

301 Among immunocompromised individuals, we classified patients as completing a primary series if
302 they received either an initial Ad26.COVID2 dose plus one additional COVID-19 vaccine dose (AD26.COVID2
303 or mRNA) or three doses of an mRNA vaccine ≥ 7 days before illness onset. Immunocompromised
304 patients were classified as receiving a booster dose if they completed a primary series and received an
305 additional dose of any licensed COVID-19 vaccine product ≥ 7 days prior to illness onset.

306 Patients were classified as unvaccinated if they had never received any COVID-19 vaccine. Those
307 who received one mRNA COVID-19 vaccine dose but did not complete a primary series were classified as
308 partially vaccinated and excluded from this analysis. Sample size of patients who receive two booster
309 doses was not large enough to calculate VE for a primary series plus two booster doses; thus, patients
310 who received two booster doses were excluded from this analysis. Patients were also excluded if they
311 received a booster dose prior to eligibility based on US recommendations (**Table S4**).

312

313 *Molecular diagnosis and sequencing*

314 Upper respiratory specimens were obtained from enrolled patients by nasal swab or saliva
315 collection for SARS-CoV-2 testing. The samples underwent standardized RT-PCR testing at a central
316 laboratory at Vanderbilt University Medical Center (Nashville, Tennessee) for detection of two SARS-
317 CoV-2 nucleocapsid gene targets (N1 and N2). Samples with detection of either N1 or N2 with a cycle
318 threshold ≤ 32 were shipped to the University of Michigan (Ann Arbor, Michigan) for viral whole genome

319 sequencing using the ARTIC Network protocol (v4.1 primer set) and an Oxford Nanopore Technologies
320 GridION instrument.²³ SARS CoV-2 variants and lineages are reported using the PANGO nomenclature.²⁴
321 Case-patients with a SARS-CoV-2 variant other than Omicron identified through sequencing were
322 excluded from this analysis.

323

324 *Statistical Analysis*

325 VE for the prevention of COVID-19-associated hospitalization was estimated by comparing the
326 odds of antecedent COVID-19 vaccination versus no vaccination among case- and control-patients.²⁰
327 Adjusted odds ratios (aORs) were generated using multivariable logistic regression models with case
328 status as the outcome, vaccination as the primary exposure, and prespecified covariables considered
329 potential confounders: admission date (biweekly intervals), age (18–49, 50–64, and ≥65 years), sex, self-
330 reported race and ethnicity, and U.S. Health and Human Services region of the admitting hospital. VE
331 was calculated as $(1 - \text{aOR}) \times 100$.

332 Models were stratified by vaccination group (primary series plus one booster dose or primary
333 series alone), immunosuppression status (immunocompetent or immunocompromised), age group (18–
334 64 versus ≥65 years), time from receipt of last vaccine dose to illness onset, and vaccine product
335 received (Ad26.CO2, BNT162b2, or mRNA-1273). Time between last vaccine dose of a primary series
336 and illness onset was stratified into 14–150 days and >150 days to align with current US
337 recommendations for the timing of a first booster dose.²⁵ Time between first booster dose and illness
338 onset was dichotomized into 7–120 days and >120 days based on timing of eligibility for a second
339 booster dose as recently allowed in select populations.²⁶

340 Statistical differences among baseline characteristics, outcomes, and treatments were evaluated
341 using Pearson’s chi-squared test for binary or categorical variables and the Wilcoxon rank-sum test for
342 continuous variables. Vaccine effectiveness P values were calculated by fitting a multilevel regression

343 model and performing a pairwise comparison across levels of categorical variables (vaccination group,
344 vaccine product). Statistical analyses were performed using Stata 16 (College Station, TX) and GraphPad
345 Prism version 9.3.1 for Windows (GraphPad Software, San Diego, CA).

346

347 *Post-vaccination antibody responses*

348 To complement the VE analysis described above, we also evaluated anti-SARS-CoV-2 antibody
349 responses after booster doses with the BNT162b2, mRNA-1273, and Ad26.CO2 vaccine products.
350 Healthy adult volunteers scheduled for their first booster dose were recruited at four IVY Network sites
351 during October 5, 2021–January 28, 2022. Enrolled participants reported never having symptomatic
352 COVID-19, either at the time of enrollment or in the past, and never testing positive for SARS-CoV-2.

353 Serum was collected before the booster dose and then again 2–6 weeks after the dose. These
354 serum samples were tested at CDC with the V-PLEX SARS-CoV-2 panel 2 kit (Meso Scale Diagnostics) for
355 IgG against the spike protein (S), receptor binding domain (RBD), and nucleocapsid (N). Targets of the
356 antibody responses were based on proteins from the USA-WA1/2020 strain. Participants with elevated
357 anti-nucleocapsid antibody concentration (>11.8 binding antibody units [BAU] per mL) suggestive of a
358 prior SARS-CoV-2 infection at either the pre-booster or post-booster time point were excluded. Pre-
359 booster and post-booster anti-S and anti-RBD concentrations were summarized with spaghetti plots and
360 geometric means. Some participants had previously contributed serum specimens for antibody
361 measurements 2–6 weeks after a primary series (i.e., after a second mRNA dose or after a first
362 Ad26.CO2 dose) earlier in this program.²⁷ When available, these post-primary series antibody
363 measurements were displayed to facilitate evaluation of antibodies in the same individual after a
364 primary series, before a first booster dose, and after a first booster dose.

365

366 *Patient and public involvement*

367 Patients were not involved in the original design of this study. Throughout the conduct of the
368 study, patients were routinely engaged in the work via structured interviews conducted between
369 research personnel and patients, which included discussions about COVID-19 and COVID-19 vaccines.
370 Results of the study will be disseminated to the public via announcements from the Centers for Disease
371 Control and Prevention and via lay and social media.

372

373 **RESULTS**

374 *Participants in VE Analyses*

375 During December 26, 2021–April 30, 2022, 4,299 hospitalized patients were enrolled from 21
376 hospitals. 1,118 (26%) patients were excluded from the analysis, with the most common reason being
377 partial vaccination (n=461) (**Figure S1**). 3,181 patients were included in the final analysis, including 1,572
378 (49%) COVID-19 case-patients and 1,609 (51%) test-negative control-patients, with a median overall age
379 of 64 years (IQR 52–74). 1,520 (48%) included patients were female, 619 (19%) were non-Hispanic Black,
380 423 (13%) were Hispanic, and 654 (21%) were immunocompromised (**Table 1**).

381 Of the 1,572 case-patients, 671 (43%) were unvaccinated, 654 (42%) completed a primary series
382 alone, and 247 (16%) completed a primary series plus one booster dose. Of the 1,609 control-patients,
383 386 (24%) were unvaccinated, 672 (42%) completed a primary series alone, and 551 (34%) received a
384 primary series plus one booster dose. Unvaccinated patients were younger (median 58 years [IQR 44–
385 69]) than those who completed a primary series alone (median 65 years [IQR 54–74]), or a primary
386 series plus one booster (median 68 years [IQR 59–78]) ($p<0.001$). Unvaccinated patients were less likely
387 to have had ≥ 1 hospital admission in the past year than those who were vaccinated with a primary series
388 plus one booster dose or primary series alone ($p<0.001$) (**Table 1**).

389 Viral whole genome sequencing was performed for 648 COVID-19 case-patients, and a SARS-
390 CoV-2 variant was successfully identified in 508 (78%). Among those with a variant identified, 444 (87%)

391 were Omicron, and 64 (13%) were Delta. Patients with the Delta variant were excluded from analyses.
392 Of the 444 sequenced Omicron cases, 396 (89%) were BA.1 lineage and 48 (11%) were BA.2 lineage.
393 BA.2 became the predominant lineage during the week starting March 27, 2022 (**Figure 1**).

394 Among vaccinated patients, most received a homologous mRNA primary series (90%), with
395 lower proportions of patients receiving Ad26.CO2 (9%) or a heterologous mRNA (1%) primary series
396 (**Figure 2**). For booster dose product received, 97% of patients received an mRNA vaccine, with only 3%
397 receiving Ad26.CO2. Most mixing of vaccine products occurred after receipt of one dose of Ad26.CO2
398 or after two doses of the same mRNA product.

399

400 *VE against COVID-19 hospitalization*

401 When considering all vaccine products (BNT162b2, mRNA-1273, and AD26.CO2), among
402 immunocompetent patients, VE against COVID-19 hospitalization was higher for a primary series plus a
403 booster (77%; 95% CI: 71–82) than a primary series alone (44%; 95% CI: 31–54) ($p < 0.001$) (**Figure 3**).
404 Among immunocompetent patients vaccinated with either BNT162b2 (Pfizer) or mRNA-1273 (Moderna),
405 those who received a homologous booster dose (i.e., a third dose of the same vaccine product) had
406 significantly higher VE against COVID-19 hospitalization than those who received only a primary series.
407 For BNT162b2, VE for a primary series plus a booster was 80% (95% CI: 73–85%) and for a primary series
408 alone was 46% (95% CI: 30–58%) ($p < 0.001$). For mRNA-1273, VE for a primary series plus a booster was
409 77% (95% CI: 67–83) and for a primary series alone was 47% (95% CI: 30–60) ($p < 0.001$). While the
410 sample size of patients who received a homologous booster dose with Ad26.CO2 (Johnson & Johnson)
411 was small ($n=20$), the addition of a booster dose did not appear to increase VE compared to an
412 AD26.CO2 single dose primary series. VE against COVID-19 hospitalization for two doses of Ad26.CO2
413 (i.e., a booster dose following a primary Ad26.CO2 dose) was 30% (95% CI: -85–74%) and for a single
414 dose primary series alone was 41% (95% CI: 9–62%) ($p=0.665$). Among heterologous booster product

415 recipients (those who received a different product for the primary series and booster dose), VE for
416 mixed mRNA vaccine doses (i.e., any combination of BNT162b2 and mRNA-1273) was 70% (95% CI: 34–
417 86), while VE for a primary series Ad26.COV2 plus one mRNA booster was 64% (95% CI: 35–80).

418 VE for immunocompromised patients completing a primary series (three doses of an mRNA
419 vaccine) was 60% (95% CI: 41–73). VE could not be estimated for a primary series plus one booster in
420 immunocompromised patients due to a small number of participants (n=5) who received a first booster
421 dose (i.e., a fourth mRNA vaccine dose).

422 In analyses of VE against COVID-19 hospitalization stratified by time since the last vaccine dose,
423 point estimates consistently showed a waning of protection at longer time points for both a primary
424 series plus booster dose and a primary series alone. VE after a primary series for immunocompetent
425 patients at 14–150 days (median 109 days) since the last vaccine dose was 54% (95% CI: 32–69), and at
426 >150 days (median 279 days) was 42% (95% CI: 28–54%). VE after a booster dose for
427 immunocompetent patients at 7–120 days (median 69 days) following the booster dose was 80% (95%:
428 74–84%) and at >120 days (median 147 days) was 65% (95% CI: 47–77%). For immunocompromised
429 patients, VE for a primary series at 14–150 days (median 91 days) was 65% (95% CI: 46–77%) and at
430 >150 days (median 172 days) was 48% (95% CI: 5–72%).

431

432 *Clinical outcomes among unvaccinated and vaccinated patients hospitalized with COVID-19*

433 Clinical outcomes by day 28 of admission were available for the 1,361 COVID-19 case-patients
434 admitted to hospital between December 26, 2021 and April 2, 2022; 1,117 (82%) of these patients were
435 discharged from the hospital prior to day 28, 127 (9%) remained hospitalized at day 28, and 117 (9%)
436 died in the hospital before day 28 (**Table 2**). Intensive care unit admission was more common among
437 unvaccinated patients (34%) than vaccinated patients (26%, including 26% among those who completed
438 a primary series alone and 26% among those who completed a primary series plus booster) (p=0.007).

439 The composite critical COVID-19 outcome of death or invasive mechanical ventilation was more
440 common among unvaccinated patients (23%) than vaccinated patients (15%, including 16% among those
441 who completed a primary series alone and 14% among those who completed a primary series plus one
442 booster dose) ($p=0.002$). Among 1,257 COVID-19 case-patients with data available on in-hospital
443 treatments, use of one or more treatment indicated for severe COVID-19 (corticosteroids, tocilizumab,
444 or baricitinib) was more common among unvaccinated patients (72%) than vaccinated patients (59%,
445 including 60% who completed a primary series alone and 55% who completed a primary series plus
446 booster) ($p<0.001$).

447

448 *Pre-booster and post-booster serum antibody results*

449 Paired serum samples were collected before and after a COVID-19 booster dose in 63 healthy
450 volunteers, including 33 with a BNT162b2 booster dose after a BNT162b2 primary series, 16 with an
451 mRNA-1273 booster dose following an mRNA-1273 primary series, 8 with an Ad26.COVID2 booster dose
452 after an Ad26.COVID2 primary series dose and 6 with one mRNA booster dose after an Ad26.COVID2
453 primary series dose (**Table S5**). Anti-RBD and anti-S antibody concentrations were higher after compared
454 to before the booster dose for all vaccines (**Figure 4; Table S6**). Post-booster anti-RBD and anti-S
455 antibody concentrations were higher for participants who received three BNT162b2 doses and three
456 mRNA-1273 doses compared to two Ad26.COVID2 doses.

457

458 **DISCUSSION**

459 *Principal Findings*

460 In this analysis of hospitalized adults at 21 hospitals in the US during an Omicron predominant
461 period from December 26, 2021–April 30, 2022, receipt of a COVID-19 primary vaccine series plus a
462 booster dose provided greater protection against COVID-19 hospitalization than receipt of a primary

463 series alone. This added protection of a booster dose was seen across all age groups and for all three
464 vaccine products used in the US. mRNA vaccines (BNT162b2 and mRNA-1273) provided greater
465 protection than the Ad26.COV2 vaccine, both when considering a primary series alone and boosted
466 vaccine regimens. These clinical vaccine effectiveness findings were supported by serology results
467 demonstrating substantially higher anti-SARS-CoV-2 antibody titers following booster vaccine doses.
468 These antibody and VE data support US recommendations that all eligible patients receive a booster
469 dose to protect against severe disease from the Omicron variant.

470

471 *Comparison with other studies and policy implications*

472 COVID-19 vaccines have been authorized in the US for over a year, and as of June 2022, an
473 estimated 77% of the adult population has received a primary series, of whom nearly half of those
474 eligible to receive a first booster dose had not yet received it.³ Modest waning in protection of a primary
475 COVID-19 vaccine series was initially demonstrated during the Delta variant period.²⁹⁻³¹ Our findings
476 support the concept of waning protection for primary vaccine series for the Omicron variant as well,
477 with a decline in protection for a primary series against COVID-19 hospitalization during the Omicron
478 period greater than 5 months after a primary series. These data add to the growing evidence of waning
479 effectiveness of a primary series.^{32,33} Despite known immune evasion features of the Omicron variant for
480 vaccines currently available, our results show that VE substantially increased following a booster dose,
481 consistent with results from other studies.^{7,8} Data from immunological studies suggest that a broadening
482 of the immune response occurs after a booster dose, including an increase in, and adaptation of, anti-
483 receptor binding domain-specific memory B cells, providing biologic plausibility for increased VE after a
484 booster dose even with the highly divergent Omicron variant.^{25,34-36} Our data from healthy adult
485 volunteers suggested significant increases in anti-RBD and anti-spike antibody levels 2-6 weeks after
486 receiving one booster dose, consistent with observed differences in VE between those who received a

487 primary series only versus those who received one booster dose. Understanding the extent to which VE
488 against severe Omicron disease wanes following booster doses will require the accumulation of more
489 data over time. While some early evidence from the US, United Kingdom, and Israel have shown some
490 decrease in effectiveness of mRNA vaccines >120 days from a first booster dose^{10,37,38}, we found only a
491 modest decline in VE following a booster dose in this study (from 80% at 7–120 days to 65% at >120
492 days).

493 We also observed that vaccinated patients hospitalized with COVID-19 experienced less severe
494 outcomes than unvaccinated patients hospitalized with COVID-19, suggesting that COVID-19 vaccines
495 result in disease attenuation and providing further rationale for COVID-19 vaccination.^{30,31} In this
496 analysis, while patients who received boosted vaccine regimens were less likely to be hospitalized with
497 COVID-19 than those who received a primary series alone, in-hospital outcomes were similar between
498 those who received boosted regimens and a primary series alone. Additional study will be required to
499 understand if booster doses lead to incremental disease attenuation beyond a primary series among
500 vaccine breakthrough cases.

501 Our findings also suggest lower effectiveness for the adenovirus vector vaccine (Ad26.COV2)
502 both as a primary vaccine series and as a booster dose compared to mRNA vaccines. Although
503 mechanisms of protection against SARS-CoV-2 have not yet been established, binding antibodies
504 correlate with protection against SARS-CoV-2, allowing for contextualization of findings from
505 observational data.^{27,39,40} In this analysis, the persistently low anti-spike and anti-RBD levels post-primary
506 series dose and before a first booster dose for recipients of Ad26.COV2 compared with recipients of
507 mRNA vaccines provide complementary understanding of the reduced effectiveness of this vaccine
508 relative to mRNA vaccines. These findings support preferential use of mRNA vaccines both for a primary
509 series and as a booster dose, regardless of which vaccine product was used for the primary series.^{25,26}

510

511 *Strengths and limitations*

512 Important strengths of this study included enrollment of patients with active COVID-19
513 symptoms ascertained at the bedside in real-time and laboratory confirmed SARS-CoV-2 infection; these
514 methods facilitated calculations of vaccine effectiveness to prevent symptomatic, laboratory confirmed
515 COVID-19 hospitalization. Additionally, ascertainment of vaccination status was robust, with patient
516 interviews combined with systematic searches of medical records and vaccines registries, which enabled
517 precise classification of each patient's vaccination status, including the receipt of booster doses.
518 Furthermore, respiratory samples with SARS-CoV-2 detection underwent viral sequencing, which
519 enabled exclusion of patients identified to have infections with a variant other than Omicron.

520 This analysis also had limitations. First, although several relevant confounders were controlled in
521 VE models, residual or unmeasured confounding is possible. In particular, increases in the proportion of
522 individuals with prior SARS-CoV-2 infection, which is associated with a degree of protection against
523 reinfection, may have led lower VE observed in this study compared with studies from earlier in the
524 pandemic when fewer control patients had prior natural infection.⁴¹⁻⁴³ Second, although binding
525 antibodies likely correlate with protection against SARS-CoV-2 infection, other immune responses
526 including neutralizing antibodies and cellular immunity were not evaluated. Third, patients included in
527 the antibody analysis were healthy adult volunteers and may not fully represent the clinical and
528 demographic characteristics of those included in VE analyses. Fourth, modest sample size limited
529 precision of some estimates, including waning of VE >120 days after a booster dose and effectiveness of
530 Ad26.COV2, and prevented estimates for effectiveness of booster doses in immunocompromised
531 patients. Fifth, our study was restricted to analysis of first booster doses due to second booster doses
532 only emerging in select populations toward the end of the study period and low uptake of second
533 boosters in the study population. Future studies on second boosters will be important.

534

535 **CONCLUSION**

536 Vaccination with a primary COVID-19 vaccine series plus a booster dose was significantly more
537 effective than a primary series alone in preventing COVID-19 associated hospitalization during the
538 Omicron-variant period in the US. Additionally, mRNA vaccines were more effective than the Ad26.COV2
539 vaccine, both as a primary series and as booster doses. Serology results support these findings by
540 showing substantial increases in anti-SARS-CoV-2 antibody titers following booster vaccine doses,
541 particularly with mRNA vaccines. These findings support recommendations for all eligible people aged
542 ≥ 18 years to receive a booster dose of an mRNA vaccine.

543 **NOTES**

544 **Contributions:** Guarantors of this work include Dr. Self (protocol and data integrity), Ms. Adams
545 (statistical analysis), Dr. Lauring (viral sequencing laboratory methods), Dr. Chappell (RT-PCR laboratory
546 methods), Dr. Thornburg (antibody measurement methods). Contributions of each author include the
547 following. Responsibility for decision to submit the manuscript: Self. Composed the initial manuscript
548 draft: Adams, Rhoads, Surie, Tenforde, Self (the authors alone wrote the manuscript without outside
549 assistance). Conceptualization of study methods: Adams, Rhoads, Surie, Gaglani, Ginde, McNeal,
550 Ghamande, Huynh, Talbot, Casey, Mohr, Zepeski, Shapiro, Gibbs, Files, Hicks, Hager, Ali, Prekker, Frosch,
551 Exline, Gong, Mohamed, Johnson, Srinivasan, Steingrub, Peltan, Brown, Martin, Monto, Lauring, Khan,
552 Hough, Busse, ten Lohuis, Duggal, Wilson, Gordon, Qadir, Chang, Mallow, Rivas, Babcock, Kwon,
553 Chappell, Halasa, Grijalva, Rice, Stubblefield, Baughman, Lindsell, Hart, Lester, Thornburg, Park,
554 McMorrow, Patel, Tenforde, Self. Statistical analysis and data management: Adams, Tenforde, Lindsell,
555 Hart, Zhu. Funding acquisition: Self. Critical review of the manuscript for important intellectual content:
556 Adams, Rhoads, Surie, Gaglani, Ginde, McNeal, Ghamande, Huynh, Talbot, Casey, Mohr, Zepeski,
557 Shapiro, Gibbs, Files, Hicks, Hager, Ali, Prekker, Frosch, Exline, Gong, Mohamed, Johnson, Srinivasan,
558 Steingrub, Peltan, Brown, Martin, Monto, Lauring, Khan, Hough, Busse, ten Lohuis, Duggal, Wilson,
559 Gordon, Qadir, Chang, Mallow, Rivas, Babcock, Kwon, Chappell, Halasa, Grijalva, Rice, Stubblefield,
560 Baughman, Lindsell, Hart, Lester, Thornburg, Park, McMorrow, Patel, Tenforde, Self. The corresponding
561 author (Dr. Self) attests that all listed authors meet authorship criteria and that no others meeting the
562 criteria have been omitted.

563

564 **Funding:** Primary funding for this work was provided by the United States Centers Disease Control and
565 Prevention (contracts 75D30120F00002 and 75D30122C12914 to Dr. Self). Scientists from the US CDC
566 participated in all aspects of this study, including its design, analysis, interpretation of data, writing the

567 report, and the decision to submit the article for publication. The REDCap data tool used in this work
568 was supported by a Clinical and Translational Science Award (UL1 TR002243) from the National Center
569 for Advancing Translational Sciences, National Institutes of Health.

570

571 **Competing Interests:** All authors have completed and submitted the International Committee of
572 Medical Journal Editors (ICMJE) disclosure form. Funding for this work was provided to all participating
573 sites by the United States Centers for Disease Control and Prevention. Samuel Brown reports grants
574 from National Institutes of Health (NIH) and Department of Defense (DoD), participation as the DSMB
575 chair for Hamilton Ventilators, and participation as a member of the DSMB for New York University
576 COVID clinical trials. Jonathan Casey reports funding from NIH and DoD. Steven Chang reports consulting
577 fees from La Jolla Pharmaceuticals, PureTech Health, and Kiniska Pharmaceuticals, payment/honoraria
578 from La Jolla Pharmaceuticals, and participation on a DSMB for an investigator-initiated study conducted
579 at UCLA. James Chappell reports grants and other support from NIH. Abhijit Duggal reports consulting
580 fees from ALung technologies. Matthew Exline reports payment/honoraria from Abbott Lab for
581 sponsored talks. D. Clark Files reports consulting fees from Cytovale and participation on a DSMB for
582 Medpace. Anne Frosch reports grants from NIH. Manjusha Gaglani reports grants from Centers for
583 Disease Control and Prevention (CDC), CDC-Abt Associates, CDC-Westat, and Janssen, and a leadership
584 role as co-chair of the Infectious Disease and Immunization Committee of the Texas Pediatric Society,
585 Texas Chapter of American Academy of Pediatrics. Kevin Gibbs reports funding from NIH/ National
586 Heart, Lung, and Blood Institute (NHLBI) for the ACTIV-4HT NECTAR trial. Adit Ginde reports grants from
587 NIH, DoD, AbbVie, and Faron Pharmaceuticals. Michelle Gong reports grants from NIH/NHLBI and
588 Agency for Healthcare Research and Quality (AHRQ), consulting fees from Endpoint, a leadership role on
589 the American Thoracic Society (ATS) executive committee and board as well as support from ATS for
590 meeting travel expenses, and participation on a DSMB for Regeneron. Carlos Grijalva reports grants

591 from NIH, CDC, Food and Drug Administration (FDA), AHRQ, Sanofi, and Syneos Health and consulting
592 fees from Pfizer, Merck, and Sanofi. David Hager reports grants from NIH/NHLBI for the ACTIV-4HT
593 NECTAR trial and Incyte Corporation and participation as a DSMB chair for the SAFE EVICT Trial of
594 vitamin C in COVID-19. Natasha Halasa reports grants from NIH, Quidel, and Sanofi and honoraria for
595 speaking at the American Academy of Pediatrics (AAP) conference. Catherine Hough reports grants from
596 NIH and American Lung Association (ALA) and participation as a DSMB member for iSPY COVID and
597 Team (ANZICS). Nicholas Johnson reports grants from NIH/NHLBI/NINDS and the University of
598 Washington Royalty Research Fund and payment for expert testimony for the Washington Department
599 of Health. Akram Khan reports grants from United Therapeutics, Gilead Sciences, and 4D Medical and a
600 leadership role on the guidelines committee for Chest. Jennie Kwon reports grants from NIH/NIAID.
601 Adam Lauring reports grants from CDC, NIH/NIAID, and Burroughs Wellcome Fund and consulting fees
602 from Sanofi and Roche. Christopher Lindsell reports grants from NIH, DoD, CDC, bioMerieux, Entegron
603 Inc., Endpoint Health, and AbbVie, patents for risk stratification in sepsis and septic shock, participation
604 on DSMBs for clinical trials unrelated to the current work, a leadership role on the executive committee
605 for the Board of Directors of the Association for Clinical and Translational Science, and stock options in
606 Bioscape Digita. Emily Martin reports grants from Merck, CDC, and NIH and payment/honoraria from the
607 Michigan Infectious Disease Society. Tresa McNeal reports payment/honoraria from the Society of
608 Hospital Medicine. Arnold Monto reports grants from CDC and NIAID/NIH and participation on a DSMB
609 for the FDA. Ithan Peltan reports grants from NIH, Janssen, Regeneron, and Asahi Kasei Pharma. Todd
610 Rice reports grants from AbbVie Inc., consulting fees from Cumberland Pharmaceuticals, Inc. and
611 Cytovale, Inc., membership on a DSMB for Sanofi, Inc., a leadership role as immediate past president of
612 the American Society of Parenteral and Enteral Nutrition, and stock options in Cumberland
613 Pharmaceuticals, Inc. Wesley Self reports receiving the primary funding for this project from the United

614 States Centers for Disease Control and Prevention, and research funding from Merck and Gilead

615 Sciences. William Stubblefield reports grants from the NIH/NHLBI.

616 **Patient Consent:** not applicable.

617 **Ethical Approval:** This program was approved as a public health surveillance activity with waiver of

618 informed consent by institutional review boards at the US Centers for Disease Control and Prevention

619 (CDC), the program's coordinating center at Vanderbilt University Medical Center and each participating

620 site.

621 **Data Sharing:** No additional data are available.

622 **Transparency:** Dr. Self affirms that the manuscript is an honest, accurate, and transparent account of

623 the study being reported; that no important aspects of the study have been omitted; and that any

624 discrepancies from the study as planned have been explained. Dr. Self led the development of the study

625 protocol and participant enrollment. Ms. Adams led statistical analysis. Dr. Luring led viral sequencing

626 work. Dr. Chappell led RT-PCR work. Dr. Self takes responsibility for the work overall.

627 **Dissemination to participants and related patient and public communities:** Results will be

628 disseminated to relevant communities via public health announcements from the US Centers for Disease

629 Control and Prevention, via press releases in the lay press, and public presentations by the investigators.

630 **REFERENCES**

- 631 1. Viana R, Moyo S, Amoako DG, et al. Rapid epidemic expansion of the SARS-CoV-2 Omicron
632 variant in southern Africa. *Nature*. Mar 2022;603(7902):679-686. doi:10.1038/s41586-022-04411-y
- 633 2. Lambrou AS, Shirk P, Steele MK, et al. Genomic Surveillance for SARS-CoV-2 Variants:
634 Predominance of the Delta (B.1.617.2) and Omicron (B.1.1.529) Variants - United States, June 2021-
635 January 2022. *MMWR Morb Mortal Wkly Rep*. Feb 11 2022;71(6):206-211.
636 doi:10.15585/mmwr.mm7106a4
- 637 3. Centers for Disease Control and Prevention. COVID-19 Data Tracker. Accessed April 9, 2022,
638 <https://covid.cdc.gov/covid-data-tracker/>
- 639 4. Cele S, Jackson L, Khoury DS, et al. SARS-CoV-2 Omicron has extensive but incomplete escape of
640 Pfizer BNT162b2 elicited neutralization and requires ACE2 for infection. *medRxiv*. Dec 17
641 2021;doi:10.1101/2021.12.08.21267417
- 642 5. Wilhelm A, Widera M, Grikscheit K, et al. Reduced Neutralization of SARS-CoV-2 Omicron
643 Variant by Vaccine Sera and Monoclonal Antibodies. *medRxiv*. 2021:2021.12.07.21267432.
644 doi:10.1101/2021.12.07.21267432
- 645 6. Lassauniere R, Polacek C, Frische A, et al. Neutralizing Antibodies Against the SARS-CoV-2
646 Omicron Variant (BA.1) 1 to 18 Weeks After the Second and Third Doses of the BNT162b2 mRNA
647 Vaccine. *JAMA Netw Open*. May 2 2022;5(5):e2212073. doi:10.1001/jamanetworkopen.2022.12073
- 648 7. Andrews N, Stowe J, Kirsebom F, et al. Covid-19 Vaccine Effectiveness against the Omicron
649 (B.1.1.529) Variant. *N Engl J Med*. Mar 2 2022;doi:10.1056/NEJMoa2119451
- 650 8. Ferdinands JM, Rao S, Dixon BE, et al. Waning 2-Dose and 3-Dose Effectiveness of mRNA
651 Vaccines Against COVID-19-Associated Emergency Department and Urgent Care Encounters and
652 Hospitalizations Among Adults During Periods of Delta and Omicron Variant Predominance - VISION
653 Network, 10 States, August 2021-January 2022. *MMWR Morb Mortal Wkly Rep*. Feb 18 2022;71(7):255-
654 263. doi:10.15585/mmwr.mm7107e2
- 655 9. Hansen CH, Schelde AB, Moustsen-Helm IR, et al. Vaccine effectiveness against SARS-CoV-2
656 infection with the Omicron or Delta variants following a two-dose or booster BNT162b2 or mRNA-1273
657 vaccination series: A Danish cohort study. *medRxiv*. 2021:2021.12.20.21267966.
658 doi:10.1101/2021.12.20.21267966
- 659 10. Stowe J, Andrews N, Kirsebom F, Ramsay M, Bernal JL. Effectiveness of COVID-19 vaccines
660 against Omicron and Delta hospitalisation: test negative case-control study. *medRxiv*.
661 2022:2022.04.01.22273281. doi:10.1101/2022.04.01.22273281
- 662 11. Buchan SA, Chung H, Brown KA, et al. Effectiveness of COVID-19 vaccines against Omicron or
663 Delta symptomatic infection and severe outcomes. *medRxiv*. 2022:2021.12.30.21268565.
664 doi:10.1101/2021.12.30.21268565
- 665 12. Tseng HF, Ackerson BK, Luo Y, et al. Effectiveness of mRNA-1273 against SARS-CoV-2 Omicron
666 and Delta variants. *Nat Med*. Feb 21 2022;doi:10.1038/s41591-022-01753-y
- 667 13. Thompson MG, Natarajan K, Irving SA, et al. Effectiveness of a Third Dose of mRNA Vaccines
668 Against COVID-19-Associated Emergency Department and Urgent Care Encounters and Hospitalizations
669 Among Adults During Periods of Delta and Omicron Variant Predominance - VISION Network, 10 States,
670 August 2021-January 2022. *MMWR Morb Mortal Wkly Rep*. Jan 21 2022;71(4):139-145.
671 doi:10.15585/mmwr.mm7104e3
- 672 14. Natarajan K, Prasad N, Dascomb K, et al. Effectiveness of Homologous and Heterologous COVID-
673 19 Booster Doses Following 1 Ad.26.COVS (Janssen [Johnson & Johnson]) Vaccine Dose Against COVID-
674 19-Associated Emergency Department and Urgent Care Encounters and Hospitalizations Among Adults -
675 VISION Network, 10 States, December 2021-March 2022. *MMWR Morb Mortal Wkly Rep*. Apr 1
676 2022;71(13):495-502. doi:10.15585/mmwr.mm7113e2

- 677 15. Offit PA. Covid-19 Boosters - Where from Here? *N Engl J Med*. Apr 28 2022;386(17):1661-1662.
678 doi:10.1056/NEJMe2203329
- 679 16. Klann JG, Strasser ZH, Hutch MR, et al. Distinguishing Admissions Specifically for COVID-19 from
680 Incidental SARS-CoV-2 Admissions: A National Retrospective EHR Study. *medRxiv*.
681 2022:2022.02.10.22270728. doi:10.1101/2022.02.10.22270728
- 682 17. Modes ME, Directo MP, Melgar M, et al. Clinical Characteristics and Outcomes Among Adults
683 Hospitalized with Laboratory-Confirmed SARS-CoV-2 Infection During Periods of B.1.617.2 (Delta) and
684 B.1.1.529 (Omicron) Variant Predominance - One Hospital, California, July 15-September 23, 2021, and
685 December 21, 2021-January 27, 2022. *MMWR Morb Mortal Wkly Rep*. Feb 11 2022;71(6):217-223.
686 doi:10.15585/mmwr.mm7106e2
- 687 18. Patel MK, Bergeri I, Bresee JS, et al. Evaluation of post-introduction COVID-19 vaccine
688 effectiveness: Summary of interim guidance of the World Health Organization. *Vaccine*. Jul 5
689 2021;39(30):4013-4024. doi:10.1016/j.vaccine.2021.05.099
- 690 19. United States Food and Drug Administration. COVID-19 Vaccines. Updated 04/01/2022.
691 Accessed 04/05/2022, [https://www.fda.gov/emergency-preparedness-and-response/coronavirus-](https://www.fda.gov/emergency-preparedness-and-response/coronavirus-disease-2019-covid-19/covid-19-vaccines#authorized-vaccines)
692 [disease-2019-covid-19/covid-19-vaccines#authorized-vaccines](https://www.fda.gov/emergency-preparedness-and-response/coronavirus-disease-2019-covid-19/covid-19-vaccines#authorized-vaccines)
- 693 20. Patel MM, Jackson ML, Ferdinands J. Postlicensure Evaluation of COVID-19 Vaccines. *JAMA*. Nov
694 17 2020;324(19):1939-1940. doi:10.1001/jama.2020.19328
- 695 21. Centers for Disease Control and Prevention. Stay Up to Date with Your COVID-19 Vaccines.
696 Updated April 2, 2022. <https://www.cdc.gov/coronavirus/2019-ncov/vaccines/stay-up-to-date.html>
- 697 22. Centers for Disease Control and Prevention. Interim Clinical Considerations for Use of COVID-19
698 Vaccines Currently Approved or Authorized in the United States. Updated April 21, 2022. Accessed May
699 17, 2022, [https://www.cdc.gov/vaccines/covid-19/clinical-considerations/interim-considerations-](https://www.cdc.gov/vaccines/covid-19/clinical-considerations/interim-considerations-us.html)
700 [us.html](https://www.cdc.gov/vaccines/covid-19/clinical-considerations/interim-considerations-us.html)
- 701 23. Quick J. *nCoV-2019 sequencing protocol v3 (LoCost) V.3*. 2020. Accessed May 26, 2021.
702 <https://www.protocols.io/view/ncov-2019-sequencing-protocol-v3-locost-bp2l6n26rgge/v3>
- 703 24. Rambaut A, Holmes EC, O'Toole A, et al. A dynamic nomenclature proposal for SARS-CoV-2
704 lineages to assist genomic epidemiology. *Nat Microbiol*. Nov 2020;5(11):1403-1407.
705 doi:10.1038/s41564-020-0770-5
- 706 25. Centers for Disease Control and Prevention. COVID-19 Vaccine: Interim COVID-19 Immunization
707 Schedule for Ages 5 Years and Older. Updated April 23, 2022. Accessed April 20, 2022.
708 [https://www.cdc.gov/vaccines/covid-19/downloads/COVID-19-immunization-schedule-ages-5yrs-](https://www.cdc.gov/vaccines/covid-19/downloads/COVID-19-immunization-schedule-ages-5yrs-older.pdf)
709 [older.pdf](https://www.cdc.gov/vaccines/covid-19/downloads/COVID-19-immunization-schedule-ages-5yrs-older.pdf)
- 710 26. Centers for Disease Control and Prevention. Clinical Considerations Second COVID-19 Vaccine
711 Booster Dose. Accessed April 25, 2022, [https://www.cdc.gov/vaccines/covid-19/downloads/Clinical-](https://www.cdc.gov/vaccines/covid-19/downloads/Clinical-Considerations-Second-COVID-19-Booster-508.pdf)
712 [Considerations-Second-COVID-19-Booster-508.pdf](https://www.cdc.gov/vaccines/covid-19/downloads/Clinical-Considerations-Second-COVID-19-Booster-508.pdf)
- 713 27. Self WH, Tenforde MW, Rhoads JP, et al. Comparative Effectiveness of Moderna, Pfizer-
714 BioNTech, and Janssen (Johnson & Johnson) Vaccines in Preventing COVID-19 Hospitalizations Among
715 Adults Without Immunocompromising Conditions - United States, March-August 2021. *MMWR Morb*
716 *Mortal Wkly Rep*. Sep 24 2021;70(38):1337-1343. doi:10.15585/mmwr.mm7038e1
- 717 28. Centers for Disease Control and Prevention. CDC Strengthens Recommendations and Expands
718 Eligibility for COVID-19 Booster Shots. Updated May 19, 2022. Accessed May 20, 2022,
719 <https://www.cdc.gov/media/releases/2022/s0519-covid-booster-acip.html>
- 720 29. Tartof SY, Slezak JM, Fischer H, et al. Effectiveness of mRNA BNT162b2 COVID-19 vaccine up to 6
721 months in a large integrated health system in the USA: a retrospective cohort study. *Lancet*. Oct 16
722 2021;398(10309):1407-1416. doi:10.1016/S0140-6736(21)02183-8

- 723 30. Tenforde MW, Self WH, Adams K, et al. Association Between mRNA Vaccination and COVID-19
724 Hospitalization and Disease Severity. *JAMA*. Nov 23 2021;326(20):2043-2054.
725 doi:10.1001/jama.2021.19499
- 726 31. Lauring AS, Tenforde MW, Chappell JD, et al. Clinical severity of, and effectiveness of mRNA
727 vaccines against, covid-19 from omicron, delta, and alpha SARS-CoV-2 variants in the United States:
728 prospective observational study. *BMJ*. Mar 9 2022;376:e069761. doi:10.1136/bmj-2021-069761
- 729 32. Committee IMoHC-VCE. Vaccine effectiveness data on a cohort of persons vaccinated by 31-Jan-
730 2021 with two doses. . [https://www.gov.il/BlobFolder/reports/vaccine-efficacy-safety-follow-up-
731 committee/he/files_publications_corona_two-dose-vaccination-data.pdf](https://www.gov.il/BlobFolder/reports/vaccine-efficacy-safety-follow-up-committee/he/files_publications_corona_two-dose-vaccination-data.pdf)
- 732 33. Chemaitelly H, Tang P, Hasan MR, et al. Waning of BNT162b2 Vaccine Protection against SARS-
733 CoV-2 Infection in Qatar. *N Engl J Med*. Dec 9 2021;385(24):e83. doi:10.1056/NEJMoa2114114
- 734 34. Muecksch F, Wang Z, Cho A, et al. Increased Memory B Cell Potency and Breadth After a SARS-
735 CoV-2 mRNA Boost. *Nature*. Apr 21 2022;doi:10.1038/s41586-022-04778-y
- 736 35. Sadarangani M, Marchant A, Kollmann TR. Immunological mechanisms of vaccine-induced
737 protection against COVID-19 in humans. *Nat Rev Immunol*. Aug 2021;21(8):475-484.
738 doi:10.1038/s41577-021-00578-z
- 739 36. Cromer D, Juno JA, Houry D, et al. Prospects for durable immune control of SARS-CoV-2 and
740 prevention of reinfection. *Nat Rev Immunol*. Jun 2021;21(6):395-404. doi:10.1038/s41577-021-00550-x
- 741 37. Centers for Disease Control and Prevention. COVID-19 Vaccine Effectiveness during Omicron.
742 Accessed April 25, 2022, [https://www.cdc.gov/vaccines/acip/meetings/downloads/slides-2022-04-
743 20/02-COVID-Link-Gelles-508.pdf](https://www.cdc.gov/vaccines/acip/meetings/downloads/slides-2022-04-20/02-COVID-Link-Gelles-508.pdf)
- 744 38. Magen O, Waxman JG, Makov-Assif M, et al. Fourth Dose of BNT162b2 mRNA Covid-19 Vaccine
745 in a Nationwide Setting. *N Engl J Med*. Apr 13 2022;doi:10.1056/NEJMoa2201688
- 746 39. Bajema KL, Dahl RM, Evener SL, et al. Comparative Effectiveness and Antibody Responses to
747 Moderna and Pfizer-BioNTech COVID-19 Vaccines among Hospitalized Veterans - Five Veterans Affairs
748 Medical Centers, United States, February 1-September 30, 2021. *MMWR Morb Mortal Wkly Rep*. Dec 10
749 2021;70(49):1700-1705. doi:10.15585/mmwr.mm7049a2
- 750 40. Gilbert PB, Montefiori DC, McDermott AB, et al. Immune correlates analysis of the mRNA-1273
751 COVID-19 vaccine efficacy clinical trial. *Science*. Jan 7 2022;375(6576):43-50.
752 doi:10.1126/science.abm3425
- 753 41. Centers for Disease Control and Prevention. Science Brief: SARS-CoV-2 Infection-induced and
754 Vaccine-induced Immunity. Updated October 29, 2021. Accessed May 1, 2022,
755 <https://www.cdc.gov/coronavirus/2019-ncov/science/science-briefs/vaccine-induced-immunity.html>
756

757 **Table 1.** Baseline characteristics by vaccination and COVID-19 status—21 hospitals in 18 US states, December 26, 2021–April 30, 2022 (SARS-
758 CoV-2 Omicron variant period)

	Total	Vaccination status			COVID-19 status	
		Unvaccinated	Completed primary series	Primary series + booster dose	COVID-19 case-patients	Control-patients
	N=3,181	N=1,057	N=1,326	N=798	N=1,572	N=1,609
Age in years, median (IQR)	64 (52–74)	58 (44–69)	65 (54–74)	68 (59–78)	64 (52–74)	63 (52–74)
Female	1,520/3,181 (48%)	489/1,057 (46%)	622/1,326 (47%)	409/798 (51%)	740/1,572 (47%)	780/1,609 (48%)
Race & Ethnicity						
Non-Hispanic White	1,916/3,181 (60%)	603/1,057 (57%)	771/1,326 (58%)	542/798 (68%)	933/1,572 (59%)	983/1,609 (61%)
Non-Hispanic Black	619/3,181 (19%)	217/1,057 (21%)	266/1,326 (20%)	136/798 (17%)	287/1,572 (18%)	332/1,609 (21%)
Hispanic, any race	423/3,181 (13%)	156/1,057 (15%)	192/1,326 (14%)	75/798 (9%)	236/1,572 (15%)	187/1,609 (12%)
Non-Hispanic, all other races	179/3,181 (6%)	60/1,057 (6%)	82/1,326 (6%)	37/798 (5%)	95/1,572 (6%)	84/1,609 (5%)
Other ^a	44/3,181 (1%)	21/1,057 (2%)	15/1,326 (1%)	8/798 (1%)	21/1,572 (1%)	23/1,609 (1%)
US census region ^b						
Northeast	732/3,181 (23%)	214/1,057 (20%)	302/1,326 (23%)	216/798 (27%)	397/1,572 (25%)	335/1,609 (21%)
South	1,072/3,181 (34%)	401/1,057 (38%)	464/1,326 (35%)	207/798 (26%)	527/1,572 (34%)	545/1,609 (34%)
Midwest	647/3,181 (20%)	221/1,057 (21%)	255/1,326 (19%)	171/798 (21%)	313/1,572 (20%)	334/1,609 (21%)
West	730/3,181 (23%)	221/1,057 (21%)	305/1,326 (23%)	204/798 (26%)	335/1,572 (21%)	395/1,609 (25%)
≥1 hospital admissions in past year	1,565/3,121 (50%)	441/1,027 (43%)	718/1,304 (55%)	406/790 (51%)	690/1,532 (45%)	875/1,589 (55%)
Self-reported prior laboratory-confirmed SARS-CoV-2 infection	345/2,974 (12%)	120/997 (12%)	147/1,252 (12%)	78/725 (11%)	115/1,487 (8%)	230/1,487 (15%)
No. of chronic medical conditions,	2 (1–3)	2 (1–3)	2 (2–3)	2 (1–3)	2 (1–3)	2 (1–3)

median (IQR) ^c						
Immunocompromising condition ^d	654/3,181 (21%)	184/1,057 (17%)	465/1,326 (35%)	5/798 (1%)	318/1,572 (20%)	336/1,609 (21%)
Obesity (≥30 kg/m ² BMI)	1,306/3,097 (42%)	461/1,035 (45%)	525/1,301 (40%)	320/761 (42%)	654/1,531 (43%)	652/1,566 (42%)
Vaccine product received for primary series						
BNT162b2 (Pfizer-BioNTech)	1,154/2,124 (54%)	--	740/1,326 (56%)	414/798 (52%)	503/901 (56%)	651/1,223 (53%)
mRNA-1273 (Moderna)	762/2,124 (36%)	--	469/1,326 (35%)	293/798 (37%)	300/901 (33%)	462/1,223 (38%)
Mixed mRNA	17/2,124 (1%)	--	7/1,326 (1%)	10/798 (1%)	5/901 (1%)	12/1,223 (1%)
Ad26.CO2 (Johnson & Johnson)	191/2,124 (9%)	--	110/1,326 (8%)	81/798 (10%)	93/901 (10%)	98/1,223 (8%)
Vaccine product received for booster dose						
BNT162b2 (Pfizer-BioNTech)	460/798 (58%)	--	--	460/798 (58%)	142/247 (57%)	318/551 (58%)
mRNA-1273 (Moderna)	318/798 (40%)	--	--	318/798 (40%)	96/247 (39%)	222/551 (40%)
Ad26.CO2 (Johnson & Johnson)	20/798 (3%)	--	--	20/798 (3%)	9/247 (4%)	11/551 (2%)
Omicron lineage						
BA.1	396/444 (89%)	163/177 (92%)	189/207 (91%)	44/60 (73%)	396/444 (89%)	--
BA.2	48/444 (11%)	14/177 (8%)	18/207 (9%)	16/60 (27%)	48/444 (11%)	--

759 Abbreviations: BMI = Body mass index; IQR = interquartile range

760 ^a Other includes self-reported race and ethnicity as other or non-Hispanic, or patients for whom information on race and ethnicity was unavailable.

761 ^b Hospitals by region included Northeast: Baystate Medical Center (Springfield, Massachusetts), Beth Israel Deaconess Medical Center (Boston, Massachusetts),
762 Montefiore Medical Center (Bronx, New York); South: Vanderbilt University Medical Center (Nashville, Tennessee), University of Miami Medical Center (Miami,
763 Florida), Emory University Medical Center (Atlanta, Georgia), Johns Hopkins Hospital (Baltimore, Maryland), Wake Forest University Baptist Medical Center
764 (Winston-Salem, North Carolina), Baylor Scott & White Health (Temple, Texas); Midwest: University of Iowa Hospitals and Clinics (Iowa City, Iowa), University
765 of Michigan Hospital (Ann Arbor, Michigan), Hennepin County Medical Center (Minneapolis, Minnesota), Barnes-Jewish Hospital (St. Louis, Missouri), Cleveland
766 Clinic (Cleveland, Ohio), Ohio State University Wexner Medical Center (Columbus, Ohio); West: Stanford University Medical Center (Stanford, California), UCLA

767 Medical Center (Los Angeles, California), UCHealth University of Colorado Hospital (Aurora, Colorado), Oregon Health & Science University Hospital (Portland,
768 Oregon), Intermountain Medical Center (Murray, Utah), University of Washington (Seattle, Washington).

769 ^c Chronic medical conditions included: cardiovascular disease, neurologic disease, pulmonary disease, gastrointestinal disease, endocrine disease, kidney
770 disease, hematologic disease, malignancy, immunosuppression not captured in other categories, autoimmune condition, or other condition (sarcoidosis,
771 amyloidosis, or unintentional weight loss ≥ 4.5 kg [10 lb] in the last 90 days).

772 ^d Immunocompromising conditions included: active solid organ cancer (active cancer defined as treatment for the cancer or newly diagnosed cancer in the past
773 6 months), active hematologic cancer (such as leukemia, lymphoma, or myeloma), HIV infection without AIDS, AIDS, congenital immunodeficiency syndrome,
774 previous splenectomy, previous solid organ transplant, immunosuppressive medication, systemic lupus erythematosus, rheumatoid arthritis, psoriasis,
775 scleroderma, or inflammatory bowel disease, including Crohn's disease or ulcerative colitis.

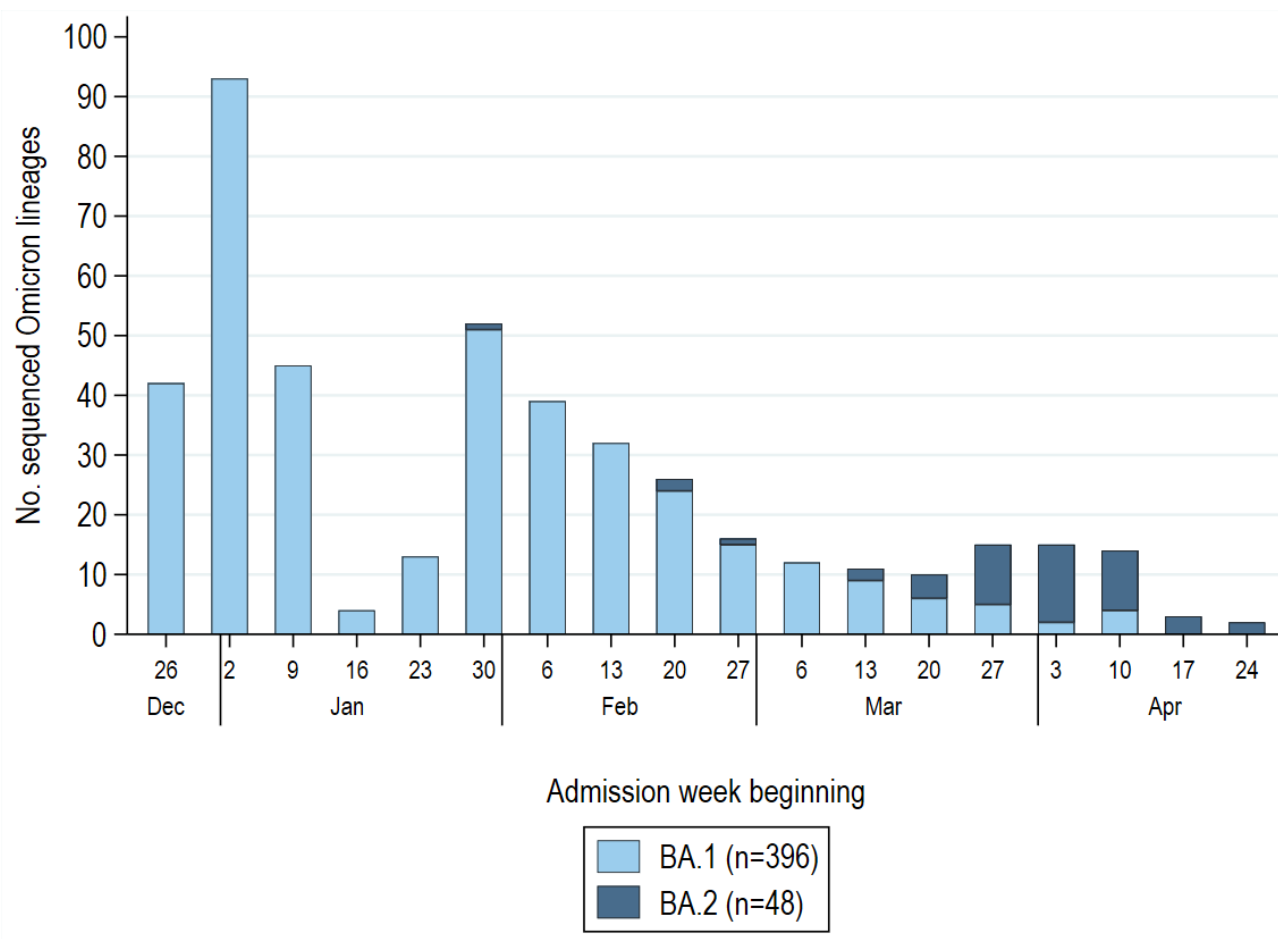
776 **Table 2.** In-hospital clinical outcomes and treatments for adults hospitalized with COVID-19 during
 777 December 26, 2021–April 2, 2022 (the SARS-CoV-2 Omicron variant period), by vaccination status.

Outcome	Total	Unvaccinated	Primary vaccine series alone	Primary vaccine series plus booster	P-value ^a
Status at 28 days following admission, No. / Total (%)					0.032
Remained hospitalized	127/1,361 (9%)	65/621 (10%)	55/570 (10%)	7/170 (4%)	
Discharged	1,117/1,361 (82%)	493/621 (79%)	475/570 (83%)	149/170 (88%)	
Died	117/1,361 (9%)	63/621 (10%)	40/570 (7%)	14/170 (8%)	
Admitted to intensive care unit, No. / Total (%)	406/1,359 (30%)	212/621 (34%)	149/568 (26%)	45/170 (26%)	0.007
Any oxygen support, No. / Total (%)	1,022/1,361 (75%)	488/621 (79%)	410/570 (72%)	124/170 (73%)	0.023
HFNC	320/1,361 (24%)	176/621 (28%)	120/570 (21%)	24/170 (14%)	<0.001
NIPPV	179/1,361 (13%)	94/621 (15%)	69/570 (12%)	16/170 (9%)	0.092
IMV	208/1,361 (15%)	125/621 (20%)	66/570 (12%)	17/170 (10%)	<0.001
ECMO	18/1,361 (1%)	15/621 (2%)	3/570 (1%)	0/170 (0%)	0.005
Vasopressors, no. (%)	208/1,361 (15%)	114/621 (18%)	77/570 (14%)	17/170 (10%)	0.008
New renal replacement therapy, no. (%)	56/1,361 (4%)	31/621 (5%)	22/570 (4%)	3/170 (2%)	0.16
Venous thromboembolic event, No. (%) ^b	108/1,361 (8%)	60/621 (10%)	38/570 (7%)	10/170 (6%)	0.092
Stroke, No. (%)	20/1,361 (1%)	11/621 (2%)	6/570 (1%)	3/170 (2%)	0.56
Myocardial infarction, No. (%)	35/1,361 (3%)	15/621 (2%)	13/570 (2%)	7/170 (4%)	0.39
Composite of death or IMV, no. (%)	255/1,361 (19%)	141/621 (23%)	90/570 (16%)	24/170 (14%)	0.002
Any of the following therapeutics used for severe COVID-19, No. / Total (%)	812/1,257 (65%)	404/561 (72%)	318/533 (60%)	90/163 (55%)	<0.001
Corticosteroids	808/1,257 (64%)	403/561 (72%)	316/533 (59%)	89/163 (55%)	<0.001
Tocilizumab	48/1,257 (4%)	28/561 (5%)	16/533 (3%)	4/163 (2%)	0.14
Baricitinib	90/1,257 (7%)	64/561 (11%)	26/533 (5%)	0/163 (0%)	<0.001
Anti-SARS-CoV-2 Monoclonal Antibodies	29/1,257 (2%)	11/561 (2%)	16/533 (3%)	2/163 (1%)	0.32

778 Abbreviations: ECMO = extracorporeal membrane oxygenation; HFNC = high-flow nasal cannula; ICU = intensive
 779 care unit; IMV = invasive mechanical ventilation; NIPPV = nasal intermittent positive-pressure ventilation

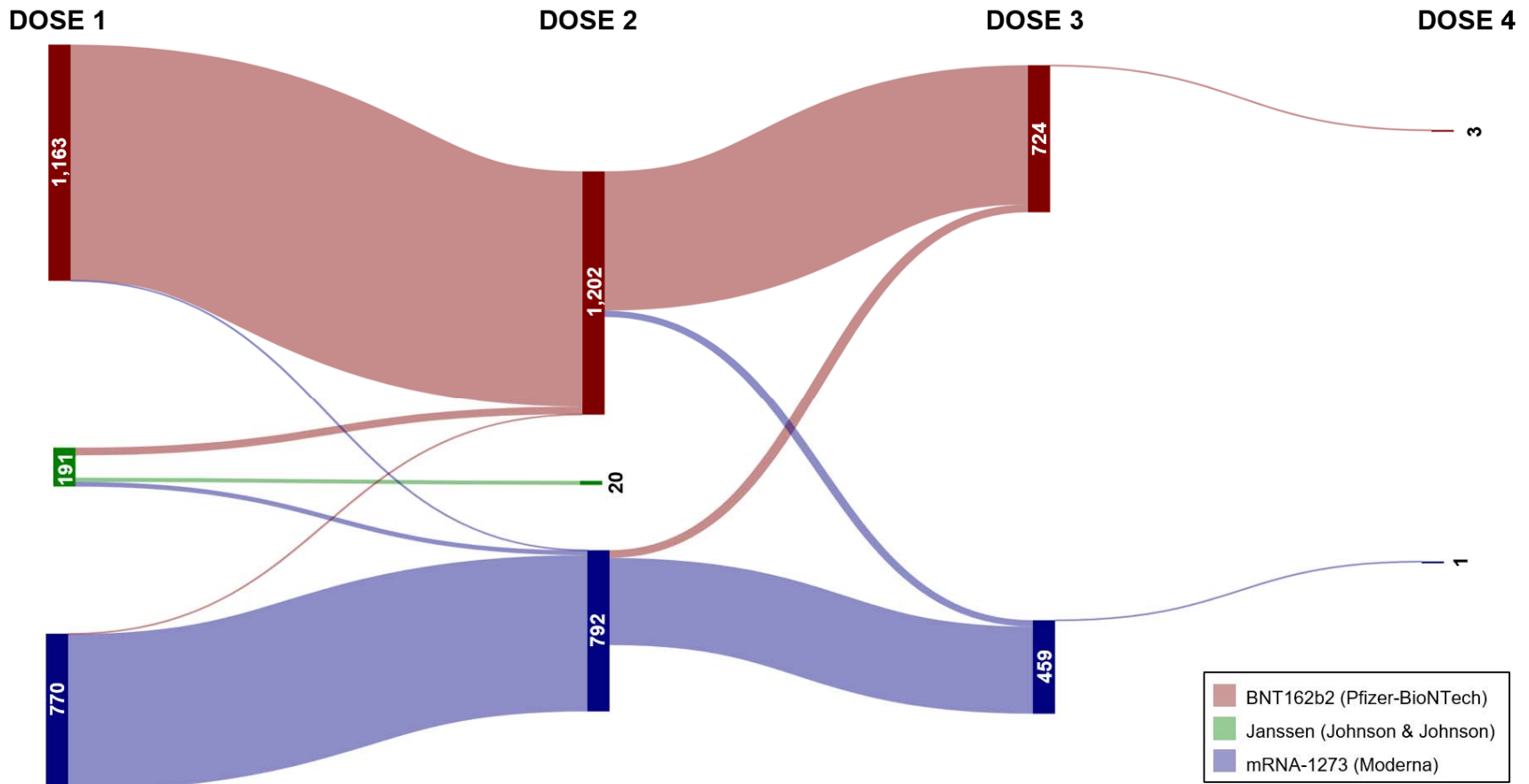
- 780 ^a Statistical differences were evaluated using Pearson's chi-squared test for binary or categorical variables.
781 Statistical significance was determined using a p-value threshold of 0.05.
782 ^b Deep vein thrombosis and/or pulmonary embolism

783 **Figure 1.** SARS-CoV-2 Omicron lineage by admission week among 1,572 COVID-19 case-patients enrolled
784 during December 26, 2021–April 30, 2022 (with a pause in enrollment January 25–31, 2022). Sequenced
785 Omicron variants were grouped into BA.1 (B.1.1.529, BA.1, BA.1.1, BA.1.15, BA.1.17) and BA.2 (BA.2,
786 BA.2.1, BA.2.3) lineages. Non-Omicron case-patients (Delta variant, B.1.1.519) confirmed through
787 sequencing were excluded from the analysis (n=64) and not displayed in this figure. Of 444 patients with
788 a sequence-confirmed Omicron variant infection, 396 (89%) had BA.1 and 48 (11%) had BA.2. Low
789 sequencing totals in late January reflect a pause in IVY network enrollment during January 25–31, 2022
790 during a protocol update.



791

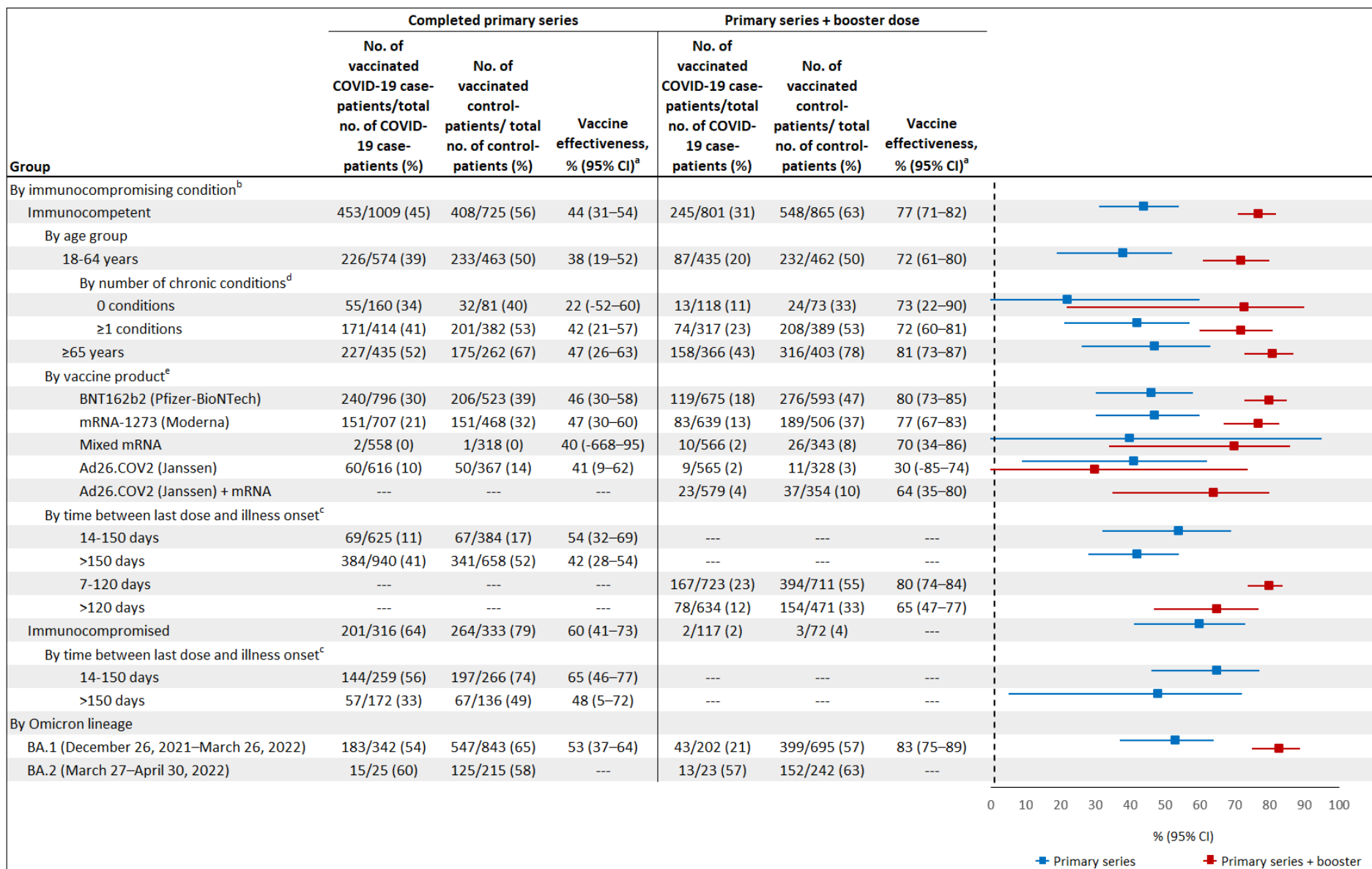
792 **Figure 2.** Pattern of COVID-19 vaccine products received across doses. The figure includes both patients hospitalized with COVID-19 (cases) and
 793 patients hospitalized with an acute respiratory illness without COVID-19 (controls) during December 26, 2021–April 30, 2022 (the SARS-CoV-2
 794 Omicron variant period).



795

Product	Dose 1, n/N (%)	Dose 2, n/N (%)	Dose 3, n/N (%)	Dose 4, n/N (%)
BNT162b2 (Pfizer-BioNTech)	1,163/2,124 (55)	1,202/2,014 (60)	724/1,183 (61)	3/4 (75%)
mRNA-1273 (Moderna)	770/2,124 (36)	792/2,014 (39)	459/1,183 (39)	1/4 (25%)
Ad26.COV2 [Janssen (Johnson & Johnson)]	191/2,124 (9)	20/2,014 (1)	0/1,183 (0)	0/4 (0%)

6 **Figure 3.** Vaccine effectiveness (VE) for prevention of COVID-19 hospitalization in the US during a period of SARS-CoV-2 Omicron variant predominance,
 7 December 26, 2021 through April 30, 2022. Vaccine effectiveness for a primary vaccine series plus one booster dose is displayed in red while vaccine
 8 effectiveness for a primary series alone is displayed in blue.



0

1 ^a Multivariable logistic regression models were used to determine vaccine effectiveness, with vaccine status as the primary independent variable, case status as the dependent
2 variable, and the following covariates: admission date (biweekly intervals), age (18–49, 50–64, and ≥65 years), sex, self-reported race and ethnicity, and U.S. Health and Human
3 Services region of the admitting hospital. Models stratified by age group were adjusted using age in years as a continuous variable. VE was not calculated for certain subgroups
4 due to limited sample size.

5 ^b Immunocompromising conditions included: active solid organ cancer (active cancer defined as treatment for the cancer or newly diagnosed cancer in the past 6 months), active
6 hematologic cancer (such as leukemia, lymphoma, or myeloma), HIV infection without AIDS, AIDS, congenital immunodeficiency syndrome, previous splenectomy, previous solid
7 organ transplant, immunosuppressive medication, systemic lupus erythematosus, rheumatoid arthritis, psoriasis, scleroderma, or inflammatory bowel disease, including Crohn’s
8 disease or ulcerative colitis.

9 ^c Time between last vaccine dose of a primary series and illness onset was stratified into 14–150 days and >150 days to align with current US recommendations.²⁵ Time between
0 booster dose and illness onset was stratified into 7–120 days and >120 days based on timing between a first booster dose and second booster recently recommended to be
1 allowed in select populations.²⁶

2 ^d Chronic medical conditions included: cardiovascular disease, neurologic disease, pulmonary disease, gastrointestinal disease, endocrine disease, kidney disease, hematologic
3 disease, malignancy, immunosuppression not captured in other categories, autoimmune condition, or other condition (sarcoidosis, amyloidosis, or unintentional weight loss ≥4.5
4 kg [10 lb] in the last 90 days).

5 ^e Vaccinated case- and control-patients counted under BNT162b2 (Pfizer-BioNTech), mRNA-1273 (Moderna), and Ad26.COVID2 (Johnson & Johnson [Janssen]) received
6 homologous product series for all doses. Mixed mRNA includes those receiving any heterologous combination of BNT162b2 (Pfizer-BioNTech) and mRNA-1273 (Moderna).
7 Ad26.COVID2 (Janssen) + mRNA received Ad26.COVID2 for their first dose, followed by one dose of any mRNA product.

818 **Figure 4.** Spaghetti plots of serum antibody concentrations to the SARS-CoV-2 receptor binding domain
819 (anti-RBD) (panel A) and spike protein (anti-spike) (panel C) among healthy adult volunteers before and
820 2–6 weeks after receiving COVID-19 booster doses, October 5, 2021–January 28, 2022. Targets of the
821 antibody responses were based on proteins from the USA-WA1/2020 strain. Antibody concentrations 2–
822 6 weeks after a primary series is also displayed for the subset of participants with anti-RBD (panel B) and
823 anti-spike (panel D) measurements available from prior participation in the program. Each participant is
824 represented with a single line connecting the antibody concentration at each time point. The Pfizer-
825 BioNTech group included 33 participants who received three doses of BNT162b2, including 9 who had
826 antibody measurements after the second dose. The Moderna group included 16 participants who
827 received three mRNA-1273 doses, including 7 who had antibody measurements after the second dose.
828 The Johnson and Johnson (J&J) group included 8 participants who received two doses of Ad26.COVID2,
829 including 3 who had antibody measurements after the first dose. The J&J + mRNA group included 6
830 participants who received an mRNA vaccine (BNT162b2 or mRNA-1273) booster dose after a single
831 Ad26.COVID2 primary series dose, including 2 who had antibody measurements after the initial
832 Ad26.COVID2 dose. The data accompanying this figure are shown in Table S6.

