

# Insurance as an instrument of financial security in addressing mental illness among agricultural workers in the LMICs

Sandip K. Agarwal<sup>¶</sup>, Snehil Gupta<sup>#@</sup>, Vijender Singh<sup>#</sup>, Roshan Sutar<sup>#</sup>, Drupad Nair<sup>¶</sup>

## Executive Summary

**Introduction:** Agriculture is a high-risk occupation globally, with risk intensities being higher in low-and middle-income countries (LMICs). Formal risk-mitigation instruments are absent in LMICs. Prevalence of financial insecurity often acts as a prominent stressor predisposing to various mental illnesses among the agrarian workers in LMICs.

**Aims:** We review the existing scientific evidence from LMICs on the role of insurance in improving the mental health of rural workers. Our research identifies the different insurance interventions available for agrarian or rural workers in LMICs, and review their effectiveness - overall and across sub-groups in preventing the development of mental illnesses or reducing existing ones.

**Methodology:** Our review included both peer and non-peer-reviewed literature. We involved people with lived experience (PWLE) that included farmers, workers, NGOs and health workers, policy researchers etc. with experiences from India, Bangladesh, Nepal, Peru, and South Africa. Inputs from PWLE helped in defining our key concepts for the study and in curating a list of keywords for literature search. We identified 79 articles of which we reviewed 47 articles that reported effectiveness of financial interventions, primarily Cash transfer (CT), Pension and Health insurance, Workfare and Microfinance on the mental health of rural workers in LMICs. A cash transfer (CT) is a direct transfer payment of money to an eligible person. Unlike Unconditional CT (UCT), conditional CT (CCT) are conditional upon completing specific actions beyond being eligible for CT such as sending children to school or making regular health visits. Microfinance is provision of banking service to individuals or groups who otherwise would have

---

<sup>¶</sup> Department of Economic Sciences, Indian Institute of Science Education and Research (IISER) Bhopal

<sup>#</sup> Department of Psychiatry, All Indian Institute of Medical Sciences (AIIMS) Bhopal

<sup>@</sup> Corresponding author: [snehil.psy@aiimsbhopal.edu.in](mailto:snehil.psy@aiimsbhopal.edu.in)

<sup>¶</sup> Department of Economic Sciences, Indian Institute of Science Education and Research (IISER) Bhopal

*no access to financial services. Workfare program require participants to perform usually public-service work to receive payment.*

***Insights from PWLE:*** *We learned from PWLE that it is hard to distinguish between self and wage employment as workers are engaged in multiple livelihood activities, and similarly between rural and urban workers due to seasonal migration. Workers continue to work in old age as there is no concept of retirement. PWLE reported that public assistance program whether they supplement income or consumption are beneficial. Access to low cost credit enhances financial security as most workers operate in highly credit-constrained environments.*

***Key findings:*** *(i) Pension and health insurance led to a significant reduction in symptoms of depression and anxiety among workers, particularly among the elderly. (ii) Workfare participation led to a reduction in depression among women by increasing income security. However, in addition to financial security, non-pecuniary benefits of employment were also observed among the unemployed refugee men. (iii) CT led to a reduction in suicides among farmers during adverse income shocks, and in general improved mental health of recipients. However, when the recipients perceived CT as stigmatizing or perceived the compliance condition (as in CCT) as an additional burden, the effects of CT on mental health were negative. (iv) Microfinance schemes had mixed effects on mental health of the participants, primarily women. While it led to a reduction in depression and anxiety, loan repayment was often reported to be stressful.*

***Recommendation for practice:*** *Mental health should be incorporated as an additional welfare parameter in the cost-benefit analysis of policy evaluation as evidence suggest that higher income or consumption do not necessarily improve mental health. While pension and health insurance can bring in positive changes in mental health of workers, CT and microfinance schemes are no silver bullets for improving psychological well-being. CT and microfinance interventions can have an adverse effect on mental health of recipients which depend upon their design and delivery.*

***Recommendation for research:*** *We believe that lack of mental health data largely inhibits evidence-based research on mental health. For example, we did not find any study that evaluated agricultural insurance or price support scheme in spite of these having existed in*

*LMICs for some time now. Evaluation of existing insurance interventions on parameters of mental health is only possible if data collection on mental health variables are encouraged.*

## **Introduction and Background**

Agricultural livelihoods are impacted by several risks which include production-, market-, institutional-, idiosyncratic-, and financial-risks [1-3]. While fundamentally similar, the intensity of these risk is higher in Low and Middle-Income countries (LMICs) due to weak institutions, and an increased vulnerability to disease hazards and pest infestation in tropical climates [1]. More than 70% of the farms in LMICs are less than 2 hectares in size, with a trend of increasing numbers of farms and smaller farm size, particularly in South Asia [4,5]. LMICs have a predominantly rural and agrarian population with a highly informal agricultural sector, with an overwhelming proportion of agrarian households living in poverty.

Recent scientific evidence has found bidirectional causality between poverty and mental illness, suggesting a poverty trap [6]. With LMICs housing more than 80% of the global population affected by mental health disorders, vulnerability of rural poor to these disorders is particularly high [7]. Multiple sources of evidence of mental illness and suicide exist among agriculture workers, linked to the usage (acute or chronic) of chemicals and pesticides on the farm [8-12]. Climate change has exacerbated the incidence of mental illness and suicide among agricultural workers [13-17]. Additionally, strong evidence exists identifying socio-economic and financial factors as key predictors of mental illness and suicide among the agrarian population in LMICs [18,19].

Agricultural sectors in LMICs are highly informal, therefore formal or market-based instruments to mitigate risk are generally non-existent. Furthermore, low agricultural incomes, and high income volatility aggravates the already poor mental health of agrarian workers. Among many, financial burden and farm losses have been one of the crucial predictors of poor mental health and cases of suicide among the agrarian workforce [18, 20-30]. Therefore, we hypothesize that insurance can have a significant role in providing adequate protection to agricultural workers in adverse income situations, which can subsequently prevent development of mental illness or further deterioration of mental health conditions of the agrarian workers.

Our definition of insurance is broad, and includes financial interventions that potentially enhance financial security of rural workers by reducing income uncertainty. Our concept of insurance

includes both market-based insurance instruments and social protection-based welfare programs for which the beneficiaries need not contribute to be eligible for the benefits or their contribution for participating in the program is often highly subsidized.

We attempt to answer the following questions by reviewing the existing evidence:

1. What are the different insurance interventions available for agrarian or rural workers in LMICs?
2. How effective are existing insurance interventions in preventing the development of mental illnesses or reducing existing ones?
3. What is the evidence of heterogeneity in effectiveness of available insurance interventions across sub-populations?

## **Methodology**

Our study methodology included a mix of review of peer reviewed literature from academic journals and non-peer reviewed gray literature. We actively involved people with lived experience (PWLE) by using inputs from their interviews and focus group discussions to inform our research design.

Input from PWLE was used for two purposes. Firstly, it helped us to improve our research design by aligning our definitions with the experiences of PWLE. Secondly, input from PWLE was used to curate a list of keywords used for literature search. The diversity of the PWLE engaged in our study is provided in table 1. A total of 39 distinct PWLE were involved, of which around 30% were women and 66% were from India, including regions with high agrarian distress like Mandya, Karnataka; Vidarbha, Maharashtra; Punjab; and Sundarbans in West Bengal. While the Sundarbans bear an unproportionate burden of climate change in the form of intermittent cyclones and floods, other regions have high incidence of agrarian suicide and drug and alcohol abuse.

Table 1: PWLE across diverse occupational experience and gender (male (M) and female (F))

Countries	India		Bangladesh		Nepal		Peru & South Africa	
	M	F	M	F	M	F	M	F
Farmers and Farm workers	11	1	2	2	2	1	0	0
Rural Credit institution	2	0	0	0	0	0	0	0
Farmer Producer Organization	2	0	0	0	0	0	0	0
Social and Health Workers	1	1	0	0	0	0	0	0
NGOs	1	3	0	0	0	0	0	0
Researchers (including Policy Think Tanks)	2	2	2	2	1	0	1	0

Our key definitions evolved during the study with the involvement of PWLE, as we continuously updated our definitions to reflect the understanding of PWLE rather than what we had initially conceived. Our definition of agrarian workers relied upon a recent collaborative report by the International Labor Organization (ILO) and Food and Agriculture Organization (FAO) on extending social protection to rural populations [31]. Agricultural workers were defined as “predominantly rural, engaged in wage or self-employment who often work in temporary employment (seasonal or casual) and part-time employment.” It is often true that in informal work settings the definition of a workplace is blurred. We learned from our PWLE that the distinction between self and wage employment is blurred too, and so is the distinction between rural and urban workers, as rural workers often migrate to urban areas for work during lean season, while they continue to remain engaged in agriculture during the farming season. Similarly, workers in rural areas are simultaneously engaged in multiple livelihood options, which is an informal way of risk diversification. Based on these discoveries, we modified our unit of analysis from workplace to workers which included migrant workers.

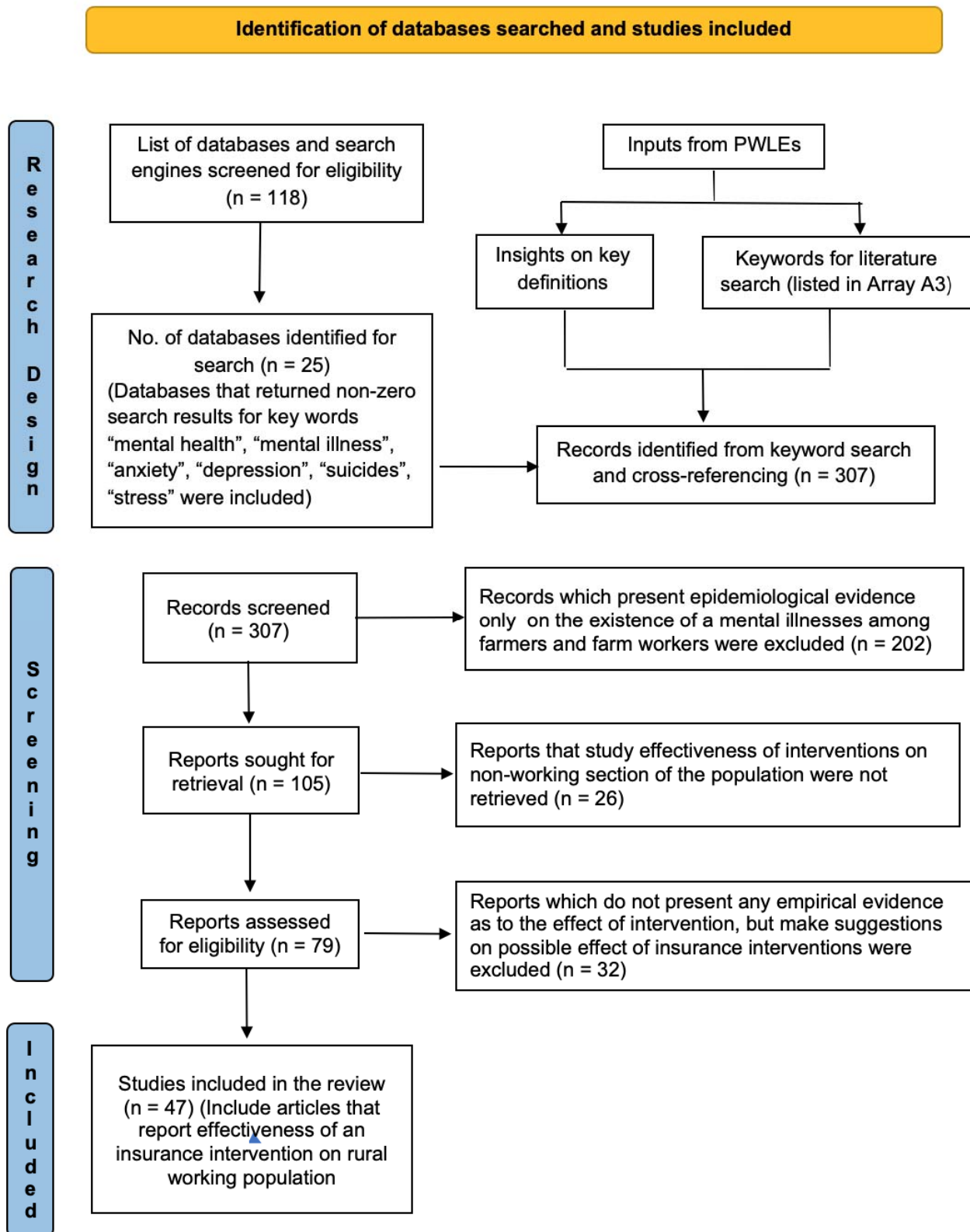
Our definition of insurance included interventions that enhance financial security of rural workers. We included social insurance and assistance schemes for the rural workers in our review following the definition of social protection in the ILO and FAO joint report. We also learned from PWLE that eligible beneficiaries for social protection are identified based on socio-economic conditions rather than sector of employment. Hence, income threshold is used as a key parameter in targeting the beneficiaries. However, PWLE mentioned that if there is some form of insurance, the method of targeting is inconsequential. Considering the above, we expanded our research to include welfare programs too, and included rural households since households included working members too. We also included social pension insurance as an intervention, as PWLE informed us that workers continue to work in their old age, because there is no concept of retirement in the informal sector. We also learned that in credit constrained environments, access to formal credit provides financial security and reduces their worries. Subsequently, we included credit interventions too.

Mental illnesses for our review primarily included depression, anxiety, stress, and suicide. We also included other mental health issues, such as entrenched negative beliefs, ruminations, and suicidal ideation. While we did not include studies that exclusively focused on quality of life, subjective well-being, or level of disability, we included studies that link either of these with one of our primary variables above.

A second purpose of the inputs from PWLE was to identify the keywords that were used for literature search. Array A2 in the appendix provides the master list of the keywords that were created from interactions with PWLE. Prior to finding the literature, relevant databases (as in table A1 in the appendix) were shortlisted from the list of database and search engines on Wikipedia.

The research design and the search strategy used to identify the relevant literature have been depicted in Figure 1.

Figure 1 – Flowchart of research design and articles included for review



## Results



Our final review included 47 articles that reported effectiveness of financial interventions on the rural or agrarian working population in LMICs. Table A3 in the appendix lists a detailed summary table of these 47. Additionally, we also have another 32 articles that make suggestions and claims about several financial interventions that can address agrarian distress, where farmer suicides are a manifestation of agrarian distress. These studies are rather suggestions and opinions unlike the 47 studies we have included in our review, which provide robust empirical evidence of the effectiveness of insurance interventions. We provide a brief review of ideas and summary of these articles in section A4 and table A5 in the appendix.

The primary financial interventions that the 47 articles span for our review include Cash transfers, Pension insurance, Health insurance, Workfare, Microfinance and some miscellaneous but innovative interventions.

#### **(a) Cash Transfers (CT)**

A cash transfer (CT) is a direct transfer payment of money to an eligible person. Unconditional cash transfers (UCTs) are given to beneficiaries without any specific requirements beyond eligibility, whereas conditional cash transfers (CCTs) are conditional upon completing specific actions such as sending children to school or making regular health visits.

Studies have found causal effects of both UCTs and CCTs on psychological well-being of the beneficiaries by a reduction in at least one of the following mental health variables - depression, stress, anxiety, and suicide in rural settings in LMICs [32-39]. Haushofer and Shapiro (2018) found that the positive effect of CT on psychological outcomes persisted in the long term as well. In a comparative study of CT and psychotherapy, Haushofer et al. (2020a), found CT to be more effective than psychotherapy in reducing stress and depression. However, another study by the same authors did not find CT to be effective in reducing stress among informal workers in Kenya working in hazardous conditions with minimal safety equipment [40].

The mental health effects of CT also varied across sub-population. For instance, Christian et al. (2019) found CT to be more effective in reducing suicide among farmers by mitigating the depressive symptoms resulting from negative income shock due to poor rainfall that lowered agricultural productivity. Kilburn et al. (2016) reported a reduction in depression following a CT scheme for Orphans and Vulnerable Children in Kenya. They found a positive effect of CT on males aged 15-24yrs, but the effect was non-significant for female counterparts. Yet another

study based on CCT (Prencipe et al., 2021), involving youth aged 14-28yrs, found a reduction in depressive symptoms among the males, however, symptoms worsened among females.

Notably, CT programs can also adversely affect a recipient's mental health, if stigma and shame are associated with the receipt of the CT, as in the case of China's Dibao, which is an income assistance program for the ultra-poor [41, 42]. However, the above results as in Wu et al. (2021), establishes only correlation, not causality. As Dibao beneficiaries are already an ultra-poor population, it is likely that their baseline mental health was worse (compared to the non-recipients) and the intervention likely had a positive effect.

Another apparently similar interventions are cash grants, which are CTs offered with the expectation of providing opportunities to rural youth for self-employment in the non-farm sector. No significant effect on the level of depression or distress among the grant recipients whether in the short-term or long-term basis were observed [43-45]. All the above studies measured depression and distress using a pre-validated instrument that was developed locally in the conflict and violence ridden settings of rural Northern Uganda [46].

### **(b) Pension Insurance**

Old age pension is an allowance paid to elderly people by the government or their employers after a certain age when they retire and stop working. While there is no concept of old age retirement in the informal sector as people continue to work in their old age, pension insurance provides elderly people with income security. Under non-contributory pensions, the entire pension insurance scheme is financed by the government, whereas participants have to partly contribute to the pension fund in a contributory pension.

Non-contributory pensions have been found to have a profound impact on the beneficiaries through a significant reduction in their depression, but concern exists about their long-term positive effects [47-51]. Similarly, contributory social pensions have been shown to be associated with lower depression among the elderly rural recipients [52-55]. While another study, involving marginalized population in South Africa, reports a non-significant association between pension and anxiety and depression symptoms [57].

The heterogeneous effects of contributory social insurance have also been observed across sub-population. The largest reduction in depression was observed among the least educated and the lowest income elderly populace [52,55]. Additionally, Wang and Zheng (2021) found no

effects of pension on depression among the elderly males relative to females; a reduction in depression among the elders were found who lived independently vs. those who lived in extended households.

### **(c) Health Insurance**

Health insurance covers the cost of medical care for an individual. Often, people without health insurance suffer from poor health as they are unable to access medical care and treatment for themselves and their families. As health insurance is absent in informal sector employment, governments in many LMICs have introduced floated social health insurance to provide health coverage for their population.

In the studies we reviewed, social health insurance participation significantly reduced depression [58-61]. The above studies evaluated the causal effect of subsidized contributory social health insurance in China. Catastrophic medical insurance was also found to be associated with lower reduced depression and anxiety among the elderly [62, 63]. Non-significant effects also exist for the effects of social health insurance on psychological well-being [53]. In an experimental study in Kenya, free health insurance for urban workers working in hazardous conditions reduced stress compared to an equivalent amount of CT, which was inconsequential to mental health [40].

Differential effects of health insurance across sub-populations has also been reported. For instance, Wang et al. (2009) found the largest effect of the intervention on people older than 55 years and those who were already ill prior to the intervention. Similarly, for Sun and Lyu (2020) the largest positive effect of the intervention was on lower income individuals and for Sun et al. (2021) it was most effective for males and population below 65 years in a sample population of 45 years and above.

### **(d) Workfare**

Workfare is a welfare program in which recipients are required to perform usually public-service work to receive payment. Workfare can reduce symptoms of depression and anxiety [38,64,65]. Ravi and Engler (2015) and Tsaneva & Balakrishnan (2019) used the National Rural Employment Guarantee Scheme (NREGS) in India as the workfare intervention for their study while Hussam et al. (2021) used a workfare and CT experiment in the Rohingyas refugee camp

in Bangladesh. Hussam et al. (2021) found higher reduction in symptoms of depression and stress for the workfare intervention relative to UCT among the males; no significant difference was observed among the females. Bhanot et al. (2018) found similar results of significant positive impacts of workfare on psychological well-being, relative to those who got the same benefit by waiting instead of working. Pailler and Tsaneva (2018) found adverse effects of climate change on depression, sleep and cognitive difficulties in rural agrarian populations in India, which they suggest can be mitigated by a workfare program like NREGS.

#### **(e) Microfinance**

Microfinance or microcredit is a type of banking service provided to unemployed or low-income individuals or groups who otherwise would have no other access to financial services. Microcredit participation can improve mental health [68-69]. For instance, Mohindra et al. (2008) found that microcredit participation reduces emotional stress among agrarian women participants in a South Indian village. Similarly, Hamad and Fernald (2015) found that microcredit participation reduces depression among Peruvian women. Both the studies also report higher effectiveness of microcredit participation among women who had longer duration of microcredit participation.

Evidence of the ineffectiveness of microcredit participation or its adverse effects on mental health also exist [70, 72-74]. Participation in a group-based savings and loan scheme did not have any significant reduction in depression, anxiety, and post-traumatic stress disorder (PTSD) among women survivors of sexual violence in Eastern Democratic Republic of Congo (DRC). However, in the same context, another variant of microfinance where livestock instead of money were loaned was effective in reducing depression and PTSD among women [71]. Research from Bangladesh has also found microcredit participation to be associated with higher emotional stress [72,73]. In a study of marginally rejected microloan borrowers in South Africa, who were extended loan on second consideration, it was found that access to microloan increased stress but reduced depression [74]. Similarly, in a study among HIV positive Kenyan farmers, Hatcher et al. (2020) have found that participants of a multi-sectoral intervention with a limited liability loan reported higher levels of stress associated with loan repayment even though the qualitative data report reduction in symptoms of depression and anxiety.

#### **(f) Miscellaneous**

Liang et al. (2014) evaluated the effectiveness of social security policies towards rehabilitation of landless farmers and found them to be associated with lower levels of depression and anxiety. The policies included land acquisition compensation, medical insurance, pension, employment security, basic livelihood guarantee and housing compensation.

Living wage (i.e., a wage significantly higher than the minimum wage) in combination with significant workplace improvements was found to be associated with lower scores of depressions among apparel factory workers in the Dominican Republic [77].

An intervention of affordable low-cost daycare programs, targeted towards poor women in rural India, was associated with a modest reduction in mental distress [78].

In a multi-country, “Graduation” program which consisted of a holistic set of services that included the granting of a productive asset, a consumption support, a savings account, and training support, did not have a consistent effect on mental health in all six countries [79].

## **Discussion**

We provide a synthesis of results from the previous section to build insights on the effectiveness of insurance on the rural (mostly agrarian) population in LMICs.

The CT has been the most widely investigated intervention. The evidence on the effectiveness of CT had been very diverse in different context and across different sub-population. While most evidence point towards positive effects of CT in improving mental health of the beneficiaries, negative effect also exist. Similarly, microcredit is another intervention for which we find conflicting evidence on its effect on mental health of recipients. For interventions that include health and pension insurance and workfare, overall evidence indicates toward their positive effect on the mental health of beneficiaries.

A crude comparison and synthesis of results from our review help us make some compelling inferences. Firstly, it is likely that the effectiveness of a particular intervention depends largely upon the cause and the nature of insecurity. For example, CT has been found to be more effective in reducing suicide among farmers relative to the general population. However, CT did not help improving mental health of informal workers working in a hazardous work setting, while free health insurance did lower stress. In a sample of unemployed refugees, though positive,

effectiveness of CT has been lower compared to workfare intervention among males relative to females. In the farmer and the refugee settings, a source of mental distress was income uncertainty, and so CT could improve their psychological well-being. In addition, males were unable to use time productively in the refugee settings, unlike the females who were involved in day-to-day household activities. So, providing employment was associated with non-pecuniary benefits by greater improvement in mental health of male participants relative to equivalent CT. However, in the context of informal workers, there was no income uncertainty as they were under wage employment. Rather, health hazard and chances of meeting with an accident was worrisome, and hence free health was effective in improving their mental health. Similarly, a study that compared CT with psychotherapy found that CT reduced depression and stress, but no significant effects were observed for psychotherapy. This contrasts with existing research which has found strong positive effects of psychotherapy in reducing depression particularly [113, 114]. The sample population for the above studies with psychotherapy as an intervention were different as for one of them it consisted of women participants with a history of sexual violence. It is likely that unlike the sample population from other psychotherapy studies, women with past experiences of sexual violence were traumatized, and hence psychotherapy was effective in improving mental health.

A second general inference that we draw from the results about the effects of an intervention is based upon the condition that the interventions place upon the beneficiaries. For example, a CCT worsened mental health of female participants relative to male, for whom the effects were positive, because the necessary compliance conditions for the CCT disproportionately burdened the females. Similarly, participants of microfinance intervention have reported stress associated with the repayment of microloans, even when the loan featured limited liability. On the contrary, a variant of microfinance, where instead of money livestock was loaned, reduced depression and PTSD among participating women. Since cash loans being liquid can be easily channeled into unproductive expenditure, whereas livestock being a productive asset demands lesser compliance conditions to repay, and hence are less worrisome.

A third inference that we draw from our review is associated with the process of delivery of the benefits from the intervention. If the benefits of an intervention are delivered using a mechanism that stigmatizes the beneficiary, this can adversely affect the mental health. Evidence of higher depression among recipients of CT social assistance program in China has been found as CT benefits are made public which invites shame and stigma for the beneficiaries.

One of the major contributions of our research is to identify gaps in the literature and opportunities for future research. While interactions with the PWLE and literature search informed us that several financial schemes exist, we did not find an evaluation of such schemes which included the mental health dimension. Examples of such schemes in India include: quarterly CT to farmers, Social Health insurance schemes, Rural informal sector employee life and disability insurance, and Pension insurance. Other than studies with experimental designs, few studies have evaluated the effectiveness of existing insurance interventions on dimensions of mental health. It was rather surprising that we did not find any study that evaluated effectiveness of crop insurance and price support insurance on mental health of agrarian workers. While Tafere et al. (2019) evaluated the livestock insurance in Ethiopia, the primary outcome was subjective well-being rather than psychological well-being. We found a sizeable number of articles that evaluated the effectiveness of pension insurance and social health insurance on mental health in China. This was possibly because data on mental health of beneficiaries was collected. Therefore, we strongly believe that one of the largest impediments to the existence of evidence based mental health research is the lack of mental health data.

Our study had several limitations too. Firstly, we only considered resources available in English for our review, so the possibility that we might have missed relevant articles in other languages remains. Secondly, though we had planned to include farmers and farm workers as PWLE from Kenya, Uganda, and Sri Lanka in our study, due to the surge in COVID-19 infections worldwide and internal economic instability in Sri Lanka, travel to these countries had to be cancelled. We believe that involving PWLE from these countries would have strengthened our research design further.

We would like to mention that not all PWLE we engaged, particularly the farmers and workers, were experiencing a mental health condition. While for many it was quite apparent during the conversation that there were symptoms of mental illnesses, often a condition had not been clinically diagnosed. Nonetheless, irrespective of the state of their mental health, contribution of each PWLE was significant for improving our research design. Therefore, we also included studies that used self-reported indicators of mental health rather than limiting our review to studies that have used clinical measures of mental health used for diagnosing mental illness.

## **Recommendations for Policy and Practice**

Of all the interventions reviewed, we would recommend non-contributory pensions to be one of the strongest forms of insurance intervention that has the potential to address mental illnesses among the rural working population. Among the research studies that evaluated the non-contributory pension, we found consistent positive effects of non-contributory pension on the mental health of beneficiaries or the enrollees across different countries and context, at least in the short run. This further strengthens the external validity of positive effects of non-contributory pensions.

Our next recommendation would be contributory pensions and health insurance interventions, as they have been found to have desirable positive effects on mental health of the beneficiaries in several studies. However, this recommendation is not without reservation as almost all studies except one that evaluated the effectiveness of the above two interventions, were based in China, which raises doubts about their replicability in other LMICs. This calls for evaluation of social insurance schemes for the informal workers in India which include programs like Ayushman Bharat National Health Protection Scheme, Atal Pension Scheme, future benefits under e-shram scheme and similar programs in other LMICs.

Workfare intervention has some compelling evidence towards improving mental health of beneficiaries. But the evidence comes from few specific settings, the results from which might not get translated to another setting. Therefore, limited but encouraging evidence from workfare intervention requires further research to establish the external validity of the effectiveness of workfare intervention beyond the chosen experimental settings.

CT and microcredit interventions have produced contrasting evidence in terms of their effectiveness on mental health of beneficiaries. We found that the design and the delivery mechanism of the CT largely influenced the effectiveness of the CT on the mental health of the beneficiaries. Under a CCT, if the designed compliance condition to be eligible to receive the benefits are stringent, it may adversely affect the mental health of the individual expected to adhere to the prescribed conditions. Similarly, the benefits of a CT must be delivered in a non-stigmatizing manner so that the recipients do not suffer from the perceived-stigma, which otherwise can worsen mental health. Therefore, we recommend that the CT must be used with caution with particular attention being paid to its design. Similarly, microcredit interventions must



not be considered a silver bullet as they can have ambiguous effect on the beneficiaries which is highly contextual.

## **Recommendations for Research**

Our major recommendation for future research would be to focus on a long-term strategy to evaluate the interventions on the domain of mental health in addition to existing economic parameters. Evidence does not suggest that economic and psychological well-being following a policy intervention necessarily co-move in the same direction. This implies that not taking mental health effects into account could be underestimating or overestimating the overall benefits of the policy intervention. This calls for introducing mental health variables in the existing health databases. One of the largest impediments towards understanding the effectiveness of mental health research is the lack of mental health data in LMICs. There are already global programs like Demographic and Health Surveys (DHS) which collect health data in various countries. Programs like DHS may consider collecting mental health data too. Similar initiatives at national level can be introduced, for example, National Family and Health Survey data collection in India might consider giving serious thought to the collection of mental health data in addition to physical health variables. Moreover, mental health variables should be collected using clinically validated tools as much as possible, to ensure robust evaluation. An initiative towards evidence-based research on mental health policies would be an investment for LMICs to inform scientific and evidence-based research, practice, and policies in the domain of mental health.

## **Conclusions**

We reviewed the existing evidence on the effectiveness of several insurance interventions among the rural agrarian working population in LMICs. Our primary interventions included non-contributory pensions, contributory pensions, contributory and non-contributory health insurance, cash transfer, workfare, and microcredit. We recommend non-contributory pension insurance to be the most effective in improving the mental health of the beneficiaries across different countries and in various context. The recommendations regarding the rest of the interventions are not without reservation on grounds of external validity or mixed results, which indicates that generalization of the results demand further research. Moreover, we highly

recommend that global health organizations and LMICs should focus on evidence based mental health research and strengthen the mental health data collection to inform evidence based mental health research, practices and policies.

**Acknowledgement** *This research was commissioned by the Wellcome Trust. For the purpose of open access, Wellcome has applied a CC BY public copyright licence to any Author Accepted Manuscript version arising from this submission*

*We are thankful to Binoy Majumdar, Shubham Mishra, Gauri Kulkarni, Viraj Mulik and Maharnab Naha for their excellent research assistance.*

## References

- [1] Cervantes-Godoy, Dalila, Shingo Kimura, and Jesús Antón. "Smallholder risk management in developing countries." (2013).
- [2] Ullah, Raza, et al. "Farm risks and uncertainties: Sources, impacts and management." *Outlook on Agriculture* 45.3 (2016): 199-205.
- [3] Komarek, Adam M., Alessandro De Pinto, and Vincent H. Smith. "A review of types of risks in agriculture: What we know and what we need to know." *Agricultural Systems* 178 (2020): 102738.
- [4] Adamopoulos, Tasso, and Diego Restuccia. "The size distribution of farms and international productivity differences." *American Economic Review* 104.6 (2014): 1667-97.
- [5] Lowder, Sarah K., Jakob Scoet, and Terri Raney. "The number, size, and distribution of farms, smallholder farms, and family farms worldwide." *World Development* 87 (2016): 16-29.
- [6] Ridley, Matthew, et al. "Poverty, depression, and anxiety: Causal evidence and mechanisms." *Science* 370.6522 (2020): eaay0214.

- [7] Rathod, Shanaya et al. "Mental Health Service Provision in Low- and Middle-Income Countries." *Health services insights* vol. 10 1178632917694350. 28 Mar. 2017, doi:10.1177/1178632917694350
- [8] Meyer, Armando, et al. "Mood disorders hospitalizations, suicide attempts, and suicide mortality among agricultural workers and residents in an area with intensive use of pesticides in Brazil." *Journal of Toxicology and Environmental Health, Part A* 73.13-14 (2010): 866-877.
- [9] Dawson, Andrew H., et al. "Acute human lethal toxicity of agricultural pesticides: a prospective cohort study." *PLoS medicine* 7.10 (2010): e1000357.
- [10] Wesseling, Catharina, et al. "Symptoms of psychological distress and suicidal ideation among banana workers with a history of poisoning by organophosphate or n-methyl carbamate pesticides." *Occupational and environmental medicine* 67.11 (2010): 778-784.
- [11] Carmen, Freire and Koifman, Sergio. "Pesticides, depression and suicide: a systematic review of the epidemiological evidence." *International journal of hygiene and environmental health* 216.4 (2013): 445-460.
- [12] Khan, Nufail, et al. "A pest to mental health? Exploring the link between exposure to agrichemicals in farmers and mental health." *International journal of environmental research and public health* 16.8 (2019): 1327.
- [13] Carleton, Tamma A. "Crop-damaging temperatures increase suicide rates in India." *Proceedings of the National Academy of Sciences* 114.33 (2017): 8746-8751.
- [14] Pailler, Sharon, and Tsaneva, Magda. "The effects of climate variability on psychological well-being in India." *World Development* 106 (2018): 15-26.
- [15] Acharibasam, Jeremiah Wezanamo, and Samuel Weniga Anuga. "Psychological distance of climate change and mental health risks assessment of smallholder farmers in Northern Ghana: Is habituation a threat to climate change?." *Climate Risk Management* 21 (2018): 16-25.

- [16] Barve, Sonal, KS Kavi Kumar, and Brinda Viswanathan. "Weather Variability, Agricultural Productivity, And Farmer Suicides In India." *Climate Change Economics* 12.02 (2021): 2150005.
- [17] Talukder, Byomkesh, et al. "Health impacts of climate change on smallholder farmers." *One Health* 13 (2021): 100258.
- [18] Yazd, Sahar, Daghigh, Wheeler, Sarah Ann and Zuo, Alec. "Key risk factors affecting farmers' mental health: A systematic review." *International journal of environmental research and public health* 16.23 (2019): 4849.
- [19] Santos, Emelyne Gabrielly de Oliveira, et al. "Factors associated with suicidal behavior in farmers: a systematic review." *International journal of environmental research and public health* 18.12 (2021): 6522.
- [20] Mishra, Srijit. "Risks, farmers' suicides and agrarian crisis in India: Is there a way out?." *Indian Journal of Agricultural Economics* 63.902-2016-67948 (2008)
- [21] Mishra, Srijit. "Agrarian scenario in post-reform India: a story of distress, despair and death." (2012).
- [22] Meyer, Sarah R., et al. "Labor migration and mental health in Cambodia: a qualitative study." *The Journal of nervous and mental disease* 202.3 (2014): 200-208.
- [23] Merriott, Dominic. "Factors associated with the farmer suicide crisis in India." *Journal of epidemiology and global health* 6.4 (2016): 217-227.
- [24] Olowogbon, Toyin S., et al. "Agricultural stressors: identification, causes and perceived effects among Nigerian crop farmers." *Journal of agromedicine* 24.1 (2019): 46-55.
- [25] Knipe, D. W., et al. "Socioeconomic position and suicidal behaviour in rural Sri Lanka: a prospective cohort study of 168,000+ people." *Social psychiatry and psychiatric epidemiology* 54.7 (2019): 843-855.

[26] Lachaud, James, et al. "Agricultural wealth better predicts mental wellbeing than market wealth among highly vulnerable households in Haiti: Evidence for the benefits of a multidimensional approach to poverty." *American Journal of Human Biology* 32.2 (2020): e23328.

[27] Bomble, Priyanka, and Hemkothang, Lhungdim. "Mental health status of Farmers in Maharashtra, India: A study from farmer suicide prone area of Vidarbha region." *Clinical epidemiology and global health* 8.3 (2020): 684-688.

[28] Nuvey, Francis Sena, et al. "Poor mental health of livestock farmers in Africa: a mixed methods case study from Ghana." *BMC public health* 20.1 (2020): 1-12.

[29] Greenwood, Veronique, "Linking Mental and Fiscal Health" Harvard Magazine, May-June 2021

<https://www.harvardmagazine.com/2021/05/right-now-linking-mental-fiscal-health?page=all>

[30] Gelaye, Kassahun Alemu, et al. "Common mental disorders among seasonal migrant farmworkers in Northwest Ethiopia." *BMC psychiatry* 21.1 (2021): 1-8.

[31] ILO and FAO. 2021. *Effectively extending social protection to rural populations: Perspectives for a common FAO and ILO approach*. Geneva. <https://doi.org/10.4060/cb2332en>

[32] Kilburn, Kelly et al. "Effects of a Large-Scale Unconditional Cash Transfer Program on Mental Health Outcomes of Young People in Kenya." *The Journal of adolescent health : official publication of the Society for Adolescent Medicine* vol. 58,2 (2016): 223-9. doi:10.1016/j.jadohealth.2015.09.023

[33] Haushofer, Johannes, and Jeremy Shapiro. "The short-term impact of unconditional cash transfers to the poor: experimental evidence from Kenya." *The Quarterly Journal of Economics* 131.4 (2016): 1973-2042.

[34] Haushofer, Johannes, and Jeremy Shapiro. "The long-term impact of unconditional cash transfers: experimental evidence from Kenya." *Busara Center for Behavioral Economics, Nairobi, Kenya* (2018).

- [35] Christian, Cornelius, Lukas Hensel, and Christopher Roth. "Income shocks and suicides: Causal evidence from Indonesia." *Review of Economics and Statistics* 101.5 (2019): 905-920.
- [36] Haushofer, Johannes, Robert Mudida, and Jeremy P. Shapiro. *The comparative impact of cash transfers and a psychotherapy program on psychological and economic well-being*. No. w28106. National Bureau of Economic Research, (2020a).
- [37] Hidrobo, Melissa, Karachiwalla, Naureen, and Roy, Shalini. The impacts of cash transfers on mental health and investments: Experimental evidence from Mali. IFPRI Discussion Paper 1989. Washington, DC: International Food Policy Research Institute (IFPRI). (2020). <https://doi.org/10.2499/p15738coll2.134223>
- [38] Hussam, Reshmaan N., et al. The psychosocial value of employment. No. w28924. National Bureau of Economic Research, (2021).
- [39] Prencipe, Leah, et al. "Do conditional cash transfers improve mental health? Evidence from Tanzania's governmental social protection program." *Journal of Adolescent Health* 69.5 (2021): 797-805.
- [40] Haushofer, Johannes, et al. "Economic and psychological effects of health insurance and cash transfers: Evidence from a randomized experiment in Kenya." *Journal of Development Economics* 144 (2020b): 102416.
- [41] Qi, Di, and Yichao Wu. "Does welfare stigma exist in China? Policy evaluation of the Minimum Living Security System on recipients' psychological health and wellbeing." *Social Science & Medicine* 205 (2018): 26-36.
- [42] Wu, Shiyu, et al. "Welfare Participation and Depression Symptoms Among Youth in China." *Global Social Welfare* 8.1 (2021): 117-126.
- [43] Blattman, Christopher, Nathan Fiala, and Sebastian Martinez. "Generating skilled self-employment in developing countries: Experimental evidence from Uganda." *The Quarterly Journal of Economics* 129.2 (2014): 697-752.

[44] Green, Eric P., et al. "Does poverty alleviation decrease depression symptoms in post-conflict settings? A cluster-randomized trial of microenterprise assistance in Northern Uganda." *Global Mental Health* 3 (2016).

[45] Blattman, Christopher, Nathan Fiala, and Sebastian Martinez. "The Long-Term Impacts of Grants on Poverty: Nine-Year Evidence from Uganda's Youth Opportunities Program." *American Economic Review: Insights* 2.3 (2020): 287-304.

[46] Bolton P, Bass J, Betancourt T, Speelman L, Onyango G, Clougherty KF, Neugebauer R, Murray L, Verdeli H. Interventions for depression symptoms among adolescent survivors of war and displacement in northern Uganda: a randomized controlled trial. *JAMA*. (2007);298(5):519-27. doi: 10.1001/jama.298.5.519. PMID: 17666672.

[47] Salinas-Rodríguez, Aarón, et al. "Impact of the non-contributory social pension program 70 y más on older adults' mental well-being." *PloS one* 9.11 (2014): e113085.

[48] Galiani, Sebastian, Paul Gertler, and Rosangela Bando. "Non-contributory pensions." *Labour economics* 38 (2016): 47-58.

[49] Bando Grana, Rosangela, Sebastián Galiani, and Paul J. Gertler. *The effects of non-contributory pensions on material and subjective well being*. No. IDB-WP-840. IDB Working Paper Series (2017).

[50] Alzua, Maria Laura, et al. "Mental Health Effects of an Old Age Pension: Experimental Evidence for Ekiti State in Nigeria." (2020).

[51] Bando, Rosangela, Sebastian Galiani, and Paul Gertler. "Another brick on the wall: On the effects of non-contributory pensions on material and subjective well being." *Journal of Economic Behavior & Organization* 195 (2022): 16-26.

[52] Chen, Xi, Tianyu Wang, and Susan H. Busch. "Does money relieve depression? Evidence from social pension expansions in China." *Social Science & Medicine* 220 (2019): 411-420.

[53] Ma, Xinxin, and Takashi Oshio. "The impact of social insurance on health among middle-aged and older adults in rural China: a longitudinal study using a three-wave nationwide survey." *BMC public health* 20.1 (2020): 1-9.

[54] Pan, Guochen, et al. "Do Social Pension Schemes Promote the Mental Health of Rural Middle-Aged and Old Residents? Evidence From China." *Frontiers in Public Health* 9 (2021).

[55] Wang, Fang, and Haitao Zheng. "Do public pensions improve mental wellbeing? Evidence from the new rural society pension insurance program." *International journal of environmental research and public health* 18.5 (2021): 2391.

[56] He, Hui, Ling Xu, and Noelle Fields. "Pensions and depressive symptoms of older adults in China: the mediating role of intergenerational support." *International journal of environmental research and public health* 18.7 (2021): 3725.

[57] Lloyd-Sherlock, Peter, and Sutapa Agrawal. "Pensions and the health of older people in South Africa: is there an effect?." *The journal of development studies* 50.11 (2014): 1570-1586.

[58] Wang, Hong, et al. "The impact of rural mutual health care on health status: evaluation of a social experiment in rural China." *Health Economics* 18.S2 (2009): S65-S82.

[59] Tian, Donghua, et al. "The role of basic health insurance on depression: an epidemiological cohort study of a randomized community sample in Northwest China." *BMC psychiatry* 12.1 (2012): 1-11.

[60] Sun, Jian, and Shoujun Lyu. "Does health insurance lead to improvement of health status among Chinese Rural Adults? Evidence from the China Family Panel Studies." *International Journal of Health Services* 50.3 (2020): 350-359.

[61] Sun, Jian, Nengliang Yao, and Shoujun Lyu. "The association between Urban and Rural Resident Basic Medical Insurance and depressive symptoms among Chinese middle-aged and older adults: Evidence from the China Health and Retirement Longitudinal Study." *The International Journal of Health Planning and Management* 36.5 (2021).



[62] Shieh, Jusheng, et al. "Did More Generous Health Insurance Improve Health Outcomes of The Elderly? Evidence From China." (2021).

[63] Yang, Wei, and Bo Hu. "Catastrophic health expenditure and mental health in the older Chinese population: The moderating role of social health insurance." *The Journals of Gerontology: Series B* 77.1 (2022): 160-169.

[64] Ravi, Shamika, and Monika Engler. "Workfare as an effective way to fight poverty: The case of India's NREGS." *World Development* 67 (2015): 57-71.

[65] Tsaneva, Magda, and Uttara Balakrishnan. "The Effect of a workfare programme on psychological wellbeing in India." *The Journal of Development Studies* 55.12 (2019): 2593-2609.

[66] Bhanot, Syon P., Jiyoung Han, and Channing Jang. "Workfare, wellbeing and consumption: Evidence from a field experiment with Kenya's urban poor." *Journal of Economic Behavior & Organization* 149 (2018): 372-388.

[67] Pailler, Sharon, and Magda Tsaneva. "The effects of climate variability on psychological well-being in India." *World Development* 106 (2018): 15-26.

[68] Mohindra, Katia S., Slim Haddad, and Delampady Narayana. "Can microcredit help improve the health of poor women? Some findings from a cross-sectional study in Kerala, India." *International journal for equity in health* 7.1 (2008): 1-14.

[69] Hamad, Rita, and Lia CH Fernald. "Microcredit participation and women's health: results from a cross-sectional study in Peru." *International Journal for Equity in Health* 14.1 (2015): 1-10.

[70] Bass, J., et al. "Economic, social and mental health impacts of an economic intervention for female sexual violence survivors in Eastern Democratic Republic of Congo." *Global Mental Health* 3 (2016).

[71] Glass, Nancy, et al. "Livestock/animal assets buffer the impact of conflict-related traumatic events on mental health symptoms for rural women." *PLoS One* 9.11 (2014): e111708.

[72] Ahmed, Syed Masud, Mushtaque Chowdhury, and Abbas Bhuiya. "Micro-credit and emotional well-being: experience of poor rural women from Matlab, Bangladesh." *World development* 29.11 (2001): 1957-1966.

[73] Bhuiyan, Muhammad Faress, and Artjoms Ivlevs. "Micro-entrepreneurship and subjective well-being: Evidence from rural Bangladesh." *Journal of Business Venturing* 34.4 (2019): 625-645.

[74] Fernald, Lia CH, et al. "Small individual loans and mental health: a randomized controlled trial among South African adults." *BMC public health* 8.1 (2008): 1-14.

[75] Hatcher, Abigail M., et al. "Mechanisms and perceived mental health changes after a livelihood intervention for HIV-positive Kenyans: Longitudinal, qualitative findings." *Transcultural psychiatry* 57.1 (2020): 124-139.

[76] Liang, Ying, Wanyi Lu, and Wei Wu. "Are social security policies for Chinese landless farmers really effective on health in the process of Chinese rapid urbanization? A study on the effect of social security policies for Chinese landless farmers on their health-related quality of life." *International Journal for Equity in Health* 13.1 (2014): 1-16.

[77] Burmaster, Katharine B., et al. "Impact of a private sector living wage intervention on depressive symptoms among apparel workers in the Dominican Republic: a quasi-experimental study." *BMJ open* 5.8 (2015): e007336.

[78] Richardson, Robin A., et al. "The effect of affordable daycare on women's mental health: Evidence from a cluster randomized trial in rural India." *Social Science & Medicine* 217 (2018): 32-41.

[79] Banerjee, Abhijit, et al. "A multifaceted program causes lasting progress for the very poor: Evidence from six countries." *Science* 348.6236 (2015): 1260799.

[80] Kandlur, Raksha, Srishti Sardana, and Randall Richardson-Vejlgaard. "The Agrarian distress: Factors explaining the will to live among rural and distressed family farmers." *Psychiatry Research Communications* 2.1 (2022): 100019.

[81] Knipe, Duleeka W., et al. "Suicide in Sri Lanka 1975–2012: age, period and cohort analysis of police and hospital data." *BMC public health* 14.1 (2014): 1-13.

[82] Murray, Kim, and Pashupati Mahat. "Understanding the psychosocial and mental health needs of Haruwa and Charuwa bonded labourers in South-Eastern Nepal." (2017).

[83] Deshpande, Ram S. "Suicide by farmers in Karnataka: agrarian distress and possible alleviatory steps." *Economic and Political Weekly* (2002): 2601-2610.

[84] Jeromi, P. D. "Farmers' indebtedness and suicides: impact of agricultural trade liberalisation in Kerala." *Economic and political weekly* (2007): 3241-3247.

[85] Mukherjee, Sanchita. "Examining farmer suicides in India: a study of literature." (2009).

[86] Das, Anindya. "Farmers' suicide in India: Implications for public mental health." *International journal of social psychiatry* 57.1 (2011): 21-29.

[87] Guha, Jennifer. "Farmer Suicides in Maharashtra, India: Facts, Factors, and Possible Fixes." (2012).

[88] Raghavalu, M. V. "Farmers' Suicide Deaths in India: Can it be Controlled?." *Economic Affairs* 58.4 (2013): 441-447.

[89] Kennedy, Jonathan, and Lawrence King. "The political economy of farmers' suicides in India: indebted cash-crop farmers with marginal landholdings explain state-level variation in suicide rates." *Globalization and health* 10.1 (2014): 1-9.

[90] Grover, Davinder K., et al. "Farmer Suicides in Punjab: Causes and Suggestions." *AERC Study* 40 (2016).

- [91] Manjunatha, A.V and Ramappa, K.B. Farmer Suicides in Karnataka, Agriculture Development and Rural Transformation Centre Report, Institute for Social and Economic Change, Karnataka (2017)
- [92] Rao, TS Sathyanarayana, et al. "Prevention of farmer suicides: Greater need for state role than for a mental health professional's role." *Indian journal of psychiatry* 59.1 (2017): 3.
- [93] Rangarajan, C., and D. Mahendra. "Removing the roots of farmers' distress." *on <https://www.thehindu.com/topic/agriculture>, on January 28 (2019).*
- [94] Sravanth, K. R., and N. Sundaram. "Agricultural crisis and farmers suicides in India." *International Journal of Innovative Technology and Exploring Engineering* 8.11 (2019): 1576-1580.
- [95] Chouhan, Ravi Singh, et al. "Farmer Suicides in Madhya Pradesh." *Economic Affairs* 64.3 (2019): 487-494.
- [96] Iyer, Saraswati Raju. "Indian Farmers' Suicides and Interventions to Combat the Problem." (2021).
- [97] Behere, Prakash B., et al. "Psychosocial aspects of suicide in largest industry of farmers in Vidarbha Region of Maharashtra." *Industrial psychiatry journal* 30.Suppl 1 (2021): S10.
- [98] Kaur, Mallika. "The Paradox of India's Breadbasket: Farmer Suicides in Punjab." *PRAXIS The Fletcher Journal of Human Security* 25 (2010): 39-57.
- [99] Dongre, Amol R., and Pradeep R. Deshmukh. "Farmers' suicides in the Vidarbha region of Maharashtra, India: a qualitative exploration of their causes." *Journal of Injury and Violence research* 4.1 (2012): 2.
- [100] Bhojanna, U., and Geeta Raturi. "" Corporate Social Responsibility"-A Ray of Hope for the Farmers." *AMBER-ABBS Management Business and Entrepreneurship Review* 3.1 (2012): 16-23.

[101] Sulaiman, Munshi, and Michael Murigi. "Analysis of Crop Insurance and Graduating Ultra-poor in Andhra Pradesh." (2018).

[102] Parida, Yashobanta, et al. "Effects of drought and flood on farmer suicides in Indian states: an empirical analysis." *Economics of disasters and climate change* 2.2 (2018): 159-180.

[103] Jabeen, Urooj Afshan. "FACTORS AFFECTING ON FARMERS'INDEBTEDNESS AND SUICIDE—A STUDY IN NALGONDA DISTRICT OF TELANGANA STATE IN INDIA." (2014).

[104] van de Meerendonk, Tim. "Claiming crisis: narratives of tension and insurance in rural India." *Contemporary South Asia* 28.3 (2020): 362-373.

[105] Mishra, Srijit. *Agrarian Scenario in Post-reform India: A Story of Distress, Despair and Death*, *Orissa Economic Journal*, 39 (1 & 2), 53-84. IGIDR Working paper version is WP-2007-001, 2007.

[106] Sadanandan, Anoop. "Political economy of suicide: financial reforms, credit crunches and farmer suicides in India." *The journal of developing areas* (2014): 287-307.

[107] Taylor, Marcus. "'Freedom from poverty is not for free': rural development and the microfinance crisis in Andhra Pradesh, India." *Journal of Agrarian Change* 11.4 (2011): 484-504.

[108] Nair, K. N., and Menon, Vineetha. "Distress debt and suicides among agrarian households: findings from three village studies in Kerala." (2007).

[109] Sangalad, Purnanand Nagappa. "Farmers' suicides in India as an socio-economical phenomenon: A study of Karnataka state." *International Journal of Criminology and Sociological Theory* 5.3 (2012).

[110] Parvathamma, G. L. "Farmers suicide and response of the Government in India-An Analysis." *IOSR Journal of Economics and Finance* 7.3 (2016): 1-6.

[111] Ravi, Shamika. "A reality check on suicides in India." *Available at SSRN 3041206* (2015).

[112] Cuijpers, Pim, et al. "Efficacy of cognitive-behavioural therapy and other psychological treatments for adult depression: meta-analytic study of publication bias." *The British Journal of Psychiatry* 196.3 (2010): 173-178.

[113] Cuijpers, Pim, et al. "A meta-analysis of cognitive-behavioural therapy for adult depression, alone and in comparison with other treatments." *The Canadian Journal of Psychiatry* 58.7 (2013): 376-385.

[114] Bryant, Richard A., et al. "Effectiveness of a brief behavioural intervention on psychological distress among women with a history of gender-based violence in urban Kenya: a randomised clinical trial." *PLoS medicine* 14.8 (2017): e1002371.

[115] Carey, Rachel N., et al. "Behavior change techniques and their mechanisms of action: a synthesis of links described in published intervention literature." *Annals of Behavioral Medicine* 53.8 (2019): 693-707.

## Appendix

**Table A1: Databases and aggregators shortlisted from Wikipedia used for keyword searches**  
([https://en.wikipedia.org/wiki/List\\_of\\_academic\\_databases\\_and\\_search\\_engines](https://en.wikipedia.org/wiki/List_of_academic_databases_and_search_engines))

Database/ Aggregator	URL
African Journals Online	<a href="https://www.ajol.info/index.php/ajol">https://www.ajol.info/index.php/ajol</a>
Bielefeld Academic Search Engine	<a href="https://www.base-search.net/">https://www.base-search.net/</a>
Cochrane library	<a href="https://www.cochranelibrary.com/">https://www.cochranelibrary.com/</a>
Connected Papers	<a href="https://www.connectedpapers.com/">https://www.connectedpapers.com/</a>
CORE	<a href="https://core.ac.uk/">https://core.ac.uk/</a>
Directory of Open Access Journals	<a href="https://doaj.org/">https://doaj.org/</a>
Econbiz	<a href="https://www.econbiz.de/">https://www.econbiz.de/</a>
Google Scholar	<a href="http://scholar.google.com/">http://scholar.google.com/</a>
My Science Work	<a href="https://www.mysciencework.com/">https://www.mysciencework.com/</a>
Open Grey	<a href="http://www.opengrey.eu/">http://www.opengrey.eu/</a>

PsychExtra	<a href="https://www.apa.org/pubs/databases/psyceextra">https://www.apa.org/pubs/databases/psyceextra</a>
PsychINFO	<a href="http://www.apa.org/pubs/databases/psycinfo/index.aspx">http://www.apa.org/pubs/databases/psycinfo/index.aspx</a>
PubMed	<a href="https://pubmed.ncbi.nlm.nih.gov/">https://pubmed.ncbi.nlm.nih.gov/</a>
PubPsych	<a href="https://www.pubpsych.eu/">https://www.pubpsych.eu/</a>
Research Gate	<a href="https://www.researchgate.net/">https://www.researchgate.net/</a>
Sci Dev Net	<a href="https://www.scidev.net/global/">https://www.scidev.net/global/</a>
Science Open	<a href="https://www.scienceopen.com/">https://www.scienceopen.com/</a>
Scopus	<a href="https://www.scopus.com/home.uri">https://www.scopus.com/home.uri</a>
Semantic Scholar	<a href="https://www.semanticscholar.org/">https://www.semanticscholar.org/</a>
Social Science Research Network	<a href="https://www.ssrn.com/index.cfm/en/">https://www.ssrn.com/index.cfm/en/</a>
The Lens	<a href="https://www.lens.org/">https://www.lens.org/</a>
Think-Asia	<a href="https://think-asia.org/discover">https://think-asia.org/discover</a>
Web of Science	<a href="https://clarivate.com/webofsciencigroup/solutions/web-of-science/">https://clarivate.com/webofsciencigroup/solutions/web-of-science/</a>
World Wide Science	<a href="https://worldwidescience.org/">https://worldwidescience.org/</a>

#### **Array A2: Keywords used for literature search**

“Access to higher education”, “Alcoholism”, “ASHA worker”, “Awareness of mental illness”, “Banking penetration”, “Behavioural issues”, “Big hit to the prices of farm produce in the market during covid pandemic”, “Cash versus bank transfer”, “Cattle rearing”, “Climate shocks”, “Collateral for bank loan”, “Commercial crops”, “Compensation for low yield”, “Compulsory crop insurance”, “Conditions for getting free loans by Society”, “Co-operative Society”, “Corrupt system”, “Counselling”, “COVID relief transfer”, “Crop diversification”, “Crop insurance”, “Crop loss”, “Crop rotation”, “Customs”, “Cyclones and storms”, “Debt burden”, “Debt trap”, “Demographic and Family Health Survey”, “Depression”, “Drought”, “Drug abuse”, “Duplication of efforts”, “Effective social safety nets”, “Emergency loan”, “Facilities / treatment mental illness”, “Farmer Suicides”, “Farming as the only income source for the farmers who own less than two acres of land”, “Female participation”, “Fertiliser subsidy”, “Food for work”, “Fragmentation”, “Free



seeds and fertilizers”, “Freedom women have at home to make important decisions related to farming”, “Gold mortgage”, “Government survey”, “Groundwater depletion”, “Hallucinations”, “Health and Wellness Centre”, “Heavy expenditures on farming till the harvest”, “Hesitancy of approaching for help”, “High labour cost”, “Hope for next year”, “Helplessness felt by farmers when crops don't come up well and get unfair prices for it - no other ways they find to come out of this”, “Improved seed variety”, “Inability to repay loans”, “Informal credit”, “Insomnia”, “Integrated farming”, “Internal cultivation”, “Irrational expenditure”, “Kapas (Cotton) farming in Vidarbha”, “Labour cost”, “Lack of government funds”, “Land ownership”, “Lease land”, “Loan waiver”, “Low interest loans”, “Market price fluctuation”, “Mechanization of agriculture”, “Media glorification of suicides”, “Mental distress”, “Mental Health Clinic”, “Mental pressure and tense mind because of disturbed weather and less/no rainfall”, “MGNREGA”, “Microfinance”, “Middlemen”, “Migration”, “Multi-factorial etiology”, “National Income Dynamics Study”, “Natural disaster”, “Negative thoughts”, “No compensations by the government on damage”, “No expected revenue at least to recover investment in agriculture”, “No one-time payments when sold to the government at MSP”, “Nuksan Bharpai by the government (compensation)”, “Organic Farming”, “Partition of the farmland”, “Patriarchy”, “Pawning of jewellery”, “Peace of mind”, “Peer support system”, “Peer support volunteers”, “Pest infection”, “Physical disability”, “Pradhan Mantri Kisan Samman Nidhi Scheme”, “Price volatility”, “Prolonged sadness”, “Psychological autopsy”, “Relief / Rehabilitation”, “Rise in the costs of seeds, fertilizers, pesticides supplied by the government”, “Role of Gram Sevaks in MGNREGA”, “Sanstha in the village”, “Seasonal employment”, “Second job”, “Self Help Groups (*Bachat Gat*) / Microcredit”, “Self help groups”, “Selling farmland because of mental pressures and less farming income”, “Severe mental disorder”, “Shift towards other income sources because of less farming income”, “Small and medium farmers”, “Social protection”, “Society for farmers”, “Soil health card”, “Soil quality”, “Status quo bias towards farming”, “Steady income”, “Stigma/ taboo of mental illness”, “Strained family relations”, “Subsidies by the government for farming : requirements and possibilities”, “Subsidized health care”, “Sudden irritation”, “Suicidal ideation”, “Suicide attempts”, “Suicide compensation as perverse incentive”, “Unavailability of work at MGNREGA”, “Uncertain weather (rains)”, “Unproductive expenditure”, “Water management for farming”, “Water scarcity and stress”, “Ways that farmers follow to overcome the tensions”, “Wild animal attacks”, “Women farmers”, “Women reservation”, “Worries about getting good prices for the farm produce”

**Table A3: Summary of Evidence based Studies**

Author(Year)	Country	Type of Intervention	Name of Intervention	Sample and size	Study design / Data	Psychological variables	Measurement tool	Findings
Haushofer & Shapiro (2016)	Kenya	UCT	NA	1008 rural poor households in Rarieda district	RCT	Psychological Well-being, Depression, Worry, Stress, Happiness, Life Satisfaction, Cortisol levels	CES-D, Cohen's Perceived Stress Scale, World Value Survey, Cortisol levels	CT has a positive effect on psychological well-being.
Haushofer & Shapiro (2018)	Kenya	UCT	NA	Long-term follow-up study of Haushofer and Shapiro (2016).	RCT	Psychological Well-being, Depression, Worry, Stress, Happiness, Life Satisfaction, Cortisol levels	CES-D, Cohen's Perceived Stress Scale, World Value Survey, Cortisol levels	Positive effect of CT on mental health persist over the long term.
Christian et al. (2019)	Indonesia	CCT	Program Keluarga Harapan	Farmers and rural poor from 80000 villages in Indonesia	PODES census data set (years 2000, 2003, 2005, 2011 and 2014) and	Suicides, Depression	CES-D (10-item)	CT prevents suicides from negative income shocks.

					RCT			
Haushofer et al. (2020b)	Kenya	UCT or Psychotherapy or both	NA	5756 individuals from rural low-income households	RCT	Psychological well-being index, Stress, Happiness, Life satisfaction, Disability	GHQ-12, Cohen Perceived Stress Scale - 4, World Value Survey, WHODAS	CT was more effective in reducing stress and depression as compared to psychotherapy
Kilburn et al. (2016)	Kenya	UCT	Cash Transfer for Orphans and Vulnerable Children (CT-OVC)	1960 youth aged between 15 and 24 years	Quasi-experiment	Depression, hope	CES-D (10 item)	CT aids in reducing depression, especially among men. The effects are not significant on female participants.
Hidrobo et al. (2020)	Mali	UCT with voluntary information sessions	Filets Sociaux (Jigisemejiri)	2262 individuals from poor households	Cluster RCT	Worry, Stress/Anxiety	Cohen's Perceived Stress Scale	CT reduces anxiety.
Prencipe et al. (2021)	Tanzania	Social Safety Net- UCT and CCT along	Productive Social Safety Net (PSSN)	880 individuals from the poorest 10% of	Cluster RCT	Depression, Social Support	CES-D (10 items); Multidimension	CCT reduces depressive symptoms

		with Public Works Program		the population			al Scale of Perceived Social Support (MSPSS-8 item)	among male participants, but females report no reduction in depressive symptoms.
Hussam et al. (2021)	Bangladesh	Employment / UCT	NA	745 adults aged between 18 and 45 years in Rohingya refugee camps	RCT	Depression, Stress, Life satisfaction, Locus of control	PHQ-9, Cohen's Perceived Stress Scale, Diener's Satisfaction With Life Scale, Rotter's thirteen-question Locus of Control Instrument	Employment / workfare has higher positive impact in terms of improving mental health among participants than cash transfers. This difference in the effects was evident among males, but not among females.
Haushofer et al. (2020a)	Kenya	UCT / Free Health Insurance	NA	789 informal workers in hazardous	RCT	Subjective well-being index,	Cohen's Perceived Stress Scale	Health insurance reduces self-

				conditions with minimal safety equipment		Perceived stress, Optimism, Self-esteem, Depression, Internal locus of control, Life-satisfaction, Happiness		reported stress, relative to receiving cash transfers. However depression is unaffected by health insurance.
Qi and Wu (2018)	China	Social Safety Net- UCT and CCT along with Public Works Program	Dibao	34000 adults over the age of 16 years (from 16000 households)	China Family Panel Study Survey data investigated by the Institute of Social Science Survey at Peking University (2010, 2012, 2014 waves)	Self-satisfaction, Emotional status indicators	Self- reported indicators	Receiving income assistance through cash transfers is associated with stigma.
Wu et al. (2021)	China	Social Safety Net- UCT and CCT along with Public Works Program	Dibao	4192 youth between the ages of 16 and 24 years (3345 households)	China Family Panel Study (2012 wave)	Depression	CES-D (20 items)	Receiving income assistance through cash transfers is associated

								with stigma.
Blattman et al. (2014)	Uganda	Cash Grant	Youth Opportunities Program (YOP)	11278 poor unemployed young adults between 16 and 35 years of age (535 groups)	RCT	Alienation and aggression (Participation and engagement, Social integration, Depression and distress symptoms, Aggression and hostility); Subjective-well-being (Current subjective well-being, Future subjective well-being)	Self-reported indicators	Cash grants have no significant effects on depression or stress in the short term.
Green et al. (2016)	Uganda	Multiple interventions - (i) business skills training (ii) start-up grant (iii)	Women's Income Generating Support (WINGS)	1800 young women between 14 and 30 years of age from 120 villages in	RCT	Depression	Acholi Psychosocial Assessment Instrument (APAI - 35-item) locally	Cash grants have no significant effects on mental health variables

		business advice and encouragement to use the grant for business development.		post conflict settings			developed in Northern Uganda	among women.
Blattman et al. (2020)	Uganda	Cash Grant	Youth Opportunities Program (YOP)	11278 poor unemployed young adults between 16 and 35 years of age (535 groups)	RCT	Alienation and aggression (Participation and engagement, Social integration, Depression and distress symptoms, Aggression and hostility); Subjective-well-being (Current subjective well-being, Future subjective well-being)	Self-reported indicators	Even in the long term, cash grants have no significant effects on depression or stress

Salinas-Rodríguez et al. (2014)	Mexico	Non-contributory Social Pension	Adultos Mayores	5270 rural elderly aged 70 years and above	Quasi-experiment	Depression, Autonomy, Empowerment	Geriatric Depression Scale (GDS)	Non-contributory social pension helps reduce depression.
Galiani et al. (2016)	Mexico	Non-contributory Social Pension	Adultos Mayores	3556 individuals from households with at least one adult between 66 and 74 years of age	Quasi-experiment	Depression	Geriatric Depression Scale (GDS)	Non-contributory social pension helps reduce depression.
Bando et al. (2017)	Peru	Non-contributory Social Pension	Pension 65	3342 elderly adults from 2584 households, between the ages of 65 and 80, marginally below and above the poverty index	Primary survey conducted by National Institute of Statistics (Instituto Nacional de Estadística e Informática or INEI)	Depression	Geriatric Depression Scale (GDS)	Non-contributory social pension helps reduce depression.



Alzua et al. (2020)	Nigeria	Non-contributory Social Pension	NA	6326 rural elders above 65 years of age with monthly income less than NGN 3000	Cluster RCT	Depression and Self-esteem	Geriatric Depression Scale (GDS), Self-reported indicators	Non-contributory social pension helps reduce depression.
Bando et al. (2022)	Paraguay	Non-contributory Social Pension	Pensión Alimentaria	2473 poor adults above 65 years of age	RCT	Depression, Satisfaction, Empowerment, Contribution, Self-worth, Well-being	Geriatric Depression Scale (GDS), Self-reported indicators	Non-contributory social pension helps reduce depression.
Chen et al. (2019)	China	Social Pension Insurance - Contributory but Subsidized	New Rural Social Pension Scheme	8636 rural individuals above 45 years of age	China Family Panel Study survey (2010, 2012 waves)	Depression	CES-D (20 items)	Contributory social pensions reduce depression among elderly in rural areas.
Ma & Oshio (2020)	China	Social Health insurance and Pension Insurance	New Rural Social Pension Insurance (NRSPI), New Rural	32808 rural adults from Hukou population above 45	China Health and Retirement Longitudinal Study (2011,	Present and Prospective Mental Health	Self-reported indicators	Contributory social pensions reduce depression

			Cooperative Medical Scheme (NRCMS)	years of age	2013, 2015 waves)			among elderly in rural areas. However social health insurance has no significant effects on psychological well-being.
Pan et al. (2021)	China	Social Pension Insurance - Contributory but Subsidized	New Rural Social Pension Scheme	21122 rural individuals above 45 years of age	China Health and Retirement Longitudinal Study (2015, 2018 waves)	Depression	CES-D (10 items)	Contributory social pensions reduce depression among elderly in rural areas.
Wang & Zheng (2021)	China	Social Pension Insurance - Contributory but Subsidized	New Rural Society Pension Insurance	1362 rural households with elders above 60 years of age	China Health and Retirement Longitudinal Study (2011, 2013 waves)	Depression	CES-D (10 items)	Contributory social pensions reduce depression among elderly in rural areas. Effects observed among elderly

								females, but not among males.
He et al. (2021)	China	Social Pension Insurance - Contributory but Subsidized	Basic Pension system for urban workers (UW), Pension system of Public institutions (PI), Basic Pension system for urban and rural residents (URR), New Rural Pension	6687 elderly individuals 60 years old and above	Chinese Longitudinal Aging Social Survey (2014)	Depression	CES-D	Social pensions are associated with lower depression scores, but causality needs to be validated.
Lloyd-Sherlock & Agarwal (2014)	South Africa	Pension (may include contributory and non-contributory)	Old Age Grant	Approximately 2000 black South African elderly women aged 60 years and above, men aged 63 years and above	WHO Study of global AGEing and adult health	Depression, Anxiety	Self-reported indicators	Effects of pension on depression and anxiety are not significant.

Wang et al. (2009)	China	Social Health Insurance - Community based Contributory but Subsidized	Rural Mutual Health Care (RMHC) - Experiment	7025 individuals aged 15 years and above from 1925 households	Quasi-experiment	Depression, Anxiety	Categorical Rating Scale (CRS), EQ-5D	Social health insurance reduces depression. Effects were most significant among people older than 55 years, and ill during the time of intervention.
Tian et al. (2012)	China	Health Insurance	NA	4079 individuals from households in Lanzhou City and Baiyin City in Gansu province	Clustered sampling primary survey	Depression	CES-D	Social health insurance reduces depression.
Sun & Lyu (2020)	China	Social Health Insurance - Contributory but Subsidized	New Rural Cooperative Medical Scheme (NRCMS)	2093 rural adults aged 45 years and above	China Family Panel Study (2016 wave)	Depression	whether or not they had felt uncomfortable in the previous 2 weeks, Frequency at	Social health insurance reduces depression. Low-income individuals

							which they had felt sad over the previous week	benefit the most in terms of mental health improvements.
Sun et al. (2021)	China	Social Health Insurance - Contributory but Subsidized	Urban and Rural Resident Basic Medical Insurance (URRBMI)	2198 adults aged 45 years and above	China Health and Retirement Longitudinal Study (2018 wave)	Depression	CES-D (10-item)	Social health insurance reduces depression. Higher effects observed among males less than 65 years of age.
Shieh et al. (2021)	China	Social Health Insurance	Catastrophic Medical Insurance (CMI)	4727 old adults aged 60 years and above	Chinese Longitudinal Healthy Longevity Survey (conducted by Peking University and China Scientific Research Centre on	Index of Positive well-being, Index of negative well-being	Self-reported indicators	Catastrophic medical insurance reduces anxiety and depression among elderly.

					Ageing) (2011-12 and 2014 waves)			
Yang & Hu (2022)	China	Social Health Insurance	Urban Employee Insurance (UEI), Urban Resident Insurance (URI), New Rural Cooperative Medical Scheme (NCMS)	13166 old adults aged 60 years and above	China Health and Retirement Longitudinal Study (2011, 2013 and 2015 waves)	Depression	CES-D (10 items)	Social health insurance is associated with lower depression scores, even with catastrophic medical expenditure.
Ravi & Engler (2015)	India	Public Workfare Programme	National Rural Employment Guarantee Scheme	1064 ultra poor households in Medak district of Andhra Pradesh	Primary survey	Felt Worried/Tense d/Anxious for one month in previous year	Self-reported indicators	Workfare helps reduce anxiety.
Tsaneva & Balakrishnan (2019)	India	Public Workfare Programme	National Rural Employment Guarantee Scheme	Approx. 3905 (136 districts) recovered from supplementary appendix	WHO Study of global AGEing and adult health	Depression, Stress, Psychological Well-being	ICD-10, Self-reported indicators	Workfare reduces depression among rural women.

Bhanot et al. (2018)	Kenya	Employment / UCT	NA	432 individuals from low income households in Kawangware settlement in Nairobi	Randomized experiment	Mental Health, Well-being index	PANAS (6 item), Self-reported indicators	Working for benefits has much more positive impact on psychological well-being, than receiving benefits without working.
Pailler & Tsaneva (2018)	India	Public Workfare Programme	National Rural Employment Guarantee Scheme	16227 working-age adults between 18 years and 60 years of age	World Health Survey (WHS) and the WHO Study of global AGEing and adult health (SAGE)	Depression, Stress, Psychological Well-being	Self-reported indicators	Workfare helps mitigate the negative effects of climate change on mental health of participants.
Mohindra et al. (2008)	India	Microfinance	Self-help Groups - Kudumbrasree	928 women between 18 years and 59 years (excluding the Paniya group) in Kottathara,	Primary household survey	Frequency of disturbance in mental peace; Life satisfaction	Self-reported indicators	Microfinance reduces emotional stress among female farmers.

				Wayanad district in Kerala				
Hamad & Fernald (2015)	Peru	Microfinance	Prisma (NGO) microcredit intervention	1593 women in Pucallpa who are PRISMA clients	Primary cross-sectional survey	Depression, Perceived Control on life circumstances, Perceived social support	CES-D (20 items, range 0-60); Duke-UNC Functional Social Support Questionnaire (11 items, range 0–55)	Microcredit reduces depression among women borrowers.
Bass et al. (2016)	Congo	Microfinance	Village Savings and Loans Associations (VSLA)	301 female sexual violence survivors	RCT	Depression, Anxiety, Post-traumatic stress	Hopkins Symptom Checklist-25 (HSCL-25), Harvard Trauma Questionnaire (HTQ), Self-reported indicator	No reduction in symptoms of depression, anxiety, or PTSD.
Glass et al. (2014)	Congo	Microfinance - Livestock intervention	Pigs for Peace (PFP)	649 rural women in settings of	Randomized Community Trial	Post-traumatic stress syndrome	Harvard Trauma Questionnaire	Microcredit in the form of animal assets



				conflict and violence		(PTSD), Depression	(HTQ); Hopkins Symptom Checklist (HSCL)	reduces depression and PTSD among women.
Ahmed et al. (2001)	Bangladesh	Microfinance	Building Resources Across Communities (BRAC NGO) microcredit intervention	2075 married women between 15 years and 55 years from poor households	Primary cross-sectional survey	Emotional stress, Depression	Self-reported indicators	Microcredit is associated with higher emotional stress among women.
Bhuiyan & Ivlevs (2019)	Bangladesh	Microfinance	NA	1430 households in three villages in Tangail district, Bangladesh	Village census survey	Subjective well-being, Negative affect (worry and depression), Positive affect (happiness)	Self-reported indicators	Microcredit is associated with higher emotional stress among women.
Fernald et al. (2008)	South Africa	Microfinance	NA	787 marginally rejected loan applicants of one of the largest urban micro-lender	RCT	Stress, Depression	CES-D (20 items, range 0-60); Cohen's Perceived Stress Scale (10 items,	Access to microcredit decreases depression but is associated with elevated

							range 0-40),	stress among borrowers.
Hatcher et al. (2020)	Kenya	Multiple interventions - (i) a low-cost micro-irrigation water pump (ii) training on sustainable farming practices and financial management (iii) loan program of vouchers (worth □\$150 USD)	Shamba Maisha	54 HIV positive farmers	In-depth interviews	Stress and Anxiety	Qualitative Description	Reduction in symptoms of anxiety and depression.
Liang et al. (2014)	China	Social Security Policies - Land Acquisition Compensation Policy, Medical Insurance Policy, Pension	New Rural Cooperative Medical Care Insurance	1236 landless farmers	Household survey	Health-related quality of life (HRQOL) on 5 dimensions - Mobility, Self-care ability, Daily activities, Pain/Discomfor	EQ-5D	Social security policies are associated with lower levels of depression and anxiety among

		Insurance Policy, Employment Security Policy, Basic Livelihood Guarantee Policy, Housing Compensation Policy				t, and Anxiety/Depression		landless farmers.
Banerjee et al. (2015)	Ethiopia, Ghana, Honduras, India, Pakistan, Peru	Multiple interventions	Graduation Programme	10495 ultra poor households	RCT and Cluster RCT	Mental Health Index, Stress Index	Self-reported indicators	No significant improvement in psychological well-being of participants.
Burmester et al. (2015)	Dominica	Living Wage Intervention and Key work place improvements	NA	204 apparel factory workers	Quasi-experiment	Depression	CES-D	Living wage intervention is associated with lower depression scores.
Richardson et al. (2018)	India	Subsidized Day Care	NA	3041 rural women in low	Cluster RCT	Mental distress	GHQ-12	Access to low-cost daycare

				income settings				resulted in modest reduction of mental distress among rural women.
--	--	--	--	-----------------	--	--	--	--

#### **A4 Suggestion based studies**

In this section we present a review of literature that provides recommendations or suggestions that would reduce agrarian distress rather than any evidence-base as was derived from original research papers. Except for Kandlur et al. (2022) that measured mental distress among farmers through anxiety, depression, distress and psychological morbidity as the mental health variables, all studies that reviewed in these studies equated agrarian distress with agrarian suicides. Moreover, all our reviewed studies were from India except from Knipe et al. (2014), which was about suicides in rural Sri Lanka and Murray and Mahat (2017), which was conducted among the bonded labor in Nepal.

Price insurance against low market prices in the form of Minimum Support Prices had been strongly advocated as a potential insurance intervention to reduce agrarian distress and farmers suicides [81,83-97]. Crop insurance had been suggested as one of the most important insurance intervention that can potentially mitigate suicides by extending financial security in the event of crop loss [83-86,88,90-92,94,95,98-100,101-103]. While Parida et al. (2018) advocated compulsory crop insurance for all farmers, Bhojanna and Raturi (2012) suggested that corporates could bear the cost of crop insurance premium under Corporate Social Responsibility (CSR), which would save farmer's lives. Sulaiman and Murigi (2018) in a hypothetical cost benefit analysis of crop insurance estimated the number of farmers' lives that can be saved in a year by crop insurance. However, Van de Meenderdonk (2020) found in an ethnographic study in India that farmers reported crop insurance to be ineffective in reducing their distress. Rao et al. (2017) suggested designing comprehensive crop insurance such that it covered loss at every stage of the crop cycle rather than only at harvest.

Alternative livelihoods or off-farm employment similar to NREGS could potentially reduce farmers' suicides by reducing dependence upon highly volatile farm income [85,90,95,96,98,102,105]. Knipe et al. (2014) suggested that implementation of the minimum daily wages for laborers could reduce rural suicides in Sri Lanka. Parida et al. (2018) suggested on similar lines that higher agricultural wage income could potentially reduce agrarian distress. Few other suggestions to reduce suicides included provision of health insurance and pension insurance for farmers [95,98].

Suggestions had been also made that access to formal credit at zero or low interest rate could also reduce farmer's suicides [84,85,91,92,97,98,100,106]. Credit access from microfinance could also contribute in reducing agrarian distress [82,88,94]. Murray and Mahat (2017) in a study among bonded manual labor, which is a form of modern slavery in Nepal, suggested that the incidence of anxiety, depression and PTSD among the bonded labor could be potentially reduced by their participation in microfinance. However, Taylor (2011) argued that microfinance was not a solution to agrarian distress citing the example of microfinance crisis in Andhra Pradesh, India.

Heavy indebtedness among the farmers had been associated with suicides. As a consequence, there had been suggestions of loan moratorium and loan waivers, which could relieve indebtedness, and hence can reduce suicides among farmers [84, 88, 89, 108, 109]. However, most authors also acknowledged that the debt relief measures offered temporary relief and generally lacked long-term effectiveness [108-110]. Kandlur et al. (2022) suggested that loan waivers are unlikely to reduce depression, anxiety or distress among farmers. Further, Ravi (2015) critically puts forward that instead of combating, loan waivers and cash supports rather aggravate the issue of farmer suicides.

**Table A5: Summary of Suggestion based Studies**

Author (Year)	Country	Type of Intervention	Reference Population	Hypothesis
Rangarajan & Dev (2019)	India	MSP	Farmers	MSP brings higher income for farmers and dispel agrarian distress
Guha (2012)	India	MSP		MSP acts as a cushion and could help mitigate farmer suicides.
Deshpande (2002)	India	MSP, CI	Suicide victim families	Administering MSP and CI could act as safety nets to deal with farmers' distress
Kennedy & Kling (2014)	India	MSP, Loan Moratorium	Indebted farmers	Loan moratoriums could relieve distressed farmers and reduce suicide among them.
Knipe et al. (2014)	Sri Lanka	MSP, Minimum Daily Wage for Labourers	farmers, daily wage labourers, and foreign migrant households, and significantly elevated in female headed households	MSP could help reduce suicides among farmers
Iyer (xxxx)	India	MSP, Alternative Livelihoods	Farmers	MSP or alternative livelihoods provide relief against indebtedness and reduce farmer suicides

Behere et al. (2021)	India	MSP, Low-interest Formal Credit	Farmers	Recurring debt is the primary reason for farmer suicide; farm loans at affordable interest loans could eliminate financial stress and thereby reduce farmer suicide.
Grover et al. (2016)	India	MSP, CI, Alternative Livelihoods	Agrarian community	Increase in MSP improves income; this and crop insurance might help lessen suicides among farmers.
Das (2016)	India	MSP, Agricultural Insurance, Low-interest Formal Credit	Agrarian community	Agriculture insurance reduces risk and thereby agrarian distress
Rao et al. (2017)	India	MSP, CI, Soft Interest Farm Loans	Farmers	MSP, CI and soft interest loans help reduce agrarian distress
Manjunatha & Ramappam (2017)	India	MSP, CI, low-interest formal credit	Agrarian community	MSP and bank loans at low interest rates help reduce farmer suicides
Mukherjee (2009)	India	MSP, CI, alternate livelihood, low-interest formal credit	Agrarian community	Financial interventions may reduce suicides among farmers
Jeromi (2007)	India	MSP, CI, low-interest formal credit, loan waivers	Plantation farmers	Formal credit at low interest rates could help prevent



				farmer suicides
Raghavalu (2013)	India	MSP, CI, microfinance, moratorium on credit repayment	Agrarian community	Financial interventions may reduce suicides among farmers
Sravanth & Sundaram (2019)	India	MSP, CI, Microcredit through SHGs, price stabilization fund, loan waiver	Agrarian community	Loan moratorium cannot reduce farmer suicides
Chouhan et al. (2019)	India	MSP, CI, alternative livelihood, health insurance, pension insurance	Families of suicide victims	Wider insurance coverage can decrease farmer suicides in Madhya Pradesh
Meerendonk (2020)	India	CI	Indebted farmers	Crop insurance might help address agrarian distress
Bhojanna & Raturi (2012)	India	CI costs borne by corporates (Corporate Social Responsibility), soft rate interest loans	small & marginal farmers	Crop insurance protects farmers against financial loss and reduces agrarian distress
Sulaiman & Murigi (2018)	India	Graduation Program including CI	Ultra-Poor	Crop insurance protects from risk of crop loss and income loss; however cost of intervention is very high
Jabeen (2019)	India	CI	Agrarian community	Crop insurance helps deal with indebtedness and reduce agrarian distress

Parida et al. (2017)	India	Compulsory CI, alternative livelihood, higher agricultural wages, loan waiver	Agrarian community in drought and flood affected regions	Compulsory crop insurance and loan waivers could help reduce agrarian distress
Dongre et al. (2012)	India	CI	Rural community	Crop insurance can alleviate debt issues and thereby reduce farmer suicides
Kaur (2010)	India	CI, low-interest formal credit, alternative livelihood, health insurance, pension insurance	Civil societies in Punjab, villagers, suicide-affected families	Financial interventions create safety net and could reduce suicides among farmers
Mishra (2007)	India	Alternative livelihood	Agrarian community	Alternative livelihood like NREGS can help reduce farmer suicides
Taylor (2011)	India	Microfinance	Agrarian community	Unless regulated, MFI cannot help deal with farmer suicides
Murray & Mahat (2017)	Nepal	Microfinance through SHGs	Haruwa and Charuwa: Bonded and forced labourers	SHG participation could reduce depressive symptoms and PTSD among bonded manual labourers.
Sadanandan (2014)	India	Low-interest formal credit	Farmers	Low interest formal credit could help reduce farmer

				suicides, particularly in suicide prone states of India
Ravi (2015)	India	Loan waivers	Farmers, housewives	Loan waivers are not effective in countering farmer suicides
Nair & Menon (2007)	India	Loan moratorium	Agrarian community	Moratorium on loan payment can reduce financial burden and help reduce farmer suicides
Parvathamma (2016)	India	Loan moratorium	Agrarian community	Moratorium on loan payment can reduce agrarian distress
Sangalad (2012)	India	Loan moratorium	Suicide victims' and control families	Temporary relief in the form of loan moratorium won't help reduce farmer suicides
Kandlur et al. (2022)	India	Loan waivers	Farmers who are members of cooperatives	Loan waivers need not reduce the distress of all farmers

MSP: Minimum Support Price; CI: Crop insurance