

1  
2  
3  
4  
5  
6  
7  
8  
9  
10  
11  
12  
13  
14  
15  
16  
17  
18  
19  
20  
21  
22

# Seroprevalence of SARS-CoV-2 and risk factors in Bantul Regency, Yogyakarta, Indonesia

Riris Andono Ahmad<sup>1,2\*</sup>, Citra Indriani<sup>1,2</sup>, Risalia Reni Arisanti<sup>1,2</sup>, Ratih Oktri Nanda<sup>1</sup>, Yodi Mahendradhata<sup>1,3</sup>, Tri Wibawa<sup>4</sup>

<sup>1</sup> Center for Tropical Medicine, Faculty of Medicine, Public Health, and Nursing Universitas Gadjah Mada, Yogyakarta, Indonesia

<sup>2</sup> Department of Biostatistics, Epidemiology and Population Health, Faculty of Medicine, Public Health, and Nursing Universitas Gadjah Mada, Yogyakarta, Indonesia

<sup>3</sup> Department of Health Policy and Management, Faculty of Medicine, Public Health, and Nursing Universitas Gadjah Mada, Yogyakarta, Indonesia

<sup>4</sup> Department of Microbiology, Faculty of Medicine, Public Health, and Nursing Universitas Gadjah Mada, Yogyakarta, Indonesia 55281

\* Corresponding author

Email: risandono\_ahmad@ugm.ac.id

## 23 Abstract

24 COVID-19 case counts in Indonesia inevitably underestimate the true cumulative incidence of  
25 infection due to limited barriers to testing accessibility and asymptomatic infections. Therefore,  
26 community-based serological data are essential for understanding the true prevalence of  
27 infections. This study aims to estimate the seroprevalence of SARS-CoV-2 infection and  
28 factors related to the seropositivity in Bantul Regency, Yogyakarta, Indonesia. A cross-  
29 sectional study involving 425 individuals in 40 clusters was conducted between March and  
30 April 2021. Participants were interviewed using an e-questionnaire developed in the Kobo  
31 toolbox to collect information on socio-demographic, COVID-19 suggestive symptoms,  
32 history of COVID-19 diagnosis and COVID-19 vaccination status. A venous blood sample was  
33 collected from each participant and tested for immunoglobulin G (Ig-G) SARS-CoV-2  
34 antibody titers using the enzyme-linked immunosorbent assay (ELISA). Seroprevalence was  
35 31.1% in the Bantul Regency: 34.2% in semi-urban and 29.9% in urban villages. However,  
36 there is no significant proportion difference between both areas. A significant difference was  
37 reported in the age group. Participants in the 55-64 age group demonstrated the highest  
38 seroprevalence (43.7%;  $p=0.00$ ), with a higher risk compared to the other age group (aOR=  
39 3.79; 95% CI, 1.46-9.85,  $p<0.05$ ). Seroprevalence in the unvaccinated participants was 29.9%.  
40 Family clusters accounted for 10.6% of the total seropositive cases. No significant difference  
41 was observed between individual preventive actions and their mobility with seropositivity  
42 status. This study observed a discrepancy with COVID-19 confirmed cumulative incidence  
43 data reported in the same period (11 out of 1000 population), indicating silent transmission  
44 may have occurred within the community. Higher seroprevalence in semi-urban areas rather  
45 than urban areas suggests a gap in health services access. Surveillance improvement through  
46 testing, tracing, and treatment, particularly in areas with lower access to health services, are  
47 necessary, along with more robust implementations of health protocols.

48

49 **Keywords:** Indonesia; SARS-CoV-2; Seroprevalence; Urban; Semi-urban

## 50 Introduction

51 Coronavirus disease 2019 (COVID-19) is a respiratory illness caused by the newly  
52 discovered severe acute respiratory syndrome coronavirus 2 (SARS-CoV-2), leading to a  
53 global pandemic, including Indonesia. Since the first confirmed SARS-CoV-2 by Mar 2 2020  
54 [1], Indonesia has experienced exponential growth of COVID-19 cases in 34 provinces. As of  
55 Mar 31 2021, the government of Indonesia reported a total of 1.511.712 confirmed COVID-19

56 cases and 40.858 deaths [2] and became one of the countries with high cumulative and  
57 incidence cases of COVID-19. However, these case counts inevitably underestimate the true  
58 cumulative incidence of infection because of limited diagnostic test availability, barriers to  
59 testing accessibility, and asymptomatic infections [2]. As a consequence, the national  
60 prevalence of SARS-CoV-2 remains unknown.

61         The lack of clarity about the number of SARS-CoV-2 infections across Indonesia limits  
62 the Indonesian government's ability to plan appropriately, prepare and respond to this epidemic.  
63 Counting the incidence of newly diagnosed cases of severe COVID-19 and the case fatality  
64 rate is critical as it is necessary to project the need to address the demands on the healthcare  
65 system. The absence of a reasonable estimate of the number of infections poses a challenge for  
66 authorities to estimate this need.

67         One of the epidemiological investigations used to determine the level of disease spread  
68 is to apply a seroprevalence survey. According to the Centers for Disease Control and  
69 Prevention (CDC), this survey uses serological tests to detect antibodies in the blood, indicating  
70 an infection [3]. This test uses an enzyme-linked immunosorbent (ELISA) where the antigen  
71 used is purified SARS-CoV-2 S protein (without live virus). Population-based serological  
72 testing provides better estimates of the cumulative incidence of infection by complementing  
73 diagnostic testing of acute illness and helping to inform the public health response to COVID-  
74 19. A seroprevalence study could also be a powerful tool to detect subclinical infections and  
75 improve policy making in the country [4, 5]. Furthermore, as the world moves through the  
76 vaccine and variant era, synthesizing seroepidemiology findings is increasingly important to  
77 track the spread of infection, identify disproportionately affected groups, and measure progress  
78 towards herd immunity [2].

79         Seroprevalence varies geographically; the denser urban areas have higher seropositivity  
80 rates than rural areas [6]. A study in East Java, Indonesia, in the second semester of 2020

81 showed a higher prevalence in Surabaya (13.1%) which is an urban area, than in Jombang  
82 (9,9%), a rural area [7]. The epidemiological trend also implicates SARS-CoV-2 spread among  
83 rural communities only later in the epidemic wave [8, 9], which would require sound  
84 anticipatory interventions. A seroprevalence survey involving more diverse groups of people  
85 among urban and rural communities is necessary to grasp the overall picture of SARS-CoV-2  
86 infection. Bantul regency has become one area that contributes to a high number of cases and  
87 leads to the high transmission of COVID-19 in Yogyakarta Provinces. Therefore, this study  
88 aims to estimate the SARS-CoV-2 prevalence, seropositive risk factors, and COVID-19  
89 vaccine acceptance in Bantul Regency, Yogyakarta.

90

## 91 **Materials and methods**

### 92 **Study setting**

93 Bantul Regency is located in the southern region of Yogyakarta Province, covering  
94 506.85 km<sup>2</sup>. The regency consists of 17 sub-districts and 75 villages, 30% semi-urban. The  
95 main occupation is the non-formal sector such as farmer, trade and services business [10]. The  
96 daily mobility of residents between districts to and from Bantul is high [11], which might risk  
97 disease transmission.

98

99 **Fig 1. Map of Bantul Regency, Special Region of Yogyakarta, Indonesia**

100

101

## 102 **Study design and sampling**

103 A cross-sectional study was conducted from March to April 2021. The population in  
104 this study was individuals who lived in the Bantul regency for a minimum of six months, with  
105 a total of 1.018.402 inhabitants [10]. EpiInfo<sup>TM</sup> was used to calculate the sample size. The  
106 minimum sample size required was estimated based on a 20% of anti-SARS-CoV-2 antibodies  
107 prevalence, 6% sampling error, a significance level of 0.05 with a design effect of 2 and a non-  
108 response rate of 15%. Therefore, a total minimal sample size of 414 people.

109 Sampling was selected using a multistage cluster random sampling adopted from the  
110 WHO/EPI rapid survey [12]. Cluster size was 11, and clusters are neighbourhoods in a sub-  
111 village of around 50-70 households and selected using simple random sampling based on the  
112 elected village. A probability proportionate to size (PPS) sample was used to determine villages  
113 and clusters. We used a C-survey, 40 clusters distributed in 36 villages (25 urban and 11 semi-  
114 urban) and 17 subdistricts (48% from whole villages in Bantul). Systematic random sampling  
115 was used for recruiting households. Household members were defined as anyone who lived  
116 under one roof, ate from one kitchen, and resided in the study area for at least six months. In  
117 each household, a maximum of five eligible participants were recruited.

118 Participants must meet inclusion criteria as follows: residing in the study location at  
119 least six months before the survey commences, age of 5 years old or older, able to communicate  
120 verbally, give written consent to participate in the research or consent from parents/ guardians  
121 for respondents under 18 years old. Meanwhile, the exclusion criteria include people who  
122 cannot be sampled due to untoward illness (including immunocompromised individuals who  
123 have a history of blood disorders and people with mental disorders).

124

## 125 **Data collection**

126 Door to door visit was conducted for collecting the primary data. Written informed  
127 consent was obtained from each study participant before data collection. Fifteen enumerators,  
128 including a phlebotomist, were involved in the data collection. Two supervisors were assigned  
129 to ensure the methodology and conduct the spot check. All study teams were involved in four  
130 training days regarding methods, data entry, phlebotomy and ethics in research.

131 Two milliliters of blood were drawn from a cubital vein and kept in an EDTA tube.  
132 Each participant's data included a unique identifier (barcode label) linked to their blood sample  
133 and data for tracking and confidentiality. The blood sample was further transported, examined  
134 and stored in the Laboratory of Microbiology, Faculty of Medicine, Public Health, and Nursing  
135 UGM. Plasma was then tested for Ig-G anti-SARS-Cov2 procedures using (Human Anti-2019  
136 n-CoV(N) IgG ELISA Kit V1.5 FineTest [13].

137 Risk factors information at household and individual levels were obtained using an  
138 electronic structured questionnaire developed in the KoBo toolbox. Variables included in the  
139 household questionnaire were socio-demographic information (age, gender, relationship with  
140 the head of household, and household income). Individual questionnaires observed socio-  
141 demographic information (age, gender, highest education, occupation), COVID-19 vaccination  
142 status, previous diagnosis of COVID-19 and symptoms related to COVID-19 within the last  
143 six months, preventive actions taken and mobility in the previous two weeks. The data manager  
144 validated data daily. A day after the data entry, the data manager sent the supervisor feedback  
145 and confirmation regarding completeness and data consistency.

146 Updated cumulative data on notified cases were obtained through the COVID-19  
147 surveillance system conducted by Bantul District Health Office Bantul from March to April  
148 2021. COVID-19 was defined as an asymptomatic or asymptomatic person with positive PCR  
149 results tested for SAR-CoV2. Population numbers per sub-district were obtained through

150 Bantul Statistical Bureau for calculating incidence per 1000 population [10]. Data on urban-  
151 rural classification was obtained from the National Statistical Bureau [14].

152

## 153 **Statistical analysis**

154 The seroprevalence and socio-demographic characteristics of study participants were  
155 described proportionally using the table. Map developed in ArcGIS was used to visualize the  
156 comparison between seroprevalence and incidence of notified cases by district and urban-rural  
157 status. Bivariate analysis was conducted to identify the association between presumed risk  
158 factors (age, gender, occupation, comorbidities, prevention taken and mobility over the last two  
159 weeks) and anti-SARS CoV-2 seropositivity. After considering collinearity and interaction, a  
160 multiple logistic regression was used to examine the relationship between the independent  
161 variable and Anti-SARS CoV-2 seropositivity while controlling for the effects of other  
162 covariates. The P-value would be considered statistically significant at  $p < 0.05$ . All statistical  
163 analysis was performed using STATA 14.0.

164

## 165 **Ethics**

166

167 The study was approved by the Medical and Health Research Ethics Committee of the  
168 Faculty of Medicine, Public Health and Nursing Universitas Gadjah Mada with the number  
169 KE/1242/12/2020. Written informed consent was obtained from adult respondents and parents  
170 of enrolled children. Confidentiality of information from the respondents was upheld with  
171 utmost care throughout data collection, processing and analysis for all data collected.  
172 Therefore, their names were included in the notes only for traceability and referral during the  
173 data analysis.

## 174 **Result**

### 175 **Characteristics of study participants**

176 The prevalence of SARS-CoV-2 seropositivity among the participants in this study was  
177 31.1% (n=132/425). A significant difference was observed in the seroprevalence among age  
178 groups (p=0.000), with the highest proportion reported in the 55-64 years age group (43.7%;  
179 n=31/71). Meanwhile, the under 15 years age group showed no seropositivity.

180 A significant difference was also observed among occupation groups (p=0.009). The  
181 highest seroprevalence was demonstrated by participants working as daily workers/farmers  
182 (37.2%), followed by professional/health workers (34.6%), and  
183 unemployed/students/housewives (26%). Seroprevalence does not differ between semi-urban  
184 and urban areas even though we observed that semi-urban areas have higher seroprevalence  
185 (34.2%; n=40/117) than urban areas (29.9%; n=92/308). In terms of gender, we found no  
186 significant differences in prevalence between males and females, even where females showed  
187 higher seropositivity than males (Table 1).

188

189

190 **Table 1. Distribution of Study Participants by Background Characteristics.**

Characteristic	Total	IgG-positive	IgG-negative	P-value
	n = 425	n=132	n=293	
<b>Sex, n (%)</b>				
Male	174 (40.9)	52 (29.9)	122 (70.1)	0.663
Female	251 (59.1)	80 (31.9)	171 (68.1)	
<b>Age group, years, n (%)</b>				
<=14	16 (3.8)	0 (0.0)	16 (100)	
15-24	52 (12.2)	8 (15.4)	44(84.6)	
25-34	51 (12.0)	8 (15.7)	43(84.3)	



35-44	90 (21.2)	33 (36.7)	57(63.3)	0.000
45-54	92 (21.7)	32 (34.8)	60 (65.2)	
55-64	71 (16.7)	31 (43.7)	40 (56.3)	
65+	53 (12.5)	20 (37.7)	33 (62.3)	
<b>Occupation, n (%)</b>				
Unemployed/students/housewife	200 (47.2)	52 (26.0)	148 (74.0)	0.009
Professional/health worker	130 (30.7)	45 (34.6)	85 (65.3)	
Daily worker/farmer	94 (22.2)	35 (37.2)	59 (62.8)	
<b>Residence setting, n (%)</b>				
Urban	308 (72.5)	92 (29.9)	216 (70.1)	0.390
Semi-urban area	117 (27.5)	40 (34.2)	77 (65.8)	
<b>Smoking, n (%)</b>				
Smoker	74 (18.1)	14 (18.9)	60(81.1)	0.007
Non smoker	335 (81.9)	118 (35.2)	217(64.8)	
<b>History of chronic disease, n (%)</b>				
Yes	96 (22.6)	37 (38.5)	59 (61.5)	0.072
No	329 (77.4)	95 (28.9)	234 (71.1)	
<b>Diabetes mellitus, n (%)</b>				
Yes	15 (3.5)	6 (40.0)	9 (60.0)	0.514
No	394 (92.5)	126 (32.0)	268 (68.0)	
<b>Hypertension, n (%)</b>				
Yes	65 (15.9)	23 (35.4)	42 (64.6)	0.559
No	344 (84.1)	109 (31.7)	235 (68.1)	
<b>Obesity, n (%)</b>				
Yes	8 (1.9)	4 (50)	4 (50)	0.279
No	401 (98.1)	128 (31.9)	273 (68.1)	
<b>Previous COVID-19 diagnosis, n (%)</b>				
Yes	3 (0.7)	1 (33.3)	2 (66.7)	1.000
No	422 (99.3)	131 (31.0)	291 (68.9)	
<b>COVID-19 symptoms n (%)</b>				
Yes	155 (36.4)	44 (28.4)	111 (71.6)	0.4
No	270 (63.4)	88 (32.6)	182 (67.4)	

<b>COVID-19 vaccination, n (%)</b>				
Yes, at least 1 dosage	13 (3.1)	9 (69.2)	4 (30.8)	0.005
Not yet	412 (96.9)	123 (29.9)	289 (70.2)	

191

192

193 This study also explored the seroprevalence based on chronic diseases and  
194 comorbidities history. Participants with a history of chronic conditions accounted for 22.6% of  
195 the total participants, and comorbidities identified in this study were diabetes mellitus,  
196 hypertension and obesity. Among those with comorbidities, seroprevalence for participants  
197 with obesity, diabetes mellitus, and hypertension were 50%, 40%, and 35.4%, respectively.  
198 Participants with a prior diagnosis of COVID-19 in the last six months accounted for 1 out of  
199 132 seropositive cases. Seroprevalence among participants with no previous experience of  
200 COVID-19 related symptoms was found to be 31.1%. Seropositivity was observed in 14  
201 participants under seven different households, making family clusters account for 10.6% of the  
202 total positive cases.

203 In terms of preventive actions, seroprevalence was found highest in participants who  
204 reported not always taking the preventive measures such as 1) wearing masks when going out  
205 (35.6%); 2) maintaining a physical distancing (1-2 m) in the public area (33.1%); and 3)  
206 washing hands for at least 20 seconds (32.1%). Meanwhile, in the mobility aspect, the highest  
207 seroprevalence was observed in participants who always attended invitations to traditional or  
208 religious activities (35.9%). Frequent mobility in visiting relatives/friends for essential matters  
209 and going to the shops/markets/offices contributed to 30.9% and 30.1% of seroprevalence,  
210 respectively. Of the participants who reported not always staying at home, the seroprevalence  
211 was 33.9%. No significant difference was observed between individual preventive actions and  
212 their mobility with seropositivity status (Table 2).

213

214 **Table 2. Distribution of Study Participants by Preventive Action and Mobility.**

Preventive measure and mobility	Total	IgG-positive	IgG-negative	p-value
	n = 425	n=132	n=293	
<b>Preventive measure</b>				
<i>Wearing masks when going out</i>				
Always	380 (89.4)	116 (30.5)	264 (69.5)	0.491
Not always	45 (10.6)	16 (35.6)	29 (64.4)	
<i>Washing hands for at least 20 seconds with running water</i>				
Always	344 (80.9)	106 (30.8)	238 (69.2)	0.822
Not always	81 (19.1)	26 (32.1)	55 (67.9)	
<i>Maintain a physical distancing (1-2m) in the public area</i>				
Always	274 (64.5)	82 (29.9)	192 (70.1)	0.497
Not always	151 (35.5)	50 (33.1)	101 (66.9)	
<b>Mobility</b>				
<i>Attending invitations to traditional or religious activities (e.g. weddings, funerals)</i>				
Always	39 (9.2)	14 (35.9)	25 (64.5)	0.493
Not always	386 (90.8)	118 (30.6)	268 (69.4)	
<i>Visiting relatives or friends or other people due to important matters</i>				
Always	42 (9.9)	13 (30.9)	29 (69.1)	0.987
Not always	383 (90.1)	119 (31.1)	264 (68.9)	
<i>Going to the markets/shops/offices/crowds</i>				
Always	166 (39.1)	50 (30.1)	116 (69.9)	0.738
Not always	259 (60.9)	82 (31.7)	177 (68.3)	
<i>Staying at home, except for essential matters</i>				
Always	313 (73.7)	94 (30.1)	219 (69.9)	0.444
Not always	112 (26.3)	38 (33.9)	74 (66.1)	

215

## 216 **Seroprevalence of anti-SARS-CoV-2 based on the geographical** 217 **distribution**

218 This study reported no difference between urban and semi-urban areas. However, we observed  
219 higher seropositive cases in semi-urban areas, of which higher numbers were found in Pajangan  
220 (56.5%), Dlingo (42.1%), and Sanden (41.7%) (Figure 1). The highest distribution of  
221 confirmed cases acquired from routine regional data reported a higher cumulative cases number  
222 in urban areas, such as Banguntapan, Bantul, Sewon, and Jetis.

223

### 224 **Fig 2. Seroprevalence and Reported Cumulative Incidence of SARS-Cov-2 in April 2021** 225 **Based on District.**

226

## 227 **Risk factors associated with SARS-CoV-2 seropositivity**

228 This study further explored the risk factors associated with the seropositivity of SARS-CoV-2,  
229 adjusting for age, sex, occupation, comorbidities, and vaccination status. A significant  
230 association was observed within the age group. The odds of SARS-CoV-2 seropositivity is  
231 higher in the age 55-64 (adjusted odds ratio [aOR]=3.79; 95% CI 1.46-9.85, p=0.006).  
232 Although females demonstrated higher seroprevalence, no association was found between  
233 gender difference and occupation. (aOR=0.81; 95% CI 0.50-1.31, p>0.005) (Table 3).

234

235

236

237

238

239 **Table 3. Factors Associated with SARS-Cov-2 Seropositivity in Bantul Regency (N=425).**

<b>Risk Factors</b>	<b>ELISA+ (n/N)</b>	<b>Adjusted OR (95% CI)</b>	<b>p-value</b>
<b>Age group</b>			
<=14	0/132	NA	NA
15-24	8/132	Reference	NA
25-34	8/132	0.93 (0.31-2.79)	0.893
35-44	33/132	2.71 (1.08-6.81)	0.034
45-54	32/132	2.67 (1.05-6.80)	0.040
55-64	31/132	3.79 (1.46-9.85)	0.006
65+	20/132	3.38 (1.27-9.00)	0.015
<b>Sex</b>			
Male	52/132	0.81 (0.50-1.31)	0.388
Female	80/132	Reference	NA
<b>Occupation</b>			
Unemployed/students/housewife	52/132	Reference	NA
Professional/health worker	45/132	1.14 (0.64-2.00)	0.661
Daily worker/farmer	35/132	1.27 (0.70-2.31)	0.441
<b>Comorbidities</b>			
Hypertension	23/132	0.87 (0.48-1.57)	0.646
Obesity	4/132	2.46 (0.57-10.65)	0.229
Diabetes Mellitus	6/132	1.12 (0.38-3.31)	0.832
<b>Vaccination Status</b>			
Yes	14/132	Reference	NA
No	13/132	0.19 (0.05-0.68)	0.010

240

241 Comorbidities were presumed as one of the risk factors of SARS-CoV-2 seropositivity.

242 The odds of SARS-CoV-2 seropositivity are higher in participants with obesity (aOR=2.46;

243 95% CI 0.57-10.65) and diabetes mellitus (aOR=1.12; 95% CI 0.38-3.31) than participants

244 without each respective comorbidity. However, this finding is not statistically significant (p-

245 value>0.05).

246           Although vaccination has not been rolled out to the general public during the data  
247 collection, the majority of the participants (91.5%) were aware that the government would  
248 provide the vaccination for the people and stated their willingness (79.1%) to get vaccinated.  
249 Only a small proportion of the participants (11.1%) refused to get vaccinated for various  
250 reasons, such as being afraid of the adverse effect, uncertain safety and effectiveness, and  
251 religious beliefs.

## 252 **Discussion**

253           The finding from this seroprevalence study for SARS-CoV-2 reported that the  
254 prevalence of IgG antibodies against SARS-CoV-2 was 31.1% in Bantul when the vaccination  
255 program had just started targeted health workers. It indicates higher seropositivity than 11.4%  
256 in a study in East Java in late 2020 [7]. The discrepancy between our research and COVID-19  
257 cumulative incidence notified cases in the Bantul Regency, which reported a 1.1% cumulative  
258 incidence within the same period. This finding is in line with previous research that suggested  
259 the estimates obtained from seroprevalence were 18.1 times higher than the corresponding  
260 cumulative incidence of COVID-19 infections, implying that confirmed cases as a poor  
261 indicator of the extent of the disease spread [15].

262           Seroprevalence varies geographically, and previous research indicated that urban areas  
263 mainly reported a higher number of seropositivity [6]. Regional data reported a higher  
264 prevalence in urban areas in Bantul (Bantul, Banguntapan, Sewon, and Jetis). However, this  
265 study showed that higher seropositivity was descriptively observed in semi-urban areas  
266 (Pajangan, Dlingo and Sanden), suggesting a disparity in access to health services.

267           At the pandemic's beginning, urban areas with dense populations were impacted earlier.  
268 A previous study on epidemiological modelling predicted that COVID-19 spread faster in  
269 urban than rural areas [16]. Despite the rapid transmission, urban areas are usually supported

270 by better surveillance management, such as more accessible testing, tracing, and control of the  
271 infection. Consequently, cases in urban areas were reported faster and earlier.

272         Meanwhile, rural areas usually have shortages in resources and workforces, which  
273 affects their ability to detect, respond, prevent, and control infectious disease outbreaks [17,  
274 18]. In this study, a large proportion of seropositivity was reported in participants with no prior  
275 diagnosis of COVID-19, indicating that the infection might be undiagnosed due to a lack of  
276 individual testing. Thus, this study suggests that the higher transmission observed in semi-  
277 urban areas was lower access to health services, including lack of individual testing, resulting  
278 in unreported positive cases.

279         Higher seroprevalence in this study was observed in females. However, no statistically  
280 significant gender difference was reported. A previous study also suggested that SARS-CoV-  
281 2 IgG/IgM dynamic is mainly affected by age and disease severity, not sex [19]. Higher  
282 seropositivity was observed in the age group 55-64, and this finding supports many previous  
283 studies that indicate older age as one of the risk factors for COVID-19. Though not statistically  
284 significant, this study found a higher risk of infection in participants with obesity. As suggested  
285 in a previous study, obesity now emerges as an essential risk factor for COVID-19 with more  
286 severe symptoms and an adverse prognosis [20].

287         This study subsequently found that a proportion of seropositivity was present among  
288 those with a frequent stay at home except for essential matters. In addition, occupation  
289 seemingly requires lower mobility, such as unemployed, students, and housewives, also  
290 accounted for seropositivity cases. As this study found one-tenth of family clusters, these  
291 findings indicate the transmission might also have occurred at the household level. Previous  
292 studies suggest that household transmission is considered a dominant route of COVID-19  
293 infection [21, 22].

294 Household transmission might have occurred due to the challenging and ineffective  
295 separation and quarantine for higher mobility individuals in the same household [23]. The  
296 transmission at the household level may further spread to the community by those individuals.  
297 In this study, occupations requiring higher mobility, for instance, daily workers, farmers, and  
298 professional/health workers, have a higher seroprevalence. This study suggests that frequent  
299 mobility and lower compliance to preventive measures (wearing masks, washing hands, and  
300 physical distancing) also led to a higher number of seropositivity.

301 Surveillance and containment measures such as large-scale social restrictions and other  
302 anticipatory prevention become priority to curb the transmission, primarily focusing on areas  
303 with lower access to health services. Earlier in the pandemic, outbreak containment was  
304 concentrated in the dense urban areas, which may have reduced the number of cases. However,  
305 the transmission slowly moved to the semi-urban and rural communities due to high mobility.  
306 People living in rural communities might develop a false sense of security and take fewer  
307 precautions at the beginning than the urban communities [8,9].

308 One of the effective ways to prevent the fatalities caused by COVID-19 is through  
309 vaccination. Due to no vaccination programme rolled out to the general population during the  
310 data collection period, it is reasonable that higher seroprevalence was found in unvaccinated  
311 groups. As this study explored the seroprevalence when most people were still unvaccinated, a  
312 better picture of the infection spread in Bantul was obtained since there was no implication  
313 from vaccine-induced antibodies.

314 Despite the findings, this study is not without limitations. Following a natural infection,  
315 antibody titers peak and begin to wane in a various manner. This study, however, did not take  
316 into account the assay performance in relation to the waning immunity. Furthermore, as a cross-  
317 sectional study, this study only analyzed the variables at once and did not explore the  
318 seroprevalence changes over time as obtained in longitudinal studies.



## 319 **Conclusion**

320 This serosurvey demonstrated a higher seroprevalence compared to reported data in the  
321 same period. Based on the findings, it is strongly recommended for the local government to  
322 strengthen the surveillance and 3T (testing, tracing, and treatment) efforts by involving the task  
323 force at the neighbourhood community and village levels throughout Bantul Regency,  
324 particularly in areas with lower access to health services. Besides that, increase awareness and  
325 implementation of health protocols, especially when carrying out activities with high mobility,  
326 to prevent transmission within the household. As the vaccination for the general population is  
327 being rolled out, it is crucial to provide adequate implementation information, including health  
328 resources and logistics. This study can be implemented in other areas, both at the district/city  
329 and provincial levels, to better understand the seroprevalence of SARS-CoV-2 in Indonesia.  
330 This study provides a district-level view of the extent of COVID-19 spread and a different  
331 approach to conducting serosurvey among diverse populations in various regions to fit the gaps  
332 in understanding COVID-19 spread in a global level.

## 333 **Acknowledgments**

334 We thank all study participants involved in the study, Bantul DHO, for supporting the research  
335 and all of the enumerators and the supervisor for the great work during the data collection.

336

## 337 **Funding**

338 This research was funded by the Ministry of Research and Technology/National Research and  
339 Innovation Agency and Indonesia (BRIN) and the Indonesia Endowment Fund for Education  
340 (LPDP) of the Ministry of Finance of the Republic of Indonesia.

341 **Conflict of interest**

342 The authors declare no conflict of interest.

343

344

345 **Supporting information**

346 **S1 Fig. Map of Bantul Regency, Special Region of Yogyakarta, Indonesia.**

347 **S2 Fig. Seroprevalence and Reported Cumulative Incidence of SARS-Cov-2 in April 2021**

348 **Based on District.**

349 **S1 Table. Distribution of Study Participants by Background Characteristics.**

350 **S2 Table. Distribution of Study Participants by Preventive Action and Mobility.**

351 **S3 Table. Factors Associated with SARS-Cov-2 Seropositivity in Bantul Regency**

352 **(N=425).**

353

354

355

356

357

358

359

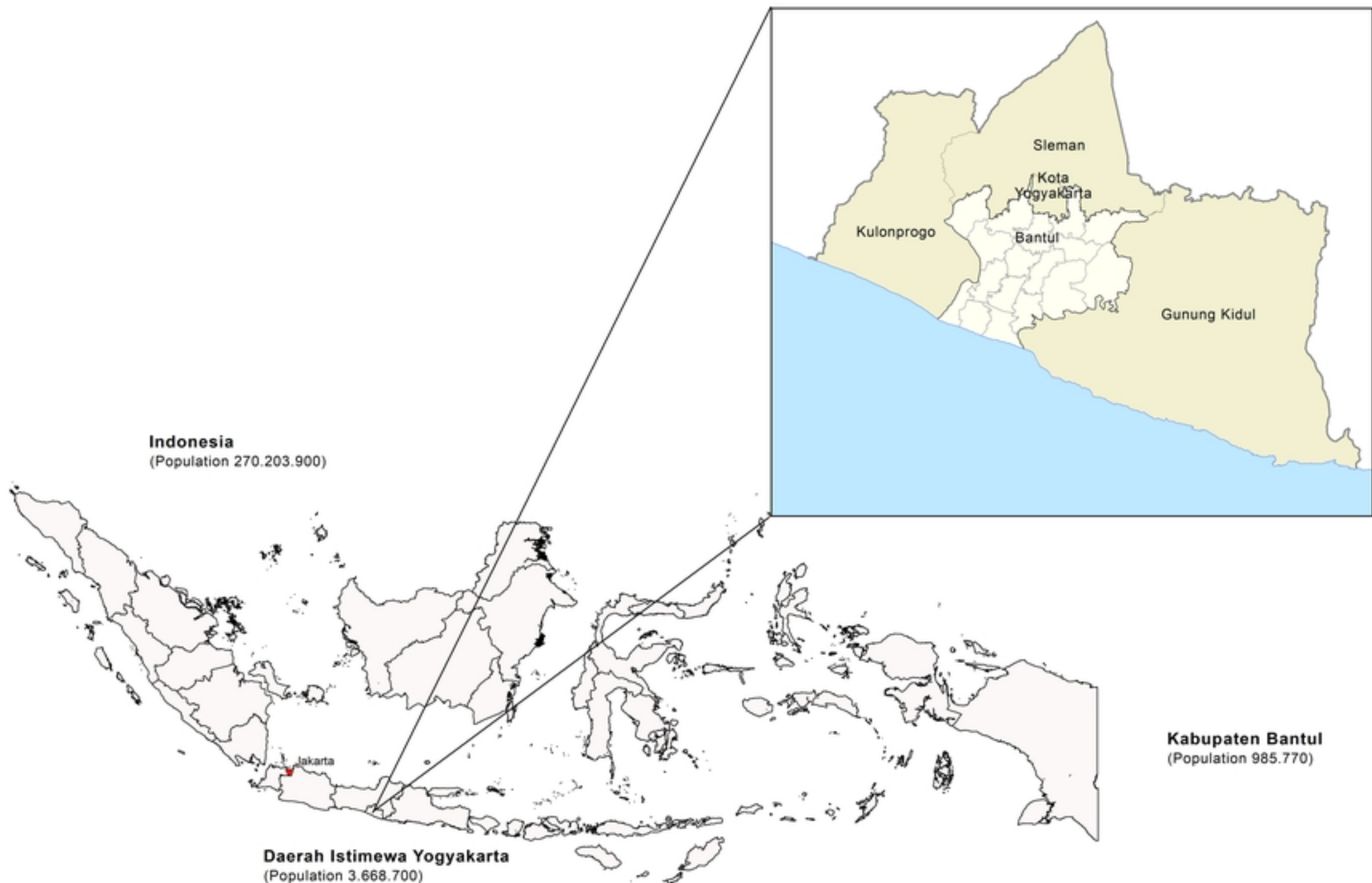
## 360 **References**

- 361 1. Hanggara AG. Covid-19 [Internet]. [cited 2021 Dec 23]. Available from:  
362 [https://corona.jakarta.go.id/en/artikel/jakarta-tanggap-covid-19-kenapa-harus-](https://corona.jakarta.go.id/en/artikel/jakarta-tanggap-covid-19-kenapa-harus-dirumahaja-selama-14-hari)  
363 [dirumahaja-selama-14-hari](https://corona.jakarta.go.id/en/artikel/jakarta-tanggap-covid-19-kenapa-harus-dirumahaja-selama-14-hari)
- 364 2. World Health Organization. Coronavirus disease 2019 (COVID-19): situation report, 51  
365 [Internet]. World Health Organization; 2020 Mar [cited 2021 Dec 23]. Available from:  
366 <https://apps.who.int/iris/handle/10665/331475>
- 367 3. CDC. Cases, Data, and Surveillance [Internet]. Centers for Disease Control and  
368 Prevention. 2020 [cited 2021 Dec 23]. Available from:  
369 [https://www.cdc.gov/coronavirus/2019-ncov/covid-data/serology-](https://www.cdc.gov/coronavirus/2019-ncov/covid-data/serology-surveillance/index.html)  
370 [surveillance/index.html](https://www.cdc.gov/coronavirus/2019-ncov/covid-data/serology-surveillance/index.html)
- 371 4. West R, Kobokovich A, Connell N, Gronvall GK. COVID-19 Antibody Tests: A  
372 Valuable Public Health Tool with Limited Relevance to Individuals. *Trends Microbiol.*  
373 2021 Mar;29(3):214–23. <https://doi.org/10.1016/j.tim.2020.11.002> PMID: 33234439
- 374 5. Ojeda DS, Ledesma MMGL, Pallarés HM, Navarro GSC, Sanchez L, Perazzi B, et al.  
375 Emergency response for evaluating SARS-CoV-2 immune status, seroprevalence and  
376 convalescent plasma in Argentina. *PLOS Pathogens.* 2021 Jan 14;17(1):e1009161.  
377 <https://doi.org/10.1371/journal.ppat.1009161> PMID: 33444413
- 378 6. Mohanan M, Malani A, Krishnan K, Acharya A. Prevalence of SARS-CoV-2 in  
379 Karnataka, India. *JAMA.* 2021 Mar 9;325(10):1001–3. doi:10.1001/jama.2021.0332  
380 PMID: 33538774.

- 381 7. Megasari NLA, Utsumi T, Yamani LN, Juniastuti, Gunawan E, Furukawa K, et al.  
382 Seroepidemiological study of SARS-CoV-2 infection in East Java, Indonesia. PLOS  
383 ONE. 2021 May 6;16(5):e0251234. <https://doi.org/10.1371/journal.pone.0251234>  
384 PMID: 33956869
- 385 8. Peters DJ. Community Susceptibility and Resiliency to COVID-19 Across the Rural-  
386 Urban Continuum in the United States. *The Journal of Rural Health*. 2020;36(3):446–56.  
387 <https://doi.org/10.1111/jrh.12477> PMID: 32543751
- 388
- 389 9. Murhekar MV, Bhatnagar T, Selvaraju S, Saravanakumar V, Thangaraj JWV, Shah N, et  
390 al. SARS-CoV-2 antibody seroprevalence in India, August–September, 2020: findings  
391 from the second nationwide household serosurvey. *The Lancet Global Health*. 2021 Mar  
392 1;9(3):e257–66. [https://doi.org/10.1016/S2214-109X\(20\)30544-1](https://doi.org/10.1016/S2214-109X(20)30544-1) PMID: 33515512
- 393 10. BPS Bantul. Bantul Regency in Figure 2021. Badan Pusat Statistik Kabupaten Bantul;  
394 2021.
- 395 11. Sadali MI, Sadali MI. *Mobilitas Pekerja Pada Kawasan Industri Piyungan di Kabupaten*  
396 *Bantul, Daerah Istimewa Yogyakarta [Internet]*. Universitas Gadjah Mada; 2014 [cited  
397 2021 Dec 23]. Available from: <http://etd.repository.ugm.ac.id/penelitian/detail/75081>
- 398 12. WHO. *The EPI Coverage Survey: Module: Training for mid-level manager (MLM)*.  
399 World Health Organization; 2008.
- 400 13. Van Honacker E, Coorevits L, Boelens J, Verhasselt B, Van Braeckel E, Bauters F, et al.  
401 Sensitivity and specificity of 14 SARS-CoV-2 serological assays and their diagnostic

- 402 potential in RT-PCR negative COVID-19 infections. *Acta Clin Belg.* :1–6.  
403 <https://doi.org/10.1080/17843286.2020.1861885> PMID: 33350362
- 404 14. BPS. *Klasifikasi Perkotaan dan Perdesaan di Indonesia: Peraturan Kepala Badan Pusat*  
405 *Statistik Nomor 37 Tahun 2010.* Badan Pusat Statistik; 2010.
- 406 15. Bobrovitz N, Arora RK, Cao C, Boucher E, Liu M, Donnici C, et al. Global  
407 seroprevalence of SARS-CoV-2 antibodies: A systematic review and meta-analysis.  
408 *PLOS ONE.* 2021 Jun 23;16(6):e0252617. <https://doi.org/10.1371/journal.pone.0252617>  
409 PMID: 34161316
- 410 16. Stier AJ, Berman MG, Bettencourt LMA. COVID-19 attack rate increases with city size  
411 [Internet]. 2020 Apr [cited 2021 Dec 23] p. 2020.03.22.20041004. Available from:  
412 <https://www.medrxiv.org/content/10.1101/2020.03.22.20041004v2>
- 413 17. Turner-Musa J, Ajayi O, Kemp L. Examining Social Determinants of Health, Stigma, and  
414 COVID-19 Disparities. *Healthcare (Basel).* 2020 Jun 12;8(2):168.  
415 <https://doi.org/10.3390/healthcare8020168> PMID: 32545647
- 416 18. Patel L, Elliott A, Storlie E, Kethireddy R, Goodman K, Dickey W. Ethical and Legal  
417 Challenges During the COVID-19 Pandemic: Are We Thinking About Rural Hospitals?  
418 *The Journal of Rural Health.* 2021;37(1):175–8. <https://doi.org/10.1111/jrh.12447> PMID:  
419 32282953
- 420 19. Luo C, Liu M, Li Q, Zheng X, Ai W, Gong F, et al. Dynamic changes and prevalence of  
421 SARS-CoV-2 IgG/IgM antibodies: Analysis of multiple factors. *International Journal of*  
422 *Infectious Diseases.* 2021 Jul 1;108:57–62. <https://doi.org/10.1016/j.ijid.2021.04.078>  
423 PMID: 33932603

- 424 20. Petrakis D, Margină D, Tsarouhas K, Tekos F, Stan M, Nikitovic D, et al. Obesity - a risk  
425 factor for increased COVID-19 prevalence, severity and lethality (Review). *Mol Med*  
426 *Rep.* 2020;22(1):9-19. Epub 2020/05/08. doi: 10.3892/mmr.2020.11127. PubMed PMID:  
427 32377709; PubMed Central PMCID: PMC7248467.
- 428
- 429 21. Shen M, Peng Z, Guo Y, Rong L, Li Y, Xiao Y, et al. Assessing the effects of  
430 metropolitan-wide quarantine on the spread of COVID-19 in public space and  
431 households. *International Journal of Infectious Diseases.* 2020 Jul 1;96:503–5.  
432 <https://doi.org/10.1016/j.ijid.2020.05.019>
- 433
- 434 22. Madewell ZJ, Yang Y, Longini IM Jr, Halloran ME, Dean NE. Household Transmission  
435 of SARS-CoV-2: A Systematic Review and Meta-analysis. *JAMA Network Open.* 2020  
436 Dec 14;3(12):e2031756 doi:10.1001/jamanetworkopen.2020.31756 PMCID:  
437 PMC7737089.
- 438 23. Peak CM, Kahn R, Grad YH, Childs LM, Li R, Lipsitch M, et al. Individual quarantine  
439 versus active monitoring of contacts for the mitigation of COVID-19: a modelling study.  
440 *The Lancet Infectious Diseases.* 2020 Sep 1;20(9):1025–33  
441 [https://doi.org/10.1016/S1473-3099\(20\)30361-3](https://doi.org/10.1016/S1473-3099(20)30361-3) PMID: 32445710



Source : Geospatial Information Agency of the Republic of Indonesia, 2015-2019. Indonesia's Digital Topographic Map. Bogor, West Java. Accessed from: <http://tanahair.indonesia.go.id/portal-web/>

Map layout by Center for Tropical Medicine, Universitas Gadjah Mada, 2021

Figure 1



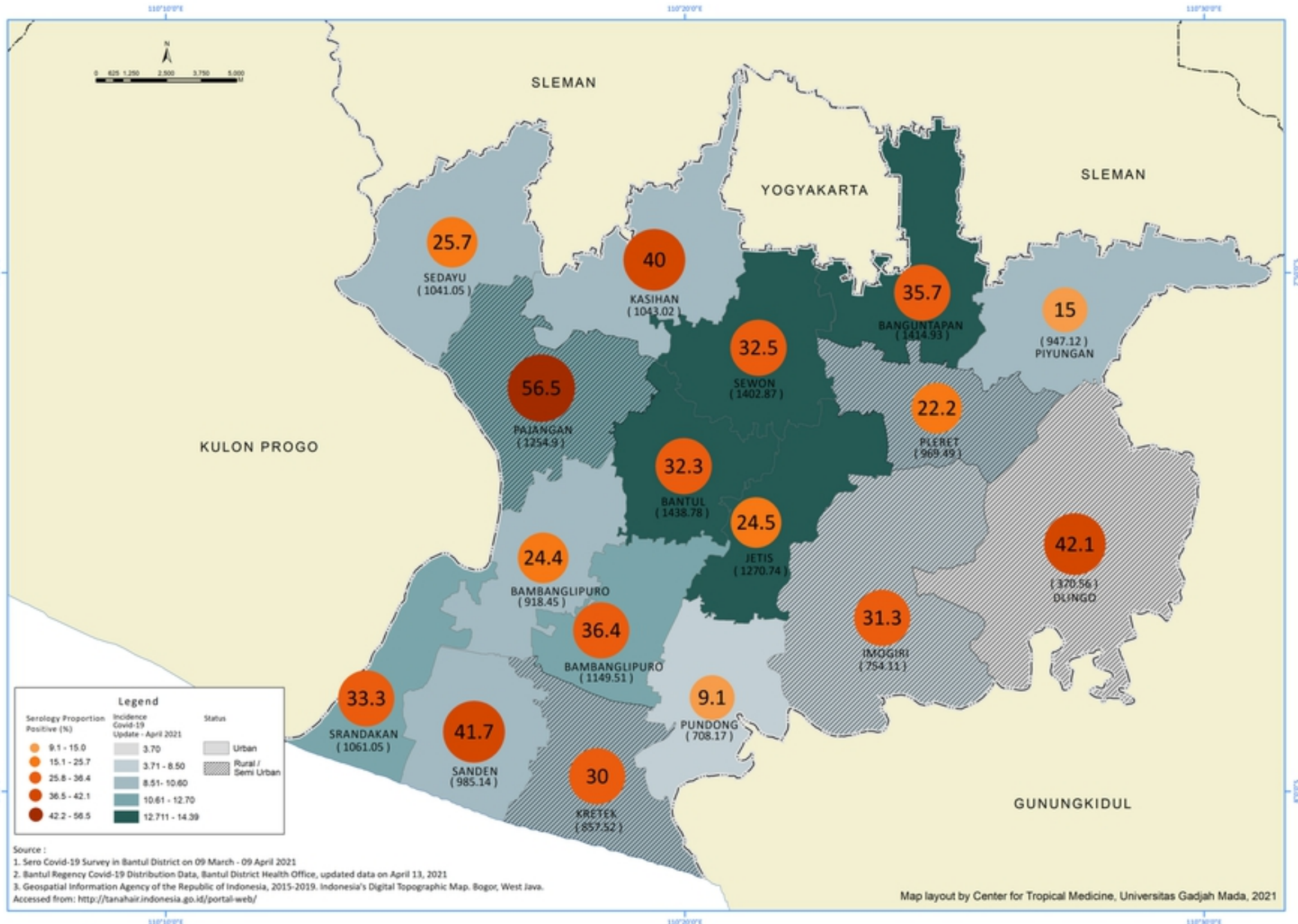


Figure2