

1 June 2022

LIVER-RELATED AND OTHER-CAUSE MORTALITY RISK IN EXCESSIVE DRINKERS: ANALYSIS OF DATA FROM THE UK BIOBANK

John B Whitfield (1)*, Devanshi Seth (2,3,4), Timothy R Morgan (5,6), GenomALC Consortium#

- (1) QIMR Berghofer Medical Research Institute, 300 Herston Road, Brisbane 4006 Australia
- (2) Drug Health Services, Royal Prince Alfred Hospital, Missenden Road, Camperdown NSW 2050, Australia
- (3) Faculty of Medicine and Health, University of Sydney, NSW 2006, Australia
- (4) Centenary Institute of Cancer Medicine and Cell Biology, University of Sydney, NSW 2006, Australia
- (5) Department of Veterans Affairs, VA Long Beach Healthcare System, 5901 East Seventh Street, Long Beach CA 90822, USA
- (6) Department of Medicine, University of California, Irvine, USA

*Corresponding Author. John.Whitfield@qimrberghofer.edu.au. Address as above.

#GenomALC Consortium investigators are listed in Appendix 1.

Word count:

Abstract 259

Abstract, Main text, References, Table and Figure Legends 5934

5 Tables, 2 Figures.

NOTE: This preprint reports new research that has not been certified by peer review and should not be used to guide clinical practice.

Conflict of interest statement

TRM has conducted clinical research with AbbVie, Genfit, Gilead, and Merck but none of these are related to this manuscript.

Financial support statement

This work was supported, in part, by the National Institutes of Health, USA (U01 AA018389). Funders had no role in study design, data analysis, conclusions, writing and revision of the paper or decisions on publication.

Authors' contributions.

Conception and design of the work, acquisition of data: JBW, DS, TRM. Analysis and interpretation of data: JBW. Drafting the work or revising it critically for important intellectual content and final approval of the version to be published; JBW, DS, TRM. All authors agree to be accountable for all aspects of the work in ensuring that questions related to the accuracy or integrity of any part of the work are appropriately investigated and resolved.

ABBREVIATIONS

ALT	Alanine aminotransferase
AST	Aspartate aminotransferase
BMI	Body Mass Index
CI	Confidence Interval
DBP	Diastolic Blood Pressure
GGT	Gamma-glutamyl transferase
HDL	High-density lipoprotein
HR	Hazard Ratio
ICD-10	International Classification of Diseases, 10 th Edition
IGF-1	Insulin-like growth factor 1
LDL	Low-density lipoprotein
Lp(a)	Lipoprotein (a)
MCV	Mean cell volume (of erythrocytes)
MRV	Mean reticulocyte volume
MSCV	Mean spherical cell volume
RDW	Red cell distribution width
SBP	Systolic Blood Pressure
SE	Standard Error
SHBG	Sex-hormone-binding globulin
WHR	Waist/Hip Ratio

ABSTRACT

Background and Aims High alcohol intake is associated with increased mortality. We aimed to identify factors affecting mortality in people drinking extreme amounts. **Approach and Results.** Information was obtained from the UK Biobank on approximately 500,000 participants aged 40-70 years at baseline assessment in 2006-2010. Habitual alcohol intake, lifestyle and physiological data, laboratory test results, and hospital diagnoses and death certificate data (to June 2020) for 5136 men (2.20% of male participants) and 1504 women (0.60%) who reported taking ≥ 80 g/day or ≥ 50 g/day, respectively, were used in survival analysis. Compared to all other participants, their mortality HRs were 9.40 (95% CI 7.00-12.64) for any liver disease (ICD-10 K70-K76), 2.02 (1.89-2.17) for all causes, 1.89 (1.69-2.12) for any cancer (C00-C99), and 1.87 (1.61-2.17) for any circulatory disease (I00-I99). Liver disease diagnosis or abnormal liver function tests predicted not only deaths attributed to liver disease but also those from cancers or circulatory diseases. Mortality among excessive drinkers was also associated with quantitative alcohol intake, diagnosed alcohol dependence (ICD-10 F10.2), and current smoking at assessment. **Conclusions.** People with chronic excessive alcohol intake experience decreased average survival but there is substantial variation in their mortality, with liver abnormality and alcohol dependence each associated with worse prognosis. Clinically, patients with these risk factors as well as high alcohol intake should be considered for early or intensive management. Research can usefully focus on the factors predisposing to dependence or liver abnormality.

KEY WORDS

Alcohol; Alcohol dependence; Excessive drinking; Liver disease; All-cause Mortality.

INTRODUCTION

Many studies have compared all-cause mortality, mortality from pre-defined causes, or incidence of conditions of interest between groups of people classified by their self-reported alcohol intake (1-4). Most have found associations between higher alcohol intake and poorer outcomes. Few studies have asked the complementary question - what happens to people who do consume hazardous amounts of alcohol? How much are their lives shortened, what are their causes of death, and what factors modify or predict mortality and morbidity in people with persistently high alcohol intake? There have been estimates of alcohol-related disease burden based on prevalence of high intake and the dose-response curve for mortality (5), and studies based on follow-up of patients with alcohol dependence (6-10), but information on long-term outcomes for excessive drinkers from the general population is scarce. A direct approach to these questions requires prospective study of a substantial cohort of high-risk drinkers, representative of the general population and not biased towards patients seeking treatment.

Such studies require an operational definition of ‘excessive’ drinking. Reported consumption of 80 grams of alcohol per day for men, 50 grams per day or more for women, is frequently associated with adverse consequences (1, 11, 12) (although lower limits are appropriate for public health messaging and for reduction of alcohol-related risk across the population).

The UK Biobank is a prime source of relevant information for the general population of an economically developed country. This project recruited just over 500,000 UK-resident men and women, aged 40-70 years in 2006-2010, and the resulting resource (13) contains self-report information on alcohol use and on a wide range of personal, physiological, biochemical and genetic characteristics. Subsequent information from death certificates and hospital records allows comparison of outcomes for excessive drinkers versus the rest of the participating population. Because the study sample is so large, it contains a substantial

number of excessive drinkers even though they comprise only a small proportion of participants.

Our analysis of the UK Biobank data addresses questions related to risk in excessive drinkers. How do their all-cause mortality, and the distribution of causes, compare with those who do not meet excessive drinking criteria? In particular, how prominent is alcohol-related liver disease (recognised as a major medical consequence of excessive drinking), or liver disease in general, among the causes of death? What risk factors or predictors are associated with risk of death among excessive drinkers, and how large are their effects?

SUBJECTS AND METHODS

Information used in this analysis was obtained from the UK Biobank (application number 18870). Recruitment and initial assessment of just over 500,000 participants occurred between 2006 and 2010, targeted at the 40-69 years age group (actual range 37-73, median 58 years). Participants gave informed consent, and our application was approved by the UK Biobank through their procedures, consistent with the UK Biobank Ethics and Governance Framework (<https://www.ukbiobank.ac.uk/learn-more-about-uk-biobank/about-us/ethics>, accessed 2022-03-22). A small number of participants who had withdrawn their consent after initial participation were excluded from the data analysis.

Information obtained at an assessment session included responses to computer-administered questionnaires, physiological measurements and collection of blood samples for laboratory tests and genotyping. Questions about alcohol use included quantity and frequency of specified alcoholic beverages at the time of assessment, and a simple comparison with the amount ten years previously. Participants' answers were used to calculate the number of standard drinks per week and hence the amount of alcohol in grams per day. Initial

assessment included information about smoking, body mass index (BMI), blood pressure and consumption of non-alcoholic beverages including tea and coffee. Details are available at <https://biobank.ndph.ox.ac.uk/showcase/> (accessed 2022-03-22).

Excessive drinkers were defined, for this analysis, as participants with self-reported alcohol intake at the time of assessment greater than or equal to 80 g/day for men, 50 g/day for women and also (to ensure that they had long-term high exposure) similar or greater consumption ten years previously.

Information on diagnoses from UK hospital encounters, and from death certificates, was coded using the International Classification of Diseases, 10th Edition (ICD-10). Death records were obtained in June 2020 and dates of death ranged from 10 May 2006 to 26 April 2020.

IBM SPSS Statistics, version 22, was used for data management and statistical tests. The main results are based on survival analysis using either Kaplan-Meier or Cox regression methods. Because participants entered the study at differing ages and times, and exposure to alcohol-related risk was over a substantial time, age at death was used as the survival variable. Except where comparisons were made between results for men and women, sex was included as a factor in survival analyses. Analysis based on all-cause mortality was supplemented with more detailed analysis by cause of death, using only the underlying (primary) cause of death (UK Biobank field 40001). Sub-groups were created for deaths from all cancers (ICD-10 C00 to C99), all circulatory diseases (ICD-10 I00 to I99), and all other causes except liver disease. Because of its strong association with alcohol use, there was a separate analysis for deaths from any liver disease (ICD-10 K70 to K76, including both alcohol-related liver disease and other liver diseases). Age at death was calculated from the year of birth (exact dates of birth are not available) and the date of death, and participants who had not died were censored at an age calculated from the difference between year of birth and 2020.

Frequency distributions for laboratory test results were plotted and examined visually; if appropriate the results were log₁₀-transformed to obtain more symmetrical distributions. Data (for excessive drinkers only) were regressed on age at blood collection, separately for men and women, and the standardised residuals were saved for use as predictors in the survival analysis. Amount of alcohol reported by the excessive drinkers was also log-transformed. Binary variables such as presence or absence of a diagnosis were coded as 0 (absent) or 1 (present).

RESULTS

Comparisons between excessive-drinking and other participants

Among the UK Biobank participants, 5136 men (2.20% of male participants) reported drinking at or above 80 g of alcohol/day with similar or greater consumption 10 years previously, and 1504 women (0.60% of female participants) reported drinking 50 g/day or more at the time of assessment with similar or greater consumption 10 years earlier. These participants are referred to as the ‘excessive drinkers’. Descriptive information for excessive drinkers, and for all other participants, is shown in Supplementary Table 1.

811 (12.2%) of the 6640 excessive drinkers and 29,448 (5.9%) of the other participants were recorded as having died from any cause by June 2020. Survival analysis showed a sex-adjusted Hazard Ratio of 2.02 (95% CI 1.89-2.17, $p = 2.54 \times 10^{-86}$) for all-cause mortality among excessive drinkers, similar for men (1.99, 1.85-2.15) and women (2.09, 1.73-2.52). Estimated mean survival was 79.2 years for excessive drinkers and 83.1 years for all others in men, 80.4 and 82.5 years respectively in women (Figure 1). Results of survival analysis using only those who reported alcohol intake of 5-15 g/day as the comparison group, rather than all participants who did not meet the criteria for excessive drinking, gave slightly higher HRs (Supplementary Table 2).

The proportions of total deaths and estimated Hazard Ratios (HR) by major ICD-10 cause-of-death groups, comparing excessive drinkers against all other participants, are shown in Figure 2 and Supplementary Table 3. Information on how these HR estimates change when other risk factors were added, firstly smoking status and then body mass index (BMI), waist/hip ratio (WHR), years of education, self-reported diabetes at the time of assessment, and systolic and diastolic blood pressures (SBP, DBP) are shown in Supplementary Table 4.

Deaths attributed to diseases of the digestive system were more common among the excessive drinkers (9.5% of deaths) compared to other participants (3.4%), with the excess mostly due to liver diseases. Other causes of death were similar between the two groups (Figure 2, panel A). The highest proportion of deaths in both groups were from cancers and circulatory diseases. The HRs for most cause-of-death groups were in the range 1.5 to 2.5, consistent with our all-cause mortality estimate of 2.0. However liver disease (HR 9.34, 95% CI 6.95-12.56) and mental and behavioural disorders (3.68, 2.44-5.56) had higher, and nervous system diseases lower (0.82 [0.48-1.42]), HRs (Figure 2, panel B; Supplementary Table 3).

Liver disease in excessive drinkers

Because of the important association between alcohol and liver disease we firstly considered deaths ascribed to any liver disease (including but not limited to alcohol-related liver disease). Fifty-two out of 6640 (0.78%) excessive drinkers and 355 out of 496,036 (0.07%) other participants died of liver diseases between the time of recruitment and June 2020.

Variation in liver disease mortality among excessive drinkers was associated with multiple risk factors (Tables 1 and 2). Smoking and alcohol-related conditions including current smoking (at the time of assessment), amount of alcohol, and diagnosis of alcohol dependence

were each associated with liver deaths but when these factors were considered together (Table 1, lower part) alcohol dependence was the most significant.

Many of the laboratory test results from the baseline assessment showed significant associations with risk of death from liver disease (Table 2). The liver function tests gamma-glutamyl transferase (GGT), aspartate aminotransferase (AST), alkaline phosphatase and direct bilirubin each showed doubling or more of risk for each 1-Standard Deviation increase in the age- and sex-adjusted standardised residuals for the excessive drinkers group. For renal tests, creatinine, urea and uric acid were inversely associated with risk but cystatin C was not. There were also strong positive associations (higher values = higher risk) between deaths from liver disease and sex hormone binding globulin (SHBG) and testosterone (in men only); and negative associations (higher values = lower risk) for insulin-like growth factor-1 (IGF-1) and vitamin D. Associations with haematology tests were mostly related to erythrocyte size or shape, or to platelet count.

Overall mortality in the excessive-drinking group

Few of the risk factors expected to affect all-cause mortality in the general population were statistically significant in the excessive-drinkers group (Table 3). Diagnosed alcohol-related liver disease (ICD-10 K70.0 to K70.9) was associated with increased all-cause mortality. Other factors related to alcohol use including reported amount of alcohol (even though results in this Table are for people meeting the excessive drinking criteria); smoking; alcohol dependence (ICD-10 F10.2, mental and behavioural disorders due to use of alcohol; dependence syndrome) each had highly significant detrimental associations with survival. For smoking, the major difference was between current and never/former smokers (at the time of assessment). Because these substance-use measures are strongly associated an analysis including alcohol consumption, alcohol dependence and smoking was conducted, with results shown in the second part of Table 3. Each remained significant but diagnosis of alcohol

dependence showed the most significant association. The effect size for amount of alcohol appears large in relation to the other factors included but, because this measure was log-transformed, the HR of 4.27 in the multivariate analysis applies to a ten-fold increase in alcohol intake. An alternative analysis, comparing excessive drinkers with alcohol intake above versus below the sex-specific medians for this group, showed HR = 1.17 (1.02-1.35) in a multivariate analysis with alcohol dependence and smoking status.

More detailed analysis of risk factors, with separation of causes of death into cancers, circulatory diseases and other causes, is shown in Table 4. Cancer deaths in excessive drinkers were affected by smoking and alcohol dependence but not amount of alcohol. Circulatory system deaths were also affected by these factors, and by diagnosed alcohol-related liver disease. Mortality from the remaining causes of death except liver disease was associated with smoking, amount of alcohol consumed, alcohol dependence and reported alcohol-related liver disease (Table 4).

Biochemical and haematological risk factors for mortality in excessive drinkers

Results for many laboratory test results had substantial associations with overall survival (Table 5), particularly but not only the liver function tests. There were also strong but paradoxical associations with renal tests, with opposite effects for cystatin C (higher results = higher mortality) and urea or creatinine (lower results = higher mortality). Among the other biochemical tests, apolipoprotein B and LDL cholesterol were both negatively associated with mortality, as were IGF-1 and calcium. The association with calcium, which is partly bound to albumin in serum, became non-significant when albumin was also included in the survival analysis. C-reactive protein, sex-hormone-binding globulin, and testosterone (in men) were positively associated with all-cause mortality. Significant associations with all-cause mortality were also found for white cell count; red cell count, mean cell volume, and

red cell distribution width; platelet count; reticulocyte maturity and size; and spherical cell volume.

When causes of death were divided into cancers, circulatory diseases and other causes (see Supplementary Table 5) a number of differences were seen. For cancers, higher values for the liver function tests alkaline phosphatase and GGT, and for C-reactive protein, were associated with greater mortality. On the other hand higher values for urea and vitamin D were associated with lower cancer mortality. Among the haematology results, measures related to erythrocyte and reticulocyte size (MCV, RDW, reticulocyte and spherical cell volumes) were significantly related to risk of death from any cancer.

For deaths due to circulatory diseases, many of the liver function tests showed positive (higher result = higher risk) associations. These included the liver enzymes alkaline phosphatase, AST (but not ALT) and GGT, direct (conjugated) bilirubin and globulins. Albumin showed a negative association. In addition the renal tests urea and cystatin C showed significant associations, though in opposite directions, and higher values for both apolipoprotein B and LDL cholesterol were associated with lower risk. The haematology tests associated with cardiovascular deaths were similar to those identified for cancer deaths; size of erythrocytes and related cells in the blood.

For deaths from all other causes except liver disease, the liver function and renal tests were significantly associated with risk and in addition there were associations with IGF-1, C-reactive protein, apolipoprotein B and both LDL and HDL cholesterol, calcium, vitamin D, SHBG and testosterone (in men). The haematology tests showing significant association with other-cause deaths included the erythrocyte-size-related ones mentioned previously, and also the red and white cell (total, monocyte and neutrophil) counts.

DISCUSSION

As expected, the high and persistent alcohol intake which defined the excessive drinker group was associated with increased mortality compared to other UK Biobank participants.

However many of the people in this category do survive into old age, and apart from an excess of liver disease the causes of death are similar to those for other participants. Within the excessive-drinking group, risk factors with substantial effects on mortality have been identified; firstly alcohol dependence, and secondly liver disease (either as a documented clinical diagnosis or inferred from abnormality in biochemical liver function tests). Smoking, which is common among the excessive drinkers, also affects mortality within this group.

Mortality associated with excessive drinking

All-cause mortality was substantially increased in UK Biobank participants who reported long-term very high alcohol intake, with all-cause mortality risk (measured as hazard ratio) approximately two-fold compared to all other participants. HRs were similar in the men and women despite the different cut-offs for excessive drinking, supporting the decision to use 80 g/day for men and 50 g/day for women. This two-fold HR estimate is based on a reference group comprising everyone who did not meet the definition of excessive drinker, and when a more tightly defined reference group consisting of those who reported some but low-risk alcohol intake (5-15 grams/day) was used instead then the all-cause mortality HR was slightly higher at 2.5 (Supplementary Table 2). In contrast, the liver disease mortality HR estimate was doubled from 9-fold for the excessive drinkers versus all others comparison, to 18-fold when the reference group was the 5-15 g/d drinkers. The increases in risk difference may be due to exclusion of current non-drinkers, or exclusion of those reporting over 15 g/d but not meeting the excessive drinker criteria, or both.

Inspection of the proportions for underlying or primary causes of death, coded as ICD-10 diagnoses, showed that cancers (C00-C99) and circulatory diseases (I00-I99) were the most common categories in both the excessive drinkers and all other participants (see Figure 2,

panel A). Out of the major ICD-10 categories, only diseases of the digestive system (K00-K93, which includes liver diseases as K70-K76) comprised a significantly higher proportion of deaths in the excessive drinkers than in all others. Survival analysis by reported cause of death (Figure 2, panel B), showed HRs significantly above 1 for most groups of causes and with confidence intervals which included the all-cause mortality HR of 2.0. So although excessive drinkers have poorer survival ($HR > 1$), the distribution of causes of death other than liver disease is similar to that for the rest of the population.

Smoking, which is more common among the excessive drinkers than among the other participants, accounts for part of the mortality difference between these groups. It is worth pointing out that although mortality is higher in the excessive drinkers, not all of this increase is directly attributable to alcohol. At least part is due to other characteristics of the excessive drinker group. Most large-scale studies on alcohol-related mortality have accounted for smoking in their data analysis, so comparisons between our HR estimates and previous ones should take this into account (relevant information is shown in Supplementary Table 4).

Risk factors for mortality among excessive drinkers

Although survival curves appear to diverge by age 60 (Figure 1), around three-quarters of the male excessive drinkers are projected to live to age 78 and of the female excessive drinkers, to 81. There is substantial variation in mortality within the excessive drinking group, and we have identified multiple factors associated with differences in risk.

Conventional risk factors such as obesity and blood pressures were not good predictors of mortality in the excessive drinkers. This may be a matter of power (numbers and length of follow-up) but is quite likely due to other factors taking a major role. Given the association between obesity and liver disease, including alcohol-related liver disease, the lack of

association between BMI or WHR and mortality is surprising but may be due to poor nutrition contributing to poor outcomes.

As can be seen from Supplementary Figures 1 and 2, the effects of alcohol dependence and alcohol-related liver disease are greater than those of excessive drinking alone on survival. The importance of alcohol dependence rather than quantitative alcohol intake supports conclusions from previous studies (14-16), in which mortality associations with symptom count for alcohol dependence, or with alcohol dependence diagnosis, were more significant than those with the participants' reported alcohol intake. Alcohol dependence and high alcohol intake are strongly associated but have at least some differences in their causes, as shown by the genetic correlation between them being significantly less than 1 (17, 18). In this analysis of mortality affecting excessive drinkers, the presence of a recorded diagnosis of alcohol dependence had a substantial and detrimental association with survival which applied across the major groupings of causes of death (except for cancers, for which $p = 0.055$).

Our results cannot answer the question of how alcohol dependence (as distinct from high alcohol intake) leads to or is associated with increased mortality. One obvious possibility is that those who are dependent consume more alcohol, but the multivariate analysis including both dependence and intake does not support this. Another hypothesis is that those with dependence are likely to have poorer social support and poorer nutrition than people who drink excessively without diagnosed dependence. Alcohol dependence is likely to co-exist with other substance use disorders or psychiatric conditions, and possibly with despair and feelings of being unable to control events, but the biological link between these and mortality is unclear.

Many biochemical and metabolic factors are known to be affected by alcohol intake (19), and several of these, particularly liver enzymes, are associated with mortality in the general population (20). Although it is reasonable to suppose that abnormal liver function tests in

excessive drinkers without known liver disease are in fact an indication of liver damage, and will be associated with a poorer prognosis, there is little published information to substantiate this. Here we show that measures of liver damage (alkaline phosphatase, AST, GGT), and hepatic excretory and synthetic function (direct bilirubin, albumin) significantly predict deaths from any cause (Table 5), from cancers, cardiovascular disease (Supplementary Table 5), and from liver disease (Table 2). Having results in the top quintile for alkaline phosphatase, AST or GGT is associated with a more than two-fold risk for all-cause mortality compared to those in the lowest quintile for excessive drinkers (see Supplementary Figure 3). However mortality was not associated with ALT except for deaths ascribed to liver disease, and the AST/ALT ratio offered no predictive advantage over AST alone.

Direct bilirubin was associated with mortality but total and indirect bilirubin were not. The probable explanation is that the ‘signal’ (direct bilirubin being associated with mortality) is obscured by ‘noise’ from variation in indirect bilirubin (which is not associated) when total bilirubin is tested as the predictor variable. Indirect or unconjugated bilirubin, mainly reflecting red cell turnover, makes up about four-fifths of the total bilirubin in both the overall UK Biobank population and in the excessive drinkers. Direct bilirubin reflects defective excretion after conjugation of bilirubin in the liver, and is therefore a more sensitive index of minor or early alcohol-related liver dysfunction.

Among the excessive drinkers in UK Biobank, liver function tests and presence of liver disease are associated with causes of death not obviously involving the liver, particularly cardiovascular disease. A study in Sweden showed that alcohol-related liver disease was associated with significantly (> 4-fold) increased all-cause mortality, with >40% of these deaths being liver-related (21). The association between liver function tests and all-cause or cardiovascular mortality is well-documented for the general population (20, 22, 23),

consistent with reports associating non-alcoholic liver disease or liver enzymes with cardiovascular disease risk (24, 25).

Several measures related to erythrocyte size, including red cell count, mean cell volume, red cell distribution width, and reticulocyte and spherical cell size, were strongly associated with mortality (larger cells = higher risk) in the excessive drinkers. Examination of the correlation matrix, and factor analysis of these tests (results not shown), suggested that all except red cell distribution width were associated with each other and presumably with variation in erythrocyte maturation and/or red cell membrane characteristics. Erythrocyte size (MCV) has long been recognised as being increased by high alcohol intake, and a small prospective study in patients attending a hospital emergency department (26) showed increased rates of alcohol-related illness including liver disease or gastrointestinal bleeding in men in the top quintile for MCV. Association between erythrocyte size and mortality, including mortality from primary liver cancer has also been reported (27) in the general population,. Red cell distribution width has been shown to be associated with mortality, but most reports are on patients with renal disease (28) or on acute mortality after hospital admission (29, 30). It is currently unknown how variation in erythrocyte characteristics in excessive drinkers (or indeed in others) is associated with variation in mortality.

Other test results associated with all-cause mortality include markers of renal function. Both urea and creatinine showed inverse associations (higher result = lower risk) with mortality. It is possible that the association with urea is due to impairment of liver function, as urea is synthesised in the liver, but this does not apply to creatinine and it seems probable that the associations for these two tests are due to them acting as markers of protein intake and muscle mass. On the other hand the associations for cystatin C, another measure of glomerular filtration rate, are positive (higher result = higher risk). Cystatin C is derived from nucleated cells, is cleared from the blood by the kidneys, and is less subject to the non-renal

sources of variation affecting urea or creatinine. It appears that mortality in excessive drinkers can be affected by both decreased renal function and poor nutritional status.

Several other tests showed significant associations with mortality which were consistent with those reported for the general population. C-reactive protein reflects chronic inflammation and predicts all-cause and cardiovascular mortality (31), and the similar association in excessive drinkers is to be expected. Lower vitamin D results were associated with higher mortality, again as expected from previous studies (32). The associations for IGF-1, SHBG and testosterone, although strong and consistent with at least some previous reports (33, 34), do not have ready explanations.

Lipid risk factors such as apolipoproteins and lipoprotein cholesterol fractions had associations with mortality which were unlike those expected for the general population. Higher levels of apolipoprotein B and LDL cholesterol were associated with lower mortality from all causes, from cardiovascular diseases and from liver diseases, and the association was in the same direction for cancers. As discussed for urea and creatinine above, this may be due to poor nutrition in some of the excessive drinkers affecting the test results and decreasing survival. Alternatively or additionally, patients with liver disease (which is associated with poorer prognosis) may be less able to synthesise low-density lipoproteins.

Limitations.

The nature of the data used for this analysis imposes some limitations. Only those who survived to age 40 were eligible for participation in the UK Biobank, so alcohol-associated mortality earlier in life could not be assessed. The conclusions may not be applicable to non-UK populations, although risk factor information can probably be generalised to other economically advanced societies. Only a small proportion of participants had died by the cut-off date used; this does not appear to lead to insufficient power because the starting number

was large but the causes of death may change over time as the average age of the cohort increases. Some of those who did not meet both the current and ten-years-previously criteria for excessive drinking would have been drinking at hazardous levels, or may have done so previously. This will tend to diminish rather than increase the mortality differences between the excessive drinkers and others and it will not have affected the identification of factors influencing risk within the excessive-drinker group. Diagnoses may be incomplete, with disease being present but not recorded during life; and causes of death listed on death certificates can be inaccurate. In relation to the two risk factors of diagnosed alcohol dependence and alcohol-related liver disease, it is possible these overlap because identification of alcohol dependence may have led to diagnosis of alcohol-related liver disease, or *vice versa*.

Overall, the strengths afforded by such a large unselected cohort outweigh the limitations, and make it possible to address questions about the natural history of high alcohol intake in ways which have not previously been possible.

Clinical and research implications

Clinically, identification and early intervention for excessive drinkers with alcohol dependence and/or alcohol-related liver damage could divert at least some of them towards abstinence, and there is evidence (35) that feedback about liver damage can motivate patients to reduce alcohol intake. For research directions, alcohol-related liver disease risk in excessive drinkers is known to be affected by genetic variation (36), and larger studies should provide additional loci, define likely pathways, and lead to investigation of possible associations between polygenic risk scores for liver disease and mortality. Similarly, identification of causes of alcohol dependence, distinct from those affecting alcohol intake, would allow testing of these against the mortality data. The role of alcohol in changing

erythrocyte and erythrocyte precursor size and membrane characteristics, and how these affect mortality, also deserves further investigation.

REFERENCES

1. Corrao G, Bagnardi V, Zambon A, Torchio P. Meta-analysis of alcohol intake in relation to risk of liver cirrhosis. *Alcohol Alcohol* 1998;33:381-392.
2. Corrao G, Bagnardi V, Zambon A, La Vecchia C. A meta-analysis of alcohol consumption and the risk of 15 diseases. *Prev Med* 2004;38:613-619.
3. Xi B, Veeranki SP, Zhao M, Ma C, Yan Y, Mi J. Relationship of Alcohol Consumption to All-Cause, Cardiovascular, and Cancer-Related Mortality in U.S. Adults. *J Am Coll Cardiol* 2017;70:913-922.
4. Wood AM, Kaptoge S, Butterworth AS, Willeit P, Warnakula S, Bolton T, Paige E, et al. Risk thresholds for alcohol consumption: combined analysis of individual-participant data for 599 912 current drinkers in 83 prospective studies. *Lancet* 2018;391:1513-1523.
5. Rehm J, Guiraud J, Poultais R, Shield KD. Alcohol dependence and very high risk level of alcohol consumption: a life-threatening and debilitating disease. *Addict Biol* 2018;23:961-968.
6. Holst C, Tolstrup JS, Sorensen HJ, Becker U. Alcohol dependence and risk of somatic diseases and mortality: a cohort study in 19 002 men and women attending alcohol treatment. *Addiction* 2017;112:1358-1366.
7. Askgaard G, Leon DA, Kjaer MS, Deleuran T, Gerds TA, Tolstrup JS. Risk for alcoholic liver cirrhosis after an initial hospital contact with alcohol problems: A nationwide prospective cohort study. *Hepatology* 2017;65:929-937.
8. Batty GD, Hunt K, Emslie C, Lewars H, Gale CR. Alcohol problems and all-cause mortality in men and women: predictive capacity of a clinical screening tool in a 21-year follow-up of a large, UK-wide, general population-based survey. *J Psychosom Res* 2009;66:317-321.
9. Askgaard G, Leon DA, Deleuran T, Tolstrup JS. Hospital admissions and mortality in the 15 years after a first-time hospital contact with an alcohol problem: a prospective cohort study using the entire Danish population. *Int J Epidemiol* 2020;49:94-102.

10. Im PK, Millwood IY, Chen Y, Guo Y, Du H, Kartsonaki C, Bian Z, et al. Problem drinking, wellbeing and mortality risk in Chinese men: findings from the China Kadoorie Biobank. *Addiction* 2020;115:850-862.
11. Leibel WK. Epidemiology of alcoholic liver disease. *Prog.Liver Dis.* 1976;5:494-515.
12. Corrao G, Arico S, Zambon A, Torchio P, Di Orio F. Female sex and the risk of liver cirrhosis. Collaborative Groups for the Study of Liver Diseases in Italy. *Scand J Gastroenterol* 1997;32:1174-1180.
13. Sudlow C, Gallacher J, Allen N, Beral V, Burton P, Danesh J, Downey P, et al. UK biobank: an open access resource for identifying the causes of a wide range of complex diseases of middle and old age. *PLoS Med* 2015;12:e1001779.
14. Dawson DA. Alcohol consumption, alcohol dependence, and all-cause mortality. *Alcohol Clin Exp.Res.* 2000;24:72-81.
15. Roerecke M, Rehm J. Alcohol use disorders and mortality: a systematic review and meta-analysis. *Addiction* 2013;108:1562-1578.
16. Whitfield JB, Heath AC, Madden PAF, Landers JG, Martin NG. Effects of high alcohol intake, alcohol-related symptoms and smoking on mortality. *Addiction* 2018;113:158-166.
17. Whitfield JB, Zhu G, Madden PA, Neale MC, Heath AC, Martin NG. The genetics of alcohol intake and of alcohol dependence. *Alcohol Clin.Exp.Res.* 2004;28:1153-1160.
18. Mallard TT, Savage JE, Johnson EC, Huang Y, Edwards AC, Hottenga JJ, Grotzinger AD, et al. Item-Level Genome-Wide Association Study of the Alcohol Use Disorders Identification Test in Three Population-Based Cohorts. *Am J Psychiatry* 2021:appiajp202020091390.
19. Whitfield JB, Heath AC, Madden PA, Pergadia ML, Montgomery GW, Martin NG. Metabolic and Biochemical Effects of Low-to-Moderate Alcohol Consumption. *Alcohol Clin Exp Res* 2013;37:575-586.
20. Rahmani J, Miri A, Namjoo I, Zamaninour N, Maljaei MB, Zhou K, Cerneviciute R, et al. Elevated liver enzymes and cardiovascular mortality: a systematic review and dose-response meta-analysis of more than one million participants. *Eur J Gastroenterol Hepatol* 2019.

21. Hagstrom H, Thiele M, Roelstraete B, Soderling J, Ludvigsson JF. Mortality in biopsy-proven alcohol-related liver disease: a population-based nationwide cohort study of 3453 patients. *Gut* 2021;70:170-179.
22. Kunutsor SK, Apekey TA, Seddoh D, Walley J. Liver enzymes and risk of all-cause mortality in general populations: a systematic review and meta-analysis. *Int J Epidemiol* 2014;43:187-201.
23. Kunutsor SK, Apekey TA, Van Hemelrijck M, Calori G, Perseghin G. Gamma glutamyltransferase, alanine aminotransferase and risk of cancer: systematic review and meta-analysis. *Int J Cancer* 2015;136:1162-1170.
24. Francque SM, van der Graaff D, Kwanten WJ. Non-alcoholic fatty liver disease and cardiovascular risk: Pathophysiological mechanisms and implications. *J Hepatol* 2016;65:425-443.
25. Pazoki R, Vujkovic M, Elliott J, Evangelou E, Gill D, Ghanbari M, van der Most PJ, et al. Genetic analysis in European ancestry individuals identifies 517 loci associated with liver enzymes. *Nat Commun* 2021;12:2579.
26. Conigrave KM, Saunders JB, Reznik RB, Whitfield JB. Prediction of alcohol-related harm by laboratory test results. *Clin.Chem.* 1993;39:2266-2270.
27. Yoon HJ, Kim K, Nam YS, Yun JM, Park M. Mean corpuscular volume levels and all-cause and liver cancer mortality. *Clin Chem Lab Med* 2016;54:1247-1257.
28. Roumeliotis S, Stamou A, Roumeliotis A, Theodoridis M, Leivaditis K, Panagoutsos S, Liakopoulos V. Red Blood Cell Distribution Width Is Associated with Deterioration of Renal Function and Cardiovascular Morbidity and Mortality in Patients with Diabetic Kidney Disease. *Life (Basel)* 2020;10.
29. Su C, Liao LZ, Song Y, Xu ZW, Mei WY. The role of red blood cell distribution width in mortality and cardiovascular risk among patients with coronary artery diseases: a systematic review and meta-analysis. *J Thorac Dis* 2014;6:1429-1440.
30. Zurauskaite G, Meier M, Voegeli A, Koch D, Haubitz S, Kutz A, Bernasconi L, et al. Biological pathways underlying the association of red cell distribution width and adverse clinical outcome: Results of a prospective cohort study. *PLoS One* 2018;13:e0191280.

31. Emerging Risk Factors C, Kaptoge S, Di Angelantonio E, Lowe G, Pepys MB, Thompson SG, Collins R, et al. C-reactive protein concentration and risk of coronary heart disease, stroke, and mortality: an individual participant meta-analysis. *Lancet* 2010;375:132-140.
32. Schottker B, Jorde R, Peasey A, Thorand B, Jansen EH, Groot L, Streppel M, et al. Vitamin D and mortality: meta-analysis of individual participant data from a large consortium of cohort studies from Europe and the United States. *BMJ* 2014;348:g3656.
33. Andreassen M, Raymond I, Kistorp C, Hildebrandt P, Faber J, Kristensen LO. IGF1 as predictor of all cause mortality and cardiovascular disease in an elderly population. *Eur J Endocrinol* 2009;160:25-31.
34. Gyawali P, Martin SA, Heilbronn LK, Vincent AD, Jenkins AJ, Januszewski AS, Adams RJT, et al. Higher Serum Sex Hormone-Binding Globulin Levels Are Associated With Incident Cardiovascular Disease in Men. *J Clin Endocrinol Metab* 2019;104:6301-6315.
35. Subhani M, Knight H, Ryder S, Morling JR. Does Advice Based on Biomarkers of Liver Injury or Non-Invasive Tests of Liver Fibrosis Impact High-Risk Drinking Behaviour: A Systematic Review With Meta-analysis. *Alcohol Alcohol* 2021;56:185-200.
36. Schwantes-An TH, Darlay R, Mathurin P, Masson S, Liangpunsakul S, Mueller S, Aithal GP, et al. Genome-wide association study and meta-analysis on alcohol-related liver cirrhosis identifies novel genetic risk factors. *Hepatology* 2020;73:1920-1931.

Appendix 1. List of Investigators, GenomALC Consortium.

Guruprasad P. Aithal PhD FRCP

Guru.Aithal@nottingham.ac.uk

NIHR Nottingham Biomedical Research Centre,
Nottingham University Hospitals and the University of
Nottingham, Nottingham NG7 2UH, United Kingdom

Stephen R. Atkinson PhD

stephen.atkinson@imperial.ac.uk

Department of Metabolism, Digestion and
Reproduction, Imperial College London, London,
United Kingdom

Ramon Bataller MD PhD

bataller@pitt.edu

Center for Liver Diseases, University of Pittsburgh
Medical Center, 3471 Fifth Avenue, Pittsburgh, PA
15213, USA

Gregory Botwin PhD

gregory.botwin@cshs.org

Translational Genomics Group, Inflammatory Bowel
& Immunobiology Research Institute, 8700 Beverly
Blvd., Thelians Bldg. #E244 : Los Angeles CA 90048.
F. Widjaja Family Foundation Inflammatory Bowel
and Immunobiology Research Institute, Cedars-Sinai
Medical Center, Los Angeles, California, CA 90822,
USA

Naga P. Chalasani MD

nchalasa@iupui.edu

Department of Medicine, Indiana University,
Indianapolis, IN 46202-5175, USA

Heather J. Cordell DPhil

heather.cordell@newcastle.ac.uk

Population Health Sciences Institute, Faculty of
Medical Sciences, Newcastle University, International
Centre for Life, Central Parkway, Newcastle upon
Tyne NE1 3BZ, United Kingdom

Ann K. Daly PhD

a.k.daly@newcastle.ac.uk

Faculty of Medical Sciences, Newcastle University
Medical School, Framlington Place, Newcastle upon
Tyne NE2 4HH, United Kingdom

Rebecca Darlay PhD

rebecca.darlay@newcastle.ac.uk

Population Health Sciences Institute, Faculty of
Medical Sciences, Newcastle University, International
Centre for Life, Central Parkway, Newcastle upon
Tyne NE1 3BZ, United Kingdom

Christopher P. Day MD, PhD

chris.day@newcastle.ac.uk

Newcastle University, Framlington Place, Newcastle
upon Tyne NE2 4HH, United Kingdom

Florian Eyer MD

florian.eyer@tum.de

Division of Clinical Toxicology, Department of
Internal Medicine 2, Klinikum rechts der Isar, School
of Medicine, Technical University of Munich,
Ismaninger Str. 22, 81675 Munich, Germany

Tatiana Foroud PhD

tforoud@iupui.edu

Department of Medical and Molecular Genetics,
Indiana University, USA

Dermot Gleeson MD FRCP

Dermot.Gleeson@sth.nhs.uk

Liver Unit, Sheffield Teaching Hospitals, AO Floor
Robert Hadfield Building, Northern General Hospital,
Sheffield S5 7AU, UK. Dermot.Gleeson@sth.nhs.uk

David Goldman MD

davidgoldman@mail.nih.gov

Laboratory of Neurogenetics, NIAAA, Rockville, MD
20852, USA

Paul S. Haber MD PhD

paul.haber@sydney.edu.au

Drug Health Services, Royal Prince Alfred Hospital,
Missenden Road, Camperdown, NSW 2050, Australia
Faculty of Medicine and Health, The University of
Sydney, Sydney, NSW 2006, Australia

Jean-Marc Jacquet MD

jeanmarc.jacquet@chu-nimes.fr

Service Addictologie, CHRU Caremeau, 30029 Nîmes,
France

Tiebing Liang PhD

tliang@iu.edu

Department of Medicine, Indiana University,
Indianapolis, IN 46202-5175, USA

Suthat Liangpunsakul MD

sliangpu@iupui.edu

Division of Gastroenterology and Hepatology,
Department of Medicine, Indiana University,
Indianapolis and and Roudebush Veterans
Administration Medical Center, Indianapolis, IN, USA

Steven Masson FRCP

steven.masson@nhs.net

Faculty of Medical Sciences, Newcastle University
Medical School, Framlington Place, Newcastle upon
Tyne NE2 4HH, United Kingdom

Philippe Mathurin MD PhD
Philippe.MATHURIN@CHRU-LILLE.FR
 CHRU de Lille, Hôpital Claude Huriez, Rue M.
 Polonovski CS 70001, 59 037 Lille Cedex, France

Romain Moirand MD PhD
romain.moirand@univ-rennes1.fr
 Univ Rennes, INRA, INSERM, CHU Rennes, Institut
 NUMECAN (Nutrition Metabolisms and Cancer), F-
 35000 Rennes, France

Christophe Moreno MD PhD
Christophe.Moreno@erasme.ulb.ac.be
 CUB Hôpital Erasme, Université Libre de Bruxelles,
 Brussels, Belgium

Timothy R. Morgan MD
timothy.morgan@va.gov
 Department of Veterans Affairs, VA Long Beach
 Healthcare System, 5901 East Seventh Street, Long
 Beach, CA 90822, USA
 Department of Medicine, University of California,
 Irvine, USA

Marsha Morgan MD PhD
marsha.morgan@ucl.ac.uk
 UCL Institute for Liver & Digestive Health, Division
 of Medicine, Royal Free Campus, University College
 London, London NW3 2PF, UK

Sebastian Mueller MD PhD
sebastian.mueller@urz.uni-heidelberg.de
 Department of Internal Medicine, Salem Medical
 Center and Center for Alcohol Research, University of
 Heidelberg, Zeppelinstraße 11-33, 69121 Heidelberg,
 Germany

Beat Müllhaupt MD
beat.muellhaupt@usz.ch
 Department of Gastroenterology and Hepatology,
 University Hospital Zurich, Rämistrasse 100, CH-8901
 Zurich, Switzerland

Laura E. Nagy PhD
nagy13@ccf.org
 Lerner Research Institute, 9500 Euclid Avenue,
 Cleveland, Ohio, OH 44195, USA

Pierre Nahon MD PhD
pierre.nahon@aphp.fr
 AP-HP, Hôpital Avicenne, Liver Unit, Bobigny,
 France
 Inserm U1162 Génomique fonctionnelle des tumeurs
 solides, Paris, France

Bertrand Nalpas MD PhD
bertrand.nalpas@gmail.com;
bertrand.nalpas@inserm.fr

Service Addictologie, CHRU Caremeau, 30029 Nîmes,
 France
 DISC, Inserm, 75013 Paris, France

Sylvie Naveau MD
sylvienaveau@orange.fr
 Hôpital Antoine-Béclère, 157 Rue de la Porte de
 Trivaux, 92140 Clamart, France

Pascal Perney MD PhD
pascal.PERNEY@chu-nimes.fr
 Hôpital Universitaire Caremeau, Place du Pr. Robert
 Debre, 30029 Nîmes, France, UM1, INSERM U1018

Munir Pirmohamed PhD FRCP
munirp@liverpool.ac.uk
 MRC Centre for Drug Safety Science and Wolfson
 Centre for Personalised Medicine, Institute of
 Translational Medicine, University of Liverpool,
 Liverpool, L69 3GL, UK
 MRC Centre for Drug Safety Science, Liverpool
 Centre for Alcohol Research, University of Liverpool,
 The Royal Liverpool and Broadgreen University
 Hospitals NHS Trust, and Liverpool Health Partners,
 Liverpool, L69 3GL, UK

Tae-Hwi Schwantes-An PhD
tlschwan@iu.edu
 Department of Medical and Molecular Genetics,
 Indiana University, USA

Helmut K. Seitz MD
helmut_karl.seitz@urz.uni-heidelberg.de
 Department of Internal Medicine, Salem Medical
 Center and Center for Alcohol Research, University of
 Heidelberg, Zeppelinstraße 11e33, 69121 Heidelberg,
 Germany

Devanshi Seth PhD
d.seth@sydney.edu.au
 Edith Collins Centre (Translational Research in
 Alcohol Drugs and Toxicology), Drug Health Services,
 Sydney Local Health District, KGV Building, 83-117
 Missenden Road, Camperdown, NSW 2050, Australia
 Centenary Institute of Cancer Medicine and Cell
 Biology, The University of Sydney, Sydney, NSW
 2006, Australia
 Faculty of Medicine and Health, The University of
 Sydney, Sydney, NSW 2006, Australia

Michael Soyka MD
m.soyka@medicalpark.de;
 Psychiatric Hospital University of Munich,
 Nussbaumsstr.7, 80336 Munich, Germany and
 Privatklinik Meiringen, Willigen, CH 3860 Meiringen,
 Switzerland

Felix Stickel MD PhD

Felix.Stickel@hirslanden.ch

Department of Gastroenterology and Hepatology,
University Hospital Zurich, Rämistrasse 100, CH-8901
Zurich, Switzerland

Andrew Thompson PhD

andrew.thompson@liverpool.ac.uk

Health Analytics, Lane Clark & Peacock LLP,
London, UK
MRC Centre for Drug Safety Science, Liverpool
Centre for Alcohol Research, University of Liverpool,
The Royal Liverpool and Broadgreen University
Hospitals NHS Trust, and Liverpool Health Partners,
Liverpool, L69 3GL, UK

Mark R. Thursz MD

m.thursz@imperial.ac.uk

Institute for Liver & Digestive Health, Imperial
College, London, UK

Eric Trepo MD PhD

eric.trepo@ulb.be

Université Libre de Bruxelles, Brussels, Belgium

John B. Whitfield PhD FRCPATH

John.Whitfield@qimrberghofer.edu.au

Genetic Epidemiology, QIMR Berghofer Medical
Research Institute, Queensland 4029, Australia

Table 1. Risk Factors affecting sex-adjusted mortality from any liver disease (ICD-10 codes K70 to K77) in excessive drinkers. Results in the upper section (univariate associations) are not adjusted for the effects of the other factors listed, while the results in the lower section (multivariate analysis) estimate the independent effects of intake, dependence and smoking (adjusted for each other).

	Beta	SE	p-value	HR	95% CI
<i>Univariate associations:</i>					
Body mass index (kg/m ²)	-0.030	0.033	0.363	0.970	0.909 to 1.036
Waist/Hip Ratio	5.723	2.102	0.0065	305.8	4.965 to 18830
Diabetes (self-report at baseline)	0.695	0.408	0.089	2.004	0.900 to 4.461
Mean Systolic Blood Pressure	-0.007	0.008	0.387	0.993	0.978 to 1.009
Mean Diastolic Blood Pressure	-0.008	0.014	0.589	0.992	0.966 to 1.020
Tea (cups per day)	-0.178	0.067	0.0074	0.837	0.734 to 0.953
Coffee (cups per day)	-0.148	0.083	0.073	0.862	0.733 to 1.014
Alcohol intake (log ₁₀ grams per day)	5.063	0.979	2.34 x 10⁻⁷	158.0	23.18 to 1077
Smoking status (Ex vs Never)	-0.301	0.450	0.503	0.740	0.306 to 1.787
Smoking status (Current vs Never)	1.312	0.397	9.51 x 10⁻⁴	3.712	1.705 to 8.080
Alcohol dependence (1 = present)	3.028	0.283	8.41 x 10⁻²⁷	20.66	11.87 to 35.94
<i>Multivariate analysis:</i>					
Alcohol intake (log ₁₀ grams per day)	2.704	1.014	0.0077	14.94	2.047 to 108.9
Alcohol dependence (1 = present)	2.649	0.297	4.63 x 10⁻¹⁹	14.14	7.903 to 23.31
Smoking status (Ex vs Never)	-0.167	0.451	0.711	0.846	0.350 to 2.047
Smoking status (Current vs Never)	0.989	401	0.014	2.687	1.225 to 5.896

Table 2. Mortality for deaths ascribed to any liver disease (ICD-10 codes K70 to K77) in excessive drinkers, by age- and sex-adjusted standardised laboratory test results.

	Beta	SE	p-value	HR	95% CI
<i>Liver tests:</i>					
Alkaline phosphatase	0.893	0.083	4.27×10^{-27}	2.441	2.076 to 2.872
ALT	0.668	0.117	1.16×10^{-8}	1.950	1.550 to 2.453
AST	0.982	0.075	6.78×10^{-39}	2.669	2.303 to 3.093
AST/ALT ratio	0.693	0.069	9.24×10^{-34}	1.999	1.747 to 2.288
GGT	1.340	0.125	7.02×10^{-27}	3.817	2.989 to 4.875
Total bilirubin	0.461	0.130	4.01×10^{-4}	1.585	1.228 to 2.045
Direct bilirubin	0.816	0.099	1.33×10^{-16}	2.261	1.863 to 2.743
Indirect bilirubin	0.216	0.139	0.121	1.241	0.945 to 1.630
Total protein	0.254	0.147	0.083	1.290	0.967 to 1.719
Albumin	-0.778	0.134	5.55×10^{-9}	0.459	0.353 to 0.597
Globulins	0.608	0.102	2.68×10^{-9}	1.837	1.503 to 2.244
<i>Renal tests:</i>					
Creatinine	-0.765	0.137	2.22×10^{-8}	0.465	0.356 to 0.608
Cystatin C	0.243	0.126	0.053	1.276	0.997 to 1.632
Urea	-1.183	0.176	1.90×10^{-11}	0.533	0.469 to 0.605
Urate	-0.424	0.155	0.0063	0.654	0.483 to 0.887
<i>CVD-related tests:</i>					
Glucose	0.128	0.138	0.353	1.137	0.867 to 1.491
Glycated haemoglobin	-0.109	0.158	0.489	0.897	0.659 to 1.221
IGF-1	-1.543	0.183	3.07×10^{-17}	0.214	0.149 to 0.306
C-reactive protein	0.178	0.146	0.224	1.195	0.897 to 1.592
Apolipoprotein A	0.007	0.157	0.966	1.007	0.741 to 1.368
Apolipoprotein B	-0.432	0.166	0.0093	0.649	0.469 to 0.899
Lp(a)	-0.417	0.216	0.053	0.659	0.432 to 1.006
LDL cholesterol	-0.545	0.165	9.75×10^{-4}	0.580	0.420 to 0.802
HDL cholesterol	0.089	0.147	0.544	1.093	0.820 to 1.458
Triglycerides	-0.075	0.153	0.624	0.928	0.688 to 1.252
<i>Bone-related tests:</i>					
Calcium ¹	-0.630	0.137	4.46×10^{-6}	0.532	0.407 to 0.697
Phosphate	-0.239	0.161	0.136	0.787	0.574 to 1.079
Vitamin D	-0.720	0.209	5.82×10^{-4}	0.487	0.323 to 0.734
<i>Endocrine tests:</i>					
Sex-hormone-binding globulin	1.283	0.166	9.41×10^{-15}	3.608	2.608 to 4.993
Oestradiol (M)	-0.555	0.491	0.258	0.574	0.219 to 1.503
Oestradiol (F)	(Insufficient data for survival analysis)				
Testosterone (M)	0.547	0.121	6.27×10^{-6}	1.728	1.363 to 2.191
Testosterone (F)	-0.385	0.544	0.479	0.681	0.234 to 1.976
<i>Haematology tests:</i>					
White cell count	-0.211	0.166	0.202	0.810	0.585 to 1.120
Red cell count	-0.608	0.073	9.95×10^{-17}	0.544	0.472 to 0.628
Haemoglobin	-0.235	0.129	0.068	0.790	0.614 to 1.017
Haematocrit	-0.273	0.125	0.029	0.761	0.596 to 0.972
MCV	0.947	0.098	3.12×10^{-22}	2.577	2.128 to 3.121

	Beta	SE	p-value	HR	95% CI
MCH	0.617	0.069	2.05×10^{-19}	1.854	1.621 to 2.121
MCHC	0.092	0.137	0.502	1.097	0.838 to 1.435
Red cell distribution width	0.303	0.052	6.77×10^{-9}	1.354	1.222 to 1.501
Platelet count	-1.037	0.156	2.94×10^{-11}	0.354	0.261 to 0.481
Platelet-Crit	-0.943	0.136	3.86×10^{-12}	0.390	0.298 to 0.508
Mean Platelet Volume	0.379	0.123	0.0020	1.460	1.149 to 1.857
Platelet Distribution Width	0.178	0.136	0.191	1.194	0.915 to 1.559
Lymphocyte count	-0.131	0.174	0.452	0.877	0.624 to 1.234
Monocyte count	0.261	0.095	0.0060	1.298	1.078 to 1.565
Neutrophil count	-0.269	0.170	0.114	0.764	0.547 to 1.067
Eosinophil count	-0.017	0.150	0.912	0.984	0.733 to 1.319
Basophil count	-0.030	0.156	0.847	0.970	0.715 to 1.316
Reticulocyte count	-0.187	0.164	0.252	0.829	0.601 to 1.143
Immature Reticulocytes	0.099	0.148	0.502	1.104	0.827 to 1.475
Mean Reticulocyte Volume	0.736	0.096	1.90×10^{-14}	2.088	1.729 to 2.521
Mean Spherical Cell Volume	1.085	0.098	1.19×10^{-28}	2.960	2.444 to 3.584

¹Calcium results are not adjusted for albumin concentration.

Table 3. Risk Factors affecting sex-adjusted all-cause mortality in excessive drinkers. Results in the upper section (univariate associations) are not adjusted for the effects of the other factors listed, while the results in the lower section (multivariate analysis) estimate the independent effects of intake, dependence and smoking (adjusted for each other).

	Beta	SE	p-value	HR	95% CI
<i>Univariate associations:</i>					
Body mass index (kg/m ²)	-0.031	0.009	2.44 x 10 ⁻⁴	0.969	0.953 to 0.986
Waist/Hip Ratio	1.643	0.557	0.0032	5.169	1.735 to 15.399
Diabetes (self-report at baseline)	0.242	0.121	0.046	1.273	1.004 to 1.614
Mean Diastolic Blood Pressure	-0.007	0.004	0.060	0.993	0.986 to 1.000
Mean Systolic Blood Pressure	-0.005	0.002	0.013	0.995	0.991 to 0.999
Tea (cups per day)	-0.015	0.013	0.232	0.985	0.961 to 1.010
Coffee (cups per day)	0.011	0.017	0.539	1.011	0.977 to 1.045
Alcohol intake (log ₁₀ grams per day)	2.373	0.319	9.72 x 10 ⁻¹⁴	10.73	5.74 to 20.03
Smoking status (Ex vs Never)	0.147	0.106	0.166	1.158	0.941 to 1.425
Smoking status (Current vs Never)	1.062	0.105	5.47 x 10 ⁻²⁴	2.892	2.353 to 3.553
Alcohol dependence (1 = present)	1.565	0.087	9.33 x 10 ⁻⁷²	4.784	4.031 to 5.678
Any alcoholic liver disease, K70.0-K70.9 (1 = present)	1.969	0.099	9.41 x 10 ⁻⁸⁹	7.166	5.907 to 8.694
<i>Multivariate analysis:</i>					
	Beta	SE	p-value	HR	95% CI
Alcohol intake (log ₁₀ grams per day)	1.452	0.324	7.25 x 10 ⁻⁶	4.274	2.266 to 8.061
Alcohol dependence (1 = present)	1.337	0.091	2.77 x 10 ⁻⁴⁹	3.807	3.188 to 4.547
Smoking status (Ex vs Never)	0.179	0.106	0.091	1.196	0.972 to 1.472
Smoking status (Current vs Never)	0.951	0.106	2.29 x 10 ⁻¹⁹	2.588	2.104 to 3.183

Table 4. Risk Factors affecting sex-adjusted mortality, by major cause-of-death groups, in excessive drinkers.

	Any cancer					Any circulatory disease					Other conditions, excluding liver disease				
	Beta	SE	p-value	HR	95% CI	Beta	SE	p-value	HR	95% CI	Beta	SE	p-value	HR	95% CI
<i>Univariate associations:</i>															
Body mass index	-0.041	0.014	0.0033	0.960	0.934 to 0.986	0.000	0.017	0.998	1.000	0.966 to 1.035	-0.043	0.015	0.0045	0.958	0.930 to 0.987
Waist/Hip ratio	-1.135	0.917	0.216	0.322	0.053 to 1.941	3.603	1.182	0.0023	36.706	3.617 to 372.5	2.681	0.955	0.0050	14.602	2.246 to 94.95
Diabetes at baseline	0.037	0.218	0.864	1.038	0.678 to 1.590	0.453	0.233	0.052	1.572	0.996 to 2.483	0.198	0.211	0.347	1.219	0.807 to 1.843
Mean Diastolic BP	-0.003	0.006	0.568	0.997	0.985 to 1.008	-0.006	0.008	0.457	0.994	0.979 to 1.009	-0.011	0.006	0.083	0.989	0.977 to 1.001
Mean Systolic BP	0.002	0.003	0.599	1.002	0.996 to 1.008	-0.004	0.004	0.387	0.996	0.988 to 1.005	-0.013	0.004	1.96 x 10 ⁻⁴	0.987	0.980 to 0.994
Tea (cups per day)	-0.020	0.021	0.338	0.980	0.942 to 1.021	-0.004	0.026	0.865	0.996	0.946 to 1.047	0.006	0.020	0.758	1.006	0.967 to 1.047
Coffee (cups per day)	0.042	0.027	0.118	1.043	0.989 to 1.099	-0.026	0.040	0.518	0.975	0.902 to 1.053	0.024	0.029	0.396	1.025	0.969 to 1.084
Alcohol (log grams per day)	1.092	0.571	0.056	2.980	0.972 to 9.134	1.449	0.739	0.050	4.258	1.001 to 18.119	3.506	0.501	2.53 x 10 ⁻¹²	33.312	12.49 to 88.88
Smoking (Ex vs Never)	0.118	0.171	0.490	1.126	0.805 to 1.575	0.383	0.227	0.092	1.466	0.939 to 2.289	0.081	0.182	0.657	1.084	0.759 to 1.549
Smoking (Current vs Never)	1.063	0.170	3.66 x 10 ⁻¹⁰	2.894	2.076 to 4.034	0.913	0.237	1.14 x 10 ⁻⁴	2.491	1.567 to 3.960	1.072	0.179	2.18 x 10 ⁻⁹	2.921	2.056 to 4.149
Alcohol dependence	0.609	0.203	0.0026	1.839	1.237 to 2.735	1.296	0.199	6.60 x 10 ⁻¹¹	3.655	2.477 to 5.394	2.027	0.134	2.28 x 10 ⁻⁵¹	7.593	5.834 to 9.883
Any alcoholic liver disease	0.608	0.284	0.032	1.836	1.052 to 3.204	1.252	0.270	3.67 x 10 ⁻⁶	3.498	2.058 to 5.963	2.092	0.163	9.99 x 10 ⁻³⁸	8.104	5.888 to 11.15
<i>Multivariate analysis:</i>															
Alcohol (log grams per day)	0.733	0.573	0.201	2.081	0.676 to 6.402	0.645	0.759	0.396	1.905	0.430 to 8.440	2.272	0.513	9.29 x 10 ⁻⁶	9.703	3.553 to 26.50
Alcohol dependence	0.395	0.206	0.055	1.485	0.992 to 2.224	1.152	0.207	2.65 x 10 ⁻⁸	3.166	2.109 to 4.751	1.764	0.140	2.64 x 10 ⁻³⁶	5.834	4.433 to 7.679
Smoking (Ex vs Never)	0.124	0.171	0.468	1.133	0.809 to 1.585	0.405	0.227	0.075	1.500	0.961 to 2.342	0.134	0.182	0.463	1.143	0.800 to 1.633
Smoking (Current vs Never)	1.038	0.170	9.95 x 10 ⁻¹⁰	2.825	2.024 to 3.941	0.825	0.238	5.19 x 10 ⁻⁴	2.281	1.432 to 3.634	0.896	0.180	6.78 x 10 ⁻⁷	2.450	1.720 to 3.488

Table 5. Laboratory test associations with all-cause mortality in excessive drinkers. Hazard Ratios (HR) are shown per 1-standard-deviation change in the age- and sex-adjusted standardised residuals for test results.

	Beta	SE	p-value	HR	95% CI
<i>Liver tests:</i>					
Alkaline phosphatase	0.396	0.034	6.47×10^{-32}	1.486	1.391 to 1.587
ALT	0.052	0.037	0.165	1.053	0.979 to 1.134
AST	0.357	0.031	3.39×10^{-31}	1.430	1.346 to 1.518
AST/ALT ratio	0.325	0.028	1.90×10^{-31}	1.384	1.311 to 1.462
GGT	0.383	0.033	8.92×10^{-31}	1.466	1.374 to 1.564
Total bilirubin	0.056	0.037	0.136	1.057	0.983 to 1.137
Direct bilirubin	0.275	0.035	9.71×10^{-15}	1.316	1.228 to 1.411
Indirect bilirubin	-0.010	0.039	0.804	0.990	0.918 to 1.069
Total protein	0.122	0.037	0.0011	1.130	1.050 to 1.216
Albumin	-0.296	0.039	1.84×10^{-14}	0.744	0.690 to 0.802
Globulins	0.293	0.033	5.37×10^{-19}	1.341	1.257 to 1.430
<i>Renal tests:</i>					
Creatinine	-0.250	0.037	2.51×10^{-11}	0.779	0.724 to 0.838
Cystatin C	0.262	0.031	2.32×10^{-17}	1.300	1.223 to 1.381
Urea	-0.456	0.040	6.39×10^{-30}	0.634	0.586 to 0.686
Urate	-0.060	0.037	0.109	0.942	0.876 to 1.013
<i>CVD-related tests:</i>					
Glucose	0.094	0.035	0.0073	1.098	1.026 to 1.177
Glycated haemoglobin	0.098	0.035	0.0056	1.103	1.029 to 1.181
IGF-1	-0.315	0.040	3.76×10^{-15}	0.730	0.675 to 0.789
C-reactive protein	0.218	0.037	2.40×10^{-9}	1.244	1.158 to 1.336
Apo A	0.052	0.038	0.170	1.054	0.978 to 1.135
Apo B	-0.250	0.040	5.21×10^{-10}	0.779	0.719 to 0.843
Lp(a)	-0.025	0.043	0.559	0.975	0.897 to 1.061
LDL cholesterol	-0.264	0.039	2.19×10^{-11}	0.768	0.711 to 0.830
HDL cholesterol	0.117	0.035	8.20×10^{-4}	1.124	1.050 to 1.204
Triglycerides	-0.111	0.039	0.0043	0.895	0.830 to 0.966
<i>Bone-related tests:</i>					
Calcium ¹	-0.149	0.039	1.19×10^{-4}	0.861	0.798 to 0.929
Phosphate	0.064	0.039	0.104	1.066	0.987 to 1.151
Vitamin D	-0.295	0.044	1.73×10^{-11}	0.745	0.684 to 0.812
<i>Endocrine tests:</i>					
SHBG	0.349	0.041	3.23×10^{-17}	1.417	1.307 to 1.537
Oestradiol (M)	0.043	0.074	0.563	1.044	0.903 to 1.207
Oestradiol (F)	0.245	0.272	0.368	1.277	0.750 to 2.175
Testosterone (M)	0.178	0.037	1.80×10^{-6}	1.195	1.111 to 1.285
Testosterone (F)	0.015	0.066	0.824	1.015	0.891 to 1.156
<i>Haematology tests:</i>					
White cell count	0.175	0.035	7.33×10^{-7}	1.191	1.111 to 1.277
Red cell count	-0.249	0.034	3.58×10^{-13}	0.780	0.729 to 0.834
Haemoglobin	-0.022	0.037	0.547	0.978	0.911 to 1.051
Haematocrit	-0.004	0.037	0.914	0.996	0.927 to 1.070
MCV	0.439	0.034	2.48×10^{-38}	1.551	1.451 to 1.658
MCH	0.322	0.029	7.77×10^{-28}	1.380	1.302 to 1.462

	Beta	SE	p-value	HR	95% CI
MCHC	-0.046	0.036	0.203	0.955	0.889 to 1.025
Red cell distribution width	0.213	0.020	5.83×10^{-27}	1.237	1.190 to 1.286
Platelet count	-0.012	0.038	0.755	0.988	0.918 to 1.064
Platelet-Crit	-0.097	0.038	0.011	0.908	0.843 to 0.978
Mean Platelet Volume	-0.101	0.038	0.0072	0.904	0.839 to 0.973
Platelet Distribution Width	-0.046	0.037	0.213	0.955	0.888 to 1.027
Lymphocyte count	-0.002	0.034	0.953	0.998	0.934 to 1.067
Monocyte count	0.179	0.030	1.27×10^{-9}	1.197	1.129 to 1.268
Neutrophil count	0.188	0.035	1.11×10^{-7}	1.207	1.126 to 1.294
Eosinophil count	-0.040	0.038	0.291	0.961	0.892 to 1.035
Basophil count	0.078	0.034	0.022	1.081	1.011 to 1.156
Reticulocyte count	-0.006	0.038	0.866	0.994	0.921 to 1.071
Immature Reticulocytes	0.135	0.037	2.29×10^{-4}	1.145	1.065 to 1.230
Mean Reticulocyte Volume	0.372	0.034	2.28×10^{-28}	1.451	1.358 to 1.550
Mean Spherical Cell Volume	0.457	0.033	5.83×10^{-44}	1.579	1.481 to 1.684

¹ Calcium results are not adjusted for albumin concentration

Figure 1. Kaplan-Meier survival analysis showing effects of excessive drinking on all-cause mortality. The lines contrast survival for the excessive drinkers and for all others. For men the difference in mean estimated age at death was 3.9 years (79.2 versus 83.1, $p = 8.42 \times 10^{-75}$) and for women 2.1 years (80.4 versus 82.5, $p = 2.94 \times 10^{-15}$).

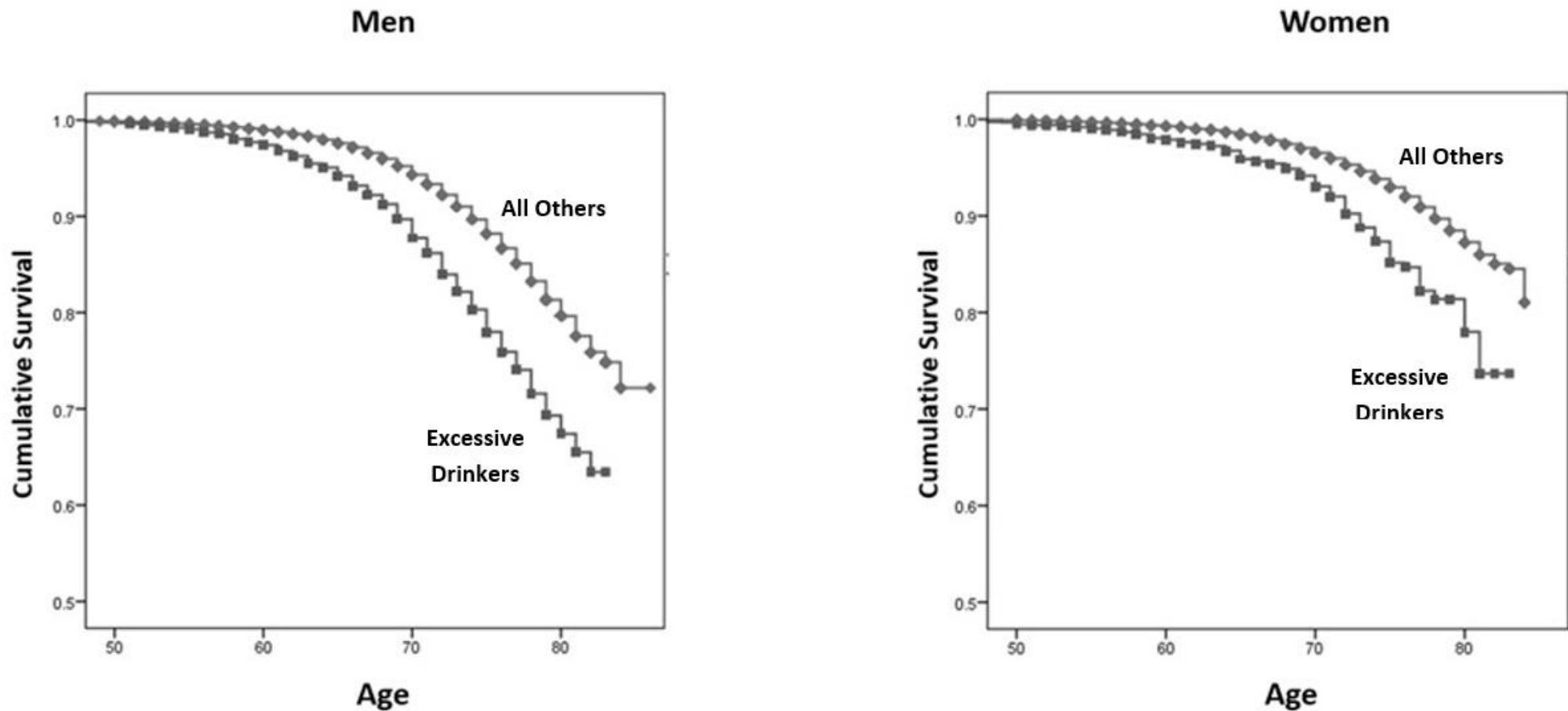
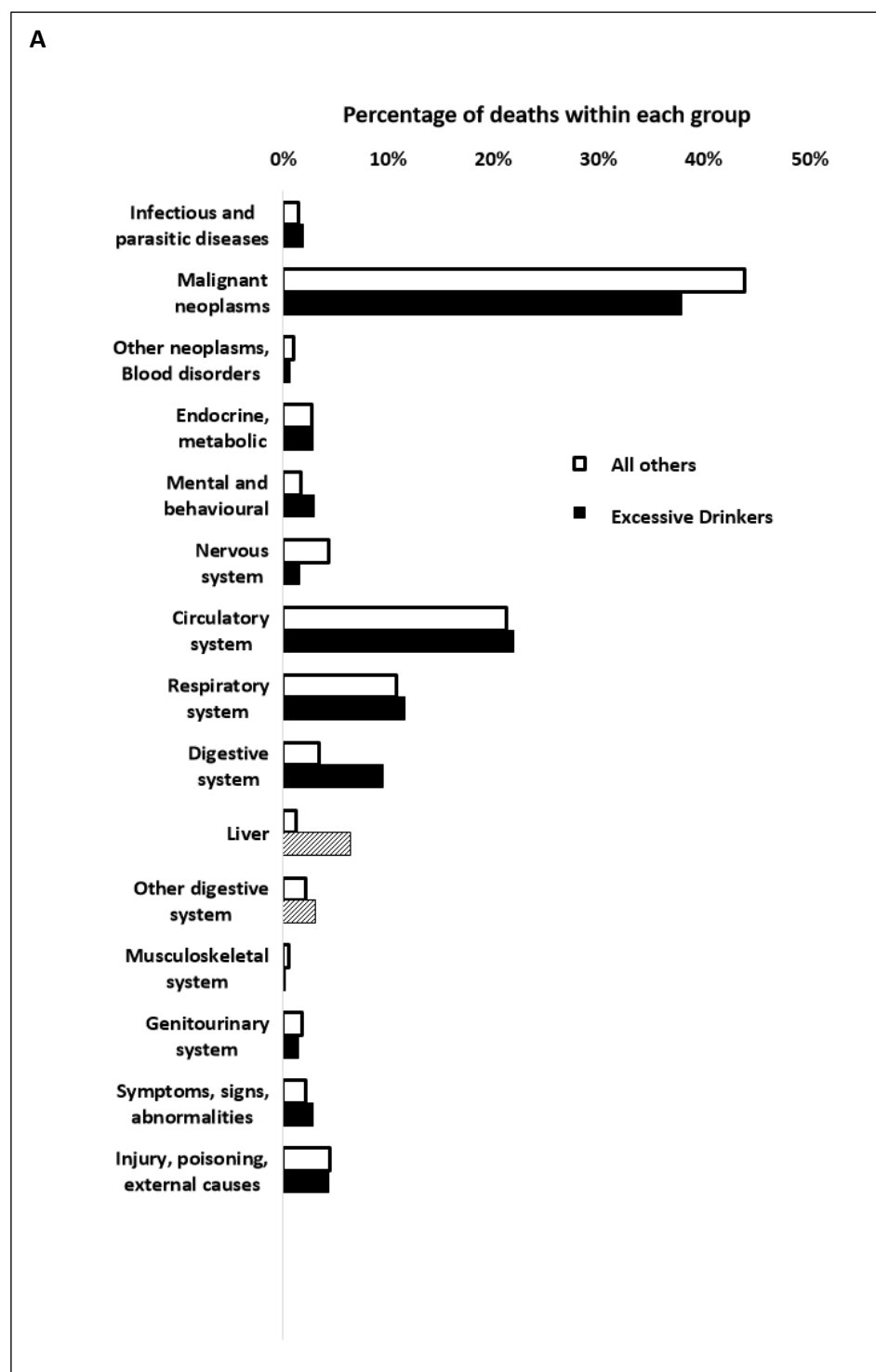
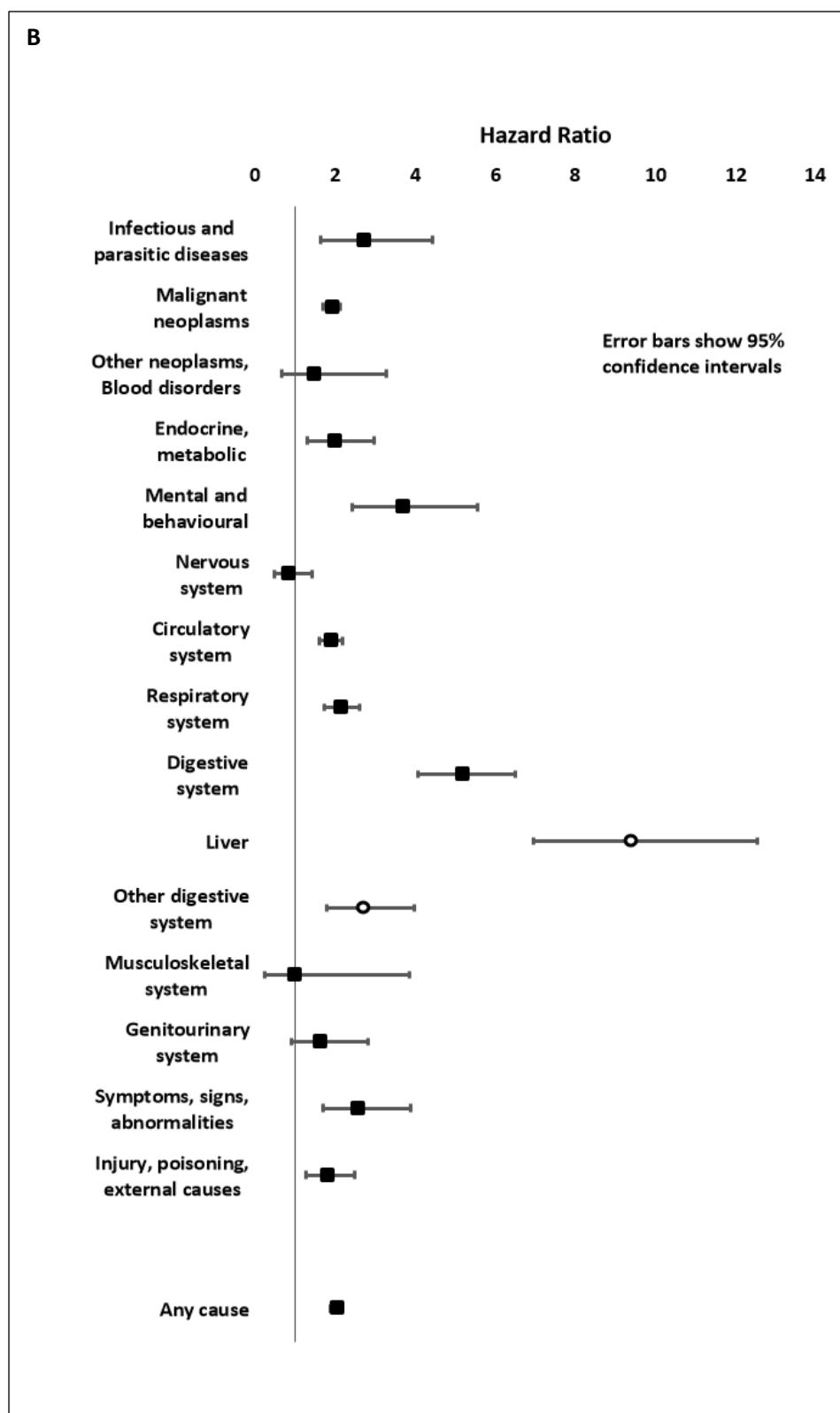


Figure 2. Comparison of causes of death by major ICD-10 category in excessive drinkers and all other UK Biobank participants (panel A), and Hazard Ratios for excessive drinkers compared to others by cause-of-death category (panel B). The vertical line in panel B indicates a Hazard ratio of 1.0. Results for deaths attributed to digestive system diseases (ICD-10 K00 to K93) are further divided into those from liver disease (K70 to K76) and from other digestive disease (shown by lighter shading and error bars).





SUPPLEMENTARY MATERIAL

LIVER-RELATED AND OTHER-CAUSE MORTALITY RISK IN EXCESSIVE DRINKERS: ANALYSIS OF DATA FROM THE UK BIOBANK

Five Supplementary Tables

Three Supplementary Figures

Supplementary Table 1. Descriptive statistics (percentages, or medians, 20th and 80th centiles, and numbers of people with data) for UK Biobank participants at the time of initial assessment (except for alcohol dependence, which is based on hospital or death certificate data). Presence of diabetes is based on whether the participant had been told by a doctor that they had diabetes.

		Excessive drinkers (N=6640)		All others (N=495,866)	
		Men (N=5136)	Women (N=1504)	Men (N=223,985)	Women (N=271,879)
Age at assessment (years)		57 (49, 64) 5136	55 (47, 62) 1504	58 (48, 65) 223,985	57 (48, 64) 271,879
BMI (kg/m ²)		28.0 (24.7, 31.6) 5105	26.0 (23.1, 30.5) 1496	27.3 (24.4, 30.8) 222,370	26.1 (22.9, 30.8) 270,428
Systolic Blood Pressure		147 (133, 162) 4817	138 (122, 155) 1428	139 (126,155) 210,725	133 (119, 151) 255,415
Diastolic Blood Pressure		88 (79, 96) 4817	84 (75, 92) 1428	84 (76, 92) 210,727	80 (72, 89) 255,418
Smoking:	Never	1300 (25.4%)	377 (25.1%)	110148 (49.5%)	161648 (59.8%)
	Former	2268 (44.3%)	684 (45.6%)	85340 (38.3%)	84766 (31.4%)
	Current	1556 (30.4%)	439 (29.3%)	27055 (12.2%)	23928 (8.9%)
Diabetes		314/5112 (6.1%)	39/1502 (2.6%)	15,686/222,596 (7.0%)	10,360/270,679 (3.8%)
Alcohol intake (grams/day)		95 (85, 119) 5136	60 (52, 75) 1504	16.2 (1.2, 35.7) 233,985	6.3 (0, 16.7) 271,879
Alcohol dependence		346/5136 (6.7%)	40/1504 (2.7%)	1681/223,986 (0.8%)	588/271,878 (0.2%)
Albumin (g/l)		45.4 (43.2, 47.6) 4430	45.3 (43.3, 47.6) 1281	45.5 (43.4, 47.7) 194,178	44.9 (42.8, 47.1) 230,187
Bilirubin (total) (μmol/l)		9.1 (6.9, 12.4) 4775	7.7 (5.8, 10.2) 1391	9.1 (7.0, 12.5) 209,246	7.3 (5.6, 9.8) 252,149
ALP (units/l)		81 (66, 102) 4804	79 (62, 101) 1400	79 (64, 97) 210,160	82 (64, 103) 253,239
AST (units/l)		29 (24, 39) 4774	24 (20, 30) 1391	26 (22, 32) 209,315	23 (19, 28) 252,317
ALT (units/l)		27 (19, 41) 4800	19 (13, 28) 1400	24 (17, 35) 209,990	18 (13, 25) 253,212
GGT (units/l)		62 (35, 124) 4791	31 (20, 57) 1397	33 (22, 55) 210,040	21 (15, 36) 253,115
Mean cell volume (fl)		94.5 (90.9, 98.4) 4890	94.6 (91.2, 98.2) 1425	91.3 (88.1, 94.7) 214,344	91.1 (87.6, 94.4) 257,460

Supplementary Table 2. Survival analysis by Cox regression comparing excessive drinkers versus participants reporting alcohol intake of 5-15 grams/day. In each case sex has been included as an additional factor affecting survival. All-cause mortality, and mortality from any cancer, any cardiovascular disease, all other causes except liver diseases, and liver disease. SE, standard error; HR, Hazard Ratio; 95% CI, 95% confidence interval for the Hazard Ratios.

	N total	N deaths	Beta	SE	p-value	HR	95% CI
All-cause	140,986	7,109	0.920	0.038	7.65×10^{-127}	2.51	2.33 to 2.71
Liver diseases	140,964	102	2.900	0.215	1.35×10^{-41}	18.2	11.94 to 27.7
Any cancer	140,983	3,341	0.786	0.062	3.10×10^{-37}	2.20	1.95 to 2.48
Any CVD	140,984	1,370	0.897	0.082	1.40×10^{-27}	2.45	2.09 to 2.88
Other causes, excluding liver	140,986	2,290	0.934	0.066	4.12×10^{-45}	2.55	2.24 to 2.90

Supplementary Table 3. Comparison of reported causes of death between excessive drinkers and all other participants. The HR estimates and p-values are from survival analysis rather than a direct comparison of proportions.

ICD-10 Codes	Categories included	All other participants		Excessive drinkers		HR	95% CI	p-value
		Number of deaths	Percent of deaths	Number of deaths	Percent of deaths			
A00 to B99	Infectious and parasitic diseases	433	1.5%	16	2.0%	2.69	1.63 to 4.44	1.15×10^{-4}
C00 to C99	Malignant neoplasms	12,877	43.8%	307	37.9%	1.89	1.69 to 2.12	4.07×10^{-28}
D00 to D89	Other neoplasms, Blood disorders	293	1.0%	6	0.7%	1.46	0.65 to 3.27	0.365
E00 to E90	Endocrine, nutritional, metabolic	797	2.7%	23	2.8%	1.96	1.29 to 2.97	0.0015
F00 to F99	Mental and behavioural	516	1.8%	24	3.0%	3.68	2.44 to 5.56	6.05×10^{-10}
G00 to G99	Nervous system	1277	4.3%	13	1.6%	0.82	0.48 to 1.42	0.481
H00 to H95	Eye, ear	3	0.0%	0	0.0%	N/A		
I00 to I99	Circulatory system	6237	21.2%	177	21.9%	1.87	1.61 to 2.17	3.59×10^{-16}
J00 to J99	Respiratory system	3173	10.8%	94	11.6%	2.12	1.72 to 2.60	9.83×10^{-13}
K00 to K93	Digestive system	1011	3.4%	77	9.5%	5.15	4.07 to 6.51	9.83×10^{-43}
	- Liver (K70 to K76)	355	1.2%	52	6.4%	9.34	6.95 to 12.56	1.17×10^{-49}
	- Other digestive system	656	2.2%	25	3.1%	2.67	1.79 to 3.99	1.67×10^{-6}
L00 to L99	Skin	46	0.2%	0	0.0%	N/A		
M00 to M99	Musculoskeletal system	183	0.6%	2	0.2%	0.95	0.24 to 3.84	0.943
N00 to N99	Genitourinary system	549	1.9%	12	1.5%	1.59	0.90 to 2.82	0.114
O00 to O99	Pregnancy and childbirth	1	0.0%	0	0.0%	N/A		
P00 to P96	Perinatal	0	0.0%	0	0.0%	N/A		
Q00 to Q99	Congenital and chromosomal abnormalities	32	0.1%	0	0.0%	N/A		
R00 to R99	Symptoms, signs, abnormalities	633	2.2%	23	2.8%	2.56	1.68 to 3.88	1.09×10^{-5}
S00 to Y98	Injury, poisoning, external causes	1315	4.5%	35	4.3%	1.77	1.26 to 2.48	8.89×10^{-4}
Z00 to Z99	Health service encounters	6	0.0%	0	0.0%	N/A		
Total		29,382	100.0%	809	100.0%	2.02	1.89 to 2.17	1.70×10^{-86}

Supplementary Table 4. Comparison of Hazard Ratios between excessive drinkers and all other participants, showing results adjusted for sex only, then with addition of information on smoking status, then with addition of information on other recognised risk factors (as listed in the footnote).

	Sex only			Add smoking			Add others*		
	HR	95% CI	p-value	HR	95% CI	p-value	HR	95% CI	p-value
All-cause	2.02	1.89 to 2.17	1.70×10^{-86}	1.66	1.54 to 1.78	7.77×10^{-45}	1.70	1.56 to 1.84	9.86×10^{-37}
Infectious and parasitic diseases	2.69	1.63 to 4.44	1.15×10^{-4}	2.26	1.36 to 3.74	0.0016	2.29	1.24 to 4.22	0.0081
Malignant neoplasms	1.89	1.69 to 2.12	4.07×10^{-28}	1.58	1.41 to 1.78	2.97×10^{-15}	1.65	1.45 to 1.88	8.52×10^{-14}
Other neoplasms, Blood disorders	1.45	0.65 to 3.27	0.365	1.37	0.61 to 3.09	0.450	1.65	0.67 to 4.06	0.273
Endocrine, nutritional, metabolic	1.96	1.29 to 2.97	0.0015	1.68	1.11 to 2.56	0.015	1.75	1.06 to 2.89	0.029
Mental and behavioural	3.68	2.44 to 5.56	6.05×10^{-10}	3.21	2.12 to 4.87	3.88×10^{-8}	2.86	1.74 to 4.70	3.25×10^{-5}
Nervous system	0.82	0.47 to 1.42	0.481	0.81	0.47 to 1.40	0.447	0.73	0.36 to 1.47	0.374
Circulatory system	1.87	1.61 to 2.17	3.59×10^{-16}	1.49	1.28 to 1.73	2.82×10^{-7}	1.50	1.26 to 1.78	5.45×10^{-6}
Respiratory system	2.12	1.72 to 2.60	9.83×10^{-13}	1.55	1.26 to 1.91	2.97×10^{-5}	1.53	1.21 to 1.95	4.46×10^{-4}
Digestive system	5.15	4.07 to 6.51	7.48×10^{-43}	3.98	3.14 to 5.05	3.01×10^{-30}	3.74	2.81 to 4.97	1.03×10^{-19}
Liver	9.34	6.95 to 12.56	1.17×10^{-49}	7.25	5.36 to 9.80	8.87×10^{-38}	6.67	4.63 to 9.62	2.72×10^{-24}
Other	2.67	1.79 to 3.99	1.67×10^{-6}	2.06	1.38 to 3.09	4.46×10^{-4}	2.01	1.24 to 3.24	0.0043
Musculoskeletal system	0.95	0.24 to 3.84	0.943	0.82	0.20 to 3.34	0.785	1.24	0.30 to 5.09	0.762
Genitourinary system	1.59	0.89 to 2.82	0.114	1.34	0.76 to 2.39	0.313	1.61	0.90 to 2.88	0.107
Symptoms, signs, abnormalities	2.56	1.68 to 3.88	1.09×10^{-5}	2.06	1.35 to 3.14	7.73×10^{-4}	2.57	1.61 to 4.10	7.99×10^{-5}
Injury, poisoning, external causes	1.77	1.26 to 2.48	8.89×10^{-4}	1.46	1.04 to 2.05	0.029	1.42	0.95 to 2.12	0.089

* Additional risk factors are BMI, WHR, age completed full-time education, self-reported diabetes, systolic and diastolic blood pressures.

Supplementary Table 5. Mortality for major cause-of-death groups in excessive drinkers, by age- and sex-adjusted standardised biomarker results.

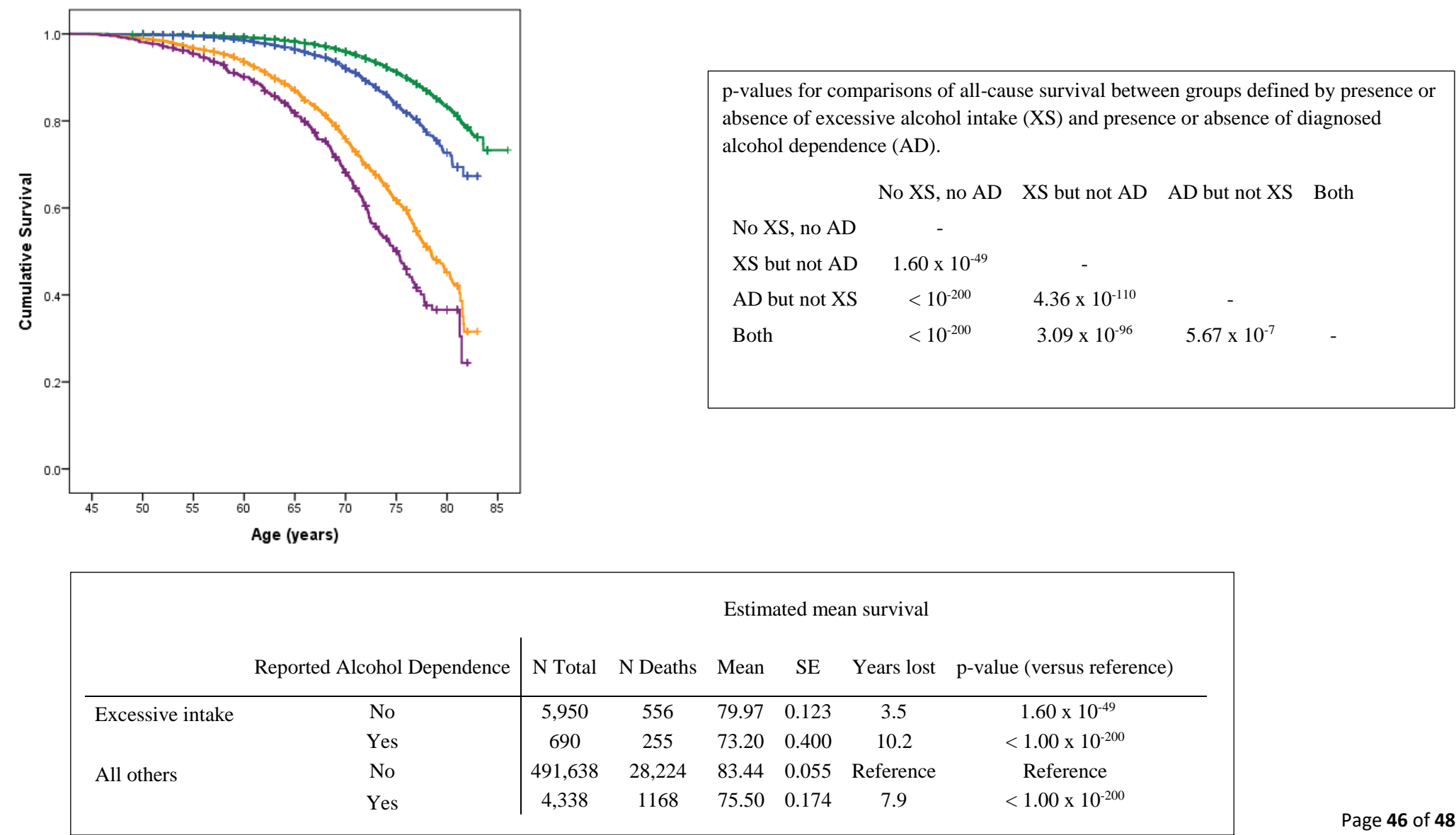
	Any cancer					Any CVD					Other conditions, excluding liver disease				
	Beta	SE	p-value	HR	95% CI	Beta	SE	p-value	HR	95% CI	Beta	SE	p-value	HR	95% CI
<i>Liver tests:</i>															
Alkaline phosphatase	0.245	0.059	3.62 x 10 ⁻⁵	1.278	1.137 to 1.435	0.313	0.074	2.12 x 10 ⁻⁵	1.368	1.184 to 1.581	0.449	0.056	1.25 x 10 ⁻¹⁵	1.567	1.404 to 1.750
ALT	-0.016	0.062	0.798	0.984	0.871 to 1.112	0.027	0.080	0.732	1.028	0.879 to 1.202	-0.001	0.066	0.982	0.999	0.878 to 1.136
AST	0.126	0.060	0.035	1.135	1.009 to 1.276	0.285	0.069	4.01 x 10 ⁻⁵	1.330	1.161 to 1.524	0.400	0.052	9.34 x 10 ⁻¹⁵	1.491	1.348 to 1.650
AST/ALT ratio	0.142	0.056	0.012	1.152	1.032 to 1.286	0.259	0.064	4.50 x 10 ⁻⁵	1.296	1.144 to 1.468	0.403	0.044	3.15 x 10 ⁻²⁰	1.497	1.374 to 1.631
GGT	0.202	0.057	3.60 x 10 ⁻⁴	1.224	1.095 to 1.368	0.343	0.072	1.65 x 10 ⁻⁶	1.410	1.225 to 1.622	0.409	0.057	7.30 x 10 ⁻¹³	1.505	1.346 to 1.683
Total bilirubin	-0.046	0.062	0.457	0.955	0.845 to 1.078	0.125	0.078	0.108	1.133	0.973 to 1.319	0.039	0.065	0.541	1.040	0.917 to 1.180
Direct bilirubin	0.132	0.061	0.031	1.141	1.012 to 1.286	0.336	0.074	5.21 x 10 ⁻⁶	1.399	1.211 to 1.616	0.241	0.062	9.11 x 10 ⁻⁵	1.273	1.128 to 1.436
Indirect bilirubin	-0.075	0.065	0.246	0.927	0.816 to 1.053	0.071	0.080	0.374	1.074	0.918 to 1.255	-0.035	0.067	0.598	0.965	0.847 to 1.101
Total protein	0.038	0.062	0.545	1.038	0.919 to 1.173	0.115	0.078	0.141	1.122	0.962 to 1.309	0.191	0.063	0.0026	1.210	1.069 to 1.370
Albumin	-0.184	0.064	0.0039	0.832	0.734 to 0.943	-0.258	0.081	0.0014	0.772	0.659 to 0.905	-0.342	0.066	2.53 x 10 ⁻⁷	0.710	0.624 to 0.809
Globulins	0.149	0.059	0.012	1.160	1.034 to 1.303	0.270	0.070	1.12 x 10 ⁻⁴	1.310	1.142 to 1.503	0.371	0.053	3.15 x 10 ⁻¹²	1.450	1.306 to 1.609
<i>Renal tests:</i>															
Creatinine	-0.127	0.060	0.035	0.881	0.782 to 0.991	-0.190	0.079	0.016	0.827	0.708 to 0.966	-0.322	0.065	5.77 x 10 ⁻⁷	0.724	0.638 to 0.822
Cystatin C	0.137	0.055	0.013	1.146	1.030 to 1.276	0.370	0.059	4.25 x 10 ⁻¹⁰	1.448	1.289 to 1.626	0.315	0.051	8.74 x 10 ⁻¹⁰	1.370	1.239 to 1.515
Urea	-0.285	0.064	8.08 x 10 ⁻⁶	0.752	0.664 to 0.852	-0.447	0.084	1.14 x 10 ⁻⁷	0.640	0.542 to 0.754	-0.537	0.070	1.65 x 10 ⁻¹⁴	0.584	0.510 to 0.670
Urate	-0.072	0.061	0.232	0.930	0.826 to 1.047	0.166	0.077	0.031	1.181	1.016 to 1.373	-0.134	0.065	0.038	0.874	0.770 to 0.993
<i>CVD-related tests:</i>															
Glucose	0.070	0.059	0.229	1.073	0.957 to 1.204	0.183	0.066	0.0055	1.200	1.055 to 1.366	0.042	0.064	0.515	1.043	0.920 to 1.182
Glycated haemoglobin	0.093	0.057	0.103	1.098	0.981 to 1.228	0.220	0.068	0.0013	1.246	1.089 to 1.424	0.048	0.063	0.450	1.049	0.927 to 1.187
IGF-1	-0.067	0.063	0.285	0.935	0.827 to 1.057	-0.227	0.083	0.0065	0.797	0.677 to 0.939	-0.477	0.071	1.51 x 10 ⁻¹¹	0.621	0.540 to 0.713
C-reactive protein	0.219	0.060	2.31 x 10 ⁻⁴	1.245	1.108 to 1.400	0.130	0.079	0.097	1.139	0.977 to 1.329	0.283	0.062	5.51 x 10 ⁻⁶	1.327	1.175 to 1.499
Apo A	0.029	0.062	0.645	1.029	0.911 to 1.162	-0.070	0.082	0.397	0.933	0.794 to 1.096	0.169	0.064	0.0085	1.184	1.044 to 1.342
Apo B	-0.192	0.065	0.0029	0.825	0.727 to 0.937	-0.306	0.087	4.27 x 10 ⁻⁴	0.737	0.622 to 0.873	-0.244	0.070	4.39 x 10 ⁻⁴	0.783	0.683 to 0.898
Lp(a)	0.057	0.067	0.397	1.059	0.928 to 1.208	-0.018	0.091	0.845	0.982	0.821 to 1.175	-0.086	0.075	0.250	0.917	0.792 to 1.063
LDL cholesterol	-0.199	0.063	0.0016	0.820	0.724 to 0.927	-0.325	0.085	1.30 x 10 ⁻⁴	0.723	0.612 to 0.853	-0.246	0.068	3.14 x 10 ⁻⁴	0.782	0.684 to 0.894
HDL cholesterol	0.052	0.059	0.377	1.054	0.938 to 1.184	0.065	0.076	0.392	1.067	0.920 to 1.238	0.222	0.057	8.41 x 10 ⁻⁵	1.249	1.118 to 1.396

	Any cancer					Any CVD					Other conditions, excluding liver disease				
	Beta	SE	p-value	HR	95% CI	Beta	SE	p-value	HR	95% CI	Beta	SE	p-value	HR	95% CI
Triglycerides	-0.062	0.063	0.322	0.940	0.831 to 1.063	-0.144	0.082	0.081	0.866	0.737 to 1.018	-0.147	0.067	0.028	0.863	0.757 to 0.985
<i>Bone-related tests:</i>															
Calcium ¹	0.040	0.063	0.520	1.041	0.921 to 1.178	-0.151	0.081	0.063	0.860	0.734 to 1.008	-0.265	0.066	6.72 x 10 ⁻⁵	0.767	0.673 to 0.874
Phosphate	0.074	0.064	0.248	1.077	0.950 to 1.220	0.197	0.082	0.016	1.218	1.038 to 1.429	0.006	0.068	0.925	1.006	0.881 to 1.149
Vitamin D	-0.142	0.067	0.034	0.868	0.761 to 0.989	-0.393	0.097	4.58 x 10 ⁻⁵	0.675	0.558 to 0.815	-0.356	0.078	4.31 x 10 ⁻⁶	0.700	0.602 to 0.815
<i>Endocrine tests:</i>															
SHBG	0.087	0.067	0.191	1.091	0.958 to 1.243	0.384	0.087	9.92 x 10 ⁻⁶	1.469	1.239 to 1.742	0.450	0.072	3.93 x 10 ⁻¹⁰	1.569	1.362 to 1.806
Oestradiol (M)	0.043	0.131	0.743	1.044	0.807 to 1.350	0.165	0.133	0.215	1.179	0.909 to 1.529	0.067	0.114	0.560	1.069	0.855 to 1.337
Oestradiol (F)	0.372	0.362	0.304	1.450	0.714 to 2.948						0.143	0.393	0.716	1.153	0.534 to 2.490
Testosterone (M)	-0.002	0.068	0.978	0.998	0.873 to 1.141	0.223	0.074	0.0027	1.250	1.081 to 1.447	0.222	0.064	4.83 x 10 ⁻⁴	1.249	1.102 to 1.414
Testosterone (F)	-0.073	0.149	0.623	0.930	0.695 to 1.244	0.025	0.172	0.884	1.025	0.732 to 1.437	0.107	0.102	0.297	1.112	0.911 to 1.359
<i>Haematology tests:</i>															
White cell count	0.144	0.058	0.014	1.155	1.030 to 1.294	0.182	0.076	0.016	1.200	1.034 to 1.392	0.255	0.058	1.06 x 10 ⁻⁵	1.291	1.152 to 1.446
Red cell count	-0.173	0.058	0.0027	0.841	0.751 to 0.942	-0.186	0.076	0.015	0.831	0.715 to 0.964	-0.248	0.059	2.38 x 10 ⁻⁵	0.781	0.696 to 0.876
Haemoglobin	-0.028	0.059	0.633	0.972	0.866 to 1.092	0.051	0.079	0.520	1.052	0.901 to 1.230	-0.015	0.063	0.814	0.985	0.872 to 1.114
Haematocrit	0.010	0.060	0.872	1.010	0.898 to 1.135	0.037	0.079	0.640	1.038	0.888 to 1.213	0.012	0.063	0.852	1.012	0.894 to 1.145
MCV	0.323	0.057	1.43 x 10 ⁻⁸	1.381	1.235 to 1.545	0.390	0.075	2.29 x 10 ⁻⁷	1.477	1.274 to 1.711	0.462	0.058	1.56 x 10 ⁻¹⁵	1.587	1.416 to 1.777
MCH	0.220	0.053	3.21 x 10 ⁻⁵	1.246	1.123 to 1.382	0.321	0.065	7.47 x 10 ⁻⁷	1.378	1.214 to 1.565	0.331	0.050	5.63 x 10 ⁻¹¹	1.392	1.261 to 1.537
MCHC	-0.093	0.059	0.113	0.911	0.812 to 1.022	0.030	0.076	0.689	1.031	0.888 to 1.197	-0.066	0.063	0.295	0.936	0.828 to 1.059
RDW	0.181	0.037	1.15 x 10 ⁻⁶	1.198	1.114 to 1.289	0.203	0.043	2.37 x 10 ⁻⁶	1.225	1.126 to 1.332	0.223	0.032	5.34 x 10 ⁻¹²	1.250	1.173 to 1.332
Platelet count	-0.022	0.061	0.722	0.979	0.868 to 1.103	0.037	0.080	0.641	1.038	0.887 to 1.214	0.128	0.062	0.039	1.136	1.007 to 1.282
Platelet-Crit	-0.032	0.061	0.601	0.969	0.860 to 1.092	-0.034	0.081	0.674	0.966	0.824 to 1.133	-0.051	0.065	0.433	0.950	0.837 to 1.079
MPV	-0.010	0.059	0.871	0.991	0.883 to 1.112	-0.080	0.080	0.319	0.923	0.789 to 1.080	-0.345	0.070	9.38 x 10 ⁻⁷	0.708	0.617 to 0.813
PDW	0.068	0.057	0.231	1.071	0.957 to 1.198	-0.163	0.083	0.050	0.849	0.721 to 1.000	-0.151	0.066	0.022	0.859	0.755 to 0.978
Lymphocyte count	0.037	0.046	0.414	1.038	0.949 to 1.136	-0.006	0.075	0.938	0.994	0.859 to 1.151	-0.046	0.066	0.481	0.955	0.839 to 1.086
Monocyte count	0.135	0.051	0.0085	1.144	1.035 to 1.265	0.163	0.066	0.014	1.177	1.034 to 1.340	0.212	0.048	9.20 x 10 ⁻⁶	1.236	1.126 to 1.358
Neutrophil count	0.134	0.059	0.023	1.143	1.019 to 1.283	0.207	0.076	0.0066	1.230	1.059 to 1.429	0.296	0.058	2.88 x 10 ⁻⁷	1.344	1.200 to 1.505
Eosinophil count	-0.038	0.061	0.538	0.963	0.855 to 1.085	-0.039	0.082	0.636	0.962	0.819 to 1.130	-0.051	0.065	0.437	0.950	0.836 to 1.080
Basophil count	0.090	0.055	0.098	1.095	0.983 to 1.219	0.052	0.076	0.491	1.054	0.908 to 1.223	0.097	0.057	0.088	1.102	0.986 to 1.231
Reticulocyte count	-0.016	0.062	0.792	0.984	0.871 to 1.112	0.090	0.080	0.262	1.094	0.935 to 1.280	-0.031	0.066	0.641	0.970	0.851 to 1.104
Immature Retics	0.097	0.059	0.103	1.102	0.981 to 1.238	0.177	0.080	0.026	1.194	1.021 to 1.396	0.158	0.063	0.011	1.171	1.036 to 1.324

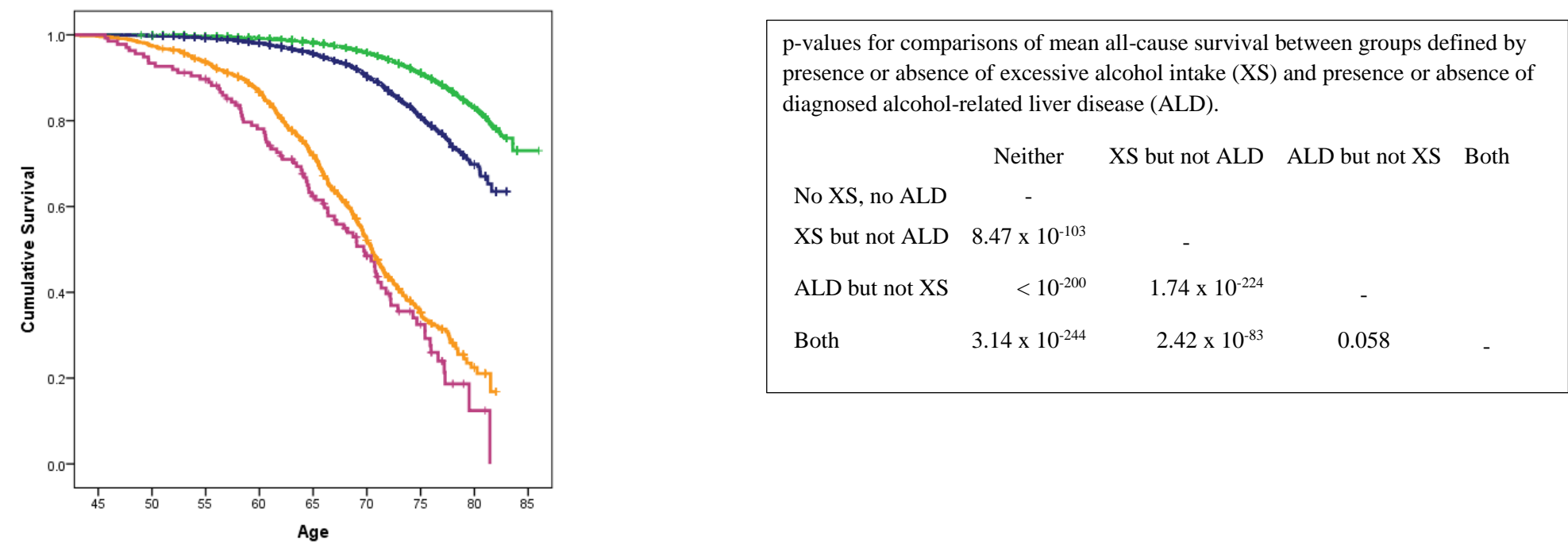
	Any cancer					Any CVD					Other conditions, excluding liver disease				
	Beta	SE	p-value	HR	95% CI	Beta	SE	p-value	HR	95% CI	Beta	SE	p-value	HR	95% CI
Mean Reticulocyte Volume	0.281	0.057	7.82×10^{-7}	1.325	1.185 to 1.481	0.365	0.074	7.00×10^{-7}	1.441	1.247 to 1.664	0.378	0.058	5.83×10^{-11}	1.459	1.303 to 1.634
Mean Spherical Cell Volume	0.294	0.056	1.90×10^{-7}	1.341	1.201 to 1.498	0.376	0.074	3.29×10^{-7}	1.457	1.261 to 1.683	0.517	0.055	4.77×10^{-21}	1.677	1.506 to 1.867

¹Calcium results are not adjusted for albumin concentration.

Supplementary Figure 1. Sex-adjusted Kaplan-Meier mortality curves by excessive drinking and reported diagnosis (from hospital or death records) of alcohol dependence. Green line: no reported excessive drinking, no alcohol-dependence diagnosis; blue line: excessive drinking but no alcohol dependence diagnosis; orange line: no excessive drinking but alcohol dependence diagnosis; purple line: excessive drinking and alcohol dependence diagnosis.



Supplementary Figure 2. Sex-adjusted Kaplan-Meier mortality curves by excessive drinking and reported diagnosis (from hospital or death records) of alcohol-related liver disease (ALD). Green line: no reported excessive drinking, no ALD diagnosis; blue line: excessive drinking but no ALD; orange line: no excessive drinking but ALD diagnosis; purple line: excessive drinking and ALD.



		Estimated mean survival					
Reported ALD		N Total	N Deaths	Mean	SE	Years lost	p-value (versus reference)
Excessive intake	No	6504	728	79.47	0.12	3.9	8.47×10^{-103}
	Yes	136	83	68.22	0.91	15.2	3.14×10^{-244}
All others	No	494,962	28,935	83.40	0.05	Reference	N/A
	Yes	904	457	70.34	0.35	13.1	$< 10^{-250}$

Supplementary Figure 3. Hazard Ratios (HR) for all-cause mortality by quintiles of biochemical test results, excessive drinkers only. The three panels show results for liver function tests, for tests related to cardiometabolic risk, and for other tests. For each test, the points plotted (moving down the charts) show HRs for quintiles 2, 3, 4 and 5 relative to quintile 1 (the lowest quintile).

