

## **Profiling of immune responses to COVID-19 and vaccination uncovers potent adjuvant capacities of SARS CoV-2 infection to vaccination leading to memory T cell responses with a Th17 signature in cancer patients**

Miriam Echaide<sup>1</sup>, Ibone Labiano<sup>2</sup>, Marina Delgado<sup>2,3</sup>, Angela Fernández de Lascoiti<sup>2,3</sup>, Patricia Ochoa<sup>3</sup>, Maider Garnica<sup>1</sup>, Pablo Ramos<sup>1</sup>, Luisa Chocarro<sup>1</sup>, Leticia Fernández<sup>1</sup>, Hugo Arasanz<sup>1,3</sup>, Ana Bocanegra<sup>1</sup>, Ester Blanco<sup>1</sup>, Sergio Piñeiro<sup>1</sup>, Miren Zuazo<sup>1</sup>, Pilar Morente<sup>1</sup>, Ruth Vera<sup>2,3</sup>, Maria Alsina<sup>2,3</sup>, David Escors<sup>1\*</sup>, Grazyna Kochan<sup>1\*</sup>.

<sup>1</sup>Oncoimmunology Group, Navarrabiomed, Fundación Miguel Servet-Hospital Universitario de Navarra-UPNA-IdISNA, Irunlarrea 3, 31008 Pamplona, Spain.

<sup>2</sup>Oncobiona Group-Navarrabiomed, IdiSNA, Irunlarrea 3, 31008 Pamplona, Spain.

<sup>3</sup>Department of Medical Oncology, Hospital Universitario de Navarra, IdISNA, Irunlarrea 3, 31008 Pamplona, Spain.

\* Corresponding authors: David Escors ([descorsm@navarra.es](mailto:descorsm@navarra.es)), Grazyna Kochan ([grazyna.kochan@navarra.es](mailto:grazyna.kochan@navarra.es)), Navarrabiomed, Irunlarrea 3, 31008 Pamplona, Navarra, Spain.

Summary: Immune profiling was performed in oncologic patients to assess responses to SARS CoV-2 and vaccination. COVID-19 disease before vaccination had major consequences for antibody and T cell responses in oncologic patients.

## **ABSTRACT**

Previous studies have shown differing immune responses in cancer patients towards natural infection and vaccination compared to healthy individuals. Therefore, it is yet unclear whether cancer patients show differential responses to SARS CoV-2 natural infection and vaccination with current mRNA vaccines. Immune profiling was performed in three cohorts of healthy donors and oncologic patients: infected with SARS CoV-2, BNT162b2-vaccinated, and vaccinated with previous SARS CoV-2 infection. Vaccine was found to be a poor inductor of S-specific T cell responses compared to natural infection, which acted as a potent adjuvant for vaccination in antibody and T cell responses. Antibodies towards the M protein were a biomarker of disease severity, while the major targets for T cell responses in natural infection were the M and S protein, but not the N protein. T cell responses quickly decayed after 6 months post-vaccination. T cell profiling showed that vaccination expands effector T cells rather than memory T cell subsets unless the subjects had previous COVID-19 disease. Cancer patients with previous COVID-19 and subsequently vaccinated exhibited exacerbated CD8 responses, with elevated IL17 CD4 and CD8 T cell subsets, and neutrophils. Concluding, a previous COVID-19 infection has potent adjuvant effects for vaccination leading to memory T cell differentiation, but with enhanced inflammatory responses in cancer patients.

## INTRODUCTION

Severe acute respiratory syndrome coronavirus-2 (SARS CoV-2) caused a new outbreak of pneumonia in Wuhan, China, in December 2019[1]. Since then, it has caused the COVID-19 pandemic [2]. Patients with cancer are thought to be at higher risk of contracting a severe disease leading to death [3]. Patients with cancer often present co-morbidities and risk factors associated with COVID-19 severity, including older age, chronic inflammation and genetic alterations associated with severe disease [2-5]. Patients with cancer are usually immunocompromised by the disease and antineoplastic treatments [3, 6-8]. Another frequent feature in cancer patients is T cell senescence. During aging, T cells proceed towards terminal differentiation by a sequential loss of CD27 and CD28 co-receptor surface expression [9, 10]. T cell senescence is characterized loss of effector functions and impaired anti-viral immunity. Senescent T cells are enriched in effector phenotypes such as effector-memory (CD62L- CD45RA-) and effector T cells (CD62L- CD45RA+), with a loss of central memory (CD62L+ CD45RA-) and naïve (CD62L+ CD45RA+) phenotypes [10]. On top of this, cancers can exacerbate chronic inflammation, which may favour pro-inflammatory cytokine release that may contribute to COVID-19 clinical syndrome [11, 12]. It is yet unclear who these alterations impact immunity against SARS-CoV-2 and responses to vaccination [3, 13, 14].

Immune responses to SARS CoV-2 infection in healthy subjects are diverse and complex [15, 16], and only few studies have addressed this in cancer patients. In general, oncologic patients have shown comparable antibody responses [13, 17-19]. However, T cell responses were strongly reduced in oncologic patients [17]. Although regarded as a risk population, cancer patients were underrepresented in clinical trials assessing vaccine safety and efficacy [20, 21]. Overall, high seroconversion rates were shown with comparable or slightly lower antibody titres in patients with solid tumours compared to healthy donors [19, 20, 22-34]. However, a meta-analysis of 35 studies suggested lower protection by vaccination in oncologic patients [35]. T cell activities towards the S protein [22, 23, 29, 33] showed from insufficient responses [22], lower activation rates [23, 33] or comparable to healthy donors [29].

So far, detailed information on SARS CoV-2 immunity and responses to vaccination in patients with cancer is still lacking [14, 35]. For instance, three of the structural proteins

(S, M and N) are the main components of the coronavirion [36, 37], but only the S protein is included in most vaccine formulations in Europe. Therefore, immune responses towards other structural proteins remain poorly studied [38, 39]. Finally, it is still far from clear whether previous infection affects the responses to vaccination in cancer patients, particularly in T cell immunity.

## MATERIALS AND METHODS

### Study cohort and design

This study was conducted according to the principles of the Declaration of Helsinki. The study was approved by the Clinical Research Ethics Committees of Hospital Universitario de Navarra and informed consents were obtained for all subjects. Study cohort and design are schematically depicted in **supplementary figure S1**. Peripheral blood samples from 57 healthy donors (H) and from 40 oncology patients (O) were obtained in the Oncology Unit of the University Hospital of Navarra (HUN), between April and December 2021. Samples corresponded to six study groups, including H donors and O patients with previous SARS CoV-2 infection (H-CoV, n=15; O-CoV, n=10), vaccinated without previous infection (H-V, n=22; O-V, n=20) and vaccinated after having an infection (H-V-CoV, n=10; O-V-CoV, n=10). SARS CoV-2 infection was confirmed by a positive PCR test. A group of H donors without previous infection nor vaccination was included as a control (H-N/N, n=10). The total sample size of the study was established *a priori* to achieve a minimum power of 0.8 considering a large effect size ( $f=0.4$ ) using Gpower 3.1 [40]. General clinical characteristics and SARS CoV-2-related parameters of the study cohort are summarized in Table 1 and Table 2, respectively. Infected patients were classified for COVID-19 severity according to the Treatment Guidelines of the NIH (<https://www.covid19treatmentguidelines.nih.gov/overview/clinical-spectrum/>):

*0 = Asymptomatic or Presymptomatic Infection:* Positive for SARS-CoV-2 without symptoms.

*1 = Mild Illness:* Any of the symptoms of COVID-19 without shortness of breath, dyspnoea, or abnormal chest imaging.

*2 = Moderate Illness:* Evidence of lower respiratory disease during clinical assessment or imaging with oxygen saturation ( $SpO_2$ )  $\geq 94\%$  on room air at sea level.

3 = *Severe Illness*: Individuals with SpO<sub>2</sub> <94%, a ratio of arterial partial pressure of oxygen to fraction of inspired oxygen (PaO<sub>2</sub>/FiO<sub>2</sub>) <300 mm Hg, a respiratory rate >30 breaths/min, or lung infiltrates >50%.

4 = *Critical Illness*: Respiratory failure, septic shock, and/or multiple organ dysfunction.

### **Sample processing, PBMCs reactivation and flow cytometry**

Blood collection, PBMC, myeloid cells and T cell purification, activation and flow cytometry were carried out as previously described [41]. The following fluorochrome-conjugated antibodies were used: CD14-Violet Fluor 450 (Ref 75-0149-T100, TONBO), CD11b-PerCP-Cy5-5 (Ref 65-0112-U1, TONBO), CD62L-APC (Ref 130-113-617, Miltenyi), CD66b-APC-Cy7 (Ref 130-120-146, Miltenyi), CD54-FITC (Ref 130-104-214, Miltenyi), CD19-PE (Ref 130-113-731, Miltenyi), CD3-APC (Ref 130-113-135, Miltenyi), CD8-APC-Cy7 (Ref 130-110-681, Miltenyi), CD4-FITC (Ref 130-114-531, Miltenyi), CD27-PE (Ref 50-0279-T100, TONBO), CD28-PE-Cy7 (Ref 130-126-316, Miltenyi), CD8-PE-Cy7 (Ref 130-110-680, Miltenyi), CD4-APC-Cy7 (Ref 25-0049-T100, TONBO), CD154-PerCP-Cy5-5 (Ref 130-122-800, Miltenyi), CD137-PE (Ref 130-110-763, Miltenyi), IFN $\gamma$ -FITC (Ref 130-113-497, Miltenyi), IL-17-Vio770 (Ref 130-118-249, Miltenyi), CD45RA-FITC (Ref 35-0458-T025, TONBO), CD62L-APC (Ref 130-113-617, Miltenyi).

For T cell activation half a million PBMCs were plated per well in a 96-well plate, and reactivated with 0.8 ng/ $\mu$ l of the following SARS-CoV-2 PepTivators (Miltenyi) separately: PepTivator SARS-CoV-2 Prot\_M, PepTivator SARS-CoV-2 Prot\_N, PepTivator SARS-CoV-2 Prot\_S, PepTivator SARS-CoV-2 Prot\_S1, PepTivator SARS-CoV-2 Prot\_S+. S protein PepTivators were mixed. Cells were incubated for 17-19 hours at 37°C, and then treated with 1  $\mu$ l/ml of Brefeldin A (ThermoFisher Scientific). Cells were washed and stained for flow cytometry.

### **SARS CoV-2 protein expression and purification**

For ELISA and stimulation studies M, S and N proteins were produced using Bac-to-Bac baculovirus expression. Briefly, synthetic genes encoding S1 (1-303 amino acid), full length N and the cytoplasmic domain of the M protein (1-100 amino acid) were fused to histidine tags and cloned. Protein production and purification by Ni-NTA affinity and

size exclusion chromatographies were performed following standard protocols (Bac-to-Bac ThermoFisher).

### **Non-sandwich ELISA**

Donor sera were obtained from peripheral blood, centrifuged and frozen at -20°C. For detection of S and N specific antibodies, a 96-well plate was coated with 5 µg/mL of the corresponding protein, followed by blocking with 1X PBS-2% BSA. 1:800, 1:250 and 1:80 sera dilutions were used for detection of anti-S antibodies, anti-N antibodies and anti-M antibodies, respectively. Anti-human IgGs HRP-labelled antibody (ThermoFisher) was used as secondary antibody. ELISAS were developed with 100 µL TMB substrate (Sigma) and read at 450 nm.

### **Statistical analyses**

Statistical analyses were performed with GraphPad 8. Variables under study were tested for normality (Kruskal-Wallis test), homogeneity of variances (F test), and homogeneity (Spearman's coefficient of variation). Antibody titres and percentages of cell types as quantified by flow cytometry were either not normally distributed or showed high variability. For multi-group comparisons of these variables, non-parametric Kruskal-Wallis tests were performed followed by pair-wise comparisons with Dunn's test. For experiments involving only two independent groups, the non-parametric U of Mann Whitney was used. The percentages of T cell phenotypes were normally distributed, homogeneous and with comparable variances. In this case, one-way ANOVAs were carried out followed by *a posteriori* pair-wise comparisons with Tukey's test.

## RESULTS

### Cohort characteristics

Clinical and SARS-CoV-2-related characteristics of the cohorts are summarized in **Table 1** and **Table 2**. Most oncologic (O) patients with solid tumours were under anti-neoplastic treatments, mostly chemotherapy at the time of sample collection. Treatments were not interrupted during vaccination. The degree of COVID-19 severity was generally higher in O patients compared to healthy (H) donors (**Supplementary figure S2a**). Disease severity was significantly different between H donors with previous COVID-19 disease (H-CoV) and O patients with previous COVID-19 disease (O-CoV) (**Supplementary figure S2b**). The majority of donors were vaccinated with BNT162b2 (Pfizer), inducing mild adverse events in 5% of O patients. The time elapsed from SARS CoV-2 infection or vaccination to sample collection was heterogeneous (**Supplementary figure S2d and S2e**), but only significantly different in O-CoV *versus* vaccinated oncologic patients with previous COVID-19 disease (O-CoV-V), which was longer for the latter group. 45.5% of vaccinated healthy (H-V) donors completed the vaccination regime more than 6 months before sample extraction.

**Table 1. Clinical and demographic characteristics of the study cohort**

		Healthy donors				Oncologic patients		
		H-N/N (n= 10)	H-CoV (n= 15)	H-V (n = 22)	H-CoV-V (n= 10)	O-CoV (n = 10)	O-V (n= 20)	O-CoV-V (n =10)
Age (median, Q1,Q3)		40 (25-58)	55 (53-61)	55 (42-61)	48 (34-61)	68 (61-75)	65 (60-71)	68 (57-74)
Gender (n, %)	Male	6 (60)	9 (60)	2 (9)	2 (20)	8 (80)	8 (40)	5 (50)
	Female	4 (40)	6 (40)	20 (91)	8 (80)	2 (20)	12 (60)	5 (50)
Comorbidities (n, %)	AHT	1 (11)	4 (29)	2 (9)	1 (10)	4 (40)	8 (40)	6 (60)
	DM	0 (0)	0 (0)	0 (0)	1 (10)	3 (30)	3 (15)	3 (30)
	DLP	1 (11)	5 (36)	4 (18)	2 (20)	7 (70)	7 (35)	3 (30)
	IC	0 (0)	0 (0)	0 (0)	0 (0)	3 (30)	3 (15)	0 (0)
	Neumo	0 (0)	3 (21)	1 (4,5)	0 (0)	5 (50)	4 (20)	1 (10)
Type of cancer (n, %)						Colon/ rectum 4 (40); breast 2 (20); pancreas, meso., lung, sarcoma 1 (10)	Pancreas 8(40); liver 5 (25); colon/rectu m 3 (15); ovary 2 (10); renal, gastric 1 (5)	Breast, pancreas, gastric 2 (20); meso., lung, ovary, salivary glands 1 (10)
Cancer treatment during sample extraction (n, %)	NT CT IT TKI CT+TKI					2 (20) 5 (50) 0 (0) 2 (20) 1 (20)	5 (25) 10 (50) 0 (0) 2 (10) 3 (15)	0 (0) 5 (50) 1 (10) 2 (20) 2 (20)

CoV, SARS CoV-2 infection; vac, vaccinated; CT, chemotherapy; DLP, dyslipidaemia; DM, diabetes mellitus; AHT, arterial hypertension; IC, ischemic cardiopathy; IT, immunotherapy; meso., mesothelioma; Neumo., neumopathies; NT, non-treated; TKI, tyrosin-kinase inhibitors; Q1, quartile 1; Q3, quartile 3; vac, vaccinated.



**Table 2. SARS CoV-2- related parameters of the study cohort**

		Healthy donors				Oncologic patients		
		H-N/N (n= 10)	H-CoV (n= 15)	H-V (n = 22)	H-CoV-V (n= 10)	O-CoV (n = 10)	O-V (n= 20)	O-CoV-V (n =10)
SARS CoV-2 infection severity	0		4(27)		5 (56)	0 (0)		3 (30)
	1		11(73)		4(44)	3(30)		5(50)
	2		0(0)		0(0)	3(30)		0(0)
	3		0(0)		0(0)	4(40)		2(20)
Clinical manifestation	Pneum.		0(0)		0(0)	9(90)		3(30)
	Complications		0 (0)		0(0)	4 (40)		0(0)
Time: infection-sample months (mean±SD)			4.7±2.4		8.5±4.2	2.8±2.6		8.6±3.3
Cancer treatment during SARS CoV-2 infection (n, %)	NT					3 (30)		6 (60)
	CT					4 (40)		2 (20)
	IT					0 (0)		1 (10)
	TKI					2 (20)		1 (10)
	CT+TKI					1 (10)		0 (0)
Type of vaccine (n, %)	BNT162b2 (Pfizer)			18 (82)	9 (90)		15 (75)	10 (100)
	mRNA-1273 (Moderna)			2 (9)	1 (10)			
	Vaxzevria (Astrazeneca)			2 (9)	0 (0)		5 (25)	0 (0)
Adverse events (n, %)				0(0)	0(0)		2 (10)	0 (0)
Time: vaccine-sample months (mean±SD)				5.1±3.7	3.1±1.3		3.3±2.7	0.9±0.4
Cancer treatment during vaccination (n, %)	NT					2 (10)		0 (0)
	CT					11 (55)		2 (30)
	IT					0 (0)		1 (10)
	TKI					3 (11)		3 (30)
	CT+TKI					4 (20)		3 (30)

CoV, SARS CoV-2 infection; vac, vaccinated; CT, chemotherapy; IT, immunotherapy; NT, non-treated; SD, standard deviation; TKI, tyrosin-kinase inhibitors; Q1, quartile 1; Q3, quartile 3; vac, vaccinated.

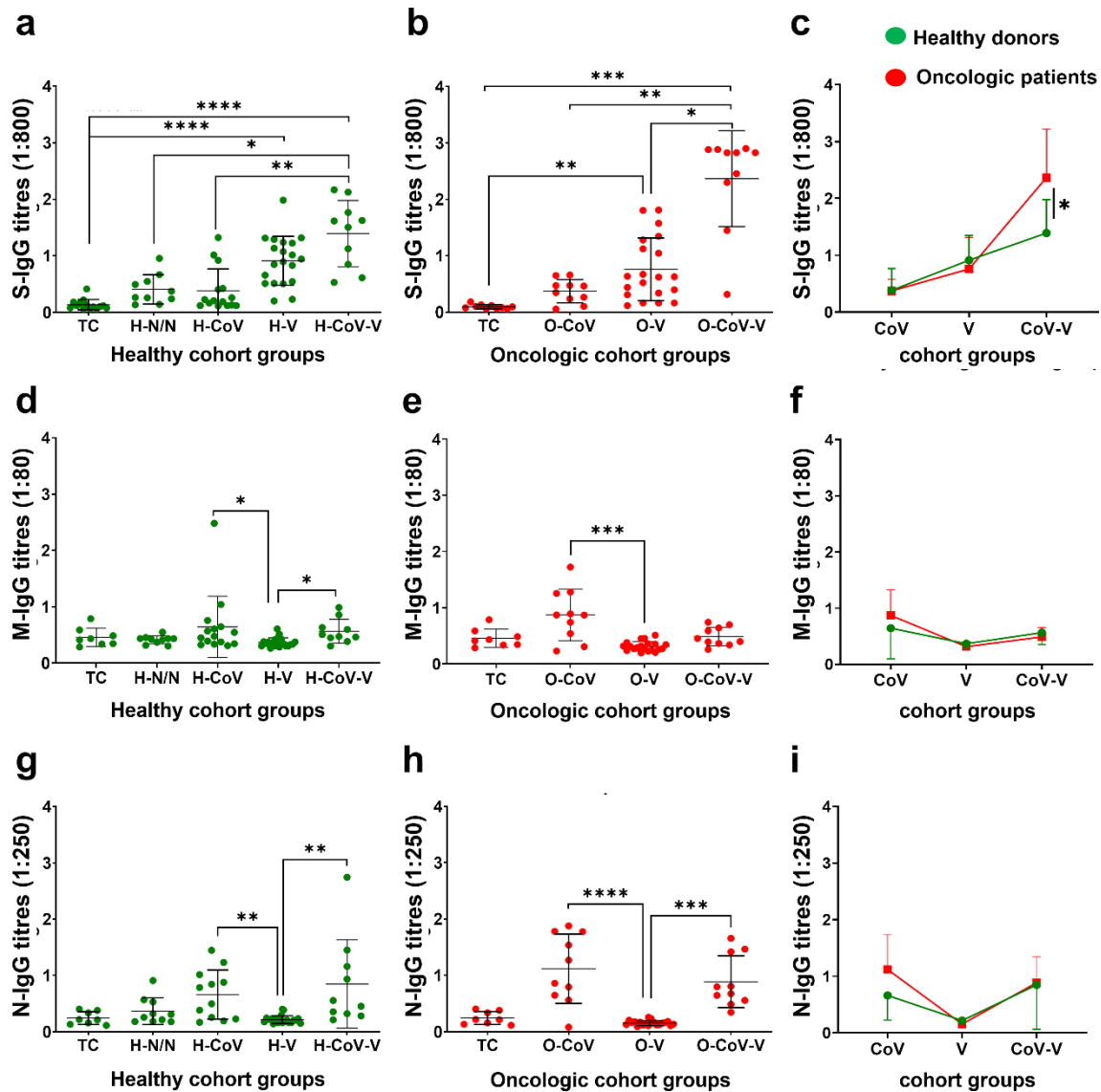
## Profiling of antibody responses towards S, M and N proteins

IgG antibody responses were evaluated towards SARS CoV-2 infection and vaccination. IgG antibody titres towards the viral proteins S, M and N were quantified, and sera from pre-pandemic donors served as technical negative controls (TC).

Infected healthy and oncologic individuals (H-CoV and O-CoV) had low S-specific IgG titres [42]. No differences were observed as well between H-N/N (healthy no COVID, no vaccinated) and H-CoV groups (**figure 1a, 2b**). As expected, vaccination significantly increased titres in H donors and O patients (H-V and O-V groups) (**Figure 1a, 2b**).

Vaccination in previously infected subjects (H-CoV-V and O-CoV-V) elevated S-specific IgG titers highly significantly, suggesting a potent adjuvant effect over vaccination (**figure 1a, 2b**). Interestingly, S-specific antibody titres were elevated in O-CoV-V group compared to H-CoV-V group (**figure 1c**). A positive correlation between antibody titres and disease severity was described before [16]. However, the differences in COVID-19 severity between O-CoV-V and H-CoV-V groups were not significant (**Supplementary figure 2c**). Otherwise, the time elapsed from vaccination to sample collection was shorter in O-CoV-V compared to H-CoV-V (**Supplementary figure 2e**). To find out if this could be the case, IgG titres were quantified in H-V donors as a function of the time elapsed from vaccination to sample collection. There was a non-significant reduction of IgG titres in donors who completed their vaccination regimen more than 6 months before sample collection (**Supplementary figure S3**).

M-specific IgG antibody titres were generally very low, and previous SARS CoV-2 or vaccination did not have an effect with the exception of a mild elevation in H-CoV and O-CoV groups (**figure 1d, 1e**). No differences were found between H donors and O patients (**figure 1f**). In contrast, N-specific IgG titres in infected groups (H-CoV, H-CoV-V, O-CoV and O-CoV-V) were significantly elevated compared to their vaccinated counterparts (H-V and O-H) (**figure 1g, 1h**), without differences between H donors and O patients (**figure 1i**).



**Figure 1. IgGs antibody titres against S, M and N proteins.** *a, b, c*) S-specific IgG antibody titres in sera (1:800) from H donors (*a*) and from O patients (*b*). *c*) Comparison between H donors and O patients. *d, e, f*) M-specific IgG antibody titres in sera (1:80) from H donors (*d*) and from O patients (*e*). *f*) Comparison between H donors and O patients. *g, h, i*) N-specific IgG antibody titres in sera (1:250) from H donors (*g*) and from O patients (*h*). *i*) Comparison of N-IgG titres between H donors and O patients. Non-parametric Krustal-Wallis test was used for multiple comparisons followed by Dunn's test for selected pair-wise comparisons. \*, \*\*, \*\*\* and \*\*\*\* indicate a p value <0.05, <0.01, <0.001 and <0.0001, respectively.

### Profiling of CD4 T cell activation and differentiation phenotypes

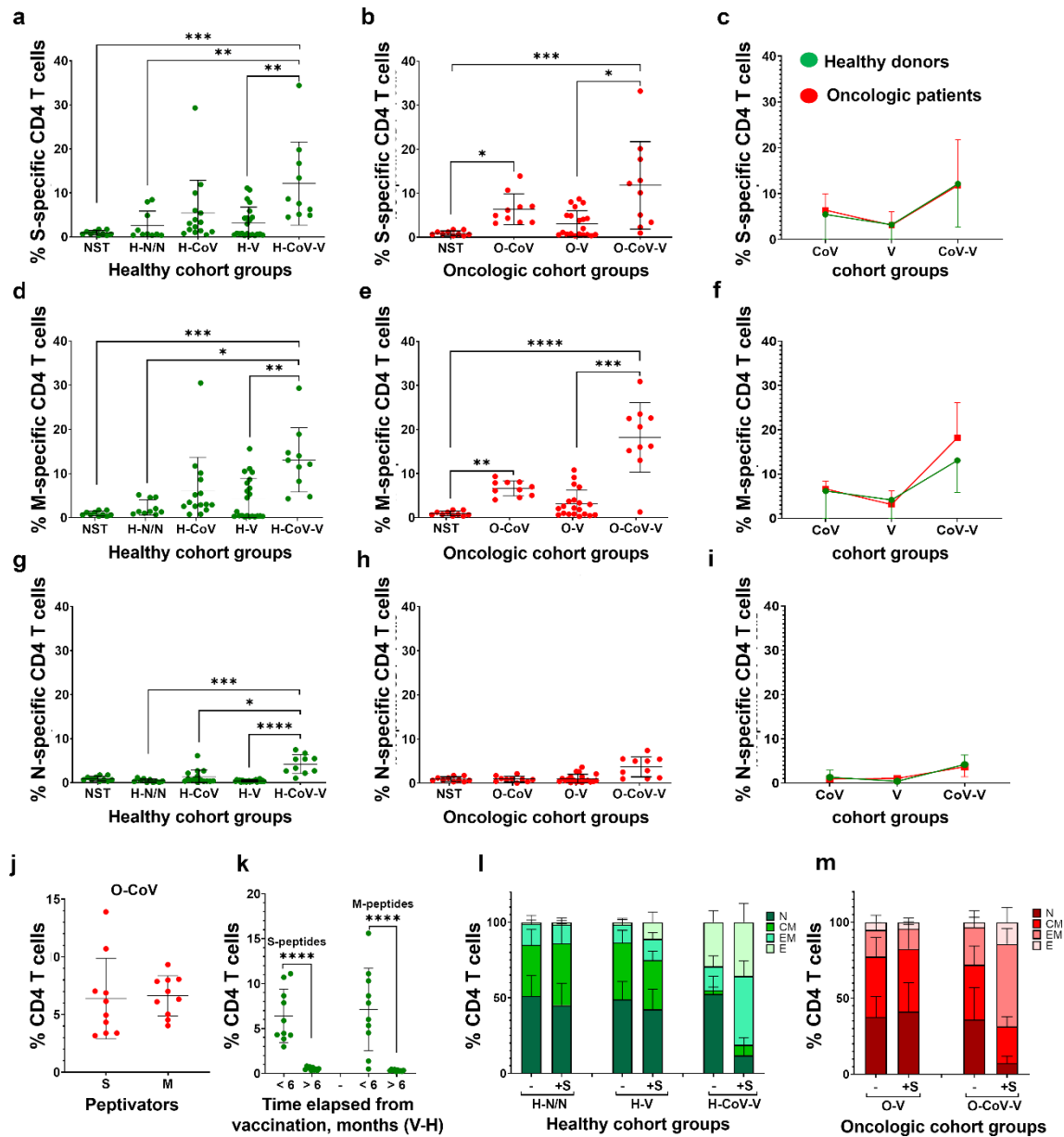
Specific T cell responses towards the three main structural proteins were evaluated in peripheral blood mononuclear cells (PBMCs). PBMCs were incubated with viral protein-specific peptivators and upregulation of the early activation markers CD154 and CD137

assessed by flow cytometry. Non-stimulated PBMCs were used as a control (NST) (**Supplementary figure S4**). S-specific CD4 T cells were detectable in patients with previous SARS-CoV-2 infection, especially in O patients. However, vaccination alone was not a potent inducer of S-specific CD4 T cells. In contrast, CD4 T cell responses were boosted in CoV-V groups, suggesting again a potent adjuvant effect of previous infection over T cell responses as well (**figure 2a, 2b**). No differences were observed between H donors and O patients (**figure 2c**).

Similar results were found for M-specific CD4 T cells, which were the most abundant in donors with previous COVID-19 and similar in H and O patients (H-CoV-V and O-CoV-V) (**figure 2d-2f**). Unexpectedly, some CD4 reactivity towards M protein was observed in H-V and O-V donors, who did not have a previous infection. These results suggested expansion of cross-reactive CD4 T cells specific possibly towards other human coronaviruses caused by vaccination. Indeed, the M protein sequence is well-conserved between human coronaviruses (**supplementary figure S5**).

CD4 responses towards the N protein were only detected in vaccinated donors with previous infection (H-CoV-V and O-CoV-V). We found that N is a poor inducer of T cell responses both in H and O donors, requiring natural infection and vaccination to expand them (**figure 2g-2i**). Both S and M proteins were equally good inducers of CD4 responses (**figure 2j**), but significantly decayed after 6 months post-vaccination (**figure 2k**).

Most oncologic patients have dysfunctional T cell immunity with altered T cell phenotypes [42]. To investigate if this was the case after infection or vaccination, CD62L and CD45RA expression profiles were characterized in S-specific CD4 T cells (**supplementary figure S6a**). Vaccination alone caused a significant increase in effector cells (CD62L<sup>-</sup> CD45RA<sup>+</sup>) in H-V donors (**figure 2l and supplementary figure S6b**). Importantly, H and O donors with previous COVID-19 showed a significant increase in effector memory (CD62L<sup>-</sup> CD45RA<sup>-</sup>) and effector (CD62L<sup>-</sup> CD45RA<sup>+</sup>) S-specific CD4 T cells following vaccination, compared to their counterparts without COVID-19 infection. These results showed that SARS-CoV-2 infection was a potent adjuvant to vaccination in addition to expanding memory T cells (**figures 2l, 2m, supplementary figures S6c-S6f**). No significant differences were observed in CD27/CD28 expression profiles in T cells within H and O groups (**supplementary figures S6g, S6h**).



**Figure 2. CD4 T cell responses to S, M and N peptides of SARS CoV-2 proteins.** A technical control of non-stimulated (NST) PMBCs was included. **a, b, c**) Percentage CD4 T cells in PBMCs stimulated with S peptides in the H donors (**a**) and in O patients (**b**). **c**) Comparison between H donors and O patients. **d, e, f**) Percentage CD4 T cells in PBMCs stimulated with M peptides in H donors (**d**) and in O patients (**e**). **f**) Comparison between H donors and O patients. **g, h, i**) Percentage CD4 T cells in PBMCs stimulated with N peptides in the H donors (**g**) and in O patients (**h**). **i**) Comparison between H donors and O patients. **a-i**) Krustal-Wallis test followed by Dunn's test for pair-wise comparisons was employed. **j**) Dot plot of the percentage of S and M-specific CD4 T cells. The U of Mann-Whitney was used to test differences. **k**) Dot plot of S- and M-specific CD4 T cells in vaccinated H donors, from samples collected at the indicated timelines. Pair-wise comparisons were performed using the U of Mann-Whitney. **l, m**) Relative percentages of CD4 T cell differentiation phenotypes in H donors (**l**) and O patients (**m**). N, CM, EM and E, indicate naïve-stem cell (CD62L+ CD45RA+), central memory (CD62L+ CD45RA-), effector memory (CD62L- CD45RA-) and effector (CD62L- CD45RA+)

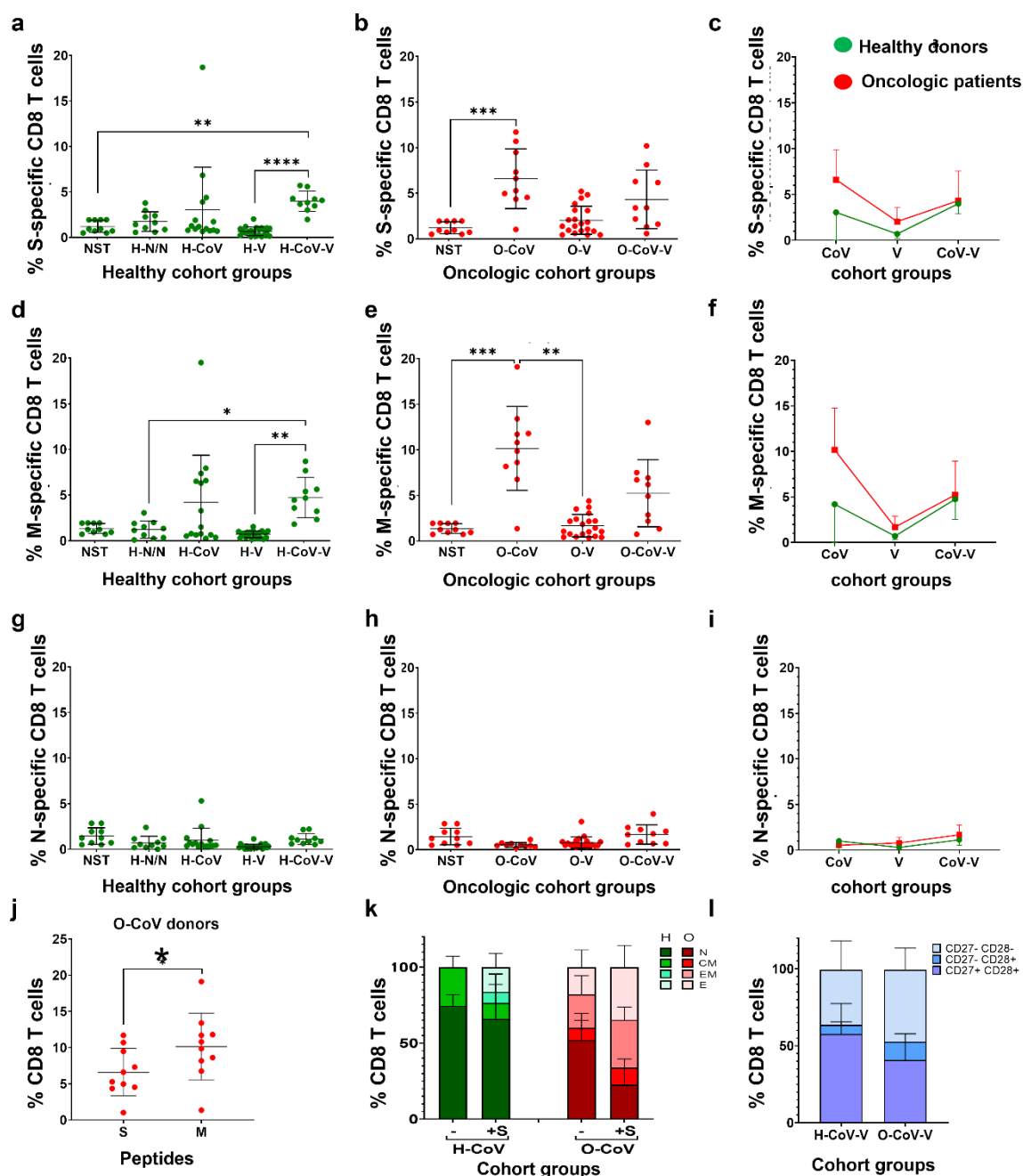
*phenotypes. Relevant statistical comparisons are detailed in supplementary figures S6b-6f. \*, \*\*, \*\*\*, \*\*\*\* indicate  $P < 0.05$ ,  $< 0.01$ ,  $< 0.001$  and  $< 0.0001$ , respectively.*

### **Profiling of CD8 T cell activation and differentiation phenotypes**

The strongest inducer of CD8 T cell responses was having a previous infection with COVID-19 both for O and H donors but not vaccination alone (**figure 3a-3c and supplementary figure S7**). There was a tendency to increased percentages of S-specific CD8 T cells in O patients which could be caused by the differences in COVID-19 severity (**supplementary figure S2b**). A similar pattern of response was observed for M-specific CD8 T cells (**figure 3d, 3e**). No evidence of potential cross-reactive M-specific CD8 T cells was observed after vaccination in subjects without previous COVID-19. A tendency to elevated M-specific CD8 T cells in O-CoV group was found compared to H-CoV (**figure 3f and supplementary figure S2b**).

No N-specific CD8 responses were observed (**figure 3g-3i**). While the N protein was found a poor inducer of CD8 T cells, the M protein was instead the main target as evaluated in the O-CoV group (**figure 3j**).

No differences in S-specific CD8 phenotypes or changes were observed between H-V and O-V (**supplementary figure S8a-S8f**). However, there were marked baseline differences between H-CoV-V and O-CoV-V who had COVID-19 infection (**figure 3k, supplementary figure S8b-S8g**). A large proportion of S-specific CD8 T cells in H-CoV-V were poorly differentiated phenotypes (CD62L<sup>+</sup> CD45RA<sup>+</sup>) before stimulation with S peptides. Their oncologic counterparts had expanded effector memory and effector T cell compartments (**figure 3k and supplementary figure S8h**). After stimulation with S peptides, in contrast to H donors, O patients further expanded T cells with effector phenotypes with a drastic reduction of naïve T cells (**figure 3k and supplementary figure 7I**). These results strongly indicated that O-CoV-V donors had exacerbated effector memory and effector responses. Indeed, baseline T cell phenotypes in O-CoV-V patients showed an drastic reduction in poorly differentiated (CD27<sup>+</sup> CD28<sup>+</sup>) CD8 T cells compared to the non-oncologic H-CoV-V counterparts (**figure 3l, supplementary figure S8j**). Not significant differences were found between H-V and O-V (**supplementary figure S8k**).



**Figure 3. SARS-CoV-2-CD8 T cell responses in H and O donors.** *a, b, c*) Percentage of S-specific CD8 T cells in PBMCs stimulated with S-peptides in H donors and O patients as indicated. *d, e, f*) Percentage of S-specific CD8 T cells in PBMCs stimulated with M-peptides in H donors and O patients. *g, h, i*) Percentage of S-specific CD8 T cells in PBMCs stimulated with N-peptides in H donors and O patients. *a-i*) Significance was tested with Krustal-Wallis followed by Dunn's test. *j*) Percentage of activated CD8 T cells after stimulation with S or M specific peptides in O-CoV donors. U of Mann-Whitney was used to test for significance. *k*) Relative percentages of CD8 T cell differentiation phenotypes in the indicated groups of H and O donors. Means and error bars (standard deviations) are shown. N, CM, EM and E, indicate naïve-stem cell (CD62L+ CD45RA+), central memory (CD62L+ CD45RA-), effector memory (CD62L- CD45RA-) and effector (CD62L- CD45RA+) phenotypes. Relevant statistical differences are detailed in **supplementary figure S8**. *j*) Relative percentages of CD8 T cell differentiation phenotypes in the indicated groups of H and O donors. CD27+ CD28+, CD27- CD28+



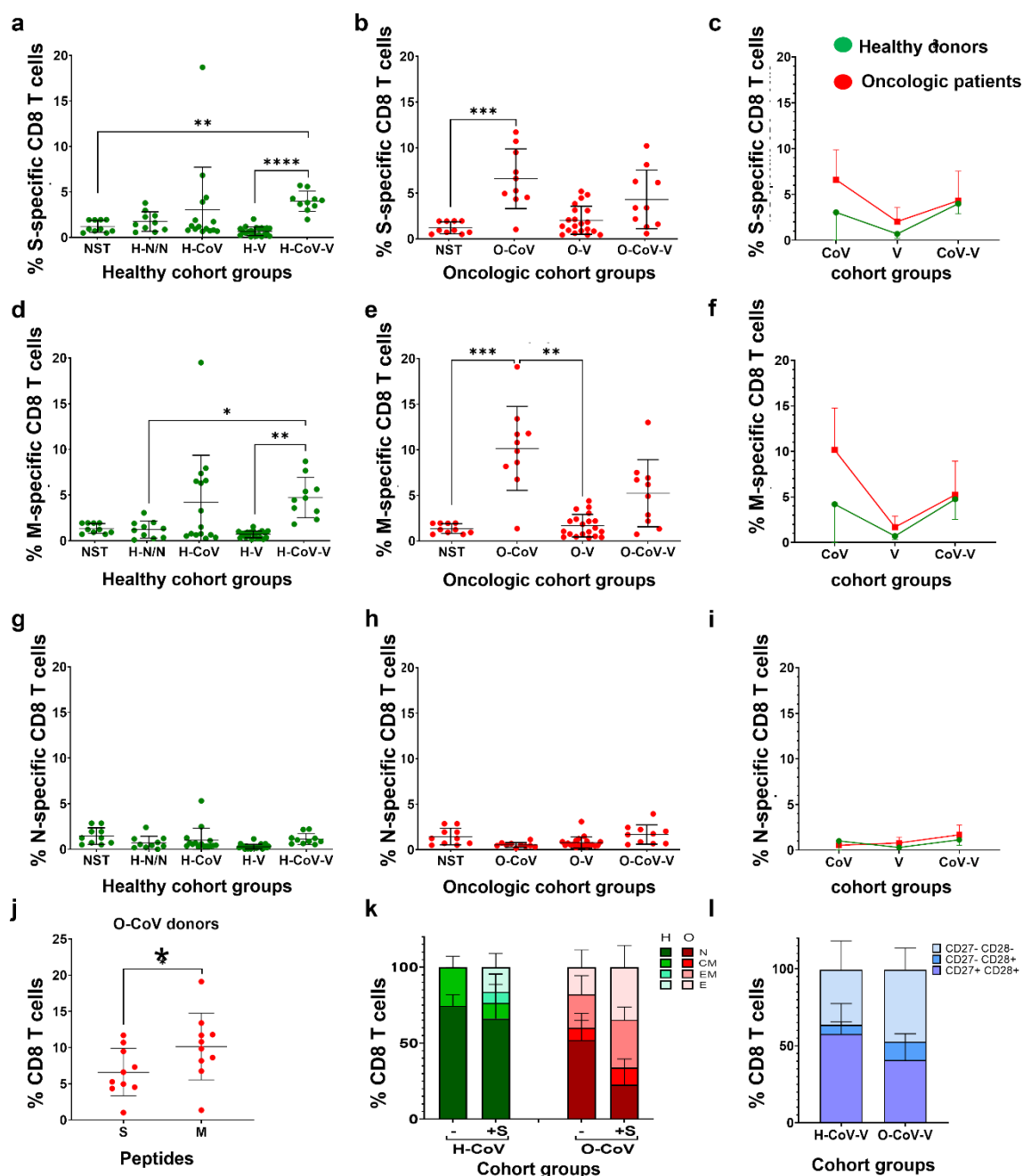
*and CD27<sup>+</sup> CD28<sup>+</sup> indicate poorly differentiated, intermediate differentiated and highly differentiated T cell phenotypes.. Relevant statistical differences are detailed in **supplementary figure S8**. \*, \*\* and \*\*\* indicate significant ( $P<0.05$ ), very significant ( $P<0.01$ ) and highly significant ( $P<0.001$ ) differences. NST, technical control of non-stimulated (NST) PMBCs.*

### **Evaluation of inflammatory cytokine expression in T cells**

As severe COVID-19 is associated with exacerbated inflammatory responses, IFN $\gamma$  and IL-17 expression was evaluated first within S and M-specific CD4 T cells following stimulation (**supplementary figure S9**). Overall, the proportion of inflammatory CD4 T cells was heterogeneous. Previous infection induced IFN $\gamma$ -CD4 T cells in H donors and O patients (H-CoV and O-CoV), significantly higher in O-CoV compared to O-V group. In H donors, the CoV-V group showed the strongest responses (**figure 4a, 4b**). Nevertheless, responses were comparable between H donors and O patients (**figure 4c**). Similar results were observed for M-specific IFN $\gamma$ -CD4 T cells (**figure 4d-4f**).

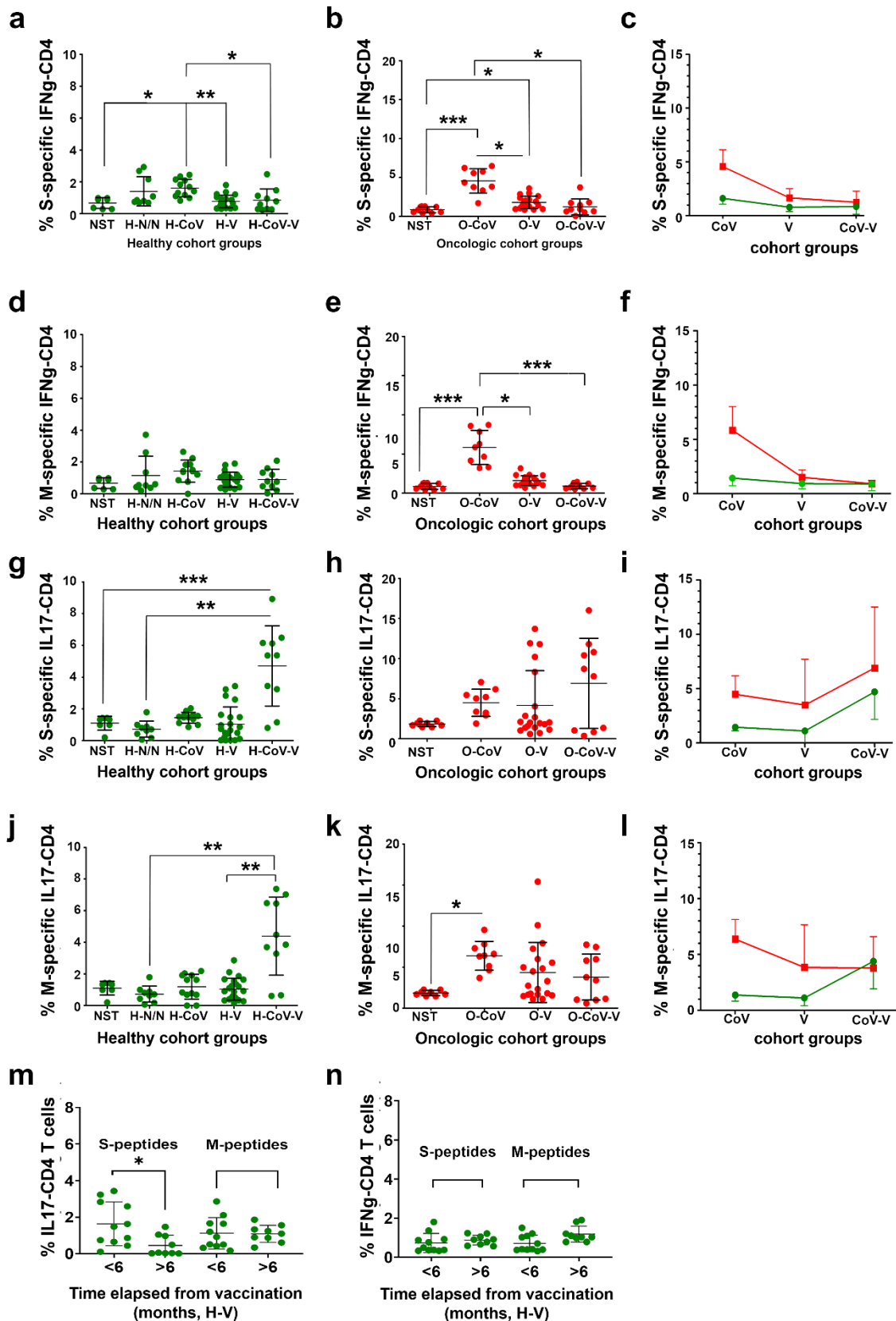
IL-17-CD4 T cells specific for the S protein were only elevated in H-CoV and O-CoV groups, suggesting that infection was an inducer of Th17 responses (**figure 4g, 4h**). O patients showed a non-significant trend towards increased IL-17 CD4 T cells compared to H donors (**figure 4i**). Equivalent results were obtained for the M protein (**figure 4j-4l**). Overall, these results indicated a stronger inflammatory response in O patients compared to H donors that could be associated to disease severity or cancer (**Supplementary figure S2b**). As expected from our previous results, inflammatory CD4 T cell subsets decayed 6 months after vaccination (**figure 4m, 4n**).





**Figure 4.  $IFN\gamma$  and  $IL-17$  expression in  $CD4$  T cells specific for  $S$  and  $M$  proteins. a, b, c) Percentage of  $IFN\gamma$ - $CD4$  T cells specific for the  $S$  protein in  $H$  and  $O$  groups. d, e, f) Percentage of  $IFN\gamma$ - $CD4$  T cells specific for the  $M$  protein in  $H$  and  $O$  groups. g, h, i) Percentage of  $IL17$ - $CD4$  T cells specific for the  $S$  protein in  $H$  and  $O$  groups. j, k, l) Percentage of  $IL17$ - $CD4$  T cells specific for the  $M$  protein in  $H$  and  $O$  groups. a-l) Statistical significance was evaluated with Kruskal-Wallis followed by Dunn's pair-wise comparisons. m, n) Percentage of  $CD4$  T cells expressing  $IL-17$  and  $IFN\gamma$  expression in  $H$ - $V$  donors that completed the vaccine regime before sample collection in the indicated timelines, for both  $S$  and  $M$  proteins. Significance was tested with the U of Mann-Whitney test. NST, technical control of non-stimulated PMBCs. \*, \*\*, \*\*\* indicate significant ( $P < 0.05$ ), very significant ( $P < 0.01$ ) and highly significant ( $P < 0.001$ ) differences.**

Inflammatory S and M-specific CD8 T cell subsets were quantified (**supplementary figure S9b**). Infection but not vaccination was the strongest inducer of S-specific IFN $\gamma$ -CD8 T cells in H and O patients (**figure 5a-5c**). Similar results were obtained for M-specific T cells (**figure 5d, 5e**), without differences between H donors and O patients (**figure 5f**). There were however marked differences for IL17-CD8 T cells, which were increased in subjects with previous COVID-19 following vaccination (**figure 5g, 5h**). Although there was high variability, we observed a tendency towards increased IL17-CD8 T cells in O patients compared to H donors (**figure 5i**). Similar results were obtained for M-specific CD8 T cells (**figure 5j, 5k**), which were comparable between H donors and O patients (**figure 5l**). Although responses were in general low, inflammatory S- and M-specific CD8 T cells decayed 6 months after vaccination (**figure 5m, 5n**)



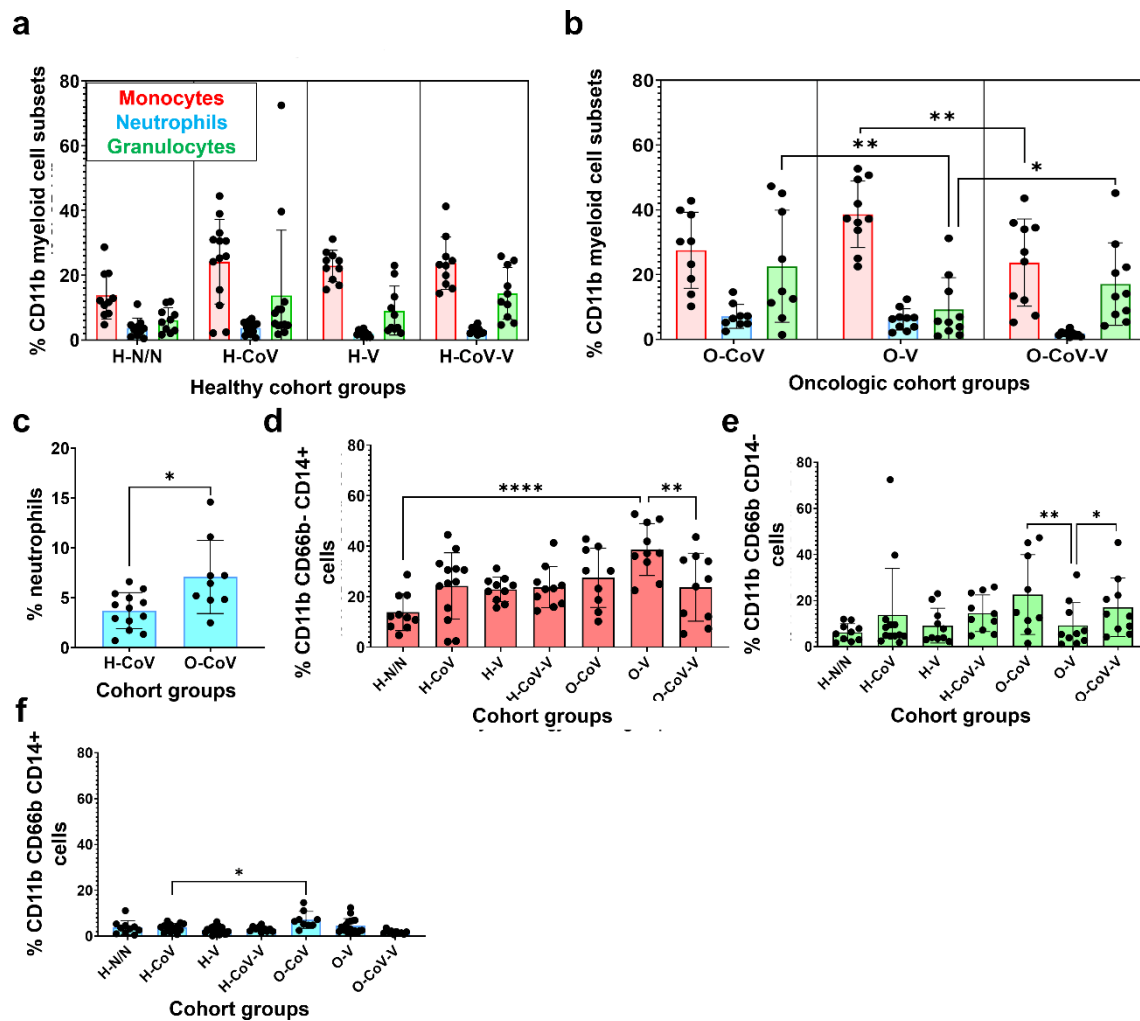
**Figure 5. IFN $\gamma$  and IL-17 expression in CD8 T cells specific for S and M proteins. a, b, c) Percentage of IFN $\gamma$ -CD8 T cells specific for the S protein in H and O groups. d, e, f) Percentage of IFN $\gamma$ -CD8 T cells specific for the M protein in H and O groups. g, h, i) Percentage of IL17-CD8 T cells specific for the S protein in H and O groups. j, k, l)**

*Percentage of IL17-CD8 T cells specific for the M protein in H and O groups. a-l) Statistical significance was evaluated with Kruskal-Wallis followed by Dunn's pair-wise comparisons. m, n) Percentage of CD8 T cells expressing IL-17 and IFN $\gamma$  expression in H-V donors that completed the vaccine regime before sample collection in the indicated timelines, for both S and M proteins. Significance was tested with the U of Mann-Whitney test. NST, technical control of non-stimulated PMBCs. \*, \*\*, \*\*\* indicate significant ( $P<0.05$ ), very significant ( $P<0.01$ ) and highly significant ( $P<0.001$ ) differences.*

### **Profiling of systemic myeloid cell subsets and B cells**

The percentages of monocytes, granulocytes and neutrophils were quantified in peripheral blood and no differences were found in H donors (**figure 6a-c**). However, there was a significant elevation of circulating granulocytes in O-CoV and O-CoV-V compared to O-V patients, suggesting that COVID-19 enhanced the expansion of systemic granulocytes (**figure 6b**). In contrast, O-V donors had significantly expanded the percentage of circulating monocytes, suggesting that vaccination targeted the monocytic lineage instead of the granulocytic lineage (**figure 6b-6f**). Hence, COVID-19 could perturb systemic immunity in cancer patients towards responses mediated by granulocytes rather than monocytes.

Baseline percentages of circulating CD19<sup>+</sup> CD14<sup>-</sup> B cells were also quantified, without finding significant differences (**supplementary figure S10a-S10c**). Nevertheless, there was a tendency in O patients to have decreased percentages of circulating B cells (**supplementary figure S10d**).



**Figure 6. Systemic compositions of myeloid cell subsets.** *a,b*) Percentages of monocytes ( $CD11b+ CD66b- CD14+$ ; red), neutrophils ( $CD11b+ CD66b+ CD14+$ ; blue) and total granulocytes ( $CD11b+ CD66b+ CD14-$ , green), within  $CD11b+$  cells. *d*) Percentage of neutrophils in H-CoV and O-CoV. *d, e, f*) Percentages of monocytes ( $CD11b+ CD66b- CD14+$ ), neutrophils ( $CD11b+ CD66b+ CD14+$ ) and granulocytes ( $CD11b+ CD66b+ CD14-$ ) in the indicated groups. Statistical significance was evaluated by Kruskal-Wallis test followed by Dunn's pair-wise comparisons. \*, \*\*, and \*\*\* indicate significant ( $P < 0.05$ ), very significant ( $P < 0.01$ ) and highly significant ( $P < 0.001$ ) differences.

## DISCUSSION

Oncologic patients usually have a compromised immunity from cancer progression and treatments [10, 43] which may impact on responses to COVID-19 and vaccination. In this study we included S-, M- and N-specific T cell profiling and myeloid cell signatures. Most of donors had been vaccinated with mRNA BNT162b2. This vaccine is a potent inducer of S-specific antibodies [44-46] and we found that antibody responses were not impaired in cancer patients in agreement with others [47]. In this study, we confirmed

that antibody titres decreased over time which would limit serological protection to 6 months [48]. Importantly, T cell responses after vaccination also decayed after 6 months. Indeed, vaccination did not preferentially expand memory T cell subsets, unless the subjects had previous COVID-19. Hence resolution of COVID-19 disease followed by vaccination may confer longer protection for both healthy donors and oncologic patients.

Vaccination mainly induced CD4 T cells, in contrast to SARS CoV-2 infection, which could explain its potency of raising antibody responses possibly through activated CD4 T helper cells [49]. T cell responses towards M and S proteins were found previously [50, 51], but we extended this observation to O patients. In general, M protein was found to be a potent target for CD8 T cell responses even when compared to the S protein. Therefore, the M-protein could be key for developing novel vaccines.

O patients showed differences in T cell immunity compared to healthy donors. Their T cell repertoire was skewed towards differentiated phenotypes expressing IFN $\gamma$  as shown before [23, 52], but also IL17 as assessed here in H donors and O patients [53]. Vaccination induced IFN $\gamma$  and elevated IL-17 in CD4 T cells, a marker of Th17 responses [23, 52]. Indeed, SARS-CoV-2 infection also induced a Th17 signature, which could be important for disease severity.

Finally, the profiles of circulating myeloid subsets was in agreement with oncologic patients having more inflammatory profile, as expected in cancer patients [43]. This could be detrimental for vaccine efficacy. Elevated neutrophil counts are frequent in O patients [54, 55], which were even higher in subjects with previous COVID-19. A relationship between COVID-19 severity and higher monocyte and granulocyte content was found in early studies [56, 57].

Concluding, cancer patients showed antibody, T cell and myeloid responses to infection and vaccination. Previous SARS CoV-2 infection had potent adjuvant effects for subsequent vaccination. However, cancer patients showed baseline inflammation, which could be exacerbated upon infection followed by vaccination.

## ACKNOWLEDGEMENTS

We are grateful to the patients and their families for generously participating in the study.

## FINANCIAL SUPPORT

The OncoImmunology group is funded by the Spanish Association against Cancer (AECC, PROYE16001ESCO); Instituto de Salud Carlos III (ISCIII)-FEDER project grants (FIS PI17/02119, FIS PI20/00010, COV20/00000, and TRANSPOCART ICI19/00069); a Biomedicine Project grant from the Department of Health of the Government of Navarre (BMED 050-2019); Strategic projects from the Department of Industry, Government of Navarre (AGATA, Ref 0011-1411-2020-000013; LINTERNA, Ref. 0011-1411-2020-000033; DESCARTHES, 0011-1411-2019-000058); Ministerio de Ciencia e Innovación (PID2019-108989RB-I00, PLEC2021-008094 MCIN/AEI/10.13039/ 501100011033). This project has received funding from the European Union's Horizon 2020 research and innovation programme under grant agreement No 848166.

## REFERENCES

1. Li Q, Guan X, Wu P, Wang X, Zhou L, Tong Y, Ren R, Leung KSM, Lau EHY, Wong JY, Xing X, Xiang N, Wu Y, Li C, Chen Q, Li D, Liu T, Zhao J, Liu M, Tu W, Chen C, Jin L, Yang R, Wang Q, Zhou S, Wang R, Liu H, Luo Y, Liu Y, Shao G, Li H, Tao Z, Yang Y, Deng Z, Liu B, Ma Z, Zhang Y, Shi G, Lam TTY, Wu JT, Gao GF, Cowling BJ, Yang B, Leung GM, Feng Z. Early Transmission Dynamics in Wuhan, China, of Novel Coronavirus-Infected Pneumonia. *The New England journal of medicine* 2020; 382(13): 1199-1207.
2. Huang X, Liang H, Zhang H, Tian L, Cong P, Wu T, Zhang Q, Gao X, Li W, Chen A, Zhang Y, Dong Q, Wan H, He M, Dai D, Li Z, Xiong L. The Potential Mechanism of Cancer Patients Appearing More Vulnerable to SARS-CoV-2 and Poor Outcomes: A Pan-Cancer Bioinformatics Analysis. *Frontiers in immunology* 2021; 12: 804387.
3. Bakouny Z, Hawley JE, Choueiri TK, Peters S, Rini BI, Warner JL, Painter CA. COVID-19 and Cancer: Current Challenges and Perspectives. *Cancer cell* 2020; 38(5): 629-646.
4. Ng WH, Tipih T, Makoah NA, Vermeulen JG, Goedhals D, Sempa JB, Burt FJ, Taylor A, Mahalingam S. Comorbidities in SARS-CoV-2 Patients: a Systematic Review and Meta-Analysis. *mBio* 2021; 12(1).
5. Zhang L, Wei C, Li D, He J, Liu S, Deng H, Cheng J, Du J, Liu X, Chen H, Sun S, Yu H, Fu J. COVID-19 receptor and malignant cancers: Association of CTSL expression with susceptibility to SARS-CoV-2. *International journal of biological sciences* 2022; 18(6): 2362-2371.



6. Muenst S, Laubli H, Soysal SD, Zippelius A, Tzankov A, Hoeller S. The immune system and cancer evasion strategies: therapeutic concepts. *Journal of internal medicine* 2016; 279(6): 541-562.
7. Swann JB, Smyth MJ. Immune surveillance of tumors. *The Journal of clinical investigation* 2007; 117(5): 1137-1146.
8. Galluzzi L, Buque A, Kepp O, Zitvogel L, Kroemer G. Immunological Effects of Conventional Chemotherapy and Targeted Anticancer Agents. *Cancer cell* 2015; 28(6): 690-714.
9. Lanna A, Gomes DC, Muller-Durovic B, McDonnell T, Escors D, Gilroy DW, Lee JH, Karin M, Akbar AN. A sestrin-dependent Erk-Jnk-p38 MAPK activation complex inhibits immunity during aging. *Nature immunology* 2017; 18(3): 354-363.
10. Zuazo M, Arasanz H, Fernandez-Hinojal G, Garcia-Granda MJ, Gato M, Bocanegra A, Martinez M, Hernandez B, Teijeira L, Morilla I, Lecumberri MJ, Fernandez de Lascoiti A, Vera R, Kochan G, Escors D. Functional systemic CD4 immunity is required for clinical responses to PD-L1/PD-1 blockade therapy. *EMBO molecular medicine* 2019; 11(7): e10293.
11. Diakos CI, Charles KA, McMillan DC, Clarke SJ. Cancer-related inflammation and treatment effectiveness. *The Lancet Oncology* 2014; 15(11): e493-503.
12. Mangalmurti N, Hunter CA. Cytokine Storms: Understanding COVID-19. *Immunity* 2020; 53(1): 19-25.
13. Abdul-Jawad S, Bau L, Alaguthurai T, Del Molino Del Barrio I, Laing AG, Hayday TS, Monin L, Munoz-Ruiz M, McDonald L, Francos Quijorna I, McKenzie D, Davis R, Lorenc A, Chan JNE, Ryan S, Bugallo-Blanco E, Yorke R, Kamdar S, Fish M, Zlatareva I, Vantourout P, Jennings A, Gee S, Doores K, Bailey K, Hazell S, De Naurois J, Moss C, Russell B, Khan AA, Rowley M, Benjamin R, Enting D, Alrifai D, Wu Y, Zhou Y, Barber P, Ng T, Spicer J, Van Hemelrijck M, Kumar M, Vidler J, Lwin Y, Fields P, Karagiannis SN, Coolen ACC, Rigg A, Papa S, Hayday AC, Patten PEM, Irshad S. Acute Immune Signatures and Their Legacies in Severe Acute Respiratory Syndrome Coronavirus-2 Infected Cancer Patients. *Cancer cell* 2021; 39(2): 257-275 e256.
14. Latif MB, Shukla S, Del Rio Estrada PM, Ribeiro SP, Sekaly RP, Sharma AA. Immune mechanisms in cancer patients that lead to poor outcomes of SARS-CoV-2 infection. *Translational research : the journal of laboratory and clinical medicine* 2022; 241: 83-95.
15. Mathew D, Giles JR, Baxter AE, Oldridge DA, Greenplate AR, Wu JE, Alanio C, Kuri-Cervantes L, Pampena MB, D'Andrea K, Manne S, Chen Z, Huang YJ, Reilly JP, Weisman AR, Ittner CAG, Kuthuru O, Dougherty J, Nzingha K, Han N, Kim J, Pattekar A, Goodwin EC, Anderson EM, Weirick ME, Gouma S, Arevalo CP, Bolton MJ, Chen F, Lacey SF, Ramage H, Cherry S, Hensley SE, Apostolidis SA, Huang AC, Vella LA, Unit UCP, Betts MR, Meyer NJ, Wherry EJ. Deep immune profiling of COVID-19 patients reveals distinct immunotypes with therapeutic implications. *Science* 2020; 369(6508).
16. Laing AG, Lorenc A, Del Molino Del Barrio I, Das A, Fish M, Monin L, Munoz-Ruiz M, McKenzie DR, Hayday TS, Francos-Quijorna I, Kamdar S, Joseph M, Davies D, Davis R, Jennings A, Zlatareva I, Vantourout P, Wu Y, Sofra V, Cano F, Greco M, Theodoridis E, Freedman JD, Gee S, Chan JNE, Ryan S, Bugallo-Blanco E, Peterson P, Kisand K, Haljasmagi L, Chadli L, Moingeon P, Martinez L, Merrick B, Bisnauthsing K, Brooks K, Ibrahim MAA, Mason J, Lopez Gomez F, Babalola K, Abdul-Jawad S, Cason J, Mant C, Seow J, Graham C, Doores KJ, Di Rosa F, Edgeworth J, Shankar-Hari M, Hayday AC. A dynamic COVID-19 immune signature includes associations with poor prognosis. *Nature medicine* 2020; 26(10): 1623-1635.
17. Bilich T, Roerden M, Maringer Y, Nelde A, Heitmann JS, Dubbelaar ML, Peter A, Horber S, Bauer J, Rieth J, Wacker M, Berner F, Flatz L, Held S, Brossart P, Marklin M, Wagner P, Erne E, Klein R, Rammensee HG, Salih HR, Walz JS. Preexisting and Post-COVID-19 Immune Responses to SARS-CoV-2 in Patients with Cancer. *Cancer discovery* 2021; 11(8): 1982-1995.
18. Esperanca-Martins M, Goncalves L, Soares-Pinho I, Gomes A, Serrano M, Blankenhaus B, Figueiredo-Campos P, Catarina-Marques A, Castro-Barbosa A, Cardoso A, Antunes-Meireles P, Atalaia-Barbacena H, Gaspar P, Howell-Monteiro P, Pais-de-Lacerda A, Mota C, Veldhoen M. Humoral Immune Response of SARS-CoV-2-Infected Patients with Cancer: Influencing Factors and Mechanisms. *The oncologist* 2021; 26(9): e1619-e1632.

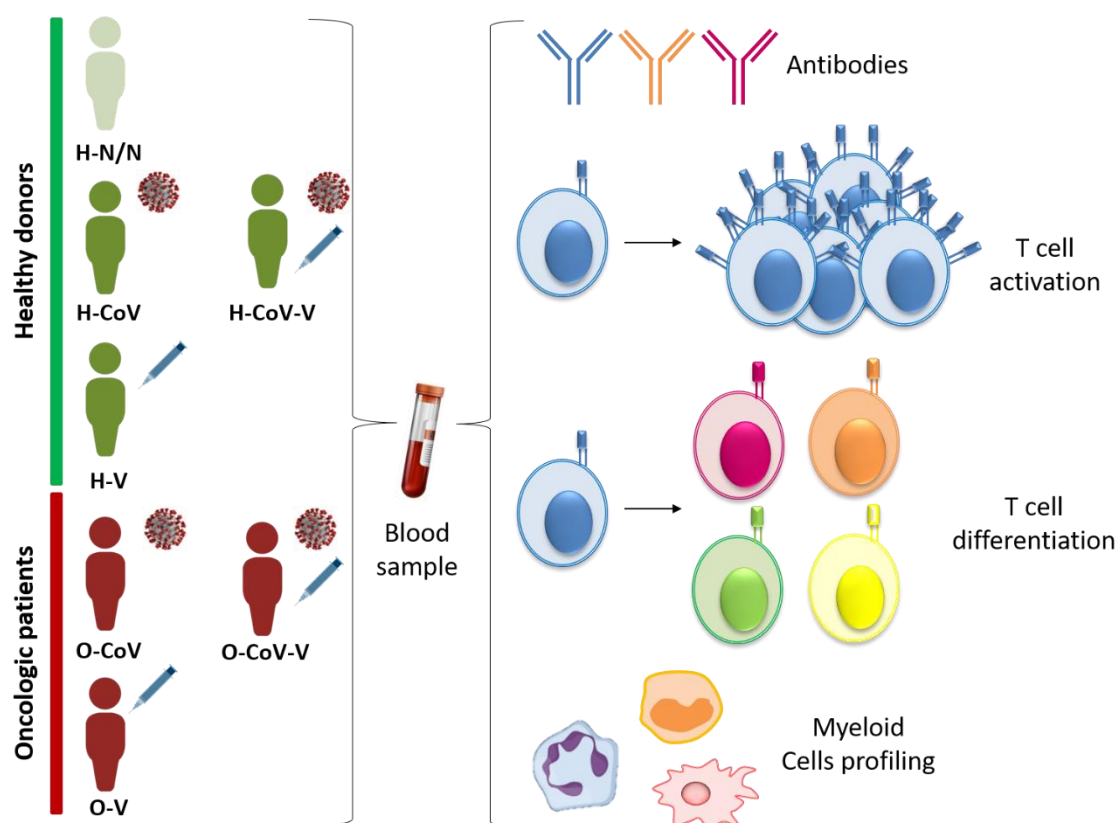


19. Grinshpun A, Rottenberg Y, Ben-Dov IZ, Djian E, Wolf DG, Kadouri L. Serologic response to COVID-19 infection and/or vaccine in cancer patients on active treatment. *ESMO open* 2021; 6(6): 100283.
20. Griffiths EA, Segal BH. Immune responses to COVID-19 vaccines in patients with cancer: Promising results and a note of caution. *Cancer cell* 2021; 39(8): 1045-1047.
21. Friese CR, Choueiri TK, Duma N, Farmakiotis D, Grivas P, Rini BI, Shah DP, Thompson MA, Pergam SA, Mishra S, Warner JL. Care without a compass: Including patients with cancer in COVID-19 studies. *Cancer cell* 2021; 39(7): 895-896.
22. Ehmsen S, Asmussen A, Jeppesen SS, Nilsson AC, Osterlev S, Vestergaard H, Justesen US, Johansen IS, Frederiksen H, Ditzel HJ. Antibody and T cell immune responses following mRNA COVID-19 vaccination in patients with cancer. *Cancer cell* 2021; 39(8): 1034-1036.
23. Monin L, Laing AG, Munoz-Ruiz M, McKenzie DR, Del Molino Del Barrio I, Alaguthurai T, Domingo-Vila C, Hayday TS, Graham C, Seow J, Abdul-Jawad S, Kamdar S, Harvey-Jones E, Graham R, Cooper J, Khan M, Vidler J, Kakkassery H, Sinha S, Davis R, Dupont L, Francos Quijorna I, O'Brien-Gore C, Lee PL, Eum J, Conde Poole M, Joseph M, Davies D, Wu Y, Swampillai A, North BV, Montes A, Harries M, Rigg A, Spicer J, Malim MH, Fields P, Patten P, Di Rosa F, Papa S, Tree T, Doores KJ, Hayday AC, Irshad S. Safety and immunogenicity of one versus two doses of the COVID-19 vaccine BNT162b2 for patients with cancer: interim analysis of a prospective observational study. *The Lancet Oncology* 2021; 22(6): 765-778.
24. Palich R, Veyri M, Marot S, Vozy A, Gligorov J, Maingon P, Marcelin AG, Spano JP. Weak immunogenicity after a single dose of SARS-CoV-2 mRNA vaccine in treated cancer patients. *Annals of oncology : official journal of the European Society for Medical Oncology* 2021; 32(8): 1051-1053.
25. Addeo A, Shah PK, Bordry N, Hudson RD, Albracht B, Di Marco M, Kaklamani V, Dietrich PY, Taylor BS, Simand PF, Patel D, Wang J, Labidi-Galy I, Fertani S, Leach RJ, Sandoval J, Mesa R, Lathrop K, Mach N, Shah DP. Immunogenicity of SARS-CoV-2 messenger RNA vaccines in patients with cancer. *Cancer cell* 2021; 39(8): 1091-1098 e1092.
26. Barriere J, Chamorey E, Adjtoutah Z, Castelnaud O, Mahamat A, Marco S, Petit E, Leysalle A, Raimondi V, Carles M. Impaired immunogenicity of BNT162b2 anti-SARS-CoV-2 vaccine in patients treated for solid tumors. *Annals of oncology : official journal of the European Society for Medical Oncology* 2021; 32(8): 1053-1055.
27. Massarweh A, Eliakim-Raz N, Stemmer A, Levy-Barda A, Yust-Katz S, Zer A, Benouaich-Amiel A, Ben-Zvi H, Moskovits N, Brenner B, Bishara J, Yahav D, Tadmor B, Zaks T, Stemmer SM. Evaluation of Seropositivity Following BNT162b2 Messenger RNA Vaccination for SARS-CoV-2 in Patients Undergoing Treatment for Cancer. *JAMA oncology* 2021; 7(8): 1133-1140.
28. Cavanna L, Citterio C, Biasini C, Madaro S, Bacchetta N, Lis A, Cremona G, Muroli M, Bernuzzi P, Lo Cascio G, Schiavo R, Mutti M, Tassi M, Mariano M, Trubini S, Bandieramonte G, Maestri R, Mordenti P, Marazzi E, Vallisa D. COVID-19 vaccines in adult cancer patients with solid tumours undergoing active treatment: Seropositivity and safety. A prospective observational study in Italy. *European journal of cancer* 2021; 157: 441-449.
29. Oosting SF, van der Veldt AAM, GeurtsvanKessel CH, Fehrmann RSN, van Binnendijk RS, Dingemans AC, Smit EF, Hiltermann TJN, den Hartog G, Jalving M, Westphal TT, Bhattacharya A, van der Heiden M, Rimmelzwaan GF, Kvistborg P, Blank CU, Koopmans MPG, Huckriede ALW, van Els C, Rots NY, van Baarle D, Haanen J, de Vries EGE. mRNA-1273 COVID-19 vaccination in patients receiving chemotherapy, immunotherapy, or chemoimmunotherapy for solid tumours: a prospective, multicentre, non-inferiority trial. *The Lancet Oncology* 2021; 22(12): 1681-1691.
30. Shmueli ES, Itay A, Margalit O, Berger R, Halperin S, Jurkowicz M, Levin EG, Levy I, Olmer L, Regev-Yochay G, Lustig Y, Rahav G. Efficacy and safety of BNT162b2 vaccination in patients with solid cancer receiving anticancer therapy - a single centre prospective study. *European journal of cancer* 2021; 157: 124-131.
31. Thakkar A, Gonzalez-Lugo JD, Goradia N, Gali R, Shapiro LC, Pradhan K, Rahman S, Kim SY, Ko B, Sica RA, Kornblum N, Bachier-Rodriguez L, McCort M, Goel S, Perez-Soler R, Packer S, Sparano J, Gartrell B, Makower D, Goldstein YD, Wolgast L, Verma A, Halmos B.

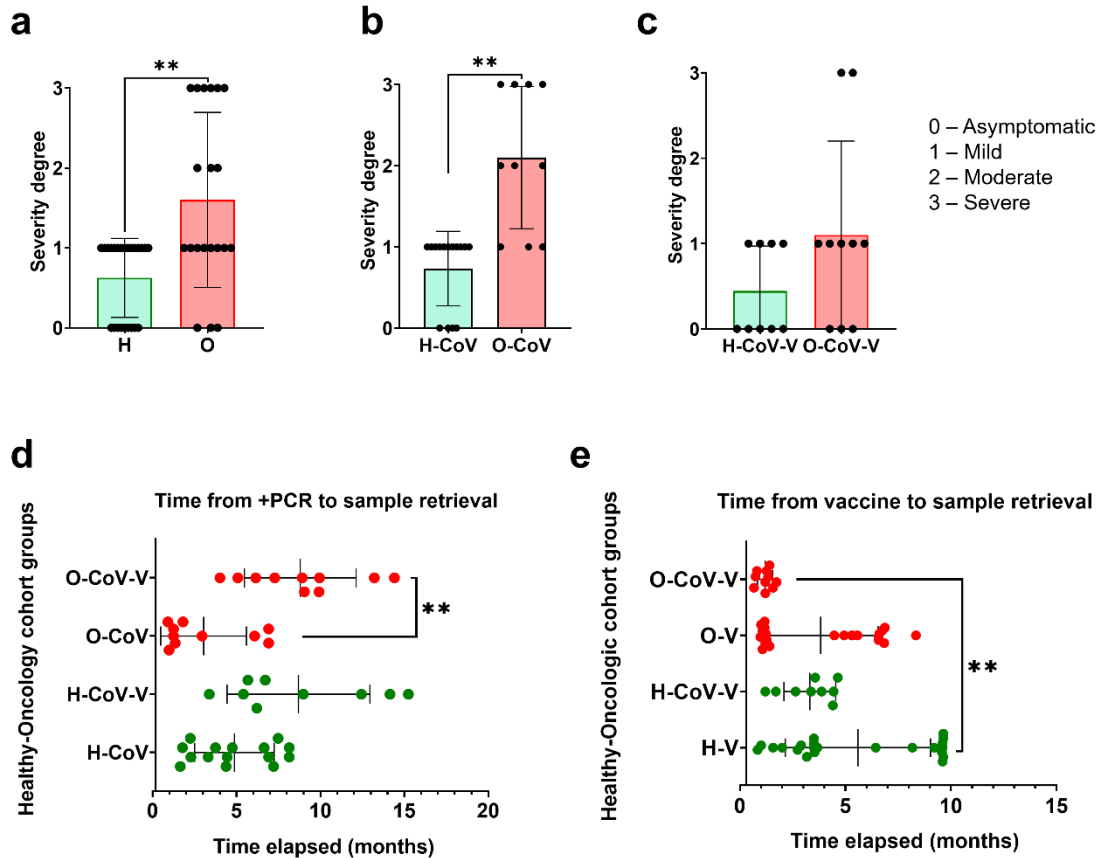
- Seroconversion rates following COVID-19 vaccination among patients with cancer. *Cancer cell* 2021; 39(8): 1081-1090 e1082.
32. Eliakim-Raz N, Massarweh A, Stemmer A, Stemmer SM. Durability of Response to SARS-CoV-2 BNT162b2 Vaccination in Patients on Active Anticancer Treatment. *JAMA oncology* 2021; 7(11): 1716-1718.
  33. Shroff RT, Chalasani P, Wei R, Pennington D, Quirk G, Schoenle MV, Peyton KL, Uhrlaub JL, Ripperger TJ, Jergovic M, Dalgai S, Wolf A, Whitmer R, Hammad H, Carrier A, Scott AJ, Nikolich-Zugich J, Worobey M, Sprissler R, Dake M, LaFleur BJ, Bhattacharya D. Immune responses to two and three doses of the BNT162b2 mRNA vaccine in adults with solid tumors. *Nature medicine* 2021; 27(11): 2002-2011.
  34. Provencio M, Mazarico Gallego JM, Calles A, Antonanzas M, Pangua C, Mielgo Rubio X, Nadal E, Castro RL, Lopez-Martin A, Del Barco E, Domine M, Franco F, Diz P, Sandoval C, Girona ES, Sullivan I, Sala MA, Ledo GG, Cucurull M, Mosquera J, Martinez M, Chara LE, Arriola E, Herrera BE, Jarabo JR, Alvarez RA, Baena J, Cao MG. Lung cancer patients with COVID-19 in Spain: GRAVID study. *Lung cancer* 2021; 157: 109-115.
  35. Becerril-Gaitan A, Vaca-Cartagena BF, Ferrigno AS, Mesa-Chavez F, Barrientos-Gutierrez T, Tagliamento M, Lambertini M, Villarreal-Garza C. Immunogenicity and risk of Severe Acute Respiratory Syndrome Coronavirus 2 (SARS-CoV-2) infection after Coronavirus Disease 2019 (COVID-19) vaccination in patients with cancer: a systematic review and meta-analysis. *European journal of cancer* 2022; 160: 243-260.
  36. Escors D, Camafeita E, Ortego J, Laude H, Enjuanes L. Organization of two transmissible gastroenteritis coronavirus membrane protein topologies within the virion and core. *Journal of virology* 2001; 75(24): 12228-12240.
  37. Escors D, Ortego J, Laude H, Enjuanes L. The membrane M protein carboxy terminus binds to transmissible gastroenteritis coronavirus core and contributes to core stability. *Journal of virology* 2001; 75(3): 1312-1324.
  38. Yewdell J, Lopez-Munoz A, Kosik I, Holly J. Cell Surface SARS-CoV-2 Nucleocapsid Protein Modulates Innate and Adaptive Immunity. *Research square* 2021.
  39. Fu YZ, Wang SY, Zheng ZQ, Yi H, Li WW, Xu ZS, Wang YY. SARS-CoV-2 membrane glycoprotein M antagonizes the MAVS-mediated innate antiviral response. *Cellular & molecular immunology* 2021; 18(3): 613-620.
  40. Faul F, Erdfelder E, Lang AG, Buchner A. G\*Power 3: a flexible statistical power analysis program for the social, behavioral, and biomedical sciences. *Behavior research methods* 2007; 39(2): 175-191.
  41. Gato-Canas M, Zuazo M, Arasanz H, Ibanez-Vea M, Lorenzo L, Fernandez-Hinojal G, Vera R, Smerdou C, Martisova E, Arozarena I, Wellbrock C, Llopiz D, Ruiz M, Sarobe P, Breckpot K, Kochan G, Escors D. PDL1 Signals through Conserved Sequence Motifs to Overcome Interferon-Mediated Cytotoxicity. *Cell reports* 2017; 20(8): 1818-1829.
  42. Arasanz H, Zuazo M, Bocanegra A, Chocarro L, Blanco E, Martinez M, Morilla I, Fernandez G, Teijeira L, Morente P, Echaide M, Castro N, Fernandez L, Garnica M, Ramos P, Escors D, Kochan G, Vera R. Hyperprogressive Disease: Main Features and Key Controversies. *International journal of molecular sciences* 2021; 22(7).
  43. Ibanez-Vea M, Zuazo M, Gato M, Arasanz H, Fernandez-Hinojal G, Escors D, Kochan G. Myeloid-Derived Suppressor Cells in the Tumor Microenvironment: Current Knowledge and Future Perspectives. *Archivum immunologiae et therapiae experimentalis* 2018; 66(2): 113-123.
  44. Rose R, Neumann F, Grobe O, Lorentz T, Fickenscher H, Krumbholz A. Humoral immune response after different SARS-CoV-2 vaccination regimens. *BMC medicine* 2022; 20(1): 31.
  45. Vollenberg R, Tepasse PR, Kuhn JE, Hennies M, Strauss M, Rennebaum F, Schomacher T, Boeckel G, Lorentzen E, Bokemeyer A, Nowacki TM. Humoral Immune Response in IBD Patients Three and Six Months after Vaccination with the SARS-CoV-2 mRNA Vaccines mRNA-1273 and BNT162b2. *Biomedicines* 2022; 10(1).
  46. Malipiero G, Moratto A, Infantino M, D'Agaro P, Piscianz E, Manfredi M, Grossi V, Benvenuti E, Bulgaresi M, Benucci M, Villalta D. Assessment of humoral and cellular immunity induced by the BNT162b2 SARS-CoV-2 vaccine in healthcare workers, elderly people, and

- immunosuppressed patients with autoimmune disease. *Immunologic research* 2021; 69(6): 576-583.
47. Walsh EE, Frenck RW, Jr., Falsey AR, Kitchin N, Absalon J, Gurtman A, Lockhart S, Neuzil K, Mulligan MJ, Bailey R, Swanson KA, Li P, Koury K, Kalina W, Cooper D, Fontes-Garfias C, Shi PY, Tureci O, Tompkins KR, Lyke KE, Raabe V, Dormitzer PR, Jansen KU, Sahin U, Gruber WC. Safety and Immunogenicity of Two RNA-Based Covid-19 Vaccine Candidates. *The New England journal of medicine* 2020; 383(25): 2439-2450.
48. Naaber P, Tserel L, Kangro K, Sepp E, Jurjenson V, Adamson A, Haljasmagi L, Rumm AP, Maruste R, Karner J, Gerhold JM, Planken A, Ustav M, Kisand K, Peterson P. Dynamics of antibody response to BNT162b2 vaccine after six months: a longitudinal prospective study. *The Lancet regional health Europe* 2021; 10: 100208.
49. Cortes A, Casado JL, Longo F, Serrano JJ, Saavedra C, Velasco H, Martin A, Chamorro J, Rosero D, Fernandez M, Gion M, Martinez Janez N, Soria Rivas A, Alonso Gordoia T, Martinez Delfrade I, Lage Y, Lopez Miranda E, Olmedo ME, Reguera Puertas P, Gajate P, Molina Cerrillo J, Guerra Alia E, Fuentes Mateos R, Romero B, Rodriguez-Dominguez MJ, Vallejo A, Carrato A. Limited T cell response to SARS-CoV-2 mRNA vaccine among patients with cancer receiving different cancer treatments. *European journal of cancer* 2022; 166: 229-239.
50. Gussarow D, Bonifacius A, Cossmann A, Stankov MV, Mausberg P, Tischer-Zimmermann S, Godecke N, Kalinke U, Behrens GMN, Blasczyk R, Eiz-Vesper B. Long-Lasting Immunity Against SARS-CoV-2: Dream or Reality? *Frontiers in medicine* 2021; 8: 770381.
51. Lehmann AA, Kirchenbaum GA, Zhang T, Reche PA, Lehmann PV. Deconvoluting the T Cell Response to SARS-CoV-2: Specificity Versus Chance and Cognate Cross-Reactivity. *Frontiers in immunology* 2021; 12: 635942.
52. Bergamaschi C, Terpos E, Rosati M, Angel M, Bear J, Stellas D, Karaliota S, Apostolakou F, Bagratuni T, Patseas D, Gumeni S, Trougakos IP, Dimopoulos MA, Felber BK, Pavlakis GN. Systemic IL-15, IFN-gamma, and IP-10/CXCL10 signature associated with effective immune response to SARS-CoV-2 in BNT162b2 mRNA vaccine recipients. *Cell reports* 2021; 36(6): 109504.
53. De Winter FHR, Hotterbeekx A, Huizinga MT, Konnova A, Fransen E, Jongers B, Jairam RK, Van Averbeke V, Moons P, Roelant E, Le Blon D, Vanden Berghe W, Janssens A, Lybaert W, Croes L, Vulsteke C, Malhotra-Kumar S, Goossens H, Berneman Z, Peeters M, van Dam PA, Kumar-Singh S. Blood Cytokine Analysis Suggests That SARS-CoV-2 Infection Results in a Sustained Tumour Promoting Environment in Cancer Patients. *Cancers* 2021; 13(22).
54. Schernberg A, Mezquita L, Boros A, Botticella A, Caramella C, Besse B, Escande A, Planchard D, Le Pechoux C, Deutsch E. Neutrophilia as prognostic biomarker in locally advanced stage III lung cancer. *PloS one* 2018; 13(10): e0204490.
55. Schernberg A, Vernerey D, Goldstein D, Van Laethem JL, Glimelius B, van Houtte P, Bonnetain F, Louvet C, Hammel P, Huguet F. Predictive Value of Neutrophils Count for Local Tumor Control After Chemoradiotherapy in Patients With Locally Advanced Pancreatic Carcinoma. *International journal of radiation oncology, biology, physics* 2021; 110(4): 1022-1031.
56. Hanahan D, Weinberg RA. Hallmarks of cancer: the next generation. *Cell* 2011; 144(5): 646-674.
57. Alberca RW, Andrade MMS, Branco A, Pietrobon AJ, Pereira NZ, Fernandes IG, Oliveira LM, Teixeira FME, Beserra DR, de Oliveira EA, Gozzi-Silva SC, Ramos YAL, de Brito CA, Arnone M, Orfali RL, Aoki V, Duarte A, Sato MN. Frequencies of CD33+CD11b+HLA-DR-CD14-CD66b+ and CD33+CD11b+HLA-DR-CD14+CD66b- Cells in Peripheral Blood as Severity Immune Biomarkers in COVID-19. *Frontiers in medicine* 2020; 7: 580677.

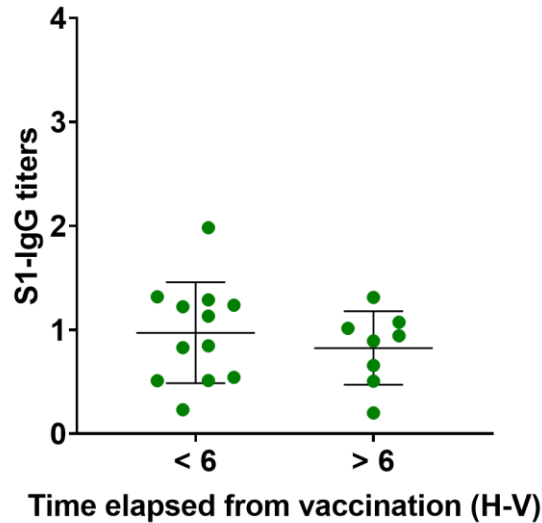
## SUPPLEMENTARY FIGURES



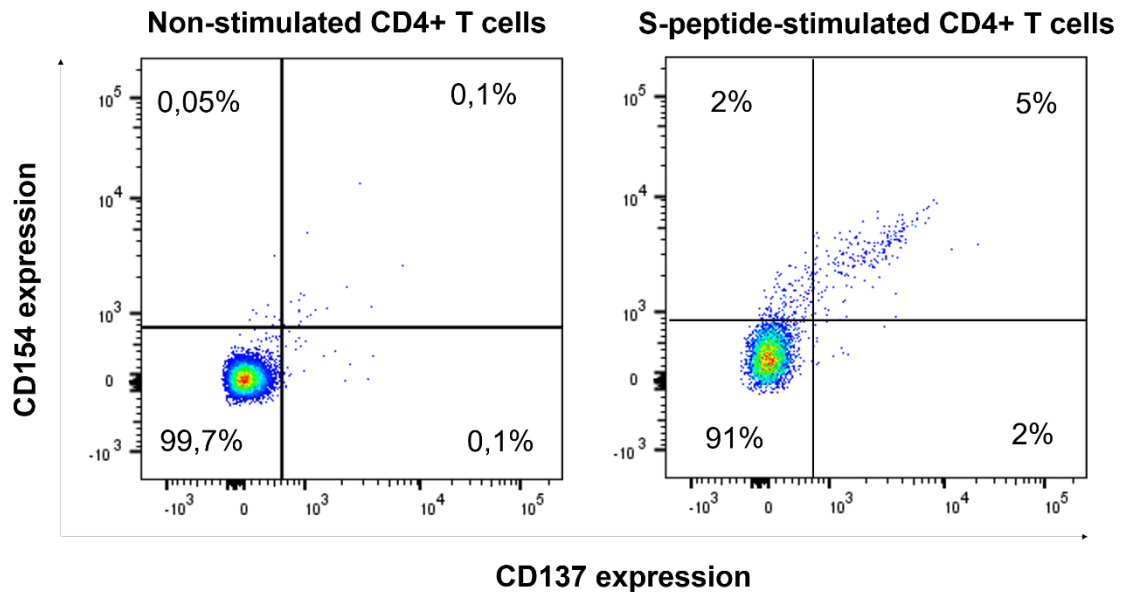
**Supplementary figure S1. Schematic representation of the study cohort and design.** Samples from H donors and O patients naturally infected by SARS CoV-2 and vaccinated with/without previous SARS CoV-2 infection were collected. A group of non-infected non-vaccinated H donors was included for comparison. Blood samples were obtained and analysed for antibody levels, T cell activation and differentiation, and myeloid cell characterisation.



**Supplementary figure S2. COVID-19 severity degree and time elapsed from SARS CoV-2 infection and/or vaccination to sample.** *a, b, c*) COVID-19 severity degree according to the NIH guidelines in all H and O individuals (*a*), in H-CoV and O-CoV individuals (*b*), and in H-CoV-V and O-CoV-V individuals (*c*). The U of Mann-Whitney test was used to evaluate significance. *d, e*) Time elapsed from SARS CoV-2 diagnosis to sample collection (*d*) and from vaccination to sample collection (*e*) in the indicated groups of H donors and O patients. The Kruskal-Wallis test was used for multiple comparisons followed by Dunn's test for pair-wise comparison. \*, \*\*, indicate significant ( $P < 0.05$ ) and very significant ( $P < 0.01$ ) differences.



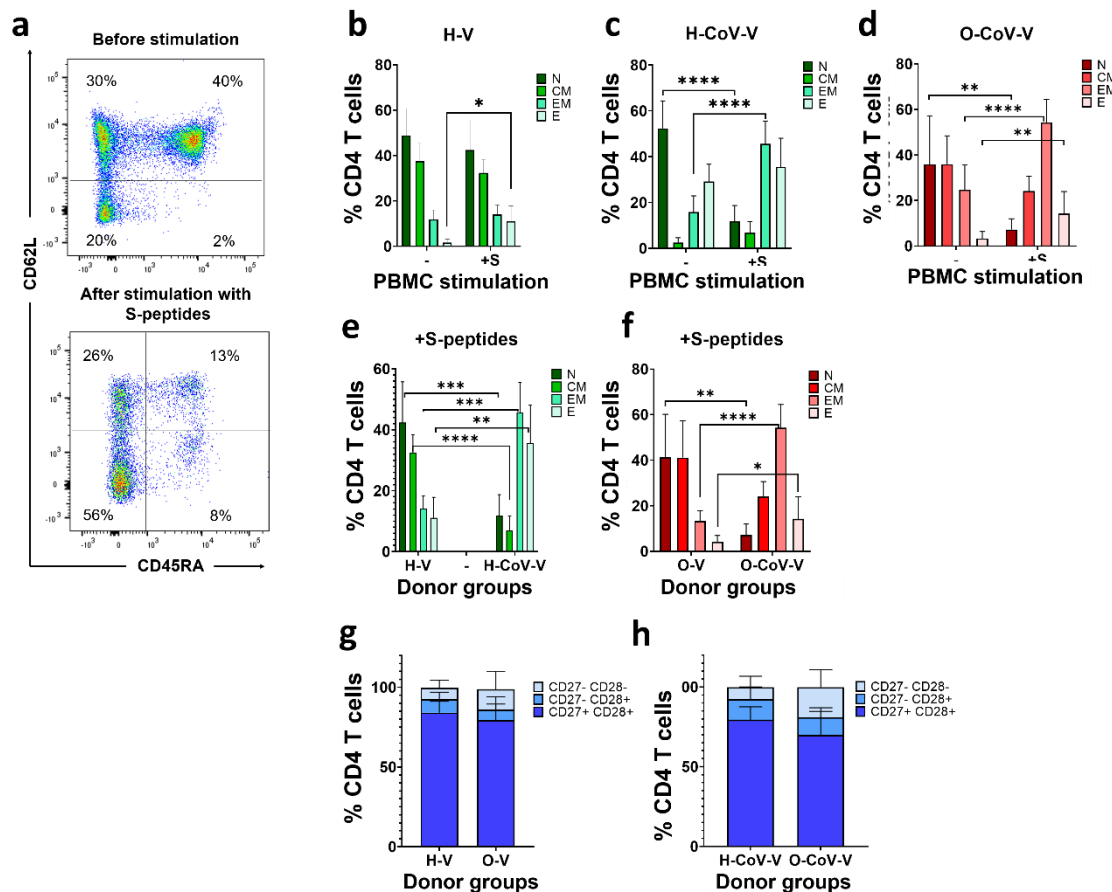
**Supplementary figure S3. Dynamics of S-specific IgG titres.** S specific IgG antibody titres in V-H individuals from samples collected less than 6 months and more than 6 months after vaccination. The U of Mann-Whitney test was used for statistical significance.



**Supplementary figure S4. Flow cytometry and gating strategy for quantification of activated CD4 T cells.** Representative flow cytometry density plots of CD154 and CD137 co-expression profiles in CD4 T cells from donors before and after stimulation with S-peptides, as indicated.

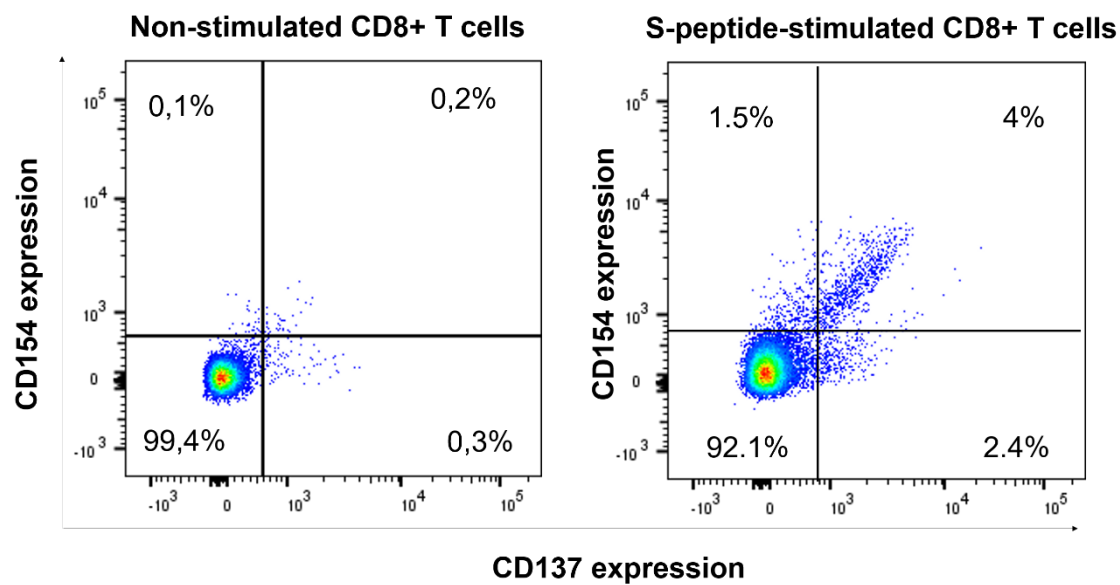




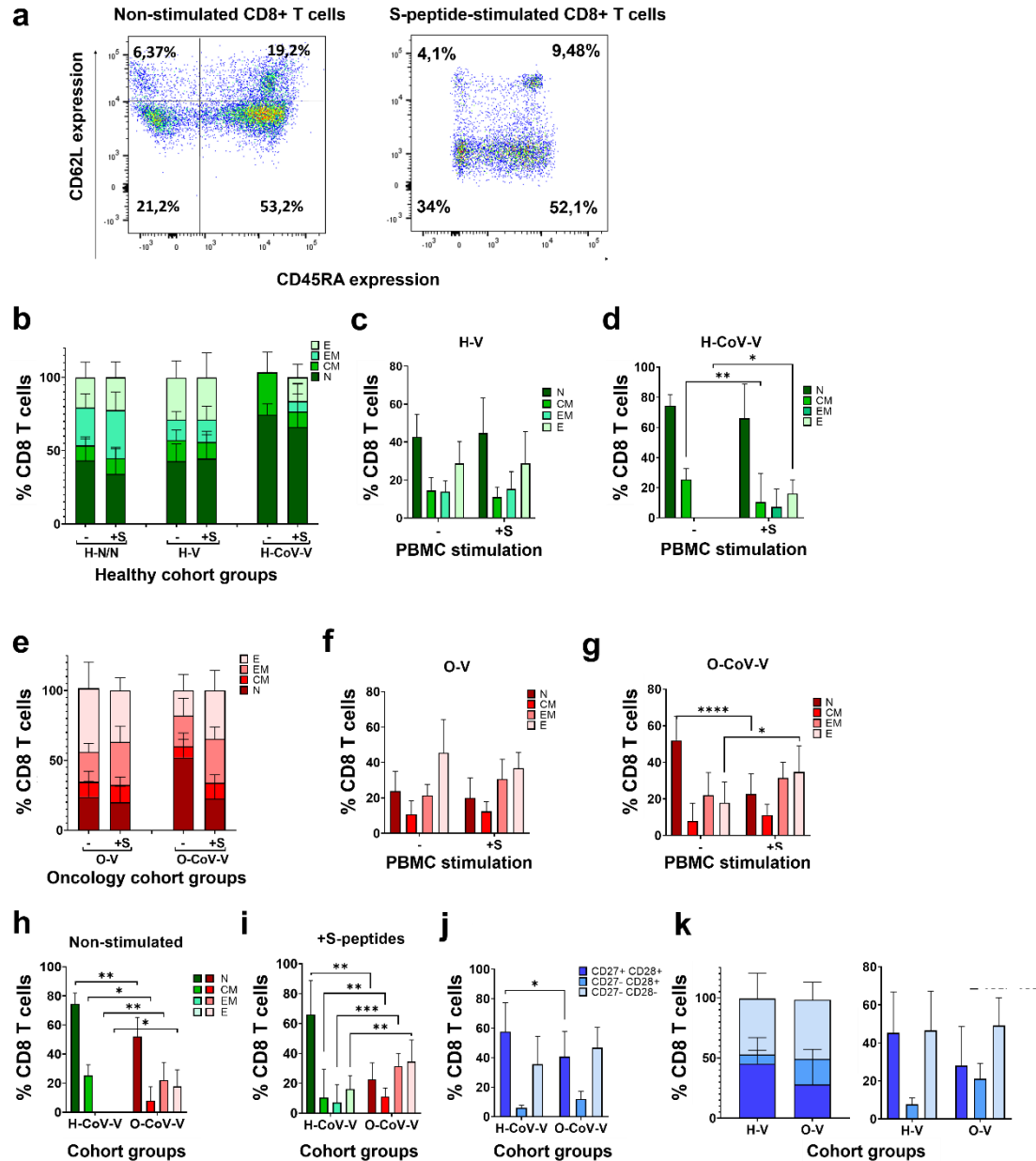


**Supplementary figure S6. CD4 T cell phenotypes after stimulation with S peptides.** *a*) Representative flow cytometry density plots with CD62L-CD45RA co-expression profiles in CD4 T cells before and after the stimulation with S-peptides. Quadrants were established with unstained controls. Percentages of the corresponding populations are shown within the quadrants. *b,c*) CD4 T cell phenotypic changes in H-V (*b*) and H-CoV-V (*c*) donors. (-) and (+S), non-stimulated and S-peptide stimulation. N, CM, EM and E, indicate naïve-stem cell (CD62L+ CD45RA+), central memory (CD62L+ CD45RA-), effector memory (CD62L- CD45RA-) and effector (CD62L- CD45RA+) phenotypes. *d*) Phenotypic changes in CD4 T cells within O-CoV-V before and after stimulation with S-peptides. *e,f*) Effects of previous CoV infection in vaccinated H donors and O patients over T cell phenotypes after stimulation with S-peptides. *b-f*) Relevant statistical comparisons are indicated by ANOVA followed by pair-wise comparisons with Tukey's test. *g,h*) Relative percentages of CD4 T cell differentiation phenotypes in H-V and O-V (*g*) and in H-CoV-V and O-CoV-V (*h*) CD27+ CD28+, CD27- CD28+ and CD27- CD28+ indicate poorly differentiated, intermediate differentiated and highly differentiated T cell phenotypes. U of Mann-Whitney was used to test for significance. \*, \*\*, \*\*\* indicate significant ( $P < 0.05$ ), very significant ( $P < 0.01$ ) and highly significant ( $P < 0.001$ ) differences.



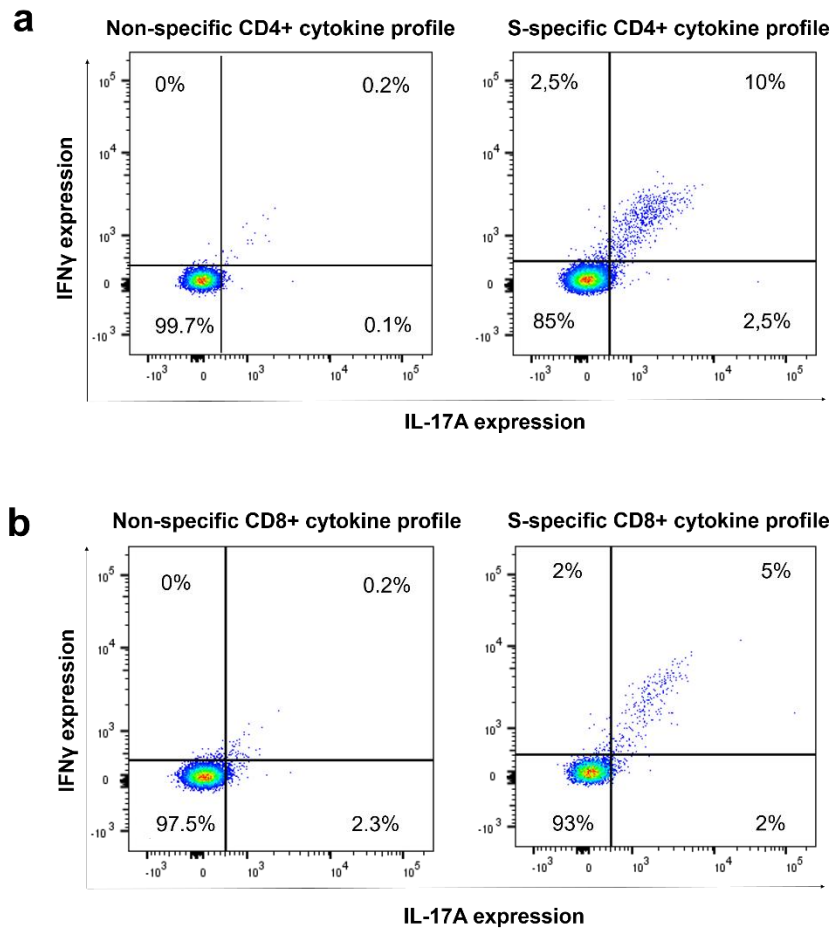


*Supplementary figure S7. Flow cytometry and gating strategy for quantification of activated CD8 T cells. Representative flow cytometry density plots of CD154 and CD137 co-expression profiles in CD8 T cells from donors before and after stimulation with S-peptides, as indicated.*

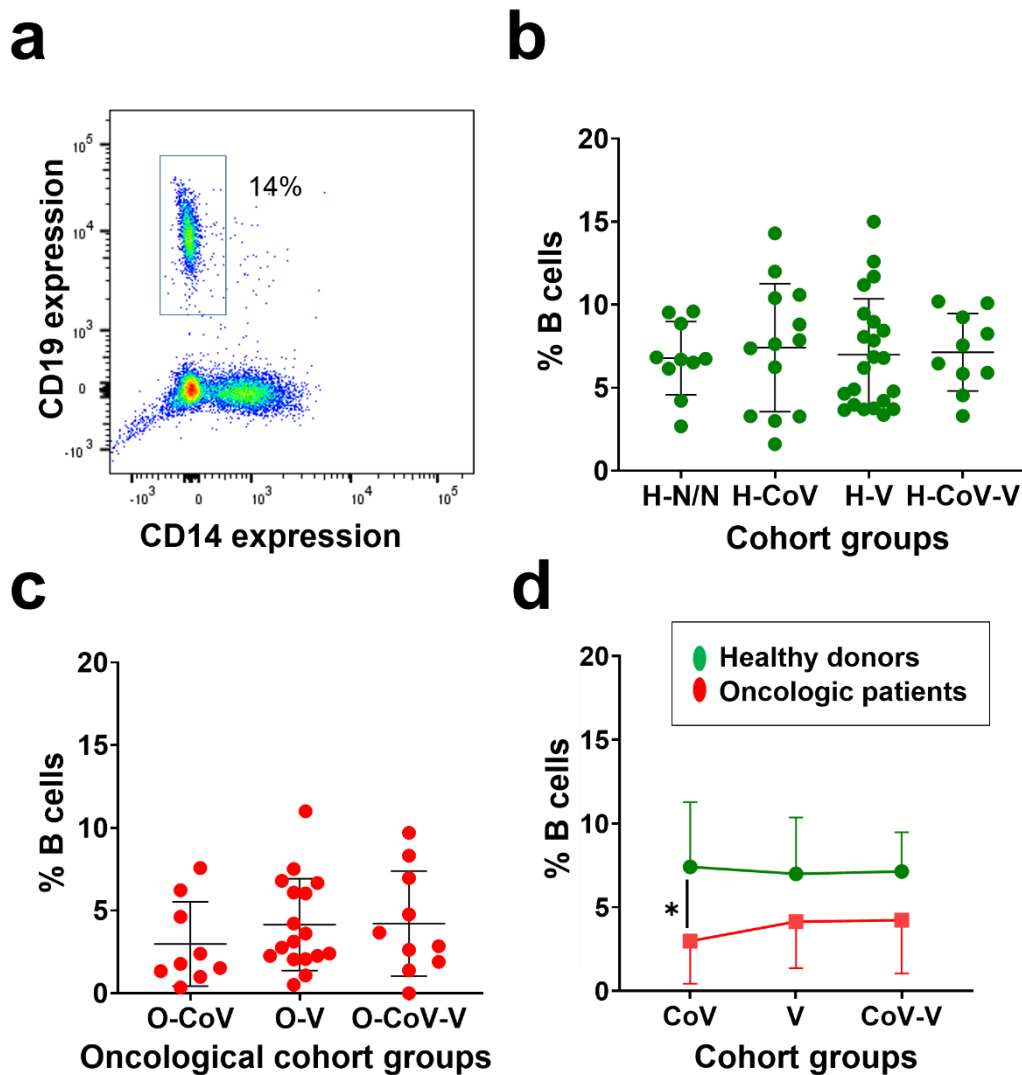


**Supplementary figure S8. Differentiation phenotypes in CD8 T cells.** a) Representative flow cytometry density plots with CD62L-CD45RA co-expression profiles in CD8 T cells before and after the stimulation with S-peptides. Quadrants were established with unstained controls. Percentages of the corresponding populations are shown within the quadrants. b, c, d) Relative percentages of CD8 T cell differentiation phenotypes from the indicated H donors and O patient cohorts. Means and error bars (standard deviations) are shown. N, CM, EM and E, indicate naïve-stem cell (CD62L+ CD45RA+), central memory (CD62L+ CD45RA-), effector memory (CD62L- CD45RA-) and effector (CD62L- CD45RA+) phenotypes. e, f, g) Relative percentages of CD8 T cell differentiation phenotypes from the indicated H and O cohort groups. h, i) Relative percentages of CD8 T cell differentiation phenotypes in H-CoV-V and O-CoV-V groups before and after stimulation with S-peptides. j, k) Relative percentages of CD8 T cell differentiation phenotypes in V-H-CoV, V-O-CoV, H-V and O-V groups as indicated in the graphs. CD27+ CD28+, CD27- CD28+ and CD27+ CD28+ indicate poorly differentiated, intermediate differentiated and highly differentiated T cell phenotypes. b-

*k) Statistical significance was tested by ANOVA followed by Tukey's pair-wise comparisons. \*, \*\* and \*\*\* indicate, significant ( $P < 0.05$ ), very significant ( $P < 0.01$ ) and highly significant ( $P < 0.001$ ) differences.*



*Supplementary figure S9. Flow cytometry and gating strategy for quantification of cytokine expression within activated T cells. a) Representative flow cytometry density plots with the expression of IFN $\gamma$  and IL-17 before and after stimulation with S peptides in CD4 T cells. b) In CD8 T cells.*



**Supplementary figure S10. B-lymphocyte levels in peripheral blood from H donors and O donors.** *a)* Representative flow cytometry density plot of CD19 and CD14 expression in PBMCs from donors. *b, c)* Percentage of circulating B-cells in the indicated groups of H donors and O patients. *d)* Percentage of circulating B-cells in the indicated groups of H (in green) and O (in red) subjects. Statistical significance was tested with Kruskal-Wallis followed by Dunn's pair-wise comparisons. \*, \*\*, and \*\*\* indicate significant ( $P < 0.05$ ), very significant ( $P < 0.01$ ) and highly significant ( $P < 0.001$ ) differences.

