

1           **SHIVIR - An Agent-Based Model to assess the transmission of COVID-19 in India**

2   M.S. Narassima<sup>1</sup>, Denny John<sup>2\*</sup>, S.P. Anbuudayasankar<sup>3</sup>, Guru Rajesh Jammy<sup>4</sup>, Rashmi Pant<sup>5</sup>, Lincoln  
3   Choudhury<sup>6</sup>

4

5   <sup>1</sup>Academics, Great Lakes Institute of Management, Chennai, Tamil Nadu, India.

6   <sup>2</sup>Department of Public Health, Ramaiah University of Applied Sciences, Bengaluru, Karnataka, India.

7   <sup>3</sup>Department of Mechanical Engineering, Amrita School of Engineering, Coimbatore, Tamil Nadu, India.

8   <sup>4</sup>Health Nutrition and Population, The World Bank, New Delhi, Delhi, India.

9   <sup>5</sup>Health Research, Society for Health Allied Research and Education India, Gurgaon, Haryana, India.

10   <sup>6</sup>DLF capital Green, Moti Nagar, New Delhi, Delhi, India.

11

12   \*Corresponding author

13   Email: [djohn1976@gmail.com](mailto:djohn1976@gmail.com)

14 **Abstract**

15 **Background**

16 COVID-19 has tormented the global health and economy like no other event in the recent past. Researchers  
17 and policymakers have been working strenuously to end the pandemic completely.

18 **Methodology/ Principal Findings**

19 Infectious disease dynamics could be well-explained at an individual level with established contact  
20 networks and disease models that represent the behaviour of the infection. Hence, an Agent-Based Model,  
21 SHIVIR (Susceptible, Infected, Admitted, ICU, Ventilator, Recovered, Immune) that can assess the  
22 transmission dynamics of COVID-19 and the effects of Non-Pharmaceutical Interventions (NPI) was  
23 developed. Two models were developed using to test the synthetic populations of Rangareddy, a district in  
24 Telangana state, and the state itself respectively. NPI such as lockdowns, masks, and social distancing along  
25 with the effect of post-recovery immunity were tested across scenarios.

26 The actual and forecast curves were plotted till the unlock phase began in India. The Mean Absolute  
27 Percentage Error of scenario MD100I180 was 6.41 percent while those of 3 other scenarios were around  
28 10 percent each. Since the model anticipated lifting of lockdowns that would increase the contact rate  
29 proportionately, the forecasts exceeded the actual estimates. Some possible reasons for the difference are  
30 discussed.

31 **Conclusions**

32 Models like SHIVIR that employ a bottom-up Agent-Based Modelling are more suitable to investigate  
33 various aspects of infectious diseases owing to their ability to hold details of each individual in the  
34 population. Also, the scalability and reproducibility of the model allow modifications to variables, disease  
35 model, agent attributes, etc. to provide localized estimates across different places.

36

## 37 **Keywords**

38 Agent-Based Modelling, COVID-19, Disease Modelling, India, Infectious diseases.

## 39 **Author Summary**

40 The world has witnessed several infectious disease outbreaks from time to time. COVID-19 is one such  
41 event that tormented the life of mankind. Healthcare practitioners, policymakers, and governments  
42 struggled enormously to handle the influx of infections and devise suitable interventions. Agent-Based  
43 Models that use the population data could cater to these requirements better. Hence, we developed a disease  
44 model that represents various states acquired by COVID-19 infected individuals. The contact network  
45 among the individuals in the population was defined based on which the simulation progresses. The effect  
46 of various Non-Pharmaceutical Interventions such as lockdowns, the use of masks and social distancing  
47 along with post-recovery immunity were enacted considering two case studies viz. population of  
48 Rangareddy district and Telangana state. The capability of these models to adapt to different input data  
49 fields and types make them handy to be tailored based on available inputs and desired outputs. Simulating  
50 them using local population data would fetch useful estimates for policymakers.

## 51 **1. Introduction**

52 Infectious diseases affect the economy, healthcare systems, public health, and society [1]. There have been  
53 1438 epidemics reported by the World Health Organization (WHO) between 2010 to 2018 [2]. Though all  
54 these events have created a substantial impact across multiple dimensions, COVID-19 has made a colossal  
55 impact since its outbreak in Wuhan, China in December 2019. The pandemic has presently marked its  
56 presence across 224 territories causing 442,413,066 infections with 6,001,844 deaths and 375,259,135  
57 recoveries as of March 04, 2022 [3]. Researchers, healthcare fraternity, and governments worldwide have  
58 been working in tandem to devise policies to curtail the spread of pandemic [4,5]. These are achievable by  
59 employing mathematical models that could assess multiple aspects like the transmission dynamics, effect  
60 of Non-Pharmaceutical Interventions (NPI), the capacity of health infrastructure, etc. [6–8].

61 The capability of modelling and simulation to replicate the behaviour of real-time systems and generate  
62 good estimates has attracted researchers from a range of sectors, especially healthcare and engineering [9].  
63 Of the two broad categories of simulation viz. Compartmental and Agent-Based Modeling (ABM), latter  
64 can address infectious diseases more precisely owing to its ability to accommodate agent-level details. The  
65 bottom-up approach of these models wherein the behaviour of individual agents cumulates to give the  
66 overall behaviour of the system makes it more suitable compared to the compartmental models. ABM  
67 approach in the past has been employed to plan evacuation strategies for airborne infections [10], devise  
68 methods to administer vaccines for influenza [11], prevent the spread of measles [12], tuberculosis [13],  
69 and smallpox [14], and others. Proper use of simulations could help the developing countries with limited  
70 healthcare resource settings, like India for planning capacity based on estimates. Some researchers have  
71 adopted compartmental models such as Susceptible (S), Hospitalized or Quarantined (H), Symptomatic (I),  
72 Purely Asymptomatic (P), Exposed (E), Recovered (R) and Deceased (D) (SIPHERD) [15], Susceptible  
73 (S), Exposed (E), Infective (I), and Recovered (R) (SEIR) [16], or mathematical models [17] in the context  
74 of COVID-19. The advantageous approach i.e., ABMs, has been used in several aspects of COVID-19 such  
75 as to safeguard the vulnerable population [18,19], devise NPI such as lockdowns, use of mask, and social  
76 distancing [6,19], schedule location and time-dependent contacts [19,20], assess transmission [20], etc.

77 The model proposed in the study adopts an ABM approach that simulates the given synthetic population to  
78 assess the transmission dynamics. The NPI such as lockdowns, use of masks, and social distancing along  
79 with the effect of post-recovery immunity have been included to compare the effects of imposing  
80 interventions concurrently. It also has the flexibility to account for changes in the values of parameters,  
81 contact network, disease model, and NPIs imposed. These would be helpful to assess the transmission of  
82 infectious diseases using regional synthetic populations and devise interventions appropriately [21].

## 83 **2. Modelling of infectious diseases**

84 Modelling of infectious diseases requires interactions among the agents/ entities that govern the  
85 transmission of these close contact infections [22]. These cannot be incorporated into the compartmental

86 models that work based on the general population model by distributing the population across various  
87 compartments [23]. Each compartment corresponds to a health state such as Susceptible, Exposed, Infected,  
88 Recovered, etc. Partitioning/ Compartmentalization is based on the required number of states. In these  
89 models, the transitions are governed by rates of flow and variables influencing the flow [24]. Heterogeneity,  
90 which is needful for infectious diseases is achieved using time-dependent contact mixing patterns, networks  
91 across the community, and seasonality [25,26]. Yet, these models might be less accurate as they neither  
92 incorporate agent-level details nor involve interactions among agents. Establishing a contact network within  
93 the population being studied or agents is essential to achieve the same. This has been proven by researchers  
94 in the past where Compartmental and ABM have been compared. The capability of the latter to track each  
95 agent during the simulation enables it to deliver additional agent-specific results [27]. This is because the  
96 latter models adopt a simulation-based approach in addition to the set of equations that govern the process  
97 [27]. The bottom-up approach makes the incorporation of heterogeneity easier by defining attributes at  
98 agent level. Unlike the compartmental models where the transition is governed by variables, the behaviour  
99 of agents and contact networks govern the transition between the states in ABMs [6,27]. Despite the  
100 advantages of ABMs to inculcate more heterogeneity and population dynamics, the implementation is  
101 subject to the computational capabilities and technical expertise of the modellers [27,28].

### 102 **3. SHIVIR - Agent-Based Model**

103 The SHIVIR (Susceptible, Infected, Admitted, ICU, Ventilator, Recovered, Immune) model has been  
104 developed based on the understanding of the dynamics of COVID-19 among the infected people from risk  
105 of infection to hospitalisation and death. Inputs from epidemiologists, public health practitioners, and  
106 biostatisticians were useful for the development of the model as presented successively.

#### 107 *3.1. Agent Creation*

108 The creation of agents forms the base for ABM studies. In the studies in which the agents represent the  
109 actual population of any territory, a synthetic population approach can be employed. People in the

110 population are modelled as agents for these simulations. The population data from Census could be used to  
111 generate the synthetic population based on the required fields/ characteristics to be assigned to each  
112 agent[29]. Data cleansing is to be done to eliminate the records with invalid or missing information for any  
113 of the required fields. Unique attributes could be assigned to each of the agents in the population to closely  
114 represent the actual population studied. The agents could be distinguished into various cohorts to assist a  
115 sub-group analysis of measured outcomes.

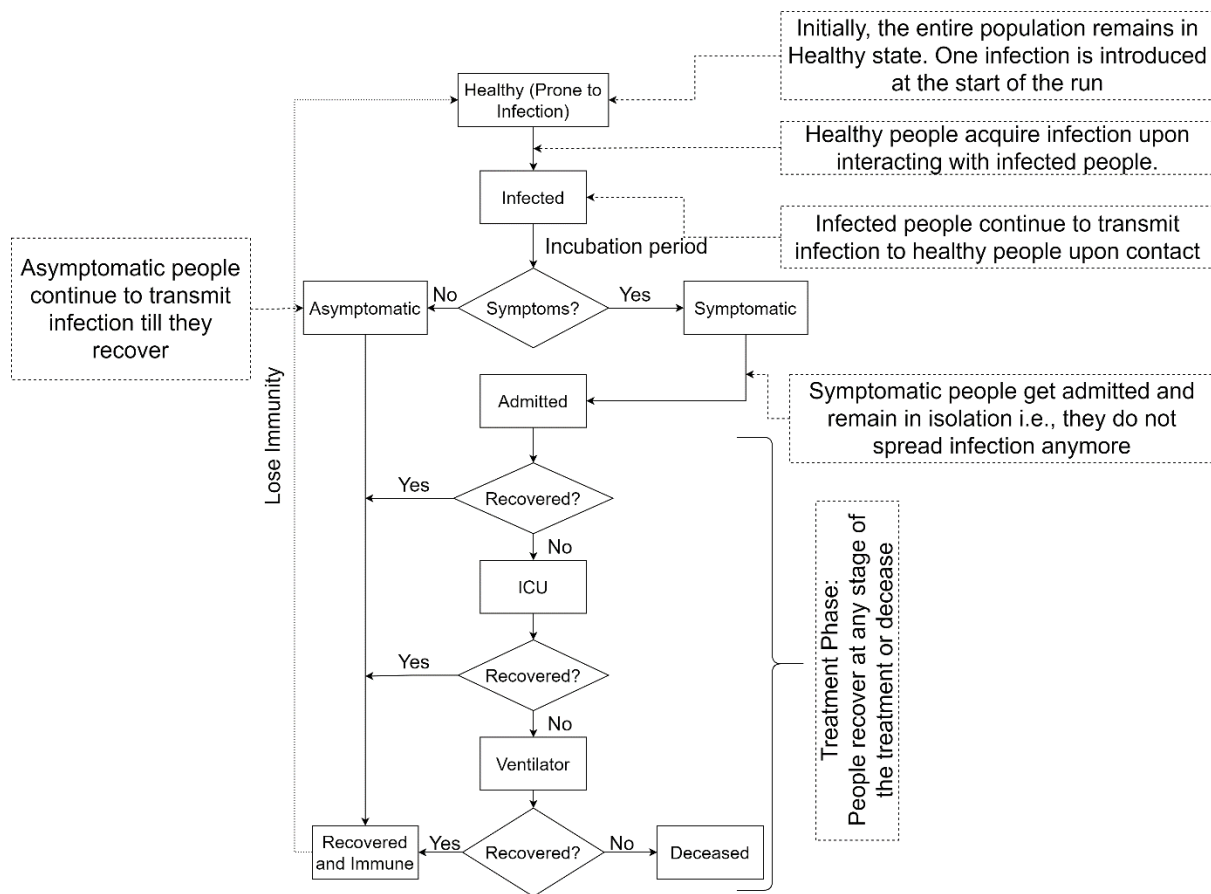
### 116 *3.2. Disease Model*

117 The progression of infection across various phases in an infected human need to be defined by a disease  
118 model. The SHIVIR model was developed with the following states:

- 119 1. Susceptible/ Healthy: Every agent in the population is assigned this state. Agents (people) in this  
120 state are susceptible to infection upon contact with an infected individual.
- 121 2. Infected: Agents who have acquired the infection and are in incubation period.
  - 122 a. Asymptomatic: The infected agents who do not show any symptoms. They are unnoticed  
123 and continue to transmit the infection to others till recovery.
  - 124 b. Symptomatic: The infected agents who exhibit symptoms. They are diagnosed and  
125 admitted in isolation. They do not spread the infection to others post-admission. These  
126 agents recover when they are in any of these three states: Admitted, ICU, and Ventilator.
- 127 3. Admitted: Initial stage of treatment for symptomatic agents. Indicates mild or moderate infection  
128 level.
- 129 4. ICU: Agents with a higher infection level. These agents require additional care and extended  
130 treatment.
- 131 5. Ventilator: Agents with severe infection levels. They need the support of a ventilator for breathing.
- 132 6. Recovered and Immune: Agents who have recovered from the infection. They are assumed to  
133 possess immunity for a certain duration post-recovery. They are not susceptible to infection during  
134 this period.

135           7. Deceased: Agents who have failed to recover from the infection and died. They are no more a part  
136           of the simulation.

137 All the created agents are assigned “Healthy” status at the start of the simulation. Every agent can exist in  
138 any of the above-mentioned states at an instant. Based on the contacts made by agents during the simulation,  
139 they are subject to acquire infection upon transmission from an infected agent. The agents then undergo a  
140 series of transitions across the different states. Duration of existence in each state and probability of  
141 transition to successive states are governed by the parameters defined in Table I. From the descriptions of  
142 the states, it is interpretable that the contact network plays a significant role in transmitting the infection  
143 across the population. The Timestep considered is day as it is suitable to define the transition between the  
144 states and contact rate. Based on the transitions of agents, the counts of agents in each state described in the  
145 disease model would be recorded at the end of each day, for the three age groups considered viz. kids (age  
146 < 5), adults ( $5 \leq \text{age} \leq 59$ ), and elders (age > 59). The model allows alteration (addition/ removal or  
147 modification) of any states and the cohorts considered.



148

149

Figure 1: SHIVIR - Disease Model

### 150 3.3. Contact Network

151 Contact network was established henceforth based on the characteristics of agents in the population. It is a  
 152 factor that majorly affects the spread of infection across the population. The present model considered the  
 153 contacts made at home, schools, and work depending on place and age as defined by Prem et al., (2017).  
 154 This helped segregate the contacts like those in the closer circle (home) and external. For each agent in the  
 155 population, a list of close circle contacts was defined based on the closeness of their locations i.e., the  
 156 probability of two agents being in each other's closer circle is inversely proportional to the distance between  
 157 them, as in equation (1). The following two assumptions were made to work this out:

- 158 i. Two people who are farthest in the population have zero probability of meeting



159 ii. The probability of people with the same Geographic Information System (GIS) coordinates to meet  
160 is '1', which is certain in any scenario.

$$161 \text{ Probability of } A \text{ and } B \text{ meeting} = 1 - \left( \frac{\text{Euclidean distance between } A \text{ and } B}{\text{Euclidean distance between the farthest points}} \right) \quad (1)$$

162 where 'A' and 'B' are any two people within the population.

163 The proportion of contacts made with external people was proportionately reduced for stricter lockdowns  
164 while the ones in the closer circle were retained. Also, the number of contacts made by each person is to be  
165 determined based on the location and age. For this, the results of a study by Supriya Kumar et al., (2018)  
166 that determined the contact rates for close-contact infections were utilized. Supriya Kumar et al., (2018)  
167 defined the number of contacts made by each person in Ballabgarh district in India, which were used to  
168 proportionately calculate the contacts made by people in districts of Telangana. This was accomplished by  
169 assuming a density-dependent contact rate i.e., contact rate and population density are directly proportional  
170 to each other. The distributions followed by these contact rates were generated using the Input Analyzer  
171 tool of Arena (a Rockwell Automation software) that generates distributions followed by the input  
172 dataset[32].

#### 173 **4. Results of application of the SHIVIR model in Telangana state, India**

174 The disease model was replicated to test the performance of the chosen population of Rangareddy district  
175 and Telangana state, India. Initially, the Rangareddy model was created using AnyLogic while that of  
176 Telangana was coded using Python. The former is a relatively simpler model that was developed during the  
177 initial stages while the latter involves complex dynamics and interventions. To make the mode reproducible,  
178 we coded the same using Python.

##### 179 *4.1. Timestep*

180 The Timestep chosen for the study is days as it would be meaningful to present these time series estimates  
181 daily and also that the contact rates and COVID-19 related variables are defined in days. A healthy

182 individual who has been infected through contact on a day would not acquire a secondary infection.  
183 Duration of the existence of each individual in state increments each day to transform to the next state upon  
184 reaching the defined time of existence in that state. The code iterates through the entire population every  
185 day and governs their contacts with other agents in the population. The state of existence of agents on a  
186 particular day governs their behaviour or interaction with other agents.

#### 187 *4.2. Synthetic population approach for Rangareddy district and Telangana state*

188 The initial model for Rangareddy was run with 5,48,323 agents representing 10.35 percent of the population  
189 of the district as per the 2011 Census of India [33]. The population was divided into three age groups as  
190 mentioned in Section 3.2.

191 The second study on Telangana used data consisting of 31,738,270 people as per the 2011 Census of India,  
192 as generated by Sayeed, 2018[29]. Each agent consisted of unique identifiers/ parameters such as:

- 193 i. Geocoordinates
- 194 ii. District Code
- 195 iii. Household ID
- 196 iv. Age

197 Additionally, a unique ID to each agent of the population was mapped for direct reference. Initially, 30  
198 records that did not contain one or more of the required information were discarded and 35,003,674 operable  
199 agents were retained. These represented 90.67 percent population of Telangana [33,34]. The Initial health  
200 status of all the created agents was set as “Healthy”, indicating their susceptibility to infection.

#### 201 *4.3. Establishment of contact network*

202 The number of contacts made by every agent daily and proportionate reduction during the lockdowns were  
203 designed as explained in Section 3.3. For the Rangareddy model, different distributions were generated

204 based on the stringency of lockdowns by proportionately reducing the contacts made by every agent per  
205 day.

206 For the Telangana model, the contact distributions were proportionately altered based on the lockdown  
207 stringencies such that the proportion of contacts in closer circles increased whilst reducing the overall  
208 contact rate. A close contact list was defined for each agent in the population based on the Euclidean  
209 distance approach considering the GIS coordinates of the agents. This is to set the list of contacts with  
210 which an agent would more likely interact i.e., close contacts with whom there are more chances of  
211 interactions during lockdowns. This was done considering the actual reduction in external contacts that  
212 happen during lockdowns.

#### 213 *4.4. Intervention scenarios*

214 In the Rangareddy model, imposing lockdowns was the only NPI modelled across three different scenarios.  
215 The base scenario was a ‘no lockdown’ with no interventions. Two other scenarios represented 50 and 75  
216 percent stringencies imposed. The number of contacts was defined based on the cumulative contacts made  
217 at home, office, school, and others based on the results of Prem et al., (2017). To enact the lockdown  
218 scenarios, the workplace and other location contacts were reduced proportionately (50 and 75 percent)  
219 whilst completely eliminating the contacts at school to indicate closure of schools.

220 In the Telangana model, the lockdown was imposed as per the Indian scenario [35]. Further, to observe the  
221 effects of post-recovery immunity and adoption of mask and distancing, six scenarios were enacted. The  
222 scenarios are MD100I90, MD75I90, MD50I90, MD100I180, MD75I180, and MD50I180. An example for  
223 the nomenclature of scenarios are as follows:

- 224 i. MD100: ‘100’ succeeding ‘MD’ indicates that 100 percent of the population follows the use of  
225 masks and social distancing.
- 226 ii. I90: ‘90’ succeeding ‘I’ indicates the post-recovery immunity days when a recovered person is not  
227 susceptible to infection.

228 The stringency of lockdowns and the contacts made were during each phase are presented in Table I. Higher  
 229 the stringency of lockdown, lower the contact rate. Contact rate indicated in the percentage of contacts  
 230 made as compared to a no lockdown/ normal scenario. It is seen that the proportion of close contacts is  
 231 higher for more stringent lockdowns indicating higher contacts within the locality or at home.

232 Table I: Parameters during lockdown phases

Lockdown	Duration	Days	Lockdown Stringency (%)	Contact rate (%)	Close contacts (%)
Phase 1	25 March 2020 – 14 April 2020	21	75	42.80	90.75
Phase 2	15 April 2020 – 3 May 2020	19			
Phase 3	4 May 2020 – 17 May 2020	14			
Phase 4	18 May 2020 – 31 May 2020	14			
Unlock 1.0	1 June 2020 – 30 June 2020	30	50	56.44	81.50
Unlock 2.0	1 July 2020 – 31 July 2020	31			
Unlock 3.0	1 August 2020 – 31 August 2020	13	25	70.08	72.25
<b>Post Unlock</b>	After 31 August 2020	NA	0	100	63

233 *4.5. Data inputs to the model*

234 Following the development of the disease model, establishment of contact network, and agent creation,  
 235 simulation has to be performed to assess the spread of infection across the given synthetic population. The  
 236 input variables used for the simulation of models are presented in Table II. For both the districts, the  
 237 population densities of Rangareddy and other districts were used to derive the contacts made per day  
 238 considering a population-dependent contact rate [36]. The synthetic population generated forms the basis  
 239 of simulation as the entire simulation aims to estimate the measures for the input population.

Table II: Input variables to the models

Parameters	Value		References
	Rangareddy Model	Telangana Model	
Close contacts in a day	<5: Lognormal(2.77,0.9,6) 5-59: Lognormal(2.88,0.86,6) >60: Lognormal(2.6,0.84,5)	Table S I	[36,37]
Rate of Transmission by direct contact (percent)	Random(1,10)	i) Close network: 3 to 10 ii) External: 1 to 5	[38]
Proportion of asymptomatic infections (percent)	80		[38,39]
Incubation period (days)	5		[40,41]
Treatment period (days)	14		[40]
Proportion of admitted cases that need ICU (percent)	11		[42,43]
Treatment period in ICU (days)	Triangular(7,8,9)		[40,43]
Proportion of critical cases that need	88		[43]

Ventilator support (percent)			
Period of Ventilator support (days)	Triangular(5,7,12)		[40]
Mortality rate	As per Indian statistics		[44]
Risk difference for use of control measures (percent)	NA	i) Mask: 10.2 ii) Distancing: 14.3	[45]

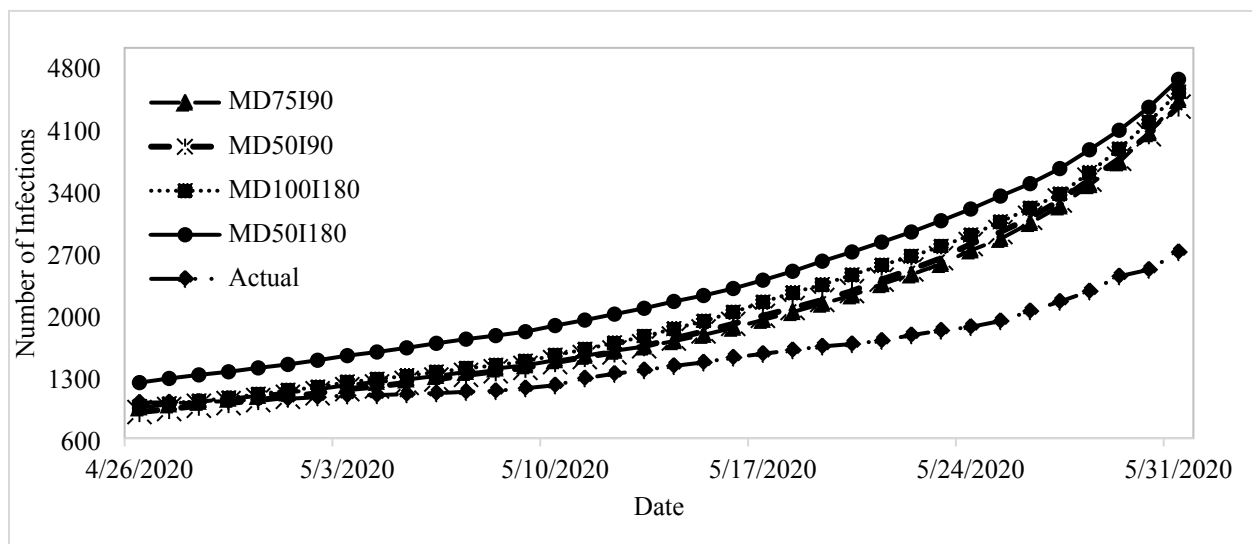
## 241 5. Validation of the results

242 The model was simulated for 365 days by introducing an infected agent to the population. The code was  
 243 run on a High-Performance Computing server facility of Amrita Vishwa Vidyapeetham, India. The  
 244 estimates provided by the model are governed by the variables that were gathered during the initial stages  
 245 of the pandemic. Also, the lockdown phase considered was based on the initial phases that were imposed  
 246 in India for 142 days [35]. The model increased the contact rates proportionately for each of the unlock  
 247 phases and assumed a 100 percent normalcy post 142<sup>nd</sup> day, which marks the end of Unlock 3.0 (Table I).  
 248 The symptomatic infections in the model that indicate the diagnosed and identified positive cases were  
 249 plotted against the actual values for the period from 26 April 2020, the date from which the actual values  
 250 were available till the end of lockdown phase 4 (31 May 2020) [44]. Mean Absolute Percentage Errors for  
 251 each of the simulated scenarios were found. The scenario MD100I180 had the least MAPE of 6.41 percent  
 252 till the end of lockdown phase 4 i.e., 31 May 2020. The scenarios MD75I90, MD50I90, and MD50I180 had  
 253 MAPE values around 10 percent during this period. Whilst considering the unlock phases (after 31 May,  
 254 2020), the error increased. In the simulated model, the stringency of lockdowns was reduced from 75 to 50  
 255 percent post phase 4 which is a possible reason for the gap between the actual and forecast to widen.

256 The actual value is lesser than the forecast indicating the cumulative effects of various interventions apart  
 257 from lockdowns that offered protection, similar to the Swiss cheese model [46]. Offices that had the  
 258 capabilities to offer work-from-home continued to the practice. Schools and colleges were not opened as  
 259 education continued to happen online [47]. Also, there were restrictions imposed on mass gatherings and  
 260 in public places to prevent transmission on a larger scale [48]. Self-awareness among the public to avoid  
 261 getting infected is a major driver that flattened the transmission curve [49]. All these measures resulted in  
 262 overall increased protection on a societal level. At an individual level, avoiding over-crowding, going to  
 263 closed environments where there are higher chances of infection through suspended particles, wearing face  
 264 masks, using sanitizers, maintaining social distancing, etc., proved to be effective [45,48].

265 Table III: Mean Absolute Percentage Error across the scenarios

Start date	Till date	MD100I90	MD75I90	MD50I90	MD100I180	MD75I180	MD50I180
26/04/2020	31/05/2020	17.35	10.46	10.93	6.41	35.23	10.50
26/04/2020	30/06/2020	78.68	43.51	20.25	20.06	112.63	18.90



266

267 Figure 2: Number of Infections across scenarios

268 Of all these interventions and control strategies that could help to curtail the spread of infection, the  
269 Telangana model included only lockdowns, use of masks, and social distancing with the effect of post-  
270 recovery immunity. The model also considered reducing the proportion of close contacts and external  
271 contacts at school, workplace, and others based on the stringency of lockdown. The exclusion of other  
272 parameters such as the proportion of the population with work from home capabilities [5], contact tracing  
273 to identify and isolate the close contacts and asymptomatic carriers [7,50], and indirect transmission through  
274 suspended particles, objects, etc. [20], underreporting of the cases [51], and others, could be some of the  
275 reasons for the gap.

276 Face mask and social distancing reduce the transmission by 10.2 and 14.3 percent respectively [45]. Owing  
277 to their importance, the State and Central governments across India have been imposing penalties for not  
278 wearing masks [52,53]. Yet, right from the early phases of the pandemic, a significant proportion of the  
279 population has not been using face masks. The reported values are 44 percent in India as of September 2020  
280 [54] and May 2021 [55], 52 and 45 percent in Chandigarh [56] and Hyderabad [57] respectively as of  
281 January 2022. Discomfort being the highly reported reason among the public is irrelevant considering the  
282 objective of wearing masks. Awareness programs need to be held to emphasize the importance of acting  
283 socially to protect oneself and others.

## 284 **Conclusions**

285 The study presented the framework to use ABM for studying infectious diseases using a synthetic  
286 population approach. Infectious disease dynamics are well-explained on an individual level with contact  
287 networks than compartmental which is the key idea behind the adoption of this approach [6,58]. The  
288 development of a suitable disease model to represent the behaviour of COVID-19 was the initial process.  
289 The disease model, SHIVIR was developed in this study to assess the effects of various NPIs and  
290 transmission dynamics of COVID-19. The models were developed using AnyLogic (Rangareddy) and  
291 Python (Telangana). The former model is less complex as it involved only lockdown as NPI whilst the latter



292 model included the effect of masks, social distancing, and post-recovery immunity additionally. The  
293 Telangana model had a more complex contact network that mapped close circle contacts using GIS  
294 coordinates. Also, in addition to age, the latter model included GIS, household ID, district code. The  
295 simulation was run for 365 days across six different scenarios involving varied combinations of the NPIs.  
296 The lockdowns were imposed per the actual ones that were in place in India. The forecast and actual curves  
297 matched closely during the initial lockdown phases. After the beginning of the unlock phases, the reduction  
298 of lockdown stringency and increase in contact rate in the model spiked the estimates generated by the  
299 model. Contrarily, the slope of the actual curve was much lesser than those of the estimates because of the  
300 cumulative interventions in real-time.

301 The code is expandable and reproducible in terms of the synthetic population being used, the attributes  
302 mapped to each agent, addition/ deletion/ modification of existing states in the existing (SHIVIR) model,  
303 behaviour of agents in each state, transition rules, and probability between the states, duration of stay in  
304 each state, the interaction between the agents (contact network), contact rate and probability, NPIs imposed  
305 and their associated effects on transmission, level of NPI, etc. These determinants make the model more  
306 suitable for different scenarios with varied requirements. ABM models as in this study could help the  
307 governments and policymakers to understand the lower-level dynamics better to devise localized NPI  
308 strategies that are more suitable for infectious diseases [21]. Also, conservative steps can be taken during  
309 such events to anticipate the worst possible outcomes and enhance the preparedness of healthcare systems  
310 and resources. Future works could focus on developing similar models using the ABM logic to estimate the  
311 transmission dynamics of other infectious diseases. Other aspects such as vaccination pattern, interaction  
312 among the agents, contact tracing, etc., could be analyzed in the context of an event. The estimates provided  
313 by such models would help to be equipped to handle uninvited events in the future. The addition of more  
314 dimensions such as Social Determinants of Health, schedule-based contacts, workplace restrictions, modes  
315 of transportation used, etc., might provide more accurate estimates. However, these are subject to data  
316 availability and time within which the models need to be acted.

317 **Author Contributions**

<b>Contributor Role</b>	<b>Authors</b>
<b>Conceptualization</b>	DJ, GRJ, SPA, RP, LC, MSN
<b>Data Curation</b>	GRJ, MSN, SPA
<b>Formal Analysis</b>	GRJ, DJ, SPA, RP, MSN, LC
<b>Funding Acquisition</b>	Not Applicable
<b>Investigation</b>	GRJ, MSN, SPA, DJ
<b>Methodology</b>	GRJ, RP, LC, SPA, SPA, MSN
<b>Project Administration</b>	DJ, SPA, GRJ, MSN, RP
<b>Resources</b>	GRJ, DJ, MSN, SPA
<b>Software</b>	MSN, SPA, GRJ
<b>Supervision</b>	SPA, DJ, MSN, GRJ
<b>Validation</b>	MSN, DJ,
<b>Visualization</b>	MSN, SPA, DJ, GRJ, RP
<b>Writing – Original Draft Preparation</b>	MSN, SPA
<b>Writing – Review &amp; Editing</b>	DJ, GRJ, RP, LC

318 **Acknowledgment**

319 None

320 **Conflict of Interest**

321 The authors declare that they have no known competing financial interests or personal relationships that  
322 could have appeared to influence the work reported in this paper.

323 **Data availability statement**

324 The synthetic population used, the AnyLogic model along with the input data are available at:

325 <https://cloud.anylogic.com/model/7cd10c0c-f1c1-4b8f-9aac-0bf37a45379a?mode=SETTINGS> and

326 [https://osf.io/utmhg/?view\\_only=05ac26fc100645be8b1bba6557d606be](https://osf.io/utmhg/?view_only=05ac26fc100645be8b1bba6557d606be).

327 The code developed using Python is available at: <https://doi.org/10.6084/m9.figshare.19121939>.

328 **Funding**

329 No funding support was received for this study.

330 **Ethical Approval**

331 The study has been conducted using publicly available data. No ethical approvals were sort for this study.

332 **References**

- 333 1. Gomez J, Prieto J, Leon E, Rodríguez A. INFEKTA—An agent-based model for transmission of  
334 infectious diseases: The COVID-19 case in Bogotá, Colombia. *PLoS One*. 2021;16: e0245787.  
335 doi:10.1371/JOURNAL.PONE.0245787
- 336 2. WHO. World Health Organization. 2020. Available: <https://www.who.int/>
- 337 3. Worldometer. Worldometer - Coronavirus Update (Live). In: Worldometer [Internet]. 2020 [cited  
338 12 Apr 2020]. Available: <https://www.worldometers.info/coronavirus/>
- 339 4. Chinazzi M, Davis JT, Ajelli M, Gioannini C, Litvinova M, Merler S, et al. The effect of travel  
340 restrictions on the spread of the 2019 novel coronavirus (COVID-19) outbreak. *Science* (80- ).  
341 2020;368: 395–400. doi:10.1126/science.aba9757
- 342 5. Guan D, Wang D, Hallegatte S, Davis SJ, Huo J, Li S, et al. Global supply-chain effects of  
343 COVID-19 control measures. *Nat Hum Behav*. 2020;4: 577–587. doi:10.1038/s41562-020-0896-8
- 344 6. Narassima MS, Anbuudayasankar SP, Jammy GR, Pant R, Choudhury L, Ramakrishnan A, et al.  
345 An agent based model for assessing transmission dynamics and health systems burden for  
346 COVID-19. *Indones J Electr Eng Comput Sci*. 2021;24: 1735–1743.  
347 doi:10.11591/ijeecs.v24.i3.pp1735-1743
- 348 7. Kerr CC, Stuart RM, Mistry D, Abey Suriya RG, Hart G, Rosenfeld K, et al. Covasim: an agent-  
349 based model of COVID-19 dynamics and interventions. *medRxiv*. 2020; 2020.05.10.20097469.

- 350           doi:10.1101/2020.05.10.20097469
- 351    8.    Kapoor G, Sriram A, Joshi J, Nandi A, Laxminarayan R. COVID-19 in India: State-Wise  
352    Estimates of Current Hospital Beds, ICU Beds, and Ventilators. In: CDDEP and Princeton  
353    University [Internet]. 2020 [cited 26 Jun 2020]. Available: [https://cddep.org/publications/covid-](https://cddep.org/publications/covid-19-in-india-state-wise-estimates-of-current-hospital-beds-icu-beds-and-ventilators/)  
354    19-in-india-state-wise-estimates-of-current-hospital-beds-icu-beds-and-ventilators/
- 355    9.    Fone D, Hollinghurst S, Temple M, Round A, Lester N, Weightman A, et al. Systematic review of  
356    the use and value of computer simulation modelling in population health and health care delivery.  
357    J Public Health Med. 2003;25: 325–335. doi:10.1093/PUBMED/FDG075
- 358    10.   Epstein JM, Pankajakshan R, Hammond RA. Combining computational fluid dynamics and agent-  
359    based modeling: A new approach to evacuation planning. PLoS One. 2011;6: e20139.  
360    doi:10.1371/journal.pone.0020139
- 361    11.   Cooley P, Lee BY, Brown S, Cajka J, Chasteen B, Ganapathi L, et al. Protecting health care  
362    workers: A pandemic simulation based on Allegheny County. Influenza Other Respi Viruses.  
363    2010;4: 61–72. doi:10.1111/j.1750-2659.2009.00122.x
- 364    12.   Enanoria WTA, Liu F, Zipprich J, Harriman K, Ackley S, Blumberg S, et al. The effect of contact  
365    investigations and public health interventions in the control and prevention of measles  
366    transmission: A simulation study. PLoS One. 2016;11: e0167160.  
367    doi:10.1371/journal.pone.0167160
- 368    13.   Murray M. Determinants of cluster distribution in the molecular epidemiology of tuberculosis.  
369    Proc Natl Acad Sci U S A. 2002;99: 1538–43. doi:10.1073/pnas.022618299
- 370    14.   Halloran ME, Longini IM, Nizam A, Yang Y. Containing bioterrorist smallpox. Science (80- ).  
371    2002;298: 1428–32. doi:10.1126/science.1074674
- 372    15.   Mahajan A, Sivadas NA, Solanki R. An epidemic model SIPHERD and its application for

- 373 prediction of the spread of COVID-19 infection in India. *Chaos, Solitons and Fractals*. 2020;140:  
374 110156. doi:10.1016/j.chaos.2020.110156
- 375 16. Chatterjee K, Chatterjee K, Kumar A, Shankar S. Healthcare impact of COVID-19 epidemic in  
376 India: A stochastic mathematical model. *Med J Armed Forces India*. 2020;76: 147–155.  
377 doi:10.1016/j.mjafi.2020.03.022
- 378 17. Ambikapathy B, Krishnamurthy K. Mathematical modelling to assess the impact of lockdown on  
379 COVID-19 transmission in India: Model development and validation. *J Med Internet Res*.  
380 2020;22: 1–8. doi:10.2196/19368
- 381 18. Hoertel N, Blachier M, Blanco C, Olfson M, Massetti M, Limosin F, et al. Facing the COVID-19  
382 epidemic in NYC: a stochastic agent-based model of various intervention strategies. *medRxiv*.  
383 2020. doi:10.1101/2020.04.23.20076885
- 384 19. Hoertel N, Blachier M, Blanco C, Olfson M, Massetti M, Rico MS, et al. A stochastic agent-based  
385 model of the SARS-CoV-2 epidemic in France. *Nat Med*. 2020;26: 1417–1421.  
386 doi:10.1038/s41591-020-1001-6
- 387 20. Jalayer M, Orsenigo C, Vercellis C. CoV-ABM: A stochastic discrete-event agent-based  
388 framework to simulate spatiotemporal dynamics of COVID-19. *arXiv*. 2020. Available:  
389 <http://arxiv.org/abs/2007.13231>
- 390 21. Brian. and Caiado CC. Coronavirus: why we need local models to successfully exit lockdown. In:  
391 *The Conversation Media Group Ltd [Internet]*. 2020 [cited 12 Oct 2021]. Available:  
392 [https://theconversation.com/coronavirus-why-we-need-local-models-to-successfully-exit-](https://theconversation.com/coronavirus-why-we-need-local-models-to-successfully-exit-lockdown-138358#:~:text=They show what can quickly,set of possible future scenarios.)  
393 [lockdown-138358#:~:text=They show what can quickly,set of possible future scenarios.](https://theconversation.com/coronavirus-why-we-need-local-models-to-successfully-exit-lockdown-138358#:~:text=They show what can quickly,set of possible future scenarios.)
- 394 22. Kerr CC, Stuart RM, Mistry D, Abeysuriya RG, Rosenfeld K, Hart GR, et al. Covasim: An agent-  
395 based model of COVID-19 dynamics and interventions. *PLOS Comput Biol*. 2021;17: e1009149.

- 396 doi:10.1371/JOURNAL.PCBI.1009149
- 397 23. Kermack W, McKendrick A. A contribution to the mathematical theory of epidemics. Proc R Soc  
398 London Ser A, Contain Pap a Math Phys character. 1927;115.
- 399 24. Grigoryev I. Anylogic in three days: A quick course in simulation modeling. Fifth. The AnyLogic  
400 Company; 2018. Available: <https://www.anylogic.com/upload/al-in-3-days/anylogic-in-3-days.pdf>
- 401 25. Mossong J, Hens N, Jit M, Beutels P, Auranen K, Mikolajczyk R, et al. Social contacts and mixing  
402 patterns relevant to the spread of infectious diseases. PLoS Med. 2008;5: 0381–0391.  
403 doi:10.1371/journal.pmed.0050074
- 404 26. Salathé M, Jones JH. Dynamics and control of diseases in networks with community structure.  
405 PLoS Comput Biol. 2010;6. doi:10.1371/journal.pcbi.1000736
- 406 27. Gallagher Advisor S, Eddy WF. Comparing compartment and agent-based models. 2017.
- 407 28. Tracy M, Cerdá M, Keyes KM. Agent-Based Modeling in Public Health: Current Applications and  
408 Future Directions. Annu Rev Public Health. 2018;39: 77–94. doi:10.1146/annurev-publhealth-  
409 040617-014317
- 410 29. Raheel Sayeed. Creating a Synthetic Population: Case Study, Telangana, India. Public Health  
411 Dynamics Workshop (PHD 2018). 2018.
- 412 30. Prem K, Cook AR, Jit M. Projecting social contact matrices in 152 countries using contact surveys  
413 and demographic data. PLoS Comput Biol. 2017;13: 1–21. doi:10.1371/journal.pcbi.1005697
- 414 31. Kumar S, Gosain M, Sharma H, Swetts E, Amarchand R, Kumar R, et al. Who interacts with  
415 whom? Social mixing insights from a rural population in India. PLoS One. 2018;13: 1–17.  
416 doi:10.1371/journal.pone.0209039
- 417 32. Rockwell Automation. Getting started with Arena. Rockwell Automation. Supersedes Publication

- 418 ARENA-UM001F-EN-P PN-111648; 2017. doi:10.2307/778906
- 419 33. Office of the Registrar General & Census Commissioner. Ministry of Home Affairs, Government  
420 of India. 2020 [cited 12 Sep 2020]. Available: <https://censusindia.gov.in/>
- 421 34. Government of Telangana. Telangana State Portal. In: Government of Telangana [Internet]. 2020  
422 [cited 12 Oct 2020]. Available: <https://www.telangana.gov.in/about/state-profile>
- 423 35. Soni P. Effects of COVID-19 lockdown phases in India: an atmospheric perspective. *Environ Dev*  
424 *Sustain.* 2021;23: 1–12. doi:10.1007/S10668-020-01156-4
- 425 36. Kumar S, Gosain M, Sharma H, Swetts E, Amarchand R, Kumar R, et al. Who interacts with  
426 whom? Social mixing insights from a rural population in India. Lau EH, editor. *PLoS One.*  
427 2018;13: e0209039. doi:10.1371/journal.pone.0209039
- 428 37. Balk D, Montgomery MR, Engin H, Lin N, Major E, Jones B. Urbanization in India: Population  
429 and urban classification grids for 2011. *Data.* 2019;4: 1–16. doi:10.3390/data4010035
- 430 38. WHO. Report of the WHO-China Joint Mission on Coronavirus Disease 2019 (COVID-19). 2020  
431 Feb. Available: [https://www.who.int/docs/default-source/coronaviruse/who-china-joint-mission-](https://www.who.int/docs/default-source/coronaviruse/who-china-joint-mission-on-covid-19-final-report.pdf)  
432 [on-covid-19-final-report.pdf](https://www.who.int/docs/default-source/coronaviruse/who-china-joint-mission-on-covid-19-final-report.pdf)
- 433 39. Day M. Covid-19: four fifths of cases are asymptomatic, China figures indicate. *BMJ.* 2020;369:  
434 m1375. doi:10.1136/bmj.m1375
- 435 40. Zhao W, Yu S, Zha X, Wang N, Pang Q, Li T, et al. Clinical characteristics and durations of  
436 hospitalized patients with COVID-19 in Beijing: a retrospective cohort study. *medRxiv.* 2020.  
437 doi:10.1101/2020.03.13.20035436
- 438 41. Chang SL, Harding N, Zachreson C, Cliff OM, Prokopenko M. Modelling transmission and  
439 control of the COVID-19 pandemic in Australia. *arXiv.* 2020; 1–31. doi:10.1038/s41467-020-  
440 19393-6

- 441 42. Arentz M, Yim E, Klaff L, Lokhandwala S, Riedo FX, Chong M, et al. Characteristics and  
442 Outcomes of 21 Critically Ill Patients with COVID-19 in Washington State. *JAMA - J Am Med*  
443 *Assoc.* 2020;323: 1612–1614. doi:10.1001/jama.2020.4326
- 444 43. Grasselli G, Zangrillo A, Zanella A, Antonelli M, Cabrini L, Castelli A, et al. Baseline  
445 Characteristics and Outcomes of 1591 Patients Infected with SARS-CoV-2 Admitted to ICUs of  
446 the Lombardy Region, Italy. *JAMA - J Am Med Assoc.* 2020;323: 1574–1581.  
447 doi:10.1001/jama.2020.5394
- 448 44. Covid19India. Coronavirus Outbreak in India - covid19india.org. 2020 [cited 5 Mar 2021].  
449 Available: <https://www.covid19india.org/>
- 450 45. Chu DK, Akl EA, Duda S, Solo K, Yaacoub S, Schünemann HJ, et al. Physical distancing, face  
451 masks, and eye protection to prevent person-to-person transmission of SARS-CoV-2 and COVID-  
452 19: a systematic review and meta-analysis. *Lancet.* 2020;395: 1973–1987. doi:10.1016/S0140-  
453 6736(20)31142-9
- 454 46. Grewal K. Swiss cheese model — a combination of “interventions” experts are suggesting to  
455 combat Covid. In: PrintLine Media [Internet]. 2020 [cited 4 Apr 2021]. Available:  
456 [https://theprint.in/health/swiss-cheese-model-a-combination-of-interventions-experts-are-](https://theprint.in/health/swiss-cheese-model-a-combination-of-interventions-experts-are-suggesting-to-combat-covid/522499/)  
457 [suggesting-to-combat-covid/522499/](https://theprint.in/health/swiss-cheese-model-a-combination-of-interventions-experts-are-suggesting-to-combat-covid/522499/)
- 458 47. Hussain S. As govt relaxes lockdown, decision to reopen schools, colleges in July. In: *Hindustan*  
459 *Times* [Internet]. 30 May 2020 [cited 21 Mar 2022]. Available:  
460 [https://www.hindustantimes.com/india-news/as-govt-relaxes-lockdown-decision-to-reopen-](https://www.hindustantimes.com/india-news/as-govt-relaxes-lockdown-decision-to-reopen-schools-in-july/story-fpMKxorsOl2PvDxf0XjffM.html)  
461 [schools-in-july/story-fpMKxorsOl2PvDxf0XjffM.html](https://www.hindustantimes.com/india-news/as-govt-relaxes-lockdown-decision-to-reopen-schools-in-july/story-fpMKxorsOl2PvDxf0XjffM.html)
- 462 48. WHO. Coronavirus disease (COVID-19): Small public gatherings. 2020 Aug. Available:  
463 [https://www.who.int/news-room/questions-and-answers/item/coronavirus-disease-covid-19-small-](https://www.who.int/news-room/questions-and-answers/item/coronavirus-disease-covid-19-small-public-gatherings)  
464 [public-gatherings](https://www.who.int/news-room/questions-and-answers/item/coronavirus-disease-covid-19-small-public-gatherings)



- 465 49. Singh AK, Agrawal B, Sharma A, Sharma P. COVID-19: Assessment of knowledge and  
466 awareness in Indian society. *J Public Aff.* 2020;20. doi:10.1002/PA.2354
- 467 50. Shamil MS, Farheen F, Ibtehaz N, Khan IM, Rahman MS. An Agent Based Modeling of COVID-  
468 19: Validation, Analysis, and Recommendations. *medRxiv.* 2020; 2020.07.05.20146977.  
469 doi:10.1101/2020.07.05.20146977
- 470 51. Yadav Y. What shocking data on Covid second wave deaths really reveals: Yogendra Yadav. 16  
471 Jun 2021 [cited 17 Jun 2021]. Available: [https://theprint.in/opinion/what-shocking-data-on-covid-](https://theprint.in/opinion/what-shocking-data-on-covid-second-wave-deaths-really-reveals-yogendra-yadav/678890/?fbclid=IwAR3lCQ9pYGunAmztxOtv2VUNESewRcrVckaCuH3cvYIM5keEcdEOtO0k3LE)  
472 [second-wave-deaths-really-reveals-yogendra-](https://theprint.in/opinion/what-shocking-data-on-covid-second-wave-deaths-really-reveals-yogendra-yadav/678890/?fbclid=IwAR3lCQ9pYGunAmztxOtv2VUNESewRcrVckaCuH3cvYIM5keEcdEOtO0k3LE)  
473 [yadav/678890/?fbclid=IwAR3lCQ9pYGunAmztxOtv2VUNESewRcrVckaCuH3cvYIM5keEcdE](https://theprint.in/opinion/what-shocking-data-on-covid-second-wave-deaths-really-reveals-yogendra-yadav/678890/?fbclid=IwAR3lCQ9pYGunAmztxOtv2VUNESewRcrVckaCuH3cvYIM5keEcdEOtO0k3LE)  
474 [OtO0k3LE](https://theprint.in/opinion/what-shocking-data-on-covid-second-wave-deaths-really-reveals-yogendra-yadav/678890/?fbclid=IwAR3lCQ9pYGunAmztxOtv2VUNESewRcrVckaCuH3cvYIM5keEcdEOtO0k3LE)
- 475 52. BusinessLine. Telangana imposes ₹1,000 penalty for not wearing mask. In: *The Hindu*  
476 BusinessLine [Internet]. 11 Apr 2021 [cited 21 Mar 2022]. Available:  
477 [https://www.thehindubusinessline.com/news/telangana-imposes-1000-as-penalty-for-not-wearing-](https://www.thehindubusinessline.com/news/telangana-imposes-1000-as-penalty-for-not-wearing-mask/article34295348.ece)  
478 [mask/article34295348.ece](https://www.thehindubusinessline.com/news/telangana-imposes-1000-as-penalty-for-not-wearing-mask/article34295348.ece)
- 479 53. MoHFW. SOP on preventive measures to contain spread of COVID-19 in offices. 2020 Jun.  
480 Available: <https://www.mohfw.gov.in/pdf/1SoPstobefollowedinOffices.pdf>
- 481 54. Alves G. Survey says 90% Indians aware, but only 44% wearing a mask; discomfort key reason  
482 for non-compliance. In: *The Economic Times* [Internet]. 25 Sep 2020 [cited 20 Mar 2022].  
483 Available: [https://economictimes.indiatimes.com/magazines/panache/survey-says-90-indians-](https://economictimes.indiatimes.com/magazines/panache/survey-says-90-indians-aware-but-only-44-wearing-a-mask-discomfort-key-reason-for-non-compliance/articleshow/78315069.cms?from=mdr)  
484 [aware-but-only-44-wearing-a-mask-discomfort-key-reason-for-non-](https://economictimes.indiatimes.com/magazines/panache/survey-says-90-indians-aware-but-only-44-wearing-a-mask-discomfort-key-reason-for-non-compliance/articleshow/78315069.cms?from=mdr)  
485 [compliance/articleshow/78315069.cms?from=mdr](https://economictimes.indiatimes.com/magazines/panache/survey-says-90-indians-aware-but-only-44-wearing-a-mask-discomfort-key-reason-for-non-compliance/articleshow/78315069.cms?from=mdr)
- 486 55. Sharma N. Only 44 per cent of India is wearing a face mask. In: *The New Indian Express*  
487 [Internet]. 4 May 2021 [cited 20 Mar 2022]. Available:  
488 <https://www.newindianexpress.com/nation/2021/may/04/only-44-per-cent-of-india-is-wearing-a->

489 face-mask-2298187.html

490 56. Rohtaki H. Survey says 52 per cent UT population not wearing masks. In: The Indian Express

491 [Internet]. 6 Jan 2022 [cited 20 Mar 2022]. Available:

492 [https://indianexpress.com/article/cities/chandigarh/survey-says-52-per-cent-ut-population-not-](https://indianexpress.com/article/cities/chandigarh/survey-says-52-per-cent-ut-population-not-wearing-masks-7708900/)

493 [wearing-masks-7708900/](https://indianexpress.com/article/cities/chandigarh/survey-says-52-per-cent-ut-population-not-wearing-masks-7708900/)

494 57. Ahmed H. Only 45 percent wear face masks in Hyderabad. In: Siasat Daily [Internet]. 13 Jan 2022

495 [cited 21 Mar 2022]. Available: [https://www.siasat.com/hyderabad-only-45-percent-wear-face-](https://www.siasat.com/hyderabad-only-45-percent-wear-face-masks-2257654/)

496 [masks-2257654/](https://www.siasat.com/hyderabad-only-45-percent-wear-face-masks-2257654/)

497 58. Willem L, Verelst F, Bilcke J, Hens N, Beutels P. Lessons from a decade of individual-based

498 models for infectious disease transmission: A systematic review (2006-2015). *BMC Infect Dis.*

499 2017;17. doi:10.1186/s12879-017-2699-8