

Associations of Sputum Biomarkers with Clinical Outcomes in People with Cystic Fibrosis

Theodore G Liou^{1,2,*§}, Natalia Argel³, Fadi Asfour², Perry S Brown⁴, Barbara A Chatfield^{2,†}, David R Cox^{5,†}, Cori L Daines⁶, Dixie Durham⁵, Jessica A Francis^{1,7}, Barbara Glover⁸, My Helms¹, Theresa Heynekamp⁹, John R Hoidal¹, Judy L Jensen¹, Christiana Kartsonaki¹⁰, Ruth Keogh¹¹, Carol M Kopecky¹², Noah Lechtzin¹³, Yanping Li¹, Jerimiah Lysinger¹⁴, Osmara Molina⁶, Craig Nakamura⁸, Kristyn A Packer¹, Robert Paine III¹, Katie R Poch¹⁵, Alexandra L Quittner¹⁶, Peggy Radford³, Abby J Redway⁹, Scott D Sagel¹², Rhonda D Szczesniak^{17,18}, Shawna Sprandel¹⁴, Jennifer L Taylor-Cousar^{15,19}, Jane B Vroom^{1,2}, Ryan Yoshikawa⁸, John P Clancy^{18,§}, J Stuart Elborn^{20,§}, Kenneth N Olivier^{21,§}, Frederick R Adler^{22,§}

Affiliations:

¹Adult Cystic Fibrosis Center, Division of Respiratory, Critical Care and Occupational Pulmonary Medicine, Department of Internal Medicine, University of Utah, 26 North Mario Capecchi Drive, Salt Lake City, UT 84132, USA (Dr Liou, ted.liou@utah.edu; Dr. Helms, my.helms@hsc.utah.edu; Dr Hoidal, john.hoidal@hsc.utah.edu; and Ms Jensen, judy.jensen@hsc.utah.edu; Ms Packer, kristyn.packer@hsc.utah.edu; Dr Paine, robert.paine@hsc.utah.edu; Ms Vroom, jane.vroom@hsc.utah.edu; and Ms Li, yanping.li@hsc.utah.edu);

²Primary Children's Cystic Fibrosis Center, Division of Pediatric Pulmonology, Department of Pediatrics, University of Utah, 81 North Mario Capecchi Drive, Salt Lake City, UT 84113, USA (Drs Liou; Asfour, fadi.asfour@hsc.utah.edu and Chatfield[†] and Ms Vroom);

³Cystic Fibrosis Center, Phoenix Children's Hospital, 1919 East Thomas Road, Phoenix, AZ 85016, USA (Ms Argel, nargel@phoenixchildrens.com and Dr Radford, peggy_radford@hotmail.com);

⁴St. Luke's Cystic Fibrosis Center of Idaho, 610 W. Hays Street, Boise, ID 83702, USA (Dr Brown, perry.brown@fmridaho.org and Ms Durham, durhamd@slhs.org);

⁵Nuffield College, 1 New Rd, Oxford OX1 1NF, UK (Prof Sir David Cox);

⁶Division of Pediatric Pulmonary and Sleep Medicine, Department of Pediatrics, University of Arizona Health Sciences, 1501 N. Campbell Avenue, Room 3301, PO Box 245073, University of Arizona, Tucson, AZ 85724,

NOTE: This preprint reports new research that has not been certified by peer review and should not be used to guide clinical practice.

28 USA (Dr Daines, cdaines@email.arizona.edu and Ms Molina, omolina@u.arizona.edu);

29 ⁷Current Affiliation with ICON Plc (Ms Francis, jessicabakerfrancis@gmail.com);

30 ⁸Cystic Fibrosis Center, 3006 S. Maryland Pkwy, Suite #315, Las Vegas, NV 89109, USA (Ms Glover,

31 bglover1619@gmail.com; Dr Nakamura, kerristrawberry@yahoo.com; and Mr Yoshikawa,

32 rmyoshika@gmail.com);

33 ⁹Adult Cystic Fibrosis Program, Division of Pulmonary, Critical Care and Sleep Medicine, DoIM MSC10-5550,

34 1 University of New Mexico, Albuquerque, NM 87131, USA (Dr Heynekamp, theynekamp@salud.unm.edu

35 and Ms Redway, ajredway@salud.unm.edu);

36 ¹⁰Clinical Trial Service Unit & Epidemiological Studies Unit and Medical Research Council Population Health

37 Research Unit, Nuffield Department of Population Health, University of Oxford, Oxford, United Kingdom (Dr

38 Kartsonaki, christiana.kartsonaki@dph.ox.ac.uk);

39 ¹¹Department of Medical Statistics, London School of Hygiene and Tropical Medicine, Keppel Street, London,

40 UK WC1E 7HT, United Kingdom (Dr Keogh, ruth.keogh@lshtm.ac.uk);

41 ¹²Department of Pediatrics, Children's Hospital Colorado and University of Colorado Anschutz Medical

42 Campus, 13123 East 16th Avenue, Aurora, CO 80045, USA (Ms Kopecky,

43 carol.kopecky@childrenscolorado.org and Dr Sagel, scott.sagel@childrenscolorado.org);

44 ¹³Division of Pulmonary and Critical Care and Sleep Medicine, Department of Medicine, Johns Hopkins

45 University School of Medicine, 1830 E. Monument Street, Baltimore, MD 21205, USA (Dr Lechtzin,

46 nlechtz1@jhmi.edu);

47 ¹⁴Montana Cystic Fibrosis Center, Billings Clinic, 2800 10th Avenue N, Billings, MT 59101, USA (Dr Lysinger,

48 jlysinger@billingsclinic.org and Ms Sprandel, ssprandel@billingsclinic.org);

49 ¹⁵Division of Pulmonary and Critical Care and Sleep Medicine, Department of Medicine, National Jewish

50 Health, 1400 Jackson Street, Denver, CO 80206, USA (Ms Poch, pochk@njhealth.org and Dr Taylor-Cousar,

51 taylor-cousarj@njhealth.org);

52 ¹⁶Behavioral Health Systems Research, Miami, FL, 33133 (Dr. Quittner, aquittner0202@gmail.com);

53 ¹⁷Division of Biostatistics & Epidemiology, Cincinnati Children's Hospital Medical Center, Cincinnati, OH,

54 USA (Dr Szczesniak, Rhonda.Szczesniak@cchmc.org);

55 ¹⁸Former: Division of Pulmonary Medicine, Department of Pediatrics, University of Cincinnati, Cincinnati, OH,
56 USA; Current: Cystic Fibrosis Foundation, 4550 Montgomery Avenue, Bethesda, MD 20814, USA (Dr Clancy,
57 john.clancy@cchmc.org);

58 ¹⁹Division of Pulmonology, Department of Pediatrics, National Jewish Health, 1400 Jackson St, Denver, CO
59 80206, USA (Dr Taylor-Cousar);

60 ²⁰Centre for Infection and Immunity, School of Medicine, Dentistry and Biomedical Sciences, Queen's
61 University, Health Sciences Building, Lisburn Rd, Belfast BT9 7AE, UK and Respiratory Group in CF, Faculty
62 of Medicine, Royal Brompton Hospital, Imperial College, Sydney Street, London SW3 6NP, UK (Dr Elborn,
63 s.elborn@qub.ac.uk);

64 ²¹Laboratory of Chronic Airway Infection, Pulmonary Branch, National Heart Lung and Blood Institute,
65 National Institutes of Health, 10 Center Drive MSC1454, Building 10-CRC, Room 1408A, Bethesda, MD
66 20892, USA (Dr Olivier, olivierk@nhlbi.nih.gov);

67 ²²Department of Mathematics, 155 South 1400 East, and School of Biological Sciences, 257 South 1400 East,
68 University of Utah, Salt Lake City, UT 84112, USA (Dr Adler, adler@math.utah.edu).

69

70 ***Corresponding Author:** Theodore G. Liou, MD, 26 North Mario Capecchi Drive, Salt Lake City, UT 84132,
71 USA; email: ted.liou@utah.edu.

72 [†]In Memoriam: Dr. Barbara A Chatfield, August 25, 1959—October 8, 2016; Professor Sir David Roxbee Cox,
73 July 15, 1924—January 18, 2022.

74 [§]Authors are alphabetical except first (TGL), advisory committee (JPC, JSE, KNO) and senior (FRA).

75 **Abstract:** 238 words.

76 **Manuscript Text:** 2,946 words

77 Abstract

78 **Background:** Airway inflammation promotes bronchiectasis and lung injury in cystic fibrosis (CF).

79 Amplification of inflammation underlies pulmonary exacerbations of disease. We asked whether sputum
80 inflammatory biomarkers provide explanatory information on pulmonary exacerbations.

81 **Patients and Methods:** We collected sputum from randomly chosen stable adolescents and adults and
82 prospectively observed time to next exacerbation, our primary outcome. We evaluated relationships between
83 potential biomarkers of inflammation, clinical characteristics and outcomes and assessed clinical variables as
84 potential confounders or mediators of explanatory models. We assessed associations between the markers and
85 time to next exacerbation using proportional hazard models adjusting for confounders.

86 **Results:** We enrolled 114 patients, collected data on clinical variables [December 8, 2014 to January 16, 2016;
87 46% male, mean age 28 years (SD 12), mean percent predicted forced expiratory volume in 1 s (FEV₁%) 70
88 (SD 22)] and measured 24 inflammatory markers. Half of the inflammatory markers were plausibly associated
89 with time to next exacerbation. Age and sex were confounders while we found that FEV₁% was a mediator.
90 Three potential biomarkers of RAGE axis inflammation were associated with time to next exacerbation while
91 six potential neutrophil-associated biomarkers indicate associations between protease activity or reactive
92 oxygen species with time to next exacerbation.

93 **Conclusion:** Pulmonary exacerbation biomarkers are part of the RAGE proinflammatory axis or reflect
94 neutrophil activity, specifically implicating protease and oxidative stress injury. Further investigations or
95 development of novel anti-inflammatory agents should consider RAGE axis, protease and oxidant stress
96 antagonists.

97
98 **Tweetable abstract:** Sputum from 114 randomly chosen people with CF show RAGE axis inflammation,
99 protease and oxidative stress injury are associated with time to next pulmonary exacerbation and may be targets
100 for bench or factorial design interventional studies. (242 characters)

101

102 Introduction

103 Airway inflammation erodes lung health in cystic fibrosis (CF). Infecting organisms initiate and amplify
 104 inflammation in infants with CF (1). Infections persist, interact (2) and lead to airway obstruction, mucus
 105 impaction, antibiotic resistant microbial biofilms and bronchiectasis. Consequences include strenuous treatment
 106 burdens, reduced quality of life, hospitalizations for pulmonary exacerbations and early mortality (3).

107 Nine variables summarize clinical CF and durably and successfully predict survival (4, 5) but do not
 108 explain inflammatory pathways underlying clinical disease and outcomes. Seeking explanations quantitatively
 109 linking inflammation to clinical outcomes, we previously found that high mobility group box 1 (HMGB1)
 110 adjusted by number of prior pulmonary exacerbations was associated with time to next exacerbation in a
 111 proportional hazards model (6). Other biomarkers may help identify and explain inflammatory pathway roles in
 112 CF. In particular, calprotectin (a heterodimer of S100A8 and S100A9), neutrophil elastase (NE) were associated
 113 with subsequent pulmonary exacerbations (7–9) in single center studies. None of the study cohorts fully
 114 represented people with CF, and no study considered confounding (10) or mediation (11) of inflammatory
 115 relationships by clinical covariables.

116 To potentially validate calprotectin, NE or HMGB1, or identify other biomarkers as explanatory for
 117 clinical CF outcomes, we performed a prospective observational multicenter study incorporating randomized
 118 selection to minimize observer bias and maximize generalizability (12). We collected sputum during clinical
 119 stability as the least invasive sample closest to sources of persistent airway inflammation and evaluated clinical
 120 covariables for confounding and mediation of biomarker effects leading to a pulmonary exacerbation. This
 121 strategy does not seek a prediction model (13), but rather searches for insights into pathways underlying
 122 pulmonary exacerbations in CF, seeking specific targets for further investigation and potentially novel
 123 interventions.

125 Methods

126 *Study Design and Patients*

127 We previously published a detailed study design (12). Briefly, we randomly selected patients with CF 12

years and older from accredited care centers for a prospective observational study of sputum biomarkers of airway inflammation. Our primary outcome was time to next pulmonary exacerbation defined as the number of days between enrollment and first hospitalization for acute treatment of at least one symptom and one objective sign of exacerbation of CF (6).

After institutional reviews (Supplemental Table 1), we obtained written informed consent from adults and assent from adolescents with parental consent before enrolling clinically stable participants at outpatient visits from December 8, 2014 through January 16, 2016. We collected, processed, aliquoted, froze expectorated sputum samples within 4 hours of collection (mean 54 minutes, SD = 98 minutes, max = 225 minutes on ice) and annotated with clinical information (12). We measured forced expiratory volume in 1 s (FEV₁) according to American Thoracic Society Guidelines (14) and estimated percent predicted FEV₁ (FEV₁%) using third National Health and Nutrition Examination Study (NHANES III) equations (15). Prior year exacerbations counts were based on hospitalization dates within one year prior to enrollments. We calculated weight-for-age z-score and 5-year prognostic scores, with higher scores indicating longer predicted survival (4).

Biomarker Measurements

The Pediatric Clinical Translational Research Center Core Laboratory at Colorado Children's Medical Center measured NE activity spectrofluorometrically (7). The University of Utah CF Center lab measured Calprotectin, C-reactive protein (CRP), and HMGB1 by enzyme linked immunosorbent assays (ELISA) using commercially available antibodies (Supplemental Table 2). We shipped samples on dry ice (Fedex, Memphis, TN, USA) to R&D Systems' Biomarker Testing Service to assay remaining cytokines using their Human Magnetic Luminex Screening Assay Premixed Multi-Analyte Kits (Cat # LXSAHM-16 and LXSAHM-04). We used quantile plots to visually ascertain (16) upper and lower limits of detection. Log-transformed concentrations above or below the limits of detection were assigned values 0.1% above or below the limits of detection, respectively, to retain the partial information.

Statistical Analysis

We compared clinical measurements that predict CF survival (4, 5) between participants with at least one pulmonary exacerbation in the year following enrollment and those without exacerbations. We obtained Kaplan-Meier (17) estimates of the distribution of time to next pulmonary exacerbation stratified by clinical variables, followed by evaluations using logistic regression (18) and proportional hazards models (19). For logistic regression, we used the occurrence of the next exacerbation during study follow up as the outcome with clinical variables as the inputs, and for proportional hazards models, we used time to next exacerbation as the outcome with the clinical variables as explanatory variables.

We evaluated collinearity among biomarker measurements adjusted for detection limits with Pearson Product Moment Correlations (20). We considered $p < 0.01$ after Bonferroni correction as statistically significant.

Age, sex and prior pulmonary exacerbations may confound time-to-next pulmonary exacerbation but by definition cannot be mediators thus should be included to adjust models (10). To help assess whether other clinical variables were confounding, mediating or both (11) for associations of biochemical markers with time to next pulmonary exacerbation, we fitted univariable linear regression models of age, weight-for age z-score, diabetes and FEV₁% as outcomes with each potential biomarker as explanatory variable. We fitted quasi-Poisson models of prior pulmonary exacerbations with each potential biomarker. We tested each potential biomarker as an adjustment to each of the remaining potentially mediating clinical variables (weight-for-age z-score, diabetes and FEV₁%) in proportional hazards models for time to next pulmonary exacerbation. We excluded variables that substantially reduced biomarker effect sizes and significance, indicating a mediation effect.

We fitted a regression model for each biomarker with 5-year prognostic risk score variables (4, 5) dependent, using the appropriate regression method as appropriate: linear regressions for age, FEV₁% and weight-for-age z-score; quasi-Poisson regression for pulmonary exacerbation count in the year prior to enrollment; logistic regressions for pancreatic sufficiency, diabetes and status of infections with MSSA and *Burkholderia cepacia* complex. Because of their clinical importance (3, 21), we evaluated relationships between

MRSA and *Pseudomonas aeruginosa* status with potential biomarkers using logistic regression.

To develop potentially explanatory models for our primary outcome, time to next pulmonary exacerbation, we fitted univariable proportional hazards models (19) for each biomarker, adjusted for confounding variables and excluded mediating variables identified by mediation analysis (11). For each set of models, we accounted for multiple testing using FDR analysis (22) for cutoff values of 0.001, 0.01, 0.05, 0.1 and 0.2 to understand the support for discovered associations for different biomarkers.

Sensitivity Analyses

We assessed sensitivity of models to anti-inflammatory treatments including inhaled and oral steroids, oral azithromycin and other antibiotics and inhaled antibiotics including aztreonam and tobramycin in any form. We examined ivacaftor or ivacaftor-lumacaftor combination medication effects because they alter airway physiology (3). In each case, we examined the models for independent effects and interactions with potential biomarkers that could indicate mediation of medication effects. We assessed the impact of using Global Lung Initiative equations (23) for estimating FEV₁% instead of NHANES III equations (15).

Missingness of Biomarker Measurements

Some sputum samples were small, preventing some biomarker measurements. We preferentially assayed NE, HMGB1 and Calprotectin (12). To evaluate missingness associated bias, we performed multiple imputation by chained equations (24) for completely missing biomarker values using times to next exacerbation, non-missing biomarker values, age, sex, FEV₁%, weight-for-age z-score and number of prior pulmonary exacerbations. We performed three analyses, first, using a dataset with deletion of records with biomarkers that were completely or partially unmeasured, second, using records with deletion of records with completely unmeasured biomarkers but retaining records with partial measurements and third, with all records with imputed values as needed, seeking evidence that missingness was other than completely at random.

204 Results

205 *Patients and Clinical Measurements*

206 We enrolled 114 from Mountain West CF Consortium (MWCFC) patients and collected sputum samples
207 from December 8, 2014 through January 16, 2016. All patients completed follow up to the next pulmonary
208 exacerbation after enrollment or were censored at study end which occurred up to 2.65 years after enrollment.

209 Characteristics differed between patients who had at least one pulmonary exacerbation or had none
210 within one year post-enrollment. The differences suggested that the 5-year prognostic risk score (4, 5), FEV₁%,
211 number of exacerbations in the year prior to enrollment and weight-for-age z-score are potential clinical
212 confounders, mediators or both for time to next exacerbation (Table 1). No other variable incorporated in the 5-
213 year prognostic risk score or methicillin resistant *Staphylococcus aureus* (MRSA) or *Pseudomonas aeruginosa*
214 significantly differed between patients with and without an exacerbation during one year follow up.

215 Kaplan-Meier analysis, logistic regression and proportional hazards modeling found that FEV₁%,
216 number of prior pulmonary exacerbations, weight-for-age z-score and diabetes were associated with time to next
217 exacerbation within a year of enrollment (Supplemental Figure 1, Supplemental Table 3A-B). Proportional
218 hazards modeling confirmed these associations (Supplemental Tables 3B-C) and confirmed these specific
219 clinical markers as potential confounders, mediators or both (10, 11). The remaining prognostic risk score
220 variables, MRSA or *Pseudomonas aeruginosa* infection status were not associated with time to next
221 exacerbation.

222

223 *Biomarkers*

224 Biomarker measurements outside the limits of detection were adjusted after log transformation
225 (Supplemental Table 4), to preserve partial information and retain as many patients as possible for analysis.
226 Multiple correlations between biomarkers remained significant after Bonferroni correction (Supplemental Table
227 5) suggesting that confounding and mediation may exist among the biomarkers themselves.

228

229 *Biomarkers, Confounding and Mediation Analyses*

230 We found multiple univariable associations among biomarkers by proportional hazards modeling for
231 time to next pulmonary exacerbation. The results suggest that some potential biomarkers may be causal
232 variables for time to next pulmonary exacerbation (11) (Table 2 and Supplemental Table 6).

233 We evaluated confounding and mediation by clinical variables (Supplemental Figure 2) and found
234 associations between different subsets of our markers with each clinical variable except sex (Table 3 and
235 Supplemental Table 7A-E). With a false discovery rate (FDR) <0.001, three biomarkers were significantly
236 associated with FEV₁%, secretory leukoprotease inhibitor (SLPI), NE and myeloperoxidase (MPO), and for an
237 FDR <0.01, an additional three were significant, soluble receptor for advanced glycation end-products
238 (sRAGE), matrix metalloproteinase 9 (MMP9) and extracellular newly identified receptor for advanced
239 glycation end-products (ENRAGE) (Supplemental Figure 3). S100A8 was likely to be associated with weight-
240 for-age z-score (Table 3). Altogether, these findings suggest a potential for confounding or mediation by these
241 clinical markers (11).

242 By definition, age, sex, and prior pulmonary exacerbations, cannot mediate associations between
243 biomarkers and time to next exacerbation. Thus, we treated them as confounders in further modeling with
244 biochemical markers of inflammation.

245 We evaluated weight-for-age z-score, diabetes and FEV₁% as potential confounders, mediators or both.
246 In proportional hazards models of weight-for-age z-score and diabetes for time to next exacerbation, the hazard
247 ratios and *p*-values for the biomarkers used as adjustment variables (Table 4 and Supplemental Tables 8A-C)
248 were similar to those found in earlier models of the biomarkers alone for time to next exacerbation (Table 2 and
249 Supplemental Table 6). Weight-for-age z-score and diabetes are unlikely to be confounders or mediators of
250 inflammation.

251 Estimated biomarker hazard ratios were weaker and uniformly non-significant when used as adjustments
252 in proportional hazards models of FEV₁% for time to next exacerbation (Table 4 and Supplemental Tables 8A-
253 C). FEV₁% partially mediates the association between inflammation and time to next exacerbation and should
254 be excluded from further models (11).

255
256
257
258
259
260
261
262
263
264
265
266
267
268
269
270
271
272
273
274
275
276
277
278
279
280

Biomarkers and Pulmonary Exacerbations

Multivariable proportional hazards models of each potential biomarker including age, sex and prior pulmonary exacerbations as confounders for time to next pulmonary exacerbation (10) found 14 inflammatory markers with hazard ratios for time to next exacerbation with $p < 0.2$ (Table 5 and Supplemental Table 9). Among these, setting false discovery rate (FDR) < 0.2 sets an 80% likelihood suggesting eight of the first ten have true associations with time to next exacerbation (Supplemental Figure 4). Setting the FDR < 0.01 shows ENRAGE and MPO each have $> 99\%$ chance of being true findings (Table 5).

Sensitivity Analyses

Adding inflammation modifying treatments as confounders to the proportional hazards models adjusted by age, sex and number of prior exacerbations did not substantially modify coefficients for any biomarker. Use of corticosteroids, inhaled, oral or both, chronic azithromycin, inhaled aztreonam, tobramycin, each alone or alternating every other month had no significant independent associations with time to next exacerbation nor interactions with the biomarker variables in each model. Coefficients (Table 5) remained stable throughout sensitivity testing suggesting that results are not due to anti-inflammatory treatments.

Seven patients used ivacaftor or ivacaftor-lumacaftor, but their use had no independent effect or interaction, and individual biomarker variable effects were stable throughout testing. Use of Global Lung Initiative equations (23) to calculate FEV₁% instead of NHANES III led to similar results and identical interpretations and conclusions.

Biomarker Measurement Missingness

We repeated models to understand the impact of partially missing information due to biomarker measurements outside detection limits and completely missing data due to insufficient samples. Analyses excluding patients with partially missing data produced similar results for models derived from using complete data sets. Analyses with missing data imputed using multiple imputation with chained equations produced

similar model results from using complete data sets (Supplemental Tables 6-9). We found no evidence of bias for any relationship examined.

Discussion

We measured 24 sputum biomarkers from 114 randomly chosen, clinically stable adolescents and adults with CF to validate prior observations for calprotectin, NE and HMGB1 (6–8) and to explore causal inference, confounding (10) and mediation (11) between an expanded list of inflammatory biomarkers and clinical outcomes. After evaluation for confounders and mediators of biomarker effects, we found potential associations with ten different molecules: ENRAGE, MPO, sRAGE, ICAM1, NE, chitinase-3-like 1 protein (YKL40), thymus and activation regulated chemokine (TARC), MMP9, IL1 β and IL5 (Table 5). At least eight are associated with time to next pulmonary exacerbation (Supplemental Figure 4). FEV₁% mediates biomarker effects and was excluded from every model, while age, sex, number of prior pulmonary exacerbations were confounders and were included (10, 11). Results were insensitive to anti-inflammatory treatments or ivacaftor, although the latter was infrequently used.

Severe CF lung disease continues to steadily decrease as treatments with CFTR modulators increase (25). FEV₁% remains the single most common measure of disease severity, but it strongly mediates and obscures biomarker effects (Table 4). FEV₁% poorly distinguishes between rapid or slow worsening of lung disease (4). As CF disease severity lessens (26), FEV₁% will become less useful, and biomarkers measuring inflammation with appropriate adjustments for confounding will be increasingly useful for understanding clinical status (Figure 1) and providing attractive intervention targets.

Biomarkers associated with time to next exacerbation fall into several categories (Figure 2). ENRAGE and sRAGE are constituents of RAGE-axis related inflammation. ENRAGE is a high avidity RAGE ligand that indicates neutrophil activity (27). It is elevated in CF airways in infancy (28) and is associated with low FEV₁ and CF-related diabetes (29). ENRAGE increases during pulmonary exacerbation and falls with antibiotic treatment (30). Beyond CF, higher ENRAGE is associated with cigarette smoking-induced injury (31), higher coronary artery disease risk (32) and higher chronic kidney disease mortality (33). ENRAGE increases in

bronchoalveolar lavage in the acute respiratory distress syndrome (ARDS) and decreases with recovery (34). In SARS-CoV-2-associated ARDS, it rises with increasing severity and falls with recovery (35).

ENRAGE most strongly correlated with MMP9 and MPO (Supplemental Table 5) suggesting associations between RAGE axis inflammation and both protease and oxidative stress mediated injuries. SRAGE is the soluble form of the membrane bound RAGE receptor. Strong correlations with NE (0.80), MMP9 (0.65) and IL1 β (0.69) may indicate associations between RAGE axis inflammation and neutrophil-derived protease mediated injuries. MPO, ICAM1, NE, YKL40, TARC and MMP9 reflect the important roles of neutrophils, neutrophil-associated proteases (MMP9) (7, 36) and reactive oxygen species (MPO) (37) in CF airway inflammation (Figure 2).

SLPI, NE and MPO (Supplemental Figure 3) were associated with FEV₁% with a FDR set at 0.001. For FDR set at 0.01, we found another three biomarkers, sRAGE, MMP9 and ENRAGE. Anti-protease SLPI opposes NE, MMP9 and proteinase 3 (PR3) activities (7, 37, 38) and was associated with higher FEV₁% (Table 3). These findings suggest that RAGE-axis, protease-anti-protease imbalance and reactive oxygen species sources of inflammation might cause lower FEV₁% (Supplemental Figure 5).

Contrary to pre-study expectations (6–8), Calprotectin, NE and HMGB1 were not associated with time to next pulmonary exacerbation. However, the study redemonstrated associations between these molecules and prior pulmonary exacerbations (Table 3 and Supplemental Table 7D), and they are markers of neutrophil activity and part of the RAGE-axis of inflammation. These partial validation results reinforce that this study differs from prior studies in at least two substantial ways. First, we recruited randomly selected clinically stable (39) rather than mixed stable and unstable serial patients. Second, our analyses evaluated confounding and mediation by clinical covariables (10, 11).

Our study has limitations. Because we are pursuing explanatory airway inflammation models (13), no methods of model selection are sufficient (10) to confidently produce a multivariable panel of inflammatory biomarkers. However, our current observational work will be useful prior to launching new observational and other types of investigations to discover a multivariable biomarker model. Although many study patients took every prior effective treatment, due to study timing, only 6% received CFTR modulators. Our study does not

confirm whether CFTR modulators reduce airway inflammation. Further studies are needed, however, modulators are associated with reduced sputum production, so alternative sampling methods may be required.

Finally, our explanatory models infer but cannot confirm causal relationships. RAGE axis inflammation, protease mediated injury and oxidative stress are strongly associated with future exacerbation. FEV₁%, the single most important predictor of survival in CF, mediates the association of inflammatory markers with time to next pulmonary exacerbation. Further studies in cell culture or animal models or human trials of anti-proteases, anti-oxidants, RAGE inhibiting agents or a combination are needed to provide the information to improve causal inference and potentially treat the CF airway inflammation. Because of the importance and commonality of these inflammatory processes in other lung diseases such as ARDS, progress in CF with novel anti-inflammatory treatments may have broad application.

Author Contributions

TGL is the manuscript guarantor and takes responsibility for the integrity of the work from inception to publication. TGL drafted the initial manuscript; all authors contributed interpretive insights, edits and corrections. MH created the graphical abstract with assistance from TGL and assisted TGL in turn to diagram interactions between biomarkers and lung disease. DRC initiated and oversaw development of the statistical plan for randomized enrollment by TGL, FRA, RK with additional inputs from JLJ, KRP and SDS. TGL, FRA, DRC, CK, RK and RDS performed the statistical analysis. JLJ oversaw IRB submissions throughout the MWCFC with help at each site from NA, DD, JAF, BG, CMK, OM, KAP, KRP, AJR, JBV and RY. TGL, NA, PSB, BAC, CLD, DD, JAF, BG, JLJ, TH, JRH, CMK, YL, JL, NL, OM, CN, KAP, KRP, ALQ, PR, AJR, SDS, JLT-C, JBV, RY, JPC, JSE, KNO developed and performed patient enrollment processes, sample collections and clinical annotations. JLJ oversaw the work preceding the study planning meeting with critical assistance from KAP, JAF and JBV. JLJ oversaw and coordinated logistics and regulatory documentation for the entire study. TGL, JAF, JLJ, YL, KAP and JBV developed the sputum processing protocol. JAF, JLJ, KAP, YL and JBV provided central and on-site laboratory training. TGL and JLJ performed site initiation visits. JLJ and KAP centrally monitored data collection. JAF, KAP and JBV performed interim and end-of-study site visits to verify

data integrity and regulatory compliance. KAP developed and implemented REDCap electronic data capture (40) with input from TGL, JAF, JLJ and JBV. KAP oversaw data entry, query generation and resolution and generation of raw data reports. JBV with assistance from JAF, JLJ and YL developed protocols and oversaw specimen shipping by NA, DD, BG, CMK, OM, KRP, AJR and RY. JAF, JLJ, JBV, KAP and YL received, handled and successfully managed sputum specimens centrally despite shipment damage, floods, power outages, freezer and complete building services failures. YL performed ELISA studies in Utah. SS oversaw NE activity determinations in Colorado. TGL obtained funding with assistance from FRA, JLJ and SDS and additional help from PSB, BAC, CLD, RK, JL, CN and DRC. JPC, JSE and KNO were the Study Advisory Committee and contributed to multiple study aspects. All authors had access to complete raw and processed datasets from this study.

The results, interpretations and opinions expressed in this work are those of the authors and do not necessarily represent the views of their institutions, the NIH, NHLBI, NCATS, NSF, the Veteran's Administration, the Margolis Foundation, the Claudia Ruth Goodrich Stevens Family, the US CF Foundation, the European CF Society or the Medical Research Council in the UK or any of the sponsors of clinical trials that provided other support for individual authors or the governments of the US or the UK.

Acknowledgments

We thank the study participants and their families. We thank Mike Mitchell in the Pulmonary Laboratory at the University of Utah for technical assistance.

Funding

This project was supported by the CF Foundation (CFF) (LIOU13A0, LIOU14Y4), the National Center for Advancing Translational Science at the National Institutes of Health (NCATS/NIH 8UL1TR000105 [formerly UL1RR025764]), the Ben B and Iris M Margolis Foundation of Utah and the Claudia Ruth Goodrich Stevens Endowment Fund. Neither the project sponsors nor any sources of other support had direct roles in development and conduct of the study. None of the sponsors of clinical trials mentioned in the competing interests and other

support section that follows participated in any way with this trial.

Potential Conflicts of Interest and Other Support

TGL, JAF, JLJ, YL, KAP and JBV received other support from the CFF (CC132-16AD, LIOU14Y0, LIOU14P0) and the National Heart Lung and Blood Institute (NHLBI) of the National Institutes of Health (NIH) (R01 HL125520) and received support during the current study for performing clinical trials from Abbvie, Calithera Biosciences, Corbus Pharmaceuticals, Gilead Sciences, Laurent Pharmaceuticals, Nivalis Therapeutics, Novartis, Proteostasis, Savara Pharmaceuticals, Translate Bio and Vertex Pharmaceuticals. FRA received additional other support from the NHLBI/NIH (R01 HL125520), the National Science Foundation (EMSW21-RTG) and the Margolis Foundation of Utah. PSB received other support from the CFF (Center and TDC grants) and the NHLBI/NIH (U01 HL114623) and received support for a clinical trial from Alcresta Therapeutics. BAC received other support from the CFF (C112-12, C112-TDC09Y, 10063SUB, 41339154.s132P010379SUB) and received support for clinical trials from Genentech, Novartis and Vertex Pharmaceuticals. CLD received other support from the CFF (C004-11, C004-TDC09Y, DAINES11Y3) and from the Health Resources and Services Administration (T72MC00012). JAF is now an employee of ICON plc, a clinical research organization involved in various trials pertinent to CF; She and ICON had no direct involvement in performance of the study following the change in affiliation. TH received other support from the CFF (PACE, Center Grant) and received support for clinical trials from Celtaxsys and Vertex Pharmaceuticals. JRH received other support from the NHLBI/NIH (HHSN268200900018C) and the Veterans Administration Healthcare System (I01 BX001533). JL received other support from the CFF (C017-11AF). CN received other support from the CFF (C138-12). PR received other support from the CFF (C003-12, C003-TDC09Y). SDS received other support from the CFF (AQUADEK12K1, SAGEL11CS0, GOAL13K2, NICK13A0, SAGEL14K1, NICK15R0) and the NHLBI/NIH (U54 HL096458) and the NCATS/NIH (Colorado CTSA Grant Number UL1 TR002535). JLT-C received other support from the CFF (TDC) and the NHLBI/NIH (HL103801) and received support for clinical trials from Vertex Pharmaceuticals. KNO is funded by the intramural research program of the NHLBI, NIH.

411

412 References

1. Zemanick ET et al. Airway microbiota across age and disease spectrum in cystic fibrosis. *Eur. Respir. J.* 2017;50(5). doi:10.1183/13993003.00832-2017
2. Granchelli AM et al. Microbial Interactions in the Cystic Fibrosis Airway. *J. Clin. Microbiol.* 2018;56(8):e00354-18.
3. Elborn JS. Cystic fibrosis. *Lancet* 2016;388(10059):2519–2531.
4. Liou TG et al. Predictive 5-year survivorship model of cystic fibrosis. *Am J Epidemiol* 2001;153(4):345–52.
5. Liou TG, Kartsonaki C, Keogh RH, Adler FR. Evaluation of a five-year predicted survival model for cystic fibrosis in later time periods. *Sci Rep* 2020;10(1):6602.
6. Liou TG et al. Sputum biomarkers and the prediction of clinical outcomes in patients with cystic fibrosis. *PLoS ONE* 2012;7(8):e42748.
7. Sagel SD, Wagner BD, Anthony MM, Emmett P, Zemanick ET. Sputum biomarkers of inflammation and lung function decline in children with cystic fibrosis. *Am. J. Respir. Crit. Care Med.* 2012;186(9):857–865.
8. Gray RD et al. Sputum and serum calprotectin are useful biomarkers during CF exacerbation. *J. Cyst. Fibros.* 2010;9(3):193–198.
9. Reid PA et al. Measurement of Serum Calprotectin in Stable Patients Predicts Exacerbation and Lung Function Decline in Cystic Fibrosis. *Am J Respir Crit Care Med* 2015;191(2):233–236.
10. Lederer DJ et al. Control of Confounding and Reporting of Results in Causal Inference Studies. Guidance for Authors from Editors of Respiratory, Sleep, and Critical Care Journals. *Annals ATS* 2019;16(1):22–28.
11. Baron RM, Kenny DA. The moderator-mediator variable distinction in social psychological research: conceptual, strategic, and statistical considerations. *J Pers Soc Psychol* 1986;51(6):1173–1182.
12. Liou TG et al. Prospective Multicenter Randomized Patient Recruitment and Sample Collection to Enable Future Measurements of Sputum Biomarkers of Inflammation in an Observational Study of Cystic Fibrosis. *BMC Medical Research Methodology* 2019;19(1):88.
13. Shmueli G. To Explain or to Predict?. *Statistical Science* 2010;25(3):289–310.
14. Standardization of Spirometry, 1994 Update. American Thoracic Society. *Am. J. Respir. Crit. Care Med.*

1995;152(3):1107–1136.

15. Hankinson JL, John R. Odencrantz, Kathleen B. Fedan. Spirometric reference values from a sample of the general U.S. population. *Am. J. Respir. Crit. Care Med.* 1999;159(1):179–187.

16. Tukey JW. *Exploratory data analysis*. Reading, Massachusettes: Addison-Wesley Publishing Company; 1977:

17. Kaplan EL, Meier P. Nonparametric Estimation from Incomplete Observations. *Journal of the American Statistical Association* 1958;53(282):457–481.

18. Cox DR. The Regression Analysis of Binary Sequences. *Journal of the Royal Statistical Society. Series B (Methodological)* 1958;20(2):215–242.

19. Cox DR. Regression models and life-tables. *J R Stat Soc B Met* 1972;34(2):187–220.

20. Venables WN, Ripley BD. *Modern Applied Statistics with S*. Springer New York; 2010:

21. Dasenbrook EC et al. Association between respiratory tract methicillin-resistant *Staphylococcus aureus* and survival in cystic fibrosis. *JAMA* 2010;303(23):2386–2392.

22. Benjamini Y, Hochberg Y. Controlling the False Discovery Rate: A Practical and Powerful Approach to Multiple Testing. *Journal of the Royal Statistical Society. Series B (Methodological)* 1995;57(1):289–300.

23. Quanjer PH et al. Multi-ethnic reference values for spirometry for the 3–95-yr age range: the global lung function 2012 equations. *Eur Respir J* 2012;40(6):1324–1343.

24. Buuren S van, Boshuizen HC, Knook DL. Multiple imputation of missing blood pressure covariates in survival analysis. *Statistics in Medicine* 1999;18(6):681–694.

25. Rubin JL et al. Modeling long-term health outcomes of patients with cystic fibrosis homozygous for F508del-CFTR treated with lumacaftor/ivacaftor. *Ther Adv Respir Dis* 2019;13:1753466618820186.

26. Bayfield KJ et al. Time to get serious about the detection and monitoring of early lung disease in cystic fibrosis. *Thorax* 2021;thoraxjnl-2020-216085.

27. Makam M et al. Activation of critical, host-induced, metabolic and stress pathways marks neutrophil entry into cystic fibrosis lungs. *Proc. Natl. Acad. Sci. U.S.A.* 2009;106(14):5779–5783.

28. McMorran BJ et al. Novel neutrophil-derived proteins in bronchoalveolar lavage fluid indicate an exaggerated inflammatory response in pediatric cystic fibrosis patients. *Clin. Chem.* 2007;53(10):1782–1791.

29. Hunt WR, Helfman BR, McCarty NA, Hansen JM. Advanced glycation end products are elevated in cystic fibrosis-related diabetes and correlate with worse lung function. *J. Cyst. Fibros.* 2016;15(5):681–688.
30. Foell D et al. Expression of S100A12 (EN-RAGE) in cystic fibrosis. *Thorax* 2003;58(7):613–617.
31. Reynolds PR et al. RAGE: developmental expression and positive feedback regulation by Egr-1 during cigarette smoke exposure in pulmonary epithelial cells. *Am. J. Physiol. Lung Cell Mol. Physiol* 2008;294(6):L1094-1101.
32. Ligthart S et al. EN-RAGE: a novel inflammatory marker for incident coronary heart disease. *Arterioscler. Thromb. Vasc. Biol.* 2014;34(12):2695–2699.
33. Isoyama N et al. Plasma S100A12 and soluble receptor of advanced glycation end product levels and mortality in chronic kidney disease Stage 5 patients. *Nephrol. Dial. Transplant.* 2015;30(1):84–91.
34. Wittkowski H et al. Neutrophil-derived S100A12 in acute lung injury and respiratory distress syndrome. *Crit Care Med* 2007;35(5):1369–1375.
35. Arunachalam PS et al. Systems biological assessment of immunity to mild versus severe COVID-19 infection in humans. *Science* 2020;369(6508):1210–1220.
36. Sagel SD, Kapsner RK, Osberg I. Induced sputum matrix metalloproteinase-9 correlates with lung function and airway inflammation in children with cystic fibrosis. *Pediatr Pulmonol* 2005;39(3):224–32.
37. Chandler JD et al. Myeloperoxidase oxidation of methionine associates with early cystic fibrosis lung disease. *Eur. Respir. J.* 2018;52(4). doi:10.1183/13993003.01118-2018
38. Rao NV, Marshall BC, Gray BH, Hoidal JR. Interaction of secretory leukocyte protease inhibitor with proteinase-3. *Am J Respir Cell Mol Biol* 1993;8(6):612–6.
39. Cox DR. *Planning of Experiments*. New York: Wiley; 1958:
40. Harris PA et al. Research electronic data capture (REDCap)--a metadata-driven methodology and workflow process for providing translational research informatics support. *J Biomed Inform* 2009;42(2):377–381.

Table 1. Enrollment Characteristics and Treatments for Patients by Exacerbations Observed Within One Year

Characteristic or Chronic Treatment Received	All Patients n = 114	Exacerbations Observed in One Year		p value
		None n = 42	One or More n = 72	
Years of Age*	26.3 (12.8 to 68.2)	27.8 (12.8 to 68.2)	24.5 (13 to 67.1)	0.084 [§]
FEV ₁ %*	72.1 (19.6 to 119)	80.5 (30.2 to 119)	66.5 (19.6 to 113)	0.018 [§]
Exacerbations in Year Prior to Enrollment*	1 (0 to 7)	0 (0 to 5)	2 (0 to 7)	<0.001 [¶]
Weight-for Age z-score*	-0.118 (-3.29 to 2.72)	-0.0257 (-1.41 to 2.12)	-0.147 (-3.29 to 2.72)	0.23 [§]
Female [†]	0.46	0.43	0.49	0.69 [‡]
Diabetes [†]	0.22	0.095	0.29	0.027 [‡]
Pancreatic Sufficiency [†]	0.079	0.12	0.056	0.29 [‡]
MSSA Infection [†]	0.45	0.48	0.43	0.78 [‡]
<i>Burkholderia cepacia</i> Complex Infection [†]	0.026	0	0.042	0.30 [‡]
5-Year Prognostic Risk Score*	3.16 (-1.8 to 6.08)	3.73 (0.676 to 6.08)	2.76 (-1.8 to 5.59)	<0.001 [§]
Inhaled Steroids	0.59	0.5	0.64	0.21 [‡]
Oral Steroids	0.07	0.12	0.042	0.14 [‡]
Any Steroids	0.61	0.55	0.64	0.45 [‡]
Azithromycin	0.54	0.48	0.58	0.36 [‡]
Other Oral Antibiotic	0.11	0.095	0.12	0.77 [‡]
Any Oral antibiotics	0.61	0.5	0.67	0.12 [‡]
Inhaled Tobramycin	0.33	0.31	0.35	0.84 [‡]
Inhaled Aztreonam	0.35	0.29	0.39	0.36 [‡]
Any Inhaled Antibiotics	0.61	0.52	0.67	0.19 [‡]
Any Antibiotics	0.82	0.74	0.86	0.17 [‡]
Ivacaftor	0.044	0.071	0.028	0.36 [‡]
Ivacaftor-Lumacaftor	0.018	0	0.028	0.53 [‡]
Ivacaftor or Ivacaftor-lumacaftor	0.061	0.071	0.056	0.71 [‡]

*Median (Range)

[†]Decimal Fraction for Status

[§]Linear Regression

[¶]Quasipoisson Regression

[‡]χ-square Test

[‡]Fisher's Exact Test

423

Table 2. Univariable Biomarker Proportional Hazards Models of Time to Next Exacerbation *

Biomarker	Estimate	SE	Hazard Ratio	<i>p</i>	95% CI of the Hazard Ratio
MPO	0.24	0.10	1.28	0.01	1.06 to 1.54
NE	0.18	0.08	1.20	0.02	1.03 to 1.39
S100A9	-0.27	0.12	0.76	0.03	0.6 to 0.971
sRAGE	0.20	0.09	1.22	0.03	1.02 to 1.45
ENRAGE	0.20	0.09	1.22	0.03	1.02 to 1.46
IL1 β	0.16	0.08	1.17	0.04	1.01 to 1.37
YKL40	0.19	0.10	1.21	0.06	0.996 to 1.46
IL17A	0.30	0.17	1.35	0.08	0.967 to 1.88
PR3	0.14	0.09	1.15	0.11	0.967 to 1.37
ICAM1	0.24	0.15	1.27	0.12	0.938 to 1.71
IL8	0.36	0.24	1.44	0.13	0.902 to 2.29
Calprotectin	0.05	0.04	1.06	0.13	0.984 to 1.13
MMP9	0.13	0.08	1.13	0.13	0.962 to 1.34

424

* See Supplemental Table 6 for results for all biomarkers.

Table 3. Unadjusted Associations between Biomarkers and Clinical Characteristics.*

Clinical Variable	Biomarkers	Univariable Models			
		Estimates	SE	<i>p</i>	95% CI
Age (years) [†]	SLPI [^]	-2.01	0.73	0.007	-3.45 to -0.57
	NE	1.80	0.75	0.016	0.37 to 3.33
	sRAGE	2.00	0.84	0.02	0.33 to 3.61
Weight for Age z-score [†]	S100A8 [‡]	0.43	0.11	<0.001	0.21 to 0.64
	IL10 [°]	0.33	0.12	0.01	0.09 to 0.56
	IL6 [°]	0.30	0.11	0.01	0.08 to 0.53
	GMCSF [°]	0.65	0.24	0.01	0.17 to 1.13
	IFN γ [^]	0.43	0.20	0.03	0.05 to 0.82
	ICAM1 [^]	0.26	0.13	0.04	0.01 to 0.50
Diabetes Status [†]	IL10 [°]	-0.15	0.05	0.002	-0.25 to -0.05
	IL17A	-0.13	0.06	0.02	-0.24 to -0.02
	IFN γ	-0.19	0.08	0.02	-0.35 to -0.03
	TARC	-0.31	0.14	0.03	-0.58 to -0.04
Prior Pulmonary Exacerbations [§]	Calprotectin	0.13	0.049	0.012	0.0299 to 0.223
	HMGB1	0.47	0.22	0.033	0.0442 to 0.897
	IL10	-0.41	0.20	0.037	-0.797 to -0.0286
	NE	0.20	0.099	0.05	0.00231 to 0.392
FEV ₁ % [†]	SLPI [¶]	6.39	1.24	<0.001	3.97 to 8.81
	NE [¶]	-5.63	1.30	<0.001	-8.17 to -3.09
	MPO [¶]	-6.33	1.56	<0.001	-9.38 to -3.27
	sRAGE [‡]	-5.24	1.47	<0.001	-8.12 to -2.36
	MMP9 [‡]	-5.03	1.50	0.001	-7.97 to -2.09
	ENRAGE [‡]	-5.32	1.64	0.001	-8.53 to -2.12
	IL1 β [‡]	-3.74	1.36	0.007	-6.41 to -1.07
	S100A8 [‡]	6.41	2.54	0.01	1.42 to 11.4
	PR3 [‡]	-4.11	1.65	0.01	-7.35 to -0.87
	Calprotectin [°]	-1.57	0.69	0.02	-2.91 to -0.22
	IL8 [^]	-8.00	4.03	0.05	-15.9 to -0.10
	IL10 [^]	5.28	2.69	0.05	0.017 to 10.5
	YKL40 [^]	-3.56	1.85	0.06	-7.19 to 0.08

* See Supplemental Table 7A-E for results with all potential biomarkers. [†]Linear Regression; [§]Quasipoisson regression. [¶]Significant with FDR < 0.001; [‡]Significant with FDR < 0.01; [‡]Significant with FDR = 0.05; [°] FDR < 0.1; [^] FDR < 0.2.

Table 4. Biomarkers as Univariable Adjustments to Clinical Variables in Proportional Hazards Models of Time to Next Exacerbation.

Clinical Variable*	Adjustment Univariables					
	Biomarkers	Estimates	SE	Hazard Ratio	p	95% CI of the Hazard Ratio
Weight for Age z-score	MPO [^]	0.29	0.09	1.33	0.002	1.11 to 1.6
	NE	0.17	0.07	1.18	0.03	1.02 to 1.37
	S100A9	-0.27	0.12	0.76	0.03	0.597 to 0.971
	sRAGE	0.19	0.09	1.21	0.04	1.01 to 1.44
	ENRAGE [^]	0.25	0.09	1.29	0.01	1.07 to 1.55
	IL1 β	0.17	0.08	1.18	0.03	1.02 to 1.37
	YKL40	0.19	0.09	1.20	0.05	1 to 1.45
	IL17A	0.43	0.18	1.54	0.02	1.08 to 2.2
	PR3	0.12	0.09	1.13	0.16	0.952 to 1.33
	ICAM1	0.32	0.16	1.38	0.04	1.02 to 1.87
	IL8	0.42	0.24	1.52	0.08	0.956 to 2.41
	Calprotectin	0.06	0.04	1.06	0.10	0.989 to 1.14
	MMP9	0.16	0.09	1.17	0.07	0.989 to 1.39
Diabetes Status	MPO	0.22	0.10	1.24	0.03	1.03 to 1.5
	NE	0.17	0.08	1.19	0.03	1.02 to 1.38
	S100A9	-0.25	0.13	0.78	0.05	0.607 to 0.995
	sRAGE	0.19	0.09	1.21	0.03	1.02 to 1.45
	ENRAGE	0.18	0.09	1.19	0.06	0.993 to 1.43
	IL1 β	0.15	0.08	1.17	0.05	0.999 to 1.36
	YKL40	0.17	0.10	1.19	0.09	0.975 to 1.44
	IL17A	0.30	0.16	1.34	0.07	0.973 to 1.86
	PR3	0.12	0.09	1.13	0.17	0.946 to 1.35
	ICAM1	0.24	0.16	1.27	0.12	0.939 to 1.72
	IL8	0.28	0.23	1.32	0.23	0.839 to 2.09
	Calprotectin	0.06	0.04	1.06	0.11	0.986 to 1.14
	MMP9	0.11	0.08	1.12	0.19	0.946 to 1.32
FEV ₁ %	MPO	0.19	0.10	1.21	0.06	0.99 to 1.48
	NE	0.14	0.08	1.15	0.09	0.98 to 1.35
	S100A9	-0.24	0.12	0.79	0.05	0.619 to 1
	sRAGE	0.14	0.10	1.15	0.14	0.954 to 1.39
	ENRAGE	0.15	0.10	1.16	0.12	0.961 to 1.41
	IL1 β	0.13	0.08	1.14	0.11	0.973 to 1.33
	YKL40	0.15	0.10	1.16	0.14	0.951 to 1.41
	IL17A	0.24	0.17	1.28	0.16	0.908 to 1.79
	PR3	0.11	0.09	1.12	0.22	0.935 to 1.35
	ICAM1	0.18	0.15	1.20	0.23	0.888 to 1.63
	IL8	0.29	0.24	1.33	0.23	0.83 to 2.14
	Calprotectin	0.04	0.04	1.04	0.34	0.963 to 1.11
	MMP9	0.08	0.09	1.08	0.37	0.909 to 1.29

* See Supplemental Table 8A-C for results of all biomarkers. [†] Significant with FDR = 0.001; ^{*} Significant with FDR = 0.01;

[‡] Significant with FDR = 0.05; [°] FDR < 0.1; [^] FDR < 0.2.

Table 5. Biomarkers in Adjusted* Proportional Hazards Models of Time to Next Exacerbation.

Biomarkers	Estimates	SE	Hazard Ratio	<i>p</i>	95% CI of the Hazard Ratio
ENRAGE [°]	0.30	0.10	1.35	0.004	1.1 to 1.65
MPO [°]	0.26	0.099	1.30	0.008	1.07 to 1.57
sRAGE [^]	0.20	0.088	1.23	0.021	1.03 to 1.46
ICAM1 [^]	0.38	0.16	1.46	0.021	1.06 to 2.02
NE [^]	0.18	0.077	1.19	0.022	1.03 to 1.39
YKL40 [^]	0.23	0.10	1.26	0.024	1.03 to 1.53
TARC [^]	1.00	0.46	2.72	0.031	1.10 to 6.74
MMP9 [^]	0.18	0.09	1.20	0.039	1.01 to 1.43
IL1B [^]	0.16	0.08	1.17	0.049	1.00 to 1.37
IL5 [^]	0.58	0.31	1.79	0.062	0.97 to 3.29
IL17A	0.28	0.17	1.32	0.098	0.95 to 1.83
S100A9	-0.20	0.12	0.823	0.12	0.645 to 1.05
IFN γ	0.37	0.26	1.44	0.16	0.861 to 2.41
PR3	0.12	0.094	1.13	0.19	0.94 to 1.36

* Adjusted by Age, Sex and Number of Prior Pulmonary Exacerbations. See Supplemental Table 9 for results for all biomarkers.

[¶] Significant with FDR = 0.001; ^{*} FDR = 0.01; [†] FDR = 0.05; [°] FDR < 0.1; [^] FDR < 0.2.

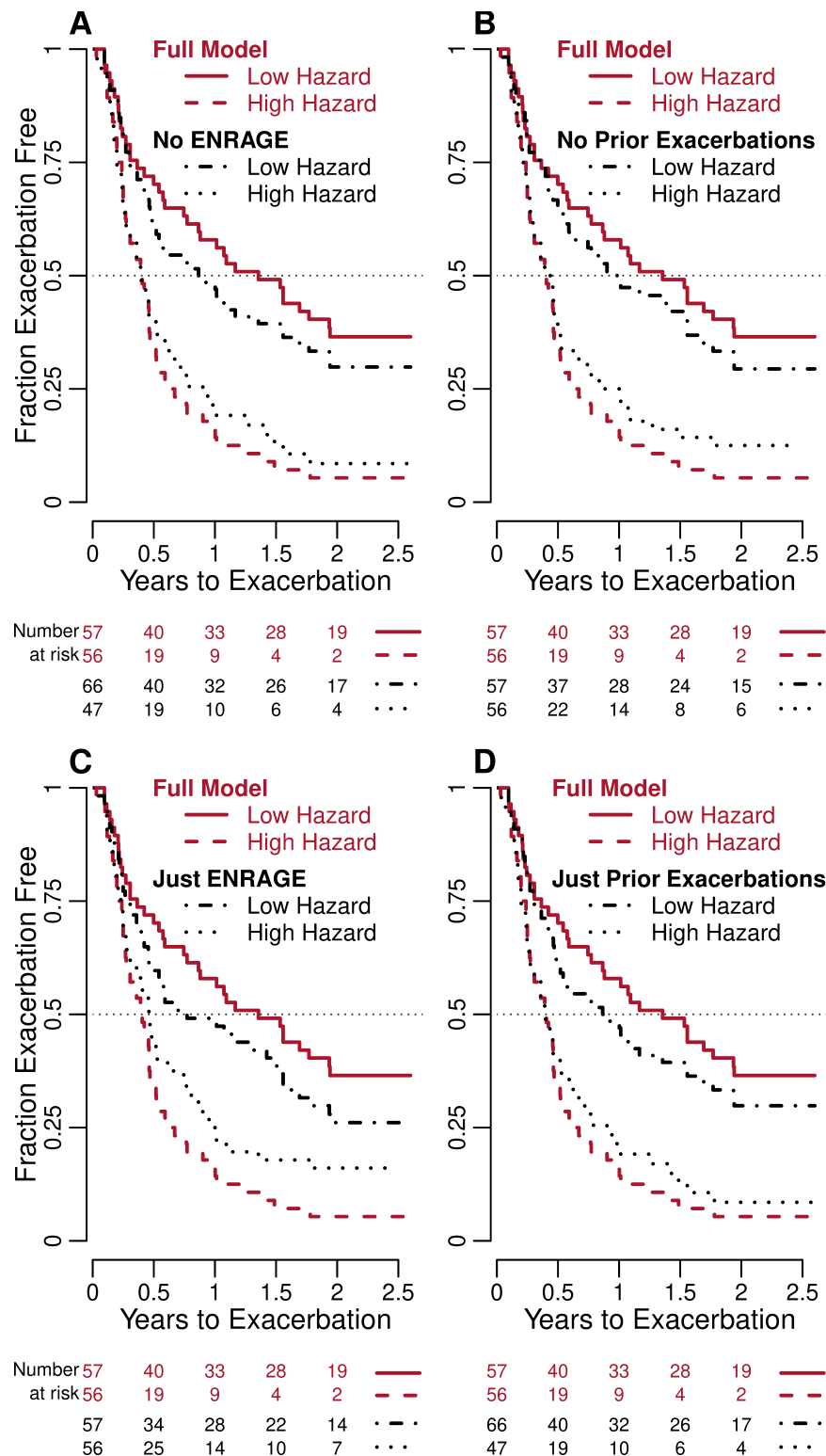


Figure 1. Kaplan Meier Plots Based on Proportional Hazard Ratio Estimates for Individual Patients. We categorized patients by hazard ratios higher or lower than the median estimated using a **full model** including log transformed values of ENRAGE adjusted by age, sex and number of prior pulmonary exacerbations as confounders. We drew Kaplan-Meier plots and compared with plots based on hazard ratios estimated using model **A. excluding ENRAGE data**, **B. excluding prior pulmonary exacerbations**, **C. including only ENRAGE data**, and **D. including only prior pulmonary exacerbations**. The numbers at risk for **A** and **D** differ from other plots because median hazard ratios including exacerbation count data did not divide patients into equal groups.

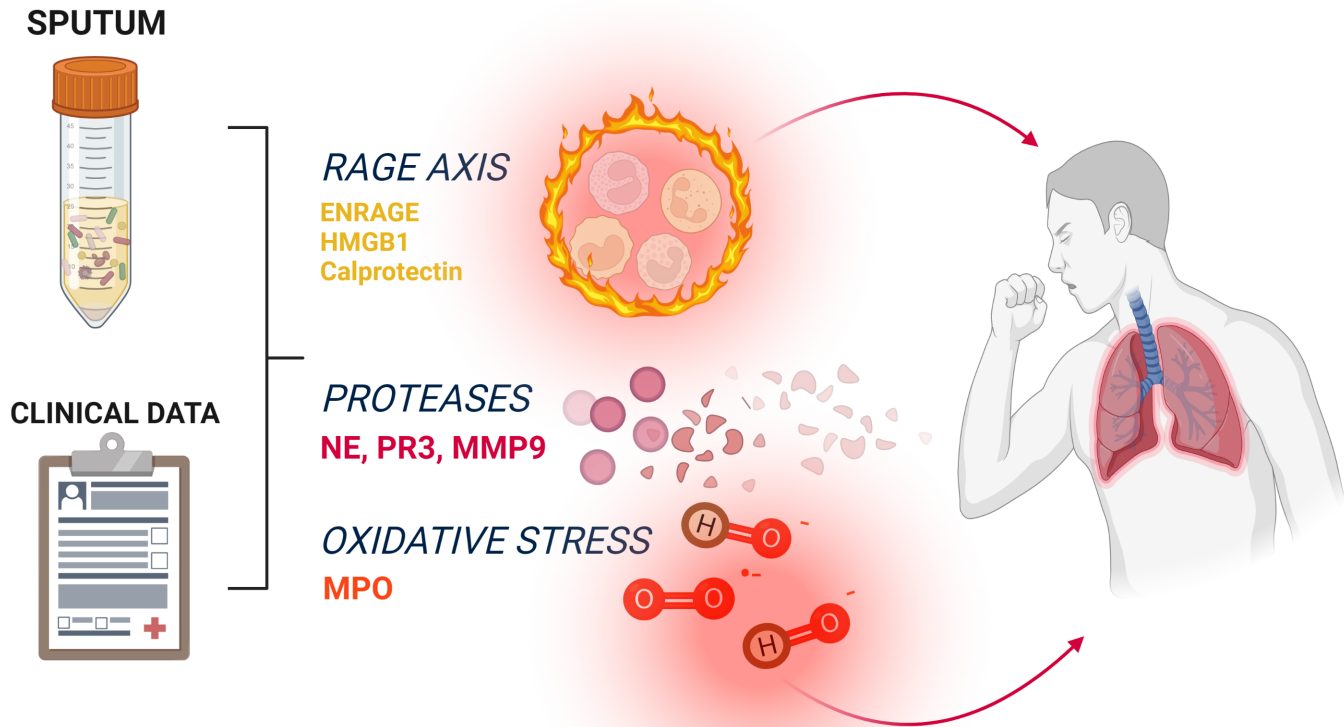


Figure 2. Schematic Model of Inflammation in the CF Airway. Using sputum and clinical data, we measured potential inflammatory biomarkers to investigate pulmonary exacerbations of CF. We found that RAGE Axis related inflammation and neutrophil related protease-anti-protease imbalance and oxidative stress are the most likely pathophysiologic processes involved.