

## Outpatient regimens to reduce COVID-19 hospitalizations: a systematic review and meta-analysis of randomized controlled trials.

David J. Sullivan M.D.<sup>1</sup>

Daniele Focosi M.D.<sup>2</sup>

Daniel Hanley M.D.<sup>3</sup>

Mario Cruciani, MD<sup>4</sup>

Massimo Franchini, M.D.<sup>4</sup>

Jiangda Ou M.S.<sup>3</sup>

Arturo Casadevall M.D., Ph. D.<sup>1</sup>

Nigel Paneth M.D., M.P.H.<sup>5</sup>

<sup>1</sup>Johns Hopkins Bloomberg School of Public Health, Department of Molecular Microbiology and Immunology, Baltimore, MD USA,

<sup>2</sup>North-Western Tuscany Blood Bank, Pisa University Hospital, Pisa, Italy.

<sup>3</sup>Johns Hopkins University School of Medicine Department of Neurology, Brain Injury Outcomes Division, Baltimore, MD, USA.

<sup>4</sup>Division of Hematology, Carlo Poma Hospital, Mantua, Italy.

<sup>5</sup>Departments of Epidemiology & Biostatistics and Pediatrics & Human Development, College of Human Medicine, Michigan State University, East Lansing, MI, USA.

Corresponding author: David Sullivan, 615 N. Wolfe St Rm W4606, Baltimore MD 21205. Tel 410 502 2522, fax 410 955 0105. E-mail [dsulliv7@jhmi.edu](mailto:dsulliv7@jhmi.edu).

Title 15 words

Abstract word count 150

Main text- 4271

3 tables and 7 figures

**Abbreviations:** CCP: COVID-19 convalescent plasma; mAb: monoclonal antibody. RCT: randomized controlled trial; VOC: variant of concern.

**Keywords:** small molecule antivirals; convalescent plasma; monoclonal antibody; COVID-19; outpatients; randomized controlled trial.

|   |    |
|---|----|
| Abstract .....  | 3  |
| Introduction .....                                    | 4  |
| Results .....   | 4  |
| Trial populations.....                                | 5  |
| Age and Ethnicity .....                               | 5  |
| Risk factors for COVID19 progression .....            | 6  |
| Seropositivity and timing from symptom onset.....     | 6  |
| Geography and time period.....                        | 6  |
| Efficacy endpoints .....                              | 6  |
| Efficacy at preventing hospitalization .....          | 6  |
| Efficacy at reducing mortality .....                  | 8  |
| Efficacy at symptom resolution .....                  | 8  |
| Costs and resiliency against variants of concern..... | 8  |
| Discussion.....                                       | 9  |
| Methods .....   | 10 |
| Literature search .....                               | 11 |
| Statistical methods.....                              | 11 |
| Declaration of interests .....                        | 12 |
| Contributors .....                                    | 12 |
| Data availability statement .....                     | 12 |
| Funding.....  | 12 |
| Role of the funding source.....                       | 13 |
| References .....                                      | 13 |
| Table 1 .....   | 19 |
| Table 2.....  | 24 |
| Table 3.....  | 29 |
| Figure 1.....   | 31 |
| Included .....  | 31 |
| Eligibility .....                                     | 31 |
| Screening .....                                       | 31 |
| Identification .....                                  | 31 |
| Figure 2.....   | 32 |

|               |    |
|---------------|----|
| Figure 3..... | 33 |
| Figure 4..... | 34 |
| Figure 5..... | 35 |
| Figure 6..... | 37 |
| Figure 7..... | 38 |

## Abstract

During pandemics, out-of-hospital treatments reduce the health system burden. Controversies persist regarding the best treatment options for COVID-19 outpatients at risk for hospitalization. We assembled data from 47 randomized controlled trials investigating 51 distinct interventions in more than 60,000 outpatients until October 2022 with the endpoint of hospitalization. These trials, largely performed in unvaccinated cohorts during pre-Omicron waves, mostly targeted populations with at least one risk factor for COVID-19 hospitalization. Grouping by class, the COVID-19 convalescent plasma (CCP) (OR=0.69 [95% CI=0.53 to 0.9]), anti-Spike monoclonal antibodies (OR=0.32 [95% CI=0.24-0.42]) and small molecule antivirals (OR=0.57 [95% CI=0.3-1.09]) each had comparable efficacy for hospital relative risk reduction dependent on intervention dose and timing. Repurposed drugs had lower efficacy. The recent Omicron sublineages (XBB and BQ.1.1) *in vitro* resistance to monoclonal antibodies suggests a pressing need to reevaluate CCP recommendations for COVID-19 outpatients at risk for hospitalization, especially in constrained medical resource settings.

## Introduction

By late October 2022 the world had recorded over 630 million cases and more than 6.6 million deaths from COVID-19. Hospitalization rates are about 6% in the US, where from August 2020 to October 2022, nearly 5 million individuals were hospitalized for COVID-19. A pronounced spike in hospitalizations for COVID-19 in the US took place in the first two months of 2022 with the introduction of the Omicron variant of concern (VOC). Vaccination boosts have substantially reduced the risk of hospitalization and death, but outpatients at risk still require early treatment to avoid disease progression to hospitalization.

The risk of hospitalization can be reduced by antivirals of different classes (COVID-19 convalescent plasma (CCP), anti-Spike monoclonal antibodies (mAbs) or small molecules) or supportive care drugs (which are largely repurposed). Randomized controlled trials (RCTs) in outpatients have tested therapeutic agents against placebo or standard of care, but no RCT has been conducted comparing the main classes of outpatient treatments. CCP was first administered to hospitalized patients across the world in March 2020, a few weeks after the pandemic began<sup>1</sup>, but was initially FDA restricted to inpatient use in the US.

The first outpatient treatments for COVID-19 authorized by the FDA were anti-Spike mAbs (bamlanivimab, bamlanivimab plus etesevimab<sup>2, 3</sup> or casirivimab plus imdevimab<sup>4</sup>) approvals that preceded the introduction of mRNA vaccines<sup>5, 6</sup>. While many small molecules were repurposed as antivirals during the early stages of the pandemic, oral antivirals developed against SARS-CoV-2 for outpatients were not authorized and available until December 2021, when nirmatrelvir/ritonavir<sup>7</sup> and molnupiravir<sup>8</sup> were approved. The following month, intravenous remdesivir was also approved for outpatient use<sup>9</sup>. On December 2021, nearly two years after the first use of CCP, the FDA approved CCP outpatient use, but only for immunosuppressed patients<sup>10, 11</sup>.

To date no head-to-head RCT has ever compared antiviral treatment options for COVID-19 outpatients (with the few exceptions of Eli Lilly comparing bebtelovimab to bebtelovimab+bamlanivimab+etesevimab<sup>12</sup> or metformin, ivermectin and fluvoxamine in COVID-OUT<sup>13</sup>), making treatment choices difficult. We assembled RCTs of different therapies all sharing hospitalization as an endpoint. A literature search of MEDLINE (through PubMed), medRxiv and bioRxiv databases was carried out inclusive of RCTs published from March 2020 to October 2022 summarized in the PRISMA chart (Figure 1). This systematic review and meta-analysis of RCTs of outpatient therapy for COVID-19, compared outcomes, taking into account risk factors for progression, dosage of the intervention, time between onset of symptoms and treatment administration, and predominant variants of concern at the time of the interventions.

## Results

We reviewed in detail 47 distinct outpatient RCTs (51 different interventions), conducted from March 2020 to October 2022, across waves sustained by different SARS-CoV-2 variants of concern (VOC) and different vaccination periods. We focused on four different therapeutic categories – CCP, anti-Spike mAbs, small molecule antivirals and repurposed drugs.

Five large-scale outpatient RCTs investigating CCP have been published. A successful RCT from Argentina<sup>14</sup> was followed by another RCT (C3PO-SIREN) halted at 511 participants after the data safety monitoring board (DSMB) determined “futility” before completion<sup>15</sup>. The third RCT in Spain (CONV-ERT) involved methylene blue-treated CCP<sup>16</sup>, raising concern about interference with Fc-dependent antibody function<sup>17</sup>, and the fourth was a large RCT in the USA (CSSC-004)

<sup>11</sup>. A fifth RCT was run in The Netherlands (Cov-Early), originally published as combined analysis with the Spanish RCT<sup>18</sup> and later as individual data<sup>19</sup>.

Eight anti-Spike mAb RCTs (bamlanivimab<sup>2</sup>, bamlanivimab/ etesevimab<sup>3</sup>, casirivimab/imdevimab phase 1/2<sup>20</sup> and phase 3<sup>21</sup>, sotrovimab<sup>22</sup>, regdanvimab<sup>23</sup>, bebtelovimab<sup>12</sup> and tixagevimab–cilgavimab<sup>24</sup>) led to FDA emergency use authorizations (EUA), with regdanvimab<sup>23</sup> approved in Europe only and bebtelovimab approved in US only.

Of 11 outpatient RCTs of small molecule antivirals - oral molnupiravir<sup>8, 25, 26</sup>, oral nirmatrelvir/ritonavir<sup>7</sup> and intravenous remdesivir<sup>27</sup> led to EUAs. Other antivirals studied by RCTs included peginterferon lambda<sup>28, 29, 30</sup>, sofosbuvir/daclatasvir<sup>31</sup>, favipiravir<sup>32</sup> and lopinavir/ritonavir<sup>33</sup>.

Additionally, 15 repurposed drugs tested in 23 outpatient RCTs were included in our analysis for context: metformin<sup>13</sup>, fluvoxamine<sup>13, 34, 35</sup>, ivermectin<sup>13, 36, 37, 38</sup>, hydroxychloroquine<sup>33, 39, 40, 41, 42</sup>, nitazoxanide<sup>43</sup>, colchicine<sup>44</sup>, niclosamide<sup>45</sup>, four antithrombotics-aspirin, apixaban<sup>46</sup>, sulodexide<sup>47</sup>, enoxaparin<sup>48, 49</sup>, inhaled ciclesonide<sup>50</sup>, the herbal mixture Saliravira<sup>51</sup>, azithromycin<sup>52, 53</sup>, and resveratrol<sup>54</sup>.

## GRADE

The 5 CCP RCTs had a high GRADE (Supplementary Table 1). Most information is from results at low risk of bias or with some concerns, but unlikely to lower confidence in the estimate of effect. The GRADE for anti-Spike mAbs RCTs was moderate (downgraded for risk of bias (ROB)). The RCTs for small molecule antivirals had a GRADE level low for inconsistency ( $I^2=81$ ) and ROB. The RCTs for repurposed antiviral drugs had a moderate GRADE score for ROB. All four trial classes showed reduced rates of hospitalization for each group. The ROB independently was evaluated by NMA-COVID-19 for most all of the RCTs (Supplementary Figure 1).

## Trial populations

The 47 RCTs (51 interventions) ranged in duration between 1 and 16 months, averaging 9, 4, 5 and 7 months for the CCP, anti-Spike mAbs, small molecule antivirals and repurposed drugs, respectively (Figure 2, Table 1, Supplementary Table 2). 24 studies were completed in the pre-Alpha VOC period, with 14 encompassing either the Delta or Omicron wave only. All cause (n=30) or COVID-19 related (n=21) admissions by day 28-30 was the hospital endpoint for most RCTs (9 RCTs measuring at day 14-23, 1 at day 45 and 2 at day 90), excepting the single Argentinean CCP RCT, which used severe respiratory distress as a proxy for hospitalization<sup>14</sup> (Table 1). Of more than 60,000 participants enrolled, 55% were in RCTs of small molecule antivirals, 28% in RCTs of repurposed antiviral drugs, 12.5% in RCTs of anti-Spike mAbs and 4.5% in CCP RCTs. Nearly half of all recruited outpatients were from the single molnupiravir-PANORAMIC RCT, which recruited 25,000 participants<sup>25</sup>.

## Age and ethnicity

The median age of participants was about 50 years. The CCP group had a nonweighted trial average of median age equal to 58 years, while the anti-Spike mAbs, small molecule antivirals and repurposed drug groups younger average of median age was equal to 45 to 48 years. Most RCTs

had more women than men, and 84% of all RCT 60,043 participants had Caucasian ethnicity (Table 1, Supplementary Table 2).

#### Risk factors for COVID19 progression

The individual RCTs differed in the percentage of participants with risk factors for progression to severe COVID-19. Of the 37 RCTs reporting aggregated hospitalization risk factors, ten had 100% of participants with at least one hospitalization risk factor, while 5 had less than 50%. The Bebtelovimab placebo-controlled RCT explicitly focused exclusively on low-risk individuals<sup>12</sup>. Individual risk factors like diabetes mellitus occurred in 10 to 20% of participants within most RCTs. Obesity with BMI over 29 averaged near 40% of RCT participants in the 4 therapy groups after excluding the large single 25,000 molnupiravir-PANORAMIC RCT with 15% of participants over 30 BMI (Table 1)<sup>25</sup>.

#### Seropositivity and timing from symptom onset

Of 18 RCTs reporting seropositivity rates at baseline, 11 had < 25% screening seropositivity (Table 1, Figure 2). The molnupiravir-PANORAMIC RCT was an outlier, with 98% seropositives<sup>25</sup>. All but one<sup>44</sup> of the RCTs enrolled within 8 days (median) of symptom onset. In RCTs of anti-Spike mAbs and small molecule antivirals, median time from illness onset to intervention was 3.5 to 4 days (Figure 3, Table 1, Supplementary Table 2). CCP and repurposed antiviral drug RCTs enrolled within 4.5 to 5.1 days from symptom onset.

#### Geography and time period

The CCP RCTs were conducted in the USA<sup>11, 15</sup>, Argentina<sup>14</sup>, Netherlands<sup>18</sup> and Spain<sup>16</sup> (Supplementary Table 2). The anti-Spike mAb RCTs all had a USA component, but were largely centered in the Americas except for the sotrovimab RCT, which took place in Spain<sup>22</sup>. Many of the repurposed drugs and nirmatrelvir/ritonavir RCTs recruited worldwide<sup>7</sup>.

Four of the five CCP RCTs (COV-Early<sup>18</sup>, CONV-ERT<sup>16</sup>, Argentina<sup>14</sup> and C3PO<sup>15</sup>), and all eight anti-Spike mAb RCTs took place in the setting of the D614G variant and the Alpha VOC (Figure 2). By contrast, most of the molnupiravir, nirmatrelvir/ritonavir<sup>7</sup> and interferon lambda RCTs were conducted in the setting of the Delta VOC. The ivermectin<sup>36</sup> and fluvoxamine<sup>34</sup> RCTs ended as the Delta VOC wave began in August 2021. The remdesivir RCT spanned D614G, Alpha and Beta VOC but missed Delta<sup>27</sup>. The CSSC-004 RCT of CCP was the longest RCT reviewed, spanning periods characterized by D614G to Delta VOC infections<sup>11</sup>.

#### Efficacy endpoints

##### Efficacy at preventing hospitalization

Because inclusion criteria varied across the RCTs, the power to detect a difference in hospitalization rates varied across studies. Three CCP RCTs had higher control arm hospitalization rates (11% - 31%) than all other antiviral RCTs, indicating that they studied sicker populations.<sup>11</sup> (Table 2 and Figure 4). The six mAb RCTs had hospitalization rates in the controls of 4.6-8.9%, the same range as CSSC-004<sup>11</sup> (6.3%). Control hospitalization rates in the molnupiravir-MOVE-OUT<sup>7</sup>, nirmatrelvir/ritonavir<sup>7</sup> and remdesivir<sup>27</sup> RCTs, all agents that obtained FDA EUAs, ranged from 5.3% to 9.7%. Low hospitalization rates were found in RCTs that had many vaccinees (metformin-COVID-OUT – 3.2%<sup>13</sup>) or in which most participants were seropositive (molnupiravir-PANORAMIC – 0.8%). Low control arm hospitalization rates were also found in



two mAb RCTs – the bebtelovimab trial (1.6%)<sup>12</sup> and REGN-CoV phase 1/2 (<2%), with the bebtelovimab RCT focusing on low-risk patients<sup>12</sup>

Examining RCTs by agent class, statistically significant relative risk reductions in hospitalization were found in two of 5 CCP RCTs, 5 of 8 anti-Spike mAb RCTs, 4 of 11 small molecule antiviral RCTs, but just 2 of 23 repurposed drug RCTs (Table 2). Considering effect size, CCP efficacy in preventing hospitalization or progression was about 50% in both the Argentinean<sup>14</sup> and in CSSC-004 RCTs<sup>11</sup> and 36% and 31% in COV-Early<sup>18</sup> and C3PO<sup>15</sup>. Except for the bebtelovimab RCT (2 hospitalizations in each arm<sup>12</sup>), anti-Spike mAb RCTs reduced the risk of hospitalization by 69-80% (average 75%). Two of the three small molecule antiviral drugs (remdesivir<sup>27</sup> and nirmatrelvir/ritonavir<sup>7</sup>) showed very high levels of relative risk reduction - 86% and 88% respectively - but molnupiravir reduced risk of hospitalization by only 30%<sup>7</sup> (no reduction in the PANORAMIC RCT<sup>25</sup>), and the combination of lopinavir/ritonavir was associated with a non-significant increase in risk of hospitalization<sup>33</sup>.

Among RCTs of repurposed drugs, all except metformin (57%) and sulodexide (40%), showed small and non-significant relative risk reductions of hospitalization - 11% for ivermectin<sup>36</sup>, 20% for colchicine<sup>44</sup>, 21% for fluvoxamine<sup>34</sup> and 24% for hydroxychloroquine<sup>33</sup>. The RCT of nitazoxanide<sup>43</sup> found one hospitalization among 184 treated participants compared to five hospitalizations among 195 controls, far too few events to achieve significance.

In the pooled meta-analysis by class group, the CCP RCTs had a fixed effect OR of 0.69 (95% CI=0.53 to 0.9) with moderate heterogeneity ( $I^2=43\%$ ), the anti-Spike mAbs had a fixed effect OR of 0.32 (95% CI=0.24-0.42) with low heterogeneity ( $I^2=0\%$ ), the small molecule antivirals had a random effect OR of 0.57 (95% CI=0.3-1.09) with high heterogeneity ( $I^2=80\%$ ) and the repurposed drugs had a fixed effect OR of 0.77 (95% CI- 0.68-0.88) with low heterogeneity ( $I^2=4\%$ ) (Figure 5, Supplementary Table 3). The meta-analysis of all interventions had a random effect OR of 0.62 (95% CI=0.51-0.74) with high heterogeneity ( $I^2=58\%$ ) (Supplementary Figure 2).

Overall, RCTs proved the value of early treatment. Ten RCTs by design began outpatient treatment within the 5-days window and an eleventh reported point estimate numbers. Relative risk reduction in hospitalization was 73% (OR=0.2, 95%CI-.06-0.71) in recipients of higher dose or higher antibody titer CCP in Argentina transfused within 3 days,<sup>14</sup> and was 80% (OR=0.18, 95%CI-.07-0.49) in participants treated within 5 days of symptoms in CSSC-004<sup>11</sup> (Figure 6), which is comparable to nirmatrelvir<sup>7</sup> (OR=0.12, 95%CI-.06-0.24) and sotrovimab (OR=0.19, 95%CI-.08-0.46) therapy within 5 days of symptom onset (Supplementary Table 3).

The final certainty of the available evidence with GRADE assessment (Supplementary Table 1) showed high level of certainty within CCP trials, moderate certainty with mAbs, and low certainty with small molecule antivirals and repurposed drugs. The heterogeneity amongst all of the outpatient trials with hospitalization as an endpoint measured by the  $I^2$  statistic is 58%, with p-value < 0.01. The main reason for downgrading individual studies was imprecision, related to small number of participants and the wide confidence intervals around the effect, followed by ROB (Supplementary Figure 1). In the cumulative analysis, small molecule antivirals were downgraded to low certainty of evidence because of ROB (some/high ROB in 4 RCTs) and inconsistency (due

to high heterogeneity), while repurposed drugs were downgraded to low certainty due to ROB (some/high ROB in 5 of the 11 comparisons) and indirectness (due to large difference in mechanism of action of the included drugs). Anti-Spike mAbs were downgraded to moderate certainty due to ROB (in 4 of the 8 included RCTs, ROB for the outcome hospitalization was judged of some concern). Of note, we could not find concerns in any of the GRADE factors for CCP RCTs and therefore they were graded as high level of certainty. Funnel plot analysis shows a low risk of publication bias except for the anti-Spike mAbs, for which either the efficacy of high dose antibodies or non-reporting bias are plausible explanations (Supplementary Figure 3).

#### Efficacy at reducing mortality

While several RCTs showed fewer deaths in the treatment arm, no outpatient study was powered to compare differences in mortality. Cumulatively, the two effective CCP RCTs (Argentina<sup>14</sup> and CSSC-004<sup>11</sup>) recorded 7 deaths in controls and 2 in the treatment arm, but C3PO reported 4 more deaths in the CCP arm<sup>15</sup>. Cumulatively, the anti-Spike mAbs RCTs had 21 deaths among controls and 4 in the intervention arm (Supplementary Table 4). The 3 emergency-authorized small molecule antiviral RCTs experienced 22 deaths in the control groups and 1 in the intervention groups while the total for all small molecule antiviral RCTs was 28 in the controls and 7 in the interventions. The repurposed drugs RCTs recorded 72 deaths in the control groups and 53 in the intervention groups. Because of the low rate of deaths during trials the absolute risk reductions amongst the 4 antiviral classes are all below 1% corresponding to relative risk reductions of 20%, 84%, 75% and 28% with OR of 0.80 (95% CI-.31-2.02), 0.16(95% CI-.06-.48), 0.25(95% CI-.11-.57), and 0.72(95% CI-.5-1.02), for CCP, anti-Spike mAbs, small molecule antivirals or repurposed drugs, respectively (Supplementary Table 4).

#### Efficacy at symptom resolution

The two effective CCP RCTs (Argentina<sup>14</sup> and CSSC-004<sup>11</sup>) did not compare time to symptom resolution, while the COV-Early<sup>18</sup> and ConV-ert<sup>16</sup> RCTs reported no difference in the median time of symptom resolution in the two groups<sup>16</sup> (Table 2). The anti-Spike mAbs noted faster resolution by 1, 2, 3 or 4 days for bamlanivimab/etesevimab<sup>3</sup>, bebtelovimab<sup>12</sup>, regdanvimab<sup>23</sup>, and casirivimab/imdevimab<sup>21</sup>, respectively. The smaller bamlanivimab-only RCT did not show a difference<sup>2</sup>. Of the three emergency-authorized small molecule antivirals that noted reductions in hospitalizations, molnupiravir was associated with no difference in time of symptom resolution in MOVE-OUT<sup>7</sup> but improvements in both PANORAMIC<sup>25</sup> and Aurobindo<sup>27</sup> RCTs. The 3-day outpatient remdesivir RCT showed that symptoms were alleviated by day 14 nearly twice as often in the treatment arm<sup>27</sup>. The nirmatrelvir/ritonavir RCT did not report on this parameter<sup>7</sup>. Six out of 9 RCTs in the antiviral group did not show faster symptom resolution with intervention. The three RCTs largely performed in Brazil for fluvoxamine, ivermectin<sup>36</sup> and hydroxychloroquine<sup>33</sup> noted no differences in symptom resolution. Metformin did not evidence faster symptom resolution despite reducing hospitalizations. 3 of the 18 RCTs reporting symptom resolution in the repurposed drug group noted faster symptom resolution.

#### Costs and resiliency against variants of concern

Anti-Spike mAbs and intravenous remdesivir schedules cost about 1000 to 2000 Euros per patient, respectively, while the oral drugs are much less than 1000 Euros per patient (Table 3). By comparison, the cost of CCP approximates 200 Euros per patient, and the cost for repurposed drugs is even lower. Considering the absolute risk reduction in hospitalization, the number needed to



treat to prevent a single hospitalization is often very high, as are the associated costs. With the recently patented antivirals, costs for outpatient treatment often exceeds the cost of a COVID-19 hospitalization<sup>53</sup>.

mAb and mAb cocktails successively lost efficacy against Delta and Omicron, with cilgavimab (the only Omicron-active ingredient in Evusheld™) and bebtelovimab also failing against BQ.1.1 sublineages (Figure 7). This had led the FDA to withdraw EUAs, while EMA has not restricted usage at all. Small molecule antivirals retain *in vitro* efficacy against Omicron, but concerns remain: molnupiravir showed low efficacy *in vivo*<sup>8</sup> and is mutagenic for mammals *in vitro*<sup>55</sup>, while nirmatrelvir/ritonavir has drug/drug interaction contraindications (CYP3 metabolites especially tacrolimus, anti-cholesterol, anti-migraine or many anti-depressants) and has been associated with early virological and clinical rebounds in immunocompetent patients<sup>56</sup>. CCP from unvaccinated donors does not inhibit Omicron, but CCP from donors having any sequence of vaccination and COVID-19 or having had boosted mRNA vaccine doses universally has high Omicron-neutralizing activity.

### Discussion

Outpatient RCTs are more difficult to perform by non-industrial institutions compared to drug manufacturers during an infectious disease pandemic, since switching between already constrained inpatient academic /nonindustrial personnel and outpatient spaces is challenging. By contrast, the pharmaceutical industry has well established internal resources and economical support for running outpatient trials. The relative ease of conducting inpatient RCTs may have led most initial CCP, small molecule antiviral and repurposed trials –conducted principally by academic institutions - to be based in hospitals, often in patients treated too late for antiviral treatment to be expected to work given that antiviral therapy must be given early in disease. Consistent with this, the outpatient RCT data extant confirms that most antiviral/antimicrobial therapies are more effective when given before hospital admission. The paucity of head-to-head RCTs amongst outpatient COVID-19 therapy makes clinical comparisons difficult when the RCTs were run during different times, targeting different variants and in populations with different vaccination status. Cooperation to run head-to-head intervention RCTs between different pharmaceutical companies is always more difficult. Consequently, these limitations need to be considered in our head-to-head meta-analysis assembled COVID-19 outpatient placebo controlled RCTs.

SARS-CoV-2 antibodies, whether elicited by vaccines, or provided as polyclonal (CCP) or anti-Spike mAbs, have all been demonstrated to substantially prevent progression of COVID-19 to hospitalization, as have several small molecule antivirals. Either vaccination of immunocompetent subjects and therapeutic administration of anti-Spike mAbs, generate high serum levels of neutralizing antibodies (albeit of different subclasses and at different times): dose concerns still exist for monoclonals (e.g., tixagevimab-cilgavimab<sup>57</sup>), and the risk of treatment-emergent immune escape under selective pressure<sup>58</sup> has been marginally investigated. RCTs showed minimal effects of most agents on time to symptom resolution, but a more amplified effect of 50 to 80% reduction in rates of hospitalization was seen in the three major classes of outpatient treatment – CCP, anti-spike mAbs and small molecule antivirals.

Despite the heterogeneity of these 47 RCTs trials, which varied in participant age, medical risk factors, vaccination history and serological status, the assembly of these effective, yet molecularly

disparate interventions, outpatient RCTs shows the consistent importance of early outpatient treatment for patients at risk of progression<sup>59</sup>. Treatment within 5 days of illness onset was more effective than later treatment, as would be expected for an antiviral mechanism of action. Importantly, for CCP, increasing the dose in the Argentina RCT<sup>14</sup> and shortening the intervention interval to within five days of illness onset produced a relative risk reduction for hospitalization close to 80%, which is comparable to (or superior) to the findings of RCTs with anti-Spike mAbs and small molecule antivirals. Overall, a reduction in mortality is suggested with these outpatient therapies, but the individual RCTs are underpowered to investigate death as an outcome.

In recent months, the clinical armamentarium was reduced to small molecule antivirals-oral molnupiravir or nirmatrelvir/ritonavir as well as three day intravenous remdesivir and CCP, since single and double (“cocktail”) anti-Spike MAb have lost effectiveness against new VOCs. Both vaccine and disease elicited antibodies are polyclonal, meaning that they include various isotypes that provide functional diversity and target numerous epitopes making variant escape much more difficult with CCP. Hence, polyclonal antibody preparations are much more resilient to the relentless evolution of variants. This is in marked contrast to mAbs, which target single epitopes of SARS-CoV-2. The exquisite anti-Spike mAb (and receptor binding domain) specificity renders them susceptible to becoming ineffective with single amino acid changes. Adding boosters to the vaccine regimen and also producing vaccine-boosted CCP provide high amounts of neutralizing antibodies which can be effective against practically any existing VOC, including Omicron<sup>60</sup> (so-called “heterologous immunity” , likely due to the well-known phenomenon of “epitope spreading”). The vaccine-boosted CCP also has more than ten times the amount of total SARS-CoV-2 specific antibody as well as neutralizing activity compared to the pre-omicron CCP used in the effective outpatient CCP RCTs.

In addition to efficacy, other points to consider in an outpatient pandemic are tolerability, scalability and affordability. Repurposed drugs are generally well tolerated, widely available and relatively inexpensive, but have limited efficacy. On the contrary small molecule antivirals are often plagued by contraindications and side effects, which makes frail patient to rely on passive immunotherapies. Both small molecule antivirals and anti-Spike mAbs take time to develop and are unaffordable to low-and-middle income countries (LMIC). CCP is instead a tolerable, scalable, and affordable treatment.

As shown in Table 3, the market cost of anti-Spike mAbs is generally about 10 times higher than that for manufacturing CCP (at the same level of engagement), making CCP the only COVID-19 antiviral therapy affordably available in LMICs.

In light of our meta-analysis, we therefore urge the WHO to revise its guidelines in order to include CCP as an option for outpatients.

## Methods

The protocol has been registered in PROSPERO, the prospective register of systematic reviews and meta-analysis of the University of York (protocol registration number CRD42022369181)

### Literature search

We assembled outpatient COVID-19 RCTs with hospitalization as the primary outcome, by searching MEDLINE (through PubMed), medRxiv and bioRxiv databases for the period of March 1, 2020 to October 1, 2022, with English language as the only restriction. The Medical Subject Heading (MeSH) and search query used were: “(“COVID-19” OR “SARS-CoV-2” OR “coronavirus disease 2019”) AND (“treatment” OR “therapy”) AND (“outpatient” OR “hospitalization”)”. In PubMed, the filter “Randomized Controlled Trial” was applied. We also screened the reference list of reviewed articles for additional studies not captured in our initial literature search. Interventions were classified as antiviral or supportive (repurposed) in nature. We also excluded case reports, case series, retrospective propensity matched studies, non-randomized clinical trials, review articles, meta-analyses, low number of participants with no hospitalizations, homeopathy and zinc vitamin C study with low number of participants and original research articles reporting only aggregate data. Articles underwent a blind evaluation for inclusion by two assessors (D.S. and D.F.) and disagreements were resolved by a third senior assessor (A.C.). Figure 1 shows a PRISMA flowchart of the literature reviewing process. The following parameters were extracted from studies: baseline SARS-CoV-2 serology status time from onset of symptoms to treatment, study dates, recruiting countries, gender, age (including the fraction of participants over age 50, 60 and 65), ethnicity, risk factors for COVID-19 progression (systemic arterial hypertension, diabetes mellitus, and obesity), sample size, dosage type of control, hospitalizations and deaths in each arm, and time to symptom resolution. Study dates were used to infer predominant VOCs.

### Assessment of risk of bias and GRADE assessment

A risk of bias assessment of each selected RCT was performed by COVID-19- Network Meta-Analysis (NMA)<sup>61, 62</sup>. Within-trial risk of bias is assessed, using the Cochrane ROB tool for RCTs<sup>63</sup>. The Cochrane ‘Risk of bias’ tool addresses six specific domains: sequence generation, allocation concealment, blinding, incomplete data, selective outcome reporting, and other issues relating to bias. We explored clinical heterogeneity (e.g., risk factors for progression, time between onset of symptoms and treatment administration, and predominant variants of concern at the time of the interventions) and assess statistical heterogeneity using  $\tau^2$ , Cochran’s Q and estimated this using the  $I^2$  statistic, which examines the percentage of total variation across studies that is due to heterogeneity rather than to chance.

We used the principles of the GRADE (The Grading of Recommendations Assessment, Development and Evaluation) system to assess the quality of the body of evidence associated with specific outcomes, and constructed a ‘Summary of findings’ table using the software Review Manager (RevMan), Version 5.4 The Cochrane Collaboration, 2020 (available at <https://training.cochrane.org/online-learning/core-software/revman/revman-5-download>). The certainty of a body of evidence involves consideration of within-trial risk of bias (methodological quality), directness of evidence, heterogeneity, precision of effect estimates, and risk of publication bias<sup>63</sup>. Publication bias was assessed by visual inspection of funnel plots.

### Statistical methods

Descriptive analysis included time-to-treatment, geography (country) of the study, age, sex, race (white and black), ethnicity, seropositive, hospital type and medical high-risk conditions (e.g., diabetes, hypertension, and obesity or BMI > 30).

Absolute risk reduction (ARR, i.e., the arithmetic difference in hospitalization between the 2 groups) and relative risk reduction (RRR, i.e., percent reduction in risk) were used to represent the efficacy of treatment. The number needed to treat (NNT) to prevent a single hospitalization was calculated as  $1/ARR$ .

Odds ratios (OR, the odds of hospitalization for the treatment group over the odds of hospitalization for the control group) and 95% confidence intervals (95% CI) were used to show the direction of effect and its significance in comparing treatment group and control groups. Weight, heterogeneity, between-study variance, and significance level were displayed in forest plots. Funnel plots were used to estimate the risk of publication bias.

The forest plot and the enrolment figure were used for visualization and comparison of the odds ratio among studies. The enrolment progress (duration and calendar months) of each study was shown as a Gantt plot. PRISMA flowchart was used to summarize the number of studies. The significance level was 0.05. The figures were created in Prism software, R (version 4.2.1, R Foundation) and its statistical package “meta” (version 6.0-0). All the data manipulation and the analyses were performed in Excel, Prism, MedCalc, R and REVMAN.5.

#### Declaration of interests

DS, DFH, AC were investigators in the CSSC-004 study; D.F. and M.F. were investigators in the TSUNAMI RCT of CCP. DJS reports AliquantumRx Founder and Board member with stock options (macrolide for malaria), Hemex Health malaria diagnostics consulting and royalties for malaria diagnostic test control standards to Alere- all outside of submitted work. AC reports being part of the scientific advisory board of SabTherapeutics and has received personal fees from Ortho Diagnostics, outside of the submitted work. All other authors report no relevant disclosures.

#### Contributors

DS wrote the first draft and extracted data verified by DF, and MF. DF curated Table 3 and 7 and revised the text. MC, JO, MF and DS performed statistical analyses. MC and DS performed GRADE assessment. AC, NP, MF and DH critically revised the manuscript. DS and DF directly accessed and verified the underlying data reported here. All authors read and agree with manuscript.

#### Data availability statement

Datasets used for this systematic review are publicly available in PubMed, medRxiv and bioRxiv.

#### Funding

This study was supported by the U.S. Department of Defense’s Joint Program Executive Office for Chemical, Biological, Radiological and Nuclear Defense (JPEO-CBRND), in collaboration with the Defense Health Agency (DHA) (contract number: W911QY2090012) (DS, AC, DH), with additional support from Bloomberg Philanthropies, State of Maryland, the National Institutes of Health (NIH) National Institute of Allergy and Infectious Diseases 3R01AI152078-01S1 (DS, AC), NIH National Center for Advancing Translational Sciences U24TR001609-S3 and UL1TR003098 (DH).

### Role of the funding source

The study sponsors did not contribute to the study design; the collection, analysis, and interpretation of data; manuscript preparation, and the decision to submit the paper for publication.

### References

1. Salazar E, *et al.* Treatment of Coronavirus Disease 2019 Patients with Convalescent Plasma Reveals a Signal of Significantly Decreased Mortality. *Am J Pathol* **190**, 2290-2303 (2020).
2. Chen P, *et al.* SARS-CoV-2 Neutralizing Antibody LY-CoV555 in Outpatients with Covid-19. *N Engl J Med* **384**, 229-237 (2021).
3. Dougan M, *et al.* Bamlanivimab plus Etesevimab in Mild or Moderate Covid-19. *N Engl J Med* **385**, 1382-1392 (2021).
4. Weinreich DM, *et al.* REGN-COV2, a Neutralizing Antibody Cocktail, in Outpatients with Covid-19. *N Engl J Med* **384**, 238-251 (2021).
5. Polack FP, *et al.* Safety and Efficacy of the BNT162b2 mRNA Covid-19 Vaccine. *N Engl J Med* **383**, 2603-2615 (2020).
6. Anderson EJ, *et al.* Safety and Immunogenicity of SARS-CoV-2 mRNA-1273 Vaccine in Older Adults. *N Engl J Med* **383**, 2427-2438 (2020).
7. Hammond J, *et al.* Oral Nirmatrelvir for High-Risk, Nonhospitalized Adults with Covid-19. *N Engl J Med* **386**, 1397-1408 (2022).
8. Jayk Bernal A, *et al.* Molnupiravir for Oral Treatment of Covid-19 in Nonhospitalized Patients. *N Engl J Med* **386**, 509-520 (2022).
9. FDA. FDA Takes Actions to Expand Use of Treatment for Outpatients with Mild-to-Moderate COVID-19. (ed FDA) (2022).
10. O'Shaughnessy JA. Convalescent Plasma EUA Letter of Authorization 12282021.) (2021).
11. Sullivan DJ, *et al.* Early Outpatient Treatment for Covid-19 with Convalescent Plasma. *N Engl J Med*, (2022).

12. Dougan M, *et al.* Bebtelovimab, alone or together with bamlanivimab and etesevimab, as a broadly neutralizing monoclonal antibody treatment for mild to moderate, ambulatory COVID-19. *medRxiv*, 2022.2003.2010.22272100 (2022).
13. Bramante CT, *et al.* Randomized Trial of Metformin, Ivermectin, and Fluvoxamine for Covid-19. *N Engl J Med* **387**, 599-610 (2022).
14. Libster R, *et al.* Early High-Titer Plasma Therapy to Prevent Severe Covid-19 in Older Adults. *N Engl J Med* **384**, 610-618 (2021).
15. Korley FK, *et al.* Early Convalescent Plasma for High-Risk Outpatients with Covid-19. *N Engl J Med* **385**, 1951-1960 (2021).
16. Alemany A, *et al.* High-titre methylene blue-treated convalescent plasma as an early treatment for outpatients with COVID-19: a randomised, placebo-controlled trial. *Lancet Respir Med* **10**, 278-288 (2022).
17. Focosi D, Casadevall A. Convalescent plasma in outpatients with COVID-19. *Lancet Respir Med* **10**, 226-228 (2022).
18. Millat-Martinez P, *et al.* Prospective individual patient data meta-analysis of two randomized trials on convalescent plasma for COVID-19 outpatients. *Nature Communications* **13**, 2583 (2022).
19. Gharbharan A, *et al.* Outpatient convalescent plasma therapy for high-risk patients with early COVID-19. A randomized placebo-controlled trial. *Clin Microbiol Infect*, (2022).
20. Norton T, *et al.* REGEN-COV Antibody Combination in Outpatients With COVID-19 – Phase 1/2 Results. *medRxiv*, 2021.2006.2009.21257915 (2022).
21. Weinreich DM, *et al.* REGEN-COV Antibody Combination and Outcomes in Outpatients with Covid-19. *N Engl J Med* **385**, e81 (2021).
22. Gupta A, *et al.* Early Treatment for Covid-19 with SARS-CoV-2 Neutralizing Antibody Sotrovimab. *N Engl J Med*, (2021).
23. Streinu-Cercel A, *et al.* Efficacy and Safety of Regdanvimab (CT-P59): A Phase 2/3 Randomized, Double-Blind, Placebo-Controlled Trial in Outpatients With Mild-to-Moderate Coronavirus Disease 2019. *Open Forum Infect Dis* **9**, ofac053 (2022).



24. Montgomery H, *et al.* Efficacy and safety of intramuscular administration of tixagevimab-cilgavimab for early outpatient treatment of COVID-19 (TACKLE): a phase 3, randomised, double-blind, placebo-controlled trial. *Lancet Respir Med* **10**, 985-996 (2022).
25. Butler C, *et al.* Molnupiravir Plus Usual Care Versus Usual Care Alone as Early Treatment for Adults with COVID-19 at Increased Risk of Adverse Outcomes (PANORAMIC): Preliminary Analysis from the United Kingdom Randomised, Controlled Open-Label, Platform Adaptive Trial. *SSRN ssrn.4237902*, (2022).
26. Tippabhotla SK, Lahiri S, Rama Raju D, Kandi C, Prasad VN. Efficacy and Safety of Molnupiravir for the Treatment of Non-Hospitalized Adults With Mild COVID-19: A Randomized, Open-Label, Parallel-Group Phase 3 Trial. . *SSRN 4042673*, (2022).
27. Gottlieb RL, *et al.* Early Remdesivir to Prevent Progression to Severe Covid-19 in Outpatients. *N Engl J Med* **386**, 305-315 (2022).
28. Feld JJ, *et al.* Peginterferon lambda for the treatment of outpatients with COVID-19: a phase 2, placebo-controlled randomised trial. *The Lancet Respiratory Medicine* **9**, 498-510 (2021).
29. Jagannathan P, *et al.* Peginterferon Lambda-1a for treatment of outpatients with uncomplicated COVID-19: a randomized placebo-controlled trial. *Nature Communications* **12**, 1967 (2021).
30. Eiger BioPharmaceuticals I. Eiger's Single-dose Peginterferon Lambda for COVID-19 Reduced Risk of Hospitalization or ER Visits by 50% in a Predominantly Vaccinated Population in Phase 3 TOGETHER Study.). Cision Distribution (2022).
31. Roozbeh F, *et al.* Sofosbuvir and daclatasvir for the treatment of COVID-19 outpatients: a double-blind, randomized controlled trial. *Journal of Antimicrobial Chemotherapy* **76**, 753-757 (2020).
32. Bosaeed M, *et al.* Efficacy of favipiravir in adults with mild COVID-19: a randomized, double-blind, multicentre, placebo-controlled clinical trial. *Clin Microbiol Infect* **28**, 602-608 (2022).
33. Reis G, *et al.* Effect of Early Treatment With Hydroxychloroquine or Lopinavir and Ritonavir on Risk of Hospitalization Among Patients With COVID-19: The TOGETHER Randomized Clinical Trial. *JAMA Netw Open* **4**, e216468 (2021).

34. Reis G, *et al.* Effect of early treatment with fluvoxamine on risk of emergency care and hospitalisation among patients with COVID-19: the TOGETHER randomised, platform clinical trial. *Lancet Glob Health* **10**, e42-e51 (2022).
35. Lenze EJ, *et al.* Fluvoxamine vs Placebo and Clinical Deterioration in Outpatients With Symptomatic COVID-19: A Randomized Clinical Trial. *JAMA* **324**, 2292-2300 (2020).
36. Reis G, *et al.* Effect of Early Treatment with Ivermectin among Patients with Covid-19. *N Engl J Med*, (2022).
37. Rezai MS, *et al.* Non-effectiveness of Ivermectin on Inpatients and Outpatients With COVID-19; Results of Two Randomized, Double-Blinded, Placebo-Controlled Clinical Trials. *Front Med (Lausanne)* **9**, 919708 (2022).
38. Naggie S, *et al.* Effect of Ivermectin vs Placebo on Time to Sustained Recovery in Outpatients With Mild to Moderate COVID-19: A Randomized Clinical Trial. *JAMA* **328**, 1595-1603 (2022).
39. Mitjà O, *et al.* Hydroxychloroquine for Early Treatment of Adults With Mild Coronavirus Disease 2019: A Randomized, Controlled Trial. *Clinical Infectious Diseases* **73**, e4073-e4081 (2020).
40. Schwartz I, *et al.* Assessing the efficacy and safety of hydroxychloroquine as outpatient treatment of COVID-19: a randomized controlled trial. **9**, E693-E702 (2021).
41. Skipper CP, *et al.* Hydroxychloroquine in Nonhospitalized Adults With Early COVID-19 : A Randomized Trial. *Ann Intern Med* **173**, 623-631 (2020).
42. Johnston C, *et al.* Hydroxychloroquine with or without azithromycin for treatment of early SARS-CoV-2 infection among high-risk outpatient adults: A randomized clinical trial. *Eclinicalmedicine* **33**, (2021).
43. Rossignol JF, Bardin MC, Fulgencio J, Mogelnicki D, Brechot C. A randomized double-blind placebo-controlled clinical trial of nitazoxanide for treatment of mild or moderate COVID-19. *Eclinicalmedicine* **45**, 101310 (2022).
44. Tardif JC, *et al.* Colchicine for community-treated patients with COVID-19 (COLCORONA): a phase 3, randomised, double-blinded, adaptive, placebo-controlled, multicentre trial. *Lancet Respir Med* **9**, 924-932 (2021).

45. Cairns DM, *et al.* Efficacy of Niclosamide vs Placebo in SARS-CoV-2 Respiratory Viral Clearance, Viral Shedding, and Duration of Symptoms Among Patients With Mild to Moderate COVID-19: A Phase 2 Randomized Clinical Trial. *JAMA Network Open* **5**, e2144942-e2144942 (2022).
46. Connors JM, *et al.* Effect of Antithrombotic Therapy on Clinical Outcomes in Outpatients With Clinically Stable Symptomatic COVID-19: The ACTIV-4B Randomized Clinical Trial. *JAMA* **326**, 1703-1712 (2021).
47. Gonzalez-Ochoa AJ, *et al.* Sulodexide in the Treatment of Patients with Early Stages of COVID-19: A Randomized Controlled Trial. *Thromb Haemost* **121**, 944-954 (2021).
48. Cools F, *et al.* Thromboprophylactic low-molecular-weight heparin versus standard of care in unvaccinated, at-risk outpatients with COVID-19 (ETHIC): an open-label, multicentre, randomised, controlled, phase 3b trial. *Lancet Haematol* **9**, e594-e604 (2022).
49. Barco S, *et al.* Enoxaparin for primary thromboprophylaxis in symptomatic outpatients with COVID-19 (OVID): a randomised, open-label, parallel-group, multicentre, phase 3 trial. *Lancet Haematol* **9**, e585-e593 (2022).
50. Duvignaud A, *et al.* Inhaled ciclesonide for outpatient treatment of COVID-19 in adults at risk of adverse outcomes: a randomised controlled trial (COVERAGE). *Clin Microbiol Infect* **28**, 1010-1016 (2022).
51. Khorshiddoust RR, *et al.* Efficacy of a multiple-indication antiviral herbal drug (Saliravira(R)) for COVID-19 outpatients: A pre-clinical and randomized clinical trial study. *Biomed Pharmacother* **149**, 112729 (2022).
52. Hinks TSC, *et al.* Azithromycin versus standard care in patients with mild-to-moderate COVID-19 (ATOMIC2): an open-label, randomised trial. *Lancet Respir Med* **9**, 1130-1140 (2021).
53. Oldenburg CE, *et al.* Effect of Oral Azithromycin vs Placebo on COVID-19 Symptoms in Outpatients With SARS-CoV-2 Infection: A Randomized Clinical Trial. *Jama* **326**, 490-498 (2021).
54. McCreary MR, Schnell PM, Rhoda DA. Randomized double-blind placebo-controlled proof-of-concept trial of resveratrol for outpatient treatment of mild coronavirus disease (COVID-19). *Sci Rep* **12**, 10978 (2022).

55. Zhou S, *et al.* beta-d-N4-hydroxycytidine Inhibits SARS-CoV-2 Through Lethal Mutagenesis But Is Also Mutagenic To Mammalian Cells. *J Infect Dis* **224**, 415-419 (2021).
56. Gupta K, Strymish J, Stack G, Charness M. Rapid Relapse of Symptomatic SARS-CoV-2 Infection Following Early Suppression with Nirmatrelvir/Ritonavir. *Research Square* (2022).
57. Simonovich VA, *et al.* A Randomized Trial of Convalescent Plasma in Covid-19 Severe Pneumonia. *N Engl J Med* **384**, 619-629 (2020).
58. Focosi D, Maggi F, Franchini M, McConnell S, Casadevall A. Analysis of Immune Escape Variants from Antibody-Based Therapeutics against COVID-19: A Systematic Review. *Int J Mol Sci* **23**, 29 (2022).
59. Hasan Ali O, *et al.* Severe COVID-19 is associated with elevated serum IgA and antiphospholipid IgA-antibodies. *Clinical Infectious Diseases*, (2020).
60. Focosi D, Franchini M, Joyner MJ, Casadevall A. Comparative analysis of antibody responses from COVID-19 convalescents receiving various vaccines reveals consistent high neutralizing activity for SARS-CoV-2 variant of concern Omicron. 2021.2012.2024.21268317 (2021).
61. Nguyen TV, *et al.* RCT studies on preventive measures and treatments for COVID-19. *Zenodo*, (2020).
62. Boutron I, *et al.* The COVID-NMA Project: Building an Evidence Ecosystem for the COVID-19 Pandemic. *Ann Intern Med* **173**, 1015-1017 (2020).
63. JPT H, S G. Cochrane Handbook for Systematic Reviews of Interventions Version 5.1.0. In: *The Cochrane Collaboration*, 2011). [www.handbook.cochrane.org](http://www.handbook.cochrane.org) (2011).

Table 1

Demographic and clinical characteristics of recruits in the RCTs analyzed in this review.

| Study  | mITT  | median age (range) | total female n(%) | White n(%) | Black n(%) | Hispanic n(%) | 1 or more medical high risk conditions for COVID-19 progression | diabetes n(%) | hypertension n(%) | obesity or BMI > 30 n(%) | median duration symptoms | Seropositive at baseline n(%)         | Hospital type         | Endpoint days for hosp |
|--|-------|--------------------|-------------------|------------|------------|---------------|---|---------------|-------------------|--------------------------|--------------------------|---------------------------------------|-----------------------|------------------------|
| CCP (5 RCTs) totals or averages                        | 2634  | 58                 | 1409 (53)         | 2213 (84)  | 266 (10)   | 862 (33)      | 2074 (79)   | 326 (15)      | 606 (33)          | 854 (38)                 | 4.5                      | 73 (9)                                |                       |                        |
| anti-Spike mAbs (8 RCTs) totals or averages            | 7421  | 47                 | 3944 (53)         | 6214 (84)  | 455 (6)    | 3113 (42)     | 6562 (88)   | 1067 (14)     | 1249 (17)         | 3197 (43)                | 3.5                      | 1087 (15)                             |                       |                        |
| Small molecule antivirals (11 RCTs) totals or averages | 33148 | 45.4               | 18116 (55)        | 28726 (87) | 399 (1)    | 2458 (7)      | 22400 (68)  | 3150 (10)     | 6954 (21)         | 6271 (19)                | 4                        | 25710 (77) {710/8148=9% w/o-Mol-Pan.} |                       |                        |
| Repurposed drugs (27 RCTs) totals or averages          | 16840 | 48                 | 9595 (57)         | 14752 (89) | 815 (5)    | 4212 (32)     | 8669 (88)   | 2174 (13)     | 4318 (27)         | 6615 (46)                | 5.1                      | 2303 (51)                             |                       |                        |
| CCP-CONV-ert <sup>16</sup>                             | 376   | 56                 | 173 (46)          | 0          | 0          | 376 (100)     | 278 (74)  | 49 (13)       | not reported      | 96 (26)                  | 4.4                      | 43 (11)                               | All cause             | 28-30                  |
| CCP-COV-Early <sup>19</sup>                            | 406   | 58                 | 187 (46)          | 406 (100)  | 0          | 0             | 278 (68)  | not reported  | not reported      | not reported             | 5 (iqr4-6)               | 30 (8)                                | All cause             | 28-30                  |
| CCP-C3PO <sup>15</sup>                                 | 511   | 54                 | 274 (54)          | 237 (46)   | 103 (20)   | 156 (31)      | 511 (100)   | 142 (28)      | 216 (42)          | 302 (59)                 | 4                        | not reported                          | All cause             | 15                     |
| CCP-Argentina <sup>14</sup>                            | 160   | 77 (65-90+)        | 100 (62)          | 0          | 0          | 160 (100)     | 131 (82)  | 36 (23)       | 114 (71)          | 12 (8)                   | 3                        | not reported                          | hypoxia resp rate def | 28-30                  |

|  |           |                          |                   |                   |              |              |                |                     |                 |                  |   |                                   |  |       |
|--|-----------|--------------------------|-------------------|-------------------|--------------|--------------|----------------|---------------------|-----------------|------------------|---|-----------------------------------|--|-------|
| CCP-CSSC-004 <sup>11</sup>                                   | 1181      | 43<br>(18-85)            | 675<br>(57)       | 934<br>(79)       | 163<br>(14)  | 170<br>(14)  | 470 (40)       | 99 (8)              | 276 (23)        | 444<br>(38)      | 6 | not reported                      | COVI<br>D-19<br>related                  | 28-30 |
| Bamlanivimab-<br>BLAZE-1 <sup>2</sup>                        | 452       | 45<br>(18-86)            | 249<br>(55)       | 389<br>(86)       | 29<br>(6)    | 198<br>(44)  | 310 (69)       |                     | not<br>reported | 201<br>(44)      | 4 | not reported                      | COVI<br>D-19<br>related<br>+ ED<br>visit | 28-30 |
| Sotrovimab-<br>COMET-ICE <sup>23</sup>                       | 1057      | 53(17<br>-96)            | 571<br>(54)       | 919<br>(87)       | 42<br>(4)    | 687<br>(65)  | 1055<br>(99.9) | 233<br>(23)         | not<br>reported | 665<br>(63)      | 3 | not reported                      | All<br>cause                             | 28-30 |
| Bamlanivimab/etesev<br>imab-BLAZE-1 <sup>3</sup>             | 1035      | 54<br>(12-<br>77+)       | 538<br>(52)       | 896<br>(87)       | 83<br>(8)    | 304<br>(29)  | 983 (95)       | 285<br>(28)         | not<br>reported | median<br>34 bmi | 4 | not reported                      | COVI<br>D-19<br>related                  | 28-30 |
| Casirivimab/<br>imdevimab-REGEN-<br>COV Ph 3 <sup>21</sup>   | 2696      | 50<br>(iqr<br>39-<br>50) | 1407<br>(52)      | 2297<br>(85)      | 143<br>(5)   | 935<br>(35)  | 2696<br>(100)  | 412<br>(15)         | 993 (37)        | 1559<br>(58)     | 3 | 620 (23)                          | COVI<br>D-19<br>related                  | 28-30 |
| Casirivimab/<br>imdevimab-REGEN-<br>COV Ph 1/2 <sup>20</sup> | 799       | 42<br>(iqr<br>31-<br>52) | 423<br>(53)       | 681<br>(85)       | 74<br>(9)    | 403<br>(50)  | 483 (61)       |                     |                 | 298<br>(37)      | 3 | 304 (38)                          | All<br>cause                             | 28-30 |
| Bebtelovimab-<br>BLAZE-4 <sup>12</sup>                       | 253       | 34                       | 135<br>(53)       | 187<br>(74)       | 48<br>(19)   | 91 (36)      | 0 (0)          | not<br>report<br>ed | not<br>reported |                  | 3 | 27 (11)                           | COVI<br>D-19<br>related                  | 28-30 |
| Regdanvimab-CT-<br>P59 <sup>23</sup>                         | 307       | 51<br>(iqr40<br>-60)     | 166<br>(51)       | 286<br>(87)       | 0            | 27 (8)       | 226 (69)       | 29 (9)              | not<br>reported | 52 (16)          | 3 | 9 (3)                             | All<br>cause                             | 28-30 |
| Tixagevimab-<br>cilgavimab-<br>TACKLE <sup>24</sup>          | 822       | 46 (sd<br>15.2)          | 455<br>(50)       | 559<br>(62)       | 36<br>(4)    | 468<br>(52)  | 809 (90)       | 108<br>(12)         | 256 (28)        | 388<br>(43)      | 5 | 127 (14)                          | COVI<br>D-19<br>related                  | 28-30 |
| Molnupiravir-MOVE-<br>OUT <sup>7</sup>                       | 1408      | 43<br>(18-<br>90)        | 735<br>(51.3<br>) | 813<br>(56)       | 75<br>(5)    | 711<br>(49)  | 1424<br>(99.4) | 228<br>(15.9)<br>%  | not<br>reported | 1056(7<br>3)     | 3 | 620 (23)                          | All<br>cause                             | 28-30 |
| Molnupiravir-<br>PANORAMIC <sup>25</sup>                     | 2500<br>0 | 57<br>(18-<br>99)        | 1510<br>1<br>(59) | 2427<br>0<br>(94) | 155<br>(0.6) |              | 17759<br>(69)  | 2195<br>(9)%        | 5782 (22)       | 3912<br>(15)%    | 3 | 25333 (98) 2+<br>doses of vaccine | All<br>cause                             | 28-30 |
| Molnupiravir-<br>Aurobindo <sup>27</sup>                     | 1220      | 36<br>(18-<br>60)        | 468<br>(38)       | 1220<br>(100)     | 0            | 0            | 90 (7.3)       |                     |                 |                  | 3 | not reported                      | All<br>cause                             | 28-30 |
| Nirmatrelvir/ritonavir<br>-EPIC-HR <sup>7</sup>              | 2085      | 46<br>(18-<br>88)        | 1098<br>(49)      | 1607<br>(72)      | 110<br>(4.9) | 1010<br>(45) | 2085<br>(100)  | 252<br>(11)         | 739 (33)        | 744<br>(36)      | 3 | 27 (11)                           | COVI<br>D-19<br>related                  | 28-30 |



|  |      |                   |             |              |             |              |               |             |                 |             |              |              |                         |  |
|--|------|-------------------|-------------|--------------|-------------|--------------|---------------|-------------|-----------------|-------------|--------------|--------------|-------------------------|--|
| Remdesivir-PINETREE <sup>27</sup>                | 562  | 50<br>(12-77+)    | 269<br>(48) | 452<br>(80)  | 42<br>(7.5) | 235<br>(41)  | 562<br>(100)  | 346<br>(62) | 268 (48)        | 310<br>(55) | 5            | 9 (3)        | COVI<br>D-19<br>related | 28-30  |
| Interferon Lambda-TOGETHER <sup>30</sup>         | 1936 |                   |             |              |             |              |               |             |                 |             | not reported | not reported | COVI<br>D-19<br>related | 28-30  |
| Interferon Lambda-ILIAD <sup>28</sup>            | 60   | 46<br>(iqr32-54)  | 35<br>(60)  | 31           | 6           |              | 9             |             |                 | 12          | 5            | 5/51 (10)    | COVI<br>D-19<br>related | 14   |
| Interferon Lambda-COVID-Lambda <sup>29</sup>     | 120  | 36<br>(18-71)     | 50<br>(42)  | 33<br>(28)   |             | 74 (63)      |               | 12<br>(10)  | 14 (12)         |             | 5 (iqr3-6)   | 49 (41)      | All<br>cause            | 28-30  |
| Sofosbuvir and daclatasvir-SOVODAK <sup>31</sup> | 55   | <50               | 29<br>(53)  | 55<br>(100)  |             |              |               |             |                 |             | not reported | not reported | All<br>cause            | 28-30  |
| Favipiravir-Avi-Mild-19 <sup>32</sup>            | 231  | 37<br>(iqr32-44)  | 76<br>(33)  | 231<br>(100) | 0           | 0            |               | 25<br>(11)  | 14 (6)          | 39 (17)     | 3            | not reported | All<br>cause            | 28-30  |
| Lopinavir/ritonavir-TOGETHER <sup>33</sup>       | 471  | 53<br>(IQR 18-94) | 255<br>(54) | 14 (3)       | 11<br>(2)   | 428<br>(91)  | 471<br>(100)  | 92<br>(20)  | 137 (29)        | 198<br>(42) | 6            | not reported | COVI<br>D-19<br>related | 90   |
| Metformin-COVID-OUT <sup>13</sup>                | 1197 | 46<br>(iqr 37-55) | 741<br>(56) | 1091<br>(82) | 90<br>(7)   |              |               | 26 (2)      | 353 (27)<br>cvd | 646<br>(49) | 5            | 690 (52fv)   | COVI<br>D-19<br>related | 28-30  |
| Fluvoxamine-TOGETHER <sup>35</sup>               | 1497 | <50               | 862<br>(58) | 1486<br>(99) | 5 (1)       | 1486<br>(99) | 1497<br>(100) | 243<br>(16) | 194 (13)        | 751<br>(50) | 4            | not reported | COVI<br>D-19<br>related | 28-30  |
| Fluvoxamine -STOP COVID <sup>36</sup>            | 152  | 46                | 109<br>(72) | 106<br>(70)  | 38<br>(25)  | 5 (3)        |               | 17<br>(11)  | 30 (20)         | 75 (49)     | 4            | not reported | COVI<br>D-19<br>related | 15 (2<br>noncov<br>id after<br>day 15<br>to day<br>28) |
| Fluvoxamine-COVID-OUT <sup>13</sup>              | 592  | 44<br>(iqr37-53)  | 358<br>(54) | 539<br>(82)  | 51<br>(8)   |              |               | 7 (1)       | 172 (26)<br>cvd | 302<br>(46) | 5            | 373 (56fv)   | COVI<br>D-19<br>related | 28-30  |
| Ivermectin-TOGETHER <sup>37</sup>                | 1349 | 49                | 791<br>(58) | 1310<br>(98) | 12<br>(1)   | 1310<br>(98) | 1349<br>(100) | 180<br>(13) | 114 (8)         | 675<br>(50) | 4            | not reported | COVI<br>D-19<br>related | 28-30  |

|  |      |                |           |           |         |          |            |          |              |           |                |              |                   |            |
|--|------|----------------|-----------|-----------|---------|----------|------------|----------|--------------|-----------|----------------|--------------|-------------------|------------|
| Ivermectin-COVID-OUT <sup>13</sup>             | 730  | 46 (iqr37-56)  | 442 (55)  | 662 (82)  | 59 (7)  |          |            | 13 (2)   | 184 (23) cvd | 383 (47)  | 5              | 449 (56fv)   | COVI D-19 related | 28-30      |
| Ivermectin Iran <sup>38</sup>                  | 549  | 35 (5-87)      | 294 (48)  | 582 (100) | 0       | 0        | 112 (20)   | 42 (7.3) | 46 (7.8)     | 101 (21)  | 3              | not reported | All cause         | not stated |
| Ivermectin-ACTIV-6 <sup>39</sup>               | 1591 | 47 (iqr39-56)  | 932 (59)  | 1286 (81) | 113(7)  | 163 (10) |            | 184      | 415          | 648       | 6              | 753 (fv47)   | All cause         | 28-30      |
| Hydroxychloroquine-TOGETHER <sup>34</sup>      | 441  | 53 (IQR 18-81) | 243 (55)  | 422 (96)  | 7 (1)   | 422 (96) | 441 (100)  | 89 (20)  | 210 (48)     | 177 (40)  | 6              | not reported | COVI D-19 related | 90         |
| Hydroxychloroquine-COVID-19 PEP <sup>42</sup>  | 423  | 40 (iqr 32-50) | 238 (56)  | 235 (48)  | 15 (3)  | 28 (6)   |            | 15 (3)   | 46 (11)      |           | 2              | not reported | All cause         | 14         |
| Hydroxychloroquine-AH COVID-19 <sup>41</sup>   | 148  | 47             | 66 (45)   | 51        | 12      |          |            | 29       | 41           |           | 7 (iqr5-8)     | not reported | All cause         | 28-30      |
| Hydroxychloroquine-BCN PEP-CoV-2 <sup>40</sup> | 293  | 42 (12 sd)     | 201 (69)  |           |         |          | 156 (53)   | 20 (7)   |              |           | 3 (iqr 2-4)    | not reported | All cause         | 28-30      |
| Hydroxychloroquine-BMG <sup>43</sup>           | 231  | 37 (18-78)     | 131 (57)  | 117 (51)  | 26 (11) | 71 (31)  | 129 (56)   | 17 (7)   | 27 (12)      | 98 (42)   | 6              | not reported | COVI D-19 related | 28-30      |
| Nitazoxanide-Romark <sup>43</sup>              | 379  | 40 (12-83)     | 214 (57)  | 233 (61)  | 8 (2)   | 130 (34) | 238 (63%)  |          |              |           | 2              | 38 (10)      | COVI D-19 related | 28-30      |
| Colchicine-COLCORONA <sup>44</sup>             | 4488 | 54 (iqr 47-61) | 2421 (54) | 4182 (93) | 233 (5) | <10%     | 4488 (100) | 894 (20) | 1629 (36)    | 2052 (46) | 5.3            | not reported | COVI D-19 related | 28-30      |
| Niclosamide <sup>45</sup>                      | 67   | 36 mean        | 26 (39)   | 53 (79)   | 4 (6)   | 7 (10)   |            |          | 5 (8)        | 4 (7)     | not reported   | not reported | All cause         | 28-30      |
| aspirin-ACTIV-4B <sup>46</sup>                 | 280  | 54 (iqr 46-59) | 191 (58)  | 250 (76)  | 36 (11) | 93 (28)  |            | 53 (16)  | 109 (33)     | 164 (50)  | 10 (diagnosis) | not reported | All cause         | 45         |
| 2.5-mg apixaban-ACTIV-4B <sup>46</sup>         | 271  | 54 (iqr 46-59) | 191 (58)  | 255 (78)  | 38 (12) | 91 (28)  |            | 60 (18)  | 120 (37)     | 164 (50)  | 10 (diagnosis) | not reported | All cause         | 45         |
| 5-mg apixaban-ACTIV-4B <sup>46</sup>           | 279  | 54 (iqr        | 198 (6)   | 251 (77)  | 36 (11) | 80 (24)  |            | 55 (17)  | 111 (34)     | 164 (50)  | 10 (diagnosis) | not reported | All cause         | 45         |

|  |     |               |          |           |        |           |          |             |              |          |              |              |           |       |
|--|-----|---------------|----------|-----------|--------|-----------|----------|-------------|--------------|----------|--------------|--------------|-----------|-------|
|  |     | 46-59)        |          |           |        |           |          |             |              |          |              |              |           |       |
| Sulodexide <sup>47</sup>                   | 243 | 55            | 128 (53) | 243 (100) |        | 243 (100) |          | 50 (21)     | 83 (43)      |          | 3            | not reported | All cause | 21    |
| Enoxaparin-ETHIC <sup>49</sup>             | 219 | 59 (iqr51-66) | 96 (44)  | 129 (59)  | 5 (2)  | 12 (5)    |          | 50/152 (33) | 114/152 (75) | 109 (49) | 5            | not reported | All cause | 21    |
| Enoxaparin-OVID <sup>50</sup>              | 572 | 56 (iqr53-62) | 217 (38) | 446 (78)  | 3 (1)  |           |          | 38 (7)      | 115 (20)     |          | 3 (dx)       | not reported | All cause | 28-30 |
| Inhaled ciclesonide-COVERAGE <sup>50</sup> | 217 | 63 (50-86)    | 111 (51) | 217 (100) | 0      | 0         | 157 (72) | 33(16)      | 89 (41)      | 52 (24)  | 4            | not reported | All cause | 28-30 |
| Saliravira <sup>51</sup>                   | 143 | 50 (24-80)    | 59 (41)  | 143 (100) |        |           |          |             | 33 (23)      |          | not reported | not reported | All cause | 23    |
| Azithromycin-Atomic <sup>52</sup>          | 292 | 46            | 143 (49) | 201 (68)  | 11 (4) |           | 70 (24)  | 25 (9)      | 52 (18)      |          | 6            | not reported | All cause | 28-30 |
| Azithromycin-ACTION <sup>53</sup>          | 197 | 43            | 130 (66) | 169 (86)  | 9 (5)  | 59 (30)   |          | 24 (12)     | 26 (13)      |          | 6            | not reported | All cause | 21    |
| Resveratrol <sup>54</sup>                  | 100 | 55 (45-84)    | 62 (59)  | 93 (89)   | 4 (4)  | 2 (2)     | 32 (30)  | 10 (10)     |              | 50 (50)  | 5            | not reported | All cause | 21    |

Table 2

Hospital rates, risk reductions, NNT, numbers and symptom resolution

| Study   | Control hospitalizations % | hospitalizations % in intervention arm | ARR percent (95% CI) | RRR percent (95% CI) | NNT to prevent 1 hospitalization | Hospitalization (n) in control arm | total pts in control arm (n) | Hospitalization (n) in intervention arm | Total pts (n) in intervention arm | Symptom resolution: median duration- Intervention to control in days |
|---|----------------------------|--|----------------------|----------------------|----------------------------------|------------------------------------|------------------------------|---|-----------------------------------|--|
| CCP (5 RCT) % or totals   | 12.0                       | 8.8                                    | 3.2 (0.9, 5.6)       | 26.8 (8.1, 41.7)     | 31                               | 158                                | 1315                         | 116                                     | 1319                              |  |
| anti-Spike mAbs (8 RCT) % or totals                               | 5.5                        | 1.8                                    | 3.7 (2.8, 4.6)       | 67.2 (57.1, 74.9)    | 27                               | 190                                | 3443                         | 72                                      | 3978                              |  |
| Small molecule antiviral (11 RCTs) total or average               | 1.9                        | 1.3                                    | 0.7 (0.4, 0.9)       | 34.5 (22.2, 44.9)    | 149                              | 322                                | 16606                        | 210                                     | 16542                             |  |
| Small molecule antiviral (10 RCTs -w/o Mol-Pan.) total or average | 5.5                        | 2.7                                    | 2.8 (2.0, 3.7)       | 51.5 (39.2, 61.3)    | 35                               | 226                                | 4122                         | 107                                     | 4026                              |  |
| Repurposed drugs (20 RCTs) total or average                       | 6.5                        | 5.1                                    | 1.4 (0.7, 2.1)       | 21.9 (11.7, 30.9)    | 70                               | 541                                | 8316                         | 433                                     | 8524                              |  |
| All (47 RCTs) total or average                                    | 4.1                        | 2.7                                    | 1.3 (1.1, 1.6)       | 32.9 (26.8, 38.5)    | 74                               | 1211                               | 29680                        | 831                                     | 30363                             |  |
| CCP-CONV-ert <sup>16</sup>  | 11.2                       | 11.7                                   | -0.5 (-7.0, 5.9)     | -4.8 (-83.9, 40.3)   | -188                             | 21                                 | 188                          | 22                                      | 188                               | NO difference 12 d vs 12 d   |
| CCP-COV-Early <sup>19</sup>                                       | 9.3                        | 5.9                                    | 3.4 (-1.8, 8.5)      | 36.2 (-27.9, 68.2)   | 29                               | 19                                 | 204                          | 12                                      | 202                               | NO difference 13 d vs 12 d   |
| CCP-C3PO <sup>15</sup>  | 22.0                       | 20.2                                   | 1.8 (-5.3, 8.9)      | 8.2 (-28.3, 34.4)    | 55                               | 56                                 | 254                          | 52                                      | 257                               | NO difference  |

|   |      |      |                        |                        |       |    |       |     |       |                               |
|---|------|------|------------------------|------------------------|-------|----|-------|-----|-------|-------------------------------|
| CCP-Argentina <sup>14</sup>                                 | 31.3 | 16.3 | 15.0<br>(2.0,<br>28.0) | 48.0 (5.8,<br>71.3)    | 7     | 25 | 80    | 13  | 80    | Not reported                  |
| CCP-CSSC-004 <sup>11</sup>                                  | 6.3  | 2.9  | 3.4 (1.0,<br>5.8)      | 54.3 (19.7,<br>74.0)   | 29    | 37 | 589   | 17  | 592   | Not reported                  |
| CCP-Argentina<br>(high titer) <sup>14</sup>                 | 8.3  | 31.3 | 22.9 (9.3,<br>36.5)    | 73.3 (17.4,<br>91.4)   | 4     | 25 | 80    | 3   | 36    | Not reported                  |
| CCP-CSSC-004 (<= 5 days) <sup>11</sup>                      | 1.9  | 9.7  | 7.7 (3.7,<br>11.7)     | 79.9 (48.4,<br>92.2)   | 13    | 25 | 259   | 5   | 257   | Not reported                  |
| Bamlanivimab-<br>BLAZE-1 <sup>2</sup>                       | 6.3  | 1.6  | 4.7 (0.5,<br>8.9)      | 74.3 (24.7,<br>91.2)   | 21    | 9  | 143   | 5   | 309   | NO difference 11 d<br>to 11 d |
| Sotrovimab-<br>COMET-ICE <sup>23</sup>                      | 5.7  | 1.1  | 4.5 (2.4,<br>6.7)      | 80.0 (52.3,<br>91.6)   | 22    | 30 | 529   | 6   | 528   | Not reported                  |
| Bamlanivimab/etese<br>vimab-BLAZE-1 <sup>3</sup>            | 7.0  | 2.1  | 4.8 (2.3,<br>7.4)      | 69.5 (40.8,<br>84.3)   | 21    | 36 | 517   | 11  | 518   | YES- 8d vs 9d<br>p=0.007      |
| Casirivimab/imdevi<br>mab-REGEN-COV<br>Ph 3 <sup>21</sup>   | 4.6  | 1.3  | 3.3 (2.0,<br>4.6)      | 71.3 (51.7,<br>82.9)   | 30    | 62 | 1341  | 18  | 1355  | YES- 10 d vs 14<br>p=0.0001   |
| Casirivimab/imdevi<br>mab-REGEN-COV<br>Ph 1/2 <sup>20</sup> | 1.9  | 0.6  | 1.3 (-0.4,<br>3.1)     | 70.1 (-24.4,<br>92.8)  | 76    | 5  | 266   | 3   | 533   | Not reported                  |
| Bebtelovimab-<br>BLAZE-4 <sup>12</sup>                      | 1.6  | 1.6  | -0.4 (-<br>3.1, 3.0)   | -2.4 (-615.7,<br>85.4) | -2667 | 2  | 128   | 2   | 125   | YES- 6d to 8d<br>p=0.003      |
| Regdanvimab-CT-<br>P59 <sup>23</sup>                        | 8.7  | 4.4  | 4.2 (-1.9,<br>10.3)    | 48.8 (-25.2,<br>79.0)  | 23    | 9  | 104   | 9   | 203   | YES 6 d vs 9 d<br>p=0.01      |
| Tixagevimab-<br>cilgavimab-<br>TACKLE <sup>24</sup>         | 8.9  | 4.4  | 4.5 (1.1,<br>7.9)      | 50.4 (14.3,<br>71.3)   | 22    | 37 | 415   | 18  | 407   | Not reported                  |
| Molnupiravir-<br>MOVE-OUT <sup>7</sup>                      | 9.7  | 6.8  | 3.0 (0.1,<br>5.8)      | 30.4 (0.8,<br>51.2)    | 34    | 68 | 699   | 48  | 709   | NO difference                 |
| Molnupiravir-<br>PANORAMIC <sup>25</sup>                    | 0.8  | 0.8  | -0.1 (-<br>0.3, 0.2)   | -7.0 (-41.2,<br>18.9)  | -1853 | 96 | 12484 | 103 | 12516 | YES 9 d vs 15 d               |
| Molnupiravir-<br>Aurobindo <sup>27</sup>                    | 0.0  | 0.0  | NC                     | NC                     | 0     | 0  | 610   | 0   | 610   | Yes 10 d vs 14 d<br>p<0.001   |

|  |      |      |                   |                      |      |     |      |    |      |   |
|--|------|------|-------------------|----------------------|------|-----|------|----|------|---|
| Nirmatrelvir/ritonavir-EPIC-HR <sup>7</sup>      | 6.3  | 0.8  | 5.5 (4.0, 7.1)    | 87.8 (74.7, 94.1)    | 18   | 66  | 1046 | 8  | 1039 | Not reported  |
| Remdesivir-PINETREE <sup>27</sup>                | 5.3  | 0.7  | 4.6 (1.8, 7.4)    | 86.5 (41.4, 96.9)    | 22   | 15  | 283  | 2  | 279  | YES- Alleviation of symptoms by day 14 (rate ratio, 1.92; 95% CI, 1.26 to 2.94) |
| Interferon Lambda-TOGETHER <sup>30</sup>         | 5.6  | 2.7  | 2.9 (1.1, 4.6)    | 51.2 (22.5, 69.2)    | 35   | 57  | 1020 | 25 | 916  | Not reported  |
| Interferon Lambda-ILIAD <sup>28</sup>            | 3.3  | 3.3  | 0 (-9.1, 9.1)     | 0 (-1426, 93.4)      |      | 1   | 30   | 1  | 30   | No difference   |
| Interferon Lambda-COVID-Lambda <sup>29</sup>     | 3.3  | 3.3  | 0 (-6.4, 6.4)     | 0 (-586.9, 85.4)     |      | 2   | 60   | 2  | 60   | NO difference 20 d vs 20 d  |
| Sofosbuvir and daclatasvir-SOVODAK <sup>31</sup> | 14.3 | 3.7  | 10.6 (-4.2, 25.4) | 74.1 (-117, 96.9)    | 9    | 4   | 28   | 1  | 27   | NO difference in 7 d symptoms   |
| Favipavir-Avi-Mild-19 <sup>32</sup>              | 1.7  | 5.4  | -3.7 (-8.4, 1.1)  | -219 (-1447, 34.3)   | -27  | 2   | 119  | 6  | 112  | NO difference 7d vs 7d  |
| Lopinavir/ritonavir-TOGETHER <sup>33</sup>       | 4.8  | 5.7  | -0.9 (-4.9, 3.1)  | -18.4 (-155.4, 45.1) | -112 | 11  | 227  | 14 | 244  | NO difference by Cox proportional HR  |
| Metformin-COVID-OUT <sup>13</sup>                | 3.2  | 1.3  | 1.8 (0.1, 3.5)    | 57.5 (3.8, 81.3)     | 55   | 19  | 601  | 8  | 596  | NO difference   |
| Fluvoxamine-TOGETHER <sup>35</sup>               | 12.8 | 10.1 | 2.7 (-0.5, 5.9)   | 21.1 (-4.8, 40.6)    | 37   | 97  | 756  | 75 | 741  | NO difference- 40% resolved by day 14   |
| Fluvoxamine-STOP COVID <sup>36</sup>             | 8.3  | 0.0  | 8.3 (1.9, 14.7)   | 1 (1, 1)             | 12   | 6   | 72   | 0  | 80   | YES (100% vs 91.7% resolved on day 7) p=0.009                                   |
| Fluvoxamine-COVID-OUT <sup>13</sup>              | 1.7  | 2.0  | -0.3 (-2.5, 1.9)  | -17.6 (-281, 63.7)   | -333 | 5   | 293  | 6  | 299  | No difference (14 symptoms on 4 pt scale over 14 days)                          |
| Ivermectin-TOGETHER <sup>37</sup>                | 15.9 | 14.1 | 1.8 (-2.1, 5.6)   | 11.1 (-14.7, 31.1)   | 57   | 107 | 675  | 95 | 674  | NO difference- 40% resolved by day 14   |
| Ivermectin-COVID-OUT <sup>13</sup>               | 1.4  | 1.1  | 0.3 (-1.3, 1.9)   | 23.9 (-181, 79.4)    | 299  | 5   | 356  | 4  | 374  | No difference (14 symptoms on 4 pt scale over 14 days)                          |



|  |      |      |                   |                     |        |     |      |     |      |  |
|--|------|------|-------------------|---------------------|--------|-----|------|-----|------|--|
| Ivermectin Iran <sup>38</sup>                  | 5.0  | 7.1  | -2.1 (-6.1, 1.9)  | -42.3 (-178, 27.2)  | -47    | 14  | 281  | 19  | 268  | NO difference  |
| Ivermectin-ACTIV-6 <sup>39</sup>               | 1.2  | 1.2  | -0.1 (-1.1, 1.0)  | -5.3 (-158, 57.0)   | -1634  | 9   | 774  | 10  | 817  | No difference (12d vs 13 d)  |
| Hydroxychloroquine-TOGETHER <sup>34</sup>      | 4.8  | 3.7  | 1.1 (-2.7, 4.9)   | 22.9 (-88.1, 68.4)  | 90     | 11  | 227  | 8   | 214  | NO difference by Cox proportional HR   |
| Hydroxychloroquine-COVID-19 PEP <sup>42</sup>  | 4.7  | 2.4  | 2.4 (-1.1, 5.9)   | 50.2 (-43.1, 82.7)  | 42     | 10  | 211  | 5   | 212  | NO Difference in symptom severity score over 14 days                         |
| Hydroxychloroquine-AH COVID-19 <sup>41</sup>   | 0.0  | 3.6  | -3.6 (-7.1, -0.1) | NA                  | -28    | 0   | 37   | 4   | 111  | NO difference 14 d vs 12 d   |
| Hydroxychloroquine-BCN PEP-CoV-2 <sup>40</sup> | 7.0  | 5.9  | 1.1 (-4.5, 6.7)   | 16.0 (-103, 65.2)   | 89     | 11  | 157  | 8   | 136  | NO difference 10 d vs 12 d   |
| Hydroxychloroquine-BMG <sup>43</sup>           | 4.8  | 3.4  | 1.4 (-4.0, 6.9)   | 29.9 (-154, 80.6)   | 69     | 4   | 83   | 5   | 148  | NO difference 11 d vs 12 d   |
| Nitazoxanide-Romark <sup>43</sup>              | 2.6  | 0.5  | 2.0 (-0.4, 4.5)   | 78.8 (-79.7, 97.5)  | 49     | 5   | 195  | 1   | 184  | Yes mild illness (13 d vs 18 d , p=0.01), NO difference for moderate illness |
| Colchicine-COLCORONA <sup>44</sup>             | 5.8  | 4.7  | 1.2 (-0.1, 2.5)   | 20.0 (-2.8, 37.7)   | 86     | 131 | 2253 | 104 | 2235 | Not reported   |
| Niclosamide <sup>45</sup>                      | 2.9  | 0.0  | 2.9 (-2.7, 8.6)   | 1 (1, 1)            | 34     | 1   | 34   | 0   | 33   | NO difference 12 d vs 15 d   |
| Aspirin-ACTIV-4B <sup>46</sup>                 | 0.7  | 0.7  | 0.04 (-1.9, 2.0)  | 5.6 (-1395, 94)     | 2448   | 1   | 136  | 1   | 144  | Not reported   |
| 2.5-mg apixaban-ACTIV-4B <sup>46</sup>         | 0.7  | 0.7  | -0.01 (-2.0, 2.0) | -0.7 (-1494, 93.6)  | -18360 | 1   | 136  | 1   | 135  | Not reported   |
| 5-mg apixaban-ACTIV-4B <sup>46</sup>           | 0.7  | 1.4  | -0.7 (-3.1, 1.7)  | -90.2 (-1974, 82.6) | -151   | 1   | 136  | 2   | 143  | Not reported   |
| Sulodexide <sup>47</sup>                       | 29.4 | 17.7 | 11.7 (1.1, 22.3)  | 39.7 (3.5, 62.3)    | 9      | 35  | 119  | 22  | 124  | Not reported   |
| Enoxaparin-ETHIC <sup>49</sup>                 | 10.5 | 11.4 | -0.9 (-9.2, 7.4)  | -8.6 (-131, 49.0)   | -111   | 12  | 114  | 12  | 105  | Not reported   |

|  |      |      |                   |                    |       |    |     |    |     |                                 |
|--|------|------|-------------------|--------------------|-------|----|-----|----|-----|---------------------------------|
| Enoxaparin-OVID <sup>50</sup>              | 3.4  | 3.4  | -0.1 (-3.3, 3.2)  | -1.7 (-166, 61.2)  | -1740 | 8  | 238 | 8  | 234 | Not reported                    |
| Inhaled ciclesonide-COVERAGE <sup>50</sup> | 11.2 | 12.7 | -1.5 (-10.1, 7.1) | -13.5 (-134, 45.0) | -66   | 12 | 107 | 14 | 110 | NO difference 13 d vs 12 d      |
| Saliravira <sup>51</sup>                   | 28.6 | 0.0  | 28.6 (16.7, 40.4) | 1 (1, 1)           | 4     | 16 | 56  | 0  | 87  | YES 9d vs 14 d p<0.05           |
| Azithromycin-Atomic2 <sup>52</sup>         | 11.6 | 10.3 | 1.2 (-5.9, 8.4)   | 10.5 (-72.3, 53.6) | 82    | 17 | 147 | 15 | 145 | Not reported                    |
| Azithromycin-ACTION <sup>53</sup>          | 0.0  | 4.0  | -4.0 (-7.4, -0.6) | NA                 | -25   | 0  | 72  | 5  | 125 | No difference resolution day 14 |
| Resveratrol <sup>54</sup>                  | 6.0  | 2.0  | 4.0 (-3.6, 11.6)  | 66.7 (-210, 96.4)  | 25    | 3  | 50  | 1  | 50  | Not reported                    |

Table 3

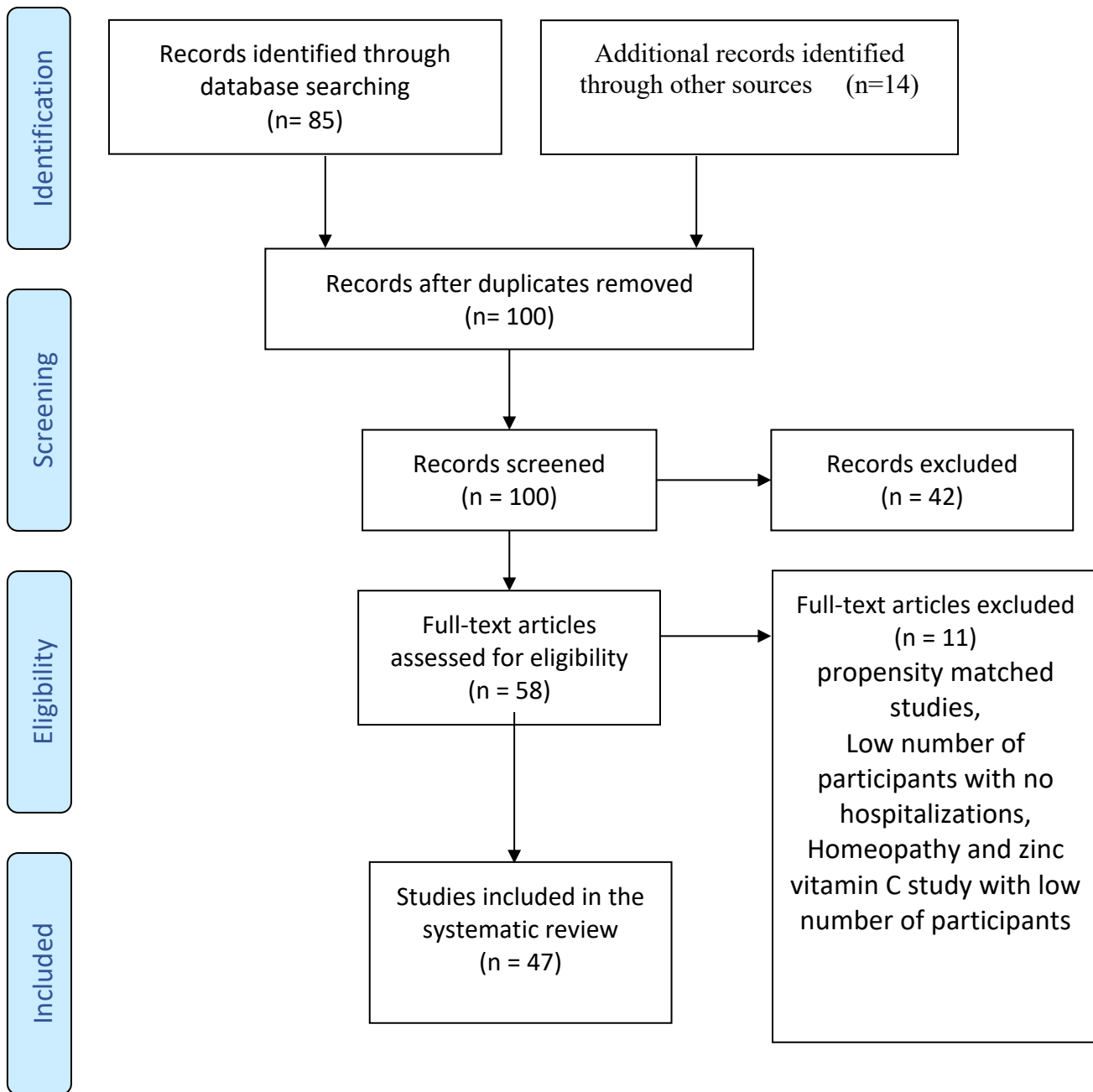
Summary of historical efficacy of different therapeutics against SARS-CoV-2 VOCs. White = drug not available at that time; green = effective; orange = partially effective; red= not effective. Restriction reported refer to initial restrictions by FDA. NNT : number needed to treat.

|                                  | approximate cost per patient | average NNT (sourced from Table 2) | cost to prevent a single hospitalization (€) | efficacy against VOC Alpha | efficacy against VOC Delta | efficacy against VOC BA.1 | efficacy against VOC BA.2 | efficacy against BA.4/5 | efficacy against BQ.1.1 |
|----------------------------------|------------------------------|------------------------------------|--|----------------------------|----------------------------|---------------------------|---------------------------|-------------------------|-------------------------|
| <b>bamlanivimab+etesesevimab</b> | 2000                         | 21                                 | 42,000                                       | green                      | restricted 04/2021         | red                       | red                       | red                     | red                     |
| <b>casirivimab+imdevimab</b>     | 2000                         | 30                                 | 60,000                                       | green                      | green                      | restricted 01/2022        | red                       | red                     | red                     |
| <b>sotrovimab</b>                | 1000                         | 22                                 | 22,000                                       | white                      | green                      | green                     | restricted 03/2022        | red                     | red                     |
| <b>tixagevimab+cilgavimab</b>    | 1000                         | 22                                 | 22,000                                       | white                      | white                      | red                       | orange                    | orange                  | restricted 10/22        |
| <b>regdanvimab</b>               | 300                          | 23                                 | 6,900  | white                      | green                      | red                       | red                       | red                     | red                     |
| <b>bebtelovimab</b>              | 2000                         | Not calculated (low-risk pts)      | Not calculated (low-risk pts)                | white                      | green                      | green                     | green                     | green                   | red                     |
| <b>nirmatrelvir</b>              | 635 (5 days)                 | 18                                 | 11,435                                       | white                      | white                      | green                     | green                     | green                   | green                   |
| <b>molnupiravir</b>              | 635 (5 days))                | 34                                 | 21,590                                       | white                      | white                      | green                     | green                     | green                   | green                   |
| <b>remdesivir</b>                | 1600 (3 days)                | 22 (MOVE-Out)                      | 35,200                                       | green                      | green                      | green                     | green                     | green                   | green                   |
| <b>CCP</b>                       | 200 (600-ml)                 | 31                                 | 6,200  | green                      | green                      | orange                    | orange                    | orange                  | orange                  |
| <b>Vax-CCP</b>                   |                              |                                    |  | white                      | green                      | green                     | green                     | green                   | green                   |



Figure 1

PRISMA flowchart for randomized controlled trials (RCT) selection in this systematic review.



It is made available under a [CC-BY-ND 4.0 International license](https://creativecommons.org/licenses/by-nd/4.0/).

**Figure 2**

Duration and calendar months of the RCT in context of dominant variant(s) of concern and seropositivity rates. Study start and end for enrollments are charted with approximate time periods for variants of concern.

| Study                            | mont | MAR-20 | APR  | MAY  | JUN  | JUL  | AUG  | SEP  | OCT  | NOV  | DEC  | JAN-21 | FEB  | MAR  | APR  | MAY | JUN | JUL | AUG | SEP | OCT | NOV | DEC | JAN-21 | FEB | MAR | Baseline Antibody Positive % |     |
|----------------------------------|------|--------|------|------|------|------|------|------|------|------|------|--------|------|------|------|-----|-----|-----|-----|-----|-----|-----|-----|--------|-----|-----|------------------------------|-----|
| CCP-CONV-ert                     | 9    |        |      |      |      |      |      |      |      | 1    | 2    | 3      | 4    | 5    | 6    | 7   | 8   | 9   |     |     |     |     |     |        |     |     | 11%                          |     |
| CCP-COV-early                    | 10   |        |      |      |      |      |      |      | 1    | 2    | 3    | 4      | 5    | 6    | 7    | 8   | 9   | 10  |     |     |     |     |     |        |     |     |                              | 8%  |
| CCP-C3PO                         | 7    |        |      |      |      |      |      | 1    | 2    | 3    | 4    | 5      | 6    | 7    |      |     |     |     |     |     |     |     |     |        |     |     |                              | NR  |
| CCP-Argentina                    | 5    |        |      |      | 1    | 2    | 3    | 4    | 5    |      |      |        |      |      |      |     |     |     |     |     |     |     |     |        |     |     |                              | NR  |
| CCP-CSSC-004                     | 16   |        |      |      | 1    | 2    | 3    | 4    | 5    | 6    | 7    | 8      | 9    | 10   | 11   | 12  | 13  | 14  | 15  | 16  |     |     |     |        |     |     |                              | NR  |
| Bamlanivimab-BLAZE-1             | 3    |        |      |      |      |      |      |      | 1    | 2    | 3    |        |      |      |      |     |     |     |     |     |     |     |     |        |     |     |                              | NR  |
| Sotrovimab-COMET-ICE             | 6    |        |      |      |      |      |      |      | 1    | 2    | 3    | 4      | 5    | 6    |      |     |     |     |     |     |     |     |     |        |     |     |                              | NR  |
| Bamlanivimab/etesevimab          | 3    |        |      |      |      |      |      |      | 1    | 2    | 3    |        |      |      |      |     |     |     |     |     |     |     |     |        |     |     |                              | NR  |
| Casirivimab/imdevimab-REGEN      | 4    |        |      |      |      |      |      |      | 1    | 2    | 3    | 4      |      |      |      |     |     |     |     |     |     |     |     |        |     |     |                              | 23% |
| Casirivimab/imdevimab-REGEN      | 3    |        |      |      | 1    | 2    | 3    |      |      |      |      |        |      |      |      |     |     |     |     |     |     |     |     |        |     |     |                              | 38% |
| Bebtelovimab-BLAZE-4             | 3    |        |      |      |      |      |      |      |      |      |      |        |      |      |      | 1   | 2   | 3   |     |     |     |     |     |        |     |     |                              | 11% |
| Regdanvimab-CT-P59               | 2    |        |      |      |      |      |      |      | 1    | 2    |      |        |      |      |      |     |     |     |     |     |     |     |     |        |     |     |                              | 3%  |
| Tixagevimab-cilgavimab-TACKLE    | 6    |        |      |      |      |      |      |      |      |      |      |        | 1    | 2    | 3    | 4   | 5   | 6   |     |     |     |     |     |        |     |     |                              | 14% |
| Molnupiravir-MOVE-OUT            | 6    |        |      |      |      |      |      |      |      |      |      |        |      |      |      | 1   | 2   | 3   | 4   | 5   | 6   |     |     |        |     |     |                              | 23% |
| Molnupiravir-PANORAMIC           | 5    |        |      |      |      |      |      |      |      |      | 1    | 2      | 3    | 4    | 5    |     |     |     |     |     |     |     |     |        |     |     |                              | 98% |
| Molnupiravir-Aurobindo           | 2    |        |      |      |      |      |      |      |      |      |      |        |      |      |      |     |     |     | 1   | 2   |     |     |     |        |     |     |                              | NR  |
| Nirmatrelvir/ritonavir-EPIC-HR   | 6    |        |      |      |      |      |      |      |      |      |      |        |      |      |      |     |     |     | 1   | 2   | 3   | 4   | 5   | 6      |     |     |                              | 11% |
| Remdesivir-PINETREE              | 8    |        |      |      |      |      |      |      | 1    | 2    | 3    | 4      | 5    | 6    | 7    | 8   |     |     |     |     |     |     |     |        |     |     |                              | 3%  |
| Interferon Lambda-TOGETHER       | 9    |        |      |      |      |      |      |      |      |      |      |        |      |      |      |     |     |     | 1   | 2   | 3   | 4   | 5   | 6      | 7   | 8   | 9                            | NR  |
| Interferon Lambda-ILIAD          | 4    |        |      | 1    | 2    | 3    | 4    |      |      |      |      |        |      |      |      |     |     |     |     |     |     |     |     |        |     |     |                              | 10% |
| Interferon Lambda-COVID-Lambda   | 2    |        |      | 1    | 2    |      |      |      |      |      |      |        |      |      |      |     |     |     |     |     |     |     |     |        |     |     |                              | 41% |
| Sofosbuvir & daclatasvir-SOVG    | 1    |        | 1    |      |      |      |      |      |      |      |      |        |      |      |      |     |     |     |     |     |     |     |     |        |     |     |                              | NR  |
| Favipiravir-Avi-Mild-19          | 12   |        |      |      |      |      |      | 1    | 2    | 3    | 4    | 5      | 6    | 7    | 8    | 9   | 10  | 11  | 12  |     |     |     |     |        |     |     |                              | NR  |
| Lopinavir/ritonavir-TOGETHER     | 13   |        |      |      | 1    | 2    | 3    | 4    |      |      |      |        |      |      |      |     |     |     |     |     |     |     |     |        |     |     |                              | NR  |
| Metformin-COVID-OUT              | 4    |        |      |      |      |      |      |      |      |      |      | 1      | 2    | 3    | 4    | 5   | 6   | 7   | 8   | 9   | 10  | 11  | 12  | 13     |     |     | 52% FV                       |     |
| Fluvoxamine-TOGETHER             | 8    |        |      |      |      |      |      |      |      |      |      | 1      | 2    | 3    | 4    | 5   | 6   | 7   | 8   |     |     |     |     |        |     |     |                              | NR  |
| Fluvoxamine-STOP COVID           | 4    |        |      | 1    | 2    | 3    | 4    |      |      |      |      |        |      |      |      |     |     |     |     |     |     |     |     |        |     |     |                              | NR  |
| Fluvoxamine-COVID-OUT            | 13   |        |      |      |      |      |      |      |      |      |      | 1      | 2    | 3    | 4    | 5   | 6   | 7   | 8   | 9   | 10  | 11  | 12  | 13     |     |     | 56% FV                       |     |
| Ivermectin-TOGETHER              | 5    |        |      |      |      |      |      |      |      |      |      |        |      | 1    | 2    | 3   | 4   | 5   |     |     |     |     |     |        |     |     |                              | NR  |
| Ivermectin-COVID-OUT             | 13   |        |      |      |      |      |      |      |      |      |      | 1      | 2    | 3    | 4    | 5   | 6   | 7   | 8   | 9   | 10  | 11  | 12  | 13     |     |     | 56% FV                       |     |
| Ivermectin Iran                  | 7    |        |      |      |      |      |      |      |      |      |      |        | 1    | 2    | 3    | 4   | 5   | 6   | 7   |     |     |     |     |        |     |     |                              | NR  |
| Ivermectin-ACTIV-6               | 7    |        |      |      |      |      |      |      |      |      |      |        |      |      |      |     |     | 1   | 2   | 3   | 4   | 5   | 6   | 7      |     |     | 47%                          |     |
| Hydroxychloroquine-TOGETHER      | 4    |        |      |      | 1    | 2    | 3    | 4    |      |      |      |        |      |      |      |     |     |     |     |     |     |     |     |        |     |     |                              | NR  |
| Hydroxychloroquine-COVID-19 PEP  | 2    | 1      | 2    |      |      |      |      |      |      |      |      |        |      |      |      |     |     |     |     |     |     |     |     |        |     |     |                              | NR  |
| Hydroxychloroquine-AH COVID-19   | 1    |        |      | 1    |      |      |      |      |      |      |      |        |      |      |      |     |     |     |     |     |     |     |     |        |     |     |                              | NR  |
| Hydroxychloroquine-BCN PEP-CoV-2 | 2    |        | 1    | 2    |      |      |      |      |      |      |      |        |      |      |      |     |     |     |     |     |     |     |     |        |     |     |                              | NR  |
| Hydroxychloroquine-BMG           | 3    |        | 1    | 2    | 3    |      |      |      |      |      |      |        |      |      |      |     |     |     |     |     |     |     |     |        |     |     |                              | NR  |
| Nitazoxanide-Romark              | 5    |        |      |      |      |      | 1    | 2    | 3    | 4    | 5    |        |      |      |      |     |     |     |     |     |     |     |     |        |     |     |                              | 10% |
| Colchicine-COLCORONA             | 9    | 1      | 2    | 3    | 4    | 5    | 6    | 7    | 8    | 9    |      |        |      |      |      |     |     |     |     |     |     |     |     |        |     |     |                              | NR  |
| Niclosamide                      | 7    |        |      |      |      |      |      |      | 1    | 2    | 3    | 4      | 5    | 6    | 7    |     |     |     |     |     |     |     |     |        |     |     |                              | NR  |
| Aspirin-ACTIV-4B                 | 10   |        |      |      |      |      |      |      | 1    | 2    | 3    | 4      | 5    | 6    | 7    | 8   | 9   | 10  |     |     |     |     |     |        |     |     |                              | NR  |
| 2.5-mg apixaban-ACTIV-4B         | 10   |        |      |      |      |      |      |      | 1    | 2    | 3    | 4      | 5    | 6    | 7    | 8   | 9   | 10  |     |     |     |     |     |        |     |     |                              | NR  |
| 5-mg apixaban-ACTIV-4B           | 10   |        |      |      |      |      |      |      | 1    | 2    | 3    | 4      | 5    | 6    | 7    | 8   | 9   | 10  |     |     |     |     |     |        |     |     |                              | NR  |
| Sulodexide                       | 2    |        |      | 1    | 2    |      |      |      |      |      |      |        |      |      |      |     |     |     |     |     |     |     |     |        |     |     |                              | NR  |
| Enoxaparin-ETHIC                 | 12   |        |      |      |      |      |      |      |      | 1    | 2    | 3      | 4    | 5    | 6    | 7   | 8   | 9   | 10  | 11  | 12  |     |     |        |     |     |                              | NR  |
| Enoxaparin-OVID                  | 17   |        |      |      |      |      | 1    | 2    | 3    | 4    | 5    | 6      | 7    | 8    | 9    | 10  | 11  | 12  | 13  | 14  | 15  | 16  | 17  |        |     |     |                              | NR  |
| Inhaled ciclesonide-COVERAGE     | 7    |        |      |      |      |      |      |      |      |      |      | 1      | 2    | 3    | 4    | 5   | 6   | 7   |     |     |     |     |     |        |     |     |                              | NR  |
| Salitiravira                     | 3    |        |      |      |      |      |      |      |      |      |      | 1      | 2    | 3    |      |     |     |     |     |     |     |     |     |        |     |     |                              | NR  |
| Azithromycin-Atomic2             | 8    |        |      |      | 1    | 2    | 3    | 4    | 5    | 6    | 7    | 8      |      |      |      |     |     |     |     |     |     |     |     |        |     |     |                              | NR  |
| Azithromycin-ACTION              | 9    |        |      |      | 1    | 2    | 3    | 4    | 5    | 6    | 7    | 8      | 9    |      |      |     |     |     |     |     |     |     |     |        |     |     |                              | NR  |
| Resveratrol                      | 3    |        |      |      |      |      |      | 1    | 2    | 3    |      |        |      |      |      |     |     |     |     |     |     |     |     |        |     |     |                              | NR  |
| 614G                             |      | 614G   | 614G | 614G | 614G | 614G | 614G | 614G | 614G | 614G | 614G | 614G   | 614G | 614G | 614G |     |     |     |     |     |     |     |     |        |     |     |                              |     |
| Alpha                            |      |        |      |      |      |      |      |      |      |      |      |        |      |      |      |     |     |     |     |     |     |     |     |        |     |     |                              |     |
| Beta                             |      |        |      |      |      |      |      |      |      |      |      |        |      |      |      |     |     |     |     |     |     |     |     |        |     |     |                              |     |
| Delta                            |      |        |      |      |      |      |      |      |      |      |      |        |      |      |      |     |     |     |     |     |     |     |     |        |     |     |                              |     |
| Omicron                          |      |        |      |      |      |      |      |      |      |      |      |        |      |      |      |     |     |     |     |     |     |     |     |        |     |     |                              |     |

**Figure 3**

Comparison of mean interval from symptom onset to enrollment/intervention as well as per protocol interval inclusion limit for all participants.

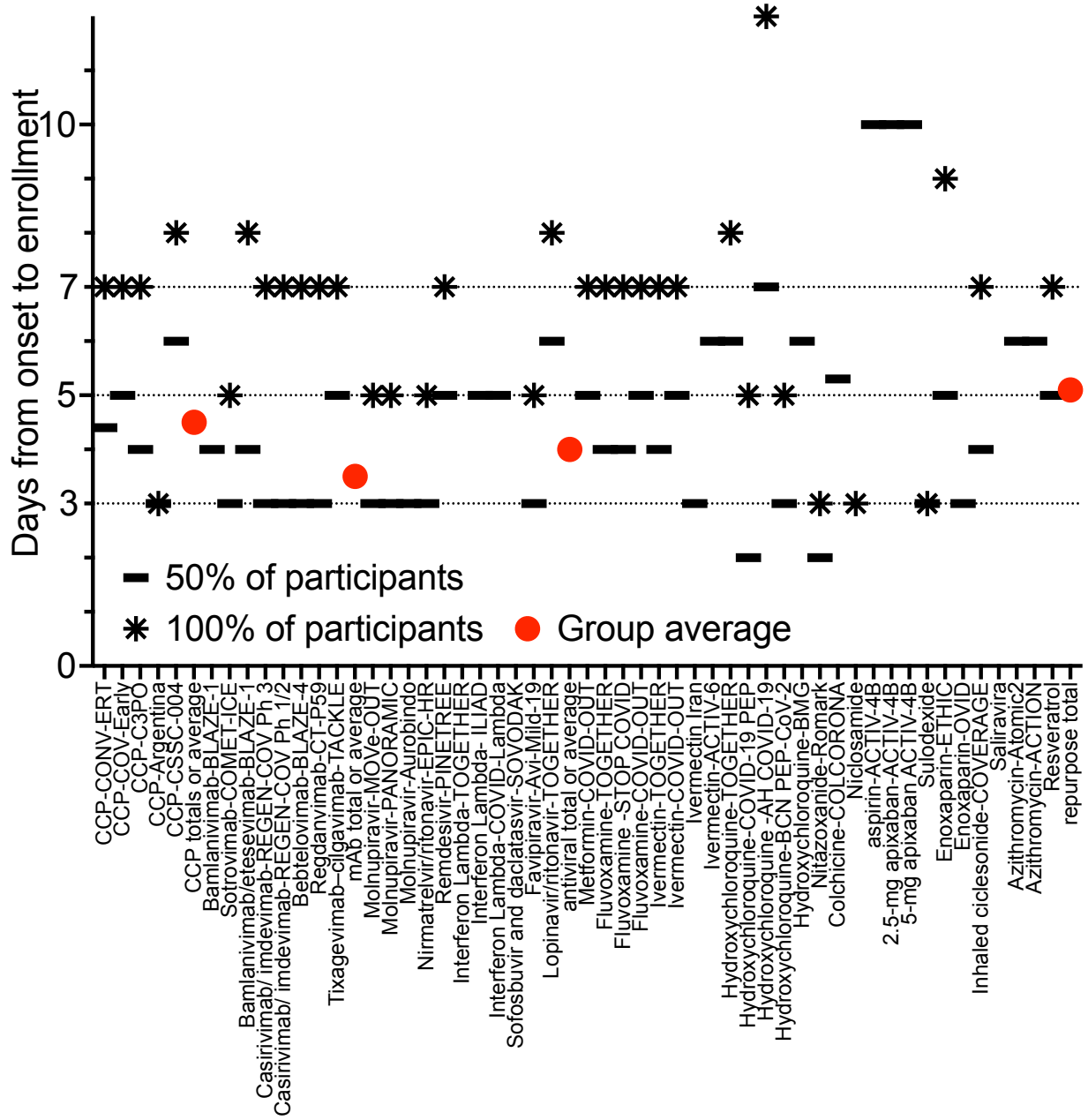
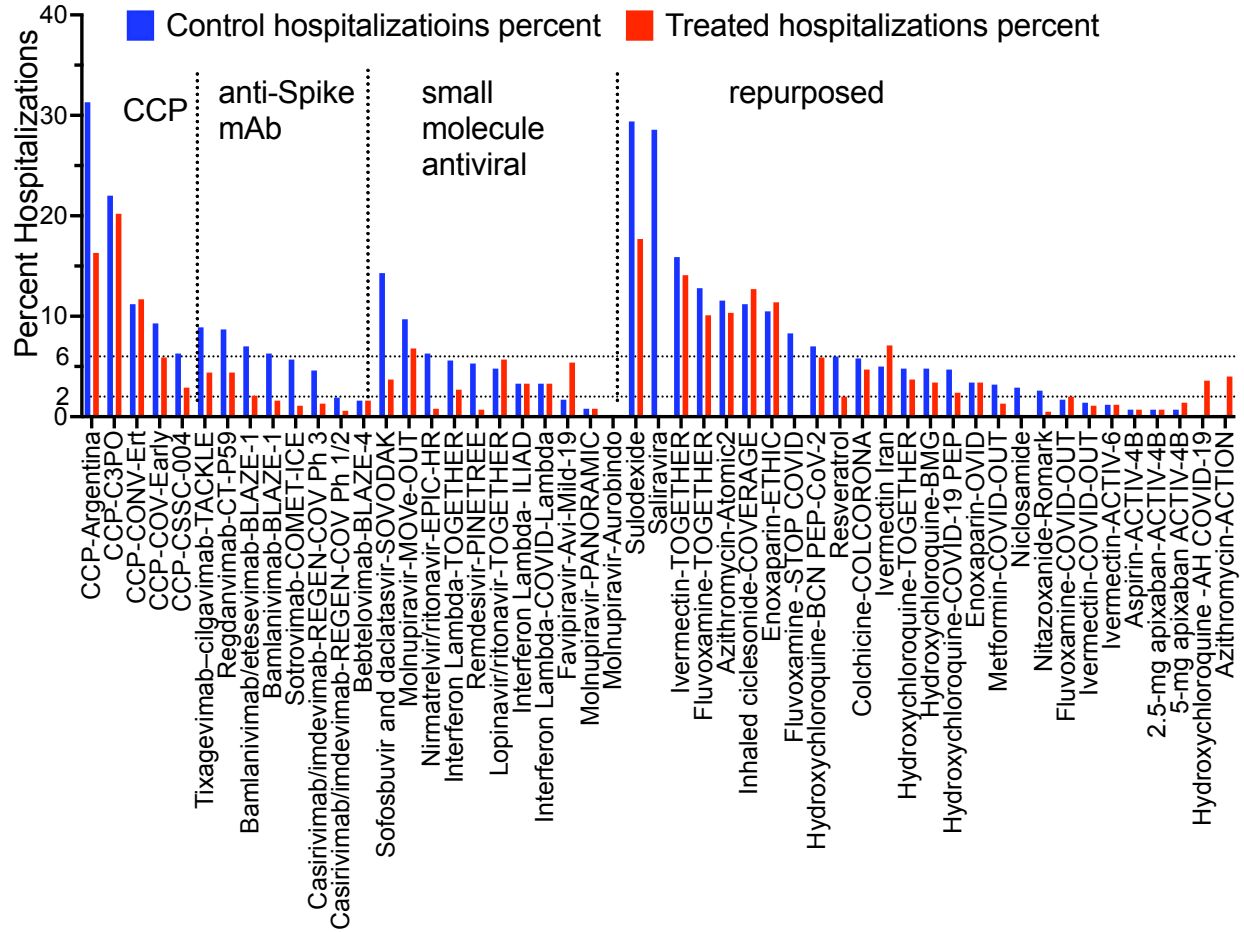


Figure 4

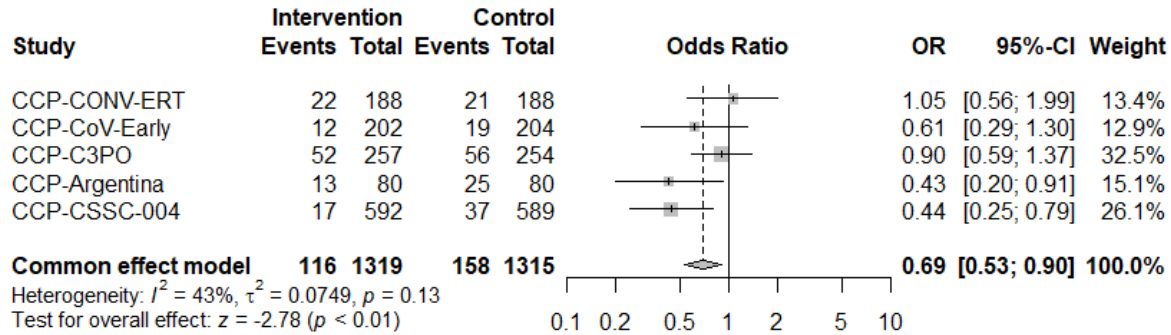
Percent hospitalizations in control groups sorted by therapy type and descending control hospitalization rates.



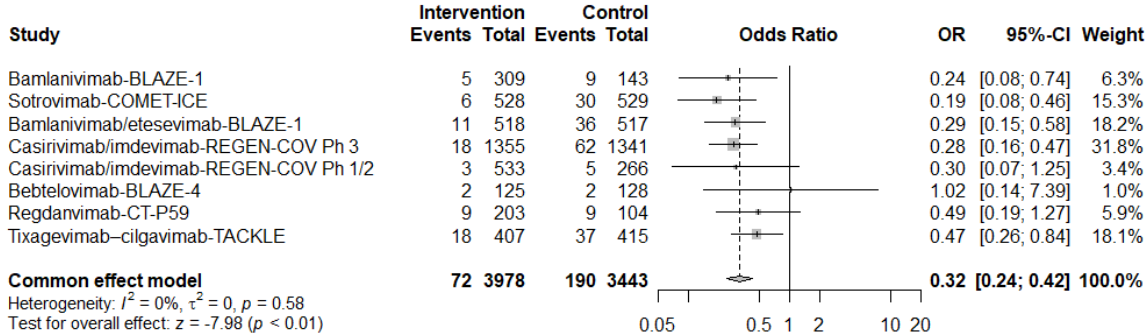


## Figure 5

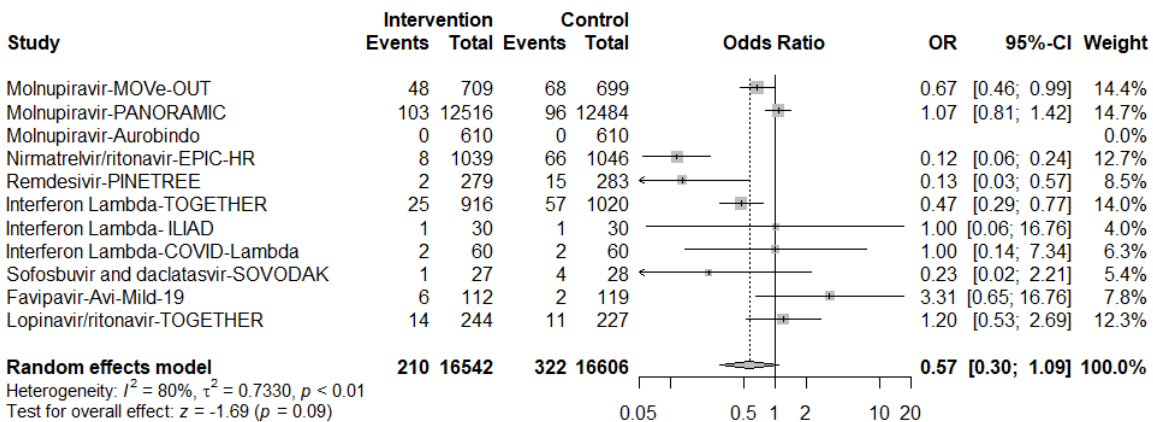
Odds ratio for hospitalizations with diverse therapeutic interventions, grouped according to mechanism of action (CCP, anti-Spike mAbs, small molecule antivirals and repurposed drugs).  
CCP- Fixed effect model



Anti-Spike mAbs- Fixed effect model

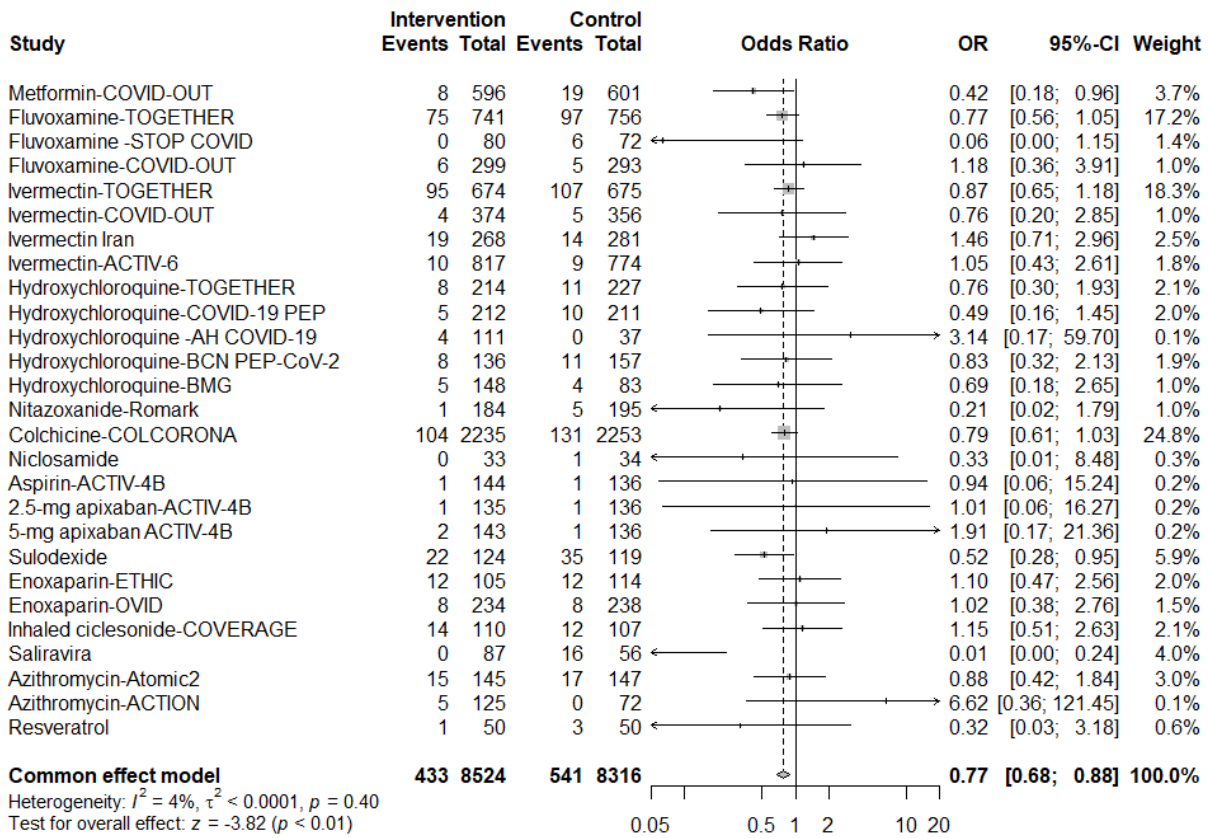


Small Molecule antivirals- Random effect model



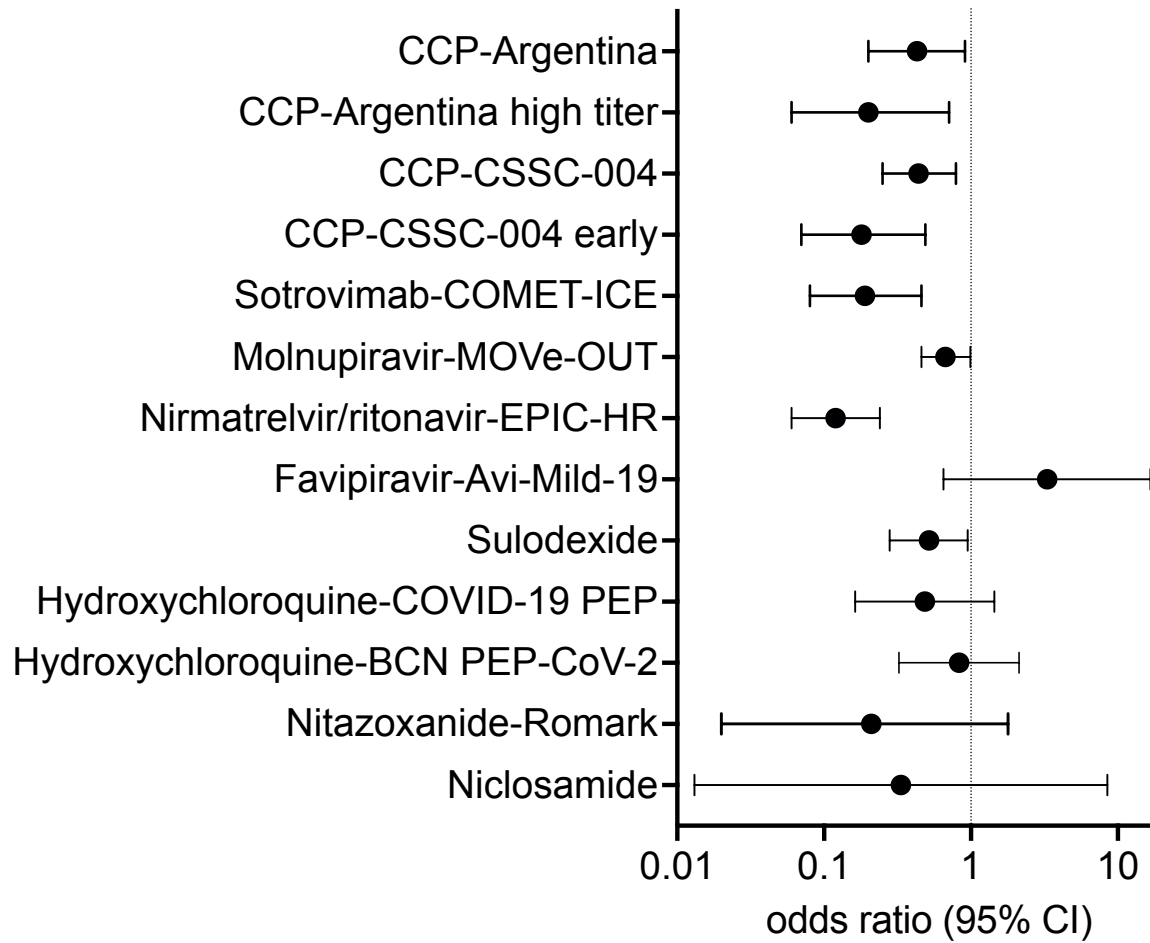
It is made available under a [CC-BY-ND 4.0 International license](https://creativecommons.org/licenses/by-nd/4.0/).

## Repurposed Drugs-Fixed effect model



## Figure 6

Odds ratio for hospitalization in RCT subgroups treated within 5 days since onset of symptoms

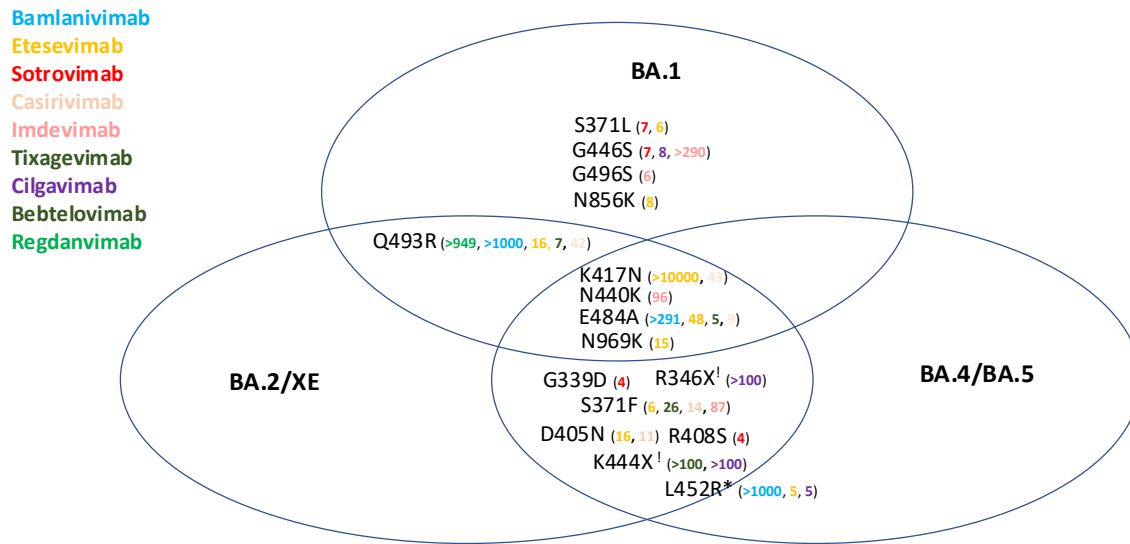


## Figure 7

**Venn diagram of anti-Spike mAb efficacy against Omicron sublineages.** *In vitro* activity of currently approved anti-Spike mAbs against Omicron sublineages circulating as of October 2022. Specific Omicron Spike amino acid mutations causing baseline  $\geq 4$ -fold-reduction in neutralization against mAbs are reported. Mutations for which the majority of studies are concordant are reported: the different fold-reductions for each mAb are identified across concordant studies as color coded numbers defining the mean median values of specific reduction in each study. Sourced from <https://covdb.stanford.edu/page/susceptibility-data> (accessed on November 7, 2022)

\* L452R occurs in all BA.4/BA.5 lineages, but only in several BA.2. sublineages.

! R346X and K444X occur in a growing number of BA.2 and BA.4/5 sublineages as a result of convergent evolution.



Supplementary Table 1

GRADE evaluation by RCT.

Patient or population: COVID-19 outpatients

Settings: Ambulatory patients with COVID-19

Intervention: COVID-19 convalescent plasma, anti-Spike mAbs, small molecule antivirals and repurposed drugs

Comparison: standard of care, placebo

| Study                       | Assumed risk- controls<br>Illustrative comparative risks* (95% CI) | Corresponding risk- Intervention<br>Illustrative comparative risks* (95% CI) | Effect size: OR (95% CI) | No of Participants (studies) | Quality of the evidence (GRADE)  | Comments   |
|-----------------------------|--|--|--------------------------|------------------------------|--|--|
| <i>CCP</i>                  |  |  |                          |                              |  |  |
| CCP-CONVERT <sup>16</sup>   | 111 per 1000   | 116 per 1000 (from 61 to 219)  | 1.05 (0.55/1.98)         | 376 (1)                      | ⊕⊕⊕⊖ moderate (downgraded for imprecision-95% CI includes line of no effect) | CCP does not reduce hospitalization compared to placebo          |
| CCP-COV-Early <sup>19</sup> | 93 per 1000  | 57.6 per 1000 (from 26.9 to 120.9)   | 0.62 (0.29/1.30)         | 406 (1)                      | ⊕⊕⊕⊖ moderate (downgraded for imprecision-95% CI includes line of no effect) | It is unclear if CCP reduces hospitalization compared to placebo |
| CCP-C3PO <sup>15</sup>      | 220 per 1000   | 198 per 1000 (from 127 to 301)   | 0.9 (0.58/1.37)          | 511 (1)                      | ⊕⊕⊕⊖ moderate (downgraded for imprecision-95% CI includes line of no effect) | It is unclear if CCP reduces hospitalization compared to placebo |
| CCP-Argentina <sup>14</sup> | 312 per 1000   | 133 per 1000 (from 62 to 180)  | 0.43 (0.20/0.91)         | 160 (1)                      | ⊕⊕⊕⊖ moderate (downgraded for imprecision due to low number of participants) | CCP reduces rate of hospitalization compared to placebo          |
| CCP-CSSC-004 <sup>11</sup>  | 62.8 per 1000  | 27.6 per 1000 (from 15.7 to 49.6)  | 0.44 (0.25/0.79)         | 1181 (1)                     | ⊕⊕⊕⊕ high (there are no concerns in any of the                               | CCP reduces rate of hospitalization compared to placebo          |

|  |               |                                  |                  |                            | GRADE factors)  |  |
|--|---------------|----------------------------------|------------------|----------------------------|---|--|
| CCP-mITT all cause hospitalization: cumulative results | 120 per 1000  | 82 per 1000 (from 63 to 108)     | 0.69(0.53 /0.90) | 2634 participants (5 RCTs) | ⊕⊕⊕⊕ high (there are no concerns in any of the GRADE factors)             | CCP reduces significantly need of hospitalization compared to placebo. Most information is from results at low risk of bias or with some concerns, but unlikely to lower confidence in the estimate of effect. |
| <i>Anti-Spike mAbs</i>                                 |               |                                  |                  |                            |   |  |
| Bamlanivimab <sup>2</sup>                              | 62.9 per 1000 | 15 per 1000 (from 5 to 46.5)     | 0.24 (0.08/0.74) | 919 (1 RCT)                | ⊕⊕⊕⊖ moderate(downgraded for imprecision )                                | Bamlanivimab reduces need of hospitalization compared to placebo   |
| Sotrovimab-COMET-ICE <sup>23</sup>                     | 56.7 per 1000 | 10.7 per 1000 (from 4.5 to 26)   | 0.19 (0.08/0.46) | 1061 (1 RCT)               | ⊕⊕⊕⊖ moderate (downgraded for ROB)  | Sotrovimab reduces need of hospitalization compared to placebo   |
| Bamlanivimab/etesevimab <sup>3</sup>                   | 69.3 per 1000 | 20 per 1000 (from 10.3 to 40.1)  | 0.29 (0.15/0.58) | 1035 (1 RCT)               | ⊕⊕⊖⊖ low(downgraded for imprecision and ROB)                              | Bamlanivimab/etesevimab in combination reduce need of hospitalization compared to placebo  |
| Casirivimab/imdevimab <sup>21</sup>                    | 41.6 per 1000 | 11.6 per 1000 (from 7.0 to 19.1) | 0.28 (0.17/0.46) | 3495 (2 RCT)               | ⊕⊕⊖⊖ low (downgraded for ROB and imprecision due to low number of events) | Casirivimab/imdevimab in combination reduce need of hospitalization compared to placebo  |
| Bebtelovimab-BLAZE-4 <sup>12</sup>                     | 15.6 per 1000 | 15.9 per 1000 (from 2.1 to 115)  | 1.02 (0.14/7.39) | 253 (1 RCT)                | ⊕⊕⊖⊖ low (downgraded twice for serious imprecision)                       | Bebtelovimab does not reduce need of hospitalization compared to placebo   |

|   |               |                                   |                   |                 |   |   |
|---|---------------|-----------------------------------|-------------------|-----------------|---|---|
| Regdanvimab-CT-P59 <sup>23</sup>            | 86.5 per 1000 | 42.3 per 1000 (from 16.4 to 109)  | 0.49 (0.19/1.27)  | 307 (1 RCT)     | ⊕⊕⊖⊖ low (downgraded for ROB and imprecision)           | It is unclear if regdanvimab reduces hospitalization compared to placebo                  |
| Tixagevimab-cilgavimab-TACKLE <sup>24</sup> | 89.1 per 1000 | 41.8 per 1000 (from 24 to 74.7)   | 0.47 (0.27/0.84)  | 822 (1)         | ⊕⊕⊕⊖ moderate (downgraded for imprecision)              | Tixagevimab-cilgavimab reduces hospitalization compared to placebo in unvaccinated adults |
| mAbs: combined results                      | 55.1 per 1000 | 17.6 per 1000 (from 13.2 to 23.1) | 0.32(0.24/0.42)   | 7411 (8 trials) | ⊕⊕⊕⊖ moderate (downgraded for ROB)                      | Anti-Spike mAbs reduce hospitalization compared to placebo                                |
| <i>Small molecule antivirals</i>            |               |                                   |                   |                 |   |   |
| Molnupiravir <sup>8, 25, 26</sup>           | 11.8 per 1000 | 10.8 per 1000 (from 8.6 to 13.4)  | 0.91 (0.73/1.14)  | 27628 (3 RCTs)  | ⊕⊕⊖⊖ low (downgraded for inconsistency and imprecision) | It is unclear if Molnupiravir reduces hospitalization compared to placebo                 |
| Nirmatrelvir/ritonavir <sup>7</sup>         | 63 per 1000   | 7.5 per 1000 (from 3.7 to 15.1)   | 0.12 (0.06/0.24)  | 2085 (1)        | ⊕⊕⊖⊖ low (downgraded for ROB and imprecision)*          | Nirmatrelvir/ritonavir reduces hospitalization compared to placebo in unvaccinated adults |
| Remdesivir <sup>27</sup>                    | 53 per 1000   | 6.8 per 1000 (from 1.5 to 50.2)   | 0.13 (0.03/0.57)  | 562 (1)         | ⊕⊕⊖⊖ low (downgraded for ROB and imprecision)           | Remdesivir reduces hospitalization compared to placebo                                    |
| Favipiravir <sup>32</sup>                   | 16.8 per 1000 | 55.6 per 1000 (from 10.9 to 281)  | 3.31 (0.65/16.76) | 231 (1)         | ⊕⊕⊖⊖ low (downgraded for serious imprecision)           | Favipiravir does not reduce need of hospitalization compared to placebo                   |
| Peg-interferon lambda <sup>28, 29, 30</sup> | 54.5 per 1000 | 26.7 per 1000 (from 16.8 to 47.5) | 0.49 (0.31/0.78)  | 2116 (3 RCTs)   | ⊕⊕⊕⊖ moderate (downgraded for ROB)                      | -Peginterferon lambda reduces hospitalization compared to placebo.                        |

|   |                |                                    |                  |               |  |   |
|---|----------------|------------------------------------|------------------|---------------|--|---|
| Sofosbuvir and daclatasvir- SOVODAK <sup>31</sup> | 142.8 per 1000 | 32.8 per 1000 (from 2.8 to 315)    | 0.23 (0.02/2.21) | 55 (1)        | ⊕⊕⊕⊖ low (downgraded for serious imprecision)                                | It is unclear if sofosbuvir/daclatasvir reduces hospitalization compared to placebo |
| Lopinavir/ritonavir- TOGETHER <sup>33</sup>       | 48.4 per 1000  | 58 per 1000 (from 25.6 to 130.1)   | 1.20 (0.53/2.69) | 471 (1)       | ⊕⊕⊕⊖ low (downgraded for serious imprecision)                                | Lopinavir/ritonavir does not reduce need of hospitalization compared to placebo     |
| Small molecule antivirals: combined results       | 19.3 per 1000  | 12.5 per 1000 (from 10.4 to 15)    | 0.65 (0.54/0.78) | 33148 (11)    | ⊕⊕⊖ ⊖ low (downgraded for inconsistency and ROB) ( $I^2=81$ )                | -Antivirals reduce rate of hospitalization compared to placebo                      |
| <i>Repurposed</i>                                 |                |                                    |                  |               |  |   |
| Metformin- COVID-OUT <sup>13</sup>                | 31.6 per 1000  | 13.2 per 1000 (from 5.6 to 30.3)   | 0.42 (0.18/0.96) | 1197 (1)      | ⊕⊕⊕⊖ low (downgraded for serious imprecision)                                | Metformin reduces hospitalization compared to placebo.                              |
| Fluvoxamine <sup>13, 34, 35</sup>                 | 96.3 per 1000  | 69.1 per 1000 (from 30.7 to 156.4) | 0.72 (0.32/1.63) | 2241 (3 RCTs) | ⊕⊖⊖⊖ very-low (downgraded for imprecision, inconsistency and ROB)            | It is unclear if fluvoxamine reduces hospitalization compared to placebo            |
| Ivermectin <sup>13, 36, 37, 38</sup>              | 64.4 per 1000  | 60.5 per 1000 (from 47 to 78.5)    | 0.94(0.73/1.22)  | 4228 (4 RCTs) | ⊕⊕⊕⊖ moderate (downgraded for imprecision)                                   | -It is unclear if Ivermectin reduces rate of hospitalization compared to placebo    |
| Hydroxychloroquine <sup>33, 39, 40, 41, 42</sup>  | 41.9 per 1000  | 31 per 1000 (from 18.8 to 51.5)    | 0.74 (0.45/1.23) | 1536 (5 RCTs) | ⊕⊕⊕⊖ moderate (downgraded for imprecision-95% CI includes line of no effect) | It is unclear if hydroxychloroquine reduces hospitalization compared to placebo     |
| Nitazoxanide- Romark <sup>43</sup>                | 25.6 per 1000  | 5.3 per 1000 (from 0.5 to 45.8)    | 0.21 (0.02/1.79) | 379 (1)       | ⊕⊖⊖⊖ very-low (downgraded for serious imprecision and ROB)                   | It is unclear if nitazoxanide reduces   |



|  |               |                                     |                  |              |  |   |
|--|---------------|-------------------------------------|------------------|--------------|--|---|
|  |               |                                     |                  |              |  | hospitalization compared to placebo   |
| Colchicine-COLCORONA <sup>44</sup>       | 58.1 per 1000 | 45.8 per 1000 (from 35.4 to 59.8)   | 0.79 (0.61/1.03) | 379 (1)      | ⊕⊕⊕⊖ moderate (downgraded for imprecision-95% CI includes line of no effect) | It is unclear if colchicine reduces hospitalization compared to placebo         |
| Niclosamide <sup>45</sup>                | 29.4 per 1000 | 9.5 per 1000 (from 0.29 to 249)     | 0.33 (0.01/8.48) | 67 (1)       | ⊕⊕⊖⊖ low (downgraded for serious imprecision)                                | It is unclear if niclosamide reduces hospitalization compared to placebo        |
| aspirin                                  | 7.3 per 1000  | 6.8 per 1000 (from 0.4 to 11)       | 0.94 (0.06/15.2) | 280 (1)      | ⊕⊖⊖⊖ very-low (downgraded for serious imprecision and indirectness)          | Aspirin does not reduce need of hospitalization compared to placebo             |
| apibaxan                                 | 7.3 per 1000  | 7.3 per 1000 (from 1 to 52)         | 1.0 (0.14/7.18)  | 414 (2 arms) | ⊕⊖⊖⊖ very-low (downgraded for serious imprecision and indirectness)          | Apibaxan 2.5-5 mg does not reduce need of hospitalization compared to placebo   |
| Sulodexide <sup>47</sup>                 | 294 per 1000  | 223.4 per 1000 (from 82.3 to 279.3) | 0.52 (0.28/0.95) | 243 (1)      | ⊕⊕⊕⊖ moderate (downgraded for imprecision)                                   | Sulodexide reduces hospitalization compared to placebo                          |
| Enoxaparin-LMW heparin <sup>48, 49</sup> | 56.8 per 1000 | 60.2 per 1000 (from 31.8 to 115.3)  | 1.06 (0.56/2.03) | 691 (2)      | ⊕⊕⊖⊖ low (downgraded for serious imprecision)                                | LMW heparin does not reduce hospitalization compared to placebo                 |
| Inhaled ciclesonide <sup>50</sup>        | 112 per 1000  | 128.8 per 1000 (from 57.1 to 294.5) | 1.15 (0.51/2.63) | 217 (1)      | ⊕⊖⊖⊖ very-low (downgraded for serious imprecision and ROB)                   | Inhaled ciclesonide does not reduce need of hospitalization compared to placebo |
| Saliravirine <sup>51</sup>               | 285 per 1000  | 133.9 per 1000 (from 82.6 to 220.2) | 0.47 (0.29/0.77) | 143 (1)      | ⊕⊖⊖⊖ very-low (downgraded for serious imprecision and serious ROB)           | Saliravirine reduces hospitalization compared to control                        |

|                                   |               |                                    |                  |                                 |   |  |
|-----------------------------------|---------------|------------------------------------|------------------|---------------------------------|---|--|
| Azithromycin <sup>52, 53</sup>    | 77.6 per 1000 | 85.3 per 1000 (from 43.4 to 169.1) | 1.10 (0.56/2.18) | 489 (2)                         | ⊕⊕⊖⊖ low (downgraded for serious imprecision) | azithromycin does not reduce hospitalization compared to placebo         |
| Resveratrol <sup>54</sup>         | 60 per 1000   | 19.2 per 1000 (from 1.8 to 190.8)  | 0.32 (0.03/3.18) | 100 (1)                         | ⊕⊕⊖⊖ low (downgraded for serious imprecision) | It is unclear if resveratrol reduces hospitalization compared to placebo |
| Repurposed drugs combined results | 64.9 per 1000 | 50 per 1000 (from 44.1 to 57.1)    | 0.77 (0.68/0.88) | 16840 (27 arms, 15 comparisons) | ⊕⊕⊕⊖ moderate (downgraded for ROB)            | Repurposed treatments reduce rate of hospitalization compared to placebo |

\*The basis for the assumed risk is the mean control group risk across studies. The corresponding risk (and its 95% confidence interval) is based on the assumed risk in the comparison group and the relative effect (the Risk Difference, also called ARR, absolute risk reduction) of the intervention (and its 95% CI).

GRADE Working Group grades of evidence

High quality: Further research is very unlikely to change our confidence in the estimate of effect.

Moderate quality: Further research is likely to have an important impact on our confidence in the estimate of effect and may change the estimate.

Low quality: Further research is very likely to have an important impact on our confidence in the estimate of effect and is likely to change the estimate.

Very low quality: We are very uncertain about the estimate.

Footnote: OR, Odds Ratio; CIs, confidence intervals; ROB, risk of bias. GRADE, Grading of Recommendations, Assessment, Development and Evaluations

Supplementary Table 2  
Additional baseline data from RCTs

| Study   | Enrollment Period             | Study months | Geography                                | Enrolled | age over 65 n(%) | age over 60 n(%) | age over 50 n(%) | symptoms <= 8 days n(%) | symptoms <=7 days n(%) | symptoms <= 5 days n(%) | symptoms <= 3 days n(%) |
|---|-------------------------------|--------------|--|----------|------------------|------------------|------------------|-------------------------|------------------------|-------------------------|-------------------------|
| CCP-CONV-ert <sup>16</sup>                            | Nov 10 2020 -July 28 2021     | 9            | Spain                                    | 376      |                  |                  | 376 (100)        |                         | 376 (100)              |                         |                         |
| CCP-COV-Early <sup>19</sup>                           |                               |              | Netherlands                              | 406      |                  |                  | 351 (86)         |                         | 406 (100)              |                         |                         |
| CCP-C3PO <sup>15</sup>                                | Aug 2020-Feb 2021             | 7            | USA                                      | 511      |                  |                  | 511 (100)        |                         | 511 (100)              |                         | 246 (48)                |
| CCP-Argentina <sup>14</sup>                           | Jun 4 2020 – Oct 25 2020      | 5            | Argentina                                | 160      | 160 (100)        |                  |                  |                         |                        |                         | 160 (100)               |
| CCP-CSSC-004 <sup>11</sup>                            | June 3 2020-Oct 2021          | 16           | USA                                      | 1225     | 80 (7)           |                  | 410 (35)         | 1181 (100)              |                        | 517 (44)                |                         |
| Bamlanivimab-BLAZE-1 <sup>2</sup>                     | June 2020-Aug 2020            | 3            | USA                                      | 467      | 53 (12)          |                  |                  |                         |                        | 226 (50)mean            |                         |
| Sotrovimab-COMET-ICE <sup>23</sup>                    | Aug 27 2020-March 2021        | 6            | United States, Canada, Brazil, and Spain | 1057     | 211(20)          |                  |                  |                         |                        | 1057 (100)              | 624 (59)                |
| Bamlanivimab/etesevimab-BLAZE-1 <sup>3</sup>          | Sept 2020-Dec 2020            | 3            | USA                                      | 1035     | 323 (31)         |                  |                  | 979 (95)                |                        |                         |                         |
| Casirivimab/ imdevimab-REGEN-COV Ph 3 <sup>21</sup>   | Sept 24 2020-Jan 17 2021      | 4            | USA Mexico                               | 2696     | 358 (13)         |                  |                  |                         | 2696 (100)             |                         | 1489 (66)               |
| Casirivimab/ imdevimab-REGEN-COV Ph 1/2 <sup>20</sup> | June 16, 2020 - Sept 23, 2020 | 3            | USA                                      | 799      |                  |                  |                  |                         | 799 (100)              | 599 (75)                | 400 (50)                |
| Bebtelovimab-BLAZE-4 <sup>12</sup>                    | May 2021-July 2021            | 3            | USA                                      | 253      | 1 (<1)           |                  |                  |                         | 253 (100)              |                         |                         |

|  |                                    |    |   |       |           |          |  |  |               |                |
|--|------------------------------------|----|---|-------|-----------|----------|--|--|---------------|----------------|
| Regdanvimab-CT-P59 <sup>23</sup>                     | Oct 2020-<br>Dec 2020              | 2  | South<br>Korea,<br>Romania,<br>Spain, USA       | 327   |           | 85 (26)  |  |  | 327 (100)     |                |
| Tixagevimab-cilgavimab-<br>TACKLE <sup>24</sup>      | Jan 28,<br>2021- July<br>22, 2021, | 6  | USA, Latin<br>America,<br>Europe, and<br>Japan. | 1014  | 116 (13)  |          |  |  | 910 (100)     |                |
| Molnupiravir-MOVE-<br>OUT <sup>7</sup>               | May 2021-<br>Oct 2021              | 6  | worldwide                                       | 1433  |           | 246 (17) |  |  | 1408<br>(100) | 674 (48)       |
| Molnupiravir-<br>PANORAMIC <sup>25</sup>             | Dec 8-2021<br>- April 27,<br>2022  | 5  | UK  | 25783 | 6838 (27) |          |  |  | 22510<br>(87) |                |
| Molnupiravir-Aurobindo <sup>27</sup>                 | July 1, 2021<br>- Aug 24,<br>2021  | 2  | India   | 1220  |           |          |  |  |               | 661 (54)       |
| Nirmatrelvir/ritonavir-<br>EPIC-HR <sup>7</sup>      | July 1 2021<br>- Dec 2021          | 6  | worldwide                                       | 2246  | 287(12.8) |          |  |  | 2246<br>(100) | 1489<br>(66.3) |
| Remdesivir-PINETREE <sup>27</sup>                    | Sept 2020-<br>Apr 2021             | 8  | USA,<br>Spain,<br>Denmark<br>UK                 | 562   |           | 170 (30) |  |  | 562 (100)     |                |
| Interferon Lambda-<br>TOGETHER <sup>30</sup>         | July 6 2021-<br>March 2022         | 15 | Brazil  | 1936  |           |          |  |  |               |                |
| Interferon Lambda-<br>ILIAD <sup>28</sup>            | May 18,<br>2020-Sep 4<br>2020      | 4  | Canada  | 60    |           |          |  |  | 60 (100)      |                |
| Interferon Lambda-<br>COVID-Lambda <sup>29</sup>     | April 25<br>2020-July 7<br>2020    | 2  | USA   | 120   |           |          |  |  |               |                |
| Sofosbuvir and daclatasvir-<br>SOVODAK <sup>31</sup> | April 8<br>2020-May<br>19 2020     | 1  | Iran  | 55    |           |          |  |  |               |                |

|   |                             |    |               |      |  |  |          |           |            |           |          |
|---|-----------------------------|----|---------------|------|--|--|----------|-----------|------------|-----------|----------|
| Favipiravir-Avi-Mild-19 <sup>32</sup>         | July 23, 2020- Aug 4 2021   | 12 | Saudi Arabia  | 245  |  |  | 30 (13)  |           |            | 231 (100) |          |
| Lopinavir/ritonavir-TOGETHER <sup>33</sup>    | June 2 2020-Oct 9 2020      | 4  | Brazil        | 471  |  |  | 275      | 471 (100) |            | 74 (16)   |          |
| Metformin-COVID-OUT <sup>13</sup>             | Dec 30 2020 - Jan 28 2022   | 13 | USA           | 1323 |  |  |          |           | 1197 (100) |           |          |
| Fluvoxamine-TOGETHER <sup>35</sup>            | Jan 2021 - Aug 2021         | 8  | Brazil        | 1497 |  |  | 655 (44) |           | 1497 (100) |           | 638 (43) |
| Fluvoxamine -STOP COVID <sup>36</sup>         | April 10 2020 - Aug 5 2020  | 4  | USA           | 152  |  |  |          |           | 152 (100)  | 114 (75)  |          |
| Fluvoxamine-COVID-OUT <sup>13</sup>           | Dec 30 2020 - Jan 28 2022   | 13 | USA           | 661  |  |  |          |           | 733 (100)  |           |          |
| Ivermectin-TOGETHER <sup>37</sup>             | March 23 - Aug 2 2021       | 5  | Brazil        | 1358 |  |  |          |           | 1358 (100) |           | 597 (44) |
| Ivermectin-COVID-OUT <sup>13</sup>            | Dec 30 2020 - Jan 28 2022   | 13 | USA           | 808  |  |  |          |           | 592 (100)  |           |          |
| Ivermectin Iran <sup>38</sup>                 | Feb 19 21 - Aug 30 21       | 7  | iran          | 582  |  |  |          |           |            |           | 291 (50) |
| Ivermectin-ACTIV-6                            | June 23 2021 - Feb 4 2022   | 7  | USA           | 1591 |  |  | 680 (43) | 1193 (75) |            |           |          |
| Hydroxychloroquine-TOGETHER <sup>34</sup>     | June 2 2020-Oct 9 2020      | 4  | Brazil        | 441  |  |  | 262 (59) | 441 (100) |            | 77 (17)   |          |
| Hydroxychloroquine-COVID-19 PEP <sup>42</sup> | March 22 2020 - May 20 2020 | 2  | USA<br>canada | 491  |  |  | 99 (20)  |           |            | 423 (100) |          |

|   |                                   |    |  |      |  |           |  |           |          |           |           |
|---|-----------------------------------|----|--|------|--|-----------|--|-----------|----------|-----------|-----------|
| Hydroxychloroquine -AH<br>COVID-19 <sup>41</sup>  | April 15<br>2020 -May<br>22 2020  | 1  | Canada   | 148  |  |           |  |           |          |           |           |
| Hydroxychloroquine-BCN<br>PEP-CoV-2 <sup>40</sup> | March 17<br>2020-May<br>26 2020   | 2  | Spain  | 293  |  |           |  |           |          | 293 (100) |           |
| Hydroxychloroquine-<br>BMG <sup>43</sup>          | April 15<br>2020-July<br>27 2020  | 3  | USA  | 231  |  | 23 (10)   |  |           | 143 (62) | 85 (37)   |           |
| Nitazoxanide-Romark <sup>43</sup>                 | Aug 2020-<br>Jan 2021             | 5  | USA Peurto<br>rico   | 379  |  |           |  |           |          |           | 379 (100) |
| Colchicine-<br>COLCORONA <sup>44</sup>            | March<br>2020-Dec<br>2020         | 9  | Brazil,<br>Canada,<br>Greece,<br>South<br>Africa,<br>Spain, and<br>the USA | 4488 |  | 1122 (25) |  | 3590 (80) |          |           |           |
| Nicosamide <sup>45</sup>                          | Oct 1 2020-<br>April 20<br>2021   | 7  | USA  | 73   |  |           |  |           |          |           | 67 (100)  |
| aspirin-ACTIV-4B <sup>46</sup>                    | Sept 1 2020<br>- June 17<br>2021  | 10 | USA  | 328  |  | ~82 (25)  |  |           |          | 82 (25)   |           |
| 2.5-mg apixaban-ACTIV-<br>4B <sup>46</sup>        | Sept 1 2020<br>- June 17<br>2021  | 10 | USA  | 329  |  | ~82 (25)  |  |           |          | 82 (25)   |           |
| 5-mg apixaban ACTIV-<br>4B <sup>46</sup>          | Sept 1 2020<br>- June 17<br>2021  | 10 | USA  | 328  |  | ~82 (25)  |  |           |          | 82 (25)   |           |
| Sulodexide <sup>47</sup>                          | June 5 2020<br>- August 5<br>2020 | 2  | Mexico   | 243  |  |           |  |           |          |           | 243 (100) |

|  |   |    |   |     |         |          |           |  |           |             |  |
|--|---|----|---|-----|---------|----------|-----------|--|-----------|-------------|--|
| Enoxaparin-ETHIC <sup>49</sup>             | Oct 27 2020 - Nov 8 2021                | 12 | Belgium, Brazil, India, South Africa, Spain, and the UK). | 219 |         |          | 164 (75)  |  |           | 121 (50)    |  |
| Enoxaparin-OVID <sup>50</sup>              | Aug 5 2020-Jan 14 2022                  | 17 | Switzerland and Germany                                   | 572 |         |          | 572 (100) |  |           | 429 (dx 75) |  |
| Inhaled ciclesonide-COVERAGE <sup>50</sup> | Dec 29 2020-July 22 2021                | 7  | France  | 217 |         | 151 (70) | 217 (100) |  | 217 (100) |             |  |
| Saliravira <sup>51</sup>                   | Dec 21 2020 - March 1 2021              | 3  | Iran  | 143 |         |          |           |  |           |             |  |
| Azithromycin-Atomic <sup>52</sup>          | June 3, 2020- Jan 29, 2021,             | 8  | UK  | 292 |         |          |           |  |           |             |  |
| Azithromycin-ACTION <sup>53</sup>          | May 22 2020 - March 16 2021             | 9  | USA   | 197 |         | 18 (9)   |           |  | 197 (100) |             |  |
| Resveratrol <sup>54</sup>                  | September 13, 2020 - December 11, 2020, | 3  | USA   | 100 | 16 (16) |          |           |  |           | 50 (50)     |  |

Supplementary Table 3  
Hospitalized Odds Ratio statistics

| Study   | Hospitalization Odds ratio | Hospitalization 95 CI low | Hospitalization 95 CI high | Hospitalization significance (p) | Hospitalization statistic z |
|---|----------------------------|---------------------------|----------------------------|----------------------------------|-----------------------------|
| <b>Total CCP</b>                                      | <b>0.71</b>                | <b>0.55</b>               | <b>0.91</b>                | <b>0.0035</b>                    | <b>2.697265</b>             |
| <b>Total mAb</b>                                      | <b>0.32</b>                | <b>0.24</b>               | <b>0.42</b>                | <b>P&lt;0.001</b>                | <b>8.213656</b>             |
| <b>Total antivirals</b>                               | <b>0.65</b>                | <b>0.55</b>               | <b>0.77</b>                | <b>P&lt;0.001</b>                | <b>4.814847</b>             |
| <b>Total repurposed</b>                               | <b>0.76</b>                | <b>0.66</b>               | <b>0.88</b>                | <b>P&lt;0.001</b>                | <b>3.953106</b>             |
| <b>Total</b>  | <b>0.65</b>                | <b>0.59</b>               | <b>0.71</b>                | <b>P&lt;0.001</b>                | <b>9.021468</b>             |
| CCP-CONV-ERT <sup>16</sup>                            | 1.05                       | 0.56                      | 1.99                       | 0.4356                           | 0.162033                    |
| CCP-CoV-Early <sup>19</sup>                           | 0.61                       | 0.29                      | 1.30                       | 0.1021                           | 1.269694                    |
| CCP-C3PO <sup>15</sup>                                | 0.90                       | 0.59                      | 1.37                       | 0.3078                           | 0.502004                    |
| CCP-Argentina <sup>14</sup>                           | 0.43                       | 0.20                      | 0.91                       | 0.0140                           | 2.197789                    |
| CCP-CSSC-004 <sup>11</sup>                            | 0.44                       | 0.25                      | 0.79                       | 0.0031                           | 2.737543                    |
| CCP-Argentina (high titer) <sup>14</sup>              | 0.20                       | 0.06                      | 0.71                       | 0.0132                           | 2.478                       |
| CCP-CSSC-004 (<= 5 days) <sup>11</sup>                | 0.18                       | 0.07                      | 0.49                       | 0.0007                           | 3.38                        |
| Bamlanivimab-BLAZE-1 <sup>2</sup>                     | 0.24                       | 0.08                      | 0.74                       | 0.0066                           | 2.479993                    |
| Sotrovimab-COMET-ICE <sup>23</sup>                    | 0.19                       | 0.08                      | 0.46                       | 0.0001                           | 3.663844                    |
| Bamlanivimab/etesevimab-BLAZE-1 <sup>3</sup>          | 0.29                       | 0.15                      | 0.58                       | 0.0002                           | 3.534471                    |
| Casirivimab/ imdevimab-REGEN-COV Ph 3 <sup>21</sup>   | 0.28                       | 0.16                      | 0.47                       | 0.0000                           | 4.734662                    |
| Casirivimab/ imdevimab-REGEN-COV Ph 1/2 <sup>20</sup> | 0.30                       | 0.07                      | 1.25                       | 0.0484                           | 1.660556                    |
| Bebtelovimab-BLAZE-4 <sup>12</sup>                    | 1.02                       | 0.14                      | 7.39                       | 0.4905                           | 0.023906                    |
| Regdanvimab-CT-P59 <sup>23</sup>                      | 0.49                       | 0.19                      | 1.27                       | 0.0716                           | 1.463817                    |



|  |      |      |       |        |          |
|--|------|------|-------|--------|----------|
| Tixagevimab–cilgavimab-TACKLE <sup>24</sup>      | 0.47 | 0.26 | 0.84  | 0.0057 | 2.528551 |
| Molnupiravir-MOVE-OUT <sup>7</sup>               | 0.67 | 0.46 | 0.99  | 0.0223 | 2.00829  |
| Molnupiravir-PANORAMIC <sup>25</sup>             | 1.07 | 0.81 | 1.42  | 0.3156 | 0.479984 |
| Molnupiravir-Aurobindo <sup>27</sup>             | NA   | NA   | NA    | NA     | NA       |
| Nirmatrelvir/ritonavir-EPIC-HR <sup>7</sup>      | 0.12 | 0.06 | 0.24  | 0.0000 | 5.731691 |
| Remdesivir-PINETREE <sup>27</sup>                | 0.13 | 0.03 | 0.57  | 0.0034 | 2.703067 |
| Interferon Lambda-TOGETHER <sup>30</sup>         | 0.47 | 0.29 | 0.77  | 0.0011 | 3.054966 |
| Interferon Lambda-ILIAD <sup>28</sup>            | 1.00 | 0.06 | 16.76 | 0.5000 | 0        |
| Interferon Lambda-COVID-Lambda <sup>29</sup>     | 1.00 | 0.14 | 7.34  | 0.5000 | 0        |
| Sofosbuvir and daclatasvir-SOVODAK <sup>31</sup> | 0.23 | 0.02 | 2.21  | 0.1018 | 1.271414 |
| Favipiravir-Avi-Mild-19 <sup>32</sup>            | 3.31 | 0.65 | 16.76 | 0.0739 | 1.44706  |
| Lopinavir/ritonavir-TOGETHER <sup>33</sup>       | 1.20 | 0.53 | 2.69  | 0.3333 | 0.430926 |
| Metformin-COVID-OUT <sup>13</sup>                | 0.42 | 0.18 | 0.96  | 0.0198 | 2.057    |
| Fluvoxamine-TOGETHER <sup>35</sup>               | 0.77 | 0.56 | 1.05  | 0.0505 | 1.640023 |
| Fluvoxamine -STOP COVID <sup>36</sup>            | 0.06 | 0.00 | 1.15  | 0.0310 | 1.866043 |
| Fluvoxamine-COVID-OUT <sup>13</sup>              | 1.18 | 0.36 | 3.91  | 0.3935 | 0.270145 |
| Ivermectin-TOGETHER <sup>37</sup>                | 0.87 | 0.65 | 1.18  | 0.1831 | 0.903781 |
| Ivermectin-COVID-OUT <sup>13</sup>               | 0.76 | 0.20 | 2.85  | 0.3414 | 0.408715 |
| Ivermectin Iran <sup>38</sup>                    | 1.46 | 0.71 | 2.96  | 0.1507 | 1.033341 |
| Ivermectin-ACTIV-6 <sup>39</sup>                 | 1.05 | 0.43 | 2.61  | 0.4553 | 0.112309 |
| Hydroxychloroquine-TOGETHER <sup>34</sup>        | 0.76 | 0.30 | 1.93  | 0.2840 | 0.570928 |

|   |      |      |        |        |          |
|---|------|------|--------|--------|----------|
| Hydroxychloroquine-<br>COVID-19 PEP <sup>42</sup> | 0.49 | 0.16 | 1.45   | 0.0971 | 1.298164 |
| Hydroxychloroquine -AH<br>COVID-19 <sup>41</sup>  | 3.14 | 0.17 | 59.70  | 0.2232 | 0.761332 |
| Hydroxychloroquine-BCN<br>PEP-CoV-2 <sup>40</sup> | 0.83 | 0.32 | 2.13   | 0.3486 | 0.389184 |
| Hydroxychloroquine-<br>BMG <sup>43</sup>          | 0.69 | 0.18 | 2.65   | 0.2945 | 0.54027  |
| Nitazoxanide-Romark <sup>43</sup>                 | 0.21 | 0.02 | 1.79   | 0.0766 | 1.428571 |
| Colchicine-<br>COLCORONA <sup>44</sup>            | 0.79 | 0.61 | 1.03   | 0.0407 | 1.742726 |
| Niclosamide <sup>45</sup>                         | 0.33 | 0.01 | 8.48   | 0.2529 | 0.665353 |
| Aspirin-ACTIV-4B <sup>46</sup>                    | 0.94 | 0.06 | 15.24  | 0.4838 | 0.040562 |
| 2.5-mg apixaban-ACTIV-<br>4B <sup>46</sup>        | 1.01 | 0.06 | 16.27  | 0.4979 | 0.005238 |
| 5-mg apixaban ACTIV-<br>4B <sup>46</sup>          | 1.91 | 0.17 | 21.36  | 0.2988 | 0.527902 |
| Sulodexide <sup>47</sup>                          | 0.52 | 0.28 | 0.95   | 0.0167 | 2.128119 |
| Enoxaparin-ETHIC <sup>49</sup>                    | 1.10 | 0.47 | 2.56   | 0.4155 | 0.213485 |
| Enoxaparin-OVID <sup>50</sup>                     | 1.02 | 0.38 | 2.76   | 0.4862 | 0.034489 |
| Inhaled ciclesonide-<br>COVERAGE <sup>50</sup>    | 1.15 | 0.51 | 2.63   | 0.3659 | 0.34277  |
| Saliravira <sup>51</sup>                          | 0.01 | 0.00 | 0.24   | 0.0016 | 2.9467   |
| Azithromycin-Atomic <sup>52</sup>                 | 0.88 | 0.42 | 1.84   | 0.3694 | 0.333472 |
| Azithromycin-ACTION <sup>53</sup>                 | 6.62 | 0.36 | 121.45 | 0.1015 | 1.272994 |
| Resveratrol <sup>54</sup>                         | 0.32 | 0.03 | 3.18   | 0.1654 | 0.972432 |

Supplementary Table 4  
Deaths during RCTs

| Study  | ARR%              | RRR%             | 95% CI<br>ARR        | 95% CI<br>RRR       | Odds<br>ratio         | 95 CI<br>low          | 95 CI<br>high         | z<br>statistic | significance<br>(p) |
|--|-------------------|------------------|----------------------|---------------------|-----------------------|-----------------------|-----------------------|----------------|---------------------|
| Total CCP                                    | 0.15              | 20               | (-0.48,<br>0.78)     | (-101,<br>68.4)     | 0.80                  | 0.31                  | 2.02                  | 0.4785         | 0.3162              |
| Total mAb                                    | 0.51              | 84               | (0.23,<br>0.79)      | (52.0,<br>94.3)     | 0.16                  | 0.06                  | 0.48                  | 3.3107         | 0.0005              |
| Total antivirals                             | 0.13              | 75               | (0.06,<br>0.20)      | (42.6,<br>89.0)     | 0.25                  | 0.11                  | 0.57                  | 3.2733         | 0.0005              |
| Total repurposed                             | 0.24              | 28               | (-0.02,<br>0.50)     | (-2.3,<br>49.6)     | 0.72                  | 0.5                   | 1.02                  | 1.8362         | 0.0332              |
| Total  | 0.20              | 46               | (0.11,<br>0.30)      | (28.4,<br>59.7)     | 0.54                  | 0.4                   | 0.72                  | 4.2423         | 1E-05               |
| Study  | Deaths<br>control | Total<br>control | Deaths<br>intervent. | Total<br>intervent. | Total<br>both<br>arms | %<br>death<br>control | % death<br>intervent. |                |                     |
| <b>Total CCP</b>                             | 10                | 1315             | 8                    | 1319                | 2634                  | 0.76                  | 0.61                  |                |                     |
| <b>Total mAb</b>                             | 21                | 3443             | 4                    | 3978                | 7421                  | 0.61                  | 0.10                  |                |                     |
| <b>Total antivirals</b>                      | 28                | 16606            | 7                    | 16542               | 33148                 | 0.17                  | 0.04                  |                |                     |
| <b>Total repurposed</b>                      | 72                | 8316             | 53                   | 8524                | 16840                 | 0.87                  | 0.62                  |                |                     |
| <b>Total</b>                                 | 131               | 29680            | 72                   | 30363               | 60043                 | 0.44                  | 0.24                  |                |                     |
| CCP-CONV-ert <sup>16</sup>                   | 2                 | 188              | 0                    | 188                 | 376                   | 1.06                  | 0.00                  |                |                     |
| CCP-CoV-Early <sup>19</sup>                  | 0                 | 204              | 1                    | 202                 | 406                   | 0.00                  | 0.50                  |                |                     |
| CCP-C3PO <sup>15</sup>                       | 1                 | 254              | 5                    | 257                 | 511                   | 0.39                  | 1.95                  |                |                     |
| CCP-Argentina <sup>14</sup>                  | 4                 | 80               | 2                    | 80                  | 160                   | 5.00                  | 2.50                  |                |                     |
| CCP-CSSC-004 <sup>11</sup>                   | 3                 | 589              | 0                    | 592                 | 1181                  | 0.51                  | 0.00                  |                |                     |
| Bamlanivimab-BLAZE-1 <sup>2</sup>            | 0                 | 143              | 0                    | 309                 | 452                   | 0.00                  | 0.00                  |                |                     |
| Sotrovimab-COMET-ICE <sup>23</sup>           | 2                 | 529              | 0                    | 528                 | 1057                  | 0.38                  | 0.00                  |                |                     |
| Bamlanivimab/etesevimab-BLAZE-1 <sup>3</sup> | 10                | 517              | 0                    | 518                 | 1035                  | 1.93                  | 0.00                  |                |                     |

|   |    |       |    |       |       |      |      |  |  |
|---|----|-------|----|-------|-------|------|------|--|--|
| Casirivimab/ imdevimab-<br>REGEN-COV Ph 3 <sup>21</sup>   | 3  | 1341  | 1  | 1355  | 2696  | 0.22 | 0.07 |  |  |
| Casirivimab/ imdevimab-<br>REGEN-COV Ph 1/2 <sup>20</sup> | 0  | 266   | 0  | 533   | 799   | 0.00 | 0.00 |  |  |
| Bebtelovimab-BLAZE-4 <sup>12</sup>                        | 0  | 128   | 0  | 125   | 253   | 0.00 | 0.00 |  |  |
| Regdanvimab-CT-P59 <sup>23</sup>                          | 0  | 104   | 0  | 203   | 307   | 0.00 | 0.00 |  |  |
| Tixagevimab-cilgavimab-<br>TACKLE <sup>24</sup>           | 6  | 415   | 3  | 407   | 822   | 1.45 | 0.74 |  |  |
| Molnupiravir-MOVE-OUT <sup>7</sup>                        | 9  | 699   | 1  | 709   | 1408  | 1.29 | 0.14 |  |  |
| Molnupiravir-<br>PANORAMIC <sup>25</sup>                  | 5  | 12484 | 2  | 12516 | 25000 | 0.04 | 0.02 |  |  |
| Molnupiravir-Aurobindo <sup>27</sup>                      | 0  | 610   | 0  | 610   | 1220  | 0.00 | 0.00 |  |  |
| Nirmatrelvir/ritonavir-EPIC-<br>HR <sup>7</sup>           | 12 | 1046  | 0  | 1039  | 2085  | 1.15 | 0.00 |  |  |
| Remdesivir-PINETREE <sup>27</sup>                         | 1  | 283   | 0  | 279   | 562   | 0.35 | 0.00 |  |  |
| Interferon Lambda-<br>TOGETHER <sup>30</sup>              | 1  | 1020  | 4  | 916   | 1936  | 0.10 | 0.44 |  |  |
| Interferon Lambda- ILIAD <sup>28</sup>                    | 0  | 30    | 0  | 30    | 60    | 0.00 | 0.00 |  |  |
| Interferon Lambda-COVID-<br>Lambda <sup>29</sup>          | 0  | 60    | 0  | 60    | 120   | 0.00 | 0.00 |  |  |
| Sofosbuvir and daclatasvir-<br>SOVODAK <sup>31</sup>      | 0  | 28    | 0  | 27    | 55    | 0.00 | 0.00 |  |  |
| Favipiravir-Avi-Mild-19 <sup>32</sup>                     | 0  | 119   | 0  | 112   | 231   | 0.00 | 0.00 |  |  |
| Lopinavir/ritonavir-<br>TOGETHER <sup>33</sup>            | 0  | 227   | 0  | 244   | 471   | 0.00 | 0.00 |  |  |
| Metformin-COVID-OUT <sup>13</sup>                         | 1  | 601   | 1  | 596   | 1197  | 0.17 | 0.17 |  |  |
| Fluvoxamine-TOGETHER <sup>35</sup>                        | 25 | 756   | 17 | 741   | 1497  | 3.31 | 2.29 |  |  |
| Fluvoxamine -STOP<br>COVID <sup>36</sup>                  | 0  | 72    | 0  | 80    | 152   | 0.00 | 0.00 |  |  |
| Fluvoxamine-COVID-<br>OUT <sup>13</sup>                   | 0  | 293   | 0  | 299   | 592   | 0.00 | 0.00 |  |  |
| Ivermectin-TOGETHER <sup>37</sup>                         | 24 | 675   | 21 | 674   | 1349  | 3.56 | 3.12 |  |  |

|  |   |      |   |      |      |      |      |  |  |
|--|---|------|---|------|------|------|------|--|--|
| Ivermectin-COVID-OUT <sup>13</sup>             | 0 | 356  | 1 | 374  | 730  | 0.00 | 0.27 |  |  |
| Ivermectin Iran <sup>38</sup>                  | 1 | 281  | 1 | 268  | 549  | 0.36 | 0.37 |  |  |
| Ivermectin-ACTIV-6 <sup>39</sup>               | 0 | 774  | 1 | 817  | 1591 | 0.00 | 0.12 |  |  |
| Hydroxychloroquine-TOGETHER <sup>34</sup>      | 1 | 227  | 0 | 214  | 441  | 0.44 | 0.00 |  |  |
| Hydroxychloroquine-COVID-19 PEP <sup>42</sup>  | 1 | 211  | 1 | 212  | 423  | 0.47 | 0.47 |  |  |
| Hydroxychloroquine -AH COVID-19 <sup>41</sup>  | 0 | 37   | 0 | 111  | 148  | 0.00 | 0.00 |  |  |
| Hydroxychloroquine-BCN PEP-CoV-2 <sup>40</sup> | 0 | 157  | 0 | 136  | 293  | 0.00 | 0.00 |  |  |
| Hydroxychloroquine-BMG <sup>43</sup>           | 0 | 83   | 0 | 148  | 231  | 0.00 | 0.00 |  |  |
| Nitazoxanide-Romark <sup>43</sup>              | 0 | 195  | 0 | 184  | 379  | 0.00 | 0.00 |  |  |
| Colchicine-COLCORONA <sup>44</sup>             | 9 | 2253 | 5 | 2235 | 4488 | 0.40 | 0.22 |  |  |
| Niclosamide <sup>45</sup>                      | 0 | 34   | 0 | 33   | 67   | 0.00 | 0.00 |  |  |
| Aspirin-ACTIV-4B <sup>46</sup>                 | 0 | 136  | 0 | 144  | 280  | 0.00 | 0.00 |  |  |
| 2.5-mg apixaban-ACTIV-4B <sup>46</sup>         | 0 | 136  | 0 | 135  | 271  | 0.00 | 0.00 |  |  |
| 5-mg apixaban ACTIV-4B <sup>46</sup>           | 0 | 136  | 0 | 143  | 279  | 0.00 | 0.00 |  |  |
| Sulodexide <sup>47</sup>                       | 7 | 119  | 3 | 124  | 243  | 5.88 | 2.42 |  |  |
| Enoxaparin-ETHIC <sup>49</sup>                 | 0 | 114  | 1 | 105  | 219  | 0.00 | 0.95 |  |  |
| Enoxaparin-OVID <sup>50</sup>                  | 0 | 238  | 0 | 234  | 472  | 0.00 | 0.00 |  |  |
| Inhaled ciclesonide-COVERAGE <sup>50</sup>     | 2 | 107  | 0 | 110  | 217  | 1.87 | 0.00 |  |  |
| Saliravira <sup>51</sup>                       | 0 | 56   | 0 | 87   | 143  | 0.00 | 0.00 |  |  |
| Azithromycin-Atomic2 <sup>52</sup>             | 1 | 147  | 1 | 145  | 292  | 0.68 | 0.69 |  |  |
| Azithromycin-ACTION <sup>53</sup>              | 0 | 72   | 0 | 125  | 197  | 0.00 | 0.00 |  |  |
| Resveratrol <sup>54</sup>                      | 0 | 50   | 0 | 50   | 100  | 0.00 | 0.00 |  |  |

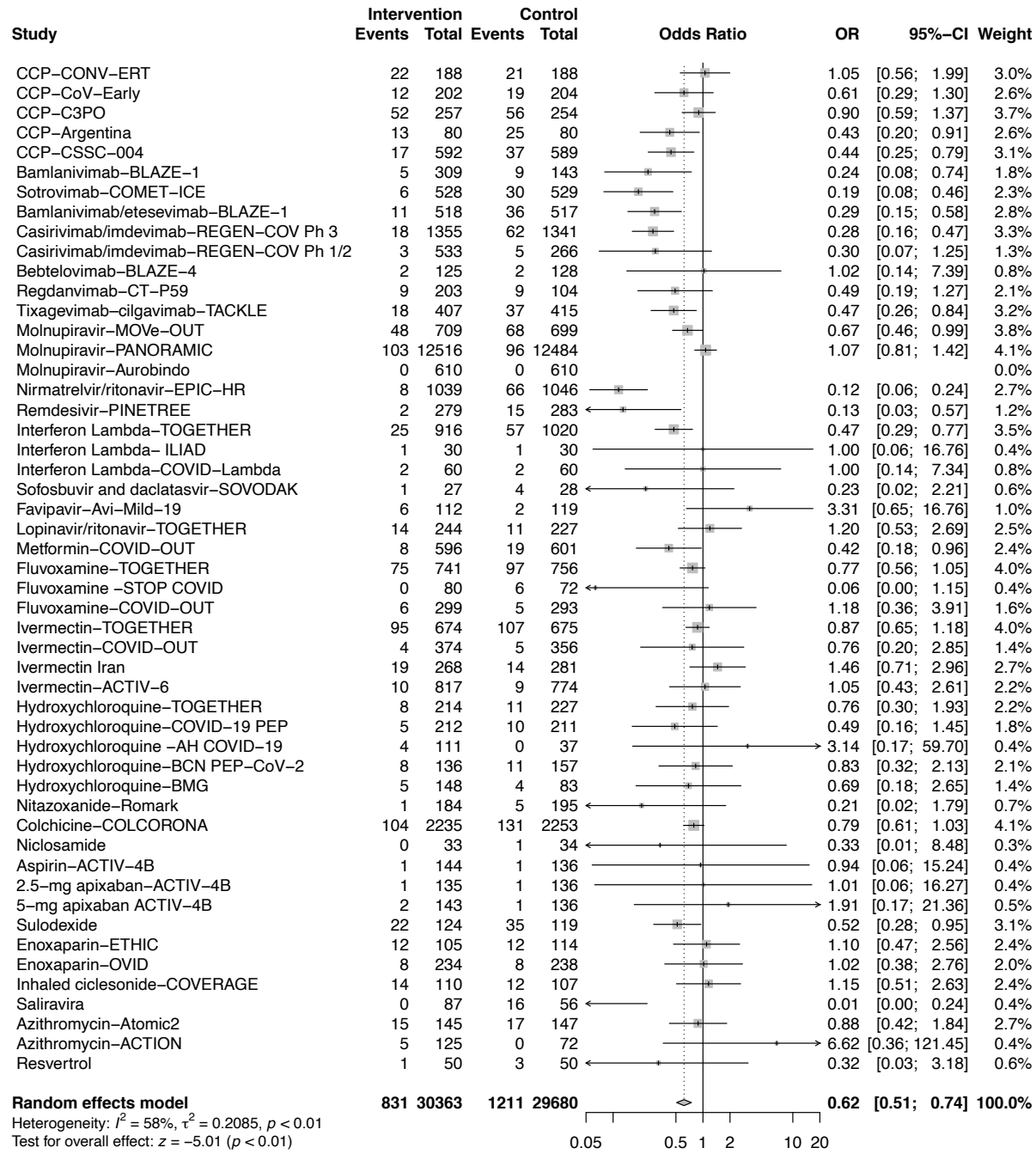
It is made available under a [CC-BY-ND 4.0 International license](https://creativecommons.org/licenses/by-nd/4.0/).

## Supplementary Figure 1 Risk of bias by RCT

| TYPE     | Study                                  | Radomization             | Deviations from intervention | Missing outcome data     | Mesaurement of the outcome | Selection of the reported results | Overall risk of bias     | ROB Source   |
|----------|--|--------------------------|------------------------------|--------------------------|----------------------------|-----------------------------------|--------------------------|--|
| Ab-CCP   | CCP-CONV-ert                           | Low                      | Low                          | Low                      | Low                        | Low                               | Low                      | <a href="https://covid-nma.com/">https://covid-nma.com/</a>  |
| Ab-CCP   | CCP-COV-early                          |                          |                              |                          |                            |                                   |                          | pending in NMA-COVID   |
| Ab-CCP   | CCP-C3PO                               | Low                      | Low                          | Some concerns            | Low                        | Low                               | Some concerns            | <a href="https://covid-nma.com/">https://covid-nma.com/</a>  |
| Ab-CCP   | CCP-Argentina                          | Low                      | Low                          | Low                      | Low                        | Some concerns                     | Some concerns            | <a href="https://covid-nma.com/">https://covid-nma.com/</a>  |
| Ab-CCP   | CCP-CSSC-004                           | Low                      | Low                          | Low                      | Low                        | Low                               | Low                      | <a href="https://covid-nma.com/">https://covid-nma.com/</a>  |
| Ab-MONO  | Bamlanivimab-BLAZE-1                   | Low                      | Low                          | Low                      | Low                        | Low                               | Low                      | <a href="https://covid-nma.com/">https://covid-nma.com/</a>  |
| Ab-MONO  | Sotrovimab-COMET-HCE                   | Low                      | Low                          | Some concerns            | Low                        | Some concerns                     | Some concerns            | <a href="https://covid-nma.com/">https://covid-nma.com/</a>  |
| Ab-MONO  | BLAZE-1                                | Low                      | Low                          | Some concerns            | Low                        | Low                               | Some concerns            | <a href="https://covid-nma.com/">https://covid-nma.com/</a>  |
| Ab-MONO  | Casirivimab/imdevimab-REGEN-COV Ph 3   | Some concerns            | Low                          | Some concerns            | Low                        | Some concerns                     | Some concerns            | <a href="https://covid-nma.com/">https://covid-nma.com/</a>  |
| Ab-MONO  | Casirivimab/imdevimab-REGEN-COV Ph 1/2 | Low                      | Low                          | Low                      | Low                        | Low                               | Low                      | <a href="https://covid-nma.com/">https://covid-nma.com/</a>  |
| Ab-MONO  | Bebtelovimab-BLAZE-4                   | Low                      | Low                          | Low                      | Low                        | Low                               | Low                      | <a href="https://covid-nma.com/">https://covid-nma.com/</a>  |
| Ab-MONO  | Regdanvimab-CT-P59                     | Low                      | Low                          | Some concerns            | Low                        | Low                               | Some concerns            | <a href="https://covid-nma.com/">https://covid-nma.com/</a>  |
| Ab-MONO  | Tixagevimab-cilgavimab-TACKLE          | Low                      | Some concerns                | Some concerns            | Low                        | Low                               | Some concerns            | <a href="https://covid-nma.com/">https://covid-nma.com/</a>  |
| DRUG-AV  | Molnupiravir-MOVE-OUT                  | Low                      | Low                          | Low                      | Low                        | Low                               | Low                      | <a href="https://covid-nma.com/">https://covid-nma.com/</a>  |
| DRUG-AV  | Molnupiravir-PANORAMIC                 | Low                      | Some concerns                | HIGH                     | Some concerns              | Low                               | HIGH                     | <a href="https://covid-nma.com/">https://covid-nma.com/</a>  |
| DRUG-AV  | Molnupiravir-Aurobindo                 | Low                      | Low                          | Low                      | Some concerns              | Some concerns                     | Some concerns            | <a href="https://covid-nma.com/">https://covid-nma.com/</a>  |
| DRUG-AV  | Nirmatrelvir/ritonavir-EPIC-HR         | Low                      | Low                          | Some concerns            | Low                        | Low                               | Some concerns            | <a href="https://covid-nma.com/">https://covid-nma.com/</a>  |
| DRUG-AV  | Remdesivir-PINETREE                    | Some concerns            | Low                          | Low                      | Low                        | Low                               | Some concerns            | <a href="https://covid-nma.com/">https://covid-nma.com/</a>  |
| DRUG-AV  | Interferon Lambda-TOGETHER             |                          |                              |                          |                            |                                   |                          | data not published Eiger   |
| DRUG-AV  | Interferon Lambda-ILIAD                | Low                      | Low                          | Low                      | Low                        | Some concerns                     | Some concerns            | <a href="https://covid-nma.com/">https://covid-nma.com/</a>  |
| DRUG-AV  | Interferon Lambda-COVID                | Low                      | Low                          | Low                      | Low                        | Some concerns                     | Some concerns            | <a href="https://covid-nma.com/">https://covid-nma.com/</a>  |
| DRUG-AV  | SOVODAK                                | little evidence to score | little evidence to score     | little evidence to score | little evidence to score   | little evidence to score          | little evidence to score | <a href="https://covid-nma.com/">https://covid-nma.com/</a>  |
| DRUG-AV  | Favipiravir-Avi-Mild-19                | Low                      | Low                          | Low                      | Some concerns              | Low                               | Some concerns            | <a href="https://covid-nma.com/">https://covid-nma.com/</a>  |
| DRUG-AV  | Lopinavir/ritonavir-TOGETHER           | Low                      | Low                          | Some concerns            | Low                        | Some concerns                     | Some concerns            | <a href="https://covid-nma.com/">https://covid-nma.com/</a>  |
| DRUG-RP  | Metformin-COVID-OUT                    | Low                      | Low                          | Unclear                  | Low                        | Low                               | Low                      | RevMan pending in NMA-COVID  |
| DRUG-RP  | Fluvoxamine-TOGETHER                   | Low                      | Some concerns                | Low                      | Low                        | Low                               | Some concerns            | <a href="https://covid-nma.com/">https://covid-nma.com/</a>  |
| DRUG-RP  | Fluvoxamine-STOP COVID                 | Low                      | Low                          | Some concerns            | Low                        | Low                               | Some concerns            | <a href="https://covid-nma.com/">https://covid-nma.com/</a>  |
| DRUG-RP  | Fluvoxamine-COVID-OUT                  | Low                      | Low                          | Unclear                  | Low                        | Low                               | Low                      | RevMan pending in NMA-COVID  |
| DRUG-RP  | Ivermectin-TOGETHER                    | Low                      | Low                          | Unclear                  | Low                        | Low                               | Low                      | Revman and <a href="https://www.cochranelibrary.com/cdsr/doi/10.1002/14651858.CD015017.pub3/references#riskOfBias2">https://www.cochranelibrary.com/cdsr/doi/10.1002/14651858.CD015017.pub3/references#riskOfBias2</a> |
| DRUG-RP  | Ivermectin-COVID-OUT                   | Low                      | Low                          | Unclear                  | Low                        | Low                               | Low                      | RevMan pending in NMA-COVID  |
| DRUG-RP  | Ivermectin Iran                        |                          |                              |                          |                            |                                   |                          | pending in NMA-COVID   |
| DRUG-RP  | Ivermectin-ACTIV-6                     | Low                      | Low                          | Low                      | Low                        | Low                               | Unclear                  | RevMan pending in NMA-COVID  |
| DRUG-RP  | TOGETHER                               | Low                      | Low                          | Some concerns            | Low                        | Some concerns                     | Some concerns            | <a href="https://covid-nma.com/">https://covid-nma.com/</a>  |
| DRUG-RP  | 19 PEP                                 | Some concerns            | Low                          | Some concerns            | Low                        | Low                               | Some concerns            | <a href="https://covid-nma.com/">https://covid-nma.com/</a>  |
| DRUG-RP  | COVID-19                               | Low                      | Low                          | Low                      | Low                        | Some concerns                     | Some concerns            | <a href="https://covid-nma.com/">https://covid-nma.com/</a>  |
| DRUG-RP  | CoV-2                                  | Low                      | Low                          | Some concerns            | Some concerns              | Some concerns                     | Some concerns            | <a href="https://covid-nma.com/">https://covid-nma.com/</a>  |
| DRUG-RP  | Hydroxychloroquine-BMG                 | Low                      | Low                          | Some concerns            | Low                        | Some concerns                     | Some concerns            | <a href="https://covid-nma.com/">https://covid-nma.com/</a>  |
| DRUG-RP  | Nitazoxanide-Romark                    | Low                      | Low                          | Some concerns            | Low                        | Some concerns                     | Some concerns            | <a href="https://covid-nma.com/">https://covid-nma.com/</a>  |
| DRUG-RP  | Colchicine-COLCORONA                   | Low                      | Low                          | Low                      | Low                        | Some concerns                     | Some concerns            | <a href="https://covid-nma.com/">https://covid-nma.com/</a>  |
| DRUG-RP  | Niclosamide                            | Some concerns            | Low                          | Some concerns            | Low                        | Low                               | Some concerns            | <a href="https://covid-nma.com/">https://covid-nma.com/</a>  |
| DRUG-RP  | Aspirin-ACTIV-4B                       | Low                      | Some concerns                | Some concerns            | Low                        | Low                               | Some concerns            | <a href="https://covid-nma.com/">https://covid-nma.com/</a>  |
| DRUG-RP  | 2.5-mg apixaban-ACTIV-4B               | Low                      | Some concerns                | Some concerns            | Low                        | Low                               | Some concerns            | <a href="https://covid-nma.com/">https://covid-nma.com/</a>  |
| DRUG-RP  | 5-mg apixaban ACTIV-4B                 | Low                      | Some concerns                | Some concerns            | Low                        | Low                               | Some concerns            | <a href="https://covid-nma.com/">https://covid-nma.com/</a>  |
| DRUG-RP  | Sulodexide                             | Some concerns            | Low                          | Some concerns            | Low                        | Some concerns                     | Some concerns            | <a href="https://covid-nma.com/">https://covid-nma.com/</a>  |
| DRUG-RP  | Enoxaparin-ETHIC                       |                          |                              |                          |                            |                                   |                          | pending in NMA-COVID   |
| DRUG-RP  | Enoxaparin-OVID                        |                          |                              |                          |                            |                                   |                          | pending in NMA-COVID   |
| DRUG-RP  | Inhaled ciclesonide-COVERAGE           | Low                      | Low                          | Low                      | Low                        | Low                               | Low                      | <a href="https://covid-nma.com/">https://covid-nma.com/</a>  |
| DRUG-RPH | Saliravira                             |                          |                              |                          |                            |                                   |                          | pending in NMA-COVID   |
| DRUG-RP  | Azithromycin-Atomic2                   | Low                      | Low                          | Low                      | Some concerns              | Some concerns                     | Some concerns            | <a href="https://covid-nma.com/">https://covid-nma.com/</a>  |
| DRUG-RP  | Azithromycin-ACTION                    | Low                      | Low                          | Some concerns            | Low                        | Low                               | Some concerns            | <a href="https://covid-nma.com/">https://covid-nma.com/</a>  |
| DRUG-RP  | Resveratrol                            |                          |                              |                          |                            |                                   |                          | pending in NMA-COVID   |

## Supplementary Figure 2

Odds ratio for hospitalizations from all therapeutic interventions, ordered according to mechanism of action (CCP, anti-Spike mAbs, small molecule antivirals and repurposed drugs)



### Supplementary Figure 3

Funnel plots by RCTs class A) CCP, B) anti-Spike mAbs C) small molecule antivirals and D) repurposed drugs. For anti-Spike mAbs RCTs, there is a suggestion of missing studies on the right side of the plot, where results would be unfavourable to the experimental intervention, for which either very high efficacy of high-dose anti-Spike mAbs or non-reporting bias is a plausible explanation.

