

1 **Original Article**

2

3 **Evaluation of triage checklist for mild COVID-19 outpatients in predicting subsequent**
4 **emergency department visits and hospitalization during isolation period**

5

6 Yasuhiro Tanaka ^{1,2}, Kazuko Yamamoto ^{*2}, Shimpei Morimoto ³, Takeshi Nabeshima ⁴, Kayoko
7 Matsushima ⁵, Hiroshi Ishimoto ², Nobuyuki Ashizawa ^{2,6}, Tatsuro Hirayama ², Kazuaki Takeda ²,
8 Hiroshi Gyotoku ², Naoki Iwanaga ², Shinnosuke Takemoto ², Susumu Fukahori ², Takahiro Takazono
9 ^{2,7}, Hiroyuki Yamaguchi ^{2,8}, Takashi Kido ², Noriho Sakamoto ², Naoki Hosogaya ³, Shogo Akabame ⁹,
10 Takashi Sugimoto ⁹, Hiroto Yamanashi ^{9,10}, Kosuke Matsui ¹⁰, Mai Izumida ¹⁰, Ayumi Fujita ⁶,
11 Masato Tashiro ^{6,7}, Takeshi Tanaka ⁶, Koya Ariyoshi ¹⁰, Akitsugu Furumoto ¹¹, Kouichi Morita ⁴,
12 Koichi Izumikawa ^{6,7}, Katsunori Yanagihara ¹², Hiroshi Mukae ^{1,2}

13

14 Authors' affiliation(s):

15 ¹ Department of Respiratory Medicine, Nagasaki University Graduate School of Biomedical Sciences,
16 Nagasaki City, Nagasaki, 852-8501, Japan; yasu-tanaka@nagasaki-u.ac.jp; hmukae@nagasaki-u.ac.jp

17 ² Department of Respiratory Medicine, Nagasaki University Hospital, Nagasaki City, Nagasaki, 852-
18 8501, Japan; kazukomd@nagasaki-u.ac.jp; h-ishimoto@nagasaki-u.ac.jp; n-ashizawa@nagasaki-
19 u.ac.jp; tatsuro_h_20@nagasaki-u.ac.jp; k-takeda@nagasaki-u.ac.jp; gyotokuh@nagasaki-u.ac.jp;
20 niwanaga@nagasaki-u.ac.jp; shinnosuke-takemoto@nagasaki-u.ac.jp; susumu-f@nagasaki-u.ac.jp;
21 takahiro-takazono@nagasaki-u.ac.jp; t-kido@nagasaki-u.ac.jp; nsakamot@nagasaki-u.ac.jp

22 ³ Clinical Research Center, Nagasaki University Hospital, Nagasaki City, Nagasaki, 852-8102, Japan;
23 morimoto.s@nagasaki-u.ac.jp; nhosogaya@nagasaki-u.ac.jp

24 ⁴ Department of Virology, Institute of Tropical Medicine, Nagasaki University, Nagasaki City,
25 Nagasaki, 852-8523, Japan; mtmikami@sb3.so-net.ne.jp; moritak@nagasaki-u.ac.jp

26 ⁵ Medical Education Development Center, Nagasaki University Hospital, Nagasaki City, Nagasaki,
27 852-8501, Japan; kmatsu@nagasaki-u.ac.jp

28 ⁶ Infection Control and Education Center, Nagasaki University Hospital, Nagasaki City, Nagasaki,
29 852-8501, Japan; ayumi.f@nagasaki-u.ac.jp; mtashiro@nagasaki-u.ac.jp; ttakeshi@nagasaki-u.ac.jp;
30 koizumik@nagasaki-u.ac.jp

31 ⁷ Department of Infectious Diseases, Nagasaki University Graduate School of Biomedical Sciences,
32 Nagasaki City, Nagasaki, 852-8501, Japan

33 ⁸ Clinical Oncology Center, Nagasaki University Hospital, Nagasaki City, Nagasaki, 852-8501, Japan;
34 hyamaguchi@nagasaki-u.ac.jp;

35 ⁹ Department of General Medicine, Nagasaki University Hospital, Nagasaki City, Nagasaki, 852-8501,
36 Japan; s.akabame@nagasaki-u.ac.jp; sugimoto@nagasaki-u.ac.jp; yamanashi@nagasaki-u.ac.jp

37 ¹⁰ Department of Infectious Diseases, Nagasaki University Hospital, Nagasaki City, Nagasaki, 852-
38 8523, Japan; middlematsui@nagasaki-u.ac.jp; mizumida@nagasaki-u.ac.jp; kari@nagasaki-u.ac.jp

39 ¹¹ Infectious Diseases Experts Training Center, Nagasaki University Hospital, Nagasaki City,
40 Nagasaki, 852-8501, Japan; akifmtjp@nagasaki-u.ac.jp

41 ¹² Department of Laboratory Medicine, Nagasaki University Hospital, Nagasaki City, Nagasaki, 852-
42 8501, Japan; k-yanagi@nagasaki-u.ac.jp

43

44 ***Corresponding author:**

45 Name: Kazuko Yamamoto

46 Address: 1-7-1 Sakamoto

47 Post code: 852-8102

48 City: Nagasaki City, Nagasaki Prefecture

49 Country: Japan

50 Email: kazukomd@nagasaki-u.ac.jp

51

52 Word Count: Abstract, 245; Main text, 3033 (without references, tables, or figure legends)

53

54 **SUMMARY AT A GLANCE:**

55 Overall, 338 patients with mild COVID-19 were retrospectively followed up. Factors such as age
56 >50 years, BMI >25, underlying hypertension, high blood pressure and tachycardia at triage, and
57 delayed visit after symptom onset were associated with emergency department visit and
58 hospitalization during the isolation period.

59

60 **ABSTRACT:**

61 **Background and objective:** Limited evidence exists regarding the outcomes of patients with
62 coronavirus disease 2019 (COVID-19) who are not hospitalized. This study aimed to assess the
63 outcomes for mild COVID-19 patients in terms of emergency department (ED) visits and hospital
64 admission given initial outpatient triage evaluation and to identify the triage factors affecting these
65 outcomes.

66 **Methods:** This retrospective cohort study investigated adult COVID-19 Japanese patients who were
67 triaged at Nagasaki University Hospital between April 1, 2021, and May 31, 2021. A triage checklist
68 with 30 factors was used to identify patients requiring hospitalization. Patients recommended for
69 isolation were followed up for later ED visit or hospital admission.

70 **Results:** Overall, 338 COVID-19 patients (mean age, 44.7; 45% women) visited the clinic at an
71 average of 5.4 days after symptom onset. Thirty-six patients (10.6%) were hospitalized from triage,
72 and the rest were recommended for isolation. Seventy-two non-hospitalized patients (23.8%) visited
73 ED during their isolation period, and 30 (9.9%) were hospitalized after ED evaluation. The mean
74 duration to ED visit and hospitalization after symptom onset were 8.8 and 9.7 days, respectively.
75 Checklist factors associated with hospitalization during the isolation period were age > 50 years,
76 obesity with BMI > 25, underlying hypertension, tachycardia with HR > 100/min or blood pressure >
77 135 mmHg at triage, and >3-day delay in hospital visit after symptom onset.

78 **Conclusion:** Clinicians should be wary of COVID-19 patients with above risk factors and prompt
79 them to seek follow-up assessment by a medical professional.

80

81 **Key words:** COVID-19, outpatient, triage checklist, emergency department visit, hospitalization

82

83 **Short title:** Mild COVID-19 and subsequent ED visits

84

85 **INTRODUCTION:**

86 In January 2020, coronavirus disease 2019 (COVID-19)—caused by the severe acute respiratory
87 syndrome coronavirus-2 (SARS-CoV-2)—first appeared in Japan, and it has caused five pandemic
88 waves counting to the end of 2021. Overall, 2.93 million polymerase chain reaction (PCR)-positive
89 cases have been confirmed, and 18,393 deaths have been reported by the Ministry of Health, Labour
90 and Welfare in Japan as of December 31, 2021.¹ During the COVID-19 pandemic, emergency
91 departments (EDs) were involved in the crisis, managing cases of severe respiratory failure as well as
92 a large number of patients with mild symptoms.² This caused overcrowding in many EDs and
93 unavailability of hospital beds across the nation.³ An early triage system is critical for identifying
94 patients with high risk of severe COVID-19 who will require hospitalization.⁴ To date, many risk
95 factors have been identified that contribute to the severity of COVID-19, such as advanced age,
96 obesity, and diabetes mellitus.⁵ However, there is minimal evidence regarding the outcomes of
97 patients with mild COVID-19 who are not hospitalized and under home or facility isolation. Factors
98 associated with later exacerbation of symptoms, leading to an ED visit and admission of these patients,
99 have not been clarified. Although more than 80% of patients with COVID-19 have mild disease,⁶ this
100 percentage has further increased following the introduction of SARS-CoV-2 vaccinations.⁷
101 Investigation of patients with mild disease is important to avoid disruption of EDs and the society at
102 large. The present study aimed to assess the outcomes of mild COVID-19 patients in terms of
103 subsequent ED visits and hospitalization following initial triage and identify the factors leading to
104 these outcomes. Its novelty is contributing an evaluation of the potential benefits of a triage checklist
105 in avoiding treatment delay and subsequent hospitalization of patients with mild COVID-19.

106

107 **METHODS:**

108 *Study population*

109 This was a retrospective, observational cohort study of patients aged ≥ 20 years who visited the
110 COVID-19 triage outpatient clinic at Nagasaki University Hospital (NUH) between April 1, 2021, and
111 May 31, 2021, during Japan's fourth wave of the COVID-19 pandemic. Since the pandemic, a
112 COVID-19 triage outpatient clinic has been operational at NUH for patients with mild illnesses.
113 SARS-CoV-2 PCR-positive patients detected in Nagasaki City are listed by the Nagasaki City Public
114 Health Center and reported to the Nagasaki University Hospital Infection Control and Education
115 Center (NICE), which then assigns these patients to hospitals for initial assessment. NUH caters to the
116 largest number of COVID-19 patients in Nagasaki City. Such patients arriving at NUH for first
117 assessment are examined by a doctor in a triage room or tent and interviewed using a COVID-19
118 checklist while a nurse records their vital signs. Patients who directly visited or were transported to
119 the emergency room for hospital admission without outpatient triage were excluded from this analysis.

120

121 *Factors in the triage checklists*

122 Checklist factors included age, sex, date of symptom onset, height, weight, body mass index (BMI),
123 vital signs (body temperature [BT], respiratory rate [RR], SpO₂, pulse rate [PR], systolic blood
124 pressure [sBP], diastolic blood pressure [dBp]), underlying diseases (hypertension, diabetes,
125 cardiovascular diseases, chronic lung diseases, chronic liver diseases, chronic renal diseases,
126 malignancies, history of organ transplantation, human immunodeficiency virus [HIV] infection, use of
127 oral steroids/immunosuppressive drugs, and pregnancy), and symptoms that may be considered for
128 hospitalization (fatigue with difficulty moving, dyspnea, chest pain, poor dietary intake, and severe
129 diarrhea with ≥ 6 bowel movements per day). Indication for hospitalization was determined by a
130 doctor based on the checklist. Hospitalization was recommended if the patient's SpO₂ was $\leq 95\%$,
131 RR was ≥ 22 /min, sBP was ≤ 90 mmHg, or if severe dyspnea was present.

132

133 *SARS-CoV-2 genetic background in the study period at Nagasaki prefecture*

134 The epidemic since March 2021 in Japan is called the "fourth wave." To clarify the genotypic changes
135 in the fourth wave, we constructed a phylogenetic tree of SARS-CoV-2 isolated in Nagasaki

136 Prefecture. Eighteen hundred ten (1810) records of SARS-CoV-2 genome sequences from Nagasaki
137 Prefecture were available on GISAID⁸ as of 2022/03/24. The tree was generated by Nextstrain.^{9,10} The
138 third wave in Japan lasted until June 2020. COVID-19 was not endemic in Nagasaki Prefecture after
139 the third wave until the end of March 2021. The phylogenetic tree (Supplementary Fig. 1) suggested
140 that a clade 20B/R.1 had remained in Nagasaki Prefecture during the low endemic period. The "fourth
141 wave" is mainly caused by the clade 20I/B.1.1.7/Alpha. This clade was first detected in Japan in
142 December 2020 and introduced into Nagasaki Prefecture until late March 2021. The tree suggests that
143 at least four independent sub-clades of 20I/B.1.1.7/Alpha were introduced into Nagasaki Prefecture
144 around the end of March 2021. And the old clade, 20B/R.1, remained in Nagasaki Prefecture until
145 May 2021. Nagasaki City is located in the southern part of Nagasaki Prefecture. The diversity of
146 genomic RNA sequences suggested that 20I/B.1.1.7/Alpha spread rapidly in Nagasaki Prefecture
147 beginning in early April 2021. However, many of the GISAID records do not include geographical
148 information in Nagasaki Prefecture. Therefore, it is possible that some of the cases investigated in this
149 study may have been caused by the older 20B/R.1.

150

151 *End point*

152 The outcomes of the present study were 1) ED visit during isolation at home or facilities, and 2)
153 hospitalization following ED visit.

154

155 *Ethics*

156 This study was approved by the Ethical Review Committee of NUH (permission number 21101927),
157 and the study was conducted in accordance with the Declaration of Helsinki. The research was
158 conducted in an opt-out format, and the information was disclosed at the Clinical Research Center,
159 NUH.

160

161 *Analysis*

162 All variables in the COVID-19 triage checklist were included in the analysis. Events were designated
163 as "ED visit during isolation" or "hospitalization following ED visit," and the association of a variable

164 with each of these events was described as the odds ratio or the mean difference. The p -value for the
165 null hypothesis for each of the associations, derived from either Fisher's exact test or Wilcoxon rank
166 sum test, was utilized as a signal. We stated "significantly" associated when the obtained p -value was
167 lower than 0.05.

168

169 **RESULTS:**

170 *Patients' characteristics at outpatient triage*

171 The period of the study was applied to the fourth wave of COVID-19 pandemic in Japan, which was
172 due to mainly the clade 20I/B.1.1.7/Alpha and partly the old clade, 20B/R.1 (Figure S1). Overall, 338
173 SARS-CoV-2-positive patients visited the NUH outpatient triage clinic, and their characteristics are
174 listed in Table 1. All patients were of Japanese ethnicity with a mean age of 44.7 ± 15.2 years, and
175 45% of them were women. Outpatient triage visits occurred at a mean of 5.4 days after symptom
176 onset. The mean values and standard deviation for BMI, BT, RR, SpO₂, PR, and sBP/dBP at triage
177 were, 23.6 ± 4.4 kg/m², 37.0 ± 0.7 °, 17.9 ± 5.6 /min, 96.8 ± 3.0 %, 87.0 ± 14.4 /min, and $129 \pm 20.7/76 \pm$
178 13.6 mmHg), respectively. Overall, 71 patients (21.0%) had underlying diseases. The most frequent
179 comorbidity was hypertension (11%), followed by chronic lung diseases (4.4%), cardiovascular
180 diseases (3.8%), and diabetes (3.6%). Of all the patients, 2.1% were pregnant. None of the patients
181 had a history of organ transplant or HIV infection. Symptoms that potentially necessitated
182 hospitalization were found in 111 patients (32.8%). Poor dietary intake (22.0%) was the most frequent
183 symptom calling for hospitalization, followed by dyspnea (8.3%) and chest pain (6.5%). Of the 338
184 patients evaluated, 36 patients (10.6%) were hospitalized at the initial triage, while the remaining 302
185 patients were isolated in facilities or at home (Figure 1). To assess the factors in the checklist relating
186 to patients' admissions, the group of patients hospitalized at initial triage was compared with those
187 who underwent facility- or home-isolation. The factors that were likely associated ($p < 0.1$) with
188 hospitalization at triage are shown in Table 2. Patients hospitalized at triage were likely to consult at a
189 later time (6.2 days) after symptom onset compared to those who underwent isolation (5.3 days). The
190 former group of patients were also significantly older (mean age, 58.2 years; first quartile, 50.8 years)
191 and had a higher BMI (mean, 26.1 kg/m²) than the non-hospitalized group. Moreover, the following

192 clinical factors were associated with the hospitalization at triage: high fever, tachypnea, oxygen
193 desaturation, and tachycardia. BT was the only factor that did not overlap between the hospitalized
194 (first quartile, 37.6□) and non-hospitalized groups (third quartile, 37.3□). Comorbidities such as
195 hypertension, diabetes, cardiovascular diseases, or liver diseases were associated with hospitalization
196 at triage. Patients hospitalized at triage had significant symptoms of severe fatigue, dyspnea, or poor
197 dietary intake. The outcomes of patients hospitalized at initial triage were as follows: three patients
198 (8.3%) did not progress from mild disease; 11 patients (30.6%) progressed to non-oxygen requiring
199 pneumonia; 21 patients (58.3%) progressed to moderate pneumonia requiring oxygen
200 supplementation; and one patient (2.8%) died from severe disease (Figure 1).

201

202 *Triage factors associated with ED visit during isolation at facilities or home*

203 Among the 302 patients who were isolated in facilities or at home, 71 patients (23.5%) visited the ED
204 during the isolation period (Figure 1). The mean duration from symptom onset to ED visit was 8.8
205 ±2.5 days. Patients who visited the ED while on isolation and those who did not visit the ED while on
206 isolation were compared. Table 3 lists the factors that were likely associated ($p < \square 0.1$) with ED visits
207 while in facility- or home-isolation. ED visit during isolation was associated with older age (among
208 these without ED visit, 75% patients were $\leq \square 50$ years old, while among those who visited the ED,
209 50% were $> \square 50$ years old) and higher BMI (75% of patients without ED visit had BMI $< \square 24.9$ kg/m²,
210 while 50% of the patients who visited ED had $\geq \square 24.4$ kg/m²). Moreover, low grade fever (75% of
211 patients without ED visit had BT $< \square 37.2$ □, while 50% of patients who visited ED had BT $\geq \square 37.1$ □)
212 and higher sBP (75% patients without ED visit had sBP $\leq \square 139$ mmHg, while 50% of patients who
213 visited ED had sBP $\geq \square 134$ mmHg) at triage were associated with ED visit during isolation. Lower
214 SpO₂ and higher PR were statistically likely associated with ED, although there were small
215 differences in the variance. A total of 16.9% of patients had hypertension, while 12.7% reported
216 having chest pain at triage.

217

218 *Triage factors associated with hospital admission at ED visit during isolation at facilities or home*

219 Among the 302 patients who were isolated to facilities or home after triage, 30 patients (9.9%) were
220 hospitalized after an ED visit during the isolation period (Figure 1). To assess which factors at triage
221 distinguished patients who required hospitalization during isolation, we compared the characteristics
222 of patients who were hospitalized at ED visit and those who were not hospitalized at ED visit. Factors
223 that were likely associated ($p < 0.1$) with hospitalization at ED during the isolation period shown in
224 Table 4. The mean duration from COVID-19 symptom onset to hospitalization was 9.7 ± 2.0 days.
225 Patients hospitalized at ED visit were likely to present at initial triage later (5.5 days) than patients in
226 the non-hospitalized group (4.5 days) post symptomatic. Duration from first triage to ED visit was 2.0
227 ± 2.5 days. Patients who were hospitalized following ED visit during isolation were older (75% of
228 patients without hospitalization at ED visit were < 52 years old while 75% of patients who were
229 hospitalized at ED were > 49.5 years old) and had higher BMI (75% of patients without
230 hospitalization at ED visit had BMI < 25.9 kg/m², while 50% of patients who were hospitalized at
231 ED visit had BMI > 25.3 kg/m²). At triage, patients who were hospitalized following ED visit during
232 isolation had low grade fever (75% of patients without ED visit had BT < 37.4 , while 50% of
233 patients who visited ED had > 37.5) and higher sBP (75% of patients without ED visit had sBP
234 < 143 mmHg, while 50% of patients who visited ED had sBP > 140 mmHg). A total of 30% of
235 patients who were hospitalized at ED visit had underlying hypertension. The outcomes of patients
236 hospitalized following ED visit were as follows: none maintained their mild disease (0%); 9 (30.0%)
237 progressed to non-oxygen requiring pneumonia; 21 (70.0%) progressed to oxygen-requiring
238 pneumonia; and none died or progressed to severe disease requiring intensive care unit admission
239 (Figure 1).

240 A heatmap for variables comparing those who were hospitalized following ED visit ($n = 30$) to
241 those who were not hospitalized ($n = 272$) during isolation is shown in Figure 2. The OR of
242 hospitalization and the p-value (null hypothesis: OR = 1) were obtained for each variable. The
243 continuous variables were dichotomized at the cutoffs stated by Youden index. Age > 50 years
244 (OR = 6.8), obesity with BMI > 25 kg/m² (OR = 3.2), underlying hypertension (OR = 6.4),
245 tachycardia with PR > 100 /min (OR = 2.7), high blood pressure (sBP > 135 mmHg) at triage
246 (OR = 3.5), and delay of presence to hospital > 3 days after symptom onset (OR = 3.5) were

247 associated with hospitalization during isolation period. To consider confounding and other variables
248 related to delay of triage visit (“duration” in the Figure 2), the distribution of the delay was explored
249 using the relative rank of the numbers of days. The result showed that patients aged 65 years or older
250 and of male sex had a tendency for later triage visit (median, 1.5 days) compared to those younger
251 than 65 years or of female sex (median, 1.0 days) (Supplemental Figure 2A and 2B).

252

253 **DISCUSSION:**

254 In this retrospective cohort study of 338 SARS-CoV-2-positive patients, we provide evidence to state
255 that relatively young patients (age < 53 years) and those without hypertension at triage can self-
256 manage their conditions without hospitalization. Our sample had a higher rate of ED visits than the
257 14% rate reported by a previous study, which followed patients with coronavirus-like symptoms
258 during COVID-19 pandemic.¹¹ Our study results show that >□10% of the patients were hospitalized
259 at first triage visit and that another 10% were hospitalized following an ED visit during isolation;
260 these proportions were also similar when compared to previous reports.^{12,13} Although all patients had
261 only mild disease at initial triage visit, the condition of those who were hospitalized progressed to
262 pneumonia, with 60–70% of them requiring oxygen therapy and one patient dying during
263 hospitalization. High prevalence of disease progression and hospitalization in our cohort may have
264 been caused by the alpha variant, which was reported to be associated with increased hospitalization
265 risk.¹⁴ The clinical course of disease progression to ED visit or hospitalization in our cohort was
266 similar to that reported in earlier publications, which described progression to maximal symptom
267 severity at 8–10 days after symptom onset.⁵ The Ministry of Health, Labour and Welfare of Japan has
268 specified that at least 10 days of isolation is required after the onset of COVID-19 symptoms to
269 prevent transmission,¹⁶ which is a reasonable time for patients to observe their symptoms for possible
270 disease progression. In our study, the mean interval from first triage to ED return was 2 days, which is
271 much shorter than the 5 days reported previously.¹¹ We attribute this result to the dense monitoring
272 system of Nagasaki City Public Health Center or isolation facilities. Our results suggested that later
273 triage visit after symptom onset was associated with ED visit or hospitalization during the isolation
274 period. Similar to previous reports,^{17,18} a delay in hospital visit was seen in patients who were >□65

275 years of age or male. This finding may reflect the difference in health seeking behavior across sex and
276 age groups and/or the non-recognition of developing symptoms in the elderly.¹⁹ Our study indicated
277 that COVID-19 patients aged ≥ 50 years, those with obesity per BMI $> \geq 25$, those having underlying
278 hypertension, those presenting to the hospital $> \geq 3$ days after symptom onset, and those presenting
279 with tachycardia (PR $> \geq 100/\text{min}$)² or high blood pressure (sBP $> \geq 135$ mmHg) at triage significantly
280 required admission during isolation. COVID-19 outpatients with the abovementioned features at first
281 triage should be better followed up remotely²⁰ or by phone²¹ to avoid missing their proper hospital
282 visit.

283 The study has several limitations. First, this was a retrospective study and, therefore, has a potential
284 for biases from incomplete clinician documentation. Second, follow-up information was not available
285 after patients were discharged, which may have led to underestimated rates of hospitalization or
286 mortality. Third, members of the team reviewing the ED revisits were not blinded, which may have
287 introduced assessment bias. Fourth, since different variants of coronavirus have different clinical
288 characteristics, important factors at the triage may be different during other pandemic waves. Lastly,
289 the generalizability of the current study findings to other settings is limited by single-center design.
290 Because of site-specific characteristics, it is possible that other ED sites with differences in
291 availability of transportation and access to professional medical support may have different rates of
292 outcomes than our own patient cohort.

293 In summary, approximately 80% of patients with mild COVID-19 disease can be safely isolated at
294 home in a facility. Ten percent of patients will experience progression of symptoms in the ensuing
295 week that will require hospitalization for treatment—typically at 10 days of symptomatic illness.
296 Clinicians should inform patients, especially those aged $> \geq 50$ years, or those that are obese with BMI
297 > 25 , or those with underlying hypertension, or those presenting to the hospital > 3 days after
298 symptom onset and presenting tachycardia (PR $> 100/\text{min}$) or high blood pressure (sBP > 135 mmHg)
299 at triage, that they may experience worsening of symptoms after the first visit and may eventually
300 require hospitalization. Such patients should be advised to seek follow-up assessment by a medical
301 professional. Further prospective studies in the upcoming new COVID-19 pandemic waves will be
302 recommended to clarify checklist factors and cutoff values that affect patients' outcomes.

303

304 **ACKNOWLEDGEMENTS:**

305 We acknowledge all medical staff of the outpatient triage clinic in Nagasaki University Hospital for
306 their care provided to COVID-19 patients.

307

308 **DISCLOSURE STATEMENT:**

309 The authors declare no conflicts of interest.

310

311 **Author Contributions**

312 Conceptualization: Kazuko Yamamoto;

313 Data curation: Yasuhiro Tanaka, Kazuko Yamamoto, and Shimpei Morimoto;

314 Formal analysis: Shimpei Morimoto and Takeshi Nabeshima;

315 Funding acquisition: Kazuko Yamamoto and Hiroshi Mukae;

316 Investigation: Kayoko Matsushima, Hiroshi Ishimoto, Nobuyuki Ashizawa, Tatsuro Hirayama,

317 Kazuaki Takeda, Hiroshi Gyotoku, Naoki Iwanaga, Shinnosuke Takemoto, Naoyuki Yamaguchi,

318 Susumu Fukahori, Takahiro Takazono, Hiroyuki Yamaguchi, Takashi Kido, Noriho Sakamoto, Naoki

319 Hosogaya, Shogo Akabame, Takafumi Sugimoto, Hirotomo Yamanashi, Kosuke Matsui, Mai Izumida,

320 Masato Tashiro, Takeshi Tanaka, Koya Ariyoshi, and Akitsugu Furumoto;

321 Methodology: Kazuko Yamamoto and Shimpei Morimoto;

322 Project administration: Kazuko Yamamoto and Hiroshi Mukae;

323 Resources: Koichi Izumikawa and Hiroshi Mukae;

324 Supervision: Katsunori Yanagihara and Kouichi Morita;

325 Validation: Kazuko Yamamoto and Shimpei Morimoto;

326 Writing—original draft: Yasuhiro Tanaka;

327 Writing—review & editing: Kazuko Yamamoto.

328

329 **REFERENCES:**

- 330 1) Ministry of Health, Labour and Welfare of Japan. (Htt World Health Organisation, 3 July 2003.
331 Update 94: Preparing for the Next Influenza Season in a World Altered by SARS.)
332 https://www.mhlw.go.jp/stf/seisakunitsuite/bunya/0000164708_00079.html
- 333 2) Husain I, O'Neill J, Mudge R, Bishop A, Soltany KA, Heinen J, et al. Clinical Characteristics
334 Associated with Return Visits to the Emergency Department after COVID-19 Diagnosis. *West J*
335 *Emerg Med.* 2021; **22(6)**: 1257–61.
- 336 3) Oh YJ, Kim GM, Ko SH, Seo YW, Lee SH, Jang TC. Effects of dynamic response to coronavirus
337 disease outbreak in a regional emergency medical center: A retrospective study. *Medicine (Baltimore).*
338 2021; **100(28)**: e26634.
- 339 4) Gandhi RT, Lynch JB, Del Rio C. Mild or Moderate Covid-19. *N Engl J Med.* 2020; **383(18)**:
340 1757200966.
- 341 5) Jordan RE, Adab P, Cheng KK. Covid-19: risk factors for severe disease and death. *BMJ.* 2020;
342 **368**: m1198.
- 343 6) Huang C, Wang Y, Li X, Ren L, Zhao J, Hu Y, et al. Clinical features of patients infected with
344 2019 novel coronavirus in Wuhan, China. *The Lancet.* 2020; **395(10223)**: 497–506.
- 345 7) Moghadas SM, Vilches TN, Zhang K, Wells CR, Shoukat A, Singer BH, et al. The Impact of
346 Vaccination on Coronavirus Disease 2019 (COVID-19) Outbreaks in the United States. *Clin Infect*
347 *Dis.* 2021; **73(12)**: 2257–64.
- 348 8) Khare S, Gurry C, Freitas L, Schultz MB, Bach G, Diallo A, et al. GISAIID's Role in Pandemic
349 Response. *China CDC Wkly.* 2021; **3(49)**: 1049–51.
- 350 9) Hadfield J, Megill C, Bell SM, Huddleston J, Potter B, Callender C, et al. Nextstrain: real-time
351 tracking of pathogen evolution. *Bioinformatics.* 2018; **34(23)**: 4121–3.
- 352 10) Sagulenko P, Puller V, Neher RA. TreeTime: Maximum-likelihood phylodynamic analysis. *Virus*
353 *Evol.* 2018; **4(1)**: vex042.
- 354 11) Berdahl CT, Glennon NC, Henreid AJ, Torbati SS. The safety of home discharge for low-risk
355 emergency department patients presenting with coronavirus-like symptoms during the COVID-19
356 pandemic: A retrospective cohort study. *J Am Coll Emerg Physicians Open.* 2020; **1(6)**: 1380–5.

- 357 12) Ayaz CM, Dizman GT, Metan G, Alp A, Unal S. Out-patient management of patients with
358 COVID-19 on home isolation. *Le Infezioni in Medicina*. 2020; **3**: 351–6.
- 359 13) Blair PW, Brown DM, Jang M, Antar AAR, Keruly JC, Bachu VS, et al. The Clinical Course of
360 COVID-19 in the Outpatient Setting: A Prospective Cohort Study. *Open Forum Infect Dis*. 2021;
361 **8(2)**: ofab007.
- 362 14) Grint DJ, Wing K, Houlihan C, Gibbs HP, Evans SJW, Williamson E, et al. Severity of SARS-
363 CoV-2 alpha variant (B.1.1.7) in England. *Clin Infect Dis*. 2021 <https://doi.org/10.1093/cid/ciab754>
- 364 15) Gomes, C. Report of the WHO-China Joint Mission on Corona Virus Disease 2019 (COVID-19).
365 *Braz. J. Implantol. Health Sci. [Internet]*. 2020; **2(3)**:
366 <https://bjih.emnuvens.com.br/bjih/article/view/1722020>. Accessed: 02 May 2022.
- 367 16) Ministry of Health, Labour and Welfare of Japan.
368 () <https://www.mhlw.go.jp/content/mar2022.pdf>
- 369 17) Forsblom E, Silen S, Kortela E, Ahava M, Kreivi HR, Holmberg V, et al. Male predominance in
370 disease severity and mortality in a low Covid-19 epidemic and low case-fatality area - a population-
371 based registry study. *Infect Dis (Lond)*. 2021; **53(10)**: 789–99.
- 372 18) Zheng W, Kampfen F, Huang Z. Health-seeking and diagnosis delay and its associated factors: a
373 case study on COVID-19 infections in Shaanxi Province, China. *Sci Rep*. 2021; **11(1)**: 17331.
- 374 19) Janssens J-P, Krause K-H. Pneumonia in the very old. *The Lancet Infectious Diseases*. 2004; **4(2)**:
375 112–24.
- 376 20) Kricke G, Roemer PE, Barnard C, Peipert JD, Henschen BL, Bierman JA, et al. Rapid
377 Implementation of an Outpatient Covid-19 Monitoring Program. *NEJM Catalyst*. DOI:
378 10.1056/CAT.20.0214 2020.
- 379 21) O'Keefe JB, Tong EJ, Taylor TH, Jr., O'Keefe GAD, Tong DC. Use of a Telemedicine Risk
380 Assessment Tool to Predict the Risk of Hospitalization of 496 Outpatients With COVID-19:
381 Retrospective Analysis. *JMIR Public Health Surveill*. 2021; **7(4)**: e25075.
- 382
383

384 TABLES:

385 Table 1. Characteristics of COVID-19 patients at outpatient triage.

factors in the triage check sheet	mean	Q1 (25%)	Q2 (50%)	Q3 (75%)
Days post symptom onset	5.4	3.8	5.0	7.0
Age	44.7	32	44	56
Female sex	152 (45.0%)			
BMI (kg/m ²)	23.6	20.8	22.9	25.8
BT (□)	37.0	36.5	36.9	37.4
RR (/min)	17.9	16.0	16.0	20.0
SpO ₂ (%)	96.8	96.0	97.0	98.0
PR (/min)	87.0	78.0	86.0	98.0
sBP (mmHg)	129.0	114.0	128.0	142.0
dBP (mmHg)	76.4	67.0	77.0	85.0
factors in the triage check sheet	n	%		
Underlying diseases	71	21.0		
Hypertension	37	11.0		
Diabetes mellitus	12	3.6		
Cardiovascular diseases	13	3.8		
Chronic lung diseases	15	4.4		
Chronic liver diseases	3	0.9		
Chronic renal diseases	2	0.6		
Malignancy	5	1.4		
Organ transplant	0	0		
HIV infection	0	0		
Other immunosuppressed status	5	1.4		
Pregnancy	7	2.1		
factors in the triage check sheet	n	%		
Symptoms with consideration for hospitalization	111	32.8		
fatigue with difficulty moving	14	4.1		
dyspnea	28	8.3		
chest pain	22	6.5		
poor dietary intake	76	22.0		
severe diarrhea (≥ 6 times/ day)	6	1.8		

386 Abbreviations; ED, emergency department; BMI, body mass index; BT, body temperature; RR,
 387 respiratory rate; PR, pulse rate; sBP, systolic blood pressure; dBP, diastolic blood pressure; HIV,
 388 human immunodeficiency virus; Q1, first quartile; Q2, second quartile; Q3, third quartile.
 389
 390

391 **Table 2. Checklist factors and hospitalization at outpatient triage.**

	mean	Q1 (25%)	Q2 (50%)	Q3 (75%)	<i>P</i> value
Days post symptom onset					0.061
Hospitalized	6.2	4.5	5.0	7.5	
Isolation on facilities or home	5.3	3.0	5.0	7.0	
Age					<0.001
Hospitalized	58.2	50.8	58.5	67.0	
Isolation on facilities or home	43.1	31.0	41.0	53.0	
BMI (kg/m ²)					0.002
Hospitalized	26.1	22.8	26.1	28.2	
Isolation on facilities or home	23.4	20.5	22.7	25.4	
BT (□)					<0.001
Hospitalized	37.7	37.6	38.5	40.0	
Isolation on facilities or home	37.0	36.5	36.9	37.3	
RR (/min)					0.002
Hospitalized	20.8	16.0	18.0	25.5	
Isolation on facilities or home	17.6	16.0	16.0	20.0	
SpO ₂ (%)					<0.001
Hospitalized	93.4	94.0	95.0	97.0	
Isolation on facilities or home	97.2	97.0	97.0	98.0	
PR (/min)					0.004
Hospitalized	94.4	84.8	94.0	105.3	
Isolation on facilities or home	86.2	78.0	85.0	96.0	
		Hospitalized (n=36)	Isolation on facilities or home (n=302)	Odds ratio	<i>P</i> value
Hypertension		11 (30.6)	26 (8.6)	1.85-11.17	0.001
Cardiovascular diseases		4 (11.1)	9 (3.0)	0.86-15.53	0.039
Diabetes mellitus		4 (11.1)	8 (2.6)	0.95-18.20	0.029
Chronic liver diseases		2 (5.6)	1 (0.3)	0.88- 1039.73	0.031
Severe fatigue with hard to move		5 (13.9)	9 (3.0)	1.29-18.64	0.010
Malignancy		2 (5.6)	3 (1.0)	0.47-52.58	0.090
Immunosuppressed status		2 (5.6)	3 (1.0)	0.47-52.58	0.090
dyspnea		14 (38.9)	14 (4.6)	5.02-33.50	<0.001
poor dietary intake		14 (38.9)	62 (20.5)	1.09-5.36	0.013

392 Abbreviations; BMI, body mass index; BT, body temperature; RR, respiratory rate; PR, pulse rate; Q1,
393 first quartile; Q2, second quartile; Q3, third quartile.

394
395

396 **Table 3. Checklist factors associated with ED visit during isolation on facilities or home.**

	mean	Q1 (25%)	Q2 (50%)	Q3 (75%)	<i>P</i> value
Age					<0.001
ED visit	49.6	35.5	50.0	61.5	
Remission without ED visit	41.1	29.0	40.0	50.0	
BMI (kg/m ²)					0.044
ED visit	24.2	21.6	24.4	26.2	
Remission without ED visit	23.1	20.2	22.3	24.9	
BT (□)					<0.001
ED visit	37.2	36.7	37.1	37.7	
Remission without ED visit	36.9	36.5	36.8	37.2	
SpO ₂ (%)					0.042
ED visit	97.0	96.0	97.0	98.0	
Remission without ED visit	97.3	97.0	97.0	98.0	
PR (/min)					0.014
ED visit	89.8	79.0	87.0	99.5	
Remission without ED visit	85.0	77.0	84.0	95.0	
sBP (mmHg)					0.008
ED visit	134.5	121.0	134.0	147.0	
Remission without ED visit	126.7	113.0	126.0	139.0	
		ED visit (n=71)	Remission without ED visit (n=231)	Odds ratio	<i>P</i> value
Hypertension		12 (16.9)	14 (6.0)	1.25-7.76	0.004
chest pain		9 (12.7)	10 (4.3)	1.10-9.18	0.021

397 Abbreviations; ED, emergency department; BMI, body mass index; BT, body temperature; PR, pulse
 398 rate; sBP, systolic blood pressure; Q1, first quartile; Q2, second quartile; Q3, third quartile.
 399
 400

401 **Table 4. Checklist factors associated with hospitalization following ED visit during isolation.**

	mean	Q1 (25%)	Q2 (50%)	Q3 (75%)	<i>P</i> value
Days post symptom onset					0.028
Hospitalized at ED	5.5	4.0	5.0	6.0	
Non-hospitalized at ED	4.5	3.0	4.0	6.0	
Age					<0.001
Hospitalized at ED	57.9	49.5	58.5	69.5	
Non-hospitalized at ED	43.5	32.0	39.0	52.0	
BMI (kg/m ²)					0.092
Hospitalized at ED	25.0	22.3	25.3	26.8	
Non-hospitalized at ED	23.5	21.3	23.4	25.9	
Days post symptom onset					0.028
Hospitalized at ED	5.5	4.0	5.0	6.0	
Non-hospitalized at ED	4.5	3.0	4.0	6.0	
BT (□)					0.008
Hospitalized at ED	37.4	37.0	37.5	37.9	
Non-hospitalized at ED	37.0	36.6	37.0	37.4	
SpO ₂ (%)					0.002
Hospitalized at ED	96.4	96.0	96.5	97.0	
Non-hospitalized at ED	97.4	97.0	97.0	98.0	
PR (/min)					0.055
Hospitalized at ED	93.6	82.5	94.5	103.0	
Non-hospitalized at ED	87.0	78.0	84.0	97.0	
sBP (mmHg)					0.064
Hospitalized at ED	140.4	125.5	140.0	148.8	
Non-hospitalized at ED	130.2	113.0	127.5	143.0	
		Hospitalized at ED (n=30)	Non- hospitalized at ED (n=41)	Odds ratio	<i>P</i> value
Female Sex		9 (30.0)	21 (51.2)	0.82-7.55	0.074
Hypertension		9 (30.0)	3 (7.3)	1.15-33.68	0.012

402 Abbreviations; ED, emergency department; BMI, body mass index; BT, body temperature; PR, pulse
 403 rate; sBP, systolic blood pressure; Q1, first quartile; Q2, second quartile; Q3, third quartile.

404
 405

406 **FIGURE LEGEND:**

407 **Figure 1.** Flowsheet demonstrating the numbers of COVID-19 patients who visited the outpatient
408 triage, who were hospitalized at triage, who visited the emergency department (ED) during isolation,
409 and who were hospitalized at ED visit during isolation (white-filled square). Hospitalized patients
410 were followed up and outcomes were recorded (gray-filled square). Abbreviation; OS, oxygen
411 supplementation.

412

413 **Figure 2.** Heatmap on each variable in the COVID-19 outpatient triage. Hospitalized patients at ED
414 visit ($n = 30$) and patients without hospitalization during isolation ($n = 272$) were grouped.
415 Black-filled patients represent values over than cutoff values (for continuous variable) or presence of
416 underlying diseases or symptoms. Gray-filled patients represent under than cutoff values (for
417 continuous variable) or absence of underlying diseases or symptoms. White-filled patients represent
418 missing data. The cutoff value was defined using Youden index. In the brackets, odds ratio (OR) and
419 p values (Fisher exact test) for the association between the variable (\leq median, $>$ median) and
420 occurrence of “Hospitalized at ED visit”. Abbreviations; BMI, body mass index; BT, body
421 temperature; RR, respiratory rate; PR, pulse rate; sBP, systolic blood pressure.

422

423 **Supplemental Figure 1.** Phylogenetic tree of SARS-COV-2 which isolated in Nagasaki prefecture.
424 Data were obtained from GISAID. The area enclosed by the dotted line is the time period of this study.

425

426 **Supplemental Figure 2. A, B.** Association between the delay of triage visit from symptom onset and
427 **A)** age and **B)** gender. The delay (days) is on the x-axis and the relative rank of the days is on the y-
428 axis. A solid line was used for patients with age over 65 years and a dotted line for patients with age
429 under 65 years. The solid line shows male patients and dotted line shows female patients.

Figure 1.

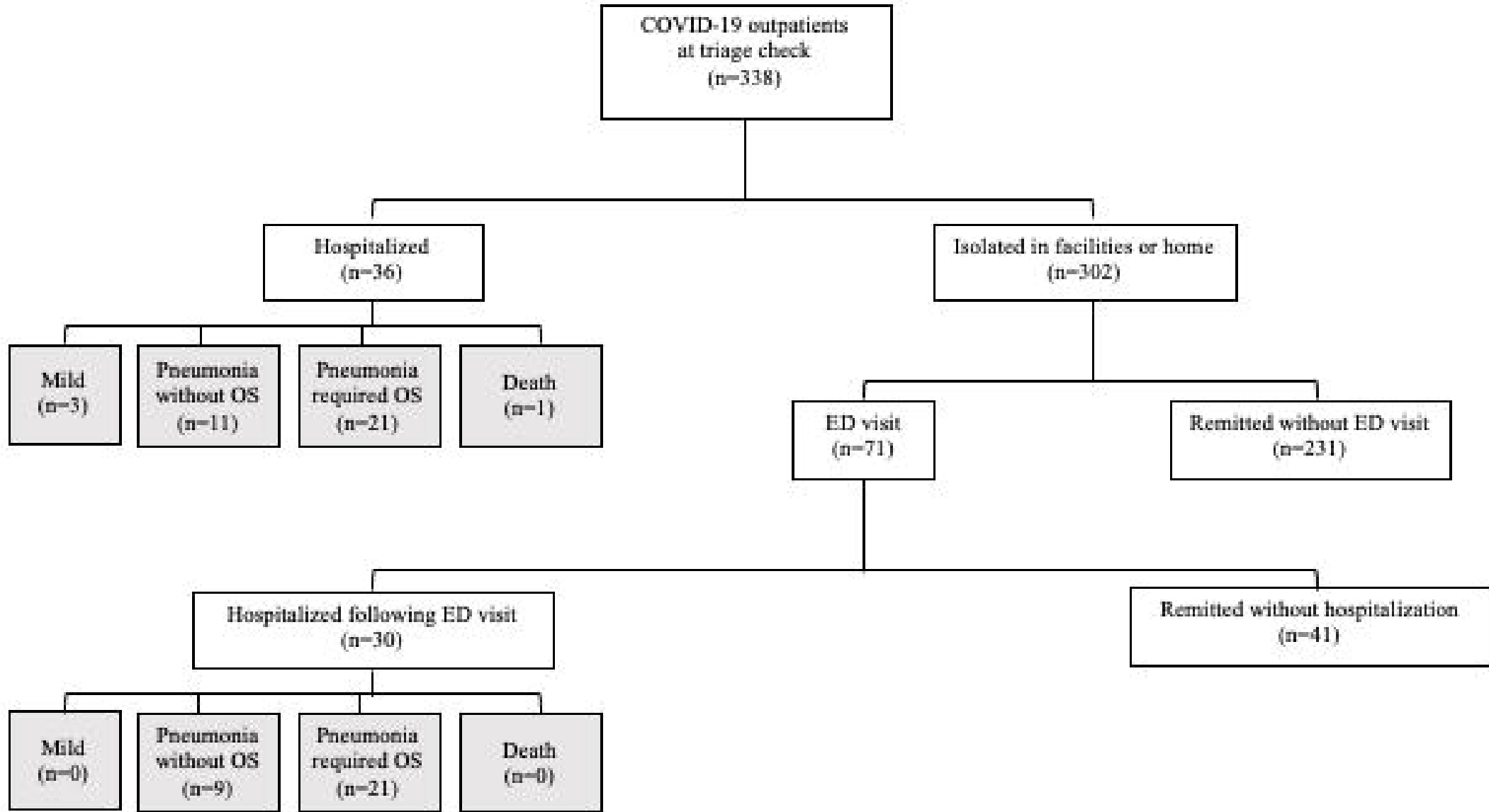


Figure 2.

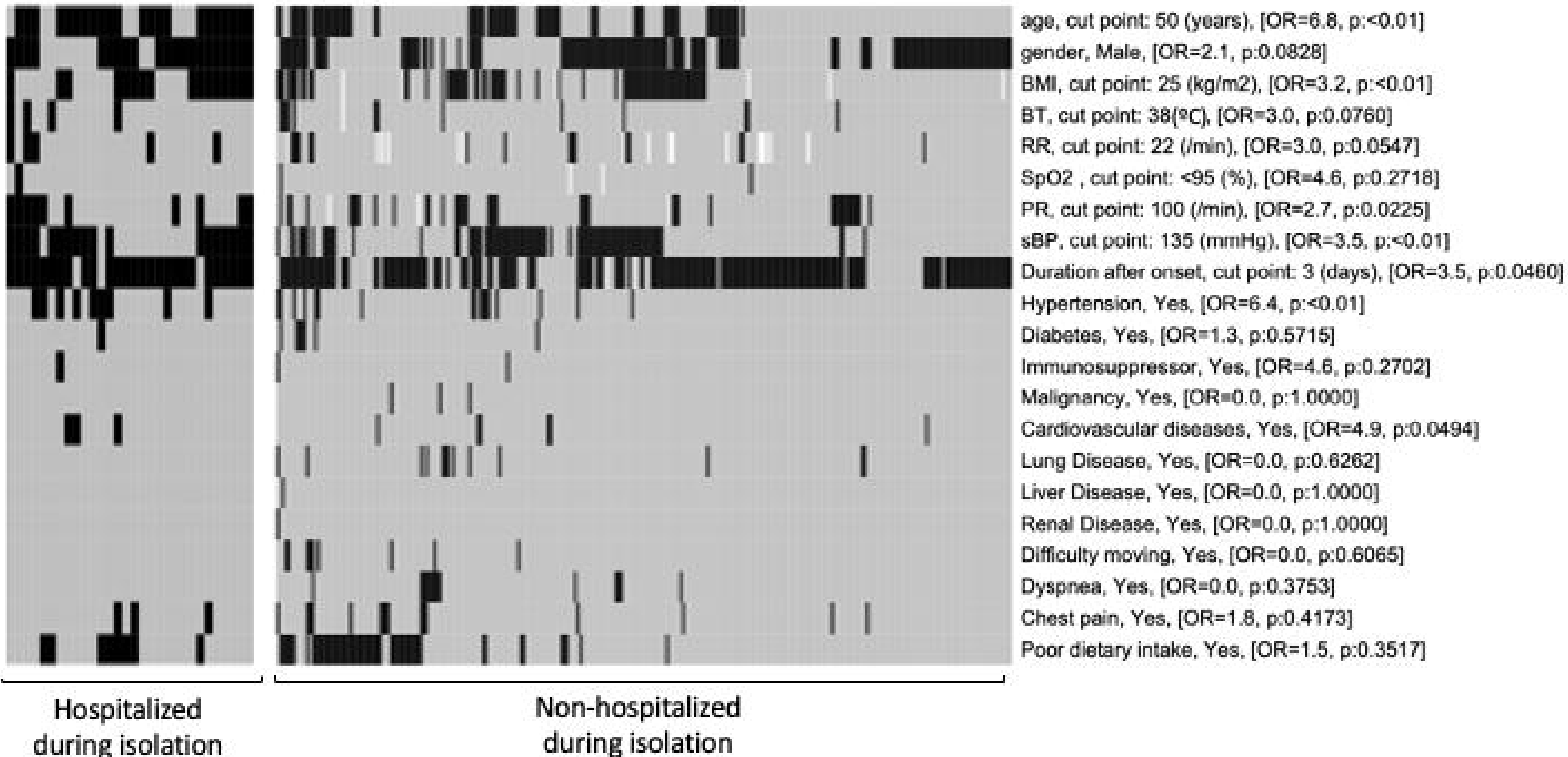


Fig S1.

20I (Alpha, V1)
21J (Delta)
21M (Omicron)

19A
20B

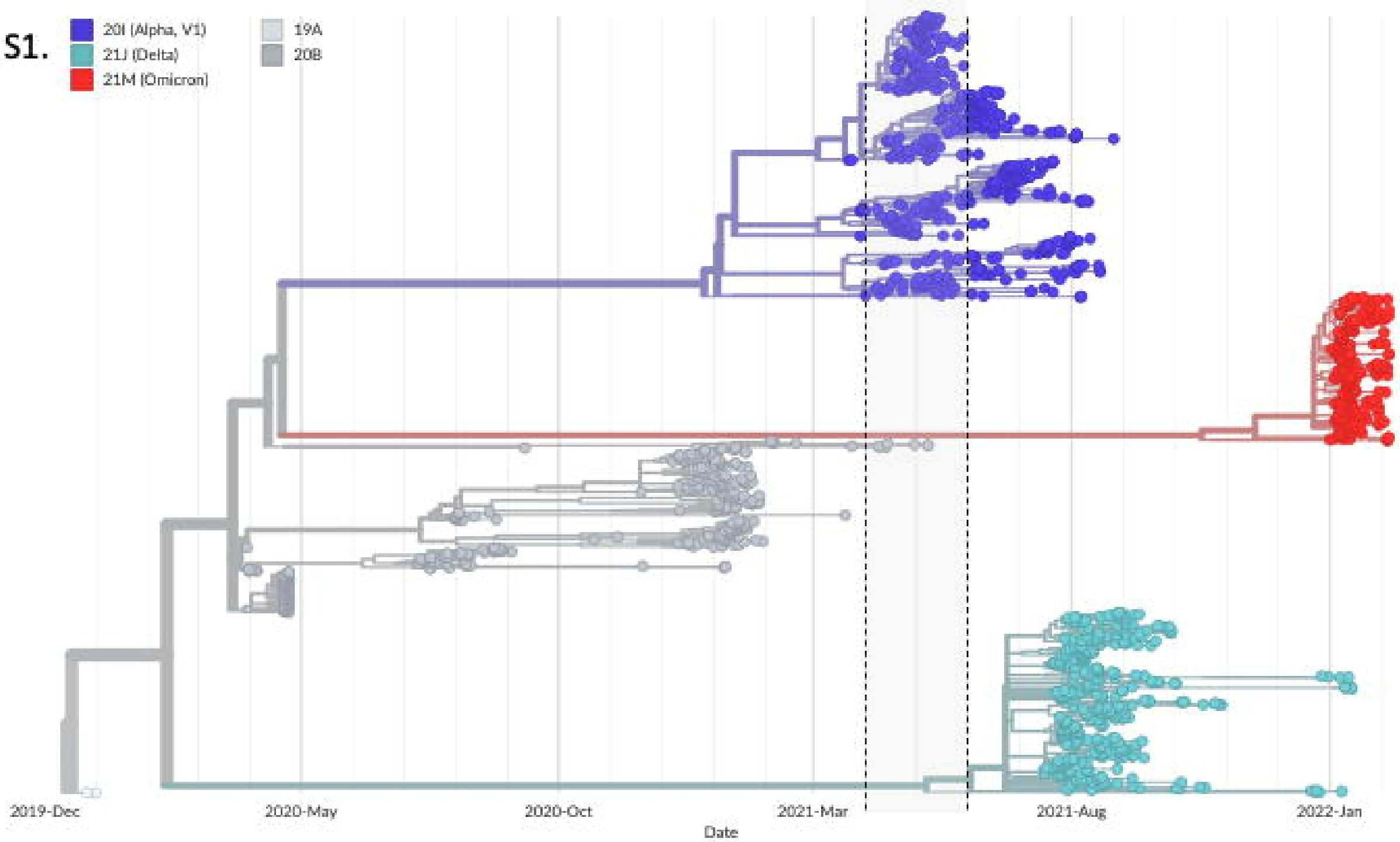
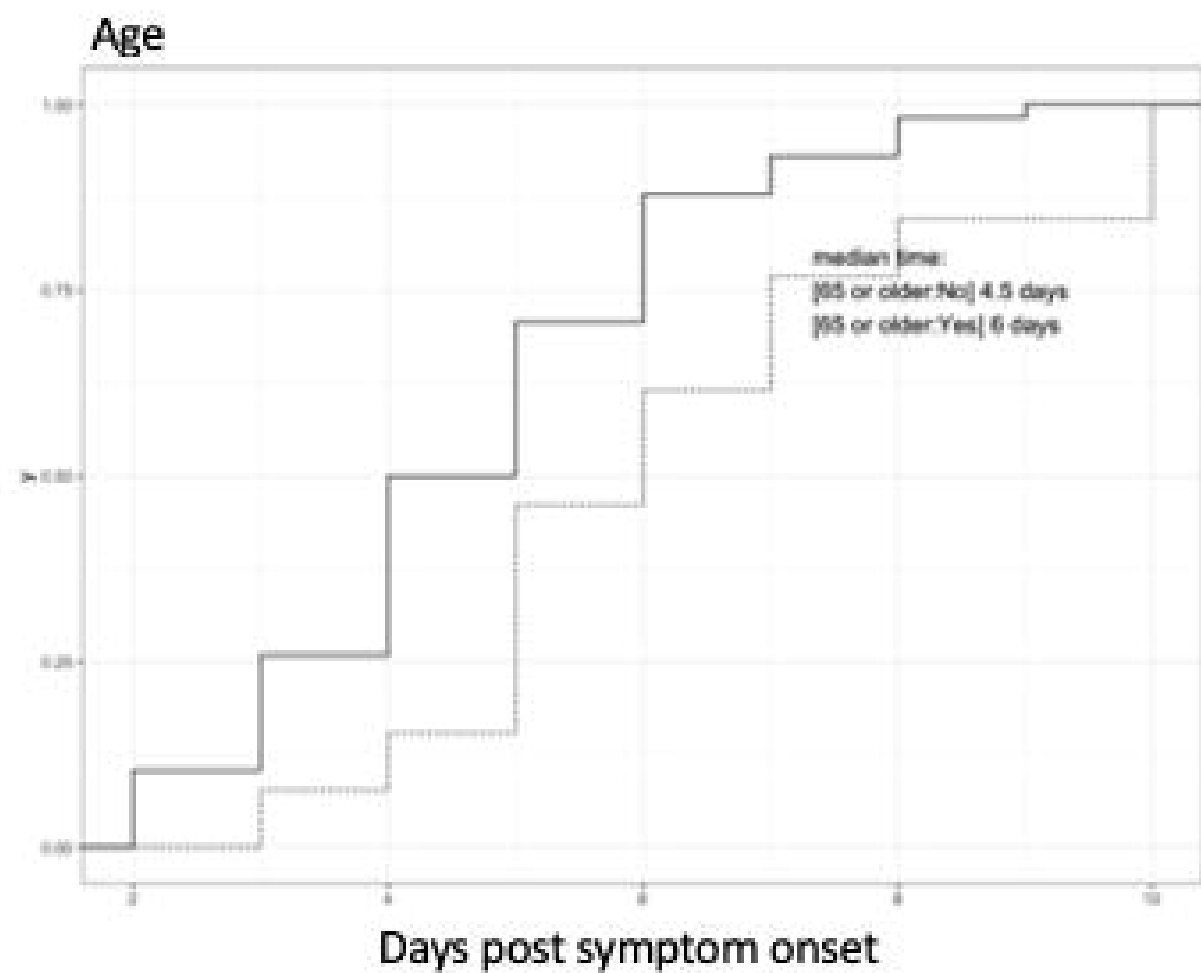


Fig S2.

A.



B.

