

1 **Cross-sectional analysis of the humoral response after SARS-CoV-2 vaccination in Sardinian**
2 **Multiple Sclerosis patients, a follow-up study**

3
4 Maria Laura Idda*^{†1}, Maristella Pitzalis*^{†1}, Valeria Lodde², Annalisa Loizedda¹, Jessica Frau³, Monia
5 Lobina¹, Magdalena Zoledziewska¹, Francesca Viridis¹, Giuseppe Delogu², Maria Giuseppina Marini¹, Maura
6 Mingoia¹, Marco Masala¹, Lorena Lorefice³, Marzia Fronza⁴, Daniele Carmagnini⁴, Elisa Carta⁴, Silvy
7 Pilotto^{5,4}, Paolo Castiglia⁵, Paola Chessa^{5,4}, Sergio Uzzau^{2,8}, Gabriele Farina⁶, Paolo Solla⁵, Maristella Steri¹,
8 Marcella Devoto^{1,7}, Edoardo Fiorillo¹, Matteo Floris^{^2}, Roberto Ignazio Zarbo^{^5,6}, Eleonora Cocco^{^3,4} and
9 Francesco Cucca^{^2}

10
11 † These authors have contributed equally to this work and share first authorship

12 ^ These authors have contributed equally to this work and share last authorship

13
14 *** Correspondence:**

15 Maristella Pitzalis, Maria Laura Idda

16 maristella.pitzalis@irgb.cnr.it, marialaura.idda@irgb.cnr.it

17
18
19 ¹ Institute for Genetic and Biomedical Research, National Research Council, Monserrato, Cagliari, Italy

20 ² Department of Biomedical Sciences, University of Sassari, Sassari, Italy

21 ³ Regional Multiple Sclerosis Center, ASL Cagliari, Cagliari, Italy

22 ⁴ Department of Medical Science and Public Health, University of Cagliari, Cagliari, Italy

23 ⁵ Department of Medical, Surgical and Experimental Sciences, University of Sassari, Italy

24 ⁶ Neurology Unit, Azienda Ospedaliera Universitaria (AOU) Sassari, Sassari, Italy

25 ⁷ Dipartimento di Medicina Traslationale e di Precisione, Università la Sapienza, Rome, Italy.

26 ⁸ Unit of Clinical Microbiology, Azienda Ospedaliera Universitaria (AOU) Sassari, Sassari, Italy

27
28 **Keywords:** SARS-CoV-2; multiple sclerosis; humoral immunity; disease-modifying therapy; vaccine
29 efficacy; BNT162b2; COVID-19.

30
31 **Abstract**

32
33 Monitoring immune responses to SARS-CoV-2 vaccination and its clinical efficacy over time in Multiple
34 Sclerosis (MS) patients treated with disease-modifying therapies (DMTs) help to establish the optimal
35 strategies to ensure adequate COVID-19 protection without compromising disease control offered by DMTs.
36 Following our previous observations of the humoral response one month after two doses of BNT162b2
37 vaccine (T1) in MS patients differently treated, here we present a cross-sectional and longitudinal follow-up
38 analysis six months following vaccination (T2, n=662) and a month following the first booster (T3, n=185).
39 Consistent with results at T1, humoral responses were decreased in MS patients treated with fingolimod and
40 anti-CD20 therapies compared with untreated patients also at the time points considered here (T2 and T3).
41 Interestingly, a strong upregulation one month after the booster was observed in patients under every DMTs
42 analyzed, including those treated with fingolimod and anti-CD20 therapies. And although patients taking
43 these latter therapies had a higher rate of COVID-19 infection five months after the first booster, only mild
44 symptoms that did not require hospitalization were reported for all the DMTs analyzed here. Based on these
45 findings we anticipate that additional vaccine booster shots will likely further improve immune responses
46 and COVID-19 protection in MS patients treated with any DMT.

48 **Introduction**

49 General population data on SARS-CoV-2 vaccination support its effectiveness in preventing COVID-19
50 infection (1). Still, the magnitude of protection it offers to Multiple Sclerosis (MS) patients receiving certain
51 disease-modifying therapies (DMTs) is not completely clear.

52
53 Several evidence have already demonstrated that the humoral and cellular response after SARS-CoV-2
54 vaccination were strongly affected by the treatment with certain DMTs used to ameliorate MS symptoms (2–
55 4). Notably, azathioprine (AZA), fingolimod (FTY) and anti-CD20 treatments, including ocrelizumab (OCR)
56 and rituximab (RTX), negatively influences the humoral response after SARS-CoV-2 vaccination and likely
57 affect the level of protection against COVID-19 (2–4). Additionally, older age, male sex and active smoking
58 were significantly associated with lower antibody titers against SARS-CoV-2 vaccine in MS patients (2,5).

59
60 Based on these results, it has been suggested that the immune response after SARS-CoV-2 vaccination can
61 be improved through additional booster shots, and by optimally adjusting vaccination timing based on the
62 timing of immune cell repopulation after the last administration of specific immunosuppressive DMTs (6).
63 Specifically, in contrast to the initial international recommendation for timing DMTs (1) of a 3-month
64 waiting time after the last dose of immune-suppressive therapies, we and others have recommended a 6-
65 month waiting time (2,7). It is now important to further monitor, over time and after booster doses, the
66 immune responses and clinical efficacy of SARS-CoV-2 vaccination in MS patients. This will provide new
67 insight to define the most effective strategies that will ensure optimal treatment of MS providing at the same
68 time the most effective prevention of COVID-19 and especially of its severe forms.

69
70 Following our initial observations of humoral response one month after two doses of BNT162b2 vaccine in
71 MS patients treated with different DMTs or untreated (2) here we present a cross-sectional and longitudinal
72 follow-up analysis on the humoral responses to BNT162b2 vaccination 6 months after the second dose, and a
73 month after the third dose (booster). The effect of previous or concomitant detectable SARS-CoV-2
74 infection, as well as age, sex, and active smoking was also considered. Reciprocally, we provide preliminary
75 evidence of the impact of vaccination on the incidence of SARS-CoV-2 infection and its clinical severity 5
76 months after the third dose of vaccine. The findings further help in defining an appropriate immunization
77 strategy in MS patients in relation to DMTs and other factors influencing humoral immunity.

78

79

80 **Methods**

81

82 *Study participants*

83 847 MS patients who had received two BNT162b2 vaccine injections, 21 days apart, followed by a booster 6
84 month later were enrolled between October 2021 and January 2022 from the MS clinical centers of Cagliari
85 and Sassari, Sardinia (Italy). Each injection contained 30µg of BNT162b2 (0.3ml volume per dose).

86 662 MS patients were analyzed 6 months after the second dose (T2) and 185 MS patients a month after the
87 booster (third) dose (T3). Data from 912 MS patients at 4 weeks after the second dose (T1) were also used
88 (2) (**Figure 1**).

89 In summary we analyzed 1,944 serum samples of 1,307 unique MS patients. Of these, only 94 were recruited
90 at each time point (T1, T2 and T3). The overlap between samples was 31.8% between T2 and T1, 22.8%
91 between T2 and T3, and 13.9% between T3 and T1.

92 All MS patients, diagnosed according to the McDonald criteria, were contacted using different
93 communication methods. They were questioned concerning previous SARS-CoV-2 infection and the
94 manifestation of any adverse events following vaccination. Clinical and demographic information were
95 collected for each patient, including age, sex, disability score, disease subcategory and disease-modifying
96 treatment. All the data collected have been summarized in **Table 1**.

97

98 *Detection of SARS-CoV-2 IgG antibodies*

99 Blood samples were collected in vacutainer tubes containing clot activator and gel separator.

100 Samples were processed within two hours after blood collection to avoid time-dependent artifacts, and
101 subsequently serum was stored at -80°C until use. Quantification of SARS-CoV-2 antibodies direct against
102 the proteins Spike (S) or Nucleocapsid (N) in human serum was performed using the
103 electrochemiluminescence immunoassays Elecsys® Anti-SARS- CoV-S and Elecsys® Anti-SARS-CoV-N
104 (Roche). Anti-S and Anti-N results are expressed as units per ml (U/ml). The anti-N reactive index cutoff
105 (COI) used is > 1.

106

107 *Statistical analysis*

108 For all categorical variables the absolute number and percentage were reported, and for quantitative variables
109 the median and interquartile range (IQR) were reported.
110 Differences between patient groups - stratified according to therapy and selected for Anti-N antibody
111 negativity - were assessed with a negative binomial generalized linear mixed-effects model, which takes into
112 account the nature of the outcome variable (anti-S, non-negative count data); in addition to therapy, the
113 models also consider the contribution of other variables such as age, smoke, sex, Expanded Disability Status
114 Scale (EDSS), disease duration, and clinical sampling center. Results are presented as Incidence Rate Ratio,
115 calculated as the exponential of the regression coefficient (8). Differences between medians were tested with
116 the Mann-Whitney test. Differences between groups in longitudinal data were tested using the non-
117 parametric Friedman test for repeated measures, followed by a post-hoc pairwise comparison using paired
118 Wilcoxon signed-rank test. All statistical analyses were performed using R v.4.0.3 software with the
119 following CRAN libraries: ggplot2, dplyr, readxl, MASS, kableExtra, rstatix. P values <0.05 were
120 considered statistically significant.

121

122 *Ethics and data collection*

123 The study was reviewed and approved by the Ethical Review Boards ATS Sardegna - Prot. N° 2492/CE.
124 Patient data and samples were coded anonymously to ensure confidentiality during sample processing and
125 data analysis. The patients/participants provided their written informed consent to participate in this study.

126

127

128 Results

129 Description of the studied MS cohort

130 A total of 1,944 sera were analyzed at three different time points following BNT162b2 vaccination. Results
131 from 912 MS patients obtained 4 weeks after the second dose (T1) of vaccine have already been published
132 (2) and have been used here as baseline for the two subsequent time points. 662 MS patients were analyzed 6
133 months after the second dose (T2) and 185 MS patients 4 weeks after the booster dose (T3) (**Figure 1**).

134 The T1 cohort has been previously described (2). The T2 MS cohort included 448 (73.6%) female and 214
135 (26.4%) male patients of whom 84.9% had relapsing-remitting MS (RR), 1.51% had primary progressive MS
136 (PP), and 13.6% had secondary progressive MS (SP). Finally, the T3 MS cohort included 137 (74.1%) female
137 and 48 (25.9%) male patients of whom 89.7% had RR, 0.54% had PP and 9.7% had SP (**Table 1**).

138 Untreated MS patients at T2 and at T3 were respectively 73 (11%) and 13 (7%). The remaining 589 (88.9%)
139 at T2 and 172 (92.9%) at T3 were treated with different DMTs. The most common treatments were dimethyl
140 fumarate (DMF) at T2 and FTY at T3. DMTs used less frequently included cladribine (CLA) and RTX, only
141 one patient included in a study with a Bruton's tyrosine kinase (BTK) inhibitor. No patients treated with
142 methotrexate (MET) were present either at T2 or T3. A detailed description of the specific DMTs received
143 by the MS patients along with their demographic characteristics at T1, T2 and T3 are summarized in **Table**
144 **1**.

145 Disease-Modifying Therapies Impact Humoral Responses to BNT162b2 Vaccine

146 To evaluate the effects of different DMTs on humoral responses to BNT162b2 vaccine, we applied a
147 negative binomial generalized linear mixed-effects model in patients negative for anti-N antibodies
148 production for both T2 and T3 time points separately. Only treatments with data available for at least 10
149 patients were considered in this analysis.

150 In line with previously reported humoral responses to vaccine one month after the second dose (T1) (2,7),
151 after six months (T2) we observed a significant difference in anti-S antibody levels between patients
152 untreated (UNT) and those treated with FTY (IRR = 0.17, $p = 1.82 \times 10^{-21}$), OCR (IRR = 0.20, $p = 4.54 \times 10^{-42}$)
153 and RTX (IRR = 0.33, $p = 1.35 \times 10^{-17}$). No significant difference was observed for the other DMTs (**Table 2**
154 **and Figure 2A**). Similarly, one month after the booster (T3) we observed a significantly lower level of anti-
155 S antibodies in MS patients treated with FTY (IRR = 0.37, $p = 1.52 \times 10^{-11}$) and OCR (IRR = 0.34, $p =$
156 1.20×10^{-14}) compared to untreated patients. Other treatments did not show significant results (**Table 3 and**
157 **Figure 2B**).

158 The nucleocapsid protein antigens analysis, used to discriminate the immune response generated by the
159 vaccination from immune response generated by natural SARS-CoV-2 infection, identified 23 anti-N
160 positive patients at T2 (3.5% of 662 patients) and 9 at T3 (4.9% of 185 patients) (**Table 1**). Prior natural
161 SARS-CoV-2 infection impact the humoral responses to BNT162b2 vaccine (2). Indeed, in MS patients with
162 evidence of a natural exposure to SARS-CoV-2 virus, postvaccination anti-S antibodies levels were
163 significantly higher than in patients who did not experience SARS-CoV-2 infection at T2 (medians 2,500 vs.
164 303.4 U/ml, Mann-Whitney test $p = 2.36 \times 10^{-11}$). We observed a comparable trend at T3 (medians 10,965 vs.
165 9,600 U/ml, Mann-Whitney test $p = 0.4816$). However, the number of MS patients positive for anti-N
166 proteins was small, especially at T3, and additional data are required to properly evaluate the impact of
167 SARS- CoV-2 infection on the immune response to BNT162b2 vaccine.

168 The influence of disability status, sex, age, and smoking on anti-S production after BNT162b2 vaccine

169 We also tested at T2 and T3 the impact of additional factors that had been shown to influence anti-S
170 production after BNT162b2 vaccine at T1 (2). In contrast with findings at T1, at T2 our statistical model did
171 not reveal additional significant effects for sex, while age and the Expanded Disability Status Scale (EDSS)
172 continue to show consistent effects. Specifically, we observed reduced postvaccination levels of anti-SARS-
173 CoV-2 antibodies directed against the S protein in older patients (IRR = 0.98, $p = 4.459 \times 10^{-07}$) as well as in
174 patients with reduced EDSS (IRR = 0.95, $p = 0.022$). At T3 only the reduced EDSS showed a significant
175 effect (IRR = 0.89, $p = 0.01$) on anti-SARS-CoV-2 antibodies production.

183 Due to the impact of smoking on antibodies production in healthy and unhealthy cohorts of smokers
184 compared to non-smokers (2,9), we examined the effects of active cigarette smoking on humoral response to
185 SARS-CoV-2 vaccine in a subset of MS patients negative for anti-N antibodies production for whom
186 smoking status was available (T2=510, T3=157). Our analyses showed that active cigarettes smoking
187 reduced anti-S antibodies production (median = 128.0 U/ml) compared to non-smokers (median = 349.6
188 U/ml) in response to BNT162b2 vaccine (Mann-Whitney test $p = 4.9 \times 10^{-4}$) at T2. No differences were
189 observed at T3 (Mann-Whitney test $p = 0.3$). The discrepancy between the three time points analyzed could
190 be due to the effect of vaccination over time or the sample size, significantly smaller at T3 than T2.

191 *Cross sectional and longitudinal study on anti-S and anti-N SARS-CoV-2 antibody levels*

192 Overall, evaluating the median of anti-S antibody level at each timepoint (T1-T2-T3) (**Figure 1**), we found
193 that 6 months after the second dose of BNT162b2 vaccination (T2), the levels of anti-S decrease 3-fold
194 compared to T1 (median T1= 962.2 U/ml and T2 = 323.7 U/ml). Furthermore, in line with previous reports
195 (10), a strong upregulation in serum anti-S antibody levels was observed a month after the BNT162b2
196 booster (median T3 = 9,758 U/ml). The anti-S antibody median at T3 is ~30-fold higher than T2 and ~10-
197 fold higher than T1. After stratification for each DMTs analyzed in this study, we observed that antibody
198 levels significantly decrease when comparing T1 with T2 for the following treatments: interferon (IFN),
199 DMF, natalizumab (NAT) and teriflunomide (TER) (**Figure 3**). Furthermore, the booster significantly
200 increased anti-S production for DMF, NAT, TER, FTY and OCR. Interestingly, the increase in anti-S
201 antibodies due to the booster was also observed for FTY and OCR even if with a lower impact (**Figure 3**).
202 The upregulation of SARS-CoV-2 anti-S antibodies at 4 weeks after the booster (T3) was confirmed in an
203 additional longitudinal analysis of a subgroup of 94 MS patients with data at every time points (Median T1=
204 888 U/ml, T2= 562 U/ml and T3 = 13,346 U/ml) (**Table 4**).

205
206
207 Longitudinal analysis of anti-N antibodies also revealed a progressive decline in anti-N proteins from T1 to
208 T3. Indeed, all 13 MS patients positive for SARS-CoV-2 infection at T1 (as determined by anti-N positivity),
209 and with data for at least another time point, were anti-N negative ~7-9 month later demonstrating a
210 consistent loss of circulating humoral response against N antigens over time (data not shown). It is important
211 to take this into account when testing samples without information on COVID-19 disease status. Indeed, if
212 exposure occurred well before the time of antibody testing, it may be impossible to detect individuals with
213 natural humoral immunity against the virus.

214 *Impact of different DMTs on COVID-19 risk and severity*

215 To evaluate the risk of COVID-19 in patients receiving anti-CD20 (OCR and RTX) and FTY therapies,
216 which are associated with reduced humoral responses to vaccine, we assessed the number of MS patients
217 who became positive for COVID-19 five months after the booster. The presence of symptomatic infection
218 and its severity was evaluated. A subset of 140 MS patients was monitored and among them 52 patients
219 (37%) were treated with anti-CD20 or FTY while 88 (62.9%) received other therapies or were untreated.
220 Overall, 28 MS patient (20%) of the 140 examined became positive for COVID-19 during the five months
221 following the booster. Among them, COVID-19 infection was significantly more common (risk ratio = 1.95,
222 95% C.I =1.01 - 3.77, $p=0.046$) in patients under anti-CD20 and FTY therapies as compared to patients
223 receiving other therapies or untreated. The higher incidence of disease in the group treated with anti-CD20
224 and FTY compared with the other therapies correlates with the lower antibody titers observed in those DMT
225 categories. Importantly, regardless of the DMT received, all patients reported mild symptoms that did not
226 require hospitalization.

227
228

229

230 **Discussion**

231 Following previous observations on humoral responses to the BNT162b2 vaccine one month after the second
232 dose of vaccine (T1) in MS patients treated with different DMTs or untreated (2), here we performed a cross-
233 sectional and longitudinal follow-up study to analyze the humoral response in MS patients 6 months (T2)
234 after the second dose and to 1 month after the first booster dose (T3) of BNT162b2 vaccine.

235

236 In line with early results obtained at T1(2), we show that, compared to untreated patients, humoral responses
237 in patients treated with FTY, OCR and RTX were impaired at T2 while in general they were not significantly
238 different in patients treated with the other DMTs including alemtuzumab (ALEM), IFN, glatiramer acetate
239 (GA), DMF, NAT, TER and AZA (**Table 2**).

240

241 Regarding the effects of the first booster dose of vaccine, at T3 we observed a strong upregulation of the
242 humoral response in both treated and untreated patients, although the humoral responses observed in patients
243 treated with anti-CD20 (OCR) and FTY remained significantly lower than those observed in untreated
244 patients (**Table 3 and 4**). Yet, the first booster dose significantly increases anti-S levels even in most patients
245 taking these immunosuppressive therapies. For example, in anti-N negative patients under OCR and FTY the
246 median anti-S antibody levels were, respectively, 40.5 and 28.6-fold higher at T3 than at T1.

247

248 Likewise, prior natural SARS-CoV-2 infection, documented through the presence of anti-N antibodies, also
249 strongly potentiated the humoral responses to BNT162b2 vaccine by inducing a strong increase in levels of
250 anti-S antibodies at both T2 and T3 regardless of the DMTs analyzed and including, albeit to a lesser extent,
251 patients treated with anti-CD20 or FTY.

252

253 Anti-N antibody analysis also provided additional data on the rate of decline in anti-N seropositivity which is
254 essential for identifying patients with asymptomatic SARS-CoV-2 infection. We found that anti-N antibody
255 levels declined at a sharper rate over time until they were no longer detectable, at least with the assay used in
256 this study, 7 to 9 months after infection. Thus, it is possible that natural asymptomatic SARS-CoV-2
257 infections during the early phase of the pandemic were not detected in some of the MS patients considered
258 here, and that these early infections still had a residual but not ascertainable effect on anti-S antibodies
259 produced after vaccination. This is in agreement with a cross-sectional study by Alfego and colleagues that
260 showed a decay rate of anti-N responses of 68.2% after only 9.7 months following infection, whereas anti-S
261 seropositivity maintained a positivity rate of 87.8% 10 months later (11).

262

263 In addition to DMTs and prior SARS-CoV-2 infection, in agreement with previous result at T1 (2), we
264 confirmed that both older age and reduced EDSS also influence antibody response to vaccine. Anti-S
265 antibodies levels, however, were significantly lower in older patients at T2 but not a T3. The discrepancy
266 between T1, T2 and T3 is probably due to the smaller sample size we analyzed at T3. Similar findings have
267 been reported in a general population (12) where older age was associated with lower seroconversion rates.
268 By contrast, Cohen and colleague have reported associations between older age and higher immune
269 responses to natural infection, including IgG neutralizing antibody and memory B cell levels (13).

270

271 We also evaluated the relationship between antibodies titers in response to BNT162b2 vaccine and active
272 smoking status in a subgroup of MS patients. Our data showed a significant downregulation in anti-S
273 antibodies in MS patients who were active smokers, in line with the association of smoking with immune
274 system dysfunctions (14).

275

276 An important preliminary observation of this study is the about two-fold higher risk of COVID-19 disease
277 observed in the group treated with anti-CD20 and FTY compared with other therapies; a result which is
278 somewhat expected given the lower antibody levels observed in those DMT categories. However, despite the
279 higher incidence of COVID-19, these patients reported mild symptoms that did not require hospitalization,
280 like those treated with other DMTs. This suggests that vaccination, and in particular booster doses of the
281 vaccine, still may provide additional protection against severe COVID-19 disease most likely by enhancing
282 immune responses like those mediated by T cells, that are not directly affected by these DMTs and by further
283 stimulating residual B-cell and humoral responses. However, the sample size considered in this study,
284 especially for patients treated with some DMTs, is small to draw firm conclusions. Our observations should

285 be thus expanded to larger case series and further followed over time, including consideration of the immune
286 and clinical impact of additional vaccine booster shots.

287
288 In this regard, the results presented here refer to the evaluation of the effects of the initial anti-Sars-Cov2
289 vaccination followed by a single booster dose of the vaccine completed several months ago and should
290 therefore be placed in a more current context. Initial reports suggest that an additional booster - already
291 approved by many regulatory agencies for the elderly and immunocompromised individuals - improves
292 protection without affecting safety (15). Given these findings and the improved immune responses to vaccine
293 after prior infection and/or the first booster dose of vaccine, it is likely that the use of further booster shots --
294 with existing mRNA vaccines and possible new generation of mRNA vaccines designed on emerging SARS-
295 CoV-2 variants of concern -- will further improve immune responses against SARS-CoV-2 of MS patients
296 under any DMT and thus their safety.

297
298

299 **Study Funding**

300 The study was supported by the Italian Foundation for Multiple Sclerosis- FISM (Grant N.
301 22021/Special/002 and 2021/C19-R-Single/010)

302

303 **Glossary:** Multiple sclerosis (MS), disease-modifying therapies (DMTs), severe acute respiratory syndrome
304 coronavirus type-2 (SARS-CoV-2), Coronavirus disease 2019 (COVID-19), Antibody (Ab), Spike (S),
305 Nucleocapsid (N).

306

307 **Acknowledgment**

308 We thank all the patients and volunteers who generously participated in this study. We would also like to
309 thank all the medical doctors, nurses, and students who have collaborated to the realization of this study.

310 **Reference**

311

312 1. Pritchard E, Matthews PC, Stoesser N, Eyre DW, Gethings O, Vihta K-D, Jones J, House T,
313 VanSteenHouse H, Bell I, et al. Impact of vaccination on new SARS-CoV-2 infections in the United
314 Kingdom. *Nat Med* (2021) 27:1370–1378. doi: 10.1038/s41591-021-01410-w

315 2. Pitzalis M, Idda ML, Lodde V, Loizedda A, Lobina M, Zoledziewska M, Virdis F, Delogu G, Pirinu F,
316 Marini MG, et al. Effect of Different Disease-Modifying Therapies on Humoral Response to
317 BNT162b2 Vaccine in Sardinian Multiple Sclerosis Patients. *Front Immunol* (2021) 12:781843. doi:
318 10.3389/fimmu.2021.781843

319 3. Achiron A, Dolev M, Menascu S, Zohar D-N, Dreyer-Alster S, Miron S, Shirbint E, Magalashvili D,
320 Flechter S, Givon U, et al. COVID-19 vaccination in patients with multiple sclerosis: What we have
321 learnt by February 2021. *Mult Scler* (2021) 27:864–870. doi: 10.1177/13524585211003476

322 4. Apostolidis SA, Kakara M, Painter MM, Goel RR, Mathew D, Lenzi K, Rezk A, Patterson KR,
323 Espinoza DA, Kadri JC, et al. Cellular and humoral immune responses following SARS-CoV-2 mRNA
324 vaccination in patients with multiple sclerosis on anti-CD20 therapy. *Nat Med* (2021) doi:
325 10.1038/s41591-021-01507-2

326 5. Moncunill G, Aguilar R, Ribes M, Ortega N, Rubio R, Salmerón G, Molina MJ, Vidal M, Barrios D,
327 Mitchell RA, et al. Determinants of early antibody responses to COVID-19 mRNA vaccines in a cohort
328 of exposed and naïve healthcare workers. *eBioMedicine* (2022) 75:103805. doi:
329 10.1016/j.ebiom.2021.103805

330 6. Otero-Romero S, Ascherio A, Lebrun-Fréney C. Vaccinations in multiple sclerosis patients receiving
331 disease-modifying drugs. *Current Opinion in Neurology* (2021) 34:322–328. doi:
332 10.1097/WCO.0000000000000929

333 7. Sormani MP, Inglese M, Schiavetti I, Carmisciano L, Laroni A, Lapucci C, Da Rin G, Serrati C,
334 Gandoglia I, Tassinari T, et al. Effect of SARS-CoV-2 mRNA vaccination in MS patients treated with
335 disease modifying therapies. *EBioMedicine* (2021) 72:103581. doi: 10.1016/j.ebiom.2021.103581

336 8. Hilbe J. *Negative binomial regression*. Cambridge; New York: Cambridge University Press (2011).

337 9. Watanabe M, Balena A, Tuccinardi D, Tozzi R, Risi R, Masi D, Caputi A, Rossetti R, Spoltore ME,
338 Filippi V, et al. Central obesity, smoking habit, and hypertension are associated with lower antibody
339 titres in response to COVID-19 mRNA vaccine. *Diabetes Metab Res Rev* (2021) doi:
340 10.1002/dmrr.3465

341 10. Dreyer-Alster S, Menascu S, Mandel M, Shirbint E, Magalashvili D, Dolev M, Flechter S, Givon U,
342 Guber D, Stern Y, et al. COVID-19 vaccination in patients with multiple sclerosis: Safety and humoral
343 efficacy of the third booster dose. *Journal of the Neurological Sciences* (2022) 434:120155. doi:
344 10.1016/j.jns.2022.120155

345 11. Alfego D, Sullivan A, Poirier B, Williams J, Grover A, Gillim L, Adcock D, Letovsky S. A population-
346 based analysis of the longevity of SARS-CoV-2 antibody seropositivity in the United States.
347 *EClinicalMedicine* (2021) 36:100902. doi: 10.1016/j.eclinm.2021.100902

348 12. Wei J, Matthews PC, Stoesser N, Maddox T, Lorenzi L, Studley R, Bell JI, Newton JN, Farrar J,
349 Diamond I, et al. Anti-spike antibody response to natural SARS-CoV-2 infection in the general
350 population. *Nat Commun* (2021) 12:6250. doi: 10.1038/s41467-021-26479-2

351 13. Cohen KW, Linderman SL, Moodie Z, Czartoski J, Lai L, Mantus G, Norwood C, Nyhoff LE, Edara
352 VV, Floyd K, et al. Longitudinal analysis shows durable and broad immune memory after SARS-CoV-

353 2 infection with persisting antibody responses and memory B and T cells. *Cell Reports Medicine*
354 (2021) 2:100354. doi: 10.1016/j.xcrm.2021.100354

355 14. 23andMe Research Team, HUNT All-In Psychiatry, Liu M, Jiang Y, Wedow R, Li Y, Brazel DM,
356 Chen F, Datta G, Davila-Velderrain J, et al. Association studies of up to 1.2 million individuals yield
357 new insights into the genetic etiology of tobacco and alcohol use. *Nat Genet* (2019) 51:237–244. doi:
358 10.1038/s41588-018-0307-5

359 15. Arbel R, Sergienko R, Friger M, Peretz A, Beckenstein T, Yaron S, Netzer D, Hammerman A.
360 Effectiveness of a second BNT162b2 booster vaccine against hospitalization and death from COVID-
361 19 in adults aged over 60 years. *Nat Med* (2022) doi: 10.1038/s41591-022-01832-0

362

363

364 **Tables**

365

366

367

Table 1. Clinical and demographic characteristics of multiple sclerosis patients at T1, T2 and T3.

	T1, pwMS (n=912) (2)	T2, pwMS, (n=662)	T3, pwMS, (n=185)
Female, n (%)	658 (73.1)	488 (73.6)	137 (74.1)
Age, median (IQR 25-75)	48.8 (38.8 - 57.8)	47.39 (38.4 - 55.7)	48.07 (38.9 – 55)
Disease duration, median (IQR 25-75)	13.6 (7.6 - 21.6)	13.58 (7.57 – 21)	13.58 (8.57 - 19)
EDSS, median (IQR 25-75)	2 (1 - 4.5)	2 (1 - 4)	2 (1 - 4)
RRMS, n (%)	750 (82.7)	562 (84.9)	166 (89.7)
PPMS, n (%)	16 (1.8)	10 (1.51)	1 (0.54)
SPMS, n (%)	142 (15.6)	90 (13.6)	18 (9.7)
Positivity for N antibodies	38 (4.16)	23 (3.47)	9 (4.86)
Previously Covid-19 positive record	25	16	8
DMTs, n - Age median (IQR 25-75)			
ALEM	17 - 41.3 (36.5 - 45)	10 - 39.1 (34.0 - 44.1)	3 - 44.18 (38.84 - 48.05)
AZA	28 - 58.9 (55.2 - 64.1)	20 - 59.5 (48.7 - 63.8)	6 - 47.5 (41.56 - 58.00)
CLA	6 - 46.8 (37.8 - 48)	15 - 36.8 (29.9 - 44.1)	1 - 47.0
DMF	161 - 44.6 (36.3 - 51.8)	133 - 44.9 (37.1 - 53.1)	39 - 49.17 (42.40 - 57.45)
FTY	75 - 45 (37.8 - 52.1)	112 - 47.7 (39.4 - 53.1)	45 - 45.3 (39.08 - 52.38)
GA	96 - 53.6 (42.8 - 59.4)	40 - 52.6 (43.7 - 58.1)	5 - 48.5 (47.40 - 60.99)
IFN	135 - 47.9 (36.7 - 54.4)	57 - 49.9 (37.1 - 56.2)	11 - 38.8 (31.00 - 53.72)
NAT	75 - 36.3 (31.2 - 46.2)	55 - 37.2 (32.0 - 47.0)	24 - 38.2 (33.90 - 53.25)
OCR	42 - 43.4 (35.4 - 52.4)	80 - 41.2 (34.2 - 49.3)	19 - 42.6 (34.54 - 51.46)
RTX	13 - 53.9 (41.5 - 56.8)	15 - 48.6 (42.5 - 55.3)	1 –
TER	56 - 51.5 (45.6 - 56.5)	52 - 52.5 (47.0 - 59.5)	18 - 54.4 (50.82 - 60.36)
MET	2 - 61.4		
BTK	1 -	1 -	
UNT	205 - 59 (48.3 - 65.6)	73 - 59.8 (49.4 - 68.2)	13 - 54.10 (40.10 - 59.46)

368

369

370

371

372

373

374

375

376

377

378

379

380

381

382

383

384

Abbreviations: pwMS= multiple sclerosis patients; RRMS= relapsing-remitting multiple sclerosis; PPMS= primary progressive multiple sclerosis; SPMS= secondary progressive multiple sclerosis; EDSS= Expanded Disability Status Scale; IQR= interquartile range DMT=disease modifying therapy; UNT=untreated; ALEM=alemtuzumab; IFN=interferon; GA=glatiramer acetate; DMF=dimethyl fumarate; NAT=natalizumab; CLA=cladribine; TER=teriflunomide; AZA=azathioprine; FTY=fingolimod; RTX=rituximab; OCR=ocrelizumab; MET= methotrexate; BTK= Bruton Tyrosine Kinase trial; IQR= interquartile range.

385
386
387
388

Table 2. Negative binomial generalized linear mixed-effects model of anti-S-Ab levels in untreated and treated MS patients (anti-N negative) 6 months after the second dose (T2) of BNT162b2 vaccine.

DMTs	N	Median anti-S in U/ml (IQR 25-75)	IRR (IQR 25-75)	SE	p value
IFN	53	735 (342.3-1137)	1.08 (0.70-1.69)	0.22	0.73
DMF	127	554 (299.75-1010.5)	1.07 (0.73-1.57)	0.19	0.71
ALEM	10	912 (845.1-1030.9)	1.00 (0.48-2.34)	0.39	0.99
TER	51	389 (242-875.15)	1.00 (0.64-1.57)	0.22	0.99
GA	39	489 (308.65-854.8)	0.91 (0.57-1.48)	0.24	0.69
NAT	50	564 (265.55-892.27)	0.70 (0.43-1.15)	0.24	0.14
AZA	20	382 (200.07-611.3)	0.68 (0.38-1.27)	0.30	0.19
UNT	71	357 (170.6-625.7)	Reference		
FTY	108	37 (4.55-115.77)	0.17 (0.11-0.24)	0.19	1.82E-21
OCR	79	9 (4-52.815)	0.07 (0.04-0.10)	0.20	4.54E-42
RTX	15	4 (4-16.63)	0.06 (0.03-0.12)	0.33	1.35E-17

389
390
391
392
393
394
395
396
397
398
399
400
401
402

Abbreviations: DMT=disease modifying therapy; UNT=untreated; ALEM=alemtuzumab; IFN=interferon; GA=glatiramer acetate; DMF=dimethyl fumarate; NAT=natalizumab; CLA=cladribine; TER=teriflunomide; AZA=azathioprine; FTY=fingolimod; RTX=rituximab; OCR=ocrelizumab; MET= methotrexate; BTK= Bruton Tyrosine Kinase trial; IQR=interquartile range; SE=standard error; IRR=Incidence Rate Ratio calculated as exp(coefficient) (8).

Table 3. Negative binomial generalized linear mixed-effects model of anti-S-Ab levels in untreated and treated MS patients (anti-N negative) one month after the BNT162b2 booster (T3).

DMTs	N	Median anti-S in U/ml (IQR 25-75)	IRR (IQR 25-75)	SE	p value
IFN	11	24639 (18339-89010)	1.95 (0.75-5.08)	0.48	0.16
TER	18	14008 (7791-24802)	0.90 (0.36-2.15)	0.43	0.80
NAT	21	16540 (9608-25000)	0.76 (0.30-1.82)	0.43	0.52
DMF	37	13346 (9031-25000)	0.74 (0.32-1.60)	0.39	0.44
UNT	12	16989 (12475-37407)	Reference		
FTY	42	764 (315-2944)	0.08 (0.04-0.17)	0.37	1.52e-11
OCR	19	324 (8-1668)	0.04 (0.01-0.09)	0.43	1.20e-14

403
404
405
406
407
408
409
410
411
412
413
414
415
416

Abbreviations: DMT=disease modifying therapy; UNT=untreated; IFN=interferon; DMF=dimethyl fumarate; NAT=natalizumab; TER=teriflunomide; FTY=fingolimod; RTX=rituximab; OCR=ocrelizumab; IQR= interquartile range; SE= standard error; IRR=Incidence Rate Ratio calculated as exp(coefficient) (8).

417 **Table 4.** Median of anti-S SARS-CoV-2 antibody levels in 94 MS patients enrolled at every time point (T1, T2 and
 418 T3) and stratified by DMTs.
 419

DMTs	N	Median anti-S in U/ml (IQR 25-75)		
		T1	T2	T3
ALEM	3	1696 (1204-2297)	833 (472-871)	20942 (18717-52661)
AZA	2	559 (368-750)	565 (490-641)	10894 (9132-12656)
DMF	23	1859 (1065-3200)	530 (293-766)	13346 (8705-22508)
FTY	21	45 (8-113)	18 (4-156)	555 (144-3937)
GA	3	888 (466-2221)	214 (132-685)	16962 (8623-56476)
IFN	5	1341 (862-1502)	934 (500-2849)	20335 (19660-132280)
NAT	10	1700 (853-2787)	619 (503-746)	13577 (9596-23535)
OCR	12	10 (8-405)	6 (0.4-99)	272 (8-978)
RTX	1	8 (8-8)	0.4 (0.4-0.4)	8 (8-8)
TER	8	557 (389-664)	559 (176-661)	11060 (6156-17912)
UNT	6	2230 (1420-2835)	647 (342-895)	15406 (13028-31248)

420 Abbreviations: UNT=untreated; ALEM=alemtuzumab; IFN=interferon; GA=glatiramer acetate; DMF=dimethyl
 421 fumarate; NAT=natalizumab; CLA=cladribine; TER=teriflunomide; AZA=azathioprine; FTY=fingolimod;
 422 RTX=rituximab; OCR=ocrelizumab; IQR= interquartile range.
 423
 424

425 **Figure legends**

426

427 **Figure 1. Timeline of MS patients' enrollment.** Schematic of the vaccination (blue) and sample collection
428 (green) timeline in MS patients.

429

430 **Figure 2. Post-vaccination SARS-CoV-2 anti-S antibody response by disease- modifying therapy**
431 **(DMT) in MS patients negative for anti-N antibodies.** (A) Antibody response to SARS-CoV-2 vaccination
432 by DMT in MS patients six month after SARS-CoV-2 vaccination (T2). (B) Antibody response one month
433 after booster (T3) by DMT in MS patients. Results are reported as boxplots, showing the median value (in
434 bold) and the quartiles as box limits; whiskers at the top and bottom sides represent the overall maximum
435 value and the overall minimum value, respectively. Data outside boxes and whiskers represent the outliers of
436 the distribution. (*P< 0.05; **P<0.01; ***<0.001).

437 (UNT=untreated; ALEM=alemtuzumab; IFN=interferon; GA=glatiramer acetate; DMF=dimethyl fumarate;
438 NAT=natalizumab; CLA=cladribine; TER=terifluomide; AZA= azathioprine; FTY=fingolimod; RTX=rituximab;
439 OCR=ocrelizumab)

440

441

442 **Figure 3. Cross-sectional humoral response over time (T1, T2 and T3) in MS patients treated with**
443 **different DMTs or untreated.** Post-vaccination anti-S antibody response by disease- modifying therapy
444 (DMT) in MS patients. Results are represented as histogram showing the median value. Significance was
445 tested using Mann-Whitney test. (*P< 0.05; **P<0.01; ***<0.001).

446 (UNT=untreated; ALEM=alemtuzumab; IFN=interferon; GA=glatiramer acetate; DMF=dimethyl fumarate;
447 NAT=natalizumab; CLA=cladribine; TER=terifluomide; AZA= azathioprine; FTY=fingolimod; RTX=rituximab;
448 OCR=ocrelizumab)

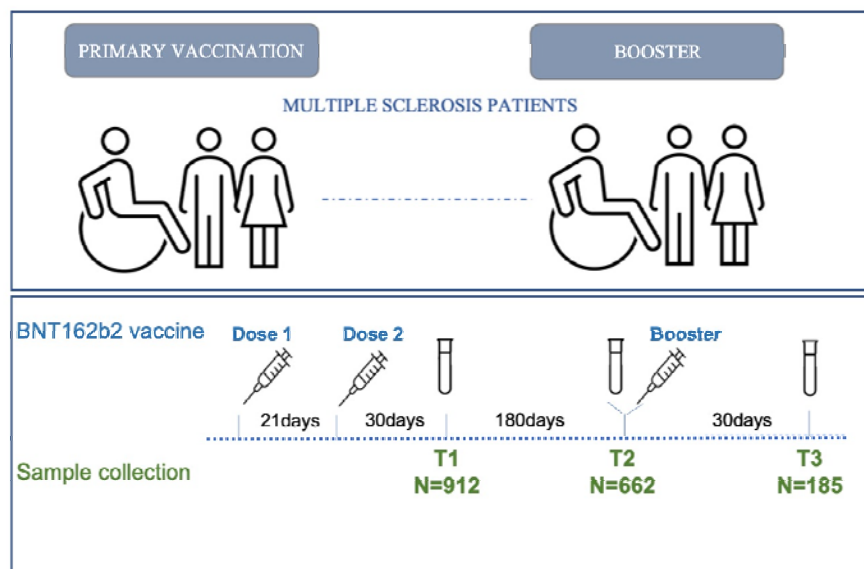
449

450

451
452
453
454
455
456
457
458
459

Figure

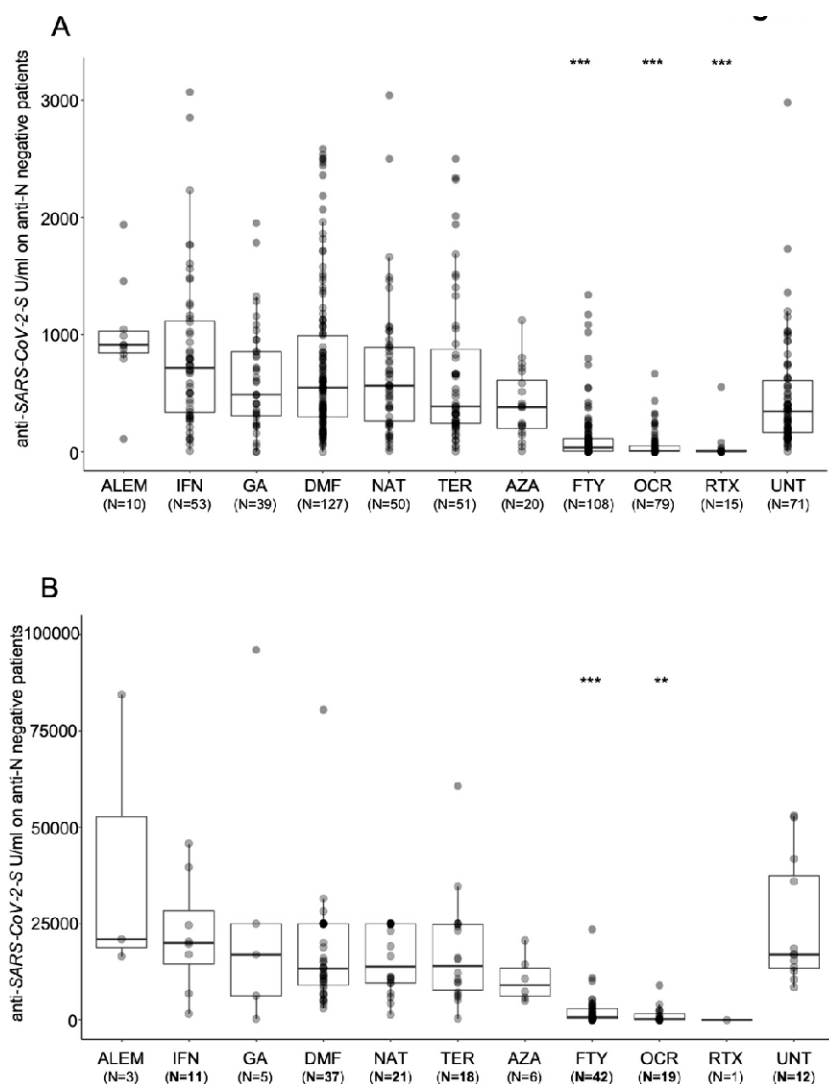
Figure 1. Timeline of MS patients' enrollment. Schematic of the vaccination (blue) and sample collection (green) timeline in MS patients.



460
461
462
463
464
465
466
467
468
469
470
471
472
473
474
475
476
477
478
479
480
481
482
483
484
485
486
487

488
489
490
491
492
493
494
495
496
497
498
499
500
501

Figure 2. Post-vaccination SARS-CoV-2 anti-S antibody response by disease- modifying therapy (DMT) in MS patients negative for anti-N antibodies. (A) Antibody response to SARS-CoV-2 vaccination by DMT in MS patients six month after SARS-CoV-2 vaccination (T2). (B) Antibody response one month after booster (T3) by DMT in MS patients. Results are reported as boxplots, showing the median value (in bold) and the quartiles as box limits; whiskers at the top and bottom sides represent the overall maximum value and the overall minimum value, respectively. Data outside boxes and whiskers represent the outliers of the distribution. (*P< 0.05; **P<0.01; ***<0.001). (UNT=untreated; ALEM=alemtuzumab; IFN=interferon; GA=glatiramer acetate; DMF=dimethyl fumarate; NAT=natalizumab; CLA=cladribine; TER=teriflunomide; AZA= azathioprine; FTY=fingolimod; RTX=rituximab; OCR=ocrelizumab)

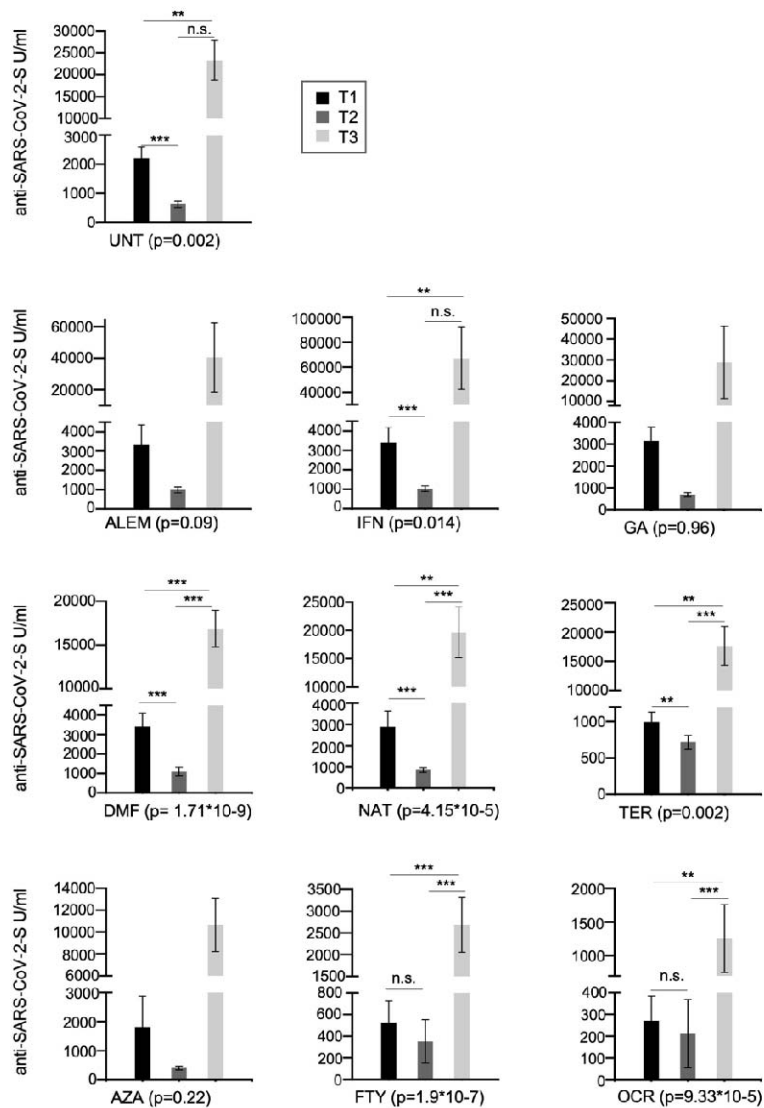


502
503
504
505
506
507
508
509
510

511
512
513
514
515
516
517
518
519
520
521
522

Figure 3. Cross-sectional humoral response over time (T1, T2 and T3) in MS patients treated with different DMTs or untreated. Post-vaccination anti-S antibody response by disease- modifying therapy (DMT) in MS patients. Results are represented as histogram showing the median value. Significance was tested using Mann-Whitney test. (*P< 0.05; **P<0.01; ***<0.001).

(UNT=untreated; ALEM=alemtuzumab; IFN=interferon; GA=glatiramer acetate; DMF=dimethyl fumarate; NAT=natalizumab; CLA=cladribine; TER=teriflunomide; AZA= azathioprine; FTY=fingolimod; RTX=rituximab; OCR=ocrelizumab)



523

