

GWAS of preeclampsia and hypertensive disorders of pregnancy uncovers genes related to cardiometabolic, endothelial and placental function

Jaakko S. Tyrmi^{1,2,3,4,*}, Tea Kaartokallio⁵, Inkeri Lokki^{5,6}, Tiina Jääskeläinen^{5,7}, Eija Kortelainen⁵, Sanni Ruotsalainen⁸, Juha Karjalainen^{8,20,21}, Samuli Ripatti^{8,21}, FINNPEC Study Group, FinnGen, Estonian Biobank Research Team, Triin Laisk⁹, Johannes Kettunen^{10,11}, Anneli Pouta¹², Katja Kivinen⁸, Eero Kajantie¹²⁻¹⁵, Seppo Heinonen¹⁶, Juha Kere^{17,18}, Hannele Laivuori^{1,5,8,19}

¹ Center for Child, Adolescent and Maternal Health Research, Faculty of Medicine and Health Technology, Tampere University, Tampere, Finland

² Computational Medicine, Faculty of Medicine, University of Oulu, Oulu, Finland

³ Center for Life Course Health Research, Faculty of Medicine, University of Oulu, Oulu, Finland

⁴ Biocenter Oulu, University of Oulu, Oulu, Finland

⁵ Medical and Clinical Genetics, University of Helsinki and Helsinki University Hospital, Helsinki, Finland

⁶ Department of Bacteriology and Immunology, University of Helsinki and Helsinki University Hospital, Helsinki, Finland

⁷ Department of Food and Nutrition, University of Helsinki, Helsinki, Finland

⁸ Institute for Molecular Medicine Finland (FIMM), Helsinki Institute of Life Science, University of Helsinki, Helsinki, Finland

⁹ Estonian Genome Centre, Institute of Genomics, University of Tartu, Tartu, Estonia;

¹⁰ Systems Epidemiology, Center for Life Course Health Research, Faculty of Medicine, Oulu, Finland

¹¹ National Institute for Health and Welfare, Helsinki, Finland

¹² PEDEGO Research Unit, Medical Research Center Oulu, Oulu University Hospital and University of Oulu, Oulu, Finland

¹³ Population Health Unit, Finnish Institute for Health and Welfare, Helsinki and Oulu, Finland

¹⁴ Children's Hospital, University of Helsinki and Helsinki University Hospital, Helsinki, Finland

¹⁵ Department of Clinical and Molecular Medicine, Norwegian University of Health and Technology, Trondheim, Norway

¹⁶ Obstetrics and Gynaecology, University of Helsinki and Helsinki University Hospital, Helsinki, Finland

¹⁷ Department of Biosciences and Nutrition, Karolinska Institutet, Huddinge, Sweden

¹⁸ Folkhälsan Research Center and Stem Cells and Metabolism Research Program, University of Helsinki, Helsinki, Finland

¹⁹ Department of Obstetrics and Gynecology, Tampere University Hospital, Tampere, Finland

²⁰ Analytic and Translational Genetics Unit, Massachusetts General Hospital and Harvard Medical School, Boston, Massachusetts, United States of America.

Department of Public Health, University of Helsinki, Helsinki, Finland.

²¹ Broad Institute of the Massachusetts Institute of Technology and Harvard University, Cambridge, Massachusetts, United States of America.

*Corresponding author: jaakko.tyrmi@oulu.fi

Abstract

Preeclampsia is a vascular pregnancy disorder that affects 3-5% of all pregnancies. Genetic contribution to preeclampsia susceptibility is well established, but the actual risk loci have remained largely unknown. To make further discoveries of the underlying genetic architecture, we performed a new genome-wide association study (GWAS) for maternal preeclampsia and for two other combination phenotypes encompassing maternal preeclampsia and other types of gestational hypertension disorders. We combined the data resources of the Finnish preeclampsia cohort 'FINNPEC', the Finnish FinnGen project and the Estonian Biobank to obtain cases for the three abovementioned phenotypes. In addition, we performed meta-analyses of the preeclampsia phenotype combining results with the previous largest GWAS results. The controls for each phenotype comprised all parous women in the cohorts not diagnosed with these conditions. In total, we found 18 genome-wide significant associations, of which 12 have not been associated with preeclampsia in any previous maternal GWAS for maternal preeclampsia. Seven of the novel loci were near genes previously associated with blood pressure traits – supporting the concept of pregnancy as a window to future cardiovascular health. The genetic susceptibility to cardiovascular disease may manifest for the first time during pregnancy. Alterations in the integrity of the endothelium or specifically in the glomerular filtration barrier may modify disease susceptibility. Interesting novel associations are in proximity of genes involved in the development of placenta, remodeling of uterine spiral arteries and maintenance of proteostasis in pregnancy serum. Overall, the novel associated genes shed more light on the pathophysiology of preeclampsia.

Introduction

Preeclampsia is a vascular pregnancy disorder that affects 3-5% of all pregnancies^{1,2}. The disorder develops only in the presence of a placenta, and especially the early-onset preeclampsia is often accompanied by defects in the placental development and function^{3,4}. Substances released by the placenta, such as antiangiogenic factors, are thought to evoke the systemic endothelial dysfunction manifested as the maternal preeclampsia symptoms including hypertension and proteinuria^{5,6}. Preeclampsia is, however, both phenotypically and etiologically heterogeneous⁷. The disorder often develops without any evident placental

malfunction, and the predisposition to preeclampsia is likely affected by multiple underlying cardiometabolic factors that modify a woman's response to the pregnancy-induced stress⁸.

Genetic contribution to preeclampsia susceptibility is well established^{9,10}, but the actual risk loci have remained mostly unknown. The largest genome-wide association study (GWAS) of preeclampsia by the InterPregGen consortium identified five risk loci, all of which have previously been connected to hypertension¹¹. The same study also reported that the polygenic risk score for hypertension was associated with preeclampsia, implying that the genetic risk factors of these conditions are partially shared. In accordance with these observations, epidemiological evidence shows that prior cardiovascular disease inflates the risk of preeclampsia, and in addition, the previously preeclamptic women are at increased risk of developing cardiovascular disease later in life¹²⁻¹⁵. However, comparison with gestational hypertension in the InterPregGen study indicated that in addition to the genetic risk variants of hypertension, other variants are likely to modify susceptibility to preeclampsia¹¹.

Preeclampsia is a syndromic disorder that shares features with other hypertensive disorders of pregnancy and, on the other hand, with placental disorders such as fetal growth restriction. Indeed, preeclampsia is likely to consist of several subtypes with differing etiologies⁸. The overlap in the genetic risk factors between preeclampsia and the related disorders could be subtype-specific, some subtypes sharing more features with hypertensive diseases and others being more closely linked to disorders of placental development. In this work we have therefore selected three separate phenotype groups for examination: 1) preeclampsia, 2) preeclampsia or any other type of gestational hypertension 3) preeclampsia or indication of fetal growth restriction.

The aim of our study was to identify genetic risk factors related to preeclampsia and hypertensive disorders of pregnancy in the maternal genome-wide meta-analysis comprising samples from the closely related populations of Finland and Estonia. For the strict preeclampsia, these data were supplemented with the previously published InterPregGen GWAS to achieve the largest genetic data set studied in preeclampsia to date. In addition, we performed GWAS in smaller paternal and fetal sample sets from Finland to identify risk loci of preeclampsia conveyed via the fetus. Our functional annotation of the associated loci suggested putative variants and genes likely contributing to the pathophysiology of preeclampsia and other hypertensive disorders of pregnancy.

Material & Methods

Ethical considerations

The FINNPEC study was approved by the Coordinating Ethics Committee of the Hospital District of Helsinki and Uusimaa (149/EO/2007). All FINNPEC study participants and the participating parents of the neonates provided a written informed consent.

Patients and control subjects in FinnGen provided informed consent for biobank research, based on the Finnish Biobank Act. Alternatively, older research cohorts, collected prior the start of FinnGen (in August 2017), were collected based on study-specific consents and later transferred to the Finnish biobanks after approval by Fimea, the National Supervisory Authority for Welfare and Health. Recruitment protocols followed the biobank protocols approved by Fimea. The Coordinating Ethics Committee of the Hospital District of Helsinki and Uusimaa (HUS) approved the FinnGen study protocol Nr HUS/990/2017.

The FinnGen study is approved by the Finnish Institute for Health and Welfare (permit numbers: THL/2031/6.02.00/2017, THL/1101/5.05.00/2017, THL/341/6.02.00/2018, THL/2222/6.02.00/2018, THL/283/6.02.00/2019, THL/1721/5.05.00/2019, THL/1524/5.05.00/2020, and THL/2364/14.02/2020), the Digital and population data service agency (permit numbers: VRK43431/2017-3, VRK/6909/2018-3, VRK/4415/2019-3), the Social Insurance Institution (permit numbers: KELA 58/522/2017, KELA 131/522/2018, KELA 70/522/2019, KELA 98/522/2019, KELA 138/522/2019, KELA 2/522/2020, KELA 16/522/2020 and the Statistics Finland (permit numbers: TK-53-1041-17 and TK-53-90-20).

The Biobank Access Decisions for the FinnGen samples and the data utilized in the FinnGen Data Freeze 6 include: THL Biobank BB2017_55, BB2017_111, BB2018_19, BB_2018_34, BB_2018_67, BB2018_71, BB2019_7, BB2019_8, BB2019_26, BB2020_1, Finnish Red Cross Blood Service Biobank 7.12.2017, Helsinki Biobank HUS/359/2017, Auria Biobank AB17-5154, Biobank Borealis of Northern Finland_2017_1013, Biobank of Eastern Finland 1186/2018, Finnish Clinical Biobank Tampere MH0004, Central Finland Biobank 1-2017, and Terveystalo Biobank STB 2018001.

The Estonian Biobank (EstBB) is a population-based biobank that has obtained clinical data from the national registries and hospital databases. Analyses in the EstBB were carried out under ethical approval 1.1-12/624 from the Estonian Committee on Bioethics, and Human Research and data release N05 from the EstBB. All biobank participants have signed a broad informed consent form.

Study phenotypes and cohorts

For the maternal meta-analysis, genome-wide genotyped and imputed samples from the FINNPEC, FinnGen and EstBB were utilised. In addition, we included summary statistics from the earlier largest meta-analysis study of preeclampsia¹¹. For the fetal and paternal genome-wide association analysis, samples from the FINNPEC cohort were available. The analyses were performed with 3 phenotypes: 1) preeclampsia, eclampsia or preeclampsia superimposed on chronic hypertension (PE); 2) the aforementioned preeclampsia phenotypes, gestational hypertension or other maternal hypertension during pregnancy (PE-HTP); and 3) preeclampsia or fetal growth restriction (as mother's diagnosis), used as proxy for small for gestational age (FinnGen and EstBB) or diagnoses of placental insufficiency or small-for-gestational age infant (FINNPEC) (PE-FGR). The case group consisted of women fulfilling these inclusion criteria while the control group for each phenotype comprised all parous women not diagnosed with these conditions. The sample sizes available in each analysis are presented in Table 1 and the study cohort and phenotypes are described in more detail below.

The FINNPEC study is a nationwide preeclampsia case-control cohort recruited from five university hospitals in Finland. The cohort consist of both prospectively and retrospectively recruited women, as well as spouses and neonates of the participating women in the prospective arm of the cohort. Blood samples for DNA extraction were collected from all the participants, and first and third trimester serum samples as well as placental samples from a subset of the women. In addition, extensive clinical information collected from hospital records of the participants' obstetric histories, pregnancy complications and outcomes, and laboratory, blood pressure and proteinuria measurements during pregnancy, as well as information on delivery and the newborn have been obtained. In the FINNPEC cohort, preeclampsia was defined according to the ACOG 2002 criteria as hypertension ($\geq 140/90$ mmHg) and proteinuria (≥ 0.3 g/24h, or 0.3 g/L, or two $\geq 1+$ dipstick readings) occurring after 20 weeks of gestation. Gestational hypertension was defined as hypertension ($\geq 140/90$ mmHg) occurring after 20

weeks of gestation in the absence of proteinuria. Birth weights below -2.0 SD units according to the Finnish standards¹⁶ were classified as small-for-gestational age. Placental insufficiency was defined as umbilical artery resistance index or pulsatility index $\geq +2$ SD. Women with multiple or ovum donation pregnancy, age below 18 years, or an inability to provide informed consent based on information in Finnish or Swedish were excluded. All unaffected women not fulfilling the exclusion criteria were included in the control group. Diagnoses were established based on medical records and confirmed independently by a research nurse and a study physician. A total of 1479, 1689 and 1564 FINNPEC cases of PE, HTP and PE-FGR, respectively, were available for the maternal meta-analyses. A full list of FinnGen contributors can be found in Supplementary Data 1.

The FinnGen project combines genotype data from Finnish nationwide biobanks that are linked with digital health records from the national hospital discharge (from 1968 onwards), cancer (1953-), death (1969-) and medication reimbursement (1995-) registers. The Data Freeze 6 used in this study contains the genomic and health record data for 6% of adult Finnish women. In FinnGen, 88028 women with offspring were included in the study. The cases of each phenotype were defined according to the ICD-entries described in Table S1, with total of 4743, 9427 and 6464 cases in the PE, PE-HTP and PE-FGR phenotypes respectively. A full list of FinnGen contributors can be found in Supplementary Data 2.

EstBB is a population-based biobank, which closely reflects the age, sex and geographical distribution of the Estonian population. ICD-code information is obtained from the Estonian Causes of Death, Estonian Cancer, Estonian Tuberculosis and Estonian Health Insurance Fund registries, and also from the databases of Tartu University Hospital and North Estonia Medical Centre. The case definition for the EstBB 200K data freeze was similar to FinnGen, but only the ICD-10 codes were used. Total case counts for the PE, PE-HTP and PE-FGR phenotypes were 1464, 4084 and 2772, respectively.

In addition, we used summary statistics from the previous largest genome-wide association meta-analysis for preeclampsia conducted by Steinhorsdottir et al¹¹. This dataset was generated based on 9515 preeclamptic women and 157,719 controls from Europe and Central Asia. These data were included only for the meta-analysis of the PE phenotype.

Genotyping and imputation

FINNPEC: Genotyping of the FINNPEC samples was performed using Infinium Global Screening Array-24 v2.0 BeadChip (Illumina Inc., San Diego, CA, USA). Pre-imputation quality control was carried out with Plink 1.07 and 1.9. Duplicated samples and members of triads and dyads that did not show expected genetic relationships based on Mendelian errors and the IBD analysis with the Plink's `-genome` option were excluded. In addition, samples with unresolved sex mismatch, missingness rate over 5%, heterozygosity rate ± 4 SD or non-Finnish ancestry based on MDS analysis were excluded. In the variant-wise quality control, variants with missing call rate $> 2\%$, Hardy-Weinberg equilibrium (HWE) $p < 1 \times 10^{-6}$, or minor allele count < 3 were removed. The genotyped samples were pre-phased with Eagle v2.3.5 and imputed with Beagle v4.1 using a population-specific reference panel SISu v3, which consists of 3775 whole genome sequenced individuals of Finnish ancestry.

FinnGen: Sample genotyping in FinnGen was performed using Illumina and Affymetrix arrays (Illumina Inc., San Diego, and Thermo Fisher Scientific, Santa Clara, CA, USA). Genotype calls were made using GenCall or zCall for Illumina and AxiomGT1 algorithm for Affymetrix data. Genotypes with HWE p-value $p < 1 \times 10^{-6}$, minor allele count < 3 and genotyping success rate $< 98\%$ were removed. Samples with ambiguous gender, high genotype missingness $> 5\%$ and those that were outliers in population structure (> 4 SD from mean on first two dimensions) were omitted. Samples were pre-phased with Eagle 2.3.5 using 20,000 conditioning haplotypes. Genotypes were imputed with Beagle 4.1 using SiSu v3 imputation reference panel.

Estonian Biobank: All EstBB participants were genotyped at the Core Genotyping Lab of the Institute of Genomics, University of Tartu, using Illumina GSAv1.0, GSAv2.0, and GSAv2.0_EST arrays. Samples were genotyped and PLINK format files were created using Illumina GenomeStudio v2.0.4. Individuals were excluded from the analysis if their call-rate was $< 95\%$ or if sex defined based on heterozygosity of X chromosome did not match sex in phenotype data. Before imputation, variants were filtered by call-rate $< 95\%$, HWE p-value $< 1 \times 10^{-4}$ (autosomal variants only), and minor allele frequency $< 1\%$. All variants were changed to be from TOP strand using GSAMD-24v1-0_20011747_A1-b37.strand.RefAlt.zip files from <https://www.well.ox.ac.uk/~wrayner/strand/> webpage. Prephasing was done using the Eagle v2.3 software (number of conditioning haplotypes Eagle2 uses when phasing each

sample was set to: --Kpbwt=20000) and imputation was done using Beagle v.28Sep18.793 with effective population size $n_e=20,000$. Population specific imputation reference of 2297 WGS samples was used¹⁷.

Association analyses

FINNPEC: The association analyses were performed with SAIGE version 0.39. The null models were adjusted for maternal age at birth and the first 10 principal components (PC).

FinnGen: Association analysis was performed using generalized mixed model as implemented in SAIGE v.0.39.1¹⁸. Included adjustments were age, genotyping batches and the first ten PCs.

Estonian Biobank: Association analysis was carried out using SAIGE (v0.38) software implementing mixed logistic regression model with year of birth and 10 PCs as covariates.

Meta-analyses

For meta-analysis, the GWAS summary statistics of FinnGen were lifted over from hg38 to hg37 reference genome build using UCSC liftOver¹⁹ and only high imputation quality markers were retained (INFO score > 0.7). METAL software²⁰ was used to perform inverse variance-weighted meta-analysis with genomic control correction applied. Genomic inflation factor estimates were calculated with ‘LD Score regression’ software²¹. Genome-wide significance was set to $p < 5 \times 10^{-8}$. The meta-analysis was conducted by two analysts independently and summary statistics were compared for consistency. Formatting and preparation of the association summary statistics data for downstream analysis was managed with the workflow management software STAPLER²².

Annotation of loci

We defined annotated loci as the lead variants and the surrounding ± 1 Mbp area. To identify putative candidate genes we first used the web-based FUMA platform²³. ANNOVAR²⁴ and MAGMA²⁵ are integrated as part of FUMA, and were used for performing gene-based analysis

and creating functional annotation for the meta-analysis results, respectively. We examined whether the variants residing in the associating loci had any predicted functional consequences by identifying missense mutations or pathogenic variants. Furthermore, we assessed if the variants had high CADD score²⁶, and examined whether the variants were eQTLs based on the information provided in the Genotype-Tissue Expression (GTEx) Portal or had been previously associated with any preeclampsia related phenotype in the GWAS catalog²⁷.

If the above functional annotation did not provide support for any causal variants or genes within a locus, we then conducted a broad literature search to identify additional important information of all other genes within ± 1 Mbp of each lead variant. Here, genes most proximal to the lead variant in each locus were prioritized. In addition to the literature search, we explored the information provided in GenBank²⁸ and UniProt²⁹ databases.

Lastly, we used LDSC software^{21,30} to test for potential inflation in the test statistics, estimate regression-derived SNP-based heritability and to evaluate genetic correlation (r_g) between PE, PE-HTP and PE-FGR and 895 other previously published phenotypes (Supplementary file 3). The phenotypes were selected to closely match the (currently defunct) LDhub³¹ dataset, combined with additional circulating metabolite data from Kettunen et al.³².

Data availability

Meta-analysis summary statistics will be made available upon publication.

Results

Association signals from the maternal meta-analyses

Considering the syndromic nature of preeclampsia and its close resemblance to other pregnancy disorders, we conducted maternal meta-analyses with three overlapping preeclampsia phenotypes (Table 1): 1) preeclampsia (PE); 2) preeclampsia or other hypertensive pregnancy (PE-HTP); and 3) preeclampsia or fetal growth restriction (as mother's diagnosis), used as proxy for small for gestational age (PE-FGR). In the PE, PE-HTP and PE-FGR phenotypes, we identified altogether 9, 13 and 2 genome-wide significant loci, respectively (Table 2, Figures 2 and S1-5). Four of the PE-META loci, nine of the PE-HTP-META and one of the PE-FGR-META loci had not been significantly associated with preeclampsia in the earlier maternal GWAS.

There was no evidence of inflation in the meta-analysis test statistics based on calculated LD Score intercepts, which were 0.9928 (SE 0.0085), 0.9717 (SE 0.0082) and 0.9722 (SE 0.0082) for the PE, PE-HTP and PE-FGR phenotypes, respectively. The majority of the directions of the effects were concordant between the cohorts with the exception of four loci near 3q26, 12q24, 19p13, 20q13 that showed discordant effect of direction in the smallest cohort of FINNPEC to the others (Table 2). Also, the effect sizes of the lead variants were in general modest and similar across the loci, with an average beta of 0.11. We did not observe genetic heterogeneity, except for the lead variant rs167479 at locus 19p13 (heterogeneity p-value 0.004). Almost all the lead variants were common, with the only exception being the lead variant of the 12q13 locus (minor allele frequency 0.02).

PE-META reveals several novel risk loci for preeclampsia and replicates earlier findings

Four of the nine genome wide significant loci in PE-META have not been previously identified in the maternal GWAS of preeclampsia (Figure 2A). For the first of these, *FLT1*, the earlier InterPregGen GWAS found an association between the locus in the fetal genome and mother's

preeclampsia³³. The lead variant in the *FLT1* locus (rs7318880) is in tight linkage disequilibrium ($r^2=0.98$) with the lead variant rs4769612 in Steinthorsdottir et al.¹¹. The soluble form of the *FLT1* encoded protein, sFlt1, is a well-known biomarker for preeclampsia: levels of this antiangiogenic protein are increased in the circulation of women destined to develop the disease already before the onset of the symptoms and correlate with the disease severity^{6,34}. By sequencing a large number of candidate genes, we have previously found low-frequency variants in the *FLT1* gene to be protective of maternal preeclampsia³⁵. The current study is the first to find a genome-wide significant association of the locus in preeclamptic mothers.

We also found a genome-wide significant association within the HLA region, which is known for its high density of genes involved in immune regulation and recognition. Tissue compatibility, autoimmunity, and cardiovascular diseases are processes with known susceptibility loci within the HLA and pathophysiological relevance in preeclampsia. In pregnancy, HLA-G, -F, -E and -C are potentially directly involved in tolerance induction by recognition of fetal trophoblast cells by maternal immune cells, the classical HLA genes likely also play a role in the maintenance of peripheral tolerance³⁶⁻³⁸. The association lies within the major susceptibility locus for psoriasis (PSORS1), known for accounting much of the genetic risk for psoriasis^{39,40}. The two top outliers of the HLA-region in MAGMA test, ‘Coiled-Coil Alpha-Helical Rod Protein 1/Coiled-Coil Alpha-Helical Rod Protein 1’ (*CCHCR1*) and ‘Psoriasis Susceptibility 1 Candidate 2’ (*PSORSIC2*), have indeed been previously suggested as risk genes for psoriasis⁴¹⁻⁴³. Additionally, evidence shows *PSORSIC2* effects on apolipoprotein B and blood protein levels^{44,45}. Psoriasis increases the risk of adverse pregnancy outcomes and specifically preeclampsia with an odds ratio of 1.5⁴⁵⁻⁴⁸. Furthermore, intronic regions within HLA class I were associated with preeclampsia. Other putative causal genes suggested by MAGMA analysis include *MCCD1*, previously suggested to cause cardiovascular disease⁴⁹, *TCF19*, possibly harboring variants for type 2 diabetes⁵⁰, and *BAG6*, which contributes to numerous cellular processes, including immunological pathways⁵¹. Due to the high gene density, extreme polymorphism and complex haplotype structure, identifying exact candidate genes in the HLA region typically involves specialized methods. Identifying genome-wide significant association within the HLA region in preeclampsia is of great interest.

Another novel association was detected near the genes ‘AU RNA binding methylglutaconyl-CoA hydratase’ (*AUH*) and ‘Nuclear Factor, Interleukin 3 Regulated’ (*NFIL3*). According to

the GTExPortal the lead variant rs7862828 is an eQTL for the RNA-gene *LINC00484* in multiple tissues. The gene is poorly characterized, but variants within the gene have been associated with several traits, such as waist-to-hip ratio adjusted for BMI⁵², total bilirubin levels⁵³ and glycosuria in pregnancy⁵⁴.

In another novel associating locus at 11q22, the intergenic variant rs3018700 lies near ‘progesterone receptor’ gene (*PGR*) and ‘Transient Receptor Potential Cation Channel Subfamily C Member 6’ (*TRPC6*). *PGR* mediates the effects of progesterone, an essential hormone in pregnancy that maintains pregnancy and promotes endometrial maturation, angiogenesis, vasodilation and placentation⁵⁵. Transcriptomic profiling has revealed perturbed *PGR* signalling in the decidual endometrium of previously preeclamptic women⁵⁶. The eQTL data provide some support for the causativity of the *PGR* gene. Mutations in the other plausible candidate gene in the same locus, *TRPC6*, contributes to various biochemical pathways throughout the body. Variants in this gene have been shown to cause familial focal segmental glomerulosclerosis⁵⁷, and to affect vascular smooth muscle contractility⁵⁸, which may subsequently contribute to the risk of cardiac hypertrophy, heart failure⁵⁹ and idiopathic pulmonary arterial hypertension⁶⁰. Also, the gene exhibits enhanced placental expression, and the *TRPC6* knock-out mice presents with structural changes of the placenta and reduced litter sizes⁶¹.

In addition to these novel findings, we replicated all five loci reported by Steinthorsdottir et al.¹¹. The lead variant in the *FGF5* locus (rs16998073) reached genome-wide significance in all phenotypes studied here (Table 2, Figure 2), and is in high linkage disequilibrium (LD, $r^2 = 0.93$) with the lead variant of the Steinthorsdottir study (rs1458038). The other replicated loci include ‘MDS1 And EVI1 Complex Locus’ (*MECOM*), ‘SH2B adaptor protein 3’ / ‘ataxin 2’ (*SH2B3* / *ATXN2*), ‘FTO Alpha-Ketoglutarate Dependent Dioxygenase’ (*FTO*) and ‘Zinc Finger Protein 831’ (*ZNF831*).

In addition, for the PE phenotype significant p-values were obtained in the MAGMA gene-based analysis for the ‘Methylenetetrahydrofolate Reductase’ (*MTHFR*) and ‘Chloride Voltage-Gated Channel 6’ (*CLCN6*) genes (Fig. 3). Variants in both of these genes have previously been associated with blood pressure in UKBB⁶². Variants in this same locus reached genome-wide significance in the meta-analysis of the PE-HTP phenotype, with the PE-HTP increasing allele also increasing the risk for blood pressure according to the UKBB data.

Genetic correlations calculated with LDSC between PE and 895 phenotypes show that the most strongly associated phenotypes are related to blood pressure or various cardiovascular disease, but also to several measures of body fat (Supplementary File 3).

PE-HTP-META identifies novel loci with candidate genes related to hypertensive diseases and maintenance of successful pregnancy

PE-HTP-META revealed nine novel loci not identified by Steinthorsdottir or in the PE phenotype studied here. Of the identified novel associating loci, seven harbor genes previously associated with high blood pressure or hypertensive diseases. These include the *MTHFR*, *CLCN6* and ‘Natriuretic Peptide A’ (*NPPA*) genes on chromosome 1p36, ‘Natriuretic Peptide Receptor 3’ (*NPR3*) on 5p13, Phospholipase C Epsilon 1 (*PLCE1*) on 10q23, Tensin 2 (*TNS2*) on 12q13, ‘Furin, Paired Basic Amino Acid Cleaving Enzyme’ (*FURIN*) on 15q26, ‘Ral Guanine Nucleotide Dissociation Stimulator Like 3’ (*RGL3*) and Phosphatidylinositol-3,4,5-Trisphosphate Dependent Rac Exchange Factor 1 (*PREX1*) on 20q13. However, two loci on 12p13 and 19q13 do not appear to contain any genome-wide significant variants directly contributing to hypertensive diseases, or genes associated with hypertensive disorders in close proximity. The most likely candidate genes in these two loci are ‘pregnancy zone protein’ (*PZP*) on 12p13 and ‘actinin alpha 4’ (*ACTN4*) on 19q13.

PZP is a protease inhibitor that prevents the activity of all four classes of proteases and stabilises misfolded proteins, which have been shown to accumulate in preeclampsia and contribute to its pathophysiology⁶³⁻⁶⁷. For instance, *PZP* has been shown to inhibit the aggregation of amyloid beta peptide⁶⁸ – an important driver in plaque formation in several disorders, including preeclampsia, age-related macular degeneration (particularly in women), and Alzheimer disease. Also importantly, the protein has been suggested to clear out pro-inflammatory cytokines and inhibit the effects of T helper cells, thus preventing further inflammation, oxidative stress and placental dysfunction⁶⁹. *PZP* is also highly expressed in late-pregnancy serum and its upregulation during pregnancy represents a major maternal adaptation that helps to maintain extracellular proteostasis during gestation⁶⁸. Furthermore, balanced expression of Glycodelin A (GdA) and its carrier protein *PZP* in the decidua seems crucial for a successful ongoing pregnancy⁷⁰. Even though we cannot pinpoint putative causal variants,

our study provides important additional support for the pathophysiological role of *PZP* in preeclampsia.

The *ACTN4* gene encodes for an actin-binding protein with multiple roles in different cell types, and is well known for causing focal segmental glomerulosclerosis^{71–73}. The gene product is also involved in the maintenance of cytoskeletal structure, modulating cell motility and regulating endothelial cells^{74,75}, and may play a role in placentation⁷⁶. *ACTN4* has been suspected to act as a regulator of trophoblast proliferation and differentiation during early pregnancy, and has been shown to have reduced expression in severe preeclampsia⁷⁶. Specifically, the lack of expression appears to prevent cytotrophoblast differentiation into interstitial extravillous cytotrophoblasts, possibly compromising the remodelling of the spiral arteries. In addition, the reduced *ACTN4* levels have been suggested to activate endothelial cell apoptosis⁷⁷. In laboratory studies conducted by Kos et al.⁷³, *ACTN4*^{-/-} mice developed a severe glomerular disease with no other histological abnormalities. However, only 6 % of the offspring of mated *ACTN4*^{+/-} mice were homozygous for the dysfunctional gene, instead of the expected 25 %. Whether the reduced litter size observed in this study was caused by dysfunctional placental development remains unclear since the placentas were unfortunately not examined. Further functional studies are needed to gain evidence of the potential causal role of *ACTN4* in preeclampsia and to uncover pathophysiological mechanisms behind the association of this locus.

PE-HTP-META also replicated four out of the five associations identified in Steinthorsdottir et al.¹¹, with only the locus in 12q24 remaining slightly below genome-wide significance.

PE-FGR-META reveals putative association with uterine natural killer cells

Two loci were associated with the PE-FGR phenotype with genome-wide significance. The first replicated the association near *FGF5* (rs16998073) and the second overlapped the novel locus near the *AUH* and *LINC00484* genes that was also detected in PE-META, but remained without a plausible biological explanation. Interestingly, the lead variant of the latter finding in PE-FGR-META is rs7470773, which is in only modest LD (r^2 0.34) with the PE-META lead variant rs7862828, suggesting that the mechanisms behind the association might differ between the two phenotypes. Functional characterization of the locus revealed an interesting intergenic variant rs7028982 (p-value 6.7e-09, beta 0.13) that is in tight LD (r^2 0.98) with the lead variant

rs7470773. This variant is positioned within a highly conserved genomic element (phastCons score 417). The allele associated with increased PE-FGR risk reduces the expression of two nearby poorly characterized long non-coding RNA genes *LINC00484* and *ENSG00000273381* in several tissues, but the allele also reduces the expression of *NFIL3* in whole blood (normalized effect size -0.14). In mice studies, the dysfunction of *NFIL3* on 9q22 has been shown to cause absence of uterine natural killer cells⁷⁸, which have a central role in the placental vascular remodeling during pregnancy⁷⁹. This absence results in incomplete remodeling of the uterine arteries and decidua, placental defects, and fetal growth restriction⁷⁸, which are all features associated with preeclampsia.

Paternal and fetal association analyses in the FINNPEC cohort

GWAS of paternal and fetal PE, PE-HTP and PE-FGR did not yield any genome-wide significant associations (Figure S6). Uncovering the paternal and fetal associations may require significantly larger sample sizes than available in the current study.

Discussion

In this largest GWAS meta-analysis of maternal preeclampsia to date, we identified multiple novel risk loci for the strict preeclampsia and for the broader phenotypes of hypertensive pregnancy. By combining the GWAS summary statistics from the Finnish and Estonian study populations we received a large and ethnically relatively homogenous data set. For the strict preeclampsia phenotype, we supplemented the Finnish-Estonian data with the summary statistics from the large and genetically more diverse InterPregGen study (Steinthorsdottir et al.) to increase the statistical power. In preeclampsia, general hypertensive pregnancy and preeclampsia-SGA phenotypes we identified altogether 18 genome-wide significant loci, 12 of which had not previously been reported in the genome-wide studies of maternal preeclampsia. These results offer valuable insights into the genetic architecture and biology behind preeclampsia as well as into the connection between preeclampsia and related pregnancy phenotypes such as gestational hypertension and impaired fetal growth.

Novel associations shed light on the genetic architecture of preeclampsia

As the life of every new individual begins with fetal development and birth, it is an important period also from an evolutionary perspective. All dysfunctions in this process have the potential of severely reducing the biological fitness (i.e. the likelihood of future reproductive success of the individual) of the mother and the offspring. The evolutionary origin of preeclampsia has been suggested to be related to the particularly large brain size of humans, which imposes strict requirements for efficient oxygen flow during pregnancy, and thus, deep implantation of the placenta to the uterus⁸⁰. However, this places great stress on the maternal circulation. Such opposing selection patterns is called antagonistic pleiotropy – a phenomenon which has been shown to be enriched in the coronary artery disease related genes⁸¹. Specific HLA-G haplotypes were lately suggested as being under balancing selection, with heterozygotes providing resistance towards infectious diseases, but male fetal homozygotes resulting in maternal immune response and increased preeclampsia risk³⁸. Interestingly, a recent study⁵³ found several genes that are associated with preeclampsia in our study – namely *FGF5*, *SH2B3*, *FTO* and the HLA region – to be amongst the reported 20 most pleiotropic. Likewise, the other genes that probably drive the associations found in our study appear to affect several different traits, as discussed in the results and more in depth in the following paragraphs.

Theoretically, in pleiotropic scenarios, the loci of small effects are expected to have pronounced contribution, as the loci of large effect have a deleterious impact, and thus become under negative selection, eventually purging them from the population⁸². Absence of large effect susceptibility variants has been detected in early onset diseases, such as type I diabetes, but not for instance in cancers⁸³. This purging of high effect alleles from the population likely inflates the polygenic nature of the disorder⁸⁴. Such genetic architecture complicates pinpointing the causal variants, as detecting weakly associated alleles in GWAS requires large samples sizes⁸⁵. Indeed, earlier genome-wide association studies on preeclampsia have yielded few findings, despite including fairly large number of samples. The ongoing era of GWAS has permitted generating novel hypotheses on molecular background of numerous medical conditions over the past decade⁸⁶ – but preeclampsia related findings have been few and far between. The results of our meta-analysis demonstrate that we now begin to reach large enough sample size to finally utilize the benefits of GWAS in the study of preeclampsia to uncover its underlying genetic architecture.

Findings underline the prominent role of factors related to cardiometabolic, endothelial and placental dysfunction

The 6/9 loci in the PE phenotype, 11/13 HTP loci and 1/2 PE-FGR loci have reached genome-wide significant association in the previous GWA studies of cardiovascular diseases. This strongly implies that the established blood pressure loci modify predisposition to hypertension also during pregnancy, plausibly via the same mechanisms. This interpretation is also supported by our genetic correlation results: correlations of preeclampsia with blood pressure medication and high blood pressure were as high as 0.587 and 0.560, respectively. Moreover, correlations between preeclampsia and stroke, heart attack and coronary artery disease were all above 0.4. These results are in accordance with the InterPregGen study which reported that the polygenic risk score of hypertension was associated with preeclampsia. In addition, the well-established epidemiological evidence of the shared risk factors between preeclampsia and cardiovascular diseases as well as the increased incidence of cardiovascular diseases after preeclampsia further support the existence of the shared genetic risk factors for these conditions^{13–15}. All in all, the findings of our study support the idea of pregnancy as a window to future cardiovascular health: the increased genetic susceptibility to cardiovascular disease might become evident for the first time during pregnancy.

While this study does not reveal the putative causal variants in many of the loci, we are able to recognize general trends when looking at most likely candidate genes in each locus. We are now able to show genome-wide significant associations between the hypertensive pregnancy disorders and the loci related to endothelial dysfunction, placental development and immunology. Systemic endothelial dysfunction is central to the pathophysiology of preeclampsia and is characterized by impaired vasodilation, endothelial injury, and reduction in vascular integrity^{87–89}. The best known biomarker of preeclampsia, sFlt-1, is a soluble antiangiogenic protein that reduces the availability of the proangiogenic proteins *VEGF* and *PlGF* to endothelial cells therefore impairing the maintenance of vascular integrity and cellular viability^{90,91}. Our study provides strong hypothesis-free evidence of the relevance of the *FLT1* gene in maternal preeclampsia. Interestingly, also several other genes proximal to the associated lead SNPs of the current study, including *NPPA* on 1p36, *FES* and *FURIN* on 15q26, *ACTN4* on 19q13, and *PREX1* on 20q13.13, encode for proteins that are involved in regulating endothelial permeability and leukocyte transmigration^{92–96}. These findings

provide further support to the idea that preeclampsia liability might be modified by alterations in the integrity of the endothelium.

Abnormal leakage of protein to urine is another key feature of preeclampsia. Intriguingly, several of the genes proximal to our associating lead SNPs have been linked with kidney disease. Mutations in *PLCE1*, *TNS2*, *ACTN4*, and *TRPC6* cause nephrotic syndrome characterized by proteinuria^{57,72,97–100}. Products of these genes have important roles in podocyte function and integrity of the glomerular filtration barrier^{71,101–103}. The mechanisms of action of these genes in causing kidney damage are likely to be variable. For example, *TRPC6* might contribute to the podocyte damage in preeclampsia by mediating the effects of angiotensin II type I receptor agonistic autoantibody¹⁰⁴, which is also known to increase the effect of angiotensin II leading to vasoconstriction and activation of reactive oxygen species.

Many of the genes next to the lead SNPs of our study are involved in the placental development and function, which are often compromised in preeclampsia. Both of the genes closest to the lead variant in the locus 11q22, *PGR* and *TRPC6*, as well as *NFIL3* on 9q22, are known to affect placental functions and maintenance of pregnancy, as described earlier. *PGR* has been suggested to contribute to balanced hormonal signalling during pregnancy, and subsequently aid the immune and endothelial cells in the cytotrophoblast invasion⁵⁶. Also the 19q13 located *ACTN4* is known for regulating the trophoblast proliferation and differentiation during early pregnancy. Specifically, the lack of *ACTN4* expression appears to prevent the cytotrophoblast differentiation into the interstitial extravillous cytotrophoblasts, possibly compromising the remodelling of the spiral arteries⁷⁶. During placentation, the invasive trophoblast cells called the extravillous trophoblasts migrate into the maternal spiral arteries and, in cooperation with the maternal cells, transform these arteries into dilated and non-contractile tubes capable of providing adequate perfusion for the growing fetus. Defects in these processes are well-documented especially in the early-onset preeclampsia^{3,4}.

Immunological factors have been shown to contribute to pathophysiology of preeclampsia. In this work, the locus on HLA region is particularly intriguing. Even though this work is not able to pinpoint the causal variant or gene, the association is possibly driven by variants in the psoriasis causing candidate genes *CCHCR1* or *PSORSIC2*. Additional examples of genes putatively modulating the immunological response to pregnancy include *NFIL3* (a candidate gene in the PE and PE-FGR phenotypes), suspected to contribute to the numbers of uterine

natural killer cells, and *PZP* (in the PE-HTP phenotype) likely modulating T helper cell response. Fetal growth restriction is an indication of severe preeclampsia¹⁰⁵, and immunological etiology is typically linked to patients with severe/early-onset preeclampsia¹⁰⁶. Immunology related findings have been absent in previous preeclampsia GWAS results, but our work provides the first support for their role in this type of studies.

Examples of pleiotropic candidate genes of the associating loci in our study include the natriuretic peptide genes *NPPA* and *NPPB* on 1p36 and their clearance receptor *NPR3* on 5p13. Natriuretic peptide hormones regulate blood pressure and renal function among their several other effects¹⁰⁷. In addition, mice that lack the expression of atrial natriuretic peptide develop gestational hypertension and proteinuria and, similar to preeclampsia, exhibit impairment in trophoblast invasion and uterine spiral artery remodeling^{108,109}. It is tempting to hypothesize that changes in the function or expression level of these genes with several effects in the key mechanisms of preeclampsia could contribute to the multi-organ dysfunction that is characteristic of this pregnancy disorder. As we were not, however, able to pinpoint the actual causal variants in the associating loci, further research is required to verify the relevance of the candidate genes highlighted by our study.

The exploration of combinatory phenotypes that included also other hypertensive disorders of pregnancy and, on the other hand, fetal growth restriction in addition to preeclampsia, allowed us to estimate the connections between these related disorders. The effect sizes of the uncovered loci were largely similar between the different phenotypes explored in this study. However, when comparing genome-wide significant loci between the PE, PE-HTP and PE-FGR phenotypes, the most likely candidate genes on many PE-HTP loci appeared to be related to hypertensive diseases. This observation implies that preeclampsia, gestational hypertension and preeclampsia superimposed on chronic hypertension share genetic risk factors with each other, and the same factors also increase the risk of hypertension later in life. Some of the previously identified hypertension risk loci were also associated with the PE and PE-FGR phenotypes, but in these two phenotypes the number of the associations with the known hypertension loci was smaller and the results also pointed towards other processes, such as the placental development and immunology. Future studies with even larger sample sizes and detailed phenotype information will aid in classifying pregnancy disorders in general and subtypes of preeclampsia in specific.

The main strength of this study is the use of three well characterized cohorts of FINNPEC, FinnGen and EstBB, originating from two closely related populations of Finns and Estonians. We also perform the largest genetic study of preeclampsia to date, when we include the results from the previous InterPregGen study. By comparing the PE-HTP and PE-FGR phenotypes we are able to obtain a more nuanced view on possible genetic variants contributing to preeclampsia phenotypes leaning towards either hypertensive disorders of pregnancy or towards placental defects. The register-based approach used in this study can be seen as a limiting factor, as FinnGen and the EstBB do not contain identifying information of the subjects and thus we are not able to directly validate the ICD-codes. Nonetheless, the coverage and accuracy of the Finnish Care Register for Health Care has previously been shown to be excellent¹¹⁰. Furthermore, our PE and PE-HTP phenotypes replicate the findings of the largest previously published GWAS meta-analysis and our different study cohorts provide uniform support for our findings with no evidence of heterogeneity.

In conclusion, our study uncovers 12 novel loci with genome-wide significant association with preeclampsia or hypertensive disorders of pregnancy. We show that the cardiovascular disease related genes have a central role in the pathophysiology of preeclampsia as previously suggested, but importantly we also emphasize that many of those genes have pleiotropic effects on cardiometabolic, endothelial and placental function. In addition, we provide further evidence for a role of several loci not previously associated with cardiovascular disease, but containing genes with apparent importance in the maintenance of successful pregnancy, with dysfunctions leading to preeclampsia-like symptoms.

Acknowledgements

We appreciate contribution of the members and assisting personnel of the FINNPEC study. The FINNPEC study was supported by the Jane and Aatos Erkko Foundation, Juho Vainio Foundation, Päivikki and Sakari Sohlberg Foundation, Academy of Finland, research funds of the University of Helsinki, government special state subsidy for the health sciences for the Hospital District of Helsinki and Uusimaa, Finska Läkaresällskapet, Liv och Hälsa Foundation, NovoNordisk Foundation, Finnish Foundation for Pediatric Research, Emil Aaltonen Foundation, Sigrid Juselius Foundation, Signe and Ane Gyllenberg Foundation and Finnish Foundation for Laboratory Medicine. We wish to thank InterPregGen consortium members for

assistance in accessing the summary data of Steinthorsdottir et al. study¹¹. We appreciate the contribution of the EstBB participants and staff.

We want to acknowledge the participants and investigators of FinnGen study. The FinnGen project is funded by two grants from Business Finland (HUS 4685/31/2016 and UH 4386/31/2016) and the following industry partners: AbbVie Inc., AstraZeneca UK Ltd, Biogen MA Inc., Bristol Myers Squibb (and Celgene Corporation & Celgene International II Sàrl), Genentech Inc., Merck Sharp & Dohme Corp, Pfizer Inc., GlaxoSmithKline Intellectual Property Development Ltd., Sanofi US Services Inc., Maze Therapeutics Inc., Janssen Biotech Inc, Novartis AG, and Boehringer Ingelheim. Following biobanks are acknowledged for delivering biobank samples to FinnGen: Auria Biobank (www.auria.fi/biopankki), THL Biobank (www.thl.fi/biobank), Helsinki Biobank (www.helsinginbiopankki.fi), Biobank Borealis of Northern Finland (<https://www.ppsbp.fi/Tutkimus-ja-opetus/Biopankki/Pages/Biobank-Borealis-briefly-in-English.aspx>), Finnish Clinical Biobank Tampere (www.tays.fi/en-US/Research_and_development/Finnish_Clinical_Biobank_Tampere), Biobank of Eastern Finland (www.ita-suomenbiopankki.fi/en), Central Finland Biobank (www.ksshp.fi/fi-FI/Potilaalle/Biopankki), Finnish Red Cross Blood Service Biobank (www.veripalvelu.fi/verenluovutus/biopankkitoiminta) and Terveystalo Biobank (www.terveystalo.com/fi/Yritystietoa/Terveystalo-Biopankki/Biopankki/). All Finnish Biobanks are members of BBMRI.fi infrastructure (www.bbmri.fi). Finnish Biobank Cooperative -FINBB (<https://finbb.fi/>) is the coordinator of BBMRI-ERIC operations in Finland. The Finnish biobank data can be accessed through the Fingenious[®] services (<https://site.fingenious.fi/en/>) managed by FINBB.

The Genotype-Tissue Expression (GTEx) Project was supported by the Common Fund of the Office of the Director of the National Institutes of Health, and by NCI, NHGRI, NHLBI, NIDA, NIMH, and NINDS. The data used for the analyses described in this manuscript were obtained from the GTEx Portal on 03/24/22.

Tables

Table 1. Sample sizes in the association analyses in the FINNPEC, FinnGen, Estonian Biobank and InterPregGen studies and in the maternal meta-analyses for three phenotypes.

Cohort	Analysis	Case	Ctrl	Total n
FINNPEC	PE, maternal	1479	972	2451
EstBB	PE, maternal	1464	38 105	39 569
FinnGen	PE, maternal	4285	83 285	87 570
InterPregGen	PE, maternal	9515	157 719	167 234
Meta-analysis	PE, maternal	16 743	280 081	296 824
FINNPEC	HTP, maternal	1689	778	2467
EstBB	HTP, maternal	4084	35 628	39 712
FinnGen	HTP, maternal	9427	78 601	88 028
Meta-analysis	HTP, maternal	15 200	115 007	130 207
FINNPEC	PE-FGR, maternal	1564	890	2454
EstBB	PE-FGR, maternal	2772	36 797	39 569
FinnGen	PE-FGR, maternal	6464	81 538	88 002
Meta-analysis	PE-FGR, maternal	10 800	119 225	130 025
FINNPEC	PE, fetal	796	894	1690
FINNPEC	HTP, fetal	946	750	1696
FINNPEC	PE-FGR, fetal	839	852	1691
FINNPEC	PE, paternal	595	654	1249
FINNPEC	HTP, paternal	697	557	1254
FINNPEC	PE-FGR, paternal	633	618	1251

PE=preeclampsia; PE-HTP=preeclampsia, gestational hypertension or preeclampsia superimposed on chronic hypertension; PE-FGR=preeclampsia or indication of fetal growth restriction.

Table 2. Lead variants of the genome-wide significant loci from the maternal meta-analyses in the PE, HTP and PE-FGR phenotypes. Novel loci are bolded.

Phenotype	rsID	Cytoband	Chr:pos	Candidate gene	EA/OA	EAF	Beta	p	+/-*
PE	rs4245909	3q26	3:169172788	<i>MECOM</i>	G/A	0.51	-0.08	3.19E-09	----
PE	rs16998073	4q21	4:81184341	<i>FGF5</i>	T/A	0.32	0.12	1.33E-15	++++
PE	rs2596471	6p21	6:31428911	<i>HLA/PSORS1C2</i>	G/A	0.81	0.11	1.98E-09	++++
PE	rs7862828	9q22	9:93919803	<i>AUH/LINC00484</i>	C/A	0.75	0.09	1.12E-08	++++
PE	rs3018700	11q22	11:101266410	<i>PGR/TRPC6</i>	C/T	0.85	0.12	9.98E-10	++++
PE	rs10774624	12q24	12:111833788	<i>ATXN2/SH2B3</i>	A/G	0.59	-0.09	2.52E-10	--+
PE	rs7318880	13q12	13:29138285	<i>FLT1</i>	T/C	0.48	0.09	5.04E-12	++++
PE	rs1421085	16q12	16:53800954	<i>FTO</i>	C/T	0.41	0.09	1.55E-11	++++
PE	rs6026744	20q13	20:57742388	<i>ZNF831</i>	T/A	0.15	0.12	9.72E-11	+++
PE-HTP	rs13306561	1p36	1:11865804	<i>MTHFR/NPPA</i>	G/A	0.14	-0.13	7.49E-12	---
PE-HTP	rs1918969	3q26	3:169139890	<i>MECOM</i>	C/T	0.47	-0.08	1.34E-08	--+
PE-HTP	rs16998073	4q21	4:81184341	<i>FGF5</i>	T/A	0.33	0.13	6.27E-19	+++
PE-HTP	rs12656497	5p13	5:32831939	<i>NPR3</i>	C/T	0.58	0.10	2.52E-12	+++
PE-HTP	rs10882398	10q23	10:95892788	<i>PLCE1</i>	A/T	0.59	0.10	1.77E-13	+++
PE-HTP	rs10843404	12p13	12:9471215	<i>PZP</i>	C/G	0.47	0.08	3.16E-08	+++
PE-HTP	rs117928258	12q13	12:53457585	<i>TNS2</i>	T/C	0.02	0.37	2.74E-14	+++
PE-HTP	rs6224	15q26	15:91423543	<i>FURIN/FES</i>	T/G	0.42	0.09	1.77E-10	+++
PE-HTP	rs113935429	16q12	16:53822169	<i>FTO</i>	A/AT	0.38	0.09	1.07E-10	+++
PE-HTP	rs167479	19p13	19:11526765	<i>RGL3</i>	T/G	0.44	-0.10	6.95E-13	--+
PE-HTP	rs979971	19q13	19:39144244	<i>ACTN4</i>	T/C	0.47	-0.08	9.10E-09	---
PE-HTP	rs2208589	20q13.13	20:47408414	<i>PREX1</i>	G/A	0.87	0.12	1.70E-08	+++
PE-HTP	rs201454025	20q13.32	20:57757760	<i>ZNF831</i>	G/GTGT	0.17	0.13	8.41E-13	+++
PE-FGR	rs16998073	4q21	4:81184341	<i>FGF5</i>	T/A	0.33	0.09	9.08E-09	+++
PE-FGR	rs7470773	9q22	9:93914316	<i>AUH/NFIL3</i>	T/C	0.86	0.13	7.92E-09	+++

EA=effect allele; FP=FINNPEC; EstBB=Estonian Biobank; FG=FinnGen;
 HTP=preeclampsia, gestational hypertension or preeclampsia superimposed on chronic hypertension; OA=other allele; PE=preeclampsia; PE-FGR=preeclampsia or indication of fetal growth restriction.

*Direction of effect in FG-EstBB-FP

Figures

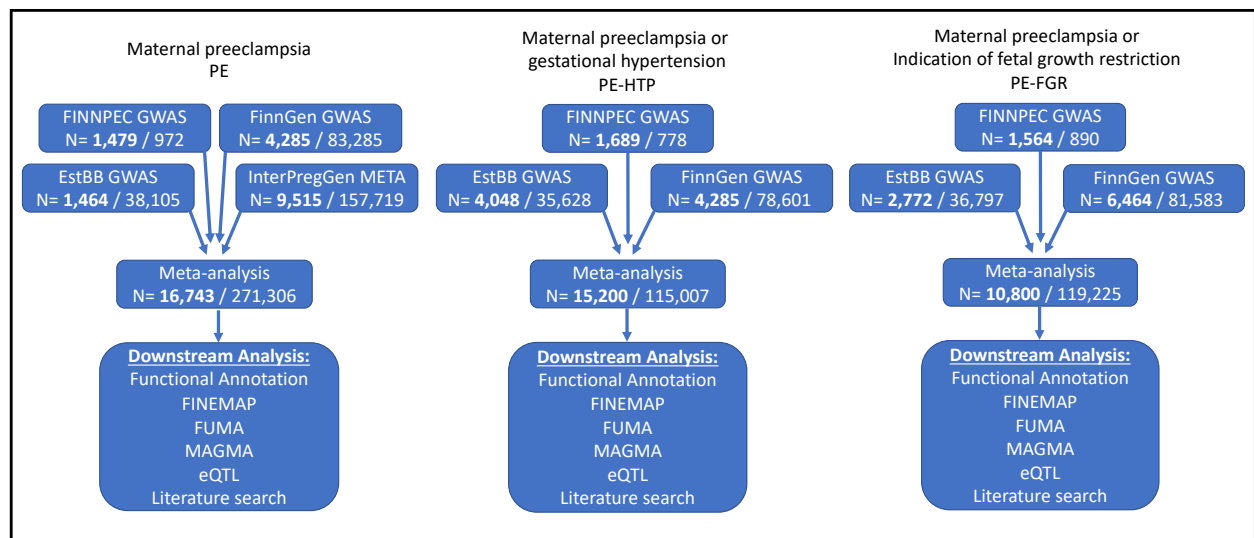


Figure 1. Flow chart of the study design.

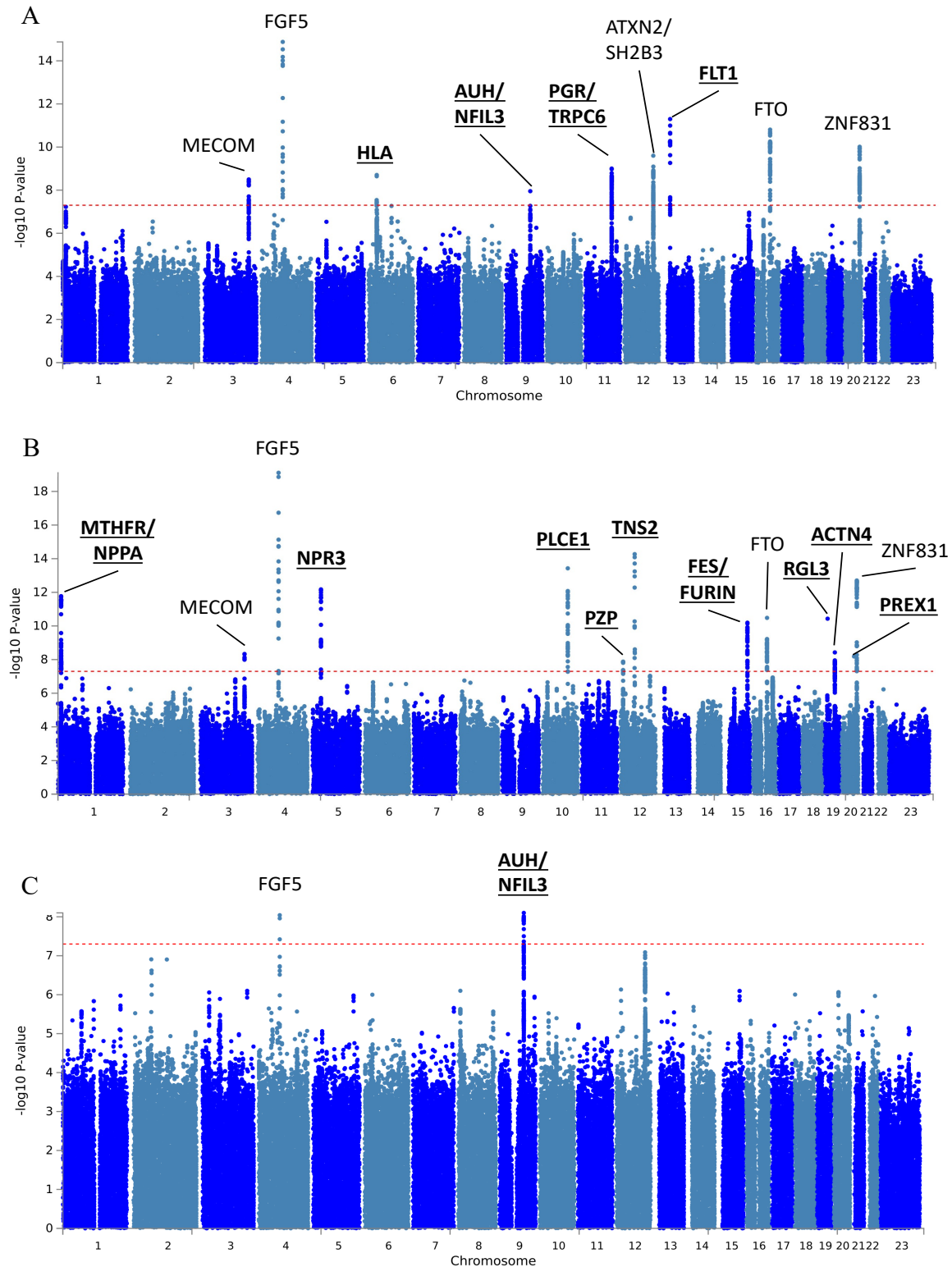


Figure 2. Manhattan plot for the meta-analysis results of PE (A), PE-HTP (B) and PE-FGR (C) phenotypes with genome-wide significant loci labeled with most likely candidate gene. Novel loci not detected in previous GWAS are bolded and underlined. PE=preeclampsia; PE-HTP=preeclampsia, gestational hypertension or preeclampsia superimposed on chronic hypertension; PE-FGR=preeclampsia or indication of fetal growth restriction.

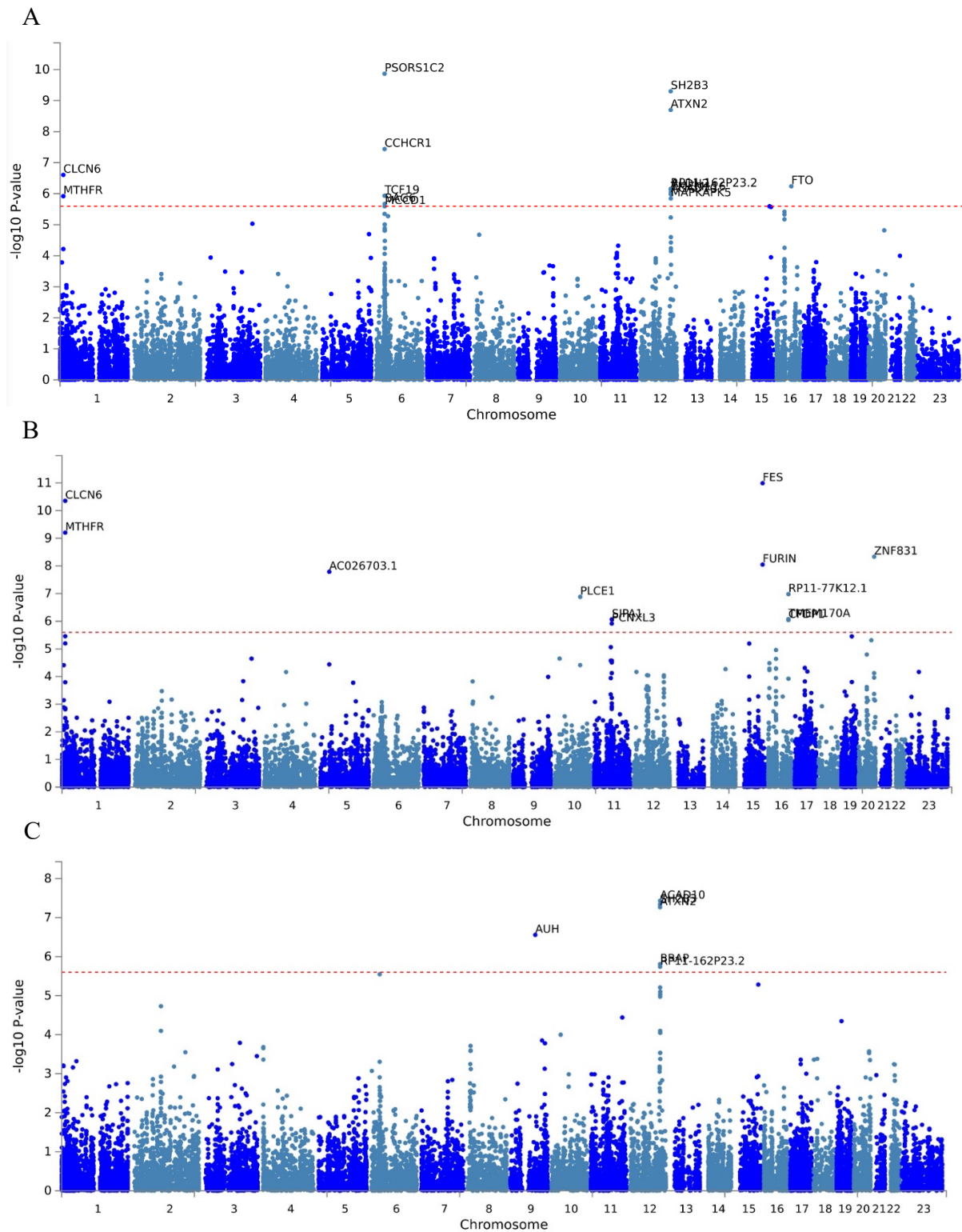


Figure 3. MAGMA gene based test results for the meta-analysis results PE (A), PE-HTP (B) and PE-FGR (C) phenotypes. PE=preeclampsia; PE-HTP=preeclampsia, gestational hypertension or preeclampsia superimposed on chronic hypertension; PE-FGR=preeclampsia or indication of fetal growth restriction.

REFERENCES

1. Abalos E, Cuesta C, Grosso AL, Chou D, Say L. Global and regional estimates of preeclampsia and eclampsia: A systematic review. *Eur J Obstet Gynecol Reprod Biol.* 2013;170:1–7.
2. Hernández-Díaz S, Toh S, Cnattingius S. Risk of pre-eclampsia in first and subsequent pregnancies: Prospective cohort study. *BMJ.* 2009;339:34.
3. Brosens IA, Robertson WB, Dixon HG. The role of the spiral arteries in the pathogenesis of pre-eclampsia. *J Pathol.* 1970;101:Pvi--Pvi.
4. Meekins JW, Pijnenborg R, Hanssens M, McFadyen IR, Van Asshe A. A study of placental bed spiral arteries and trophoblast invasion in normal and severe pre-eclamptic pregnancies. *BJOG An Int J Obstet & Gynaecol.* 1994;101:669–674.
5. Redman CWG. Pre-eclampsia and the placenta. *Placenta.* 1991;12:301–308.
6. Levine RJ, Maynard SE, Qian C, Lim K-H, England LJ, Yu KF, Schisterman EF, Thadhani R, Sachs BP, Epstein FH, Sibai BM, Sukhatme VP, Karumanchi SA. Circulating angiogenic factors and the risk of preeclampsia. *N Engl J Med.* 2004;350:672–683.
7. of Obstetricians AC, Gynecologists, others. Gestational hypertension and preeclampsia: ACOG Practice Bulletin, number 222. *Obs Gynecol.* 2020;135:e237--e260.
8. Burton GJ, Redman CW, Roberts JM, Moffett A. Pre-eclampsia: pathophysiology and clinical implications. *BMJ.* 2019;366:1–15.
9. Ros HS, Lichtenstein P, Lipworth L, Cnattingius S. Genetic effects on the liability of developing pre-eclampsia and gestational hypertension. *Am J Med Genet.* 2000;91:256–260.
10. Cnattingius S, Reilly M, Pawitan Y, Lichtenstein P. Maternal and fetal genetic factors account for most of familial aggregation of preeclampsia: A population-based swedish cohort study. *Am J Med Genet.* 2004;130 A:365–371.
11. Steinhorsdottir V, McGinnis R, Williams NO, Stefansdottir L, Thorleifsson G, Shooter S, Fadista J, Sigurdsson JK, Auro KM, Berezina G, Borges MC, Bumpstead S, Bybjerg-Grauholm J, Colgiu I, Dolby VA, Dudbridge F, Engel SM, Franklin CS, Frigge ML, Frisbaek Y, Geirsson RT, Geller F, Gretarsdottir S, Gudbjartsson DF, Harmon Q, Hougaard DM, Hegay T, Helgadottir A, Hjartardottir S, Jääskeläinen T, Johannsdottir H, Jonsdottir I, Juliusdottir T, Kalsheker N, Kasimov A, Kemp JP, Kivinen K, Klungsoyr K, Lee WK, Melbye M, Miedzybrodska Z, Moffett A, Najmutdinova D, Nishanova F, Olafsdottir T, Perola M, Pipkin FB, Poston L, Prescott G, Saevarsdottir S, Salimbayeva D, Scaife PJ, Skotte L, Staines-Urias E, Stefansson OA, Sørensen KM, Thomsen LCV, Tragante V, Trogstad L, Simpson NAB, Laivuori H, Heinonen S, Kajantie E, Kere J, Kivinen K, Pouta A, Morgan L, Pipkin FB, Kalsheker N, Walker JJ, Macphail S, Kilby M, Habiba M, Williamson C, O’Shaughnessy K, O’Brien S, Cameron A, Redman CWG, Farrall M, Caulfield M, Dominiczak AF, Aripova T, Casas JP, Dominiczak AF, Thorsteinsdottir U, Iversen AC, Feenstra B, Lawlor DA, Boyd HA, Magnus P, Zakhidova N, Laivuori H, Svyatova G, Stefansson K, Morgan L. Genetic predisposition to hypertension is associated with preeclampsia in European and Central Asian women. *Nat Commun.* 2020;11. doi:10.1038/s41467-020-19733-6.
12. Lisonkova S, Joseph KS. Incidence of preeclampsia: risk factors and outcomes associated with early- versus late-onset disease. *Am J Obstet Gynecol.*

- 2013;209:544.e1-544.e12.
13. Bartsch E, Medcalf KE, Park AL, Ray JG, Al-Rubaie ZTA, Askie LM, Berger H, Blake J, Graves L, Kingdom JC, Lebovic G, Lord SJ, Maguire JL, Mamdani MM, Meloche J, Urquia ML, Van Wagner V. Clinical risk factors for pre-eclampsia determined in early pregnancy: Systematic review and meta-analysis of large cohort studies. *BMJ*. 2016;353. doi:10.1136/bmj.i1753.
 14. Wu P, Haththotuwa R, Kwok CS, Babu A, Kotronias RA, Rushton C, Zaman A, Fryer AA, Kadam U, Chew-Graham CA, Mamas MA. Preeclampsia and future cardiovascular health. *Circ Cardiovasc Qual Outcomes*. 2017;10:1–9.
 15. Brown MC, Best KE, Pearce MS, Waugh J, Robson SC, Bell R. Cardiovascular disease risk in women with pre-eclampsia: Systematic review and meta-analysis. *Eur J Epidemiol*. 2013;28:1–19.
 16. Pihkala J, Hakala T, Voutilainen P, Raivio K. Uudet suomalaiset sikiön kasvukäyrät. *Duodecim*. 1989;105:1540–1546.
 17. Mitt M, Kals M, Pärn K, Gabriel SB, Lander ES, Palotie A, Ripatti S, Morris AP, Metspalu A, Esko T, Mägi R, Palta P. Improved imputation accuracy of rare and low-frequency variants using population-specific high-coverage WGS-based imputation reference panel. *Eur J Hum Genet*. 2017;25:869–876.
 18. Zhou W, Nielsen JB, Fritsche LG, Dey R, Gabrielsen ME, Wolford BN, LeFaive J, VandeHaar P, Gagliano SA, Gifford A, Bastarache LA, Wei WQ, Denny JC, Lin M, Hveem K, Kang HM, Abecasis GR, Willer CJ, Lee S. Efficiently controlling for case-control imbalance and sample relatedness in large-scale genetic association studies. *Nat Genet*. 2018;50:1335–1341.
 19. Kent WJ, Sugnet CW, Furey TS, Roskin KM, Pringle TH, Zahler AM, Haussler and D. The Human Genome Browser at UCSC. *Genome Res*. 2002;12:996–1006.
 20. Willer CJ, Li Y, Abecasis GR. METAL: Fast and efficient meta-analysis of genomewide association scans. *Bioinformatics*. 2010;26:2190–2191.
 21. Bulik-Sullivan B, Loh PR, Finucane HK, Ripke S, Yang J, Patterson N, Daly MJ, Price AL, Neale BM, Corvin A, Walters JTR, Farh KH, Holmans PA, Lee P, Collier DA, Huang H, Pers TH, Agartz I, Agerbo E, Albus M, Alexander M, Amin F, Bacanu SA, Begemann M, Belliveau RA, Bene J, Bergen SE, Bevilacqua E, Bigdeli TB, Black DW, Bruggeman R, Buccola NG, Buckner RL, Byerley W, Cahn W, Cai G, Cairns MJ, Champion D, Cantor RM, Carr VJ, Carrera N, Catts S V., Chambert KD, Chan RCK, Chen RYL, Chen EYH, Cheng W, Cheung EFC, Chong SA, Cloninger CR, Cohen D, Cohen N, Cormican P, Craddock N, Crespo-Facorro B, Crowley JJ, Curtis D, Davidson M, Davis KL, Degenhardt F, Del Favero J, DeLisi LE, Demontis D, Dikeos D, Dinan T, Djurovic S, Donohoe G, Drapeau E, Duan J, Dudbridge F, Durmishi N, Eichhammer P, Eriksson J, Escott-Price V, Essioux L, Fanous AH, Farrell MS, Frank J, Franke L, Freedman R, Freimer NB, Friedl M, Friedman JI, Fromer M, Genovese G, Georgieva L, Gershon ES, Giegling I, Giusti-Rodríguez P, Godard S, Goldstein JI, Golimbet V, Gopal S, Gratten J, De Haan L, Hammer C, Hamshere ML, Hansen M, Hansen T, Haroutunian V, Hartmann AM, Henskens FA, Herms S, Hirschhorn JN, Hoffmann P, Hofman A, Hollegaard M V., Hougaard DM, Ikeda M, Joa I, Juliá A, Kahn RS, Kalaydjieva L, Karachanak-Yankova S, Karjalainen J, Kavanagh D, Keller MC, Kelly BJ, Kennedy JL, Khrunin A, Kim Y, Klovins J, Knowles JA, Konte B, Kucinkas V, Kucinskiene ZA, Kuzelova-Ptackova H, Kähler AK, Laurent C, Keong JLC, Lee SH, Legge SE, Lerer B, Li M, Li T, Liang KY, Lieberman J, Limborska S, Loughland CM, Lubinski J, Lönnqvist J, Macek M, Magnusson PKE, Maher BS, Maier W, Mallet J, Marsal S, Mattheisen M, Mattingdal M, McCarley RW, McDonald C, McIntosh AM, Meier S, Meijer CJ, Melegh B, Melle

- I, Meshulam-Gately RI, Metspalu A, Michie PT, Milani L, Milanova V, Mokrab Y, Morris DW, Mors O, Murphy KC, Murray RM, Myin-Germeys I, Müller-Myhsok B, Nelis M, Nenadic I, Nertney DA, Nestadt G, Nicodemus KK, Nikitina-Zake L, Nisenbaum L, Nordin A, O’Callaghan E, O’Dushlaine C, O’Neill FA, Oh SY, Oliney A, Olsen L, Van Os J, Pantelis C, Papadimitriou GN, Papiol S, Parkhomenko E, Pato MT, Paunio T, Pejovic-Milovancevic M, Perkins DO, Pietiläinen O, Pimm J, Pocklington AJ, Powell J, Pulver AE, Purcell SM, Quedstedt D, Rasmussen HB, Reichenberg A, Reimers MA, Richards AL, Roffman JL, Roussos P, Ruderfer DM, Salomaa V, Sanders AR, Schall U, Schubert CR, Schulze TG, Schwab SG, Scolnick EM, Scott RJ, Seidman LJ, Shi J, Sigurdsson E, Silagadze T, Silverman JM, Sim K, Slominsky P, Smoller JW, So HC, Spencer CCA, Stahl EA, Stefansson H, Steinberg S, Stogmann E, Straub RE, Strengman E, Strohmaier J, Stroup TS, Subramaniam M, Suvisaari J, Svrakic DM, Szatkiewicz JP, Söderman E, Thirumalai S, Toncheva D, Tooney PA, Tosato S, Vejjola J, Waddington J, Walsh D, Wang D, Wang Q, Webb BT, Weiser M, Wildenauer DB, Williams NM, Williams S, Witt SH, Wolen AR, Wong EHM, Wormley BK, Wu JQ, Xi HS, Zai CC, Zheng X, Zimprich F, Wray NR, Stefansson K, Visscher PM, Adolfsson R, Andreassen OA, Blackwood DHR, Bramon E, Buxbaum JD, Børglum AD, Cichon S, Darvasi A, Domenici E, Ehrenreich H, Esko T, Gejman P V., Gill M, Gurling H, Hultman CM, Iwata N, Jablensky A V., Jönsson EG, Kendler KS, Kirov G, Knight J, Lencz T, Levinson DF, Li QS, Liu J, Malhotra AK, McCarroll SA, McQuillin A, Moran JL, Mortensen PB, Mowry BJ, Nöthen MM, Ophoff RA, Owen MJ, Palotie A, Pato CN, Petryshen TL, Posthuma D, Rietschel M, Riley BP, Rujescu D, Sham PC, Sklar P, St Clair D, Weinberger DR, Wendland JR, Werge T, Sullivan PF, O’Donovan MC. LD score regression distinguishes confounding from polygenicity in genome-wide association studies. *Nat Genet.* 2015;47:291–295.
22. Tyrmi JS. STAPLER: a simple tool for creating, managing and parallelizing common high-throughput sequencing workflows. *bioRxiv.* 2018;:445056.
 23. Watanabe K, Taskesen E, Van Bochoven A, Posthuma D. Functional mapping and annotation of genetic associations with FUMA. *Nat Commun.* 2017;8:1–10.
 24. Wang K, Li M, Hakonarson H. ANNOVAR: Functional annotation of genetic variants from high-throughput sequencing data. *Nucleic Acids Res.* 2010;38:1–7.
 25. de Leeuw CA, Mooij JM, Heskes T, Posthuma D. MAGMA: Generalized Gene-Set Analysis of GWAS Data. *PLoS Comput Biol.* 2015;11:1–19.
 26. Kircher M, Witten DM, Jain P, O’Roak BJ, Cooper GM, Shendure J. A general framework for estimating the relative pathogenicity of human genetic variants. *Nat Genet.* 2014;46:310–315.
 27. Buniello A, MacArthur JAL, Cerezo M, Harris LW, Hayhurst J, Malangone C, McMahon A, Morales J, Mountjoy E, Sollis E, Suveges D, Vrousitou O, Whetzel PL, Amode R, Guillen JA, Riat HS, Trevanion SJ, Hall P, Junkins H, Flicek P, Burdett T, Hindorf LA, Cunningham F, Parkinson H. The NHGRI-EBI GWAS Catalog of published genome-wide association studies, targeted arrays and summary statistics 2019. *Nucleic Acids Res.* 2019;47:D1005–D1012.
 28. Sayers EW, Cavanaugh M, Clark K, Pruitt KD, Schoch CL, Sherry ST, Karsch-Mizrachi I. GenBank. *Nucleic Acids Res.* 2021;49:D92–D96.
 29. Bateman A. UniProt: A worldwide hub of protein knowledge. *Nucleic Acids Res.* 2019;47:D506–D515.
 30. Bulik-Sullivan B, Finucane HK, Anttila V, Gusev A, Day FR, Loh PR, Duncan L, Perry JRB, Patterson N, Robinson EB, Daly MJ, Price AL, Neale BM. An atlas of genetic correlations across human diseases and traits. *Nat Genet.* 2015;47:1236–1241.

31. Zheng J, Erzurumluoglu AM, Elsworth BL, Kemp JP, Howe L, Haycock PC, Hemani G, Tansey K, Laurin C, Pourcain BS, Warrington NM, Finucane HK, Price AL, Bulik-Sullivan BK, Anttila V, Paternoster L, Gaunt TR, Evans DM, Neale BM. LD Hub: A centralized database and web interface to perform LD score regression that maximizes the potential of summary level GWAS data for SNP heritability and genetic correlation analysis. *Bioinformatics*. 2017;33:272–279.
32. Kettunen J, Demirkan A, Würtz P, Draisma HHM, Haller T, Rawal R, Vaarhorst A, Kangas AJ, Lyytikäinen LP, Pirinen M, Pool R, Sarin AP, Soininen P, Tukiainen T, Wang Q, Tiainen M, Tynkkynen T, Amin N, Zeller T, Beekman M, Deelen J, Van Dijk KW, Esko T, Hottenga JJ, Van Leeuwen EM, Lehtimäki T, Mihailov E, Rose RJ, De Craen AJM, Gieger C, Kähönen M, Perola M, Blankenberg S, Savolainen MJ, Verhoeven A, Viikari J, Willemsen G, Boomsma DI, Van Duijn CM, Eriksson J, Jula A, Järvelin MR, Kaprio J, Metspalu A, Raitakari O, Salomaa V, Eline Slagboom P, Waldenberger M, Ripatti S, Ala-Korpela M. Genome-wide study for circulating metabolites identifies 62 loci and reveals novel systemic effects of LPA. *Nat Commun*. 2016;7:1–9.
33. McGinnis R, Steinhorsdottir V, Williams NO, Thorleifsson G, Shooter S, Hjartardottir S, Bumpstead S, Stefánsdóttir L, Hildyard L, Sigurdsson JK, Kemp JP, Silva GB, Thomsen LC V., Jääskeläinen T, Kajantie E, Chappell S, Kalsheker N, Moffett A, Hiby S, Lee WK, Padmanabhan S, Simpson NAB, Dolby VA, Staines-Urias E, Engel SM, Haugan A, Trogstad L, Svyatova G, Zakhidova N, Najmutdinova D, Dominiczak AF, Gjessing HK, Casas JP, Dudbridge F, Walker JJ, Pipkin FB, Thorsteinsdóttir U, Geirsson RT, Lawlor DA, Iversen AC, Magnus P, Laivuori H, Stefansson K, Morgan L. Variants in the fetal genome near FLT1 are associated with risk of preeclampsia. *Nat Genet*. 2017;49:1255–1260.
34. Maynard SE, Min J-Y, Merchan J, Lim K-H, Li J, Mondal S, Libermann TA, Morgan JP, Sellke FW, Stillman IE, Epstein FH, Sukhatme VP, Karumanchi SA. Excess placental soluble fms-like tyrosine kinase 1 (sFlt1) may contribute to endothelial dysfunction, hypertension, and proteinuria in preeclampsia. *J Clin Invest*. 2003;111:649–658.
35. Inkeri Lokki A, Daly E, Triebwasser M, Kurki MI, Roberson EDO, Häppölä P, Auro K, Perola M, Heinonen S, Kajantie E, Kere J, Kivinen K, Pouta A, Salmon JE, Meri S, Daly M, Atkinson JP, Laivuori H. Protective Low-Frequency Variants for Preeclampsia in the Fms Related Tyrosine Kinase 1 Gene in the Finnish Population. *Hypertension*. 2017;70:365–371.
36. Lokki AI, Heikkinen-Eloranta JK, Laivuori H. The immunogenetic conundrum of preeclampsia. *Front Immunol*. 2018;9:1–8.
37. Ranella A, Vassiliadis S, Mastora C, Valentina M, Dionyssopoulou E, Athanassakis I. Constitutive intracellular expression of human leukocyte antigen (HLA)-DO and HLA-DR but not HLA-DM in trophoblast cells. *Hum Immunol*. 2005;66:43–55.
38. Wedenoja S, Yoshihara M, Teder H, Sariola H, Gissler M, Katayama S, Wedenoja J, Häkkinen IM, Ezer S, Linder N, Lundin J, Skoog T, Sahlin E, Iwarsson E, Pettersson K, Kajantie E, Mokkonen M, Heinonen S, Laivuori H, Krjutškov K, Kere J. Fetal HLA-G mediated immune tolerance and interferon response in preeclampsia. *EBioMedicine*. 2020;59:102872.
39. Nair RP, Henseler T, Jenisch S, Stuart P, Bichakjian CK, Lenk W, Westphal E, Guo SW, Christophers E, Voorhees JJ, Elder JT. Evidence for two psoriasis susceptibility loci (HLA and 17q) and two novel candidate regions (16q and 20p) by genome-wide scan. *Hum Mol Genet*. 1997;6:1349–1356.
40. Trembath RC, Clough RL, Rosbotham JL, Jones AB, Camp RDR, Frodsham A,

- Browne J, Barber R, Terwilliger J, Lathrop GM, Barker JNWN. Identification of a major susceptibility locus on chromosome 6p and evidence for further disease loci revealed by a two stage genome-wide search in psoriasis. *Hum Mol Genet.* 1997;6:813–820.
41. Holm SJ, Carlén LM, Mallbris L, Ståhle-Bäckdahl M, O’Brien KP. Polymorphisms in the SEEK1 and SPR1 genes on 6p21.3 associate with psoriasis in the Swedish population. *Exp Dermatol.* 2003;12:435–444.
 42. Asumalahti K, Laitinen T, Itkonen-Vatjus R, Lokki ML, Suomela S, Snellman E, Saarialho-Kere U, Kere J. A candidate gene for psoriasis near HLA-C, HCR (Pg8), is highly polymorphic with a disease-associated susceptibility allele. *Hum Mol Genet.* 2000;9:1533–1542.
 43. Asumalahti K, Veal C, Laitinen T, Suomela S, Allen M, Elomaa O, Moser M, De Cid R, Ripatti S, Vorechovsky I, Marcusson JA, Nakagawa H, Lazaro C, Estivill X, Capon F, Novelli G, Saarialho-Kere U, Barker J, Trembath R, Kere J, Burden DB, Tillman D, Powis SH, Balendran N, Ameen M, Vaughan RW, Heath EK, Itkonen-Vatjus R, Jansen C, Karvonen J, Karvonen SL, Kivekäs K, Reunala T, Snellman E, Uurasmaa T, Toftgård R, Murakami T, Otsuki M, Asahina A, Saeki H, Barberà E, Ferrándiz C, Giménez Arnau A, Grimalt F, Puig S, Sánchez A, Palacios A, Pujol JA, Sánchez M, Simal E, Vázquez F, Ramírez B. Coding haplotype analysis supports HCR as the putative susceptibility gene for psoriasis at the MHC PSORS1 locus. *Hum Mol Genet.* 2002;11:589–597.
 44. Sun W, Kechris K, Jacobson S, Drummond MB, Hawkins GA, Yang J, Chen TH, Quibrera PM, Anderson W, Barr RG, Basta P V., Bleecker ER, Beaty T, Casaburi R, Castaldi P, Cho MH, Comellas A, Crapo JD, Criner G, Demeo D, Christenson SA, Couper DJ, Curtis JL, Doerschuk CM, Freeman CM, Gouskova NA, Han ML, Hanania NA, Hansel NN, Hersh CP, Hoffman EA, Kaner RJ, Kanner RE, Kleerup EC, Lutz S, Martinez FJ, Meyers DA, Peters SP, Regan EA, Rennard SI, Scholand MB, Silverman EK, Woodruff PG, O’Neal WK, Bowler RP, Alexis NE, Boucher RC, Carretta EE, Comellas AP, Cooper CB, Criner GJ, Crystal RG, Dransfield MT, Hastie AT, Krishnan JA, LaVange LM, Lazarus SC, Newell JD, Oelsner EC, Paine R, Putcha N, Tashkin DP, Wells JM, Wise RA, Crapo J, Silverman E, Make B, Regan E, Laird N, Lange C, Cho M, Santorico S, Hokanson J, De D, Hansel N, Hersh C, McDonald ML, Wan E, Hardin M, Hetmanski J, Parker M, Foreman M, Hobbs B, Busch R, El-Bouiez A, Qiao D, Halper-Stromberg E, Begum F, Won S, Lynch DA, Coxson HO, Humphries S, Jacobson FL, Judy PF, Kazerooni EA, Ross JC, San Jose Estepar R, Stoel BC, Tschirren J, van Rikxoort E, van Ginneken B, Washko G, Wilson CG, Al Qaisi M, Gray T, Kluiber A, Mann T, Sieren J, Stinson D, Schroeder J, Van Beek E, Jensen R, Everett D, Faino A, Strand M, Wilson C, Hokanson JE, Kinney G, Lutz S, Young K, Pratte K, Duca L, Martinez CH, Pernicano PG, Alapat P, Bandi V, Atik M, Boriek A, Guntupalli K, Guy E, Parulekar A, Nachiappan A, Jacobson F, Thomashow B, Austin J, D’Souza B, Pearson GDN, Rozenshtein A, MacIntyre N, Washington L, McAdams HP, McEvoy C, Tashjian J, Wise R, Brown R, Horton K, Adami A, Porszasz J, Fischer H, Budoff M, Rossiter H, Sharafkhaneh A, Lan C, Wendt C, Bell B, Westney G, Berkowitz E, Bowler R, Lynch D, Rosiello R, Pace D, Ciccolella D, Cordova F, Dass C, D’Alonzo G, Desai P, Jacobs M, Kelsen S, Kim V, James Mamary A, Marchetti N, Satti A, Shenoy K, Steiner RM, Swift A, Swift I, Vega-Sanchez ME, Dransfield M, Bailey W, Michael Wells J, Bhatt S, Nath H, Ramsdell J, Friedman P, Soler X, Yen A, Cornellias A, Newell J, Thompson B, Kazerooni E, Martinez C, Billings J, Allen T, Sciurba F, Chandra D, Weissfeld J, Fuhrman C, Bon J, Anzueto A, Adams S, Maselli-Caceres D, Ruiz ME. Common Genetic Polymorphisms Influence

- Blood Biomarker Measurements in COPD. *PLoS Genet.* 2016;12:1–33.
45. Serrano NC, Guio-Mahecha E, Quintero-Lesmes DC, Becerra-Bayona S, Paez MC, Beltran M, Herrera VM, Leon LJ, Williams D, Casas JP. Lipid profile, plasma apolipoproteins, and pre-eclampsia risk in the GenPE case-control study. *Atherosclerosis.* 2018;276:189–194.
 46. Huang YH, Yee Ng C, Chiou MJ, Kuo CF. Fetal–neonatal and maternal outcomes in women with psoriasis vulgaris: A nationwide population-based registry linkage study in Taiwan. *J Dermatol.* 2021;48:184–189.
 47. Yang YW, Chen CS, Chen YH, Lin HC. Psoriasis and pregnancy outcomes: A nationwide population-based study. *J Am Acad Dermatol.* 2011;64:71–77.
 48. Bröms G, Haerskjold A, Granath F, Kieler H, Pedersen L, Berglund IA. Effect of maternal psoriasis on pregnancy and birth outcomes: A population-based cohort study from Denmark and Sweden. *Acta Derm Venereol.* 2018;98:728–734.
 49. Molina E, Clarence EM, Ahmady F, Chew GS, Charchar FJ. Coronary Artery Disease: Why We should Consider the Y Chromosome. *Hear Lung Circ.* 2016;25:791–801.
 50. Mahajan A, Wessel J, Willems SM, Zhao W, Robertson NR, Chu AY, Gan W, Kitajima H, Taliun D, Rayner NW, Guo X, Lu Y, Li M, Jensen RA, Hu Y, Huo S, Lohman KK, Zhang W, Cook JP, Prins BP, Flannick J, Grarup N, Trubetskoy VV, Kravic J, Kim YJ, Rybin D V., Yaghoobkar H, Müller-Nurasyid M, Meidtner K, Li-Gao R, Varga T V., Marten J, Li J, Smith AV, An P, Ligthart S, Gustafsson S, Malerba G, Demirkan A, Tajes JF, Steinthorsdottir V, Wuttke M, Lecoeur C, Preuss M, Bielak LF, Graff M, Highland HM, Justice AE, Liu DJ, Marouli E, Peloso GM, Warren HR, Afaq S, Afzal S, Ahlqvist E, Bang LB, Bertoni AG, Bombieri C, Bork-Jensen J, Brandslund I, Brody JA, Burt NP, Canouil M, Chen YDI, Cho YS, Christensen C, Eastwood S V., Eckardt KU, Fischer K, Gambaro G, Giedraitis V, Grove ML, De Haan HG, Hackinger S, Hai Y, Han S, Tybjaerg-Hansen A, Hivert MF, Isomaa B, Jäger S, Jørgensen ME, Jørgensen T, Käräjämäki A, Kim BJ, Kim SS, Koistinen HA, Kovacs P, Kriebel J, Kronenberg F, Läll K, Lange LA, Lee JJ, Lehne B, Li H, Lin KH, Linneberg A, Liu CT, Liu J, Loh M, Mägi R, Mamakou V, McKean-Cowdin R, Nadkarni G, Neville M, Nielsen SF, Ntalla I, Peyser PA, Rathmann W, Rice K, Rich SS, Rode L, Rolandsson O, Schönherr S, Selvin E, Small KS, Stančáková A, Surendran P, Taylor KD, Teslovich TM, Thorand B, Thorleifsson G, Tin A, Tönjes A, Varbo A, Witte DR, Wood AR, Yajnik P, Yao J, Yengo L, Young R, Boeing H, Boerwinkle E, Bottinger EP, Chowdhury R, Dedoussis G, Dehghan A, Deloukas P, Ferrario MM, Ferrières J, Florez JC, Frossard P, Gudnason V, Harris TB, Heckbert SR, Howson JMM, Ingelsson M, Kathiresan S, Kee F, Kuusisto J, Langenberg C, Launer LJ, Lindgren CM, Männistö S, Meitinger T, Mohlke KL, Moitry M, Morris AD, Murray AD, De Mutsert R, Orho-Melander M, Owen KR, Perola M, Peters A, Province MA, Rasheed A, Ridker PM, Rivadineira F, Rosendaal FR, Rosengren AH, Salomaa V, Sheu WHH, Sladek R, Smith BH, Strauch K, Uitterlinden AG, Varma R, Willer CJ, Blüher M, Chambers JC, Danesh J, Van Duijn C, Dupuis J, Franco OH, Franks PW, Froguel P, Grallert H, Groop L, Han BG, Hansen T, Hattersley AT, Hayward C, Ingelsson E, Kardina SLR, Karpe F, Kooner JS, Köttgen A, Kuulasmaa K, Laakso M, Lin X, Lind L, Liu Y, Loos RJJ, Marchini J, Metspalu A, Mook-Kanamori D, Nordestgaard BG, Palmer CNA, Pankow JS, Pedersen O, Psaty BM, Rauramaa R, Sattar N, Schulze MB, Soranzo N, Spector TD, Stefansson K, Stumvoll M, Thorsteinsdottir U, Tuomi T, Tuomilehto J, Wareham NJ, Wilson JG, Zeggini E, Scott RA, Barroso I, Frayling TM, Goodarzi MO, Meigs JB, Boehnke M, Saleheen D, Morris AP, Rotter JI, McCarthy MI. Refining the accuracy of validated target identification through coding variant fine-mapping in type 2 diabetes article. *Nat*

- Genet.* 2018;50:559–571.
51. Binici J, Koch J. BAG-6, a jack of all trades in health and disease. *Cell Mol Life Sci.* 2014;71:1829–1837.
 52. Zhu Z, Guo Y, Shi H, Liu C-L, Panganiban RA, Chung W, O'Connor LJ, Himes BE, Gazal S, Hasegawa K, Camargo CAJ, Qi L, Moffatt MF, Hu FB, Lu Q, Cookson WOC, Liang L. Shared genetic and experimental links between obesity-related traits and asthma subtypes in UK Biobank. *J Allergy Clin Immunol.* 2020;145:537–549.
 53. Sakaue S, Kanai M, Tanigawa Y, Karjalainen J, Kurki M, Koshihara S, Narita A, Konuma T, Yamamoto K, Akiyama M, Ishigaki K, Suzuki A, Suzuki K, Obara W, Yamaji K, Takahashi K, Asai S, Takahashi Y, Suzuki T, Shinozaki N, Yamaguchi H, Minami S, Murayama S, Yoshimori K, Nagayama S, Obata D, Higashiyama M, Masumoto A, Koretsune Y, Ito K, Terao C, Yamauchi T, Komuro I, Kadowaki T, Tamiya G, Yamamoto M, Nakamura Y, Kubo M, Murakami Y, Yamamoto K, Kamatani Y, Palotie A, Rivas MA, Daly MJ, Matsuda K, Okada Y. A cross-population atlas of genetic associations for 220 human phenotypes. *Nat Genet.* 2021;53:1415–1424.
 54. Lee MA, McMahon G, Karhunen V, Wade KH, Corbin LJ, Hughes DA, Smith GD, Lawlor DA, Jarvelin MR, Timpson NJ. Common variation at 16p11.2 is associated with glycosuria in pregnancy: Findings from a genome-wide association study in European women. *Hum Mol Genet.* 2020;29:2098–2106.
 55. Pereira MM, Mainigi M, Strauss JF. Secretory products of the corpus luteum and preeclampsia. *Hum Reprod Update.* 2021;27:651–672.
 56. Garrido-Gomez T, Castillo-Marco N, Clemente-Ciscar M, Cordero T, Muñoz-Blat I, Amadoz A, Jimenez-Almazan J, Monfort-Ortiz R, Climent R, Perales-Marin A, Simon C. Disrupted pgr-b and esr1 signaling underlies defective decidualization linked to severe preeclampsia. *Elife.* 2021;10:1–20.
 57. Winn MP, Conlon PJ, Lynn KL, Farrington MK, Creazzo T, Hawkins AF, Daskalakis N, Kwan SY, Ebersviller S, Burchette JL, Pericak-Vance MA, Howell DN, Vance JM, Rosenberg PB. Medicine: A mutation in the TRPC6 cation channel causes familial focal segmental glomerulosclerosis. *Science (80-).* 2005;308:1801–1804.
 58. Dietrich A, Mederos y Schnitzler M, Gollasch M, Gross V, Storch U, Dubrovskaja G, Obst M, Yildirim E, Salanova B, Kalwa H, Essin K, Pinkenburg O, Luft FC, Gudermann T, Birnbaumer L. Increased Vascular Smooth Muscle Contractility in TRPC6 $-/-$ Mice. *Mol Cell Biol.* 2005;25:11191–11191.
 59. Yamaguchi Y, Iribe G, Nishida M, Naruse K. Role of TRPC3 and TRPC6 channels in the myocardial response to stretch: Linking physiology and pathophysiology. *Prog Biophys Mol Biol.* 2017;130:264–272.
 60. Yu Y, Keller SH, Remillard C V., Safrina O, Nicholson A, Zhang SL, Jiang W, Vangala N, Landsberg JW, Wang JY, Thistlethwaite PA, Channick RN, Robbins IM, Loyd JE, Ghofrani HA, Grimminger F, Schermuly RT, Cahalan MD, Rubin LJ, Yuan JXJ. A functional single-nucleotide polymorphism in the TRPC6 gene promoter associated with idiopathic pulmonary arterial hypertension. *Circulation.* 2009;119:2313–2322.
 61. Hasna J, Nahed RA, Sergent F, Alfaidy N, Bouron A. The deletion of TRPC6 channels perturbs iron and zinc homeostasis and pregnancy outcome in mice. *Cell Physiol Biochem.* 2019;52:455–467.
 62. Ehret GB, Munroe PB, Rice KM, Bochud M, Johnson AD, Chasman DI, Smith AV, Tobin MD, Verwoert GC, Hwang S-J, Pihur V, Vollenweider P, O'Reilly PF, Amin N, Bragg-Gresham JL, Teumer A, Glazer NL, Launer L, Zhao JH, Aulchenko Y, Heath S, Söber S, Parsa A, Luan J, Arora P, Dehghan A, Zhang F, Lucas G, Hicks AA, Jackson

- AU, Peden JF, Tanaka T, Wild SH, Rudan I, Igl W, Milaneschi Y, Parker AN, Fava C, Chambers JC, Fox ER, Kumari M, Go MJ, van der Harst P, Kao WHL, Sjögren M, Vinay DG, Alexander M, Tabara Y, Shaw-Hawkins S, Whincup PH, Liu Y, Shi G, Kuusisto J, Tayo B, Seielstad M, Sim X, Nguyen K-DH, Lehtimäki T, Matullo G, Wu Y, Gaunt TR, Onland-Moret NC, Cooper MN, Platou CGP, Org E, Hardy R, Dahgam S, Palmen J, Vitart V, Braund PS, Kuznetsova T, Uiterwaal CSPM, Adeyemo A, Palmas W, Campbell H, Ludwig B, Tomaszewski M, Tzoulaki I, Palmer ND, Aspelund T, Garcia M, Chang Y-PC, O'Connell JR, Steinle NI, Grobbee DE, Arking DE, Kardia SL, Morrison AC, Hernandez D, Najjar S, McArdle WL, Hadley D, Brown MJ, Connell JM, Hingorani AD, Day INM, Lawlor DA, Beilby JP, Lawrence RW, Clarke R, Hopewell JC, Ongen H, Dreisbach AW, Li Y, Young JH, Bis JC, Kähönen M, Viikari J, Adair LS, Lee NR, Chen M-H, Olden M, Pattaro C, Bolton JAH, Köttgen A, Bergmann S, Mooser V, Chaturvedi N, Frayling TM, Islam M, Jafar TH, Erdmann J, Kulkarni SR, Bornstein SR, Grässler J, Groop L, Voight BF, Kettunen J, Howard P, Taylor A, Guarrera S, Ricceri F, Emilsson V, Plump A, Barroso I, Khaw K-T, Weder AB, Hunt SC, Sun Y V, Bergman RN, Collins FS, Bonnycastle LL, Scott LJ, Stringham HM, Peltonen L, Perola M, Vartiainen E, Brand S-M, Staessen JA, Wang TJ, Burton PR, Soler Artigas M, Dong Y, Snieder H, Wang X, Zhu H, Lohman KK, Rudock ME, Heckbert SR, Smith NL, Wiggins KL, Doumatey A, Shriner D, Veldre G, Viigimaa M, Kinra S, Prabhakaran D, Tripathy V, Langefeld CD, Rosengren A, Thelle DS, Corsi AM, Singleton A, Forrester T, Hilton G, McKenzie CA, Salako T, Iwai N, Kita Y, Ogiwara T, Ohkubo T, Okamura T, Ueshima H, Umemura S, Eyheramendy S, Meitinger T, Wichmann H-E, Cho YS, Kim H-L, Lee J-Y, Scott J, Sehmi JS, Zhang W, Hedblad B, Nilsson P, Smith GD, Wong A, Narisu N, Stančáková A, Raffel LJ, Yao J, Kathiresan S, O'Donnell CJ, Schwartz SM, Ikram MA, Longstreth WTJ, Mosley TH, Seshadri S, Shrine NRG, Wain L V, Morken MA, Swift AJ, Laitinen J, Prokopenko I, Zitting P, Cooper JA, Humphries SE, Danesh J, Rasheed A, Goel A, Hamsten A, Watkins H, Bakker SJL, van Gilst WH, Janipalli CS, Mani KR, Yajnik CS, Hofman A, Mattace-Raso FUS, Oostra BA, Demirkan A, Isaacs A, Rivadeneira F, Lakatta EG, Orru M, Scuteri A, Ala-Korpela M, Kangas AJ, Lyytikäinen L-P, Soininen P, Tukiainen T, Würtz P, Ong RT-H, Dörr M, Kroemer HK, Völker U, Völzke H, Galan P, Hercberg S, Lathrop M, Zelenika D, Deloukas P, Mangino M, Spector TD, Zhai G, Meschia JF, Nalls MA, Sharma P, Terzic J, Kumar MVK, Denniff M, Zukowska-Szczepowska E, Wagenknecht LE, Fowkes FGR, Charchar FJ, Schwarz PEH, Hayward C, Guo X, Rotimi C, Bots ML, Brand E, Samani NJ, Polasek O, Talmud PJ, Nyberg F, Kuh D, Laan M, Hveem K, Palmer LJ, van der Schouw YT, Casas JP, Mohlke KL, Vineis P, Raitakari O, Ganesh SK, Wong TY, Tai ES, Cooper RS, Laakso M, Rao DC, Harris TB, Morris RW, Dominiczak AF, Kivimäki M, Marmot MG, Miki T, Saleheen D, Chandak GR, Coresh J, Navis G, Salomaa V, Han B-G, Zhu X, Kooner JS, Melander O, Ridker PM, Bandinelli S, Gyllenstein UB, Wright AF, Wilson JF, Ferrucci L, Farrall M, Tuomilehto J, Pramstaller PP, Elosua R, Soranzo N, Sijbrands EJG, Altshuler D, Loos RJJ, Shuldiner AR, Gieger C, Meneton P, Uitterlinden AG, Wareham NJ, Gudnason V, Rotter JI, Rettig R, Uda M, Strachan DP, Witteman JCM, Hartikainen A-L, Beckmann JS, Boerwinkle E, Vasani RS, Boehnke M, Larson MG, Järvelin M-R, Psaty BM, Abecasis GR, Chakravarti A, Elliott P, van Duijn CM, Newton-Cheh C, Levy D, Caulfield MJ, Johnson T. Genetic variants in novel pathways influence blood pressure and cardiovascular disease risk. *Nature*. 2011;478:103–109.
63. Buhimschi IA, Nayeri UA, Zhao G, Shook LL, Pensalfini A, Funai EF, Bernstein IM, Glabe CG, Buhimschi CS. Protein misfolding, congophilia, oligomerization, and

- defective amyloid processing in preeclampsia. *Sci Transl Med*. 2014;6:245ra92.
64. Buhimschi IA, Zhao G, Funai EF, Harris N, Sasson IE, Bernstein IM, Saade GR, Buhimschi CS. Proteomic profiling of urine identifies specific fragments of SERPINA1 and albumin as biomarkers of preeclampsia. *Am J Obstet Gynecol*. 2008;199:551.e1-551.e16.
 65. Tong M, Cheng S Bin, Chen Q, Desousa J, Stone PR, James JL, Chamley LW, Sharma S. Aggregated transthyretin is specifically packaged into placental nano-vesicles in preeclampsia. *Sci Rep*. 2017;7:1–9.
 66. Kalkunte SS, Neubeck S, Norris WE, Cheng S Bin, Kostadinov S, Vu Hoang D, Ahmed A, Von Eggeling F, Shaikh Z, Padbury J, Berg G, Olofsson A, Markert UR, Sharma S. Transthyretin is dysregulated in preeclampsia, and its native form prevents the onset of disease in a preclinical mouse model. *Am J Pathol*. 2013;183:1425–1436.
 67. Millen KR, Buhimschi CS, Zhao G, Rood KM, Tabbah S, Buhimschi IA. Serum and Urine Thioflavin-T-Enhanced Fluorescence in Severe Preeclampsia. *Hypertens (Dallas, Tex 1979)*. 2018;71:1185–1192.
 68. Cater JH, Kumita JR, Abdallah RZ, Zhao G, Bernardo-Gancedo A, Henry A, Winata W, Chi M, Grenyer BSF, Townsend ML, Ranson M, Buhimschi CS, Stephen Charnock-Jones D, Dobson CM, Wilson MR, Buhimschi IA, Wyatt AR. Human pregnancy zone protein stabilizes misfolded proteins including preeclampsia- and Alzheimer’s associated amyloid beta peptide. *Proc Natl Acad Sci U S A*. 2019;116:6101–6110.
 69. Wyatt AR, Cater JH, Ranson M. PZP and PAI-2: Structurally-diverse, functionally similar pregnancy proteins? *Int J Biochem Cell Biol*. 2016;79:113–117.
 70. Löb S, Vattai A, Kuhn C, Schmoeckel E, Mahner S, Wöckel A, Kolben T, Keil C, Jeschke U, Vilsmairer T. Pregnancy Zone Protein (PZP) is significantly upregulated in the decidua of recurrent and spontaneous miscarriage and negatively correlated to Glycodelin A (GdA). *J Reprod Immunol*. 2021;143. doi:10.1016/j.jri.2020.103267.
 71. Pollak MR. Inherited podocytopathies: FSGS and nephrotic syndrome from a genetic viewpoint. *J Am Soc Nephrol*. 2002;13:3016–3023.
 72. Kaplan JM, Kim SH, North KN, Rennke H, Correia LA, Tong HQ, Mathis BJ, Rodríguez-Pérez JC, Allen PG, Beggs AH, Pollak MR. Mutations in ACTN4, encoding α -actinin-4, cause familial focal segmental glomerulosclerosis. *Nat Genet*. 2000;24:251–256.
 73. Kos CH, Le TC, Sinha S, Henderson JM, Kim SH, Sugimoto H, Kalluri R, Gerszten RE, Pollak MR. Mice deficient in α -actinin-4 have severe glomerular disease. *J Clin Invest*. 2003;111:1683–1690.
 74. Sjöblom B, Salmazo A, Djinić-Carugo K. α -Actinin structure and regulation. *Cell Mol Life Sci*. 2008;65:2688–2701.
 75. Hiroi Y, Guo Z, Li Y, Beggs AH, Liao JK. Dynamic regulation of endothelial NOS mediated by competitive interaction with α -actinin-4 and calmodulin. *FASEB J Off Publ Fed Am Soc Exp Biol*. 2008;22:1450–1457.
 76. Peng W, Liu Y, Qi H, Li Q. Alpha-actinin-4 is essential for maintaining normal trophoblast proliferation and differentiation during early pregnancy. *Reprod Biol Endocrinol*. 2021;19:1–12.
 77. Zhao J, Peng W, Ran Y, Ge H, Zhang C, Zou H, Ding Y, Qi H. Dysregulated expression of ACTN4 contributes to endothelial cell injury via the activation of the p38-MAPK/p53 apoptosis pathway in preeclampsia. *J Physiol Biochem*. 2019;75:475–487.
 78. Boulenouar S, Doisne J-M, Sferruzzi-Perri A, Gaynor LM, Kieckbusch J, Balmas E, Yung HW, Javadzadeh S, Volmer L, Hawkes DA, Phillips K, Brady HJM, Fowden

- AL, Burton GJ, Moffett A, Colucci F. The Residual Innate Lymphoid Cells in NFIL3-Deficient Mice Support Suboptimal Maternal Adaptations to Pregnancy. *Front Immunol.* 2016;7:43.
79. Sojka DK, Yang L, Yokoyama WM. Uterine natural killer cells. *Front Immunol.* 2019;10:1–9.
80. Rosenberg KR, Trevathan WR. An anthropological perspective on the evolutionary context of preeclampsia in humans. *J Reprod Immunol.* 2007;76:91–97.
81. Byars SG, Huang QQ, Gray LA, Bakshi A, Ripatti S, Abraham G, Stearns SC, Inouye M. Genetic loci associated with coronary artery disease harbor evidence of selection and antagonistic pleiotropy. *PLoS Genet.* 2017;13:1–27.
82. Dittmar EL, Oakley CG, Conner JK, Gould BA, Schemske DW. Factors influencing the effect size distribution of adaptive substitutions. *Proc R Soc B Biol Sci.* 2016;283. doi:10.1098/rspb.2015.3065.
83. Park JH, Gail MH, Weinberg CR, Carroll RJ, Chung CC, Wang Z, Chanock SJ, Fraumeni JF, Chatterjee N. Distribution of allele frequencies and effect sizes and their interrelationships for common genetic susceptibility variants. *Proc Natl Acad Sci U S A.* 2011;108:18026–18031.
84. O'Connor LJ, Schoech AP, Hormozdiari F, Gazal S, Patterson N, Price AL. Extreme Polygenicity of Complex Traits Is Explained by Negative Selection. *Am J Hum Genet.* 2019;105:456–476.
85. de Lange KM, Barrett JC. Understanding inflammatory bowel disease via immunogenetics. *J Autoimmun.* 2015;64:91–100.
86. Loos RJF. 15 Years of Genome-Wide Association Studies and No Signs of Slowing Down. *Nat Commun.* 2020;11:10–12.
87. Boeldt DS, Bird IM. Vascular adaptation in pregnancy and endothelial dysfunction in preeclampsia. *J Endocrinol.* 2017;232:R27–R44.
88. Gouloupoulou S. Maternal vascular physiology in preeclampsia. *Hypertension.* 2017;70:1066–1073.
89. Daehn IS, Duffield JS. The glomerular filtration barrier: a structural target for novel kidney therapies. *Nat Rev Drug Discov.* 2021;20:770–788.
90. Maharaj ASR, D'Amore PA. Roles for VEGF in the adult. *Microvasc Res.* 2007;74:100–113.
91. Domigan CK, Warren CM, Antanesian V, Happel K, Ziyad S, Lee S, Krall A, Duan L, Torres-Collado AX, Castellani LW, Elashoff D, Christofk HR, Van Der Blik AM, Potente M, Iruela-Arispe ML. Autocrine VEGF maintains endothelial survival through regulation of metabolism and autophagy. *J Cell Sci.* 2015;128:2236–2248.
92. Schaefer A, Te Riet J, Ritz K, Hoogenboezem M, Anthony EC, Mul FPJ, de Vries CJ, Daemen MJ, Figdor CG, van Buul JD, Hordijk PL. Actin-binding proteins differentially regulate endothelial cell stiffness, ICAM-1 function and neutrophil transmigration. *J Cell Sci.* 2014;127:4470–4482.
93. Reinhard NR, Van Der Niet S, Chertkova A, Postma M, Hordijk PL, Gadella TWJ, Goedhart J. Identification of guanine nucleotide exchange factors that increase Cdc42 activity in primary human endothelial cells. *Small GTPases.* 2021;12:226–240.
94. Birukova AA, Xing J, Fu P, Yakubov B, Dubrovskiy O, Fortune JA, Klivanov AM, Birukov KG. Atrial natriuretic peptide attenuates LPS-induced lung vascular leak: role of PAK1. *Am J Physiol Lung Cell Mol Physiol.* 2010;299:L652–63.
95. Sangrar W, Mewburn JD, Vincent SG, Fisher JT, Greer PA. Vascular defects in gain-of-function *fps/fes* transgenic mice correlate with PDGF- and VEGF-induced activation of mutant *Fps/Fes* kinase in endothelial cells. *J Thromb Haemost.* 2004;2:820–832.

96. Yang X, Yang W, McVey DG, Zhao G, Hu J, Poston RN, Ren M, Willeit K, Coassin S, Willeit J, Webb TR, Samani NJ, Mayr M, Kiechl S, Ye S. FURIN Expression in Vascular Endothelial Cells Is Modulated by a Coronary Artery Disease-Associated Genetic Variant and Influences Monocyte Transendothelial Migration. *J Am Heart Assoc.* 2020;9:1–10.
97. Hinkes B, Wiggins RC, Gbadegesin R, Vlangos CN, Seelow D, Nürnberg G, Garg P, Verma R, Chaib H, Hoskins BE, Ashraf S, Becker C, Hennies HC, Goyal M, Wharram BL, Schachter AD, Mudumana S, Drummond I, Kerjaschki D, Waldherr R, Dietrich A, Ozaltin F, Bakkaloglu A, Cleper R, Basel-Vanagaite L, Pohl M, Griebel M, Tsygin AN, Soylyu A, Müller D, Sorli CS, Bunney TD, Katan M, Liu J, Attanasio M, O'Toole JF, Hasselbacher K, Mucha B, Otto EA, Airik R, Kispert A, Kelley GG, Smrcka A V., Gudermann T, Holzman LB, Nürnberg P, Hildebrandt F. Positional cloning uncovers mutations in PLCE1 responsible for a nephrotic syndrome variant that may be reversible. *Nat Genet.* 2006;38:1397–1405.
98. Boyer O, Benoit G, Gribouval O, Nevo F, Pawtowski A, Bilge I, Bircan Z, Deschênes G, Guay-Woodford LM, Hall M, Macher MA, Soulami K, Stefanidis CJ, Weiss R, Loirat C, Gubler MC, Antignac C. Mutational analysis of the PLCE1 gene in steroid resistant nephrotic syndrome. *J Med Genet.* 2010;47:445–452.
99. Yao J, Le TC, Kos CH, Henderson JM, Allen PG, Denker BM, Pollak MR. α -actinin-4-mediated FSGS: An inherited kidney disease caused by an aggregated and rapidly degraded cytoskeletal protein. *PLoS Biol.* 2004;2:787–794.
100. Ashraf S, Kudo H, Rao J, Kikuchi A, Widmeier E, Lawson JA, Tan W, Hermle T, Warejko JK, Shril S, Airik M, Jobst-Schwan T, Lovric S, Braun DA, Gee HY, Schapiro D, Majmundar AJ, Sadowski CE, Pabst WL, Daga A, Van Der Ven AT, Schmidt JM, Low BC, Gupta AB, Tripathi BK, Wong J, Campbell K, Metcalfe K, Schanze D, Niihori T, Kaito H, Nozu K, Tsukaguchi H, Tanaka R, Hamahira K, Kobayashi Y, Takizawa T, Funayama R, Nakayama K, Aoki Y, Kumagai N, Iijima K, Fehrenbach H, Kari JA, El Desoky S, Jalalah S, Bogdanovic R, Stajić N, Zappel H, Rakhmetova A, Wassmer SR, Jungraithmayr T, Strehlau J, Kumar AS, Bagga A, Soliman NA, Mane SM, Kaufman L, Lowy DR, Jairajpuri MA, Lifton RP, Pei Y, Zenker M, Kure S, Hildebrandt F. Mutations in six nephrosis genes delineate a pathogenic pathway amenable to treatment. *Nat Commun.* 2018;9. doi:10.1038/s41467-018-04193-w.
101. Uchio-Yamada K, Yasuda K, Monobe Y, Akagi KI, Suzuki O, Manabe N. Tensin2 is important for podocyte-glomerular basement membrane interaction and integrity of the glomerular filtration barrier. *Am J Physiol - Ren Physiol.* 2020;318:F1520–F1530.
102. Yu S, Choi W Il, Choi YJ, Kim HY, Hildebrandt F, Gee HY. PLCE1 regulates the migration, proliferation, and differentiation of podocytes. *Exp Mol Med.* 2020;52:594–603.
103. Feng D, Kumar M, Muntel J, Gurley SB, Birrane G, Stillman IE, Ding L, Wang M, Ahmed S, Schlondorff J, Alper SL, Ferrante T, Marquez SL, Ng CF, Novak R, Ingber DE, Steen H, Pollak MR. Phosphorylation of ACTN4 leads to podocyte vulnerability and proteinuric glomerulosclerosis. *J Am Soc Nephrol.* 2020;31:1479–1495.
104. Yu Y, Zhang L, Xu G, Wu Z, Li Q, Gu Y, Niu J. Angiotensin II Type I receptor agonistic autoantibody induces podocyte injury via activation of the TRPC6-Calcium/calcieneurin pathway in pre-eclampsia. *Kidney Blood Press Res.* 2018;43:1666–1676.
105. Ødegård RA, Vatten LJ, Nilsen ST, Salvesen KÅ, Austgulen R. Preeclampsia and fetal growth. *Obstet Gynecol.* 2000;96:950–955.
106. Lokki AI, Heikkinen-Eloranta J. Pregnancy induced TMA in severe preeclampsia

- results from complement-mediated thromboinflammation. *Hum Immunol*. 2021;82:371–378.
107. Volpe M. Natriuretic peptides and cardio-renal disease. *Int J Cardiol*. 2014;176:630–639.
 108. Cui Y, Wang W, Dong N, Lou J, Srinivasan DK, Cheng W, Huang X, Liu M, Fang C, Peng J, Chen S, Wu S, Liu Z, Dong L, Zhou Y, Wu Q. Role of corin in trophoblast invasion and uterine spiral artery remodelling in pregnancy. *Nature*. 2012;484:246–250.
 109. Armstrong DWJ, Tse MY, O’Tierney-Ginn PF, Wong PG, Ventura NM, Janzen-Pang JJ, Matangi MF, Johri AM, Croy BA, Adams MA, Pang SC. Gestational hypertension in atrial natriuretic peptide knockout mice and the developmental origins of salt-sensitivity and cardiac hypertrophy. *Regul Pept*. 2013;186:108–115.
 110. Sund R. Quality of the Finnish Hospital Discharge Register: a systematic review. *Scand J Public Health*. 2012;40:505–515.