

‘Self-Management Intervention through Lifestyle Education for Kidney health’ (the SMILE-K study): protocol for a single-blind longitudinal randomised control trial with nested pilot study

*Courtney J. Lightfoot^{1,2}, *Thomas J. Wilkinson^{1,3}, Thomas Yates^{2,4}, Melanie J Davies^{2,4},
Alice C. Smith^{1,2}

¹Leicester Kidney Lifestyle Team, Department of Health Sciences, University of Leicester, Leicester, UK

²Leicester NIHR Biomedical Research Centre, Leicester General Hospital, Leicester, UK

³NIHR Applied Research Collaboration East Midlands, Leicester Diabetes Centre, Leicester, UK

⁴Leicester Diabetes Centre, Leicester General Hospital, Leicester, UK

*joint first author

Corresponding author:

Dr Courtney J Lightfoot, Leicester Kidney Lifestyle Team, Department of Health Sciences, University of Leicester, Leicester, UK. Email: courtney.lightfoot@leicester.ac.uk Twitter: CourtneyJLight. ORCID ID: 0000-0002-5855-4159

ABSTRACT

Introduction

Many people living with chronic kidney disease (CKD) are expected to self-manage their condition. Patient activation is the term given to describe the knowledge, skills, and confidence a person has in managing their own health and is closely related to the engagement in preventive health behaviors. Self-management interventions have the potential to improve remote disease management and health outcomes. We are testing an evidence- and theory-based digital self-management structured 10-week programme developed for CKD patients called 'My Kidneys & Me'. The primary aim of the study (SMILE-K) is to assess the effect on patient activation levels.

Methods and analysis

A single-blind randomised control trial (RCT) with a nested pilot study will assess the feasibility of the intervention and study design before continuation to a full RCT. Individuals aged 18 years or older, with established CKD stage 3-4 (eGFR of 15-59 ml/min/1.73m²) will be recruited through both primary and secondary care pathways. Participants will be randomised into two groups: intervention group and control group. The primary outcome is the Patient Activation Measure (PAM-13). The full RCT will assess the effect of the programme on online self-reported outcomes which will be assessed at baseline, after 10-weeks, and then after 20-weeks in both groups. A total sample size of n=432 participants are required based on a 2:1 randomisation. A sub-study will measure physiological changes (e.g., muscle mass, physical function) and patient experience (qualitative semi-structured interviews).

Ethics and dissemination

This study was fully approved by the Research Ethics Committee-Leicester South on the 19/11/2020 (reference: 17/EM/0357). All participants are required to provide informed consent obtained online. The results are expected to be published in scientific journals and presented at clinical research conferences. This is protocol version 1.0 dated 27/01/2021.

Trial registration number

The study was prospectively registered as ISRCTN18314195 in December 2020.

Keywords

Chronic kidney disease, self-management, digital health, patient activation

INTRODUCTION

Chronic kidney disease (CKD) is a long-term condition associated with high morbidity and premature mortality ¹, and has an estimated UK prevalence ~5–7%. In the UK, 70% of National Health Service (NHS) expenditure is spent on patients with long-term conditions such as CKD ². With less than 1% of time spent in contact with healthcare professionals, many patients are expected to self-manage their condition ². In CKD, the majority of people are managed in primary care rather than by kidney specialists ³. Long-term CKD management requires a high level of patient engagement, both in decision-making and in the implementation of care ⁴. For those with CKD, this encompasses a spectrum of behaviours ranging from adherence to medication and diet recommendations, maintaining physical activity, recognition and monitoring of risk factors (e.g., blood glucose and blood pressure), and self-adjustment of home-care routines ⁵. Self-management interventions aim to facilitate an individual's ability to make appropriate lifestyle changes ⁶ and have shown beneficial impacts on various modifiable risk factors relevant to the progression of CKD (e.g. proteinuria, blood pressure, exercise capacity) ^{6 7}. The COVID-19 global pandemic has presented unique challenges for people living with CKD and has further highlighted the need for and importance of self-management.

In order to implement self-management behaviours and participate in healthcare decisions, patients must have knowledge of their condition, and patient education is a crucial pathway to ensuring that individuals can be taught to engage in self-management tasks ⁵. Empirical studies have shown that patient education, including an understanding of CKD, is associated with better outcomes ⁵. Patient activation is the term given to describe the knowledge, skills, and confidence a person has in managing their own health ⁸ and is closely related to the engagement of preventive health behaviors ⁴. Studies have indicated that activated patients are more likely to attend screenings, check-ups and immunizations, as well as engage in healthy behaviors such as eating a balanced diet ^{9 10}. Increased patient activation is associated with improved health outcomes in many long term conditions ^{11 12}. In CKD lower patient activation is associated with worse cardiovascular disease risk profiles ¹³ and promoting patient activation in kidney disease care is increasingly being prioritized and has recently emerged as central to legislative policy in the United States ¹⁴ and UK ¹⁵. In the UK, National Institute for Health and Care Excellence (NICE) clinical guidance recommends that

informational and educational programmes are offered to those with CKD, including information regarding what people can do to manage and influence their own condition. Interventions to increase patient activation are likely to improve self-management behaviour, and consequently this may be a suitable outcome for self-management-based interventions.

A range of barriers have prevented widespread implementation of comprehensive education for people with CKD and a recent systematic review of self-management interventions in CKD found many interventions lack patient engagement in their design, and the majority of interventions do not apply behavioural change theory to inform their development ⁷. As such there remains a need for better and innovative self-management interventions for those with CKD ^{3 7}. Digital self-management interventions have the potential to improve remote disease management and health outcomes ¹⁶ and are increasingly becoming integrated into self-management to improve behaviour. The COVID-19 pandemic has also presented those with long-term conditions and their healthcare teams an opportunity to innovate and move towards an increasingly digitalised care, with particular emphasis on supporting patients from their own homes.

Developed in the UK, the structured DESMOND diabetes self-management group education programme has recently been shown to improve patient activation in individuals living with diabetes ¹⁷. Based on the same principles, MyDESMOND is a global digital programme to provide ongoing support and guidance ^{18 19}. Using the MyDESMOND platform, we developed an evidence- and theory-based digital self-management programme for CKD patients called 'My Kidneys & Me'. The programme was developed in conjunction with patients and their families, key stakeholders, and a wide range of healthcare professionals including nephrologists, psychologists, physiotherapists, dieticians, exercise scientists, and pharmacists. The programme was developed using 'Intervention Mapping', a six-step framework used to guide behaviour change interventions and health education development ²⁰. A full and detailed description of the development of 'My Kidneys & Me' can be found in Lightfoot et al. ²¹.

Objectives and hypotheses

The primary aim of the proposed 'SMILE-K' research study is to assess the effect of a structured online self-management programme - 'My Kidneys & Me' - on patient activation levels and subsequent self-management behaviour. Further objectives include assessing the feasibility of using such an intervention in this population and exploring patient experience of the programme itself. We hypothesise that access to 'My Kidneys & Me' will increase patient activation, compared to usual care, in people living with CKD.

METHODS AND ANALYSIS

This protocol adheres to the SPIRIT (Standard Protocol Items: Recommendations for Interventional Trials) reporting recommendations²² (Supplementary material S1).

Study design overview

A single-blind randomised control trial (RCT) with a nested pilot study will be used to assess the effect of the 'My Kidneys & Me' programme. An initial nested pilot study will assess the feasibility of the intervention and study design before continuation to a full RCT is considered. Continuation to the full RCT will be based on a pre-defined 'stop/go' criteria assessed after n=60 participants have been recruited. The study intervention period will last 20-weeks with outcome measures assessed at baseline (pre-intervention), week-10 (post-intervention), and week-20 (follow-up). A flow diagram showing the participant flow through the study can be found in **Figure 1**.

An optional sub-study will occur in parallel with the main study. This will consist of additional objective assessments of body composition, physical activity, and physical function to the main study outcome protocol, as well as qualitative interviews with participants to discuss their expectations and experiences of the intervention and study protocol.

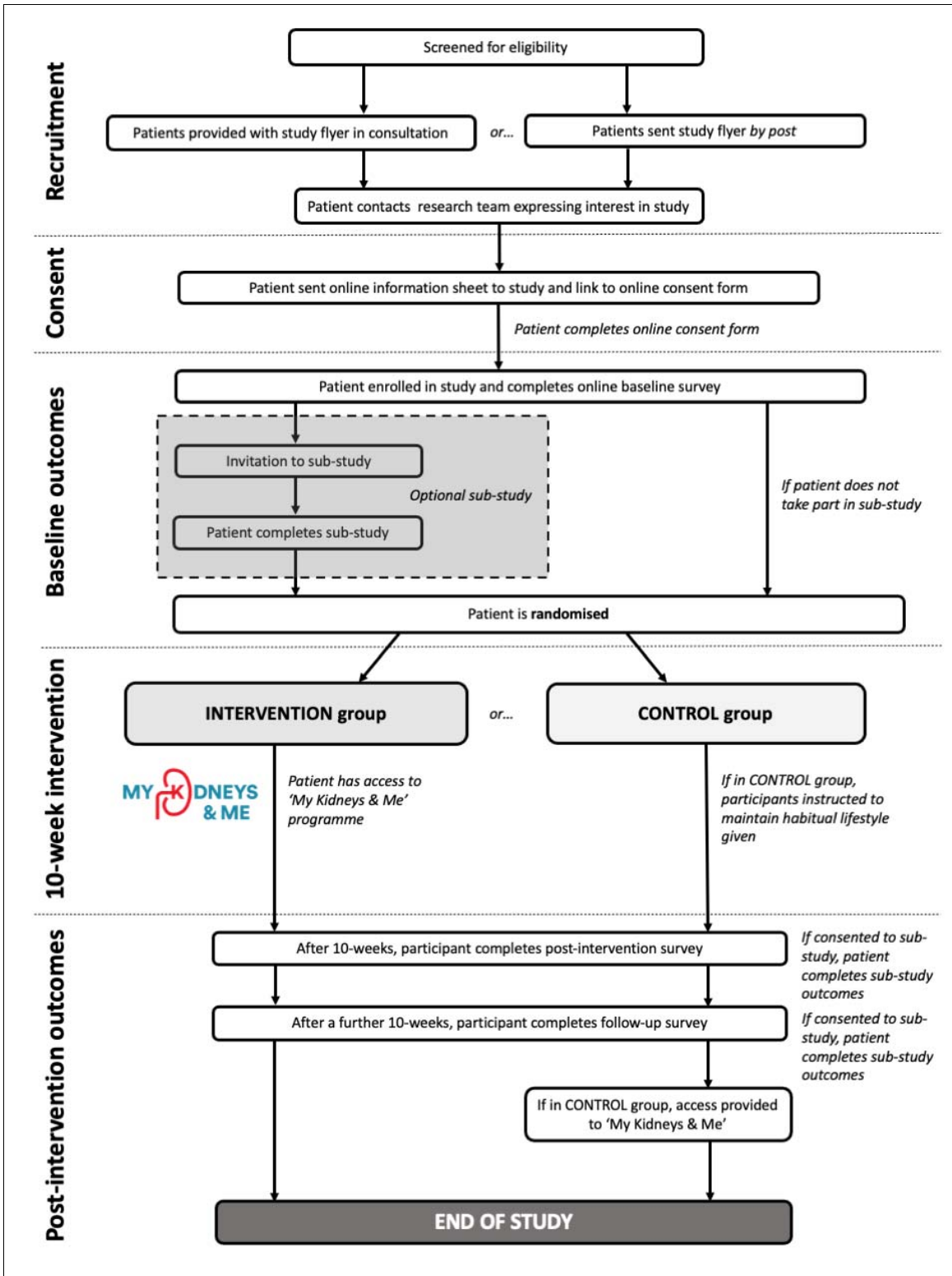


Figure 1. Study flow diagram

Eligibility criteria

Individuals aged 18 years or older, with established CKD stage 3-4 (eGFR of 15-59 ml/min/1.73m²) according to the NICE guidelines will be included. Those requiring any form of kidney replacement therapy (i.e., any modality of dialysis, or transplantation) or with insufficient command of English or any other precluding factors that prevent ability to give informed consent or comply with protocol will be excluded. For the sub-study, in addition, participants will be excluded if they are pregnant and/or if any element of protocol considered by own clinician or General Practitioner (GP) is contraindicated and/or the individual is deemed unfit due to physical impairment, significant co-morbidity, or other reason (e.g., unstable hypertension, arrhythmia, myocardial infarction <6 months, unstable angina, uncontrolled diabetes mellitus, advanced cerebral or vascular disease).

Recruitment

Participants will be recruited through both primary and secondary care pathways across multiple sites in England. Primary care practices will identify eligible patients and provide them with an introduction flyer and study invitation letter, either during a consultation or via the post. If recruited from secondary care, the flyer will be provided during the patient's routine outpatient clinic visit by the nephrologist. Alternatively, patients may be recruited by postal means. Interested participants are requested to contact the research team by email who will then respond with further detailed information and an online consent form. When participants have consented, they are sent a link to complete the online outcome measures. In eligible patients, further information regarding the sub-study is provided. Once the baseline outcome measures have been completed, participants are randomised and provided access to the programme if appropriate. Access will be a secure link that ask participants to register and create a unique username and password. Once created, patients can then access 'My Kidneys & Me' (dashboard shown in **Figure 2**).

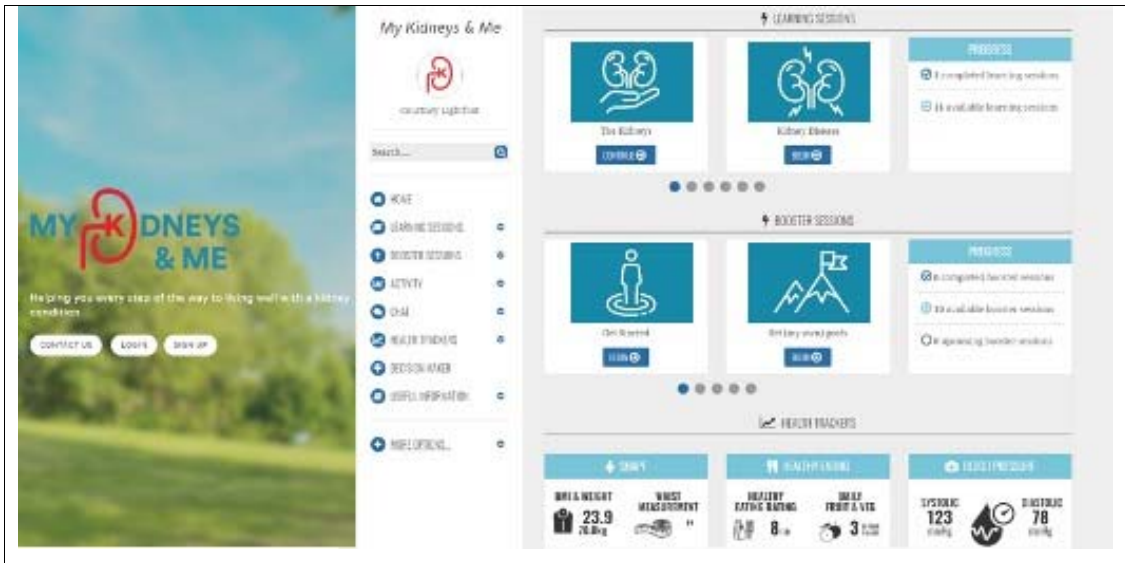


Figure 2. 'My Kidneys & Me' dashboard page

Randomisation

Participants will be randomised into two groups: intervention group and control group. Randomisation will be performed by the research team in a single-blind fashion. Participants will be stratified based on age (≤ 63 , > 63 years) to ensure comparatively equal representative age characteristics in both groups. These values are based on the median age attained from preliminary unpublished data from two ongoing observational studies in non-dialysis CKD patients by our group. The control group will not be provided with the intervention during the study and will be asked to maintain their habitual lifestyle activities. The control group will be provided with the intervention upon study completion. The intervention group will be provided access to the online 'My Kidneys & Me' intervention.

Intervention

'My Kidneys & Me'

The 'My Kidneys & Me' programme forms part of the award-winning and quality assured MyDESMOND e-learning platform ²¹. The educational sessions provide information about the kidneys, CKD, its treatment, and the different ways to self-manage and is written to accommodate for those with low patient activation levels. 'How to' booster sessions are interactive educational sessions, which provide instructions on how to perform the self-

management behaviours and are released weekly. A summary of these sessions is found in **Table 1**.

Table 1. Summary of the ‘How to’ booster sessions

‘How to’ session	Summary of session
1. Get started	This is an introduction about the ‘How to’ sessions and explains what can be expected from them. This will be available from the start.
2. Set my own goals	The first ‘How to’ session introduces patients to what goals are, why they are important, how to create their own personalised goals and how to use an action plan. It is recommended that patients firstly read the ‘Kidney disease and general health’ and ‘Reducing my health risks’ educational sessions so that they can identify which areas they may want to set their own goals in.
3. Move more and be active	This session includes how to set an activity goal, how to break up sedentary time, how to do aerobic activity, and how to maintain activity levels. It is recommended that patients firstly read the ‘Moving more and being active’ educational session.
4. How to keep my muscles healthy through strength training	This ‘How to’ session provides instruction on how to safely take part in strength training exercises and how this could help them. It is recommended that patients firstly read the ‘Keeping my muscles healthy’ educational session.
5. Take control of my health	This session looks at taking medications and managing other conditions such as diabetes and hypertension. It is recommended that patients firstly read ‘Kidney disease’ ‘Kidney disease and general health’, and ‘Reducing my health risks’ educational sessions.
6. Get the most from my healthcare	This session covers information about why attending healthcare appointments is important, how to make the most out of appointments and how to decide which healthcare professional they may want to talk to for different areas so that they can share treatment decisions. It is recommended that patients firstly read ‘Treatment options available’ which includes information about their

	healthcare team and what appointments are for.
7. Eat well	This session covers how to make healthier food choices and adapt recipes. It is recommended that patients firstly read the 'Eating a healthy balanced diet' educational sessions.
8. Manage my symptoms	This session includes how to recognise and keep track of symptoms so that they can modify their lifestyle accordingly and speak to their healthcare professional if needed. It is recommended that patients firstly read 'Reducing my health risks and 'Managing my symptoms' educational sessions as this explains the common symptoms of CKD.
9. Improve my sleep quality	The penultimate session covers how to set sleep goals, improve sleep quality and monitor sleep. It is recommended that patients firstly read 'Improving my sleep quality' educational session.
10. Look after my well-being	The final session focuses on how to balance daily life with CKD and how to manage illness related stress. This also includes the importance of social support and how to talk to others. It is recommended that patients firstly read the 'Looking after my well-being' educational sessions.

The health trackers feature allows patients to self-monitor different aspects of their health that are involved in the self-management of the condition: body weight and measurements; fruit and vegetable intake; symptoms; smoking; cholesterol; and blood pressure. These allow patients to manually update their trackers and see their progress over time through graphs and charts. Similarly, the 'Activity' feature allows patients to track their physical activity, although this is broken down into different forms of activity. Patients can track how many steps they have walked and for how many minutes and can challenge others or invite up to five of their own friends and family to join these challenges. The patients can track this by either synchronizing the programme with their activity tracker (e.g., Fitbit) or they can enter their steps manually. They can also use a bespoke tracker created for 'My Kidneys & Me' to record their strength training progress and resources (e.g., instructional videos) will be available online. The Decision maker feature is a tool to help patients create and monitor their own health related goals, as this works through a series of questions to help patients identify which goals are most important to them and how they can achieve these by overcoming identified barriers.

Outcome measures

Nested feasibility outcomes

Before progression to the full RCT, we will assess feasibility outcomes on the first n=60 participants recruited. Based on these outcomes, a decision will be made to continue with the trial based on pre-specified progression criteria. These progression criteria will be developed with input from stakeholders in the study, researchers, and patients. The following feasibility outcomes will be assessed:

- *Recruitment rate*: The number of eligible patients and number consented will be recorded. Monthly recruitment rate and the time taken to recruit 25%, 50%, 75%, and 100% patients will be recorded.
- *Acceptability of randomisation and assessment procedure*: Acceptability of randomisation (and stratification variables) and procedures will be determined by comparison of randomized group characteristics, and by measuring loss to follow-up and by exploring patient' views about their participation in the research.
- *Programme usage and adherence to intervention*: Adherence will be assessed by the completion of sessions, and the use of the goal setting and health tracking features. We will also assess patterns and frequency of programme usage.
- *Attrition rate*: The number of dropouts (attrition rate) will be recorded.
- *Missing data*: Quantity of missing data (e.g., questionnaire return rate, outcome measures not completed)
- *Patient experience*: This will be attained through qualitative interviews in a sub-set of patients.

Primary study outcome

The primary outcome is the Patient Activation Measure (PAM-13), the most widely used instrument for measuring patient activation ⁸ which was piloted in the NHS through the UK Renal Registry (UKRR), and has been validated ²³ and recommend for use in those with kidney disease ^{14 23}. The PAM-13 is a validated tool of 13 questions which assesses a patient's knowledge, skills, and confidence in managing their own health. The PAM-13 has

demonstrated good internal consistency as well as adequate reliability and validity^{8 24}, including in those with kidney disease²³. Answers are weighted and combined to provide a score on a scale from 0 to 100. The PAM allows respondents to be categorized into one of four levels with lower levels indicating low activation and higher levels indicating high activation. The PAM-13 will be assessed amongst a battery survey of other questionnaires that will be delivered online using Jisc Online Surveys (University of Leicester). As per SPIRIT recommendations, the timepoints for each outcome can be found in **Table 2**.

Secondary outcomes

Alongside a bespoke self-reported demographic questionnaire, other validated questionnaires in the online survey, which capture different aspects of self-management and lifestyle behaviours that are addressed in 'My Kidneys & Me', include:

- *Chronic Kidney Disease Self-Management Knowledge Tool (CKD-SMKT)*: The CKD-SMKT is a validated 11-item questionnaire, which assesses kidney disease patients' knowledge of various key self-management behaviours and kidney health²⁵.
- *12-Item Short Form Health Survey (SF-12)*: The SF-12 is a multipurpose short form survey with 12 questions. The SF-12 assesses patients mental and physical functioning and overall health-related-quality of life (QoL)²⁶.
- *Kidney Symptom Questionnaire (KSQ)*: The KSQ assesses the frequency, intrusiveness, and total impact of a range of 13 common kidney disease-related symptoms. This questionnaire has been validated by our group²⁷ and used widely in the literature²⁸.
- *SARC-F questionnaire*: The SARC-F questionnaire includes five components: strength, assistance walking, rise from a chair, climb stairs, and falls. SARC-F scores range from 0 to 10 and a score ≥ 4 is predictive of sarcopenia²⁹.
- *Illness Representations Questionnaire (Brief) (IPQ-R)*: The IPQ-R is a widely accepted measure of illness representations. These components are identity, cause, timeline,

consequence, and controllability/cure. The questionnaire consists of three parts: an identity scale, a structure scale, and a causal scale ³⁰.

- *General Practice Physical Activity Questionnaire (GPPAQ)*: The GPPAQ was developed by the World Health Organization and Department of Health detailing a 4-level Physical Activity Index (PAI) reflecting an individual's current physical activity. The GPPAQ is a validated measure of physical activity behaviour in CKD ³¹.
- *UK Diabetes and Diet Questionnaire (UKDDQ)*: The UKDDQ is a 25-item questionnaire designed to assess diet and dietary behaviours. Respondents are asked to identify how often they consumed certain foods (vegetables, fruits, sugary drinks, processed meat) over that last month ³². Responses will be scored as per previous research ³³. This questionnaire is sensitive to changes following an intervention ³⁴.
- *Medication Adherence Report Scale (MARS-5)*: The MARS-5 is a non-disease specific questionnaire used to measure adherence to medications and has been previously used in CKD. This comprises of five questions regarding changing medication dosage, forgetting to take medication, consciously stopping taking medication, skipping medication, and using less than prescribed ³⁵.
- *Modified Economic Patient Questionnaire (EPQ)*: We will use a modified version of the 'Economic Patient Questionnaire (EPQ)' to assess participants' use of inpatient and outpatient services and data on non-hospital-based health and social care use at all assessment points ³⁶.

When the participant consents to the study, the researcher will access their clinical records and extract information such as blood and urine results to gather information of kidney function, proteinuria, iron status, and lipid profiles. We will record prescribed medication. Self-reported co-morbidities will be checked against those recorded in the medical notes.

Sub-study

In an optional sub-study, the following additional physical assessments will be performed during a visit to a hospital site:

- *Anthropometry*: Height, weight, body mass index (BMI), and waist and hip circumference will be measured in line with established procedures. Resting heart rate and blood pressure will be assessed using a standard sphygmomanometer device.
- *Muscle phenotyping*: Muscle and fat mass/size/thickness, and body fat % will be measured using a free-standing bioelectrical impedance analysis (BIA) monitor and B-mode ultrasonography of the rectus femoris muscle. These are painless, non-invasive methods for measuring body composition. Our group has recently validated our BIA device against dual-energy X-ray absorptiometry (DXA)³⁷ whilst ultrasonography can be used to assess sarcopenia in CKD^{38 39}.
- *Gait speed*: The participant is asked to walk a 4m course at their 'usual' walking speed, with a walking aid if normally used⁴⁰.
- *Handgrip strength (HGS)*: Handgrip strength will be assessed using a handheld dynamometer (Jamar Plus+ Digital). Participants will be asked to hold the dynamometer with their shoulder at 0 degrees flexion and elbow at 90-degree flexion. Participants will be asked to squeeze the dynamometer handle maximally for 3 seconds. The peak force output (kg) from the three attempts from both the dominant and non-dominant hand will be recorded⁴¹.
- *Sit-to-stand-60 test*: Sit-to-stand (STS) tests are a good measure of functional ability and have been used extensively in CKD patients. Our group has extensive use and knowledge of this test, and published reliability and validation data for it⁴². The patient starts from a seated position on a hard, upright chair, with the feet flat on the floor and the knees bent at 90°. For the test, the patient simply stands up fully and then sits down again to the starting position, without using the hands (one repetition). The STS-60 test involves

completing as many STS cycles as possible in 60 seconds. Participants will also be asked to record a STS-60 score as part of the online survey.

- *Timed-up-and-go' test (TUAG)*: The TUAG assesses mobility and requires dynamic balance. The participant will be asked to rise from a chair, walk 3 metres, turn around a cone, and sit back down ⁴⁰.
- *Accelerometry*: To accurately measure objective physical activity, patients will wear a wrist accelerometer (GENEActiv) for a 7-day period before the intervention and post-intervention ³¹⁴³.

Familiarisation of objective physical performance measures will be performed before baseline assessments. In order to assess any potential differences in administering the questionnaires online, participants in the sub-study will also be asked to complete the same questionnaires via paper format.

In the sub-study, semi-structured interviews will be held with a researcher trained in qualitative methodology. Individual interviews will last between ~30 to 60 minutes. Interviews will take place in private area. For those unable to attend a face-to-face interview, interviews may also be performed via telephone using a secure recording device as used currently in other studies by our group. Patients recruited may be interviewed on at least one occasion (e.g., before and/or after the intervention). Topics in this interview will include current self-management knowledge, skills, confidence and behaviours, and attitudes towards lifestyle self-management. Topics of the subsequent interviews will include experiences of the intervention, the quality of the content, the quality of the delivery method, reasons for non-adherence with the intervention, and healthcare usage.

Table 2. Outcome measure timepoints

Item	Scale/test	Baseline	Week 10	Week 20
Main study†				
Demographics	-	X	-	-
Patient activation	PAM-13	X	X	X
Knowledge	CKD-SMKT	X	X	X
Health status	SF-12	X	X	X
Symptoms	KSQ	X	X	X
Sarcopenia	SARC-F	X	X	X
Illness perception	IPQ-R	X	X	X
Physical activity	GPPAQ	X	X	X
Diet	UKDDQ	X	X	X
Medication adherence	MARS-5	X	X	X
Healthcare use	EPQ	X	X	X
Physical function	STS-60	X	X	X
Clinical data	Full blood count, U&Es	X	X	X
Sub-study‡				
Anthropometry	Height, weight, BMI, waist and hip circumference	X	X	X
Muscle phenotyping	BIA, ultrasonography	X	X	X
Physical function	Gait speed, HGS, STS-60, TUAG	X	X	X
Physical activity	Accelerometry (7-day)	X	X	X
Qualitative component	Semi-structured interview	X	X	X
<p><i>Note.</i> PAM-13 = Patient Activation Measure; CKD-SMKT = Chronic Kidney Disease Self-Management Knowledge Tool; SF-12 = 12-Item Short Form Health Survey; KSQ = Kidney Symptom Questionnaire; IPQ-R = Illness Representations Questionnaire (Brief); GPPAQ = General Practice Physical Activity Questionnaire; UKDDQ = UK Diabetes and Diet Questionnaire; MARS-5 = Medication Adherence Report Scale; EPQ = Modified Economic Patient Questionnaire; STS-60 = Sit-to-stand-60; U&Es = Urea and electrolytes; HGS = Handgrip strength; TUAG = Timed-up-and-go' test</p> <p>†Main study outcomes delivered online to all patient</p>				

¥Sub-study outcomes assessed in a sub-set of patients. Qualitative interviews may be performed at any of the timepoints

Patient and public involvement

A full description of how patients and their families were involved in the development of the programme can be found in Lightfoot et al. ²¹. In summary, a study patient steering group was formed consisting of ten individuals living with kidney disease and two family members. An initial priority setting workshop determined key topics of interest to this group, including lack of educational support from healthcare professionals. Following this, we developed an educational booklet which was co-designed using our patient steering group. This booklet was disseminated to local primary care practices where individuals provided feedback on the content. The information in this booklet was then adapted for digital use and was termed 'My Kidneys & Me' by the patient group. We also performed semi-structured interviews with patients around self-management and the use of educational resources. Key examples of feedback from patients included the following: 1) to provide a symptom tracker to enable self-monitoring of symptoms; 2) include a separate session on sleep; 3) include a separate session on well-being, emphasising the importance of looking after mental health; 4) use of myth and fact quizzes as a way to test knowledge; 5) state how long sessions should take in the introduction. Once 'My Kidneys & Me' was developed, members of the steering group were provided with access to the programme to provide initial comment. The patient steering group assisted with the selection of questionnaires for the study, and reviewed the final questionnaire survey to ensure that it was acceptable. Throughout the study, the steering group will be used to develop a suitable and relevant topic guide exploring exploration of their attitudes towards self-management and the impact these have on their lives. The group will also be used to interpret initial and final findings. In addition, the patient steering group will support the development of the lay summary outputs to be disseminated to patients and the public.

Data analysis

Sample size calculation

With PAM-13 as the primary outcome in the full RCT, a total sample size of n=432 participants are required based on a 2:1 randomisation (n=288 in the intervention group

and n=144 in the control group). This was based on previously published PAM-13 data by our group¹³ and on the required power to detect a minimal clinically significant difference of 4 points in the PAM-13⁴⁴⁻⁴⁶. For the initial nested pilot study, a pragmatic sample size of n=60 participants (n=40 in the intervention group and n=20 in the control group, based on 2:1 randomisation) will be used. We aim to recruit at least 10 patients into the optional sub-study.

Statistical analysis

Participant demographics and clinical characteristics will be analysed using descriptive statistics. The primary outcome is the PAM-13 where answers are weighted provide a score on a scale from 0 to 100. As recommended by Twisk et al.⁴⁷, estimates of treatment effect will be assessed by longitudinal analysis of covariance. In this method the outcome variable measured at the different follow-up measurements (post-intervention at week 10, follow-up at week 20) is adjusted for the baseline value of the outcome. Analysis will be performed using 'intention-to-treat' (ITT) analysis. In an ITT approach, patients are analyzed by how they were randomised regardless of their actual compliance with treatment. For patient-reported outcomes missing data items will be handled according to established protocols for the validated surveys. Additional post-hoc analysis will be performed to determine if differences exist in PAM score changes between those with low and high PAM scores.

In the sub-study, interview recordings will be professionally transcribed verbatim. The precise analytical methodology used may change based on the nature of the data collected, however thematic analysis will be used as an initial foundation for data analysis as it provides a systematic model for managing and mapping the data. Analysis will follow recognised steps (e.g., familiarisation, initial and confirmation of coding (using NVivo), defining themes). In an integrative strategy, any available quantitative data will be used to inform the qualitative analysis.

ETHICS AND DISSEMINATION

To carry out this study, we will consider the Good Clinical Practice (GCP) guidelines of the local governance organisations (University of Leicester and University Hospitals of Leicester

NHS Trust) thus guaranteeing the protection of the rights, the safety, and the well-being of the participants of the trial in compliance with the principles of the Declaration of Helsinki, as well as the credibility of the data obtained in the clinical trial. All participant data entered into the 'My Kidneys & Me' will be managed through the MyDESMOND platform. Data entered as part of the online outcomes is managed by Jisc Online Surveys under a University of Leicester license. A full informative sheet explaining the study in detail, the voluntary nature of the research, and the procedure for the protection of their personal data will be provided along with the online consent form. Patients will be given the opportunity to contact the researchers with any questions prior to the informed consent. The informed consent obtained from study participants will be online.

This study was fully approved by the Research Ethics Committee (REC)-Leicester South and Health Research Authority (HRA) on the 19/11/2020 (reference: 17/EM/0357). The results are expected to be published in scientific journals and presented at clinical research conferences in 2024. Findings will be disseminated to patients and the wider kidney and healthcare community via social media platforms, interest groups, recruiting sites, and institutions associated with the research team. Any subsequent changes to the study protocol will reviewed by the REC and HRA through appropriate amendments. Any significant protocol changes will be stated on the ISRCTN Registry. The study was prospectively registered as ISRCTN18314195.

SUMMARY

'My Kidneys & Me', an online self-management and lifestyle education programme, aims to increase patient activation and promote self-management behaviours. If this is achieved, it is anticipated that the intervention will achieve its distal aims of improving patient QoL, physical function, and symptom burden whilst experiencing fewer hospital admissions and saving costs to the NHS.

LIST OF ABBREVIATIONS

BIA	Bioelectrical Impedance Analysis
BMI	Body Mass Index
CKD	Chronic Kidney Disease
CKD-SMKT	Chronic Kidney Disease Self-Management Knowledge Tool
COVID-19	Coronavirus Disease-2019
DXA	Dual-Energy X-Ray Absorptiometry
eGFR	Estimated Glomerular Filtration Rate
EPQ	Modified Economic Patient Questionnaire
EWGSOP	European Working Group on Sarcopenia in Older People
GCP	Good Clinical Practice
GP	General Practitioner
GPPAQ	General Practice Physical Activity Questionnaire
HGS	Handgrip Strength
HRA	Health Research Authority
IPQ-R	Illness Representations Questionnaire
ITT	Intention-To-Treat
KSQ	Kidney Symptom Questionnaire
MARS-5	Medication Adherence Report Scale
NHS	National Health Service
NICE	National Institute for Health and Care Excellence
PAI	Physical Activity Index
PAM-13	Patient Activation Measure
QoL	Quality of Life
RCT	Randomised Control Trial
REC	Research Ethics Committee
SF-12	12-Item Short Form Health Survey
SPIRIT	Standard Protocol Items: Recommendations for Interventional Trials
STS	Sit-To-Stand
TUAG	Timed-Up-And-Go

UKDDQ	UK Diabetes and Diet Questionnaire
UKRR	UK Renal Registry

REFERENCES

1. Webster AC, Nagler EV, Morton RL, Masson P. Chronic kidney disease. *Lancet*. 2017;389:1238-52.
2. Barker I, Steventon A, Williamson R, Deeny SR. Self-management capability in patients with long-term conditions is associated with reduced healthcare utilisation across a whole health economy: cross-sectional analysis of electronic health records. *BMJ Qual. Saf.* 2018;27:989-99.
3. Hull SA, Nitsch D, Caplin B, Griffith K, Wheeler DC. The National CKD Audit: a primary care condition that deserves more attention. *Br J Gen Pract.* 2018;68:356-57.
4. Lightfoot CJ, Nair D, Bennett PN, Smith AC, Griffin AD, Warren M, et al. Patient Activation: The Cornerstone of Effective Self-Management in Chronic Kidney Disease? *Kidney and Dialysis.* 2022;2(1):91-105.
5. Narva AS, Norton JM, Boulware LE. Educating patients about CKD: the path to self-management and patient-centered care. *Clin J Am Soc Neph.* 2016;11:694-703.
6. Peng S, Shen F, Wen A, Wang L, Fan Y, Liu X, et al. Detecting Lifestyle Risk Factors for Chronic Kidney Disease With Comorbidities: Association Rule Mining Analysis of Web-Based Survey Data. *J Med Internet Res.* 2019;21:e14204.
7. Donald M, Kahlon BK, Beanlands H, Straus S, Ronksley P, Herrington G, et al. Self-management interventions for adults with chronic kidney disease: a scoping review. *BMJ Open.* 2018;8:3.
8. Hibbard JH, Stockard J, Mahoney ER, Tusler M. Development of the Patient Activation Measure (PAM): conceptualizing and measuring activation in patients and consumers. *Health Serv Res.* 2004;39:1005-26.
9. Greene J, Hibbard JH. Why does patient activation matter? An examination of the relationships between patient activation and health-related outcomes. *J Gen Intern Med.* 2012;27:520-6.
10. Hibbard JH, Mahoney ER, Stock R, Tusler M. Do increases in patient activation result in improved self-management behaviors? *Health Serv Res.* 2007;42:1443-63.
11. Kinney RL, Lemon SC, Person SD, Pagoto SL, Saczynski JS. The association between patient activation and medication adherence, hospitalization, and emergency room

utilization in patients with chronic illnesses: a systematic review. *Patient Educ Couns.* 2015;98:545-52.

12. Newland P, Lorenz R, Oliver BJ. Patient activation in adults with chronic conditions: A systematic review. *Health Psychol.* 2021;26:103-14.

13. Wilkinson TJ, Memory K, Lightfoot CL, Palmer J, Smith AC. Patient activation and CVD risk in CKD. *Health Expectations.* 2021; Early View

14. Nair D, Cavanaugh KL. Measuring Patient Activation as Part of Kidney Disease Policy: Are We There Yet? *J Am Soc Nephrol.* 2020;31:1435-1443.

15. UK Renal Registry (2020) UK Renal Registry 22nd Annual Report – data to 31/12/2018, Bristol, UK. Available from renal.org/audit-research/annual-report

16. Shen H, Van Der Kleij RM, van der Boog PJ, Chang X, Chavannes NH. Electronic Health Self-Management Interventions for Patients With Chronic Kidney Disease: Systematic Review of Quantitative and Qualitative Evidence. *J Med Internet Res.* 2019;21:e12384.

17. Miller VM, Davies MJ, Etherton-Bear C, McGough S, Schofield D, Jensen JF, et al. Increasing patient activation through diabetes self-management education: outcomes of DESMOND in regional Western Australia. *Patient education and counseling.* 2020;103:848-53.

18. Hadjiconstantinou M, Schreder S, Brough C, Northern A, Stribling B, Khunti K, et al. Using Intervention Mapping to Develop a Digital Self-Management Program for People With Type 2 Diabetes: Tutorial on MyDESMOND. *J Med Internet Res.* 2020;22:e17316.

19. Quinn LM, Davies MJ, Northern A, Brough C, Schreder S, Stribling B, et al. Use of MyDesmond digital education programme to support self-management in people with type 2 diabetes during the COVID-19 pandemic. *Diabetic Medicine.* 2020:e14469.

20. Bartholomew LK, Parcel GS, Kok G. Intervention mapping: a process for developing theory and evidence-based health education programs. *Health education & behavior.* 1998;25(5):545-63.

21. Lightfoot CJ, Wilkinson TJ, Hadjiconstantinou M, Graham-Brown M, Barratt J, Brough C, et al. The co-development of 'My Kidneys & Me': a digital self-management programme for people with chronic kidney disease. *J Med Internet Res.* (*pre-print*) 2022. doi: 10.2196/39657

22. Chan A-W, Tetzlaff JM, Altman DG, Laupacis A, Gøtzsche PC, Krleža-Jerić K, et al. SPIRIT 2013 statement: defining standard protocol items for clinical trials. *Ann Intern Med.* 2013;158:200-7.
23. Lightfoot CJ, Wilkinson TJ, Memory KE, Palmer J, Smith AC. Reliability and Validity of the Patient Activation Measure in Kidney Disease: Results of Rasch Analysis. *Clinical Journal of the American Society of Nephrology.* 2021;16(6):880-8.
24. Hibbard JH, Mahoney ER, Stockard J, Tusler M. Development and testing of a short form of the patient activation measure. *Health Serv Res.* 2005;40:1918-30.
25. Devraj R, Wallace LS. Application of the content expert process to develop a clinically useful low-literacy Chronic Kidney Disease Self-Management Knowledge Tool (CKD-SMKT). *Res Social Adm Pharm.* 2013;9:633-9.
26. Jenkinson C, Layte R, Jenkinson D, Lawrence K, Petersen S, Paice C, et al. A shorter form health survey: can the SF-12 replicate results from the SF-36 in longitudinal studies? *J Public Health.* 1997;19:179-86.
27. Brown SA TF, Clarke AL. Kidney Symptom Questionnaire: Development, content validation and relationship with quality of life. *J Ren Care.* 2018. doi: 10.1111/jorc.12247. Online ahead of print.
28. Nixon A, Wilkinson T, Young H, Taal M, Pendleton N, Mitra S, et al. Symptom-burden in people living with frailty and chronic kidney disease. *BMC Neph.* 2020;21(1):1-11.
29. Malmstrom TK, Morley JE. SARC-F: a simple questionnaire to rapidly diagnose sarcopenia. *J Am Med Dir Assoc.* 2013;14:531-2.
30. Moss-Morris R, Weinman J, Petrie K, Horne R, Cameron L, Buick D. The revised illness perception questionnaire (IPQ-R). *Psychol Health.* 2002;17:1-16.
31. Wilkinson TJ, Palmer J, Gore EF, Smith AC. The validity of the 'General Practice Physical Activity Questionnaire' against accelerometry in patients with chronic kidney disease. *Physio Theory Prac.* 2020:1-10.
32. England CY, Thompson JL, Jago R, Cooper AR, Andrews RC. Development of a brief, reliable and valid diet assessment tool for impaired glucose tolerance and diabetes: the UK diabetes and diet questionnaire. *Pub Health Nutr.* 2017;20:191-9.
33. Emadian A, England CY, Thompson JL. Dietary intake and factors influencing eating behaviours in overweight and obese South Asian men living in the UK: mixed method study. *BMJ Open.* 2017;7:e016919.

34. England C, Leary S, Thompson C, Lorimer C, Andrews R. Sensitivity to change of the UK Diabetes and Diet Questionnaire in a specialist weight management service. *Br J Nutr (Proceedings of the Nutrition Society)*. 2020;79(OCE2).
35. Chan AHY, Horne R, Hankins M, Chisari C. The Medication Adherence Report Scale: A measurement tool for eliciting patients' reports of nonadherence. *Br J Clin Pharmacol*. 2020;86:1281-1288.
36. Wells A, McNicol K, Reeves D, Salmon P, Davies L, Heagerty A, et al. Improving the effectiveness of psychological interventions for depression and anxiety in the cardiac rehabilitation pathway using group-based metacognitive therapy (PATHWAY Group MCT): study protocol for a randomised controlled trial. *Trials*. 2018;19:1-12.
37. Wilkinson TJ, Richler-Potts D, Nixon DG, Neale J, Smith AC. Anthropometry-based Equations to Estimate Body Composition: A Suitable Alternative in Renal Transplant Recipients and Patients With Nondialysis Dependent Kidney Disease? *J Ren Nutr*. 2019;29:16-23
38. Gould DW, Watson EL, Wilkinson TJ, Wormleighton J, Xenophontos S, Viana JL, et al. Ultrasound assessment of muscle mass in response to exercise training in chronic kidney disease: a comparison with MRI. *J Cachexia Sarcopenia Muscle*. 2019;10:748-755.
39. Wilkinson TJ, Gore EF, Vadaszy N, Nixon DG, Watson EL, Smith AC. Utility of Ultrasound as a Valid and Accurate Diagnostic Tool for Sarcopenia: Sex-Specific Cutoff Values in Chronic Kidney Disease. *J Ultrasound Med*. 2020. doi: 10.1002/jum.15421. Online ahead of print.
40. Roshanravan B, Robinson-Cohen C, Patel KV, Ayers E, Littman AJ, de Boer IH, et al. Association between physical performance and all-cause mortality in CKD. *J Am Soc Nephrol*. 2013;24:822-30.
41. Wilkinson TJ, Gabrys I, Lightfoot CJ, Lambert K, Baker LA, Billany RE, et al. A Systematic Review of Handgrip Strength Measurement in Clinical and Epidemiological Studies of Kidney Disease: Toward a Standardized Approach. *J Ren Nutr*. 2021.
42. Wilkinson TJ, Xenophontos S, Gould DW, Vogt BP, Viana JL, Smith AC, et al. Test-retest reliability, validation, and "minimal detectable change" scores for frequently reported tests of objective physical function in patients with non-dialysis chronic kidney disease. *Physio Ther Prac*. 2018:1-12.

43. Dillon CB, Fitzgerald AP, Kearney PM, Perry IJ, Rennie KL, Kozarski R, et al. Number of days required to estimate habitual activity using wrist-worn GENEActiv accelerometer: a cross-sectional study. *PloS one*. 2016;11:e0109913.
44. Hibbard JH, Tusler M. Assessing activation stage and employing a "next steps" approach to supporting patient self-management. *J Ambul Care Manage*. 2007;30(1):2-8.
45. Hibbard JH. Using systematic measurement to target consumer activation strategies. *Med Care Res Rev*. 2009;66(1 Suppl):9S-27S.
46. Hibbard JH, Greene J, Tusler M. Improving the outcomes of disease management by tailoring care to the patient's level of activation. *Am J Manag Care*. 2009;15(6):353-60.
47. Twisk J, Bosman L, Hoekstra T, Rijnhart J, Welten M, Heymans M. Different ways to estimate treatment effects in randomised controlled trials. *Cont Clin Trials Comm*. 2018;10:80-5.

DECLARATIONS

Ethics approval and consent to participate

This study was fully approved by the Research Ethics Committee-Leicester South on the 19/11/2020 (reference: 17/EM/0357). All participants will provide consent either online or face-to-face (sub-study). All participants will be given the opportunity to ask questions before completing the consent process. The trial is sponsored by the University of Leicester (rgo@le.ac.uk).

Consent for publication

N/A

Availability of data and materials

N/A

Competing interests

The authors declare that they have no competing interests.

Funding

This study is funded by the Stoneygate Trust and the Leicester NIHR Biomedical Research Centre. All PPIE activities were supported by two grants from the Leicester Kidney Care Appeal awarded to TJW and ACS. Funders had no input into study protocol.

Authors' contributions

All authors contributed to the design of the SMILE-K trial protocol. CLJ and TJW drafted the manuscript contributing equally. All authors read and approved the final manuscript.

Acknowledgements

The authors would like to thank participating members of our patient and public steering group in their support in the development of the study. The authors thank members of the professional stakeholder group who have contributed to the design and development of 'My Kidneys & Me': Jonathan Barratt, Mike Bonar, Christopher Brough, James Burton, John

Feehally, Charlie Franklin, Matthew Graham-Brown, Michelle Hadjiconstantinou, Jenny Hainsworth, Vicki Johnson, Maria Martinez, Andrew Nixon, Vicky Pursey, Sally Schreder, Hannah Young, Noemi Vadasz, Fiona Willingham, and Lucina Wilde.