

1 Title Page, Original Research

2

3 **A Phase1 Results of a Non-Stabilized Spike-Encoding mRNA Vaccine in Adults**

4 **Authors:**

5 Sivaporn Gatechompol\*, MD, School of Global Health, and Center of Excellence in tuberculosis,

6 Faculty of Medicine, Chulalongkorn University, and HIV-NAT, Thai Red Cross AIDS Research

7 Centre

8 Wonngarm Kittanamongkolchai\*, MD, Clinical Research Center (Chula CRC), Faculty of

9 Medicine, Chulalongkorn University

10 Chutitorn Ketloy, Ph.D., Center of Excellence in Vaccine Research and Development, and

11 Department of Laboratory Medicine, Faculty of Medicine, Chulalongkorn University, Thailand

12 Eakachai Prompetchara, Ph.D., Center of Excellence in Vaccine Research and Development, and

13 Department of Laboratory Medicine, Faculty of Medicine, Chulalongkorn University, Thailand

14 Arunee Thitithanyanont, MD, Department of Microbiology, Faculty of Science, Mahidol

15 University, Bangkok, Thailand

16 Anan Jongkaewwattana, Ph.D., Virology and Cell Technology Research Team, National Center

17 for Genetic Engineering and Biotechnology (BIOTEC), National Science and Technology

18 Development Agency (NSTDA), Thailand

19 Supranee Buranapraditkun, Ph.D., Center of Excellence in Vaccine Research and Development,

20 and Department of Medicine, Faculty of Medicine, Chulalongkorn University, Thailand

21 Mohamad-Gabriel Alameh, Ph.D., Perelman School of Medicine, University of Pennsylvania,

22 USA

23 Sasiwimol Ubolyam, Ph.D., Clinical Research Laboratory/HIV-NAT laboratory, Chula CRC, Faculty  
24 of Medicine; and HIVNAT, Thai Red Cross AIDS Research Centre, Thailand

25 Jiratchaya Sophonphan, M.Sc., Biostatistics Unit, HIVNAT, Thai Red Cross AIDS Research Centre,  
26 Thailand

27 Tanakorn Apornpong, M.Sc., Biostatistics Unit, HIVNAT, Thai Red Cross AIDS Research Centre,  
28 Thailand

29 Stephen Kerr, Ph.D., Biostatistics Excellence Centre, Faculty of Medicine, Chulalongkorn  
30 University, Bangkok, Thailand

31 Adeeba Kamarulzaman, MD, Faculty of Medicine, University of Malaya, Malaysia

32 Sarawut Siwamogsatham, MD, Clinical Research Center (Chula CRC), Faculty of Medicine,  
33 Chulalongkorn University

34 Eugène Kroon, MD, Institute of HIV Research and Innovation (IHRI), Bangkok, Thailand

35 Thanyawee Puthanakit, MD, Department of Pediatrics, and Center of Excellence in Pediatric  
36 Infectious Diseases and Vaccines, Faculty of Medicine, Chulalongkorn University, Bangkok,  
37 Thailand

38 Kanitha Patarakul, MD, Chula Vaccine Research Center (Chula VRC), and Department of  
39 Microbiology, Faculty of Medicine, Chulalongkorn University, Bangkok, Thailand

40 Tanapat Palaga, Ph.D., Chula Vaccine Research Center (Chula VRC), Faculty of Medicine; and  
41 Department of Microbiology, Faculty of Science, Chulalongkorn University, Bangkok, Thailand

42 Wassana Wijagkanalan, Ph.D., Bionet Asia, Co. Ltd., Ayutthaya, Thailand

43 Drew Weissman\*\*, MD, Perelman School of Medicine, University of Pennsylvania, USA

44 Kiat Ruxrungtham\*\*, MD, Center of Excellence in Vaccine Research and Development  
45 (ChulaVRC), Department of Medicine; and School of Global Health, Faculty of Medicine,  
46 Chulalongkorn University, Thailand  
47 and ChulaVAC-001 study team.

48  
49 \*Contributed equally as first author  
50 \*\*Contributed equally as senior author

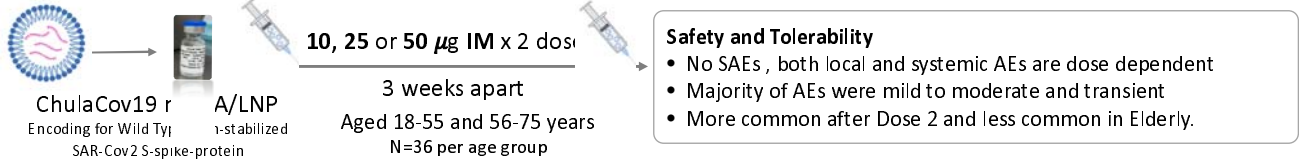
51  
52 **Corresponding author**  
53 Kiat Ruxrungtham, MD  
54 Center of Excellence in Vaccine Research and Development (ChulaVRC)  
55 Faculty of Medicine, Chulalongkorn University  
56 10<sup>th</sup> Floor, Aor Por Ror Building,  
57 1873 Rama IV Road, Pathumwan, Bangkok 10330  
58 Thailand  
59 telephone: +66 2 256 4000 ext. 3563  
60 e-mail: [kiat.r@chula.ac.th](mailto:kiat.r@chula.ac.th)

61  
62  
63  
64  
  
65  
  
66  
  
67  
  
68  
  
69

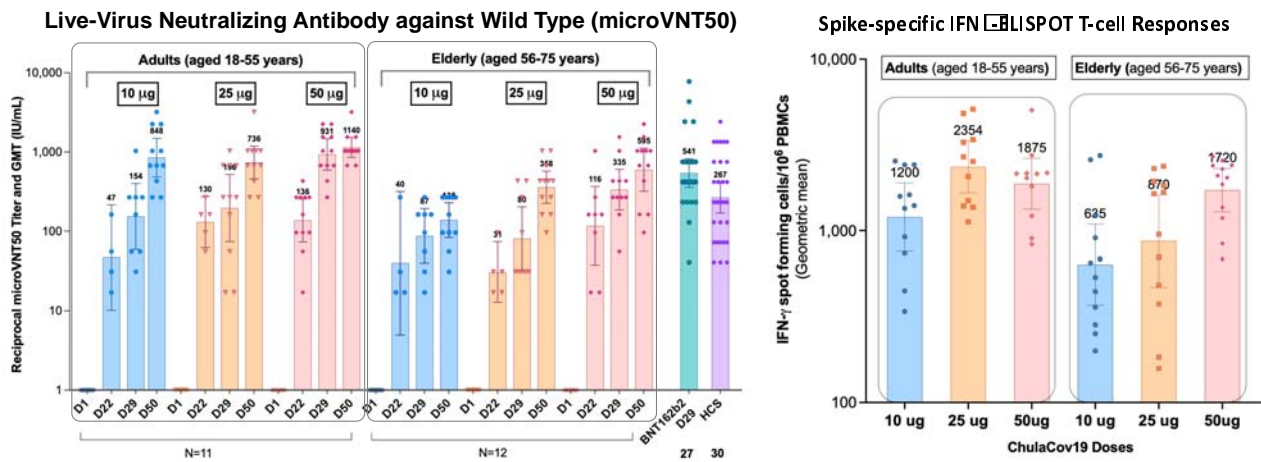
70  
71  
72  
73

**Graphical Abstract**

**ChulaCov19 mRNA Vaccine Phase 1 Dose escalating Study**



**Immunogenicity Results: Elicited strong SARS-Cov2 specific antibodies and T-cell Responses**



74  
75

76 **ABSTRACT:**

77 **Background**

78 Effective COVID-19 mRNA vaccines are mainly available in high-income countries. ChulaCov19,  
79 a prefusion non-stabilized Spike protein-encoding, nucleoside-modified mRNA, lipid  
80 nanoparticle encapsulated vaccine development, aims to enhance accessibility of mRNA  
81 vaccine and future pandemic preparedness for low- to middle-income countries.

82 **Methods**

83 Seventy-two eligible volunteers, 36 aged 18-55 (adults) followed by 36 aged 56-75 (elderly)  
84 enrolled in a dose escalation study of ChulaCov19 mRNA vaccine. Two doses of vaccine were  
85 given 21 days apart at 10, 25, or 50 µg/dose (12/group). Safety was the primary and  
86 immunogenicity the secondary outcome. Human convalescents' (HCS) and Pfizer/BioNTech  
87 vaccinees' sera provided comparison panels.

88 **Results**

89 All three doses of ChulaCov19 were well tolerated and elicited robust dose-dependent and age-  
90 dependent B- and T-cell responses. Transient mild/moderate injection site pain, fever, chills,  
91 fatigue, and headache were more common after the second dose. Four weeks after the second  
92 ChulaCov19: dose at 10, 25, and 50 µg dose, MicroVNT-50 Geometric mean titer (GMT) against  
93 wild-type was 848, 736 and 1,140 IU/mL, respectively, versus 267 IU/mL for HCS. All dose levels  
94 elicited 100% seroconversion, with GMT ratio 4-8-fold higher than for HCS ( $p < 0.01$ ), and high  
95 IFN $\gamma$  spot-forming cells/million peripheral blood mononuclear cells. The 50 µg dose induced  
96 better cross-neutralization against Alpha, Beta, Gamma, and Delta variants than lower doses.

97 **Conclusions**

98 ChulaCov19 at 50 µg/dose is well tolerated and elicited higher neutralizing antibodies than HCS  
99 with strong T-cell responses. These antibodies cross neutralized four variants of concern and  
100 ChulaCov19 has therefore proceeded to phase 2 and 3 clinical trials.

101 **Trial registration number:** ClinicalTrials.gov Identifier NCT04566276

102

103

104

105

106

107

108

109

110

111

## 112 INTRODUCTION

113 More than 10 billion doses of COVID-19 vaccines have been administered worldwide,  
114 however only 10 % of those living in low-income countries received at least one dose (8  
115 February 2022)<sup>1</sup>. Among approved vaccines, mRNA vaccines have shown the highest efficacy<sup>2</sup>.  
116 Building capacity to develop and manufacture mRNA vaccines in low- to middle-income  
117 countries (LMIC) is important for the current and future pandemics. The ChulaCov19 mRNA  
118 vaccine (ChulaCov19) is a lipid nanoparticle (LNP) encapsulated nucleoside-modified mRNA,  
119 encoding a non-stabilized, full-length SARS-Cov2 spike protein. Two major differences between  
120 ChulaCov19 with the Pfizer/BioNTech and Moderna vaccines are that ChulaCov19 is not  
121 prefusion stabilized and is encapsulated in a different LNP formulation. ChulaCov19 was  
122 conceptualized in Thailand and initially manufactured in North America for early clinical  
123 development, in parallel with large-scale production capacity development in Thailand. In  
124 rodent and macaques, ChulaCov19 elicited strong B and T cells responses. The induced high  
125 neutralizing antibody levels against wild-type virus were able to cross neutralize four variants of  
126 concern (VOC). Here, we report a phase 1 open-label, dose-escalation study of ChulaCov19.

### 127 **Methods:**

#### 128 **Trial Design**

129 This phase 1, open-label, dose escalation study to evaluate safety and immunogenicity  
130 of ChulaCov19 vaccine enrolled healthy participants aged 18-55 (adults, n=36) followed by a  
131 cohort aged 56-75 (elderly, n=36). The inclusion and exclusion criteria are shown in the  
132 **Supplemental Table S1**. Both age cohorts received ChulaCov19 at 10, 25, or 50- $\mu$ g per dose, 12  
133 participants per dose group for each age cohort, in a sentinel, dose-escalating manner.

134 The trial and the Investigational New Drug application were approved by the ethics  
135 committee of the Faculty of Medicine, Chulalongkorn University, Bangkok, and Thailand's Food  
136 and Drug Administration, respectively. All participants provided written informed consent. The  
137 trial was conducted at the Chula Clinical Research Center and King Chulalongkorn Memorial  
138 Hospital, Bangkok.

### 139 **Trial vaccine**

140 ChulaCov19 mRNA was manufactured at Trilink Biotechnologies (San Diego, California),  
141 and Integrity Bio Inc. (Camarillo, California). The encapsulating LNP formulation consists of four  
142 lipid components with a proprietary ionizable ionized lipid developed by Genevant Sciences  
143 Corporation (Vancouver, British Columbia). ChulaCov19 is stable at  $-75\pm 10^{\circ}\text{C}$ ,  $-20\pm 5^{\circ}\text{C}$ , and,  
144 importantly,  $5\pm 3^{\circ}\text{C}$  for up to 6 months. ChulaCov19 was stored as a sterile suspension of 0.2  
145 mg/ml at  $-75\pm 10^{\circ}\text{C}$  and diluted with normal saline according to the assigned dose, to be given  
146 at 0.5 ml intramuscularly (IM).

### 147 **Trial procedures**

148 Four adult sentinel participants were enrolled to receive ChulaCov19 at 10- $\mu\text{g}$  (IM).  
149 Once no halting criteria (**Table S2**) were reported by Day 3, the remaining eight 10- $\mu\text{g}$   
150 participants were enrolled. The same approach was followed for the 25- and 50- $\mu\text{g}$  doses. The  
151 vaccine was administered in the deltoid muscle on Day 1 and Day  $22\pm 3$ , followed by 2 hours  
152 safety monitoring on-site. Enrollment of the elderly participants was commenced after DSMB  
153 review of the data when the last adult participant of the 10- $\mu\text{g}$  group had reached Day 29 (one  
154 week after second vaccination) on study. A diary was provided to participants to record



155 solicited- and unsolicited adverse reactions, and concomitant medications for seven days.

156 Safety laboratory tests were performed at baseline, and days 8, 22, 29 and 50.

### 157 **Assessment of safety and tolerability**

158 Safety endpoints included solicited and unsolicited local adverse events (AE), systemic  
159 AE, use of antipyretics/analgesics in the seven days after vaccination, and serious adverse  
160 events (SAE) up to Day 50 (four weeks after second vaccination).

### 161 **Assessment of immunogenicity**

162 The binding to the SARS-CoV-2 S1 receptor-binding domain (RBD) was measured by  
163 enzyme-linked immunosorbent assay (ELISA). Neutralizing antibody titers against wild-type and  
164 VOC were assessed by live-virus microneutralization assay (MicroVNT-50) and pseudovirus  
165 neutralization assay (PsVNT-50). SARS-Cov2 RBD-ACE2 blocking antibody was measured by  
166 surrogate viral neutralization test. Cellular immunity was measured by IFN $\gamma$ -ELISpot assay  
167 (ELISpot), and by intracellular cytokine staining (ICS) assay (**Table S3**). Tests were performed on  
168 specimens collected at Days 1, 8, 22, 29 and 50; however, PsVNT-50 was performed only at  
169 Days 29 and 50. Exploratory comparator serum panels included 30 human convalescents'  
170 serum (HCS) from adults with COVID-19; serum samples were collected at four weeks after  
171 confirmed diagnosis, and 27 Pfizer/BioNTech mRNA vaccinees; serum samples were collected at  
172 Day 29 (**Table S4 and S5**).

### 173 **Statistical Analysis**

174 Sample size for Phase I was based on practical and medical considerations, not power  
175 for statistical hypothesis testing or precision of parameter estimation. Results of safety analyses  
176 are presented as counts, percentages and group ages as mean (SD). Summary descriptive

177 statistics relevant for study endpoints were provided for each cohort and vaccine dose group at  
178 the study time points indicated in the protocol.

179 Immunogenicity was analyzed based on the per protocol (PP) analysis set. Geometric  
180 mean titers (GMT) and their 95%CI were calculated for MicroVNT-50, PsVNT-50, anti RBD-IgG,  
181 anti S-Trimer, sVNT, IFN $\gamma$ -ELISpot and Th1/Th2 spike-specific-CD4+ and CD8+ T-cells. Formal  
182 comparisons of MicroVNT-50, PsVNT-50, anti RBD-IgG and sVNT against samples of 30 HCS from  
183 adults with COVID-19 and 27 Pfizer/BioNTech mRNA vaccinees, were made using geometric  
184 mean ratios (GMR 95%CI). Statistical analysis was conducted with Stata 15 (Statacorp LLC,  
185 College Station, TX, USA).

## 186 **Results:**

187 Between 28 May 2021 and 2 July 2021, 132 individuals were screened of whom 36 were  
188 enrolled in each age cohort (12 per dose group in each age cohort) (**Figure S1 and S2**). All but  
189 one participant completed both vaccinations. The participant declining second vaccination was  
190 from the adult 25- $\mu$ g group and experienced moderate myalgia after the first vaccination,  
191 which resolved within three days and which was accompanied by moderate CPK elevation but  
192 normal cardiac enzymes, possibly related to strenuous physical labor. This participant was  
193 excluded from the per protocol immunogenicity analysis as were two others: one participant  
194 from the adult 10- $\mu$ g group who was diagnosed with asymptomatic COVID-19 on the sixth day  
195 after the second vaccination and one participant from the adult 50- $\mu$ g group who had  
196 confirmed positive baseline anti-RBD binding antibody test but was negative for SARS-CoV-2  
197 molecular testing, indicating asymptomatic COVID-19 prior to enrolment. All participants  
198 contributed to the safety analysis.

## 199 Characteristics of the study participants

200 Characteristics of the study participants are listed in **Table 1**. Mean age (SD) in the adult and  
201 elderly cohorts was 35.8(9.1) and 65.1(5.4) years, respectively; body mass index was 23(2.8)  
202 and 23.3(3.3); and proportion of females was 67% and 53%.

203 **Table 1:** Demographic Characteristics of the participants by dose age groups

204

Characteristic	10 µg Group	25 µg Group	50 µg Group	Overall
<b>Adults (aged 18–55 years)</b>	N=12	N=12	N=12	N=36
Sex-number (%)				
Female	9 (75.0)	7 (58.3)	8 (66.7)	24 (66.7)
Age-Mean (SD)	35.9 (5.9)	34.1 (9.0)	37.3 (11.8)	35.8 (9.1)
Min-max	21-44	26-53	21-53	21-53
Body-mass index (kg/m <sup>2</sup> ), Mean (SD)	23.9(3.3)	22.1(2.6)	22.9 (2.5)	23.0 (2.8)
<b>Elderly (aged 56–75 years)</b>	N=12	N=12	N=12	N=36
Sex-number (%)				
Female	7 (58.3)	7 (58.3)	5 (41.7)	19 (52.8)
Age-Mean (SD)	67.4 (3.2)	67.8 (3.2)	60 (5.5)	65.1 (5.4)
Min-max	64 -73	65 -74	56 -71	56 -74
Body-mass index (kg/m <sup>2</sup> ), Mean (SD)	24.1 (4.2)	22.7 (3.1)	23.2 (2.5)	23.3 (3.3)

205

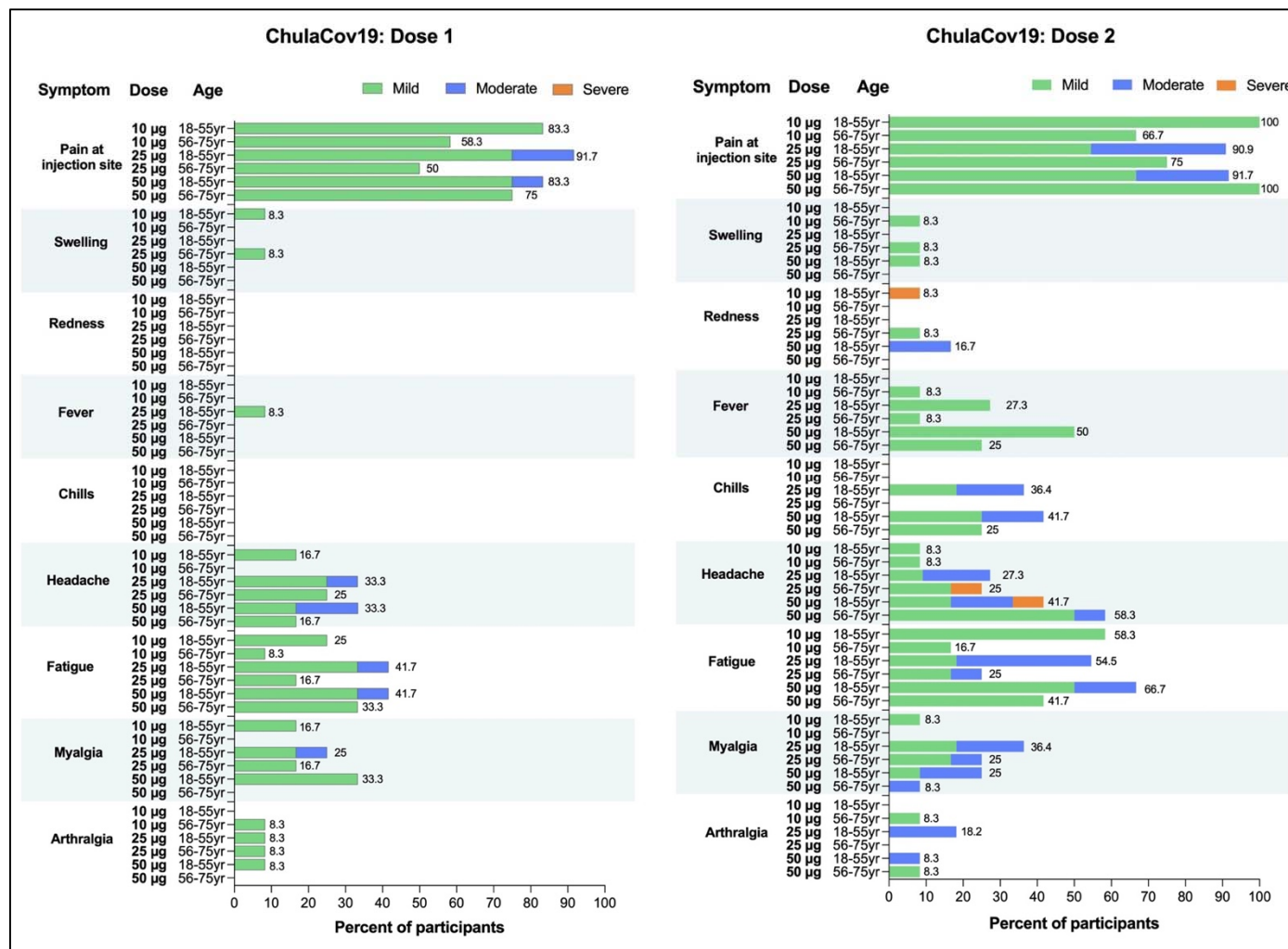
## 206 Safety and Tolerability

### 207 *Local reactions* (Figure 1)

208 The most common local reaction was injection site pain. Its incidence was dose-dependent,  
209 more common in adults than elderly, and after Dose 2. All local reactions were mild in the  
210 elderly; some moderate events occurred in adults. All participants recovered after 2.79±1.7 and  
211 1.91±0.9 days on average in adults and elderly after Dose 2, respectively. A single event of  
212 severe erythema in the adult 10-µg group after Dose 2 resolved within 6 days.

### 213 *Systemic reactions* (Figure 1)

214 The three most common systemic reactions were fever, headache, and fatigue. Systemic  
 215 reactions were more common at the 25- $\mu$ g and 50- $\mu$ g doses, after Dose 2, and in adults. Most  
 216 reactions were mild to moderate and transient with mean duration  $1.97\pm 1.2$  days in adults and  
 217  $1.39\pm 0.5$  days in elderly after Dose 2.  
 218 **Figure 1.** Local and Systemic Adverse Events, by dose group and age cohorts. The 18-55- and  
 219 56-75-years old cohort is also referred to as adults and elderly.



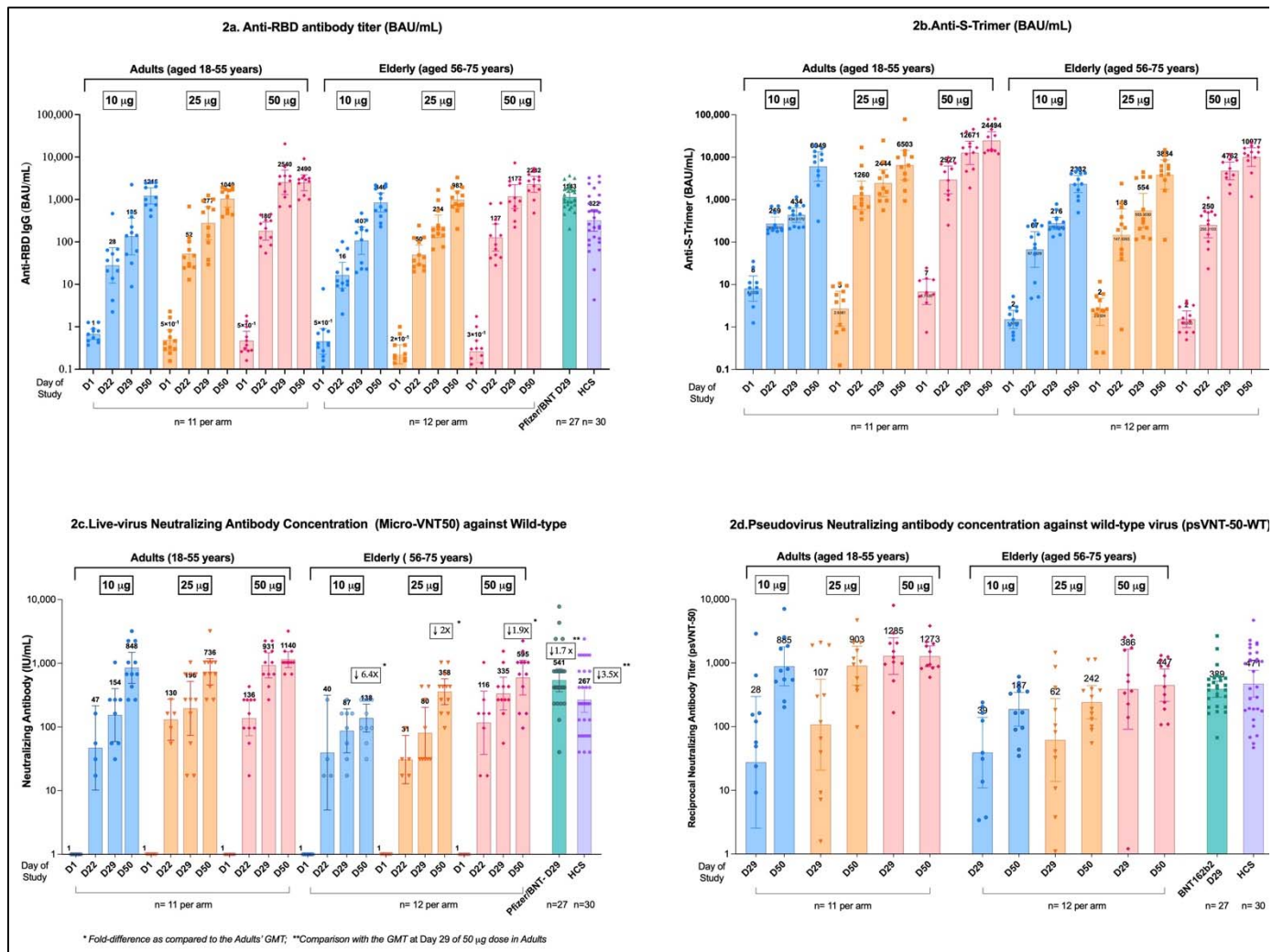
220  
 221 **Immunogenicity Results**

222 **SARS-CoV-2 Receptor Binding Domain (RBD) Antibody Responses (Figure 2a)**

223 In the adult cohort, 4 weeks after second vaccination (Day50) the GMT of anti-RBD  
 224 antibody was significantly higher than for HCS 4 weeks after COVID-19 diagnosis with GMR of  
 225 3.78, 3.23, and 7.74,  $p \leq 0.01$ , respectively. In the elderly cohort, anti-RBD GMT were also dose-  
 226 dependent but lower than observed in the adult cohort (Table S6).

227

228 **Figure 2. SARS-CoV-2 Antibody-Binding and Neutralization Responses.**



229

230

231 **SARS-CoV-2 S-Spike Trimer Antibody Responses (Figure 2b)**

232 In the adult cohort at Day 50, ChulaCov19 at 50-ug elicited highest anti-Spike-GMT at  
233 24493.9 BAU/mL ( $p < 0.01$ ). In the elderly cohort, the anti-Spike GMT was lower than for the  
234 adults at all three doses while anti Spike-GMT for the 50- $\mu$ g dose was significantly higher than  
235 for the 10- $\mu$ g dose,  $p = 0.001$ .

### 236 **RBD-ACE2 Binding Inhibition Antibody Responses (sVNT)**

237 GM of % RBD-ACE2 binding inhibition showed a dose-dependent pattern in both age-cohorts at  
238 Day 29 but not at Day 50. All doses at Day 50 in both age-cohorts elicited GM > 90% inhibition. %  
239 Inhibition of the HCS and Pfizer/BNT vaccinee's (Day 29) panels was 76% and 93%, respectively  
240 (**Figure S3**).

### 241 **SARS-CoV-2-specific Live-virus Micro-Neutralization Tests (MicroVNT-50)**

242 Seroconversion rate on MicroVNT-50 in all dose groups reached 100% by Day50. GMT of  
243 the responses against WT virus were both dose- and age-dependent, and markedly increased  
244 from Day 29 to Day 50 for the 10, 25 and 50  $\mu$ g doses (**Figure 2c**). In the adult cohort at Day50,  
245 ChulaCov19 at 10, 25 and 50- $\mu$ g doses induced significantly higher MicroVNT-50 GMT than HCS  
246 at a ratio of 2.98, 2.59 and 4.01, respectively ( $p < 0.01$ ), whereas in the elderly cohort the values  
247 were: 0.48, 1.26 and 2.09-folds, respectively. (**Table S6**). ChulaCov19 at 50- $\mu$ g dose induced  
248 significantly higher MicroVNT-50 GMT against wild-type and 3 variants as compared to the 10-  
249  $\mu$ g dose in both age cohorts while in the elderly cohort elicited MicroVNT-50 GMT were lower  
250 for all doses when compared to the adult cohort. (**Figure 3a and Table S7**).

252

### 253 **Pseudovirus Neutralization Tests**

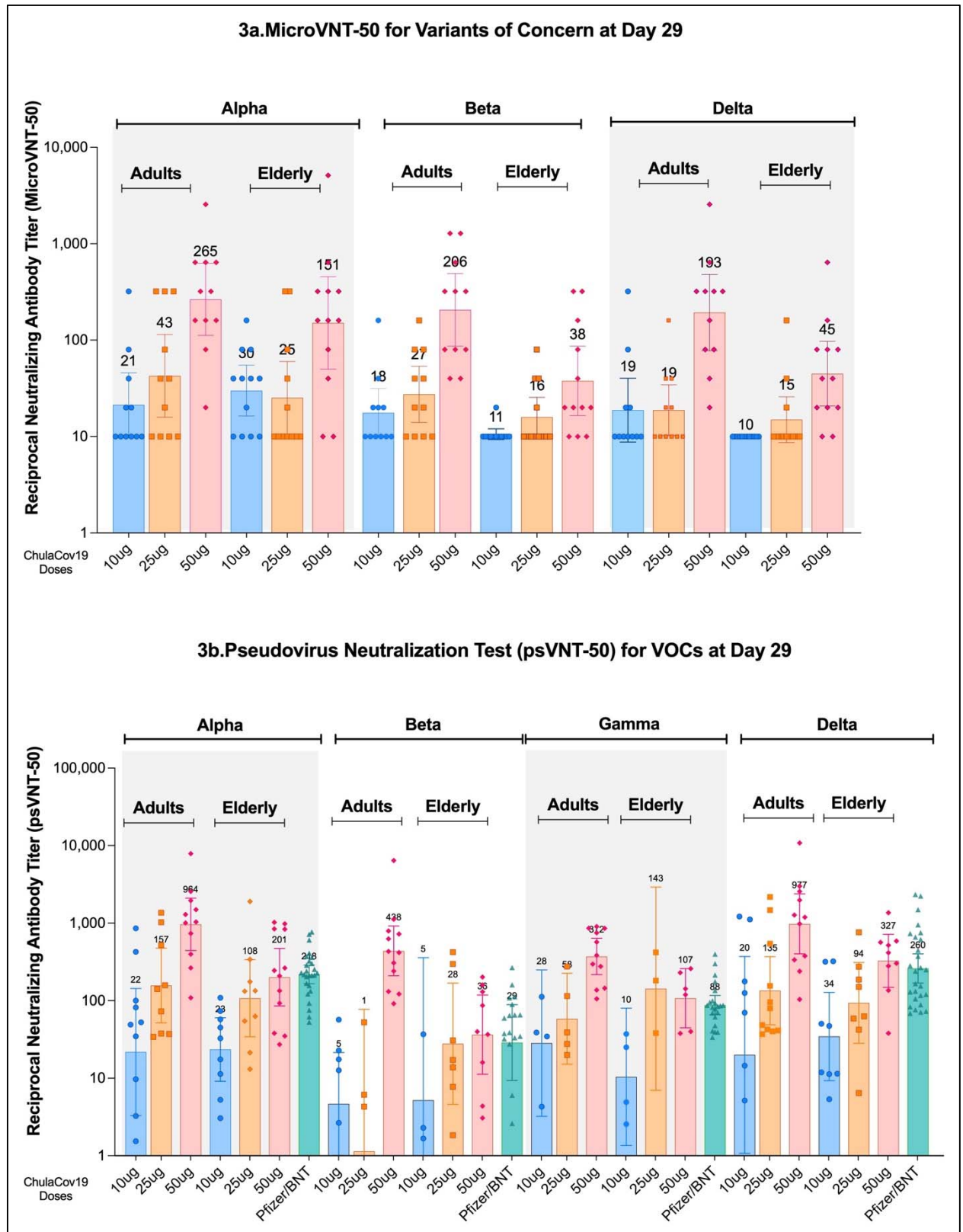
254 In the adult cohort, PsVNT-50 GMT (95% CI) of ChulaCov19 against WT at Day50 at 10, 25, 50-  
255  $\mu\text{g}$  and of HCS panel was 885.3, 902.9, 1,273.1, and 471.2, respectively. (**Figure 2d**). The GMT-  
256 ratio of 50  $\mu\text{g}$  dose/HCS was 2.7 ( $p=0.01$ ). At Day 29, ChulaCov19 at 50- $\mu\text{g}$  dose induced  
257 significantly higher GMT than the Pfizer/BNT vaccinated panel against Alpha, Beta and Gamma  
258 variants at a ratio of 4.47, 11.94 and 4.23 ( $p=0.01$ ), respectively (**Figures 3b and Table S8**). A  
259 new variant Omicron PsVNT-50 test results showed two-doses of ChulaCov19 at 50- $\mu\text{g}$  has a  
260 significant decline of GMT against Omicron variant as compared to WT (**Figure S4**).

261

262

263 **Figure 3.** SARS-CoV-2 Neutralization Responses against variants of concern at Day 29 (4 weeks

264 after Dose2)



265

266

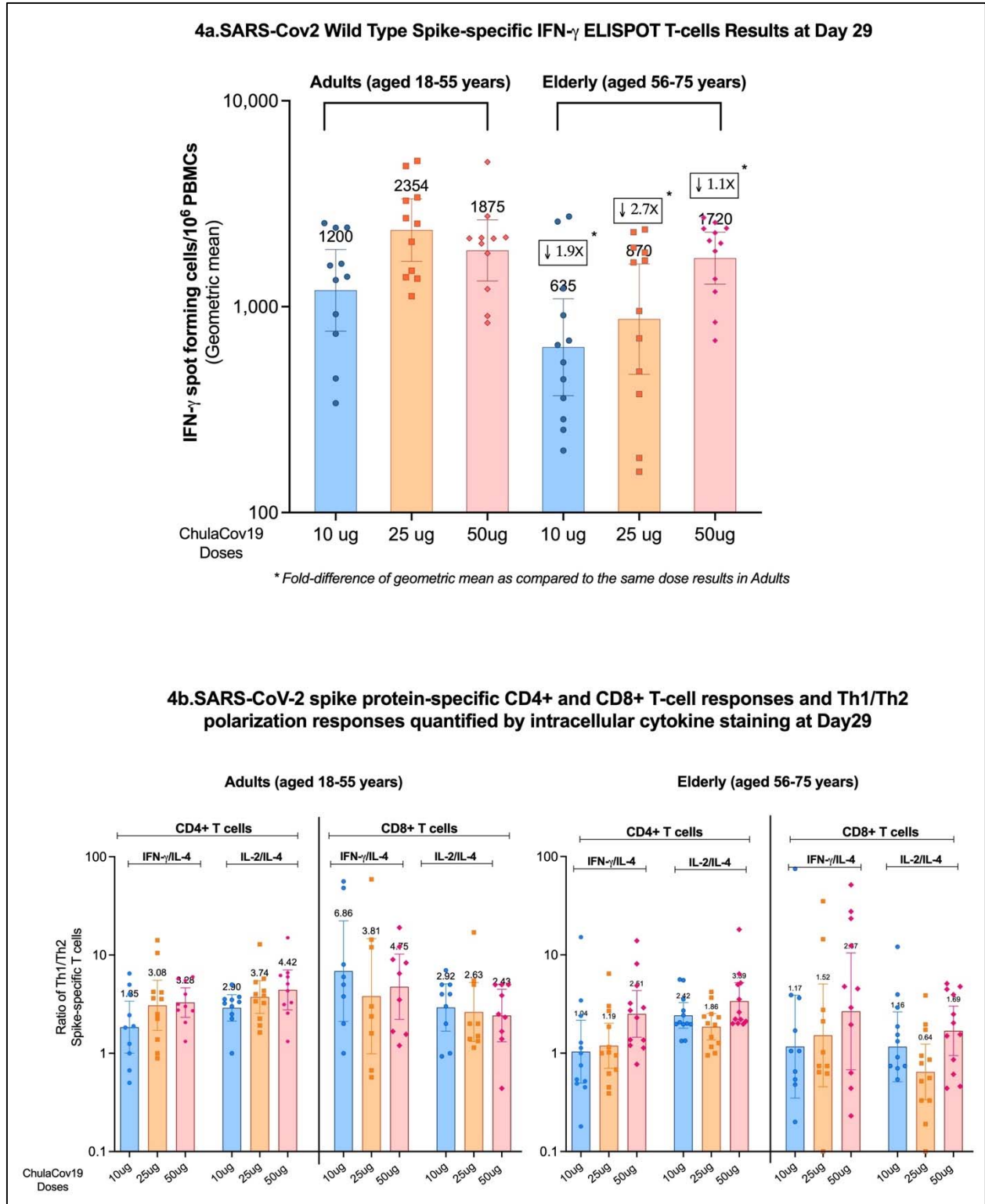


267 **SARS-Cov2 Spike-specific T-Cell Responses**

268 At Day 29, all participants in the adult and elderly cohorts at 10-, 25-, and 50- $\mu$ g showed strong  
269 Spike-specific T-cell responses measured by IFN $\gamma$ -ELISpot tests. The responses were lower in  
270 elderly at 10- and 25-ug than in adults (**Figure 4a and Table S9**). In adults, both Spike-specific  
271 IFN $\gamma$ <sup>+</sup>CD4<sup>+</sup> and IL2<sup>+</sup>-CD4<sup>+</sup> T-cell percentages were significantly higher in the 25- and 50- $\mu$ g dose  
272 recipients when compared to the 10- $\mu$ g dose. (**Table S10**). ChulaCov19 elicited Spike-specific  
273 Th1-dominated responses (**Figure 4b**).

274

275 **Figure 4:** SARS-Cov2 Wild-type Spike-specific T-cells responses



276  
277

278

279

## 280 **Discussion**

281 To enhance access to effective COVID-19 mRNA vaccines in LMIC and to be prepared for  
282 a next pandemic, complete mRNA-LNP vaccine development and manufacturing value chains  
283 need to be established in LMICs. Unlike currently approved mRNA vaccines, such as Pfizer/BNT  
284 and Moderna<sup>3</sup>, ChulaCov19 is a wild-type non-stabilized Spike-protein encoded mRNA vaccine  
285 encapsulated with a different LNP and demonstrated thermostability at 2-8<sup>0</sup>C for up to 6  
286 months. In this phase 1 trial, three doses of ChulaCov19 vaccine were well tolerated with no  
287 SAE observed in either age-group. Injection site pain is the most common AE while fever, chills,  
288 headache, and myalgia were reported to be dose-dependent and more frequent after the  
289 second dose. AEs were both less frequent and milder among the elderly participants. Moderate  
290 to severe events were rare overall and all AEs resolved on average 2.5 days.

291 The results indicated that this LNP-encapsulated non-di-Proline-stabilized Spike-protein mRNA  
292 vaccine is strongly immunogenic. ChulaCov19 at 50- $\mu$ g dose induced high SARS-CoV2-binding  
293 and neutralizing antibodies one week after dose 2 ( $p<0.01$ ) with a microVNT-50 GMT 6-fold  
294 higher than for HCS. At 4 weeks after dose 2, there was a further rise of all tested antibodies  
295 and all 3 doses elicited microVNT-50 GMT higher than HCS with a GMT ratio of 4-8-fold  
296 ( $p<0.01$ ). The 50- $\mu$ g dose induced higher micro-VNT-50 and psVNT-50 GMT against tested  
297 variants than the lower doses ( $p<0.01$ ). In the adult cohort, at one week after Dose 2, the ratios  
298 of ChulaCov19 50- $\mu$ g dose elicited psVNT-50 GMT against Alpha, Beta, and Gamma variants  
299 that were 4.5, 11.9 and 4.2, respectively higher compared to Pfizer/BNT vaccine( $p<0.01$ ). In  
300 term of Omicron variant, ChulaCov19 vaccine, as reported in approved Covid-19 mRNA vaccine,

301 2-doses vaccination may not effective against Omicron variant, a Third dose is required<sup>4</sup>.

302 Developing pan-SARS-Cov2 or pan-Coronavirus vaccine against future pandemic by is

303 warranted<sup>5</sup>.

304 All doses of ChulaCov19 generated strong T cell responses and the higher doses (25 and 50- $\mu$ g)

305 elicited higher % of Spike-specific IL2+CD4+T-cells and % of IFN $\gamma$ +CD4+T-cells than the 10- $\mu$ g

306 dose ( $p < 0.01$  and  $p < 0.05$ , respectively). All doses ChulaCov19 elicited predominantly SARS-

307 CoV2-specific Th1-type responses. Based on these results, the DSMB has recommended that

308 ChulaCov19 be further advanced to a phase 2 randomized-controlled trial with the 50- $\mu$ g dose.

309 This vaccine did not contain prefusion stabilization of Spike with 2 prolines

310 (K986P/V987P) that many approved COVID-19 vaccine platforms use<sup>6</sup>. The Phase I data

311 presented here show ChulaCov19 elicited robust humoral and T cell responses, which are often

312 greater than the BioNTech/Pfizer vaccine that contains the di-proline modification. There are

313 other differences in the BioNTech/Pfizer modified mRNA vaccine that could account for the

314 greater potency of ChulaCov19, including different UTRs, coding sequence optimization, poly(A)

315 tail, and the LNP formulation used. Our data does support that the Spike does not need to be

316 prefusion stabilized to induce a potent and protective response, unlike RSV<sup>7</sup>.

317 Recent studies suggest that a GMT-ratio of neutralizing or binding antibody in vaccinees

318 to the level in convalescent patients of  $>1$  is associated with  $>70\%$  vaccine efficacy rate (VE).<sup>2</sup> In

319 addition, higher binding and neutralizing antibody levels at four weeks after the second dose

320 were found to correlate with symptomatic infection risk reduction in the AZD1222 trial<sup>8</sup> and

321 COVE study<sup>9</sup>. ChulaCov19 induced strong binding and neutralizing antibody responses four

322 weeks after the second dose and the ratio of neutralizing antibody GMT in ChulaCov19

323 vaccinees vs convalescent sera of four weeks after diagnosis of approximately four to eight  
324 folds suggests that this vaccine candidate has a potentially significant vaccine efficacy. A  
325 consensus on correlates of protection may be achieved soon<sup>10</sup> and recently the International  
326 Coalition of Medicines Regulatory Authorities (ICMRA) has accepted well-designed  
327 immunobridging studies for authorizing COVID-19 vaccines<sup>11</sup>.

328       Accessibility to effective COVID-19 vaccines, particularly mRNA vaccines, remains very  
329 limited in many low-middle income countries (LMICs)<sup>12</sup>. The main goal of ChulaCov19  
330 development is to be part of the solution for LMICs. There are several challenges to overcome:  
331 the speed of clinical development to reach emergency use authorization (EUA), the speed of  
332 establishing large scale manufacturing capacity, negotiation of expanding LNP-licensing  
333 territory, and the cost and long lead-time raw materials. Currently Bionet Asia, Thailand has  
334 already established manufacturing capacity for both mRNA production and encapsulation, and  
335 a first clinical lot has been released for further clinical development and EUA approval.

336       The limitations of this study include: the sample size is small due to the phase 1  
337 uncontrolled dose-finding design. The exploratory comparative immunogenicity analyses with  
338 convalescent sera or Pfizer/BNT vaccinees' sera are not direct head-to-head comparisons and  
339 can contain bias. Convalescent sera were collected during the rise of the Delta variant outbreak,  
340 and possibly antibody responses are stronger against Delta than WT. To minimize bias, the  
341 convalescent and Pfizer/BNT vaccinees' serum samples were tested at the same laboratories  
342 together with the ChulaCov19 vaccinated samples. In addition, a RCT phase 2 study has  
343 commenced and a larger scale immune-bridging, non-inferiority phase 3 study is planned.

344

345 In summary, ChulaCov19 mRNA vaccine is well tolerated and elicited strong SARS-CoV2  
346 specific B- and T-cell immunogenicity and is currently under Phase 2 and later clinical  
347 development.

348

## 349 **References**

- 350 1. Coronavirus Pandemic (COVID-19) Vaccinations. Our World in Data, 2020. at  
351 <https://ourworldindata.org/coronavirus.>)
- 352 2. Khoury DS, Cromer D, Reynaldi A, et al. Neutralizing antibody levels are highly predictive  
353 of immune protection from symptomatic SARS-CoV-2 infection. *Nature Medicine* 2021;27:1205-  
354 11.
- 355 3. Chaudhary N, Weissman D, Whitehead KA. mRNA vaccines for infectious diseases:  
356 principles, delivery and clinical translation. *Nat Rev Drug Discov* 2021;20:817-38.
- 357 4. Thompson MG, Natarajan K, Irving SA, et al. Effectiveness of a Third Dose of mRNA  
358 Vaccines Against COVID-19-Associated Emergency Department and Urgent Care Encounters and  
359 Hospitalizations Among Adults During Periods of Delta and Omicron Variant Predominance -  
360 VISION Network, 10 States, August 2021-January 2022. *MMWR Morb Mortal Wkly Rep*  
361 2022;71:139-45.
- 362 5. Saunders KO, Lee E, Parks R, et al. Neutralizing antibody vaccine for pandemic and pre-  
363 emergent coronaviruses. *Nature* 2021;594:553-9.
- 364 6. Martínez-Flores D, Zepeda-Cervantes J, Cruz-Reséndiz A, Aguirre-Sampieri S, Sampieri A,  
365 Vaca L. SARS-CoV-2 Vaccines Based on the Spike Glycoprotein and Implications of New Viral  
366 Variants. *Front Immunol* 2021;12:701501.

- 367 7. McLellan JS, Chen M, Joyce MG, et al. Structure-based design of a fusion glycoprotein  
368 vaccine for respiratory syncytial virus. *Science* 2013;342:592-8.
- 369 8. Feng S, Phillips DJ, White T, et al. Correlates of protection against symptomatic and  
370 asymptomatic SARS-CoV-2 infection. *Nat Med* 2021;27:2032-40.
- 371 9. Gilbert PB, Montefiori DC, McDermott A, et al. Immune Correlates Analysis of the  
372 mRNA-1273 COVID-19 Vaccine Efficacy Trial. *medRxiv* 2021.
- 373 10. Koup RA, Donis RO, Gilbert PB, Li AW, Shah NA, Houchens CR. A government-led effort  
374 to identify correlates of protection for COVID-19 vaccines. *Nat Med* 2021;27:1493-4.
- 375 11. Access Consortium: Alignment with ICMRA consensus on immunobridging for  
376 authorising new COVID-19 vaccines. 2021.
- 377 12. Mathieu E, Ritchie H, Ortiz-Ospina E, et al. A global database of COVID-19 vaccinations.  
378 *Nat Hum Behav* 2021;5:947-53.

379

## 380 **Acknowledgement**

381 This study was funded by National Vaccine Institute (NVI), grant no. 2563.1/11 and 2564.1/4;  
382 Chulalongkorn University Second Century Fund (C2F); the Ratchadapisek Sompoch Endowment  
383 Fund (2021), Chulalongkorn University (764002-HE04); and Public Donation through Covid-19  
384 vaccine development fund of the Faculty of Medicine, Chulalongkorn University and the Thai  
385 Red Cross Society, Thailand. The authors would like to thank all the study participants without  
386 whose support the study would not have been possible.