

1 **Exploratory data on the clinical efficacy of monoclonal antibodies against SARS-CoV-2 Omicron**  
2 **Variant of Concern**

3

4 Fulvia Mazzaferri<sup>1</sup>, Massimo Mirandola<sup>1</sup>, Alessia Savoldi<sup>1</sup>, Pasquale De Nardo<sup>1</sup>, Matteo Morra<sup>1</sup>, Maela  
5 Tebon<sup>1</sup>, Maddalena Armellini<sup>1</sup>, Giulia De Luca<sup>1</sup>, Lucrezia Calandrino<sup>2</sup>, Lolita Sasset<sup>2</sup>, Denise D'Elia<sup>3</sup>,  
6 Emanuela Sozio<sup>3</sup>, Elisa Danese<sup>4</sup>, Davide Gibellini<sup>5</sup>, Isabella Monne<sup>6</sup>, Giovanna Scroccaro<sup>7</sup>, Nicola Magrini<sup>8</sup>,  
7 Annamaria Cattelan<sup>2</sup>, Carlo Tascini<sup>3</sup>, MANTICO Working Group, and Evelina Tacconelli<sup>1</sup>

8

9 **MANTICO working group:** Francesca Simbeni<sup>1</sup>, Alessandro Castelli<sup>1</sup>, Ilaria Dalla Vecchia<sup>1</sup>, Chiara Konishi  
10 de Toffoli<sup>1</sup>, Gaia Maccarrone<sup>1</sup>, Marco Meroi<sup>1</sup>, Chiara Perlini<sup>1</sup>, Matilde Rocchi<sup>1</sup>, Giulia Rosini<sup>1</sup>, Laura Rovigo<sup>1</sup>,  
11 Lorenzo Tavernaro<sup>1</sup>, Amina Zaffagnini<sup>1</sup>, Ilaria Currò<sup>1</sup>, Ruth Joanna Davis<sup>1</sup>, Elena Agostini<sup>2</sup>, Carla Benfatto<sup>2</sup>,  
12 Nicola Bonadiman<sup>2</sup>, Marco Canova<sup>2</sup>, Giuseppe Lombardo<sup>2</sup>, Daniele Mengato<sup>2</sup>, Danilo Puntrello<sup>2</sup>, Francesca  
13 Pratavia<sup>3</sup>, Tosca Semenzin<sup>3</sup>, Dario Carloni<sup>3</sup>, Giuseppe Lippi<sup>4</sup>, Davide Negrini<sup>4</sup>, Martina Montagnana<sup>4</sup>,  
14 Riccardo Cecchetto<sup>5</sup>, Alice Fusaro<sup>6</sup>, Francesco Bonfante<sup>6</sup>, Elisa Palumbo<sup>6</sup>, Edoardo Giussani<sup>6</sup>

15

16 <sup>1</sup> Infectious Diseases Division, Department of Diagnostics and Public Health, University of Verona, Verona,  
17 Italy; <sup>2</sup> Infectious Disease Unit, Padova University Hospital, Padua, Italy; <sup>3</sup>Infectious Diseases Division,  
18 Department of Medicine, University of Udine and Azienda Sanitaria Universitaria Friuli Centrale, Udine, Italy;  
19 <sup>4</sup> Section of Clinical Biochemistry, Department of Neuroscience, Biomedicine and Movement, University of  
20 Verona, Verona, Italy; <sup>5</sup> Microbiology and Virology Unit, Department of Diagnostics and Public Health,  
21 University of Verona, Verona, Italy; <sup>6</sup> Viral genomics and transcriptomics Laboratory, Istituto Zooprofilattico  
22 Sperimentale delle Venezie, Legnaro, Italy; <sup>7</sup> Direzione Farmaceutico, Protesica, Dispositivi Medici, Regione  
23 del Veneto, Venice, Italy; <sup>8</sup> Italian Medicines Agency, Rome, Italy

24

25 **Corresponding author**

26 Evelina Tacconelli

27 Infectious Diseases Division, Department of Diagnostics and Public Health, University of Verona

28 Piazzale Scuro 10, 37134, Verona, Italy

29 evelina.tacconelli@univr.it

## 30 **Background**

31 Recent in-vitro data have shown that the activity of monoclonal antibodies (mAbs) targeting SARS-CoV-2  
32 varies according to the Variant of Concern (VOC). No studies have compared the clinical efficacy of different  
33 mAbs against Omicron VOC.

## 34 **Methods**

35 The MANTICO trial is a non-inferiority randomised controlled trial comparing the clinical efficacy of  
36 bamlanivimab/etesevimab, casirivimab/imdevimab, and sotrovimab in outpatients aged 50 or older with early  
37 COVID-19. As the patient enrolment was interrupted for possible futility after the onset of the Omicron wave,  
38 the analysis was performed according to the SARS-CoV-2 VOC. The primary outcome was COVID-19  
39 progression (hospitalisation, need of supplemental oxygen therapy, or death through day 14). Secondary  
40 outcomes included the time to symptom resolution, assessed using the product-limit method. Kaplan-Meier  
41 estimator and Cox proportional hazard model were used to assess the association with predictors. Log rank  
42 test was used to compare survival functions.

## 43 **Results**

44 Overall, 319 patients were included. Among 141 patients infected with Delta, no disease progression was  
45 recorded and the time to symptom resolution did not differ significantly between treatment groups (Log-rank  
46 Chi-square 0.22,  $p$  0.895). Among 170 patients infected with Omicron (80.6% BA.1, 19.4% BA.1.1), two  
47 disease progressions were recorded in the bamlanivimab/etesevimab group and the median time to  
48 symptom resolution was 5 days shorter in the sotrovimab group compared to bamlanivimab/etesevimab and  
49 casirivimab/imdevimab (HR 0.526 and HR 0.451, 95% CI 0.359 - 0.77 and 95% CI 0.303 - 0.669,  $p$  0.001  
50 and 0.0001, respectively).

## 51 **Conclusions**

52 These results confirm the in-vitro data of superiority of sotrovimab versus casirivimab/imdevimab and  
53 bamlanivimab/etesivamab in reducing the time to recovery in patients infected with Omicron BA.1 and  
54 BA.1.1, while no difference was detected in Delta infections. Casirivimab/imdevimab seems to maintain a  
55 role in preventing severe COVID-19 in the Omicron population. Adaptive clinical trials comparing mAbs by  
56 VOC should be pursued to promptly inform clinical recommendations.

57

## 58 **Funding**

59 This trial was funded by the Italian Medicines Agency (Agenzia Italiana del Farmaco, AIFA). The VOC  
60 identification was funded by the ORCHESTRA (Connecting European Cohorts to Increase Common and

- 61 Effective Response to SARS-CoV-2 Pandemic) project, which has received funding from the European  
62 Union's Horizon 2020 research and innovation programme under grant agreement No 101016167.  
63  
64 **Clinical trial number**  
65 NCT05205759

## 66 **Introduction**

67 Coronavirus disease 2019 (COVID-19), which is caused by severe acute respiratory syndrome coronavirus 2  
68 (SARS-CoV-2), has spread globally and poses a major challenge to healthcare systems worldwide. A high  
69 incidence of hospitalisation and death due to COVID-19 has been reported among older patients and those  
70 with certain coexisting conditions, such as obesity, diabetes mellitus, cardiovascular disease, chronic  
71 obstructive pulmonary disease, and chronic kidney disease [1, 2]. The implementation of mass vaccination  
72 campaigns has markedly reduced the healthcare burden related to COVID-19. Nevertheless, SARS-CoV-2  
73 vaccination rates differ considerably across countries and growing evidence suggests a reduced efficacy of  
74 vaccines against new viral Variants of Concern (VOC) [3-6].

75 Therapeutic agents directed against SARS-CoV-2 have been developed to prevent the disease progression,  
76 especially addressing high-risk groups of patients. Neutralizing monoclonal antibodies (mAbs) target the  
77 spike protein of SARS-CoV-2 that mediates viral entry into host cells [7]. Based on the results of randomised  
78 placebo-controlled trials showing the efficacy in preventing COVID-19 progression, drug regulatory  
79 authorities, such as the US Food and Drug Administration (FDA), the European Medicines Agency (EMA),  
80 and the Italian Medicines Agency (AIFA), had granted the emergency use authorization status for  
81 bamlanivimab 700 mg combined with etesevimab 1400 mg, casirivimab 600 mg combined with imdevimab  
82 600 mg, and sotrovimab 500 mg to treat early COVID-19 in patients at high risk of progression [8-10]. To  
83 date, no randomised trials have compared the efficacy of these mAbs in preventing severe COVID-19.

84 This paper reports the results of the MANTICO trial, a non-inferiority randomised controlled trial comparing  
85 the clinical efficacy of routinely-used mAbs in a real-life setting of outpatients aged 50 or older with early  
86 mild-to-moderate COVID-19. The patient enrolment started in December 2021 and was interrupted after the  
87 publication of in-vitro evidence that two treatments under investigation (bamlanivimab/etesevimab and  
88 casirivimab/imdevimab) were not effective against the new emerging viral Omicron VOC [3-5]. The analysis  
89 is therefore restricted to 319 randomised patients, who were enrolled up to the interruption for possible  
90 futility, and was performed according to the SARS-CoV-2 VOC (Delta and Omicron).

91 **Methods**

92 *Trial design*

93 The trial was designed as a pragmatic, randomised, single-blind, non-inferiority, parallel group, multi-centre,  
94 controlled trial. Eligible subjects were outpatients aged 50 years or older, presenting with a positive test  
95 (either direct antigen or nucleic acid SARS-CoV-2) and mild to moderate COVID-19 symptoms within 4 days  
96 of the onset [11]. COVID-19 symptoms included cough, nasal congestion, sore throat, feeling hot or feverish,  
97 myalgia, fatigue, headache, anosmia/ageusia, nausea, vomiting, and/or diarrhoea [12]. Predefined exclusion  
98 criteria included a peripheral oxygen saturation level of 93% or less on room air, a respiratory rate of 30 or  
99 more breaths per minute, a heart rate of 125 or more beats per minute, and previous COVID-19 treatments  
100 with mAbs.

101 Participants were randomly assigned in a 1:1:1 ratio to receive a single intravenous infusion over a period of  
102 1 hour, consisting of a combination of 700 mg of bamlanivimab and 1400 mg of etesevimab or 500 mg of  
103 sotrovimab or a combination of 600 mg of casirivimab and 600 mg of imdevimab. The study drugs were  
104 diluted to 250 mL with normal saline. Patients were masked to treatment group assignment. Randomisation  
105 was computer-generated in permuted blocks with a stratification based on site. The allocated drug was  
106 revealed to the investigator using an online randomisation module within the REDCap data management  
107 system [13].

108 The trial was conducted in accordance with the principles of the Declaration of Helsinki, the international  
109 ethical guidelines of the Council for International Organizations of Medical Sciences, the International  
110 Council for Harmonisation Good Clinical Practice guidelines, and applicable laws and regulations. All  
111 patients or their legally authorized representatives provided written informed consent. This study is  
112 registered with ClinicalTrials.gov, NCT05205759, where details on the sample size determination are  
113 provided.

114 *Outcomes*

115 The composite primary outcome was the COVID-19 progression, defined as hospitalisation, need of  
116 supplemental oxygen therapy, or death from any cause through day 14. The presence of any of the three  
117 variables qualified the presence of the COVID-19 progression. Prespecified secondary outcomes were  
118 emergency department visits through day 28, all-cause mortality through day 28, duration of supplemental  
119 oxygen therapy, rate and duration of non-invasive ventilation and mechanical ventilation, and time to  
120 sustained patient-reported symptom resolution, which was defined as the absence of any symptom related to  
121 COVID-19 for at least 24 hours [14].

122 *Predictors*

123 The main predictor was the treatment regimen randomised at enrolment (bamlanivimab/etesevimab,  
124 casirivimab/imdevimab, and sotrovimab). All patients were assessed at baseline for the following predictors  
125 to be tested for association with the time to symptom resolution: age, sex, body mass index, relevant  
126 comorbidities (diabetes for which medication was warranted, cardiovascular disease [hypertension, coronary  
127 artery disease, congestive heart failure], chronic kidney disease, chronic liver disease, chronic pulmonary  
128 disease, active cancer, transplant, and other immunocompromising conditions), SARS-CoV-2 serological  
129 status (anti-spike IgG), and SARS-CoV-2 vaccination status. The SARS-CoV-2 serological status was  
130 categorized as serum antibody-negative (if test results were negative), serum antibody-positive (if test results  
131 were positive), or other (inconclusive or unknown results). The SARS-CoV-2 vaccination status was  
132 categorised as not vaccinated, partial or complete primary COVID-19 vaccination series administered more  
133 than 180 days before the enrolment, complete primary COVID-19 vaccination series administered 180 days  
134 or less before the enrolment, and booster vaccination [6]. These categories were further collapsed as not  
135 vaccinated and partial or complete primary COVID-19 vaccination series administered more than 180 days  
136 before the enrolment versus complete primary COVID-19 vaccination series administered 180 days or less  
137 before the enrolment and booster vaccination.

138 *Procedures and tools*

139 Outpatient visits were scheduled at baseline, 14±3 days and 30±3 days after the randomisation. Patients  
140 were considered lost to follow-up if they repeatedly did not participate in scheduled visits and could not be  
141 contacted by the investigators. Medical evaluation, vital signs recording, and laboratory tests were performed  
142 at each visit. If patients missed the visits, they were called by telephone to assess clinical conditions.

143 The SARS-CoV-2 serological status was assessed using LIAISON SARS-CoV-2 TrimericS IgG assay  
144 (DiaSorin), an indirect chemiluminescence immunoassay (CLIA) detecting IgG against the spike viral protein  
145 in its native trimeric conformation, which includes receptor-binding domain and N-terminal domain sites from  
146 the three subunit S1. According to the to manufacturer's instructions, Binding Antibody Units (BAU)/mL ≥  
147 33.8 were considered positive for anti-trimeric spike protein specific IgG antibodies.

148 Nasopharyngeal swabs were processed using MagMAX Viral/Pathogen Nucleic Acid Isolation Kit and  
149 KingFisher automated extraction system (ThermoFisher Scientific). Viral RNA was detected using  
150 COVIDSeq amplicon-based Next Generation Sequencing Test combined with COVIDSeq V4 Primer Pool  
151 (Illumina, Inc.). Sequencing libraries were synthesized using automated Microlab STAR liquid handler  
152 (Hamilton Company). Pooled samples were quantified using Qubit 2.0 fluorometer (Invitrogen Inc.). Next

153 generation sequencing was performed in 150 PE mode on NextSeq 550 Sequencing System (Illumina, Inc.)  
154 or MiSeq System (Illumina, Inc.) using the NextSeq 500/550 Mid Output Kit v2.5 or the Miseq Reagent Kit  
155 v3, respectively.

#### 156 *Statistical analysis*

157 For continuous variables, mean and standard deviation or median and IQR were calculated. For categorical  
158 variables, count and percentages were used. All outcome variables estimates were reported with 95%  
159 confidence interval (95% CI). Wilcoxon–Mann–Whitney test was used to compare independent groups. The  
160 association between categorical variables was assessed using the Fisher's test. The product-limit method  
161 (Kaplan and Meier) was used to describe the time to symptom resolution. Kaplan-Meier estimator and Cox  
162 proportional hazard model were used to assess the bivariate association of independent variables with the  
163 time-dependent outcome. Kaplan-Meier curves were plotted to depict the association between each  
164 predictor and symptom persistence and the Log-rank test was used to compare survival functions. Predictors  
165 associated with the time to symptom resolution with a probability < 0.05 were considered significant. A two-  
166 sided test of less than 0.05 was considered statistically significant in all analyses. All statistical analyses  
167 were performed with the use of Stata Version 17.0 (College Station, TX: StataCorp LP).

168

## 169 **Results**

170 The first patient was enrolled on December 9, 2021. Overall, 319 patients underwent randomisation by  
171 January 20, 2022, and were assigned to receive bamlanivimab/etesevimab (106 patients), sotrovimab (107  
172 patients), or casirivimab/imdevimab (106 patients). No patients reported previous SARS-CoV-2 infections.  
173 No patients withdrew from the trial. VOC data were available for 311 patients: 170 (53.3%) were infected  
174 with Omicron and 141 (44.2%) with Delta. Eight (2.5%) patients were excluded from this analysis due to the  
175 lack of SARS-CoV-2 VOC identification. Baseline characteristics of the population by type of SARS-CoV-2  
176 VOC are reported in Table 1.

177 Comparing symptoms at enrolment by VOC, anosmia/ageusia ( $p < 0.001$ ), nausea/vomiting ( $p < 0.001$ ), and  
178 feeling feverish or hot ( $p < 0.01$ ) were significantly more frequent among patients infected with Delta, while  
179 sore throat ( $p < 0.001$ ) was significantly more frequent among patients infected with Omicron. Serological  
180 positivity to anti-SARS-CoV-2 antibodies ( $p < 0.001$ ) and complete primary COVID-19 vaccination series  
181 within 180 days of the enrolment or booster vaccination ( $p < 0.001$ ) were significantly more frequent among  
182 patients infected with Omicron. Table 2 shows the bivariate Cox regression of symptom resolution predictors  
183 by type of SARS-CoV-2 VOC. No predictors were associated with the time to symptom resolution in both  
184 SARS-CoV-2 VOC.

### 185 *Delta VOC*

186 Baseline characteristics of 141 patients infected with Delta VOC by type of treatment are reported in Table 3.  
187 The main detected lineages were 34 AY.4 (24.1%), 33 AY.43 (23.4%), and 26 AY.122 (18.4%). 77 (54.6%)  
188 were male, median age was 65.7 years (IQR±15.4), 115 (78.8%) had at least one comorbidity, 74 (52.5%)  
189 were serum antibody-positive at the enrolment, and 23 (16.3%) received complete primary COVID-19  
190 vaccination series within 180 days of the enrolment or booster vaccination.

191 No disease progression was recorded. An emergency department visit without hospitalisation was observed  
192 once in one patient in the casirivimab/imdevimab group. This visit was not deemed to be related to COVID-  
193 19.

194 The median time to symptom resolution was 7 days (95% CI 7 - 13) in the bamlanivimab/etesevimab group,  
195 10 days (95% CI 7 - 14) in the sotrovimab group, and 10 days (95% CI 7 - 15) in the casirivimab/imdevimab  
196 group, not differing significantly among the overall groups of treatment (Log-rank Chi-square 0.22,  $p$  0.895)  
197 and for each comparison between treatment groups, namely bamlanivimab/etesevimab with  
198 casirivimab/imdevimab (Log-rank Chi-square 0.08,  $p$  0.776), sotrovimab with casirivimab/imdevimab (Log-  
199 rank Chi-square 0.40,  $p$  0.527), and bamlanivimab/etesevimab with sotrovimab (Log-rank Chi-square 0.01,  $p$



200 0.92). Figure 1 shows the survival time to symptom resolution by type of treatment in the Delta study  
201 population. The Cox regression analysis confirmed the non-significantly different effects upon the time to  
202 symptom resolution between casirivimab/imdevimab (reference standard according to the original trial  
203 protocol) and both bamlanivimab/etesevimab and sotrovimab (HR 1.052 and HR 1.097, 95% CI 0.704 -  
204 1.573 and 0.729 - 1.652,  $p$  0.805 and 0.657, respectively).

#### 205 *Omicron VOC*

206 Baseline characteristics of 170 patients infected with Omicron VOC by type of treatment are reported in  
207 Table 4. The detected lineages were 137 (80.6%) BA.1 and 33 (19.4%) BA.1.1. 101 (59.4%) were male,  
208 median age was 64.5 years (IQR±14.8), 135 (79.4%) had at least one comorbidity, 134 (78.8%) were serum  
209 antibody-positive at the enrolment, and 66 (38.8%) received complete primary COVID-19 vaccination series  
210 within 180 days of the enrolment or booster vaccination.

211 Two of 53 in the bamlanivimab/etesevimab group (3.8%) had disease progression leading to hospitalisation  
212 and no disease progression was recorded in the casirivimab/imdevimab and sotrovimab groups. The primary  
213 reasons for the two hospitalisations were deemed to be related to COVID-19. Both patients admitted to  
214 hospital were serum antibody-negative at enrolment and underwent non-invasive mechanical ventilation at  
215 hospital admission. One of these patients, a man aged 71-75 who received three doses of SARS-CoV-2  
216 vaccine and was affected by non-Hodgkin lymphoma under active chemotherapy and chronic heart failure,  
217 died 12 days after the symptom onset, 10 days after the administration of bamlanivimab/etesevimab, and 4  
218 days after the hospitalisation. The other patient, a man aged 66-70 who was not vaccinated against SARS-  
219 CoV-2 and was affected by obesity (body mass index, 31) and type 2 diabetes, was admitted 7 days after  
220 the symptom onset and 4 days after the administration of bamlanivimab/etesevimab; the length of his  
221 hospital stay was 22 days, including non-invasive mechanical ventilation for 13 days and low-flow oxygen  
222 therapy for 8 days. All-cause mortality through day 28 was the same as the one through day 14.

223 An emergency department visit without hospitalisation was observed once in one patient in the  
224 bamlanivimab/etesevimab group. This visit was not deemed to be related to COVID-19.

225 The median time to symptom resolution was 12 days (95% CI 8 - 14) in the bamlanivimab/etesevimab group,  
226 12 days in the casirivimab/imdevimab group (95% CI 9 - 16), and 7 days in the sotrovimab group (95% CI 6 -  
227 9), turning out to be 5 days shorter in the sotrovimab group compared to both bamlanivimab/etesevimab and  
228 casirivimab/imdevimab groups (HR 0.526 and HR 0.451, 95% CI 0.359 - 0.77 and 95% CI 0.303 - 0.669,  $p$   
229 0.001 and 0.0001, respectively). Figure 2 shows the survival time to symptom resolution by type of treatment  
230 in the Omicron study population. In each of the assessed subgroups (SARS-CoV-2 serological and

231 vaccination status), sotrovimab showed a significantly shorter time to symptom resolution compared to  
232 bamlanivimab/etesevimab and casirivimab/imdevimab, as reported in Table 5.

## 233 Discussion

234 During the SARS-CoV-2 pandemic, the paradigm of discovering and implementing mAb and antiviral  
235 treatments based on the randomised controlled trials has lagged significantly behind the new evidence  
236 coming from in-vitro studies, which has driven clinical recommendations causing ethical dilemmas on the  
237 continuation of ongoing trials. At the time of approving the MANTICO trial protocol (November 2021),  
238 casirivimab/imdevimab, bamlanivimab/etesevimab, and, later, sotrovimab were the only therapies  
239 recommended by the COVID-19 treatment guidelines for outpatients with mild to moderate COVID-19 at high  
240 risk of progressing to severe disease. Delta was the SARS-CoV-2 dominant VOC worldwide and the  
241 selection of the study mAbs was based on their in-vitro activity against the circulating variants and on the  
242 existing evidence of their clinical efficacy. After mid-December 2021, the Omicron VOC has been spreading  
243 worldwide, rapidly becoming the dominant VOC. Preliminary in-vitro studies on Omicron demonstrated  
244 numerous mutations in the gene encoding the spike protein, predicting a markedly reduced susceptibility to  
245 bamlanivimab/etesevimab and casirivimab/imdevimab [3-5]. According to these findings, FDA and AIFA  
246 have revised the emergency use authorization for bamlanivimab/etesevimab and casirivimab/imdevimab,  
247 halting their use, in line with the National Institutes of Health (NIH) COVID-19 Treatment Guidelines Panel,  
248 which advised against the use of these mAbs due to reduced activity against Omicron and because real-time  
249 testing to identify rare, non-Omicron variants is not readily available [15]. Therefore, the study enrolment in a  
250 real-life outpatient setting was prematurely discontinued for possible futility, after the inclusion of barely one  
251 fourth of the predefined sample size. Nevertheless, the recruitment timeframe provided a unique opportunity  
252 to collect data on the clinical efficacy of bamlanivimab/etesevimab, casirivimab/imdevimab, and sotrovimab  
253 in patients infected with Omicron.

254 Overall, the three treatment groups appeared to be balanced with respect to the predictors of outcomes in  
255 both Delta and Omicron population, as expected under the randomised allocation design. As reported by  
256 previous studies, patients infected with Omicron were more likely than those infected with Delta to present  
257 with symptoms limited to the upper respiratory tract and to have pre-existing immunity, considering that  
258 Omicron is better equipped than Delta to infect people with pre-existing immunity [16].

259 Considering the time to symptom resolution, no differences in the effect between treatment groups was  
260 found in Delta infections, whereas sotrovimab showed a significant benefit compared to  
261 bamlanivimab/etesevimab and casirivimab/imdevimab in patients infected with Omicron BA.1 and BA.1.1.  
262 This benefit was consistent across all Omicron subgroups, regardless of the SARS-CoV-2 serology and

263 vaccination status, confirming the preliminary in-vitro evidence on the mAbs activity against Omicron BA.1  
264 and BA.1.1 [3-5].

265 The disease progression was recorded in two patients infected with Omicron, who were both randomised to  
266 receive bamlanivimab/etesevimab. The absence of COVID-19 progression in two treatment groups  
267 (casirivimab/imdevimab and sotrovimab) in the Omicron study population, as well as in all three treatment  
268 groups in the Delta study population, could be influenced by the small sample size, the lower intrinsic-  
269 severity of Omicron, the high vaccination rate in Italy, and the prioritization of the booster vaccination for the  
270 elderly [17]. Nevertheless, these findings are consistent with recent in-vitro data showing that all study  
271 treatments were active against Delta and both casirivimab/imdevimab and sotrovimab retained a residual  
272 neutralizing activity against Omicron, whereas bamlanivimab/etesevimab did not neutralize Omicron [18-20].  
273 Additional clinical studies with an adequate sample size are required to determine whether  
274 casirivimab/imdevimab and sotrovimab are indeed effective in preventing COVID-19 progression due to  
275 Omicron infection. Should the role of casirivimab/imdevimab in preventing severe COVID-19 due to Omicron  
276 infections be confirmed, this mAb could represent a readily-available and well-tolerated treatment option in  
277 case of shortages of mAbs supplies and contraindication to other early COVID-19 treatments.

278 The MANTICO trial provides the first data on the clinical efficacy of bamlanivimab/etesevimab,  
279 casirivimab/imdevimab, and sotrovimab against Omicron VOC. There is an urgent need for adaptive clinical  
280 trials comparing anti-SARS-CoV-2 treatments by VOC to promptly inform recommendations for the  
281 management of early COVID-19.

282 **Competing interests**

283 Lolita Sasset has served as a paid consultant to Abbvie, Janssen, MSD, Gilead Sciences, Janssen, MSD  
284 and ViiV Healthcare; she does not have any financial competing interests with this study. Annamaria  
285 Cattelan has served as a paid consultant to Abbvie, Janssen, MSD, and received research fundings from  
286 Gilead Sciences, Janssen, MSD and ViiV Healthcare; she does not have any financial competing interests  
287 with this study. Carlo Tascini has received grants from Correvio, Biotest, Biomerieux, Gilead, Angelini, MSD,  
288 Pfizer, Thermofisher, Zambon, Shionogi, Avir Pharma and Hikma outside the submitted work in the last two  
289 years. The other authors do not have any financial and non-financial competing interests.

290 **References**

- 291
- 292 1. Petrilli CM, Jones SA, Yang J, et al. Factors associated with hospital admission and critical illness  
293 among 5279 people with coronavirus disease 2019 in New York City: prospective cohort study. *BMJ*,  
294 2020; 369: m1966. DOI: 10.1136/bmj.m1966
- 295 2. Huang C, Wang Y, Li X, et al. Clinical features of patients infected with 2019 novel coronavirus in  
296 Wuhan, China. *Lancet*, 2020; 395: 497-506. DOI: 10.1016/S0140-6736(20)30183-5
- 297 3. Cao, Y, Wang J, Jian F, et al. Omicron escapes the majority of existing SARS-CoV-2 neutralizing  
298 antibodies. *Nature*, 2022; 602: 657–663. DOI: 10.1038/s41586-021-04385-3
- 299 4. Planas, D., Saunders, N., Maes, P. *et al.* Considerable escape of SARS-CoV-2 Omicron to antibody  
300 neutralization. *Nature*, 2022; 602: 671–675. DOI: 10.1038/s41586-021-04389-z
- 301 5. Dejnirattisai W, Huo J, Zhou D, et al. SARS-CoV-2 Omicron-B.1.1.529 leads to widespread escape from  
302 neutralizing antibody responses. *Cell*, 2022; 185: 447-456. DOI: 10.1016/j.cell.2021.12.046
- 303 6. Andrews N, Stowe J, Kirsebom F, et al. (2022) Covid-19 vaccine effectiveness against the Omicron (B.  
304 1.1. 529) variant. *N Engl J Med* [in press]. DOI: 10.1056/NEJMoa2119451
- 305 7. Benton DJ, Wrobel AG, Xu P, et al. Receptor binding and priming of the spike protein of SARS-CoV-2  
306 for membrane fusion. *Nature*, 2020; 588: 327-330. DOI: 10.1038/s41586-020-2772-0
- 307 8. Dougan M, Nirula A, Azizad M, et al. Bamlanivimab plus Etesevimab in Mild or Moderate Covid-19. *N*  
308 *Engl J Med*, 2021; 385: 1382-1392. DOI: 10.1056/NEJMoa2102685
- 309 9. Weinreich DM, Sivapalasingam S, Norton T, et al. REGEN-COV Antibody Combination and Outcomes  
310 in Outpatients with Covid-19. *N Engl J Med*, 2021; 385: e81. DOI: 10.1056/NEJMoa2108163
- 311 10. Gupta A, Gonzalez-Rojas Y, Juarez E, et al. COMET-ICE Investigators. Early Covid-19 Treatment With  
312 SARS-CoV-2 Neutralizing Antibody Sotrovimab. *N Engl J Med*, 2021; 385: 1941-1950. DOI:  
313 10.1056/NEJMoa2107934
- 314 11. COVID-19 Treatment Guidelines Panel. Coronavirus Disease 2019 (COVID-19) Treatment Guidelines:  
315 clinical spectrum of SARS-CoV-2 infection. National Institutes of Health. Available  
316 at <https://www.covid19treatmentguidelines.nih.gov/overview/clinical-spectrum/>. Accessed 17 April 2022.
- 317 12. U.S. Department of Health and Human Services Food and Drug Administration. Assessing COVID19-  
318 Related Symptoms in Outpatient Adult and Adolescent Subjects in Clinical Trials of Drugs and  
319 Biological Products for COVID-19 Prevention or Treatment. Available at [https://www.fda.gov/regulatory-](https://www.fda.gov/regulatory-information/search-fda-guidance-documents/assessing-covid-19-related-symptoms-outpatient-adult-and-adolescent-subjects-clinical-trials-drugs)  
320 [information/search-fda-guidance-documents/assessing-covid-19-related-symptoms-outpatient-adult-](https://www.fda.gov/regulatory-information/search-fda-guidance-documents/assessing-covid-19-related-symptoms-outpatient-adult-and-adolescent-subjects-clinical-trials-drugs)  
321 [and-adolescent-subjects-clinical-trials-drugs](https://www.fda.gov/regulatory-information/search-fda-guidance-documents/assessing-covid-19-related-symptoms-outpatient-adult-and-adolescent-subjects-clinical-trials-drugs). Accessed 30 March 2022.
- 322 13. Harris PA, Taylor R, Thielke R, Payne J, Gonzalez N, Conde JG. Research electronic data capture  
323 (REDCap): a metadata-driven methodology and workflow process for providing translational research  
324 informatics support. *J Biomed Inform*, 2009; 42: 377-381. DOI: 10.1016/j.jbi.2008.08.010
- 325 14. U.S. Department of Health and Human Services Food and Drug Administration. COVID-19: developing  
326 drugs and biological products for treatment or prevention. Available at [https://www.fda.gov/regulatory-](https://www.fda.gov/regulatory-information/search-fda-guidance-documents/covid-19-developing-drugs-and-biological-products-treatment-or-prevention)  
327 [information/search-fda-guidance-documents/covid-19-developing-drugs-and-biological-products-](https://www.fda.gov/regulatory-information/search-fda-guidance-documents/covid-19-developing-drugs-and-biological-products-treatment-or-prevention)  
328 [treatment-or-prevention](https://www.fda.gov/regulatory-information/search-fda-guidance-documents/covid-19-developing-drugs-and-biological-products-treatment-or-prevention). Accessed 30 March 2022.
- 329 15. National Institutes of Health. COVID-19 Treatment Guidelines Panel. Coronavirus Disease 2019  
330 (COVID-19) Treatment Guidelines. Available at <https://www.covid19treatmentguidelines.nih.gov/>.  
331 Accessed 13 Feb 2022.
- 332 16. Nyberg T, Ferguson NM, Nash SG, et al. (2022) Comparative analysis of the risks of hospitalisation and  
333 death associated with SARS-CoV-2 Omicron (B.1.1.529) and Delta (B.1.617.2) variants in England: a  
334 cohort study. *Lancet* [in press]. DOI: 10.1016/S0140-6736(22)00462-7
- 335 17. Bhattacharyya RP and Hanage, WP. Challenges in Inferring Intrinsic Severity of the SARS-CoV-2  
336 Omicron Variant. *N Engl J Med*, 2022; 386: e14. DOI: 10.1056/NEJMp2119682
- 337 18. Takashita E, Kinoshita N, Yamayoshi S, et al. Efficacy of Antibodies and Antiviral Drugs against Covid-  
338 19 Omicron Variant. *N Engl J Med*, 2022; 386: 995-998. DOI: 10.1056/NEJMc2119407
- 339 19. Iketani, S., Liu, L., Guo, Y, et al. (2022) Antibody evasion properties of SARS-CoV-2 Omicron  
340 sublineages. *Nature* [in press]. DOI: 10.1038/s41586-022-04594-4
- 341 20. Takashita E, Kinoshita N, Yamayoshi S, et al. (2022) Efficacy of Antiviral Agents against the SARS-CoV-  
342 2 Omicron Subvariant BA.2. *N Engl J Med* [in press]. DOI: 10.1056/NEJMc2201933

343 **Table 1 - Baseline characteristics of the overall study population by type of Variant of Concern**

Characteristic	Delta N = 141	Omicron N = 170	p value
<b>Sex (male) – n (%)</b>	77 (54.61)	101 (59.41)	0.421
<b>Age – median (interquartile range) [range]</b>	65.7 (15.4) [50-92]	64.5 (14.8) [50-90]	0.585
<b>Smoking status – n (%)</b>			
Smoker	8 (5.67)	24 (14.12)	<b>0.015</b>
Former smoker	32 (22.70)	28 (16.47)	0.194
Non smoker	101 (71.63)	118 (69.41)	0.709
<b>Body Mass Index – n (%)</b>			
≤29	100 (70.92)	132 (77.65)	0.192
≥30	41 (29.08)	38 (22.35)	0.192
<b>SARS-CoV-2 serological status – n (%)</b>			
Antibody-positive	74 (52.48)	134 (78.82)	<b>&lt;0.001</b>
Antibody-negative	64 (45.39)	35 (20.59)	<b>&lt;0.001</b>
Other	3 (2.13)	1 (0.59)	
<b>Anti-SARS-CoV-2 vaccination status – n (%)</b>			
3 doses or 2 doses ≤ 120 days	23 (16.31)	66 (38.82)	<b>&lt;0.001</b>
1 or 2 doses ≥ 120 days or not vaccinated	113 (80.14)	99 (58.24)	<b>&lt;0.001</b>
Other	5 (3.55)	5 (2.94)	
<b>Comorbidities – n (%)</b>			
Diabetes	3 (2.13)	6 (3.53)	0.519
Cardiovascular disease	57 (40.43)	61 (35.88)	0.414
Chronic kidney disease	7 (4.96)	9 (5.29)	1.000
Chronic liver disease	4 (2.84)	12 (7.06)	0.061
Chronic pulmonary disease	19 (13.48)	33 (19.41)	0.173
Immunocompromising conditions	22 (15.60)	39 (22.94)	0.116
<b>Symptoms at enrolment – n (%)</b>			
Cough	99 (70.21)	118 (69.41)	0.902
Nasal congestion	70 (49.65)	69 (40.59)	0.136
Sore throat	33 (23.40)	69 (40.59)	<b>&lt;0.001</b>
Feeling hot or feverish	103 (73.05)	99 (58.24)	<b>0.009</b>
Myalgia	47 (33.33)	54 (31.76)	0.808
Fatigue	49 (34.75)	75 (44.12)	0.104
Headache	60 (42.55)	60 (35.29)	0.200
Anosmia/ageusia	41 (29.08)	4 (2.35)	<b>&lt;0.001</b>
Nausea/vomiting	28 (19.86)	11 (6.47)	<b>&lt;0.001</b>
Diarrhoea	15 (10.64)	12 (7.06)	0.314
<b>Serum C-reactive protein level – n</b>			
Mean (standard deviation)	140 20.26 (28.66)	161 14.29 (21.72)	<b>0.026</b>

344

345 **Table 2 – Bivariate Cox regression of symptom resolution predictors by type of Variant of Concern**  
 346

Predictor	Delta		Omicron	
	Hazard ratio (95% CI)	p value	Hazard ratio (95% CI)	p value
Gender	0.796 (0.569 - 1.113)	0.182	0.836 (0.613 - 1.139)	0.257
Age	1.0005 (0.984 - 1.017)	0.952	0.996 (0.980 - 1.012)	0.626
Body Mass Index	1.035 (0.716 - 1.495)	0.855	1.171 (0.815 - 1.684)	0.393
SARS-CoV-2 serological status	0.934 (0.667 - 1.307)	0.690	0.823 (0.566 - 1.196)	0.307
Anti-SARS-CoV-2 vaccination status	1.299 (0.827 - 2.040)	0.257	0.906 (0.662 - 1.24)	0.539
Diabetes	0.633 (0.34 - 1.179)	0.150	1.19 (0.758 - 1.879)	0.444
Cardiovascular disease	0.964 (0.686 - 1.354)	0.831	0.852 (0.621 - 1.168)	0.319
Chronic kidney disease	1.24 (0.577 - 2.665)	0.581	1.125 (0.573 - 2.209)	0.733
Chronic liver disease	2.417 (0.761 - 7.683)	0.135	1.33 (0.738 - 2.401)	0.341
Chronic pulmonary disease	0.778 (0.461 - 1.313)	0.346	0.976 (0.666 - 1.431)	0.902
Immunocompromising conditions	0.997 (0.597 - 1.664)	0.989	0.802 (0.55 - 1.169)	0.252

347



348  
349

**Table 3 - Baseline characteristics of the study population infected with Delta by type of treatment**

Characteristic	Total N = 141	Sotrovimab N = 44	Bamlanivimab/ Etesevimab N = 47	Casirivimab/ Imdevimab N = 50
<b>Sex (male) – n (%)</b>	77 (54.61)	23 (52.27)	25 (53.19)	29 (58.00)
<b>Age – median (interquartile range) [range]</b>	65.7 (15.4) [50-92]	65.8 (16.4) [50-90]	68.6 (11.8) [50-92]	63.2 (12) [50-89]
<b>Smoking status – n (%)</b>				
Smoker	8 (5.67)	2 (4.45)	4 (8.51)	2 (4.00)
Former smoker	32 (22.70)	8 (18.18)	11 (23.40)	13 (26.00)
Non smoker	101 (71.63)	34 (77.27)	32 (68.09)	35 (70.00)
<b>Body Mass Index – n (%)</b>				
≤29	100 (70.92)	29 (65.91)	35 (74.47)	36 (72.00)
≥30	41 (29.08)	15 (34.09)	12 (25.53)	14 (28.00)
<b>SARS-CoV-2 serological status – n (%)</b>				
Antibody-positive	74 (52.48)	22 (50.00)	30 (63.83)	22 (44.00)
Antibody-negative	64 (45.39)	22 (50.00)	16 (34.04)	26 (52.00)
Other	3 (2.13)	0	1 (2.13)	2 (4.00)
<b>Anti-SARS-CoV-2 vaccination status – n (%)</b>				
3 doses	16 (11.35)	6 (13.64)	3 (6.38)	7 (14.00)
2 doses ≤ 120 days	7 (4.96)	2 (4.55)	2 (4.26)	3 (6.00)
1 or 2 doses ≥ 120 days	55 (39.01)	16 (36.36)	24 (51.06)	15 (30.00)
Not vaccinated	58 (41.13)	18 (40.91)	16 (34.04)	24 (48.00)
Other	5 (3.55)	2 (4.55)	2 (4.26)	1 (2.00)
<b>Comorbidities – n (%)</b>				
Diabetes	3 (2.13)	0	2 (4.26)	1 (2.00)
Cardiovascular disease	57 (40.43)	18 (40.91)	20 (42.55)	19 (38.00)
Chronic kidney disease	7 (4.96)	1 (2.27)	2 (4.26)	4 (8.00)
Chronic liver disease	4 (2.84)	1 (2.27)	1 (2.13)	2 (4.00)
Chronic pulmonary disease	19 (13.48)	7 (15.91)	5 (10.64)	7 (14.00)
Immunocompromising conditions	22 (15.60)	6 (13.64)	7 (14.89)	9 (18.00)
<b>Symptoms at enrolment – n (%)</b>				
Cough	99 (70.21)	30 (68.18)	36 (76.60)	33 (66.00)
Nasal congestion	70 (49.65)	20 (45.45)	22 (46.81)	28 (56.00)
Sore throat	33 (23.40)	11 (25.00)	8 (17.02)	14 (28.00)
Feeling hot or feverish	103 (73.05)	31 (70.45)	36 (76.60)	36 (72.00)
Myalgia	47 (33.33)	11 (25.00)	16 (34.04)	20 (40.00)
Fatigue	49 (34.75)	14 (31.82)	15 (31.91)	20 (40.00)
Headache	60 (42.55)	15 (34.09)	15 (31.91)	30 (60.00)
Anosmia/ageusia	41 (29.08)	13 (29.55)	15 (31.91)	13 (26.00)
Nausea/vomiting	28 (19.86)	6 (13.64)	9 (19.15)	13 (26.00)
Diarrhoea	15 (10.64)	1 (2.27)	5 (10.64)	9 (18.00)
<b>Serum C-reactive protein level – n</b>	140	43	46	51
Mean (standard deviation)	20.26 (28.66)	22.15 (33.04)	25.27 (34.20)	14.14 (15.78)

350

351 **Table 4 – Baseline characteristics of the study population infected with Omicron by type of treatment**

Characteristic	Total N = 170	Sotrovimab N = 61	Bamlanivimab/ Etesevimab N = 57	Casirivimab/ Imdevimab N = 52
<b>Sex (male) – n (%)</b>	101 (59.41)	36 (59.02)	30 (52.63)	35 (67.31)
<b>Age – median (interquartile range) [range]</b>	64.5 (14.8) [50-90]	64.2 (15) [50-90]	64.8 (14.6) [50-86]	65.3 (14.8) [50-86]
<b>Smoking status – n (%)</b>				
Smoker	24 (14.12)	6 (9.84)	11 (19.30)	7 (13.46)
Former smoker	28 (16.47)	9 (14.75)	11 (19.30)	8 (15.38)
Non smoker	118 (69.41)	46 (75.41)	35 (61.40)	37 (71.15)
<b>Body Mass Index – n (%)</b>				
≤29	132 (77.65)	53 (86.89)	42 (73.68)	37 (71.15)
≥30	38 (22.35)	8 (13.11)	15 (26.32)	15 (28.85)
<b>SARS-CoV-2 serological status – n (%)</b>				
Antibody-positive	134 (78.82)	45 (73.77)	45 (78.95)	44 (84.62)
Antibody-negative	35 (20.59)	16 (26.23)	11 (19.30)	8 (15.38)
Other	1 (0.59)	0	1 (1.75)	0
<b>Anti-SARS-CoV-2 vaccination status – n (%)</b>				
3 doses	62 (36.47)	24 (39.34)	19 (33.33)	19 (36.54)
2 doses ≤ 120 days	4 (2.35)	2 (3.28)	1 (1.75)	1 (1.92)
1 or 2 doses ≥ 120 days	57 (33.53)	16 (26.23)	22 (38.60)	19 (36.54)
Not vaccinated	42 (24.71)	18 (29.51)	13 (22.81)	11 (21.15)
Other	5 (2.94)	1 (1.64)	2 (3.51)	2 (3.85)
<b>Comorbidities – n (%)</b>				
Diabetes	6 (3.53)	2 (3.28)	2 (3.51)	2 (3.85)
Cardiovascular disease	61 (35.88)	18 (29.51)	17 (29.82)	26 (50.00)
Chronic kidney disease	9 (5.29)	4 (6.56)	2 (3.51)	3 (5.77)
Chronic liver disease	12 (7.06)	4 (6.56)	5 (8.77)	3 (5.77)
Chronic pulmonary disease	33 (19.41)	11 (18.03)	15 (26.32)	7 (13.46)
Immunocompromising conditions	39 (22.94)	17 (27.87)	11 (19.30)	11 (21.15)
<b>Symptoms at enrolment – n (%)</b>				
Cough	118 (69.41)	42 (68.85)	37 (64.91)	39 (75.00)
Nasal congestion	69 (40.59)	28 (45.90)	25 (43.86)	16 (30.77)
Sore throat	69 (40.59)	22 (36.07)	27 (47.37)	20 (38.46)
Feeling hot or feverish	99 (58.28)	37 (60.66)	32 (56.14)	30 (57.69)
Myalgia	54 (31.76)	20 (32.79)	18 (31.58)	16 (30.77)
Fatigue	75 (44.12)	31 (50.82)	20 (35.09)	24 (46.15)
Headache	60 (35.29)	23 (37.70)	20 (35.09)	17 (32.69)
Anosmia/ageusia	4 (2.35)	1 (1.64)	2 (3.51)	1 (1.92)
Nausea/vomiting	11 (6.47)	4 (6.56)	5 (8.77)	2 (3.85)
Diarrhoea	12 (7.06)	5 (8.20)	4 (7.02)	3 (5.77)
<b>Serum C-reactive protein level – n</b>				
Mean (standard deviation)	161 14.29 (21.72)	57 12.65 (15.97)	56 17.19 (31.07)	48 12.87 (12.55)

352

353 **Table 5 – Cox regression to assess the difference between treatment effects upon the time to**  
 354 **symptom resolution in selected subgroups of interest in the study population infected with Omicron**

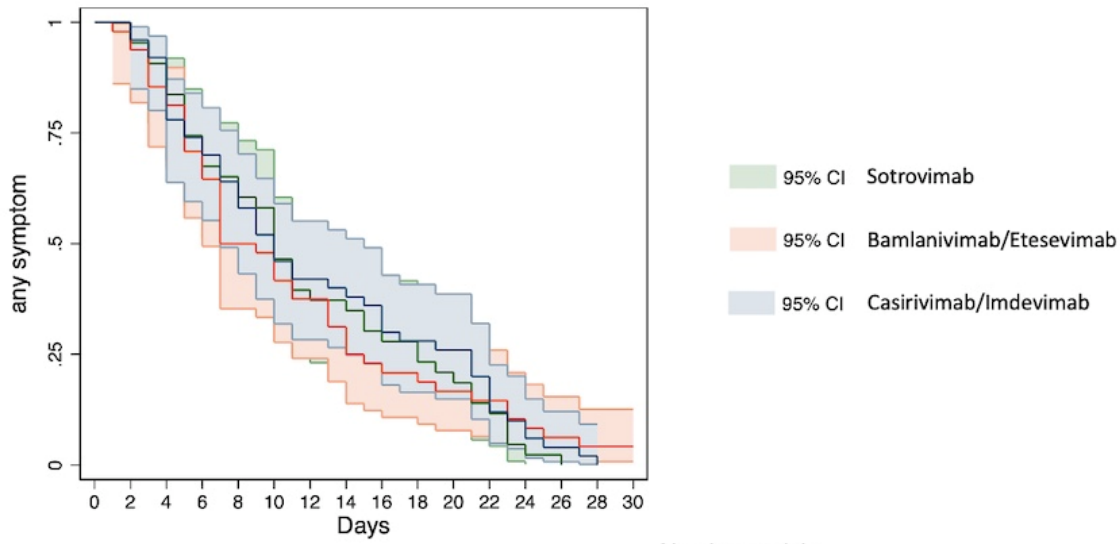
Subgroup	Sotrovimab	Bamlanivimab/etesevimab		Casirivimab/imdevimab	
	Hazard ratio	Hazard ratio (95% CI)	p value	Hazard ratio (95% CI)	p value
<b>SARS-CoV-2 serological status</b>					
Antibody-negative	1	0.345 (0.158 - 0.753)	<b>0.008</b>	0.415 (0.177 - 0.973)	<b>0.043</b>
Antibody-positive	1	0.398 (0.221 - 0.714)	<b>0.002</b>	0.318 (0.175 - 0.575)	<b>&lt;0.001</b>
<b>Anti-SARS-CoV-2 vaccination status</b>					
1 or 2 doses ≥ 120 days or not vaccinated	1	0.472 (0.289 - 0.772)	<b>0.003</b>	0.495 (0.298 - 0.821)	<b>0.006</b>
3 doses or 2 doses ≤ 120 days	1	0.504 (0.284 - 0.894)	<b>0.019</b>	0.346 (0.194 - 0.62)	<b>&lt;0.001</b>

355

356 **Figure 1 - Survival time to symptom resolution by type of treatment in the study population infected**

357 **with Delta**

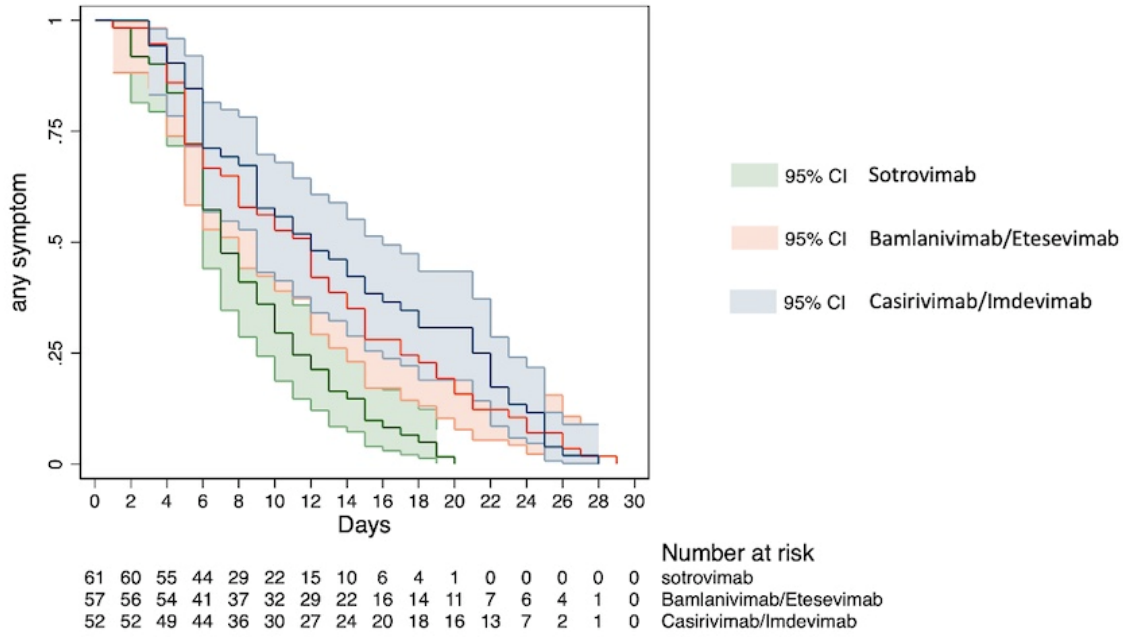
358



											Number at risk						
											sotrovimab	Bamlanivimab/Etesevimab	Casirivimab/Imdevimab				
43	43	39	32	28	25	17	16	13	12	9	6	2	1	0	0		
48	47	41	34	24	23	18	15	11	10	8	7	5	3	2	2		
50	50	46	37	32	26	21	20	18	14	13	10	5	2	1	0		

359  
 360  
 361  
 362  
 363

364 **Figure 2 - Survival time to symptom resolution by type of treatment in the study population infected**  
 365 **with Omicron**



366