



46 **Abstract**

47 **Introduction.** The COVID-19 pandemic brought an urgent need to discover novel effective  
48 therapeutics for patients hospitalized with severe COVID-19. The ISPY COVID trial was  
49 designed and implemented in early 2020 to evaluate investigational agents rapidly and  
50 simultaneously on a phase 2 adaptive platform. This manuscript outlines the design, rationale,  
51 implementation, and challenges of the ISPY COVID trial during the first phase of trial activity  
52 from April 2020 until December 2021.

53  
54 **Methods and analysis.** The ISPY COVID Trial is a multi-center open label phase 2 platform  
55 trial in the United States designed to evaluate therapeutics that may have a large effect on  
56 improving outcomes from severe COVID-19. The ISPY COVID Trial network includes academic  
57 and community hospitals with significant geographic diversity across the country. Enrolled  
58 patients are randomized to receive one of up to four investigational agents or a control and are  
59 evaluated for a family of two primary outcomes—time to recovery and mortality. The statistical  
60 design uses a Bayesian model with “stopping” and “graduation” criteria designed to efficiently  
61 discard ineffective therapies and graduate promising agents for definitive efficacy trials. Each  
62 investigational agent arm enrolls to a maximum of 125 patients per arm and is compared to  
63 concurrent controls. As of December 2021, 11 investigational agent arms had been activated,  
64 and 8 arms were complete. Enrollment and adaptation of the trial design is ongoing.

65  
66 **Ethics and dissemination.** ISPY COVID operates under a central institutional review board via  
67 Wake Forest School of Medicine IRB00066805. Data generated from this trial will be reported in  
68 peer reviewed medical journals.

69  
70 **Trial registration number.** Clinicaltrials.gov registration number NCT04488081  
71

72

73 **Strengths and limitations of this study**

- 74 • The ISPY COVID Trial was developed in early 2020 to rapidly and simultaneously  
75 evaluate therapeutics for severe COVID-19 on an adaptive open label phase 2 platform
- 76 • The ISPY COVID Adaptive Platform Trial Network is an academic-industry partnership  
77 that includes academic and community hospitals spanning a wide geographic area  
78 across the United States
- 79 • Of December 2021, 11 investigational agent arms have been activated on the ISPY  
80 COVID Trial Platform
- 81 • The ISPY COVID Trial was designed to identify therapeutic agents with a large clinical  
82 effect for further testing in definitive efficacy trials—limitations to this approach include  
83 the risk of a type 2 error

84

85

86

87

88

89

90

91

92

93

94

95

96

## 97 **Introduction**

98 Despite decades of promising pre-clinical studies and large well-organized clinical trials, the  
99 discovery of effective pharmacotherapeutics in critically ill patients has been exceedingly rare.  
100 The COVID-19 pandemic brought an unprecedented level of attention and urgency to uncover  
101 therapies for severe acute respiratory failure and acute respiratory distress syndrome (ARDS)  
102 related to COVID-19. New approaches to critical care clinical trials that may rapidly screen  
103 potentially effective therapies are urgently needed.<sup>1</sup> In the early phase of the pandemic, in the  
104 winter of 2019-2020, global efforts were made to establish clinical trials and trial networks to  
105 investigate therapies for COVID-19. In this report, we describe the I-SPY COVID Trial, a phase  
106 2 adaptive platform randomized trial in the United States designed to test and identify drugs with  
107 a large impact on improving recovery of hospitalized patients with severe COVID-19. This report  
108 focuses on the (1) trial rationale and background, (2) design, (3) operations, (4) statistical plan,  
109 (5) challenges and limitations of this approach in the context of the evolving COVID-19  
110 pandemic during 2020-2021. This report focuses on the initial design of the I-SPY COVID Trial  
111 and reflects the study protocol conduct from initial implementation in April 2020 through  
112 December 31<sup>st</sup> 2021.

113

## 114 **Methods and Analysis**

### 115 *Design: Rationale, Background, Eligibility Criteria and Exclusions*

116 The I-SPY COVID Trial was inspired in large part by the I-SPY 2 Trial, a phase 2 adaptive  
117 platform clinical trial designed to discover novel treatments for patients with early-stage breast  
118 cancer with high risk for early recurrence.<sup>2</sup> The I-SPY COVID Trial is a phase 2, multi-center,  
119 multi-arm, adaptive, open-label, randomized controlled trial designed to rapidly screen agents to  
120 identify those with potential impact to meaningfully improve outcomes for severe COVID-19  
121 patients (**Figure 1**). Patients with confirmed COVID-19 and a modified World Health

122 Organization COVID-19 level of  $\geq 5$  (defined here as requiring  $\geq 6$ L/min nasal oxygen) who meet  
123 none of the exclusion criteria are eligible for the interventional and observational arms of the trial  
124 (**Table 1 & Figure 2**). Initially, time to recovery (defined as reaching COVID-19 level  $\leq 4$  for at  
125 least two consecutive days) was the primary endpoint, and overall mortality a key secondary  
126 endpoint (**Supplemental Table 1**). Following discussions with the Data Monitoring Committee

**Table 1.** Master Inclusion Exclusion Criteria of the ISPY COVID Platform Trial

**Inclusion** (must meet all)

- Age  $\geq 18$  years of age
- Admitted to the hospital and treated with high flow oxygen ( $\geq 6$ liters nasal cannula or mask delivery) or intubated and mechanically ventilated for the treatment of established or presumed COVID-19
- Informed consent signed by patient or proxy
- Confirmation of SARS-CoV-2 infection by PCR or antigen testing prior to randomization

**Exclusion** (any single excludes patient from trial)

- Pregnant or breastfeeding
- History of allergic reactions attributed to compounds of similar chemical or biologic composition to study agent based on review of medical record and patient history
- Comfort measures only
- Acute or chronic liver disease with a Child-Pugh score  $> 11$
- Resident for more than six months at a skilled nursing facility
- Estimated mortality greater than 50% over the next six months from underlying chronic conditions
- Time since requirement for high flow oxygen or mechanical ventilation greater than 5 days
- Anticipated transfer to another hospital which is not a study site expected within 72 hours
- End-stage kidney disease or acute kidney injury requiring dialysis
- Co-enrolled in another clinical trial of a pharmacologic agent with an Investigational New Drug (IND) assignment

127 and the Food and Drug Administration, mortality was combined with time to recovery as a family  
128 of two primary endpoints on January 15<sup>th</sup> 2021.

129

130 *Design: Study Backbone and Investigational Agent Selection*

131 Patients who meet inclusion/exclusion criteria are randomized to backbone therapy alone (the  
132 control arm) or backbone therapy plus 1 of up to 4 investigational agents or agent combinations.  
133 The initial backbone treatment for the trial was assigned following review of data that emerged

134 in mid 2020 on the use of remdesivir and dexamethasone for COVID-19 from separate clinical  
135 trials.<sup>3,4</sup> During the conduct of the trial, the investigators have regularly re-evaluated the  
136 selection and dosing of dexamethasone, remdesivir and other potential therapies as new data  
137 has become available. As new therapies became available for COVID-19 (e.g. baricitinib and  
138 tocilizumab) during the conduct of the trial, the case report forms were modified to capture the  
139 clinical use of these concomitant medications.

140

141 The I-SPY COVID Agents Committee was formed to develop a process for evaluation of  
142 potential agents into the I-SPY COVID Trial. Overall agent prioritization is based on the  
143 estimated assessment of likelihood to reduce mortality and time to recovery. More specific rank  
144 criteria include a range of biologic, logistical and safety considerations as well as manufacturing  
145 supply chain capability (**Table 2**). In addition to these characteristics, practical considerations  
146 relate to the adaptive trial design, available resources for funding the testing of the therapy, and  
147 an accelerated timeline of the public health crisis. These selection criteria include a requirement  
148 for minimal drug-specific patient exclusions and low risk for drug-drug interactions in critically ill  
149 patients. High priority is assigned to the presence of a sufficient drug supply and mechanism to  
150 rapidly scale up drug production to reach a large population if treatment efficacy is established.  
151 When agents with overlapping mechanisms of action are considered, priority is assigned to one  
152 agent in that class that ranks higher in other rank criteria in order to avoid testing multiple  
153 agents within a single biologic pathway.

154

155 Members of the Agents Committee with complementary expertise in acute lung injury, critical  
156 illness, and pharmacology evaluate each potential agent and present the higher priority  
157 candidate agents to the entire investigator group. In some instances, staff from the  
158 manufacturing company of potential agents are invited to present data directly to the  
159 investigators. However, company representatives are excluded from all follow-up deliberations  
160 and decisions on inclusion of the agent in the trial. In these subsequent discussions, pro- and

**Table 2.** Agent Selection Criteria

- Mechanism of action and biologic plausibility
- Approved drug indications and dosing
- Safety and efficacy in established use and approved indications
- Expected safety and toxicity in patients with critical illness and hypoxemia
- Adverse events of special interest
- Drug-specific exclusion criteria
- Drug-drug interactions
- Proposed trial dose, route of administration, duration of treatment
- Dose adjustment requirements and drug discontinuation criteria
- Available drug supply and production capacity

161 con- arguments are developed and priorities for additional background research established. In  
162 twice-monthly follow-up reviews, the investigator group reaches consensus-based decisions on  
163 whether or not the agent should be included in the trial.

164

165 Throughout the agent review process, individual investigators voluntarily identify agents to  
166 support in the trial and serve as agent “chaperones” for the duration of the trial. Each agent is  
167 assigned two to three investigator chaperones. If the agent is selected for inclusion, the  
168 chaperones prepare the materials necessary for IRB approval and implementation, including  
169 agent-specific appendices to the master protocol, informed consent documents and technical  
170 guides on dosing and administration. Chaperones work closely with the clinical trial operations  
171 group to nest the agent appropriately in the context of the I-SPY Trial platform. Chaperones  
172 remain available to study site personnel throughout the treatment period to provide assistance  
173 on dosing, side effects and technical issues. The common inclusion/exclusion criteria of the  
174 platform necessitate minimizing agent-specific exclusion criteria. Therefore, significant efforts  
175 are made by chaperones and agent sponsors to streamline and eliminate as many as possible  
176 agent-specific exclusions. In instances where agent-specific exclusions become numerous, thus  
177 limiting the generalizability of the agent, the proposed agent is not selected for placement on the  
178 platform.

179

180 Investigative agents were initially identified through partnership with COVID-19 Research and  
181 Development Alliance (COVID-19 R&D),<sup>5</sup> a consortium of research and development leaders in  
182 industry formed to accelerate new COVID-19 therapies and vaccines. These initially proposed  
183 agents were identified by COVID-19 R&D as having high probability of becoming successfully  
184 repurposed for COVID-19 treatment. Of the 11 agents initially identified in this process, three  
185 were selected for trial inclusion (apremilast, icatibant and cenicriviroc). Subsequent agents  
186 were brought forward for consideration through direct communication to the Agents Committee  
187 by trial investigators with expertise with a particular repurposed agent, by pharmaceutical  
188 companies responding to the opening of the trial, the United States government as well as  
189 informal contacts in academia. Between April 2020 and November 2021, over 70 individual



190 agents were reviewed in detail, including 12 that were included in 11 trial arms (one arm was a  
191 combination of famotidine and celecoxib). Of the 8 completed arms, 5 were solicited by the  
192 pharmaceutical industry and the remainder were nominated the United States government and  
193 by trial investigators. A figure of the activated arms on the ISPY COVID trial from August 2020  
194 through December 2021 are provided in **Supplemental Figure 1**.

195

#### 196 *Design: Patient and Public Involvement*

197 The primary outcomes of the ISPY COVID Trial were designed to focus on patient-centered  
198 outcomes. Both recovery of respiratory function and mortality are patient-centered endpoints.  
199 Due to the urgent nature of the pandemic, no COVID-19 patients were included in the  
200 development of the ISPY COVID Trial Protocol. The randomization followed by consent process  
201 outlined in this manuscript was developed using the process employed in the ISPY 2 Trial<sup>6</sup> to  
202 reduce burden on participants and surrogates. During the development of the ISPY COVID  
203 Trial, this method was presented to the ISPY IRB Working group, which includes a patient  
204 advocate. The ISPY IRB Working group found this method to be more patient-centered and  
205 supported this method to be used in the ISPY COVID trial.

206

#### 207 *Operations: Randomization and Consent*

208 Up to four investigational agents can be active in I-SPY COVID at any given time. Patients are  
209 randomly assigned with equal probability to receive any of the investigational agents, while a  
210 higher proportion of participants are assigned to the backbone control arm. For instance, the  
211 ratio of randomization is 1.4:1:1:1:1 for the control arm to the four investigational arms (the  
212 ratios of control to interventional changes depending on the number of active agents in the  
213 study, with ratios 1:1 with one active agent, 1.2:1:1 with two active agents, and 1.3:1:1:1 with  
214 three active agents). Randomization is performed centrally and is stratified by site and modified  
215 WHO COVID-19 status at study enrollment.

216

217 To facilitate a patient-centered consent process, randomization is performed prior to consent.  
218 This order of the randomization and consent process has worked well in I-SPY 2 and has the  
219 advantages of avoiding a two-step consent process and simplifying patient information.<sup>67</sup> That  
220 is, an individual patient interested in the trial only receives information about the one  
221 investigational agent that they are randomized to receive (which could also be the control arm).  
222 The disadvantage of this consent approach is that there is a risk of generating different accrual  
223 patterns across the trial arms, due to different perceived risks by participants during consent.  
224 Therefore accrual across arms must be closely monitored. Patients who do not consent to be  
225 randomized enter an observational cohort (using an IRB-approved waiver of consent  
226 mechanism), where disease outcomes and other endpoints are tracked. Patients with an agent-  
227 specific exclusion to a study drug upon randomization move into the backbone control arm. The  
228 study screening, randomization and consent process in relation to investigational drug arm,  
229 control arm or observational arm is shown in **Figure 2**.

230

231 *Rationale: The I-SPY COVID Trial-Endpoints and Open Label Design*

232 We explicitly decided to focus on severe COVID-19, defined by clinical and physiologic criteria.  
233 This rationale is reflected in the choice of the primary endpoints of the trial. Time to recovery  
234 and mortality were thought to be important outcomes for managing the health crisis created by  
235 the global pandemic; faster time to recovery helps to increase hospital bed availability and to  
236 avoid hospital strain – a key objective during the pandemic. Mortality remains the optimal  
237 primary outcome in the field of critical care; while modification of mortality is challenging to  
238 achieve, it is still the most important patient-centered outcome.

239

240 Multiple reasons exist for the open label design for a phase 2 trial during the pandemic. Rapidly  
241 developing and executing a platform trial, whereby multiple agents are tested simultaneously,

242 and new agents replace outgoing agents in succession, requires flexible study operations.  
243 Because different agents in the platform will have different routes of administration, dosing  
244 schedules, and durations, the use of placebos for each agent was deemed complex and  
245 unwieldy, resulting in testing fewer active agents for COVID-19. Some platform trials have used  
246 a pooled placebo concept, though this option remained impractical given the number of agents  
247 that were planned to be rapidly tested during the pandemic. While the open-label approach  
248 does potentially allow for investigator bias, a similar open label approach has also been used  
249 successfully in the RECOVERY Platform for COVID-19 in the United Kingdom.<sup>8</sup>  
250 Ultimately, the open label design of the I-SPY COVID trial was deemed to be the most efficient  
251 approach to rapidly and safely evaluate novel therapeutics for severe COVID-19, with the goal  
252 that promising agents could be further tested in a closed, double blinded placebo-controlled  
253 format upon trial graduation. Lastly, we chose to include a parallel observational cohort that  
254 could be included to better understand demographics and outcomes of COVID-19 patients with  
255 rapidly changing therapeutic standards and to provide generalizability against a non-study  
256 population.

257

### 258 *Design: Biomarkers and Biospecimen Collections*

259 Severe COVID-19 is characterized by an inflammatory host response to the SARS-CoV-2 virus;  
260 however, even within the group of patients with severe and critical COVID-19, there is  
261 potentially important biologic heterogeneity that may influence treatment response.<sup>9</sup> The I-SPY  
262 COVID trial was designed to collect key biospecimens from enrolled patients in order to permit  
263 subsequent analyses of heterogenous treatment effect, to identify potentially important  
264 mechanisms that relate to clinical outcomes, and enable pharmacokinetic evaluations of the  
265 novel therapies being tested. Biospecimens include plasma and whole blood RNA (Days 1, 3  
266 and 7), serum and peripheral blood mononuclear cells (PBMCs) (Days 1 and 7), urine (Days 1

267 and 3), and DNA (Day 1 only). Examples of the type of analyses that will be conducted include  
268 testing whether previously identified phenotypes of ARDS are relevant in COVID-19<sup>9</sup>, replicating  
269 innovative analyses of immunotypes within severe COVID-19,<sup>10</sup> testing for anti-Type I interferon  
270 antibodies in serum from enrolled patients,<sup>11</sup> and measuring plasma viral antigen levels and  
271 SARS-CoV-2 endogenous antibody levels. In addition to these exploratory biomarker analyses,  
272 biomarkers measured in clinical labs at enrolling sites such as D-dimers, CRP, and the absolute  
273 neutrophil count/absolute lymphocyte ratio are being recorded in order to test for prognostic  
274 and/or predictive enrichment value.

275

#### 276 *Design: Statistical Analysis Plan*

277 Bayesian survival regression models are used to model the hazard functions for the two events  
278 of interest: (i) recovery (treating death as a competing event); and (ii) overall death. We used  
279 Bayesian proportional-hazard Weibull models with weakly informative priors to model the cause-  
280 specific hazard function for recovery (treating death prior to recovery as a competing event) as a  
281 function of study arm, adjusting for baseline COVID-19 level. Similarly, Bayesian proportional-  
282 hazard Weibull models were used to model the hazard function for all-cause mortality.

283 Importantly, concurrent controls are used so that the control group is chosen from the same  
284 population as the investigational agent group over time given the potential of changing  
285 background recovery and mortality rates in an evolving pandemic. The primary analyses are  
286 performed on the intention-to-treat (ITT) population, which includes those randomized patients  
287 who signed the informed consent.

288

289 Due to the randomization followed by consent process in this trial, the *a priori* analyses also  
290 include a *super ITT population*. This population consists of all randomized patients, regardless  
291 of whether they consented to receive the investigational agents or declined, thereby entering the

292 observational cohort. The super ITT population will thus not be impacted by the potential effect  
293 of the randomization-consent process on the patient population in the different trial arms.

294

295 *Design: Agent Graduation and Futility Boundaries*

296 During the course of the trial, the effect of the treatments is evaluated every two weeks by the  
297 DMC. At these evaluations, treatments may “graduate” for superiority or be dropped for futility  
298 according to the following criteria:

- 299 • If at least 50 patients have been randomized and consented to a treatment arm and the  
300 posterior probability is at least 0.975 that the cause-specific hazard ratio (csHR) for  
301 recovery (investigational agent vs. control) is greater than one OR if the posterior  
302 probability is at least 90% that the hazard ratio for overall mortality is smaller than one,  
303 the treatment is evaluated by the DMC for *graduation*.
- 304 • If at least 40 patients have been randomized and consented to a treatment arm and the  
305 posterior probability is at least 0.9 that the csHR for recovery is less than 1.5 AND the  
306 posterior probability is at least 50% that the hazard ratio for overall mortality is greater  
307 than one, a treatment is evaluated by the DMC to be dropped for futility.

308 If the maximum sample size of 125 participants in a treatment arm is reached, assignments to  
309 that arm will end. If an investigational agent reaches a threshold for graduation or futility, the  
310 DMC reviews the findings and make a recommendation to Study Principal Investigators (PIs) for  
311 final approval. In addition to examining hazard ratios for recovery and overall mortality, the DMC  
312 also reviews and evaluates cumulative incidence functions (**Figure 3**).

313

314 *Design: Operating Characteristics—Type 1 and Type 2 Errors*

315 Prior to beginning the trial, study statisticians tested the trial’s operating characteristics by  
316 simulating a large number of virtual trials under multiple scenarios. The type I error rate for an

317 individual Investigative Agent (probability to graduate a specific Investigational Agent despite no  
318 effect on reducing recovery or mortality rate) was estimated to be 4-5% when time to recovery  
319 was used a single primary endpoint. After adding overall mortality to the primary endpoint  
320 definition (to form a family of two primary endpoints, recovery and overall mortality), the type 1  
321 error rate was estimated to up to 17% depending on simulated scenario, which was deemed  
322 acceptable for a phase 2 signal seeking trial. The power to graduate an individual agent was  
323 above 85% in scenarios where the csHR for recovery was set to 1.75. Similarly, the power for a  
324 given individual investigational agent arm was greater than 85% if the HR for overall mortality  
325 was below 0.5. Investigational Agents with more moderate effect sizes for recovery (csHRs of  
326 1.5 or less or a HR for overall mortality of 0.7 or higher) graduated at lower rates (about 65% or  
327 less).

328  
329 Overall, these simulations indicate that the current graduation and futility rules may control  
330 reasonably well the false graduation rates, while at the same time they might provide sufficient  
331 power to graduate highly effective investigational agents. However, there are important  
332 limitations to this approach including the risk of a type 2 error, due to small sample sizes, giving  
333 limited power for smaller effect sizes. The design to use 40-125 patients in each group runs the  
334 risk of discarding a potentially effective agent, ie a type 2 error. In prior phase 2 trials, wide  
335 confidence intervals illustrate the potential for a type 2 error with a restricted number of patients,  
336 as discussed by Abraham and Rubinfeld regarding a phase 2 trial of sepsis.<sup>12</sup> With wide  
337 confidence intervals and small numbers of patients, it is challenging to exclude harm or benefit.  
338 Another example is the Brower trial of lung protective ventilation in 52 patients which showed no  
339 benefit,<sup>13</sup> but then the properly powered ARMA trial with 861 patients showed a major reduction  
340 in mortality.<sup>14</sup>

341

342 The I-SPY COVID Trial was designed early in the pandemic, and given the singular etiology of  
343 lung injury in patients with severe COVID-19, many investigators anticipated that ARDS from  
344 COVID-19 would exhibit less heterogeneity than “traditional” ARDS.<sup>15</sup> While it remains unclear  
345 whether severe COVID-19 ARDS exhibits the degree of heterogeneity of ARDS in the pre-  
346 COVID-19 era,<sup>9,16</sup> further biologic and clinical phenotyping may be necessary to find effective  
347 targeted therapies in a screening trial of this size and potentially re-evaluating the number of  
348 patients needed to evaluate candidate agents.

349

#### 350 *Operations: Real Time Data Entry and Reporting*

351 A minimal set of key clinical and research outcome data elements were defined as part of the  
352 daily checklist for enrolled participants (**Figure 4**). The “checklist” was implemented in  
353 OpenClinica (Waltham, MA) Electronic Data Capture (EDC) system to support data entry for  
354 subjects randomized to investigational agent arms or the observational cohort. Daily eCRFs are  
355 completed from enrollment until discharge, with additional follow up consisting of electronic  
356 Patient Reported Outcome (ePRO) survey questionnaires using HealthMeasures PROMIS©  
357 and Patient-Reported Outcomes version of the Common Terminology Criteria for Adverse  
358 Events (PRO-CTCAE™) validated instruments at day 28, 60 and 120.

359

360 Despite streamlining the data collection in I-SPY COVID, the pandemic strains on clinical and  
361 research staff sometimes led to delays in data entry that were addressed on a site-specific basis  
362 using remote staffing models (see “Novel Implementation Challenges” section below).

363 Limitations to a streamlined dataset include reduced granularity of exploring important  
364 physiologic variables such as oxygenation index or plateau pressures, or the FiO<sub>2</sub> or flow rates  
365 on patients enrolled being treated with high-flow nasal oxygen, which have important clinical  
366 implications for patients with acute respiratory failure from severe lung injuries.

367

368 *Operations: Safety*

369 Clinical trials in critically ill patients share unique challenges for safety monitoring. Specifically,  
370 study participants often possess significant comorbidities (i.e., chronic organ dysfunction,  
371 immune suppression, and malignancy), receive numerous concomitant medications with  
372 potential for interactions, and experience marked derangements in baseline physiology (i.e.,  
373 vital sign and laboratory abnormalities) relative to populations in which potential investigational  
374 agents have previously been studied. These challenges are amplified for COVID-19 patients  
375 where multisystem organ involvement is common but accurate baseline rates of complications  
376 such as stroke, thrombosis, and cardiac dysfunction are yet to be established, and may vary  
377 over time. Additionally, the usual care of these patients is a rapidly moving target. This topic is  
378 particularly challenging for phase 2 trials in which there may be limited clinical experience for  
379 investigational agents and even FDA-approved medications may be used at higher doses and in  
380 combinations not previously studied. The open-label and shared control structure of the I-SPY  
381 COVID platform trial is designed to allow for monitoring for known side effects and rapid testing  
382 of multiple agents, but also creates potential for bias in adverse event reporting due to  
383 differential scrutiny applied to study arms (i.e., monitoring for secondary infections in patients  
384 randomized to an immunomodulatory agent or kidney injury for a potentially nephrotoxic agent  
385 relative to shared controls). The I-SPY COVID platform has used several strategies to  
386 overcome these challenges.

387  
388 First, laboratory assessment of vital signs and organ dysfunction are collected daily and  
389 clinically important events (i.e., pulmonary embolism, deep venous thrombosis, and kidney  
390 injury) are systemically collected on daily report forms. This approach allows for systematic  
391 comparisons across therapy arms of event rates and organ failures rather than relying on  
392 investigator recognition and capture of these events (**Figures 4 and 5**). Second, I-SPY COVID  
393 has constituted a Safety Working Group (SWG) to provide an additional layer of structured



394 safety monitoring across all trials within the platform. The SWG provides real-time monitoring of  
395 adverse events and provides guidance to the DMC on adverse event reporting. The SWG is led  
396 by two critical care physicians not otherwise part of the clinical trial and also includes the drug  
397 chaperones, study principal investigators, and operations committee chairs. This group meets  
398 on a regular basis to review adverse events and to determine potential attribution to COVID-19  
399 and/or to investigational agents. The SWG chairs also provide external review of severe  
400 adverse events and other safety events that might require expedited reporting. Finally, the drug  
401 chaperones serve as internal content experts for a given agent and are available to  
402 investigators on a 24/7 basis to review potential events related to the investigational agent  
403 regardless of expectedness. Reporting of potential events is encouraged so that these can be  
404 formally reviewed by the Safety Working Group. Every death, AE, AESIs and SAE is reviewed  
405 by the Safety Working Group to evaluate if the adverse event is expected for the investigational  
406 agent, if expected with COVID-19 or ARDS, and likelihood of being caused by the  
407 investigational agent. Adverse event reporting is configured using the Shiny R Studio. Lastly,  
408 site conduct is audited by Quantum Leap Healthcare Collaborative and trial conduct by other  
409 study sponsors.

410

#### 411 *Operations: Pharmacy*

412 The investigational drug services (IDS) pharmacy plays a pivotal role in the ability to deploy  
413 agents safely and rapidly into a continuously running adaptive platform trial, such as I-SPY  
414 COVID. Careful planning and strong communication are paramount, but several additional key  
415 issues must be addressed to accomplish this efficiently. First, participating sites typically  
416 designate one lead and at least one back-up pharmacist at each site. Second, a consistent  
417 workflow (standard operating procedure) for the implementation of each new agent is  
418 established. This workflow includes centralized delivery of drug and trial arm-related

419 information, personnel training documentation procedures, and drug storage provisions. Third,  
420 IDS pharmacists implement drug ordersets into the clinical workflows at each site.

421  
422 Given the rapidity with which new agents enter the trial, pharmacy lead time and preparedness  
423 is important. Adequate lead-time is required to allow for the preparations mentioned above to be  
424 safely and smoothly executed. As such, for a trial of this nature in which study arms may drop  
425 out without warning and new arms quickly advance in the priority list, the coordinating center  
426 must ensure that all affiliated pharmacies are prepared for future agents before they are added  
427 to the trial.

428  
429 For study sites that do not already have an Investigational Drug Services (IDS) Pharmacy, the  
430 aforementioned recommendations are even more critical. In addition to those, it is also vital to  
431 identify a pharmacist (and back-up) committed to overseeing the pharmaceutical aspects of the  
432 study at both the community partner site and the supervising site. An electronic drug  
433 accountability system that meets FDA requirements for investigational drugs is necessary to  
434 allow for ease of monitoring for drug usage and storage. A remote (or in-person) visit from the  
435 partnering IDS pharmacy can help ensure that drug storage conditions are appropriate and that  
436 evaluation as well as documentation (e.g., of temperature controls) can be appropriately  
437 conducted and any gaps in training, equipment, space, or hours of site pharmacy coverage or  
438 expertise can be identified and addressed.

439  
440 *Additional Considerations: No established network or funding, contracting*

441 To rapidly meet the short timeline of the pandemic, I-SPY COVID leveraged the efficiency and  
442 infrastructure of the I-SPY 2 Trial, partnering with the not-for-profit sponsor, Quantum Leap  
443 Healthcare Collaborative. One of the solutions to drive efficiency was to first activate sites that  
444 already had existing I SPY 2 contracts. As well, we used the same contract for every site. All

445 pharma companies also agree to a single contract. The prior experience with many of the  
 446 companies sped the process of working with companies. As well, the initial partnership with the  
 447 COVID R&D consortium established an example for how companies could work collaboratively  
 448 and quickly in a pandemic. Some sites (primarily those not familiar with I SPY 2) had longer  
 449 delays with contracting and site activation. Establishing a central IRB was essential for this  
 450 process. The ISPY COVID trial is composed primarily of academic medical centers with  
 451 experience conducting critical care clinical trials. However, the group felt it important to also  
 452 include community sites, where most patients across the country receive care for COVID-19.  
 453 The group used hybrid approaches to activate and support community sites without significant  
 454 research infrastructure using different site involvement paradigms (**Table 3**).

455 **Table 3. Community Site Infrastructure Paradigms in ISPY COVID**

| <b>Types of hospitals</b>  | <b>Status</b>                                 | <b>Pharmacy</b>   | <b>Coordinators</b>   | <b>Compensation</b> | <b>Geographic</b> |
|--|---|---|---|---------------------|-------------------|
| <b>Academic or Community Centers with Research Capacity and Experience</b>             | I-SPY COVID site                              | Investigational Pharmacy  | I-SPY COVID site  | Full                | NA                |
| <b>Academic or Community Centers with ICU care but Limited Research Infrastructure</b> | Partnership with one of the I SPY COVID sites | Clinical Pharmacist trained by Investigational Pharmacy Partner | In partnership with one of the I-SPY COVID sites                                    | Shared              | NO                |
| <b>Community Hospitals without Sufficient ICU Care for Severe COVID-19</b>             | Transfer patients to nearby I SPY COVID site  | Transfer to I-SPY Site  | Partner with I-SPY site. Work to identify eligible patients and coordinate transfer | Shared              | YES               |

456  
 457 *Additional Considerations: Novel Implementation Challenges During the Pandemic*

458 The alarming pace of the COVID-19 pandemic has placed substantial time pressure on  
 459 therapeutic trials.<sup>17</sup> Hospitals surging with COVID-19 patients have potential to be the largest  
 460 contributors to trials. Yet, frequently, they are also the most resource-strained. Shortages of  
 461 such basic necessities as personal protective equipment (PPE), medications, and personnel  
 462 have occurred often.<sup>18</sup> In many hospitals, investigators and clinical research staff with relevant  
 463 skills were reassigned to clinical duties. Several hospitals and universities, concerned for

464 anticipated revenue losses, instituted broad hiring freezes or required new arduous  
465 administrative approvals to hire staff, which in some cases unintentionally impeded timely  
466 scaling up of trial personnel.

467  
468 To address these issues, I-SPY COVID took several innovative steps. The trial secured PPE for  
469 shipment to sites as needed, helping ensure trial procedures would not deplete PPE in hospitals  
470 facing extreme scarcity. To address potential medication shortages, the trial committed to  
471 providing an independent supply of backbone therapies received by all patients, which included  
472 remdesivir at the time of initial trial design.

473  
474 Staffing shortages have been addressed in part by partnering with a healthcare staffing  
475 company to hire off-site data entry specialists, freeing on-site staff to focus on patient accrual  
476 and in-person study procedures during surges. This “rapid response” staffing model has the  
477 added benefit of being able to reassign data entry specialists already familiar with the protocol  
478 and case report forms to new locations as surges wax and wane among sites over time. To  
479 overcome in-person research staff shortages, high-enrolling sites have engaged qualified,  
480 approved clinical staff in the recruitment and consent process—embracing a shared mission of  
481 expanding access to promising therapeutics and accelerating discovery, overcoming the  
482 conventional clinical/research divide.

483  
484 Each of the above sections includes comments on the challenges for the design and conduct of  
485 this I-SPY COVID platform trial during the COVID-19 pandemic. The investigators will consider  
486 future modifications to the protocol, including moving consent prior to randomization, decreasing  
487 the number of agents to be tested at the same time, reviewing the graduation and futility criteria,  
488 and the sample size as well as increasing the granularity of baseline systemic and respiratory  
489 data collection. The strengths and weaknesses of the open-label versus a placebo-controlled

490 design will also be evaluated. We now know that many factors contribute to heterogeneity of  
491 COVID-19 disease severity in hospitalized patients so further consideration of ways to enhance  
492 the database but maintain reasonable feasibility and efficiency will be evaluated.

493

494

#### 495 **Ethics and Dissemination**

496 The trial procedures and protocols are regulated under a central IRB structure at the Wake  
497 Forest School of Medicine. All patients (or designated surrogate) entering the portion of the trial  
498 that receive an investigational agent undergo patient level consent by study staff and/or study  
499 investigators. Protocol revisions are announced at weekly investigator and coordinator meetings  
500 and are submitted to the FDA and IRB. No patient level data will be released, and all personal  
501 information will remain confidential and de-identified. Results of the agents completing the ISPY  
502 COVID Trial will be reported in press releases, scientific abstracts and manuscripts.

503

504

505

506

507

508

509

510

511

512

513

514

515 **Contributorship Statement.** DCF, MAM, CSC, NA, JRB, PAB, ELB, GC, SG, KWG, PTH,  
516 KTK, JLK, JL, NJM, DWR, KWT, ME, LJE, KDL contributed to the study protocol design and  
517 drafting of the manuscript. ALA, MHC, JL, PTH, CAGI, AJ, ML, JDM, DCF, MAM, CSC, LJE,  
518 KDL contributed to the study operations. AC, AD, RL, ME, LE contributed to the statistical  
519 design. All authors reviewed and provided final edits.

520  
521 **Competing Interests.** DCF has received funding from Quantum Leap Healthcare Collaborative  
522 related to this work and from the National Institutes of Health unrelated to this work. DCF has  
523 worked as a consultant for Cytovale and Medpace unrelated to this work. ICJME forms from all  
524 authors will be uploaded.

525  
526 **Funding.** Effort was sponsored by Allergan, Amgen, Takeda Pharmaceutical Company, Implicit  
527 Bioscience, J&J, Pfizer, Roche/Genentech, Apotex, Omeros, the COVID-19 Research and  
528 Development Consortium, a FAST Grant from Emergent Venture George Mason University, the  
529 DoD Defense Threat Reduction Agency (DTRA), The Department of Health and Human  
530 Services Biomedical Advanced Research and Development Authority (BARDA) and  
531 the Grove Foundation. Effort was sponsored in part by the U.S. Government under Other  
532 Transaction number W15QKN-16-9-1002 between the MCDC and the Government. The U.S.  
533 Government is authorized to reproduce and distribute reprints for Governmental purposes  
534 notwithstanding any copyright notation thereon. The views and conclusions contained herein  
535 are those of the authors and should not be interpreted as necessarily representing the official  
536 policies or endorsements, either expressed or implied, of the U.S. Government.

537  
538 **Data Sharing Statement.** Data generated from the ISPY COVID Trial will be made available in  
539 peer reviewed journals.

540  
541

542

543

544

545

546

547

548

549

550

551

552

553

## 554 References

- 555 1. Goligher EC, Zampieri F, Calfee CS, et al. A manifesto for the future of ICU trials.  
556 *Critical care* 2020;24(1):686. doi: 10.1186/s13054-020-03393-5 [published Online First:  
557 2020/12/11]
- 558 2. Esserman LJ, Woodcock J. Accelerating identification and regulatory approval of  
559 investigational cancer drugs. *Jama* 2011;306(23):2608-9. doi: 10.1001/jama.2011.1837  
560 [published Online First: 2011/12/22]
- 561 3. Beigel JH, Tomashek KM, Dodd LE, et al. Remdesivir for the Treatment of Covid-19 -  
562 Final Report. *The New England journal of medicine* 2020;383(19):1813-26. doi:  
563 10.1056/NEJMoa2007764 [published Online First: 2020/05/24]
- 564 4. Group RC, Horby P, Lim WS, et al. Dexamethasone in Hospitalized Patients with Covid-  
565 19. *The New England journal of medicine* 2021;384(8):693-704. doi:  
566 10.1056/NEJMoa2021436 [published Online First: 2020/07/18]
- 567 5. <https://www.covirdalliance.com>.
- 568 6. Barker AD, Sigman CC, Kelloff GJ, et al. I-SPY 2: an adaptive breast cancer trial design  
569 in the setting of neoadjuvant chemotherapy. *Clin Pharmacol Ther* 2009;86(1):97-100.  
570 doi: 10.1038/clpt.2009.68 [published Online First: 2009/05/15]
- 571 7. Wang H, Yee D. I-SPY 2: a Neoadjuvant Adaptive Clinical Trial Designed to Improve  
572 Outcomes in High-Risk Breast Cancer. *Curr Breast Cancer Rep* 2019;11(4):303-10. doi:  
573 10.1007/s12609-019-00334-2 [published Online First: 2020/12/15]
- 574 8. Normand ST. The RECOVERY Platform. *The New England journal of medicine*  
575 2021;384(8):757-58. doi: 10.1056/NEJMe2025674 [published Online First: 2020/07/25]
- 576 9. Sinha P, Calfee CS, Cherian S, et al. Prevalence of phenotypes of acute respiratory  
577 distress syndrome in critically ill patients with COVID-19: a prospective observational  
578 study. *The Lancet Respiratory medicine* 2020;8(12):1209-18. doi: 10.1016/s2213-  
579 2600(20)30366-0 [published Online First: 2020/08/31]
- 580 10. Mathew D, Giles JR, Baxter AE, et al. Deep immune profiling of COVID-19 patients  
581 reveals distinct immunotypes with therapeutic implications. *Science* 2020;369(6508) doi:  
582 10.1126/science.abc8511 [published Online First: 2020/07/17]
- 583 11. Combes AJ, Courau T, Kuhn NF, et al. Global absence and targeting of protective  
584 immune states in severe COVID-19. *Nature* 2021;591(7848):124-30. doi:  
585 10.1038/s41586-021-03234-7 [published Online First: 2021/01/26]

- 586 12. Rubenfeld GD, Abraham E. When is a negative phase II trial truly negative? *American*  
587 *journal of respiratory and critical care medicine* 2008;178(6):554-5. doi:  
588 10.1164/rccm.200807-1136ED [published Online First: 2008/08/30]
- 589 13. Brower RG, Shanholtz CB, Fessler HE, et al. Prospective, randomized, controlled  
590 clinical trial comparing traditional versus reduced tidal volume ventilation in acute  
591 respiratory distress syndrome patients. *Critical care medicine* 1999;27(8):1492-8. doi:  
592 10.1097/00003246-199908000-00015 [published Online First: 1999/09/02]
- 593 14. Ventilation with Lower Tidal Volumes as Compared with Traditional Tidal Volumes  
594 for Acute Lung Injury and the Acute Respiratory Distress Syndrome. *New England*  
595 *Journal of Medicine* 2000;342(18):1301-08. doi: doi:10.1056/NEJM200005043421801
- 596 15. Juschten J, Tuinman PR, Guo T, et al. Between-trial heterogeneity in ARDS research.  
597 *Intensive care medicine* 2021;47(4):422-34. doi: 10.1007/s00134-021-06370-w  
598 [published Online First: 2021/03/14]
- 599 16. Grasselli G, Tonetti T, Protti A, et al. Pathophysiology of COVID-19-associated acute  
600 respiratory distress syndrome: a multicentre prospective observational study. *The*  
601 *Lancet Respiratory medicine* 2020;8(12):1201-08. doi: 10.1016/s2213-2600(20)30370-2  
602 [published Online First: 2020/08/31]
- 603 17. Lane HC, Fauci AS. Research in the Context of a Pandemic. *The New England journal*  
604 *of medicine* 2021;384(8):755-57. doi: 10.1056/NEJMe2024638 [published Online First:  
605 2020/07/18]
- 606 18. Ranney ML, Griffeth V, Jha AK. Critical Supply Shortages - The Need for Ventilators  
607 and Personal Protective Equipment during the Covid-19 Pandemic. *The New England*  
608 *journal of medicine* 2020;382(18):e41. doi: 10.1056/NEJMp2006141 [published Online  
609 First: 2020/03/27]  
610  
611  
612  
613  
614  
615  
616  
617  
618



19 **Figure Legends**

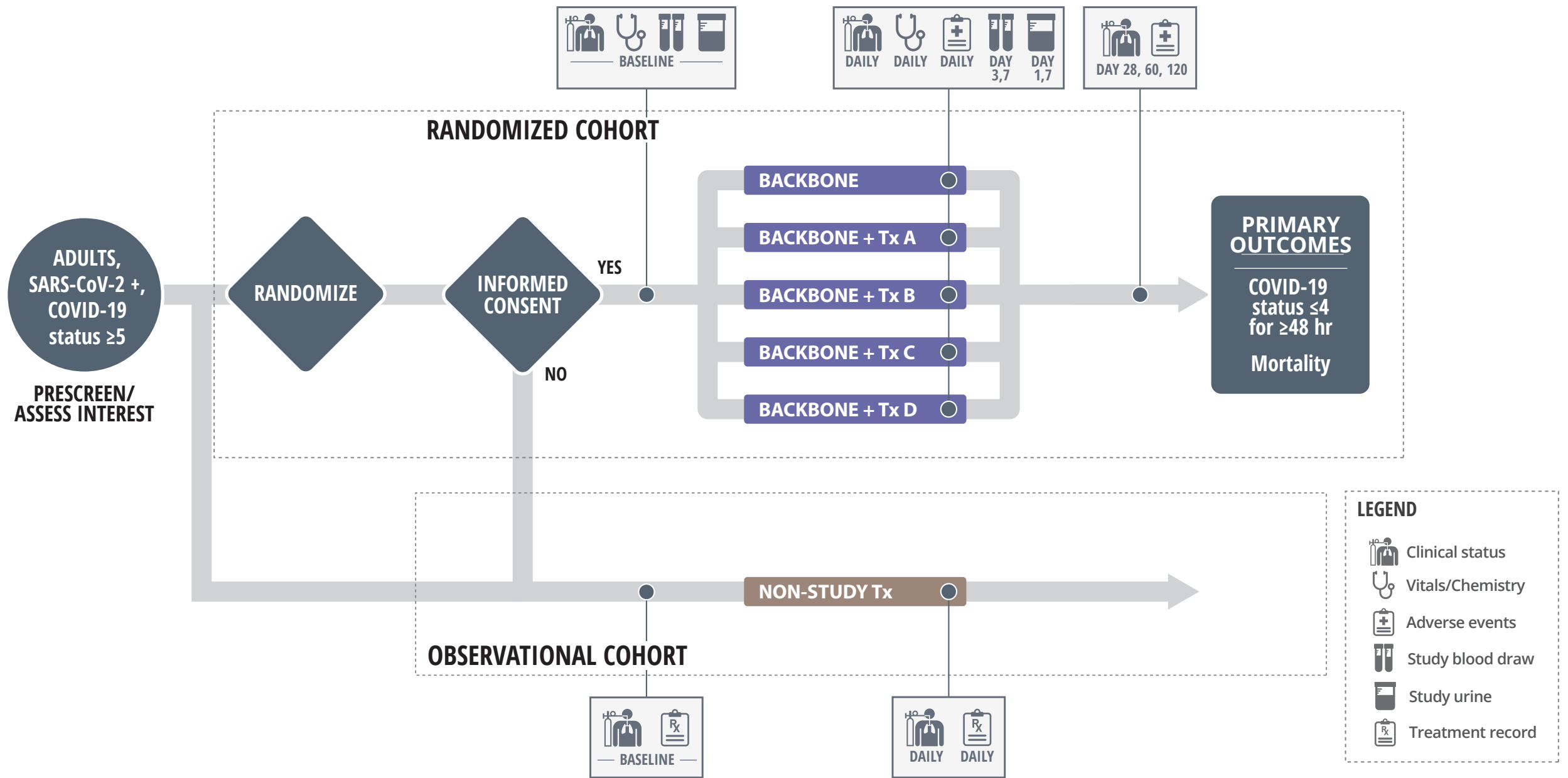
20  
21  
22 **Figure 1. ISPY COVID Trial Design.** Hospitalized COVID-19 patients who require  $\geq 6$  L/min nasal oxygen or  
23 more (COVID-19 status  $\geq 5$ ) are eligible for the trial. Patients or surrogates that meet master protocol  
24 inclusion/exclusion are approached for willingness to participate in the Randomized Cohort of the trial. Those  
25 that voice interest are randomized, and then approached with the agent specific consent. All patients in the  
26 Randomized Cohort receive backbone therapy with or without an additional investigational agent. Enrolled  
27 participants are followed for the assessment of the primary outcomes of resolution of severe COVID-19 and  
28 mortality. Patients that are either not approached for the Randomized Cohort of the trial or decline individual  
29 investigation agent consent are tracked in the observational cohort.

30  
31 **Figure 2. Patient Enrollment Flow into the ISPY COVID Platform Trial.**

32  
33 **Figure 3. Modeling Recovery in the ISPY COVID Trial.** The figure shows examples of trial data based on  
34 simulations. Top panel: Posterior cumulative incidence and survival functions (solid lines) and 95% quantile  
35 credible intervals (shaded area between dotted lines). Bottom panel: Medians (solid lines) and 95% quantile  
36 credible intervals (shaded area between dotted lines) for the posterior distribution of the difference in the  
37 Cumulative Incidence functions (Investigational Arm versus Control).

38  
39 **Figure 4. Daily Clinically Important Events Systematically Captured in Participants.** Daily forms are  
40 completed in ISPY participants relating to clinically important events occurring in the context of severe COVID-  
41 19. These events are then systematically reported across arms of the study for safety reports to the Data  
42 Monitoring Committee.

43  
44 **Figure 5. Severe Laboratory Abnormalities Systematically Captured in Participants.** Potentially  
45 significant daily laboratory data entered by study coordinators is systematically captured, graded and reported  
46 back to the Data Monitoring Committee to evaluate safety. In this simulated example, Agent C appears to be  
47 associated with increased creatinine, suggesting renal toxicity.






  
 BASELINE



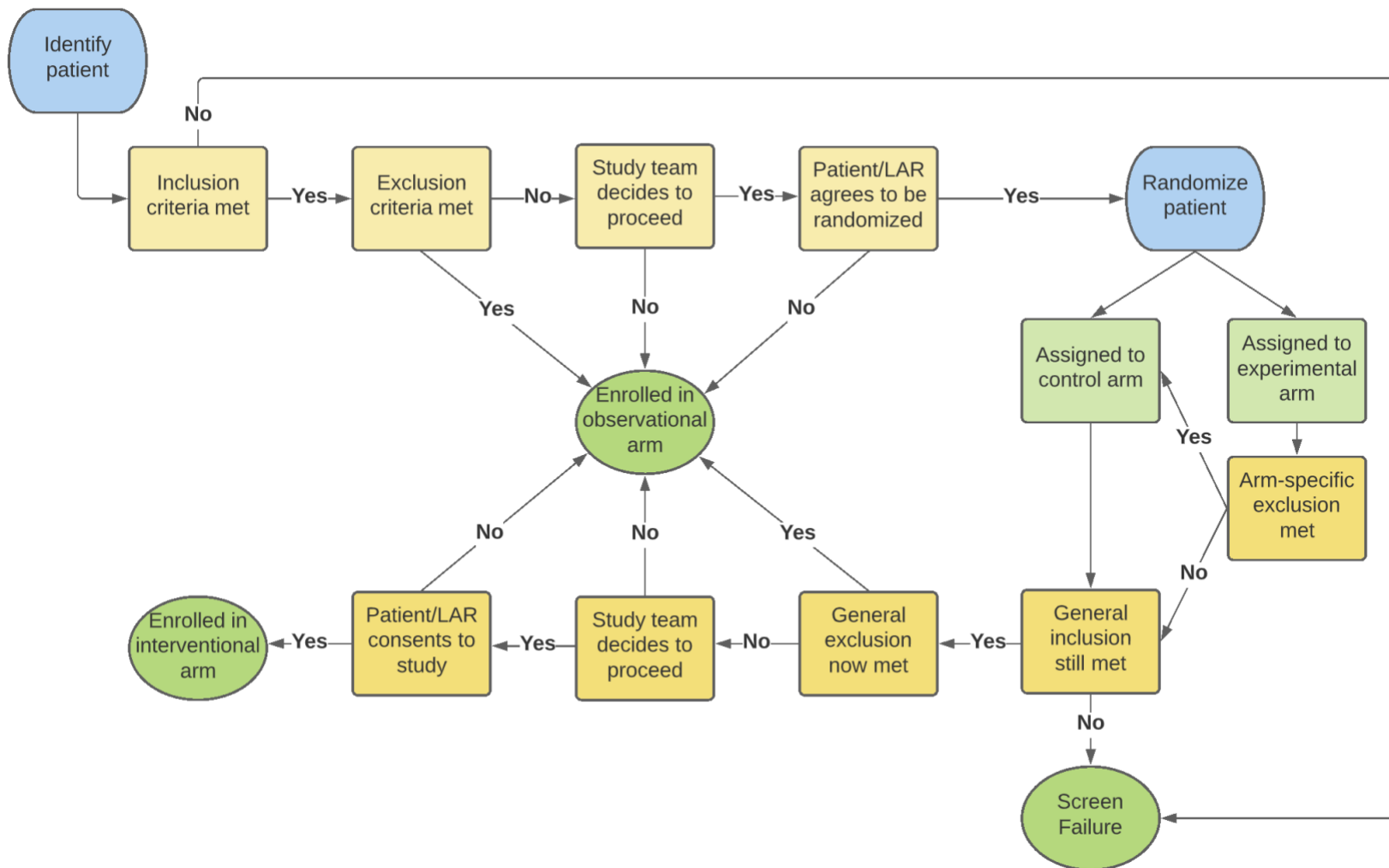


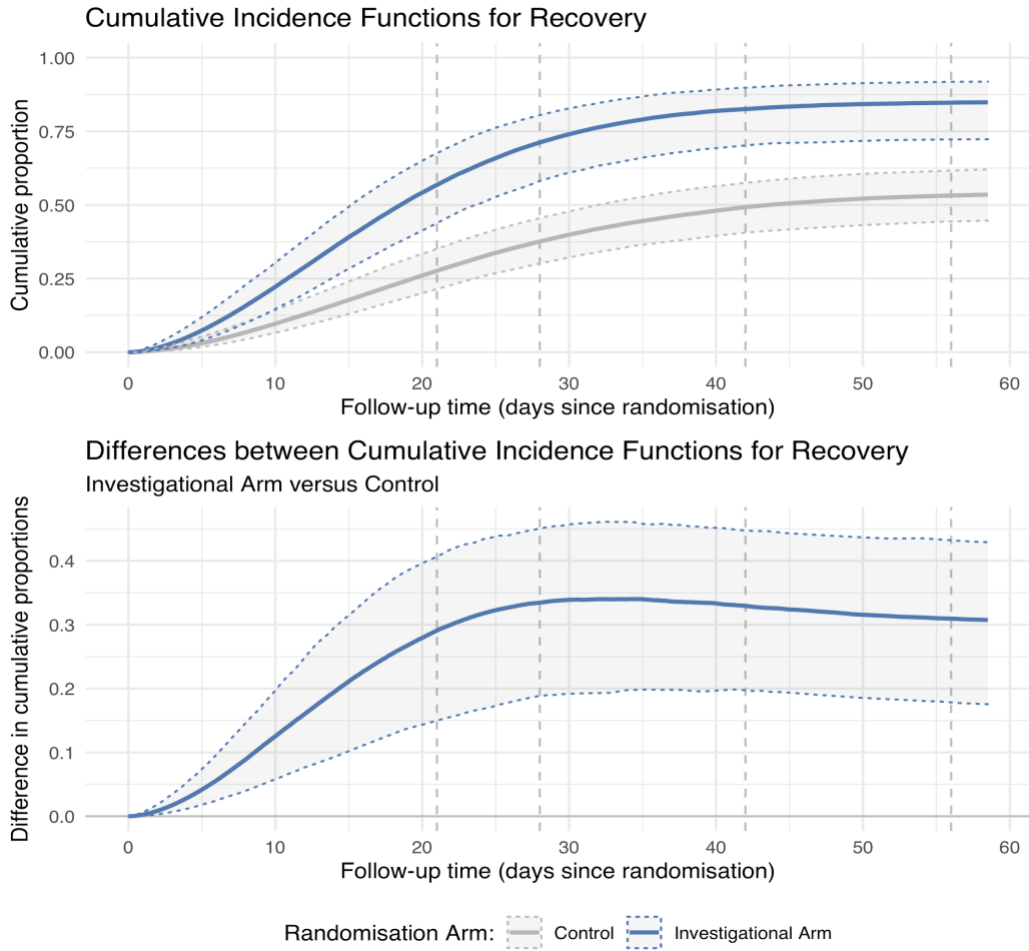
  
 DAILY DAILY DAILY DAY 3,7 DAY 1,7


  
 DAY 28, 60, 120

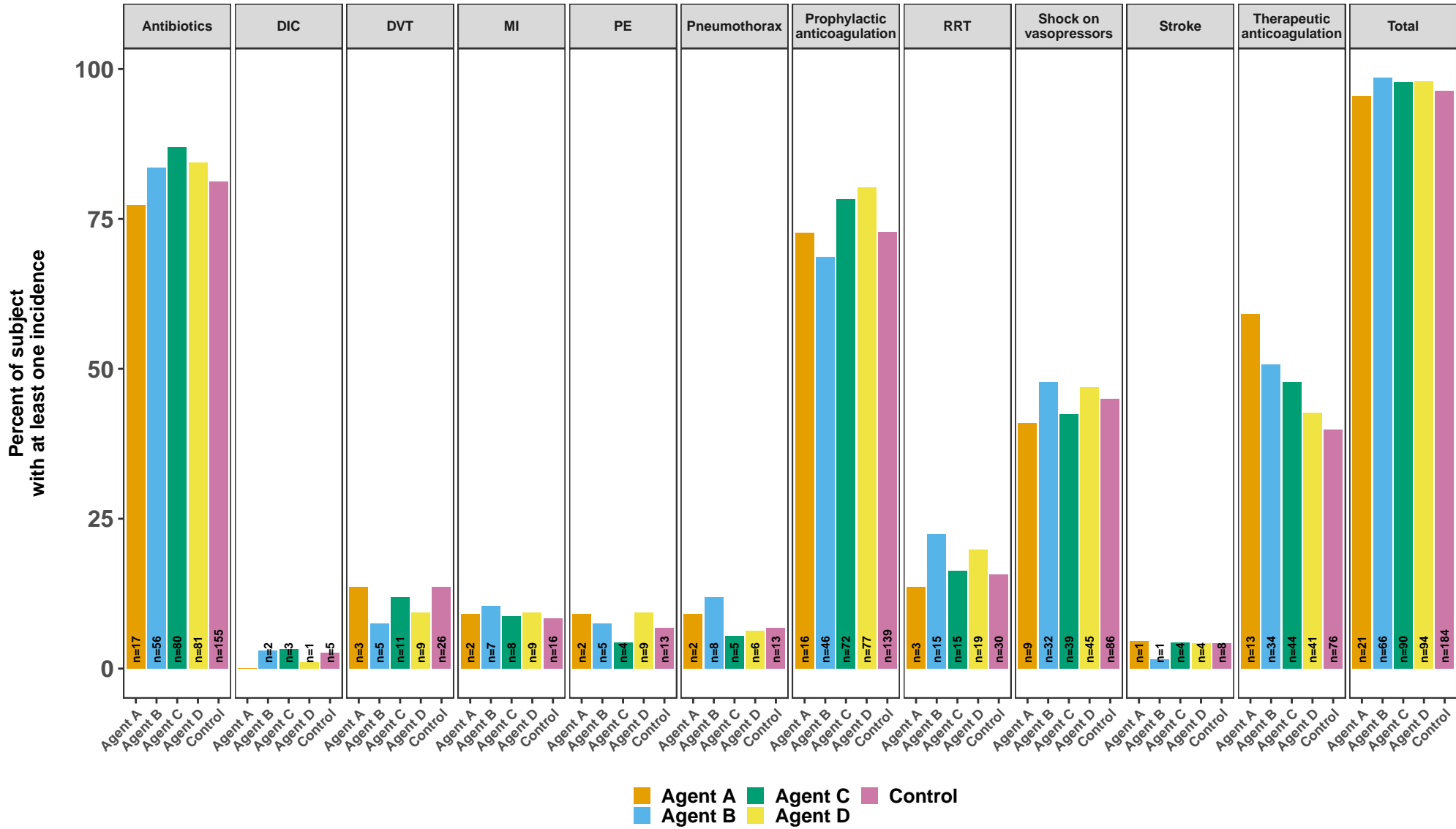

  
 BASELINE


  
 DAILY DAILY





## ARDS Related Clinical Event (% subject with at least one incidence)



## Laboratory CTCAE v5.0 Grading (Grade 3 or 4) (% subject with at least one incidence)

