

# **The Prevalence of Mental Health Disorders in people with HIV and the effects on the HIV Care Continuum**

## **AUTHORS:**

Raynell Lang<sup>1,2</sup>, Brenna Hogan<sup>1</sup>, Jiafeng Zhu<sup>3</sup>, Kristen McArthur<sup>3</sup>, Jennifer Lee<sup>1</sup>, Peter Zandi<sup>4</sup>, Paul Nestadt<sup>4</sup>, Michael J. Silverberg<sup>5</sup>, Angela M. Parcesepe<sup>6</sup>, Judith A. Cook<sup>7</sup>, M. John Gill<sup>2</sup>, David Grelotti<sup>8</sup>, Kalysha Closson<sup>9</sup>, Viviane D. Lima<sup>10</sup>, Joseph Goulet<sup>11</sup>, Michael A. Horberg<sup>12</sup>, Kelly A. Gebo<sup>13</sup>, Reena M. Camoens<sup>14</sup>, Peter F. Rebeiro<sup>15</sup>, Ank E. Nijhawan<sup>16</sup>, Kathleen McGinnis<sup>17</sup>, Joseph Eron<sup>18</sup>, and Keri N. Althoff<sup>1</sup> for the North American AIDS Cohort Collaboration on Research and Design (NA-ACCORD) of the International Epidemiologic Databases to Evaluate AIDS (IeDEA).

## **AFFILIATIONS:**

1. Department of Epidemiology, Johns Hopkins Bloomberg School of Public Health, Baltimore, MD, USA
2. Department of Medicine, University of Calgary, Calgary, Canada
3. Department of Biostatistics, Johns Hopkins Bloomberg School of Public Health, Baltimore, MD, USA
4. Department of Psychiatry and Behavioral Sciences, Johns Hopkins School of Medicine, Baltimore, MD, USA
5. Division of Research, Kaiser Permanente Northern California, Oakland CA, USA
6. University of North Carolina at Chapel Hill, Gillings School of Global Public Health, Department of Maternal and Child Health; Carolina Population Center, Chapel Hill, NC
7. Department of Psychiatry, University of Illinois at Chicago, Chicago, IL USA

8. Department of Psychiatry, University of California, San Diego, CA USA
9. School of Population and Public Health, University of British Columbia, Vancouver,  
British Columbia, Canada
10. University of British Columbia & BC Centre for Excellence in HIV/AIDS, Vancouver,  
British Columbia, Canada
11. Yale School of Medicine & VA Connecticut Healthcare System, West Haven, CT USA
12. Mid-Atlantic Permanente Research Institute, Kaiser Permanente Mid-Atlantic States,  
Rockville, MD, USA
13. Department of Medicine, Johns Hopkins University School of Medicine, Baltimore, MD  
USA
14. Vanderbilt University School of Medicine [retired], Nashville, TN USA
15. Departments of Medicine & Biostatistics, Vanderbilt University School of Medicine,  
Nashville, TN USA
16. University of Texas Southwestern Medical Center, Dallas TX USA
17. Veterans Affairs Connecticut Healthcare System, West Haven, CT USA
18. University of North Carolina at Chapel Hill, Chapel Hill, NC USA

**CORRESPONDING AUTHOR:**

Keri N Althoff, MPH, PhD  
Associate Professor  
Department of Epidemiology  
Johns Hopkins Bloomberg School of Public Health  
615 N Wolfe Street, #E7142  
Baltimore, MD, 21205  
Office: 410-614-4914  
Email: [kalthoff@jhu.edu](mailto:kalthoff@jhu.edu)

## ABSTRACT:

**Objective:** To describe the prevalence of diagnosed depression, anxiety, bipolar disorder, and schizophrenia in people with HIV (PWH) and the differences in HIV care continuum outcomes in those with and without mental health disorders (MHD).

**Design:** Observational study of participants in the NA-ACCORD.

**Methods:** PWH ( $\geq 18$  years) contributed data on prevalent schizophrenia, anxiety, depressive, and bipolar disorders from 2008-2018 based on ICD code mapping. MH multimorbidity was defined as having  $\geq 2$  MHD. Log binomial models with generalized estimating equations estimated adjusted prevalence ratios (aPR) and 95% confidence intervals for retention in care ( $\geq 1$  visit/year) and viral suppression (HIV RNA  $\leq 200$  copies/mL) by presence vs. absence of each MHD between 2016-2018.

**Results:** Among 122,896 PWH, 67,643 (55.1%) were diagnosed with  $\geq 1$  MHD: 39% with depressive disorders, 28% with anxiety disorders, 10% with bipolar disorder, and 5% with schizophrenia. The prevalence of depressive and anxiety disorders increased between 2008-2018, while bipolar disorder and schizophrenia remained stable. MH multimorbidity affected 24% of PWH. From 2016-2018 (N=64,684), retention in care was marginally lower among PWH with depression or anxiety, however those with MH multimorbidity were more likely to be retained in care. PWH with bipolar disorder had marginally lower prevalence of viral suppression (aPR=0.98 [0.98-0.99]) as did PWH with MH multimorbidity (aPR=0.99 [0.99-1.00]) compared with PWH without MHD.

**Conclusion:** The prevalence of MHD among PWH was high, including MH multimorbidity. Although retention and viral suppression were similar to people without MHD, viral suppression was lower in those with bipolar disorder and MH multimorbidity.

---

## INTRODUCTION:

With advances in HIV care, chronic disease management including care for co-occurring mental health disorders (MHD) among people with HIV (PWH) has become a primary focus of attention<sup>[1]</sup>. MHD remain a significant source of morbidity and mortality across the world;<sup>[2]</sup> however, health outcomes of PWH with MHD remains under-studied, particularly within the Treat-All era (2015 and later)<sup>[3]</sup>. At the introduction of highly active antiretroviral therapy (ART) (in 1996), the first national estimates of 12-month prevalence of MHD among PWH in the US reported that nearly half of PWH screened positive for  $\geq 1$  of the following: major depression, dysthymia, generalized anxiety disorder, or panic attacks<sup>[4]</sup>. More recent studies have reported the prevalence of major depression, anxiety, bipolar disorder (BD), and schizophrenia are all more common among PWH compared to the general population<sup>[5-13]</sup>.

MHD have been associated with adverse outcomes in PWH, including poor adherence to ART, reduced viral suppression and excess mortality<sup>5-8,[14]</sup>. A correlation between depressive symptoms, lower CD4 counts and higher HIV RNA levels has been identified<sup>[15]</sup>. Prior to the Treat-All era, Moore et al. documented adherence to ART in PWH with BD to be 48% compared to 91% among PWH without BD<sup>[16, 17]</sup>. Schizophrenia in PWH has been associated with reduced linkage into care and poor adherence to treatment<sup>[18]</sup>. PWH who have effective treatment of their psychiatric symptoms are more successful in their HIV treatment<sup>[9, 19]</sup>. This association underlines the importance of early screening and evidence-based treatment for MHD among PWH<sup>[20]</sup>.

HIV and depressive disorders (individually) are predicted to be the top two leading causes of burden of disease by 2030, with the greatest predicted years lost to disability<sup>[21]</sup>. Estimates of the burden of MHD among PWH are important for guiding policy and programs to ensure access to care, retention in care, viral suppression, and increased well-being of PWH. The objective of this study was to describe the prevalence of schizophrenia, anxiety, bipolar and depressive disorders in PWH in North America, and the effect of these disorders on the HIV care cascade during the transition to the Treat-All era.

## **METHODS:**

### **Study population**

The North American AIDS Cohort Collaboration on Research and Design (NA-ACCORD) is a consortium of HIV cohort studies located throughout the United States and Canada, which was formed as part of the International epidemiology Databases to Evaluate AIDS (IeDEA) initiative of the National Institute of Allergy and Infectious Diseases<sup>[22]</sup>. Participants in contributing clinical cohorts had to link into care with  $\geq 2$  HIV care visits in 12 months to be eligible for enrollment in the NA-ACCORD. NA-ACCORD participants are demographically representative of the population of PWH in the US (according to US Centers of Disease Control and Prevention HIV surveillance data)<sup>[23]</sup>.

Each participating cohort annually submits data in a standardized format to the Data Management Core (DMC, University of Washington, Seattle WA). The DMC assesses data quality, harmonizes the data, and transfers it to the Epidemiology/Biostatistics Core (EBC, Johns Hopkins University, Baltimore MD). The EBC assesses the completeness of data elements and

calculates cohort-specific “observation-windows” for specific outcomes to minimize the risk of falsely assuming complete event ascertainment from electronic health records<sup>[24]</sup>. Each participating cohort has been granted ethics approval by their respective local institutional review boards, as well as by the Johns Hopkins School of Medicine.

The source population for our nested study were PWH ( $\geq 18$  years) participating in one of 13 NA-ACCORD-contributing clinical cohorts ascertaining anxiety, depression, BD, and schizophrenia diagnoses. Individual-level selection criteria for our study population included those who were observed in care from Jan 1, 2008 – Dec 31, 2018 (study period).

### **Mental Health Disorders (MHD)**

Cohorts collected inpatient and outpatient mental health diagnoses (and date at diagnosis) from health records using a list of ICD-9 and ICD-10 codes for depression, anxiety, BD, and schizophrenia (**Supplement Table 1**). The NA-ACCORD DMC mapped the ICD codes to create standardized definitions and the NA-ACCORD Mental Health Working group, in partnership with the NA-ACCORD EBC, established operationalized definitions of these MHD. Each MHD was defined as having at least one documented diagnosis over the follow-up period. A diagnosis of BD excluded classification of this participant as having depression; these two diagnoses were considered mutually exclusive<sup>[25]</sup>. Treatment data for BD and schizophrenia was obtained at the first time an individual met the criteria for a BD or schizophrenia diagnosis and was prescribed a medication indicated for treatment of these conditions (**Supplemental Table 1** outlines medications used to indicate treatment status). Due to the lack of specificity of medications for depression and anxiety, treatment data for these disorders were not included.

## **Mental Health (MH) Multimorbidity**

Mental health (MH) multimorbidity was defined as  $\geq 2$  mental health diagnoses (depression, anxiety, BD, or schizophrenia).

## **HIV Care Continuum Outcomes: Retention in care and viral suppression**

Retention in care was defined as having at least one in-person HIV primary care visit within a calendar year. Viral suppression was defined as having an HIV RNA  $< 200$  copies/mL at the patient's last measurement of the year.

## **Covariates of interest**

Sex was defined as sex at birth. Race/ethnicity was grouped into non-Hispanic white, non-Hispanic Black, Hispanic, and other/unknown. HIV acquisition risk group was determined at enrollment into the NA-ACCORD; using a mutually exclusive hierarchy: 1) injection drug use (IDU); 2) men who have sex with men (MSM); 3) heterosexual sexual contact; 4) other/unknown risk. Cigarette smoking was defined as ever reported use, via self-report or substance survey. At-risk alcohol use was defined as ever having an alcohol abuse or dependence diagnosis in the medical record. Hepatitis B (HBV) and Hepatitis C (HCV) infection were parameterized as ever/never. HBV was determined by a positive HBV surface antigen test, a positive HBV e-antigen test, or detectable HBV DNA. HCV was determined by a positive HCV antibody test, detectable HCV RNA, or the presence of any HCV genotype. CD4 count and HIV RNA were measured at baseline (i.e., the closest measurement to study entry, within 9 months prior through

3 months after study entry). ART regimen was also assessed at baseline (i.e., the closest record to study entry,  $\pm 6$  months).

Comorbidities were assessed at baseline (i.e., prior to study entry, to 9 months after entry) using NA-ACCORD operationalized definitions. Treated hypertension was defined as having a hypertension diagnosis and prescription for antihypertensive medication<sup>[26]</sup>. Diabetes mellitus was defined as either: a type 2 diabetes diagnosis with prescription for diabetes-related medication; any prescription for diabetes-specific medication; or HgA1c  $\geq 6.5\%$ <sup>[26]</sup>. Chronic kidney disease (CKD) was defined as having eGFR calculated using the CKD-EPI study equation  $< 60 \text{ mL/min}$  (Stage 2), based on serum creatinine measured closest to study entry<sup>[26]</sup>. Hypercholesterolemia was defined as having any total cholesterol measurements  $\geq 240 \text{ mg/dL}$  prior to statin initiation<sup>[27]</sup>.

## Statistical Analysis

**Study entry** was defined as the date the cohort began observing patients, MH observation-window open date, patient enrollment into the NA-ACCORD, or January 1, 2008, whichever came last. The MH observation-window was specific to the cohort and defined as the calendar years when the cohort was ascertaining diagnoses for all four MHD. **Study exit** was defined as the earliest date the cohort stopped observing patients, MH observation-window close date, the date the patient was lost to follow-up (defined as 1.5 years with no CD4 or HIV RNA measurement), date of death, or December 31, 2018, whichever came first.



Pearson chi-square tests and Kruskal-Wallis tests were used to assess the differences in demographic and clinical characteristics by each MHD. Annual prevalence for each MHD was estimated and trends were evaluated with a log binomial model with generalized estimating equations (GEE) (as participants could contribute information to multiple years) that included calendar year as a continuous variable to test the hypothesis that there was no change in prevalence from one year to the next.

Retention in care and HIV viral suppression were estimated using data restricted to the most recent years available (Jan 1, 2016, to Dec 31, 2018) and stratified by the four MHD categories and MH multimorbidity. Log binomial models with GEE estimated crude (PR) and adjusted prevalence ratios (aPR) and associated 95% confidence intervals ([ - ]) for each MHD.

Multivariable regression models included age, sex, race/ethnicity, HIV acquisition risk group, and cohort. Subgroup analyses were conducted to evaluate whether having an untreated BD or schizophrenia was associated with a difference on retention in care or viral suppression, compared to no schizophrenia or BD diagnosis. All statistical analyses were conducted using SAS version 9.4 (SAS Institute Inc., Cary North Carolina).

## RESULTS:

### Characteristics of the Study Population

Among 122,896 PWH included in this study between 2008-2018, 67,643 (55%) were diagnosed with at least one of the four assessed MHD: 47,553 (39%) were diagnosed with depressive disorder, 34,219 (28%) with anxiety disorder, 11,716 (10%) with BD, and 5,022 (5%) with schizophrenia (**Supplement Figure 1**). In the last two years of observation (2016-2018)

(n=64,689), the prevalence of depression was 43%, anxiety was 35%, BD was 10% and schizophrenia was 5% (**Figure 1**).

A greater proportion of those with depression, anxiety and BD were non-Hispanic white PWH, whereas a greater proportion of those with schizophrenia were Non-Hispanic Black PWH compared to those without these diagnoses. The median age at study entry was older among those with schizophrenia (51 years [interquartile range (IQR): 44, 57]) compared to those without schizophrenia (46 years [IQR: 37, 54]). PWH with any of these MHD were more likely to have a history of IDU as an HIV acquisition risk factor and were more likely to smoke, have HCV coinfection, and hypertension compared to those without these diagnoses. Those with schizophrenia were more likely to have diabetes, a relationship which was not seen in those with other MHD (**Table 1**).

PWH with any of these four MHD were more likely to have initiated ART prior to 2005 compared to PWH without each MHD, suggesting exposure to earlier ART and a diagnosis of HIV prior to 2005. There were no significant differences in CD4 count or HIV RNA levels at study entry between those with and without depression, anxiety, or BD. PWH with schizophrenia were more likely to have missing CD4 or HIV RNA measurements at study entry and to have never initiated ART (**Table 1**).

## Prevalence of MHD and the effects on the HIV Care Continuum

### Depression

The prevalence of depressive disorder increased from 35.9% [35.5-36.4%] in 2008 to 44.8% [44.0-45.5%] in 2018 ( $p=0.001$  for annual trend) (**Figure 1**). Those with depression had a higher annual prevalence of retention in care, and lower annual prevalence of viral suppression, compared with those without depression from 2008-2018 (**Figure 2a**). In adjusted models however, PWH with depression had a 2% [0.97-0.98] lower prevalence of retention in care and a statistically nonsignificant 1% [1.00-1.02] higher prevalence of viral suppression than those without depression in recent years (2016-2018) (**Table 2**).

### Anxiety

The prevalence of anxiety disorder increased from 21.5% [21.1-21.8%] in 2008 to 36.9% [36.1-37.6%] in 2018 ( $p=0.001$  for annual trend) (**Figure 1**). Those with anxiety had slightly higher annual proportion of retention in care compared to those without anxiety. From 2008 to 2013, those with anxiety had a consistently lower viral suppression compared to those without anxiety, however viral suppression was similar by anxiety diagnosis from 2014-2018 (**Figure 2b**). In adjusted models PWH with anxiety had a 2% [0.97-0.98] lower prevalence of retention in care than those without anxiety in recent years (2016-2018). Those with anxiety had no difference in the prevalence of viral suppression compared to those without anxiety in both crude and adjusted models (**Table 2**).

## Bipolar Disorder

Unlike depression and anxiety, the prevalence of BD decreased slightly over calendar time, from 10.7% [10.4-10.9%] in 2008 to 8.4% [7.9-8.8%] in 2018 ( $p=0.058$  for annual trend) (**Figure 1**). There was no difference in annual trends of the proportions retained in care among those with and without BD from 2008-2018. Those with and without BD had similar proportions virally suppressed from 2008-2013, but from 2014-2018 the proportion suppressed was lower in those with BD compared to those without BD (**Figure 2c**). Those with BD had no difference in the prevalence of retention in care compared to those without (2016-2018) in adjusted models. Those with BD had a 5% [0.94-0.97] lower prevalence of viral suppression than those without BD; however, this changed to a 2% [0.98-0.99] lower prevalence of viral suppression among those with BD after adjustment for demographic characteristics (**Table 2**).

## Schizophrenia

The prevalence of schizophrenia declined over time, from 4.7% [4.5%-4.9%] in 2008 to 2.1% [1.9%-2.3%] in 2018 ( $p=0.013$  for annual trend) (**Figure 1**). Those with schizophrenia had similar retention in care to those without from 2008-2013, and a higher proportion retained in care from 2014-2018. Those with and without schizophrenia had similar viral suppression until 2013; from 2014-2018 those with schizophrenia were less likely to be virally suppressed compared to those without schizophrenia (**Figure 2d**). In adjusted models PWH with schizophrenia had no difference in the prevalence of retention in care compared to those without schizophrenia (2016-2018). Those with schizophrenia had a 4% [0.93-0.99] decrease in the prevalence of viral suppression compared to those without schizophrenia, and this attenuated to no difference after adjustment for demographic characteristics (**Table 2**).

## Multimorbidity of MHD among PWH

From 2008-2018, MH multimorbidity prevalence was 24% (29,243/122,896), with 92% of those with schizophrenia (n=5,022), 82% with anxiety (n=34,219), 69% with BD (n=11,716) and 53% with depression (n=47,553) having a diagnosis of at least one other MHD (**Figure 3**). Anxiety was the most common MH comorbidity among those with depression, BD, and schizophrenia. From 2008-2018, the annual proportion of PWH retained in care was similar but consistently higher in those MH multimorbidity compared to those without, whereas viral suppression was similar but consistently lower among PWH with MH multimorbidity, with a gap beginning to widen from 2016-2018 (**Figure 2e**).

In more recent years (2016-2018), the prevalence of MH multimorbidity was 16% (19,457/64,864) among PWH (**Supplement Figure 2**). Those with MH multimorbidity had a 4% [1.04-1.05] higher prevalence of retention in care compared to those without MHD (2016-2018); however, this attenuated to a 2% [1.02-1.02] higher retention in care after adjustment for demographic characteristics. Those with MH multimorbidity had a 2% [0.97-0.99] lower prevalence of viral suppression compared to those without MHD, and this attenuated to a 1% [0.99-1.00] lower prevalence in viral suppression after adjustment for demographic characteristics (**Table 2**).

## Treated vs. Untreated BD and Schizophrenia

The majority of PWH diagnosed with BD (89%) and schizophrenia (88%) were initiated on mental health treatment. In adjusted analyses there was a statistically nonsignificant 1% lower prevalence of retention in care and viral suppression among PWH with untreated BD compared

to those without BD. Untreated schizophrenia was associated with a statistically nonsignificant 1% higher prevalence of retention in care and no difference in viral suppression when compared to PWH without schizophrenia (**Supplemental Table 2**).

## DISCUSSION:

The prevalence of MHD is high among PWH in North America, with a large proportion of those with any MHD having MH multimorbidity. MHD disproportionally affect PWH with prevalence rates greater than that reported for the general US population among all four disorders evaluated in this study<sup>[28-30]</sup>. A nationally representative survey of over 9,000 US adults found a lifetime prevalence of 46.4% for any mental health disorder, and a prevalence of 27.7% for two or more disorders<sup>[28]</sup>. We evaluated just four MHD and found 55.1% of PWH had a MHD and 23.8% had  $\geq 2$  MHD. The general population lifetime prevalence of having a major depressive disorder was 16.6%, generalized anxiety disorder 5.7% and BD was 3.9%<sup>[28]</sup>, compared to PWH in our population with a prevalence of depression being 2.3-fold higher (38.7%), anxiety 4.9-fold higher (27.8%) and bipolar being 2.4-fold higher (9.5%). The median lifetime prevalence of schizophrenia is estimated to be 0.4%<sup>[29],[30, 31]</sup>, and in PWH is 4.1%, over a 10-fold increase.

From 2008-2018, the annual prevalence of depression and anxiety increased among PWH in the NA-ACCORD, with BD and schizophrenia remaining relatively stable until recent years, when prevalence decreased. US General population data suggests that the annual prevalence of depression and anxiety are increasing<sup>[32, 33]</sup>. This increase is likely multifactorial and may be due to a greater recognition over time, increased incidence due to environmental and biologic/genetic factors or increased duration of depression or anxiety disorder due to delayed diagnosis and

treatment<sup>[33]</sup>. Temporal trends of the prevalence of BD and schizophrenia in the general population are understudied. However, studies that do report time trends suggest either stable or decreasing prevalence of both BD and schizophrenia<sup>[34-38]</sup>. Reasons for this trend are unknown with suggestions that changing diagnostic criteria may be contributory<sup>[34-37]</sup>. It is possible we are seeing fluctuations in annual prevalence of MHD in 2017 and 2018 due to less PWH being observed in our study during this time.

Although prior studies have demonstrated that PWH with MHD access health services less often and have worse outcomes along the HIV care continuum<sup>[1, 15, 39-41]</sup>, we did not identify large differences associated with MHD or MH multimorbidity on retention in care or viral suppression. However, we did find PWH with depression and anxiety had marginally lower retention in care and those with MH multimorbidity had marginally increased retention in care. Guidance suggests more frequent follow-up visits for PWH with MHD<sup>[42, 43]</sup>, therefore despite small differences observed in retention in care between those with and without MHD, this may signal greater disparity. We found lower viral suppression among PWH with BD and MH multimorbidity compared to those without these diagnoses. Despite these small differences in continuum of care outcomes identified among PWH with MHD and MH multimorbidity, the high prevalence of these conditions among PWH requires ongoing vigilance and tailored interventions to achieve the “Ending the HIV Epidemic” goals of viral suppression<sup>[44]</sup>.

Regardless of MHD diagnosis, the proportion of PWH in NA-ACCORD achieving viral suppression increased between 2008-2018. However, the proportion achieving viral suppression was lower among PWH with BD (vs. no BD) and schizophrenia (vs. no schizophrenia),

particularly during the Treat-All era even though retention in care was similar among those with (vs. without) these MHD. This suggests that barriers to viral suppression exist beyond barriers to retention in care which have been exacerbated in the Treat-All era.

PWH with MHD may have higher retention in HIV care and ART adherence if their MH care visits are combined with their HIV care visits, providing convenience and increased access to both types of care<sup>[45-48]</sup>. When evaluating PWH with BD and schizophrenia, we found the majority (~90%) had initiated therapy for these disorders. This may explain the small differences in HIV care continuum among those with MHD vs those without. Our findings highlight the success of HIV care programs to provide PWH with both HIV and MH treatment, but also the ongoing need for improved resources for MH screening, linkage to treatment, and support programs to eliminate the identified gaps. The importance of MH services being integrated into HIV care programs has been emphasized through the COVID-19 pandemic as reports suggest increasing prevalence and worsening symptoms of MHD<sup>[49, 50]</sup>.

One strength of this work is the use of a large, diverse, and representative cohort of PWH who have linked into HIV care in North America. However, enrollment criteria into the NA-ACCORD includes only individuals successfully linked into care. Those who have never linked into care may be more likely to also have MHD, greater severity of MHD or untreated MHD and would not be included in this study population. A second strength lies in the ascertainment for MH diagnoses to classify PWH as ever having a MHD or multimorbidity. However, ascertainment of MHD depended on PWH having been diagnosed with MHD and underdiagnosis is common.



Further limitations include that we did not have sufficient data to evaluate time-varying severity or management of these MHD and are therefore likely identifying a heterogeneous population of PWH with MHD. Many of the NA-ACCORD HIV clinical cohort sites provide in-clinic MH screening and treatment; the generalizability of increased retention in care among PWH with MHD and multimorbidity may be limited to clinics with such services. Continuum of care outcome definitions were chosen to be comparable to other research in this field, however it is possible that the sensitivity of these definitions led to the small differences seen between groups. Retention in care was measured with in-person visits and may have been under ascertained if only virtual care visits were attended. Despite this being a large evaluation of MHD in PWH, we were constrained by a small sample size for certain analyses. Finally, there is likely to be residual confounding impacting the associations with HIV care continuum outcomes, particularly by active drug or alcohol use, socioeconomic status, family history of MHD or high stress/traumatic life events, which were not measured.

## **CONCLUSIONS:**

This analysis provides novel insight into the prevalence and HIV care continuum outcomes associated with MHD and multimorbidity in PWH. Due to the high prevalence of MHD and multimorbidity among PWH, care providers must remain vigilant with screening for these disorders and providing effective engagement into MH services when needed. Understanding barriers to viral suppression, and effective interventions to overcome such barriers among PWH with MHD and multimorbidity must continue to be a priority to increase the health and well-being of PWH.

## **DECLARATIONS:**

**Conflicts of Interest/Competing interests:** Dr. Althoff is a consultant to the All of Us Research Program and serves on the scientific advisory board for Trio Health. Dr. Gill has received honoraria for ad hoc participation on National HIV advisory Boards to Merck Gilead and ViiV Health. Dr. Rebeiro received honoraria from Gilead and Johnson & Johnson (money paid to individual); funding from NIH/NIAID (money paid to institution). Dr. Eron receives grants and personal fees from ViiV Healthcare, Janssen, and Gilead Sciences and personal fees from Merck, outside the submitted work. All other authors report no relevant conflicts of interest.

**Availability of data and materials:** Complete data for this study cannot be publicly shared because of legal and ethical restrictions. The NA-ACCORD Principals of Collaboration requires submission and approval of a concept sheet that describes the intended research project for which data are being requested. The NA-ACCORD Executive Committee and the Steering Committee (composed of principle investigators of contributing cohorts) must approve the concept sheet and elect to have their data included for the research project. A signed Data User Agreement is required before data can be released. Guidance for how to obtain NA-ACCORD data are outlined on the NA-ACCORD website ([www.naaccord.org/collaboration-policies](http://www.naaccord.org/collaboration-policies)).

## **FUNDING:**

The content is solely the responsibility of the authors and does not necessarily represent the official views of the National Institutes of Health. This work was supported by National Institutes of Health grants U01AI069918, F31AI124794, F31DA037788, G12MD007583, K01AI093197, K01AI131895, K23EY013707, K24AI065298, K24AI118591, K24DA000432, KL2TR000421, N01CP01004, N02CP055504, N02CP91027, P30AI027757, P30AI027763, P30AI027767, P30AI036219, P30AI050409, P30AI050410, P30AI094189, P30AI110527,

P30MH62246, R01AA016893, R01DA011602, R01DA012568, R01AG053100, R24AI067039, R34DA045592, U01AA013566, U01AA020790, U01AI038855, U01AI038858, U01AI068634, U01AI068636, U01AI069432, U01AI069434, U01DA036297, U01DA036935, U10EY008057, U10EY008052, U10EY008067, U01HL146192, U01HL146193, U01HL146194, U01HL146201, U01HL146202, U01HL146203, U01HL146204, U01HL146205, U01HL146208, U01HL146240, U01HL146241, U01HL146242, U01HL146245, U01HL146333, U24AA020794, U54GM133807, UL1RR024131, UL1TR000004, UL1TR000083, UL1TR002378, Z01CP010214 and Z01CP010176; contracts CDC-200-2006-18797 and CDC-200-2015-63931 from the Centers for Disease Control and Prevention, USA; contract 90047713 from the Agency for Healthcare Research and Quality, USA; contract 90051652 from the Health Resources and Services Administration, USA; the Grady Health System; grants CBR-86906, CBR-94036, HCP-97105 and TGF-96118 from the Canadian Institutes of Health Research, Canada; Ontario Ministry of Health and Long Term Care, and the Government of Alberta, Canada. Additional support was provided by the National Institute Of Allergy And Infectious Diseases (NIAID), National Cancer Institute (NCI), National Heart, Lung, and Blood Institute (NHLBI), Eunice Kennedy Shriver National Institute Of Child Health & Human Development , National Human Genome Research Institute (NHGRI), National Institute for MH (NIMH) and National Institute on Drug Abuse (NIDA), National Institute On Aging (NIA), National Institute Of Dental & Craniofacial Research (NIDCR), National Institute Of Neurological Disorders And Stroke , National Institute Of Nursing Research (NINR), National Institute on Alcohol Abuse and Alcoholism (NIAAA), National Institute on Deafness and Other Communication Disorders (NIDCD), and National Institute of Diabetes and Digestive and Kidney Diseases (NIDDK).

## REFERENCES

1. Remien RH, Stirratt MJ, Nguyen N, Robbins RN, Pala AN, Mellins CA. **Mental health and HIV/AIDS: the need for an integrated response.** *AIDS* 2019; 33(9):1411-1420.
2. Walker ER, McGee RE, Druss BG. **Mortality in mental disorders and global disease burden implications: a systematic review and meta-analysis.** *JAMA Psychiatry* 2015; 72(4):334-341.
3. WHO. **Consolidated Guidelines on the Use of Antiretroviral Drugs for Treating and Preventing HIV Infection: Recommendations for a Public Health Approach.** In. Geneva; 2016.
4. Bing EG, Burnam MA, Longshore D, Fleishman JA, Sherbourne CD, London AS, et al. **Psychiatric disorders and drug use among human immunodeficiency virus--infected adults in the United States.** *Arch Gen Psychiatry* 2001; 58(8):721-728.
5. Brody DJ, Pratt LA, Hughes JP. **Prevalence of Depression Among Adults Aged 20 and Over: United States, 2013–2016.** In: National Center for Health Statistics, Centers for Disease Control and Prevention, NCHS Data Brief No. 303 2018
6. Cook JA, Burke-Miller JK, Steigman PJ, Schwartz RM, Hessol NA, Milam J, et al. **Prevalence, Comorbidity, and Correlates of Psychiatric and Substance Use Disorders and Associations with HIV Risk Behaviors in a Multisite Cohort of Women Living with HIV.** *AIDS Behav* 2018; 22(10):3141-3154.
7. Do AN, Rosenberg ES, Sullivan PS, Beer L, Strine TW, Schulden JD, et al. **Excess burden of depression among HIV-infected persons receiving medical care in the united states: data from the medical monitoring project and the behavioral risk factor surveillance system.** *PLoS One* 2014; 9(3):e92842.
8. Rubin LH, Maki PM. **HIV, Depression, and Cognitive Impairment in the Era of Effective Antiretroviral Therapy.** *Curr HIV/AIDS Rep* 2019; 16(1):82-95.
9. Beer L, Tie Y, Padilla M, Shouse RL, Medical Monitoring P. **Generalized anxiety disorder symptoms among persons with diagnosed HIV in the United States.** *AIDS* 2019; 33(11):1781-1787.
10. Depp CA, Moore DJ, Patterson TL, Lebowitz BD, Jeste DV. **Psychosocial interventions and medication adherence in bipolar disorder.** *Dialogues Clin Neurosci* 2008; 10(2):239-250.
11. Ribeiro CMF, Gurgel WS, Luna JRG, Matos KJN, Souza FGM. **Is bipolar disorder a risk factor for HIV infection?** *J Affect Disord* 2013; 146(1):66-70.
12. de Sousa Gurgel W, da Silva Carneiro AH, Barreto Rebouças D, Negreiros de Matos KJ, do Menino Jesus Silva Leitão T, de Matos e Souza FG, et al. **Prevalence of bipolar disorder in a HIV-infected outpatient population.** *AIDS Care* 2013; 25(12):1499-1503.
13. Wang Q, Polimanti R, Kranzler HR, Farrer LA, Zhao H, Gelernter J. **Genetic factor common to schizophrenia and HIV infection is associated with risky sexual behavior: antagonistic vs. synergistic pleiotropic SNPs enriched for distinctly different biological functions.** *Hum Genet* 2017; 136(1):75-83.
14. Haas AD, Ruffieux Y, van den Heuvel LL, Lund C, Boulle A, Euvrard J, et al. **Excess mortality associated with mental illness in people living with HIV in Cape Town, South Africa: a cohort study using linked electronic health records.** *Lancet Glob Health* 2020; 8(10):e1326-e1334.
15. Nanni MG, Caruso R, Mitchell AJ, Meggiolaro E, Grassi L. **Depression in HIV infected patients: a review.** *Curr Psychiatry Rep* 2015; 17(1):530.

16. Gonzalez JS, Batchelder AW, Psaros C, Safren SA. **Depression and HIV/AIDS treatment nonadherence: a review and meta-analysis.** *J Acquir Immune Defic Syndr* 2011; 58(2):181-187.
17. Moore DJ, Posada C, Parikh M, Arce M, Vaida F, Riggs PK, et al. **HIV-infected individuals with co-occurring bipolar disorder evidence poor antiretroviral and psychiatric medication adherence.** *AIDS Behav* 2012; 16(8):2257-2266.
18. Walsh C, McCann E, Gilbody S, Hughes E. **Promoting HIV and sexual safety behaviour in people with severe mental illness: a systematic review of behavioural interventions.** *Int J Ment Health Nurs* 2014; 23(4):344-354.
19. Murphy K, Edelstein H, Smith L, Clanon K, Schweitzer B, Reynolds L, et al. **Treatment of HIV in outpatients with schizophrenia, schizoaffective disorder and bipolar disease at two county clinics.** *Community Ment Health J* 2011; 47(6):668-671.
20. Owe-Larsson B, Sall L, Salamon E, Allgulander C. **HIV infection and psychiatric illness.** *African Journal of Psychiatry* 2009; 12(2):115-128.
21. Mathers CD, Loncar D. **Projections of global mortality and burden of disease from 2002 to 2030.** *PLoS Med* 2006; 3(11):e442.
22. Gange SJ, Kitahata MM, Saag MS, Bangsberg DR, Bosch RJ, Brooks JT, et al. **Cohort profile: the North American AIDS Cohort Collaboration on Research and Design (NA-ACCORD).** *Int J Epidemiol* 2007; 36(2):294-301.
23. Althoff KN, Buchacz K, Hall HI, Zhang J, Hanna DB, Rebeiro P, et al. **U.S. trends in antiretroviral therapy use, HIV RNA plasma viral loads, and CD4 T-lymphocyte cell counts among HIV-infected persons, 2000 to 2008.** *Ann Intern Med* 2012; 157(5):325-335.
24. Althoff KN, Wong C, Hogan B, Desir F, You B, Humes E, et al. **Mind the gap: observation windows to define periods of event ascertainment as a quality control method for longitudinal electronic health record data.** *Ann Epidemiol* 2019; 33:54-63.
25. Grande I, Berk M, Birmaher B, Vieta E. **Bipolar disorder.** *Lancet* 2016; 387(10027):1561-1572.
26. Wong C, Gange SJ, Buchacz K, Moore RD, Justice AC, Horberg MA, et al. **First Occurrence of Diabetes, Chronic Kidney Disease, and Hypertension Among North American HIV-Infected Adults, 2000-2013.** *Clin Infect Dis* 2017; 64(4):459-467.
27. Chou R, Dana T, Blazina I, Daeges M, Bougatsos C, Jeanne TL. **Screening for Dyslipidemia in Younger Adults: A Systematic Review for the U.S. Preventive Services Task Force.** *Ann Intern Med* 2016; 165(8):560-564.
28. Kessler RC, Berglund P, Demler O, Jin R, Merikangas KR, Walters EE. **Lifetime prevalence and age-of-onset distributions of DSM-IV disorders in the National Comorbidity Survey Replication.** *Arch Gen Psychiatry* 2005; 62(6):593-602.
29. Saha S, Chant D, Welham J, McGrath J. **A systematic review of the prevalence of schizophrenia.** *PLoS Med* 2005; 2(5):e141.
30. Kessler RC, Birnbaum H, Demler O, Falloon IR, Gagnon E, Guyer M, et al. **The prevalence and correlates of nonaffective psychosis in the National Comorbidity Survey Replication (NCS-R).** *Biol Psychiatry* 2005; 58(8):668-676.
31. Desai PR, Lawson KA, Barner JC, Rascati KL. **Identifying patient characteristics associated with high schizophrenia-related direct medical costs in community-dwelling patients.** *J Manag Care Pharm* 2013; 19(6):468-477.

32. Goodwin RD, Weinberger AH, Kim JH, Wu M, Galea S. **Trends in anxiety among adults in the United States, 2008-2018: Rapid increases among young adults.** *J Psychiatr Res* 2020; 130:441-446.
33. Weinberger AH, Gbedemah M, Martinez AM, Nash D, Galea S, Goodwin RD. **Trends in depression prevalence in the USA from 2005 to 2015: widening disparities in vulnerable groups.** *Psychol Med* 2018; 48(8):1308-1315.
34. Frisher M, Crome I, Martino O, Croft P. **Assessing the impact of cannabis use on trends in diagnosed schizophrenia in the United Kingdom from 1996 to 2005.** *Schizophr Res* 2009; 113(2-3):123-128.
35. Woogh C. **Is schizophrenia on the decline in Canada?** *Can J Psychiatry* 2001; 46(1):61-67.
36. Pilon D, Patel C, Lafeuille MH, Zhdanava M, Lin D, Cote-Sergeant A, et al. **Prevalence, incidence and economic burden of schizophrenia among Medicaid beneficiaries.** *Curr Med Res Opin* 2021; 37(10):1811-1819.
37. Leclerc J, Lesage A, Rochette L, Huynh C, Pelletier E, Sampalis J. **Prevalence of depressive, bipolar and adjustment disorders, in Quebec, Canada.** *J Affect Disord* 2020; 263:54-59.
38. Kessler RC, Demler O, Frank RG, Olfson M, Pincus HA, Walters EE, et al. **Prevalence and treatment of mental disorders, 1990 to 2003.** *N Engl J Med* 2005; 352(24):2515-2523.
39. Burnam MA, Bing EG, Morton SC, Sherbourne C, Fleishman JA, London AS, et al. **Use of mental health and substance abuse treatment services among adults with HIV in the United States.** *Arch Gen Psychiatry* 2001; 58(8):729-736.
40. Yehia BR, Stephens-Shield AJ, Momplaisir F, Taylor L, Gross R, Dubé B, et al. **Health Outcomes of HIV-Infected People with Mental Illness.** *AIDS Behav* 2015; 19(8):1491-1500.
41. Pence BW, Mills JC, Bengtson AM, Gaynes BN, Breger TL, Cook RL, et al. **Association of Increased Chronicity of Depression With HIV Appointment Attendance, Treatment Failure, and Mortality Among HIV-Infected Adults in the United States.** *JAMA Psychiatry* 2018; 75(4):379-385.
42. Gelenberg AJ. **A review of the current guidelines for depression treatment.** *J Clin Psychiatry* 2010; 71(7):e15.
43. Keepers GA, Fochtmann LJ, Anzia JM, Benjamin S, Lyness JM, Mojtabai R, et al. **The American Psychiatric Association Practice Guideline for the Treatment of Patients With Schizophrenia.** *Am J Psychiatry* 2020; 177(9):868-872.
44. Fauci AS, Redfield RR, Sigounas G, Weahkee MD, Giroir BP. **Ending the HIV Epidemic: A Plan for the United States.** *JAMA* 2019; 321(9):844-845.
45. Himelhoch S, Brown CH, Walkup J, Chander G, Korthius PT, Afful J, et al. **HIV patients with psychiatric disorders are less likely to discontinue HAART.** *AIDS* 2009; 23(13):1735-1742.
46. Cook JA, Cohen MH, Burke J, Grey D, Anastos K, Kirstein L, et al. **Effects of depressive symptoms and mental health quality of life on use of highly active antiretroviral therapy among HIV-seropositive women.** *J Acquir Immune Defic Syndr* 2002; 30(4):401-409.
47. Tegger MK, Crane HM, Tapia KA, Uldall KK, Holte SE, Kitahata MM. **The effect of mental illness, substance use, and treatment for depression on the initiation of highly active antiretroviral therapy among HIV-infected individuals.** *AIDS Patient Care STDS* 2008; 22(3):233-243.



48. Yun LW, Maravi M, Kobayashi JS, Barton PL, Davidson AJ. **Antidepressant treatment improves adherence to antiretroviral therapy among depressed HIV-infected patients.** *J Acquir Immune Defic Syndr* 2005; 38(4):432-438.
49. Parisi CE, Varma DS, Wang Y, Vaddiparti K, Ibanez GE, Cruz L, et al. **Changes in Mental Health Among People with HIV During the COVID-19 Pandemic: Qualitative and Quantitative Perspectives.** *AIDS Behav* 2022.
50. Collaborators C-MD. **Global prevalence and burden of depressive and anxiety disorders in 204 countries and territories in 2020 due to the COVID-19 pandemic.** *Lancet* 2021; 398(10312):1700-1712.

**Table 1:** Demographic characteristics at study entry among PWH in the NA-ACCORD and under observation for mental health outcomes between 2008-2018 (N=122,896).

	Overall		Depression				Anxiety				Bipolar Disorder				Schizophrenia			
	N=122,896		No Depression n=75,343		Depression n=47,553		No Anxiety n=88,677		Anxiety n=34,219		No Bipolar Disorder n=111,189		Bipolar Disorder n=11,716		No Schizophrenia n=117,874		Schizophrenia n=5,022	
Characteristics	n	%	n	%	n	%	n	%	n	%	n	%	n	%	N	%	n	%
<b>Age</b>																		
Median (IQR)	46	(37-54)	45	(35-53)	47	(39-55)	46	(36-54)	47	(39-54)	46	(37-54)	46	(38-53)	46	(37-54)	51	(44-57)
<b>Sex</b>																		
Male	104062	85%	63524	84%	40538	85%	74216	84%	29846	87%	94408	85%	9654	82%	99687	85%	4375	87%
Female	18832	15%	11819	16%	7013	15%	14458	16%	4374	13%	16770	15%	2062	18%	18184	15%	648	13%
<b>Race</b>																		
Non-Hispanic White	44816	36%	25796	34%	19019	40%	29022	33%	15794	46%	39626	36%	5190	44%	43516	37%	1300	26%
Non-Hispanic Black	52196	42%	32902	44%	19295	41%	40677	46%	11519	34%	47384	43%	4812	41%	49163	42%	3033	60%
Hispanic	17651	14%	10938	15%	6713	14%	12557	14%	5094	15%	16382	15%	1269	11%	17100	15%	551	11%
Non-Hispanic Asian	2219	2%	1517	2%	703	1%	1714	2%	505	1%	2125	2%	94	1%	2186	2%	33	1%
Other/Unknown	6014	5%	4191	6%	1823	4%	4706	5%	1308	4%	5663	5%	351	3%	5908	5%	106	2%
<b>HIV acquisition risk</b>																		
IDU	21115	17%	10656	14%	10459	22%	12265	14%	8850	26%	16487	15%	4628	40%	18452	16%	2663	53%
MSM	42869	35%	28477	38%	14392	30%	32157	36%	10712	31%	39954	36%	2915	25%	42379	36%	490	10%
Heterosexual contact	24662	20%	17061	23%	7601	16%	20609	23%	4053	12%	22916	21%	1746	15%	23987	20%	675	13%
Other/Unknown	34250	28%	19149	25%	15101	32%	23645	27%	10605	31%	31823	29%	2427	21%	33055	28%	1195	24%
<b>Smoking</b>																		
Never	26585	22%	15963	21%	10621	22%	18691	21%	7892	23%	24978	22%	1607	14%	25991	22%	594	12%
Ever	61191	50%	32229	43%	28963	61%	39501	45%	21690	63%	52673	47%	8518	73%	57253	49%	3938	78%
Not assessed	35120	29%	27151	36%	7969	17%	30484	34%	4636	14%	33529	30%	1591	14%	34629	29%	491	10%
<b>Hepatitis C infection</b>	25009	20%	13459	18%	11551	24%	16323	18%	8686	25%	21006	19%	4003	34%	22814	19%	2195	44%
<b>Hepatitis B infection</b>	7004	6%	4196	6%	2808*	6%	5084	6%	1920*	6%	6268	6%	736*	6%	6681	6%	323*	6%
<b>Treated hypertension</b>	36543	30%	19099	25%	17445	37%	23625	27%	12918	38%	32221	29%	4322	37%	34030	29%	2513	50%
<b>Diabetes</b>	12136	10%	6577	9%	5559	12%	8447	10%	3689	11%	10803	10%	1333	11%	11209	10%	927	18%



CKD stage 2 (eGFR <60)																		
No	103064	84%	61511	82%	41553	87%	72926	82%	30138	88%	92597	83%	10467	89%	98721	84%	4343	86%
Yes	7978	6%	4669	6%	3309	7%	5792	7%	2186	6%	7295	7%	683	6%	7547	6%	431	9%
Not assessed	11854	10%	9163	12%	2691	6%	9958	11%	1896	6%	11288	10%	566	5%	11605	10%	249	5%
Hypercholesterolemia	26243	21%	14206	19%	12035	25%	17154	19%	9089	27%	23286	21%	2957	25%	24921	21%	1322	26%
Statin Use	20674	17%	11003	15%	9671	20%	13625	15%	7049	21%	18631	17%	2043*	17%	19608	17%	1066*	21%
CD4 count (cells/mm³)																		
Median (IQR)	431 (251-634)		428 (247-630)		435 (258-643)		421 (240-626)		454 (279-657)		430 (250-629)		439 (265-642)		423 (234-631)		412 (237-612)	
<200	19986	16%	12521	17%	7465	16%	15293	17%	4693	14%	18317	16%	1669	14%	19212	16%	774	15%
>=200	85238	70%	51917	69%	33321	70%	60584	69%	24654	72%	77174	70%	8064	69%	82142	70%	3096	61%
Missing	17571	14%	10905	14%	6727	14%	12799	14%	4873	14%	15689	14%	1983	17%	16519	14%	1153	23%
HIV RNA (copies/mL)																		
<200	43075	35%	26436	35%	16638	35%	31138	35%	11937	35%	39150	35%	3925	34%	41604	35%	1471	29%
>=200	51433	42%	32139	43%	19294	41%	37676	42%	13757	40%	46465	42%	4968	42%	49448	42%	1985	40%
Missing	28388	23%	16768	22%	11621	24%	19862	22%	8526	25%	25565	23%	2823	24%	26821	23%	1567	31%
Year of ART initiation																		
1996-2004	33820	28%	17283	23%	16537	35%	22135	25%	11685	35%	29805	26%	4015	34%	31748	27%	2072	41%
2005-2009	26728	22%	16041	21%	10687	22%	19484	22%	7244	21%	24120	22%	2608	22%	25761	22%	967	19%
2010-2018	48644	40%	32385	43%	16259	34%	36322	41%	12322	36%	44853	40%	3791	32%	47515	40%	1129	22%
Not initiate ART	13690	11%	9622	13%	4068	9%	10726	12%	2964	9%	12391	11%	1299	11%	12835	11%	855	17%
HIV treatment regimen at ART initiation																		
NNRTI	14770	12%	10107	13%	4663	10%	10841	12%	3929	12%	13655	12%	1115	10%	14495	12%	275	5%
PI	6609	5%	3913	5%	2696	6%	4689	5%	1920	6%	6023	5%	586	5%	6408	5%	201	4%
Integrase Inhibitor	42922	35%	25933	35%	16989	36%	30968	35%	11954	35%	39322	36%	3600	31%	41553	35%	1369	27%
Other/Unknown	44343	36%	25402	34%	18941	40%	31021	35%	13322	39%	39266	35%	5077	43%	42029	36%	2314	46%
Never on HAART	13690	11%	9622	13%	4068	9%	10726	12%	2964	9%	12391	11%	1299	11%	12835	11%	855	17%

P-values calculated using chi-squared tests for all categorical or binary variables and t-tests for all continuous variables. All p-values are <0.001, unless specified with (\*). Due to large numbers of participants statistical significance was common, however clinical significance was considered as a difference in 5% between comparison groups and these differences are bolded.

Age, sex, race/ethnicity, and HIV transmission acquisition group are time-fixed variables, measured at enrollment into the NA-ACCORD.

IDU: injection drug use, MSM: Men who have sex with men, NNRTI: non-nucleoside reverse transcriptase inhibitor, PI: Protease inhibitor.

**Table 2:** The impact of Mental Health Disorders on the HIV care continuum among PWH on ART (2016-2018)

	n	%	PR <sup>a</sup>	95% CI	aPR <sup>b</sup>	95% CI
<b>Retained in Care (N=54,606)</b>						
No depression	30463	56%	1.00		1.00	
Depression	24143	44%	<b>1.03</b>	<b>1.03-1.04</b>	<b>0.98</b>	<b>0.97-0.98</b>
No anxiety	35068	64%	1.00		1.00	
Anxiety	19538	36%	<b>1.03</b>	<b>1.02-1.03</b>	<b>0.98</b>	<b>0.97-0.98</b>
No bipolar disorder	48943	90%	1.00		1.00	
Bipolar disorder	5663	10%	1.01	1.00-1.01	1.00	1.00-1.01
No schizophrenia	52304	96%	1.00		1.00	
Schizophrenia	2302	4%	1.01	1.00-1.03	1.00	1.00- 1.01
No MH Disorder	20724	38%	1.00		1.00	
One MH Disorder	17101	31%	<b>1.02</b>	<b>1.02-1.03</b>	<b>1.01</b>	<b>1.01- 1.01</b>
MH Multimorbidity <sup>c</sup>	16781	31%	<b>1.04</b>	<b>1.04-1.05</b>	<b>1.02</b>	<b>1.02- 1.02</b>
<b>Suppressed HIV RNA (≤200 copies/mL) (N=20,231)</b>						
No depression	12625	62%	1.00		1.00	
Depression	7606	38%	<b>0.99</b>	<b>0.98- 0.99</b>	1.01	1.00-1.02
No anxiety	13901	69%	1.00		1.00	
Anxiety	6330	31%	1.00	1.00- 1.01	1.00	1.00-1.01
No bipolar disorder	18572	92%	1.00		1.00	
Bipolar disorder	1659	8%	<b>0.95</b>	<b>0.94-0.97</b>	<b>0.98</b>	<b>0.98-0.99</b>
No schizophrenia	19865	98%	1.00		1.00	
Schizophrenia	366	2%	<b>0.96</b>	<b>0.93-0.99</b>	1.00	0.98-1.01
No MH Disorder	9136	45%	1.00		1.00	
One MH Disorder	6282	31%	<b>0.97</b>	<b>0.97-0.98</b>	0.99	0.99-1.00
MH Multimorbidity <sup>c</sup>	4813	24%	<b>0.98</b>	<b>0.97-0.99</b>	<b>0.99</b>	<b>0.99-1.00</b>

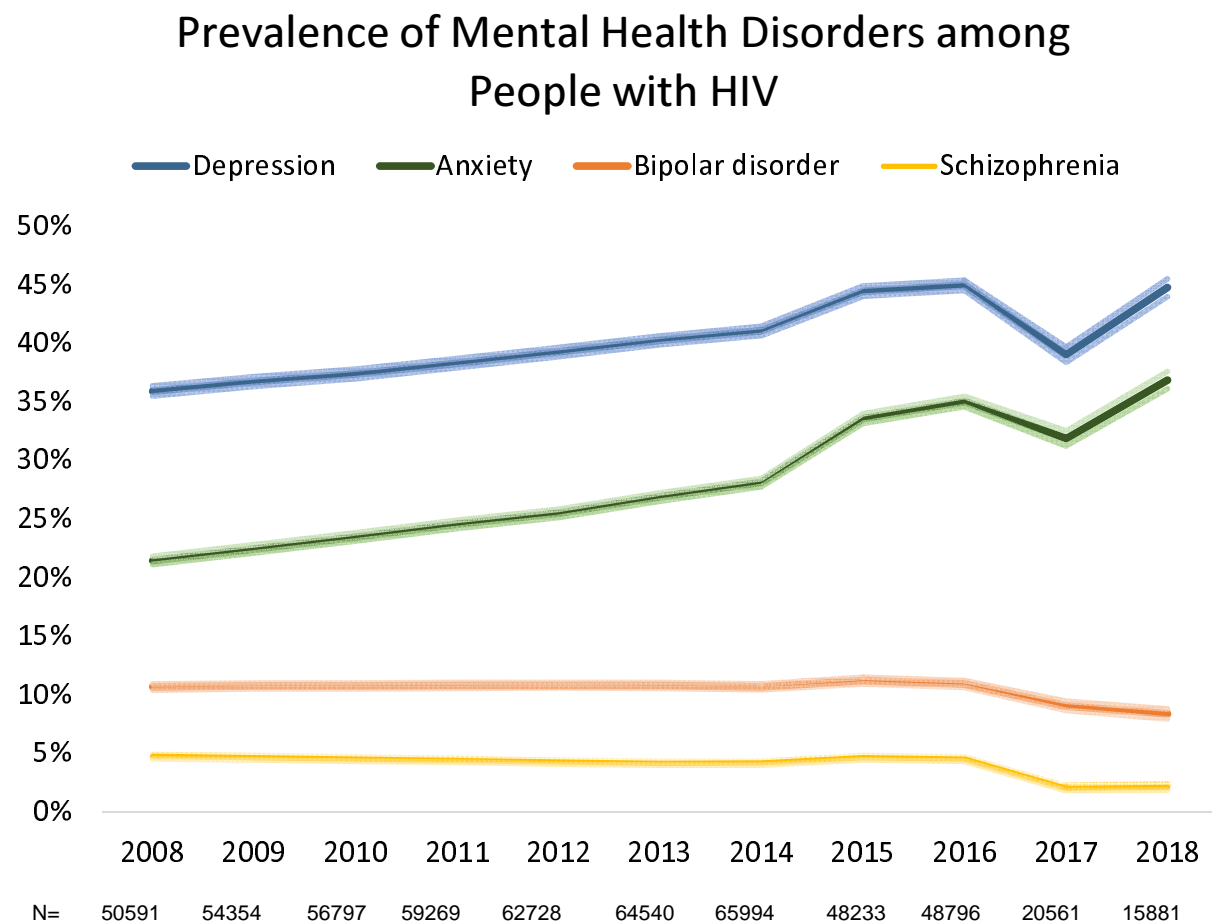
<sup>a</sup> PR = unadjusted prevalence ratio from a log binomial regression model

<sup>b</sup> aPR = adjusted prevalence ratio from a log binomial regression model, adjusted for decade of age, race/ethnicity (due to small numbers, Asian/PI was collapsed into the other/unknown category), sex, HIV acquisition risk group, and cohort.

<sup>c</sup> Mental health multimorbidity included those with ≥2 MH comorbidities

Values with P<0.05 are bolded.

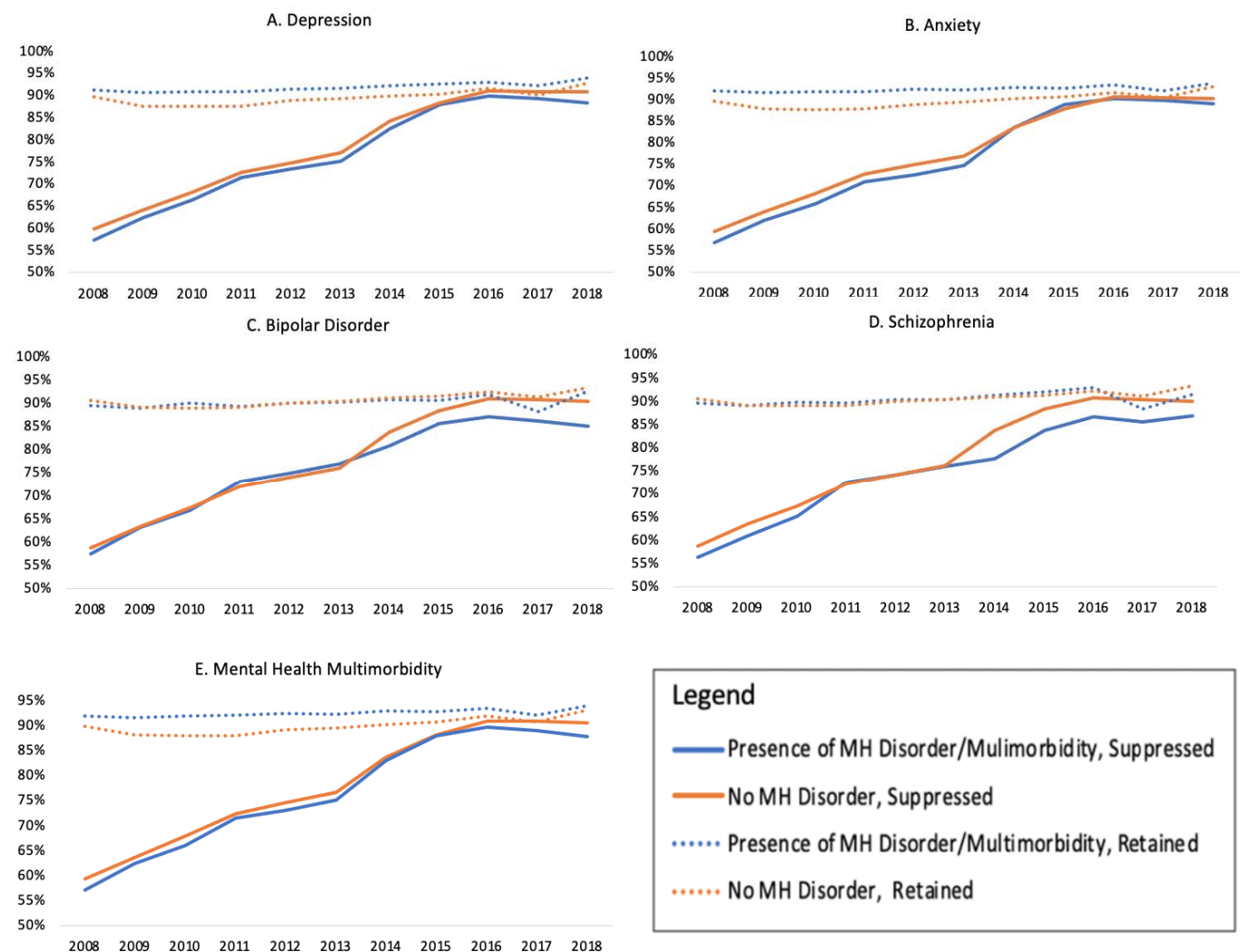
**Figure 1:** Prevalence (and 95% confidence intervals represented by the lighter color shade) of mental health disorders, 2008-2018.



Footnotes: Trends in annual prevalence for each mental health disorder evaluated with a log binomial model with generalized estimating equations, depressive disorder (p for trend= 0.001), anxiety disorder (p for trend= <0.001), bipolar disorder (p for trend= 0.058), and schizophrenia (p for trend= 0.013).

Fluctuations in annual prevalence in 2017 and 2018 in mental health disorders may be due to less PWH being observed in our study during this time.

**Figure 2:** Trends in retention in care and viral suppression by a) depression diagnoses, b) anxiety diagnoses, c) bipolar disorder diagnosis, and c) schizophrenia diagnosis, 2008-2018 (N=122,896)

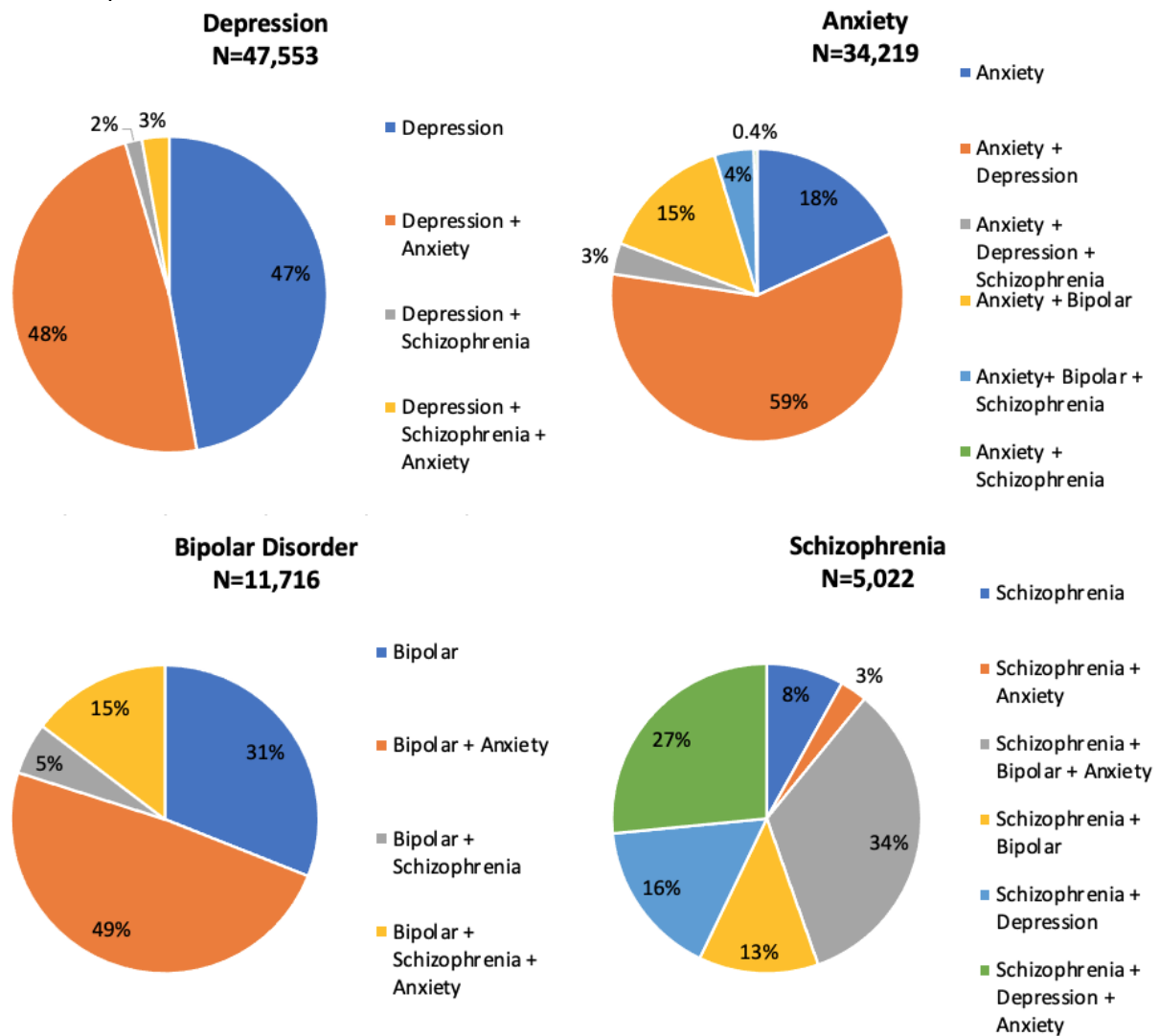


Footnotes:

Retention is defined as 2 or more HIV care visits between 2016-2018.

Suppression defined as having a viral load  $\leq 200$  copies/mL between 2016-2018.

**Figure 3:** The percentage mental health multimorbidity, by individual mental health comorbidity, 2008-2018.



Footnotes: A diagnosis of BD excluded classification of this participant as having depression; these two diagnoses were considered mutually exclusive

## **Supplemental Figure 1: Flow chart of study population selection**

### **Source Population**

Adult ( $\geq 18$  years) participants of 13 clinical cohorts that ascertain depression, anxiety, bipolar disorder, and schizophrenia diagnoses

**N= 156,892**



### **Overall Study Population**

Participants who are observed  
1 Jan 2008 – 31 Dec 2018

**N=122,896**



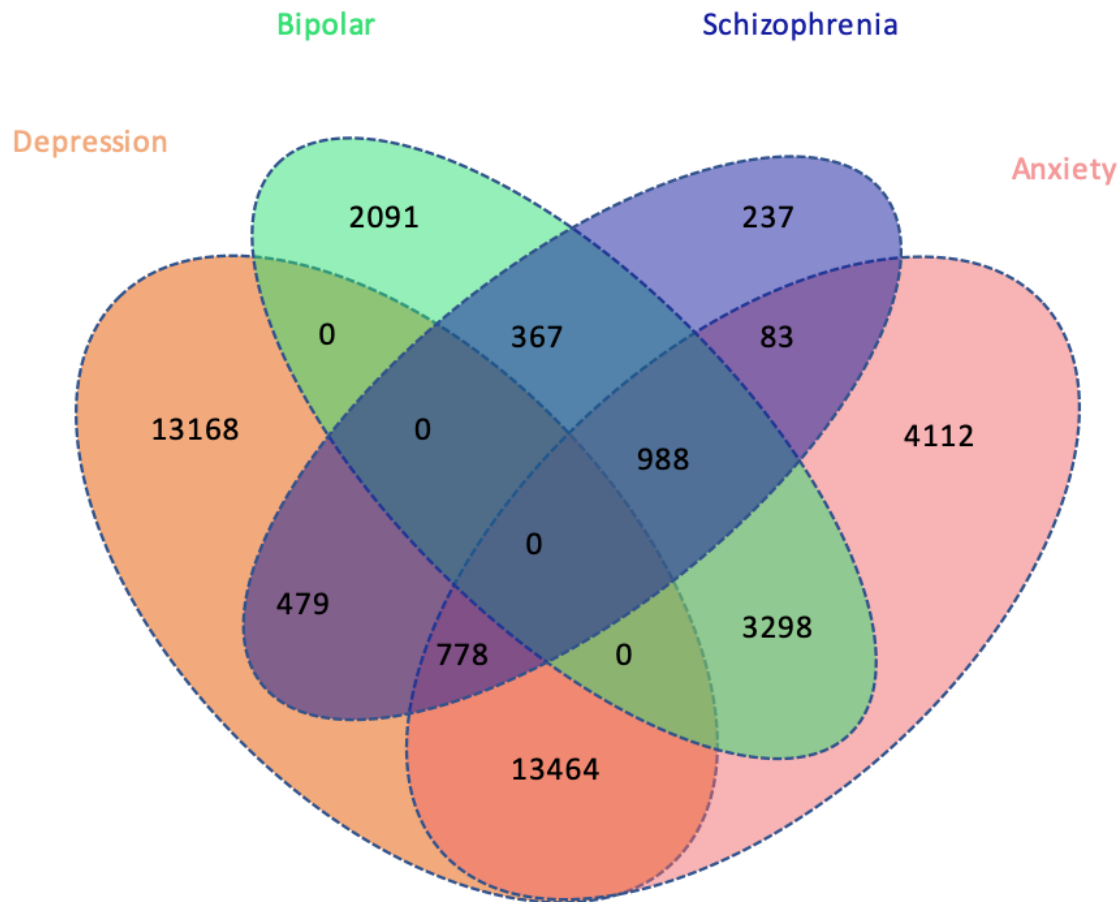
### **Recent (2016-2018) Study Population**

Participants who are observed  
1 Jan 2016 – 31 Dec 2018

**N=64,864**

**Supplemental Figure 2:** Venn diagram of mental health multimorbidity among people with HIV between 2016-2018 (N=64,864).

Year 2016-2018



Footnotes: Depression and bipolar disorder are considered mutually exclusive; therefore, depression diagnoses were excluded among those with bipolar disorder.

**Supplemental Table 1:** Diagnosis codes used to identify Mental health disorders and Medications used to indicate treatment.

MENTAL HEALTH DISORDER	DIAGNOSIS CODE	DIAGNOSIS CONDITION NAME	MEDICATIONS <sup>A</sup>
DEPRESSIVE DISORDER	309.0, F43.21	ADJUSTMENT DISORDER AND DEPRESSION	NOT ASSESSED
	296, 296.2-296.36, 296.82, 296.9, 300.4, 309.1, 311, F32.0-F32.2, F32.4-F32.5, F32.8, F32.89-F33.2, F33.4-F44.42, F33.8-F34.1, F34.8-F34.9, F39, R45.851, T14.91, T43.592A, T50.902A, V11.1, V62.84, Z91.5	DEPRESSION	
	296.24, 296.34, 298.0, F32.3, F33.3	DEPRESSION AND PSYCHOSIS	
ANXIETY	309.24, F43.22	ADJUSTMENT DISORDER AND ANXIETY	NOT ASSESSED
	293.84-293.127	ANXIETY DISORDER	
BIPOLAR DISORDER	296.0-296.16, 296.4-296.81, 296.89, F30.10-F30.11, F30.3, F30.4, F30.8-F31.13, F31.30-F31.4, F31.60-F31.63, F31.7-F31.9	BIPOLAR DISORDER	ALPRAZOLAM, ARIPIPRAZOLE, ASENAPINE, BREXIPRAZOLE, CARBAMAZEPINE, CARIPRAZINE, CLOZAPINE, CLONAZEPAM, DIAZEPAM, DIVALPROEX, GABAPENTIN, LAMOTRIGINE, LITHIUM, LORAZEPAM, LURASIDONE, OLANZAPINE, OXCARBAZEPINE, QUETIAPINE, RISPERIDONE, TOPIRAMATE, VALPROIC ACID, ZIPRASIDONE



	296.04, 296.14, 296.44, 296.54, 296.64, F30.2, F31.12, F31.2, F31.5, F31.64	BIPOLAR AND PSYCHOSIS	
SCHIZOPHRENIA	295.0-295.65, 295.08-295.95, F20.0-F20.3, F20.5, F20.81, F20.89, F20.9	SCHIZOPHRENIA	AMISULPRIDE, AMOXAPINE, ARIPIRAZOLE, ASENAPINE, BREXPIRAZOLE, CARIPRAZINE, CARIPRAZINE HCL, CHLORPROMAZINE, CLOZAPINE, FLUPHENAZINE, HALOPERIDOL, ILOPERIDONE, LOXAPINE, LURASIDONE, MOLINDONE, OLANZAPINE, PALIPERIDONE, PERPHENAZINE, PIMOZIDE, QUETIAPINE, RISPERIDONE, THIORIDAZINE, THIOTHIXENE, TRIFLUOPERAZINE, ZIPRASIDONE, ZUCLOPHNTHIXOL, Anti-psychotic unspecified

<sup>A</sup>These categories are not mutually exclusive, and many medications are not used exclusively for a single condition.

**Supplemental Table 2:** The impact of Mental Health Disorders on the HIV care continuum among PWH on ART (2016-2018)

	n	%	PR <sup>a</sup>	95% CI	aPR <sup>b</sup>	95% CI
<b>Retained in Care (N=54,606)</b>						
No bipolar disorder	48943	90%	1.00		1.00	
Treated Bipolar disorder	5022	9%	1.01	1.00-1.02	1.00	1.00-1.01
Untreated Bipolar disorder	641	1%	0.98	0.95-1.00	0.99	0.98-1.00
No schizophrenia	52304	96%	1.00		1.00	
Treated schizophrenia	1928	3%	1.01	1.00-1.02	1.00	0.99-1.01
Untreated schizophrenia	374	1%	<b>1.03</b>	<b>1.01-1.06</b>	1.01	1.00-1.02
<b>Suppressed HIV RNA (≤200 copies/mL) (N=20,231)</b>						
No bipolar disorder	18572	92%	1.00		1.00	
Treated Bipolar disorder	1393	7%	<b>0.95</b>	<b>0.93-0.97</b>	<b>0.98</b>	<b>0.97-0.99</b>
Untreated Bipolar disorder	266	1%	0.98	0.94-1.02	0.99	0.98-1.01
No schizophrenia	19865	98%	1.00		1.00	
Treated schizophrenia	321	2%	<b>0.96</b>	<b>0.92-0.99</b>	0.99	0.98-1.01
Untreated schizophrenia	45	0%	0.99	0.90-1.08	1.00	0.95-1.04

<sup>a</sup> PR = unadjusted prevalence ratio from a log binomial regression model

<sup>b</sup> aPR = adjusted prevalence ratio from a log binomial regression model, adjusted for decade of age, race/ethnicity, sex, HIV acquisition risk group, and cohort.

Values with P<0.05 are bolded.

