

1                   Anti-inflammatory therapy with nebulised dornase alfa for severe  
2   COVID-19 pneumonia

3  
4   Joanna C. Porter<sup>1,2</sup>, Jamie Inshaw<sup>3</sup>, Vincente Joel Solis<sup>2</sup>, Emma Denny<sup>1,2</sup>, Rebecca Evans<sup>2</sup>,  
5   Mia I. Temkin<sup>4\*</sup>, Nathalia De Vasconcelos<sup>4\*</sup>, Iker Valle Aramburu<sup>4\*</sup>, Dennis Hoving<sup>4\*</sup>, Donna  
6   Basire<sup>1</sup>, Tracey Crissell<sup>2</sup>, Jesusa Guinto<sup>2</sup>, Alison Webb<sup>2</sup>, Hanif Esmail<sup>2,5</sup>, Victoria Johnston<sup>2,5</sup>,  
7   Anna Last<sup>2,6</sup>, Thomas Rampling<sup>2,5</sup>, Elisa Theresa Helbig<sup>7</sup>, Lena Lippert<sup>7</sup>, Florian Kurth<sup>7</sup>, Bryan  
8   Williams<sup>2,5</sup>, Aiden Flynn<sup>3</sup>, Pauline T Lukey<sup>8</sup>, Veronique Birault<sup>9</sup> and Venizelos  
9   Papayannopoulos<sup>4</sup>

10   1.UCL Respiratory, University College London, UK ; 2.University College London Hospitals  
11   NHS Trust, London, UK; 3. Exploristics, Belfast, N. Ireland; 4.Antimicrobial Defence lab, The  
12   Francis Crick Institute, London, UK; 5.National Institute for Health Research, University  
13   College London Hospital Biomedical Research Centre, UK; 6. Clinical Research Department,  
14   London School of Hygiene and Tropical Medicine, London, UK; 7. Charité –  
15   Universitätsmedizin Berlin, Department of Infectious Diseases and Respiratory Medicine,  
16   Berlin, Germany. 8. Target to Treatment Consulting Ltd, Stevenage, UK; 9.Translation, The  
17   Francis Crick Institute, London, UK \*contributed equally

18   **Correspondence:** Professor Joanna C Porter, [joanna.porter@ucl.ac.uk](mailto:joanna.porter@ucl.ac.uk) and Venizelos  
19   Papayannopoulos, [veni.p@crick.ac.uk](mailto:veni.p@crick.ac.uk)

20   Funding: LifeArc, Breathing Matters

21   Trial registration: NCT04359654 <https://clinicaltrials.gov/ct2/show/NCT04359654>

22

23

24   We show proof-of-concept that nebulised DNase can reduce inflammation in patients with  
25   severe COVID-19 pneumonia and should be prioritised for further investigation in other viral  
26   pneumonias characterised by NETosis with high circulating cell free-DNA.

27

28

29

30

31

32 ABSTRACT

33

34 **Background:**

35 Cell-free (cf)-DNA, from cellular sources, including Neutrophil Extracellular Traps (NETs), is  
36 found in the circulation of COVID-19 patients and may contribute to immune dysregulation.  
37 This study determined whether pulmonary administration of the endonuclease, dornase  
38 alfa, reduced systemic inflammation by degrading local and systemic cf-DNA.

39 **Methods:**

40 Eligible patients were randomized (3:1) to receive twice-daily nebulised dornase alfa in  
41 addition to best available care (BAC) or BAC alone for seven days or until discharge. A 2:1  
42 ratio of matched contemporary controls (CC-BAC) provided additional comparators. The  
43 primary endpoint was improvement in C-reactive protein (CRP) over time, analysed using a  
44 repeated-measures mixed model, adjusted for baseline factors.

45

46 **Results:** Between June 2020-October 2021 we recruited 39 evaluable patients: 30  
47 randomised to dornase alfa (R-BAC+DA); 9 randomised to BAC (R-BAC); with the addition of  
48 60 CC-BAC participants. Dornase alfa was well tolerated and reduced CRP by 33% compared  
49 to combined BAC groups (T-BAC). Least squares (LS) mean post-dexamethasone CRP fell  
50 from 101.9mg/L to 23.23 mg/L in the BAC+ dornase alfa group versus a fall from 99.5mg/L  
51 to 34.82 mg/L in the T-BAC group at 7 days;  $P=0.01$ . This effect of dornase alfa on CRP was  
52 confirmed with subgroup and sensitivity analyses that mitigated potential biases associated  
53 with the use of the CC-BAC group. Dornase alfa increased the chance of live discharge by  
54 63% (HR 1.63, 95% CI 1.01 to 2.61,  $P=0.03$ ), increased lymphocyte counts (LS mean: 1.08 vs  
55 0.87,  $P=0.02$ ) and reduced circulating cf-DNA and the coagulopathy marker D-dimer (LS  
56 mean: 570.78 vs 1656.96  $\mu\text{g}/\text{mL}$ ,  $P=0.004$ ).

57 **Conclusions:** We provide proof-of-concept evidence that dornase alfa reduces pathogenic  
58 inflammation in hospitalised patients with COVID-19 pneumonia, suggesting that best  
59 available care can be improved by the inclusion of anti-inflammatory treatments that target  
60 damage-associated molecules.

61

62

63 **Key words:** COVID-19, SARS-CoV-2, endonuclease, Dornase, DNA, virus, infection,  
64 pneumonia, anti-inflammatory, DNase, NETs, neutrophil, neutrophil extracellular traps.

## 65 INTRODUCTION

66 SARS-CoV-2 pneumonia can lead to hyperinflammation, coagulopathy, respiratory  
67 failure, and death (Siddiqi and Mehra, 2020; Zhou et al., 2020), even with less pathogenic  
68 variants and in immunised patients (2000). In severe COVID-19 neutrophil activation drives  
69 neutrophil extracellular trap (NET) formation (Radermecker et al., 2020; Zuo et al., 2020).  
70 NETs, are composed of DNA-histone complexes and have been associated with  
71 coagulopathy and endothelial dysfunction (Papayannopoulos, 2018). Moreover,  
72 extracellular histones promote inflammation, immune dysfunction and lethality in sepsis  
73 (Ioannou et al., 2022; Tsurouktsoglou et al., 2020; Xu et al., 2011; Xu et al., 2009).  
74 Digestion of chromatin DNA by endonucleases suppresses the proinflammatory activity of  
75 histones and enables their clearance from the circulation (Ioannou et al., 2022;  
76 Tsurouktsoglou et al., 2020). Consistently, DNase I treatment reduces pathology in murine  
77 pulmonary viral infections (Cortjens et al., 2018; Pillai et al., 2016). Endogenous DNase  
78 activity and NET clearance capacity are defective in severe COVID-19 pneumonia, and the  
79 extent of these defects correlates with mortality (Aramburu et al., 2022). Hence,  
80 supplementation with exogenous DNases may facilitate extracellular chromatin degradation  
81 and increase survival.

82 Pulmozyme, dornase alfa, is a recombinant human DNAase approved since 1993 for  
83 patients with cystic fibrosis (CF) (Konstan and Ratjen, 2012; Lazarus and Wagener†, 2019).  
84 Dornase alfa solubilizes NETs, reduces inflammation and improves pulmonary function in  
85 chronic and acute exacerbations of CF (Konstan and Ratjen, 2012; Papayannopoulos et al.,  
86 2011). Pulmozyme is safe and well-tolerated in children and adults with CF at doses up to  
87 10mg BD. Nebulized pulmozyme does not increase circulating endonucleases. Hence, it  
88 remained unclear whether the degradation of extracellular chromatin in the lungs would  
89 reduce circulating chromatin and systemic hyper-inflammation.

90 To probe the effectiveness of DNase I as an anti-inflammatory therapy in severe  
91 COVID-19 pneumonia, we measured as our primary endpoint C-reactive protein (CRP). CRP  
92 is a reliable marker of systemic inflammation in severe infection (McArdle et al., 2004). In  
93 patients infected with COVID-19, a high CRP of  $\geq 40$  mg/L carried a poor prognosis with a  
94 lower cut-off of  $\geq 35$  mg/L in the elderly (Villoteau et al., 2021), particularly when combined  
95 with lymphopenia and coagulopathy marked by elevated D-dimer (Fisher et al., 2022; Liu et  
96 al., 2020; Luo et al., 2020; Smilowitz et al., 2021; Tornling et al., 2021; Ullah et al., 2020).

97 Poor outcomes are associated with an early rise (Mueller et al., 2020), higher peak and  
98 delayed reduction in CRP (Cui et al., 2021). Moreover, elevated IL-6 and CRP can predict the  
99 need for mechanical ventilation (Herold et al., 2020). In addition, CRP correlated well with  
100 levels of DNase and NET degradation activity in COVID-19 patient plasma suggesting a link  
101 between CRP and the capacity to degrade cf-DNA in the circulation (Aramburu et al., 2022).  
102 CRP became a reliable primary endpoint in subsequent trials demonstrating the  
103 effectiveness of other systemic therapies such as namilumab or infliximab that target  
104 inflammatory cytokines (Fisher et al., 2022).

105 In this proof-of-concept study we evaluated the effect of dornase alfa on  
106 inflammation, as measured by the impact on circulating CRP in patients with COVID-19,  
107 compared with best available care (BAC). The trial was initiated in June 2020 and was  
108 completed in October 2021. At the start of the trial only dexamethasone had been proven  
109 to benefit hospitalized COVID-19 pneumonia patients and was thus included in both arms of  
110 the trial. To increase the chance of reaching significance under challenging constraints in  
111 patient access, we opted to increase our sample size by using a combination of randomized  
112 individuals in the BAC group (R-BAC) and the dornase alfa treated arm (R-BAC+DA) with  
113 available CRP data from matched contemporary controls (CC-BAC) hospitalized at the same  
114 site at UCL but not recruited to a trial and using the same selection criteria as the  
115 randomised group to minimise potential biases. In the analysis framework we compared  
116 treated R-BAC-DA participants to both R-BAC and CC-BAC groups individually or combined  
117 (T-BAC). These approaches demonstrated that when combined with dexamethasone,  
118 nebulized DNase treatment was an effective anti-inflammatory treatment in randomized  
119 individuals with or without the implementation of CC-BAC data.

120

121

## 122 **METHODS**

### 123 **Sponsor and location**

124 The trial was sponsored by University College London (UCL) and carried out at  
125 University College London Hospital UCLH with ethical (REC: 20/SC/0197, Protocol: 132333,  
126 RAS ID:283091) and UK MHRA approvals. All randomized participants provided informed  
127 consent. Consent for CC-BAC participants was covered by Health Service (Control of  
128 Participant Information) Regulations 2002. Safety and data integrity were overseen by the  
129 Trial Monitoring Group and Data Monitoring Committee. All data was collected at UCLH.  
130 Additional CRP data is reported from the Pa-COVID-19 study, Charité Universitätsmedizin  
131 Berlin with ethical approval, Berlin (EA2/066/20). Both Pa-COVID-19 and COVASE studies  
132 were carried out according to the Declaration of Helsinki and the principles of Good Clinical  
133 Practice (ICH 1996).

134

### 135 **Trial design**

136 The COVASE trial was a single-site, randomised, controlled, parallel, open-label  
137 investigation. The primary endpoint was change in CRP. Screening was performed within 24  
138 hours prior to the administration of dornase alfa (**Figure 1A**). Eligible, consented participants  
139 were randomly assigned (3:1) to either BAC plus nebulised dornase alfa (R-BAC+DA) or R-  
140 BAC group alone. On Day 1 a baseline sample was collected. From Day 1-7 participants  
141 randomised to active arm received 2.5mg BD nebulised dornase alfa in addition to BAC. In  
142 all cases BAC included dexamethasone (6 mg/day) for 10 days or until discharge, whichever  
143 was shorter as per RECOVERY (Group et al., 2021). Participants received additional  
144 treatments at the discretion of their physicians. The primary analysis was performed on  
145 samples up to Day 7. The final trial visit occurred at day 35.

146 In addition to the recruited randomised group, we included CC-BAC participants to  
147 increase the sample size due to practical difficulties in recruiting patients in the UK. For  
148 every COVASE participant randomised to active treatment, 2 matched CC-BAC participants  
149 were included. CC-BAC participants were admitted to UCLH over the same time as  
150 randomised patients and treated with the same BAC, including dexamethasone. CC-BAC  
151 participants fulfilled the inclusion and exclusion criteria of the COVASE study and were

152 matched for age, gender, BMI, comorbidities and CRP. CRP matching was based either on  
153 admission CRP, or matched based on the first CRP reading after starting dexamethasone.

154

## 155 **Eligibility**

156 Trial participant inclusion criteria

157 Male and female participants, aged  $\geq 18$  years, who were hospitalised for suspected  
158 Coronavirus (SARS-CoV)-2 infection confirmed by polymerase chain reaction (PCR) test and  
159 optionally with radiological confirmation with chest CT. Participants with stable oxygen  
160 saturation ( $\geq 94\%$ ) on supplementary oxygen and a CRP  $\geq 30$  mg/L. Participants that  
161 provided written informed consent to participate in the study and were able to comply with  
162 instructions and the use of a nebuliser.

163 Exclusion criteria

164 Females who were pregnant, planning pregnancy or breastfeeding. Concurrent and/or  
165 recent involvement in other research or use of another experimental investigational  
166 medicinal product that was likely to interfere with the study medication within 3 months of  
167 study enrolment. Serious condition meeting either respiratory distress with respiratory rate  
168  $\geq 40$  breaths/min, or an oxygen saturation  $\leq 93\%$  on high-flow oxygen. Participants who  
169 required mechanical invasive or non-invasive ventilation at screening or had concurrent  
170 severe respiratory disease such as asthma, COPD and/or ILD, or any major disorder that in  
171 the opinion of the Investigator would interfere with the evaluation of the results or  
172 constitute a health risk for the trial participant. Participants with terminal disease and life  
173 expectancy  $< 12$  months without COVID-19, known allergies to dornase alfa and excipients,  
174 or participants who were unable to inhale or exhale orally throughout the entire  
175 nebulisation period.

## 176 **Participants**

177 Adults ( $\geq 18$  years of age) admitted to UCLH with confirmed SARS-Cov2 infection by  
178 RT-PCR and radiologically confirmed COVID-19 pneumonia on chest radiograph or CT-scan;  
179 oxygen saturation  $< 94\%$  requiring supplemental oxygen; and evidence of  
180 hyperinflammation (CRP  $\geq 30$  mg/L, after administration of dexamethasone) were eligible.  
181 While all participants had CRP  $> 30$  mg/L at screening, on two occasions the baseline CRP

182 concentrations fell below 30 mg/L after the patients had already agreed to participate. For  
183 full inclusion and exclusion criteria see Protocol in the Supplementary Material.

184

## 185 **Outcomes**

186 The primary outcome was the least square (LS) mean CRP up to 7 days or at hospital  
187 discharge whichever was sooner. Data beyond 7 days was included in the model to  
188 estimate the slope. Subsequently, the estimated slope in each group was used in order to  
189 calculate the LS mean at 7 days. Pre-specified secondary outcomes included days on oxygen;  
190 time to hospital discharge; mortality by day 35; and changes in clinically relevant biomarkers  
191 including lymphocyte count and D-dimer levels. Day 35 was chosen as being likely to include  
192 most early mortality due to COVID-19 being 4 weeks after completion of a week of  
193 treatment. ( i.e. d7 of treatment +28 (4 x 7 days)).

194 Efficacy assessments of primary and secondary outcomes in the intention-to-treat  
195 (ITT) population were performed on all randomised participants who had received at least  
196 one dose of dornase alfa if randomized to treatment. For full details see Statistical Analysis  
197 Plan. The ITT was adjusted to mitigate the following protocol violations where one  
198 participant in the R-BAC arm and one in the R-BAC+DA arm withdrew before they received  
199 treatment and provided only a baseline CRP measurement available. The participant in the  
200 DA arm was replaced with an additional recruited patient. Exploratory endpoints were only  
201 available in randomised participants and not in the CC-BAC. In this case, a *post hoc* within  
202 group analysis was conducted to compare baseline and post-baseline measurements.

## 203 **Sample size calculation**

204 Size calculations were produced using the proc power function in SAS Version 9.4.  
205 These were conducted to achieve 80% power to detect difference in the active arm versus  
206 the control group at 5% level of significance. Based on a mean of 99mg/L in the control  
207 group and a common standard deviation of 62mg/L derived from the literature (Han et al.,  
208 2020; Zhou, 2020), a total sample size of 90 participants would provide sufficient power to  
209 detect a greater than a 40% relative difference for CRP in the dornase alfa group compared  
210 to the control group.



211            This study used existing data collected at UCLH from CC-BAC participants admitted  
212 with COVID-19. This gave a ratio of active versus comparator of 1:2. The required power,  
213 would result in 30 participants in the active treatment group and at least 60 in the control  
214 group. An additional 10 randomised control participants were recruited for exploratory  
215 objectives and to compare the characteristics of enrolled participants with CC-BAC  
216 participants. Therefore, a total of 40 participants were enrolled in the study and 60 CC-BAC  
217 participants were included.

#### 218    **Randomisation**

219    A closed envelope method was implemented to randomize the participants into the control  
220 and active treatment groups.

221

222

223

224

225

## 226 RESULTS

### 227 Patient characteristics

228 From June 2020–October 2021, 41 participants were recruited and randomised, with  
229 1 participant in R-BAC group discharged before a second CRP measurement who was  
230 excluded from all analyses except for safety (CONSORT Diagram: **Figure 1B and S1**). One  
231 participant withdrew consent prior to receiving dornase alfa and was replaced and excluded  
232 from all analyses. 39 participants were included in the ITT analysis set, 30 R-BAC+DA and 9  
233 R-BAC. One participant withdrew due to side-effects. This participant was removed from the  
234 per protocol population (PPP). All 39 participants were followed up for 35 days or death  
235 whichever was sooner. Two participants were excluded from the PPP and one from R-BAC  
236 as this was the only patient in whom randomisation occurred prior to dexamethasone being  
237 widely used in COVID-19 and a second participant who withdrew after one dose of dornase  
238 alfa (**Figure 1B and S1**). The trial ended when 40 eligible participants had been recruited,  
239 although thereafter 1 had participant in the R-BAC arm had to be excluded from the primary  
240 and secondary endpoint analysis.

241 Baseline characteristics were well balanced across groups (**Table 1**). Selection of 60  
242 matched CC-BAC participants via propensity score matching was successful in ensuring the  
243 means of the characteristics included in propensity score matching were similar (**Table 1**  
244 and **Figure S2**). The overall mean age was 56.8 years (56.8 years R-BAC+DA, 56.8 years T-  
245 BAC). The percentage of males was 75.8% (76.7% R-BAC+DA, 75.4% T-BAC). The most  
246 prevalent ethnicity was “White British”, with 30.3% of participants identifying in that  
247 category (33.3% BAC+DA, 29.0% T-BAC). The mean BMI was 28.0kg/m<sup>2</sup> (27.8kg/m<sup>2</sup> R-  
248 BAC+DA, 28.2kg/m<sup>2</sup> T-BAC). The mean baseline CRP (post dexamethasone) was 100.2mg/L  
249 (101.9mg/L R-BAC+DA, 99.5mg/L T-BAC). The proportion of participants with a comorbidity,  
250 defined as one or more of hypertension, diabetes, or cardiovascular disease, was 52.5%  
251 (46.7% R-BAC+DA, 55.1% T-BAC). All randomised participants, except one, received  
252 dexamethasone prior to randomisation. In addition, 48 of the total 99 participants also  
253 received remdesivir or tocilizumab in addition to dexamethasone within the first 7 days. The  
254 average duration of dexamethasone treatment prior to dornase alfa was 1.13±/− 0.79 days  
255 (**Table S1**). The last pre-dexamethasone CRP was also similar between groups with a mean of  
256 125.0mg/L (128.1mg/L R-BAC+DA, 122.7mg/L T-BAC). The number of days between  
257 dexamethasone initiation and baseline was 1.2 days (0.7 days R-BAC+DA, 1.3 days T-BAC).

258 There were imbalances noted at baseline between the groups in white blood cell count,  
259 neutrophil count, procalcitonin count and D-dimer (**Table 1**).

260

## 261 **Clinical outcomes**

### 262 *Longitudinal CRP correlates with disease outcomes*

263 To ascertain the clinical value of CRP as the COVASE trial's primary endpoint, we first  
264 examined the correlation of CRP with mortality in a cohort of 63 hospitalized patients with  
265 severe COVID-19 (Aramburu et al., 2022; Kurth et al., 2020; Messner et al., 2020). All  
266 participants who reached a WHO severity ordinance scale 7 were recruited at the Charité  
267 Hospital in Berlin in spring 2020 and did not receive anti-inflammatory therapies such as  
268 dexamethasone or anti-IL-6 antibody treatments. Plasma CRP measurements in 465 samples  
269 were segregated by disease outcome. This analysis revealed that deceased participants had  
270 significantly higher CRP than participants in the survivor group (**Figure 2A**). Clustering the 63  
271 participants according to their longitudinal average CRP indicated that the frequency of  
272 mortality increased as the average CRP per patient increased (**Figure 2B**). Consistently,  
273 Mantel Cox survival analysis of the participants segregated into three groups with average  
274 longitudinal CRP ranges of 0-100 mg/L, 100-200 mg/L and 200-450 mg/L, showed that  
275 survival decreased significantly as the average CRP increased (**Figure 2C**). These results  
276 highlighted the strong correlation between CRP and survival in hospitalized individuals with  
277 severe COVID-19 pneumonia, suggesting that the blood CRP concentration was a strong  
278 predictor of clinical outcomes such as the probability of survival.

279

### 280 *Primary outcome*

281 Next, we analysed the results from our COVASE participants. The individual CRP  
282 traces over time are shown in **Figure S3A**. Blood collection for both R-BAC and R-BAC+DA  
283 groups occurred at similar times and comparable frequencies (**Figure S3B**). In the  
284 participants who were randomised into the COVASE trial, excluding the CC-BAC participants  
285 the LS mean Ln (CRP) over 7 days follow-up was 3.10 (95% confidence interval [CI] 2.84 to  
286 3.35) R-BAC+DA (n=30), and 3.59 (95% CI, 3.13 to 4.06) in R-BAC (n=9) (**Table 2 and Figure**  
287 **3A**). Moreover, in the ITT group which included randomised and CC-BAC groups, the LS  
288 mean Ln (CRP) over 7 days follow-up was 3.15 (95% confidence interval [CI] 2.87 to 3.42) R-  
289 BAC+DA (n=30), and 3.55 (95% CI, 3.35 to 3.75) in T-BAC (n=69) (**Table 2 and Figure 3A**),

290  $p=0.01$ . This indicates a reduction in mean CRP of approximately 33% in the R-BAC+DA  
291 (23.23 mg/mL) compared to T-BAC (34.82 mg/mL) at mean follow-up over 7 days. The  
292 suppressive effect of dornase alfa on CRP was confirmed in various other subgroup analyses:  
293 the per-modified-protocol population only; participants who were randomised to BAC+DA in  
294 the COVASE trial, and CC-BAC participants alone excluding those randomised to BAC (**Table**  
295 **2**). In addition, to ensure that the CC-BAC participants did not have a significantly different  
296 CRP trajectory to those randomised to BAC, we compared participants who were  
297 randomised to BAC (R-BAC) with the CC-BAC group by excluding those randomised to R-  
298 BAC+DA and found no significant differences (**Table 2**). Sensitivity analyses supported the  
299 observed effect on CRP. These included the Ln(CRP) as an area under the curve; the CC-BAC  
300 matched for the last pre-dexamethasone CRP measurement as opposed to their first CRP  
301 after starting dexamethasone; and the effect of remdesivir or tocilizumab (**Table 2**). A daily  
302 mean Ln CRP measurement chart is also provided (**Table 3**).

303 To better understand the effects of dornase alfa on the CRP of the treated  
304 population we also performed a frequency distribution analysis of the change in CRP over  
305 time. Instead of fitting a slope on the CRP values of the individual samples of each  
306 participant, we plotted the fraction between the CRP measurement of the baseline and final  
307 sample collected for each participant during the 7 day treatment period. We then plotted  
308 the distribution of participants within the different ranges of change in CRP (**Figure 3B**).  
309 Compared to T-BAC, the R-BAC+DA treatment group exhibited a higher CRP reduction  
310 distribution with fewer participants that did not respond to treatment as indicated by an  
311 increase in CRP concentrations. Therefore, the addition of dornase alfa to dexamethasone  
312 resulted in a significant and sustained reduction in CRP in a greater number of COVID-19-  
313 infected participants compared to treatment with dexamethasone alone.

314

### 315 *Secondary outcomes*

316 The length of hospitalisation was analysed as a time-to-event outcome of alive  
317 discharge from the hospital censored at 35 days. The hazard ratio observed in the Cox  
318 proportional hazards model was 1.63 (95% CI, 1.01 to 2.61),  $p=0.03$  (**Figure 3C and S3C**).  
319 Showing that throughout 35 days follow-up, there was a 63% higher chance of discharge  
320 alive at any given time-point in R-BAC+DA compared to T-BAC. Although the rate of  
321 discharge was similar in 50% of patients, 80% discharge occurred by 8 days in R-BAC+DA

322 whereas, whereas the same proportion was reached at 30 days in T-BAC. This trend was also  
323 seen when only the randomised R-BAC participants were considered, although not powered  
324 to reach significance and with a smaller HR of 1.18 (95% CI, 0.52-2.69),  $p=0.62$ , (**Table S2**  
325 **and Figure S3C**).

326 Over 7 days of follow up there was no significant difference between R-BAC+DA and  
327 T-BAC in either the fraction of participants admitted to ICU (23.3% versus 21.74%),  $p=0.866$ ,  
328 or the length of ICU stay, LS mean 21.25 (95% CI, 4.65 to 37.84) hours versus 19.85 (95% CI,  
329 8.00 to 31.70) hours,  $p=0.883$ . The same was seen over 35-day follow-up, LS mean 55.21  
330 95% CI, -23.59 to 134.00) hours versus 60.60 (95% CI, 4.34 to 116.86) hours,  $p=0.905$ . At any  
331 point during the 35 days follow-up, 23% of R-BAC+DA were admitted to ICU compared to  
332 23.19% T-BAC,  $p=0.983$  (**Table S3**). Similarly, there was no significant difference in the time  
333 requiring oxygen between the two groups (R-BAC-DA vs T BAC), at either 7 days, LS mean  
334 94.32 (95% CI, 72.8 to 115.79) hours, versus 88.96 (95% CI, 73.64 to 104.29) hours,  $p=0.662$ ,  
335 or 35 days, LS mean 133.22 (95% CI, 52.01 to 214.43) hours versus 156.35 (95% CI, 98.36,  
336 214.33) hours,  $p=0.618$ . At 35 days follow up, there were only 9 randomised participants to  
337 evaluate, but mean oxygen use exhibited a reduction of 123 hours in R-BAC+DA participants,  
338 versus 241 hours for the T-BAC group,  $p=0.187$  (**Table S3**).

339 The time to event data was censored at 28 days post last dose (up to d35) for the  
340 randomised participants (R-BAC and R-BAC+DA) and at the date of the last electronic record  
341 for the CC-BAC group. Over 35 days follow up, 1 person amongst the 30 patients in the R-  
342 BAC+DA group died, compared to 8 of the 69 T-BAC participants. The hazard ratio observed  
343 in the Cox proportional hazards model was 0.47 (95% CI, 0.06 to 3.86), indicating a trend  
344 towards a reduced chance of death at any given time-point in R-BAC+DA compared to T-  
345 BAC, but this did not reach significance  $p=0.460$  (**Figure 3D and S3C**). The hazard ratio  
346 observed in the Cox proportional hazards model (95% CI) was 0.47 (0.06, 3.86), which  
347 estimates that throughout 35 days follow-up, there was a 53% reduced chance of death at  
348 any given timepoint in the R-BAC+DA group compared to the T-BAC group. However, the  
349 confidence intervals are wide due to the small number of events and consequently the  $p$ -  
350 value from a log-rank test was 0.460, which does not reach statistical significance.

351 There was no significant difference at either 7- or 35-days follow-up, in the number  
352 of participants that required mechanical ventilation in R-BAC+DA compared with T-BAC  
353 (16.67% vs 13.04%),  $p=0.628$ . Amongst participants that were ventilated, the mean length of

354 mechanical ventilation at 7 days follow-up in R-BAC+DA participants was 76.8 hours,  
355 compared to 88.78 in the T-BAC group. At 35 days follow-up, the mean length of mechanical  
356 ventilation in BAC+DA was 76.8 hours compared to 411.17 hours in T-BAC participants  
357 (**Table S3**). There was no significant difference in superadded bacterial pneumonia at either  
358 7 or 35 days follow-up: 7 days, 1 (3.33%) participant in BAC+DA compared to 3 (4.35%)  
359 participants in T-BAC,  $p=0.934$ ; 35 days, 2 (6.67%) R-BAC+DA participants had bacterial  
360 pneumonia, compared to 3 (4.35%) T-BAC participants,  $p=0.548$  (**Table S3**).

361 Blood analysis with no adjustment for multiple testing showed a significant  
362 treatment effect in the BAC+DA vs. T-BAC group comparison for three parameters:  
363 lymphocyte counts, D-dimer, and procalcitonin (PCT). First, R-BAC+DA exhibited higher  
364 lymphocyte counts with LS mean of 0.87 (95% CI, 0.76-0.98) in the T-BAC group vs. 1.08  
365 (95% CI, 0.92-1.27) in R-BAC+DA participants,  $p=0.02$  (**Figure 4A, Table S2**). Amongst  
366 individuals with lymphopenia at baseline ( $<1 \times 10^9$  lymphocytes/L), the R-BAC+DA group  
367 exhibited a greater increase in blood lymphocyte numbers compared to the T-BAC group  
368 throughout the entire length of treatment. Furthermore, D-dimer levels were lower in R-  
369 BAC+DA participants compared to T-BAC participants, with LS mean D-dimer difference of  
370 1657 (95% CI, 3131-877) (**Figure 4B and S4A**). R-BAC+DA participants also exhibited lower  
371 levels of PCT, mean 0.18 ng/mL (95% CI, -0.2-0.56) compared to the T-BAC group, mean 1.31  
372 ng/mL (95% CI, 0.56-2.05),  $p=0.005$ . Repeat analysis excluding the CC-BAC population  
373 replicated these results, and changes in all 3 parameters were significant (**Table S2**).

374

### 375 *Exploratory outcomes*

376 Given the potential role of circulating cf-DNA in pathology, we examined whether  
377 the pulmonary administration of dornase alfa influenced cf-DNA levels circulating in plasma.  
378 Compared to anonymized healthy donor volunteers at the Francis Crick institute (HD), cf-  
379 DNA levels were elevated in the plasmas of all R-BAC and R-BAC-DA randomised COVASE  
380 participants. There was no difference in baseline plasma cf-DNA levels between the two  
381 randomised participant groups. Notably, during the treatment period plasma cf-DNA was  
382 reduced in R-BAC+DA compared to R-BAC participants (**Figure 4C and Figure S4B**).  
383 Moreover, there was a positive correlation between the levels of cf-DNA in the final sample  
384 collected during the treatment period and the magnitude of CRP reduction measured as the  
385 ratio of final over baseline CRP ( $CRP_{\text{final}}/CRP_{\text{baseline}}$ ) (**Figure 4D**). Moreover, samples with cf-

386 DNA >100µg/mL exhibited significantly higher D-dimer levels compared to samples with cf-  
387 DNA levels <100µg/mL (**Figure 4E**). Hence, dornase alfa treatment was associated with a  
388 suppression of circulating cf-DNA that correlated with a reduced risk for coagulopathy and a  
389 more sustained reduction in CRP.

390

#### 391 *Safety*

392 Dornase alfa was well tolerated with no systemic side-effects which is consistent  
393 with its short half-life *in vivo* (**Table S4**). Overall, there were 10 reported adverse events  
394 (AEs) in the study, in 9 R-BAC and 30 R-BAC+DA participants (**Table S5**). Of these, one was  
395 reported by the clinical team as definitely related and one as unlikely to be related to  
396 dornase alfa. No treatment-related serious AEs were reported.

397

398

399

## 400 DISCUSSION

401 Our findings show that nebulised dornase alfa significantly reduced systemic  
402 inflammation as measured by plasma CRP concentrations in patients with severe COVID-19  
403 pneumonia even when already receiving dexamethasone. Dornase alfa exhibited a robust  
404 anti-inflammatory effect as assessed with several sensitivity analyses including analysis of  
405 only randomised participants, excluding CC-BAC participants. These findings confirm the  
406 usefulness of CRP as a sensitive readout to monitor the impact of anti-inflammatory agents  
407 in small cohorts. Improvements in care were also indicated by other biomarkers and  
408 secondary endpoints when both randomised and CC-BAC participants were considered.  
409 Moreover, despite not being formally powered for length of stay, dornase alfa reduced time  
410 to discharge over 35 days.

411 During the pandemic, the identification of novel and repurposed treatments  
412 effective for COVID-19 was hampered by patient recruitment to competing studies during  
413 pandemic. This resulted in small studies with inconclusive or contrary findings. Our study  
414 design took advantage of frequent repeated measures of CRP in each patient, to allow a  
415 smaller sample size to determine efficacy. CRP was also a primary readout in CATALYST  
416 (Fisher et al., 2022) and ATTRACT studies (Tornling et al., 2021). In addition, we used  
417 contemporary controls as additional comparators to use limited resources more efficiently.

418 Following the RECOVERY trial, dexamethasone became the standard care in patients  
419 with COVID-19 pneumonitis requiring oxygen. We recruited participants with CRP  $\geq$  30  
420 mg/L, on the day after receiving dexamethasone to minimise steroid-dependent effects on  
421 CRP. The finding that dornase alfa can significantly reduce CRP in participants receiving  
422 dexamethasone suggests a complementary mechanism of action with significant  
423 improvement in existing standard anti-inflammatory care. Moreover, dornase alfa may be a  
424 treatment choice for patients with mild COVID-19 pneumonia not requiring oxygen, in  
425 whom dexamethasone may be harmful (Group et al., 2021).

426 The primary endpoint effect was consistently reflected in secondary outcomes.  
427 Dornase alfa increased the chance of live discharge by 63% at any time up to 35 days,  
428 reduce overall hospital stay. The reduction in hospital occupancy during the COVID-19  
429 pandemic proved critical in sustaining life-saving treatment availability. In addition, dornase  
430 alfa significantly increased lymphocyte counts and reduced D-dimer. In addition to the  
431 increased mortality data we provide here, CRP levels are associated with venous



432 thromboembolic disease in COVID-19 with the worst outcomes seen in patients with high  
433 CRP and D-dimers (Smilowitz et al., 2021). In a metanalysis of 32 studies involving 107491  
434 COVID-19 patients, elevated CRP (OR 4.37,  $p < 0.00001$ ), lymphopenia (3.33,  $p < 0.00001$ ),  
435 elevated D-dimer (3.39 ( $p < 0.00001$ ) and elevated PCT (6.33,  $p < 0.00001$ ) were independent  
436 markers of poor outcomes (Malik et al., 2021).

437 Our study design offered a solution to the early screening of compounds for  
438 inclusion in larger platform trials. The study took advantage of frequent repeated measures  
439 of quantifiable CRP in each patient, to enable the determination of efficacy using a smaller  
440 sample size to than if powered were based on clinical outcomes. We applied a CRP-based  
441 approach that was similar to the CATALYST and ATTRACT studies (Fisher et al., 2022;  
442 Tornling et al., 2021). CATALYST showed in much smaller groups (usual care, 54, namilumab,  
443 57 and infliximab, 35) that the GM-CSF-blocking antibody namilumab reduced CRP even in  
444 participants treated with dexamethasone whereas infliximab that targets TNF- $\alpha$  had no  
445 significant effect on CRP. This led to a suggestion that namilumab should be considered as  
446 an agent to be prioritised for further investigation in the RECOVERY trial. A direct  
447 comparison of our results with CATALYST is difficult due to the different nature of the  
448 modelling employed in the two studies. Nevertheless, dornase alfa exhibited comparable  
449 significance in the reduction in CRP compared to standard of care as described for  
450 namilumab at a fraction of the cost. Furthermore, endonuclease therapies may prove safer  
451 and more applicable than cytokine-blocking monotherapies, as they are unlikely to increase  
452 the risk for microbial co-infections which are a risk factor associated with antibody therapies  
453 that neutralize inflammatory cytokines that are critical for immune defence such as IL-1 $\beta$ , IL-  
454 6 or GM-CSF.

455 In addition, dornase alfa reduced circulating cf-DNA levels, suggesting that lung  
456 administration of the enzyme exerts systemic effects on circulating chromatin. The  
457 reduction in plasma cf-DNA levels suggests that by stripping the DNA from chromatin,  
458 dornase alfa suppresses the proinflammatory properties of histones and potentiates their  
459 degradation (Papayannopoulos et al., 2011; Tsourouktsoglou et al., 2020). The inverse  
460 correlation between final circulating cf-DNA and the reduction in CRP during treatment is  
461 consistent with link between circulating chromatin and systemic inflammation observed in  
462 animal models (Ioannou et al., 2022). The correlation between d-dimer and cf-DNA as well  
463 as the reduction in D-dimer after dornase alfa treatment is consistent with the reported pro-

464 thrombotic role of NETs in the alveoli (Radermecker et al., 2020). Moreover, the  
465 improvement in the recovery rates of lymphopenia support the link between extracellular  
466 chromatin and lymphocyte death during sepsis that we also detected in individuals with  
467 severe COVID-19 pneumonia (Aramburu et al., 2022; Ioannou et al., 2022). Another reason  
468 why recombinant endonuclease treatment may be warranted in severe COVID-19 and  
469 microbial sepsis infections is the significant reduction in endogenous NET chromatin  
470 degradation capacity that strongly correlates with a high risk for mortality in these  
471 conditions (Aramburu et al., 2022).

472 Nebulized dornase alfa treatment has several advantages. Whilst immunisation has  
473 reduced COVID-19 hospital admissions, viral evolution and immune escape may still cause  
474 substantial mortality and other symptoms associated with long-COVID. Hence, there will  
475 always be a need for virally agnostic therapies that retain efficacy as viruses mutate.  
476 Importantly, nebulised dornase alfa has the potential to control immune pathology in a  
477 range of infections. Moreover, it can be administered safely and effectively in its nebulized  
478 form, outside the health-care setting. Three other small trials of dornase alfa (totalling 18  
479 patients) in COVID-19 have reported improved oxygenation (Holliday et al., 2021; Okur et  
480 al., 2020; Weber et al., 2020). One small study indicated improvements in plasma and  
481 sputum proteomic profiles (Fisher et al., 2021). Despite differing study designs, patient  
482 populations and endpoints, there is a consensus for improvement in clinical outcomes.

483 Yet, there are a few limitations in this study. This single centre open-label study was  
484 designed to powerfully report futility or efficacy despite including just under 40 randomised  
485 patients and 60 CC-BAC. However, the trial was not powered to report mortality nor to  
486 overcome confounders, such as the use of antivirals and tocilizumab, an IL-6 inhibitor  
487 recognised to reduce CRP (Galvan-Roman et al., 2021), or the impact of an open-label study  
488 on influencing other therapeutic/ discharge decisions. Although underpowered, we  
489 demonstrate a trend to a reduction in CRP with dornase alfa in participants that had  
490 received tocilizumab and/or remdesivir, and those that had not. Moreover, the open-label  
491 nature of the study could potentially introduce a placebo effect bias. Nevertheless, we tried  
492 to minimize this by applying a standard testing schedule and discharge criteria.

493 In conclusion, we demonstrate that nebulised dornase alfa significantly reduces  
494 inflammation in hospitalised patients with severe COVID-19 pneumonia leading to improved  
495 clinical profiles and earlier discharge from hospital. These results confirm the role of cf-DNA

496 in promoting systemic inflammation, coagulopathy and immune dysfunction in acute  
497 respiratory infections and suggest that recombinant endonucleases provide an additional  
498 mode of action that can broaden the effectiveness and sustainability of anti-inflammatory  
499 regimens. These encouraging data warrant further investigation in other serious respiratory  
500 infections characterized by hyperinflammation, cell lysis and NET formation.  
501

## 502 **Acknowledgements**

503 We thank the patients, caregivers, and families who participated in the trial; and  
504 acknowledge the help of the following: Additional BRC Contributors: Margaret Duku, Gulten  
505 Geneci, Farah Islam, Ciprian-Ionut Matei, Marta Merida, Eleni Nastouli, Marivic Ricamara,  
506 Anisa Tariq. Pharmacy: Matthew Baker, Nina Bason, Chi Yee Chung, Zoila Gilham-Fernandez,  
507 Temi Olusi. Sponsors/UCL: Liam Banks, Helen Cadiou, Novin Fard, Farhat Gilani, Vince  
508 Greaves, Yusuf Jaami, Pushpsen Joshi, Misha Ladva, David Lomas, Catherine Maidens,  
509 Anthea Mo, Anisha Nayar, Nick McNally, Samim Patel. Data Monitoring Committee: Balaji  
510 Ganeshan, Maria Leandro, Kay Roy. COVID Clinical Consultants: Diana Ayoola, Robin Bailey,  
511 David Brealey, Mike Brown, Anna Checkley, Charlie Coughlan, Philip Gothard, Robert  
512 Heyderman, Sarah Logan, Nicky Longley, Jessica Manson, Michael Marks, David Moore, Neil  
513 Stone, Emma Wall. T8 Nursing Staff: Adam Cureton-Griffiths, Amy Mann, Laura Nichols,  
514 Pantelis Savvides. NOCRI Respiratory Translational Research Collaboration: Chris Brightling,  
515 Jane Davies, Ratko Djukanovic, Liam Heeney, Ling-Pei Ho, Alex Horsley, Tracy Hussell, Stefan  
516 Marciniak, Lorcan McGarvey, Thomas Wilkinson. Pari/Roche Products Limited/LifeArc: Mal  
517 Apter, Ruth Davies, Ciara O'Brien, Pauline Stasiak, Davia Viellec.

518

## 519 **Funding**

520 This work was supported by LifeArc (UCL-UCLH132333), UCL, Breathing Matters and the  
521 Francis Crick Institute which receives its core funding from the UK Medical Research Council  
522 (FC0010129), Cancer Research UK (FC0010129) and the Wellcome Trust (FC0010129). The  
523 study was undertaken at UCLH/UCL who received a proportion of funding from the  
524 Department of Health's NIHR Biomedical Research Centres funding scheme. VJS and DB are  
525 funded by the NIHR University College London Hospitals Biomedical Research Centre. I.V.A  
526 was funded by an EMBO LTF (ALTF 113-2019). Dornase alfa was provided by Roche Products  
527 Limited and nebulizers were donated by PARI. Disclosure forms provided by the authors are  
528 available with the full text of the published article.

529

## 530 **Author contributions:**

531 VP conceived the study. JCP, JI, ED, BW, AF, PTL, VB and VP contributed to the concept and  
532 design of the study. JCP, VJS, ED, RE, MIT, NDV, IVA, DH, DB, TC, JG, AW, HE, VJ, AL, TR, VP  
533 contributed to the acquisition of data. ETH, LL, FK designed and directed the Berlin Pa-

534 COVID-19 study. JCP, JI, AF and VP contributed to analysis, and/or interpretation of data or  
535 the creation of new software used in the work. JCP, JI, PTL and VP drafted the  
536 manuscript. VP graphed and compiled figures and handled revisions. All authors have  
537 approved the submitted version (and any substantially modified version that involves the  
538 author's contribution to the study); and to have agreed both to be personally accountable  
539 for the author's own contributions and to ensure that questions related to the accuracy or  
540 integrity of any part of the work, even ones in which the author was not personally involved,  
541 are appropriately investigated, resolved, and the resolution documented in the literature.  
542 Roche Products Ltd conducted a factual accuracy check on the final version but any decision  
543 to incorporate comments was made solely at the discretion of the authors.

544

545 The authors declare no conflicts of interest.

546

547

## 548 **References:**

- 549 (2000). American Thoracic Society. Idiopathic pulmonary fibrosis: diagnosis and treatment.  
550 International consensus statement. American Thoracic Society (ATS), and the European Respiratory  
551 Society (ERS). *Am J Respir Crit Care Med* 161, 646-664.
- 552 Aramburu, I.V., Hoving, D., Vernardis, S.I., Tin, M.C.F., Ioannou, M., Temkin, M.I., De Vasconcelos,  
553 N.M., Demichev, V., Helbig, E.T., Lippert, L., *et al.* (2022). Functional proteomic profiling links  
554 deficient DNA clearance with increased mortality in individuals with severe COVID-19 pneumonia.  
555 *Immunity* 55, 2436-2453 e2435.
- 556 Cortjens, B., de Jong, R., Bonsing, J.G., van Woensel, J.B.M., Antonis, A.F.G., and Bem, R.A. (2018).  
557 Local dornase alfa treatment reduces NETs-induced airway obstruction during severe RSV infection.  
558 *Thorax* 73, 578-580.
- 559 Cui, Z., Merritt, Z., Assa, A., Mustehsan, H., Chung, E., Liu, S., Kumthekar, A., Ayesha, B., McCort, M.,  
560 Palaiodimos, L., *et al.* (2021). Early and Significant Reduction in C-Reactive Protein Levels After  
561 Corticosteroid Therapy Is Associated With Reduced Mortality in Patients With COVID-19. *J Hosp Med*  
562 16, 142-148.
- 563 Fisher, B.A., Veenith, T., Slade, D., Gaskell, C., Rowland, M., Whitehouse, T., Scriven, J., Parekh, D.,  
564 Balasubramaniam, M.S., Cooke, G., *et al.* (2022). Namilumab or infliximab compared with standard  
565 of care in hospitalised patients with COVID-19 (CATALYST): a randomised, multicentre, multi-arm,  
566 multistage, open-label, adaptive, phase 2, proof-of-concept trial. *Lancet Respir Med* 10, 255-266.
- 567 Fisher, J., Mohanty, T., Karlsson, C.A.Q., Khademi, S.M.H., Malmstrom, E., Frigyesi, A., Nordenfelt, P.,  
568 Malmstrom, J., and Linder, A. (2021). Proteome Profiling of Recombinant DNase Therapy in Reducing  
569 NETs and Aiding Recovery in COVID-19 Patients. *Mol Cell Proteomics* 20, 100113.
- 570 Galvan-Roman, J.M., Rodriguez-Garcia, S.C., Roy-Vallejo, E., Marcos-Jimenez, A., Sanchez-Alonso, S.,  
571 Fernandez-Diaz, C., Alcaraz-Serna, A., Mateu-Albero, T., Rodriguez-Cortes, P., Sanchez-Cerrillo, I., *et*  
572 *al.* (2021). IL-6 serum levels predict severity and response to tocilizumab in COVID-19: An  
573 observational study. *J Allergy Clin Immunol* 147, 72-80 e78.
- 574 Group, R.C., Horby, P., Lim, W.S., Emberson, J.R., Mafham, M., Bell, J.L., Linsell, L., Staplin, N.,  
575 Brightling, C., Ustianowski, A., *et al.* (2021). Dexamethasone in Hospitalized Patients with Covid-19.  
576 *The New England journal of medicine* 384, 693-704.
- 577 Herold, T., Jurinovic, V., Arnreich, C., Lipworth, B.J., Hellmuth, J.C., von Bergwelt-Baildon, M., Klein,  
578 M., and Weinberger, T. (2020). Elevated levels of IL-6 and CRP predict the need for mechanical  
579 ventilation in COVID-19. *The Journal of allergy and clinical immunology* 146, 128-136 e124.
- 580 Holliday, Z.M., Earhart, A.P., Alnijoumi, M.M., Krvavac, A., Allen, L.H., and Schrum, A.G. (2021). Non-  
581 Randomized Trial of Dornase Alfa for Acute Respiratory Distress Syndrome Secondary to Covid-19.  
582 *Front Immunol* 12, 714833.
- 583 Ioannou, M., Hoving, D., Aramburu, I.V., Temkin, M.I., De Vasconcelos, N.M., Tsourouktsoglou, T.D.,  
584 Wang, Q., Boeing, S., Goldstone, R., Vernardis, S., *et al.* (2022). Microbe capture by splenic  
585 macrophages triggers sepsis via T cell-death-dependent neutrophil lifespan shortening. *Nature*  
586 *communications* 13, 4658.
- 587 Konstan, M.W., and Ratjen, F. (2012). Effect of dornase alfa on inflammation and lung function:  
588 potential role in the early treatment of cystic fibrosis. *J Cyst Fibros* 11, 78-83.
- 589 Kurth, F., Roennefarth, M., Thibeault, C., Corman, V.M., Muller-Redetzky, H., Mittermaier, M.,  
590 Ruwwe-Glosenkamp, C., Heim, K.M., Krannich, A., Zvorc, S., *et al.* (2020). Studying the  
591 pathophysiology of coronavirus disease 2019: a protocol for the Berlin prospective COVID-19 patient  
592 cohort (Pa-COVID-19). *Infection* 48, 619-626.
- 593 Lazarus, R.A., and Wagenert, J.S. (2019). Recombinant Human Deoxyribonuclease I. In  
594 *Pharmaceutical Biotechnology: Fundamentals and Applications*, D.J.A. Crommelin, R.D. Sindelar, and  
595 B. Meibohm, eds. (Cham: Springer International Publishing), pp. 471-488.
- 596 Liu, F., Li, L., Xu, M., Wu, J., Luo, D., Zhu, Y., Li, B., Song, X., and Zhou, X. (2020). Prognostic value of  
597 interleukin-6, C-reactive protein, and procalcitonin in patients with COVID-19. *J Clin Virol* 127,  
598 104370.

- 599 Luo, X., Zhou, W., Yan, X., Guo, T., Wang, B., Xia, H., Ye, L., Xiong, J., Jiang, Z., Liu, Y., *et al.* (2020).  
600 Prognostic Value of C-Reactive Protein in Patients With Coronavirus 2019. *Clin Infect Dis* *71*, 2174-  
601 2179.
- 602 Malik, P., Patel, U., Mehta, D., Patel, N., Kelkar, R., Akrmah, M., Gabrilove, J.L., and Sacks, H. (2021).  
603 Biomarkers and outcomes of COVID-19 hospitalisations: systematic review and meta-analysis. *BMJ*  
604 *Evid Based Med* *26*, 107-108.
- 605 McArdle, P.A., McMillan, D.C., Sattar, N., Wallace, A.M., and Underwood, M.A. (2004). The  
606 relationship between interleukin-6 and C-reactive protein in patients with benign and malignant  
607 prostate disease. *Br J Cancer* *91*, 1755-1757.
- 608 Messner, C.B., Demichev, V., Wendisch, D., Michalick, L., White, M., Freiwald, A., Textoris-Taube, K.,  
609 Vernardis, S.I., Egger, A.S., Kreidl, M., *et al.* (2020). Ultra-High-Throughput Clinical Proteomics  
610 Reveals Classifiers of COVID-19 Infection. *Cell Syst* *11*, 11-24 e14.
- 611 Mueller, A.A., Tamura, T., Crowley, C.P., DeGrado, J.R., Haider, H., Jezmir, J.L., Keras, G., Penn, E.H.,  
612 Massaro, A.F., and Kim, E.Y. (2020). Inflammatory Biomarker Trends Predict Respiratory Decline in  
613 COVID-19 Patients. *Cell Rep Med* *1*, 100144.
- 614 Okur, H.K., Yalcin, K., Tastan, C., Demir, S., Yurtsever, B., Karakus, G.S., Kancagi, D.D., Abanuz, S.,  
615 Seyis, U., Zengin, R., *et al.* (2020). Preliminary report of in vitro and in vivo effectiveness of dornase  
616 alfa on SARS-CoV-2 infection. *New Microbes New Infect* *37*, 100756.
- 617 Papayannopoulos, V. (2018). Neutrophil extracellular traps in immunity and disease. *Nat Rev*  
618 *Immunol* *18*, 134-147.
- 619 Papayannopoulos, V., Staab, D., and Zychlinsky, A. (2011). Neutrophil elastase enhances sputum  
620 solubilization in cystic fibrosis patients receiving DNase therapy. *PloS one* *6*, e28526.
- 621 Pillai, P.S., Molony, R.D., Martinod, K., Dong, H., Pang, I.K., Tal, M.C., Solis, A.G., Bielecki, P.,  
622 Mohanty, S., Trentalange, M., *et al.* (2016). Mx1 reveals innate pathways to antiviral resistance and  
623 lethal influenza disease. *Science* *352*, 463-466.
- 624 Radermecker, C., Detrembleur, N., Guiot, J., Cavalier, E., Henket, M., d'Emal, C., Vanwinge, C.,  
625 Cataldo, D., Oury, C., Delvenne, P., and Marichal, T. (2020). Neutrophil extracellular traps infiltrate  
626 the lung airway, interstitial, and vascular compartments in severe COVID-19. *J Exp Med* *217*.
- 627 Siddiqi, H.K., and Mehra, M.R. (2020). COVID-19 illness in native and immunosuppressed states: A  
628 clinical-therapeutic staging proposal. *J Heart Lung Transplant* *39*, 405-407.
- 629 Smilowitz, N.R., Kunichoff, D., Garshick, M., Shah, B., Pillinger, M., Hochman, J.S., and Berger, J.S.  
630 (2021). C-reactive protein and clinical outcomes in patients with COVID-19. *Eur Heart J* *42*, 2270-  
631 2279.
- 632 Tornling, G., Batta, R., Porter, J.C., Williams, B., Bengtsson, T., Parmar, K., Kashiva, R., Hallberg, A.,  
633 Cohrt, A.K., Westergaard, K., *et al.* (2021). Seven days treatment with the angiotensin II type 2  
634 receptor agonist C21 in hospitalized COVID-19 patients; a placebo-controlled randomised multi-  
635 centre double-blind phase 2 trial. *EclinicalMedicine* *41*, 101152.
- 636 Tsourouktsoglou, T.D., Warnatsch, A., Ioannou, M., Hoving, D., Wang, Q., and Papayannopoulos, V.  
637 (2020). Histones, DNA, and Citrullination Promote Neutrophil Extracellular Trap Inflammation by  
638 Regulating the Localization and Activation of TLR4. *Cell Rep* *31*, 107602.
- 639 Ullah, W., Basyal, B., Tariq, S., Almas, T., Saeed, R., Roomi, S., Haq, S., Madara, J., Boigon, M., Haas,  
640 D.C., and Fischman, D.L. (2020). Lymphocyte-to-C-Reactive Protein Ratio: A Novel Predictor of  
641 Adverse Outcomes in COVID-19. *J Clin Med Res* *12*, 415-422.
- 642 Villoteau, A., Asfar, M., Otekpo, M., Loison, J., Gautier, J., Annweiler, C., and group, G.-C.s. (2021).  
643 Elevated C-reactive protein in early COVID-19 predicts worse survival among hospitalized geriatric  
644 patients. *PloS one* *16*, e0256931.
- 645 Weber, A.G., Chau, A.S., Egeblad, M., Barnes, B.J., and Janowitz, T. (2020). Nebulized in-line  
646 endotracheal dornase alfa and albuterol administered to mechanically ventilated COVID-19 patients:  
647 a case series. *Mol Med* *26*, 91.
- 648 Xu, J., Zhang, X., Monestier, M., Esmon, N.L., and Esmon, C.T. (2011). Extracellular histones are  
649 mediators of death through TLR2 and TLR4 in mouse fatal liver injury. *J Immunol* *187*, 2626-2631.

650 Xu, J., Zhang, X., Pelayo, R., Monestier, M., Ammollo, C.T., Semeraro, F., Taylor, F.B., Esmon, N.L.,  
651 Lupu, F., and Esmon, C.T. (2009). Extracellular histones are major mediators of death in sepsis. *Nat*  
652 *Med* 15, 1318-1321.  
653 Zhou, F., Yu, T., Du, R., Fan, G., Liu, Y., Liu, Z., Xiang, J., Wang, Y., Song, B., Gu, X., *et al.* (2020). Clinical  
654 course and risk factors for mortality of adult inpatients with COVID-19 in Wuhan, China: a  
655 retrospective cohort study. *Lancet* 395, 1054-1062.  
656 Zuo, Y., Yalavarthi, S., Shi, H., Gockman, K., Zuo, M., Madison, J.A., Blair, C., Weber, A., Barnes, B.J.,  
657 Egeblad, M., *et al.* (2020). Neutrophil extracellular traps in COVID-19. *JCI Insight* 5.

658

659



660 **MAIN FIGURE LEGENDS**

661 **Figure 1. Trial design and Consort diagram**

662 A. COVASE Trial Design.

663 B. Consort diagram summary. Numbers not in parentheses indicate the participants in the  
664 ITT population and the numbers in parentheses indicate the number of participants in the  
665 per-protocol population. A complete consort diagram is shown in Supplementary figure 1.

666

667 **Figure 2. Longitudinal CRP predicts survival probability in severe COVID-19 pneumonia.**

668 A. Individual CRP concentrations in 465 plasmas from 63 participants with maximum WHO  
669 severity grade 7 COVID-19 pneumonia segregated into survivor and deceased groups,  
670 extracted from the Berlin COVID-19 study.

671 B. Participants ordered by their longitudinal average CRP concentrations shown in the left  
672 column. Mortality is depicted in yellow in the right column.

673 C. Kaplan Meier survival probabilities (left panel) and numbers at risk (right panel) for  
674 patients segregated into three categories of longitudinal average CRP ranges: 0-100, 100-  
675 200, and 200-450 mg / L. Statistical significance (P), Hazard ratios (HR) and 95% confidence  
676 intervals (95% CI) for group 1 against group 3 and group 2 against group 3 are shown below  
677 the survival plot.

678 Statistics by Mann-Whitney and Mantel-Cox log rank tests.

679

680 **Figure 3. Analysis of primary and clinical endpoints**

681 A. Fitted mean (95% confidence interval) from mixed model of natural log (CRP) over 7 days  
682 follow-up as the outcome. (Left panel) randomised participants only: Blue: participants  
683 randomised to R-BAC, N=9; Pink: participants randomised to R-BAC+DA, N=30. (Right panel)  
684 ITT population: Blue: T-BAC (CC-BAC and R-BAC) N=69; Pink: R-BAC+DA, N=30. Results were  
685 adjusted for natural log baseline CRP, age, sex, BMI, serious comorbidity (Diabetes,  
686 Cardiovascular disease or hypertension), time and a treatment × time interaction. P-value  
687 generated by comparing least-square means between arms.

688 B. Distribution of participants based on the change in CRP measured as a ratio of the final  
689 CRP reading within the 7-day treatment period over the baseline CRP reading per patient.  
690 Statistical analysis by Fisher's test.

691 C. Kaplan-Meier plot showing time to discharge from hospital from baseline. Hazard ratio  
692 from Cox proportional hazards model adjusted for baseline CRP, age, sex, BMI, serious  
693 comorbidity (diabetes, cardiovascular disease of hypertension). P-value from log-rank test.  
694 (Blue: CC-BAC and participants randomised to R-BAC, N=69. Pink: participants randomised  
695 to R-BAC+DA, N=30).

696 D. Kaplan-Meier plot showing time to death over 35 days follow up. Hazard ratio from Cox  
697 proportional hazards model adjusted for baseline CRP, age, sex, BMI, serious comorbidity  
698 (Diabetes, Cardiovascular disease of hypertension). P-value from log-rank test.

699

#### 700 **Figure 4. Analysis of secondary and exploratory endpoints in blood**

701 A. Difference between the lymphocyte count for each day of the treatment period and the  
702 baseline in each ITT participant who exhibited lymphopenia at baseline ( $<1 \times 10^9$   
703 lymphocytes/mL). Mean and 95%CI interval is shown with statistical analysis by two-way  
704 Anova.

705 B. Mean D-dimer levels per day in randomised R-BAC (blue) and R-BAC+DA (pink)  
706 participants with error bars depicting 95% CI. Statistical difference by mixed effects Anova  
707 analysis.

708 C. Mean cf-DNA levels per day in randomised R-BAC (blue) and R-BAC+DA (pink)  
709 participants, with error bars depicting standard deviation. Statistical analysis by mixed  
710 effects Anova.

711 D. Correlation between the final cf-DNA levels and ratio of CRP at day-7 normalized to the  
712 baseline CRP ( $CRP_{final}/CRP_{baseline}$ ) per randomised participant. Fitting by non-linear  
713 regression.

714 E. Correlation between D-dimer and cf-DNA levels in the blood of participants randomised  
715 to R-BAC (blue) or to R-BAC+DA (DA) (pink), where samples were segregated depending on

716 whether the corresponding levels of cf-DNA were below or above 100 µg/mL. Statistical  
717 analysis by unpaired parametric t-test.  
718

719 **Table 1. Patient baseline characteristics**

	<b>R-BAC+DA</b>	<b>R-BAC</b>	<b>CC-BAC</b>	<b>T-BAC</b>	<b>Total</b>
	<b>(N=30)</b>	<b>(N=9)</b>	<b>(N=60)</b>	<b>(N=69)</b>	<b>(N=99)</b>
<b>Age (years)</b>					
Mean	56.8	53.3	57.3	56.8	56.8
SD	12.5	13.7	14.5	14.3	13.7
Median	58.0	53.0	57.0	57.0	57.0
Min	32.0	31.0	23.0	23.0	23.0
Max	77.0	76.0	86.0	86.0	86.0
<b>Gender</b>					
Female N (%)	7 (23.3)	2 (22.2)	15 (25.0)	17 (24.6)	24 (24.2)
Male N (%)	23 (76.7)	7 (77.8)	45 (75.0)	52 (75.4)	75 (75.8)
<b>BMI (kg/m<sup>2</sup>)</b>					
Mean	27.8	30.8	27.8	28.2	28.0
SD	4.7	7.8	5.6	6.0	5.6
Median	26.5	28.9	27.9	28.2	27.7
Min	20.7	22.6	16.3	16.3	16.3
Max	41.7	48.4	43.8	48.4	48.4
<b>Baseline CRP</b>					
<b>(mg/L)</b>					
Mean	101.9	91.9	100.7	99.5	100.2
SD	52.2	68.1	68.3	67.8	63.3
Median	86.3	74.6	75.8	75.3	79.6
Min	25.2	18.9	30.8	18.9	18.9
Max	261.5	221.6	336.4	336.4	336.4
<b>Comorbidity</b>					
No N (%)	16 (53.3)	3 (33.3)	28 (46.7)	31 (44.9)	47 (47.5)
Yes N (%)	14 (46.7)	6 (66.7)	32 (53.3)	38 (55.1)	52 (52.5)
<b>WHO ordinal severity score</b>					
Mean	5.0	5.0	4.63	-	-
SD	0.0	0.5	1.33	-	-
Median	5.0	5.0	5	-	-
Min	5.0	4.0	3	-	-
Max	5.0	6.0	7	-	-

**WBC count**

( $\times 10^9/L$ )

N	30	9	60	69	99
Mean	6.7	7.0	10.6	10.2	9.1
SD	2.5	2.7	9.2	8.7	7.6
Median	6.5	7.0	9.5	8.9	7.9
Min	3.1	1.8	1.8	1.8	1.8
Max	12.9	10.3	72.6	72.6	72.6

**Neutrophil count ( $\times 10^9/L$ )**

N	30	9	60	69	99
Mean	5.7	5.6	9.1	8.7	7.8
SD	2.3	2.6	8.8	8.4	7.2
Median	5.3	5.8	7.9	7.9	6.7
Min	2.4	1.2	1.2	1.2	1.2
Max	10.9	8.6	69.5	69.5	69.5

**Lymphocyte**

**count ( $\times 10^9/L$ )**

N	30	9	60	69	99
Mean	0.7	0.9	0.9	0.9	0.9
SD	0.3	0.4	0.5	0.5	0.5
Median	0.5	0.9	0.8	0.8	0.7
Min	0.2	0.4	0.1	0.1	0.1
Max	1.5	1.5	3.7	3.7	3.7

**Monocyte**

**count ( $\times 10^9/L$ )**

N	30	9	60	69	99
Mean	0.4	0.4	0.5	0.5	0.4
SD	0.2	0.3	0.3	0.3	0.3
Median	0.3	0.3	0.4	0.4	0.4
Min	0.1	0.1	0.1	0.1	0.1
Max	0.9	0.8	1.7	1.7	1.7

**Eosinophil**

**count ( $\times 10^9/L$ )**

N	30	9	60	69	99
Mean	0.0	0.0	0.0	0.0	0.0
SD	0.1	0.0	0.1	0.1	0.1
Median	0.0	0.0	0.0	0.0	0.0
Min	0.0	0.0	0.0	0.0	0.0

Max	0.2	0.1	0.6	0.6	0.6
<b>Basophil count</b> ( $\times 10^9/L$ )					
N	30	9	60	69	99
Mean	0.0	0.0	0.0	0.0	0.0
SD	0.0	0.0	0.0	0.0	0.0
Median	0.0	0.0	0.0	0.0	0.0
Min	0.0	0.0	0.0	0.0	0.0
Max	0.2	0.1	0.1	0.1	0.2
<b>Procalcitonin</b> <b>count (ng/ml)</b>					
N	27	8	1	9	36
Mean	0.3	0.3	19.3	2.4	0.8
SD	0.4	0.3	-	6.3	3.2
Median	0.1	0.2	19.3	0.2	0.2
Min	0.1	0.1	19.3	0.1	0.1
Max	1.8	0.8	19.3	19.3	19.3
<b>D-dimer (ug/L)</b> <b>FEU</b>					
N	30	9	15	24	54
Mean	885.0	909.1	1059.3	1003.0	937.4
SD	1154.5	1054.1	1115.0	1071.8	1109.6
Median	545.0	570.0	600.0	585.0	570.0
Min	190.0	1.9	280.0	1.9	1.9
Max	6580.0	3570.0	4460.0	4460.0	6580.0

720

721

722

723 Table 2. Primary endpoint and sensitivity analysis

CRP (mg/L)	BAC+DA	BAC	Difference	p-value*
<b>ITT population (R-BAC+ DA, R-BAC, CC-BAC)</b>				
N	30	69		
LS means log(CRP)*	3.15	3.55	-0.4	0.010
(95% CI)	(2.87 to 3.42)	(3.35 to 3.75)	(-0.71 to -0.10)	
LS means CRP **	23.23	34.82	0.67	
(95% CI)	(17.71 to 30.46)	(28.55 to 42.47)	(0.49 to 0.91)	
<b>Sensitivity Analyses</b>				
<b>PP population (R-BAC+DA, R-BAC, CC-BAC)</b>				
N	29	68		
LS means log(CRP)*	3.12	3.55	-0.43	0.006
(95% CI)	(2.85 to 3.39)	(3.36 to 3.74)	(-0.73 to -0.13)	
LS means CRP**	22.64	34.82	0.65	
(95% CI)	(17.35 to 29.54)	(27.7 to 42.21)	(0.48 to 0.88)	
<b>ITT population (R-BAC+DA, R-BAC)</b>				
N	30	9		
LS means log(CRP)*	3.1	3.59	-0.5	0.041
(95% CI)	(2.84 to 3.35)	(3.13 to 4.06)	(-0.97 to -0.02)	
LS means CRP**	22.12	36.34	0.61	
(95% CI)	(17.16 to 28.5)	(22.79 to 57.94)	(0.38 to 0.98)	
<b>ITT population (R-BAC+DA, CC-BAC)</b>				
N	30	60		
LS means log(CRP)*	3.18	3.56	-0.37	0.019
(95% CI)	(2.91 to 3.45)	(3.35 to 3.76)	(-0.68 to -0.06)	
LS means CRP**	24.09	35.03	0.69	
(95% CI)	(18.36 to 31.6)	(28.44 to 43.15)	(0.5 to 0.94)	
<b>ITT population (R-BAC, CC-BAC)</b>				
N	9	60		
LS means log(CRP)*	3.78	3.53	0.24	0.386
(95% CI)	(3.23 to 4.33)	(3.3 to 3.77)	(-0.32 to 0.8)	
LS means CRP**	43.69	34.23	1.28	
(95% CI)	(25.18 to 75.8)	(27.11 to 43.24)	(0.73 to 2.23)	
<b>Area under the log(CRP), standardised by days followed up, over 7 days follow-up</b>				
<b>ITT population (R-BAC+DA, R-BAC, CC-BAC)</b>				
N	30	69		
LS means area <sup>a</sup>	3.45	3.72	-0.27	0.043

(95% CI)	(3.22 to 3.68)	(3.55 to 3.88)	(-0.53 to -0.01)	
<b>ITT population (R-BAC+DA, R-BAC, CC-BAC) including last pre-Dexamethasone CRP value</b>				
N	30	69		
LS means log(CRP)*	3.16	3.69	-0.53	0.007
(95% CI)	(2.83 to 3.5)	(3.44 to 3.93)	(-0.91 to -0.14)	
LS means CRP**	23.57	39.92	0.59	
(95% CI)	(16.85 to 32.970)	(31.32 to 50.89)	(0.4 to 087)	
<b>ITT population (R-BAC+DA, R-BAC, CC-BAC) stratified by BAC treatment</b>				
<b>No Remdesivir or Tocilizumab</b>				
N	12	39		
LS means log(CRP)*	3.29	3.75	-0.45	0.079
(95% CI)	(2.83 to 3.76)	(3.45 to 4.04)	(-0.96 to 0.05)	
LS means CRP**	26.97	42.35	0.64	
(95% CI)	(16.87 to 43.11)	(31.44 to 57.04)	(0.38 to 1.06)	
<b>Remdesivir no Tocilizumab</b>				
N	16	23		
LS means log(CRP)*	3.16	3.5	-0.35	0.123
(95% CI)	(2.79 to 3.53)	(3.18 to 3.83)	(-0.79 to 0.1)	
LS means CRP**	23.53	33.26	0.71	
(95% CI)	(16.29 to 33.99)	(23.97 to 46.15)	(0.45 to 1.1)	
<b>Tocilizumab no Remdesivir</b>				
N	1	5		
<b>Remdesivir and Tocilizumab</b>				
N	1	2		
* From linear repeated measures model, adjusted for natural log(baseline CRP, age, sex, BMI, serious condition, time, treatment, a treatment*time interaction, and subject as a random effect. Least squares means compared at mean follow-up time.				
** Antilog of estimates from *. Ratio of BAC + dorna-alfa: BAC shown in the difference column.				
<sup>a</sup> From linear model, adjusted for natural log(baseline CRP, age, sex, BMI, serious condition, and treatment).				

724  
725  
726  
727  
728  
729  
730  
731  
732  
733  
734



735 Table 3. Primary endpoint by day

736

737 Mean Ln CRP over 7 days follow-up by treatment: ITT population including all individuals (R-BAC+DA, R-  
738 BAC & CC-BAC).

739

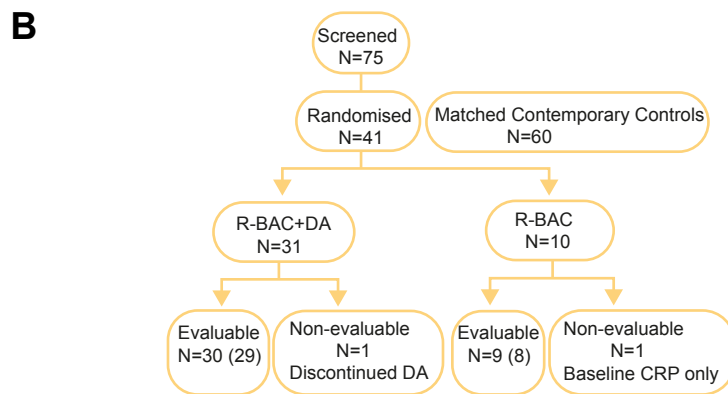
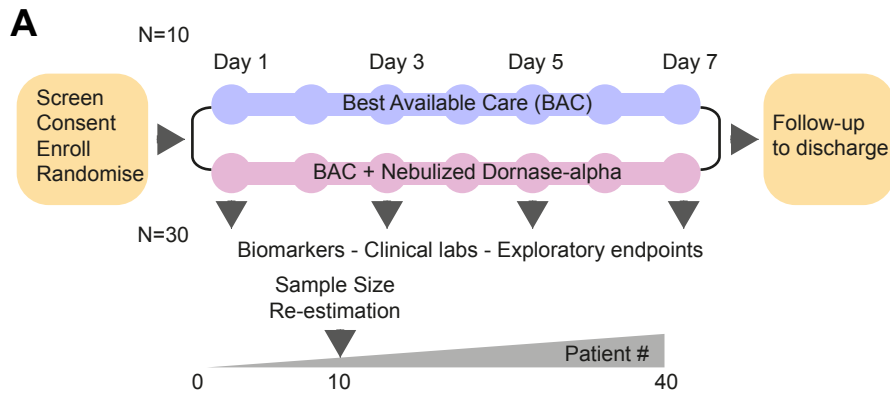
Days from baseline	Mean		N	Mean	SD BAC	N
	BAC + DA	SD BAC + DA	BAC + DA	BAC		
1	4.058	0.591	21	4.029	0.734	42
2	3.538	0.658	33	3.852	0.937	52
3	3.332	0.816	24	3.839	1.037	53
4	2.917	1.017	17	3.573	1.132	37
5	2.52	1.118	15	3.872	1.157	24
6	3.059	1.508	12	3.547	1.516	26
7	3.386	1.824	9	3.504	1.451	27
8	3.428	-	1	2.478	1.393	9

740

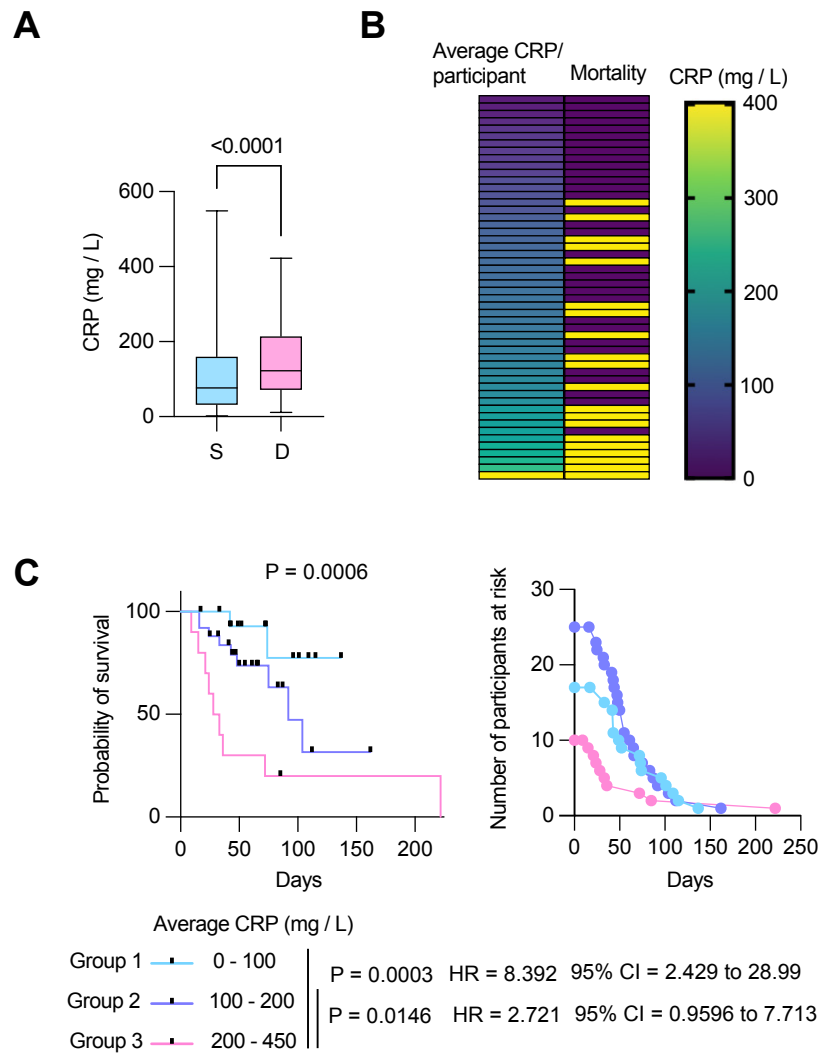
741

742

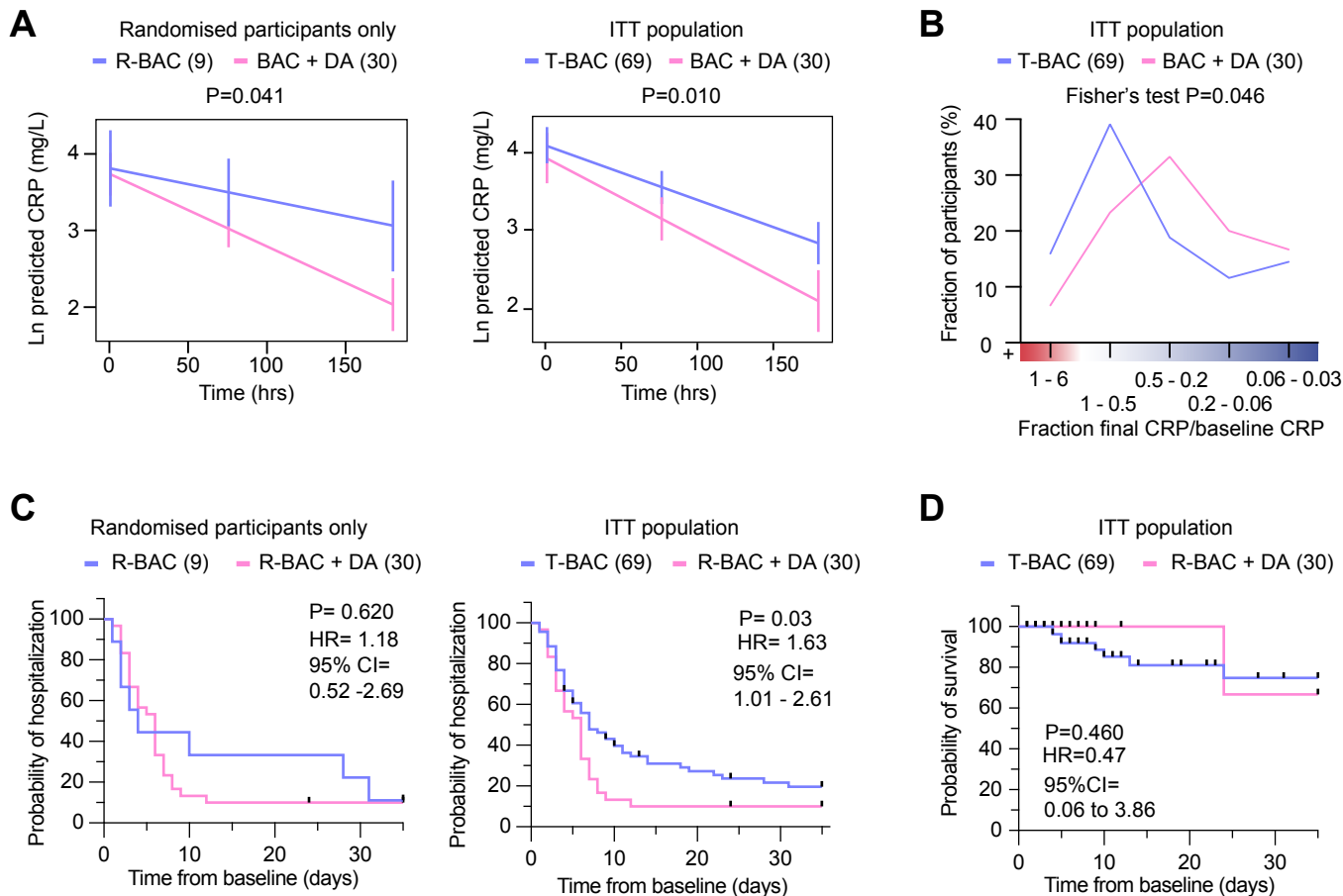
## Figure 1



## Figure 2



### Figure 3



## Figure 4

