

1 **Low Intensity Vibration Protects the Weight Bearing Skeleton and Suppresses Fracture**  
2 **Incidence in Boys with Duchenne Muscular Dystrophy**

3

4 Bianchi ML<sup>1\*</sup>, Vai S<sup>1</sup>, Baranello G<sup>2,3</sup>, Broggi F<sup>1</sup>, Judex S<sup>4</sup>, Hangartner TN<sup>5</sup> & Rubin CT<sup>4#</sup>

5

6 <sup>1</sup>Experimental Laboratory for Children's Bone Metabolism Research, Bone Metabolism Unit,  
7 Istituto Auxologico Italiano IRCCS, Milan, Italy; <sup>2</sup>UO Neurologia dello Sviluppo, Fondazione  
8 IRCCS Istituto Neurologico Carlo Besta, Milan, Italy; <sup>3</sup>The Dubowitz Neuromuscular Centre, UCL  
9 NIHR GOSH Biomedical Research Centre, UCL Great Ormond Street Institute of Child Health,  
10 London, UK; <sup>4</sup>Department of Biomedical Engineering, Stony Brook University, Stony Brook, NY,  
11 USA.; <sup>5</sup>Department of Biomedical, Industrial & Human Factors Engineering, BioMedical Imaging  
12 Laboratory, Wright State University, Dayton, OH, USA;

13

14 **\*deceased**

15 **#Corresponding Author:** Clinton.rubin@stonybrook.edu

16 **Competing Financial Interests:** CTR and SJ have several US and International patents issued  
17 on the use of low intensity vibration for the treatment of musculoskeletal injury and disease. CTR  
18 is also a founder of Marodyne, Inc, who developed the LIV platform for clinical use as LivMD. No  
19 other authors have any conflicts to report.

20 **Word Count:** Abstract: 220 Body of manuscript: 7,100

21 **ClinicalTrials.gov Identifier:** NCT05281120

22 **Ethical Publication Statement:** We confirm that we have read the Journal's position on issues  
23 involved in ethical publication and affirm that this report is consistent with those guidelines.

24 **Abstract**

25 *Introduction/Aims:* The ability of low intensity vibration (LIV) to combat skeletal decline in  
26 Duchenne Muscular Dystrophy (DMD) was evaluated in a randomized controlled trial.

27 *Methods:* Twenty DMD boys were enrolled, all ambulant and treated with glucocorticoids  
28 (mean age 7.6, height-adjusted Z-scores (HAZ) of hip BMD -2.3). Ten DMD boys were assigned  
29 to stand for 10min/d on an Active LIV platform (0.4g @ 30Hz), while 10 stood on a Placebo device.  
30 Baseline and 14-month BMC and BMD of spine, hip and total body were measured with DXA,  
31 and trabecular bone density (TBD) of tibia with QCT.

32 *Results:* All children tolerated the LIV intervention well, with daily compliance averaging  
33 78%. At 14 months, TBD in the proximal and distal tibia remained unchanged in Placebo (-0.7%  
34 & -0.8%), while rising 4.1% and 4.5% in LIV. HAZ for hip BMD and BMC in Placebo declined 22%  
35 and 13% respectively, contrasting with no change from baseline (0.9% and 1.4%) in LIV. Fat  
36 mass in the leg increased 33% in Placebo, contrasting with 20% in LIV subjects. Across the 14-  
37 month study, there were four incident fractures in three placebo patients (30%), with no new  
38 fractures identified in LIV subjects.

39 *Conclusions:* These data suggest that non-invasive LIV can help protect the skeleton of  
40 DMD children against the disease progression, the consequences of diminished load bearing,  
41 and the complications of chronic steroid use.

42

43 **Keywords:** whole body vibration, DMD, bone mineral density, bone mineral content, bone,  
44 fracture, osteoporosis, functional adaptation, mechanical signals

45

46

## 47 **Introduction**

48       Duchenne muscular dystrophy (DMD) is an X-linked recessive genetic disease due to a  
49 mutation in the dystrophin gene. DMD is characterized by severely reduced or absent dystrophin  
50 in skeletal muscles, with progressive muscle degeneration and fibro-fatty replacement.[1]  
51 Affected individuals experience progressive muscle weakness beginning in early childhood, with  
52 loss of ambulation by the age of 12 years [2] and reduced life expectancy due to the progressive  
53 cardio-respiratory impairment.[3] While there is no cure, the introduction of glucocorticosteroids  
54 (GCs) in the 90's have been shown to partially preserve muscle strength, protect pulmonary  
55 function, delay onset of ambulatory decline, reduce severity of scoliosis, and extend life.[4] GC  
56 treatment of DMD is now initiated at a much earlier age, as built on clear evidence that the sooner  
57 they initiate the treatment the greater its effectiveness in slowing progression of the disease,[5, 6]  
58 and with ventilator support life expectancy can approach 40y.[7]

59       In concert with GC treatments, novel dystrophin restoration therapies have slowed muscle  
60 collapse, and have mitigated - to a limited degree - some functional decline of DMD patients,[8]  
61 yet concomitant skeletal complications persist.[9] Indeed, compromised bone mineral density  
62 (BMD) and bone mineral content (BMC), are considered primary causal factors in increased  
63 occurrence of fragility fractures.[10, 11] As compared to healthy age-matched boys, DMD  
64 patients show a significant disparity in bone quantity and quality in the lower limbs, which in part  
65 is a consequence of reduced weight-bearing and muscular activity on bone [12] associated with  
66 this crucial period of growth.[13]

67       During the period that DMD boys retain their ability to walk, lumbar spine BMD is only slightly  
68 decreased but then drops precipitously when they lose ambulation.[14] In some contrast, lower  
69 limbs are more severely affected, reflected by reduced BMD and BMC at hip even while walking  
70 ability is only slightly impaired. DMD boys have 30% less trabecular bone density in the tibia than  
71 healthy controls, falling below 50% on loss of ambulation.[15] This decline in bone quality is

72 accompanied by an increase in fracture risk: Individuals with muscular dystrophies are at a 1.4-  
73 fold increased risk of fracture when compared with population-based controls, a risk that rises  
74 with age and triples when glucocorticoids have been used for at least six months.[16] These  
75 fractures have a devastating impact: 4 out of 9 ambulatory DMD boys never recover to walking  
76 status after a fracture.[14] Any strategy that protects bone will help reduce fractures and prevent  
77 early loss of ambulation.

78 It is well known that physical activity is critical in achieving and maintaining bone mass  
79 accrual across the years of growth in children.[13] To a degree bone mass can be correlated to  
80 muscular strength during adolescence,[17, 18] while animal studies show that lean muscle mass  
81 persists as a significant determinant of bone quantity and quality even when challenged by a  
82 dystrophic phenotype.[19] Although the decline in bone status in DMD parallels deterioration of  
83 muscle phenotype, it does not appear to be directly caused by the disease itself but instead as a  
84 secondary consequence of the reduced loading that parallels muscle weakness.[1, 20]

85 Exercise regimens as a strategy to preserve muscle function and bone accrual in DMD  
86 children shows some promise, however, it is still unclear if this can protect from skeletal decline  
87 or if instead can lead to an increased risk of fractures.[21] As a surrogate for exercise, low  
88 magnitude mechanical signals, delivered using Low Intensity Vibration (LIV), have been  
89 demonstrated to have an anabolic effect on bone in animal models,[22] driven by some degree  
90 by biasing bone marrow mesenchymal stem cells away from adipogenesis and towards  
91 osteoblastogenesis.[23] High-frequency, low magnitude mechanical signals are omnipresent in  
92 the functional load regime,[24] arising from the dynamics of muscle contraction.[25] It is proposed  
93 here that introducing these signals as a surrogate for exercise could help protect the skeleton of  
94 DMD patients, who, because of muscle decline, have reduced muscle-induced loading of bone.  
95 The present study is aimed at evaluating the safety, tolerability and effects on bone status of LIV  
96 in children with DMD.

97 **Methods**

98 **Study Design:** The study was originally designed as a prospective, double-blind,  
99 randomized, placebo-controlled 12-month trial on 20 boys with DMD. Due to a severe illness of  
100 the principal clinician (MLB) at the 1-year mark, protocol duration was extended to 14-months.  
101 The study was approved by the Ethical Committees of both institutions involved in subject  
102 recruitment (Istituto Auxologico Italiano IRCCS and Istituto Neurologico Besta IRCCS) and  
103 conducted according to the Clinical Good Practice rules. Recruitment for the trial was initiated  
104 before the FDAAA 801 requirement for registration with [clinicaltrials.gov](https://clinicaltrials.gov), so retroactive  
105 registration was made after the trial was completed (identifier: NCT05281120). Considering that  
106 all potential subjects were minors, informed consent and assent was obtained from the boys'  
107 parents.

108 Each enrolled subject received a LIV platform to take home. Participants were randomized  
109 to either receive an Active or Placebo platform. Subjects, parents, and study team were blinded  
110 to the Active/Placebo status of the device. Subjects and their parents were instructed to use the  
111 platform for 10 minutes each day, scheduled at any time during the day convenient for its use.  
112 Instructions included to stand upright, in a relaxed stance, wearing only socks to cover the feet.  
113 The patients were provided a diary to record the day, time, and minutes of their platform use, and  
114 they were instructed to record any day where the LIV treatment was not used, a strategy that had  
115 shown close similarity to electronic recording of compliance in prior clinical trials.[26, 27] Patients  
116 in both the LIV and Placebo groups received weekly phone calls from the study's clinicians and  
117 hospital staff to reinforce their commitment to participating.

118 **Subjects:** Recruitment for the study was initiated through DMD family groups with clinical  
119 histories at the two enrolling institutions. Twenty ambulant boys diagnosed with DMD, aged 4-15  
120 years (mean age  $7.6 \pm 3.9$  years), were enrolled. Baseline data are reported in Table 1. Inclusion  
121 criteria included: diagnosis of DMD; ability to stand up and walk (some balance assistance

122 allowed, but full weight-bearing necessary); treatment with a fixed dose of prednisone (1.25 mg/kg  
123 every 2 days, according to the treatment protocol of the Istituto Neurologico Besta IRCCS);  
124 treatment with 25-D (calcifediol, 0.7 mcg/kg/d); and dietary calcium intake equal to the  
125 internationally recommended daily allowance (RDA). All inclusion criteria had to be met for at  
126 least 6 months before starting the study. DMD diagnosis was made at the Muscle Pathology and  
127 Immunology Unit of the Istituto Neurologico Besta IRCCS. The diagnostic criteria were based on  
128 clinical data, molecular analysis, morphological evaluation, and/or immunochemical analysis  
129 confirming the absence of dystrophin in muscle fibers.

130 **LIV Platform:** The 20 enrolled DMD boys were randomized into two groups and assigned  
131 to either an active LIV platform delivering 0.4g (where 1g is Earth's gravitational field or  $9.8\text{m/s}^2$ ),  
132 with a 30Hz (cycles per second) sinusoidal vibration (N=10) or Placebo platform (N=10), which –  
133 to mask status of the device - emitted a 500Hz hum through an onboard loudspeaker but produced  
134 no vibration signal through the plantar surface of the standing child. Peak to peak accelerations  
135 of 0.4g at 30Hz require displacements of less than 120 microns, or the thickness of two human  
136 hairs. 100% compliance would be the use of the platforms for 10 minutes each day, seven days  
137 per week, across the length of the study. To avoid over-use, the device was restricted to a  
138 maximum of 10 minutes of LIV within any calendar day. A LIV prototype designed for adults  
139 weighing between 40 and 115kg was modified for use by children by reducing spring constants  
140 of the springs that suspend the top platen, allowing a weight range of 15-65kg.[28]

141 The design of the LIV platform uses closed-loop acceleration feedback to drive an  
142 electromagnetic actuator, ensuring a high-fidelity sinusoidal signal,[29] a design which can safely  
143 deliver these barely perceptible mechanical signals to standing subjects.[30] Signals at this  
144 frequency and intensity are considered a non-significant risk by the FDA,[31] and as defined by  
145 the International Standards Organization Advisory 2631, exposure to vibration signals at this  
146 frequency and magnitude is considered safe for up to four hours of exposure each day.[32]

147           **Evaluation Program:** At baseline and end-of-protocol, all enrolled DMD boys underwent  
148 the following evaluations: weight, height, fracture history and an interview with a dietician to  
149 evaluate the daily intake of calcium. Weight was measured with an electric scale to the nearest  
150 0.1 kg. All patients were able to stand up (with aid in some cases), and the standing height was  
151 measured with a stadiometer.

152           Baseline and end-of-protocol DXA and QCT bone imaging studies were performed at Istituto  
153 Auxologico Italiano IRCCS (Milan, Italy). At baseline only, bone age was evaluated with hand  
154 radiography. All the enrolled subjects underwent neurological functional evaluation at baseline  
155 and end-of-protocol at the Istituto Neurologico Besta IRCCS, as part of their standard clinical  
156 monitoring.

157           **Dietary Calcium Intake:** Calcium intake was evaluated at baseline, administered by the  
158 same skilled dietician. Each subject had a 20-30-minute dietary interview, including a food  
159 frequency questionnaire and 24-h dietary recall, administered in a private room in the presence  
160 of one or both parents. In addition, the nutritional composition of the lunch menus (5 days/week)  
161 from the children's schools were evaluated. The frequency consumption (daily, weekly, and  
162 monthly) of each food item was evaluated. For each item, the children indicated the size of their  
163 usual meals using photographs of small, medium, and large portions. The food frequency  
164 questionnaire included 16 main food groups (e.g., milk and dairy products; pasta and rice; drinks;  
165 cereals and oven products such as bread and biscuits, etc.), classified according to nutrient  
166 composition and customary use by Italian children.[33] The calcium content of water (tap and  
167 bottled mineral water) was considered, obtaining the calcium content of local tap water at the  
168 patients' locations, or from the labels of the mineral waters. The analysis was performed using  
169 an Italian National Institute of Nutrition software (Winfood 1.0b), providing detailed food  
170 composition data.[34]

171           **Vitamin D and Bone Formation Markers:** From all subjects, at both baseline and 14  
172 months, blood samples were collected between 8-9a.m., after an overnight fasting. Biochemical  
173 measurements of serum 25-hydroxy vitamin D (25-D), 1,25-dihydroxy vitamin D (1,25-D),  
174 parathyroid hormone (PTH), bone-specific alkaline phosphatase (BSAP) and osteocalcin (OC)  
175 were performed. 25-D was quantified by radioimmunological assay (RIA; DiaSorin); intra- and  
176 inter-assay coefficient of variation (CV) 3.5% and 7.5%; 1,25-D by radio receptor assay (Nichols  
177 Institute Diagnostics, San Juan Capistrano, CA, USA) intra- and inter-assay CV 5.6% and 7.9%,  
178 PTH by immunoradiometric assay (IRMA; DiaSorin Inc, Stillwater, MN, USA) intra- and inter-  
179 assay CV 2.8% and 4.7%; and OC by RIA; (Technogenetics, Milano, Italy); intra- and inter-assay  
180 CV 3.6% and 6.9%.

181           **Computed Tomography:** Quantitative computed tomography (QCT) scans of the tibia were  
182 performed with a GE QCT (34 slices) at both legs with the same protocol in all boys. One of the  
183 coauthors (TH) analyzed these data, blinded, with special software.[35]

184           **Bone Mineral Density:** Bone mineral content (BMC) and density (BMD), as well as fat and  
185 lean mass, were measured by dual energy x-ray absorptiometry (DXA; Hologic Discovery Horizon  
186 A densitometer) at lumbar spine, proximal femur, and total body. At Istituto Auxologico Italiano  
187 IRCCS, a strict DXA quality control procedure, including the instrument's daily phantom  
188 calibration, is standard and was regularly followed during the study. The DXA CV, with  
189 repositioning, was 0.62-1% for spine and 0.64-1.09% for total body, depending on age. Total  
190 body BMC, BMD, fat and lean mass were calculated excluding head (TBLH), the most appropriate  
191 measurement in a growing skeleton,[36] considering the different patterns of cranial  
192 development.[37] Height-Adjusted Z-scores (HAZ) for BMD and BMC for spine, hip and TBLH  
193 were calculated based on healthy boys of the same age.[38]

194           Two *post-hoc* analyses were performed. First, changes in BMD and BMC in the spine and  
195 hip were normalized to BMD/BMC of TBLH, and second, normalized to BMD/BMC of the arm, as



196 automatically segmented from the total body DXA measures. As the LIV platform challenges only  
197 the weight-bearing bones and is not considered a ‘systemic’ stimulus to the skeleton,[31] BMD  
198 and BMC of TBLH and the segmented changes in the arm were considered an intra-subject  
199 measure that could be used to approximate DMD-driven changes in the status of the skeleton  
200 that occurred across the 14 months of study, with less ‘exposure’ to the LIV signal. As  
201 normalization of hip or spine to TBLH would include the very regions that were being examined  
202 (i.e., the hip being included in TBLH would mask changes in the hip), normalization to the arm  
203 would exclude those regions being evaluated (i.e., the hip would be assessed relative to a change  
204 in the arm, independent of the hip).

205 **Fractures:** Fracture history, including circumstances, skeletal site, date, and type of  
206 intervention, was taken at baseline and updated at each clinical visit. All fractures were  
207 documented by radiography. At baseline and end-of-protocol, lateral radiographs of thoracic and  
208 lumbar spine were taken to evaluate the presence of vertebral fractures.

209 **Statistical Analyses:** Data were expressed as the mean  $\pm$  SD. For group comparisons,  
210 Student’s *t* test for unpaired (Placebo vs LIV) and paired (Baseline vs 14-months) samples were  
211 used, as appropriate. For intragroup comparisons, changes at 14-months were expressed as  
212 absolute and relative differences from baseline values. Chi-square tests were used to determine  
213 whether occurrence of fractures was significantly different between Placebo and LIV groups.  
214 Statistical significance was defined at  $p < 0.05$ . Because of the small sample size, *p*-values  
215 between 0.05 and 0.20 were reported as potential differences (trends).[39] *P*-values of greater  
216 than 0.2 represented a lack of statistically significant differences.

217

218

219

## 220 **Results**

221 Due to investigator illness at the one-year mark of the first subject, the intended 12-month  
222 protocol was extended to 14 months (~400 days), a delay incorporated into the follow-up  
223 schedules of all boys. All enrolled patients completed the 14-month study, and all subjects  
224 tolerated the treatment well and declared they had been happy to use the LIV platforms. Neither  
225 subjects nor parents reported any discomfort, inconvenience, or adverse effects.

226 **Baseline Characteristics:** Sixty-six patients were screened for the study, with 37 not  
227 meeting inclusion criteria and nine who declined to participate (**Figure 1**). Across the twenty  
228 enrolled subjects (**Table 1**), diagnosis of DMD was made at  $2.8 \pm 1.2$  y, with steroid therapy begun  
229 at  $5.1 \pm 1.1$  y. There were significant differences in age between Placebo ( $6.6 \pm 1.8$  y) and LIV  
230 ( $9.4 \pm 3.4$  y) subjects ( $p < 0.05$ ). There were also significant differences in height between Placebo  
231 ( $114.0 \pm 12.5$  cm) and LIV ( $127.4 \pm 15.7$  cm) subjects ( $p < 0.05$ ), and a trend in difference in weight  
232 between Placebo ( $20.8 \pm 4.6$  kg) and LIV ( $31.5 \pm 10.2$  kg) subjects ( $p < 0.20$ ). Height Z-score for  
233 Placebo ( $-1.11 \pm 1.0$ ) was not different than LIV ( $-1.3 \pm 1.4$ ). While assignment of platform status  
234 was blinded, these disparities in age, weight and height remain a major limitation of the study and  
235 are addressed in the discussion.

236 The compliance was evaluated using the patients' diaries and the platforms' records was  
237 79% in LIV and 75% in Placebo groups. Specific compliance measures per subject, including  
238 logbooks, were lost to follow-up, and thus efficacy as a function of compliance could not be  
239 determined.

240 **14-Month Changes in Body Habitus:** When considering subject specific changes in height  
241 from baseline, there was a 5.6% increase in the Placebo group ( $p < 0.05$ ), as compared to a 4.5%  
242 increase in height in the LIV group ( $p < 0.05$ ), but no difference in growth rates between the groups  
243 ( $p = 0.27$ ). When considering subject specific changes in weight from baseline, there was a 13.1%

244 increase in Placebo ( $p < 0.05$ ) as compared to a 17.8% increase in the LIV group ( $p < 0.05$ ),  
245 representing a 5.8% difference in body mass gained between the groups ( $p < 0.20$ ).

246 **Calcium and Vitamin D Intake:** The dietary calcium intake was  $650 \pm 132$  mg/day at  
247 baseline and  $710 \pm 129$  mg/day at month 3, as established by phone interview, measures in line  
248 with the average calcium intake of healthy Italian children.[34] After dietary adjustment at month  
249 3, it increased to  $1,186 \pm 233$  mg/day by end of study ( $p < 0.05$  vs. baseline). The adherence to  
250 diet and vitamin D intake was estimated via interviews with children and parents about calcium  
251 intake from foods, by measuring the children's' serum 25-D levels, and by checking the used  
252 calcifediol bottles that the patients were asked to keep and bring back. "High adherence," defined  
253 as taking at least 80% of the prescribed doses, was estimated in  $73 \pm 6.3\%$  of patients, and even  
254 those with lower adherence had an increased calcium intake with respect to baseline (average  
255 increase:  $280 \pm 110$  mg/day). High adherence to calcifediol treatment was estimated in  $84 \pm 5.3\%$   
256 of patients. There was no difference between LIV and Placebo groups in any dietary measures  
257 (data not shown).

258 **14-Month Changes in BSAP, PTH and OC and Vitamin D:** Baseline and 14-month  
259 markers of bone turnover are summarized in **Table 2**. Follow-up serum measures were lost to  
260 follow-up for five subjects in each group, so that baseline/end-of-study comparisons are based on  
261  $n=5$  in each group. Baseline BSAP in the Placebo group did not change at 14 months ( $+1.8\%$ ;  
262  $p=0.27$ ), while LIV rose  $7.2\%$  ( $p < 0.20$ ). Baseline PTH in the Placebo group did not change at 14  
263 months ( $p=0.47$ ), while rising  $12\%$  in LIV ( $p < 0.035$ ). Baseline OC did not change at 14-months  
264 in either the Placebo ( $-2.1\%$ ;  $p=0.40$ ) or LIV group ( $+16.9\%$ ;  $p=0.33$ ). Baseline 1,25-D did not  
265 change at 14-months in either the Placebo ( $-10.5\%$ ;  $p=0.24$ ) or LIV group ( $+6.6\%$ ;  $p=0.32$ ).  
266 Baseline 25-D increased  $31\%$  in Placebo ( $p < 0.20$ ), but did not change in LIV ( $-5\%$ ;  $p=0.42$ )

267 **QCT Measures of Bone Density in the Tibia:** Data are reported as  $n=10$  in each group.  
268 After 14 months, trabecular bone density (TBD) in the proximal region of the tibia remained

269 unchanged in the Placebo group (-0.7%;  $p=0.44$ ), while the 4.1% rise in the LIV group trended  
270 towards significance ( $p<0.20$ ). TBD in the distal region of the tibia remained unchanged in the  
271 Placebo group (-0.8%;  $p=0.43$ ) while rising 4.5% in the LIV subjects ( $p<0.20$ , **Figure 2**). When  
272 considering subject-specific changes from baseline, TBD of the distal region was 4.9% higher in  
273 LIV as compared to the Placebo group ( $p<0.20$ ). Increases in cortical BMD of the tibial midshaft  
274 were significant in Placebo subjects (+1.8%,  $p<0.20$ ) but failed to reach significance in LIV  
275 (+1.7%,  $p=0.55$ ). There was no difference in changes in cortical bone in the Placebo as compared  
276 to LIV group ( $p=0.47$ ).

277 ***BMD and BMC Measures of TBLH:*** Data reported are  $n=9$  for both LIV and Placebo;  
278 baseline data sets could not be located for one subject in each group. As measured by DXA,  
279 BMD changes in TBLH in the Placebo group showed a 3.5% increase over the course of the 14-  
280 month period ( $p<0.05$ ), as compared to a 2.8% increase in the LIV group ( $p<0.05$ ). Changes in  
281 the two groups were not different from each other ( $p=0.44$ ). BMC changes in TBLH in the Placebo  
282 group showed a 15.6% increase over the course of 14 months ( $p<0.05$ ), as compared to a 13.1%  
283 increase in the LIV group ( $p<0.05$ ). Changes in the two groups were not different from each other  
284 ( $p=0.39$ ).

285 The degree to which the skeleton of these DMD subjects is compromised becomes evident  
286 with direct comparisons to age- and height-matched healthy boys. HAZ of TBLH BMD in the  
287 Placebo group were -0.3 at baseline and fell to -0.8 by the end of the 14-month protocol ( $p<0.05$ ).  
288 LIV subjects at baseline were -1.2 and fell to -1.7 by the end of the experimental period ( $p<0.05$ ).  
289 When evaluating absolute change in HAZ, Placebo fell by 0.52 ( $p<0.05$ ), similar to the 0.51  
290 absolute decrease measured in LIV subjects ( $p<0.05$ ), with the changes between groups not  
291 different from each other ( $p=0.95$ , **Figure 3**). Absolute decreases in BMC were -0.09 in both  
292 Placebo and LIV groups, with no differences from baseline or between groups.

293 **BMD and BMC Measures of Hip:** DXA measures of BMD in the hip of Placebo subjects  
294 did not change over the experimental period (+0.6%;  $p=0.35$ ), while increasing 3.0% in the LIV  
295 group ( $p<0.20$ ). There was no difference between groups ( $p=0.31$ ). DXA measures of BMC in  
296 the hip increased 11.4% in Placebo ( $p<0.05$ ) and increased 12.6% in LIV subjects ( $p<0.05$ ).  
297 There was no difference between groups ( $p=0.31$ ).

298 **BMD and BMC Height Adjusted Z-Scores of Hip:** Matched to healthy boys, hip BMD HAZ-  
299 scores of Placebo subjects at baseline were -1.4, falling 21% to -1.7 by the end of the 14-month  
300 protocol ( $p<0.05$ ). HAZ-scores of Hip BMD in LIV subjects at baseline were -2.6, with a 0.9%  
301 drop at 14-months not significantly different from baseline ( $p=0.91$ , **Figure 3**). HAZ of hip BMC  
302 in the Placebo group fell 13% ( $p<0.20$ ) from -2.0 to -2.3, while the baseline measure of -3.2 in the  
303 LIV group was not different at 14 months ( $p=0.87$ ). Absolute HAZ in hip BMD fell 0.3 in Placebo  
304 ( $p<0.05$ ) but remained similar to baseline in LIV (-0.02;  $p=0.45$ , **Figure 3**). Absolute HAZ in hip  
305 BMC fell 0.28 in Placebo ( $p<0.20$ ) but remained similar to baseline in LIV (-0.04;  $p=0.87$ ).

306 **BMD and BMC Measures of Spine:** DXA measures of BMD in the spine of Placebo  
307 subjects increased 7.0% ( $p<0.05$ ), while increasing 7.8% for LIV subjects ( $p<0.05$ ). Changes in  
308 the two groups were not significantly different from each other (+1.5%;  $p=0.34$ ). DXA measures  
309 of BMC in the spine of Placebo subjects increased 8.8% ( $p<0.20$ ), whereas BMC in the LIV  
310 group increased 13.1% ( $p<0.05$ ). Changes in LIV were not different than the Placebo group  
311 (+4.3%;  $p=0.29$ ).

312 **BMD and BMC Height Adjusted Z-Scores of Spine:** Matched to healthy boys of the same  
313 age, baseline HAZ of BMD spine in the Placebo group was -0.11 at baseline, and did not change  
314 by the end of the 14-month protocol (+0.38;  $p=0.29$ ). At baseline, HAZ-scores of spine BMD in  
315 LIV subjects was -0.8, and had not changed by the end of the 14-month protocol (-0.2,  $p=0.54$ ).  
316 HAZ of spine BMC in the Placebo group at baseline was -1.5, and had not changed by the end of

317 the 14-month protocol (-14%,  $p=0.29$ ). HAZ of spine BMC in the LIV subjects began at -2.1, with  
318 no change at 14 months ( $p=0.89$ ).

319 ***Bone, Lean and Fat Measures of Arm:*** BMD changes in the left arm of the Placebo group  
320 showed a 5.9% increase over 14 months ( $p<0.20$ ), as compared to a 2.9% increase in the LIV  
321 group ( $p=0.20$ ). Changes in BMD in the left arm measured in the Placebo group was not different  
322 than the LIV group ( $p=0.49$ ). BMC changes in the left arm in the Placebo group showed a 14.2%  
323 increase over the 14 months ( $p<0.05$ ), as compared to a 10.4% increase in the LIV group  
324 ( $p<0.05$ ). Over the 14-month protocol, BMC in the left arm of the Placebo group increased 6.9%  
325 more than the LIV group ( $p=0.20$ ).

326 Fat mass in the arms of the Placebo group increased 18.2% across the 14 months ( $p<0.05$ ),  
327 as compared to 15.1% in the LIV group ( $p<0.05$ ). Group specific changes were not different from  
328 each other ( $p=0.57$ ). Lean mass in the Placebo group increased 10.3% across the 14-month  
329 period ( $p<0.05$ ), in contrast to 6.4% increase in the LIV group ( $p<0.05$ ). Group specific changes  
330 were not different from each other ( $p=0.55$ ).

331 ***Fat and Lean Mass of TBLH and Leg:*** DXA-measured increase in TBLH fat mass across  
332 the 14 months were not different ( $p=0.94$ ) between Placebo (+26.9%,  $p<0.05$  from baseline) and  
333 LIV (+27.1%,  $p<0.05$  from baseline). Fat mass of the left leg showed a 32.9% ( $p<0.05$ ) increase  
334 in Placebo subjects as compared to a 19.8% ( $p<0.05$ ) increase in LIV subjects, a 40%  
335 suppression of fat accumulation ( $p<0.20$ ; **Figure 4**).

336 DXA-measured increase in TBLH lean mass across the 14 months was similar ( $p=0.69$ )  
337 between Placebo (+10.7%,  $p<0.05$  from baseline) and Active (+8.9%,  $p<0.05$  from baseline).  
338 Lean mass of the left leg closely tracked TBLH, with a 9.6% ( $p<0.05$ ) increase in Placebo subjects  
339 as compared to an 8.0% ( $p<0.05$ ) increase in the Active subjects ( $p=0.75$  between groups).

340           **Spine and Hip BMD and BMC Normalized to TBLH:** *Post-hoc* analyses of DXA data were  
341 first performed by normalizing subject-specific parameters to that individual's changes measured  
342 across the entire body minus the head (TBLH). This normalization was performed to determine  
343 if 'systemic' changes in bone quantity and quality caused by the disease, as represented by the  
344 entire skeleton (including hip and spine), would help determine if LIV influenced those regions of  
345 the skeleton that were subject to the mechanical signal delivered primarily to the weightbearing  
346 bones.[28] When normalized to changes in TBLH, BMD in the spine of Placebo subjects was not  
347 different to baseline (+2.4%;  $p=0.42$ ), as compared to a 4.3% increase in LIV subjects ( $p<0.20$ ).  
348 There were no differences between groups ( $p=0.34$ ). When normalized to changes in TBLH,  
349 BMC in the spine dropped 6.2% ( $p<0.05$ ) in the Placebo group, as contrasted to a 1.0% decrease  
350 in the LIV subjects ( $p=0.39$ ). When considering subject-specific changes of BMC of spine from  
351 baseline, there was a 5.6% positive swing from the Placebo group to the LIV group ( $p<0.20$ ).

352           Relative to TBLH, BMD in the hip fell 3.1% ( $p<0.05$ ) in the Placebo group, while remaining  
353 unchanged from baseline in the LIV subjects (-0.7%;  $p=0.40$ ). Group specific changes were not  
354 different from each other ( $p=0.43$ ). Normalizing BMC changes in TBLH to those measured in the  
355 hip showed a 6.5% drop in BMC in the Placebo group ( $p<0.20$ ) as compared to no change from  
356 baseline in LIV subjects (-1.6%;  $p=0.78$ ). Group-specific changes were not different from each  
357 other ( $p=0.24$ ).

358           **Spine and Hip BMD and BMC Normalized to Arm:** *Post-hoc* analyses of DXA data were  
359 also performed where subject specific parameters were normalized to that subject's changes  
360 measured in the arm. This normalization was performed to determine if 'systemic' changes in  
361 bone quantity and quality caused by the disease, as represented by an upper extremity (i.e.,  
362 minus hip and spine), would help determine if LIV influenced those regions of the skeleton that  
363 were subject to the mechanical signal delivered to the weightbearing bones.[28] When  
364 normalized to changes in the arm, BMD in the spine of the Placebo subjects was not different

365 from baseline (+1.5;  $p=0.52$ ), as compared to a 4.9% ( $p<0.20$ ) increase in the LIV subjects  
366 (**Figure 5**). Group-specific changes were not different from each other ( $p=0.21$ ). When  
367 normalized to changes in the arm, BMC in the spine dropped 5.6% ( $p<0.20$ ) in the Placebo  
368 subjects, as contrasted to a 4.8% increase in the Active group ( $p<0.20$ ), a 10.4% positive swing  
369 from Placebo to Active ( $p<0.05$ ; **Figure 6**).

370 Normalizing BMD changes relative to those realized in the arm across 14-months to those  
371 measured in the hip showed a 4.0% fall in the Placebo subjects ( $p<0.05$ ), while remaining  
372 unchanged from baseline in LIV subjects (+0.2%;  $p=0.80$ ), representing a 3.5% difference groups  
373 ( $p<0.20$ ; **Figure 5**). BMC in the hip normalized to that measured in the arm, there was a 6.0%  
374 drop in the Placebo subjects ( $p<0.20$ ), in contrast to no change from baseline in LIV subjects  
375 (+3.7%,  $p=0.26$ ), a 9.7% positive swing from Placebo to Active groups ( $p<0.20$ ; **Figure 6**).

376 **Fractures:** At baseline, across the whole group, 13 lower-limb fractures had been  
377 sustained by 8 DMD subjects before starting the study (40%). No vertebral fractures were  
378 reported in the clinical records, but baseline lateral spine radiographs revealed 6 prior fractures  
379 of dorsal vertebrae in 4 DMD subjects (1 fracture each in 3 patients; 3 fractures in 1 patient).

380 Regarding incident fractures at study end (month 14), there was 1 dorsal vertebral fracture  
381 and 3 appendicular fractures (2 foot fractures, 1 fibula fracture) identified in 3 patients in the  
382 Placebo group (30%), while no new fractures were identified in the LIV group, a significant  
383 difference between groups ( $p<0.05$ ; **Figure 7**). The cause of these fractures is not known.

384

385

386

387

388



## 389 Discussion

390 Implementation of exercise programs to protect the musculoskeletal systems of children  
391 with Duchenne Muscular Dystrophy (DMD) has been complicated by fears that high-intensity or  
392 eccentric exercise may accelerate muscle deterioration, that active weight-bearing protocols are  
393 often beyond reach of this population, or – paradoxically - that these activities may increase risk  
394 of fractures.[40] As a surrogate for exercise protocols, this prospective randomized double-blind  
395 placebo-controlled study reports on the effects of LIV on skeletal bone status in children with  
396 DMD. The 20 DMD boys enrolled in this study were all ambulant, treated with the same GC  
397 regimen, with dietary calcium intake according to the RDA for age, and receiving calcifediol (25-  
398 OH vitamin D<sub>3</sub>) supplementation. This study showed that LIV was safe and well tolerated, as  
399 daily compliance was high and there were no reported adverse events. The study, while small,  
400 provides some insight into the potential of exogenously delivered, low-magnitude mechanical  
401 signals as a means of protecting the skeleton in an at-risk population.

402 LIV has been shown to increase bone mass and quality in children with disabling conditions,  
403 including cerebral palsy[41] and adolescent girls with idiopathic scoliosis.[42] LIV augments bone  
404 accretion in survivors of childhood cancer[43] and patients with Crohn's disease.[44] In a one-  
405 year study on young women (age 15-21) with osteoporosis, LIV was shown to be anabolic to both  
406 femur and spine, as well as paraspinous musculature, representing improvements relative to that  
407 measured in placebo control and achieved while suppressing fat formation in the torso.[45]  
408 Translating LIV to children with muscular dystrophies, a one-year pilot trial evaluated LIV as a  
409 protective influence on muscle function in five patients with DMD or Becker muscular dystrophy,  
410 with the first six months exposing each subject to 10min/d of LIV (0.4g @ 30Hz), with the second  
411 six months halting the LIV intervention.[46] Timed motor function and lower extremity muscle  
412 strength remained unchanged or slightly improved during the intervention phase, but was followed  
413 by marked deterioration once LIV was discontinued. While the investigators concluded LIV to

414 have a “stabilizing effect on lower extremity muscle function,” no measures on the skeletal system  
415 were performed.

416 In the DMD study reported here, changes from baseline to 14-month DXA measures of bone  
417 mineral content and bone mineral density in TBLH, arm, hip and spine showed significant  
418 increases in both the Active and Placebo groups, emphasizing that the skeleton of these children  
419 continued to grow. Despite differences in ages of the two groups, 14-month increases in BMD  
420 and BMC measures of TBLH and arm were highly similar between LIV and Placebo subjects,  
421 suggesting that skeletal growth in the non-weightbearing regions progressed in a similar fashion.  
422 Nevertheless, even with increases in BMD and BMC in LIV and Placebo subjects, comparative  
423 metrics of DMD bone quality and quantity – as established by HAZ - fall well short of that observed  
424 in healthy children, indicating that the DMD skeleton is more susceptible to fracture,[47] a risk that  
425 becomes more severe with age and extended GC use.[48]

426 HAZ provide information about the skeleton relative to an age, height and gender-matched  
427 average established in healthy boys. For example, the Hip BMD HAZ for this DMD cohort shows  
428 the baseline measures for LIV subjects being at -2.45, more than two standard deviations below  
429 what might be expected at that age and for that height. And while HAZ declined 21% in the  
430 Placebo group, pointing towards an escalating susceptibility to fracture, the Active group  
431 remained unchanged from baseline, pointing to a potential for LIV to limit bone loss in the  
432 weightbearing skeleton of extremely high-risk DMD patients. These regional Z-scores reinforce  
433 prior findings that skeletal quality in the lower appendicular skeleton is lower than that of the spine  
434 or total body,[49] but are encouraging in that LIV suppresses further decline in these regions of  
435 greatest risk.

436 When considering the influence of LIV on the skeleton as measured by DXA, trends showed  
437 increases at both the hip and spine, in both BMD and BMC, in the LIV vs the Placebo group, but  
438 none of these measures reached significance. However, when DXA outcomes were normalized,

439 first to the overall index of TBLH, and then to 14-month changes measured in the arm, the  
440 consequences of DMD to the weightbearing skeleton became more apparent within the Placebo  
441 group, with neither the hip nor spine ‘keeping up’ with BMC and BMD increases in upper regions  
442 of the body. This failure of the weight-bearing bones to parallel increases in the arm is – at least  
443 in some part – a consequence of diminished functional demands made to these regions: as the  
444 disease progresses, those individuals with DMD are less active and not loading their skeleton in  
445 the same way that healthy boys might do.[21] Thus, while genetic programming drives the  
446 skeleton to continue to grow across adolescence,[36] robustness, the added anabolic benefit of  
447 mechanical loading, is less evident, resulting in a mismatch between bone quantity and quality in  
448 the upper and lower extremities.[14]

449 Normalizing bone quality and quantity in the hip and spine of LIV subjects to either TBLH or  
450 the arm suggest that these mechanical signals could serve as a protective agent, particularly  
451 when compared to the regional disparities identified in the Placebo group. For example, when  
452 normalized to specific changes in TBLH occurring over the 14 months, BMC in the spine increased  
453 by 1% in the LIV group, but fell 6.2% in the Placebo subjects, representing a 5.6% ‘benefit’ of LIV  
454 even when considering this older cohort is at greater risk. Of course, TBLH *includes* the spine  
455 and hip, and thus any changes in these regions of interest would be masked by this ‘aggregate’  
456 measure. Normalizing solely to the arm showed that the spine in Placebo subjects had decreased  
457 5.6% 14-months later, while there was a 4.8% increase in LIV subjects, reflecting a 10.2% benefit  
458 of low-magnitude mechanical signals. These data reinforce several important elements of  
459 mechanical loading. First, the hip and spine of Placebo subjects fall more quickly than the upper  
460 regions of the body, emphasizing that, as the disease progresses, the lower extremities and axial  
461 skeleton are more susceptible to decline due to a reduction in normal functional loading.[14] In  
462 some contrast, when BMC and BMD changes in hip and spine in the LIV group are normalized to  
463 TBLH or the arm, there is a relative increase in those measures in the weightbearing regions,

464 suggesting that the low magnitude mechanical signals are – to a degree - successful in restoring  
465 an anabolic response in the bone tissue, adapting to a surrogate of functional load bearing. It is  
466 important to emphasize, however, that the results reported here, while encouraging, must be  
467 viewed with caution, as several are evident only after normalizing to other regions of the skeleton.  
468 It is also important to note that such a site-specific assessment is limited to interventions such as  
469 LIV, as it is a regional signal to the weight-bearing skeleton, not a systemic stimulus to the entire  
470 skeleton.

471 In considering LIV's ability to protect the skeleton, it is also important to note that this  
472 approach has failed in some trials. Two years of LIV stimulated no response in the skeleton of  
473 persons of advanced age, with subjects averaging 82y.[50] However, it is also known that bone  
474 tissue in 'older' skeletons is not as sensitive to mechanical stimuli as in a young population.[51]  
475 Whether that is a consequence of a reduced bone cell population in aged bone,[52] that the cell  
476 population is less responsive,[53] or that bone marrow shifts towards a fat phenotype,[54] and  
477 thus less progenitors are available to recruit, is unclear, but these and other factors attenuate the  
478 adaptive response to loading and conspire to an increased risk of fracture.[55]

479 Prior studies of using high intensity whole body vibration (WBV; >5.0g) in DMD have not  
480 shown responses in bone, perhaps because these studies were short in duration (4, 8 & 12  
481 weeks).[56-58] In an 8w study on 14 DMD patients and 8 with spinal muscular atrophy (SMA),  
482 high-intensity WBV for 3 minutes per day, 5x/w, aimed to improve muscle strength and function.  
483 Mild functional improvements were observed, including a significant improvement in the 6-min  
484 walking test in children with SMA.[57] No skeletal measures were made. A 12w study examined  
485 the influence of high-intensity WBV delivered 2x/w on muscle and bone in 6 ambulatory DMD  
486 patients,[56] but no significant changes in bone mass or strength were measured. Finally, 4w of  
487 high-intensity WBV, delivered 3x/w, in 4 DMD patients showed the subjects tolerated the  
488 intervention, but no significant changes in functional mobility were identified.[58] While the

489 magnitude of the vibration in these studies are up to 20x higher than those used here (e.g., 8.0g  
490 vs. 0.4g), it is not clear that a benefit of higher intensity ultimately outweighs the added risk.[46]  
491 The safety of chronic exposure to high intensity vibration must also be considered,[59] particularly  
492 in those with skeletons at high risk of fracture.[60] Thus, while ‘magnitude’ *per se* does not seem  
493 to be a critical variable, delivering these signals each day, and for an extended period, appears  
494 to be important to harness the response of the skeleton.

495 As measured by DXA, there were significant 14-month increases in fat mass in TBLH and  
496 the arms of both LIV and Placebo subjects, but no difference of this increase between groups,  
497 suggesting LIV had no influence on fat phenotype in these non-weightbearing regions of the body.  
498 In some contrast, DXA pointed to a 33% increase of fat mass in the leg of Placebo subjects, 60%  
499 greater than that measured increase in LIV subjects. Thus, while fat mass increases were  
500 significant in the leg of both LIV and Placebo subjects, it was also evident that the Placebo group  
501 rose at a higher rate, a predictor of regional functional decline.[61] And while 14-month increases  
502 in lean mass of the leg were also significant in both LIV and Placebo subjects, the 2% difference  
503 between groups was not different. Importantly, fat encroachment into muscle is a major  
504 complication in DMD, starting in the lower limbs as early as the age of five,[62] compromising  
505 both function and regenerative capacity.[63] While this study was not structured to examine either  
506 the fat or muscle phenotypes *per se*, there is certainly evidence that inactivity is permissive to  
507 increased fat production in growing children,[64] that GC can promote adipogenesis and suppress  
508 osteoblastogenesis in DMD patients,[65, 66] and that LIV – like exercise[55] - has suppressed  
509 systemic adipogenesis, including subcutaneous, visceral, and marrow fat production.[23, 67]

510 As a more precise assessment of bone quality, QCT measures of trabecular bone density  
511 of the proximal and distal tibia showed that the Placebo group remained essentially unchanged  
512 over the course of 14-months. These data suggest that, despite increases in overall BMD and  
513 BMC as measured by DXA at the hip, spine and TBLH, reflecting growth patterns in these

514 children, the structural elements of the bone are not keeping pace, similar to findings reported in  
515 other disabling conditions in children.[68] Whereas Placebo subjects show no change from  
516 baseline, LIV subjects show an increase in TBD across the 14 month period, suggesting that the  
517 anabolic potential of LIV is reinforcing trabecular structures in this region, similar to that measured  
518 in children with Crohn's disease.[44] Recent findings, using MRI as an assay of bone quality,  
519 show that LIV enhances bone mineral density in the weight-bearing skeleton of post-menopausal  
520 women as well as trabecular connectivity and bone microstructure.[69] Perhaps such  
521 improvements translate to a more robust skeleton and an overall decrease in susceptibility to  
522 fracture.[70]

523         There is a large fracture burden in children with DMD. Results reported from the NorthStar  
524 data base show that – over a 4y period – incident fractures occurred in 28% of the 564  
525 participants, but this rate almost doubled in those patients taking corticosteroids.[48] While GC  
526 use has shown great benefit to skeletal muscle mass and function in DMD,[71] consequences of  
527 long-term use include accelerated decline of the skeleton and greater risk of fracture. Indeed,  
528 30% of the subjects in the Placebo group suffered an incident fracture over the 14-month period  
529 of the study. In some contrast, despite HAZ-scores well below those of the Placebo group, there  
530 were no incident fractures reported in the LIV cohort. It is entirely possible that no fractures in  
531 LIV subjects is a coincidence, or perhaps the influence of these mechanical signals serves to  
532 improve bone microarchitecture, and thus provides a proportional benefit to fracture  
533 resistance.[69] Further, as Petryk demonstrated an improvement of muscle function and strength  
534 through LIV, perhaps these small contributions work synergistically, through stability, balance and  
535 skeletal strength, to resist fractures.[46] Regardless, any means of reducing fracture incidence  
536 can have a tremendous impact on retaining quality-of-life, as over 40% of ambulatory DMD  
537 patients who suffer a fracture never return to weight bearing activities.[14]

538 This double-blind, prospective trial was designed to determine if LIV could effectively  
539 suppress the deleterious changes in the skeleton seen in DMD. Several limitations must be  
540 considered in interpreting the results. First and foremost, the study was designed such that the  
541 Active/Placebo devices were randomly assigned. Un-blinding revealed that the mean age of the  
542 LIV group was 3y older than that of the Placebo group. Whereas such disparities are always a  
543 risk in a small trial,[39] the observation that older DMD subjects in the LIV group were building  
544 bone and suppressing fat production can also be considered reassuring, as these boys – *by any*  
545 *perspective* – would be less active, at greater fracture risk, and at a later stage of disease  
546 progression. Further, reporting the 14-month outcomes in relation to HAZ-scores, helps diminish  
547 age-specific differences between groups, particularly as the BMD/BMD decreases in TBLH were  
548 identical between LIV and Placebo. Using each subject as their own control, normalizing first to  
549 TBLH and then to changes in the arm, allows for determining the relative changes to the weight-  
550 bearing skeleton as contrasted with the bones in the upper extremity, which is less ravaged by  
551 the disease.[12] Most importantly, as the fracture incidence in LIV was significantly lower than  
552 Placebo, despite a higher age and lower baseline BMD, is encouraging.

553 LIV is only a potential surrogate for exercise, not a replacement.[55] LIV's efficacy is  
554 stronger in some populations than others,[72] with those that are 'least' responsive tending  
555 towards older cohorts, including the frail elderly.[50] That the DMD group is young, however, can  
556 only potentiate LIV's ability to combat skeletal decline.[41-45] It is also important to emphasize  
557 that the focus of this study was bone, and not muscle, the primary system ravaged by DMD.  
558 Further studies are necessary to determine if – and how – LIV can protect muscle strength and  
559 function in the human. Prior work in the mouse has shown that LIV can stimulate hypertrophy in  
560 muscle,[73] and can promote power output in muscle units,[74] while satellite cells, compromised  
561 by endocrine deficiency, are protected by LIV.[75] Nevertheless, until clinical studies are

562 performed, it is impossible to project whether LIV can guard the musculoskeletal 'system' against  
563 LIV.

564 Functional load bearing is essential to preserving a robust skeletal system. A devastating  
565 consequence of diseases such as Duchenne Muscular Dystrophy is that, as the anabolic element  
566 of muscle loading declines across childhood, the skeleton's risk of fracture increases, placing  
567 quality of life at risk; over 40% of ambulatory DMD boys never recover to walking status after a  
568 fracture. Results from this 14-month study suggest that daily LIV treatment is safe, well tolerated,  
569 and may benefit the quantity and quality of the weight bearing skeleton of DMD children, and thus  
570 reduced their risk of fracture.

571



572           ***In Memoriam:*** It is with a great sense of sorrow that we must write that  
573 the lead clinical investigator, and first author of this study, Professor Maria  
574 Luisa Bianchi, passed away in September 2020. She was an internationally  
575 renowned expert on pediatric metabolic bone disease, fully committed to  
576 clinical research that could ultimately help her patients and families of those  
577 children. We are grateful for her leadership and enthusiasm for fostering this study forward, and  
578 hope that, in some small way, this work contributes to her lasting memory and enormous impact  
579 on the science and community of pediatric endocrinology.



580

581           ***Acknowledgments:*** The authors thank the participants and their parents for their courage  
582 and commitment to participating in this study. We are hopeful that the time invested by the  
583 children and families will help the biomedical community better understand strategies to help  
584 those afflicted with this disease. We also thank Claudio Cappuccino, who was instrumental in  
585 collecting and compiling the data following the passing of his wife, Professor Bianchi. Finally, we  
586 are grateful to the Istituto Auxologico Italiano IRCCS, Milan, Italy, for providing funding for the  
587 study, and to Mr. Ian Cutts, COPA Healthcare, for the generous loan of the prototype LIV devices.

588

589

590

591

**Table 1: Baseline Characteristics of Body Habitus and Bone Density**

	Placebo	Active	P-value
Age (yrs.)	6.6 ± 1.6	9.4 ± 3.1	<0.05
Weight (kg)	20.8 ± 4.6	31.5 ± 10.2	0.06
Height (cm)	114.0 ± 12.5	127.4 ± 15.7	<0.05
Height (Z-score)	1.1 ± 1.0	1.3 ± 1.4	0.45
Hip BMD (g/cm <sup>2</sup> )	0.530 ± 0.071	0.503 ± 0.073	0.52
Hip BMD HAZ	-1.39 ± 1.25	-2.59 ± 0.62	0.06
Hip BMC (g)	6.90 ± 2.09	8.69 ± 4.26	0.41
Hip BMC HAZ	-2.08 ± 1.28	-3.12 ± 1.12	0.21
TBLH BMD (g/cm <sup>2</sup> )	0.529 ± 0.053	0.596 ± 0.080	0.08
TBLH BMD HAZ	-0.33 ± 1.05	-1.24 ± 0.96	0.10
TBLH BMC (g)	422.5 ± 98.7	544.5 ± 198.7	0.16
TBLH BMC HAZ	-1.07 ± 0.63	-2.03 ± 0.67	<0.05
Proximal Tibia Trabecular Bone Density (mg/cm <sup>3</sup> )	240.2 ± 61.2	184.9 ± 46.3	0.10
Distal Tibia Trabecular Bone Density (mg/cm <sup>3</sup> )	203.8 ± 33.1	173.5 ± 16.1	<0.05
Tibia Cortical Bone Density (mg/cm <sup>3</sup> )	1227.1 ± 40.4	1245.3 ± 58.1	0.44

592

593

**Table 2: Bone Turnover Markers**

	Placebo		Active	
	Baseline	14 months	Baseline	14 months
BSAP	51.6 ± 17.9	50.7 ± 23.3	61.2 ± 35.2	65.6 ± 22.3
	-1.8%; p=0.27		+7.2%; p<0.20	
PTH	23.8 ± 7.5	24.1 ± 1.0	29.2 ± 8.2	32.7 ± 10.4
	<1%; p=0.45		+12%; p<0.05	
OC	61.7 ± 9.6	60.4 ± 18.9	77.3 ± 32.0	90.4 ± 37.9
	-2.1%; p=0.40		+16.9%; p=0.33	
1,25-D	37.7 ± 11.6	33.8 ± 11.5	51.5 ± 11.0	54.9 ± 12.4
	-10.5%; p=0.24		+6.6%; p=0.32	
25-D	17.5 ± 7.8	23.0 ± 9.8	38.0 ± 17.6	36.0 ± 10.0
	+31.4; p<0.20		-5.3; p=0.42	

594

595

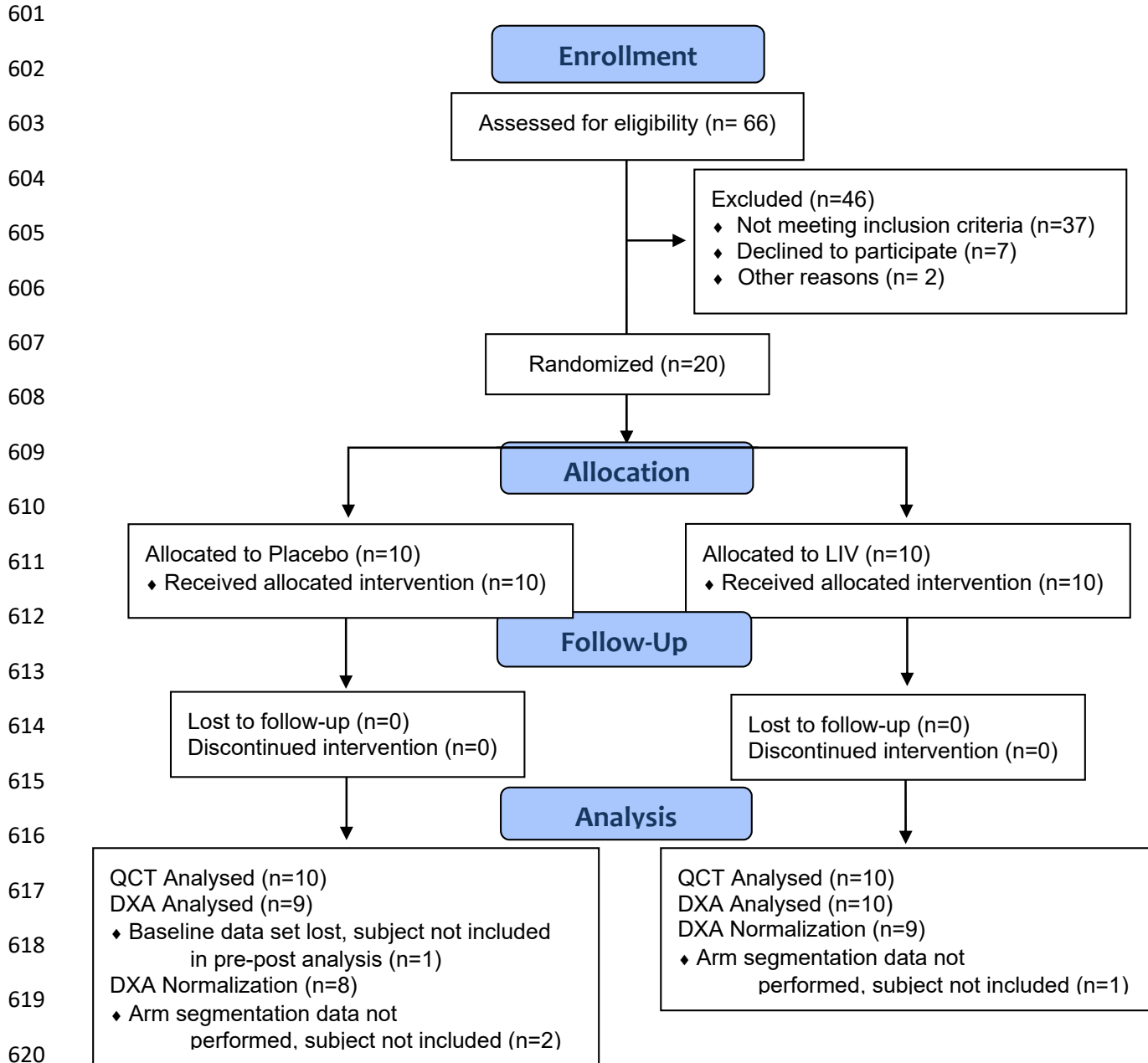
596

597

598

599

600



621

622 **Fig. 1.** Consort Diagram for the Duchenne Low Intensity Vibration trial.

623

624

625

626

627

628

629

630

631

632

633

634

635

636

637

638

639

640

641

642

643

644

645

646

647

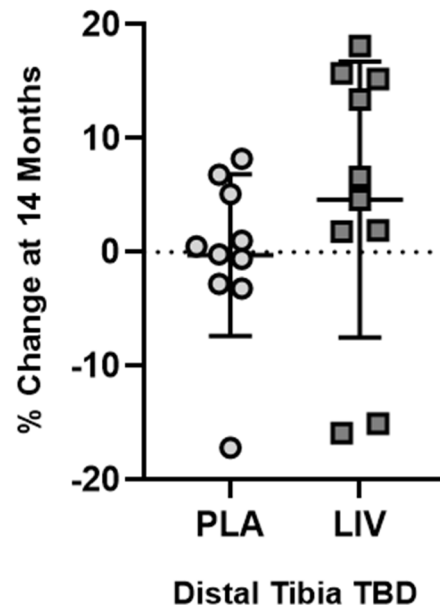
648

649

650

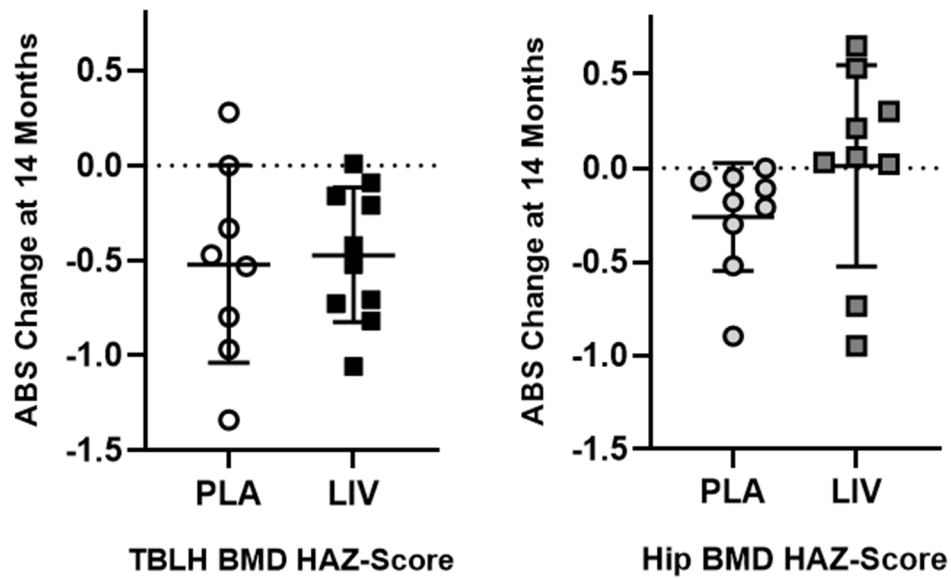
651

652



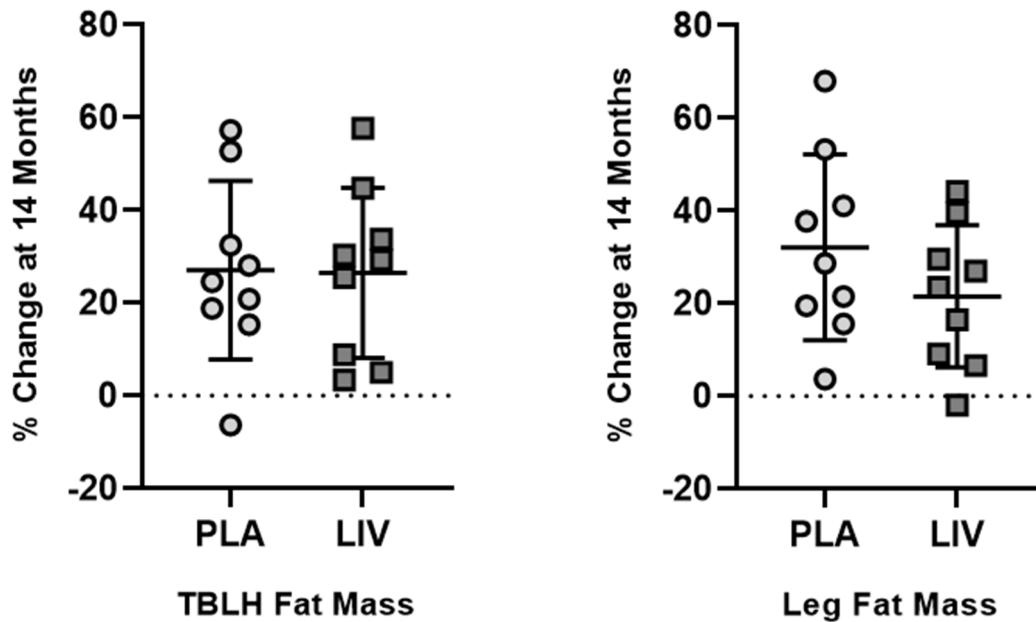
**Fig. 2.** QCT measured changes (mean  $\pm$  SD) at 14-months in trabecular bone density in distal tibia. TBD did not change in Placebo (circles, 0.8% below baseline,  $p=0.43$ ), in some contrast with TBD increases typical to healthy boys of the same age.[76] LIV increased TBD by 4.8% (squares,  $p<0.20$  from baseline).

653  
654  
655  
656  
657  
658  
659  
660  
661  
662  
663  
664  
665  
666  
667  
668  
669  
670  
671  
672  
673  
674  
675  
676  
677



**Fig. 3.** Absolute change in TBLH (left) and Hip (right) BMD HAZ score from baseline (mean  $\pm$  SD). The 14-month decrease from baseline in TBLH was significant for both Placebo and LIV ( $p < 0.5$ ), but the differences between groups was not different ( $p = 0.95$ ). In contrast, the absolute decrease in HAZ hip BMD was significant in Placebo ( $p < 0.05$ ), but there was no change from baseline in LIV.

678  
679  
680  
681  
682  
683  
684  
685  
686  
687  
688  
689  
690  
691  
692  
693  
694  
695  
696  
697

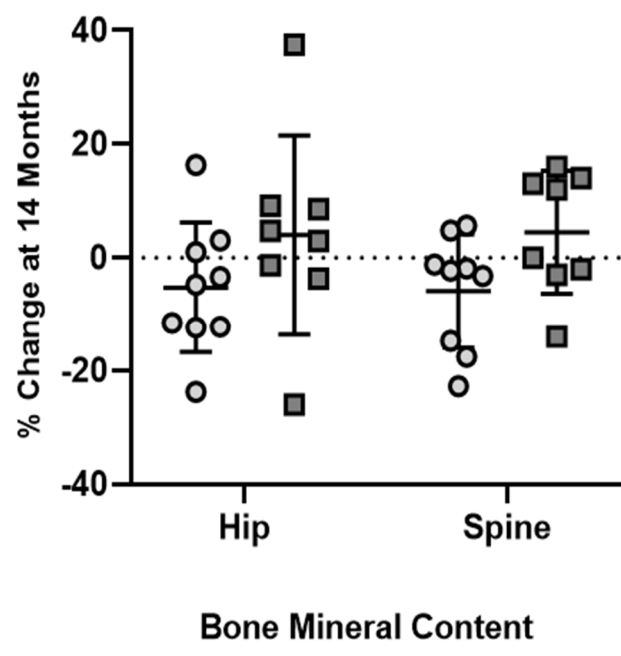


698  
699  
700

701 **Fig. 4.** Percent increase (mean  $\pm$  SD) from baseline in fat mass for TBLH (left) and Hip (right).  
702 The 14-month increase from baseline in TBLH was significant ( $p < 0.05$ ) for both Placebo (circles)  
703 and LIV (squares), but the differences between groups was not different ( $p = 0.95$ ). DXA measured  
704 fat mass of left leg showed increases in both Placebo (circles; 32.9%) and LIV (squares; 21.6%)  
705 DMD subjects. Subject-specific changes showed a 40% suppression of fat mass in LIV as  
706 compared to Placebo ( $p < 0.20$ ).

707  
708  
709

710  
711  
712  
713  
714  
715  
716  
717  
718  
719  
720  
721  
722  
723  
724  
725  
726  
  
727  
  
728  
  
729  
730  
731  
732  
733  
  
734  
735  
736  
737  
738  
739  
740  
741  
742



**Fig. 5.** DXA measured percent change (mean  $\pm$  SD) in BMC at Hip and Spine at 14-months w/ placebo (circles) and LIV (squares) subjects, as normalized to changes in arm (intra-subject control). Hip BMC in placebo decreased by 5.2%, while LIV increased by 4.0%, a 9.2% shift ( $p < 0.20$ ). BMC in spine dropped 5.9% in placebo, and increased 4.4% in LIV, a 10.2% shift ( $p < 0.05$ ).



743

744

745

746

747

748

749

750

751

752

753

754

755

756

757

758

759

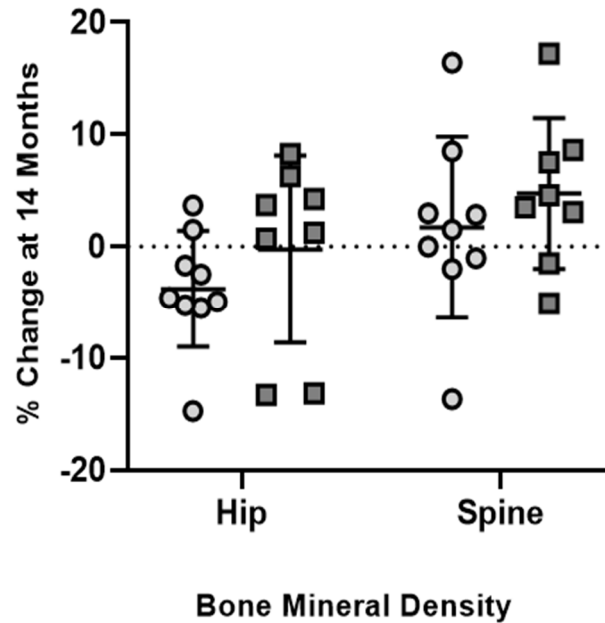
760

761

762

763

764



765 **Fig. 6.** DXA measured percent change (mean  $\pm$  SD) at 14-months in BMD in Placebo (circles)

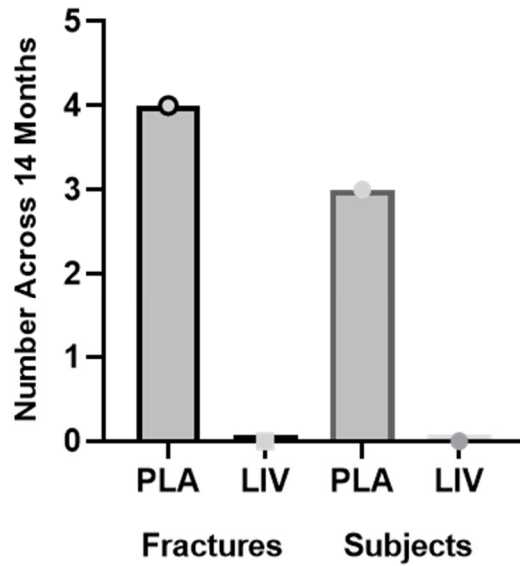
766 and LIV subjects (squares), as normalized to changes in arm (intra-subject control). Hip BMD in

767 the placebo decreased by 3.8%, while LIV remained unchanged (0.02%), a 3.5% shift ( $p < 0.20$ ).

768 BMD spine increased 1.7% in placebo, and 4.7% in LIV, a 3.0% shift ( $p < 0.20$ ).

769

770  
771  
772  
773  
774  
775  
776  
777  
778  
779  
780  
781  
782  
783  
784  
785  
786  
787  
788  
789  
790  
791  
792  
793  
794  
795  
796  
797  
798  
799  
800  
801  
802  
803



**Figure 7.** Absolute number of incident fractures (left) and subjects with fracture (right) identified across the 14-month protocol in both Placebo and LIV group (N=10 subjects in each group). While the causes of the fractures are not known, the difference between groups is significant ( $p < 0.05$ ).

804 **References**

- 805 1. Summer SS, Wong BL, Rutter MM, Horn PS, Tian C, Rybalsky I, et al. Age-related  
806 changes in appendicular lean mass in males with Duchenne muscular dystrophy: A  
807 retrospective review. *Muscle Nerve*. 2021;63(2):231-8. Epub 2020/10/27. doi:  
808 10.1002/mus.27107. PubMed PMID: 33104257.
- 809 2. Deconinck N, Dan B. Pathophysiology of duchenne muscular dystrophy: current  
810 hypotheses. *Pediatr Neurol*. 2007;36(1):1-7. Epub 2006/12/13. doi:  
811 10.1016/j.pediatrneurol.2006.09.016. PubMed PMID: 17162189.
- 812 3. Sussman M. Duchenne muscular dystrophy. *J Am Acad Orthop Surg*. 2002;10(2):138-  
813 51. Epub 2002/04/04. doi: 10.5435/00124635-200203000-00009. PubMed PMID: 11929208.
- 814 4. Szabo SM, Salhany RM, Deighton A, Harwood M, Mah J, Gooch KL. The clinical course  
815 of Duchenne muscular dystrophy in the corticosteroid treatment era: a systematic literature  
816 review. *Orphanet J Rare Dis*. 2021;16(1):237. Epub 2021/05/24. doi: 10.1186/s13023-021-  
817 01862-w. PubMed PMID: 34022943; PubMed Central PMCID: PMC8141220.
- 818 5. Beytia Mde L, Vry J, Kirschner J. Drug treatment of Duchenne muscular dystrophy:  
819 available evidence and perspectives. *Acta Myol*. 2012;31(1):4-8. Epub 2012/06/05. PubMed  
820 PMID: 22655510; PubMed Central PMCID: PMC3440798.
- 821 6. Matthews E, Brassington R, Kuntzer T, Jichi F, Manzur AY. Corticosteroids for the  
822 treatment of Duchenne muscular dystrophy. *Cochrane Database Syst Rev*. 2016;(5):CD003725.  
823 Epub 2016/05/06. doi: 10.1002/14651858.CD003725.pub4. PubMed PMID: 27149418.
- 824 7. Landfeldt E, Thompson R, Sejersen T, McMillan HJ, Kirschner J, Lochmuller H. Life  
825 expectancy at birth in Duchenne muscular dystrophy: a systematic review and meta-analysis.  
826 *Eur J Epidemiol*. 2020;35(7):643-53. Epub 2020/02/29. doi: 10.1007/s10654-020-00613-8.  
827 PubMed PMID: 32107739; PubMed Central PMCID: PMC7387367.
- 828 8. Takeda S, Clemens PR, Hoffman EP. Exon-Skipping in Duchenne Muscular Dystrophy.  
829 *Journal of neuromuscular diseases*. 2021. Epub 2021/06/29. doi: 10.3233/JND-210682.  
830 PubMed PMID: 34180420.
- 831 9. Annexstad EJ, Bollerslev J, Westvik J, Myhre AG, Godang K, Holm I, et al. The role of  
832 delayed bone age in the evaluation of stature and bone health in glucocorticoid treated patients  
833 with Duchenne muscular dystrophy. *Int J Pediatr Endocrinol*. 2019;2019:4. Epub 2020/01/01.  
834 doi: 10.1186/s13633-019-0070-0. PubMed PMID: 31889957; PubMed Central PMCID:  
835 PMC6927168.
- 836 10. Larson CM, Henderson RC. Bone mineral density and fractures in boys with Duchenne  
837 muscular dystrophy. *Journal of pediatric orthopedics*. 2000;20(1):71-4. Epub 2000/01/21.  
838 PubMed PMID: 10641693.
- 839 11. Bianchi ML, Morandi L, Andreucci E, Vai S, Frasunkiewicz J, Cottafava R. Low bone  
840 density and bone metabolism alterations in Duchenne muscular dystrophy: response to calcium  
841 and vitamin D treatment. *Osteoporosis international*. 2011;22(2):529-39. Epub 2010/05/12. doi:  
842 10.1007/s00198-010-1275-5. PubMed PMID: 20458570.
- 843 12. Bianchi ML, Mazzanti A, Galbiati E, Saraifoger S, Dubini A, Cornelio F, et al. Bone  
844 mineral density and bone metabolism in Duchenne muscular dystrophy. *OsteoporosInt*.  
845 2003;14(9):761-7.
- 846 13. Gabel L, Macdonald HM, Nettlefold L, McKay HA. Physical Activity, Sedentary Time, and  
847 Bone Strength From Childhood to Early Adulthood: A Mixed Longitudinal HR-pQCT study.

- 848 Journal of bone and mineral research :. 2017;32(7):1525-36. doi: 10.1002/jbmr.3115. PubMed  
849 PMID: 28326606.
- 850 14. Aparicio LF, Jurkovic M, DeLullo J. Decreased bone density in ambulatory patients with  
851 duchenne muscular dystrophy. *JPediatrOrthop.* 2002;22(2):179-81.
- 852 15. Crabtree NJ, Roper H, Shaw NJ. Cessation of ambulation results in a dramatic loss of  
853 trabecular bone density in boys with Duchenne muscular dystrophy (DMD). *Bone.*  
854 2022;154:116248. Epub 2021/11/01. doi: 10.1016/j.bone.2021.116248. PubMed PMID:  
855 34718220.
- 856 16. Pouwels S, de Boer A, Leufkens HG, Weber WE, Cooper C, van Onzenoort HA, et al.  
857 Risk of fracture in patients with muscular dystrophies. *Osteoporosis international.*  
858 2014;25(2):509-18. Epub 2013/08/21. doi: 10.1007/s00198-013-2442-2. PubMed PMID:  
859 23948807.
- 860 17. Laddu DR, Farr JN, Lee VR, Blew RM, Stump C, Houtkooper L, et al. Muscle density  
861 predicts changes in bone density and strength: a prospective study in girls. *J Musculoskelet  
862 Neuronal Interact.* 2014;14(2):195-204. Epub 2014/06/01. PubMed PMID: 24879023; PubMed  
863 Central PMCID: PMC4414028.
- 864 18. Torres-Costoso A, Gracia-Marco L, Sanchez-Lopez M, Garcia-Prieto JC, Garcia-  
865 Hermoso A, Diez-Fernandez A, et al. Lean mass as a total mediator of the influence of muscular  
866 fitness on bone health in schoolchildren: a mediation analysis. *J Sports Sci.* 2015;33(8):817-30.  
867 Epub 2014/11/12. doi: 10.1080/02640414.2014.964750. PubMed PMID: 25385511.
- 868 19. Montgomery E, Pennington C, Isales CM, Hamrick MW. Muscle-bone interactions in  
869 dystrophin-deficient and myostatin-deficient mice. *Anat Rec A Discov Mol Cell Evol Biol.*  
870 2005;286(1):814-22. Epub 2005/08/04. doi: 10.1002/ar.a.20224. PubMed PMID: 16078270.
- 871 20. Del Rocio Cruz-Guzman O, Rodriguez-Cruz M, Almeida-Becerril T, Maldonado-  
872 Hernandez J, Baeza CW. Muscle function and age are associated with loss of bone mineral  
873 density in Duchenne muscular dystrophy. *Muscle Nerve.* 2019;59(4):417-21. Epub 2019/01/10.  
874 doi: 10.1002/mus.26416. PubMed PMID: 30623456.
- 875 21. Lott DJ, Taivassalo T, Cooke KD, Park H, Moslemi Z, Batra A, et al. Safety, feasibility,  
876 and efficacy of strengthening exercise in Duchenne muscular dystrophy. *Muscle Nerve.*  
877 2021;63(3):320-6. Epub 2020/12/10. doi: 10.1002/mus.27137. PubMed PMID: 33295018.
- 878 22. Rubin C, Turner AS, Bain S, Mallinckrodt C, McLeod K. Anabolism: Low mechanical  
879 signals strengthen long bones. *Nature.* 2001;412(6847):603-4.
- 880 23. Rubin CT, Capilla E, Luu YK, Busa B, Crawford H, Nolan DJ, et al. Adipogenesis is  
881 inhibited by brief, daily exposure to high-frequency, extremely low-magnitude mechanical  
882 signals. *ProcNatlAcadSciUSA.* 2007;104(45):17879-84.
- 883 24. Judex S, Rubin CT. Is bone formation induced by high-frequency mechanical signals  
884 modulated by muscle activity? *JMusculoskeletNeuronalInteract.* 2010;10(1):3-11.
- 885 25. Huang RP, Rubin CT, McLeod KJ. Changes in postural muscle dynamics as a function  
886 of age. *J Gerontol A Biol Sci Med Sci.* 1999;54(8):B352-B7.
- 887 26. Hannan MT, Cheng DM, Green E, Swift C, Rubin CT, Kiel DP. Establishing the  
888 compliance in elderly women for use of a low level mechanical stress device in a clinical  
889 osteoporosis study. *OsteoporosInt.* 2004;15(11):918-26.
- 890 27. Gilsanz V, Wren TAL, Sanchez M, Dorey F, Judex S, Rubin C. Low-Level, High-  
891 Frequency Mechanical Signals Enhance Musculoskeletal Development of Young Women With

- 892 Low BMD. *Journal of Bone and Mineral Research*. 2006;21(9):1464-74. doi:  
893 10.1359/jbmr.060612.
- 894 28. Rubin C, Pope M, Chris FJ, Magnusson M, Hansson T, McLeod K. Transmissibility of  
895 15-hertz to 35-hertz vibrations to the human hip and lumbar spine: determining the physiologic  
896 feasibility of delivering low-level anabolic mechanical stimuli to skeletal regions at greatest risk  
897 of fracture because of osteoporosis. *Spine*. 2003;28(23):2621-7.
- 898 29. Fritton JC, Rubin CT, Qin YX, McLeod KJ. Whole-body vibration in the skeleton:  
899 development of a resonance-based testing device. *AnnBiomedEng*. 1997;25(5):831-9.
- 900 30. Chan ME, Uzer G, Rubin CT. The Potential Benefits and Inherent Risks of Vibration as a  
901 Non-Drug Therapy for the Prevention and Treatment of Osteoporosis. *Curr Osteoporos Rep*.  
902 2013. Epub 2013/02/02. doi: 10.1007/s11914-012-0132-1. PubMed PMID: 23371467.
- 903 31. Muir J, Kiel DP, Rubin CT. Safety and severity of accelerations delivered from whole  
904 body vibration exercise devices to standing adults. *Journal of science and medicine in Sports*  
905 *Medicine*. 2013. Epub 2013/03/05. doi: 10.1016/j.jsams.2013.01.004. PubMed PMID:  
906 23453990; PubMed Central PMCID: PMC3688642.
- 907 32. International Standards O. Evaluation of Human Exposure to Whole-Body Vibration.  
908 Geneva: 1985.
- 909 33. Bertoli S, Petroni ML, Pagliato E, Mora S, Weber G, Chiumello G, et al. Validation of  
910 food frequency questionnaire for assessing dietary macronutrients and calcium intake in Italian  
911 children and adolescents. *J Pediatr Gastroenterol Nutr*. 2005;40(5):555-60. Epub 2005/04/30.  
912 doi: 10.1097/01.mpg.0000153004.53610.0e. PubMed PMID: 15861015.
- 913 34. Turrini A, Leclercq C, D'Amicis A. Patterns of food and nutrient intakes in Italy and their  
914 application to the development of food-based dietary guidelines. *Br J Nutr*. 1999;81 Suppl  
915 2:S83-9. Epub 2000/09/22. doi: 10.1017/s0007114599001762. PubMed PMID: 10999031.
- 916 35. Hangartner TN. Thresholding technique for accurate analysis of density and geometry in  
917 QCT, pQCT and microCT images. *J Musculoskelet Neuronal Interact*. 2007;7(1):9-16. Epub  
918 2007/03/31. PubMed PMID: 17396001.
- 919 36. Zemel BS, Leonard MB, Kelly A, Lappe JM, Gilsanz V, Oberfield S, et al. Height  
920 adjustment in assessing dual energy x-ray absorptiometry measurements of bone mass and  
921 density in children. *J Clin Endocrinol Metab*. 2010;95(3):1265-73. Epub 2010/01/28. doi:  
922 10.1210/jc.2009-2057. PubMed PMID: 20103654; PubMed Central PMCID: PMCPMC2841534.
- 923 37. Taylor A, Konrad PT, Norman ME, Harcke HT. Total body bone mineral density in young  
924 children: influence of head bone mineral density. *Journal of bone and mineral research*.  
925 1997;12(4):652-5. Epub 1997/04/01. doi: 10.1359/jbmr.1997.12.4.652. PubMed PMID:  
926 9101377.
- 927 38. Zemel BS, Kalkwarf HJ, Gilsanz V, Lappe JM, Oberfield S, Shepherd JA, et al. Revised  
928 reference curves for bone mineral content and areal bone mineral density according to age and  
929 sex for black and non-black children: results of the bone mineral density in childhood study. *J*  
930 *Clin Endocrinol Metab*. 2011;96(10):3160-9. Epub 2011/09/16. doi: 10.1210/jc.2011-1111.  
931 PubMed PMID: 21917867; PubMed Central PMCID: PMCPMC3200252.
- 932 39. Lee EC, Whitehead AL, Jacques RM, Julious SA. The statistical interpretation of pilot  
933 trials: should significance thresholds be reconsidered? *BMC Med Res Methodol*. 2014;14:41.  
934 Epub 2014/03/22. doi: 10.1186/1471-2288-14-41. PubMed PMID: 24650044; PubMed Central  
935 PMCID: PMCPMC3994566.

- 936 40. Markert CD, Case LE, Carter GT, Furlong PA, Grange RW. Exercise and Duchenne  
937 muscular dystrophy: where we have been and where we need to go. *Muscle Nerve*.  
938 2012;45(5):746-51. Epub 2012/04/14. doi: 10.1002/mus.23244. PubMed PMID: 22499105.
- 939 41. Ward K, Alsop C, Caulton J, Rubin C, Adams J, Mughal Z. Low magnitude mechanical  
940 loading is osteogenic in children with disabling conditions. *JBone MinerRes*. 2004;19(3):360-9.
- 941 42. Lam TP, Ng BK, Cheung LW, Lee KM, Qin L, Cheng JC. Effect of whole body vibration  
942 (WBV) therapy on bone density and bone quality in osteopenic girls with adolescent idiopathic  
943 scoliosis: a randomized, controlled trial. *Osteoporosis international*. 2013;24(5):1623-36. doi:  
944 10.1007/s00198-012-2144-1. PubMed PMID: 23011683.
- 945 43. Mogil RJ, Kaste SC, Ferry RJ, Jr., Hudson MM, Mulrooney DA, Howell CR, et al. Effect  
946 of Low-Magnitude, High-Frequency Mechanical Stimulation on BMD Among Young Childhood  
947 Cancer Survivors: A Randomized Clinical Trial. *JAMA oncology*. 2016. doi:  
948 10.1001/jamaoncol.2015.6557. PubMed PMID: 26967465.
- 949 44. Leonard MB, Shults J, Long J, Baldassano RN, Brown JK, Hommel K, et al. Effect of  
950 Low Magnitude Mechanical Stimuli on Bone Density and Structure in Pediatric Crohn's Disease:  
951 A Randomized Placebo Controlled Trial. *Journal of bone and mineral research*. 2016. doi:  
952 10.1002/jbmr.2799. PubMed PMID: 26821779.
- 953 45. Gilsanz V, Wren TA, Sanchez M, Dorey F, Judex S, Rubin C. Low-Level, High-  
954 Frequency Mechanical Signals Enhance Musculoskeletal Development of Young Women With  
955 Low BMD. *JBone MinerRes*. 2006;21(9):1464-74.
- 956 46. Petryk A, Polgreen LE, Grames M, Lowe DA, Hodges JS, Karachunski P. Feasibility and  
957 tolerability of whole-body, low-intensity vibration and its effects on muscle function and bone in  
958 patients with dystrophinopathies: a pilot study. *Muscle Nerve*. 2017;55(6):875-83. Epub  
959 2016/10/09. doi: 10.1002/mus.25431. PubMed PMID: 27718512; PubMed Central PMCID:  
960 PMCPMC5385164.
- 961 47. Bell JM, Shields MD, Watters J, Hamilton A, Beringer T, Elliott M, et al. Interventions to  
962 prevent and treat corticosteroid-induced osteoporosis and prevent osteoporotic fractures in  
963 Duchenne muscular dystrophy. *Cochrane Database Syst Rev*. 2017;1:CD010899. Epub  
964 2017/01/25. doi: 10.1002/14651858.CD010899.pub2. PubMed PMID: 28117876; PubMed  
965 Central PMCID: PMCPMC6464928.
- 966 48. Joseph S, Wang C, Bushby K, Guglieri M, Horrocks I, Straub V, et al. Fractures and  
967 Linear Growth in a Nationwide Cohort of Boys With Duchenne Muscular Dystrophy With and  
968 Without Glucocorticoid Treatment: Results From the UK NorthStar Database. *JAMA Neurol*.  
969 2019;76(6):701-9. Epub 2019/03/12. doi: 10.1001/jamaneurol.2019.0242. PubMed PMID:  
970 30855644; PubMed Central PMCID: PMCPMC6563545.
- 971 49. Forbes SC, Arora H, Willcocks RJ, Triplett WT, Rooney WD, Barnard AM, et al. Upper  
972 and Lower Extremities in Duchenne Muscular Dystrophy Evaluated with Quantitative MRI and  
973 Proton MR Spectroscopy in a Multicenter Cohort. *Radiology*. 2020;295(3):616-25. Epub  
974 2020/04/15. doi: 10.1148/radiol.2020192210. PubMed PMID: 32286193.
- 975 50. Kiel DP, Hannan MT, Barton BA, Bouxsein ML, Sisson E, Lang T, et al. Low-Magnitude  
976 Mechanical Stimulation to Improve Bone Density in Persons of Advanced Age: A Randomized,  
977 Placebo-Controlled Trial. *Journal of bone and mineral research*. 2015;30(7):1319-28. doi:  
978 10.1002/jbmr.2448. PubMed PMID: 25581217; PubMed Central PMCID: PMCPMC4834704.
- 979 51. Srinivasan S, Agans SC, King KA, Moy NY, Poliachik SL, Gross TS. Enabling bone  
980 formation in the aged skeleton via rest-inserted mechanical loading. *Bone*. 2003;33(6):946-55.  
981 Epub 2003/12/18. PubMed PMID: 14678854.



- 982 52. Bonewald LF. The amazing osteocyte. *Journal of bone and mineral research*.  
983 2011;26(2):229-38. Epub 2011/01/22. doi: 10.1002/jbmr.320. PubMed PMID: 21254230.
- 984 53. Rubin CT, Bain SD, McLeod KJ. Suppression of the osteogenic response in the aging  
985 skeleton. *CalcifTissue Int*. 1992;50(4):306-13.
- 986 54. Rosen CJ, Bouxsein ML. Mechanisms of disease: is osteoporosis the obesity of bone?  
987 *Nat Clin Pract Rheumatol*. 2006;2(1):35-43. doi: 10.1038/ncprheum0070. PubMed PMID:  
988 16932650.
- 989 55. Pagnotti GM, Styner M, Uzer G, Patel VS, Wright LE, Ness KK, et al. Combating  
990 osteoporosis and obesity with exercise: leveraging cell mechanosensitivity. *Nature reviews*  
991 *Endocrinology*. 2019;15(6):339-55. Epub 2019/03/01. doi: 10.1038/s41574-019-0170-1.  
992 PubMed PMID: 30814687; PubMed Central PMCID: PMC6520125.
- 993 56. Soderpalm AC, Kroksmark AK, Magnusson P, Karlsson J, Tulinius M, Swolin-Eide D.  
994 Whole body vibration therapy in patients with Duchenne muscular dystrophy--a prospective  
995 observational study. *J Musculoskelet Neuronal Interact*. 2013;13(1):13-8. Epub 2013/03/01.  
996 PubMed PMID: 23445910.
- 997 57. Vry J, Schubert IJ, Semler O, Haug V, Schonau E, Kirschner J. Whole-body vibration  
998 training in children with Duchenne muscular dystrophy and spinal muscular atrophy. *Eur J*  
999 *Paediatr Neurol*. 2014;18(2):140-9. Epub 2013/10/26. doi: 10.1016/j.ejpn.2013.09.005. PubMed  
1000 PMID: 24157400.
- 1001 58. Myers KA, Ramage B, Khan A, Mah JK. Vibration therapy tolerated in children with  
1002 Duchenne muscular dystrophy: a pilot study. *Pediatr Neurol*. 2014;51(1):126-9. Epub  
1003 2014/05/17. doi: 10.1016/j.pediatrneurol.2014.03.005. PubMed PMID: 24830767.
- 1004 59. Pel JJ, Bagheri J, van Dam LM, van den Berg-Emons HJ, Horemans HL, Stam HJ, et al.  
1005 Platform accelerations of three different whole-body vibration devices and the transmission of  
1006 vertical vibrations to the lower limbs. *Med Eng Phys*. 2009;31(8):937-44. Epub 2009/06/16. doi:  
1007 S1350-4533(09)00116-7 [pii] 10.1016/j.medengphy.2009.05.005. PubMed PMID: 19523867.
- 1008 60. Kiiski J, Heinonen A, Jarvinen TL, Kannus P, Sievanen H. Transmission of vertical whole  
1009 body vibration to the human body. *JBone MinerRes*. 2008;23(8):1318-25.
- 1010 61. Skalsky AJ, Han JJ, Abresch RT, Shin CS, McDonald CM. Assessment of regional body  
1011 composition with dual-energy X-ray absorptiometry in Duchenne muscular dystrophy:  
1012 correlation of regional lean mass and quantitative strength. *Muscle Nerve*. 2009;39(5):647-51.  
1013 Epub 2009/04/07. doi: 10.1002/mus.21212. PubMed PMID: 19347922.
- 1014 62. Forbes SC, Willcocks RJ, Triplett WT, Rooney WD, Lott DJ, Wang DJ, et al. Magnetic  
1015 resonance imaging and spectroscopy assessment of lower extremity skeletal muscles in boys  
1016 with Duchenne muscular dystrophy: a multicenter cross sectional study. *PLoS One*.  
1017 2014;9(9):e106435. Epub 2014/09/10. doi: 10.1371/journal.pone.0106435. PubMed PMID:  
1018 25203313; PubMed Central PMCID: PMC4159278.
- 1019 63. Willcocks RJ, Forbes SC, Walter GA, Sweeney L, Rodino-Klapac LR, Mendell JR, et al.  
1020 Assessment of rAAVrh.74.MHCK7.micro-dystrophin Gene Therapy Using Magnetic Resonance  
1021 Imaging in Children With Duchenne Muscular Dystrophy. *JAMA Netw Open*.  
1022 2021;4(1):e2031851. Epub 2021/01/05. doi: 10.1001/jamanetworkopen.2020.31851. PubMed  
1023 PMID: 33394000; PubMed Central PMCID: PMC67783546.
- 1024 64. Manson JE, Skerrett PJ, Greenland P, VanItallie TB. The escalating pandemics of  
1025 obesity and sedentary lifestyle. A call to action for clinicians. *Arch Intern Med*. 2004;164(3):249-  
1026 58. doi: 10.1001/archinte.164.3.249. PubMed PMID: 14769621.

- 1027 65. Schara U, Mortier, Mortier W. Long-Term Steroid Therapy in Duchenne Muscular  
1028 Dystrophy-Positive Results versus Side Effects. *J Clin Neuromuscul Dis.* 2001;2(4):179-83.  
1029 Epub 2001/06/01. doi: 10.1097/00131402-200106000-00002. PubMed PMID: 19078632.
- 1030 66. Seibel MJ, Cooper MS, Zhou H. Glucocorticoid-induced osteoporosis: mechanisms,  
1031 management, and future perspectives. *Lancet Diabetes Endocrinol.* 2013;1(1):59-70. Epub  
1032 2014/03/14. doi: 10.1016/S2213-8587(13)70045-7. PubMed PMID: 24622268.
- 1033 67. Luu YK, Capilla E, Rosen CJ, Gilsanz V, Pessin JE, Judex S, et al. Mechanical  
1034 stimulation of mesenchymal stem cell proliferation and differentiation promotes osteogenesis  
1035 while preventing dietary-induced obesity. *Journal of bone and mineral research.* 2009;24(1):50-  
1036 61. Epub 2008/08/22. doi: 10.1359/jbmr.080817. PubMed PMID: 18715135; PubMed Central  
1037 PMCID: PMCPCmc2689082.
- 1038 68. Al Wren T, Lee DC, Kay RM, Dorey FJ, Gilsanz V. Bone density and size in ambulatory  
1039 children with cerebral palsy. *Dev Med Child Neurol.* 2011;53(2):137-41. Epub 2010/12/21. doi:  
1040 10.1111/j.1469-8749.2010.03852.x. PubMed PMID: 21166671; PubMed Central PMCID:  
1041 PMCPMC3064513.
- 1042 69. Rajapakse CS, Johncola AJ, Batzdorf AS, Jones BC, Al Mukaddam M, Sexton K, et al.  
1043 Effect of Low-Intensity Vibration on Bone Strength, Microstructure, and Adiposity in Pre-  
1044 Osteoporotic Postmenopausal Women: A Randomized Placebo-Controlled Trial. *Journal of*  
1045 *bone and mineral research.* 2021;36(4):673-84. Epub 2020/12/15. doi: 10.1002/jbmr.4229.  
1046 PubMed PMID: 33314313.
- 1047 70. Chang G, Rajapakse CS, Regatte RR, Babb J, Saxena A, Belmont HM, et al. 3 Tesla  
1048 MRI detects deterioration in proximal femur microarchitecture and strength in long-term  
1049 glucocorticoid users compared with controls. *Journal of magnetic resonance imaging.*  
1050 2015;42(6):1489-96. Epub 2015/06/16. doi: 10.1002/jmri.24927. PubMed PMID: 26073878;  
1051 PubMed Central PMCID: PMCPMC4676948.
- 1052 71. Arpan I, Willcocks RJ, Forbes SC, Finkel RS, Lott DJ, Rooney WD, et al. Examination of  
1053 effects of corticosteroids on skeletal muscles of boys with DMD using MRI and MRS. *Neurology.*  
1054 2014;83(11):974-80. Epub 2014/08/08. doi: 10.1212/WNL.0000000000000775. PubMed PMID:  
1055 25098537; PubMed Central PMCID: PMCPMC4162304.
- 1056 72. Ozcivici E, Luu YK, Adler B, Qin YX, Rubin J, Judex S, et al. Mechanical signals as  
1057 anabolic agents in bone. *NatRevRheumatol.* 2010;6(1):50-9.
- 1058 73. Xie L, Jacobson JM, Choi ES, Busa B, Donahue LR, Miller LM, et al. Low-level  
1059 mechanical vibrations can influence bone resorption and bone formation in the growing  
1060 skeleton. *Bone.* 2006;39(5):1059-66. Epub 2006/07/11. doi: 10.1016/j.bone.2006.05.012.  
1061 PubMed PMID: 16824816.
- 1062 74. Mettlach G, Polo-Parada L, Peca L, Rubin CT, Plattner F, Bibb JA. Enhancement of  
1063 neuromuscular dynamics and strength behavior using extremely low magnitude mechanical  
1064 signals in mice. *J Biomech.* 2014;47(1):162-7. Epub 2013/10/26. doi:  
1065 10.1016/j.jbiomech.2013.09.024. PubMed PMID: 24157062; PubMed Central PMCID:  
1066 PMCPMC3881264.
- 1067 75. Frechette DM, Krishnamoorthy D, Adler BJ, Chan ME, Rubin CT. Diminished satellite  
1068 cells and elevated adipogenic gene expression in muscle as caused by ovariectomy are averted  
1069 by low-magnitude mechanical signals. *Journal of applied physiology.* 2015;119(1):27-36. Epub  
1070 2015/05/02. doi: 10.1152/jappphysiol.01020.2014. PubMed PMID: 25930028; PubMed Central  
1071 PMCID: PMCPCmc4491530.



1072 76. Batra A, Harrington A, Lott DJ, Willcocks R, Senesac CR, McGehee W, et al. Two-Year  
1073 Longitudinal Changes in Lower Limb Strength and Its Relation to Loss in Function in a Large  
1074 Cohort of Patients With Duchenne Muscular Dystrophy. *Am J Phys Med Rehabil*.  
1075 2018;97(10):734-40. Epub 2018/05/08. doi: 10.1097/PHM.0000000000000957. PubMed PMID:  
1076 29734234; PubMed Central PMCID: PMC6148402.

1077

1078

1079