

1 **Lens Thickness and Its Association with General and Ocular Parameters in Healthy**

2 **Subjects**

3

4 Yi Cao, MD^a, Fucheng, Liao, MD^a, Yushen He, MD^a, Yujuan Huang, MD^a, Lijun Zhou, MD^b,
5 Xiangbin Kong, MD^{a,*}

6 ^a Department Of Ophthalmology, Affiliated Foshan Hospital, Southern Medical University, Foshan,
7 528000, China.

8 ^b Zhongshan Ophthalmic Center Sun Yat-Sen University, Guangzhou, 510000, China.

9 * **Correspondence :** Xiangbin Kong, MD, Department of Ophthalmology, Affiliated Foshan
10 Hospital, Southern Medical University, No.78 Weiguo Road, Foshan, 510080, China. (e-mail:
11 xiangbin_kong@sina.com).

12

13 **Abstract**

14 The crystalline lens thickness playing an essential role in maintaining normal visual function,
15 but little attention is paid to the lens thickness. The purpose of this study is to document the
16 normative values of lens thickness (LT) in healthy subjects of Southern China and to evaluate its
17 associated factors. This was a prospective, clinic-based, observational, cross-sectional study. A total
18 of 526 eyes from 263 healthy subjects aged between 5-84 years (mean age, 38.48 ± 22.04 years)
19 were included in the study. All subjects underwent detailed ophthalmic examination, including the
20 measurement of ocular biometric parameters by LenStar LS900. The study focused on LT and its
21 association with general and ocular factors. The generalized estimation equation (GEE) model was
22 used for statistical analysis. The Mean LT was 4.01 ± 0.57 mm (95% CI, 3.97 - 4.06; median, 3.94
23 mm; range, 3.10 - 5.36). In a univariate regression analysis, the LT was associated significantly age,
24 body weight, body height, body mass index (BMI), systolic pressure, diastolic pressure, spherical
25 equivalent (SE), intraocular pressure (IOP), anterior chamber depth (ACD) and axial length (AL)
26 (all $P < 0.05$). After adjusting the general parameters and ocular parameters, LT was associated
27 significantly with age (β , 0.0151; 95% CI, 0.0116 - 0.0186; $P < 0.001$), gender (β , 0.1233; 95% CI,
28 0.0553 - 0.1913; $P < 0.001$) and ACD (β , -0.5815; 95% CI, -0.8059 - -0.3571; $P < 0.001$) using the
29 multivariate regression model. The LT was associated with older age, female gender, and shallower

30 **NOTE: This preprint reports new research that has not been certified by peer review and should not be used to guide clinical practice.**
ACD in healthy subjects from Southern China. The data may help understand ocular diseases

1 concerning lens thickness.

2 **Abbreviations:** ACD= anterior chamber depth, AL=axial length, BCVA= best-corrected visual
3 acuity, BMI= body mass index, CCT=central corneal thickness, CI=confidence intervals,
4 CMT=central macular thickness, GEE=generalized estimation equation, IOP= intraocular pressure,
5 LT=lens thickness, SD=standard deviation, SE= spherical equivalent.

6 **Keywords:** lens thickness, healthy subjects, anterior chamber depth

7

8

9

10

11

12

13

14

15

16

17

18

19

20

21

22

23

24

25

26

27

28

29

30

1 **1. Introduction**

2 The normal crystalline lens is a transparent, biconvex structure, which lies posterior to the iris and
3 anterior to the vitreous body in the globe, playing an essential role in maintaining normal visual
4 function. Previous studies demonstrated that the crystalline lens contributes to approximately one-
5 third of ocular refractive power and takes part in accommodation[1, 2]. In accommodation, the lens
6 thickness (LT) increases by 0.17 to 0.4 mm[3, 4]. Furthermore, the LT still continuously increases
7 by 0.15 to 0.20mm per decade, even though axial length no longer increases[5]. And the raised LT
8 leads to the shallower anterior chamber depth, which would induce the development of angle-
9 closure glaucoma[6]. Therefore evaluation of the LT was helpful to understand the development of
10 some ocular diseases. Though there are many studies about the ocular biometrics, few studies were
11 focused on the LT. Jonas et al. reported the LT and associated factors, yet the subjects in their study
12 were more than 30 years old [7]. To explore the LT of adults and children, we performed the present
13 study to evaluate the LT and associated factors in healthy subjects of southern China.

14 **2. Methods**

15 **2.1 Study design**

16 This was a prospective, observational, single-center, cross-sectional study conducted at the
17 Department of Ophthalmology, Foshan Second Hospital, Southern Medical University, between
18 May 2019 and April 2020. This study was registered on the Chinese Clinical Trial Registry
19 (identifier: ChiCTR1900024921) and approved by the Institutional Review Board of Foshan Second
20 Hospital. The study was in accordance with the tenets of the Declaration of Helsinki. All subjects
21 gave informed consent before the beginning of the study.

22 **2.2 Study subjects**

23 Healthy subjects with best-corrected visual acuity (BCVA) of 20/25 or better were included in the
24 study. The inclusion criteria were as follows: age ≥ 5 years, intraocular pressure (IOP) < 21 mmHg,
25 normal findings of the slit-lamp examination, and fundus evaluation. The exclusion criteria were:
26 any history of ocular surgery or ocular trauma, opacity media preventing high-quality imaging,
27 glaucoma, systemic diseases, such as hypertension, diabetes mellitus, retinal and choroidal disease,
28 for example, retinal vein obstruction, macular hole, epiretinal membrane, and polychoroidal
29 retinopathy.

30 **2.3 Ophthalmic examinations**

1 All subjects underwent a comprehensive ocular examination, including BCVA, slit lamp, IOP, and
2 fundus evaluation. Refraction data were collected with an autorefractor (KR8900, Topcon, Japan).
3 Spherical equivalent (SE; sphere power+cylinder power/2) was used for analysis. IOP was
4 measured three times with noncontact tonometer (TX-20; Canon, Japan) and calculated the mean.
5 Ocular biometric parameters, including central corneal thickness (CCT), axial length (AL), anterior
6 chamber depth (ACD), and LT, were measured with optical low-coherence reflectometry (LenStar
7 LS900, Haag-Streit, Inc., Koeniz, Switzerland). The measurement, which consists of 16 consecutive
8 scans each time, was repeated three times for each eye of all subjects, and the mean was taken for
9 further statistical analysis. The central macular thickness (CMT, central 1 mm) was assessed by the
10 macular cube 512 x 128 model of optical coherence tomography (Cirrus 5000 HD-OCT;
11 Carl Zeiss Meditec, Inc, Dublin, CA). Arterial blood pressure, body weight, and height were
12 recorded, and the body mass index (BMI) was calculated as a variable to explore the association
13 with LT.

14 **2.4 Statistical analysis**

15 Data were presented as mean \pm standard deviation (SD) for continuous variables and frequency (%)
16 for categorical variables. For the associated factors of LT, regression analysis was performed using
17 a generalized estimation equation (GEE) model that was applied to adjust for the possible intra-eyes
18 correlation. Firstly, univariate GEE was performed to identify potential factors. The dependent
19 variables, including systemic parameters and ocular parameters, were selected into the models,
20 respectively. Then, variables with $P < 0.2$ in univariable analysis and potential confounders were
21 included in the multivariate GEE model. Regression coefficients and odds ratios with 95%
22 confidence intervals (CI) were reported. SAS statistical software version 9.4 (SAS Institute Inc.,
23 Cary, NC) was used for statistical analysis. P value < 0.05 was considered statistically significant.

24 **3. Results**

25 Of 315 screened individuals, a total of 263 subjects (83.49 %) enrolled. Fifty-two subjects were
26 excluded from analysis, including 12 subjects for hypertension or diabetics, 5 subjects for high
27 ocular pressure, 25 subjects for remarkable cataract, 4 subjects for ocular surgery history, 3 for lack
28 of refraction or biometric data. Finally, the 526 eyes of the 263 remaining subjects were included in
29 the study. The demographic data and clinical characteristics of the subjects and their eyes are
30 summarized in Table 1. The mean LT was 4.01 ± 0.57 mm (95% CI, 3.97 - 4.06; median, 3.94 mm;

1 range, 3.10 - 5.36). The mean age of subjects was 38.48 ± 22.04 years (range, 5 - 84 years). Of the
2 subjects, 138 (52.47%) were female.

3 In univariate analysis, the LT increased significantly with age ($P < 0.001$, Figure 1), higher body
4 weight ($P < 0.001$), higher body height ($P < 0.001$), higher BMI ($P < 0.001$), lower IOP ($P = 0.02$),
5 taller SE ($P = 0.01$), shallower ACD ($P < 0.001$, Figure 2), shorter AL ($P < 0.001$), higher systolic
6 pressure ($P < 0.001$) and higher diastolic pressure ($P < 0.001$). In univariate analysis, LT was not
7 significantly associated with gender ($P = 0.64$), CCT ($P = 0.6172$), and CMT ($P = 0.41$) (Table 2).

8 Variables with $P < 0.2$ in univariable analysis and potential confounders (gender) related to the
9 primary variable included in multivariate models. After controlling the ocular parameters and
10 systemic factors, LT was significantly associated with older age ($P < 0.001$), female gender ($P <$
11 0.001), and shallower ACD ($P < 0.001$) (Table 3). However, body weight, body height, BMI, SE,
12 AL, systolic pressure, and diastolic pressure were no longer significantly associated with thickness.

13 **4. Discussion**

14 LT, as an essential parameter of the lens, varies from the population and has significance in some
15 ocular diseases, for example, acute angle-closure glaucoma, cataract, and presbyopia[8-10].
16 However, fewer researches were focused on the LT of healthy subjects. The present study
17 systematically evaluated the LT in healthy Chinese subjects and investigated its association with
18 general and ocular factors. The results show that the mean crystalline LT is 4.01 ± 0.57 mm (95%
19 CI, 3.97 - 4.06; median, 3.94 mm; range, 3.10 - 5.36). It is strongly associated with older age (β ,
20 0.0151; 95%CI, 0.0116-0.0186; $P < 0.001$), female gender (β , 0.1233; 95%CI, 0.0553-0.1913; $P <$
21 0.001), and shallower ACD (β , -0.5815; 95%CI, -0.8058 - -0.357; $P < 0.001$) after adjusting systemic
22 parameters and other ocular parameters.

23 The results indicate that healthy subjects from Southern China have similar LT as studies reported
24 previously, although it is a clinic-based cross-sectional study. The mean LT is 4.01 ± 0.57 mm in
25 our study, which is slightly less than the value of 4.07 ± 0.40 mm in the study reported by Lesley
26 Doyle[11] and 4.05 ± 0.20 mm in a study published by Richdale[10]. It is possible relative to the
27 age amplitude. The age range of enrolled subjects is much broader in our research that includes
28 children, and the age of subjects in the previous study was more than 30 years.

29 It has been proven that the LT was increasing with age based on previous studies. A population-
30 based cross-sectional survey reported by Jonas et al. showed that the mean LT was significantly

1 related to higher age[7] ($\beta=0.003$, $P<0.001$), including 9046 eyes of 4610 subjects with an average
2 age of 49.1 ± 13.2 years (range: 30-100 years). With a per year increase in age, Jonas also reported
3 that the LT maybe increases approximately by 0.009 mm in another study[12]. Similar results were
4 confirmed in other studies[13, 14]. Our results also demonstrated an age-related increase in LT each
5 year (β , 0.0151, $P< 0.001$). Why does the LT increase with age? One explanation was due to the
6 continuous development of the new lens fibers in the equatorial region of the lens[15, 16].
7 Additionally, the ciliary body becomes relaxed to the curvature enlargement of the lens with aging,
8 which will also cause an increase in LT[17-19].

9 There was still no consensus with aspect to the association between gender and LT. Jonas' results
10 showed that the LT was significantly associated with the male gender in a multivariate analysis[7].
11 In contrast, Hassan et al. reported that LT was positive with the female gender[20]. In our study, LT
12 is predominant in females. The result might explain why angle-closure glaucoma is more common
13 in females than males, especially in older females.

14 In our study, we found that the ACD would become shallow by 0.58 mm with per 1 mm increase of
15 LT, after adjusting for other variables. The association between the ACD and the crystalline LT was
16 investigated in some studies[15, 21]. Jonas et al. demonstrated that the ACD decreased by 0.007
17 mm when LT increased by 0.009 mm[12]. In agreement, Praveen et al. also reported that LT would
18 significantly affect the ACD[22]. Still, the Singapore Chinese Eye study demonstrated that LT was
19 not associated independently with ACD[23]. In that study, they thought the lens vault would
20 influence the ACD as well as.

21 In the present study, we did found the systemic variables, such as height, weight, and BMI were not
22 associated with the LT in the multivariate analysis, although those were associated significantly
23 with LT in univariate analysis. Conversely, in a population-based study with age more than 30 years,
24 authors found that a thicker lens was related to high body stature and high BMI[7], and they
25 considered that tall subjects maybe have larger eyes[24].

26 The major strength of our study was a relatively large sample size with a wider age range (from 5
27 to 84 years). Furthermore, we adjusted for the intra-eyes correlation effect on the LT using the GEE
28 model. The limitation of this study should be mentioned. Firstly, it was not a population-based study.
29 The subjects in the study were mainly from ophthalmic clinical, physical examination center, and
30 community screening, which would lead to selection bias to some extent. Secondly, there was no

1 data on LT with an age of less than five years because these children can not finish the examination
2 of ocular biometrics.

3 In conclusion, the mean LT was 4.01 ± 0.5 mm (95% CI, 3.97 - 4.06 mm) in healthy subjects of
4 Southern China. It was significantly associated with older age, female gender, and shallower ACD
5 after adjusting general and ocular parameters. The results may be helpful to explain the development
6 of ocular diseases as for lens, especially such as cataract and closure-angle glaucoma.

7

8 **Acknowledgments**

9 We want to express our gratitude to all data collectors and study subjects.

10 **Auther contributions**

11 Y. Cao and X. Kong conceptualized the study.

12 Y. Cao performed data analysis and visualization, and wrote the manuscript.

13 F. Liao performed the project administration and data curation.

14 Y. He collected the data.

15 Y.Huang provided technical assistance.

16 L.Zhou revised the manuscript.

17 All authors read and approved the final manuscript.

18 **Data Availability**

19 The data of the present study are available from the corresponding author and can be obtained on a
20 reasonable request.

21 **Conflicts of Interest**

22 The authors have no financial or conflicts of interest concerning this study.

23 **Funding Statement**

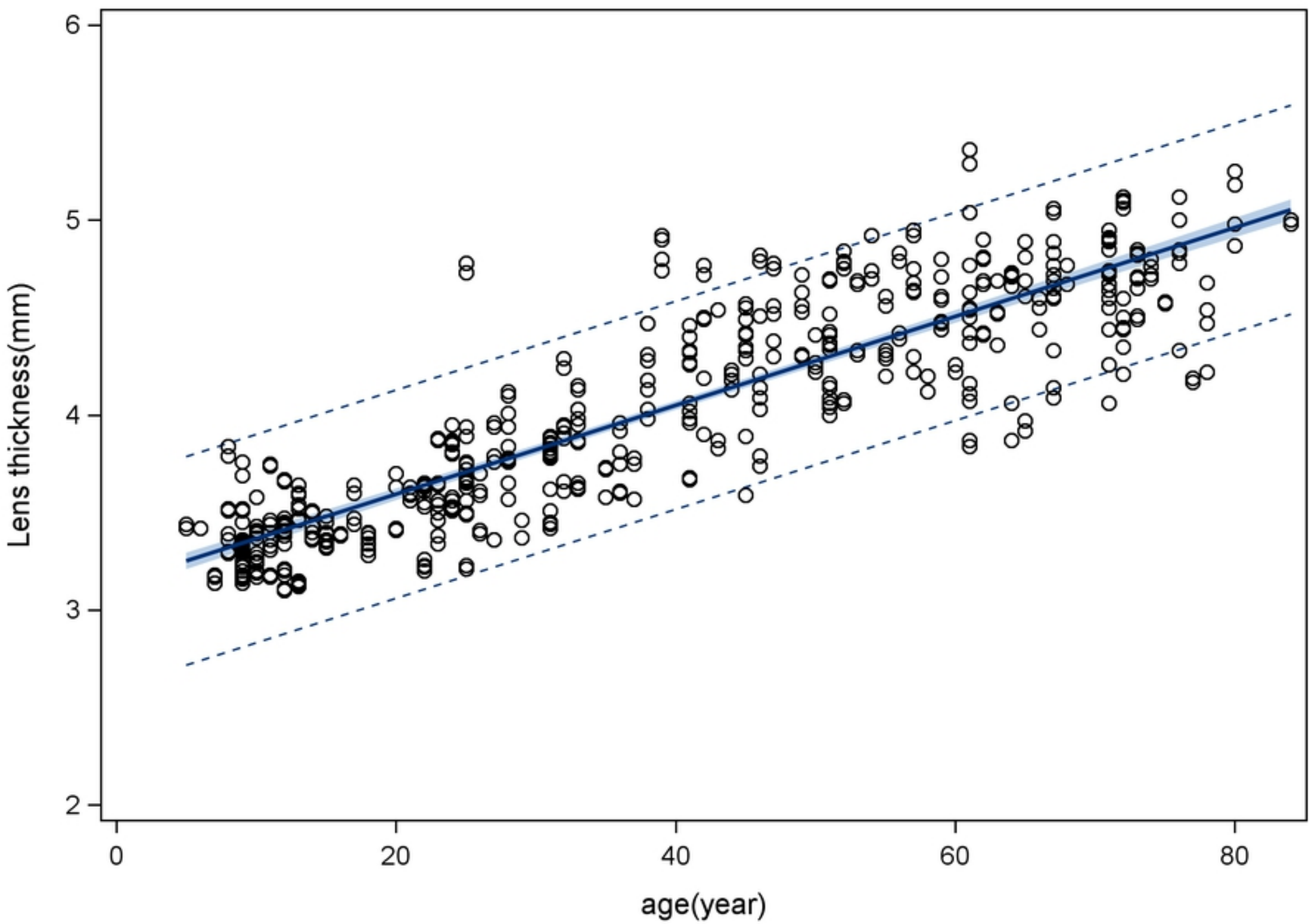
24 This study was no supporte.

25 **References**

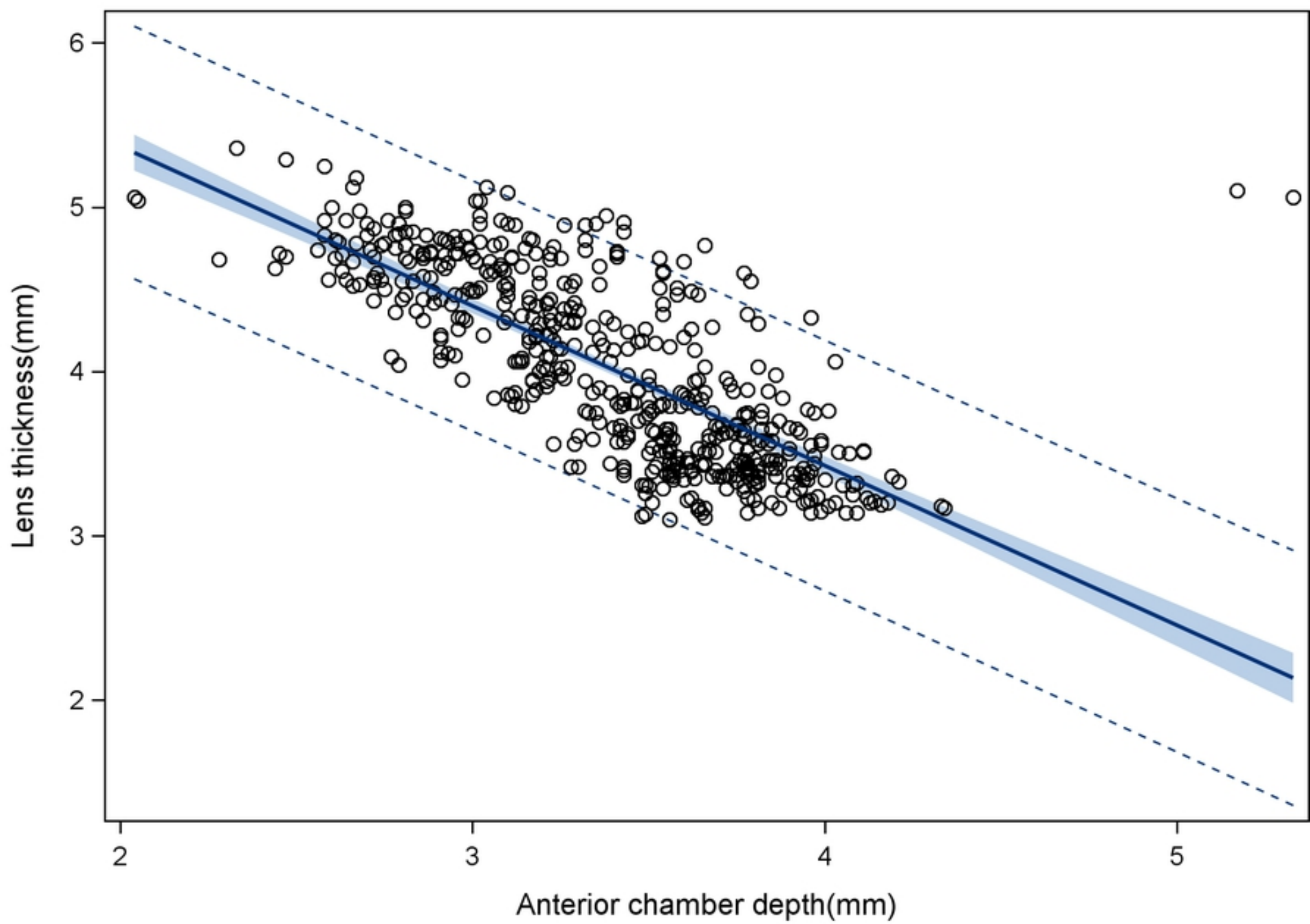
- 26 1. Hernandez VM, Cabot F, Ruggeri M, de Freitas C, Ho A, Yoo S *et al*. Calculation of crystalline lens
27 power using a modification of the Bennett method. *Biomed Opt Express*2015 Nov 1;6(11):4501-4515.
- 28 2. Zadnik K, Mutti DO, Fusaro RE, Adams AJ. Longitudinal evidence of crystalline lens thinning in
29 children. *Invest Ophthalmol Vis Sci*1995 Jul;36(8):1581-1587.
- 30 3. Kaluzny BJ. Anterior movement of the crystalline lens in the process of accommodation in children.
31 *Eur J Ophthalmol*2007 Jul-Aug;17(4):515-520.
- 32 4. Drexler W, Findl O, Schmetterer L, Hitzenberger CK, Fercher AF. Eye elongation during

- 1 accommodation in humans: differences between emmetropes and myopes. *Invest Ophthalmol Vis*
2 *Sci*1998 Oct;39(11):2140-2147.
- 3 5. Roters S, Hellmich M, Szurman P. Prediction of axial length on the basis of vitreous body length
4 and lens thickness: retrospective echobiometric study. *J Cataract Refract Surg*2002 May;28(5):853-9.
- 5 6. Wang X, Chen X, Tang Y, Wang J, Chen Y, Sun X. Morphologic Features of Crystalline Lens in
6 Patients with Primary Angle Closure Disease Observed by CASIA 2 Optical Coherence Tomography.
7 *Invest Ophthalmol Vis Sci*2020 May 11;61(5):40.
- 8 7. Jonas JB, Nangia V, Gupta R, Sinha A, Bhate K. Lens thickness and associated factors. *Clin Exp*
9 *Ophthalmol*2012 Aug;40(6):583-590.
- 10 8. Satou T, Shimizu K, Tsunehiro S, Igarashi A, Kato S, Koshimizu M *et al*. Relationship between
11 Crystalline Lens Thickness and Shape and the Identification of Anterior Ocular Segment Parameters for
12 Predicting the Intraocular Lens Position after Cataract Surgery. *Biomed Res Int*2019;2019:3458548.
- 13 9. Guo C, Zhao Z, Zhang D, Liu J, Li J, Zhang J *et al*. Anterior Segment Features in Nanophthalmos With
14 Secondary Chronic Angle Closure Glaucoma: An Ultrasound Biomicroscopy Study. *Invest Ophthalmol*
15 *Vis Sci*2019 May 1;60(6):2248-2256.
- 16 10. Richdale K, Bullimore MA, Zadnik K. Lens thickness with age and accommodation by optical
17 coherence tomography. *Ophthalmic Physiol Opt*2008 Sep;28(5):441-447.
- 18 11. Doyle L, Little JA, Saunders KJ. Repeatability of OCT lens thickness measures with age and
19 accommodation. *Optom Vis Sci*2013 Dec;90(12):1396-1405.
- 20 12. Jonas JB, Iribarren R, Nangia V, Sinha A, Pardhi P, Shukla R *et al*. Lens Position and Age: The Central
21 India Eye and Medical Study. *Invest Ophthalmol Vis Sci*2015 Aug;56(9):5309-5314.
- 22 13. Hashemi H, Pakzad R, Iribarren R, Khabazkhoob M, Emamian MH, Fotouhi A. Lens power in Iranian
23 schoolchildren: a population-based study. *Br J Ophthalmol*2018 Jun;102(6):779-783.
- 24 14. Yoo YS, Whang WJ, Kim HS, Joo CK, Yoon G. Preoperative biometric measurements with anterior
25 segment optical coherence tomography and prediction of postoperative intraocular lens position.
26 *Medicine (Baltimore)*2019 Dec;98(50):e18026.
- 27 15. Warriar S, Wu HM, Newland HS, Muecke J, Selva D, Aung T *et al*. Ocular biometry and determinants
28 of refractive error in rural Myanmar: the Meiktila Eye Study. *Br J Ophthalmol*2008 Dec;92(12):1591-
29 1594.
- 30 16. Sikic H, Shi Y, Lubura S, Bassnett S. A stochastic model of eye lens growth. *J Theor Biol*2015 Jul
31 7;376:15-31.
- 32 17. Shoji T, Kato N, Ishikawa S, Ibuki H, Yamada N, Kimura I *et al*. Association between axial length and
33 in vivo human crystalline lens biometry during accommodation: a swept-source optical coherence
34 tomography study. *Jpn J Ophthalmol*2020 Jan;64(1):93-101.
- 35 18. Khan A, Pope JM, Verkicharla PK, Suheimat M, Atchison DA. Change in human lens dimensions,
36 lens refractive index distribution and ciliary body ring diameter with accommodation. *Biomed Opt*
37 *Express*2018 Mar 1;9(3):1272-1282.
- 38 19. Esteve-Taboada JJ, Ferrer-Blasco T, Aloy MA, Adsua JE, Cerda-Duran P, Mimica P *et al*. Ocular
39 anatomic changes for different accommodative demands using swept-source optical coherence
40 tomography: a pilot study. *Graefes Arch Clin Exp Ophthalmol*2017 Dec;255(12):2399-2406.
- 41 20. Hashemi H, Pakzad R, Khabazkhoob M, Yekta A, Emamian MH, Fotouhi A. Ocular biometrics as a
42 function of age, gender, height, weight, and its association with spherical equivalent in children. *Eur J*
43 *Ophthalmol*2020 Feb 27;1120672120908722.
- 44 21. Xu L, Cao WF, Wang YX, Chen CX, Jonas JB. Anterior chamber depth and chamber angle and their

- 1 associations with ocular and general parameters: the Beijing Eye Study. *Am J Ophthalmol*2008
2 May;145(5):929-936.
- 3 22. Praveen MR, Vasavada AR, Shah SK, Shah CB, Patel UP, Dixit NV *et al.* Lens thickness of Indian eyes:
4 impact of isolated lens opacity, age, axial length, and influence on anterior chamber depth. *Eye*
5 (Lond)2009 Jul;23(7):1542-1548.
- 6 23. Sng CC, Foo LL, Cheng CY, Allen JC, Jr., He M, Krishnaswamy G *et al.* Determinants of anterior
7 chamber depth: the Singapore Chinese Eye Study. *Ophthalmology*2012 Jun;119(6):1143-1150.
- 8 24. Wong TY, Foster PJ, Johnson GJ, Klein BE, Seah SK. The relationship between ocular dimensions
9 and refraction with adult stature: the Tanjong Pagar Survey. *Invest Ophthalmol Vis Sci*2001
10 May;42(6):1237-1242.
- 11



Figure



Figure