

Nature Human Behavior manuscript No.

(will be inserted by the editor)

THEMIS: A Framework for Cost-Benefit Analysis of COVID-19 Non-Pharmaceutical Interventions

Dimitris Bertsimas · Michael Lingzhi Li · Saksham Soni

Received: April 9th, 2022

Abstract Since December 2019, the world has been ravaged by the COVID-19 pandemic, with over 150 million confirmed cases and 3 million confirmed deaths worldwide. To combat the spread of COVID-19, governments have issued unprecedented non-pharmaceutical interventions (NPIs), ranging from mass gathering restrictions to complete lockdowns. Despite their proven effectiveness in reducing virus transmission, the policies often carry significant economic and humanitarian cost, ranging from unemployment to depression, PTSD, and anxiety. In this paper, we create a data-driven system dynamics framework, THEMIS, that allows us to compare the costs and benefits of a large class of NPIs in any geographical region across different cost dimensions. As a demonstration, we analyzed thousands of alternative policies across 5 countries (United States, Germany, Brazil, Singapore, Spain) and compared with the actual implemented policy.

Our results show that moderate NPIs (such as restrictions on mass gatherings) usually produce the worst results, incurring significant cost while unable to sufficiently slow down the pandemic to prevent the virus from becoming endemic. Short but severe restrictions

(complete lockdown for 4-5 weeks) generally produced the best results for developed countries, but only if the speed of reopening is slow enough to prevent a resurgence. Developing countries exhibited very different trade-off profiles from developed countries, and suggests that severe NPIs such as lockdowns might not be as suitable for developing countries in general.

Keywords COVID-19 · Cost-benefit Analysis · System Dynamics · Epidemiological modeling

1 Introduction

In the last 18 months, the world has been facing one of the biggest health crises in a century – the COVID-19 pandemic. Starting from the initial outbreak in Wuhan (Hui et al. 2020), the disease, caused by the SARS-CoV-2 coronavirus, quickly swept around the globe. As of May 2021, the pandemic took over 3.3 million lives, while new hotspots continue to emerge.

To curtail the spread of SARS-CoV-2 and limit its detrimental humanitarian impact, governments around the world enacted unprecedented non-pharmaceutical interventions (NPIs), ranging from social distancing and mask-wearing to complete lockdowns. Despite their proven effectiveness in reducing transmission, these NPIs incur significant cost on the society. Restrictions on mass gatherings and travel have proven to be detrimental to many industries, greatly reducing economic output while also causing mass unemployment. The travel industry alone lost 3.8 trillion USD in 2020 (WTTC 2021), while the International Labour Organization estimates that in total 114 million full-time jobs were destroyed worldwide (Monitor 2020). Beyond their significant economic cost, more severe measures, such as lockdowns, also incur a large humanitarian cost. The isolation and

Dimitris Bertsimas
Sloan School of Management
Massachusetts Institute of Technology
Cambridge, MA 02142

Michael Lingzhi Li
Operations Research Center
Massachusetts Institute of Technology
Cambridge, MA 02139
Tel.: (+1)-857-998-9610
E-mail: mlli@mit.edu

Saksham Soni
Sloan School of Management
Massachusetts Institute of Technology
Cambridge, MA 02142

NOTE: This preprint reports new research that has not been certified by peer review and should not be used to guide clinical practice.

confinement induced by these policies have caused a sharp rise in depression, anxiety, and PTSD worldwide (Xiong et al. 2020). Researchers have also raised concerns about long-term effects of NPIs such as closing schools, worrying that there will be a decline in the long-term educational attainments.

Therefore, there is significant debate both among the public and the scientific community on whether the benefits of the implemented measures outweigh their cost, and what, if any, better alternatives could have been used. However, quantifying costs from multiple social and economic dimensions is notoriously difficult. To identify the outcome under alternative policies, one also needs to be able to quantify the impact of different NPIs on the spread of COVID-19 and simulate the counterfactual pandemic.

Given these challenges, it is perhaps not surprising that despite global interest, there is relatively little literature that tackles this question holistically. Previous cost-benefit analyses were primarily focused on quantifying the cost-benefit tradeoff for the actual implemented policy (Broughel and Kotrous 2021) or comparing two specific NPIs (e.g. lockdown vs reopening) (Layard et al. 2020, Shlomai et al. 2021) with emphasis on the direct GDP impact of the NPIs (e.g. Rowthorn and Maciejowski 2020, Miles et al. 2021, Gros et al. 2020, Zhao et al. 2021). In contrast, we would look at the pandemic retroactively across the globe. We utilize the realized experience of the COVID-19 pandemic to construct a data-driven framework, THEMIS, that allow us to conduct a cost-benefit analysis of the actual sequence of NPIs implemented in any region across the history of the pandemic, and compare with a wide range of alternatives that could have been implemented. To simulate the effect of the pandemic under different sequence of NPIs (policies), we utilize a recent, policy-driven compartmental epidemiological model called DELPHI (Differential Equations Lead to Predictions of Hospitalizations and Infections). DELPHI extends classical compartmental models to capture key features of the COVID-19 pandemic: (i) under-detection due to limited testing, (ii) governmental and societal response to the pandemic, and (iii) declining mortality rates (Li et al. 2020). Since its inception in April 2020, DELPHI has been applied to more than 200 countries and regions worldwide, producing predictions at the country level and at the state/province level for a few countries. The DELPHI forecasts have been incorporated into the central ensemble at the US Center for Disease Control (2020), and have been utilized by many organizations (including the Federal Reserve, Johnson & Johnson, Hartford Healthcare) worldwide for pandemic planning.

We then build models to calculate the various dimensions of costs given the realized pandemic. In particular, humanitarian costs include the costs due to loss of life, hospitalization, ICU, and ventilation incurred in the pandemic but also includes the psychological toll on the general population due to anxiety, PTSD, and depression. The economic costs take into account both the losses due to reduced output but also the increased economic burden due to unemployment. We construct a model for each individual cost item based on the latest studies.

To demonstrate the wide applicability of the THEMIS framework, we implement THEMIS for Germany, United States, Singapore, Spain and Brazil using the latest economic and health data (see Appendix B for sources).

Our experimental results yield three main implications. First, our results show that different governments face vastly different cost tradeoff curves in the pandemic. In particular, developing countries tend to suffer more under restrictive NPIs compared to developed countries, due to differences in economy composition, demographics, compliance, population density, health-care infrastructure, among others. This suggests that developed countries potentially should take more burden of implementing restrictive policies in order to control the pandemic effectively, given the ineffectiveness of developing countries to do so. Second, we see that across countries mild pandemic restrictions are ineffective at the start of the pandemic and often produce the worst outcomes in terms of total cost. Contrary to many situations in which a moderate policy is preferred, we show that for a pandemic, moderate policies generate significant societal costs while are usually completely ineffective in stopping the spread of the pandemic. This provides further evidence that the lockdown policies widely adopted at the start of the pandemic were indeed beneficial, even when taking into account the costs of lockdown. Our final result highlights the outsized impact of when interventions start – we show that the total cost of the pandemic could decrease by 90% just by implementing policies one week earlier. This highlights the necessity for fast response in a pandemic, and also again reinforces how the exponential nature of the pandemic makes good policy-making difficult.

In summary, this paper makes two contributions. From a modeling standpoint, it formulates an original, modular system dynamics model for conducting cost-benefit analyses of COVID-19 NPIs. The model is capable to provide data-driven insights on how the pandemic could have evolved under different intervention scenarios, which is critical for policymakers to prepare for the next pandemic. The modular nature means that THEMIS could be easily applied to other regions.

To facilitate this process, we open-source the THEMIS codebase and it can be found at <https://github.com/COVIDAnalytics/THEMIS> along with detailed instructions for reproducing and extending the results.

From a practical standpoint, this paper also consolidates the insights of applying the THEMIS model to a large range of countries during the first-wave of the pandemic. In particular, it demonstrates the highly complex nature of decision making in a pandemic to balance different dimensions of social cost. Further, it highlights how swift and strong action in the pandemic is the key to minimizing the total impact, and how different governments can optimize their strategies in the future.

2 THEMIS Framework Formulation

The schematic for the THEMIS Framework is shown in Figure 1. THEMIS starts with the input of a policy $\mathbf{P} = (\mathbf{I}, \mathbf{T})$, which we formally define as a combination of k NPIs $\mathbf{I} = (i_0, \dots, i_{k-1})$ and $(k + 1)$ implementation times $\mathbf{T} = (t_0, t_1, \dots, t_k)$ where $t_0 < t_1 < \dots < t_k$. The policy is implemented such that each NPI i_l , $l \in \{0, \dots, k - 1\}$ is effective between $[t_l, t_{l+1}]$, and is selected from a set of possible NPIs \mathcal{I} . For example, the policy \mathbf{P} with:

$$\begin{aligned} \mathbf{I} &= (\text{Lockdown, Social Distancing, No Restrictions}) \\ \mathbf{T} &= (2020.03.01, 2020.04.01, 2020.05.01, 2020.06.01) \end{aligned}$$

represents a policy from March 1st, 2020 to June 1st, 2020 with the stages as outlined in Table 1. We note that this structure is general and all policies implemented in the COVID-19 pandemic can be written in such structure, given a sufficiently large set of \mathcal{N} . For simplicity only, we would assume throughout this paper that t_l for $l \in \{0, \dots, k\}$ has units of days.

Policy Start Date	Policy End Date	Policy
March 1st, 2020	April 1st, 2020	Lockdown
April 1st, 2020	May 1st, 2020	Social Distancing
May 1st, 2020	June 1st, 2020	No Restrictions

Table 1: Example Policy

Now the goal of THEMIS is to calculate, for a specific region with region-specific data \mathbf{R} , the cost of such policy \mathbf{P} within the implementation period $t \in [t_0, t_k]$. As illustrated in Figure 1, the first step is to utilize the DELPHI epidemiological model to simulate the spread of the epidemic \mathbf{E} under such policy for this region $\mathbf{E} = f_{DEL}(\mathbf{R}, \mathbf{P})$. Then, we calculate the cost of the

epidemic using both \mathbf{P} and \mathbf{E} . In particular, we separated the cost into two categories, with five dimensions in total: economic cost (unemployment (c_U), GDP (c_Y)), and humanitarian cost (deaths (c_D), hospitalizations (c_H), and mental illnesses (c_M)).

The following subsections describe the detail construction of each model ($f_{DEL, c_U, c_Y, c_D, c_H, c_M}$).

2.1 The DELPHI model: Forecasting the dynamics of the COVID-19 pandemic

DELPHI is a policy-driven compartmental epidemiological model that extends the widely used SEIR model to account for effects specific to the COVID-19 pandemic. The model is governed deterministically by a system of ordinary differential equations (ODEs) involving 11 states: susceptible (S), exposed (E), infectious (I), undetected cases who will recover (U^R) or die (U^D), detected hospitalized cases who will recover (H^R) or die (H^D), detected quarantined cases who will recover (Q^R) or die (Q^D), recovered (R) and deceased (D). Within the hospitalized states (H), there are also helper states to govern patients that are in the ICU (IC) and patients who are ventilated (V). Since its conception in late March 2020, it has been successfully applied to more than 210 countries and regions worldwide with high accuracy, and is utilized by organizations including the Hartford Hospital system for pandemic planning. (Li et al. 2020)

DELPHI differs from other COVID-19 forecasting models (see, e.g. Kissler et al. 2020) by capturing three key elements of the pandemic:

- **Under-detection:** Many cases remain undetected due to limited testing, asymptomatic carriers, and detection errors. Ignoring them would underestimate the scale of the pandemic. The DELPHI model captures them through the U^R and U^D states.
- **Governmental and societal response:** Social distancing policies limit the spread of the virus. Ignoring them would overestimate the scale of the pandemic. However, if restrictions are lifted prematurely, a resurgence may occur. We define a governmental and societal response function $\gamma(t)$, which modulates the infection rate and is parameterized as follows:

$$\begin{aligned} \gamma(t) &= 1 + \frac{2}{\pi} \arctan \left(\frac{-(t - t_{\text{int}})}{\kappa} \right) \\ &\quad + c \exp \left(-\frac{(t - t_{\text{jump}})^2}{2\sigma^2} \right). \end{aligned} \quad (1)$$

This parameterization encompasses four phases (Figure 2). In Phase I, most activities continue normally

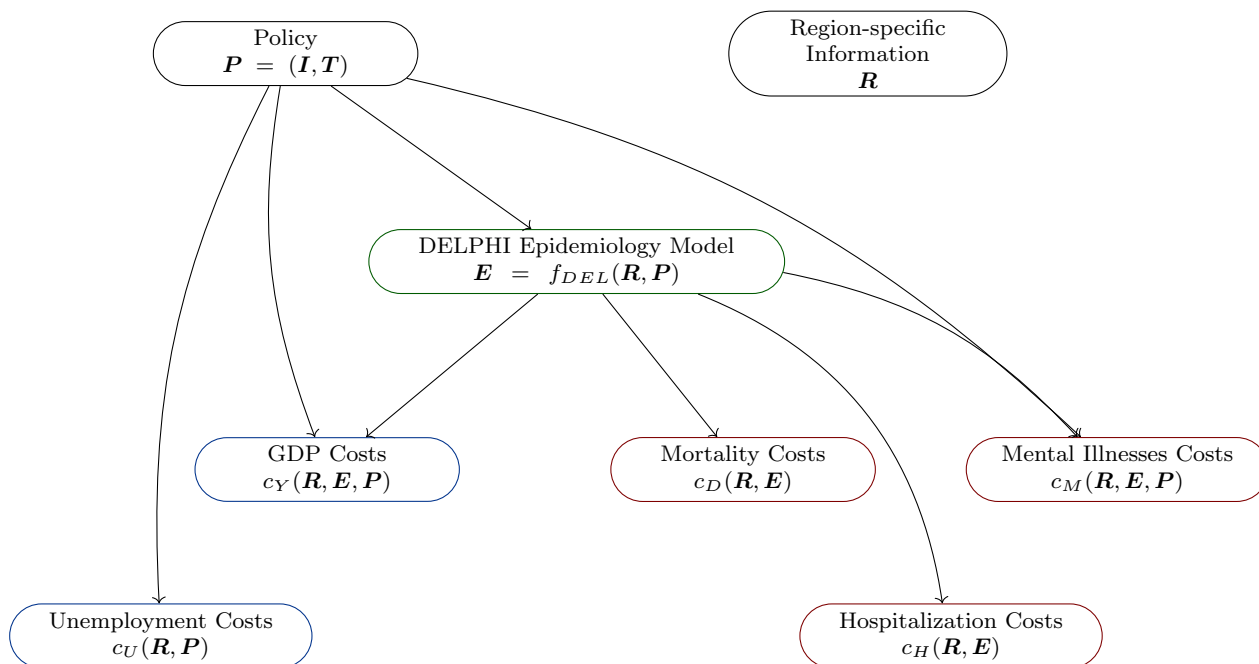


Fig. 1: THEMIS Schematic. Here we ignore the arrows from R to every module for simplicity.

as people adjust their behaviors. This is followed by a sharp decline in the infection rate during Phase II as the policies get implemented. The parameters t_{int} and κ can be interpreted as the start time and the strength of this response. In Phase III, the decline in the infection rate reaches saturation. The epidemic then experiences a resurgence of magnitude c in Phase IV, due to relaxations in governmental restrictions and in social behaviors. This is counteracted at time t_{jump} , when restrictions are re-implemented, with σ controlling the duration of this second wave.

- **Declining mortality rates:** The mortality rate of COVID-19 has been declining through the pandemic, due to a better detection of mild cases, enhanced care for COVID-19 patients, and other factors. We model the mortality rate as a monotonically decreasing function of time:

$$m(t) = (m_0 - m_{\min}) \left(1 + \frac{2}{\pi} \arctan(-r_m t) \right) + m_{\min}, \quad (2)$$

where m_0 is the initial mortality rate, m_{\min} is the minimum mortality rate and r_m is a decay rate.

Ultimately, DELPHI involves 16 parameters that define the transition rates between the 11 states. We calibrate 7 of them from a database on clinical outcomes (Bertsimas et al. 2020b). Using non-linear optimization, we estimate the other 9 parameters from

historical data on the number of cases and deaths in each region. We provide the full mathematical formulation of the DELPHI model and its fitting procedure in Appendix A.

We utilize the DELPHI model to provide THEMIS with a highly accurate epidemiological model that responds to changes in policy. The key feature of DELPHI that is specifically relevant to THEMIS is that the rate of people being exposed to the virus and leaving the susceptible state (S) is policy-driven, and governed by the following differential equation:

$$\frac{dS}{dt} = -\alpha_R \gamma_R(t) S(t) I(t). \quad (3)$$

Here α_R can be interpreted as the natural infection rate of the epidemic in the region, while $\gamma_R(t)$ is the time-varying reduction of such infection rate due to the policies implemented in the region. α_R is extracted directly from the appropriate fitted parameters for DELPHI. For the actual policy implemented in the region, We can also estimate $\gamma_R(t)$ directly by the DELPHI model.

To create $\gamma_R(t)$ for a hypothetical policy P , we first estimate a global correction factor γ_i for every potential NPI $i \in \mathcal{I}$ using historical data (we assume that every $i \in \mathcal{I}$ has been historically implemented somewhere). Specifically, γ_i is calculated as the average reduction of the natural infection rate α_R as observed all days and regions that i was implemented. We normalize these values so that $\gamma_i = 1$ for $i = \text{“No Measure”}$. Note that

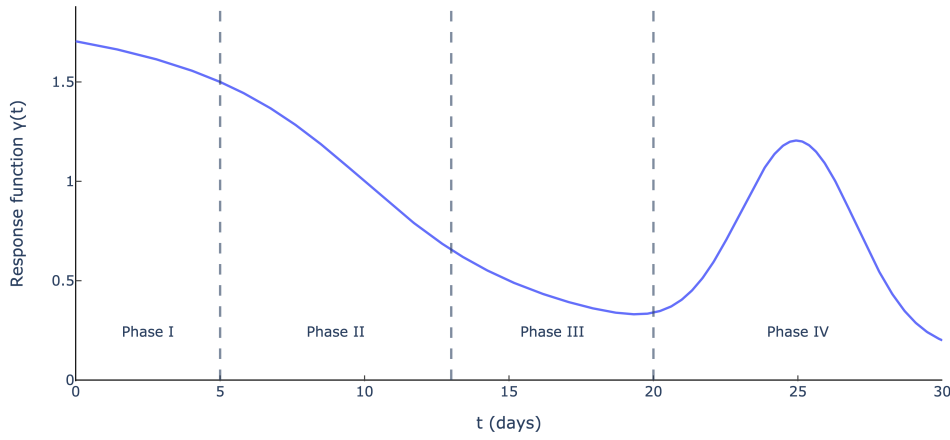


Fig. 2: Governmental and societal response function $\gamma(t)$ ($\kappa = 5$, $t_{\text{int}} = 10$, $c = 1$, $t_{\text{jump}} = 25$ and $\sigma = 2$).

we are not using these correction values in our model directly but we use these to calculate the region specific $\gamma_{R,i}$ as explained below, which means implementing no NPI can also have a correction factor not equal to 1 for a region.

Then, for any region R , we calculate $\gamma_{R,i_{obs}}$ for every potential NPI $i_{obs} \in \mathcal{I}$ that was implemented in the region by taking the average observed $\gamma_R(t)$ over all days that i_{obs} was implemented in region R . For a NPI $i_{uobs} \in \mathcal{I}$ that were not historically implemented in region R , we perform a linear regression between the global and region-specific reduction factors ($\gamma^{i_{obs}}$, $\gamma_{R,i_{obs}}$), and utilize the imputed value as the region-specific reduction factor $\gamma_{R,i_{uobs}}$, as shown in Figure 3.

Then, for a hypothetical policy $\mathbf{P} = (\mathbf{I}, \mathbf{T})$, we define $\gamma_R(t)$ as a piecewise constant function of the region-specific reduction factors:

$$\gamma_R(t) = \begin{cases} \gamma_{R,i_0} & t_0 \leq t < t_1 \\ \gamma_{R,i_1} & t_1 \leq t < t_2 \\ \vdots & \vdots \\ \gamma_{R,i_{k-1}} & t_{k-1} \leq t < t_k \end{cases} \quad (4)$$

Intuitively, we are assuming that each NPI has a region-specific constant reduction on the infection rate during its duration of application. Thus, by changing the policy \mathbf{P} , the evolution of the pandemic \mathbf{E} would be different.

2.2 Humanitarian Cost Models

The first major category of cost during the pandemic is the humanitarian cost. This includes not just the phys-

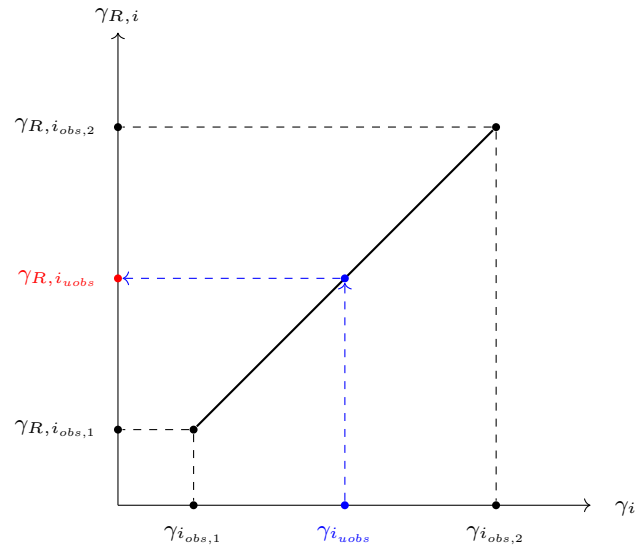


Fig. 3: A linear interpolation procedure to impute the impact of policies on the infection rate $\gamma_{R,i_{uobs}}$ that were not implemented in region R , using the global estimated impact γ_i .

ical health component of hospitalization and deaths in the COVID-19 pandemic, but also the impact on mental health. The NPIs induce isolation and confinement, leading to increased mental illnesses, while healthcare workers on the COVID-19 front-line experience PTSD (Liu et al. 2020a, Carmassi et al. 2020). We develop models for these components of humanitarian cost below.

Cost of COVID-19 Deaths

We calculate the cost of COVID-19 deaths by considering the total quality-adjusted life years (QALYs) lost due to the premature mortality. This allows us to adjust for the skew in COVID-19 mortality that is predominantly concentrated in the elder age group. Specifically, we assume that each individual of age u who died from COVID-19 would have otherwise on average lived for $l(u)$ years, where $l(u)$ is the expected remaining life expectancy at age u for the population in the region under consideration (we omit the dependence on the region in the notation here for simplicity). Then, we denote the Probability Density Function (PDF) of age in COVID-19 deaths in that region as $f(u)$. Using $f(u)$ and $l(u)$, we can calculate the expected QALY lost for each COVID-19 death as:

$$\int_0^U l(u)f(u) du, \quad (5)$$

where U is some finite maximum age. Then, we calculate the total cost of QALYs lost using the total number of deaths in the epidemic E_D and the unit QALY cost c_{QALY} :

$$c_D = c_{QALY} \times E_D \times \int_0^U l(u)f(u) du \quad (6)$$

Cost of COVID-19 Hospitalizations

Our calculation of the cost of COVID-19 hospitalizations separates into three categories: general hospitalizations, Intensive Care Unit (ICU) hospitalizations, and ventilated hospitalizations. This separation is natural due to the large differences in both the length and cost of treatment across the three categories, of which the DELPHI epidemiological model takes into account. Therefore, we can extract the total number of hospitalization-days in each category from the DELPHI simulated pandemic \mathbf{E} as E_H, E_I, E_V respectively. Then, denoting the daily treatment cost in each category as c_H^D, c_I^D, c_V^D , the cost of COVID-19 hospitalizations can be written as:

$$c_H = c_H^D E_H + c_I^D E_I + c_V^D E_V \quad (7)$$

Cost of Mental Illnesses

For mental illnesses, we focus on the effects of the pandemic and policies on post-traumatic stress disorder (PTSD) and depression, highlighted by multiple studies as the leading mental health issues arising in the pandemic (e.g. Pfefferbaum and North 2020, Usher et al. 2020, Zhong et al. 2021). Specifically, there has been

a sharp increase in PTSD among healthcare workers and hospitalized COVID-19 patients, while the general population experiences a significant increase in rate of clinical depression due to isolation caused by containment policies (Liu et al. 2020a, Carmassi et al. 2020). We would consider both these effects in our calculations. Specifically, we write N for the total population in the region, and N_H as the total number of health workers exposed to COVID-19.

To calculate the cost of depression, we make a few practical assumptions. First, we assume that the increase in clinical depression is only significant if the current NPI implemented is in the set of "severe NPIs", $\mathcal{I}_S \subset \mathcal{I}$, such as lockdown. Then, denote the increase in prevalence of clinical depression under severe NPIs in the general population as Δr_{Dep} and the total general population as N . Then, if we write the daily cost of depression as c_{Dep} , then the total cost of depression can be written as:

$$c_{Dep} \times N \Delta r_{Dep} \times \sum_{l=1}^k (t_l - t_{l-1}) \mathbf{1}\{i_l \in \mathcal{I}_S\} \quad (8)$$

Compared to depression induced by the containment policies, PTSD due to either COVID-19 hospitalization or working closely with severe COVID-19 patients can be more persistent (Carmassi et al. 2020). We assume that PTSD due to effects of COVID-19 continue for T_{PTSD} days. We denote the increase in prevalence of PTSD among the susceptible population as Δr_{PTSD} . Then the total cost of PTSD can be written as:

$$c_{PTSD} \times (N_H + E_H + E_V + E_I) \Delta r_{PTSD} \times T_{PTSD} \quad (9)$$

Therefore, the total cost of mental illnesses is:

$$c_M = c_{Dep} \times N \Delta r_{Dep} \times \sum_{l=1}^k (t_l - t_{l-1}) \mathbf{1}\{i_{l-1} \in \mathcal{I}_S\} + c_{PTSD} \times (N_H + E_H + E_V + E_I) \Delta r_{PTSD} \times T_{PTSD} \quad (10)$$

2.3 Economic Cost Models

Beyond the humanitarian impact, the COVID-19 pandemic created an outsized shock to the economy. The effect of the pandemic, and the NPIs aimed to slow the spread created large economic consequences that goes beyond the direct GDP impact. In particular, the reduced output triggered massive unemployment, which carries significant costs on its own. Therefore, in this category, we would consider both the direct costs of the pandemic on output, and the indirect costs of unemployment.

GDP Costs

The COVID-19 pandemic affects the GDP in at least two important ways. The first is the direct output loss due to sick workers for their duration of illness. Note that the long-term output loss due to deaths of individuals have already been considered in the costs of COVID-19 deaths, and thus we would only focus on the short-term output loss due to recovered COVID-19 patients. Denote the average length (in days) of COVID-19 sickness in the region as T_S , and the number of yearly working days as T_W . Then we assume that the total number of people who were sick, E_S , is representative of the entire workforce, which has size N_W . The total output loss due to sick workers is thus the appropriate portion of the entire yearly GDP, GDP_Y :

$$GDP_Y \times \frac{E_S}{N_W} \times \frac{T_S}{T_W} \quad (11)$$

The second important mechanism in which the COVID-19 pandemic affects output is through the government policy P . Concretely, we need to estimate a function $\Delta Y_R(i)$ which outputs the impact on the annual GDP for region R for any NPI $i \in \mathcal{I}$. We do so by breaking down GDP of region R into private consumption (C), investment (I), government expenditures (G), and net exports (NX):

$$GDP_R = C_R + I_R + G_R + NX_R$$

Then, we first establish the counterfactuals for each of the 4 constituents of annual GDP if the pandemic did not happen: $C_{R,0}, I_{R,0}, G_{R,0}, NX_{R,0}$. Then for a NPI $i_{obs} \in \mathcal{I}$ that was implemented in region R , we calculate $\Delta Y_R(i)$ as:

$$\Delta Y_R(i_{obs}) = (\bar{C}_{R,i_{obs}} - C_{R,0}) + (\bar{I}_{R,i_{obs}} - I_{R,0}),$$

where $\bar{C}_{R,i_{obs}}$ is the average annual private consumption over all periods during the pandemic when NPI i_{obs} was implemented, and similar for $\bar{I}_{R,i_{obs}}$. Note that we are ignoring the GDP change due to changes in government expenditure and net exports. We ignore changes in G to avoid the confounding effect due to government stimulus policies in the pandemic (which would not have likely been enacted if the pandemic had not occurred). We further ignore any fluctuations in NX as net exports are primarily affected by international policies, and therefore should not be counted towards the effect of i as applied within the region.

For NPI $i_{uobs} \in \mathcal{I}$ that were not historically implemented in region R , we estimate $\Delta Y_R(i_{uobs})$ by linear interpolation between $\gamma_{i_{obs}}$ and $\Delta Y_R(i_{obs})$ to impute $\Delta Y_R(i_{uobs})$, similar to the procedure illustrated on Figure 3.

With $\Delta Y_R(i)$, we can calculate the total output loss due to government policies as:

$$\sum_{l=1}^k \frac{(t_l - t_{l-1})}{365} \Delta Y_R(i_{l-1}) \quad (12)$$

Therefore, the total GDP costs can be calculated as:

$$c_Y = GDP_Y \times \frac{E_S T_S}{N_W T_W} + \sum_{l=1}^k \frac{(t_l - t_{l-1})}{365} \Delta Y_R(i_{l-1}) \quad (13)$$

Unemployment Costs

Due to government-issued NPIs, many industries were forced to ground to a halt or severely reduce its capacity to produce, driving massive unemployment. In this model, we would calculate the *indirect* costs of unemployment beyond the direct loss of GDP as included in the model for GDP costs. Specifically, this refers to the costs of reduced well-being (physical and psychological) due to loss of work. We denote the yearly indirect cost of unemployment as c_U^Y .

Then similar to the GDP costs, we would estimate the function $\Delta U_R(i)$ that measures the impact on unemployment rate for any NPI $i \in \mathcal{I}$. First, we establish a pre-pandemic unemployment rate $U_{R,0}$ by averaging the seasonally-adjusted unemployment rate in region R 6 months prior to the pandemic. Then, for an observed NPI $i_{obs} \in \mathcal{I}$, we calculate $\Delta U_R(i_{obs})$ as the average gain in unemployment rate over U_0 across all months where i_{obs} was implemented. For an unobserved NPI $i_{uobs} \in \mathcal{I}$ in region R , we again utilize linear interpolation with γ_i to impute $\Delta U_R(i_{uobs})$, similar to the procedure illustrated on Figure 3. Then the total cost of unemployment can be calculated as:

$$c_U = c_U^Y \times \sum_{l=1}^k \frac{(t_l - t_{l-1})}{365} \Delta U_R(i_{l-1}) \times N_W \quad (14)$$

3 Analyzing the Governmental Response in the First Wave of the COVID-19 Pandemic

Using the THEMIS model, we now proceed to analyze the governmental response during the COVID-19 pandemic. As a demonstration, we focus on the first wave as it spread around the world ($t_0 \geq 2020.03.15$, $t_k \leq 2020.06.15$). We aim to understand the costs of the pandemic induced by the actual policy and compare to alternative strategies to understand how different countries could have better responded to the pandemic.

3.1 Data and Experimental Setup

During the first wave of the pandemic, there was still much unknown about COVID-19. Although the Wuhan outbreak proved COVID-19's capability to transmit between humans, key characteristics such as symptoms, mode of transmission, and mortality, were still being heavily debated in the scientific community. Therefore, most countries around the world focused on NPIs that primarily affected population mobility, including restrictions on travel, work, school, or stay-at-home/lockdown orders.

With such context, in the THEMIS model simulation, we would limit the set of potential NPIs \mathcal{I} to only mobility restrictions that were actually implemented around the world during the very early stages of the first wave (2020.03-2020.04). This ensures that our comparison is realistic and we do not propose alternative strategies that rely on information unavailable during the early stages of the pandemic.

We collected the mobility restriction NPIs deployed by 167 countries and regions around the world during March and April of 2020, and categorized the NPIs based on whether they restrict mass gatherings, schools, travel and work activities. We group travel restrictions and work restrictions together due to their tendency to be implemented simultaneously. The set \mathcal{I} includes six strategies, ranked from least to most severe: (1) *No measure*; (2) *Restrict mass gatherings only*; (3) *Restrict mass gatherings, travel and work*; (4) *Restrict mass gatherings and school*; (5) *Restrict mass gatherings, schools, travel and work*; and (6) *Stay-at-Home/Lockdown*. We consider the last two NPIs as "severe NPIs" (\mathcal{I}_s), incurring costs due to mental illnesses. We specify that each NPI would last for one month, and thus throughout the period of consideration [2020.03.15, 2020.06.15] each policy consists of three different NPIs. We consider all 6^3 combinations of NPIs as valid policies \mathbf{P} . For simplicity, we would refer to policies by the numerical numbering of the NPIs below - a 6-6-6 policy thus represents a policy that enforced lockdowns for 3 months.

To demonstrate the wide applicability of THEMIS, we apply it to a diverse selection of countries around the world: Germany, United States, Singapore, Spain and Brazil. To ensure the greatest accuracy in modeling the alternative strategies, we take the region-specific epidemiological parameters from the DELPHI model trained at the end of the first wave (2020.07.01), and the region-specific reduction coefficients $\gamma_{R,i}$ are estimated using the process detailed in Section 2.1. For the region-specific cost parameters, we take the most recent available data, and apply an appropriate infla-

tion correction if necessary. The full table is included in Appendix B.

3.2 Results and Discussion

In Figure 4, we present the results of the simulation of all valid policies \mathbf{P} for the countries specified above. We graph the resultant cost of such policy along both the humanitarian dimension (including mortality, hospitalization and mental illnesses' costs), and the economic dimension (including GDP and unemployment). The cost of the actual implemented policy is denoted in blue. We immediately observe that the different regions have drastically dissimilar tradeoff curves, which highlight that a policy suitable for a certain area may very well be suboptimal for another. This is a reflection of the significant differences in cultural and governmental structure and capabilities across the different regions analyzed here.

However, despite the immense differences, there are still some important general trends that we can draw from these graphs. First, we see that the incurred humanitarian cost varies logarithmically while the economic cost roughly stays on the same order of magnitude. This is a reflection of the exponential nature of a pandemic - NPIs insufficient to control the spread of COVID-19 carry exponentially more humanitarian cost than those that do. We empirically observe that policies with the highest humanitarian cost most often are policies that assume a very relaxed measure during the start of a pandemic (e.g. Restrict Mass Gatherings only), regardless of the policies later in the pandemic. This demonstrates the outsized importance of policy timing in regards to controlling the pandemic. In contrast, most policies seem to incur between 10 – 30% of the GDP of that region within the 3-month period.

Therefore, the "efficient frontier" of the policies in terms of economic and humanitarian costs in instituting NPIs is very flat: An exponential decrease in humanitarian cost only requires a small increase in economic costs. For example, for Germany, compared with the 1-1-1 policy, the 6-6-6 policy (that institutes 3 months of lockdown) reduces humanitarian costs by over 1 Trillion Euros with only an increase in economic costs of less than 70 Billion. We can also compare the efficient frontier with the actual policy implemented in the regions, demonstrated by the blue dots in Figure 4, to understand how different policymakers valued the tradeoffs differently. In Germany, we see that the actual policy implemented is very close to the minimum humanitarian cost achievable, while the economic costs are higher. This suggests that the German government implemented a policy that highly valued a reduction in

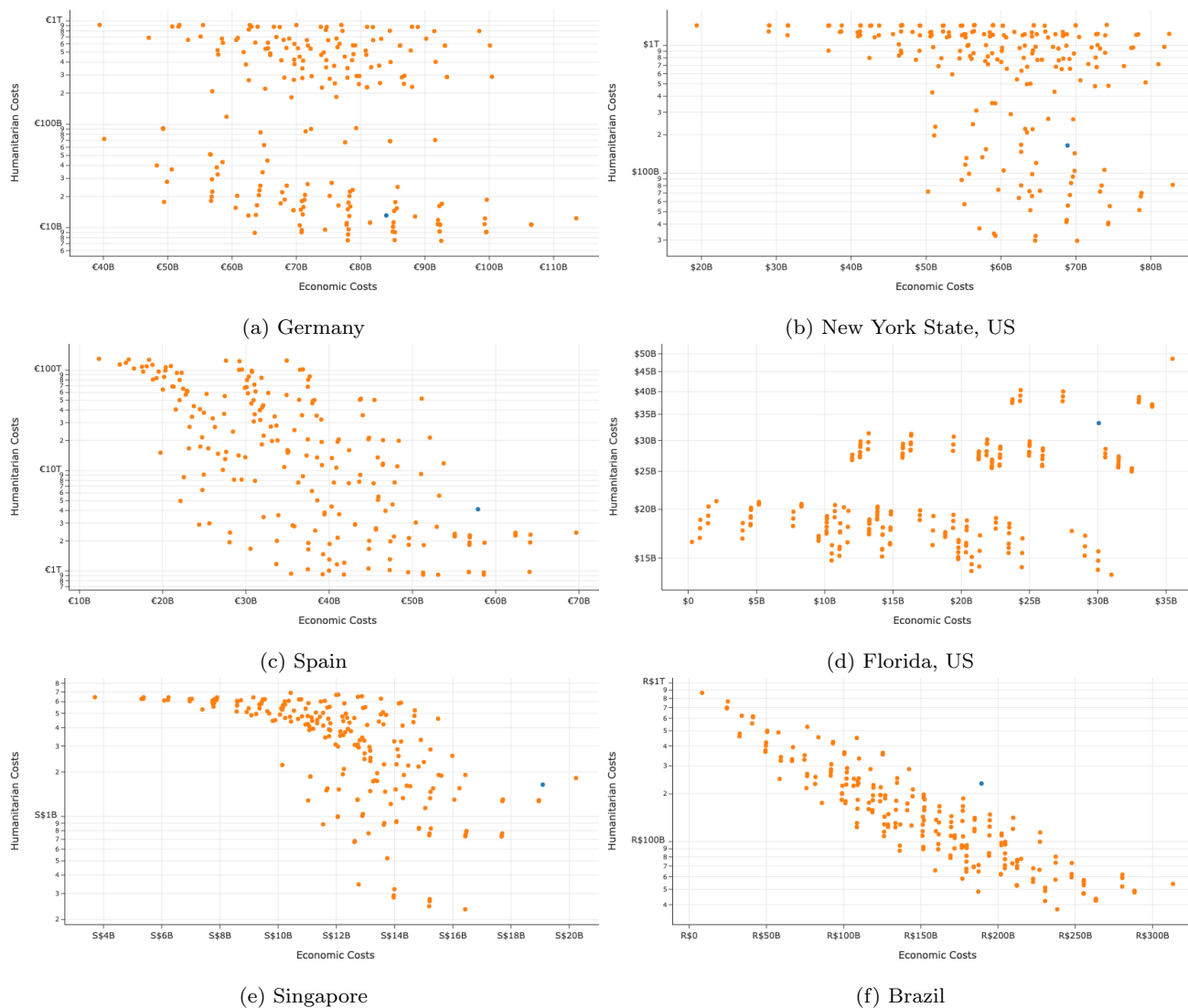


Fig. 4: Tradeoff of Humanitarian and Economic Costs for various governmental policies P starting on March 15th and continuing for 3 months. Blue indicates the cost of the actual policy implemented over such period.

humanitarian cost. We also note that the actual policy is relatively close to the efficient frontier, suggesting that the German government had implemented a very successful policy in combating the first wave of the COVID-19 pandemic. In contrast, the actual policy for New York is quite far away from the efficient frontier, incurring a significant economic cost yet still registering a high humanitarian cost. The optimal policy for New York could have saved 120 billion dollars in estimated humanitarian cost while *also* saving 4 billion dollars in estimated economic cost.

However, the presence of an efficient frontier that is heavily biased towards reducing humanitarian costs does not mean that a more severe NPI is always better. In fact, across all countries tested, the most severe policy, 6-6-6, is never the optimal policy in terms of

achieving minimum costs in the sum of the two dimensions.

The Figure 5 shows 20 minimum overall cost policies for all regions and the breakdown of all the costs. It shows how the share of all cost components for the optimal policies of different regions are so different. For example, for Germany, the optimal policies have very low *Loss of Life Costs* (about €10 billion) but higher share of *Economic Costs* (about €60 billion). On the other hand, for Spain, even with a more severe policy of 5-5-3 the *Loss of Life Costs* are the dominant costs at around €920 billion out of €960 billion, which justifies taking those more severe policy measures for Spain.

For New York State, Spain, and Brazil, the optimal policy is to have a strong initial response, followed by slow gradual reopening can avoid the vast majority

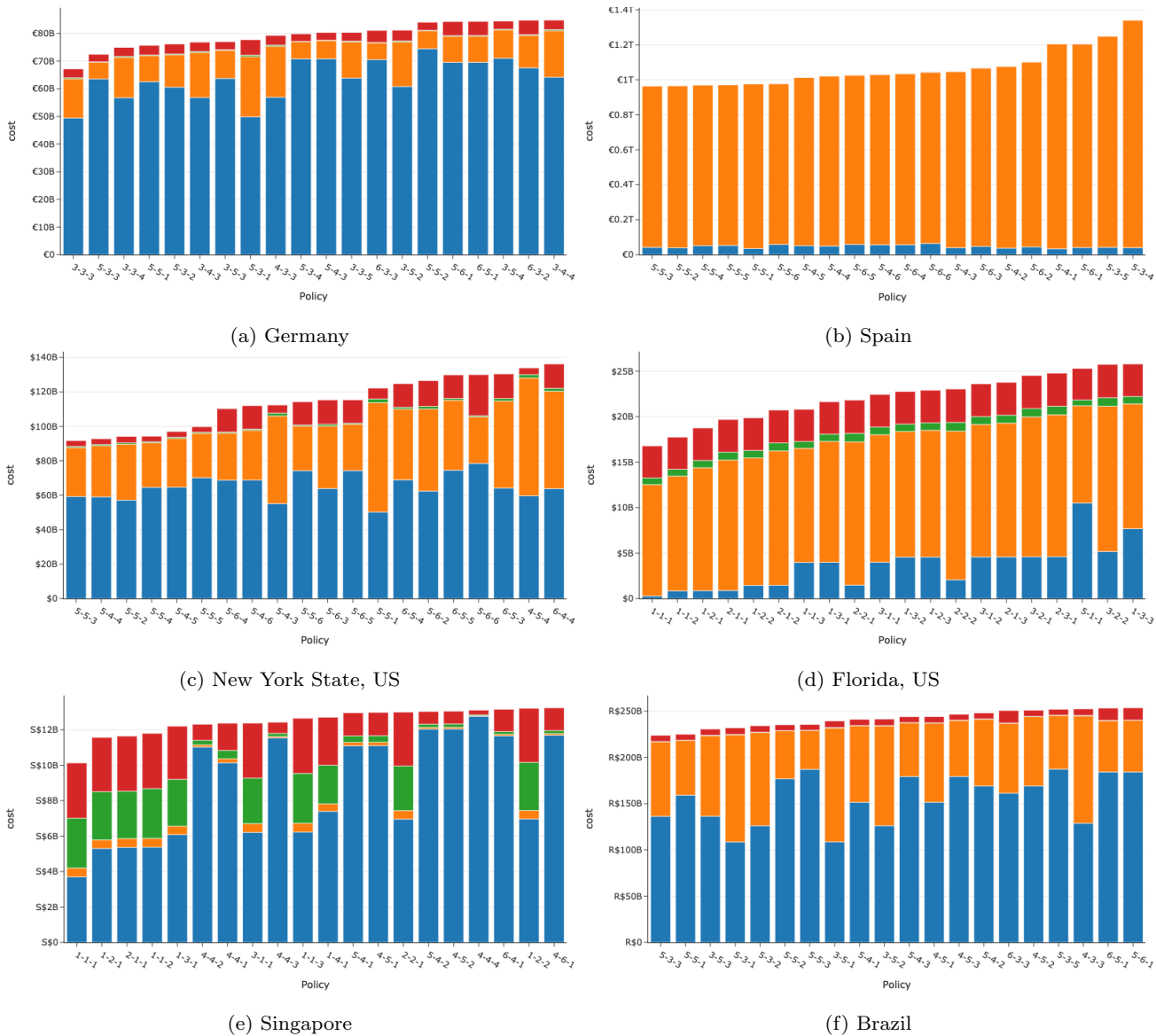


Fig. 5: The 20 minimum total cost policies for different regions, starting on March 15th and continuing for 3 months. The red bar is mental health costs, the orange bar is loss of life costs, the green bar is hospitalization costs, while the blue bar is economic costs.

of humanitarian costs while also protecting the economy. In contrast, in Florida and Singapore, the most optimal policy is to institute no measures for 3 months (1-1-1). This is because in both regions, the model believes that additional restrictions would bring little benefit. In Florida, the model estimates that the pandemic is already so widespread that additional restrictions, leading to large economic costs, would not save many additional lives. In Singapore, the model predicts that there is not enough local transmission to sustain an epidemic even if no restrictions were instituted. This again highlights the critical importance of timing for these government actions.

Furthermore, we observe that regions with high GDP per capita (US, Singapore and Germany) have different behavior with regions with lower GDP per capita (Spain and Brazil). For regions with high GDP per capita, we note in Figure 4 that generally there is a "twin peak" structure - the policies with the highest economic costs tend to occur both at those with the least humanitarian costs, but also those with the highest humanitarian costs. The peak at the minimum humanitarian costs are a result from policies that continually apply the most severe NPIs, culminating in a large reduction in societal output. The peak at the maximum humanitarian costs are due to an uncontrolled

pandemic reducing worker availability across the society, and thus GDP.

In contrast, for Spain and Brazil, high humanitarian costs does not mean high economic costs (due to reduced worker availability). This is because even if the government implements a relaxed COVID-19 policy, the effect of reduced output caused by COVID-19 infections is less significant in areas with lower GDP per capita. This indicates that developing countries might have more economic incentive to institute a more relaxed pandemic policy.

4 Limitations

Although the THEMIS model uncovered important actionable insights for policymakers, there are some innate limitations. First, due to the data-driven nature of estimating the effect of NPI, the THEMIS framework is unable to analyze any alternative NPI i that has not been historically implemented. This in turn restricts the potential set of alternative policies that we can consider.

Another important limitation of the THEMIS model relates to confounding in estimating the policy effect on the pandemic. Due to the observational nature of data, many societal variables change concurrently as NPIs are implemented, creating potential confounding effects. For example, voluntary behavior changes during the pandemic could inflate the perceived effect of NPIs on reducing infection rates. It is therefore important to attempt to isolate the effect of NPIs so that the counterfactual estimates are reliable. The THEMIS model, in its construction, attempts to minimize confounding whenever possible. For example, the DELPHI model contains many epidemiological parameters in attempt to isolate the policy-driven effect on the pandemic. The GDP cost model removes the change in GDP due to governmental expenditures and net exports as these are confounded by additional policies not within the scope of this paper. However, despite these measures, it is likely that residual confounding remains. Therefore, the conclusions drawn in this paper should be treated as a first step to attempt to create a holistic cost-benefit analysis of various policies. Further research is needed to develop a greater understanding of how the NPIs and other levers work together in affecting key dimensions of a society during a pandemic.

The modeling of various models within THEMIS also carries limitations of its own. The DELPHI model, while accurate, is still a simplification of the complex real-world dynamics of a pandemic. In particular, DELPHI carries the same limitations as other SEIR-based models in requiring a sufficiently large population and

epidemic size for the large-scale population dynamics of compartmental models to be accurate. (Holmdahl and Buckee 2020) This means that the THEMIS model might be unsuited for application to granular regions or to regions where the epidemic is not yet significant. Furthermore, in many of the cost models, we have assumed the effects are linear and additive, when in reality non-linearities are often present. These assumptions were necessary to create a tractable model that could be supported by available data.

5 Conclusion

In this paper, we presented a system dynamics framework, THEMIS, that allows us to compare both the humanitarian and the economic effects of different NPIs on the society during a pandemic. THEMIS builds upon a state-of-the-art epidemiological model, DELPHI, and constructs data-driven cost models to analyze the impact of NPIs across mortality, hospitalizations, mental illnesses, GDP, and unemployment. We applied THEMIS to a wide variety of countries; the results demonstrate that early application of severe NPIs for a short period of time generally minimized total societal cost but the situation differs widely between countries. In particular, we note that developing countries face a relatively higher cost in implementing severe NPIs. The THEMIS framework is open-source and can be easily extended to other countries/regions around the world.

References

- Arons MM, Hatfield KM, Reddy SC, Kimball A, James A, Jacobs JR, Taylor J, Spicer K, Bardossy AC, Oakley LP, et al. (2020) Presymptomatic sars-cov-2 infections and transmission in a skilled nursing facility. *New England Journal of Medicine*
- Bäuerle A, Steinbach J, Schweda A, Beckord J, Hetkamp M, Weismüller B, Kohler H, Musche V, Dörrie N, Teufel M, Skoda EM (2020) Mental health burden of the covid-19 outbreak in germany: Predictors of mental health impairment. *Journal of Primary Care & Community Health* 11:2150132720953682, DOI 10.1177/2150132720953682, URL <https://doi.org/10.1177/2150132720953682>, PMID: 32865107, <https://doi.org/10.1177/2150132720953682>
- BCBS (2021) Infographic: Covid-19 patients with high-risk conditions 3x more likely to need the icu. URL <https://www.bcbs.com/coronavirus-updates/stories/infographic-covid-19-patients-high-risk-conditions-3x-more-likely-need-the-icu>
- Bertsimas D, Bandi H, Boussioux L, Cory-Wright R, Delarue A, Dikalakis V, Gilmour S, Graham J, Kim A, Lahlou Kitane D, Lin Z, Lukin G, Li M, Mingardi L, Na L, Orfanoudaki A, Papalexopoulos T, Paskov I, Pauphilet J, Skali Lami O, Sobiesk M, Stellato B,

- Carballo K, Wang Y, Wiberg H, Zeng C (2020a) An aggregated dataset of clinical outcomes for covid-19 patients. URL http://www.covidanalytics.io/dataset_documentation
- Bertsimas D, Boussioux L, Wright RC, Delarue A, Digalakis Jr V, Jacquillat A, Kitane DL, Lukin G, Li ML, Mingardi L, et al. (2020b) From predictions to prescriptions: A data-driven response to COVID-19. arXiv preprint arXiv:200616509
- Bittner MI, Donnelly M, Van Zanten AR, Andersen JS, Guidet B, Trujillano Cabello JJ, Gardiner S, Fitzpatrick G, Winter B, Joannidis M, et al. (2013) How is intensive care reimbursed? a review of eight european countries. *Annals of intensive care* 3(1):1–9
- Blanchflower DG, Oswald AJ (2004) Well-being over time in britain and the usa. *Journal of public economics* 88(7-8):1359–1386
- Bothe T, Jacob J, Kröger C, Walker J (2020a) How expensive are post-traumatic stress disorders? estimating incremental health care and economic costs on anonymised claims data. *The European Journal of Health Economics* 21(6):917–930
- Bothe T, Jacob J, Kröger C, Walker J (2020b) How expensive are post-traumatic stress disorders? estimating incremental health care and economic costs on anonymised claims data. *The European journal of health economics* : HEPAC : health economics in prevention and care 21
- Broughel J, Kotrous M (2021) The benefits of coronavirus suppression: A cost-benefit analysis of the response to the first wave of covid-19 in the united states. *PLoS one* 16(6):e0252729
- Bureau of Economic Analysis (2020) Gross domestic product by state. URL <https://www.bea.gov/data/gdp/gdp-state>
- Bureau of Labor Statistics (2020) Labor force statistics including the national unemployment rate. URL <https://www.bls.gov/data/#unemployment>
- Burri A, Maercker A (2014) Differences in prevalence rates of ptsd in various european countries explained by war exposure, other trauma and cultural value orientation. *BMC Research Notes* 7(1):1–11
- Carmassi C, Foghi C, Dell’Oste V, Cordone A, Bertelloni CA, Bui E, Dell’Osso L (2020) Ptsd symptoms in healthcare workers facing the three coronavirus outbreaks: What can we expect after the covid-19 pandemic. *Psychiatry research* p 113312
- CDC (2018) The healthcare workforce in new york - trends in the supply of and demand for health workers. URL https://www.chwsny.org/wp-content/uploads/2018/04/Full_CHWS_NY_Tracking_Report-2018b-1.pdf
- CDC (2021) Mental health symptoms among 26,174 state, tribal, local, and territorial public health workers during the past 2 weeks, by demographic characteristics and work factors — united states, march–april 2021. URL https://www.cdc.gov/mmwr/volumes/70/wr/mm7048a6.htm?s_cid=mm7048a6_w#T1_down
- Chen WH, Hou F (2019) The effect of unemployment on life satisfaction: a cross-national comparison between canada, germany, the united kingdom and the united states. *Applied Research in Quality of Life* 14(4):1035–1058
- DoH F (2021a) Covid-19: Summary for florida. URL http://ww11.doh.state.fl.us/comm/_partners/covid19_report_archive/cases-monitoring-and-pui-information/county-report/county_reports_latest.pdf
- DoH NY (2021b) Department of health covid-19 tracker. URL <https://coronavirus.health.ny.gov/covid-19-testing-tracker?%3Aembed=yes&%3Atoolbar=no&%3Atabs=n>
- Ettman CK, Abdalla SM, Cohen GH, Sampson L, Vivier PM, Galea S (2020) Prevalence of Depression Symptoms in US Adults Before and During the COVID-19 Pandemic. *JAMA Network Open* 3(9):e2019686–e2019686, DOI 10.1001/jamanetworkopen.2020.19686, URL <https://doi.org/10.1001/jamanetworkopen.2020.19686>, https://jamanetwork.com/journals/jamanetworkopen/articlepdf/2770146/ettman_2020_oi_200687_1602708692.31352.pdf
- Federal Statistical Office, Wiesbaden, Germany (2020) Health personnel: Germany, years, facilities, sex, occupations in healthcare. URL <https://www-genesis.destatis.de/genesis/online?sequenz=tabelleErgebnis&selectionname=23621-0002&language=en#abreadcrumb>
- Feng M (2020) The true cost of healthcare in singapore that every singaporean should be aware of. URL <https://blog.seedly.sg/the-true-cost-of-healthcare-in-singapore-that-every-singaporean-should-be-aware-of/>
- Feter N, Caputo E, Doring I, Leite J, Cassuriaga J, Reichert F, da Silva M, Coombes J, Rombaldi A (2021) Sharp increase in depression and anxiety among brazilian adults during the covid-19 pandemic: findings from the pampa cohort. *Public Health* 190:101–107, DOI <https://doi.org/10.1016/j.puhe.2020.11.013>, URL <https://www.sciencedirect.com/science/article/pii/S0033350620305011>
- FIOCRUCZ (2021) Observatório covid-19. URL https://portal.fiocruz.br/sites/portal.fiocruz.br/files/documentos/boletim_covid_2021-semanas_10-11-red.pdf
- Florida, Office of Economic and Demographic Research (2015) Florida population by age group. URL http://edr.state.fl.us/content/population-demographics/data/pop_census_day.pdf
- González-Sanguino C, Ausín B, Castellanos M, Saiz J, López-Gómez A, Ugidos C, M M (2020) Mental health consequences during the initial stage of the 2020 coronavirus pandemic (covid-19) in spain. *Brain Behav Immun* DOI 10.1016/j.bbi.2020.05.040.
- Gorjón L, de la Rica S, Villar A (2018) The social cost of unemployment: the spanish labour market from a social welfare approach. Available at SSRN 3261709
- Goularte JF, Serafim SD, Colombo R, Hogg B, Caldieraro MA, Rosa AR (2021) Covid-19 and mental health in brazil: Psychiatric symptoms in the general population. *Journal of Psychiatric Research* 132:32–37, DOI <https://doi.org/10.1016/j.jpsychires.2020.09.021>, URL <https://www.sciencedirect.com/science/article/pii/S0022395620309870>
- Greenberg PE, Fournier AA, Sisitsky T, Pike CT, Kessler RC (2015) The economic burden of adults with major depressive disorder in the united states (2005 and 2010). *The Journal of clinical psychiatry* 76(2):5356
- Grein J, Ohmagari N, Shin D, Diaz G, Asperges E, Castagna A, Feldt T, Green G, Green ML, Lescure FX, et al.

- (2020) Compassionate use of remdesivir for patients with severe covid-19. *New England Journal of Medicine*
- Gros D, et al. (2020) The great lockdown: was it worth it. *CEPS Policy Insights* 11
- Health Hub (2020) An overview of singapore's healthcare workforce statistics from 2015 to 2017. URL <https://www.healthhub.sg/a-z/health-statistics/12/health-manpower>
- Ho R, Mak K, Chua A, Ho C, Mak A (2013) The effect of severity of depressive disorder on economic burden in a university hospital in singapore. *Expert Rev Pharmacoecon Outcomes Res*
- Holmdahl I, Buckee C (2020) Wrong but useful — what covid-19 epidemiologic models can and cannot tell us. *New England Journal of Medicine* 383(4):303–305, DOI 10.1056/NEJMp2016822
- Hoon S, Lim KM (2008) The value of statistical life in singapore. *NTU Digital Repository*
- Hu Z, Song C, Xu C, Jin G, Chen Y, Xu X, Ma H, Chen W, Lin Y, Zheng Y, et al. (2020) Clinical characteristics of 24 asymptomatic infections with covid-19 screened among close contacts in nanjing, china. *Science China Life Sciences* pp 1–6
- Hui DS, Azhar EI, Madani TA, Ntoumi F, Kock R, Dar O, Ippolito G, Mchugh TD, Memish ZA, Drosten C, et al. (2020) The continuing 2019-nCoV epidemic threat of novel coronaviruses to global health—The latest 2019 novel coronavirus outbreak in Wuhan, China. *International Journal of Infectious Diseases* 91:264–266
- IBGE (2020) Complete life tables. URL <https://www.ibge.gov.br/en/statistics/social/population/17117-complete-life-tables.html?#t=resultados>
- IBGE (2020) Unemployment rate
- iFHP (2021) Ifhp comparative price report
- IMF (2020) Gross domestic product and components selected indicators. URL <https://data.imf.org/regular.aspx?key=61545852>
- INE (2021) Tablas de mortalidad por año, provincia, sexo, edad y funciones. URL <https://ine.es/jaxiT3/Datos.htm?t=27155>
- INED (2021) Spain. URL <https://dc-covid.site.ined.fr/en/data/spain/>
- Institut RK (2021) “robert koch-institut: Covid-19-dashboard
- Kaier K, Heister T, Wolff J, Wolkewitz M (2020) Mechanical ventilation and the daily cost of icu care. *BMC health services research* 20(1):1–5
- Kayano T, Nishiura H (2020) A comparison of case fatality risk of covid-19 between singapore and japan
- Kissler SM, Tedijanto C, Goldstein E, Grad YH, Lipsitch M (2020) Projecting the transmission dynamics of SARS-CoV-2 through the postpandemic period. *Science*
- Kluytmans M, Buiting A, Pas S, Bentvelsen R, van den Bijllaardt W, van Oudheusden A, van Rijen M, Verweij J, Koopmans M, Kluytmans J (2020) Sars-cov-2 infection in 86 healthcare workers in two dutch hospitals in march 2020. *medRxiv*
- Krantz SG, Rao ASS (2020) Level of under-reporting including under-diagnosis before the first peak of covid-19 in various countries: Preliminary retrospective results based on wavelets and deterministic modeling. *Infection Control & Hospital Epidemiology* pp 1–8
- Lauer SA, Grantz KH, Bi Q, Jones FK, Zheng Q, Meredith HR, Azman AS, Reich NG, Lessler J (2020) The incubation period of coronavirus disease 2019 (covid-19) from publicly reported confirmed cases: estimation and application. *Annals of internal medicine* 172(9):577–582
- Layard R, Clark A, De Neve JE, Krekel C, Fancourt D, Hey N, O'Donnell G (2020) When to release the lockdown? a wellbeing framework for analysing costs and benefits. *IZA Discussion Paper*
- Lepine BAea (2012) Treatment-resistant depression increases health costs and resource utilization. *Brazilian Journal of Psychiatry* [online]
- Li ML, Tazi Bouardi H, Skali Lami O, Trikalinos TA, Trichakis NK, Bertsimas D (2020) Forecasting COVID-19 and analyzing the effect of government interventions. *medRxiv* URL <https://www.medrxiv.org/content/early/2020/06/24/2020.06.23.20138693>, <https://www.medrxiv.org/content/early/2020/06/24/2020.06.23.20138693.full.pdf>
- Liu CH, Zhang E, Wong GTF, Hyun S, et al. (2020a) Factors associated with depression, anxiety, and ptsd symptomatology during the covid-19 pandemic: Clinical implications for us young adult mental health. *Psychiatry research* 290:113172
- Liu Y, Sun W, Chen L, Wang Y, Zhang L, Yu L (2020b) Clinical characteristics and progression of 2019 novel coronavirus-infected patients concurrent acute respiratory distress syndrome. *medRxiv*
- Mardones C, Riquelme M (2018) Estimation of the value of statistical life in chile and extrapolation to other latin american countries. *Latin American Research Review* 53(4):815–830
- Miles DK, Stedman M, Heald AH (2021) “stay at home, protect the national health service, save lives”: A cost benefit analysis of the lockdown in the united kingdom. *International Journal of Clinical Practice* 75(3):e13674
- Ministry of Manpower (2020) Statistical table: Unemployment
- Monitor I (2020) Covid-19 and the world of work. Updated estimates and analysis
- Moody's (2020) Singapore - economic indicators. URL <https://www.economy.com/singapore/indicators>
- New York, Department of Health (2018) Estimated population by age, sex and region, new york state - 2018. URL https://www.health.ny.gov/statistics/vital_statistics/2018/table01.htm
- Niehus R, Martinez de Salazar Munoz P, Taylor A, Lipsitch M (2020) Quantifying bias of covid-19 prevalence and severity estimates in wuhan, china that depend on reported cases in international travelers. *medRxiv*
- NIMH (2021) Post-traumatic stress disorder (ptsd). URL <https://www.nimh.nih.gov/health/statistics/post-traumatic-stress-disorder-ptsd>
- Nocedal J, Wright S (2006) Numerical optimization. Springer Science & Business Media
- Pfefferbaum B, North CS (2020) Mental health and the covid-19 pandemic. *New England Journal of Medicine* 383(6):510–512
- Robinson LA, Sullivan R, Shogren JF (2021) Do the benefits of covid-19 policies exceed the costs? exploring uncertainties in the age–vsl relationship. *Risk Analysis* 41(5):761–770

- Rowthorn R, Maciejowski J (2020) A cost–benefit analysis of the covid-19 disease. *Oxford Review of Economic Policy* 36(Supplement1):S38–S55
- Santos HLPd, Maciel FBM, Santos Junior GM, Martins PC, Prado NMdBL (2021) Public expenditure on hospitalizations for covid-19 treatment in 2020, in brazil. *Revista de Saúde Pública* 55:52
- Schlender M, Schaefer R, Schwarz O (2017) Empirical studies on the economic value of a statistical life year (vsly) in europe: what do they tell us? *Value in Health* 20(9):A666
- Shlomain A, Leshno A, Sklan EH, Leshno M (2021) Modeling social distancing strategies to prevent sars-cov-2 spread in israel: a cost-effectiveness analysis. *Value in Health* 24(5):607–614
- da Silva HC, Furtado da Rosa MM, Berger W, Luz MP, Mendlowicz M, Coutinho ES, Portella CM, Marques PI, Mograbi DC, Figueira I, et al. (2018) Ptsd in mental health outpatient settings: highly prevalent and under-recognized. *Brazilian Journal of Psychiatry* 41:213–217
- Singstat (2020) Complete life tables for singapore resident population 2019-2020. URL <https://www.singstat.gov.sg/-/media/files/publications/population/lifetable19-20.pdf>
- SSA (2021) Actuarial life table. URL <https://www.ssa.gov/oact/STATS/table4c6.html>
- St Louis Fed (2020a) Harmonized unemployment rate: Total: All persons for spain. URL <https://fred.stlouisfed.org/series/LRHUTTTTESM156S>
- St Louis Fed (2020b) Unemployment rate in florida. URL <https://fred.stlouisfed.org/series/FLUR>
- St Louis Fed (2020c) Unemployment rate in new york. URL <https://fred.stlouisfed.org/series/NYUR>
- Statista (2020) Number of healthcare professionals in the spanish national health system (sns) in 2019, by type and autonomous community. URL <https://www.statista.com/statistics/1104285/number-from-professionals-from-the-medicine-in-the-sns-by-kind-y-region-in-spain/>
- Statistisches Bundesamt (2020a) Periodensterbetafeln für deutschland. URL https://www.destatis.de/DE/Themen/Gesellschaft-Umwelt/Bevoelkerung/Sterbefaelle-Lebenserwartung/Publikationen/_publikationen-innen-periodensterbetafel.html
- Statistisches Bundesamt (2020b) Unemployment. URL https://www.destatis.de/EN/Themes/Labour/Labour-Market/Unemployment/_node.html
- Steutde-Schmiedgen S, Stieler L, Erim Y, Morawa E, Geiser F, Beschoner P, Jerg-Bretzke L, Albus C, Hiebel N, Weidner K (2021) Correlates and predictors of ptsd symptoms among health care workers during the covid-19 pandemic: results of the egepan-voice study. *Frontiers in psychiatry* 12:959
- Subramaniam M, Abdin E, Vaingankar J, Shafie S, Chua B, Sambasivam R, Zhang Y, Shahwan S, Chang S, Chua H, Verma S, James L, Kwok K, Heng D, Chong S (2019) Tracking the mental health of a nation: prevalence and correlates of mental disorders in the second singapore mental health study. *Epidemiol Psychiatr Sci*
- Tan BY, Chew NW, Lee GK, Jing M, Goh Y, Yeo LL, Zhang K, Chin HK, Ahmad A, Khan FA, et al. (2020) Psychological impact of the covid-19 pandemic on health care workers in singapore. *Annals of internal medicine* 173(4):317–320
- US Center for Disease Control (2020) COVID-19 Forecasts. <https://www.cdc.gov/coronavirus/2019-ncov/covid-data/forecasting-us.html>
- US Department of Health and Human Services (2018) The u.s. health workforce - state profiles - florida. URL <https://bhwh.hrsa.gov/sites/default/files/bureau-health-workforce/data-research/state-profiles/florida-2018.pdf>
- Usher K, Durkin J, Bhullar N (2020) The covid-19 pandemic and mental health impacts. *International Journal of Mental Health Nursing* 29(3):315
- Vieta E, Alonso J, Pérez-Sola V, Roca M, Hernandez T, Sicras-Mainar A, Sicras-Navarro A, Herrera B, Gabilondo A (2021) Epidemiology and costs of depressive disorder in spain: the epico study. *European Neuropsychopharmacology* 50:93–103, DOI <https://doi.org/10.1016/j.euroneuro.2021.04.022>, URL <https://www.sciencedirect.com/science/article/pii/S0924977X21002182>
- Wang C, Liu L, Hao X, Guo H, Wang Q, Huang J, He N, Yu H, Lin X, Pan A, et al. (2020) Evolving epidemiology and impact of non-pharmaceutical interventions on the outbreak of coronavirus disease 2019 in wuhan, china. *medRxiv*
- World Bank (2020a) Labor force, total - brazil. URL <https://data.worldbank.org/indicator/SL.TLF.TOTL.IN?locations=BR>
- World Bank (2020b) Labor force, total - germany. URL <https://data.worldbank.org/indicator/SL.TLF.TOTL.IN?locations=DE>
- World Bank (2020c) Labor force, total - spain. URL <https://data.worldbank.org/indicator/SL.TLF.TOTL.IN?locations=DE>
- World Bank (2020d) Population ages 0-14 (% of total population) - brazil. URL <https://data.worldbank.org/indicator/SP.POP.0014.T0.ZS?locations=BR>
- World Bank (2020e) Population ages 0-14 (% of total population) - germany. URL <https://data.worldbank.org/indicator/SP.POP.0014.T0.ZS?locations=DE>
- World Bank (2020f) Population ages 0-14 (% of total population) - spain. URL <https://data.worldbank.org/indicator/SP.POP.0014.T0.ZS?locations=ES>
- World Bank (2020g) Population ages 0-14, total - singapore. URL <https://data.worldbank.org/indicator/SP.POP.0014.T0?locations=SG>
- WTTC (2021) Economic impact reports. World Travel and Tourism Council URL <https://wttc.org/Research/Economic-Impact>
- Xiang Y, Sun D, Fan W, Gong X (1997) Generalized simulated annealing algorithm and its application to the thomson model. *Physics Letters A* 233(3):216–220
- Xiong J, Lipsitz O, Nasri F, Lui LM, Gill H, Phan L, Chen-Li D, Jacobucci M, Ho R, Majeed A, McIntyre RS (2020) Impact of covid-19 pandemic on mental health in the general population: A systematic review. *Journal of Affective Disorders* 277:55–64, DOI <https://doi.org/10.1016/j.jad.2020.08.001>, URL <https://www.sciencedirect.com/science/article/pii/S0165032720325891>

Xu H, Huang S, Liu S, Deng J, Jiao B, Ai L, Xiao Y, Yan L, Li S (2020) Evaluation of the clinical characteristics of suspected or confirmed cases of covid-19 during home care with isolation: A new retrospective analysis based on o2o. Available at SSRN 3548746

Young KP, Kolcz DL, O’Sullivan DM, Ferrand J, Fried J, Robinson K (2021) Health care workers’ mental health and quality of life during covid-19: Results from a mid-pandemic, national survey. *Psychiatric Services* 72(2):122–128, DOI 10.1176/appi.ps.202000424, URL <https://doi.org/10.1176/appi.ps.202000424>, PMID: 33267652, <https://doi.org/10.1176/appi.ps.202000424>

Zhao J, Jin H, Li X, Jia J, Zhang C, Zhao H, Ma W, Wang Z, He Y, Lee J, et al. (2021) Disease burden attributable to the first wave of covid-19 in china and the effect of timing on the cost-effectiveness of movement restriction policies. *Value in Health* 24(5):615–624

Zhong B, Huang Y, Liu Q (2021) Mental health toll from the coronavirus: Social media usage reveals wuhan residents’ depression and secondary trauma in the covid-19 outbreak. *Computers in human behavior* 114:106524

A The DELPHI Model

The DELPHI model is a compartment epidemiological model that extends the classical SEIR model into 11 states under the following 8 groups:

- **Susceptible (S)**: People who have not been infected.
- **Exposed (E)**: People currently infected, but not contagious and within the incubation period.
- **Infected (I)**: People currently infected and contagious.
- **Undetected (U_R) & (U_D)**: People infected and self-quarantined due to the effects of the disease, but not confirmed due to lack of testing. Some of these people recover (U_R) and some die (U_D).
- **Detected, Hospitalized (DH_R) & (DH_D)**: People who are infected, confirmed, and hospitalized. Some of these people recover (DH_R) and some die (DH_D).
- **Detected, Quarantine (DQ_R) & (DQ_D)**: People who are infected, confirmed, and home-quarantined rather than hospitalized. Some of these people recover (DQ_R) and some die (DQ_D).
- **Recovered (R)**: People who have recovered from the disease (and assumed to be immune).
- **Deceased (D)**: People who have died from the disease.

In addition to main functional states, we introduce auxiliary states to calculate a few useful quantities: Total Hospitalized (TH), Total Detected deaths (DD) and Total Detected Cases (DT). The full mathematical formulation of the model is as followed:

$$\begin{aligned} \frac{dS}{dt} &= -\tilde{\alpha}\gamma(t)S(t)I(t) \\ \frac{dE}{dt} &= \tilde{\alpha}\gamma(t)S(t)I(t) - \beta E(t) \\ \frac{dI}{dt} &= \beta E(t) - r_d I(t) \\ \frac{dU_R}{dt} &= r_d(1 - \tilde{\mu}(t))(1 - \tilde{p}_d)I(t) - \sigma U_R(t) \\ \frac{dDH_R}{dt} &= r_d(1 - \tilde{\mu}(t))\tilde{p}_d p_h I(t) - \kappa DH_R(t) \\ \frac{dDQ_R}{dt} &= r_d(1 - \tilde{\mu}(t))\tilde{p}_d(1 - p_h)I(t) - \sigma DQ_R(t) \\ \frac{dU_D}{dt} &= r_d \tilde{\mu}(t)(1 - \tilde{p}_d)I(t) - \tilde{\tau} U_D(t) \\ \frac{dDH_D}{dt} &= r_d \tilde{\mu}(t)\tilde{p}_d p_h I(t) - \tilde{\tau} DH_D(t) \\ \frac{dDQ_D}{dt} &= r_d \tilde{\mu}(t)\tilde{p}_d(1 - p_h)I(t) - \tilde{\tau} DQ_D(t) \\ \frac{dTH}{dt} &= r_d \tilde{p}_d p_h I(t) \\ \frac{dDD}{dt} &= \tilde{\tau}(DH_D(t) + DQ_D(t)) \\ \frac{dDT}{dt} &= r_d \tilde{p}_d I(t) \\ \frac{dR}{dt} &= \sigma(U_R(t) + DQ_R(t)) + \kappa DH_R(t) \\ \frac{dD}{dt} &= \tilde{\tau}(U_D(t) + DQ_D(t) + DH_D(t)). \end{aligned}$$

Figure 6 depicts a flow representation of the model, where each arrow represents how individuals can flow between different states. The underlying differential equations are governed by 16 parameters which are shown on the appropriate arrows in Figure 6 and defined below. To limit the amount of data needed to train this model, only the parameters denoted with a tilde are being fitted against historical data for

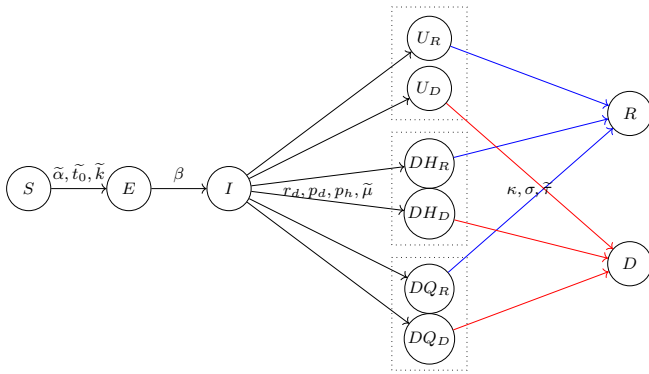


Fig. 6: Flow Diagram of DELPHI.

each area (country/state/province); the others are largely biological parameters that are fixed using available clinical data from a meta-analysis of over 190 papers on COVID-19 available at time of model creation (Bertsimas et al. 2020a). A small selection of references for each parameter is given below.

- $\tilde{\alpha}$ is the baseline infection rate.
- $\gamma(t)$ measures the effect of government response and is defined as:

$$\gamma(t) = 1 + \frac{2}{\pi} \arctan\left(\frac{-(t - \tilde{t}_0)}{\tilde{k}}\right) + \tilde{c} \exp\left(-\frac{(t - \tilde{t}_{\text{jump}})^2}{2\tilde{\sigma}^2}\right),$$

where the parameters \tilde{t}_0 and \tilde{k} capture, respectively, the timing and the strength of the response. The exponential term intends to reflect a resurgence in infections due to relaxation of governmental policy and societal response, where \tilde{c} controls the magnitude of resurgence, \tilde{t}_{jump} the time of the acme of the resurgence, and $\tilde{\sigma}$ the duration of the resurgence phase. The effective infection rate in the model is $\tilde{\alpha}\gamma(t)$, which is time dependent. The $\frac{2}{\pi}$ constant is so that the starting $\gamma(t)$ with $\tilde{c} = 0$ is normalized to the range of $[0, 2]$ with $\gamma(t) = 1$ if $t = t_0$.

- r_d is the rate of detection. This equals to $\frac{\log 2}{T_d}$, where T_d is the median time to detection (fixed to be 2 days), see Wang et al. (2020).
- β is the rate of infection leaving incubation phase. This equals to $\frac{\log 2}{T_\beta}$, where T_β is the median time to leave incubation (fixed at 5 days), see Lauer et al. (2020).
- σ is the rate of recovery of non-hospitalized patients. This equals to $\frac{\log 2}{T_\sigma}$, where T_σ is the median time to recovery of non-hospitalized patients (fixed at 10 days), see Hu et al. (2020), Kluytmans et al. (2020).
- κ is the rate of recovery under hospitalization. This equals to $\frac{\log 2}{T_\kappa}$, where T_κ is the median time to recovery under hospitalization (fixed at 15 days), see Liu et al. (2020b), Grein et al. (2020).
- $\tilde{\tau}$ is the rate of death. This captures the speed at which a dying patient dies, and thus inversely proportional to how long a dying patient stays alive.
- $\tilde{\mu}(t)$ is the case fatality rate, defined as:

$$\tilde{\mu}(t) = (\tilde{\mu}_0 - \mu_{\min}) \left(1 + \frac{2}{\pi} \arctan(-\tilde{r}_m t)\right) + \mu_{\min},$$

Where $\tilde{\mu}_0$ is the initial case fatality rate, μ_{\min} is the minimum case fatality rate and \tilde{r}_m is the decay rate for mortality. This parametric curve describes the natural decay

of case fatality rate as standard of care improves throughout the pandemic. Notice that this quantity measures the percentage of people who die from the disease in a particular region, and is independent from the rate of death. If $r_m < 0$, this function can also capture the effect of an increasing mortality rate.

- p_d is the percentage of infectious cases detected, which is fixed at 20% based on various reports trying to understand the extent of underdetection in countries with earlier outbreaks. Wang et al. (2020), Krantz and Rao (2020), Niehus et al. (2020)
- p_h is the (constant) percentage of detected cases hospitalized, which is set to 15%, see Arons et al. (2020), Xu et al. (2020).

We fit on 11 parameters from the list above ($\tilde{\alpha}, \tilde{\mu}, \tilde{\tau}, \tilde{t}_0, \tilde{k}, \tilde{c}, \tilde{t}_{\text{jump}}, \tilde{\sigma}, \tilde{\mu}_0, \tilde{r}_m$). In addition, we introduce 2 additional parameters k_1, k_2 to account for the unknown initial population in the infected (I) and exposed (E) states. We thus fit 13 parameters per area.

The parameters are fitted by minimizing a weighted Mean Squared Error (MSE) metric with respect to the parameters. Let $DT(t)$ and $DD(t)$ denote the number of reported total detected cases and detected deaths, respectively, on day t . Then, the loss function for a training period of T days is defined as:

$$\sum_{t=1}^T \frac{t^2}{T^2} \cdot (\overline{DT}(t) - DT(t))^2 + \lambda^2 \cdot \sum_{t=1}^T t \cdot (\overline{DD}(t) - DD(t))^2,$$

where $\overline{DT}(t)$ and $\overline{DD}(t)$ are respectively the total detected cases and deaths predicted by DELPHI. The factor $\frac{t^2}{T^2}$ gives more prominence to more recent data, as recent errors are more likely to propagate into future errors. The lambda factor $\lambda = \min\left\{\frac{DT(T)}{3 \cdot DD(T)}, 10\right\}$ balances the fitting between detected cases and deaths; this re-scaling coefficient was obtained experimentally. We specifically exclude historical data starting before the area recorded more than 100 cases; this allows us to exclude sporadic outbreaks that are not epidemics. To optimize over the highly non-convex search space, we utilize both the local truncated newton algorithm (TNC) (Nocedal and Wright 2006) and the global optimization method of dual annealing (DA) (Xiang et al. 1997). TNC is utilized to produce forecasts on a daily basis while DA, being more computationally expensive, is performed on a weekly basis to shift and re-adjust the parameters more significantly if the underlying mechanics have changed (e.g. in the case of a new wave of cases). We use a bound of 20% deviation around the latest value for TNC, and a bound of 50% deviation for DA.

B List of Region-specific Cost Parameters

Parameters	Germany	Spain	New York, US
<i>Cost of loss of life</i>			
COVID-19 deaths	Institut (2021)	INED (2021)	DoH (2021b)
Actuarial tables	Statistisches Bundesamt (2020a)	INE (2021)	SSA (2021)
VSLY	158,448 (Schlander et al. 2017)	158,448 (Schlander et al. 2017)	455,484 (Robinson et al. 2021)
<i>Hospitalization Cost</i>			
Inpatient	162 (Kaier et al. 2020)	353 (iFHP 2021)	2,250 (BCBS 2021)
ICU	795 (Kaier et al. 2020)	1,700 (Bittner et al. 2013)	5,625 (BCBS 2021)
ICU+Ventilation	1539 (Kaier et al. 2020)	2,703 (Bittner et al. 2013)	7,010 (BCBS 2021)
<i>Economic Cost</i>			
GDP	3.86×10^{12} (IMF 2020)	1.25×10^{12} (IMF 2020)	1.77×10^{12} (Bureau of Economic Analysis 2020)
<i>Mental Health Cost</i>			
Cost of MDD	4,000 (Rowthorn and Maciejowski 2020)	3,412 (Vieta et al. 2021)	37,932 (Greenberg et al. 2015)
Cost of PTSD	40,000 (Bothe et al. 2020b)	1,876 (Bothe et al. 2020b)	14,857 (Bothe et al. 2020a)
No. of Healthcare Workers	892,000 (Federal Statistical Office, Wiesbaden, Germany 2020)	542,140 (Statista 2020)	600,000 (CDC 2018)
General Population over 14	72,520,000 (World Bank 2020e)	39,756,493 (World Bank 2020f)	16,164,571 (New York, Department of Health 2018)
Baseline Depression rate	7.6% (Bäuerle et al. 2020)	4.7% (Vieta et al. 2021)	8.5% (Ettman et al. 2020)
Depression rate increase for General Population	6.7% (Bäuerle et al. 2020)	14.0% (González-Sanguino et al. 2020)	20.2% (Young et al. 2021), (Liu et al. 2020a)
Depression rate increase for Sick			5.8% (Feng 2020)
Depression rate increase for Healthcare Workers			3.6% (NIMH 2021)
Baseline PTSD rate	2.31% (Burri and Maercker 2014)	0.57% (Burri and Maercker 2014)	
PTSD rate increase for sick	6.7% (Bäuerle et al. 2020), (Steedte-Schmiedgen et al. 2021)	15.2% (González-Sanguino et al. 2020)	
PTSD rate increase for Healthcare Workers			
Total Labor Force	43,356,000 (World Bank 2020b)	22,694,625 (World Bank 2020c)	9,500,000 (Bureau of Labor Statistics 2020)
Unemployment	Statistisches Bundesamt (2020b)	St. Louis Fed (2020a)	St. Louis Fed (2020c)
Unemployment Cost	77,510 (Chen and Hou 2019)	66,312 (Gorjón et al. 2018)	100,000 (Blanchflower and Oswald 2004)
Parameters	Florida, US	Brazil	Singapore
<i>Cost of loss of life</i>			
COVID-19 deaths	DoH (2021a)	FIOCRUZ (2021)	Kayano and Nishiura (2020)
Actuarial tables	SSA (2021)	IBGE (2020)	Singstat (2020)
VSLY	455,484 (Robinson et al. 2021)	247,803 (Mardones and Riquelme 2018)	59,971 (Hoon and Lim 2008)
<i>Hospitalization Cost</i>			
Inpatient	2,250 (BCBS 2021)	593 [†] (Santos et al. 2021)	520 (Feng 2020)
ICU	5,625 (BCBS 2021)		1,560 (Feng 2020)
ICU+Ventilation	7,010 (BCBS 2021)		1,944 (Feng 2020)
<i>Economic Cost</i>			
GDP	1.11×10^{12} (Bureau of Economic Analysis 2020)	1.25×10^{12} (IMF 2020)	4.69×10^{11} (Moody's 2020)
<i>Mental Health Cost</i>			
Cost of MDD	37,932 (Greenberg et al. 2015)	4,100 (Lepine 2012)	23,971 (Ho et al. 2013)
Cost of PTSD	14,857 (Bothe et al. 2020a)	4,100 (Lepine 2012)	23,971 (Ho et al. 2013)
No. of Healthcare Workers	624,451 (U.S. Department of Health and Human Services 2018)	2,579,430 (World Bank 2020a)	58,000 (Health Hub 2020)
General Population over 14	17,696,804 (Florida, Office of Economic and Demographic Research 2015)	43,695,990 (World Bank 2020d)	3,456,030 (World Bank 2020g)
Baseline Depression rate	8.5% (Ettman et al. 2020)	3.9% (Feter et al. 2021)	2.3% (Subramaniam et al. 2019)
Depression rate increase for General Population	20.2% (Young et al. 2021), (Liu et al. 2020a)	25.2% (Feter et al. 2021)	8.0% (Tan et al. 2020)
Depression rate increase for Sick			5.8% (Feng 2020)
Depression rate increase for Healthcare Workers			
Baseline PTSD rate	3.6% (NIMH 2021)	5.0% (da Silva et al. 2018)	0.0%
PTSD rate increase for sick	4.8% (CDC 2021), (Liu et al. 2020a)	29.2% (Goularte et al. 2021)	10.9% (Tan et al. 2020)
PTSD rate increase for Healthcare Workers			
Total Labor Force	10,451,550 (Bureau of Labor Statistics 2020)	107,461,083 (World Bank 2020a)	3,750,000 (Moody's 2020)
Unemployment	St. Louis Fed (2020b)	IBGE (2020)	Ministry of Manpower (2020)
Unemployment Cost	80,000 (Blanchflower and Oswald 2004)	52,557* (Chen and Hou 2019)	120,000* (Chen and Hou 2019)

Table 2: Values and sources for the THEMIS parameters used in Section 3. All monetary units are in local currency units unless otherwise specified. For sources with monetary information not from the simulation year (2020), we correct the monetary value using the Consumer Price Index. [†]We were only able to find the blended average hospitalization cost for COVID-19 across inpatient, ICU, and ventilated patients. *We extrapolate from the observation in the paper that unemployment cost is around 1.5 year of GDP per capita.