

Title Page

Full title: Risk and severity of SARS-CoV-2 reinfections during 2020-2022 in Vojvodina, Serbia: a population-level study

Short title: SARS-CoV-2 reinfections risk & severity

Authors: Snežana Medić^{1,2}, Cleo Anastassopoulou³, Zagorka Lozanov-Crvenković⁴, Vladimir Vuković^{1,2}, Nataša Dragnić⁵, Vladimir Petrović^{1,2}, Mioljub Ristić^{1,2}, Zoran Gojković^{2,6}, Athanasios Tsakris³, John P. A. Ionnidis^{7*}

Affiliations:

¹ Center for Disease Control and Prevention, Institute of Public Health of Vojvodina, Novi Sad, Serbia

² Faculty of Medicine, University of Novi Sad, Novi Sad, Serbia

³ Department of Microbiology, Medical School, National and Kapodistrian University of Athens, Athens, Greece

⁴ Department of Mathematics and Informatics, Faculty of Science, University of Novi Sad, Novi Sad, Serbia

⁵ Center for Informatics and Biostatistics, Institute of Public Health of Vojvodina, Novi Sad, Serbia

⁶ Clinical Center of Vojvodina, Novi Sad, Serbia

⁷ Departments of Medicine, Epidemiology and Population Health, Biomedical Data Science, and Statistics, Stanford University, Stanford, USA

*Corresponding author:

E-mail: jioannid@stanford.edu (JPAI)

Manuscript information: word count of abstract: 295; word count of main text: 3,452

2 Figures/4 Tables; Supplementary information: 4 SI Tables/2 SI Figures; References: 34

Abstract

Background: Data on the rate and severity of reinfections with SARS-CoV-2 in real-world settings are scarce and the effects of booster vaccination on reinfection risk are unknown.

Methods: In a retrospective cohort study, all SARS-CoV-2 laboratory-confirmed residents of Vojvodina, registered in the database of the Institute of Public Health of Vojvodina, between March 6, 2020 and October 31, 2021, were followed for reinfection ≥ 90 days after primary infection. Data were censored at the end of follow-up (January 31, 2022) or death. The risk of reinfection was visualized with Kaplan-Meier plots. To examine whether vaccination protected from reinfection, the subset of Vojvodina residents with primary infection in 2020 (March 6–December 31) were matched (1:2) with controls without reinfection.

Results: Until January 31, 2022, 13,792 reinfections were recorded among 251,104 COVID-19 primary infections (5.49%). Most reinfections (86.8%) were recorded in January 2022. Reinfections were mostly mild (99.2%). Hospitalizations were uncommon (1.08% vs. 3.70% in primary infection) and COVID-19 deaths were very rare ($n=20$, case fatality rate 0.15%). The overall incidence rate of SARS-CoV-2 reinfections was 5.99 (95% CI 5.89–6.09) per 1,000 person-months for those who survived the first three months after primary infection. The reinfection risk was estimated as 0.76% at six months, 1.36% at nine months, 4.96% at 12 months, 16.7% at 15 months, and 18.9% at 18 months. Among 34 second reinfections, none resulted in hospitalization or death. Unvaccinated (OR=1.23; 95%CI=1.14–1.33), incompletely (OR=1.33; 95%CI=1.08–1.64) or completely vaccinated (OR=1.50; 95%CI=1.37–1.63), were modestly more likely to be reinfected compared with those who received a third (booster) vaccine dose.

Conclusions: SARS-CoV-2 reinfections were exceptionally uncommon until the end of 2021 but became common with the advent of the Omicron variant. Very few reinfections were severe. A vaccination booster dose may modestly reduce reinfection risk.

Keywords: SARS-CoV-2; reinfection risk; reinfection severity; COVID-19 vaccines; boosters.

Introduction

Reinfections with SARS-CoV-2 are an important aspect of COVID-19 and its potential transition to endemicity.¹⁻³ Current challenges include the absence of widespread genomic surveillance, the durability of immunity after primary infection, and the need, timing and variant target of booster doses.⁴

Reinfections, commonly defined by a positive RT-PCR test ≥ 90 days from the first episode, were rare (absolute rate 0-1.1%) before COVID-19 vaccines were available.⁵⁻⁷ As mass vaccination proceeded and longer follow-up accrued, reinfection parameters, particularly pertaining to severity, are important to evaluate. Recent studies showed that reinfection is less likely in vaccinated individuals who have recovered from a previous infection.^{8,9}

This study aimed to assess the SARS-CoV-2 reinfection rate and associated severity in the population of the Autonomous Province of Vojvodina, which comprises almost a third of Serbia's population. A secondary aim was to determine the potential reinfection prevention benefit of vaccination in persons who have recovered from an initial episode.

Materials and methods

Study setting, objectives, and data collection

The study was conducted at the Institute of Public Health of Vojvodina (IPHV), an integrated health institution responsible for the oversight of disease control and prevention for ≈ 1.9 million Vojvodina inhabitants. Reinfection was defined as the detection of SARS-CoV-2 RNA or antigen in nasopharyngeal swab specimens after ≥ 90 days from the first episode (primary infection), regardless of the presence of symptoms.

Our primary objective was to determine the risk of reinfection and associated severity in Vojvodina residents with primary infection (first positive SARS-CoV-2 test) between March 6, 2020 and October 31, 2021. Data were censored at the end of follow-up (January 31, 2022) or death. A secondary objective was to examine whether vaccination protected from reinfection. For this purpose, the risk of reinfection was estimated for the subset of participants with primary infection in 2020 (March 6–December 31), before vaccines were available.

Socio-demographic and epidemiological data were retrieved from the IPHV surveillance database which contains data for all registered COVID-19 cases in Vojvodina from the beginning of the pandemic (March 6, 2020). All cases were residents of Vojvodina. Data originated from epidemiological questionnaires and mandatory notification forms. The minimum set of data for each laboratory-confirmed case included demographics, occupation, date of symptom(s) onset and list of symptoms, severity of COVID-19 disease, date and type of positive laboratory diagnostic test, date of case registration, number of comorbidities, hospitalization status (hospitalized vs. non-hospitalized), disease outcome with a specified date (active/recovered/death outcome) and COVID-19 vaccination status (type of vaccine, number of doses and date(s) of vaccination(s)). Regarding disease severity, for surveillance purposes, COVID-19 cases were classified into three groups: 1) mild, if there were no symptoms or COVID-19-related symptoms were present but without confirmed pneumonia by chest

imaging; 2) severe, if COVID-19 pneumonia was confirmed by chest imaging; and 3) critical, if COVID-19 pneumonia required mechanical ventilation and/or admission to the intensive care unit.

Laboratory testing

For the purpose of SARS-CoV-2 detection, posterior nasopharyngeal swab samples were collected as part of case-based surveillance protocol for COVID-19 or due to other indications, regardless of reason for testing. Different semi-quantitative RT-PCR tests were used, depending on availability; results were interpreted in accordance with the manufacturer's instructions.¹⁰⁻¹³ Antigen rapid diagnostic tests (Ag-RDT), for the qualitative detection of SARS-CoV-2 antigens in nasopharyngeal swabs, were introduced in November 2020. Patients with COVID-19-related symptoms within five days of symptom(s) onset were tested using the STANDARD Q COVID-19 Ag Test (SD Biosensor, Gyeonggi-do, South Korea).^{14,15} Patients with COVID-19-related symptoms and negative Ag-RDT results were subsequently tested by RT-PCR in a repeated nasopharyngeal swab for a definitive diagnosis.¹⁶ A COVID-19 laboratory-confirmed case was defined as a subject with detected SARS-CoV-2 RNA or antigen in a nasopharyngeal swab by a positive RT-PCR test or Ag-RDT, respectively.

Assessment of the protective effect of vaccination towards reinfection

Eligibility criteria and case/control definitions

The study case was a resident of Vojvodina, with laboratory-confirmed SARS-CoV-2 infection reported in the period March 6, 2020 to December 31, 2020, with confirmed reinfection from January 1, 2021 to January 31, 2022. *The study control* was a resident of Vojvodina with a laboratory-confirmed SARS-CoV-2 infection reported in the period March 6 to December 31, 2020 and without laboratory confirmation of reinfection from January 1, 2021 to January 31, 2022.

Exclusion criteria: To examine the relationship between vaccination and SARS-CoV-2 reinfections, 25 detected reinfection cases in 2020, when vaccination was still unavailable, were excluded. For the

same reason, the status of all study cases and controls was checked in the provincial mortality database and in case of death outcome (regardless of cause) before January 31, 2022, were excluded from analysis (12 study cases and 2,784 controls). Since children did not have the same chances for vaccination as adults (recommendations for vaccination of children aged 12-17 years were issued in June 2021), 2051 children and adolescents aged <18 years were excluded from analysis.

Matching of study cases and controls

The IPHV electronic database was searched to assess the SARS-CoV-2 reinfection rate in the study period and to identify study cases and controls, according to eligibility criteria and case definitions. To document reinfection, we used the Unique Master Citizen Number (ID number) that accompanies all reported cases. For 5.6% of persons for whom the ID number was missing, the search was performed by patient name, surname, date of birth and residence. Matching of study cases and controls was done in a ratio of 1:2. Each study case was paired individually with a control in relation to gender, date of initial SARS-CoV-2 positive test (± 10 days) and corresponding age (± 3 years). Random selection was applied if several controls corresponded to a study case by using a random number generator. Of 7,083 study-cases ≥ 18 years, 12 (0.2%) were excluded due to unsuccessful matching in relation to applied criteria.

Classification of study cases and controls by vaccination status

The following definitions were used: Unvaccinated status was considered if no vaccine dose was received or if a single (or the first of a two-dose scheme) dose was received ≤ 14 days before the reinfection date, which was the date of reinfection symptoms onset (or positive test, in the absence of symptoms). Incomplete (partial) vaccination was considered if a single vaccine dose was received and > 14 days had passed since the vaccination day; if the vaccination schedule had not been completed; or if the final dose was given ≤ 14 days or > 6 months before the reinfection date. Fully

vaccinated status was considered if two vaccine doses were administered and the final dose was received >14 days and ≤6 months before the reinfection date. Boosted were considered patients who received the third (booster) dose and >7 days had passed since receiving the vaccine before the reinfection date. The same definitions were applied to controls.

Statistical analysis

Descriptive analysis of socio-demographic, epidemiological and clinical features, including reinfections severity, was conducted. Cochran–Armitage test was used to assess trend of proportions of primary infection that were reinfected in the observed period. We assessed the risk of suspected reinfection, using time-to-event Kaplan-Meier analysis to estimate the reinfection risk during follow-up. Only patients who survived three months after primary infection were considered for analysis (since, by definition, there can be no reinfection risk in the first three months). We also show Kaplan-Meier plots separately for primary infections that occurred in time periods defining each pandemic wave. Each of these curves were plotted for those who were first infected in that time interval. Using the same analysis, we additionally estimated the risk of severe reinfection or worse outcome (severe/critical/death) over time, again starting at three months after primary infection. Pearson's chi-squared test or Fisher's exact test, as appropriate, was used to compare differences between groups of categorical set of data. For variables with multiple ordered categories, we used analyses adjusted for trend. Binary logistic regression was applied to assess the association between different factors and reinfection severity. Conditional logistic regression was applied to compare unvaccinated, incomplete and full vaccination with boosted vaccination status as a reference variable among study-cases and controls. McNemar test was used to test difference in proportions between paired data. A p-value <0.005 was considered statistically significant and p-values <0.05 were considered suggestive.¹⁷ Stata v.16 (College Station, TX: StataCorp LLC. 2019) and TIBCO Statistica™ 14.0.0 (license for University of Novi Sad) were used for matching and statistical analyses.

Ethics Statement

This case-control study was performed in the frame of national public health surveillance. Sample collection for laboratory diagnosis of COVID-19 formed part of the standard patient management, thus, only oral informed patient consent was required. Access to patients' data was restricted for employees directly involved in COVID-19 diagnosis, treatment, and reporting. Patients' data were anonymized before any analysis was conducted. According to the law, no approval by the Ethics Committee for the retrospective analysis of anonymized data is required in Serbia.

Results

SARS-CoV-2 reinfections over time

A total of 362,650 COVID-19 cases were registered among the population of Vojvodina from the beginning of the pandemic (March 6, 2020) until January 31, 2022 (Table 1). The cohort included a subset of 251,104 patients with primary infection in the period March 6, 2020-October 31, 2021, of which 13,792 (5.49%) experienced reinfection (Table 2). Before August 2021, reinfections were sporadically registered (rate <1%). Most reinfections (86.77%) were recorded in January 2022, when the reinfection rate abruptly increased up to 15.32%. The highest proportion of primary infections that were reinfected was in October and November 2020 (11.05% and 10.67%, respectively), with decreasing linear trend after October 2020 (SI Fig.1). The average time duration from primary infection to reinfection was 340 ± 101 days (min 90 days–max 662 days).

The overall incidence rate of SARS-CoV-2 reinfections was 5.99 (CI 5.89-6.09) per 1,000 person-months. Fig.1A shows the Kaplan-Meier plot for the reinfection risk for patients who survived three months after primary infection (n=242,737). The risk becomes 0.76% at six months, 1.36% at nine months, 4.96% at 12 months, 16.68% at 15 months, 18.86% at 18 months. The risk of reinfection for severe or critical clinical forms of primary infections at these time points was 0.25% 0.74%, 2.26%, 6.14%, 7.10%, and 0.82%, 3.74%, 4.87%, 6.78%, 6.78%, respectively (Fig.1B). The probability of reinfection was low before, and substantially higher, after the advent of Omicron in in the sixth pandemic wave (Fig.1C).

Patients' characteristics and risk factors for re-infection and for severe re-infection

Compared to patients without reinfection, reinfected patients were significantly younger (mean age 41.61 ± 14.43 vs. 46.16 ± 18.87 years), with more pronounced female dominance (57.98% vs. 52.65%), more frequently employed as health-care workers (HCWs) (10.90% vs. 4.37%), and with lower vaccination coverage (2.51% vs. 10.26% who received ≥ 2 doses) at the day of laboratory confirmation of primary infection. Other main characteristics of both groups of patients are shown in Table 3. Older age (≥ 70 years), ≥ 1 comorbidities and severe (OR 7.35, CI 4.84-11.17, $p < 0.001$) or critical primary infection (OR 221.40, CI 48.74-1005.65, $p < 0.001$) were significantly associated with severe reinfections (Table 4).

Severity of reinfections versus primary infections

Most reinfections were mild (99.17%), and only a minority were severe (0.78%) or critical (0.05%). Reinfections were milder than primary infections. The share of severe clinical forms decreased from 5.47% in initial episodes to 0.78% in reinfections, while critical forms remained the same (0.05%). The proportion of severe and critical disease forms was higher in cases without reinfection (9.30 and 0.70%, respectively) (Fig.2).

Hospitalizations after reinfection

Overall, the hospitalization rate of COVID-19 patients in the observed period was 7.95%. At the beginning of the pandemic (March-June 2020) almost all patients were hospitalized (98.02%). The proportion of hospitalized gradually decreased from 10.47% in 2020 to 6.80% in 2021 (Table 2). Reinfected patients were rarely hospitalized (1.08% vs. 3.70% during initial infection). Reinfected patients were 4.2 times more likely to be hospitalized during initial infection compared to reinfection (McNemar OR=4.21, 95%CI 3.41-5.22, $p < 0.001$). Overall, 38 patients were hospitalized in both the

primary infection and reinfection. In January 2022, when most reinfections were recorded, only 0.69% of patients were hospitalized.

Deaths

Among reinfected patients, 31 deaths occurred, of which 20 were classified as COVID-19 deaths (case fatality ratio 0.15% among 13,792 reinfections); the rest were caused by non-COVID causes. COVID-19 deaths occurred mainly in reinfected patients ≥ 60 years (70.0%), with severe (75.0%) or critical disease (25.0%). Most of them died during the fifth (50.00%) or sixth (36.4%) pandemic wave (SI Table 1). K-M curves for the risk of death for the entire cohort of 251,104 positive patients and for reinfected patients appear in SI Fig.2.

Second reinfections

In total, 34 cases (0.01%) with three consecutive SARS-CoV-2 reinfections were recorded (SI Table 2). Cases of second reinfection ≥ 90 days after the previous one were registered in December 2021 (n=1) and January 2022 (n=33). Overall, 14.7% of patients were hospitalized due to severe primary infection, while first and second reinfections were mild. None of these reinfections led to hospitalization or death. On the day of laboratory confirmation of the second reinfection, most patients (55.9%) were unvaccinated.

Case control study

A total of 13,189 reinfections were recorded in the period January 1, 2021, through January 31, 2022, of which 7071 (53.6%) met the eligibility criteria for study cases and were matched with 14,142 controls. Women (56.8%) and middle-age groups (55.0%) predominated in the study population, while most participants (91.4%) were initially infected during October–December 2020 (SI Table 3). In relation to vaccination status of study cases and controls, the distribution of

unvaccinated ($\approx 52\%$) and incompletely vaccinated ($\approx 2\%$) was similar but there were more fully vaccinated (24.7% vs. 20.3%), and less boosted (21.3% vs. 25.9%) ($p < 0.001$) among study cases. All three categories of cases, regardless of whether they were unvaccinated (OR=1.23; 95%CI=1.14–1.33), incompletely (OR=1.33; 95% CI=1.08–1.64) or completely vaccinated (OR=1.50; 95% CI=1.37–1.63), were modestly more likely to be reinfected compared with those who received a booster dose (SI Table 4).

Discussion

In this large population-based study, we have documented that the risk of reinfection remained exceedingly low before the emergence of Omicron and increased substantially thereafter, accounting for 15% of the infections during January 2022. Reinfections were generally mild, and their severity was much lower compared with primary infections. Accordingly, hospitalizations were uncommon and fatal outcomes were distinctly rare, much lower than in primary infections. Vaccination, in particular a booster dose, diminished modestly the probability of reinfection in a case-control analysis.

In the early stages of the pandemic, accumulated evidence supported the effectiveness of natural immunity after infection in protecting against reinfection with different SARS-CoV-2 variants for at least one year.³ Omicron, however, showed substantial ability to evade natural and vaccine-induced immunity, leading to reduced protection against reinfection, but similar protection against hospitalization or death due to reinfection.¹⁸ Unlike the Beta and Delta periods of predominance when there was no evidence of population-level immune escape, the explosive spread of Omicron in South Africa led to a dramatic increase of reinfections in mid-November 2021.¹⁹ Similar findings have also been reported in Qatar and the United Kingdom and are relevant to the dominance of Omicron worldwide by early 2022.^{18,20}

Repeated infections should be anticipated from viruses like SARS-CoV-2 that infect mucosal surfaces without a viremic phase, which typically result in relatively short-lived antibody responses.²¹ Accordingly, we registered 34 patients with three consecutive infections, almost all in January 2022. An increased risk of a third infection was also documented in South Africa, with 1,788 individuals with at least three and 18 with four suspected infections.¹⁹ Almost all third infections occurred after October 2021, during the period of Omicron circulation.

The global epidemiology of SARS-CoV-2 in January 2022 was characterized by the emergence of Omicron (B.1.1.529), declining prevalence of Delta (B.1.617.2), and very low-level circulation of

previous VOCs.²² The only published genomic surveillance data from Serbia thus far revealed the existence of different Alpha sub-lineages (B.1.1.1 and B.1.1.7) in the period April-October 2020.^{23,24} Despite the limited availability of sequencing data from Serbia, it seems reasonable to assume that the increase in reinfections after August 2021 was due to introduction and spread of Delta, while the abrupt increase in January 2022 was due to the explosive spread of Omicron.

Characteristics that we observed to be more common among reinfected patients (younger, working-age groups, more often employed as HCWs) support the hypothesis that the reinfection risk is a function of the risk of exposure.³ Older age groups, especially retirees, were less exposed due to lockdowns in 2020 and generally more compliant with the recommendations of mask wearing, distancing, and accepting vaccination. In our study, being older ≥ 70 years, having ≥ 1 comorbidities and a severe or critical primary infection were significantly associated with severe reinfections. In a retrospective cohort study of SARS-CoV-2-positive HCWs in 2020, reinfections were uncommon and more likely in women, adults, immunocompromised and previously hospitalized for COVID-19.²⁵ More frequent testing may also affect the documentation of reinfections. Most reinfections are likely to be missed otherwise, if they are asymptomatic or have very mild symptoms.

Clinical manifestations of SARS-CoV-2 reinfections compared to primary infections vary from mild to severe and even life-threatening, yet factors contributing to changes in severity remain largely unknown. In our study, reinfections tended to be milder compared to primary infections. Similarly, reinfections had 90% lower odds of resulting in hospitalization or death compared to primary infections in Qatar and were generally rare and mild.²⁶ A plausible explanation for this finding could be a primed immune system after the initial infection, which raises hope that the disease course could be milder when the virus becomes endemic. The massive surges of Omicron in late 2021 and 2022 that were often accompanied by very mild disease and disproportionately few severe cases may be consistent with a transition to endemicity. Perhaps as exceptions to the general rule, severe reinfections in different age and racial/ethnic groups have also been reported.^{27,28}

A recent systematic review showed wide variations between the severity of primary infection compared to reinfection, with increases in asymptomatic cases.²⁹ In a study by Wang et al., the majority (69%) of reinfections with a genetically distinct SARS-CoV-2 strain, were of similar severity; 18·8% had worse and 12·5% milder symptoms with the second episode.³⁰ Additionally, in a pre-print of a cohort study on the immune correlates of natural infection, seropositivity was associated with 69·2% protection from symptomatic infection mostly against Gamma and Delta variants with higher protection against moderate or severe infection and reinfections were less severe than first infections.³¹

The frequency and timeliness of required vaccination doses (typically for protection against severe COVID-19) have not yet been determined with certainty. The third dose should probably be seen as the final dose of the original vaccination scheme. We observed a slightly decreased reinfection risk in boosted versus unvaccinated, partially and fully vaccinated people. This result, however, needs to be interpreted with caution since individuals may vary in other factors that were not accounted for in our analysis.³² For example, boosted people may be more health conscious in general and have a heightened sense of protection, resulting in lower reinfection rates. Several studies have shown vaccinated people to be in better general health, e.g. having three-fold lower mortality risk from non-COVID-19 causes than non-vaccinated.³³ Still, our data are compatible with the potential benefits of hybrid immunity, generated from the combination of prior infection plus vaccination. If true, the modest benefit of a booster dose on a relative risk scale needs to be examined also in terms of absolute risk reduction, a task that might not be trivial currently, in the absence of an active epidemic wave in most countries. Randomized trials should be considered to evaluate booster doses in the future.

We must emphasize some limitations. Both primary infections and reinfections were diagnosed mainly by Ag-RDT testing without subsequent confirmative RT-PCR testing of positive results. There is a lack of evidence of genotyping variance, threshold cycle values as well as at least one negative

between two positive RT-PCR tests in patients with suspected reinfection.³⁴ Therefore, the possibility that reinfection was caused by genetically different SARS-CoV-2 variants compared to primary infection could not be investigated. Most asymptomatic patients and those who did not seek testing were not captured, particularly in the early pandemic days. Also, if previously infected people were tested less due to their presumed natural immunity, the reinfection rate could have been underestimated. Given missed asymptomatic reinfections, the proportion of severe reinfections is certainly substantially over-estimated many-fold. Matching was not implemented to control for differences in race, nationality and education level that might influence the decision to be vaccinated or vaccine choice.

Our study offers large-scale population-level evidence on reinfections over a two-year period. Since spatiotemporal differences are relevant to SARS-CoV-2 reinfections, longer prospective population-based studies with well characterized virologic and immunologic data are needed to assess the risk of reinfection in the future and whether low severity remains a key feature.

Funding: No specific funding was obtained for this study.

Conflicts of interest: none.

References

1. European Centre for Disease Prevention and Control E. Reinfection with SARSCoV-2: considerations for public health response 2020. Available at: <https://www.ecdc.europa.eu/sites/default/files/documents/Re-infection-and-viral-shedding-threat-assessment-brief.pdf> (accessed March 12, 2022).
2. Yahav D, Yelin D, Eckerle I, et al. Definitions for coronavirus disease 2019 reinfection, relapse and PCR re-positivity. *Clin Microbiol Infect* 2021; **27**(3): 315-318.
3. Pilz S, Theiler-Schwetz V, Trummer C, Krause R, Ioannidis JPA. SARS-CoV-2 reinfections: Overview of efficacy and duration of natural and hybrid immunity. *Environ Res* 2022; **209**: 112911.
4. Krammer F. Correlates of protection from SARS-CoV-2 infection. *Lancet* 2021; **397**: 1421–1423.
5. O Murchu E, Byrne P, Carty PG, et al. Quantifying the risk of SARS-CoV-2 reinfection over time. *Rev Med Virol* 2022; **32**(1): e2260.
6. Pilz S, Chakeri A, Ioannidis JP, et al. SARS-CoV-2 re-infection risk in Austria. *Eur J Clin Invest* 2021; **51** (4): e13520.
7. Hansen CH, Michlmayr D, Gubbels SM, Mølbak K, Ethelberg S. Assessment of protection against reinfection with SARS-CoV-2 among 4 million PCR-tested individuals in Denmark in 2020: a population-level observational study. *Lancet* 2021; **397** (10280): 1204-1212.
8. Cavanaugh AM, Spicer KB, Thoroughman D, Glick C, Winter K. Reduced Risk of Reinfection with SARS-CoV-2 After COVID-19 Vaccination - Kentucky, May-June 2021. *MMWR Morb Mortal Wkly Rep* 2021; **70** (32): 1081-1083.
9. Ronchini C, Gandini S, Pasqualato S, et al. Lower probability and shorter duration of infections after COVID-19 vaccine correlate with anti-SARS-CoV-2 circulating IgGs. *PLoS One* 2022; **17** (1): e0263014.

10. Bio-Tech Corp, Ltd. Liferiver Novel Coronavirus (2019-nCoV) Real Time Multiplex RT-PCR Kit. Shanghai: Bio-Tech Corp, Ltd; 2020 https://www.who.int/diagnostics_laboratory/eual/eul_0486_139_00_novel_coronavirus_sars_cov_2_real_time_multiplex_rt_pcr_kit_ifu.pdf (accessed December 30, 2021).
11. OSANG Healthcare Corp, Ltd. GeneFinder COVID-19 Plus RealAmp Kit - Instructions for Use. Anyang-si: OSANG Healthcare Corp, Ltd; 2020 <https://www.fda.gov/media/137116/download>. BioMérieux, Inc. ARGENE® SARS-COV-2 R-GENE (accessed December 31, 2021).
12. Durham, North Carolina: BioMérieux, Inc; 2020. <https://www.fda.gov/media/137742/download> (accessed December 29, 2021).
13. BGI Genomics Corp Ltd. Real-Time Fluorescent RT-PCR Kit for Detecting SARS-CoV-2 - Instructions for Use. Shenzhen: BGI Genomics Corp Ltd; 2021 <https://www.fda.gov/media/136472/download> (accessed December 29, 2021).
14. Ristić M, Nikolić N, Čabarkapa V, Turkulov V, Petrović V. Validation of the STANDARD Q COVID-21 antigen test in Vojvodina, Serbia. *PLoS One* 2021; **16** (2): e0247606.
15. Pustahija T, Ristić M, Medić S, et al. Epidemiological characteristics of COVID-19 travel-associated cases in Vojvodina, Serbia, during 2020. *PLoS One* 2021; **16** (12): e0261840.
16. World Health Organization. Antigen-detection in the diagnosis of SARS-CoV-2 infection using rapid immunoassays. Interim guidance. 11 September 2020. Geneva; 2020. <https://www.who.int/publications/i/item/antigen-detection-in-the-diagnosis-of-sars-cov-2infection-using-rapid-immunoassays> (accessed February 11, 2022).
17. Benjamin DJ, Berger JO, Johannesson M, et al. Redefine statistical significance. *Nat Hum Behav* 2018; **2** (1): 6-10.
18. Altarawneh HN, Chemaitelly H, Hasan MR, et al. Protection against the Omicron Variant from Previous SARS-CoV-2 Infection. *N Engl J Med* 2022; **386** (13): 1288-1290.

19. Pulliam JRC, van Schalkwyk C, Govender N, et al. Increased risk of SARS-CoV-2 reinfection associated with emergence of Omicron in South Africa. *Science* 2022: eabn4947.
20. Ferguson N, Ghani A, Cori A, Hogan A, Hinsley W, Volz E, Imperial College COVID-19 Response Team, “Report 49: Growth, population distribution and immune escape of Omicron in England” (WHO Collaborating Centre for Infectious Disease Modelling, MRC Centre for Global Infectious Disease Analysis, Jameel Institute, Imperial College London, 2021); <https://www.imperial.ac.uk/media/imperial-college/medicine/mrc-gida/2021-12-16-COVID19-Report-49.pdf> (accessed April 1, 2022).
21. Cohen JI, Burbelo PD. Reinfection With SARS-CoV-2: Implications for Vaccines. *Clin Infect Dis* 2021; **73** (11): e4223-e4228.
22. World Health Organisation: COVID-19 Weekly Epidemiological Update, Edition 74, published 11 January 2022. <https://apps.who.int/iris/bitstream/handle/10665/351044/CoV-weekly-sitrep11Jan22-eng.pdf?sequence=1&isAllowed=y> (accessed February 22, 2022).
23. Miljanovic D, Milicevic O, Loncar A, Abazovic D, Despot D, Banko A. The First Molecular Characterization of Serbian SARS-CoV-2 Isolates from a Unique Early Second Wave in Europe. *Front Microbiol* 2021; **12**: 691154.
24. Vidanović D, Tešović B, Volkening J, et al. First whole-genome analysis of the novel coronavirus (SARS-CoV-2) obtained from COVID-19 patients from five districts in Western Serbia. *Epidemiol Infect* 2021; **149**: E246.
25. Slezak J, Bruxvoort K, Fischer H, Broder B, Ackerson B, Tartof S. Rate and severity of suspected SARS-Cov-2 reinfection in a cohort of PCR-positive COVID-19 patients. *Clin Microbiol Infect* 2021; **27** (12): 1860.e7-1860.e10.
26. Abu-Raddad LJ, Chemaitelly H, Bertollini R. National Study Group for COVID-19 Epidemiology. Severity of SARS-CoV-2 Reinfections as Compared with Primary Infections. *N Engl J Med* 2021; **385** (26): 2487-2489.

27. Taylor CA, Whitaker M, Anglin O, et al. COVID-19–Associated Hospitalizations Among Adults During SARS-CoV-2 Delta and Omicron Variant Predominance, by Race/Ethnicity and Vaccination Status — COVID-NET, 14 States, July 2021–January 2022. *MMWR Morb Mortal Wkly Rep* 2022; **71**: 466–473.
28. Tso WWY, Kwan M, Wang YL, et al. Intrinsic Severity of SARS-CoV-2 Omicron BA.2 in Uninfected, Unvaccinated Children: A Population-Based, Case-Control Study on Hospital Complications. *Lancet* 2022; published online March 21. <http://dx.doi.org/10.2139/ssrn.4063036> (preprint).
29. Dhillon RA, Qamar MA, Gilani JA, et al. The mystery of COVID-19 reinfections: A global systematic review and meta-analysis. *Ann Med Surg (Lond)* 2021; **72**: 103130.
30. Wang J, Kaperak C, Sato T, Sakuraba A. COVID-19 reinfection: a rapid systematic review of case reports and case series. *J Investig Med* 2021; **69** (6): 1253-1255.
31. Maier H.E, Balmaseda A, Ojeda S, et al. An immune correlate of SARS-CoV-2 infection and severity of reinfections. *medRxiv* 2021; published online November 24. <https://doi.org/10.1101/2021.11.23.21266767> (preprint).
32. Ioannidis JPA. Factors influencing estimated effectiveness of COVID-19 vaccines in non-randomised studies. *BMJ Evid Based Med* 2022: bmjebm-2021-111901. <https://doi.org/10.1136/bmjebm-2021-111901>.
33. Xu S, Huang R, Sy LS, et al. COVID-19 Vaccination and Non-COVID-19 Mortality Risk - Seven Integrated Health Care Organizations, United States, December 14, 2020–July 31, 2021. *MMWR Morb Mortal Wkly Rep* 2021; **70** (43): 1520-1524.
34. Sciscent BY, Eisele CD, Ho L, King SD, Jain R, Golamari RR. COVID-19 reinfection: the role of natural immunity, vaccines, and variants. *J Community Hosp Intern Med Perspect* 2021; **11** (6): 733-739.

Author contributions

SM, CA and JPAI conceived and designed the study. SM, VV, NG, VP, TP, MR and ZG processed laboratory results and collected data, SM, CA, ZLC, ND, VV, AT analyzed and interpreted data, SM and CA supervised and validated data. SM, CA, ZLC, ND, VV and JPAI were involved in data visualization, presentation and formal analysis. SM, ZLC, VV, ND and VP accessed and verified underlying data. SM, CA, AT and JPAI drafted the Article. All authors critically reviewed the article. All authors had access to aggregated data reported in the study and had final responsibility for the decision to submit the publication.

Acknowledgments

The authors would like to thank all epidemiologists and health-care workers who were involved in the study. We also wish to thank computer engineer Dušan Krstić for the excellent technical assistance. The work of Zagorka Lozanov-Crvenković was funded by the Ministry of Education, Science and Technological Development of the Republic of Serbia (grant numbers: 451-03-68/2022-14/200032 and 451-03-68/2022-14/200125).

Table 1. Proportion of patients with SARS-CoV-2 reinfection in relation to overall registered COVID-19 cases in Vojvodina, Serbia, March 6, 2020- January 31, 2022.

	Months	Overall registered COVID-19 cases [†]		Proportion of reinfections [§]	
		n	%	n	%
2020	March-June	1,570	0.43	-	-
	July	4,597	1.27	0	0
	August	1,750	0.48	0	0
	September	330	0.09	0	0
	October	1,547	0.43	1	0.06
	November	30,659	8.45	9	0.03
	December	38,392	10.59	15	0.04
	Total	78,845	-	25	0.03
2021	January	11,441	3.15	7	0.06
	February	11,868	3.27	11	0.09
	March	30,012	8.27	47	0.16
	April	21,929	6.05	47	0.21
	May	5,084	1.40	21	0.41
	June	586	0.16	5	0.85
	July	860	0.24	8	0.93
	August	7,029	1.94	80	1.14
	September	35,515	9.79	351	0.99
	October	47,935	13.22	567	1.18
	November	28,194	7.78	474	1.68
	December	5,217	1.44	182	3.49
Total	205,670	-	1,800	0.63	
2022	January	78,135	21.55	11,967	15.32
Total	362,650	100.00	13,792	3.80	

[†]by month of first episode registration; [§]by month of reinfection registration.

Table 2. Overall registered SARS-CoV-2 primary infections (March 6, 2020–October 31,2021), SARS-CoV-2 reinfections and related hospitalization rates, in Vojvodina, Serbia, in the period March 6, 2020–January 31, 2022.

		Overall SARS-CoV-2 primary infections [†]		Proportion of hospitalized primary infections [¶]		SARS-CoV-2 reinfections [§]		Proportion of hospitalized reinfections [§]		Primary SARS-CoV-2 infections that were reinfected	
	Months	n	%	n	%	n	%	n	%	n	%
2020	March-June	1,570	0.63	1,539	98.02	-	-	-	-	80	5.10
	July	4,597	1.83	2,102	45.73	0	0	-	-	296	6.44
	August	1,750	0.70	420	24.00	0	0	-	-	92	5.26
	September	330	0.13	66	20.00	0	0	-	-	29	8.79
	October	1,547	0.62	196	12.67	1	0.01	0	0	171	11.05
	November	30,659	12.21	1,796	5.86	9	0.07	1	11.11	3,272	10.67
	December	38,392	15.29	2,138	5.57	15	0.11	1	6.67	3,353	8.73
	Total	78,845	-	8,257	10.47	25	-	2	8.00	7,293	9.25
2021	January	11,441	4.56	868	7.59	7	0.05	0	0.00	858	7.50
	February	11,868	4.73	831	7.00	11	0.08	3	27.27	925	7.79
	March	30,012	11.95	2,089	6.96	47	0.34	2	4.25	1,874	6.24
	April	21,929	8.73	1,691	7.71	47	0.34	2	4.25	1,211	5.52
	May	5,084	2.02	491	9.66	21	0.15	0	0.00	287	5.65
	June	586	0.23	70	11.95	5	0.04	1	20.00	43	7.34
	July	860	0.34	71	8.26	8	0.06	0	0.00	39	4.53
	August	7,029	2.80	442	6.28	80	0.58	6	7.50	187	2.66
	September	35,515	14.14	2,094	5.90	351	2.54	13	3.70	657	1.85
	October	47,935	19.09	3,061	6.39	567	4.11	19	3.35	418	0.87
	November	-	-	-	-	474	3.44	13	2.74	-	-
	December	-	-	-	-	182	1.32	6	3.30	-	-
Total	172,259	-	11,708	6.80	1,800	-	65	3.61	6,499	3.77	
2022	January	-	-	-	-	11,967	86.77	82	0.69	-	-
TOTAL		251,104	100.00	19,965	7.95	13,792	100.00	149	1.08	13,792	5.49

[†]by month of first episode registration; [§]by month of reinfection registration.

Table 3. Demographic characteristics and vaccination status of COVID-19 cases and SARS-CoV-2 reinfections in Vojvodina, Serbia, March 2020–October 2021[¶].

Characteristic	Overall COVID-19 cases n=251,104		Reinfection cases [§] n=13,792		Cases without reinfection [§] n=237,312		P value
	n	%	n	%	n	%	
Gender							
Male	118,152	47.05	5,795	42.02	112,357	47.35	<0.001
Female	132,952	52.95	7,997	57.98	124,955	52.65	
Age (years), mean ± SD	45.91± 18.68		41.61±14.43		46.16±18.87		<0.001
Age category	n	%	n	%	n	%	<0.001
0-9	4,220	1.68	105	0.76	4,115	1.73	
10-19	17,633	7.02	661	4.79	16,972	7.15	
20-29	29,490	11.74	1,976	14.33	27,514	11.59	
30-39	45,235	18.01	3,693	26.78	41,542	17.51	
40-49	48,262	19.22	3,516	25.49	44,746	18.86	
50-59	40,687	16.20	2,189	15.87	38,498	16.22	
60-69	36,702	14.62	1,189	8.62	35,513	14.96	
70-79	20,450	8.14	361	2.62	20,089	8.47	
≥80	8,425	3.36	102	0.74	8,323	3.51	
Occupation							
Healthcare workers (HCWs)	11,872	4.73	1,504	10.9	10,368	4.37	<0.001
Non-HCWs [#]	187,924	74.84	11,215	81.32	176,709	74.46	
Retired	51,308	20.43	1,073	7.78	50,235	21.17	
Comorbidities							
0	198,017	78.86	11,514	83.48	186,503	78.59	<0.001
1	39,828	15.86	1,803	13.07	38,025	16.02	
2	10,123	4.03	372	2.7	9,751	4.11	
≥3	3,136	1.25	103	0.75	3,033	1.28	
Vaccination status							
Unvaccinated	213,268	84.93	13,207	95.76	200,061	84.30	<0.001
Partially vaccinated	13,154	5.24	238	1.73	12,916	5.44	
Fully vaccinated	21,846	8.7	325	2.35	21,521	9.10	
Boosted	2,836	1.13	22	0.16	2,814	1.16	

[¶] Indicators of significance between groups using Pearson's chi-squared test and unpaired t-test.

[§] At the time of laboratory confirmation of primary infection

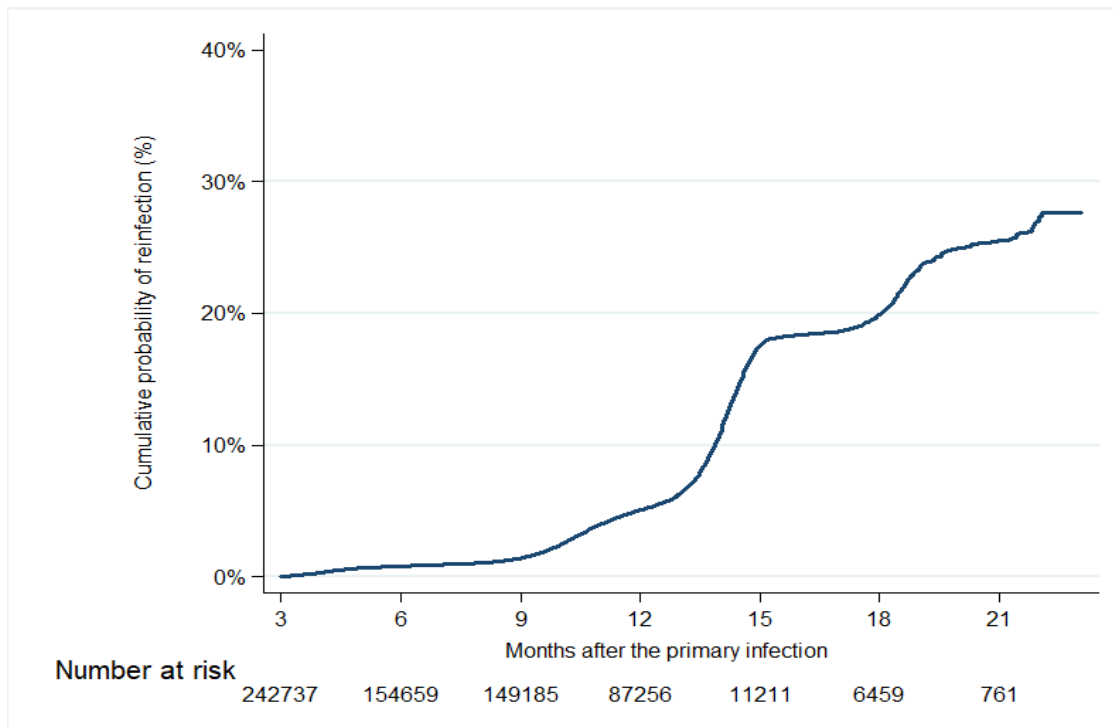
[#]Non-HCWs included professions that provide various services, other employment categories as well as retired individuals.

Table 4. Associations between different factors and the severity of the reinfection (i.e. severe+critical vs. mild) in Vojvodina, Serbia, Mar 2020-Jan 2022.

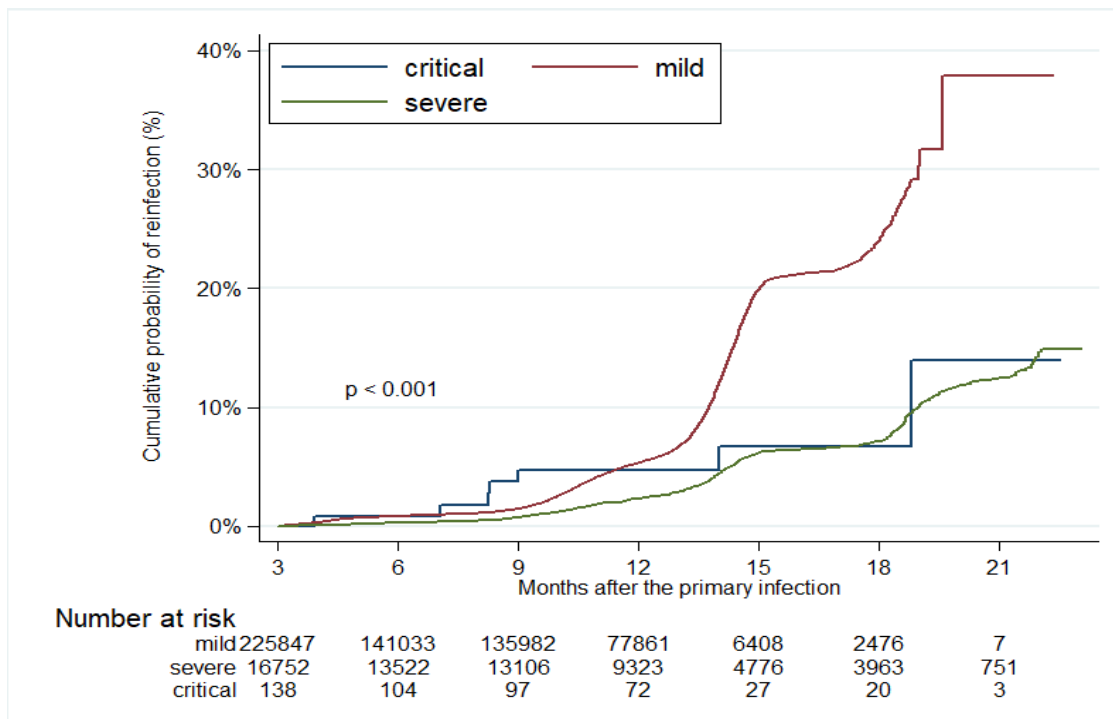
	Unadjusted Model				Adjusted Model [§]			
	OR	95% CI		p-value	OR	95% CI		p-value
Gender								
Male	1.43	0.99	2.07	0.056	-	-	-	-
Female	Reference group				-	-	-	-
Age (years)	1.06	1.04	1.07	<0.001	-	-	-	-
Age category (years)								
0-9	NA	NA	NA	NA	-	-	-	-
10-19	Reference group				-	-	-	-
20-29	4.03	0.52	31.07	0.181	-	-	-	-
30-39	3.23	0.43	24.26	0.254	-	-	-	-
40-49	2.83	0.37	21.44	0.315	-	-	-	-
50-59	4.86	0.64	36.71	0.125	-	-	-	-
60-69	14.75	2.00	108.98	0.008	-	-	-	-
70-79	38.71	5.17	289.66	<0.001	-	-	-	-
≥80	41.25	4.91	346.35	0.001	-	-	-	-
Occupation								
Health-care workers (HCWs)	0.81	0.37	1.78	0.608	0.87	0.40	1.93	0.737
Non-HCWs [#]	Reference group				Reference group			
Retired	7.27	4.92	10.76	<0.001	3.00	1.63	5.52	<0.001
Number of comorbidities								
0	Reference group				Reference group			
1	2.81	1.82	4.32	<0.001	1.58	1.00	2.50	0.051
2	5.53	2.97	10.30	<0.001	2.59	1.35	4.99	0.004
≥3	4.98	1.54	16.07	0.007	2.10	0.64	6.93	0.224
Severity of primary infection								
Mild	Reference group				Reference group			
Severe	7.35	4.84	11.17	<0.001	5.01	3.26	7.71	<0.001
Critical	221.40	48.74	1005.65	<0.001	189.00	39.13	912.95	<0.001

[§]adjusted for age (continuous) and gender.

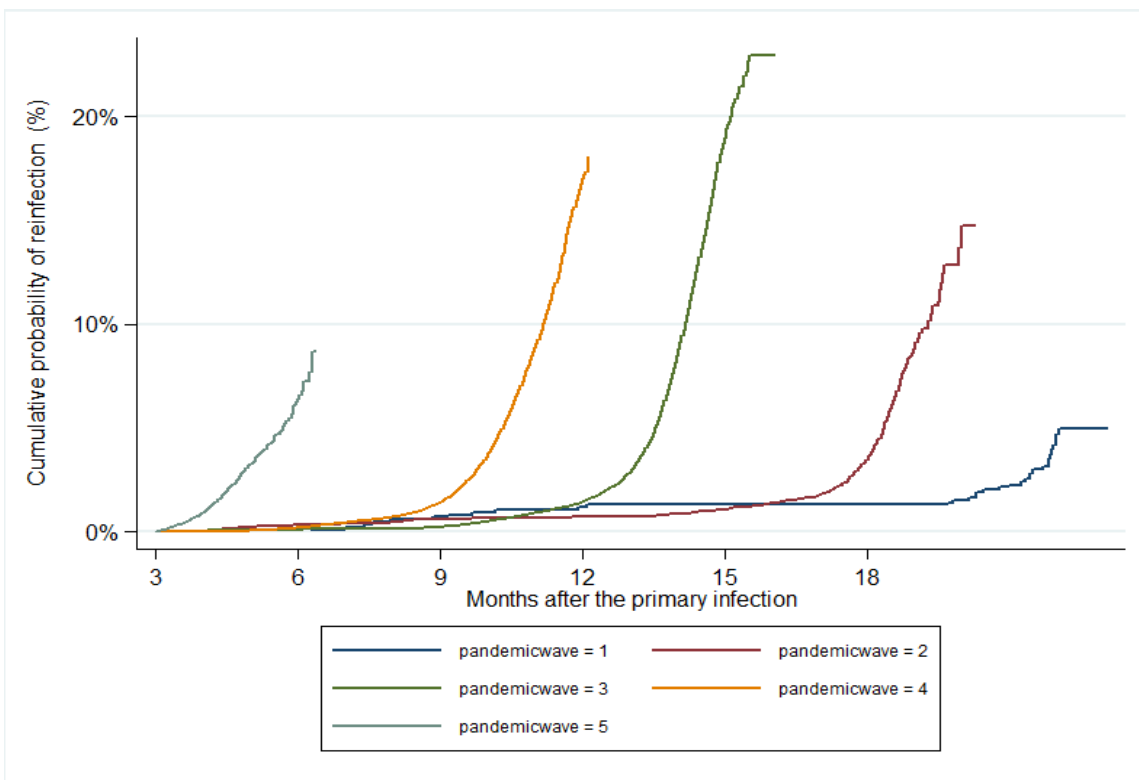
A



B



C



*Duration of pandemic waves: First pandemic wave lasted from March 6 until June 1, 2020; Second pandemic wave lasted from June 2 until October 6, 2020; Third pandemic wave lasted from October 7, 2020 until January 31, 2021; Fourth pandemic wave lasted from February 1 until July 23, 2021; Fifth pandemic wave lasted from July 24 until December 31, 2021.

Figure 1. Kaplan-Meier curve showing: the cumulative probability of reinfection in the overall cohort (A) and according to disease severity (B) and pandemic waves* (C), in Vojvodina, Serbia, March 2020- January 2022.

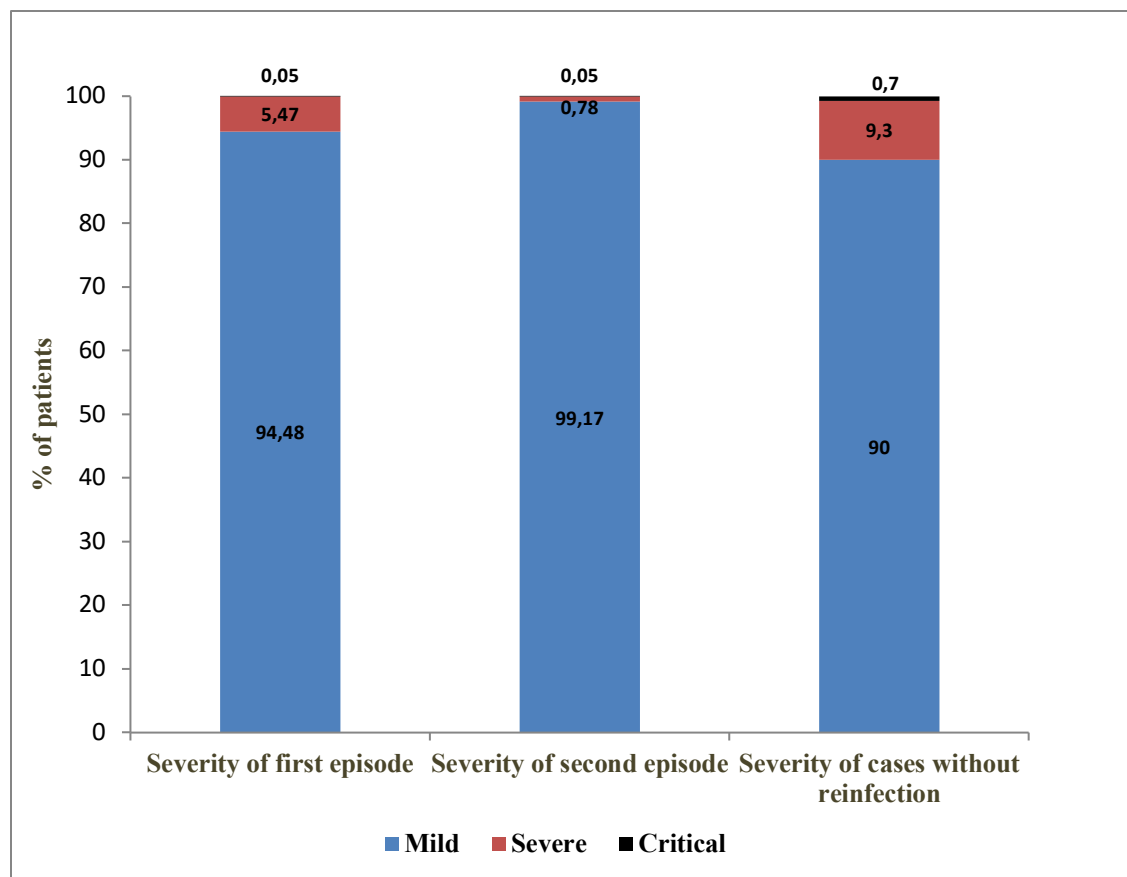


Figure 2. Severity of COVID-19 in patients with reinfection (first and second episode) and patients without reinfection, in Vojvodina, Serbia, March 06, 2020-January 31, 2022.

Supplementary material

Supplementary Table 1. Characteristics of patients with death outcome caused by SARS CoV-2 reinfections, in Vojvodina, Serbia, March 6, 2020 - January 31,2022.

Characteristics	Patients with death outcome		
	n	%	
Age at reinfection (years)			
<30	0	0.00	
30-59	6	30.00	
≥60	14	70.00	
Gender			
Female	8	40.00	
Male	12	60.00	
Time between first infection and death (days)			
90-200	6	30.00	
201-400	11	55.00	
>400	3	15.00	
Disease severity at primary infection			
Mild	8	40.00	
Severe	10	50.00	
Critical	2	10.00	
Disease severity at reinfection			
Severe	15	75.00	
Critical	5	15.00	
Hospitalization			
None	1	5.00	
At reinfection	7	35.00	
Both in primary infection and reinfection	12	60.00	
Pandemic wave*			
At primary infection	Second	3	15.00
	Third	7	35.00

	Forth	9	45.00
	Five	1	5.00
At reinfection	Third	1	5.00
	Forth	2	10.00
	Fifth	10	50.00
	Sixth	7	35.00
Total		20	100.00

*Time duration of pandemic waves:

First wave: March 6-June 1, 2020

Second wave: June 2-October 6, 2020

Third wave: October 7, 2020-January 31, 2021

Fourth wave: February 2-July 23, 2021.

Fifth wave: July 24-December 31, 2021.

Sixth wave: January 1, 2022-January 31, 2022.

Supplementary Table 2. Characteristics of patients with three consecutive SARS-CoV-2 infections in Vojvodina, Serbia, March 6, 2020- January 31, 2022.

Characteristics	Thrice infected with SARS-CoV-2	
	n	%
Age (years)		
0-9	0	0.0
10-19	1	2.9
20-29	6	17.7
30-39	8	23.5
40-49	8	23.5
50-59	8	23.5
≥60	3	8.9
Gender		
Male	11	32.3
Female	23	67.7
Severity		
Mild	34	100.0
Profession		
HCWs ^a	9	26.5
Non-HCWs ^b	25	73.5
Number of comorbidities		
0	33	97.1
1	1	2.9
Vaccination status		
Unvaccinated	19	55.9
Partially vaccinated	8	23.5
Fully vaccinated	4	11.8
Boosted	3	8.8
Total	34	100.0

^a Health-care-workers (HCWs); ^b other occupations except HCWs.

Supplementary Table 3. Characteristics of study cases (reinfected with SARS-CoV-2) and control participants (who were not reinfected) in Vojvodina, Serbia, January 1, 2021–January 31, 2022.

Characteristic	Study cases ^a (n=7,071)		Controls (n=14,142)	
	n	%	n	%
Age group (years)				
18-29	1,108	15.7	2,293	16.2
30-39	2,036	28.8	3,873	27.4
40-49	1,855	26.2	3,712	26.2
50-59	1,259	17.8	2,552	18.0
60-69	586	8.3	1,261	8.9
70-79	179	2.5	354	2.5
≥80	48	0.7	97	0.7
Gender				
Male	3,057	43.2	6,114	43.2
Female	4,014	56.8	8,028	56.8
Occupation				
Healthcare workers (HCWs)	1,021	14.4	1,510	10.7
Non-HCWs ^b	6,050	85.6	12,632	89.3
Number of comorbidities				
0	5,715	80.8	10,951	77.4
1	1,071	15.1	2,476	17.5
2	225	3.2	555	3.9
≥3	60	0.8	160	1.1
Month of initial infection in 2020				
March	0	0.0	0	0.0
April	13	0.2	26	0.2
May	2	0.0	1	0.0
June	44	0.6	93	0.7
July	268	3.8	534	3.8
August	86	1.2	173	1.2
September	23	0.3	41	0.3
October	170	2.4	352	2.5
November	3,198	45.2	6852	48.5
December	3,267	46.2	6070	42.9

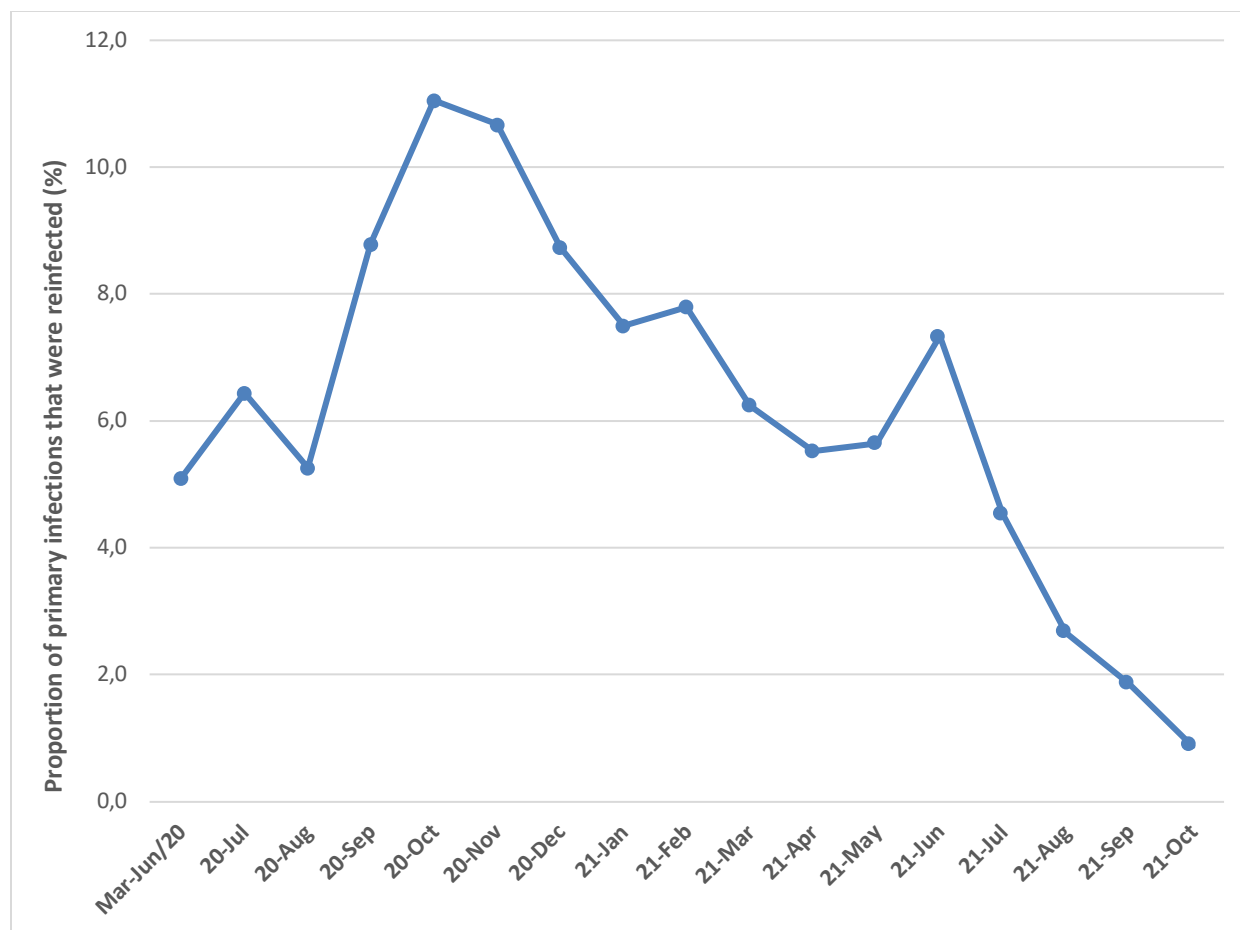
^a Each individual study case was matched to a control appropriate for age (± 3 years), gender, and date of testing (± 10 days).

^b Non-HCWs included professions that provide various services (e.g. caregivers, waiters), other employment categories as well as retired individuals.

Supplementary Table 4. Association of SARS-CoV-2 reinfection with COVID-19 vaccination status of study cases and controls, Vojvodina, Serbia, January 1, 2021–January 31, 2022.

Vaccination status	Study cases (n=7,071)	Controls (n=14,142)	OR* (95% CI) #	p-value
	n (%)	n (%)		
Unvaccinated	3,667 (51.9)	7,326 (51.8)	1.23 (1.14, 1.33)	<0.001
Incompletely vaccinated	148 (2.1)	276 (2.0)	1.33 (1.08, 1.64)	0.008
Fully vaccinated	1,747 (24.7)	2,874 (20.3)	1.50 (1.37, 1.63)	<0.001
Boosted	1,509 (21.3)	3,666 (25.9)	Reference group	

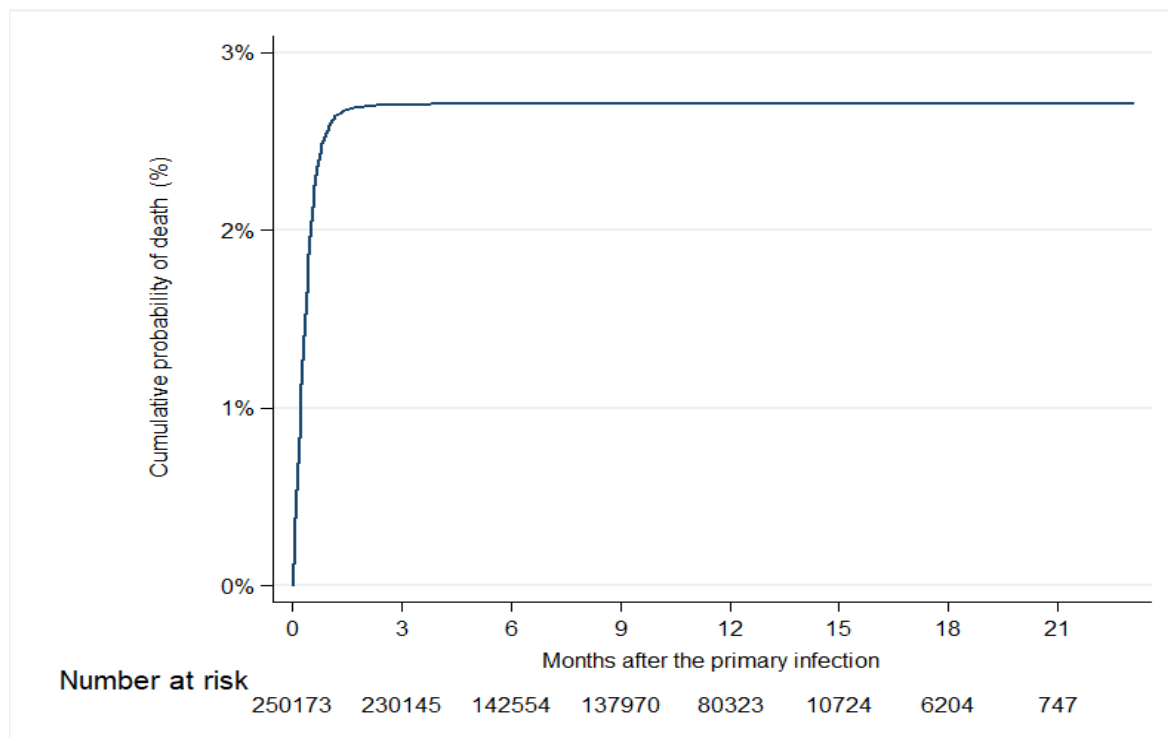
*OR: odds ratio; CI: confidence interval.



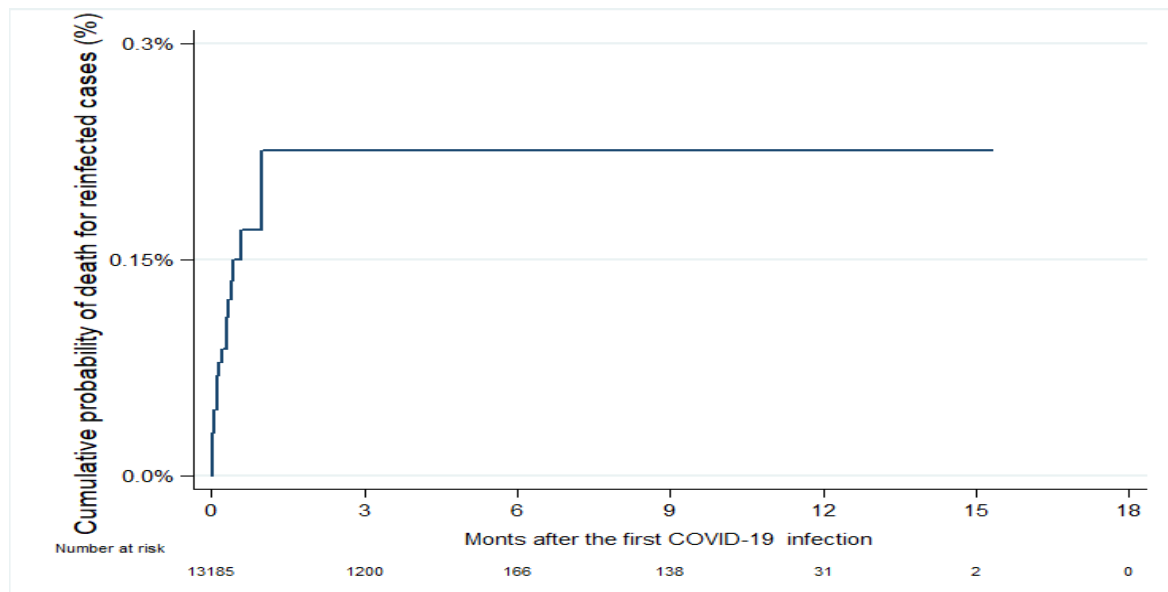
Supplementary Figure 1: The proportion of primary infections that were reinfected in Vojvodina, Serbia, March 6, 2020-October 31, 2021.*

*Cochran–Armitage test was applied

A



B



Supplementary Figure 2. Kaplan-Meier curve showing: the cumulative probability of death in the overall cohort (A) and for the patients with reinfection (B) in Vojvodina, Serbia, March 2020- January 2022.