

1 **Individual cardiorespiratory fitness exercise prescription in elderly**
2 **based on BP neural network**

3

4

5 Yiran Xiao¹, Chunyan Xu^{1*}, Lantian Zhang¹, Xiaozhen Ding²

6

7

8

9 ¹Department of Exercise Biochemistry, Beijing Sport University, Beijing, China

10 ²Department of Exercise Physiology, Beijing Sport University, Beijing, China

11

12

13 * Corresponding author

14 E-mail: xiaoxu131@126.com (C.Xu)

15

16

17 **Abstract**

18 Cardiorespiratory fitness (CRF) declines as age increases in elderly. An individualized CRF
19 exercise prescription can maintain the CRF level and delay aging process. Traditional exercise
20 prescriptions are general and lack of individualization. In this paper, a new study based on back-
21 propagation (BP) neural network, is investigated to predict the individualized CRF exercise
22 prescriptions for elderly by correlate variables (age, sex, BMI, VO_{2max} initial value, improvement
23 etc.). The raw data are split to two parts, 90% for training the machine and the remaining 10% for
24 testing the performance. Based on a database with 2078 people, the exercise prescription
25 prediction model's MAE, RMSE and R^2 are 1.5206, 1.4383 and 0.9944. 26 female subjects aged
26 60-79 years are recruited to test the model's validity. The VO_{2max} 's expected improvement was set
27 at 10%. Based on the basic information of these elder women, we get personalized exercise
28 prescription (frequency, intensity, time and volume) of each subject. All of them finished their
29 own exercise intervention. The results show that the post VO_{2max} was significantly different from
30 the pre VO_{2max} and improved by 10.1%, and a total of 20 subjects (74.1%) improved within
31 one standard deviation and 25 subjects (92.6%) improved within 1.96 times standard deviations.
32 Our study shows that a high degree of accuracy in exercise suggestions for elderly was achieved by
33 applying the BP neural network model.

34

35 **KEYWORDS** BP neural network, elderly, exercise prescription.

36 **Introduction**

37 Cardiorespiratory fitness (CRF), also known as Cardiovascular fitness, is a health-related
38 component of physical fitness which refers to the capacity of the circulatory respiratory systems to
39 supply oxygen to muscular systems during physical activity[1]. Longitudinal studies have found that
40 the decline of CRF over time range from 5% to 20% per decade from the age of 30 onwards[2], with
41 prior studies demonstrating a greater rate of decline in older age[3,4]. CRF is associated with
42 cardiovascular disease (CVD) and all-cause mortality in both men and women[5]. In addition,
43 specifically among the elderly, satisfactory CRF is also required for quality of life, preservation of
44 function, and independence[2-6].

45 In all methods to improve the CRF of elderly, according to given exercise prescription, supervised
46 exercise training is one of the well-established strategies. Exercise prescription is a specific plan of
47 fitness-related activities designed for a specific purpose (such as maintaining CRF), which is usually
48 developed by a fitness or a rehabilitation specialist. It mainly includes the exercise frequency, intensity,
49 type, and time (FITT), also includes volume, and progress (VP). Currently, the WHO recommends
50 that the elderly should do at least 150-300 minutes of moderate-intensity aerobic physical exercise; or
51 at least 75-150 minutes of vigorous aerobic physical exercise; or an equivalent combination of
52 moderate-intensity and vigorous exercise throughout the week, for substantial benefits to CRF[7].
53 However, there is substantial heterogeneity in CRF response to a certain exercise prescription; some
54 participants got a high improvement in CRF levels, some had no improvement with training[8,9]. In
55 these studies, it may be limited by the high heterogeneity of dose parameters, participant
56 characteristics, or both[10]. The ACSM standpoint to ensure improved CRF in older adults

57 recommends at least 30 minutes of moderate-intensity exercise at least 5 days per week or at least 20
 58 minutes of high-intensity exercise at least 3 days per week. Furthermore, in previous studies have
 59 adopted a variety of methods to formulate an individualized CRF exercise prescription for elderly[11],
 60 For example, after evaluating the basic physical condition of elderly, the doctor formulates the exercise
 61 prescription for elderly people according to their own experience, but this is not individualized exercise
 62 prescription, because of the possibility of directly adopting predecessors' exercise prescription, and
 63 often fail to achieve the desired improvement effect[12]. Therefore, factors such as age, sex, and
 64 physical fitness need to be considered when formulating personalized exercise prescriptions to
 65 improve CRF in the elderly.

66 Therefore, it is necessary to collect the basic information of subjects in advance to achieve
 67 accurate and individualized exercise prescription prediction. At present, there are many methods for
 68 prediction, such as traditional prediction method, regression analysis method and gray theory
 69 prediction method etc. The disadvantages of these methods in practical applications include: (1)
 70 Due to nonlinear prediction model, the parameters are difficult to determine, (2) Forecast factors
 71 obtained from relevant analysis are often fuzzy and uncertain, so prediction accuracy is low and it's
 72 hard to get ideal results[13].

73 In order to solve this problem, we propose a novel model based on BP neural network that has a
 74 good ability of deep learning and inferencing. For nonlinear systems, BP neural network has
 75 powerful simulation calculation ability, and can approximate any non-linear mapping
 76 capabilities[14]. For this reason, it can be used as a suitable tool to generate individual exercise
 77 prescription for elderly[13].

78 **Methods**

79 **Data collection**

80 We collect and summarize previous experimental research which improve the CRF of elderly.
 81 PubMed, EBSCO, Web of Science and CNKI were screened for research published in 1989 to
 82 2021(last search in June 2021). A combination of each keyword under the three topics was used as
 83 search terms. The topics of this study were older adults, exercise intervention, and cardiorespiratory
 84 fitness (Table 1). Synonymous search terms were also added by referring to the retrieved articles
 85 during the literature search. Filters were used, including research when written in English or
 86 Chinese, designed as randomized controlled trials or self-controlled trials (reviews were excluded)
 87 and included elderly aged at least 60 years old were included. Only research with an exercise
 88 intervention in older adults, with an outcome focused on VO_{2max} were included; research focusing
 89 on the effect of nutritional supplementation was not eligible. Allow research with or without a
 90 control group. A total of 63 articles and 2078 subjects were included in result[15–77].

91 **TABLE 1 Keywords of dose effect of exercise intervention on improving cardiopulmonary**
 92 **fitness in the elderly**

Search words	Older adults	Exercise intervention	Cardiorespiratory fitness
Key words	Older adult	Exercise	Cardiovascular fitness
	Elderly	Training	Cardiopulmonary

Aging	Physical activity	Cardiorespiratory fitness
Aged	Aerobic training	VO _{2max}
	Combined training	

93

94 **Data processing**

95 **Data encoding process**

96 In each research, we summarize the basic information include age, BMI, VO_{2max} initial value
97 (VO_{2max}pre), improvement and sex, and exercise prescription elements of the research's subjects,
98 include exercise frequency, intensity, time and volume.

99 To prepare the available data as input and output for training the model, we coded basic
100 information and exercise prescription elements to facilitate loading into the model program. Some
101 information, such as age, BMI and VO_{2max} initial value (VO_{2max}pre), are reserve a decimal place.
102 For the setting of VO_{2max} improvement, we use the formula to calculate and reserve two decimal
103 places (VO_{2max} final value = VO_{2max}post) and the calculation process is

$$104 \quad \text{Improvement}(\text{VO}_{2\max}) = \frac{\text{VO}_{2\max\text{post}} - \text{VO}_{2\max\text{pre}}}{\text{VO}_{2\max\text{pre}}} \quad (1)$$

105 The encoding of the output data set is the same as the input set.

106 When using the trained BP neural network, not only the input sets should be encoded, but also
107 the output data sets should be encoded. Exercise prescription elements set as our output sets. In the
108 part of exercise intensity set, we extract the average value of the exercise intensity range, convert it
109 to a decimal and subtract 0.5 (we take 50% HRR exercise intensity as zero), such as a study's
110 exercise intensity is 60%HRR, in our exercise intensity set is 0.1. In the part of exercise time and
111 volume set, we reserve two decimal places.

112 **Data expansion process**

113 To expand the sample size reasonably, we expand the collected studies based on the basic
114 information (age, BMI, VO_{2max} initial value) data (mean ± standard deviation) and the number of
115 subjects in each study[78].

116 The expansion method is implemented on MATLAB 2020a. These generated numbers have
117 passed various statistical tests of randomness and independence, and their calculation can be
118 repeated for testing or diagnostic purposes. The code is as follows:

```
119 %% sd1= age's sd; sd2= BMI's sd; sd3= VO2max initial value's sd;  
120 %% mean1= age's mean; mean2= BMI's mean; sd3=VO2max initial value's mean;  
121 a = [sd1 sd2 sd3];  
122 b = [mean1 mean2 mean3];  
123 y = a.*randn(n,1) + b;
```

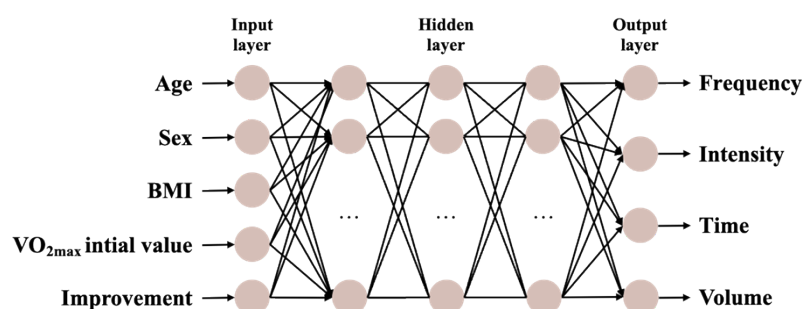
124 Simulate the basic information of each subject in each study, and the information of each
125 subject is generated in the form of a 1*3 matrix. We simulated 2078 groups of sample data in result.
126 By extracting and calculating the above input and output data sets, thus we optimized the input of
127 data in the back propagation neural network.

128 **BP model**

129 **Input and output layer settings**

130 The number of neurons in the input unit is directly linked to the prediction outcome. The input
131 data set are the basic information of each sample, and the output data set are the exercise prescription
132 elements of each sample. In order to predict exercise prescription elements at the same time, we
133 construct a multi-input and multi-output model. The input parameters are age, sex, BMI, VO_{2max}
134 initial value and improvement, the output parameters are frequency, intensity, time and volume.

135 In order to get a precise model, before training the BP neural network, we should set the
136 parameters of the neural network, the selection of neuron transfer functions and neural network
137 training algorithm and errors, etc.[78]. The structure of BPNN in our study is as follows (Fig 1).



138

139 **Fig 1. The structure of BPNN**

140 **Model algorithm selection**

141 The traditional BPNN algorithm has certain drawbacks, such as slow iterations and a strong
142 tendency to fall into local minima. In our study, the Levenberg-Marquardt (LM) algorithm is used
143 to improve our BPNN algorithm. LM is the fastest algorithm in the MATLAB Deep Learning
144 Toolbox for medium-sized neural networks with fast computational convergence and high accuracy,
145 and is often used to solve fitting and prediction problems, and is highly recommended as the
146 algorithm of choice, although it requires more memory than other algorithms[80].

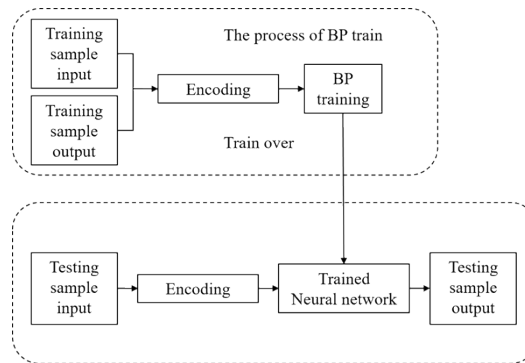
147 **Network layers selection**

148 In BP neural network model, the parameter setup is vital, where the number of nodes in the
149 hidden layer and neurons in the input set unit are the most important variables. It has been proved
150 that if a BP neural network with one hidden layer has enough number of neurons, it can realize any
151 nonlinear mapping. But if the sample number is large, the network with one hidden layer cannot
152 reach an accurate function and the calculation efficiency declines intensively[82]. In order to get an
153 accurate model, we should determine the appropriate number of hidden layers, in which the number
154 of neurons in each hidden layer is determined by (2).

$$155 \quad n_1 = \sqrt{n + m} + a \quad (2)$$

156 where n_1 is the hidden neurons, n is the number of input units, m is the number of output units, a is
157 a constant between[83].

158 According to the empirical formula, the range of the number of neurons is determined as 4-14.
 159 In this study, several network architectures with 1, 2, ... , 7 hidden layers are tested. We find that,
 160 when using our data set, the LM algorithm with three hidden layers and 12/10/8 neurons in layer
 161 1/2/3 performed best in predicting the exercise prescription. The neural network processing is shown
 162 in Fig 2.



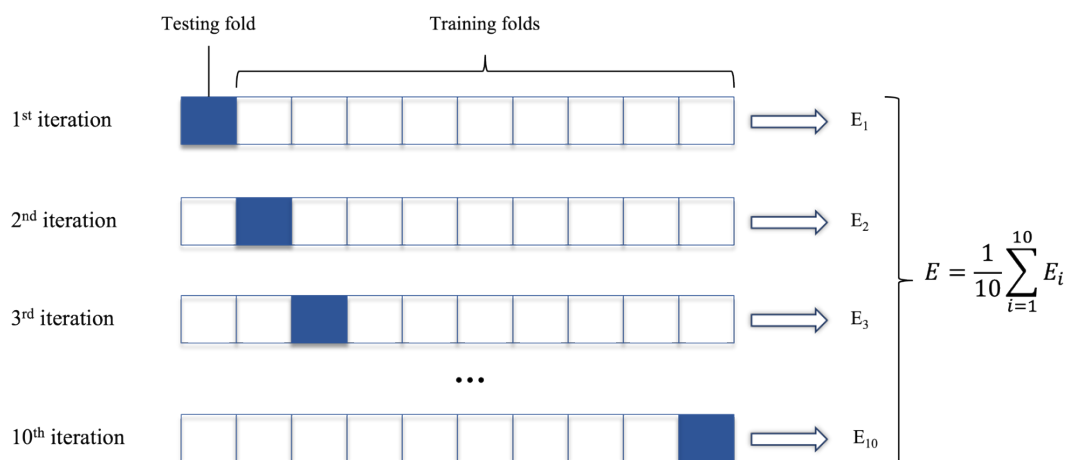
163
 164 **Fig 2. BP neural network training and testing process**

165 **BP model training and validation**

166 **BP model training process**

167 The present study needs to determine the appropriate division of the data set to train the
 168 model and test the model. Cross-validation is a statistical method that is commonly used in applied
 169 machine learning to compare and select a model for a given predictive modeling problem because
 170 it is easy to understand, easy to implement, and results in skill estimates that generally have a
 171 lower bias than other methods.

172 The 10-fold cross validation (Fig 3) was done 10 times as an evaluation of the model
 173 prediction error by randomly dividing the data set into 10 parts, 9 of which were used as the
 174 training set to train the model and the remaining part was used as the test set to test the model
 175 error. As a result, 10 test results were obtained, and the error evaluation metrics were averaged to
 176 provide an overall measure of the model's prediction performance.



177
 178 **Fig 3. 10-fold Cross-Validation**

179 **BP model validation**

180 (1) Evaluation Indicators

181 Three evaluation indicators, Mean Absolute Error (MAE), Root Mean Squared Error (RMSE) and
182 R-squared (R^2) are selected to evaluate the accuracy of the exercise prescription prediction model.
183 Their expressions are as follows:

184
$$\text{MAE:MAE} = \frac{1}{n} \sum_{i=1}^n |\tilde{y}_i - y_i| \quad (3)$$

185
$$\text{RMSE:RMSE} = \sqrt{\frac{1}{n} \sum_{i=1}^n (\tilde{y}_i - y_i)^2} \quad (4)$$

186
$$R^2:R^2 = 1 - \frac{\sum_{i=1}^n (y_i - \tilde{y}_i)^2}{\sum_{i=1}^n (y_i - \bar{y})^2} \quad (5)$$

187 where \tilde{y} represents the predicted value and y represents the actual value.

188 (2) Instance Verification

189 Twenty-six elderly female subjects aged 60-79 are recruited to test the practical application
190 effect of the model. The inclusion criteria of the subjects were in accordance with the inclusion
191 criteria of the data set literature. The basic characteristics of the subjects are shown in Table 3. The
192 subjects' $\text{VO}_{2\text{max}}$ was estimated from the 6-minute walk performance ($r=0.81$, $\text{SEE}=2.68$)[84]. The
193 expected improvement was set at 10%. Based on the basic information of these subjects, we get
194 personalized exercise prescription (frequency, intensity, time and volume) of each subject from the
195 model. And they follow the prescription to do aerobic exercise. Heart rate monitors (Polar Electro,
196 H10) can record a person's heart rate during exercise, allowing them to determine and adjust the
197 intensity of their workout.

198 **Table 3 The basic characteristics of the subjects**

	Basic characteristic
Age (years)	67.1±4.8
Sex	Female
BMI (kg/m ²)	24.5±3.7
Pre $\text{VO}_{2\text{max}}$ (mL kg ⁻¹ min ⁻¹)	12.4±2.2
Improvement (%)	10

199 **Result**

200 **Neural network design**

201 We selected 63 articles and 2078 datasets as the dataset. After dividing the dataset into 10
202 randomly, 9 of them (N=1870) are selected as the training set for building the model, and the
203 remaining one (N=208) is used as the testing set for the model. The framework structure of the
204 model is 5 dimensions for the input layer, 12-10-8 dimensions for the 3 hidden layers, and 4
205 dimensions for the output layer. The results of each round of cross-validation are shown in Table 4.

206 **Table 4. Comparison of error indicators of each round of cross-validation**

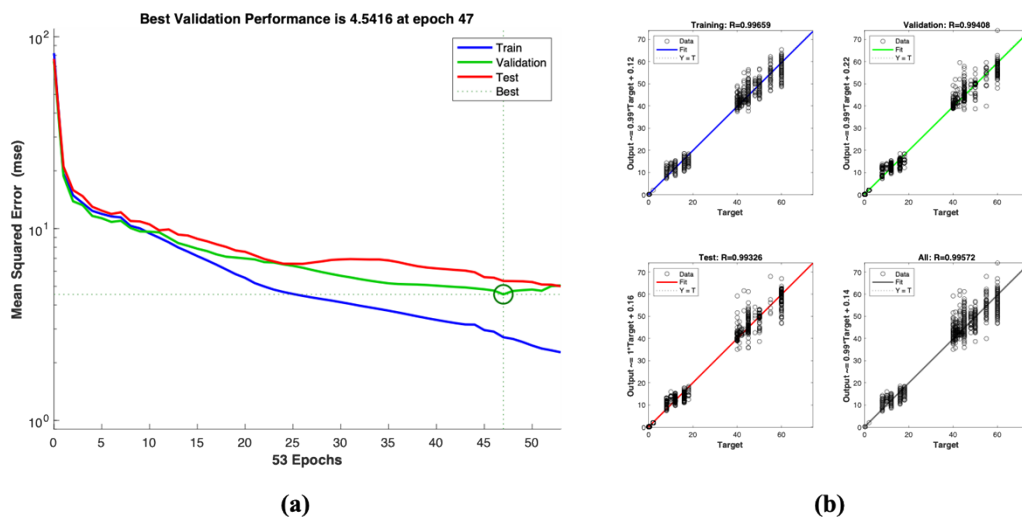
Round	RMSE	MAE	R^2
1	1.4190	1.6433	0.9946

2	1.3964	1.4312	0.9947
3	1.4777	1.6964	0.9941
4	1.6234	1.3363	0.9930
5	1.5250	1.4587	0.9938
6	1.3549	1.4226	0.9951
7	1.2620	1.2711	0.9957
8	1.5960	1.8182	0.9932
9	1.2366	1.5394	0.9959
10	1.4918	1.5887	0.9940
AVG	1.4383	1.5206	0.9944
Best	1.2366	1.5394	0.9959

207 From the error indicators in Table 4, the average and best of RMSE of this BP neural network
 208 are 1.4383 and 1.2366. Similarly, the average and best of MAE of this network are 1.5394 and
 209 1.5206. According to previous study, in their intelligent physical health evaluation model, the MAE
 210 of the BPNN is about 2.649 and the RMSE of the BPNN is about 3.032 [98]. Likewise, in another
 211 study, in their blood pressure prediction with BPNN, their MAE of diastolic blood pressure (DBP)
 212 is about 2.43, and systolic blood pressure (SBP) is about 3.97. And their RMSE of DBP and SBP
 213 are about 4.18 and 8.9[85]. Besides, in our study, average R^2 are all above 0.99, which prove that
 214 our BP neural network have good results as elderly exercise prescription elements prediction model.

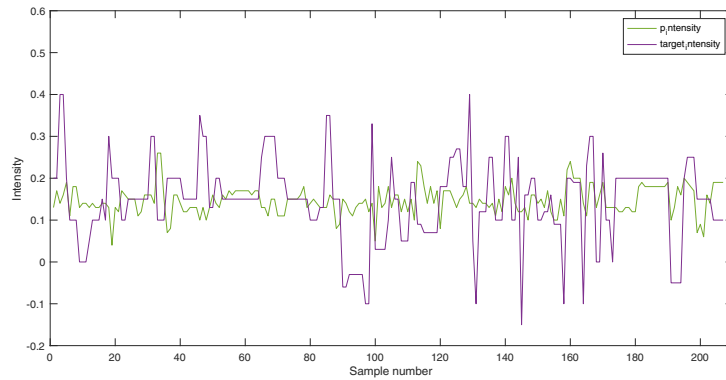
215 Fig 4(a) shows the training error diagram of the LM-BPNN. The horizontal axis shows the
 216 training epoch, and the vertical axis shows the mean squared error (MSE) on the data set. The best
 217 training performance of the model is 4.5416 at epoch 47. Fig 4(b) shows the regression fitting values
 218 R for the training set, validation set, testing set and the overall are 0.99659, 0.99408, 0.99326 and
 219 0.99572 respectively. The R values measure the correlation between outputs and targets. An R value
 220 of 1 means a close relationship, 0 a random relationship.

221 Figs 5-7 show the predicted result of the BP neural network on best test round. These figures
 222 show the predicted results between the true value and prediction value, we can see that a small
 223 difference between the prediction value and true value and demonstrates a better prediction trend
 224 and accuracy in exercise time and period. For the prediction of exercise intensity, our model can
 225 also make a basically accurate prediction.



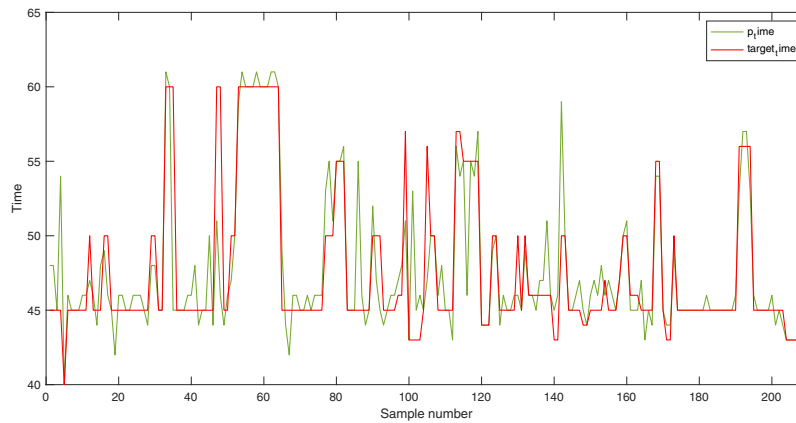
226

227 **Fig 4. Model training error situation.** (a) Fitting regression diagram of LM-BPNN model; (b)
228 Training error diagram of LM-BPNN



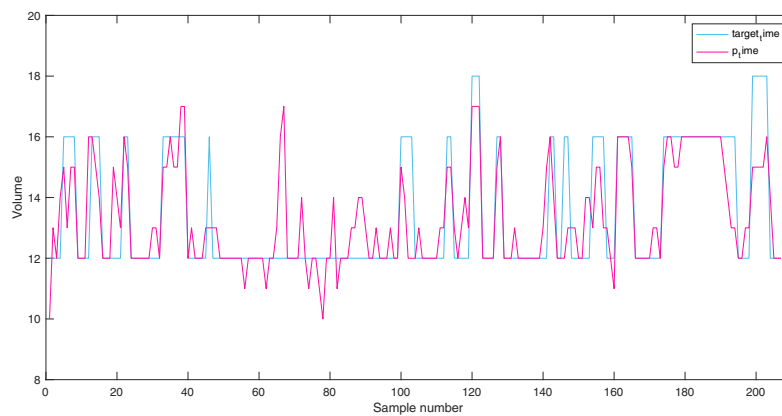
229

230 **Fig 5. Comparison between the true results and BPNN prediction results at Intensity**



231

232 **Figure 6. Comparison between the true results and BPNN prediction results at Time**



233

234 **Figure 7. Comparison between the true results and BPNN prediction results at Volume**

235 Instance Verification results

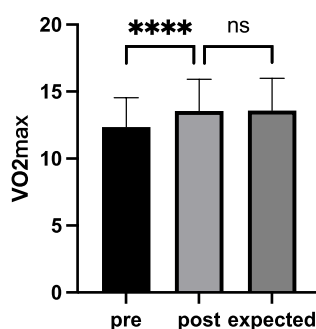
236 The exercise prescriptions generated from the model are shown in Table 5. It can be seen that
237 the frequency of exercise is 2 times per week, the exercise intensity is mostly concentrated at 64%

238 HRR, the average exercise time is about 48 minutes (range from 45 minutes to 55 minutes), and the
 239 volume is around 12 weeks.

240 **Table 5. Model-generated exercise prescriptions for subjects**

	Frequency (d/w)	Intensity (%HRR)	Time (min)	Volume (w)
M±s	2.0±0	64.2±2.7	48±3	11.9±0.6
Range	2	59.9-67.4	45-55	10.9-12.8

241 After finish their exercise intervention, the 6MWT is measured for estimating VO_{2max}
 242 again. The differences in pre VO_{2max} , post VO_{2max} and the expected improvement in VO_{2max} are
 243 shown in Fig 8. It can be seen that the post VO_{2max} was significantly different from the pre VO_{2max}
 244 and improved by 10.1%. There was no difference between the post VO_{2max} and the expected
 245 improved VO_{2max} , indicating that the actual improvement in the model was largely in line with the
 246 expected improvement.



247
 248 **Fig 8. Difference between pre VO_{2max} , post VO_{2max} and expected improvement in VO_{2max} .**

249 Note: ****, $p < 0.0001$; ns: no significant.

250 Table 6 shows the "hit rate" (also called predictive accuracy) of CRF improvement for 26
 251 subjects over a range of one standard deviation and a range of 1.96 times standard
 252 deviations[86,87].A total of 20 subjects improved within one standard deviation and 25 subjects
 253 improved within two standard deviations, indicating that each subject had good CRF improvement.

254 **Table 6. "Hit rate" of improvement at one standard deviation and 1.96 times standard deviation**
 255 **range.**

	Range	Hit rate
M±sd	1.9%-18.2%	76.9%
M±1.96sd	-6.2%-26.3%	96.2%

256 Limitations and further work

257 Compared to previous studies, we innovatively use the BP neural network model to
 258 recommend exercise prescriptions for elderly. Although the model can achieve good results, it still
 259 has limitations. In our study, the reason why exercise intensity is not well predicted is mainly due
 260 to the variety of exercise intensity, such as percentage of heart rate reserve, percentage of VO_{2max} ,
 261 and percentage of HR_{max} , they designed for elderly in each research we collected, so when we
 262 process each exercise intensity from each study, some random errors will generate. Therefore, the

263 exercise intensity prediction of this model cannot achieve the general accuracy of predicting
264 exercise time and exercise volume.

265 However, in the reality exercise intervention for elderly, they do not exercise at a fixed exercise
266 intensity, but exercise within a range. Likewise, when we encode the exercise intensity set, we use
267 the middle value of the exercise intensity range in each study, so the predicted exercise intensity
268 result can also be used as a reference median value. We can use an increase and decrease of 5% to
269 10% in the median as a range of predicted exercise intensity.

270 Although our model can achieve a good degree of simulation, it is currently not possible to
271 give different prescriptions for each independent individual. For example, if two elderly people have
272 the same parameters, the prescriptions generated from the model will be the same. So the actual
273 improvement effect still needs to be verified in practice.

274 In the following, we can consider expanding the sample size and research parameters of the
275 model, adding a new algorithm to pre-process the exercise intensity set and then inputting it into the
276 BP neural network for prediction, and use this model as the core to establish an application that can
277 be used for elderly.

278 **Conclusion**

279 In this study, we propose to use a model based on BP neural network to create individualized
280 CRF exercise prescriptions for elderly. The model consists of 5 layers BP neural network and the
281 structure is 5-12-10-8-4. By inputting the basic information of elderly after exercise evaluation and
282 the expected improvement degree of CRF, this model can generate a suitable exercise prescription.
283 After expanding the collected data, an evaluation system for evaluating the sample cardiopulmonary
284 health (VO_{2max}) is obtained through machine learning and modeling, which provides a convenient
285 solution for future elderly health exercise. The experimental results show that the exercise
286 prescriptions predicted by our proposed model are closely related to the actual exercise
287 prescriptions. To examine the actual improvement of the model, we verified the improvement in
288 CRF by recruiting subjects to perform the model-generated exercise prescriptions for the
289 intervention. At the end of the intervention, the post-intervention VO_{2max} was close to the expected
290 improved VO_{2max} , which can indicate the high validity and reliability of the exercise prescription
291 model based on BP neural network for the elderly.

292 This work demonstrates the potential of the BP neural network model in predicting
293 individualized sports for elderly. This article introduces our method from several parts, including
294 data collection, data expansion and the model establishment based on BP neural network. The
295 advantages of the BPNN model come from the capacity to learn input data at multiple spatial and
296 temporal levels of abstraction. In summary, our study proposed in this paper provides an innovative
297 and effective solution for the health exercise of elderly.

298 **Acknowledgments**

299 Funding was provided by the National Key R&D Program of China (2018YFC2000604).

300 **Institutional Review Board Statement**

301 The research proposal was approved by the Institutional Review Board of Beijing Sport
302 University (BSU IRB) and all participants gave written informed consent prior to study
303 participation (No. 2018018H).

304 **Author contributions**

305 **Conceptualization:** Chunyan Xu, Yiran Xiao, Lantian Zhang, Xiaozhen Ding.

306 **Data curation:** Yiran Xiao, Lantian Zhang, Xiaozhen Ding.

307 **Formal analysis:** Yiran Xiao, Xiaozhen Ding.

308 **Funding acquisition:** Chunyan Xu.

309 **Investigation:** Chunyan Xu, Yiran Xiao, Lantian Zhang, Xiaozhen Ding.

310 **Methodology:** Chunyan Xu, Yiran Xiao, Lantian Zhang, Xiaozhen Ding.

311 **Project administration:** Chunyan Xu.

312 **Resources:** Chunyan Xu, Yiran Xiao, Lantian Zhang, Xiaozhen Ding.

313 **Software:** Chunyan Xu, Yiran Xiao, Lantian Zhang.

314 **Supervision:** Chunyan Xu.

315 **Validation:** Chunyan Xu, Yiran Xiao, Lantian Zhang, Xiaozhen Ding.

316 **Visualization:** Yiran Xiao, Lantian Zhang, Xiaozhen Ding.

317 **Writing – original draft:** Yiran Xiao, Lantian Zhang, Xiaozhen Ding.

318 **Writing – review & editing:** Chunyan Xu, Yiran Xiao, Lantian Zhang, Xiaozhen Ding.

319

320 **References**

- 321 [1] Raghuv eer G, Hartz J, Lubans DR, Takken T, Wiltz JL, Mietus-Snyder M, et al.
322 Cardiorespiratory Fitness in Youth: An Important Marker of Health: A Scientific
323 Statement From the American Heart Association. *Circulation* 2020;142:e101–
324 18. <https://doi.org/10.1161/CIR.0000000000000866>.
- 325 [2] Kohler R, Rorato P, Braga ALF, Velho RB, Krause MP. Effects of Aging and
326 Exercise on the Cardiorespiratory Fitness of Older Women. *Rev Bras Geriatr E*
327 *Gerontol* 2016;19:603–12. <https://doi.org/10.1590/1809-98232016019.150092>.
- 328 [3] Raguso CA, Kyle U, Kossovsky MP, Roynette C, Paoloni-Giacobino A, Hans D,
329 et al. A 3-year longitudinal study on body composition changes in the elderly:
330 role of physical exercise. *Clin Nutr Edinb Scotl* 2006;25:573–80.
331 <https://doi.org/10.1016/j.clnu.2005.10.013>.
- 332 [4] Fleg JL, Morrell CH, Bos AG, Brant LJ, Talbot LA, Wright JG, et al.
333 Accelerated longitudinal decline of aerobic capacity in healthy older adults.
334 *Circulation* 2005;112:674–82.
335 <https://doi.org/10.1161/CIRCULATIONAHA.105.545459>.
- 336 [5] Kodama S, Saito K, Tanaka S, Maki M, Yachi Y, Asumi M, et al.
337 Cardiorespiratory fitness as a quantitative predictor of all-cause mortality and
338 cardiovascular events in healthy men and women: a meta-analysis. *JAMA*
339 2009;301:2024–35. <https://doi.org/10.1001/jama.2009.681>.

- 340 [6] Pollock M, Gaesser G, Butcher J, Després J, Dishman R, Franklin B, et al.
341 ACSM Position Stand: The Recommended Quantity and Quality of Exercise for
342 Developing and Maintaining Cardiorespiratory and Muscular Fitness, and
343 Flexibility in Healthy Adults 1998. [https://doi.org/10.1097/00005768-](https://doi.org/10.1097/00005768-199806000-00032)
344 [199806000-00032](https://doi.org/10.1097/00005768-199806000-00032).
- 345 [7] Lambert EV, Kolbe-Alexander T, Adlakha D, Oyeyemi A, Anokye NK, Goenka
346 S, et al. Making the case for “physical activity security”: the 2020 WHO
347 guidelines on physical activity and sedentary behaviour from a Global South
348 perspective. *Br J Sports Med* 2020;54:1447–8. [https://doi.org/10.1136/bjsports-](https://doi.org/10.1136/bjsports-2020-103524)
349 [2020-103524](https://doi.org/10.1136/bjsports-2020-103524).
- 350 [8] Bouchard C. Individual differences in the response to regular exercise. *Int J*
351 *Obes Relat Metab Disord J Int Assoc Study Obes* 1995;19 Suppl 4:S5.
352 <https://doi.org/doi:10.1159/000184620>.
- 353 [9] Ross R, Goodpaster BH, Koch LG, Sarzynski MA, Kohrt WM, Johannsen NM,
354 et al. Precision exercise medicine: understanding exercise response variability.
355 *Br J Sports Med* 2019;53:1141–53. [https://doi.org/10.1136/bjsports-2018-](https://doi.org/10.1136/bjsports-2018-100328)
356 [100328](https://doi.org/10.1136/bjsports-2018-100328).
- 357 [10] Galloway M, Marsden DL, Callister R, Erickson KI, Nilsson M, English C.
358 What Is the Dose-Response Relationship Between Exercise and
359 Cardiorespiratory Fitness After Stroke? A Systematic Review. *Phys Ther*
360 2019;99:821–32. <https://doi.org/10.1093/ptj/pzz038>.
- 361 [11] Nelson ME, Rejeski WJ, Blair SN, Duncan PW, Judge JO, King AC, et al.
362 Physical activity and public health in older adults: recommendation from the
363 American College of Sports Medicine and the American Heart Association. *Med*
364 *Sci Sports Exerc* 2007;39:1435–45.
365 <https://doi.org/10.1249/mss.0b013e3180616aa2>.
- 366 [12] Luan X, Tian X, Zhang H, Huang R, Li N, Chen P, et al. Exercise as a
367 prescription for patients with various diseases. *J Sport Health Sci* 2019;8:422–
368 41. <https://doi.org/10.1016/j.jshs.2019.04.002>.
- 369 [13] Xie L. The Heat load Prediction Model based on BP Neural Network-markov
370 Model. *Procedia Comput Sci* 2017;107:296–300.
371 <https://doi.org/10.1016/j.procs.2017.03.108>.
- 372 [14] Luo FL. An Improved BP Neural Network Algorithm and its Application in
373 Competitive Advantage Evaluation of Logistics Enterprises. *Adv Mater Res*
374 2014;850–851:788–91. [https://doi.org/10.4028/www.scientific.net/AMR.850-](https://doi.org/10.4028/www.scientific.net/AMR.850-851.788)
375 [851.788](https://doi.org/10.4028/www.scientific.net/AMR.850-851.788).
- 376 [15] Faramarzi M, Bagheri L, Banitalebi E. Effect of sequence order of combined
377 strength and endurance training on new adiposity indices in overweight elderly
378 women. *Isokinet Exerc Sci* 2018;26:1–9. <https://doi.org/10.3233/IES-172195>.
- 379 [16] Alcazar J, Losa-Reyna J, Rodriguez-Lopez C, Navarro-Cruz R, Acha A, Ara I, et
380 al. Effects of concurrent exercise training on muscle dysfunction and systemic

- 381 oxidative stress in older people with COPD. *Scand J Med Sci Sports* 2019;29.
382 <https://doi.org/10.1111/sms.13494>.
- 383 [17] Christopher H, Weston KL, Matthew W. The effect of 12 weeks of combined
384 upper- and lower-body high-intensity interval training on muscular and
385 cardiorespiratory fitness in older adults. *Aging Clin Exp Res* 2018;1–11.
386 <https://doi.org/10.1007/s40520-018-1015-9>.
- 387 [18] Lovell D, Cuneo R, Wallace J, McLellan C. The hormonal response of older
388 men to sub-maximum aerobic exercise: The effect of training and detraining.
389 *Steroids* 2012;77:413–8. <https://doi.org/10.1016/j.steroids.2011.12.022>.
- 390 [19] Strasser B, Keinrad M, Haber P, Schobersberger W. Efficacy of systematic
391 endurance and resistance training on muscle strength and endurance
392 performance in elderly adults - A randomized controlled trial. *Wien Klin*
393 *Wochenschr* 2009;121:757–64. <https://doi.org/10.1007/s00508-009-1273-9>.
- 394 [20] Brubaker PH, Moore JB, Stewart KP, Wesley DJ, Kitzman DW. Endurance
395 Exercise Training in Older Patients with Heart Failure: Results from a
396 Randomized, Controlled, Single-Blind Trial. *J Am Geriatr Soc* 2009;57:1982–9.
397 <https://doi.org/10.1111/j.1532-5415.2009.02499.x>.
- 398 [21] Santana M, Lira C, Passos G, Santos C, Silva A, Yoshida C, et al. Is the six-
399 minute walk test appropriate for detecting changes in cardiorespiratory fitness in
400 healthy elderly men? *J Sci Med Sport Sports Med Aust* 2011;15:259–65.
401 <https://doi.org/10.1016/j.jsams.2011.11.249>.
- 402 [22] Park J, Nakamura Y, Kwon Y, Park H, Kim E, Park S. The effect of combined
403 exercise training on carotid artery structure and function, and vascular
404 endothelial growth factor (VEGF) in obese older women. *Jpn J Phys Fit Sports*
405 *Med* 2010;59:495–504. <https://doi.org/10.7600/jspfsm.59.495>.
- 406 [23] Wilhelm E, Rech A, Minozzo F, Botton C, Radaelli R, Teixeira B, et al.
407 Concurrent strength and endurance training exercise sequence does not affect
408 neuromuscular adaptations in older men. *Exp Gerontol* 2014;60:207–14.
409 <https://doi.org/10.1016/j.exger.2014.11.007>.
- 410 [24] Kwon Y, Park S, Kim E, Park J. The effects of multi-component exercise
411 training on VO₂max, muscle mass, whole bone mineral density and fall risk in
412 community-dwelling elderly women. *Tairyoku Kagaku Jpn J Phys Fit Sports*
413 *Med* 2008;57:339–48. <https://doi.org/10.7600/jspfsm.57.339>.
- 414 [25] Zafra MM, E García-Cantó, PLR García, JJ Pérez-Soto, MLT López. Influence
415 of a physical exercise program on VO₂max in adults with cardiovascular risk
416 factors. *Clin E Investig En Arterioscler* 2018;30.
417 <https://doi.org/10.1016/j.arteri.2017.11.003>.
- 418 [26] Solomon TPJ, Sistrun SN, Krishnan RK, Del Aguila LF, Marchetti CM,
419 O’Carroll SM, et al. Exercise and diet enhance fat oxidation and reduce insulin
420 resistance in older obese adults. *J Appl Physiol Bethesda Md* 1985
421 2008;104:1313–9. <https://doi.org/10.1152/jappphysiol.00890.2007>.

- 422 [27] Cadore E, Pinto R, Lhullier F, Correa C, Alberton C, Pinto S, et al. Physiological
423 Effects of Concurrent Training in Elderly Men 2010.
- 424 [28] Vianna M, SA Cáder, Gomes A, Guimar?Es AC, Seixas- Da -Silva IA, Adriana
425 Ribeiro de O.N. do Rêgo, et al. Aerobic conditioning, blood pressure (BP) and
426 body mass index (BMI) of older participants of the Brazilian Family Health
427 Program (FHP) after 16 weeks of guided physical activity. *Arch Gerontol*
428 *Geriatr* 2012;54:210–3. <https://doi.org/10.1016/j.archger.2011.02.013>.
- 429 [29] Ryan AS, Li G, Blumenthal JB, Ortmeyer HK. Aerobic exercise + weight loss
430 decreases skeletal muscle myostatin expression and improves insulin sensitivity
431 in older adults. *Obesity* 2013;21:1350–6. <https://doi.org/10.1002/oby.20216>.
- 432 [30] Paillard T, Sablayrolles M, Costes-Salon MC, Lafont C, Riviere D. Walking
433 program influence on maximal oxigen uptake (VO2 max) and perceptive motor
434 skills in healthy active elderly subjects. *Ence Sports* 2001;16.
435 [https://doi.org/10.1016/S0765-1597\(00\)00035-6](https://doi.org/10.1016/S0765-1597(00)00035-6).
- 436 [31] Bichay A, JM Ramírez, Víctor M. Núez, Lancho C, Poblador MS, Lancho JL.
437 Efficacy of treadmill exercises on arterial blood oxygenation, oxygen
438 consumption and walking distance in healthy elderly people: a controlled trial.
439 *BMC Geriatr* 2016;16:1–10. <https://doi.org/10.1186/s12877-016-0283-5>.
- 440 [32] Burich R, Teljigović S, Boyle E, Sjøgaard G. Aerobic training alone or
441 combined with strength training affects fitness in elderly: Randomized trial. *Eur*
442 *J Sport Sci* 2015;15:1–11. <https://doi.org/10.1080/17461391.2015.1060262>.
- 443 [33] Bruseghini P, Calabria E, Tam E, Milanese C, Oliboni E, Pezzato A, et al.
444 Effects of eight weeks of aerobic interval training and of isoinertial resistance
445 training on risk factors of cardiometabolic diseases and exercise capacity in
446 healthy elderly subjects. *Oncotarget* 2015;6.
447 <https://doi.org/10.18632/oncotarget.4031>.
- 448 [34] Pospieszna B, Rychlewski T, Michalak E. The influence of an 8-week ergometer
449 training on postmenopausal women in view of their biological age. *Stud Phys*
450 *Cult Tour* 2010;7:302–8.
- 451 [35] Knowles AM, Herbert P, Easton C, Sculthorpe N, Grace FM. Impact of low-
452 volume, high-intensity interval training on maximal aerobic capacity, health-
453 related quality of life and motivation to exercise in ageing men. *Age* 2015;37.
454 <https://doi.org/10.1007/s11357-015-9763-3>.
- 455 [36] Chen CH, Chen YJ, Tu HP, Huang MH, Jhong JH, Lin KL. Benefits of exercise
456 training and the correlation between aerobic capacity and functional outcomes
457 and quality of life in elderly patients with coronary artery disease. *Kaohsiung J*
458 *Med Sci* 2014;30. <https://doi.org/10.1016/j.kjms.2014.08.004>.
- 459 [37] Vilela E, Ladeiras Lopes R, Torres S, João A, Ribeiro J, Primo J, et al.
460 Differential Impact of a Cardiac Rehabilitation Program on Functional
461 Parameters in Elderly versus Non-Elderly Myocardial Infarction Survivors.
462 *Cardiology* 2019;145:1–8. <https://doi.org/10.1159/000504875>.

- 463 [38] Coker R, Hays N, Williams R, Brown A, Freeling S, Kortebein P, et al.
464 Exercise-Induced Changes in Insulin Action and Glycogen Metabolism in
465 Elderly Adults. *Med Sci Sports Exerc* 2006;38:433–8.
466 <https://doi.org/10.1249/01.mss.0000191417.48710.11>.
- 467 [39] Deiseroth A, Streese L, Köchli S, Wüst R, Infanger D, Schmidt-Trucksäss A, et
468 al. Exercise and Arterial Stiffness in the Elderly: A Combined Cross-Sectional
469 and Randomized Controlled Trial (EXAMIN AGE). *Front Physiol* 2019;10.
470 <https://doi.org/10.3389/fphys.2019.01119>.
- 471 [40] Lange E, Kucharski D, Svedlund S, Svensson K, Bertholds G, Gjertsson I, et al.
472 Effects of Aerobic and Resistance Exercise in Older Adults With Rheumatoid
473 Arthritis: A Randomized Controlled Trial. *Arthritis Care Res* 2018;71.
474 <https://doi.org/10.1002/acr.23589>.
- 475 [41] Michael S, Fisher N, Yaniv A, Rudoy J. Effect of Running versus Isometric
476 Training Programs on Healthy Elderly at Rest. *Gerontology* 1989;35:72–7.
477 <https://doi.org/10.1159/000213002>.
- 478 [42] Bouaziz W, Schmitt E, Vogel T, Lefebvre F, Remetter R, Lonsdorfer-Wolf E, et
479 al. Effects of Interval Aerobic Training Program with Recovery bouts on
480 cardiorespiratory and endurance fitness in seniors. *Scand J Med Sci Sports*
481 2018;28. <https://doi.org/10.1111/sms.13257>.
- 482 [43] Gildenhuis G, Fourie M, Shaw I, Shaw B, Toriola A, Witthuhn J. Evaluation of
483 Pilates training on agility, functional mobility and cardiorespiratory fitness in
484 elderly women. *AJPHRD* 2013;19:505–12.
- 485 [44] Cadore E, Pinto R, Teodoro J, X. Neves da Silva L, Silveira E, Alberton C, et al.
486 Cardiorespiratory Adaptations in Elderly Men Following Different Concurrent
487 Training Regimes. *J Nutr Health Aging* 2017;22.
488 <https://doi.org/10.1007/s12603-017-0958-4>.
- 489 [45] Bagheri R, Hooshmand-Moghadam B, Church D, Tinsley G, Eskandari M,
490 Moghadam B, et al. The effects of concurrent training order on body
491 composition and serum concentrations of follistatin, myostatin and GDF11 in
492 sarcopenic elderly men. *Exp Gerontol* 2020;133:110869.
493 <https://doi.org/10.1016/j.exger.2020.110869>.
- 494 [46] Cao L, Jiang Y, Li Q, Wang J, Tan S. Exercise Training at Maximal Fat
495 Oxidation Intensity for Overweight or Obese Older Women: A Randomized
496 Study. *J Sports Sci Med* 2019;18:413–8.
- 497 [47] Audette J, Jin Y, Appaneal R, Stein L, Duncan G, Frontera W. Tai Chi versus
498 brisk walking in elderly women. *Age Ageing* 2006;35:388–93.
499 <https://doi.org/10.1093/ageing/afl006>.
- 500 [48] Østerås H, Hoff J, Helgerud J. Effects of High-Intensity Endurance Training on
501 Maximal Oxygen Consumption in Healthy Elderly People. *J Appl Gerontol*
502 2005;24:377–87. <https://doi.org/10.1177/0733464804273185>.
- 503 [49] Albinet C, Abou-Dest A, André N, Audiffren M. Executive functions
504 improvement following a 5-month aquaerobics program in older adults: Role of

- 505 cardiac vagal control in inhibition performance. *Biol Psychol* 2016;115.
506 <https://doi.org/10.1016/j.biopsycho.2016.01.010>.
- 507 [50] Takeshima N, Tanaka K, Kobayashi F, Watanabe T, Kato T. Effects of aerobic
508 exercise conditioning at intensities corresponding to lactate threshold in the
509 elderly. *Eur J Appl Physiol* 1993;67:138–43.
510 <https://doi.org/10.1007/BF00376657>.
- 511 [51] Villanueva M, He J, Schroeder E. Periodized resistance training with and
512 without supplementation improve body composition and performance in older
513 men. *Eur J Appl Physiol* 2014;114. <https://doi.org/10.1007/s00421-014-2821-1>.
- 514 [52] Imai A, Sengoku N, Koizumi D, Kitabayashi Y, Naruse A, Rogers ME, et al.
515 Effect of a Concurrent Well-Rounded Exercise Training Using a Floor-Based
516 Exercise Station in Older Women. *Int J Sport Health Sci* 2017;15.
517 <https://doi.org/10.5432/ijshs.201706>.
- 518 [53] Aldred S, Rohalu M. A moderate intensity exercise program did not increase the
519 oxidative stress in older adults. *Arch Gerontol Geriatr* 2011;53:350–3.
520 <https://doi.org/10.1016/j.archger.2010.12.002>.
- 521 [54] Pospieszna B, Rychlewski T, Michalak E. The influence of an 8-week ergometer
522 training on postmenopausal women in view of their biological age. *Stud Phys
523 Cult Tour* 2010;7:302–8.
- 524 [55] Watson E, Gould D, Wilkinson T, Xenophontos S, Clarke A, Vogt B, et al. 12-
525 weeks combined resistance and aerobic training confers greater benefits than
526 aerobic alone in non-dialysis CKD. *Am J Physiol-Ren Physiol* 2018;314.
527 <https://doi.org/10.1152/ajprenal.00012.2018>.
- 528 [56] Boukabous I, Marcotte-Chénard A, Amamou T, Boulay P, Brochu M, Tessier D,
529 et al. Low-Volume High-Intensity Interval Training (HIIT) versus Moderate-
530 Intensity Continuous Training on Body Composition, Cardiometabolic Profile
531 and Physical Capacity in Older Women. *J Aging Phys Act* 2019;27:1–34.
532 <https://doi.org/10.1123/japa.2018-0309>.
- 533 [57] Latosik E, Zubrzycki I, Ossowski Z, Bojke O, Clarke A, Wiacek M, et al.
534 Physiological Responses Associated with Nordic-Walking Training in Systolic
535 Hypertensive Postmenopausal Women. *J Hum Kinet* 2014;43.
536 <https://doi.org/10.2478/hukin-2014-0104>.
- 537 [58] Babcock M, Paterson D, Cunningham D. Effects of aerobic endurance training
538 on gas exchange kinetics of older men. *Med Sci Sports Exerc* 1994;26:447–52.
539 <https://doi.org/10.1249/00005768-199404000-00008>.
- 540 [59] Belman M, Gaesser G. Exercise training below and above the lactate threshold
541 in the elderly. *Med Sci Sports Exerc* 1991;23:562–8.
542 <https://doi.org/10.1249/00005768-199105000-00008>.
- 543 [60] Blumenthal J, Emery C, Madden D, Coleman RE, Riddle M, Schniebolk S, et al.
544 Effects of exercise training on cardiorespiratory function in men and women >60
545 years of age. *Am J Cardiol* 1991;67:633–9. [https://doi.org/10.1016/0002-9149\(91\)90904-Y](https://doi.org/10.1016/0002-9149(91)90904-Y).
- 546

- 547 [61] Braith R, Pollock M, Lowenthal D, Graves J, Limacher M. Moderate and high-
548 intensity exercise lowers blood pressure in normotensive subjects 60 to 79 years
549 of age. *Am J Cardiol* 1994;73:1124–8. [https://doi.org/10.1016/0002-](https://doi.org/10.1016/0002-9149(94)90294-1)
550 [9149\(94\)90294-1](https://doi.org/10.1016/0002-9149(94)90294-1).
- 551 [62] Carroll J, Convertino V, Pollock M, Graves J, Lowenthal D. Effect of 6 months
552 of exercise training on cardiovascular responses to head-up tilt in the elderly.
553 *Clin Physiol Oxf Engl* 1995;15:13–25. [https://doi.org/10.1111/j.1475-](https://doi.org/10.1111/j.1475-097X.1995.tb00426.x)
554 [097X.1995.tb00426.x](https://doi.org/10.1111/j.1475-097X.1995.tb00426.x).
- 555 [63] Carroll J, Pollock M, Graves J, Leggett S, Spitler D, Lowenthal D. Incidence of
556 Injury During Moderate-and High-Intensity Walking Training in the Elderly. *J*
557 *Gerontol* 1992;47:M61-6. <https://doi.org/10.1093/geronj/47.3.M61>.
- 558 [64] Engels H, Drouin J, Zhu W, Kazmierski J. Effects of Low-Impact, Moderate-
559 Intensity Exercise Training with and without Wrist Weights on Functional
560 Capacities and Mood States in Older Adults. *Gerontology* 1998;44:239–44.
561 <https://doi.org/10.1159/000022018>.
- 562 [65] Fahlman M, Boardley D, Flynn M, Braun WA, Lambert CP, Bouillon L. Effects
563 of Endurance Training on Selected Parameters of Immune Function in Elderly
564 Women. *Gerontology* 2000;46:97–104. <https://doi.org/10.1159/000022142>.
- 565 [66] Jessup J, Lowenthal D, Pollock M, Turner T. The effects of endurance exercise
566 training on ambulatory blood pressure in normotensive older adults. *Geriatr*
567 *Nephrol Urol* 1998;8:103–9. <https://doi.org/10.1023/A:1008287320868>.
- 568 [67] Panton L, Guillen G, Williams L, Graves J, Vivas C, Cediél M, et al. The Lack
569 of Effect of Aerobic Exercise Training on Propranolol Pharmacokinetics in
570 Young and Elderly Adults. *J Clin Pharmacol* 1995;35:885–94.
571 <https://doi.org/10.1002/j.1552-4604.1995.tb04133.x>.
- 572 [68] Schwartz R, Shuman W, Larson V, Cain K, Fellingham G, Beard J, et al. The
573 effect of intensive endurance exercise training on body fat distribution in young
574 and older men. *Metabolism* 1991;40:545–51. [https://doi.org/10.1016/0026-](https://doi.org/10.1016/0026-0495(91)90239-S)
575 [0495\(91\)90239-S](https://doi.org/10.1016/0026-0495(91)90239-S).
- 576 [69] Sunami Y, Motoyama M, Kinoshita F, Mizooka Y, Sueta K, Matsunaga A, et al.
577 Effects of low-intensity aerobic training on the high-density lipoprotein
578 cholesterol concentration in healthy elderly subjects. *Metabolism* 1999;48:984–
579 8. [https://doi.org/10.1016/S0026-0495\(99\)90194-4](https://doi.org/10.1016/S0026-0495(99)90194-4).
- 580 [70] Fabre C-B, Massé-Biron J, Ahmaidi S, Adam B, Préfaut C. Effectiveness of
581 Individualized Aerobic Training at the Ventilatory Threshold in the Elderly. *J*
582 *Gerontol A Biol Sci Med Sci* 1997;52:B260-6.
583 <https://doi.org/10.1093/gerona/52A.5.B260>.
- 584 [71] Pichot V, Roche F, Denis C, Garet M, Duverney D, Costes F, et al. Interval
585 training in elderly men increases both heart rate variability and baroreflex
586 activity. *Clin Auton Res Off J Clin Auton Res Soc* 2005;15:107–15.
587 <https://doi.org/10.1007/s10286-005-0251-1>.

- 588 [72] Nieman D, Warren B, O'Donnell K, Dotson R, Butterworth D, Henson D.
589 Physical Activity and Serum Lipids and Lipoproteins in Elderly Women. *J Am*
590 *Geriatr Soc* 1994;41:1339–44. [https://doi.org/10.1111/j.1532-](https://doi.org/10.1111/j.1532-5415.1993.tb06485.x)
591 [5415.1993.tb06485.x](https://doi.org/10.1111/j.1532-5415.1993.tb06485.x).
- 592 [73] De Vito G, Hernandez R, Gonzalez V, Felici F, Figura F. Low intensity physical
593 training in older subjects. *J Sports Med Phys Fitness* 1997;37:72–7.
- 594 [74] Posner J, M Gorman K, Landsberg L, Larsen J, Bleiman M, Shaw C, et al. Low
595 to Moderate Intensity Endurance Training in Healthy Older Adults:
596 Physiological Responses after Four Months. *J Am Geriatr Soc* 1992;40:1–7.
597 <https://doi.org/10.1111/j.1532-5415.1992.tb01820.x>.
- 598 [75] Murias J, Kowalchuk J, Paterson D. Time course and mechanisms of adaptations
599 in cardiorespiratory fitness with endurance training in older and young men. *J*
600 *Appl Physiol Bethesda Md* 1985 2010;108:621–7.
601 <https://doi.org/10.1152/jappphysiol.01152.2009>.
- 602 [76] Kanitz A, Delevatti R, Reichert T, Liedtke G, Ferrari R, Almada B, et al. Effects
603 of two deep water training programs on cardiorespiratory and muscular strength
604 responses in older adults. *Exp Gerontol* 2015;64:55–61.
605 <https://doi.org/10.1016/j.exger.2015.02.013>.
- 606 [77] Stewart K, Ouyang P, Bacher A, Lima S, Shapiro E. Exercise effects on cardiac
607 size and left ventricular diastolic function: Relationships to changes in fitness,
608 fatness, blood pressure and insulin resistance. *Heart Br Card Soc* 2006;92:893–8.
609 <https://doi.org/10.1136/hrt.2005.079962>.
- 610 [78] Lei Z. An upper limb movement estimation from electromyography by using BP
611 neural network. *Biomed Signal Process Control* 2019;49:434–9.
612 <https://doi.org/10.1016/j.bspc.2018.12.020>.
- 613 [79] Huang X, Liao W, Lei X, Jia Y, Wang Y, Wang X, et al. Parameter optimization
614 of distributed hydrological model with a modified dynamically dimensioned
615 search algorithm. *Environ Model Softw* 2014;52:98–110.
616 <https://doi.org/10.1016/j.envsoft.2013.09.028>.
- 617 [80] Hagan MT, Menhaj MB. Training feedforward networks with the Marquardt
618 algorithm. *IEEE Trans Neural Netw* 1994;5:989–93.
619 <https://doi.org/10.1109/72.329697>.
- 620 [81] Luo F. An Improved BP Neural Network Algorithm and its Application in
621 Competitive Advantage Evaluation of Logistics Enterprises. *Adv Mater Res*
622 2013;850–851:788–91. [https://doi.org/10.4028/www.scientific.net/AMR.850-](https://doi.org/10.4028/www.scientific.net/AMR.850-851.788)
623 [851.788](https://doi.org/10.4028/www.scientific.net/AMR.850-851.788).
- 624 [82] Bahadir E. Prediction of Prospective Mathematics Teachers' Academic Success
625 in Entering Graduate Education by Using Back-Propagation Neural Network. *J*
626 *Educ Train Stud* 2016;4:113–22.
- 627 [83] Ding H, Lu Q, Gao H, Peng Z. Non-invasive prediction of hemoglobin levels by
628 principal component and back propagation artificial neural network. *Biomed Opt*
629 *Express* 2014;5:1145–52. <https://doi.org/10.1364/BOE.5.001145>.

- 630 [84] Cahalin LP, Mathier MA, Semigran MJ, Dec GW, DiSalvo TG. The six-minute
631 walk test predicts peak oxygen uptake and survival in patients with advanced
632 heart failure. *Chest* 1996;110:325–32. <https://doi.org/10.1378/chest.110.2.325>.
- 633 [85] Mousavi SS, Firouzmand M, Charmi M, Hemmati M, Moghadam M, Ghorbani
634 Y. Blood pressure estimation from appropriate and inappropriate PPG signals
635 using A whole-based method. *Biomed Signal Process Control* 2019;47:196–206.
636 <https://doi.org/10.1016/j.bspc.2018.08.022>.
- 637 [86] Poldrack RA, Huckins G, Varoquaux G. Establishment of Best Practices for
638 Evidence for Prediction: A Review. *JAMA Psychiatry* 2020;77:534–40.
639 <https://doi.org/10.1001/jamapsychiatry.2019.3671>.
- 640 [87] Koo E, Kim H. Empirical strategy for stretching probability distribution in
641 neural-network-based regression. *Neural Netw Off J Int Neural Netw Soc*
642 2021;140:113–20. <https://doi.org/10.1016/j.neunet.2021.02.030>.
- 643

644 **Supporting information**