

1 **SARS-CoV-2 Omicron sublineage BA.2 replaces BA.1.1:**  
2 **genomic surveillance in Japan from September 2021 to March**  
3 **2022**

4  
5 Yosuke Hirotsu<sup>1\*</sup>, Makoto Maejima<sup>2</sup>, Masahiro Shibusawa<sup>2</sup>, Yume Natori<sup>2</sup>, Yuki Nagakubo<sup>2,3</sup>,  
6 Kazuhiro Hosaka<sup>2</sup>, Hitomi Sueki<sup>2</sup>, Hitoshi Mochizuki<sup>1,4,5</sup>, Toshiharu Tsutsui<sup>6</sup>, Yumiko  
7 Kakizaki<sup>6</sup>, Yoshihiro Miyashita<sup>6</sup>, and Masao Omata<sup>5,7</sup>

8  
9 <sup>1</sup>Genome Analysis Center, Yamanashi Central Hospital, 1-1-1 Fujimi, Kofu, Yamanashi,  
10 Japan

11 <sup>2</sup>Division of Microbiology in Clinical Laboratory, Yamanashi Central Hospital, 1-1-1 Fujimi,  
12 Kofu, Yamanashi, Japan

13 <sup>3</sup>Division of Genetics and Clinical Laboratory, Yamanashi Central Hospital, 1-1-1 Fujimi,  
14 Kofu, Yamanashi, Japan

15 <sup>4</sup>Central Clinical Laboratory, Yamanashi Central Hospital, 1-1-1 Fujimi, Kofu, Yamanashi,  
16 Japan

17 <sup>5</sup>Department of Gastroenterology, Yamanashi Central Hospital, 1-1-1 Fujimi, Kofu,  
18 Yamanashi, Japan

19 <sup>6</sup>Lung Cancer and Respiratory Disease Center, Yamanashi Central Hospital, 1-1-1 Fujimi,  
20 Kofu, Yamanashi, Japan

21 <sup>7</sup>The University of Tokyo, 7-3-1 Hongo, Bunkyo-ku, Tokyo, Japan

22  
23 \*Corresponding author: Yosuke Hirotsu, Genome Analysis Center, Yamanashi Central  
24 Hospital, 1-1-1 Fujimi, Kofu, Yamanashi, Japan

25 Email: [hirotsu-bdyu@ych.pref.yamanashi.jp](mailto:hirotsu-bdyu@ych.pref.yamanashi.jp)

26 Tel: +81-55-253-7111, Fax: +81-55-253-8011

27 ORCID iD: 0000-0002-8002-834X

28 Keywords: SARS-CoV-2, variant of concern, Omicron, BA.1, BA.2

29 Running title: Omicron sublineage BA.2 replaces BA.1.1

30

## 31 **Abstract**

### 32 ***Objective***

33 The new emerging Omicron strain of severe acute respiratory syndrome  
34 coronavirus 2 (SARS-CoV-2) is currently spreading worldwide. We aimed to analyze the  
35 genomic evolution of the shifting Omicron virus subtypes.

### 36 ***Methods***

37 The study included 1,297 individuals diagnosed as SARS-CoV-2 positive by PCR  
38 test or antigen quantification test from September 2021 to March 2022. Samples were  
39 analyzed by whole genome sequencing analysis (n=489) or TaqMan assay (n=808).

### 40 ***Results***

41 After the outbreak of the SARS-CoV-2 Delta strain, the Omicron strain spread  
42 rapidly in Yamanashi, Japan. BA.1.1 was the predominant sublineage of the Omicron strain  
43 from January to mid-February 2022, but the number of cases of sublineage BA.2 began to  
44 increase after mid-February, and this sublineage was shown to have replaced BA.1.1 by the  
45 end of March 2022. We observed higher viral and antigen levels of sublineage BA.2 than of  
46 sublineage BA.1.1 in nasopharyngeal swab samples. However, no difference in viral load by  
47 patient age was apparent between sublineages BA.1.1 and BA.2.

### 48 ***Conclusions***

49 A transition from sublineage BA.1.1 to sublineage BA.2 was clearly observed over  
50 approximately one month. Omicron sublineage BA.2 was found to be more transmissible  
51 owing to its higher viral load regardless of patient age.

52

## 53 **Introduction**

54 Since the discovery of severe acute respiratory syndrome coronavirus 2  
55 (SARS-CoV-2) at the end of 2019, large numbers of infections and deaths have been  
56 reported. The Omicron (B.1.1.529) strain of SARS-CoV-2 was first identified in South Africa,  
57 and infection with Omicron has been confirmed in 169 countries to date [1, 2]. World Health  
58 Organization designated the Omicron strain as a variant of concern at the end of November  
59 2021 [1]. Now several Omicron strain sublineages, such as BA.1, BA.1.1, BA.2, and BA.3,  
60 have been described.

61 The Omicron strain has multiple spike protein mutations compared with other  
62 variants of concern, such as the Alpha and Delta strains [2]. Consequently, there is concern  
63 that serum antibody activity against the Omicron strain in vaccinated or convalescent  
64 persons will be weaker than that against previous SARS-CoV-2 strains [3, 4]. In addition, for  
65 some antibody therapies, the level of neutralizing activity was shown to differ between  
66 Omicron sublineages BA.1 and BA.2 [5, 6]. Omicron strains are considered to be highly  
67 transmissible but have a relatively lower critical illness risk [7-10]. In many countries,  
68 Omicron strains are rapidly increasing in prevalence and affecting medical and social  
69 activities. Because the characteristics of infectivity and treatment response differ among  
70 Omicron sublineages, it is important to understand the evolutionary process in real time.

71 In this study, we conducted whole genome sequencing analyses and TaqMan  
72 assays of SARS-CoV-2 on nasopharyngeal swab samples collected from 1,297 patients in  
73 Japan from September 2021 to March 2022 to investigate the evolution of SARS-CoV-2  
74 strains.

## 76 **Methods**

### 77 ***SARS-CoV-2 diagnostic testing***

78 Multiple molecular diagnostic testing platforms, including COVID-19 reverse  
79 transcription-PCR performed in accordance with the protocol developed by the National  
80 Institute of Infectious Diseases in Japan [11], the FilmArray Respiratory Panel 2.1 test  
81 performed with the FilmArray Torch system (bioMérieux, Marcy-l'Etoile, France) [12], the  
82 Xpert Xpress SARS-CoV-2 test performed with Cepheid GeneXpert (Cepheid, Sunnyvale,  
83 CA, USA) [13], and the Lumipulse antigen test performed with the LUMIPULSE G600II  
84 system (Fujirebio, Inc., Tokyo, Japan) were used for this study [14, 15]. All tests were  
85 conducted on material obtained from nasopharyngeal swabs immersed in viral transport  
86 media (Copan, Murrieta, CA, USA).

### 88 ***Quantitative reverse transcription-PCR (RT-qPCR)***

89 To detect SARS-CoV-2, we performed one-step RT-qPCR amplifying the  
90 nucleocapsid (N) gene of SARS-CoV-2, as we described previously [16]. The human  
91 ribonuclease P protein subunit p30 (*RPP30*) gene was used as the internal positive control  
92 (Integrated DNA Technologies, Coralville, IA, USA) [16].

93 The RT-qPCR assays were performed on a StepOnePlus Real-Time PCR System  
94 (Thermo Fisher Scientific) with the following cycling conditions: reverse transcription at  
95 50 °C for 5 min, inactivation of reverse transcription at 95 °C for 20 s, and denature,  
96 annealing and extension at 45 cycles of 95 °C for 3 s, 60 °C for 30 s. The threshold was set  
97 at 0.2. In accordance with the national protocol (version 2.9.1) [11], samples were assessed  
98 as positive if a visible amplification plot was observed and as negative if no amplification  
99 was observed.

100

### 101 **SARS-CoV-2 genome analysis**

102 Whole genome sequencing analysis was conducted in accordance with a  
103 previously described method on 489 nasopharyngeal swabs collected from patients with  
104 coronavirus disease 2019 (COVID-19) from September 2021 to March 2022. In brief,  
105 SARS-CoV-2 genomic RNA was reverse-transcribed into cDNA and amplified using the Ion  
106 AmpliSeq SARS-CoV-2 Research Panel or Ion AmpliSeq SARS-CoV-2 Insight Research  
107 Assay (Thermo Fisher Scientific, Waltham, MA, USA) on the Ion Torrent Genexus System in  
108 accordance with the manufacturer's instructions [17-19]. Sequencing reads were processed,  
109 and their quality was assessed using Genexus Software with SARS-CoV-2 plugins. The  
110 sequencing reads were then mapped and aligned using the torrent mapping alignment  
111 program. After initial mapping, a variant call was performed using the Torrent Variant Caller.  
112 The COVID19AnnotateSnpEff plugin was used to annotate the variants. Assembly was  
113 performed using the Iterative Refinement Meta-Assembler [20].

114 The viral clade and lineage classifications were conducted using Nextstrain [21]  
115 and Phylogenetic Assignment of Named Global Outbreak Lineages (PANGOLIN) [22].  
116 Sequence data were deposited in the Global Initiative on Sharing Avian Influenza Data  
117 (GISAID) EpiCoV database [23].

118

### 119 **TaqMan assay**

120 We used the pre-designed TaqMan SARS-CoV-2 Mutation Panel for detecting  
121 SARS-CoV-2 spike  $\Delta 69-70$ , G339D, L452R, and/or Q493R (Thermo Fisher Scientific) using  
122 808 SARS-CoV-2-positive samples (in submission). The TaqMan MGB probe for the  
123 wild-type allele was labelled with VIC dye, and the probe for the variant allele was labelled  
124 with FAM dye. This TaqMan probe system detected both wild-type and variant sequences of

125 SARS-CoV-2. TaqPath 1-Step RT-qPCR Master Mix CG was used as master mix. Real-time  
126 PCR was conducted on a Step-One Plus Real Time PCR System (Thermo Fisher  
127 Scientific).

128

## 129 **Results**

### 130 ***Transition of SARS-CoV-2 strain prevalence***

131 To determine the viral lineage of SARS-CoV-2, we performed whole genome  
132 sequencing analyses or TaqMan assays using SARS-CoV-2-positive samples ( $n = 1,297$ )  
133 collected consecutively in Yamanashi, Japan from September 2021 to March 2022 (Figure  
134 1A). During this period, we identified Delta strain ( $n = 159$ ) and Omicron strain ( $n = 1,139$ ).  
135 After the first case of Omicron was identified in January 2022, Omicron rapidly replaced  
136 Delta as the prevalent strain of SARS-CoV-2 (Figure 1A).

137

### 138 ***Changes in Omicron sublineages***

139 The whole genome sequencing data were analyzed using PANGOLIN (version  
140 3.1.20), and BA.1 ( $n = 5$ ), BA.1.1 ( $n = 992$ ), and BA.2 ( $n = 142$ ) were identified as  
141 sublineages of Omicron (Figure 1B). Sublineage BA.1.1 was the dominant sublineage of  
142 Omicron from January to mid-February 2022; however, the incidence of sublineage BA.2  
143 increased from mid-February 2022 onward, with this sublineage becoming dominant by the  
144 end of March (Figure 1B and 1C). The average frequency for the seven-day period from  
145 March 8 to March 14 was 62.2% (51/82) for sublineage BA.1.1 and 37.8% (31/82) for  
146 sublineage BA.2, whereas from March 15 to March 21 it was 29.3% (27/92) for sublineage  
147 BA.1.1 and 70.7% (65/92) for sublineage BA.2. These results indicate an extremely rapid  
148 replacement of sublineage BA.1.1 by sublineage BA.2 and a higher transmissibility of  
149 sublineage BA.2 compared with sublineage BA.1.1.

150

### 151 ***Viral load of Omicron sublineages***

152 To investigate the underlying factors for the high transmissibility of Omicron  
153 sublineage BA.2, we performed an RT-qPCR analysis of the viral load in the  
154 nasopharyngeal swabs collected from patients infected with sublineage BA.1.1 ( $n = 748$ ) or  
155 sublineage BA.2 ( $n = 118$ ). The median viral load ( $\log_{10}$  copies/mL) was 5.7 (range: 0.2–7.9)  
156 for sublineage BA.1.1 versus 6.4 (range: 0.3–8.2) for sublineage BA.2 (Figure 2A). The  
157 median Ct value for sublineage BA.1.1 was 19 (range: 11–38) versus 17 (range: 10–38) for  
158 sublineage BA.2 (Figure 2B). There are significant differences in the viral load between  
159 cases of sublineage BA.1.1 and sublineage BA.2 (Figure 2A,  $p = 4.8 \times 10^{-4}$ , Student's  $t$ -test)  
160 and Ct value (Figure 2B,  $p = 1.6 \times 10^{-3}$ , Student's  $t$ -test).

161 Of the 866 samples, 827 were tested for SARS-CoV-2 antigen, and the percentage  
162 of samples with high antigen levels was examined. The percentage of specimens with  
163 antigen levels of >5000 pg/mL was 57.3% (386/711) for sublineage BA.1.1 and 69%  
164 (80/116) for sublineage BA.2, indicating that sublineage BA.2 had higher antigen levels ( $p =$   
165 0.004, chi-squared test). However, the median age of infected patients was not significantly  
166 different between these sublineages (35 years [range: 0–101 years] for BA.1.1 vs. 34.5  
167 years [range: 0–90 years] for BA.2;  $p = 0.1$ , Student's  $t$ -test) (Figure 2C). These results  
168 indicate that the viral load in nasopharyngeal swabs is higher for sublineage BA.2 than for  
169 sublineage BA.1.1 and that sublineage BA.2 is more contagious.

170 We next examined whether the viral load varied with patient age. There was no  
171 apparent correlation between patient age and viral load or Ct value for either sublineage  
172 BA.1.1 or BA.2 (Figure 3D and 3E). The Pearson's correlation coefficients for sublineage  
173 BA.1.1 were  $r = -0.0075$  ( $p = 0.84$ ) for patient age and viral load and  $r = 0.0070$  ( $p = 0.85$ )  
174 for patient age and Ct value, and those for sublineage BA.2 were  $r = -0.032$  ( $p = 0.73$ ) for  
175 patient age and viral load and  $r = 0.034$  ( $p = 0.71$ ) for patient age and Ct value (Figures 2D  
176 and 2E). These results indicate that the viral load remained fairly high in Omicron-infected  
177 patients regardless of their age.

178

## 179 Discussion

180 This study indicates that after the expansion of the SARS-CoV-2 Delta strain, a  
181 rapid spread of the Omicron strain occurred. Sublineage BA.1 was very minor in Japan  
182 when Omicron was first discovered. First, sublineage BA.1.1 expanded dominantly and was  
183 then gradually replaced by sublineage BA.2. The results of the present study show that the  
184 amount of viral load in the nasopharyngeal swab was higher for sublineage BA.2 than for  
185 sublineage BA.1.1. These epidemiological and viral characteristic results indicate that  
186 Omicron sublineage BA.2 is more transmissible than sublineage BA.1.1.

187 Previous reports showed that sublineage BA.2 has a lower Ct value (i.e., higher  
188 viral load) compared with sublineages BA.1 and BA.1.1 [24-26]. The findings of the present  
189 study are consistent with those reports, and this difference could be one reason for the  
190 higher infectivity of sublineage BA.2. In Denmark, England, India, the Philippines, and South  
191 Africa, where Omicron strains were predominantly sublineage BA.1 in the early stages of the  
192 outbreak, sublineage BA.2 later became predominant [27]. Furthermore, reinfection with  
193 sublineage BA.2 after infection with sublineage BA.1 can occur, although it is rare [28].  
194 Therefore, there is concern that the prevalence of the BA.2 sublineage may increase in the  
195 future.

196 The relationship between age and SARS-CoV-2 viral load of other strains was

197 shown previously [29-33]; however, no data on Omicron sublineages were reported.  
198 Previous studies suggested that the SARS-CoV-2 viral load tends to be higher in young  
199 children than in adults, whereas other data suggest that the viral load does not vary by age  
200 group [29-33]. In this study, no obvious differences in viral load by age group were observed  
201 for either the Omicron BA.1.1 or BA.2 sublineages. In general, viral load peaks in the early  
202 phase of infection and then gradually declines; hence, the timing of sampling relative to the  
203 onset of symptoms is an important factor [34]. Because the time between onset and  
204 sampling was not taken into account in the present study, our data are limited by sampling  
205 bias. However, our data are derived from random sampling, therefore these results are  
206 expected to better reflect real-world conditions. Although a high incidence of household  
207 COVID-19 infections stemming from young children has been reported [35], our results  
208 indicate that the Omicron strain retains a fairly high viral load across age groups, which may  
209 contribute to the high infectivity of the Omicron strain and its accelerated spread. These data  
210 provide insights for determining appropriate COVID-19 prevention and control measures for  
211 homes, schools, workplaces, and facilities for the elderly during the spread of Omicron strain  
212 viruses.

213 Recombinant variants may emerge in communities where SARS-CoV-2 strains  
214 with different genomic architecture are co-circulating [36]. Recently, a new hybrid strain  
215 (AY.4/BA.1 recombinant, EPI\_ISL\_10819657), which has the properties of both the Delta  
216 and Omicron strains, was reported in France [23]. This hybrid virus has been detected in  
217 several countries, including Belgium, Germany, Denmark, and the Netherlands. There is  
218 also evidence for co-infection and recombination events between Delta and Omicron strains  
219 in the same patient [37]. Recombinant viruses BA.1 and BA.2 (named XE) were also  
220 reported from the United Kingdom [38]. It is not yet fully understood whether these hybrids  
221 are highly infectious, pathogenic, or resistant to antibodies or therapy. Therefore, it is  
222 necessary to survey the hybrid viruses to see if there is likely to be an explosion of infections.  
223 Genomic epidemiological analysis of SARS-CoV-2 strains and variants should be continued  
224 to monitor future virus trends.

225

## 226 **Acknowledgements**

227 We thank all medical and ancillary hospital staff for their support. We thank Katie Oakley,  
228 PhD, from Edanz (<https://jp.edanz.com/ac>) for editing a draft of this manuscript.

229

230 **Funding:** This work was supported by a Grant-in-Aid for the Genome Research Project from  
231 Yamanashi Prefecture (to M.O. and Y.H.), the Japan Society for the Promotion of Science  
232 (JSPS) KAKENHI Early-Career Scientists JP18K16292 (to Y.H.), a Grant-in-Aid for Scientific

233 Research (B) 20H03668 (to Y.H.), a Research Grant for Young Scholars (to Y.H.), the  
234 YASUDA Medical Foundation (to Y.H.), the Uehara Memorial Foundation (to Y.H.) and  
235 Medical Research Grants from the Takeda Science Foundation (to Y.H.).

236

#### 237 **Declaration of interest**

238 None.

239

#### 240 **References**

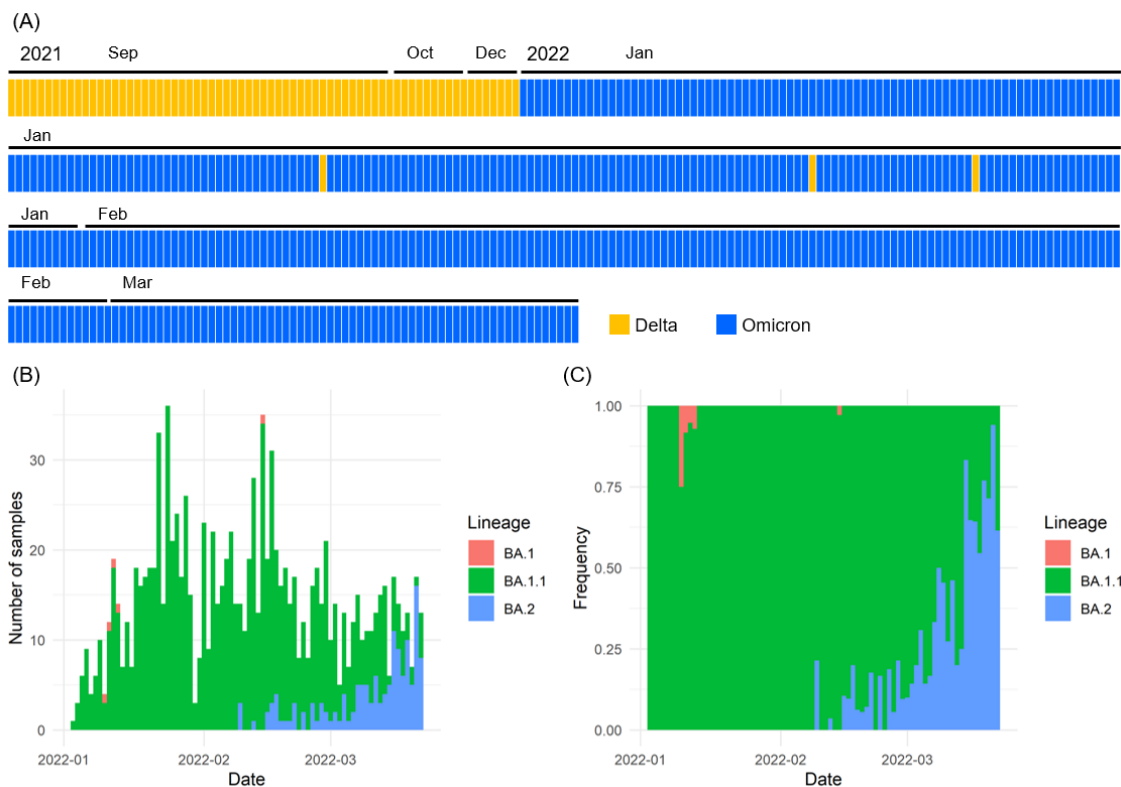
- 241 1. World Health Organization. Classification of Omicron (B.1.1.529): SARS-CoV-2 Variant  
242 of Concern. 2021.
- 243 2. Julia LM, Ginger T, Alaa AL, Manar A, Marco C, Emily H, et al. outbreak.info.
- 244 3. Iketani S, Liu L, Guo Y, Liu L, Chan JFW, Huang Y, et al. Antibody evasion properties of  
245 SARS-CoV-2 Omicron sublineages. *Nature*. 2022. doi: 10.1038/s41586-022-04594-4.
- 246 4. Yu J, Collier A-rY, Rowe M, Mardas F, Ventura JD, Wan H, et al. Neutralization of the  
247 SARS-CoV-2 Omicron BA.1 and BA.2 Variants. *New England Journal of Medicine*. 2022. doi:  
248 10.1056/NEJMc2201849.
- 249 5. Bruel T, Hadjadj J, Maes P, Planas D, Seve A, Staropoli I, et al. Serum neutralization of  
250 SARS-CoV-2 Omicron sublineages BA.1 and BA.2 in patients receiving monoclonal antibodies.  
251 *Nature Medicine*. 2022. doi: 10.1038/s41591-022-01792-5.
- 252 6. Takashita E, Kinoshita N, Yamayoshi S, Sakai-Tagawa Y, Fujisaki S, Ito M, et al.  
253 Efficacy of Antiviral Agents against the SARS-CoV-2 Omicron Subvariant BA.2. *New England*  
254 *Journal of Medicine*. 2022. doi: 10.1056/NEJMc2201933.
- 255 7. Wolter N, Jassat W, Walaza S, Welch R, Moultrie H, Groome M, et al. Early  
256 assessment of the clinical severity of the SARS-CoV-2 omicron variant in South Africa: a data  
257 linkage study. *The Lancet*. 2022;399(10323):437-46. doi: 10.1016/S0140-6736(22)00017-4.
- 258 8. Christensen PA, Olsen RJ, Long SW, Snehal R, Davis JJ, Saavedra MO, et al. Signals  
259 of significantly increased vaccine breakthrough, decreased hospitalization rates, and less severe  
260 disease in patients with COVID-19 caused by the Omicron variant of SARS-CoV-2 in Houston,  
261 Texas. *The American Journal of Pathology*. 2022. doi: 10.1016/j.ajpath.2022.01.007.
- 262 9. Veneti L, Bøås H, Bråthen Kristoffersen A, Stålcrantz J, Bragstad K, Hungnes O, et al.  
263 Reduced risk of hospitalisation among reported COVID-19 cases infected with the SARS-CoV-2  
264 Omicron BA.1 variant compared with the Delta variant, Norway, December 2021 to January 2022.  
265 *Eurosurveillance*. 2022;27(4):2200077. doi:  
266 <https://doi.org/10.2807/1560-7917.ES.2022.27.4.2200077>.
- 267 10. Espenhain L, Funk T, Overvad M, Edslev SM, Fonager J, Ingham AC, et al.  
268 Epidemiological characterisation of the first 785 SARS-CoV-2 Omicron variant cases in Denmark,



- 269 December 2021. *Eurosurveillance*. 2021;26(50):2101146. doi:  
270 <https://doi.org/10.2807/1560-7917.ES.2021.26.50.2101146>.
- 271 11. Shirato K, Nao N, Katano H, Takayama I, Saito S, Kato F, et al. Development of  
272 Genetic Diagnostic Methods for Novel Coronavirus 2019 (nCoV-2019) in Japan. *Jpn J Infect Dis*.  
273 2020;73(4):304-7 doi: 10.7883/yoken.JJID.2020.061. PubMed PMID: 32074516.
- 274 12. Hirotsu Y, Maejima M, Shibusawa M, Amemiya K, Nagakubo Y, Hosaka K, et al.  
275 Analysis of Covid-19 and non-Covid-19 viruses, including influenza viruses, to determine the  
276 influence of intensive preventive measures in Japan. *J Clin Virol*. 2020;129:104543. doi:  
277 10.1016/j.jcv.2020.104543
- 278 13. Hirotsu Y, Maejima M, Shibusawa M, Natori Y, Nagakubo Y, Hosaka K, et al. Direct  
279 comparison of Xpert Xpress, FilmArray Respiratory Panel, Lumipulse antigen test, and RT-qPCR  
280 in 165 nasopharyngeal swabs. *BMC Infectious Diseases*. 2022;22(1):221. doi:  
281 10.1186/s12879-022-07185-w.
- 282 14. Hirotsu Y, Maejima M, Shibusawa M, Amemiya K, Nagakubo Y, Hosaka K, et al.  
283 Prospective Study of 1,308 Nasopharyngeal Swabs from 1,033 Patients using the LUMIPULSE  
284 SARS-CoV-2 Antigen Test: Comparison with RT-qPCR. *International Journal of Infectious*  
285 *Diseases*. 2021. doi: <https://doi.org/10.1016/j.ijid.2021.02.005>.
- 286 15. Hirotsu Y, Maejima M, Shibusawa M, Nagakubo Y, Hosaka K, Amemiya K, et al.  
287 Comparison of Automated SARS-CoV-2 Antigen Test for COVID-19 Infection with Quantitative  
288 RT-PCR using 313 Nasopharyngeal Swabs Including from 7 Serially Followed Patients.  
289 *International Journal of Infectious Diseases*. 2020. doi: <https://doi.org/10.1016/j.ijid.2020.08.029>.
- 290 16. Hirotsu Y, Mochizuki H, Omata M. Double-quencher probes improve detection  
291 sensitivity toward Severe Acute Respiratory Syndrome Coronavirus 2 (SARS-CoV-2) in a  
292 reverse-transcription polymerase chain reaction (RT-PCR) assay *J Virol Methods*.  
293 2020;284:113926. doi: 10.1016/j.jviromet.2020.113926
- 294 17. Hirotsu Y, Omata M. Detection of R.1 lineage severe acute respiratory syndrome  
295 coronavirus 2 (SARS-CoV-2) with spike protein W152L/E484K/G769V mutations in Japan.  
296 *PLOS Pathogens*. 2021;17(6):e1009619. doi: 10.1371/journal.ppat.1009619.
- 297 18. Hirotsu Y, Omata M. Discovery of a SARS-CoV-2 variant from the P.1 lineage harboring  
298 K417T/E484K/N501Y mutations in Kofu, Japan. *Journal of Infection*. 2021;82(6):276-316. doi:  
299 <https://doi.org/10.1016/j.jinf.2021.03.013>.
- 300 19. Hirotsu Y, Omata M. SARS-CoV-2 B.1.1.7 lineage rapidly spreads and replaces R.1  
301 lineage in Japan: Serial and stationary observation in a community. *Infection, Genetics and*  
302 *Evolution*. 2021;95:105088. doi: <https://doi.org/10.1016/j.meegid.2021.105088>.
- 303 20. Shepard SS, Meno S, Bahl J, Wilson MM, Barnes J, Neuhaus E. Viral deep sequencing  
304 needs an adaptive approach: IRMA, the iterative refinement meta-assembler. *BMC Genomics*.

- 305 2016;17:708. doi: 10.1186/s12864-016-3030-6. PubMed PMID: 27595578; PubMed Central  
306 PMCID: PMCPMC5011931.
- 307 21. Hadfield J, Megill C, Bell SM, Huddleston J, Potter B, Callender C, et al. Nextstrain:  
308 real-time tracking of pathogen evolution. *Bioinformatics*. 2018;34(23):4121-3. doi:  
309 10.1093/bioinformatics/bty407. PubMed PMID: 29790939; PubMed Central PMCID:  
310 PMCPMC6247931.
- 311 22. Rambaut A, Holmes EC, O'Toole A, Hill V, McCrone JT, Ruis C, et al. A dynamic  
312 nomenclature proposal for SARS-CoV-2 lineages to assist genomic epidemiology. *Nat Microbiol*.  
313 2020;5(11):1403-7. doi: 10.1038/s41564-020-0770-5. PubMed PMID: 32669681.
- 314 23. Shu Y, McCauley J. GISAID: Global initiative on sharing all influenza data - from vision  
315 to reality. *Euro Surveill*. 2017;22(13). doi: 10.2807/1560-7917.ES.2017.22.13.30494. PubMed  
316 PMID: 28382917; PubMed Central PMCID: PMCPMC5388101.
- 317 24. Qassim SH, Chemaitelly H, Ayoub HH, AlMukdad S, Tang P, Hasan MR, et al. Effects  
318 of BA.1/BA.2 subvariant, vaccination, and prior infection on infectiousness of SARS-CoV-2  
319 Omicron infections. *medRxiv*. 2022:2022.03.02.22271771. doi: 10.1101/2022.03.02.22271771.
- 320 25. Chadeau-Hyam M, Tang D, Eales O, Bodinier B, Wang H, Jonnerby J, et al. Omicron  
321 BA.1/BA.2 variant transition in the Swedish population reveals higher viral quantity in BA.2  
322 casesThe Omicron SARS-CoV-2 epidemic in England during February 2022. *medRxiv*.  
323 2022:2022.03.10.22272177. doi: 10.1101/2022.03.10.22272177.
- 324 26. Kirsebom FCM, Andrews N, Stowe J, Toffa S, Sachdeva R, Gallagher E, et al.  
325 COVID-19 Vaccine Effectiveness against the Omicron BA.2 variant in England. *medRxiv*.  
326 2022:2022.03.22.22272691. doi: 10.1101/2022.03.22.22272691.
- 327 27. Emma B. Hodcroft. *CoVariants: SARS-CoV-2 Mutations and Variants of Interest*. 2021.
- 328 28. Stegger M, Edslev SM, Sieber RN, Căcilia Ingham A, Ng KL, Tang M-HE, et al.  
329 Occurrence and significance of Omicron BA.1 infection followed by BA.2 reinfection. *medRxiv*.  
330 2022:2022.02.19.22271112. doi: 10.1101/2022.02.19.22271112.
- 331 29. Baggio S, L'Huillier AG, Yerly S, Bellon M, Wagner N, Rohr M, et al. Severe Acute  
332 Respiratory Syndrome Coronavirus 2 (SARS-CoV-2) Viral Load in the Upper Respiratory Tract of  
333 Children and Adults With Early Acute Coronavirus Disease 2019 (COVID-19). *Clinical Infectious  
334 Diseases*. 2020;73(1):148-50. doi: 10.1093/cid/ciaa1157.
- 335 30. Colson P, Fournier P-E, Delerce J, Million M, Bedotto M, Houhamdi L, et al. Culture and  
336 identification of a "Deltamicron" SARS-CoV-2 in a three cases cluster in southern France.  
337 *medRxiv*. 2022:2022.03.03.22271812. doi: 10.1101/2022.03.03.22271812.
- 338 31. Madera S, Crawford E, Langelier C, Tran NK, Thornborrow E, Miller S, et al.  
339 Nasopharyngeal SARS-CoV-2 viral loads in young children do not differ significantly from those  
340 in older children and adults. *Scientific Reports*. 2021;11(1):3044. doi:

- 341 10.1038/s41598-021-81934-w.
- 342 32. Heald-Sargent T, Muller WJ, Zheng X, Rippe J, Patel AB, Kociolek LK. Age-Related  
343 Differences in Nasopharyngeal Severe Acute Respiratory Syndrome Coronavirus 2  
344 (SARS-CoV-2) Levels in Patients With Mild to Moderate Coronavirus Disease 2019 (COVID-19).  
345 JAMA Pediatrics. 2020;174(9):902-3. doi: 10.1001/jamapediatrics.2020.3651.
- 346 33. Ochoa V, Díaz FE, Ramirez E, Fentini MC, Carobene M, Geffner J, et al. Infants  
347 Younger Than 6 Months Infected With SARS-CoV-2 Show the Highest Respiratory Viral Loads.  
348 The Journal of Infectious Diseases. 2021;225(3):392-5. doi: 10.1093/infdis/jiab577.
- 349 34. Jones TC, Biele G, Mühlemann B, Veith T, Schneider J, Beheim-Schwarzbach J, et al.  
350 Estimating infectiousness throughout SARS-CoV-2 infection course. Science.  
351 2021;373(6551):eabi5273. doi: doi:10.1126/science.abi5273.
- 352 35. Paul LA, Daneman N, Schwartz KL, Science M, Brown KA, Whelan M, et al.  
353 Association of Age and Pediatric Household Transmission of SARS-CoV-2 Infection. JAMA  
354 Pediatrics. 2021;175(11):1151-8. doi: 10.1001/jamapediatrics.2021.2770.
- 355 36. Jackson B, Boni MF, Bull MJ, Colleran A, Colquhoun RM, Darby AC, et al. Generation  
356 and transmission of interlineage recombinants in the SARS-CoV-2 pandemic. Cell.  
357 2021;184(20):5179-88.e8. doi: <https://doi.org/10.1016/j.cell.2021.08.014>.
- 358 37. Bolze A, Basler T, White S, Rossi AD, Wyman D, Roychoudhury P, et al. Evidence for  
359 SARS-CoV-2 Delta and Omicron co-infections and recombination. medRxiv.  
360 2022:2022.03.09.22272113. doi: 10.1101/2022.03.09.22272113.
- 361 38. UK Health Security Agency. SARS-CoV-2 variants of concern and variants under  
362 investigation in England, Technical briefing 39. 2022.
- 363
- 364

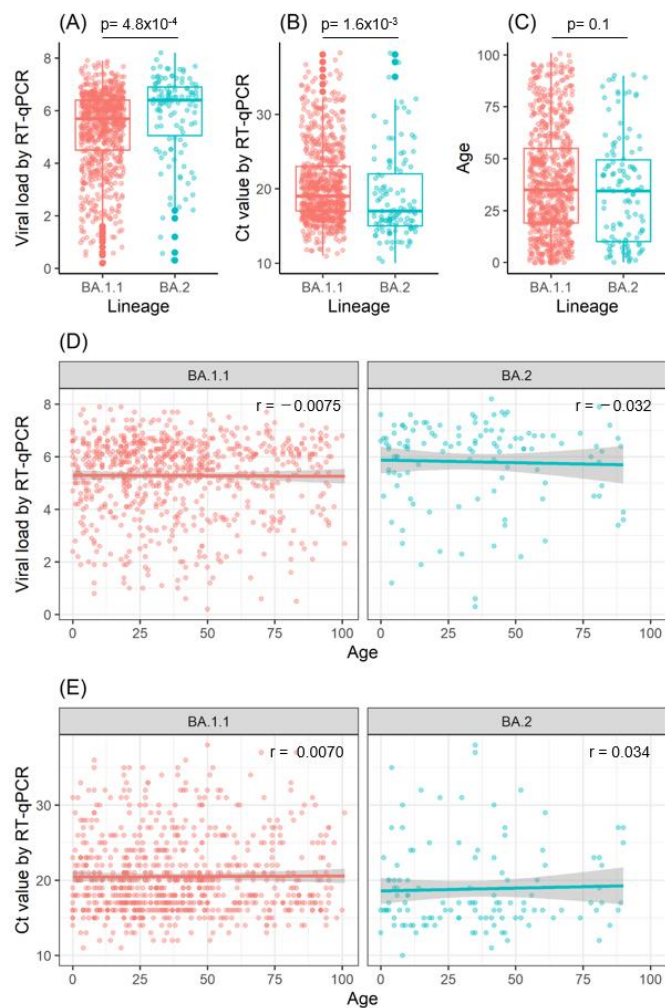


365

366

367 **Figure 1. Changes in Omicron strain prevalence**

368 **(A)** SARS-CoV-2 strains identified from September 2021 to March 2022. Orange boxes  
369 indicate Delta strains, and blue boxes indicate Omicron strains. **(B, C)** Sublineage of  
370 Omicron strains detected from January 2022 to March 2022, indicated by BA.1 (pink),  
371 BA.1.1 (green), and BA.2 (blue). The number of samples detected per day (B) and the  
372 frequency of detection (C) are shown.



373

374

375 **Figure 2. Viral load and age of infected patients for sublineages BA.1. and BA.2.**

376 **(A, B)** The viral load and Ct values in Omicron sublineages BA.1.1 (n = 748) and BA.2 (n =  
377 118) were analyzed by RT-qPCR. Box plots show the viral load (A) and Ct values (B) in  
378 BA.1.1 and BA.2. **(C)** Box plot shows the age of patients infected with sublineage BA.1.1 or  
379 BA.2. **(D, E)** Relationship between patient age and viral load (D) or Ct value (E). Pearson's  
380 correlation coefficient (r) is noted in the figures. The gray background of the regression line  
381 indicates the 95% confidence interval.