

1 **Interleukin-6 as a predictor of early weaning from invasive**
2 **mechanical ventilation in patients with acute respiratory**
3 **distress syndrome**

4
5 Kazuya Sakai, M.D.;¹ Mototsugu Nishii, M.D. Ph.D.;¹ Ryo Saji, M.D.;¹ Reo Matsumura, M.D.;¹ Fumihiko Ogawa,
6 M.D. Ph.D., Ichiro Takeuchi, M.D. Ph.D.¹

7 ¹ Department of Emergency Medicine, Yokohama City University, School of Medicine, Fukuura,
8 Kanazawa-ku, Yokohama, Kanagawa, 236-0004, Japan

9
10
11
12 Corresponding author: Mototsugu Nishii, M.D. Ph.D.,
13 Yokohama City University, School of Medicine, Fukuura, Kanazawa-ku, Yokohama, Kanagawa, 236-0004, Japan.
14 Phone: +81-045-787-2985, Ext: 2889, Email: s461211@yokohama-cu.ac.jp
15
16
17
18
19
20
21
22
23
24
25
26
27
28
29
30
31
32
33
34
35
36
37
38
39
40
41
42
43
44
45
46

1 **Abstract**

2 **Background:**

3 Therapeutic effects of steroids on acute respiratory distress syndrome (ARDS) requiring mechanical
4 ventilation (MV) have been reported. However, predictive indicators of early weaning from MV post-
5 treatment have not yet been defined, making treating established ARDS challenging. Interleukin (IL)-6
6 has been associated with the pathogenesis of ARDS.

7 **Objective:**

8 Our aim was to clarify clinical utility of IL-6 level in ventilated patients with established ARDS.

9 **Methods:**

10 Clinical, treatment, and outcome data were evaluated in 119 invasively ventilated patients with severe
11 acute respiratory syndrome coronavirus 2 (SARS-CoV-2)-mediated ARDS. Plasma levels of IL-6 and C-
12 reactive protein (CRP) were measured on days 1, 4, and 7 after intubation.

13 **Results:**

14 Fifty-two patients were treated with dexamethasone (steroid group), while the remaining 67 patients were
15 not (non-steroid group). Duration of MV use was significantly shorter in the steroid group compared to
16 non-steroid group (11.5 ± 0.6 vs. 16.1 ± 1.0 days, $P = 0.0005$, respectively) along with significantly
17 decreased levels of IL-6 and CRP. Even when restricted to the steroid group, among variables post-MV,
18 IL-6 level on day 7 was most closely correlated with duration of MV use (Spearman's rank correlation
19 coefficient [ρ] = 0.73, $P < 0.0001$), followed by CRP level on day 7 and the percentage change in IL-6 or
20 CRP levels between day 1 and day 7. Moreover, among these variables, IL-6 levels on day 7 showed the
21 highest accuracy for withdrawal from MV within 11 days (AUC: 0.88), with optimal cutoff value of 20.6
22 pg/mL. Consistently, the rate of MV weaning increased significantly earlier in patients with low IL-6 (\leq
23 20.6 pg/mL) than in those with high IL-6 (> 20.6 pg/mL) (log-rank test $P < 0.0001$).

24 **Conclusions:**

1 In invasively ventilated patients with established ARDS due to SARS-CoV-2, plasma IL-6 levels served
2 as a predictor of early withdrawal from MV after dexamethasone administration.

3 **Key Words**

4 Acute respiratory distress syndrome, Interleukin-6, Dexamethasone, Invasive mechanical ventilator

5

1 **List of abbreviations**

- 2 ARDS: acute respiratory distress syndrome
- 3 A new coronavirus: COVID-19
- 4 SARS-CoV-2: severe acute respiratory syndrome coronavirus 2
- 5 IL: interleukin
- 6 CRP: C-reactive protein
- 7 MV: mechanical ventilation
- 8 ECMO: extracorporeal membranous oxygenation

9 **Introduction**

10 Acute respiratory distress syndrome (ARDS), characterized by acute diffuse inflammatory lung injury and
11 rapidly impaired oxygenation requiring mechanical ventilation (MV), represents a common pulmonary
12 disorder in intensive care unit (ICU). ARDS can be caused by many etiologies, such as trauma,
13 transfusion history, infection, sepsis, pneumonia, and even ventilator-induced lung injury.¹⁻³ Moreover,
14 in-hospital mortality remains high at approximately 40-50% in overall patients with ARDS, and further
15 increases along with severity of ARDS, from mild to severe.⁴⁻⁵ Against this background, development of
16 underlying therapies for ARDS is needed. So far, a number of randomized controlled studies have been
17 conducted to evaluate the efficacy of corticosteroids with the ability to modulate hyperinflammation on
18 ARDS.⁶⁻¹⁰ Based on these observations, the effectiveness of corticosteroids on ARDS is still controversial
19 ⁸⁻⁹ yet early administration of dexamethasone is likely to reduce duration of MV use and mortality in
20 patients with moderate to severe ARDS.¹⁰ Recently, at the end of 2019, COVID-19 outbreak
21 unexpectedly emerged from Wuhan, China, and quickly spread around the world.¹¹ Critically ill COVID-
22 19 patients who required MV suffered from ARDS caused by severe acute respiratory syndrome
23 coronavirus 2 (SARS-CoV-2) and had a high in-hospital mortality.¹² Consistent with previous report,¹⁰
24 early administration of dexamethasone as well as remdesivir, an antiviral agent was reported to reduce the
25 duration of MV use and in-hospital mortality in patients with ARDS caused by SARS-CoV-2.¹³⁻¹⁴

1 However, the treating ARDS with steroid therapy remains challenging, because the fundamental
2 indicators to predict early withdrawal from MV post-treatment have not yet been defined.
3 Studies with experimental models of ARDS have demonstrated that that lung injury can be induced by
4 primed alveolar macrophages.¹⁵⁻¹⁶ Consistently, the autopsy and pathological studies of SARS-CoV-2-
5 induced ARDS patients suggested that over-activation of alveolar macrophages causes cytokine storm,
6 resulting in severe damage to lung tissue.¹⁷ Interleukin (IL)-6, derived from inflammatory monocytes and
7 alveolar macrophage, may be responsible for severe lung inflammation and pulmonary function disability
8 in the pathophysiology of ARDS. It has been reported that in the bronchoalveolar lavage fluid (BALF)
9 from patients at risk for ARDS or with established ARDS, which mainly contains inflammatory
10 monocytes and alveolar macrophages, IL-6 levels were extremely increased and remained high
11 throughout the course of ARDS.¹⁸⁻²⁰ Moreover, detailed single-cell RNA sequencing data obtained from
12 BALF and peripheral blood mononuclear cells from patients with SARS-CoV-2-induced ARDS have
13 recently shown that IL-6 is released into the systemic circulation from SARS-CoV-2-affected lungs,
14 rather than from peripheral immune cells.²¹⁻²² Thus, we hypothesized that circulating IL-6, which reflects
15 disease activity, may be a predictive indicator of early withdrawal from MV in patients with established
16 ARDS.
17 To facilitate treatment of established ARDS, we evaluated this hypothesis in critically ill patients with
18 SARS-CoV-2-mediated ARDS.

19 **Materials and methods**

20 **Study design and setting**

21 This was a single retrospective observational study in Japan. COVID-19 patients admitted to the
22 Yokohama City University Hospital (YCUH) between February 2020 and September 2021 were enrolled
23 in this study. Enrolled patients were observed until hospital discharge after the enrollment to evaluate
24 clinical outcome. Discharge was determined after the patient was weaned from invasive MV. This

1 study followed the Transparent Reporting of a multivariable prediction model for Individual Prognosis or
2 Diagnosis reporting statement for prognostic studies.

3 **Study sample**

4 The inclusion criteria were as follows: (1) diagnosis of SARS-CoV-2-induced ARDS by reverse
5 transcription-polymerase chain reaction (RT-PCR) assay for SARS-CoV-2, chest computed tomography
6 (CT) scan, and the ratio of the partial pressure of arterial oxygen to fraction of inspired oxygen (P/F
7 ratio); (2) more than 18 years; (3) the use of invasive MV corresponded to the need for intubation and
8 intensive care unit (ICU) management. Moreover, ARDS was diagnosed according to the Berlin
9 definition.²³ Invasive MV was introduced if P/F ratio was less than 100 under oxygen support from a
10 reservoir mask at 8 L/min. The exclusion criteria were as follows (Fig. S1): (1) patients not requiring
11 invasive MV; (2) those with missing data, including clinical, laboratory, and outcome data; (3) those
12 without consent for participation.

13 Ultimately, SARS-CoV-2-induced severe ARDS patients requiring invasive MV with complete clinical,
14 laboratory, and outcome data as well as consent for participation were evaluated in the final analysis.

15 **Management of ventilated patients with ARDS**

16 Management of ARDS and weaning from MV were performed according to the guideline for the
17 management of ARDS in Japan.²⁴

18 **Ethical considerations**

19 This study was approved by the Institutional Ethics Board of the YCUH (No. B210100010). During
20 hospitalization, patients were provided negative and positive information regarding this study, including
21 the purpose and contribution of this study, the use of personal information, and complications associated
22 with blood collection, and were asked to participate in this study. Ultimately, we obtained written
23 informed consent for participation in the study and access to medical and laboratory records from
24 patients. Alternatively, we were unable to obtain written consent for participation from patients who died
25 without being weaned after being placed on a ventilator, which means that we used an opt-out method to
26 obtain consent for this study from them. The study had no risk/negative consequence on those who

1 participated in the study. Medical record numbers were used for data collection and no personal
2 identifiers were collected or used in the research report. Data was accessed from February 16, 2020, to
3 October 30, 2021, and access to the collected information was limited to the principal investigator and
4 confidentiality was maintained throughout the project.

5 **Data and Specimen collection**

6 Clinical data and treatment and outcome data were obtained from electronic medical records. Two
7 researchers independently reviewed the data collection forms to double-check the collected data.

8 **IL-6 and C-reactive protein (CRP) measurements**

9 Plasma levels of IL-6 and CRP were measured on days 1, 4, and 7 after intubation. The fully automated
10 Elecsys system on a cobas e801 platform (Roche Diagnostic GmbH, Mannheim, Germany) was used for
11 IL-6 measurement. CRP levels were measured on a cobas c702 platform by using the Tina-quant CRP
12 assay (Roche Diagnostic GmbH, Mannheim, Germany).

13 **Statistical analysis**

14 Data analyses were done using the JMP ver. 12.2 software. All categorical variables were presented as
15 number (n), %. Continuous variables are shown as mean±SEM and 95% confidence interval [CI].
16 Differences between the different treatment groups were analyzed with Fisher's exact test (for categorical
17 data) or the Mann-Whitney *U* test (for continuous data). Logistic regression analysis was used for
18 univariate analysis of IL-6 and CRP levels. Correlations between variables were evaluated by the
19 Spearman's rank test. To evaluate the area under curves (AUCs) and cutoff values of parameters, the
20 receiver operator characteristic (ROC) curves were constructed. The optimal cutoff was defined as value
21 which had the best compromise between sensitivity and specificity for predicting withdrawal from MV on
22 ROC curve. Comparisons of ventilator weaning rates between subgroups were performed with the Log-
23 rank test. Statistical significance was set at $P < 0.05$.

24 **Results**

25 **Baseline characteristics**

1 From February 2020 to July 2021, 268 patients with COVID-19 pneumonia were enrolled. Of those, 149
 2 patients not using invasive MV or without complete data or consent for participation were excluded.
 3 Ultimately, a total of 119 invasively ventilated patients with SARS-CoV-2-induced ARDS were evaluated
 4 in this study (Fig. S1). Table 1 shows individual baseline clinical and outcome data in the present study
 5 population. The age was 63.1±1.2 years. Of these patients, 96 (81%) were male and 23 (19%) were
 6 female. The mean duration from symptom onset to intubation was 7.0 days. Approximately 20 to 30%
 7 had comorbidity such as chronic kidney disease, diabetes mellitus, and hypertension. Among clinical and
 8 laboratory data such as systolic blood pressure (SBP), platelet count, total bilirubin, and creatinine at
 9 inclusion, creatinine levels were elevated in some cases. Thus, no high-risk patients with sequential organ
 10 failure assessment scores of 5 or higher were identified in the study population. All patients received
 11 anticoagulation therapy. Almost patients (83%) were treated with remdesivir. In 44% (n = 52), treatment
 12 with dexamethasone (6 mg/day) was initiated before (n = 12) or on (n = 40) admission to YCUH and
 13 continued at least during MV use. Duration of MV use in overall patients was 13.9±0.6 days. Ultimately,
 14 13 patients required ECMO or died of ARDS during hospitalization.

15 **Table1. Clinical Characteristics**

	Overall	
	n = 119	95%CI
Age (year)	63.1±1.2	60.8-65.4
Male (n, %)	96, 81%	
Days to intubation from onset (day)	6.6±0.4	5.9-7.3
Comorbidity		
Diabetes mellitus (n, %)	39, 33%	
Hypertension (n, %)	43, 36%	
Chronic kidney disease (n, %)	20, 17%	

Clinical and laboratory data at inclusion

Systolic blood pressure on admission (mmHg)	136.6±2.1	132.4-140.8
Platelet count (×10 ³ /μL)	211.9±11.2	189.4-234.4
Total bilirubin (mg/dL)	0.67±0.04	0.58-0.76
Creatinine (mg/dL)	1.9±0.4	1.2-2.6
Treatments		
Remdesivir (n, %)	99, 83%	
Dexamethasone (n, %)	52, 44%	
Anticoagulation use (n, %)	119, 100%	
Outcomes		
Duration of MV use (day)	13.9±0.6	12.7-15.2
ECMO or death (n, %)	13, 11%	

1 All categorical variables were presented as number (n), %. Continuous variables are shown as
2 mean±SEM and 95% confidence interval [CI]. MV: mechanical ventilation; ECMO: extracorporeal
3 membranous oxygenation.

4

5 **The effects of dexamethasone on clinical outcomes of invasively ventilated ARDS patients**

6 To evaluate the efficacy of dexamethasone in invasively ventilated patients with SARS-CoV-2-induced
7 ARDS, clinical outcomes as well as clinical characteristics were compared between patients who received
8 dexamethasone therapy and those who did not (steroid group [n = 52] and non-steroid group [n = 67],
9 respectively) (Fig. S1, Table 2). There was fewer elderly male in the steroid group than in the non-steroid
10 group. Duration from symptom onset to intubation was significantly shorter in the steroid group than in
11 the non-steroid group. Regarding with comorbidity, diabetes mellitus was fewer in the steroid group.
12 Consideration of complications to steroids, including secondary infections and hyperglycemia, may have
13 influenced differences of age and comorbidity between the 2 groups. Among clinical and laboratory data
14 at inclusion, SBP was significantly lower in the steroid group than in the non-steroid group. However, no

1 patients with SBP below 70 mmHg were identified in both groups. Platelet count, total bilirubin level, and
 2 creatinine level were not significantly different between the 2 groups. Anti-viral agent use had no
 3 significant difference between the 2 groups. Ultimately, combined event rate of ECMO use and in-
 4 hospital death was significantly lower in the steroid group than in the non-steroid group. Moreover,
 5 duration of invasive MV use was significantly shorter in the steroid group than in the non-steroid group.
 6 These results suggest that dexamethasone positively affects clinical outcomes in invasively ventilated
 7 patients with established ARDS caused by SARS-CoV-2.

8 **Table 2. Comparisons of clinical and outcome data**

	Non-steroid		Steroid		P
	n = 67	95%CI	n = 52	95%CI	
Age (year)	66.9±1.4	64.2-69.6	58.2±1.8	54.6-61.8	0.0001
Male (n, %)	60, 90%		36, 69%		0.0091
Days to intubation from onset (day)	7.4±0.5	6.3-8.5	5.6±0.4	4.8-6.5	0.0174
Comorbidity					
Diabetes mellitus (n, %)	27, 40%		12, 23%		0.0519
Hypertension (n, %)	27, 40%		16, 31%		0.3380
Chronic kidney disease (n, %)	14, 21%		6, 12%		0.2184
Clinical and laboratory data at inclusion					
Systolic blood pressure (mmHg)	143.0±2.8	137.3-148.6	130.0±3.0	124.0-135.9	0.0008
Platelet count (×10 ³ /μL)	182.3±24.0	123.6-241.1	217.6±12.4	192.5-242.7	0.3236
Total bilirubin (mg/dL)	0.72±0.08	0.55-0.89	0.64±0.05	0.53-0.76	0.3028
Creatinine (mg/dL)	2.4±0.6	1.2-3.7	1.5±0.4	0.7-2.4	0.051
Treatments					
Remdesivir (n, %)	52, 78%		47, 90%		0.0844

Outcome

ECMO or death (n, %)	11, 16%		2, 4%		0.0377
Duration of MV use (days)	16.1±1.0	14.2-18.1	11.5±0.6	10.3-12.7	0.0005

1 All categorical variables were presented as number (n), %. Continuous variables are shown as
 2 mean±SEM and 95% confidence interval [CI]. Comparisons between the different treatment groups were
 3 performed with Fisher's exact test (for categorical data) or the Mann-Whitney U test (for continuous
 4 data). ECMO: extracorporeal membranous oxygenation; MV: mechanical ventilation.

6 **The effect of dexamethasone in plasma levels of IL-6 and CRP**

7 We evaluated if and how dexamethasone affects levels of IL-6 and CRP. In 56 patients (steroid group: n
 8 = 40 and non-steroid group: n = 16), plasma levels of IL-6 and CRP were measured on days 1, 4, and 7
 9 after MV introduction. As shown in Table 3, levels of IL-6 and CRP were significantly lower in the
 10 steroid group compared to the non-steroid group. Collectively, dexamethasone decreased circulating
 11 levels of IL-6 as well as CRP in invasively ventilated patients with SARS-CoV-2-mediated ARDS.

12 **Table 3. Comparisons of plasma levels of interleukin (IL)-6 and C-reactive protein (CRP) on days**
 13 **1, 4, and 7 after mechanical ventilation introduction**

	Non-steroid		Steroid		P
	n = 16	95%CI	n = 40	95%CI	
IL-6 (pg/mL)					
day 1	424.8±116.7	164.8-684.9	77.1±21.2	34.2-120.1	< 0.0001
day 4	413.7±60.8	281.3-546.1	57.6±21.4	14.0-101.2	< 0.0001
day 7	260.8±140.2	-44.7-566.3	48.0±12.6	22.3-73.7	0.0002
CRP (mg/dL)					
day 1	19.6±3.1	12.9-26.3	8.6±0.9	6.7-10.5	0.0004

day 4	23.2±2.0	18.8-27.6	6.7±1.3	3.9-9.4	< 0.0001
day 7	18.4±2.5	13.0-23.7	5.8±0.9	4.0-7.6	< 0.0001

1 Continuous variables are shown as mean±SEM and 95% confidence interval [CI]. Comparisons between
2 the different treatment groups were performed with the Mann-Whitney U test.

3

4 **Relationship between IL-6 levels and invasive MV duration in the presence of steroid therapy**

5 We evaluated if IL-6 and CRP levels on days 1, 4, and 7 after intubation, the 2-day difference, or
6 percentage of change were associated with duration of MV use in the steroid group. Among these
7 variables, IL-6 level on day 7 was most closely correlated with MV duration (Spearman's rank correlation
8 coefficient [ρ] = 0.7253, $P < 0.0001$), followed by the percentage of change in CRP or IL-6 levels
9 between day 1 and day 7 ($\rho = 0.4529$, $P = 0.0063$; $\rho = 0.3754$, $P = 0.0220$; respectively), CRP level on day
10 7 ($\rho = 0.3752$, $P = 0.0203$), and IL-6 level on day 1 ($\rho = 0.3668$, $P = 0.0255$), while IL-6 level on day 4,
11 CRP levels on day 1 and day 4, and difference of IL-6 or CRP levels between day 1 and day 7 were not
12 significantly correlated (Table 4 and Fig. 1). These results suggested that IL-6 as well as CRP after
13 intubation is an indicator of duration of MV use in SARS-CoV-2-mediated ARDS patients who were
14 treated with dexamethasone.

15 **Fig 1. The relationship between interleukin (IL)-6 levels and duration of invasive mechanical** 16 **ventilation (MV) use**

17 In invasively ventilated patients with SARS-CoV-2-mediated ARDS who were treated with
18 dexamethasone ($n = 40$), plasma levels of IL-6 on day 7 after intubation and percentage of change in IL-6
19 or CRP between day 1 and day 7 were correlated with duration of MV use with Spearman's rank test.
20 Closed dots indicate individual data.

21

22 **Table 4. The relationship between plasma levels of interleukin (IL)-6 and duration of invasive** 23 **mechanical ventilation (MV) use**

Variables	ρ	P
IL-6 day 1	0.3668	0.0255
IL-6 day 4	0.3067	0.0731
IL-6 day 7	0.7253	< 0.0001
2-day difference in IL-6	0.1866	0.2760
% change in IL-6	0.3754	0.0220
CRP day 1	0.0286	0.8611
CRP day 4	0.2848	0.1025
CRP day 7	0.3752	0.0203
2-day difference in CRP	0.3155	0.0648
% change in CRP	0.4529	0.0063

1 Correlations between plasma levels of IL-6 and C-reactive protein (CRP) on days 1, 4, and 7 after the
 2 introduction of MV and duration of MV use in the steroid group (n = 40) were analyzed with Spearman's
 3 rank correlation coefficient (ρ). 2-day difference and percentage (%) of change in IL-6 or CRP were
 4 calculated as follows: level on day 7 - level on day 1; 2-day difference / level on day 1 \times 100%;
 5 respectively.

6

7 **Association between IL-6 level and early withdrawal of invasive MV after steroid administration**

8 The ROC analysis in the steroid group showed that among significantly correlated variables with MV
 9 duration, IL-6 level on day 7 after intubation was most strongly predictive of MV withdrawal within 11
 10 days (median value of MV duration in the steroid group) (AUC: 0.88 [95%CI 0.72-0.96], P = 0.0001),
 11 followed by the percentage of change in CRP or IL-6 level between day 1 and day 7 (AUC: 0.78 [95%CI
 12 0.58-0.90], P = 0.0149; AUC: 0.73 [95%CI 0.54-0.86], P = 0.0051; respectively) and CRP level on day 7
 13 (AUC: 0.76 [95%CI 0.56-0.89], P = 0.0024) (Table 5 and Fig. 2). The optimal cut-off value of IL-6 on
 14 day 7 was 20.6 pg/mL, with sensitivity of 88% and specificity of 84% (Table 5 and Fig. 2). IL-6 was

1 predictive of earlier withdrawal from invasive MV after steroid administration in intubated patients with
 2 SARS-CoV-2-mediated ARDS.

3 **Fig 2. Receiver operating characteristic analysis for withdrawal from invasive mechanical**
 4 **ventilation (MV)**

5 The area under the receiver operating characteristic curve of the logistic regression models (interleukin
 6 [IL]-6 level on day 7 after intubation: blue; percentage [%] of change in IL-6 or CRP between day 1 and
 7 day 7: red or green, respectively; C-reactive protein [CRP] level on day 7 after MV introduction:
 8 black). % change in IL-6 or CRP was calculated as follow: (level on day 7 - level on day 1) / level on day
 9 $1 \times 100\%$).

10 **Table 5. Receiver operating characteristic analyses for associations of different variables and**
 11 **withdrawal from invasive mechanical ventilation (MV)**

Variables	AUC	95%CI	P	Cutoff	Sensitivity	Specificity
IL-6 day 1	0.6285	0.42-0.80	0.2362			
IL-6 day 7	0.8824	0.72-0.96	0.0001	20.6 pg/mL	88%	84%
% change in IL-6	0.7281	0.54-0.86	0.0051	0%	89%	53%
CRP day 7	0.7639	0.56-0.89	0.0024	6.1 mg/dL	88%	67%
% change in CRP	0.7778	0.58-0.90	0.0149	-54.4%	69%	83%

12 AUC: area under the curve, CI: confidence interval, IL: interleukin, CRP: C-reactive protein, percentage
 13 (%) of change in IL-6 or CRP between day 1 and day 7: (level on day 7 - level on day 1) / level on day 1 \times
 14 100%. P-value for withdrawal from invasive MV within 11 days after intubation.

15
 16 Moreover, Kaplan-Meier curves in the steroid group that were constructed according to above or below
 17 optimal cutoffs demonstrated that the cumulative weaning rate from invasive MV increased significantly

1 earlier in patients with low IL-6 (≤ 20.6 pg/mL, n = 19) compared to those with high IL-6 (> 20.6 pg/mL,
2 n = 21) (Fig. 3).

3 **Fig 3. Kaplan-Meier analysis for weaning from invasive mechanical ventilation (MV)**

4 Kaplan-Meier curves showing the cumulative weaning rate from invasive MV in SARS-CoV-2-mediated
5 ARDS patients who were treated with dexamethasone according to IL-6 levels above or below the
6 optimal cutoffs (20.6 pg/mL) on day 7 after intubation.

7

8 **Discussion**

9 So far, IL-6 on admission or before intubation generated an interest as a predictor of developing ARDS.
10 Elevation of IL-6 levels in plasma has been related with the risk of requiring ICU management, MV, or
11 ECMO in patients with COVID-19.²⁵⁻³⁰ Recently, Awasthi et al associated plasma level of IL-6 with the
12 duration of ICU stay in COVID-19 patients.³¹ Moreover, an observational study reported that IL-6 level
13 predicts requirement of invasive MV and indication for the blockade of IL-6 receptor with tocilizumab in
14 COVID-19.³² However, the clinical utility of measuring IL-6 level after intubation and in patients with
15 established ARDS has not been elucidated. The present study extends the emerging clinical utility of IL-6
16 to predict early withdrawal from MV in intubated patients with ARDS caused by SARS-CoV-2.
17 A subset of survivors from established ARDS has been proven to develop irreversible fibrotic changes in
18 disease lung, including fibroblast accumulation, deposition of collagen and other lung extracellular matrix
19 components, which leads to high mortality.³³ Thille et al demonstrated that the prevalence of fibrotic
20 change in pulmonary origin is closely related with ARDS duration.³⁴ Moreover, although the MV has
21 facilitated the management of ARDS, ventilator-induced lung injury has been shown to be a predominant
22 causative factor for lung fibrosis in ARDS patients.³⁵ Thus, early withdrawal from MV is an important
23 therapeutic strategy for established ARDS. Recently, efficacy of steroid administration on MV duration in
24 established ARDS has been reported.¹⁰ Patients with severe ARDS have been shown to frequently require
25 MV, with a mean duration of approximately 12 days, when they were treated with steroids.³⁶

1 Consistently, a recent randomized controlled trial of COVID-19 in patients with ARDS showed that
2 treatment with dexamethasone significantly shortens the duration of MV use (a mean duration of 12.5 vs.
3 13.9 days).³⁷ Our data also supported this beneficial effect (a mean MV duration of 11.5 vs. 16.1 days).
4 However, no indicators have been identified to predict responsiveness to dexamethasone. Importantly, we
5 are the first to show that IL-6 levels serve as a predictive indicator of earlier MV withdrawal after
6 dexamethasone administration in invasively ventilated patients with SARS-CoV-2-induced ARDS, and
7 that patients with IL-6 levels below or above 20.6 pg/mL on day 7 after intubation are likely to withdraw
8 from MV within 11 days or to require MV more persistently, respectively. Accordingly, measuring IL-6
9 may help monitoring therapeutic efficacy and facilitate steroid therapy in invasively ventilated patients
10 with established ARDS and contribute to the improvement of short- and long-term outcomes by early
11 withdrawal from MV and mitigation or prevention of lung fibrosis. Moreover, these observations also
12 provide a warrant for further investigation of the potential IL-6-guided therapy for established ARDS.
13 Capturing trends in IL-6 levels over time may be useful for understanding the clinical course in COVID-
14 19. For example, elevation of consecutive IL-6 concentrations shows a predictive value for changes in
15 disease severity from moderate to severe or critical.³⁸ Moreover, the re-elevation of IL-6 level after MV
16 introduction or during treatment with steroid may be indicative of ventilator-induced lung injury and
17 secondary bacterial infections, respectively.³⁹⁻⁴⁰ If so, neuromuscular blocking agents to suppress
18 excessive spontaneous-breathing efforts or antibiotics for secondary pneumonia will be needed. Our data
19 also associated changes in IL-6 levels after intubation with earlier withdrawal from invasive MV in
20 SARS-CoV-2-induced ARDS. However, we could not confirm that the 2-day difference and percentage
21 of change in IL-6 have better accuracy than the absolute level, because in the present study, some patients
22 were started dexamethasone administration, which decreases baseline levels of IL-6, prior to admission to
23 our institution. Analysis in a patient population with standardized steroid initiation times may improve
24 their accuracies. Clinical utility of changes in IL-6 levels should be investigated.
25 In the present data, absolute levels and percentage of change in CRP were also associated with earlier
26 withdrawal from invasive MV. Due to the small sample size, it was not possible to statistically compare

1 the predicted values of CRP and IL-6. However, synthesis and release of CRP protein, which is widely
2 used as a biomarker for inflammatory status, from liver and immune cells depends upon stimulation by
3 IL-6.⁴¹⁻⁴² This supports the superiority of IL-6 in early predicting disease activity of established ARDS.
4 Indeed, a previous study demonstrated that IL-6 level can earlier predict the requirement of MV in severe
5 COVID-19 compared with CRP level.²⁹
6 The present study has several strengths: First, the present results showed that IL-6 can predict not only the
7 risk of developing ARDS, but also therapeutic response, such as early withdrawal from invasive MV, in
8 established ARDS, which may suggest a potential utility as a determinant of therapeutic strategy,
9 including continuation of treatment and the need for additional treatment. Second, it is easy to measure
10 circulating IL-6 level over time in various clinical settings, as instruments for simple and rapid
11 measurement are already widely available.⁴³⁻⁴⁴ Third, IL-6 has been widely recognized as a prognostic
12 indicator of inflammatory diseases such as sepsis⁴⁵ and rheumatoid arthritis,⁴⁶ making it easy for medical
13 staff to interpret. Finally, IL-6 in plasma may be available in evaluating and monitoring the therapeutic
14 effect of new drugs on inflammatory diseases including ARDS.
15 There are several limitations of this study. The data set of this study was a backward-looking study, so
16 there were some missing values. Second, this study was conducted at a single institution, resulting in a
17 biased patient population. Third, our sample size is too small to evaluate optimal cutoffs of variables and
18 to determine clinical utility of IL-6 in the treatment of ARDS and its superiority over other markers.
19 Fourth, the cause of ARDS was limited to SARS-CoV-2 infection. Fifth, steroid therapy was not
20 standardized in our study population. Thus, the applicability of IL-6 in clinical practice needs to be
21 prospectively studied in large cohorts of strictly steroid-treated patients with ARDS derived from various
22 etiologies.

23 **Conclusions**

24 We are the first to present data illustrating that IL-6 in plasma is a promising indicator for predicting
25 earlier withdrawal from invasive MV after dexamethasone administration in intubated patients with

1 SARS-CoV-2-mediated ARDS. This suggests that measuring IL-6 may allow monitoring responsiveness
2 to dexamethasone and help determine therapeutic strategy in established ARDS. Our data provide the first
3 evidence suggesting the importance of measuring IL-6 level after intubation and in patients with
4 established ARDS.

5

6 **Acknowledgments**

7 We thank our colleagues in the Department of Emergency Medicine, Yokohama City University and, the
8 clinical nurses in the Advanced Care Unit, Yokohama City University Hospital for their kind assistance.

9

10 **References**

- 11 1. B. Lium. Adult respiratory distress syndrome (ARDS). Incidence, clinical findings,
12 pathomorphology and pathogenesis. A review. Nord Vet Med. 1983 Jan;35 (1): 38–47.
- 13 2. D.R. Janz, L.B. Ware. Biomarkers of ALI/ARDS: pathogenesis, discovery, and relevance to
14 clinical trials. Semin Respir Crit Care Med. 2013 Aug;34 (4): 537–548.
- 15 3. D.R. Janz, L.B. Ware. The role of red blood cells and cell-free hemoglobin in the pathogenesis of
16 ARDS. J Intensive Care. 2015Jun;3 (20).
- 17 4. M. Moss. Mortality is the only relevant outcome in ARDS: yes. Intensive Care Med. 2015 Jan;
18 41(1): 141-143.
- 19 5. G. Bellani, J.G. Laffey, T. Pham, E. Fan, L. Brochard, A. Esteban, et al. Epidemiology, Patterns
20 of Care, and Mortality for Patients With Acute Respiratory Distress Syndrome in Intensive Care Units in
21 50 Countries. JAMA. 2016 Feb;315 (8): 788–800.
- 22 6. G.U. Meduri, A.S. Headley, E. Golden, S.J. Carson, R.A. Umberger, T. Kelso, et al. Effect of
23 prolonged methylprednisolone therapy in unresolving acute respiratory distress syndrome: a randomized
24 controlled trial. JAMA. 1998 Jul; 280 (2):159–165.

- 1 7. G.U. Meduri, E. Golden, A.X. Freire, E. Taylor, M. Zaman, S.J. Carson, et al.
2 Methylprednisolone infusion in early severe ARDS: results of a randomized controlled trial. *Chest*. 2007
3 Apr;131 (4): 954–963.
- 4 8. K.P. Steinberg, L.D. Hudson, R.B. Goodman, C.L. Hough, P.N. Lanken, R. Hyzy, Efficacy and
5 safety of corticosteroids for persistent acute respiratory distress syndrome. *N Engl J Med*. 2006 Apr;354
6 (16):1671–1684.
- 7 9. S. Tongyoo, C. Permpikul, W. Mongkolpun, V. Vattanavanit, S. Udompanturak, M. Kocak, et al.
8 Hydrocortisone treatment in early sepsis-associated acute respiratory distress syndrome: results of a
9 randomized controlled trial. *Crit Care*. 2016 Oct;20 (1):329.
- 10 10. J. Villar, C. Ferrando, D. Martínez, A. Ambrós, T. Muñoz, J.A. Soler. Dexamethasone treatment
11 for the acute respiratory distress syndrome: a multicentre, randomised controlled trial. *Lancet Respir Med*.
12 2020 Mar;8 (3):267–276.
- 13 11. J.T. Wu, K. Leung, G.M. Leung. Nowcasting and forecasting the potential domestic and
14 international spread of the 2019-nCoV outbreak originating in Wuhan, China: A modelling study. *Lancet*.
15 2020 Feb;395 (10225):689–697.
- 16 12. X. Yang, Y. Yu, J. Xu, H. Shu, J. Xia, H. Liu, et al. Clinical course and outcomes of critically ill
17 patients with SARS-CoV-2 pneumonia in Wuhan, China: a single-centered, retrospective, observational
18 study. *Lancet Respir Med*. 2020 May;8 (5):475–481.
- 19 13. J.H. Beigel, K.M. Tomashek, L.E. Dodd, A.K. Mehta, B.S. Zingman, A.C. Kalil, et al.
20 Remdesivir for the Treatment of Covid-19 - Final Report. *N Engl J Med*. 2020 Nov;383 (19):1813-1826.
- 21 14. P. Horby, W.S. Lim, J.R. Emberson, M. Mafham, J.L. Bell, L. Linsell, et al. Dexamethasone in
22 Hospitalized Patients with Covid-19—Preliminary Report. *N Engl J Med*. 2021 Feb;384 (8).693–704.
- 23 15. S. Tasaka, A. Ishizaka, T. Urano, K. Sayama, F. Sakamaki, H. Nakamura, et al. BCG priming
24 enhances endotoxin-induced acute lung injury independent of neutrophils. *Am J Respir Crit Care Med*.
25 1995 Sep;152 (3):1041–1049.

- 1 16. C. Song, H. Li, Y. Li, M. Dai, L. Zhang, S. Liu, et al. NETs promote ALI/ARDS inflammation by
2 regulating alveolar macrophage polarization. *Exp Cell Res.* 2019 Sep;382 (2):111486.
- 3 17. C. Wang, J. Xie, L. Zhao, X. Fei, H. Zhang, Y. Tan, et al. Alveolar macrophage dysfunction and
4 cytokine storm in the pathogenesis of two severe COVID-19 patients. *EBioMedicine.* 2020
5 Jul;57:102833.
- 6 18. T.R. Martin. Lung cytokines and ARDS: Roger S. Mitchell Lecture. *Chest.* 1999 Jul;116 (1
7 Suppl):2S-8S.
- 8 19. H. Schütte, J. Lohmeyer, S. Rosseau, S. Ziegler, C. Siebert, H. Kielisch, et al. Bronchoalveolar
9 and systemic cytokine profiles in patients with ARDS, severe pneumonia and cardiogenic pulmonary
10 oedema. *Eur Respir J.* 1996 Sep;9 (9):1858–1867.
- 11 20. G.U. Meduri, S. Headley, G. Kohler, F. Stentz, E. Tolley, R. Umberger, et al. Persistent elevation
12 of inflammatory cytokines predicts a poor outcome in ARDS. Plasma IL-1 beta and IL-6 levels are
13 consistent and efficient predictors of outcome over time. *Chest.* 1995 Apr;107 (4):062-1073.
- 14 21. M. Liao, Y. Liu, J. Yuan, Y. Wen, G. X, J. Zhao, et al. Single-cell landscape of bronchoalveolar
15 immune cells in patients with COVID-19. *Nat Med.* 2020 Jun;26 (6);842–844.
- 16 22. A.J. Wilk, A. Rustagi, N.Q. Zhao, J. Roque, G.J. Martínez-Colón, J.L. McKechnie, et al. A
17 single-cell atlas of the peripheral immune response in patients with severe COVID-19. *Nat Med.* 2020
18 Jul;6 (7) (2020):1070–1076.
- 19 23. V.M. Ranieri, G.D. Rubenfeld, B.T. Thompson, N.D. Ferguson, E. Caldwell, E. Fan, et al. Acute
20 respiratory distress syndrome: The Berlin definition. *JAMA.* 2012 Jul;307 (23):2526-2533.
- 21 24. S. Hashimoto, M. Sanui, M. Egi, S. Ohshimo, J. Shiotsuka, R. Seo, R. Tanaka, et al. The clinical
22 practice guideline for the management of ARDS in Japan. *J Intensive Care.* 2017 July;5 (50):50.
- 23 25. D.M. Del Valle, S. Kim-Schulze, H.H. Huang, N.D. Beckmann, S. Nirenberg, B. Wang, et al. An
24 inflammatory cytokine signature predicts COVID-19 severity and survival. *Nat Med.* 2020
25 Oct;26(10) ;1636-1643.

- 1 26. A. Vultaggio, E. Vivarelli, G. Virgili, E. Lucenteforte, A. Bartoloni, C. Nozzoli, *et al.* Prompt
2 Predicting of Early Clinical Deterioration of Moderate-to-Severe COVID-19 Patients: Usefulness of a
3 Combined Score Using IL-6 in a Preliminary Study. *J Allergy Clin Immunol Pract.* 2020 Sep;8(8):2575–
4 2581.e2.
- 5 27. R. Laguna-Goy, A. Utrero-Rico, P. Talayero, M. Lasa-Lazaro, A. Ramirez-Fernandez, L.
6 Naranjo, *et al.* IL-6–based mortality risk model for hospitalized patients with COVID-19. *J Allergy Clin*
7 *Immunol.* 2020 Oct;146 (4):799–807.e.9.
- 8 28. R. Saji, M. Nishii, K. Sakai, K. Miyakawa, Y. Yamaoka, T. Ban, *et al.* Combining IL-6 and
9 SARS-CoV-2 RNAemia-based risk stratification for fatal outcomes of COVID-19. *PLoS One.* 2021
10 Aug;16 (8);e0256022.
- 11 29. T. Herold, V. Jurinovic, C. Arnreich, B.J. Lipworth, J.C. Hellmuth, M.V. Bergwelt-Baildon, *et al.*
12 Elevated levels of IL-6 and CRP predict the need for mechanical ventilation in COVID-19. *J Allergy Clin*
13 *Immunol.* 2020 Jul;146 (1):128–136.e.4.
- 14 30. S. Keddie, O. Ziff, M.K.L. Chou, R.L. Taylor, A. Heslegrave, E. Garr, *et al.* Laboratory
15 biomarkers associated with COVID-19 severity and management. *Clin Immunol.* 2020 Dec;221:108614.
- 16 31. S. Awasthi, T. Wagner, A.J. Venkatakrisnan, A. Puranik, M. Hurchik, V. Agarwal, *et al.* Plasma
17 IL-6 levels following corticosteroid therapy as an indicator of ICU length of stay in critically ill COVID-
18 19 patients. *Cell Death Discov.* 2021 Mar;7 (1):55.
- 19 32. J.M. Galván-Román, S.C. Rodríguez-García, E. Roy-Vallejo, A. Marcos-Jiménez, S. Sánchez-
20 Alonso, C. Fernández-Díaz, *et al.* IL-6 serum levels predict severity and response to tocilizumab in
21 COVID-19: An observational study. *J Allergy Clin Immunol.* 2021 Jan;147 (1):72-80.e8.
- 22 33. E.L. Burnham, W.J. Janssen, D.W. Riches, M. Moss, G.P. Downey. The Fibroproliferative
23 Response in Acute Respiratory Distress Syndrome: Mechanisms and Clinical Significance. *Eur Respir J.*
24 2014 Jan;43 (1):276–285.
- 25 34. A.W. Thille, A. Esteban, P. Fernández-Segoviano, J.M. Rodriguez, J.A. Aramburu, P. Vargas-
26 Errázuriz, *et al.* Chronology of Histological Lesions in Acute Respiratory Distress Syndrome With

- 1 Diffuse Alveolar Damage: A Prospective Cohort Study of Clinical Autopsies. *Lancet Respir Med*. 2013
- 2 Jul;1(5):395–401.
- 3 35. N.E. Cabrera-Benitez, J.G. Laffey, M. Parotto, P.M. Spieth, J. Villar, H. Zhang, et al. Mechanical
- 4 Ventilation-Associated Lung Fibrosis in Acute Respiratory Distress Syndrome: A Significant Contributor
- 5 to Poor Outcome. *Anesthesiology*. 2014 Jul;121 (1):189–198.
- 6 36. G.U. Meduri, P.R. Rocco, D. Annane, S.E. Sinclair. Prolonged glucocorticoid treatment and
- 7 secondary prevention in acute respiratory distress syndrome. *Expert Rev Respir Med*. 2010 Apr;4
- 8 (2) :201-210.
- 9 37. B.M. Tomazini, I.S. Maia, A.B. Cavalcanti, O. Berwanger, R.G. Rosa, V.C. Veiga, et al. Effect of
- 10 Dexamethasone on Days Alive and Ventilator-Free in Patients With Moderate or Severe Acute
- 11 Respiratory Distress Syndrome and COVID-19: The CoDEX Randomized Clinical Trial. *JAMA*. 2020
- 12 Oct;324 (13):1307-1316.
- 13 38. X. Chen, J. Zhou, C. Chen, B. Hou, A. Ali, F. Li, et al. Consecutive Monitoring of Interleukin-6
- 14 Is Needed for COVID-19 Patients. *Viol Sin*. 2021;36 (5):1093-1096.
- 15 39. A.S. Slutsky. Neuromuscular blocking agents in ARDS. *N Engl J Med*. 2010 Sep;363 (12):1176-
- 16 1180.
- 17 40. R. Obata, T. Maeda, D. Rizk, T. Kuno. Increased Secondary Infection in COVID-19 Patients
- 18 Treated with Steroids in New York City. *Jpn J Infect Dis*. 2021 Jul;74 (4):307–315.
- 19 41. J.V. Castell, M.J. Gómez-Lechón, M. David, T. Andus, T. Geiger, R. Trullenque, et al.
- 20 Interleukin-6 is the major regulator of acute phase protein synthesis in adult human hepatocytes. *FEBS*
- 21 *Lett*. 1989 Jan;242 (2):237–239.
- 22 42. P.B. Sehgal. Interleukin-6: a regulator of plasma protein gene expression in hepatic and non-
- 23 hepatic tissues. *Mol Biol Med*. 1990 Apr;7 (2):117–130.
- 24 43. S.K. Fischer, K. Williams, L. Wang, E. Capio, M. Briman. Development of an IL-6 point-of-care
- 25 assay: utility for real-time monitoring and management of cytokine release syndrome and sepsis.
- 26 *Bioanalysis*. 2019 Oct;11 (19):1777–1785.

- 1 44. D.W. Jekarl, S.Y. Lee, J. Lee, Y.J. Park, Y. Kim, J.H. Park. Procalcitonin as a diagnostic marker
2 and IL-6 as a prognostic marker for sepsis. *Diagn Microbiol Infect Dis*. 2013 Apr;75 (4):342–347.
- 3 45. P. Damas, D. Ledoux, M. Nys, Y. Vrindts, D. De Groote, P. Franchimont, M. Lamy. Cytokine
4 serum level during severe sepsis in human IL-6 as a marker of severity. *Ann Surg*. 1992 Apr;215
5 (4) :356–362.
- 6 46. J.E. Gottenberg, J.M. Dayer, C. Lukas, B. Ducot, G. Chiocchia, A. Cantagrel, et al. Serum IL-6
7 and IL-21 are associated with markers of B cell activation and structural progression in early rheumatoid
8 arthritis: results from the ESPOIR cohort. *Ann Rheum Dis*. 2012 Jul;71 (7):1243–1248.

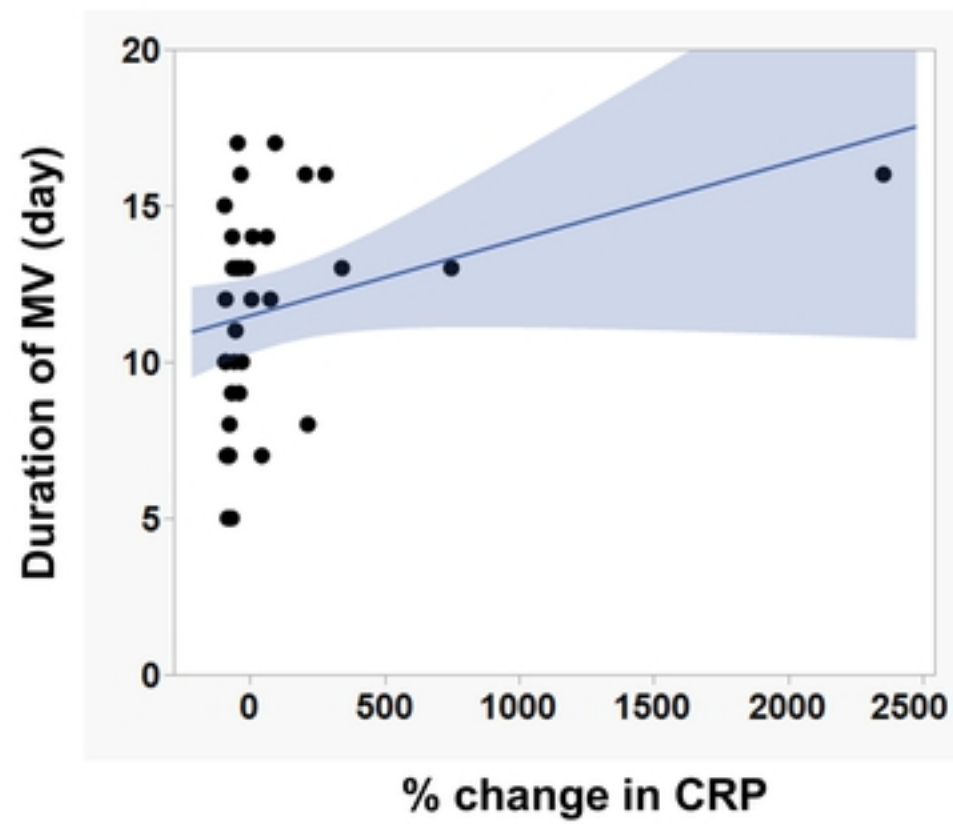
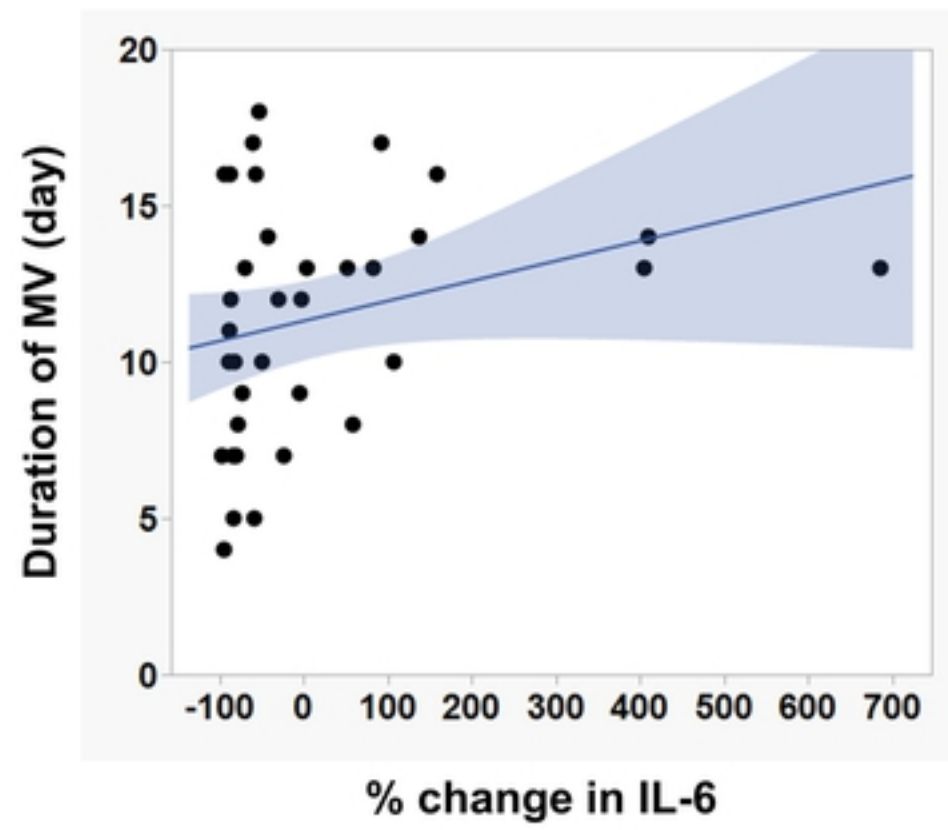
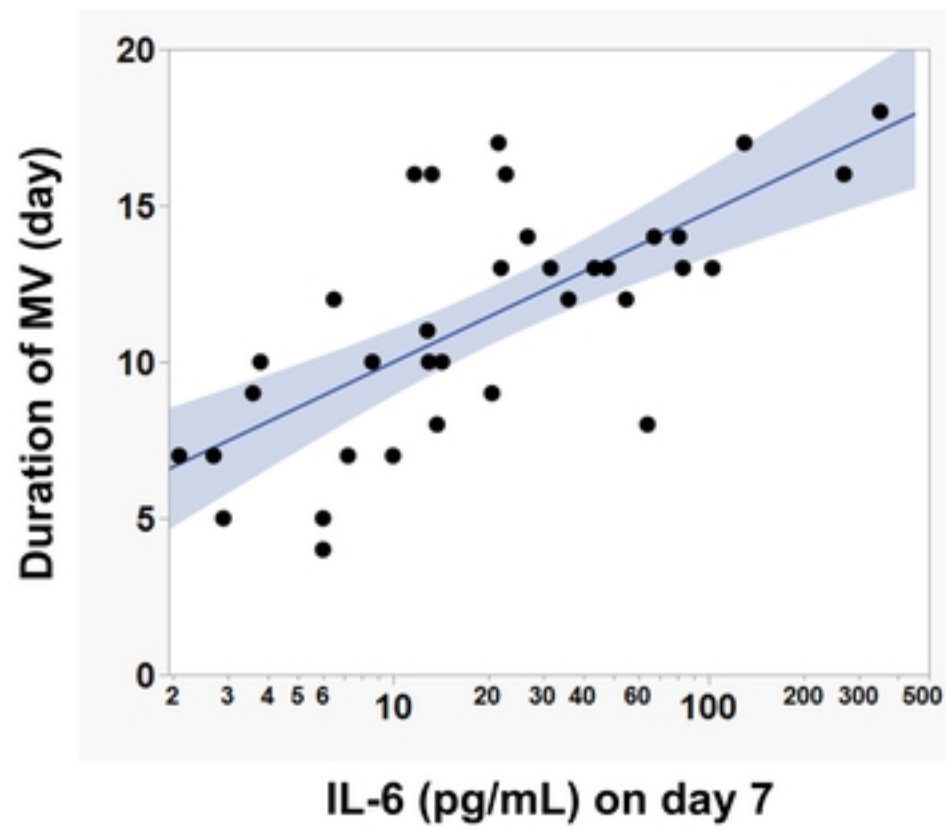


Figure 1

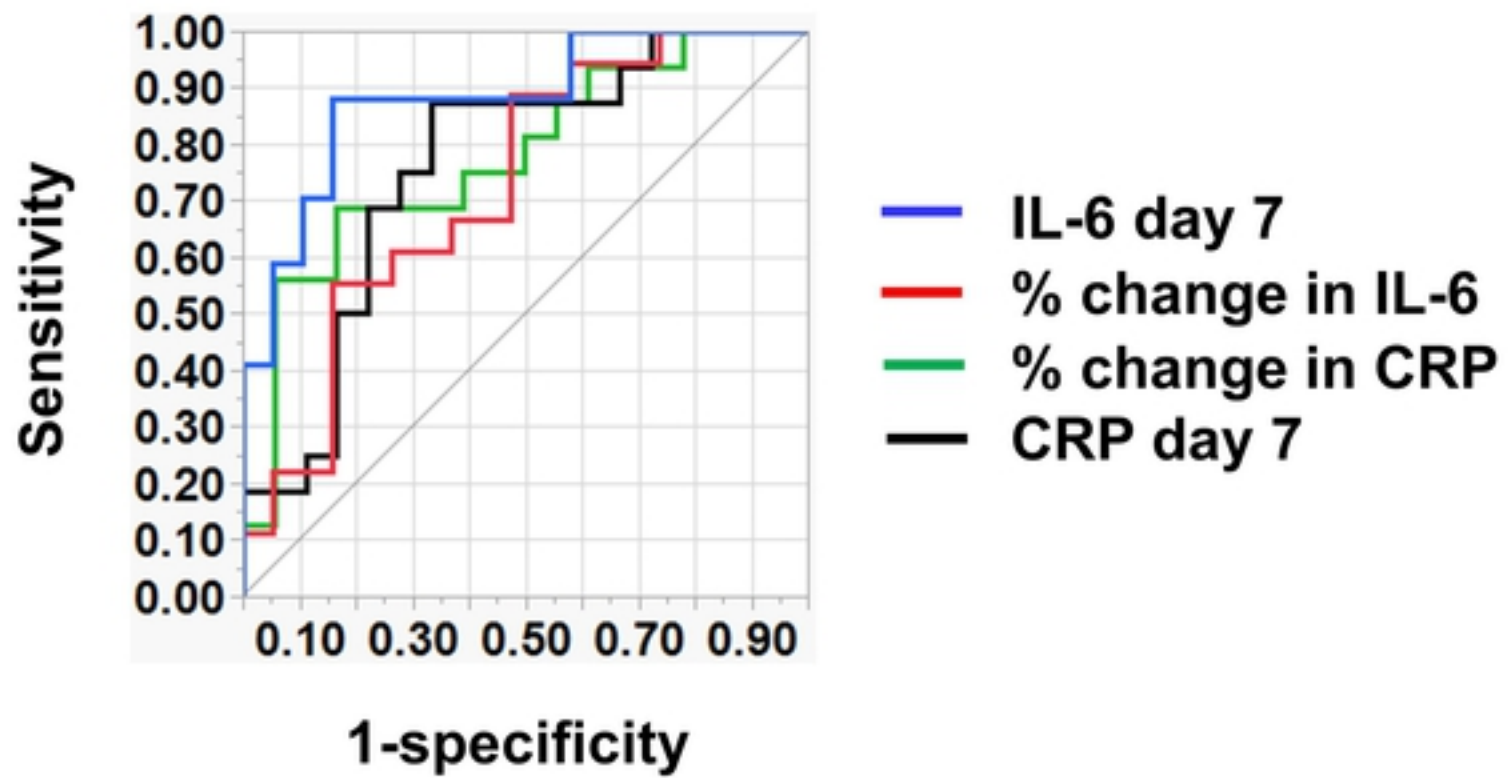


Figure2

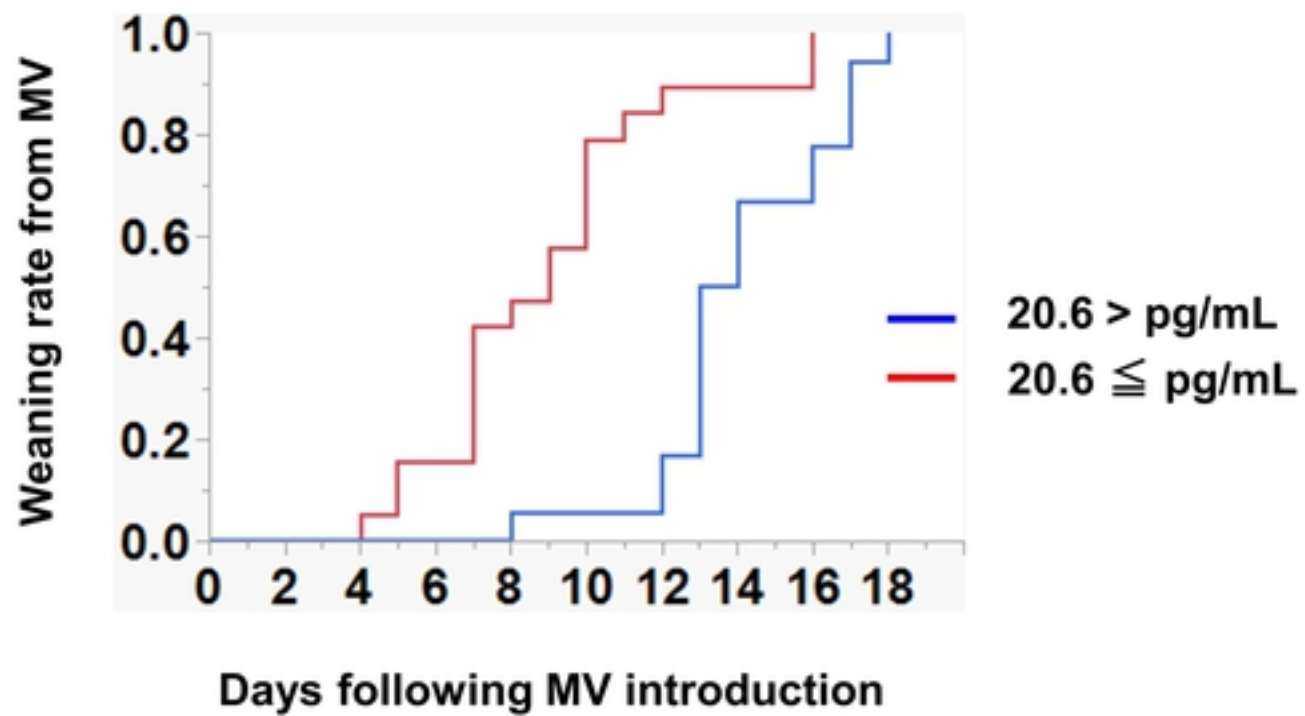


Figure3